

COLORADO STATE TEACHERS COLLEGE
BULLETIN

—
Mountain Classes
in
Natural Science



Students at the "Top of the World"

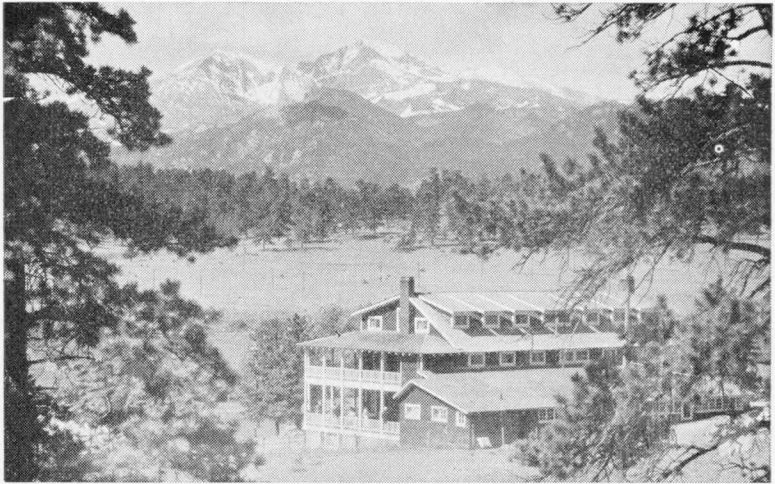
Estes Park ~ 1930

SERIES XXIX

SEPTEMBER

NUMBER 6

Published monthly by Colorado State Teachers College, Greeley, Colorado.
Entered as Second Class Matter at the Postoffice at Greeley, Colorado,
under the Act of August 24, 1912.



*"Olympus Inn—Headquarters for mountain classes.
Good food and good beds."*

THE QUESTION

How would you like to go to summer school and still have a complete change? Would you like mountain environment, beautiful scenery, invigorating atmosphere, bus rides, hikes, healthful exercise every day? Would you like college credit? And would you like to have all this at the very moderate cost of less than one hundred fifty dollars, exclusive of transportation from your home to Greeley, Colorado?

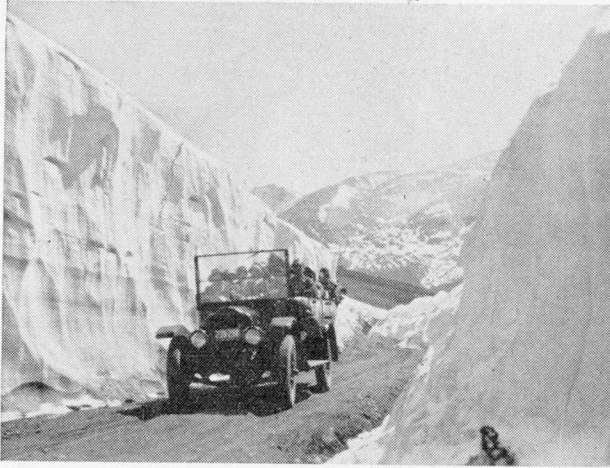
This folder is intended to show you how you may have such an outing during your summer vacation and at the same time receive college credit for the good time you are experiencing.

THE PLAN

Two mountain classes offering courses in Natural Sciences will be conducted in the Rocky Mountain National Park during each half of the summer school of Colorado State Teachers College. Students wishing to enroll for these courses will come first to Greeley, register, pay fees, and spend three days on the campus. These are busy days, each packed full of interesting, worthwhile study. The next 29 days are spent in the mountains. Headquarters for the classes will be at Camp Olympus. This is a fine mountain lodge with excellent beds, good food and ideal study conditions.

Each day includes some educational activity, but the study is out-of-doors among the rocks and trees and flowers. It consists of observing and interpreting nature rather than poring over books. The fact that the work is interesting and is done with pleasure rather than with annoyance does not detract from its educational value. It is what Thorndike would call "Whole-hearted purposeful activity with satisfaction at the end."

Three days in the week, students take bus trips into the Rocky Mountain National Park or adjacent territory. Many of these trips are far up into the mountains above the timber line, over Alpine meadows and across snow fields that endure even in August. They see all that is of interest in this region—see it accompanied by an instructor and guide who has spent many seasons in the Rocky Mountain National Park and who has had years of experience as a science teacher in college classrooms.



*Through a Canyon of Snow and Ice in July.
Students of Colorado State Teachers
College near Fall River Pass*

REGISTRATION

Students who wish to enroll for mountain classes for the first half of summer school will register Monday, June 16.

Students enrolling for the mountain classes conducted during the second half will register Monday, July 21.

These dates are arranged to permit students to enroll for mountain classes either half and campus classes the other half of the summer school. Students who wish to attend only five weeks may enroll for mountain classes either half.

THE COST

Tuition fees	\$16.00	
Laboratory fees \$2.00 per course	4.00	
Board and Lodging three days in Greeley	5.50	
Auto Bus Round Trip Greeley to Estes Park	5.00	
Board and Lodging 29 days at Olympus Inn	72.00	
Bus trips in Estes Park and vicinity	30.00	\$132.50
Longs Peak Trip, Extra and Optional	4.50	
Fees for non-residents of Colorado	2.50	7.00
TOTAL		\$139.50

THE COURSES

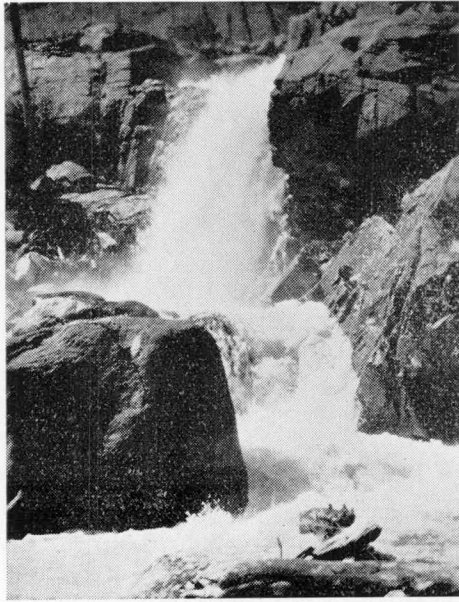
Students may complete two courses (8 quarter-hours) during either half of the summer quarter.

FIRST HALF SUMMER QUARTER, JUNE 16 TO JULY 19, 1930

ZOOLOGY 3. Bird Study. Mr. Shirling, Instructor.

Four quarter-hours credit.

Field work with birds of the Colorado mountains, consisting of identification, study of habits and habitat, nesting, food, etc. Field work will be supplemented with a lecture period each evening. Lectures will prepare the way for field work and will also emphasize the characteristics of the different bird families and groups.

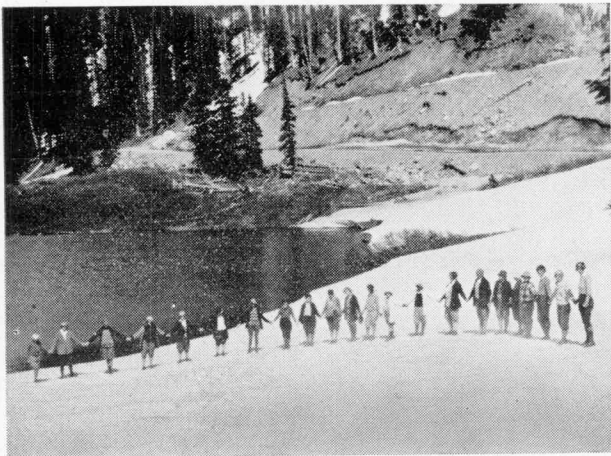


*One of the Many Fine Views Seen Along
the Trail to Loch Vale*

BOTANY 104. Mountain Flora. Mr. Shirling, Instructor.

Four quarter-hours credit.

In this course emphasis will be placed on mountain flora. Study periods will be spent in the field with flowers in their natural environment, determining their family characteristics and classification by means of an analytical key. Morning lectures will give a foundation for the field work and assist in the interpretation of various problems that arise. Great opportunity is given here for comparison of vegetation in the different climatic zones of



*A Line-up on the Snow at Milner Pass—
Photo Taken During Early Part of July*



*We Get Close to the Birds—
Warbling Vireo and Nestlings*

northern United States and Canada to far polar regions by means of field trips into the alpine regions.

SECOND HALF SUMMER QUARTER, JULY 21 TO AUGUST 23, 1930

ELEMENTARY SCIENCE I. Nature Study. Mr. Shirling, Instructor.

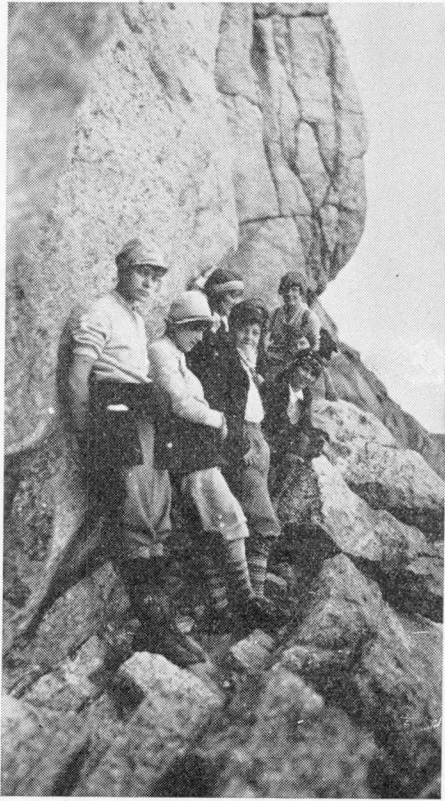
Four quarter-hours credit.

This course will consist of lectures and field work. The daily evening lecture periods will include discussions of the various phases of nature study as birds, flowers, animals, etc. Some attention will also be given to procedures in teaching nature material.

The daily field work will supplement the lectures, and will consist of observations and reports on various forms of plant and animal life appropriate for study in the environment of Estes Park and the Rocky Mountain National Park. Since opportunities are so favorable, some attention will also be given to the geological features along the way.



*Looking at the "Never Summer" Range. Student Group
from Colorado State Teachers College*



*The Long Trail is Narrow in Places;
Perfectly Safe—Even if it is a Thousand
Feet to the Bottom*

This field work will give rare opportunity for becoming familiar with mountain conditions. Three motor-bus trips a week will enable the class to see all the finer parts of the Rocky Mountain National Park. The three other days will be spent in the immediate neighborhood of Camp Olympus, Estes Park, which will be the headquarters of the class.

BOTANY 4. Forestry. Mr. Shirling, Instructor.

Four quarter-hours credit.

The forests of the mountain slopes furnish a good laboratory. The study periods will be spent in the field making observations and reports on various problems pertaining to trees and forestry. Field trips will be made in conjunction with the course in Elementary Science, the time being divided between nature study and forestry.

The daily lecture period will be in the morning and will prepare the way for the field work. In these lectures various problems of forestry that are not available for direct, local observation will also be discussed. The entire course will be planned and presented from the popular rather than the technical standpoint, and the subject matter can be applied to teaching in the public schools.



*Columbines, Colorado's State Flower, in Their
Native Mountain Wilds*

EQUIPMENT

1. Take no trunk—nothing but hand baggage.
2. Do not try to take too many clothes. We are gone only five weeks and laundry is available.
3. The following is a fair sample of equipment:
 - a. A good hiking suit of knickers and blouse, or knickers, blouse and sweater.
 - b. Some dresses as a change from hiking clothes for afternoon wear.
 - c. One good dress.
 - d. One medium weight wrap to wear over hiking clothes on our bus trips and on cold mornings.
 - e. RUBBER SOLED (*Composition*) SHOES: This is important. They are "non-skid." Get boots if you like, but shoes with tops barely above the ankle are lighter and just as good.
 - f. Heavy wool hose. This also is important.
 - g. Some sort of light weight knapsack or bag to hang over your shoulder is convenient.

NOTE: Do not worry about the hikes being too strenuous. They are carefully tempered to your ability. Teachers in ordinary good health will have no difficulty in making all of the trips.

If you wish to enroll for either term or if you wish further information, please communicate with A. E. Shirling, Teachers College, Kansas City, Missouri, who serves as an instructor and guide to student groups at Camp Olympus, or you may make reservations with the Extension Department, State Teachers College, Greeley, Colorado. Enrollment in mountain classes is limited. Reserve your place now by sending five dollars to apply on your tuition to the Extension Department, Colorado State Teachers College, Greeley, Colorado.

