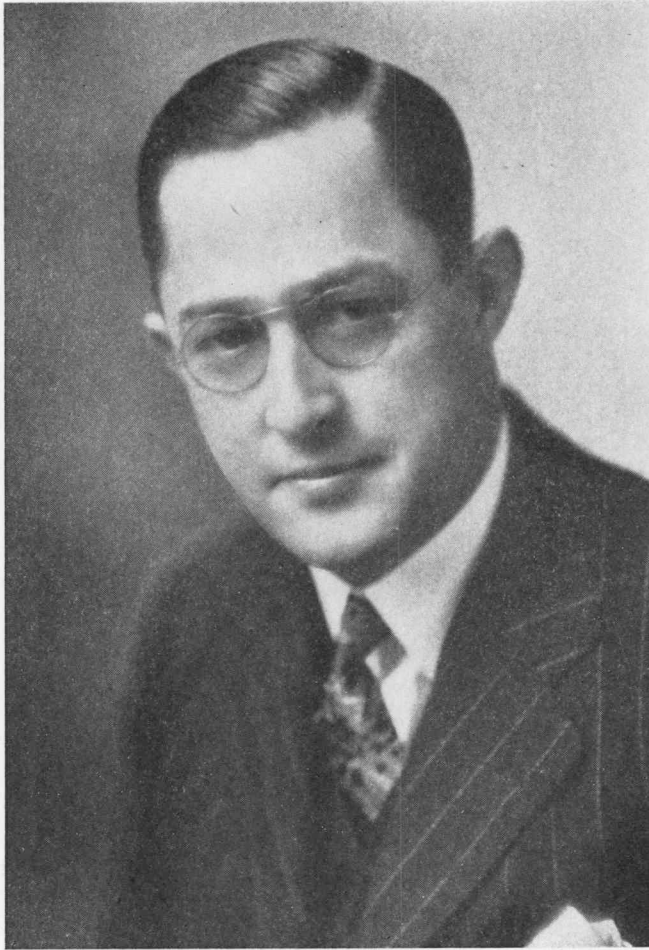


Opportunities for High School Graduates

Colorado State Teachers College
BULLETIN

Prepared by Phi Delta Kappa, Professional Fraternity for Men
in cooperation with the
Department of Publications

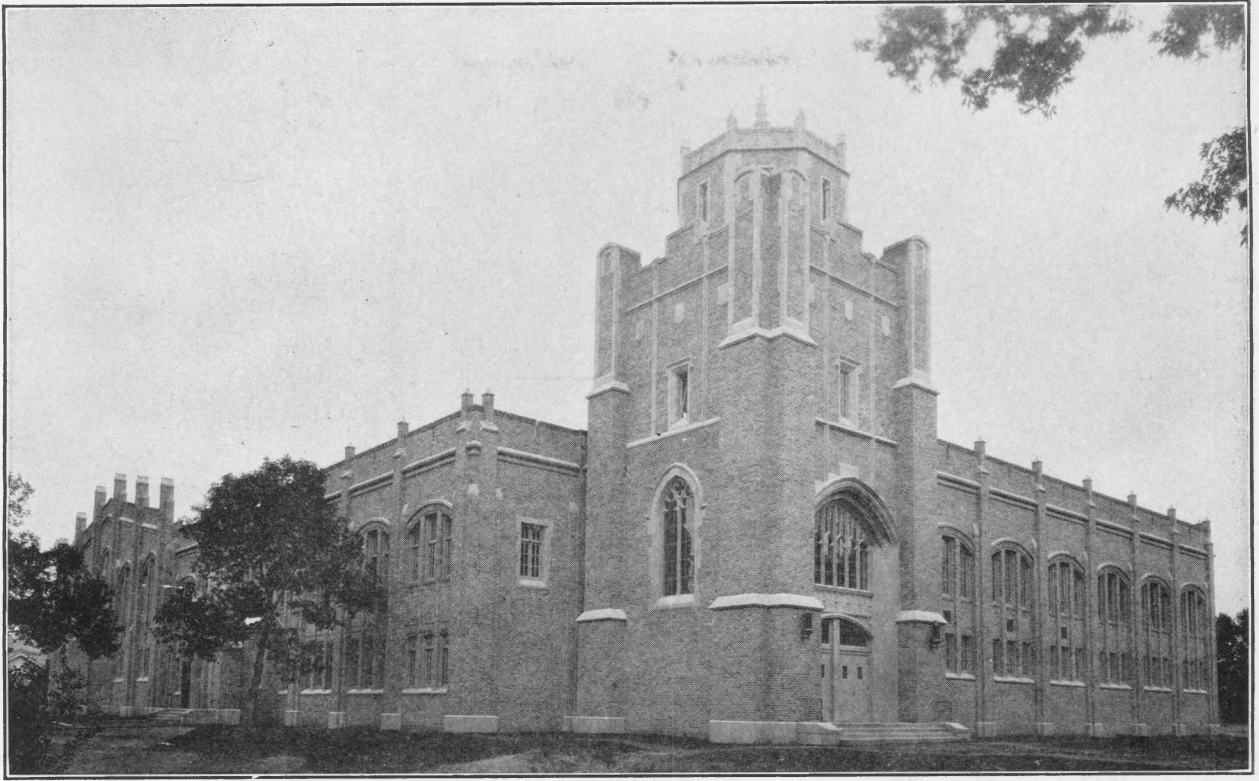
Published Monthly by Colorado State Teachers College, Greeley, Colorado
Entered as second class matter at the Postoffice at Greeley, Colorado, under the Act of
August 24, 1912



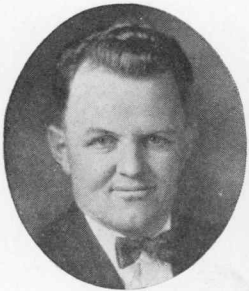
GEORGE WILLARD FRASIER, Ph. D., LL. D., President



MAIN ENTRANCE ADMINISTRATION BUILDING



GUNTER HALL OF HEALTH
Exterior view of the handsome gymnasium and the faculty of the Athletic Department



G. E. COOPER
Director



W. E. SAUNDERS
Football Coach



DR. VON DEN STEINEN
Track Coach and
Medical Adviser



PETE BROWN
Baseball Coach



J. S. DOUBENMIER
Assistant Coach

THE MEN WHO TRAIN THE STUDENTS IN ATHLETICS AND PHYSICAL EDUCATION



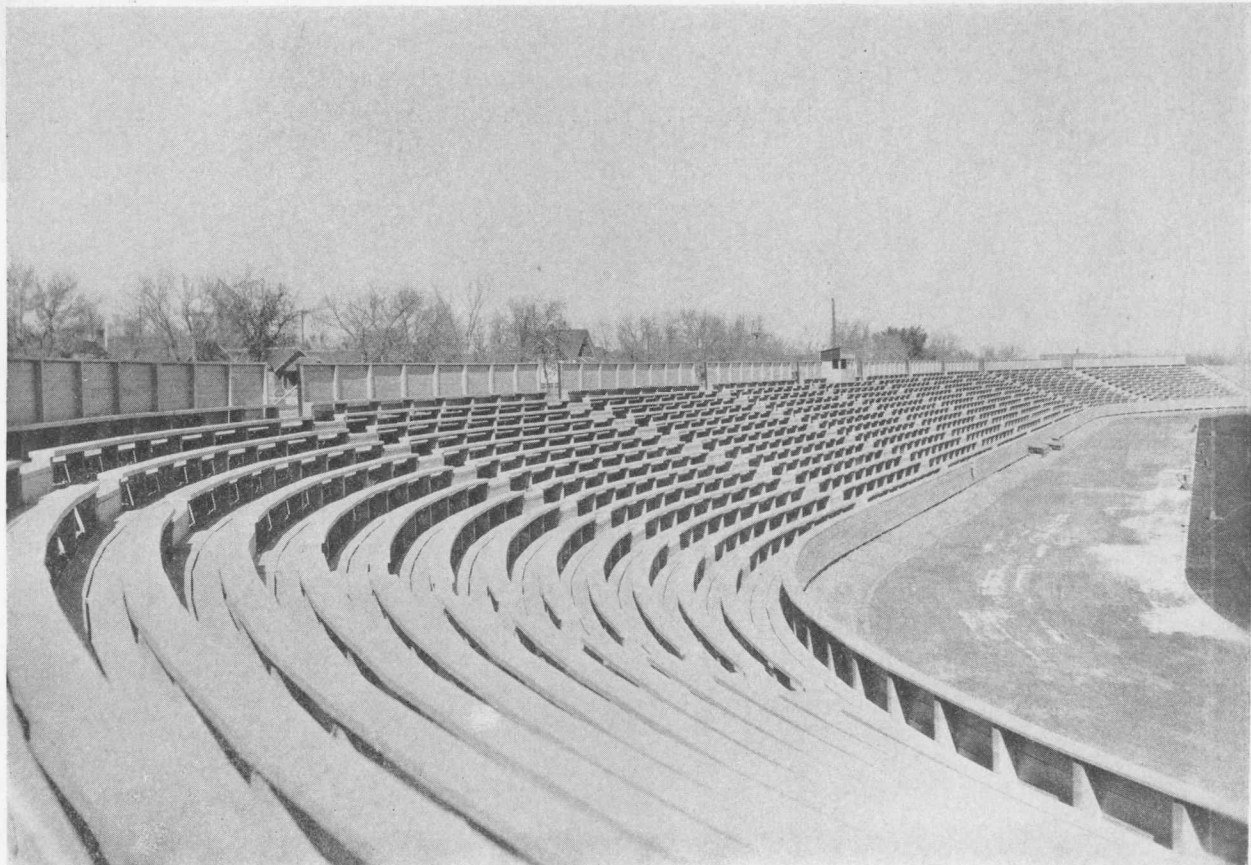
TEACHERS COLLEGE CHAMPION BASKETBALL TEAM
Rocky Mountain Conference



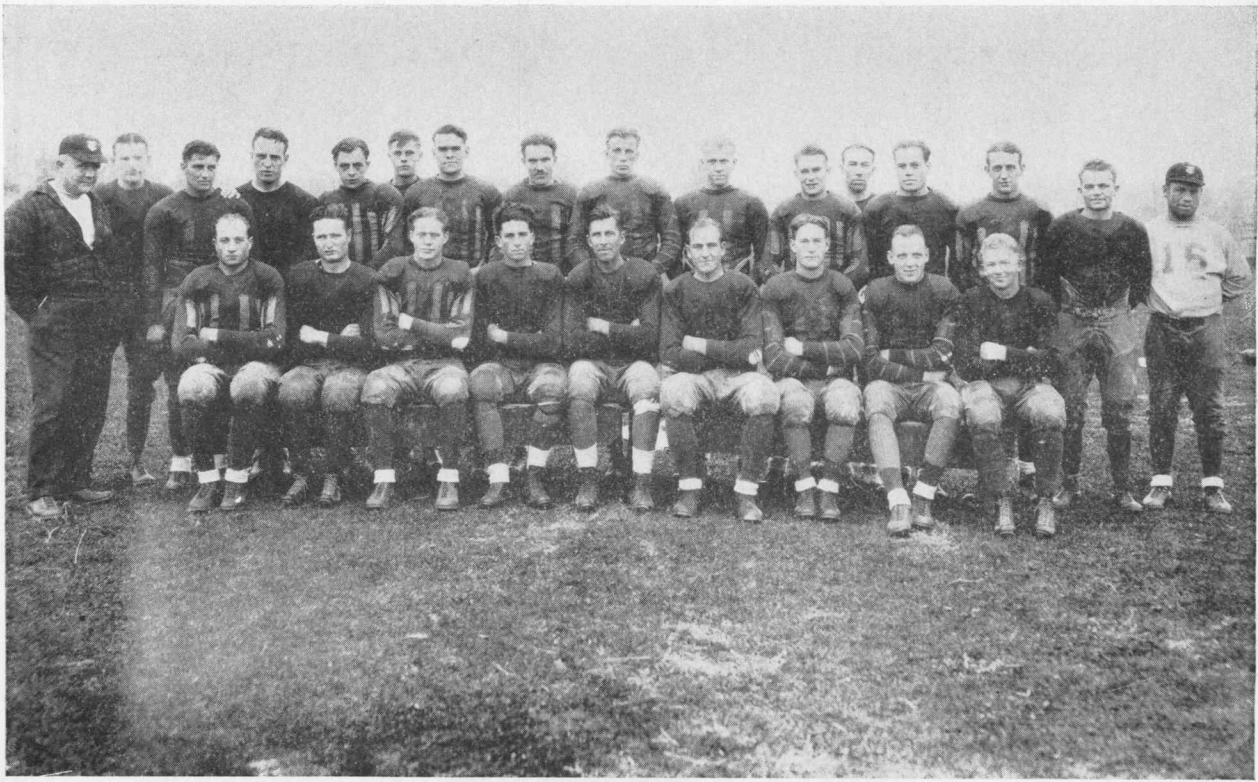
A QUINTET OF GRADUATES WHO ARE HOLDING GOOD JOBS



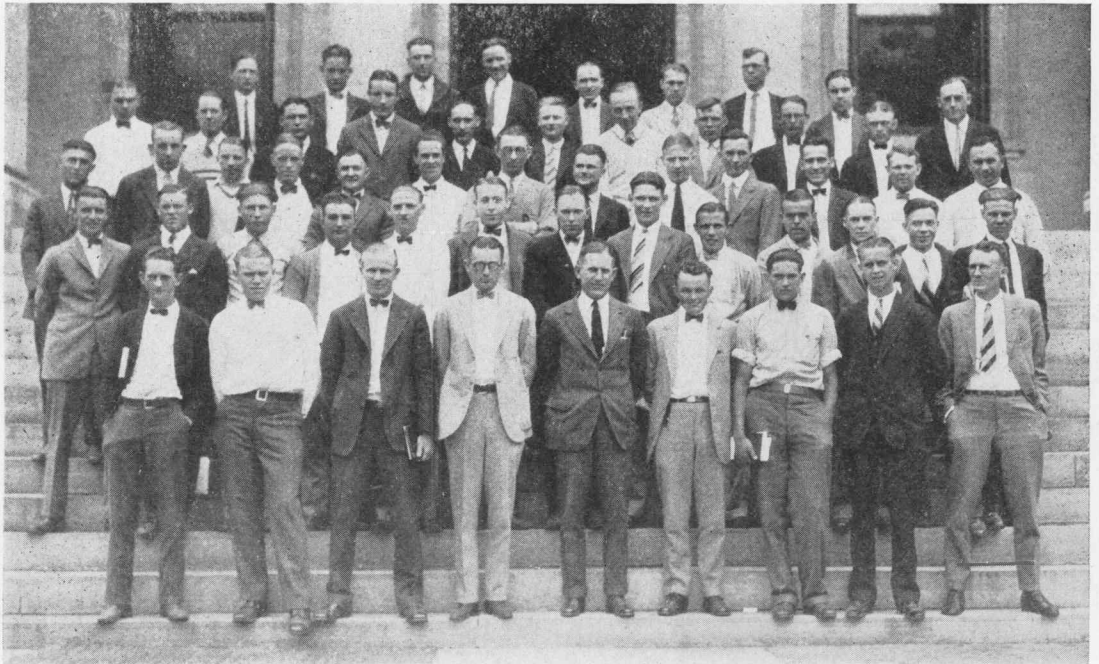
TROPHIES HAVE BEEN WON IN BASKETBALL, BASEBALL, SWIMMING, TRACK AND OTHER COLLEGE ATHLETIC EVENTS



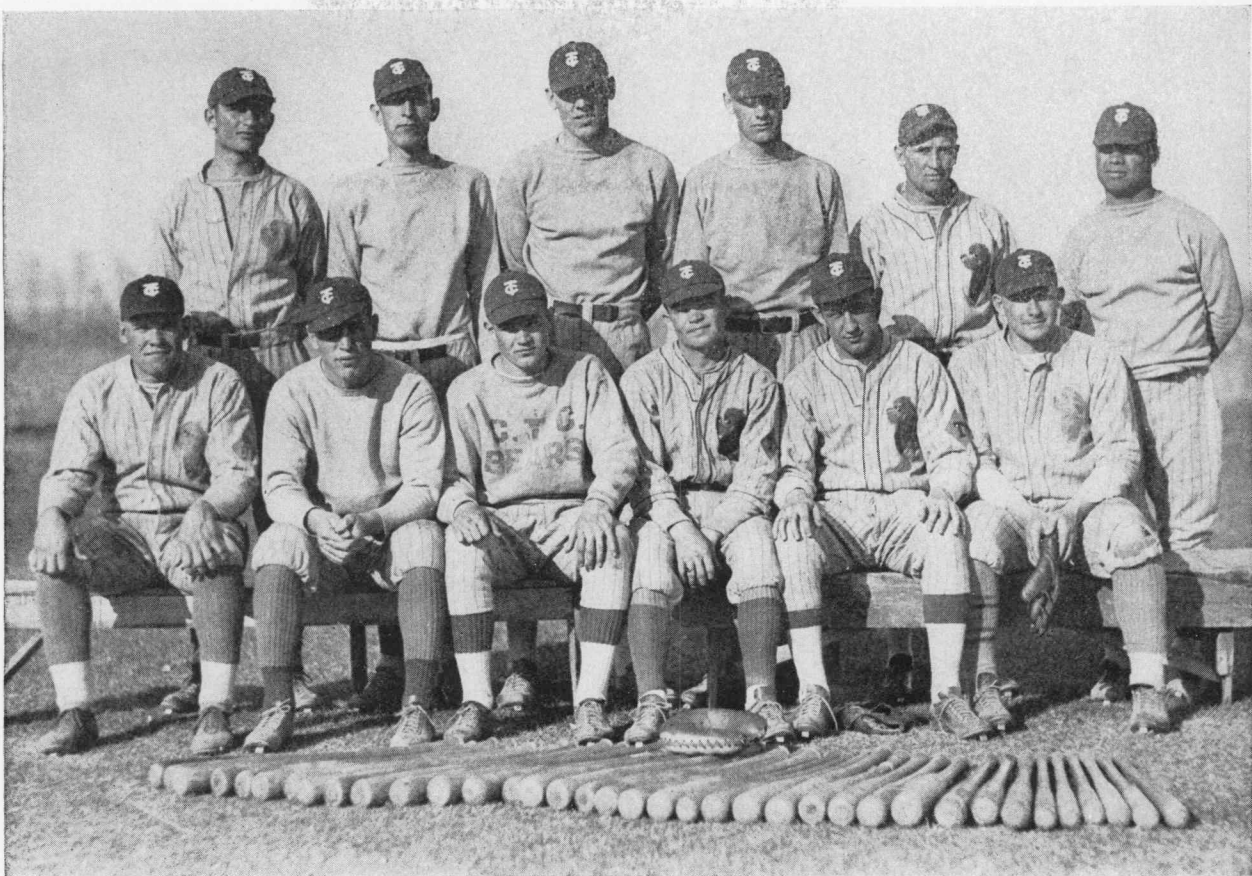
A SECTION OF THE STADIUM ON JACKSON FIELD



1929 VARSITY FOOTBALL SQUAD



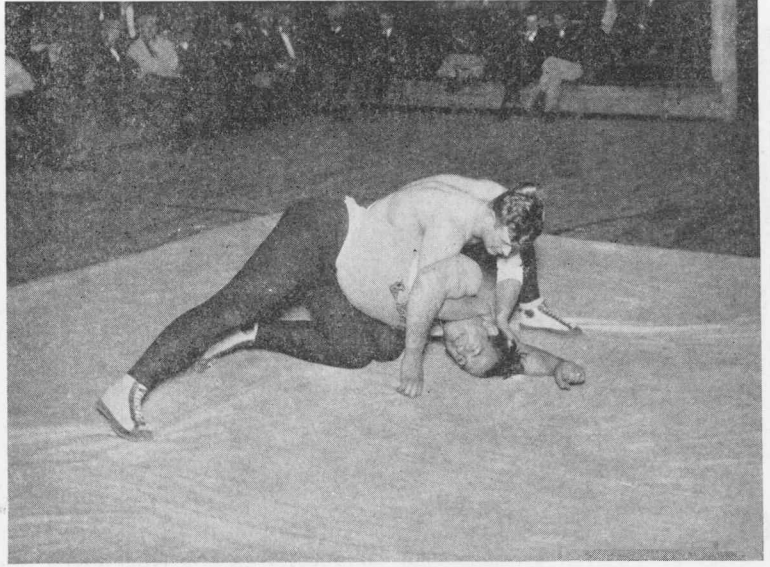
HIGH SCHOOL MENTORS ATTENDING THE SPECIAL SCHOOL FOR COACHES, COLORADO STATE TEACHERS COLLEGE



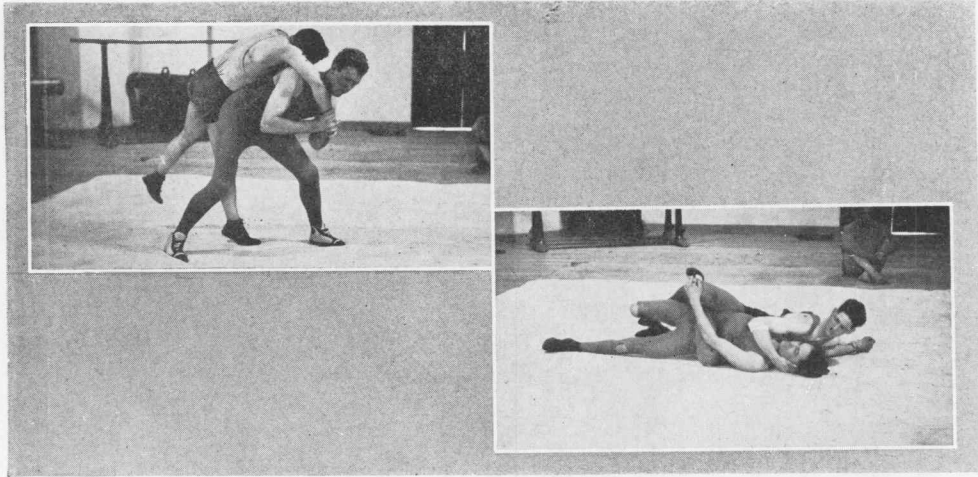
THE 1929 BASEBALL TEAM



SOME TEACHERS' BASEBALL STARS NOW MAKING GOOD



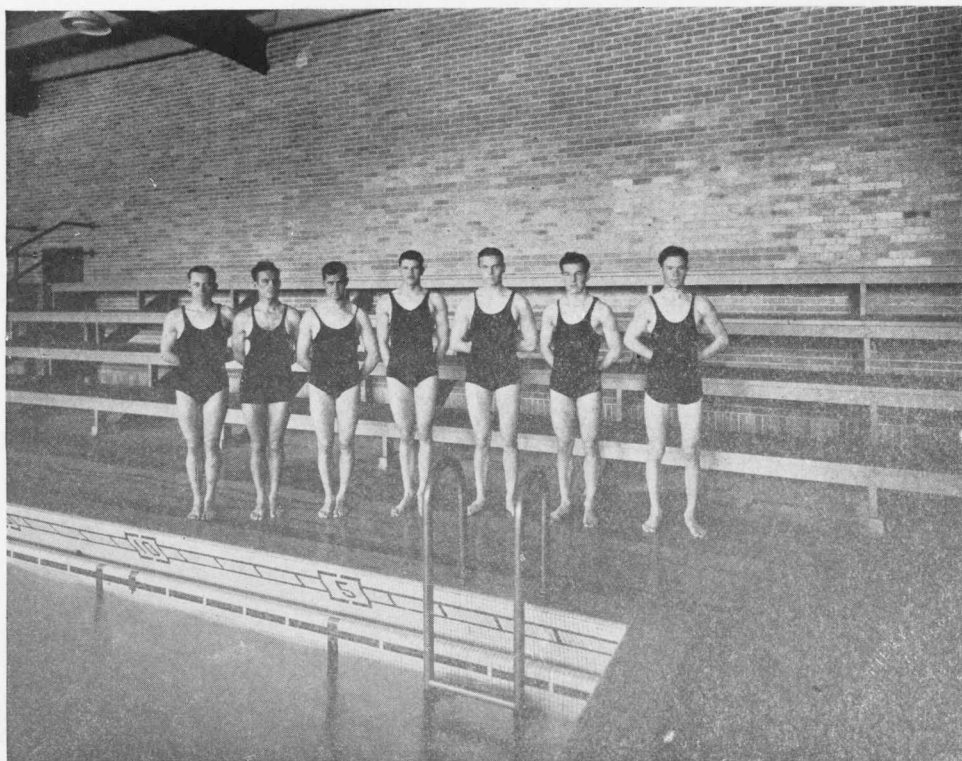
COLORADO TEACHERS CONFERENCE-WINNING MAT MEN



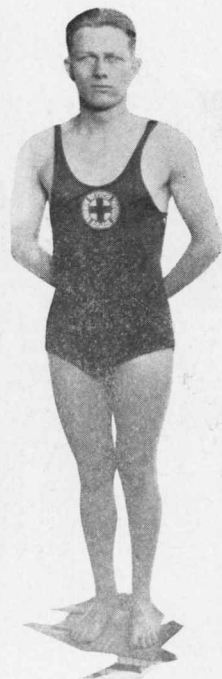
COULD YOU TALK WITH BRATS IN GREAT WRESTLING



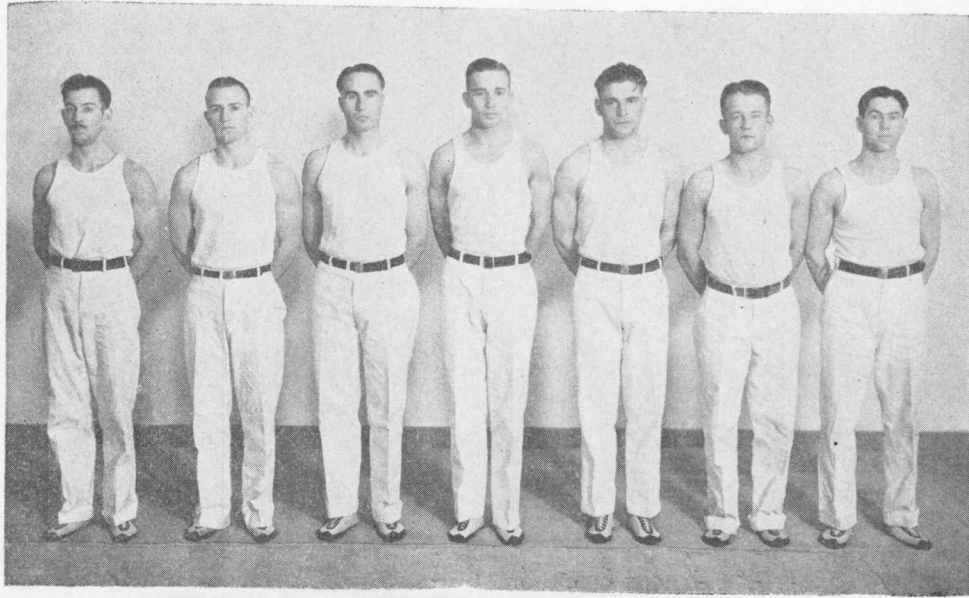
A TEACHERS COLLEGE MAN GOING OVER



THE CONFERENCE SWIMMING TEAM

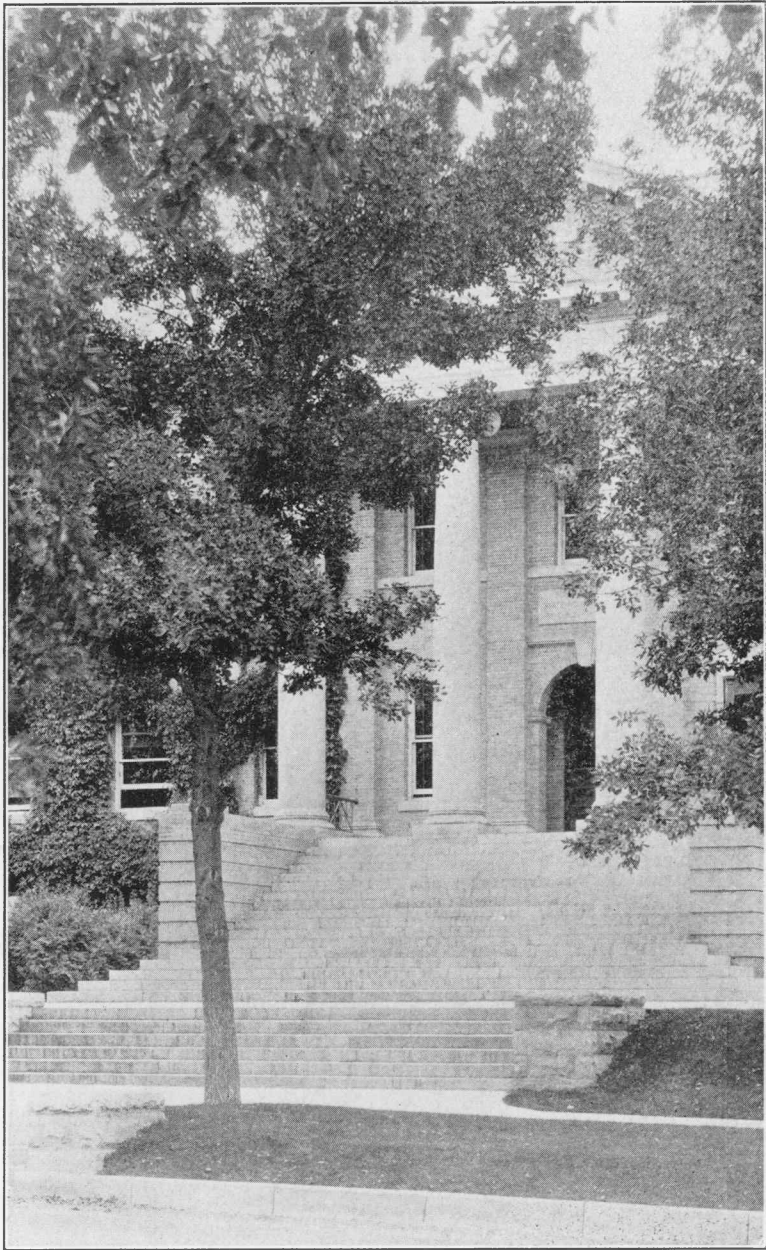


Tumbling
and Acrobatics
Develop
Healthy
Teachers



A SQUAD OF MAT MEN

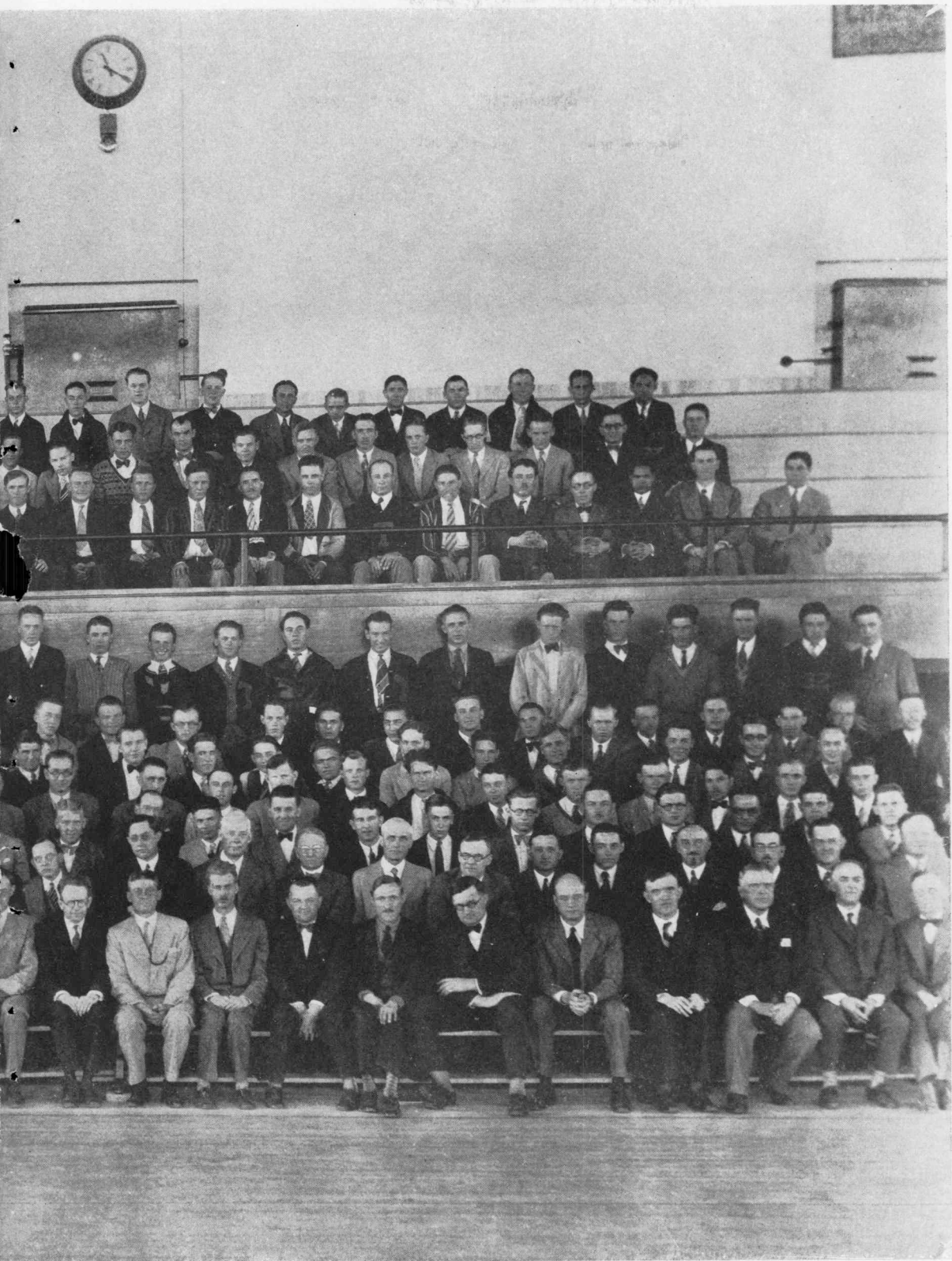




GUGGENHEIM HALL OF INDUSTRIAL ARTS



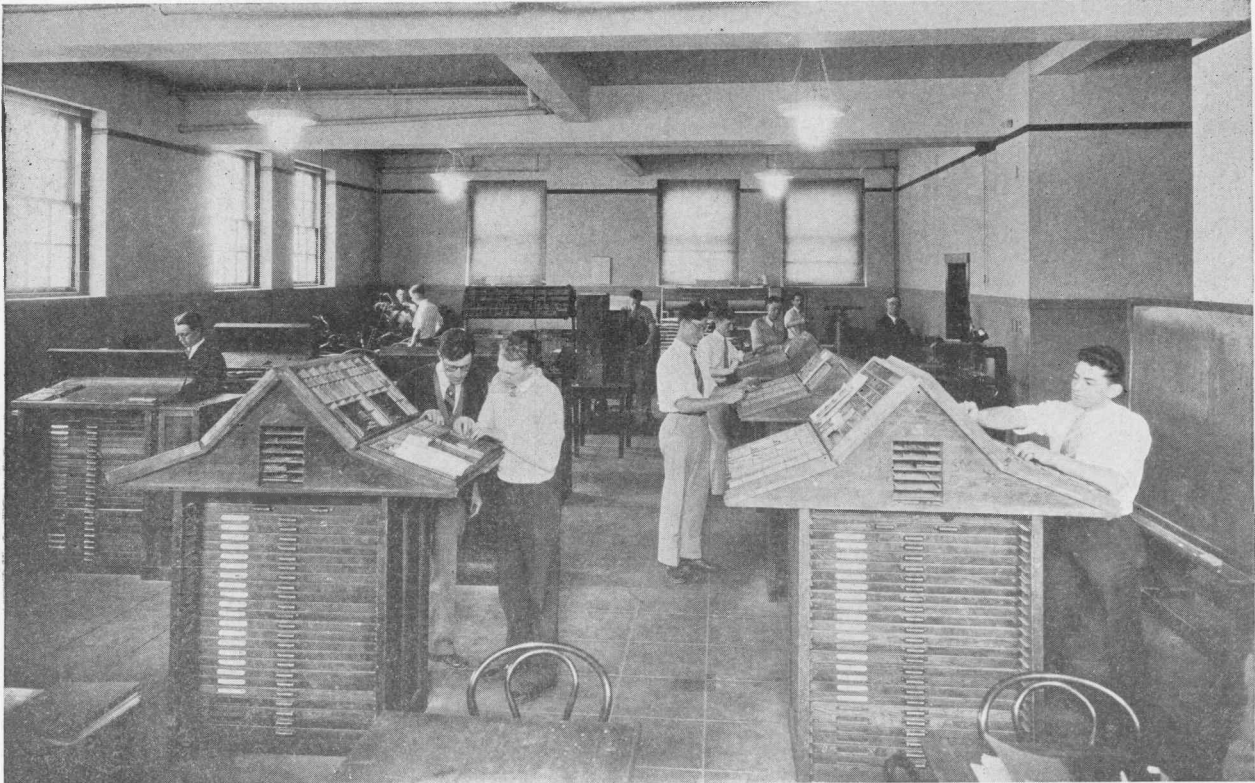
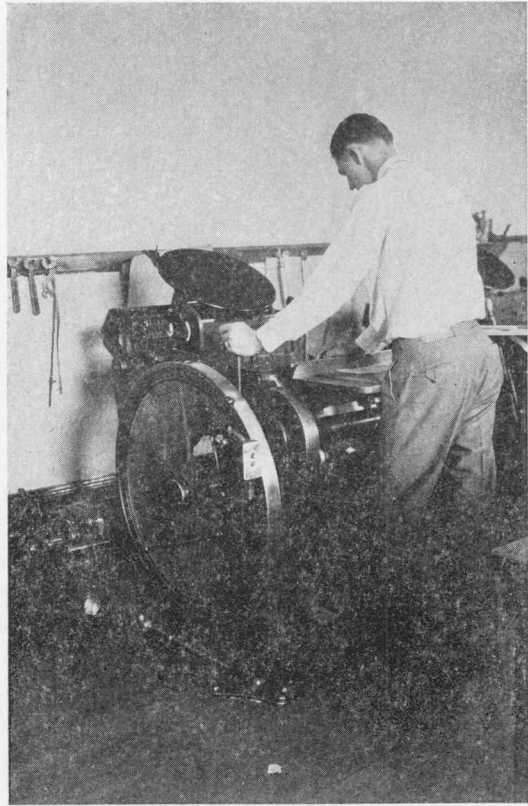
A PORTION OF THE MEN STUDENTS ATTENDING COLORADO STATE



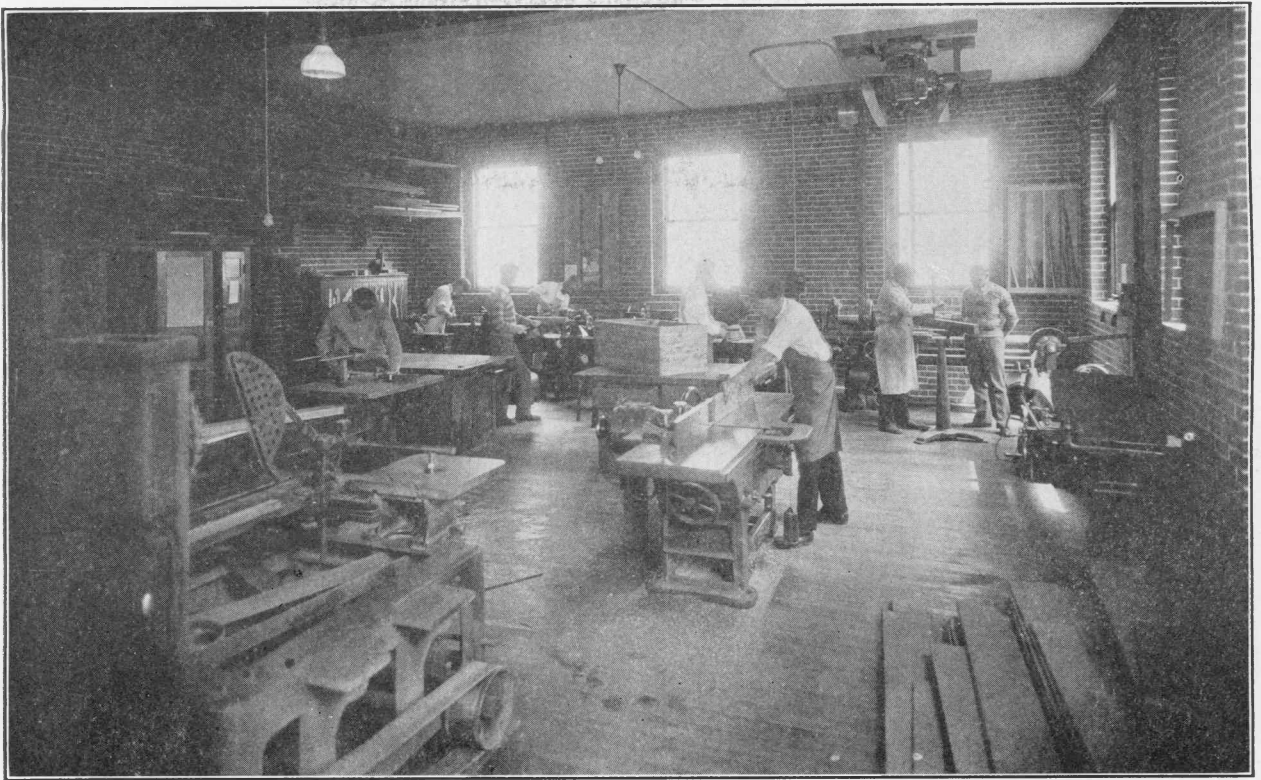
TEACHERS COLLEGE AND A FEW OF THE FACULTY MEMBERS

One of a battery
of platen presses
in the printing
department.

Each press
is operated by
individual motor



STUDENTS LEARNING THE ART OF PRINTING



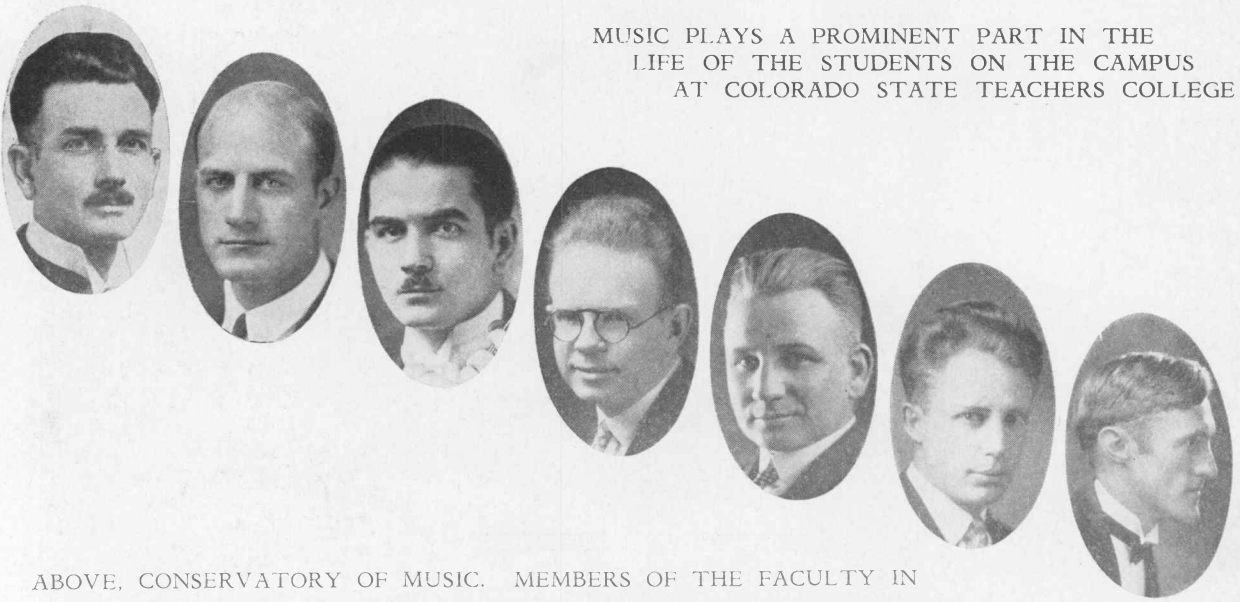
MODERNLY EQUIPPED SHOPS FOR STUDENTS IN INDUSTRIAL EDUCATION



STUDENTS IN THE ARCHITECTURAL DRAWING ROOM



MUSIC PLAYS A PROMINENT PART IN THE
LIFE OF THE STUDENTS ON THE CAMPUS
AT COLORADO STATE TEACHERS COLLEGE



ABOVE, CONSERVATORY OF MUSIC. MEMBERS OF THE FACULTY IN
MUSIC. FROM TOP TO BOTTOM THEY ARE PROFESSORS CLINE, DI-
RECTOR; MOHR, PUBLIC SCHOOL MUSIC; THOMAS, BAND AND ORCHES-
TRA; CHADWICK, PIANO; GRUBB, VOICE; OPP, CELLO; CARTER, VIOLIN



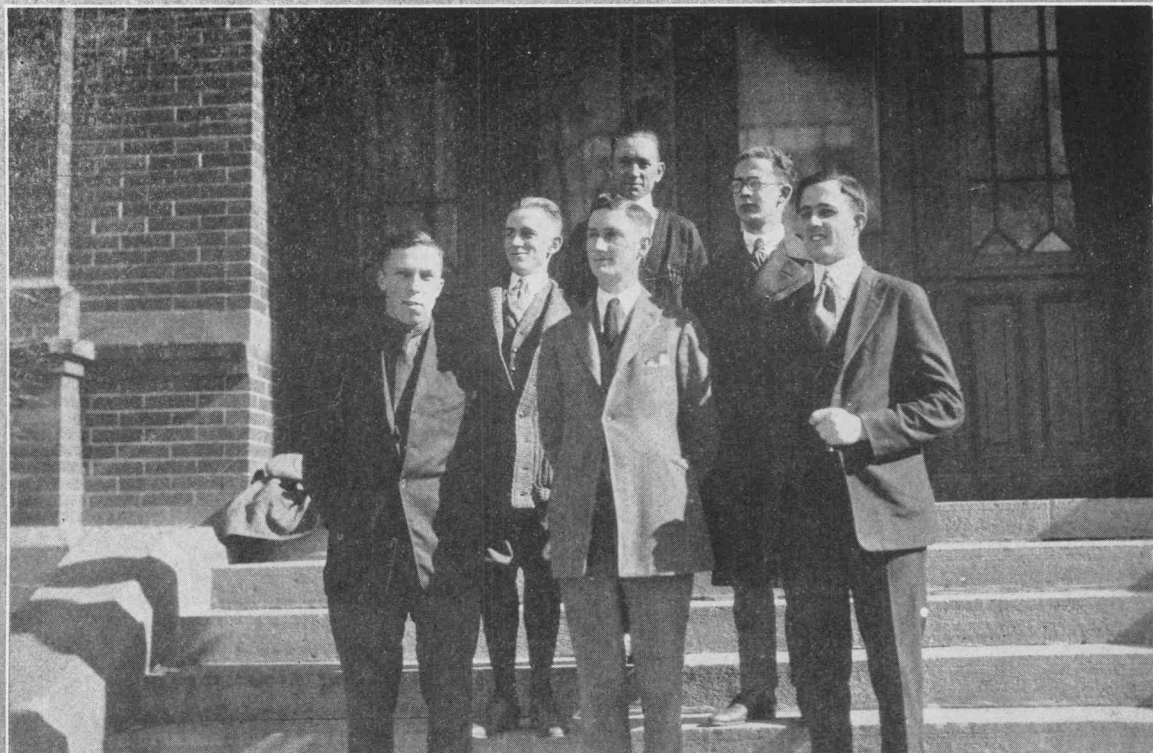
COLORADO STATE TEACHERS COLLEGE BAND



THE PHILHARMONIC ORCHESTRA

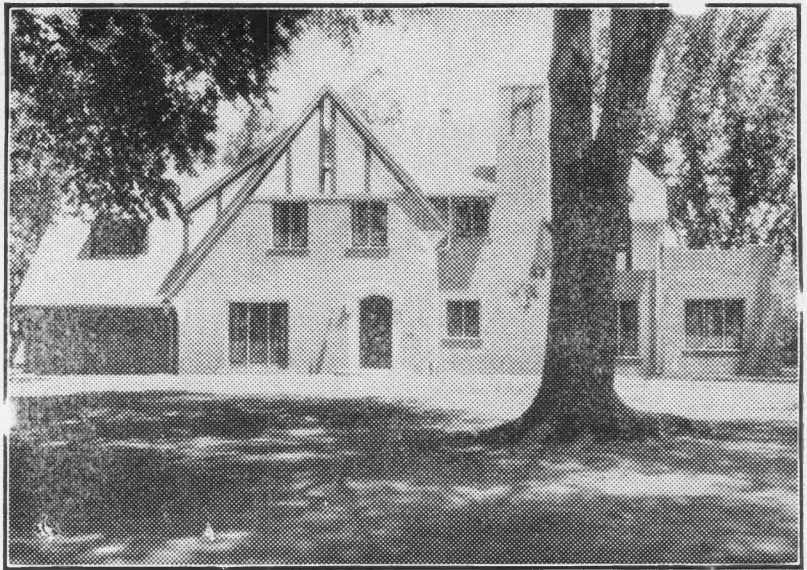


COLORADO STATE TEACHERS COLLEGE GLEE CLUB



MEMBERS OF A DEBATING TEAM

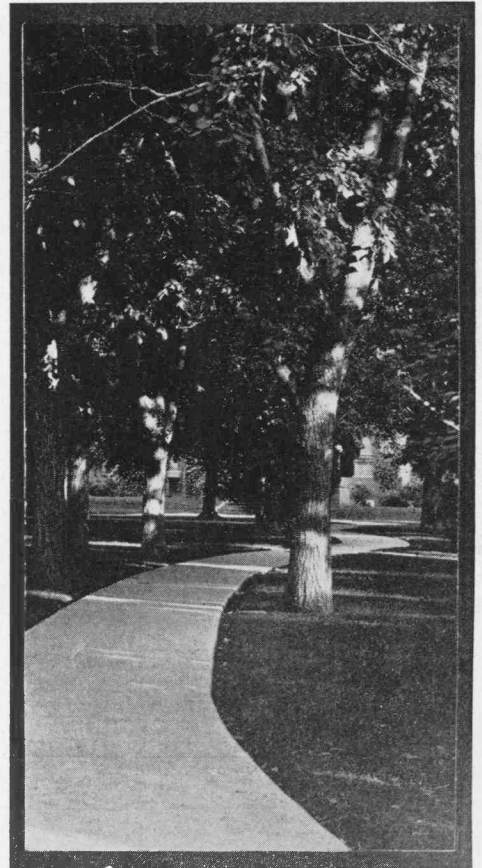
A HINT OF THE
PICTURESQUENESS
OF THE CAMPUS



The President's House



"Nature's Archway"



"Serpentine Walk"



DELTA
PSI
HOME

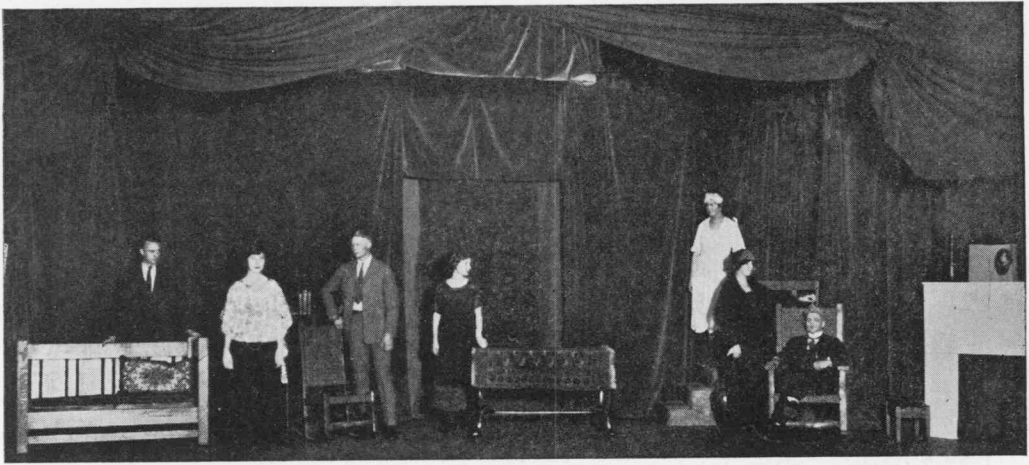


SIGMA
MU
EPSILON

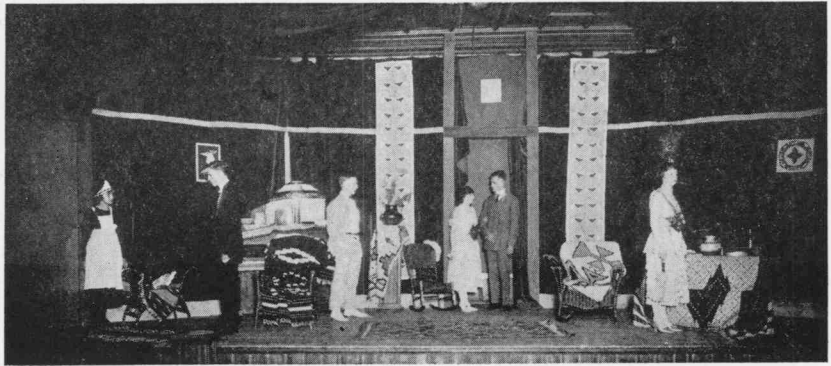


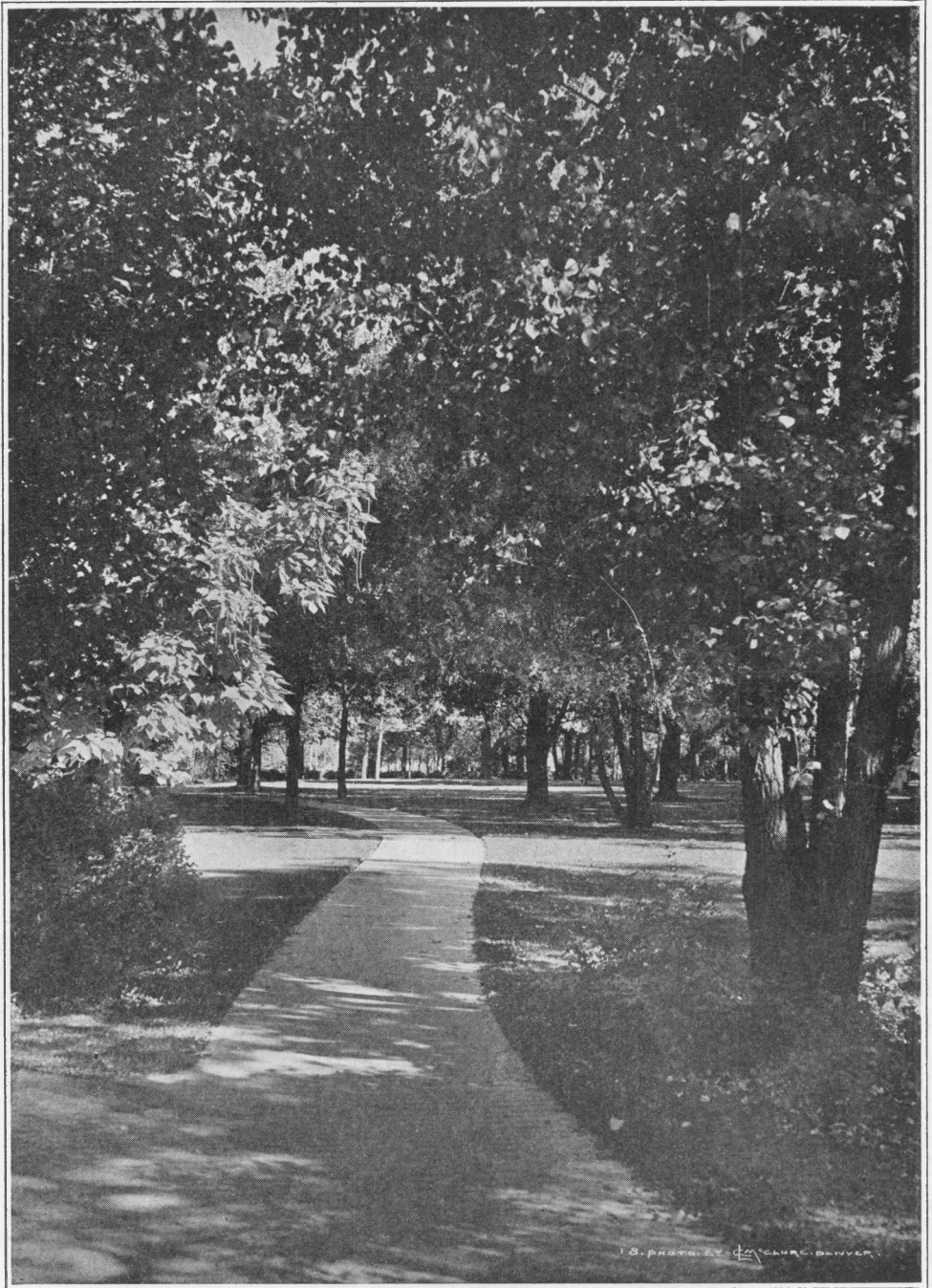
LAMBDA
GAMMA
KAPPA

FRATERNITY LIFE PLAYS AN IMPORTANT PART IN THE LIVES OF MANY OF THE STUDENTS



Dramatics Afford
Opportunities
to a Large
Number of the
Men Students





The Campus in Summertime Is a Mass of Foliage

GENERAL INFORMATION

COLORADO STATE TEACHERS COLLEGE

Date of founding—1890	
Number of students enrolled, 1927-28—1685	(Women, 1359; Men, 326)
Number enrolled summer, 1928—2582	(Women, 2262; Men, 320)
Number on Faculty—109	Number of Men on Faculty—60
Number of Certificates and Degrees granted, 1927-28:	
Life Certificates	502
Bachelors' Degrees	209
Masters' Degrees	43

Costs per quarter: Fees, College—\$15 to \$20; Student fees—\$5.00; Board and room—\$100-120. Average per quarter—High, \$150; Low, \$125.
 (Add your own estimate for travel, laundry, books, amusements, etc.) Average cost for year (3 quarters)—High, \$450; Low, \$375.

Placement of Colorado State Teachers College Men Graduates 1924 through 1928

(Placement of Our Graduates is Made <i>Without Usual</i> Five Per cent Fee of Commercial Teachers' Agencies)	
Average Number of MEN Placed Annually for Different Types of Positions for Five Years, 1924-1928	Salary data for MEN for the Five Year Period, 1924-28
College Teachers	Highest Salary
Superintendents	Lowest Salary
High School Principals	Total Salary of All Men Placed Annually
Grade School Principals	Average Salary of All Men Placed Annually
Classroom Teachers	
(chiefly high school)	

EXCELLENT OPPORTUNITIES FOR MEN IN TEACHING

Extra-Curricular Life of Men Students

Student Participation in School Government. Student Publications—*The Mirror* (weekly); *Cache la Poudre* (annual).
 Student Council Boosters' Club. T Club.
 Athletics—Regular member of Rocky Mountain College Conference. Extra-mural athletics also.
 Music—Glee Club; Band; Orchestra; Debating; Dramatics;
 Social Fraternities: Delta Psi; Lambda Gamma Kappa; Phi Delta Pi; Sigma Mu Upsilon.
 Honorary Fraternities: Phi Delta Kappa; Kappa Delta Pi; Pi Kappa Delta; Alpha Psi Omega.

Clubs:	Boosters Club	Dramatic Club
	Commercial Club	Modern Wills
	Gridiron Club	Music Club
		Math Club
		History Club
		Science Club

Student Fee of \$5.00 per quarter includes subscription to the *Mirror*, and *Cache la Poudre*; entrance to all athletic contests, debates, dramatics, Artists Series.

For catalog and detailed information about the College or any of its activities, write to the

DEPARTMENT OF PUBLICATIONS

Greeley, Colorado

