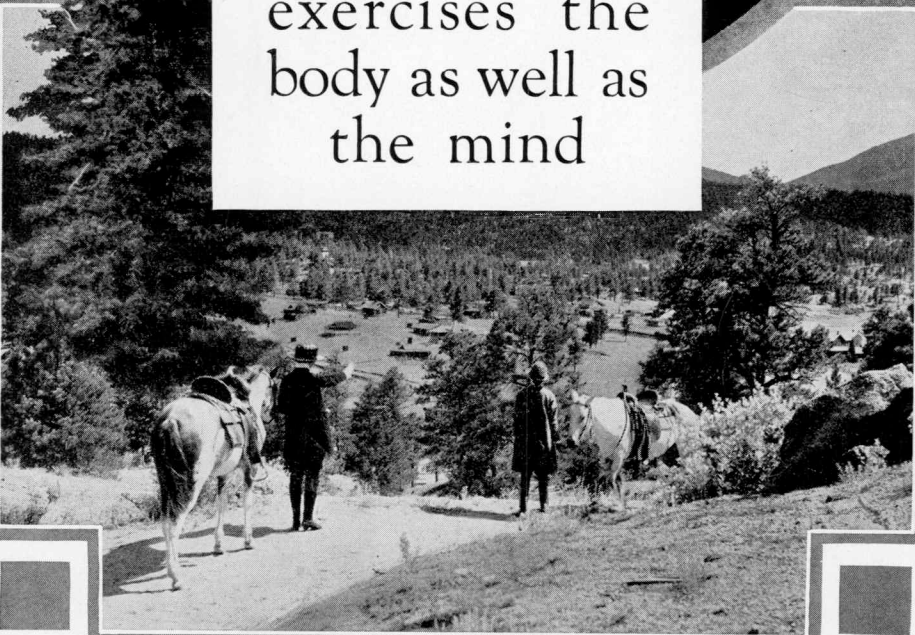


# Student Outdoor Life

exercises the  
body as well as  
the mind



**SERIES XXIX**

**JANUARY**

**NUMBER 10**

Published monthly by Colorado State Teachers College, Greeley, Colorado. Entered as second class matter at the Postoffice at Greeley, Colorado, under Act of August 24, 1912.

## Recreational and Scenic Trips for Students

Prospective students at Colorado State Teachers College will find set forth herewith a few of the mountain and scenic trips arranged for their pleasure while attending Summer School. This program is a hint only. It is simply an indication of the possibilities. There are numerous other possible trips, all within the range of an economical purse, which can be arranged for at the request of any group.

On mountain and plain there is much to be seen and enjoyed by college students, and the College will gladly assist in arranging trips for any group of students exhibiting a desire for the outdoor life.

One of the most striking bits of scenery in the Plains region of Colorado is Pawnee Buttes. Like great white ships they stand out against a sky of intense blue and have attracted artists from far and wide. But scenic beauty is not all the Pawnee Buttes have to offer. Here is one of the geological landmarks of the world. Here the early life history of the horse and the camel have been largely worked out. This ancient cemetery is still the mecca of geologists from far and wide since it was first investigated by the two great paleontologists Marsh and Cope over a half century ago. Pawnee Buttes are conveniently accessible to Greeley, being about sixty miles away. Usually the roads are good and one may camp near the buttes over night. One of the few herds of antelope still wild on the plains of Colorado is seen near the Buttes and coyotes and other wild life are common.

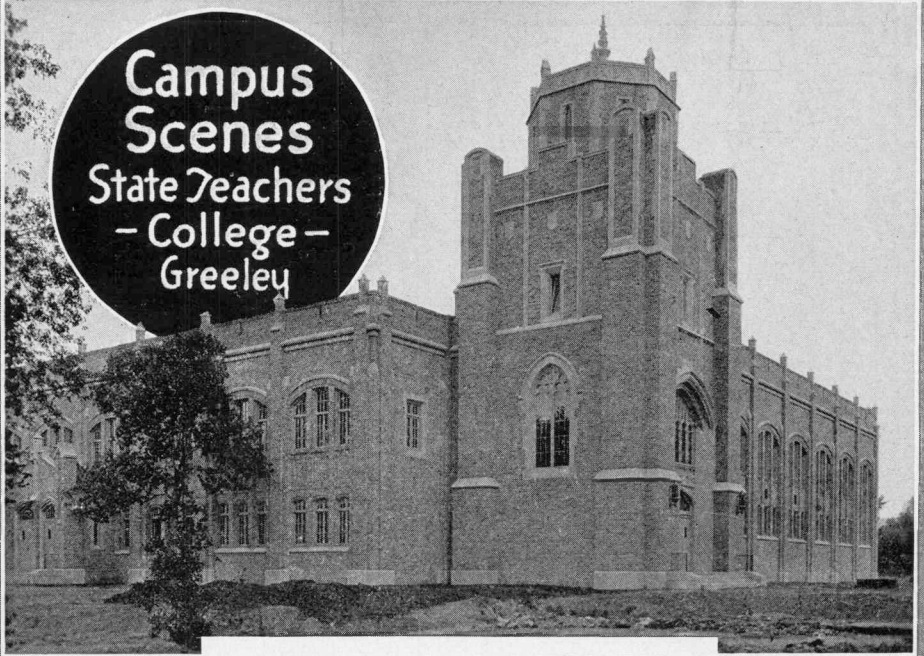
An interesting sight, and one which has claimed attention of scientists far and wide, is the home of the Blue Herons, located four miles west of Greeley and the college campus. A grove of trees located along the banks of the Cache la Poudre house in their topmost branches hundreds of these magnificent birds.

The "Natural Fort" is another point of interest, particularly to the student of history and of western life. The fort is located near Carr, Colorado, on the way to Cheyenne.

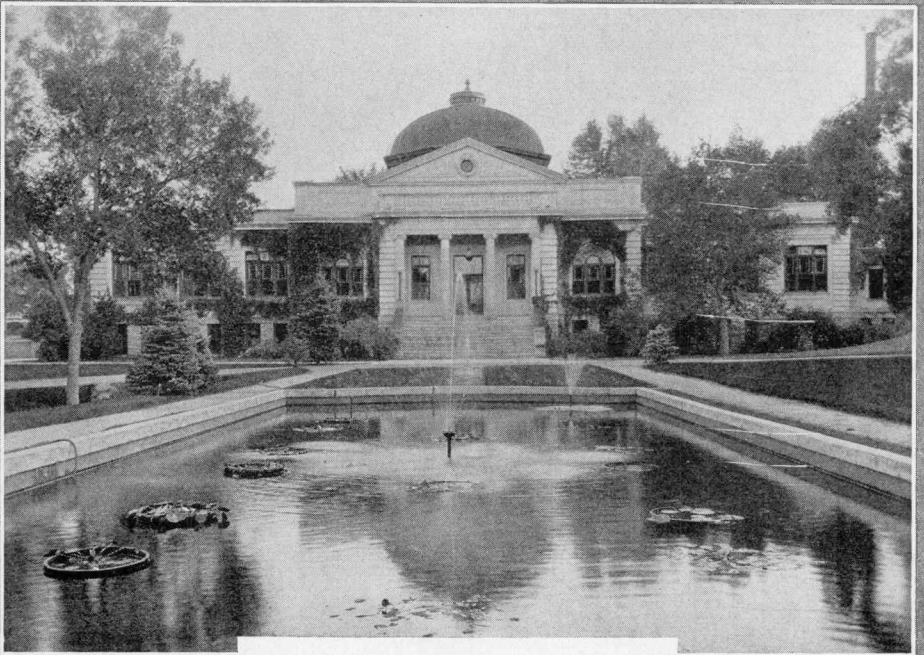
The famous "SLW" dude ranch is located only ten miles from the college campus, and students who desire a taste of this life will find this an excellent opportunity.

Definite scheduled trips, showing the dates and cost of same, will be found in the pages following.

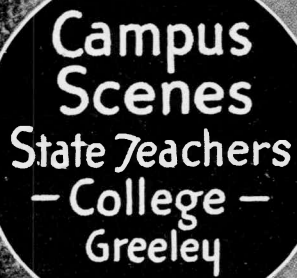
Campus  
Scenes  
State Teachers  
- College -  
Greeley



GUNTER HALL OF HEALTH



THE LIBRARY



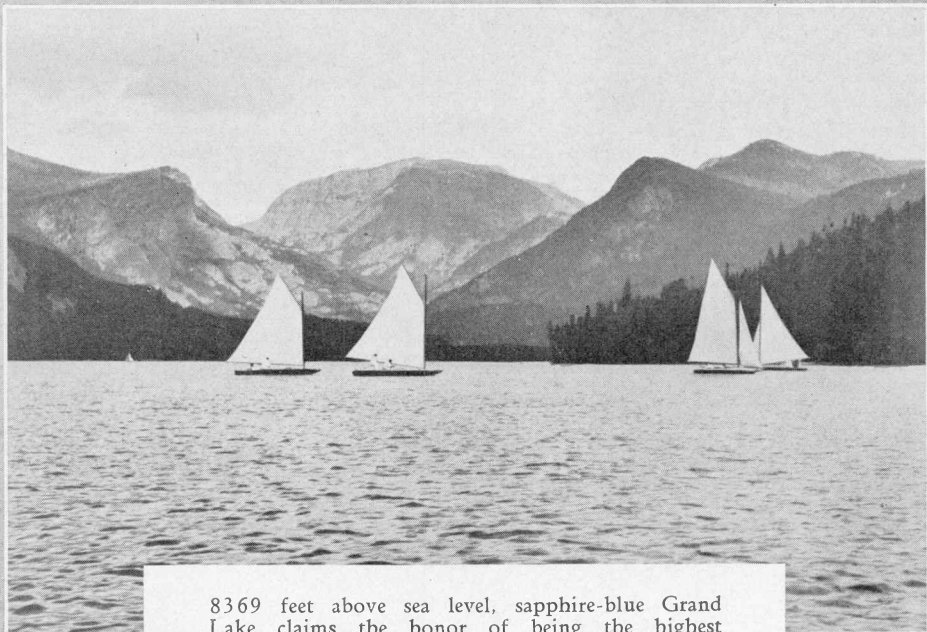
Campus  
Scenes  
State Teachers  
— College —  
Greeley



SERPENTINE  
PATHWAY



ADMINISTRATION BUILDING



8369 feet above sea level, sapphire-blue Grand Lake claims the honor of being the highest yacht anchorage in the world. . . . .

## Grand Lake Circle Tour

*Three Day Trip*

Total Distance, 262 miles

JUNE 20, 21, 22

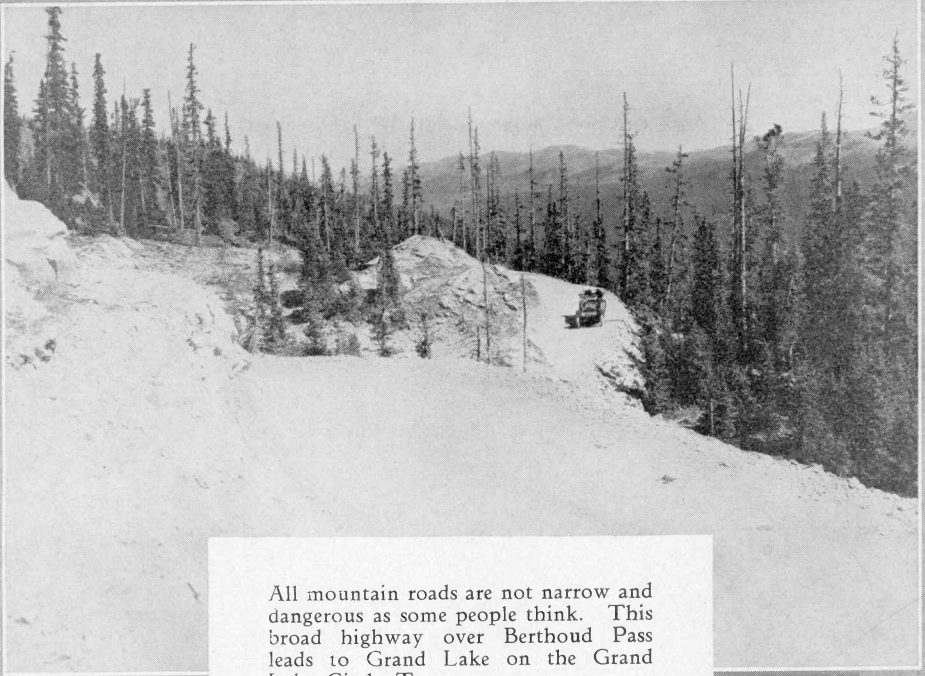
Leaving Greeley at 4 p. m. Friday and returning at 6:30 p. m. Sunday.

Points of interest—Big Thompson Canyon, Camp Olympus, Estes Park, Rocky Mountain National Park, Fall River Road, Continental Divide, Grand Lake, Moffat Tunnel, Grandby Lettuce Fields, Berthoud Pass, Idaho Springs, Lookout Mountain, Golden and Denver.

Friday evening dinner, lodging and Saturday morning breakfast at Camp Olympus. Saturday luncheon, dinner, lodging and Sunday morning breakfast at Grand Lake Lodge. Sunday dinner at Placer Inn, Idaho Springs.

In groups of 11, 14, 22, 25, 28, including transportation, lodging and meals.

*Total cost per individual* ..... \$23.75



All mountain roads are not narrow and dangerous as some people think. This broad highway over Berthoud Pass leads to Grand Lake on the Grand Lake Circle Tour. . . . .



Sparkling, clear, cold mountain streams provide perpetual filling stations all along the way on the Grand Lake Circle Tour through Rocky Mountain National Park. . . . .

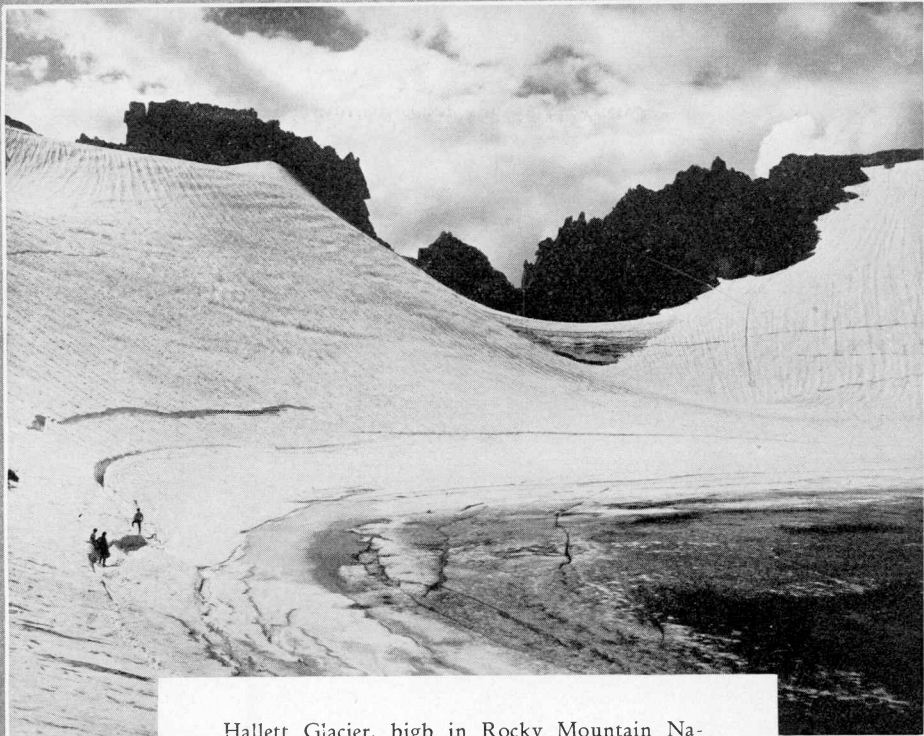


It's undoubtedly interesting in the foreground and equally so in the background with Empire Cone in the distance. On the Berthoud Road. Grand Lake Circle Tour.



It tastes so good after rough going over rocks and roots. Many a traveler is refreshed at Alpine Creek near Berthoud Pass.

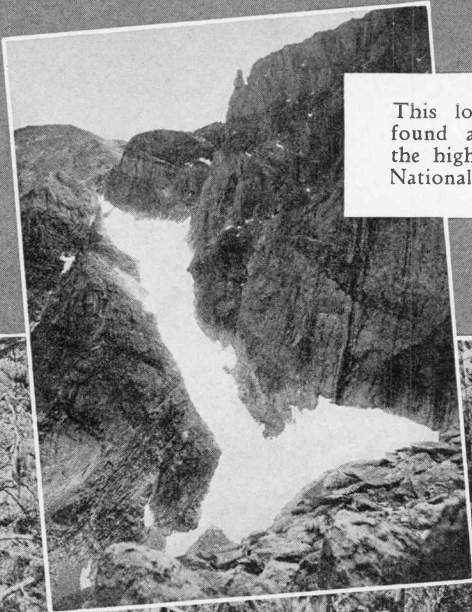




Hallett Glacier, high in Rocky Mountain National Park, Colorado, is a big nature bowl from which comes many a cooling breeze.



Winter sports in summer at Tyndall Glacier, two miles above sea level. Rocky Mountain National Park.



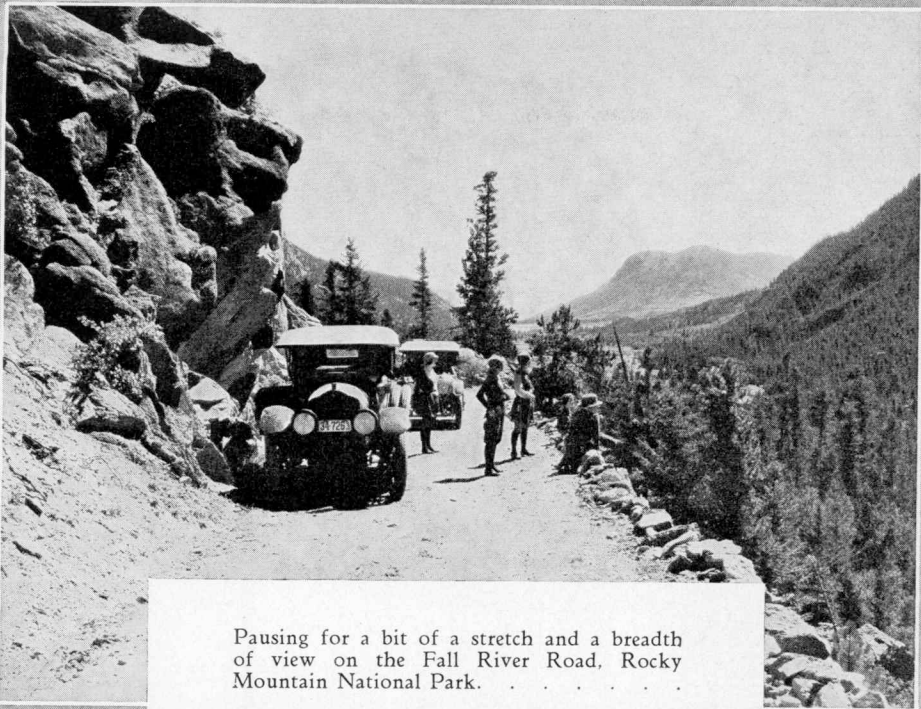
This long, narrow glacier is to be found at the base of Long's Peak the highest peak in Rocky Mountain National Park. . . . .



They're on their way over Flat Top Mountain to Lake Nanita, the largest lake in Rocky Mountain National Park. . . . .



At Berthoud pass, you cross the Continental Divide for the second time on the Grand Lake Circle Tour through Rocky Mountain National Park. Altitude 11,330 feet.



Pausing for a bit of a stretch and a breadth of view on the Fall River Road, Rocky Mountain National Park.

## Estes Park, Fall River and High Drive Tour

Total Distance, 170 miles

JUNE 27, 28

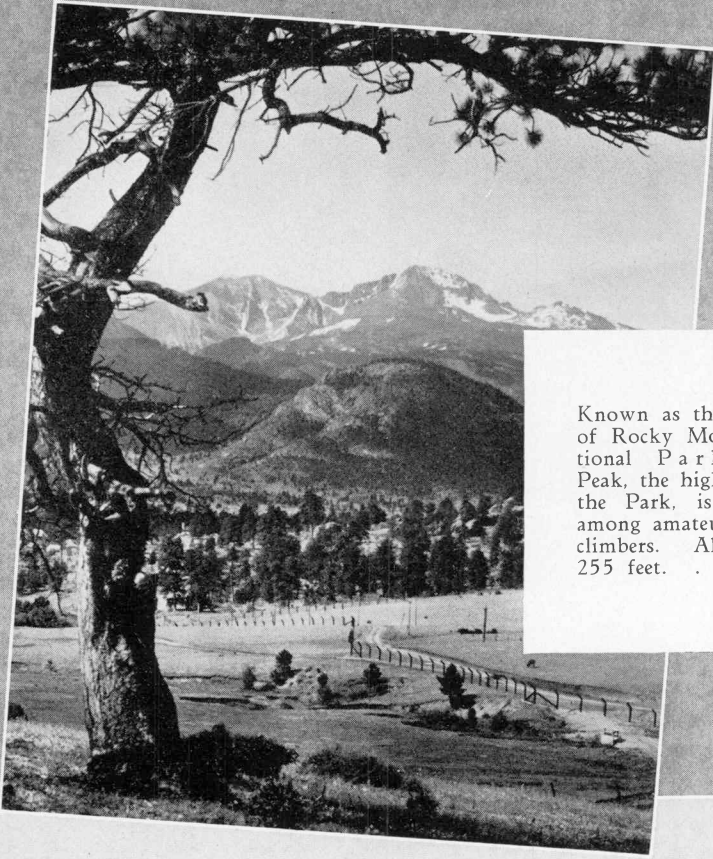
Leaving Greeley at 3:30 p. m. Friday and returning at 5 p. m. Saturday.

Route—Big Thompson Canyon to Camp Olympus, Estes Park, Rocky Mountain National Park, Fall River and High Drive, Bear Lake and return to Camp Olympus for Saturday luncheon. Returning to Greeley via Devil's Gulch Saturday afternoon.

Friday evening dinner, lodging, Saturday breakfast and luncheon at Camp Olympus.

In groups of 11 or 14, including transportation, lodging and meals.

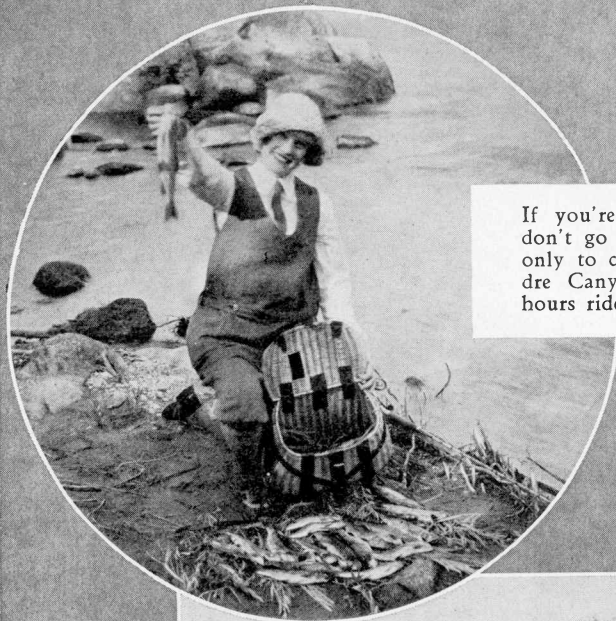
Total cost per individual .....\$10.75



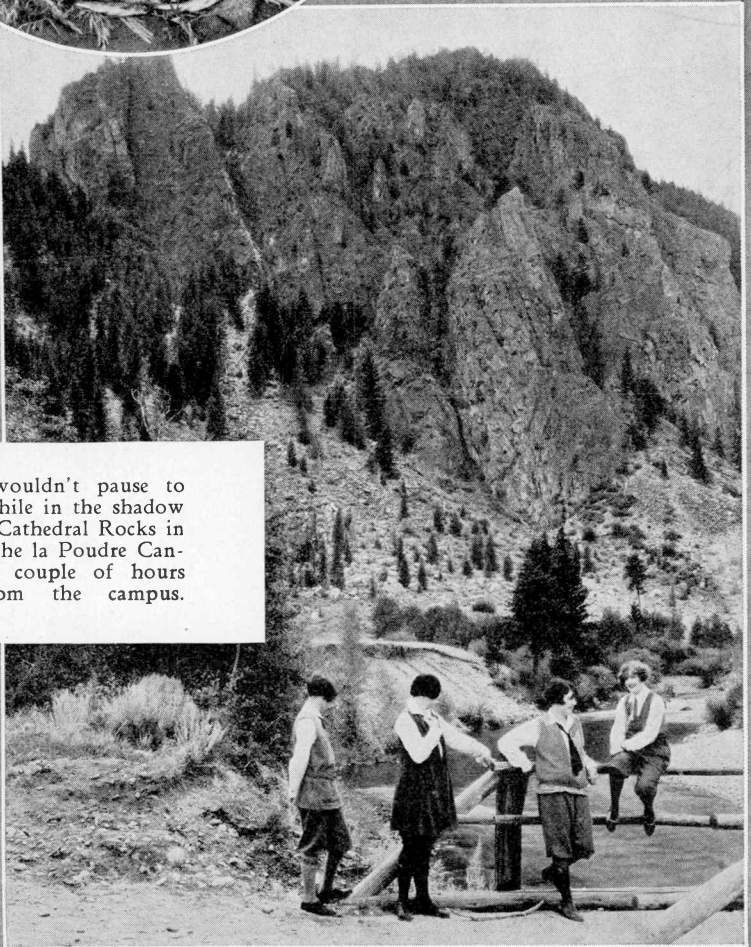
Known as the "Monarch of Rocky Mountain National Park," Long's Peak, the highest peak in the Park, is a favorite among amateur mountain climbers. Altitude 14,255 feet. . . . .



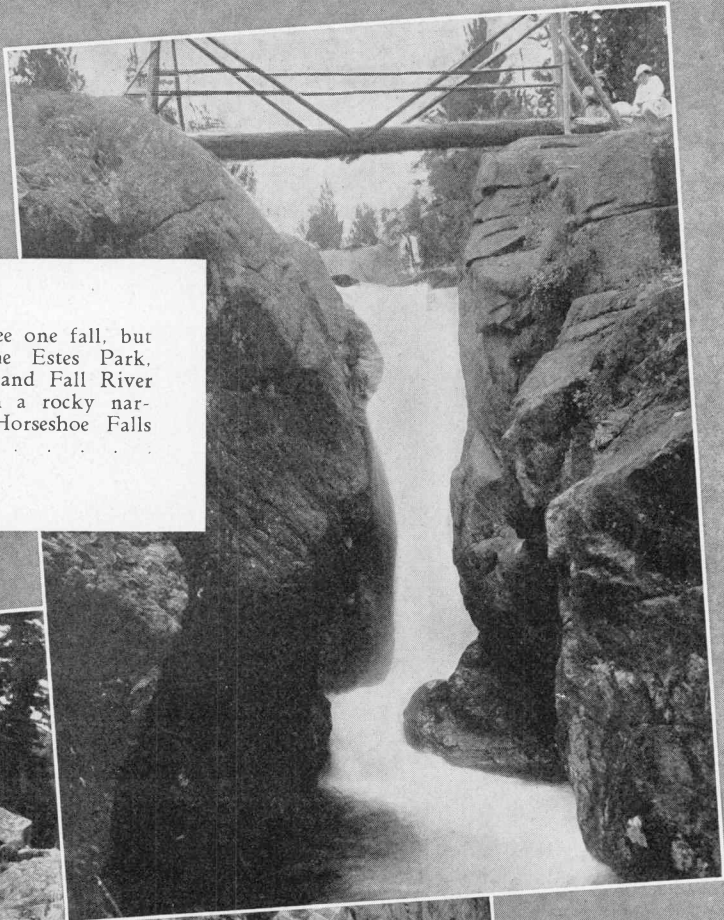
What a background for a game of golf!  
Estes Park, Colorado.



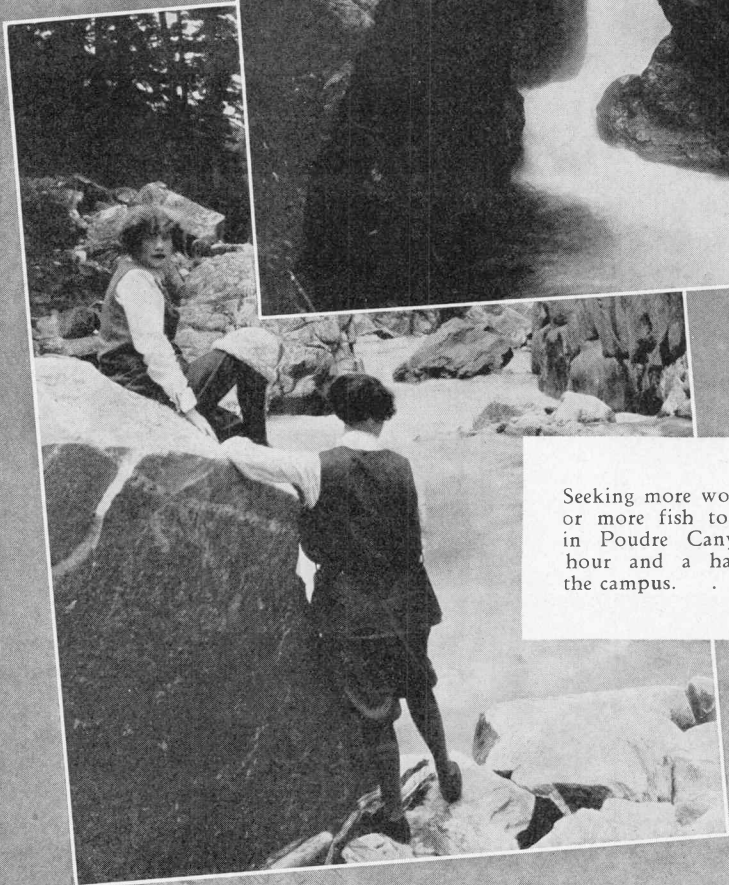
If you're looking for a "catch," don't go any farther. Two hours only to complete this job in Poudre Canyon, and it's about two hours ride from the campus. . .



Who wouldn't pause to rest awhile in the shadow of the Cathedral Rocks in the Cache la Poudre Canyon, a couple of hours ride from the campus.

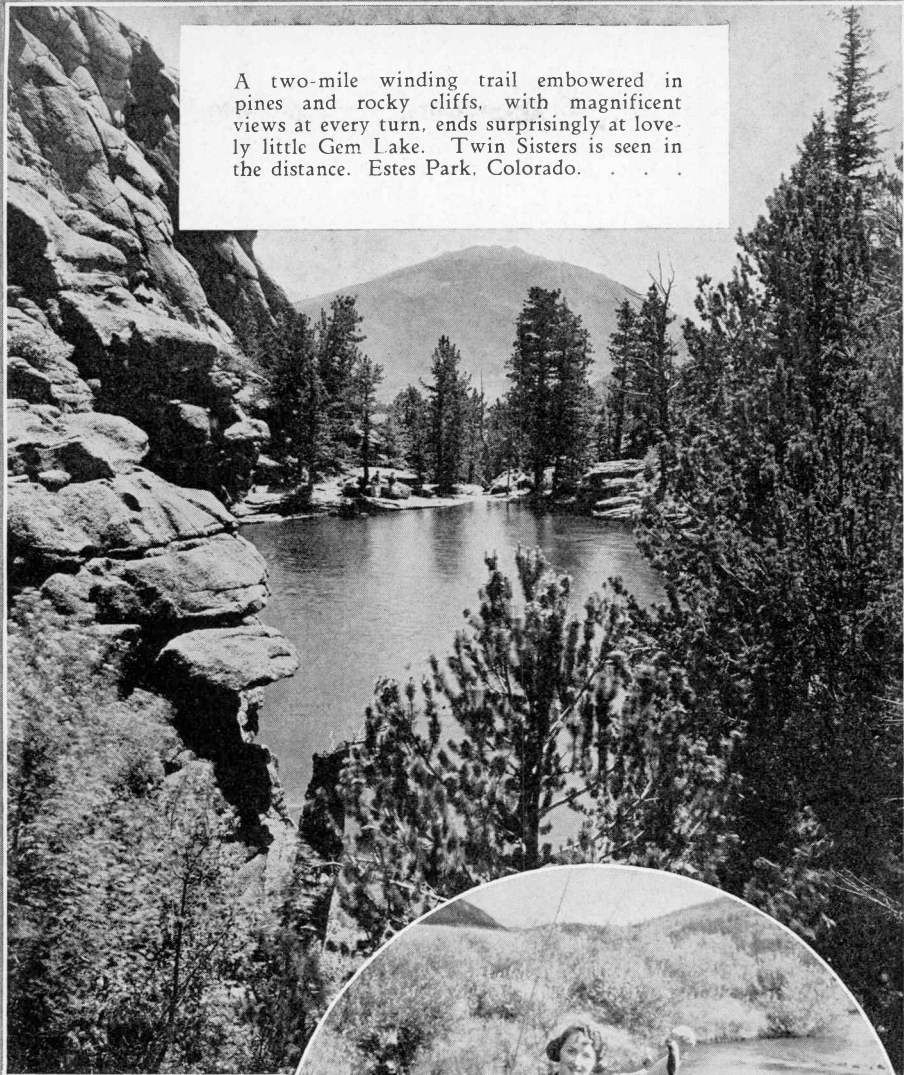


You won't see one fall, but many on the Estes Park, High Drive, and Fall River Tour. Down a rocky narrow gorge, Horseshoe Falls drops sheerly. . . . .



Seeking more worlds to conquer, or more fish to catch perhaps, in Poudre Canyon, about an hour and a half's ride from the campus. . . . .

A two-mile winding trail embowered in pines and rocky cliffs, with magnificent views at every turn, ends surprisingly at lovely little Gem Lake. Twin Sisters is seen in the distance. Estes Park, Colorado.



Outsmarting the trout in an  
Estes Park Mountain Stream.



The  
Columbine,  
"flower of the  
beautiful head"  
is Colorado's  
state flower.

Pawnee Buttes, where students  
study peculiar rock formations.

## Pawnee Buttes Tour

Total Distance, 170 miles

JULY 5

Leaving Greeley at 9 a. m. and returning in the afternoon as soon as the exploration of the Buttes is completed.

Route—Greeley to Briggsdale and then to the Buttes.

A box lunch will be furnished for each member of the party.

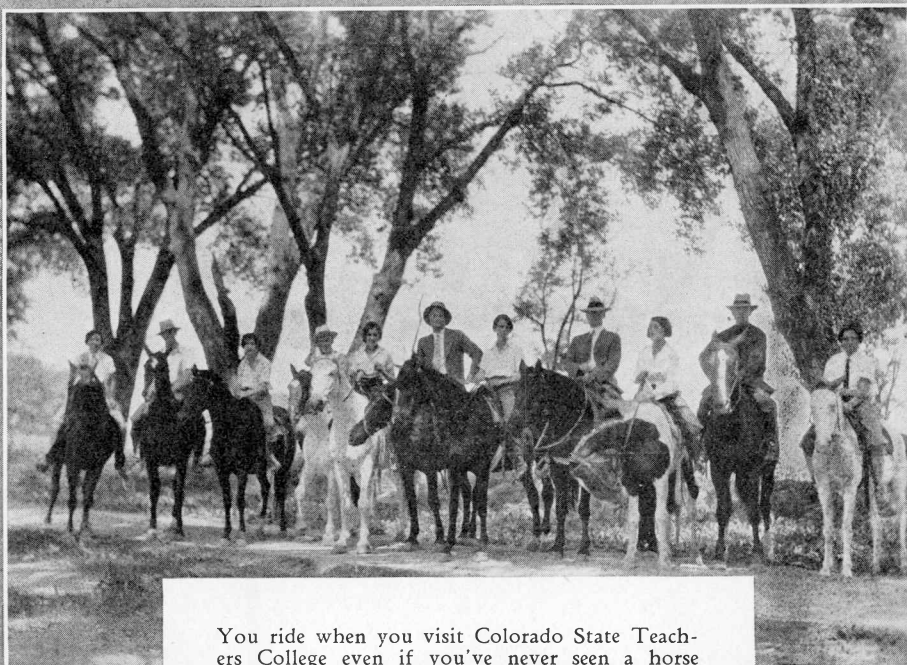
In groups of 20 or 28 including lunch and transportation.

Total cost per individual ..... \$6.75





A coach and four is part of the fun  
at the S. L. W. Dude Ranch



You ride when you visit Colorado State Teachers College even if you've never seen a horse before. The S. L. W. Dude Ranch is located only ten miles from the Campus. . . .



"Stop, look, and listen."  
says this baby doe.



The "Four Horsemen" ready for the beauties  
of the trails as they spend a week-end  
on the famous S. L. W. Dude Ranch. . . . .



Pikes Peak, 14,109 feet in altitude, is one of the highest and best known peaks in Colorado

## Pikes Peak Tour

Total Distance, 326 miles

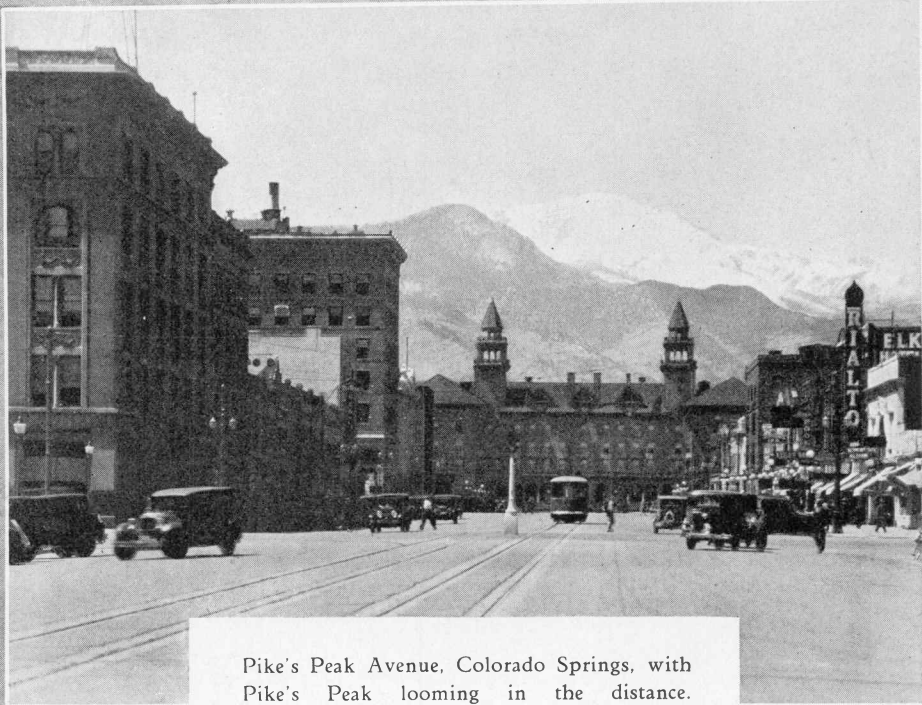
JULY 11, 12

Leaving Greeley at 1 p. m. Friday and returning at 9 p. m. Saturday.

Points of interest—Castle Rock, Elephant Mountain, Colorado Springs, Colorado City, Garden of the Gods, Cave of the Winds, Seven Falls, South Cheyenne Canyon and Pikes Peak.

In groups of 7, 14, or 21, including transportation, Friday evening dinner, Friday night's lodging, Saturday breakfast, lunch and dinner.

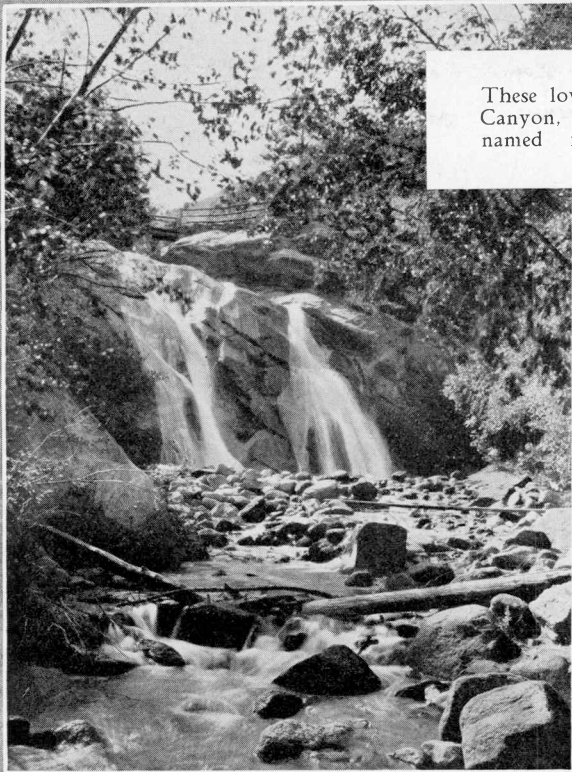
Total cost per individual.....\$23.25



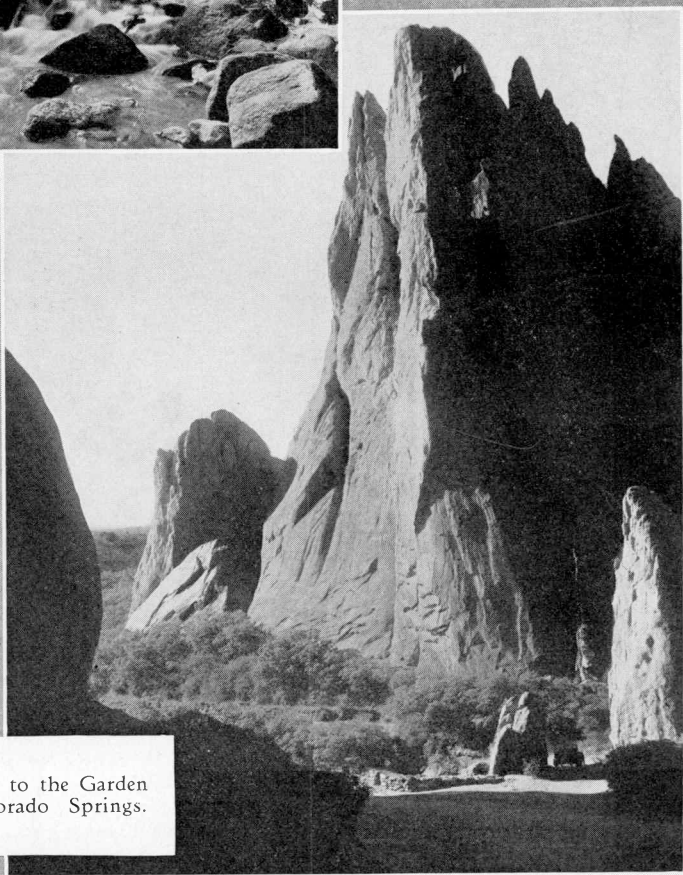
Pike's Peak Avenue, Colorado Springs, with Pike's Peak looming in the distance.



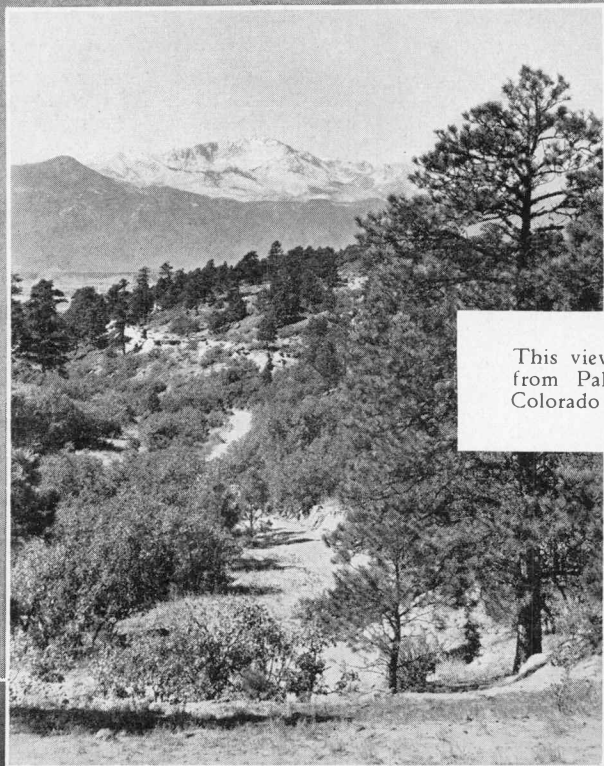
Curious sandstone formations in the Garden of the Gods, which is a part of the Park System of Colorado Springs.



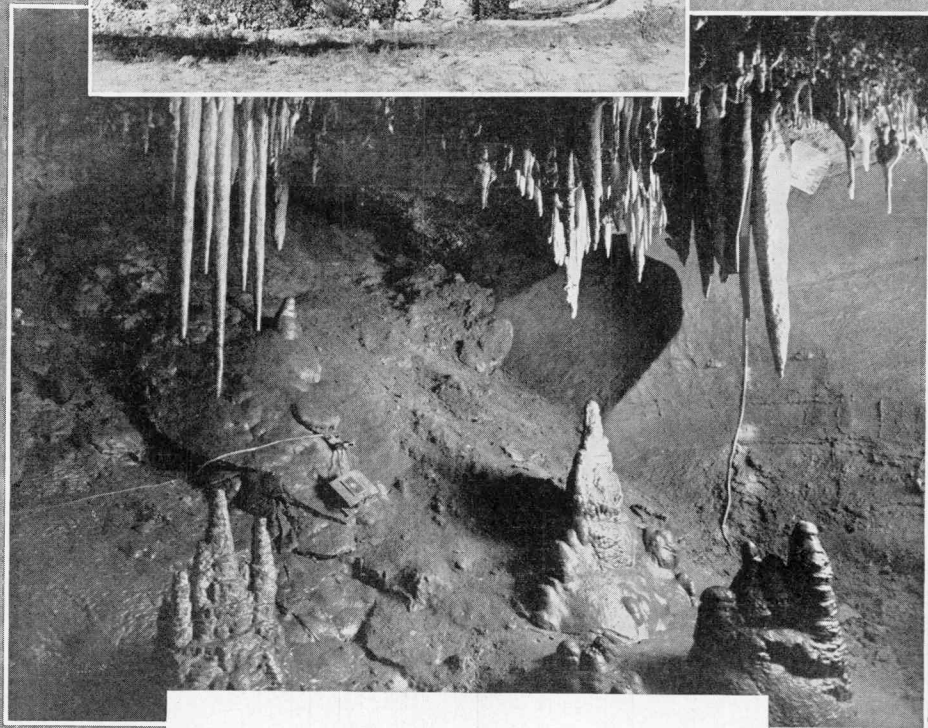
These lovely falls in North Cheyenne Canyon, Colorado Springs, were named for Helen Hunt Jackson.



The South Gateway to the Garden of the Gods, Colorado Springs.



This view of Pike's Peak is from Palmer Park, one of Colorado Springs' city parks.



Cathedral Spires in the Cave of the Winds, Manitou, Colorado, is just one of the many curious formations to be found in this beautiful cave.



It was only fifty years ago that the Ute Indians built their campfires on Lookout Mountain in the Denver Mountain Parks. Today it is a favorite picnic spot for gay parties of young folks.

# Lookout Mountain and Echo Lake Tour

Total Distance, 216 miles

JULY 26

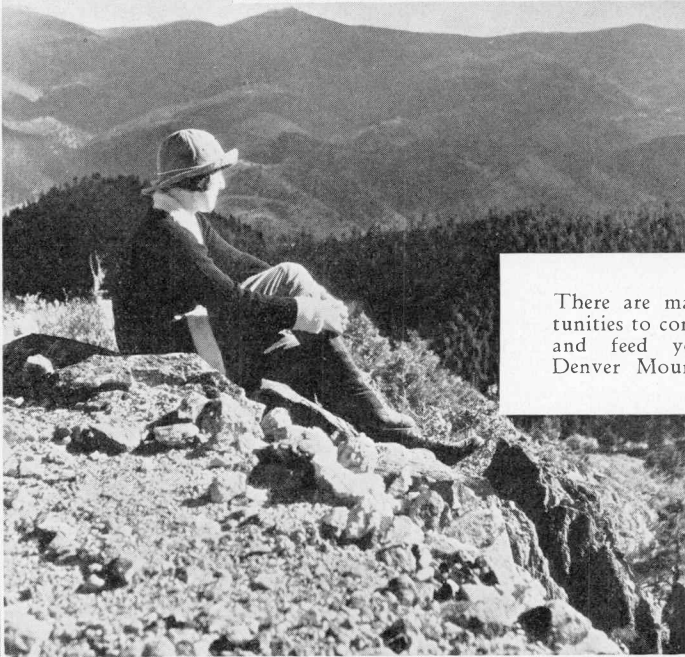
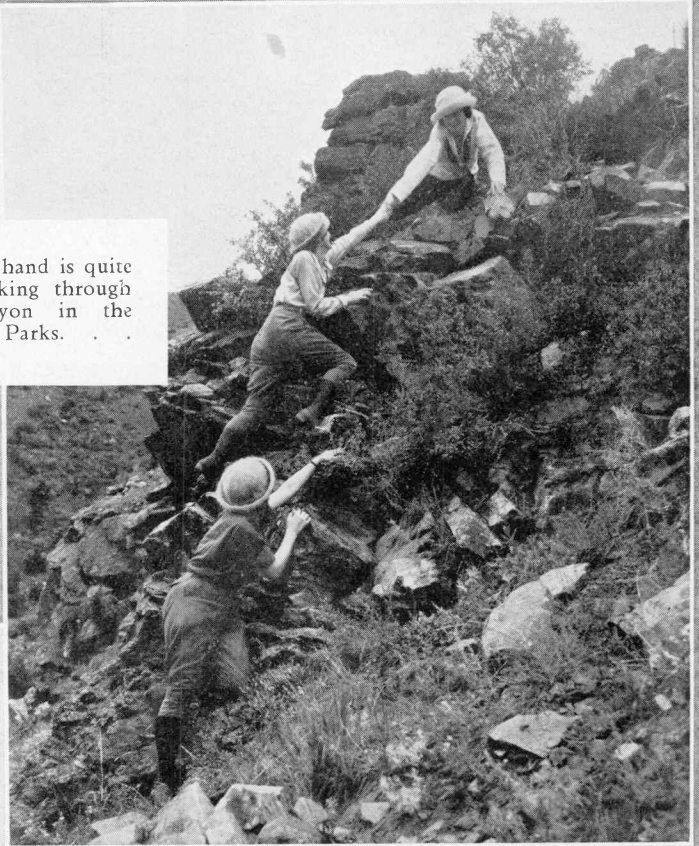
Leaving Greeley at 7 a. m. Saturday and returning at 8 p. m. of the same day.

Route—Greeley to Denver, Golden, Lookout Mountain, Buffalo Bill's Museum, Bergen Park, Silver Fox Farm, Idaho Springs, Echo Lake and return to Denver via Evergreen. Luncheon at Placer Inn, Idaho Springs.

In groups of 11, 22 or 28 including transportation, and luncheon.

Total cost per individual.....\$6.90

Lending a helping hand is quite the code when hiking through Bear Creek Canyon in the Denver Mountain Parks. . . .



There are many blessed opportunities to commune with nature and feed your soul in the Denver Mountain Parks. . . .





Elitch Gardens, Denver, is a paradise for pleasure-seekers of every age. With flowers to the right and flowers to the left wander down a shady lane leading to a lovely old-fashioned orchard, to a modern theater, to a thrilling roller coaster, or to an enormous dancing pavilion where lilting strains of dance music or a symphony concert may be heard. . . . .

## Elitch Gardens Tour

Total Distance, 116 miles

AUGUST 2

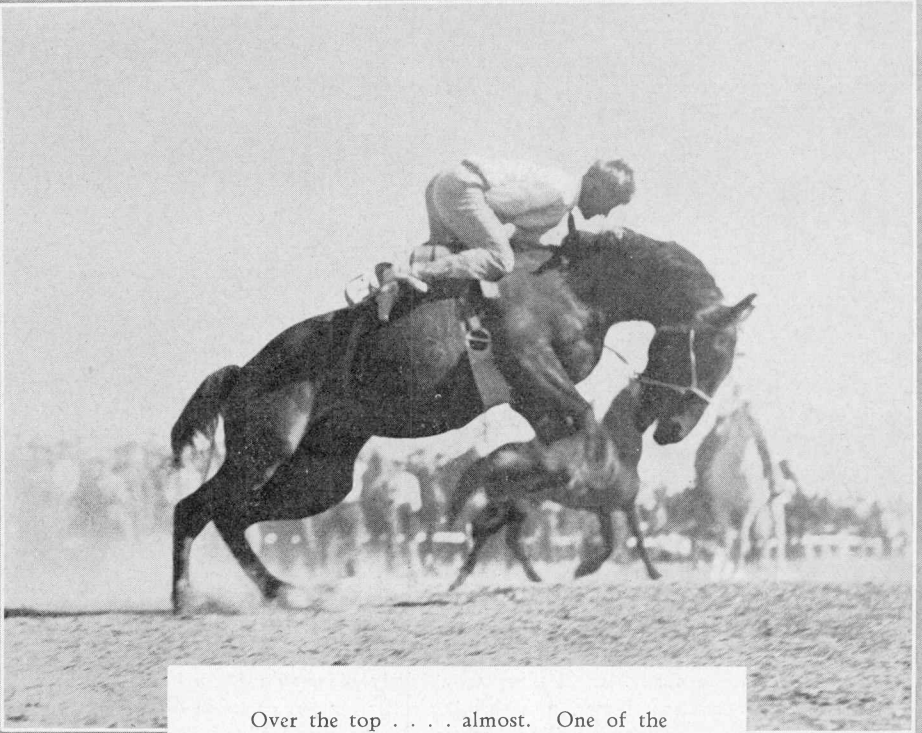
Leaving Greeley at 1 p. m. and returning after the show.

Elitch Gardens is the playground of Denver. Thousands of tourists visit this beautiful place every summer. Not to see the Elitch Gardens is not to see Denver. Players of national reputation are booked for the theater performances in Elitch Gardens every summer. Each member of this party will pay for his own ticket to the theater, supper and any other expense in Elitch Gardens.

The total cost for this tour will largely be a matter for each member of the party to decide.

In groups of 20 or 24—

*Total cost of transportation per individual*.....\$2.35



Over the top . . . . almost. One of the many thrills at the Cheyenne Rodeo.

## Frontier Days Tour

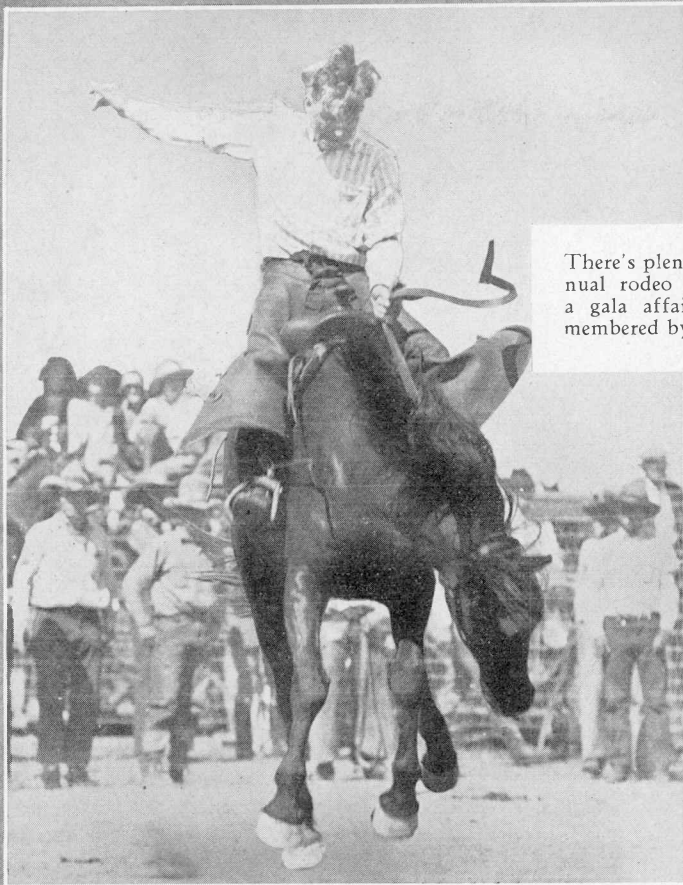
Total Distance, 130 miles

Leaving Greeley at 10 a. m. and returning from Cheyenne following the afternoon performance.

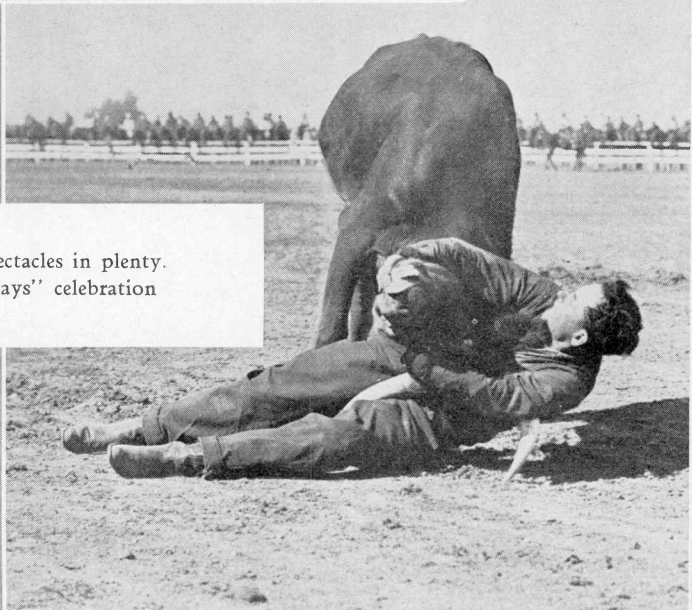
Frontier Days in Cheyenne is a rodeo of national reputation. Here, the West of the early days is reproduced. Wild steers, bucking broncs, dare-devil cowboys and cowgirls vie with each other in staging the foremost western show in the United States. Cheyenne Frontier Days is a celebration which is truly "The Daddy of Them All."

In groups of 20 or 28—

*Total cost per individual including transportation, luncheon and ticket to the rodeo* ----- \$7.25



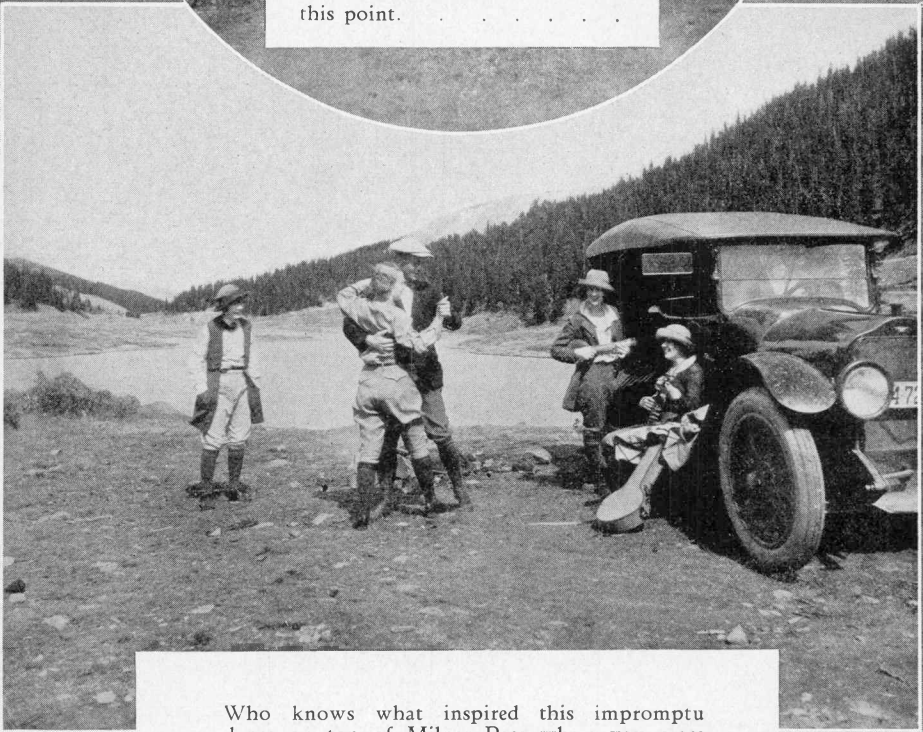
There's plenty of kick in the annual rodeo at Cheyenne. It is a gala affair that is long remembered by the students.



Thrilling spectacles in plenty.  
"Pioneer Days" celebration

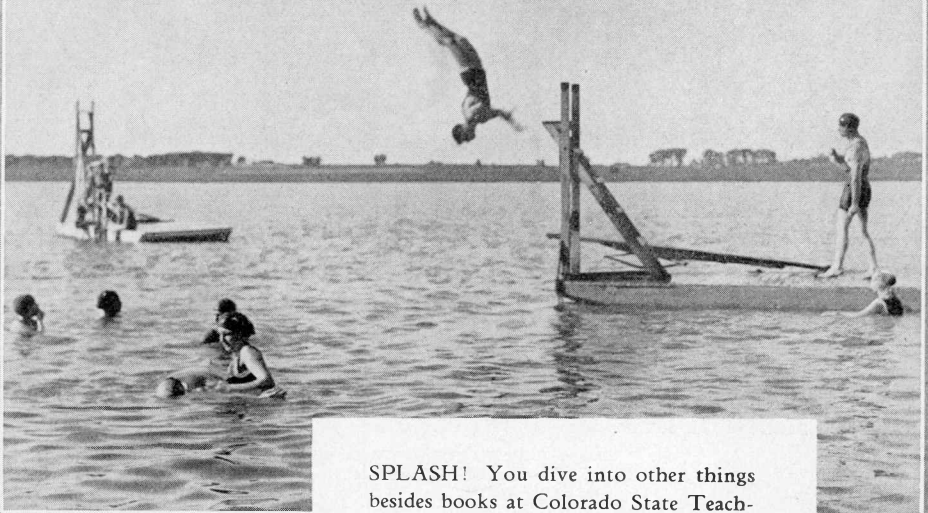
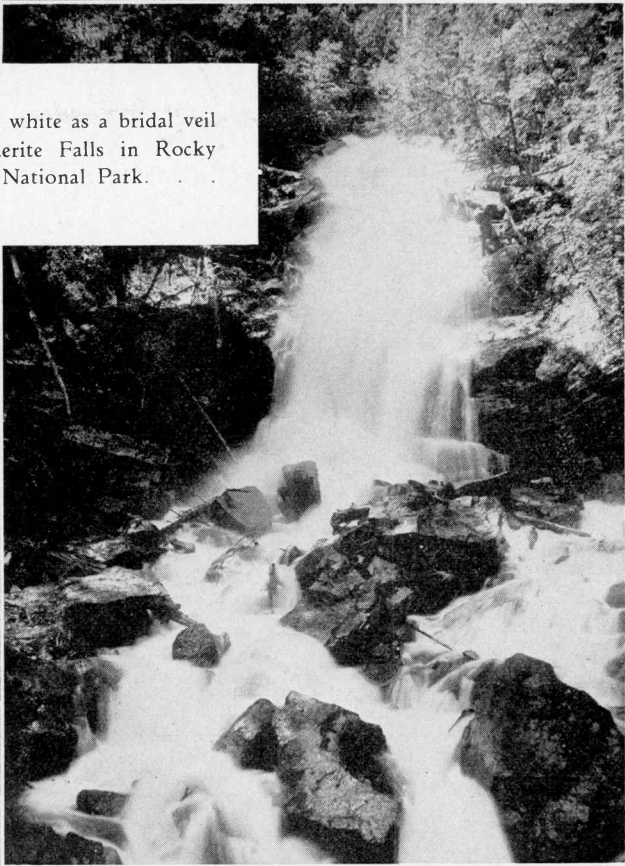


A bridge shaded by lovely trees crosses the Poudre River at this point. . . . .



Who knows what inspired this impromptu dance on top of Milner Pass where you cross the Continental Divide on the Grand Lake Circle Tour through Rocky Mountain National Park. They say the altitude sometimes goes to the head like wine, and the Pass is 10,759 feet above sea level. . . . .

Foamingly white as a bridal veil  
are Marguerite Falls in Rocky  
Mountain National Park.



SPLASH! You dive into other things  
besides books at Colorado State Teachers  
College. Seeley's Lake is a mere  
fifteen minute ride from the campus.



Not woodland nymphs, but a class in esthetic dancing drawing inspiration from lofty peaks, scented pines, and glistening pools. . . .

