

Colorado
State
Teachers
College

Bulletin



HOW TO STUDY NATURE

ONE is bound to acknowledge the fact that the best way to study Nature is to get close to Nature. It is to make possible, study under such conditions that Colorado State Teachers College has arranged to take a group of students, organized into two classes, on a tour of the three outstanding National Parks on the Continental Divide, for

BOTANY AND NATURE STUDY

Besides the joy and pleasure of a real vacation, which every teacher needs, these courses will give the students an unprecedented opportunity for study, for which full COLLEGE CREDIT will be given.

Aside from the few days spent in organization of classes on the campus and the preparation of papers and notebooks on returning, the group will spend forty days on one of the most wonderful sight-seeing trips ever arranged for college students.

This travel-study trip makes it possible for Colorado State Teachers College to offer courses not only in the environment of its own superb campus and under the ideal

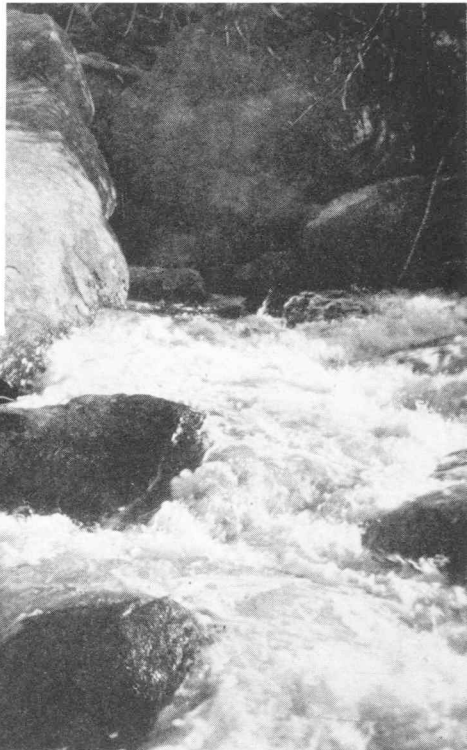
Series XXV, Number 8

Published monthly by Colorado State Teachers College, Greeley, Colo.
Entered as second-class matter at the postoffice at Greeley, Colo., under the act of August 24, 1912.

conditions that obtain in Colorado, but to organize classes in the biological sciences and those kindred subjects in which Nature herself supplies the most valuable equipment far up in the Rockies within the shadow of magnificent mountain peaks and at the edge of enormous drifts of snow.

Under the tutelage of college instructors, students will find under these ideal conditions the greatest advantages for studying nature under practically every form and condition.

In the Mountain School, the student of Nature is in a paradise of constructive suggestion. Flowers grow in endless profusion and borrow their tints from the sky and





The Top of the World

sun, trees battle for life against fierce winds and killing frosts as heroically as ever mammal fought the life and death struggle on primeval shore, and the rocks tell the story of all the cycles of the ages that are gone, and the stars reveal in their remarkable alpine vividness the illimitable reaches of space in which suns far mightier than our own dwindle to mere specks of light.

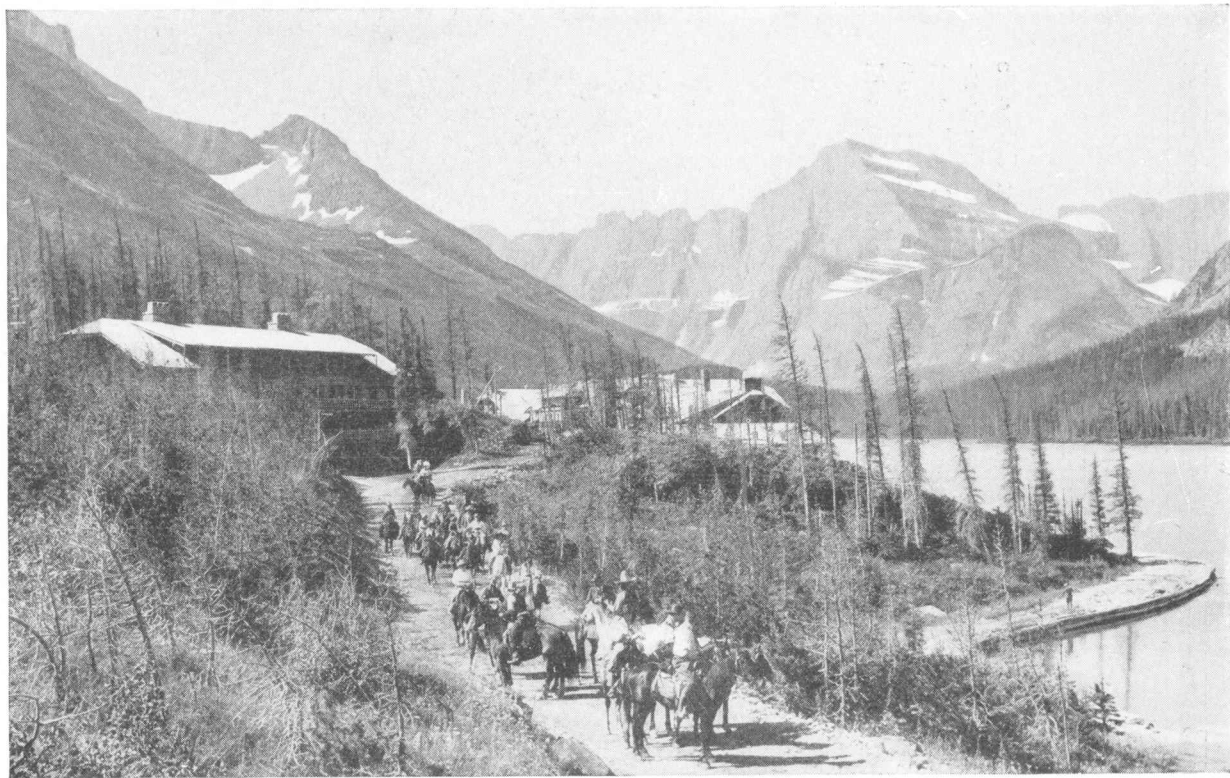
ESTES PARK

THE classes will be organized on the campus at Colorado State Teachers College, Greeley, Colorado, on Wednesday, July 21, and on the afternoon of July 23 will start for Estes Park, stopping for the first lesson at the mouth of the Big Thompson Canon. The second lesson will be given after supper at

CAMP OLYMPUS



A Group of Students in Front of the Main Lodge



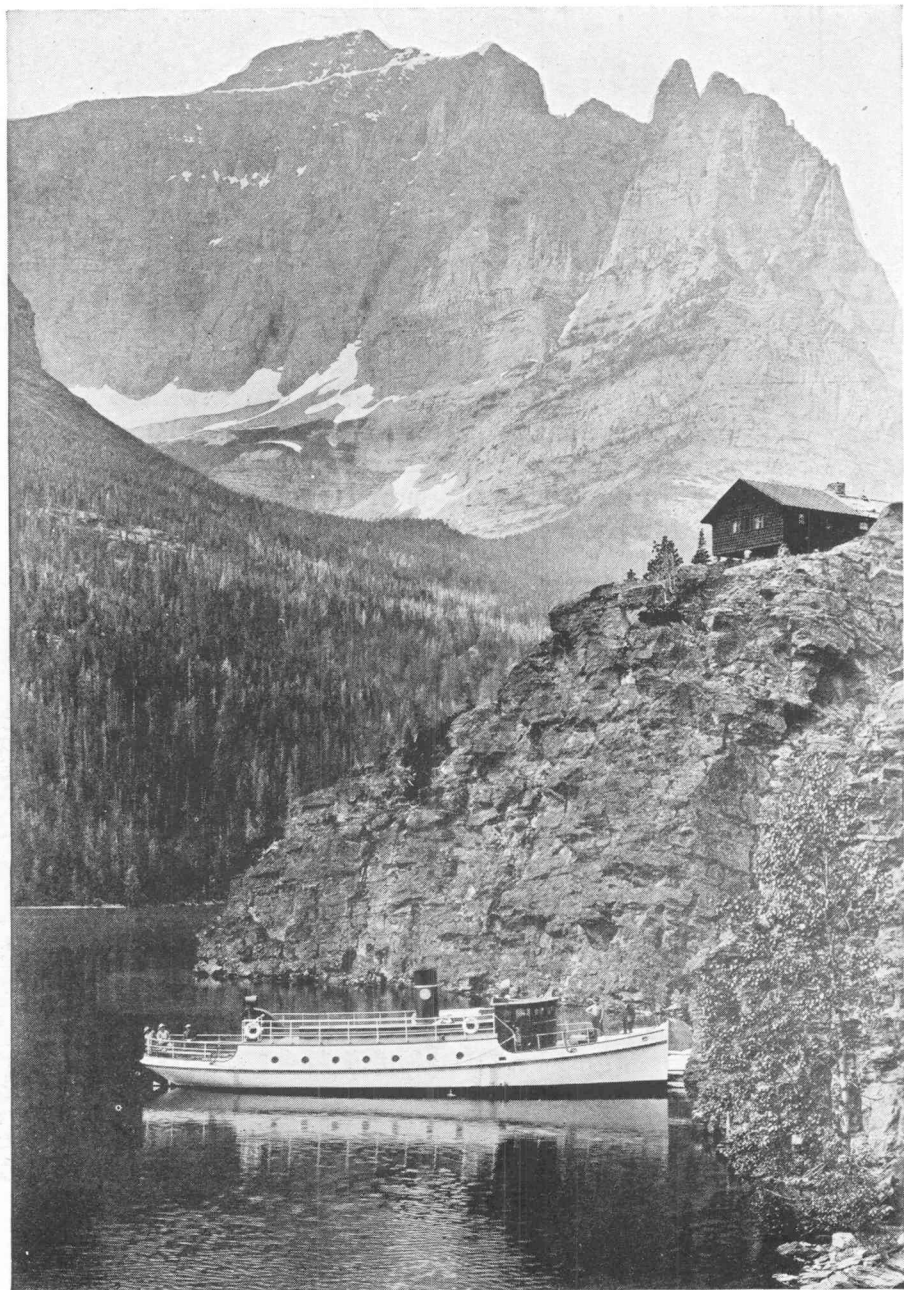
Off For a Morning's Ride

ESTES PARK OUTINGS

THE Outing Committee of Colorado State Teachers College, co-operating with the Rocky Mountain Parks Transportation Company, has arranged a series of wonderful trips to the wildest and most magnificent parts of the Rocky Mountain National Park.

Rather than depend on an attempted description of the beauty and splendor of these selected outings, the committee is content to give just a hint by word and picture in this brochure and then leave to the imagination, the inspiration and revitalization that will come to each individual who takes advantage of the opportunities thus afforded.

Loch Vale, Long's Peak (Timberline, Keyhole and Summit), The Devil's Gulch, Fern and Odessa Lakes, Lost Valley, The Fall River Road to the Summit of the Continental Divide, and Grand Lake, are only a few of the many points of interest, beauty, wonder and inspiration and awe that are included in these outings.



Upper St. Mary Lake—Going-to-the-Sun Chalets

GLACIER PARK

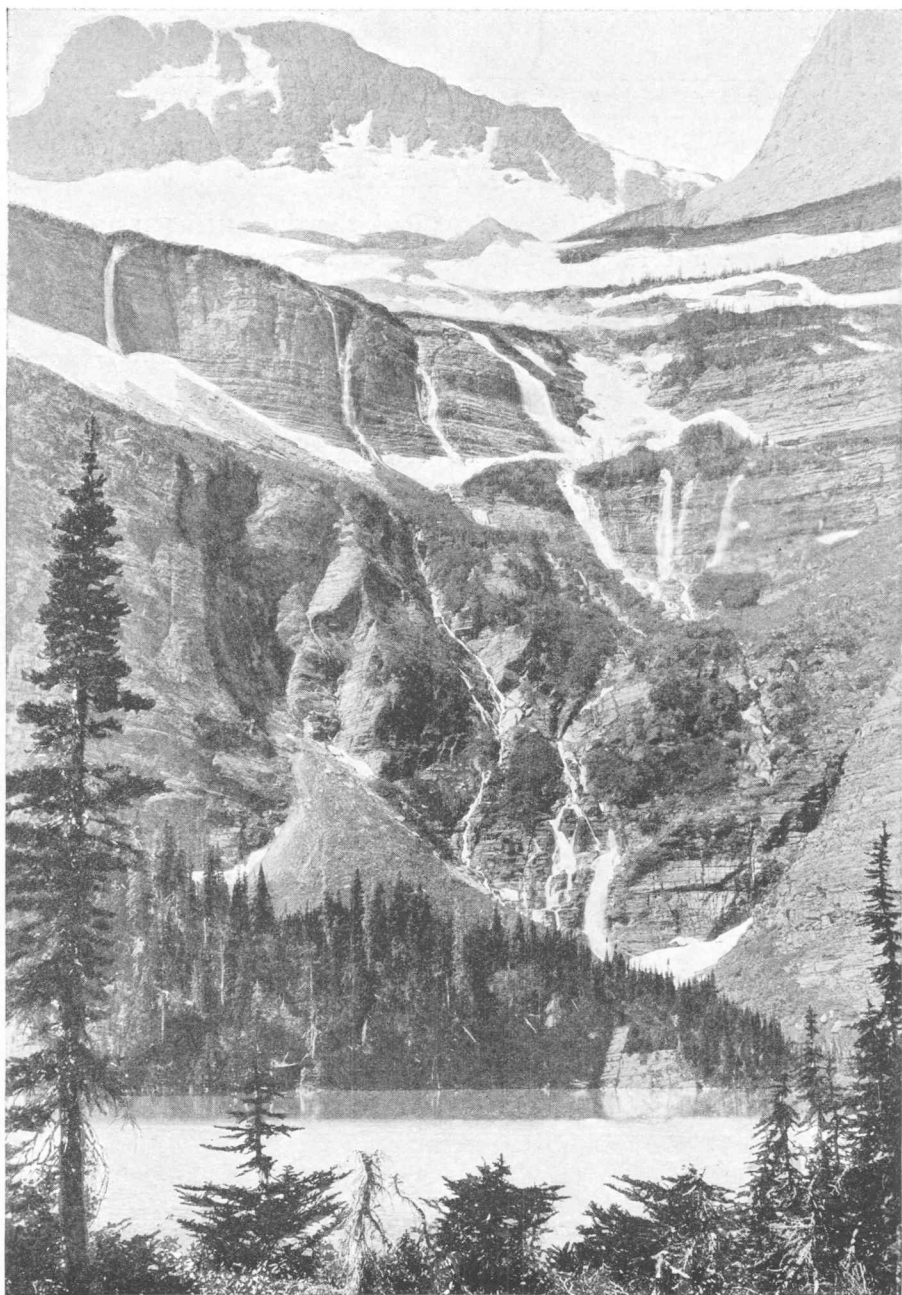
THE classes will leave Estes Park shortly after noon on August 12. On the way out of the canon they will stop for a picnic supper at Loveland Dam. They will leave Loveland by train on the evening of the same day and start for Glacier Park, arriving at this great national playground on August 14.

GLACIER PARK HOTEL

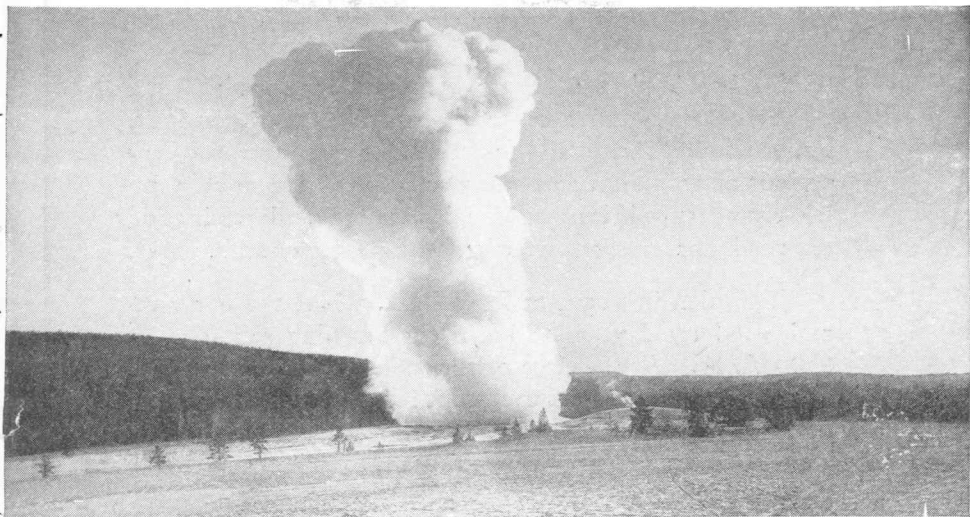
THIS will be the headquarters of the classes during a part of the study tour of Glacier Park. From this point, observation tours will be made and lectures given. Then, too, Many-Glacier Hotel, with its wonderful surroundings will be visited and a part of the time spent there will be used for study and observation.



Glacier's Mountains Rise from Their Bases Clear and Sharp as the Pyramids



Grinnell Glacier and Lake—"near by" Many-Glacier Hotel



In the Topsy-Turvy Land of Eternal Wonder—"Old Faithful" Geyser

YELLOWSTONE PARK

THE students will leave Glacier Park on August 18, for Gardner, where they will arrive on the afternoon of the next day, for a visit of four and one-half days in Yellowstone Park.

To see "Old Faithful" hurl a million and a half gallons of boiling water 170 feet into the air is alone worth a trip to Yellowstone. Yet "Old Faithful" is but one of dozens of geysers which play in Yellowstone. To hear their mighty roar, and see their gigantic columns shoot skyward, is an experience that comes but once in a lifetime and can never be forgotten.

PLAN OF STUDY

THE beneficial results derived from study in the National Parks are not due to decreasing the credit-hour load, but to its vitalization and to the unique arrangement of the periods of recitation and study and their alternation with life-giving expeditions to the interesting and fascinating retreats in America's three most celebrated mountain parks.

The plan in vogue at Estes Park, where the party remains twenty days, is to begin the morning recitation at 8:00 A. M. At the close of the recitation period, waiting busses carry the students to distant lake or base of mountain peak, where Nature, by her artful teaching, makes clear and vivid the lessons of the classroom.



The Cody Road Loops the Loop Below Sylvan Pass

Sometimes the study group returns in time for lunch; on other occasions, however, when distances are great, lunches are provided and the party is free to return at its leisure. There is always time for rest and recreation in the afternoon. A second recitation begins at 7:00 P. M.

In Glacier and Yellowstone, this plan will be adhered to as nearly as is consistent with the exigencies of transportation.

CREDIT

FOR each hour (48 quarter-hours constitute a year's work at Greeley) of credit the full amount of work is required that would be demanded upon the campus at Greeley or in any other standard institution of higher learning.

Saturday is used as a school day; the entire number of school days, therefore, from July 21 to August 31, exclusive of Sundays, is 35. This would be equivalent to seven weeks in the standard summer school. Subtracting, therefore, the time lost in railroad and bus travel, there is still left the equivalent of a full standard half-summer session.

The students are restricted to two courses and receive four quarter-hours for each course; the total credit, therefore, is eight quarter-hours, the same that would be received by attending Greeley either the first or second half of the summer quarter.

COST

THE entire cost, including all expenses except meals taken in the diner en route, is \$350. These figures represent the exact amounts that will be paid for railroad fare, pullman, bus hire, meals, lodging, tuition, with a nominal fee added to cover guides, instructors and management.

The expense of forty days in this truly remarkable tour will be less than it would cost an individual or a party to spend the same amount of time in the same places without instructors and without credit.

When coming from the East, students may make a considerable saving by buying a round-trip ticket through the three National Parks with stop-over privileges in Greeley and Denver. For those buying this class of tickets, the cost of the Study Tour from Greeley will be \$300.

RESERVATIONS

In view of the fact that the College is planning to take only fifty individuals on this initial trip to Glacier, Yellowstone, and Rocky Mountain National Park, it is essential that those desiring to go make reservations with Dr. George Willard Frasier, President of Colorado State Teachers College, at the earliest possible moment.

The first fifty enrolling will be given preference (to enroll, it is necessary to forward in advance the twenty-dollar tuition fee). All others will have their fees returned.

ITINERARY

- July 21-23 (inclusive)—Greeley.
July 23-Aug. 12 (Inclusive)—Estes Park.
Aug. 12-Aug. 14—En route to Glacier Park.
Aug. 14-Aug. 18—Glacier Park.
Aug. 18-Aug. 20—En route to Yellowstone.
Aug. 20-Aug. 27—Yellowstone.
Aug. 27-Aug. 29—En route to Greeley.
Aug. 29-Aug. 31—Completion of courses at Greeley.

