



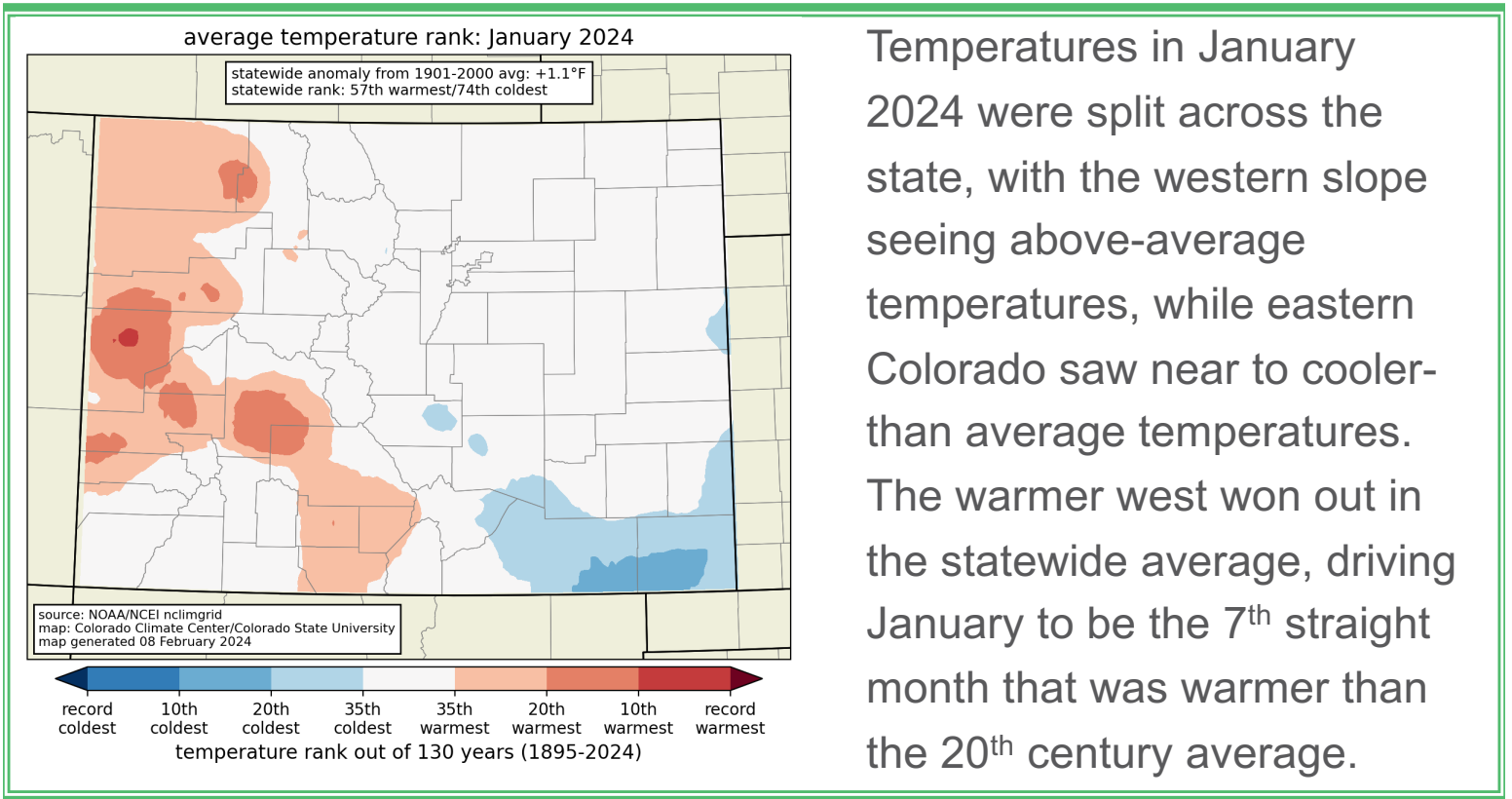
# January 2024 Colorado Monthly Climate Summary

---

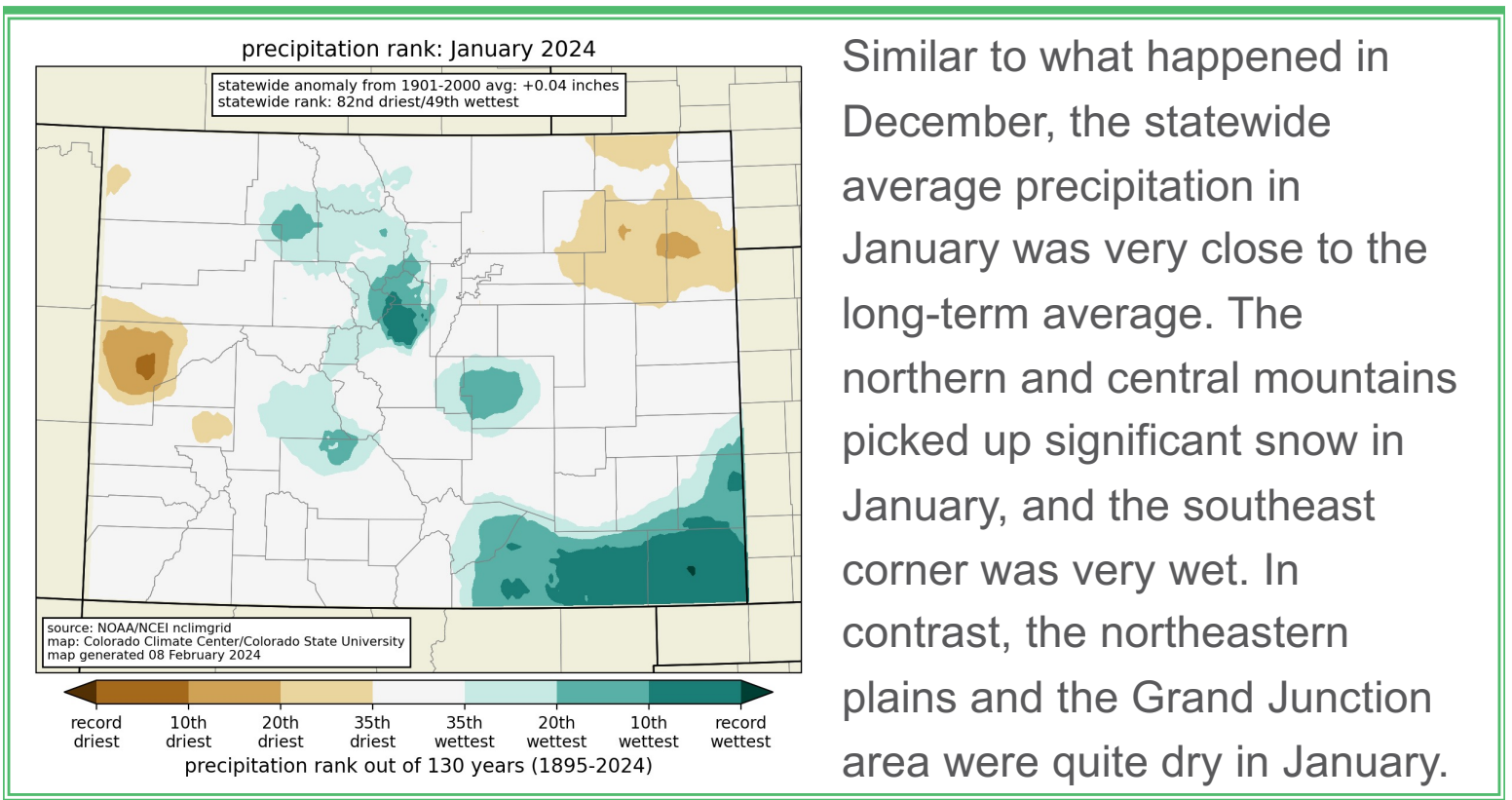


ATMOSPHERIC SCIENCE  
COLORADO STATE UNIVERSITY

# temperature



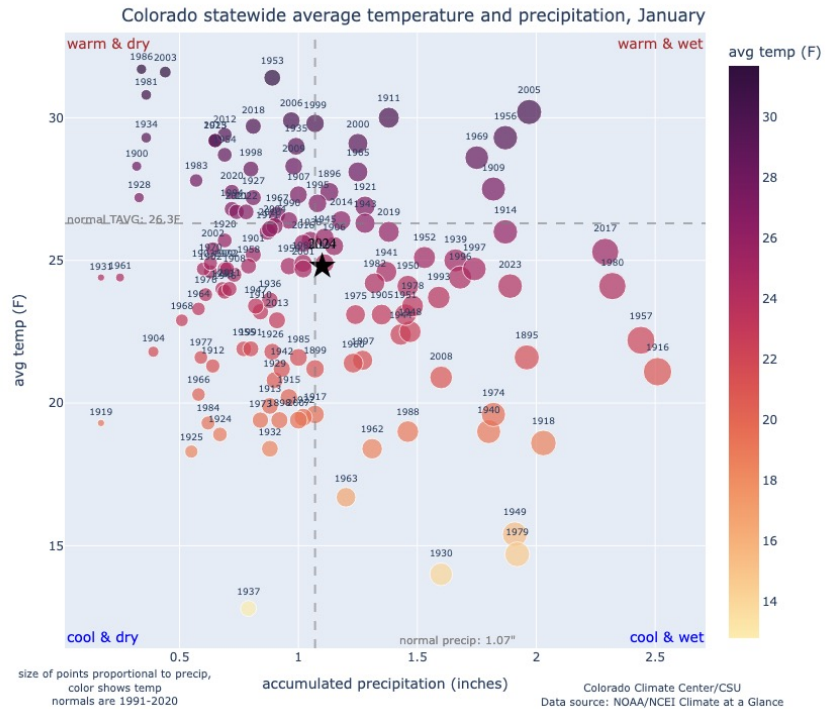
# precipitation



# quadrant charts

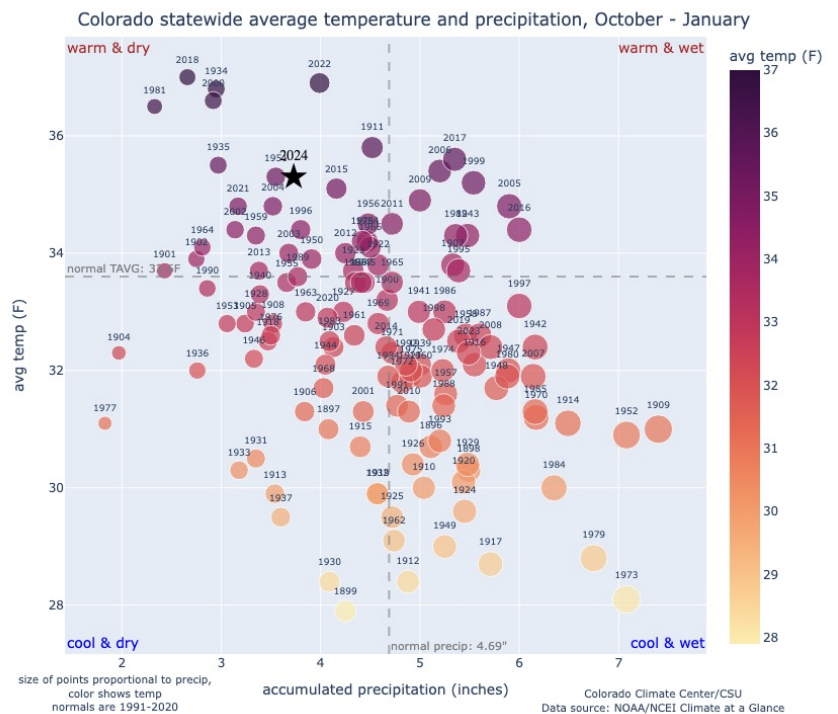
Each dot plots the precipitation on the x-axis and the temperature on the y-axis. Dots are colored based on temperature and size is based on precipitation. The current year is denoted with a star. Long-term averages are denoted by the dashed lines.

Averaged across the state, January 2024 was tied for the 57<sup>th</sup> warmest (74<sup>th</sup> coolest) January on record at 1.5° F below the 1991-2020 average but 1.1° F above the 20<sup>th</sup> century average. It was the 49<sup>th</sup> wettest/82<sup>nd</sup> wettest December, at 0.04” above average statewide.



For the first four months of the water year (October 2023-January 2024), Colorado remains squarely in the warm and dry quadrant, driven largely by the warm and dry fall and a very warm December. It has been the 33<sup>rd</sup> driest and tied for the 10<sup>th</sup> warmest first four months of a water year.

[view all quadrant charts](#)

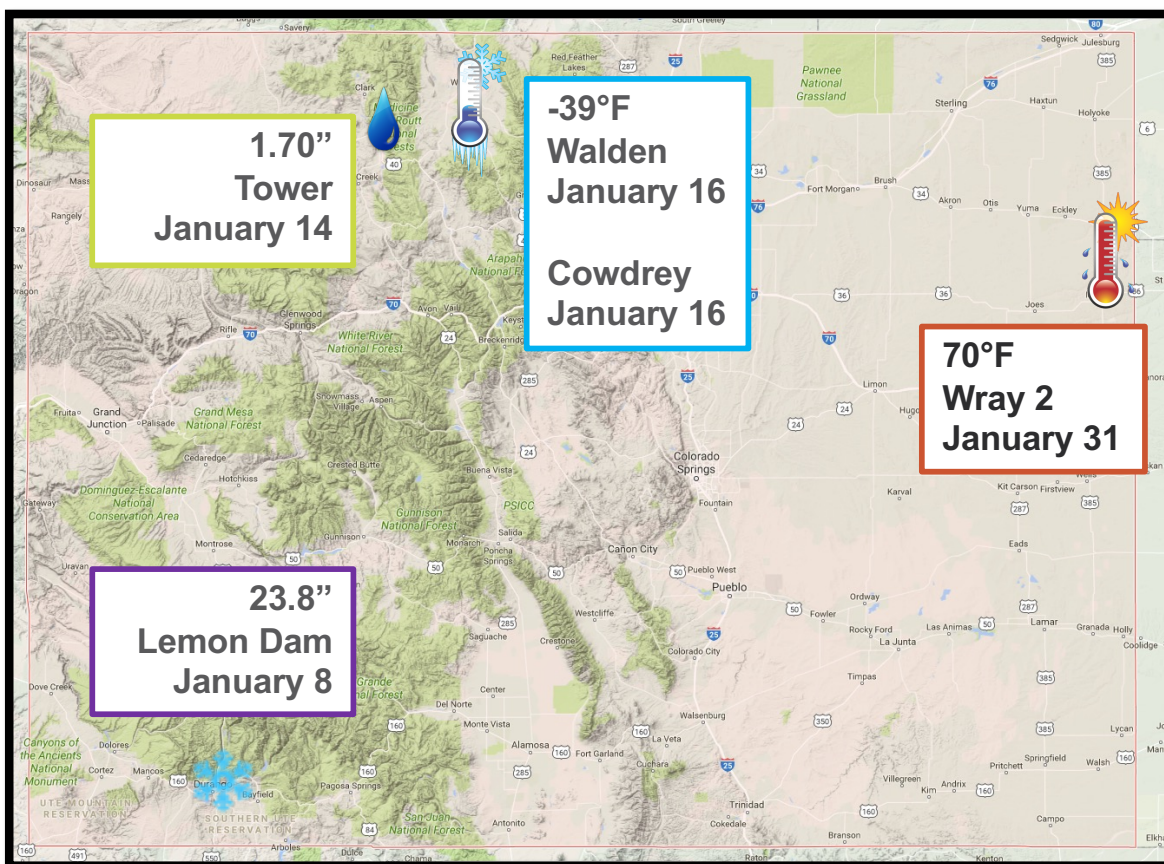


# records tied and broken

	High Max	Low Max	High Min	Low Min	Precip	Snow
Daily	14/34	173/189	15/54	105/117	43/118	8/46
Monthly	1/0	2/10	0/0	2/8	1/3	0/1
All-time	0/0	0/0	0/0	1/1	0/0	0/0

Tied/**Broken**, from NOAA National Centers for Environmental Information

# state extremes

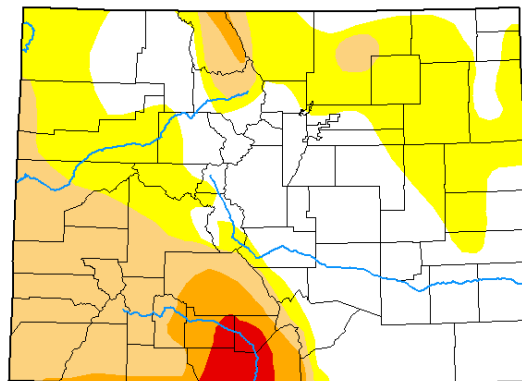


# drought

## U.S. Drought Monitor Colorado

January 30, 2024  
(Released Thursday, Feb. 1, 2024)  
Valid 7 a.m. EST

Many changes in drought status occurred in January. Most notably, improvements observed with mountain snows over the northern mountains. The plains also saw an active storm pattern and drought improvements.



Drought Conditions (Percent Area)

	None	D0-D4	D1-D4	D2-D4	D3-D4	D4
<b>Current</b>	41.97	58.03	27.83	6.69	2.05	0.00
<b>Last Week</b> 01-23-2024	39.26	60.74	27.83	6.69	2.05	0.00
<b>3 Months Ago</b> 10-31-2023	58.00	42.00	21.66	3.73	0.00	0.00
<b>Start of Calendar Year</b> 01-01-2024	34.65	65.35	29.59	8.85	2.05	0.00
<b>Start of Water Year</b> 09-26-2023	65.71	34.29	17.43	2.77	0.00	0.00
<b>One Year Ago</b> 01-31-2023	45.65	54.35	35.58	11.18	1.87	0.04

**Intensity:**  
 None (White)      D2 Severe Drought (Orange)  
 D0 Abnormally Dry (Yellow)      D3 Extreme Drought (Red)  
 D1 Moderate Drought (Light Orange)      D4 Exceptional Drought (Dark Red)

The Drought Monitor focuses on broad-scale conditions. Local conditions may vary. For more information on the Drought Monitor, go to <https://droughtmonitor.unl.edu/About.aspx>

**Author:**  
Brian Fuchs  
National Drought Mitigation Center

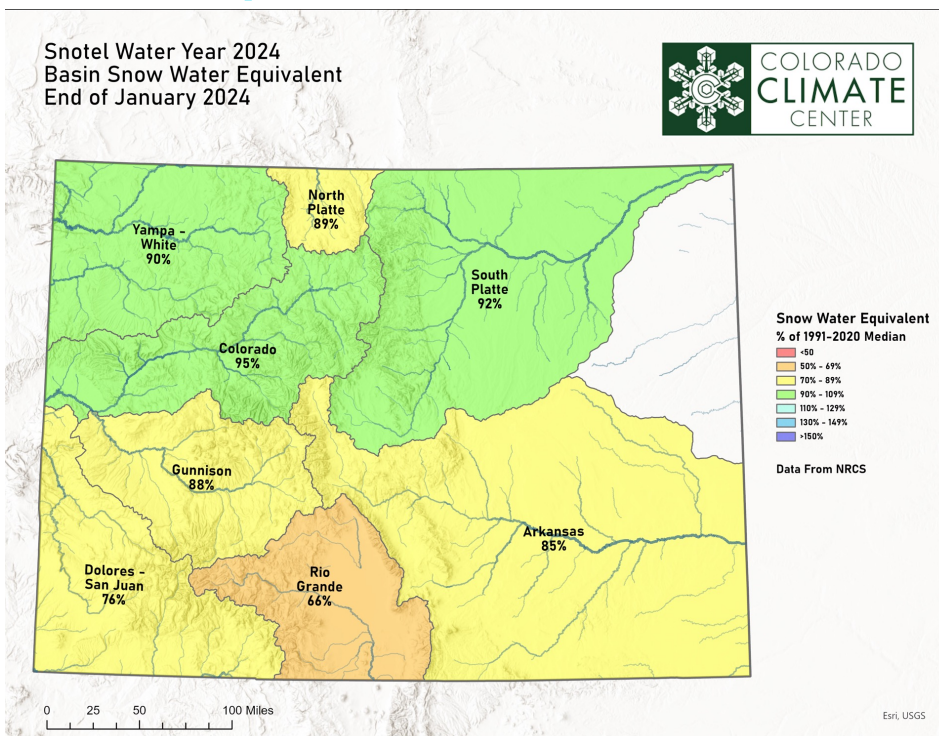


[droughtmonitor.unl.edu](http://droughtmonitor.unl.edu)

About 28% of the state remains in a drought category.

[Colorado Drought Update Page](#)

# snowpack



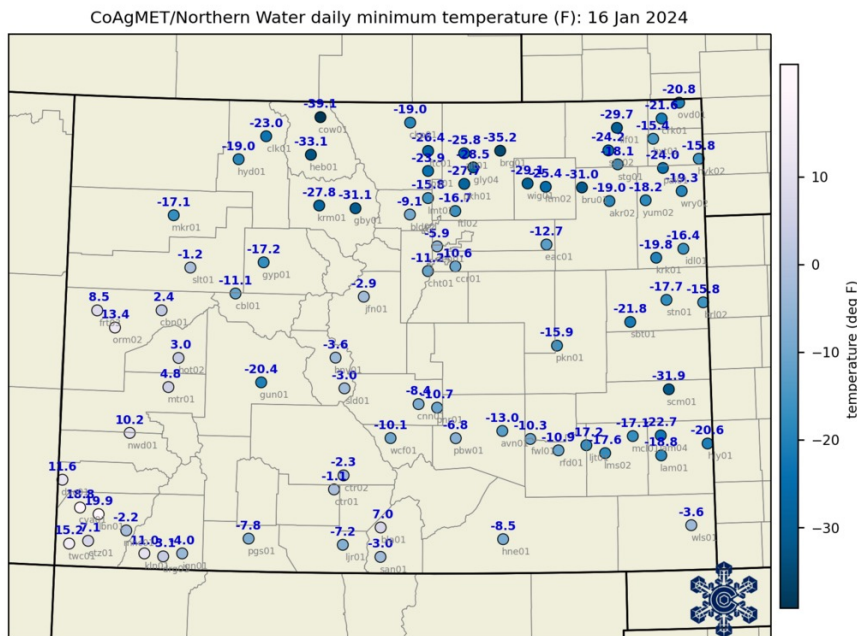
End of January snowpack was slightly below normal for all basins around the state. The northern basins are slightly better, around 90% to 95% of normal. But the southern basins have been lower. The Rio Grande basin ended the month at 66% of normal.



# significant events

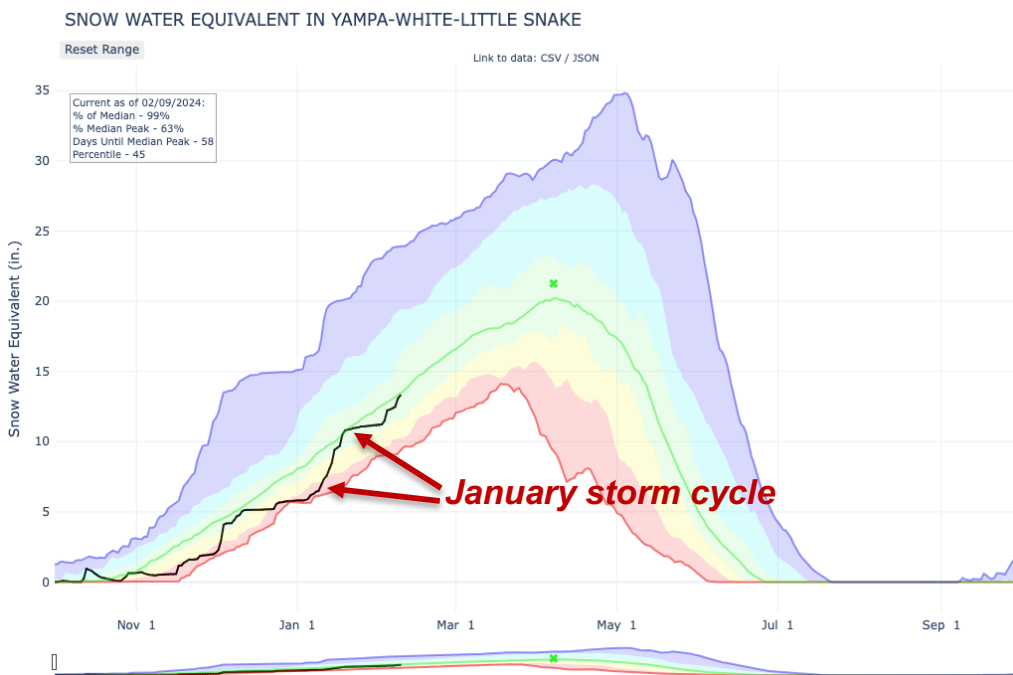
While the beginning and end of January were warm, an intense cold wave swept through eastern Colorado mid-month. On the morning of the 16<sup>th</sup>, it reached -39°F at Cowdrey in North Park, -35°F at Briggsdale in Weld County, and -30°F at the Limon airport, the lowest temperature on record for that station, with data back to 1948. This was a top-10 cold wave for northeast and southeast Colorado; read more details on [our blog!](#)

## Mid-January Arctic blast



Daily minimum temperatures (°F) for 16 January 2024 from the CoAgMET network. See current and archived maps like this [here](#).

## Major mountain storm cycle



The mountains benefited from a huge storm cycle in January. Snowpack in the northern mountains was near-record-low at the start of January, but reached back to near average with a series of snowstorms between January 9-18.

Snowpack in the Yampa-White Basin, showing a big boost in January. Source: [USDA/NRCS](#)



# CCC in the news

- ❑ [Colorado's snowpack gets boost from January snowstorms, but some regions remain in severe drought](#)
  - Denver Post, January 23, Russ Schumacher
- ❑ [Why Colorado should expect a drier future with more wildfires and air pollution](#)
  - Colorado Public Radio, January 9, Becky Bolinger
- ❑ [Colorado rivers may shrink by 30% as climate change continues, report says](#)
  - Colorado Sun, January 8, Becky Bolinger
- ❑ [Climate change could slash Colorado stream flows, with effects across the US West: report](#)
  - The Hill, January 8, Becky Bolinger
- ❑ [CSU climate report warns of more drought and wildfires](#)
  - 9News, January 8, Becky Bolinger

