



# February 2023 Colorado Monthly Climate Summary

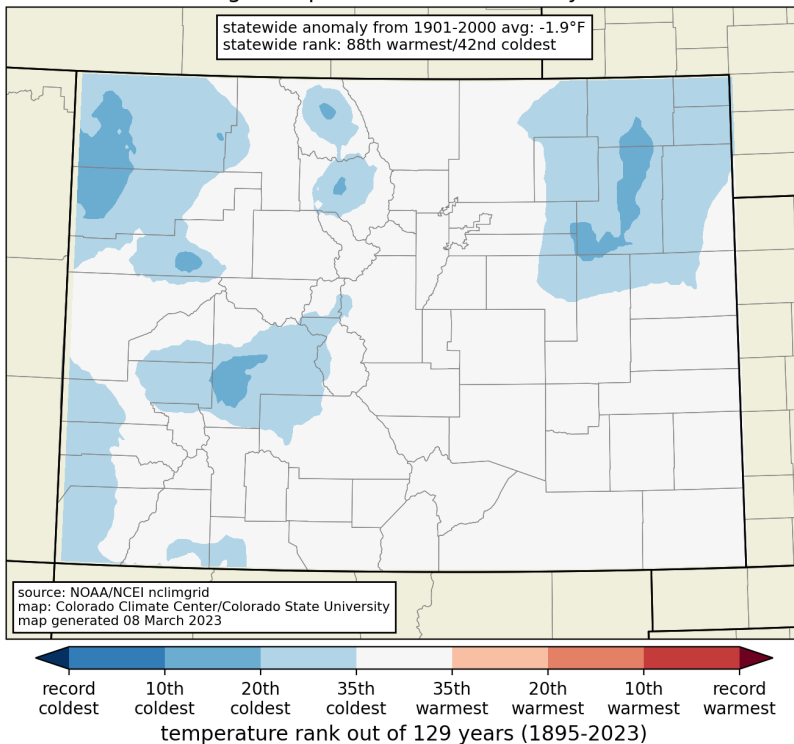
---



ATMOSPHERIC SCIENCE  
COLORADO STATE UNIVERSITY

# temperature

average temperature rank: February 2023

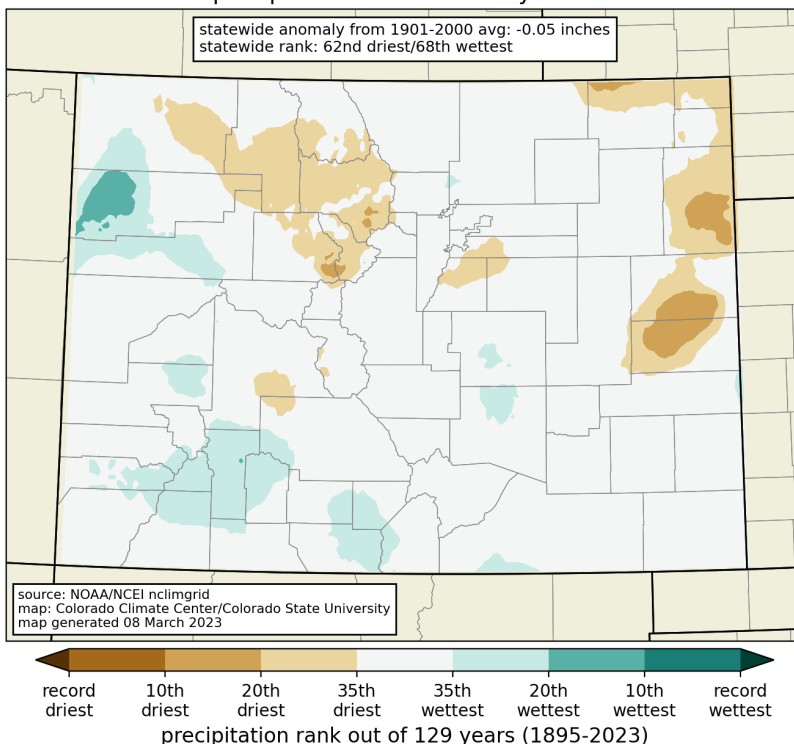


February was another month of near- to below-average temperatures across Colorado. Overall, it was tied for the 42<sup>nd</sup> coldest February on record, with portions of northeast and western Colorado recording a top-20 coldest February. February was the 4<sup>th</sup> straight month with temperatures below the 1991-2020 average statewide.

# precipitation

[http://climate.colostate.edu/co\\_cag/rank\\_maps.html](http://climate.colostate.edu/co_cag/rank_maps.html)

precipitation rank: February 2023

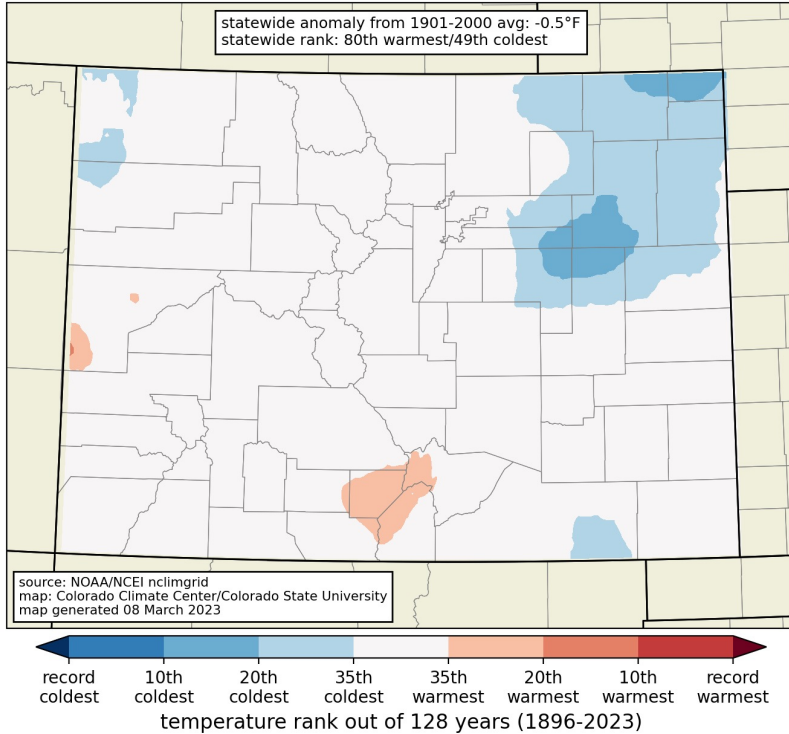


Following a very wet January, February was closer to average in terms of precipitation. Only a few spots in the state had precipitation that was much above or below normal. Statewide, it was tied for the 62<sup>nd</sup> driest and 68<sup>th</sup> wettest year: almost right in the middle of the historical pack.



# temperature

average temperature rank: 3 months ending February 2023 (Dec-Feb)

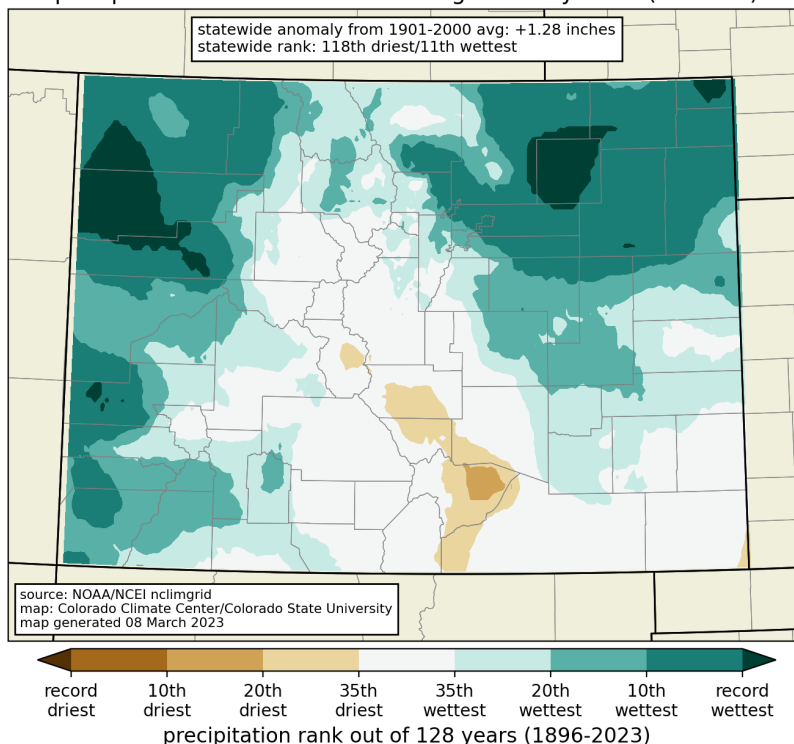


The winter season (December-January-February) was colder than average in Colorado ( $0.5^{\circ}\text{F}$  below the 20<sup>th</sup> century average), ranking in a tie for the 48<sup>th</sup> coldest winter in the 128-year record. It was the coldest winter statewide since 2013, and in the Platte river basin, the coldest since 2010.

# precipitation

[http://climate.colostate.edu/co\\_cag/rank\\_maps.html](http://climate.colostate.edu/co_cag/rank_maps.html)

precipitation rank: 3 months ending February 2023 (Dec-Feb)



The winter of 2022-23 was snowy across much of the state, and ended up as the 11<sup>th</sup> wettest winter on record. Some areas in northeast and northwest Colorado had their wettest winter on record. The exception was around the Sangre de Cristo mountain range, where winter was drier than average.



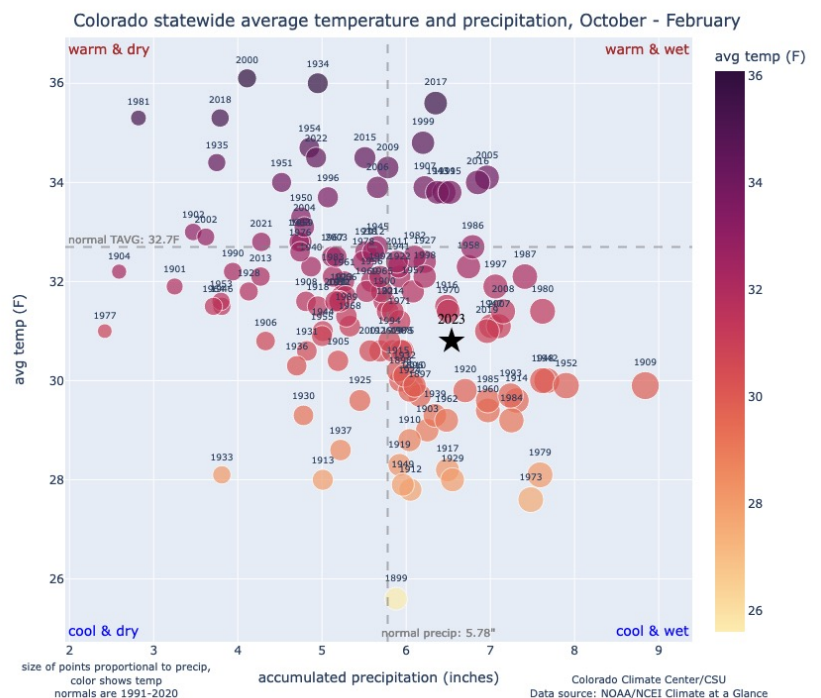
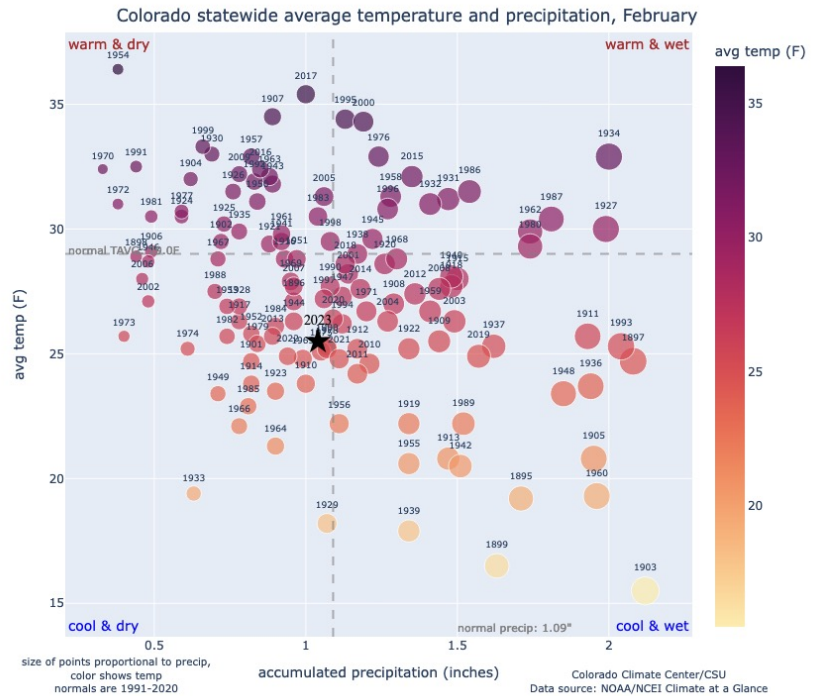
# quadrant charts

Each dot plots the precipitation on the x-axis and the temperature on the y-axis. Dots are colored based on temperature and size is based on precipitation. The current year is denoted with a star. Long-term averages are denoted by the dashed lines.

After three straight months in the cool and wet quadrant statewide, February remained cooler than average, but was closer to normal for precipitation.

Over the first five months of the water year, conditions have been squarely in the cool and wet quadrant. It's the coolest start to a water year since 2010, and wettest since 2019.

[view all quadrant charts](#)

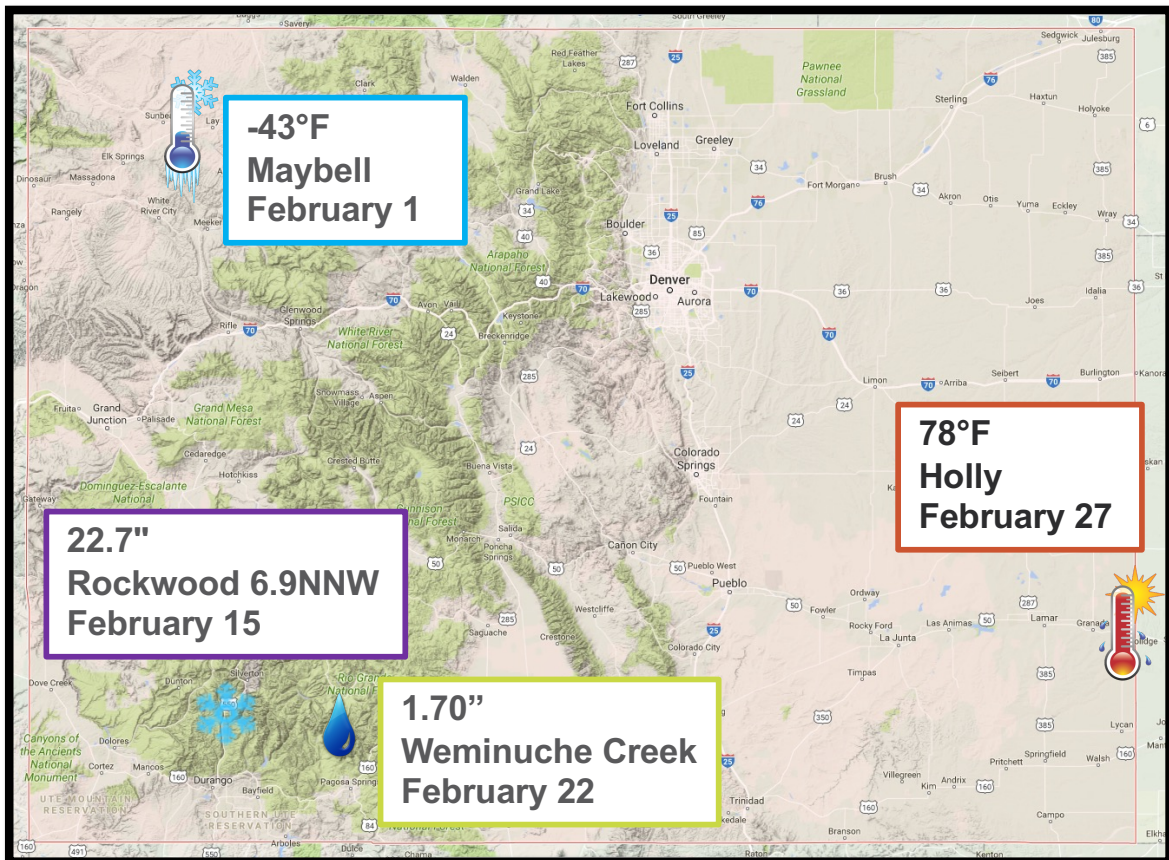


# records tied and broken

	High Max	Low Max	High Min	Low Min	Precip	Snow
Daily	6/16	17/153	8/19	20/134	10/47	1/47
Monthly	0/0	0/0	0/0	0/0	0/1	0/1
All-time	0/0	0/0	0/0	0/0	0/0	0/0

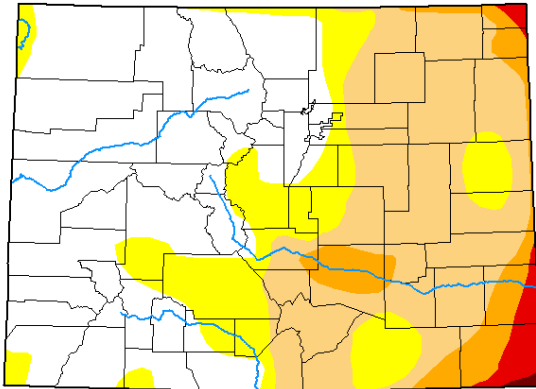
Tied/**Broken**, from NOAA National Centers for Environmental Information

# state extremes



# drought

## U.S. Drought Monitor Colorado



**February 28, 2023**  
(Released Thursday, Mar. 2, 2023)  
Valid 7 a.m. EST

Drought Conditions (Percent Area)

	None	D0-D4	D1-D4	D2-D4	D3-D4	D4
<b>Current</b>	45.67	54.33	37.42	7.94	2.00	0.16
<b>Last Week</b> 02-21-2023	44.81	55.19	37.42	7.94	2.00	0.16
<b>3 Months Ago</b> 11-29-2022	16.25	83.75	47.20	23.68	4.34	0.57
<b>Start of Calendar Year</b> 01-03-2023	39.97	60.03	33.83	12.28	1.91	0.01
<b>Start of Water Year</b> 09-27-2022	15.46	84.54	45.65	15.47	3.73	0.57
<b>One Year Ago</b> 03-01-2022	0.00	100.00	91.57	57.26	8.27	0.09

**Intensity**

- None
- D0 Abnormally Dry
- D1 Moderate Drought
- D2 Severe Drought
- D3 Extreme Drought
- D4 Exceptional Drought

The Drought Monitor focuses on broad-scale conditions. Local conditions may vary. For more information on the Drought Monitor, go to <https://droughtmonitor.unl.edu/About.aspx>

**Author:**  
Richard Heim  
NCEI/NOAA



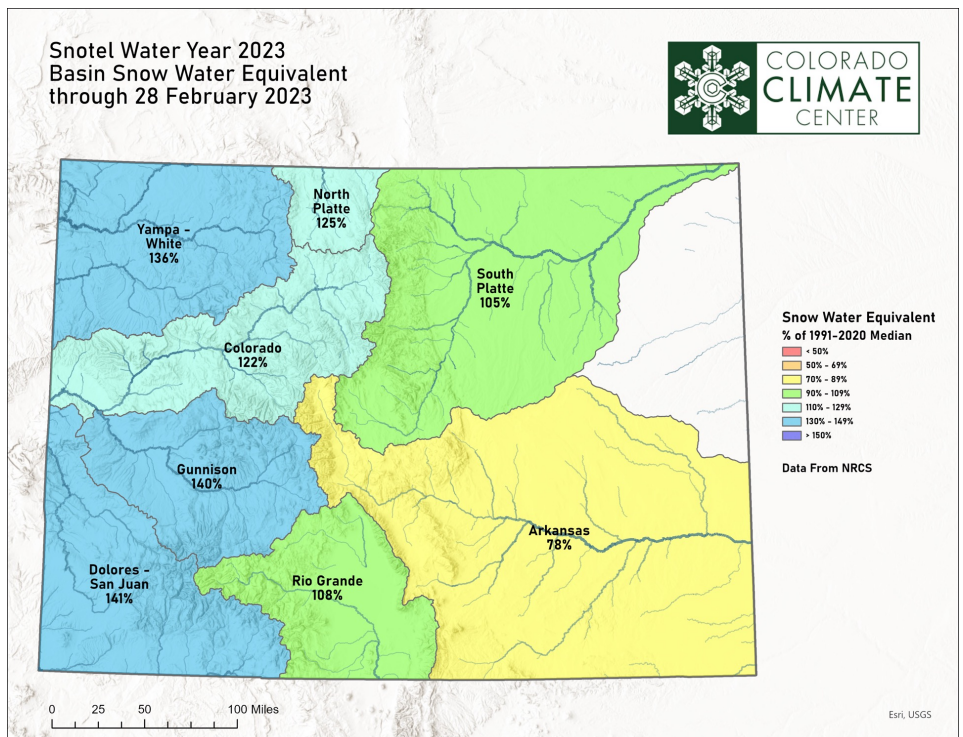
[droughtmonitor.unl.edu](http://droughtmonitor.unl.edu)

Since the start of the water year, drought coverage has decreased by about 8%. In February, some improvement in drought conditions occurred over the San Juan Mountains and parts of the Arkansas Valley in southeast CO. The Sangre de Cristos and parts of the San Luis Valley saw drought conditions worsen.

## [Colorado Drought Update Page](#)

# snowpack

End of February snowpack was well above average for the western basins. Conditions on the Rio Grande and South Platte were closer to normal, and the Arkansas Basin continued to show below average snowpack. Both the Yampa-White and the San Juan basins hit their normal peak snowpack values in late February, more than a month early.



# CCC in the news

- ❑ [CSU machine learning model helps forecasters improve confidence in storm prediction](#)
  - CSU Source, February 26, Russ Schumacher
- ❑ [Winter storm gives northern Colorado a welcome boost to its snow totals](#)
  - 9News, February 22, Becky Bolinger
- ❑ [Wet weather weirdness continues](#)
  - West Virginia News, February 21, Becky Bolinger
- ❑ [Soaring utility bills provoke questions about our energy future](#)
  - Colorado Newslines, February 17, Russ Schumacher
- ❑ [Will recent snowstorms reverse drought in Southwest Colorado?](#)
  - The Durango Herald, February 16, Russ Schumacher
- ❑ [Extra snowfall this year means happy Colorado trees](#)
  - KKCO News, February 4, Becky Bolinger
- ❑ [Arkansas River Basin snowpack below Colorado averages, but more storms could help](#)
  - The Pueblo Chieftain, February 1, Becky Bolinger

