



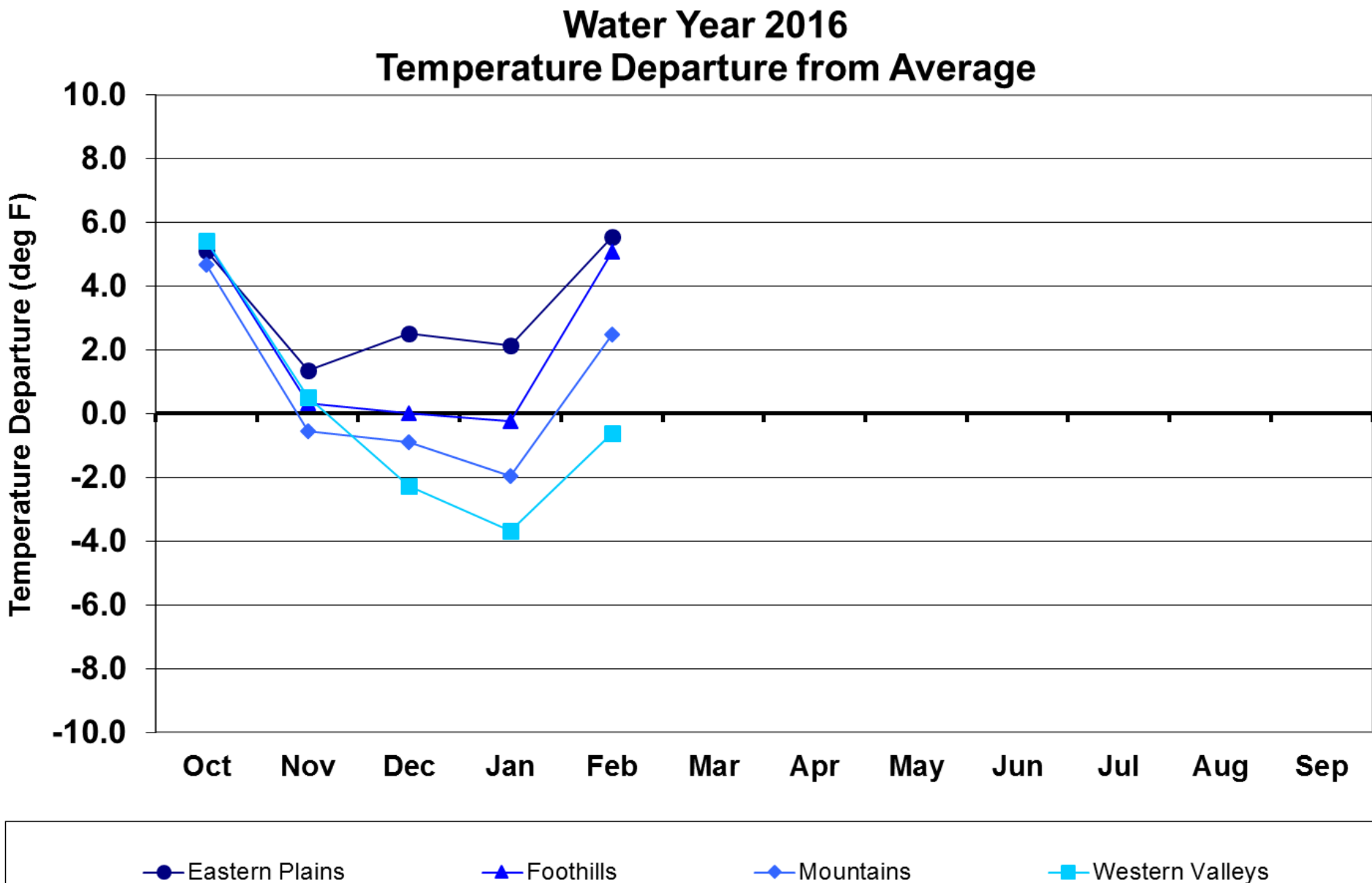
# *Climate Update*



## Colorado Climate Center

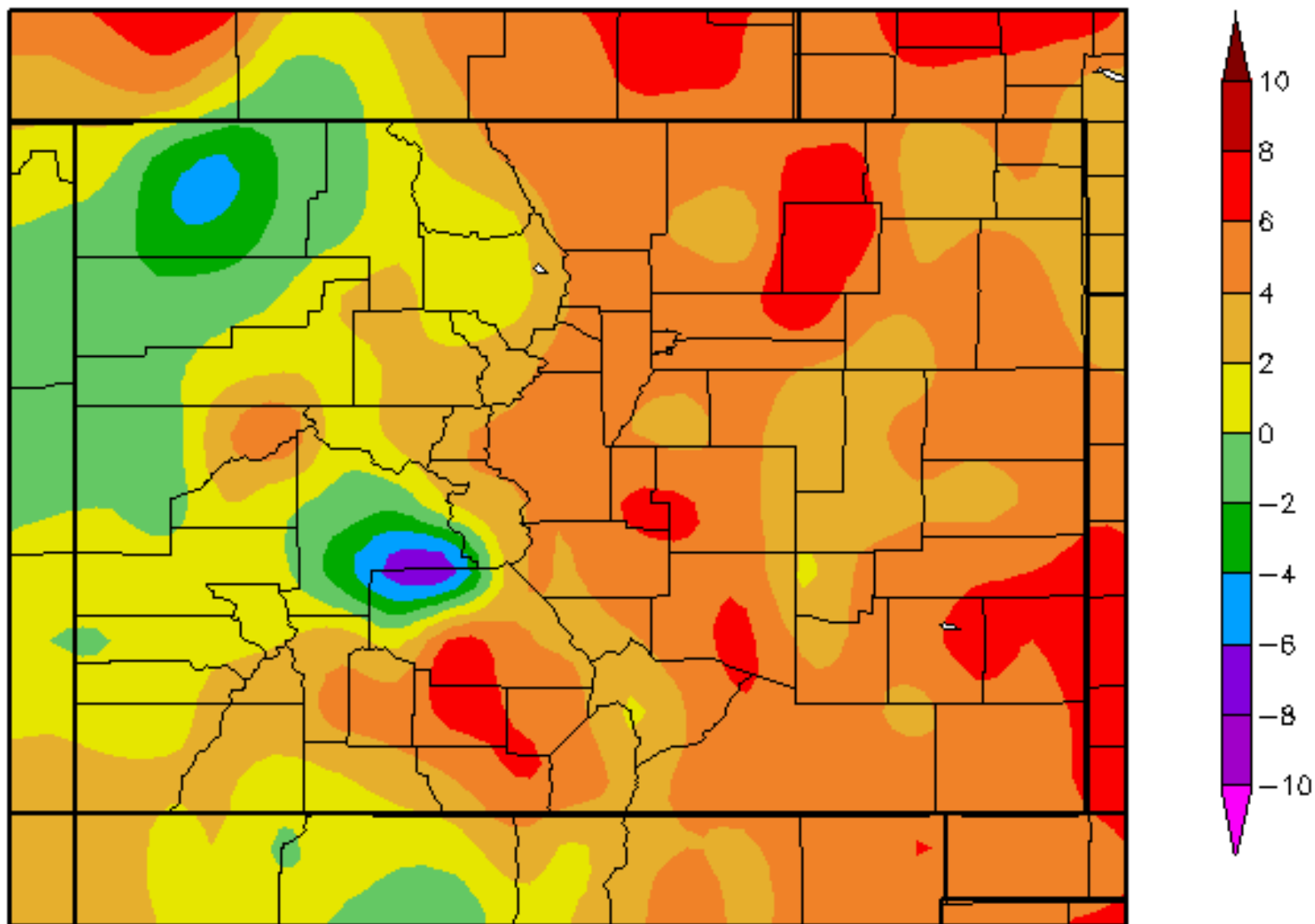
Presented to  
Water Availability Task Force  
March 25, 2016  
Denver, CO

# Water Year 2016 Temperature Departures



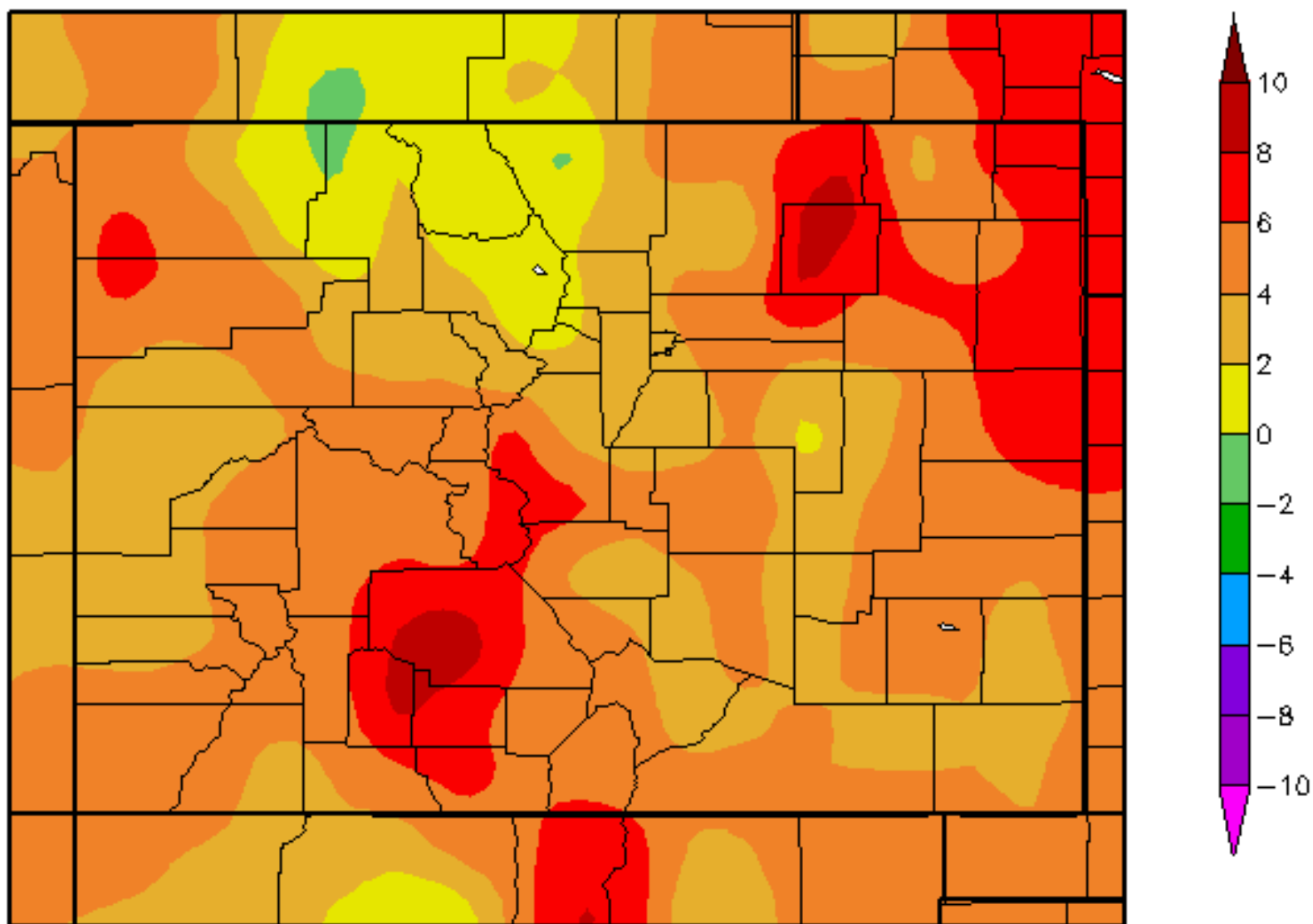
# Departure from Normal Temperature (F)

2/1/2016 - 2/29/2016



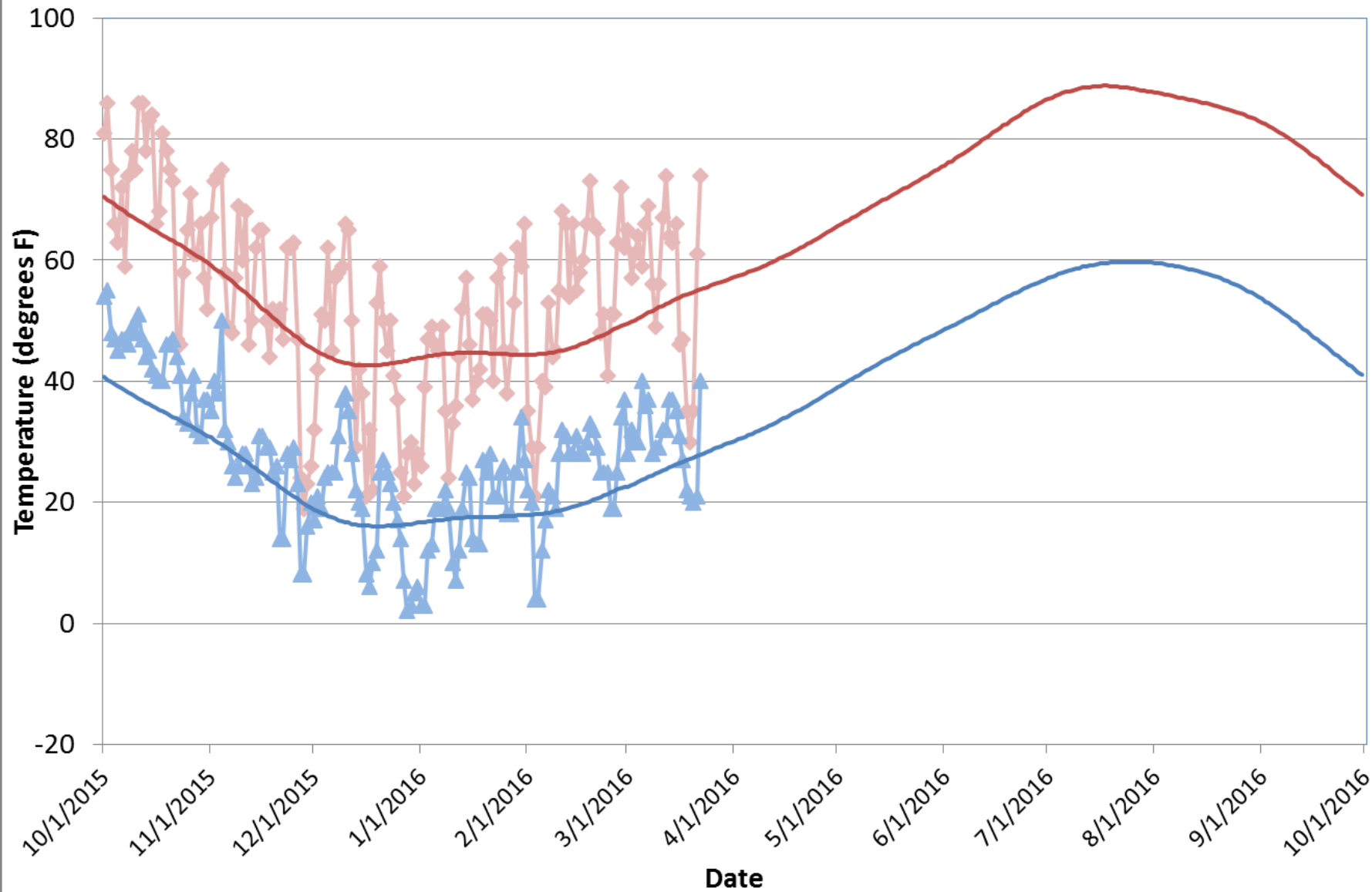
# Departure from Normal Temperature (F)

3/1/2016 – 3/21/2016



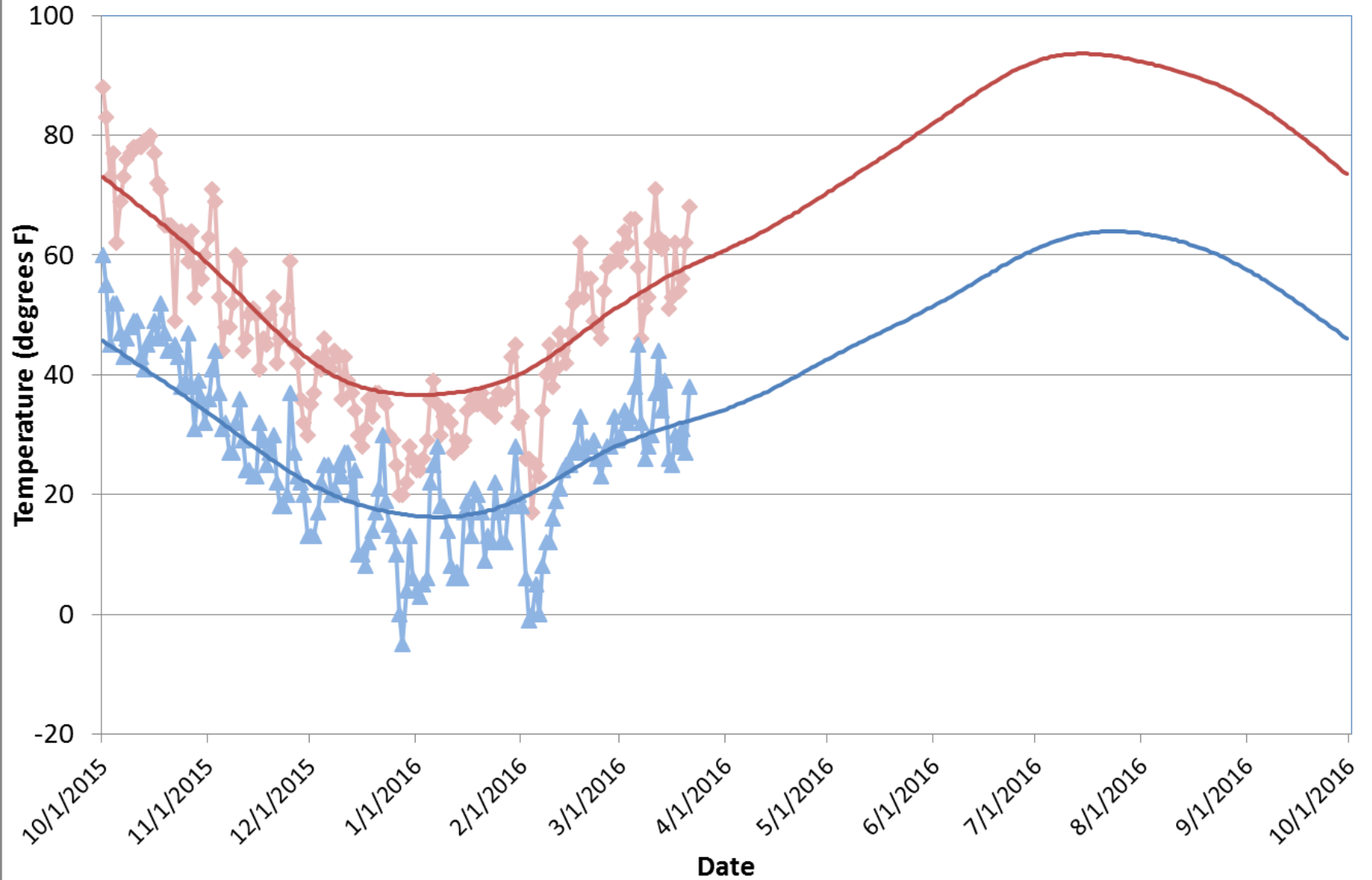
# Denver-Stapleton Daily Max/Min Temperatures with Normals, Water Year 2016

Max Temperature Normal Max Temp Min Temperature Normal Min Temp

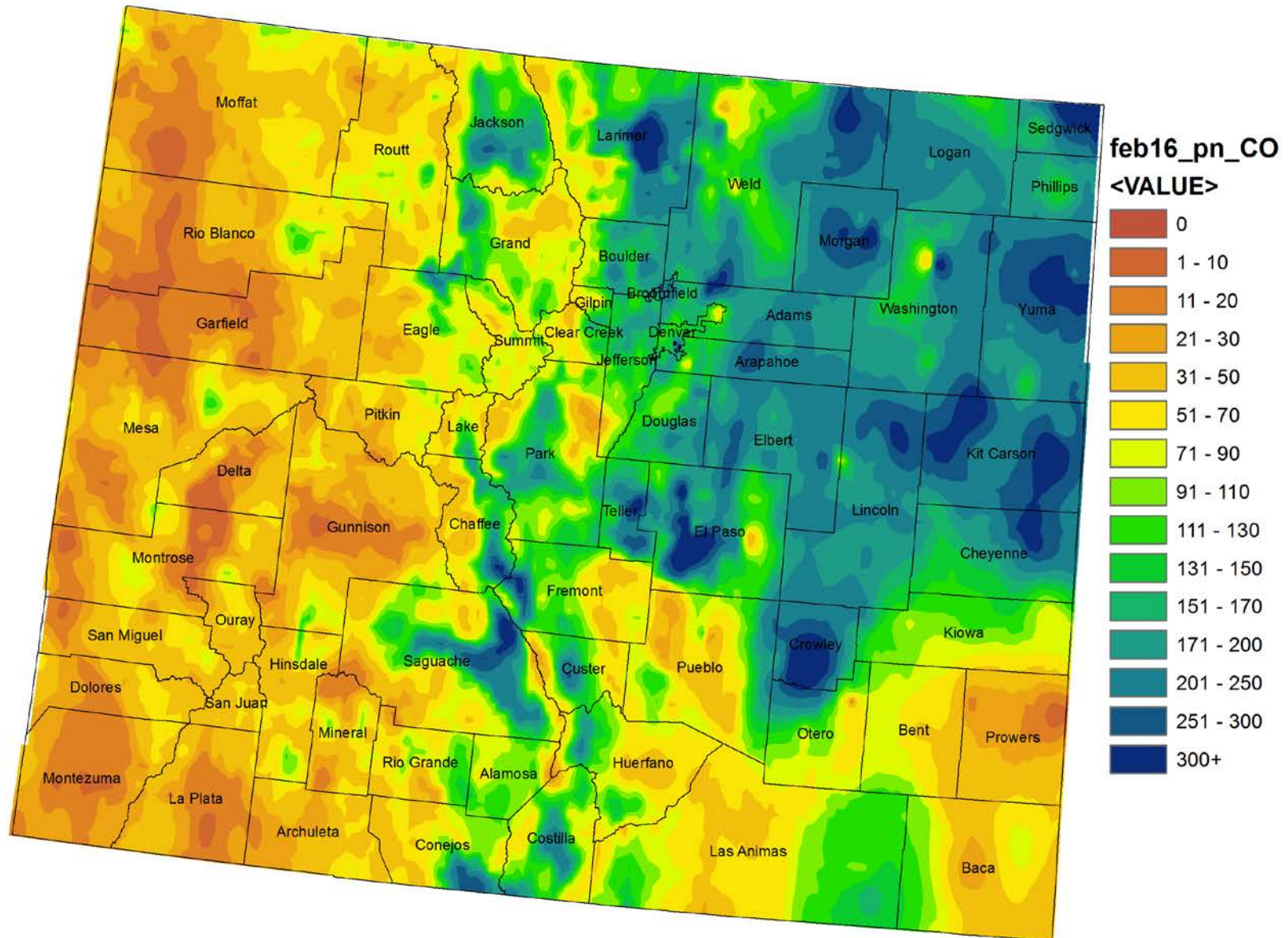


# Grand Junction Daily Max/Min Temperature with Normals, WY 2016

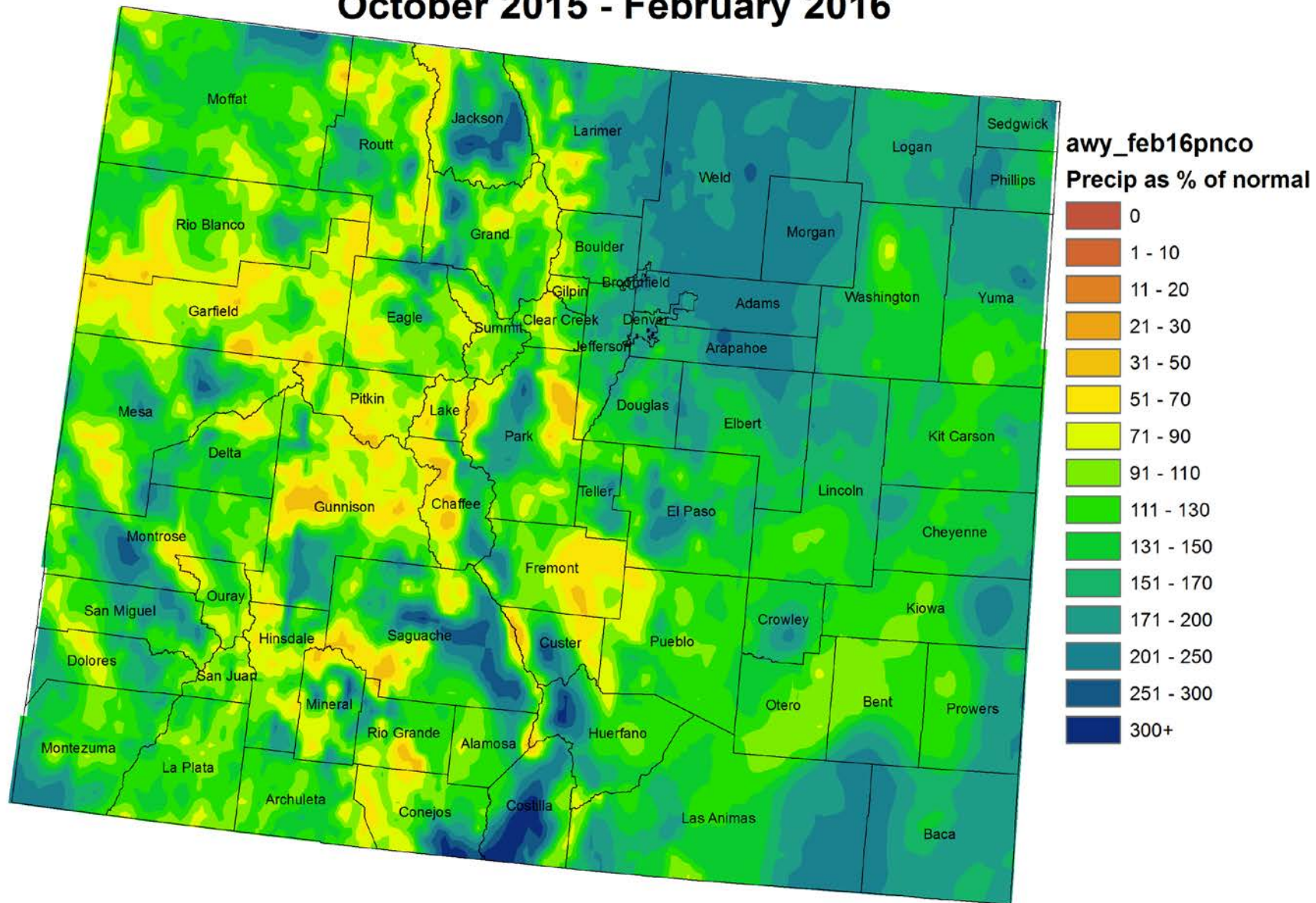
Max Temperature    Normal Max Temp    Min Temperature    Normal Min Temp



# Colorado February 2016 Precipitation as a Percentage of Normal

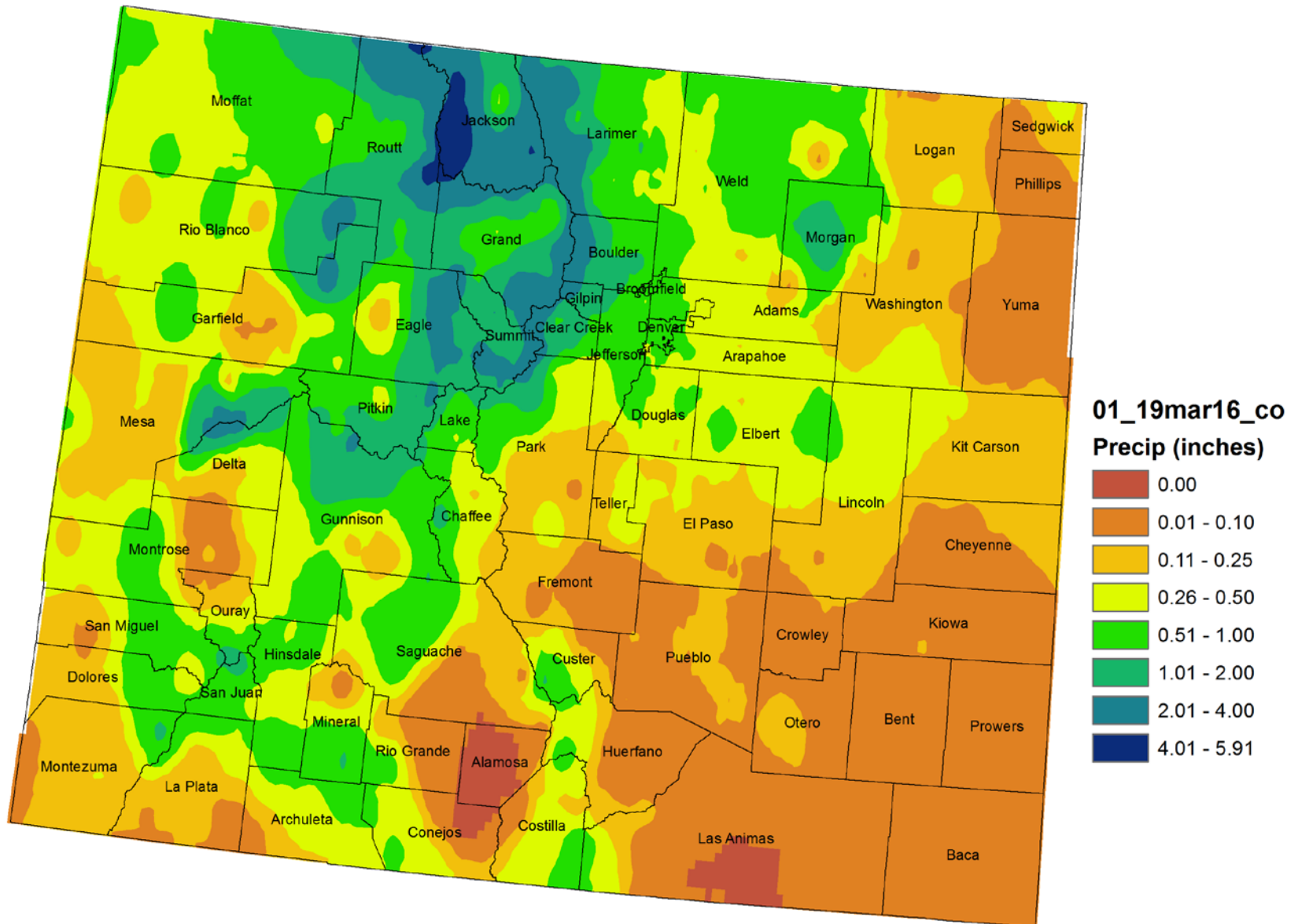


# Colorado Water Year Precipitation as a Percentage of Normal October 2015 - February 2016



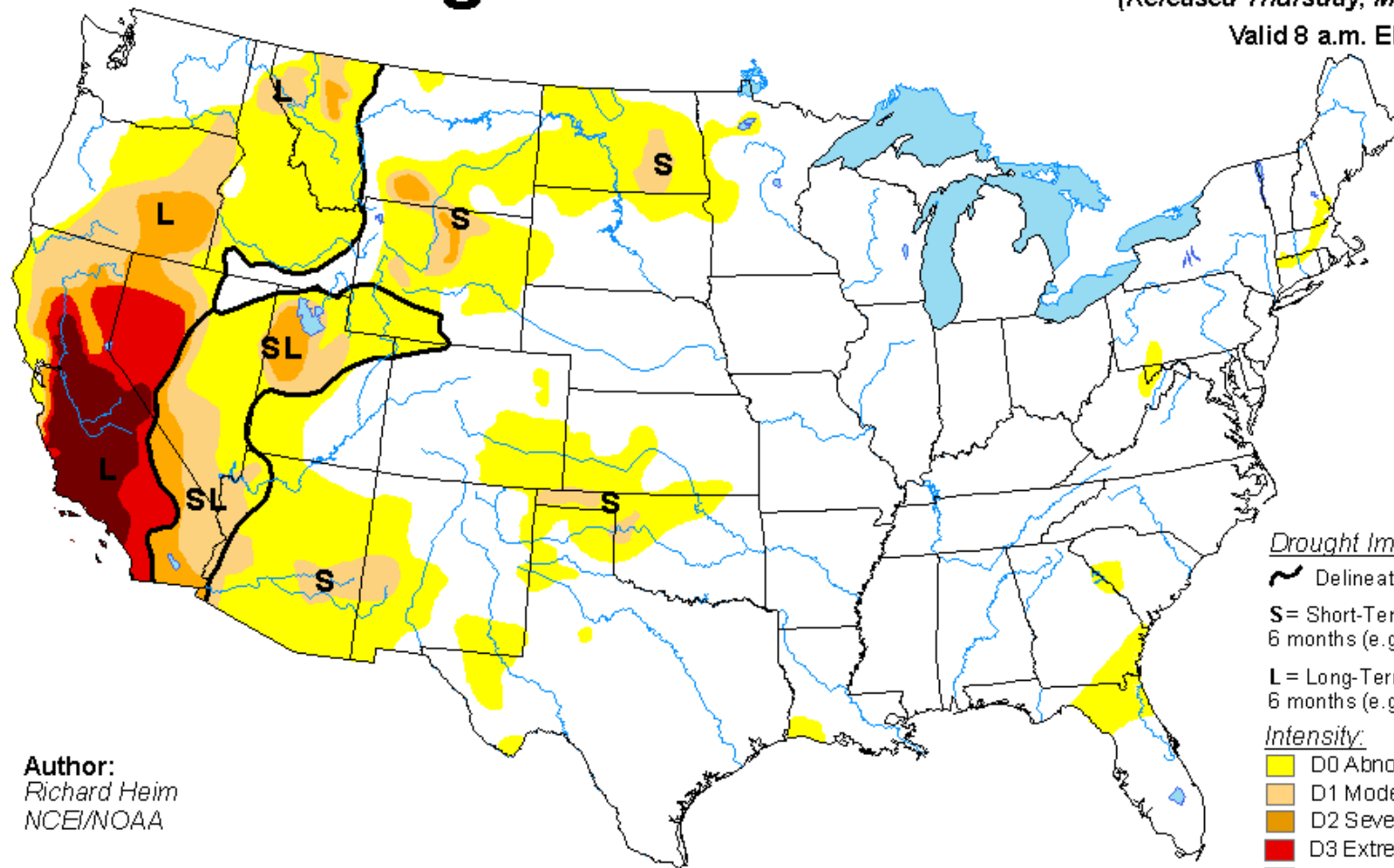


# Colorado Month to Date Precipitation 1 - 19 March 2016



# U.S. Drought Monitor

March 15, 2016  
(Released Thursday, Mar. 17, 2016)  
Valid 8 a.m. EDT



Author:  
Richard Heim  
NCEI/NOAA

### Drought Impact Types:

Delineates dominant impacts

**S** = Short-Term, typically less than 6 months (e.g. agriculture, grasslands)

**L** = Long-Term, typically greater than 6 months (e.g. hydrology, ecology)

### Intensity:

D0 Abnormally Dry

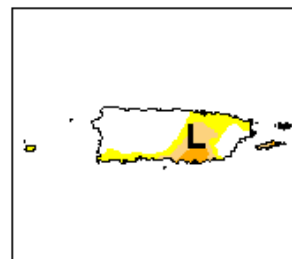
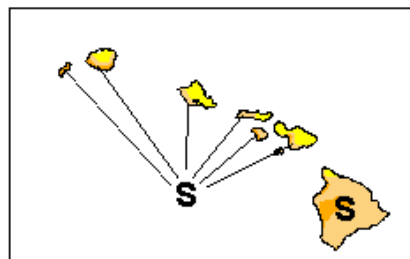
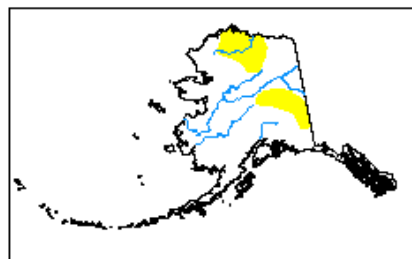
D1 Moderate Drought

D2 Severe Drought

D3 Extreme Drought

D4 Exceptional Drought

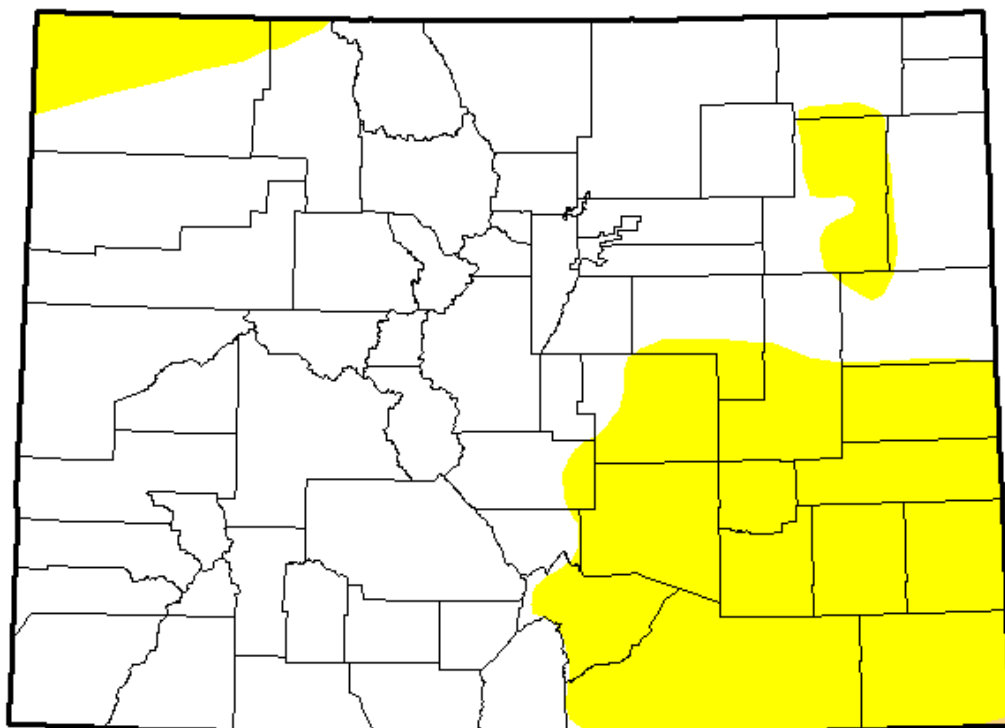
*The Drought Monitor focuses on broad-scale conditions. Local conditions may vary. See accompanying text summary for forecast statements.*



<http://droughtmonitor.unl.edu/>

# U.S. Drought Monitor Colorado

**March 15, 2016**  
(Released Thursday, Mar. 17, 2016)  
Valid 8 a.m. EDT



*Drought Conditions (Percent Area)*

	None	D0-D4	D1-D4	D2-D4	D3-D4	D4
<b>Current</b>	72.25	27.75	0.03	0.00	0.00	0.00
<b>Last Week</b> 3/8/2016	85.58	14.42	0.00	0.00	0.00	0.00
<b>3 Months Ago</b> 12/15/2015	88.11	11.89	0.00	0.00	0.00	0.00
<b>Start of Calendar Year</b> 12/29/2015	90.02	9.98	0.00	0.00	0.00	0.00
<b>Start of Water Year</b> 9/29/2015	71.49	28.51	0.00	0.00	0.00	0.00
<b>One Year Ago</b> 3/17/2015	36.34	63.66	51.51	12.20	0.00	0.00

*Intensity:*

- D0 Abnormally Dry
- D1 Moderate Drought
- D2 Severe Drought
- D3 Extreme Drought
- D4 Exceptional Drought

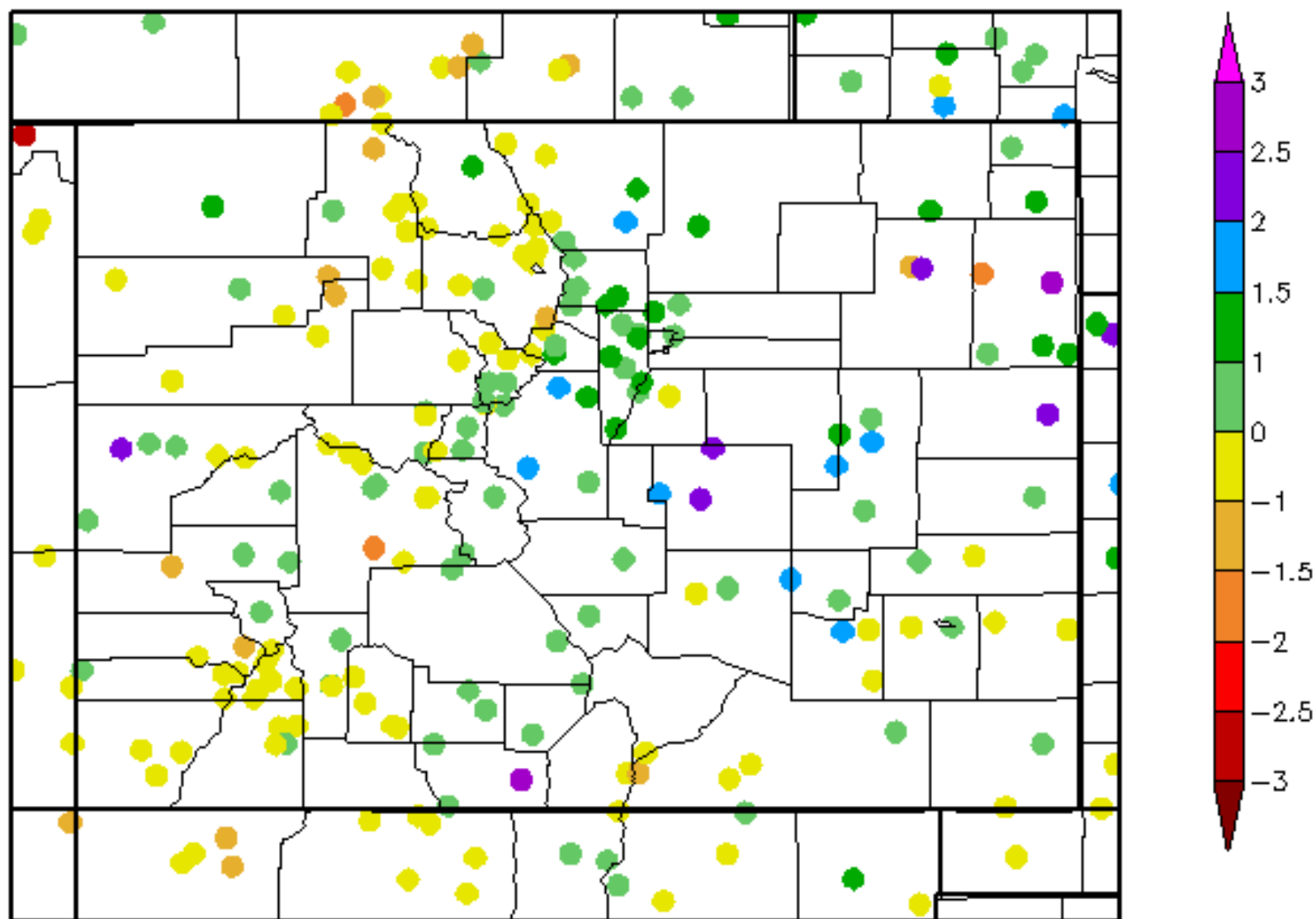
*The Drought Monitor focuses on broad-scale conditions. Local conditions may vary. See accompanying text summary for forecast statements.*

**Author:**  
Richard Heim  
NCEI/NOAA



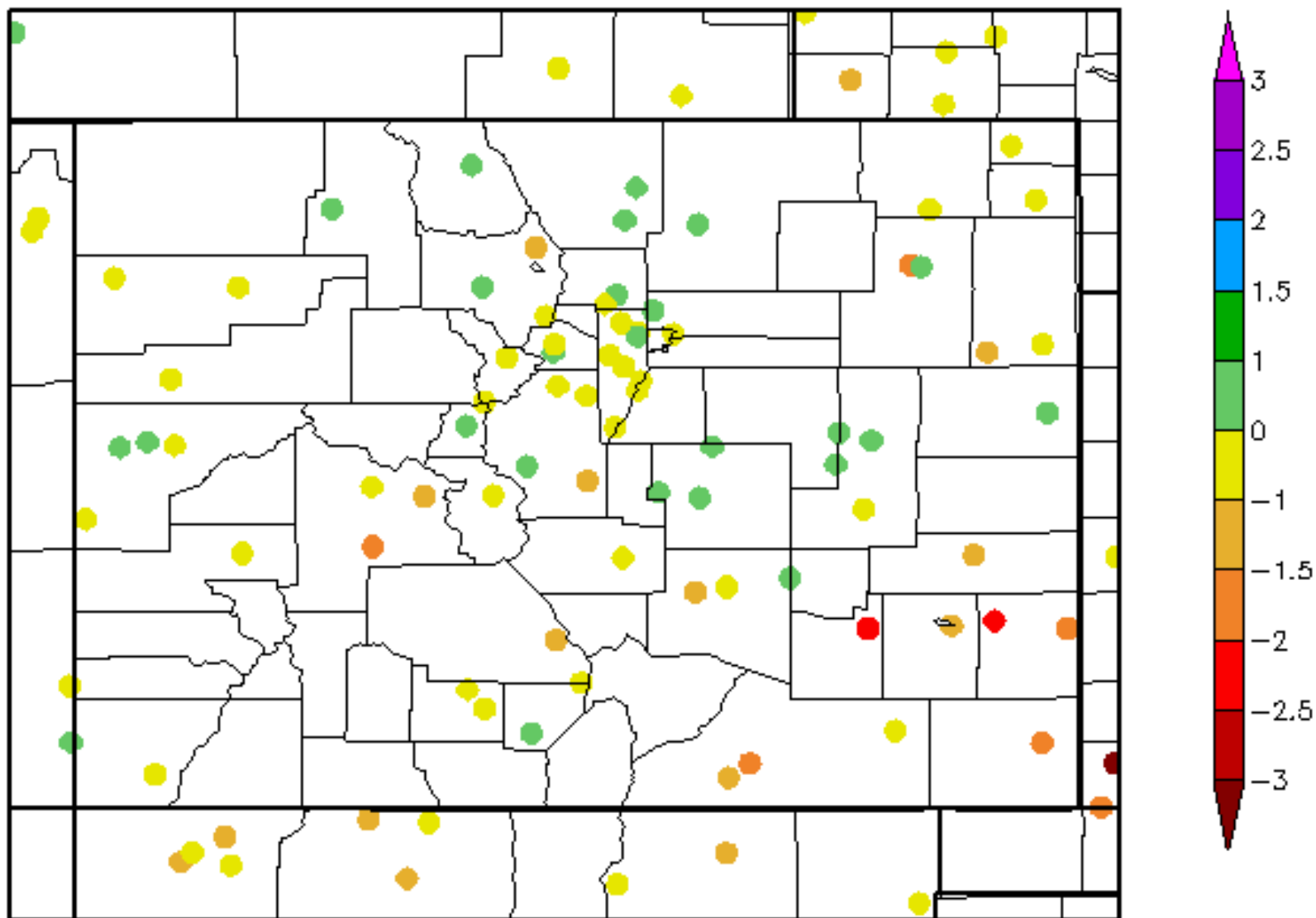
# Monthly SPI

2/1/2016 - 2/29/2016



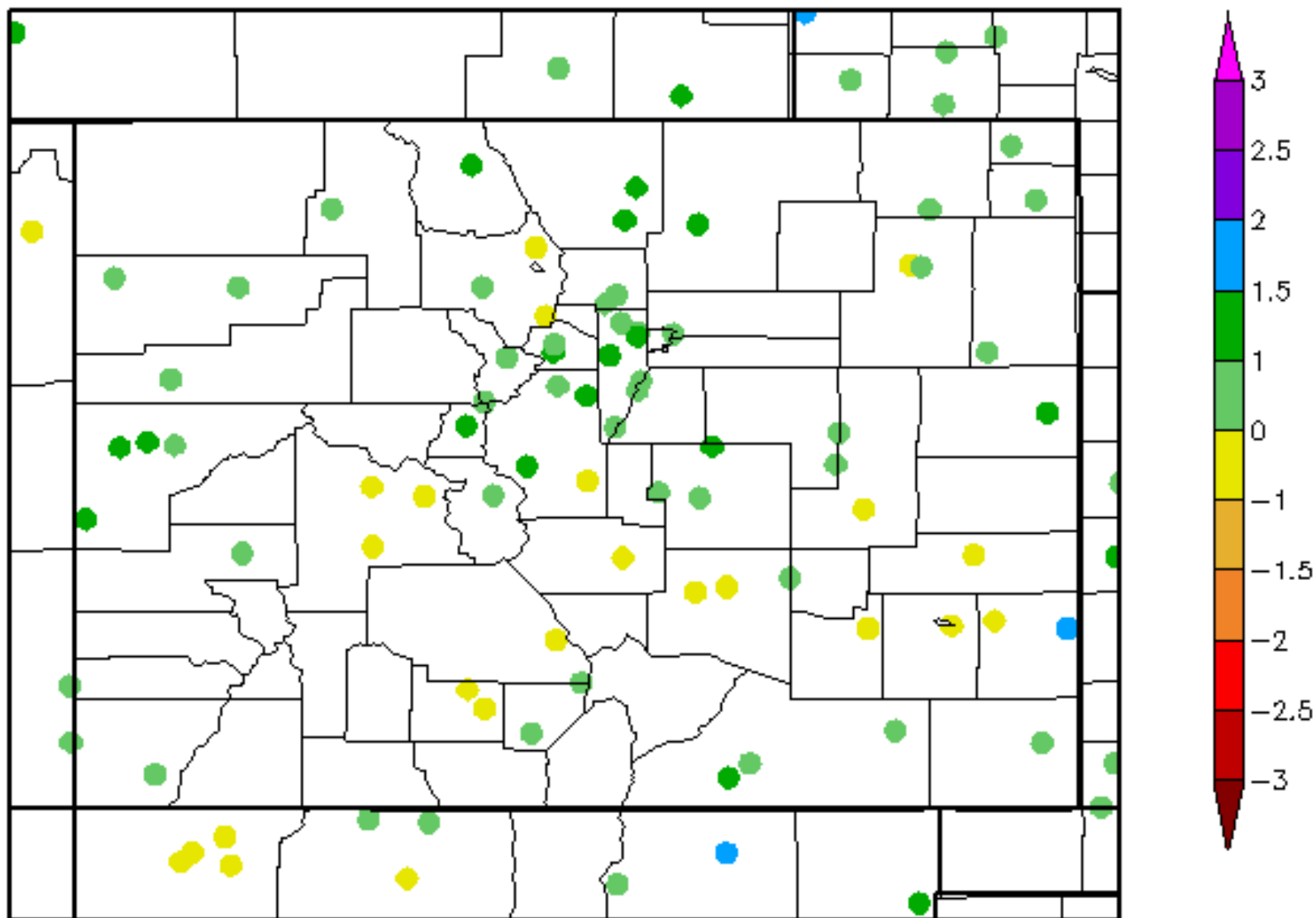
# 90 Day SPI

12/23/2015 - 3/21/2016



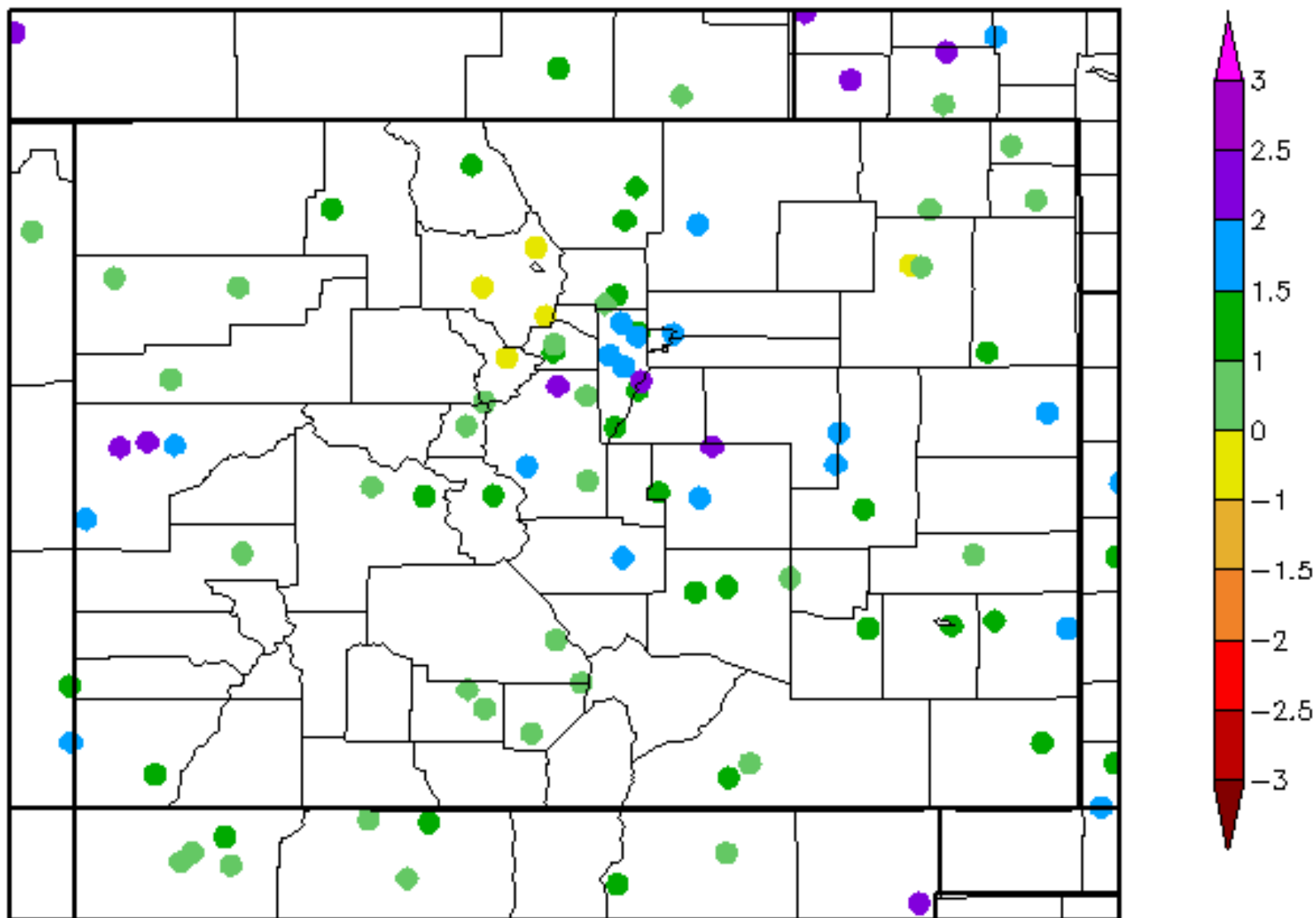
# 6 Month SPI

9/22/2015 - 3/21/2016



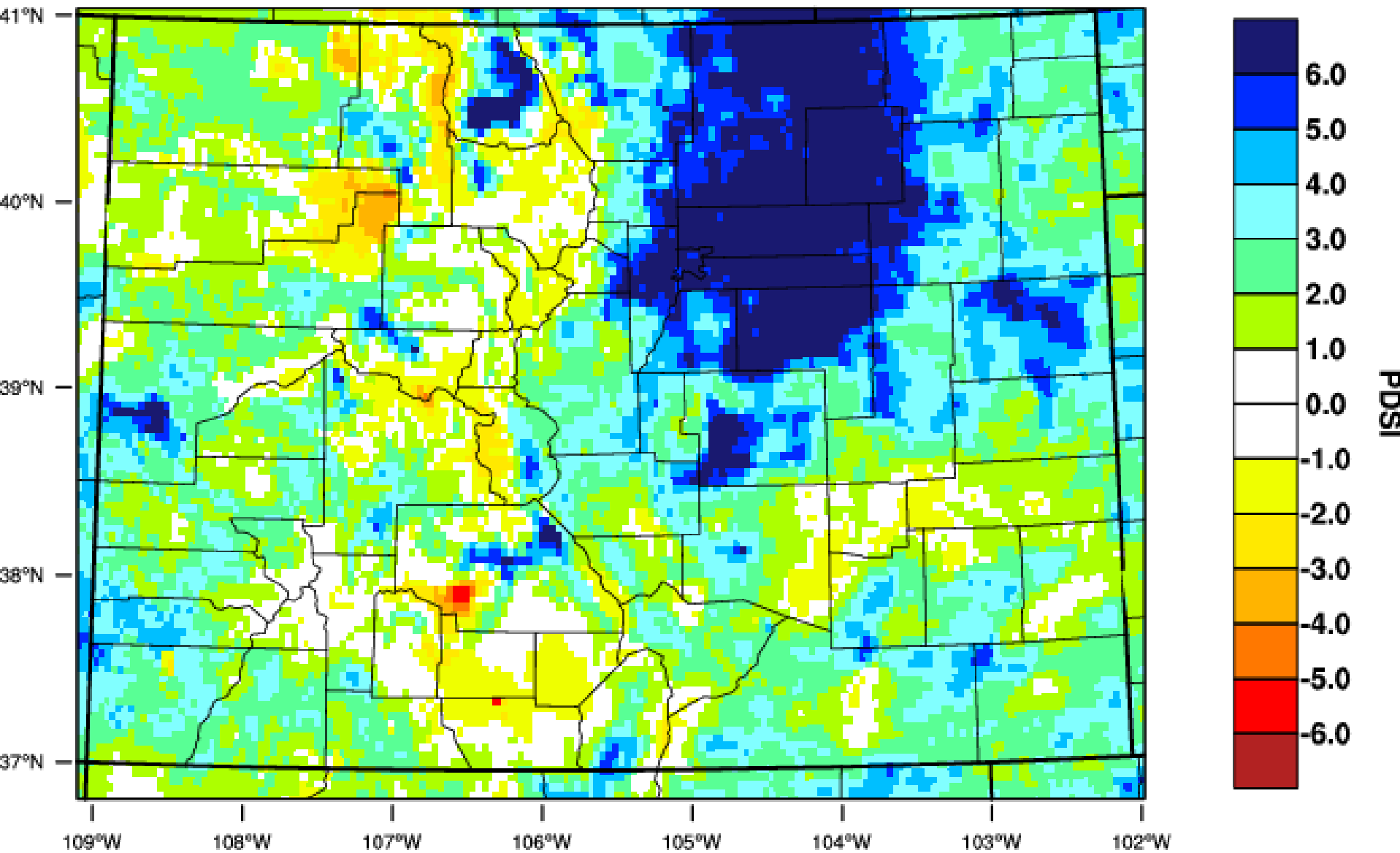
# 12 Month SPI

3/22/2015 - 3/21/2016



# Colorado - PDSI

February 2016



WestWide Drought Tracker, U Idaho/WRCC Data Source: PRISM (Prelim), created 16 MAR 2016



# Colorado Climate Center

Data and Power Point Presentations available for downloading

<http://ccc.atmos.colostate.edu/droughtpresentations.php>

