



SAFETY UPDATE AND UNIVERSITY DRUG/ALCOHOL POLICY

**Colorado
State**
University

publicsafety.colostate.edu
police.colostate.edu
Based on 2008 Statistics

Table of Contents

Alcohol and Other Drugs	2
Drug and Alcohol Policy	3
Legal Sanctions for Substance Abuse.....	4
Drugs and Their Effects.....	6
Stop Alcohol Poisoning.....	8
Club Drugs.....	10
Marijuana.....	12
Student Rights and Responsibilities	14
Drug and Alcohol Counseling	18
Security Policies and Programs	21
CSU Police Qualifications and Authority.....	21
How to Report an Emergency or Crime.....	22
Building Security	24
Fire Safety and Poudre Fire Authority.....	25
Residence Halls Arsons.....	25
Main Campus Map.....	26
Information Security and Identity Theft.....	32
Timely Warning Policy	33
Bicycle and Traffic Safety.....	33
Crime Prevention Programs	34
Honest Facts About Sexual Assault.....	36
Sexual Harassment	41
Domestic Violence	42
Stalking.....	42
Victims' Rights.....	42
What Do Crime Statistics Tell Us About a University?	44
Conflict Resolution and Student Conduct Reports.....	46
Police Crime Statistics	50

In early spring of each school year, Colorado State University Police Department Records Division begins compiling statistics from the prior year as required by the Clery Act (hereinafter “the act”). A group of professionals from several departments across campus meet, as required by the act, along with legal counsel to assure that the report presented meets the requirements of the act. This process is designed to ensure that students, potential students, employees, and parents have the most accurate information possible regarding crime and safety, and related policies, at Colorado State.

Office of the President

102 Administration Building
Fort Collins, Colorado 80523-0100

(970) 491-6211

FAX: (970) 491-0501

The safety and security of our campus are among the highest priorities for Colorado State University – because we believe that a safe environment for learning, living, and studying is essential to the success of our students, faculty, and staff.

For that reason, the University maintains a well-trained and fully functioning professional law-enforcement agency, the CSU Police Department. From staff training to campus lighting and emergency notification systems, the University has instituted a number of reasonable security measures to help prevent and address problems and maintain a safe, healthy environment for the campus community.

Even with these measures, your own common sense, careful planning, and understanding of available resources are the best tools to help you avoid becoming the victim of a crime, whether here on our campus or in any other community. This handbook provides information about campus security, crime incidents, legal expectations, policies, and where to go if you need assistance. It is a great way to begin to familiarize yourself with the rules and expectations of our campus, as well as to learn how to get help in an emergency.

In particular, we want to encourage students and parents both to read and understand the information provided about substance abuse, alcohol poisoning, and student obligations to friends and peers. Abuse of alcohol and drugs is a serious issue on college campuses, and it is important you understand CSU's expectations related to drug and alcohol abuse, as well as our processes for working with students who violate campus regulations.

Our goal is to provide a great environment for learning, and that begins with awareness and understanding. We're glad to make this safety information available to you, and we invite you to ask questions, investigate available resources, and make your own safety and security a personal priority.

Sincerely,



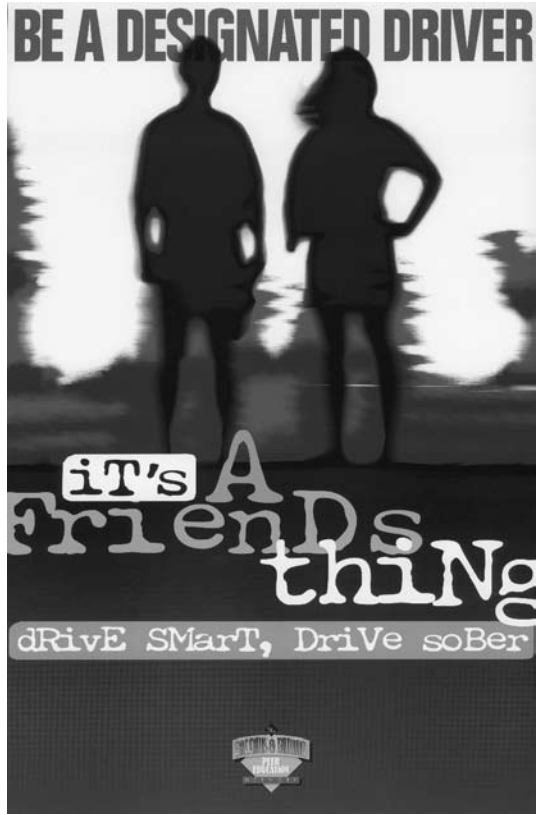
Dr. Tony Frank
President

Each year, Colorado State calls upon every student, faculty, and staff member to work together to maintain and strengthen the vitality, security, and health of this campus. To meet this challenge, you need to be well-informed. This report is intended to do that and make you a member of a safety-conscious community – a place where you will enjoy learning, living, and working.

Alcohol and Other Drugs

This section of the *2009 Safety Update* describes University policies and programs concerning alcohol and other drugs. The following page illustrates the legal sanctions of drug and alcohol-related offenses.

Although it is not a comprehensive list, it will give you a basic understanding of the serious legal penalties that can arise from unlawful possession, distribution, and use of illicit drugs and alcohol. On pages 6 and 7, we've outlined the physical effects and health risks associated with the use of illicit drugs and the abuse of alcohol.



DRUG AND ALCOHOL POLICY

Providing a positive environment in which students can study and live securely and comfortably is a priority in Colorado State's residence halls. The halls support and encourage social activities, but these are secondary to the rights of students to live in an atmosphere that supports academic success and personal well-being. Alcohol and drug use negatively impact the hall environment. Consequently, the following policies address the use of drugs and alcohol in the halls.

- No fermented malt beverages, intoxicating liquors, and illegal drugs are allowed in any of the residence halls.
- Colorado State students are expected to comply with state law regarding the purchase, possession, and consumption of alcoholic beverages.
- The sponsor of a social event could be held liable in a civil suit if state or local laws are violated (i.e., supplying alcohol to underage persons or supplying alcohol to an intoxicated person).
- A violation of the residence hall alcohol policy or state law will result in disciplinary action.
- Alcohol violations within a residence hall room will result in student conduct hearings for all involved.
- Arrest for underage possession and consumption of alcohol may result in the issuance of a summons and complaint followed by immediate release from police custody. University Police will refer the student to Housing/ University discipline and may take formal police action.
- Residence hall students are expected to abide by federal, state, and city laws and ordinances with respect to the use of dangerous drugs and narcotics.
- Students who break these laws will receive no immunity from arrest or prosecution because they live in the residence halls.

Legal Sanctions for Substance Abuse

Offense	Type of Offense	Jail Term/Penalties	Fine	Driver's License
ALCOHOL				
Alcohol consumption/ possession: illegal under 21	Class II Petty Offense	None Up to 24 hrs. community service Alcohol evaluation	\$50 to \$250	3-month suspension
Juvenile DUI: Under 21 Blood alcohol level (BAC) between .02 and .05 Zero Tolerance Law	Class A Traffic Infraction 2nd Offense = Class 2 Traffic Misdemeanor	None 10-90 days 24 hrs. community service	\$15 to \$100 \$10 to \$300	suspension, alcohol assessment, and surcharges
Driving While Impaired (DWAI) (BAC .05-.08)	Traffic Misdemeanor	2-180 days 24-48 hrs. community service	\$100 to \$500	required alcohol education, surcharges
Driving under the influence of ethyl alcohol (BAC above .08)	Traffic Misdemeanor	5-365 days 48-96 hrs. community service	\$300 to \$1,000	license suspension
Open Alcohol Container	Class A Traffic Infraction	None	\$50	None
Possession of Drug Paraphernalia	Class II Petty Offense	None 16 hr. community service, drug evaluation	\$100	suspension
CONTROLLED SUBSTANCES				
Possession or Sale:				
Schedule I and II, such as: Cocaine, Opium, Heroin, Morphine, Methadone, LSD, Mescaline, Psilocybin, GHB	1st offense: Class 3 Felony 2nd offense: C-2 Felony	1st offense: 4-12 years 2nd offense: 8-24 years 48 hrs. community service	1st offense: \$3,000 to \$750,000 2nd offense: \$5,000 to \$1,000,000	suspension, drug evaluation
Schedule III, such as: PCP, Codeine, Diltiudid	1st offense: Class 4 Felony Repeat offender: C-3 Felony	2-6 years 4-12 years 48 hrs. community service	\$2,000 to \$500,000 \$3,000 to \$750,000	suspension, drug evaluation

CONTROLLED SUBSTANCES, cont.					
Schedule IV, such as: Chloral Hydrate, Tranquilizers, some barbiturates and stimulants	1st offense: Class 5 Felony Repeat offender: C-4 Felony	1st offense: 1-3 years Repeat Offender: 2-6 years Repeat Offender: \$2,000 to \$500,000	1st offense: \$1,000 to \$100,000 \$2,000 to \$500,000	suspension, drug evaluation 48 hrs. service	
Schedule V, such as Codeine and other narcotics	1st offense: Class 1 Misdemeanor Repeat Offender: Class 5 Felony 24 hrs. community service	1st offense: 6-18 months Repeat Offender: 1-3 years	1st offense: up to \$5000 Repeat Offender: \$1,000 to \$100,000	suspension, drug evaluation	
Use:					
Schedule I, II	Class 6 Felony 48 hrs. community service	1 year - 18 months	\$1,000 to \$100,000	suspension of minor driver's license, drug evaluation required	
Schedule III, IV, V	Class 1 Misdemeanor 24 hrs. community service	6 - 18 months	\$500 to \$5,000	suspension of minor driver's license, drug evaluation required	
MARIJUANA					
Less than 1 oz. Possession, Public Use	Class II Petty Offense	0-15 days 16 hrs. community service	\$100	suspension	
Possession more than 1 oz. but less than 8 oz.	Class 1 Misdemeanor Repeat offender: C-5 Felony	1st offense: 6-18 months Repeat Offender: 1-4 years 24 hrs. community service	1st offense: up to \$5,000 Repeat Offender: \$1,000 to \$100,000	suspension	
Possession over 8 oz. or Marijuana Concentrate	Class 5 Felony Repeat Offender: C-4 Felony 48 hrs. community service	1-3 years 2 to 6 years	\$1,000 to \$100,000 \$2,000 to \$500,000	suspension	
Growing/Producing Possess with Intent to Dispense	Class 4 Felony Repeat Offender: C-3 Felony 48 hrs. community service	2-6 years 4-12 years	\$2,000 to \$500,000 \$3,000 to \$750,000	suspension	
Distribution of Marijuana	Class 4 Felony Repeat Offender: C-3 Felony 48 hrs. community service	2-6 years 4-12 years	\$2,000 to \$500,000 \$3,000 to \$750,000	suspension	

Note: All controlled substance charges also include a drug offender surcharge in addition to the fines listed.

Drugs and Their Effects

Drug Type	Name	Immediate effects
Stimulants (Uppers) Amphetamines*	Benzedrine, Dexedrine, Methedrine, diet pills	Euphoria, increased alertness, excitation, decreased appetite, insomnia, restlessness
Cocaine*	Cocaine powder, crack, freebased coke	Brief euphoria, increased energy, intense exhilaration
Nicotine	Cigarettes, cigars, pipes, snuff, chewing tobacco	Relaxation, increased confidence, increased metabolism
Depressants (Downers) Alcohol*	Beer, wine, liquor, some medications	Muscle relaxation, intoxication, depression, impaired motor control, impaired memory and judgment
Tranquilizers*	Valium, Librium, Equanil, Miltown, Thorazine	Relief of tension and anxiety, drowsiness
Narcotics*	Heroine, morphine, opium, codeine, methadone, Demerol	Euphoria, drowsiness, painkiller
Inhalants*	Amyl nitrate, butyl nitrate, nitrous oxide, glue, and paint	Lowered blood pressure, relaxation of sphincter muscles, feeling of heightened sexual arousal
Psychedelics (Hallucinogens) Cannabis*	Marijuana, hashish, TCH	Relaxation, altered sense of hearing, time, vision; euphoria, increased heart rate and appetite; dilated pupils, memory impairment
Sedatives	GHB, Rohypnol	Relaxation, mild euphoria, headache, nausea, loss of consciousness, coma
Entactogens	LSD, psilocybin, MDA, peyote, DMT, STP, ketamine MDMA (Ecstasy), MDA	Hallucinations; altered sense of time, space, and visual perception; nausea, disorientation Empathy, jitteriness, teeth clenching, increases level of serotonin, nausea, muscle cramping

*Impairs driving ability

Most common complications/long-term effects	Risk of dependence
Nervousness, paranoia, hallucinations, dizziness, tremors, decreased mental ability, sexual impotence, insomnia, skin disorders, malnutrition, delusions, psychosis, seizures, death	psychological – high physical – high
Tremors, nasal bleeding and inflammation, toxic psychosis, seizures, damage to nasal septum and blood vessels, death from overdose (heart or respiratory failure)	psychological – high physical (esp. crack) – way high
High blood pressure, emphysema, bronchitis, heart and lung disease, cancer, death	psychological – high physical – high
Dehydration, hangover, overdose or mixing with other depressants can cause respiratory failure, obesity, impotence, psychosis, ulcers, malnutrition, liver and brain damage, delirium tremens, death	psychological – high physical – moderate
Hangover, menstrual irregularities, increases or decreases effect of other drugs, especially dangerous with alcohol, destroys blood cells, jaundice, coma, death	psychological – moderate physical – moderate
Respiratory and circulatory depression, dizziness, vomiting, sweating, dry mouth, lowered libido, lethargy, constipation, weight loss, temporary sterility and impotence, withdrawal sickness, stupor, death	psychological – high physical – high
Nitrates, headaches, dizziness, accelerated heart rate, nausea, nasal irritation, cough, lost erection, hallucination; liver, kidney, bone-marrow, and brain damage; death	psychological – high
Impaired driving ability, possible lung damage, reduced sperm count and sperm motility; damage from impure dose	psychological – moderate physical – unknown as yet
Can be extremely dangerous when used in high doses, residual anxiety, may cause brain damage in some people. May be more susceptible to depression and anxiety disorders or memory problems.	moderate
Depression, paranoia, physical exhaustion after use, psychosis (“freaking out”)	psychological – low
Anxiety, depression, may cause brain damage in some people, memory problems, risk of dependence	moderate

Psychoactive drugs are most frequently used for social or recreational purposes. Many psychoactive drugs produce tolerance and dependence (psychological, physical, or both). The more frequently a person uses a drug and/or the larger the dose, the greater his or her *tolerance* to the drug.

A person who is *physically dependent* on a drug needs it to function “normally.” Discontinued use of the drug results in withdrawal symptoms that can be painful and even life-threatening. Taking the drug again temporarily relieves these symptoms.

A *psychologically dependent* person feels he or she cannot function “normally” without the drug. There can be severe mental and emotional distress that prompts the person to continue using the drug.

Stop Alcohol Poisoning

Symptoms of alcohol poisoning

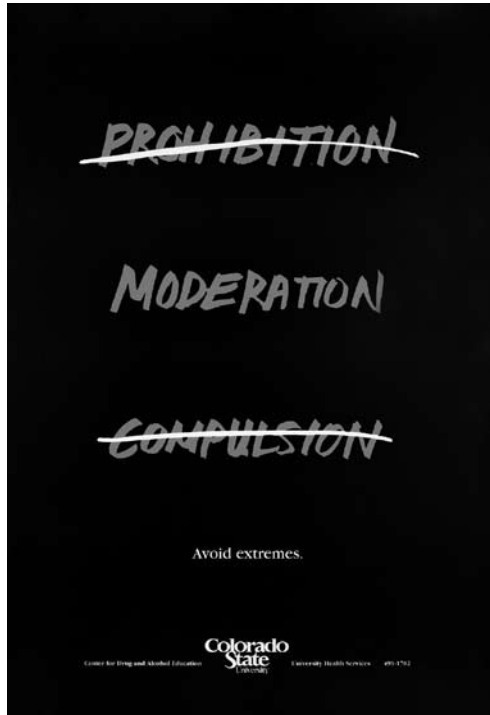
1. Person is unconscious or semi-conscious and cannot be awakened.
2. Cold, clammy, pale, or bluish skin.
3. Check to see if breathing is slow, less than eight times per minute, or irregular, with ten seconds or more between breaths.
4. Vomiting while “sleeping” or passed out, and not waking up after vomiting.

If a person has any of these symptoms, he or she is suffering from acute alcohol intoxication.

1. Get help. Call 911, a staff member, or an ambulance.
2. Do not leave the person alone. Turn the victim on his/her side to prevent choking in case of vomiting.
3. Always be “better safe than sorry” if you are not sure what to do. How can your friend be angry about you caring for him or her?

A Matter of Friendship

“When everything is said and done, it all comes down to friendship. You have a friend who is in a state where he or she cannot take care of or make decisions for himself or herself. So, who is going to do it for them? You may not want to act because you are afraid that when your friend wakes up he or she will be mad at you. But you



know what? Your friend will wake up. And how mad can someone be because you did something out of caring and friendship? The next day you can ask if your friend is OK. The next day, you can express your concern with your friend's drinking. The next day you can even be angry with your friend for putting you in this scary situation. But for now, act! Get help! Call someone! And make sure you and your friend have another day together. It might be the greatest thing you could ever do in the name of friendship.”

– Taken from *Bacchus and Gamma Peer Education Network*,
Training Manual on Alcohol Poisoning, 2009.

**Remember ... in emergencies
dial 911.**



police.colostate.edu

Club Drugs

Club drugs continue to grow in popularity with teens and college-aged students nationwide. While many users may experience sensational highs accompanied by numbness and other body stimulating effects, they fail to recognize these substances as real drugs; however, these drugs are very real and so are the dangers. According to research from the National Institute on Drug Abuse, club drugs “can have long-lasting negative effects on the brain that can alter memory function and motor skills.”

Ecstasy (MDMA): Ecstasy is an entactogen that is also called X, E, Clarity, and XTC. Ecstasy may result in decreased appetite, hallucinations, increased heart rate and blood pressure, muscle seizures, anxiety, and sweating. It also causes the body to overheat. This in turn leads to dehydration and hyperthermia, forcing users to take frequent breaks and drink water. MDMA can have serious long-term effects, causing damage to parts of the brain that are critical to thought and memory, as well as clinical depression.

Ketamine: Ketamine is a dissociative anesthetic, sold legally to veterinarians for anesthesia. Ketamine is commonly referred to as K, Special K, or Vitamin K. It is usually ingested in liquid or powder form. Ketamine is an extremely unpredictable, volatile drug that stimulates



**Nobody wants their
dreams shattered.**

GHB is commonly used for drug-facilitated sexual assault. It can be colorless, tasteless, clear and easily slipped into your drink. GHB has been known to cause coma or even death in those that use it.

If you feel you have been a victim of a drug-facilitated crime or sexual assault, go to an emergency room or contact your local police.

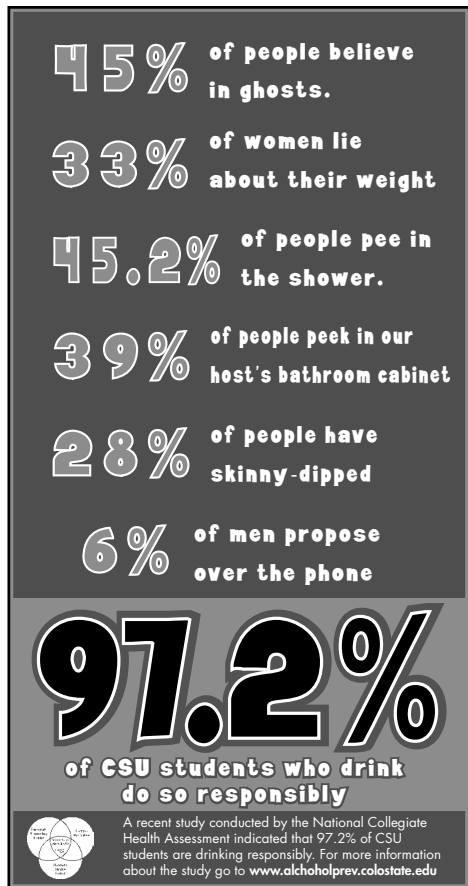
**Protect your drink.
Protect yourself.
Protect your friends.**

CSU Health Network
(970) 491-7121
Poster Design by: Robert Black

heart rate, blood pressure, and breathing to dangerously high levels. Panic, rage, paranoia, numbness, loss of coordination, and difficult breathing are all additional symptoms of Ketamine.

GHB: GHB is a euphoriant depressant also known as Liquid G, Liquid X, and GHB. It is a very powerful, fast-acting central nervous system drug. Symptoms include dizziness, nausea, slowed heart rate and breathing, and deep sleep. These symptoms become extremely dangerous when GHB and alcohol are combined. GHB is frequently used and implicated in date rape cases. See page 36 for sexual assault information.

Rohypnol: Rohypnol is a tranquilizer and sedative drug. It is a colorless, odorless, and tasteless drug that has been associated with date rape and sexual assault incidents nationwide. Its almost undetectable properties make it easy to slip into the beverage of an unsuspecting victim. Rohypnol affects the brain's memory processing and causes "retrograde amnesia," which is similar to a blackout. Users will be unable to remember events that occurred while under the drug's influence. *See the section on sexual assault (beginning on page 36) in order to protect yourself from Rohypnol and GHB drink spiking.*



Marijuana

A person should consider the four Ms before deciding to use marijuana.

M1 – Memory: Studies show that marijuana disrupts short-term memory or the process in which recent events and information are encoded in memory.

M2 – Motivation: Observational studies directly link marijuana use to lapses in motivation. As a result, marijuana is referred to as a “spectator drug,” turning a person into a passive spectator in his/her own life.

M3 – Money: The cost of maintaining any dependency affects not only personality, goals, and health, but finances as well. When making budget priorities, consider the real cost of marijuana use and where the money could be better spent.

M4 – Mental: Many people are aware that marijuana is psychologically (or mentally) addictive and not necessarily physically addictive. So, they think physical addiction is not something to worry about. The psychological aspects of marijuana addiction can take years to overcome, whereas the physical aspects take merely a few days, or maybe weeks. The THC content of most marijuana in the United States ranges from 5 to 12 percent. Hashish is around 25 percent.

Violations and/or convictions of University policies and the laws listed on pages 4-5 will result in University discipline. The University must take such action within 30 days after receipt of any notice with regard to an employee who has been convicted of a listed offense. Sanctions for employees may include mandatory participation in a drug abuse assistance or rehabilitation program or disciplinary action such as a reprimand, suspension, salary reduction, demotion, or termination of employment. Sanctions for students may include a warning, probation, suspension, ineligibility for financial assistance, athletic ineligibility, expulsion from University housing, or dismissal or expulsion from the University itself.

On University premises or at any University-sponsored activities, the following acts are prohibited:

1. Manufacture, sale, distribution, dispensation, possession, or use of any illegal drug or controlled substance without legal authorization such as a prescription.
2. Providing alcoholic beverages to individuals under 21 years of age or possession of alcoholic beverages by individuals under 21 years of age.
3. Illegal possession of an open container of an alcoholic beverage, public intoxication, driving while intoxicated, or drinking alcoholic beverages in an unlicensed public place.
4. No alcohol is allowed in residence halls.

Employee compliance with the above policy is required as a condition of employment. Any employee convicted of violating a criminal drug statute must so notify their employer within five (5) days of the conviction. The University, in turn, is obliged by law to report certain convictions to the federal government.

For further information about alcohol and drugs educational programs and individual assistance, call CSU Health Network at **491-7121** or visit our website, www.health.colostate.edu, under substance use.

Try these useful websites for additional information about drugs and alcohol:

www.collegedrinkingprevention.gov

www.drugabuse.gov

www.erowid.com

www.nida.nih.gov

Student Rights and Responsibilities

Division of Student Affairs, www.studentaffairs.colostate.edu

Conflict Resolution and Student Conduct Services, (970) 491-7165

Colorado State University expects students to maintain standards of personal integrity that are in harmony with the educational goals of the institution; to observe national, state, and local laws and University regulations; and to respect the rights, privileges, and property of other people. In order to protect the academic community and learning environment, all members of the campus community are expected to abide by the standards of academic honesty, personal integrity, respect for diversity, and pursuit of lifestyles free of alcohol and drug abuse. Students are not only members of the academic community; they are, additionally, members of the larger society and thus retain the rights, protection, guarantees, and responsibilities that are held by all citizens. A student is not immune from prosecution by local, state, or federal law enforcement agencies whether or not the University initiates disciplinary proceedings in a given situation.

The Colorado State University Student Conduct Code shall apply to conduct that occurs on University premises, University-sponsored programs or activities, and to off-campus conduct that adversely affects the University community, poses a threat to safety of person or property, or damages the institution's reputation or relationship with the greater community. In addition, Colorado State University, in collaboration with the Fort Collins community, may respond to student violations of community-based laws and ordinances designed to protect civility and quality of life.

The Office of Conflict Resolution and Student Conduct Services reflects the vision of providing a comprehensive array of approaches to act on the institutional values of interpersonal civility and honoring of community standards. Service options include:

- Conflict resolution services, including consultation, coaching, and mediation
- Training/outreach related to conflict management, academic integrity, civility
- Emergency consultation team

- Healing Action Response Team (HART) for bias incidents
- Advising of student peer conduct boards
- Criminal pre-admission hearings
- Student conduct hearings
- Restorative Justice Program for repairing harm and restoring relationships
- Outcomes/education, including the Drugs, Alcohol, and You (DAY) programs, Party Partners, and skill-building workshops
- Appeals process

Residential Contracts

Students residing in University residence halls or apartments contractually agree to maintain behavior in keeping with federal, state, and local laws; University standards of conduct; and community expectations as outlined in the residential contract and handbook.

Residential staff or student judicial boards will hear cases involving violations of the contract. Specific sanctions or restrictions may be imposed as a part of residential disciplinary action including drug and alcohol education; educational programs or activities; monetary restitution; reassignment to another residence hall room or building; and termination of the residential contract or lease. Significant incidents or a pattern of problems will result in referral to University Discipline.

Disciplinary Records

Student disciplinary records are maintained by the Conflict Resolution and Student Conduct Services Office in keeping with the Family Educational Rights and Privacy Act (1973), the Higher Education Amendments (1998), and the Student Conduct Code.

Disciplinary Statistics

Please see page 46 for recent statistics related to University Disciplinary Actions.

The complete text of the Student Conduct Code is available in the Conflict Resolution and Student Conduct Services Office, Vice President for Student Affairs Office, the Housing Office, the information desk at the Lory Student Center, or on the Colorado State University website (www.studentaffairs.colostate.edu/resources/students/policies.asp).

Colorado State University and the Fort Collins Community

“I had a party yesterday. Today I have a summons for court???”

In 2002, the state of Colorado passed a law related to riots and being present where any riot was occurring. This law, along with local ordinances, relates to nuisance social gatherings. Violating this law can have a significant impact on students who are involved in such events and get arrested. Any student who is convicted of engaging in or inciting a riot is prohibited from attending any state-supported college for a period of one year. Further, it is a misdemeanor for any person to fail to obey orders of police officers to disperse or move-along under riot conditions, even if they are only in the area watching. The main points of the new law are included in ‘bullets’ below. The message: “DON’T MAKE YOURSELF A TARGET – OBEY THE LAW!”

Noise Limits

- Noise that can be heard beyond property lines may be considered too loud.
- Police have the discretion to determine whether or not noise from a property is unreasonable.
- Police discretion is based upon and not limited to:
 - noise level while observing the situation
 - time of day or night
- If the noise is determined unreasonable, a ticket may be issued.
- Noise violators can be subject to fines of up to \$1,000 per person for the first offense.

Nuisance Gathering Ordinance

- The Ordinance addresses social gathering impacts on neighboring private or public properties.
- A social gathering is considered 5 or more people.
- Impacts may include and not limited to: trash and litter, public urination, and vandalism.
- It is a misdemeanor criminal offense to the gathering host(s), as the responsible party.
- The people actually littering or vandalizing may not be held responsible.
- The abatement cost may be charged to the gathering host(s), as the responsible party.

Public Nuisance Ordinance

- The Public Nuisance Ordinance remedies chronic problem properties.
- The Public Nuisance Ordinance takes affect on a property when the following occurs:
 - 2 tickets are issued for the same code violation within 6 months or
 - 3 or more separate code violation tickets are issued within 12 months or
 - 5 or more separate code violation tickets are issued within 24 months.

Riot Law – A Colorado State Law

- A public disturbance involving 3 or more people whose conduct:
 - Creates a danger of damage or injury to people or property
 - Substantially obstructs performance of any government function
- Anyone convicted of engaging in a riot cannot attend a public Colorado higher education institution for at least one year.
- Specific possible riot conviction definitions and fines include:
 - Inciting a riot – urging 5 or more people to engage in a riot.
 - Fines begin at \$5,000 or 18 months jail up to 3 years or \$100,000 for injury or damage.
 - Engaging in a riot – no person shall engage in a riot.
 - Fines begin at \$1,000 or 12 months jail up to 6 years or \$500,000 for injury or damage.
 - Arming Rioter – no person shall supply a deadly weapon or destructive device for use in a riot.
 - No person shall teach another to prepare or use a deadly weapon or destructive device in a riot.
 - Fine is \$500,000 or 6 years in jail.

Please call the Fort Collins Police (221-6540) or Colorado State University Police Department (491-6425) if you have questions about the responsibilities of planning a party. Better yet, go to the Fort Collins Neighborhood Resources website and look up “Party Paks” and common violations on the right side of the page.

You can also access these resources from the CSU Police Department Web page: www.police.colostate.edu

“It’s a matter of identity.”

Often, young people are tempted to “borrow” an ID card or make/obtain one of their own to show underage persons to be of legal drinking age. The result can be arrest warrants issued in the name of the wrong person for a violation they didn’t commit or even know about, misdemeanor or even felony charges against a person using an identity that isn’t theirs, and sanctions through the University.

It is NEVER worth the risk to have or use a fake ID. It’s a matter of identity – YOUR IDENTITY. Colorado is considering legislation that will also require suspension of your driver’s license if you buy for minors or loan your ID to a minor.

Drug and Alcohol Counseling

CSU Health Network
(970) 491-7121
www.health.colostate.edu

Drugs, Alcohol and You
(DAY Programs)
(970) 491-4693

It is the policy of the state of Colorado that treatment may be more appropriate for alcoholics and intoxicated individuals than criminal prosecution. It is felt that they should be afforded a continuum of treatment in order that they may lead normal lives as productive members of society [C.R.S. § 25-1-301(1)].

The Colorado general assembly has appropriated moneys

NOW PLAYING

fakes don't fly!*

* new scanner technology in use.

★★★★
"IT'LL CATCH YOU BY SURPRISE"
- FORT COLLINS POLICE DEPARTMENT

"THE MONEY AND TIME INVESTED IS NOT WORTH IT"
- GOOD SAMARITAN

"THIS SUCKS!"
- STUDENT CAUGHT AND FINED FOR CARRYING A FAKE

FAKE I.D.s DON'T FLY IN FORT COLLINS.
SAVE YOUR YOURSELF THE MONEY, HASSLE, AND THE HUMILIATION.

**AT EXCLUSIVE LOCATIONS
ALL OVER TOWN!**

for alcoholic receiving and screening centers, medical detoxification, intensive treatment, halfway house care, outpatient rehabilitative therapy, orientation, education, and in-service training [C.R.S. § 25-1-301(2)]. The Colorado Department of Health's Division of Alcohol and Drug Abuse has established a comprehensive and coordinated program for the treatment of alcoholics and intoxicated persons [C.R.S. § 25-1-305(1)]. Insofar as funds are available to the Division, the program of the Alcohol and Drug Abuse Division includes: emergency treatment; inpatient treatment; intermediate treatment; outpatient and follow-up treatment; and adequate and appropriate treatment for alcoholics and intoxicated persons who voluntarily apply for treatment and those who are involuntarily committed by the court [C.R.S. § 25-1-305(2-3)].

Voluntary treatment of alcoholics [C.R.S. § 25-1-308]. An alcoholic, including a minor, may apply for voluntary treatment directly to an approved treatment facility.

Voluntary treatment for intoxicated persons and persons incapacitated by alcohol [C.R.S.

§ 25-1-309]. An intoxicated person or person intoxicated or incapacitated by alcohol, including a minor, may voluntarily admit himself/herself to an approved treatment facility for emergency treatment.

Emergency commitment [C.R.S. § 25-1-310]. When any person is intoxicated or incapacitated by alcohol and clearly presents danger to the health and safety of himself/herself or others, he or she will be taken into protective custody by law-enforcement authorities or an emergency service patrol, acting with probable cause, and will be placed in an approved treatment facility.

Involuntary commitment of alcoholics [C.R.S. § 25-1-311]. A person may be committed to the custody of the Division of Alcohol and Drug Abuse by the court upon the petition of his or her spouse or guardian, a relative, a physician, the administrator in charge of any approved treatment facility, or any other responsible person.

CSU Health Network supports the personal and academic success of Colorado State students and helps to create a healthy environment necessary for learning. Programs of counseling, treatment, outreach, prevention, assessment, and referral are offered throughout the year. Please call 491-0262 for more information or visit www.health.colostate.edu

Driving under the influence. Driving while impaired. Driving with excessive alcoholic content [C.R.S. § 42-4-1301]. The Colorado Division of Alcohol and Drug Abuse has established an alcohol- and drug-related driving safety fund [C.R.S. § 42-4-1301.3]. All persons convicted of a driving offense involving alcohol or drugs will result in license revocation for one year, orders by the court to complete an “alcohol- and drug-related driving safety education or treatment” program, and require community service as part of any conviction. A mandatory alcohol and drug evaluation will also take place upon conviction.

Level I programs are short-term, didactic education programs. Level II programs are therapeutically oriented education, long-term outpatient, and comprehensive inpatient programs. Any defendant sentenced to level I or level II programs must meet all financial obligations of such programs [C.R.S. § 42-4-1301.3(2)(c)(iv)]. A “zero tolerance” law – which states that anyone under 21 years of age who is caught driving with a blood alcohol (or breath alcohol) content of .02 or higher is to be charged with driving under the influence – has been in effect for several years [C.R.S. § 42-4-1301(2)(a.5)].

Occasionally, transports result in the need for sanitary cleanup of bodily fluids from police vehicles. These charges are passed on to the person who was transported. The costs range from \$50-\$200 depending on provider’s “time of day” criteria and the extent of cleanup required.

New enforcement protocols related to pre-game tailgating at Hughes Stadium were implemented for the 2005 football season. As a result of two tragic deaths at Colorado State University in 2004, the Alcohol Task Force has made several recommendations to enhance enforcement of binge drinking and alcohol abuse at football games. The CSU Police Department will do everything possible to enhance enforcement and safety for students and fans at games.

Under Colorado Law, a person determined by the court to need treatment or to be dependent on a controlled substance may be ordered to undergo treatment for up to four years and may suspend sentencing or further court procedures until such treatment is completed. Failure to comply with, or complete, such treatment may result in sentencing or further court procedures as provided by law.

Security Policies and Programs

CSU Department of Public Safety, publicsafety.colostate.edu

CSU Police Department, (970) 491-6425, police.colostate.edu

CSU Police officers work closely with the various student advocacy and department offices on campus to maintain a “sense of community.” They work hard to identify safety and security needs and concerns of all our students and staff. This section of the handbook describes the CSU Police and programs related to security issues. You will find the answers to such questions as: How do you report an emergency? What should I do to keep my residence hall safe? How do I practice bicycle safety? What should I do if I’ve been sexually assaulted?

CSU Police Qualifications and Authority

CSU Police officers are armed and have full law enforcement authority on all property owned or controlled by Colorado State. Officers possess peace-officer commissions from the State of Colorado, Larimer County, and the City of Fort Collins. Colorado State University Police Department operates 24 hours a day, 7 days a week.

Colorado State University police officers complete at least 860 hours of training in a state-certified police academy and field-training program in preparation for their jobs.

Colorado State University Police officers routinely patrol on foot all buildings on campus, and have street officers patrolling campus by bicycle, motorcycle, and other motor vehicles. In addition, the department has an Investigations Division with plain clothes detectives, as well as a K-9 unit. Campus Safety Officers, student employees in “soft uniforms,” round out security and safety services by adding foot patrol and event management capabilities. These employees receive more than 50 hours of training relevant to their duties, with additional training as they take on specialized duties. Campus Safety Officers are trained civilian employees who provide additional presence on campus and provide the “Safe Walk Program.”

The CSU Police maintain a close working relationship with the Fort Collins Police Services, Poudre Fire Authority, the Larimer County Sheriff's Office, the Office of the District Attorney, and other state and federal law-enforcement agencies and investigation bureaus. CSU Police hold mutual aid agreements with the county and city to deal with contingencies such as natural disasters, civil disturbances, major crimes, and pursuits of serious offenders who travel across jurisdictional lines.



How to Report an Emergency or Crime

The CSU Police Department (CSUPD) is located in Green Hall. CSUPD operates 24 hours a day. **Call 911 for emergencies and 491-6425 for non-emergencies.**

CSU Police serves as one of the five PSAP (Public Safety Answering Point) in Larimer County handling emergency and non-emergency calls, monitoring the campus-wide alarm systems, and tracking all police incidents on a Computer Aided Dispatch (CAD) system.

Each dispatcher completes a 400-hour, in-house training program and has special training in Emergency Medical Dispatching. This includes ongoing evaluation of medical emergency calls handled by dispatchers under the supervision of a medical doctor.

Promptly call 911 from any phone, and our enhanced ANI/ALI system will allow our dispatcher to see where you are calling from. Keep in mind, though, that the dispatcher will need to know the address of the **emergency**, not necessarily where the call is coming from. 911 calls made

from wireless phones will be routed to Fort Collins Police Services. 911 calls are “enhanced,” meaning that the location and phone number from which the call comes to our Communications Center are displayed as the dispatcher answers the call.

Emergency phones on campus ring directly into the police dispatch center when the handset is lifted or simply by pushing a button. These phones may be used for emergencies AND may be used to request police services such as the Safe Walk service. The emergency phones are located in a number of convenient areas across campus in parking lots and near major building complexes. Please refer to the map on pages 26-27 for exact locations.

CSU Police give priority to reports of incidents that threaten the life or safety of people, the security of property, or the peace of the community. They handle all reports of crimes and emergencies. Prompt reporting greatly improves campus security and safety.

In the First Two Minutes ...

A study of police response times and crime clearance rates showed that if police are able to arrive on the scene of a crime-in-progress within two minutes of a citizen report, there is a good chance a perpetrator can be apprehended. The odds quickly decrease as each minute passes.

To report an emergency or a crime in-progress dial 9-1-1. If you are the victim of a crime that occurred on campus you can call and file a report with an officer at 491-6425, or you can file a crime report online at: police.colostate.edu under “CSU Police Resources.” See back cover of this booklet for additional resources.



Your police department needs you to report crimes and suspect activity. Don't let reporting a crime you've witnessed be an after-thought! Immediately go to a safe location and phone. Stay on the line and, as accurately as possible, tell the dispatcher everything you can remember about the suspect, the suspect's clothing, vehicle, and direction of travel.

What Happens When ...

You report a medical emergency?

CSU Police dispatchers are trained in emergency medical dispatching. If you are in a position to give first aid to someone or to relay information to another rescuer, the dispatcher is prepared to tell you what to do. Emergency medical personnel and police officers are dispatched to evaluate the patient's status.

You report a fire?

CSU Police will immediately notify fire and/or emergency medical personnel, then help with evacuation and manage traffic so that fire trucks and ambulances can access the scene.

Building Security

At Colorado State, you can feel safe and comfortable in your surroundings, knowing that certain security procedures are in place that are sound and are constantly re-evaluated for their effectiveness.

Most campus buildings and facilities are accessible to members of the campus community, guests, and visitors during normal business hours Monday through Friday, excluding holidays. Certain facilities also may be open for designated hours on Saturdays.

Exterior doors on campus buildings are locked and secured each evening by personnel from Facilities Services. Buildings may be secured at different times based on factors such as night classes, special events, or computer lab times.

We ask that you take the step of staying aware and avoid circumventing policies or rules that are meant to preserve your own safety and that of others.

- **Do not prop doors open or allow strangers into campus buildings that have been secured. “Tailgating” is prohibited!**
- **Do not lend keys or leave them unattended in your work or living space.**
- **Do not give codes to anyone you don’t know.**

Fire Safety and Poudre Fire Authority

Housing and Food Services works very closely with Poudre Fire Authority as well as CSU Police and our Environmental Health Services (EHS) to ensure a safe environment for residence hall and apartment life students and their families.

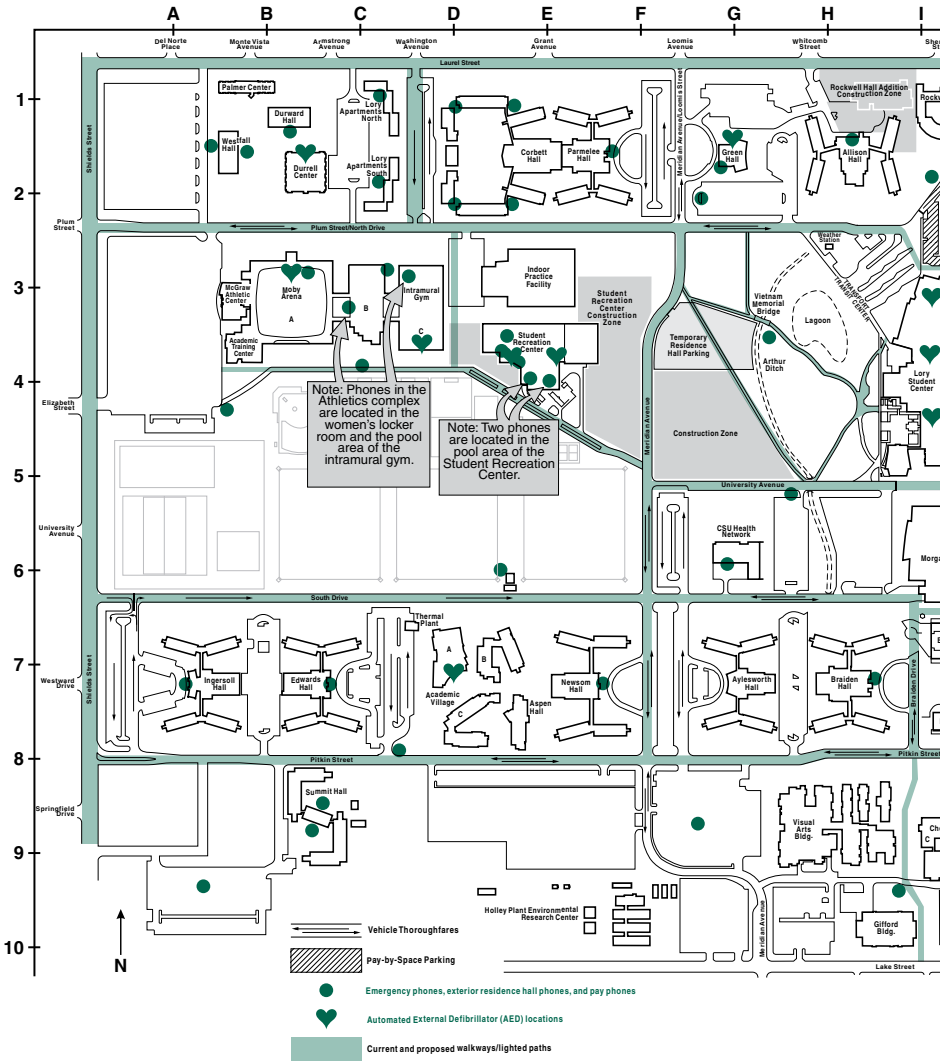
In addition, PFA works with CSU in the areas of: public education to students and families living in CSU housing; assistance with scheduled fire drills at all residence halls each semester; cooperative participation between CSU Police and PFA arson investigators in fire situations; and fire code consultation (for building remodels and new construction) through EHS and Facilities Planning. The PFA Fire Marshal is an active member to the Housing and Food Service Fire and Life Safety Core Group and the University Safety Committee.

Residence Halls Arsons

Colorado State University has policies on the use of portable electrical appliances, smoking, and open flames. For example, smoking, candles, and open flames are not allowed in residence halls and only safe, low wattage electrical appliances without open coils may be used. For more detailed information on these policies, please see the *Residence Hall Handbook* or call Residence Life at (970) 491-4719.

Additionally, Colorado State University residence halls are equipped with smoke and heat detectors, pull stations, fire sprinkler flow switches, and notification devices. Additional features include the networking of all the fire alarm panels to CSUPD that display a detailed graphic map, which will pinpoint the exact location of the device in alarm or trouble in the building. PFA (Poudre Fire Authority) also has access to on-screen pinpoint monitoring. Fire extinguishers and suppression systems are regularly tested. Fire evacuation drills are performed each semester in the residence halls, and residence hall staff receives annual fire safety training.

Safe Walk Program 491-1155

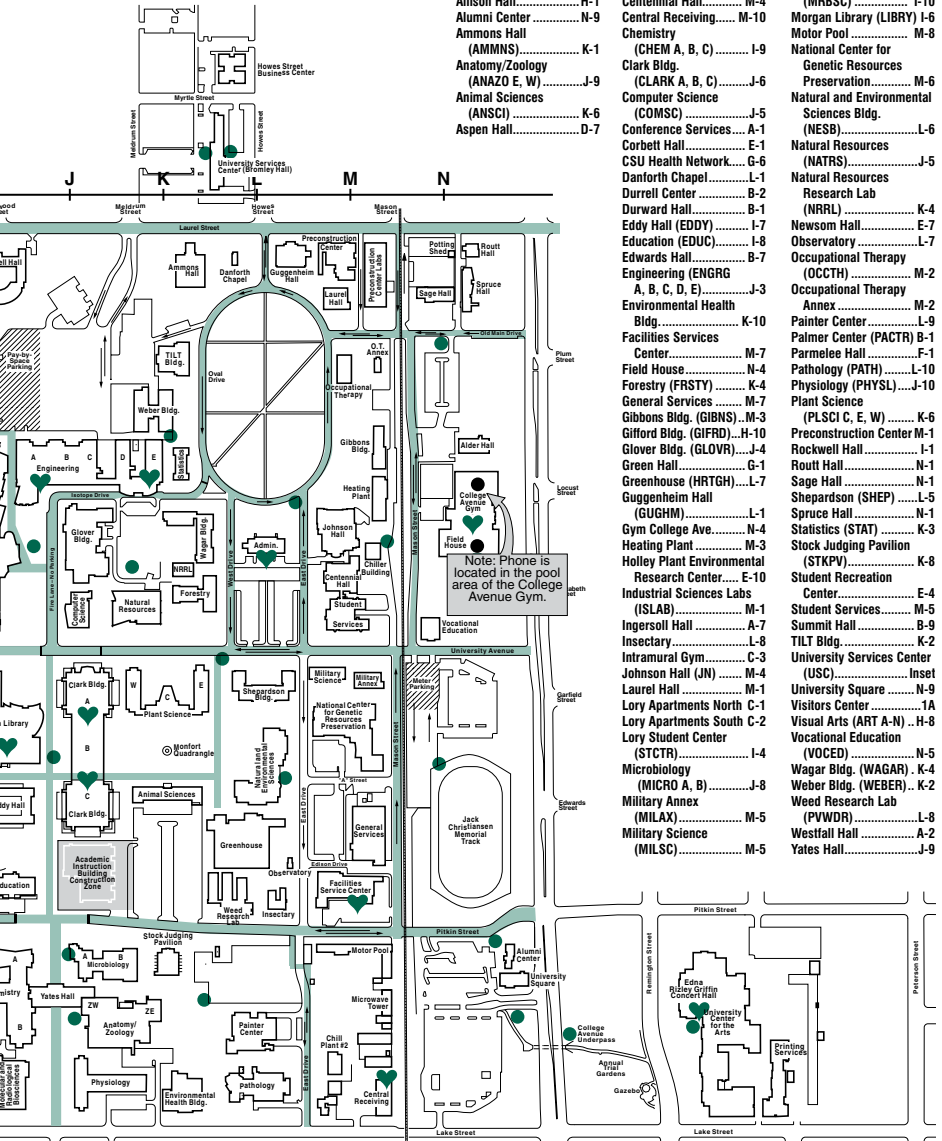


Main Campus Legend

- Academic Village D-7
- Administration L-4
- Alder Hall (CO-OP) N-3
- Allison Hall H-1
- Alumni Center N-9
- Ammons Hall (AMMNS) K-1
- Anatomy/Zoology (ANAZO E, W) J-9
- Animal Sciences (ANSCI) K-6
- Aspen Hall D-7

- Aylesworth Hall (AYLES C) G-7
- Braiden Hall H-7
- Centennial Hall M-4
- Central Receiving M-10
- Chemistry (CHEM A, B, C) I-9
- Clark Bldg. (CLARK A, B, C) J-6
- Computer Science (COMSC) J-5
- Conference Services A-1
- Corbett Hall E-1
- CSU Health Network G-6
- Danforth Chapel L-1
- Durrell Center B-2
- Durward Hall B-1 (NRRL) K-4
- Eddy Hall (EDDY) I-7
- Education (EDUC) I-8
- Edwards Hall B-7
- Engineering (ENGRG A, B, C, D, E) J-3
- Environmental Health Bldg. K-10
- Facilities Services Center M-7
- Field House N-4
- Forestry (FRSTY) K-4
- General Services M-7
- Gibbons Bldg. (GIBNS) M-3
- Gifford Hall (GIFRD) H-10
- Glover Bldg. (GLOVR) J-1
- Green Hall G-1
- Greenhouse (HRTGH) L-7
- Guehneim Hall (GUEHM) L-1
- Gym College Ave N-4
- Heating Plant M-3
- Holley Plant Environmental Research Center E-10
- Industrial Sciences Labs (ISLAB) M-1
- Ingersoll Hall A-7
- Insectary L-8
- Intramural Gym C-3
- Johnson Hall (JN) M-4
- Laurel Hall M-1
- Lory Apartments North C-1
- Lory Apartments South C-2
- Lory Student Center (STCTR) I-4
- Microbiology (MICRO A, B) J-8
- Military Annex (MILAX) M-5
- Military Science (MILSC) M-5

- Moby Arena (MB/SS) ... B-3
- Molecular and Radiological Biosciences Bldg. (MRBSC) I-10
- Morgan Library (LIBRY) I-6
- Motor Pool M-8
- National Center for Genetic Resources Preservation M-6
- Natural and Environmental Sciences Bldg. (NESB) L-6
- Natural Resources (NATRS) J-5
- Natural Resources Research Lab (NRRL) K-4
- Newsom Hall E-7
- Observatory L-7
- Occupational Therapy (OCCTH) M-2
- Occupational Therapy Annex M-2
- Painter Center L-9
- Palmer Center (PACTR) B-1
- Parmelee Hall F-1
- Pathology (PATH) L-10
- Physiology (PHYSL) J-10
- Plant Science (PLSCI C, E, W) K-6
- Preconstruction Center M-1
- Rockwell Hall I-1
- Rouff Hall N-1
- Sage Hall N-1
- Shepardson (SHEP) L-5
- Spruce Hall N-1
- Statistics (STAT) K-3
- Stock Judging Pavilion (STKJP) K-8
- Student Recreation Center E-4
- Student Services M-5
- Summit Hall K-2
- TILT Bldg. (TILTB) K-2
- University Services Center (USC) Inset
- University Square N-9
- Visitors Center 1A
- Visual Arts (ART A-N) ... H-8
- Vocational Education (VOCED) N-5
- Wagar Bldg. (WAGAR) K-4
- Weber Bldg. (WEBER) K-2
- Weed Research Lab (PWWR) L-8
- Westfall Hall A-2
- Yates Hall J-9



For more information regarding fire safety, education, or training, please contact our Safety and Security Coordinator, Ken Quintana, at (970) 491-6121.

Residence Halls Arson Statistics

	Fires	Injuries	Fire Drills
Academic Village	0	0	2 a year
Allison Hall	2	0	2 a year
Braiden Hall	0	0	2 a year
Corbett Hall	0	0	2 a year
Durward Hall	0	0	2 a year
Edwards Hall	1	0	2 a year
Ingersoll Hall	0	0	2 a year
International House	0	0	2 a year
Lory Apartments North	0	0	2 a year
Lory Apartments South	0	0	2 a year
Newsom Hall	0	0	2 a year
Parmelee Hall	0	0	2 a year
Summit Hall	0	0	2 a year
University Village	1	0	2 a year
Westfall Hall	0	0	2 a year

Property Damage from Fires

Allison Hall – One poster on a board and a bench from a burning diary outside of the building

Edwards Hall – A bank statement burned by a student in the parking lot

University Village – Burned mattress outside of the building

Planning a Safe Environment

Colorado State considers security an important consideration in planning, maintaining, designing, and remodeling facilities on campus. Exterior lighting is an important part of the University's commitment to campus safety.

On a regular basis, problems with exterior lighting are reported by the CSU Police to Facilities Services repair crews. Once a year, a comprehensive survey of all exterior lighting, facility safety, and security is conducted by the CSU Police and Facilities Services. People are encouraged to call the CSU Police when they see a light out or any safety or security-related



Motorcycle officer patrols campus

hazard. Light posts have numbers on them that help repair people find them. If possible, provide the number when reporting a light out. If you notice other safety concerns, please report them as well.

Facilities Services reports problems with door and security hardware daily. CSU Police officers also report defective locking mechanisms to Facilities Services as soon as they are discovered. Shrubbery, trees, and other vegetation on campus are trimmed on a regular basis. Fencing, roadway, and sidewalk repairs are reviewed and completed at least annually.

The CSU Public Safety Team (PST) coordinates and facilitates effective campus disaster preparedness, mitigation, response and recovery activities to minimize the impacts of emergencies on the campus community facilities and environment. Written plans are in place and exercises are regularly held to keep our staff and faculty prepared to handle major events. This team, made up of members from several campus departments, also coordinates efforts under Homeland Security for the University.

Residence Hall Security

Three layers of security exist in the residence halls:

- The lobby area is staffed 24 hours a day.
- Lobbies and common areas are open during dining center hours and then accessible only by residents of the building after hours via keycard access.
- Floors and rooms are only accessible by residents with keycard access. All common bathrooms on the floors are also secured.

Residents are asked not to allow strangers access to the building, either by propping doors, lending keys, or opening doors for anyone waiting outside the building. Visitors and delivery people may use a house phone located outside the main entrance to contact the appropriate host to gain access, once all entries to the building are locked.

All residence hall staff are trained on emergency response and have knowledge of evacuation and safety protocol in the event of an emergency. In the event of an emergency, all lobby doors and common areas can be locked down to permit access to residents of the building only. The option

To find out about crime on campus, review:

- The *Fort Collins Coloradoan*, the community newspaper
- The *Rocky Mountain Collegian*, the student newspaper
- *Today @ Colorado State*, the online faculty and staff newspaper
- KCSU and other local radio broadcasts
- Special alerts and activity reports circulated about the University
- Crime bulletins describing specific crimes or perpetrators

To obtain information about registered sex offenders:

Information about sex offenders currently registered at the University is available at the CSUPD Records Section during normal business hours. Information about offenders registered at Fort Collins Police Services or the Larimer County Sheriff's Office are available at those agencies.

Visit the CSU Police Department website to learn more about:

- **Campus Safety Information**
- **Campus Bicycling Regulations**
- **Campus Parking Regulations**
- **CSU Acronyms Used**
- **Employment Opportunities**
- **Authority/Jurisdiction**
- **Department Organization**
- **Campus SafeWalk Program**
- **Report a Crime On-Line**
- **CampusWatch Tip Form**

and more!

police.colostate.edu

of locking buildings down entirely to prevent any access into the building is also available.

The CSU Police Department has partnered with Housing and Dining Services to develop a Community-Oriented Policing Program recently. The goal of this program is to place full-time, certified police officers in residence halls regularly to enhance relationships with students and increase security and safety awareness among students and in their places of residence.

Sorority/Fraternity Security

Since Greek houses are located off campus, they are under the jurisdiction of Fort Collins Police Services. However, security in sorority and fraternity houses is managed by a variety of corporations. Students and parents who want the name of the management corporation for a particular house should call the Office of Greek Life at (970) 491-0966.

As a result of an interagency agreement between the Fort Collins Police Services and the CSU Police, CSU Police receive reports of crimes that occur in fraternities and sororities that are recognized as student organizations by Colorado State University. CSU Police share these reports with the Division of Student Affairs and other appropriate offices.

If You Think Someone Has Stolen Your Identity or Personal Information

- **ACT – Report the identity theft to your local police department.**
 - Many financial institutions will want a copy of the report before they will cooperate with the you.
- **UNLIKE YOUR FINGERPRINTS, which are unique to you and cannot be given to someone else for their use, your personal data can. You should guard your:**
 - Social Security number
 - bank account
 - credit card number
 - telephone calling card number
 - and other valuable identifying data
- **PROTECT YOURSELF**
 - Create a need-to-know approach to your personal information.
 - Banks need to know what?
 - Credit card companies need to know what?
 - Calls from strangers – Ask to have any prizes, credit card offers, etc., sent in writing. Otherwise hang up.
 - Check with the Better Business Bureau at www.bbb.com/
- **WHAT TO DO**
 1. Call toll-free at **1-877-ID THEFT (877-438-4338)**
 2. By mail to Consumer Response Center, FTC,
600 Pennsylvania Avenue NW, Washington, DC 20580

Warning the Campus Community

The Public Safety Team will determine if an ongoing or continuing threat is a serious situation on or off campus. If so, a campus-wide “timely warning” may be issued through the Colorado State University (CSU) e-mail system or other notification methods. The warning may also be posted on the CSU Police Department police.colostate.edu and CSU Department of Public Safety publicsafety.colostate.edu websites.

Depending on the particular circumstances of the crime, especially in situations that pose an immediate or on-going threat to the community and individuals, a copy of the notice may be posted in each residence hall and other CSU building locations.

Anyone with information warranting a timely warning should report the circumstances to the CSU Police Department by phone at 970-491-6425 or in person at the CSU Police Headquarters in Green Hall.

CSU uses emergency communication systems for emergency notifications including:

- **Rave Alert, text-based messaging system.** Text alerts can be sent to CSU community members notifying them of an emergency, quickly.
- **Everbridge.** This allows us to call all or specific land-based phones in a targeted area.
- **CSU Emergency Telephone Network.** This allows us to make a conference call to areas on campus to alert people to an emergency.
- **E-mail.** We can notify thousands of people quickly.
- **Emergency Broadcast System.** We can interrupt cable and broadcast stations with an emergency notification.

Bicycle and Traffic Safety

Colorado State University bicycle regulations can be found at: police.colostate.edu; click on the “Campus Bicycle Regulations” link.

Bicyclists are expected to obey traffic laws the same as any other vehicle being driven. Bicycle rules and regulations are established by the City of Fort Collins and the University Bicycle Education and Enforcement Program. Some safety tips for riding your bicycle include:

- ALWAYS wear a helmet.
- Use a light at night.
- Bicyclists must use bicycle paths and lanes where provided.
- NEVER ride through crosswalks; drivers may not see you coming.
- Yield to pedestrians on sidewalks; they have the first “right-of-way.”
- Practice COURTESY while riding and enjoy riding safely.
- Register your bike with the CSU Police Department.



CSOs handling bicycle violation

Drivers must obey all Colorado and Fort Collins laws and ordinances and University TEEP (Traffic Education and Enforcement Program) regulations, which are enforced civilly here at CSU. TEEP violations do not effect points on the driver’s license.

It is NEVER a good idea to use a cell phone while driving, riding a bike, or walking in the traffic pattern or roadway. Dividing your attention could get you and/or someone else hurt, especially if someone else is doing the same and is distracted at the same time!

Crime Prevention Programs

- *Residence hall security* – Every evening during the academic year, CSU Police officers patrol residence halls on foot.
- *Electronic alarm systems* – The CSU Police monitor intrusion, fire, environmental, and general emergency alarms throughout campus.
- *Security surveys* – CSU Police will evaluate on campus buildings and provide detailed suggestions for improving security. Officers also report exterior hazards such as defective locking mechanisms, non-functioning streetlights, overgrown bushes, and street damage to Facilities Services repair crews.
- *Personal Property Inventory* – All students are encouraged to record serial numbers found on electronic equipment and mark other valuables for identification purposes.

- *Bicycle Education and Enforcement Program (BEEP)* – Bicycle registration deters theft and helps in recovery. This program tracks all bicycles registered with the University, maintains signs and bicycle racks, and oversees bicycle safety regulations.
- *Safe Walk Program* – Since the inception of the Community Service Officer Safe Walk Program in January 1993, they’ve provided “walk-alongs” for thousands of students, staff, and faculty.
- *Presentations* – Many of the officers within the CSU Police Department have special areas of expertise and can be scheduled to present to groups and organizations on campus as staffing allows. Some of the ongoing programs include: Campus Security Procedures and Practices, Personal Safety, Crime Prevention, Sexual Assault Prevention, Alcohol and Drug Abuse, Driving Under the Influence of Alcohol, and Computer Crimes.

Remember ... in emergencies dial 911.



The campus environment continually improves through efforts to limit access to residence halls and academic buildings; through environmental design – better lighting, landscaping, and physical security in our facilities – and through the endeavors of the CSU Police Department, which devotes tremendous effort towards preventing crime.

Honest Facts About Sexual Assault

Women's Programs, (970) 491-6384, www.wps.colostate.edu

Victim Assistance Team, (970) 491-7111

CSU Health Network, (970) 491-7121, www.health.colostate.edu

The majority of sexual assaults that occur in the campus community are committed by people known by their victims, such as casual acquaintances through academic, living, work, social, or recreational interactions, including dating.

Often, these types of assaults are not reported to the police, because people do not think that, when a friend or acquaintance subjects them to unwanted sexual intercourse or contact, this is sexual assault. They may come away thinking, "That was an awful experience. I felt helpless. I feel so angry about it!" but not think of calling the police or available victim services. Also, some victims deny their own victimization as a means of coping with their pain.

The fact is that these types of sexual assaults are more common than what are known as "stranger rapes." Assailants are able to victimize people by exploiting their trust. They rely on the fact that you trust that you can be alone with them.

It is impossible for anyone to predict that a sexual assault will occur. You can be alert for unhealthy dynamics in relationships. Avoid people who don't allow you to make decisions for yourself – who make you feel you "owe them" something.

Because of the frequency of acquaintance sexual assaults in campus communities, it is best to be very explicit with dates about how intimate you expect the relationship to be. Don't assume that a person knows that you are comfortable with "going so far." Unfortunately, some people believe

For information on "date rape drugs" like GHB, Rohypnol, or Ketamine, contact 491-1702, Center for Drug and Alcohol Education, or 491-6384, Women's Programs and Studies. Advocates receive special training in the physical, psychological, and legal ramifications of sexual assault. Advocates are bound by state statute to maintain strict confidentiality. Information gained as part of victim advocacy must be treated confidentially and cannot be released without the victim's permission. Advocates will provide information about options related to crime reporting, but the final decision is up to the individual victim.

that consent to any level of intimacy implies consent to sexual intercourse. This is not true – anyone can say “no” or “stop” at any time. Often, assailants target victims who have been using drugs or intoxicants because of their increased vulnerability. In Colorado, it is a criminal offense to have sexual contact or intercourse with someone who has been using drugs or other intoxicants to the extent that they are unable to indicate their consent or lack of consent. Assailants are no less guilty because they or a victim has been drinking.

In recent years, there has been an increase in the use of drugs that impair someone’s ability to know what is going on and to subsequently make them more vulnerable to sexual assault. Drugs like GHB or Rohypnol (“roofies”) can be secretly slipped into a beverage (non-alcoholic and alcoholic drinks alike). The drug has no smell or taste and generally no color. These drugs can be present at bars and clubs, but also at parties and intimate gatherings. The reality is that “date rape drugs” can be slipped into your drink at any social setting. Victims of sexual assault are not at fault for what has been done to them, whether drugs were used or not. The perpetrators of this crime are fully responsible for their illegal behavior. There are some things that can be done, however, to reduce the chance that you will unknowingly consume a substance like GHB, Rohypnol, or Ketamine:

How to reduce your risk:

- Always keep your beverage in sight. Don’t leave it while dancing or going elsewhere.
- At a bar or club, accept drinks only from the bartender or server.
- Avoid group drinks, punch bowls, or drinks being passed around.
- Open your own containers.

If you experience the following symptoms, tell someone immediately or go to the hospital (or CSU Health Network if during business hours):

- Dizziness, vomiting, extreme drowsiness, time that can’t be accounted for and can’t be attributed to anything else, or any other unexplained symptoms.
- Try to retain a sample of the beverage.

To Report a Sexual Assault

To report a sexual assault, students should go to a safe location and call:

- **CSU Police at 911**
- **Colorado State University Victim Assistance Team (VAT) at Campus Emergency, 491-7111**
- * *These offices will educate victims about the option of reporting to the police and let them know it is their choice whether or not to do so. If victims choose to report, the offices will support this decision and will offer assistance in notifying the police.*

It is important that victims try to preserve evidence that may be necessary to prove criminal sexual assault. If victims confide in a friend about the assault, that friend can help the victim remember these guidelines:

- Do not remove clothing, especially underclothes, worn during or following the assault, as these frequently contain valuable fiber, hair, and fluid evidence.
- Don't bathe, douche, wash hands, clean fingernails, launder sheets, wash car upholstery, or rearrange furnishings or personal effects.

Victims can protect their option of pressing criminal charges at a later date by going to the Women's Clinic at CSU Health Network or, after hours, to the local hospital emergency room. Ask for an exam and for evidence of the sexual assault to be collected and sealed.

For counseling, mental health, or student services, victims may contact:

- **Colorado State University Office of Women's Programs and Studies Victim Advocates, 491-6384**
- **Victim/Witness Assistance Unit, Larimer County District Attorney's Office, 498-7235**
- **CSU Health Network Counseling Services, 491-7121**
- **Counseling Center, 491-6053**

Primarily, **Support and Services for Victims of Sexual Assault** are provided on campus by the **Colorado State University Victim Assistance Team (VAT)**. The Office of Women's Programs and Studies trains and oversees the VAT.

The primary purpose of the VAT is to provide support for members of the campus community who have experienced sexual assault. Advocates receive special training in the physical, psychological, and legal ramifications of sexual assault.

The VAT has team members on call 24 hours a day, every day of the year. An advocate may be requested by calling Campus Emergency, **491-7111**. This contact does **not** oblige the caller to make a police report. The dispatcher will request the caller's name and phone number and have an advocate get in touch with that individual. The CSU Police will honor caller requests for anonymity. General information regarding the VAT can be obtained by calling the Office of Women's Programs and Studies at **491-6384**.

Advocates receive special training in the physical, psychological, and legal ramifications of sexual assault. Advocates are bound by state statute to maintain strict confidentiality. Information gained as part of victim advocacy must be treated confidentially and cannot be released without the victim's permission. Advocates will provide information about options related to crime reporting, but the final decision is up to the individual victim.

VAT advocates work closely with victims and campus and community law enforcement agencies. This includes assisting victims of sexual assault in reporting these crimes to the police if they choose to do so. In addition, advocates are informed on medical, law enforcement, legal procedures, and campus disciplinary options and can provide other referral sources to help ensure sexual assault victims receive the services they want and/or need, such as counseling.

The possible sanctions for students who commit sexual assault, acquaintance sexual assault, or other forcible or non-forcible sex offenses, following an on-campus disciplinary procedure, are detailed in the Colorado State University Student Conduct Code. A copy of this policy is available in the Vice President for Student Affairs office, Conflict Resolution and Student Conduct Services office, the Housing office, the information desk of the Lory Student Center, or on the Web at www.studentaffairs.colostate.edu/resources/students/policies.asp. Typical sanctions include disciplinary probation, suspension, dismissal, and expulsion.

Dater's Bill of Rights

I have the right to refuse to date without feeling guilty.

I can ask for a date without feeling rejected or inadequate if the answer is no.

I may choose not to act seductively.

If I don't want physical closeness, I have the right to say no.

I have the right to be myself without changing to suit others.

I have the right to change a relationship when my feelings change. I can say, "We used to be close, but I want something else now."

If I am told a relationship is changing, I have the right not to blame or change myself to keep it going.

I have the right to an equal relationship.

I have the right not to dominate or to be dominated.

I have the right to act one way with one person and a different way with someone else.

I have the right to change my goals whenever I want to.

Reprinted with Permission: Kenney, Susan J., "Date Rape: An Alarming Problem," The Adelphean of Alpha Delta Pi, Fall 1987.

The procedures for on-campus disciplinary action in cases of alleged sexual assault are described under the heading, “Administrative Hearing Procedure” in the Student Conduct Code. When the alleged perpetrator in a sexual assault is a student, the student may be referred through the Conflict Resolution and Student Conduct Services.

During a campus disciplinary proceeding, *both victims and students accused of sexual assault are entitled to:*

- have an adviser or support person present and
- be notified of the outcome of the proceeding.

Advocates receive special training in the physical, psychological, and legal ramifications of sexual assault.

Victims of alleged assaults can request changes in academic or living situations. Such requests will be accommodated when possible. The Conflict Resolution and Student Conduct Services Office will inform students of their options and available on-campus assistance in these situations.

Sexual Harassment

Any member of the University community who believes that he or she has been subjected to sexual harassment shall contact the Office of Equal Opportunity to request advice and information about possible ways to proceed and to put the University on notice. Such discussion will be kept confidential to the full extent permitted by law. Complainants are advised that there are some instances in which the University has a responsibility to act even if the Complainant requests that no action be taken as, for example, where other members of the University community may be at risk. In those cases, the University may investigate and take action on the basis of facts it discovers.

Information related to registered sex offenders who have provided registration information to the CSU Police is available at the Records Desk of the CSU Police Department during normal business hours. Information related to sex offenders registered in Fort Collins or Larimer County is available from the Fort Collins Police Services or the Larimer County Sheriff’s Office. Additionally, the Colorado Sex Offender Registry is available on the Web at sor.state.co.us.

Domestic Violence

Sadly, violence is a “modern reality” to which students in academic settings are not immune. In Colorado, two people involved in an intimate relationship (e.g., married, boyfriend and girlfriend, intimate partner, etc.), where an argument results in injury, crime, or damage to property, or where violation of a valid restraining order is evident, are in a situation where an arrest is **mandated**; officers have no discretion. Often, police receive calls from the victims, from friends, or from concerned neighbors who hear the noise of an argument or fight. When probable cause exists and officers believe that a crime occurred during a domestic situation, an arrest(s) will be made.

Stalking

Stalking, which is a crime in the state of Colorado, is on the rise in many academic settings. It is generally defined from a legal standpoint as “willful, malicious, and repeated following and harassment combined with a credible threat intended to cause victims to be in fear for their safety.” Phases of stalking can include a number of behaviors. They range from mental obsession or preoccupation with a person; to gathering information about that person from their mail (print or electronic), trash, or friends, and family; to harassing the victim via phone or Internet or by following or pursuing the victim either from a distance or up close.

If you believe you are being stalked, let someone know. Document all activities related to the person who you believe may be stalking you and report the incident to the police. Don’t discount the situation and ignore the “red flags.” Trust your judgment. If a situation doesn’t feel right, ask for help!

Victims’ Rights

The University is committed to providing appropriate support and referrals to persons who have been the victims of any crime or violation of University policy. Persons who have been victimized by a Colorado State University student may choose to report the incident to the CSU Police or to the Conflict Resolution and Student Conduct Services Office to initiate criminal and/or disciplinary action. Victims also have the option to receive personal support from appropriate University resources.

When dealing with University agencies, the victim can expect:

- to be treated with respect;
- to have confidentiality maintained (within the bounds of the law and University policy);
- to have University or criminal proceedings fully explained;
- to receive assistance in relocation within or to campus housing if desired;
- to receive referral information for support services;
- at the victim's request, to receive University cooperation in using University procedures to deter harassment or retribution.

If University disciplinary action is initiated, the victim can expect:

- to be notified of scheduled disciplinary proceedings;
- to be apprised of potential hearing outcomes;
- to attend the disciplinary hearing, as a witness, if requested by the accused, hearing officer, or panel or if the victims desires to do so;
- to be accompanied by an adviser or support person at the hearing;
- to provide a victim impact statement for consideration by the Hearing Officer or panel;
- to be informed of the general outcome of the hearing;
- at the victim's request, to be informed (to the extent permitted by law) of the impending return of the perpetrator to campus, if the conditions of the suspension or dismissal were met prior to the victim's departure from campus.

Brochures detailing victim's rights in crimes, published by the Larimer County District Attorney, are available at all local law enforcement agencies.

What Do Crime Statistics Tell Us About a University?

A lot and, sometimes, not enough. On one hand, crime statistics tell us what has been reported to officials. On the other hand, it may or may not be representative of what is actually occurring. Crime, and specifically violent crime, is said to occur on most campuses in the United States. Colorado State University has been committed for decades to the safety, protection, education, and awareness of its students, faculty, staff, and community. Long before it was required by law, and certainly before it was popular to do so, Colorado State made crime statistics available through this publication and other campus and community media. In doing so, the University community has become aware of safety concerns and what is happening around them. In addition, Colorado State has made a commitment to offer and provide victims of crime with the best possible care and services.

The Chronicle of Higher Education has noted that colleges and universities that have comprehensive resources and services experience an increase in crime reporting. The resources and services at Colorado State University include the CSU Police Department, the Sexual Assault Victim Assistance Team, and CSU Health Network. These programs provide support and safe environments that encourages the reporting of crimes by students. Victims receiving counseling will be informed of any procedures to report crimes on a voluntary, confidential basis for inclusion in the annual disclosure of crime statistics. CSU Police will investigate anonymous and/or confidential reports of crimes and can provide options for pursuing criminal, civil charges, or University discipline against the assailant.

The following pages contain disciplinary and crime statistics for Colorado State University. The Conflict Resolution and Student Conduct Summary Report is a compilation of the total number of disciplinary referrals the office sees that may have resulted in arrests, as well as referrals to university disciplinary administrators in the categories of (a) weapons possession, (b) violations of drug law, and (c) violations of alcohol/liquor law. The arrests made by CSU Police for Weapons violations, Alcohol citations, and Drug use violations are reflected in the crime statistics on pages 50 and 51.



The numbers published are compiled from reports made to “Campus Security Authorities” including CSU Health Network, Human Resources, Victim’s Assistance Team, Conflict Resolution and Student Conduct Services, Athletics, CSU Police Department, Fort Collins Police Services, and the Larimer County Sheriff’s Department.

Crime and violent crime is a national problem. Statistics are often misunderstood. Please take the time to consider crime information and related statistics carefully.

Statistics for adjacent law enforcement jurisdictions, Fort Collins Police Services, and Larimer County Sheriff’s Department, can be found in the most recent edition of the Federal Bureau of Investigation Uniform Crime Reports at your public library, or by request to those agencies.

Conflict Resolution and Student Conduct

Summary Reports

Note that the information for 2006-2007 is different in both order and content from that of 2007 and 2008. Also, for 2006-2007, the statistics are for July 1 through June 30, whereas 2007 is for the calendar year, as will be future statistics.

	2006-2007	
A. TOTAL NUMBER OF HEARINGS	789	
B. TOTAL NUMBER OF APPEALS	7	
C. TYPE OF INFRACTIONS	N	%
1. Academic Dishonesty (Total)	43	2%
- academic dishonesty	25	
- cheating	9	
- plagiarism	6	
- unauthorized possession of academic material	2	
- falsifying acts of dishonesty	1	
2. Providing False Information to the University	35	0%
3. Forgery/Misuse of Document	3	0%
4. Disruption University Activities	15	0%
- disrupting administrative/disciplinary activity	10	
- disruption of educational interaction	5	
5. Interfere w/Speech/Movement	1	0%
6. Abusive Conduct (Total)	259	7%
- miscellaneous abusive conduct	120	
- physical abuse	18	
- verbal abuse	11	
- threats	19	
- intimidation	8	
- stalking	1	
- coercion	6	
- endangering one's self	82	
7. Harassment (Total)	43	2%
- miscellaneous harassment	40	
- based on gender	1	
- based on sexual orientation	1	
- based on race		
- based on religion	1	
8. Sexual Misconduct (Total)	5	0%
- miscellaneous sexual misconduct	4	
- penetration without consent	1	
- obscene or lewd behavior		
- posting of photos		
- observing without consent		
- posting pornography in public venues		
9. Rioting	0	0%
10. Failure to Comply (Total)	188	5%
- failure to comply with staff (general)	126	
- resisting/endangering police	62	

11. Theft/Damage (Total)	125	3%
- actual or attempted theft	40	
- criminal mischief	61	
- unauthorized entry or use of Univ. property	24	
- unauthorized entry or use of Univ. keys-access device		
12. Weapons	13	0%
13. Violation of Rules (Total)	1183	30%
- miscellaneous violations	583	
- residence hall contract	411	
- athletic events	189	
14. Soliciting	0	0%
15. Violation of Laws	612	15%
16. Alcohol Violations (Total)	1207	31%
- miscellaneous violations	626	
- manufacturing/distributing of alcohol	18	
- underage possession	528	
- public intoxication	35	
17. Drug Violations (Total)	164	5%
- use/possession of marijuana	134	
- use/possession of illegal drugs	19	
- manufacturing illegal drugs	1	
- use/possession of prescription medications	3	
- use/possession of drug paraphernalia	7	
18. Misuse of Computer Violations	1	
19. Failure to Obey (Total)	35	0%
- notice to appear at an administrative/disciplinary	3	
- abuse of the conduct system	2	
- fail to comply with disciplinary sanctions	30	
20. Aiding/Abetting	18	0%
D. LEVEL OF DISCIPLINE		
Warning	728	
General Discipline Probation	224	
Disciplinary Probation/Loss of Good Standing	44	
Deferred Suspension	36	
Disciplinary Suspension	17	
Expulsion	0	
E. LOCATION		
Allison Hall	15	
Braiden Hall	71	
Corbett Hall	177	
Durward Hall	86	
Edwards Hall	96	
Hughes Stadium	143	
Ingersoll Hall	42	
New Hall (Academic Village)	1	
Newsom Hall	46	
Off Campus	407	
On Campus	697	
Outside of Fort Collins	43	
Parmelee Hall	84	
Summit Hall	23	
University Village	10	
Westfall Hall	89	

	2007		2008	
A. TOTAL NUMBER OF HEARINGS	1471		1674	
B. TOTAL NUMBER OF APPEALS	22		2818	
C. TYPE OF INFRACTIONS	N	%	N	%
1. Academic Dishonesty (Total)	61	1%	69	2%
- academic dishonesty	38		65	
- cheating	15			
- plagiarism	5		2	
- unauthorized possession of academic material	2		2	
- falsifying acts of dishonesty	1			
2. Providing False Information to the University	51	1%	57	2%
3. Forgery/Misuse of Document	6	0%	6	0%
4. Disruption University Activities	17	0%	36	1%
- disrupting administrative/disciplinary activity	12			
- disruption of educational interaction	5			
5. Interfere w/ Speech/Movement	0	0%	0	0%
6. Abusive Conduct (Total)	399	10%	228	8%
- miscellaneous abusive conduct	109		91	
- physical abuse	42		47	
- verbal abuse	26		27	
- threats	18		7	
- intimidation	10		5	
- stalking	3		1	
- coercion	1		1	
- endangering one's self	190		49	
7. Harassment (Total)	57	1%	64	2%
- miscellaneous harassment	51		52	
- based on gender	3		6	
- based on sexual orientation	2		4	
- based on race	1		2	
- based on religion	0			
8. Sexual Misconduct (Total)	17	0%	19	0%
- miscellaneous sexual misconduct	4		3	
- penetration without consent	4		2	
- obscene or lewd behavior	8		12	
- posting of photos	1			
- observing without consent	0		1	
- posting pornography in public venues	0		1	
9. Rioting	0	0%	0	0%
10. Failure to Comply (Total)	218	5%	181	7%
- failure to comply with staff (general)	128		101	
- resisting/endangering police	90		80	
11. Theft/Damage (Total)	163	4%	118	4%
- actual or attempted theft	50		30	
- criminal mischief	79		63	
- unauthorized entry or use of University property	31		25	
- unauthorized entry or use of University keys/access device	3			
12. Weapons	16	0%	7	0%

	2007		2008	
13. Violation of Rules (Total)	1368	30%	715	30%
- miscellaneous violations	385		94	
- residence hall contract	849		544	
- athletic events	134		77	
14. Soliciting	7	0%	1	0%
15. Violation of Laws	409	10%	325	10%
16. Alcohol Violations (Total)	1360	30%	684	30%
- miscellaneous violations	445		68	
- manufacturing/distributing of alcohol	20		5	
- underage possession	853		521	
- public intoxication	42		90	
17. Drug Violations (Total)	278	7%	252	7%
- use/possession of marijuana	193		134	
- use/possession of illegal drugs	22		6	
- manufacturing illegal drugs	2		8	
- use/possession of prescription medications	4		5	
- use/possession of drug paraphernalia	57		99	
18. Misuse of Computer violations	13	0%	27	0%
19. Failure to obey (Total)	43	1%	11	1%
- notice to appear at an administrative/disciplinary	1			
- abuse of the conduct system	2		1	
- fail to comply with disciplinary sanctions	40		10	
20. Aiding/Abetting	23	0%	7	0%
D. LEVEL OF DISCIPLINE				
Warning	720		911	
General Discipline Problem	706		858	
Disciplinary Probation/Loss of Good Standing	126		110	
Deferred Suspension	33		49	
Disciplinary Suspension	12		22	
Expulsion	1		1	
E. LOCATION				
Allison Hall	20		50	
Braiden Hall	66		25	
Corbett Hall	145		63	
Durward Hall	116		49	
Edwards Hall	90		54	
Hughes Stadium	68		57	
Ingersoll Hall	20		13	
New Hall	14		25	
Newsom Hall	38		26	
Off Campus	440		208	
On Campus	821		443	
Outside of Fort Collins	54		38	
Parmelee Hall	84		47	
Summit Hall	47		21	
University Village	7		3	
Westfall Hall	86		72	

* For 2007, we subtracted CSUPD tickets. This number reflects other agency charges (FCPS, LCSO, etc). Beginning in 2007 numbers were compiled by calendar year. This method will be continued in future editions.

Police Crime Statistics

	CSU On-Campus Property			CSU Residence Halls Only		
	2006	2007	2008	2006	2007	2008
Murder, Nonnegligent Manslaughter	0	0	0	0	0	0
Negligent Manslaughter	0	0	0	0	0	0
Forcible Sex Offenses						
1st & 2nd Degree Sexual Assault	3	3	1	3	3	1
3rd Degree Sexual Assault	3	1	1	1	0	1
Non-Forcible Sex Offenses						
Other Nonforcible Sex Offenses	0	0	0	0	0	0
Robbery	0	2	0	0	0	0
Aggravated Assault	2	1	4	1	0	2
Arson	2	3	5	1	1	4
Burglary	18	14	12	4	6	4
Motor Vehicle Theft	2	7	2	1	0	0
Arrest Information						
Arrests for Liquor Law Violations	110	94	127	61	51	55
Alcohol Warnings to JA (by CSU)	NA	91	191	NA	51	169
DUI Arrests	33	21	47	NA	NA	NA
Arrests for Drug Law Violations	57	43	23	35	22	16
Drug Warnings to JA (by CSU)	NA	28	57	NA	18	50
Arrests for Weapons Possession	2	2	0	0	1	0
Hate Crimes	2	1	1	1	1	1

The numbers shown occurring in CSU Residence Halls are the portion broken out from the total which occurred on the CSU Campus.

Forcible sex offenses include:

1st & 2nd Degree Sexual Assault – The carnal knowledge of a person, forcibly and/or against a person's will or where the victim is incapable of giving consent.

3rd Degree Sexual Assault – The touching of private body parts of another person for the purpose of sexual gratification, forcibly or against that person's will or where the victim is incapable of giving consent.

Non-Forcible Sex Offenses include:

Other Non-Forcible Sex Offenses – Incest and Statutory Rape.

The following three types of incidents must be reported if they result in an arrest:

Liquor Law Violations, Drug Law Violations, and Illegal Weapons Possession.

For additional disciplinary referrals not criminally charged in these types of contacts see Judicial Affairs Summary Report.

CSU Non-Campus Property			CSU Fraternities/ Sororities			Public Property		
2006	2007	2008	2006	2007	2008	2006	2007	2008
0	0	0	0	0	0	0	0	0
0	0	0	0	0	0	0	0	0
0	1	0	0	0	0	2	0	0
0	0	0	0	0	0	0	0	0
0	0	0	0	0	0	0	0	0
0	0	0	0	0	0	1	0	1
0	0	0	0	0	0	6	2	4
0	0	0	0	0	0	0	0	0
0	0	1	2	6	2	25	19	4
1	0	2	2	3	1	5	5	2
0	0	0	0	0	3	14	20	22
NA	0	0	NA	NA	NA	NA	NA	8
0	0	0	NA	NA	NA	38	36	26
0	0	0	0	0	0	4	11	2
NA	NA	NA	NA	NA	NA	NA	NA	NA
0	0	0	1	2	0	1	1	1
0	0	0	0	0	1	0	0	0

Above three categories include CSUPD plus:

Fort Collins Police Services and Larimer County Sheriff's Office

Other CSU Non-Campus Property includes:

ARDEC
 Environmental Learning Center
 Pingree Park
 Energy Conversion Plant CSU
 Extension offices statewide

Hate Crime for fraternity/sorority was an Aggravated Assault, Anti-Gay and Anti-Black.

2008 On-Campus (residence hall) Hate Crime involved Anti-Gay Harassment.

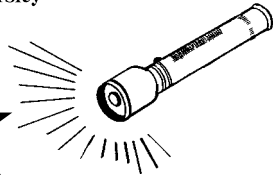
2007 On-Campus Hate Crime was Anti-Religious and involved Simple Assault.

2006 Involved Harassment and biases were Anti-Homosexual and Anti-Black in nature.

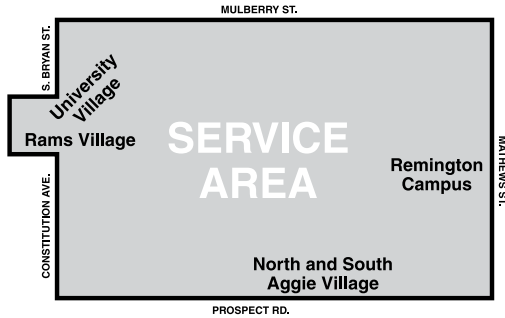
NA Field not applicable

Colorado
State
University

SAFE WALK PROGRAM



A SERVICE OF COLORADO STATE
UNIVERSITY POLICE DEPARTMENT



Call **491-1155**

to request a  to walk you
to your destination

The information included in this report is being provided in compliance with the Student Right to Know and Campus Security Act of 1990, the Drug-Free Work Place Act, the Drug Free Schools and Communities Act of 1989, and the Higher Education Amendments of 1998. This publication is intended to provide a general description of campus security arrangements and not to serve as a contractual agreement between the University and the recipient. Security procedures are subject to change without notice.

Colorado State University Thor Guard Lightning Prediction System Procedures

At Colorado State University, the University Safety Committee and Environmental Health Services partnered with five departments – Athletics, Campus Recreation, Conference Services, Facilities Services, and Health and Exercise Science – to purchase the Thor Guard Lightning Prediction and Warning System for a majority of the Main Campus (Intramural Fields, Jack Christensen Track, and the Ropes Course) as well as Hughes Stadium.

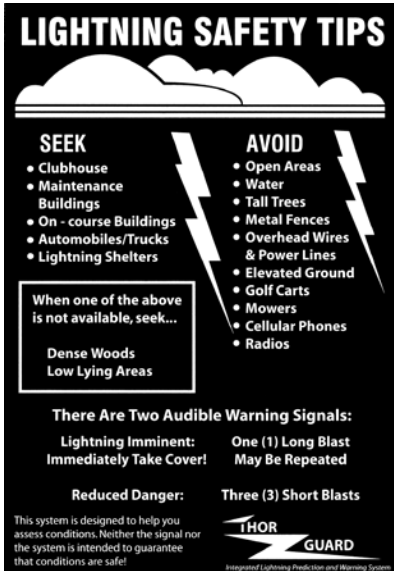
While the system is not infallible, and good judgment should still be followed, the system will be an important tool for enhancing safety of University sanctioned activities involving students, employees, and visitors. All of the partners are confident that this system – if its warnings are responsibly heeded – will substantially reduce the chances of a lightning-related tragedy occurring at these sites.

The sensor constantly monitors atmospheric conditions within a 2-mile radius of the sensor that can cause lightning and sends a signal to the horn assemblies when a danger threshold is passed. The horn assemblies then sound a “red alert” alarm – a strobe light on the assembly begins intermittently flashing, and one 15-second-long blast from the horns is sounded in all directions that can be heard approximately 700 yards away – to warn people at the sites to seek appropriate shelter for the duration of the red alert period. All outdoor activities must cease during red alert periods to protect all users of these sites. Appropriate shelter includes surrounding buildings, automobiles/trucks, and, when one of those is not available, dense woods or low-lying areas. However, if the conditions appear unsafe and a red alert alarm has not sounded, good judgment should be your guide, and activities should still cease despite the absence of a Thor Guard warning.

When the danger has passed (a minimum of 10 minutes after the original alarm), it will send the all-clear signal to the horn assemblies – the strobe light will stop flashing, and three separate, 5-second-long blasts from the horns will sound. After the all-clear signal has sounded, it is safe, according to the Thor Guard system, to resume outdoor activities. However, good judgment should still govern, and if the conditions do not appear to be safe to resume activity, it is best to wait until the weather circumstances change regardless of an all-clear from Thor Guard.

If you have any questions or would like to learn more about the Thor Guard system please send an e-mail to Ken.Quintana@ColoState.Edu or call (970) 491-6121.

*** Please note that the Thor Guard system's horns and strobe lights will be tested the first Tuesday of every month at about 9 a.m.*



LIGHTNING SAFETY TIPS

SEEK

- Clubhouse
- Maintenance Buildings
- On - course Buildings
- Automobiles/Trucks
- Lightning Shelters

AVOID

- Open Areas
- Water
- Tall Trees
- Metal Fences
- Overhead Wires & Power Lines
- Elevated Ground
- Golf Carts
- Mowers
- Cellular Phones
- Radios

When one of the above is not available, seek...

Dense Woods
Low Lying Areas

There Are Two Audible Warning Signals:

Lightning Imminent: Immediately Take Cover!	One (1) Long Blast May Be Repeated
Reduced Danger:	Three (3) Short Blasts

This system is designed to help you assess conditions. Neither the signal nor the system is intended to guarantee that conditions are safe!

THOR GUARD
Integrated Lightning Prediction and Warning System

Important Phone Numbers

Emergency	911
CSU Police.....	(970) 491-6425
County Court.....	498-6100
Crisis Shelter.....	482-3502
Detention Center	498-5200
District Attorney	498-7200
District Court.....	498-6100
Domestic Abuse Response Team/Crossroads	482-3502
Fort Collins Police.....	221-6540
Municipal Court	221-6800

Colorado State Resources

Conflict Resolution and Student Conduct Services.....	(970) 491-7165
Counseling Center	491-6053
Drug and Alcohol Education.....	491-0262
Employee Assistance Program (EAP)	491-5900
Environmental Health Services.....	491-6745
Equal Opportunity and Diversity, Office of	491-5836
Greek Life Adviser	491-0966
Health Services.....	491-7121
Housing and Dining Services.....	491-6511
Human Resource Services	491-5793
Mental Health Counseling.....	491-1702
Parking Services	491-7041
Provost Office.....	491-6614
Risk Management	491-1432
Safe Walk Program.....	491-1155
Student Legal Services.....	491-1482
University Counseling Center	491-6053
Victim Assistance	491-7111
Women’s Program and Studies	491-6384



publicsafety.colostate.edu
police.colostate.edu