



# SAFETY UPDATE

## AND UNIVERSITY DRUG/ALCOHOL POLICY

**Colorado  
State**  
University

[publicsafety.colostate.edu](http://publicsafety.colostate.edu)  
[police.colostate.edu](http://police.colostate.edu)  
Based on 2007 Statistics

# Table of Contents

<b>Alcohol and Other Drugs</b> .....	<b>2</b>
Drug and Alcohol Policy .....	3
Legal Sanctions for Substance Abuse .....	4
Drugs and Their Effects.....	6
Stop Alcohol Poisoning.....	8
Club Drugs.....	10
Marijuana.....	12
Student Rights and Responsibilities .....	14
Drug and Alcohol Counseling .....	18
<b>Security Policies and Programs</b> .....	<b>21</b>
CSU Police Qualifications and Authority.....	21
How to Report an Emergency or Crime.....	22
Building Security .....	24
Fire Safety and Poudre Fire Authority.....	25
Main Campus Map.....	26
Timely Warning Policy .....	30
Information Security and Identity Theft.....	32
Bicycle and Traffic Safety.....	33
Crime Prevention Programs .....	34
Honest Facts About Sexual Assault.....	36
Sexual Harassment .....	41
Domestic Violence .....	42
Stalking.....	42
Victims' Rights.....	42
<b>What Do Crime Statistics Tell Us About a University?</b> .....	<b>44</b>
Conflict Resolution and Student Conduct Reports.....	46
Police Crime Statistics .....	50

In early spring of each school year, Colorado State University Police Department Records Division begins compiling statistics from the prior year as required by the Clery Act (hereinafter "the act"). A group of professionals from several departments across campus meet, as required by the act, along with legal counsel to assure that the report presented meets the requirements of the act. This process is designed to ensure that students, potential students, employees, and parents have the most accurate information possible regarding crime and safety, and related policies, at Colorado State.

Office of the President

102 Administration Building  
Fort Collins, Colorado 80523-0100  
(970) 491-6211  
FAX: (970) 491-0501

Dear Students, Parents, Faculty, Staff, and Guests of Colorado State University:

Your safety and security are high priorities for Colorado State University.

For that reason, we maintain a well-trained and fully functioning professional law-enforcement agency, the CSU Police Department. We also have instituted a number of reasonable security measures – from staff training – to campus lighting and emergency notification systems – to help prevent and address problems that occur.

Even with these measures, your own common sense, careful planning, and understanding of available resources are the best tools to help you avoid becoming the victim of a crime, whether at CSU or in any other community. This handbook provides information about campus security, crime incidents, legal expectations, policies, and where to go if you need assistance. It is a great way to begin to familiarize yourself with the rules and expectations of our campus, as well as to learn how to get help in an emergency.

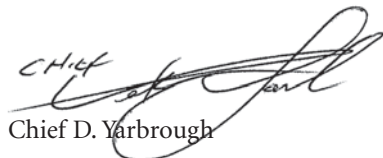
In particular, I want to encourage students and parents both to read and understand the information provided about substance abuse, alcohol poisoning, and student obligations to friends and peers. Abuse of alcohol and drugs is a serious issue on college campuses, and it is important you understand CSU's expectations related to drug and alcohol abuse, as well as our processes for working with students who violate campus regulations.

I encourage you to read this booklet, ask questions, and make your safety and security a personal priority as well. Together, we can maintain a healthy, welcoming, and comfortable learning environment here at Colorado State.

Sincerely,



Larry Edward Penley  
President

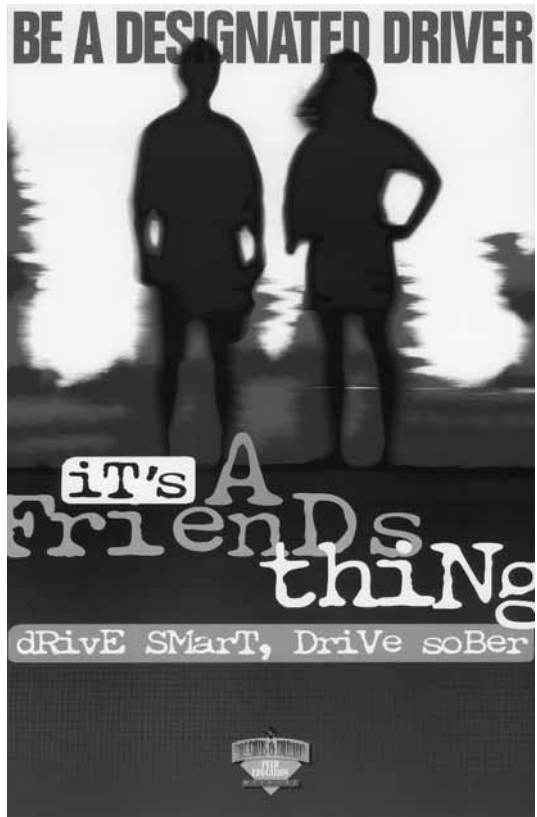


Chief D. Yarbrough  
Associate Vice President/Chief of Police

Each year, Colorado State calls upon every student, faculty, and staff member to work together to maintain and strengthen the vitality, security, and health of this campus. To meet this challenge, you need to be well-informed. This report is intended to do that and make you a member of a safety-conscious community – a place where you will enjoy learning, living, and working.

## Alcohol and Other Drugs

This section of the *2008 Safety Update* describes University policies and programs concerning alcohol and other drugs. The following page illustrates the legal sanctions of drug and alcohol-related offenses. Although it is not a comprehensive list, it will give you a basic understanding of the serious legal penalties that can arise from unlawful possession, distribution, and use of illicit drugs and alcohol. On pages 4 and 5, we've outlined the physical effects and health risks associated with the use of illicit drugs and the abuse of alcohol.



## **DRUG AND ALCOHOL POLICY**

*Providing a positive environment* in which students can study and live securely and comfortably is a priority in Colorado State's residence halls. The halls support and encourage social activities, but these are secondary to the rights of students to live in an atmosphere that supports academic success and personal well-being. Alcohol and drug use negatively impact the hall environment. Consequently, the following policies address the use of drugs and alcohol in the halls.

- No fermented malt beverages, intoxicating liquors, and illegal drugs are allowed in any of the residence halls.
- Colorado State students are expected to comply with state law regarding the purchase, possession, and consumption of alcoholic beverages.
- The sponsor of a social event could be held liable in a civil suit if state or local laws are violated (i.e., supplying alcohol to underage persons or supplying alcohol to an intoxicated person).
- A violation of the residence hall alcohol policy or state law will result in disciplinary action.
- Alcohol violations within a residence hall room will result in student conduct hearings for all involved.
- Arrest for underage possession and consumption of alcohol may result in the issuance of a summons and complaint followed by immediate release from police custody. The police also may choose to refer the student to Housing/University discipline rather than take formal police action.
- Residence hall students are expected to abide by federal, state, and city laws and ordinances with respect to the use of dangerous drugs and narcotics.
- Students who break these laws will receive no immunity from arrest or prosecution because they live in the residence halls.

# Legal Sanctions for Substance Abuse

Offense	Type of Offense	Jail Term/Penalties	Fine	Driver's License
<b>ALCOHOL</b>				
Alcohol consumption/ possession: illegal under 21	Class II Petty Offense	None Up to 24 hrs. community service Alcohol evaluation	\$50 to \$250	3-month suspension
Juvenile DUI: Under 21 Blood alcohol level (BAC) between .02 and .05 Zero Tolerance Law	Class A Traffic Infraction 2nd Offense = Class 2 Traffic Misdemeanor	None 10-90 days 24 hrs. community service	\$15 to \$100 \$10 to \$300	suspension, alcohol assessment, and surcharges
Driving While Impaired (DWAI) (BAC .05-.08)	Traffic Misdemeanor	2-180 days 24-48 hrs. community service	\$100 to \$500	required alcohol education, surcharges
Driving under the influence of ethyl alcohol (BAC above .08)	Traffic Misdemeanor	5-365 days 48-96 hrs. community service	\$300 to \$1,000	license suspension
Open Alcohol Container	Class A Traffic Infraction	None	\$50	None
Possession of Drug Paraphernalia	Class II Petty Offense	None 16 hr. community service, drug evaluation	\$100	suspension
<b>CONTROLLED SUBSTANCES</b>				
<b>Possession or Sale:</b>				
Schedule I and II, such as: Cocaine, Opium, Heroin, Morphine, Methadone, LSD, Mescaline, Psilocybin, GHB	1st offense: Class 3 Felony 2nd offense: C-2 Felony	1st offense: 4-12 years 2nd offense: 8-24 years 48 hrs. community service	1st offense: \$3,000 to \$750,000 2nd offense: \$5,000 to \$1,000,000	suspension, drug evaluation
Schedule III, such as: PCP, Codeine, Diltiazid	1st offense: Class 4 Felony Repeat offender: C-3 Felony	2-6 years 4-12 years 48 hrs. community service	\$2,000 to \$500,000 \$3,000 to \$750,000	suspension, drug evaluation

<b>CONTROLLED SUBSTANCES, cont.</b>					
Schedule IV, such as: Chloral Hydrate, Tranquilizers, some barbiturates and stimulants	1st offense: Class 5 Felony Repeat offender: C-4 Felony	1st offense: 1-3 years Repeat Offender: 2-6 years Repeat Offender: \$2,000 to \$500,000	1st offense: \$1,000 to \$100,000 \$2,000 to \$500,000	suspension, drug evaluation 48 hrs. service	
Schedule V, such as Codeine and other narcotics	1st offense: Class 1 Misdemeanor Repeat Offender: Class 5 Felony 24 hrs. community service	1st offense: 6-18 months Repeat Offender: 1-3 years	1st offense: up to \$5000 Repeat Offender: \$1,000 to \$100,000	suspension, drug evaluation	
<b>Use:</b>					
Schedule I, II	Class 6 Felony 48 hrs. community service	1 year - 18 months	\$1,000 to \$100,000	suspension of minor driver's license, drug evaluation required	
Schedule III, IV, V	Class 1 Misdemeanor 24 hrs. community service	6 - 18 months	\$500 to \$5,000	suspension of minor driver's license, drug evaluation required	
<b>MARIJUANA</b>					
Less than 1 oz. Possession, Public Use	Class II Petty Offense	0-15 days 16 hrs. community service	\$100	suspension	
Possession more than 1 oz. but less than 8 oz.	Class 1 Misdemeanor Repeat offender: C-5 Felony	1st offense: 6-18 months Repeat Offender: 1-4 years 24 hrs. community service	1st offense: up to \$5,000 Repeat Offender: \$1,000 to \$100,000	suspension	
Possession over 8 oz. or Marijuana Concentrate	Class 5 Felony Repeat Offender: C-4 Felony 48 hrs. community service	1-3 years 2 to 6 years	\$1,000 to \$100,000 \$2,000 to \$500,000	suspension	
Growing/Producing Possess with Intent to Dispense	Class 4 Felony Repeat Offender: C-3 Felony 48 hrs. community service	2-6 years 4-12 years	\$2,000 to \$500,000 \$3,000 to \$750,000	suspension	
Distribution of Marijuana	Class 4 Felony Repeat Offender: C-3 Felony 48 hrs. community service	2-6 years 4-12 years	\$2,000 to \$500,000 \$3,000 to \$750,000	suspension	

Note: All controlled substance charges also include a drug offender surcharge in addition to the fines listed.

# Drugs and Their Effects

Drug Type	Name	Immediate effects
Stimulants (Uppers) Amphetamines*	Benzedrine, Dexedrine, Methedrine, diet pills	Euphoria, increased alertness, excitation, decreased appetite, insomnia, restlessness
Cocaine*	Cocaine powder, crack, freebased coke	Brief euphoria, increased energy, intense exhilaration
Nicotine	Cigarettes, cigars, pipes, snuff, chewing tobacco	Relaxation, increased confidence, increased metabolism
Depressants (Downers) Alcohol*	Beer, wine, liquor, some medications	Muscle relaxation, intoxication, depression, impaired motor control, impaired memory and judgment
Tranquilizers*	Valium, Librium, Equanil, Miltown, Thorazine	Relief of tension and anxiety, drowsiness
Narcotics*	Heroine, morphine, opium, codeine, methadone, Demerol	Euphoria, drowsiness, painkiller
Inhalants*	Amyl nitrate, butyl nitrate, nitrous oxide, glue, and paint	Lowered blood pressure, relaxation of sphincter muscles, feeling of heightened sexual arousal
Psychedelics (Hallucinogens) Cannabis*	Marijuana, hashish, TCH	Relaxation, altered sense of hearing, time, vision; euphoria, increased heart rate and appetite; dilated pupils, memory impairment
Sedatives	GHB, Rohypnol	Relaxation, mild euphoria, headache, nausea, loss of consciousness, coma
Entactogens	LSD, psilocybin, MDA, peyote, DMT, STP, ketamine  MDMA (Ecstasy), MDA	Hallucinations; altered sense of time, space, and visual perception; nausea, disorientation  Empathy, jitteriness, teeth clenching, increases level of serotonin, nausea, muscle cramping

\*Impairs driving ability



Most common complications/long-term effects	Risk of dependence
Nervousness, paranoia, hallucinations, dizziness, tremors, decreased mental ability, sexual impotence, insomnia, skin disorders, malnutrition, delusions, psychosis, seizures, death	psychological – high physical – high
Tremors, nasal bleeding and inflammation, toxic psychosis, seizures, damage to nasal septum and blood vessels, death from overdose (heart or respiratory failure)	psychological – high physical (esp. crack) – way high
High blood pressure, emphysema, bronchitis, heart and lung disease, cancer, death	psychological – high physical – high
Dehydration, hangover, overdose or mixing with other depressants can cause respiratory failure, obesity, impotence, psychosis, ulcers, malnutrition, liver and brain damage, delirium tremens, death	psychological – high physical – moderate
Hangover, menstrual irregularities, increases or decreases effect of other drugs, especially dangerous with alcohol, destroys blood cells, jaundice, coma, death	psychological – moderate physical – moderate
Respiratory and circulatory depression, dizziness, vomiting, sweating, dry mouth, lowered libido, lethargy, constipation, weight loss, temporary sterility and impotence, withdrawal sickness, stupor, death	psychological – high physical – high
Nitrates, headaches, dizziness, accelerated heart rate, nausea, nasal irritation, cough, lost erection, hallucination; liver, kidney, bone-marrow, and brain damage; death	psychological – high
Impaired driving ability, possible lung damage, reduced sperm count and sperm motility; damage from impure dose	psychological – moderate physical – unknown as yet
Can be extremely dangerous when used in high doses, residual anxiety, may cause brain damage in some people. May be more susceptible to depression and anxiety disorders or memory problems.	moderate
Depression, paranoia, physical exhaustion after use, psychosis (“freaking out”)	psychological – low
Anxiety, depression, may cause brain damage in some people, memory problems, risk of dependence	moderate

Psychoactive drugs are most frequently used for social or recreational purposes. Many psychoactive drugs produce tolerance and dependence (psychological, physical, or both). The more frequently a person uses a drug and/or the larger the dose, the greater his or her *tolerance* to the drug.

A person who is *physically dependent* on a drug needs it to function “normally.” Discontinued use of the drug results in withdrawal symptoms that can be painful and even life-threatening. Taking the drug again temporarily relieves these symptoms.

A *psychologically dependent* person feels he or she cannot function “normally” without the drug. There can be severe mental and emotional distress that prompts the person to continue using the drug.

## Stop Alcohol Poisoning

### Symptoms of alcohol poisoning

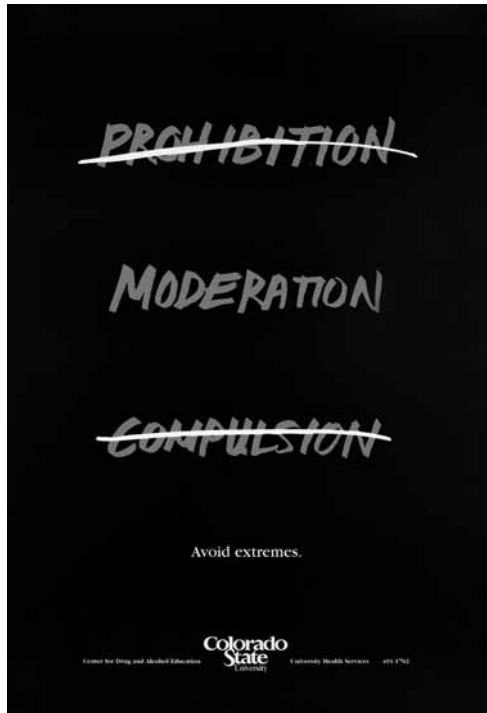
1. Person is unconscious or semi-conscious and cannot be awakened.
2. Cold, clammy, pale, or bluish skin.
3. Check to see if breathing is slow, less than eight times per minute, or irregular, with ten seconds or more between breaths.
4. Vomiting while “sleeping” or passed out, and not waking up after vomiting.

If a person has any of these symptoms, he or she is suffering from acute alcohol intoxication.

1. Get help. Call 911, a staff member, or an ambulance.
2. Do not leave the person alone. Turn the victim on his/her side to prevent choking in case of vomiting.
3. Always be “better safe than sorry” if you are not sure what to do. How can your friend be angry about you caring for him or her?

### A Matter of Friendship

“When everything is said and done, it all comes down to friendship. You have a friend who is in a state where he or she cannot take care of or make decisions for himself or herself. So, who is going to do it for them? You may not want to act because you are afraid that when your friend wakes up he or she will be mad at you. But you know what? Your friend will wake



up. And how mad can someone be because you did something out of caring and friendship? The next day you can ask if your friend is OK. The next day, you can express your concern with your friend's drinking. The next day you can even be angry with your friend for putting you in this scary situation. But for now, act! Get help! Call someone! And make sure you and your friend have another day together. It might be the greatest thing you could ever do in the name of friendship."

– Taken from *Bacchus and Gamma Peer Education Network*, Training Manual on Alcohol Poisoning, 1995.

**Remember ... in emergencies  
dial 911.**



[police.colostate.edu](http://police.colostate.edu)

## Club Drugs

Club drugs continue to grow in popularity with teens and college-aged students nationwide. While many users may experience sensational highs accompanied by numbness and other body stimulating effects, they fail to recognize these substances as real drugs; however, these drugs are very real and so are the dangers. According to research from the National Institute on Drug Abuse, club drugs “can have long-lasting negative effects on the brain that can alter memory function and motor skills.”

**Ecstasy (MDMA):** Ecstasy is an entactogen that is also called X, E, Clarity, and XTC. Ecstasy may result in decreased appetite, hallucinations, increased heart rate and blood pressure, muscle seizures, anxiety, and sweating. It also causes the body to overheat. This in turn leads to dehydration and hyperthermia, forcing users to take frequent breaks and drink water. MDMA can have serious long-term effects, causing damage to parts of the brain that are critical to thought and memory, as well as clinical depression.

**Ketamine:** Ketamine is a dissociative anesthetic, sold legally to veterinarians for anesthesia. Ketamine is commonly referred to as K, Special K, or Vitamin K. It is usually ingested in liquid or powder form. Ketamine is an extremely unpredictable, volatile drug that stimulates

**Nobody wants their  
dreams shattered.**

GHB is commonly used for drug-facilitated sexual assault. It can be colorless, tasteless, clear and easily slipped into your drink. GHB has been known to cause coma or even death in those that use it.

If you feel you have been a victim of a drug-facilitated crime or sexual assault, go to an emergency room or contact your local police.

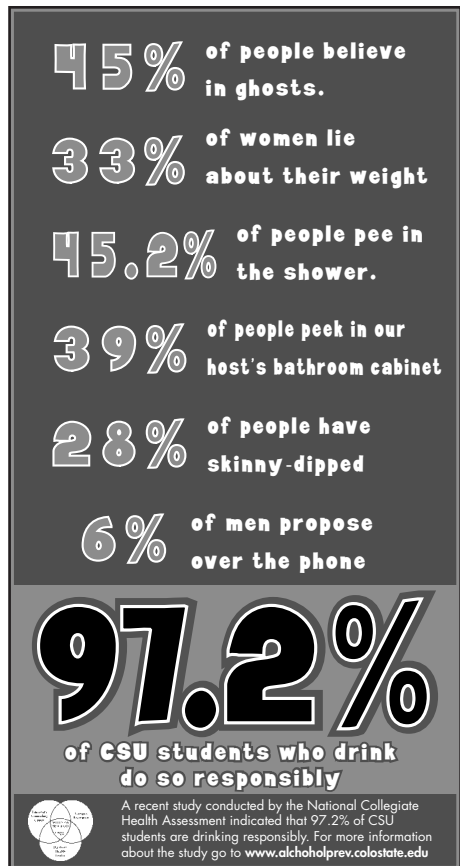
**Protect your drink.  
Protect yourself.  
Protect your friends.**

Northham Health Services  
Center for Drug and Alcohol Education  
(978) 491-1762  
Poster Design by Robert Black

heart rate, blood pressure, and breathing to dangerously high levels. Panic, rage, paranoia, numbness, loss of coordination, and difficult breathing are all additional symptoms of Ketamine.

**GHB:** GHB is a euphoriant depressant also known as Liquid G, Liquid X, and GHB. It is a very powerful, fast-acting central nervous system drug. Symptoms include dizziness, nausea, slowed heart rate and breathing, and deep sleep. These symptoms become extremely dangerous when GHB and alcohol are combined. GHB is frequently used and implicated in date rape cases. See page 36 for sexual assault information.

**Rohypnol:** Rohypnol is a tranquilizer and sedative drug. It is a colorless, odorless, and tasteless drug that has been associated with date rape and sexual assault incidents nationwide. Its almost undetectable properties make it easy to slip into the beverage of an unsuspecting victim. Rohypnol affects the brain's memory processing and causes "retrograde amnesia," which is similar to a blackout. Users will be unable to remember events that occurred while under the drug's influence. *See the section on sexual assault (beginning on page 36) in order to protect yourself from Rohypnol and GHB drink spiking.*



## Marijuana

A person should consider the four Ms before deciding to use marijuana.

**M1 – Memory:** Studies show that marijuana disrupts short-term memory or the process in which recent events and information are encoded in memory.

**M2 – Motivation:** Observational studies directly link marijuana use to lapses in motivation. As a result, marijuana is referred to as a “spectator drug,” turning a person into a passive spectator in his/her own life.

**M3 – Money:** The cost of maintaining any dependency affects not only personality, goals, and health, but finances as well. When making budget priorities, consider the real cost of marijuana use and where the money could be better spent.

**M4 – Mental:** Many people are aware that marijuana is psychologically (or mentally) addictive and not necessarily physically addictive. So, they think physical addiction is not something to worry about. The psychological aspects of marijuana addiction can take years to overcome, whereas the physical aspects take merely a few days, or maybe weeks. The THC content of most marijuana in the United States ranges from 5 to 12 percent. Hashish is around 25 percent.

Violations and/or convictions of the above policies and the laws listed on pages 4-5 will result in University discipline. The University must take such action within 30 days after receipt of any notice with regard to an employee who has been convicted of a listed offense. Sanctions for employees may include mandatory participation in a drug abuse assistance or rehabilitation program or disciplinary action such as a reprimand, suspension, salary reduction, demotion, or termination of employment. Sanctions for students may include a warning, probation, suspension, ineligibility for financial assistance, athletic ineligibility, expulsion from University housing, or dismissal or expulsion from the University itself.

On University premises or at any University-sponsored activities, the following acts are prohibited:

1. Manufacture, sale, distribution, dispensation, possession, or use of any illegal drug or controlled substance without legal authorization such as a prescription.
2. Providing alcoholic beverages to individuals under 21 years of age or possession of alcoholic beverages by individuals under 21 years of age.
3. Illegal possession of an open container of an alcoholic beverage, public intoxication, driving while intoxicated, or drinking alcoholic beverages in an unlicensed public place.
4. No alcohol is allowed in residence halls.

Employee compliance with the above policy is required as a condition of employment. Any employee convicted of violating a criminal drug statute must so notify their employer within five (5) days of the conviction. The University, in turn, is obliged by law to report certain convictions to the federal government.

For further information about alcohol and drugs, educational programs, and for individual assistance, call the University's Outreach and Prevention Services through the Counseling Center at **491-0262 or 491-6053**. Please check out [www.counseling.colostate.edu](http://www.counseling.colostate.edu).

Try these useful Web sites for additional information about drugs and alcohol:

<http://www.collegedrinkingprevention.gov>

<http://www.counseling.colostate.edu>

<http://www.drugabuse.gov>

<http://www.erowid.com>

<http://www.nida.nih.gov>

# Student Rights and Responsibilities

Division of Student Affairs <http://www.studentaffairs.colostate.edu/>

Conflict Resolution and Student Conduct Services (970) 491-7165

Colorado State University expects students to maintain standards of personal integrity that are in harmony with the educational goals of the institution; to observe national, state, and local laws and University regulations; and to respect the rights, privileges, and property of other people. In order to protect the academic community and learning environment, all members of the campus community are expected to abide by the standards of academic honesty, personal integrity, respect for diversity, and pursuit of lifestyles free of alcohol and drug abuse. Students are not only members of the academic community; they are, additionally, members of the larger society and thus retain the rights, protection, guarantees, and responsibilities that are held by all citizens. A student is not immune from prosecution by local, state, or federal law enforcement agencies whether or not the University initiates disciplinary proceedings in a given situation.

The Colorado State University Student Conduct Code shall apply to conduct that occurs on University premises, University-sponsored programs or activities, and to off-campus conduct that adversely affects the University community, poses a threat to safety of person or property, or damages the institution's reputation or relationship with the greater community. In addition, Colorado State University, in collaboration with the Fort Collins community, may respond to student violations of community-based laws and ordinances designed to protect civility and quality of life.

The Office of Conflict Resolution and Student Conduct Services reflects the vision of providing a comprehensive array of approaches to act on the institutional values of interpersonal civility and honoring of community standards. Service options include:

- Conflict resolution services, including consultation, coaching, and mediation
- Training/outreach related to conflict management, academic integrity, civility



- Emergency consultation team
- Healing Action Response Team (HART) for bias incidents
- Advising of student peer conduct boards
- Criminal pre-admission hearings
- Student conduct hearings
- Restorative Justice Program for repairing harm and restoring relationships
- Outcomes/education, including the Drugs, Alcohol, and You (DAY) programs, Party Partners, and skill-building workshops
- Appeals process

### **Residential Contracts**

Students residing in University residence halls or apartments contractually agree to maintain behavior in keeping with federal, state, and local laws; University standards of conduct; and community expectations as outlined in the residential contract and handbook.

Residential staff or student judicial boards will hear cases involving violations of the contract. Specific sanctions or restrictions may be imposed as a part of residential disciplinary action including drug and alcohol education; educational programs or activities; monetary restitution; reassignment to another residence hall room or building; and termination of the residential contract or lease. Significant incidents or a pattern of problems will result in referral to University Discipline.

### **Disciplinary Records**

Student disciplinary records are maintained by the Conflict Resolution and Student Conduct Services Office in keeping with the Family Educational Rights and Privacy Act (1973), the Higher Education Amendments (1998), and the Student Conduct Code.

### **Disciplinary Statistics**

Please see page 46 for recent statistics related to University Disciplinary Actions.

The complete text of the Student Conduct Code is available in the Conflict Resolution and Student Conduct Services Office, Vice President for Student Affairs Office, the Housing Office, the information desk at the

Lory Student Center, or on the Colorado State University Web site (<http://www.studentaffairs.colostate.edu/resources/students/policies.asp>).

## Colorado State University and the Fort Collins Community

*“I had a party yesterday. Today I have a summons for court???”*

In 2002, the state of Colorado passed a law related to riots and being present where any riot was occurring. This law, along with local ordinances, relates to nuisance social gatherings. Violating this law can have a significant impact on students who are involved in such events and get arrested. Any student who is convicted of engaging in or inciting a riot is prohibited from attending any state-supported college for a period of one year. Further, it is a misdemeanor for any person to fail to obey orders of police officers to disperse or move-along under riot conditions, even if they are only in the area watching. The main points of the new law are included in ‘bullets’ below. The message: “DON’T MAKE YOURSELF A TARGET – OBEY THE LAW!”

### Noise Limits

- Noise that can be heard beyond property lines may be considered too loud.
- Police have the discretion to determine whether or not noise from a property is unreasonable.
- Police discretion is based upon and not limited to:
  - noise level while observing the situation
  - time of day or night
- If the noise is determined unreasonable, a ticket may be issued.
- Noise violators can be subject to fines of up to \$1,000 per person for the first offense.

### Nuisance Gathering Ordinance

- The Ordinance addresses social gathering impacts on neighboring private or public properties.
- A social gathering is considered 5 or more people.
- Impacts may include and not limited to: trash and litter, public urination, and vandalism.
- It is a misdemeanor criminal offense to the gathering host(s), as the responsible party.
- The people actually littering or vandalizing may not be held responsible.

- The abatement cost may be charged to the gathering host(s), as the responsible party.

### **Public Nuisance Ordinance**

- The Public Nuisance Ordinance remedies chronic problem properties.
- The Public Nuisance Ordinance takes affect on a property when the following occurs:
  - 2 tickets are issued for the same code violation within 6 months or
  - 3 or more separate code violation tickets are issued within 12 months or
  - 5 or more separate code violation tickets are issued within 24 months.

### **Riot Law – A Colorado State Law**

- A public disturbance involving 3 or more people whose conduct:
  - Creates a danger of damage or injury to people or property
  - Substantially obstructs performance of any government function
- Anyone convicted of engaging in a riot cannot attend a public Colorado higher education institution for at least one year.
- Specific possible riot conviction definitions and fines include:
  - Inciting a riot – urging 5 or more people to engage in a riot.
  - Fines begin at \$5,000 or 18 months jail up to 3 years or \$100,000 for injury or damage.
  - Engaging in a riot – no person shall engage in a riot.
  - Fines begin at \$1,000 or 12 months jail up to 6 years or \$500,000 for injury or damage.
  - Arming Rioter – no person shall supply a deadly weapon or destructive device for use in a riot.
  - No person shall teach another to prepare or use a deadly weapon or destructive device in a riot.
  - Fine is \$500,000 or 6 years in jail.

Please call the Fort Collins Police (221-6540) or Colorado State University Police Department (491-6425) if you have questions about the responsibilities of planning a party. Better yet, go to the Fort Collins Neighborhood Resources Web site and look up “Party Paks” and common violations on the right side of the page.

You can also access these resources from the CSU Police Department Web page: <http://publicsafety.colostate.edu/>

*“It’s a matter of identity.”*

Often, young people are tempted to “borrow” an ID card or make/obtain one of their own to show underage persons to be of legal drinking age. The result can be arrest warrants issued in the name of the wrong person for a violation they didn’t commit or even know about, misdemeanor or even felony charges against a person using an identity that isn’t theirs, and sanctions through the University.

It is NEVER worth the risk to have or use a fake ID. It’s a matter of identity – YOUR IDENTITY. Colorado is considering legislation that will also require suspension of your driver’s license if you buy for minors or loan your ID to a minor.

## Drug and Alcohol Counseling

Drug & Alcohol Education  
(970) 491-0262 <http://www.colostate.edu/Depts/CFDAE/>  
University Counseling Center  
(970) 491-6053 <http://www.counseling.colostate.edu/>

It is the policy of the state of Colorado that treatment may be more appropriate for alcoholics and intoxicated individuals than criminal prosecution. It is felt that they should be afforded a continuum of treatment in order that they may lead normal lives as productive members of society [C.R.S. § 25-1-301(1)].

The Colorado general assembly has appropriated moneys for alcoholic receiving and screening

NOW PLAYING



# fakes don't fly!\*

\*new scanner technology in use.

★★★★

"IT'LL CATCH YOU BY SURPRISE"  
- FORT COLLINS POLICE DEPARTMENT

"THE MONEY AND TIME INVESTED  
IS NOT WORTH IT"  
- GOOD SAMARITAN

"THIS SUCKS!"  
- STUDENT CAUGHT AND FINED FOR CARRYING A FAKE

FAKE I.D.s DON'T FLY IN FORT COLLINS.  
SAVE YOUR YOURSELF THE MONEY, HASSLE AND THE HUMILIATION.

AT EXCLUSIVE LOCATIONS  
ALL OVER TOWN!

centers, medical detoxification, intensive treatment, halfway house care, outpatient rehabilitative therapy, orientation, education, and in-service training [C.R.S. § 25-1-301(2)]. The Colorado Department of Health's Division of Alcohol and Drug Abuse has established a comprehensive and coordinated program for the treatment of alcoholics and intoxicated persons [C.R.S. § 25-1-305(1)]. Insofar as funds are available to the Division, the program of the Alcohol and Drug Abuse Division includes: emergency treatment; inpatient treatment; intermediate treatment; outpatient and follow-up treatment; and adequate and appropriate treatment for alcoholics and intoxicated persons who voluntarily apply for treatment and those who are involuntarily committed by the court [C.R.S. § 25-1-305(2-3)].

*Voluntary treatment of alcoholics* [C.R.S. § 25-1-308]. An alcoholic, including a minor, may apply for voluntary treatment directly to an approved treatment facility.

*Voluntary treatment for intoxicated persons and persons incapacitated by alcohol* [C.R.S. § 25-1-309]. An intoxicated person or person intoxicated or incapacitated by alcohol, including a minor, may voluntarily admit himself/herself to an approved treatment facility for emergency treatment.

*Emergency commitment* [C.R.S. § 25-1-310]. When any person is intoxicated or incapacitated by alcohol and clearly presents danger to the health and safety of himself/herself or others, he or she will be taken into protective custody by law-enforcement authorities or an emergency service patrol, acting with probable cause, and will be placed in an approved treatment facility.

*Involuntary commitment of alcoholics* [C.R.S. § 25-1-311]. A person may be committed to the custody of the Division of Alcohol and Drug Abuse by the court upon the petition of his or her spouse or guardian, a

*The University Counseling Center's Alcohol and Drug Prevention and Education Services supports the personal and academic success of Colorado State students and helps to create a healthy environment necessary for learning. Programs of counseling, treatment, outreach, prevention, assessment, and referral are offered throughout the year. Please call 491-6053 for more information. [www.counseling.colostate.edu](http://www.counseling.colostate.edu)*

relative, a physician, the administrator in charge of any approved treatment facility, or any other responsible person.

*Driving under the influence. Driving while impaired. Driving with excessive alcoholic content* [C.R.S. § 42-4-1301]. The Colorado Division of Alcohol and Drug Abuse has established an alcohol- and drug-related driving safety fund [C.R.S. § 42-4-1301.3]. All persons convicted of a driving offense involving alcohol or drugs will result in license revocation for one year, orders by the court to complete an “alcohol- and drug-related driving safety education or treatment” program, and require community service as part of any conviction. A mandatory alcohol and drug evaluation will also take place upon conviction.

Level I programs are short-term, didactic education programs. Level II programs are therapeutically oriented education, long-term outpatient, and comprehensive inpatient programs. Any defendant sentenced to level I or level II programs must meet all financial obligations of such programs [C.R.S. § 42-4-1301.3(2)(c)(iv)]. A “zero tolerance” law – which states that anyone under 21 years of age who is caught driving with a blood alcohol (or breath alcohol) content of .02 or higher is to be charged with driving under the influence – has been in effect for several years [C.R.S. § 42-4-1301(2)(a.5)].

Occasionally, transports result in the need for sanitary cleanup of bodily fluids from police vehicles. These charges are passed on to the person who was transported. The costs range from \$50-\$200 depending on provider’s “time of day” criteria and the extent of cleanup required.

New enforcement protocols related to pre-game tailgating at Hughes Stadium were implemented for the 2005 football season. As a result of two tragic deaths at Colorado State University in 2004, the Alcohol Task Force has made several recommendations to enhance enforcement of binge drinking and alcohol abuse at football games. The CSU Police Department will do everything possible to enhance enforcement and safety for students and fans at games.

Under Colorado Law, a person determined by the court to need treatment or to be dependent on a controlled substance may be ordered to undergo treatment for up to four years and may suspend sentencing or further court procedures until such treatment is completed. Failure to comply with, or complete, such treatment may result in sentencing or further court procedures as provided by law.

# Security Policies and Programs

CSU Department of Public Safety <http://publicsafety.colostate.edu/>

CSU Police Department (970) 491-6425 <http://police.colostate.edu/>

CSU Police officers work closely with the various student advocacy and department offices on campus to maintain a “sense of community.” They work hard to identify safety and security needs and concerns of all our students and staff. This section of the handbook describes the CSU Police and programs related to security issues. You will find the answers to such questions as: How do you report an emergency? What should I do to keep my residence hall safe? How do I practice bicycle safety? What should I do if I’ve been sexually assaulted?

## CSU Police Qualifications and Authority

CSU Police officers are armed and have full law enforcement authority on all property owned or controlled by Colorado State. Officers possess peace-officer commissions from the State of Colorado, Larimer County, and the City of Fort Collins. Colorado State University Police Department operates 24 hours a day, 7 days a week.

Colorado State police officers complete at least 860 hours of training in a state-certified police academy and field-training program in preparation for their jobs.

Colorado State University Police officers routinely patrol on foot all buildings on campus, and have street officers patrolling campus by bicycle, motorcycle, and other motor vehicles. In addition, the department has an Investigations Division with plain clothes detectives, as well as a K-9 unit. Campus Safety Officers, student employees in “soft uniforms,” round out security and safety services by adding foot patrol and event management capabilities. These employees receive more than 50 hours of training relevant to their duties, with additional training as they take on specialized duties. Campus Safety Officers are trained civilian employees who provide additional presence on campus and provide the “Safe Walk Program.”

The CSU Police maintain a close working relationship with the Fort Collins Police Services, Poudre Fire Authority, the Larimer County Sheriff's Department, the Office of the District Attorney, and other state and federal law-enforcement agencies and investigation bureaus. CSU Police hold mutual aid agreements with the county and city to deal with contingencies such as natural disasters, civil disturbances, major crimes, and pursuits of serious offenders who travel across jurisdictional lines.



In 1999, the CSU Police were recognized for their high professional standards of conduct and service when they received the “Professional Standards Compliance Award” from the Colorado Association of Chiefs of Police.

## How to Report an Emergency or Crime

The CSU Police Department (CSUPD) is located in Green Hall. CSUPD operates 24 hours a day. **Call 911 for emergencies and 491-6425 for non-emergencies.**

CSU Police serves as a PSAP (Public Safety Answering Point) handling emergency and non-emergency calls, monitoring the campus-wide alarm systems, and tracking all police incidents on a Computer Aided Dispatch (CAD) system.

Each dispatcher completes a 400-hour, in-house training program and has special training in Emergency Medical Dispatching. This includes ongoing evaluation of medical emergency calls handled by dispatchers under the supervision of a medical doctor.



**Promptly call 911** from any phone, and our enhanced ANI/ALI system will allow our dispatcher to see where you are calling from. Keep in mind, though, that the dispatcher will need to know the address of the **emergency**, not necessarily where the call is coming from. 911 calls made from wireless phones will be routed to Fort Collins Police Services. 911 calls are “enhanced,” meaning that the location and phone number from which the call comes to our Communications Center are displayed as the dispatcher answers the call.

Emergency phones on campus ring directly into the police dispatch center when the handset is lifted or simply by pushing a button. These phones may be used for emergencies AND may be used to request police services such as the Safe Walk service. The emergency phones are located in a number of convenient areas across campus in parking lots and near major building complexes. Please refer to the map on pages 26-27 for exact locations.

CSU Police give priority to reports of incidents that threaten the life or safety of people, the security of property, or the peace of the community. They handle all reports of crimes and emergencies. Prompt reporting greatly improves campus security and safety.

## In the First Two Minutes ...

A study of police response times and crime clearance rates showed that if police are able to arrive on the scene of a crime-in-progress within two minutes of a citizen report, there is a good chance a perpetrator can be apprehended. The odds quickly decrease as each minute passes.

To report an emergency or a crime in-progress dial 9-1-1. If you are the victim of a crime that occurred on campus you can call and file a report with an officer at 491-6425, or you can file a crime



report online at: <http://police.colostate.edu/> under “Police Resources”. See back cover of this booklet for additional resources.

Your police department needs you to report crimes and suspect activity. Don't let reporting a crime you've witnessed be an after-thought! Immediately go to a safe location and phone. Stay on the line and, as accurately as possible, tell the dispatcher everything you can remember about the suspect, the suspect's clothing, vehicle, and direction of travel.

## What Happens When ...

### You report a medical emergency?

CSU Police dispatchers are trained in emergency medical dispatching. If you are in a position to give first aid to someone or to relay information to another rescuer, the dispatcher is prepared to tell you what to do. Emergency medical personnel and police officers are dispatched to evaluate the patient's status.

### You report a fire?

CSU Police immediately notify fire and/or emergency medical personnel, then help with evacuation and manage traffic so that fire trucks and ambulances can access the scene.

## Building Security

At Colorado State, you can feel safe and comfortable in your surroundings, knowing that certain security procedures are in place that are sound and are constantly re-evaluated for their effectiveness.

Most campus buildings and facilities are accessible to members of the campus community, guests, and visitors during normal business hours Monday through Friday, excluding holidays. Certain facilities also may be open for designated hours on Saturdays.

Exterior doors on campus buildings are locked and secured each evening by personnel from Facilities Services. Buildings may be secured at different times based on factors such as night classes, special events, or computer lab times.

We ask that you take the step of staying aware and avoid circumventing policies or rules that are meant to preserve your own safety and that of others.

- **Do not prop doors open or allow strangers into campus buildings that have been secured. “Tailgating” is prohibited!**
- **Do not lend keys or leave them unattended in your work or living space.**
- **Do not give codes to anyone you don’t know.**

## **Fire Safety and Poudre Fire Authority**

Housing and Food Services works very closely with Poudre Fire Authority as well as CSU Police and our Environmental Health Services (EHS) to ensure a safe environment for residence hall and apartment life students and their families.

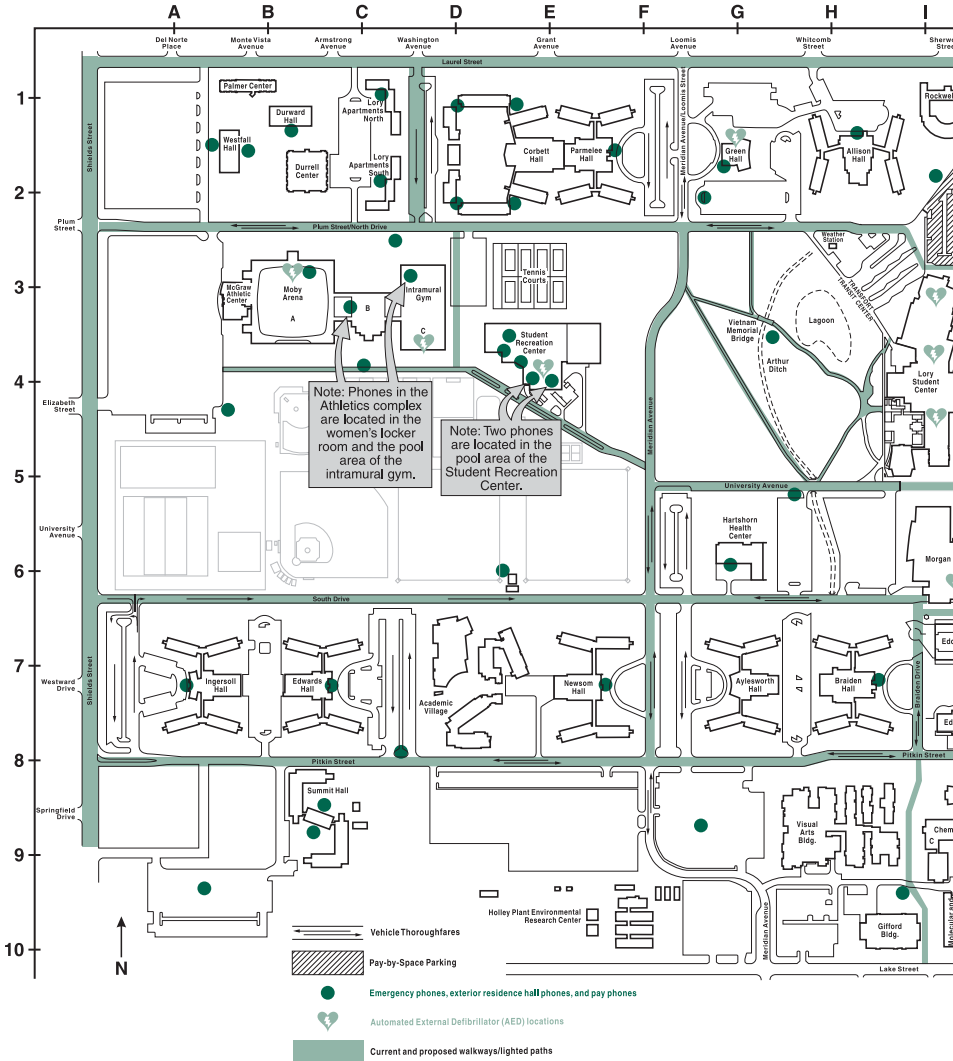
In addition, PFA works with CSU in the areas of: public education to students and families living in CSU housing; assistance with scheduled fire drills at all residence halls each semester; cooperative participation between CSU Police and PFA arson investigators in fire situations; and fire code consultation (for building remodels and new construction) through EHS and Facilities Planning. The PFA Fire Marshal is an active member to the Housing and Food Service Fire and Life Safety Core Group and the University Safety Committee.

## **Planning a Safe Environment**

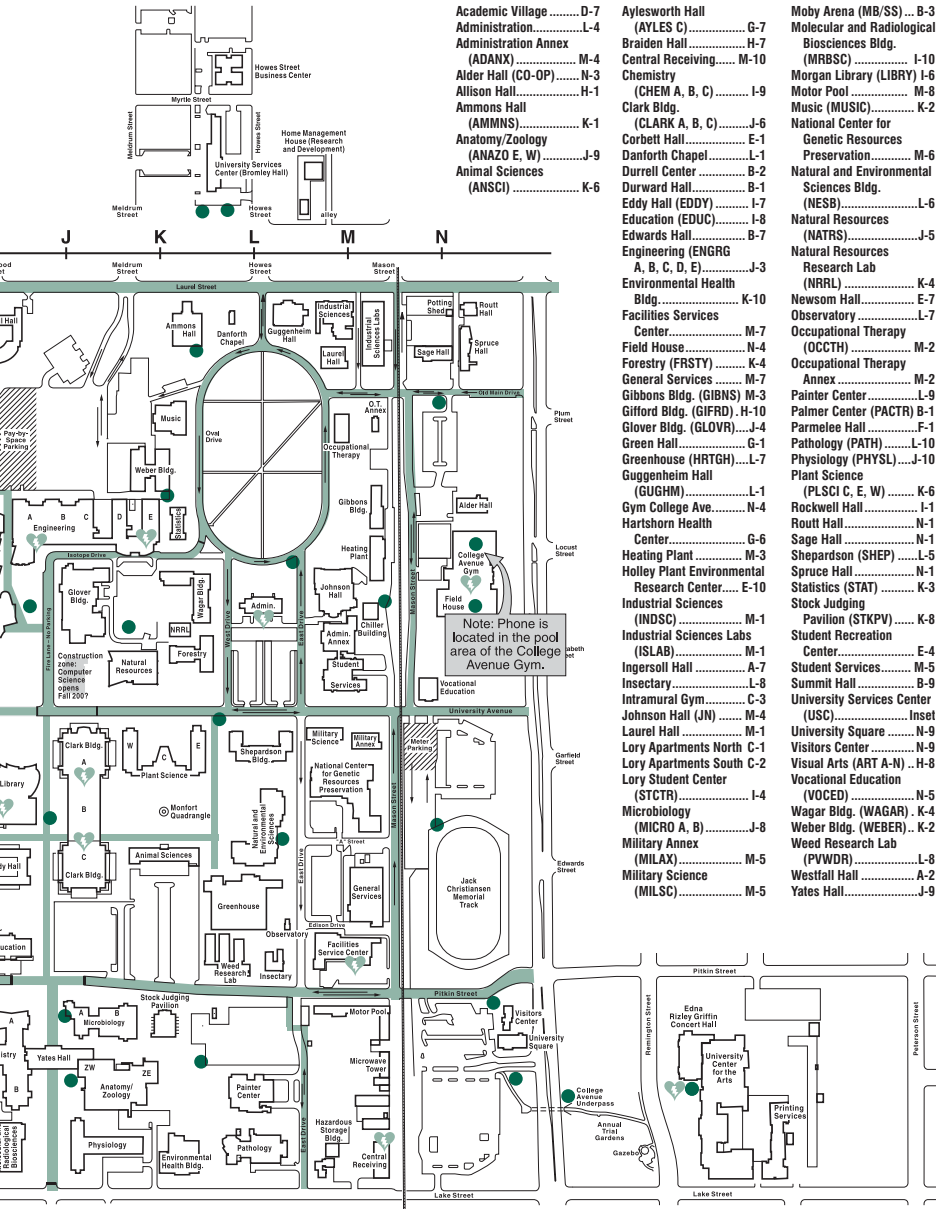
Colorado State considers security an important consideration in planning, maintaining, designing, and remodeling facilities on campus. Exterior lighting is an important part of the University’s commitment to campus safety.

On a regular basis, problems with exterior lighting are reported by the CSU Police to Facilities Services repair crews. Once a year, a comprehensive survey of all exterior lighting, facility safety, and security is conducted by the CSU Police and Facilities Services. People are encouraged to call the CSU Police when they see a light out or any safety or security-related hazard. Light posts have numbers on them that help repair people find them. If possible, provide the number when reporting a light out. If you notice other safety concerns, please report them as well.

# Safe Walk Program 491-1155



# Main Campus Legend



Facilities Services reports problems with door and security hardware daily. CSU Police officers also report defective locking mechanisms to Facilities Services as soon as they are discovered. Shrubbery, trees, and other vegetation on campus are trimmed on a regular basis. Fencing, roadway, and sidewalk repairs are reviewed and completed at least annually.

The CSU Emergency Management Team (EMT) coordinates and facilitates effective campus disaster preparedness, mitigation, response and recovery activities to minimize the impacts of emergencies on the campus community facilities and environment. Written plans are in place and exercises are regularly held to keep our staff and faculty prepared to handle major events. This team, made up of members from several campus departments, also coordinates efforts under Homeland Security for the University.

## Residence Hall Security

Three layers of security exist in the residence halls:

- The lobby area is staffed 24 hours a day.
- Lobbies and common areas are open during dining center hours and then accessible only by residents of the building after hours via keycard access.
- Floors and rooms are only accessible by residents with keycard access. All common bathrooms on the floors are also secured.

Residents are asked not to allow strangers access to the building, either by propping doors, lending keys, or opening doors for anyone waiting outside the building. Visitors and delivery people may use a house phone located outside the main entrance to contact the appropriate host to gain access, once all entries to the building are locked.

All residence hall staff are trained on emergency response and have knowledge of evacuation and safety protocol in the event of an emergency. In the event of an emergency, all lobby doors and common areas can be locked down to permit access to residents of the building only. The option of locking buildings down entirely to prevent any access into the building is also available.



*Motorcycle officer patrols campus*

Housing & Dining Services is part of the Emergency Management Team and takes direction from the Associate Vice President for Public Safety in the event of an emergency.

The CSU Police Department has partnered with Housing and Dining Services to develop a Community-Oriented Policing Program recently. The goal of this program is to place full-time, certified police officers in residence halls regularly to enhance relationships with students and increase security and safety awareness among students and in their places of residence.

## **Sorority/Fraternity Security**

Since Greek houses are located off campus, they are under the jurisdiction of Fort Collins Police Services. However, security in sorority and fraternity houses is managed by a variety of corporations. Students and parents who want the name of the management corporation for a particular house should call the Office of Greek Life at (970) 491-0966.

As a result of an interagency agreement between the Fort Collins Police Services and the CSU Police, CSU Police receive reports of crimes that occur in fraternities and sororities that are recognized as student organizations by Colorado State University. CSU Police share these reports with the Division of Student Affairs and other appropriate offices.

## Warning the Campus Community

The Associate Vice President for Public Safety or Chief of Police and, if necessary, the Office of General Counsel will determine if an ongoing or continuing threat is a serious situation on or off campus. If so, a campus-wide “timely warning” may be issued through the Colorado State University (CSU) email system or other notification methods. The warning may also be posted on the CSU Police Department <http://police.colostate.edu> and CSU Department of Public Safety <http://publicsafety.colostate.edu> websites.

### To find out about crime on campus, review:

- The daily police report on e-mail – call CSU Police at 491-6425 or subscribe online at [police.colostate.edu](http://police.colostate.edu).
- The *Fort Collins Coloradoan*, the community newspaper
- The *Rocky Mountain Collegian*, the student newspaper
- *Comment*, the faculty and staff newspaper
- KCSU and other local radio broadcasts
- Special alerts and activity reports circulated about the University
- Crime bulletins describing specific crimes or perpetrators

### To obtain information about registered sex offenders:

Information about sex offenders currently registered at the University is available from our Records Section during normal business hours. Information about offenders registered at Fort Collins Police Services or the Larimer County Sheriff’s Office are available at those agencies.



Depending on the particular circumstances of the crime, especially in situations that pose an immediate or on-going threat to the community and individuals, a copy of the notice may be posted in each residence hall and other CSU building locations.

Anyone with information warranting a timely warning should report the circumstances to the CSU Police Department by phone at 970-491-6425 or in person at the CSU Police Headquarters in Green Hall.

CSU uses emergency communication systems for emergency notifications including:

- **Rave Alert, text-based messaging system.** Text alerts can be sent to CSU community members notifying them of an emergency, quickly.
- **Reverse 911.** This allows us to call all or specific land-based phones in a targeted area.
- **CSU Emergency Telephone Network.** This allows us to make a conference call to areas on campus to alert people to an emergency.
- **Email.** We can notify thousands of people quickly.
- **Emergency Broadcast System.** We can interrupt cable and broadcast stations with an emergency notification.

## **Visit the CSU Police Department Web site to learn more about:**

- |   |   |
|---|---|
| <ul style="list-style-type: none"> <li>• <b>Campus Safety Information</b></li> <li>• <b>Campus Bicycling Regulations</b></li> <li>• <b>Campus Parking Regulations</b></li> <li>• <b>Subscribe to the Daily Report</b></li> <li>• <b>CSU Acronyms Used</b></li> <li>• <b>Employment Opportunities</b></li> </ul> | <ul style="list-style-type: none"> <li>• <b>Authority/Jurisdiction</b></li> <li>• <b>Department Organization</b></li> <li>• <b>Homeland Security Advisory System</b></li> <li>• <b>Campus SafeWalk Program</b></li> <li>• <b>Report a Crime On-Line</b></li> <li>• <b>CampusWatch Tip Form</b></li> </ul> |
|---|---|

**and more!**

**[police.colostate.edu](http://police.colostate.edu)**

## If You Think Someone Has Stolen Your Identity or Personal Information

- **ACT – Report the identity theft to your local police department.**
  - Many financial institutions will want a copy of the report before they will cooperate with the you.
- **UNLIKE YOUR FINGERPRINTS, which are unique to you and cannot be given to someone else for their use, your personal data can. You should guard your:**
  - Social Security number
  - bank account
  - credit card number
  - telephone calling card number
  - and other valuable identifying data
- **PROTECT YOURSELF**
  - Create a need-to-know approach to your personal information.
    - Banks need to know what?
    - Credit card companies need to know what?
  - Calls from strangers – Ask to have any prizes, credit card offers, etc., sent in writing. Otherwise hang up.
  - Check with the Better Business Bureau at <http://www.bbb.com/>
- **WHAT TO DO**
  1. Call toll-free at **1-877-ID THEFT (877-438-4338)**
  2. By mail to Consumer Response Center, FTC, 600 Pennsylvania Avenue NW, Washington, DC 20580.

# Bicycle and Traffic Safety

Colorado State University bicycle regulations can be found at:

[police.colostate.edu](http://police.colostate.edu); click on the “Campus Bicycle Regulations” link.

Bicyclists are expected to obey traffic laws the same as any other vehicle being driven. Bicycle rules and regulations are established by the City of Fort Collins and the University Bicycle Education and Enforcement Program. Some safety tips for riding your bicycle include:

- ALWAYS wear a helmet.
- Use a light at night.
- Bicyclists must use bicycle paths and lanes where provided.
- NEVER ride through crosswalks; drivers may not see you coming.
- Yield to pedestrians on sidewalks; they have the first “right-of-way.”
- Practice COURTESY while riding and enjoy riding safely.
- Register your bike with the CSU Police Department.

Drivers must obey all Colorado and Fort Collins laws and ordinances and University TEEP (Traffic Education and Enforcement Program) regulations, which are enforced civilly here at CSU. TEEP violations do not effect points on the driver’s license.

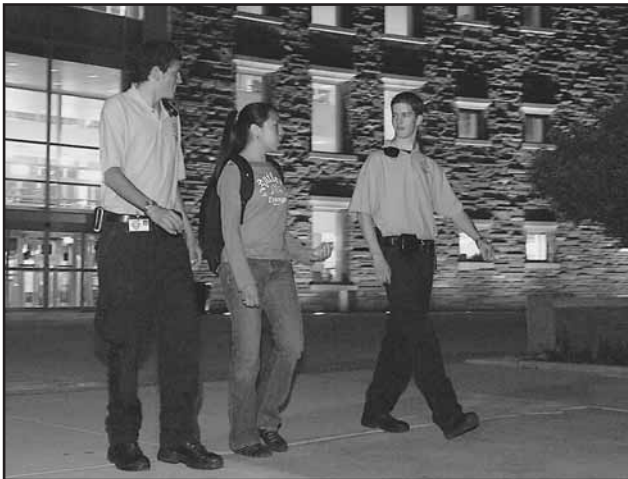
It is NEVER a good idea to use a cell phone while driving, riding a bike, or walking in the traffic pattern or roadway. Dividing your attention could get you hurt, especially if someone else is doing the same and is distracted at the same time!



*Officers handling bicycle violation*

## Crime Prevention Programs

- *Residence hall security* – Every evening during the academic year, CSU Police officers patrol residence halls on foot.
- *Electronic alarm systems* – The CSU Police monitor intrusion, fire, environmental, and general emergency alarms throughout campus.
- *Security surveys* – CSU Police will evaluate on campus buildings and provide detailed suggestions for improving security. Officers also report exterior hazards such as defective locking mechanisms, non-functioning streetlights, overgrown bushes, and street damage to Facilities Services repair crews.
- *Personal Property Inventory* – All students are encouraged to record serial numbers found on electronic equipment and mark other valuables for identification purposes.
- *Bicycle Education and Enforcement Program (BEEP)* – Bicycle registration deters theft and helps in recovery. This program tracks all bicycles registered with the University, maintains signs and bicycle racks, and oversees bicycle safety regulations.
- *Safe Walk Program* – Since the inception of the Community Service Officer Safe Walk Program in January 1993, they’ve provided “walk-alongs” for thousands of students, staff, and faculty.
- *Presentations* – Many of the officers within the CSU Police Department have special areas of expertise and can be scheduled to present to



groups and organizations on campus as staffing allows. Some of the ongoing programs include: Campus Security Procedures and Practices, Personal Safety, Crime Prevention, Sexual Assault Prevention, Alcohol and Drug Abuse, Driving Under the Influence of Alcohol, and Computer Crimes.

- *RAD Courses* – The Rape Aggression Defense System is a program of realistic self-defense tactics and techniques for women. The R.A.D. System is a comprehensive, women-only course that begins with awareness, prevention, risk reduction, and risk avoidance while progressing on to the basics of hands-on defense training.

**Remember ... in emergencies  
dial 911.**



The campus environment continually improves through efforts to limit access to residence halls and academic buildings; through environmental design – better lighting, landscaping, and physical security in our facilities – and through the endeavors of the CSU Police Department, which devotes tremendous effort towards preventing crime.

# Honest Facts About Sexual Assault

Women's Programs (970) 491-6384 <http://www.wps.colostate.edu>

Victim Assistance Team (970) 491-7111

Hartshorn Student Health Center (970) 491-7121 <http://hartshorn.colostate.edu>

The majority of sexual assaults that occur in the campus community are committed by people known by their victims, such as casual acquaintances through academic, living, work, social, or recreational interactions, including dating.

Often, these types of assaults are not reported to the police, because people do not think that, when a friend or acquaintance subjects them to unwanted sexual intercourse or contact, this is sexual assault. They may come away thinking, "That was an awful experience. I felt helpless. I feel so angry about it!" but not think of calling the police or available victim services. Also, some victims deny their own victimization as a means of coping with their pain.

The fact is that these types of sexual assaults are more common than what are known as "stranger rapes." Assailants are able to victimize people by exploiting their trust. They rely on the fact that you trust that you can be alone with them.

It is impossible for anyone to predict that a sexual assault will occur. You can be alert for unhealthy dynamics in relationships. Avoid people who don't allow you to make decisions for yourself – who make you feel you "owe them" something.

Because of the frequency of acquaintance sexual assaults in campus communities, it is best to be very explicit with dates about how intimate you expect the relationship to be. Don't assume that a person knows that you are comfortable with "going so far." Unfortunately, some people

For information on "date rape drugs" like GHB, Rohypnol, or Ketamine, contact 491-1702, Center for Drug and Alcohol Education, or 491-6384, Women's Programs and Studies. Advocates receive special training in the physical, psychological, and legal ramifications of sexual assault. Psychologists and those working under their supervision are bound by state statute to maintain strict confidentiality. Information gained as part of counseling, psychotherapy, or clinical consultation must be treated confidentially and cannot be released without the client's written permission. Although Center staff encourage crime reporting, the final decision is up to the individual client.

believe that consent to any level of intimacy implies consent to sexual intercourse. Often, assailants target victims who have been using drugs or intoxicants because of their increased vulnerability. In Colorado, it is a criminal offense to have sexual contact or intercourse with someone who has been using drugs or other intoxicants to the extent that they are unable to indicate their consent or lack of consent. Assailants are no less guilty because they or a victim has been drinking.

In recent years, there has been an increase in the use of drugs that impair someone's ability to know what is going on and to subsequently make them more vulnerable to sexual assault. Drugs like GHB or Rohypnol ("roofies") can be secretly slipped into a beverage (non-alcoholic and alcoholic drinks alike). The drug has no smell or taste and generally no color. These drugs can be present at bars and clubs, but also at parties and intimate gatherings. The reality is that "date rape drugs" can be slipped into your drink at any social setting. Victims of sexual assault are not at fault for what has been done to them, whether drugs were used or not. The perpetrators of this crime are fully responsible for their illegal behavior. There are some things that can be done, however, to reduce the chance that you will unknowingly consume a substance like GHB, Rohypnol, or Ketamine:

### **How to reduce your risk:**

- Always keep your beverage in sight. Don't leave it while dancing or going elsewhere.
- At a bar or club, accept drinks only from the bartender or server.
- Avoid group drinks, punch bowls, or drinks being passed around.
- Open your own containers.

If you experience the following symptoms, tell someone immediately or go to the hospital (or Hartshorn Health Center if during business hours):

- Dizziness, vomiting, extreme drowsiness, time that can't be accounted for and can't be attributed to anything else, or any other unexplained symptoms.
- Try to retain a sample of the beverage.

## To Report a Sexual Assault

To report a sexual assault, students should go to a safe location and call:

- CSU Police at 911
- Colorado State University Victim Assistance Team (VAT) at Campus Emergency 491-7111
- University Counseling Center at 491-6053
- Women's Clinic at University Health Service at 491-1754

\* *These offices will tell victims they have the option of reporting to the police and that they may choose not to do so. Victims who choose to can turn to campus authorities for help in notifying the police.*

It is important that victims try to preserve evidence that may be necessary to prove criminal sexual assault. If victims confide in a friend about the assault, that friend can help the victim remember these guidelines:

- Do not remove clothing, especially underclothes, worn during or following the assault, as these frequently contain valuable fiber, hair, and fluid evidence.
- Don't bathe, douche, wash hands, clean fingernails, launder sheets, wash car upholstery, or rearrange furnishings or personal effects.

Victims can protect their option of pressing criminal charges at a later date by going to the Women's Clinic at Hartshorn Health Service or, after hours, to the local hospital emergency room. Ask for an exam and for evidence of the sexual assault to be collected and sealed.

For counseling, mental health, or student services, victims may contact:

- Colorado State University VAT, 491-6384
- Victim/Witness Assistance Unit, Larimer County District Attorney's Office, 498-7235
- University Counseling Center, 491-6053

Primarily, **Support and Services for Victims of Sexual Assault** are provided on campus by the **Colorado State University Victim Assistance Team (VAT)**. The Office of Women's Programs and Studies trains and oversees the VAT.



The primary purpose of the VAT is to provide support for members of the campus community who have experienced sexual assault. Advocates receive special training in the physical, psychological, and legal ramifications of sexual assault.

The VAT has team members on call 24 hours a day, every day of the year. An advocate may be requested by calling Campus Emergency, **491-7111**. This contact does **not** oblige the caller to make a police report. The dispatcher will request the caller's name and phone number and have an advocate get in touch with that individual. The CSU Police will honor caller requests for anonymity. General information regarding the VAT can be obtained by calling the Office of Women's Programs and Studies at **491-6384**.

*Psychologists and those working under their supervision are bound by state statute to maintain strict confidentiality. Information gained as part of counseling, psychotherapy, or clinical consultation must be treated confidentially and cannot be released without the client's written permission. Although Center staff encourage crime reporting, the final decision is up to the individual client.*

VAT advocates work closely with victims and campus and community law enforcement agencies. This includes assisting victims of sexual assault in reporting these crimes to the police. In addition, advocates are informed on medical, law enforcement, and legal procedures and can provide other referral sources to help ensure sexual assault victims receive the services they want and/or need, such as counseling.

The possible sanctions for sexual assault, acquaintance sexual assault, or other forcible or non-forcible sex offenses, following an on-campus disciplinary procedure, are detailed in the Colorado State University Student Conduct Code. A copy of this policy is available in the Vice President for Student Affairs office, Conflict Resolution and Student Conduct Services office, the Housing office, the information desk of the Lory Student Center, or on the Web at <http://www.studentaffairs.colostate.edu/resources/students/policies.asp>. Typical sanctions include disciplinary probation, suspension, dismissal, and expulsion.

## **Dater's Bill of Rights**

I have the right to refuse to date without feeling guilty.

I can ask for a date without feeling rejected or inadequate if the answer is no.

I may choose not to act seductively.

If I don't want physical closeness, I have the right to say no.

I have the right to be myself without changing to suit others.

I have the right to change a relationship when my feelings change. I can say, "We used to be close, but I want something else now."

If I am told a relationship is changing, I have the right not to blame or change myself to keep it going.

I have the right to an equal relationship.

I have the right not to dominate or to be dominated.

I have the right to act one way with one person and a different way with someone else.

I have the right to change my goals whenever I want to.

Reprinted with Permission: Kenney, Susan J., "Date Rape: An Alarming Problem," The Adelphean of Alpha Delta Pi, Fall 1987.

The procedures for on-campus disciplinary action in cases of alleged sexual assault are described under the heading, “Administrative Hearing Procedure” in the Student Conduct Code. When the alleged perpetrator in a sexual assault is a student, the student may be referred through the Conflict Resolution and Student Conduct Services.

During a campus disciplinary proceeding, *both victims and students accused of sexual assault are entitled to:*

- have an adviser or support person present and
- be notified of the outcome of the proceeding.

*Advocates receive special training in the physical, psychological, and legal ramifications of sexual assault.*

Victims of alleged assaults can request changes in academic or living situations. Such requests will be accommodated when possible. The Conflict Resolution and Student Conduct Services Office will inform students of their options and available on-campus assistance in these situations.

## Sexual Harassment

Any member of the University community who believes that he or she has been subjected to sexual harassment shall contact the Office of Equal Opportunity to request advice and information about possible ways to proceed and to put the University on notice. Such discussion will be kept confidential to the full extent permitted by law. Complainants are advised that there are some instances in which the University has a responsibility to act even if the Complainant requests that no action be taken as, for example, where other members of the University community may be at risk. In those cases, the University may investigate and take action on the basis of facts it discovers.

Information related to registered sex offenders who have provided registration information to the CSU Police is available at the Records Desk of the CSU Police Department during normal business hours. Information related to sex offenders registered in Fort Collins or Larimer County is available from the Fort Collins Police Services or the Larimer County Sheriff’s Office. Additionally, the Colorado Sex Offender Registry is available on the Web at <http://sor.state.co.us>.

## Domestic Violence

Sadly, violence is a “modern reality” to which students in academic settings are not immune. In Colorado, two people involved in an intimate relationship (e.g., married, boyfriend and girlfriend, intimate partner, etc.), where an argument results in injury, crime, or damage to property, or where violation of a valid restraining order is evident, are in a situation where an arrest is **mandated**; officers have no discretion. Often, police receive calls from the victims, from friends, or from concerned neighbors who hear the noise of an argument or fight. When probable cause exists and officers believe that a crime occurred during a domestic situation, an arrest, sometimes of both involved parties, will be made.

## Stalking

Stalking, which is a crime in the state of Colorado, is on the rise in many academic settings. It is generally defined from a legal standpoint as “willful, malicious, and repeated following and harassment combined with a credible threat intended to cause victims to be in fear for their safety.” Phases of stalking can include a number of behaviors. They range from mental obsession or preoccupation with a person; to gathering information about that person from their mail (print or electronic), trash, or friends, and family; to harassing the victim via phone or Internet or by following or pursuing the victim either from a distance or up close.

If you believe you are being stalked, let someone know. Document all activities related to the person who you believe may be stalking you and report the incident to the police. Don’t discount the situation and ignore the “red flags.” Trust your judgment. If a situation doesn’t feel right, ask for help!

## Victims’ Rights

The University is committed to providing appropriate support and referrals to persons who have been the victims of any crime or violation of University policy. Persons who have been victimized by a Colorado State University student may choose to report the incident to the CSU Police or

to the Conflict Resolution and Student Conduct Services Office to initiate criminal and/or disciplinary action. Victims also have the option to receive personal support from appropriate University resources.

**When dealing with University agencies, the victim can expect:**

- to be treated with respect;
- to have confidentiality maintained (within the bounds of the law and University policy);
- to have University or criminal proceedings fully explained;
- to receive assistance in relocation within or to campus housing if desired;
- to receive referral information for support services;
- at the victim's request, to receive University cooperation in using University procedures to deter harassment or retribution.

**If University disciplinary action is initiated, the victim can expect:**

- to be notified of scheduled disciplinary proceedings;
- to be apprised of potential hearing outcomes;
- to attend the disciplinary hearing, as a witness, if requested by the accused, hearing officer, or panel or if the victims desires to do so;
- to be accompanied by an adviser or support person at the hearing;
- to provide a victim impact statement for consideration by the Hearing Officer or panel;
- to be informed of the general outcome of the hearing;
- at the victim's request, to be informed (to the extent permitted by law) of the impending return of the perpetrator to campus, if the conditions of the suspension or dismissal were met prior to the victim's departure from campus.

Brochures detailing victim's rights in crimes, published by the Larimer County District Attorney, are available at all local law enforcement agencies.

# What Do Crime Statistics Tell Us About a University?

A lot and, sometimes, not enough. On one hand, crime statistics tell us what has been reported to officials. On the other hand, it may or may not be representative of what is actually occurring. Crime, and specifically violent crime, is said to occur on most campuses in the United States. Colorado State University has been committed for decades to the safety, protection, education, and awareness of its students, faculty, staff, and community. Long before it was required by law, and certainly before it was popular to do so, Colorado State made crime statistics available through this publication and other campus and community media. In doing so, the University community has become aware of safety concerns and what is happening around them. In addition, Colorado State has made a commitment to offer and provide victims of crime with the best possible care and services.

*The Chronicle of Higher Education* has noted that colleges and universities that have comprehensive resources and services experience an increase in crime reporting. The resources and services at Colorado State University include the CSU Police Department, the Sexual Assault Victim Assistance Team, Hartshorn Health Services, and the University Counseling Center. These programs provide support and safe environments that encourages the reporting of crimes by students. Victims receiving counseling will be informed of any procedures to report crimes on a voluntary, confidential basis for inclusion in the annual disclosure of crime statistics. CSU Police will investigate anonymous and/or confidential reports of crimes and can provide options for pursuing criminal, civil charges, or University discipline against the assailant.

The following pages contain disciplinary and crime statistics for Colorado State University. The Conflict Resolution and Student Conduct Summary Report is a compilation of the total number of disciplinary referrals that office sees that did not result in arrest, but did result in referral to university disciplinary administrators in the categories of (a) weapons possession, (b) violations of drug law, and (c) violations of alcohol/liquor law. The arrests made by CSU Police for Weapons violations,



Alcohol citations, and Drug use violations are reflected in the crime statistics on pages 50 and 51.

The numbers published are compiled from reports made to “Campus Security Authorities” including University Counseling Center, Human Resources, Victim’s Assistance Team, Conflict Resolution and Student Conduct Services, Athletics, CSU Police Department, Fort Collins Police Services, and the Larimer County Sheriff’s Department.

Crime and violent crime is a national problem. Statistics are often misunderstood. Please take the time to consider crime information and related statistics carefully.

Statistics for adjacent law enforcement jurisdictions, Fort Collins Police Services, and Larimer County Sheriff’s Department, can be found in the most recent edition of the Federal Bureau of Investigation Uniform Crime Reports at your public library, or by request to those agencies.

# Conflict Resolution and Student Conduct

## Summary Reports

Note that the information for 2005-2006 is different in both order and content from that of 2006-2007 and 2007. Also, for 2005-2006 and 2006-2007, the statistics are for July 1 through June 30, whereas 2007 is for the calendar year, as will be future statistics.

	2005-2006	
<b>A. TOTAL NUMBER OF HEARINGS</b>	836	
<b>B. TOTAL NUMBER OF APPEALS</b>	6	
<b>C. TYPE OF INFRACTIONS</b>	<b>N</b>	<b>%</b>
<b>1. Academic Dishonesty</b>	45	3%
<b>2. Forgery/Misuse of Document</b>	1	0%
<b>3. Disruption University Activities</b>	10	1%
<b>4. Abusive Conduct (Total)</b>	259	18%
- miscellaneous abusive conduct	65	
- endangered own safety	10	
- alcohol overdose	28	
- endangered safety of others	16	
- driving under influence	94	
- fight or assault	26	
- verbal abuse	6	
- threats	5	
- obscene/threat phone calls	0	
- sexual assault	2	
- sexual harassment	0	
- domestic or dating violence	6	
- child abuse or neglect	0	
- abuse related to race or sexual orientation	1	
- abuse related to physical disability	0	
<b>5. Interfere w/ Speech/Movement</b>	1	0%
<b>6. Failure to Comply (Total)</b>	65	5%
- verbal or written direction	21	
- disciplinary sanctions	3	
- residence hall staff	6	
- faculty or staff	13	
- resisting/endangering police	22	
<b>7. Theft/Damage (Total)</b>	76	5%
- miscellaneous theft/damage	24	
- theft	21	
- damage	16	
- unauthorized entry or use	15	
<b>8. Weapons</b>	6	1%
<b>9. Violation of Rules (Total)</b>	314	22%
- miscellaneous violations	120	
- residence hall contract	89	
- stadium rules	105	



	2005-2006	
<b>10. Soliciting</b>	0	0%
<b>11. Violation of Laws</b>	652	45%
- miscellaneous violation of laws	141	
- underage alcohol	133	
- fake I.D.	67	
- open container	25	
- distribution to minors	3	
- drugs	29	
- distribution of drugs	1	
- driving under the influence of alcohol	93	
- noise violation	155	
- downtown violation	5	
<b>12. Aiding in Misconduct</b>	6	1%
<b>13. Serious Conviction</b>	1	0%
<b>D. LEVEL OF DISCIPLINE</b>		
<b>No Action</b>	106	13%
<b>Warning</b>	384	45%
<b>General Discipline</b>	227	27%
<b>Disciplinary Probation</b>	74	9%
<b>Suspension</b>	0	0%
<b>Dismissal</b>	56	6%
<b>Expulsion</b>	0	0%
<b>E. LOCATION</b>		
<b>Academic Building</b>	57	6%
<b>Aggie Village</b>	1	0%
<b>Allison Hall</b>	12	1%
<b>Braiden Hall</b>	16	2%
<b>Campus Grounds</b>	39	5%
<b>Campus Perimeter</b>	2	1%
<b>Corbett Hall</b>	28	3%
<b>Durward Hall</b>	21	2%
<b>Edwards Hall</b>	13	1%
<b>Ellis Hall</b>	0	0%
<b>Football Stadium</b>	117	14%
<b>Greek House</b>	0	0%
<b>Ingersoll Hall</b>	12	1%
<b>International House</b>	0	0%
<b>Lory Student Center</b>	2	1%
<b>Moby Arena</b>	6	1%
<b>Newsom Hall</b>	7	1%
<b>Non-academic Building</b>	10	1%
<b>Off Campus</b>	468	53%
<b>Parmelee Hall</b>	28	3%
<b>Summit Hall (opened Fall 2004)</b>	22	2%
<b>University Village</b>	1	0%
<b>Westfall Hall</b>	20	2%

	2006-2007		2007	
<b>A. TOTAL NUMBER OF HEARINGS</b>	789		1471	
<b>B. TOTAL NUMBER OF APPEALS</b>	7		22	
<b>C. TYPE OF INFRACTIONS</b>	<b>N</b>	<b>%</b>	<b>N</b>	<b>%</b>
<b>1. Academic Dishonesty (Total)</b>	43	2%	61	1%
- academic dishonesty	25		38	
- cheating	9		15	
- plagiarism	6		5	
- unauthorized possession of academic material	2		2	
- falsifying acts of dishonesty			1	
<b>2. Providing False Information to the University</b>	35	0%	51	1%
<b>3. Forgery/Misuse of Document</b>	3	0%	6	0%
<b>4. Disruption University Activities</b>	15	0%	17	0%
- disrupting administrative/disciplinary activity	10		12	
- disruption of educational interaction	5		5	
<b>5. Interfere w/ Speech/Movement</b>	1	0%	0	0%
<b>6. Abusive Conduct (Total)</b>	259	7%	399	10%
- miscellaneous abusive conduct	120		109	
- physical abuse	18		42	
- verbal abuse	11		26	
- threats	19		18	
- intimidation	8		10	
- stalking	1		3	
- coercion			1	
- endangering one's self	82		190	
<b>7. Harassment (Total)</b>	43	2%	57	1%
- miscellaneous harassment	40		51	
- based on gender	1		3	
- based on sexual orientation	1		2	
- based on race			1	
- based on religion	1		0	
<b>8. Sexual Misconduct (Total)</b>	5	0%	17	0%
- miscellaneous sexual misconduct	4		4	
- penetration without consent	1		4	
- obscene or lewd behavior			8	
- posting of photos			1	
- observing without consent			0	
- posting pornography in public venues			0	
<b>9. Rioting</b>	0	0%	0	0%
<b>10. Failure to Comply (Total)</b>	188	5%	218	5%
- failure to comply with staff (general)	126		128	
- resisting/endangering police	62		90	
<b>11. Theft/Damage (Total)</b>	125	3%	163	4%
- actual or attempted theft	40		50	
- criminal mischief	61		79	
- unauthorized entry or use of University property	24		31	
- unauthorized entry or use of University keys/access device			3	
<b>12. Weapons</b>	13	0%	16	0%

	2006-2007		2007	
<b>13. Violation of Rules (Total)</b>	1183	30%	1368	30%
- miscellaneous violations	583		385	
- residence hall contract	411		849	
- athletic events	189		134	
<b>14. Soliciting</b>	0	0%	7	0%
<b>15. Violation of Laws</b>	612	15%	409*	10%
<b>16. Alcohol Violations (Total)</b>	1207	31%	1360	30%
- miscellaneous violations	626		445	
- manufacturing/distributing of alcohol	18		20	
- underage possession	528		853	
- public intoxication	35		42	
<b>17. Drug Violations (Total)</b>	164	5%	278	7%
- use/possession of marijuana	134		193	
- use/possession of illegal drugs	19		22	
- manufacturing illegal drugs	1		2	
- use/possession of prescription medications	3		4	
- use/possession of drug paraphernalia	7		57	
<b>18. Misuse of Computer violations</b>	1		13	0%
<b>19. Failure to obey (Total)</b>	35	0%	43	1%
- notice to appear at an administrative/disciplinary	3		1	
- abuse of the conduct system	2		2	
- fail to comply with disciplinary sanctions	30		40	
<b>20. Aiding/Abetting</b>	18	0%	23	0%
<b>D. LEVEL OF DISCIPLINE</b>				
Warning	728		720	
General Discipline Problem	224		706	
Disciplinary Probation/Loss of Good Standing	44		126	
Deferred Suspension	36		33	
Disciplinary Suspension	17		12	
Expulsion	0		1	
<b>E. LOCATION</b>				
Allison Hall	15		20	
Braiden Hall	71		66	
Corbett Hall	177		145	
Durward Hall	86		116	
Edwards Hall	96		90	
Hughes Stadium	143		68	
Ingersoll Hall	42		30	
New Hall	1		14	
Newsom Hall	46		38	
Off Campus	407		440	
On Campus	697		821	
Outside of Fort Collins	43		54	
Parmelee Hall	84		84	
Summit Hall	23		47	
University Village	10		7	
Westfall Hall	89		86	

\* For 2007, we subtracted CSUPD tickets. This number reflects other agency charges (FCPS, LCSO, etc). Beginning in 2007 numbers were compiled by calendar year. This method will be continued in future editions.

# Police Crime Statistics

	CSU On-Campus Property			CSU Residence Halls Only		
	2005	2006	2007	2005	2006	2007
Murder, Nonnegligent Manslaughter	0	0	0	0	0	0
Negligent Manslaughter	0	0	0	0	0	0
<b>Forcible Sex Offenses</b>						
1st & 2nd Degree Sexual Assault	1	3	3	0	3	3
3rd Degree Sexual Assault	0	3	1	0	1	0
<b>Non-Forcible Sex Offenses</b>						
Other Nonforcible Sex Offenses	2	0	0	1	0	0
Robbery	0	0	2	0	0	0
Aggravated Assault	2	2	1	2	1	0
Arson	5	2	3	3	1	
Burglary	17	18	14	3	4	6
Motor Vehicle Theft	8	2	7	4	1	
<b>Arrest Information</b>						
Arrests for Liquor Law Violations	218	110	94	86	61	51
Alcohol Warnings to JA (by CSU)	NA	NA	91	NA	NA	51
DUI Arrests	*52	33	21	NA	NA	NA
Arrests for Drug Law Violations	43	57	43	11	35	22
Drug Warnings to JA (by CSU)	NA	NA	28			18
Arrests for Weapons Possession	5	2	2	1	0	1
Hate Crimes	2	2	1	1	1	1

The numbers shown occurring in CSU Residence Halls are the portion broken out from the total which occurred on the CSU Campus.

### Forcible sex offenses include:

*1st & 2nd Degree Sexual Assault* – The carnal knowledge of a person, forcibly and/or against a person's will or where the victim is incapable of giving consent.

*3rd Degree Sexual Assault* – The touching of private body parts of another person for the purpose of sexual gratification, forcibly or against that person's will or where the victim is incapable of giving consent.

### Non-Forcible Sex Offenses include:

*Other Non-Forcible Sex Offenses* – Incest and Statutory Rape.

Previous years included indecent exposure numbers, which are no longer included as of 2006.

### The following three types of incidents must be reported if they result in an arrest:

*Liquor Law Violations, Drug Law Violations, and Illegal Weapons Possession.*

For additional disciplinary referrals not criminally charged in these types of contacts see Judicial Affairs Summary Report.

CSU Non-Campus Property			CSU Fraternities/Sororities			Public Property		
2005	2006	2007	2005	2006	2007	2005	2006	2007
0	0	0	0	0	0	0	0	0
0	0	0	0	0	0	0	0	0
0	0	1	1	0	0	2	0	0
0	0	0	0	0	0	0	0	0
0	0	0	0	0	0	0	0	0
0	0	0	0	0	0	3	1	0
0	0	0	0	0	0	4	6	2
0	0	0	0	0	0	0	0	0
0	0	0	3	2	6	1	25	19
1	1	0	0	2	3	5	5	5
0	0	0	0	0	0	28	14	20
NA	NA	0	NA	NA	NA	51	38	36
0	0	0	0	0	0	3	4	11
0	0	0	0	1	2	1	1	1
0	0	0	0	0	0	0	0	0

**Above three categories include CSUPD plus:**

Fort Collins Police Services and Larimer County Sheriff's Office

**Other CSU Non-Campus Property includes:**

ARDEC

Environmental Learning Center

Pingree Park

Energy Conversion Plant

Beginning with 2007 numbers, only Hate Crimes involving above reported offenses are listed.

2007 On-Campus Hate crime was Anti-Religious and involved simple assault.

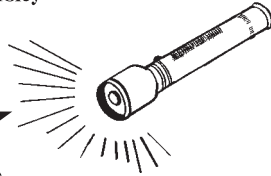
2005 and 2006 – Involved Harassment and biases were Anti-Homosexual and Anti-Black in nature.

\* Previously reported DUI numbers included all arrests; starting in 2005, only on campus arrests are reported

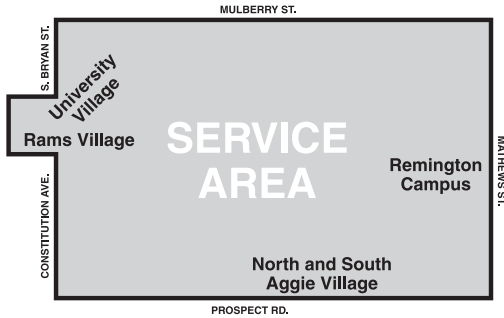
NA Field not applicable

Colorado  
State  
University

# SAFE WALK PROGRAM



A SERVICE OF COLORADO STATE  
UNIVERSITY POLICE DEPARTMENT



*Call* **491-1155**

to request a  to walk you  
to your destination

The information included in this report is being provided in compliance with the Student Right to Know and Campus Security Act of 1990, the Drug-Free Work Place Act, the Drug Free Schools and Communities Act of 1989, and the Higher Education Amendments of 1998. This publication is intended to provide a general description of campus security arrangements and not to serve as a contractual agreement between the University and the recipient. Security procedures are subject to change without notice.

# Colorado State University Thor Guard Lightning Prediction System Procedures

At Colorado State University, the University Safety Committee and Environmental Health Services partnered with five departments – Athletics, Campus Recreation, Conference Services, Facilities Services, and Health and Exercise Science – to purchase the Thor Guard Lightning Prediction and Warning System for a majority of the Main Campus (Intramural Fields, Jack Christensen Track, and the Ropes Course) as well as Hughes Stadium.

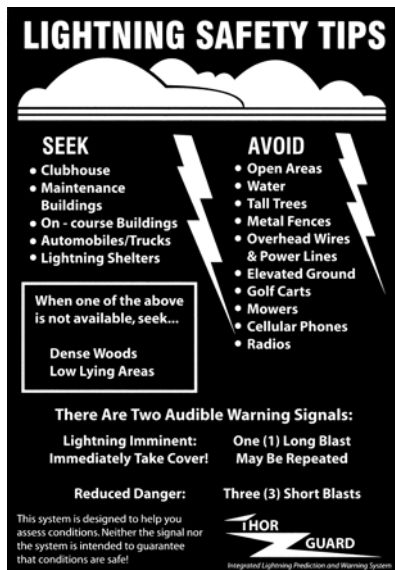
While the system is not infallible, and common sense should still be followed, the system will be an important tool for enhancing safety of University sanctioned activities involving students, employees, and visitors. All of the partners are confident that this system – if its warnings are responsibly heeded – will substantially reduce the chances of a lightning-related tragedy occurring at these sites.

The sensor constantly monitors atmospheric conditions within a 2-mile radius of the sensor that can cause lightning and sends a signal to the horn assemblies when a danger threshold is passed. The horn assemblies then sound a “red alert” alarm – a strobe light on the assembly begins intermittently flashing, and one 15-second-long blast from the horns is sounded in all directions that can be heard approximately 700 yards away – to warn people at the sites to seek appropriate shelter for the duration of the red alert period. All outdoor activities must cease during red alert periods to protect all users of these sites. Appropriate shelter includes surrounding buildings, automobiles/trucks, and, when one of those is not available, dense woods or low-lying areas. However, if the conditions appear unsafe and a red alert alarm has not sounded, common sense should be your guide, and activities should still cease despite the absence of a Thor Guard warning.

When the danger has passed (a minimum of 10 minutes after the original alarm), it will send the all-clear signal to the horn assemblies – the strobe light will stop flashing at all, and three separate, 5-second-long blasts from the horns will sound. After the all-clear signal has sounded, it is safe, according to the Thor Guard system, to resume outdoor activities. However, common sense should still govern, and if the conditions do not appear to be safe to resume activity, it is best to wait until the weather circumstances change regardless of an all-clear from Thor Guard.

If you have any questions or would like to learn more about the Thor Guard system please e-mail at [Ken.Quintana@ColoState.Edu](mailto:Ken.Quintana@ColoState.Edu) or call (970) 491-6121.

*\*\* Please note that the Thor Guard system's horns and strobe lights will be tested the first Tuesday of every month at about 9 a.m.*



**LIGHTNING SAFETY TIPS**

**SEEK**

- Clubhouse
- Maintenance Buildings
- On - course Buildings
- Automobiles/Trucks
- Lightning Shelters

**AVOID**

- Open Areas
- Water
- Tall Trees
- Metal Fences
- Overhead Wires & Power Lines
- Elevated Ground
- Golf Carts
- Mowers
- Cellular Phones
- Radios

When one of the above is not available, seek...

Dense Woods  
Low Lying Areas

**There Are Two Audible Warning Signals:**

**Lightning Imminent:** Immediately Take Cover!      **One (1) Long Blast** May Be Repeated

**Reduced Danger:**      **Three (3) Short Blasts**

This system is designed to help you assess conditions. Neither the signal nor the system is intended to guarantee that conditions are safe!

**THOR GUARD**  
Integrated Lightning Prediction and Warning System

# Important Phone Numbers

<b>Emergency</b> .....	<b>911</b>
CSU Police.....	(970) 491-6425
County Court.....	498-6100
Crisis Shelter.....	482-3502
Detention Center.....	498-5200
District Attorney.....	498-7200
District Court.....	498-6100
Domestic Abuse Response Team/Crossroads.....	482-3502
Fort Collins Police.....	221-6540
Municipal Court.....	221-6800

# Colorado State Resources

Conflict Resolution and Student Conduct Services.....	(970) 491-7165
Counseling Center.....	491-6053
Drug and Alcohol Education.....	491-0262
Employee Assistance Program (EAP).....	491-5900
Environmental Health Services.....	491-6745
Equal Opportunity and Diversity, Office of.....	491-5836
Greek Life Adviser.....	491-0966
Health Services.....	491-7121
Housing and Dining Services.....	491-6511
Human Resource Services.....	491-5793
Mental Health Counseling.....	491-1702
Parking Services.....	491-7041
Provost Office.....	491-6614
Risk Management.....	491-1432
Safe Walk Program.....	491-1155
Student Legal Services.....	491-1482
University Counseling Center.....	491-6053
Victim Assistance.....	491-7111
Women's Program and Studies.....	491-6384



[publicsafety.colostate.edu](http://publicsafety.colostate.edu)  
[police.colostate.edu](http://police.colostate.edu)