

Freshman Profile

Fall 2017

Institutional Research, Planning and Effectiveness

Table of Contents

FALL 2017

Profile: Five-Year History

Residency & Minority Status	01
High School Rank	02
SAT Critical Thinking	03
SAT Math.....	04
ACT Composite	05
High School GPA	06
CDHE Index.....	07

Profile: Fall 2017

Freshman Enrollment

Residency, Gender & Ethnicity	09
Full- & Part-Time Enrollment, Application College	10
Credit Hour Distribution by Application College.....	11

Admitted Applicants

University.....	16
Agricultural Sciences	18
Business	20
Engineering	22
Health and Human Sciences	24
Intra-University.....	26
Liberal Arts	28
Natural Sciences	30
Veterinary Medicine & Biomedical Sciences	32
Warner College of Natural Resources	34

First-Year CSU GPA (Fall 2016 Cohort) by Admission Score

University.....	37
Agricultural Sciences	39
Business	41
Engineering.....	43
Health and Human Sciences	45
Intra-University	47
Liberal Arts	49
Natural Sciences.....	51
Veterinary Medical & Biomedical Sciences.....	53
Warner College of Natural Resources	55

Profile: Five-Year History

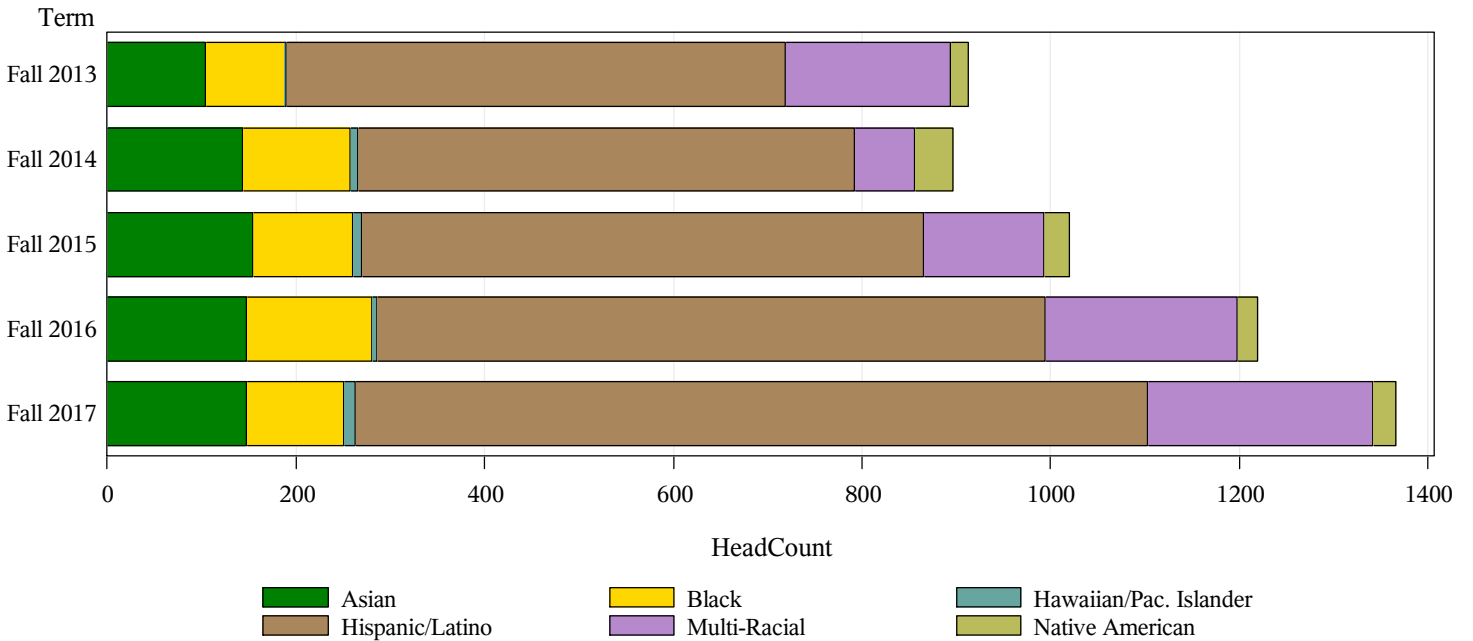
Five-Year History by:

Residency

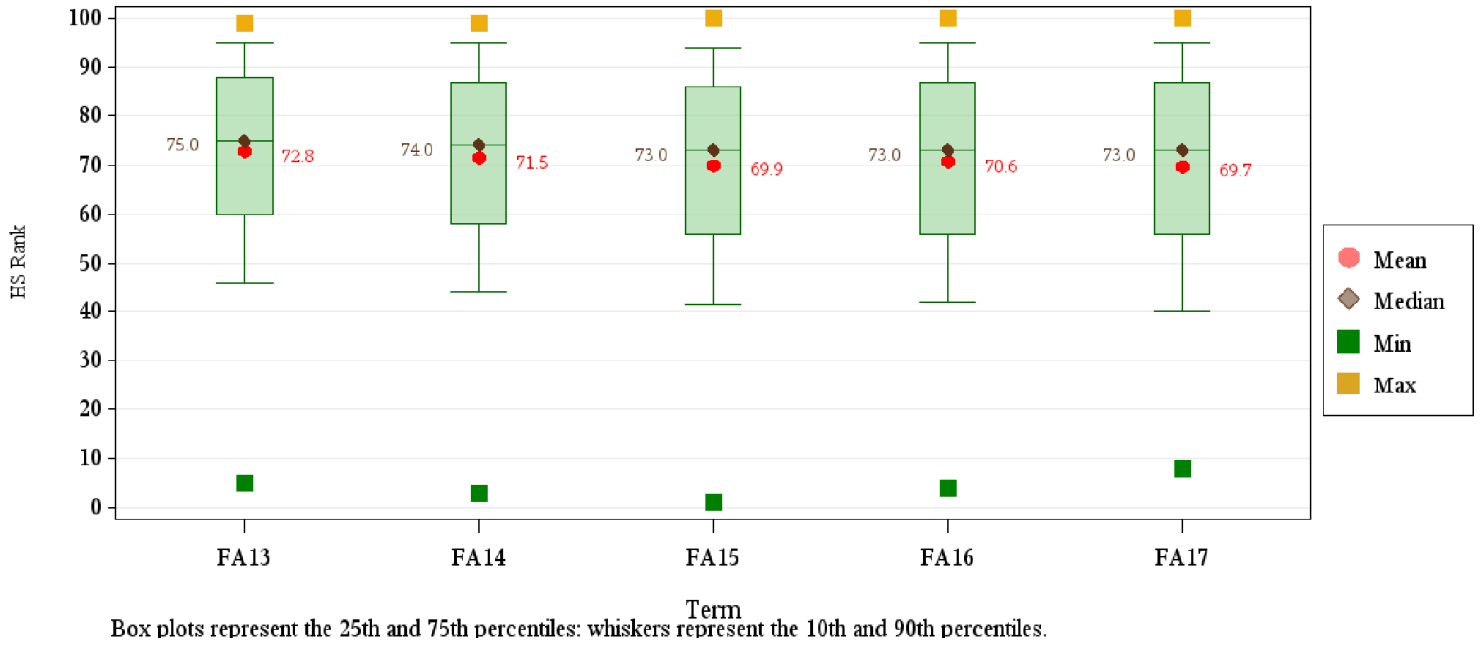
	Resident		Nonresident		Total	Percent Change
	Number	Percent	Number	Percent	Number	
Fall 2013	3,289	74.0%	1,154	26.0%	4,443	.
Fall 2014	3,154	72.5%	1,199	27.5%	4,353	-2.0%
Fall 2015	3,299	69.6%	1,438	30.4%	4,737	8.8%
Fall 2016	3,368	68.0%	1,588	32.0%	4,956	4.6%
Fall 2017	3,350	66.6%	1,681	33.4%	5,031	1.5%

Minority Status

	Minority		Other	
	Number	Percent	Number	Percent
Fall 2013	912	20.5%	3531	79.5%
Fall 2014	896	20.6%	3457	79.4%
Fall 2015	1020	21.5%	3717	78.5%
Fall 2016	1219	24.6%	3737	75.4%
Fall 2017	1366	27.2%	3665	72.8%



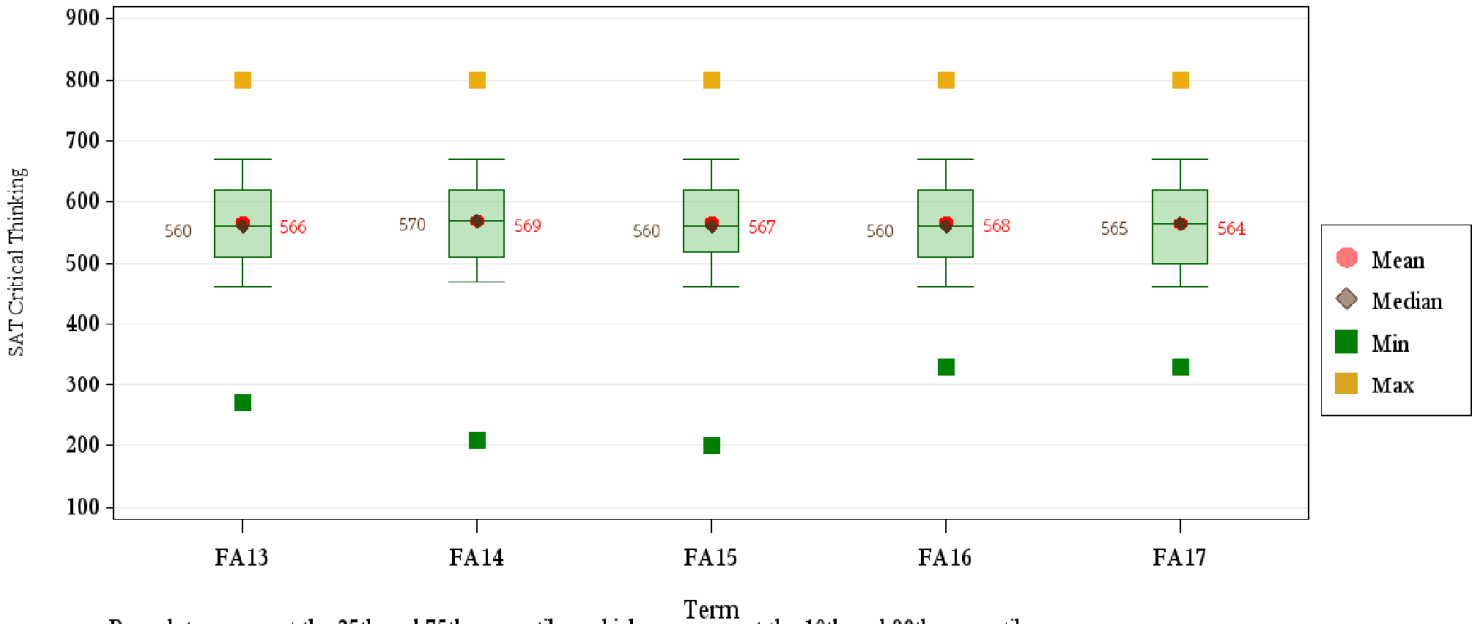
Five-Year Trends: HS Rank



Average HS Rank by Residency and Application College

		AG	BU	EG	HS	IU	LA	NR	NS	VM	Total U
Resident	Fall 2013	73.6	80.3	81.3	71.9	63.8	70.9	68.3	75.5	86.6	72.3
	Fall 2014	73.4	78.6	81.1	67.9	63.9	71.4	67.4	72.3	81.1	71.0
	Fall 2015	68.5	75.0	80.4	66.4	60.5	68.8	66.0	73.1	82.4	69.2
	Fall 2016	72.6	73.8	82.3	67.2	62.9	68.7	69.1	71.7	80.8	70.2
	Fall 2017	71.0	74.6	79.3	69.0	62.2	68.1	67.0	72.6	81.7	69.3
Nonresident	Fall 2013	80.3	76.2	82.2	74.2	67.5	66.5	71.1	76.9	82.4	75.1
	Fall 2014	76.3	78.0	82.1	70.0	62.9	72.1	70.1	76.0	87.1	73.7
	Fall 2015	74.2	76.4	81.2	73.8	60.4	65.2	72.2	74.4	83.1	73.0
	Fall 2016	74.6	70.0	84.0	68.3	64.4	74.1	74.6	71.5	76.3	72.2
	Fall 2017	75.4	72.8	77.8	73.1	64.7	63.6	74.1	70.7	82.6	71.3
Total	Fall 2013	76.0	79.7	81.5	72.2	64.2	70.3	69.3	75.8	85.5	72.8
	Fall 2014	74.5	78.5	81.3	68.2	63.8	71.5	68.2	73.0	82.2	71.5
	Fall 2015	70.8	75.2	80.6	67.6	60.5	68.2	67.9	73.4	82.6	69.9
	Fall 2016	73.4	73.1	82.6	67.4	63.1	69.6	71.3	71.7	80.0	70.6
	Fall 2017	72.8	74.3	79.0	69.6	62.5	67.3	69.6	72.2	81.8	69.7

Five-Year Trends: SAT Critical Thinking

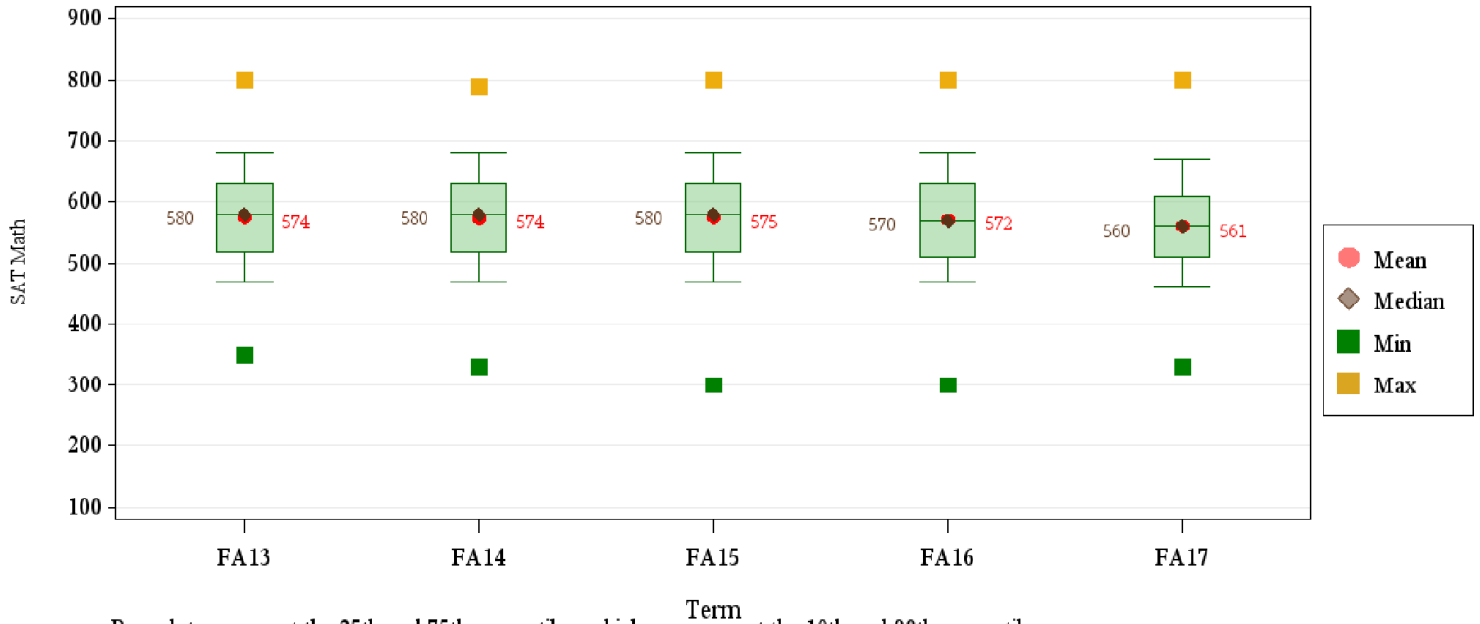


Box plots represent the 25th and 75th percentiles; whiskers represent the 10th and 90th percentiles.

Average SAT Critical Thinking by Residency and Application College

		AG	BU	EG	HS	IU	LA	NR	NS	VM	Total U
Resident	Fall 2013	568	560	593	534	537	574	545	581	595	567
	Fall 2014	562	562	595	543	540	587	588	582	589	569
	Fall 2015	580	583	605	535	541	576	594	580	638	575
	Fall 2016	569	580	607	532	561	572	576	583	559	575
	Fall 2017	558	.	698	470	554	583	490	571	770	584
Nonresident	Fall 2013	571	577	581	545	532	574	573	576	586	566
	Fall 2014	568	581	579	537	546	584	572	573	635	568
	Fall 2015	553	585	592	535	530	570	589	577	575	563
	Fall 2016	557	568	585	551	537	578	568	577	580	565
	Fall 2017	554	564	622	541	511	575	594	563	574	559
Total	Fall 2013	570	570	587	541	534	574	565	579	590	566
	Fall 2014	567	573	585	539	544	585	575	577	615	569
	Fall 2015	555	584	596	535	533	572	590	578	595	567
	Fall 2016	558	572	593	547	544	576	569	579	573	568
	Fall 2017	554	564	641	535	525	578	584	565	599	564

Five-Year Trends: SAT Math

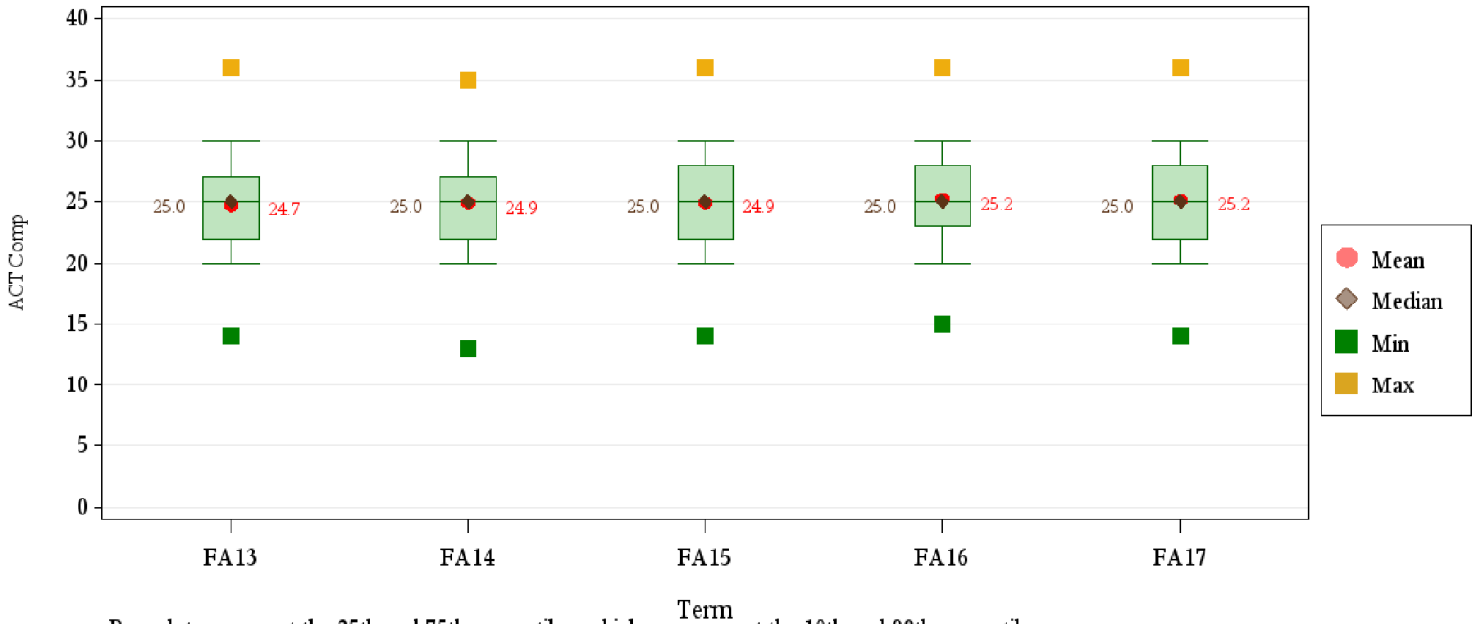


Box plots represent the 25th and 75th percentiles; whiskers represent the 10th and 90th percentiles.

Average SAT Math by Residency and Application College

		AG	BU	EG	HS	IU	LA	NR	NS	VM	Total U
Resident	Fall 2013	535	576	636	536	531	548	547	577	609	569
	Fall 2014	522	588	634	540	550	573	628	577	616	576
	Fall 2015	575	587	641	544	536	573	545	582	637	579
	Fall 2016	538	575	653	510	542	548	529	576	551	570
	Fall 2017	563	.	652	460	563	550	420	536	800	568
Nonresident	Fall 2013	577	608	636	548	551	545	567	575	610	579
	Fall 2014	557	601	633	544	548	562	559	571	600	573
	Fall 2015	549	597	635	543	553	547	574	578	608	574
	Fall 2016	566	594	636	562	553	546	581	572	575	573
	Fall 2017	540	586	625	528	545	541	522	561	593	559
Total	Fall 2013	570	595	636	543	542	547	561	576	610	574
	Fall 2014	552	595	634	542	549	567	573	573	607	574
	Fall 2015	551	594	637	543	548	556	568	580	617	575
	Fall 2016	563	588	642	551	550	547	574	573	567	572
	Fall 2017	542	586	632	522	551	544	512	557	619	561

Five-Year Trends: ACT Comp

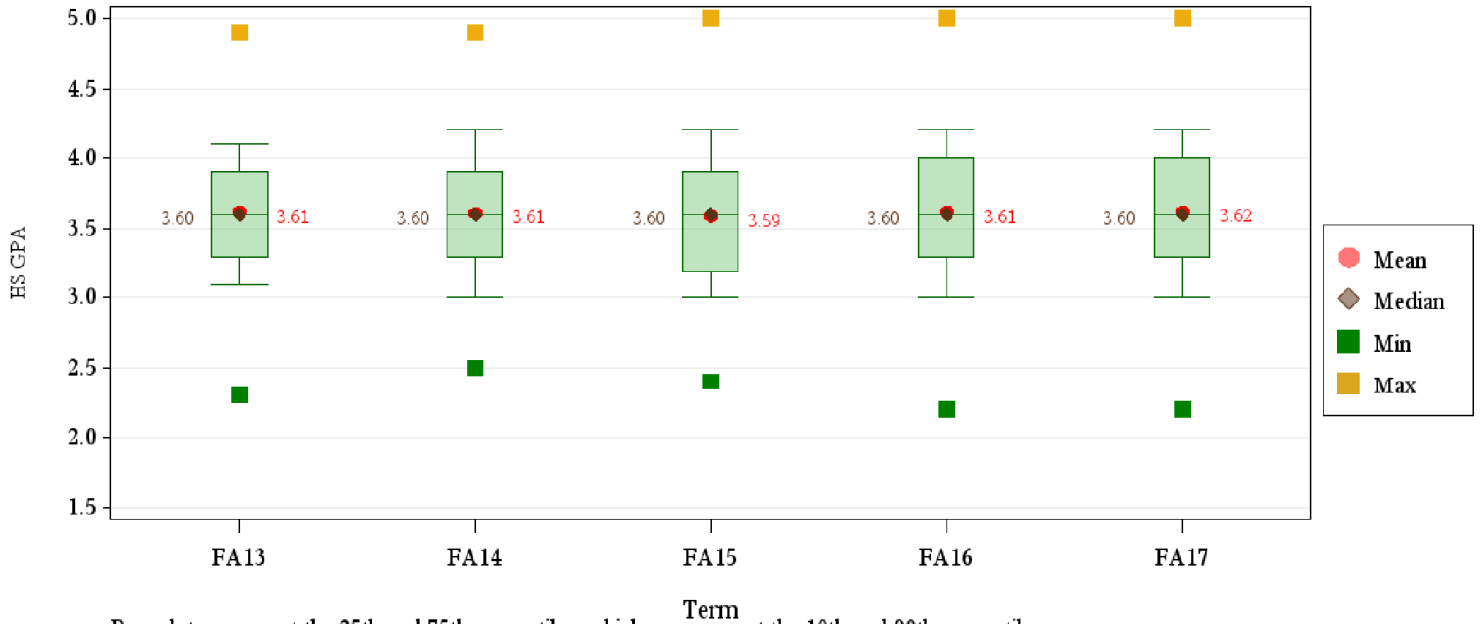


Box plots represent the 25th and 75th percentiles; whiskers represent the 10th and 90th percentiles.

Average ACT Comp by Residency and Application College

		AG	BU	EG	HS	IU	LA	NR	NS	VM	Total U
Resident	Fall 2013	23.8	25.5	27.1	23.4	23.0	24.4	24.0	25.1	27.3	24.5
	Fall 2014	23.9	25.9	27.0	23.2	23.3	24.9	25.0	25.2	26.9	24.6
	Fall 2015	24.1	26.0	27.2	23.1	23.2	24.7	24.3	25.3	27.7	24.7
	Fall 2016	24.1	25.8	28.0	23.4	23.8	24.8	25.6	25.3	27.0	25.0
	Fall 2017	24.1	26.0	27.6	23.5	23.8	24.8	25.3	25.2	26.8	24.8
Nonresident	Fall 2013	26.4	26.2	28.1	24.6	23.9	26.0	26.3	26.2	27.7	26.0
	Fall 2014	25.2	27.1	27.9	24.4	24.8	26.2	26.0	26.6	28.1	26.0
	Fall 2015	25.3	26.1	28.2	24.4	24.5	25.2	25.6	26.5	28.1	26.0
	Fall 2016	25.1	26.3	28.1	24.9	24.9	26.4	26.2	25.9	26.3	25.9
	Fall 2017	25.2	26.5	28.5	25.3	25.1	26.6	25.7	26.5	28.2	26.1
Total	Fall 2013	24.6	25.6	27.3	23.6	23.1	24.6	24.8	25.4	27.4	24.7
	Fall 2014	24.4	26.1	27.2	23.4	23.5	25.2	25.3	25.5	27.2	24.9
	Fall 2015	24.6	26.0	27.4	23.3	23.4	24.8	24.8	25.6	27.8	24.9
	Fall 2016	24.5	25.9	28.1	23.8	24.0	25.1	25.9	25.4	26.8	25.2
	Fall 2017	24.6	26.1	27.8	23.9	24.0	25.2	25.4	25.5	27.1	25.2

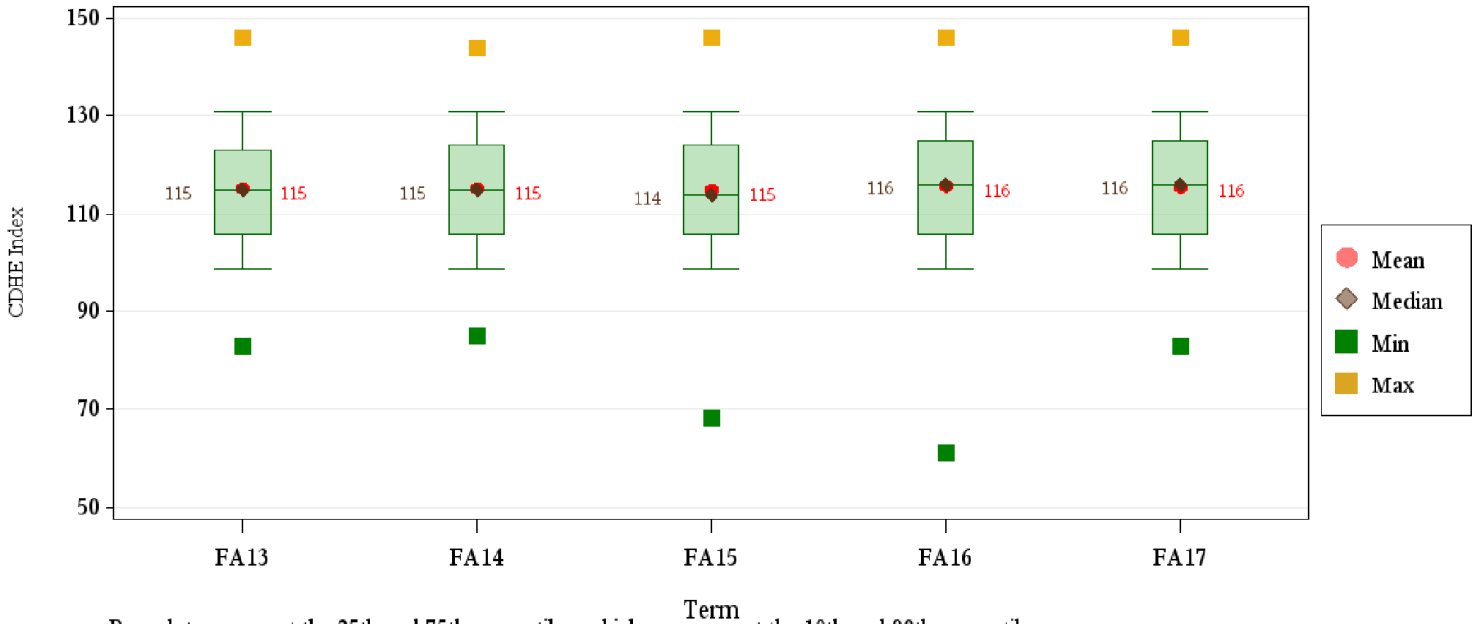
Five-Year Trends: HS GPA



Average HS GPA by Residency and Application College

		AG	BU	EG	HS	IU	LA	NR	NS	VM	Total U
Resident	Fall 2013	3.64	3.79	3.83	3.59	3.39	3.59	3.53	3.69	4.00	3.61
	Fall 2014	3.64	3.77	3.86	3.54	3.42	3.60	3.51	3.65	3.89	3.60
	Fall 2015	3.58	3.73	3.87	3.51	3.36	3.53	3.53	3.66	3.92	3.58
	Fall 2016	3.63	3.76	3.95	3.51	3.44	3.58	3.60	3.64	3.91	3.62
	Fall 2017	3.63	3.75	3.89	3.60	3.44	3.58	3.55	3.65	3.97	3.61
Nonresident	Fall 2013	3.72	3.73	3.84	3.56	3.40	3.55	3.50	3.69	3.93	3.64
	Fall 2014	3.68	3.77	3.85	3.58	3.34	3.59	3.55	3.71	3.99	3.63
	Fall 2015	3.68	3.68	3.86	3.60	3.37	3.43	3.52	3.68	3.93	3.61
	Fall 2016	3.67	3.68	3.90	3.56	3.39	3.51	3.62	3.62	3.71	3.60
	Fall 2017	3.71	3.75	3.90	3.56	3.43	3.54	3.65	3.69	3.95	3.64
Total	Fall 2013	3.68	3.78	3.84	3.58	3.39	3.58	3.52	3.69	3.98	3.61
	Fall 2014	3.66	3.77	3.86	3.55	3.40	3.60	3.53	3.67	3.92	3.61
	Fall 2015	3.63	3.72	3.87	3.53	3.36	3.51	3.52	3.67	3.92	3.59
	Fall 2016	3.65	3.73	3.94	3.53	3.42	3.56	3.61	3.64	3.85	3.61
	Fall 2017	3.68	3.75	3.90	3.59	3.43	3.57	3.60	3.66	3.97	3.62

Five-Year Trends: CDHE Index



Box plots represent the 25th and 75th percentiles; whiskers represent the 10th and 90th percentiles.

Average CDHE Index by Residency and Application College

		AG	BU	EG	HS	IU	LA	NR	NS	VM	Total U
Resident	Fall 2013	113	120	123	112	108	114	112	117	125	114
	Fall 2014	114	120	123	111	109	115	114	116	123	114
	Fall 2015	113	119	124	110	108	114	112	117	125	114
	Fall 2016	114	120	126	111	110	114	116	116	123	115
	Fall 2017	114	120	125	112	110	115	114	116	123	115
Nonresident	Fall 2013	119	120	125	114	110	115	116	119	126	117
	Fall 2014	117	121	125	113	110	117	116	119	127	117
	Fall 2015	116	119	125	113	110	113	116	119	124	117
	Fall 2016	116	119	126	114	110	115	117	117	119	116
	Fall 2017	117	121	126	113	111	115	117	118	124	117
Total	Fall 2013	116	120	124	112	108	114	114	117	125	115
	Fall 2014	115	120	124	111	109	115	115	117	124	115
	Fall 2015	115	119	124	111	108	113	114	117	124	115
	Fall 2016	115	119	126	112	110	114	117	116	122	116
	Fall 2017	115	120	125	112	110	115	116	117	123	116

Profile: Fall 2017

Fall 2017

New Freshmen

Residency

	Number	Percent
Resident	3,350	66.6 %
Nonresident	1,681	33.4 %
Total	5,031	100.0 %

Gender

	Resident		Nonresident		Total	
	Number	Percent	Number	Percent	Number	Percent
Men	1,587	47.4 %	744	44.3 %	2,331	46.3 %
Women	1,763	52.6 %	937	55.7 %	2,700	53.7 %
Total	3,350	100.0 %	1,681	100.0 %	5,031	100.0 %

Ethnicity

	Resident		Nonresident		Total	
	Number	Percent	Number	Percent	Number	Percent
Asian	122	3.6 %	26	1.5 %	148	2.9 %
Black	82	2.4 %	20	1.2 %	102	2.0 %
Hawaiian/Pac. Islander	4	0.1 %	9	0.5 %	13	0.3 %
Hispanic/Latino	639	19.1 %	200	11.9 %	839	16.7 %
International	.	.	84	5.0 %	84	1.7 %
Multi-Racial	152	4.5 %	87	5.2 %	239	4.8 %
Native American	15	0.4 %	10	0.6 %	25	0.5 %
No Response	22	0.7 %	3	0.2 %	25	0.5 %
White	2,314	69.1 %	1,242	73.9 %	3,556	70.7 %
Total	3,350	100.0 %	1,681	100.0 %	5,031	100.0 %

Full-Time/Part-Time Enrollment

	Resident		Nonresident		Total	
	Number	Percent	Number	Percent	Number	Percent
Full-Time	3,305	98.7 %	1,660	98.8 %	4,965	98.7 %
Part-Time	45	1.3 %	21	1.2 %	66	1.3 %
Total	3,350	100.0 %	1,681	100.0 %	5,031	100.0 %

Full-time students = undergraduates enrolled for 12 or more credits Fall, Spring (9 - Summer)

Application College

	Resident		Nonresident		Total	
	Number	Percent	Number	Percent	Number	Percent
Agricultural Sciences	164	4.9 %	233	13.9 %	397	7.9 %
Business	242	7.2 %	116	6.9 %	358	7.1 %
Engineering	337	10.1 %	169	10.1 %	506	10.1 %
Health and Human Sciences	310	9.3 %	134	8.0 %	444	8.8 %
Intra-University	1,084	32.4 %	398	23.7 %	1,482	29.5 %
Liberal Arts	387	11.6 %	158	9.4 %	545	10.8 %
Natural Sciences	626	18.7 %	329	19.6 %	955	19.0 %
Vet Med & BioMed Sci	130	3.9 %	62	3.7 %	192	3.8 %
Warner College of Nat Res	70	2.1 %	82	4.9 %	152	3.0 %
Total	3,350	100.0 %	1,681	100.0 %	5,031	100.0 %

Credit Hour Distribution by Application College

	N	Min	Max	Mean
Total University	5,031	3	20	14.7
Agricultural Sciences	397	7	19	14.7
Business	358	3	18	14.6
Engineering	506	7	19	15.1
Health and Human Sciences	444	7	18	14.8
Intra-University	1,482	3	19	14.5
Liberal Arts	545	3	20	14.8
Natural Sciences	955	9	20	14.7
Vet Med & BioMed Sci	192	10	18	15.0
Warner College of Nat Res	152	8	18	14.5
Men	2,331	3	20	14.6
Women	2,700	3	20	14.8
Nonresident	1,681	3	20	14.7
Resident	3,350	3	20	14.7
Full-Time	4,965	12	20	14.8
Part-Time	66	3	11	9.3
Asian	148	6	19	14.6
Black	102	3	18	14.3
Hawaiian/Pac. Islander	13	11	18	15.1
Hispanic/Latino	839	11	19	14.7
International	84	9	17	13.8
Multi-Racial	239	3	18	14.8
Native American	25	12	16	14.4
No Response	25	9	18	14.8
White	3,556	3	20	14.7
Agricultural Sciences				
Men	84	7	18	14.5
Women	313	9	19	14.7
Nonresident	233	7	18	14.7
Resident	164	9	19	14.6
Full-Time	391	12	19	14.7
Part-Time	6	7	11	9.7
Asian	6	12	16	14.7
Black	9	11	16	13.6
Hawaiian/Pac. Islander	1	15	15	15.0

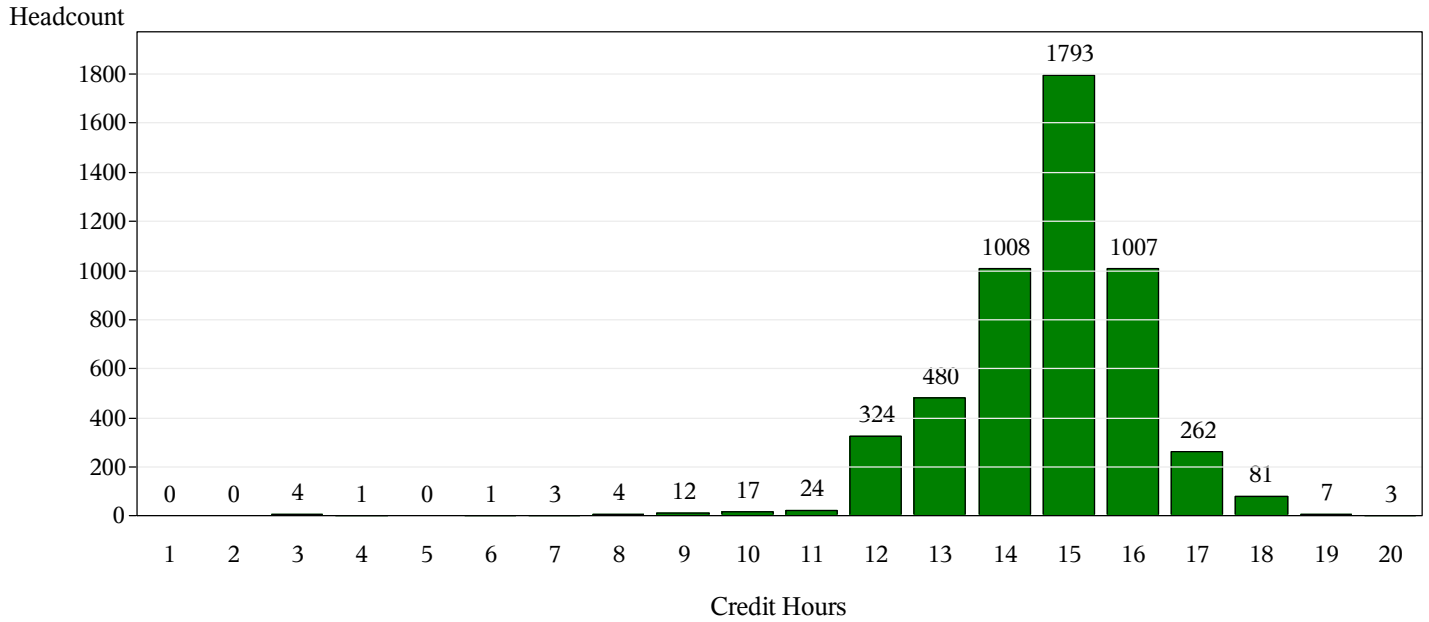
		N	Min	Max	Mean
		5,031	3	20	14.7
Agricultural Sciences	Hispanic/Latino	63	11	18	14.5
	International	9	12	15	13.3
	Multi-Racial	22	13	18	15.0
	Native American	1	16	16	16.0
	No Response	1	9	9	9.0
	White	285	7	19	14.8
Business					
	Men	211	8	18	14.7
	Women	147	3	18	14.6
	Nonresident	116	10	17	14.7
	Resident	242	3	18	14.6
	Full-Time	353	12	18	14.7
	Part-Time	5	3	11	7.2
	Asian	6	12	17	15.0
	Black	6	13	16	15.2
	Hawaiian/Pac. Islander	1	15	15	15.0
	Hispanic/Latino	49	12	17	14.5
	International	1	15	15	15.0
	Multi-Racial	24	8	17	14.4
	No Response	3	13	16	14.3
	White	268	3	18	14.7
Engineering					
	Men	393	10	18	15.1
	Women	113	7	19	15.1
	Nonresident	169	7	19	15.2
	Resident	337	10	19	15.1
	Full-Time	498	12	19	15.2
	Part-Time	8	7	11	10.3
	Asian	18	13	19	15.3
	Black	2	14	17	15.5
	Hawaiian/Pac. Islander	2	11	14	12.5
	Hispanic/Latino	74	11	18	15.1
	International	6	13	17	14.8
	Multi-Racial	22	12	17	15.2
	Native American	3	13	16	15.0
	White	379	7	19	15.1
Health and Human Sciences					
	Men	129	12	17	14.4

		N	Min	Max	Mean
		5,031	3	20	14.7
Health and Human Sciences	Women	315	7	18	15.0
	Nonresident	134	12	17	14.8
	Resident	310	7	18	14.8
	Full-Time	440	12	18	14.8
	Part-Time	4	7	11	9.5
	Asian	10	13	16	14.7
	Black	7	7	15	12.7
	Hispanic/Latino	75	12	18	14.7
	International	2	13	15	14.0
	Multi-Racial	18	12	18	15.4
	Native American	2	12	15	13.5
	No Response	3	14	15	14.7
	White	327	10	18	14.8
Intra-University	Men	808	3	19	14.4
	Women	674	9	18	14.7
	Nonresident	398	3	18	14.5
	Resident	1,084	3	19	14.5
	Full-Time	1,467	12	19	14.6
	Part-Time	15	3	11	8.9
	Asian	52	10	17	14.4
	Black	32	12	17	14.4
	Hawaiian/Pac. Islander	3	15	18	16.3
	Hispanic/Latino	266	12	18	14.7
	International	36	9	17	13.7
	Multi-Racial	68	3	18	14.3
	Native American	9	13	15	14.6
	No Response	10	12	18	15.0
	White	1,006	3	19	14.5
Liberal Arts	Men	223	3	19	14.7
	Women	322	6	20	14.9
	Nonresident	158	8	18	14.7
	Resident	387	3	20	14.8
	Full-Time	538	12	20	14.9
	Part-Time	7	3	11	8.3
	Asian	15	6	18	14.8

		N	Min	Max	Mean
		5,031	3	20	14.7
Liberal Arts	Black	18	3	17	13.9
	Hawaiian/Pac. Islander	1	18	18	18.0
	Hispanic/Latino	90	12	18	14.6
	International	5	12	15	13.0
	Multi-Racial	18	12	18	14.9
	Native American	4	12	16	14.3
	No Response	2	15	16	15.5
	White	392	8	20	14.9
Natural Sciences					
	Men	347	9	20	14.7
	Women	608	9	20	14.7
	Nonresident	329	10	20	14.7
	Resident	626	9	20	14.7
	Full-Time	941	12	20	14.8
	Part-Time	14	9	11	9.9
	Asian	33	12	16	14.5
	Black	25	12	18	14.8
	Hawaiian/Pac. Islander	3	15	17	15.7
	Hispanic/Latino	170	12	19	14.7
	International	20	10	16	14.0
	Multi-Racial	61	12	18	14.8
	Native American	5	12	15	13.6
	No Response	4	15	18	15.8
	White	634	9	20	14.7
Vet Med & BioMed Sci					
	Men	51	10	17	14.8
	Women	141	11	18	15.1
	Nonresident	62	11	17	15.0
	Resident	130	10	18	15.0
	Full-Time	188	12	18	15.1
	Part-Time	4	10	11	10.8
	Asian	7	13	16	14.4
	Black	2	15	17	16.0
	Hispanic/Latino	37	11	18	14.9
	International	3	12	16	14.0
	Multi-Racial	3	15	16	15.3
	No Response	1	15	15	15.0
	White	139	10	18	15.1

	N	Min	Max	Mean
Warner College of Nat Res				
Men	85	12	17	14.4
Women	67	8	18	14.6
Nonresident	82	8	18	14.5
Resident	70	11	18	14.4
Full-Time	149	12	18	14.6
Part-Time	3	8	11	10.0
Asian	1	14	14	14.0
Black	1	11	11	11.0
Hawaiian/Pac. Islander	2	13	14	13.5
Hispanic/Latino	15	12	17	14.1
International	2	12	13	12.5
Multi-Racial	3	15	16	15.3
Native American	1	15	15	15.0
No Response	1	14	14	14.0
White	126	8	18	14.6

Total University: Student Count by Credit Hours



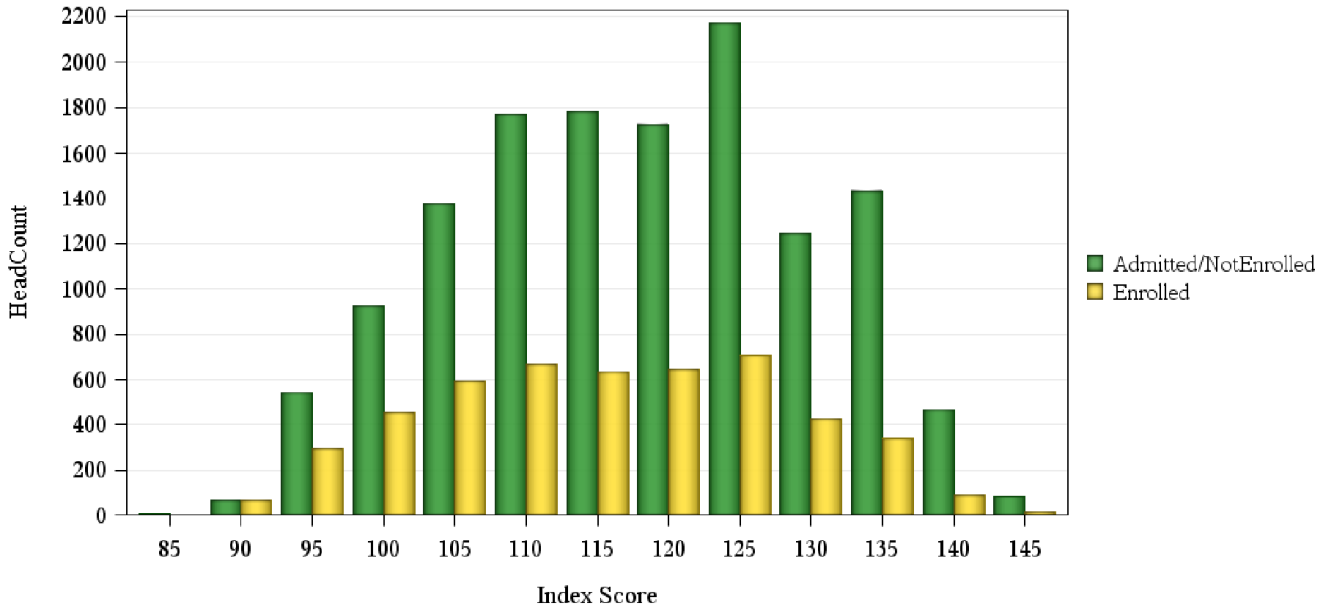
Fall 2017 Freshman Profile

University Admitted Applicants

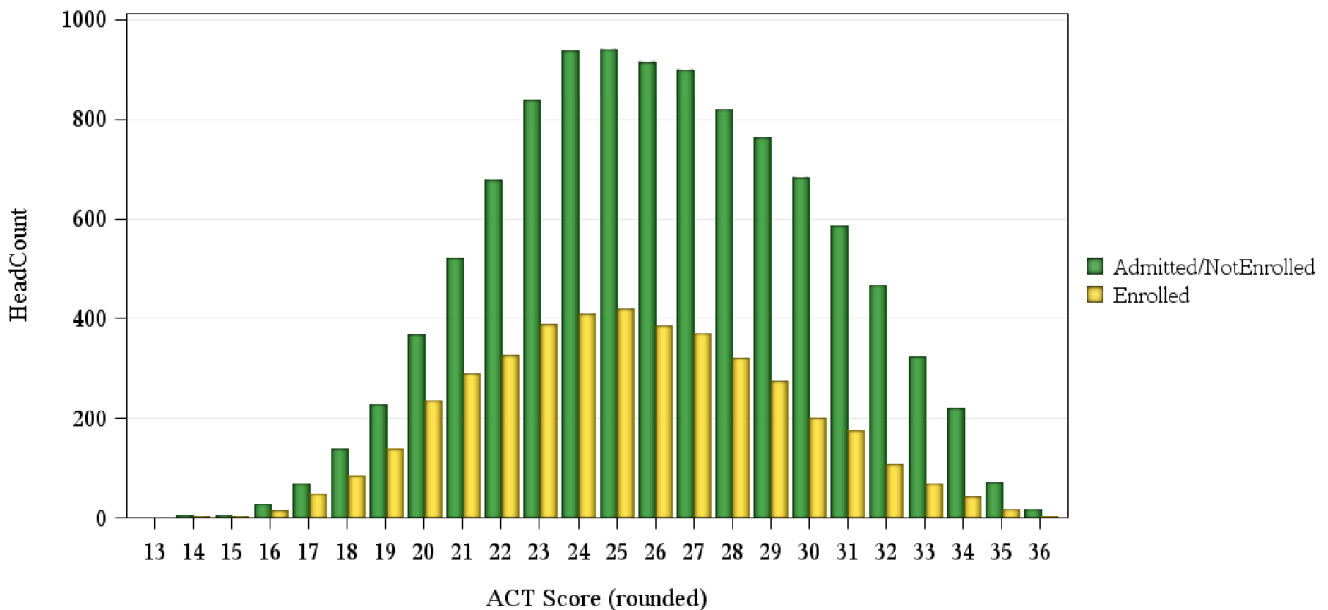
	Not Enrolled (N=13987)				Enrolled (N= 5031)			
	Res	Nonres	Total	Percent	Res	Nonres	Total	Percent
ACT Composite								
0-14	4	2	6	0%	3	.	3	0%
15-18	136	108	244	2%	124	27	151	3%
19-22	916	884	1,800	13%	844	148	992	20%
23-26	1,694	1,939	3,633	26%	1,221	381	1,602	32%
27-36	2,109	2,746	4,855	35%	1,082	505	1,587	32%
Missing Data	104	3,345	3,449	25%	76	620	696	14%
Means	25.9	26.3	26.1		24.8	26.1	25.2	
CCHE Index								
0-90	4	10	14	0%	19	10	29	1%
091-100	351	689	1,040	7%	391	156	547	11%
101-114	1,483	2,844	4,327	31%	1,284	476	1,760	35%
115-160	3,120	5,099	8,219	59%	1,640	972	2,612	52%
Missing Data	5	382	387	3%	16	67	83	2%
Means	119	118	118		115	117	116	
HS GPA								
2.0-2.49	5	1	6	0%	7	3	10	0%
2.5-2.99	193	532	725	5%	274	132	406	8%
3.0-3.59	1,390	2,992	4,382	31%	1,266	571	1,837	37%
3.6-4.00	1,914	3,406	5,320	38%	1,174	646	1,820	36%
4.01-high	1,460	2,088	3,548	25%	624	327	951	19%
Missing Data	1	5	6	0%	5	2	7	0%
Means	3.77	3.69	3.72		3.61	3.64	3.62	
HS Rank								
0-29	61	54	115	1%	108	17	125	2%
30-49	249	188	437	3%	336	78	414	8%
50-59	261	225	486	3%	299	53	352	7%
60-79	760	661	1,421	10%	751	184	935	19%
80-89	624	438	1,062	8%	441	95	536	11%
90-100	759	625	1,384	10%	464	126	590	12%
Missing Data	2,249	6,833	9,082	65%	951	1,128	2,079	41%
Means	75.4	74.4	74.9		69.3	71.3	69.7	
SAT Critical Thinking								
0-399	2	22	24	0%	1	5	6	0%
400-499	16	174	190	1%	8	30	38	1%
500-599	23	372	395	3%	16	77	93	2%
600-699	29	254	283	2%	12	52	64	1%
700-800	9	75	84	1%	6	7	13	0%
Missing Data	4,884	8,127	13,011	93%	3,307	1,510	4,817	96%
Means	583	566	567		584	559	564	
SAT Math								
0-399	.	18	18	0%	1	4	5	0%
400-499	13	147	160	1%	6	30	36	1%
500-599	27	388	415	3%	19	87	106	2%
600-699	33	275	308	2%	16	43	59	1%
700-800	6	70	76	1%	1	7	8	0%
Missing Data	4,884	8,126	13,010	93%	3,307	1,510	4,817	96%
Means	588	572	573		568	559	561	

Fall 2017 Freshman Profile

Fall 2017 CDHE Index Distribution of Admitted Applicants by Enrollment Status(University)



Fall 2017 ACT Composite Distribution of Admitted Applicants by Enrollment Status(University)



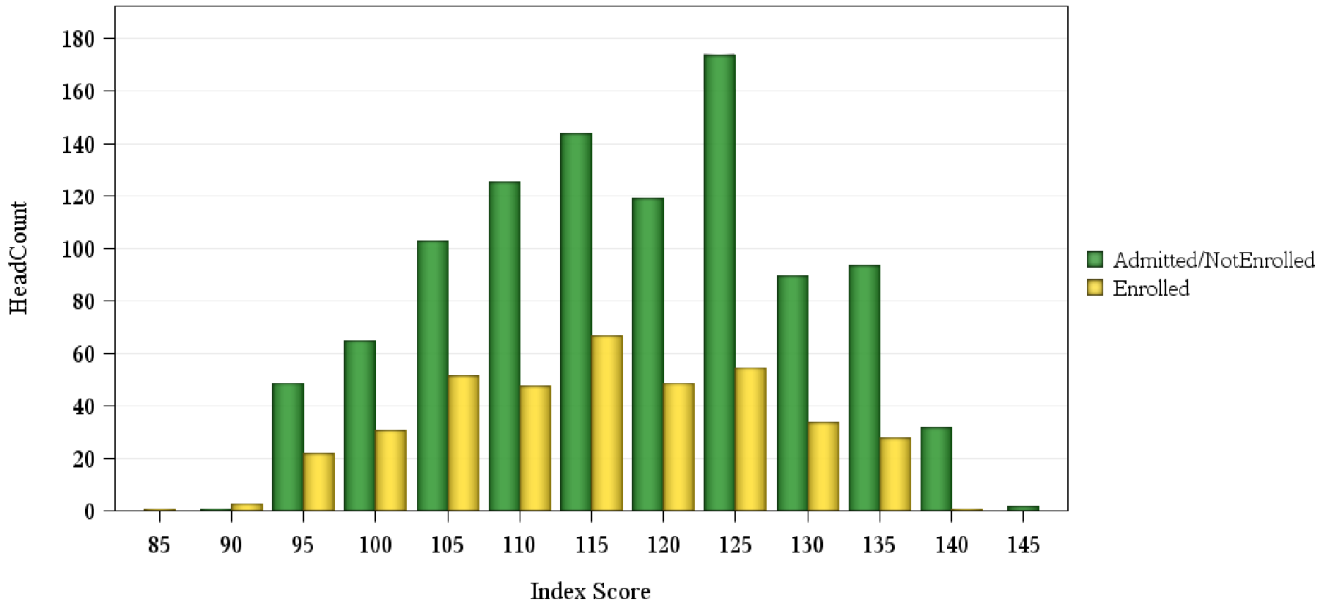
Fall 2017 Freshman Profile

Agricultural Sciences Admitted Applicants

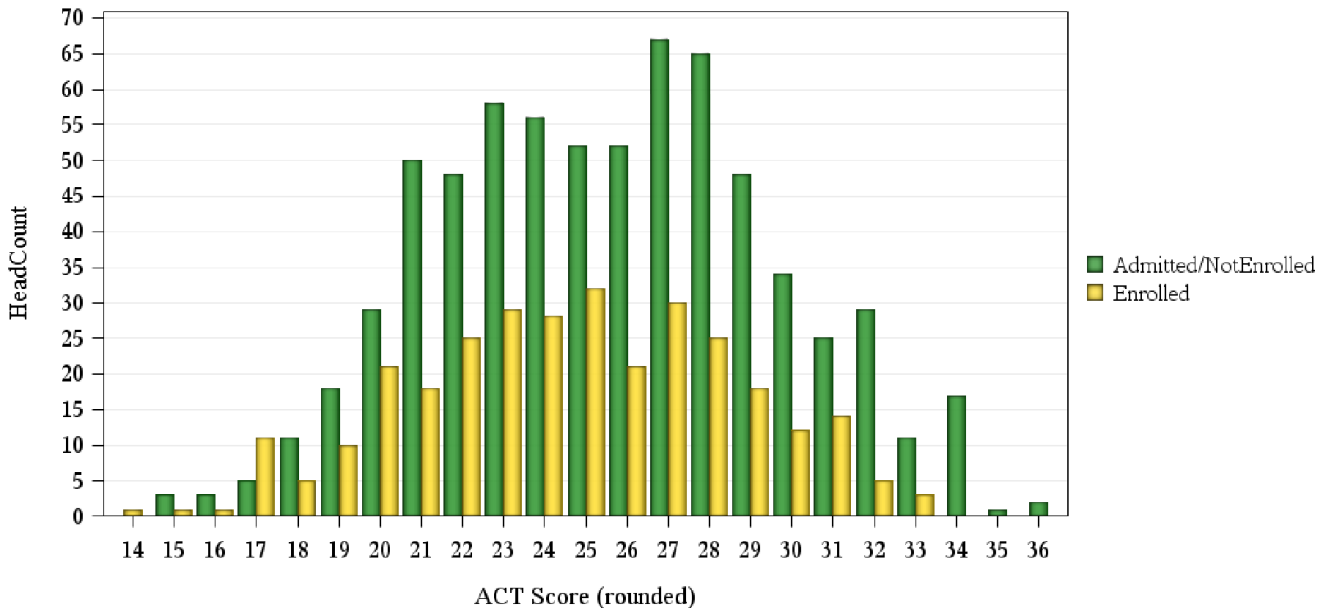
	Not Enrolled (N= 1012)				Enrolled (N= 397)			
	Res	Nonres	Total	Percent	Res	Nonres	Total	Percent
ACT Composite								
0-14	1	.	1	0%
15-18	5	17	22	2%	9	9	18	5%
19-22	38	107	145	14%	44	30	74	19%
23-26	55	163	218	22%	60	50	110	28%
27-36	39	260	299	30%	43	64	107	27%
Missing Data	4	324	328	32%	7	80	87	22%
Means	24.5	25.9	25.6		24.1	25.2	24.6	
CCHE Index								
0-90	2	1	3	1%
091-100	11	70	81	8%	18	18	36	9%
101-114	55	269	324	32%	66	76	142	36%
115-160	74	520	594	59%	78	132	210	53%
Missing Data	1	12	13	1%	.	6	6	2%
Means	115	118	118		114	117	115	
HS GPA								
2.0-2.49	1	.	1	0%
2.5-2.99	11	25	36	4%	7	9	16	4%
3.0-3.59	46	252	298	29%	64	81	145	37%
3.6-4.00	61	332	393	39%	63	93	156	39%
4.01-high	23	262	285	28%	29	50	79	20%
Means	3.64	3.78	3.76		3.63	3.71	3.68	
HS Rank								
0-29	3	2	5	0%	3	2	5	1%
30-49	11	15	26	3%	13	4	17	4%
50-59	8	26	34	3%	12	8	20	5%
60-79	24	77	101	10%	51	33	84	21%
80-89	23	43	66	7%	22	18	40	10%
90-100	17	79	96	9%	22	20	42	11%
Missing Data	55	629	684	68%	41	148	189	48%
Means	72.3	77.5	76.1		71.0	75.4	72.8	
SAT Critical Thinking								
0-399	.	3	3	0%	.	1	1	0%
400-499	1	26	27	3%	.	9	9	2%
500-599	1	50	51	5%	4	10	14	4%
600-699	.	35	35	3%	.	8	8	2%
700-800	.	8	8	1%	.	2	2	1%
Missing Data	139	749	888	88%	160	203	363	91%
Means	495	559	558		558	554	554	
SAT Math								
0-399	.	5	5	0%	.	1	1	0%
400-499	.	26	26	3%	1	10	11	3%
500-599	1	48	49	5%	1	10	11	3%
600-699	1	34	35	3%	2	8	10	3%
700-800	.	9	9	1%	.	1	1	0%
Missing Data	139	749	888	88%	160	203	363	91%
Means	585	559	559		563	540	542	

Fall 2017 Freshman Profile

Fall 2017 CDHE Index Distribution of Admitted Applicants by Enrollment Status(Agricultural Sciences)



Fall 2017 ACT Composite Distribution of Admitted Applicants by Enrollment Status(Agricultural Sciences)



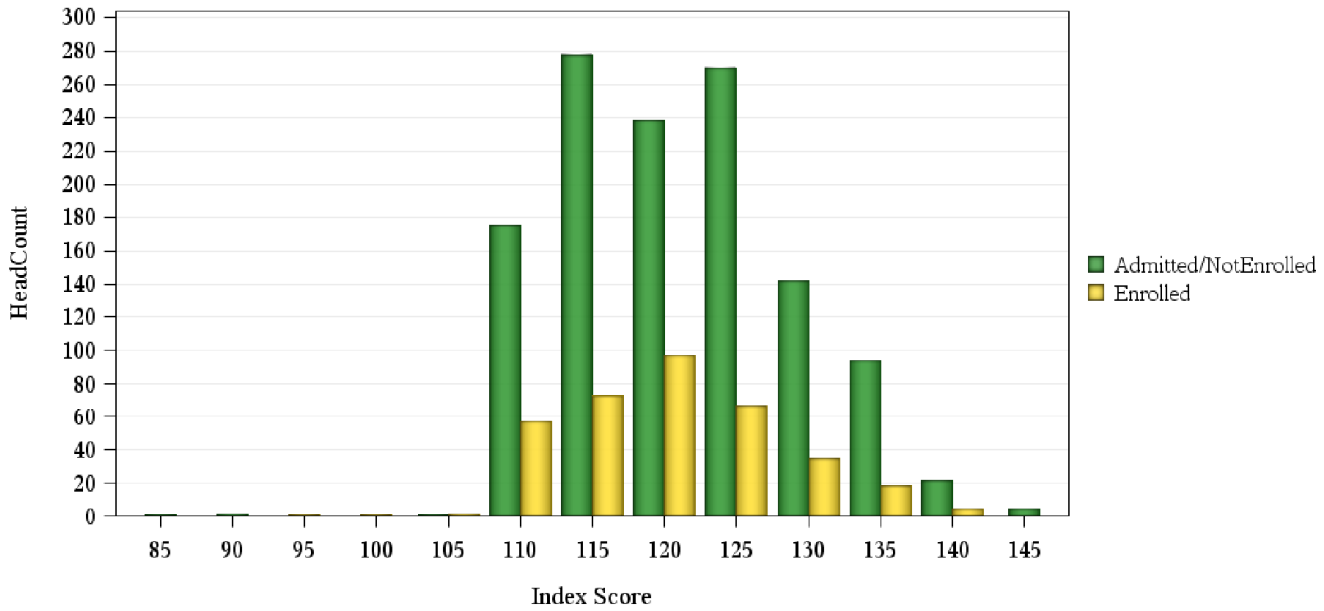
Fall 2017 Freshman Profile

Business Admitted Applicants

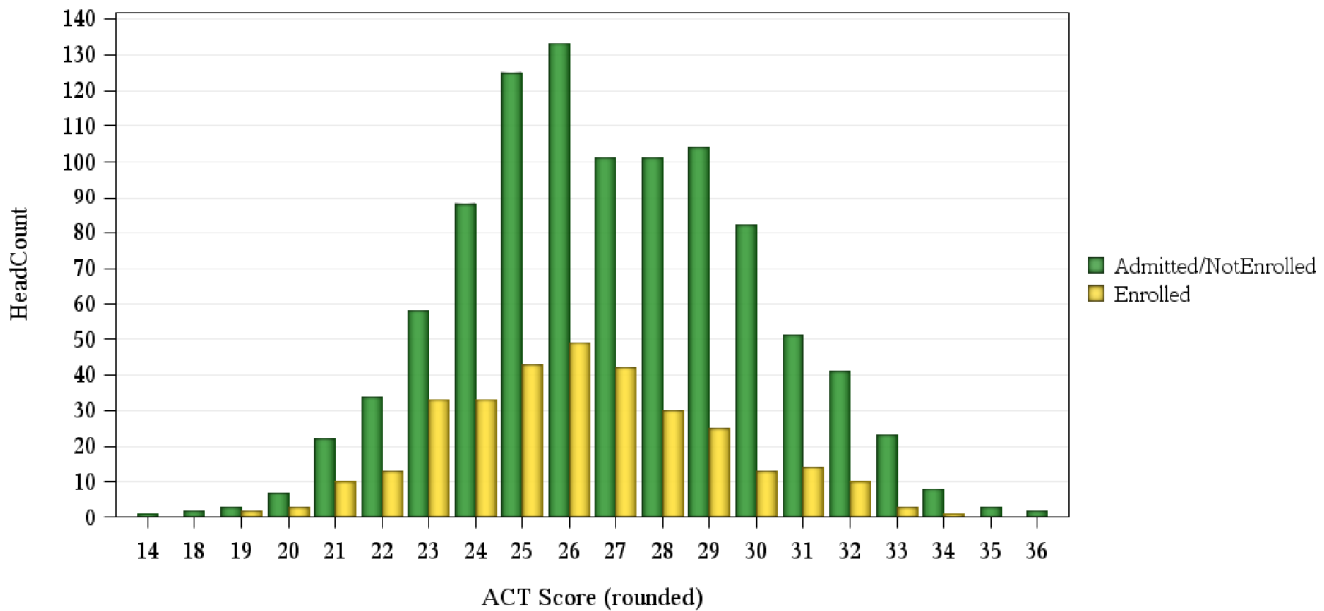
	Not Enrolled (N= 1244)				Enrolled (N= 358)			
	Res	Nonres	Total	Percent	Res	Nonres	Total	Percent
ACT Composite								
0-14	.	1	1	0%
15-18	1	1	2	0%
19-22	38	28	66	5%	25	3	28	8%
23-26	223	181	404	32%	113	45	158	44%
27-36	241	275	516	41%	100	38	138	39%
Missing Data	7	248	255	20%	4	30	34	9%
Means	26.8	27.1	26.9		26.0	26.5	26.1	
CCHE Index								
0-90	.	2	2	0%
091-100	1	.	1	0%	1	1	2	1%
101-114	100	185	285	23%	71	21	92	26%
115-160	409	531	940	76%	170	93	263	73%
Missing Data	.	16	16	1%	.	1	1	0%
Means	122	121	121		120	121	120	
HS GPA								
2.5-2.99	1	11	12	1%	.	1	1	0%
3.0-3.59	101	216	317	25%	77	32	109	30%
3.6-4.00	261	369	630	51%	116	62	178	50%
4.01-high	147	138	285	23%	49	21	70	20%
Means	3.87	3.73	3.79		3.75	3.75	3.75	
HS Rank								
0-29	2	1	3	0%	1	1	2	1%
30-49	11	12	23	2%	11	5	16	4%
50-59	23	16	39	3%	19	2	21	6%
60-79	91	69	160	13%	65	16	81	23%
80-89	68	41	109	9%	43	6	49	14%
90-100	73	35	108	9%	32	9	41	11%
Missing Data	242	560	802	64%	71	77	148	41%
Means	78.2	75.2	77.0		74.6	72.8	74.3	
SAT Critical Thinking								
0-399	.	1	1	0%
400-499	3	11	14	1%	.	2	2	1%
500-599	5	32	37	3%	.	7	7	2%
600-699	3	22	25	2%	.	5	5	1%
700-800	3	1	4	0%
Missing Data	496	667	1,163	93%	242	102	344	96%
Means	594	562	568		.	564	564	
SAT Math								
400-499	1	5	6	0%	.	2	2	1%
500-599	6	38	44	4%	.	7	7	2%
600-699	5	21	26	2%	.	5	5	1%
700-800	2	3	5	0%
Missing Data	496	667	1,163	93%	242	102	344	96%
Means	594	585	586		.	586	586	

Fall 2017 Freshman Profile

Fall 2017 CDHE Index Distribution of Admitted Applicants by Enrollment Status(Business)



Fall 2017 ACT Composite Distribution of Admitted Applicants by Enrollment Status(Business)



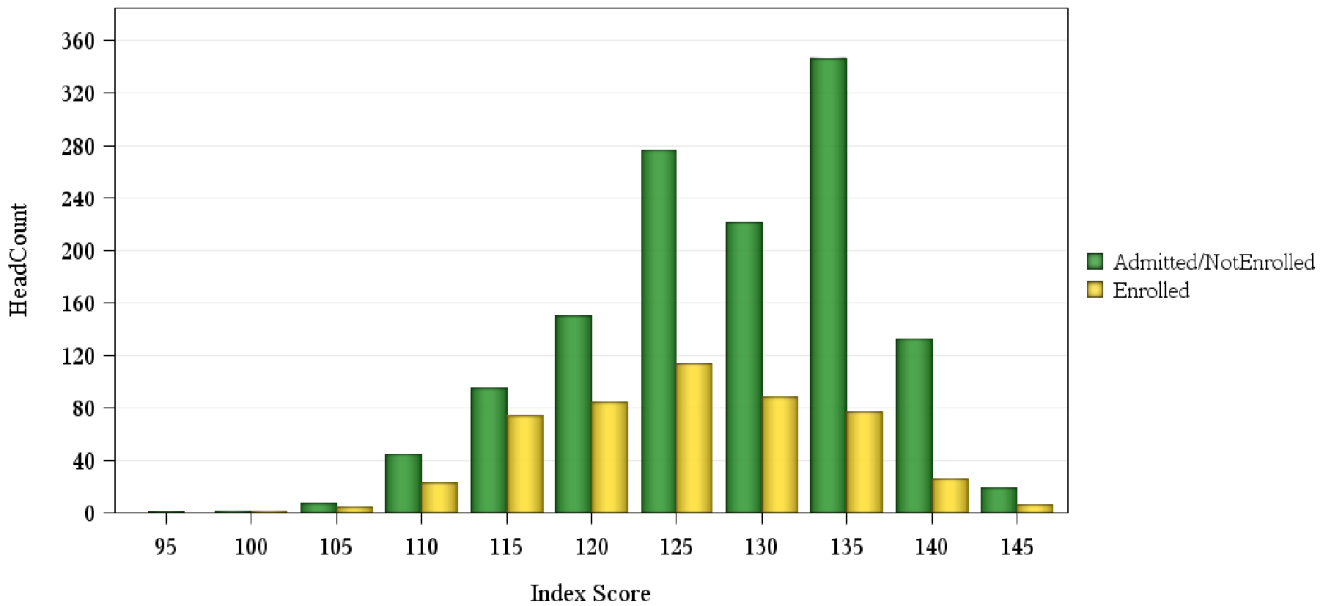
Fall 2017 Freshman Profile

Engineering Admitted Applicants

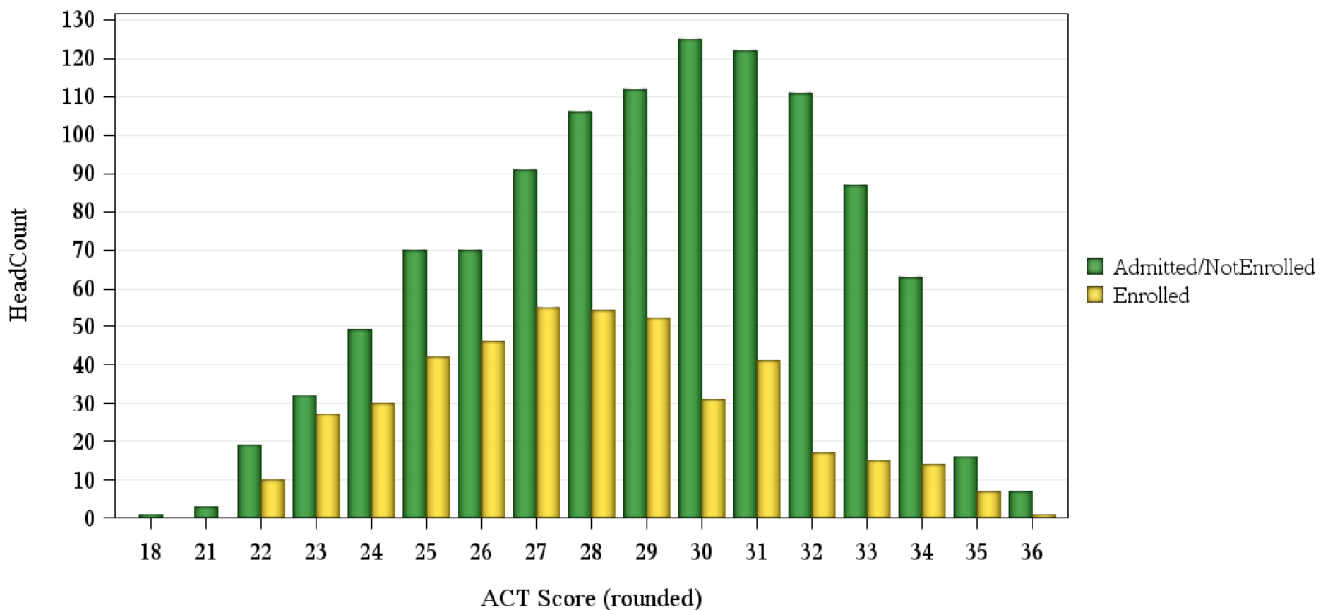
	Not Enrolled (N= 1354)				Enrolled (N= 506)			
	Res	Nonres	Total	Percent	Res	Nonres	Total	Percent
ACT Composite								
15-18	1	.	1	0%
19-22	11	11	22	2%	6	4	10	2%
23-26	121	100	221	16%	125	20	145	29%
27-36	418	422	840	62%	201	86	287	57%
Missing Data	14	256	270	20%	5	59	64	13%
Means	29.0	29.3	29.1		27.6	28.5	27.8	
CCHE Index								
091-100	.	2	2	0%	.	1	1	0%
101-114	38	54	92	7%	47	12	59	12%
115-160	524	684	1,208	89%	290	154	444	88%
Missing Data	3	49	52	4%	.	2	2	0%
Means	129	128	128		125	126	125	
HS GPA								
2.5-2.99	.	1	1	0%	1	2	3	1%
3.0-3.59	47	101	148	11%	63	25	88	17%
3.6-4.00	224	339	563	42%	160	88	248	49%
4.01-high	294	348	642	47%	113	54	167	33%
Means	4.06	3.99	4.02		3.89	3.90	3.90	
HS Rank								
0-29	.	1	1	0%
30-49	5	5	10	1%	10	5	15	3%
50-59	11	5	16	1%	20	4	24	5%
60-79	59	53	112	8%	69	26	95	19%
80-89	83	41	124	9%	60	7	67	13%
90-100	132	95	227	17%	73	23	96	19%
Missing Data	275	589	864	64%	105	104	209	41%
Means	85.2	84.5	84.9		79.3	77.8	79.0	
SAT Critical Thinking								
0-399	.	2	2	0%
400-499	.	20	20	1%
500-599	5	29	34	3%	.	8	8	2%
600-699	4	33	37	3%	3	7	10	2%
700-800	1	9	10	1%	3	3	6	1%
Missing Data	555	696	1,251	92%	331	151	482	95%
Means	624	579	583		698	622	641	
SAT Math								
400-499	.	1	1	0%
500-599	2	33	35	3%	1	7	8	2%
600-699	6	40	46	3%	5	7	12	2%
700-800	2	19	21	2%	.	4	4	1%
Missing Data	555	696	1,251	92%	331	151	482	95%
Means	635	627	627		652	625	632	

Fall 2017 Freshman Profile

Fall 2017 CDHE Index Distribution of Admitted Applicants by Enrollment Status(Engineering)



Fall 2017 ACT Composite Distribution of Admitted Applicants by Enrollment Status(Engineering)



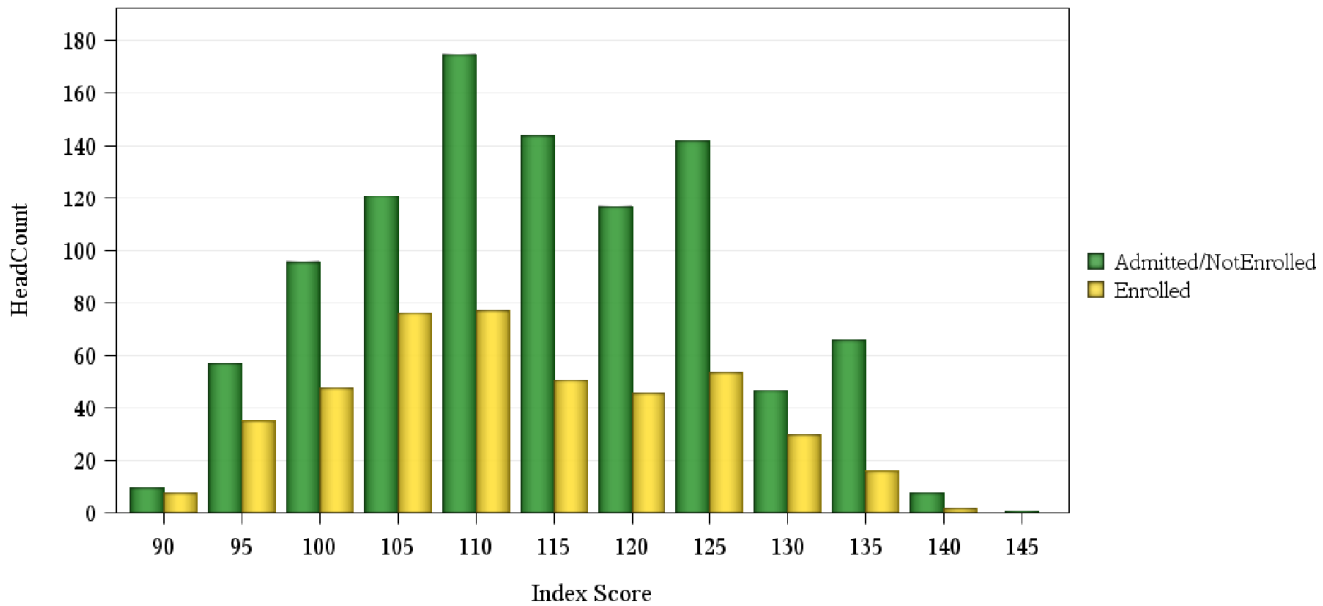
Fall 2017 Freshman Profile

Health and Human Sciences Admitted Applicants

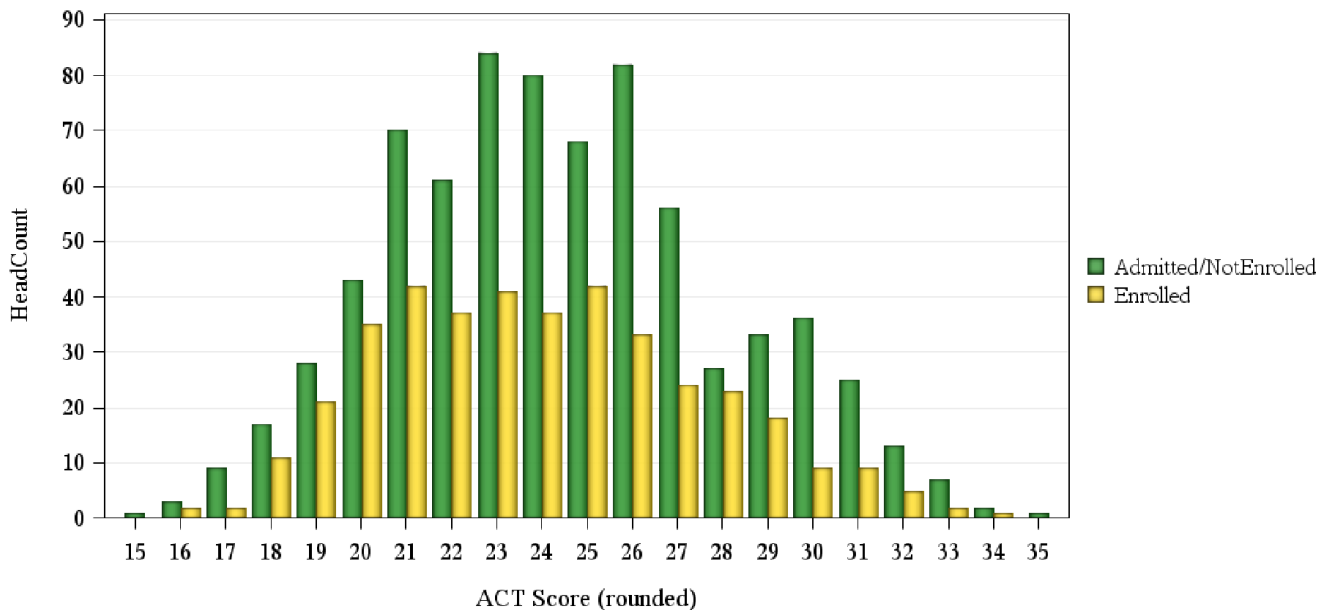
	Not Enrolled (N= 993)				Enrolled (N= 444)			
	Res	Nonres	Total	Percent	Res	Nonres	Total	Percent
ACT Composite								
15-18	18	12	30	3%	14	1	15	3%
19-22	106	96	202	20%	121	14	135	30%
23-26	145	169	314	32%	108	45	153	34%
27-36	80	120	200	20%	61	30	91	20%
Missing Data	6	241	247	25%	6	44	50	11%
Means	24.0	24.9	24.5		23.5	25.3	23.9	
CCHE Index								
0-90	1	1	0%
091-100	42	72	114	11%	40	18	58	13%
101-114	150	256	406	41%	158	54	212	48%
115-160	163	301	464	47%	112	60	172	39%
Missing Data	.	9	9	1%	.	1	1	0%
Means	114	114	114		112	113	112	
HS GPA								
2.0-2.49	1	.	1	0%
2.5-2.99	14	34	48	5%	14	18	32	7%
3.0-3.59	120	241	361	36%	137	44	181	41%
3.6-4.00	155	241	396	40%	109	51	160	36%
4.01-high	65	122	187	19%	50	21	71	16%
Means	3.68	3.65	3.66		3.60	3.56	3.59	
HS Rank								
0-29	6	3	9	1%	6	.	6	1%
30-49	20	14	34	3%	34	6	40	9%
50-59	23	17	40	4%	25	1	26	6%
60-79	60	37	97	10%	77	13	90	20%
80-89	47	31	78	8%	44	7	51	11%
90-100	45	28	73	7%	32	9	41	9%
Missing Data	154	508	662	67%	92	98	190	43%
Means	73.2	72.5	72.9		69.0	73.1	69.6	
SAT Critical Thinking								
400-499	.	14	14	1%	1	1	2	0%
500-599	1	22	23	2%	.	7	7	2%
600-699	.	16	16	2%	.	2	2	0%
700-800	.	1	1	0%
Missing Data	354	585	939	95%	309	124	433	98%
Means	560	550	551		470	541	535	
SAT Math								
0-399	.	1	1	0%
400-499	.	14	14	1%	1	4	5	1%
500-599	.	22	22	2%	.	4	4	1%
600-699	1	15	16	2%	.	2	2	0%
700-800	.	1	1	0%
Missing Data	354	585	939	95%	309	124	433	98%
Means	610	546	547		460	528	522	

Fall 2017 Freshman Profile

Fall 2017 CDHE Index Distribution of Admitted Applicants by Enrollment Status(Health and Human Sciences)



Fall 2017 ACT Composite Distribution of Admitted Applicants by Enrollment Status(Health and Human Sciences)



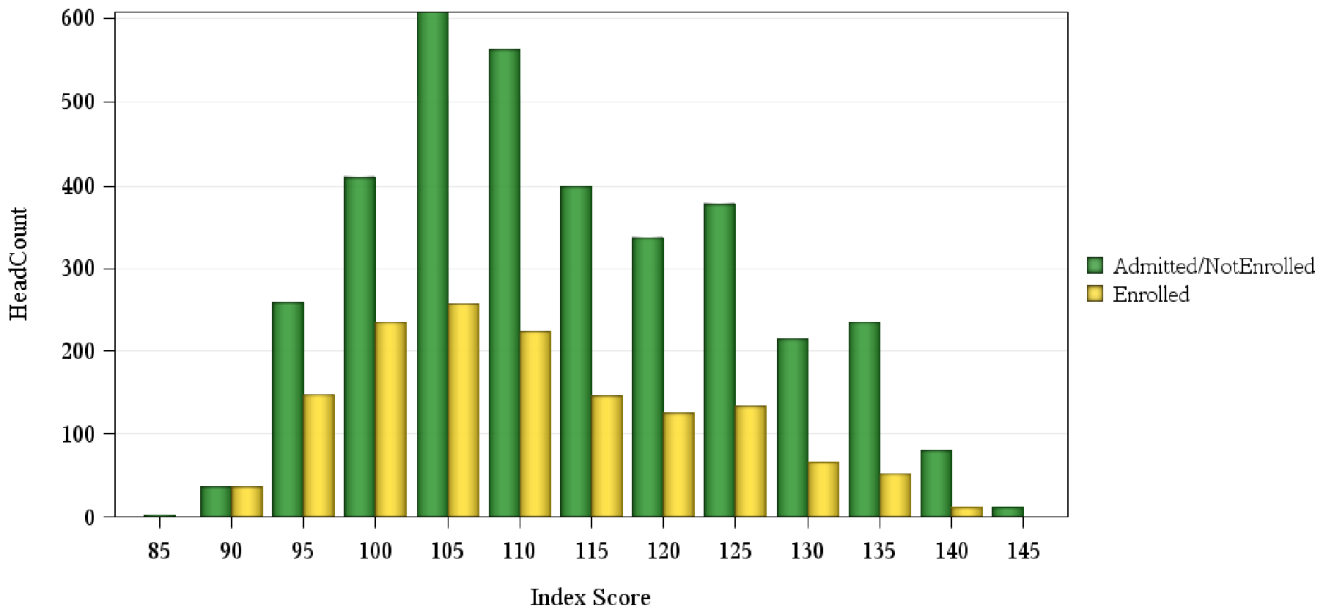
Fall 2017 Freshman Profile

Intra-University Admitted Applicants

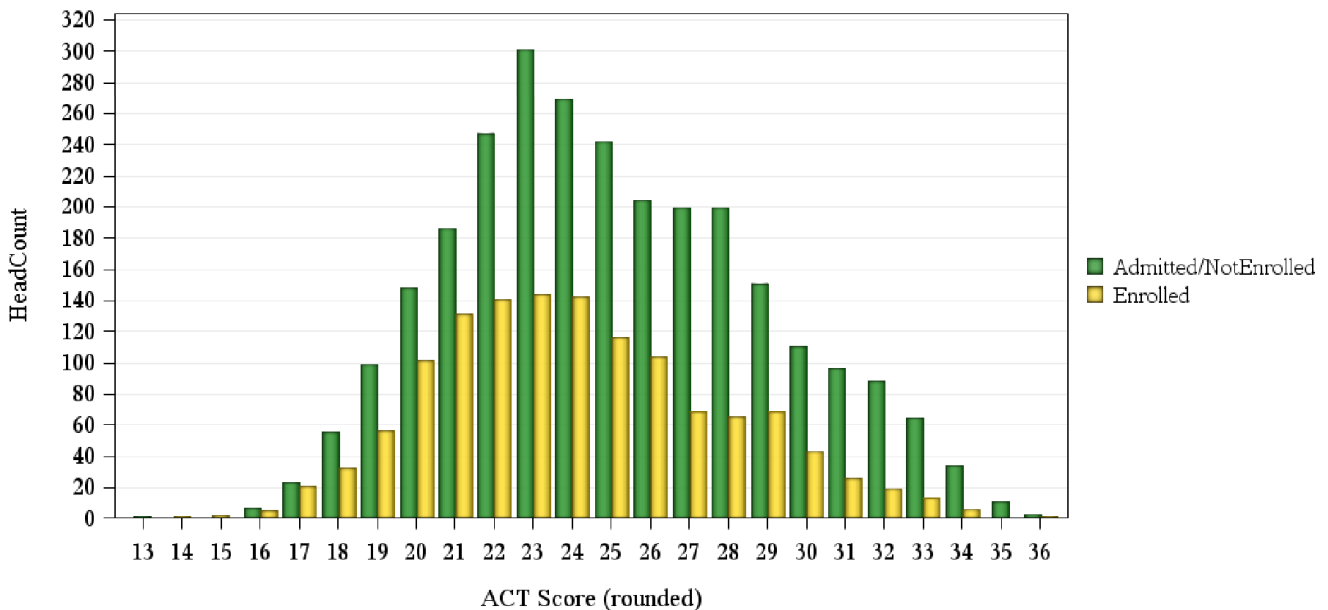
	Not Enrolled (N= 3699)				Enrolled (N= 1482)			
	Res	Nonres	Total	Percent	Res	Nonres	Total	Percent
ACT Composite								
0-14	1	.	1	0%	1	.	1	0%
15-18	54	31	85	2%	51	9	60	4%
19-22	384	296	680	18%	377	52	429	29%
23-26	498	518	1,016	27%	412	94	506	34%
27-36	461	494	955	26%	224	85	309	21%
Missing Data	28	934	962	26%	19	158	177	12%
Means	24.9	25.3	25.1		23.8	25.1	24.0	
CCHE Index								
0-90	3	6	9	0%	13	3	16	1%
091-100	185	301	486	13%	210	71	281	19%
101-114	577	986	1,563	42%	518	149	667	45%
115-160	661	834	1,495	40%	334	142	476	32%
Missing Data	.	146	146	4%	9	33	42	3%
Means	115	113	113		110	111	110	
HS GPA								
2.0-2.49	3	1	4	0%	3	1	4	0%
2.5-2.99	103	276	379	10%	164	71	235	16%
3.0-3.59	569	1,038	1,607	43%	498	166	664	45%
3.6-4.00	439	641	1,080	29%	290	112	402	27%
4.01-high	311	313	624	17%	125	47	172	12%
Missing Data	1	4	5	0%	4	1	5	0%
Means	3.62	3.49	3.54		3.44	3.43	3.43	
HS Rank								
0-29	26	26	52	1%	65	4	69	5%
30-49	115	64	179	5%	171	23	194	13%
50-59	96	64	160	4%	118	15	133	9%
60-79	240	142	382	10%	221	38	259	17%
80-89	142	73	215	6%	108	9	117	8%
90-100	165	87	252	7%	96	17	113	8%
Missing Data	642	1,817	2,459	66%	305	292	597	40%
Means	70.1	66.6	68.8		62.2	64.7	62.5	
SAT Critical Thinking								
0-399	2	9	11	0%	1	3	4	0%
400-499	4	49	53	1%	4	11	15	1%
500-599	3	95	98	3%	6	14	20	1%
600-699	7	49	56	2%	4	4	8	1%
700-800	1	11	12	0%	1	1	2	0%
Missing Data	1,409	2,060	3,469	94%	1,068	365	1,433	97%
Means	549	548	549		554	511	525	
SAT Math								
0-399	.	5	5	0%	.	2	2	0%
400-499	6	45	51	1%	1	3	4	0%
500-599	3	103	106	3%	10	23	33	2%
600-699	7	51	58	2%	5	5	10	1%
700-800	1	9	10	0%
Missing Data	1,409	2,060	3,469	94%	1,068	365	1,433	97%
Means	566	555	556		563	545	551	

Fall 2017 Freshman Profile

Fall 2017 CDHE Index Distribution of Admitted Applicants by Enrollment Status(Intra-University)



Fall 2017 ACT Composite Distribution of Admitted Applicants by Enrollment Status(Intra-University)



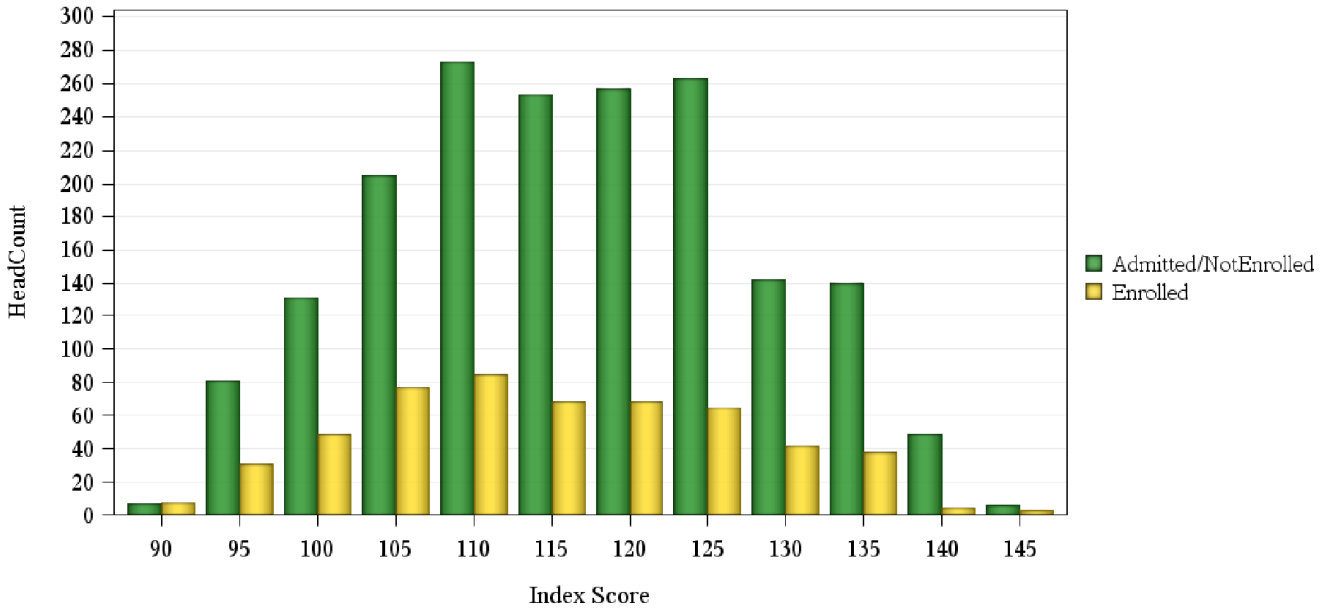
Fall 2017 Freshman Profile

Liberal Arts Admitted Applicants

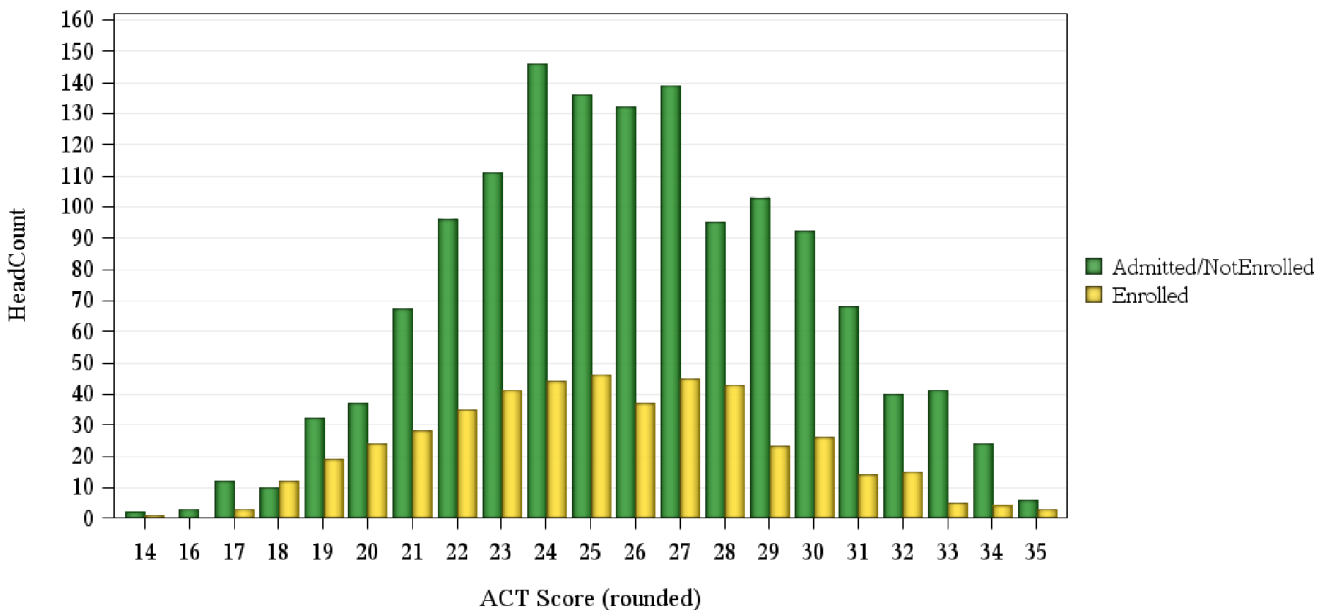
	Not Enrolled (N= 1855)				Enrolled (N= 545)			
	Res	Nonres	Total	Percent	Res	Nonres	Total	Percent
ACT Composite								
0-14	2	.	2	0%	1	.	1	0%
15-18	12	13	25	1%	14	1	15	3%
19-22	108	124	232	13%	97	9	106	19%
23-26	231	294	525	28%	137	31	168	31%
27-36	279	329	608	33%	131	47	178	33%
Missing Data	13	450	463	25%	7	70	77	14%
Means	26.0	26.0	26.0		24.8	26.6	25.2	
CCHE Index								
0-90	.	1	1	0%	1	4	5	1%
091-100	41	110	151	8%	42	13	55	10%
101-114	205	439	644	35%	166	52	218	40%
115-160	399	612	1,011	55%	178	85	263	48%
Missing Data	.	48	48	3%	.	4	4	1%
Means	119	116	117		115	115	115	
HS GPA								
2.0-2.49	1	.	1	0%
2.5-2.99	34	90	124	7%	39	18	57	10%
3.0-3.59	196	475	671	36%	147	65	212	39%
3.6-4.00	247	444	691	37%	143	51	194	36%
4.01-high	168	201	369	20%	57	24	81	15%
Means	3.72	3.60	3.65		3.58	3.54	3.57	
HS Rank								
0-29	13	6	19	1%	13	5	18	3%
30-49	39	38	77	4%	36	13	49	9%
50-59	45	28	73	4%	45	5	50	9%
60-79	104	89	193	10%	86	21	107	20%
80-89	79	60	139	7%	49	6	55	10%
90-100	75	74	149	8%	45	9	54	10%
Missing Data	290	915	1,205	65%	113	99	212	39%
Means	71.6	72.7	72.1		68.1	63.6	67.3	
SAT Critical Thinking								
0-399	.	2	2	0%
400-499	3	17	20	1%	1	3	4	1%
500-599	3	35	38	2%	3	4	7	1%
600-699	6	23	29	2%	2	6	8	1%
700-800	2	13	15	1%	1	.	1	0%
Missing Data	631	1,120	1,751	94%	380	145	525	96%
Means	604	576	580		583	575	578	
SAT Math								
0-399	.	3	3	0%
400-499	4	15	19	1%	2	2	4	1%
500-599	5	46	51	3%	3	9	12	2%
600-699	5	20	25	1%	2	2	4	1%
700-800	.	7	7	0%
Missing Data	631	1,119	1,750	94%	380	145	525	96%
Means	562	555	556		550	541	544	

Fall 2017 Freshman Profile

Fall 2017 CDHE Index Distribution of Admitted Applicants by Enrollment Status(Liberal Arts)



Fall 2017 ACT Composite Distribution of Admitted Applicants by Enrollment Status(Liberal Arts)



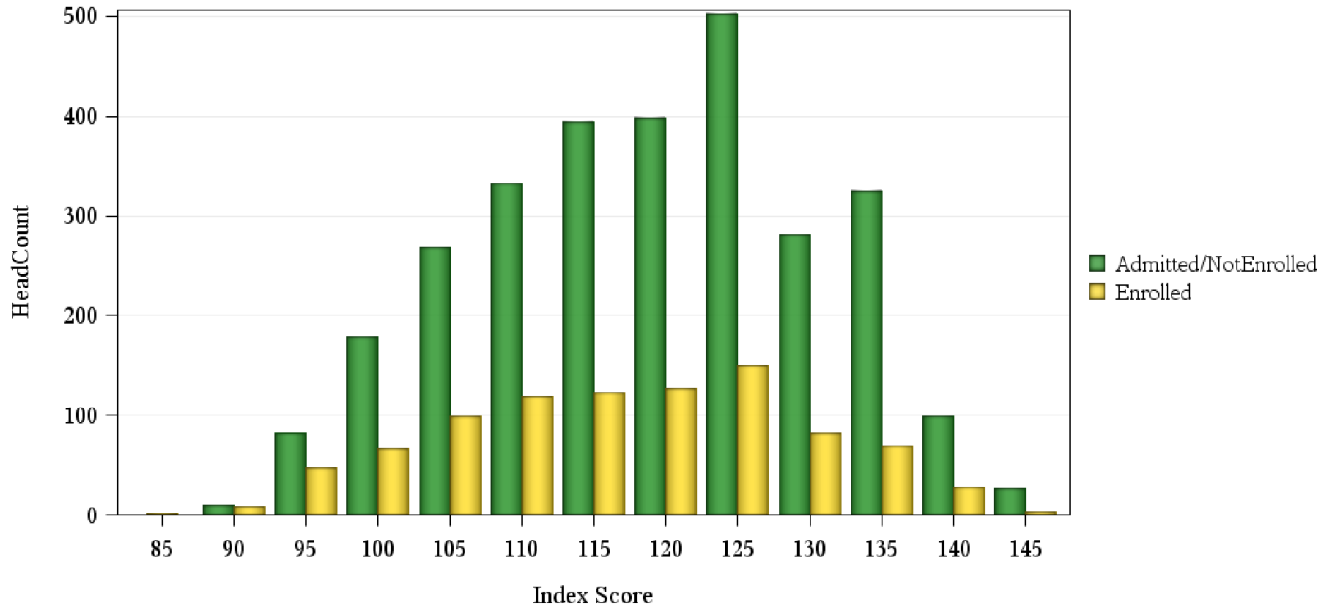
Fall 2017 Freshman Profile

Natural Sciences Admitted Applicants

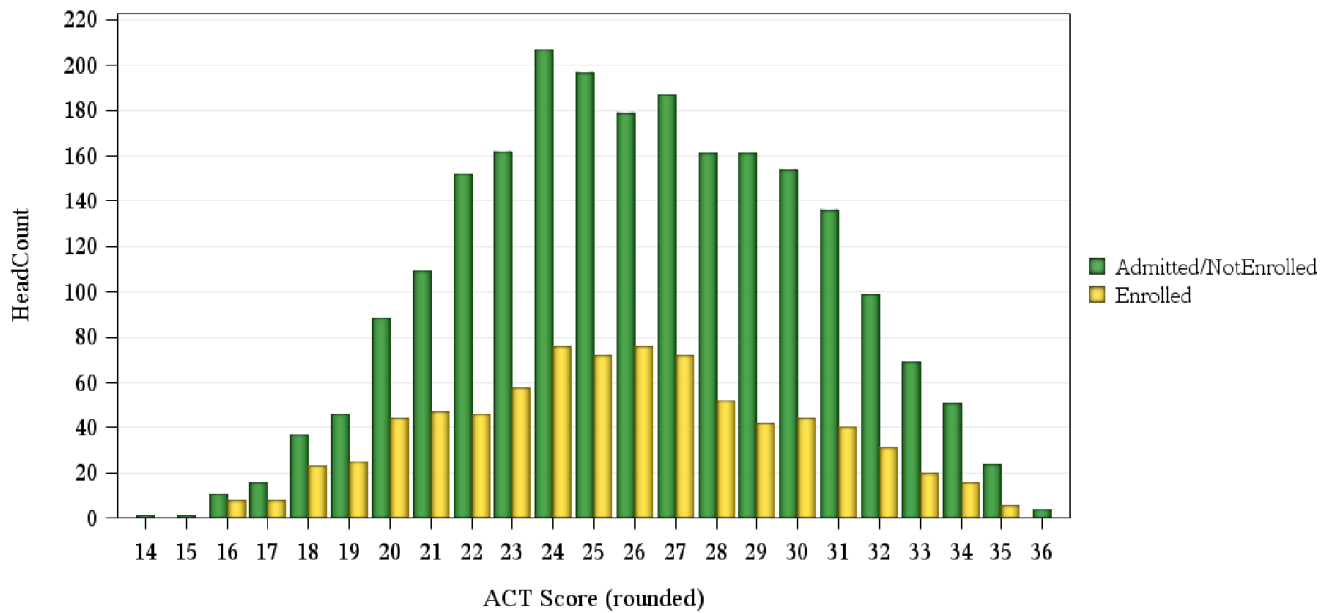
	Not Enrolled (N= 2998)				Enrolled (N= 955)			
	Res	Nonres	Total	Percent	Res	Nonres	Total	Percent
ACT Composite								
0-14	.	1	1	0%
15-18	41	24	65	2%	33	6	39	4%
19-22	206	189	395	13%	137	25	162	17%
23-26	343	402	745	25%	216	66	282	30%
27-36	450	596	1,046	35%	219	104	323	34%
Missing Data	24	722	746	25%	21	128	149	16%
Means	25.8	26.5	26.2		25.2	26.5	25.5	
CCHE Index								
0-90	1	1	2	0%	2	1	3	0%
091-100	64	110	174	6%	61	25	86	9%
101-114	312	533	845	28%	212	80	292	31%
115-160	686	1,199	1,885	63%	345	208	553	58%
Missing Data	1	91	92	3%	6	15	21	2%
Means	119	119	119		116	118	117	
HS GPA								
2.0-2.49	1	.	1	0%	2	1	3	0%
2.5-2.99	27	72	99	3%	38	10	48	5%
3.0-3.59	268	552	820	27%	231	113	344	36%
3.6-4.00	434	792	1,226	41%	226	139	365	38%
4.01-high	334	517	851	28%	128	66	194	20%
Missing Data	.	1	1	0%	1	.	1	0%
Means	3.81	3.76	3.78		3.65	3.69	3.66	
HS Rank								
0-29	8	12	20	1%	12	4	16	2%
30-49	45	29	74	2%	52	18	70	7%
50-59	50	46	96	3%	47	15	62	6%
60-79	154	155	309	10%	155	26	181	19%
80-89	149	113	262	9%	82	29	111	12%
90-100	199	171	370	12%	114	23	137	14%
Missing Data	459	1,408	1,867	62%	164	214	378	40%
Means	78.2	76.0	77.2		72.6	70.7	72.2	
SAT Critical Thinking								
0-399	.	4	4	0%	.	1	1	0%
400-499	4	27	31	1%	1	4	5	1%
500-599	4	85	89	3%	3	20	23	2%
600-699	6	54	60	2%	3	11	14	1%
700-800	2	23	25	1%	.	1	1	0%
Missing Data	1,048	1,741	2,789	93%	619	292	911	95%
Means	583	576	577		571	563	565	
SAT Math								
0-399	.	4	4	0%	1	.	1	0%
400-499	2	33	35	1%	.	7	7	1%
500-599	6	72	78	3%	4	20	24	3%
600-699	7	65	72	2%	2	8	10	1%
700-800	1	19	20	1%	.	2	2	0%
Missing Data	1,048	1,741	2,789	93%	619	292	911	95%
Means	599	578	579		536	561	557	

Fall 2017 Freshman Profile

Fall 2017 CDHE Index Distribution of Admitted Applicants by Enrollment Status(Natural Sciences)



Fall 2017 ACT Composite Distribution of Admitted Applicants by Enrollment Status(Natural Sciences)



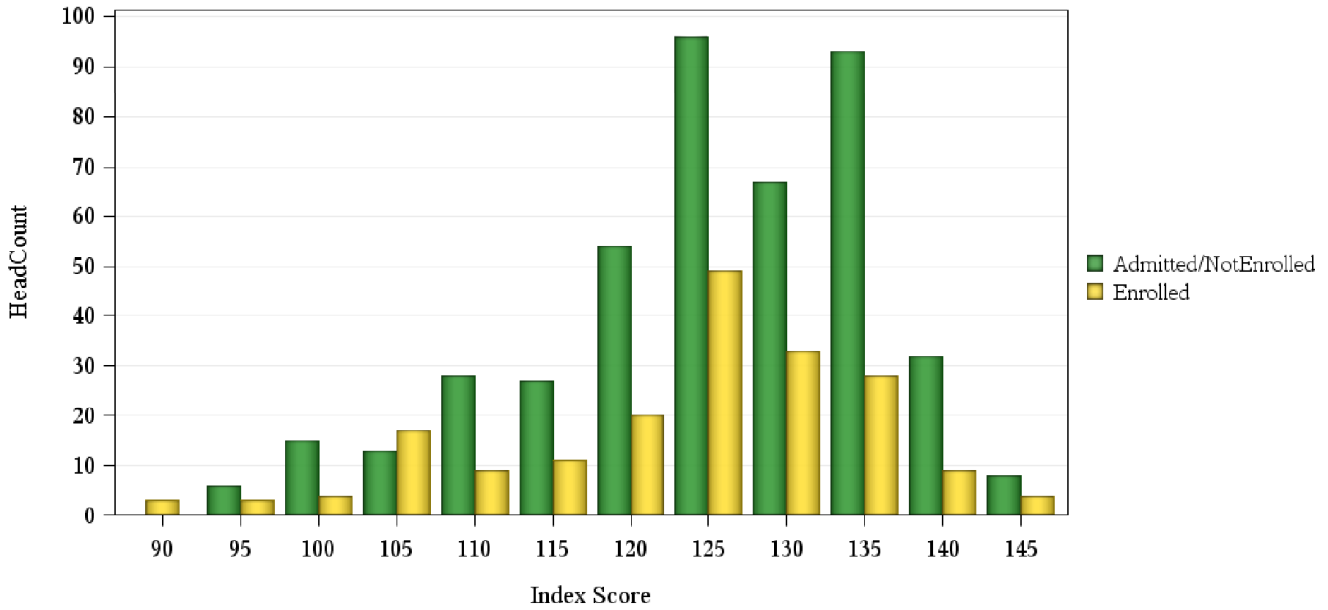
Fall 2017 Freshman Profile

Veterinary Medicine + Biomedical Sci Admitted Applicants

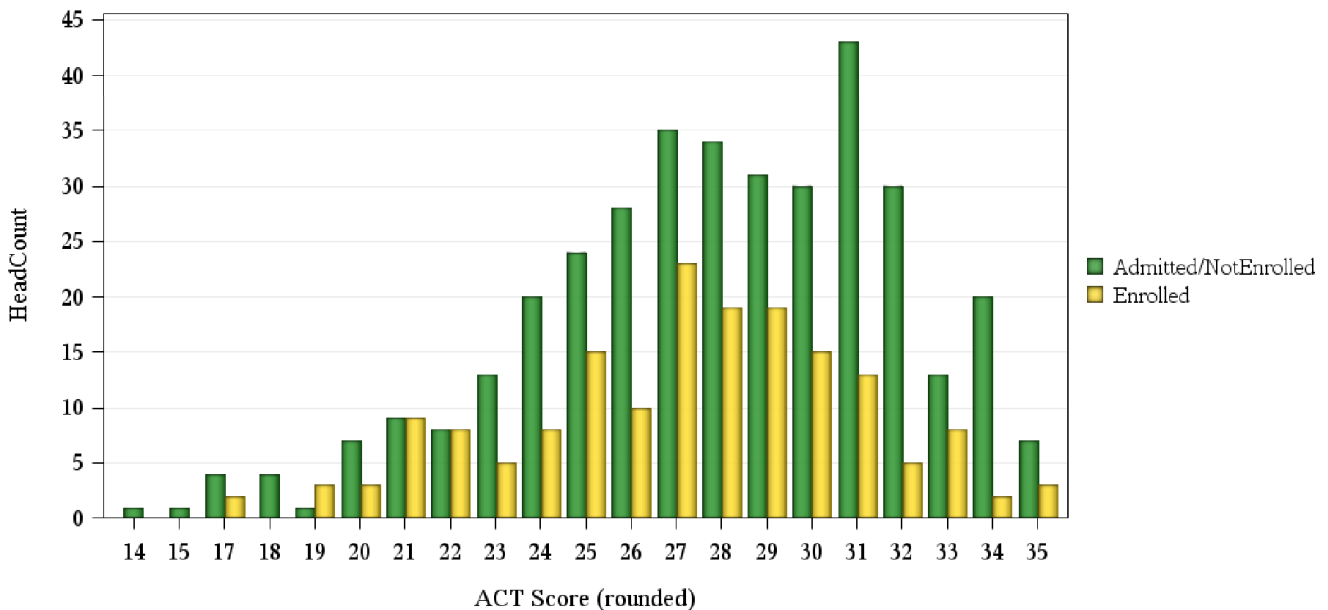
	Not Enrolled (N= 448)				Enrolled (N= 192)			
	Res	Nonres	Total	Percent	Res	Nonres	Total	Percent
ACT Composite								
0-14	1	.	1	0%
15-18	2	7	9	2%	2	.	2	1%
19-22	14	11	25	6%	21	2	23	12%
23-26	42	43	85	19%	28	10	38	20%
27-36	111	132	243	54%	76	31	107	56%
Missing Data	4	81	85	19%	3	19	22	11%
Means	28.0	27.9	27.9		26.8	28.2	27.1	
CCHE Index								
0-90	1	.	1	1%
091-100	4	4	8	2%	7	1	8	4%
101-114	18	42	60	13%	22	10	32	17%
115-160	152	219	371	83%	100	49	149	78%
Missing Data	.	9	9	2%	.	2	2	1%
Means	127	125	125		123	124	123	
HS GPA								
2.5-2.99	1	4	5	1%	4	.	4	2%
3.0-3.59	19	40	59	13%	20	14	34	18%
3.6-4.00	59	120	179	40%	45	20	65	34%
4.01-high	95	110	205	46%	61	28	89	46%
Means	4.06	3.95	3.99		3.97	3.95	3.97	
HS Rank								
0-29	1	1	2	0%	4	.	4	2%
30-49	1	2	3	1%	1	1	2	1%
50-59	3	4	7	2%	6	1	7	4%
60-79	17	15	32	7%	19	4	23	12%
80-89	20	17	37	8%	24	6	30	16%
90-100	39	31	70	16%	39	9	48	25%
Missing Data	93	204	297	66%	37	41	78	41%
Means	84.9	82.8	83.9		81.7	82.6	81.8	
SAT Critical Thinking								
400-499	1	5	6	1%
500-599	1	9	10	2%	.	4	4	2%
600-699	3	16	19	4%	.	3	3	2%
700-800	.	4	4	1%	1	.	1	1%
Missing Data	169	240	409	91%	129	55	184	96%
Means	572	591	589		770	574	599	
SAT Math								
400-499	.	2	2	0%
500-599	4	11	15	3%	.	4	4	2%
600-699	1	18	19	4%	.	3	3	2%
700-800	.	3	3	1%	1	.	1	1%
Missing Data	169	240	409	91%	129	55	184	96%
Means	580	602	599		800	593	619	

Fall 2017 Freshman Profile

Fall 2017 CDHE Index Distribution of Admitted Applicants by Enrollment Status(Veterinary Medicine + Biomedical Sci)



Fall 2017 ACT Composite Distribution of Admitted Applicants by Enrollment Status(Veterinary Medicine + Biomedical Sci)



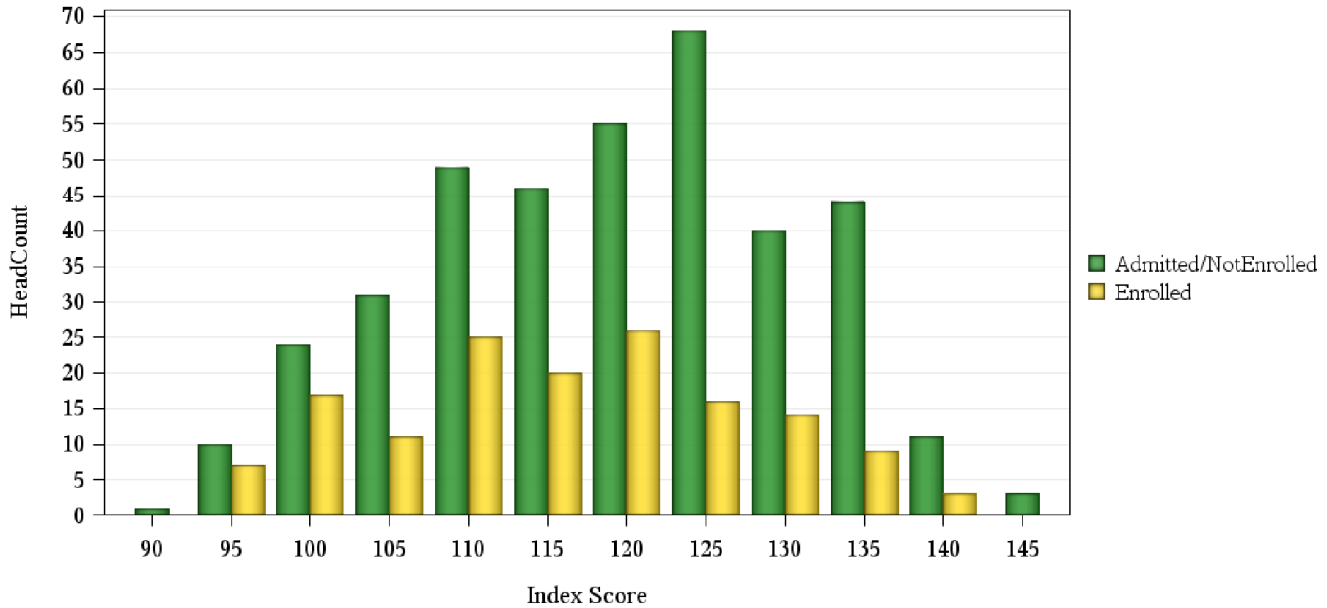
Fall 2017 Freshman Profile

Warner College of Natural Resources Admitted Applicants

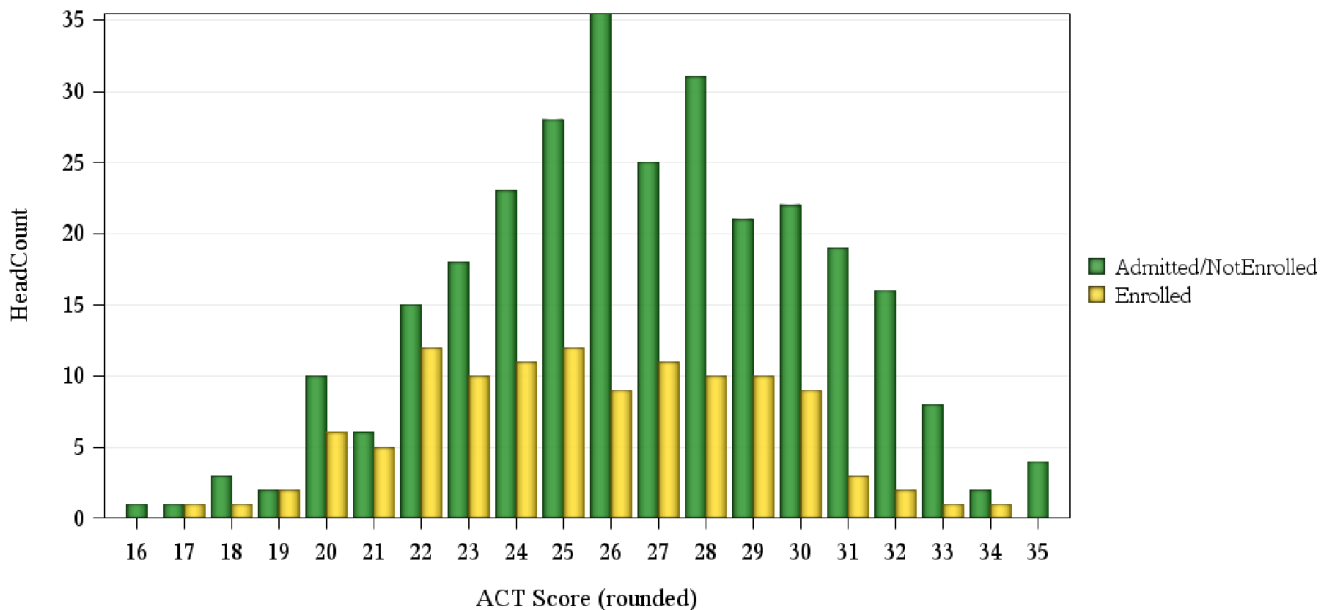
	Not Enrolled (N= 384)				Enrolled (N= 152)			
	Res	Nonres	Total	Percent	Res	Nonres	Total	Percent
ACT Composite								
15-18	2	3	5	1%	1	1	2	1%
19-22	11	22	33	9%	16	9	25	16%
23-26	36	69	105	27%	22	20	42	28%
27-36	30	118	148	39%	27	20	47	31%
Missing Data	4	89	93	24%	4	32	36	24%
Means	25.9	27.0	26.7		25.3	25.7	25.4	
CCHE Index								
091-100	3	20	23	6%	12	8	20	13%
101-114	28	80	108	28%	24	22	46	30%
115-160	52	199	251	65%	33	49	82	54%
Missing Data	.	2	2	1%	1	3	4	3%
Means	118	120	119		114	117	116	
HS GPA								
2.0-2.49	1	1	1%
2.5-2.99	2	19	21	5%	7	3	10	7%
3.0-3.59	24	77	101	26%	29	31	60	39%
3.6-4.00	34	128	162	42%	22	30	52	34%
4.01-high	23	77	100	26%	12	16	28	18%
Missing Data	1	1	1%
Means	3.77	3.74	3.75		3.55	3.65	3.60	
HS Rank								
0-29	2	2	4	1%	4	1	5	3%
30-49	2	9	11	3%	8	3	11	7%
50-59	2	19	21	5%	7	2	9	6%
60-79	11	24	35	9%	8	7	15	10%
80-89	13	19	32	8%	9	7	16	11%
90-100	14	25	39	10%	11	7	18	12%
Missing Data	39	203	242	63%	23	55	78	51%
Means	78.2	73.1	74.7		67.0	74.1	69.6	
SAT Critical Thinking								
0-399	.	1	1	0%
400-499	.	5	5	1%	1	.	1	1%
500-599	.	15	15	4%	.	3	3	2%
600-699	.	6	6	2%	.	6	6	4%
700-800	.	5	5	1%
Missing Data	83	269	352	92%	69	73	142	93%
Means	.	580	580		490	594	584	
SAT Math								
0-399	1	1	1%
400-499	.	6	6	2%	1	2	3	2%
500-599	.	15	15	4%	.	3	3	2%
600-699	.	11	11	3%	.	3	3	2%
Missing Data	83	269	352	92%	69	73	142	93%
Means	.	565	565		420	522	512	

Fall 2017 Freshman Profile

Fall 2017 CDHE Index Distribution of Admitted Applicants by Enrollment Status(Warner College of Natural Resources)



Fall 2017 ACT Composite Distribution of Admitted Applicants by Enrollment Status(Warner College of Natural Resources)



First-Year CSU GPA

Fall 2016 Cohort

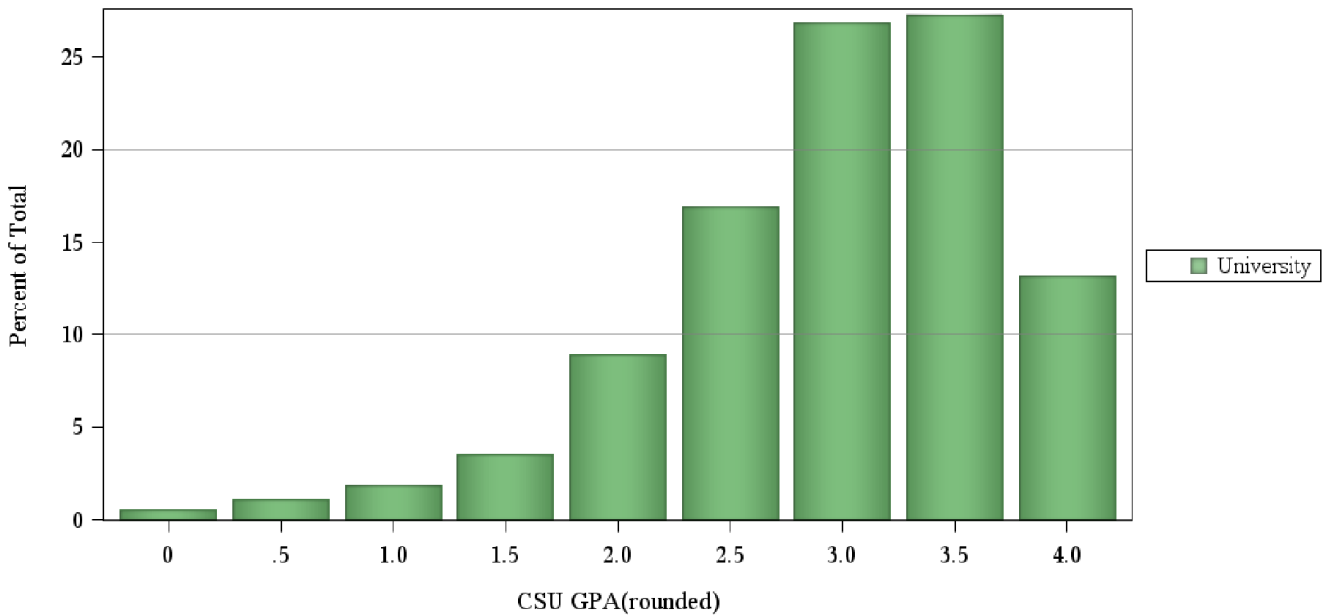
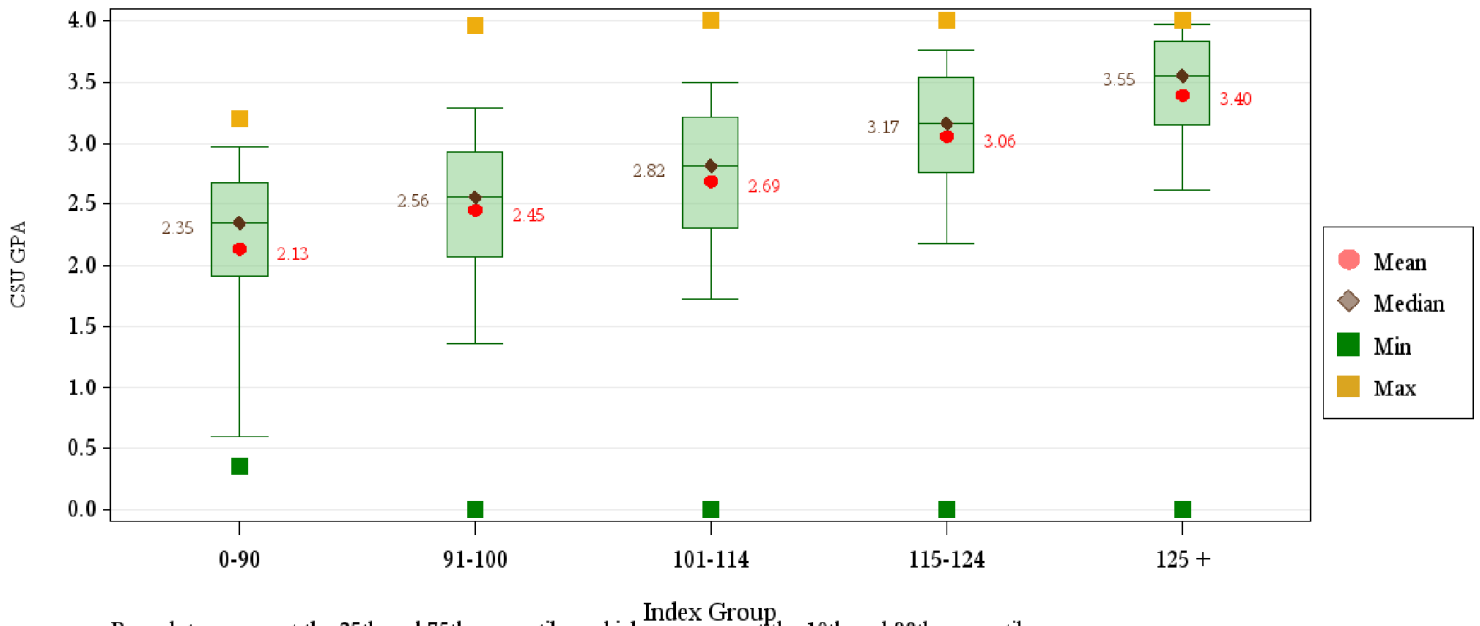
First-Year CSU GPA (Fall 2016 Cohort) by Admission Score

University Summary

	CSU GPA				Total
	0.0-1.9	2.0-2.9	3.0-3.5	3.6-high	
Total	476	1,543	1,556	955	4,530
HS GPA					
2.0-2.49	6	2	1	0	9
2.5-2.99	87	175	57	9	328
3.0-3.59	272	746	497	106	1,621
3.6-4.00	96	517	692	405	1,710
4.01-high	14	103	309	434	860
Missing Data	1	0	0	1	2
HS Rank					
0-29	22	44	14	2	82
30-49	81	218	98	22	419
50-59	57	155	124	20	356
60-79	114	362	358	146	980
80-89	31	164	231	161	587
90-100	22	108	232	313	675
Missing Data	149	492	499	291	1,431
SAT Critical Thinking					
0-399	0	7	6	1	14
400-499	27	106	51	11	195
500-599	47	149	179	76	451
600-699	31	82	113	119	345
700-800	10	19	11	27	67
Missing Data	361	1,180	1,196	721	3,458
SAT Math					
0-399	0	6	1	1	8
400-499	27	85	51	7	170
500-599	54	174	171	71	470
600-699	31	85	116	124	356
700-800	3	13	21	31	68
Missing Data	361	1,180	1,196	721	3,458
ACT Composite					
15-18	16	69	20	3	108
19-22	111	392	274	65	842
23-26	168	564	582	256	1,570
27-36	114	320	489	536	1,459
Missing Data	67	198	191	95	551
CDHE Index					
0-90	7	14	2	0	23
091-100	92	236	80	11	419
101-114	243	724	531	108	1,606
115-160	127	550	929	823	2,429
Missing Data	7	19	14	13	53

First-Year CSU GPA (Fall 2016 Cohort) by Admission Score

University Summary

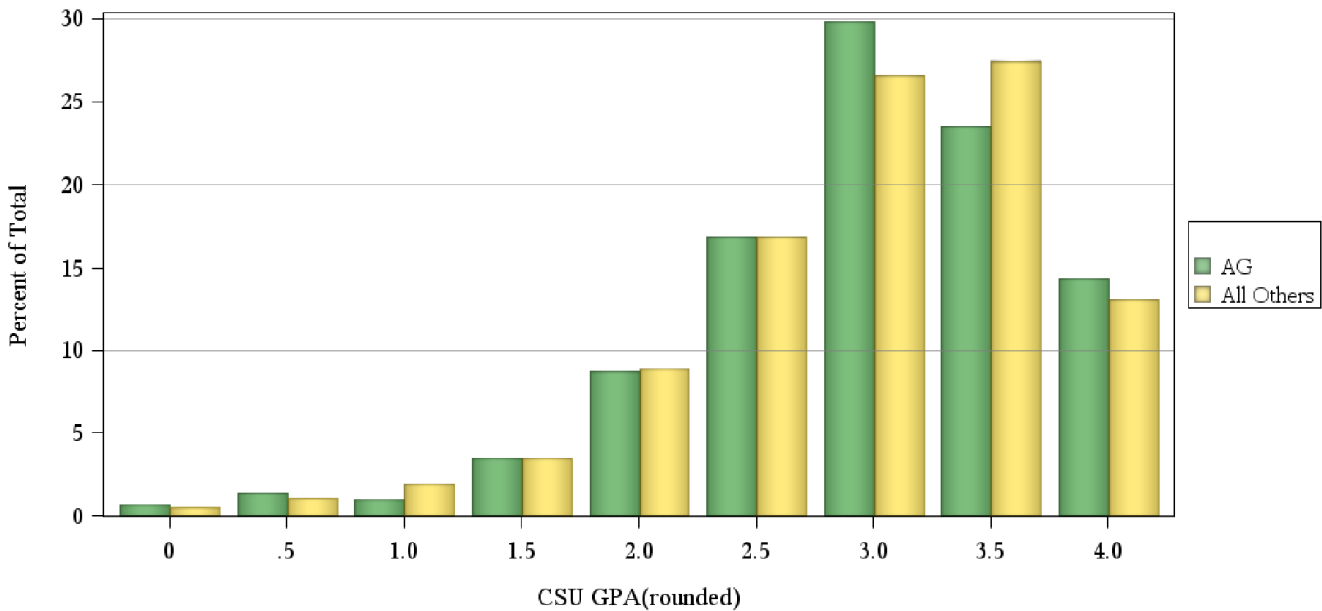
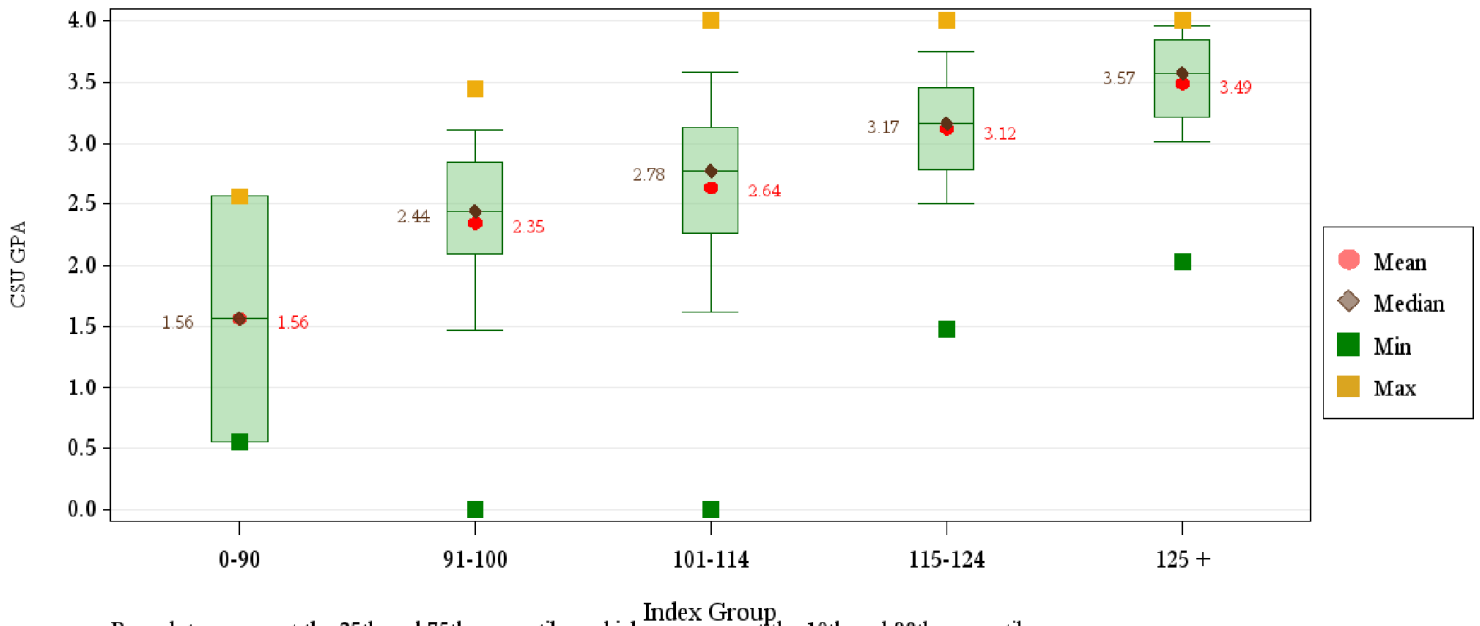


First-Year CSU GPA (Fall 2016 Cohort) by Admission Score
Agricultural Sciences

	CSU GPA				Total
	0.0-1.9	2.0-2.9	3.0-3.5	3.6-high	
Total	28	104	97	59	288
HS GPA					
2.5-2.99	6	6	1	1	14
3.0-3.59	18	51	23	6	98
3.6-4.00	3	43	46	26	118
4.01-high	1	4	27	26	58
HS Rank					
0-29	1	2	0	0	3
30-49	5	9	1	0	15
50-59	5	6	6	1	18
60-79	5	31	24	3	63
80-89	0	10	12	5	27
90-100	3	5	21	18	47
Missing Data	9	41	33	32	115
SAT Critical Thinking					
0-399	0	1	0	1	2
400-499	5	18	3	1	27
500-599	3	14	18	9	44
600-699	1	9	14	10	34
700-800	0	0	1	6	7
Missing Data	19	62	61	32	174
SAT Math					
0-399	0	1	0	0	1
400-499	4	9	5	1	19
500-599	4	26	20	8	58
600-699	1	5	11	13	30
700-800	0	1	0	5	6
Missing Data	19	62	61	32	174
ACT Composite					
15-18	0	5	0	0	5
19-22	11	31	19	6	67
23-26	7	30	29	13	79
27-36	2	11	28	26	67
Missing Data	8	27	21	14	70
CDHE Index					
0-90	1	1	0	0	2
091-100	5	15	4	0	24
101-114	20	56	30	11	117
115-160	1	32	62	47	142
Missing Data	1	0	1	1	3

First-Year CSU GPA (Fall 2016 Cohort) by Admission Score

Agricultural Sciences

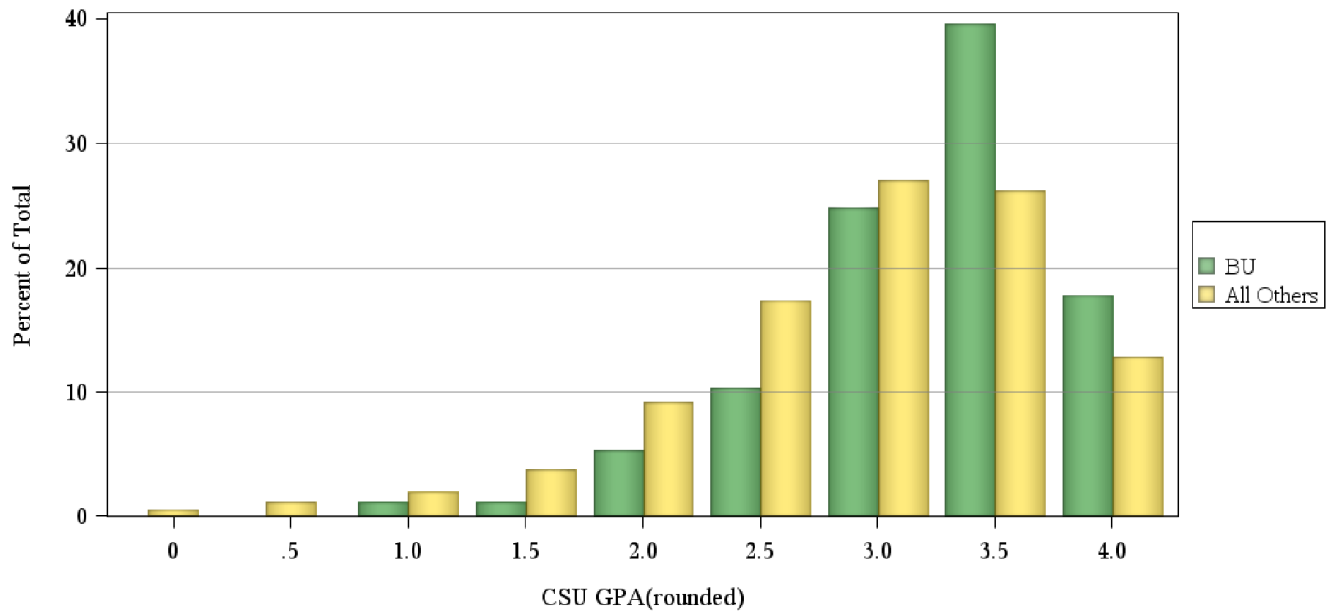
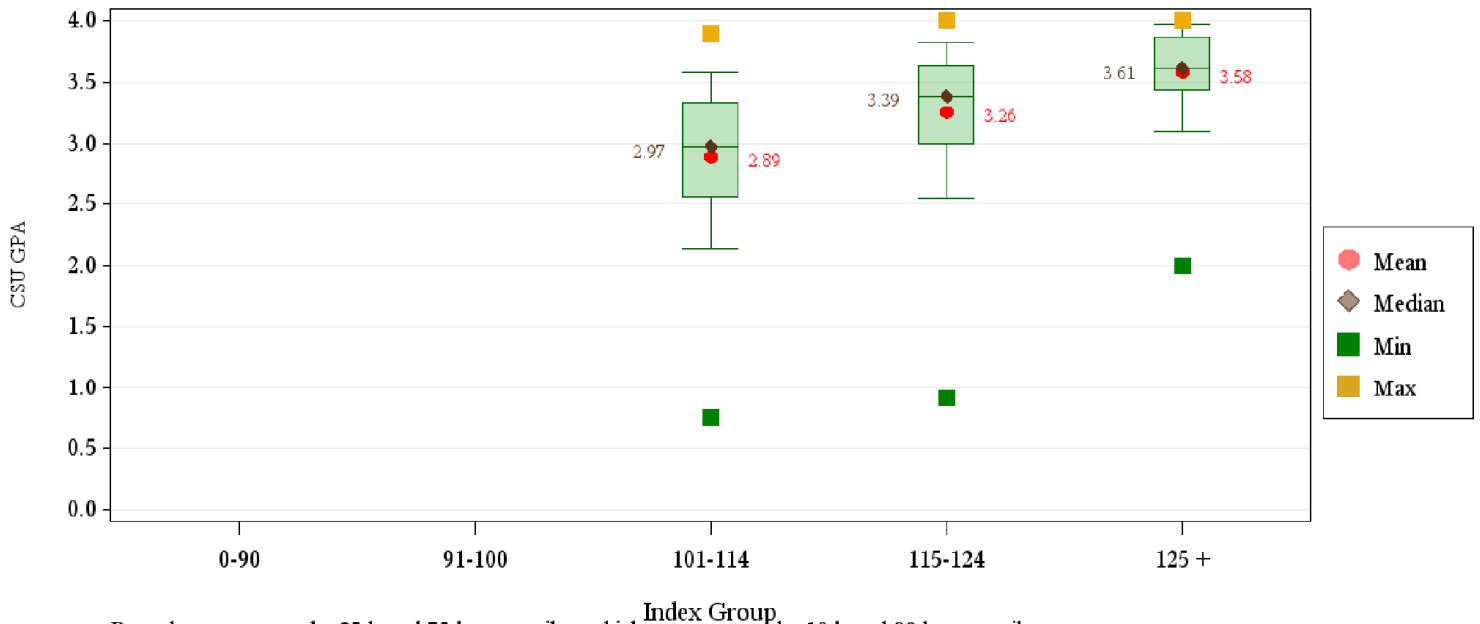


First-Year CSU GPA (Fall 2016 Cohort) by Admission Score
Business

	CSU GPA				Total
	0.0-1.9	2.0-2.9	3.0-3.5	3.6-high	
Total	16	84	151	108	359
HS GPA					
2.5-2.99	2	1	0	0	3
3.0-3.59	8	44	39	13	104
3.6-4.00	4	33	89	64	190
4.01-high	2	6	23	30	61
Missing Data	0	0	0	1	1
HS Rank					
0-29	0	1	0	0	1
30-49	2	8	7	3	20
50-59	2	10	14	4	30
60-79	7	30	47	23	107
80-89	1	11	28	28	68
90-100	1	4	13	18	36
Missing Data	3	20	42	32	97
SAT Critical Thinking					
400-499	0	6	5	0	11
500-599	1	4	27	7	39
600-699	2	6	5	10	23
700-800	0	3	1	0	4
Missing Data	13	65	113	91	282
SAT Math					
400-499	0	3	4	0	7
500-599	2	9	20	6	37
600-699	1	5	14	11	31
700-800	0	2	0	0	2
Missing Data	13	65	113	91	282
ACT Composite					
19-22	1	7	13	4	25
23-26	10	43	74	40	167
27-36	5	20	46	54	125
Missing Data	0	14	18	10	42
CDHE Index					
101-114	8	45	43	8	104
115-160	8	39	108	100	255

First-Year CSU GPA (Fall 2016 Cohort) by Admission Score

Business

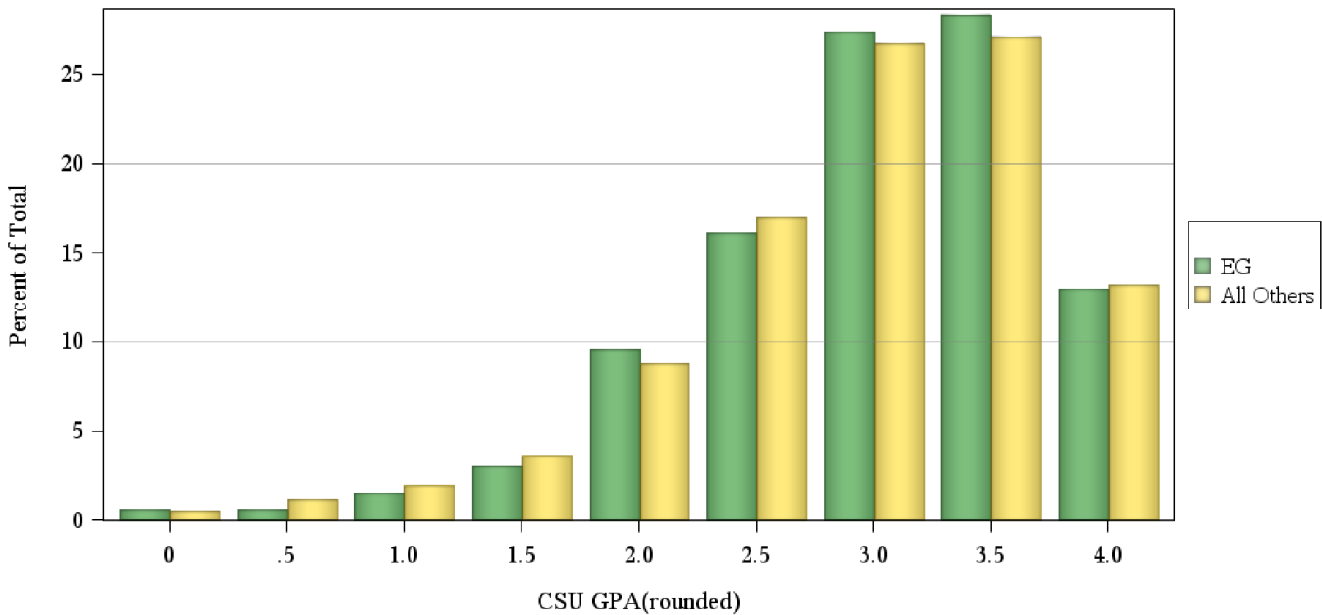
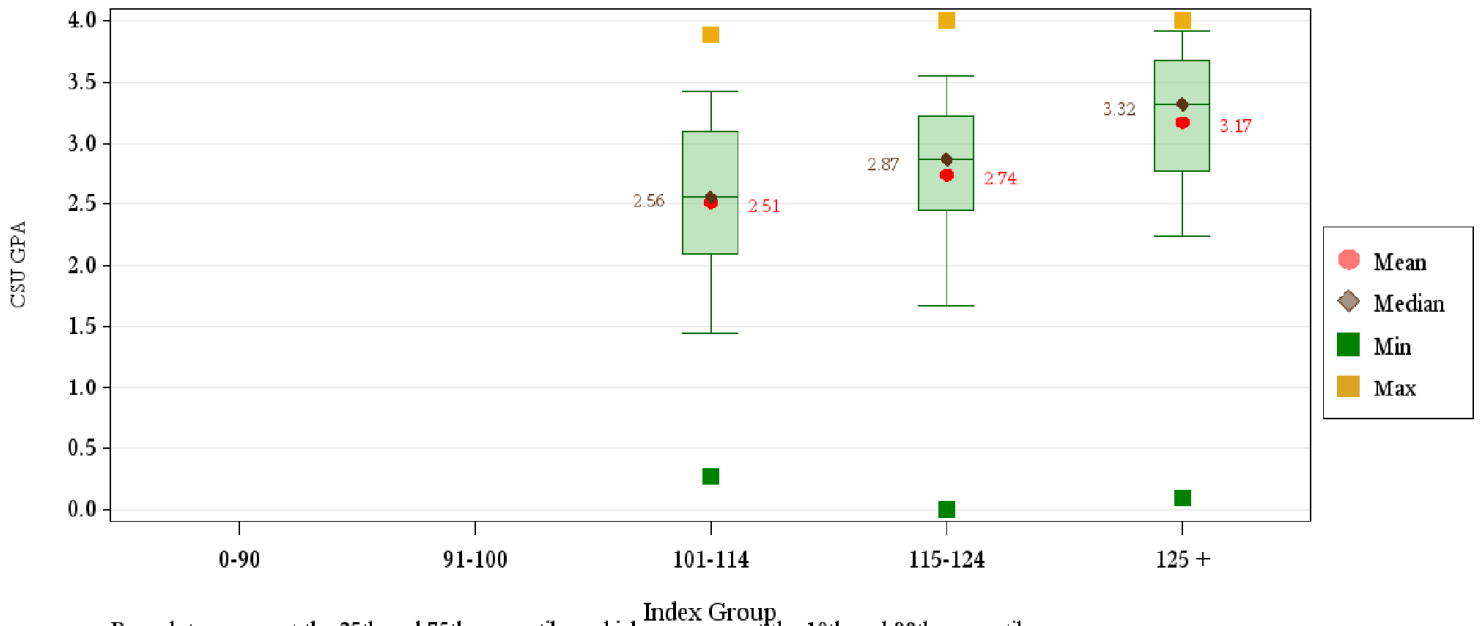


First-Year CSU GPA (Fall 2016 Cohort) by Admission Score
Engineering

	CSU GPA				Total
	0.0-1.9	2.0-2.9	3.0-3.5	3.6-high	
Total	45	186	183	109	523
HS GPA					
3.0-3.59	23	34	17	3	77
3.6-4.00	17	113	86	36	252
4.01-high	5	39	80	70	194
HS Rank					
30-49	2	2	1	0	5
50-59	4	10	2	0	16
60-79	19	48	32	8	107
80-89	5	35	30	10	80
90-100	5	33	60	51	149
Missing Data	10	58	58	40	166
SAT Critical Thinking					
0-399	0	0	1	0	1
400-499	0	10	2	1	13
500-599	1	18	23	14	56
600-699	5	23	21	16	65
700-800	2	2	4	2	10
Missing Data	37	133	132	76	378
SAT Math					
400-499	0	1	0	0	1
500-599	2	19	7	5	33
600-699	5	28	32	20	85
700-800	1	5	12	8	26
Missing Data	37	133	132	76	378
ACT Composite					
19-22	2	9	5	2	18
23-26	10	67	43	12	132
27-36	30	91	119	79	319
Missing Data	3	19	16	16	54
CDHE Index					
101-114	10	30	15	4	59
115-160	35	156	168	105	464

First-Year CSU GPA (Fall 2016 Cohort) by Admission Score

Engineering

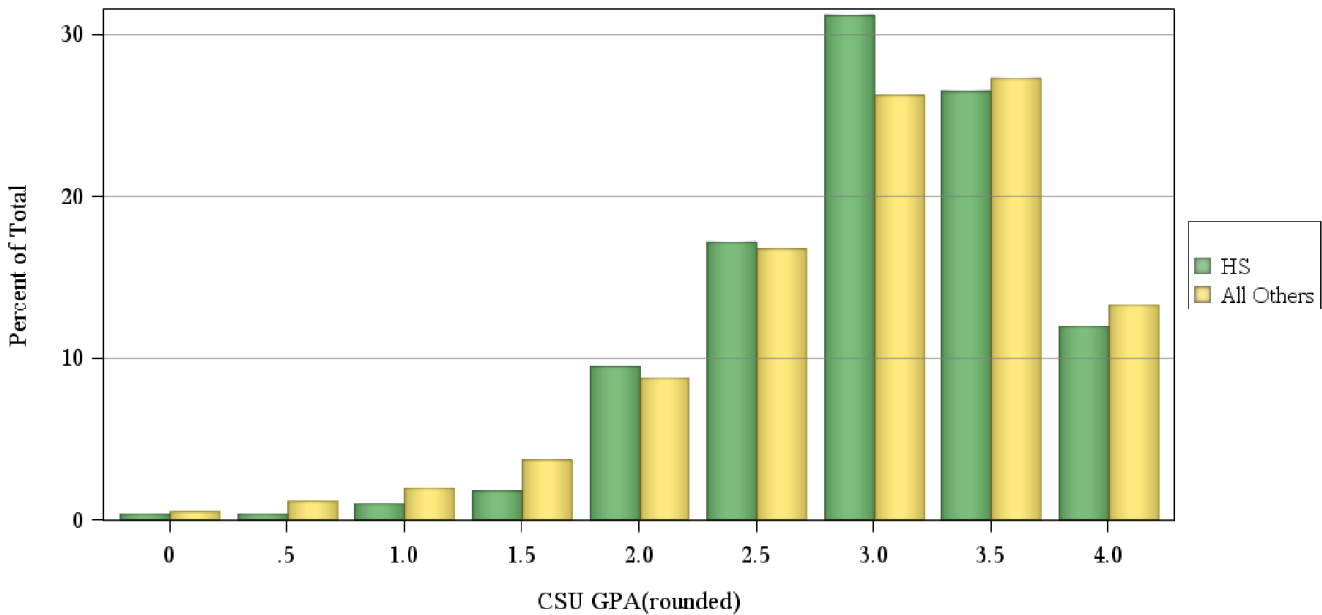
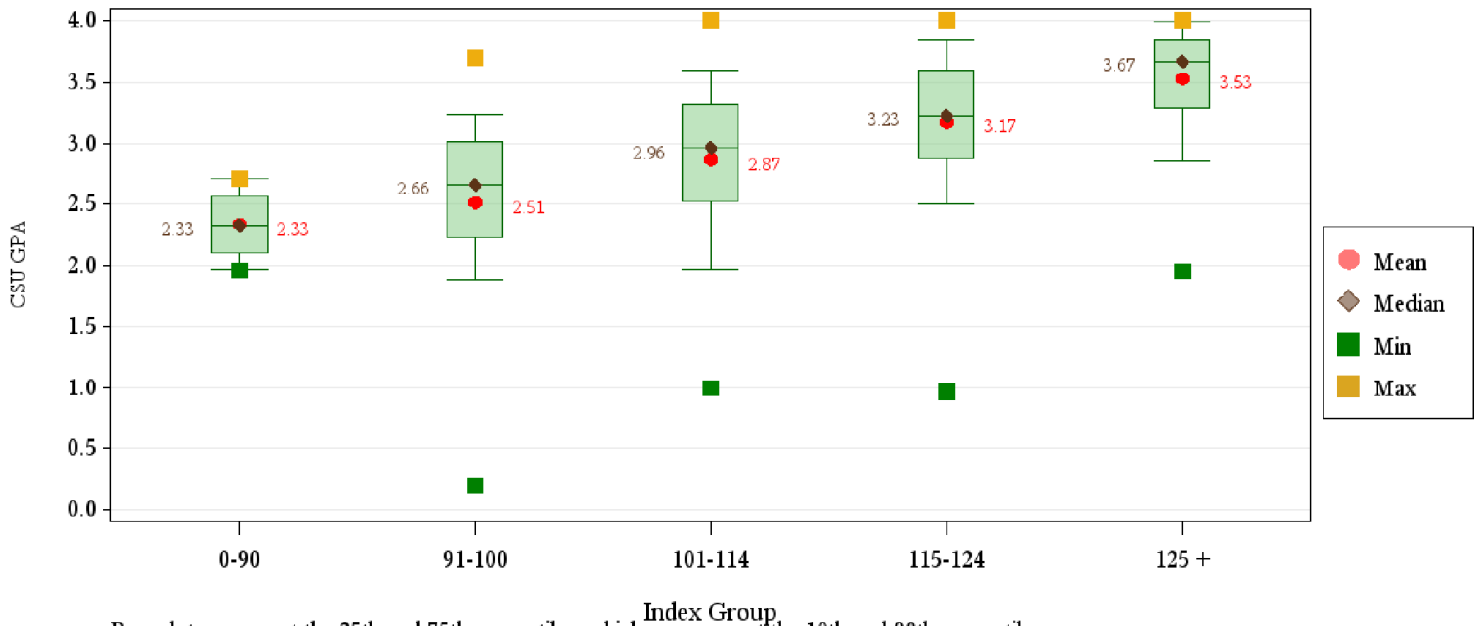


First-Year CSU GPA (Fall 2016 Cohort) by Admission Score**Health and Human Sciences**

	CSU GPA				Total
	0.0-1.9	2.0-2.9	3.0-3.5	3.6-high	
Total	38	184	174	101	497
HS GPA					
2.5-2.99	11	21	11	0	43
3.0-3.59	21	102	72	15	210
3.6-4.00	4	57	70	49	180
4.01-high	2	4	21	37	64
HS Rank					
0-29	3	7	0	1	11
30-49	7	27	16	3	53
50-59	3	29	20	2	54
60-79	10	35	37	13	95
80-89	1	19	25	25	70
90-100	2	8	11	28	49
Missing Data	12	59	65	29	165
SAT Critical Thinking					
0-399	0	1	1	0	2
400-499	3	7	7	2	19
500-599	8	18	13	11	50
600-699	0	8	11	7	26
700-800	0	2	0	1	3
Missing Data	27	148	142	80	397
SAT Math					
0-399	0	1	0	0	1
400-499	4	12	3	0	19
500-599	5	13	21	15	54
600-699	2	9	7	6	24
700-800	0	1	1	0	2
Missing Data	27	148	142	80	397
ACT Composite					
15-18	1	14	4	1	20
19-22	13	66	49	12	140
23-26	16	67	78	33	194
27-36	2	17	25	45	89
Missing Data	6	20	18	10	54
CDHE Index					
0-90	1	3	0	0	4
091-100	9	45	17	1	72
101-114	22	91	83	20	216
115-160	5	44	74	79	202
Missing Data	1	1	0	1	3

First-Year CSU GPA (Fall 2016 Cohort) by Admission Score

Health and Human Sciences

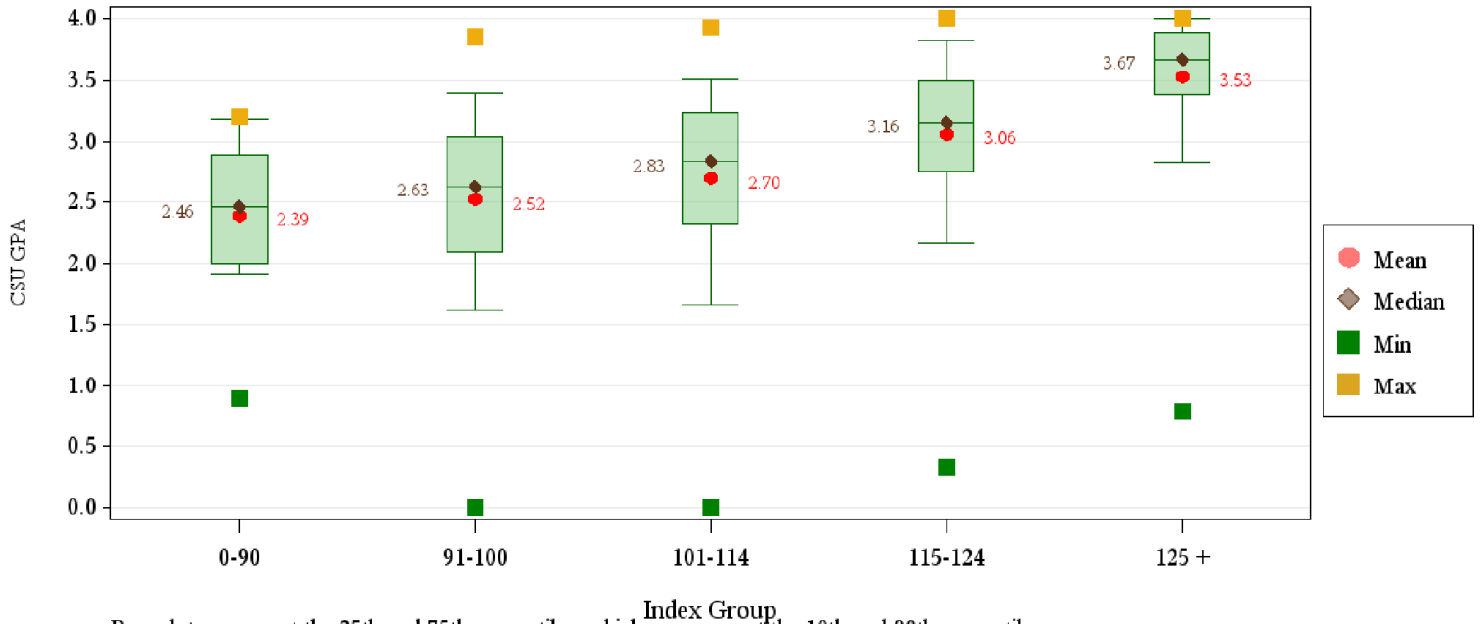


First-Year CSU GPA (Fall 2016 Cohort) by Admission Score
Intra-University

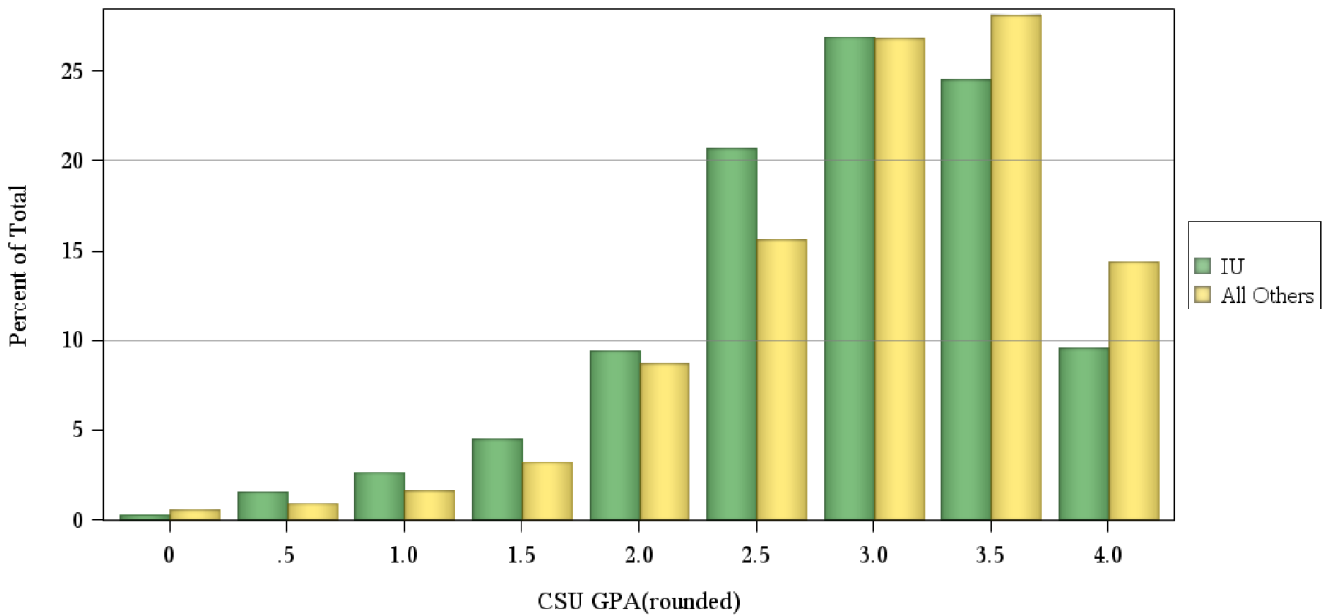
	CSU GPA				Total
	0.0-1.9	2.0-2.9	3.0-3.5	3.6-high	
Total	138	421	355	183	1,097
HS GPA					
2.0-2.49	5	1	0	0	6
2.5-2.99	32	88	24	4	148
3.0-3.59	81	238	171	35	525
3.6-4.00	19	80	127	74	300
4.01-high	1	14	33	70	118
HS Rank					
0-29	11	25	6	0	42
30-49	34	88	39	10	171
50-59	11	50	41	6	108
60-79	24	83	81	32	220
80-89	6	24	35	27	92
90-100	5	18	35	56	114
Missing Data	47	133	118	52	350
SAT Critical Thinking					
0-399	0	3	3	0	6
400-499	8	32	17	3	60
500-599	13	27	28	10	78
600-699	4	6	12	10	32
700-800	2	6	0	6	14
Missing Data	111	347	295	154	907
SAT Math					
0-399	0	2	0	0	2
400-499	7	24	16	1	48
500-599	16	34	35	8	93
600-699	4	13	7	16	40
700-800	0	1	2	4	7
Missing Data	111	347	295	154	907
ACT Composite					
15-18	3	26	10	2	41
19-22	36	144	108	21	309
23-26	55	143	139	59	396
27-36	20	60	59	88	227
Missing Data	24	48	39	13	124
CDHE Index					
0-90	2	7	2	0	11
091-100	36	97	39	7	179
101-114	79	230	187	36	532
115-160	17	75	122	133	347
Missing Data	4	12	5	7	28

First-Year CSU GPA (Fall 2016 Cohort) by Admission Score

Intra-University



Box plots represent the 25th and 75th percentiles; whiskers represent the 10th and 90th percentiles.

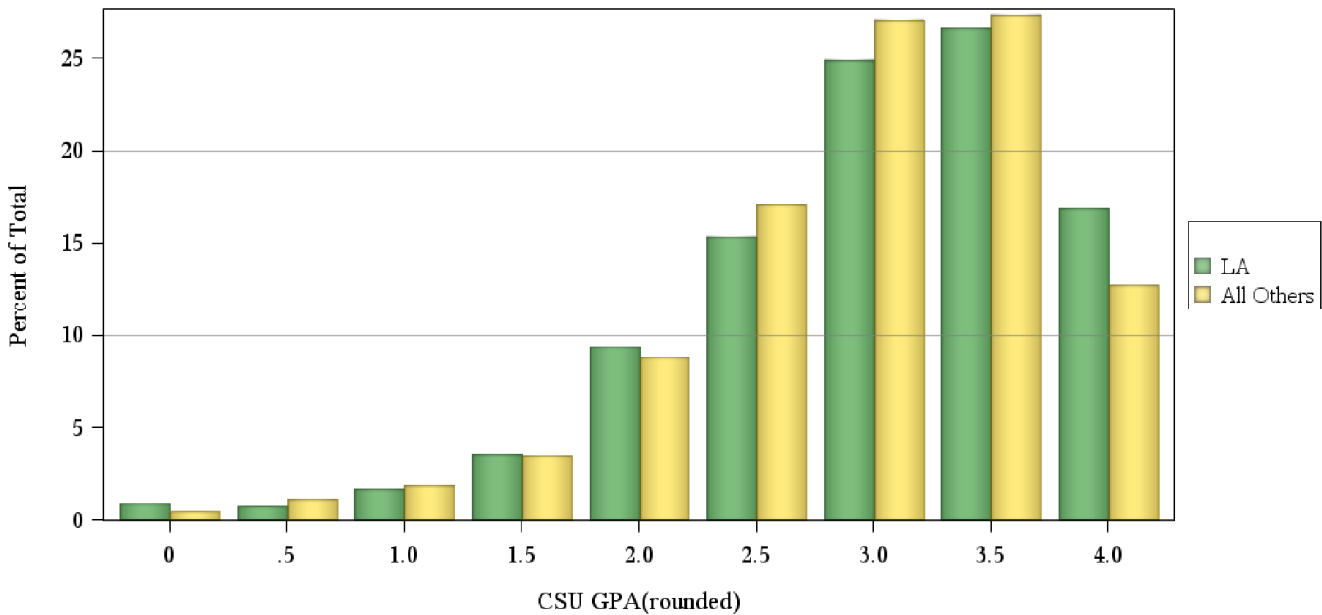
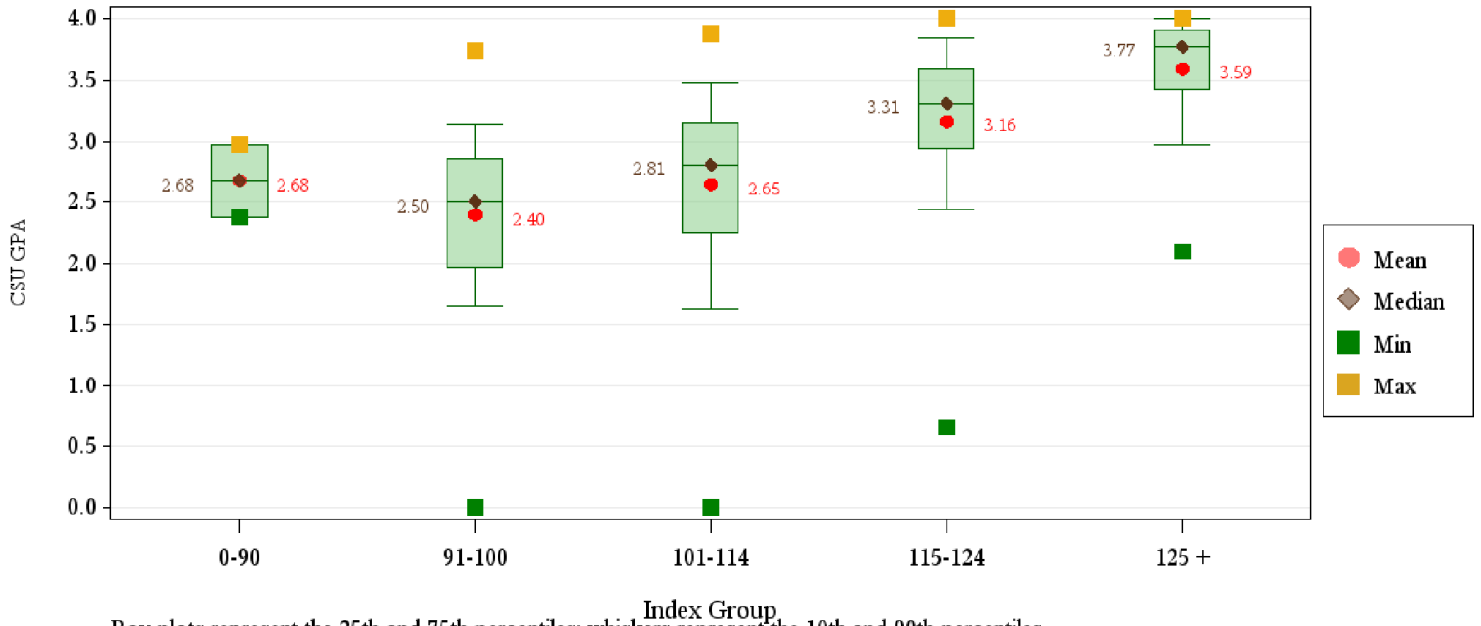


First-Year CSU GPA (Fall 2016 Cohort) by Admission Score
Liberal Arts

	CSU GPA				Total
	0.0-1.9	2.0-2.9	3.0-3.5	3.6-high	
Total	59	171	179	132	541
HS GPA					
2.0-2.49	1	0	0	0	1
2.5-2.99	13	26	6	2	47
3.0-3.59	35	95	74	9	213
3.6-4.00	10	44	74	55	183
4.01-high	0	6	25	66	97
HS Rank					
0-29	3	5	2	0	10
30-49	9	37	9	5	60
50-59	13	15	20	3	51
60-79	11	35	46	24	116
80-89	3	18	26	19	66
90-100	1	7	19	50	77
Missing Data	19	54	57	31	161
SAT Critical Thinking					
0-399	0	2	1	0	3
400-499	3	10	6	2	21
500-599	5	17	18	5	45
600-699	7	10	20	18	55
700-800	0	0	1	5	6
Missing Data	44	132	133	102	411
SAT Math					
0-399	0	0	1	0	1
400-499	4	12	13	2	31
500-599	7	20	21	13	61
600-699	4	7	10	12	33
700-800	0	0	1	3	4
Missing Data	44	132	133	102	411
ACT Composite					
15-18	5	12	4	0	21
19-22	14	45	30	7	96
23-26	20	58	55	35	168
27-36	14	33	58	80	185
Missing Data	6	23	32	10	71
CDHE Index					
0-90	0	2	0	0	2
091-100	16	36	8	1	61
101-114	33	89	67	11	200
115-160	9	41	102	119	271
Missing Data	1	3	2	1	7

First-Year CSU GPA (Fall 2016 Cohort) by Admission Score

Liberal Arts

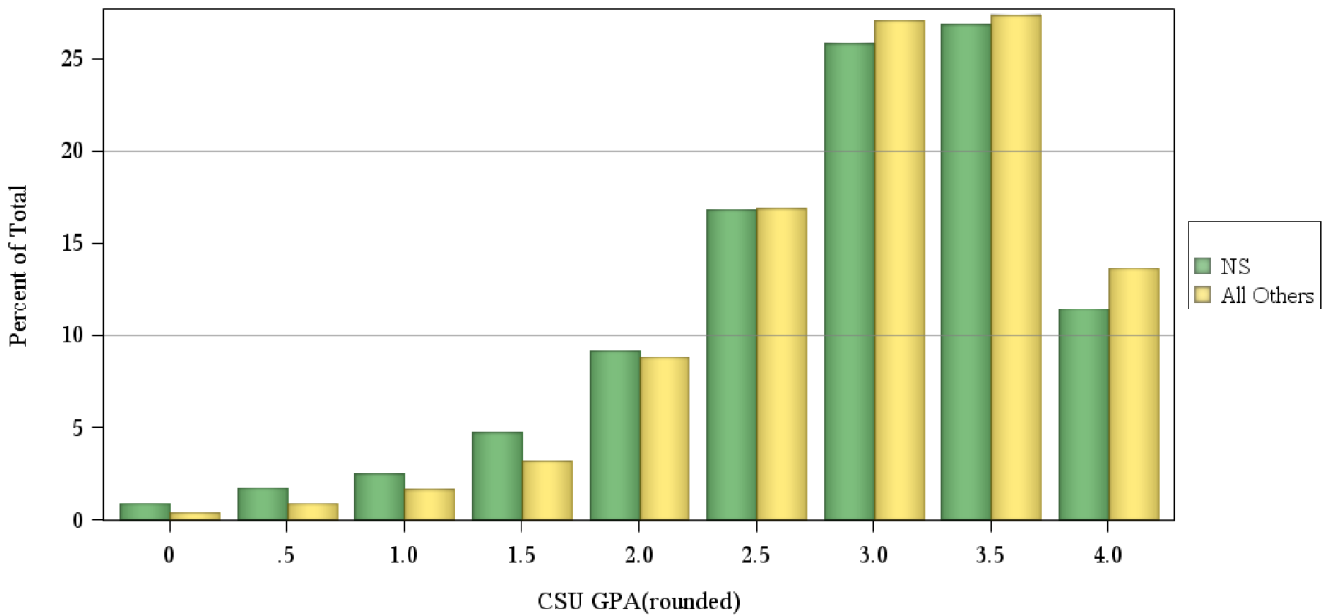
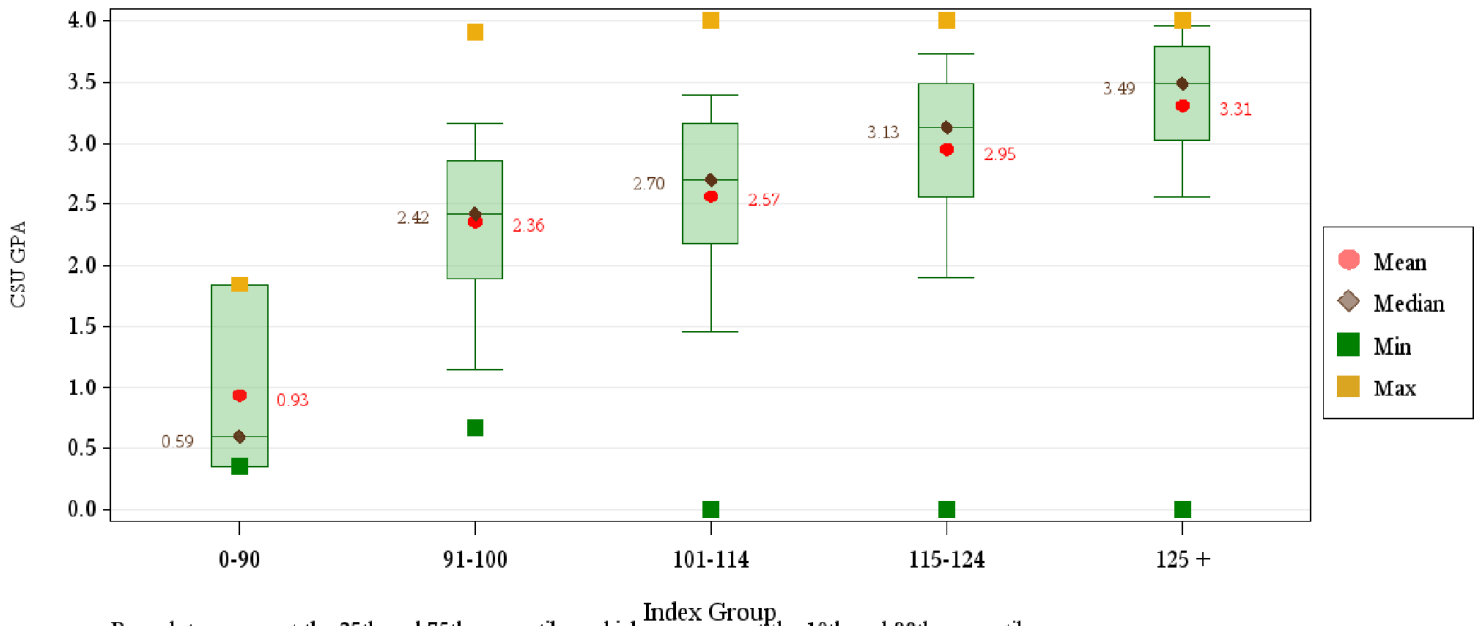


First-Year CSU GPA (Fall 2016 Cohort) by Admission Score
Natural Sciences

	CSU GPA				Total
	0.0-1.9	2.0-2.9	3.0-3.5	3.6-high	
Total	128	303	313	169	913
HS GPA					
2.0-2.49	0	0	1	0	1
2.5-2.99	18	26	12	0	56
3.0-3.59	72	143	79	21	315
3.6-4.00	34	107	154	69	364
4.01-high	3	27	67	79	176
Missing Data	1	0	0	0	1
HS Rank					
0-29	4	4	6	1	15
30-49	16	39	22	1	78
50-59	18	25	16	4	63
60-79	34	79	70	31	214
80-89	14	39	56	37	146
90-100	5	28	56	50	139
Missing Data	37	89	87	45	258
SAT Critical Thinking					
400-499	6	16	8	2	32
500-599	11	35	32	11	89
600-699	10	16	23	33	82
700-800	5	4	3	6	18
Missing Data	96	232	247	117	692
SAT Math					
0-399	0	2	0	0	2
400-499	5	16	8	2	31
500-599	13	35	30	12	90
600-699	13	15	25	29	82
700-800	1	3	3	9	16
Missing Data	96	232	247	117	692
ACT Composite					
15-18	6	11	2	0	19
19-22	30	72	41	10	153
23-26	42	119	127	43	331
27-36	34	69	111	103	317
Missing Data	16	32	32	13	93
CDHE Index					
0-90	3	0	0	0	3
091-100	17	31	10	1	59
101-114	61	149	87	15	312
115-160	47	121	212	152	532
Missing Data	0	2	4	1	7

First-Year CSU GPA (Fall 2016 Cohort) by Admission Score

Natural Sciences

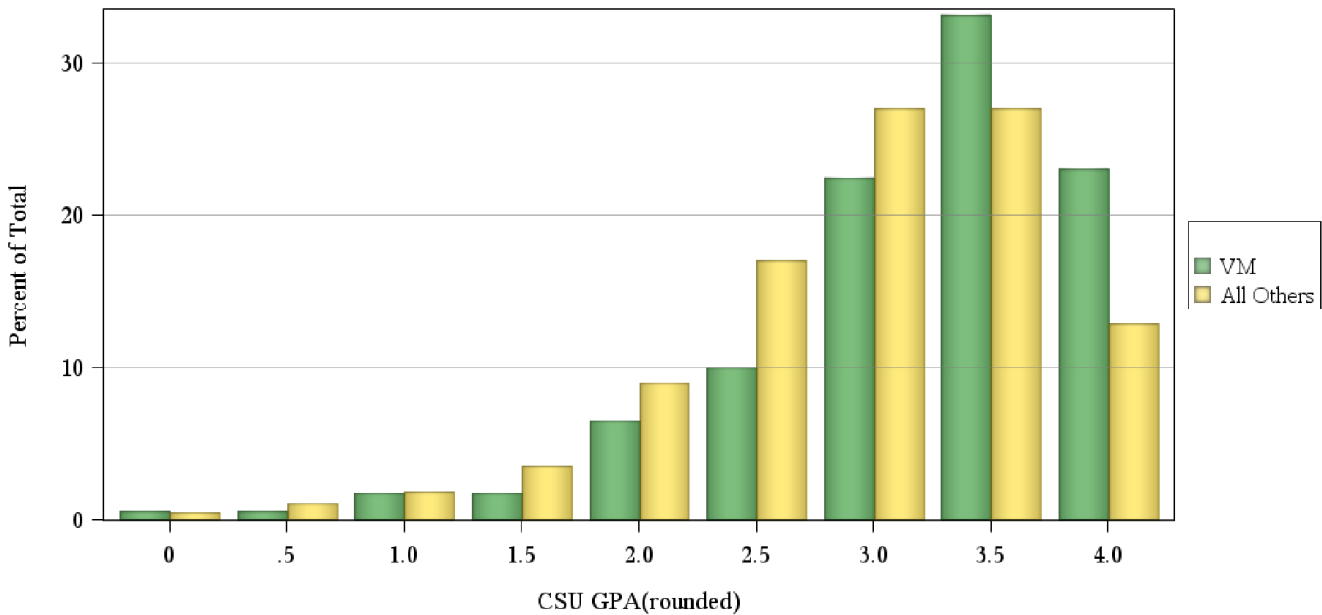
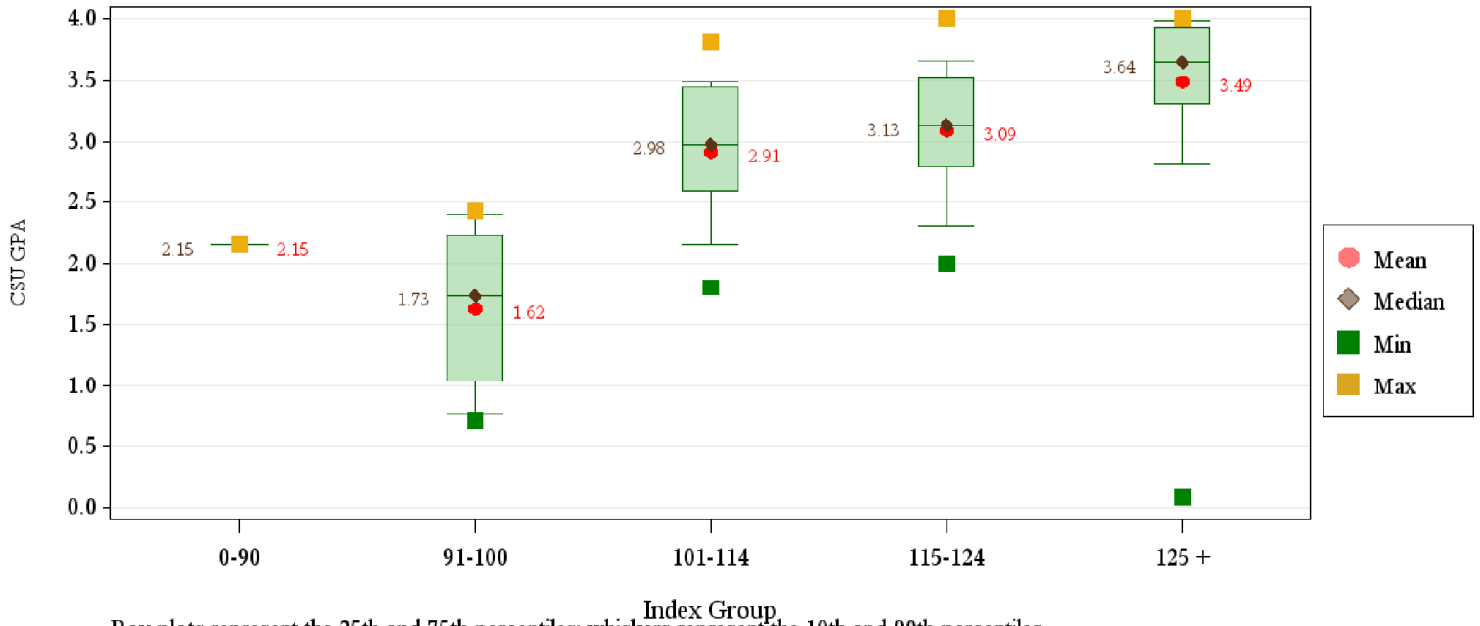


First-Year CSU GPA (Fall 2016 Cohort) by Admission Score
Veterinary Medicine + Biomedical Sci

	CSU GPA				Total
	0.0-1.9	2.0-2.9	3.0-3.5	3.6-high	
Total	10	42	55	62	169
HS GPA					
2.0-2.49	0	1	0	0	1
2.5-2.99	3	3	1	0	7
3.0-3.59	4	16	4	1	25
3.6-4.00	3	20	25	21	69
4.01-high	0	2	25	40	67
HS Rank					
30-49	2	3	1	0	6
50-59	0	5	2	0	7
60-79	0	11	11	6	28
80-89	1	4	13	7	25
90-100	0	2	14	33	49
Missing Data	7	17	14	16	54
SAT Critical Thinking					
400-499	1	3	1	0	5
500-599	1	9	10	8	28
600-699	0	2	4	4	10
700-800	1	2	0	1	4
Missing Data	7	26	40	49	122
SAT Math					
0-399	0	0	0	1	1
400-499	1	5	1	1	8
500-599	1	9	10	3	23
600-699	0	2	4	7	13
700-800	1	0	0	1	2
Missing Data	7	26	40	49	122
ACT Composite					
15-18	0	1	0	0	1
19-22	3	6	6	2	17
23-26	3	19	17	12	51
27-36	3	12	26	44	85
Missing Data	1	4	6	4	15
CDHE Index					
0-90	0	1	0	0	1
091-100	6	4	0	0	10
101-114	1	11	9	2	23
115-160	3	26	46	60	135

First-Year CSU GPA (Fall 2016 Cohort) by Admission Score

Veterinary Medicine + Biomedical Sci



First-Year CSU GPA (Fall 2016 Cohort) by Admission Score
Warner College of Natural Resources

	CSU GPA				Total
	0.0-1.9	2.0-2.9	3.0-3.5	3.6-high	
Total	14	48	49	32	143
HS GPA					
2.5-2.99	2	4	2	2	10
3.0-3.59	10	23	18	3	54
3.6-4.00	2	20	21	11	54
4.01-high	0	1	8	16	25
HS Rank					
30-49	4	5	2	0	11
50-59	1	5	3	0	9
60-79	4	10	10	6	30
80-89	0	4	6	3	13
90-100	0	3	3	9	15
Missing Data	5	21	25	14	65
SAT Critical Thinking					
400-499	1	4	2	0	7
500-599	4	7	10	1	22
600-699	2	2	3	11	18
700-800	0	0	1	0	1
Missing Data	7	35	33	20	95
SAT Math					
400-499	2	3	1	0	6
500-599	4	9	7	1	21
600-699	1	1	6	10	18
700-800	0	0	2	1	3
Missing Data	7	35	33	20	95
ACT Composite					
15-18	1	0	0	0	1
19-22	1	12	3	1	17
23-26	5	18	20	9	52
27-36	4	7	17	17	45
Missing Data	3	11	9	5	28
CDHE Index					
091-100	3	8	2	1	14
101-114	9	23	10	1	43
115-160	2	16	35	28	81
Missing Data	0	1	2	2	5

First-Year CSU GPA (Fall 2016 Cohort) by Admission Score

Warner College of Natural Resources

