

# Freshman Profile

Fall 2016

.....  
Institutional Research, Planning and Effectiveness

# Table of Contents

---

## FALL 2016

### Profile: Five-Year History

Residency & Minority Status .....	01
High School Rank .....	02
SAT Critical Thinking .....	03
SAT Math.....	04
ACT Composite .....	05
High School GPA .....	06
CDHE Index.....	07

### Profile: Fall 2016

#### Freshman Enrollment

Residency, Gender & Ethnicity .....	09
Full- & Part-Time Enrollment, Application College .....	10
Credit Hour Distribution by Application College.....	11

#### Admitted Applicants

University.....	16
Agricultural Sciences .....	18
Business .....	20
Engineering .....	22
Health and Human Sciences .....	24
Intra-University.....	26
Liberal Arts .....	28
Natural Sciences .....	30
Veterinary Medicine & Biomedical Sciences .....	32
Warner College of Natural Resources .....	34

### First-Year CSU GPA (Fall 2015 Cohort) by Admission Score

University.....	37
Agricultural Sciences .....	39
Business .....	41
Engineering.....	43
Health and Human Sciences .....	45
Intra-University .....	47
Liberal Arts .....	49
Natural Sciences.....	51
Veterinary Medical & Biomedical Sciences.....	53
Warner College of Natural Resources .....	55

# **Profile: Five-Year History**

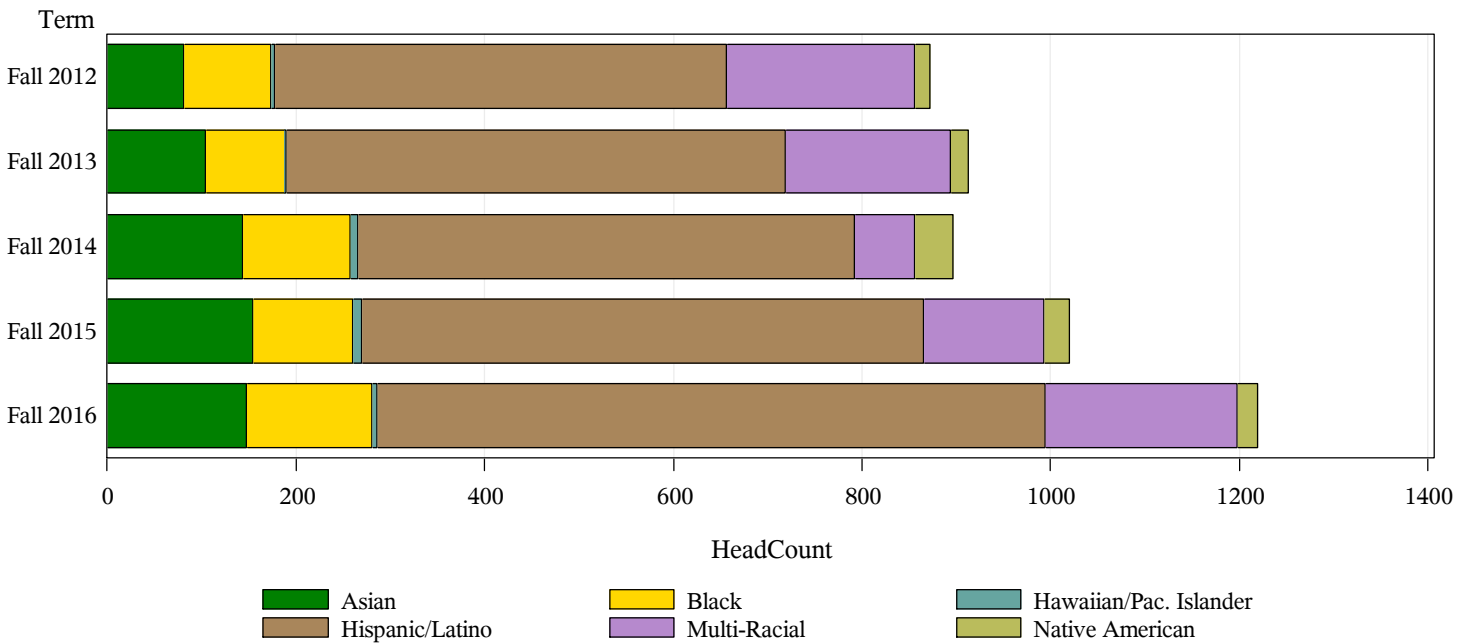
# Five-Year History by:

## Residency

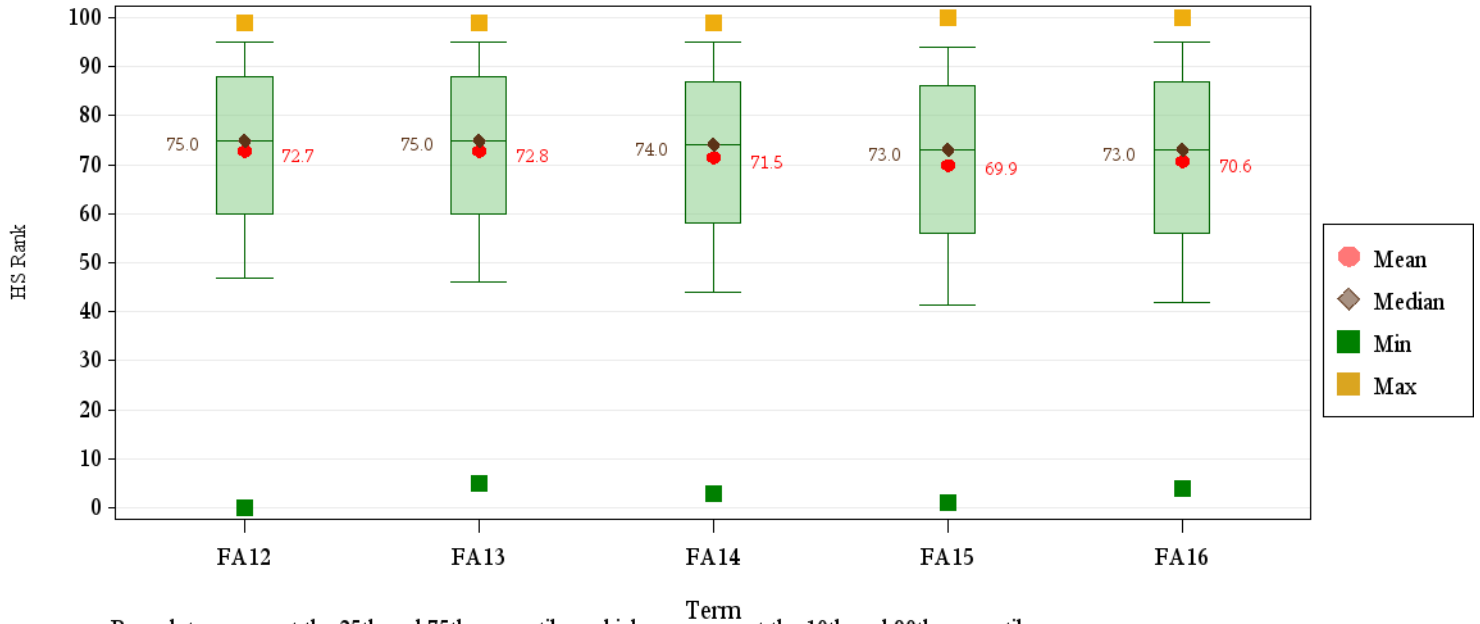
	Resident		Nonresident		Total	Percent Change
	Number	Percent	Number	Percent	Number	
Fall 2012	3,386	74.5%	1,158	25.5%	4,544	.
Fall 2013	3,289	74.0%	1,154	26.0%	4,443	-2.2%
Fall 2014	3,154	72.5%	1,199	27.5%	4,353	-2.0%
Fall 2015	3,299	69.6%	1,438	30.4%	4,737	8.8%
<b>Fall 2016</b>	<b>3,368</b>	<b>68.0%</b>	<b>1,588</b>	<b>32.0%</b>	<b>4,956</b>	<b>4.6%</b>

## Minority Status

	Minority		Other	
	Number	Percent	Number	Percent
Fall 2012	872	19.2%	3672	80.8%
Fall 2013	912	20.5%	3531	79.5%
Fall 2014	896	20.6%	3457	79.4%
Fall 2015	1020	21.5%	3717	78.5%
<b>Fall 2016</b>	<b>1219</b>	<b>24.6%</b>	<b>3737</b>	<b>75.4%</b>



# Five-Year Trends: HS Rank

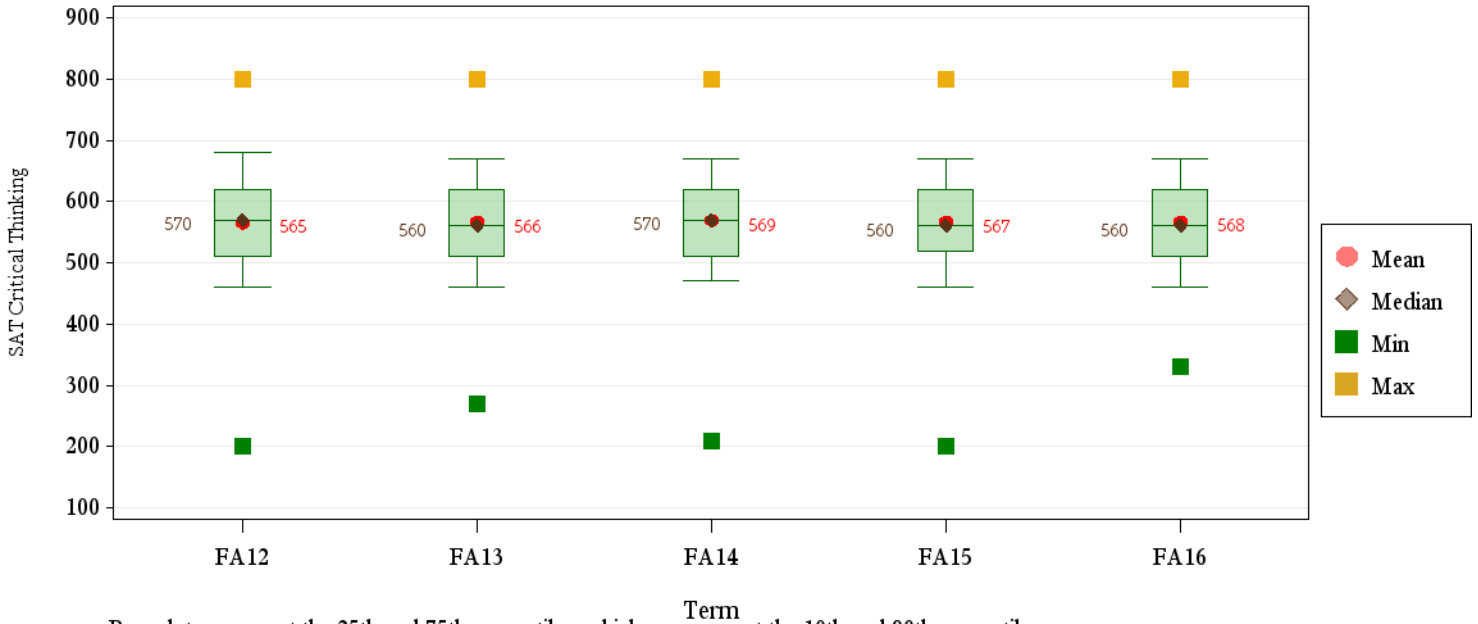


Box plots represent the 25th and 75th percentiles; whiskers represent the 10th and 90th percentiles.

## Average HS Rank by Residency and Application College

		AG	BU	EG	HS	IU	LA	NR	NS	VM	Total U
Resident	Fall 2012	75.5	78.5	81.0	70.7	64.6	70.6	67.5	77.2	85.9	72.3
	Fall 2013	73.6	80.3	81.3	71.9	63.8	70.9	68.3	75.5	86.6	72.3
	Fall 2014	73.4	78.6	81.1	67.9	63.9	71.4	67.4	72.3	81.1	71.0
	Fall 2015	68.5	75.0	80.4	66.4	60.5	68.8	66.0	73.1	82.4	69.2
	Fall 2016	72.6	73.8	82.3	67.2	62.9	68.7	69.1	71.7	80.8	70.2
Nonresident	Fall 2012	81.3	69.5	84.2	74.9	60.4	74.1	78.2	78.5	86.2	74.8
	Fall 2013	80.3	76.2	82.2	74.2	67.5	66.5	71.1	76.9	82.4	75.1
	Fall 2014	76.3	78.0	82.1	70.0	62.9	72.1	70.1	76.0	87.1	73.7
	Fall 2015	74.2	76.4	81.2	73.8	60.4	65.2	72.2	74.4	83.1	73.0
	Fall 2016	74.6	70.0	84.0	68.3	64.4	74.1	74.6	71.5	76.3	72.2
Total	Fall 2012	77.5	77.3	81.6	71.3	64.1	71.1	71.1	77.4	86.0	72.7
	Fall 2013	76.0	79.7	81.5	72.2	64.2	70.3	69.3	75.8	85.5	72.8
	Fall 2014	74.5	78.5	81.3	68.2	63.8	71.5	68.2	73.0	82.2	71.5
	Fall 2015	70.8	75.2	80.6	67.6	60.5	68.2	67.9	73.4	82.6	69.9
	Fall 2016	73.4	73.1	82.6	67.4	63.1	69.6	71.3	71.7	80.0	70.6

# Five-Year Trends: SAT Critical Thinking

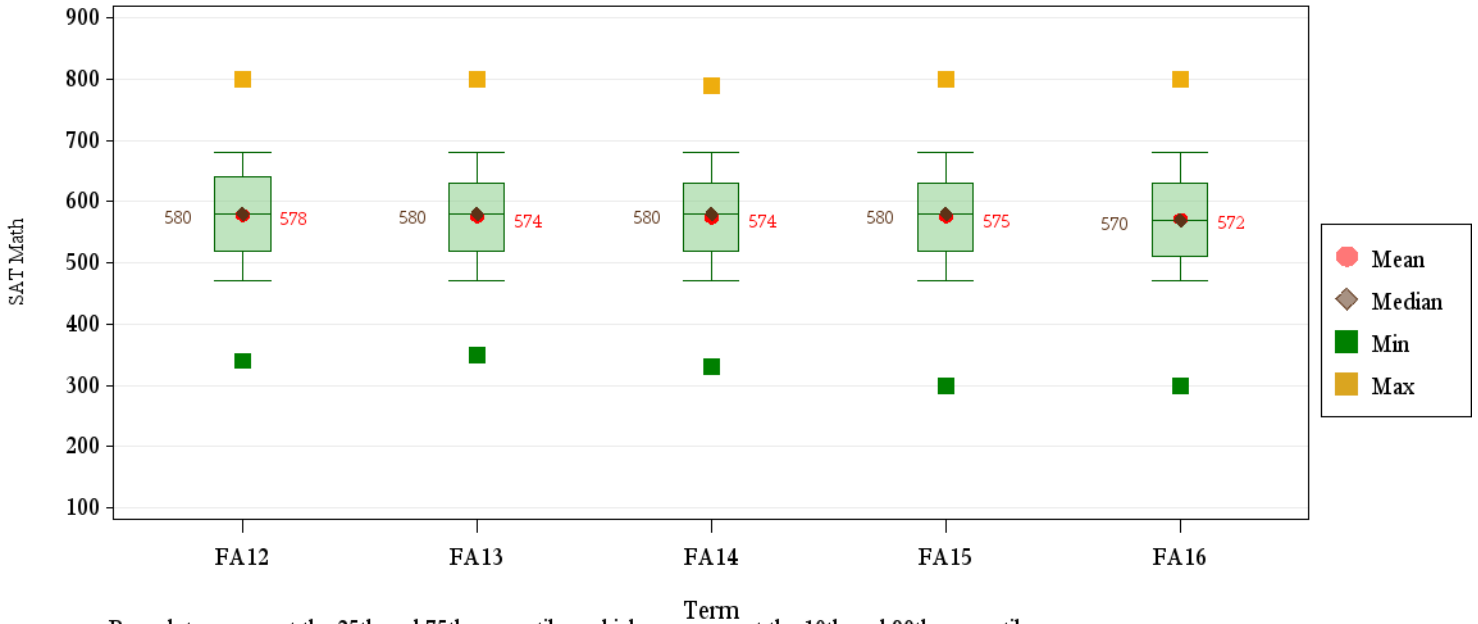


Box plots represent the 25th and 75th percentiles; whiskers represent the 10th and 90th percentiles.

## Average SAT Critical Thinking by Residency and Application College

		AG	BU	EG	HS	IU	LA	NR	NS	VM	Total U
Resident	Fall 2012	573	562	600	540	541	566	598	579	599	568
	Fall 2013	568	560	593	534	537	574	545	581	595	567
	Fall 2014	562	562	595	543	540	587	588	582	589	569
	Fall 2015	580	583	605	535	541	576	594	580	638	575
	Fall 2016	569	580	607	532	561	572	576	583	559	575
Nonresident	Fall 2012	574	599	562	526	524	560	587	587	615	563
	Fall 2013	571	577	581	545	532	574	573	576	586	566
	Fall 2014	568	581	579	537	546	584	572	573	635	568
	Fall 2015	553	585	592	535	530	570	589	577	575	563
	Fall 2016	557	568	585	551	537	578	568	577	580	565
Total	Fall 2012	574	578	581	533	532	563	589	584	608	565
	Fall 2013	570	570	587	541	534	574	565	579	590	566
	Fall 2014	567	573	585	539	544	585	575	577	615	569
	Fall 2015	555	584	596	535	533	572	590	578	595	567
	Fall 2016	558	572	593	547	544	576	569	579	573	568

# Five-Year Trends: SAT Math

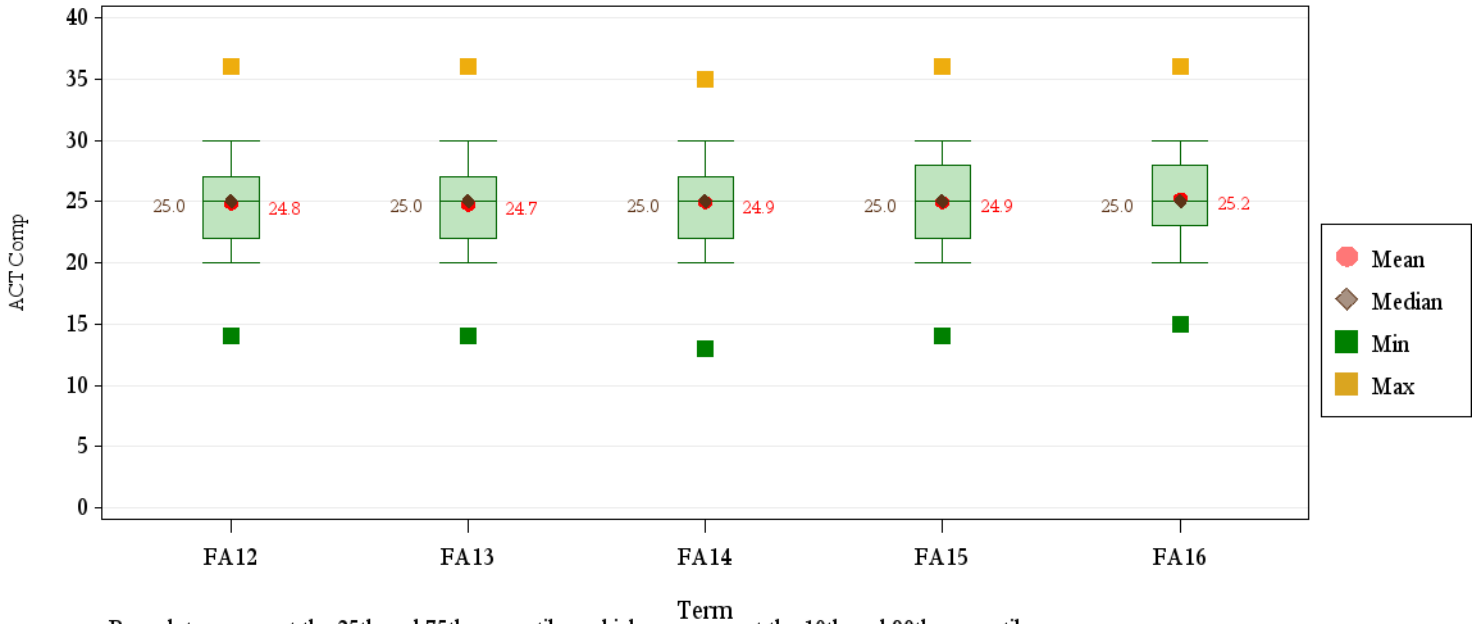


Box plots represent the 25th and 75th percentiles; whiskers represent the 10th and 90th percentiles.

## Average SAT Math by Residency and Application College

		AG	BU	EG	HS	IU	LA	NR	NS	VM	Total U
Resident	Fall 2012	551	563	638	542	550	543	551	587	609	574
	Fall 2013	535	576	636	536	531	548	547	577	609	569
	Fall 2014	522	588	634	540	550	573	628	577	616	576
	Fall 2015	575	587	641	544	536	573	545	582	637	579
	Fall 2016	538	575	653	510	542	548	529	576	551	570
Nonresident	Fall 2012	572	615	640	554	548	546	581	586	633	581
	Fall 2013	577	608	636	548	551	545	567	575	610	579
	Fall 2014	557	601	633	544	548	562	559	571	600	573
	Fall 2015	549	597	635	543	553	547	574	578	608	574
	Fall 2016	566	594	636	562	553	546	581	572	575	573
Total	Fall 2012	568	585	639	548	549	544	575	586	623	578
	Fall 2013	570	595	636	543	542	547	561	576	610	574
	Fall 2014	552	595	634	542	549	567	573	573	607	574
	Fall 2015	551	594	637	543	548	556	568	580	617	575
	Fall 2016	563	588	642	551	550	547	574	573	567	572

# Five-Year Trends: ACT Comp



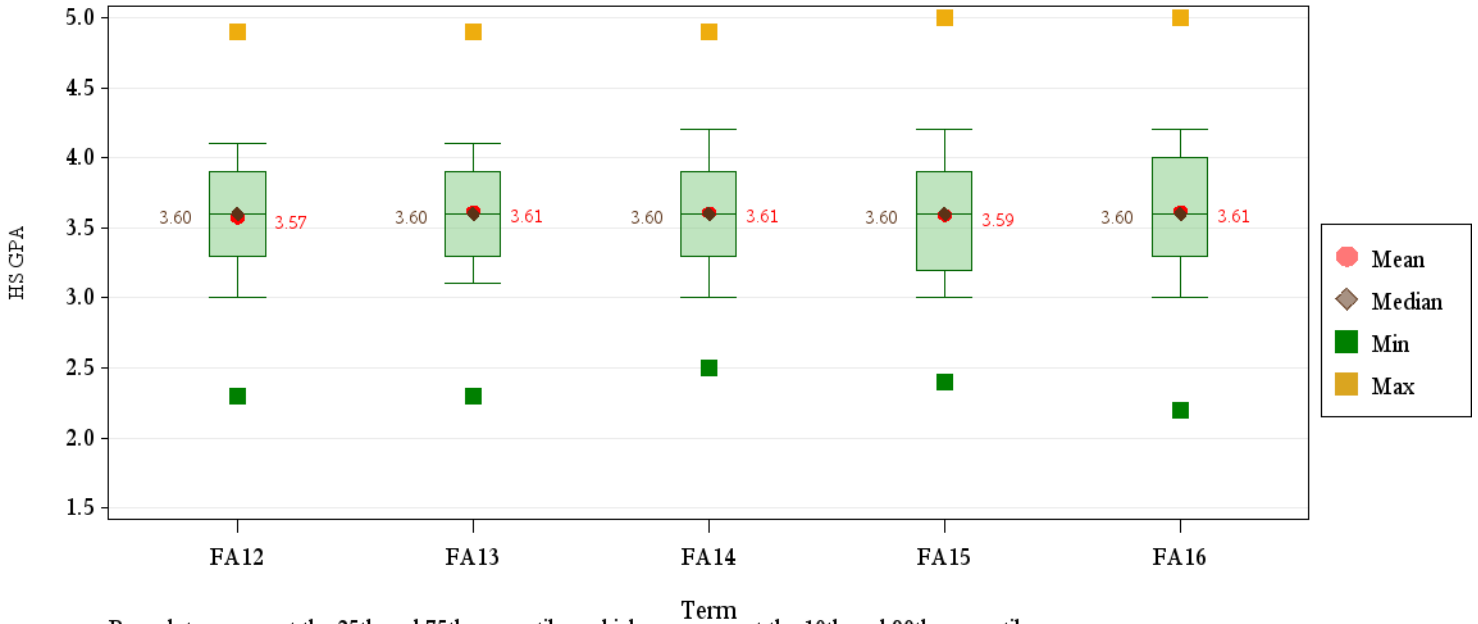
Box plots represent the 25th and 75th percentiles; whiskers represent the 10th and 90th percentiles.

## Average ACT Comp by Residency and Application College

		AG	BU	EG	HS	IU	LA	NR	NS	VM	Total U
Resident	Fall 2012	24.0	25.9	27.0	23.1	23.3	24.6	24.1	25.3	27.1	24.6
	Fall 2013	23.8	25.5	27.1	23.4	23.0	24.4	24.0	25.1	27.3	24.5
	Fall 2014	23.9	25.9	27.0	23.2	23.3	24.9	25.0	25.2	26.9	24.6
	Fall 2015	24.1	26.0	27.2	23.1	23.2	24.7	24.3	25.3	27.7	24.7
	Fall 2016	24.1	25.8	28.0	23.4	23.8	24.8	25.6	25.3	27.0	25.0
Nonresident	Fall 2012	25.9	26.6	27.8	24.1	24.0	25.7	26.6	26.5	28.1	25.9
	Fall 2013	26.4	26.2	28.1	24.6	23.9	26.0	26.3	26.2	27.7	26.0
	Fall 2014	25.2	27.1	27.9	24.4	24.8	26.2	26.0	26.6	28.1	26.0
	Fall 2015	25.3	26.1	28.2	24.4	24.5	25.2	25.6	26.5	28.1	26.0
	Fall 2016	25.1	26.3	28.1	24.9	24.9	26.4	26.2	25.9	26.3	25.9
Total	Fall 2012	24.7	26.0	27.1	23.3	23.4	24.7	25.0	25.5	27.4	24.8
	Fall 2013	24.6	25.6	27.3	23.6	23.1	24.6	24.8	25.4	27.4	24.7
	Fall 2014	24.4	26.1	27.2	23.4	23.5	25.2	25.3	25.5	27.2	24.9
	Fall 2015	24.6	26.0	27.4	23.3	23.4	24.8	24.8	25.6	27.8	24.9
	Fall 2016	24.5	25.9	28.1	23.8	24.0	25.1	25.9	25.4	26.8	25.2



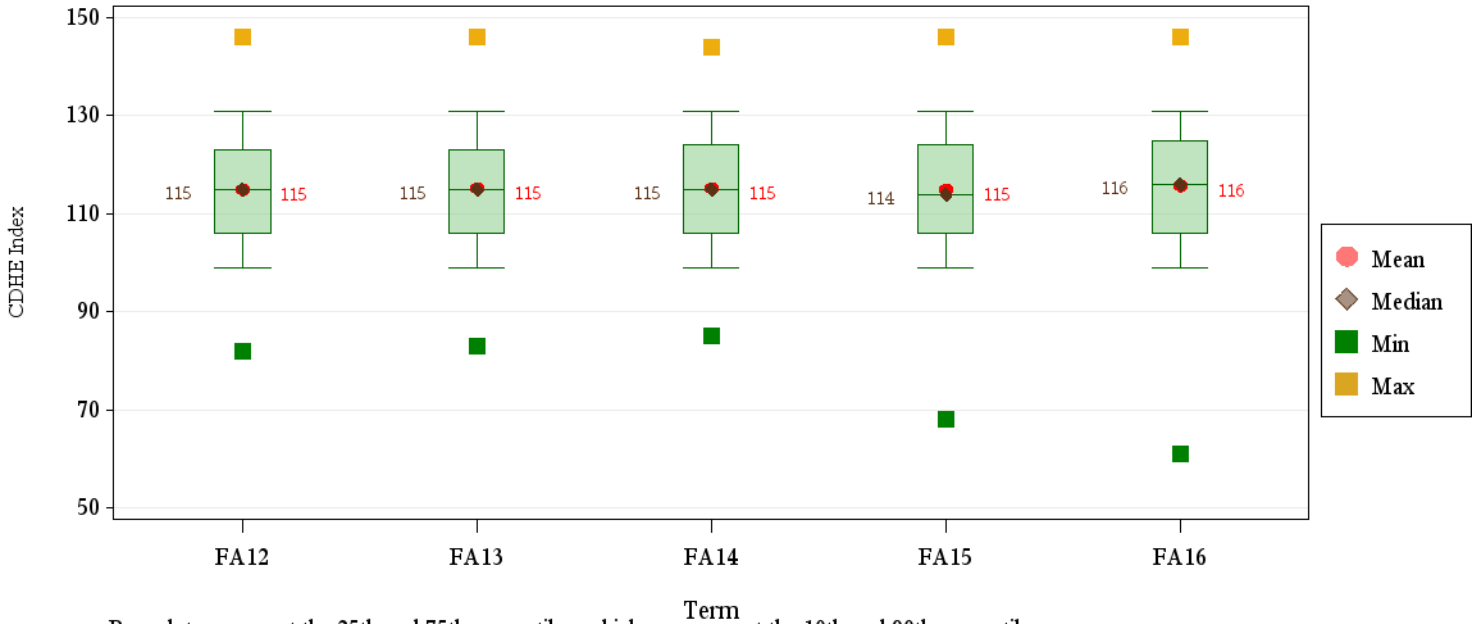
# Five-Year Trends: HS GPA



## Average HS GPA by Residency and Application College

		AG	BU	EG	HS	IU	LA	NR	NS	VM	Total U
Resident	Fall 2012	3.62	3.75	3.76	3.54	3.39	3.51	3.48	3.64	3.85	3.56
	Fall 2013	3.64	3.79	3.83	3.59	3.39	3.59	3.53	3.69	4.00	3.61
	Fall 2014	3.64	3.77	3.86	3.54	3.42	3.60	3.51	3.65	3.89	3.60
	Fall 2015	3.58	3.73	3.87	3.51	3.36	3.53	3.53	3.66	3.92	3.58
	Fall 2016	3.63	3.76	3.95	3.51	3.44	3.58	3.60	3.64	3.91	3.62
Nonresident	Fall 2012	3.65	3.64	3.90	3.52	3.32	3.55	3.72	3.69	3.95	3.61
	Fall 2013	3.72	3.73	3.84	3.56	3.40	3.55	3.50	3.69	3.93	3.64
	Fall 2014	3.68	3.77	3.85	3.58	3.34	3.59	3.55	3.71	3.99	3.63
	Fall 2015	3.68	3.68	3.86	3.60	3.37	3.43	3.52	3.68	3.93	3.61
	Fall 2016	3.67	3.68	3.90	3.56	3.39	3.51	3.62	3.62	3.71	3.60
Total	Fall 2012	3.63	3.72	3.79	3.53	3.37	3.52	3.58	3.65	3.88	3.57
	Fall 2013	3.68	3.78	3.84	3.58	3.39	3.58	3.52	3.69	3.98	3.61
	Fall 2014	3.66	3.77	3.86	3.55	3.40	3.60	3.53	3.67	3.92	3.61
	Fall 2015	3.63	3.72	3.87	3.53	3.36	3.51	3.52	3.67	3.92	3.59
	Fall 2016	3.65	3.73	3.94	3.53	3.42	3.56	3.61	3.64	3.85	3.61

# Five-Year Trends: CDHE Index



Box plots represent the 25th and 75th percentiles; whiskers represent the 10th and 90th percentiles.

## Average CDHE Index by Residency and Application College

		AG	BU	EG	HS	IU	LA	NR	NS	VM	Total U
Resident	Fall 2012	114	120	122	111	109	113	112	117	124	114
	Fall 2013	113	120	123	112	108	114	112	117	125	114
	Fall 2014	114	120	123	111	109	115	114	116	123	114
	Fall 2015	113	119	124	110	108	114	112	117	125	114
	Fall 2016	114	120	126	111	110	114	116	116	123	115
Nonresident	Fall 2012	118	120	126	112	108	115	120	120	128	117
	Fall 2013	119	120	125	114	110	115	116	119	126	117
	Fall 2014	117	121	125	113	110	117	116	119	127	117
	Fall 2015	116	119	125	113	110	113	116	119	124	117
	Fall 2016	116	119	126	114	110	115	117	117	119	116
Total	Fall 2012	116	120	123	111	109	114	115	118	125	115
	Fall 2013	116	120	124	112	108	114	114	117	125	115
	Fall 2014	115	120	124	111	109	115	115	117	124	115
	Fall 2015	115	119	124	111	108	113	114	117	124	115
	Fall 2016	115	119	126	112	110	114	117	116	122	116

# **Profile: Fall 2016**

**Fall 2016****New Freshmen****Residency**

	Number	Percent
Resident	3,368	68.0 %
Nonresident	1,588	32.0 %
<b>Total</b>	4,956	100.0 %

**Gender**

	Resident		Nonresident		Total	
	Number	Percent	Number	Percent	Number	Percent
Men	1,491	44.3 %	694	43.7 %	2,185	44.1 %
Women	1,877	55.7 %	894	56.3 %	2,771	55.9 %
<b>Total</b>	3,368	100.0 %	1,588	100.0 %	4,956	100.0 %

**Ethnicity**

	Resident		Nonresident		Total	
	Number	Percent	Number	Percent	Number	Percent
Asian	118	3.5 %	30	1.9 %	148	3.0 %
Black	108	3.2 %	24	1.5 %	132	2.7 %
Hawaiian/Pac. Islander	4	0.1 %	2	0.1 %	6	0.1 %
Hispanic/Latino	550	16.3 %	158	9.9 %	708	14.3 %
International	.	.	86	5.4 %	86	1.7 %
Multi-Racial	123	3.7 %	80	5.0 %	203	4.1 %
Native American	5	0.1 %	17	1.1 %	22	0.4 %
No Response	46	1.4 %	23	1.4 %	69	1.4 %
White	2,414	71.7 %	1,168	73.6 %	3,582	72.3 %
<b>Total</b>	3,368	100.0 %	1,588	100.0 %	4,956	100.0 %

## Full-Time/Part-Time Enrollment

	Resident		Nonresident		Total	
	Number	Percent	Number	Percent	Number	Percent
Full-Time	3,341	99.2 %	1,565	98.6 %	4,906	99.0 %
Part-Time	27	0.8 %	23	1.4 %	50	1.0 %
<b>Total</b>	<b>3,368</b>	<b>100.0 %</b>	<b>1,588</b>	<b>100.0 %</b>	<b>4,956</b>	<b>100.0 %</b>

Full-time students = undergraduates enrolled for 12 or more credits Fall, Spring (9 - Summer)

## Application College

	Resident		Nonresident		Total	
	Number	Percent	Number	Percent	Number	Percent
Agricultural Sciences	152	4.5 %	173	10.9 %	325	6.6 %
Business	262	7.8 %	122	7.7 %	384	7.7 %
Engineering	379	11.3 %	170	10.7 %	549	11.1 %
Health and Human Sciences	370	11.0 %	182	11.5 %	552	11.1 %
Intra-University	884	26.2 %	325	20.5 %	1,209	24.4 %
Liberal Arts	415	12.3 %	170	10.7 %	585	11.8 %
Natural Sciences	712	21.1 %	304	19.1 %	1,016	20.5 %
Vet Med & BioMed Sci	126	3.7 %	59	3.7 %	185	3.7 %
Warner College of Nat Res	68	2.0 %	83	5.2 %	151	3.0 %
<b>Total</b>	<b>3,368</b>	<b>100.0 %</b>	<b>1,588</b>	<b>100.0 %</b>	<b>4,956</b>	<b>100.0 %</b>

## Credit Hour Distribution by Application College

	<b>N</b>	<b>Min</b>	<b>Max</b>	<b>Mean</b>
<b>Total University</b>	4,956	1	23	14.8
<b>Agricultural Sciences</b>	325	7	18	14.7
<b>Business</b>	384	10	19	14.8
<b>Engineering</b>	549	8	23	15.4
<b>Health and Human Sciences</b>	552	10	19	14.7
<b>Intra-University</b>	1,209	1	23	14.5
<b>Liberal Arts</b>	585	2	19	14.7
<b>Natural Sciences</b>	1,016	3	21	14.9
<b>Vet Med &amp; BioMed Sci</b>	185	11	19	15.1
<b>Warner College of Nat Res</b>	151	12	18	14.5
Men	2,185	1	23	14.7
Women	2,771	2	23	14.9
Nonresident	1,588	1	21	14.8
Resident	3,368	3	23	14.8
Full-Time	4,906	12	23	14.8
Part-Time	50	1	11	8.4
Asian	148	10	19	15.1
Black	132	6	18	14.7
Hawaiian/Pac. Islander	6	12	16	14.2
Hispanic/Latino	708	6	20	14.6
International	86	2	20	14.0
Multi-Racial	203	9	21	14.8
Native American	22	12	17	14.7
No Response	69	10	19	14.6
White	3,582	1	23	14.8
<b>Agricultural Sciences</b>				
Men	79	12	18	14.5
Women	246	7	18	14.7
Nonresident	173	7	18	14.9
Resident	152	10	18	14.5
Full-Time	319	12	18	14.8
Part-Time	6	7	11	10.2
Asian	2	15	16	15.5
Black	7	13	17	14.9
Hawaiian/Pac. Islander	2	14	15	14.5

		<b>N</b>	<b>Min</b>	<b>Max</b>	<b>Mean</b>
		4,956	1	23	14.8
<b>Agricultural Sciences</b>	Hispanic/Latino	54	12	18	14.6
	International	7	7	17	13.9
	Multi-Racial	16	13	18	14.6
	Native American	2	14	16	15.0
	No Response	5	14	17	15.4
	White	230	10	18	14.7
<b>Business</b>					
	Men	211	10	19	14.8
	Women	173	10	18	14.9
	Nonresident	122	12	19	14.9
	Resident	262	10	18	14.8
	Full-Time	382	12	19	14.9
	Part-Time	2	10	10	10.0
	Asian	11	15	19	16.4
	Black	3	15	18	16.3
	Hispanic/Latino	49	12	18	14.6
	International	4	14	17	15.8
	Multi-Racial	16	13	16	15.2
	No Response	4	14	17	15.5
	White	297	10	18	14.8
<b>Engineering</b>					
	Men	378	8	20	15.2
	Women	171	12	23	15.7
	Nonresident	170	8	20	15.3
	Resident	379	11	23	15.4
	Full-Time	545	12	23	15.4
	Part-Time	4	8	11	10.0
	Asian	16	10	19	15.3
	Black	9	14	18	15.8
	Hispanic/Latino	61	12	20	15.3
	International	11	8	20	15.5
	Multi-Racial	22	13	17	15.3
	Native American	3	13	15	14.0
	No Response	6	12	16	14.0
	White	421	11	23	15.4
<b>Health and Human Sciences</b>					
	Men	174	10	18	14.4
	Women	378	10	19	14.8
	Nonresident	182	10	18	14.7

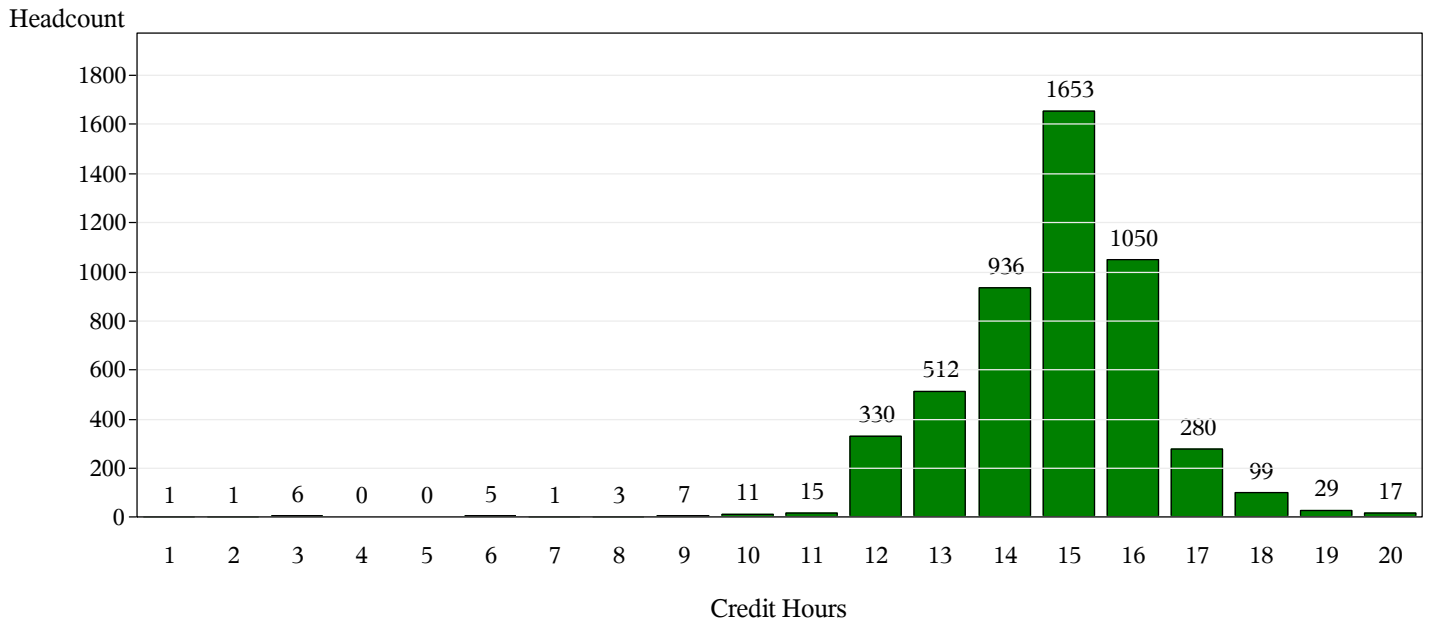
		<b>N</b>	<b>Min</b>	<b>Max</b>	<b>Mean</b>
		4,956	1	23	14.8
<b>Health and Human Sciences</b>	Resident	370	10	19	14.7
	Full-Time	549	12	19	14.7
	Part-Time	3	10	11	10.3
	Asian	18	12	16	14.3
	Black	14	12	15	14.4
	Hawaiian/Pac. Islander	1	13	13	13.0
	Hispanic/Latino	74	10	18	14.5
	International	2	13	15	14.0
	Multi-Racial	27	12	16	14.5
	Native American	2	15	16	15.5
	No Response	6	10	17	14.5
	White	408	11	19	14.7
<b>Intra-University</b>	Men	652	1	23	14.4
	Women	557	3	18	14.6
	Nonresident	325	1	19	14.4
	Resident	884	3	23	14.5
	Full-Time	1,192	12	23	14.6
	Part-Time	17	1	11	7.4
	Asian	35	12	17	14.7
	Black	33	6	18	14.3
	Hawaiian/Pac. Islander	1	12	12	12.0
	Hispanic/Latino	174	8	18	14.6
	International	38	3	19	13.5
	Multi-Racial	47	9	18	14.4
	Native American	4	12	16	14.5
	No Response	18	12	16	13.9
	White	859	1	23	14.5
<b>Liberal Arts</b>	Men	217	6	18	14.6
	Women	368	2	19	14.7
	Nonresident	170	2	18	14.4
	Resident	415	3	19	14.7
	Full-Time	576	12	19	14.8
	Part-Time	9	2	11	6.8
	Asian	15	14	18	15.5
	Black	20	14	16	14.8
	Hawaiian/Pac. Islander	2	15	16	15.5



		<b>N</b>	<b>Min</b>	<b>Max</b>	<b>Mean</b>
		4,956	1	23	14.8
<b>Liberal Arts</b>	Hispanic/Latino	90	6	18	14.6
	International	10	2	18	13.3
	Multi-Racial	20	13	17	15.0
	Native American	4	14	16	15.0
	No Response	10	13	17	15.0
	White	414	3	19	14.6
<b>Natural Sciences</b>					
	Men	351	8	19	14.7
	Women	665	3	21	14.9
	Nonresident	304	10	21	14.9
	Resident	712	3	21	14.8
	Full-Time	1,008	12	21	14.9
	Part-Time	8	3	11	8.9
	Asian	38	12	18	14.9
	Black	35	12	17	14.3
	Hispanic/Latino	172	8	18	14.7
	International	10	10	20	14.8
	Multi-Racial	38	12	21	15.1
	Native American	7	12	17	14.7
	No Response	14	12	19	14.8
	White	702	3	21	14.9
<b>Vet Med &amp; BioMed Sci</b>					
	Men	44	11	19	14.8
	Women	141	12	19	15.2
	Nonresident	59	12	19	15.3
	Resident	126	11	19	15.0
	Full-Time	184	12	19	15.1
	Part-Time	1	11	11	11.0
	Asian	12	13	19	16.3
	Black	10	11	17	15.6
	Hispanic/Latino	20	12	18	14.4
	International	1	14	14	14.0
	Multi-Racial	10	12	17	14.7
	No Response	4	14	16	15.3
	White	128	12	19	15.1
<b>Warner College of Nat Res</b>					
	Men	79	12	18	14.4
	Women	72	12	18	14.7
	Nonresident	83	12	18	14.7

		<b>N</b>	<b>Min</b>	<b>Max</b>	<b>Mean</b>
<b>Warner College of Nat Res</b>	Resident	68	12	18	14.3
	Full-Time	151	12	18	14.5
	Asian	1	16	16	16.0
	Black	1	16	16	16.0
	Hispanic/Latino	14	12	16	14.4
	International	3	12	14	13.0
	Multi-Racial	7	13	16	14.7
	No Response	2	14	14	14.0
	White	123	12	18	14.6

### Total University: Student Count by Credit Hours



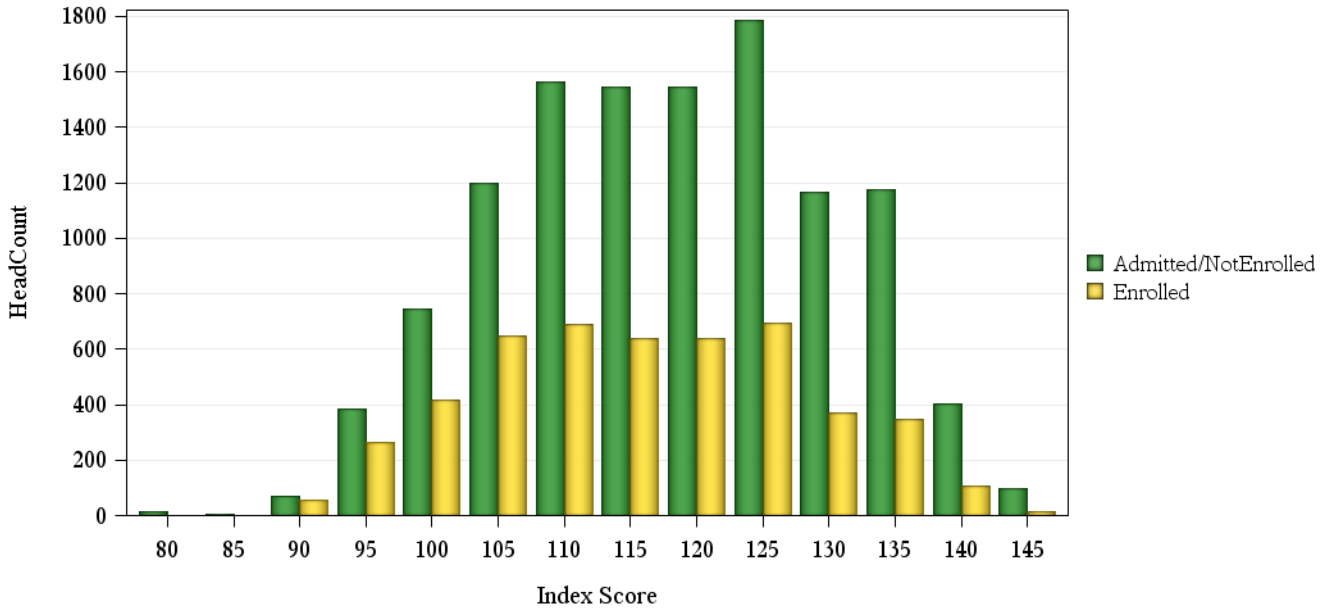
# Fall 2016 Freshman Profile

## University Admitted Applicants

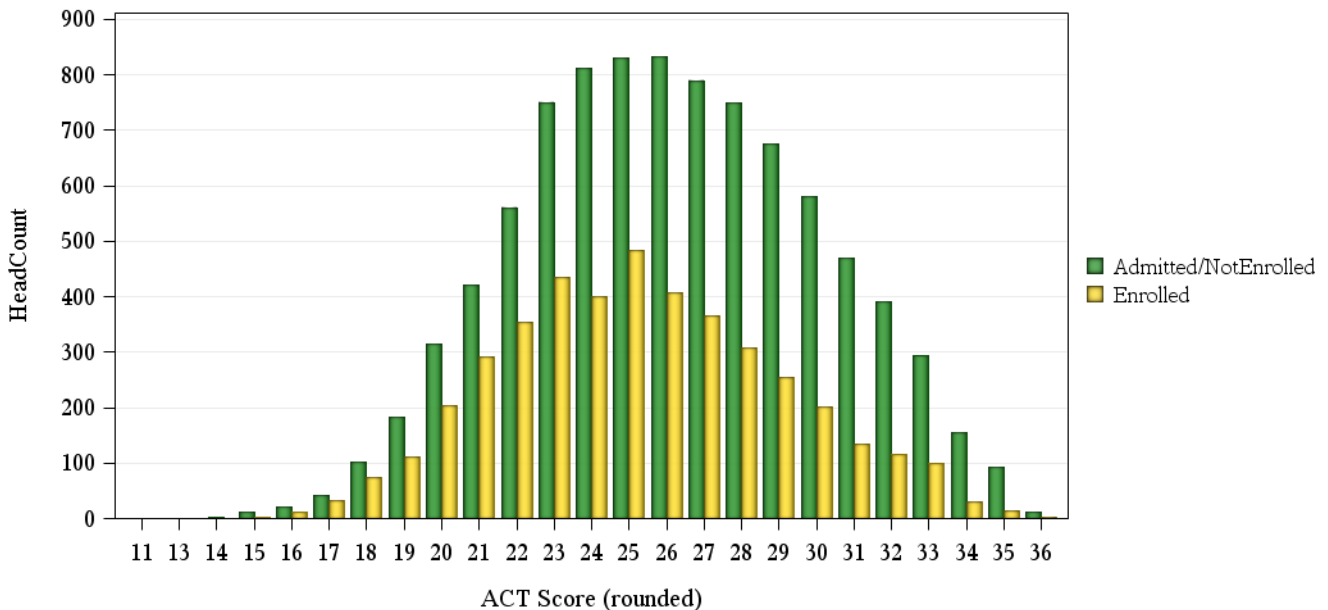
	Not Enrolled (N=12007)				Enrolled (N= 4956)			
	Res	Nonres	Total	Percent	Res	Nonres	Total	Percent
<b>ACT Composite</b>								
0-14	1	3	4	0%	.	.	.	.
15-18	95	84	179	1%	103	18	121	2%
19-22	804	676	1,480	12%	808	154	962	19%
23-26	1,553	1,671	3,224	27%	1,314	415	1,729	35%
27-36	1,934	2,275	4,209	35%	1,100	429	1,529	31%
Missing Data	75	2,836	2,911	24%	43	572	615	12%
Means	26.0	26.4	26.2		25.0	25.9	25.2	
<b>CCHE Index</b>								
0-90	9	30	39	0%	22	7	29	1%
091-100	263	507	770	6%	346	133	479	10%
101-114	1,380	2,403	3,783	32%	1,280	538	1,818	37%
115-160	2,808	4,297	7,105	59%	1,715	855	2,570	52%
Missing Data	2	308	310	3%	5	55	60	1%
Means	119	118	118		115	116	116	
<b>HS GPA</b>								
2.0-2.49	1	4	5	0%	7	3	10	0%
2.5-2.99	187	427	614	5%	248	139	387	8%
3.0-3.59	1,297	2,563	3,860	32%	1,247	579	1,826	37%
3.6-4.00	1,746	3,088	4,834	40%	1,234	609	1,843	37%
4.01-high	1,230	1,457	2,687	22%	630	256	886	18%
Missing Data	1	6	7	0%	2	2	4	0%
Means	3.75	3.66	3.70		3.62	3.60	3.61	
<b>HS Rank</b>								
0-29	39	56	95	1%	74	19	93	2%
30-49	291	241	532	4%	396	85	481	10%
50-59	319	263	582	5%	337	57	394	8%
60-79	917	767	1,684	14%	883	204	1,087	22%
80-89	709	593	1,302	11%	510	122	632	13%
90-100	884	732	1,616	13%	555	151	706	14%
Missing Data	1,303	4,893	6,196	52%	613	950	1,563	32%
Means	75.6	75.3	75.5		70.2	72.2	70.6	
<b>SAT Critical Thinking</b>								
0-399	1	53	54	0%	6	10	16	0%
400-499	56	667	723	6%	66	148	214	4%
500-599	202	1,759	1,961	16%	123	375	498	10%
600-699	204	1,180	1,384	12%	104	262	366	7%
700-800	87	243	330	3%	31	43	74	1%
Missing Data	3,912	3,643	7,555	63%	3,038	750	3,788	76%
Means	601	567	572		575	565	568	
<b>SAT Math</b>								
0-399	5	31	36	0%	7	3	10	0%
400-499	61	567	628	5%	62	134	196	4%
500-599	199	1,653	1,852	15%	136	371	507	10%
600-699	203	1,322	1,525	13%	102	282	384	8%
700-800	82	329	411	3%	23	48	71	1%
Missing Data	3,912	3,643	7,555	63%	3,038	750	3,788	76%
Means	601	579	582		570	573	572	

## Fall 2016 Freshman Profile

### Fall 2016 CDHE Index Distribution of Admitted Applicants by Enrollment Status(University)



### Fall 2016 ACT Composite Distribution of Admitted Applicants by Enrollment Status(University)



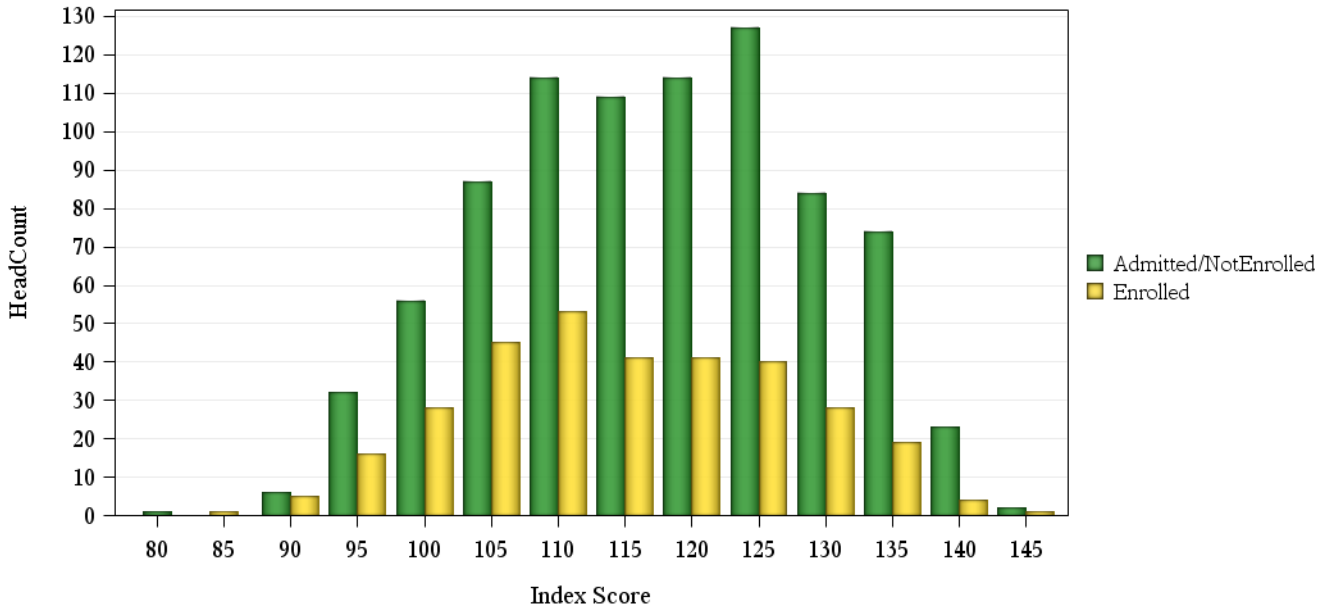
# Fall 2016 Freshman Profile

## Agricultural Sciences Admitted Applicants

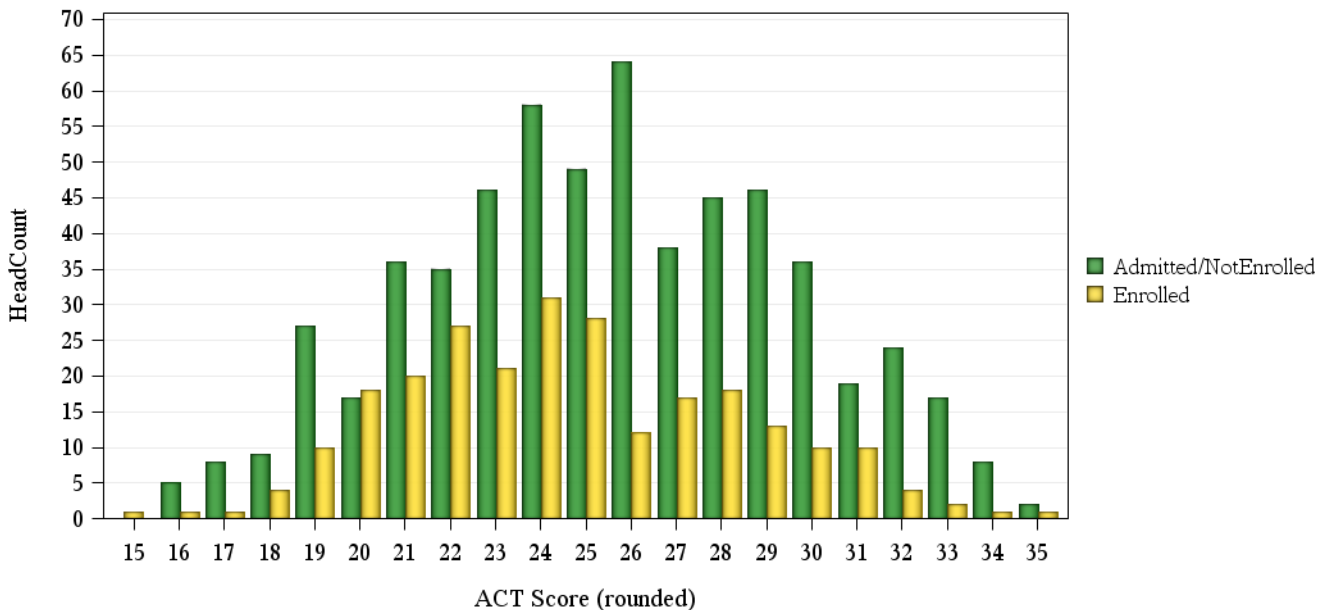
	Not Enrolled (N= 838)				Enrolled (N= 325)			
	Res	Nonres	Total	Percent	Res	Nonres	Total	Percent
<b>ACT Composite</b>								
15-18	5	17	22	3%	4	3	7	2%
19-22	44	71	115	14%	51	24	75	23%
23-26	50	167	217	26%	56	36	92	28%
27-36	35	200	235	28%	38	38	76	23%
Missing Data	4	245	249	30%	3	72	75	23%
Means	24.4	25.9	25.6		24.1	25.1	24.5	
<b>CCHE Index</b>								
0-90	.	3	3	0%	1	2	3	1%
091-100	13	53	66	8%	15	13	28	9%
101-114	51	219	270	32%	67	68	135	42%
115-160	73	417	490	58%	68	88	156	48%
Missing Data	1	8	9	1%	1	2	3	1%
Means	116	118	118		114	116	115	
<b>HS GPA</b>								
2.5-2.99	6	32	38	5%	7	13	20	6%
3.0-3.59	42	183	225	27%	57	57	114	35%
3.6-4.00	58	327	385	46%	62	67	129	40%
4.01-high	32	158	190	23%	26	36	62	19%
Means	3.72	3.75	3.75		3.63	3.67	3.65	
<b>HS Rank</b>								
0-29	2	5	7	1%	3	1	4	1%
30-49	5	19	24	3%	9	10	19	6%
50-59	7	25	32	4%	18	4	22	7%
60-79	41	79	120	14%	43	29	72	22%
80-89	25	76	101	12%	14	15	29	9%
90-100	31	99	130	16%	32	20	52	16%
Missing Data	27	397	424	51%	33	94	127	39%
Means	76.7	78.5	78.0		72.6	74.6	73.4	
<b>SAT Critical Thinking</b>								
0-399	.	7	7	1%	.	3	3	1%
400-499	2	74	76	9%	4	25	29	9%
500-599	7	194	201	24%	2	46	48	15%
600-699	5	105	110	13%	5	31	36	11%
700-800	.	22	22	3%	.	7	7	2%
Missing Data	124	298	422	50%	141	61	202	62%
Means	573	559	560		569	557	558	
<b>SAT Math</b>								
0-399	.	8	8	1%	.	1	1	0%
400-499	2	85	87	10%	3	17	20	6%
500-599	7	186	193	23%	6	55	61	19%
600-699	5	107	112	13%	1	34	35	11%
700-800	.	16	16	2%	1	5	6	2%
Missing Data	124	298	422	50%	141	61	202	62%
Means	569	556	557		538	566	563	

## Fall 2016 Freshman Profile

### Fall 2016 CDHE Index Distribution of Admitted Applicants by Enrollment Status(Agricultural Sciences)



### Fall 2016 ACT Composite Distribution of Admitted Applicants by Enrollment Status(Agricultural Sciences)



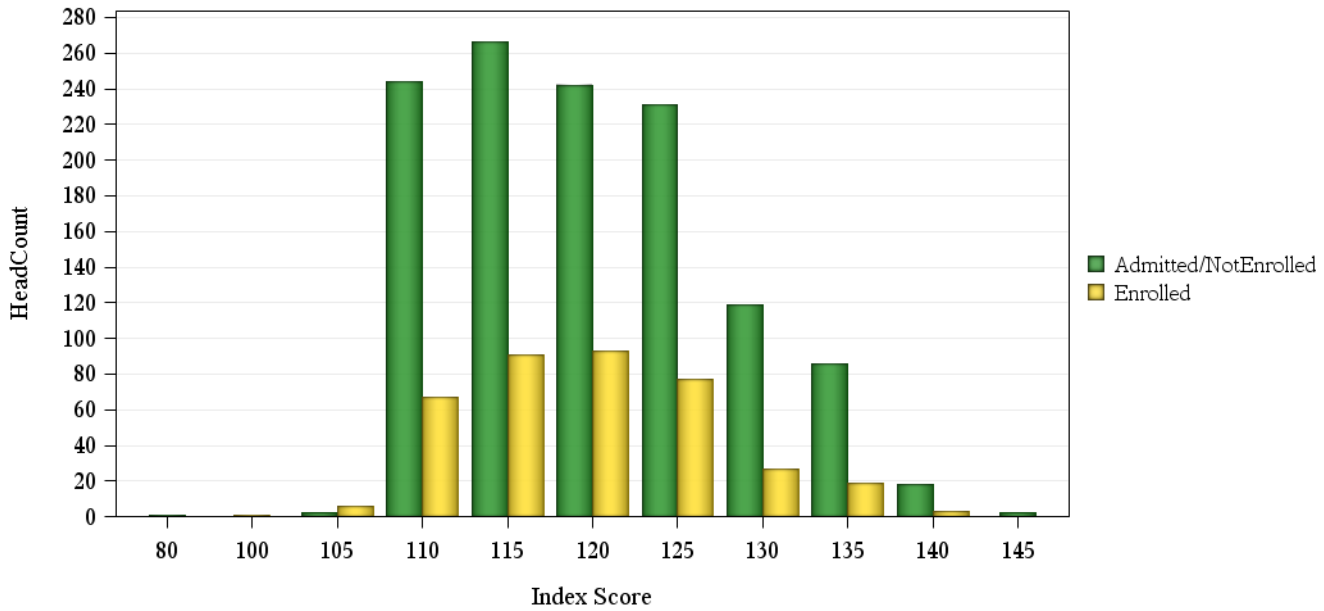
# Fall 2016 Freshman Profile

## Business Admitted Applicants

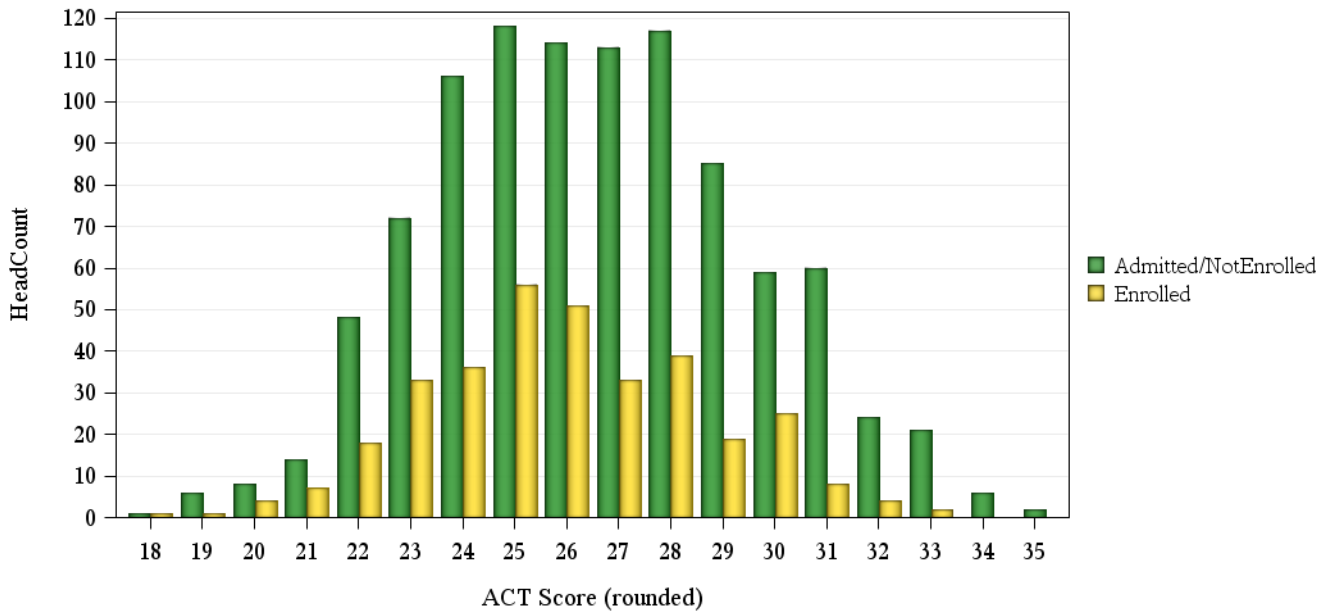
	Not Enrolled (N= 1214)				Enrolled (N= 384)			
	Res	Nonres	Total	Percent	Res	Nonres	Total	Percent
<b>ACT Composite</b>								
15-18	.	1	1	0%	1	.	1	0%
19-22	49	27	76	6%	28	2	30	8%
23-26	217	193	410	34%	134	42	176	46%
27-36	248	239	487	40%	95	35	130	34%
Missing Data	5	235	240	20%	4	43	47	12%
Means	26.4	26.8	26.6		25.8	26.3	25.9	
<b>CCHE Index</b>								
0-90	.	1	1	0%	.	.	.	.
101-114	139	214	353	29%	77	38	115	30%
115-160	380	477	857	71%	185	84	269	70%
Missing Data	.	3	3	0%	.	.	.	.
Means	121	120	120		120	119	119	
<b>HS GPA</b>								
2.5-2.99	5	10	15	1%	1	2	3	1%
3.0-3.59	129	259	388	32%	71	42	113	29%
3.6-4.00	268	324	592	49%	141	61	202	53%
4.01-high	117	101	218	18%	49	16	65	17%
Missing Data	.	1	1	0%	.	1	1	0%
Means	3.79	3.67	3.72		3.76	3.68	3.73	
<b>HS Rank</b>								
0-29	1	3	4	0%	1	1	2	1%
30-49	16	11	27	2%	18	5	23	6%
50-59	40	24	64	5%	20	10	30	8%
60-79	115	79	194	16%	92	20	112	29%
80-89	91	48	139	11%	63	8	71	18%
90-100	79	41	120	10%	32	9	41	11%
Missing Data	177	489	666	55%	36	69	105	27%
Means	76.6	74.2	75.7		73.8	70.0	73.1	
<b>SAT Critical Thinking</b>								
0-399	.	2	2	0%	.	.	.	.
400-499	5	38	43	4%	4	7	11	3%
500-599	19	178	197	16%	12	30	42	11%
600-699	20	97	117	10%	8	17	25	7%
700-800	3	14	17	1%	1	4	5	1%
Missing Data	472	366	838	69%	237	64	301	78%
Means	586	570	572		580	568	572	
<b>SAT Math</b>								
0-399	.	2	2	0%	.	.	.	.
400-499	4	13	17	1%	2	5	7	2%
500-599	16	133	149	12%	15	23	38	10%
600-699	23	151	174	14%	8	27	35	9%
700-800	4	30	34	3%	.	3	3	1%
Missing Data	472	366	838	69%	237	64	301	78%
Means	597	601	601		575	594	588	

## Fall 2016 Freshman Profile

### Fall 2016 CDHE Index Distribution of Admitted Applicants by Enrollment Status(Business)



### Fall 2016 ACT Composite Distribution of Admitted Applicants by Enrollment Status(Business)





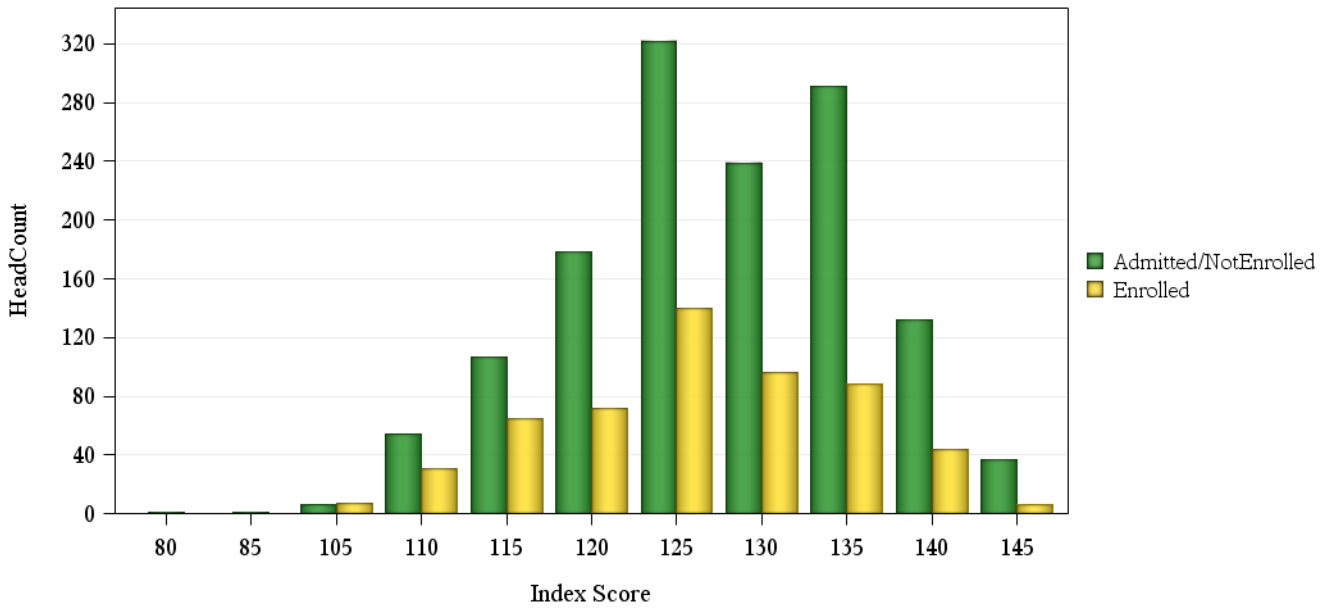
# Fall 2016 Freshman Profile

## Engineering Admitted Applicants

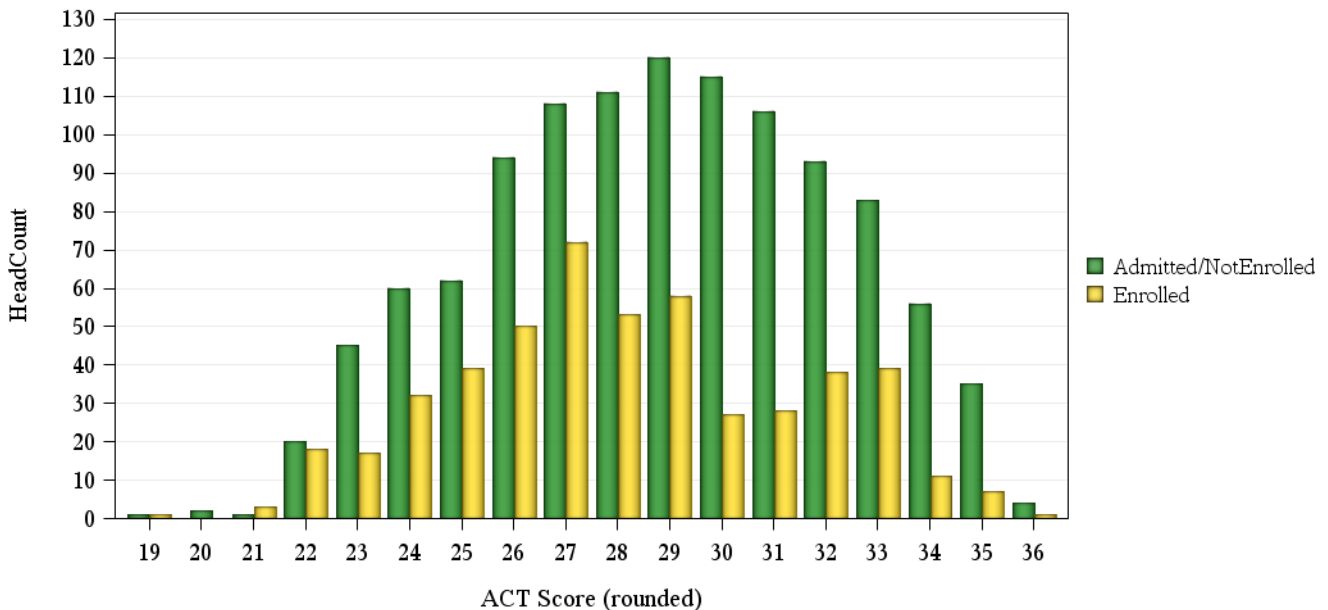
	Not Enrolled (N= 1386)				Enrolled (N= 549)			
	Res	Nonres	Total	Percent	Res	Nonres	Total	Percent
<b>ACT Composite</b>								
19-22	12	12	24	2%	17	5	22	4%
23-26	141	120	261	19%	109	29	138	25%
27-36	429	402	831	60%	249	85	334	61%
Missing Data	11	259	270	19%	4	51	55	10%
Means	28.9	28.9	28.9		28.0	28.1	28.1	
<b>CCHE Index</b>								
0-90	.	2	2	0%	.	.	.	.
101-114	39	59	98	7%	44	19	63	11%
115-160	554	714	1,268	91%	335	151	486	89%
Missing Data	.	18	18	1%	.	.	.	.
Means	129	127	128		126	126	126	
<b>HS GPA</b>								
3.0-3.59	49	83	132	10%	56	29	85	15%
3.6-4.00	251	409	660	48%	174	91	265	48%
4.01-high	293	300	593	43%	149	50	199	36%
Missing Data	.	1	1	0%	.	.	.	.
Means	4.05	3.97	4.00		3.95	3.90	3.94	
<b>HS Rank</b>								
30-49	6	4	10	1%	3	2	5	1%
50-59	13	12	25	2%	16	2	18	3%
60-79	88	74	162	12%	97	18	115	21%
80-89	122	79	201	15%	72	11	83	15%
90-100	188	129	317	23%	120	34	154	28%
Missing Data	176	495	671	48%	71	103	174	32%
Means	85.3	84.6	85.0		82.3	84.0	82.6	
<b>SAT Critical Thinking</b>								
0-399	.	2	2	0%	1	.	1	0%
400-499	8	44	52	4%	3	10	13	2%
500-599	26	180	206	15%	20	39	59	11%
600-699	44	172	216	16%	23	42	65	12%
700-800	22	41	63	5%	8	4	12	2%
Missing Data	493	354	847	61%	324	75	399	73%
Means	623	592	598		607	585	593	
<b>SAT Math</b>								
400-499	1	3	4	0%	.	1	1	0%
500-599	21	104	125	9%	10	23	33	6%
600-699	51	229	280	20%	32	57	89	16%
700-800	27	103	130	9%	13	14	27	5%
Missing Data	493	354	847	61%	324	75	399	73%
Means	654	644	646		653	636	642	

## Fall 2016 Freshman Profile

### Fall 2016 CDHE Index Distribution of Admitted Applicants by Enrollment Status(Engineering)



### Fall 2016 ACT Composite Distribution of Admitted Applicants by Enrollment Status(Engineering)



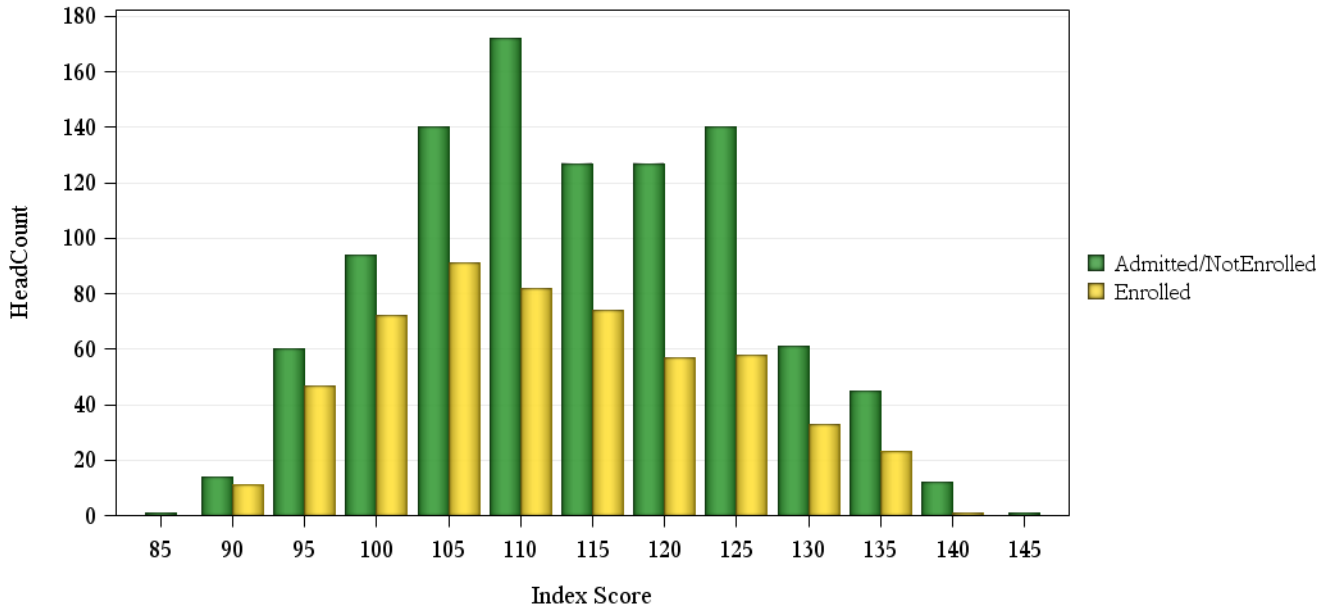
# Fall 2016 Freshman Profile

## Health and Human Sciences Admitted Applicants

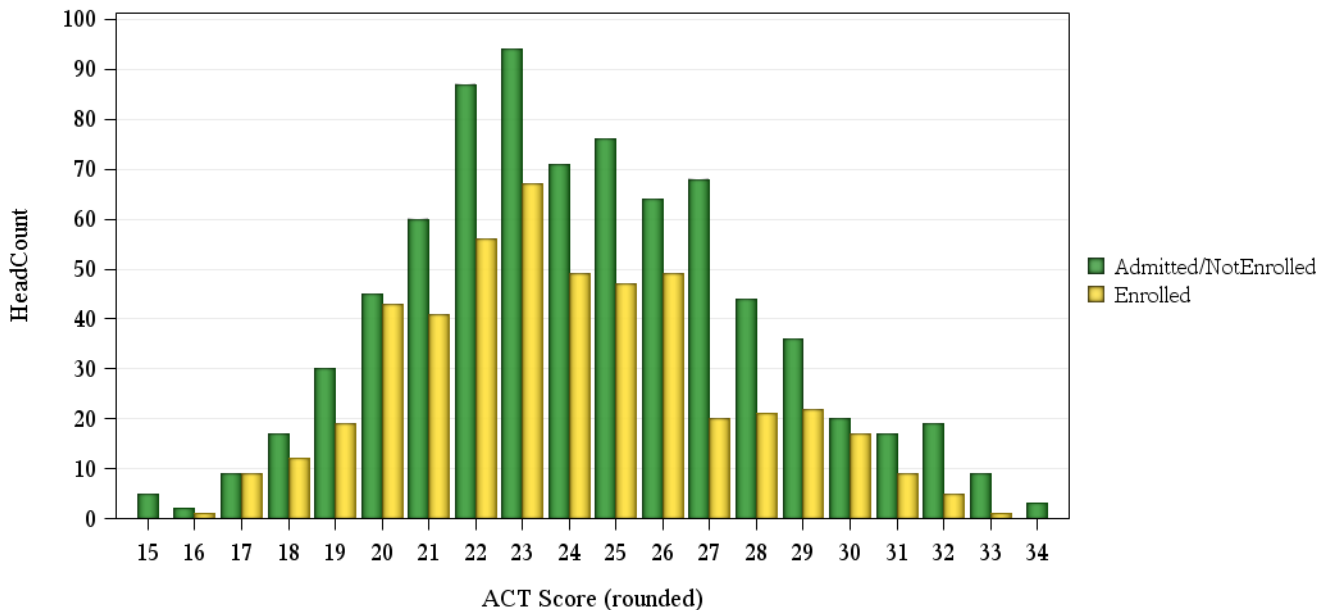
	Not Enrolled (N= 1015)				Enrolled (N= 552)			
	Res	Nonres	Total	Percent	Res	Nonres	Total	Percent
<b>ACT Composite</b>								
15-18	19	14	33	3%	18	4	22	4%
19-22	124	98	222	22%	139	20	159	29%
23-26	144	161	305	30%	148	64	212	38%
27-36	87	129	216	21%	62	33	95	17%
Missing Data	3	236	239	24%	3	61	64	12%
Means	23.9	24.7	24.3		23.4	24.9	23.8	
<b>CCHE Index</b>								
0-90	1	1	2	0%	6	.	6	1%
091-100	50	71	121	12%	66	19	85	15%
101-114	159	252	411	40%	172	69	241	44%
115-160	167	293	460	45%	126	91	217	39%
Missing Data	.	21	21	2%	.	3	3	1%
Means	113	114	114		111	114	112	
<b>HS GPA</b>								
2.0-2.49	.	.	.	.	1	.	1	0%
2.5-2.99	27	35	62	6%	40	16	56	10%
3.0-3.59	142	231	373	37%	158	73	231	42%
3.6-4.00	136	279	415	41%	130	67	197	36%
4.01-high	72	93	165	16%	41	26	67	12%
Means	3.62	3.63	3.62		3.51	3.56	3.53	
<b>HS Rank</b>								
0-29	4	6	10	1%	7	4	11	2%
30-49	41	29	70	7%	52	11	63	11%
50-59	33	31	64	6%	51	7	58	11%
60-79	91	71	162	16%	85	24	109	20%
80-89	49	60	109	11%	59	16	75	14%
90-100	52	41	93	9%	43	9	52	9%
Missing Data	107	400	507	50%	73	111	184	33%
Means	70.3	71.0	70.7		67.2	68.3	67.4	
<b>SAT Critical Thinking</b>								
0-399	.	3	3	0%	.	2	2	0%
400-499	5	81	86	8%	9	14	23	4%
500-599	16	171	187	18%	11	45	56	10%
600-699	8	69	77	8%	3	25	28	5%
700-800	.	13	13	1%	1	2	3	1%
Missing Data	348	301	649	64%	346	94	440	80%
Means	560	543	544		532	551	547	
<b>SAT Math</b>								
0-399	2	3	5	0%	1	.	1	0%
400-499	6	66	72	7%	7	15	22	4%
500-599	12	177	189	19%	15	44	59	11%
600-699	8	82	90	9%	1	27	28	5%
700-800	1	9	10	1%	.	2	2	0%
Missing Data	348	301	649	64%	346	94	440	80%
Means	548	552	551		510	562	551	

## Fall 2016 Freshman Profile

### Fall 2016 CDHE Index Distribution of Admitted Applicants by Enrollment Status(Health and Human Sciences)



### Fall 2016 ACT Composite Distribution of Admitted Applicants by Enrollment Status(Health and Human Sciences)



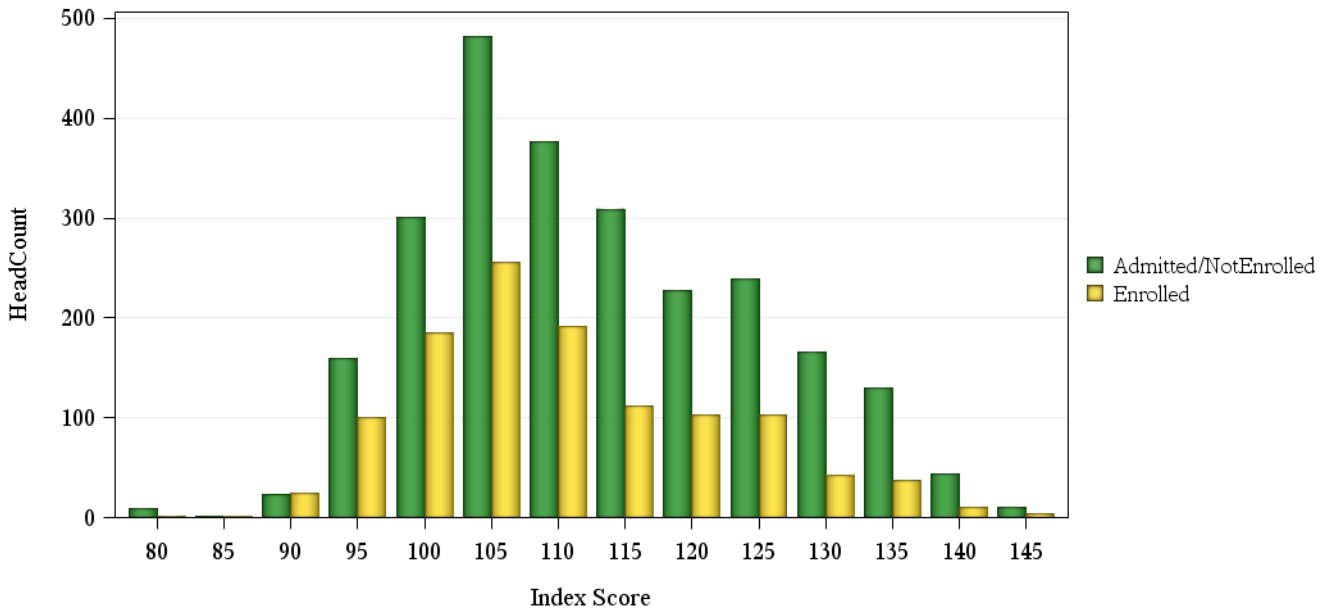
# Fall 2016 Freshman Profile

## Intra-University Admitted Applicants

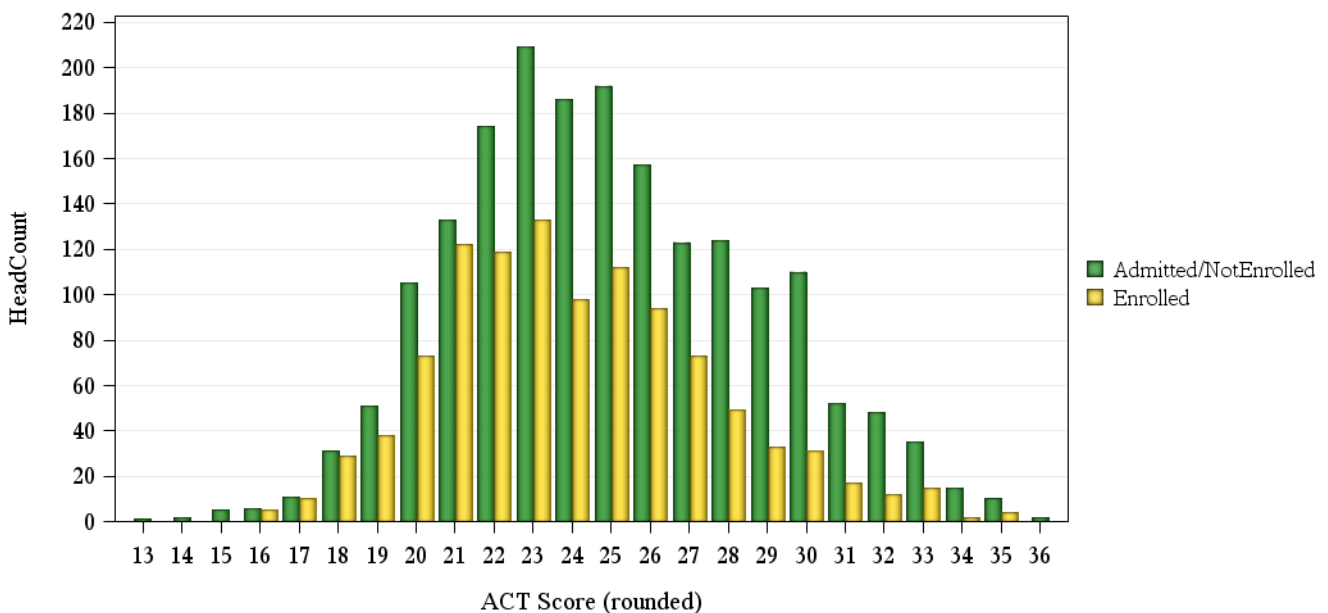
	Not Enrolled (N= 2636)				Enrolled (N= 1209)			
	Res	Nonres	Total	Percent	Res	Nonres	Total	Percent
<b>ACT Composite</b>								
0-14	1	2	3	0%	.	.	.	.
15-18	28	25	53	2%	40	4	44	4%
19-22	265	198	463	18%	301	51	352	29%
23-26	361	383	744	28%	357	80	437	36%
27-36	283	339	622	24%	173	63	236	20%
Missing Data	18	733	751	28%	13	127	140	12%
Means	24.7	25.3	25.0		23.8	24.9	24.0	
<b>CCHE Index</b>								
0-90	5	13	18	1%	10	4	14	1%
091-100	113	184	297	11%	153	48	201	17%
101-114	440	743	1,183	45%	454	141	595	49%
115-160	397	583	980	37%	265	99	364	30%
Missing Data	1	157	158	6%	2	33	35	3%
Means	114	112	113		110	110	110	
<b>HS GPA</b>								
2.0-2.49	1	3	4	0%	4	2	6	0%
2.5-2.99	79	206	285	11%	115	55	170	14%
3.0-3.59	416	787	1,203	46%	438	154	592	49%
3.6-4.00	299	510	809	31%	232	87	319	26%
4.01-high	161	173	334	13%	94	27	121	10%
Missing Data	.	1	1	0%	1	.	1	0%
Means	3.56	3.46	3.50		3.44	3.39	3.42	
<b>HS Rank</b>								
0-29	16	23	39	1%	40	7	47	4%
30-49	105	79	184	7%	174	21	195	16%
50-59	109	56	165	6%	105	13	118	10%
60-79	192	135	327	12%	218	26	244	20%
80-89	114	88	202	8%	87	15	102	8%
90-100	124	77	201	8%	98	16	114	9%
Missing Data	296	1,222	1,518	58%	162	227	389	32%
Means	68.9	67.8	68.5		62.9	64.4	63.1	
<b>SAT Critical Thinking</b>								
0-399	.	25	25	1%	2	5	7	1%
400-499	18	200	218	8%	21	44	65	5%
500-599	37	365	402	15%	17	68	85	7%
600-699	28	190	218	8%	14	26	40	3%
700-800	11	28	39	1%	9	7	16	1%
Missing Data	862	872	1,734	66%	821	175	996	82%
Means	575	545	548		561	537	544	
<b>SAT Math</b>								
0-399	1	5	6	0%	2	.	2	0%
400-499	17	136	153	6%	19	34	53	4%
500-599	38	387	425	16%	25	78	103	9%
600-699	29	244	273	10%	15	32	47	4%
700-800	9	36	45	2%	2	6	8	1%
Missing Data	862	872	1,734	66%	821	175	996	82%
Means	577	565	566		542	553	550	

## Fall 2016 Freshman Profile

### Fall 2016 CDHE Index Distribution of Admitted Applicants by Enrollment Status(Intra-University)



### Fall 2016 ACT Composite Distribution of Admitted Applicants by Enrollment Status(Intra-University)



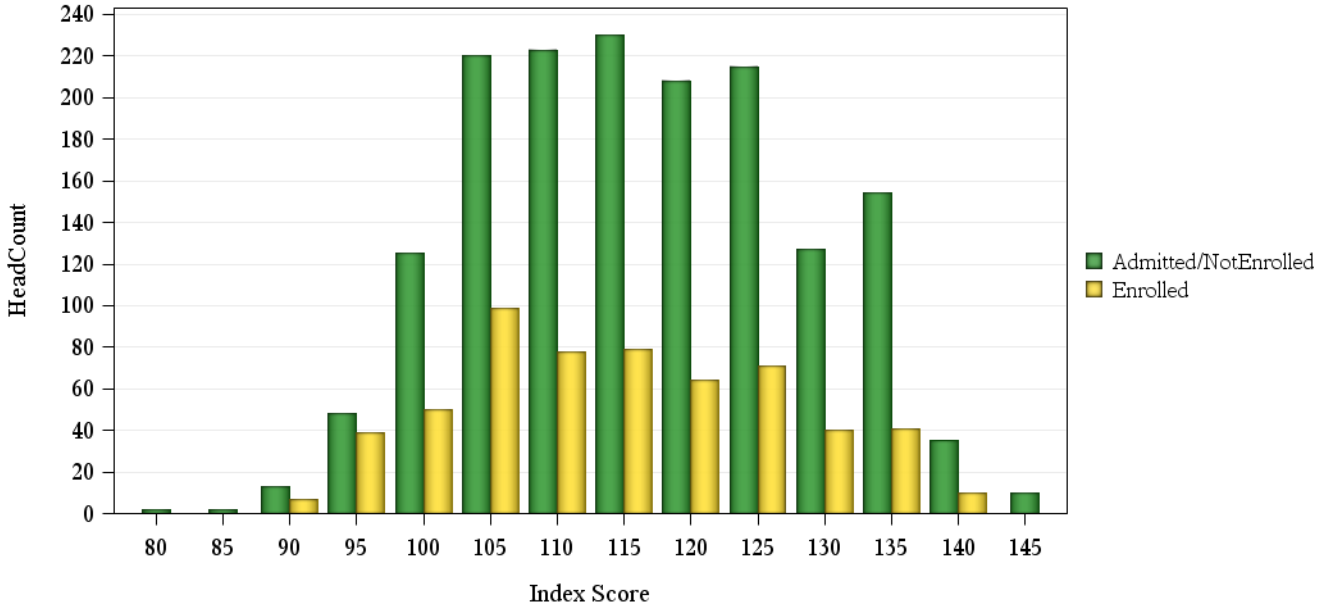
# Fall 2016 Freshman Profile

## Liberal Arts Admitted Applicants

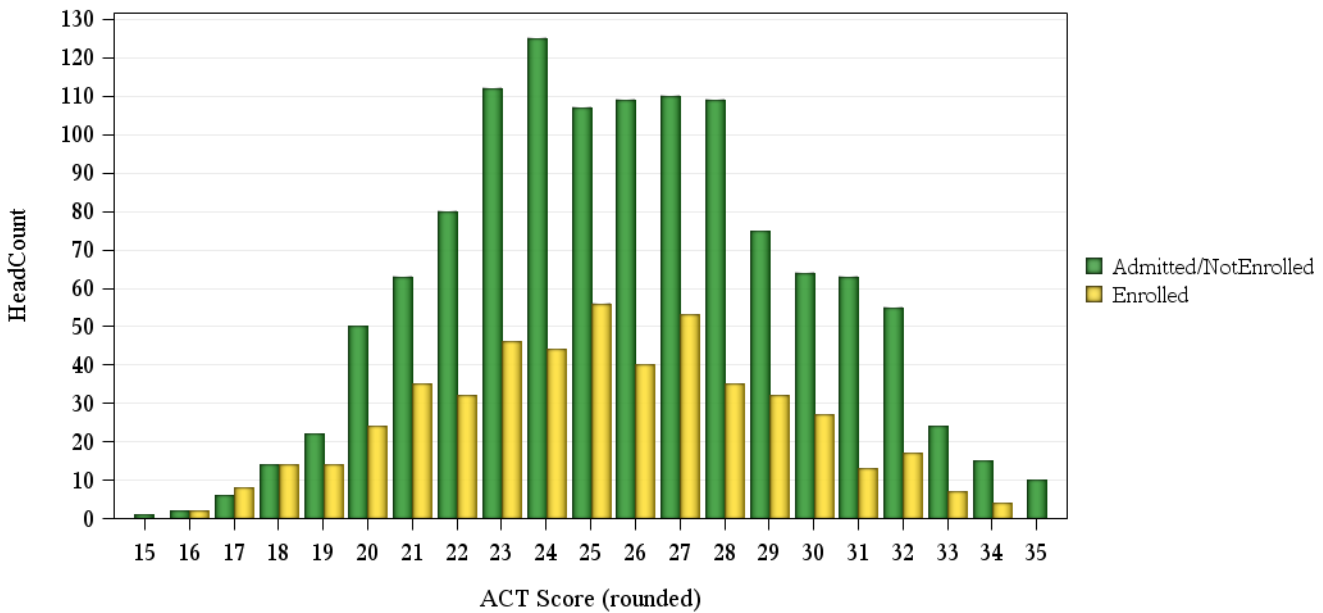
	Not Enrolled (N= 1657)				Enrolled (N= 585)			
	Res	Nonres	Total	Percent	Res	Nonres	Total	Percent
<b>ACT Composite</b>								
15-18	16	7	23	1%	21	3	24	4%
19-22	123	92	215	13%	97	8	105	18%
23-26	243	210	453	27%	147	39	186	32%
27-36	286	239	525	32%	144	44	188	32%
Missing Data	14	427	441	27%	6	76	82	14%
Means	25.8	25.9	25.9		24.8	26.4	25.1	
<b>CCHE Index</b>								
0-90	3	5	8	0%	2	.	2	0%
091-100	30	82	112	7%	48	20	68	12%
101-114	241	364	605	37%	166	62	228	39%
115-160	408	479	887	54%	199	81	280	48%
Missing Data	.	45	45	3%	.	7	7	1%
Means	118	115	117		114	115	114	
<b>HS GPA</b>								
2.0-2.49	.	1	1	0%	1	.	1	0%
2.5-2.99	34	67	101	6%	33	22	55	9%
3.0-3.59	216	400	616	37%	164	74	238	41%
3.6-4.00	255	370	625	38%	146	48	194	33%
4.01-high	177	135	312	19%	71	26	97	17%
Missing Data	.	2	2	0%	.	.	.	.
Means	3.72	3.57	3.63		3.58	3.51	3.56	
<b>HS Rank</b>								
0-29	7	7	14	1%	10	2	12	2%
30-49	51	47	98	6%	55	9	64	11%
50-59	57	38	95	6%	50	5	55	9%
60-79	142	104	246	15%	109	20	129	22%
80-89	96	68	164	10%	59	11	70	12%
90-100	137	80	217	13%	58	21	79	14%
Missing Data	192	631	823	50%	74	102	176	30%
Means	74.2	72.4	73.5		68.7	74.1	69.6	
<b>SAT Critical Thinking</b>								
0-399	1	4	5	0%	3	.	3	1%
400-499	6	61	67	4%	8	14	22	4%
500-599	33	252	285	17%	18	37	55	9%
600-699	41	182	223	13%	17	41	58	10%
700-800	18	35	53	3%	4	3	7	1%
Missing Data	583	441	1,024	62%	365	75	440	75%
Means	611	578	583		572	578	576	
<b>SAT Math</b>								
0-399	2	6	8	0%	.	2	2	0%
400-499	16	115	131	8%	14	25	39	7%
500-599	45	246	291	18%	23	43	66	11%
600-699	29	142	171	10%	12	22	34	6%
700-800	7	25	32	2%	1	3	4	1%
Missing Data	583	441	1,024	62%	365	75	440	75%
Means	569	556	558		548	546	547	

## Fall 2016 Freshman Profile

### Fall 2016 CDHE Index Distribution of Admitted Applicants by Enrollment Status(Liberal Arts)



### Fall 2016 ACT Composite Distribution of Admitted Applicants by Enrollment Status(Liberal Arts)





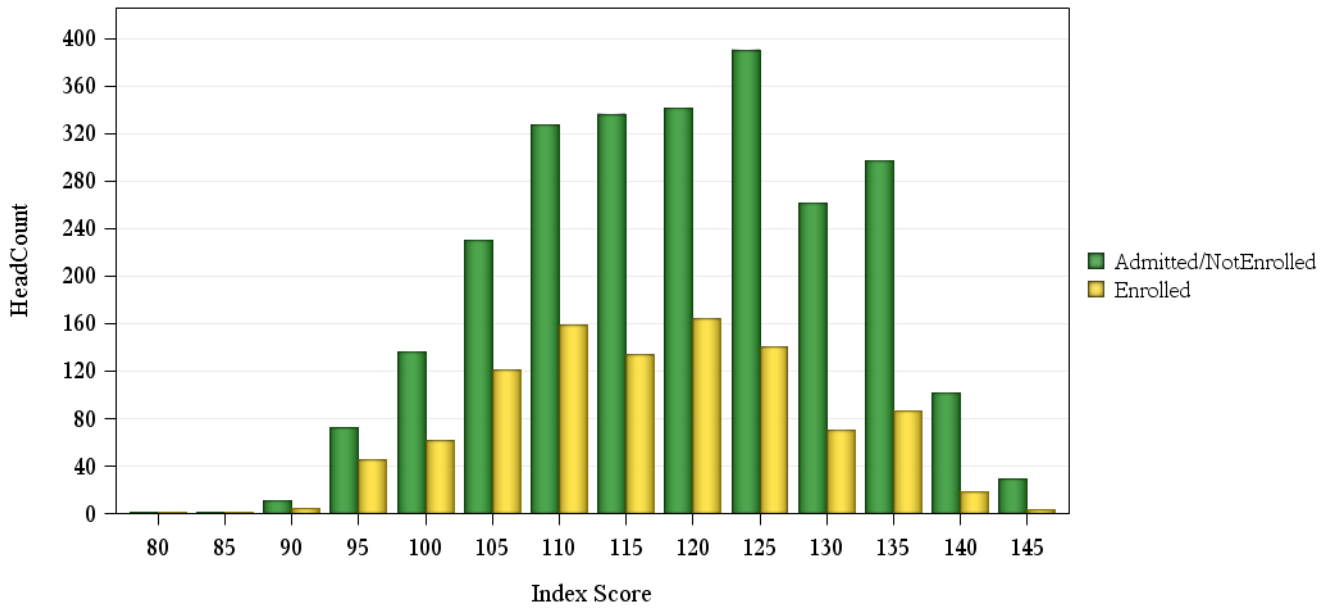
# Fall 2016 Freshman Profile

## Natural Sciences Admitted Applicants

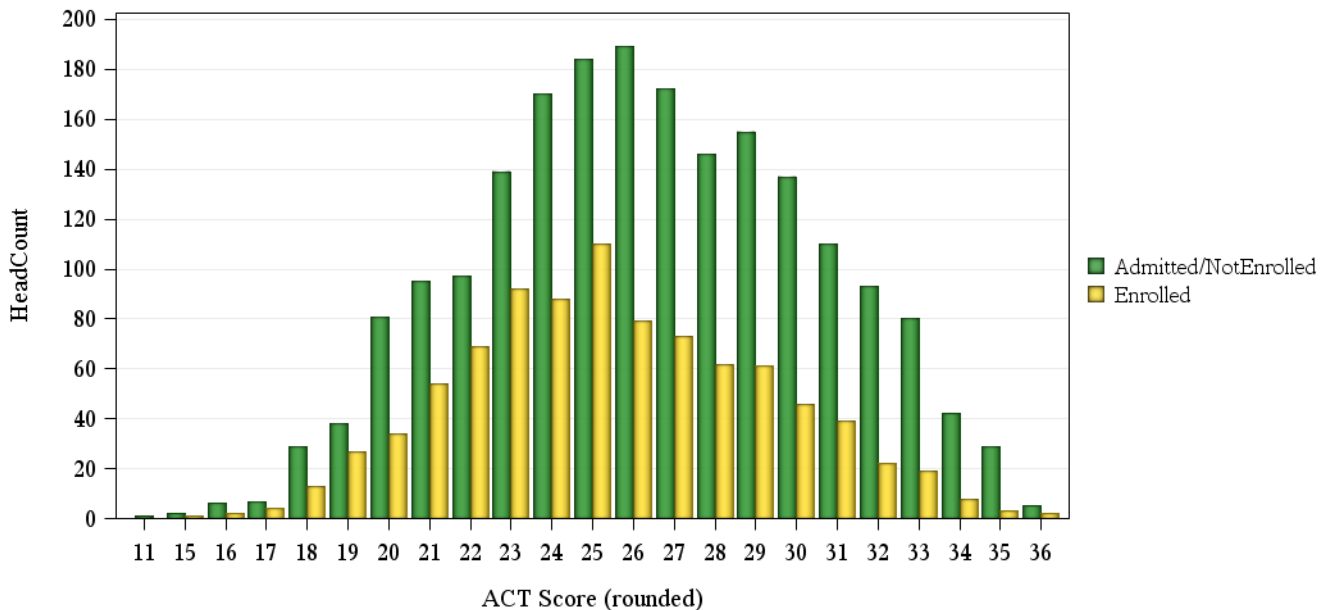
	Not Enrolled (N= 2581)				Enrolled (N= 1016)			
	Res	Nonres	Total	Percent	Res	Nonres	Total	Percent
<b>ACT Composite</b>								
0-14	.	1	1	0%	.	.	.	.
15-18	25	19	44	2%	17	3	20	2%
19-22	166	145	311	12%	148	36	184	18%
23-26	331	351	682	26%	293	76	369	36%
27-36	436	533	969	38%	246	89	335	33%
Missing Data	16	558	574	22%	8	100	108	11%
Means	26.2	26.6	26.4		25.3	25.9	25.4	
<b>CCHE Index</b>								
0-90	.	4	4	0%	3	.	3	0%
091-100	45	102	147	6%	53	17	70	7%
101-114	279	461	740	29%	257	109	366	36%
115-160	650	993	1,643	64%	399	171	570	56%
Missing Data	.	47	47	2%	.	7	7	1%
Means	120	119	119		116	117	116	
<b>HS GPA</b>								
2.0-2.49	.	.	.	.	1	.	1	0%
2.5-2.99	32	66	98	4%	43	18	61	6%
3.0-3.59	261	504	765	30%	256	112	368	36%
3.6-4.00	403	665	1,068	41%	276	127	403	40%
4.01-high	277	372	649	25%	135	46	181	18%
Missing Data	1	.	1	0%	1	1	2	0%
Means	3.78	3.73	3.75		3.64	3.62	3.64	
<b>HS Rank</b>								
0-29	6	12	18	1%	12	4	16	2%
30-49	55	40	95	4%	69	23	92	9%
50-59	52	64	116	4%	66	10	76	7%
60-79	216	181	397	15%	198	44	242	24%
80-89	174	130	304	12%	126	35	161	16%
90-100	200	190	390	15%	116	30	146	14%
Missing Data	271	990	1,261	49%	125	158	283	28%
Means	77.1	76.7	76.9		71.7	71.5	71.7	
<b>SAT Critical Thinking</b>								
0-399	.	8	8	0%	.	.	.	.
400-499	9	142	151	6%	15	23	38	4%
500-599	57	345	402	16%	30	72	102	10%
600-699	45	266	311	12%	27	58	85	8%
700-800	25	66	91	4%	8	10	18	2%
Missing Data	838	780	1,618	63%	632	141	773	76%
Means	608	573	578		583	577	579	
<b>SAT Math</b>								
0-399	.	6	6	0%	2	.	2	0%
400-499	14	126	140	5%	15	25	40	4%
500-599	49	316	365	14%	29	72	101	10%
600-699	45	283	328	13%	28	56	84	8%
700-800	28	96	124	5%	6	10	16	2%
Missing Data	838	780	1,618	63%	632	141	773	76%
Means	612	586	590		576	572	573	

## Fall 2016 Freshman Profile

### Fall 2016 CDHE Index Distribution of Admitted Applicants by Enrollment Status(Natural Sciences)



### Fall 2016 ACT Composite Distribution of Admitted Applicants by Enrollment Status(Natural Sciences)



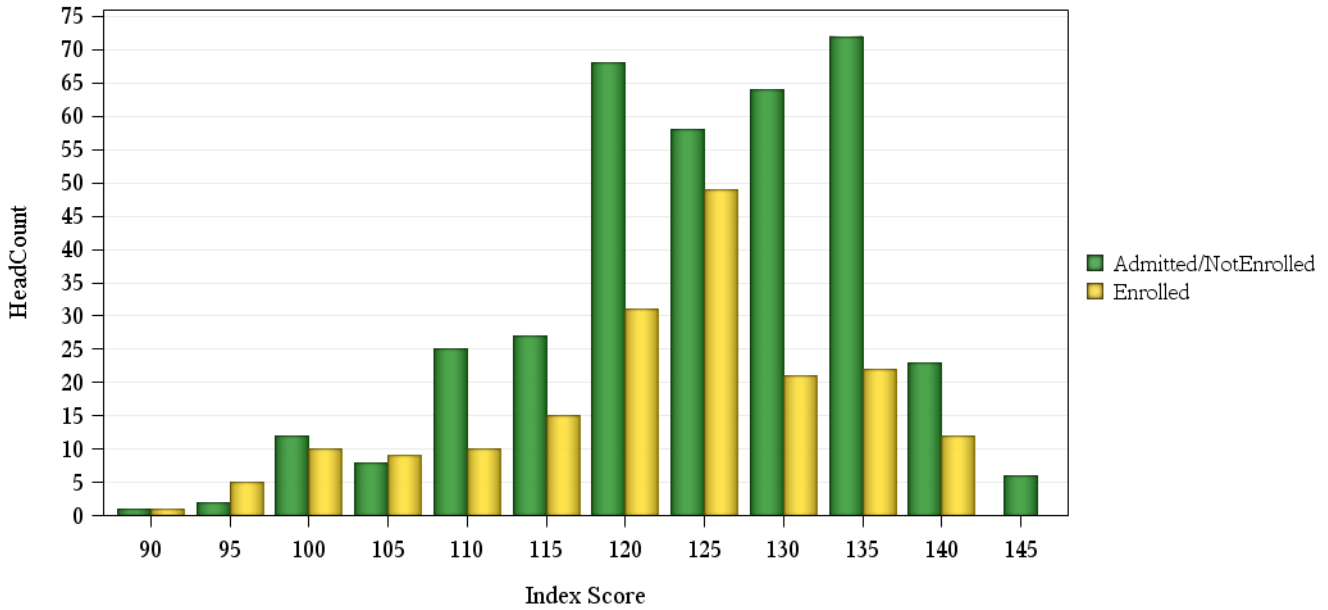
## Fall 2016 Freshman Profile

### Veterinary Medicine + Biomedical Sci Admitted Applicants

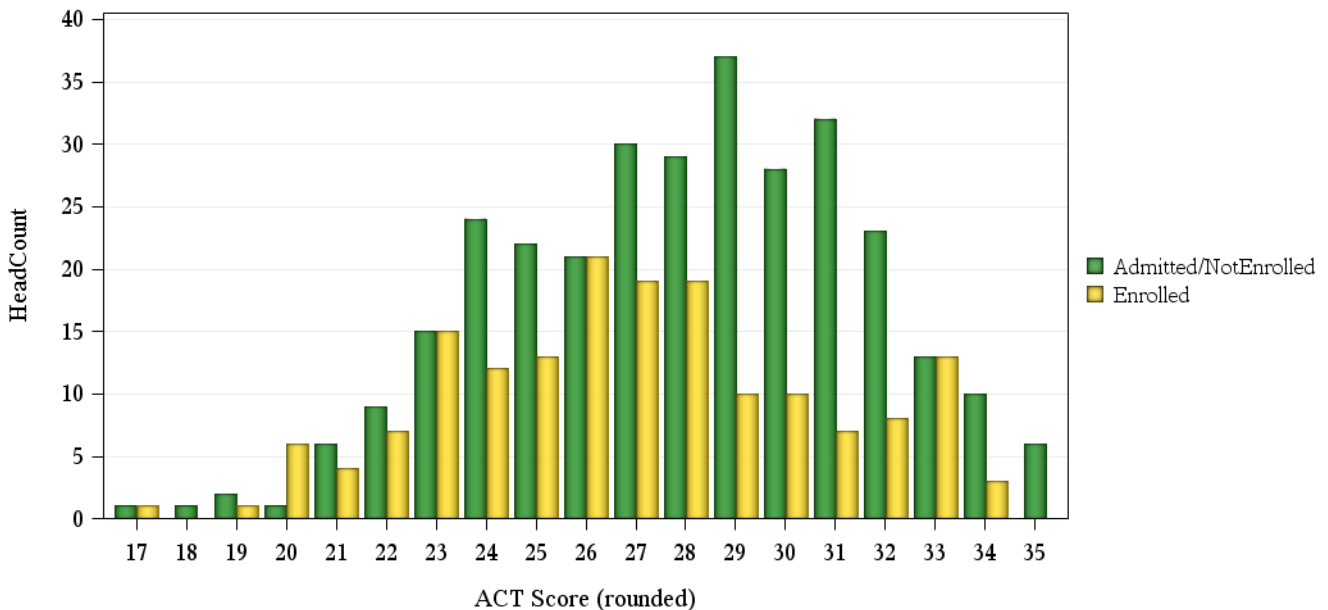
	Not Enrolled (N= 372)				Enrolled (N= 185)			
	Res	Nonres	Total	Percent	Res	Nonres	Total	Percent
<b>ACT Composite</b>								
15-18	1	1	2	1%	1	.	1	1%
19-22	7	11	18	5%	15	3	18	10%
23-26	47	35	82	22%	41	20	61	33%
27-36	105	103	208	56%	69	20	89	48%
Missing Data	1	61	62	17%	.	16	16	9%
Means	28.1	27.9	28.0		27.0	26.3	26.8	
<b>CCHE Index</b>								
0-90	.	.	.	.	.	1	1	1%
091-100	5	3	8	2%	3	8	11	6%
101-114	13	35	48	13%	19	9	28	15%
115-160	143	167	310	83%	104	41	145	78%
Missing Data	.	6	6	2%	.	.	.	.
Means	126	124	125		123	119	122	
<b>HS GPA</b>								
2.0-2.49	.	.	.	.	.	1	1	1%
2.5-2.99	3	2	5	1%	2	7	9	5%
3.0-3.59	18	42	60	16%	19	10	29	16%
3.6-4.00	57	104	161	43%	53	24	77	42%
4.01-high	83	63	146	39%	52	17	69	37%
Means	4.01	3.87	3.93		3.91	3.71	3.85	
<b>HS Rank</b>								
0-29	2	.	2	1%	.	.	.	.
30-49	6	3	9	2%	7	1	8	4%
50-59	5	9	14	4%	6	2	8	4%
60-79	20	16	36	10%	22	10	32	17%
80-89	28	24	52	14%	23	5	28	15%
90-100	61	40	101	27%	47	5	52	28%
Missing Data	39	119	158	42%	21	36	57	31%
Means	83.7	83.0	83.4		80.8	76.3	80.0	
<b>SAT Critical Thinking</b>								
0-399	.	1	1	0%	.	.	.	.
400-499	1	11	12	3%	1	4	5	3%
500-599	6	33	39	10%	10	19	29	16%
600-699	8	41	49	13%	4	7	11	6%
700-800	7	13	20	5%	.	5	5	3%
Missing Data	139	112	251	67%	111	24	135	73%
Means	642	601	608		559	580	573	
<b>SAT Math</b>								
0-399	.	.	.	.	1	.	1	1%
400-499	.	11	11	3%	2	6	8	4%
500-599	7	37	44	12%	8	17	25	14%
600-699	9	44	53	14%	4	10	14	8%
700-800	6	7	13	3%	.	2	2	1%
Missing Data	139	112	251	67%	111	24	135	73%
Means	650	595	605		551	575	567	

## Fall 2016 Freshman Profile

### Fall 2016 CDHE Index Distribution of Admitted Applicants by Enrollment Status(Veterinary Medicine + Biomedical Sci)



### Fall 2016 ACT Composite Distribution of Admitted Applicants by Enrollment Status(Veterinary Medicine + Biomedical Sci)



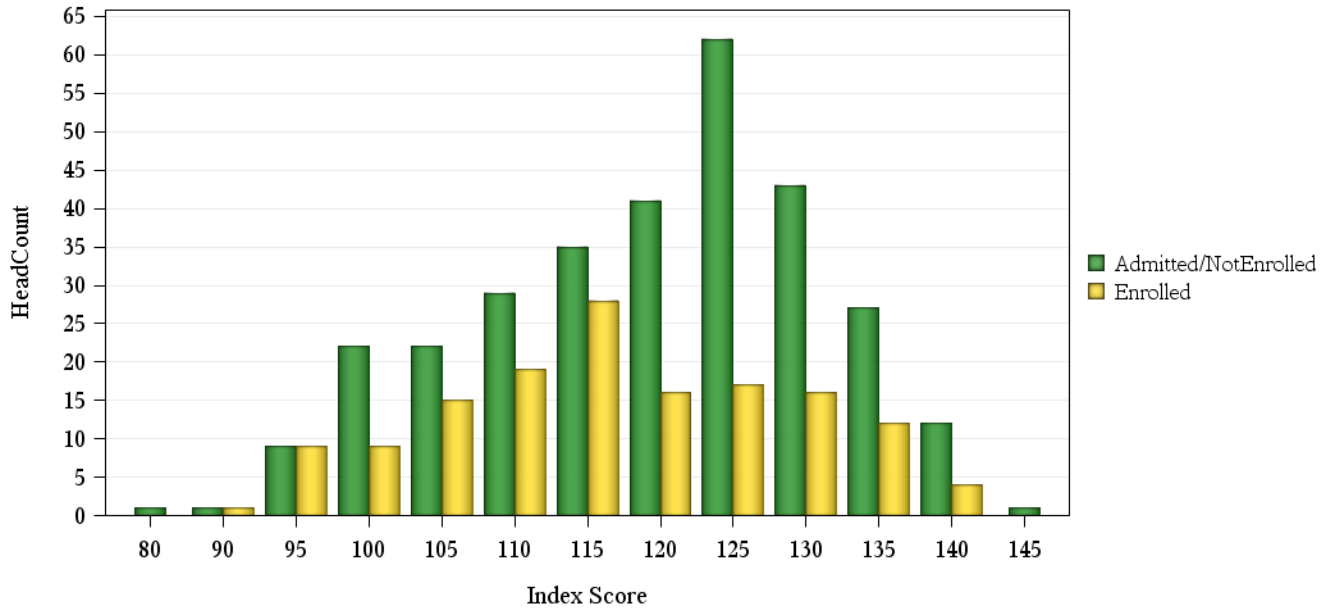
# Fall 2016 Freshman Profile

## Warner College of Natural Resources Admitted Applicants

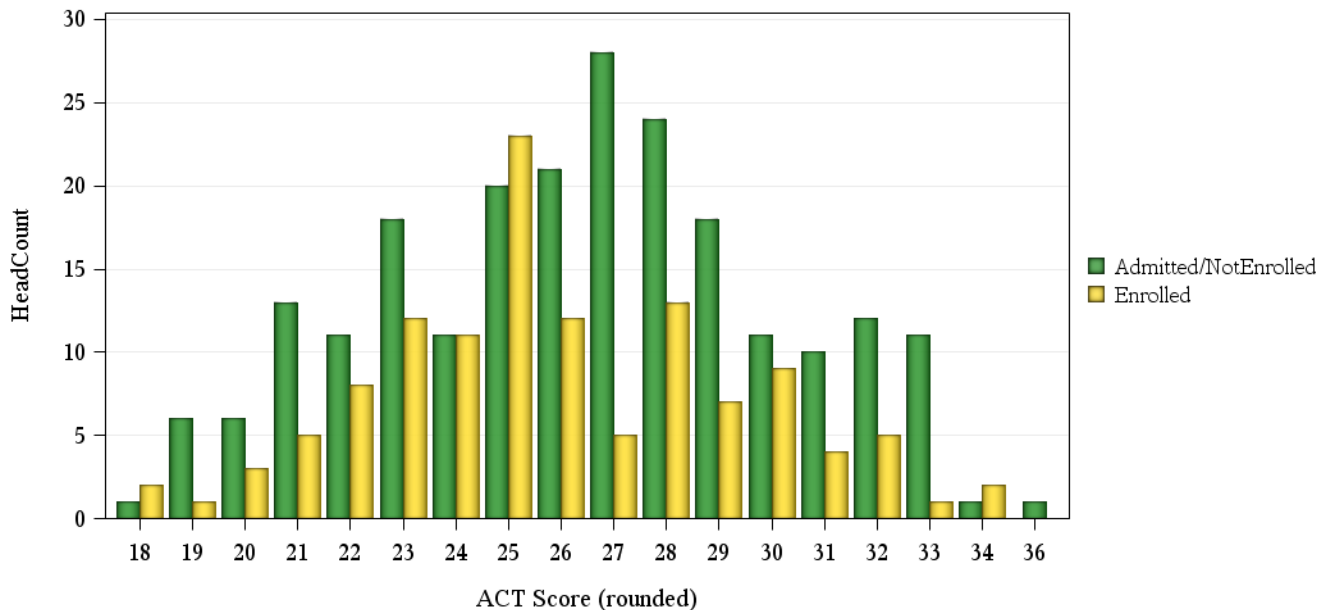
	Not Enrolled (N= 308)				Enrolled (N= 151)			
	Res	Nonres	Total	Percent	Res	Nonres	Total	Percent
<b>ACT Composite</b>								
15-18	1	.	1	0%	1	1	2	1%
19-22	14	22	36	12%	12	5	17	11%
23-26	19	51	70	23%	29	29	58	38%
27-36	25	91	116	38%	24	22	46	30%
Missing Data	3	82	85	28%	2	26	28	19%
Means	25.6	26.8	26.4		25.6	26.2	25.9	
<b>CCHE Index</b>								
0-90	.	1	1	0%	.	.	.	.
091-100	7	12	19	6%	8	8	16	11%
101-114	19	56	75	24%	24	23	47	31%
115-160	36	174	210	68%	34	49	83	55%
Missing Data	.	3	3	1%	2	3	5	3%
Means	118	120	120		116	117	117	
<b>HS GPA</b>								
2.5-2.99	1	9	10	3%	7	6	13	9%
3.0-3.59	24	74	98	32%	28	28	56	37%
3.6-4.00	19	100	119	39%	20	37	57	38%
4.01-high	18	62	80	26%	13	12	25	17%
Missing Data	.	1	1	0%	.	.	.	.
Means	3.70	3.73	3.72		3.60	3.62	3.61	
<b>HS Rank</b>								
0-29	1	.	1	0%	1	.	1	1%
30-49	6	9	15	5%	9	3	12	8%
50-59	3	4	7	2%	5	4	9	6%
60-79	12	28	40	13%	19	13	32	21%
80-89	10	20	30	10%	7	6	13	9%
90-100	12	35	47	15%	9	7	16	11%
Missing Data	18	150	168	55%	18	50	68	45%
Means	73.4	78.8	77.1		69.1	74.6	71.3	
<b>SAT Critical Thinking</b>								
0-399	.	1	1	0%	.	.	.	.
400-499	2	16	18	6%	1	7	8	5%
500-599	1	41	42	14%	3	19	22	15%
600-699	5	58	63	20%	3	15	18	12%
700-800	1	11	12	4%	.	1	1	1%
Missing Data	53	119	172	56%	61	41	102	68%
Means	592	595	595		576	568	569	
<b>SAT Math</b>								
0-399	.	1	1	0%	1	.	1	1%
400-499	1	12	13	4%	.	6	6	4%
500-599	4	67	71	23%	5	16	21	14%
600-699	4	40	44	14%	1	17	18	12%
700-800	.	7	7	2%	.	3	3	2%
Missing Data	53	119	172	56%	61	41	102	68%
Means	586	576	577		529	581	574	

## Fall 2016 Freshman Profile

### Fall 2016 CDHE Index Distribution of Admitted Applicants by Enrollment Status(Warner College of Natural Resources)



### Fall 2016 ACT Composite Distribution of Admitted Applicants by Enrollment Status(Warner College of Natural Resources)



# **First-Year CSU GPA**

## **Fall 2015 Cohort**

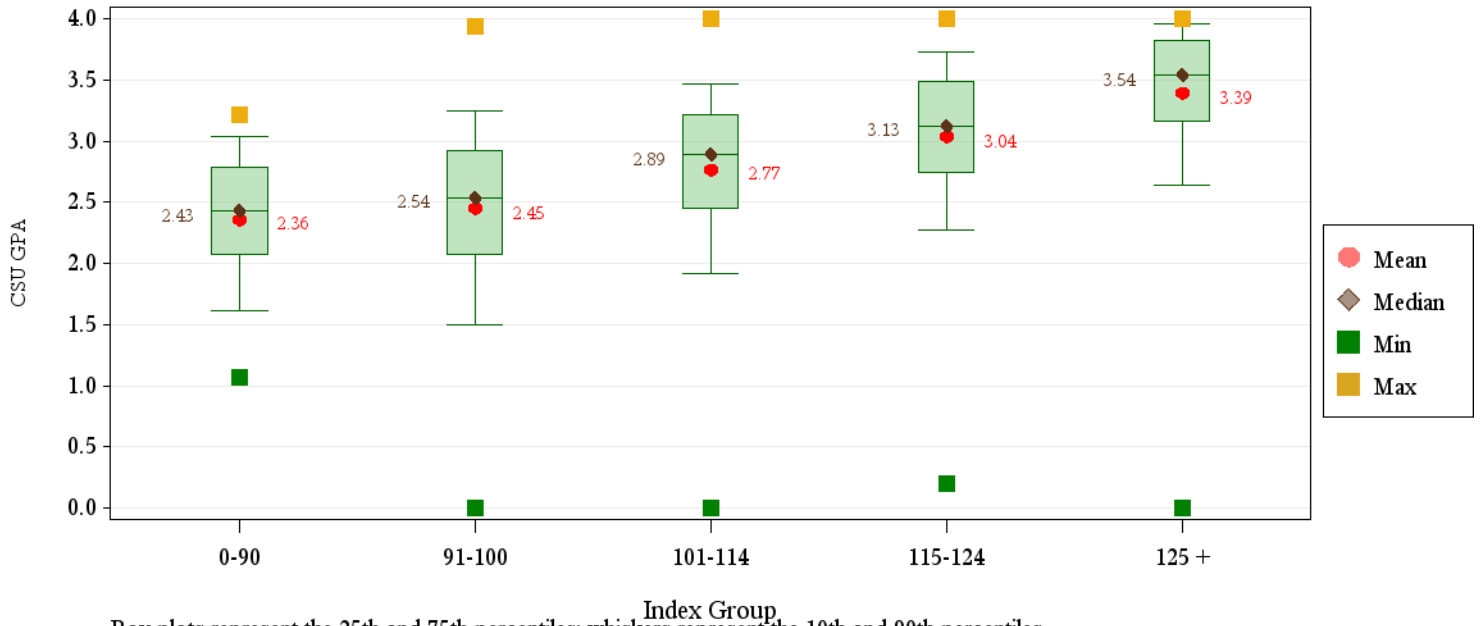
**First-Year CSU GPA (Fall 2015 Cohort) by Admission Score**
**University Summary**

	CSU GPA				Total
	0.0-1.9	2.0-2.9	3.0-3.5	3.6-high	
<b>Total</b>	<b>414</b>	<b>1,618</b>	<b>1,563</b>	<b>818</b>	<b>4,413</b>
<b>HS GPA</b>					
2.0-2.49	1	1	2	0	4
2.5-2.99	93	177	53	7	330
3.0-3.59	230	848	526	93	1,697
3.6-4.00	82	495	701	367	1,645
4.01-high	7	91	276	349	723
Missing Data	1	6	5	2	14
<b>HS Rank</b>					
0-29	25	41	17	1	84
30-49	89	230	97	9	425
50-59	54	193	122	15	384
60-79	79	434	374	123	1,010
80-89	35	159	263	162	619
90-100	17	97	246	264	624
Missing Data	115	464	444	244	1,267
<b>SAT Critical Thinking</b>					
0-399	0	5	2	0	7
400-499	32	87	60	8	187
500-599	46	167	173	93	479
600-699	23	75	100	111	309
700-800	3	8	17	26	54
Missing Data	310	1,276	1,211	580	3,377
<b>SAT Math</b>					
0-399	3	5	4	0	12
400-499	24	58	46	17	145
500-599	48	172	155	70	445
600-699	28	95	134	108	365
700-800	2	13	14	43	72
Missing Data	309	1,275	1,210	580	3,374
<b>ACT Composite</b>					
0-14	0	2	1	0	3
15-18	14	73	24	2	113
19-22	112	439	302	48	901
23-26	129	604	595	226	1,554
27-36	87	316	473	452	1,328
Missing Data	72	184	168	90	514
<b>CDHE Index</b>					
0-90	7	23	4	0	34
091-100	101	278	93	10	482
101-114	189	751	561	95	1,596
115-160	108	545	882	693	2,228
Missing Data	9	21	23	20	73

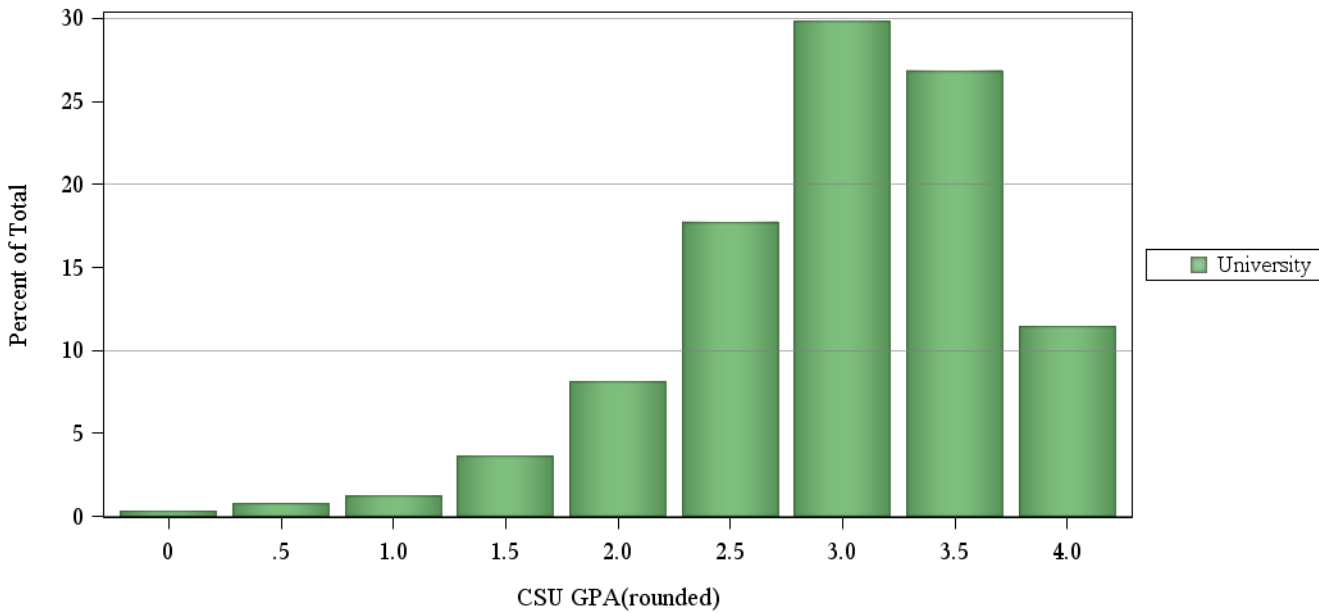


## First-Year CSU GPA (Fall 2015 Cohort) by Admission Score

### University Summary



Box plots represent the 25th and 75th percentiles: whiskers represent the 10th and 90th percentiles.

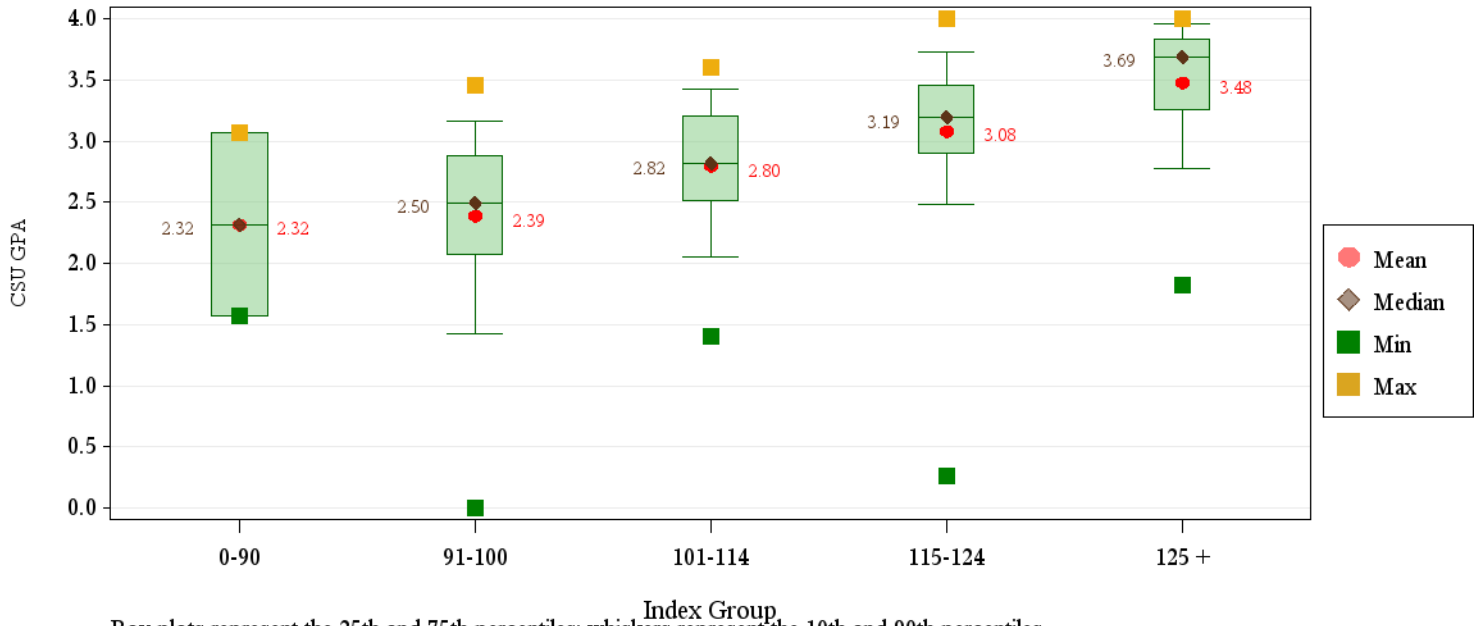


**First-Year CSU GPA (Fall 2015 Cohort) by Admission Score**
**Agricultural Sciences**

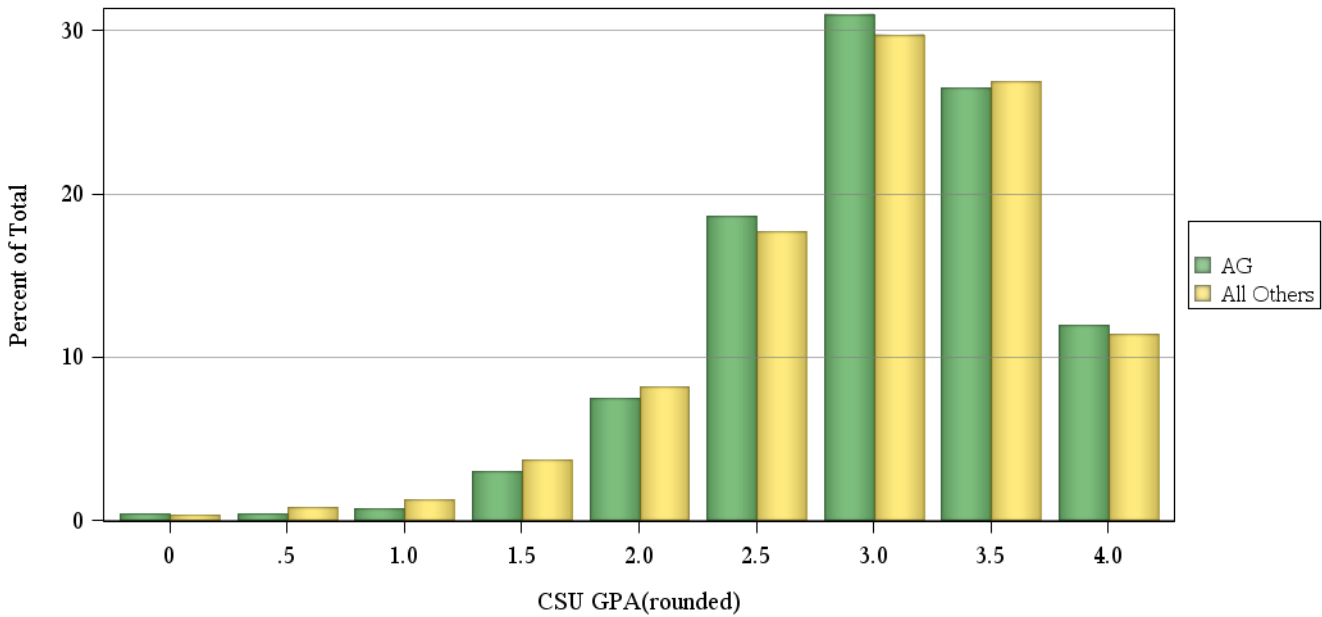
	CSU GPA				Total
	0.0-1.9	2.0-2.9	3.0-3.5	3.6-high	
<b>Total</b>	<b>23</b>	<b>92</b>	<b>103</b>	<b>54</b>	<b>272</b>
<b>HS GPA</b>					
2.5-2.99	4	9	3	0	16
3.0-3.59	14	44	37	3	98
3.6-4.00	4	37	46	24	111
4.01-high	1	2	17	27	47
<b>HS Rank</b>					
0-29	1	1	3	0	5
30-49	3	16	4	0	23
50-59	4	11	5	0	20
60-79	5	28	24	4	61
80-89	3	7	16	9	35
90-100	2	2	13	18	35
Missing Data	5	27	38	23	93
<b>SAT Critical Thinking</b>					
0-399	0	1	0	0	1
400-499	4	10	11	0	25
500-599	2	18	22	5	47
600-699	3	2	8	10	23
700-800	1	0	0	4	5
Missing Data	13	61	62	35	171
<b>SAT Math</b>					
0-399	0	0	1	0	1
400-499	2	12	9	1	24
500-599	7	15	17	6	45
600-699	2	4	14	12	32
Missing Data	12	61	62	35	170
<b>ACT Composite</b>					
15-18	0	6	0	0	6
19-22	9	21	21	3	54
23-26	4	36	40	12	92
27-36	3	15	19	31	68
Missing Data	7	14	23	8	52
<b>CDHE Index</b>					
0-90	1	0	1	0	2
091-100	6	18	6	0	30
101-114	8	48	39	1	96
115-160	7	26	56	51	140
Missing Data	1	0	1	2	4

# First-Year CSU GPA (Fall 2015 Cohort) by Admission Score

## Agricultural Sciences



Box plots represent the 25th and 75th percentiles: whiskers represent the 10th and 90th percentiles.

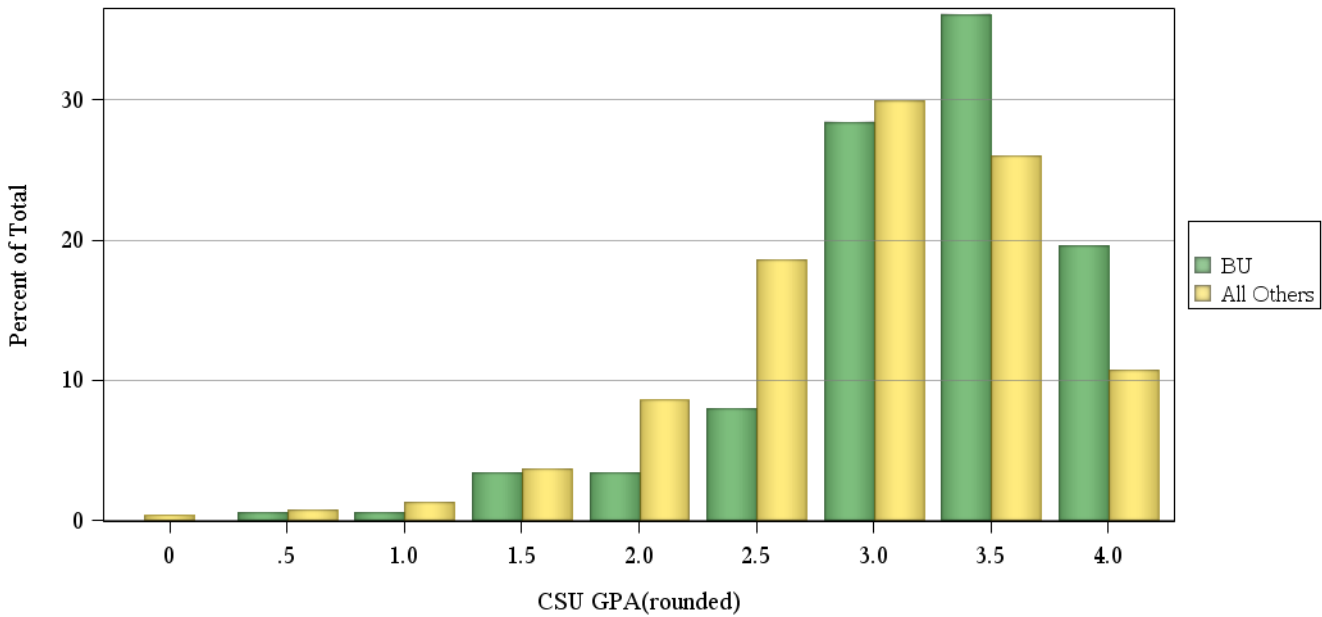
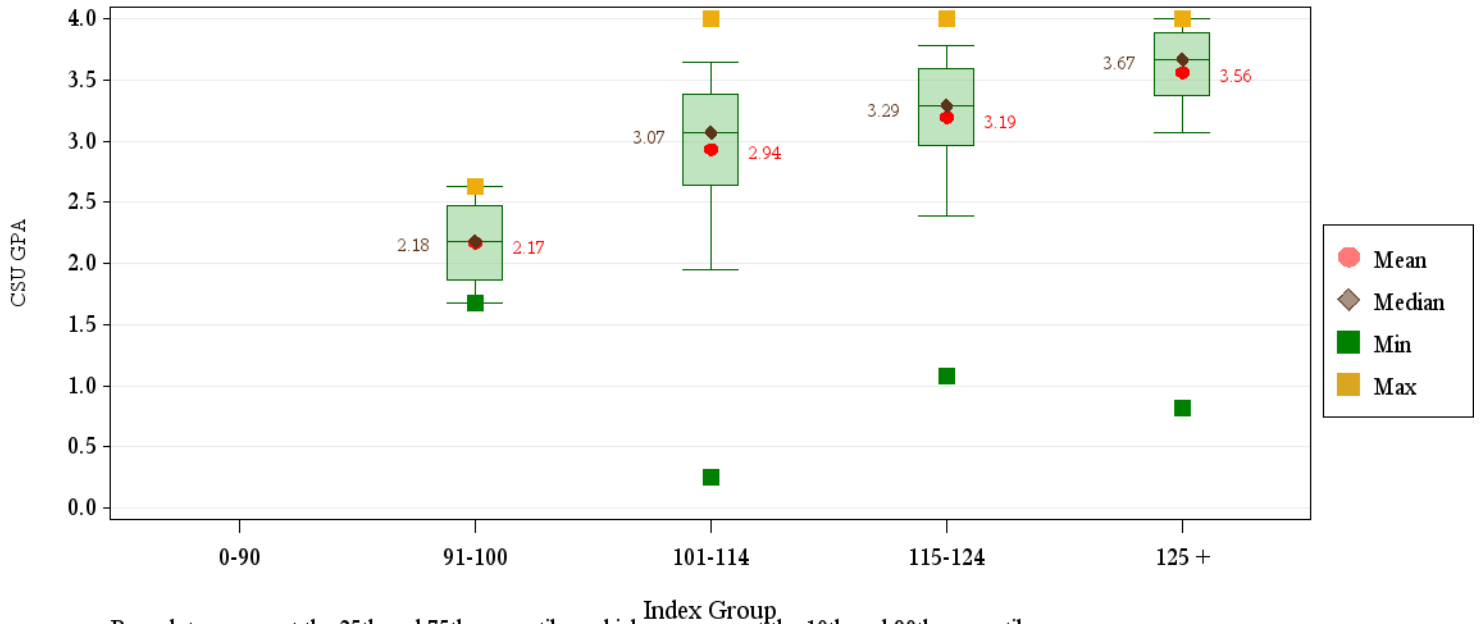


**First-Year CSU GPA (Fall 2015 Cohort) by Admission Score**
**Business**

	CSU GPA				Total
	0.0-1.9	2.0-2.9	3.0-3.5	3.6-high	
<b>Total</b>	<b>20</b>	<b>71</b>	<b>156</b>	<b>105</b>	<b>352</b>
<b>HS GPA</b>					
2.5-2.99	3	5	1	1	10
3.0-3.59	9	37	40	12	98
3.6-4.00	8	27	97	55	187
4.01-high	0	2	18	37	57
<b>HS Rank</b>					
30-49	3	5	6	0	14
50-59	1	5	14	2	22
60-79	6	26	49	24	105
80-89	2	6	35	30	73
90-100	0	2	19	21	42
Missing Data	8	27	33	28	96
<b>SAT Critical Thinking</b>					
400-499	1	1	3	0	5
500-599	1	9	15	10	35
600-699	2	3	10	15	30
700-800	0	0	1	0	1
Missing Data	16	58	127	80	281
<b>SAT Math</b>					
400-499	1	1	1	1	4
500-599	2	7	16	8	33
600-699	1	5	12	13	31
700-800	0	0	0	3	3
Missing Data	16	58	127	80	281
<b>ACT Composite</b>					
15-18	0	0	1	0	1
19-22	4	9	20	2	35
23-26	10	30	74	43	157
27-36	4	27	49	51	131
Missing Data	2	5	12	9	28
<b>CDHE Index</b>					
091-100	1	3	0	0	4
101-114	10	29	47	11	97
115-160	9	39	109	94	251

# First-Year CSU GPA (Fall 2015 Cohort) by Admission Score

## Business

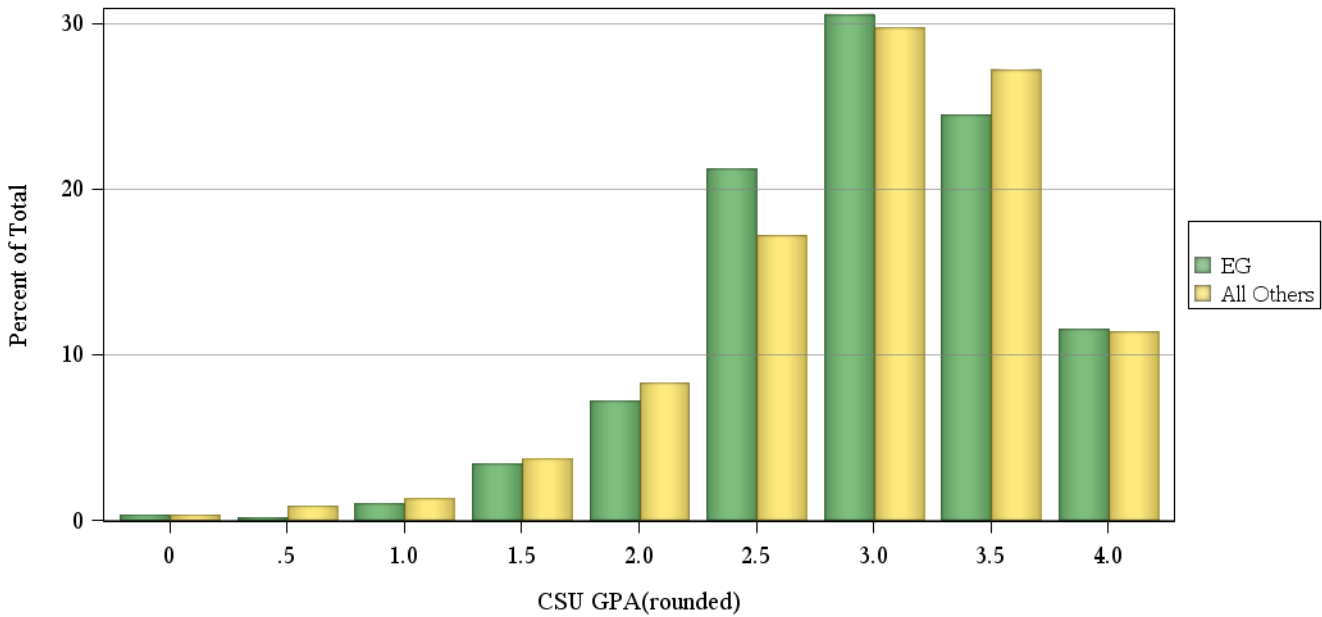
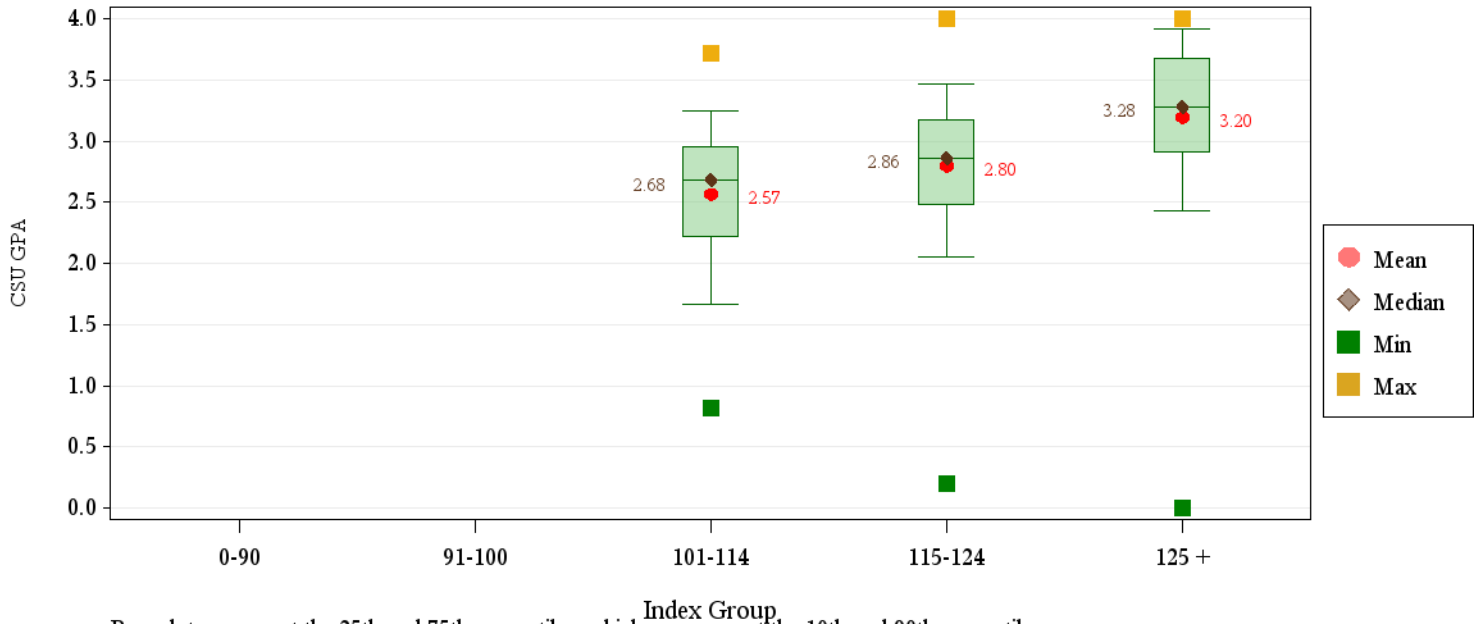


**First-Year CSU GPA (Fall 2015 Cohort) by Admission Score**
**Engineering**

	CSU GPA				Total
	0.0-1.9	2.0-2.9	3.0-3.5	3.6-high	
<b>Total</b>	<b>47</b>	<b>229</b>	<b>204</b>	<b>101</b>	<b>581</b>
<b>HS GPA</b>					
3.0-3.59	22	73	30	7	132
3.6-4.00	24	114	94	37	269
4.01-high	1	42	80	56	179
Missing Data	0	0	0	1	1
<b>HS Rank</b>					
30-49	2	5	1	0	8
50-59	4	16	10	0	30
60-79	18	68	37	9	132
80-89	7	42	50	10	109
90-100	6	39	55	47	147
Missing Data	10	59	51	35	155
<b>SAT Critical Thinking</b>					
400-499	0	7	5	0	12
500-599	5	29	22	14	70
600-699	2	16	19	18	55
700-800	1	4	5	7	17
Missing Data	39	173	153	62	427
<b>SAT Math</b>					
400-499	0	1	0	0	1
500-599	3	25	10	4	42
600-699	3	24	34	20	81
700-800	2	7	8	15	32
Missing Data	39	172	152	62	425
<b>ACT Composite</b>					
19-22	4	16	8	0	28
23-26	19	92	65	12	188
27-36	20	95	113	78	306
Missing Data	4	26	18	11	59
<b>CDHE Index</b>					
101-114	17	49	17	3	86
115-160	29	180	187	98	494
Missing Data	1	0	0	0	1

# First-Year CSU GPA (Fall 2015 Cohort) by Admission Score

## Engineering



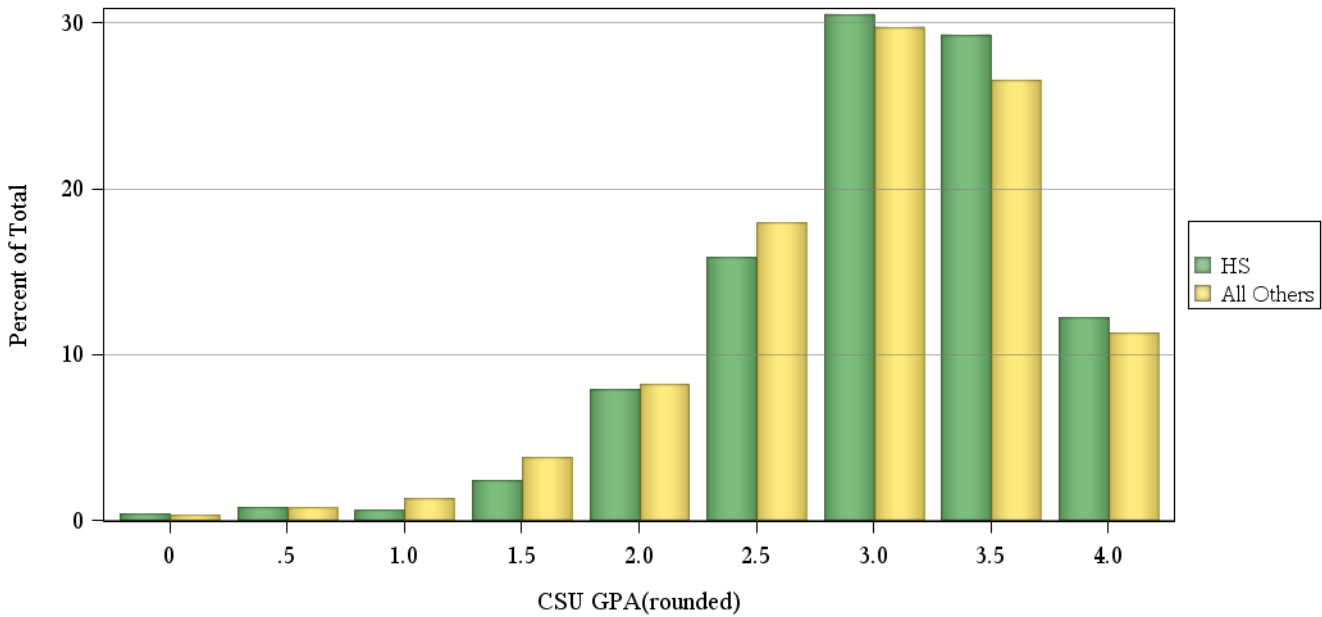
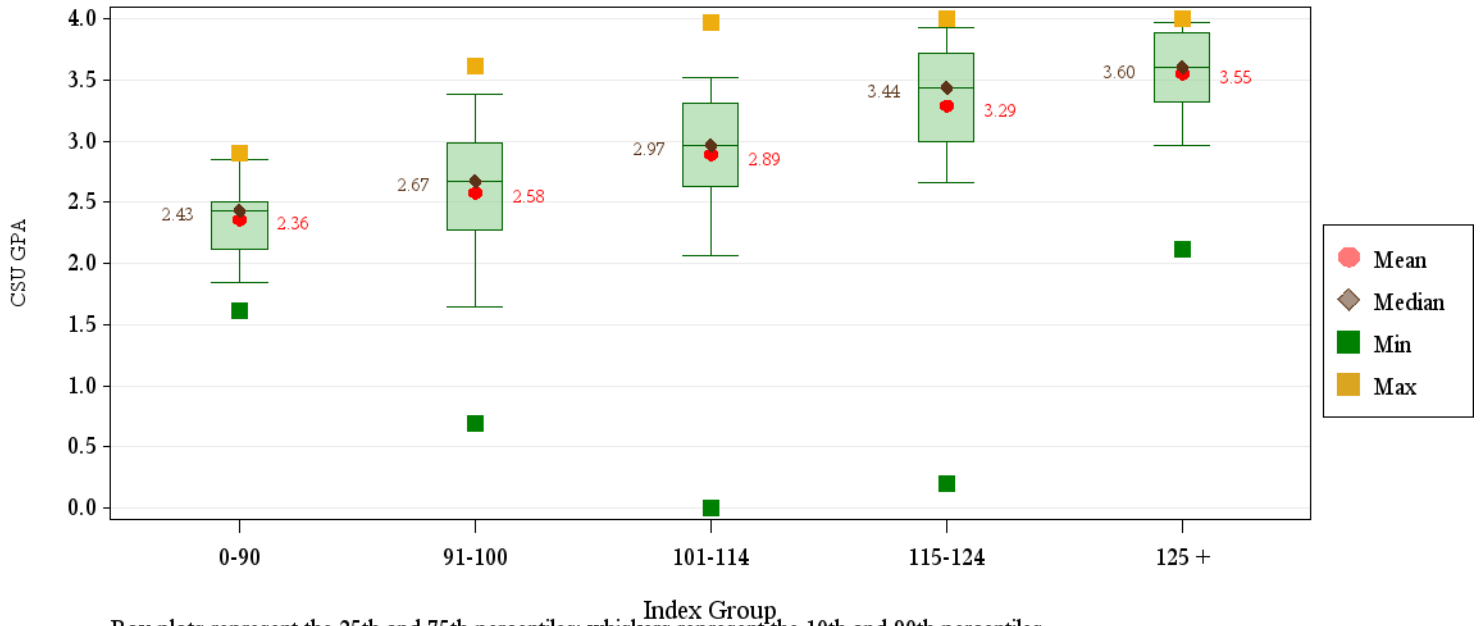
**First-Year CSU GPA (Fall 2015 Cohort) by Admission Score****Health and Human Sciences**

	CSU GPA				Total
	0.0-1.9	2.0-2.9	3.0-3.5	3.6-high	
<b>Total</b>	<b>38</b>	<b>181</b>	<b>178</b>	<b>96</b>	<b>493</b>
<b>HS GPA</b>					
2.5-2.99	6	30	9	0	45
3.0-3.59	25	101	70	9	205
3.6-4.00	7	43	78	51	179
4.01-high	0	7	20	36	63
Missing Data	0	0	1	0	1
<b>HS Rank</b>					
0-29	2	7	5	0	14
30-49	4	26	13	1	44
50-59	9	27	17	3	56
60-79	6	52	43	18	119
80-89	7	15	21	19	62
90-100	0	6	26	26	58
Missing Data	10	48	53	29	140
<b>SAT Critical Thinking</b>					
400-499	6	15	7	2	30
500-599	2	12	23	13	50
600-699	0	4	6	9	19
700-800	0	0	0	1	1
Missing Data	30	150	142	71	393
<b>SAT Math</b>					
0-399	0	1	0	0	1
400-499	5	9	5	3	22
500-599	3	16	20	11	50
600-699	0	5	11	8	24
700-800	0	0	0	3	3
Missing Data	30	150	142	71	393
<b>ACT Composite</b>					
0-14	0	1	0	0	1
15-18	5	15	5	1	26
19-22	9	83	50	6	148
23-26	15	60	69	40	184
27-36	2	8	34	39	83
Missing Data	7	14	20	10	51
<b>CDHE Index</b>					
0-90	1	9	0	0	10
091-100	14	51	20	1	86
101-114	18	92	85	17	212
115-160	5	28	73	78	184
Missing Data	0	1	0	0	1



# First-Year CSU GPA (Fall 2015 Cohort) by Admission Score

## Health and Human Sciences

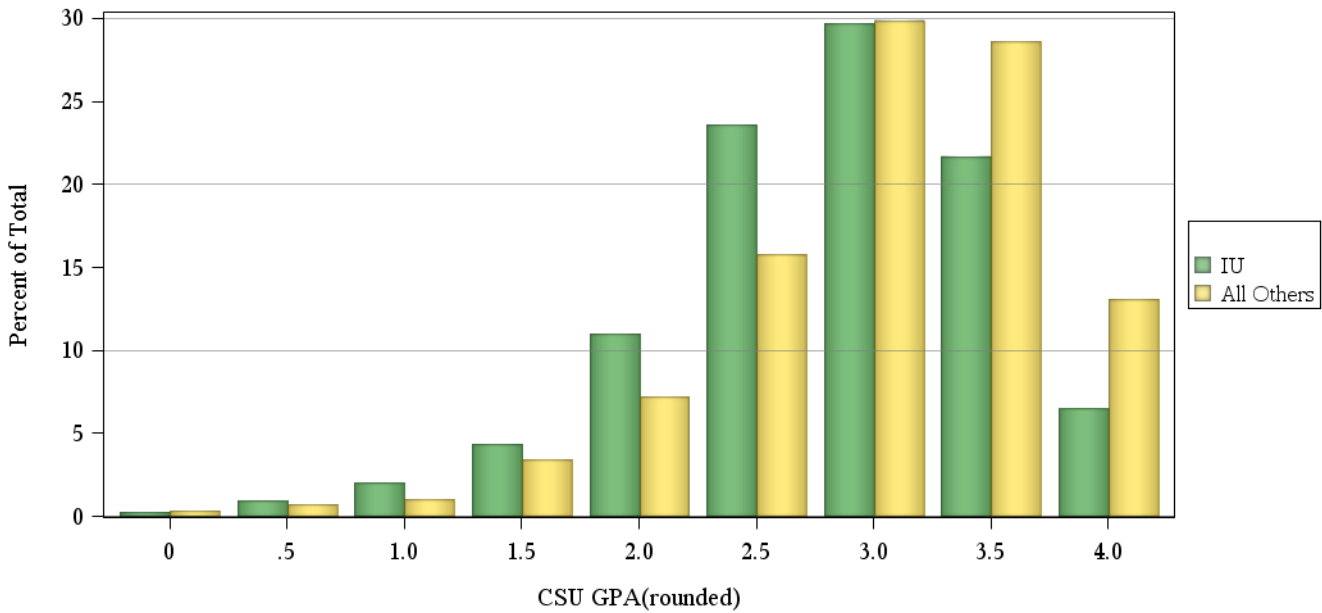
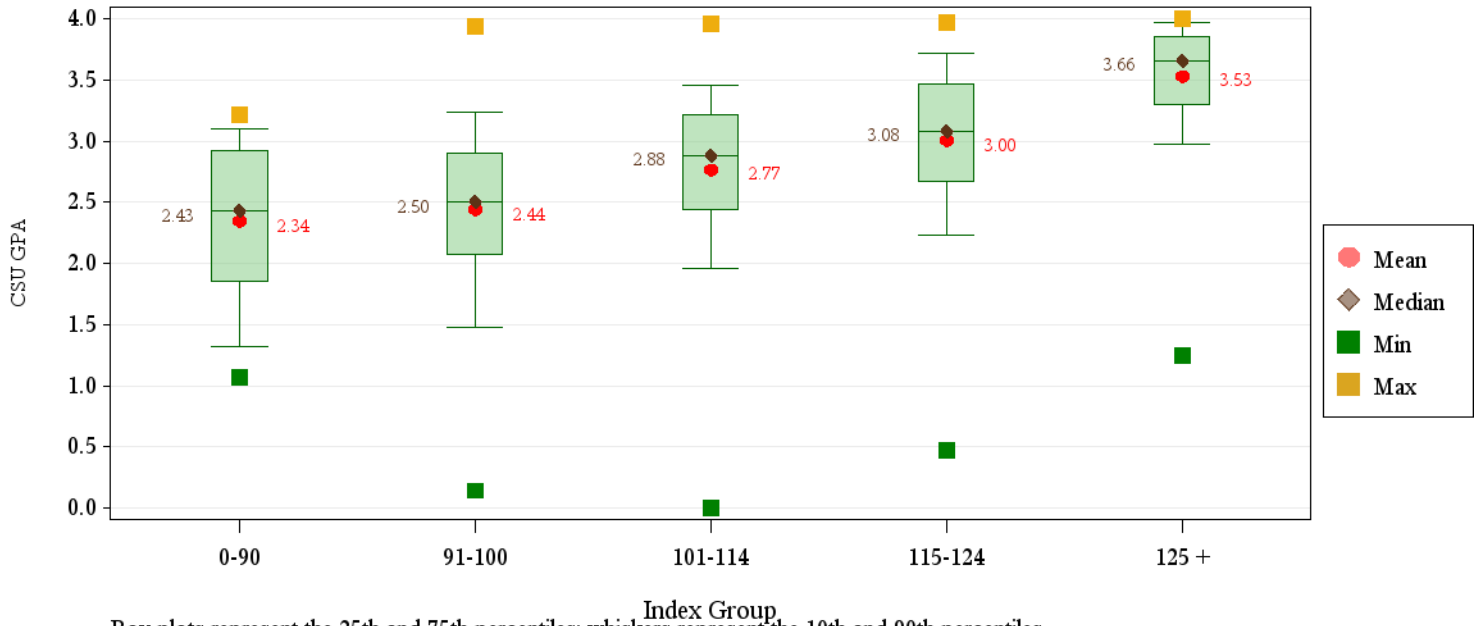


**First-Year CSU GPA (Fall 2015 Cohort) by Admission Score**
**Intra-University**

	CSU GPA				Total
	0.0-1.9	2.0-2.9	3.0-3.5	3.6-high	
<b>Total</b>	<b>133</b>	<b>521</b>	<b>360</b>	<b>141</b>	<b>1,155</b>
<b>HS GPA</b>					
2.0-2.49	1	0	1	0	2
2.5-2.99	45	82	26	4	157
3.0-3.59	81	325	175	33	614
3.6-4.00	6	99	133	62	300
4.01-high	0	10	23	42	75
Missing Data	0	5	2	0	7
<b>HS Rank</b>					
0-29	14	21	6	1	42
30-49	44	111	48	5	208
50-59	19	78	41	4	142
60-79	21	108	86	23	238
80-89	1	28	43	26	98
90-100	1	22	27	31	81
Missing Data	33	153	109	51	346
<b>SAT Critical Thinking</b>					
0-399	0	3	2	0	5
400-499	14	27	18	0	59
500-599	14	40	31	18	103
600-699	4	13	10	9	36
700-800	0	0	2	0	2
Missing Data	101	438	297	114	950
<b>SAT Math</b>					
0-399	0	2	2	0	4
400-499	9	17	16	8	50
500-599	15	41	25	10	91
600-699	8	21	20	7	56
700-800	0	2	0	2	4
Missing Data	101	438	297	114	950
<b>ACT Composite</b>					
0-14	0	1	1	0	2
15-18	3	34	11	1	49
19-22	52	199	116	15	382
23-26	35	173	135	46	389
27-36	18	47	59	53	177
Missing Data	25	67	38	26	156
<b>CDHE Index</b>					
0-90	5	10	3	0	18
091-100	52	143	45	6	246
101-114	59	275	183	32	549
115-160	12	76	110	87	285
Missing Data	5	17	19	16	57

## First-Year CSU GPA (Fall 2015 Cohort) by Admission Score

### Intra-University

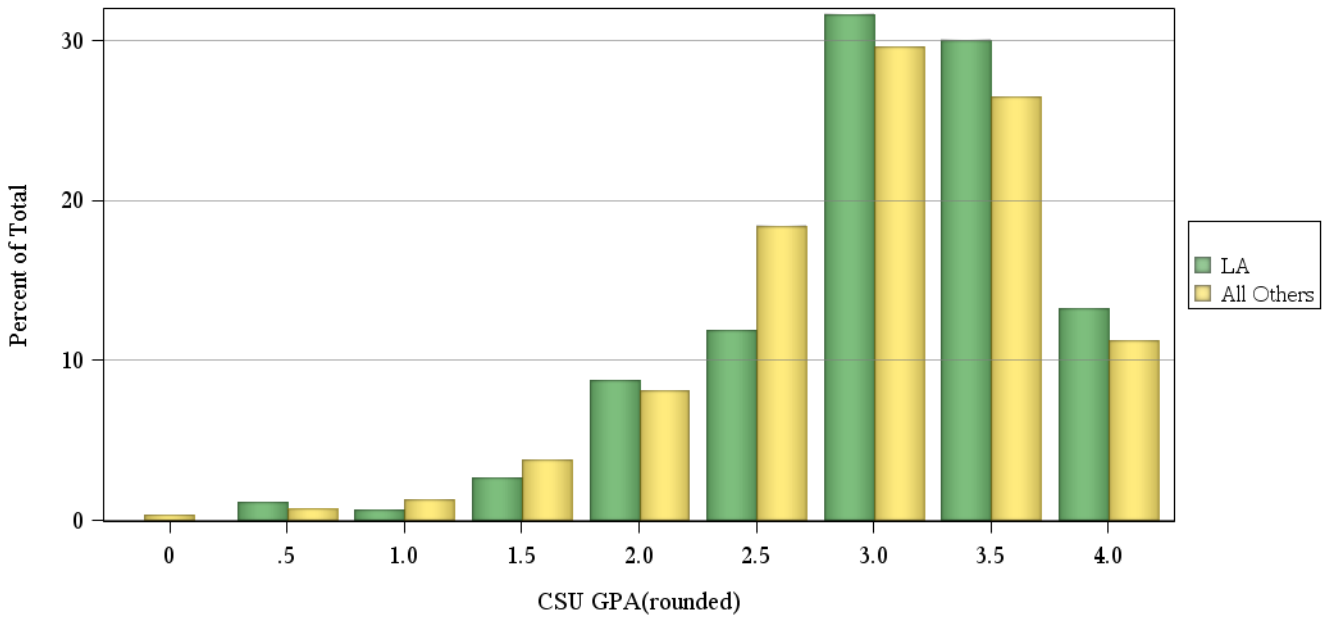
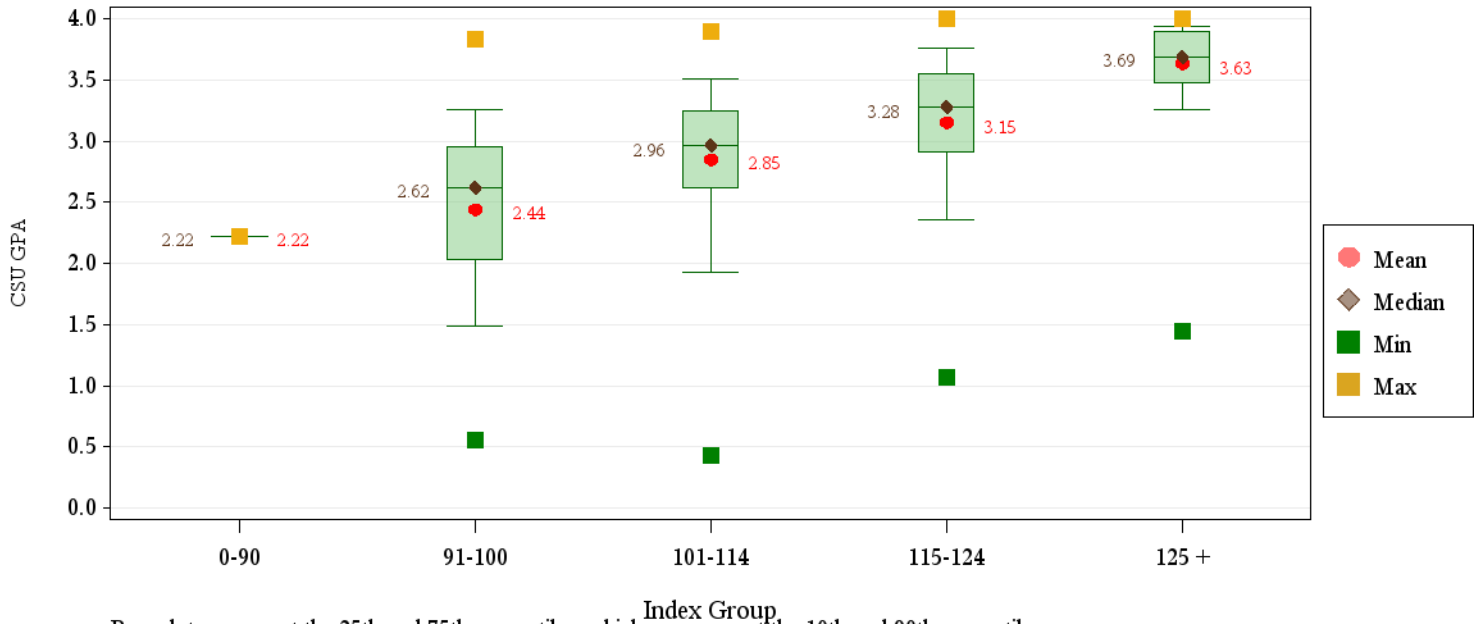


**First-Year CSU GPA (Fall 2015 Cohort) by Admission Score**
**Liberal Arts**

	CSU GPA				Total
	0.0-1.9	2.0-2.9	3.0-3.5	3.6-high	
<b>Total</b>	<b>36</b>	<b>144</b>	<b>167</b>	<b>101</b>	<b>448</b>
<b>HS GPA</b>					
2.0-2.49	0	1	1	0	2
2.5-2.99	11	26	8	0	45
3.0-3.59	19	81	71	17	188
3.6-4.00	5	34	68	49	156
4.01-high	1	1	19	35	56
Missing Data	0	1	0	0	1
<b>HS Rank</b>					
0-29	5	3	0	0	8
30-49	10	28	13	0	51
50-59	5	23	14	3	45
60-79	3	37	47	21	108
80-89	2	13	31	20	66
90-100	1	3	18	33	55
Missing Data	10	37	44	24	115
<b>SAT Critical Thinking</b>					
400-499	2	10	6	1	19
500-599	5	11	12	9	37
600-699	1	8	14	12	35
700-800	0	0	2	3	5
Missing Data	28	115	133	76	352
<b>SAT Math</b>					
0-399	2	2	0	0	4
400-499	0	5	3	3	11
500-599	4	16	23	10	53
600-699	2	5	8	8	23
700-800	0	1	0	4	5
Missing Data	28	115	133	76	352
<b>ACT Composite</b>					
15-18	2	6	4	0	12
19-22	11	36	33	14	94
23-26	12	62	70	29	173
27-36	6	22	42	52	122
Missing Data	5	18	18	6	47
<b>CDHE Index</b>					
0-90	0	1	0	0	1
091-100	9	28	10	2	49
101-114	21	82	73	17	193
115-160	6	32	84	81	203
Missing Data	0	1	0	1	2

## First-Year CSU GPA (Fall 2015 Cohort) by Admission Score

### Liberal Arts

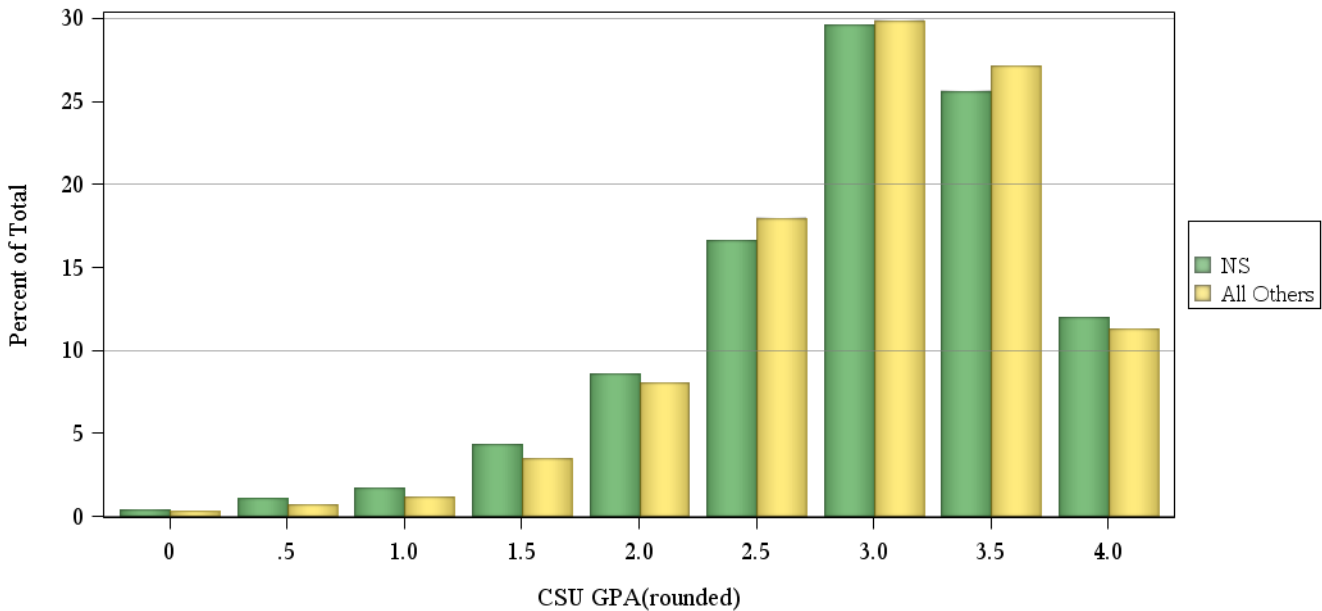
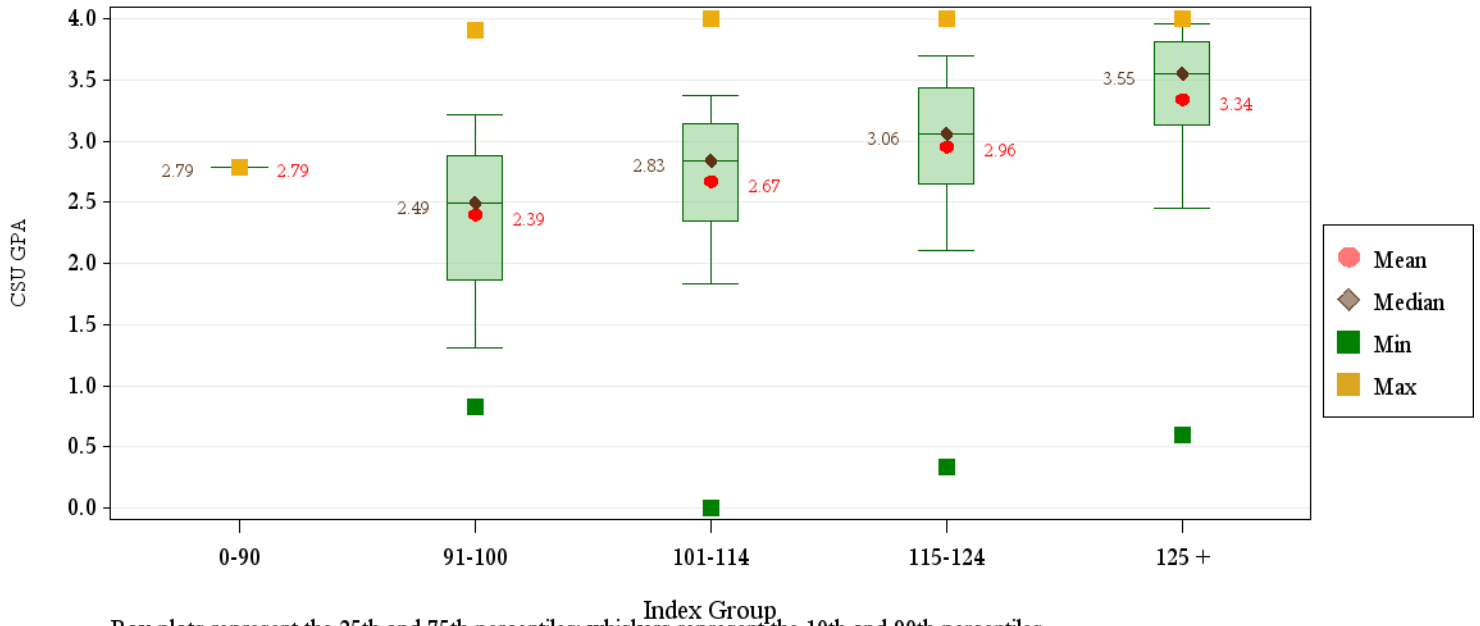


**First-Year CSU GPA (Fall 2015 Cohort) by Admission Score**
**Natural Sciences**

	CSU GPA				Total
	0.0-1.9	2.0-2.9	3.0-3.5	3.6-high	
<b>Total</b>	<b>83</b>	<b>270</b>	<b>268</b>	<b>142</b>	<b>763</b>
<b>HS GPA</b>					
2.5-2.99	14	13	5	1	33
3.0-3.59	45	132	79	8	264
3.6-4.00	20	107	121	57	305
4.01-high	3	18	61	76	158
Missing Data	1	0	2	0	3
<b>HS Rank</b>					
0-29	2	7	1	0	10
30-49	15	24	9	2	50
50-59	10	27	15	2	54
60-79	16	86	60	14	176
80-89	6	36	54	30	126
90-100	6	16	47	56	125
Missing Data	28	74	82	38	222
<b>SAT Critical Thinking</b>					
400-499	3	15	8	3	29
500-599	13	30	27	17	87
600-699	7	20	24	24	75
700-800	1	2	4	5	12
Missing Data	59	203	205	93	560
<b>SAT Math</b>					
0-399	1	0	1	0	2
400-499	5	10	10	1	26
500-599	9	32	24	13	78
600-699	9	23	22	29	83
700-800	0	3	6	6	15
Missing Data	59	202	205	93	559
<b>ACT Composite</b>					
15-18	1	9	3	0	13
19-22	17	56	40	6	119
23-26	27	109	105	34	275
27-36	23	69	92	92	276
Missing Data	15	27	28	10	80
<b>CDHE Index</b>					
0-90	0	1	0	0	1
091-100	12	24	7	1	44
101-114	40	126	96	9	271
115-160	30	117	162	132	441
Missing Data	1	2	3	0	6

## First-Year CSU GPA (Fall 2015 Cohort) by Admission Score

### Natural Sciences



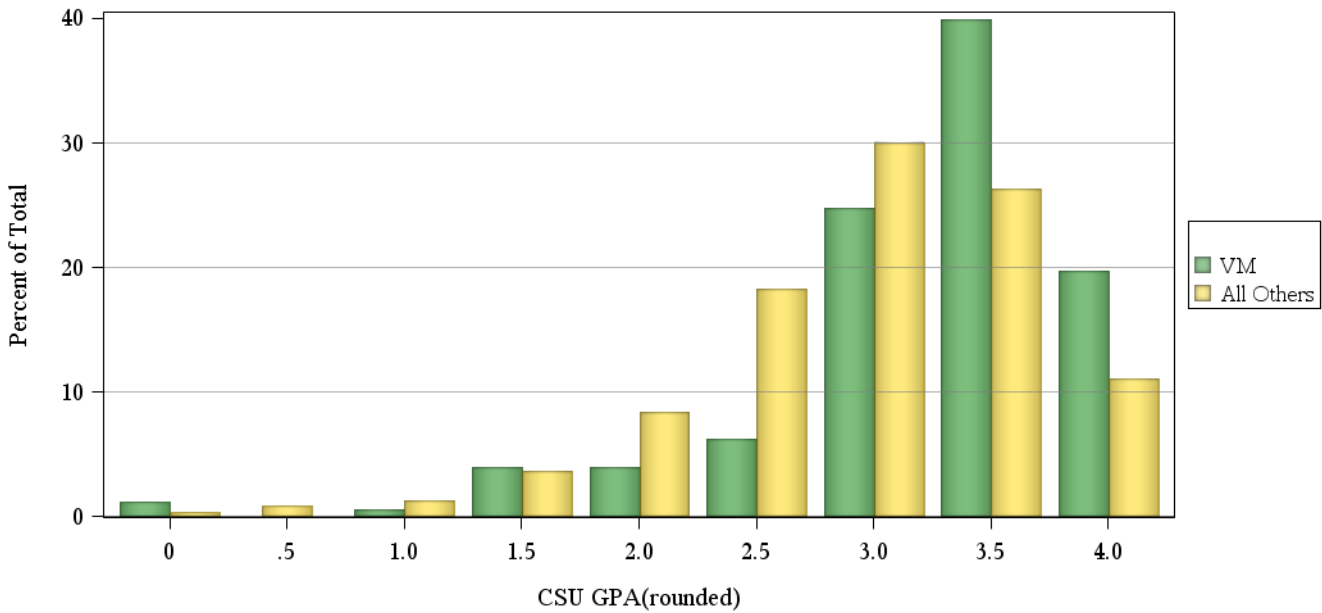
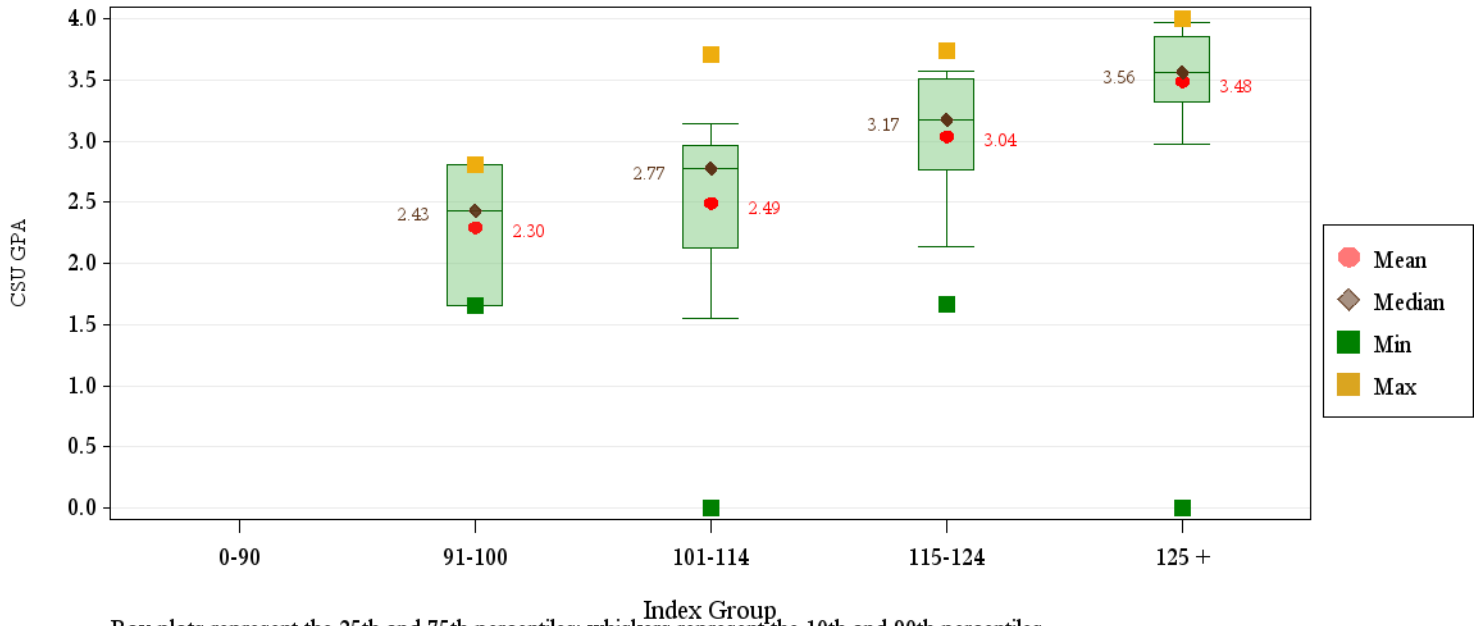
**First-Year CSU GPA (Fall 2015 Cohort) by Admission Score**
**Veterinary Medicine + Biomedical Sci**

	CSU GPA				Total
	0.0-1.9	2.0-2.9	3.0-3.5	3.6-high	
<b>Total</b>	<b>14</b>	<b>40</b>	<b>74</b>	<b>51</b>	<b>179</b>
<b>HS GPA</b>					
2.5-2.99	4	1	0	0	5
3.0-3.59	6	14	6	0	26
3.6-4.00	3	21	37	17	78
4.01-high	1	4	31	33	69
Missing Data	0	0	0	1	1
<b>HS Rank</b>					
0-29	1	1	0	0	2
30-49	3	4	1	0	8
50-59	0	0	1	0	1
60-79	3	11	11	4	29
80-89	4	6	11	12	33
90-100	0	4	34	28	66
Missing Data	3	14	16	7	40
<b>SAT Critical Thinking</b>					
0-399	0	1	0	0	1
400-499	2	2	2	1	7
500-599	1	6	7	3	17
600-699	2	3	5	11	21
700-800	0	0	2	4	6
Missing Data	9	28	58	32	127
<b>SAT Math</b>					
400-499	2	0	0	0	2
500-599	2	9	6	2	19
600-699	1	2	10	8	21
700-800	0	0	0	9	9
Missing Data	9	29	58	32	128
<b>ACT Composite</b>					
15-18	0	1	0	0	1
19-22	1	1	1	0	3
23-26	3	18	19	4	44
27-36	6	15	50	42	113
Missing Data	4	5	4	5	18
<b>CDHE Index</b>					
091-100	1	2	0	0	3
101-114	7	18	4	1	30
115-160	6	20	70	49	145
Missing Data	0	0	0	1	1



## First-Year CSU GPA (Fall 2015 Cohort) by Admission Score

### Veterinary Medicine + Biomedical Sci



**First-Year CSU GPA (Fall 2015 Cohort) by Admission Score**
**Warner College of Natural Resources**

	CSU GPA				Total
	0.0-1.9	2.0-2.9	3.0-3.5	3.6-high	
<b>Total</b>	<b>20</b>	<b>70</b>	<b>53</b>	<b>27</b>	<b>170</b>
<b>HS GPA</b>					
2.5-2.99	6	11	1	1	19
3.0-3.59	9	41	18	4	72
3.6-4.00	5	13	27	15	60
4.01-high	0	5	7	7	19
<b>HS Rank</b>					
0-29	0	1	2	0	3
30-49	5	11	2	1	19
50-59	2	6	5	1	14
60-79	1	18	17	6	42
80-89	3	6	2	6	17
90-100	1	3	7	4	15
Missing Data	8	25	18	9	60
<b>SAT Critical Thinking</b>					
400-499	0	0	0	1	1
500-599	3	12	14	4	33
600-699	2	6	4	3	15
700-800	0	2	1	2	5
Missing Data	15	50	34	17	116
<b>SAT Math</b>					
400-499	0	3	2	0	5
500-599	3	11	14	6	34
600-699	2	6	3	3	14
700-800	0	0	0	1	1
Missing Data	15	50	34	17	116
<b>ACT Composite</b>					
15-18	3	2	0	0	5
19-22	5	18	13	2	38
23-26	4	24	18	6	52
27-36	5	18	15	14	52
Missing Data	3	8	7	5	23
<b>CDHE Index</b>					
0-90	0	2	0	0	2
091-100	6	9	5	0	20
101-114	9	32	17	4	62
115-160	4	27	31	23	85
Missing Data	1	0	0	0	1

## First-Year CSU GPA (Fall 2015 Cohort) by Admission Score

### Warner College of Natural Resources

