

# Freshman Profile

Fall 2015

.....  
Institutional Research, Planning and Effectiveness

# Table of Contents

---

## FALL 2015

### Profile: Five-Year History

Residency & Minority Status .....	01
High School Rank .....	02
SAT Critical Thinking .....	03
SAT Math.....	04
ACT Composite .....	05
High School GPA .....	06
CDHE Index.....	07

### Profile: Fall 2015

#### Freshman Enrollment

Residency, Gender & Ethnicity .....	09
Full- & Part-Time Enrollment, Application College .....	10
Credit Hour Distribution by Application College.....	11

#### Admitted Applicants

University.....	16
Agricultural Sciences .....	18
Business .....	20
Engineering .....	22
Health and Human Sciences .....	24
Intra-University.....	26
Liberal Arts .....	28
Natural Sciences .....	30
Veterinary Medicine & Biomedical Sciences .....	32
Warner College of Natural Resources .....	34

### First-Year CSU GPA (Fall 2014 Cohort) by Admission Score

University.....	37
Agricultural Sciences .....	39
Business .....	41
Engineering.....	43
Health and Human Sciences .....	45
Intra-University .....	47
Liberal Arts .....	49
Natural Sciences.....	51
Veterinary Medical & Biomedical Sciences.....	53
Warner College of Natural Resources .....	55

# **Profile: Five-Year History**

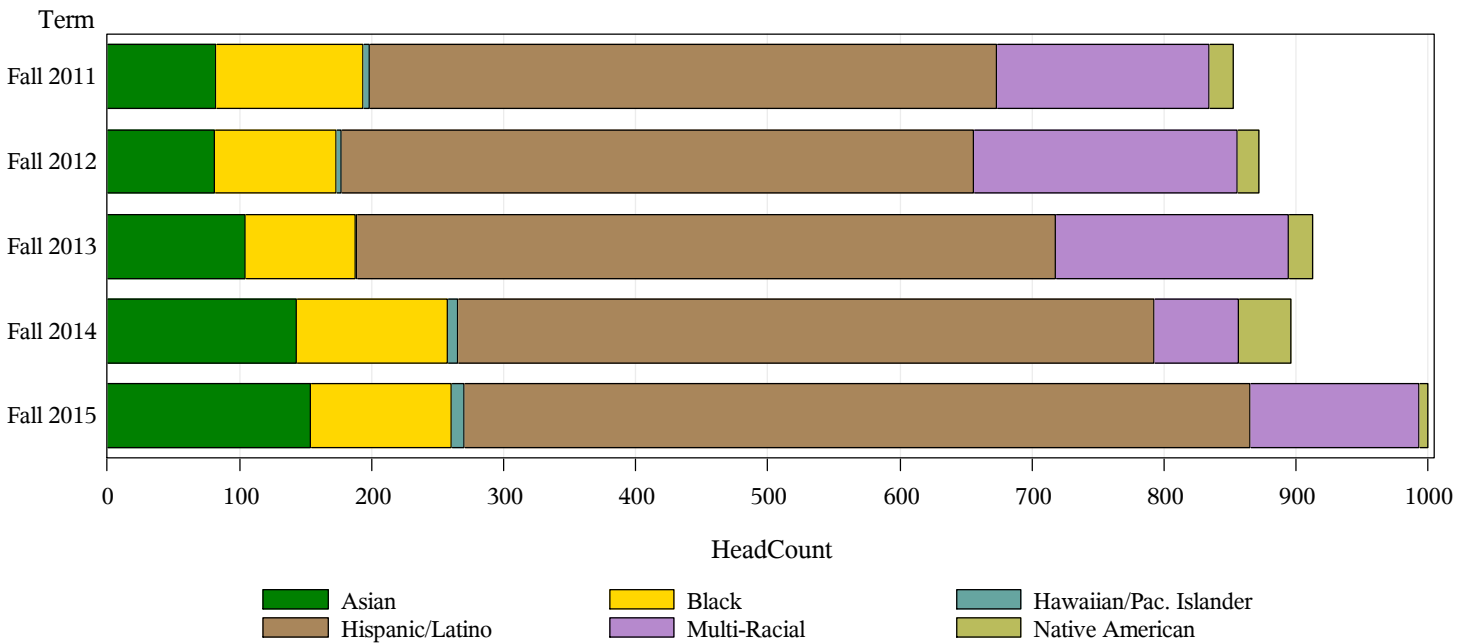
## Five-Year History by:

### Residency

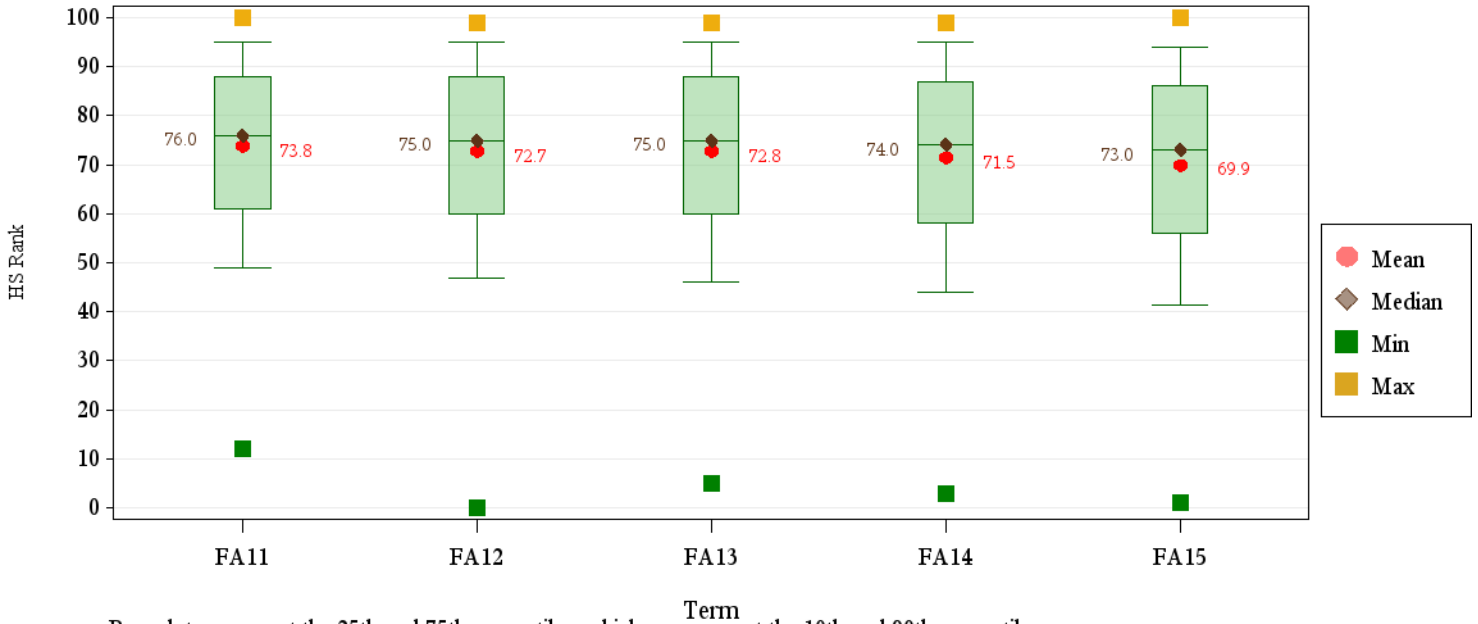
	Resident		Nonresident		Total	Percent Change
	Number	Percent	Number	Percent	Number	
Fall 2011	3,461	76.8%	1,043	23.2%	4,504	.
Fall 2012	3,386	74.5%	1,158	25.5%	4,544	0.9%
Fall 2013	3,289	74.0%	1,154	26.0%	4,443	-2.2%
Fall 2014	3,154	72.5%	1,199	27.5%	4,353	-2.0%
<b>Fall 2015</b>	<b>3,299</b>	<b>69.6%</b>	<b>1,438</b>	<b>30.4%</b>	<b>4,737</b>	<b>8.8%</b>

### Minority Status

	Minority		Other	
	Number	Percent	Number	Percent
Fall 2011	852	18.9%	3652	81.1%
Fall 2012	872	19.2%	3672	80.8%
Fall 2013	912	20.5%	3531	79.5%
Fall 2014	896	20.6%	3457	79.4%
<b>Fall 2015</b>	<b>1020</b>	<b>21.5%</b>	<b>3717</b>	<b>78.5%</b>



# Five-Year Trends: HS Rank

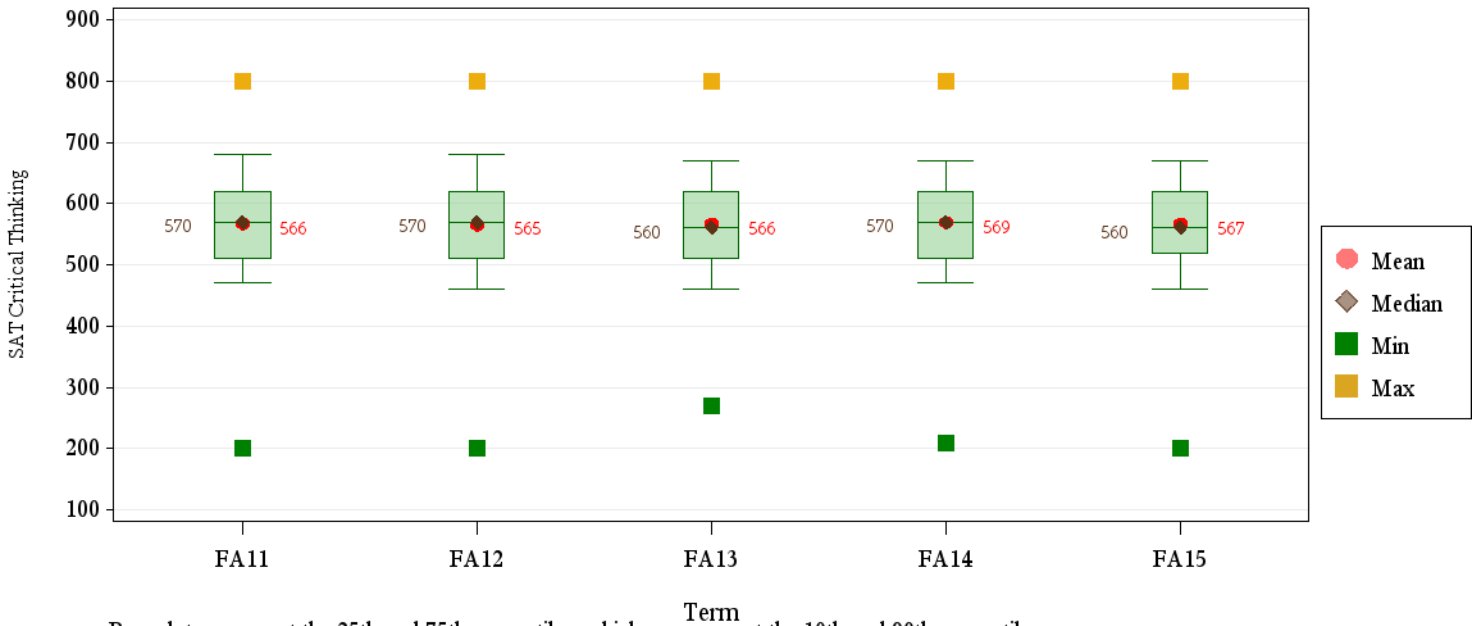


Box plots represent the 25th and 75th percentiles; whiskers represent the 10th and 90th percentiles.

## Average HS Rank by Residency and Application College

		AG	BU	EG	HS	IU	LA	NR	NS	VM	Total U
Resident	Fall 2011	72.1	78.0	82.5	72.7	66.5	73.3	74.4	75.7	83.4	73.4
	Fall 2012	75.5	78.5	81.0	70.7	64.6	70.6	67.5	77.2	85.9	72.3
	Fall 2013	73.6	80.3	81.3	71.9	63.8	70.9	68.3	75.5	86.6	72.3
	Fall 2014	73.4	78.6	81.1	67.9	63.9	71.4	67.4	72.3	81.1	71.0
	Fall 2015	68.5	75.0	80.4	66.4	60.5	68.8	66.0	73.1	82.4	69.2
Nonresident	Fall 2011	78.4	75.4	82.9	71.9	64.8	74.8	75.2	77.7	86.7	75.9
	Fall 2012	81.3	69.5	84.2	74.9	60.4	74.1	78.2	78.5	86.2	74.8
	Fall 2013	80.3	76.2	82.2	74.2	67.5	66.5	71.1	76.9	82.4	75.1
	Fall 2014	76.3	78.0	82.1	70.0	62.9	72.1	70.1	76.0	87.1	73.7
	Fall 2015	74.2	76.4	81.2	73.8	60.4	65.2	72.2	74.4	83.1	73.0
Total	Fall 2011	74.8	77.7	82.6	72.6	66.4	73.5	74.7	76.0	84.4	73.8
	Fall 2012	77.5	77.3	81.6	71.3	64.1	71.1	71.1	77.4	86.0	72.7
	Fall 2013	76.0	79.7	81.5	72.2	64.2	70.3	69.3	75.8	85.5	72.8
	Fall 2014	74.5	78.5	81.3	68.2	63.8	71.5	68.2	73.0	82.2	71.5
	Fall 2015	70.8	75.2	80.6	67.6	60.5	68.2	67.9	73.4	82.6	69.9

# Five-Year Trends: SAT Critical Thinking

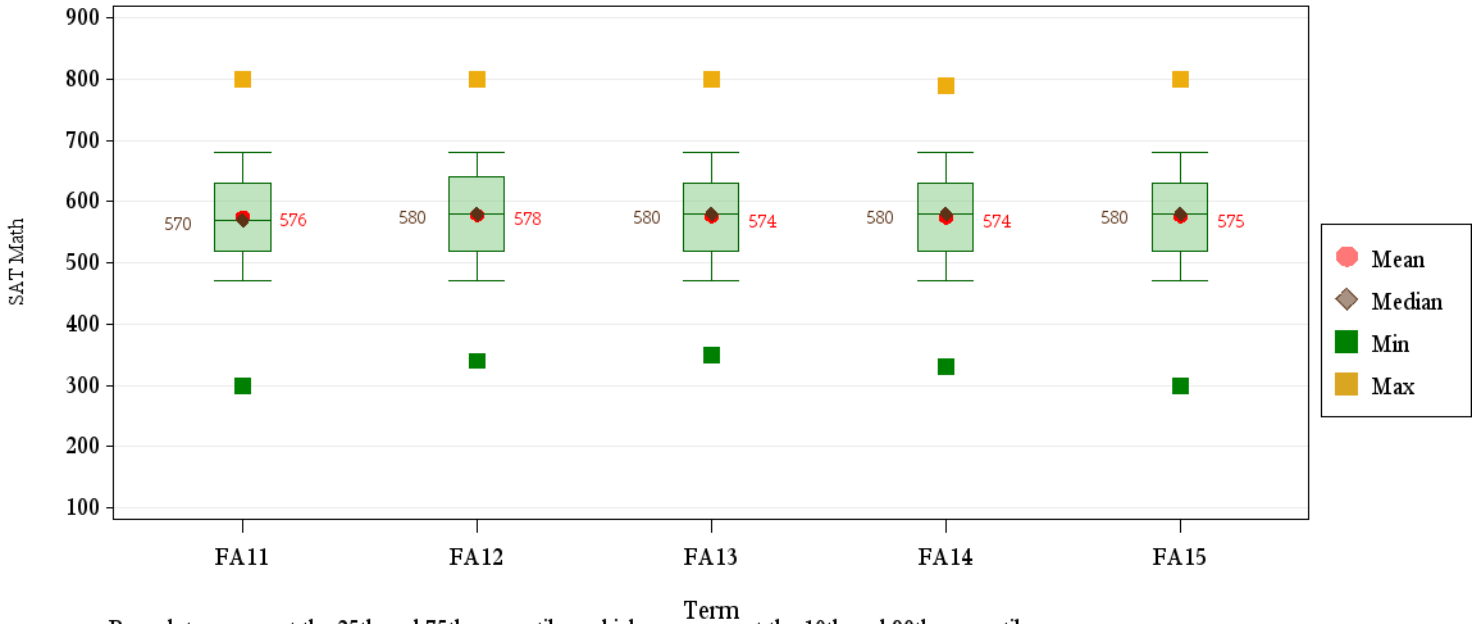


Box plots represent the 25th and 75th percentiles; whiskers represent the 10th and 90th percentiles.

## Average SAT Critical Thinking by Residency and Application College

		AG	BU	EG	HS	IU	LA	NR	NS	VM	Total U
Resident	Fall 2011	565	566	583	525	529	586	531	593	594	566
	Fall 2012	573	562	600	540	541	566	598	579	599	568
	Fall 2013	568	560	593	534	537	574	545	581	595	567
	Fall 2014	562	562	595	543	540	587	588	582	589	569
	Fall 2015	580	583	605	535	541	576	594	580	638	575
Nonresident	Fall 2011	562	576	578	542	530	594	597	571	608	567
	Fall 2012	574	599	562	526	524	560	587	587	615	563
	Fall 2013	571	577	581	545	532	574	573	576	586	566
	Fall 2014	568	581	579	537	546	584	572	573	635	568
	Fall 2015	553	585	592	535	530	570	589	577	575	563
Total	Fall 2011	563	570	581	533	530	589	581	583	602	566
	Fall 2012	574	578	581	533	532	563	589	584	608	565
	Fall 2013	570	570	587	541	534	574	565	579	590	566
	Fall 2014	567	573	585	539	544	585	575	577	615	569
	Fall 2015	555	584	596	535	533	572	590	578	595	567

# Five-Year Trends: SAT Math

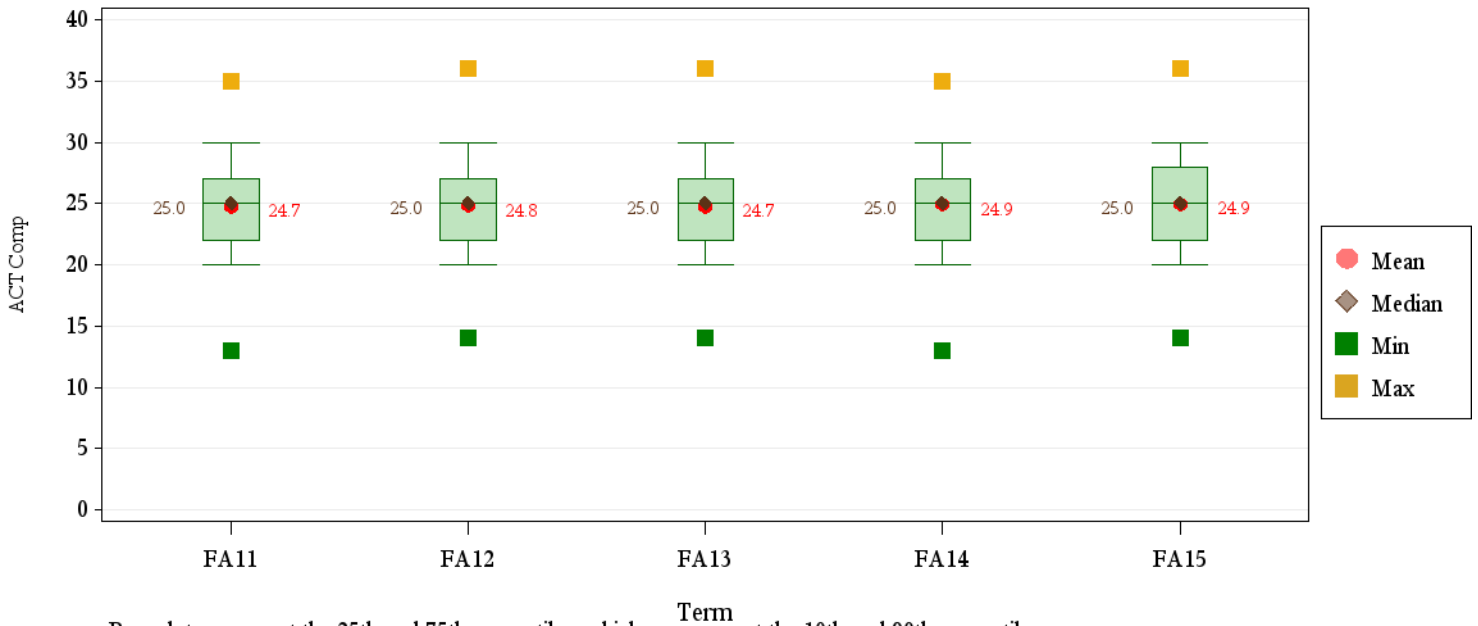


Box plots represent the 25th and 75th percentiles: whiskers represent the 10th and 90th percentiles.

## Average SAT Math by Residency and Application College

		AG	BU	EG	HS	IU	LA	NR	NS	VM	Total U
Resident	Fall 2011	579	581	623	523	540	556	556	584	584	569
	Fall 2012	551	563	638	542	550	543	551	587	609	574
	Fall 2013	535	576	636	536	531	548	547	577	609	569
	Fall 2014	522	588	634	540	550	573	628	577	616	576
	Fall 2015	575	587	641	544	536	573	545	582	637	579
Nonresident	Fall 2011	552	613	646	553	546	574	585	586	633	583
	Fall 2012	572	615	640	554	548	546	581	586	633	581
	Fall 2013	577	608	636	548	551	545	567	575	610	579
	Fall 2014	557	601	633	544	548	562	559	571	600	573
	Fall 2015	549	597	635	543	553	547	574	578	608	574
Total	Fall 2011	557	593	634	537	542	562	578	585	611	576
	Fall 2012	568	585	639	548	549	544	575	586	623	578
	Fall 2013	570	595	636	543	542	547	561	576	610	574
	Fall 2014	552	595	634	542	549	567	573	573	607	574
	Fall 2015	551	594	637	543	548	556	568	580	617	575

# Five-Year Trends: ACT Comp



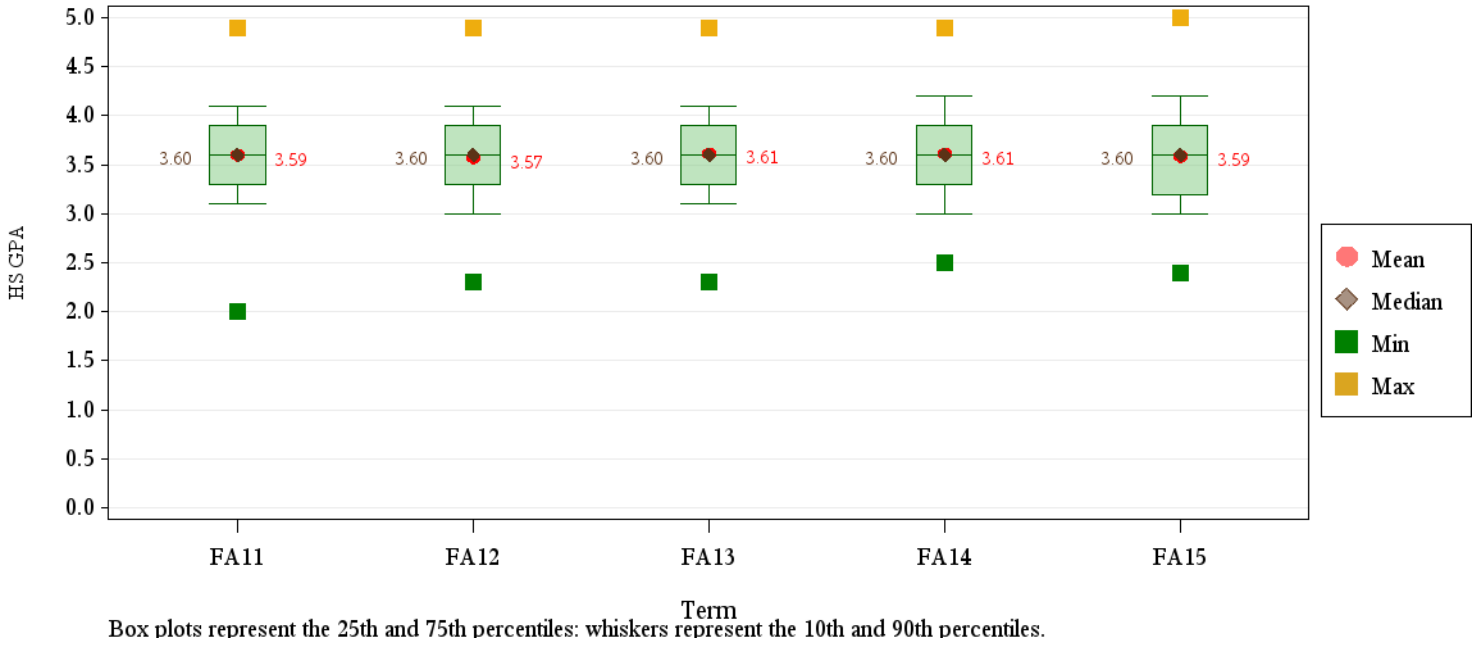
Box plots represent the 25th and 75th percentiles; whiskers represent the 10th and 90th percentiles.

## Average ACT Comp by Residency and Application College

		AG	BU	EG	HS	IU	LA	NR	NS	VM	Total U
Resident	Fall 2011	23.6	25.5	27.0	23.1	23.3	24.8	24.5	24.9	27.1	24.5
	Fall 2012	24.0	25.9	27.0	23.1	23.3	24.6	24.1	25.3	27.1	24.6
	Fall 2013	23.8	25.5	27.1	23.4	23.0	24.4	24.0	25.1	27.3	24.5
	Fall 2014	23.9	25.9	27.0	23.2	23.3	24.9	25.0	25.2	26.9	24.6
	Fall 2015	24.1	26.0	27.2	23.1	23.2	24.7	24.3	25.3	27.7	24.7
Nonresident	Fall 2011	25.3	26.0	28.0	24.7	24.2	25.8	25.5	26.5	28.7	25.8
	Fall 2012	25.9	26.6	27.8	24.1	24.0	25.7	26.6	26.5	28.1	25.9
	Fall 2013	26.4	26.2	28.1	24.6	23.9	26.0	26.3	26.2	27.7	26.0
	Fall 2014	25.2	27.1	27.9	24.4	24.8	26.2	26.0	26.6	28.1	26.0
	Fall 2015	25.3	26.1	28.2	24.4	24.5	25.2	25.6	26.5	28.1	26.0
Total	Fall 2011	24.3	25.5	27.2	23.4	23.4	24.9	24.9	25.2	27.5	24.7
	Fall 2012	24.7	26.0	27.1	23.3	23.4	24.7	25.0	25.5	27.4	24.8
	Fall 2013	24.6	25.6	27.3	23.6	23.1	24.6	24.8	25.4	27.4	24.7
	Fall 2014	24.4	26.1	27.2	23.4	23.5	25.2	25.3	25.5	27.2	24.9
	Fall 2015	24.6	26.0	27.4	23.3	23.4	24.8	24.8	25.6	27.8	24.9



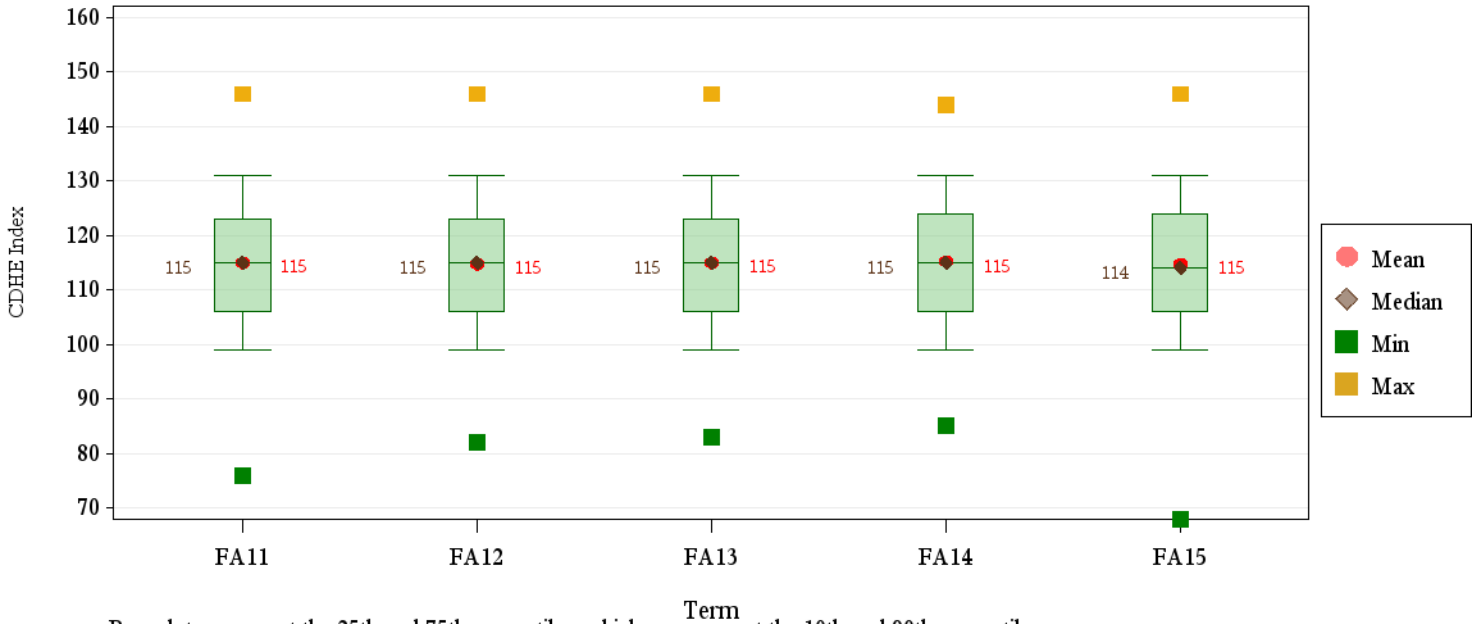
# Five-Year Trends: HS GPA



## Average HS GPA by Residency and Application College

		AG	BU	EG	HS	IU	LA	NR	NS	VM	Total U
Resident	Fall 2011	3.58	3.71	3.80	3.56	3.42	3.58	3.54	3.64	3.88	3.58
	Fall 2012	3.62	3.75	3.76	3.54	3.39	3.51	3.48	3.64	3.85	3.56
	Fall 2013	3.64	3.79	3.83	3.59	3.39	3.59	3.53	3.69	4.00	3.61
	Fall 2014	3.64	3.77	3.86	3.54	3.42	3.60	3.51	3.65	3.89	3.60
	Fall 2015	3.58	3.73	3.87	3.51	3.36	3.53	3.53	3.66	3.92	3.58
Nonresident	Fall 2011	3.64	3.71	3.88	3.61	3.32	3.56	3.59	3.70	4.04	3.63
	Fall 2012	3.65	3.64	3.90	3.52	3.32	3.55	3.72	3.69	3.95	3.61
	Fall 2013	3.72	3.73	3.84	3.56	3.40	3.55	3.50	3.69	3.93	3.64
	Fall 2014	3.68	3.77	3.85	3.58	3.34	3.59	3.55	3.71	3.99	3.63
	Fall 2015	3.68	3.68	3.86	3.60	3.37	3.43	3.52	3.68	3.93	3.61
Total	Fall 2011	3.61	3.71	3.82	3.57	3.40	3.58	3.56	3.66	3.93	3.59
	Fall 2012	3.63	3.72	3.79	3.53	3.37	3.52	3.58	3.65	3.88	3.57
	Fall 2013	3.68	3.78	3.84	3.58	3.39	3.58	3.52	3.69	3.98	3.61
	Fall 2014	3.66	3.77	3.86	3.55	3.40	3.60	3.53	3.67	3.92	3.61
	Fall 2015	3.63	3.72	3.87	3.53	3.36	3.51	3.52	3.67	3.92	3.59

# Five-Year Trends: CDHE Index



Box plots represent the 25th and 75th percentiles; whiskers represent the 10th and 90th percentiles.

## Average CDHE Index by Residency and Application College

		AG	BU	EG	HS	IU	LA	NR	NS	VM	Total U
Resident	Fall 2011	113	119	123	111	109	115	114	116	123	114
	Fall 2012	114	120	122	111	109	113	112	117	124	114
	Fall 2013	113	120	123	112	108	114	112	117	125	114
	Fall 2014	114	120	123	111	109	115	114	116	123	114
	Fall 2015	113	119	124	110	108	114	112	117	125	114
Nonresident	Fall 2011	116	120	126	115	109	117	117	120	128	117
	Fall 2012	118	120	126	112	108	115	120	120	128	117
	Fall 2013	119	120	125	114	110	115	116	119	126	117
	Fall 2014	117	121	125	113	110	117	116	119	127	117
	Fall 2015	116	119	125	113	110	113	116	119	124	117
Total	Fall 2011	114	119	124	112	109	115	115	117	125	115
	Fall 2012	116	120	123	111	109	114	115	118	125	115
	Fall 2013	116	120	124	112	108	114	114	117	125	115
	Fall 2014	115	120	124	111	109	115	115	117	124	115
	Fall 2015	115	119	124	111	108	113	114	117	124	115

# **Profile: Fall 2015**

**Fall 2015****New Freshmen****Residency**

	Number	Percent
Resident	3,299	69.6 %
Nonresident	1,438	30.4 %
<b>Total</b>	<b>4,737</b>	<b>100.0 %</b>

**Gender**

	Resident		Nonresident		Total	
	Number	Percent	Number	Percent	Number	Percent
Men	1,559	47.3 %	668	46.5 %	2,227	47.0 %
Women	1,740	52.7 %	770	53.5 %	2,510	53.0 %
<b>Total</b>	<b>3,299</b>	<b>100.0 %</b>	<b>1,438</b>	<b>100.0 %</b>	<b>4,737</b>	<b>100.0 %</b>

**Ethnicity**

	Resident		Nonresident		Total	
	Number	Percent	Number	Percent	Number	Percent
Asian	115	3.5 %	39	2.7 %	154	3.3 %
Black	90	2.7 %	16	1.1 %	106	2.2 %
Hawaiian/Pac. Islander	4	0.1 %	6	0.4 %	10	0.2 %
Hispanic/Latino	443	13.4 %	152	10.6 %	595	12.6 %
International	.	.	99	6.9 %	99	2.1 %
Multi-Racial	89	2.7 %	39	2.7 %	128	2.7 %
Native American	10	0.3 %	17	1.2 %	27	0.6 %
No Response	104	3.2 %	45	3.1 %	149	3.1 %
White	2,444	74.1 %	1,025	71.3 %	3,469	73.2 %
<b>Total</b>	<b>3,299</b>	<b>100.0 %</b>	<b>1,438</b>	<b>100.0 %</b>	<b>4,737</b>	<b>100.0 %</b>

## Full-Time/Part-Time Enrollment

	Resident		Nonresident		Total	
	Number	Percent	Number	Percent	Number	Percent
Full-Time	3,273	99.2 %	1,411	98.1 %	4,684	98.9 %
Part-Time	26	0.8 %	27	1.9 %	53	1.1 %
<b>Total</b>	<b>3,299</b>	<b>100.0 %</b>	<b>1,438</b>	<b>100.0 %</b>	<b>4,737</b>	<b>100.0 %</b>

Full-time students = undergraduates enrolled for 12 or more credits Fall, Spring (9 - Summer)

## Application College

	Resident		Nonresident		Total	
	Number	Percent	Number	Percent	Number	Percent
Agricultural Sciences	139	4.2 %	164	11.4 %	303	6.4 %
Business	272	8.2 %	88	6.1 %	360	7.6 %
Engineering	397	12.0 %	207	14.4 %	604	12.8 %
Health and Human Sciences	401	12.2 %	134	9.3 %	535	11.3 %
Intra-University	932	28.3 %	331	23.0 %	1,263	26.7 %
Liberal Arts	367	11.1 %	115	8.0 %	482	10.2 %
Natural Sciences	566	17.2 %	256	17.8 %	822	17.4 %
Vet Med & BioMed Sci	123	3.7 %	64	4.5 %	187	3.9 %
Warner College of Nat Res	102	3.1 %	79	5.5 %	181	3.8 %
<b>Total</b>	<b>3,299</b>	<b>100.0 %</b>	<b>1,438</b>	<b>100.0 %</b>	<b>4,737</b>	<b>100.0 %</b>

## Credit Hour Distribution by Application College

	<b>N</b>	<b>Min</b>	<b>Max</b>	<b>Mean</b>
<b>Total University</b>	4,737	2	20	14.7
<b>Agricultural Sciences</b>	303	6	18	14.7
<b>Business</b>	360	10	18	15.0
<b>Engineering</b>	604	3	20	15.0
<b>Health and Human Sciences</b>	535	9	19	14.6
<b>Intra-University</b>	1,263	2	20	14.4
<b>Liberal Arts</b>	482	6	19	14.8
<b>Natural Sciences</b>	822	9	18	14.8
<b>Vet Med &amp; BioMed Sci</b>	187	11	18	15.3
<b>Warner College of Nat Res</b>	181	11	18	14.7
Men	2,227	2	20	14.6
Women	2,510	6	20	14.8
Nonresident	1,438	2	20	14.7
Resident	3,299	3	20	14.7
Full-Time	4,684	12	20	14.8
Part-Time	53	2	11	8.5
Asian	154	10	18	15.1
Black	106	11	18	14.5
Hawaiian/Pac. Islander	10	12	17	14.6
Hispanic/Latino	595	6	18	14.7
International	99	2	18	13.0
Multi-Racial	128	5	18	14.4
Native American	27	12	18	14.6
No Response	149	9	18	14.5
White	3,469	3	20	14.8
<b>Agricultural Sciences</b>				
Men	71	8	18	14.3
Women	232	6	18	14.8
Nonresident	164	12	18	14.8
Resident	139	6	18	14.6
Full-Time	300	12	18	14.8
Part-Time	3	6	8	7.0
Asian	8	12	18	15.4
Black	4	14	16	14.8
Hawaiian/Pac. Islander	2	13	16	14.5

		<b>N</b>	<b>Min</b>	<b>Max</b>	<b>Mean</b>
		4,737	2	20	14.7
<b>Agricultural Sciences</b>	Hispanic/Latino	36	6	18	14.4
	International	5	12	14	13.2
	Multi-Racial	11	8	18	14.5
	Native American	3	12	16	14.0
	No Response	8	13	15	14.4
	White	226	7	18	14.8
<b>Business</b>					
	Men	203	11	18	14.9
	Women	157	10	18	15.1
	Nonresident	88	12	18	15.0
	Resident	272	10	18	15.0
	Full-Time	358	12	18	15.0
	Part-Time	2	10	11	10.5
	Asian	4	13	17	15.0
	Black	7	12	15	13.9
	Hawaiian/Pac. Islander	1	12	12	12.0
	Hispanic/Latino	32	12	17	15.0
	Multi-Racial	6	14	16	14.7
	Native American	1	17	17	17.0
	No Response	13	13	18	14.8
	White	296	10	18	15.0
<b>Engineering</b>					
	Men	428	3	20	14.9
	Women	176	12	18	15.3
	Nonresident	207	12	18	15.1
	Resident	397	3	20	15.0
	Full-Time	600	12	20	15.1
	Part-Time	4	3	11	7.3
	Asian	26	14	18	15.6
	Black	9	13	16	14.7
	Hawaiian/Pac. Islander	2	16	17	16.5
	Hispanic/Latino	55	12	18	14.9
	International	5	14	16	15.2
	Multi-Racial	16	5	16	14.1
	Native American	4	14	18	15.5
	No Response	14	12	17	15.1
	White	473	3	20	15.0

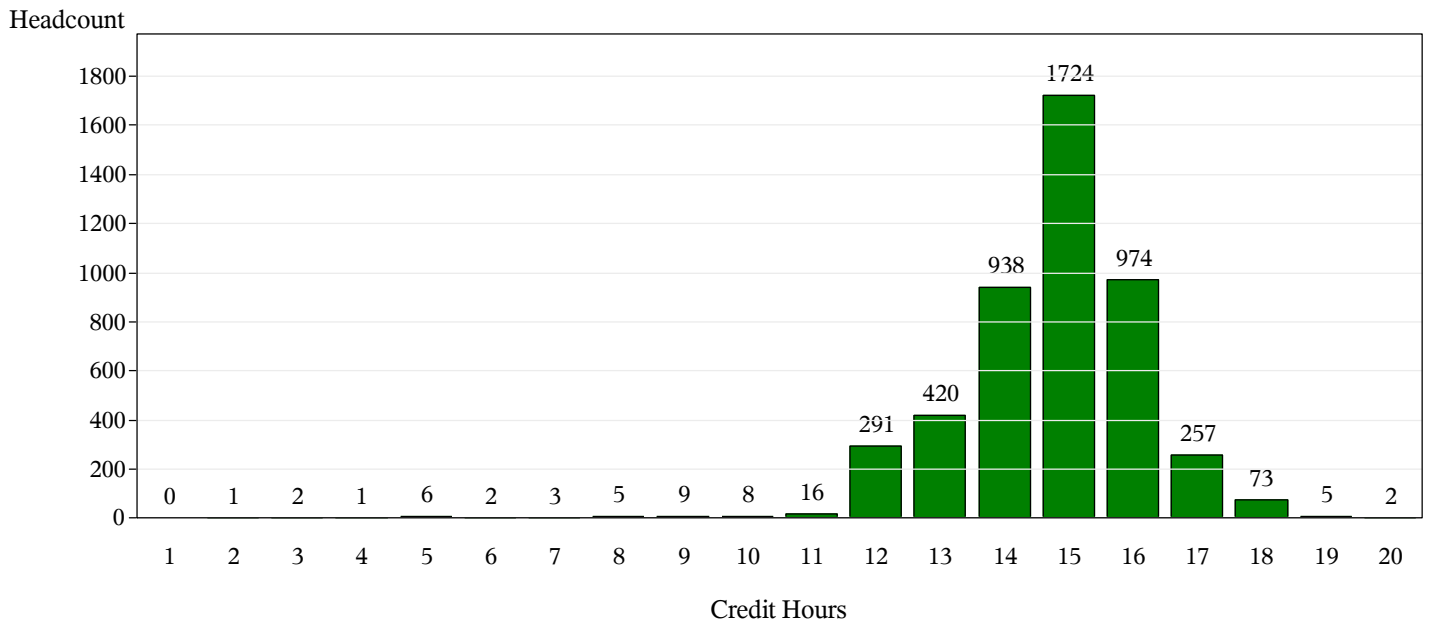
	<b>N</b>	<b>Min</b>	<b>Max</b>	<b>Mean</b>
	4,737	2	20	14.7
<b>Health and Human Sciences</b>				
Men	156	12	19	14.6
Women	379	9	19	14.7
Nonresident	134	12	18	14.8
Resident	401	9	19	14.6
Full-Time	533	12	19	14.7
Part-Time	2	9	9	9.0
Asian	16	12	16	14.7
Black	8	14	16	14.8
Hispanic/Latino	83	9	18	14.7
International	2	13	14	13.5
Multi-Racial	10	12	16	13.8
Native American	6	12	15	13.5
No Response	14	12	16	13.8
White	396	12	19	14.7
<b>Intra-University</b>				
Men	692	2	19	14.3
Women	571	8	20	14.6
Nonresident	331	2	20	14.2
Resident	932	7	18	14.5
Full-Time	1,234	12	20	14.6
Part-Time	29	2	11	8.1
Asian	37	10	17	14.7
Black	42	12	17	14.2
Hawaiian/Pac. Islander	2	12	14	13.0
Hispanic/Latino	158	12	18	14.4
International	72	2	18	12.4
Multi-Racial	36	10	16	14.2
Native American	4	13	15	14.3
No Response	57	9	17	14.3
White	855	7	20	14.6
<b>Liberal Arts</b>				
Men	196	6	18	14.7
Women	286	10	19	14.9
Nonresident	115	6	18	14.6
Resident	367	9	19	14.9
Full-Time	476	12	19	14.9
Part-Time	6	6	11	9.0



		<b>N</b>	<b>Min</b>	<b>Max</b>	<b>Mean</b>
		4,737	2	20	14.7
<b>Liberal Arts</b>					
	Asian	15	12	18	15.3
	Black	11	14	17	15.1
	Hawaiian/Pac. Islander	1	14	14	14.0
	Hispanic/Latino	60	10	17	14.7
	International	4	12	15	14.0
	Multi-Racial	14	14	17	15.0
	Native American	1	16	16	16.0
	No Response	13	9	17	14.2
	White	363	6	19	14.9
<b>Natural Sciences</b>					
	Men	314	9	18	14.7
	Women	508	9	18	14.9
	Nonresident	256	11	18	14.9
	Resident	566	9	18	14.8
	Full-Time	817	12	18	14.9
	Part-Time	5	9	11	10.2
	Asian	36	13	18	15.2
	Black	22	11	18	14.6
	Hawaiian/Pac. Islander	1	16	16	16.0
	Hispanic/Latino	125	11	18	15.0
	International	10	12	17	14.9
	Multi-Racial	26	13	17	14.7
	Native American	5	13	16	14.8
	No Response	21	12	16	14.7
	White	576	9	18	14.8
<b>Vet Med &amp; BioMed Sci</b>					
	Men	63	12	18	15.1
	Women	124	11	18	15.3
	Nonresident	64	11	18	15.5
	Resident	123	12	18	15.1
	Full-Time	186	12	18	15.3
	Part-Time	1	11	11	11.0
	Asian	11	13	18	15.5
	Black	2	13	16	14.5
	Hispanic/Latino	31	12	18	15.1
	International	1	16	16	16.0
	Multi-Racial	6	12	17	15.3
	No Response	4	14	17	15.3
	White	132	11	18	15.3

	N	Min	Max	Mean
<b>Warner College of Nat Res</b>				
Men	104	11	18	14.6
Women	77	12	18	14.8
Nonresident	79	12	17	14.9
Resident	102	11	18	14.5
Full-Time	180	12	18	14.7
Part-Time	1	11	11	11.0
Asian	1	15	15	15.0
Black	1	16	16	16.0
Hawaiian/Pac. Islander	1	16	16	16.0
Hispanic/Latino	15	12	16	14.3
Multi-Racial	3	13	15	14.0
Native American	3	15	16	15.3
No Response	5	14	17	15.2
White	152	11	18	14.7

### Total University: Student Count by Credit Hours



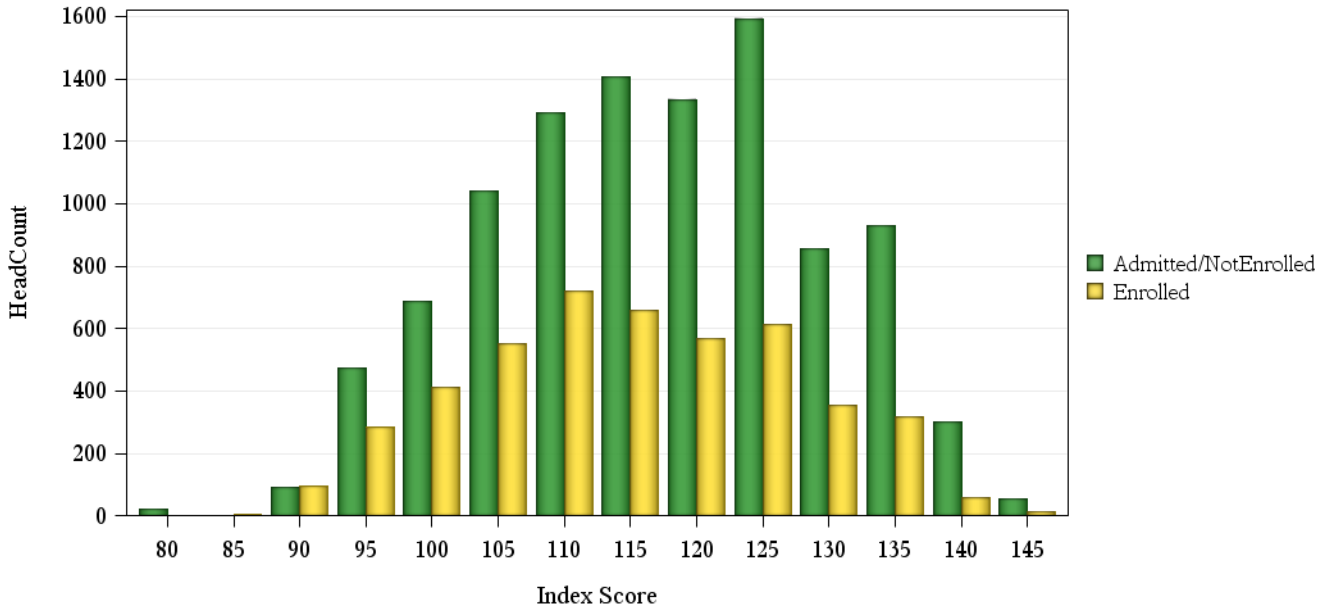
# Fall 2015 Freshman Profile

## University Admitted Applicants

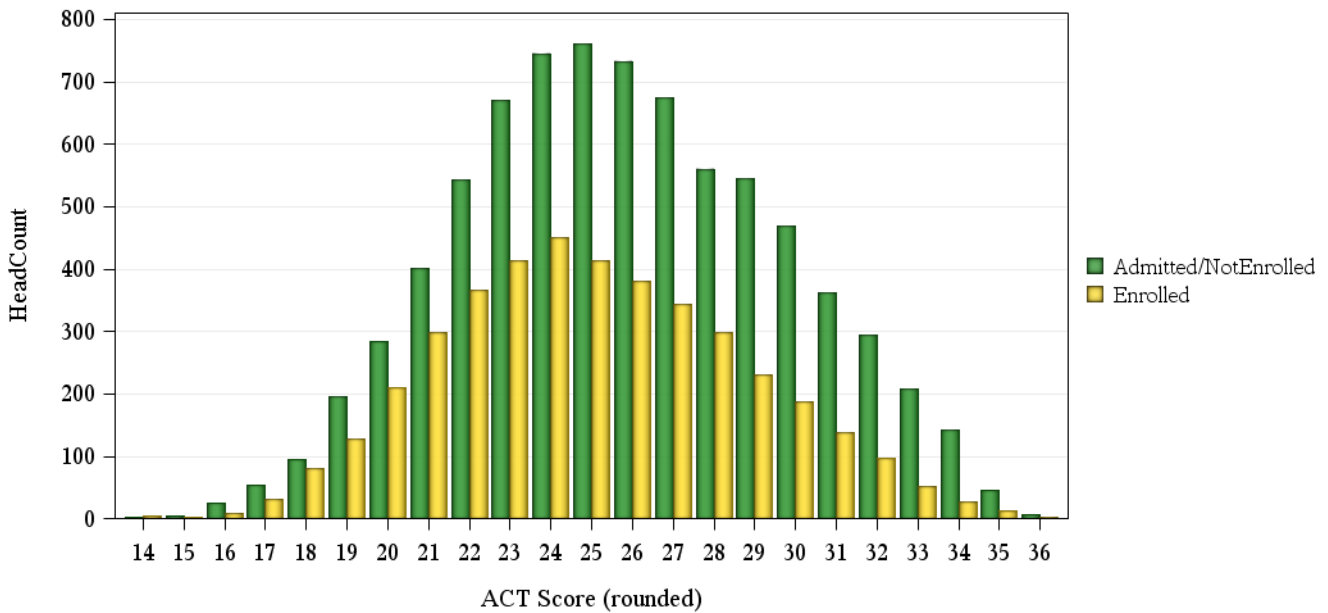
	Not Enrolled (N= 260)				Enrolled(N=4737)			
	Res	Nonres	Total	Percent	Res	Nonres	Total	Percent
<b>ACT Composite</b>								
0-14	.	2	2	0%	3	1	4	0%
15-18	97	78	175	2%	107	17	124	3%
19-22	800	623	1,423	14%	848	154	1,002	21%
23-26	1,553	1,355	2,908	28%	1,325	332	1,657	35%
27-36	1,634	1,672	3,306	32%	959	430	1,389	29%
Missing Data	62	2,384	2,446	24%	57	504	561	12%
Means	25.7	26.0	25.9		24.7	26.0	24.9	
<b>CCHE Index</b>								
0-90	22	33	55	1%	25	14	39	1%
091-100	315	548	863	8%	415	128	543	11%
101-114	1,267	1,936	3,203	31%	1,316	433	1,749	37%
115-160	2,540	3,422	5,962	58%	1,536	789	2,325	49%
Missing Data	2	175	177	2%	7	74	81	2%
Means	118	117	117		114	117	115	
<b>HS GPA</b>								
2.0-2.49	.	1	1	0%	5	1	6	0%
2.5-2.99	156	377	533	5%	273	113	386	8%
3.0-3.59	1,290	2,205	3,495	34%	1,316	529	1,845	39%
3.6-4.00	1,635	2,446	4,081	40%	1,177	560	1,737	37%
4.01-high	1,061	1,028	2,089	20%	522	225	747	16%
Missing Data	4	57	61	1%	6	10	16	0%
Means	3.74	3.64	3.68		3.58	3.61	3.59	
<b>HS Rank</b>								
0-29	36	53	89	1%	82	22	104	2%
30-49	283	205	488	5%	393	79	472	10%
50-59	285	224	509	5%	361	61	422	9%
60-79	903	726	1,629	16%	873	207	1,080	23%
80-89	614	544	1,158	11%	489	153	642	14%
90-100	890	714	1,604	16%	485	165	650	14%
Missing Data	1,135	3,648	4,783	47%	616	751	1,367	29%
Means	75.9	75.8	75.9		69.2	73.0	69.9	
<b>SAT Critical Thinking</b>								
0-399	2	48	50	0%	1	6	7	0%
400-499	83	644	727	7%	65	133	198	4%
500-599	256	1,532	1,788	17%	138	374	512	11%
600-699	205	968	1,173	11%	109	222	331	7%
700-800	69	212	281	3%	25	30	55	1%
Missing Data	3,531	2,710	6,241	61%	2,961	673	3,634	77%
Means	592	565	569		575	563	567	
<b>SAT Math</b>								
0-399	11	47	58	1%	3	9	12	0%
400-499	73	533	606	6%	50	104	154	3%
500-599	223	1,420	1,643	16%	137	351	488	10%
600-699	236	1,141	1,377	13%	121	259	380	8%
700-800	72	260	332	3%	28	44	72	2%
Missing Data	3,531	2,713	6,244	61%	2,960	671	3,631	77%
Means	593	575	578		579	574	575	

## Fall 2015 Freshman Profile

### Fall 2015 CDHE Index Distribution of Admitted Applicants by Enrollment Status(University)



### Fall 2015 ACT Composite Distribution of Admitted Applicants by Enrollment Status(University)



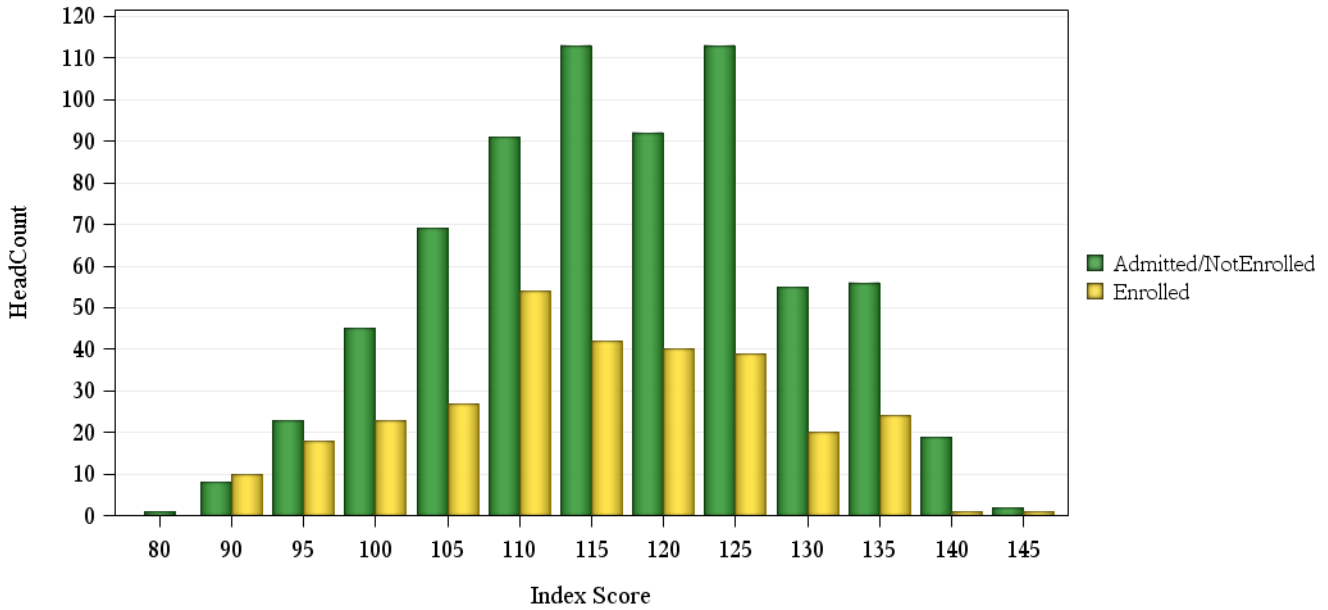
## Fall 2015 Freshman Profile

### Agricultural Sciences Admitted Applicants

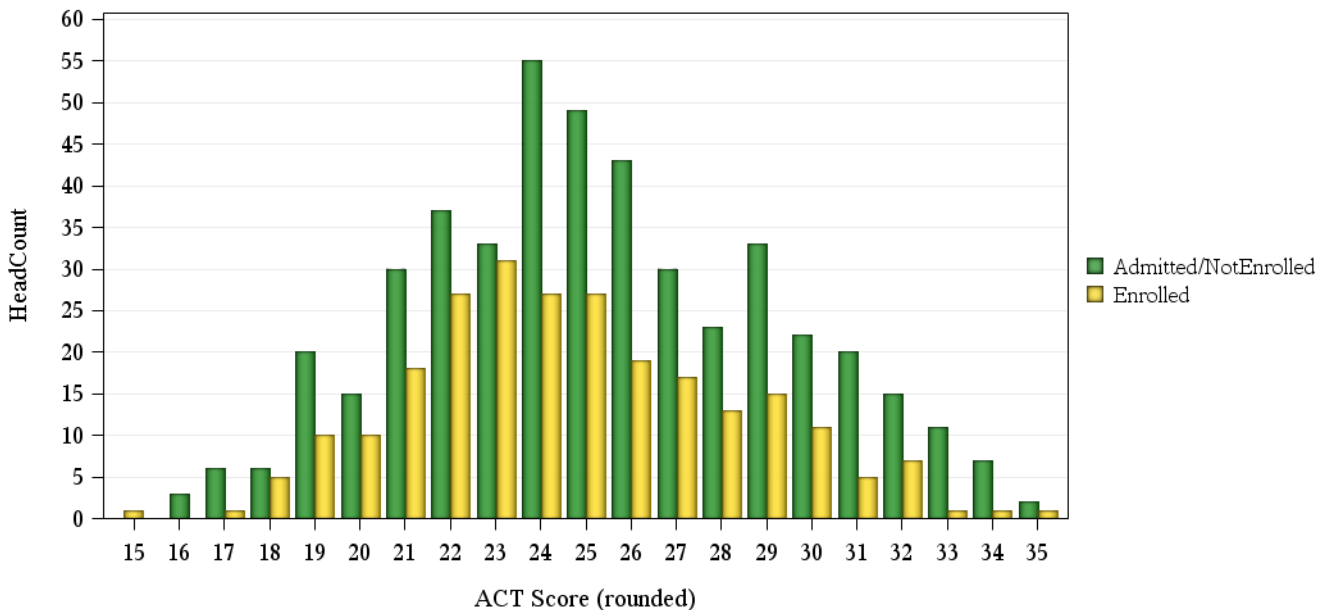
	Not Enrolled (N= 693)				Enrolled(N= 303)			
	Res	Nonres	Total	Percent	Res	Nonres	Total	Percent
<b>ACT Composite</b>								
15-18	6	9	15	2%	4	3	7	2%
19-22	33	69	102	15%	43	22	65	21%
23-26	45	135	180	26%	62	42	104	34%
27-36	27	136	163	24%	30	41	71	23%
Missing Data	2	231	233	34%	.	56	56	18%
Means	24.2	25.7	25.3		24.1	25.3	24.6	
<b>CCHE Index</b>								
0-90	1	4	5	1%	2	.	2	1%
091-100	11	41	52	8%	25	12	37	12%
101-114	39	174	213	31%	49	62	111	37%
115-160	62	355	417	60%	63	86	149	49%
Missing Data	.	6	6	1%	.	4	4	1%
Means	115	118	117		113	116	115	
<b>HS GPA</b>								
2.5-2.99	2	20	22	3%	14	6	20	7%
3.0-3.59	36	173	209	30%	51	60	111	37%
3.6-4.00	52	254	306	44%	53	68	121	40%
4.01-high	23	130	153	22%	21	30	51	17%
Missing Data	.	3	3	0%	.	.	.	.
Means	3.71	3.74	3.74		3.58	3.68	3.63	
<b>HS Rank</b>								
0-29	1	5	6	1%	6	2	8	3%
30-49	4	21	25	4%	16	9	25	8%
50-59	11	30	41	6%	18	4	22	7%
60-79	32	78	110	16%	40	29	69	23%
80-89	14	58	72	10%	21	18	39	13%
90-100	28	97	125	18%	19	19	38	13%
Missing Data	23	291	314	45%	19	83	102	34%
Means	76.7	77.2	77.1		68.5	74.2	70.8	
<b>SAT Critical Thinking</b>								
0-399	.	6	6	1%	.	1	1	0%
400-499	2	85	87	13%	2	24	26	9%
500-599	5	160	165	24%	4	49	53	17%
600-699	3	117	120	17%	4	22	26	9%
700-800	.	19	19	3%	1	4	5	2%
Missing Data	103	193	296	43%	128	64	192	63%
Means	575	561	561		580	553	555	
<b>SAT Math</b>								
0-399	.	7	7	1%	.	1	1	0%
400-499	2	77	79	11%	2	24	26	9%
500-599	6	164	170	25%	3	46	49	16%
600-699	2	110	112	16%	6	30	36	12%
700-800	.	28	28	4%	.	.	.	.
Missing Data	103	194	297	43%	128	63	191	63%
Means	548	564	563		575	549	551	

## Fall 2015 Freshman Profile

### Fall 2015 CDHE Index Distribution of Admitted Applicants by Enrollment Status(Agricultural Sciences)



### Fall 2015 ACT Composite Distribution of Admitted Applicants by Enrollment Status(Agricultural Sciences)



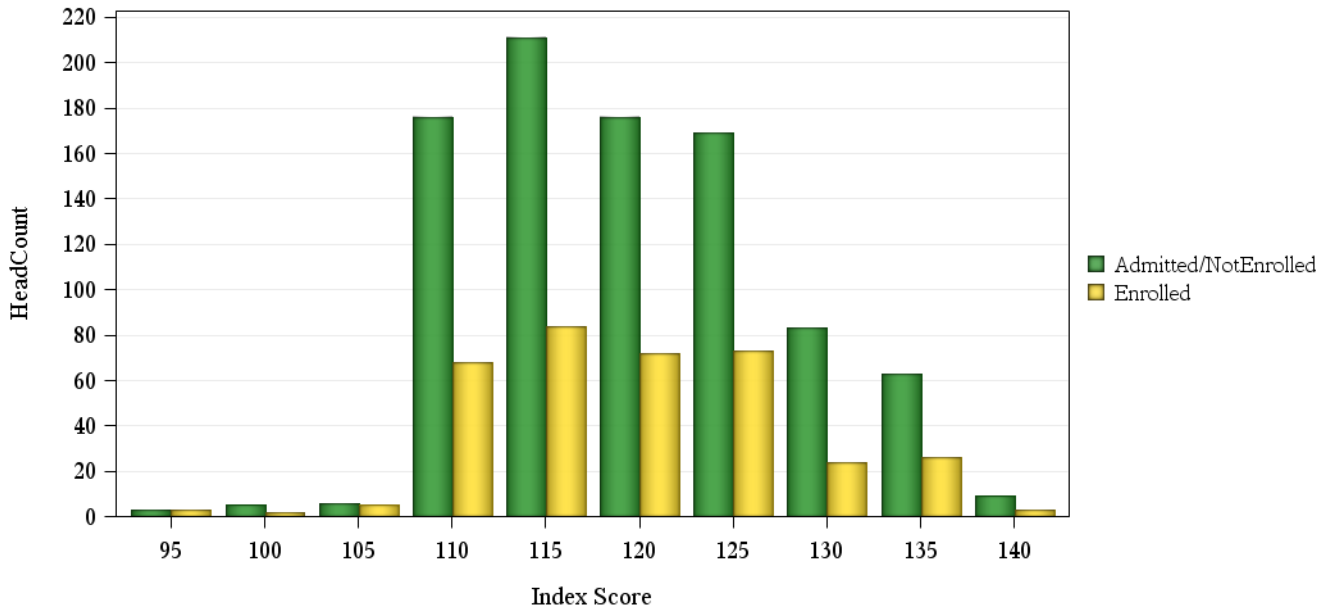
# Fall 2015 Freshman Profile

## Business Admitted Applicants

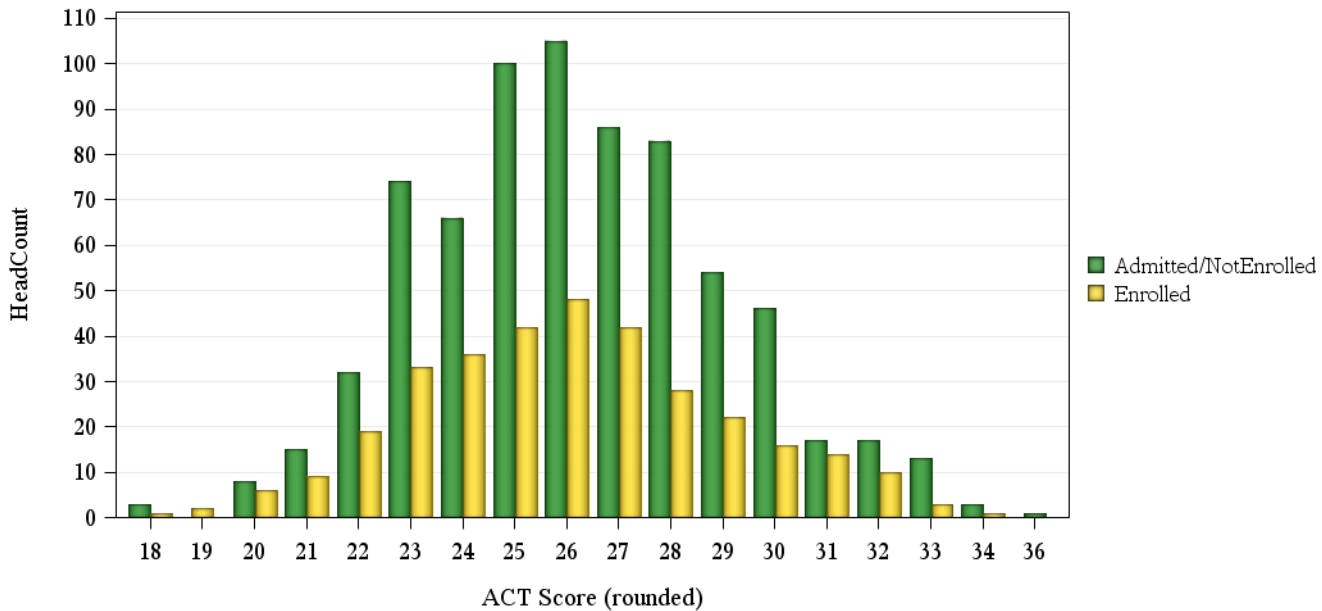
	Not Enrolled (N= 905)				Enrolled(N= 360)			
	Res	Nonres	Total	Percent	Res	Nonres	Total	Percent
<b>ACT Composite</b>								
15-18	1	2	3	0%	1	.	1	0%
19-22	31	24	55	6%	31	5	36	10%
23-26	192	153	345	38%	127	32	159	44%
27-36	184	136	320	35%	109	27	136	38%
Missing Data	6	176	182	20%	4	24	28	8%
Means	26.3	26.1	26.3		26.0	26.1	26.0	
<b>CCHE Index</b>								
091-100	4	1	5	1%	4	.	4	1%
101-114	106	160	266	29%	76	23	99	28%
115-160	304	326	630	70%	192	65	257	71%
Missing Data	.	4	4	0%	.	.	.	.
Means	121	119	120		119	119	119	
<b>HS GPA</b>								
2.5-2.99	4	7	11	1%	7	3	10	3%
3.0-3.59	100	194	294	32%	74	28	102	28%
3.6-4.00	213	223	436	48%	142	47	189	53%
4.01-high	97	65	162	18%	49	10	59	16%
Missing Data	.	2	2	0%	.	.	.	.
Means	3.81	3.66	3.73		3.73	3.68	3.72	
<b>HS Rank</b>								
0-29	1	2	3	0%	.	.	.	.
30-49	20	11	31	3%	13	2	15	4%
50-59	22	22	44	5%	20	2	22	6%
60-79	98	66	164	18%	89	16	105	29%
80-89	73	39	112	12%	61	12	73	20%
90-100	88	35	123	14%	36	7	43	12%
Missing Data	112	316	428	47%	53	49	102	28%
Means	77.9	74.3	76.6		75.0	76.4	75.2	
<b>SAT Critical Thinking</b>								
0-399	1	2	3	0%	.	.	.	.
400-499	6	24	30	3%	1	4	5	1%
500-599	33	124	157	17%	14	22	36	10%
600-699	17	97	114	13%	10	21	31	9%
700-800	1	13	14	2%	.	1	1	0%
Missing Data	356	231	587	65%	247	40	287	80%
Means	571	580	579		583	585	584	
<b>SAT Math</b>								
400-499	8	10	18	2%	3	1	4	1%
500-599	25	119	144	16%	11	24	35	10%
600-699	19	115	134	15%	10	21	31	9%
700-800	6	16	22	2%	1	2	3	1%
Missing Data	356	231	587	65%	247	40	287	80%
Means	580	597	594		587	597	594	

## Fall 2015 Freshman Profile

### Fall 2015 CDHE Index Distribution of Admitted Applicants by Enrollment Status(Business)



### Fall 2015 ACT Composite Distribution of Admitted Applicants by Enrollment Status(Business)





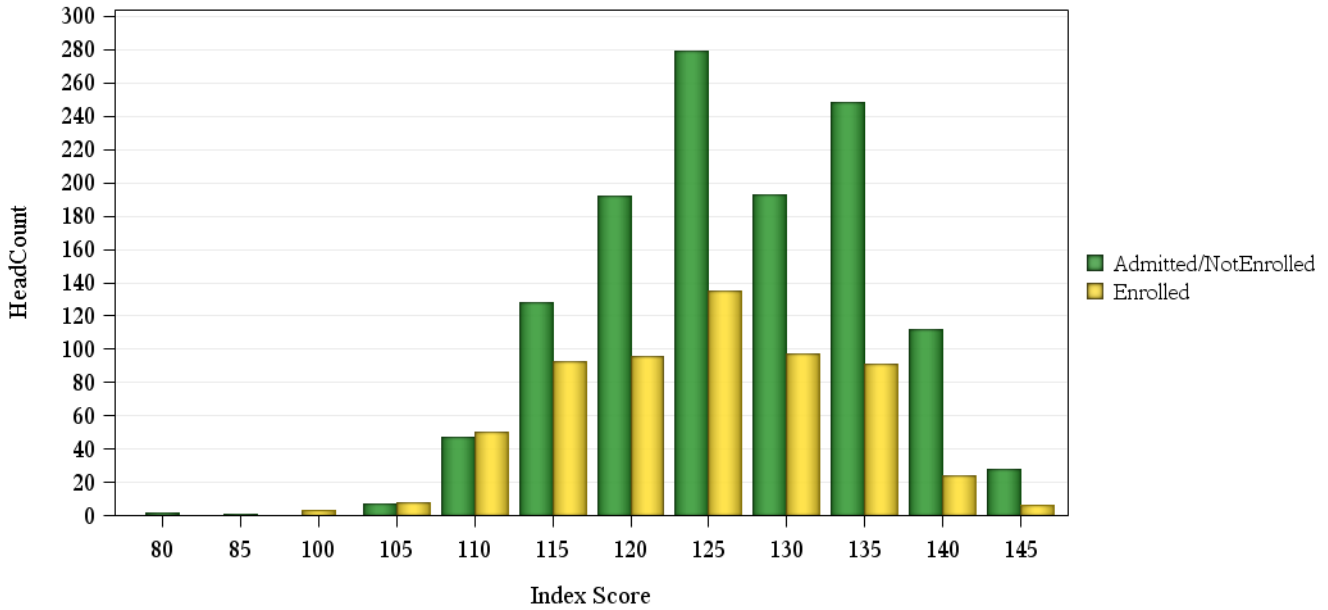
# Fall 2015 Freshman Profile

## Engineering Admitted Applicants

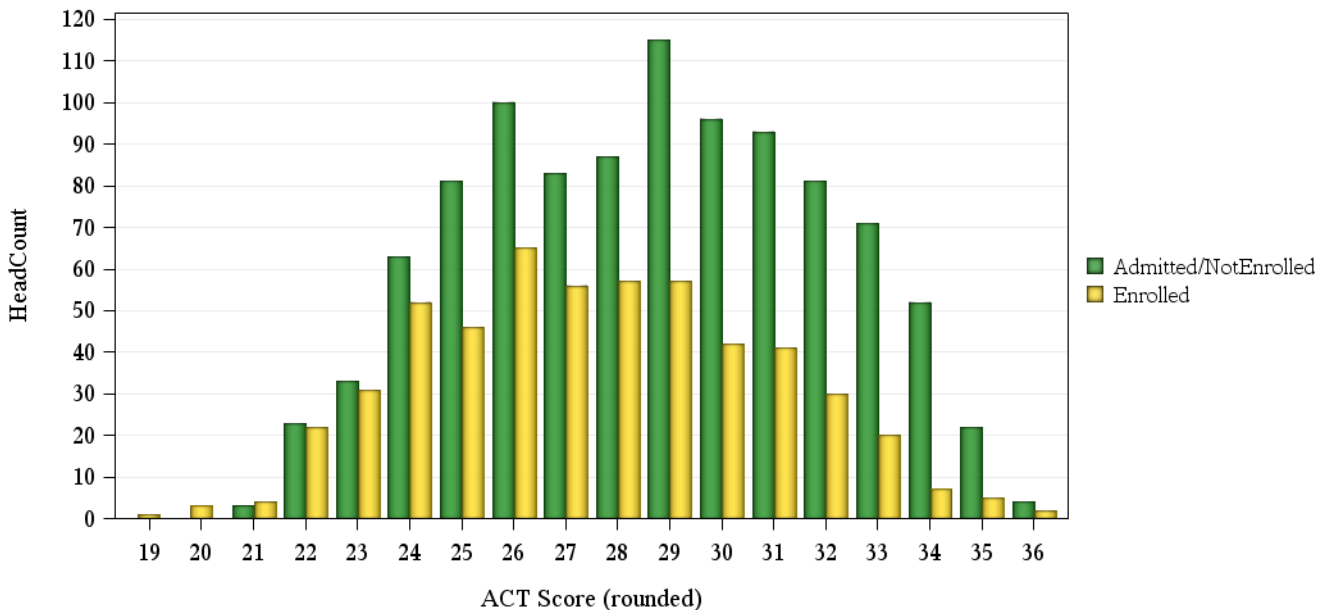
	Not Enrolled (N=1241)				Enrolled(N= 604)			
	Res	Nonres	Total	Percent	Res	Nonres	Total	Percent
<b>ACT Composite</b>								
19-22	14	12	26	2%	23	7	30	5%
23-26	181	96	277	22%	158	36	194	32%
27-36	377	327	704	57%	210	107	317	52%
Missing Data	8	226	234	19%	6	57	63	10%
Means	28.4	29.0	28.7		27.2	28.2	27.4	
<b>CCHE Index</b>								
0-90	.	3	3	0%	.	.	.	.
101-114	47	47	94	8%	65	29	94	16%
115-160	533	607	1,140	92%	331	178	509	84%
Missing Data	.	4	4	0%	1	.	1	0%
Means	127	127	127		124	125	124	
<b>HS GPA</b>								
2.5-2.99	.	.	.	.	1	.	1	0%
3.0-3.59	74	105	179	14%	88	51	139	23%
3.6-4.00	241	330	571	46%	185	95	280	46%
4.01-high	265	221	486	39%	122	61	183	30%
Missing Data	.	5	5	0%	1	.	1	0%
Means	4.00	3.93	3.96		3.87	3.86	3.87	
<b>HS Rank</b>								
0-29	2	1	3	0%	1	.	1	0%
30-49	4	4	8	1%	5	4	9	1%
50-59	15	9	24	2%	25	7	32	5%
60-79	102	58	160	13%	105	33	138	23%
80-89	118	82	200	16%	79	32	111	18%
90-100	192	131	323	26%	111	39	150	25%
Missing Data	147	376	523	42%	71	92	163	27%
Means	84.6	85.5	84.9		80.4	81.2	80.6	
<b>SAT Critical Thinking</b>								
0-399	.	1	1	0%	.	.	.	.
400-499	11	35	46	4%	7	6	13	2%
500-599	37	161	198	16%	19	55	74	12%
600-699	43	144	187	15%	18	41	59	10%
700-800	19	48	67	5%	9	8	17	3%
Missing Data	470	272	742	60%	344	97	441	73%
Means	615	599	602		605	592	596	
<b>SAT Math</b>								
400-499	2	2	4	0%	1	.	1	0%
500-599	20	88	108	9%	14	32	46	8%
600-699	57	199	256	21%	27	59	86	14%
700-800	31	101	132	11%	12	20	32	5%
Missing Data	470	271	741	60%	343	96	439	73%
Means	654	650	651		641	635	637	

## Fall 2015 Freshman Profile

### Fall 2015 CDHE Index Distribution of Admitted Applicants by Enrollment Status(Engineering)



### Fall 2015 ACT Composite Distribution of Admitted Applicants by Enrollment Status(Engineering)



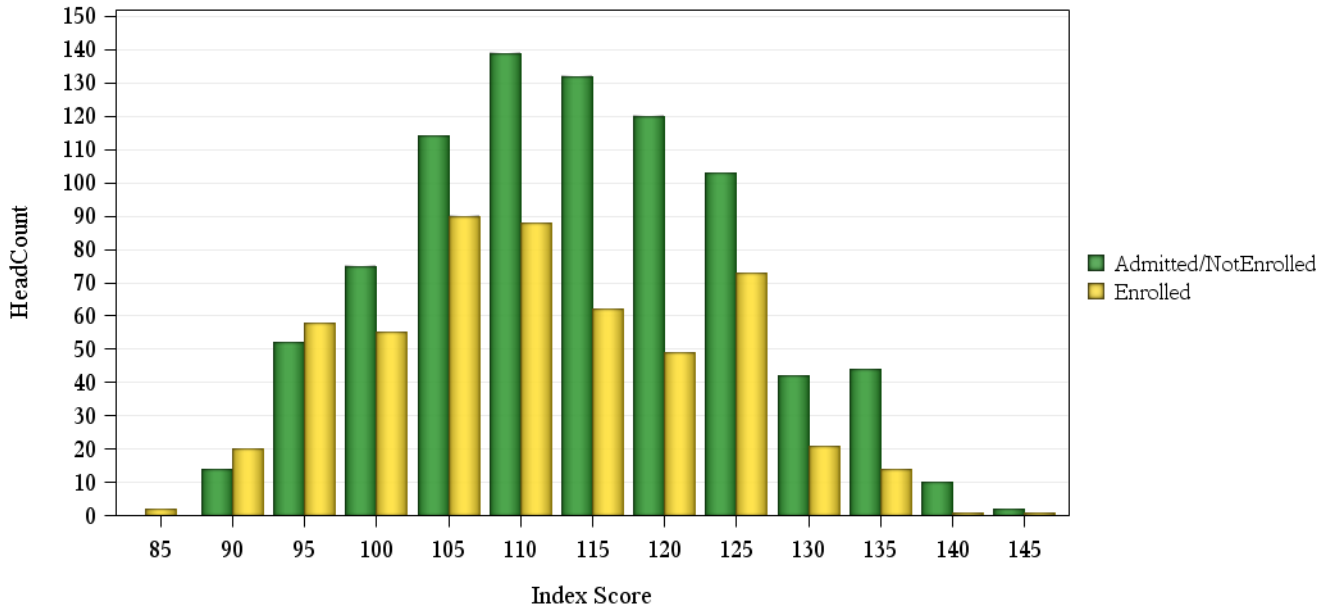
## Fall 2015 Freshman Profile

### Health and Human Sciences Admitted Applicants

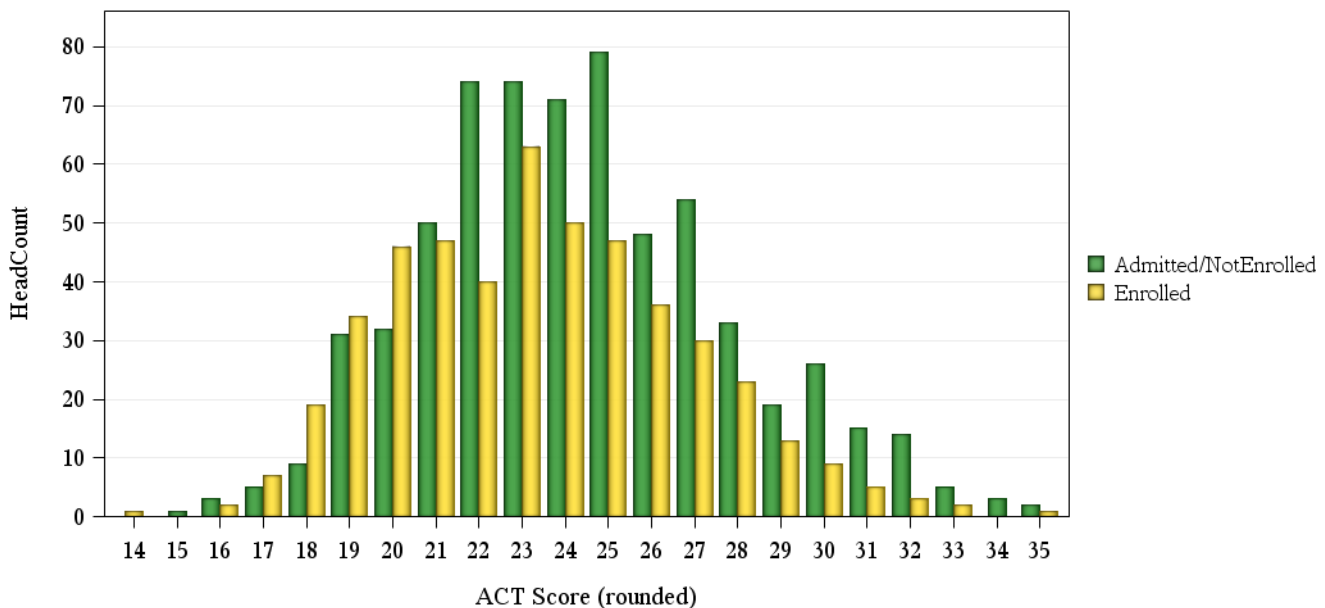
	Not Enrolled (N= 851)				Enrolled(N= 535)			
	Res	Nonres	Total	Percent	Res	Nonres	Total	Percent
<b>ACT Composite</b>								
0-14	.	.	.	.	1	.	1	0%
15-18	8	10	18	2%	23	5	28	5%
19-22	108	79	187	22%	146	21	167	31%
23-26	152	120	272	32%	163	33	196	37%
27-36	72	99	171	20%	61	25	86	16%
Missing Data	1	202	203	24%	7	50	57	11%
Means	24.0	24.8	24.4		23.1	24.4	23.3	
<b>CCHE Index</b>								
0-90	2	2	4	0%	7	4	11	2%
091-100	31	69	100	12%	74	22	96	18%
101-114	142	195	337	40%	189	43	232	43%
115-160	166	240	406	48%	130	65	195	36%
Missing Data	.	4	4	0%	1	.	1	0%
Means	114	114	114		110	113	111	
<b>HS GPA</b>								
2.5-2.99	12	27	39	5%	38	10	48	9%
3.0-3.59	127	190	317	37%	182	48	230	43%
3.6-4.00	149	221	370	43%	135	57	192	36%
4.01-high	53	69	122	14%	45	19	64	12%
Missing Data	.	3	3	0%	1	.	1	0%
Means	3.66	3.63	3.64		3.51	3.60	3.53	
<b>HS Rank</b>								
0-29	2	5	7	1%	14	1	15	3%
30-49	31	26	57	7%	48	6	54	10%
50-59	20	15	35	4%	59	7	66	12%
60-79	81	73	154	18%	106	21	127	24%
80-89	62	47	109	13%	51	14	65	12%
90-100	60	46	106	12%	48	12	60	11%
Missing Data	85	298	383	45%	75	73	148	28%
Means	74.3	72.6	73.5		66.4	73.8	67.6	
<b>SAT Critical Thinking</b>								
0-399	.	5	5	1%	.	.	.	.
400-499	12	83	95	11%	11	22	33	6%
500-599	19	135	154	18%	18	36	54	10%
600-699	8	59	67	8%	6	15	21	4%
700-800	1	4	5	1%	1	.	1	0%
Missing Data	301	224	525	62%	365	61	426	80%
Means	547	534	536		535	535	535	
<b>SAT Math</b>								
0-399	2	8	10	1%	.	1	1	0%
400-499	8	58	66	8%	10	16	26	5%
500-599	19	149	168	20%	17	38	55	10%
600-699	11	63	74	9%	7	17	24	4%
700-800	.	7	7	1%	2	1	3	1%
Missing Data	301	225	526	62%	365	61	426	80%
Means	547	546	546		544	543	543	

## Fall 2015 Freshman Profile

### Fall 2015 CDHE Index Distribution of Admitted Applicants by Enrollment Status(Health and Human Sciences)



### Fall 2015 ACT Composite Distribution of Admitted Applicants by Enrollment Status(Health and Human Sciences)



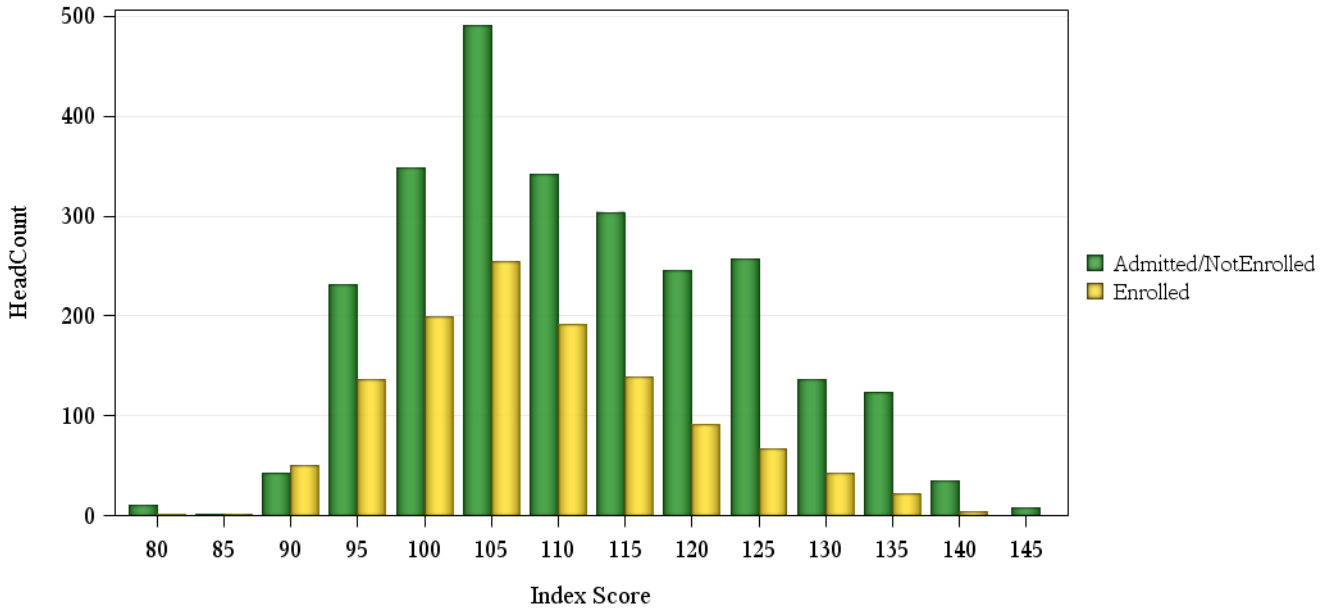
# Fall 2015 Freshman Profile

## Intra-University Admitted Applicants

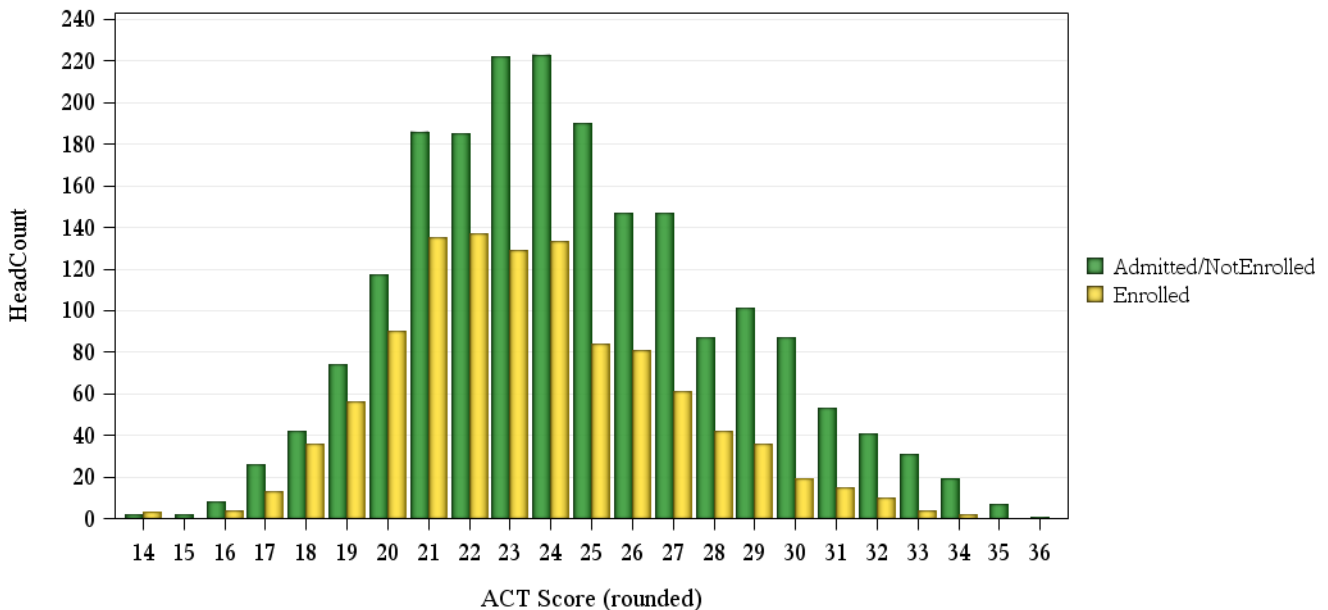
	Not Enrolled (N=2692)				Enrolled(N=1263)			
	Res	Nonres	Total	Percent	Res	Nonres	Total	Percent
<b>ACT Composite</b>								
0-14	.	2	2	0%	2	1	3	0%
15-18	48	30	78	3%	48	5	53	4%
19-22	345	217	562	21%	374	44	418	33%
23-26	431	351	782	29%	353	74	427	34%
27-36	288	286	574	21%	138	51	189	15%
Missing Data	15	679	694	26%	17	156	173	14%
Means	24.2	24.9	24.5		23.2	24.5	23.4	
<b>CCHE Index</b>								
0-90	11	15	26	1%	13	8	21	2%
091-100	167	260	427	16%	220	52	272	22%
101-114	500	631	1,131	42%	485	120	605	48%
115-160	447	545	992	37%	211	91	302	24%
Missing Data	2	114	116	4%	3	60	63	5%
Means	112	111	112		108	110	108	
<b>HS GPA</b>								
2.0-2.49	.	1	1	0%	3	1	4	0%
2.5-2.99	90	193	283	11%	132	53	185	15%
3.0-3.59	499	743	1,242	46%	506	159	665	53%
3.6-4.00	364	457	821	30%	231	91	322	25%
4.01-high	172	139	311	12%	58	20	78	6%
Missing Data	2	32	34	1%	2	7	9	1%
Means	3.55	3.45	3.49		3.36	3.37	3.36	
<b>HS Rank</b>								
0-29	22	21	43	2%	40	9	49	4%
30-49	127	76	203	8%	202	26	228	18%
50-59	116	75	191	7%	139	18	157	12%
60-79	249	173	422	16%	224	32	256	20%
80-89	121	95	216	8%	94	12	106	8%
90-100	156	115	271	10%	71	13	84	7%
Missing Data	336	1,010	1,346	50%	162	221	383	30%
Means	69.1	69.8	69.4		60.5	60.4	60.5	
<b>SAT Critical Thinking</b>								
0-399	.	22	22	1%	1	4	5	0%
400-499	26	221	247	9%	20	42	62	5%
500-599	53	368	421	16%	30	79	109	9%
600-699	35	180	215	8%	14	27	41	3%
700-800	12	27	39	1%	1	1	2	0%
Missing Data	1,001	747	1,748	65%	866	178	1,044	83%
Means	579	543	547		541	530	533	
<b>SAT Math</b>								
0-399	3	11	14	1%	1	3	4	0%
400-499	27	176	203	8%	22	30	52	4%
500-599	42	365	407	15%	28	73	101	8%
600-699	42	232	274	10%	15	43	58	5%
700-800	12	34	46	2%	.	4	4	0%
Missing Data	1,001	747	1,748	65%	866	178	1,044	83%
Means	575	557	559		536	553	548	

## Fall 2015 Freshman Profile

### Fall 2015 CDHE Index Distribution of Admitted Applicants by Enrollment Status(Intra-University)



### Fall 2015 ACT Composite Distribution of Admitted Applicants by Enrollment Status(Intra-University)



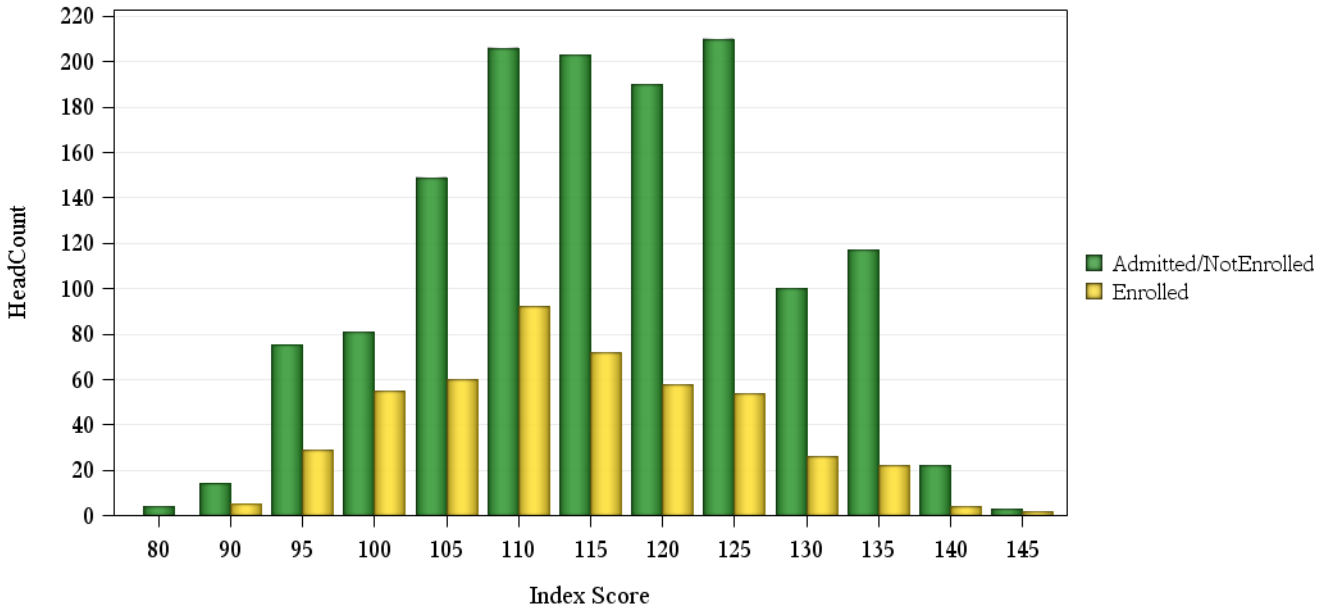
# Fall 2015 Freshman Profile

## Liberal Arts Admitted Applicants

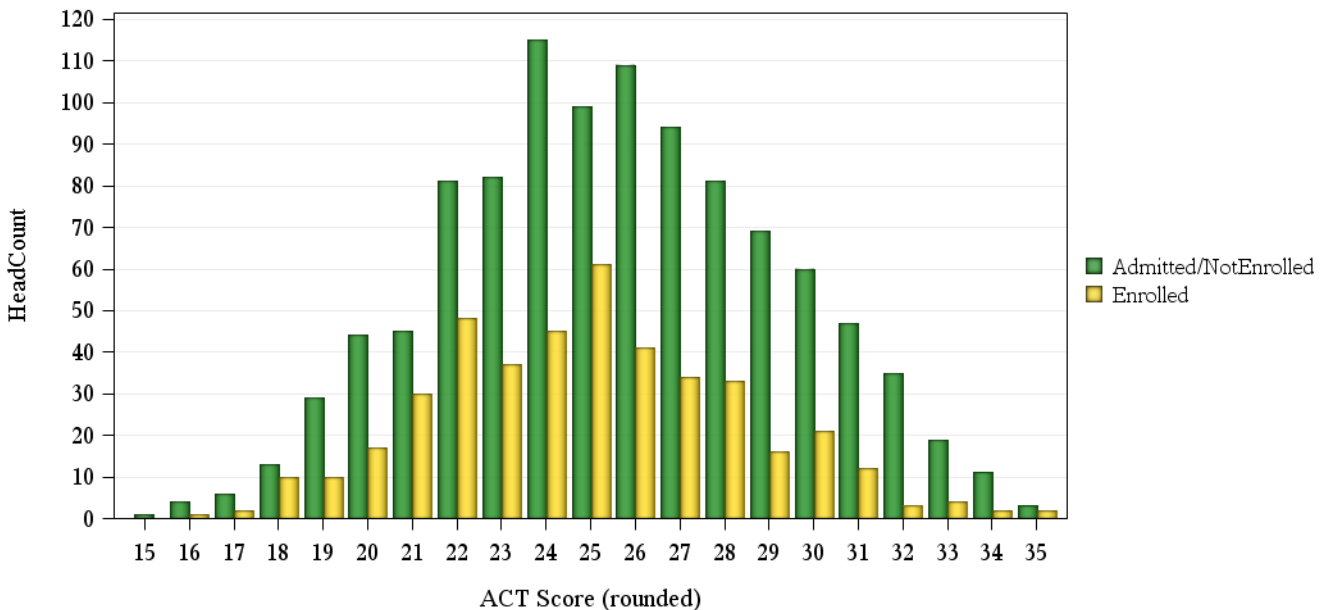
	Not Enrolled (N=1387)				Enrolled(N= 482)			
	Res	Nonres	Total	Percent	Res	Nonres	Total	Percent
<b>ACT Composite</b>								
15-18	18	6	24	2%	13	.	13	3%
19-22	118	81	199	14%	90	15	105	22%
23-26	234	171	405	29%	154	30	184	38%
27-36	253	166	419	30%	104	23	127	26%
Missing Data	18	322	340	25%	6	47	53	11%
Means	25.6	25.6	25.6		24.7	25.2	24.8	
<b>CCHE Index</b>								
0-90	5	5	10	1%	.	1	1	0%
091-100	41	70	111	8%	40	17	57	12%
101-114	202	283	485	35%	166	45	211	44%
115-160	393	375	768	55%	161	49	210	44%
Missing Data	.	13	13	1%	.	3	3	1%
Means	118	115	116		114	113	113	
<b>HS GPA</b>								
2.0-2.49	.	.	.	.	2	.	2	0%
2.5-2.99	21	55	76	5%	36	20	56	12%
3.0-3.59	205	307	512	37%	152	50	202	42%
3.6-4.00	267	280	547	39%	127	37	164	34%
4.01-high	148	101	249	18%	49	8	57	12%
Missing Data	.	3	3	0%	1	.	1	0%
Means	3.72	3.57	3.64		3.53	3.43	3.51	
<b>HS Rank</b>								
0-29	2	7	9	1%	10	4	14	3%
30-49	48	23	71	5%	43	11	54	11%
50-59	40	29	69	5%	39	9	48	10%
60-79	139	97	236	17%	100	18	118	24%
80-89	101	60	161	12%	56	10	66	14%
90-100	129	73	202	15%	48	9	57	12%
Missing Data	182	457	639	46%	71	54	125	26%
Means	75.6	74.2	75.1		68.8	65.2	68.2	
<b>SAT Critical Thinking</b>								
0-399	1	2	3	0%	.	.	.	.
400-499	8	67	75	5%	9	11	20	4%
500-599	42	206	248	18%	10	29	39	8%
600-699	40	127	167	12%	12	27	39	8%
700-800	18	35	53	4%	4	1	5	1%
Missing Data	532	309	841	61%	332	47	379	79%
Means	609	576	583		576	570	572	
<b>SAT Math</b>								
0-399	1	7	8	1%	2	2	4	1%
400-499	15	80	95	7%	2	9	11	2%
500-599	50	222	272	20%	18	42	60	12%
600-699	41	113	154	11%	9	14	23	5%
700-800	2	14	16	1%	4	1	5	1%
Missing Data	532	310	842	61%	332	47	379	79%
Means	571	553	556		573	547	556	

## Fall 2015 Freshman Profile

### Fall 2015 CDHE Index Distribution of Admitted Applicants by Enrollment Status(Liberal Arts)



### Fall 2015 ACT Composite Distribution of Admitted Applicants by Enrollment Status(Liberal Arts)





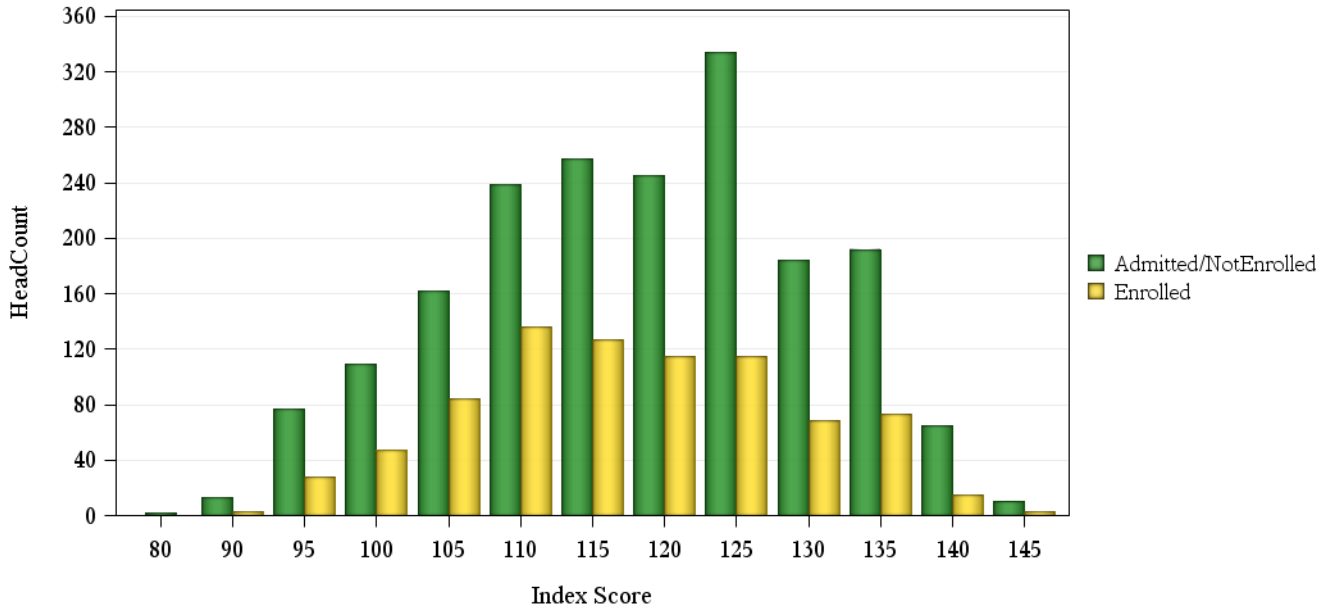
# Fall 2015 Freshman Profile

## Natural Sciences Admitted Applicants

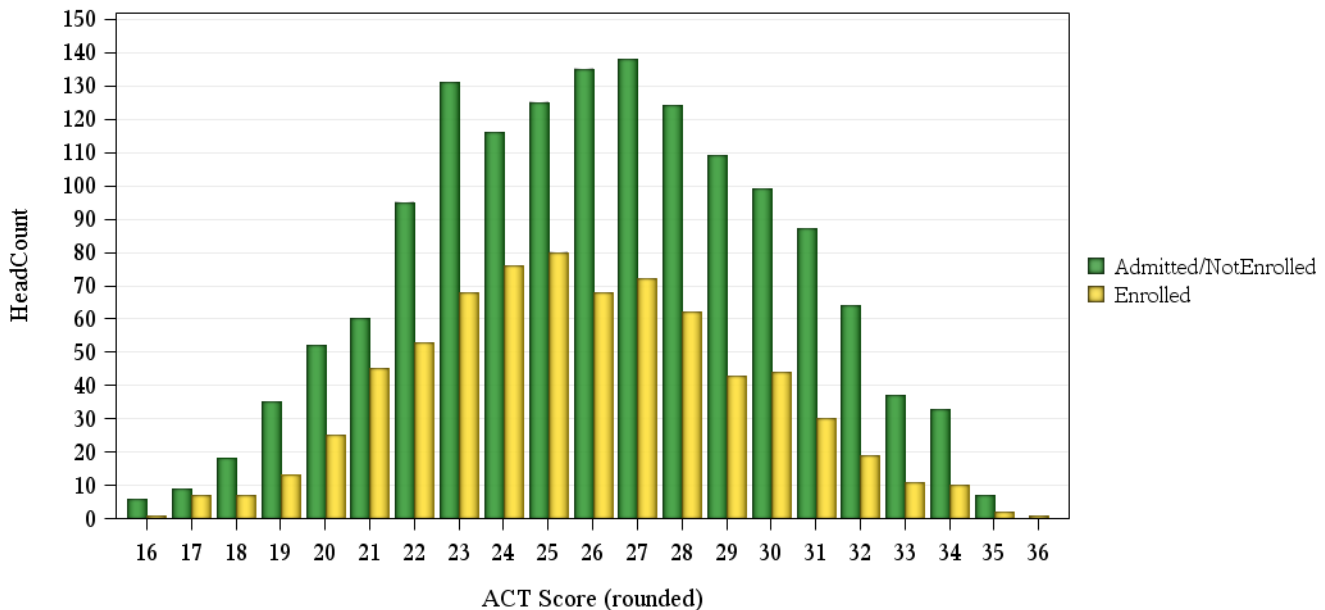
	Not Enrolled (N=1915)				Enrolled(N= 822)			
	Res	Nonres	Total	Percent	Res	Nonres	Total	Percent
<b>ACT Composite</b>								
15-18	15	18	33	2%	12	3	15	2%
19-22	128	114	242	13%	109	27	136	17%
23-26	260	247	507	26%	238	54	292	36%
27-36	314	384	698	36%	197	97	294	36%
Missing Data	11	424	435	23%	10	75	85	10%
Means	26.0	26.3	26.2		25.3	26.5	25.6	
<b>CCHE Index</b>								
0-90	1	3	4	0%	1	.	1	0%
091-100	49	92	141	7%	35	17	52	6%
101-114	203	352	555	29%	223	76	299	36%
115-160	475	714	1,189	62%	305	158	463	56%
Missing Data	.	26	26	1%	2	5	7	1%
Means	119	118	119		117	119	117	
<b>HS GPA</b>								
2.5-2.99	24	63	87	5%	31	10	41	5%
3.0-3.59	206	391	597	31%	199	91	290	35%
3.6-4.00	280	517	797	42%	220	103	323	39%
4.01-high	217	211	428	22%	115	50	165	20%
Missing Data	1	5	6	0%	1	2	3	0%
Means	3.78	3.68	3.72		3.66	3.68	3.67	
<b>HS Rank</b>								
0-29	6	9	15	1%	9	3	12	1%
30-49	38	29	67	3%	44	16	60	7%
50-59	51	36	87	5%	49	11	60	7%
60-79	168	142	310	16%	152	40	192	23%
80-89	101	115	216	11%	96	33	129	16%
90-100	168	164	332	17%	97	37	134	16%
Missing Data	196	692	888	46%	119	116	235	29%
Means	77.0	78.4	77.7		73.1	74.4	73.4	
<b>SAT Critical Thinking</b>								
0-399	.	8	8	0%	.	.	.	.
400-499	15	108	123	6%	14	17	31	4%
500-599	55	288	343	18%	31	62	93	11%
600-699	42	182	224	12%	31	45	76	9%
700-800	12	48	60	3%	5	7	12	1%
Missing Data	604	553	1,157	60%	485	125	610	74%
Means	589	571	574		580	577	578	
<b>SAT Math</b>								
0-399	5	10	15	1%	.	2	2	0%
400-499	7	104	111	6%	9	18	27	3%
500-599	47	244	291	15%	31	52	83	10%
600-699	50	228	278	15%	36	50	86	10%
700-800	15	48	63	3%	5	10	15	2%
Missing Data	604	553	1,157	60%	485	124	609	74%
Means	596	576	579		582	578	580	

## Fall 2015 Freshman Profile

### Fall 2015 CDHE Index Distribution of Admitted Applicants by Enrollment Status(Natural Sciences)



### Fall 2015 ACT Composite Distribution of Admitted Applicants by Enrollment Status(Natural Sciences)



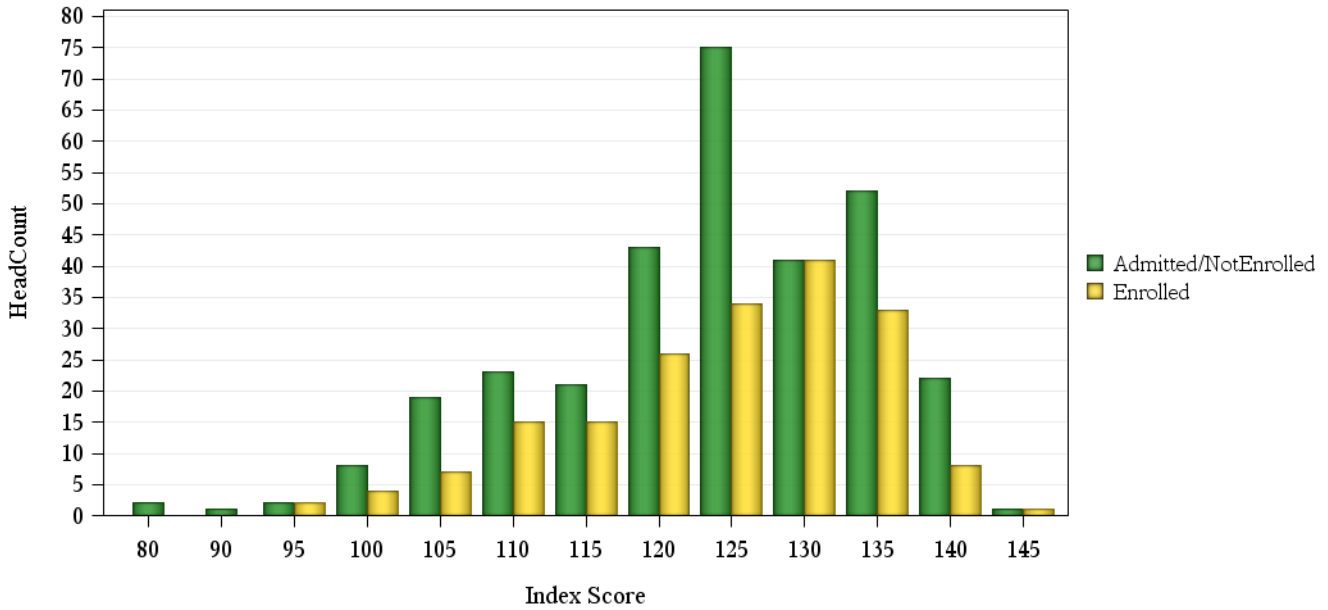
## Fall 2015 Freshman Profile

### Veterinary Medicine + Biomedical Sci Admitted Applicants

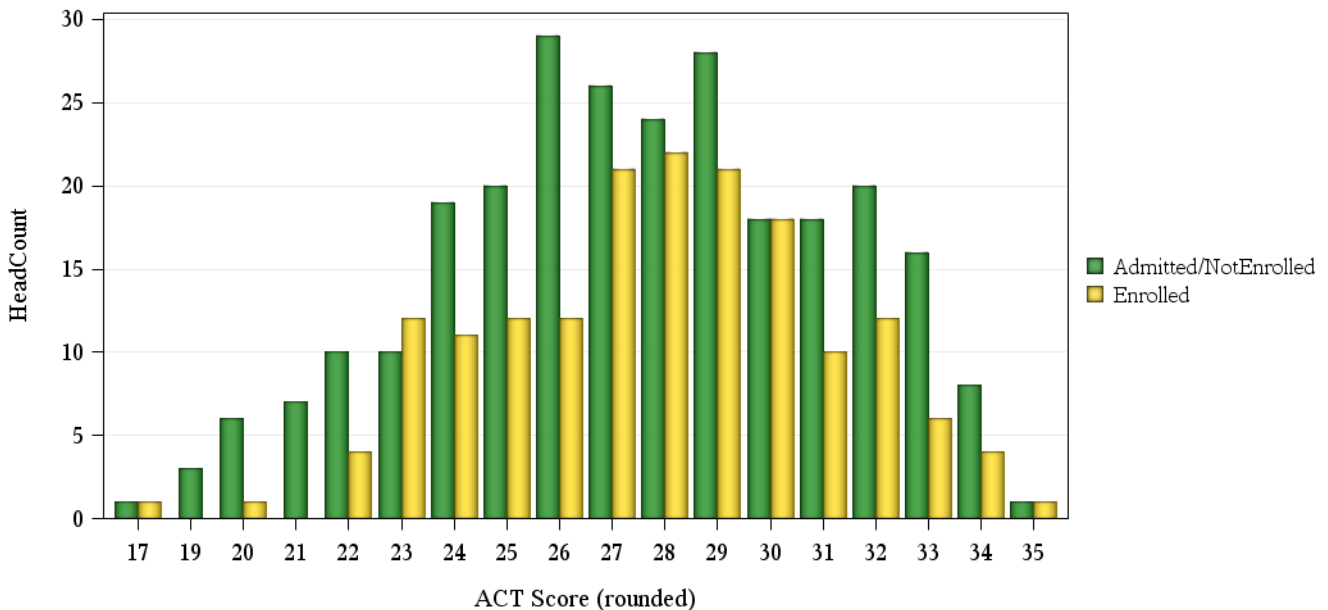
	Not Enrolled (N= 310)				Enrolled(N= 187)			
	Res	Nonres	Total	Percent	Res	Nonres	Total	Percent
<b>ACT Composite</b>								
15-18	.	1	1	0%	1	.	1	1%
19-22	13	13	26	8%	2	3	5	3%
23-26	39	39	78	25%	39	8	47	25%
27-36	93	66	159	51%	80	35	115	61%
Missing Data	.	46	46	15%	1	18	19	10%
Means	27.8	27.2	27.5		27.7	28.1	27.8	
<b>CCHE Index</b>								
0-90	1	1	2	1%	.	.	.	.
091-100	3	4	7	2%	2	1	3	2%
101-114	16	35	51	16%	22	12	34	18%
115-160	125	125	250	81%	99	50	149	80%
Missing Data	.	.	.	.	.	1	1	1%
Means	125	122	124		125	124	124	
<b>HS GPA</b>								
2.5-2.99	.	3	3	1%	4	1	5	3%
3.0-3.59	21	33	54	17%	19	11	30	16%
3.6-4.00	54	78	132	43%	49	32	81	43%
4.01-high	70	50	120	39%	51	19	70	37%
Missing Data	.	1	1	0%	.	1	1	1%
Means	4.01	3.85	3.92		3.92	3.93	3.92	
<b>HS Rank</b>								
0-29	.	.	.	.	1	1	2	1%
30-49	4	3	7	2%	6	2	8	4%
50-59	6	2	8	3%	1	.	1	1%
60-79	22	16	38	12%	24	7	31	17%
80-89	16	24	40	13%	21	14	35	19%
90-100	60	30	90	29%	45	22	67	36%
Missing Data	37	90	127	41%	25	18	43	23%
Means	85.3	83.4	84.5		82.4	83.1	82.6	
<b>SAT Critical Thinking</b>								
0-399	.	1	1	0%	.	1	1	1%
400-499	.	7	7	2%	1	6	7	4%
500-599	9	41	50	16%	4	15	19	10%
600-699	13	25	38	12%	10	12	22	12%
700-800	4	6	10	3%	3	3	6	3%
Missing Data	119	85	204	66%	105	27	132	71%
Means	636	581	595		638	575	595	
<b>SAT Math</b>								
0-399	.	3	3	1%	.	.	.	.
400-499	1	8	9	3%	.	2	2	1%
500-599	11	21	32	10%	5	17	22	12%
600-699	9	40	49	16%	9	12	21	11%
700-800	5	7	12	4%	4	5	9	5%
Missing Data	119	86	205	66%	105	28	133	71%
Means	623	595	602		637	608	617	

## Fall 2015 Freshman Profile

### Fall 2015 CDHE Index Distribution of Admitted Applicants by Enrollment Status(Veterinary Medicine + Biomedical Sci)



### Fall 2015 ACT Composite Distribution of Admitted Applicants by Enrollment Status(Veterinary Medicine + Biomedical Sci)



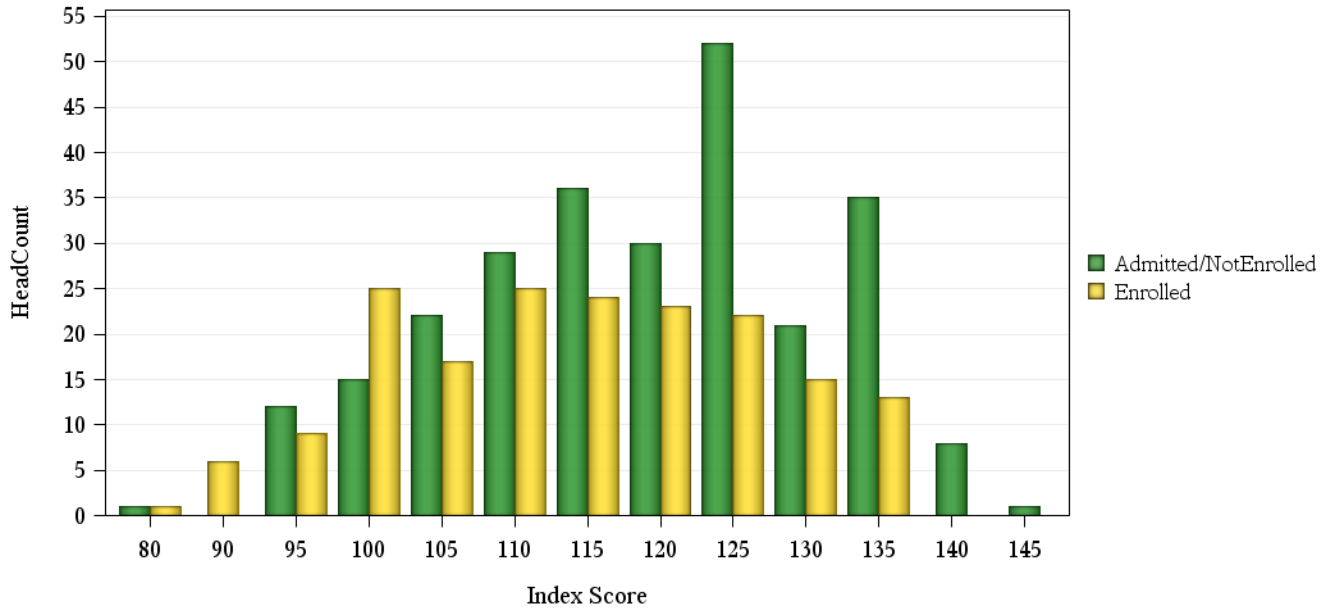
# Fall 2015 Freshman Profile

## Warner College of Natural Resources Admitted Applicants

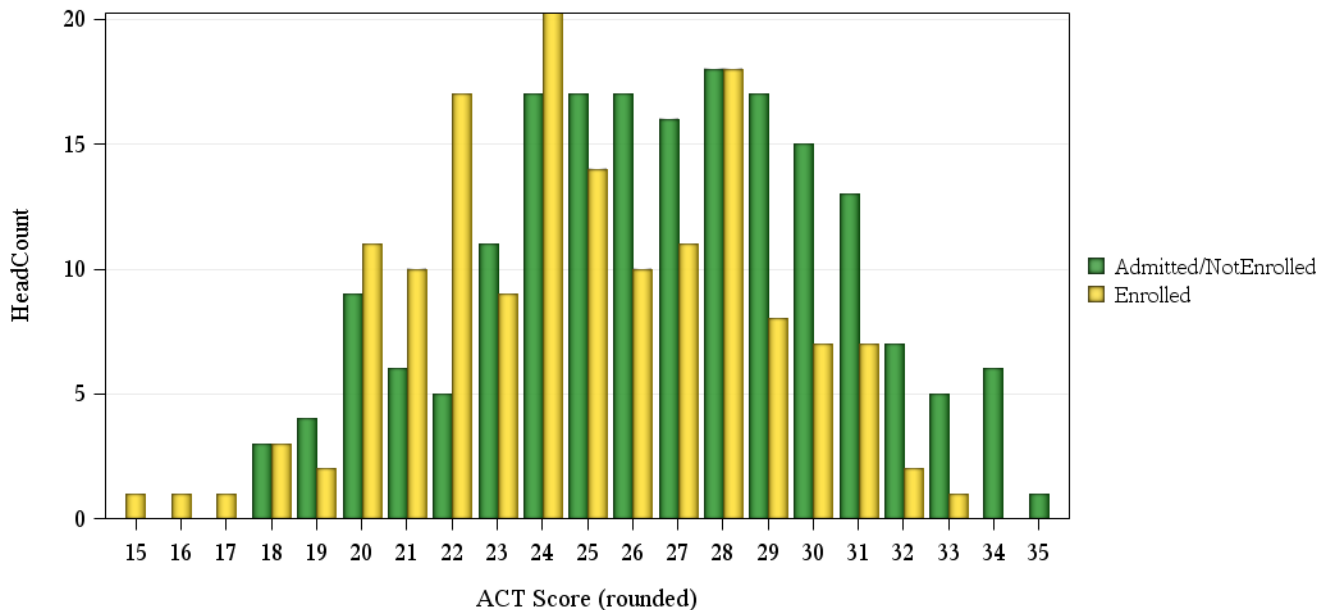
	Not Enrolled (N= 266)				Enrolled(N= 181)			
	Res	Nonres	Total	Percent	Res	Nonres	Total	Percent
<b>ACT Composite</b>								
15-18	1	2	3	1%	5	1	6	3%
19-22	10	14	24	9%	30	10	40	22%
23-26	19	43	62	23%	31	23	54	30%
27-36	26	72	98	37%	30	24	54	30%
Missing Data	1	78	79	30%	6	21	27	15%
Means	26.1	26.9	26.7		24.3	25.6	24.8	
<b>CCHE Index</b>								
0-90	1	.	1	0%	2	1	3	2%
091-100	9	11	20	8%	15	7	22	12%
101-114	12	59	71	27%	41	23	64	35%
115-160	35	135	170	64%	44	47	91	50%
Missing Data	.	4	4	2%	.	1	1	1%
Means	118	119	119		112	116	114	
<b>HS GPA</b>								
2.5-2.99	3	9	12	5%	10	10	20	11%
3.0-3.59	22	69	91	34%	45	31	76	42%
3.6-4.00	15	86	101	38%	35	30	65	36%
4.01-high	16	42	58	22%	12	8	20	11%
Missing Data	1	3	4	2%	.	.	.	.
Means	3.73	3.70	3.71		3.53	3.52	3.52	
<b>HS Rank</b>								
0-29	.	3	3	1%	1	2	3	2%
30-49	7	12	19	7%	16	3	19	10%
50-59	4	6	10	4%	11	3	14	8%
60-79	12	23	35	13%	33	11	44	24%
80-89	8	24	32	12%	10	8	18	10%
90-100	9	23	32	12%	10	7	17	9%
Missing Data	17	118	135	51%	21	45	66	36%
Means	71.6	73.7	73.1		66.0	72.2	67.9	
<b>SAT Critical Thinking</b>								
0-399	.	1	1	0%	.	.	.	.
400-499	3	14	17	6%	.	1	1	1%
500-599	3	49	52	20%	8	27	35	19%
600-699	4	37	41	15%	4	12	16	9%
700-800	2	12	14	5%	1	5	6	3%
Missing Data	45	96	141	53%	89	34	123	68%
Means	597	582	584		594	589	590	
<b>SAT Math</b>								
0-399	.	1	1	0%	.	.	.	.
400-499	3	18	21	8%	1	4	5	3%
500-599	3	48	51	19%	10	27	37	20%
600-699	5	41	46	17%	2	13	15	8%
700-800	1	5	6	2%	.	1	1	1%
Missing Data	45	96	141	53%	89	34	123	68%
Means	586	573	574		545	574	568	

## Fall 2015 Freshman Profile

### Fall 2015 CDHE Index Distribution of Admitted Applicants by Enrollment Status(Warner College of Natural Resources)



### Fall 2015 ACT Composite Distribution of Admitted Applicants by Enrollment Status(Warner College of Natural Resources)



# **First-Year CSU GPA**

## **Fall 2014 Cohort**

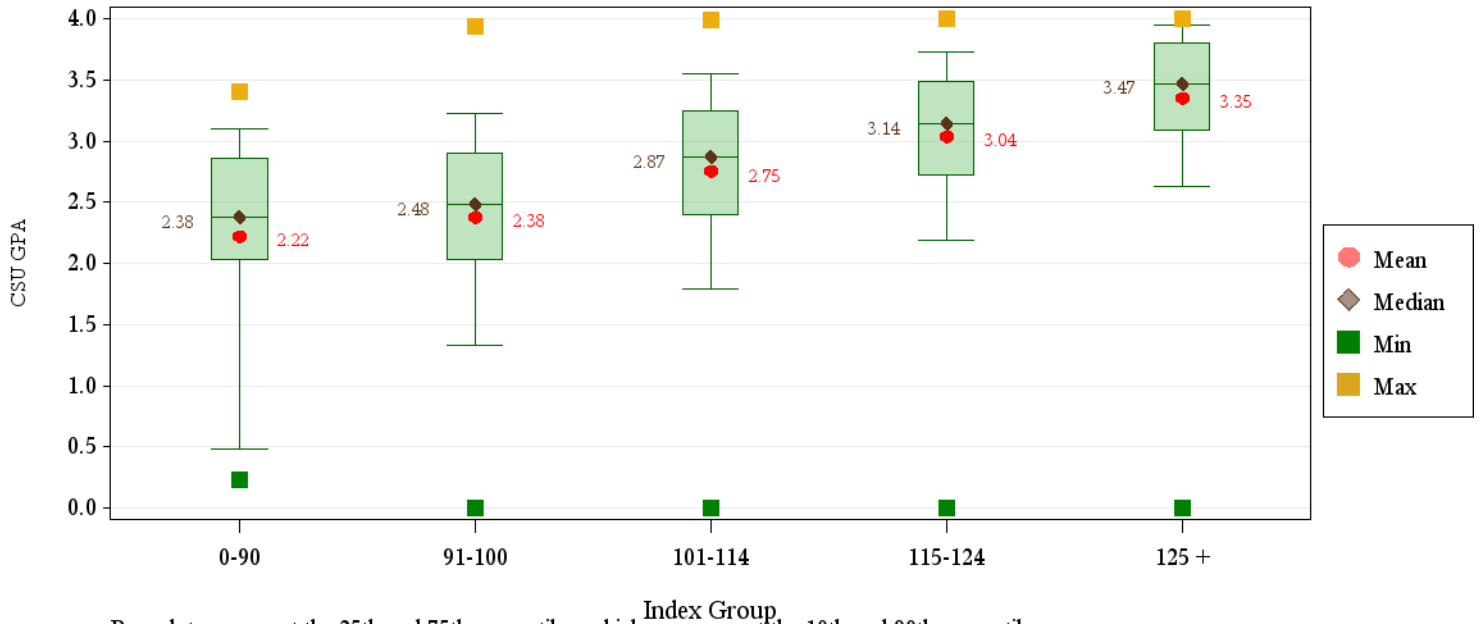
**First-Year CSU GPA (Fall 2014 Cohort) by Admission Score**
**University Summary**

	CSU GPA				Total
	0.0-1.9	2.0-2.9	3.0-3.5	3.6-high	
<b>Total</b>	<b>398</b>	<b>1,429</b>	<b>1,491</b>	<b>757</b>	<b>4,075</b>
<b>HS GPA</b>					
2.5-2.99	80	111	47	3	241
3.0-3.59	215	736	473	99	1,523
3.6-4.00	92	464	721	346	1,623
4.01-high	5	106	225	294	630
Missing Data	6	12	25	15	58
<b>HS Rank</b>					
0-29	15	30	12	1	58
30-49	77	182	107	16	382
50-59	50	167	108	15	340
60-79	86	389	369	122	966
80-89	37	174	270	111	592
90-100	11	111	232	265	619
Missing Data	122	376	393	227	1,118
<b>SAT Critical Thinking</b>					
0-399	0	10	1	1	12
400-499	17	69	57	9	152
500-599	43	155	148	75	421
600-699	20	71	115	101	307
700-800	2	5	18	24	49
Missing Data	316	1,119	1,152	547	3,134
<b>SAT Math</b>					
0-399	2	2	2	1	7
400-499	17	58	45	11	131
500-599	39	156	157	70	422
600-699	18	88	122	101	329
700-800	6	6	13	28	53
Missing Data	316	1,119	1,152	546	3,133
<b>ACT Composite</b>					
0-14	0	2	0	0	2
15-18	19	59	30	0	108
19-22	119	420	267	60	866
23-26	129	529	599	217	1,474
27-36	86	277	445	396	1,204
Missing Data	45	142	150	84	421
<b>CDHE Index</b>					
0-90	4	13	2	0	19
091-100	93	216	77	5	391
101-114	193	656	506	122	1,477
115-160	101	531	878	614	2,124
Missing Data	7	13	28	16	64

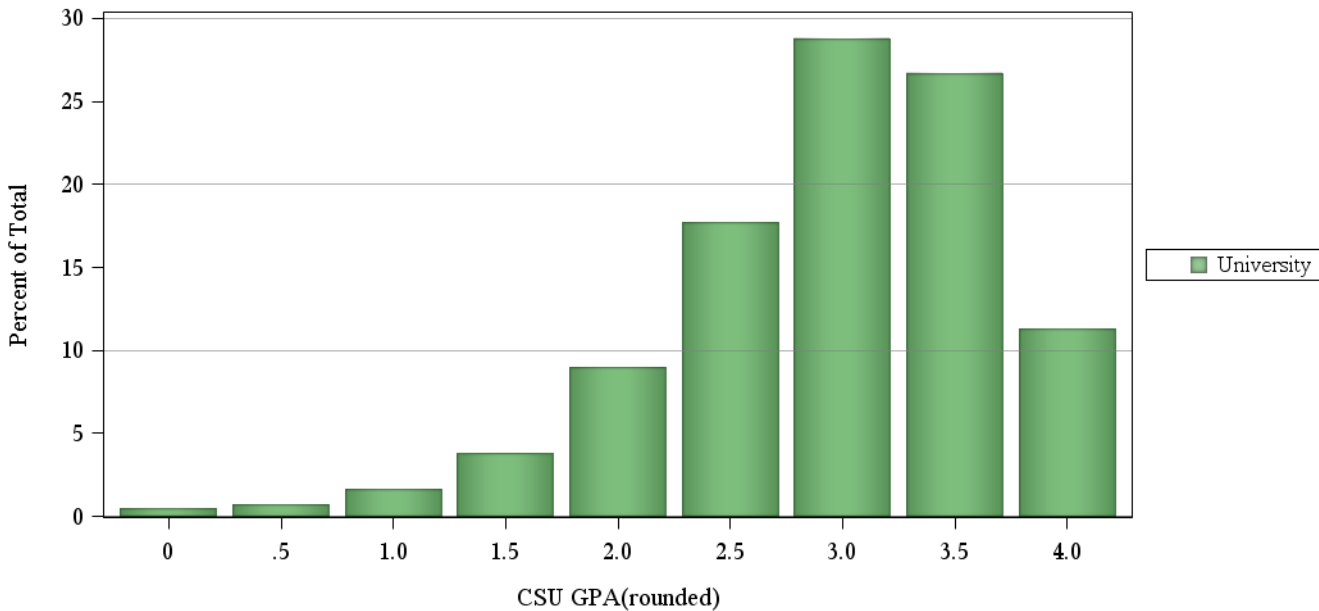


## First-Year CSU GPA (Fall 2014 Cohort) by Admission Score

### University Summary



Box plots represent the 25th and 75th percentiles: whiskers represent the 10th and 90th percentiles.

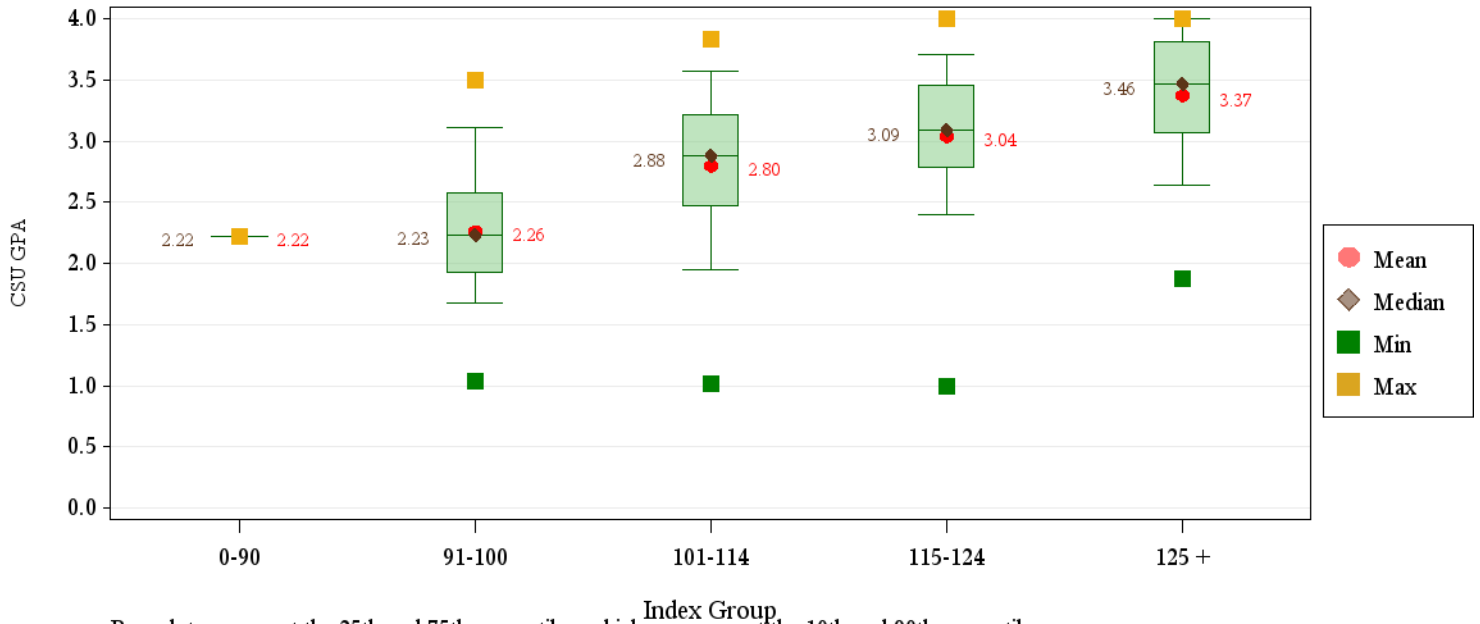


**First-Year CSU GPA (Fall 2014 Cohort) by Admission Score****Agricultural Sciences**

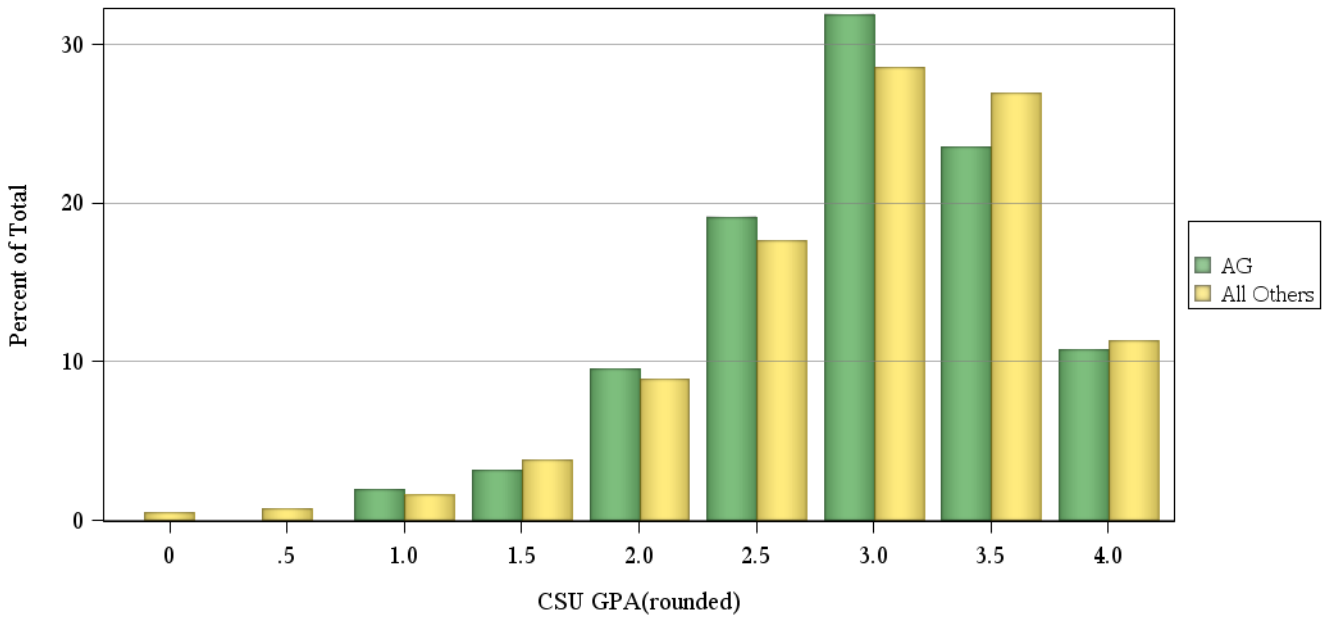
	CSU GPA				Total
	0.0-1.9	2.0-2.9	3.0-3.5	3.6-high	
<b>Total</b>	<b>20</b>	<b>102</b>	<b>87</b>	<b>44</b>	<b>253</b>
<b>HS GPA</b>					
2.5-2.99	4	4	2	0	10
3.0-3.59	10	47	25	5	87
3.6-4.00	5	38	46	27	116
4.01-high	1	13	12	12	38
Missing Data	0	0	2	0	2
<b>HS Rank</b>					
0-29	0	4	0	0	4
30-49	6	3	6	0	15
50-59	2	6	1	0	9
60-79	4	26	13	9	52
80-89	1	17	17	4	39
90-100	1	14	17	9	41
Missing Data	6	32	33	22	93
<b>SAT Critical Thinking</b>					
0-399	0	1	0	0	1
400-499	2	7	5	0	14
500-599	3	17	14	5	39
600-699	1	11	8	8	28
700-800	0	1	0	2	3
Missing Data	14	65	60	29	168
<b>SAT Math</b>					
0-399	1	0	0	0	1
400-499	2	11	4	2	19
500-599	2	20	18	6	46
600-699	1	6	5	5	17
700-800	0	0	0	2	2
Missing Data	14	65	60	29	168
<b>ACT Composite</b>					
15-18	1	4	1	0	6
19-22	8	35	17	3	63
23-26	4	30	29	11	74
27-36	3	10	25	21	59
Missing Data	4	23	15	9	51
<b>CDHE Index</b>					
0-90	0	1	0	0	1
091-100	6	14	3	0	23
101-114	10	44	31	7	92
115-160	4	43	51	37	135
Missing Data	0	0	2	0	2

# First-Year CSU GPA (Fall 2014 Cohort) by Admission Score

## Agricultural Sciences



Box plots represent the 25th and 75th percentiles: whiskers represent the 10th and 90th percentiles.

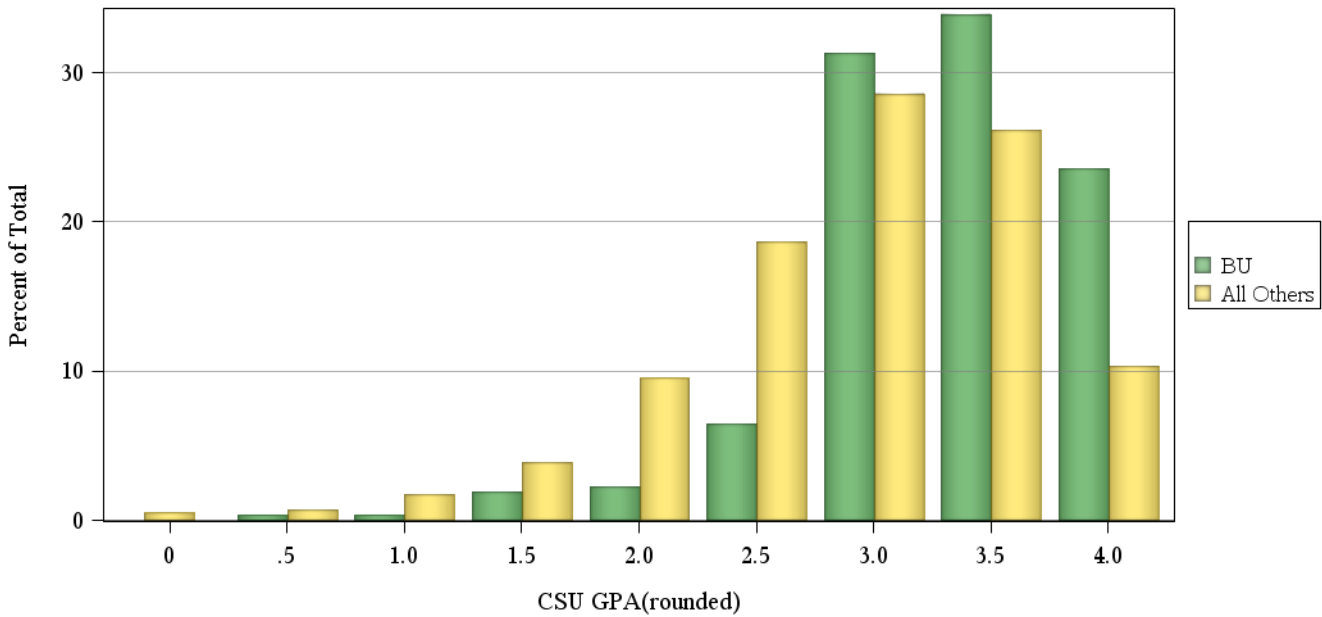
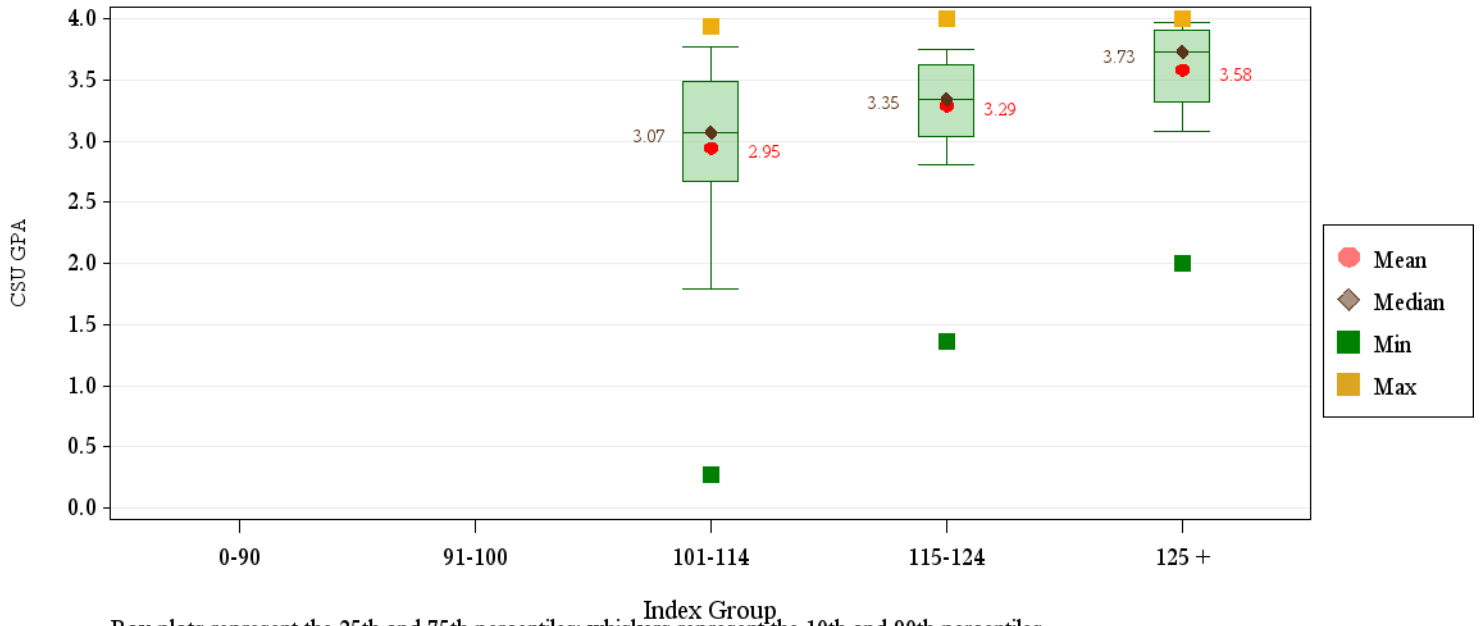


**First-Year CSU GPA (Fall 2014 Cohort) by Admission Score**
**Business**

	CSU GPA				Total
	0.0-1.9	2.0-2.9	3.0-3.5	3.6-high	
<b>Total</b>	<b>10</b>	<b>54</b>	<b>138</b>	<b>108</b>	<b>310</b>
<b>HS GPA</b>					
2.5-2.99	2	0	0	0	2
3.0-3.59	4	20	39	10	73
3.6-4.00	4	31	84	61	180
4.01-high	0	3	15	37	55
<b>HS Rank</b>					
30-49	2	2	5	1	10
50-59	1	5	8	2	16
60-79	3	19	43	19	84
80-89	1	8	34	17	60
90-100	0	4	19	41	64
Missing Data	3	16	29	28	76
<b>SAT Critical Thinking</b>					
400-499	0	3	5	2	10
500-599	2	7	20	11	40
600-699	0	3	10	13	26
700-800	0	0	1	1	2
Missing Data	8	41	102	81	232
<b>SAT Math</b>					
400-499	0	0	3	0	3
500-599	2	4	22	8	36
600-699	0	7	11	17	35
700-800	0	2	0	2	4
Missing Data	8	41	102	81	232
<b>ACT Composite</b>					
19-22	2	6	8	8	24
23-26	3	24	76	35	138
27-36	4	18	43	52	117
Missing Data	1	6	11	13	31
<b>CDHE Index</b>					
101-114	8	20	29	15	72
115-160	2	34	109	93	238

# First-Year CSU GPA (Fall 2014 Cohort) by Admission Score

## Business

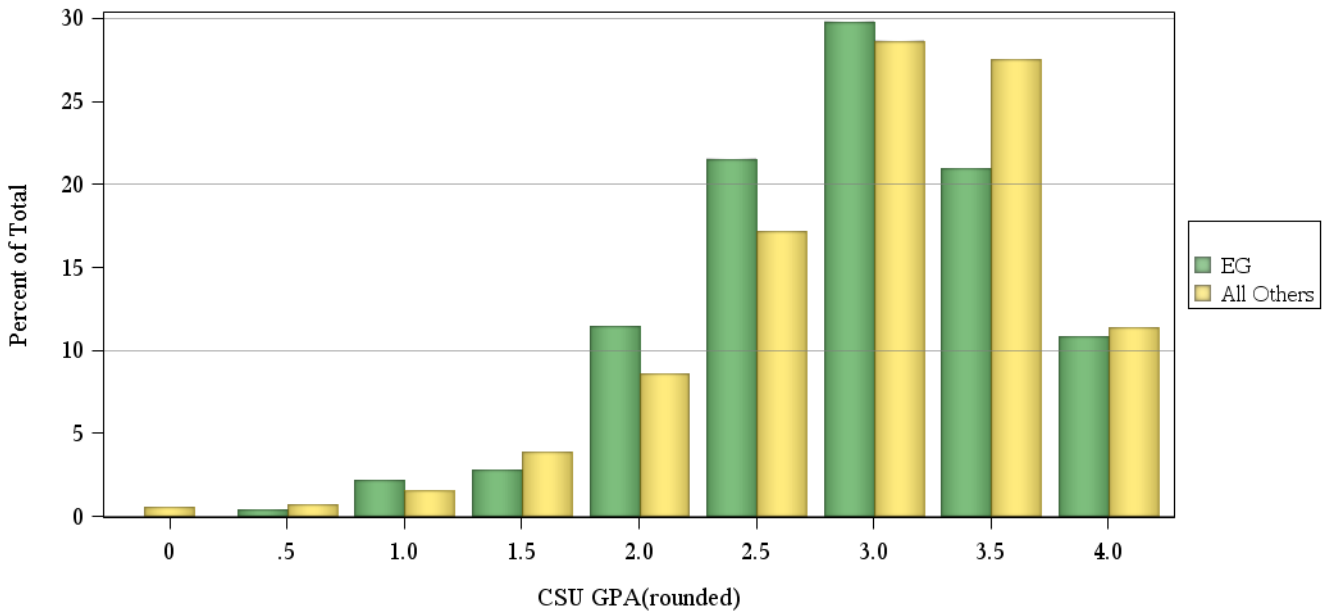
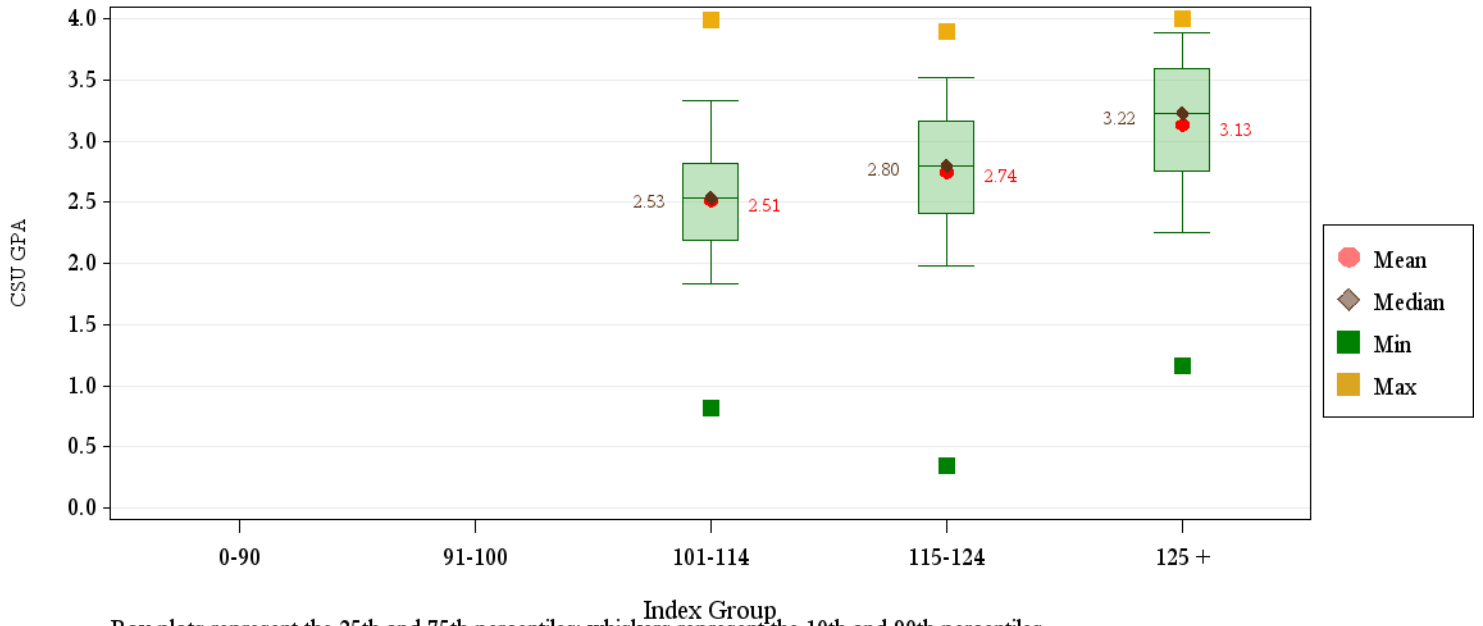


**First-Year CSU GPA (Fall 2014 Cohort) by Admission Score**
**Engineering**

	CSU GPA				Total
	0.0-1.9	2.0-2.9	3.0-3.5	3.6-high	
<b>Total</b>	<b>46</b>	<b>206</b>	<b>170</b>	<b>76</b>	<b>498</b>
<b>HS GPA</b>					
3.0-3.59	12	58	15	3	88
3.6-4.00	33	108	98	37	276
4.01-high	1	40	56	36	133
Missing Data	0	0	1	0	1
<b>HS Rank</b>					
30-49	0	4	0	0	4
50-59	3	19	5	0	27
60-79	17	62	31	6	116
80-89	13	39	32	13	97
90-100	5	30	65	33	133
Missing Data	8	52	37	24	121
<b>SAT Critical Thinking</b>					
400-499	0	10	4	1	15
500-599	4	28	10	9	51
600-699	3	16	21	12	52
700-800	2	1	3	1	7
Missing Data	37	151	132	53	373
<b>SAT Math</b>					
500-599	2	21	6	2	31
600-699	6	31	25	16	78
700-800	1	3	7	5	16
Missing Data	37	151	132	53	373
<b>ACT Composite</b>					
15-18	0	1	0	0	1
19-22	2	11	3	1	17
23-26	20	93	57	10	180
27-36	21	86	99	61	267
Missing Data	3	15	11	4	33
<b>CDHE Index</b>					
101-114	10	52	12	2	76
115-160	36	154	157	74	421
Missing Data	0	0	1	0	1

## First-Year CSU GPA (Fall 2014 Cohort) by Admission Score

### Engineering



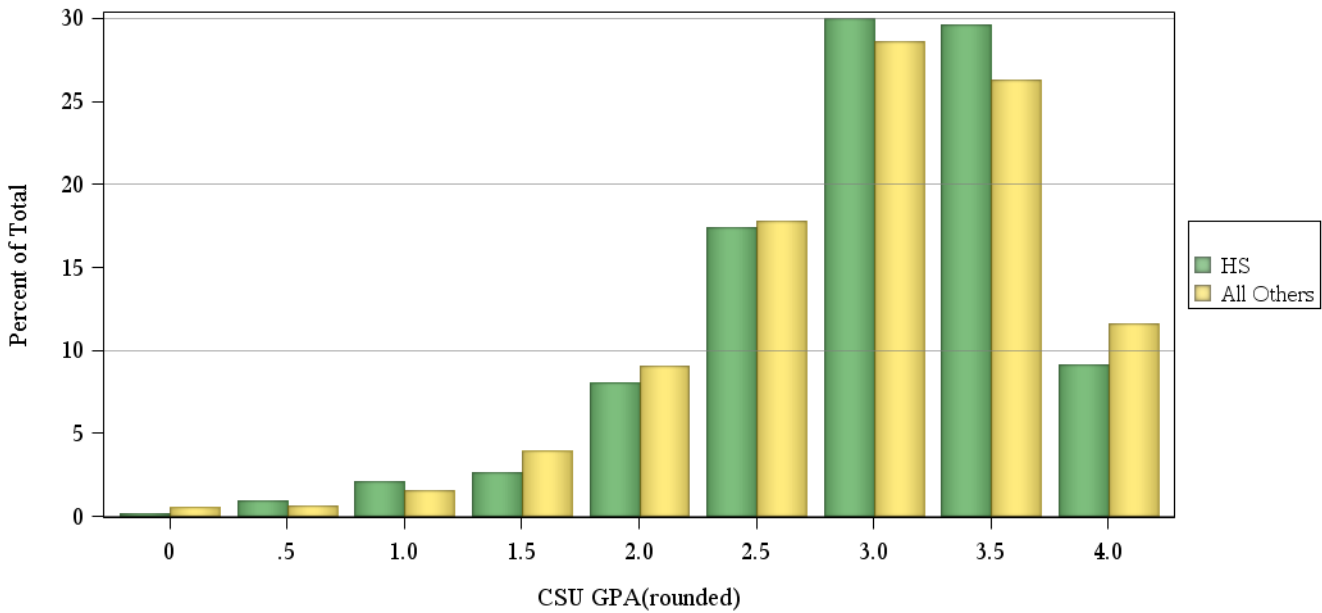
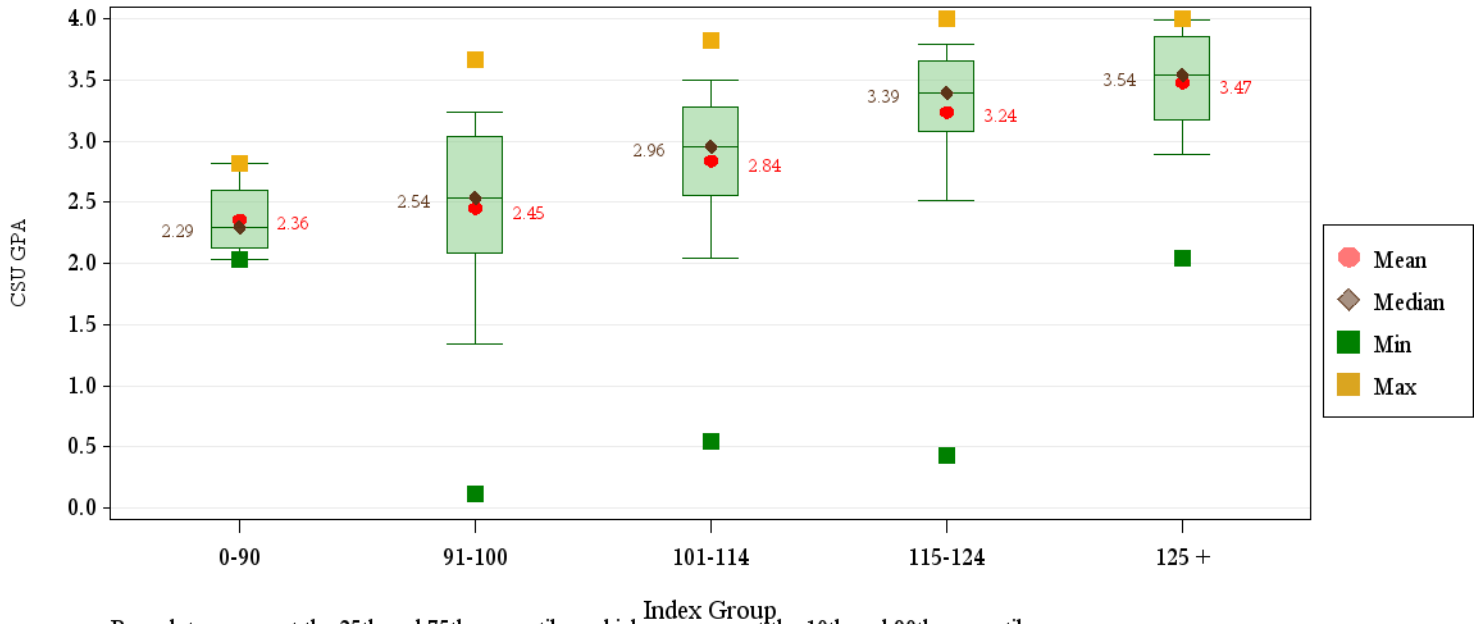
**First-Year CSU GPA (Fall 2014 Cohort) by Admission Score**
**Health and Human Sciences**

	CSU GPA				Total
	0.0-1.9	2.0-2.9	3.0-3.5	3.6-high	
<b>Total</b>	<b>46</b>	<b>181</b>	<b>209</b>	<b>89</b>	<b>525</b>
<b>HS GPA</b>					
2.5-2.99	12	12	11	0	35
3.0-3.59	27	113	78	11	229
3.6-4.00	7	51	92	50	200
4.01-high	0	5	28	27	60
Missing Data	0	0	0	1	1
<b>HS Rank</b>					
0-29	4	2	4	0	10
30-49	14	34	17	2	67
50-59	5	30	16	1	52
60-79	9	47	54	17	127
80-89	7	15	38	17	77
90-100	1	8	22	25	56
Missing Data	6	45	58	27	136
<b>SAT Critical Thinking</b>					
400-499	2	10	16	2	30
500-599	2	16	24	10	52
600-699	1	4	10	9	24
700-800	0	0	1	0	1
Missing Data	41	151	158	68	418
<b>SAT Math</b>					
0-399	0	1	0	0	1
400-499	2	10	10	0	22
500-599	2	13	31	14	60
600-699	1	6	10	6	23
700-800	0	0	0	1	1
Missing Data	41	151	158	68	418
<b>ACT Composite</b>					
15-18	5	16	8	0	29
19-22	23	74	59	11	167
23-26	14	62	88	39	203
27-36	3	14	33	30	80
Missing Data	1	15	21	9	46
<b>CDHE Index</b>					
0-90	0	4	0	0	4
091-100	19	40	20	1	80
101-114	22	104	100	18	244
115-160	5	33	89	69	196
Missing Data	0	0	0	1	1



## First-Year CSU GPA (Fall 2014 Cohort) by Admission Score

### Health and Human Sciences

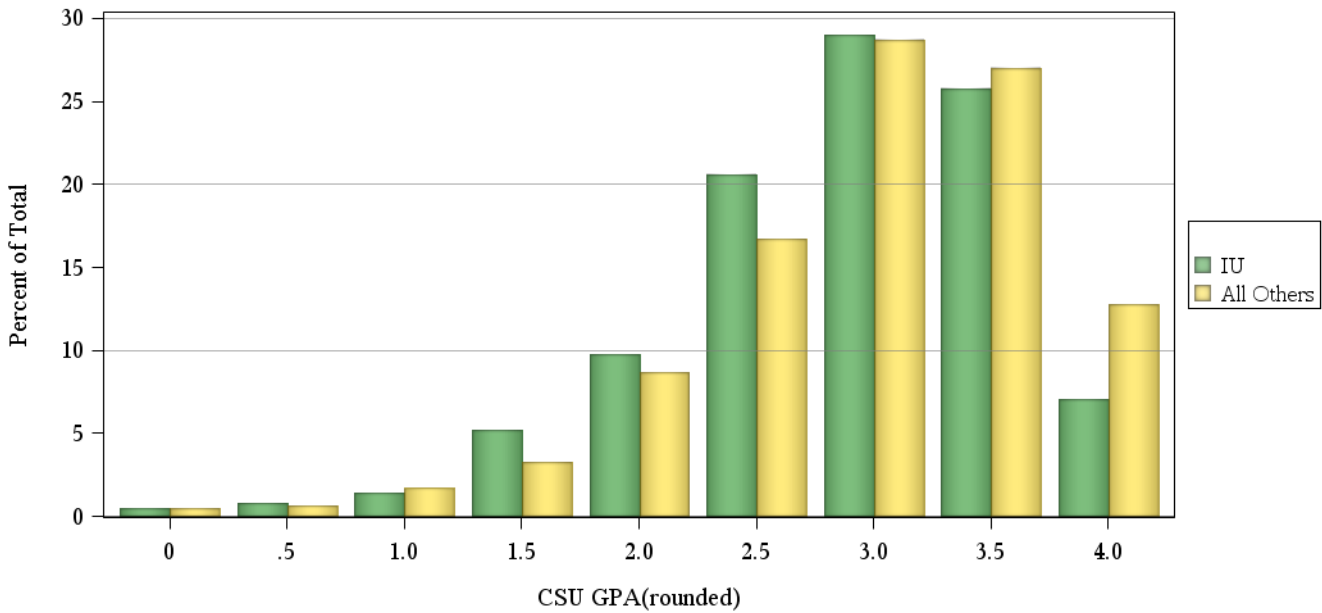
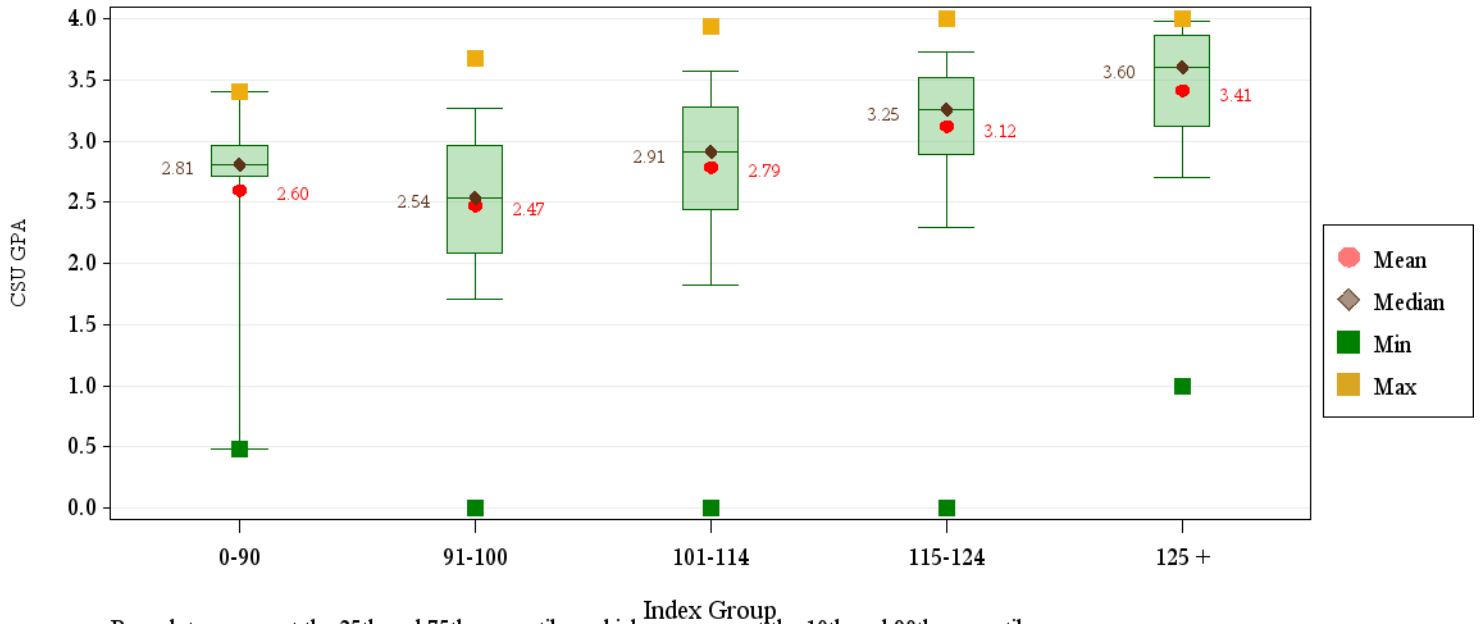


**First-Year CSU GPA (Fall 2014 Cohort) by Admission Score**
**Intra-University**

	CSU GPA				Total
	0.0-1.9	2.0-2.9	3.0-3.5	3.6-high	
<b>Total</b>	<b>116</b>	<b>406</b>	<b>383</b>	<b>146</b>	<b>1,051</b>
<b>HS GPA</b>					
2.5-2.99	33	58	23	2	116
3.0-3.59	69	257	179	35	540
3.6-4.00	8	73	142	62	285
4.01-high	1	6	21	36	64
Missing Data	5	12	18	11	46
<b>HS Rank</b>					
0-29	6	14	4	1	25
30-49	31	77	56	9	173
50-59	16	55	36	3	110
60-79	18	105	105	31	259
80-89	3	25	57	20	105
90-100	2	17	25	34	78
Missing Data	40	113	100	48	301
<b>SAT Critical Thinking</b>					
0-399	0	5	1	1	7
400-499	6	20	12	1	39
500-599	11	26	22	9	68
600-699	6	12	12	14	44
700-800	0	2	3	2	7
Missing Data	93	341	333	119	886
<b>SAT Math</b>					
0-399	1	0	1	0	2
400-499	4	18	10	4	36
500-599	11	36	26	10	83
600-699	5	11	13	10	39
700-800	2	0	0	4	6
Missing Data	93	341	333	118	885
<b>ACT Composite</b>					
0-14	0	2	0	0	2
15-18	8	25	16	0	49
19-22	40	165	120	24	349
23-26	30	133	143	46	352
27-36	23	42	63	58	186
Missing Data	15	39	41	18	113
<b>CDHE Index</b>					
0-90	1	6	2	0	9
091-100	37	102	40	3	182
101-114	62	225	191	48	526
115-160	11	61	132	84	288
Missing Data	5	12	18	11	46

# First-Year CSU GPA (Fall 2014 Cohort) by Admission Score

## Intra-University

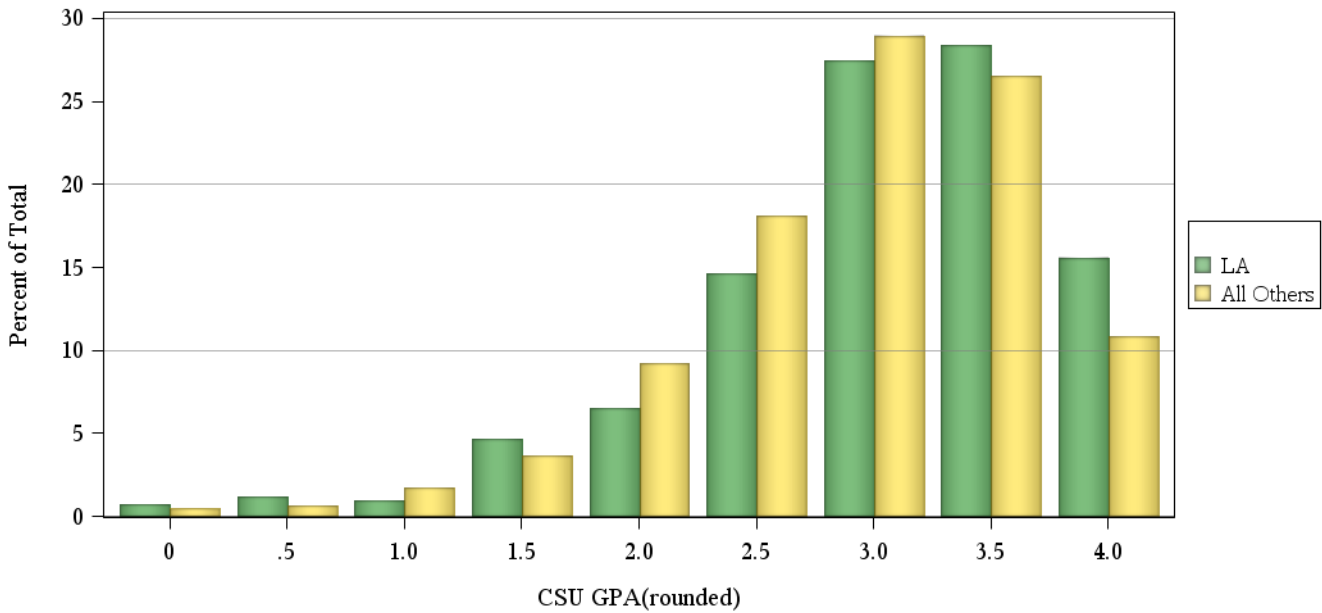
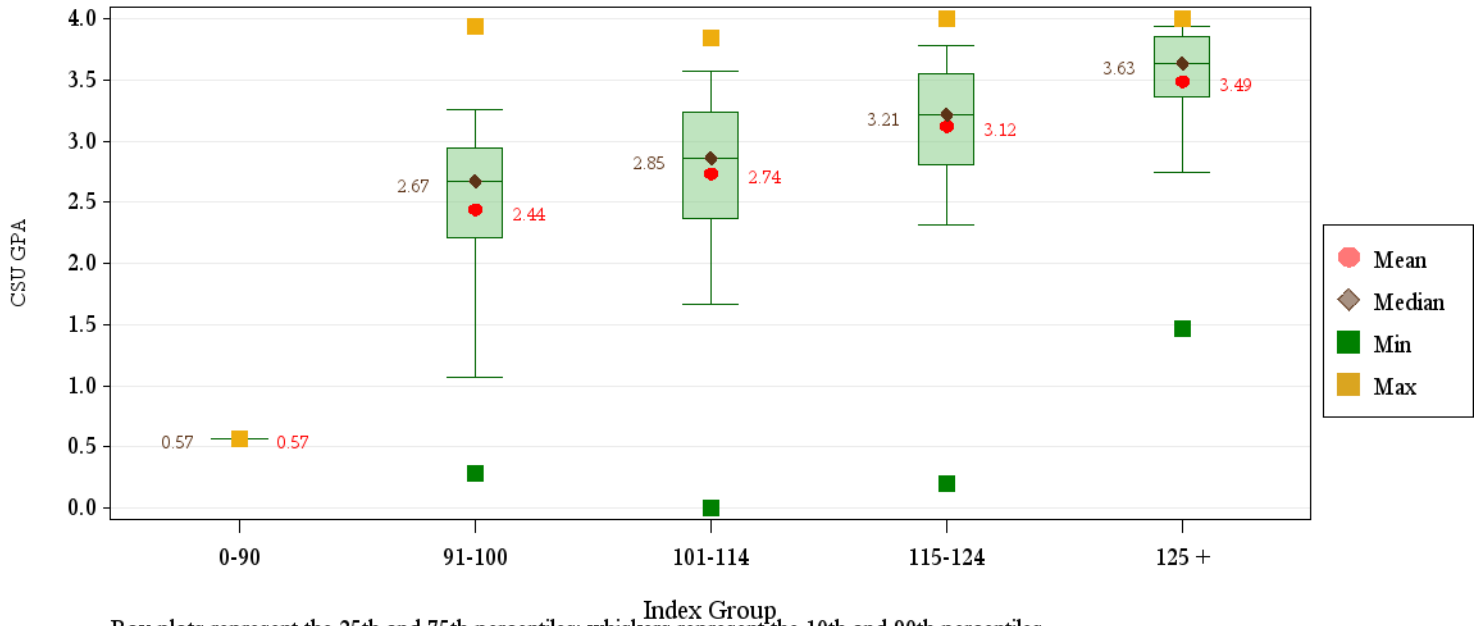


**First-Year CSU GPA (Fall 2014 Cohort) by Admission Score**
**Liberal Arts**

	CSU GPA				Total
	0.0-1.9	2.0-2.9	3.0-3.5	3.6-high	
<b>Total</b>	<b>45</b>	<b>137</b>	<b>155</b>	<b>99</b>	<b>436</b>
<b>HS GPA</b>					
2.5-2.99	8	12	5	0	25
3.0-3.59	29	82	58	14	183
3.6-4.00	7	36	70	39	152
4.01-high	1	7	20	46	74
Missing Data	0	0	2	0	2
<b>HS Rank</b>					
0-29	2	3	3	0	8
30-49	6	23	10	1	40
50-59	9	15	20	1	45
60-79	5	39	40	16	100
80-89	4	17	21	17	59
90-100	1	6	24	46	77
Missing Data	18	34	37	18	107
<b>SAT Critical Thinking</b>					
0-399	0	2	0	0	2
400-499	0	6	4	1	11
500-599	4	10	19	10	43
600-699	3	5	13	16	37
700-800	0	0	2	4	6
Missing Data	38	114	117	68	337
<b>SAT Math</b>					
0-399	0	0	1	0	1
400-499	1	7	7	0	15
500-599	4	12	15	13	44
600-699	2	4	15	15	36
700-800	0	0	0	3	3
Missing Data	38	114	117	68	337
<b>ACT Composite</b>					
15-18	3	4	3	0	10
19-22	12	54	25	5	96
23-26	16	50	64	26	156
27-36	9	20	52	63	144
Missing Data	5	9	11	5	30
<b>CDHE Index</b>					
0-90	1	0	0	0	1
091-100	8	23	9	1	41
101-114	25	73	51	9	158
115-160	10	40	91	89	230
Missing Data	1	1	4	0	6

## First-Year CSU GPA (Fall 2014 Cohort) by Admission Score

### Liberal Arts

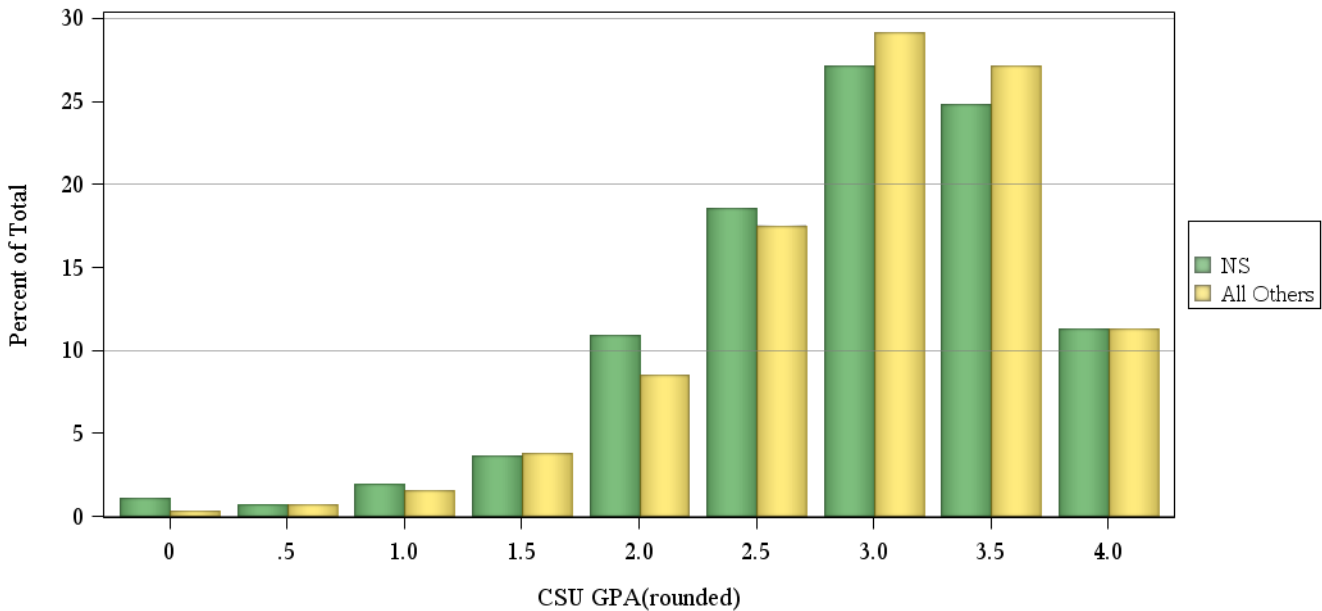
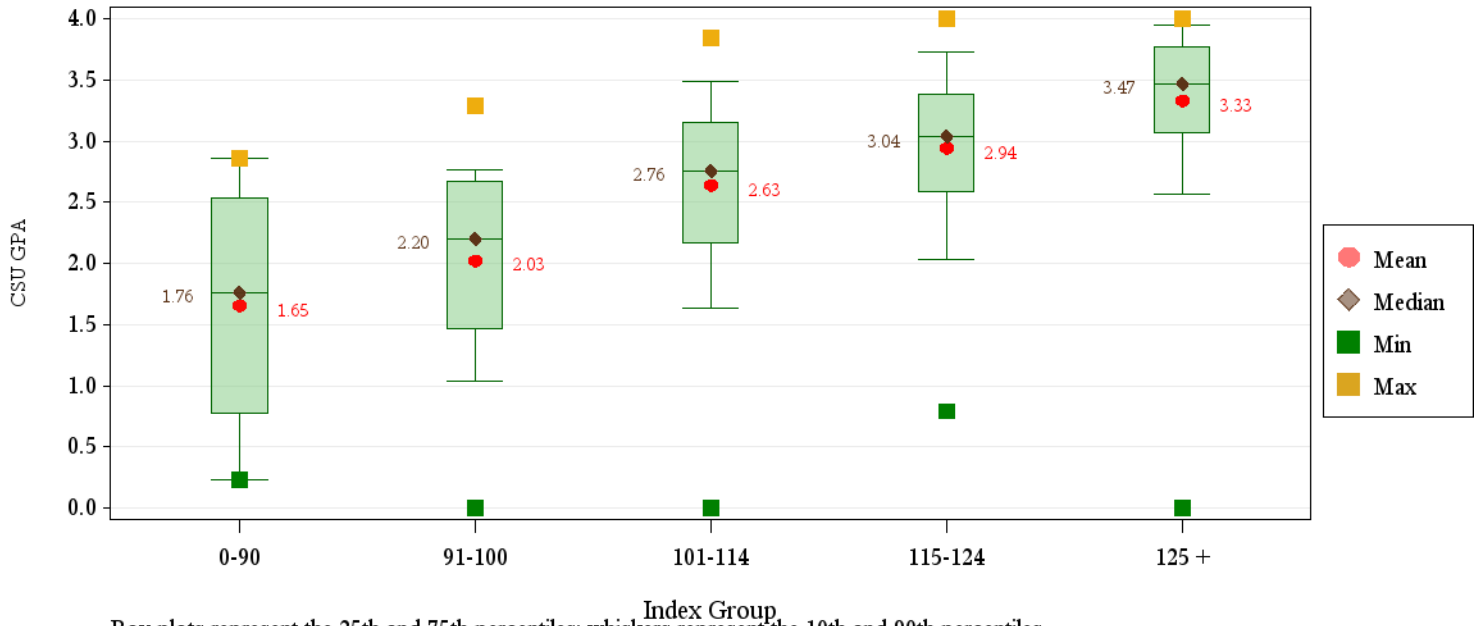


**First-Year CSU GPA (Fall 2014 Cohort) by Admission Score**
**Natural Sciences**

	CSU GPA				Total
	0.0-1.9	2.0-2.9	3.0-3.5	3.6-high	
<b>Total</b>	<b>85</b>	<b>266</b>	<b>247</b>	<b>141</b>	<b>739</b>
<b>HS GPA</b>					
2.5-2.99	14	17	3	1	35
3.0-3.59	48	128	64	15	255
3.6-4.00	22	98	131	55	306
4.01-high	1	23	48	68	140
Missing Data	0	0	1	2	3
<b>HS Rank</b>					
0-29	1	5	1	0	7
30-49	15	28	10	1	54
50-59	11	29	17	6	63
60-79	21	74	66	23	184
80-89	3	39	51	17	110
90-100	1	25	38	51	115
Missing Data	33	66	64	43	206
<b>SAT Critical Thinking</b>					
0-399	0	2	0	0	2
400-499	4	11	7	1	23
500-599	11	43	29	16	99
600-699	3	19	30	20	72
700-800	0	1	4	9	14
Missing Data	67	190	177	95	529
<b>SAT Math</b>					
0-399	0	1	0	0	1
400-499	5	9	9	3	26
500-599	10	45	26	16	97
600-699	1	21	30	20	72
700-800	2	0	5	7	14
Missing Data	67	190	177	95	529
<b>ACT Composite</b>					
15-18	2	6	2	0	10
19-22	26	60	26	6	118
23-26	28	107	110	38	283
27-36	19	65	84	77	245
Missing Data	10	28	25	20	83
<b>CDHE Index</b>					
0-90	2	2	0	0	4
091-100	16	23	3	0	42
101-114	42	112	70	17	241
115-160	25	129	172	121	447
Missing Data	0	0	2	3	5

## First-Year CSU GPA (Fall 2014 Cohort) by Admission Score

### Natural Sciences



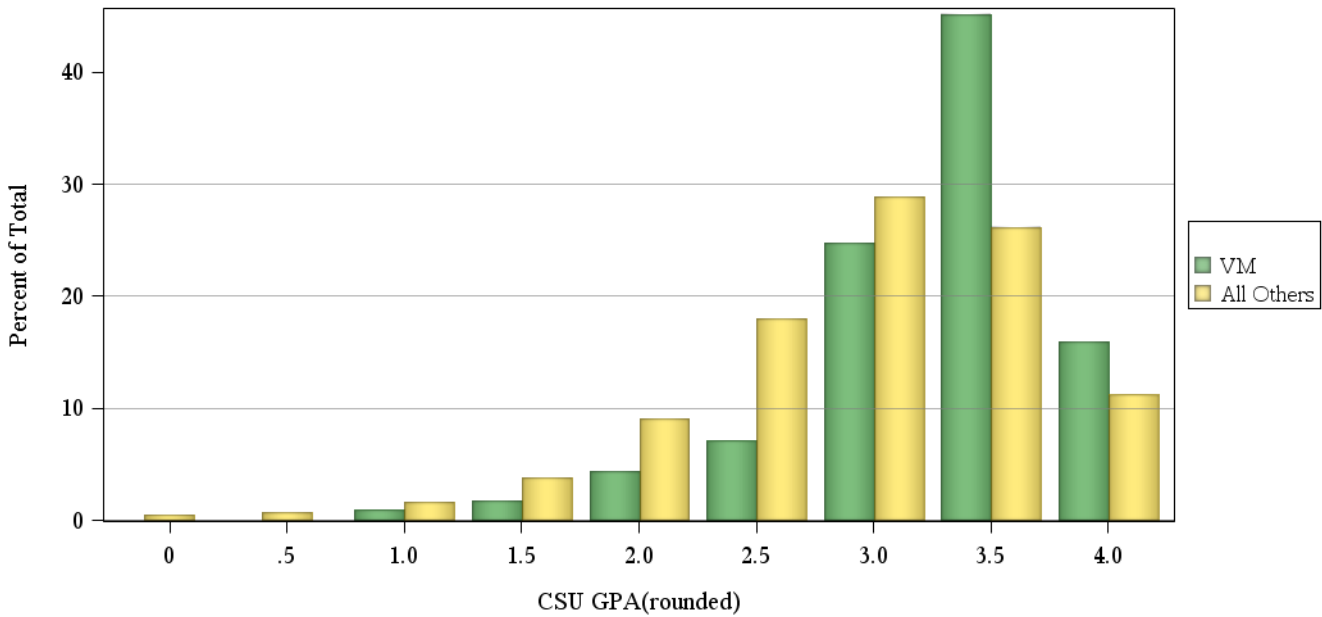
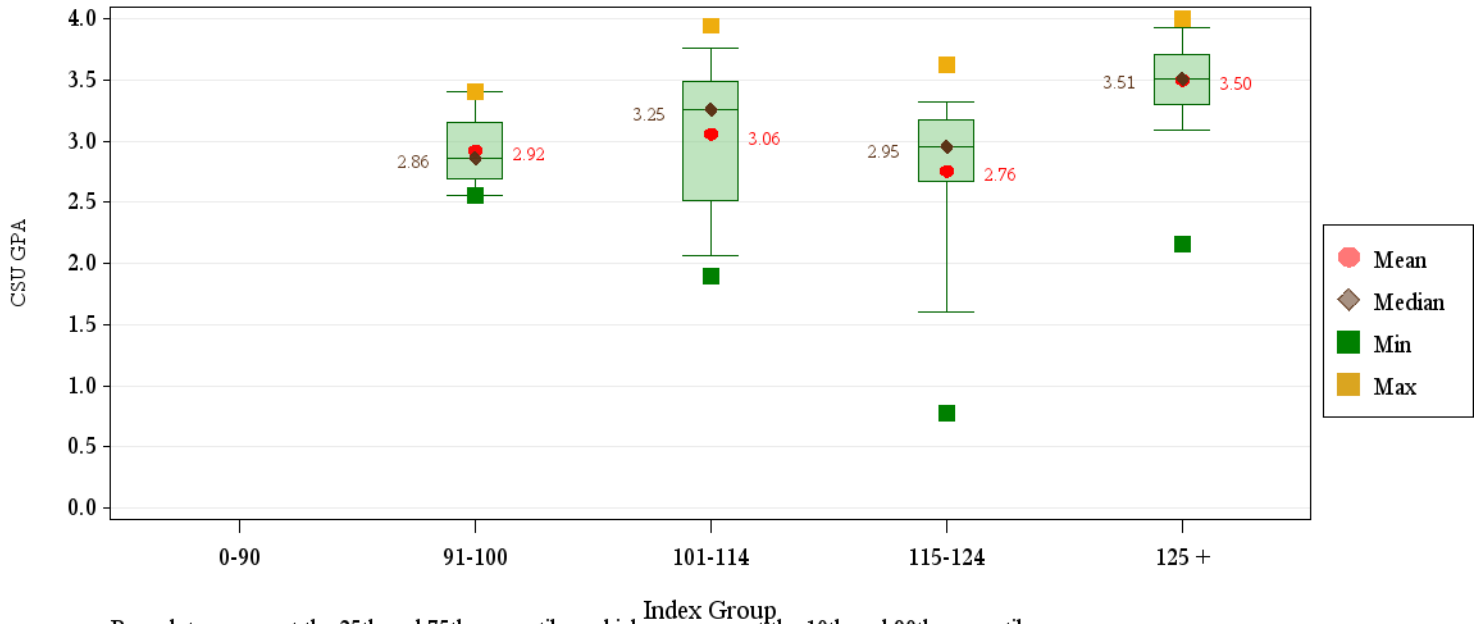
**First-Year CSU GPA (Fall 2014 Cohort) by Admission Score**
**Veterinary Medicine + Biomedical Sci**

	CSU GPA				Total
	0.0-1.9	2.0-2.9	3.0-3.5	3.6-high	
<b>Total</b>	<b>5</b>	<b>22</b>	<b>57</b>	<b>30</b>	<b>114</b>
<b>HS GPA</b>					
2.5-2.99	0	1	1	0	2
3.0-3.59	2	7	3	2	14
3.6-4.00	3	10	35	6	54
4.01-high	0	4	17	22	43
Missing Data	0	0	1	0	1
<b>HS Rank</b>					
0-29	0	1	0	0	1
30-49	0	1	1	1	3
50-59	1	2	1	0	4
60-79	0	7	9	0	16
80-89	3	5	11	3	22
90-100	0	3	16	16	35
Missing Data	1	3	19	10	33
<b>SAT Critical Thinking</b>					
400-499	0	1	2	0	3
500-599	1	1	6	4	12
600-699	0	0	6	4	10
700-800	0	0	4	3	7
Missing Data	4	20	39	19	82
<b>SAT Math</b>					
400-499	1	2	0	1	4
500-599	0	0	9	1	10
600-699	0	0	9	6	15
700-800	0	0	0	3	3
Missing Data	4	20	39	19	82
<b>ACT Composite</b>					
15-18	0	1	0	0	1
19-22	0	5	4	1	10
23-26	4	7	14	5	30
27-36	1	9	31	22	63
Missing Data	0	0	8	2	10
<b>CDHE Index</b>					
091-100	0	3	1	0	4
101-114	1	5	7	3	16
115-160	4	14	48	27	93
Missing Data	0	0	1	0	1



## First-Year CSU GPA (Fall 2014 Cohort) by Admission Score

### Veterinary Medicine + Biomedical Sci



**First-Year CSU GPA (Fall 2014 Cohort) by Admission Score**
**Warner College of Natural Resources**

	CSU GPA				Total
	0.0-1.9	2.0-2.9	3.0-3.5	3.6-high	
<b>Total</b>	<b>25</b>	<b>55</b>	<b>45</b>	<b>24</b>	<b>149</b>
<b>HS GPA</b>					
2.5-2.99	7	7	2	0	16
3.0-3.59	14	24	12	4	54
3.6-4.00	3	19	23	9	54
4.01-high	0	5	8	10	23
Missing Data	1	0	0	1	2
<b>HS Rank</b>					
0-29	2	1	0	0	3
30-49	3	10	2	1	16
50-59	2	6	4	2	14
60-79	9	10	8	1	28
80-89	2	9	9	3	23
90-100	0	4	6	10	20
Missing Data	7	15	16	7	45
<b>SAT Critical Thinking</b>					
400-499	3	1	2	1	7
500-599	5	7	4	1	17
600-699	3	1	5	5	14
700-800	0	0	0	2	2
Missing Data	14	46	34	15	109
<b>SAT Math</b>					
0-399	0	0	0	1	1
400-499	2	1	2	1	6
500-599	6	5	4	0	15
600-699	2	2	4	6	14
700-800	1	1	1	1	4
Missing Data	14	46	34	15	109
<b>ACT Composite</b>					
15-18	0	2	0	0	2
19-22	6	10	5	1	22
23-26	10	23	18	7	58
27-36	3	13	15	12	43
Missing Data	6	7	7	4	24
<b>CDHE Index</b>					
091-100	7	11	1	0	19
101-114	13	21	15	3	52
115-160	4	23	29	20	76
Missing Data	1	0	0	1	2

## First-Year CSU GPA (Fall 2014 Cohort) by Admission Score

### Warner College of Natural Resources

