



Freshman Profile  
Fall 2014

# Table of Contents

---

## FALL 2014

### Profile: Five-Year History

Residency & Minority Status .....	01
High School Rank .....	02
SAT Critical Thinking .....	03
SAT Math.....	04
ACT Composite .....	05
High School GPA .....	06
CDHE Index.....	07

### Profile: Fall 2014

#### Freshman Enrollment

Residency, Gender & Ethnicity .....	09
Full- & Part-Time Enrollment, Application College .....	10
Credit Hour Distribution by Application College.....	11

#### Admitted Applicants

University.....	16
Agricultural Sciences .....	18
Business .....	20
Engineering .....	22
Health and Human Sciences .....	24
Intra-University.....	26
Liberal Arts .....	28
Natural Sciences .....	30
Veterinary Medicine & Biomedical Sciences .....	32
Warner College of Natural Resources .....	34

### First-Year CSU GPA (Fall 2013 Cohort) by Admission Score

University.....	37
Agricultural Sciences.....	39
Business .....	41
Engineering.....	43
Health and Human Sciences .....	45
Intra-University .....	47
Liberal Arts .....	49
Natural Sciences.....	51
Veterinary Medical & Biomedical Sciences.....	53
Warner College of Natural Resources .....	55

# Profile: Five-Year History

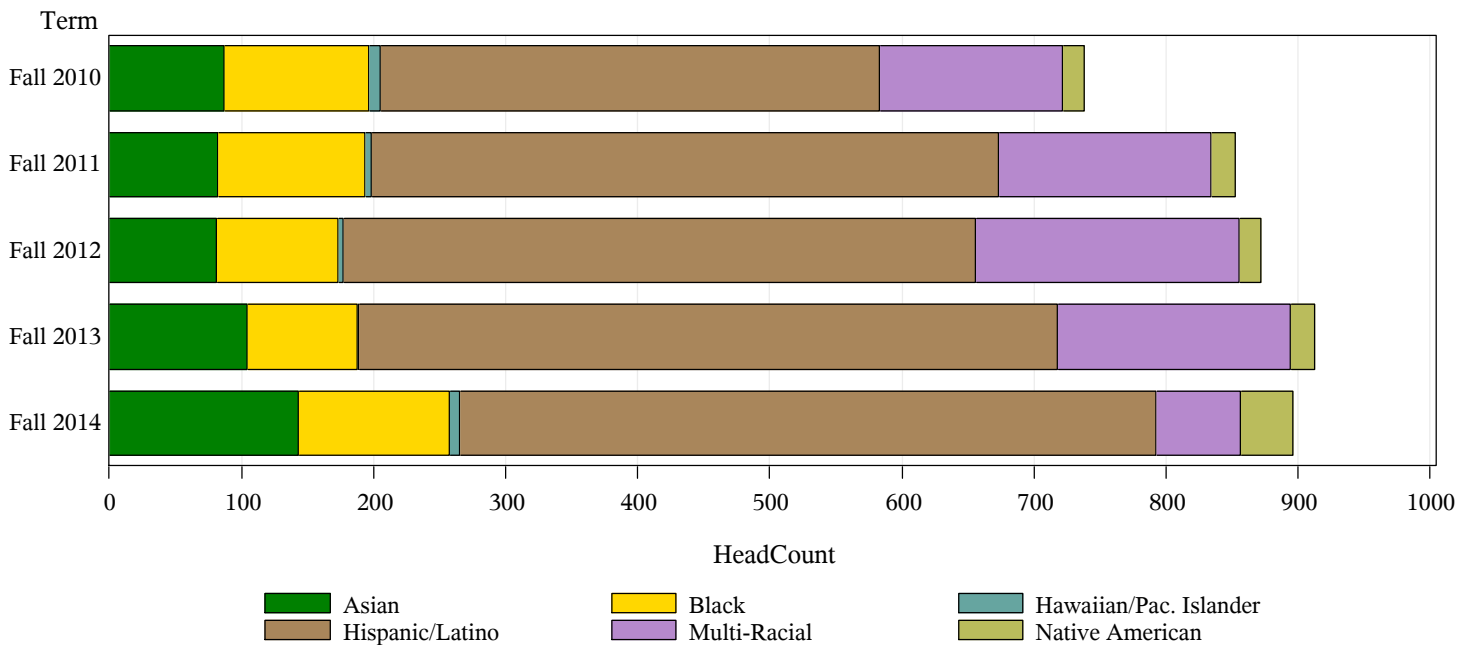
# Five-Year History by:

## Residency

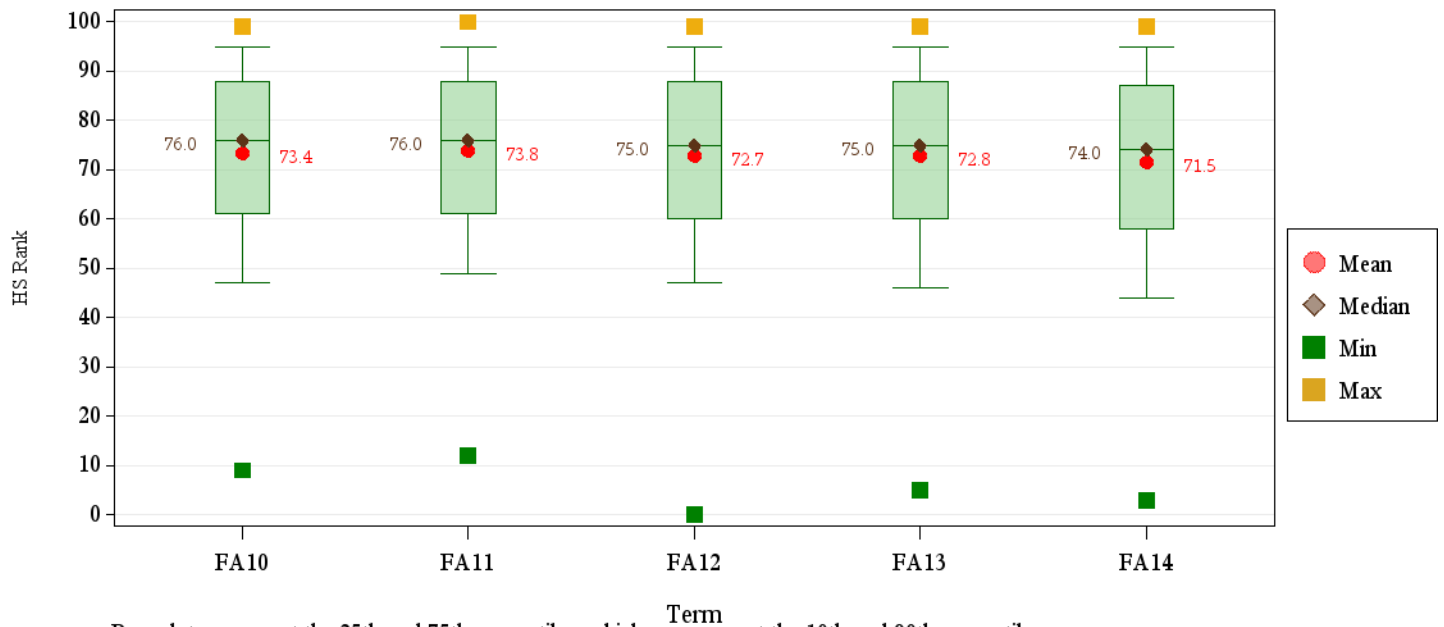
	Resident		Nonresident		Total Number	Percent Change
	Number	Percent	Number	Percent		
Fall 2010	3,541	79.2%	931	20.8%	4,472	.
Fall 2011	3,461	76.8%	1,043	23.2%	4,504	0.7%
Fall 2012	3,386	74.5%	1,158	25.5%	4,544	0.9%
Fall 2013	3,289	74.0%	1,154	26.0%	4,443	-2.2%
<b>Fall 2014</b>	<b>3,154</b>	<b>72.5%</b>	<b>1,199</b>	<b>27.5%</b>	<b>4,353</b>	<b>-2.0%</b>

## Minority Status

	Minority		Other	
	Number	Percent	Number	Percent
Fall 2010	738	16.5%	3734	83.5%
Fall 2011	852	18.9%	3652	81.1%
Fall 2012	872	19.2%	3672	80.8%
Fall 2013	912	20.5%	3531	79.5%
<b>Fall 2014</b>	<b>896</b>	<b>20.6%</b>	<b>3457</b>	<b>79.4%</b>



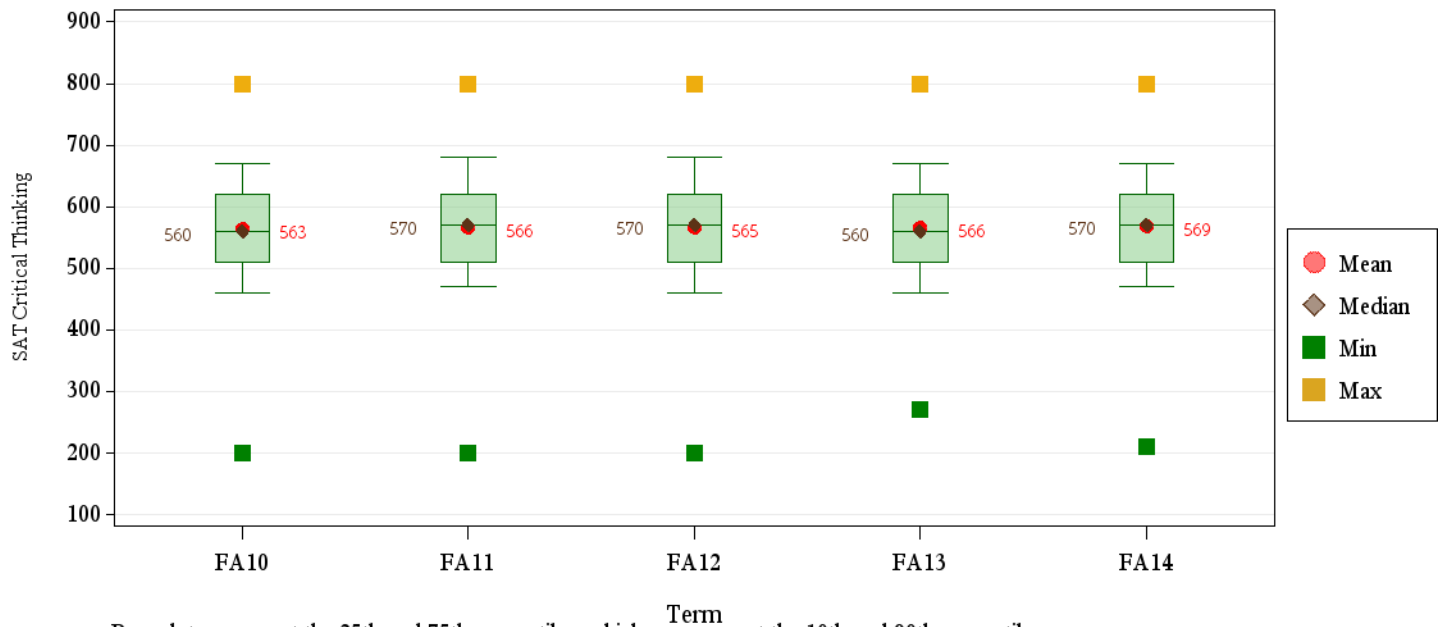
# Five-Year Trends: HS Rank



## Average HS Rank by Residency and Application College

		AG	BU	EG	HS	IU	LA	NR	NS	VM	Total U
Resident	Fall 2010	74.8	79.2	82.5	72.9	65.8	72.4	70.4	74.7	85.9	72.8
	Fall 2011	72.1	78.0	82.5	72.7	66.5	73.3	74.4	75.7	83.4	73.4
	Fall 2012	75.5	78.5	81.0	70.7	64.6	70.6	67.5	77.2	85.9	72.3
	Fall 2013	73.6	80.3	81.3	71.9	63.8	70.9	68.3	75.5	86.6	72.3
	Fall 2014	73.4	78.6	81.1	67.9	63.9	71.4	67.4	72.3	81.1	71.0
Nonresident	Fall 2010	76.1	78.7	84.1	68.3	67.3	74.8	80.9	80.7	91.9	76.3
	Fall 2011	78.4	75.4	82.9	71.9	64.8	74.8	75.2	77.7	86.7	75.9
	Fall 2012	81.3	69.5	84.2	74.9	60.4	74.1	78.2	78.5	86.2	74.8
	Fall 2013	80.3	76.2	82.2	74.2	67.5	66.5	71.1	76.9	82.4	75.1
	Fall 2014	76.3	78.0	82.1	70.0	62.9	72.1	70.1	76.0	87.1	73.7
Total	Fall 2010	75.2	79.2	82.8	72.3	66.0	72.7	73.7	75.8	86.7	73.4
	Fall 2011	74.8	77.7	82.6	72.6	66.4	73.5	74.7	76.0	84.4	73.8
	Fall 2012	77.5	77.3	81.6	71.3	64.1	71.1	71.1	77.4	86.0	72.7
	Fall 2013	76.0	79.7	81.5	72.2	64.2	70.3	69.3	75.8	85.5	72.8
	Fall 2014	74.5	78.5	81.3	68.2	63.8	71.5	68.2	73.0	82.2	71.5

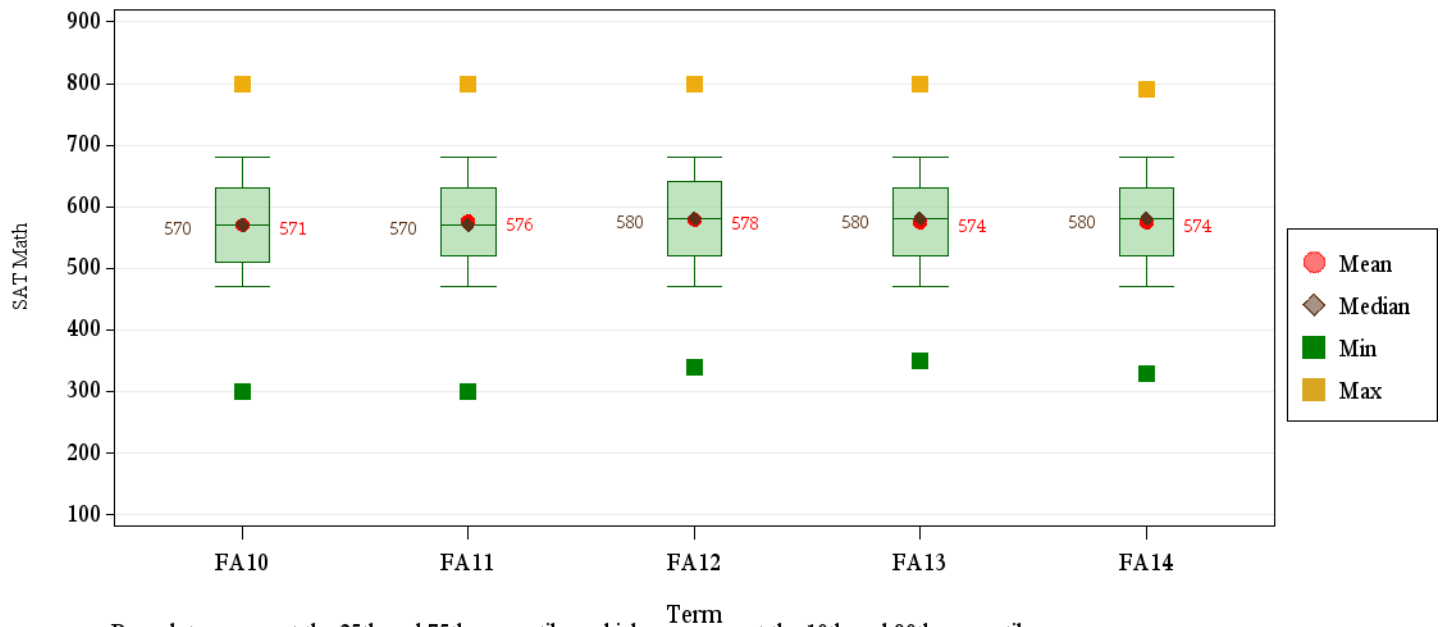
# Five-Year Trends: SAT Critical Thinking



## Average SAT Critical Thinking by Residency and Application College

		AG	BU	EG	HS	IU	LA	NR	NS	VM	Total U
Resident	Fall 2010	548	570	583	538	539	584	588	574	587	565
	Fall 2011	565	566	583	525	529	586	531	593	594	566
	Fall 2012	573	562	600	540	541	566	598	579	599	568
	Fall 2013	568	560	593	534	537	574	545	581	595	567
	Fall 2014	562	562	595	543	540	587	588	582	589	569
Nonresident	Fall 2010	543	566	571	539	539	574	595	572	598	561
	Fall 2011	562	576	578	542	530	594	597	571	608	567
	Fall 2012	574	599	562	526	524	560	587	587	615	563
	Fall 2013	571	577	581	545	532	574	573	576	586	566
	Fall 2014	568	581	579	537	546	584	572	573	635	568
Total	Fall 2010	545	569	578	538	539	581	593	573	591	563
	Fall 2011	563	570	581	533	530	589	581	583	602	566
	Fall 2012	574	578	581	533	532	563	589	584	608	565
	Fall 2013	570	570	587	541	534	574	565	579	590	566
	Fall 2014	567	573	585	539	544	585	575	577	615	569

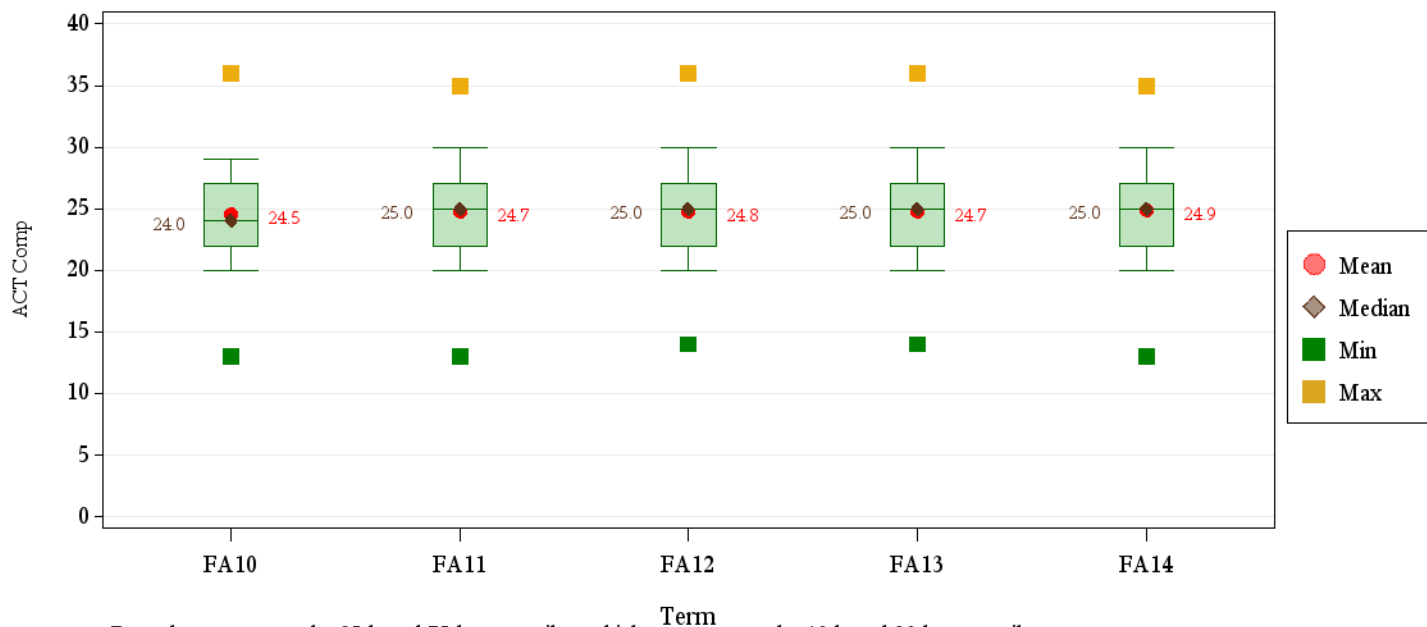
# Five-Year Trends: SAT Math



## Average SAT Math by Residency and Application College

		AG	BU	EG	HS	IU	LA	NR	NS	VM	Total U
Resident	Fall 2010	549	581	626	542	537	546	575	584	617	569
	Fall 2011	579	581	623	523	540	556	556	584	584	569
	Fall 2012	551	563	638	542	550	543	551	587	609	574
	Fall 2013	535	576	636	536	531	548	547	577	609	569
	Fall 2014	522	588	634	540	550	573	628	577	616	576
Nonresident	Fall 2010	543	585	636	553	550	552	582	586	619	575
	Fall 2011	552	613	646	553	546	574	585	586	633	583
	Fall 2012	572	615	640	554	548	546	581	586	633	581
	Fall 2013	577	608	636	548	551	545	567	575	610	579
	Fall 2014	557	601	633	544	548	562	559	571	600	573
Total	Fall 2010	545	582	630	547	542	547	580	585	618	571
	Fall 2011	557	593	634	537	542	562	578	585	611	576
	Fall 2012	568	585	639	548	549	544	575	586	623	578
	Fall 2013	570	595	636	543	542	547	561	576	610	574
	Fall 2014	552	595	634	542	549	567	573	573	607	574

# Five-Year Trends: ACT Comp



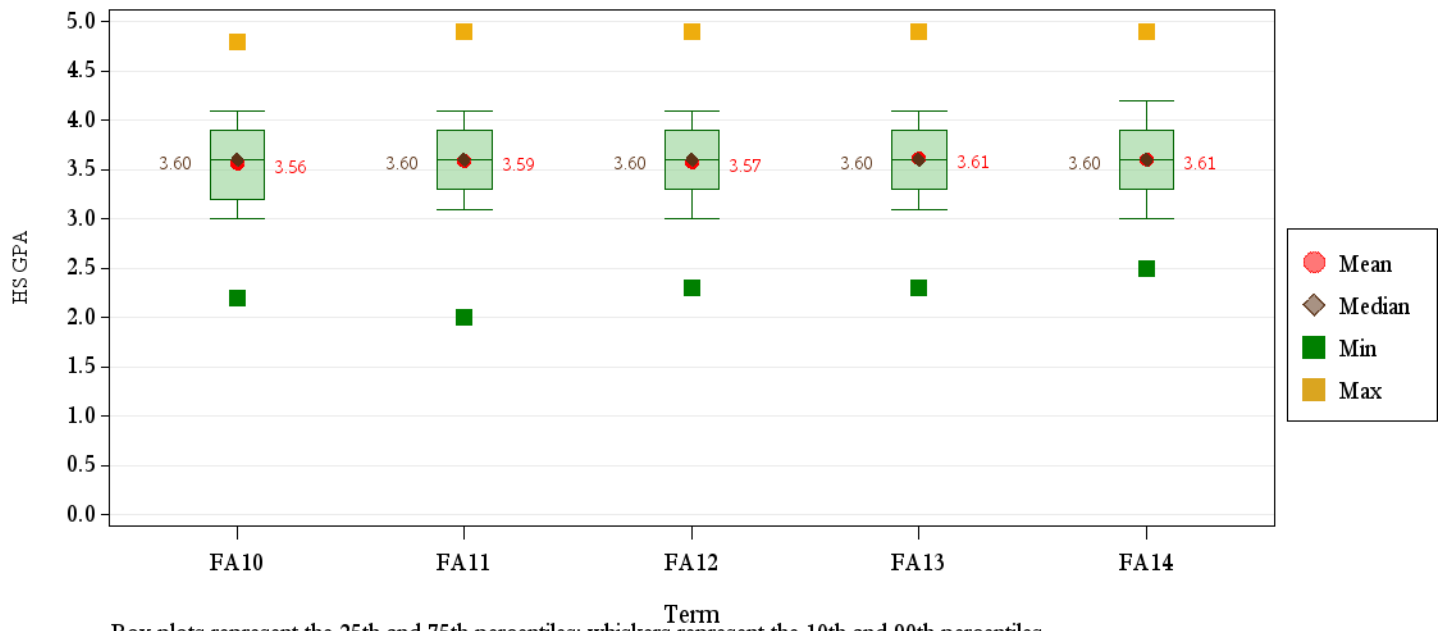
Box plots represent the 25th and 75th percentiles: whiskers represent the 10th and 90th percentiles.

## Average ACT Comp by Residency and Application College

		AG	BU	EG	HS	IU	LA	NR	NS	VM	Total U
Resident	Fall 2010	23.7	25.5	26.9	23.4	23.0	24.5	23.8	24.8	27.3	24.3
	Fall 2011	23.6	25.5	27.0	23.1	23.3	24.8	24.5	24.9	27.1	24.5
	Fall 2012	24.0	25.9	27.0	23.1	23.3	24.6	24.1	25.3	27.1	24.6
	Fall 2013	23.8	25.5	27.1	23.4	23.0	24.4	24.0	25.1	27.3	24.5
	Fall 2014	23.9	25.9	27.0	23.2	23.3	24.9	25.0	25.2	26.9	24.6
Nonresident	Fall 2010	24.8	26.3	28.1	24.2	24.2	25.0	27.1	26.9	27.5	25.7
	Fall 2011	25.3	26.0	28.0	24.7	24.2	25.8	25.5	26.5	28.7	25.8
	Fall 2012	25.9	26.6	27.8	24.1	24.0	25.7	26.6	26.5	28.1	25.9
	Fall 2013	26.4	26.2	28.1	24.6	23.9	26.0	26.3	26.2	27.7	26.0
	Fall 2014	25.2	27.1	27.9	24.4	24.8	26.2	26.0	26.6	28.1	26.0
Total	Fall 2010	24.1	25.6	27.1	23.5	23.1	24.6	24.8	25.2	27.3	24.5
	Fall 2011	24.3	25.5	27.2	23.4	23.4	24.9	24.9	25.2	27.5	24.7
	Fall 2012	24.7	26.0	27.1	23.3	23.4	24.7	25.0	25.5	27.4	24.8
	Fall 2013	24.6	25.6	27.3	23.6	23.1	24.6	24.8	25.4	27.4	24.7
	Fall 2014	24.4	26.1	27.2	23.4	23.5	25.2	25.3	25.5	27.2	24.9



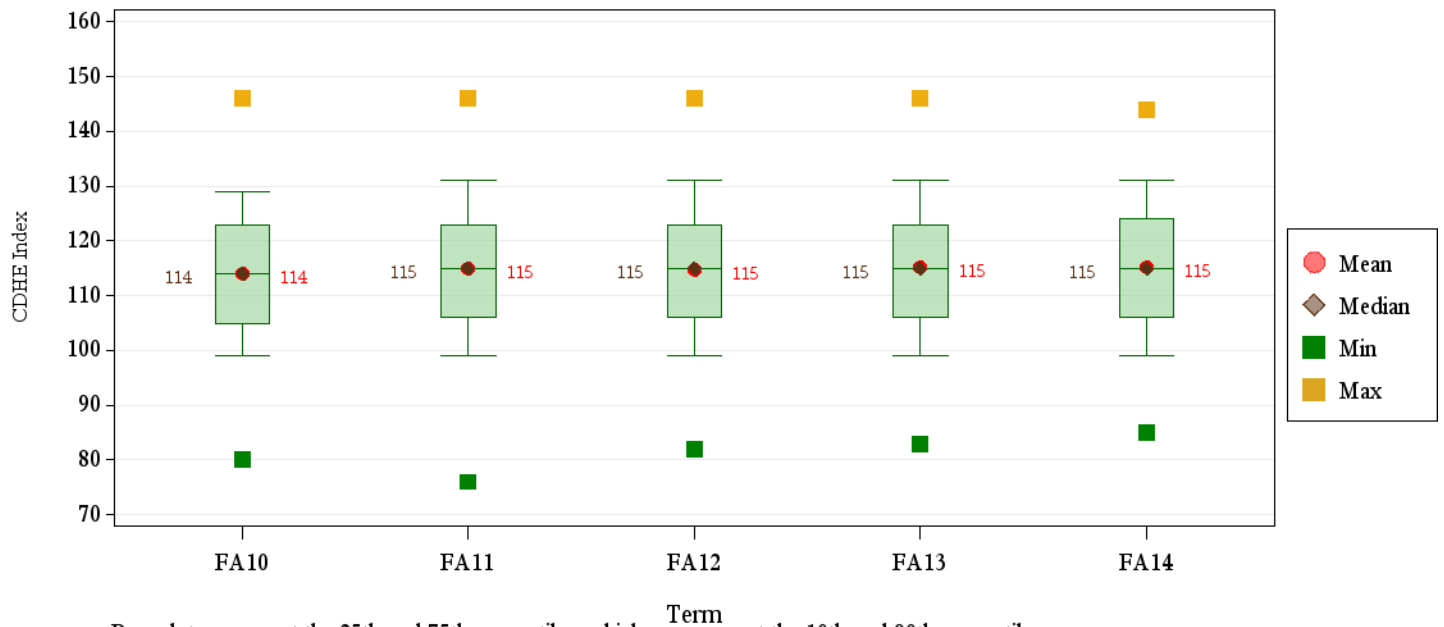
# Five-Year Trends: HS GPA



## Average HS GPA by Residency and Application College

		AG	BU	EG	HS	IU	LA	NR	NS	VM	Total U
Resident	Fall 2010	3.59	3.73	3.81	3.55	3.37	3.53	3.48	3.59	3.95	3.55
	Fall 2011	3.58	3.71	3.80	3.56	3.42	3.58	3.54	3.64	3.88	3.58
	Fall 2012	3.62	3.75	3.76	3.54	3.39	3.51	3.48	3.64	3.85	3.56
	Fall 2013	3.64	3.79	3.83	3.59	3.39	3.59	3.53	3.69	4.00	3.61
	Fall 2014	3.64	3.77	3.86	3.54	3.42	3.60	3.51	3.65	3.89	3.60
Nonresident	Fall 2010	3.54	3.76	3.84	3.51	3.34	3.56	3.70	3.72	4.00	3.60
	Fall 2011	3.64	3.71	3.88	3.61	3.32	3.56	3.59	3.70	4.04	3.63
	Fall 2012	3.65	3.64	3.90	3.52	3.32	3.55	3.72	3.69	3.95	3.61
	Fall 2013	3.72	3.73	3.84	3.56	3.40	3.55	3.50	3.69	3.93	3.64
	Fall 2014	3.68	3.77	3.85	3.58	3.34	3.59	3.55	3.71	3.99	3.63
Total	Fall 2010	3.57	3.73	3.82	3.54	3.36	3.53	3.57	3.62	3.96	3.56
	Fall 2011	3.61	3.71	3.82	3.57	3.40	3.58	3.56	3.66	3.93	3.59
	Fall 2012	3.63	3.72	3.79	3.53	3.37	3.52	3.58	3.65	3.88	3.57
	Fall 2013	3.68	3.78	3.84	3.58	3.39	3.58	3.52	3.69	3.98	3.61
	Fall 2014	3.66	3.77	3.86	3.55	3.40	3.60	3.53	3.67	3.92	3.61

# Five-Year Trends: CDHE Index



## Average CDHE Index by Residency and Application College

		AG	BU	EG	HS	IU	LA	NR	NS	VM	Total U
Resident	Fall 2010	113	119	123	112	108	114	112	115	125	114
	Fall 2011	113	119	123	111	109	115	114	116	123	114
	Fall 2012	114	120	122	111	109	113	112	117	124	114
	Fall 2013	113	120	123	112	108	114	112	117	125	114
	Fall 2014	114	120	123	111	109	115	114	116	123	114
Nonresident	Fall 2010	114	121	125	112	109	115	120	120	127	116
	Fall 2011	116	120	126	115	109	117	117	120	128	117
	Fall 2012	118	120	126	112	108	115	120	120	128	117
	Fall 2013	119	120	125	114	110	115	116	119	126	117
	Fall 2014	117	121	125	113	110	117	116	119	127	117
Total	Fall 2010	113	119	123	112	108	114	115	116	125	114
	Fall 2011	114	119	124	112	109	115	115	117	125	115
	Fall 2012	116	120	123	111	109	114	115	118	125	115
	Fall 2013	116	120	124	112	108	114	114	117	125	115
	Fall 2014	115	120	124	111	109	115	115	117	124	115

# Profile: Fall 2014

Fall 2014

New Freshmen by:

**Residency**

	Number	Percent
Resident	3,154	72.5 %
Nonresident	1,199	27.5 %
<b>Total</b>	4,353	100.0 %

**Gender**

	Resident		Nonresident		Total	
	Number	Percent	Number	Percent	Number	Percent
Men	1,446	45.8 %	517	43.1 %	1,963	45.1 %
Women	1,708	54.2 %	682	56.9 %	2,390	54.9 %
<b>Total</b>	3,154	100.0 %	1,199	100.0 %	4,353	100.0 %

**Ethnicity**

	Resident		Nonresident		Total	
	Number	Percent	Number	Percent	Number	Percent
Asian	113	3.6 %	30	2.5 %	143	3.3 %
Black	104	3.3 %	10	0.8 %	114	2.6 %
Hawaiian/Pac. Islander	5	0.2 %	3	0.3 %	8	0.2 %
Hispanic/Latino	425	13.5 %	102	8.5 %	527	12.1 %
International	1	0.0 %	80	6.7 %	81	1.9 %
Multi-Racial	39	1.2 %	25	2.1 %	64	1.5 %
Native American	28	0.9 %	12	1.0 %	40	0.9 %
No Response	46	1.5 %	17	1.4 %	63	1.4 %
White	2,393	75.9 %	920	76.7 %	3,313	76.1 %
<b>Total</b>	3,154	100.0 %	1,199	100.0 %	4,353	100.0 %

## Full-Time/Part-Time Enrollment

	Resident		Nonresident		Total	
	Number	Percent	Number	Percent	Number	Percent
Full-Time	3,134	99.4 %	1,166	97.2 %	4,300	98.8 %
Part-Time	20	0.6 %	33	2.8 %	53	1.2 %
<b>Total</b>	<b>3,154</b>	<b>100.0 %</b>	<b>1,199</b>	<b>100.0 %</b>	<b>4,353</b>	<b>100.0 %</b>

Full-time students = undergraduates enrolled for 12 or more credits Fall, Spring (9 - Summer)

## Application College

	Resident		Nonresident		Total	
	Number	Percent	Number	Percent	Number	Percent
Agricultural Sciences	127	4.0 %	144	12.0 %	271	6.2 %
Business	250	7.9 %	75	6.3 %	325	7.5 %
Engineering	376	11.9 %	149	12.4 %	525	12.1 %
Health and Human Sciences	449	14.2 %	113	9.4 %	562	12.9 %
Intra-University	859	27.2 %	273	22.8 %	1,132	26.0 %
Liberal Arts	355	11.3 %	115	9.6 %	470	10.8 %
Natural Sciences	558	17.7 %	231	19.3 %	789	18.1 %
Vet Med & BioMed Sci	86	2.7 %	31	2.6 %	117	2.7 %
Warner College of Nat Res	94	3.0 %	68	5.7 %	162	3.7 %
<b>Total</b>	<b>3,154</b>	<b>100.0 %</b>	<b>1,199</b>	<b>100.0 %</b>	<b>4,353</b>	<b>100.0 %</b>

## Credit Hour Distribution by Application College

	<b>N</b>	<b>Min</b>	<b>Max</b>	<b>Mean</b>
<b>Total University</b>	4,353	3	20	14.7
<b>Agricultural Sciences</b>	271	10	18	14.7
<b>Business</b>	325	7	18	15.0
<b>Engineering</b>	525	7	19	14.9
<b>Health and Human Sciences</b>	562	11	18	14.7
<b>Intra-University</b>	1,132	3	20	14.4
<b>Liberal Arts</b>	470	5	19	15.0
<b>Natural Sciences</b>	789	9	19	14.9
<b>Vet Med &amp; BioMed Sci</b>	117	12	19	15.0
<b>Warner College of Nat Res</b>	162	10	18	14.5
Men	1,963	3	20	14.6
Women	2,390	3	19	14.8
Nonresident	1,199	3	19	14.7
Resident	3,154	3	20	14.8
Full-Time	4,300	12	20	14.8
Part-Time	53	3	11	8.5
Asian	143	5	18	14.8
Black	114	10	16	14.6
Hawaiian/Pac. Islander	8	12	15	14.0
Hispanic/Latino	527	10	18	14.8
International	81	3	18	12.7
Multi-Racial	64	4	17	14.5
Native American	40	12	17	14.6
No Response	63	7	19	14.7
White	3,313	3	20	14.8
<b>Agricultural Sciences</b>				
Men	59	12	17	14.6
Women	212	10	18	14.7
Nonresident	144	12	18	14.9
Resident	127	10	18	14.4
Full-Time	269	12	18	14.7
Part-Time	2	10	11	10.5
Asian	3	14	17	15.3
Black	2	14	15	14.5
Hawaiian/Pac. Islander	1	15	15	15.0

		<b>N</b>	<b>Min</b>	<b>Max</b>	<b>Mean</b>	
		4,353	3	20	14.7	
<b>Agricultural Sciences</b>	Hispanic/Latino	28	12	17	14.6	
	International	4	14	17	15.5	
	Multi-Racial	7	12	16	14.3	
	Native American	3	13	14	13.7	
	No Response	2	11	13	12.0	
	White	221	10	18	14.7	
<b>Business</b>	Men	186	7	17	14.9	
	Women	139	12	18	15.2	
	Nonresident	75	7	18	14.9	
	Resident	250	12	18	15.1	
	Full-Time	323	12	18	15.1	
	Part-Time	2	7	10	8.5	
	Asian	10	13	18	14.9	
	Black	5	12	16	14.2	
	Hispanic/Latino	34	12	17	14.7	
	International	3	15	16	15.7	
	Multi-Racial	1	16	16	16.0	
	Native American	1	16	16	16.0	
	No Response	3	16	17	16.3	
	White	268	7	18	15.1	
	<b>Engineering</b>	Men	399	7	19	14.7
		Women	126	12	18	15.3
		Nonresident	149	11	18	14.9
		Resident	376	7	19	14.9
		Full-Time	522	12	19	14.9
		Part-Time	3	7	11	9.7
Asian		12	12	17	15.3	
Black		3	13	15	14.0	
Hawaiian/Pac. Islander		1	14	14	14.0	
Hispanic/Latino		46	11	17	14.5	
International		9	12	18	14.6	
Multi-Racial		8	13	16	14.9	
Native American		6	12	16	14.3	
No Response		11	12	17	14.6	
White		429	7	19	14.9	

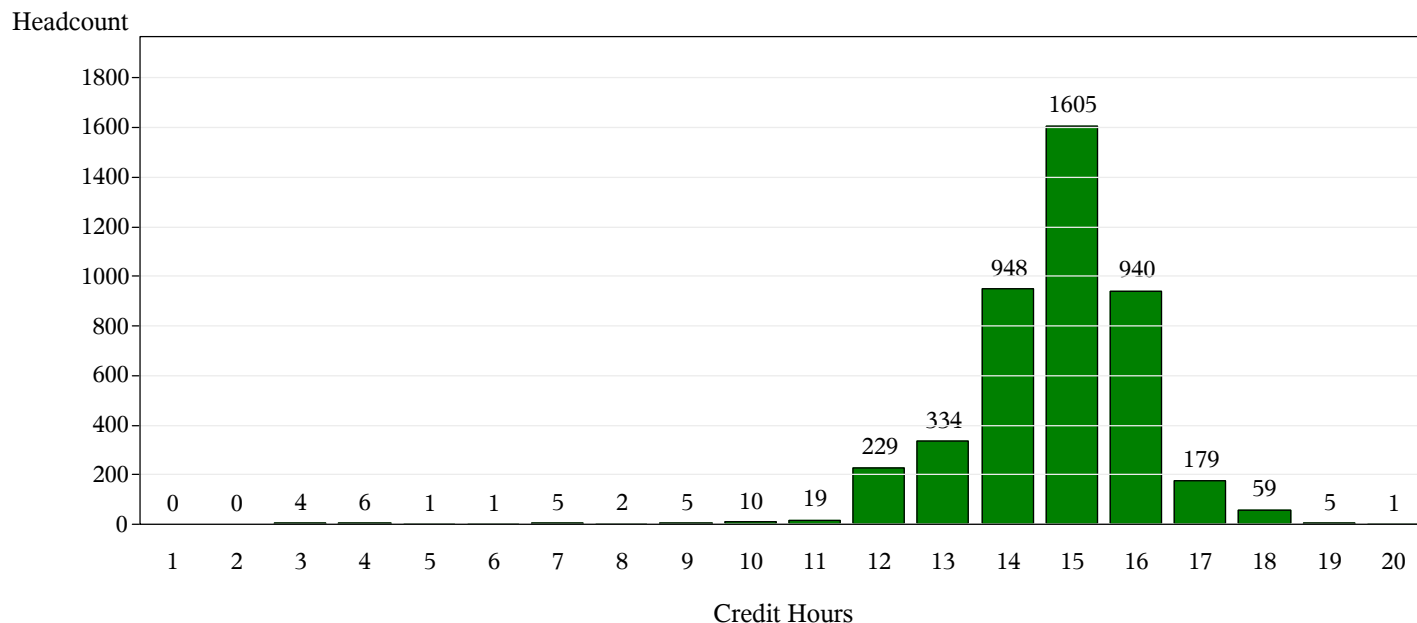
		<b>N</b>	<b>Min</b>	<b>Max</b>	<b>Mean</b>
		4,353	3	20	14.7
<b>Health and Human Sciences</b>					
	Men	172	11	18	14.5
	Women	390	11	18	14.7
	Nonresident	113	12	18	14.6
	Resident	449	11	18	14.7
	Full-Time	560	12	18	14.7
	Part-Time	2	11	11	11.0
	Asian	26	12	16	14.5
	Black	14	12	16	14.5
	Hispanic/Latino	66	12	18	14.9
	International	2	13	14	13.5
	Multi-Racial	10	12	16	14.7
	Native American	7	12	16	14.1
	No Response	9	12	16	14.0
	White	428	11	18	14.7
<b>Intra-University</b>					
	Men	579	3	20	14.3
	Women	553	3	19	14.5
	Nonresident	273	3	19	14.0
	Resident	859	3	20	14.6
	Full-Time	1,101	12	20	14.6
	Part-Time	31	3	11	7.6
	Asian	39	12	18	14.7
	Black	49	10	16	14.4
	Hawaiian/Pac. Islander	3	12	15	13.3
	Hispanic/Latino	153	12	18	14.7
	International	49	3	16	11.2
	Multi-Racial	19	4	17	14.0
	Native American	10	12	16	14.6
	No Response	8	7	16	14.0
	White	802	3	20	14.6
<b>Liberal Arts</b>					
	Men	163	5	19	14.9
	Women	307	12	18	15.1
	Nonresident	115	5	18	15.1
	Resident	355	9	19	15.0
	Full-Time	468	12	19	15.1
	Part-Time	2	5	9	7.0



		<b>N</b>	<b>Min</b>	<b>Max</b>	<b>Mean</b>
		4,353	3	20	14.7
<b>Liberal Arts</b>					
	Asian	18	5	16	14.5
	Black	14	15	16	15.1
	Hawaiian/Pac. Islander	1	14	14	14.0
	Hispanic/Latino	58	12	17	14.8
	International	2	14	17	15.5
	Multi-Racial	8	13	15	14.8
	Native American	6	14	17	15.5
	No Response	10	15	19	16.0
	White	353	9	18	15.1
<b>Natural Sciences</b>					
	Men	283	10	19	14.8
	Women	506	9	18	15.0
	Nonresident	231	10	18	15.1
	Resident	558	9	19	14.8
	Full-Time	780	12	19	15.0
	Part-Time	9	9	11	10.1
	Asian	27	12	17	14.9
	Black	23	13	16	15.0
	Hawaiian/Pac. Islander	2	14	15	14.5
	Hispanic/Latino	114	10	18	14.9
	International	9	12	17	14.8
	Multi-Racial	6	15	17	15.8
	Native American	7	13	16	14.9
	No Response	15	13	17	14.7
	White	586	9	19	14.9
<b>Vet Med &amp; BioMed Sci</b>					
	Men	26	13	19	14.7
	Women	91	12	17	15.1
	Nonresident	31	14	17	15.3
	Resident	86	12	19	14.9
	Full-Time	117	12	19	15.0
	Asian	6	14	16	15.3
	Black	4	15	15	15.0
	Hispanic/Latino	12	13	17	15.1
	International	1	17	17	17.0
	Multi-Racial	1	16	16	16.0
	No Response	2	14	15	14.5

		<b>N</b>	<b>Min</b>	<b>Max</b>	<b>Mean</b>
<b>Vet Med &amp; BioMed Sci Warner College of Nat Res</b>	White	91	12	19	15.0
	Men	96	10	18	14.6
	Women	66	11	18	14.5
	Nonresident	68	11	18	14.4
	Resident	94	10	18	14.6
	Full-Time	160	12	18	14.6
	Part-Time	2	10	11	10.5
	Asian	2	15	16	15.5
	Hispanic/Latino	16	14	18	15.2
	International	2	14	15	14.5
	Multi-Racial	4	10	16	12.8
	No Response	3	15	16	15.3
	White	135	11	18	14.5

**Total University: Student Count by Credit Hours**



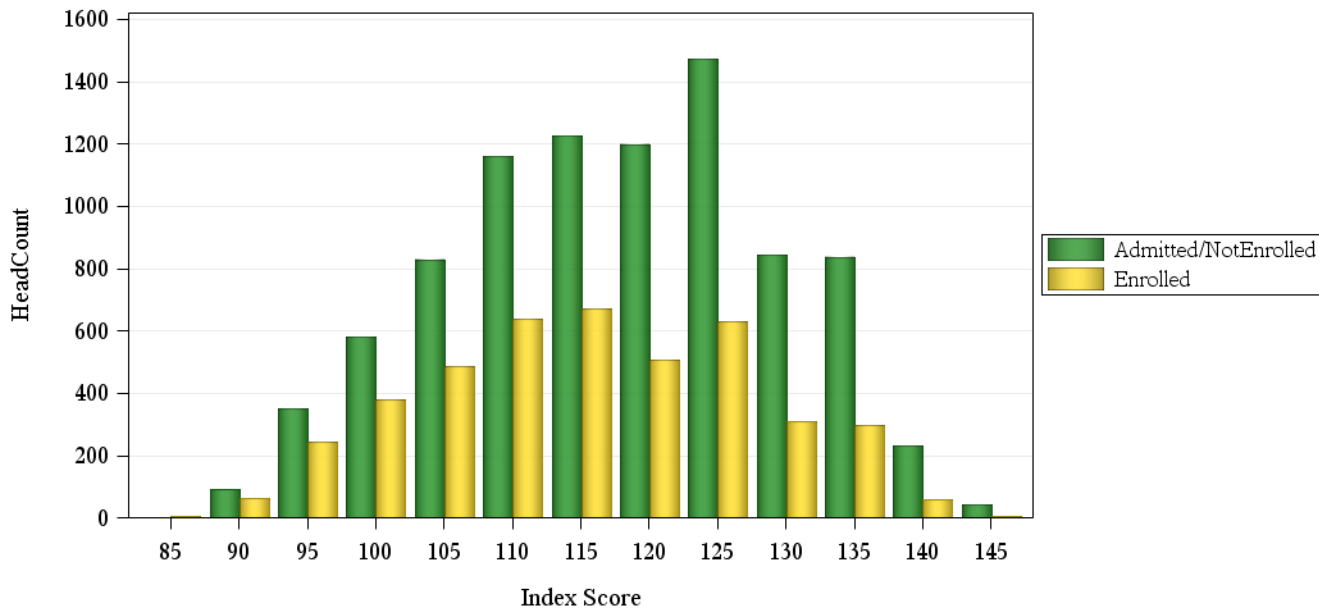
# Fall 2014 Freshman Profile

## University Admitted Applicants

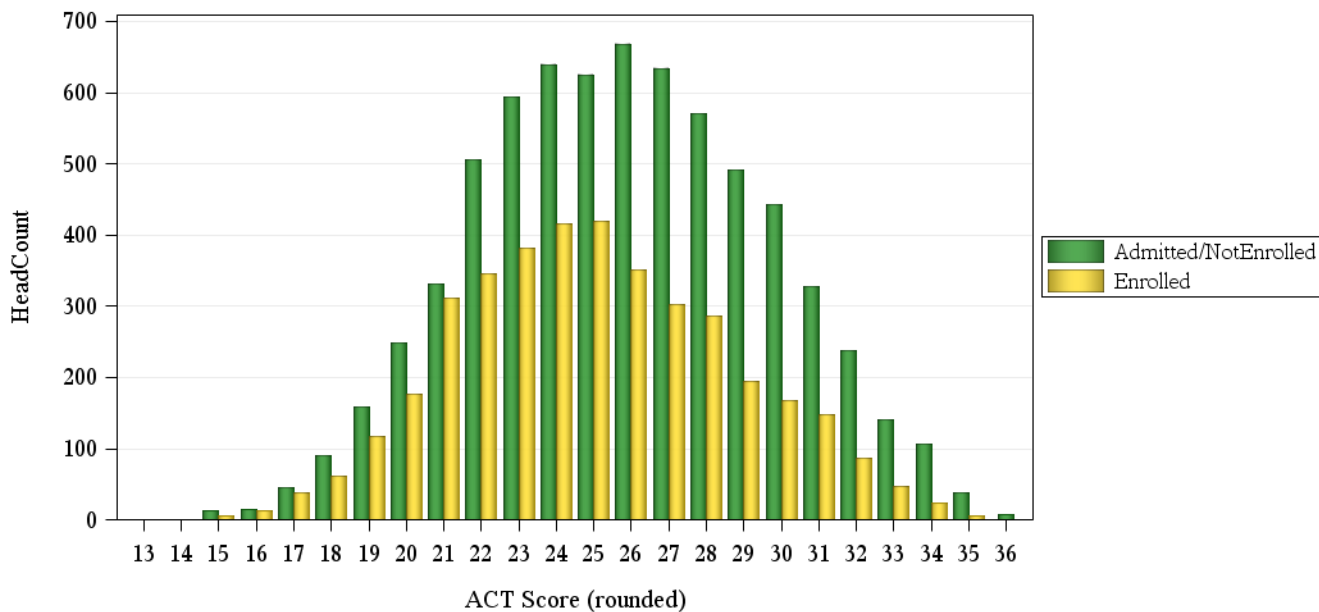
	Not Enrolled (N=9064)				Enrolled(N=4353)			
	Res	Nonres	Total	Percent	Res	Nonres	Total	Percent
<b>ACT Composite</b>								
0-14	.	1	1	0%	2	.	2	0%
15-18	91	71	162	2%	103	14	117	3%
19-22	750	494	1,244	14%	824	125	949	22%
23-26	1,409	1,117	2,526	28%	1,291	277	1,568	36%
27-36	1,536	1,460	2,996	33%	889	372	1,261	29%
Missing Data	83	2,052	2,135	24%	45	411	456	10%
Means	25.6	26.1	25.8		24.6	26.0	24.9	
<b>CCHE Index</b>								
0-90	3	8	11	0%	20	3	23	1%
091-100	272	427	699	8%	334	109	443	10%
101-114	1,170	1,600	2,770	31%	1,262	335	1,597	37%
115-160	2,413	2,967	5,380	59%	1,535	689	2,224	51%
Missing Data	11	193	204	2%	3	63	66	2%
Means	118	117	118		114	117	115	
<b>HS GPA</b>								
2.0-2.49	1	.	1	0%	.	.	.	.
2.5-2.99	123	317	440	5%	187	79	266	6%
3.0-3.59	1,202	1,769	2,971	33%	1,270	404	1,674	38%
3.6-4.00	1,654	2,128	3,782	42%	1,227	478	1,705	39%
4.01-high	887	856	1,743	19%	468	181	649	15%
Missing Data	2	125	127	1%	2	57	59	1%
Means	3.72	3.64	3.68		3.60	3.63	3.61	
<b>HS Rank</b>								
0-29	26	41	67	1%	46	18	64	1%
30-49	263	185	448	5%	370	49	419	10%
50-59	262	210	472	5%	315	53	368	8%
60-79	844	701	1,545	17%	872	162	1,034	24%
80-89	640	481	1,121	12%	511	107	618	14%
90-100	806	658	1,464	16%	502	143	645	15%
Missing Data	1,028	2,919	3,947	44%	538	667	1,205	28%
Means	76.0	76.0	76.0		71.0	73.7	71.5	
<b>SAT Critical Thinking</b>								
0-399	6	38	44	0%	6	8	14	0%
400-499	96	499	595	7%	63	105	168	4%
500-599	268	1,353	1,621	18%	167	277	444	10%
600-699	281	905	1,186	13%	123	206	329	8%
700-800	63	160	223	2%	21	29	50	1%
Missing Data	3,155	2,240	5,395	60%	2,774	574	3,348	77%
Means	589	568	572		569	568	569	
<b>SAT Math</b>								
0-399	2	31	33	0%	4	5	9	0%
400-499	81	452	533	6%	54	89	143	3%
500-599	257	1,201	1,458	16%	164	288	452	10%
600-699	291	1,014	1,305	14%	128	218	346	8%
700-800	83	257	340	4%	31	25	56	1%
Missing Data	3,155	2,240	5,395	60%	2,773	574	3,347	77%
Means	596	579	582		576	573	574	

## Fall 2014 Freshman Profile

### Fall 2014 CDHE Index Distribution of Admitted Applicants by Enrollment Status(University)



### Fall 2014 ACT Composite Distribution of Admitted Applicants by Enrollment Status(University)



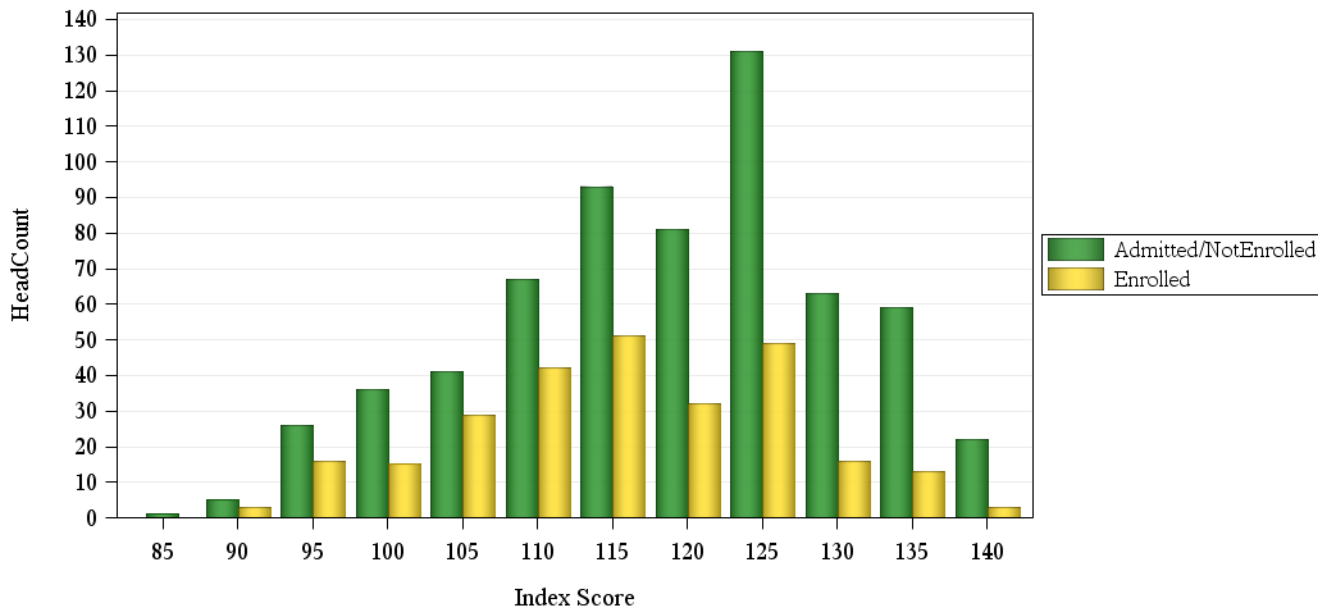
# Fall 2014 Freshman Profile

## Agricultural Sciences Admitted Applicants

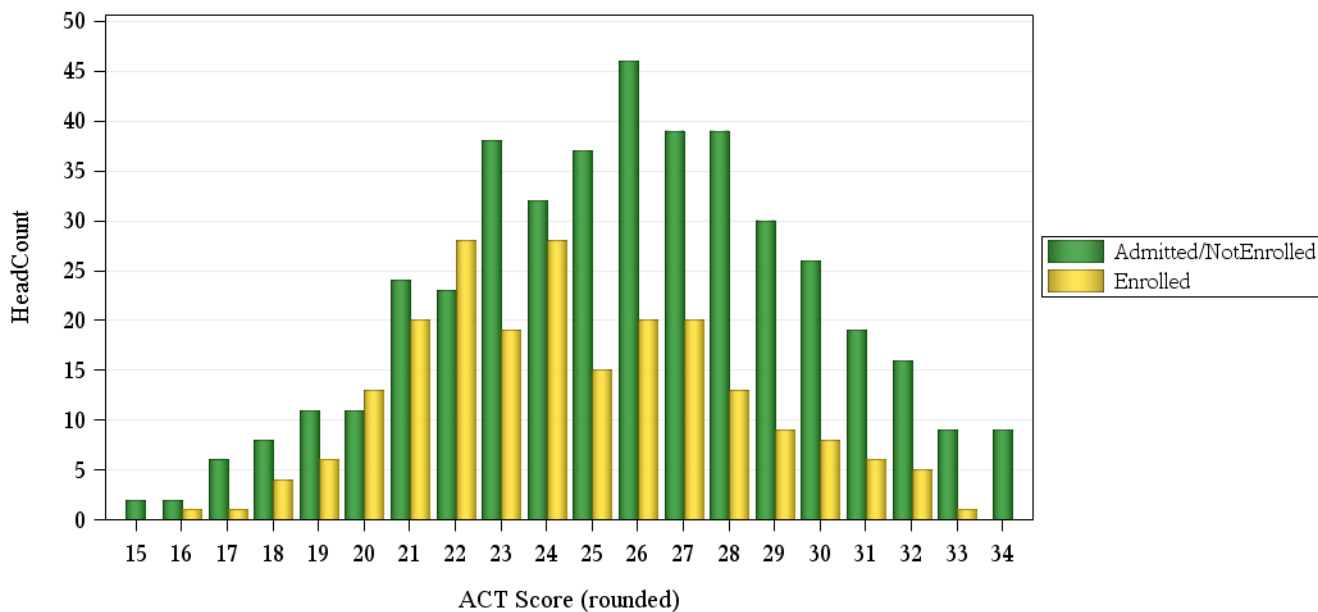
	Not Enrolled (N= 637)				Enrolled(N= 271)			
	Res	Nonres	Total	Percent	Res	Nonres	Total	Percent
<b>ACT Composite</b>								
15-18	6	12	18	3%	3	3	6	2%
19-22	22	47	69	11%	45	22	67	25%
23-26	26	127	153	24%	49	33	82	30%
27-36	28	159	187	29%	26	36	62	23%
Missing Data	.	210	210	33%	4	50	54	20%
Means	24.5	26.1	25.8		23.9	25.2	24.4	
<b>CCHE Index</b>								
0-90	1	1	2	0%	.	1	1	0%
091-100	15	35	50	8%	14	11	25	9%
101-114	21	140	161	25%	50	49	99	37%
115-160	45	367	412	65%	63	81	144	53%
Missing Data	.	12	12	2%	.	2	2	1%
Means	114	120	119		114	117	115	
<b>HS GPA</b>								
2.5-2.99	3	21	24	4%	8	2	10	4%
3.0-3.59	34	124	158	25%	43	54	97	36%
3.6-4.00	34	268	302	47%	61	61	122	45%
4.01-high	11	136	147	23%	15	25	40	15%
Missing Data	.	6	6	1%	.	2	2	1%
Means	3.62	3.79	3.77		3.64	3.68	3.66	
<b>HS Rank</b>								
0-29	1	1	2	0%	3	2	5	2%
30-49	9	14	23	4%	15	3	18	7%
50-59	9	15	24	4%	4	5	9	3%
60-79	20	83	103	16%	32	20	52	19%
80-89	15	74	89	14%	24	17	41	15%
90-100	8	96	104	16%	24	19	43	16%
Missing Data	20	272	292	46%	25	78	103	38%
Means	70.6	80.7	78.9		73.4	76.3	74.5	
<b>SAT Critical Thinking</b>								
0-399	.	3	3	0%	.	1	1	0%
400-499	1	46	47	7%	3	11	14	5%
500-599	7	153	160	25%	4	39	43	16%
600-699	3	110	113	18%	5	25	30	11%
700-800	.	30	30	5%	.	3	3	1%
Missing Data	71	213	284	45%	115	65	180	66%
Means	570	579	579		562	568	567	
<b>SAT Math</b>								
0-399	.	4	4	1%	.	1	1	0%
400-499	1	53	54	8%	2	17	19	7%
500-599	4	136	140	22%	10	38	48	18%
600-699	4	122	126	20%	.	21	21	8%
700-800	2	27	29	5%	.	2	2	1%
Missing Data	71	213	284	45%	115	65	180	66%
Means	602	577	578		522	557	552	

## Fall 2014 Freshman Profile

### Fall 2014 CDHE Index Distribution of Admitted Applicants by Enrollment Status(Agricultural Sciences)



### Fall 2014 ACT Composite Distribution of Admitted Applicants by Enrollment Status(Agricultural Sciences)



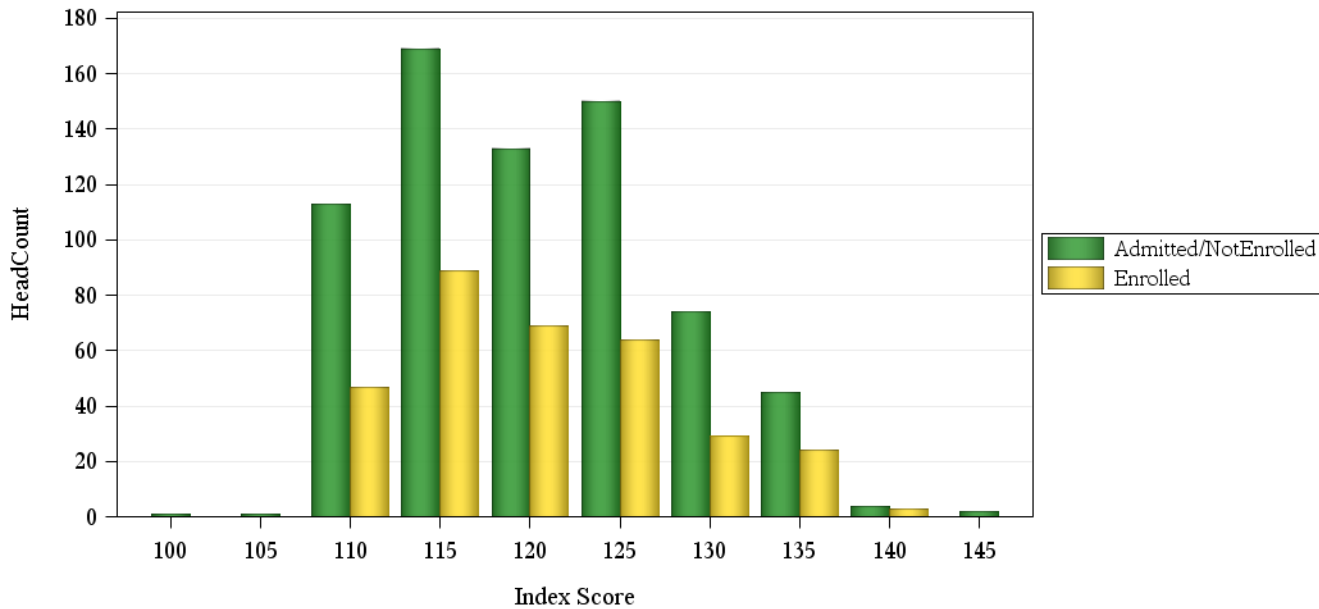
# Fall 2014 Freshman Profile

## Business Admitted Applicants

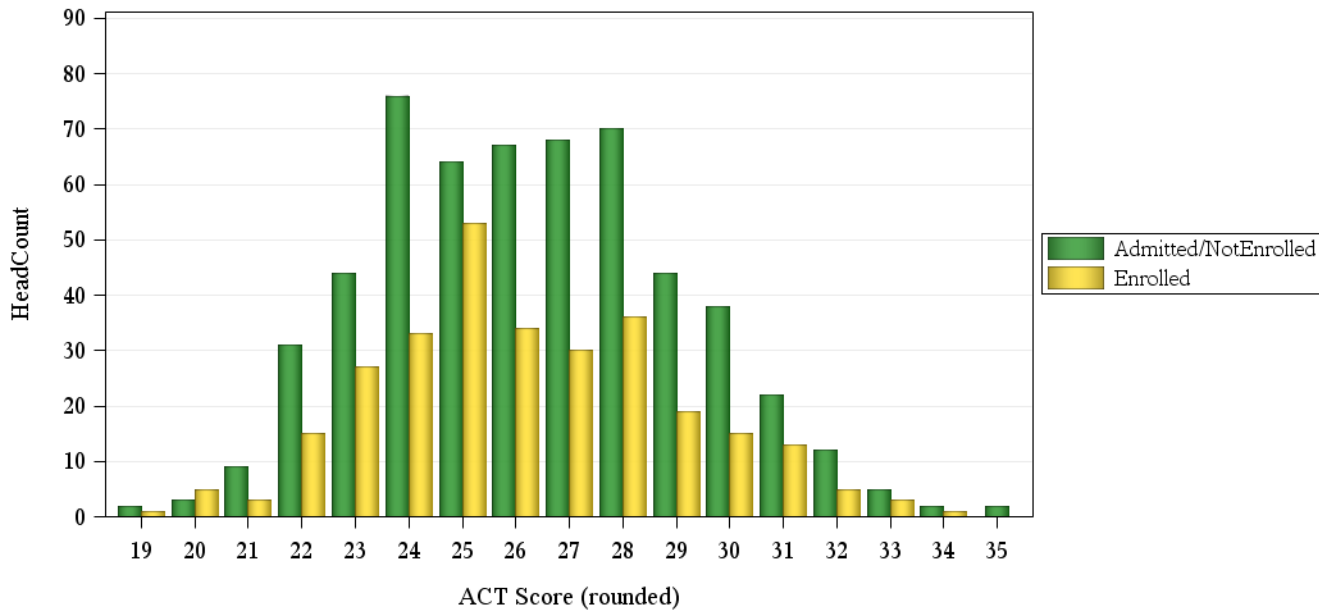
	Not Enrolled (N= 694)				Enrolled(N= 325)			
	Res	Nonres	Total	Percent	Res	Nonres	Total	Percent
<b>ACT Composite</b>								
19-22	29	16	45	6%	23	1	24	7%
23-26	143	108	251	36%	129	18	147	45%
27-36	157	106	263	38%	94	28	122	38%
Missing Data	13	122	135	19%	4	28	32	10%
Means	26.3	26.4	26.3		25.9	27.1	26.1	
<b>CCHE Index</b>								
101-114	68	99	167	24%	64	13	77	24%
115-160	273	252	525	76%	186	62	248	76%
Missing Data	1	1	2	0%	.	.	.	.
Means	121	120	121		120	121	120	
<b>HS GPA</b>								
2.5-2.99	2	4	6	1%	2	.	2	1%
3.0-3.59	76	109	185	27%	59	20	79	24%
3.6-4.00	185	190	375	54%	146	41	187	58%
4.01-high	78	48	126	18%	43	14	57	18%
Missing Data	1	1	2	0%	.	.	.	.
Means	3.79	3.71	3.75		3.77	3.77	3.77	
<b>HS Rank</b>								
0-29	3	1	4	1%	.	.	.	.
30-49	10	7	17	2%	9	2	11	3%
50-59	14	10	24	3%	15	2	17	5%
60-79	81	54	135	19%	77	13	90	28%
80-89	69	33	102	15%	53	8	61	19%
90-100	74	40	114	16%	57	9	66	20%
Missing Data	91	207	298	43%	39	41	80	25%
Means	78.5	77.5	78.1		78.6	78.0	78.5	
<b>SAT Critical Thinking</b>								
0-399	.	3	3	0%	.	.	.	.
400-499	11	24	35	5%	7	4	11	3%
500-599	26	112	138	20%	19	21	40	12%
600-699	23	67	90	13%	7	21	28	9%
700-800	2	3	5	1%	2	.	2	1%
Missing Data	280	143	423	61%	215	29	244	75%
Means	579	569	571		562	581	573	
<b>SAT Math</b>								
0-399	1	.	1	0%	.	.	.	.
400-499	10	6	16	2%	3	.	3	1%
500-599	22	96	118	17%	15	23	38	12%
600-699	26	94	120	17%	16	20	36	11%
700-800	3	13	16	2%	1	3	4	1%
Missing Data	280	143	423	61%	215	29	244	75%
Means	575	597	592		588	601	595	

## Fall 2014 Freshman Profile

### Fall 2014 CDHE Index Distribution of Admitted Applicants by Enrollment Status(Business)



### Fall 2014 ACT Composite Distribution of Admitted Applicants by Enrollment Status(Business)





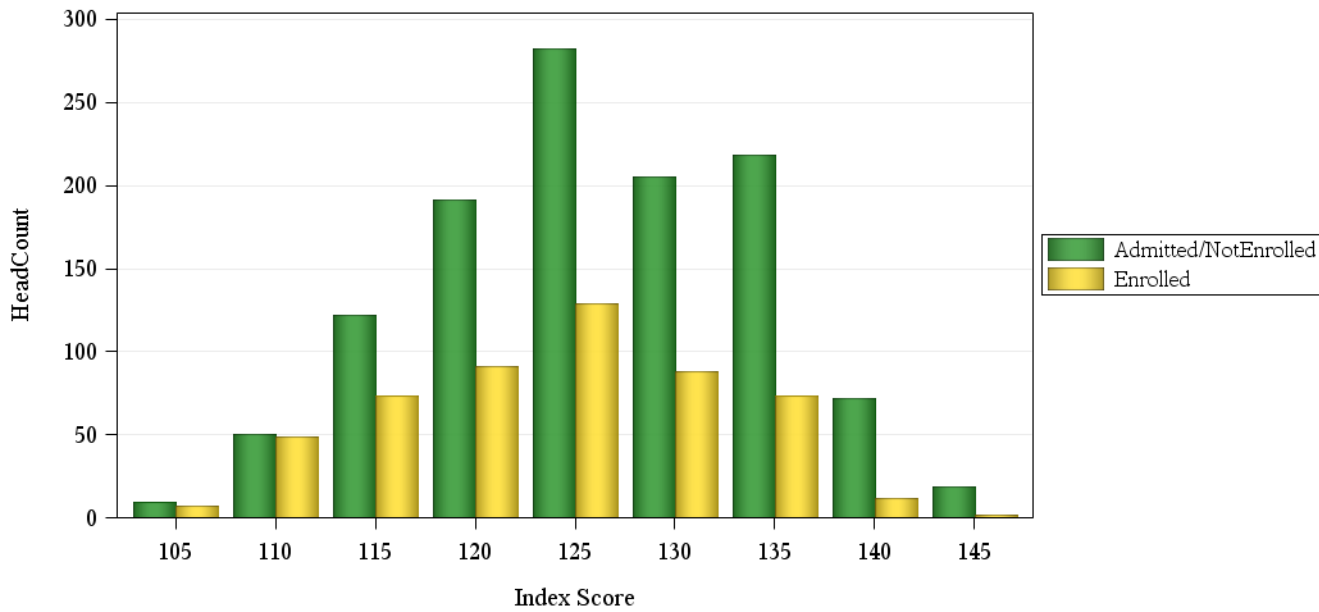
# Fall 2014 Freshman Profile

## Engineering Admitted Applicants

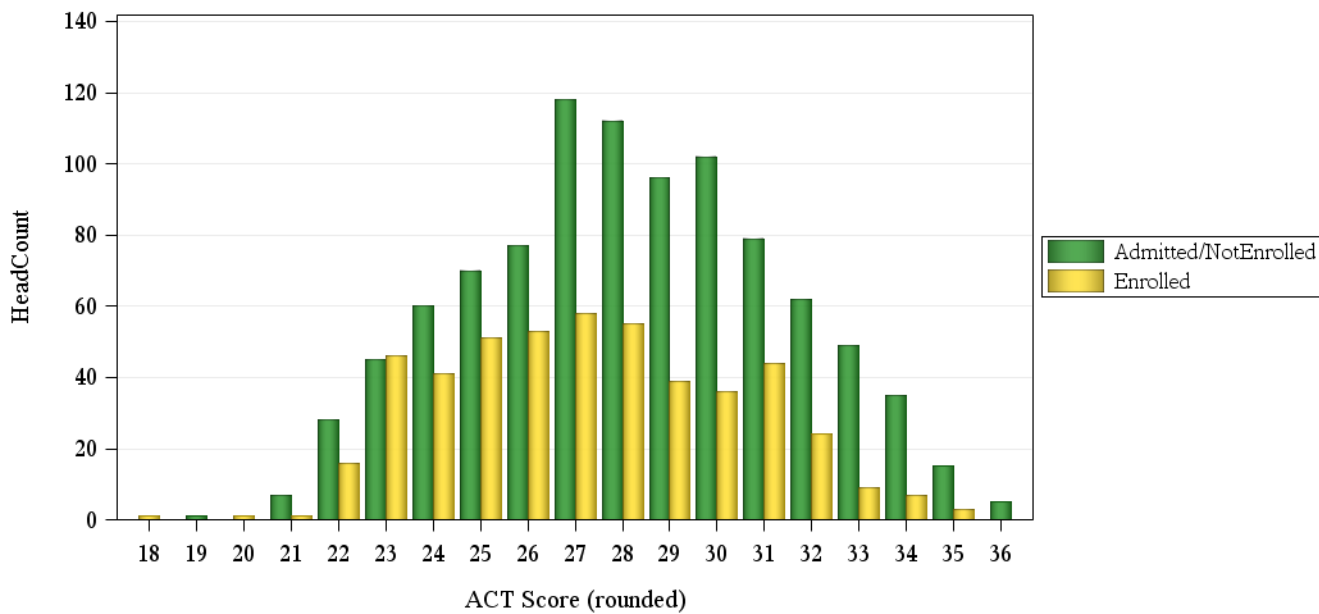
	Not Enrolled (N=1168)				Enrolled(N= 525)			
	Res	Nonres	Total	Percent	Res	Nonres	Total	Percent
<b>ACT Composite</b>								
15-18	.	.	.	.	1	.	1	0%
19-22	19	17	36	3%	14	4	18	3%
23-26	151	101	252	22%	162	29	191	36%
27-36	387	286	673	58%	197	78	275	52%
Missing Data	10	197	207	18%	2	38	40	8%
Means	28.2	28.2	28.2		27.0	27.9	27.2	
<b>CCHE Index</b>								
101-114	43	47	90	8%	63	18	81	15%
115-160	524	554	1,078	92%	313	130	443	84%
Missing Data	.	.	.	.	.	1	1	0%
Means	127	126	126		123	125	124	
<b>HS GPA</b>								
3.0-3.59	71	112	183	16%	71	27	98	19%
3.6-4.00	276	333	609	52%	203	85	288	55%
4.01-high	220	156	376	32%	102	36	138	26%
Missing Data	.	.	.	.	.	1	1	0%
Means	3.95	3.86	3.91		3.86	3.85	3.86	
<b>HS Rank</b>								
0-29	1	.	1	0%	.	1	1	0%
30-49	3	2	5	0%	4	1	5	1%
50-59	14	23	37	3%	27	.	27	5%
60-79	105	78	183	16%	96	26	122	23%
80-89	109	62	171	15%	82	21	103	20%
90-100	192	114	306	26%	114	23	137	26%
Missing Data	143	322	465	40%	53	77	130	25%
Means	84.7	82.7	83.9		81.1	82.1	81.3	
<b>SAT Critical Thinking</b>								
0-399	1	2	3	0%	.	.	.	.
400-499	15	32	47	4%	5	10	15	3%
500-599	54	157	211	18%	18	39	57	11%
600-699	63	144	207	18%	24	33	57	11%
700-800	21	23	44	4%	5	2	7	1%
Missing Data	413	243	656	56%	324	65	389	74%
Means	602	588	592		595	579	585	
<b>SAT Math</b>								
400-499	4	4	8	1%	.	.	.	.
500-599	30	66	96	8%	12	23	35	7%
600-699	82	202	284	24%	31	52	83	16%
700-800	38	86	124	11%	9	9	18	3%
Missing Data	413	243	656	56%	324	65	389	74%
Means	647	647	647		634	633	634	

## Fall 2014 Freshman Profile

### Fall 2014 CDHE Index Distribution of Admitted Applicants by Enrollment Status(Engineering)



### Fall 2014 ACT Composite Distribution of Admitted Applicants by Enrollment Status(Engineering)



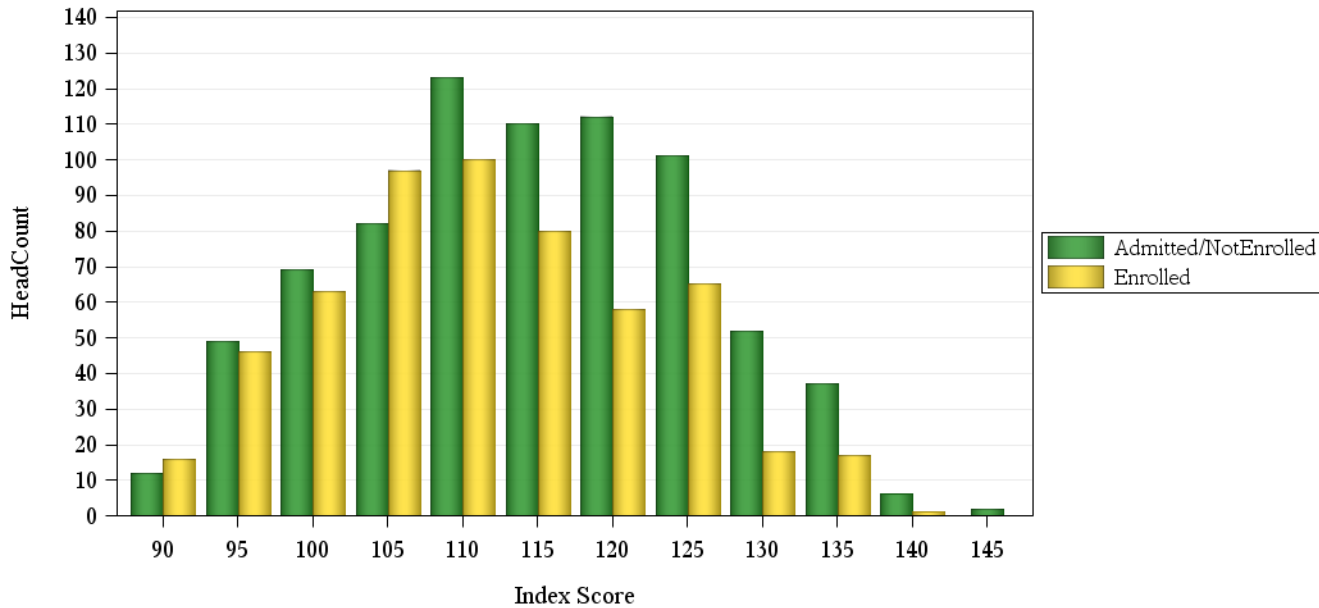
# Fall 2014 Freshman Profile

## Health and Human Sciences Admitted Applicants

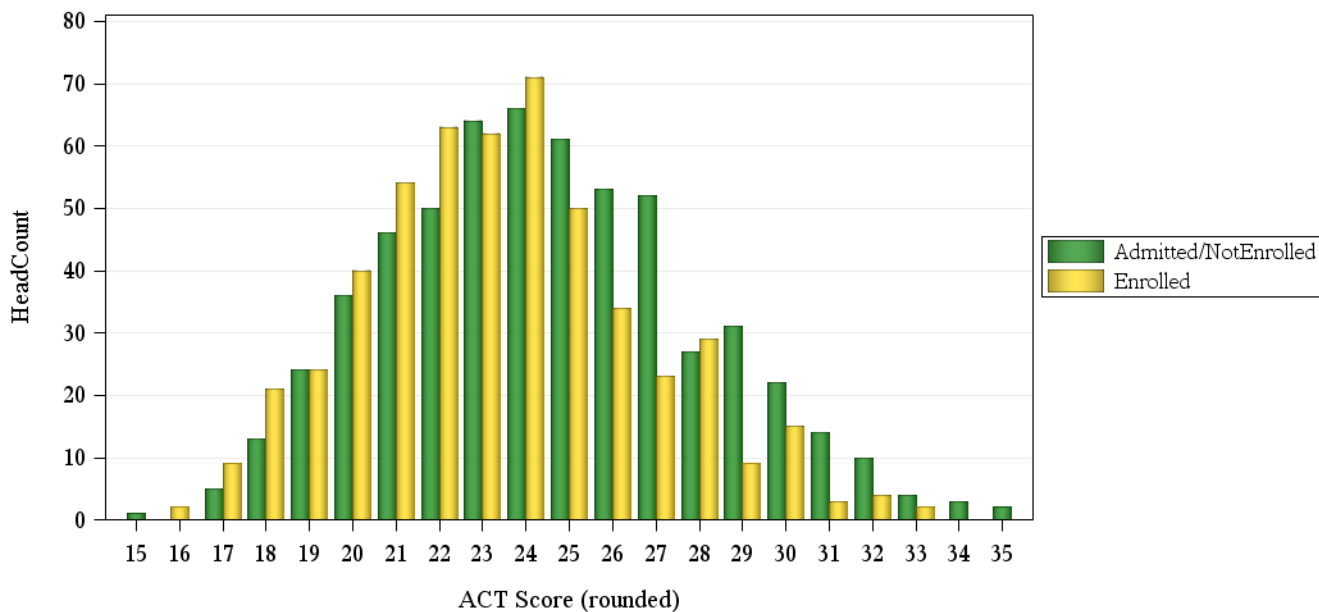
	Not Enrolled (N= 767)				Enrolled(N= 562)			
	Res	Nonres	Total	Percent	Res	Nonres	Total	Percent
<b>ACT Composite</b>								
15-18	12	7	19	2%	28	4	32	6%
19-22	86	70	156	20%	164	17	181	32%
23-26	129	115	244	32%	187	30	217	39%
27-36	72	93	165	22%	63	22	85	15%
Missing Data	6	177	183	24%	7	40	47	8%
Means	24.1	24.9	24.5		23.2	24.4	23.4	
<b>CCHE Index</b>								
0-90	.	1	1	0%	5	.	5	1%
091-100	36	55	91	12%	68	17	85	15%
101-114	118	176	294	38%	222	43	265	47%
115-160	149	220	369	48%	154	52	206	37%
Missing Data	2	10	12	2%	.	1	1	0%
Means	115	114	114		111	113	111	
<b>HS GPA</b>								
2.5-2.99	9	35	44	6%	30	6	36	6%
3.0-3.59	109	173	282	37%	211	42	253	45%
3.6-4.00	135	192	327	43%	159	53	212	38%
4.01-high	52	56	108	14%	49	11	60	11%
Missing Data	.	6	6	1%	.	1	1	0%
Means	3.68	3.59	3.62		3.54	3.58	3.55	
<b>HS Rank</b>								
0-29	2	2	4	1%	9	2	11	2%
30-49	24	18	42	5%	63	7	70	12%
50-59	25	19	44	6%	51	7	58	10%
60-79	74	60	134	17%	122	17	139	25%
80-89	53	32	85	11%	72	10	82	15%
90-100	46	44	90	12%	48	10	58	10%
Missing Data	81	287	368	48%	84	60	144	26%
Means	73.5	73.5	73.5		67.9	70.0	68.2	
<b>SAT Critical Thinking</b>								
0-399	.	2	2	0%	.	.	.	.
400-499	6	67	73	10%	11	19	30	5%
500-599	24	129	153	20%	23	31	54	10%
600-699	7	66	73	10%	13	14	27	5%
700-800	1	4	5	1%	.	1	1	0%
Missing Data	267	194	461	60%	402	48	450	80%
Means	552	548	548		543	537	539	
<b>SAT Math</b>								
0-399	.	6	6	1%	1	.	1	0%
400-499	7	55	62	8%	9	13	22	4%
500-599	22	132	154	20%	24	39	63	11%
600-699	9	68	77	10%	12	13	25	4%
700-800	.	7	7	1%	1	.	1	0%
Missing Data	267	194	461	60%	402	48	450	80%
Means	549	551	551		540	544	542	

## Fall 2014 Freshman Profile

### Fall 2014 CDHE Index Distribution of Admitted Applicants by Enrollment Status(Health and Human Sciences)



### Fall 2014 ACT Composite Distribution of Admitted Applicants by Enrollment Status(Health and Human Sciences)



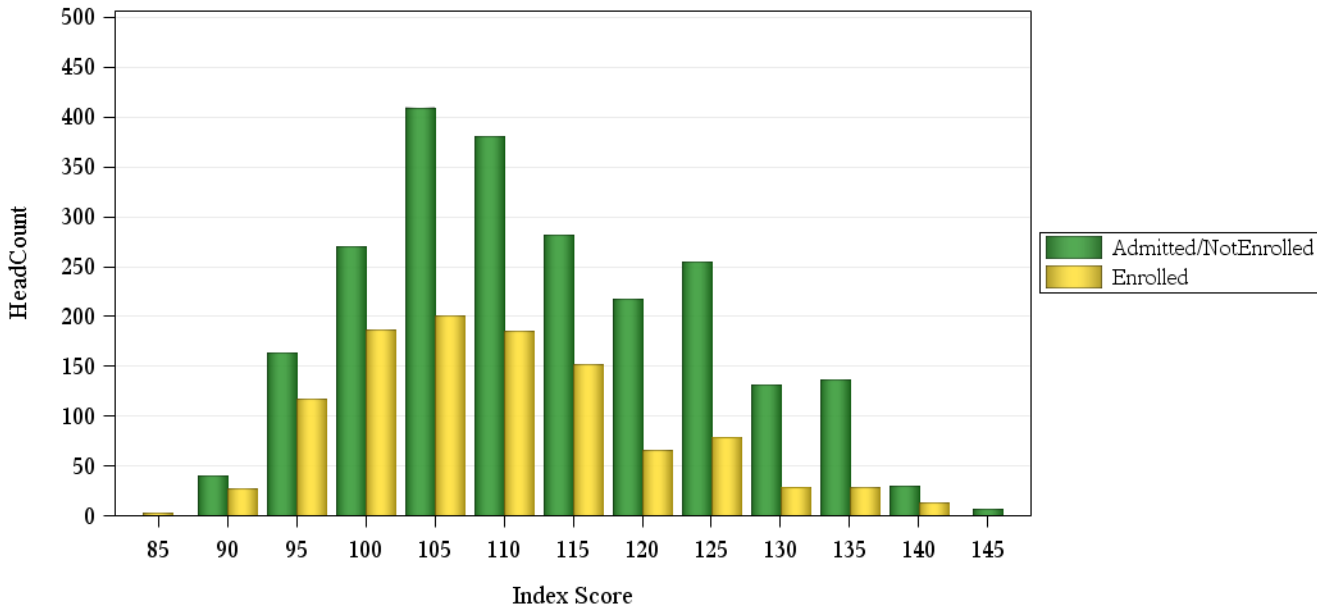
# Fall 2014 Freshman Profile

## Intra-University Admitted Applicants

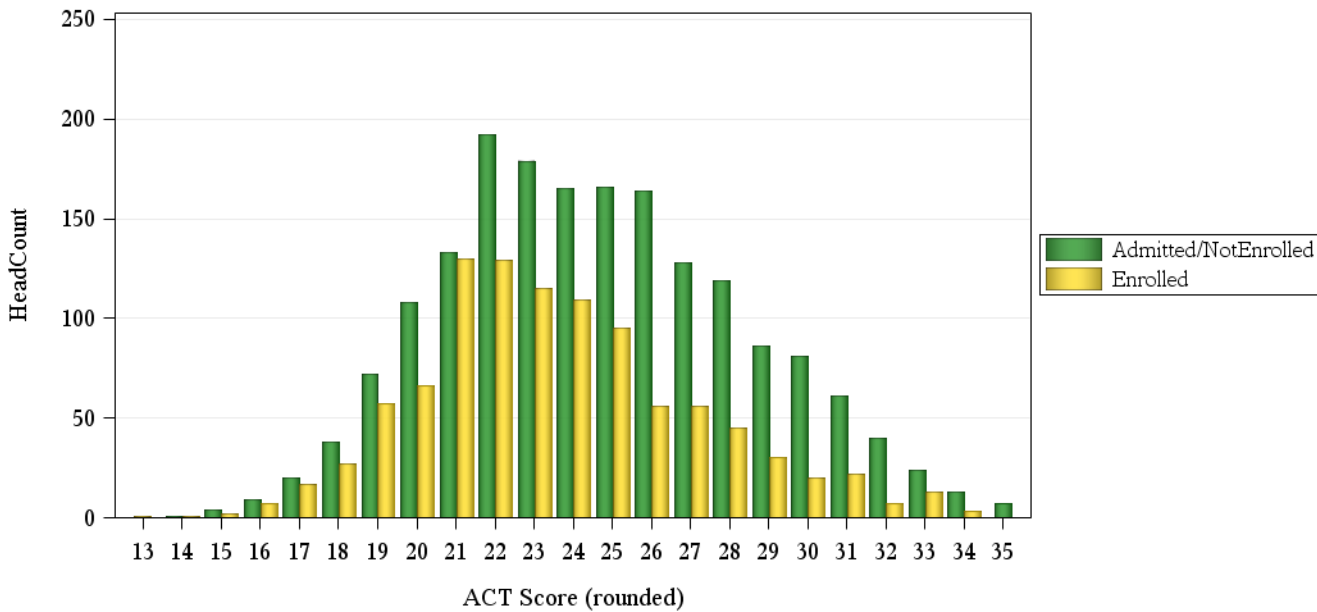
	Not Enrolled (N=2429)				Enrolled(N=1132)			
	Res	Nonres	Total	Percent	Res	Nonres	Total	Percent
<b>ACT Composite</b>								
0-14	.	1	1	0%	2	.	2	0%
15-18	42	29	71	3%	50	3	53	5%
19-22	326	179	505	21%	336	46	382	34%
23-26	418	256	674	28%	316	59	375	33%
27-36	308	251	559	23%	144	52	196	17%
Missing Data	22	597	619	25%	11	113	124	11%
Means	24.4	25.0	24.7		23.3	24.8	23.5	
<b>CCHE Index</b>								
0-90	2	4	6	0%	10	.	10	1%
091-100	138	183	321	13%	163	43	206	18%
101-114	497	551	1,048	43%	453	113	566	50%
115-160	474	471	945	39%	232	72	304	27%
Missing Data	5	104	109	4%	1	45	46	4%
Means	113	112	113		109	110	109	
<b>HS GPA</b>								
2.0-2.49	1	.	1	0%	.	.	.	.
2.5-2.99	67	140	207	9%	88	41	129	11%
3.0-3.59	502	603	1,105	45%	473	118	591	52%
3.6-4.00	379	367	746	31%	245	54	299	26%
4.01-high	167	129	296	12%	52	15	67	6%
Missing Data	.	74	74	3%	1	45	46	4%
Means	3.56	3.47	3.51		3.42	3.34	3.40	
<b>HS Rank</b>								
0-29	11	19	30	1%	19	7	26	2%
30-49	120	79	199	8%	169	18	187	17%
50-59	106	64	170	7%	106	14	120	11%
60-79	255	166	421	17%	253	26	279	25%
80-89	158	82	240	10%	100	11	111	10%
90-100	141	115	256	11%	70	13	83	7%
Missing Data	325	788	1,113	46%	142	184	326	29%
Means	70.0	70.0	70.0		63.9	62.9	63.8	
<b>SAT Critical Thinking</b>								
0-399	3	14	17	1%	5	3	8	1%
400-499	38	177	215	9%	17	26	43	4%
500-599	60	340	400	16%	28	44	72	6%
600-699	66	162	228	9%	23	26	49	4%
700-800	5	23	28	1%	2	6	8	1%
Missing Data	944	597	1,541	63%	784	168	952	84%
Means	566	545	549		540	546	544	
<b>SAT Math</b>								
0-399	1	12	13	1%	2	1	3	0%
400-499	28	138	166	7%	19	23	42	4%
500-599	83	342	425	17%	34	53	87	8%
600-699	52	190	242	10%	17	25	42	4%
700-800	8	34	42	2%	4	3	7	1%
Missing Data	944	597	1,541	63%	783	168	951	84%
Means	563	558	559		550	548	549	

## Fall 2014 Freshman Profile

### Fall 2014 CDHE Index Distribution of Admitted Applicants by Enrollment Status(Intra-University)



### Fall 2014 ACT Composite Distribution of Admitted Applicants by Enrollment Status(Intra-University)



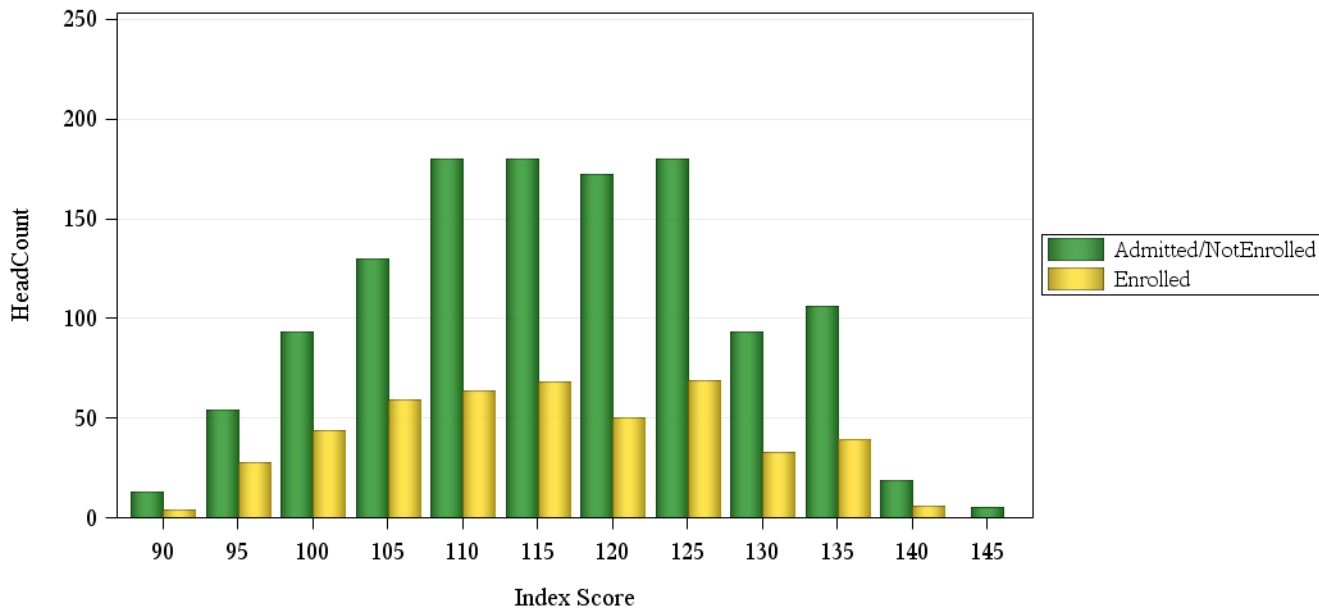
# Fall 2014 Freshman Profile

## Liberal Arts Admitted Applicants

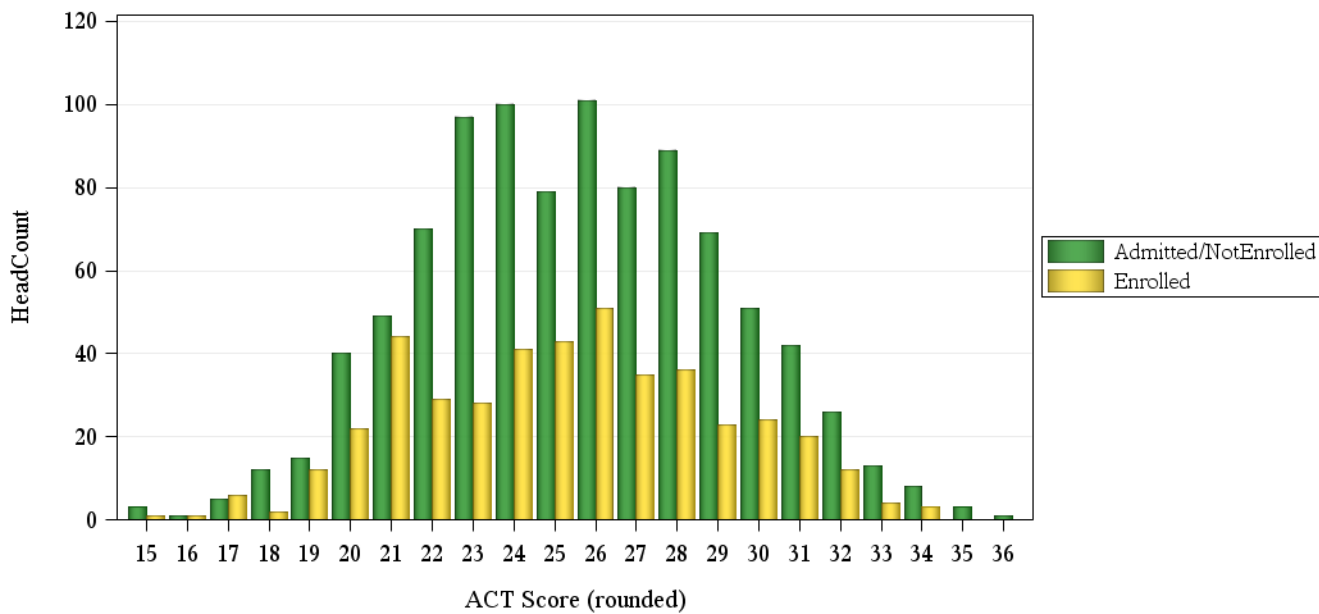
	Not Enrolled (N=1251)				Enrolled(N= 470)			
	Res	Nonres	Total	Percent	Res	Nonres	Total	Percent
<b>ACT Composite</b>								
15-18	11	10	21	2%	8	2	10	2%
19-22	107	67	174	14%	98	9	107	23%
23-26	229	148	377	30%	127	36	163	35%
27-36	224	158	382	31%	117	40	157	33%
Missing Data	15	282	297	24%	5	28	33	7%
Means	25.6	25.6	25.6		24.9	26.2	25.2	
<b>CCHE Index</b>								
0-90	.	1	1	0%	1	.	1	0%
091-100	37	70	107	9%	37	10	47	10%
101-114	191	252	443	35%	141	32	173	37%
115-160	356	318	674	54%	175	68	243	52%
Missing Data	2	24	26	2%	1	5	6	1%
Means	118	115	116		115	117	115	
<b>HS GPA</b>								
2.5-2.99	25	55	80	6%	20	8	28	6%
3.0-3.59	195	274	469	37%	156	48	204	43%
3.6-4.00	242	248	490	39%	118	41	159	34%
4.01-high	123	72	195	16%	61	16	77	16%
Missing Data	1	16	17	1%	.	2	2	0%
Means	3.69	3.55	3.62		3.60	3.59	3.60	
<b>HS Rank</b>								
0-29	5	10	15	1%	8	1	9	2%
30-49	54	21	75	6%	39	6	45	10%
50-59	51	33	84	7%	40	11	51	11%
60-79	130	87	217	17%	91	16	107	23%
80-89	75	72	147	12%	53	8	61	13%
90-100	107	65	172	14%	66	14	80	17%
Missing Data	164	377	541	43%	58	59	117	25%
Means	73.0	73.8	73.3		71.4	72.1	71.5	
<b>SAT Critical Thinking</b>								
0-399	.	5	5	0%	1	1	2	0%
400-499	7	50	57	5%	5	7	12	3%
500-599	44	160	204	16%	24	22	46	10%
600-699	48	119	167	13%	16	23	39	8%
700-800	22	32	54	4%	3	3	6	1%
Missing Data	465	299	764	61%	306	59	365	78%
Means	614	579	587		587	584	585	
<b>SAT Math</b>								
0-399	.	6	6	0%	1	.	1	0%
400-499	17	80	97	8%	7	10	17	4%
500-599	43	157	200	16%	20	27	47	10%
600-699	49	102	151	12%	18	19	37	8%
700-800	12	21	33	3%	3	.	3	1%
Missing Data	465	299	764	61%	306	59	365	78%
Means	586	558	565		573	562	567	

## Fall 2014 Freshman Profile

### Fall 2014 CDHE Index Distribution of Admitted Applicants by Enrollment Status(Liberal Arts)



### Fall 2014 ACT Composite Distribution of Admitted Applicants by Enrollment Status(Liberal Arts)





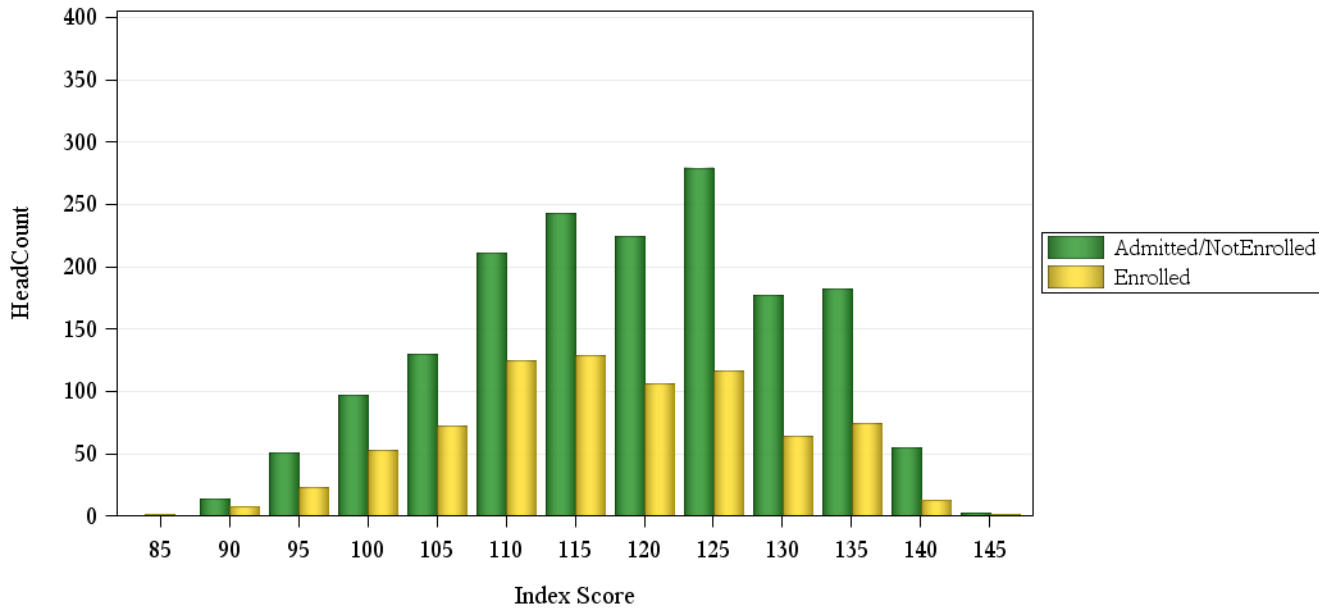
# Fall 2014 Freshman Profile

## Natural Sciences Admitted Applicants

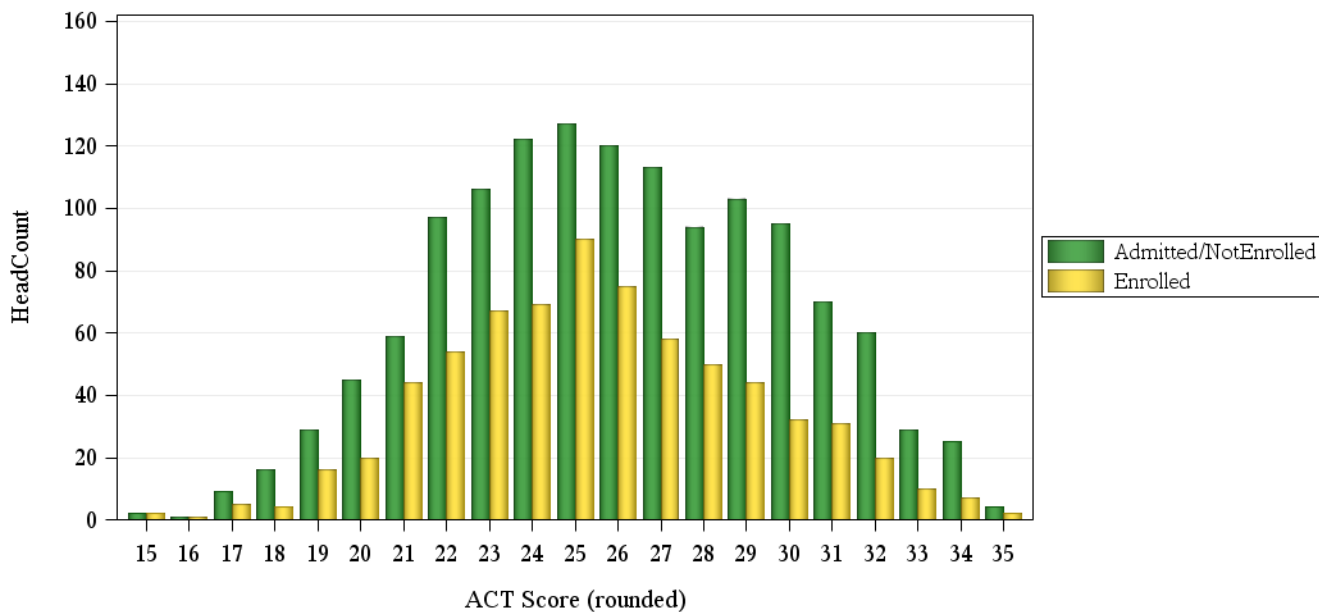
	Not Enrolled (N=1705)				Enrolled(N= 789)			
	Res	Nonres	Total	Percent	Res	Nonres	Total	Percent
<b>ACT Composite</b>								
15-18	19	9	28	2%	10	2	12	2%
19-22	145	85	230	13%	117	17	134	17%
23-26	259	216	475	28%	248	53	301	38%
27-36	293	300	593	35%	174	80	254	32%
Missing Data	11	368	379	22%	9	79	88	11%
Means	25.7	26.4	26.0		25.2	26.6	25.5	
<b>CCHE Index</b>								
0-90	.	1	1	0%	4	2	6	1%
091-100	40	66	106	6%	36	19	55	7%
101-114	212	279	491	29%	213	48	261	33%
115-160	474	593	1,067	63%	304	157	461	58%
Missing Data	1	39	40	2%	1	5	6	1%
Means	119	119	119		116	119	117	
<b>HS GPA</b>								
2.5-2.99	15	48	63	4%	27	14	41	5%
3.0-3.59	197	301	498	29%	207	69	276	35%
3.6-4.00	337	412	749	44%	226	99	325	41%
4.01-high	178	196	374	22%	97	46	143	18%
Missing Data	.	21	21	1%	1	3	4	1%
Means	3.78	3.69	3.73		3.65	3.71	3.67	
<b>HS Rank</b>								
0-29	3	6	9	1%	5	3	8	1%
30-49	39	33	72	4%	54	7	61	8%
50-59	37	38	75	4%	57	8	65	8%
60-79	156	143	299	18%	162	36	198	25%
80-89	143	108	251	15%	91	23	114	14%
90-100	186	136	322	19%	87	34	121	15%
Missing Data	163	514	677	40%	102	120	222	28%
Means	79.0	76.9	78.1		72.3	76.0	73.0	
<b>SAT Critical Thinking</b>								
0-399	1	7	8	0%	.	3	3	0%
400-499	14	86	100	6%	12	20	32	4%
500-599	48	234	282	17%	41	60	101	13%
600-699	47	180	227	13%	26	46	72	9%
700-800	8	29	37	2%	7	7	14	2%
Missing Data	609	442	1,051	62%	472	95	567	72%
Means	588	572	575		582	573	577	
<b>SAT Math</b>								
0-399	.	1	1	0%	.	2	2	0%
400-499	10	99	109	6%	9	20	29	4%
500-599	44	202	246	14%	44	61	105	13%
600-699	49	177	226	13%	26	46	72	9%
700-800	15	57	72	4%	7	7	14	2%
Missing Data	609	442	1,051	62%	472	95	567	72%
Means	605	581	586		577	571	573	

## Fall 2014 Freshman Profile

### Fall 2014 CDHE Index Distribution of Admitted Applicants by Enrollment Status(Natural Sciences)



### Fall 2014 ACT Composite Distribution of Admitted Applicants by Enrollment Status(Natural Sciences)



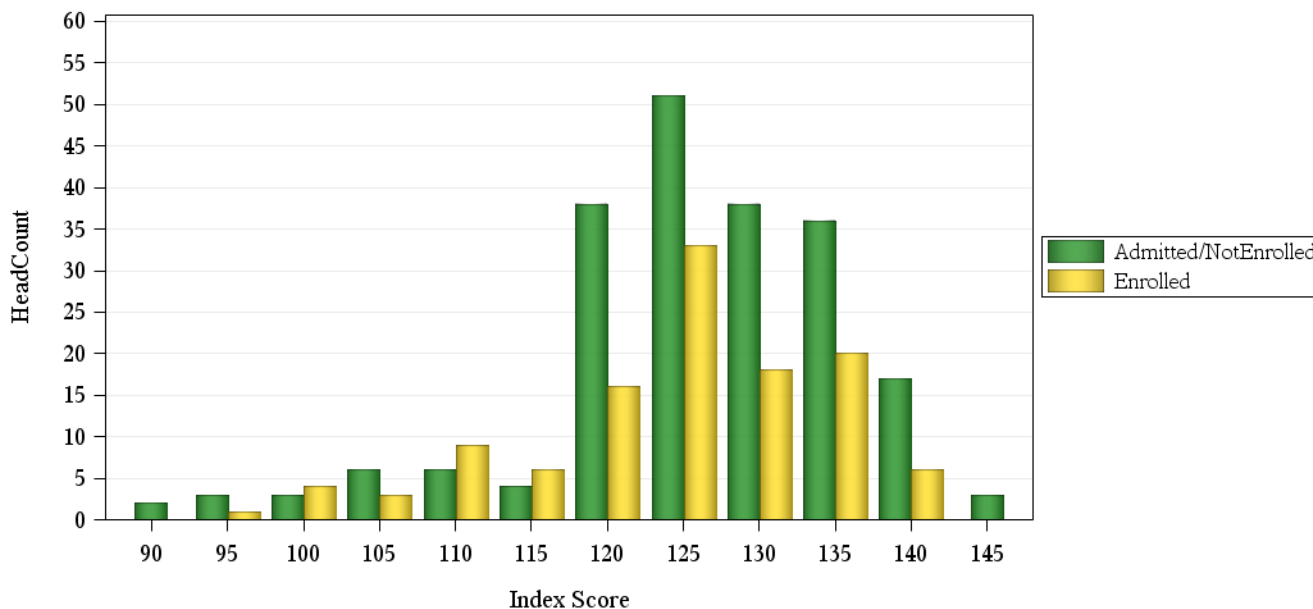
# Fall 2014 Freshman Profile

## Veterinary Medicine + Biomedical Sci Admitted Applicants

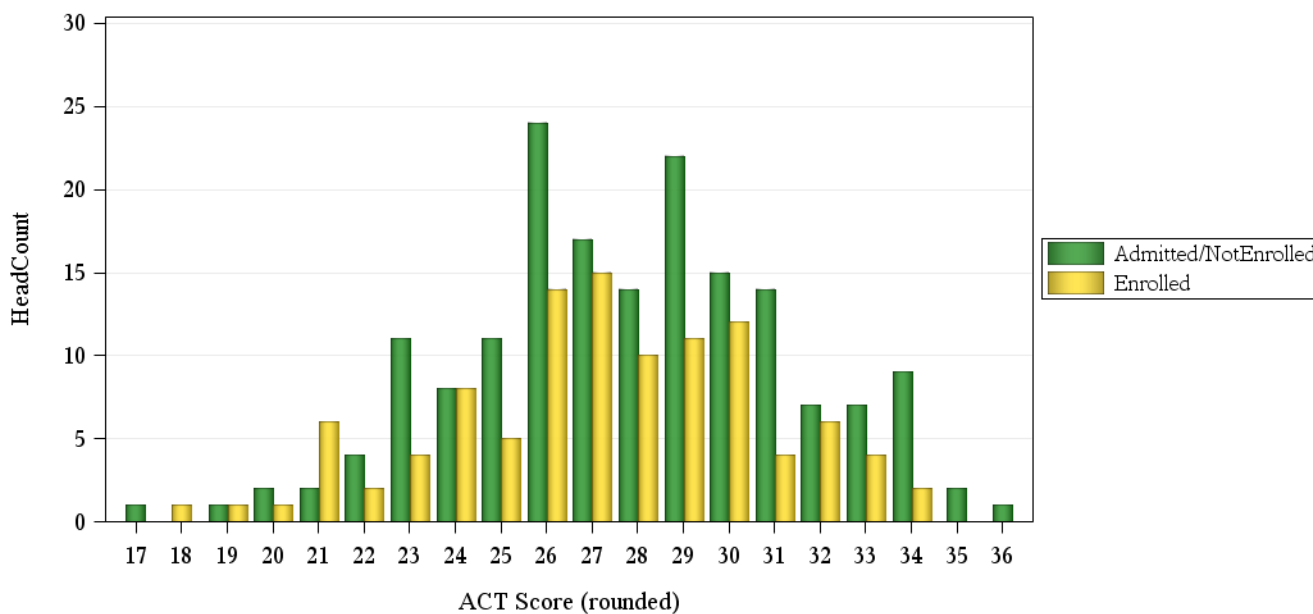
	Not Enrolled (N= 209)				Enrolled(N= 117)			
	Res	Nonres	Total	Percent	Res	Nonres	Total	Percent
<b>ACT Composite</b>								
15-18	.	1	1	0%	1	.	1	1%
19-22	5	4	9	4%	9	1	10	9%
23-26	31	23	54	26%	28	3	31	26%
27-36	49	59	108	52%	47	17	64	55%
Missing Data	5	32	37	18%	1	10	11	9%
Means	27.7	28.0	27.8		26.9	28.1	27.2	
<b>CCHE Index</b>								
091-100	2	5	7	3%	3	1	4	3%
101-114	6	8	14	7%	15	2	17	15%
115-160	82	104	186	89%	68	27	95	81%
Missing Data	.	2	2	1%	.	1	1	1%
Means	127	125	126		123	127	124	
<b>HS GPA</b>								
2.5-2.99	.	3	3	1%	2	.	2	2%
3.0-3.59	7	17	24	11%	12	3	15	13%
3.6-4.00	34	62	96	46%	38	17	55	47%
4.01-high	49	36	85	41%	34	10	44	38%
Missing Data	.	1	1	0%	.	1	1	1%
Means	4.02	3.87	3.94		3.89	3.99	3.92	
<b>HS Rank</b>								
0-29	.	.	.	.	1	.	1	1%
30-49	1	2	3	1%	4	.	4	3%
50-59	4	1	5	2%	2	2	4	3%
60-79	14	13	27	13%	16	.	16	14%
80-89	8	10	18	9%	19	3	22	19%
90-100	40	28	68	33%	26	11	37	32%
Missing Data	23	65	88	42%	18	15	33	28%
Means	85.8	85.8	85.8		81.1	87.1	82.2	
<b>SAT Critical Thinking</b>								
0-399	1	.	1	0%	.	.	.	.
400-499	2	10	12	6%	2	1	3	3%
500-599	4	22	26	12%	7	6	13	11%
600-699	18	25	43	21%	5	6	11	9%
700-800	3	10	13	6%	1	6	7	6%
Missing Data	62	52	114	55%	71	12	83	71%
Means	623	602	608		589	635	615	
<b>SAT Math</b>								
0-399	.	2	2	1%	.	.	.	.
400-499	2	2	4	2%	4	.	4	3%
500-599	5	26	31	15%	2	10	12	10%
600-699	16	27	43	21%	6	9	15	13%
700-800	5	10	15	7%	3	.	3	3%
Missing Data	62	52	114	55%	71	12	83	71%
Means	636	601	611		616	600	607	

## Fall 2014 Freshman Profile

### Fall 2014 CDHE Index Distribution of Admitted Applicants by Enrollment Status(Veterinary Medicine + Biomedical Sci)



### Fall 2014 ACT Composite Distribution of Admitted Applicants by Enrollment Status(Veterinary Medicine + Biomedical Sci)



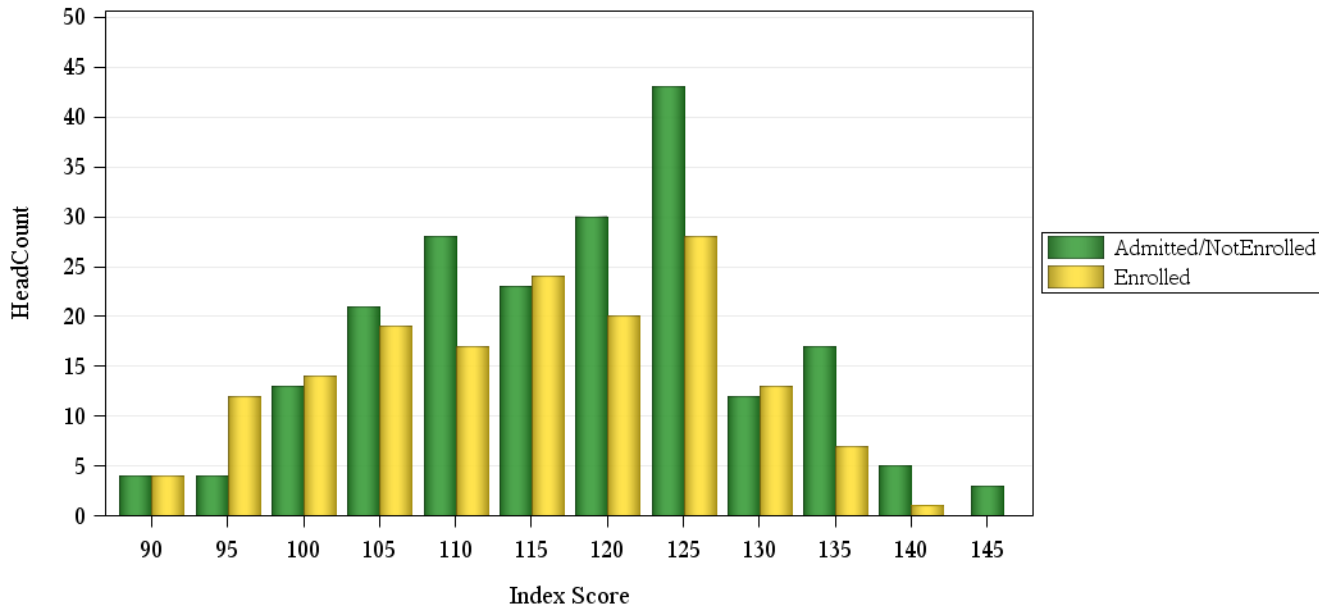
# Fall 2014 Freshman Profile

## Warner College of Natural Resources Admitted Applicants

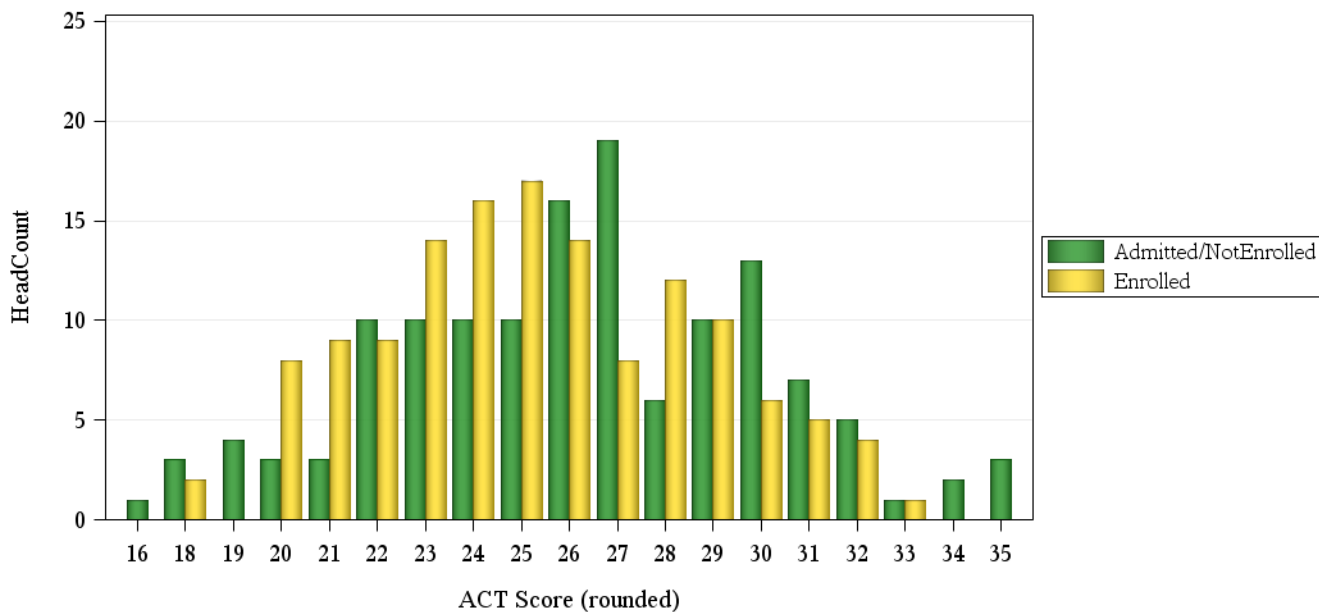
	Not Enrolled (N= 204)				Enrolled(N= 162)			
	Res	Nonres	Total	Percent	Res	Nonres	Total	Percent
<b>ACT Composite</b>								
15-18	1	3	4	2%	2	.	2	1%
19-22	11	9	20	10%	18	8	26	16%
23-26	23	23	46	23%	45	16	61	38%
27-36	18	48	66	32%	27	19	46	28%
Missing Data	1	67	68	33%	2	25	27	17%
Means	25.1	27.0	26.2		25.0	26.0	25.3	
<b>CCHE Index</b>								
091-100	4	13	17	8%	13	8	21	13%
101-114	14	48	62	30%	41	17	58	36%
115-160	36	88	124	61%	40	40	80	49%
Missing Data	.	1	1	0%	.	3	3	2%
Means	118	118	118		114	116	115	
<b>HS GPA</b>								
2.5-2.99	2	11	13	6%	10	8	18	11%
3.0-3.59	11	56	67	33%	38	23	61	38%
3.6-4.00	32	56	88	43%	31	27	58	36%
4.01-high	9	27	36	18%	15	8	23	14%
Missing Data	.	.	.	.	.	2	2	1%
Means	3.75	3.60	3.64		3.51	3.55	3.53	
<b>HS Rank</b>								
0-29	.	2	2	1%	1	2	3	2%
30-49	3	9	12	6%	13	5	18	11%
50-59	2	7	9	4%	13	4	17	10%
60-79	9	17	26	13%	23	8	31	19%
80-89	10	8	18	9%	17	6	23	14%
90-100	12	20	32	16%	10	10	20	12%
Missing Data	18	87	105	51%	17	33	50	31%
Means	80.0	72.6	75.3		67.4	70.1	68.2	
<b>SAT Critical Thinking</b>								
0-399	.	2	2	1%	.	.	.	.
400-499	2	7	9	4%	1	7	8	5%
500-599	1	46	47	23%	3	15	18	11%
600-699	6	32	38	19%	4	12	16	10%
700-800	1	6	7	3%	1	1	2	1%
Missing Data	44	57	101	50%	85	33	118	73%
Means	606	581	583		588	572	575	
<b>SAT Math</b>								
0-399	.	.	.	.	.	1	1	1%
400-499	2	15	17	8%	1	6	7	4%
500-599	4	44	48	24%	3	14	17	10%
600-699	4	32	36	18%	2	13	15	9%
700-800	.	2	2	1%	3	1	4	2%
Missing Data	44	57	101	50%	85	33	118	73%
Means	559	572	571		628	559	573	

## Fall 2014 Freshman Profile

### Fall 2014 CDHE Index Distribution of Admitted Applicants by Enrollment Status(Warner College of Natural Resources)



### Fall 2014 ACT Composite Distribution of Admitted Applicants by Enrollment Status(Warner College of Natural Resources)



**First-Year CSU GPA**  
**Fall 2013 Cohort**

**First-Year CSU GPA (Fall 2013 Cohort) by Admission Score**

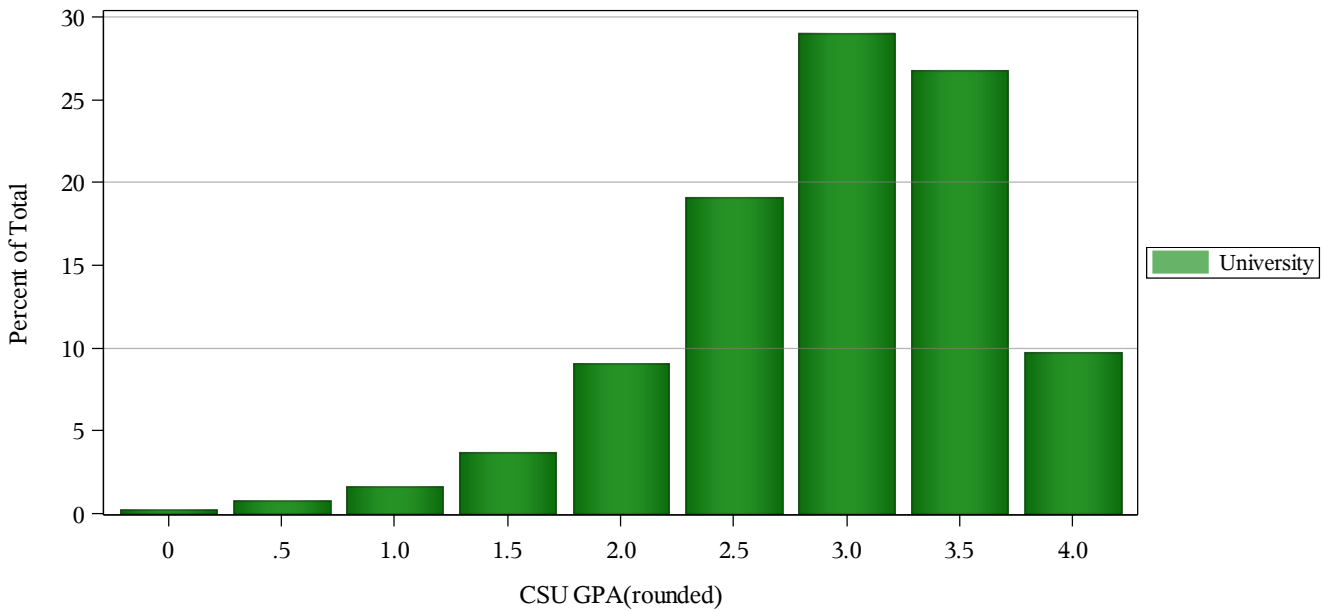
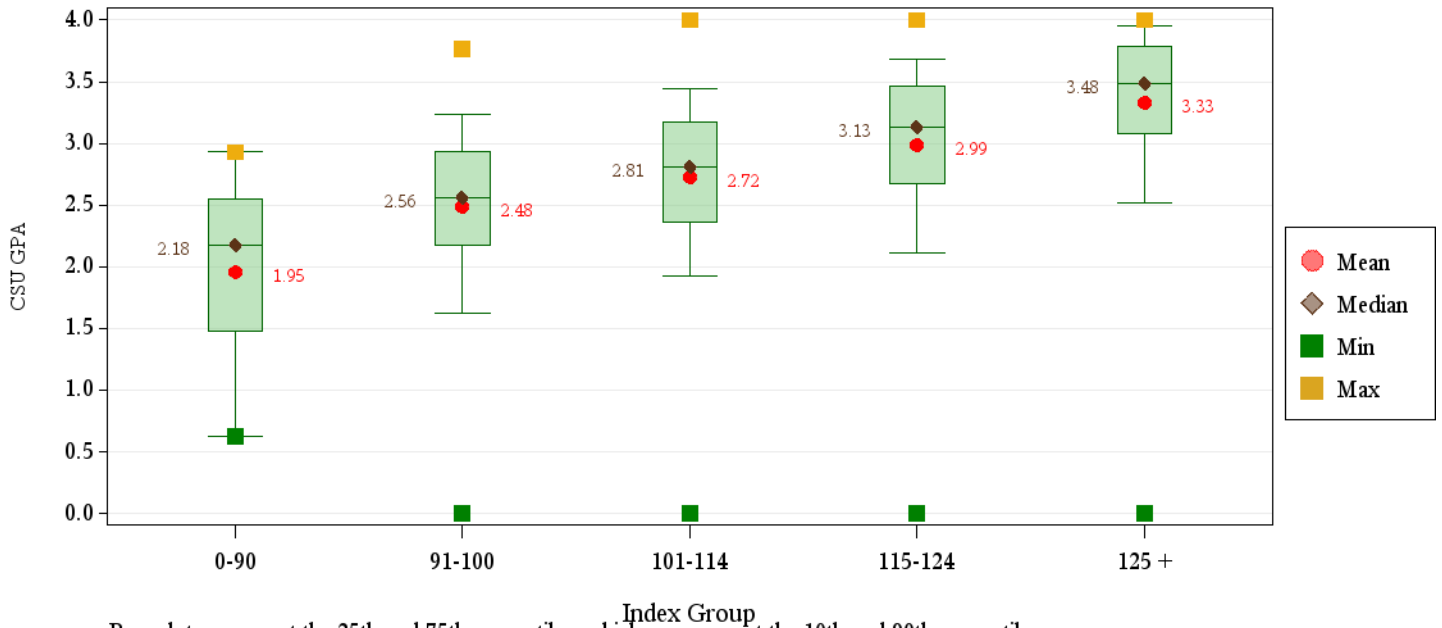
**University Summary**

	CSU GPA				Total
	0.0-1.9	2.0-2.9	3.0-3.5	3.6-high	
<b>Total</b>	<b>400</b>	<b>1,571</b>	<b>1,523</b>	<b>650</b>	<b>4,144</b>
<b>HS GPA</b>					
2.0-2.49	1	1	0	0	2
2.5-2.99	56	135	41	2	234
3.0-3.59	213	826	417	64	1,520
3.6-4.00	109	505	778	296	1,688
4.01-high	17	84	263	282	646
Missing Data	4	20	24	6	54
<b>HS Rank</b>					
0-29	9	19	9	0	37
30-49	61	181	74	10	326
50-59	54	183	88	12	337
60-79	116	473	392	76	1,057
80-89	37	201	287	102	627
90-100	20	112	269	299	700
Missing Data	103	402	404	151	1,060
<b>SAT Critical Thinking</b>					
0-399	1	6	6	2	15
400-499	25	85	75	9	194
500-599	54	194	185	71	504
600-699	23	75	125	79	302
700-800	4	12	29	38	83
Missing Data	293	1,199	1,103	451	3,046
<b>SAT Math</b>					
0-399	1	4	4	1	10
400-499	21	85	54	9	169
500-599	47	173	193	60	473
600-699	30	101	141	102	374
700-800	8	9	28	27	72
Missing Data	293	1,199	1,103	451	3,046
<b>ACT Composite</b>					
0-14	0	1	1	0	2
15-18	12	65	28	3	108
19-22	107	461	295	52	915
23-26	141	587	620	175	1,523
27-36	89	265	419	360	1,133
Missing Data	51	192	160	60	463
<b>CDHE Index</b>					
0-90	4	5	0	0	9
091-100	79	250	85	7	421
101-114	164	776	497	69	1,506
115-160	146	519	917	568	2,150
Missing Data	7	21	24	6	58



**First-Year CSU GPA (Fall 2013 Cohort) by Admission Score**

**University Summary**



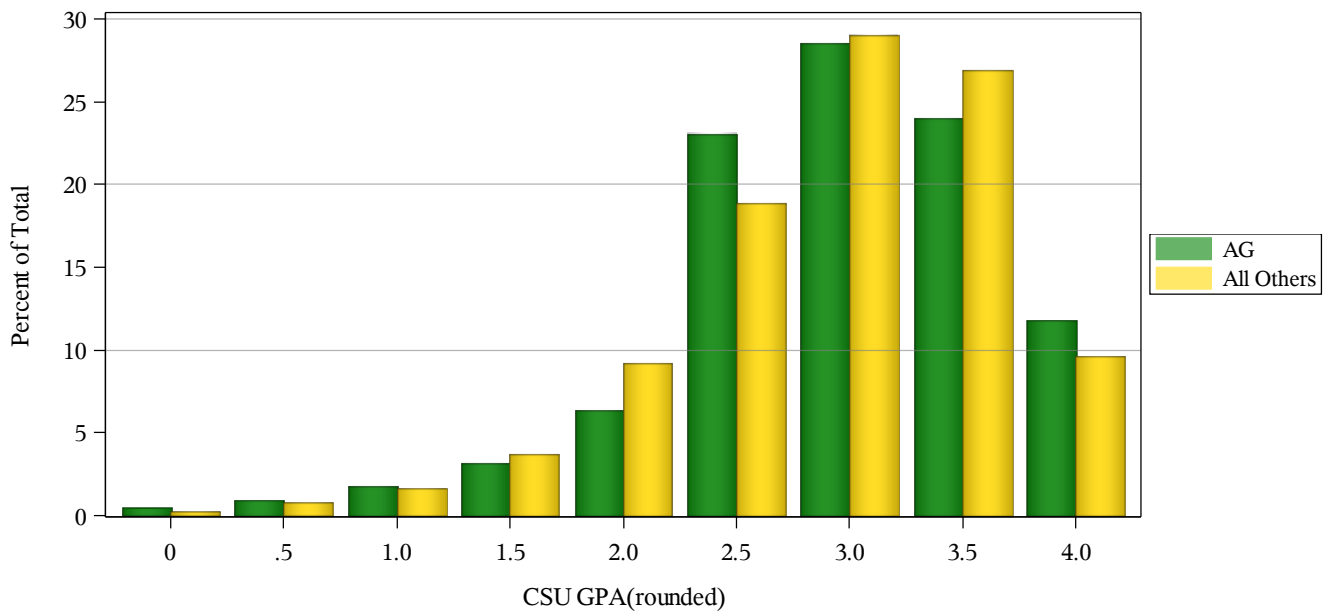
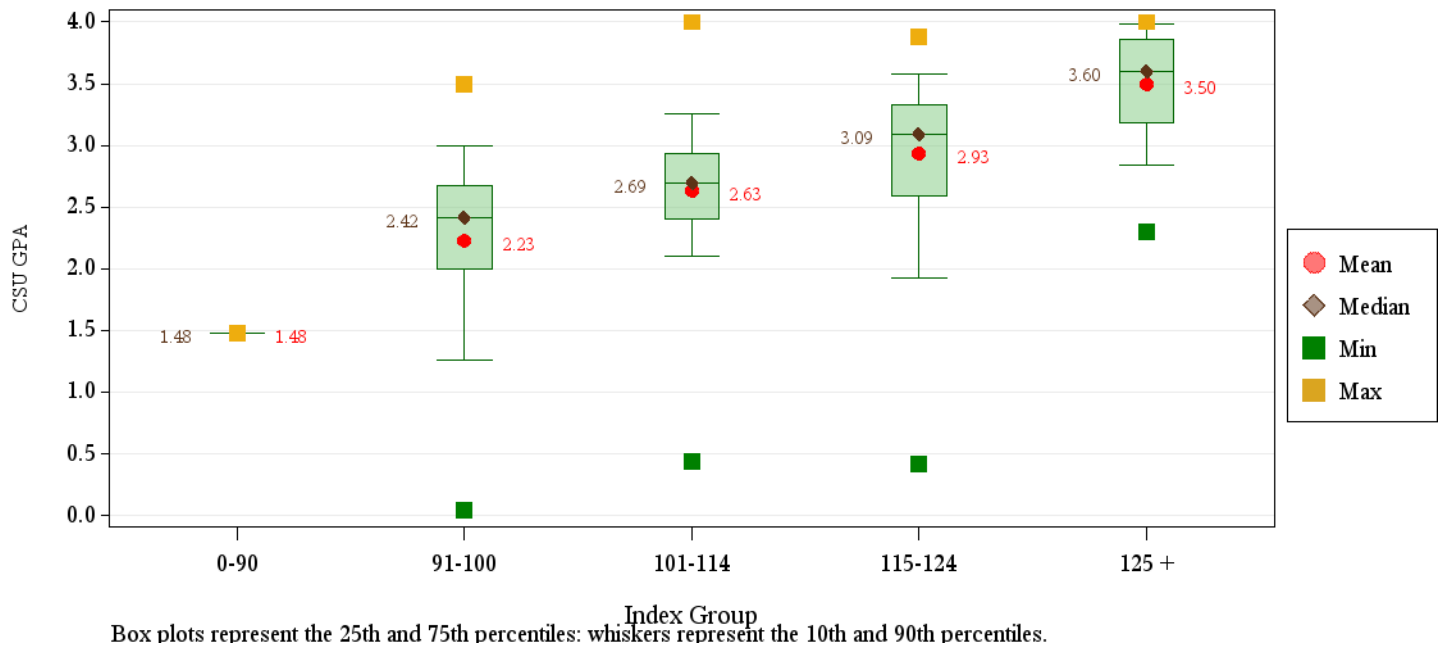
**First-Year CSU GPA (Fall 2013 Cohort) by Admission Score**

**Agricultural Sciences**

	CSU GPA				Total
	0.0-1.9	2.0-2.9	3.0-3.5	3.6-high	
<b>Total</b>	<b>18</b>	<b>91</b>	<b>74</b>	<b>38</b>	<b>221</b>
<b>HS GPA</b>					
2.5-2.99	3	2	1	0	6
3.0-3.59	10	51	14	1	76
3.6-4.00	5	33	43	21	102
4.01-high	0	5	16	16	37
<b>HS Rank</b>					
0-29	0	0	1	0	1
30-49	4	11	1	0	16
50-59	2	4	3	0	9
60-79	3	28	18	1	50
80-89	2	17	12	3	34
90-100	0	8	16	21	45
Missing Data	7	23	23	13	66
<b>SAT Critical Thinking</b>					
0-399	0	1	1	0	2
400-499	3	9	2	0	14
500-599	4	14	22	4	44
600-699	1	4	10	12	27
700-800	1	2	3	3	9
Missing Data	9	61	36	19	125
<b>SAT Math</b>					
400-499	3	7	3	0	13
500-599	4	17	25	6	52
600-699	1	6	8	12	27
700-800	1	0	2	1	4
Missing Data	9	61	36	19	125
<b>ACT Composite</b>					
15-18	2	1	0	0	3
19-22	4	27	11	1	43
23-26	5	29	24	9	67
27-36	1	11	17	16	45
Missing Data	6	23	22	12	63
<b>CDHE Index</b>					
0-90	1	0	0	0	1
091-100	3	7	2	0	12
101-114	7	54	18	2	81
115-160	7	30	54	36	127

**First-Year CSU GPA (Fall 2013 Cohort) by Admission Score**

**Agricultural Sciences**



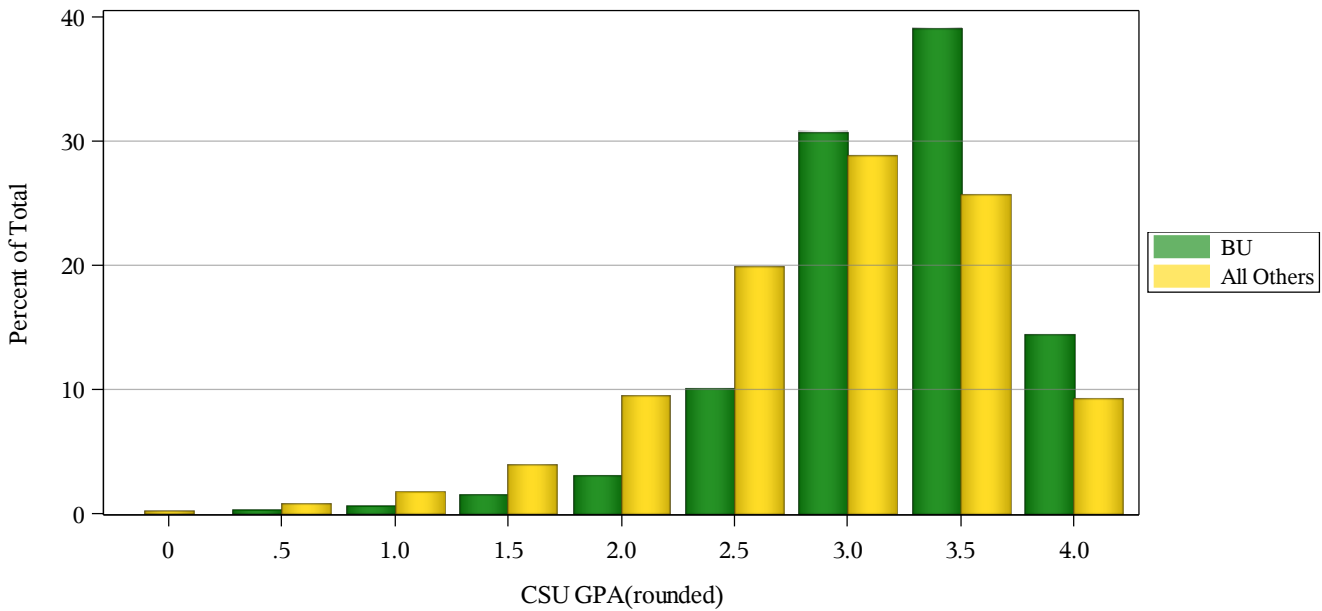
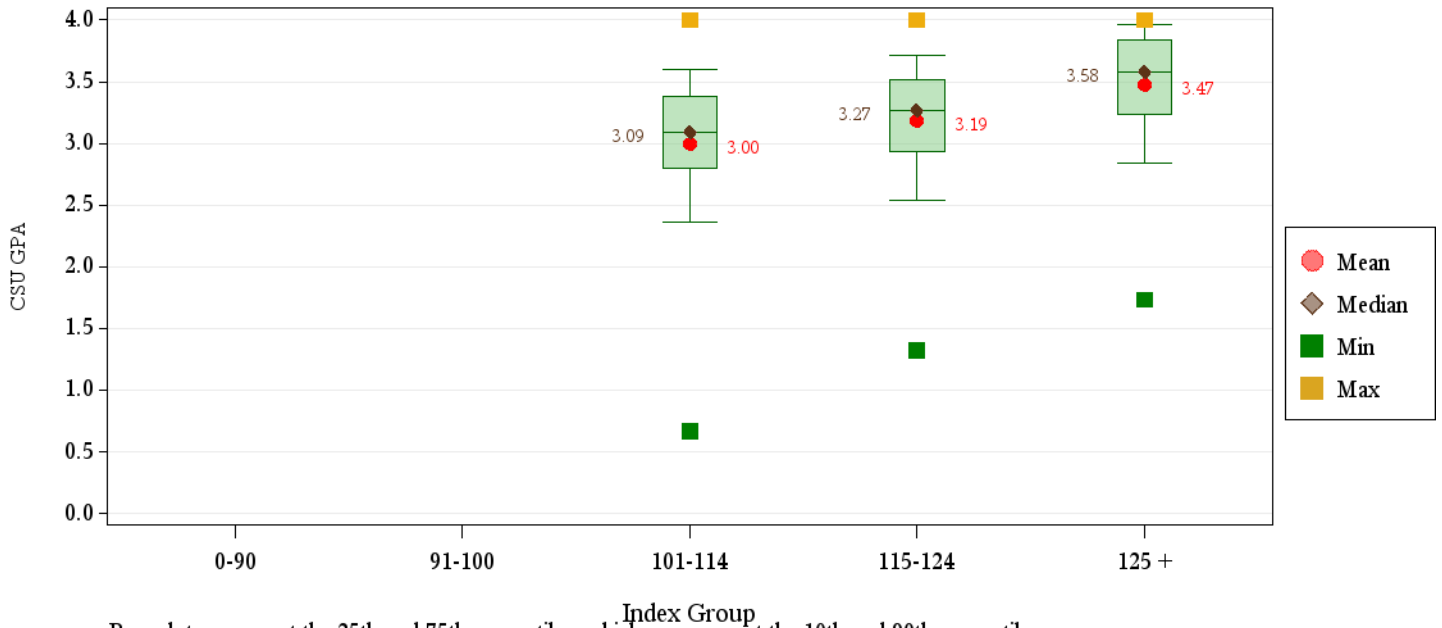
**First-Year CSU GPA (Fall 2013 Cohort) by Admission Score**

**Business**

	CSU GPA				Total
	0.0-1.9	2.0-2.9	3.0-3.5	3.6-high	
<b>Total</b>	<b>10</b>	<b>80</b>	<b>159</b>	<b>78</b>	<b>327</b>
<b>HS GPA</b>					
2.5-2.99	1	0	1	0	2
3.0-3.59	5	32	23	9	69
3.6-4.00	4	45	111	38	198
4.01-high	0	2	23	31	56
Missing Data	0	1	1	0	2
<b>HS Rank</b>					
30-49	1	0	2	1	4
50-59	1	6	4	3	14
60-79	5	26	43	12	86
80-89	1	19	43	15	78
90-100	0	6	31	24	61
Missing Data	2	23	36	23	84
<b>SAT Critical Thinking</b>					
400-499	0	0	7	0	7
500-599	3	10	23	13	49
600-699	0	3	12	8	23
700-800	0	0	1	1	2
Missing Data	7	67	116	56	246
<b>SAT Math</b>					
400-499	1	0	2	0	3
500-599	2	5	18	9	34
600-699	0	8	21	12	41
700-800	0	0	2	1	3
Missing Data	7	67	116	56	246
<b>ACT Composite</b>					
19-22	0	13	28	4	45
23-26	7	39	73	25	144
27-36	3	19	40	40	102
Missing Data	0	9	18	9	36
<b>CDHE Index</b>					
101-114	5	31	44	9	89
115-160	5	48	114	69	236
Missing Data	0	1	1	0	2

**First-Year CSU GPA (Fall 2013 Cohort) by Admission Score**

**Business**



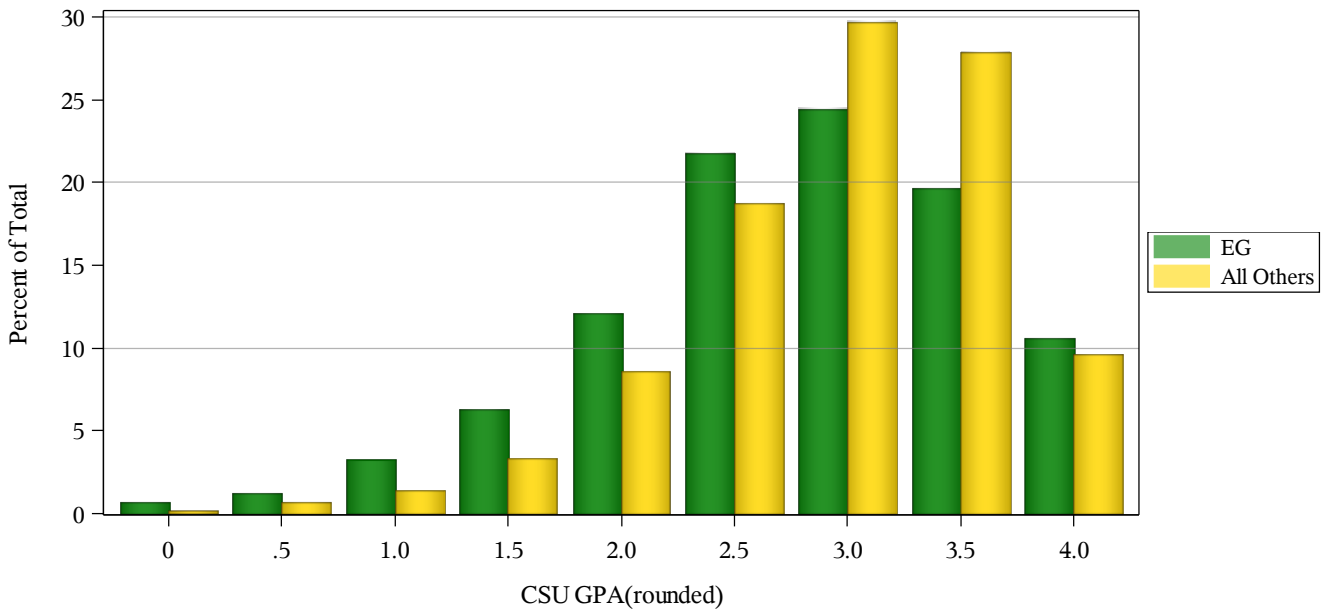
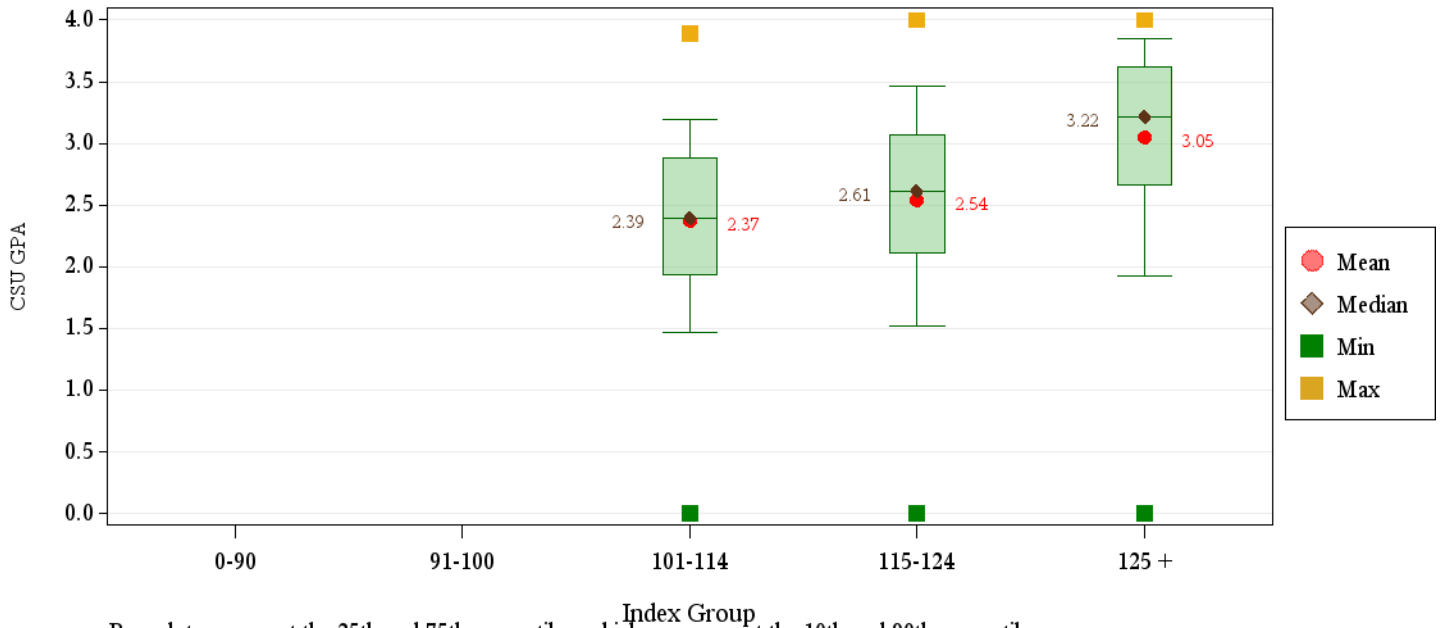
**First-Year CSU GPA (Fall 2013 Cohort) by Admission Score**

**Engineering**

	CSU GPA				Total
	0.0-1.9	2.0-2.9	3.0-3.5	3.6-high	
<b>Total</b>	<b>92</b>	<b>223</b>	<b>159</b>	<b>82</b>	<b>556</b>
<b>HS GPA</b>					
3.0-3.59	37	63	21	2	123
3.6-4.00	47	123	84	36	290
4.01-high	8	37	54	44	143
<b>HS Rank</b>					
30-49	4	3	0	1	8
50-59	6	10	4	0	20
60-79	30	72	30	8	140
80-89	14	45	41	5	105
90-100	12	37	50	51	150
Missing Data	26	56	34	17	133
<b>SAT Critical Thinking</b>					
0-399	0	0	1	1	2
400-499	6	6	2	2	16
500-599	11	32	26	7	76
600-699	11	26	26	9	72
700-800	1	3	6	8	18
Missing Data	63	156	98	55	372
<b>SAT Math</b>					
400-499	2	1	0	0	3
500-599	12	22	16	1	51
600-699	12	37	32	16	97
700-800	3	7	13	10	33
Missing Data	63	156	98	55	372
<b>ACT Composite</b>					
19-22	1	11	6	0	18
23-26	36	99	48	8	191
27-36	44	92	86	68	290
Missing Data	11	21	19	6	57
<b>CDHE Index</b>					
101-114	21	44	16	1	82
115-160	71	179	143	81	474

**First-Year CSU GPA (Fall 2013 Cohort) by Admission Score**

**Engineering**



**First-Year CSU GPA (Fall 2013 Cohort) by Admission Score**

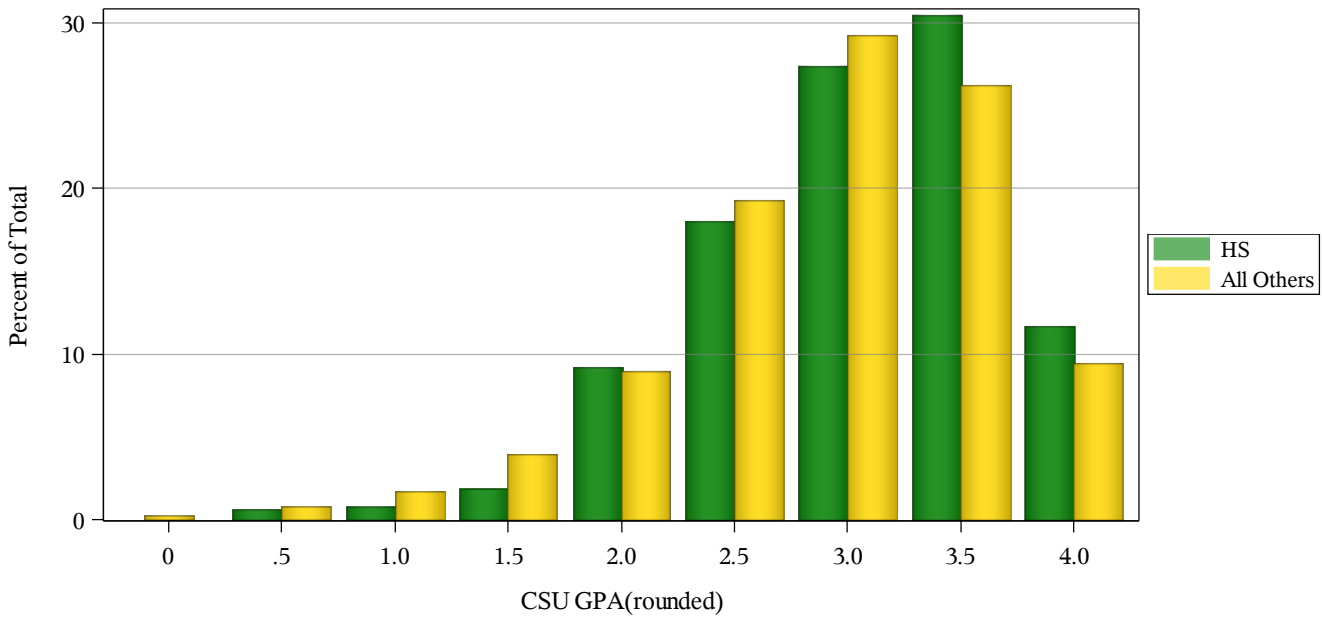
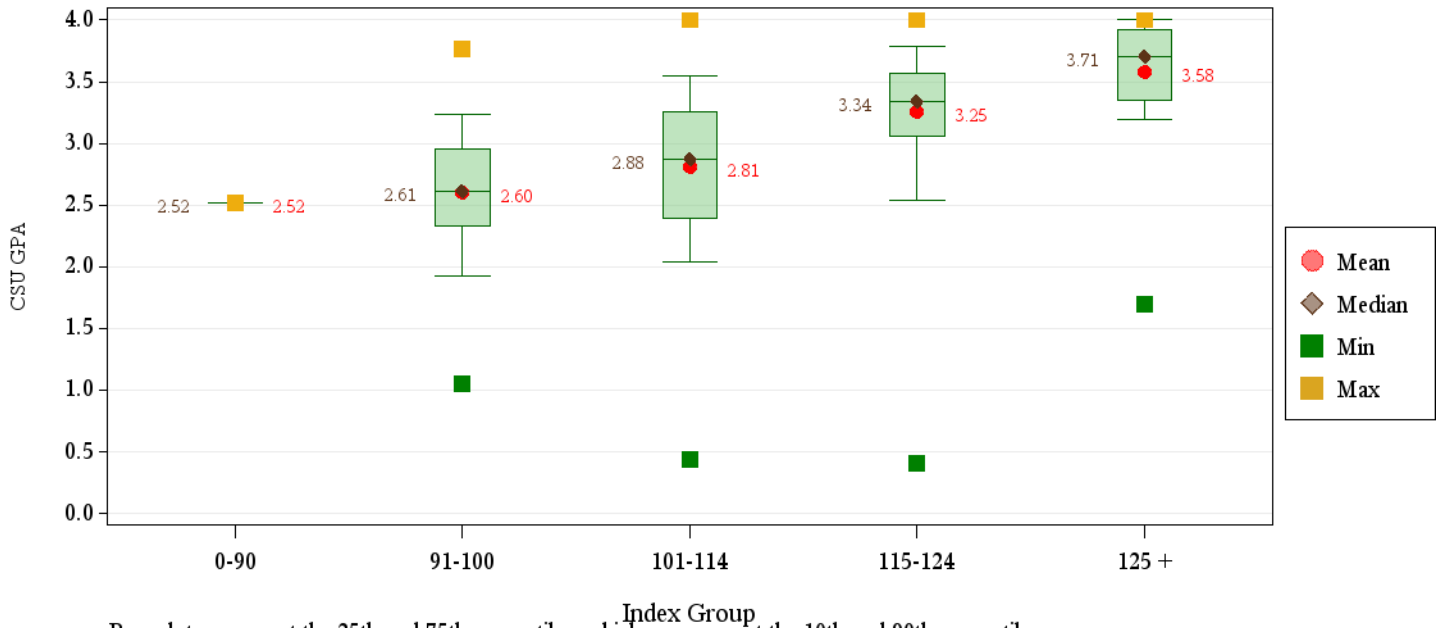
**Health and Human Sciences**

	CSU GPA				Total
	0.0-1.9	2.0-2.9	3.0-3.5	3.6-high	
<b>Total</b>	<b>28</b>	<b>176</b>	<b>193</b>	<b>92</b>	<b>489</b>
<b>HS GPA</b>					
2.5-2.99	6	17	4	0	27
3.0-3.59	17	110	60	14	201
3.6-4.00	4	44	102	50	200
4.01-high	1	5	27	28	61
<b>HS Rank</b>					
0-29	0	3	3	0	6
30-49	5	22	11	0	38
50-59	5	25	9	2	41
60-79	8	52	53	16	129
80-89	0	22	39	19	80
90-100	1	6	20	34	61
Missing Data	9	46	58	21	134
<b>SAT Critical Thinking</b>					
0-399	0	2	0	0	2
400-499	2	8	12	2	24
500-599	5	15	19	15	54
600-699	1	3	6	7	17
700-800	0	1	0	2	3
Missing Data	20	147	156	66	389
<b>SAT Math</b>					
0-399	1	2	1	0	4
400-499	1	11	8	4	24
500-599	6	9	20	10	45
600-699	0	7	7	11	25
700-800	0	0	1	1	2
Missing Data	20	147	156	66	389
<b>ACT Composite</b>					
0-14	0	1	0	0	1
15-18	1	14	5	1	21
19-22	11	71	48	16	146
23-26	8	60	98	29	195
27-36	4	12	33	39	88
Missing Data	4	18	9	7	38
<b>CDHE Index</b>					
0-90	0	1	0	0	1
091-100	7	46	13	2	68
101-114	16	100	75	17	208
115-160	5	29	105	73	212



**First-Year CSU GPA (Fall 2013 Cohort) by Admission Score**

**Health and Human Sciences**



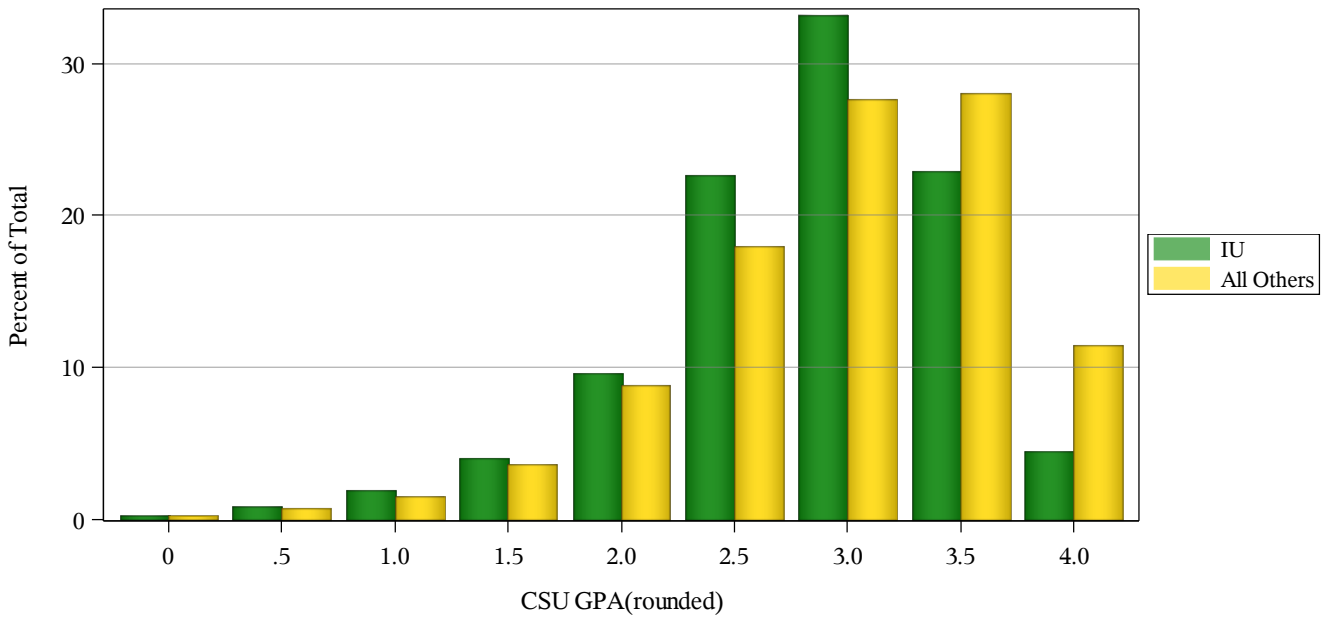
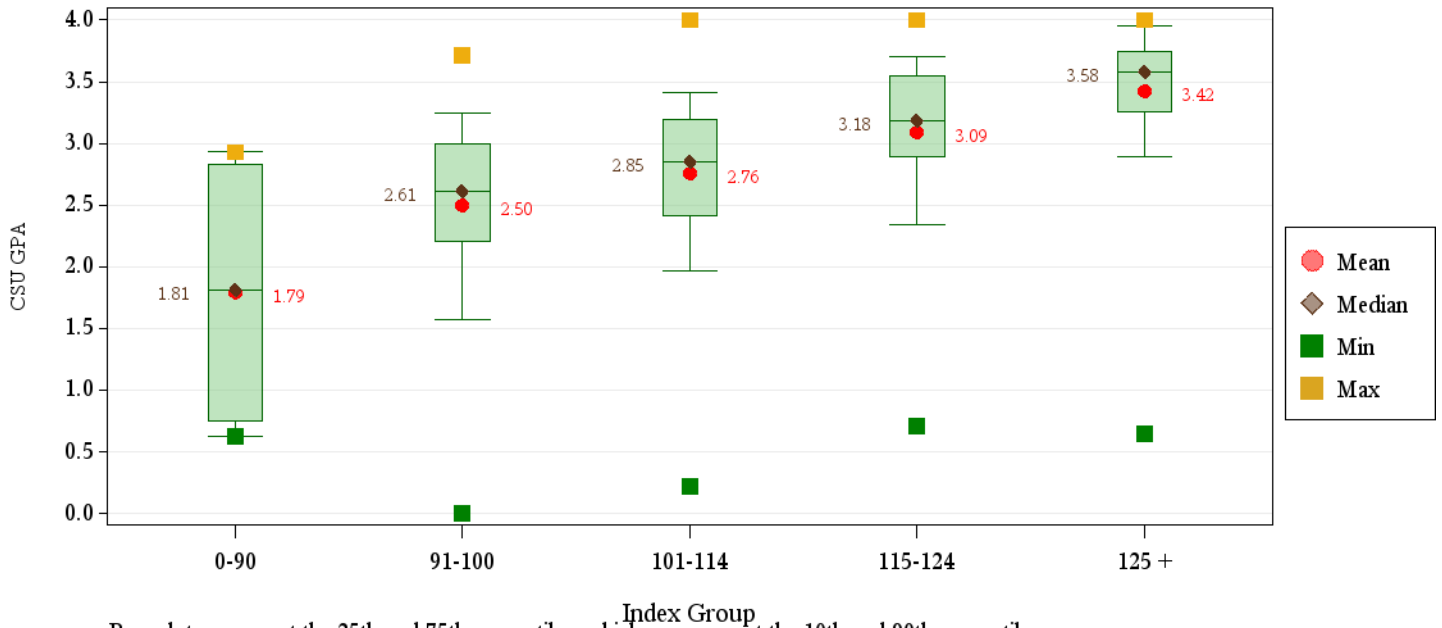
**First-Year CSU GPA (Fall 2013 Cohort) by Admission Score**

**Intra-University**

	CSU GPA				Total
	0.0-1.9	2.0-2.9	3.0-3.5	3.6-high	
<b>Total</b>	<b>118</b>	<b>452</b>	<b>389</b>	<b>106</b>	<b>1,065</b>
<b>HS GPA</b>					
2.0-2.49	1	0	0	0	1
2.5-2.99	28	67	25	1	121
3.0-3.59	69	295	184	18	566
3.6-4.00	15	70	134	47	266
4.01-high	2	2	28	35	67
Missing Data	3	18	18	5	44
<b>HS Rank</b>					
0-29	6	7	1	0	14
30-49	21	85	43	4	153
50-59	22	79	41	4	146
60-79	32	129	110	13	284
80-89	8	22	44	20	94
90-100	1	13	29	41	84
Missing Data	28	117	121	24	290
<b>SAT Critical Thinking</b>					
0-399	0	3	4	1	8
400-499	6	25	27	1	59
500-599	12	44	31	6	93
600-699	2	9	16	6	33
700-800	0	1	2	6	9
Missing Data	98	370	309	86	863
<b>SAT Math</b>					
0-399	0	1	1	1	3
400-499	5	24	17	1	47
500-599	8	43	44	6	101
600-699	7	13	17	9	46
700-800	0	1	1	3	5
Missing Data	98	370	309	86	863
<b>ACT Composite</b>					
0-14	0	0	1	0	1
15-18	4	30	14	1	49
19-22	53	192	124	13	382
23-26	36	148	150	41	375
27-36	13	29	57	40	139
Missing Data	12	53	43	11	119
<b>CDHE Index</b>					
0-90	2	2	0	0	4
091-100	41	124	53	3	221
101-114	54	263	202	18	537
115-160	16	45	116	80	257
Missing Data	5	18	18	5	46

**First-Year CSU GPA (Fall 2013 Cohort) by Admission Score**

**Intra-University**



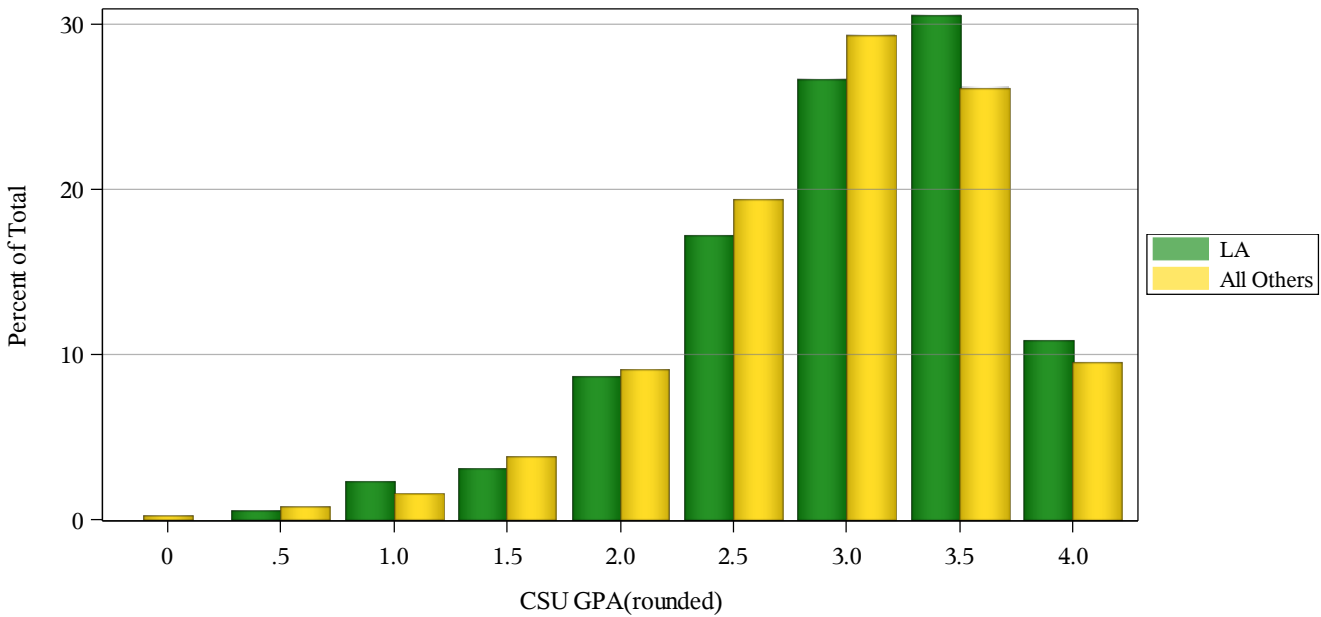
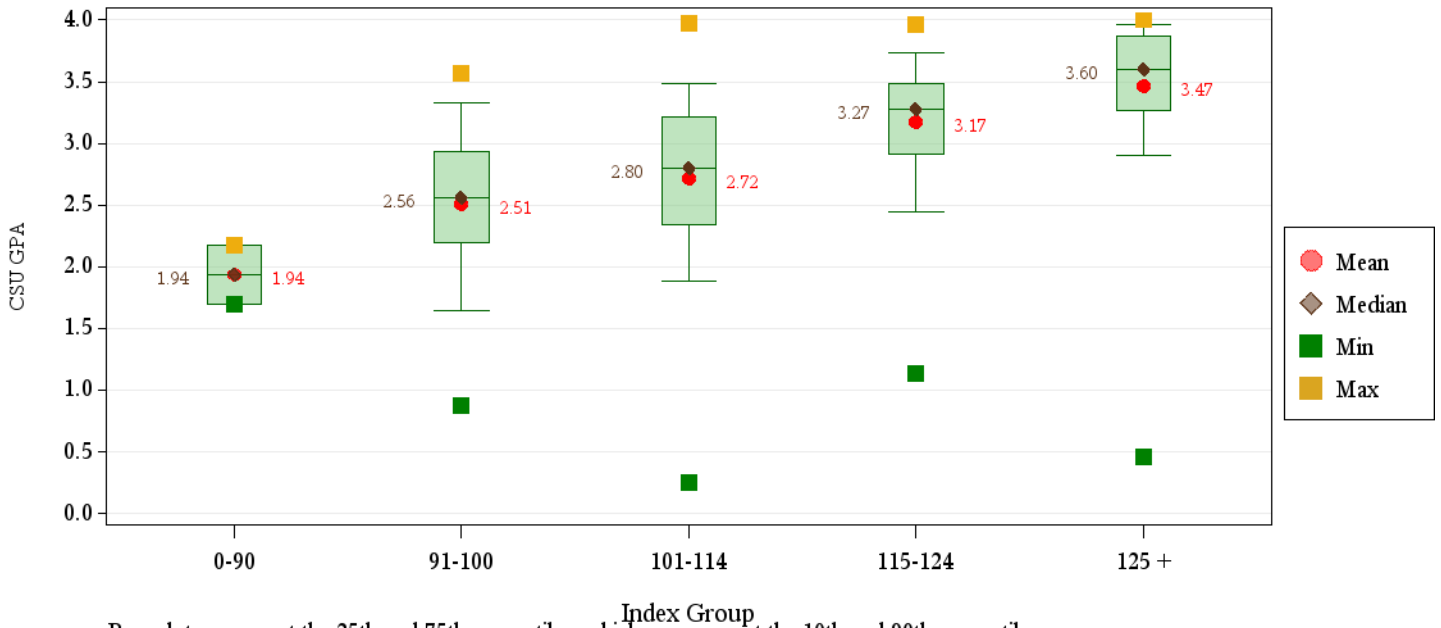
**First-Year CSU GPA (Fall 2013 Cohort) by Admission Score**

**Liberal Arts**

	CSU GPA				Total
	0.0-1.9	2.0-2.9	3.0-3.5	3.6-high	
<b>Total</b>	<b>45</b>	<b>189</b>	<b>202</b>	<b>84</b>	<b>520</b>
<b>HS GPA</b>					
2.5-2.99	8	18	4	0	30
3.0-3.59	25	118	63	7	213
3.6-4.00	10	45	112	35	202
4.01-high	2	7	21	42	72
Missing Data	0	1	2	0	3
<b>HS Rank</b>					
0-29	2	4	2	0	8
30-49	10	28	9	3	50
50-59	4	25	12	1	42
60-79	12	59	71	11	153
80-89	2	18	43	16	79
90-100	1	12	27	38	78
Missing Data	14	43	38	15	110
<b>SAT Critical Thinking</b>					
400-499	1	12	9	1	23
500-599	7	22	19	10	58
600-699	2	14	13	11	40
700-800	0	1	3	5	9
Missing Data	35	140	158	57	390
<b>SAT Math</b>					
0-399	0	1	1	0	2
400-499	3	14	9	2	28
500-599	5	29	26	11	71
600-699	2	5	7	13	27
700-800	0	0	1	1	2
Missing Data	35	140	158	57	390
<b>ACT Composite</b>					
15-18	1	11	6	0	18
19-22	14	56	43	6	119
23-26	20	72	91	26	209
27-36	4	30	47	49	130
Missing Data	6	20	15	3	44
<b>CDHE Index</b>					
0-90	1	1	0	0	2
091-100	8	26	9	0	43
101-114	28	119	78	10	235
115-160	8	42	113	74	237
Missing Data	0	1	2	0	3

**First-Year CSU GPA (Fall 2013 Cohort) by Admission Score**

**Liberal Arts**



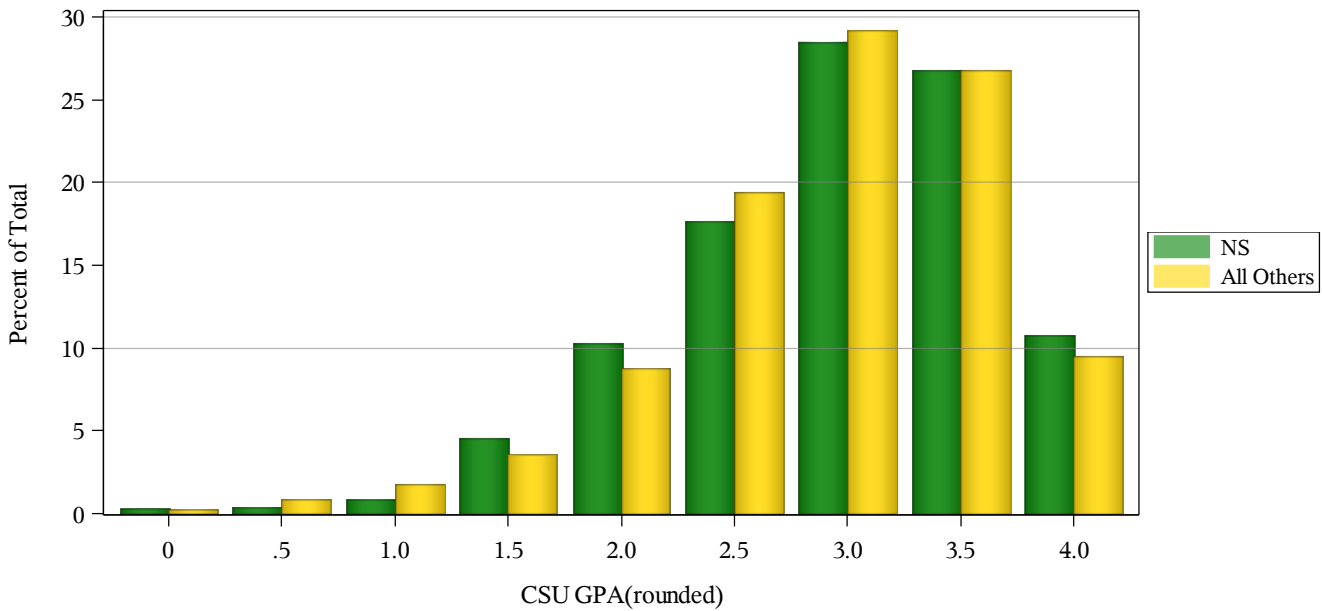
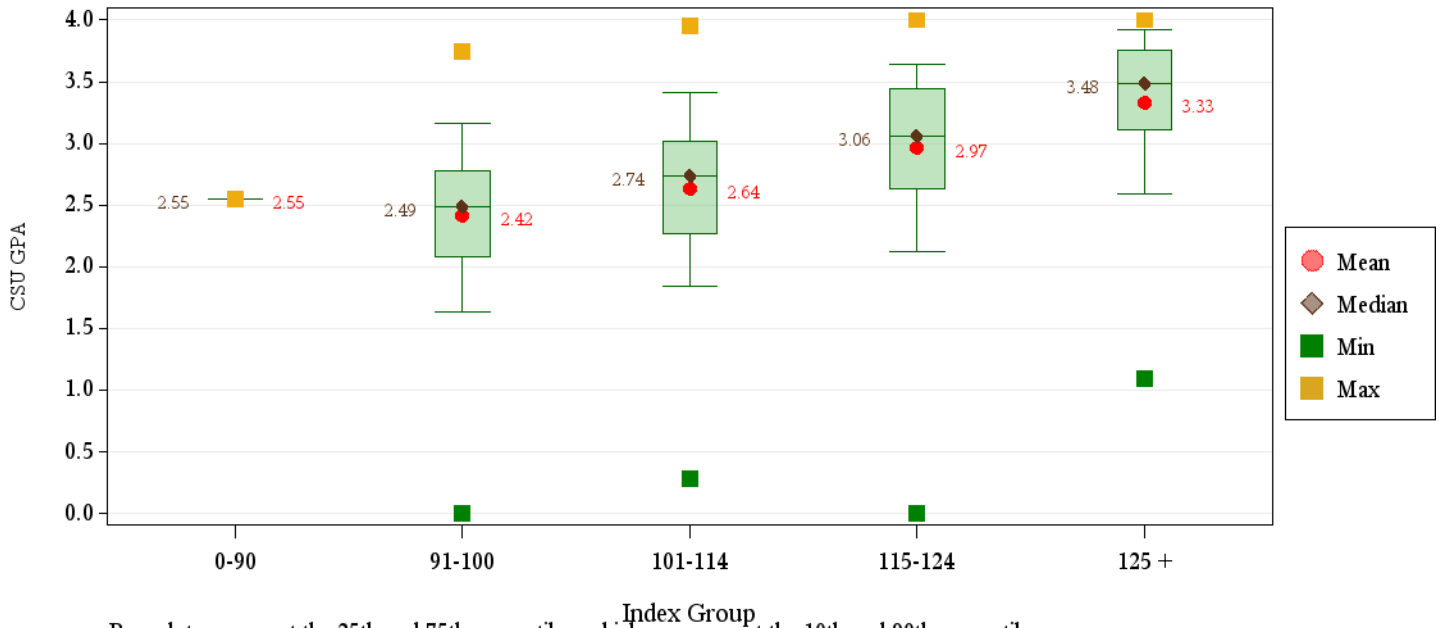
**First-Year CSU GPA (Fall 2013 Cohort) by Admission Score**

**Natural Sciences**

	CSU GPA				Total
	0.0-1.9	2.0-2.9	3.0-3.5	3.6-high	
<b>Total</b>	<b>69</b>	<b>270</b>	<b>245</b>	<b>119</b>	<b>703</b>
<b>HS GPA</b>					
2.0-2.49	0	1	0	0	1
2.5-2.99	9	17	4	1	31
3.0-3.59	33	125	37	11	206
3.6-4.00	22	110	140	45	317
4.01-high	4	17	62	61	144
Missing Data	1	0	2	1	4
<b>HS Rank</b>					
0-29	0	4	2	0	6
30-49	12	20	4	1	37
50-59	11	27	13	2	53
60-79	19	84	50	12	165
80-89	9	42	45	17	113
90-100	5	23	69	60	157
Missing Data	13	70	62	27	172
<b>SAT Critical Thinking</b>					
400-499	6	18	14	2	40
500-599	9	34	31	11	85
600-699	6	11	27	17	61
700-800	2	1	12	11	26
Missing Data	46	206	161	78	491
<b>SAT Math</b>					
0-399	0	0	1	0	1
400-499	4	19	14	2	39
500-599	9	30	32	12	83
600-699	6	15	31	18	70
700-800	4	0	6	9	19
Missing Data	46	206	161	78	491
<b>ACT Composite</b>					
15-18	2	9	3	1	15
19-22	16	70	26	12	124
23-26	26	112	100	22	260
27-36	16	49	92	76	233
Missing Data	9	30	24	8	71
<b>CDHE Index</b>					
0-90	0	1	0	0	1
91-100	11	31	6	2	50
101-114	28	132	48	12	220
115-160	29	106	189	104	428
Missing Data	1	0	2	1	4

**First-Year CSU GPA (Fall 2013 Cohort) by Admission Score**

**Natural Sciences**



**First-Year CSU GPA (Fall 2013 Cohort) by Admission Score**

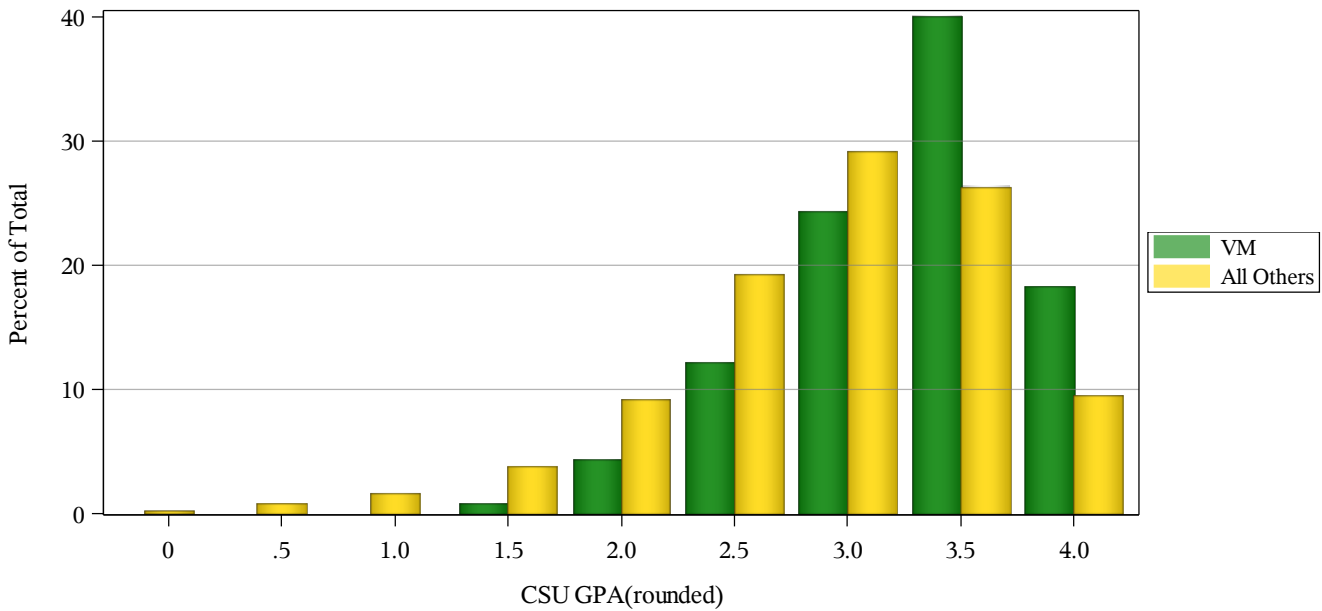
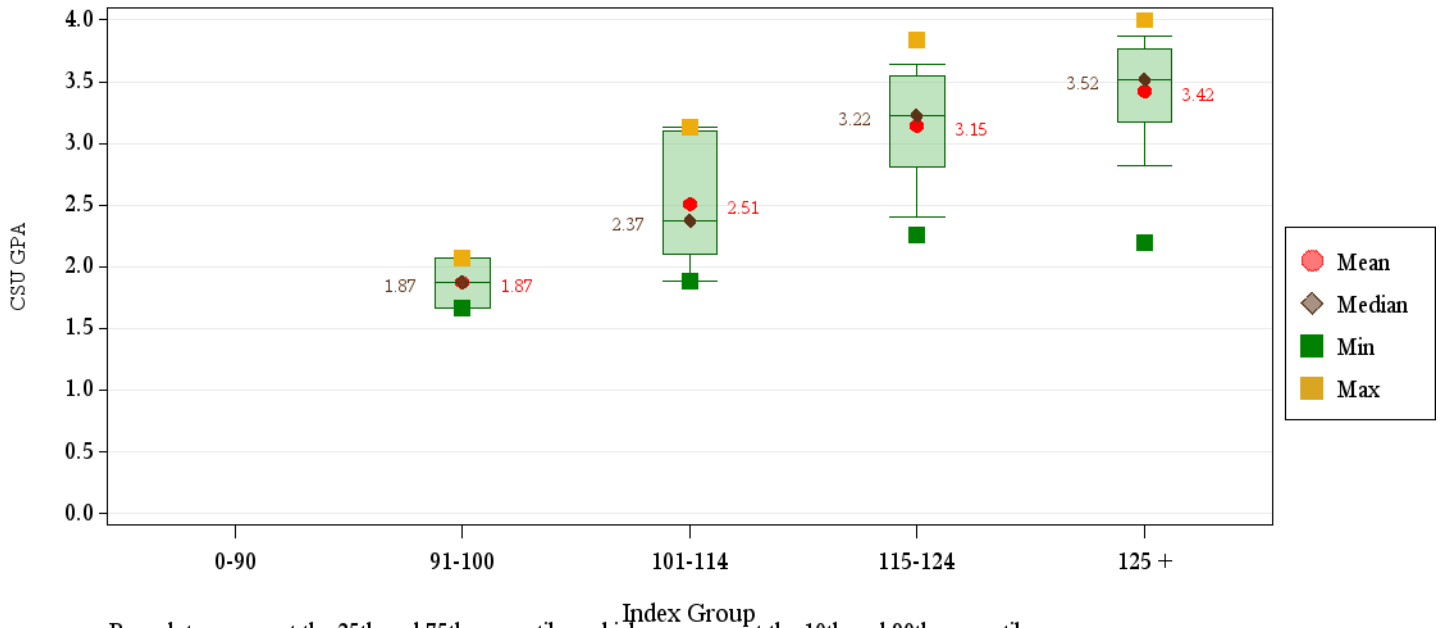
**Veterinary Medicine + Biomedical Sci**

	CSU GPA				Total
	0.0-1.9	2.0-2.9	3.0-3.5	3.6-high	
<b>Total</b>	<b>2</b>	<b>29</b>	<b>52</b>	<b>33</b>	<b>116</b>
<b>HS GPA</b>					
3.0-3.59	2	5	4	0	11
3.6-4.00	0	16	23	14	53
4.01-high	0	8	24	19	51
Missing Data	0	0	1	0	1
<b>HS Rank</b>					
0-29	1	0	0	0	1
30-49	0	1	0	0	1
50-59	1	0	1	0	2
60-79	0	6	5	1	12
80-89	0	9	11	4	24
90-100	0	6	19	20	45
Missing Data	0	7	16	8	31
<b>SAT Critical Thinking</b>					
400-499	0	2	0	0	2
500-599	0	7	11	3	21
600-699	0	3	8	5	16
700-800	0	1	1	1	3
Missing Data	2	16	32	24	74
<b>SAT Math</b>					
400-499	0	2	0	0	2
500-599	0	5	6	3	14
600-699	0	5	12	5	22
700-800	0	1	2	1	4
Missing Data	2	16	32	24	74
<b>ACT Composite</b>					
19-22	1	3	2	0	6
23-26	1	10	15	9	35
27-36	0	13	28	23	64
Missing Data	0	3	7	1	11
<b>CDHE Index</b>					
091-100	1	1	0	0	2
101-114	1	4	2	0	7
115-160	0	24	49	33	106
Missing Data	0	0	1	0	1



**First-Year CSU GPA (Fall 2013 Cohort) by Admission Score**

**Veterinary Medicine + Biomedical Sci**



**First-Year CSU GPA (Fall 2013 Cohort) by Admission Score**

**Warner College of Natural Resources**

	CSU GPA				Total
	0.0-1.9	2.0-2.9	3.0-3.5	3.6-high	
<b>Total</b>	<b>18</b>	<b>61</b>	<b>50</b>	<b>18</b>	<b>147</b>
<b>HS GPA</b>					
2.5-2.99	1	14	2	0	17
3.0-3.59	15	27	11	2	55
3.6-4.00	2	19	29	10	60
4.01-high	0	1	8	6	15
<b>HS Rank</b>					
0-29	0	1	0	0	1
30-49	4	11	4	0	19
50-59	2	7	1	0	10
60-79	7	17	12	2	38
80-89	1	7	9	3	20
90-100	0	1	8	10	19
Missing Data	4	17	16	3	40
<b>SAT Critical Thinking</b>					
0-399	1	0	0	0	1
400-499	1	5	2	1	9
500-599	3	16	3	2	24
600-699	0	2	7	4	13
700-800	0	2	1	1	4
Missing Data	13	36	37	10	96
<b>SAT Math</b>					
400-499	2	7	1	0	10
500-599	1	13	6	2	22
600-699	2	5	6	6	19
Missing Data	13	36	37	10	96
<b>ACT Composite</b>					
15-18	2	0	0	0	2
19-22	7	18	7	0	32
23-26	2	18	21	6	47
27-36	4	10	19	9	42
Missing Data	3	15	3	3	24
<b>CDHE Index</b>					
091-100	8	15	2	0	25
101-114	4	29	14	0	47
115-160	5	16	34	18	73
Missing Data	1	1	0	0	2

**First-Year CSU GPA (Fall 2013 Cohort) by Admission Score**

**Warner College of Natural Resources**

