



Freshman Profile
Fall 2013

Colorado
State
University

Institutional
Research

Table of Contents

FALL 2013

Profile: Five-Year History

Residency & Minority Status	01
High School Rank	02
SAT Verbal	03
SAT Math.....	04
ACT Composite	05
High School GPA	06
CDHE Index.....	07

Profile: Fall 2013

Freshman Enrollment

Residency, Gender & Ethnicity	11
Full- & Part-Time Enrollment, Application College	12
Credit Hour Distribution by Application College.....	13

Admitted Applicants

University.....	18
Agricultural Sciences	20
Health and Human Sciences	22
Business	24
Engineering	26
Liberal Arts	28
Warner College of Natural Resources	30
Natural Sciences.....	32
Veterinary Medicine & Biomedical Sciences.....	34
Intra-University.....	36

First-Year CSU GPA (Fall 2012 Cohort) by Admission Score

Agricultural Sciences	42
Health and Human Sciences	44
Business	46
Engineering.....	48
Liberal Arts	50
Warner College of Natural Resources	52
Natural Sciences.....	54
Veterinary Medical & Biomedical Sciences.....	56
Intra-University.....	58
University.....	60

Profile: Five-Year History

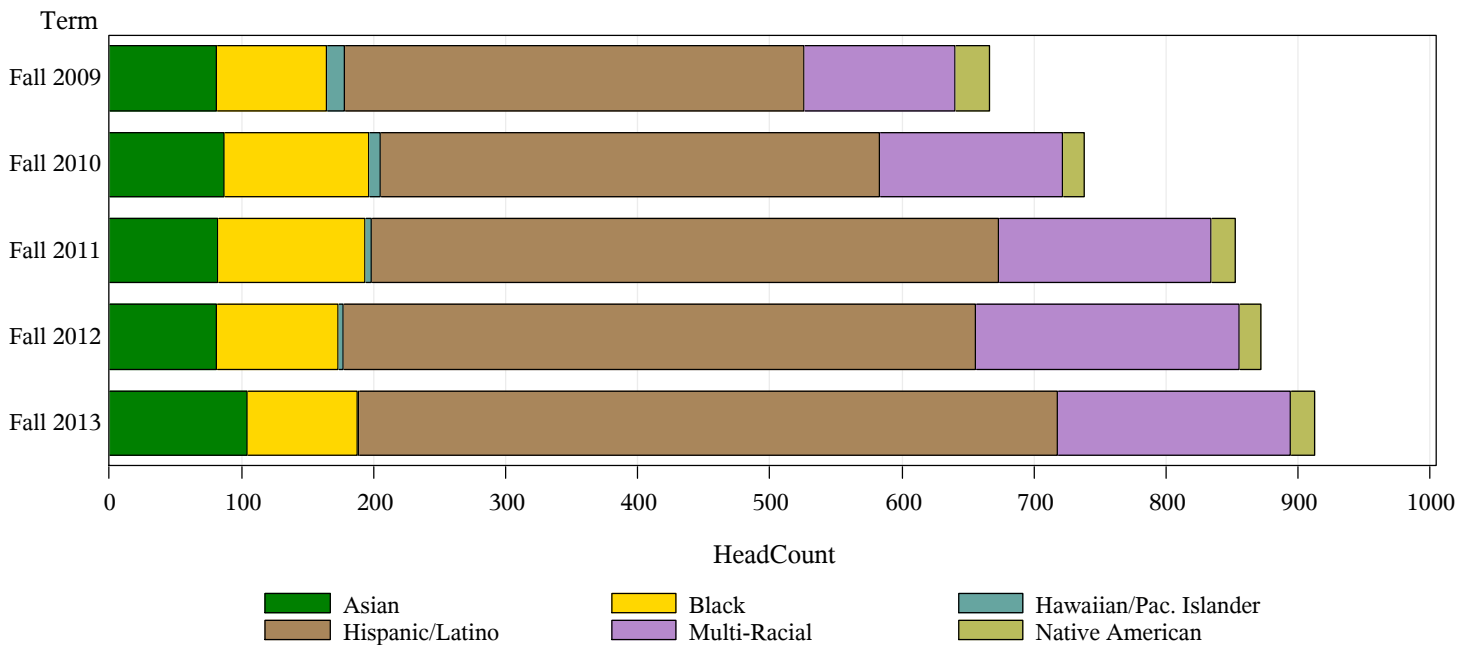
Five-Year History by:

Residency

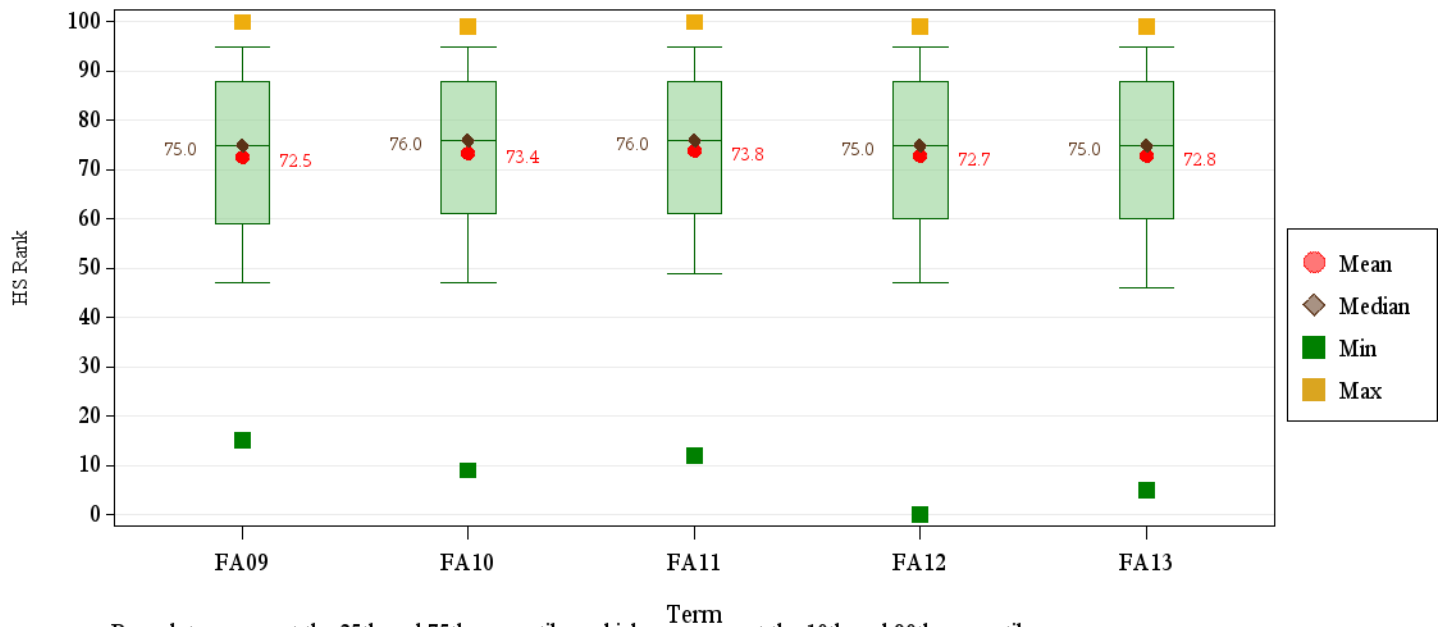
	Resident		Nonresident		Total	Percent Change
	Number	Percent	Number	Percent	Number	
Fall 2009	3,350	78.2%	935	21.8%	4,285	.
Fall 2010	3,541	79.2%	931	20.8%	4,472	4.4%
Fall 2011	3,461	76.8%	1,043	23.2%	4,504	0.7%
Fall 2012	3,386	74.5%	1,158	25.5%	4,544	0.9%
Fall 2013	3,289	74.0%	1,154	26.0%	4,443	-.2.2%

Minority Status

	Minority		Other	
	Number	Percent	Number	Percent
Fall 2009	666	15.5%	3619	84.5%
Fall 2010	738	16.5%	3734	83.5%
Fall 2011	852	18.9%	3652	81.1%
Fall 2012	872	19.2%	3672	80.8%
Fall 2013	912	20.5%	3531	79.5%



Five-Year Trends: HS Rank

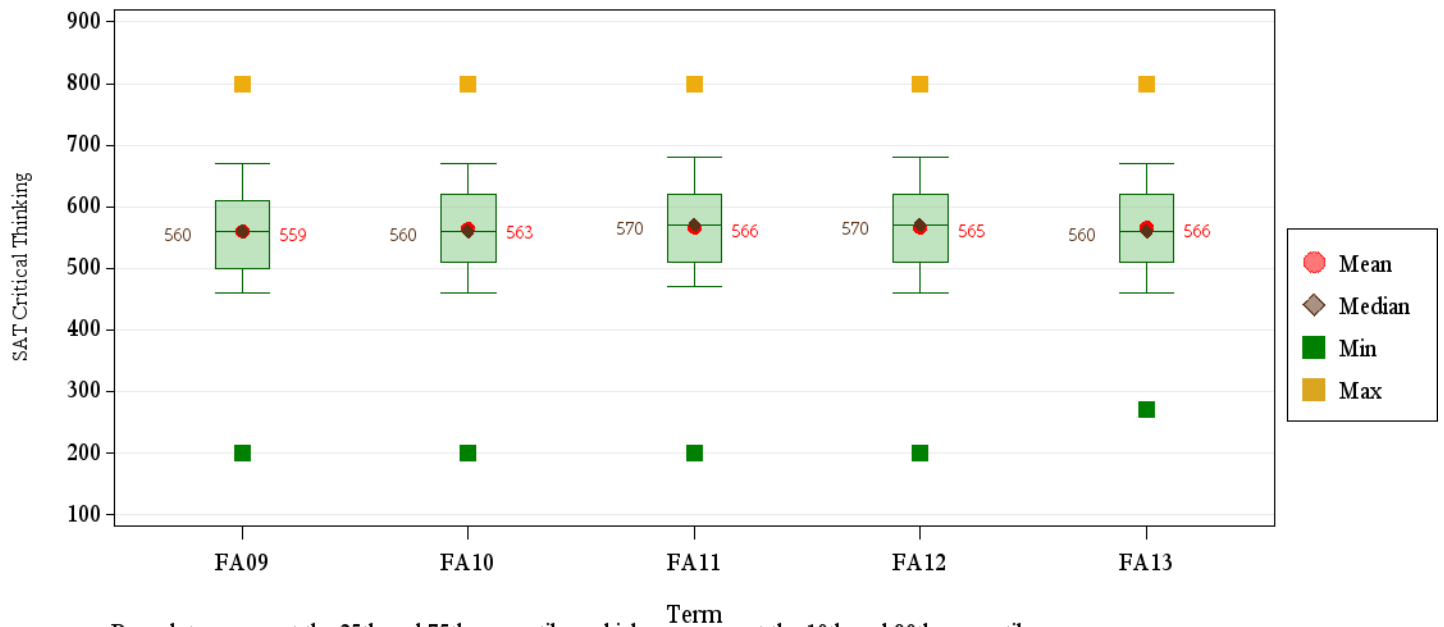


Box plots represent the 25th and 75th percentiles: whiskers represent the 10th and 90th percentiles.

Average HS Rank by Residency and Application College

		AG	BU	EG	HS	IU	LA	NR	NS	VM	Total U
Resident	Fall 2009	73.2	78.7	80.2	71.9	65.7	72.2	72.8	74.3	88.1	72.1
	Fall 2010	74.8	79.2	82.5	72.9	65.8	72.4	70.4	74.7	85.9	72.8
	Fall 2011	72.1	78.0	82.5	72.7	66.5	73.3	74.4	75.7	83.4	73.4
	Fall 2012	75.5	78.5	81.0	70.7	64.6	70.6	67.5	77.2	85.9	72.3
	Fall 2013	73.6	80.3	81.3	71.9	63.8	70.9	68.3	75.5	86.6	72.3
Nonresident	Fall 2009	76.3	78.0	80.9	69.0	65.0	72.8	72.1	79.1	89.5	74.5
	Fall 2010	76.1	78.7	84.1	68.3	67.3	74.8	80.9	80.7	91.9	76.3
	Fall 2011	78.4	75.4	82.9	71.9	64.8	74.8	75.2	77.7	86.7	75.9
	Fall 2012	81.3	69.5	84.2	74.9	60.4	74.1	78.2	78.5	86.2	74.8
	Fall 2013	80.3	76.2	82.2	74.2	67.5	66.5	71.1	76.9	82.4	75.1
Total	Fall 2009	74.3	78.6	80.4	71.5	65.7	72.3	72.5	75.1	88.6	72.5
	Fall 2010	75.2	79.2	82.8	72.3	66.0	72.7	73.7	75.8	86.7	73.4
	Fall 2011	74.8	77.7	82.6	72.6	66.4	73.5	74.7	76.0	84.4	73.8
	Fall 2012	77.5	77.3	81.6	71.3	64.1	71.1	71.1	77.4	86.0	72.7
	Fall 2013	76.0	79.7	81.5	72.2	64.2	70.3	69.3	75.8	85.5	72.8

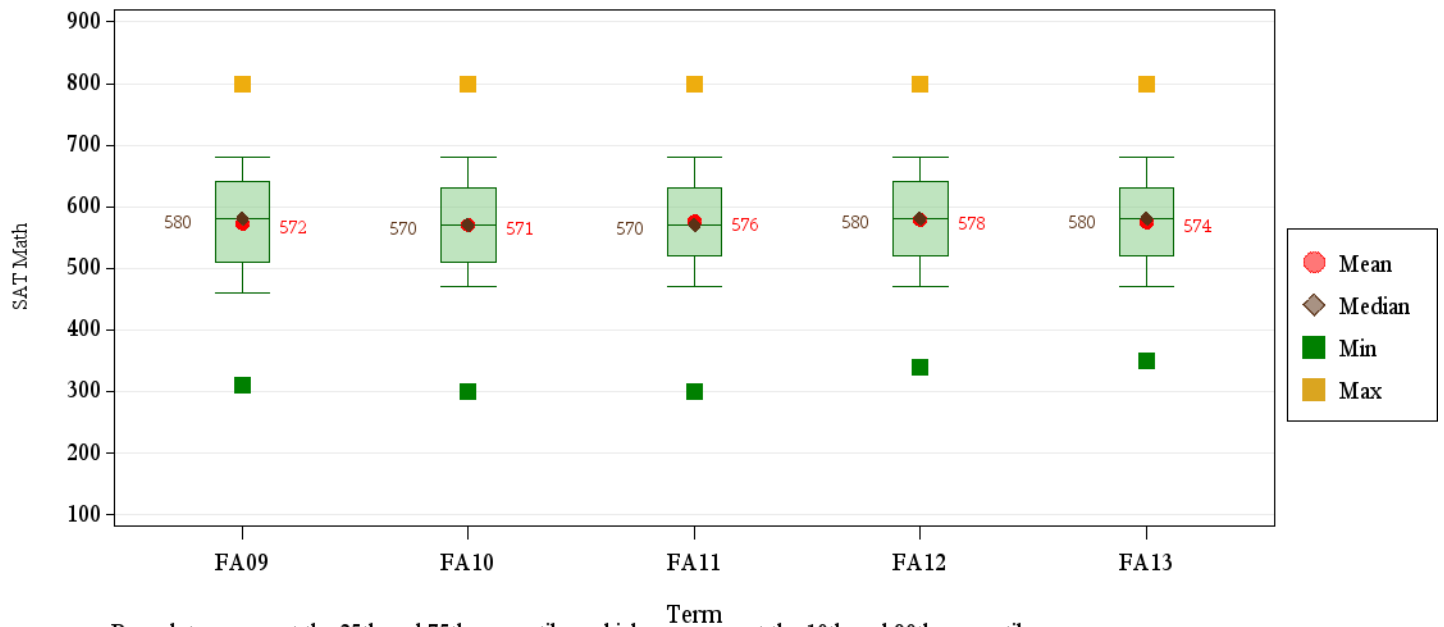
Five-Year Trends: SAT Critical Thinking



Average SAT Critical Thinking by Residency and Application College

		AG	BU	EG	HS	IU	LA	NR	NS	VM	Total U
Resident	Fall 2009	552	554	575	531	530	582	534	566	618	556
	Fall 2010	548	570	583	538	539	584	588	574	587	565
	Fall 2011	565	566	583	525	529	586	531	593	594	566
	Fall 2012	573	562	600	540	541	566	598	579	599	568
	Fall 2013	568	560	593	534	537	574	545	581	595	567
Nonresident	Fall 2009	561	561	573	532	543	563	570	584	610	566
	Fall 2010	543	566	571	539	539	574	595	572	598	561
	Fall 2011	562	576	578	542	530	594	597	571	608	567
	Fall 2012	574	599	562	526	524	560	587	587	615	563
	Fall 2013	571	577	581	545	532	574	573	576	586	566
Total	Fall 2009	558	556	574	531	534	577	560	573	614	559
	Fall 2010	545	569	578	538	539	581	593	573	591	563
	Fall 2011	563	570	581	533	530	589	581	583	602	566
	Fall 2012	574	578	581	533	532	563	589	584	608	565
	Fall 2013	570	570	587	541	534	574	565	579	590	566

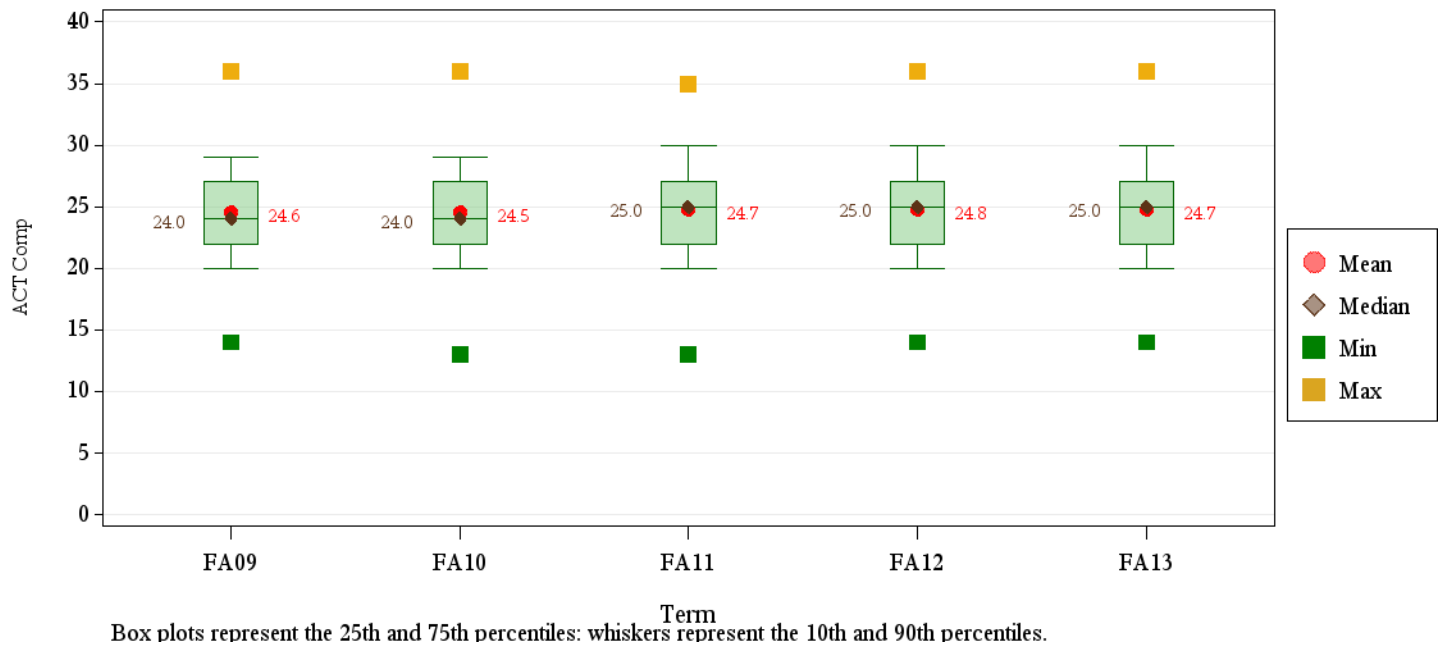
Five-Year Trends: SAT Math



Average SAT Math by Residency and Application College

		AG	BU	EG	HS	IU	LA	NR	NS	VM	Total U
Resident	Fall 2009	564	596	632	543	543	549	544	572	608	566
	Fall 2010	549	581	626	542	537	546	575	584	617	569
	Fall 2011	579	581	623	523	540	556	556	584	584	569
	Fall 2012	551	563	638	542	550	543	551	587	609	574
	Fall 2013	535	576	636	536	531	548	547	577	609	569
Nonresident	Fall 2009	550	621	633	549	554	533	573	596	621	581
	Fall 2010	543	585	636	553	550	552	582	586	619	575
	Fall 2011	552	613	646	553	546	574	585	586	633	583
	Fall 2012	572	615	640	554	548	546	581	586	633	581
	Fall 2013	577	608	636	548	551	545	567	575	610	579
Total	Fall 2009	554	604	632	544	547	545	565	582	615	572
	Fall 2010	545	582	630	547	542	547	580	585	618	571
	Fall 2011	557	593	634	537	542	562	578	585	611	576
	Fall 2012	568	585	639	548	549	544	575	586	623	578
	Fall 2013	570	595	636	543	542	547	561	576	610	574

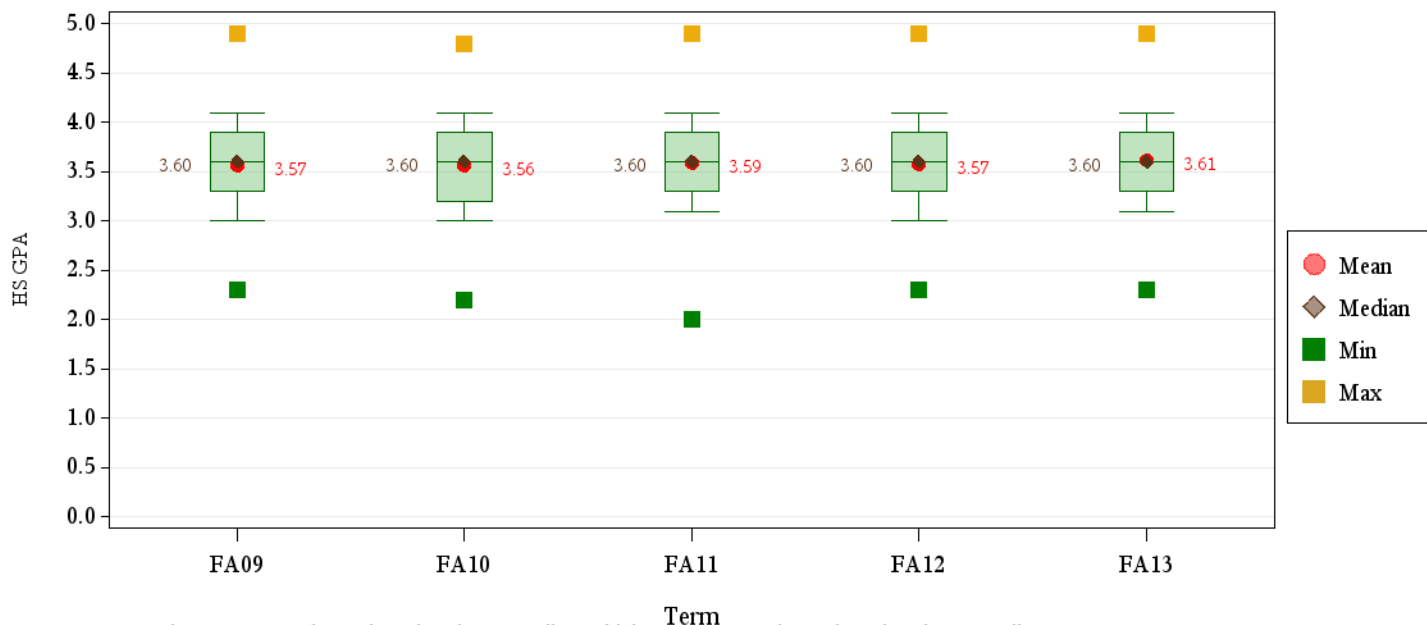
Five-Year Trends: ACT Comp



Average ACT Comp by Residency and Application College

		AG	BU	EG	HS	IU	LA	NR	NS	VM	Total U
Resident	Fall 2009	23.9	25.9	26.7	23.1	23.2	24.5	24.3	24.9	27.4	24.3
	Fall 2010	23.7	25.5	26.9	23.4	23.0	24.5	23.8	24.8	27.3	24.3
	Fall 2011	23.6	25.5	27.0	23.1	23.3	24.8	24.5	24.9	27.1	24.5
	Fall 2012	24.0	25.9	27.0	23.1	23.3	24.6	24.1	25.3	27.1	24.6
	Fall 2013	23.8	25.5	27.1	23.4	23.0	24.4	24.0	25.1	27.3	24.5
Nonresident	Fall 2009	25.1	26.2	27.3	24.1	24.2	25.2	25.1	26.8	27.7	25.6
	Fall 2010	24.8	26.3	28.1	24.2	24.2	25.0	27.1	26.9	27.5	25.7
	Fall 2011	25.3	26.0	28.0	24.7	24.2	25.8	25.5	26.5	28.7	25.8
	Fall 2012	25.9	26.6	27.8	24.1	24.0	25.7	26.6	26.5	28.1	25.9
	Fall 2013	26.4	26.2	28.1	24.6	23.9	26.0	26.3	26.2	27.7	26.0
Total	Fall 2009	24.4	26.0	26.8	23.2	23.3	24.6	24.7	25.3	27.5	24.6
	Fall 2010	24.1	25.6	27.1	23.5	23.1	24.6	24.8	25.2	27.3	24.5
	Fall 2011	24.3	25.5	27.2	23.4	23.4	24.9	24.9	25.2	27.5	24.7
	Fall 2012	24.7	26.0	27.1	23.3	23.4	24.7	25.0	25.5	27.4	24.8
	Fall 2013	24.6	25.6	27.3	23.6	23.1	24.6	24.8	25.4	27.4	24.7

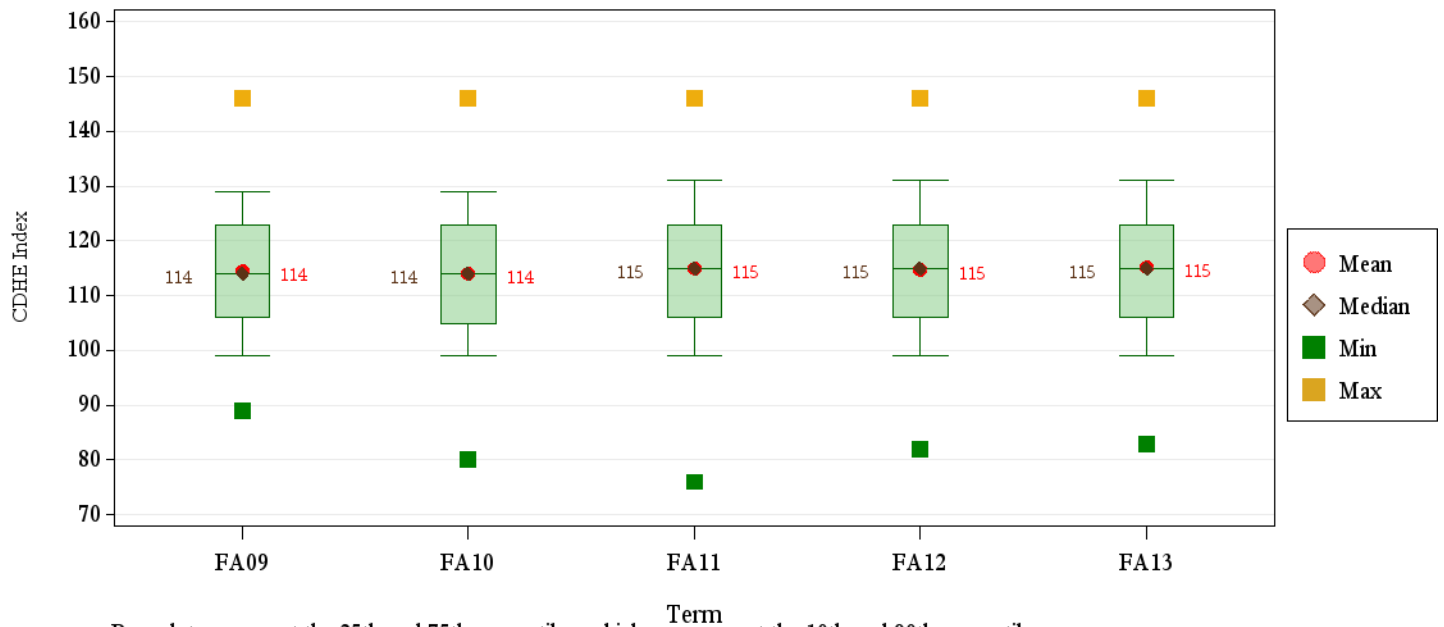
Five-Year Trends: HS GPA



Average HS GPA by Residency and Application College

		AG	BU	EG	HS	IU	LA	NR	NS	VM	Total U
Resident	Fall 2009	3.58	3.71	3.76	3.55	3.41	3.56	3.55	3.59	3.99	3.56
	Fall 2010	3.59	3.73	3.81	3.55	3.37	3.53	3.48	3.59	3.95	3.55
	Fall 2011	3.58	3.71	3.80	3.56	3.42	3.58	3.54	3.64	3.88	3.58
	Fall 2012	3.62	3.75	3.76	3.54	3.39	3.51	3.48	3.64	3.85	3.56
	Fall 2013	3.64	3.79	3.83	3.59	3.39	3.59	3.53	3.69	4.00	3.61
Nonresident	Fall 2009	3.61	3.66	3.81	3.53	3.39	3.56	3.59	3.73	3.98	3.62
	Fall 2010	3.54	3.76	3.84	3.51	3.34	3.56	3.70	3.72	4.00	3.60
	Fall 2011	3.64	3.71	3.88	3.61	3.32	3.56	3.59	3.70	4.04	3.63
	Fall 2012	3.65	3.64	3.90	3.52	3.32	3.55	3.72	3.69	3.95	3.61
	Fall 2013	3.72	3.73	3.84	3.56	3.40	3.55	3.50	3.69	3.93	3.64
Total	Fall 2009	3.60	3.70	3.77	3.55	3.40	3.56	3.57	3.63	3.99	3.57
	Fall 2010	3.57	3.73	3.82	3.54	3.36	3.53	3.57	3.62	3.96	3.56
	Fall 2011	3.61	3.71	3.82	3.57	3.40	3.58	3.56	3.66	3.93	3.59
	Fall 2012	3.63	3.72	3.79	3.53	3.37	3.52	3.58	3.65	3.88	3.57
	Fall 2013	3.68	3.78	3.84	3.58	3.39	3.58	3.52	3.69	3.98	3.61

Five-Year Trends: CDHE Index



Average CDHE Index by Residency and Application College

		AG	BU	EG	HS	IU	LA	NR	NS	VM	Total U
Resident	Fall 2009	114	120	122	111	109	114	113	115	126	114
	Fall 2010	113	119	123	112	108	114	112	115	125	114
	Fall 2011	113	119	123	111	109	115	114	116	123	114
	Fall 2012	114	120	122	111	109	113	112	117	124	114
	Fall 2013	113	120	123	112	108	114	112	117	125	114
Nonresident	Fall 2009	115	120	125	113	111	114	116	120	127	117
	Fall 2010	114	121	125	112	109	115	120	120	127	116
	Fall 2011	116	120	126	115	109	117	117	120	128	117
	Fall 2012	118	120	126	112	108	115	120	120	128	117
	Fall 2013	119	120	125	114	110	115	116	119	126	117
Total	Fall 2009	114	120	122	111	109	114	115	117	126	114
	Fall 2010	113	119	123	112	108	114	115	116	125	114
	Fall 2011	114	119	124	112	109	115	115	117	125	115
	Fall 2012	116	120	123	111	109	114	115	118	125	115
	Fall 2013	116	120	124	112	108	114	114	117	125	115

Profile: Fall 2013

Fall 2013 New Freshmen by:

Residency

	Number	Percent
Resident	3,289	74.0 %
Nonresident	1,154	26.0 %
Total	4,443	100.0 %

Gender

	Resident		Nonresident		Total	
	Number	Percent	Number	Percent	Number	Percent
Men	1,512	46.0 %	504	43.7 %	2,016	45.4 %
Women	1,777	54.0 %	650	56.3 %	2,427	54.6 %
Total	3,289	100.0 %	1,154	100.0 %	4,443	100.0 %

Ethnicity

	Resident		Nonresident		Total	
	Number	Percent	Number	Percent	Number	Percent
Asian	83	2.5 %	21	1.8 %	104	2.3 %
Black	76	2.3 %	8	0.7 %	84	1.9 %
Hispanic/Latino	449	13.7 %	80	6.9 %	529	11.9 %
Multi-Racial	114	3.5 %	62	5.4 %	176	4.0 %
No Response	133	4.0 %	51	4.4 %	184	4.1 %
White	2,425	73.7 %	861	74.6 %	3,286	74.0 %
Native American	9	0.3 %	9	0.8 %	18	0.4 %
International	.	.	61	5.3 %	61	1.4 %
Hawaiian/Pac. Islander	.	.	1	0.1 %	1	0.0 %
Total	3,289	100.0 %	1,154	100.0 %	4,443	100.0 %

Full-Time/Part-Time Enrollment

	Resident		Nonresident		Total	
	Number	Percent	Number	Percent	Number	Percent
Full-Time	3,267	99.3 %	1,131	98.0 %	4,398	99.0 %
Part-Time	22	0.7 %	23	2.0 %	45	1.0 %
Total	3,289	100.0 %	1,154	100.0 %	4,443	100.0 %

Full-time students = undergraduates enrolled for 12 or more credits Fall, Spring (9 - Summer)

Application College

	Resident		Nonresident		Total	
	Number	Percent	Number	Percent	Number	Percent
Agricultural Sciences	121	3.7 %	115	10.0 %	236	5.3 %
Business	255	7.8 %	86	7.5 %	341	7.7 %
Engineering	417	12.7 %	164	14.2 %	581	13.1 %
Health and Human Sciences	406	12.3 %	114	9.9 %	520	11.7 %
Intra-University	917	27.9 %	242	21.0 %	1,159	26.1 %
Liberal Arts	457	13.9 %	108	9.4 %	565	12.7 %
Natural Sciences	548	16.7 %	212	18.4 %	760	17.1 %
Vet Med & BioMed Sci	77	2.3 %	41	3.6 %	118	2.7 %
Warner College of Nat Res	91	2.8 %	72	6.2 %	163	3.7 %
Total	3,289	100.0 %	1,154	100.0 %	4,443	100.0 %

Credit Hour Distribution by Application College

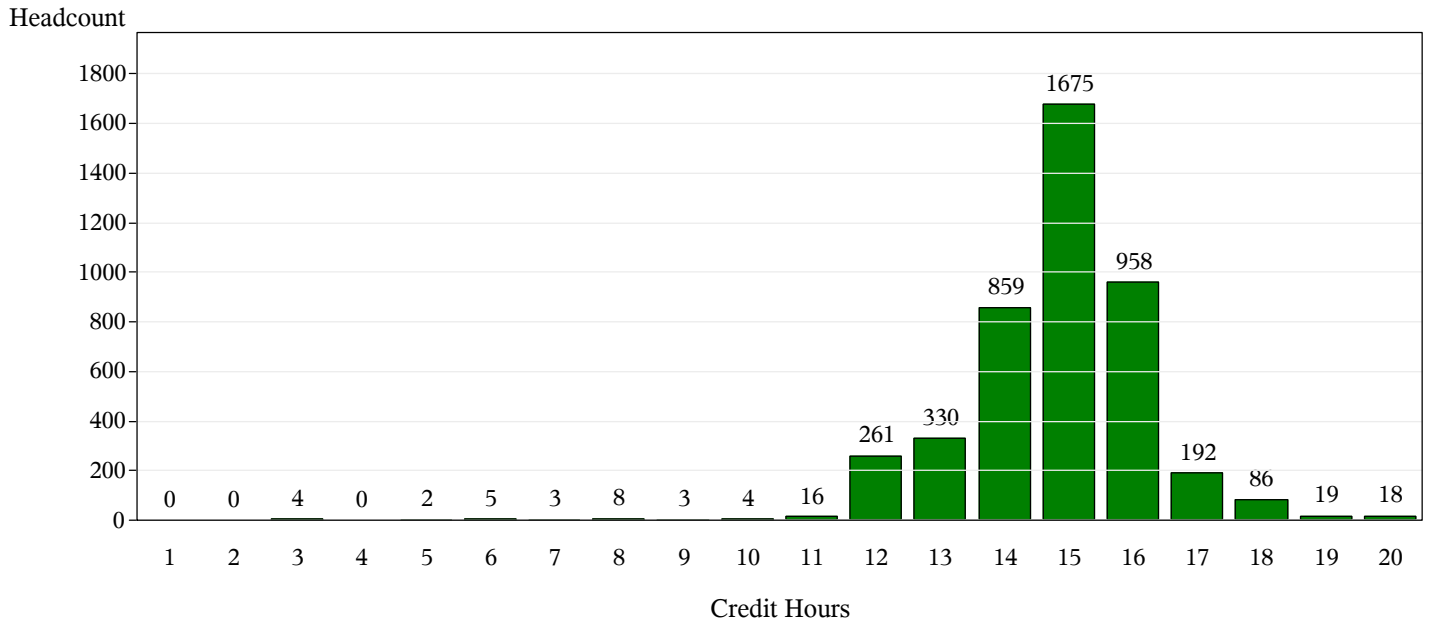
	N	Min	Max	Mean
Total University	4,443	3	24	15
Agricultural Sciences	236	11	19	15
Business	341	8	20	15
Engineering	581	6	24	15
Health and Human Sciences	520	3	20	15
Intra-University	1,159	3	19	14
Liberal Arts	565	9	19	15
Natural Sciences	760	7	20	15
Vet Med & BioMed Sci	118	9	19	15
Warner College of Nat Res	163	7	21	15
Men	2,016	3	21	15
Women	2,427	3	24	15
Nonresident	1,154	3	21	15
Resident	3,289	3	24	15
Full-Time	4,398	12	24	15
Part-Time	45	3	11	8
Asian	104	6	20	15
Black	84	11	18	15
Hawaiian/Pac. Islander	1	14	14	14
Hispanic/Latino	529	9	19	15
International	61	5	19	13
Multi-Racial	176	11	18	15
Native American	18	12	20	15
No Response	184	12	19	15
White	3,286	3	24	15
Agricultural Sciences				
Men	49	12	17	14
Women	187	11	19	15
Nonresident	115	12	19	15
Resident	121	11	17	15
Full-Time	235	12	19	15
Part-Time	1	11	11	11
Asian	5	13	17	14
Black	4	12	17	15
Hispanic/Latino	20	13	16	14

		N	Min	Max	Mean
		4,443	3	24	15
Agricultural Sciences	Multi-Racial	15	13	17	15
	Native American	1	16	16	16
	No Response	9	13	16	15
	White	182	11	19	15
Business					
	Men	187	12	18	15
	Women	154	8	20	15
	Nonresident	86	13	18	15
	Resident	255	8	20	15
	Full-Time	340	12	20	15
	Part-Time	1	8	8	8
	Asian	11	12	16	15
	Black	3	14	17	16
	Hispanic/Latino	37	12	17	15
	International	2	13	14	14
	Multi-Racial	15	14	18	16
	No Response	17	13	16	15
	White	256	8	20	15
Engineering					
	Men	442	6	21	15
	Women	139	7	24	15
	Nonresident	164	12	21	16
	Resident	417	6	24	15
	Full-Time	578	12	24	15
	Part-Time	3	6	7	6
	Asian	12	6	20	16
	Black	4	14	16	15
	Hispanic/Latino	48	12	19	15
	International	6	12	15	14
	Multi-Racial	10	13	18	15
	Native American	3	14	20	17
	No Response	27	13	19	16
	White	471	6	24	15
Health and Human Sciences					
	Men	160	10	18	15
	Women	360	3	20	15
	Nonresident	114	10	18	15

		N	Min	Max	Mean
		4,443	3	24	15
Health and Human Sciences	Resident	406	3	20	15
	Full-Time	518	12	20	15
	Part-Time	2	3	10	7
	Asian	8	12	16	15
	Black	9	13	16	14
	Hispanic/Latino	58	12	18	15
	International	1	15	15	15
	Multi-Racial	21	12	17	15
	Native American	1	14	14	14
	No Response	15	12	16	14
	White	407	3	20	15
Intra-University	Men	616	3	19	14
	Women	543	3	18	15
	Nonresident	242	3	19	14
	Resident	917	3	19	15
	Full-Time	1,132	12	19	15
	Part-Time	27	3	11	8
	Asian	31	8	17	14
	Black	24	12	17	15
	Hispanic/Latino	158	11	18	15
	International	44	5	19	12
	Multi-Racial	40	11	17	15
	Native American	6	12	16	14
	No Response	44	12	18	15
	White	812	3	19	15
Liberal Arts	Men	186	12	18	15
	Women	379	9	19	15
	Nonresident	108	12	18	15
	Resident	457	9	19	15
	Full-Time	562	12	19	15
	Part-Time	3	9	11	10
	Asian	5	12	16	13
	Black	19	13	16	15
	Hispanic/Latino	72	11	16	14
	International	2	12	15	14
	Multi-Racial	24	12	17	15

		N	Min	Max	Mean
		4,443	3	24	15
Liberal Arts	Native American	1	16	16	16
	No Response	27	14	18	15
	White	415	9	19	15
Natural Sciences					
	Men	261	10	20	15
	Women	499	7	19	15
	Nonresident	212	10	20	15
	Resident	548	7	18	15
	Full-Time	755	12	20	15
	Part-Time	5	7	11	10
	Asian	27	13	17	15
	Black	19	11	18	15
	Hawaiian/Pac. Islander	1	14	14	14
	Hispanic/Latino	113	12	17	15
	International	4	14	16	15
	Multi-Racial	42	11	17	15
	Native American	5	13	16	14
	No Response	29	12	18	15
	White	520	7	20	15
Vet Med & BioMed Sci					
	Men	33	9	18	15
	Women	85	12	19	15
	Nonresident	41	13	19	15
	Resident	77	9	18	15
	Full-Time	117	12	19	15
	Part-Time	1	9	9	9
	Asian	3	15	18	16
	Black	2	14	14	14
	Hispanic/Latino	14	9	16	14
	International	2	13	14	14
	Multi-Racial	3	15	15	15
	No Response	5	14	16	15
	White	89	12	19	15
Warner College of Nat Res					
	Men	82	9	21	15
	Women	81	7	20	15
	Nonresident	72	12	21	15

		N	Min	Max	Mean
Warner College of Nat Res	Resident	91	7	19	14
	Full-Time	161	12	21	15
	Part-Time	2	7	9	8
	Asian	2	14	16	15
	Hispanic/Latino	9	13	17	15
	Multi-Racial	6	14	17	15
	Native American	1	16	16	16
	No Response	11	12	16	14
	White	134	7	21	15



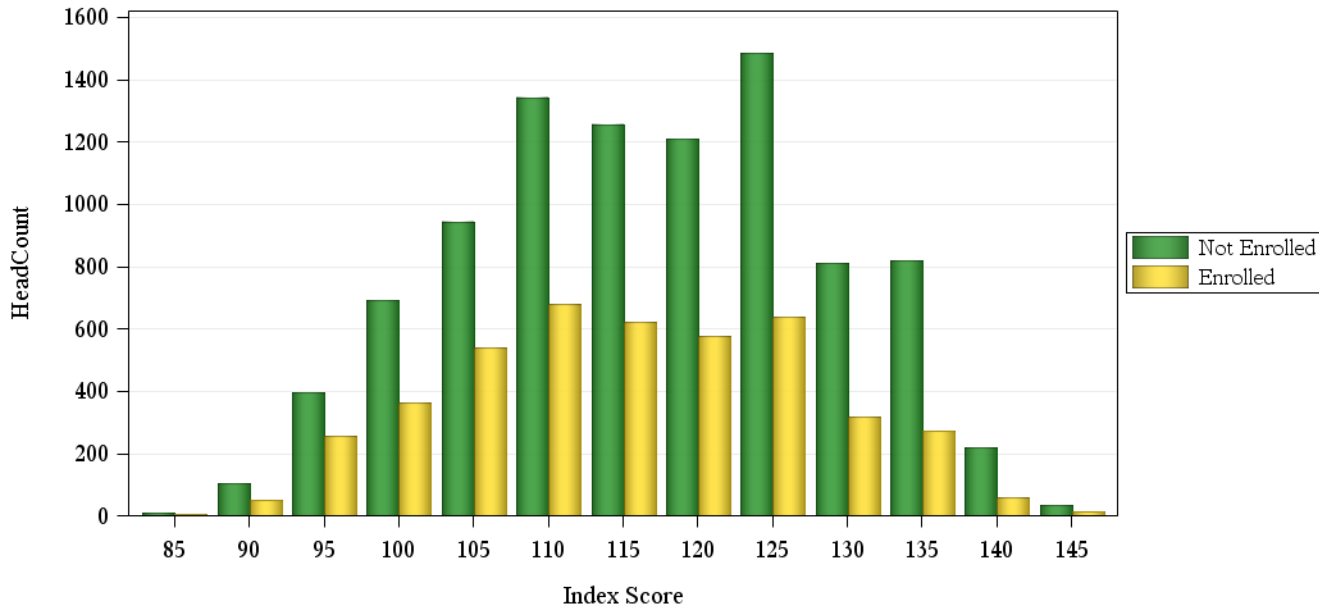
Fall 2013 Freshman Profile

University Admitted Applicants

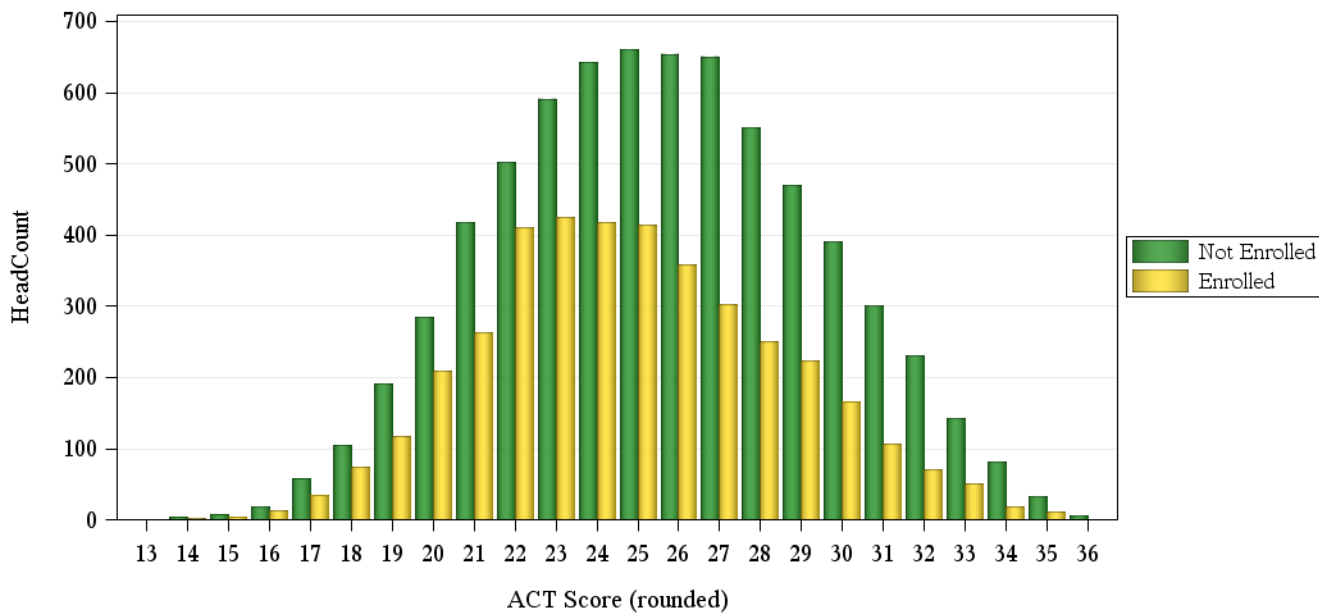
	Not Enrolled (N=9473)				Enrolled(N=4443)			
	Res	Nonres	Total	Percent	Res	Nonres	Total	Percent
ACT Composite								
0-14	1	3	4	0%	2	.	2	0%
15-18	114	73	187	2%	109	15	124	3%
19-22	876	519	1,395	15%	884	116	1,000	23%
23-26	1,429	1,118	2,547	27%	1,369	245	1,614	36%
27-36	1,463	1,390	2,853	30%	872	329	1,201	27%
Missing Data	91	2,396	2,487	26%	53	449	502	11%
Means	25.3	25.9	25.6		24.5	26.0	24.7	
CCHE Index								
0-89	6	7	13	0%	3	1	4	0%
090-100	309	499	808	9%	383	101	484	11%
101-114	1,367	1,811	3,178	34%	1,309	333	1,642	37%
115-160	2,290	3,029	5,319	56%	1,586	668	2,254	51%
Missing Data	2	153	155	2%	8	51	59	1%
Means	117	117	117		114	117	115	
HS GPA								
2.0-2.49	2	2	4	0%	1	1	2	0%
2.5-2.99	135	366	501	5%	191	80	271	6%
3.0-3.59	1,342	1,998	3,340	35%	1,306	365	1,671	38%
3.6-4.00	1,628	2,118	3,746	40%	1,300	482	1,782	40%
4.01-high	865	882	1,747	18%	485	177	662	15%
Missing Data	2	133	135	1%	6	49	55	1%
Means	3.70	3.62	3.66		3.61	3.64	3.61	
HS Rank								
0-29	18	43	61	1%	37	13	50	1%
30-49	239	200	439	5%	312	51	363	8%
50-59	283	210	493	5%	321	52	373	8%
60-79	913	706	1,619	17%	949	181	1,130	25%
80-89	645	547	1,192	13%	535	133	668	15%
90-100	848	754	1,602	17%	573	150	723	16%
Missing Data	1,028	3,039	4,067	43%	562	574	1,136	26%
Means	76.5	76.7	76.6		72.3	75.1	72.8	
SAT Critical Thinking								
0-399	8	63	71	1%	7	9	16	0%
400-499	106	635	741	8%	101	110	211	5%
500-599	353	1,481	1,834	19%	211	321	532	12%
600-699	262	976	1,238	13%	130	190	320	7%
700-800	77	211	288	3%	43	42	85	2%
Missing Data	3,168	2,133	5,301	56%	2,797	482	3,279	74%
Means	585	564	568		567	566	566	
SAT Math								
0-399	6	32	38	0%	5	6	11	0%
400-499	99	451	550	6%	91	95	186	4%
500-599	305	1,434	1,739	18%	213	287	500	11%
600-699	305	1,184	1,489	16%	156	237	393	9%
700-800	91	266	357	4%	27	47	74	2%
Missing Data	3,168	2,132	5,300	56%	2,797	482	3,279	74%
Means	592	581	583		569	579	574	

Fall 2013 Freshman Profile

Fall 2013 CDHE Index Distribution of Admitted Applicants by Enrollment Status(University)



Fall 2013 ACT Composite Distribution of Admitted Applicants by Enrollment Status(University)



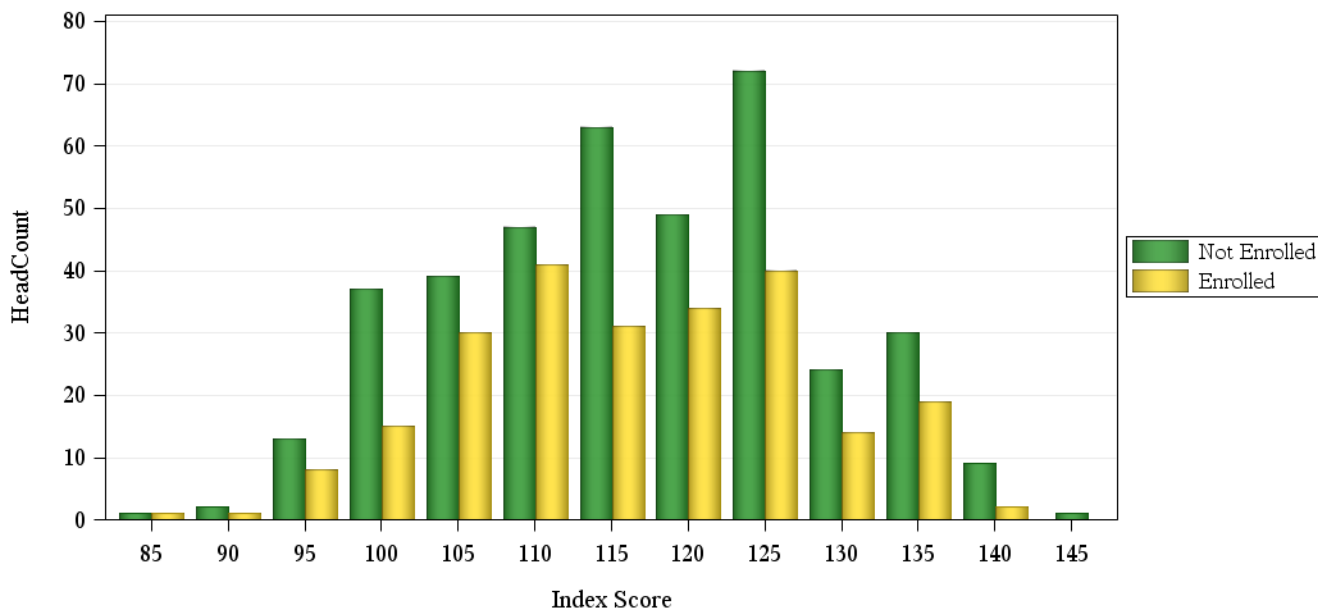
Fall 2013 Freshman Profile

Agricultural Sciences Admitted Applicants

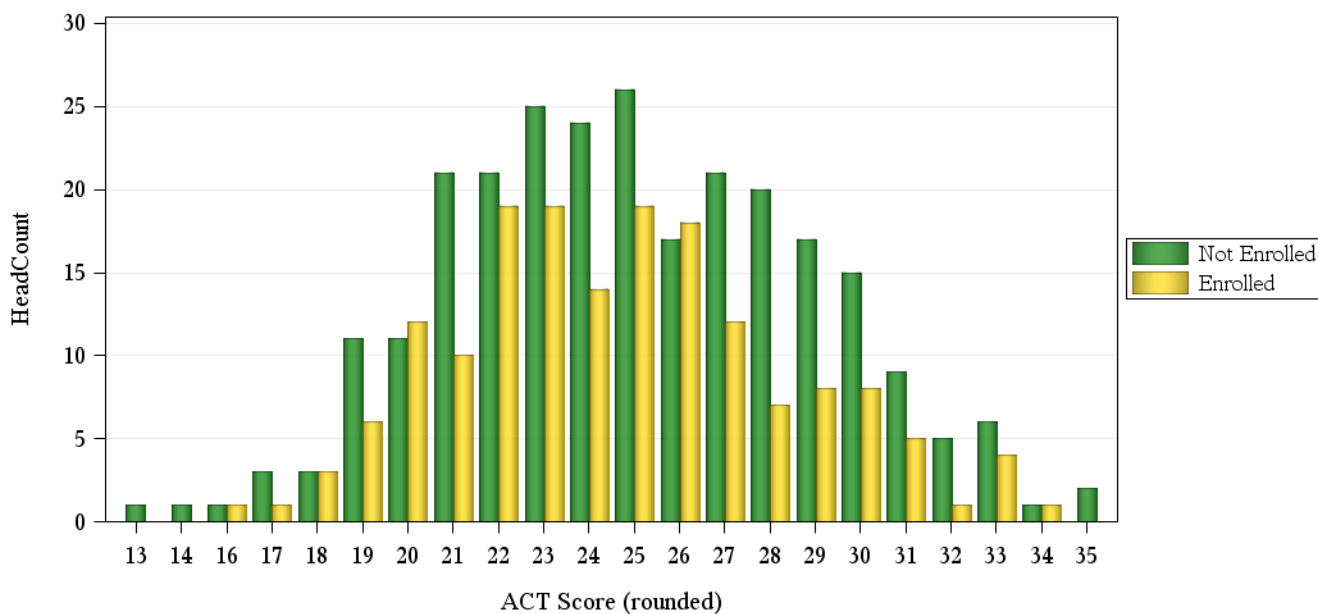
	Not Enrolled (N= 391)				Enrolled(N= 236)			
	Res	Nonres	Total	Percent	Res	Nonres	Total	Percent
ACT Composite								
0-14	.	2	2	1%
15-18	1	6	7	2%	5	.	5	2%
19-22	25	39	64	16%	39	8	47	20%
23-26	34	58	92	24%	48	22	70	30%
27-36	22	74	96	25%	24	22	46	19%
Missing Data	1	129	130	33%	5	63	68	29%
Means	24.6	25.2	25.0		23.8	26.4	24.6	
CCHE Index								
0-89	.	1	1	0%	1	.	1	0%
090-100	5	29	34	9%	10	5	15	6%
101-114	28	100	128	33%	57	29	86	36%
115-160	50	174	224	57%	53	81	134	57%
Missing Data	.	4	4	1%
Means	117	117	117		113	119	116	
HS GPA								
2.5-2.99	4	16	20	5%	6	1	7	3%
3.0-3.59	21	94	115	29%	46	37	83	35%
3.6-4.00	43	134	177	45%	49	59	108	46%
4.01-high	15	60	75	19%	20	18	38	16%
Missing Data	.	4	4	1%
Means	3.71	3.70	3.70		3.64	3.72	3.68	
HS Rank								
0-29	1	.	1	0%
30-49	4	17	21	5%	14	4	18	8%
50-59	4	9	13	3%	8	2	10	4%
60-79	24	59	83	21%	37	17	54	23%
80-89	22	37	59	15%	17	19	36	15%
90-100	16	61	77	20%	28	17	45	19%
Missing Data	13	125	138	35%	16	56	72	31%
Means	78.0	79.1	78.8		73.6	80.3	76.0	
SAT Critical Thinking								
0-399	.	2	2	1%	1	1	2	1%
400-499	2	44	46	12%	3	12	15	6%
500-599	1	97	98	25%	6	41	47	20%
600-699	4	44	48	12%	7	22	29	12%
700-800	.	10	10	3%	2	7	9	4%
Missing Data	76	111	187	48%	102	32	134	57%
Means	584	549	551		568	571	570	
SAT Math								
0-399	.	3	3	1%
400-499	2	45	47	12%	5	9	14	6%
500-599	2	92	94	24%	11	43	54	23%
600-699	2	50	52	13%	3	26	29	12%
700-800	1	7	8	2%	.	5	5	2%
Missing Data	76	111	187	48%	102	32	134	57%
Means	563	553	553		535	577	570	

Fall 2013 Freshman Profile

Fall 2013 CDHE Index Distribution of Admitted Applicants by Enrollment Status(Agricultural Sciences)



Fall 2013 ACT Composite Distribution of Admitted Applicants by Enrollment Status(Agricultural Sciences)



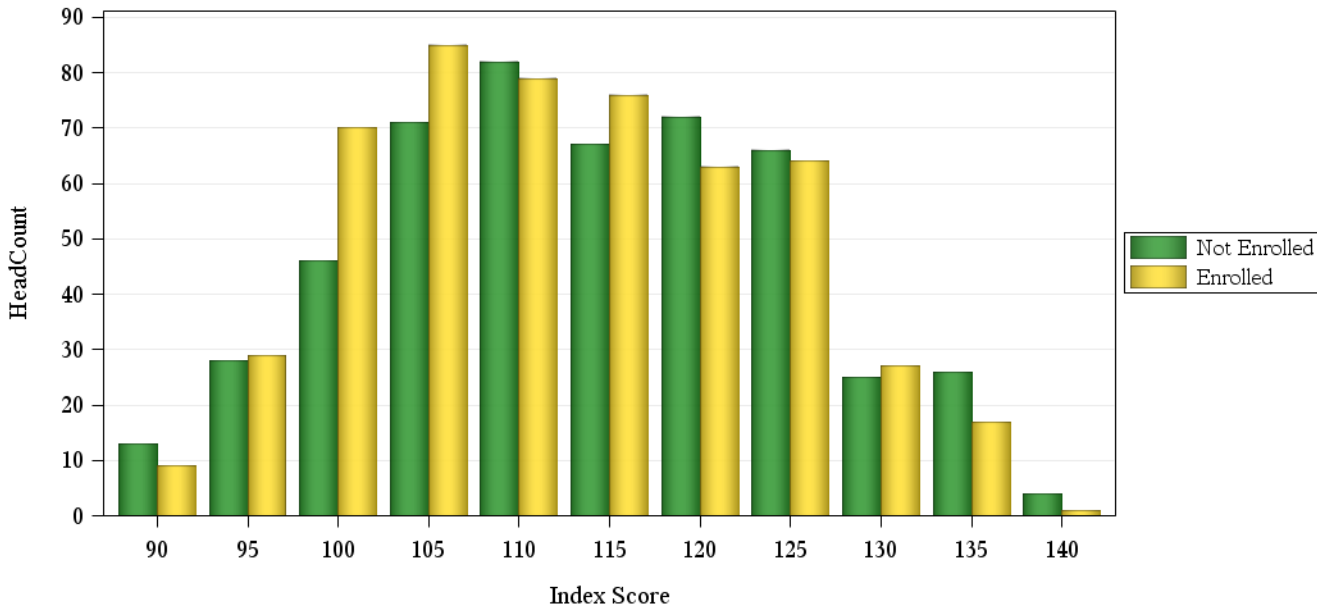
Fall 2013 Freshman Profile

Health and Human Sciences Admitted Applicants

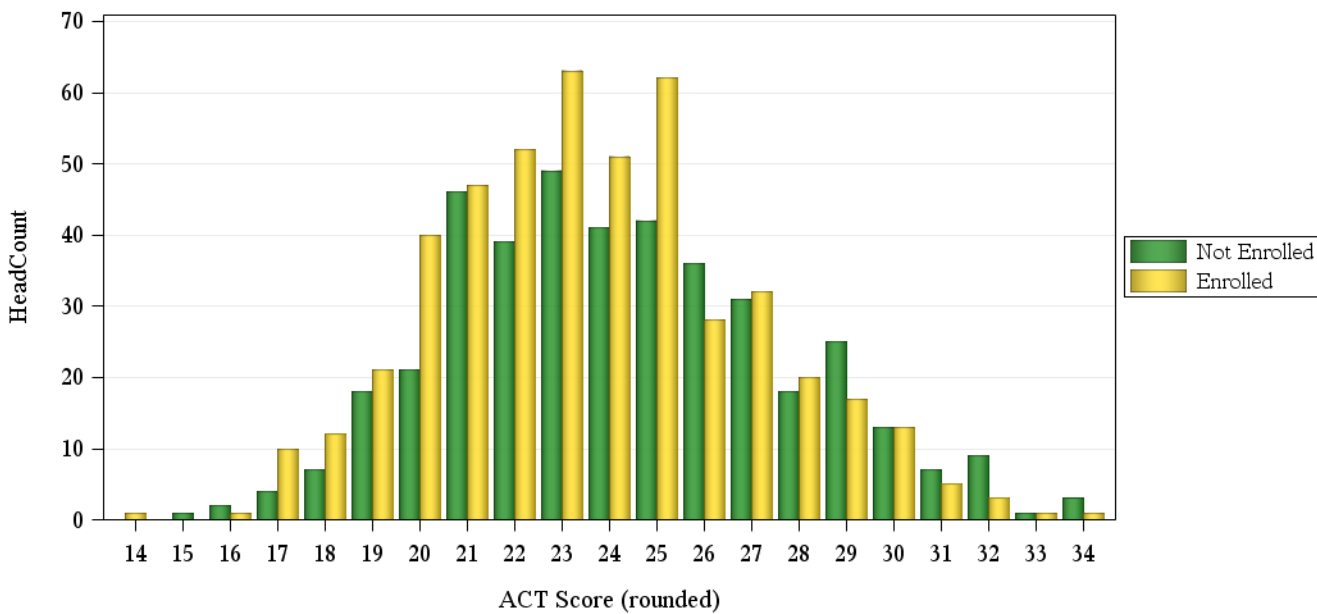
	Not Enrolled (N= 503)				Enrolled(N= 520)			
	Res	Nonres	Total	Percent	Res	Nonres	Total	Percent
ACT Composite								
0-14	1	.	1	0%
15-18	11	3	14	3%	20	3	23	4%
19-22	80	44	124	25%	137	23	160	31%
23-26	109	59	168	33%	177	27	204	39%
27-36	56	51	107	21%	65	27	92	18%
Missing Data	2	88	90	18%	6	34	40	8%
Means	23.9	24.9	24.3		23.4	24.6	23.6	
CCHE Index								
0-89	2	.	2	0%
090-100	36	31	67	13%	60	17	77	15%
101-114	95	110	205	41%	179	45	224	43%
115-160	125	101	226	45%	167	52	219	42%
Missing Data	.	3	3	1%
Means	114	113	114		112	114	112	
HS GPA								
2.5-2.99	10	10	20	4%	21	9	30	6%
3.0-3.59	88	111	199	40%	169	50	219	42%
3.6-4.00	118	93	211	42%	166	42	208	40%
4.01-high	42	29	71	14%	50	13	63	12%
Missing Data	.	2	2	0%
Means	3.65	3.59	3.62		3.59	3.56	3.58	
HS Rank								
0-29	3	2	5	1%	7	1	8	2%
30-49	17	15	32	6%	36	5	41	8%
50-59	21	12	33	7%	36	7	43	8%
60-79	67	46	113	22%	124	11	135	26%
80-89	45	26	71	14%	72	12	84	16%
90-100	45	32	77	15%	51	11	62	12%
Missing Data	60	112	172	34%	80	67	147	28%
Means	74.5	73.7	74.2		71.9	74.2	72.2	
SAT Critical Thinking								
0-399	.	1	1	0%	1	1	2	0%
400-499	8	48	56	11%	13	14	27	5%
500-599	18	52	70	14%	18	37	55	11%
600-699	9	23	32	6%	8	9	17	3%
700-800	1	3	4	1%	.	3	3	1%
Missing Data	222	118	340	68%	366	50	416	80%
Means	557	529	535		534	545	541	
SAT Math								
0-399	2	4	6	1%	2	2	4	1%
400-499	9	27	36	7%	9	16	25	5%
500-599	16	69	85	17%	19	27	46	9%
600-699	8	23	31	6%	9	18	27	5%
700-800	1	4	5	1%	1	1	2	0%
Missing Data	222	118	340	68%	366	50	416	80%
Means	530	538	536		536	548	543	

Fall 2013 Freshman Profile

Fall 2013 CDHE Index Distribution of Admitted Applicants by Enrollment Status(Health and Human Sciences)



Fall 2013 ACT Composite Distribution of Admitted Applicants by Enrollment Status(Health and Human Sciences)



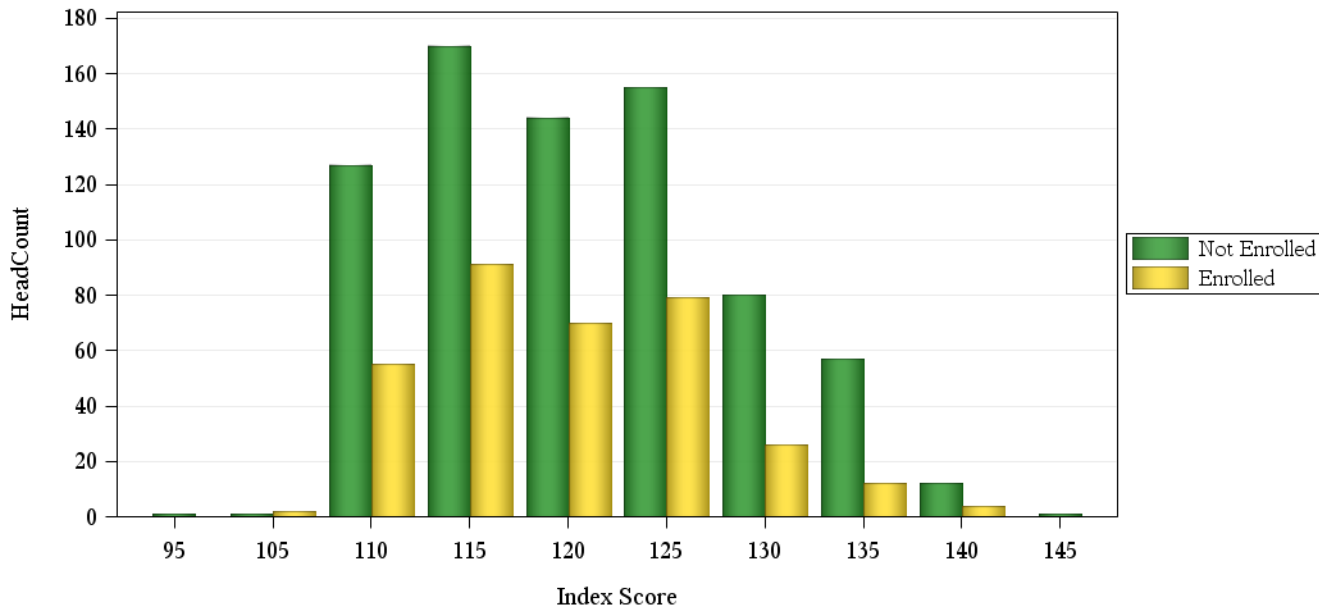
Fall 2013 Freshman Profile

Business Admitted Applicants

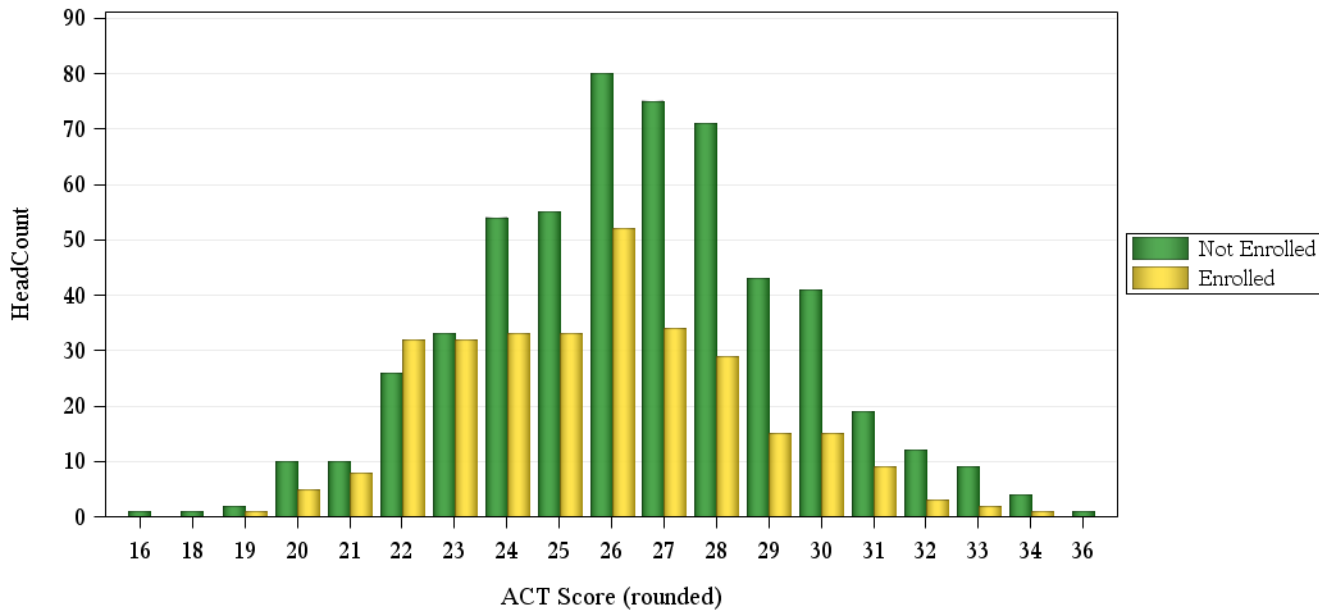
	Not Enrolled (N= 751)				Enrolled(N= 341)			
	Res	Nonres	Total	Percent	Res	Nonres	Total	Percent
ACT Composite								
15-18	1	1	2	0%
19-22	29	19	48	6%	39	7	46	13%
23-26	136	86	222	30%	132	18	150	44%
27-36	161	114	275	37%	81	27	108	32%
Missing Data	9	195	204	27%	3	34	37	11%
Means	26.3	26.7	26.5		25.5	26.2	25.6	
CCHE Index								
090-100	.	1	1	0%
101-114	78	119	197	26%	71	24	95	28%
115-160	258	292	550	73%	183	61	244	72%
Missing Data	.	3	3	0%	1	1	2	1%
Means	121	120	121		120	120	120	
HS GPA								
2.5-2.99	.	6	6	1%	1	1	2	1%
3.0-3.59	81	145	226	30%	54	19	73	21%
3.6-4.00	179	197	376	50%	153	53	206	60%
4.01-high	76	64	140	19%	46	12	58	17%
Missing Data	.	3	3	0%	1	1	2	1%
Means	3.80	3.72	3.76		3.79	3.73	3.78	
HS Rank								
30-49	6	16	22	3%	3	2	5	1%
50-59	12	17	29	4%	15	1	16	5%
60-79	83	66	149	20%	74	18	92	27%
80-89	63	49	112	15%	69	9	78	23%
90-100	67	51	118	16%	57	8	65	19%
Missing Data	105	216	321	43%	37	48	85	25%
Means	79.7	76.3	78.1		80.3	76.2	79.7	
SAT Critical Thinking								
0-399	.	4	4	1%
400-499	10	32	42	6%	4	3	7	2%
500-599	43	129	172	23%	19	32	51	15%
600-699	29	105	134	18%	8	15	23	7%
700-800	5	12	17	2%	1	1	2	1%
Missing Data	249	133	382	51%	223	35	258	76%
Means	583	574	576		560	577	570	
SAT Math								
400-499	10	12	22	3%	2	1	3	1%
500-599	32	118	150	20%	17	18	35	10%
600-699	36	127	163	22%	13	29	42	12%
700-800	9	25	34	5%	.	3	3	1%
Missing Data	249	133	382	51%	223	35	258	76%
Means	595	603	601		576	608	595	

Fall 2013 Freshman Profile

Fall 2013 CDHE Index Distribution of Admitted Applicants by Enrollment Status(Business)



Fall 2013 ACT Composite Distribution of Admitted Applicants by Enrollment Status(Business)



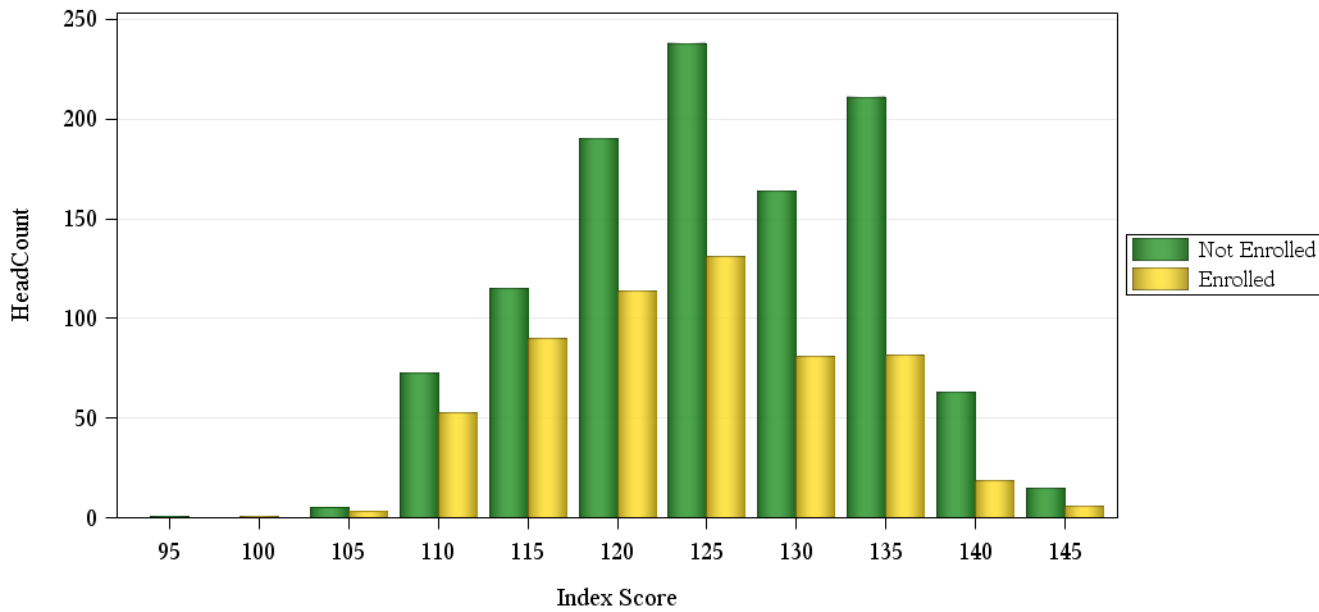
Fall 2013 Freshman Profile

Engineering Admitted Applicants

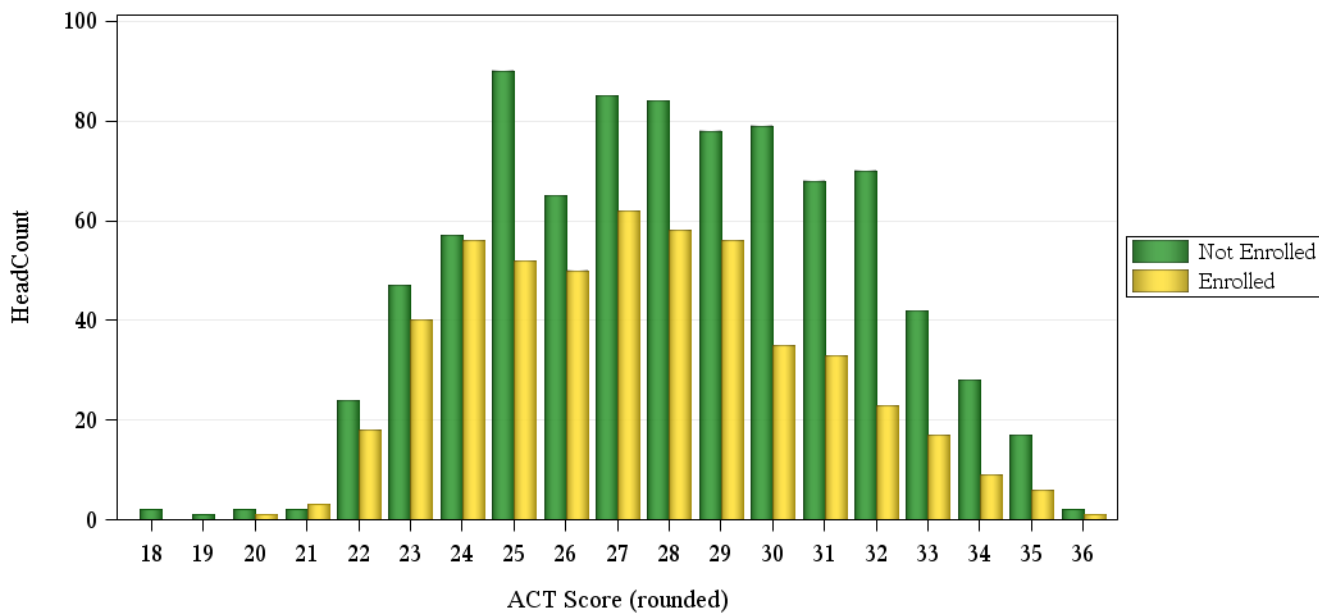
	Not Enrolled (N=1080)				Enrolled(N= 581)			
	Res	Nonres	Total	Percent	Res	Nonres	Total	Percent
ACT Composite								
15-18	.	2	2	0%
19-22	17	12	29	3%	19	3	22	4%
23-26	153	106	259	24%	176	22	198	34%
27-36	311	242	553	51%	217	83	300	52%
Missing Data	6	231	237	22%	5	56	61	10%
Means	28.1	28.1	28.1		27.1	28.1	27.3	
CCHE Index								
090-100	1	.	1	0%
101-114	44	65	109	10%	70	20	90	15%
115-160	442	523	965	89%	347	143	490	84%
Missing Data	.	5	5	0%	.	1	1	0%
Means	127	125	126		123	125	124	
HS GPA								
2.0-2.49	1	.	1	0%
3.0-3.59	65	108	173	16%	95	35	130	22%
3.6-4.00	230	330	560	52%	220	84	304	52%
4.01-high	191	150	341	32%	102	44	146	25%
Missing Data	.	5	5	0%	.	1	1	0%
Means	3.94	3.88	3.91		3.83	3.84	3.84	
HS Rank								
0-29	1	1	2	0%
30-49	2	5	7	1%	6	2	8	1%
50-59	7	9	16	1%	18	4	22	4%
60-79	94	70	164	15%	113	37	150	26%
80-89	89	71	160	15%	88	19	107	18%
90-100	166	125	291	27%	113	40	153	26%
Missing Data	128	312	440	41%	79	62	141	24%
Means	84.9	84.1	84.5		81.3	82.2	81.5	
SAT Critical Thinking								
0-399	.	11	11	1%	.	3	3	1%
400-499	10	43	53	5%	9	8	17	3%
500-599	56	167	223	21%	36	44	80	14%
600-699	43	130	173	16%	30	46	76	13%
700-800	23	37	60	6%	12	6	18	3%
Missing Data	355	205	560	52%	330	57	387	67%
Means	610	582	589		593	581	587	
SAT Math								
400-499	1	1	2	0%	3	.	3	1%
500-599	27	89	116	11%	26	29	55	9%
600-699	69	224	293	27%	44	58	102	18%
700-800	35	74	109	10%	14	20	34	6%
Missing Data	355	205	560	52%	330	57	387	67%
Means	654	641	644		636	636	636	

Fall 2013 Freshman Profile

Fall 2013 CDHE Index Distribution of Admitted Applicants by Enrollment Status(Engineering)



Fall 2013 ACT Composite Distribution of Admitted Applicants by Enrollment Status(Engineering)



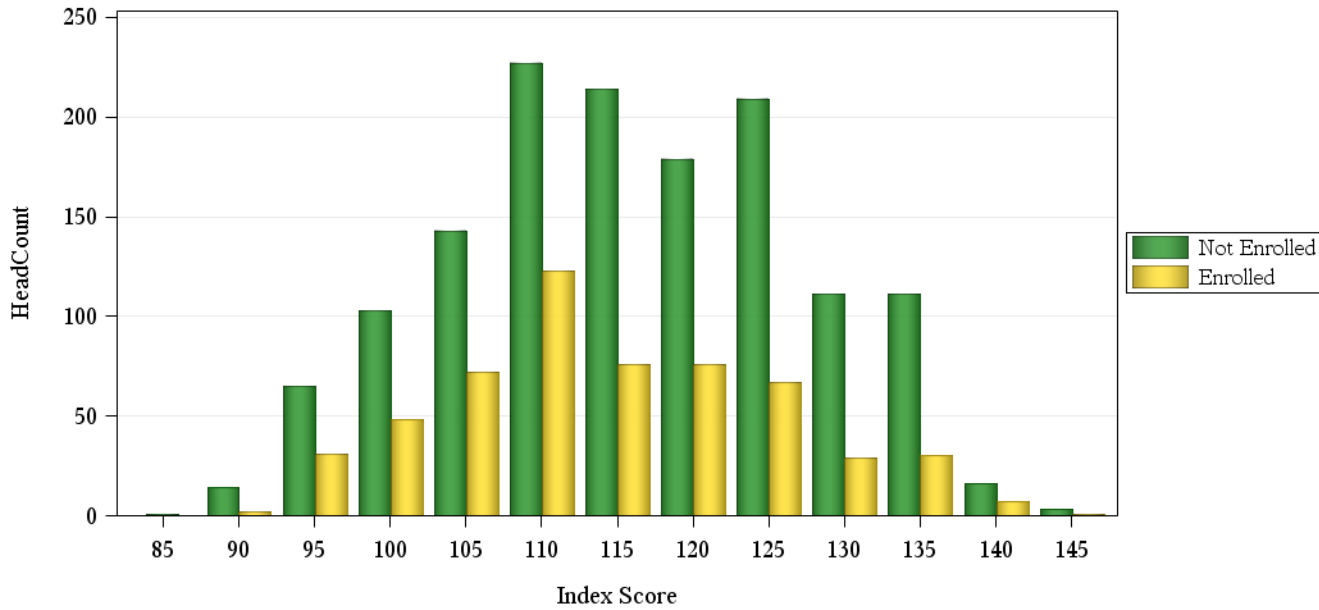
Fall 2013 Freshman Profile

Liberal Arts Admitted Applicants

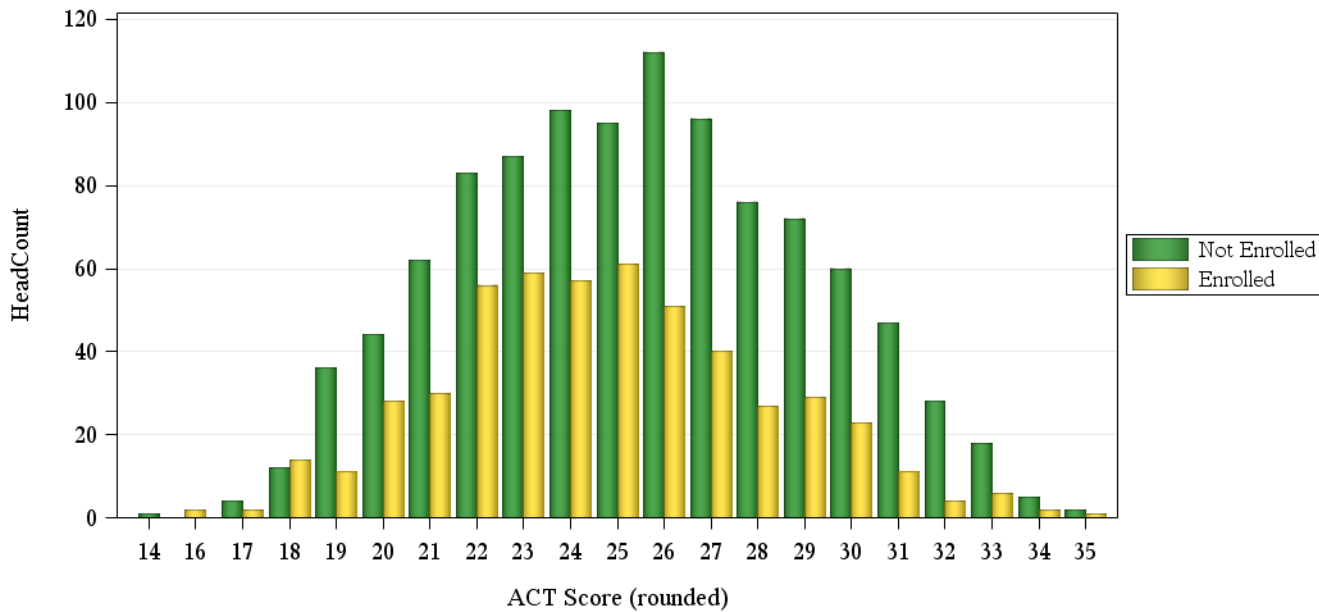
	Not Enrolled (N=1410)				Enrolled(N= 565)			
	Res	Nonres	Total	Percent	Res	Nonres	Total	Percent
ACT Composite								
0-14	1	.	1	0%
15-18	12	4	16	1%	16	2	18	3%
19-22	130	95	225	16%	118	7	125	22%
23-26	231	161	392	28%	198	30	228	40%
27-36	257	147	404	29%	118	25	143	25%
Missing Data	21	351	372	26%	7	44	51	9%
Means	25.5	25.3	25.5		24.4	26.0	24.6	
CCHE Index								
0-89	1	1	2	0%	1	.	1	0%
090-100	42	81	123	9%	37	11	48	8%
101-114	222	296	518	37%	212	45	257	45%
115-160	387	366	753	53%	206	50	256	45%
Missing Data	.	14	14	1%	1	2	3	1%
Means	118	115	116		114	115	114	
HS GPA								
2.0-2.49	.	1	1	0%
2.5-2.99	18	59	77	5%	22	12	34	6%
3.0-3.59	226	319	545	39%	195	43	238	42%
3.6-4.00	261	289	550	39%	177	38	215	38%
4.01-high	147	80	227	16%	62	13	75	13%
Missing Data	.	10	10	1%	1	2	3	1%
Means	3.71	3.54	3.62		3.59	3.55	3.58	
HS Rank								
0-29	2	10	12	1%	7	5	12	2%
30-49	43	28	71	5%	49	6	55	10%
50-59	44	34	78	6%	45	5	50	9%
60-79	150	93	243	17%	144	19	163	29%
80-89	102	74	176	12%	74	12	86	15%
90-100	137	87	224	16%	74	8	82	15%
Missing Data	174	432	606	43%	64	53	117	21%
Means	76.2	74.6	75.5		70.9	66.5	70.3	
SAT Critical Thinking								
0-399	1	8	9	1%
400-499	13	69	82	6%	15	9	24	4%
500-599	61	214	275	20%	33	31	64	11%
600-699	47	141	188	13%	22	23	45	8%
700-800	19	29	48	3%	5	4	9	2%
Missing Data	511	297	808	57%	382	41	423	75%
Means	597	570	577		574	574	574	
SAT Math								
0-399	2	7	9	1%	2	.	2	0%
400-499	20	76	96	7%	17	13	30	5%
500-599	66	238	304	22%	37	41	78	14%
600-699	46	125	171	12%	17	13	30	5%
700-800	7	15	22	2%	2	.	2	0%
Missing Data	511	297	808	57%	382	41	423	75%
Means	571	560	562		548	545	547	

Fall 2013 Freshman Profile

Fall 2013 CDHE Index Distribution of Admitted Applicants by Enrollment Status(Liberal Arts)



Fall 2013 ACT Composite Distribution of Admitted Applicants by Enrollment Status(Liberal Arts)



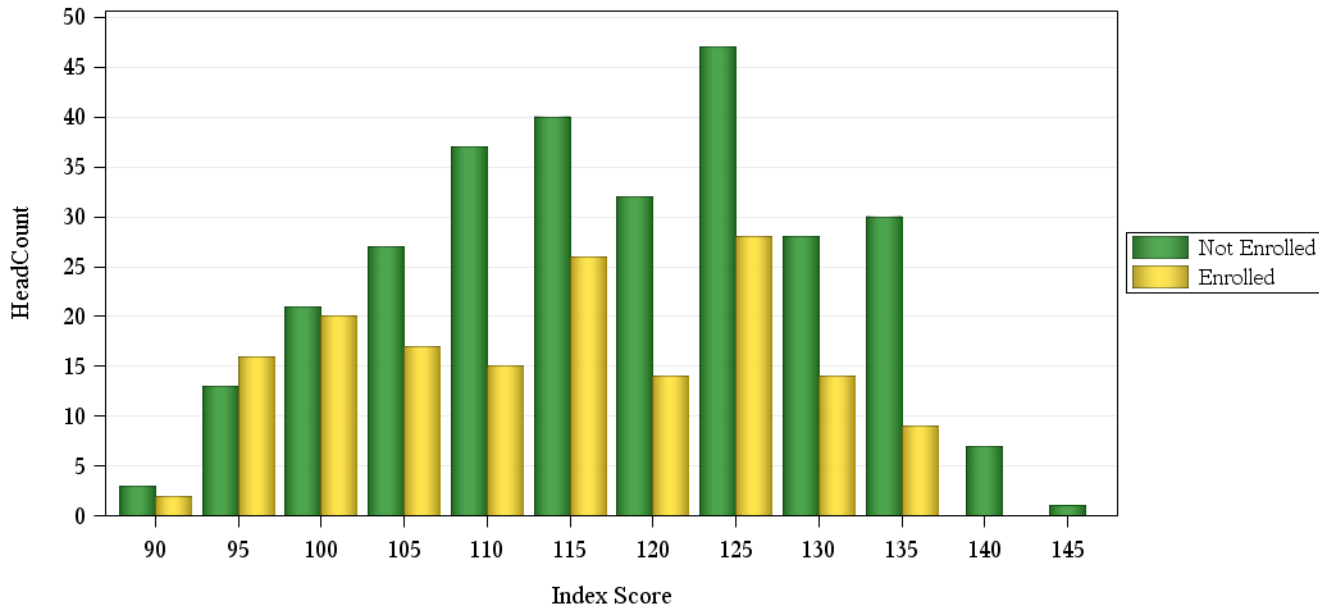
Fall 2013 Freshman Profile

Warner College of Natural Resources Admitted Applicants

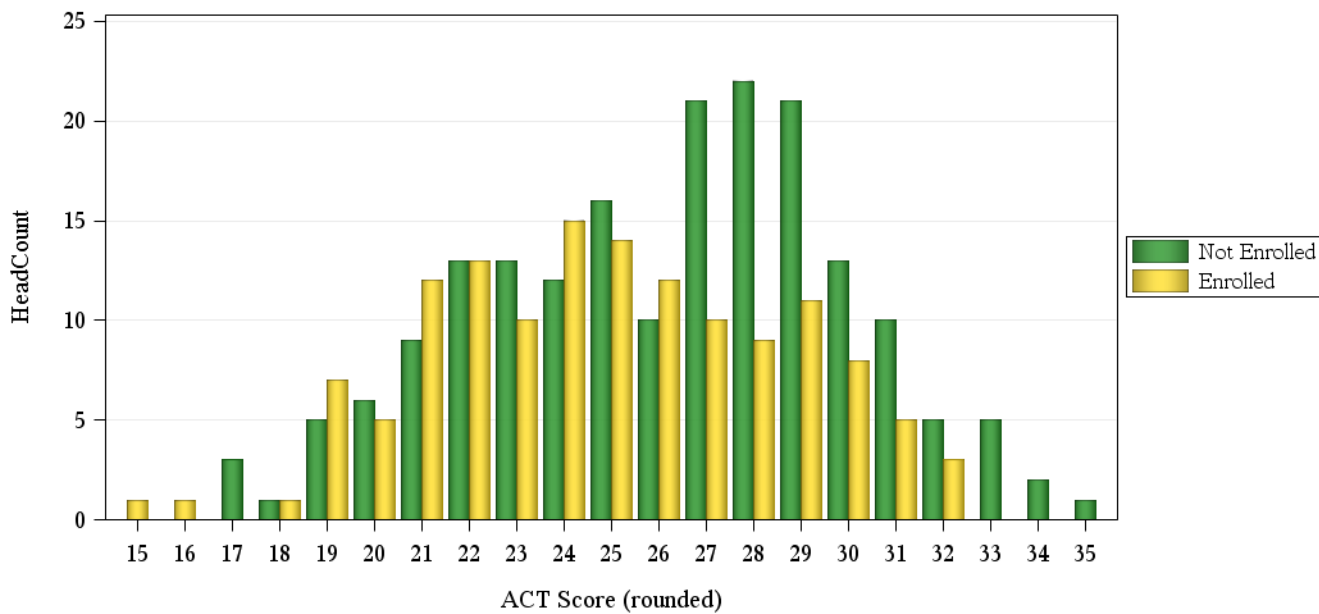
	Not Enrolled (N= 288)				Enrolled(N= 163)			
	Res	Nonres	Total	Percent	Res	Nonres	Total	Percent
ACT Composite								
15-18	1	3	4	1%	2	1	3	2%
19-22	10	23	33	11%	32	5	37	23%
23-26	17	34	51	18%	32	19	51	31%
27-36	27	73	100	35%	22	24	46	28%
Missing Data	2	98	100	35%	3	23	26	16%
Means	25.9	26.3	26.2		24.0	26.3	24.8	
CCHE Index								
090-100	6	19	25	9%	19	10	29	18%
101-114	17	79	96	33%	31	21	52	32%
115-160	34	131	165	57%	39	41	80	49%
Missing Data	.	2	2	1%	2	.	2	1%
Means	118	118	118		112	116	114	
HS GPA								
2.5-2.99	5	19	24	8%	7	13	20	12%
3.0-3.59	17	85	102	35%	40	22	62	38%
3.6-4.00	21	84	105	36%	35	30	65	40%
4.01-high	14	42	56	19%	9	7	16	10%
Missing Data	.	1	1	0%
Means	3.67	3.61	3.62		3.53	3.50	3.52	
HS Rank								
0-29	.	2	2	1%	.	1	1	1%
30-49	8	12	20	7%	15	5	20	12%
50-59	4	10	14	5%	8	6	14	9%
60-79	13	25	38	13%	31	12	43	26%
80-89	9	27	36	13%	13	7	20	12%
90-100	9	31	40	14%	12	9	21	13%
Missing Data	14	124	138	48%	12	32	44	27%
Means	72.4	75.8	74.8		68.3	71.1	69.3	
SAT Critical Thinking								
0-399	1	1	1%
400-499	2	17	19	7%	4	5	9	6%
500-599	9	53	62	22%	8	18	26	16%
600-699	5	56	61	21%	2	12	14	9%
700-800	.	13	13	5%	1	3	4	2%
Missing Data	41	92	133	46%	76	33	109	67%
Means	572	586	585		545	573	565	
SAT Math								
0-399	.	1	1	0%
400-499	2	18	20	7%	3	7	10	6%
500-599	8	61	69	24%	7	17	24	15%
600-699	6	48	54	19%	5	15	20	12%
700-800	.	11	11	4%
Missing Data	41	92	133	46%	76	33	109	67%
Means	581	582	582		547	567	561	

Fall 2013 Freshman Profile

Fall 2013 CDHE Index Distribution of Admitted Applicants by Enrollment Status(Warner College of Natural Resources)



Fall 2013 ACT Composite Distribution of Admitted Applicants by Enrollment Status(Warner College of Natural Resources)



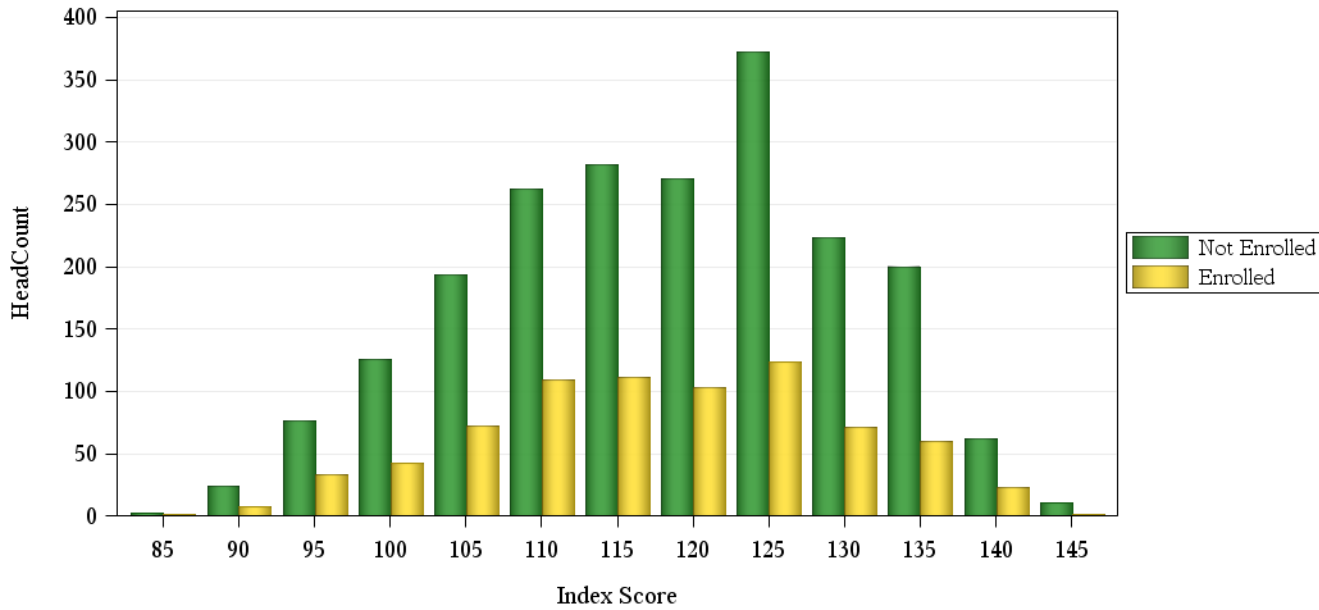
Fall 2013 Freshman Profile

Natural Sciences Admitted Applicants

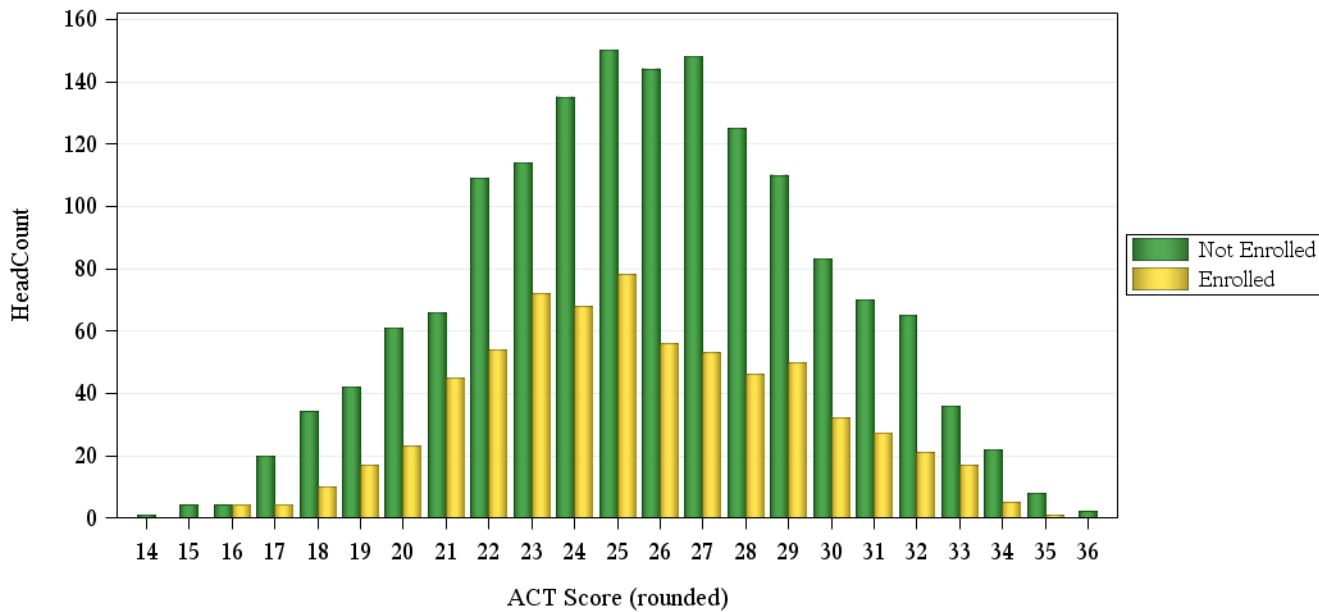
	Not Enrolled (N=2121)				Enrolled(N= 760)			
	Res	Nonres	Total	Percent	Res	Nonres	Total	Percent
ACT Composite								
0-14	.	1	1	0%
15-18	34	28	62	3%	16	2	18	2%
19-22	165	113	278	13%	118	21	139	18%
23-26	282	261	543	26%	222	52	274	36%
27-36	316	353	669	32%	185	67	252	33%
Missing Data	27	541	568	27%	7	70	77	10%
Means	25.5	25.9	25.7		25.1	26.2	25.4	
CCHE Index								
0-89	1	1	2	0%	.	1	1	0%
090-100	57	102	159	7%	46	12	58	8%
101-114	263	377	640	30%	186	61	247	33%
115-160	503	798	1,301	61%	315	135	450	59%
Missing Data	.	19	19	1%	1	3	4	1%
Means	119	118	118		117	119	117	
HS GPA								
2.0-2.49	1	1	0%
2.5-2.99	17	68	85	4%	26	13	39	5%
3.0-3.59	259	406	665	31%	177	57	234	31%
3.6-4.00	350	533	883	42%	236	100	336	44%
4.01-high	198	275	473	22%	108	38	146	19%
Missing Data	.	15	15	1%	1	3	4	1%
Means	3.76	3.70	3.72		3.69	3.69	3.69	
HS Rank								
0-29	1	6	7	0%	7	1	8	1%
30-49	37	40	77	4%	38	7	45	6%
50-59	48	49	97	5%	45	14	59	8%
60-79	173	162	335	16%	139	37	176	23%
80-89	153	135	288	14%	98	27	125	16%
90-100	189	209	398	19%	131	31	162	21%
Missing Data	223	696	919	43%	90	95	185	24%
Means	78.7	78.6	78.7		75.5	76.9	75.8	
SAT Critical Thinking								
0-399	.	15	15	1%
400-499	18	137	155	7%	20	23	43	6%
500-599	73	332	405	19%	38	49	87	11%
600-699	74	248	322	15%	30	34	64	8%
700-800	19	66	85	4%	15	13	28	4%
Missing Data	640	499	1,139	54%	445	93	538	71%
Means	599	573	578		581	576	579	
SAT Math								
0-399	1	8	9	0%	.	1	1	0%
400-499	20	110	130	6%	22	22	44	6%
500-599	67	312	379	18%	38	48	86	11%
600-699	72	296	368	17%	35	37	72	9%
700-800	24	72	96	5%	8	11	19	3%
Missing Data	640	499	1,139	54%	445	93	538	71%
Means	602	583	587		577	575	576	

Fall 2013 Freshman Profile

Fall 2013 CDHE Index Distribution of Admitted Applicants by Enrollment Status(Natural Sciences)



Fall 2013 ACT Composite Distribution of Admitted Applicants by Enrollment Status(Natural Sciences)



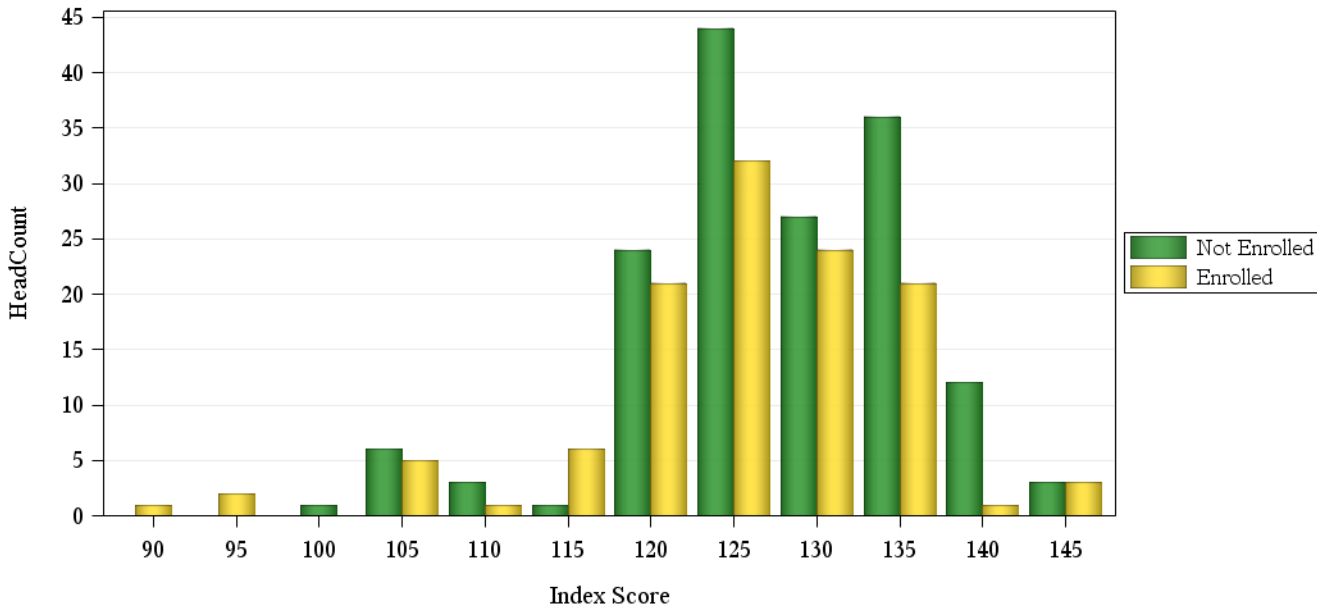
Fall 2013 Freshman Profile

Veterinary Medicine + Biomedical Sci Admitted Applicants

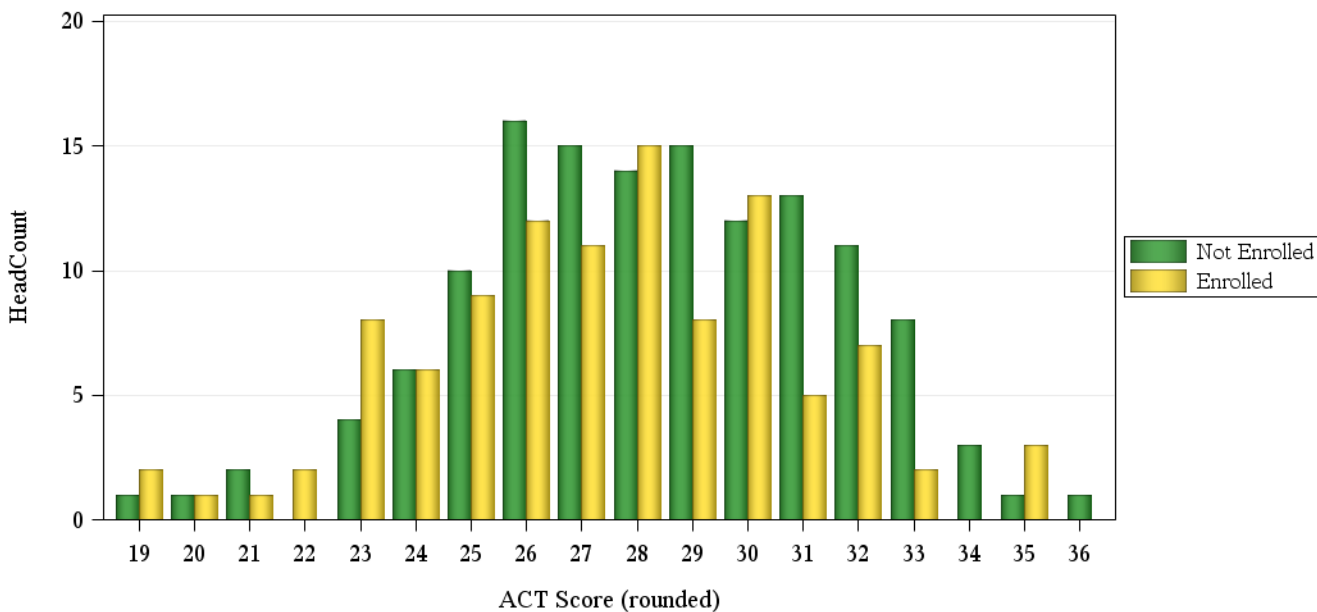
	Not Enrolled (N= 159)				Enrolled(N= 118)			
	Res	Nonres	Total	Percent	Res	Nonres	Total	Percent
ACT Composite								
19-22	3	1	4	3%	4	2	6	5%
23-26	12	24	36	23%	28	7	35	30%
27-36	40	53	93	58%	42	22	64	54%
Missing Data	.	26	26	16%	3	10	13	11%
Means	28.0	28.5	28.3		27.3	27.7	27.4	
CCHE Index								
090-100	1	.	1	1%	2	1	3	3%
101-114	3	6	9	6%	5	2	7	6%
115-160	51	96	147	92%	70	37	107	91%
Missing Data	.	2	2	1%	.	1	1	1%
Means	127	128	128		125	126	125	
HS GPA								
3.0-3.59	4	6	10	6%	8	4	12	10%
3.6-4.00	25	55	80	50%	32	22	54	46%
4.01-high	26	41	67	42%	37	14	51	43%
Missing Data	.	2	2	1%	.	1	1	1%
Means	4.06	4.01	4.03		4.00	3.93	3.98	
HS Rank								
0-29	1	.	1	1%
30-49	2	2	2%
50-59	2	.	2	1%	1	1	2	2%
60-79	3	7	10	6%	10	2	12	10%
80-89	8	16	24	15%	14	10	24	20%
90-100	23	28	51	32%	37	8	45	38%
Missing Data	19	53	72	45%	14	18	32	27%
Means	89.2	88.9	89.0		86.6	82.4	85.5	
SAT Critical Thinking								
0-399	.	1	1	1%
400-499	.	2	2	1%	2	1	3	3%
500-599	8	23	31	19%	9	12	21	18%
600-699	6	27	33	21%	6	11	17	14%
700-800	.	6	6	4%	2	1	3	3%
Missing Data	41	45	86	54%	58	16	74	63%
Means	601	608	606		595	586	590	
SAT Math								
400-499	2	2	4	3%	1	2	3	3%
500-599	3	14	17	11%	7	8	15	13%
600-699	8	33	41	26%	9	13	22	19%
700-800	1	10	11	7%	2	2	4	3%
Missing Data	41	45	86	54%	58	16	74	63%
Means	604	633	628		609	610	610	

Fall 2013 Freshman Profile

Fall 2013 CDHE Index Distribution of Admitted Applicants by Enrollment Status(Veterinary Medicine + Biomedical Sci)



Fall 2013 ACT Composite Distribution of Admitted Applicants by Enrollment Status(Veterinary Medicine + Biomedical Sci)



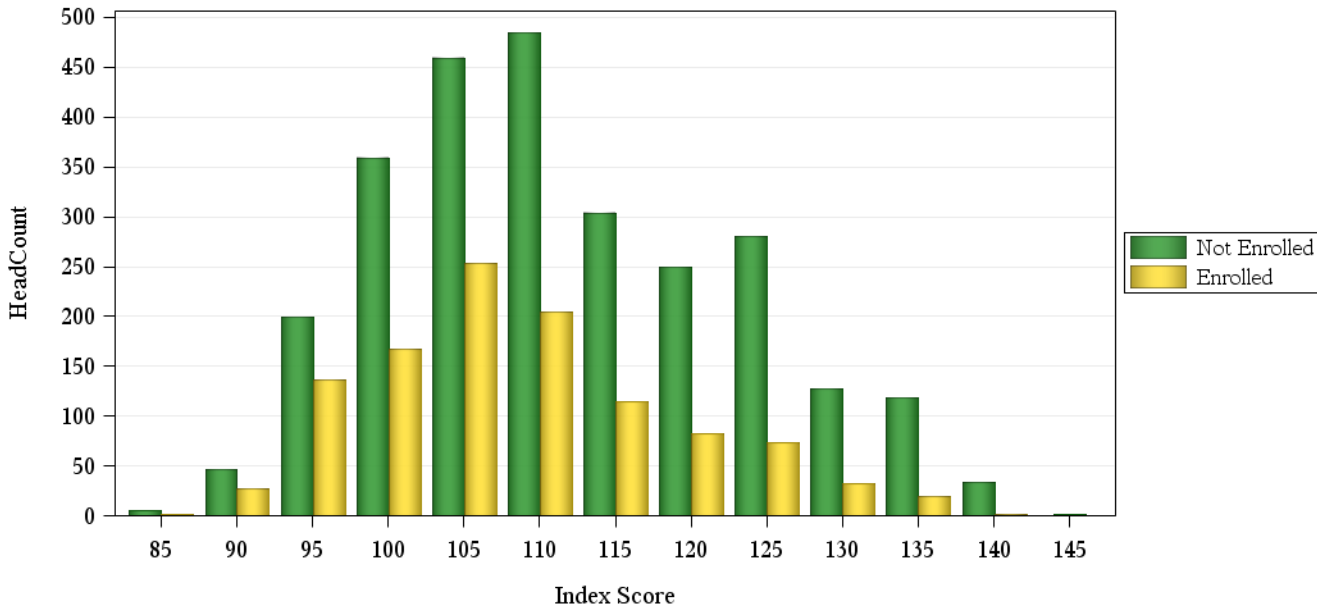
Fall 2013 Freshman Profile

Intra-University Admitted Applicants

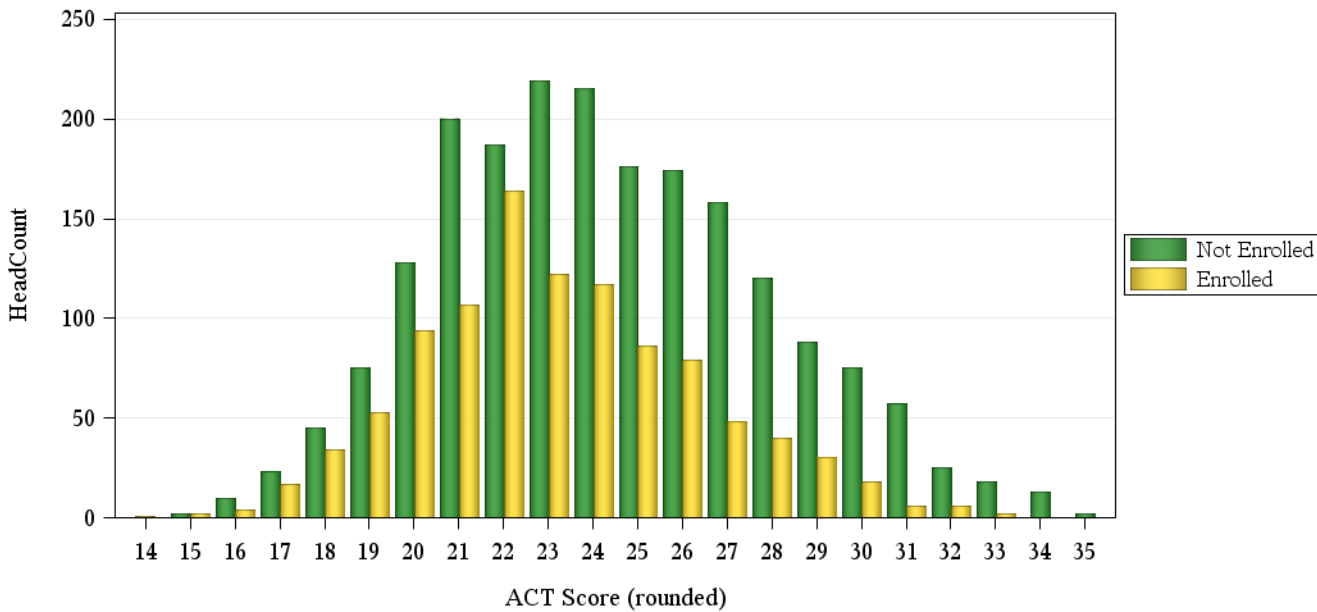
	Not Enrolled (N=2770)				Enrolled(N=1159)			
	Res	Nonres	Total	Percent	Res	Nonres	Total	Percent
ACT Composite								
0-14	1	.	1	0%
15-18	54	26	80	3%	50	7	57	5%
19-22	417	173	590	21%	378	40	418	36%
23-26	455	329	784	28%	356	48	404	35%
27-36	273	283	556	20%	118	32	150	13%
Missing Data	23	737	760	27%	14	115	129	11%
Means	23.9	25.0	24.3		23.0	23.9	23.1	
CCHE Index								
0-89	2	4	6	0%	1	.	1	0%
090-100	161	236	397	14%	209	45	254	22%
101-114	617	659	1,276	46%	498	86	584	50%
115-160	440	548	988	36%	206	68	274	24%
Missing Data	2	101	103	4%	3	43	46	4%
Means	112	112	112		108	110	108	
HS GPA								
2.0-2.49	1	1	2	0%	1	.	1	0%
2.5-2.99	81	188	269	10%	108	31	139	12%
3.0-3.59	581	724	1,305	47%	522	98	620	53%
3.6-4.00	401	403	804	29%	232	54	286	25%
4.01-high	156	141	297	11%	51	18	69	6%
Missing Data	2	91	93	3%	3	41	44	4%
Means	3.53	3.44	3.48		3.39	3.40	3.39	
HS Rank								
0-29	11	22	33	1%	14	5	19	2%
30-49	122	67	189	7%	151	18	169	15%
50-59	141	70	211	8%	145	12	157	14%
60-79	306	178	484	17%	277	28	305	26%
80-89	154	112	266	10%	90	18	108	9%
90-100	196	130	326	12%	70	18	88	8%
Missing Data	292	969	1,261	46%	170	143	313	27%
Means	71.3	71.3	71.3		63.8	67.5	64.2	
SAT Critical Thinking								
0-399	7	21	28	1%	5	3	8	1%
400-499	43	243	286	10%	31	35	66	6%
500-599	84	414	498	18%	44	57	101	9%
600-699	45	202	247	9%	17	18	35	3%
700-800	10	35	45	2%	5	4	9	1%
Missing Data	1,033	633	1,666	60%	815	125	940	81%
Means	552	544	545		537	532	534	
SAT Math								
0-399	1	9	10	0%	1	3	4	0%
400-499	33	160	193	7%	29	25	54	5%
500-599	84	441	525	19%	51	56	107	9%
600-699	58	258	316	11%	21	28	49	4%
700-800	13	48	61	2%	.	5	5	0%
Missing Data	1,033	632	1,665	60%	815	125	940	81%
Means	567	565	566		531	551	542	

Fall 2013 Freshman Profile

Fall 2013 CDHE Index Distribution of Admitted Applicants by Enrollment Status(Intra-University)



Fall 2013 ACT Composite Distribution of Admitted Applicants by Enrollment Status(Intra-University)



First-Year CSU GPA
Fall 2012 Cohort

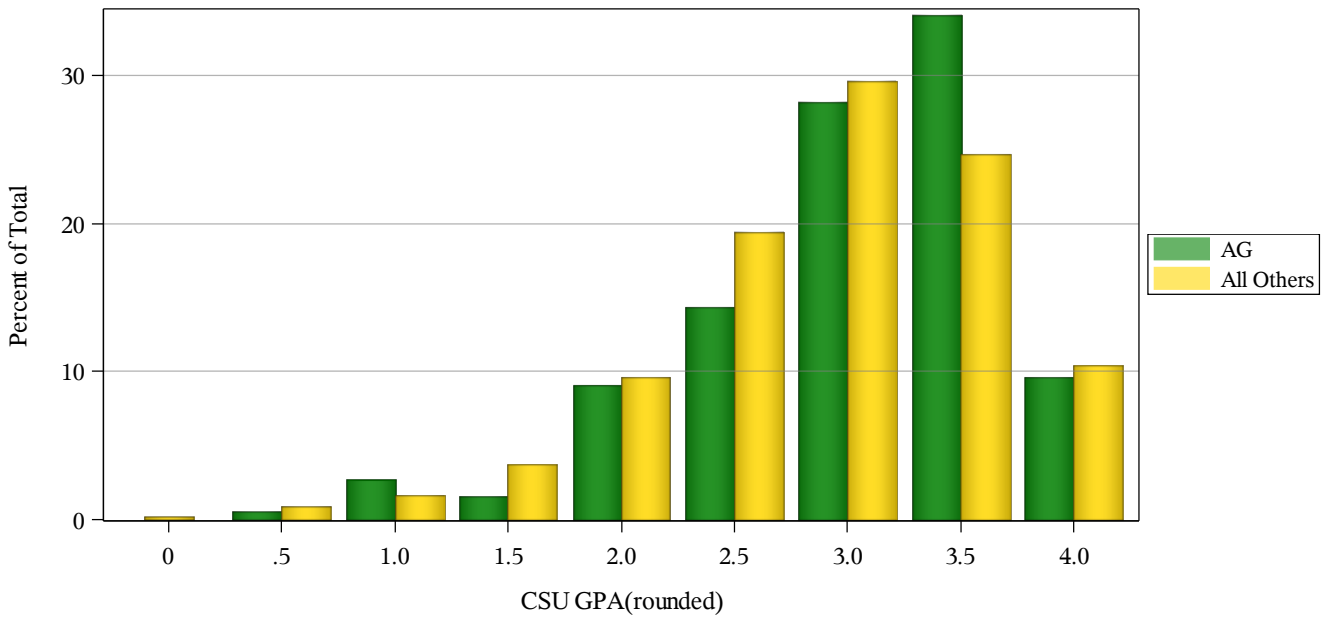
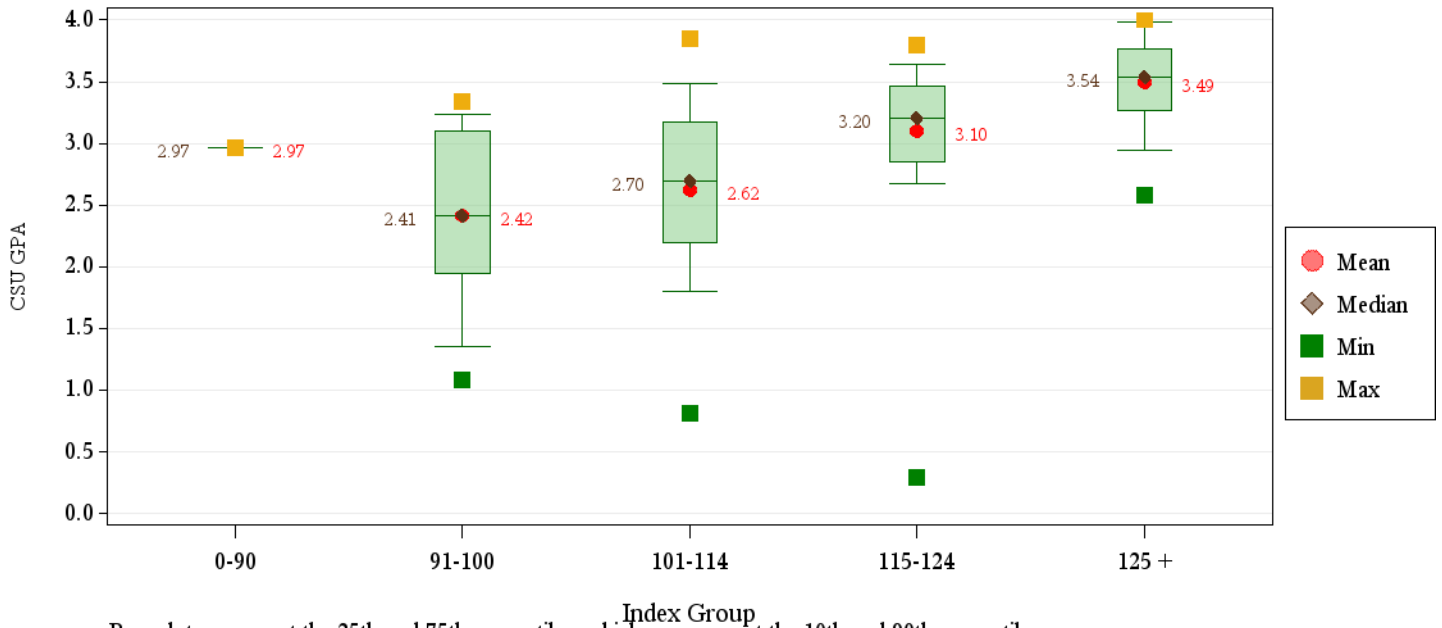
First-Year CSU GPA (Fall 2012 Cohort) by Admission Score

Agricultural Sciences

	CSU GPA				Total
	0.0-1.9	2.0-2.9	3.0-3.5	3.6-high	
Total	16	63	75	34	188
HS GPA					
2.5-2.99	2	4	3	0	9
3.0-3.59	11	31	14	3	59
3.6-4.00	3	26	51	18	98
4.01-high	0	2	7	13	22
HS Rank					
30-49	1	3	1	0	5
50-59	2	4	2	0	8
60-79	6	20	15	3	44
80-89	3	8	16	2	29
90-100	0	5	15	19	39
Missing Data	4	23	26	10	63
SAT Critical Thinking					
400-499	4	5	6	0	15
500-599	1	16	4	3	24
600-699	0	3	15	11	29
700-800	0	1	0	4	5
Missing Data	11	38	50	16	115
SAT Math					
0-399	0	0	1	0	1
400-499	1	7	5	1	14
500-599	4	9	10	5	28
600-699	0	9	9	8	26
700-800	0	0	0	4	4
Missing Data	11	38	50	16	115
ACT Composite					
15-18	1	3	2	0	6
19-22	10	17	12	1	40
23-26	3	23	26	7	59
27-36	0	13	25	20	58
Missing Data	2	7	10	6	25
CDHE Index					
0-89	0	1	0	0	1
090-100	3	5	3	0	11
101-114	12	33	22	2	69
115-160	1	24	50	32	107

First-Year CSU GPA (Fall 2012 Cohort) by Admission Score

Agricultural Sciences



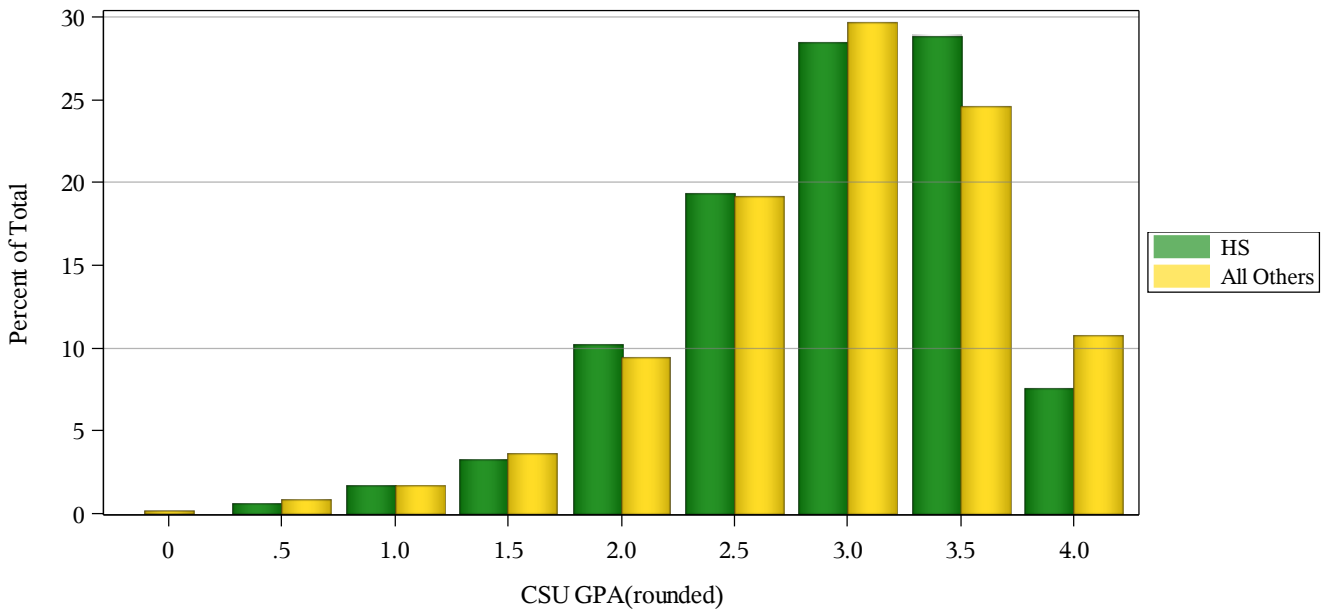
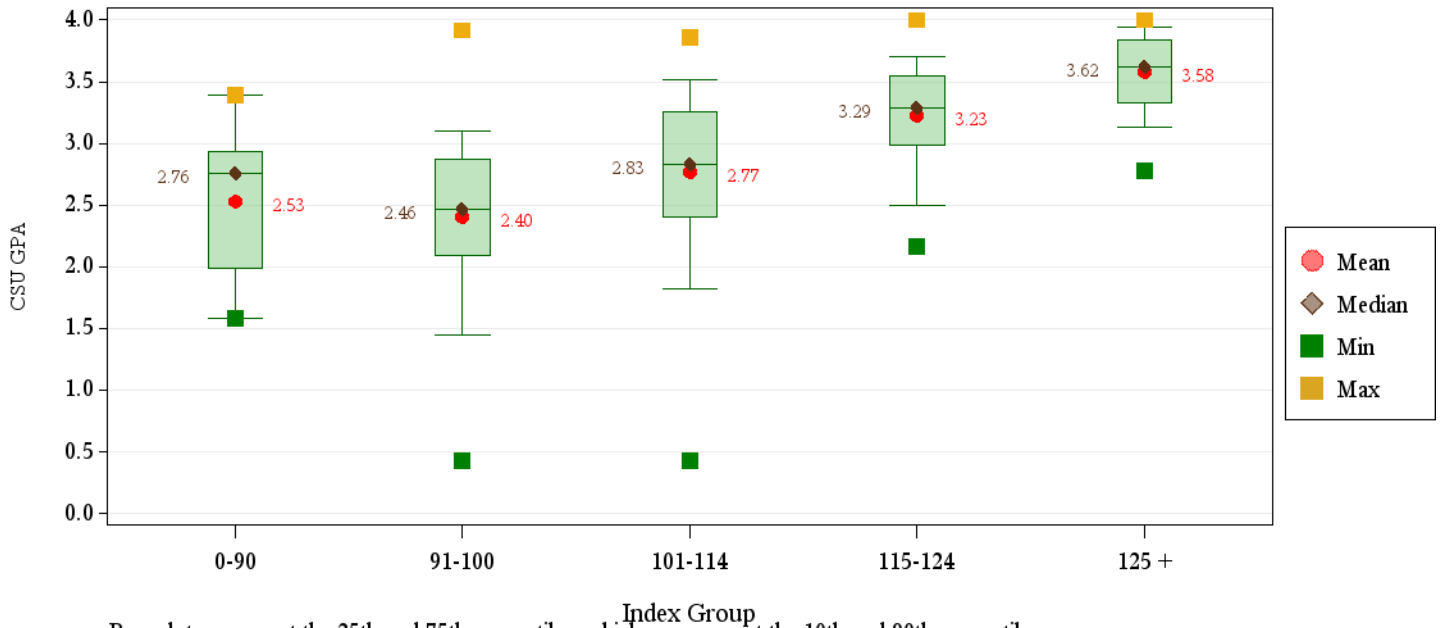
First-Year CSU GPA (Fall 2012 Cohort) by Admission Score

Health and Human Sciences

	CSU GPA				Total
	0.0-1.9	2.0-2.9	3.0-3.5	3.6-high	
Total	45	174	180	68	467
HS GPA					
2.5-2.99	11	12	5	0	28
3.0-3.59	26	111	59	10	206
3.6-4.00	7	45	99	43	194
4.01-high	0	5	15	15	35
Missing Data	1	1	2	0	4
HS Rank					
0-29	1	1	0	0	2
30-49	12	26	7	0	45
50-59	7	24	10	2	43
60-79	9	61	56	14	140
80-89	2	17	48	12	79
90-100	0	8	21	24	53
Missing Data	14	37	38	16	105
SAT Critical Thinking					
0-399	2	0	3	0	5
400-499	4	10	13	1	28
500-599	4	18	21	10	53
600-699	0	3	7	5	15
700-800	0	1	1	1	3
Missing Data	35	142	135	51	363
SAT Math					
0-399	0	2	0	0	2
400-499	4	6	7	1	18
500-599	4	16	25	6	51
600-699	2	7	13	10	32
700-800	0	1	0	0	1
Missing Data	35	142	135	51	363
ACT Composite					
15-18	3	23	4	1	31
19-22	19	69	48	12	148
23-26	12	54	83	23	172
27-36	5	20	29	25	79
Missing Data	6	8	16	7	37
CDHE Index					
0-89	0	1	1	0	2
090-100	18	50	12	2	82
101-114	26	83	67	13	189
115-160	0	39	98	51	188
Missing Data	1	1	2	2	6

First-Year CSU GPA (Fall 2012 Cohort) by Admission Score

Health and Human Sciences



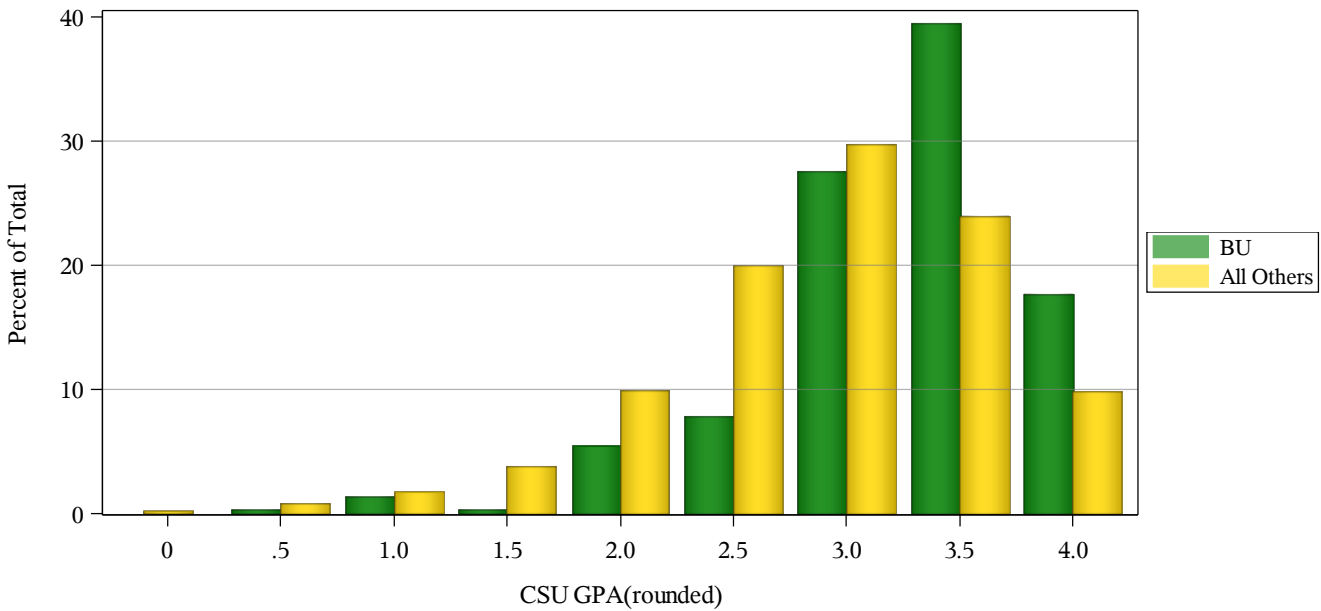
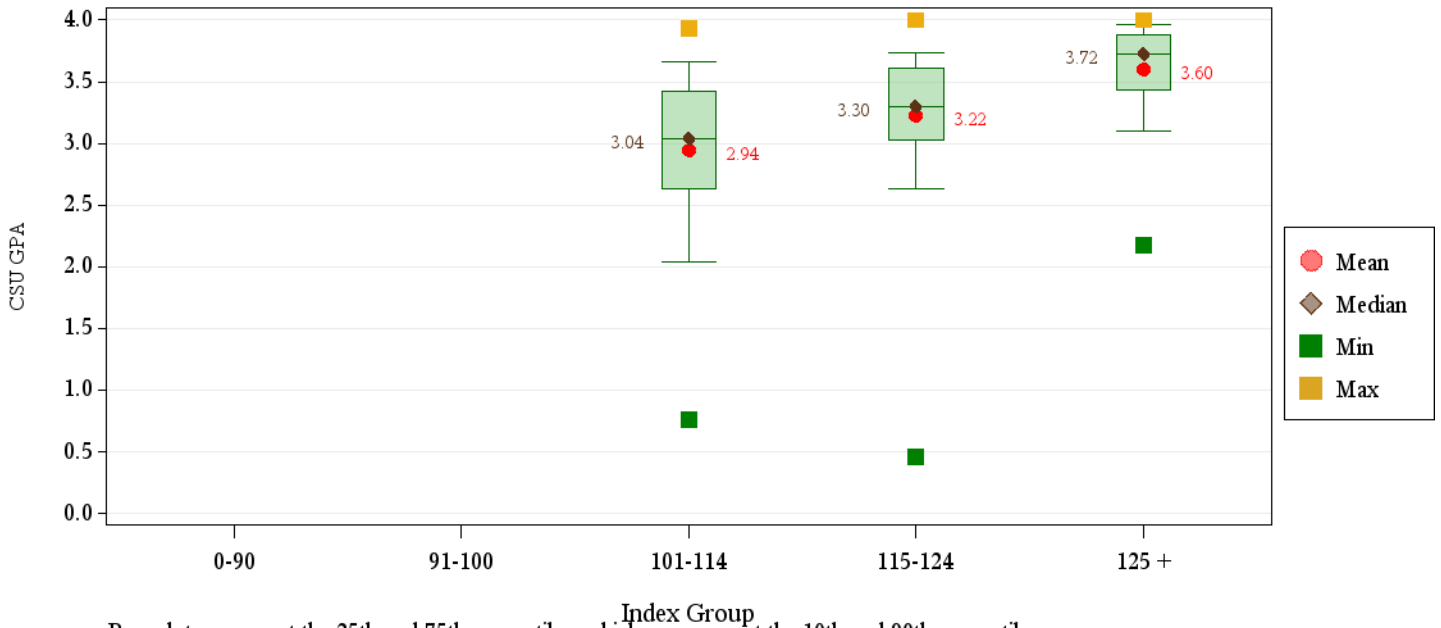
First-Year CSU GPA (Fall 2012 Cohort) by Admission Score

Business

	CSU GPA				Total
	0.0-1.9	2.0-2.9	3.0-3.5	3.6-high	
Total	11	63	123	97	294
HS GPA					
2.5-2.99	1	2	1	0	4
3.0-3.59	5	30	37	12	84
3.6-4.00	5	27	72	56	160
4.01-high	0	4	13	29	46
HS Rank					
30-49	1	1	7	1	10
50-59	0	9	8	1	18
60-79	2	25	45	21	93
80-89	2	9	22	18	51
90-100	2	4	13	37	56
Missing Data	4	15	28	19	66
SAT Critical Thinking					
400-499	0	0	3	1	4
500-599	2	12	17	21	52
600-699	1	5	9	9	24
700-800	0	1	1	2	4
Missing Data	8	45	93	64	210
SAT Math					
400-499	0	2	6	1	9
500-599	2	10	12	11	35
600-699	1	4	12	19	36
700-800	0	2	0	2	4
Missing Data	8	45	93	64	210
ACT Composite					
15-18	0	0	0	1	1
19-22	1	9	6	5	21
23-26	7	34	57	41	139
27-36	1	16	51	46	114
Missing Data	2	4	9	4	19
CDHE Index					
101-114	7	30	33	12	82
115-160	4	33	90	85	212

First-Year CSU GPA (Fall 2012 Cohort) by Admission Score

Business



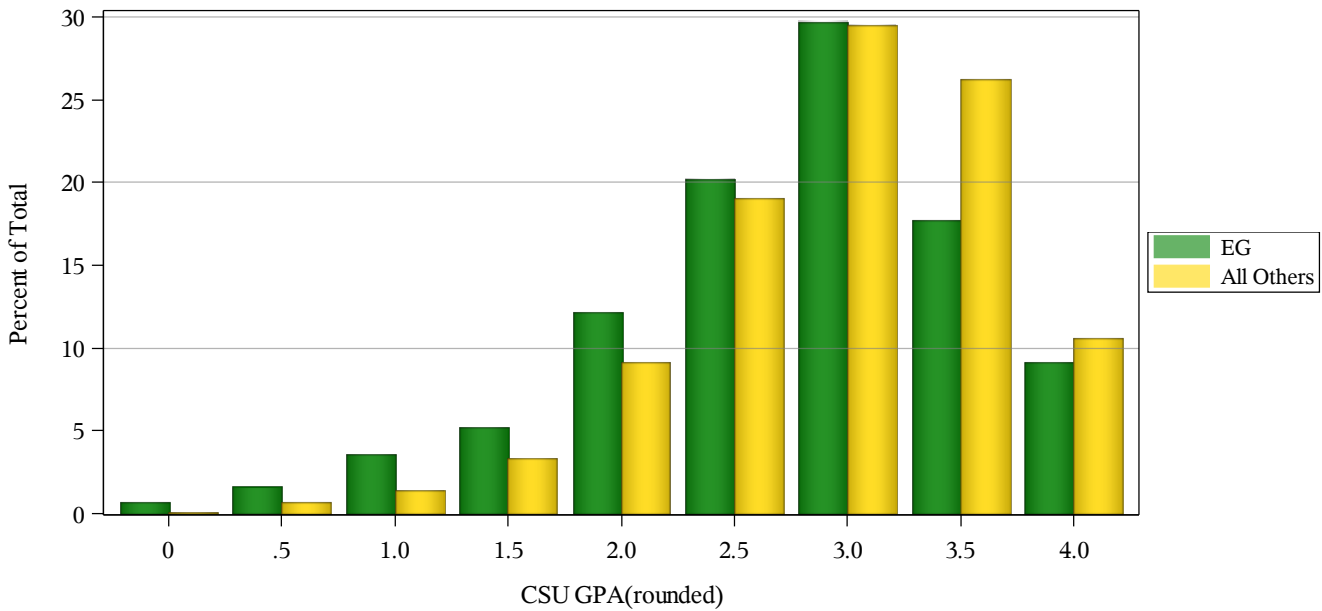
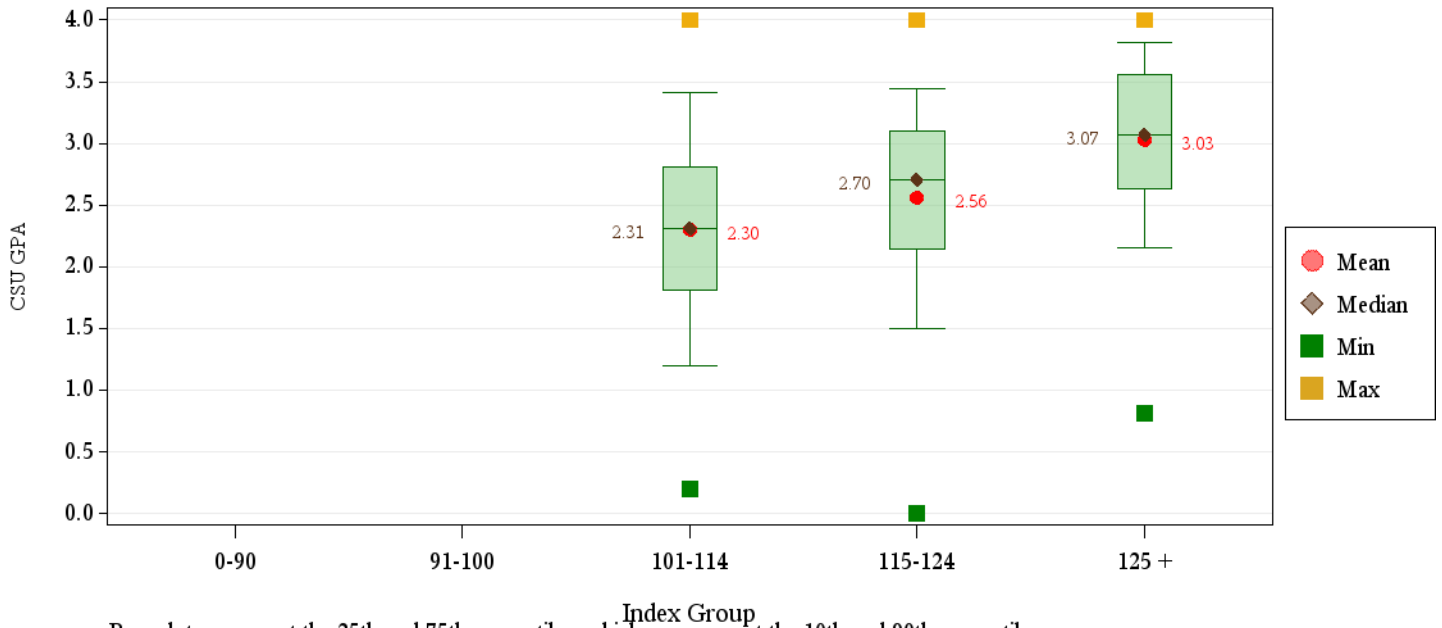
First-Year CSU GPA (Fall 2012 Cohort) by Admission Score

Engineering

	CSU GPA				Total
	0.0-1.9	2.0-2.9	3.0-3.5	3.6-high	
Total	87	245	160	79	571
HS GPA					
3.0-3.59	44	69	20	5	138
3.6-4.00	39	145	91	32	307
4.01-high	4	29	42	39	114
Missing Data	0	2	7	3	12
HS Rank					
30-49	3	3	0	0	6
50-59	7	13	1	1	22
60-79	42	76	29	6	153
80-89	15	45	26	13	99
90-100	10	45	58	44	157
Missing Data	10	63	46	15	134
SAT Critical Thinking					
0-399	0	1	7	3	11
400-499	4	8	6	2	20
500-599	6	29	15	9	59
600-699	7	31	28	12	78
700-800	2	7	5	7	21
Missing Data	68	169	99	46	382
SAT Math					
400-499	0	0	2	0	2
500-599	3	21	16	2	42
600-699	13	48	29	16	106
700-800	3	7	14	15	39
Missing Data	68	169	99	46	382
ACT Composite					
15-18	1	0	0	0	1
19-22	6	13	4	4	27
23-26	40	110	45	12	207
27-36	37	102	89	56	284
Missing Data	3	20	22	7	52
CDHE Index					
101-114	29	50	9	7	95
115-160	58	193	144	69	464
Missing Data	0	2	7	3	12

First-Year CSU GPA (Fall 2012 Cohort) by Admission Score

Engineering



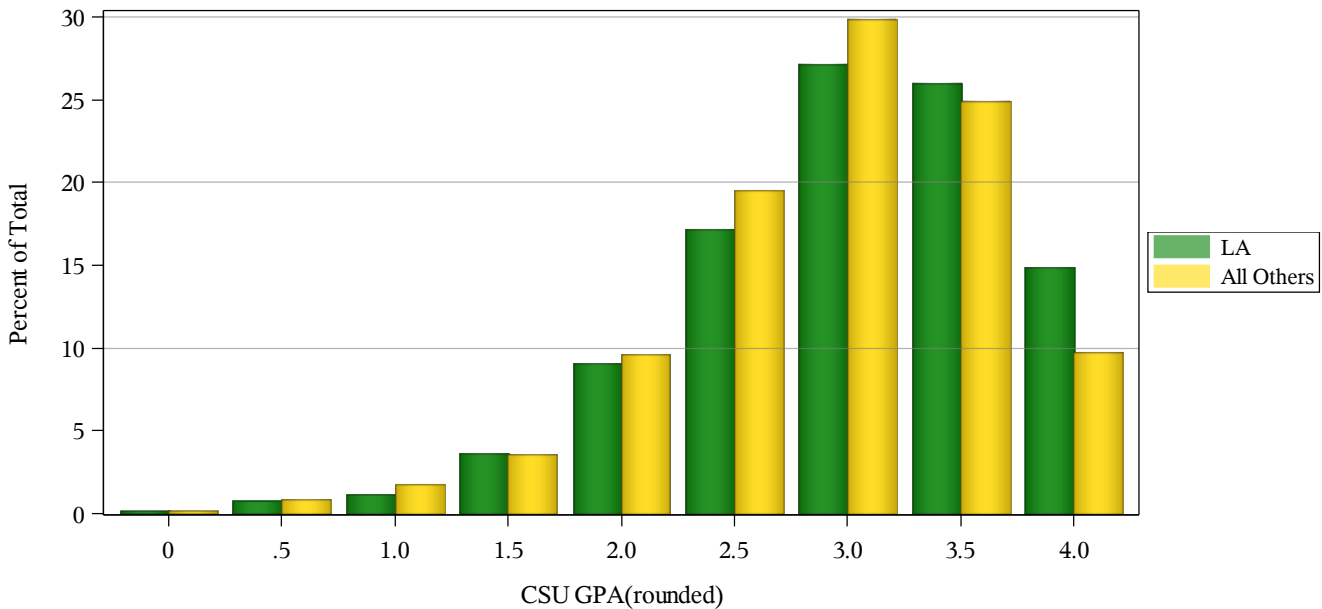
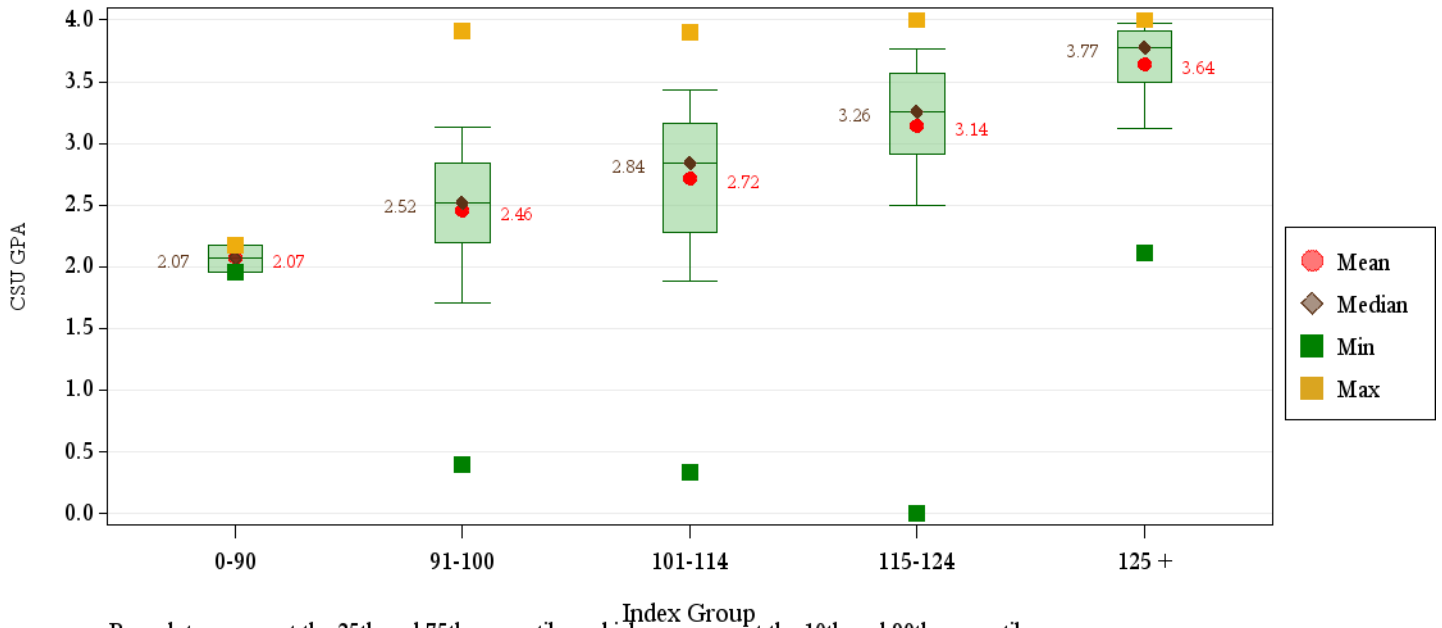
First-Year CSU GPA (Fall 2012 Cohort) by Admission Score

Liberal Arts

	CSU GPA				Total
	0.0-1.9	2.0-2.9	3.0-3.5	3.6-high	
Total	48	187	171	117	523
HS GPA					
2.0-2.49	1	0	1	0	2
2.5-2.99	9	22	5	2	38
3.0-3.59	34	122	69	8	233
3.6-4.00	3	38	80	72	193
4.01-high	0	5	15	34	54
Missing Data	1	0	1	1	3
HS Rank					
0-29	0	5	1	0	6
30-49	11	22	14	2	49
50-59	6	27	18	0	51
60-79	11	64	54	17	146
80-89	3	14	24	19	60
90-100	0	8	25	51	84
Missing Data	17	47	35	28	127
SAT Critical Thinking					
0-399	1	2	0	1	4
400-499	4	16	8	2	30
500-599	9	14	20	14	57
600-699	4	8	13	15	40
700-800	0	2	5	5	12
Missing Data	30	145	125	80	380
SAT Math					
0-399	3	1	1	0	5
400-499	3	12	13	4	32
500-599	10	18	19	15	62
600-699	2	10	12	17	41
700-800	0	1	1	1	3
Missing Data	30	145	125	80	380
ACT Composite					
15-18	4	12	1	1	18
19-22	11	57	43	6	117
23-26	13	71	71	36	191
27-36	10	28	38	70	146
Missing Data	10	19	18	4	51
CDHE Index					
0-89	1	1	0	0	2
090-100	9	38	7	2	56
101-114	31	108	76	12	227
115-160	6	40	86	102	234
Missing Data	1	0	2	1	4

First-Year CSU GPA (Fall 2012 Cohort) by Admission Score

Liberal Arts



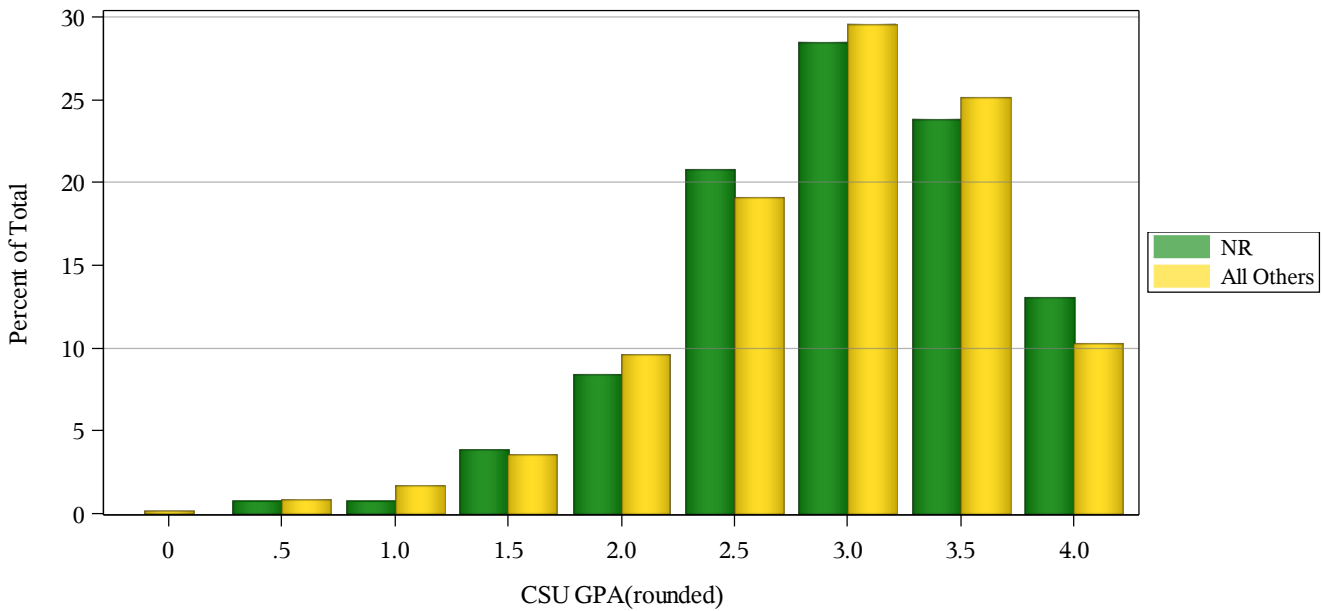
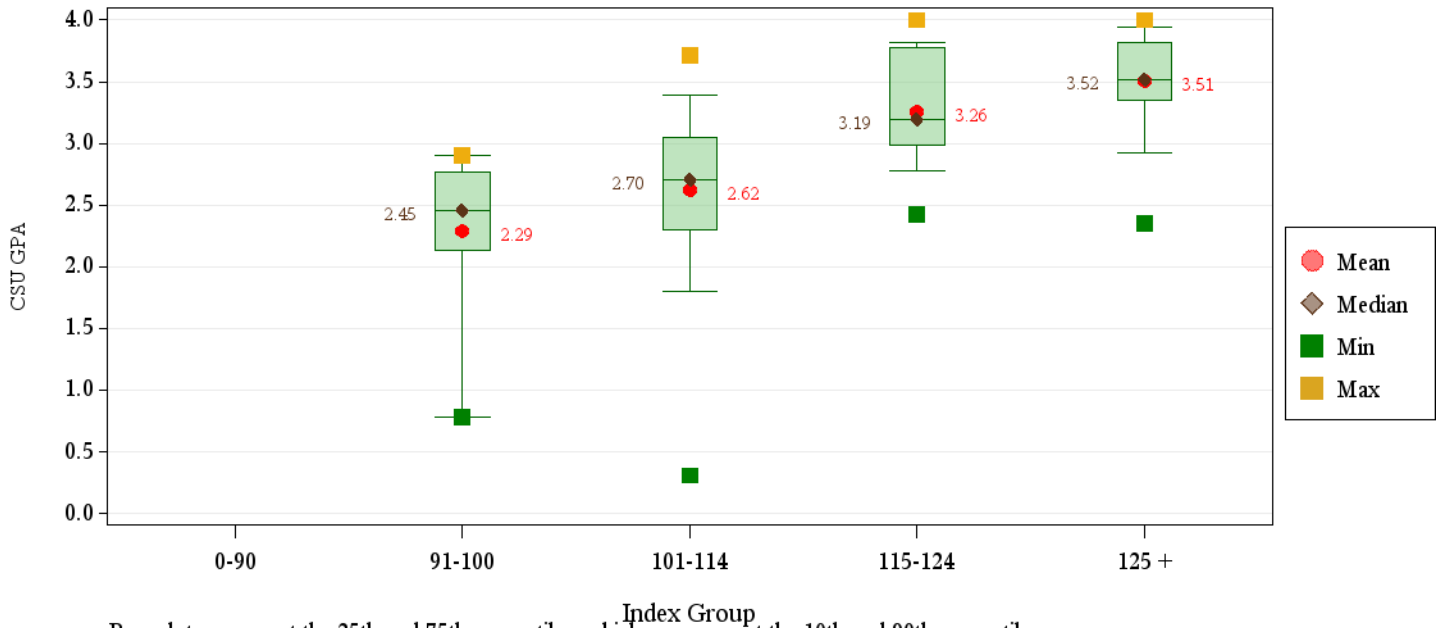
First-Year CSU GPA (Fall 2012 Cohort) by Admission Score

Warner College of Natural Resources

	CSU GPA				Total
	0.0-1.9	2.0-2.9	3.0-3.5	3.6-high	
Total	11	52	42	26	131
HS GPA					
2.5-2.99	1	3	1	1	6
3.0-3.59	9	33	17	3	62
3.6-4.00	1	15	20	11	47
4.01-high	0	1	4	10	15
Missing Data	0	0	0	1	1
HS Rank					
0-29	0	1	0	0	1
30-49	3	7	3	2	15
50-59	0	4	4	0	8
60-79	3	21	10	4	38
80-89	1	1	6	1	9
90-100	0	2	7	11	20
Missing Data	4	16	12	8	40
SAT Critical Thinking					
400-499	0	1	1	0	2
500-599	2	8	8	4	22
600-699	0	1	7	5	13
700-800	0	1	0	3	4
Missing Data	9	41	26	14	90
SAT Math					
400-499	0	1	2	2	5
500-599	1	6	10	2	19
600-699	1	4	3	6	14
700-800	0	0	1	2	3
Missing Data	9	41	26	14	90
ACT Composite					
15-18	0	1	0	0	1
19-22	3	22	4	1	30
23-26	6	17	14	10	47
27-36	0	10	16	9	35
Missing Data	2	2	8	6	18
CDHE Index					
090-100	1	6	0	0	7
101-114	10	35	16	4	65
115-160	0	11	26	21	58
Missing Data	0	0	0	1	1

First-Year CSU GPA (Fall 2012 Cohort) by Admission Score

Warner College of Natural Resources



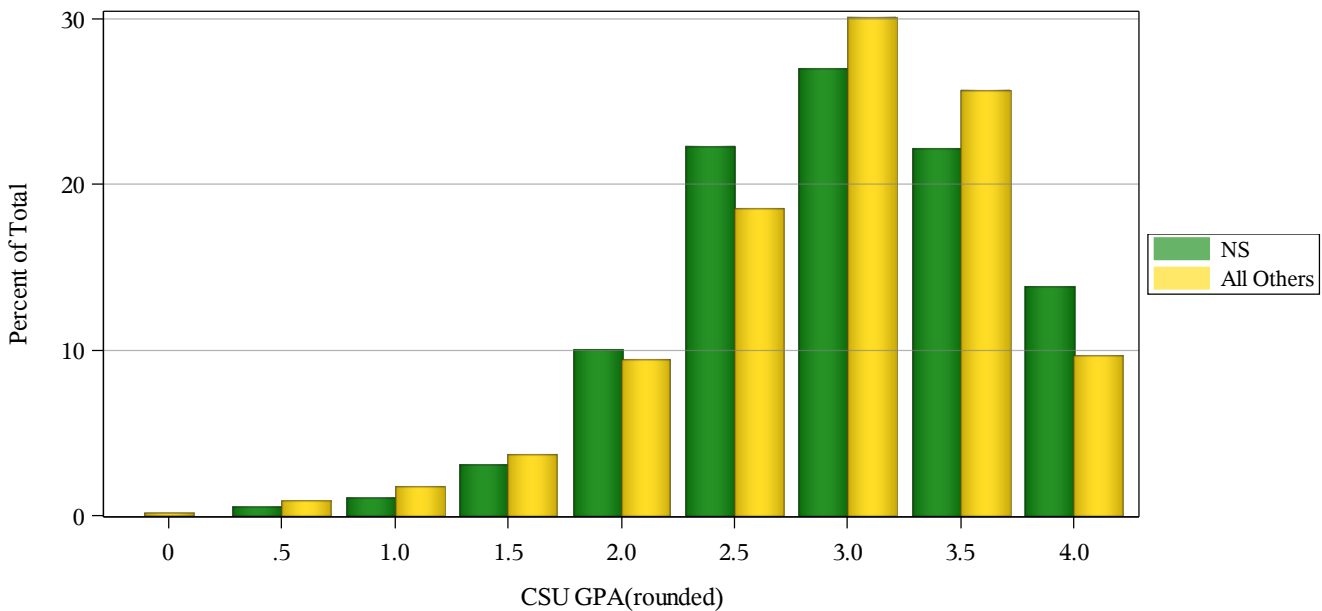
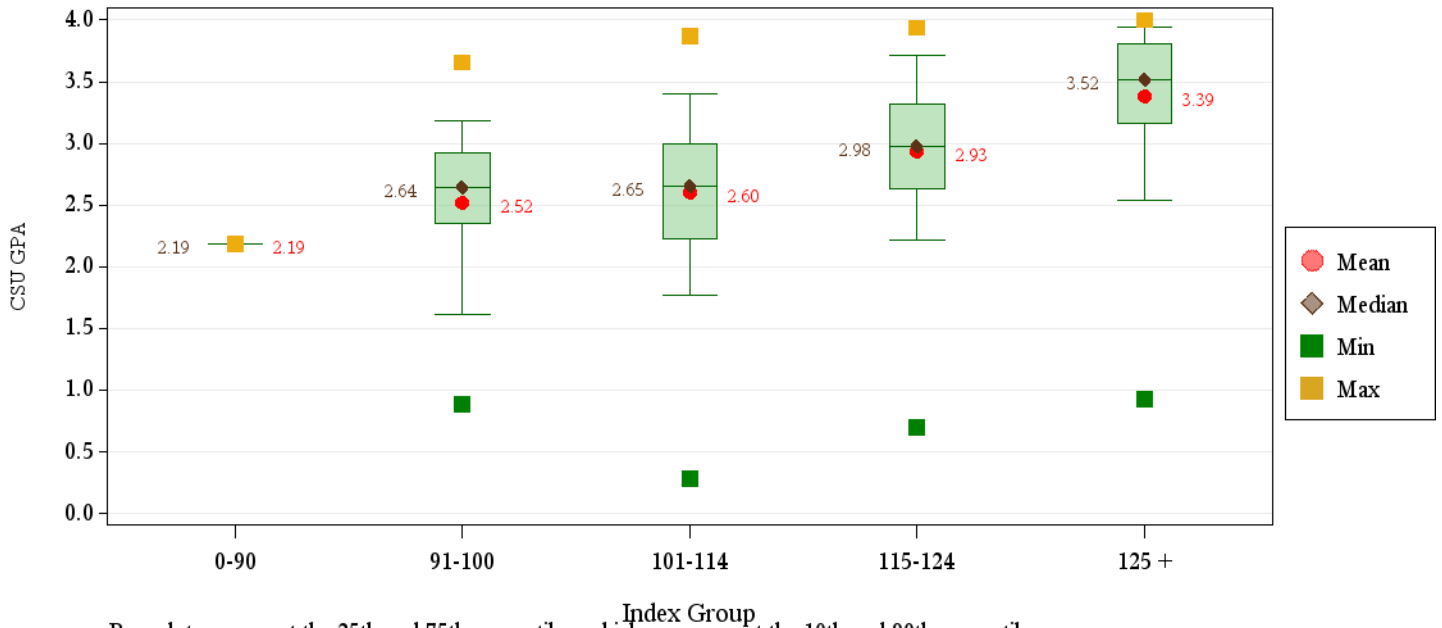
First-Year CSU GPA (Fall 2012 Cohort) by Admission Score

Natural Sciences

	CSU GPA				Total
	0.0-1.9	2.0-2.9	3.0-3.5	3.6-high	
Total	60	295	218	147	720
HS GPA					
2.5-2.99	5	18	3	2	28
3.0-3.59	41	141	43	14	239
3.6-4.00	13	126	125	69	333
4.01-high	1	8	40	62	111
Missing Data	0	2	7	0	9
HS Rank					
0-29	0	2	0	0	2
30-49	7	15	6	2	30
50-59	11	25	6	3	45
60-79	17	112	44	15	188
80-89	8	52	47	15	122
90-100	4	29	56	75	164
Missing Data	13	60	59	37	169
SAT Critical Thinking					
0-399	0	1	1	0	2
400-499	8	24	6	1	39
500-599	13	27	42	24	106
600-699	3	27	29	24	83
700-800	0	6	10	14	30
Missing Data	36	210	130	84	460
SAT Math					
0-399	0	2	0	0	2
400-499	8	16	6	4	34
500-599	10	40	36	14	100
600-699	5	25	34	32	96
700-800	1	2	12	13	28
Missing Data	36	210	130	84	460
ACT Composite					
15-18	3	9	4	1	17
19-22	25	65	25	4	119
23-26	15	114	74	39	242
27-36	10	76	83	85	254
Missing Data	7	31	32	18	88
CDHE Index					
090-100	9	32	10	1	52
101-114	35	128	40	15	218
115-160	16	133	161	129	439
Missing Data	0	2	7	2	11

First-Year CSU GPA (Fall 2012 Cohort) by Admission Score

Natural Sciences



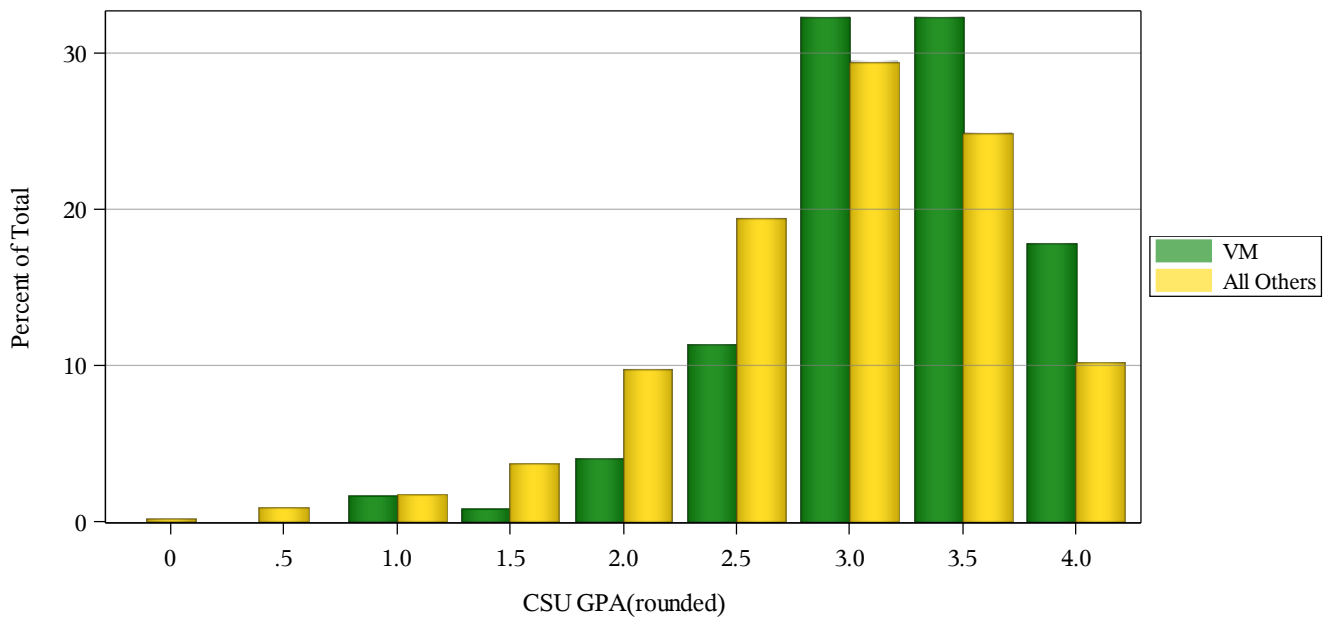
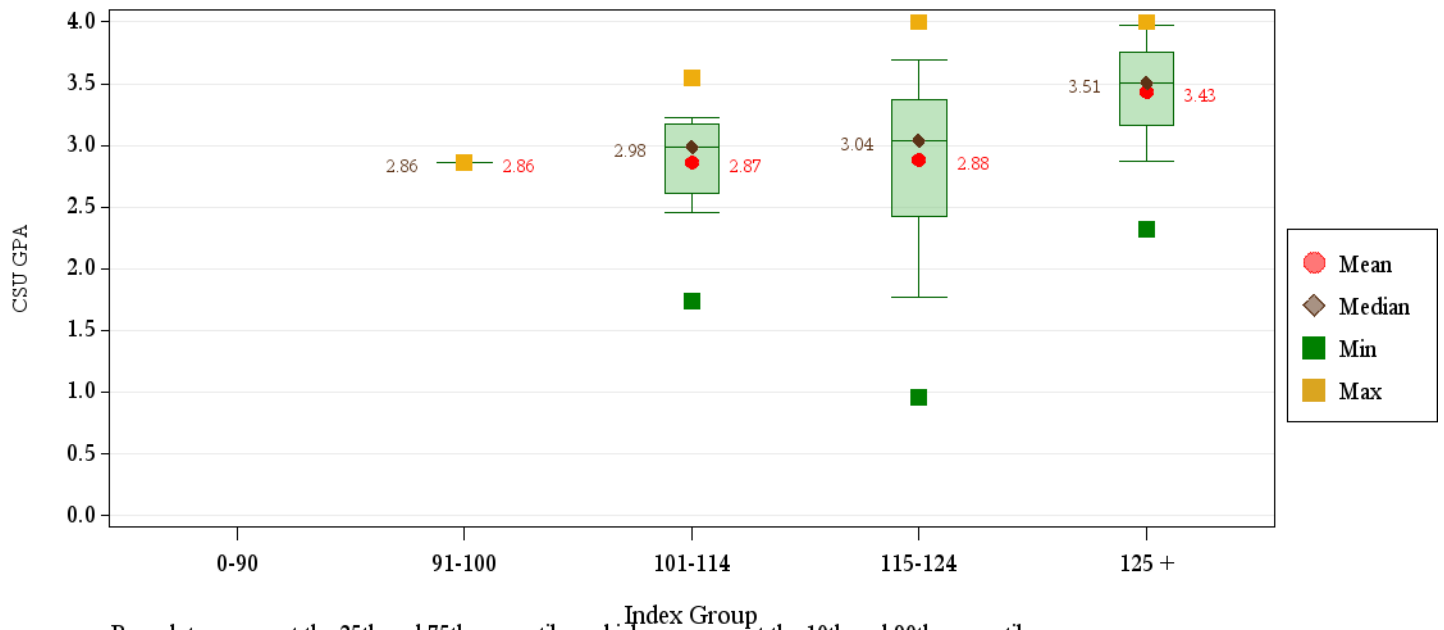
First-Year CSU GPA (Fall 2012 Cohort) by Admission Score

Veterinary Medicine + Biomedical Sci

	CSU GPA				Total
	0.0-1.9	2.0-2.9	3.0-3.5	3.6-high	
Total	7	30	54	35	126
HS GPA					
2.5-2.99	1	1	0	0	2
3.0-3.59	3	5	6	0	14
3.6-4.00	2	22	34	18	76
4.01-high	1	2	13	16	32
Missing Data	0	0	1	1	2
HS Rank					
30-49	1	0	1	0	2
50-59	0	1	2	0	3
60-79	4	6	8	0	18
80-89	2	10	9	2	23
90-100	0	8	20	21	49
Missing Data	0	5	14	12	31
SAT Critical Thinking					
0-399	0	0	0	1	1
500-599	0	5	11	4	20
600-699	0	4	12	6	22
700-800	0	1	4	3	8
Missing Data	7	20	27	21	75
SAT Math					
400-499	0	0	1	0	1
500-599	0	5	7	4	16
600-699	0	5	17	5	27
700-800	0	0	2	5	7
Missing Data	7	20	27	21	75
ACT Composite					
19-22	0	5	2	0	7
23-26	5	7	19	8	39
27-36	2	16	24	25	67
Missing Data	0	2	9	2	13
CDHE Index					
090-100	0	1	0	0	1
101-114	1	5	6	0	12
115-160	6	24	47	34	111
Missing Data	0	0	1	1	2

First-Year CSU GPA (Fall 2012 Cohort) by Admission Score

Veterinary Medicine + Biomedical Sci



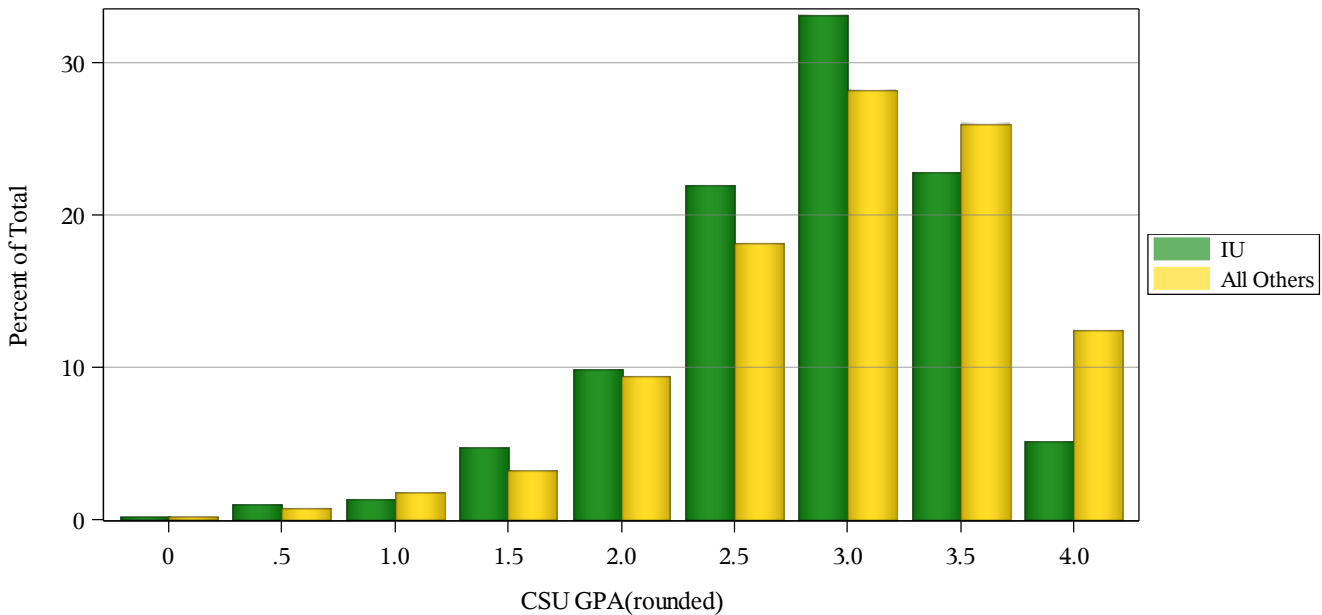
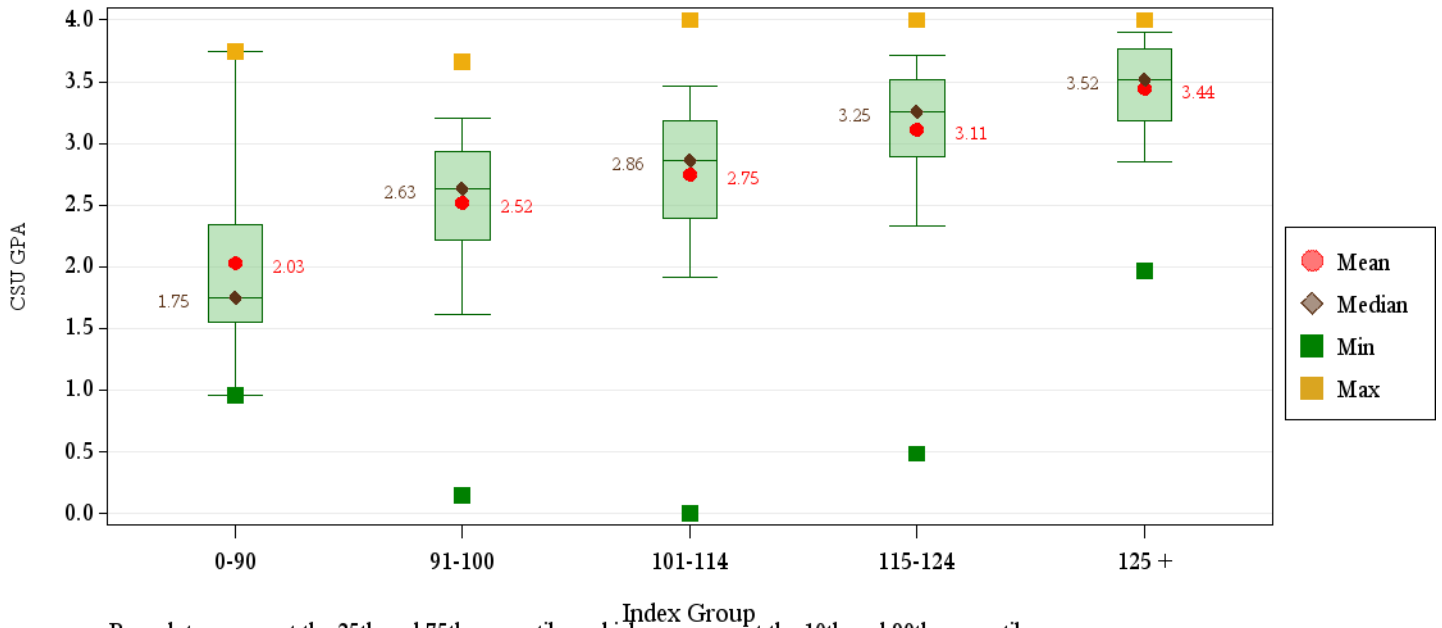
First-Year CSU GPA (Fall 2012 Cohort) by Admission Score

Intra-University

	CSU GPA				Total
	0.0-1.9	2.0-2.9	3.0-3.5	3.6-high	
Total	139	507	413	129	1,188
HS GPA					
2.5-2.99	30	84	36	4	154
3.0-3.59	90	328	190	31	639
3.6-4.00	11	75	156	53	295
4.01-high	1	9	20	35	65
Missing Data	7	11	11	6	35
HS Rank					
0-29	8	9	5	1	23
30-49	40	93	50	6	189
50-59	21	83	54	6	164
60-79	29	148	116	15	308
80-89	5	30	59	15	109
90-100	3	17	43	33	96
Missing Data	33	127	86	53	299
SAT Critical Thinking					
0-399	2	1	0	1	4
400-499	16	36	22	3	77
500-599	10	38	43	20	111
600-699	2	10	19	7	38
700-800	0	2	3	5	10
Missing Data	109	420	326	93	948
SAT Math					
0-399	2	1	3	0	6
400-499	9	23	14	3	49
500-599	15	45	44	15	119
600-699	3	18	21	14	56
700-800	1	0	5	4	10
Missing Data	109	420	326	93	948
ACT Composite					
0-14	0	2	1	0	3
15-18	8	29	9	0	46
19-22	53	217	120	11	401
23-26	40	161	163	50	414
27-36	15	53	79	44	191
Missing Data	23	45	41	24	133
CDHE Index					
0-89	4	2	0	1	7
090-100	42	148	54	1	245
101-114	71	285	201	35	592
115-160	13	61	146	85	305
Missing Data	9	11	12	7	39

First-Year CSU GPA (Fall 2012 Cohort) by Admission Score

Intra-University



First-Year CSU GPA (Fall 2012 Cohort) by Admission Score

University Summary

	CSU GPA				Total
	0.0-1.9	2.0-2.9	3.0-3.5	3.6-high	
Total	424	1,616	1,436	732	4,208
HS GPA					
2.0-2.49	1	0	1	0	2
2.5-2.99	60	146	54	9	269
3.0-3.59	263	870	455	86	1,674
3.6-4.00	84	519	728	372	1,703
4.01-high	7	65	169	253	494
Missing Data	9	16	29	12	66
HS Rank					
0-29	9	18	6	1	34
30-49	79	170	89	13	351
50-59	54	190	105	13	362
60-79	123	533	377	95	1,128
80-89	41	186	257	97	581
90-100	19	126	258	315	718
Missing Data	99	393	344	198	1,034
SAT Critical Thinking					
0-399	5	5	11	6	27
400-499	40	100	65	10	215
500-599	47	167	181	109	504
600-699	17	92	139	94	342
700-800	2	22	29	44	97
Missing Data	313	1,230	1,011	469	3,023
SAT Math					
0-399	5	6	5	0	16
400-499	25	67	56	16	164
500-599	49	170	179	74	472
600-699	27	130	150	127	434
700-800	5	13	35	46	99
Missing Data	313	1,230	1,011	469	3,023
ACT Composite					
0-14	0	2	1	0	3
15-18	20	77	20	4	121
19-22	128	474	264	44	910
23-26	141	591	552	226	1,510
27-36	80	334	434	380	1,228
Missing Data	55	138	165	78	436
CDHE Index					
0-89	5	5	1	1	12
090-100	82	280	86	6	454
101-114	222	757	470	100	1,549
115-160	104	558	848	608	2,118
Missing Data	11	16	31	17	75

First-Year CSU GPA (Fall 2012 Cohort) by Admission Score

University Summary

