



Freshman Profile
Fall 2012

Colorado
State
University

Institutional
Research

Table of Contents

Fall 2012

Profile: Five-Year History

Residency & Minority Status	1
High School Rank	2
SAT Critical Reading	3
SAT Math	4
ACT Composite	5
High School GPA	6
CDHE Index	7

Profile: Fall 2012

Residency, Gender & Ethnicity	11
Full- & Part-Time Enrollment, Application College	12
Full-Time Status	13
University	14
Agricultural Sciences	16
Applied Human Sciences	18
Business	20
Engineering	22
Liberal Arts	24
Warner College of Natural Resources	26
Natural Sciences	28
Veterinary Medicine & Biomedical Sciences	30
Intra-University	32

First-Year CSU GPA (Fall 2010 Cohort) by Admission Score

Agricultural Sciences	36
Applied Human Sciences	38
Business	40
Engineering	42
Liberal Arts	44
Warner College of Natural Resources	46
Natural Sciences	48
Veterinary Medicine & Biomedical Sciences	50
Intra-University	52
University Summary	54

Profile: Five-Year History

Five-Year History by: Residency

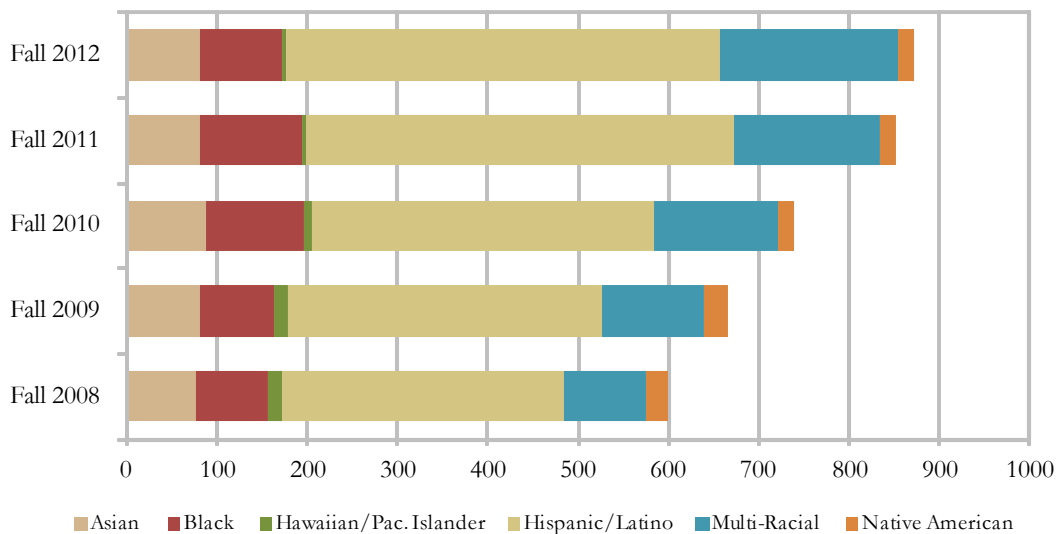
Headcount

Year	Resident		Nonresident		Total Headcount	%Change/ Previous Year
	Number	Percent	Number	Percent		
Fall 2008	3,482	79.1	922	20.9	4,404	
Fall 2009	3,350	78.2	935	21.8	4,285	-2.7
Fall 2010	3,541	79.2	931	20.8	4,472	4.4
Fall 2011	3,461	76.8	1,043	23.2	4,504	0.7
Fall 2012	3,386	74.5	1,158	25.5	4,544	0.9

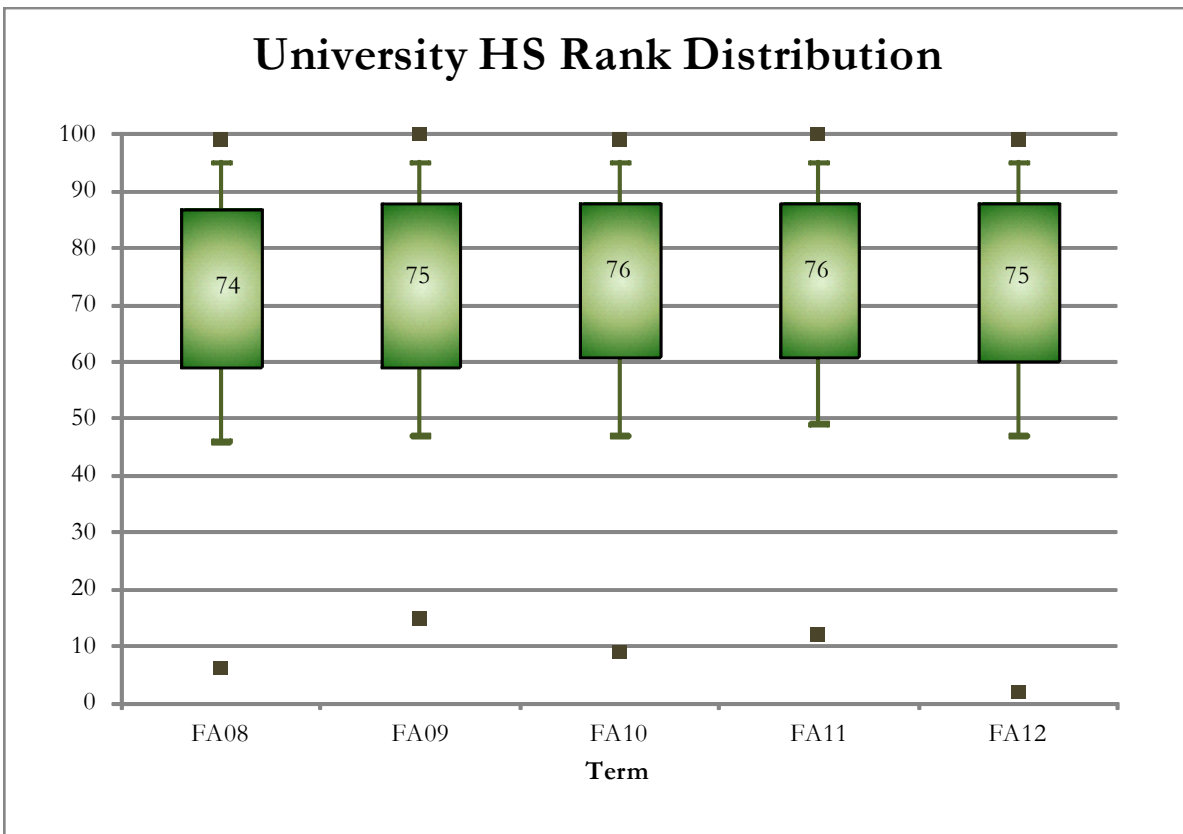
Minority Status

Headcount

Year	Minority		Other Students	
	Number	Percent	Number	Percent
Fall 2008	600	13.6	3804	86.4
Fall 2009	666	15.5	3619	84.5
Fall 2010	738	16.5	3734	83.5
Fall 2011	852	18.9	3652	81.1
Fall 2012	872	19.2	3672	80.8



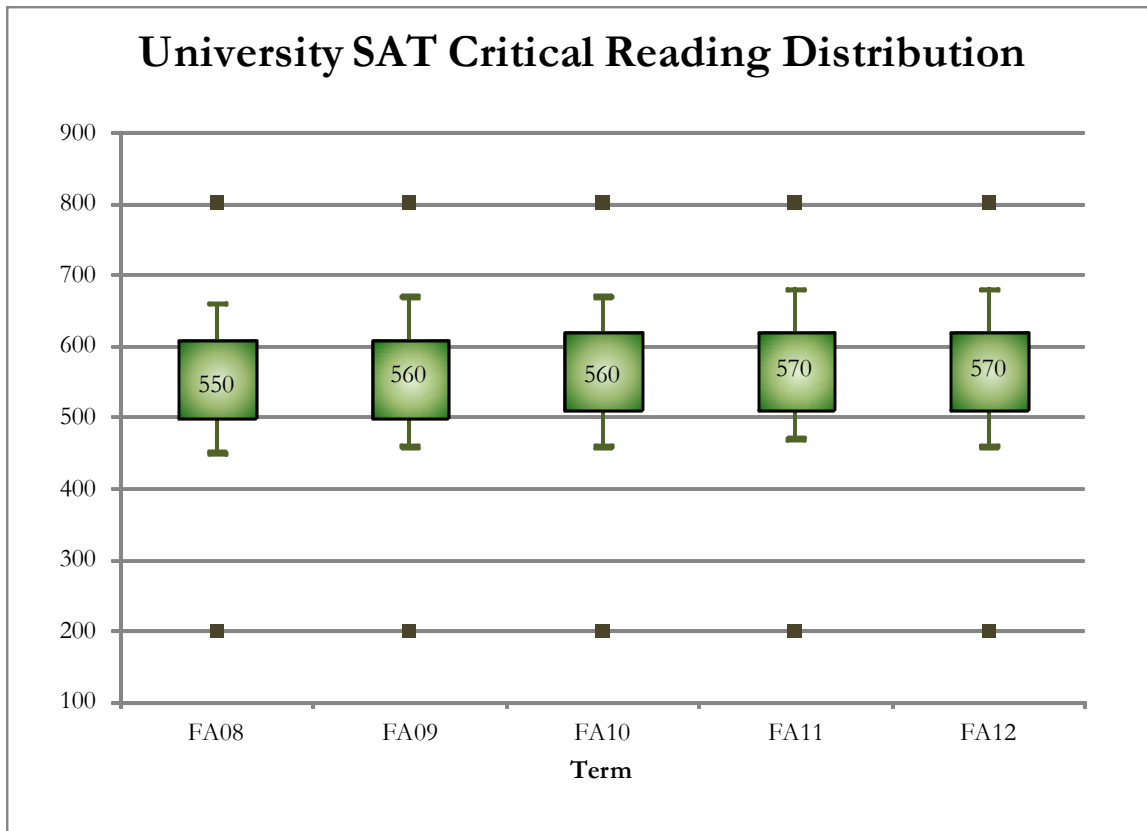
Five-Year Trends: High School Rank



Note: Chart displays the minimum and maximum in brown. Box plots represent the 25th and 75th percentiles; whiskers represent the 10th and 90th percentiles. Medians are labeled.

Application	College \bar{x}	AS	AHS	BUS	ENG	LA	WCNR	NS	VMBS	IU	Total U.
Resident	FA08	71.9	68.9	77.3	81.8	71.5	70.9	74.9	88.1	65.5	71.7
	FA09	73.2	71.9	78.7	80.2	72.2	72.8	74.3	88.1	65.7	72.1
	FA10	74.8	72.9	79.2	82.5	72.4	70.4	74.7	85.9	65.8	72.8
	FA11	72.1	72.7	78.0	82.5	73.3	74.4	75.7	83.4	66.5	73.4
	FA12	75.5	70.7	78.5	81.0	70.6	67.5	77.2	85.9	64.6	72.3
Nonresident	FA08	78.9	72.3	76.3	81.6	68.9	68.4	78.3	86.7	61.6	72.9
	FA09	76.3	69.0	78.0	80.9	72.8	72.1	79.1	89.5	65.0	74.5
	FA10	76.1	68.3	78.7	84.1	74.8	80.9	80.7	91.9	67.3	76.3
	FA11	78.4	71.9	75.4	82.9	74.8	75.2	77.7	86.7	64.8	75.9
	FA12	81.3	74.9	69.5	84.2	74.1	78.2	78.5	86.2	60.4	74.8
Total	FA08	74.3	69.4	77.2	81.7	71.2	70.5	75.6	87.9	65.0	71.9
	FA09	74.3	71.5	78.6	80.4	72.3	72.5	75.1	88.6	65.7	72.5
	FA10	75.2	72.3	79.2	82.8	72.7	73.7	75.8	86.7	66.0	73.4
	FA11	74.8	72.6	77.7	82.6	73.5	74.7	76.0	84.4	66.4	73.8
	FA12	77.5	71.3	77.3	81.6	71.1	71.1	77.4	86.0	64.1	72.7

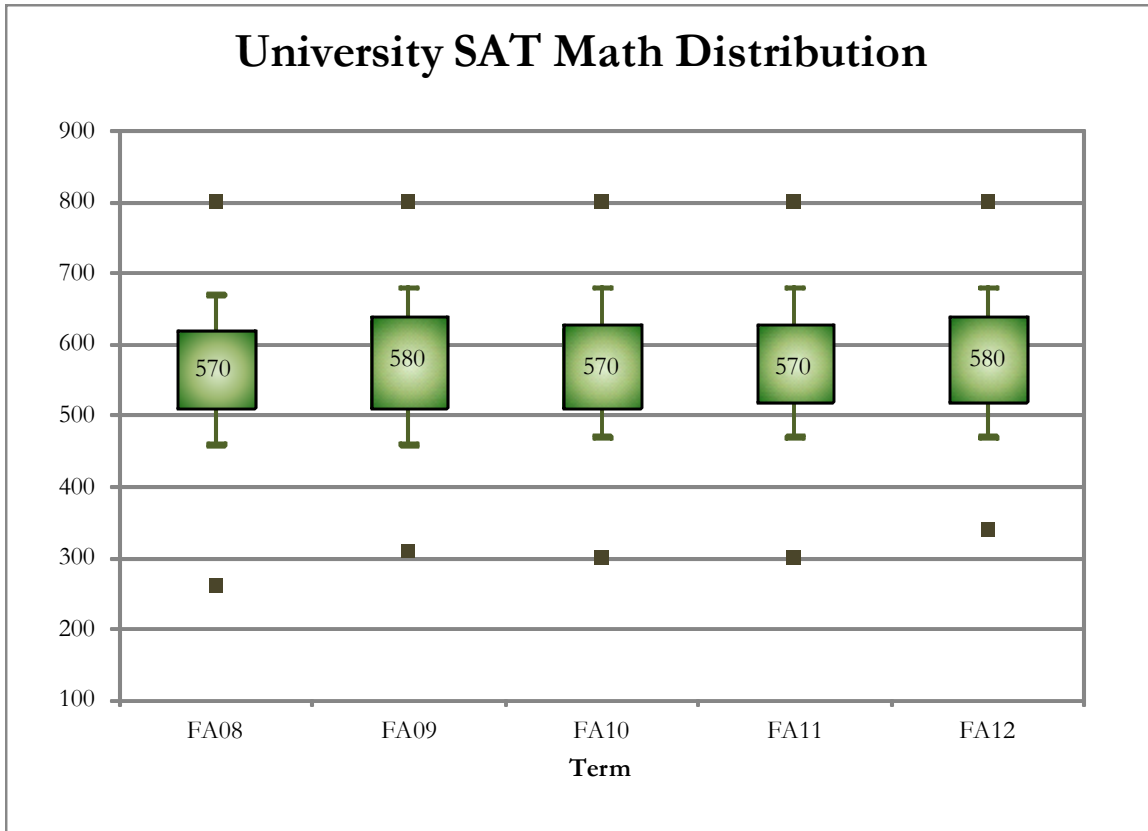
Five-Year Trends: SAT Reading



Note: Chart displays the minimum and maximum in brown. Box plots represent the 25th and 75th percentiles; whiskers represent the 10th and 90th percentiles. Medians are labeled.

Application	College \bar{x}	AS	AHS	BUS	ENG	LA	WCNR	NS	VMBS	IU	Total U.
Resident	FA08	558	516	560	575	586	541	564	618	525	554
	FA09	552	531	554	575	582	534	566	618	530	556
	FA10	548	538	570	583	584	588	574	587	539	565
	FA11	565	525	566	583	586	531	593	594	529	566
	FA12	573	540	562	600	566	598	579	599	541	568
Nonresident	FA08	571	543	556	586	577	539	557	610	530	557
	FA09	561	532	561	573	563	570	584	610	543	566
	FA10	543	539	566	571	574	595	572	598	539	561
	FA11	562	542	576	578	594	597	571	608	530	567
	FA12	574	526	599	562	560	587	587	615	524	563
Total	FA08	567	525	559	579	583	540	561	616	527	555
	FA09	558	531	556	574	577	560	573	614	534	559
	FA10	545	538	569	578	581	593	573	591	539	563
	FA11	563	533	570	581	589	581	583	602	530	566
	FA12	574	533	578	581	563	589	584	608	532	565

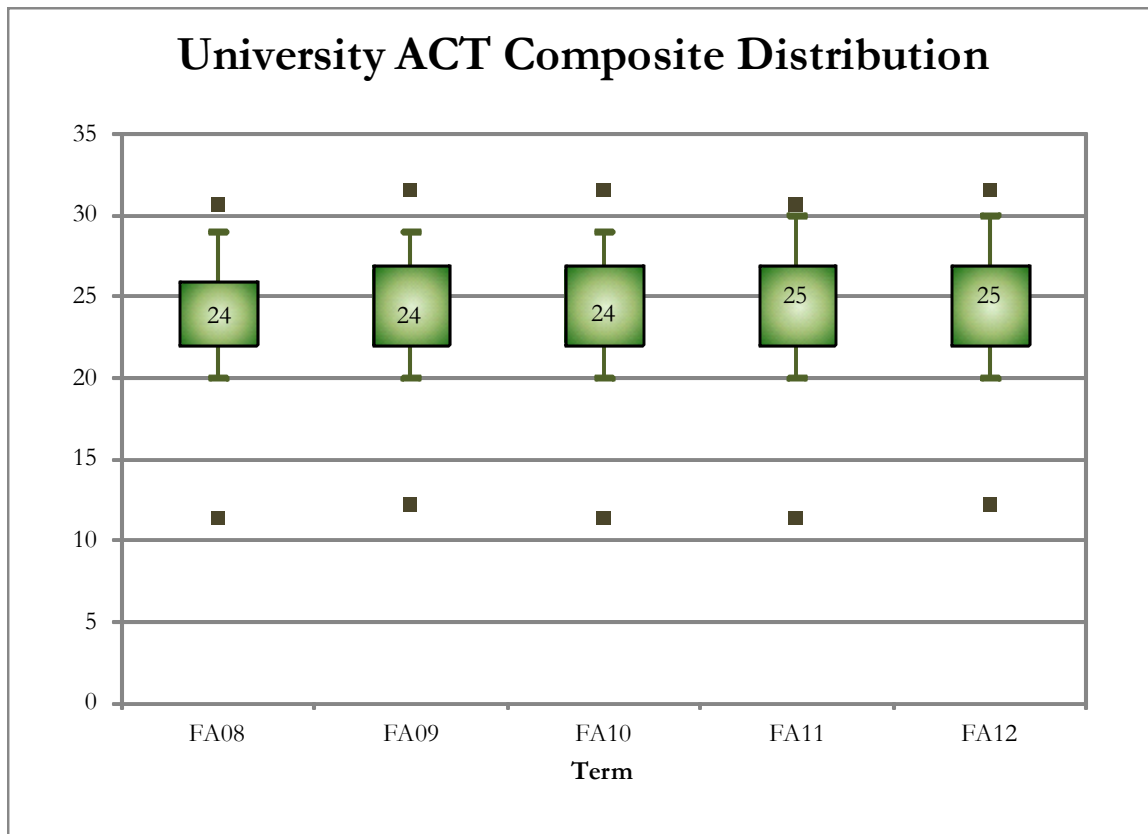
Five-Year Trends: SAT Math



Note: Chart displays the minimum and maximum in brown. Box plots represent the 25th and 75th percentiles; whiskers represent the 10th and 90th percentiles. Medians are labeled.

Application College \bar{x}	AS	AHS	BUS	ENG	LA	WCNR	NS	VMBS	IU	Total U.	
Resident	FA08	558	538	589	633	549	549	572	616	538	565
	FA09	564	543	596	632	549	544	572	608	543	566
	FA10	549	542	581	626	546	575	584	617	537	569
	FA11	579	523	581	623	556	556	584	584	540	569
	FA12	551	542	563	638	543	551	587	609	550	574
Nonresident	FA08	575	553	568	653	561	531	564	618	547	569
	FA09	550	549	621	633	533	573	596	621	554	581
	FA10	543	553	585	636	552	582	586	619	550	575
	FA11	552	553	613	646	574	585	586	633	546	583
	FA12	572	554	615	640	546	581	586	633	548	581
Total	FA08	569	543	585	639	552	540	569	617	541	566
	FA09	554	544	604	632	545	565	582	615	547	572
	FA10	545	547	582	630	547	580	585	618	542	571
	FA11	557	537	593	634	562	578	585	611	542	576
	FA12	568	548	585	639	544	575	586	623	549	578

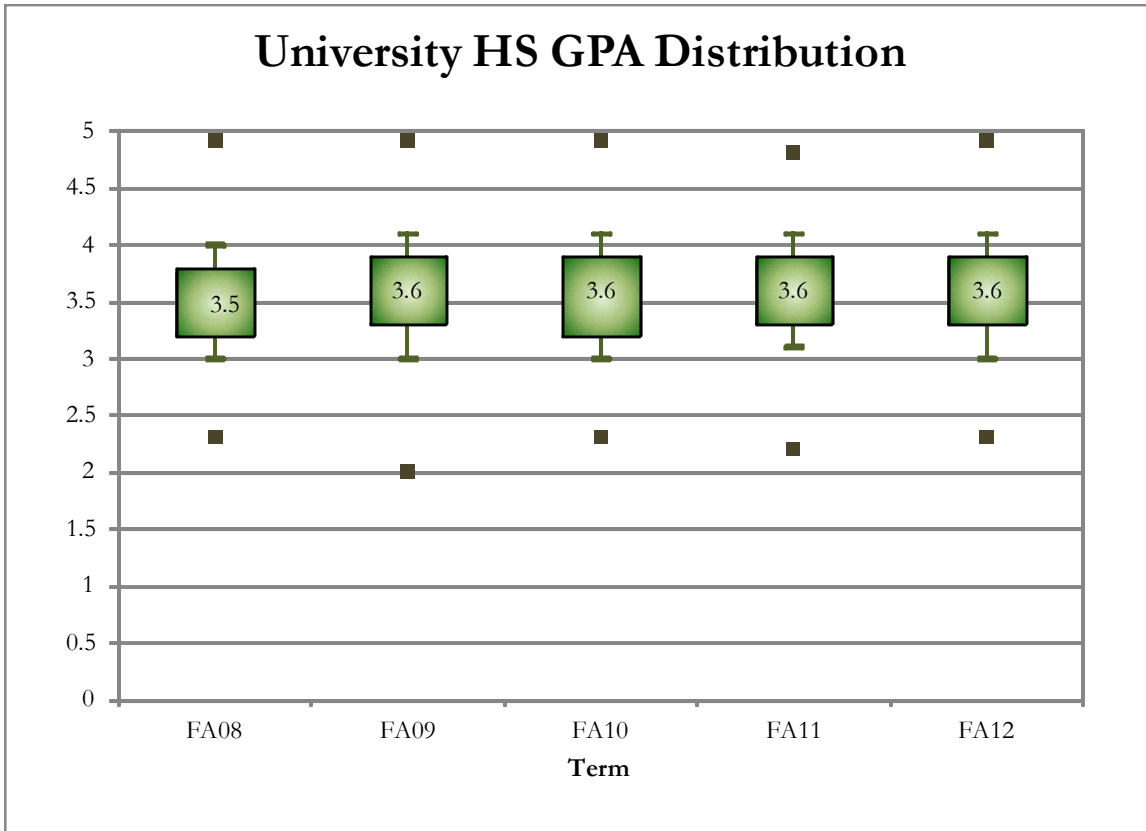
Five-Year Trends: ACT Composite



Note: Chart displays the minimum and maximum in brown. Box plots represent the 25th and 75th percentiles; whiskers represent the 10th and 90th percentiles. Medians are labeled.

Application College \bar{x}	AS	AHS	BUS	ENG	LA	WCNR	NS	VMBS	IU	Total U.	
Resident	FA08	23.5	22.7	25.3	26.4	24.5	23.6	24.6	26.9	22.8	24.0
	FA09	23.9	23.1	25.9	26.7	24.5	24.3	24.9	27.4	23.2	24.3
	FA10	23.7	23.4	25.5	26.9	24.5	23.8	24.8	27.3	23.0	24.3
	FA11	23.6	23.1	25.5	27.0	24.8	24.5	24.9	27.1	23.3	24.5
	FA12	24.0	23.1	25.9	27.0	24.6	24.1	25.3	27.1	23.3	24.6
Nonresident	FA08	25.0	23.8	25.7	27.7	25.2	24.5	25.3	27.1	23.5	24.9
	FA09	25.1	24.1	26.2	27.3	25.2	25.1	26.8	27.7	24.2	25.6
	FA10	24.8	24.2	26.3	28.1	25.0	27.1	26.9	27.5	24.2	25.7
	FA11	25.3	24.7	26.0	28.0	25.8	25.5	26.5	28.7	24.2	25.8
	FA12	25.9	24.1	26.6	27.8	25.7	26.6	26.5	28.1	24.0	25.9
Total	FA08	24.0	22.8	25.4	26.6	24.6	23.8	24.8	27.0	22.8	24.1
	FA09	24.4	23.2	26.0	26.8	24.6	24.7	25.3	27.5	23.3	24.6
	FA10	24.1	23.5	25.6	27.1	24.6	24.8	25.2	27.3	23.1	24.5
	FA11	24.3	23.4	25.5	27.2	24.9	24.9	25.2	27.5	23.4	24.7
	FA12	24.7	23.3	26.0	27.1	24.7	25.0	25.5	27.4	23.4	24.8

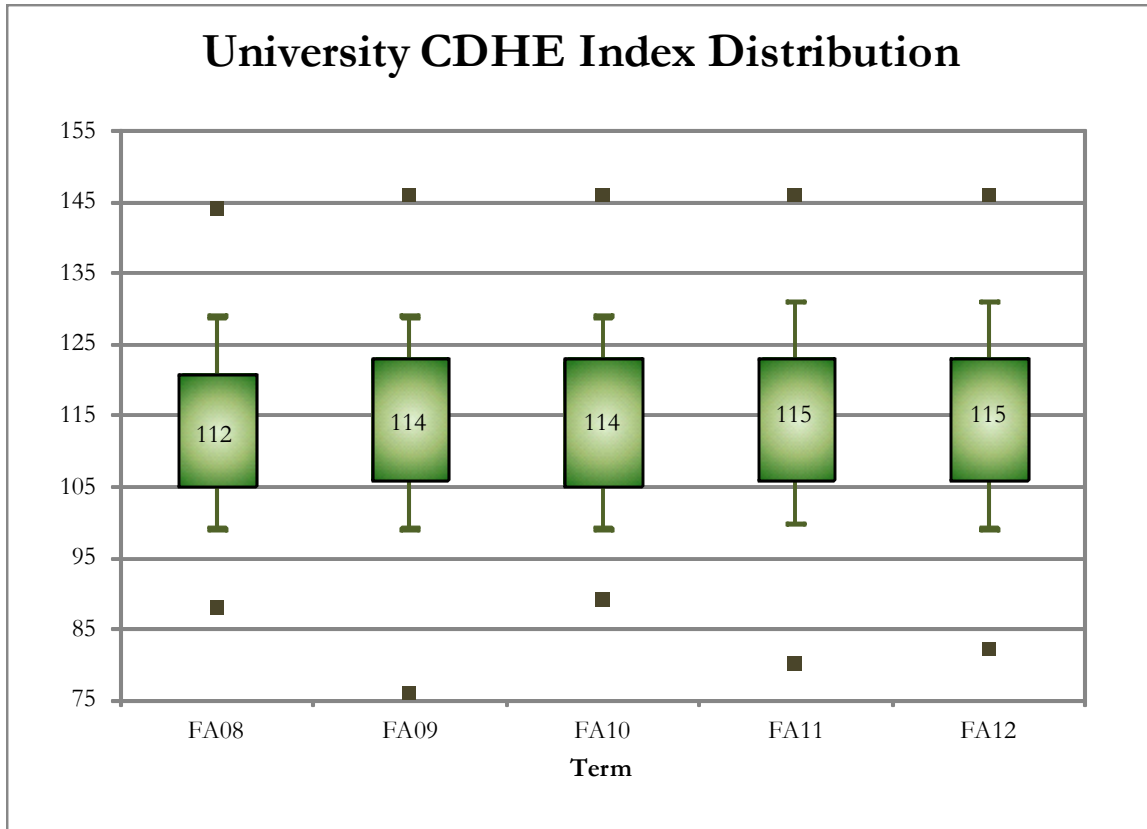
Five-Year Trends: High School GPA



Note: Chart displays the minimum and maximum in brown. Box plots represent the 25th and 75th percentiles; whiskers represent the 10th and 90th percentiles. Medians are labeled.

Application College \bar{x}	AS	AHS	BUS	ENG	LA	WCNR	NS	VMBS	IU	Total U.	
Resident	FA08	3.54	3.49	3.67	3.79	3.54	3.51	3.59	3.92	3.38	3.54
	FA09	3.58	3.55	3.71	3.76	3.56	3.55	3.59	3.99	3.41	3.56
	FA10	3.59	3.55	3.73	3.81	3.53	3.48	3.59	3.95	3.37	3.55
	FA11	3.58	3.56	3.71	3.80	3.58	3.54	3.64	3.88	3.42	3.58
	FA12	3.62	3.54	3.75	3.76	3.51	3.48	3.64	3.85	3.39	3.56
Nonresident	FA08	3.67	3.49	3.73	3.74	3.46	3.34	3.64	3.88	3.28	3.53
	FA09	3.61	3.53	3.66	3.81	3.56	3.59	3.73	3.98	3.39	3.62
	FA10	3.54	3.51	3.76	3.84	3.56	3.70	3.72	4.00	3.34	3.60
	FA11	3.64	3.61	3.71	3.88	3.56	3.59	3.70	4.04	3.32	3.63
	FA12	3.65	3.52	3.64	3.90	3.55	3.72	3.69	3.95	3.32	3.61
Total	FA08	3.60	3.49	3.68	3.78	3.52	3.46	3.60	3.91	3.36	3.53
	FA09	3.60	3.55	3.70	3.77	3.56	3.57	3.63	3.99	3.40	3.57
	FA10	3.57	3.54	3.73	3.82	3.53	3.57	3.62	3.96	3.36	3.56
	FA11	3.61	3.57	3.71	3.82	3.58	3.56	3.66	3.93	3.40	3.59
	FA12	3.63	3.53	3.72	3.79	3.52	3.58	3.65	3.88	3.37	3.57

Five-Year Trends: CDHE Index



Note: Chart displays the minimum and maximum in brown. Box plots represent the 25th and 75th percentiles; whiskers represent the 10th and 90th percentiles. Medians are labeled.

Application	College \bar{x}	AS	AHS	BUS	ENG	LA	WCNR	NS	VMBS	IU	Total U.
Resident	FA08	112	109	118	122	114	112	115	125	108	113
	FA09	114	111	120	122	114	113	115	126	109	114
	FA10	113	112	119	123	114	112	115	125	108	114
	FA11	113	111	119	123	115	114	116	123	109	114
	FA12	114	111	120	122	113	112	117	124	109	114
Nonresident	FA08	118	112	119	125	114	110	117	125	107	115
	FA09	115	113	120	125	114	116	120	127	111	117
	FA10	114	112	121	125	115	120	120	127	109	116
	FA11	116	115	120	126	117	117	120	128	109	117
	FA12	118	112	120	126	115	120	120	128	108	117
Total	FA08	115	110	118	122	114	111	115	125	108	113
	FA09	114	111	120	122	114	115	117	126	109	114
	FA10	113	112	119	123	114	115	116	125	108	114
	FA11	114	112	119	124	115	115	117	125	109	115
	FA12	116	111	120	123	114	115	118	125	109	115

Profile: Fall 2012

Fall 2012 New Freshmen by: Residency

	Number	Percent
Resident	3,386	74.5
Nonresident	1,158	25.5
Total	4,544	100.00

Gender

	Resident		Nonresident		Total	
	No.	Percent	No.	Percent	No.	Percent
Men	1,523	45.0	499	43.1	2,022	44.5
Women	1,863	55.0	659	56.9	2,522	55.5
Total	3,386	100.0	1,158	100.0	4,544	100.0

Ethnicity

	Resident		Nonresident		Total	
	No.	Percent	No.	Percent	No.	Percent
Asian	65	1.9%	16	1.4%	81	1.8%
Black	82	2.4%	10	0.9%	92	2.0%
Hawaiian/Pac Islander	1	0.0%	3	0.3%	4	0.1%
Hispanic/Latino	384	11.3%	95	8.2%	479	10.5%
International	1	0.0%	67	5.8%	68	1.5%
Multi-Racial	141	4.2%	58	5.0%	199	4.4%
Native American	13	0.4%	4	0.3%	17	0.4%
No Response	170	5.0%	82	7.1%	252	5.5%
White	2529	74.7%	823	71.1%	3352	73.8%
Total	3,386	100.0%	1,158	100.0%	4,544	100.0%

Full-Time/Part-Time Enrollment

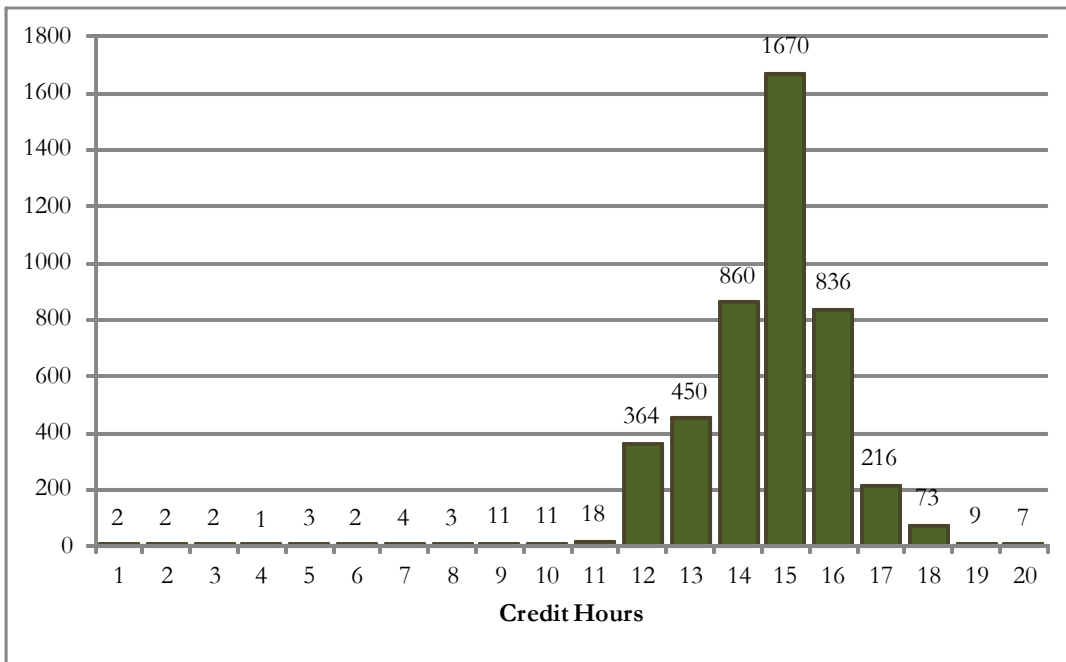
	Resident	Nonresident	Total	Percent of University
New Freshmen				
Full-Time	3,354	1,131	4,485	98.7
Part-Time	32	27	59	1.3
Total	3,386	1,158	4,544	100.0

Full-time students = undergraduates enrolled for 12 or more credits Fall, Spring (9 - Summer)

Application College

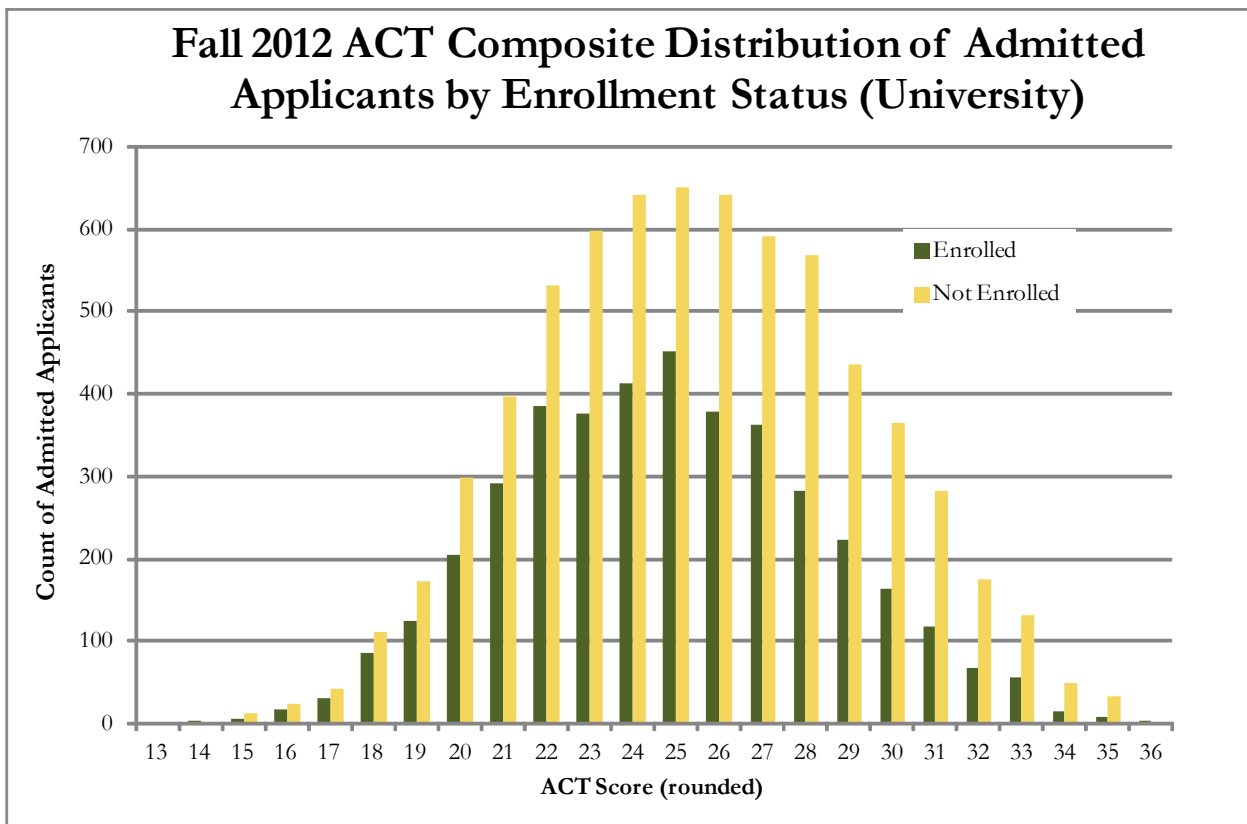
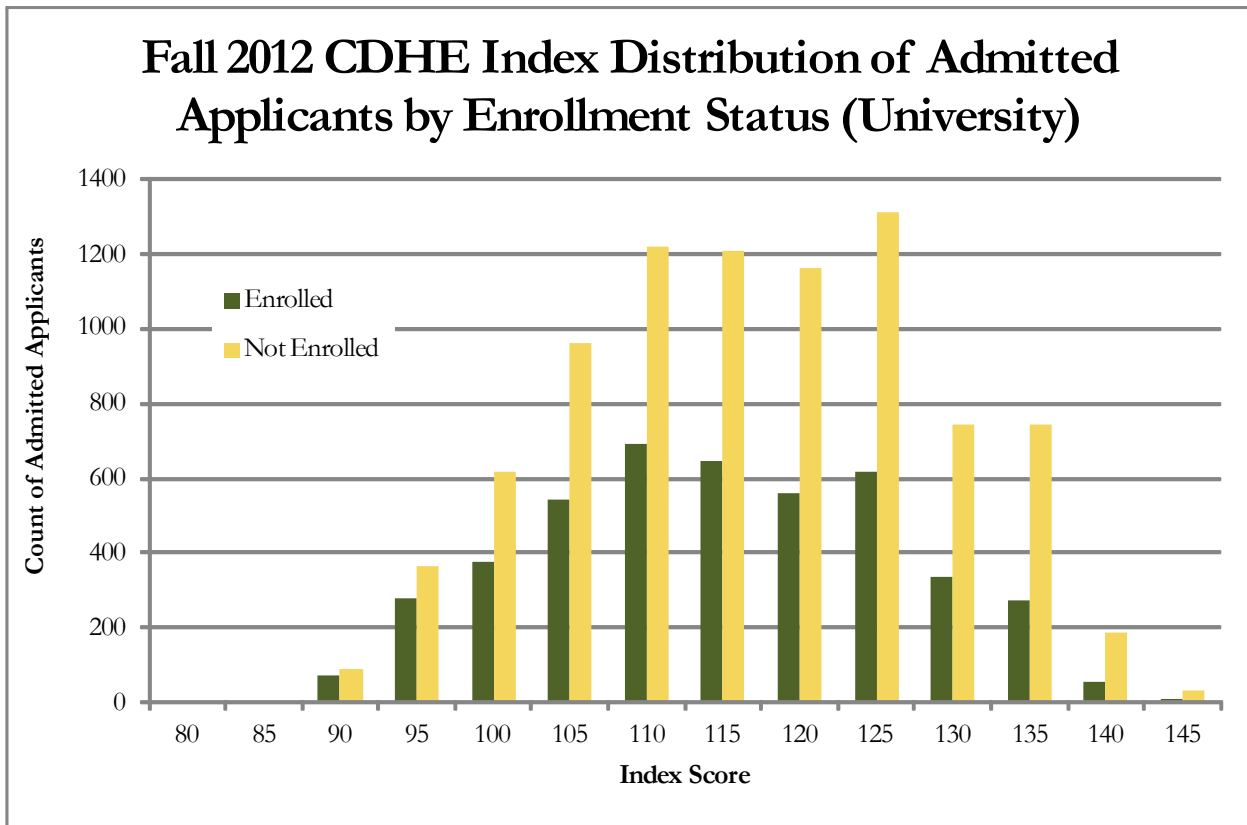
	Resident		Nonresident		Total	
	No.	Percent	No.	Percent	No.	Percent
New Freshmen						
Agricultural Sciences	110	3.2	100	8.6	210	4.6
Applied Human Sciences	392	11.6	111	9.6	503	11.1
Business	238	7.0	68	5.9	306	6.7
Engineering	443	13.1	153	13.2	596	13.1
Intra-University	1,030	30.4	278	24.0	1,308	28.8
Liberal Arts	439	13.0	127	11.0	566	12.5
Natural Sciences	565	16.7	218	18.8	783	17.2
Vet Med & BioMed Sci	89	2.6	43	3.7	132	2.9
Warner College of Nat Res	80	2.4	60	5.2	140	3.1
Total	3,386	100.0	1,158	100.0	4,544	100.0

Credit Hour Distribution



Fall 2012 Freshman Profile

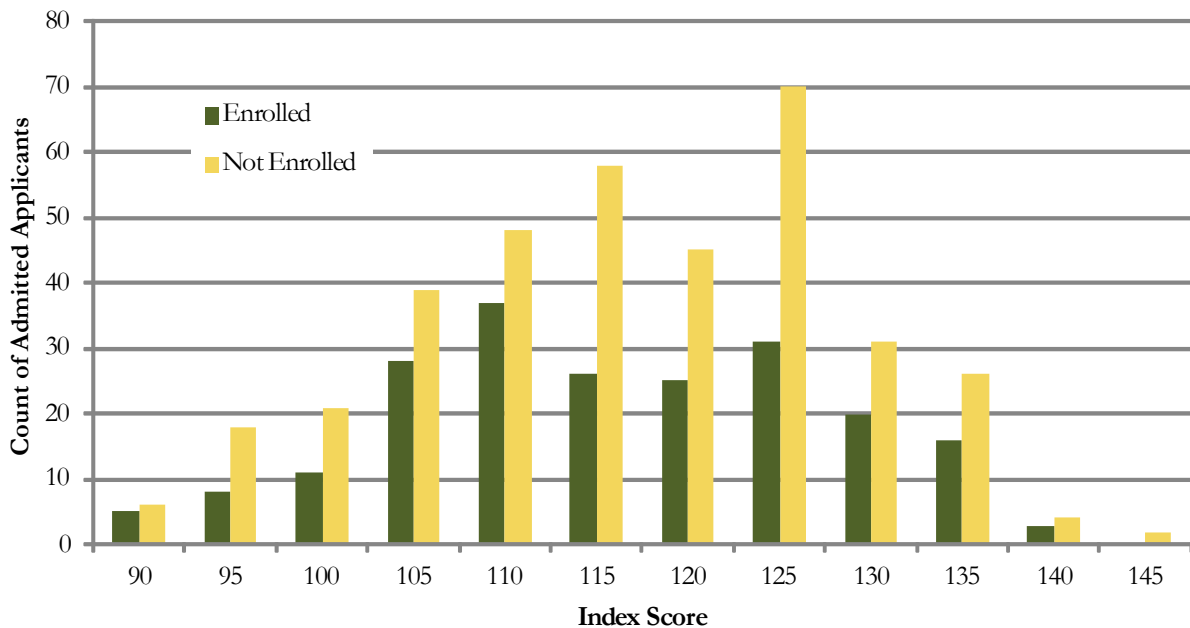
University	Admitted N= 13353				Enrolled N=4544			
	Res	Nonres	Total	Percent	Res	Nonres	Total	Percent
High School GPA								
2 - 2.499	2	1	3	0	2	0	2	0
2.5 - 2.999	348	390	738	6	210	91	301	7
3 - 3.599	2812	2226	5038	38	1450	387	1837	41
3.6 - 4.0	2931	2414	5345	41	1367	455	1822	41
4.001 - 10	1050	960	2010	15	352	162	514	11
Valid Cases	7143	5991	13134	100	3381	1095	4476	100
Means	3.62	3.62	3.62		3.56	3.61	3.57	
Percentile Rank								
0 - 29	34	48	82	1	26	10	36	1
30 - 49	579	258	837	10	323	63	386	11
50 - 59	623	291	914	10	340	57	397	12
60 - 79	1979	852	2831	32	1050	168	1218	36
80 - 89	1140	653	1793	20	533	99	632	18
90 - 100	1406	894	2300	26	573	179	752	22
Valid Cases	5761	2996	8757	100	2845	576	3421	100
Means	74.3	76.1	74.9		72.3	74.8	72.7	
SAT Critical Reading								
200 - 399	19	90	109	2	5	23	28	2
400 - 499	224	676	900	17	101	132	233	18
500 - 599	639	1719	2358	44	256	291	547	43
600 - 699	484	1100	1584	30	158	204	362	28
700 - 800	147	243	390	7	44	57	101	8
Valid Cases	1513	3828	5341	100	564	707	1271	100
Means	578	564	568		568	563	565	
SAT Math								
200 - 399	16	23	39	1	9	7	16	1
400 - 499	200	557	757	14	84	102	186	15
500 - 599	613	1537	2150	40	244	262	506	40
600 - 699	535	1396	1931	36	182	281	463	36
700 - 800	149	315	464	9	45	55	100	8
Valid Cases	1513	3828	5341	100	564	707	1271	100
Means	585	581	582		574	581	578	
ACT Composite								
1 - 14	2	3	5	0	2	1	3	0
15 - 18	239	93	332	3	121	19	140	3
19 - 22	1714	692	2406	22	878	130	1008	25
23 - 26	2749	1403	4152	38	1361	260	1621	40
27 - 36	2287	1646	3933	36	965	337	1302	32
Valid Cases	6991	3837	10828	100	3327	747	4074	100
Means	24.9	25.8	25.2		24.6	25.9	24.8	
CDHE Index								
35 - 89	13	9	22	0	9	4	13	0
90 - 100	687	566	1253	10	383	130	513	11
101 - 114	2712	1971	4683	36	1377	316	1693	38
115 - 160	3724	3431	7155	55	1606	642	2248	50
Valid Cases	7136	5977	13113	100	3375	1092	4467	100
Means	116	117	116		114	117	115	



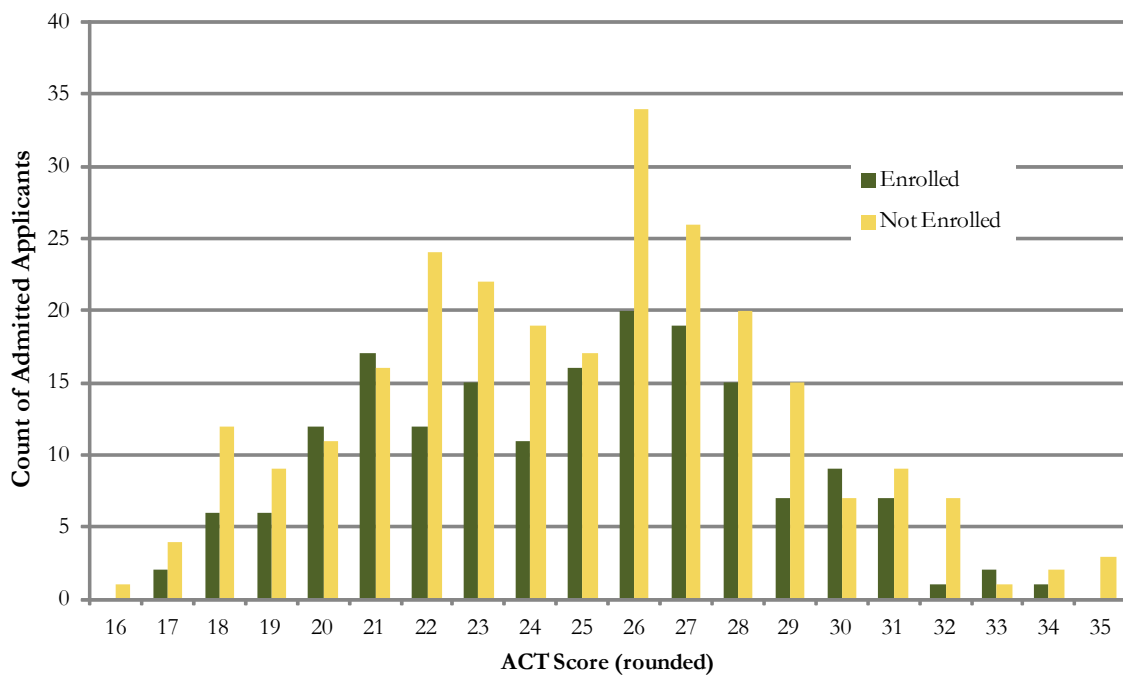
Agricultural Sciences	Admitted N= 582				Enrolled N=210			
	Res	Nonres	Total	Percent	Res	Nonres	Total	Percent
High School GPA								
2.5 - 2.999	6	12	18	3	4	6	10	5
3 - 3.599	70	120	190	33	40	33	73	35
3.6 - 4.0	80	190	270	47	57	47	104	50
4.001 - 10	19	82	101	17	9	14	23	11
Valid Cases	175	404	579	100	110	100	210	100
Means	3.62	3.72	3.69		3.62	3.65	3.63	
Percentile Rank								
0 - 29	0	1	1	0	0	0	0	0
30 - 49	8	11	19	5	5	1	6	4
50 - 59	16	16	32	8	8	4	12	8
60 - 79	57	68	125	32	38	13	51	36
80 - 89	31	67	98	25	19	15	34	24
90 - 100	33	79	112	29	22	18	40	28
Valid Cases	145	242	387	100	92	51	143	100
Means	75.1	79.7	78.0		75.5	81.3	77.5	
SAT Critical Reading								
200 - 399	0	3	3	1	0	0	0	0
400 - 499	4	51	55	19	1	16	17	21
500 - 599	17	111	128	45	11	18	29	35
600 - 699	6	79	85	30	4	26	30	37
700 - 800	3	11	14	5	1	5	6	7
Valid Cases	30	255	285	100	17	65	82	100
Means	570	562	563		573	574	574	
SAT Math								
200 - 399	0	7	7	2	0	1	1	1
400 - 499	13	47	60	21	6	11	17	21
500 - 599	7	112	119	42	5	27	32	39
600 - 699	9	77	86	30	6	21	27	33
700 - 800	1	12	13	5	0	5	5	6
Valid Cases	30	255	285	100	17	65	82	100
Means	539	558	556		551	572	568	
ACT Composite								
15 - 18	11	14	25	6	5	3	8	4
19 - 22	55	52	107	24	32	15	47	26
23 - 26	65	89	154	35	46	16	62	35
27 - 36	38	113	151	35	25	36	61	34
Valid Cases	169	268	437	100	108	70	178	100
Means	24	26	25		24.0	25.9	24.7	
CDHE Index								
35 - 89	1	0	1	0	1	0	1	0
90 - 100	19	30	49	8	8	8	16	8
101 - 114	75	127	202	35	48	32	80	38
115 - 160	80	246	326	56	53	60	113	54
Valid Cases	175	403	578	100	110	100	210	100
Means	114	118	116		114	118	116	

Note: college indicates application college

Fall 2012 CDHE Index Distribution of Admitted Applicants by Enrollment Status (Ag Sciences)



Fall 2012 ACT Composite Distribution of Admitted Applicants by Enrollment Status (Ag Sciences)

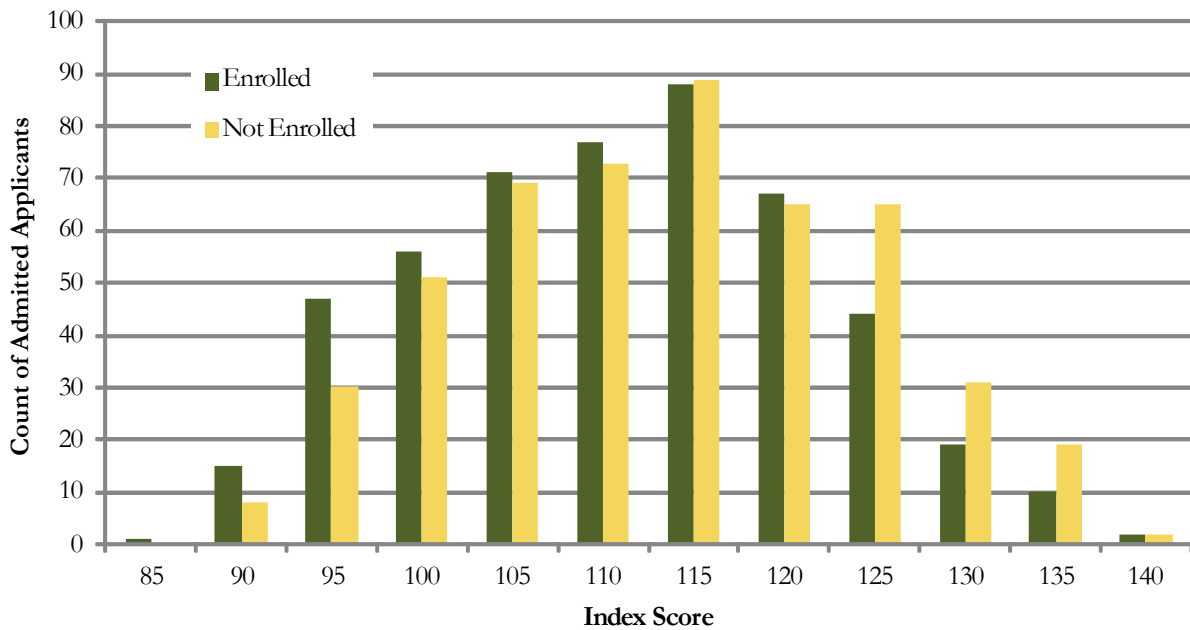


Applied Human Sciences

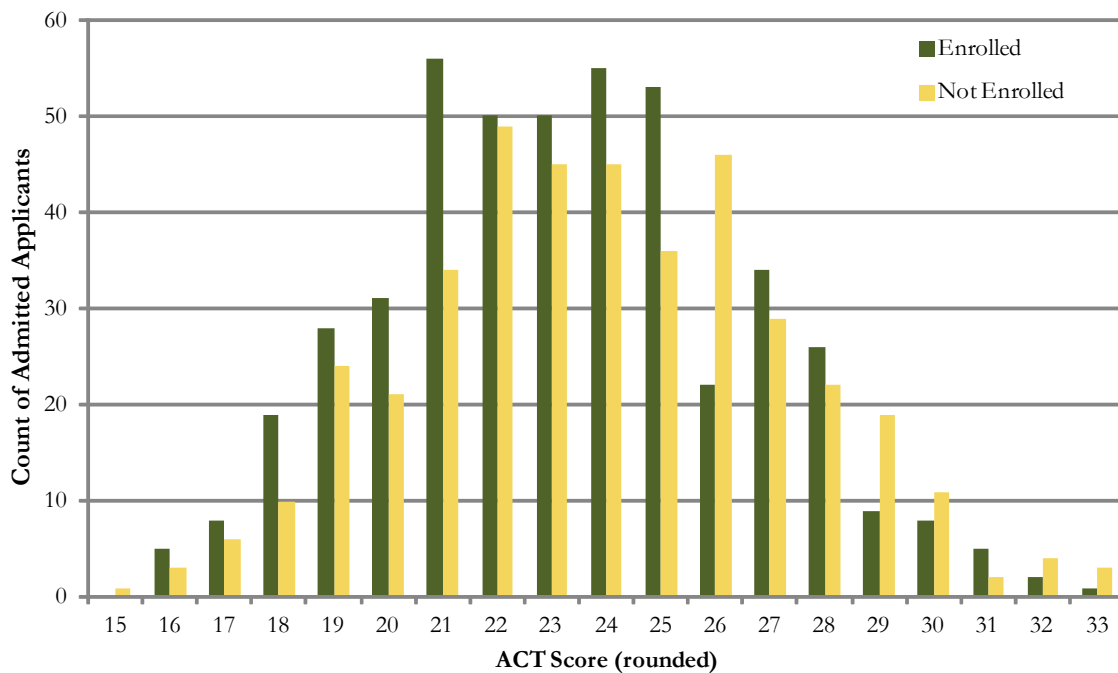
	Admitted N=1011				Enrolled N=503			
	Res	Nonres	Total	Percent	Res	Nonres	Total	Percent
High School GPA								
2.5 - 2.999	29	23	52	5	22	8	30	6
3 - 3.599	276	148	424	42	176	47	223	45
3.6 - 4.0	264	155	419	42	166	42	208	42
4.001 - 10	59	47	106	11	28	10	38	8
Valid Cases	628	373	1001	100	392	107	499	100
Means	3.56	3.59	3.57		3.54	3.52	3.53	
Percentile Rank								
0 - 29	2	1	3	0	2	0	2	1
30 - 49	63	18	81	11	42	5	47	12
50 - 59	60	23	83	11	39	8	47	12
60 - 79	212	73	285	39	132	19	151	39
80 - 89	108	48	156	21	73	12	85	22
90 - 100	86	46	132	18	44	14	58	15
Valid Cases	531	209	740	100	332	58	390	100
Means	71.6	74.5	72.4		70.7	74.9	71.3	
SAT Critical Reading								
200 - 399	2	7	9	3	2	3	5	4
400 - 499	23	58	81	26	12	18	30	26
500 - 599	44	115	159	51	28	32	60	53
600 - 699	13	44	57	18	6	10	16	14
700 - 800	2	4	6	2	2	1	3	3
Valid Cases	84	228	312	100	50	64	114	100
Means	539	538	538		540	526	533	
SAT Math								
200 - 399	2	0	2	1	2	0	2	2
400 - 499	13	53	66	21	8	14	22	19
500 - 599	42	104	146	47	26	28	54	47
600 - 699	26	68	94	30	14	21	35	31
700 - 800	1	3	4	1	0	1	1	1
Valid Cases	84	228	312	100	50	64	114	100
Means	546	553	551		542	554	548	
ACT Composite								
15 - 18	42	10	52	6	27	5	32	7
19 - 22	215	78	293	34	140	25	165	36
23 - 26	252	100	352	40	154	26	180	39
27 - 36	108	67	175	20	62	23	85	18
Valid Cases	617	255	872	100	383	79	462	100
Means	23.3	24.2	23.6		23.1	24.1	23.3	
CDHE Index								
35 - 89	2	1	3	0	2	0	2	0
90 - 100	102	50	152	15	69	22	91	18
101 - 114	261	144	405	41	166	37	203	41
115 - 160	261	178	439	44	153	48	201	40
Valid Cases	626	373	999	100	390	107	497	100
Means	112	114	112		111	112	111	

Note: college indicates application college

Fall 2012 CDHE Index Distribution of Admitted Applicants by Enrollment Status (AHS)

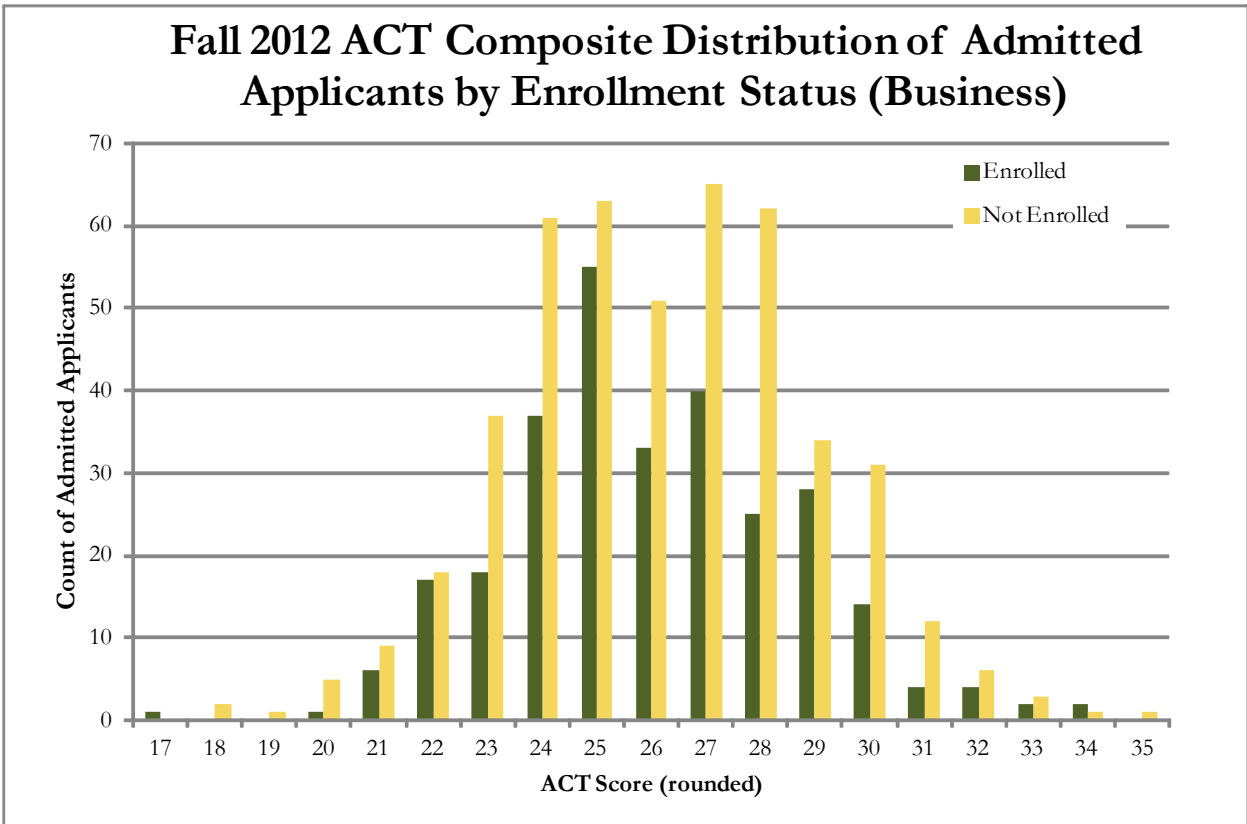
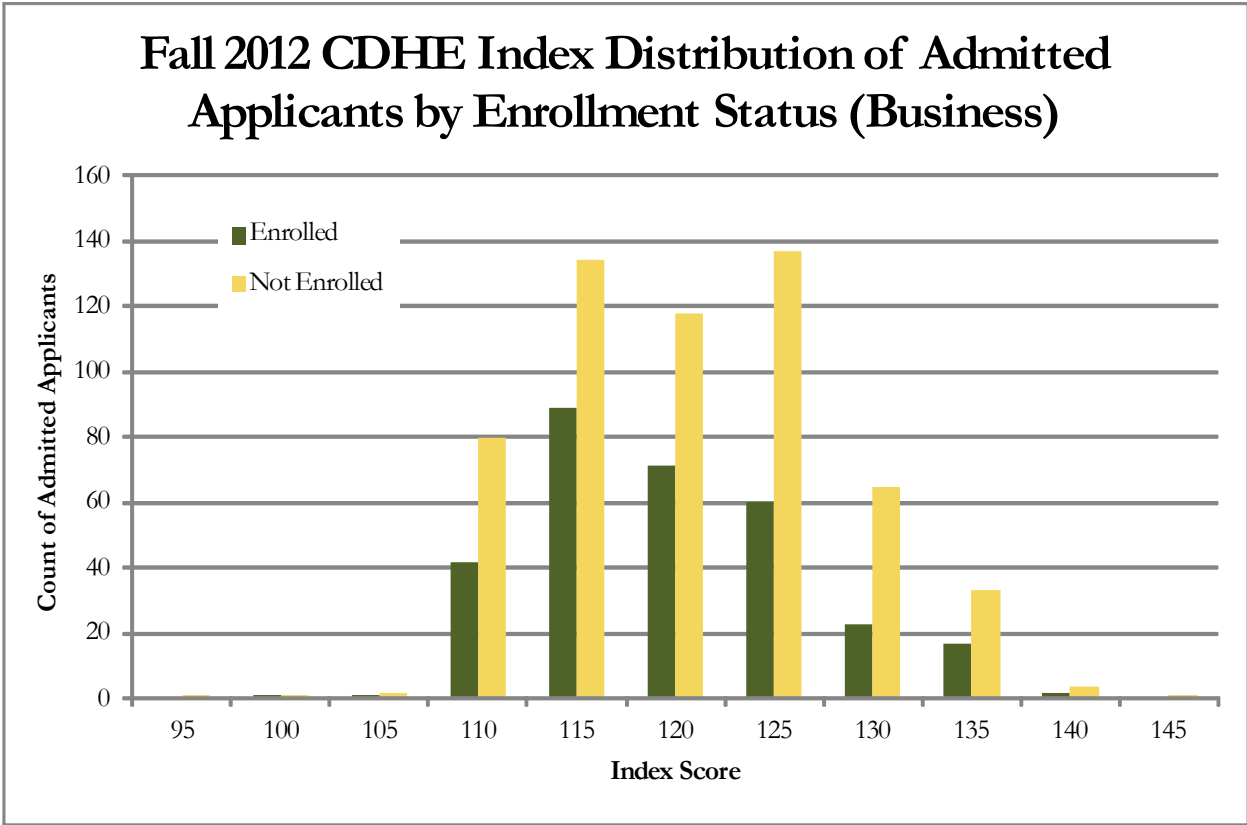


Fall 2012 ACT Composite Distribution of Admitted Applicants by Enrollment Status (AHS)



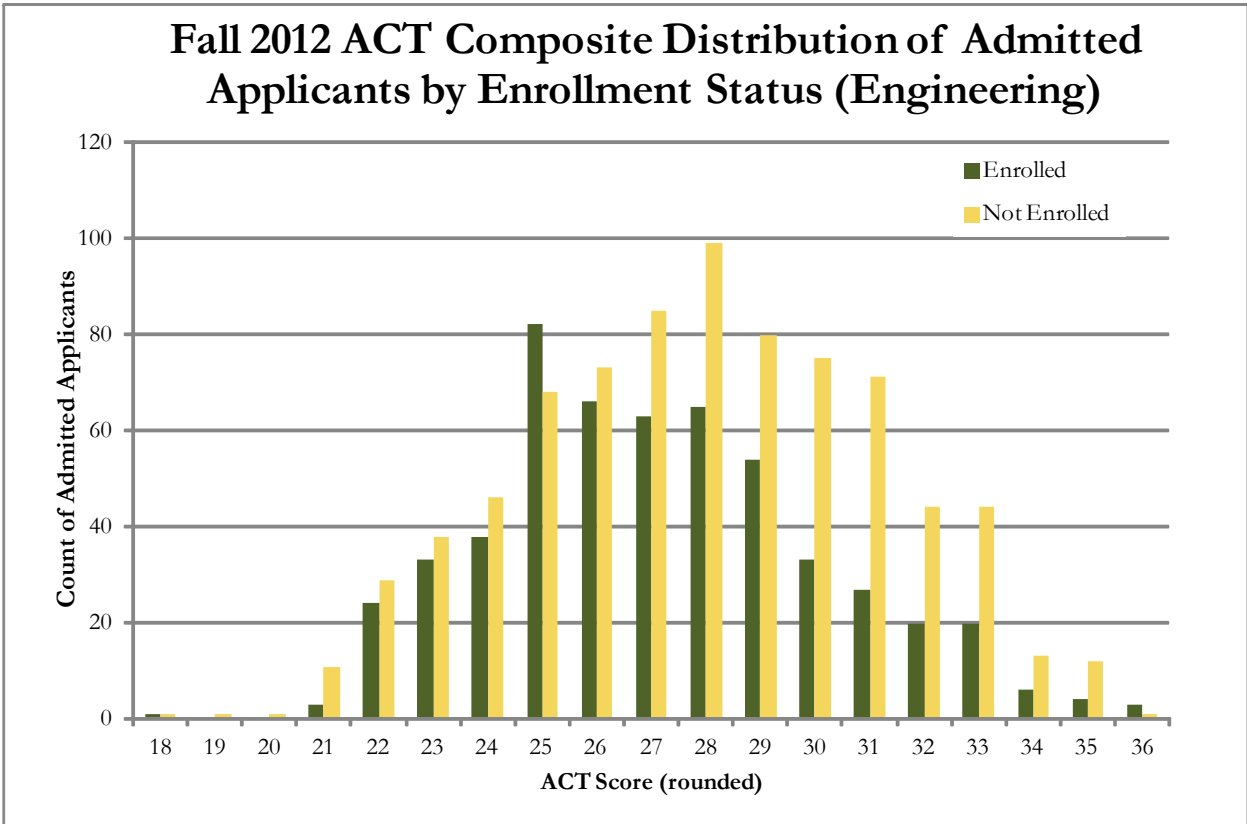
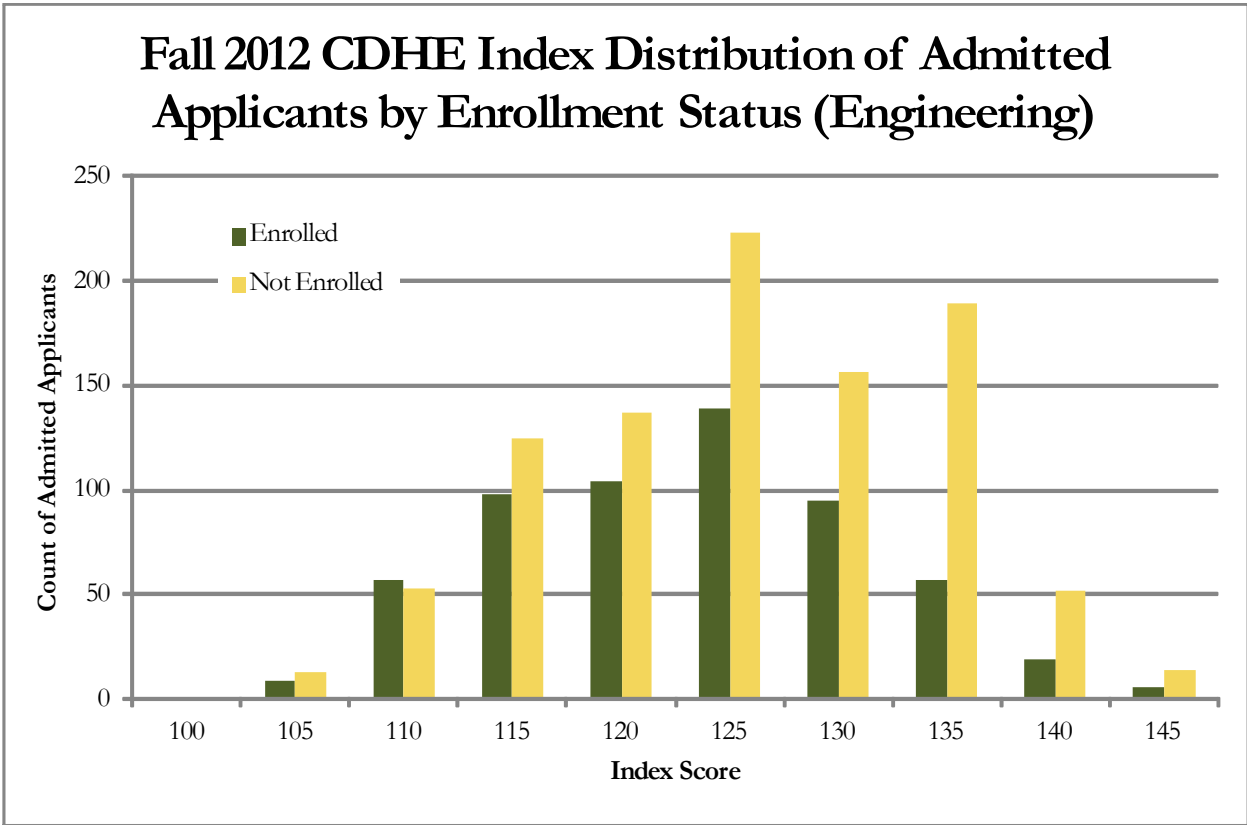
Business	Admitted N=895				Enrolled N=306			
	Res	Nonres	Total	Percent	Res	Nonres	Total	Percent
High School GPA								
2.5 - 2.999	4	5	9	1	2	2	4	1
3 - 3.599	121	123	244	28	64	26	90	29
3.6 - 4.0	297	182	479	54	134	32	166	54
4.001 - 10	99	51	150	17	38	8	46	15
Valid Cases	521	361	882	100	238	68	306	100
Means	3.78	3.70	3.75		3.75	3.64	3.72	
Percentile Rank								
30 - 49	12	11	23	4	7	3	10	4
50 - 59	26	19	45	8	13	5	18	8
60 - 79	147	56	203	35	80	16	96	40
80 - 89	117	47	164	28	52	5	57	24
90 - 100	121	32	153	26	55	2	57	24
Valid Cases	423	165	588	100	207	31	238	100
Means	79.7	75.6	78.6		78.5	69.5	77.3	
SAT Critical Reading								
200 - 399	0	4	4	1	0	0	0	0
400 - 499	7	28	35	10	2	2	4	5
500 - 599	65	103	168	49	35	17	52	60
600 - 699	41	82	123	36	12	14	26	30
700 - 800	4	8	12	4	0	4	4	5
Valid Cases	117	225	342	100	49	37	86	100
Means	579	573	575		562	599	578	
SAT Math								
200 - 399	0	1	1	0	0	0	0	0
400 - 499	15	7	22	6	9	0	9	10
500 - 599	47	86	133	39	23	13	36	42
600 - 699	46	111	157	46	16	21	37	43
700 - 800	9	20	29	8	1	3	4	5
Valid Cases	117	225	342	100	49	37	86	100
Means	587	606	600		563	615	585	
ACT Composite								
15 - 18	2	1	3	0	1	0	1	0
19 - 22	42	15	57	8	20	4	24	8
23 - 26	254	101	355	47	123	20	143	50
27 - 36	214	120	334	45	93	26	119	41
Valid Cases	512	237	749	100	237	50	287	100
Means	26.0	26.3	26.1		25.9	26.6	26.0	
CDHE Index								
90 - 100	1	1	2	0	0	0	0	0
101 - 114	128	99	227	26	67	18	85	28
115 - 160	392	261	653	74	171	50	221	72
Valid Cases	521	361	882	100	238	68	306	100
Means	121	120	120		120	120	120	

Note: college indicates application college



Engineering	Admitted N= 1587				Enrolled N=596			
	Res	Nonres	Total	Percent	Res	Nonres	Total	Percent
High School GPA								
2.5 - 2.999	0	1	1	0	0	0	0	0
3 - 3.599	193	125	318	21	126	18	144	25
3.6 - 4.0	461	370	831	54	240	83	323	55
4.001 - 10	215	183	398	26	77	40	117	20
Valid Cases	869.00	679.00	1548.00	100	443.00	141.00	584.00	100
Means	3.83	3.87	3.85		3.76	3.9	3.79	
Percentile Rank								
0 - 29	0	1	1	0	0	0	0	0
30 - 49	7	10	17	2	4	2	6	1
50 - 59	25	11	36	3	21	2	23	5
60 - 79	226	98	324	31	137	23	160	35
80 - 89	174	69	243	23	86	17	103	23
90 - 100	261	175	436	41	119	40	159	35
Valid Cases	693.0	364.0	1057.0	100	367.0	84.0	451.0	100
Means	83	84.1	83.4		81	84.2	81.6	
SAT Critical Reading								
200 - 399	0	25	25	4	0	11	11	6
400 - 499	25	45	70	10	13	8	21	11
500 - 599	88	174	262	37	29	33	62	32
600 - 699	96	168	264	38	41	40	81	41
700 - 800	31	50	81	12	12	9	21	11
Valid Cases	240	462	702	100	95	101	196	100
Means	600	579	586		600	562	581	
SAT Math								
400 - 499	3	4	7	1	0	2	2	1
500 - 599	60	101	161	23	25	19	44	22
600 - 699	121	267	388	55	47	64	111	57
700 - 800	56	90	146	21	23	16	39	20
Valid Cases	240	462	702	100	95	101	196	100
Means	641	643	643		638	640	639	
ACT Composite								
15 - 18	2	0	2	0	1	0	1	0
19 - 22	48	21	69	5	25	2	27	5
23 - 26	325	119	444	33	187	32	219	40
27 - 36	477.0	342.0	819.0	61	225.0	70.0	295.0	54
Valid Cases	852	482	1334	100	438	104	542	100
Means	27.3	28.2	27.6		27.0	27.8	27.1	
CDHE Index								
101 - 114	144	68	212	14	88	9	97	17
115 - 160	724	611	1335	86	355	132	487	83
Valid Cases	868	679	1547	100	443	141	584	100
Means	124	126	125		122	126	123	

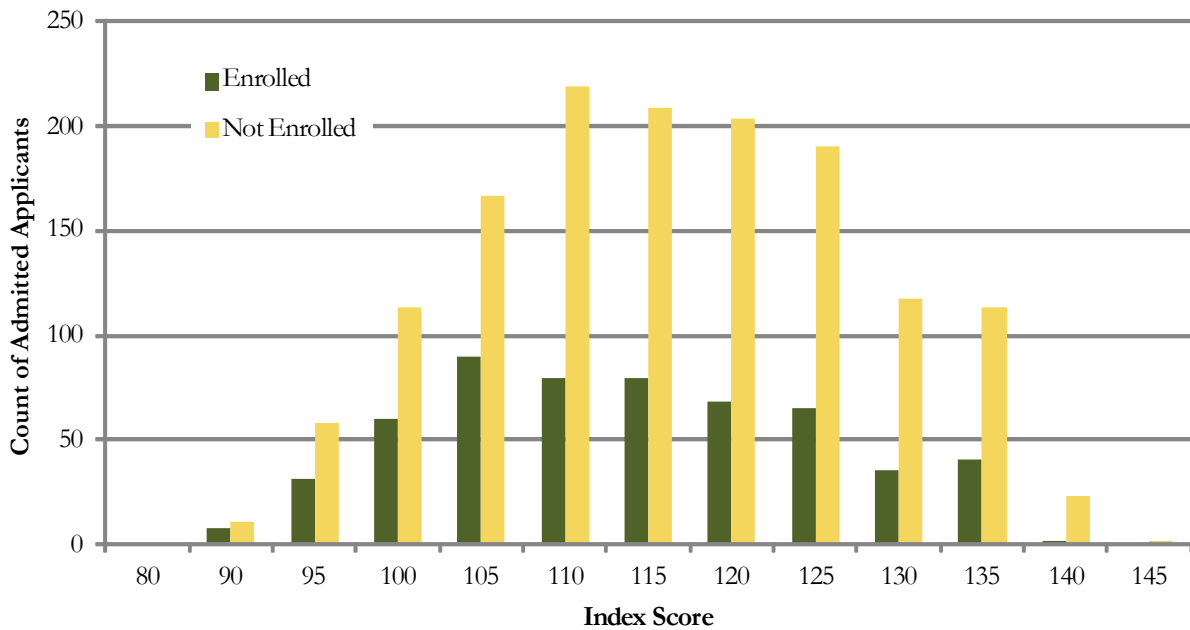
Note: college indicates application college



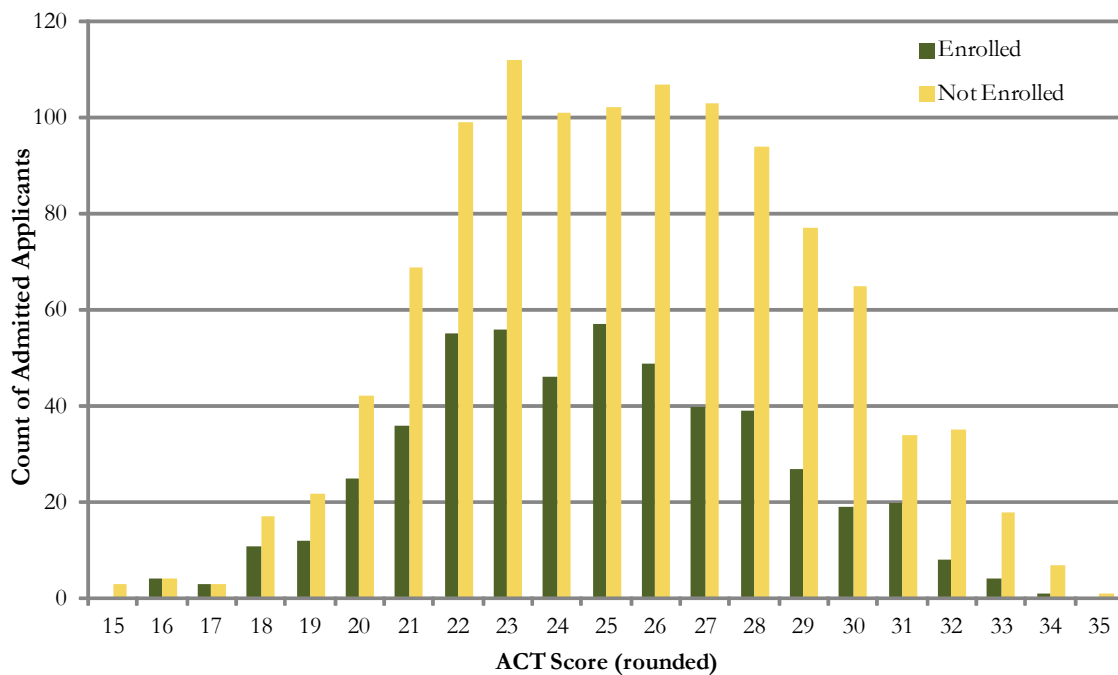
Liberal Arts	Admitted N= 2005				Enrolled N=566			
	Res	Nonres	Total	Percent	Res	Nonres	Total	Percent
High School GPA								
2 - 2.499	2	0	2	0	2	0	2	0
2.5 - 2.999	64	75	139	7	35	8	43	8
3 - 3.599	454	362	816	41	199	54	253	45
3.6 - 4.0	452	297	749	38	160	47	207	37
4.001 - 10	177	108	285	14	42	16	58	10
Valid Cases	1149.00	842.00	1991.00	100	438.00	125.00	563.00	100
Means	3.61	3.54	3.58		3.51	3.55	3.52	
Percentile Rank								
0 - 29	7	12	19	1	6	1	7	2
30 - 49	94	38	132	10	49	5	54	13
50 - 59	105	56	161	12	50	7	57	13
60 - 79	320	112	432	33	140	18	158	37
80 - 89	169	79	248	19	54	8	62	14
90 - 100	222	104	326	25	71	19	90	21
Valid Cases	917.0	401.0	1318.0	100	370.0	58.0	428.0	100
Means	73.8	73	73.6		70.6	74.1	71.1	
SAT Critical Reading								
200 - 399	4	7	11	1	3	1	4	3
400 - 499	28	79	107	13	15	17	32	21
500 - 599	104	243	347	44	31	31	62	41
600 - 699	90	168	258	32	24	18	42	27
700 - 800	43	31	74	9	8	5	13	8
Valid Cases	269	528	797	100	81	72	153	100
Means	596	574	581		566	560	563	
SAT Math								
200 - 399	5	5	10	1	2	3	5	3
400 - 499	46	101	147	18	18	18	36	24
500 - 599	135	255	390	49	45	22	67	44
600 - 699	71	147	218	27	15	27	42	27
700 - 800	12	20	32	4	1	2	3	2
Valid Cases	269	528	797	100	81	72	153	100
Means	562	557	559		543	546	544	
ACT Composite								
15 - 18	34	11	45	3	16	2	18	4
19 - 22	257	103	360	22	111	17	128	25
23 - 26	431	199	630	39	182	26	208	41
27 - 36	391	201	592	36	121	37	158	31
Valid Cases	1113.0	514.0	1627.0	100	430.0	82.0	512.0	100
Means	25.1	25.5	25.2		24.6	25.7	24.7	
CDHE Index								
35 - 89	3	1	4	0	2	0	2	0
90 - 100	90	85	175	9	42	17	59	10
101 - 114	453	330	783	39	204	45	249	44
115 - 160	602	424	1026	52	189	63	252	45
Valid Cases	1148	840	1988	100	437	125	562	100
Means	116	115	115		113	115	114	

Note: college indicates application college

Fall 2012 CDHE Index Distribution of Admitted Applicants by Enrollment Status (Liberal Arts)



Fall 2012 ACT Composite Distribution of Admitted Applicants by Enrollment Status (Liberal Arts)



Warner College

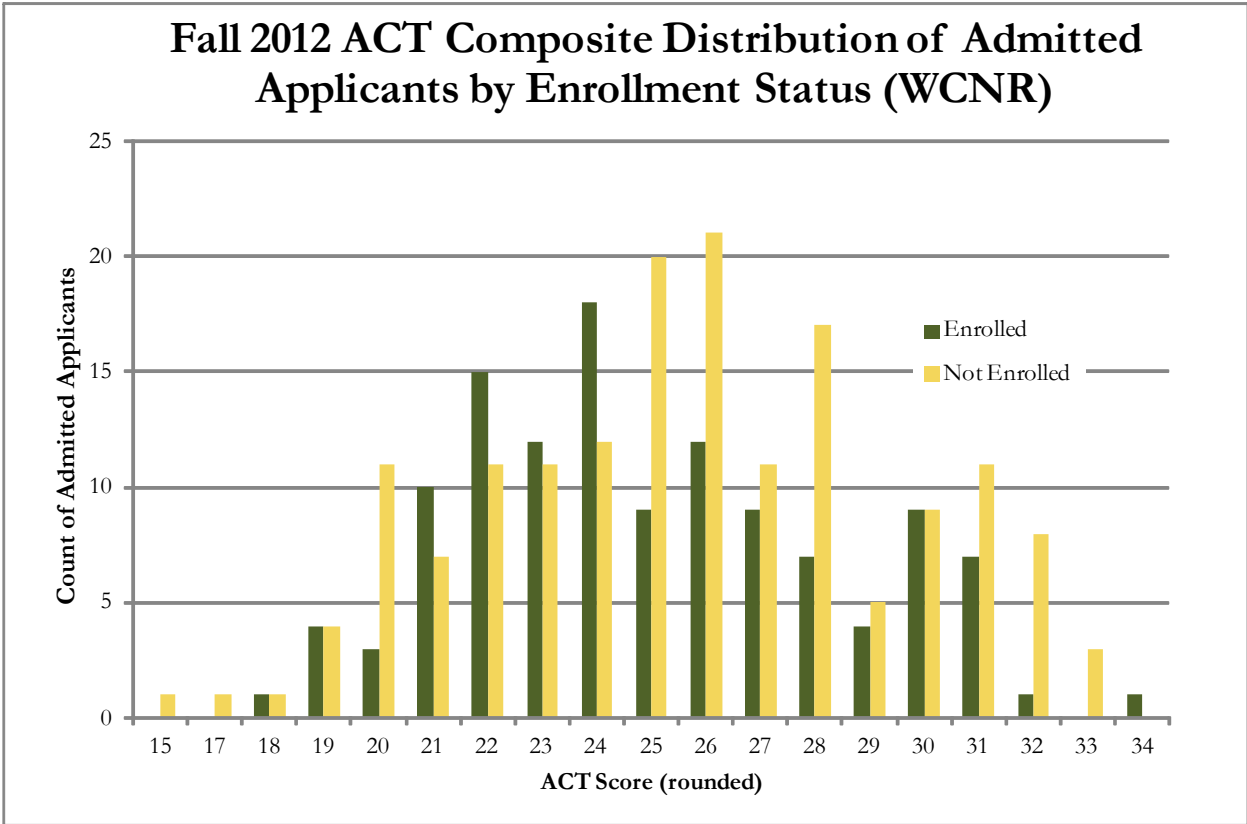
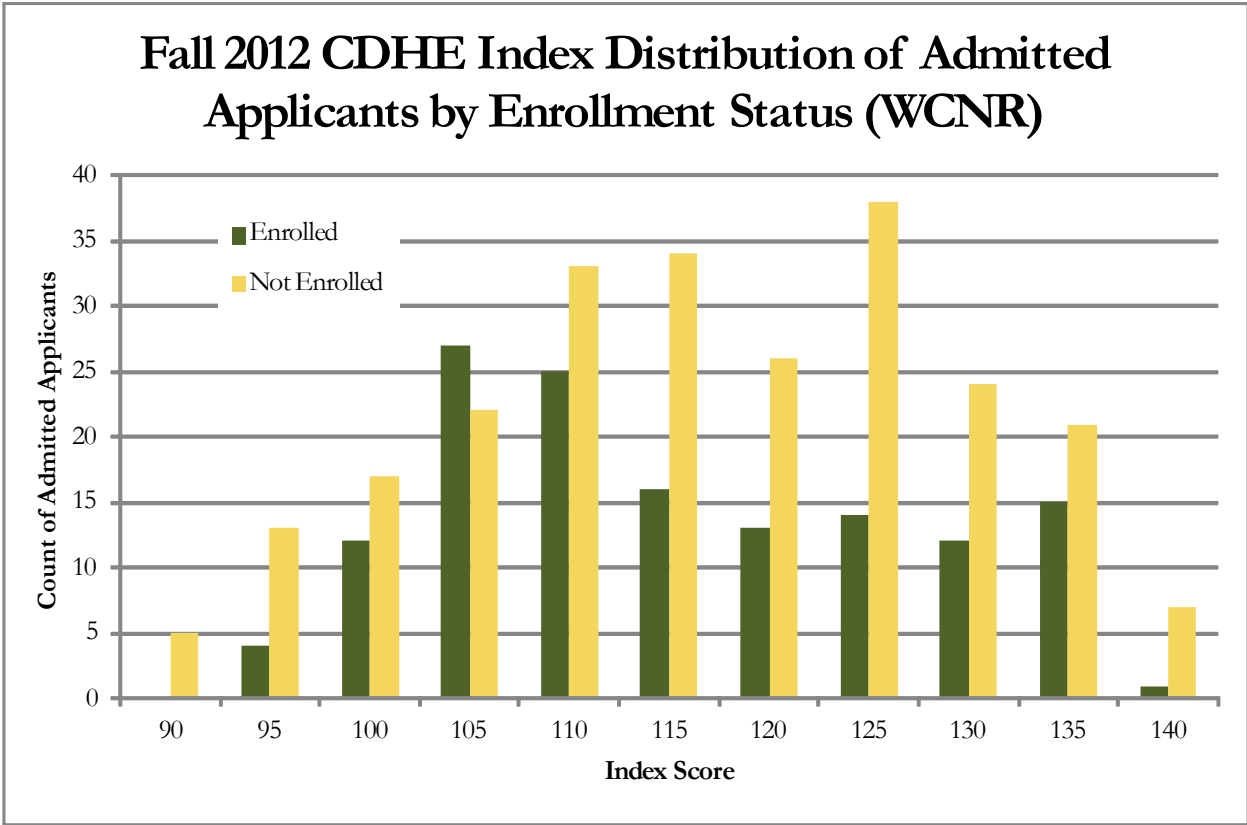
of Natural Resources

Admitted N= 386

Enrolled N=140

High School GPA	Res	Nonres	Total	Percent	Res	Nonres	Total	Percent
2.5 - 2.999	6	17	23	6	5	2	7	5
3 - 3.599	70	93	163	43	47	17	64	46
3.6 - 4.0	45	87	132	35	24	27	51	37
4.001 - 10	11	51	62	16	4	13	17	12
Valid Cases	132	248	380	100	80	59	139	100
Means	3.54	3.65	3.61		3.48	3.72	3.58	
Percentile Rank								
0 - 29	0	2	2	1	0	1	1	1
30 - 49	20	12	32	14	12	3	15	16
50 - 59	9	15	24	10	5	3	8	8
60 - 79	42	27	69	29	33	7	40	42
80 - 89	19	25	44	19	8	3	11	11
90 - 100	16	47	63	27	6	15	21	22
Valid Cases	106	128	234	100	64	32	96	100
Means	70.0	77.0	73.8		67.5	78.2	71.1	
SAT Critical Reading								
400 - 499	0	28	28	15	0	3	3	7
500 - 599	11	70	81	42	5	18	23	51
600 - 699	8	58	66	35	3	11	14	31
700 - 800	3	13	16	8	1	4	5	11
Valid Cases	22	169	191	100	9	36	45	100
Means	605	578	581		598	587	589	
SAT Math								
400 - 499	3	16	19	10	2	3	5	11
500 - 599	10	82	92	48	4	16	20	44
600 - 699	8	57	65	34	3	14	17	38
700 - 800	1	14	15	8	0	3	3	7
Valid Cases	22	169	191	100	9	36	45	100
Means	573	582	581		551	581	575	
ACT Composite								
15 - 18	2	2	4	1	1	0	1	1
19 - 22	42	23	65	23	27	5	32	26
23 - 26	54	61	115	40	36	15	51	42
27 - 36	33	69	102	36	15	23	38	31
Valid Cases	131	155	286	100	79	43	122	100
Means	24.5	26.1	25.4		24.1	26.6	25.0	
CDHE Index								
35 - 89	0.0	1.0	1.0	0	0.0	0.0	0.0	0
90 - 100	11	20	31	8	5	2	7	5
101 - 114	67	80	147	39	49	19	68	49
115 - 160	54	146	200	53	26	38	64	46
Valid Cases	132	247	379	100	80	59	139	100
Means	114	118	116		112	120	115	

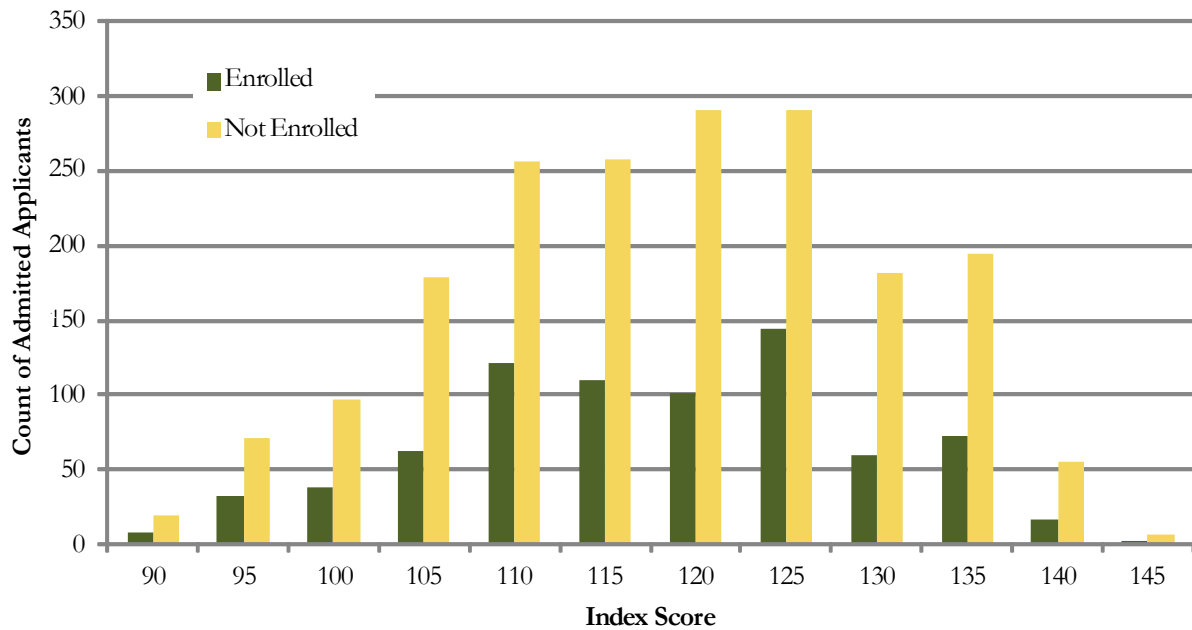
Note: college indicates application college



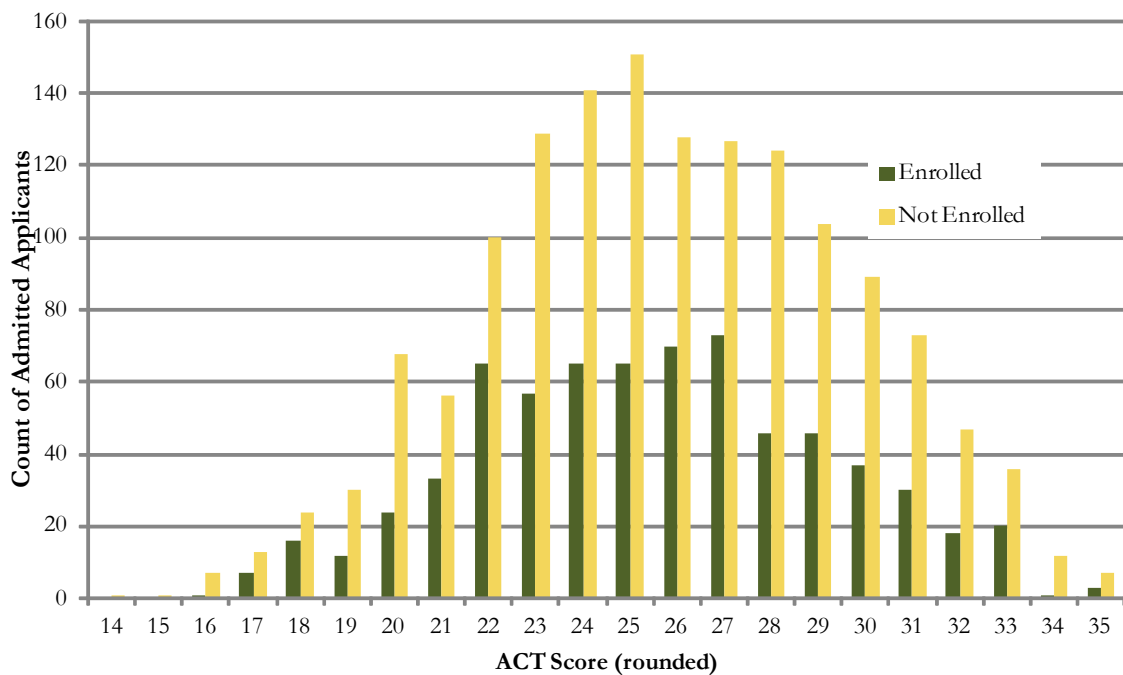
Natural Sciences	Admitted N= 2708				Enrolled N=783			
	Res	Nonres	Total	Percent	Res	Nonres	Total	Percent
High School GPA								
2 - 2.499	0	1	1	0	0	0	0	0
2.5 - 2.999	48	60	108	4	19	14	33	4
3 - 3.599	471	432	903	34	210	59	269	35
3.6 - 4.0	568	590	1158	43	254	101	355	46
4.001 - 10	254	252	506	19	80	36	116	15
Valid Cases	1341	1335	2676	100	563	210	773	100
Means	3.68	3.69	3.68		3.64	3.69	3.65	
Percentile Rank								
0 - 29	3	8	11	1	0	2	2	0
30 - 49	70	49	119	7	27	10	37	6
50 - 59	98	55	153	9	40	7	47	8
60 - 79	338	177	515	29	171	36	207	35
80 - 89	231	171	402	23	108	22	130	22
90 - 100	335	238	573	32	127	47	174	29
Valid Cases	1075	698	1773	100	473	124	597	100
Means	77.6	78.7	78.0		77.2	78.5	77.4	
SAT Critical Reading								
200 - 399	2	12	14	1	0	3	3	1
400 - 499	42	141	183	15	19	21	40	14
500 - 599	145	390	535	44	52	65	117	42
600 - 699	122	255	377	31	38	51	89	32
700 - 800	36	73	109	9	12	19	31	11
Valid Cases	347	871	1218	100	121	159	280	100
Means	585	574	577		579	587	584	
SAT Math								
200 - 399	3	3	6	0	2	0	2	1
400 - 499	42	125	167	14	16	21	37	13
500 - 599	128	327	455	37	46	59	105	38
600 - 699	131	333	464	38	44	64	108	39
700 - 800	43	83	126	10	13	15	28	10
Valid Cases	347	871	1218	100	121	159	280	100
Means	594	586	588		587	586	586	
ACT Composite								
1 - 14	0	1	1	0	0	0	0	0
15 - 18	52	17	69	3	22	2	24	3
19 - 22	258	130	388	18	117	17	134	19
23 - 26	488	318	806	37	208	49	257	37
27 - 36	508	385	893	41	205	69	274	40
Valid Cases	1306	851	2157	100	552	137	689	100
Means	25.4	26.1	25.6		25.3	26.5	25.5	
CDHE Index								
35 - 89	1	0	1	0	0	0	0	
90 - 100	104	97	201	8	41	18	59	
101 - 114	442	380	822	31	202	45	247	
115 - 160	793	855	1648	62	319	146	465	
Valid Cases	1340	1332	2672	100	562	209	771	
Means	118	119	118	118	117	120	118	

Note: college indicates application college

Fall 2012 CDHE Index Distribution of Admitted Applicants by Enrollment Status (Natural Sci)



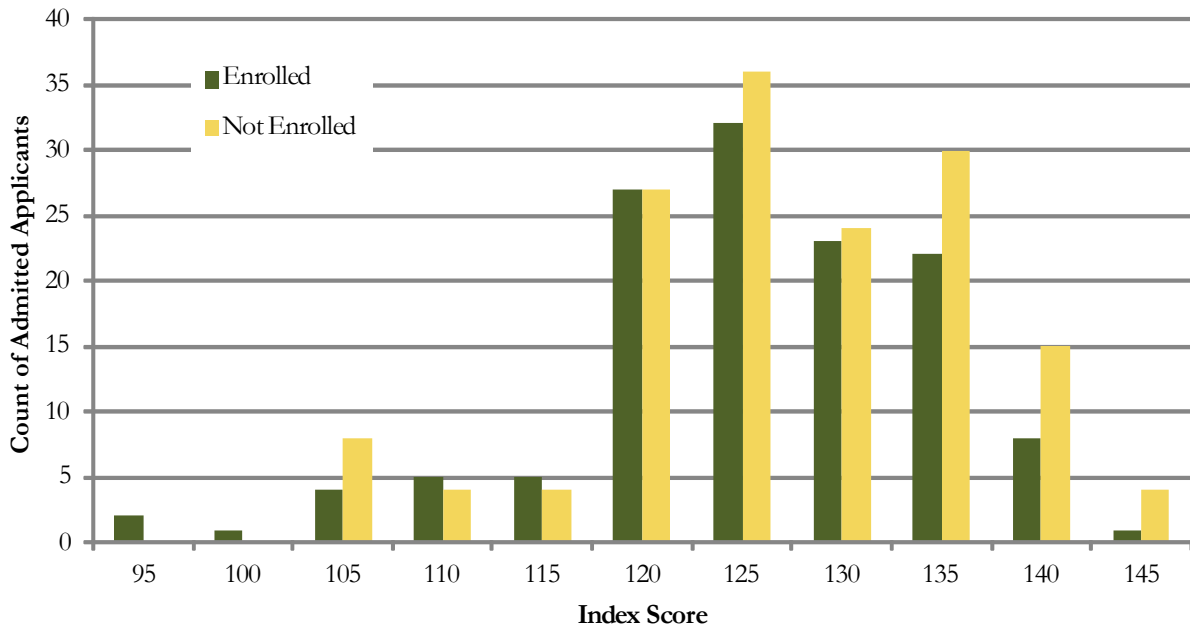
Fall 2012 ACT Composite Distribution of Admitted Applicants by Enrollment Status (Natural Sci)



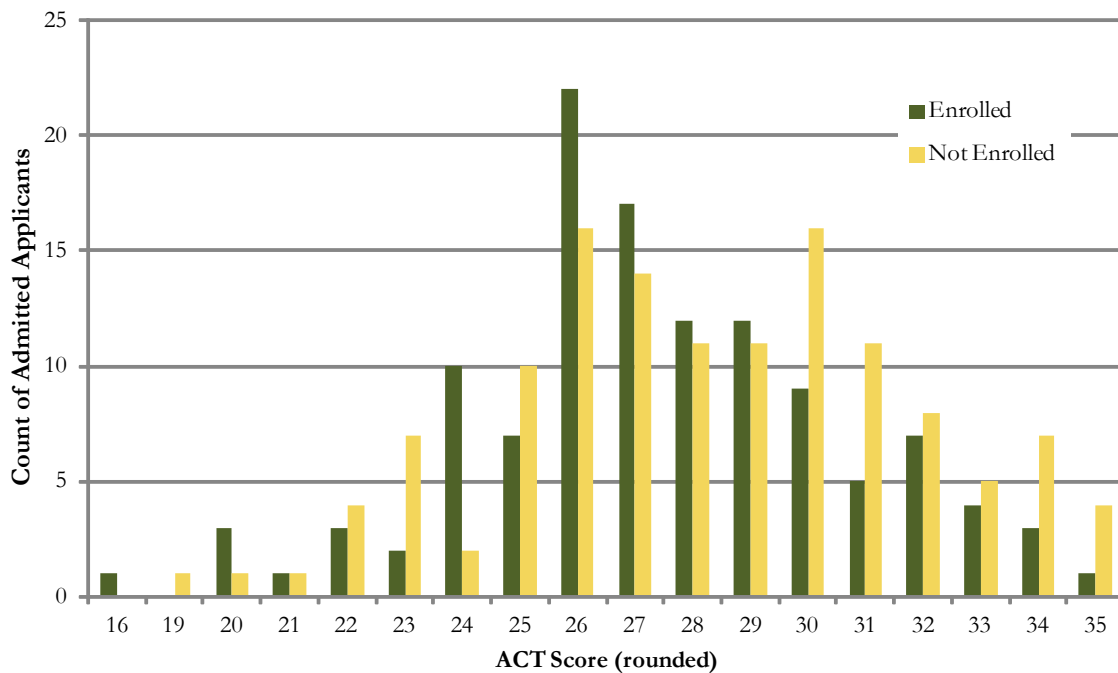
Veterinary Medicine + Biomedical Sci	Admitted N = 286				Enrolled N=132			
	Res	Nonres	Total	Percent	Res	Nonres	Total	Percent
High School GPA								
2.5 - 2.999	5	0	5	2	3	0	3	2
3 - 3.599	14	16	30	11	10	5	15	12
3.6 - 4.0	82	81	163	58	56	24	80	62
4.001 - 10	41	43	84	30	20	12	32	25
Valid Cases	142	140	282	100	89	41	130	100
Means	3.88	3.96	3.92		3.85	3.95	3.88	
Percentile Rank								
30 - 49	2	0	2	1	2	0	2	2
50 - 59	3	2	5	3	3	1	4	4
60 - 79	20	17	37	20	14	5	19	19
80 - 89	35	15	50	27	21	3	24	24
90 - 100	59	32	91	49	40	11	51	51
Valid Cases	119	66	185	100	80	20	100	100
Means	86.7	85.5	86.3		85.9	86.2	86.0	
SAT Critical Reading								
200 - 399	0	1	1	1	0	1	1	2
400 - 499	0	2	2	2	0	0	0	0
500 - 599	14	33	47	39	12	8	20	39
600 - 699	14	40	54	44	6	16	22	43
700 - 800	6	12	18	15	3	5	8	16
Valid Cases	34	88	122	100	21	30	51	100
Means	616	608	610		599	615	608	
SAT Math								
400 - 499	1	3	4	3	1	0	1	2
500 - 599	12	22	34	28	9	7	16	31
600 - 699	17	44	61	50	9	18	27	53
700 - 800	4	19	23	19	2	5	7	14
Valid Cases	34	88	122	100	21	30	51	100
Means	615	634	629		609	633	623	
ACT Composite								
15 - 18	1	0	1	0	1	0	1	1
19 - 22	9	5	14	6	6	1	7	6
23 - 26	48	28	76	31	30	11	41	34
27 - 36	82	75	157	63	52	18	70	59
Valid Cases	140	108	248	100	89	30	119	100
Means	27.3	28.6	27.8		27.1	28.1	27.4	
CDHE Index								
90 - 100	2	0	2	1	2	0	2	2
101 - 114	15	13	28	10	10	3	13	10
115 - 160	125	127	252	89	77	38	115	88
Valid Cases	142	140	282	100	89	41	130	100
Means	125	128	126	126	124	128	125	

Note: college indicates application college

Fall 2012 CDHE Index Distribution of Admitted Applicants by Enrollment Status (VMBS)

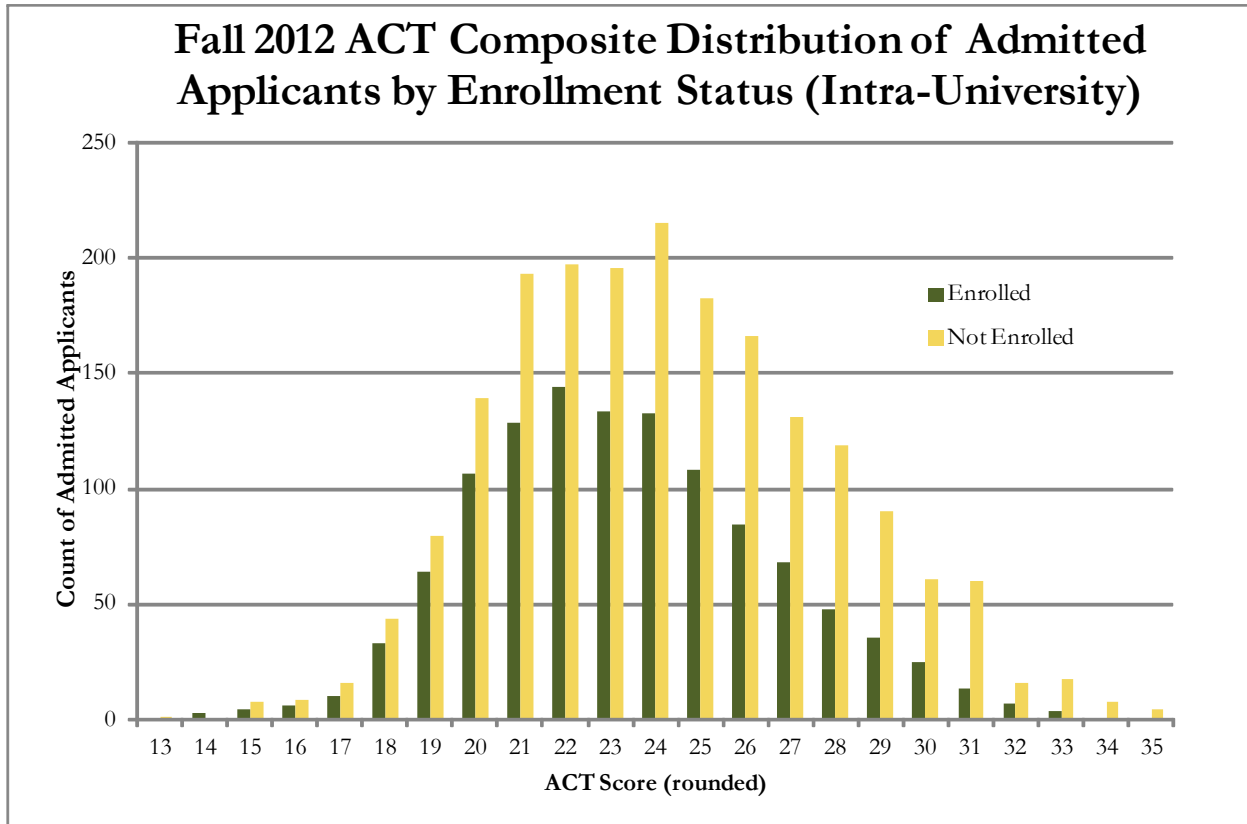
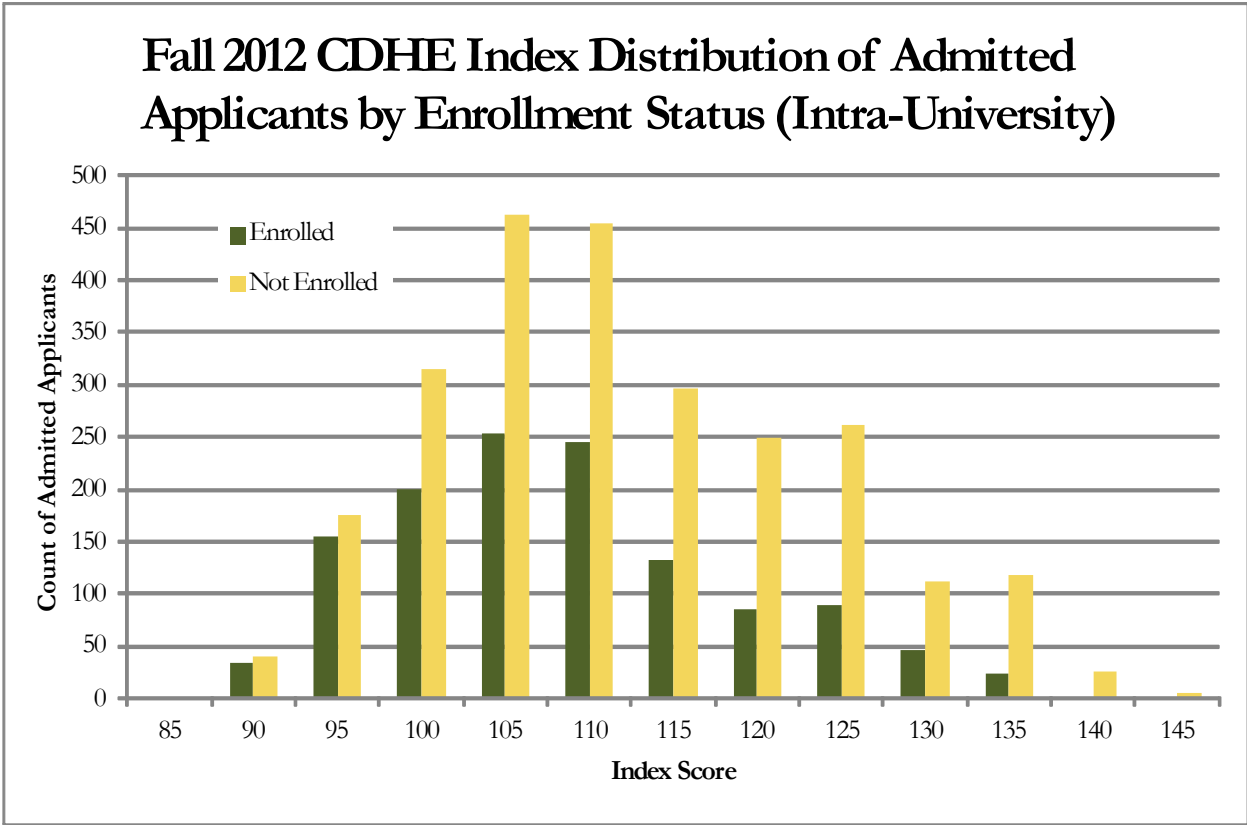


Fall 2012 ACT Composite Distribution of Admitted Applicants by Enrollment Status (VMBS)



Intra-University	Admitted N= 3893				Enrolled N=1308			
	Res	Nonres	Total	Percent	Res	Nonres	Total	Percent
High School GPA								
2.5 - 2.999	186	197	383	10	120	51	171	13
3 - 3.599	1143	807	1950	51	578	128	706	56
3.6 - 4.0	682	462	1144	30	276	52	328	26
4.001 - 10	175	143	318	8	54	13	67	5
Valid Cases	2186	1609	3795	100	1028	244	1272	100
Means	3.46	3.44	3.45		3.39	3.32	3.37	
Percentile Rank								
0 - 29	22	23	45	2	18	6	24	2
30 - 49	303	109	412	17	175	34	209	21
50 - 59	281	94	375	15	161	20	181	19
60 - 79	617	224	841	34	305	31	336	34
80 - 89	256	132	388	16	112	14	126	13
90 - 100	273	141	414	17	89	13	102	10
Valid Cases	1751	723	2474	100	859	118	977	100
Means	67.9	69.5	68.3		64.6	60.4	64.1	
SAT Critical Reading								
200 - 399	11	31	42	3	0	4	4	2
400 - 499	95	244	339	25	39	47	86	33
500 - 599	151	480	631	46	53	69	122	46
600 - 699	94	206	300	22	24	18	42	16
700 - 800	19	41	60	4	5	5	10	4
Valid Cases	370	1002	1372	100	121	143	264	100
Means	550	543	544		541	524	532	
SAT Math								
200 - 399	6	7	13	1	3	3	6	2
400 - 499	64	201	265	19	24	33	57	22
500 - 599	172	448	620	45	61	71	132	50
600 - 699	106	292	398	29	28	31	59	22
700 - 800	22	54	76	6	5	5	10	4
Valid Cases	370	1002	1372	100	121	143	264	100
Means	565	562	563		550	548	549	
ACT Composite								
1 - 14	2	2	4	0	2	1	3	0
15 - 18	93	38	131	4	47	7	54	5
19 - 22	788	265	1053	34	400	44	444	38
23 - 26	832	388	1220	39	395	65	460	40
27 - 36	436	274	710	23	167	35	202	17
Valid Cases	2151	967	3118	100	1011	152	1163	100
Means	23.6	24.5	23.9		23.3	24.0	23.4	
CCHE Index								
35 - 89	6	6	12	0	4	4	8	1
90 - 100	358	283	641	17	216	63	279	22
101 - 114	1127	730	1857	49	543	108	651	51
115 - 160	693	583	1276	34	263	67	330	26
Valid Cases	2184	1602	3786	100	1026	242	1268	100
Means	110	111	111	110	109	108	109	

Note: college indicates application college



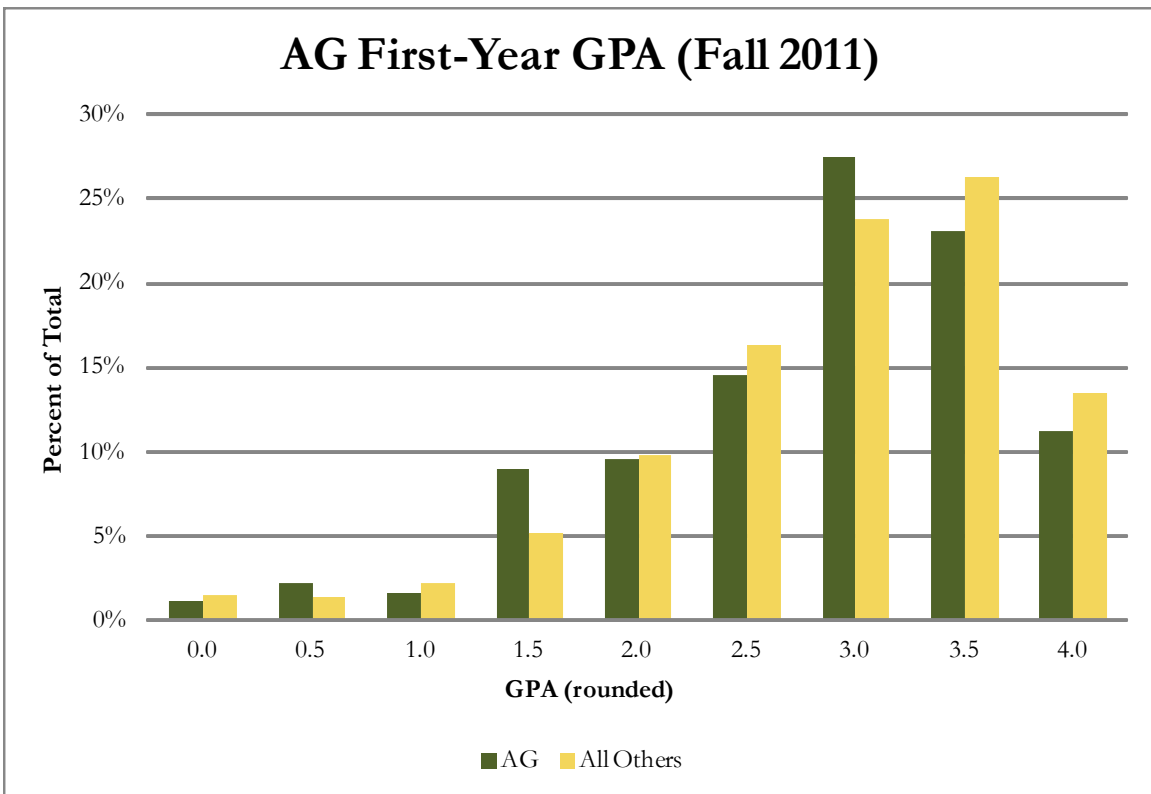
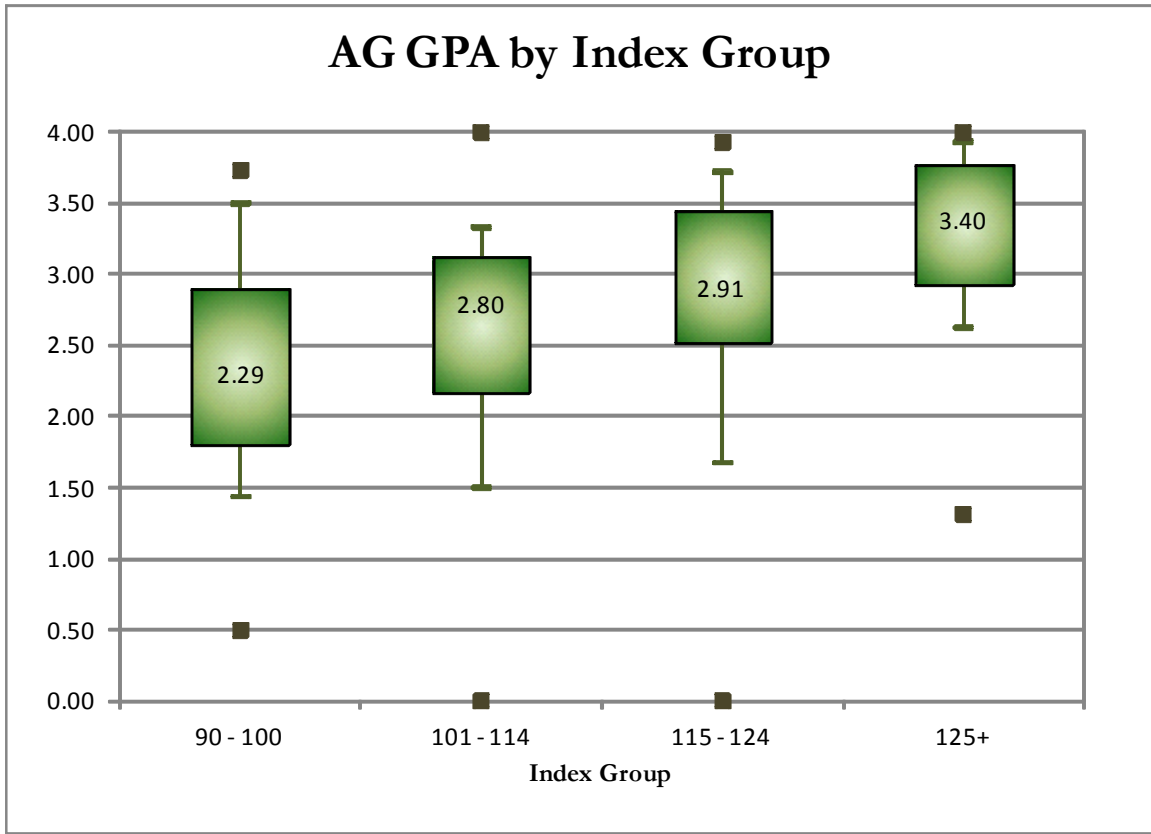
First-Year CSU GPA (Fall 2010 Cohort)

First-Year CSU GPA (Fall 2010 Cohort) by Admission Score

Agricultural Sciences

	CSU GPA				Total
	0.1 - 1.9	2.0 - 2.9	3.0 - 3.5	3.6 - 4.0	
High School GPA					
2.5 - 2.999	3		3		6
3 - 3.599	13	48	19	3	83
3.6 - 4.0	10	27	35	17	89
4.001 - 10		4	9	17	30
Total	26	79	66	37	208
Percentile Rank					
0 - 29	2	1	1		4
30 - 49	2	5			7
50 - 59	6	12	2		20
60 - 79	6	23	16	4	49
80 - 89	2	12	10	6	30
90 - 100	2	2	16	16	36
Total	20	55	45	26	146
SAT Verbal					
400 - 499		7	5	1	13
500 - 599	3	19	15	7	44
600 - 699	2	2	7	8	19
700 - 800			2	3	5
Total	5	28	29	19	81
SAT Math					
200 - 399		1			1
400 - 499	3	8	4		15
500 - 599	2	12	17	4	35
600 - 699		7	7	13	27
700 - 800			1	2	3
Total	5	28	29	19	81
ACT Composite					
15 - 18	2	6		1	9
19 - 22	10	27	15	2	54
23 - 26	9	24	21	11	65
27 - 36	2	9	17	19	47
Total	23	66	53	33	175
CDHE Index					
90 - 100	3	14	3	1	21
101 - 114	19	41	21	3	84
115 - 160	4	24	42	33	103
Total	26	79	66	37	208

Agricultural Sciences

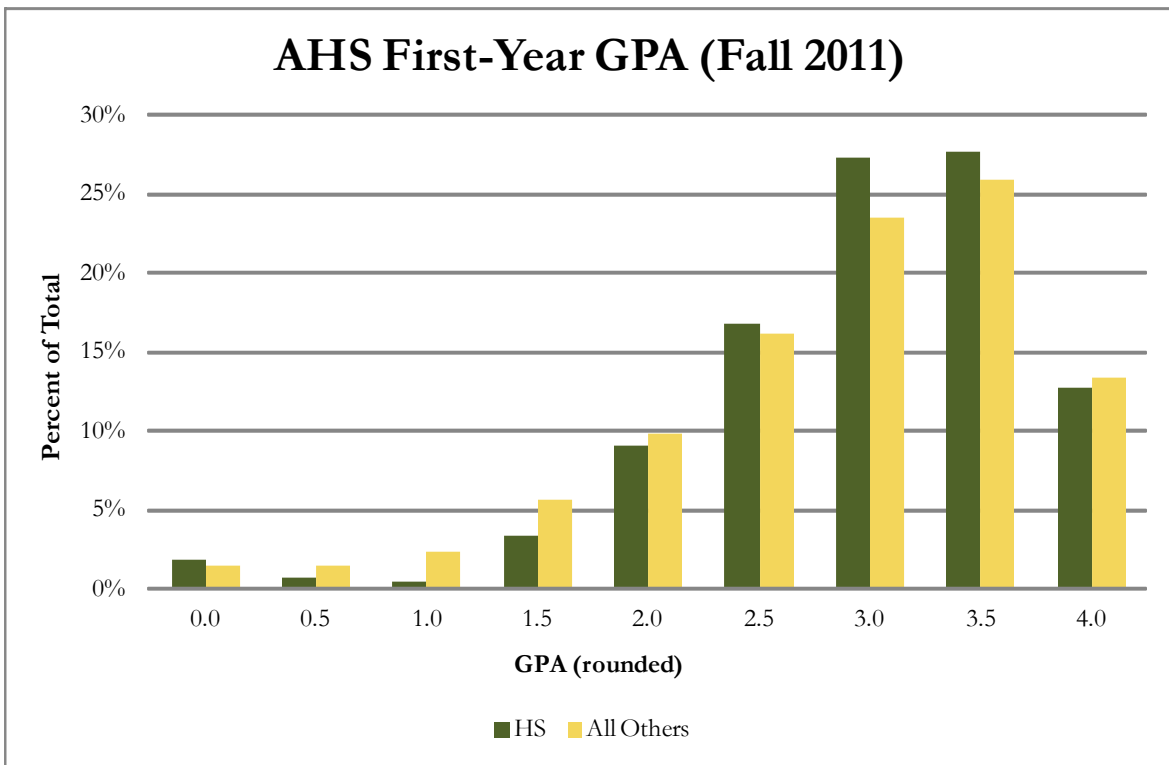
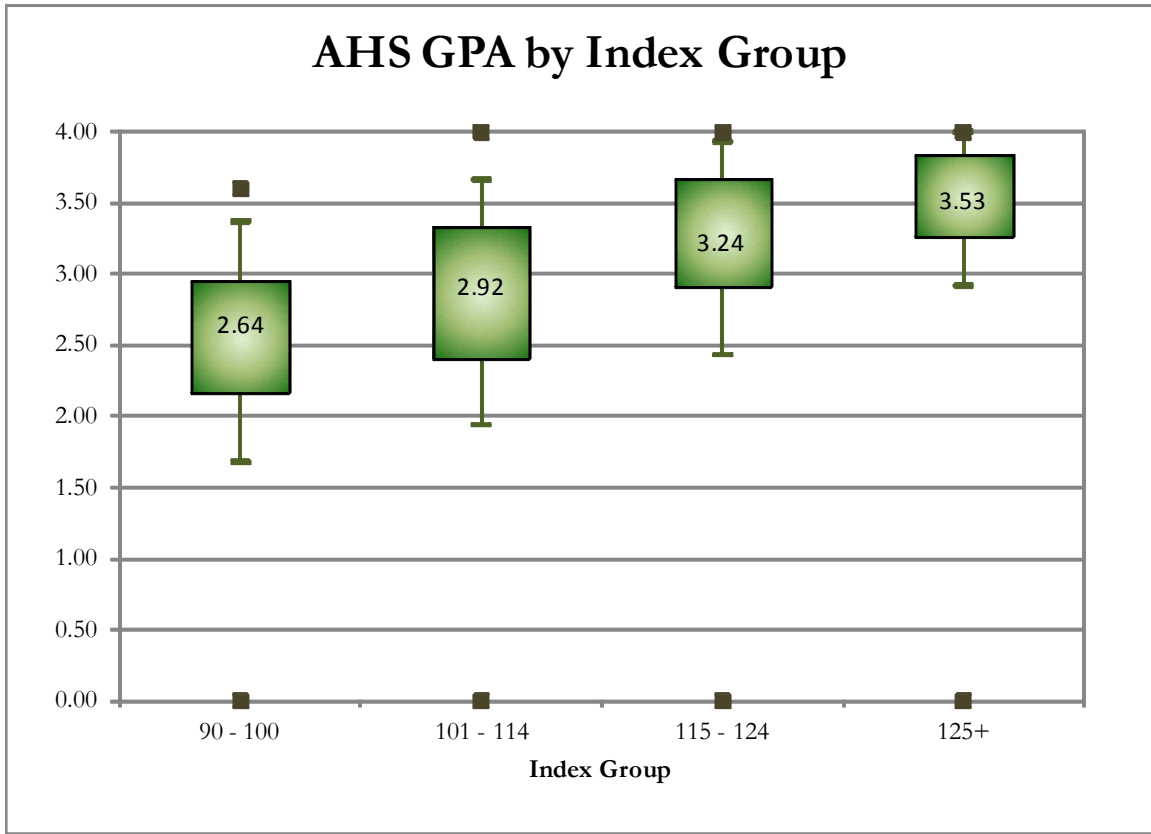


First-Year CSU GPA (Fall 2010 Cohort) by Admission Score

Applied Human Sciences

	CSU GPA				Total
	0.1 - 1.9	2.0 - 2.9	3.0 - 3.5	3.6 - 4.0	
High School GPA					
2 - 2.499				1	1
2.5 - 2.999	2	11	3		16
3 - 3.599	18	141	43	11	213
3.6 - 4.0	9	59	73	55	196
4.001 - 10		5	16	34	55
Total	29	216	135	101	481
Percentile Rank					
0 - 29				1	1
30 - 49	2	18	7	1	28
50 - 59	5	39	8	2	54
60 - 79	11	82	38	22	153
80 - 89	4	29	27	18	78
90 - 100		11	27	35	73
Total	22	179	107	79	387
SAT Verbal					
200 - 399	1	7			8
400 - 499	4	17	7	2	30
500 - 599	6	18	14	11	49
600 - 699	1	6	7	14	28
700 - 800		1		2	3
Total	12	49	28	29	118
SAT Math					
200 - 399		1	1		2
400 - 499	7	20	6	2	35
500 - 599	4	22	11	13	50
600 - 699	1	5	9	13	28
700 - 800		1	1	1	3
Total	12	49	28	29	118
ACT Composite					
15 - 18	6	17	1	1	25
19 - 22	13	95	41	12	161
23 - 26	4	75	68	42	189
27 - 36	2	19	23	41	85
Total	25	206	133	96	460
CDHE Index					
35 - 89				1	1
90 - 100	10	49	11		70
101 - 114	15	124	51	17	207
115 - 160	4	43	73	83	203
Total	29	216	135	101	481

Applied Human Sciences

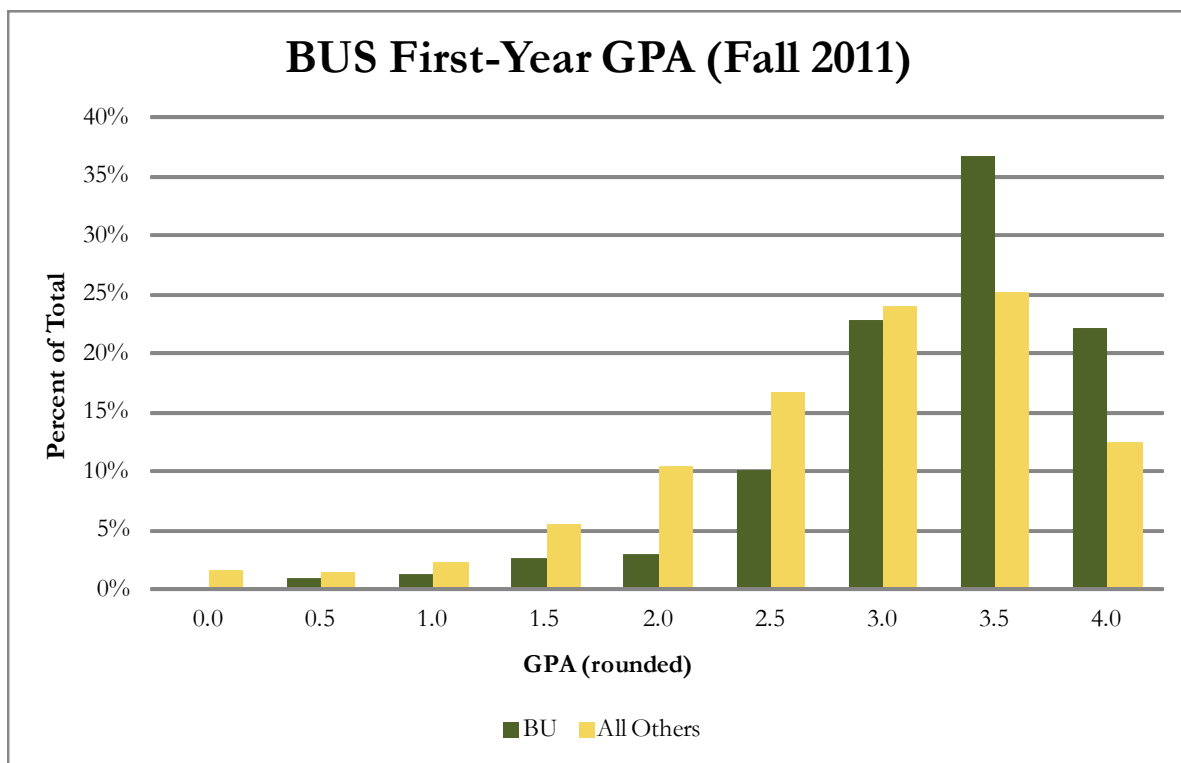
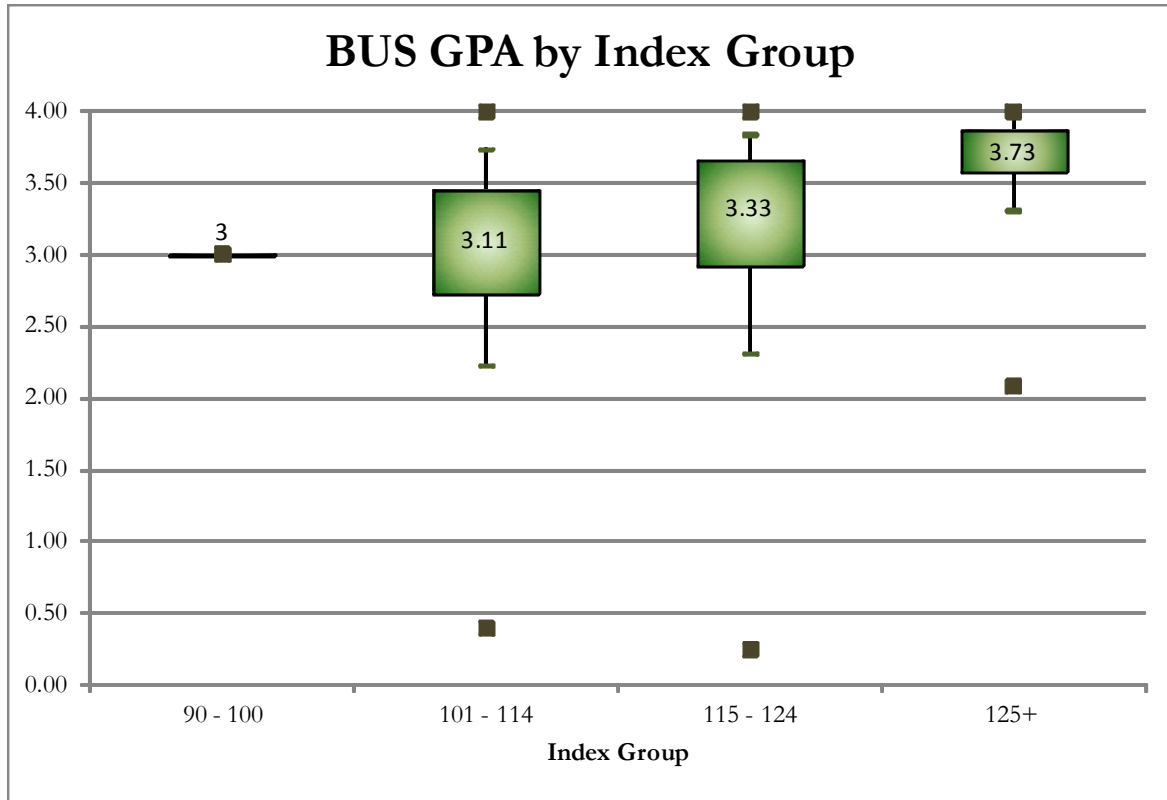


First-Year CSU GPA (Fall 2010 Cohort) by Admission Score

Business

	CSU GPA				Total
	0.1 - 1.9	2.0 - 2.9	3.0 - 3.5	3.6 - 4.0	
High School GPA					
2.5 - 2.999		1	1	1	3
3 - 3.599	18	43	29	22	112
3.6 - 4.0	4	42	68	80	194
4.001 - 10		1	16	31	48
Total	22	87	114	134	357
Percentile Rank					
30 - 49	2	5	2	1	10
50 - 59	4	11	7	7	29
60 - 79	6	37	37	23	103
80 - 89	4	12	27	25	68
90 - 100		11	16	45	72
Total	16	76	89	101	282
SAT Verbal					
400 - 499		3	11	3	17
500 - 599	5	12	15	28	60
600 - 699	1	5	13	20	39
700 - 800				2	2
Total	6	20	39	53	118
SAT Math					
400 - 499	1	2	2	3	8
500 - 599	4	8	19	20	51
600 - 699		10	16	26	52
700 - 800	1		2	4	7
Total	6	20	39	53	118
ACT Composite					
19 - 22		12	10	12	34
23 - 26	13	46	73	55	187
27 - 36	7	24	22	52	105
Total	20	82	105	119	326
CCHE Index					
101 - 114	12	42	37	22	113
115 - 160	10	45	77	112	244
Total	22	87	114	134	357

Business



First-Year CSU GPA (Fall 2010 Cohort) by Admission Score

Engineering

High School GPA	CSU GPA				Total
	0.1 - 1.9	2.0 - 2.9	3.0 - 3.5	3.6 - 4.0	
3 - 3.599	54	43	17	3	117
3.6 - 4.0	34	97	66	30	227
4.001 - 10	5	29	33	57	124
Total	93	169	116	90	468

Percentile Rank	CSU GPA				Total
	0.1 - 1.9	2.0 - 2.9	3.0 - 3.5	3.6 - 4.0	
0 - 29		1			1
30 - 49	1	3			4
50 - 59	3	4	3	1	11
60 - 79	51	52	21	6	130
80 - 89	16	33	21	9	79
90 - 100	10	36	42	55	143
Total	81	129	87	71	368

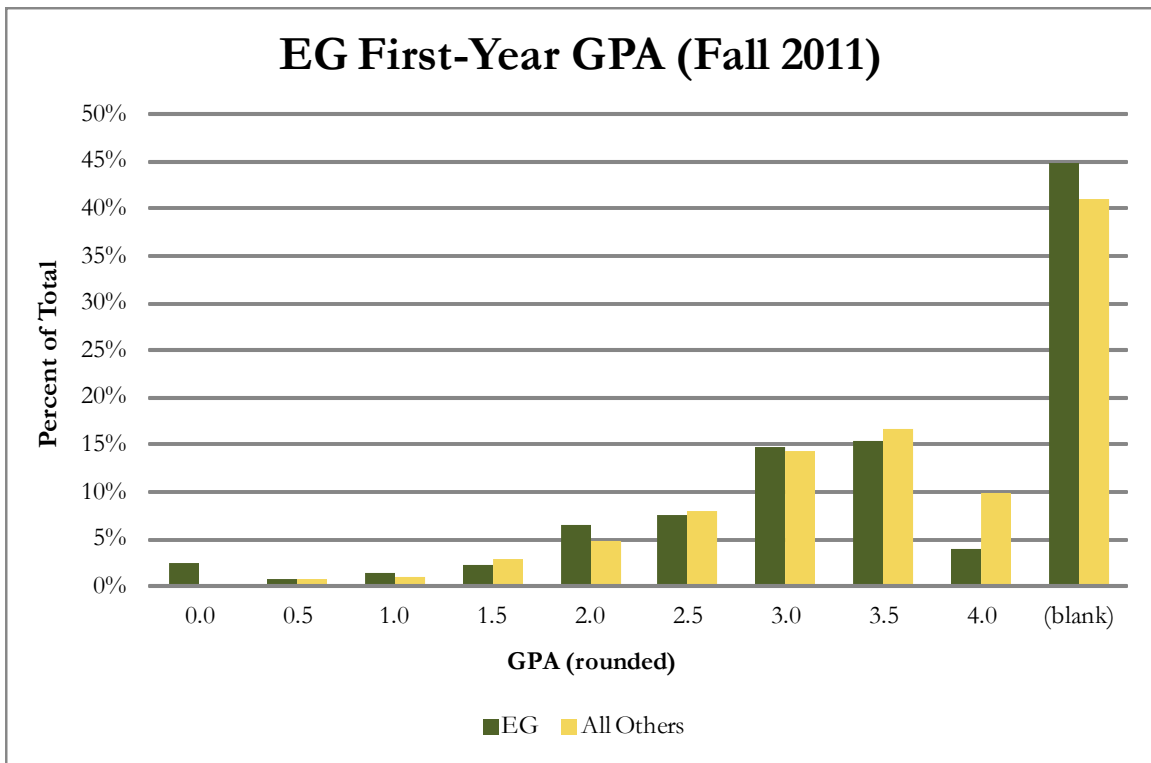
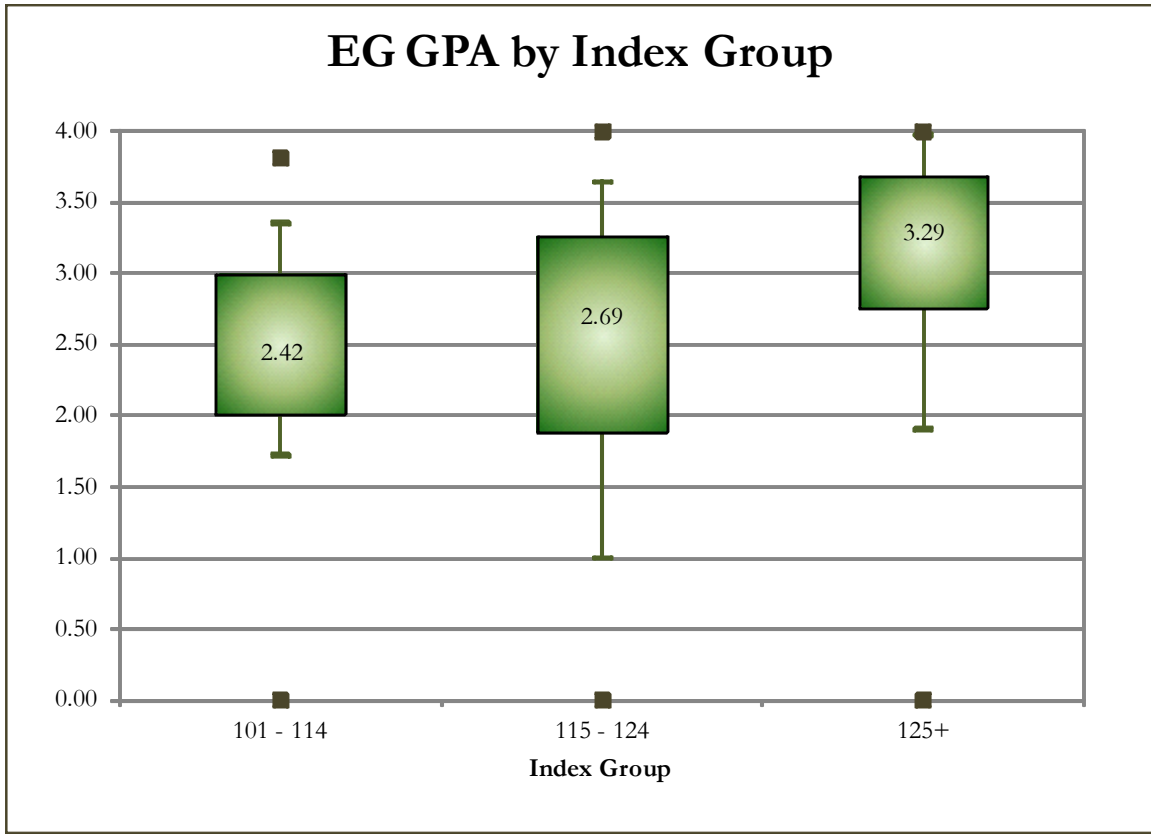
SAT Verbal	CSU GPA				Total
	0.1 - 1.9	2.0 - 2.9	3.0 - 3.5	3.6 - 4.0	
200 - 399		1	1		3
400 - 499	3	15	6		24
500 - 599	13	26	19	17	75
600 - 699	9	19	19	22	69
700 - 800	1	3	6	8	18
Total	26	64	51	48	189

SAT Math	CSU GPA				Total
	0.1 - 1.9	2.0 - 2.9	3.0 - 3.5	3.6 - 4.0	
400 - 499		2	1		3
500 - 599	10	18	12	6	46
600 - 699	15	40	27	29	111
700 - 800	1	4	11	13	29
Total	26	64	51	48	189

ACT Composite	CSU GPA				Total
	0.1 - 1.9	2.0 - 2.9	3.0 - 3.5	3.6 - 4.0	
19 - 22	3	16	3	1	23
23 - 26	55	64	38	12	169
27 - 36	32	71	59	67	229
Total	90	151	100	80	421

CCHE Index	CSU GPA				Total
	0.1 - 1.9	2.0 - 2.9	3.0 - 3.5	3.6 - 4.0	
101 - 114	29	34	14	2	79
115 - 160	64	135	102	88	389
Total	93	169	116	90	468

Engineering

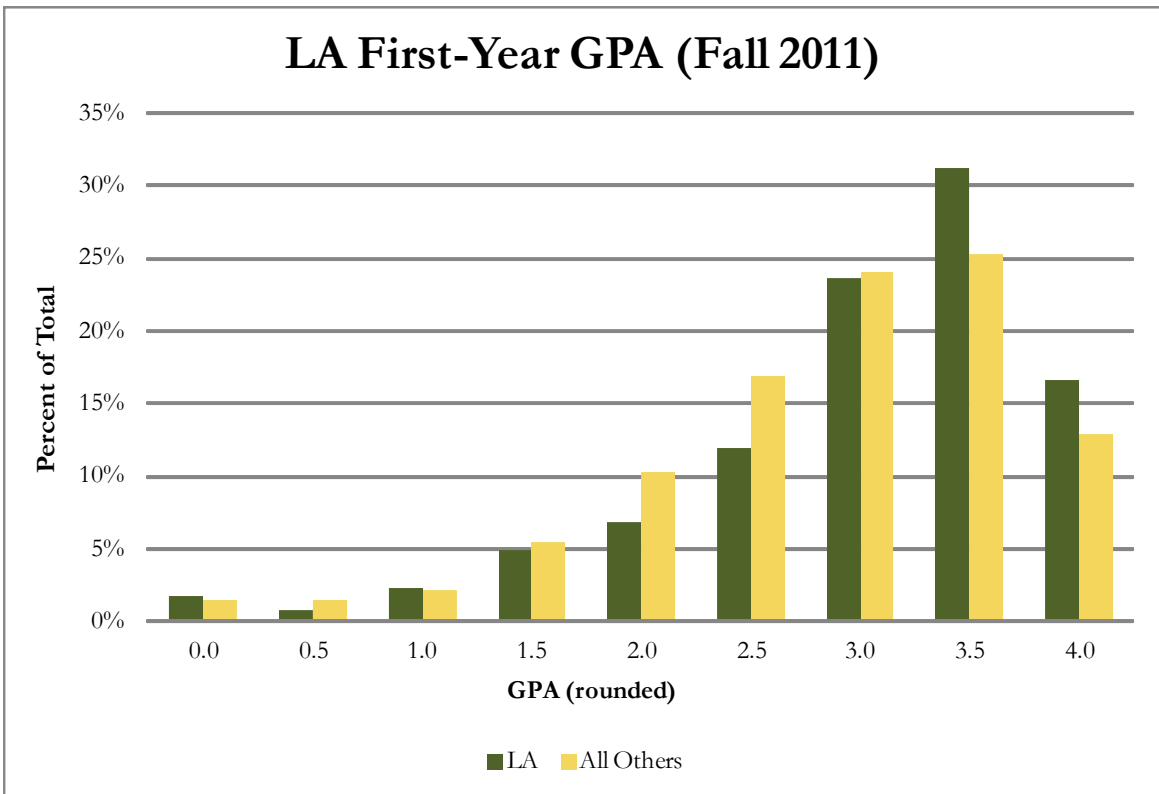
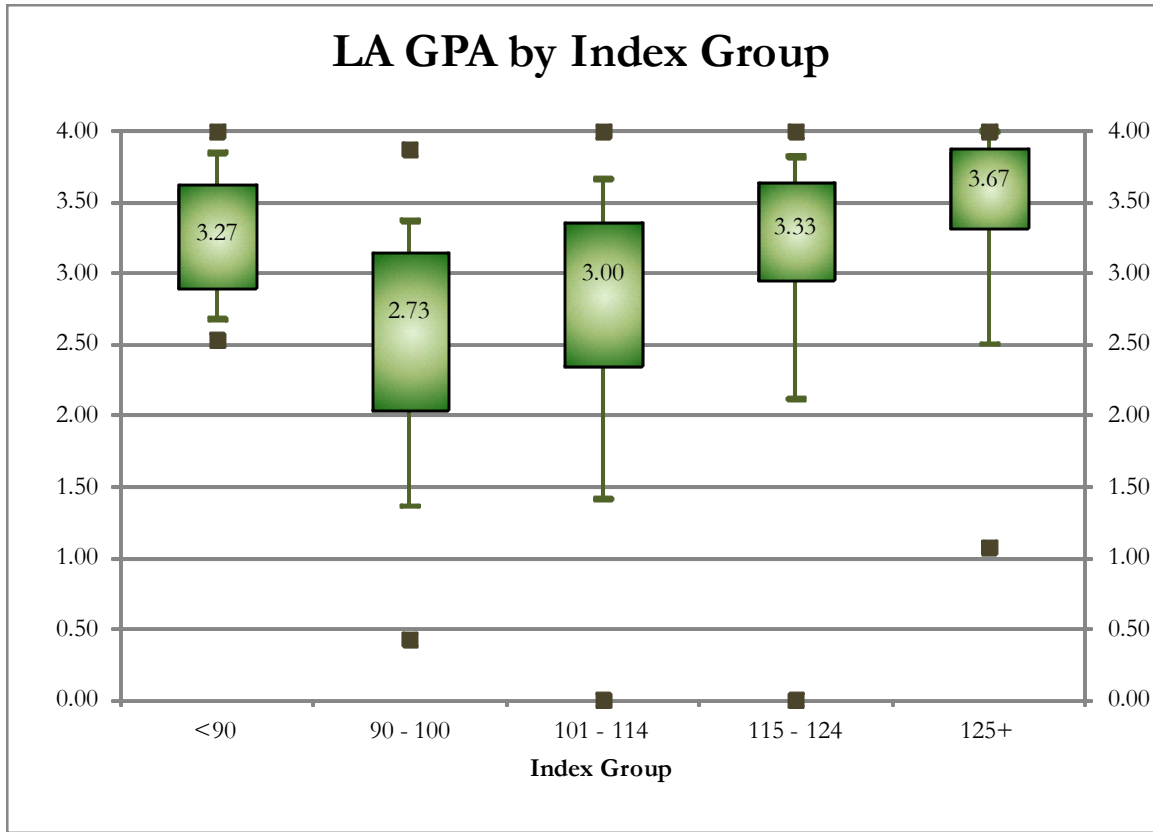


First-Year CSU GPA (Fall 2010 Cohort) by Admission Score

Liberal Arts

High School GPA	CSU GPA				Total
	0.1 - 1.9	2.0 - 2.9	3.0 - 3.5	3.6 - 4.0	
2.5 - 2.999	9	15	2	2	28
3 - 3.599	33	115	66	27	241
3.6 - 4.0	9	67	95	76	247
4.001 - 10	1	4	14	51	70
Total	52	201	177	156	586
Percentile Rank	CSU GPA				Total
0 - 29	1	2		1	4
30 - 49	8	27	12	3	50
50 - 59	13	24	14	4	55
60 - 79	17	58	53	17	145
80 - 89	4	33	39	29	105
90 - 100	0	11	30	70	111
Total	43	155	148	124	470
SAT Verbal	CSU GPA				Total
400 - 499	2	11	6	1	20
500 - 599	5	27	25	11	68
600 - 699	7	13	20	31	71
700 - 800		3	2	12	17
Total	14	54	53	55	176
SAT Math	CSU GPA				Total
200 - 399		2	1		3
400 - 499	2	17	10	4	33
500 - 599	7	21	33	15	76
600 - 699	5	12	9	31	57
700 - 800		2		5	7
Total	14	54	53	55	176
ACT Composite	CSU GPA				Total
15 - 18	3	12	3		18
19 - 22	13	57	36	10	116
23 - 26	19	71	80	55	225
27 - 36	12	46	46	78	182
Total	47	186	165	143	541
CCHE Index	CSU GPA				Total
35 - 89	1	1			2
90 - 100	12	30	6	2	50
101 - 114	27	101	75	17	220
115 - 160	12	69	96	137	314
Total	52	201	177	156	586

Liberal Arts

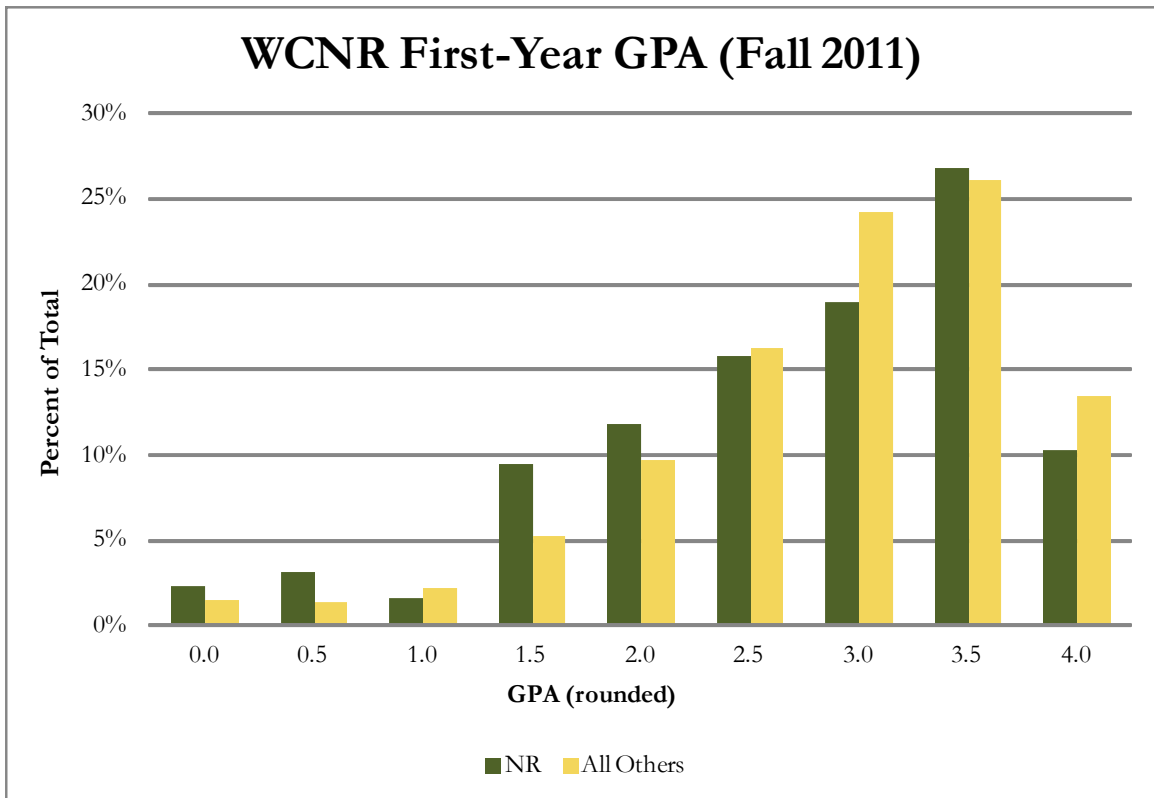
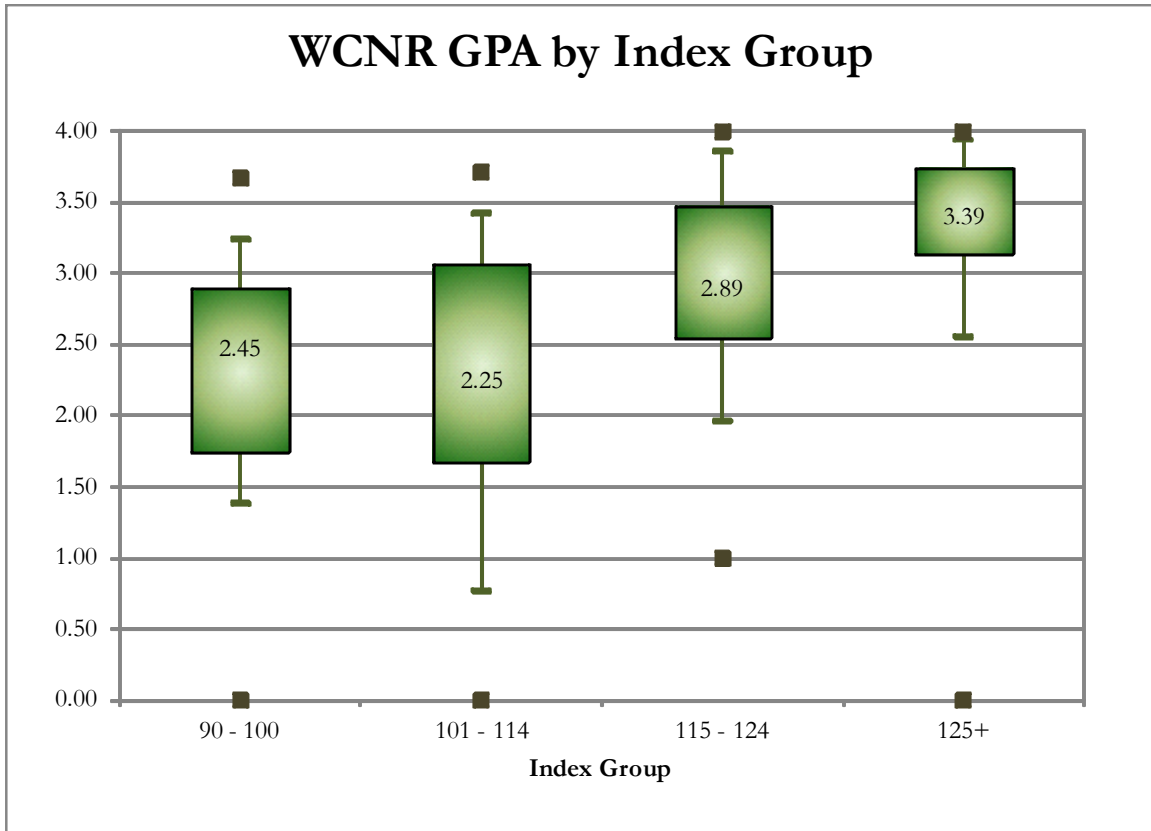


First-Year CSU GPA (Fall 2010 Cohort) by Admission Score

Warner College of Natural Resources

High School GPA	CSU GPA				Total
	0.1 - 1.9	2.0 - 2.9	3.0 - 3.5	3.6 - 4.0	
2.5 - 2.999	3	7	2		12
3 - 3.599	14	23	12	8	57
3.6 - 4.0	3	18	18	16	55
4.001 - 10		1	4	13	18
Total	20	49	36	37	142
Percentile Rank					
30 - 49	5	5	1		11
50 - 59	3	5	2	2	12
60 - 79	4	10	6	4	24
80 - 89	3	8	10	9	30
90 - 100	1	1	3	11	16
Total	16	29	22	26	93
SAT Verbal					
200 - 399		1		1	2
400 - 499	1	5	2		8
500 - 599	2	8	6	7	23
600 - 699	3	2	5	11	21
700 - 800			1	3	4
Total	6	16	14	22	58
SAT Math					
200 - 399			1		1
400 - 499	2	3	1	3	9
500 - 599	3	9	6	5	23
600 - 699	1	3	3	11	18
700 - 800		1	3	3	7
Total	6	16	14	22	58
ACT Composite					
15 - 18		1	1		2
19 - 22	5	11	5	2	23
23 - 26	8	23	15	8	54
27 - 36	4	9	10	21	44
Total	17	44	31	31	123
CCHE Index					
90 - 100	4	8	3		15
101 - 114	11	23	12	6	52
115 - 160	5	18	21	31	75
Total	20	49	36	37	142

Warner College of Natural Resources



First-Year CSU GPA (Fall 2010 Cohort) by Admission Score

Natural Sciences

High School GPA	CSU GPA				Total
	0.1 - 1.9	2.0 - 2.9	3.0 - 3.5	3.6 - 4.0	
2.5 - 2.999	3	12	6	2	23
3 - 3.599	62	149	49	12	272
3.6 - 4.0	17	113	104	67	301
4.001 - 10	4	16	45	70	135
Total	86	290	204	151	731

Percentile Rank	0.1 - 1.9	2.0 - 2.9	3.0 - 3.5	3.6 - 4.0	Total
0 - 29	1	1	1		3
30 - 49	4	24	5	2	35
50 - 59	15	32	10	7	64
60 - 79	25	107	49	18	199
80 - 89	15	39	39	27	120
90 - 100	6	33	47	63	149
Total	66	236	151	117	570

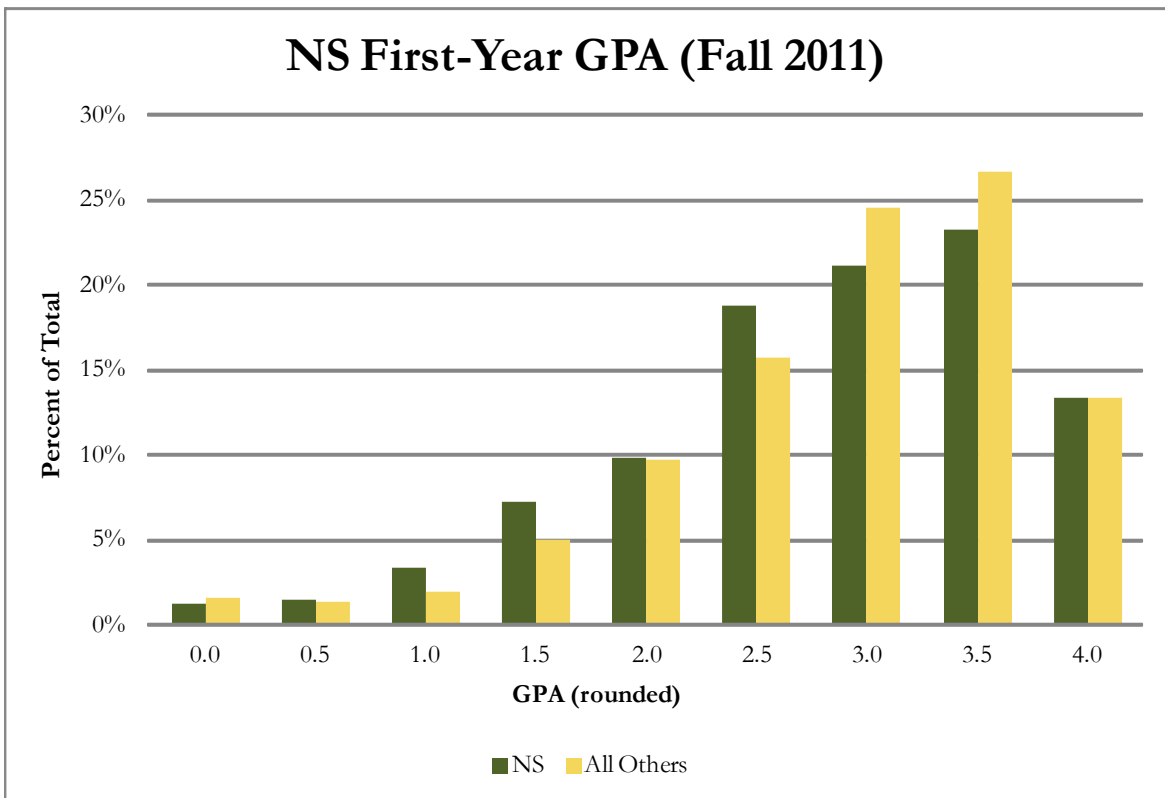
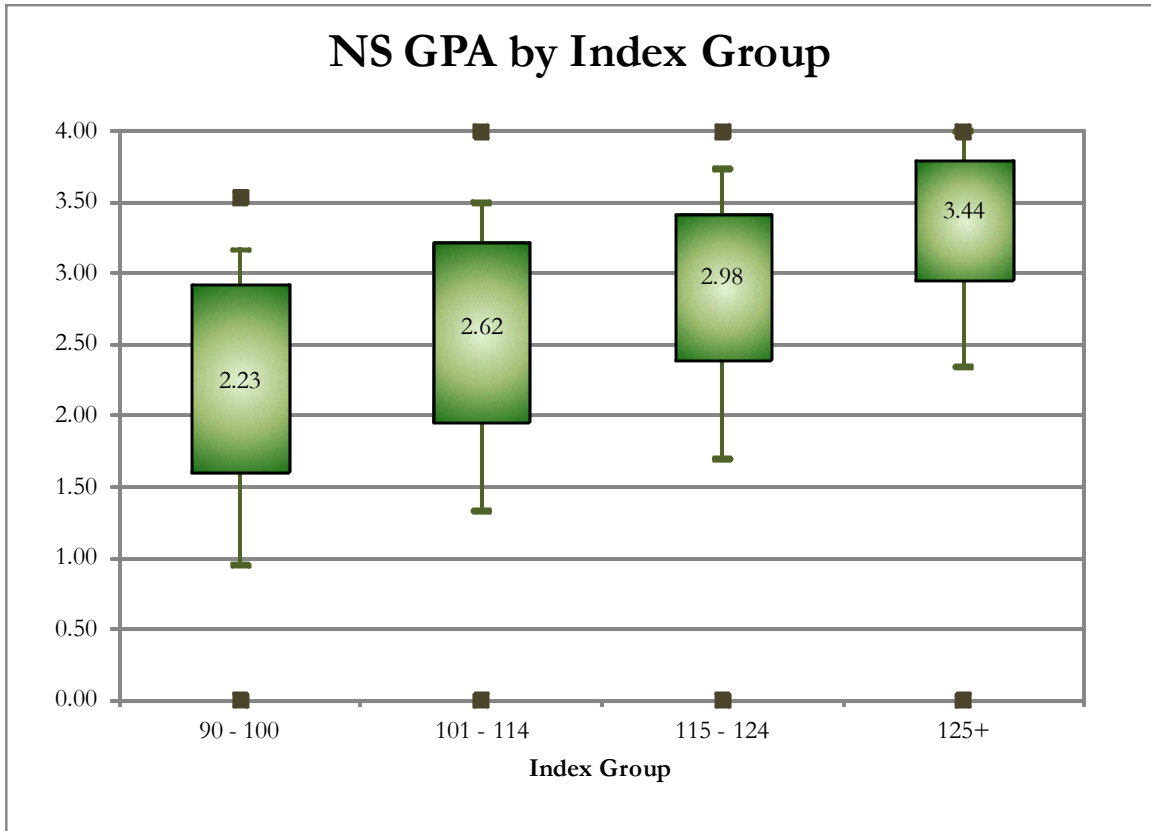
SAT Verbal	0.1 - 1.9	2.0 - 2.9	3.0 - 3.5	3.6 - 4.0	Total
200 - 399	1	2			3
400 - 499	6	11	18	1	36
500 - 599	5	34	22	20	81
600 - 699	4	20	25	33	82
700 - 800	2	3	5	11	21
Total	18	70	70	65	223

SAT Math	0.1 - 1.9	2.0 - 2.9	3.0 - 3.5	3.6 - 4.0	Total
200 - 399	1	3			4
400 - 499	2	13	7	3	25
500 - 599	10	33	35	18	96
600 - 699	4	18	25	27	74
700 - 800	1	3	3	17	24
Total	18	70	70	65	223

ACT Composite	0.1 - 1.9	2.0 - 2.9	3.0 - 3.5	3.6 - 4.0	Total
15 - 18	7	13	2		22
19 - 22	30	80	34	4	148
23 - 26	29	116	70	37	252
27 - 36	15	63	77	94	249
Total	81	272	183	135	671

CCHE Index	0.1 - 1.9	2.0 - 2.9	3.0 - 3.5	3.6 - 4.0	Total
35 - 89	1				1
90 - 100	17	33	10		60
101 - 114	46	140	53	14	253
115 - 160	22	117	141	137	417
Total	86	290	204	151	731

Natural Sciences



First-Year CSU GPA (Fall 2010 Cohort) by Admission Score

Veterinary Medicine + Biomedical Sci

High School GPA	CSU GPA				Total
	0.1 - 1.9	2.0 - 2.9	3.0 - 3.5	3.6 - 4.0	
3 - 3.599	3	7	7	1	18
3.6 - 4.0		17	21	16	54
4.001 - 10		8	14	24	46
Total	3	32	42	41	118

Percentile Rank	0.1 - 1.9	2.0 - 2.9	3.0 - 3.5	3.6 - 4.0	Total
30 - 49			1		1
50 - 59	2	1	2		5
60 - 79	1	8	5	1	15
80 - 89		12	10	5	27
90 - 100		6	17	23	46
Total	3	27	35	29	94

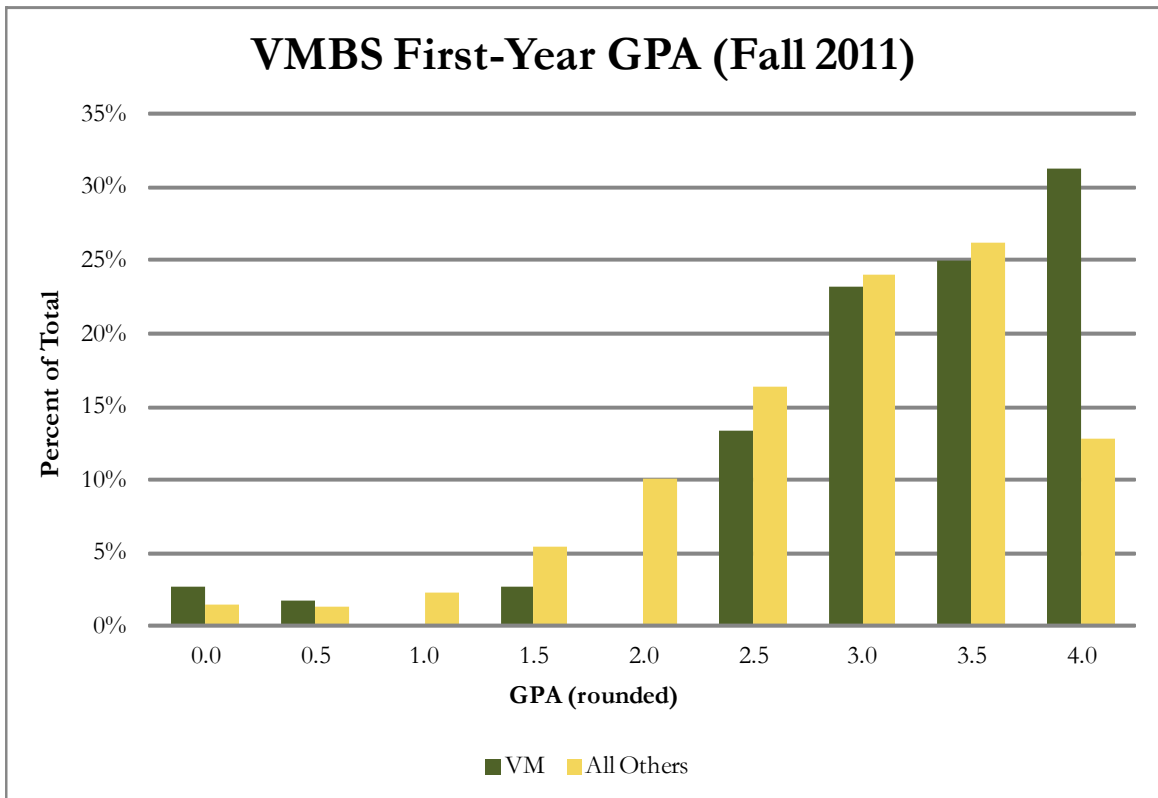
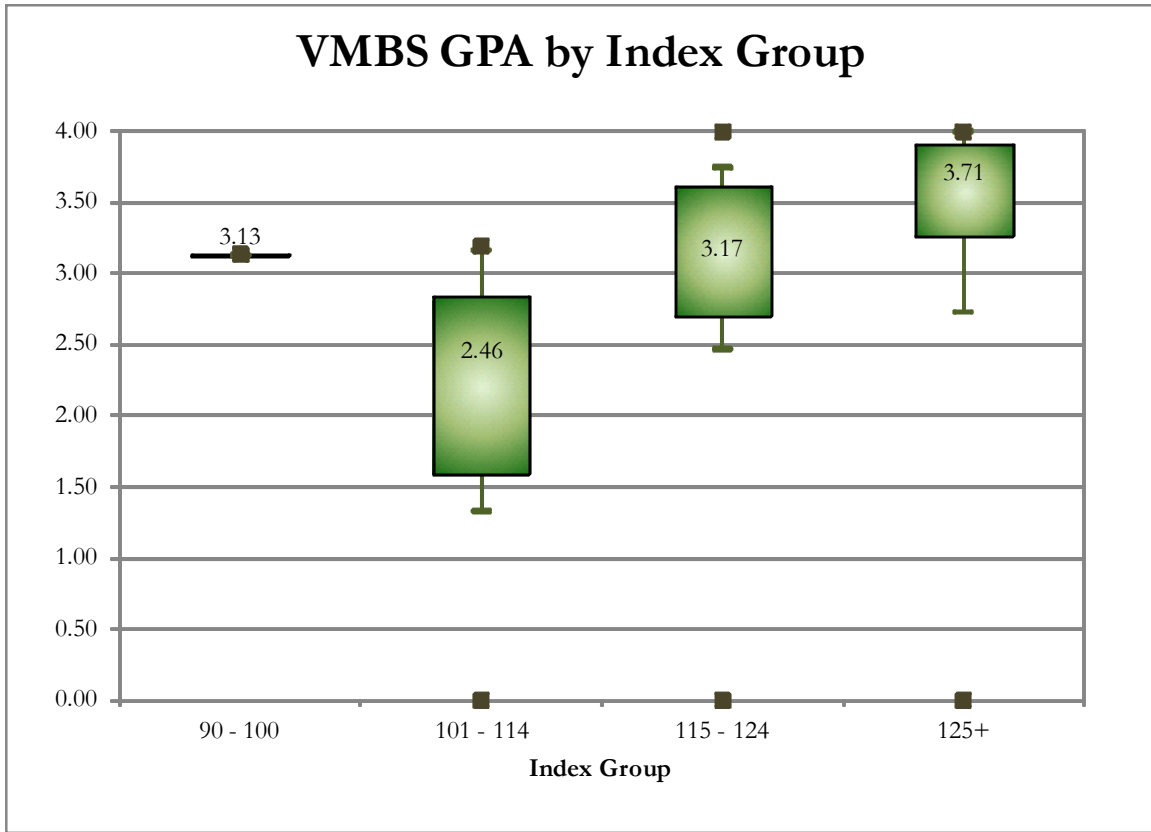
SAT Verbal	0.1 - 1.9	2.0 - 2.9	3.0 - 3.5	3.6 - 4.0	Total
400 - 499	1	1		1	3
500 - 599		5	6	6	17
600 - 699		5	9	8	22
700 - 800		1	1	3	5
Total	1	12	16	18	47

SAT Math	0.1 - 1.9	2.0 - 2.9	3.0 - 3.5	3.6 - 4.0	Total
400 - 499			1		1
500 - 599		4	6	5	15
600 - 699	1	7	9	10	27
700 - 800		1		3	4
Total	1	12	16	18	47

ACT Composite	0.1 - 1.9	2.0 - 2.9	3.0 - 3.5	3.6 - 4.0	Total
15 - 18			1		1
19 - 22	1		2		3
23 - 26	2	12	10	5	29
27 - 36		15	23	32	70
Total	3	27	36	37	103

CCHE Index	0.1 - 1.9	2.0 - 2.9	3.0 - 3.5	3.6 - 4.0	Total
90 - 100			1		1
101 - 114	3	4	6		13
115 - 160		28	35	41	104
Total	3	32	42	41	118

Veterinary Medicine & Biomedical Science



First-Year CSU GPA (Fall 2010 Cohort) by Admission Score

Intra-University

High School GPA	CSU GPA				Total
	0.1 - 1.9	2.0 - 2.9	3.0 - 3.5	3.6 - 4.0	
2.5 - 2.999	25	61	24	6	116
3 - 3.599	100	291	169	25	585
3.6 - 4.0	6	102	111	77	296
4.001 - 10	1	5	13	43	62
Total	132	459	317	151	1059

Percentile Rank	CSU GPA				Total
	0.1 - 1.9	2.0 - 2.9	3.0 - 3.5	3.6 - 4.0	
0 - 29	2	6	3	1	12
30 - 49	33	81	35	6	155
50 - 59	26	74	35	6	141
60 - 79	33	138	94	29	294
80 - 89	5	52	46	36	139
90 - 100	3	23	26	41	93
Total	102	374	239	119	834

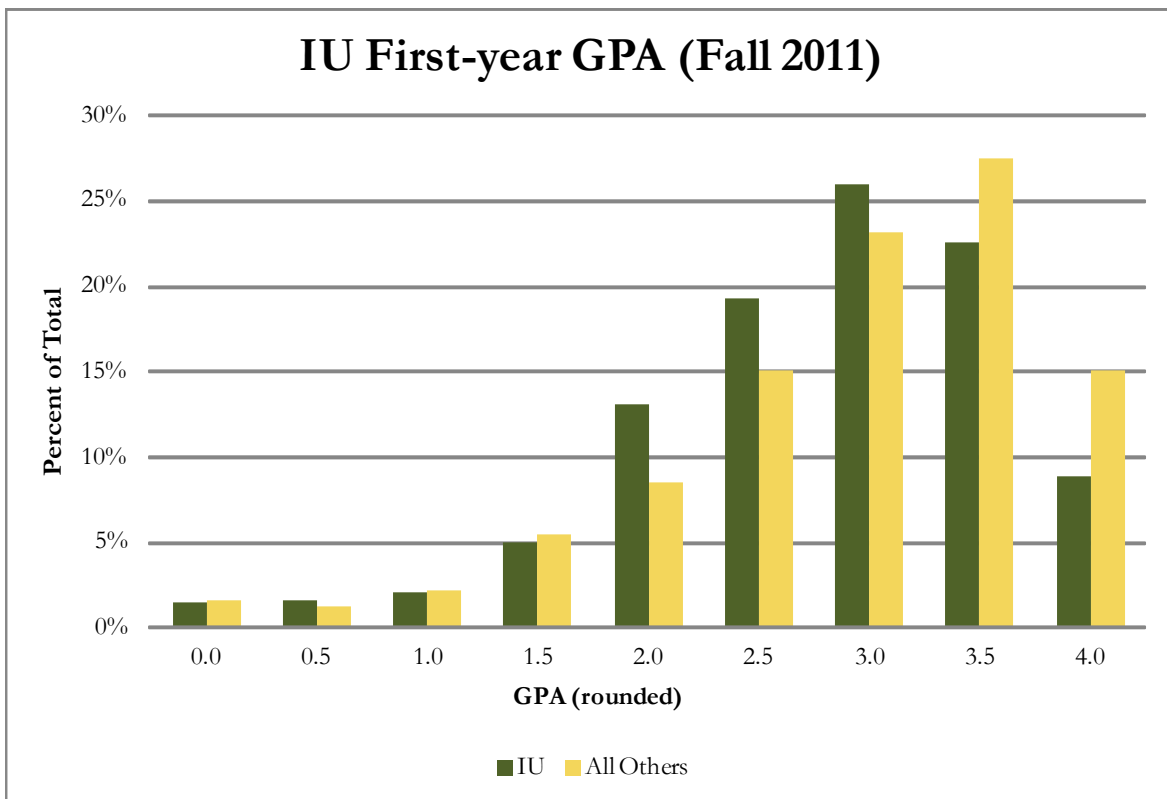
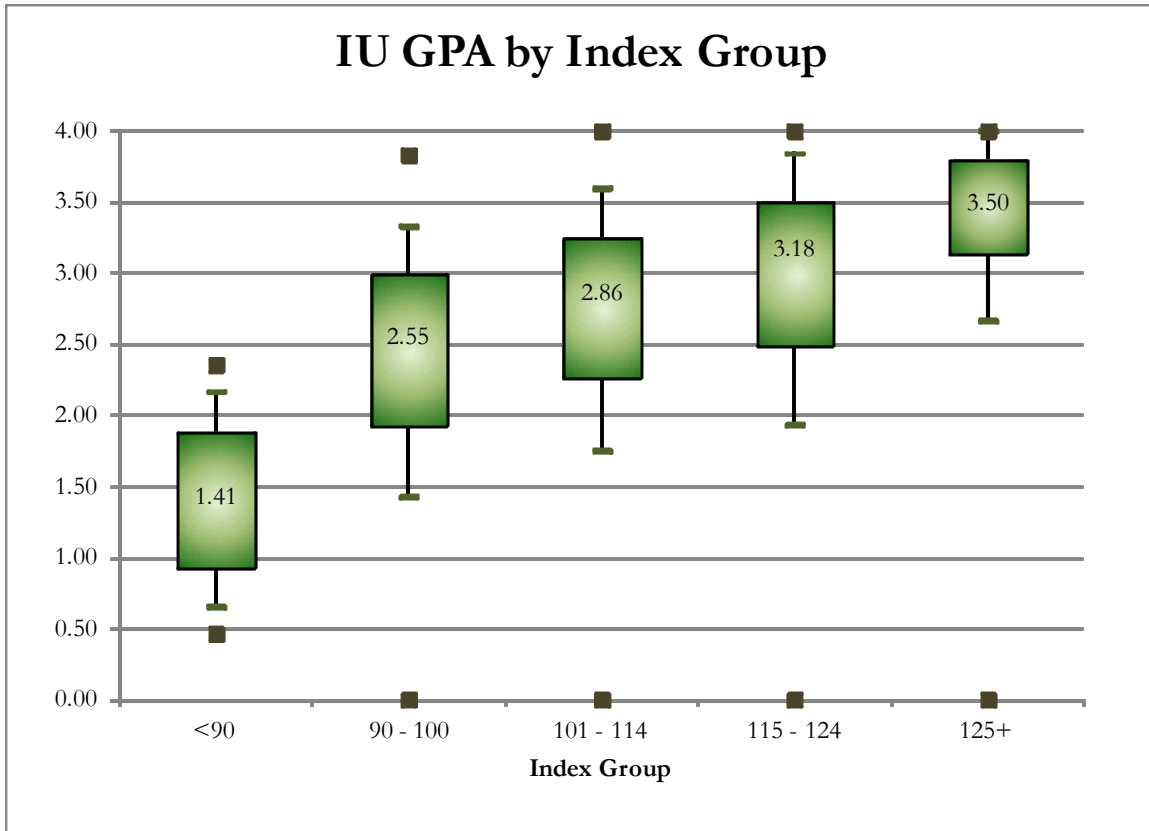
SAT Verbal	CSU GPA				Total
	0.1 - 1.9	2.0 - 2.9	3.0 - 3.5	3.6 - 4.0	
200 - 399	1	4	2	1	8
400 - 499	8	33	27	2	70
500 - 599	18	41	30	27	116
600 - 699	2	13	14	17	46
700 - 800	1		2	3	6
Total	30	91	75	50	246

SAT Math	CSU GPA				Total
	0.1 - 1.9	2.0 - 2.9	3.0 - 3.5	3.6 - 4.0	
200 - 399	2	2			4
400 - 499	9	21	18	3	51
500 - 599	11	52	43	29	135
600 - 699	8	15	14	15	52
700 - 800		1		3	4
Total	30	91	75	50	246

ACT Composite	CSU GPA				Total
	0.1 - 1.9	2.0 - 2.9	3.0 - 3.5	3.6 - 4.0	
1 - 14		1	1		2
15 - 18	10	34	5		49
19 - 22	52	177	107	16	352
23 - 26	45	167	127	63	402
27 - 36	14	45	55	63	177
Total	121	424	295	142	982

CCHE Index	CSU GPA				Total
	0.1 - 1.9	2.0 - 2.9	3.0 - 3.5	3.6 - 4.0	
35 - 89	2	1			3
90 - 100	43	105	35	2	185
101 - 114	76	283	175	33	567
115 - 160	11	68	106	115	300
Total	132	457	316	150	1055

Intra-University



First-Year CSU GPA (Fall 2011)

University Summary

	CSU GPA				Total
	0.1 - 1.9	2.0 - 2.9	3.0 - 3.5	3.6 - 4.0	
High School GPA					
2 - 2.499				1	1
2.5 - 2.999	45	107	41	11	204
3 - 3.599	315	860	411	112	1698
3.6 - 4.0	92	542	591	434	1659
4.001 - 10	11	73	164	340	588
Total	463	1582	1207	898	4150
Percentile Rank					
0 - 29	6	11	5	3	25
30 - 49	57	168	63	13	301
50 - 59	77	202	83	29	391
60 - 79	154	515	319	124	1112
80 - 89	53	230	229	164	676
90 - 100	22	134	224	359	739
Total	369	1260	923	692	3244
SAT Critical Reading					
200 - 399	3	15	3	3	24
400 - 499	25	103	82	11	221
500 - 599	57	190	152	134	533
600 - 699	29	85	119	164	397
700 - 800	4	11	19	47	81
Total	118	404	375	359	1256
SAT Math					
200 - 399	3	9	3		15
400 - 499	26	86	50	18	180
500 - 599	51	179	182	115	527
600 - 699	35	117	119	175	446
700 - 800	3	13	21	51	88
Total	118	404	375	359	1256
ACT Composite					
1 - 14		1	1		2
15 - 18	28	83	13	2	126
19 - 22	127	475	253	59	914
23 - 26	184	598	502	288	1572
27 - 36	88	301	332	467	1188
Total	427	1458	1101	816	3802
CCHE Index					
35 - 89	4	2		1	7
90 - 100	89	239	69	5	402
101 - 114	238	792	444	114	1588
115 - 160	132	547	693	777	2149
Total	463	1580	1206	897	4146

