



**institutional research**



**freshman profile**

**fall 2010**

**Colorado  
State  
University**

# **Five Year History of New Freshmen**

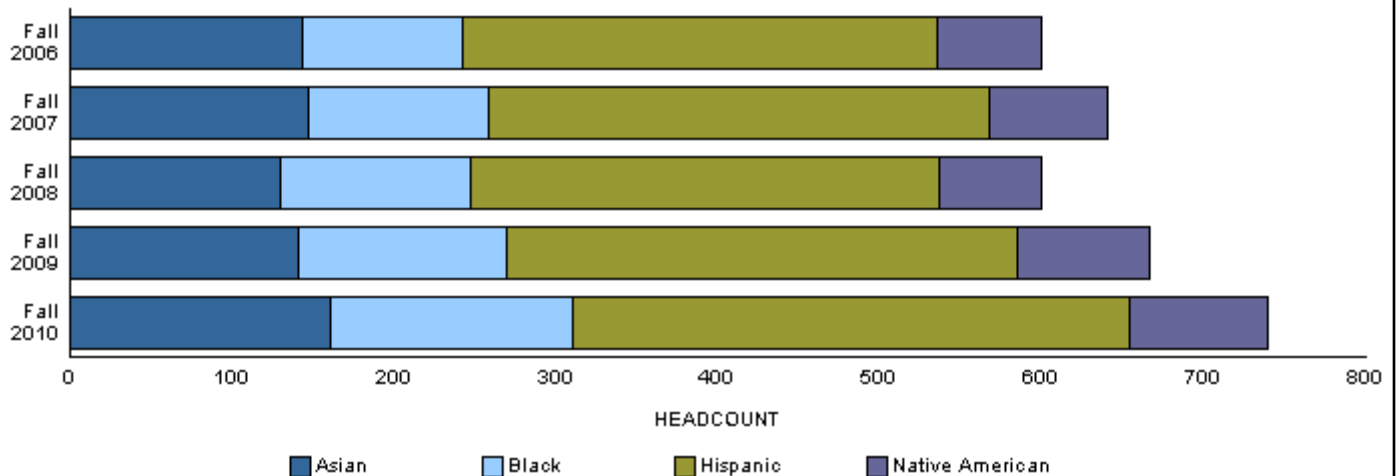
# Five Year History of New Freshmen by: Residency

## Headcount

Year	Resident		Nonresident		Total Headcount	%Change/ Previous Year
	Number	Percent	Number	Percent		
Fall 2006	3,259	79.6	834	20.4	4,093	
Fall 2007	3,445	78.4	947	21.6	4,392	7.3
Fall 2008	3,482	79.1	922	20.9	4,404	0.3
Fall 2009	3,350	78.2	935	21.8	4,285	-2.7
<b>Fall 2010</b>	<b>3,541</b>	<b>79.2</b>	<b>931</b>	<b>20.8</b>	<b>4,472</b>	<b>4.4</b>

# Minority Status

Year	Minority		Other Students	
	Number	Percent	Number	Percent
Fall 2006	600	14.7	3493	85.3
Fall 2007	641	14.6	3751	85.4
Fall 2008	600	13.6	3804	86.4
Fall 2009	667	15.6	3618	84.4
Fall 2010	740	16.5	3732	83.5



Institutional Research  
 Profile of **All New** Freshmen Enrolled Fall Semesters  
 Five Year Trend in High School Admissions Scores by College

	2006	2007	2008	2009	2010
<b>Mean High School Rank</b>					
Agricultural Sciences	75	76	74	74	75
Applied Human Sciences	72	71	70	72	72
Business	80	79	77	79	79
Engineering	80	80	82	80	83
Liberal Arts	71	71	71	72	73
Warner College of Natural Resources	70	74	71	73	74
Natural Sciences	74	73	76	75	76
Veterinary Medicine + Biomedical Sci	81	84	88	89	87
Intra–University	64	63	65	66	66
<b>Total</b>	<b>72</b>	<b>72</b>	<b>72</b>	<b>72</b>	<b>73</b>
<b>Mean SAT Verbal Score</b>					
Agricultural Sciences	552	547	567	558	545
Applied Human Sciences	526	520	525	531	538
Business	553	562	559	556	569
Engineering	567	572	579	574	578
Liberal Arts	566	581	583	577	581
Warner College of Natural Resources	586	593	540	560	593
Natural Sciences	569	567	561	573	573
Veterinary Medicine + Biomedical Sci	577	584	616	614	591
Intra–University	527	523	527	534	539
<b>Total</b>	<b>551</b>	<b>555</b>	<b>555</b>	<b>559</b>	<b>563</b>
<b>Mean SAT Math Score</b>					
Agricultural Sciences	559	560	569	554	545
Applied Human Sciences	536	542	543	544	547
Business	579	597	585	604	582
Engineering	630	623	639	632	630
Liberal Arts	543	552	552	545	547
Warner College of Natural Resources	574	592	540	565	580
Natural Sciences	576	572	569	582	585
Veterinary Medicine + Biomedical Sci	583	593	617	615	618
Intra–University	543	539	541	547	542
<b>Total</b>	<b>561</b>	<b>566</b>	<b>566</b>	<b>572</b>	<b>571</b>

Institutional Research  
 Profile of **All New** Freshmen Enrolled Fall Semesters  
 Five Year Trend in High School Admissions Scores by College

	2006	2007	2008	2009	2010
<b>Mean Composite ACT Score</b>					
Agricultural Sciences	24.2	23.8	24.0	24.4	24.1
Applied Human Sciences	22.7	23.1	22.8	23.2	23.5
Business	25.1	25.6	25.4	26.0	25.6
Engineering	26.3	26.4	26.6	26.8	27.1
Liberal Arts	24.3	24.6	24.6	24.6	24.6
Warner College of Natural Resources	23.6	24.8	23.8	24.7	24.8
Natural Sciences	24.4	24.5	24.8	25.3	25.2
Veterinary Medicine + Biomedical Sci	25.1	26.1	27.0	27.5	27.3
Intra–University	23.0	22.8	22.8	23.3	23.1
<b>Total</b>	<b>23.9</b>	<b>24.2</b>	<b>24.1</b>	<b>24.6</b>	<b>24.5</b>
<b>Mean High School Grade Point Average</b>					
Agricultural Sciences	3.57	3.58	3.60	3.60	3.57
Applied Human Sciences	3.51	3.51	3.49	3.55	3.54
Business	3.74	3.71	3.68	3.70	3.73
Engineering	3.72	3.75	3.78	3.77	3.82
Liberal Arts	3.51	3.51	3.52	3.56	3.53
Warner College of Natural Resources	3.51	3.56	3.46	3.57	3.57
Natural Sciences	3.58	3.58	3.60	3.63	3.62
Veterinary Medicine + Biomedical Sci	3.72	3.82	3.91	3.99	3.96
Intra–University	3.35	3.33	3.36	3.40	3.36
<b>Total</b>	<b>3.52</b>	<b>3.53</b>	<b>3.53</b>	<b>3.57</b>	<b>3.56</b>
<b>Mean CCHE Index</b>					
Agricultural Sciences	113.9	113.4	114.8	114.0	113.4
Applied Human Sciences	110.1	110.7	109.7	111.3	111.8
Business	119.1	119.5	118.2	119.7	119.3
Engineering	121.2	121.6	122.4	122.5	123.3
Liberal Arts	113.2	113.8	113.9	114.2	113.8
Warner College of Natural Resources	112.2	115.1	111.3	114.5	115.0
Natural Sciences	114.6	115.0	115.5	116.7	116.3
Veterinary Medicine + Biomedical Sci	118.6	121.5	125.0	126.2	125.5
Intra–University	107.8	107.1	107.7	109.2	108.2
<b>Total</b>	<b>112.7</b>	<b>113.2</b>	<b>113.2</b>	<b>114.4</b>	<b>114.1</b>

For the purposes of making index comparisons across years, the 2004 index calculation formula is used for all years.

Institutional Research  
 Profile of **Resident** Freshmen Enrolled Fall Semesters  
 Five Year Trend in High School Admissions Scores by College

	2006	2007	2008	2009	2010
<b>Mean High School Rank</b>					
Agricultural Sciences	73	74	72	73	75
Applied Human Sciences	72	71	69	72	73
Business	80	79	77	79	79
Engineering	81	80	82	80	82
Liberal Arts	71	72	72	72	72
Warner College of Natural Resources	70	75	71	73	70
Natural Sciences	75	73	75	74	75
Veterinary Medicine + Biomedical Sci	81	84	88	88	86
Intra–University	65	64	66	66	66
<b>Total</b>	<b>72</b>	<b>71</b>	<b>72</b>	<b>72</b>	<b>73</b>
<b>Mean SAT Verbal Score</b>					
Agricultural Sciences	525	558	558	552	548
Applied Human Sciences	518	518	516	531	538
Business	553	559	560	554	570
Engineering	570	580	575	575	583
Liberal Arts	572	588	586	582	584
Warner College of Natural Resources	605	619	541	534	588
Natural Sciences	570	567	564	566	574
Veterinary Medicine + Biomedical Sci	575	580	618	618	587
Intra–University	535	525	525	530	539
<b>Total</b>	<b>553</b>	<b>557</b>	<b>554</b>	<b>556</b>	<b>565</b>
<b>Mean SAT Math Score</b>					
Agricultural Sciences	547	579	558	564	549
Applied Human Sciences	531	539	538	543	542
Business	573	592	589	596	581
Engineering	622	618	633	632	626
Liberal Arts	547	552	549	549	546
Warner College of Natural Resources	582	603	549	544	575
Natural Sciences	573	568	572	572	584
Veterinary Medicine + Biomedical Sci	580	581	616	608	617
Intra–University	546	537	538	543	537
<b>Total</b>	<b>559</b>	<b>563</b>	<b>565</b>	<b>566</b>	<b>569</b>

Institutional Research  
 Profile of **Resident** Freshmen Enrolled Fall Semesters  
 Five Year Trend in High School Admissions Scores by College

	2006	2007	2008	2009	2010
<b>Mean Composite ACT Score</b>					
Agricultural Sciences	23.4	23.3	23.5	23.9	23.7
Applied Human Sciences	22.7	23.0	22.7	23.1	23.4
Business	25.1	25.5	25.3	25.9	25.5
Engineering	26.3	26.3	26.4	26.7	26.9
Liberal Arts	24.3	24.6	24.5	24.5	24.5
Warner College of Natural Resources	23.4	24.5	23.6	24.3	23.8
Natural Sciences	24.2	24.3	24.6	24.9	24.8
Veterinary Medicine + Biomedical Sci	25.1	26.1	26.9	27.4	27.3
Intra–University	23.0	22.8	22.8	23.2	23.0
<b>Total</b>	<b>23.9</b>	<b>24.0</b>	<b>24.0</b>	<b>24.3</b>	<b>24.3</b>
<b>Mean High School Grade Point Average</b>					
Agricultural Sciences	3.55	3.58	3.54	3.58	3.59
Applied Human Sciences	3.54	3.52	3.49	3.55	3.55
Business	3.74	3.72	3.67	3.71	3.73
Engineering	3.72	3.75	3.79	3.76	3.81
Liberal Arts	3.53	3.53	3.54	3.56	3.53
Warner College of Natural Resources	3.46	3.62	3.51	3.55	3.48
Natural Sciences	3.59	3.57	3.59	3.59	3.59
Veterinary Medicine + Biomedical Sci	3.74	3.83	3.92	3.99	3.95
Intra–University	3.37	3.34	3.38	3.41	3.37
<b>Total</b>	<b>3.53</b>	<b>3.53</b>	<b>3.54</b>	<b>3.56</b>	<b>3.55</b>
<b>Mean CCHE Index</b>					
Agricultural Sciences	111.9	112.4	112.4	113.5	113.0
Applied Human Sciences	110.1	110.5	109.1	111.0	111.6
Business	119.2	119.3	118.0	119.7	119.0
Engineering	120.9	121.0	121.8	121.8	123.0
Liberal Arts	113.6	114.1	114.0	114.2	113.7
Warner College of Natural Resources	110.9	115.1	111.6	113.3	111.5
Natural Sciences	114.4	114.3	115.0	115.5	115.1
Veterinary Medicine + Biomedical Sci	118.7	121.2	125.1	126.0	125.1
Intra–University	108.2	107.2	107.8	109.0	108.0
<b>Total</b>	<b>112.7</b>	<b>112.9</b>	<b>112.8</b>	<b>113.7</b>	<b>113.5</b>

For the purposes of making index comparisons across years, the 2004 index calculation formula is used for all years.

Institutional Research  
 Profile of **Nonresident** Freshmen Enrolled Fall Semesters  
 Five Year Trend in High School Admissions Scores by College

	2006	2007	2008	2009	2010
<b>Mean High School Rank</b>					
Agricultural Sciences	79	78	79	76	76
Applied Human Sciences	70	70	73	69	68
Business	78	76	76	78	79
Engineering	78	82	82	81	84
Liberal Arts	66	67	69	73	75
Warner College of Natural Resources	72	73	68	72	81
Natural Sciences	71	75	78	79	81
Veterinary Medicine + Biomedical Sci	79	83	87	90	92
Intra–University	60	60	62	65	67
<b>Total</b>	<b>71</b>	<b>72</b>	<b>73</b>	<b>75</b>	<b>76</b>
<b>Mean SAT Verbal Score</b>					
Agricultural Sciences	571	543	571	561	543
Applied Human Sciences	540	524	543	532	539
Business	552	570	556	561	566
Engineering	561	556	586	573	571
Liberal Arts	546	562	577	563	574
Warner College of Natural Resources	573	576	539	570	595
Natural Sciences	567	565	557	584	572
Veterinary Medicine + Biomedical Sci	580	590	610	610	598
Intra–University	502	518	530	543	539
<b>Total</b>	<b>548</b>	<b>550</b>	<b>557</b>	<b>566</b>	<b>561</b>
<b>Mean SAT Math Score</b>					
Agricultural Sciences	567	555	575	550	543
Applied Human Sciences	546	547	553	549	553
Business	603	610	568	621	585
Engineering	645	633	653	633	636
Liberal Arts	526	553	561	533	552
Warner College of Natural Resources	568	584	531	573	582
Natural Sciences	583	578	564	596	586
Veterinary Medicine + Biomedical Sci	587	612	618	621	619
Intra–University	534	545	547	554	550
<b>Total</b>	<b>565</b>	<b>572</b>	<b>569</b>	<b>581</b>	<b>575</b>



Institutional Research  
 Profile of **Nonresident** Freshmen Enrolled Fall Semesters  
 Five Year Trend in High School Admissions Scores by College

	2006	2007	2008	2009	2010
<b>Mean Composite ACT Score</b>					
Agricultural Sciences	25.6	24.9	25.0	25.1	24.8
Applied Human Sciences	23.1	24.0	23.8	24.1	24.2
Business	24.8	26.2	25.7	26.2	26.3
Engineering	26.5	27.0	27.7	27.3	28.1
Liberal Arts	23.6	24.2	25.2	25.2	25.0
Warner College of Natural Resources	24.0	25.4	24.5	25.1	27.1
Natural Sciences	25.6	26.0	25.3	26.8	26.9
Veterinary Medicine + Biomedical Sci	25.0	26.4	27.1	27.7	27.5
Intra–University	22.9	23.1	23.5	24.2	24.2
<b>Total</b>	<b>24.3</b>	<b>24.8</b>	<b>24.9</b>	<b>25.6</b>	<b>25.7</b>
<b>Mean High School Grade Point Average</b>					
Agricultural Sciences	3.59	3.57	3.67	3.61	3.54
Applied Human Sciences	3.41	3.44	3.49	3.53	3.51
Business	3.71	3.67	3.73	3.66	3.76
Engineering	3.72	3.76	3.74	3.81	3.84
Liberal Arts	3.40	3.43	3.46	3.56	3.56
Warner College of Natural Resources	3.58	3.50	3.34	3.59	3.70
Natural Sciences	3.50	3.60	3.64	3.73	3.72
Veterinary Medicine + Biomedical Sci	3.66	3.79	3.88	3.98	4.00
Intra–University	3.23	3.24	3.28	3.39	3.34
<b>Total</b>	<b>3.48</b>	<b>3.51</b>	<b>3.53</b>	<b>3.62</b>	<b>3.60</b>
<b>Mean CCHE Index</b>					
Agricultural Sciences	116.3	114.8	118.1	114.6	114.2
Applied Human Sciences	110.1	111.4	112.1	112.6	112.4
Business	118.7	120.4	119.3	119.6	120.7
Engineering	122.1	123.8	124.6	124.6	124.6
Liberal Arts	110.4	112.3	113.7	114.5	114.6
Warner College of Natural Resources	114.1	115.1	110.5	115.8	120.3
Natural Sciences	115.5	117.7	116.9	120.4	120.4
Veterinary Medicine + Biomedical Sci	118.3	122.4	124.7	126.6	126.9
Intra–University	105.8	106.2	107.0	110.6	109.1
<b>Total</b>	<b>113.0</b>	<b>114.4</b>	<b>114.6</b>	<b>116.9</b>	<b>116.4</b>

For the purposes of making index comparisons across years, the 2004 index calculation formula is used for all years.

# **Fall 2010 Freshmen**

# Fall 2010 New Freshmen by:

## Residency

	Number	Percent
Resident	3,541	79.2
Nonresident	931	20.8
<b>Total</b>	<b>4,472</b>	<b>100.0</b>

## Gender

	Resident		Nonresident		Total	
	No.	Percent	No.	Percent	No.	Percent
Men	1,583	44.7	397	42.6	1,980	44.3
Women	1,958	55.3	534	57.4	2,492	55.7
<b>Total</b>	<b>3,541</b>	<b>100.0</b>	<b>931</b>	<b>100.0</b>	<b>4,472</b>	<b>100.0</b>

## Ethnicity

	Resident		Nonresident		Total	
	No.	Percent	No.	Percent	No.	Percent
Native American	60	1.7	26	2.8	86	1.9
Black	131	3.7	18	1.9	149	3.3
Asian American	128	3.6	33	3.5	161	3.6
Hispanic	288	8.1	56	6.0	344	7.7
White	2,766	78.1	703	75.5	3,469	77.6
International	2	0.1	50	5.4	52	1.2
Other	166	4.7	45	4.8	211	4.7
<b>Total</b>	<b>3,541</b>	<b>100.0</b>	<b>931</b>	<b>100.0</b>	<b>4,472</b>	<b>100.0</b>

# Full-Time/Part-Time Enrollment

	Resident	Nonresident	Total	Percent of University
<b>New Freshmen</b>				
Full-Time	3,507	905	4,412	98.7
Part-Time	34	26	60	1.3
<b>Total</b>	<b>3,541</b>	<b>931</b>	<b>4,472</b>	<b>100.0</b>

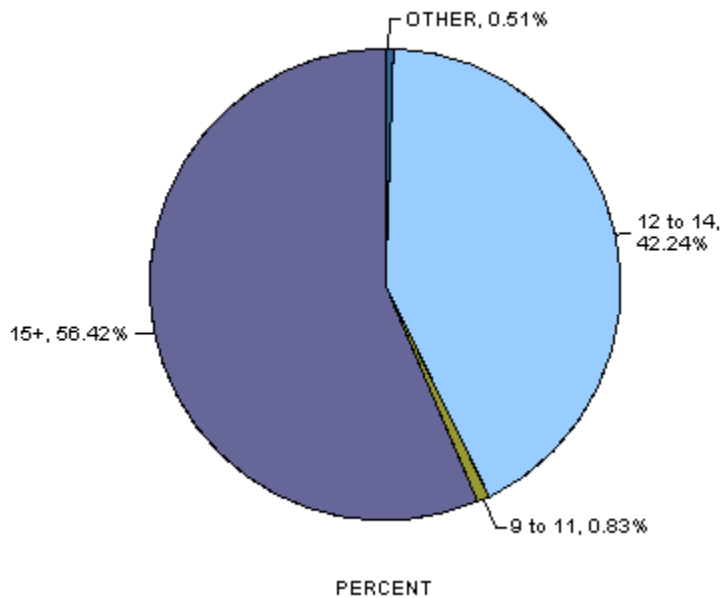
Full-time students = undergraduates enrolled for 12 or more credits Fall, Spring (9 - Summer)

## College

	Resident		Nonresident		Total	
	No.	Percent	No.	Percent	No.	Percent
<b>New Freshmen</b>						
Agricultural Sciences	133	3.8	89	9.6	222	5.0
Applied Human Sciences	447	12.6	95	10.2	542	12.1
Business	286	8.1	50	5.4	336	7.5
Engineering	344	9.7	112	12.0	456	10.2
Intra-University	1,059	29.9	218	23.4	1,277	28.6
Liberal Arts	498	14.1	102	11.0	600	13.4
Natural Sciences	582	16.4	177	19.0	759	17.0
Veterinary Medicine + Biomedical Sci	100	2.8	27	2.9	127	2.8
Warner College of Natural Resources	92	2.6	61	6.6	153	3.4
<b>Total</b>	<b>3,541</b>	<b>100.0</b>	<b>931</b>	<b>100.0</b>	<b>4,472</b>	<b>100.0</b>

# Full-Time Status

Full-Time	RI Credits	Number of New Freshmen
Fees	(6+ credits)	4,459
Tuition	(9+ credits)	4,449
Financial Aid	(12+ credits)	4,412
Graduation in 4 Years	(15+ credits)	2,523



Institutional Research  
Freshman Profile  
Fall 2010

University	Admitted N= 11712				Enrolled N=4472			
	Res	Nonres	Total	Percent	Res	Nonres	Total	Percent
<b>High School GPA</b>								
2 - 2.499	3	6	9	0	2	3	5	0
2.5 - 2.999	390	375	765	7	233	76	309	7
3 - 3.599	2841	1792	4633	40	1569	316	1885	43
3.6 - 4.0	2839	1719	4558	39	1327	340	1667	38
4.001 - 10	974	608	1582	14	406	147	553	13
Valid Cases	7047	4500	11547	100	3537	882	4419	100
<b>Means</b>	<b>3.60</b>	<b>3.57</b>	<b>3.59</b>		<b>3.55</b>	<b>3.60</b>	<b>3.56</b>	
<b>Percentile Rank</b>								
1 - 29	42	44	86	1	28	5	33	1
30 - 49	537	212	749	9	340	61	401	11
50 - 59	610	208	818	10	358	38	396	11
60 - 79	1975	709	2684	33	1076	148	1224	34
80 - 89	1217	500	1717	21	598	127	725	20
90 - 99	1400	677	2077	26	645	162	807	23
Valid Cases	5781	2350	8131	100	3045	541	3586	100
<b>Means</b>	<b>74.6</b>	<b>75.7</b>	<b>74.9</b>		<b>72.8</b>	<b>76.3</b>	<b>73.4</b>	
<b>SAT Verbal</b>								
200 - 399	27	51	78	2	9	17	26	2
400 - 499	316	545	861	18	147	96	243	19
500 - 599	823	1297	2120	44	341	242	583	44
600 - 699	571	845	1416	30	226	167	393	30
700 - 800	155	152	307	6	46	22	68	5
Valid Cases	1892	2890	4782	100	769	544	1313	100
<b>Means</b>	<b>572</b>	<b>564</b>	<b>567</b>		<b>565</b>	<b>561</b>	<b>563</b>	
<b>SAT Math</b>								
200 - 399	23	23	46	1	13	4	17	1
400 - 499	287	420	707	15	138	83	221	17
500 - 599	789	1210	1999	42	322	226	548	42
600 - 699	648	1023	1671	35	255	201	456	35
700 - 800	145	213	358	7	41	30	71	5
Valid Cases	1892	2889	4781	100	769	544	1313	100
<b>Means</b>	<b>578</b>	<b>579</b>	<b>578</b>		<b>569</b>	<b>575</b>	<b>571</b>	
<b>ACT Composite</b>								
1 - 14	7	5	12	0	3	1	4	0
15 - 18	242	59	301	3	128	9	137	3
19 - 22	1711	517	2228	23	988	93	1081	26
23 - 26	2793	1172	3965	41	1454	253	1707	42
27 - 36	2127	1147	3274	33	915	249	1164	28
Valid Cases	6880	2900	9780	100	3488	605	4093	100
<b>Means</b>	<b>24.7</b>	<b>25.6</b>	<b>25.0</b>		<b>24.3</b>	<b>25.7</b>	<b>24.5</b>	
<b>CCHE Index</b>								
35 - 89	3	6	9	0	1	4	5	0
90 - 100	711	465	1176	10	431	94	525	12
101 - 114	2818	1588	4406	38	1531	284	1815	41
115 - 160	3511	2440	5951	52	1571	500	2071	47
Valid Cases	7043	4499	11542	100	3534	882	4416	100
<b>Means</b>	<b>115</b>	<b>116</b>	<b>115</b>		<b>114</b>	<b>116</b>	<b>114</b>	

Institutional Research  
Freshman Profile  
Fall 2010

**Agricultural Sciences****Admitted N= 524****Enrolled N=222**

	Res	Nonres	Total	Percent	Res	Nonres	Total	Percent
<b>High School GPA</b>								
2 – 2.499	0	1	1	0	0	1	1	0
2.5 – 2.999	8	13	21	4	5	5	10	5
3 – 3.599	81	130	211	41	56	40	96	43
3.6 – 4.0	79	136	215	41	53	34	87	39
4.001 – 10	28	43	71	14	19	9	28	13
Valid Cases	196	323	519	100	133	89	222	100
<b>Means</b>	<b>3.60</b>	<b>3.63</b>	<b>3.62</b>		<b>3.59</b>	<b>3.54</b>	<b>3.57</b>	
<b>Percentile Rank</b>								
30 – 49	18	7	25	7	11	4	15	9
50 – 59	18	15	33	9	14	3	17	10
60 – 79	56	59	115	33	34	21	55	34
80 – 89	25	40	65	19	18	15	33	20
90 – 99	48	63	111	32	32	11	43	26
Valid Cases	165	184	349	100	109	54	163	100
<b>Means</b>	<b>74.5</b>	<b>79.6</b>	<b>77.2</b>		<b>74.8</b>	<b>76.1</b>	<b>75.2</b>	
<b>SAT Verbal</b>								
200 – 399	1	3	4	2	1	2	3	4
400 – 499	9	50	59	24	6	14	20	25
500 – 599	17	88	105	42	10	23	33	41
600 – 699	12	61	73	29	9	16	25	31
700 – 800	0	9	9	4	0	0	0	0
Valid Cases	39	211	250	100	26	55	81	100
<b>Means</b>	<b>548</b>	<b>558</b>	<b>556</b>		<b>548</b>	<b>543</b>	<b>545</b>	
<b>SAT Math</b>								
200 – 399	2	2	4	2	1	0	1	1
400 – 499	9	29	38	15	5	11	16	20
500 – 599	17	101	118	47	13	30	43	53
600 – 699	10	71	81	32	6	14	20	25
700 – 800	1	8	9	4	1	0	1	1
Valid Cases	39	211	250	100	26	55	81	100
<b>Means</b>	<b>545</b>	<b>569</b>	<b>566</b>		<b>549</b>	<b>543</b>	<b>545</b>	
<b>ACT Composite</b>								
15 – 18	13	5	18	4	8	2	10	5
19 – 22	63	54	117	28	41	14	55	28
23 – 26	78	85	163	39	51	25	76	39
27 – 36	41	83	124	29	32	23	55	28
Valid Cases	195	227	422	100	132	64	196	100
<b>Means</b>	<b>23.5</b>	<b>25.2</b>	<b>24.4</b>		<b>23.7</b>	<b>24.8</b>	<b>24.1</b>	
<b>CCHE Index</b>								
90 – 100	28	35	63	12	20	11	31	14
101 – 114	87	104	191	37	60	36	96	43
115 – 160	81	184	265	51	53	42	95	43
Valid Cases	196	323	519	100	133	89	222	100
<b>Means</b>	<b>113</b>	<b>117</b>	<b>115</b>		<b>113</b>	<b>114</b>	<b>113</b>	

Institutional Research  
Freshman Profile  
Fall 2010

Applied Human Sciences	Admitted N= 1024				Enrolled N=542			
	Res	Nonres	Total	Percent	Res	Nonres	Total	Percent
<b>High School GPA</b>								
2.5 – 2.999	36	27	63	6	26	7	33	6
3 – 3.599	273	146	419	41	197	44	241	44
3.6 – 4.0	290	151	441	43	186	35	221	41
4.001 – 10	67	30	97	10	38	9	47	9
Valid Cases	666	354	1020	100	447	95	542	100
<b>Means</b>	<b>3.58</b>	<b>3.54</b>	<b>3.57</b>		<b>3.55</b>	<b>3.51</b>	<b>3.54</b>	
<b>Percentile Rank</b>								
1 – 29	4	4	8	1	2	1	3	1
30 – 49	48	29	77	10	36	14	50	11
50 – 59	70	21	91	12	55	2	57	13
60 – 79	216	71	287	37	149	23	172	38
80 – 89	122	52	174	22	77	13	90	20
90 – 99	117	31	148	19	76	7	83	18
Valid Cases	577	208	785	100	395	60	455	100
<b>Means</b>	<b>73.8</b>	<b>70.9</b>	<b>73.0</b>		<b>72.9</b>	<b>68.3</b>	<b>72.3</b>	
<b>SAT Verbal</b>								
200 – 399	1	1	2	1	1	1	2	2
400 – 499	37	47	84	27	26	12	38	30
500 – 599	57	100	157	50	30	28	58	45
600 – 699	27	38	65	21	19	10	29	23
700 – 800	2	2	4	1	1	0	1	1
Valid Cases	124	188	312	100	77	51	128	100
<b>Means</b>	<b>540</b>	<b>541</b>	<b>541</b>		<b>538</b>	<b>539</b>	<b>538</b>	
<b>SAT Math</b>								
200 – 399	3	2	5	2	3	1	4	3
400 – 499	29	46	75	24	18	11	29	23
500 – 599	66	87	153	49	39	24	63	49
600 – 699	25	48	73	23	16	13	29	23
700 – 800	1	5	6	2	1	2	3	2
Valid Cases	124	188	312	100	77	51	128	100
<b>Means</b>	<b>542</b>	<b>550</b>	<b>547</b>		<b>542</b>	<b>553</b>	<b>547</b>	
<b>ACT Composite</b>								
15 – 18	37	6	43	5	17	2	19	4
19 – 22	222	73	295	32	168	19	187	37
23 – 26	285	124	409	45	187	35	222	43
27 – 36	114	52	166	18	70	14	84	16
Valid Cases	658	255	913	100	442	70	512	100
<b>Means</b>	<b>23.5</b>	<b>24.2</b>	<b>23.7</b>		<b>23.4</b>	<b>24.2</b>	<b>23.5</b>	
<b>CCHE Index</b>								
35 – 89	0	2	2	0	0	1	1	0
90 – 100	91	45	136	13	68	16	84	15
101 – 114	305	150	455	45	214	37	251	46
115 – 160	270	157	427	42	165	41	206	38
Valid Cases	666	354	1020	100	447	95	542	100
<b>Means</b>	<b>112</b>	<b>113</b>	<b>112</b>		<b>112</b>	<b>112</b>	<b>112</b>	



Institutional Research  
Freshman Profile  
Fall 2010

Business	Admitted N= 827				Enrolled N=336			
	Res	Nonres	Total	Percent	Res	Nonres	Total	Percent
<b>High School GPA</b>								
2.5 – 2.999	4	1	5	1	3	0	3	1
3 – 3.599	127	86	213	26	72	14	86	26
3.6 – 4.0	333	138	471	58	174	19	193	58
4.001 – 10	86	40	126	15	37	14	51	15
Valid Cases	550	265	815	100	286	47	333	100
<b>Means</b>	<b>3.76</b>	<b>3.70</b>	<b>3.74</b>		<b>3.73</b>	<b>3.76</b>	<b>3.73</b>	
<b>Percentile Rank</b>								
1 – 29	2	2	4	1	0	0	0	0
30 – 49	9	6	15	3	6	1	7	3
50 – 59	17	12	29	5	12	4	16	6
60 – 79	163	41	204	35	93	7	100	37
80 – 89	143	36	179	31	74	10	84	31
90 – 99	111	35	146	25	55	9	64	24
Valid Cases	445	132	577	100	240	31	271	100
<b>Means</b>	<b>80.0</b>	<b>78.2</b>	<b>79.6</b>		<b>79.2</b>	<b>78.7</b>	<b>79.2</b>	
<b>SAT Verbal</b>								
200 – 399	0	1	1	0	0	1	1	1
400 – 499	21	25	46	13	8	3	11	11
500 – 599	93	90	183	51	41	16	57	55
600 – 699	57	57	114	32	23	11	34	33
700 – 800	7	6	13	4	1	0	1	1
Valid Cases	178	179	357	100	73	31	104	100
<b>Means</b>	<b>573</b>	<b>570</b>	<b>572</b>		<b>570</b>	<b>566</b>	<b>569</b>	
<b>SAT Math</b>								
400 – 499	17	7	24	7	10	3	13	13
500 – 599	78	65	143	40	30	14	44	42
600 – 699	75	91	166	46	33	13	46	44
700 – 800	8	16	24	7	0	1	1	1
Valid Cases	178	179	357	100	73	31	104	100
<b>Means</b>	<b>587</b>	<b>605</b>	<b>596</b>		<b>581</b>	<b>585</b>	<b>582</b>	
<b>ACT Composite</b>								
15 – 18	3	0	3	0	0	0	0	0
19 – 22	67	13	80	11	36	2	38	12
23 – 26	254	76	330	46	150	18	168	53
27 – 36	215	83	298	42	100	14	114	36
Valid Cases	539	172	711	100	286	34	320	100
<b>Means</b>	<b>25.7</b>	<b>26.5</b>	<b>25.9</b>		<b>25.5</b>	<b>26.3</b>	<b>25.6</b>	
<b>CCHE Index</b>								
90 – 100	1	0	1	0	1	0	1	0
101 – 114	156	65	221	27	89	13	102	31
115 – 160	393	200	593	73	196	34	230	69
Valid Cases	550	265	815	100	286	47	333	100
<b>Means</b>	<b>120</b>	<b>121</b>	<b>120</b>		<b>119</b>	<b>121</b>	<b>119</b>	

Institutional Research  
Freshman Profile  
Fall 2010

Engineering	Admitted N= 1165				Enrolled N=456			
	Res	Nonres	Total	Percent	Res	Nonres	Total	Percent
<b>High School GPA</b>								
2.5 – 2.999	1	0	1	0	0	0	0	0
3 – 3.599	158	105	263	23	88	21	109	25
3.6 – 4.0	357	243	600	53	183	51	234	53
4.001 – 10	173	89	262	23	73	26	99	22
Valid Cases	689	437	1126	100	344	98	442	100
<b>Means</b>	<b>3.84</b>	<b>3.81</b>	<b>3.83</b>		<b>3.81</b>	<b>3.84</b>	<b>3.82</b>	
<b>Percentile Rank</b>								
1 – 29	1	0	1	0	1	0	1	0
30 – 49	5	4	9	1	3	1	4	1
50 – 59	14	9	23	3	10	5	15	4
60 – 79	172	57	229	28	96	12	108	30
80 – 89	149	70	219	27	74	17	91	25
90 – 99	225	106	331	41	112	29	141	39
Valid Cases	566	246	812	100	296	64	360	100
<b>Means</b>	<b>83.5</b>	<b>84.2</b>	<b>83.7</b>		<b>82.5</b>	<b>84.1</b>	<b>82.8</b>	
<b>SAT Verbal</b>								
200 – 399	0	9	9	2	0	4	4	2
400 – 499	26	32	58	10	15	6	21	12
500 – 599	109	142	251	44	45	34	79	45
600 – 699	85	107	192	34	36	21	57	32
700 – 800	25	31	56	10	10	6	16	9
Valid Cases	245	321	566	100	106	71	177	100
<b>Means</b>	<b>589</b>	<b>582</b>	<b>585</b>		<b>583</b>	<b>571</b>	<b>578</b>	
<b>SAT Math</b>								
400 – 499	6	3	9	2	5	1	6	3
500 – 599	68	61	129	23	30	16	46	26
600 – 699	116	187	303	54	54	44	98	55
700 – 800	55	70	125	22	17	10	27	15
Valid Cases	245	321	566	100	106	71	177	100
<b>Means</b>	<b>638</b>	<b>647</b>	<b>643</b>		<b>626</b>	<b>636</b>	<b>630</b>	
<b>ACT Composite</b>								
15 – 18	1	0	1	0	0	0	0	0
19 – 22	37	13	50	5	26	1	27	7
23 – 26	251	82	333	34	138	16	154	38
27 – 36	391	193	584	60	176	49	225	55
Valid Cases	680	288	968	100	340	66	406	100
<b>Means</b>	<b>27.3</b>	<b>28.0</b>	<b>27.5</b>		<b>26.9</b>	<b>28.1</b>	<b>27.1</b>	
<b>CCHE Index</b>								
90 – 100	1	0	1	0	0	0	0	0
101 – 114	95	51	146	13	51	12	63	14
115 – 160	593	386	979	87	293	86	379	86
Valid Cases	689	437	1126	100	344	98	442	100
<b>Means</b>	<b>124</b>	<b>125</b>	<b>125</b>		<b>123</b>	<b>125</b>	<b>123</b>	

Institutional Research  
 Freshman Profile  
 Fall 2010

**Liberal Arts**

**Admitted N= 1867**

**Enrolled N=600**

	Res	Nonres	Total	Percent	Res	Nonres	Total	Percent
<b>High School GPA</b>								
2 – 2.499	0	1	1	0	0	0	0	0
2.5 – 2.999	63	57	120	6	39	9	48	8
3 – 3.599	505	295	800	43	228	41	269	45
3.6 – 4.0	484	224	708	38	182	38	220	37
4.001 – 10	156	71	227	12	48	11	59	10
Valid Cases	1208	648	1856	100	497	99	596	100
<b>Means</b>	<b>3.59</b>	<b>3.51</b>	<b>3.56</b>		<b>3.53</b>	<b>3.56</b>	<b>3.53</b>	
<b>Percentile Rank</b>								
1 – 29	8	6	14	1	6	2	8	2
30 – 49	92	42	134	10	49	7	56	11
50 – 59	112	33	145	11	56	7	63	13
60 – 79	337	117	454	34	147	22	169	34
80 – 89	212	58	270	20	91	9	100	20
90 – 99	222	85	307	23	85	22	107	21
Valid Cases	983	341	1324	100	434	69	503	100
<b>Means</b>	<b>74.1</b>	<b>73.5</b>	<b>73.9</b>		<b>72.4</b>	<b>74.8</b>	<b>72.7</b>	
<b>SAT Verbal</b>								
200 – 399	4	6	10	1	1	0	1	1
400 – 499	48	72	120	16	23	8	31	18
500 – 599	132	172	304	39	38	22	60	34
600 – 699	124	141	265	34	40	22	62	36
700 – 800	47	25	72	9	17	3	20	11
Valid Cases	355	416	771	100	119	55	174	100
<b>Means</b>	<b>591</b>	<b>570</b>	<b>580</b>		<b>584</b>	<b>574</b>	<b>581</b>	
<b>SAT Math</b>								
200 – 399	4	8	12	2	3	0	3	2
400 – 499	74	78	152	20	31	11	42	24
500 – 599	160	215	375	49	50	27	77	44
600 – 699	102	103	205	27	31	14	45	26
700 – 800	15	12	27	4	4	3	7	4
Valid Cases	355	416	771	100	119	55	174	100
<b>Means</b>	<b>558</b>	<b>552</b>	<b>555</b>		<b>546</b>	<b>552</b>	<b>547</b>	
<b>ACT Composite</b>								
15 – 18	32	17	49	3	22	3	25	5
19 – 22	267	70	337	21	127	10	137	25
23 – 26	474	168	642	41	204	27	231	42
27 – 36	395	145	540	34	140	22	162	29
Valid Cases	1168	400	1568	100	493	62	555	100
<b>Means</b>	<b>25.0</b>	<b>25.3</b>	<b>25.1</b>		<b>24.5</b>	<b>25.0</b>	<b>24.6</b>	
<b>CCHE Index</b>								
35 – 89	1	1	2	0	1	1	2	0
90 – 100	92	62	154	8	52	7	59	10
101 – 114	491	291	782	42	222	46	268	45
115 – 160	624	294	918	49	222	45	267	45
Valid Cases	1208	648	1856	100	497	99	596	100
<b>Means</b>	<b>116</b>	<b>114</b>	<b>115</b>		<b>114</b>	<b>115</b>	<b>114</b>	

Institutional Research  
Freshman Profile  
Fall 2010

Warner College of Natural Resources	Admitted N= 349				Enrolled N=153			
	Res	Nonres	Total	Percent	Res	Nonres	Total	Percent
<b>High School GPA</b>								
2 – 2.499	0	1	1	0	0	1	1	1
2.5 – 2.999	10	19	29	8	9	5	14	9
3 – 3.599	67	80	147	43	44	11	55	36
3.6 – 4.0	46	79	125	36	30	28	58	38
4.001 – 10	13	30	43	12	9	14	23	15
Valid Cases	136	209	345	100	92	59	151	100
<b>Means</b>	<b>3.50</b>	<b>3.56</b>	<b>3.54</b>		<b>3.48</b>	<b>3.70</b>	<b>3.57</b>	
<b>Percentile Rank</b>								
1 – 29	0	4	4	2	0	1	1	1
30 – 49	12	7	19	9	11	3	14	12
50 – 59	13	5	18	8	10	0	10	9
60 – 79	41	37	78	36	30	9	39	35
80 – 89	23	22	45	21	13	5	18	16
90 – 99	19	35	54	25	14	17	31	27
Valid Cases	108	110	218	100	78	35	113	100
<b>Means</b>	<b>72.0</b>	<b>77.0</b>	<b>74.5</b>		<b>70.4</b>	<b>80.9</b>	<b>73.7</b>	
<b>SAT Verbal</b>								
200 – 399	0	1	1	1	0	0	0	0
400 – 499	2	22	24	16	0	6	6	13
500 – 599	14	56	70	47	6	10	16	34
600 – 699	9	36	45	30	5	16	21	45
700 – 800	1	9	10	7	0	4	4	9
Valid Cases	26	124	150	100	11	36	47	100
<b>Means</b>	<b>581</b>	<b>571</b>	<b>572</b>		<b>588</b>	<b>595</b>	<b>593</b>	
<b>SAT Math</b>								
200 – 399	0	2	2	1	0	1	1	2
400 – 499	3	20	23	15	1	1	2	4
500 – 599	15	57	72	48	6	20	26	55
600 – 699	7	41	48	32	4	13	17	36
700 – 800	1	4	5	3	0	1	1	2
Valid Cases	26	124	150	100	11	36	47	100
<b>Means</b>	<b>571</b>	<b>567</b>	<b>568</b>		<b>575</b>	<b>582</b>	<b>580</b>	
<b>ACT Composite</b>								
15 – 18	5	2	7	3	4	0	4	3
19 – 22	36	17	53	20	26	2	28	21
23 – 26	64	47	111	41	43	14	57	43
27 – 36	28	69	97	36	17	26	43	33
Valid Cases	133	135	268	100	90	42	132	100
<b>Means</b>	<b>24.1</b>	<b>26.3</b>	<b>25.2</b>		<b>23.8</b>	<b>27.1</b>	<b>24.8</b>	
<b>CCHE Index</b>								
90 – 100	16	25	41	12	14	3	17	11
101 – 114	68	70	138	40	44	13	57	38
115 – 160	51	114	165	48	33	43	76	51
Valid Cases	135	209	344	100	91	59	150	100
<b>Means</b>	<b>112</b>	<b>116</b>	<b>115</b>		<b>112</b>	<b>120</b>	<b>115</b>	

Institutional Research  
Freshman Profile  
Fall 2010

**Natural Sciences****Admitted N= 2129****Enrolled N=759**

	Res	Nonres	Total	Percent	Res	Nonres	Total	Percent
<b>High School GPA</b>								
2 – 2.499	2	0	2	0	1	0	1	0
2.5 – 2.999	63	55	118	6	35	10	45	6
3 – 3.599	431	313	744	35	241	47	288	38
3.6 – 4.0	480	382	862	41	213	76	289	38
4.001 – 10	224	161	385	18	91	39	130	17
Valid Cases	1200	911	2111	100	581	172	753	100
<b>Means</b>	<b>3.65</b>	<b>3.66</b>	<b>3.66</b>		<b>3.59</b>	<b>3.72</b>	<b>3.62</b>	
<b>Percentile Rank</b>								
1 – 29	5	3	8	1	3	0	3	0
30 – 49	76	30	106	7	49	8	57	9
50 – 59	92	39	131	9	54	11	65	10
60 – 79	300	132	432	30	168	19	187	30
80 – 89	209	109	318	22	108	32	140	23
90 – 99	288	177	465	32	122	46	168	27
Valid Cases	970	490	1460	100	504	116	620	100
<b>Means</b>	<b>76.9</b>	<b>79.3</b>	<b>77.7</b>		<b>74.7</b>	<b>80.7</b>	<b>75.8</b>	
<b>SAT Verbal</b>								
200 – 399	4	11	15	2	2	3	5	2
400 – 499	40	76	116	12	14	15	29	12
500 – 599	155	268	423	45	66	56	122	49
600 – 699	128	193	321	34	48	33	81	32
700 – 800	35	38	73	8	8	6	14	6
Valid Cases	362	586	948	100	138	113	251	100
<b>Means</b>	<b>583</b>	<b>575</b>	<b>578</b>		<b>574</b>	<b>572</b>	<b>573</b>	
<b>SAT Math</b>								
200 – 399	1	4	5	1	0	1	1	0
400 – 499	43	76	119	13	17	14	31	12
500 – 599	137	227	364	38	59	41	100	40
600 – 699	144	225	369	39	49	48	97	39
700 – 800	37	54	91	10	13	9	22	9
Valid Cases	362	586	948	100	138	113	251	100
<b>Means</b>	<b>592</b>	<b>586</b>	<b>588</b>		<b>584</b>	<b>586</b>	<b>585</b>	
<b>ACT Composite</b>								
1 – 14	4	1	5	0	3	0	3	0
15 – 18	39	7	46	3	20	0	20	3
19 – 22	238	77	315	18	129	8	137	20
23 – 26	455	231	686	39	232	53	285	41
27 – 36	420	267	687	40	186	58	244	35
Valid Cases	1156	583	1739	100	570	119	689	100
<b>Means</b>	<b>25.2</b>	<b>26.3</b>	<b>25.6</b>		<b>24.8</b>	<b>26.9</b>	<b>25.2</b>	
<b>CCHE Index</b>								
90 – 100	106	63	169	8	61	13	74	10
101 – 114	422	277	699	33	227	33	260	35
115 – 160	671	571	1242	59	292	126	418	56
Valid Cases	1199	911	2110	100	580	172	752	100
<b>Means</b>	<b>117</b>	<b>119</b>	<b>118</b>		<b>115</b>	<b>120</b>	<b>116</b>	

Institutional Research  
Freshman Profile  
Fall 2010

**Veterinary Medicine +  
Biomedical Sci**

**Admitted N= 275**

**Enrolled N=127**

	Res	Nonres	Total	Percent	Res	Nonres	Total	Percent
<b>High School GPA</b>								
2.5 – 2.999	2	2	4	1	1	1	2	2
3 – 3.599	20	11	31	11	13	2	15	12
3.6 – 4.0	76	54	130	48	49	10	59	47
4.001 – 10	65	43	108	40	37	12	49	39
Valid Cases	163	110	273	100	100	25	125	100
<b>Means</b>	<b>3.96</b>	<b>3.95</b>	<b>3.95</b>		<b>3.95</b>	<b>4.00</b>	<b>3.96</b>	
<b>Percentile Rank</b>								
1 – 29	1	0	1	0	1	0	1	1
30 – 49	2	1	3	1	2	0	2	2
50 – 59	4	4	8	4	2	0	2	2
60 – 79	24	9	33	16	16	1	17	17
80 – 89	32	17	49	23	24	4	28	27
90 – 99	74	41	115	55	44	9	53	51
Valid Cases	137	72	209	100	89	14	103	100
<b>Means</b>	<b>86.5</b>	<b>87.3</b>	<b>86.8</b>		<b>85.9</b>	<b>91.9</b>	<b>86.7</b>	
<b>SAT Verbal</b>								
200 – 399	0	1	1	1	0	1	1	2
400 – 499	7	4	11	8	4	0	4	7
500 – 599	27	27	54	41	17	6	23	43
600 – 699	25	32	57	43	14	9	23	43
700 – 800	3	6	9	7	2	1	3	6
Valid Cases	62	70	132	100	37	17	54	100
<b>Means</b>	<b>587</b>	<b>604</b>	<b>596</b>		<b>587</b>	<b>598</b>	<b>591</b>	
<b>SAT Math</b>								
400 – 499	3	5	8	6	1	1	2	4
500 – 599	19	24	43	33	13	4	17	31
600 – 699	31	33	64	48	19	10	29	54
700 – 800	9	8	17	13	4	2	6	11
Valid Cases	62	70	132	100	37	17	54	100
<b>Means</b>	<b>620</b>	<b>608</b>	<b>614</b>		<b>617</b>	<b>619</b>	<b>618</b>	
<b>ACT Composite</b>								
15 – 18	2	0	2	1	2	0	2	2
19 – 22	13	4	17	7	8	0	8	7
23 – 26	47	25	72	30	28	8	36	30
27 – 36	100	49	149	62	62	12	74	62
Valid Cases	162	78	240	100	100	20	120	100
<b>Means</b>	<b>27.2</b>	<b>27.6</b>	<b>27.3</b>		<b>27.3</b>	<b>27.5</b>	<b>27.3</b>	
<b>CCHE Index</b>								
90 – 100	3	2	5	2	1	0	1	1
101 – 114	18	6	24	9	13	2	15	12
115 – 160	142	102	244	89	86	23	109	87
Valid Cases	163	110	273	100	100	25	125	100
<b>Means</b>	<b>125</b>	<b>126</b>	<b>125</b>		<b>125</b>	<b>127</b>	<b>125</b>	

Institutional Research  
Freshman Profile  
Fall 2010

**Intra-University****Admitted N= 3552****Enrolled N=1277**

	Res	Nonres	Total	Percent	Res	Nonres	Total	Percent
<b>High School GPA</b>								
2 – 2.499	1	3	4	0	1	1	2	0
2.5 – 2.999	203	201	404	12	115	39	154	12
3 – 3.599	1179	626	1805	52	630	96	726	58
3.6 – 4.0	694	312	1006	29	257	49	306	24
4.001 – 10	162	101	263	8	54	13	67	5
Valid Cases	2239	1243	3482	100	1057	198	1255	100
<b>Means</b>	<b>3.45</b>	<b>3.38</b>	<b>3.43</b>		<b>3.37</b>	<b>3.34</b>	<b>3.36</b>	
<b>Percentile Rank</b>								
1 – 29	21	25	46	2	15	1	16	2
30 – 49	275	86	361	15	173	23	196	20
50 – 59	270	70	340	14	145	6	151	15
60 – 79	666	186	852	36	343	34	377	38
80 – 89	302	96	398	17	119	22	141	14
90 – 99	296	104	400	17	105	12	117	12
Valid Cases	1830	567	2397	100	900	98	998	100
<b>Means</b>	<b>69.1</b>	<b>68.5</b>	<b>68.9</b>		<b>65.8</b>	<b>67.3</b>	<b>66.0</b>	
<b>SAT Verbal</b>								
200 – 399	17	18	35	3	4	5	9	3
400 – 499	126	217	343	26	51	32	83	28
500 – 599	219	354	573	44	88	47	135	45
600 – 699	104	180	284	22	32	29	61	21
700 – 800	35	26	61	5	7	2	9	3
Valid Cases	501	795	1296	100	182	115	297	100
<b>Means</b>	<b>550</b>	<b>546</b>	<b>547</b>		<b>539</b>	<b>539</b>	<b>539</b>	
<b>SAT Math</b>								
200 – 399	13	5	18	1	6	1	7	2
400 – 499	103	156	259	20	50	30	80	27
500 – 599	229	373	602	46	82	50	132	44
600 – 699	138	224	362	28	43	32	75	25
700 – 800	18	36	54	4	1	2	3	1
Valid Cases	501	794	1295	100	182	115	297	100
<b>Means</b>	<b>556</b>	<b>562</b>	<b>560</b>		<b>537</b>	<b>550</b>	<b>542</b>	
<b>ACT Composite</b>								
1 – 14	3	4	7	0	0	1	1	0
15 – 18	110	22	132	4	55	2	57	5
19 – 22	768	196	964	33	427	37	464	40
23 – 26	885	334	1219	41	421	57	478	41
27 – 36	423	206	629	21	132	31	163	14
Valid Cases	2189	762	2951	100	1035	128	1163	100
<b>Means</b>	<b>23.6</b>	<b>24.5</b>	<b>23.8</b>		<b>23.0</b>	<b>24.2</b>	<b>23.1</b>	
<b>CCHE Index</b>								
35 – 89	2	3	5	0	0	2	2	0
90 – 100	373	233	606	17	214	44	258	21
101 – 114	1176	574	1750	50	611	92	703	56
115 – 160	686	432	1118	32	231	60	291	23
Valid Cases	2237	1242	3479	100	1056	198	1254	100
<b>Means</b>	<b>110</b>	<b>111</b>	<b>111</b>		<b>108</b>	<b>109</b>	<b>108</b>	

**Fall 2009 Freshmen  
and  
Their Performance  
at CSU  
After One Year**



Number of New Freshmen by High School GPA & Rank,  
Test Scores, CCHE Index and CSU GPA  
CSU GPA after One Year for Freshmen Entering Fall 2009

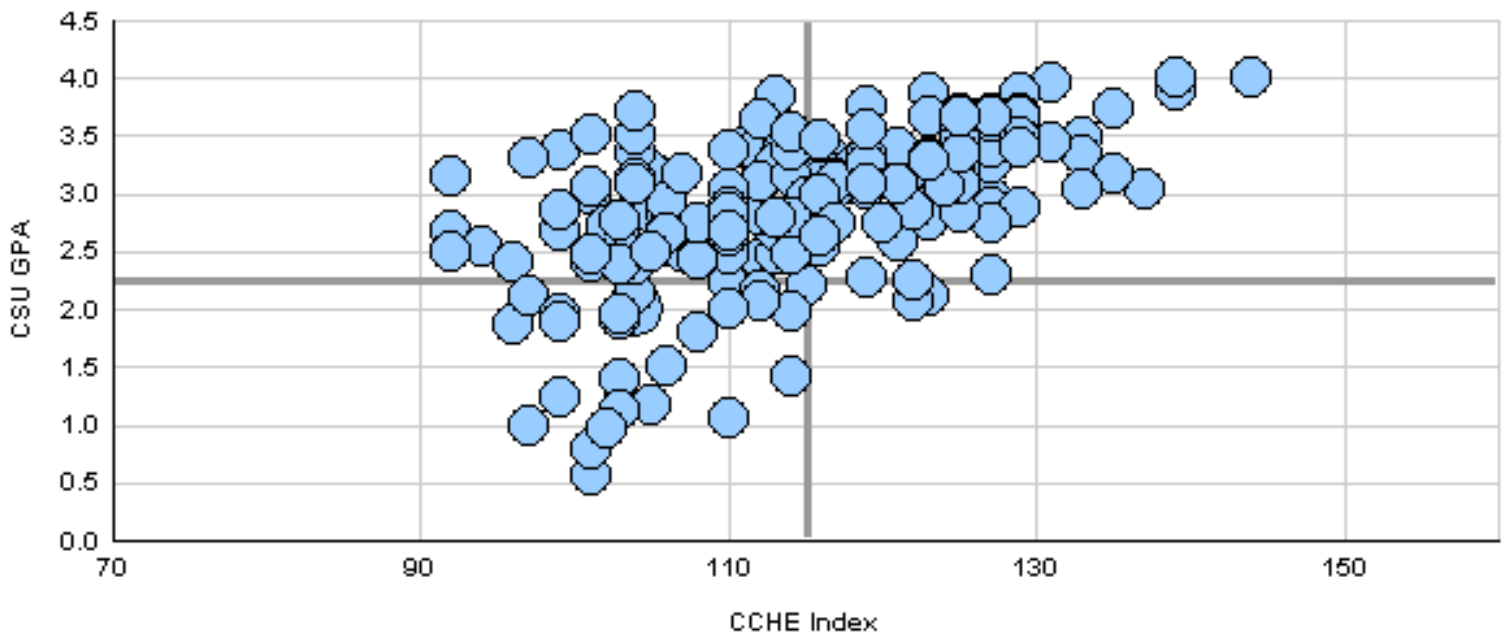
**Agricultural Sciences**

	CSU GPA				Total
	0.1 - 1.9	2.0 - 2.9	3.0 - 3.5	3.6 - 4.0	
High School GPA					
2.5 - 2.999		3	3		6
3 - 3.599	18	44	17	4	83
3.6 - 4.0	1	17	33	15	66
4.001 - 10		4	11	12	27
<b>Total</b>	<b>19</b>	<b>68</b>	<b>64</b>	<b>31</b>	<b>182</b>
Percentile Rank					
1 - 29		2	1		3
30 - 49	4	2	4		10
50 - 59	2	7		1	10
60 - 79	9	26	15	1	51
80 - 89		7	11	8	26
90 - 99		4	13	13	30
<b>Total</b>	<b>15</b>	<b>48</b>	<b>44</b>	<b>23</b>	<b>130</b>
SAT Verbal					
200 - 399		1			1
400 - 499	2	12	3		17
500 - 599	2	12	18	6	38
600 - 699		5	7	6	18
700 - 800	1	1	1	3	6
<b>Total</b>	<b>5</b>	<b>31</b>	<b>29</b>	<b>15</b>	<b>80</b>
SAT Math					
400 - 499	4	13	3	1	21
500 - 599	1	10	15	1	27
600 - 699		8	10	12	30
700 - 800			1	1	2
<b>Total</b>	<b>5</b>	<b>31</b>	<b>29</b>	<b>15</b>	<b>80</b>
ACT Composite					
15 - 18	1	1	1		3
19 - 22	10	17	10	6	43
23 - 26	5	24	25	7	61
27 - 36		12	17	16	45
<b>Total</b>	<b>16</b>	<b>54</b>	<b>53</b>	<b>29</b>	<b>152</b>
CCHE Index					
90 - 100	5	7	3		15
101 - 114	14	40	19	7	80
115 - 160		21	42	24	87
<b>Total</b>	<b>19</b>	<b>68</b>	<b>64</b>	<b>31</b>	<b>182</b>

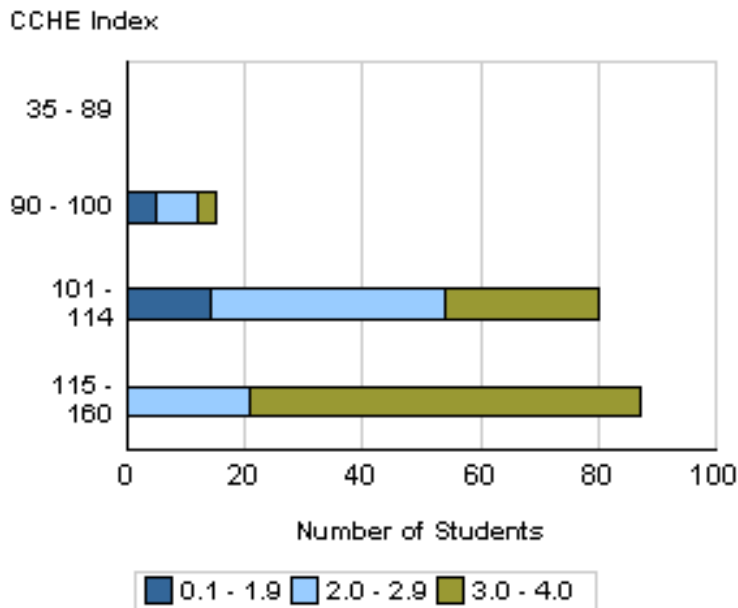
Number of New Freshmen by High School GPA & Rank,  
 Test Scores, CCHE Index and CSU GPA  
 CSU GPA after One Year for Freshmen Entering Fall 2009

**Agricultural Sciences**

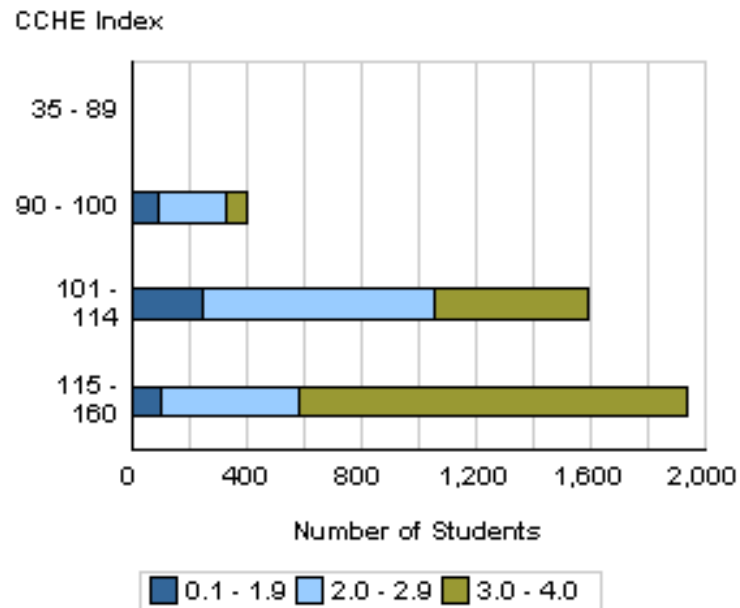
**Fall 2009 - Spring 2010  
 First Year CSU GPA by CCHE Index**



**Your College**



**All CSU Freshmen**



Number of New Freshmen by High School GPA & Rank,  
Test Scores, CCHE Index and CSU GPA  
CSU GPA after One Year for Freshmen Entering Fall 2009

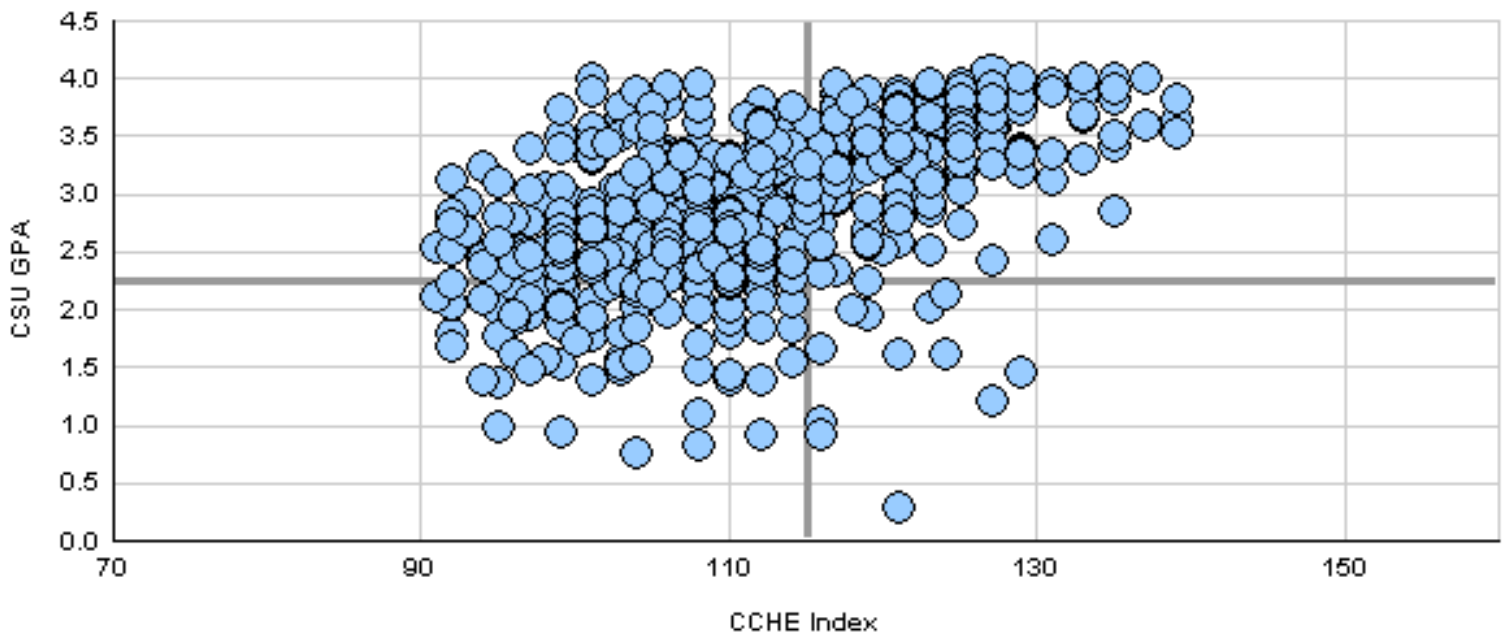
**Applied Human Sciences**

	CSU GPA				Total
	0.1 - 1.9	2.0 - 2.9	3.0 - 3.5	3.6 - 4.0	
High School GPA					
2.5 - 2.999	3	9	3	3	18
3 - 3.599	36	130	51	19	236
3.6 - 4.0	10	59	75	52	196
4.001 - 10	2	2	13	29	46
<b>Total</b>	<b>51</b>	<b>200</b>	<b>142</b>	<b>103</b>	<b>496</b>
Percentile Rank					
1 - 29		1	1		2
30 - 49	10	33	11	3	57
50 - 59	11	36	14	6	67
60 - 79	20	74	44	16	154
80 - 89	3	27	29	20	79
90 - 99	4	11	29	43	87
<b>Total</b>	<b>48</b>	<b>182</b>	<b>128</b>	<b>88</b>	<b>446</b>
SAT Verbal					
200 - 399		3			3
400 - 499	6	22	6	6	40
500 - 599	2	29	25	18	74
600 - 699	2	5	4	10	21
700 - 800			1	1	2
<b>Total</b>	<b>10</b>	<b>59</b>	<b>36</b>	<b>35</b>	<b>140</b>
SAT Math					
200 - 399	1	3			4
400 - 499	5	24	3	2	34
500 - 599	2	26	22	16	66
600 - 699	2	6	9	16	33
700 - 800			2	1	3
<b>Total</b>	<b>10</b>	<b>59</b>	<b>36</b>	<b>35</b>	<b>140</b>
ACT Composite					
1 - 14	1				1
15 - 18	4	14	7	1	26
19 - 22	22	93	45	16	176
23 - 26	18	72	63	48	201
27 - 36	4	10	24	35	73
<b>Total</b>	<b>49</b>	<b>189</b>	<b>139</b>	<b>100</b>	<b>477</b>
CCHE Index					
90 - 100	17	54	11	2	84
101 - 114	25	110	67	24	226
115 - 160	9	36	64	77	186
<b>Total</b>	<b>51</b>	<b>200</b>	<b>142</b>	<b>103</b>	<b>496</b>

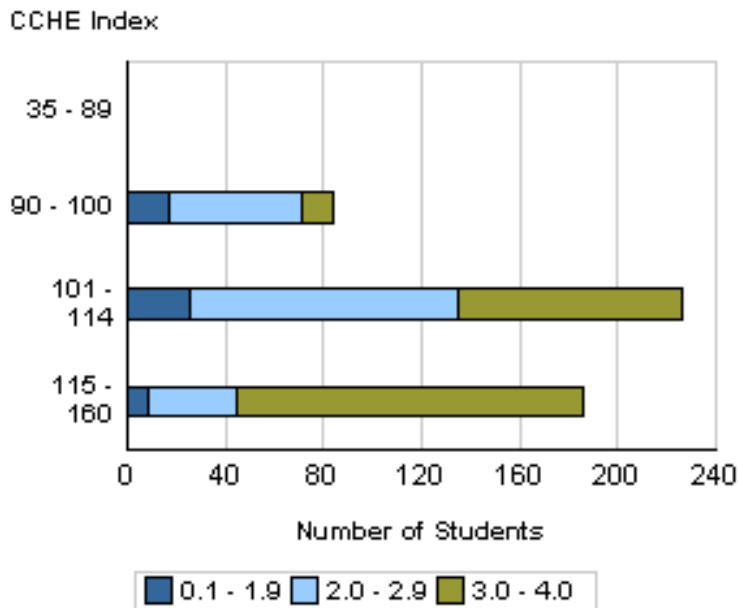
Number of New Freshmen by High School GPA & Rank,  
 Test Scores, CCHE Index and CSU GPA  
 CSU GPA after One Year for Freshmen Entering Fall 2009

**Applied Human Sciences**

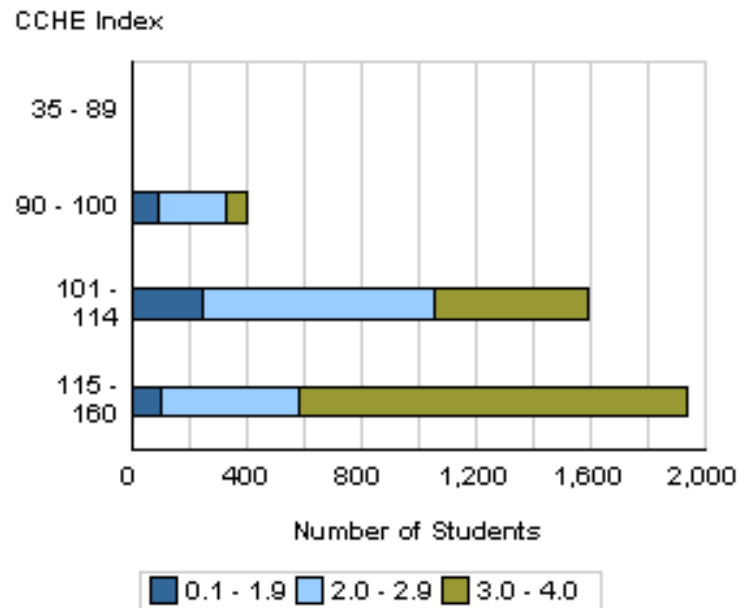
**Fall 2009 - Spring 2010  
 First Year CSU GPA by CCHE Index**



**Your College**



**All CSU Freshmen**



Number of New Freshmen by High School GPA & Rank,  
Test Scores, CCHE Index and CSU GPA  
CSU GPA after One Year for Freshmen Entering Fall 2009

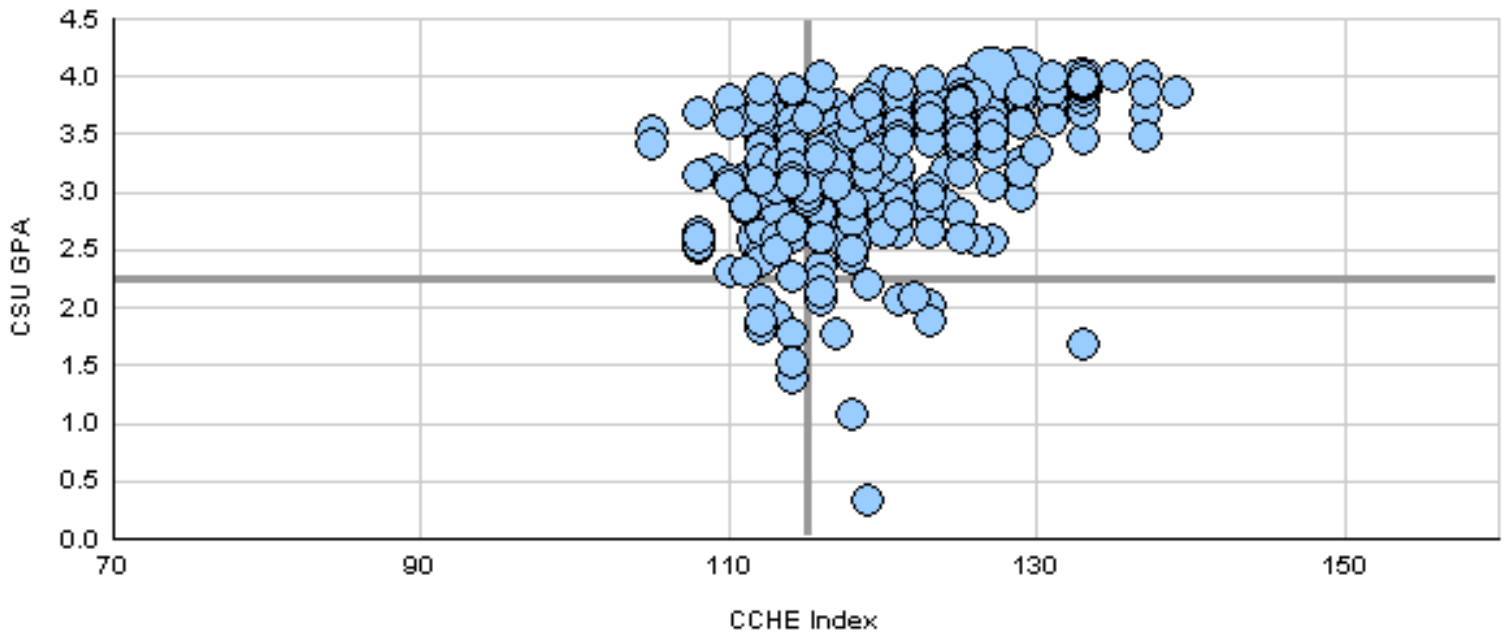
**Business**

	CSU GPA				Total
	0.1 - 1.9	2.0 - 2.9	3.0 - 3.5	3.6 - 4.0	
High School GPA					
2.5 - 2.999		2	1	1	4
3 - 3.599	7	32	32	13	84
3.6 - 4.0	4	29	59	56	148
4.001 - 10		5	4	27	36
<b>Total</b>	<b>11</b>	<b>68</b>	<b>96</b>	<b>97</b>	<b>272</b>
Percentile Rank					
1 - 29			1		1
30 - 49		7	3	1	11
50 - 59	1	3	3	1	8
60 - 79	5	28	41	20	94
80 - 89		11	23	23	57
90 - 99	2	11	16	36	65
<b>Total</b>	<b>8</b>	<b>60</b>	<b>87</b>	<b>81</b>	<b>236</b>
SAT Verbal					
200 - 399				1	1
400 - 499	1	5	7	5	18
500 - 599	4	15	16	17	52
600 - 699	2	6	3	15	26
700 - 800		1	1		2
<b>Total</b>	<b>7</b>	<b>27</b>	<b>27</b>	<b>38</b>	<b>99</b>
SAT Math					
200 - 399		1			1
400 - 499	1	1		5	7
500 - 599	3	11	10	9	33
600 - 699	2	13	16	20	51
700 - 800	1	1	1	4	7
<b>Total</b>	<b>7</b>	<b>27</b>	<b>27</b>	<b>38</b>	<b>99</b>
ACT Composite					
15 - 18			1		1
19 - 22		9	9	7	25
23 - 26	7	29	51	34	121
27 - 36	2	28	31	49	110
<b>Total</b>	<b>9</b>	<b>66</b>	<b>92</b>	<b>90</b>	<b>257</b>
CCHE Index					
101 - 114	6	26	30	14	76
115 - 160	5	42	66	83	196
<b>Total</b>	<b>11</b>	<b>68</b>	<b>96</b>	<b>97</b>	<b>272</b>

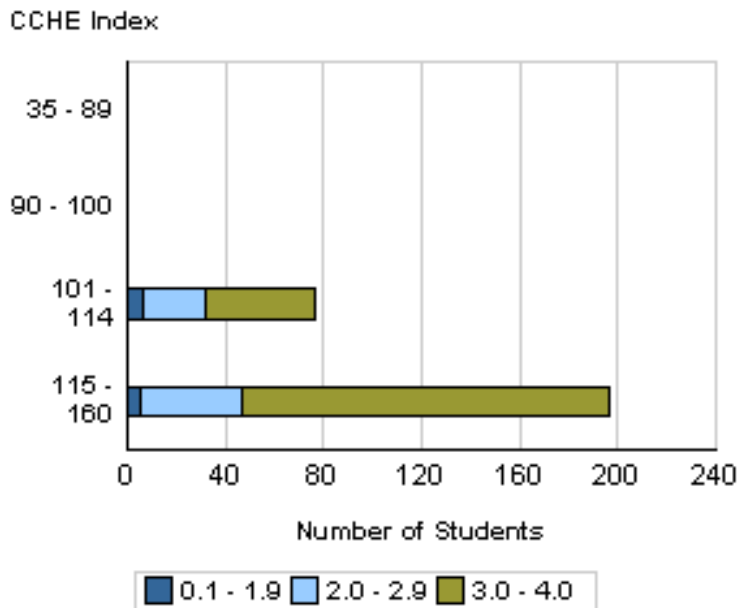
Number of New Freshmen by High School GPA & Rank,  
 Test Scores, CCHE Index and CSU GPA  
 CSU GPA after One Year for Freshmen Entering Fall 2009

**Business**

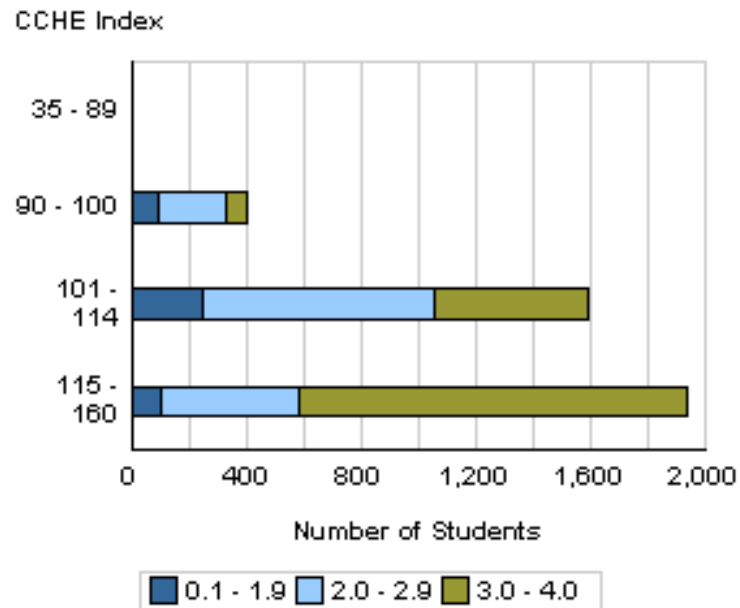
**Fall 2009 - Spring 2010  
 First Year CSU GPA by CCHE Index**



**Your College**



**All CSU Freshmen**



Number of New Freshmen by High School GPA & Rank,  
Test Scores, CCHE Index and CSU GPA  
CSU GPA after One Year for Freshmen Entering Fall 2009

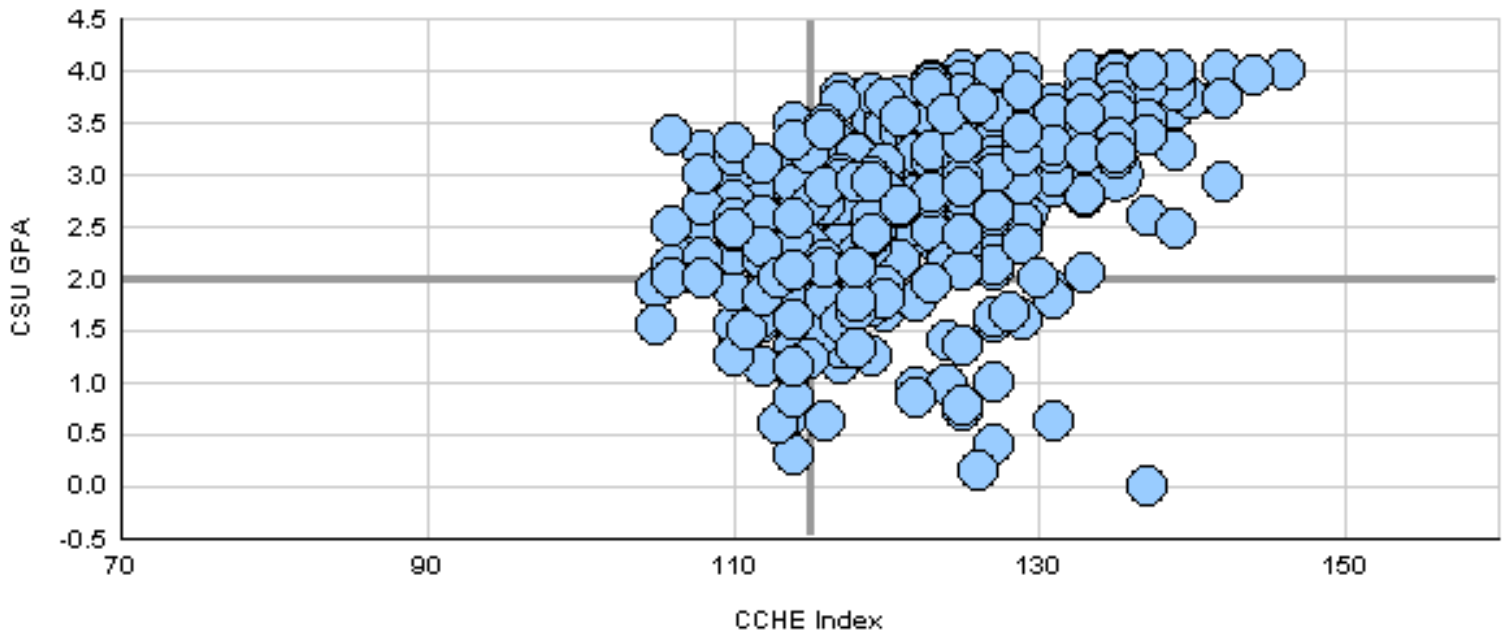
**Engineering**

	CSU GPA				Total
	0.1 - 1.9	2.0 - 2.9	3.0 - 3.5	3.6 - 4.0	
<b>High School GPA</b>					
3 - 3.599	30	60	15	1	106
3.6 - 4.0	26	107	60	42	235
4.001 - 10	1	12	34	26	73
<b>Total</b>	<b>57</b>	<b>179</b>	<b>109</b>	<b>69</b>	<b>414</b>
<b>Percentile Rank</b>					
30 - 49	1	3	1		5
50 - 59	8	17	1	1	27
60 - 79	21	73	15	3	112
80 - 89	10	45	32	10	97
90 - 99	6	21	42	38	107
<b>Total</b>	<b>46</b>	<b>159</b>	<b>91</b>	<b>52</b>	<b>348</b>
<b>SAT Verbal</b>					
200 - 399	2	4	1	1	8
400 - 499	1	6	8	1	16
500 - 599	12	33	29	8	82
600 - 699	6	16	14	19	55
700 - 800	2	4	2	9	17
<b>Total</b>	<b>23</b>	<b>63</b>	<b>54</b>	<b>38</b>	<b>178</b>
<b>SAT Math</b>					
400 - 499	1	2	1		4
500 - 599	9	17	16	1	43
600 - 699	13	39	31	22	105
700 - 800		5	6	15	26
<b>Total</b>	<b>23</b>	<b>63</b>	<b>54</b>	<b>38</b>	<b>178</b>
<b>ACT Composite</b>					
1 - 14		1			1
19 - 22	2	15	2		19
23 - 26	25	83	36	13	157
27 - 36	23	68	57	46	194
<b>Total</b>	<b>50</b>	<b>167</b>	<b>95</b>	<b>59</b>	<b>371</b>
<b>CCHE Index</b>					
101 - 114	19	45	10		74
115 - 160	38	134	99	69	340
<b>Total</b>	<b>57</b>	<b>179</b>	<b>109</b>	<b>69</b>	<b>414</b>

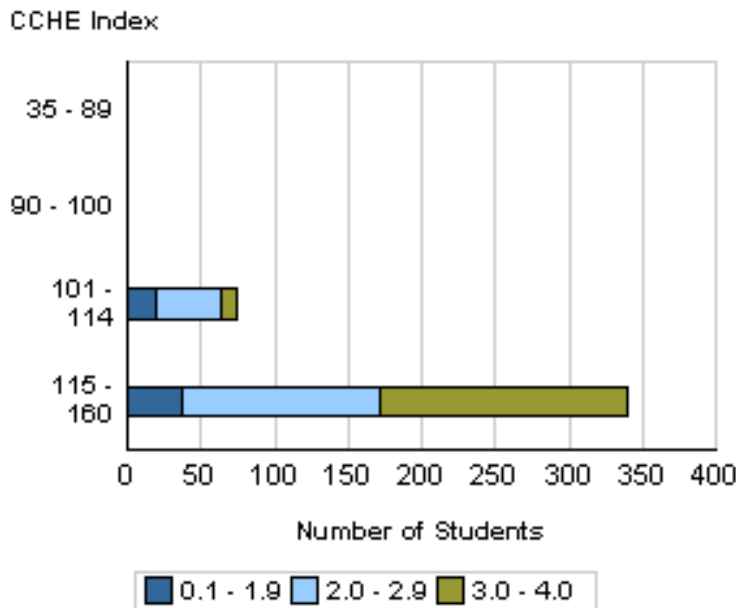
Number of New Freshmen by High School GPA & Rank,  
 Test Scores, CCHE Index and CSU GPA  
 CSU GPA after One Year for Freshmen Entering Fall 2009

**Engineering**

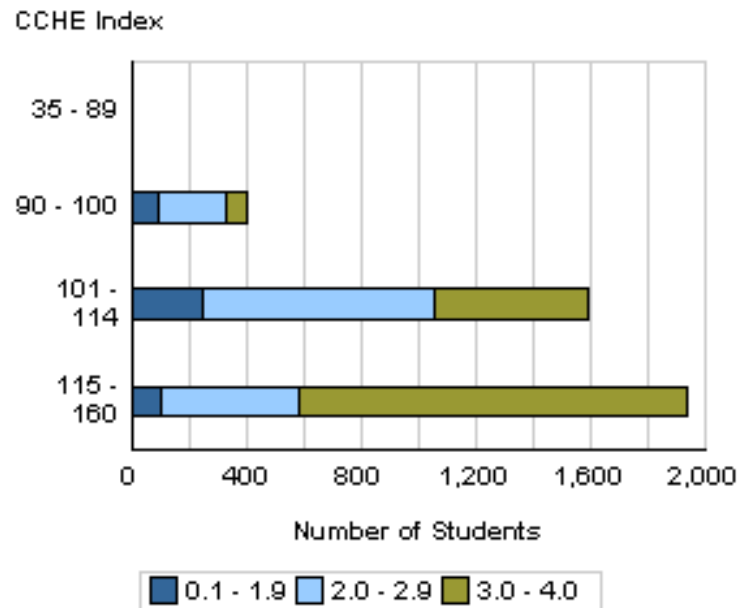
**Fall 2009 - Spring 2010  
 First Year CSU GPA by CCHE Index**



**Your College**



**All CSU Freshmen**





Number of New Freshmen by High School GPA & Rank,  
Test Scores, CCHE Index and CSU GPA  
CSU GPA after One Year for Freshmen Entering Fall 2009

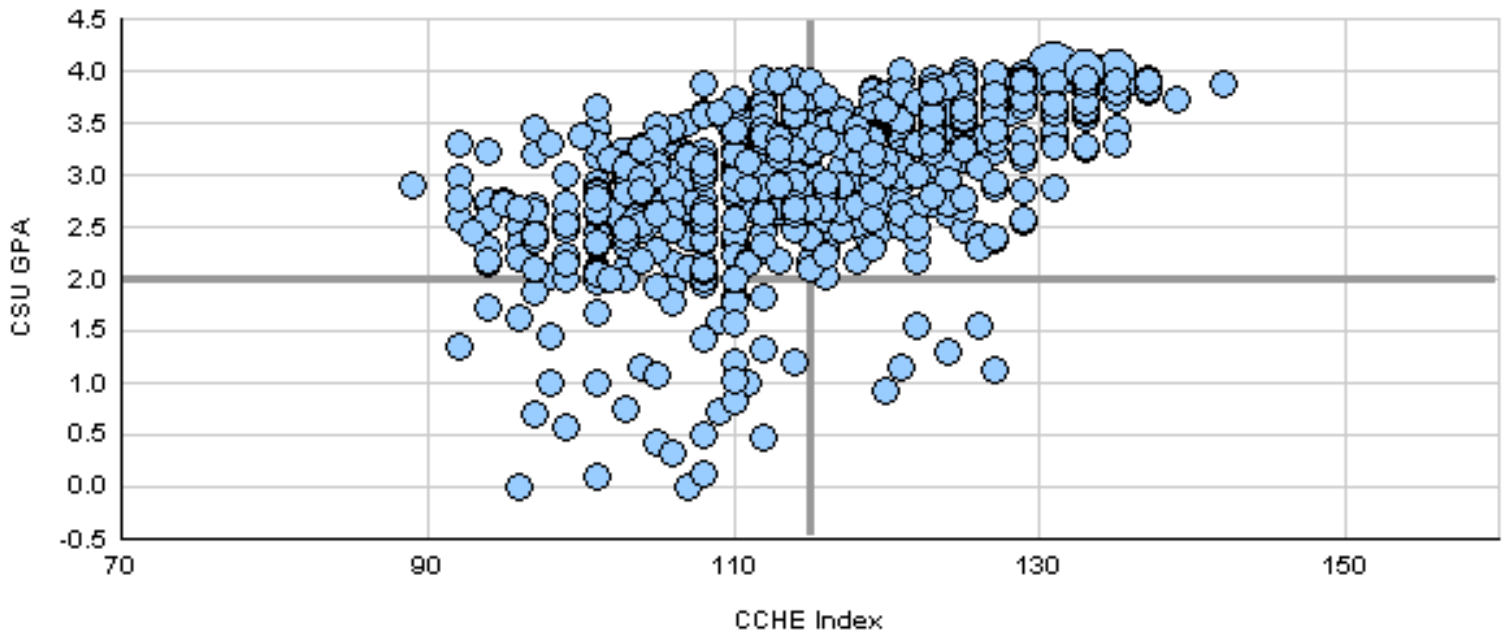
**Liberal Arts**

	CSU GPA				Total
	0.1 - 1.9	2.0 - 2.9	3.0 - 3.5	3.6 - 4.0	
High School GPA					
2.5 - 2.999	5	18	3	2	28
3 - 3.599	30	132	59	23	244
3.6 - 4.0	10	56	85	69	220
4.001 - 10		7	22	44	73
<b>Total</b>	<b>45</b>	<b>213</b>	<b>169</b>	<b>138</b>	<b>565</b>
Percentile Rank					
1 - 29	1	5	2		8
30 - 49	11	28	7	5	51
50 - 59	9	29	10	3	51
60 - 79	9	72	60	23	164
80 - 89	5	35	38	28	106
90 - 99		11	35	59	105
<b>Total</b>	<b>35</b>	<b>180</b>	<b>152</b>	<b>118</b>	<b>485</b>
SAT Verbal					
200 - 399	1		1		2
400 - 499	3	13	7	1	24
500 - 599	7	34	23	19	83
600 - 699	4	13	22	35	74
700 - 800			2	7	9
<b>Total</b>	<b>15</b>	<b>60</b>	<b>55</b>	<b>62</b>	<b>192</b>
SAT Math					
200 - 399		2	2		4
400 - 499	5	19	14	4	42
500 - 599	7	29	27	29	92
600 - 699	3	10	11	26	50
700 - 800			1	3	4
<b>Total</b>	<b>15</b>	<b>60</b>	<b>55</b>	<b>62</b>	<b>192</b>
ACT Composite					
15 - 18	1	5	3	1	10
19 - 22	15	75	43	7	140
23 - 26	19	78	70	55	222
27 - 36	7	39	44	66	156
<b>Total</b>	<b>42</b>	<b>197</b>	<b>160</b>	<b>129</b>	<b>528</b>
CCHE Index					
35 - 89		1			1
90 - 100	9	33	7		49
101 - 114	30	112	67	23	232
115 - 160	6	64	95	114	279
<b>Total</b>	<b>45</b>	<b>210</b>	<b>169</b>	<b>137</b>	<b>561</b>

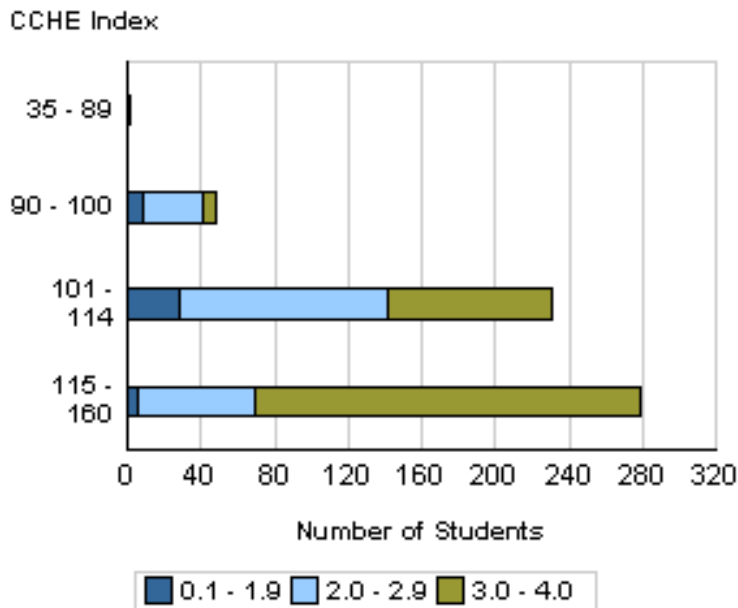
Number of New Freshmen by High School GPA & Rank,  
 Test Scores, CCHE Index and CSU GPA  
 CSU GPA after One Year for Freshmen Entering Fall 2009

**Liberal Arts**

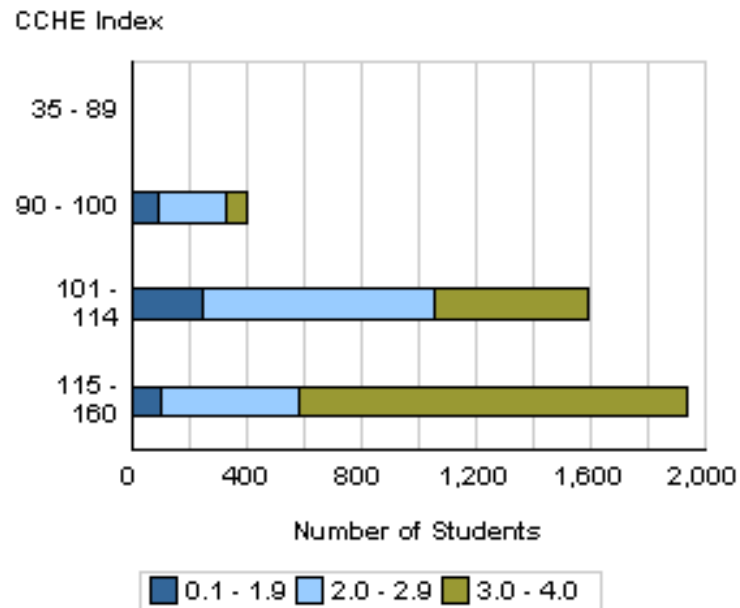
**Fall 2009 - Spring 2010  
 First Year CSU GPA by CCHE Index**



**Your College**



**All CSU Freshmen**



Number of New Freshmen by High School GPA & Rank,  
Test Scores, CCHE Index and CSU GPA  
CSU GPA after One Year for Freshmen Entering Fall 2009

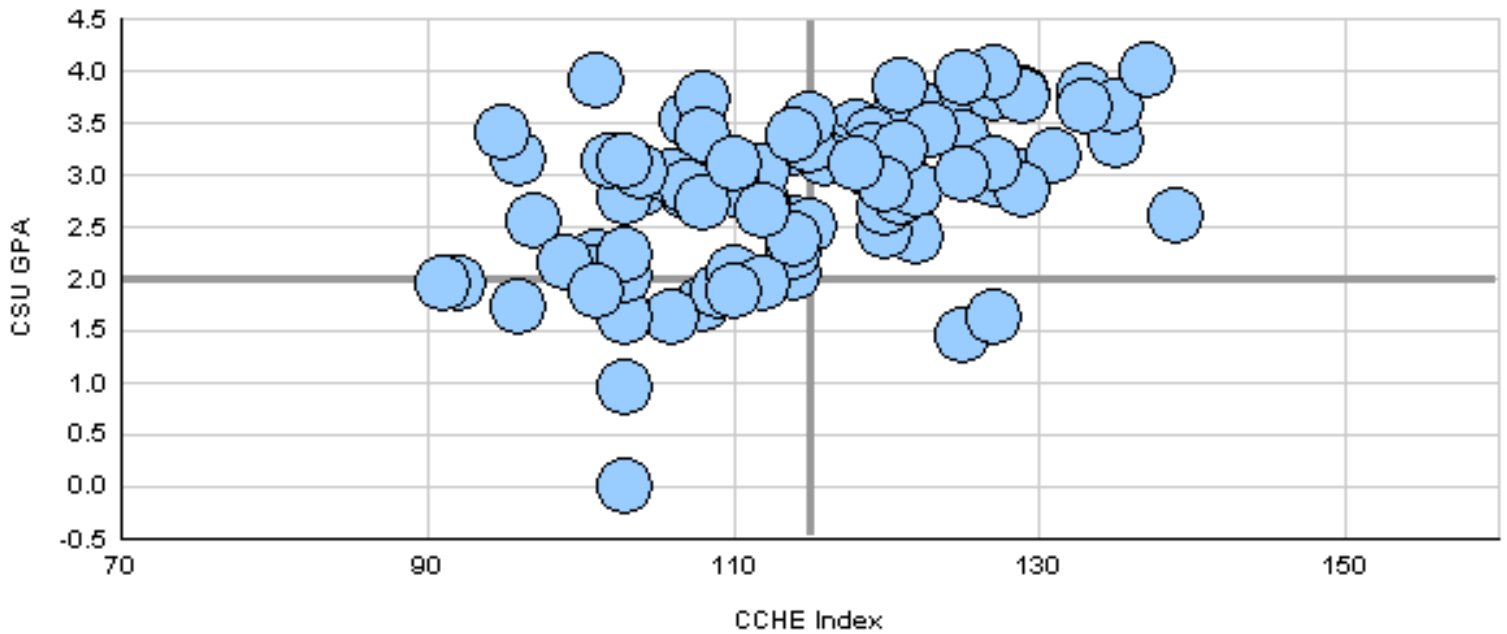
**Warner College of Natural Resources**

	CSU GPA				Total
	0.1 - 1.9	2.0 - 2.9	3.0 - 3.5	3.6 - 4.0	
High School GPA					
2.5 - 2.999	1				1
3 - 3.599	10	20	14	3	47
3.6 - 4.0	3	10	12	9	34
4.001 - 10		3	4	8	15
<b>Total</b>	<b>14</b>	<b>33</b>	<b>30</b>	<b>20</b>	<b>97</b>
Percentile Rank					
1 - 29		1			1
30 - 49	1	2	2		5
50 - 59	2	3	4		9
60 - 79	1	15	5	3	24
80 - 89	1	2	3	1	7
90 - 99		3	4	9	16
<b>Total</b>	<b>5</b>	<b>26</b>	<b>18</b>	<b>13</b>	<b>62</b>
SAT Verbal					
400 - 499		6	3		9
500 - 599	4	5	6	7	22
600 - 699		3	5	4	12
700 - 800			1		1
<b>Total</b>	<b>4</b>	<b>14</b>	<b>15</b>	<b>11</b>	<b>44</b>
SAT Math					
400 - 499		6	1		7
500 - 599	2	4	11	5	22
600 - 699	2	4	3	6	15
<b>Total</b>	<b>4</b>	<b>14</b>	<b>15</b>	<b>11</b>	<b>44</b>
ACT Composite					
15 - 18	1				1
19 - 22	3	8	4	4	19
23 - 26	6	13	10	4	33
27 - 36	2	8	6	8	24
<b>Total</b>	<b>12</b>	<b>29</b>	<b>20</b>	<b>16</b>	<b>77</b>
CCHE Index					
90 - 100	3	2	2		7
101 - 114	9	19	9	3	40
115 - 160	2	12	19	17	50
<b>Total</b>	<b>14</b>	<b>33</b>	<b>30</b>	<b>20</b>	<b>97</b>

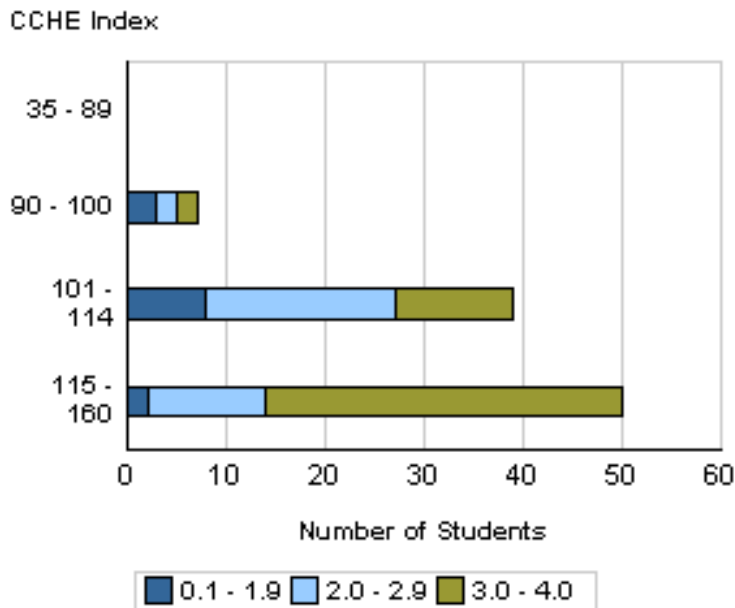
Number of New Freshmen by High School GPA & Rank,  
 Test Scores, CCHE Index and CSU GPA  
 CSU GPA after One Year for Freshmen Entering Fall 2009

**Warner College of Natural Resources**

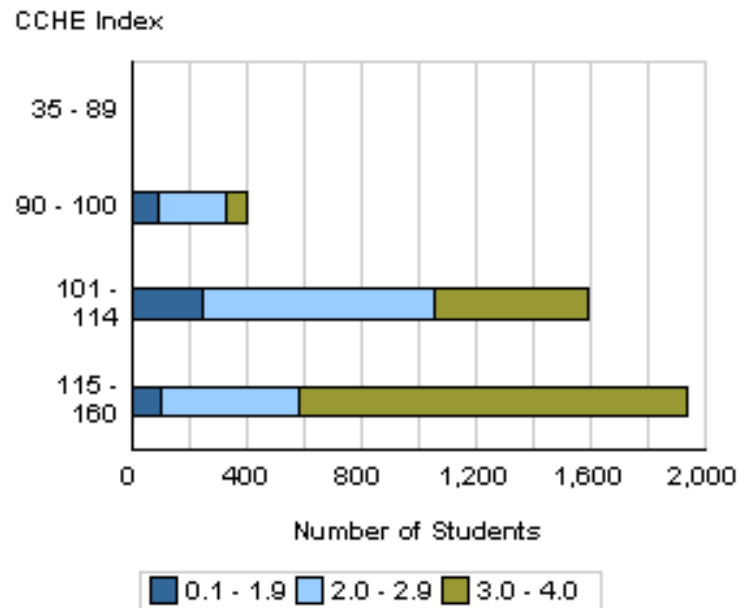
**Fall 2009 - Spring 2010  
 First Year CSU GPA by CCHE Index**



**Your College**



**All CSU Freshmen**



Number of New Freshmen by High School GPA & Rank,  
Test Scores, CCHE Index and CSU GPA  
CSU GPA after One Year for Freshmen Entering Fall 2009

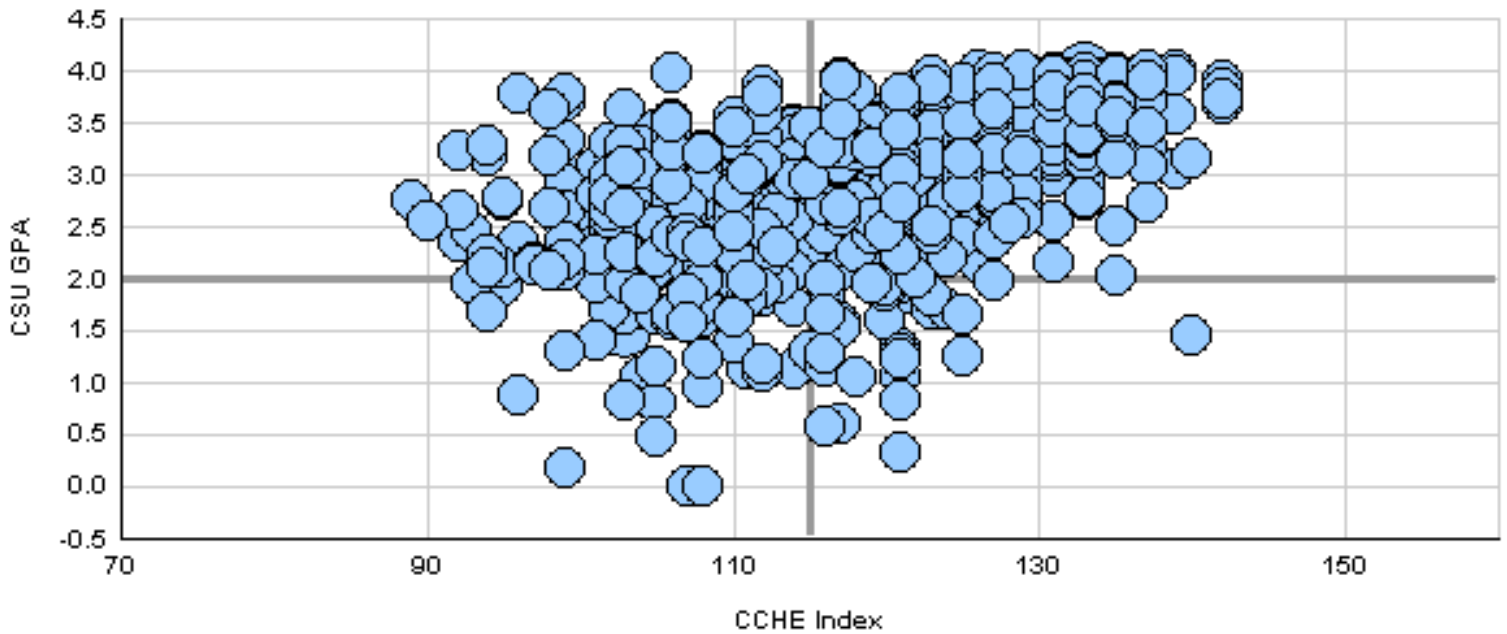
**Natural Sciences**

	CSU GPA				Total
	0.1 - 1.9	2.0 - 2.9	3.0 - 3.5	3.6 - 4.0	
High School GPA					
2.5 - 2.999	4	17	4	2	27
3 - 3.599	53	119	66	12	250
3.6 - 4.0	20	77	91	59	247
4.001 - 10	3	14	35	64	116
<b>Total</b>	<b>80</b>	<b>227</b>	<b>196</b>	<b>137</b>	<b>640</b>
Percentile Rank					
1 - 29		2	1		3
30 - 49	5	28	13	2	48
50 - 59	18	24	14	2	58
60 - 79	27	76	53	13	169
80 - 89	17	36	42	16	111
90 - 99	5	26	37	73	141
<b>Total</b>	<b>72</b>	<b>192</b>	<b>160</b>	<b>106</b>	<b>530</b>
SAT Verbal					
200 - 399		2	3		5
400 - 499	5	13	15	4	37
500 - 599	12	40	33	23	108
600 - 699	4	20	24	38	86
700 - 800	2	3	5	7	17
<b>Total</b>	<b>23</b>	<b>78</b>	<b>80</b>	<b>72</b>	<b>253</b>
SAT Math					
200 - 399		2	1		3
400 - 499	6	21	11	4	42
500 - 599	12	30	32	16	90
600 - 699	4	25	31	40	100
700 - 800	1		5	12	18
<b>Total</b>	<b>23</b>	<b>78</b>	<b>80</b>	<b>72</b>	<b>253</b>
ACT Composite					
15 - 18	3	10	1		14
19 - 22	16	57	30	10	113
23 - 26	37	86	83	32	238
27 - 36	20	50	70	88	228
<b>Total</b>	<b>76</b>	<b>203</b>	<b>184</b>	<b>130</b>	<b>593</b>
CCHE Index					
35 - 89		1			1
90 - 100	6	24	6	4	40
101 - 114	43	115	59	10	227
115 - 160	31	87	131	123	372
<b>Total</b>	<b>80</b>	<b>227</b>	<b>196</b>	<b>137</b>	<b>640</b>

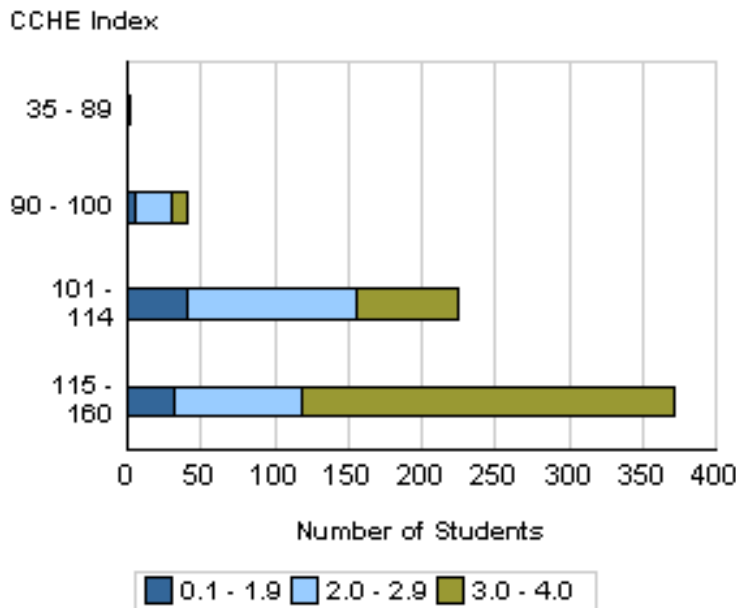
Number of New Freshmen by High School GPA & Rank,  
 Test Scores, CCHE Index and CSU GPA  
 CSU GPA after One Year for Freshmen Entering Fall 2009

**Natural Sciences**

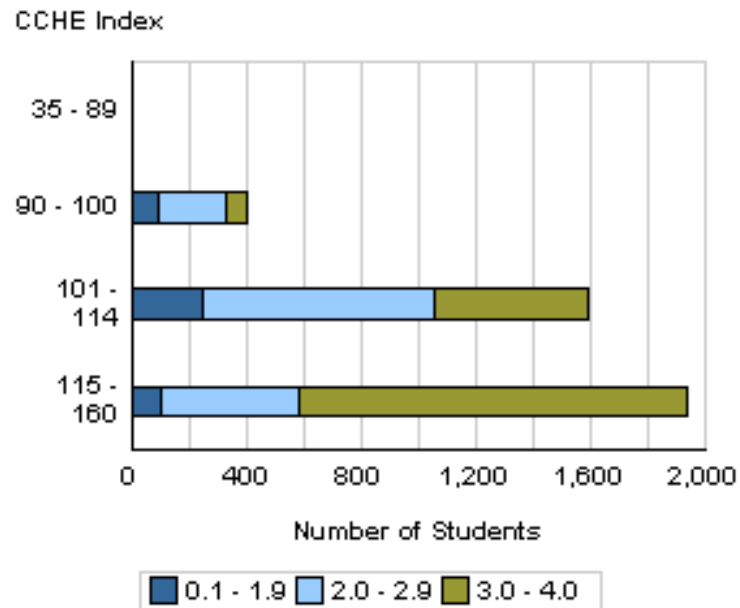
**Fall 2009 - Spring 2010  
 First Year CSU GPA by CCHE Index**



**Your College**



**All CSU Freshmen**



Number of New Freshmen by High School GPA & Rank,  
Test Scores, CCHE Index and CSU GPA  
CSU GPA after One Year for Freshmen Entering Fall 2009

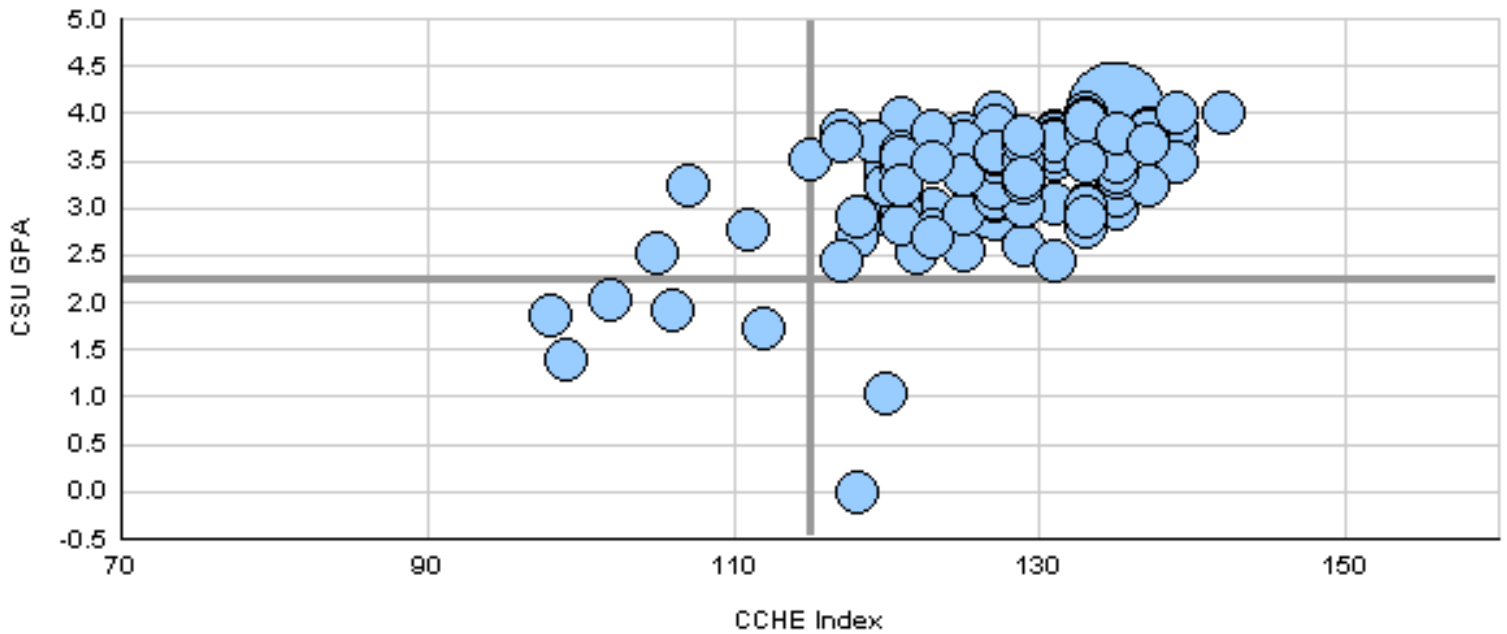
**Veterinary Medicine + Biomedical Sci**

	CSU GPA				Total
	0.1 - 1.9	2.0 - 2.9	3.0 - 3.5	3.6 - 4.0	
High School GPA					
2.5 - 2.999	1				1
3 - 3.599	3	3	4	1	11
3.6 - 4.0	2	12	22	29	65
4.001 - 10		5	20	31	56
<b>Total</b>	<b>6</b>	<b>20</b>	<b>46</b>	<b>61</b>	<b>133</b>
Percentile Rank					
50 - 59	1				1
60 - 79	3	6	3	4	16
80 - 89	1	5	11	9	26
90 - 99		5	26	36	67
<b>Total</b>	<b>5</b>	<b>16</b>	<b>40</b>	<b>49</b>	<b>110</b>
SAT Verbal					
400 - 499	1	1	1		3
500 - 599		4	8	14	26
600 - 699		6	14	12	32
700 - 800			2	8	10
<b>Total</b>	<b>1</b>	<b>11</b>	<b>25</b>	<b>34</b>	<b>71</b>
SAT Math					
400 - 499		2		1	3
500 - 599	1	5	7	6	19
600 - 699		4	17	26	47
700 - 800			1	1	2
<b>Total</b>	<b>1</b>	<b>11</b>	<b>25</b>	<b>34</b>	<b>71</b>
ACT Composite					
19 - 22	2	2	1	1	6
23 - 26	2	8	12	11	33
27 - 36	2	8	30	42	82
<b>Total</b>	<b>6</b>	<b>18</b>	<b>43</b>	<b>54</b>	<b>121</b>
CCHE Index					
90 - 100	2				2
101 - 114	2	3	1		6
115 - 160	2	17	45	61	125
<b>Total</b>	<b>6</b>	<b>20</b>	<b>46</b>	<b>61</b>	<b>133</b>

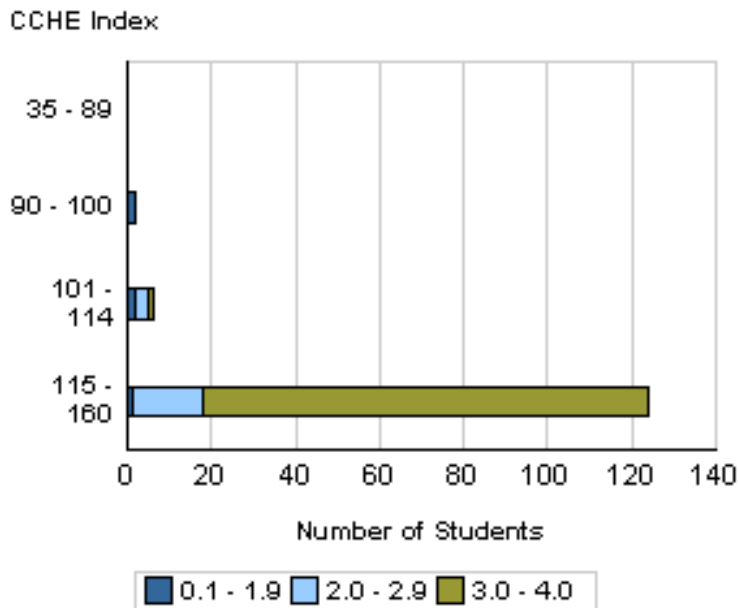
Number of New Freshmen by High School GPA & Rank,  
 Test Scores, CCHE Index and CSU GPA  
 CSU GPA after One Year for Freshmen Entering Fall 2009

**Veterinary Medicine + Biomedical Sci**

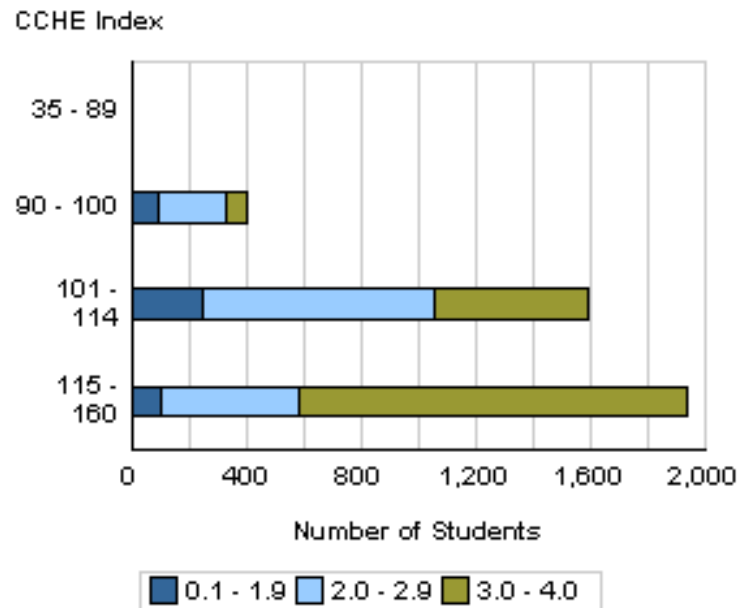
**Fall 2009 - Spring 2010  
 First Year CSU GPA by CCHE Index**



**Your College**



**All CSU Freshmen**





Number of New Freshmen by High School GPA & Rank,  
Test Scores, CCHE Index and CSU GPA  
CSU GPA after One Year for Freshmen Entering Fall 2009

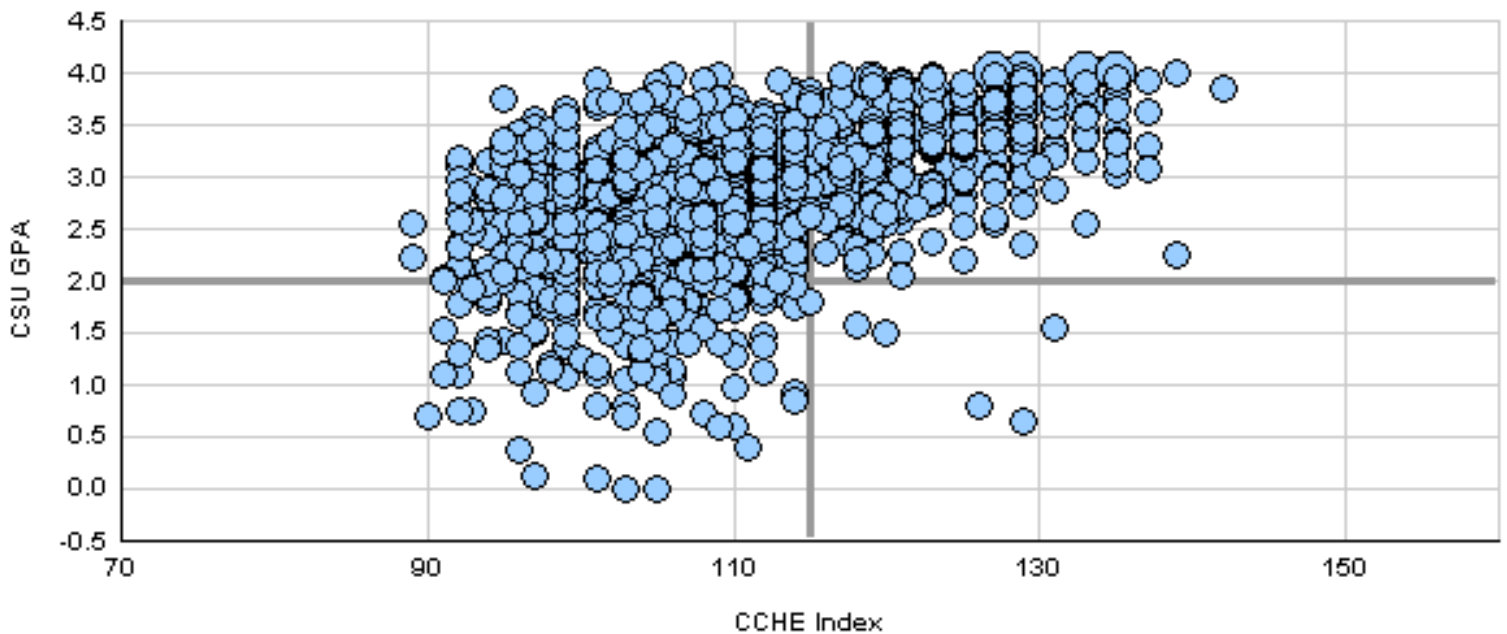
**Intra-University**

	CSU GPA				Total
	0.1 - 1.9	2.0 - 2.9	3.0 - 3.5	3.6 - 4.0	
<b>High School GPA</b>					
2 - 2.499		1			1
2.5 - 2.999	30	61	16	4	111
3 - 3.599	107	372	142	32	653
3.6 - 4.0	17	94	122	77	310
4.001 - 10	1	12	27	33	73
<b>Total</b>	<b>155</b>	<b>540</b>	<b>307</b>	<b>146</b>	<b>1,148</b>
<b>Percentile Rank</b>					
1 - 29	7	2	5	1	15
30 - 49	39	106	36	6	187
50 - 59	37	107	40	11	195
60 - 79	45	165	93	29	332
80 - 89	6	54	52	29	141
90 - 99	3	25	43	53	124
<b>Total</b>	<b>137</b>	<b>459</b>	<b>269</b>	<b>129</b>	<b>994</b>
<b>SAT Verbal</b>					
200 - 399	1	4	2	1	8
400 - 499	15	47	29	5	96
500 - 599	22	67	39	25	153
600 - 699	4	16	21	23	64
700 - 800		2	4	6	12
<b>Total</b>	<b>42</b>	<b>136</b>	<b>95</b>	<b>60</b>	<b>333</b>
<b>SAT Math</b>					
200 - 399	2	3	2		7
400 - 499	14	36	21	10	81
500 - 599	17	67	43	26	153
600 - 699	8	29	23	19	79
700 - 800	1	1	6	5	13
<b>Total</b>	<b>42</b>	<b>136</b>	<b>95</b>	<b>60</b>	<b>333</b>
<b>ACT Composite</b>					
1 - 14		1			1
15 - 18	8	33	13		54
19 - 22	64	228	82	23	397
23 - 26	57	193	139	52	441
27 - 36	12	53	61	63	189
<b>Total</b>	<b>141</b>	<b>508</b>	<b>295</b>	<b>138</b>	<b>1,082</b>
<b>CCHE Index</b>					
35 - 89		2			2
90 - 100	48	120	35	4	207
101 - 114	100	343	152	40	635
115 - 160	6	75	120	102	303
<b>Total</b>	<b>154</b>	<b>540</b>	<b>307</b>	<b>146</b>	<b>1,147</b>

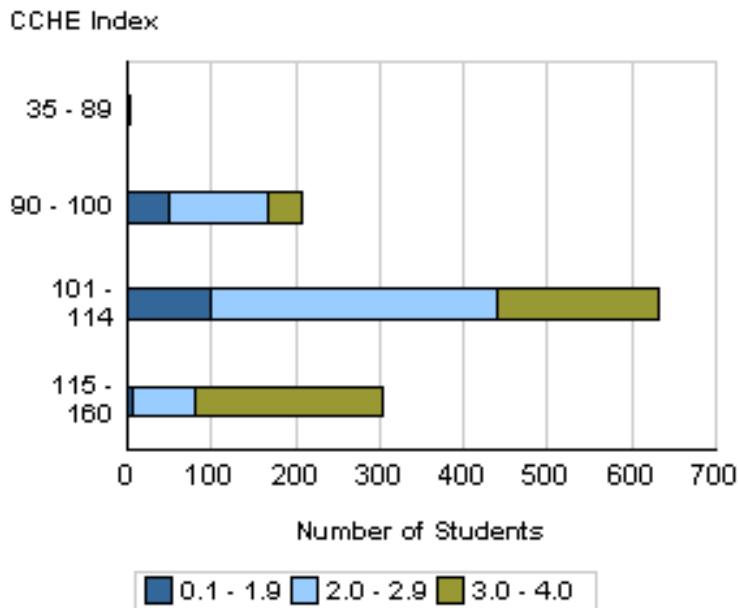
Number of New Freshmen by High School GPA & Rank,  
 Test Scores, CCHE Index and CSU GPA  
 CSU GPA after One Year for Freshmen Entering Fall 2009

**Intra-University**

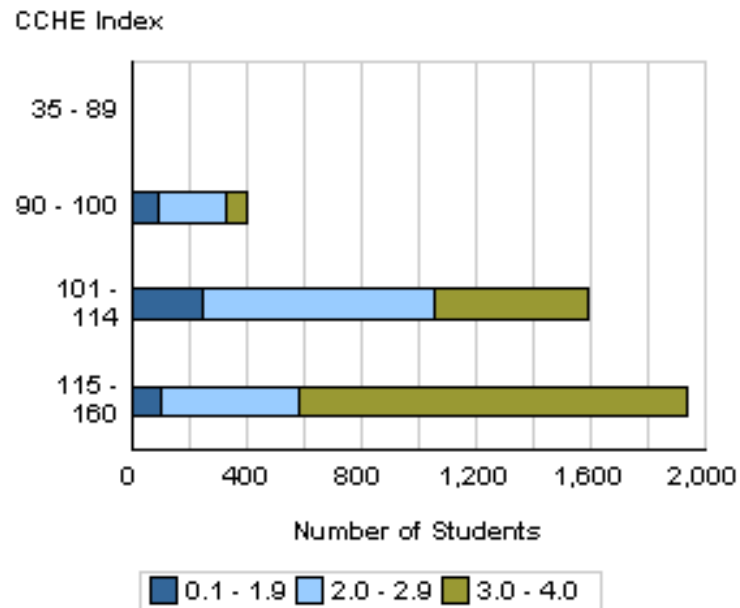
**Fall 2009 - Spring 2010  
 First Year CSU GPA by CCHE Index**



**Your College**



**All CSU Freshmen**



Number of New Freshmen by High School GPA & Rank,  
Test Scores, CCHE Index and CSU GPA  
CSU GPA after One Year for Freshmen Entering Fall 2009

**University Summary**

	CSU GPA				Total
	0.1 - 1.9	2.0 - 2.9	3.0 - 3.5	3.6 - 4.0	
<b>High School GPA</b>					
2 - 2.499		1			1
2.5 - 2.999	44	110	30	12	196
3 - 3.599	294	912	400	108	1,714
3.6 - 4.0	93	461	559	408	1,521
4.001 - 10	7	64	170	274	515
<b>Total</b>	<b>438</b>	<b>1,548</b>	<b>1,159</b>	<b>802</b>	<b>3,947</b>
<b>Percentile Rank</b>					
1 - 29	8	13	11	1	33
30 - 49	71	209	77	17	374
50 - 59	89	226	86	25	426
60 - 79	140	535	329	112	1,116
80 - 89	43	222	241	144	650
90 - 99	20	117	245	360	742
<b>Total</b>	<b>371</b>	<b>1,322</b>	<b>989</b>	<b>659</b>	<b>3,341</b>
<b>SAT Verbal</b>					
200 - 399	4	14	7	3	28
400 - 499	34	125	79	22	260
500 - 599	65	239	197	137	638
600 - 699	22	90	114	162	388
700 - 800	5	11	19	41	76
<b>Total</b>	<b>130</b>	<b>479</b>	<b>416</b>	<b>365</b>	<b>1,390</b>
<b>SAT Math</b>					
200 - 399	3	11	5		19
400 - 499	36	124	54	27	241
500 - 599	54	199	183	109	545
600 - 699	34	138	151	187	510
700 - 800	3	7	23	42	75
<b>Total</b>	<b>130</b>	<b>479</b>	<b>416</b>	<b>365</b>	<b>1,390</b>
<b>ACT Composite</b>					
1 - 14	1	2			3
15 - 18	18	63	26	2	109
19 - 22	134	504	226	74	938
23 - 26	176	586	489	256	1,507
27 - 36	72	276	340	413	1,101
<b>Total</b>	<b>401</b>	<b>1,431</b>	<b>1,081</b>	<b>745</b>	<b>3,658</b>
<b>CCHE Index</b>					
35 - 89		4			4
90 - 100	90	240	64	10	404
101 - 114	248	813	414	121	1,596
115 - 160	99	488	681	670	1,938
<b>Total</b>	<b>437</b>	<b>1,545</b>	<b>1,159</b>	<b>801</b>	<b>3,942</b>

Number of New Freshmen by High School GPA & Rank,  
Test Scores, CCHE Index and CSU GPA  
CSU GPA after One Year for Freshmen Entering Fall 2009

**University Summary**

**Fall 2009 - Spring 2010  
First Year CSU GPA by CCHE Index**

