



Freshmen Profile

2008

Colorado
State
University

Five Year History of New Freshmen

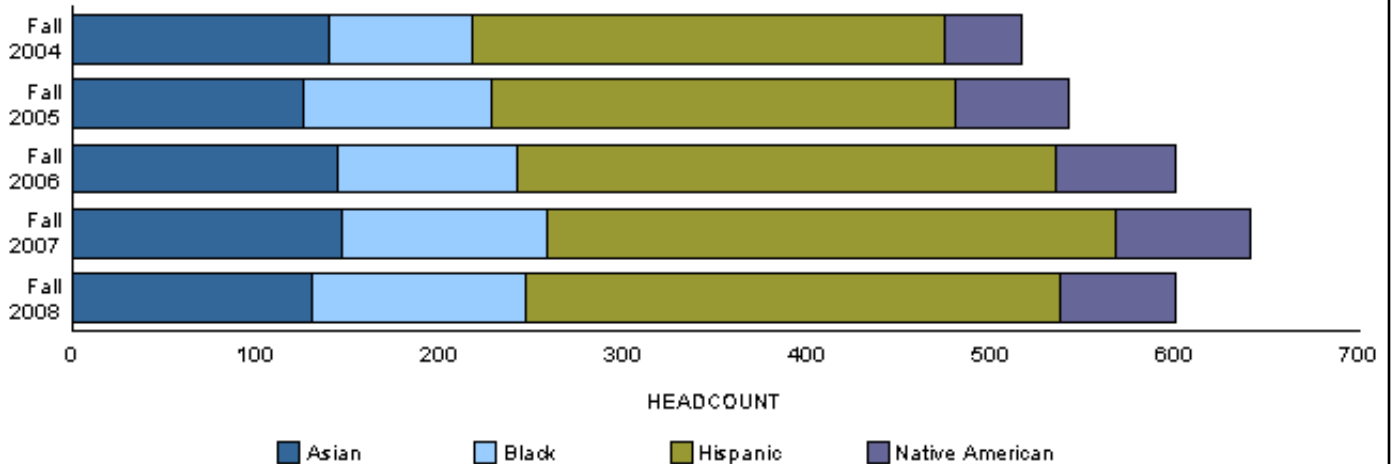
Five Year History of New Freshmen by: Residency

Headcount

Year	Resident		Nonresident		Total Headcount	%Change/ Previous Year
	Number	Percent	Number	Percent		
Fall 2004	3,199	78.8	862	21.2	4,061	
Fall 2005	3,155	81.1	737	18.9	3,892	-4.2
Fall 2006	3,259	79.6	834	20.4	4,093	5.2
Fall 2007	3,445	78.4	947	21.6	4,392	7.3
Fall 2008	3,482	79.1	922	20.9	4,404	0.3

Minority Status

Year	Minority		Other Students	
	Number	Percent	Number	Percent
Fall 2004	516	12.7	3545	87.3
Fall 2005	542	13.9	3350	86.1
Fall 2006	600	14.7	3493	85.3
Fall 2007	641	14.6	3751	85.4
Fall 2008	600	13.6	3804	86.4



Institutional Research
 Profile of **All New** Freshmen Enrolled Fall Semesters
 Five Year Trend in High School Admissions Scores by College

	2004	2005	2006	2007	2008
Mean High School Rank					
Agricultural Sciences	77	75	75	76	74
Applied Human Sciences	73	70	72	71	70
Business	81	80	80	79	77
Engineering	80	78	80	80	82
Liberal Arts	71	70	71	71	71
Warner College of Natural Resources	72	72	70	74	71
Natural Sciences	76	76	74	73	76
Veterinary Medicine + Biomedical Sci	80	78	81	84	88
Intra–University	66	63	64	63	65
Total	73	71	72	72	72
Mean SAT Verbal Score					
Agricultural Sciences	568	568	552	547	567
Applied Human Sciences	528	523	526	520	525
Business	564	564	553	562	559
Engineering	583	585	567	572	579
Liberal Arts	576	568	566	581	583
Warner College of Natural Resources	566	599	586	593	540
Natural Sciences	564	568	569	567	561
Veterinary Medicine + Biomedical Sci	573	574	577	584	616
Intra–University	535	525	527	523	527
Total	557	555	551	555	555
Mean SAT Math Score					
Agricultural Sciences	556	561	559	560	569
Applied Human Sciences	536	532	536	542	543
Business	585	592	579	597	585
Engineering	630	621	630	623	639
Liberal Arts	550	544	543	552	552
Warner College of Natural Resources	565	565	574	592	540
Natural Sciences	576	583	576	572	569
Veterinary Medicine + Biomedical Sci	559	583	583	593	617
Intra–University	542	542	543	539	541
Total	563	563	561	566	566

Institutional Research
 Profile of **All New** Freshmen Enrolled Fall Semesters
 Five Year Trend in High School Admissions Scores by College

	2004	2005	2006	2007	2008
Mean Composite ACT Score					
Agricultural Sciences	24.5	24.4	24.2	23.8	24.0
Applied Human Sciences	23.3	22.8	22.7	23.1	22.8
Business	25.4	25.4	25.1	25.6	25.4
Engineering	26.5	26.5	26.3	26.4	26.6
Liberal Arts	24.9	24.0	24.3	24.6	24.6
Warner College of Natural Resources	24.7	24.5	23.6	24.8	23.8
Natural Sciences	24.9	24.7	24.4	24.5	24.8
Veterinary Medicine + Biomedical Sci	24.9	25.0	25.1	26.1	27.0
Intra–University	23.4	22.7	23.0	22.8	22.8
Total	24.4	24.0	23.9	24.2	24.1
Mean High School Grade Point Average					
Agricultural Sciences	3.59	3.58	3.57	3.58	3.60
Applied Human Sciences	3.54	3.47	3.51	3.51	3.49
Business	3.73	3.74	3.74	3.71	3.68
Engineering	3.73	3.68	3.72	3.75	3.78
Liberal Arts	3.50	3.48	3.51	3.51	3.52
Warner College of Natural Resources	3.52	3.49	3.51	3.56	3.46
Natural Sciences	3.60	3.61	3.58	3.58	3.60
Veterinary Medicine + Biomedical Sci	3.68	3.68	3.72	3.82	3.91
Intra–University	3.39	3.31	3.35	3.33	3.36
Total	3.54	3.50	3.52	3.53	3.53
Mean CCHE Index					
Agricultural Sciences	115.5	114.7	113.9	113.4	114.8
Applied Human Sciences	111.6	109.5	110.1	110.7	109.7
Business	119.4	119.2	119.1	119.5	118.2
Engineering	121.7	120.8	121.2	121.6	122.4
Liberal Arts	114.3	112.3	113.2	113.8	113.9
Warner College of Natural Resources	114.5	113.5	112.2	115.1	111.3
Natural Sciences	116.2	115.7	114.6	115.0	115.5
Veterinary Medicine + Biomedical Sci	117.6	117.9	118.6	121.5	125.0
Intra–University	109.5	106.9	107.8	107.1	107.7
Total	114.2	112.5	112.7	113.2	113.2

For the purposes of making index comparisons across years, the 2004 index calculation formula is used for all years.

Institutional Research
 Profile of **Resident** Freshmen Enrolled Fall Semesters
 Five Year Trend in High School Admissions Scores by College

	2004	2005	2006	2007	2008
Mean High School Rank					
Agricultural Sciences	74	76	73	74	72
Applied Human Sciences	73	70	72	71	69
Business	81	81	80	79	77
Engineering	79	78	81	80	82
Liberal Arts	71	71	71	72	72
Warner College of Natural Resources	72	68	70	75	71
Natural Sciences	76	76	75	73	75
Veterinary Medicine + Biomedical Sci	79	78	81	84	88
Intra–University	67	64	65	64	66
Total	73	71	72	71	72
Mean SAT Verbal Score					
Agricultural Sciences	559	575	525	558	558
Applied Human Sciences	519	518	518	518	516
Business	563	562	553	559	560
Engineering	584	576	570	580	575
Liberal Arts	575	567	572	588	586
Warner College of Natural Resources	531	593	605	619	541
Natural Sciences	559	569	570	567	564
Veterinary Medicine + Biomedical Sci	556	574	575	580	618
Intra–University	534	528	535	525	525
Total	553	553	553	557	554
Mean SAT Math Score					
Agricultural Sciences	516	561	547	579	558
Applied Human Sciences	524	525	531	539	538
Business	578	588	573	592	589
Engineering	616	617	622	618	633
Liberal Arts	546	544	547	552	549
Warner College of Natural Resources	539	561	582	603	549
Natural Sciences	572	582	573	568	572
Veterinary Medicine + Biomedical Sci	547	570	580	581	616
Intra–University	538	539	546	537	538
Total	556	560	559	563	565

Institutional Research
 Profile of **Resident** Freshmen Enrolled Fall Semesters
 Five Year Trend in High School Admissions Scores by College

	2004	2005	2006	2007	2008
Mean Composite ACT Score					
Agricultural Sciences	24.3	24.2	23.4	23.3	23.5
Applied Human Sciences	23.0	22.7	22.7	23.0	22.7
Business	25.2	25.3	25.1	25.5	25.3
Engineering	26.2	26.3	26.3	26.3	26.4
Liberal Arts	24.8	24.1	24.3	24.6	24.5
Warner College of Natural Resources	24.7	24.0	23.4	24.5	23.6
Natural Sciences	24.8	24.7	24.2	24.3	24.6
Veterinary Medicine + Biomedical Sci	24.7	25.0	25.1	26.1	26.9
Intra–University	23.3	22.7	23.0	22.8	22.8
Total	24.3	23.9	23.9	24.0	24.0
Mean High School Grade Point Average					
Agricultural Sciences	3.56	3.66	3.55	3.58	3.54
Applied Human Sciences	3.55	3.48	3.54	3.52	3.49
Business	3.75	3.75	3.74	3.72	3.67
Engineering	3.72	3.68	3.72	3.75	3.79
Liberal Arts	3.51	3.50	3.53	3.53	3.54
Warner College of Natural Resources	3.58	3.48	3.46	3.62	3.51
Natural Sciences	3.60	3.63	3.59	3.57	3.59
Veterinary Medicine + Biomedical Sci	3.67	3.69	3.74	3.83	3.92
Intra–University	3.41	3.33	3.37	3.34	3.38
Total	3.55	3.51	3.53	3.53	3.54
Mean CCHE Index					
Agricultural Sciences	113.9	115.4	111.9	112.4	112.4
Applied Human Sciences	111.4	109.4	110.1	110.5	109.1
Business	119.3	119.2	119.2	119.3	118.0
Engineering	120.9	120.4	120.9	121.0	121.8
Liberal Arts	114.1	112.6	113.6	114.1	114.0
Warner College of Natural Resources	114.6	112.0	110.9	115.1	111.6
Natural Sciences	115.9	116.0	114.4	114.3	115.0
Veterinary Medicine + Biomedical Sci	116.5	117.7	118.7	121.2	125.1
Intra–University	109.6	107.1	108.2	107.2	107.8
Total	113.8	112.5	112.7	112.9	112.8

For the purposes of making index comparisons across years, the 2004 index calculation formula is used for all years.

Institutional Research
 Profile of **Nonresident** Freshmen Enrolled Fall Semesters
 Five Year Trend in High School Admissions Scores by College

	2004	2005	2006	2007	2008
Mean High School Rank					
Agricultural Sciences	81	73	79	78	79
Applied Human Sciences	70	66	70	70	73
Business	79	76	78	76	76
Engineering	84	82	78	82	82
Liberal Arts	71	65	66	67	69
Warner College of Natural Resources	71	79	72	73	68
Natural Sciences	77	74	71	75	78
Veterinary Medicine + Biomedical Sci	82	79	79	83	87
Intra–University	63	58	60	60	62
Total	74	69	71	72	73
Mean SAT Verbal Score					
Agricultural Sciences	573	565	571	543	571
Applied Human Sciences	546	536	540	524	543
Business	567	570	552	570	556
Engineering	581	624	561	556	586
Liberal Arts	578	572	546	562	577
Warner College of Natural Resources	583	605	573	576	539
Natural Sciences	577	564	567	565	557
Veterinary Medicine + Biomedical Sci	590	574	580	590	610
Intra–University	538	515	502	518	530
Total	566	558	548	550	557
Mean SAT Math Score					
Agricultural Sciences	574	561	567	555	575
Applied Human Sciences	559	548	546	547	553
Business	610	601	603	610	568
Engineering	658	638	645	633	653
Liberal Arts	562	545	526	553	561
Warner College of Natural Resources	577	568	568	584	531
Natural Sciences	586	584	583	578	564
Veterinary Medicine + Biomedical Sci	571	603	587	612	618
Intra–University	554	550	534	545	547
Total	579	570	565	572	569

Institutional Research
 Profile of **Nonresident** Freshmen Enrolled Fall Semesters
 Five Year Trend in High School Admissions Scores by College

	2004	2005	2006	2007	2008
Mean Composite ACT Score					
Agricultural Sciences	25.0	24.8	25.6	24.9	25.0
Applied Human Sciences	24.7	23.2	23.1	24.0	23.8
Business	26.5	25.6	24.8	26.2	25.7
Engineering	27.7	27.8	26.5	27.0	27.7
Liberal Arts	25.2	23.4	23.6	24.2	25.2
Warner College of Natural Resources	24.6	25.7	24.0	25.4	24.5
Natural Sciences	25.8	24.7	25.6	26.0	25.3
Veterinary Medicine + Biomedical Sci	25.7	25.1	25.0	26.4	27.1
Intra–University	23.7	23.1	22.9	23.1	23.5
Total	25.2	24.4	24.3	24.8	24.9
Mean High School Grade Point Average					
Agricultural Sciences	3.62	3.50	3.59	3.57	3.67
Applied Human Sciences	3.49	3.40	3.41	3.44	3.49
Business	3.62	3.70	3.71	3.67	3.73
Engineering	3.76	3.64	3.72	3.76	3.74
Liberal Arts	3.49	3.37	3.40	3.43	3.46
Warner College of Natural Resources	3.44	3.50	3.58	3.50	3.34
Natural Sciences	3.60	3.52	3.50	3.60	3.64
Veterinary Medicine + Biomedical Sci	3.71	3.65	3.66	3.79	3.88
Intra–University	3.28	3.20	3.23	3.24	3.28
Total	3.52	3.44	3.48	3.51	3.53
Mean CCHE Index					
Agricultural Sciences	117.4	113.9	116.3	114.8	118.1
Applied Human Sciences	112.5	110.0	110.1	111.4	112.1
Business	120.3	119.0	118.7	120.4	119.3
Engineering	124.6	124.0	122.1	123.8	124.6
Liberal Arts	114.8	110.6	110.4	112.3	113.7
Warner College of Natural Resources	114.4	115.8	114.1	115.1	110.5
Natural Sciences	118.0	114.8	115.5	117.7	116.9
Veterinary Medicine + Biomedical Sci	119.8	118.6	118.3	122.4	124.7
Intra–University	109.0	105.9	105.8	106.2	107.0
Total	115.5	112.7	113.0	114.4	114.6

For the purposes of making index comparisons across years, the 2004 index calculation formula is used for all years.

Fall 2008 Freshmen

Fall 2008 New Freshmen by:

Residency

	Number	Percent
Resident	3,482	79.1
Nonresident	922	20.9
Total	4,404	100.0

Gender

	Resident		Nonresident		Total	
	No.	Percent	No.	Percent	No.	Percent
Men	1,602	46.0	363	39.4	1,965	44.6
Women	1,880	54.0	559	60.6	2,439	55.4
Total	3,482	100.0	922	100.0	4,404	100.0

Ethnicity

	Resident		Nonresident		Total	
	No.	Percent	No.	Percent	No.	Percent
Native American	54	1.6	9	1.0	63	1.4
Black	99	2.8	18	2.0	117	2.7
Asian American	102	2.9	28	3.0	130	3.0
Hispanic	240	6.9	50	5.4	290	6.6
White	2,791	80.2	704	76.4	3,495	79.4
International	2	0.1	42	4.6	44	1.0
Other	194	5.6	71	7.7	265	6.0
Total	3,482	100.0	922	100.0	4,404	100.0

Full-Time/Part-Time Enrollment

	Resident	Nonresident	Total	Percent of University
New Freshmen				
Full-Time	3,442	906	4,348	98.7
Part-Time	40	16	56	1.3
Total	3,482	922	4,404	100.0

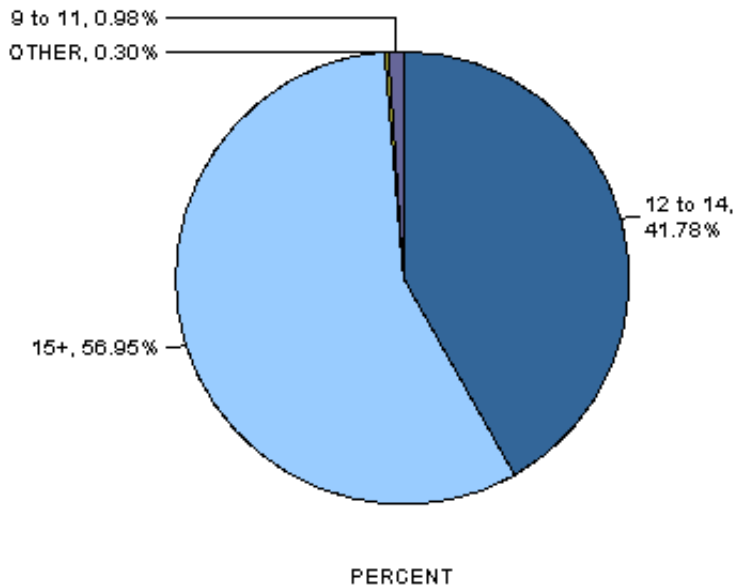
Full-time students = undergraduates enrolled for 12 or more credits Fall, Spring (9 - Summer)

College

	Resident		Nonresident		Total	
	No.	Percent	No.	Percent	No.	Percent
New Freshmen						
Agricultural Sciences	140	4.0	103	11.2	243	5.5
Applied Human Sciences	508	14.6	119	12.9	627	14.2
Business	293	8.4	53	5.7	346	7.9
Engineering	319	9.2	82	8.9	401	9.1
Intra-University	1,046	30.0	209	22.7	1,255	28.5
Liberal Arts	512	14.7	120	13.0	632	14.4
Natural Sciences	491	14.1	182	19.7	673	15.3
Veterinary Medicine + Biomedical Sci	100	2.9	26	2.8	126	2.9
Warner College of Natural Resources	73	2.1	28	3.0	101	2.3
Total	3,482	100.0	922	100.0	4,404	100.0

Full-Time Status

Full-Time	RI Credits	Number of New Freshmen
Fees	(6+ credits)	4,396
Tuition	(9+ credits)	4,391
Financial Aid	(12+ credits)	4,348
Graduation in 4 Years	(15+ credits)	2,508



Institutional Research
Freshmen Profile
Fall 2008

University	Admitted N= 10690				Enrolled N=4404			
	Res	Nonres	Total	Percent	Res	Nonres	Total	Percent
High School GPA								
2 – 2.499	3	2	5	0	3	1	4	0
2.5 – 2.999	319	376	695	7	183	98	281	6
3 – 3.599	2761	1712	4473	42	1649	354	2003	46
3.6 – 4.0	2546	1603	4149	39	1304	337	1641	38
4.001 – 10	766	462	1228	12	335	93	428	10
Valid Cases	6395	4155	10550	100	3474	883	4357	100
Means	3.58	3.55	3.57		3.54	3.53	3.53	
Percentile Rank								
1 – 29	41	44	85	1	25	17	42	1
30 – 49	599	278	877	10	387	72	459	12
50 – 59	703	269	972	12	435	59	494	13
60 – 79	2021	794	2815	33	1139	180	1319	35
80 – 89	1163	557	1720	20	626	131	757	20
90 – 99	1281	693	1974	23	602	145	747	20
Valid Cases	5808	2635	8443	100	3214	604	3818	100
Means	73.4	74.4	73.7		71.7	73.1	71.9	
SAT Verbal								
200 – 399	46	58	104	2	27	12	39	2
400 – 499	475	548	1023	20	247	111	358	22
500 – 599	994	1294	2288	45	468	259	727	44
600 – 699	656	759	1415	28	286	140	426	26
700 – 800	137	132	269	5	52	34	86	5
Valid Cases	2308	2791	5099	100	1080	556	1636	100
Means	562	557	559		554	557	555	
SAT Math								
200 – 399	28	29	57	1	13	8	21	1
400 – 499	392	425	817	16	206	95	301	18
500 – 599	969	1251	2220	44	476	235	711	43
600 – 699	778	915	1693	33	328	187	515	31
700 – 800	141	171	312	6	57	31	88	5
Valid Cases	2308	2791	5099	100	1080	556	1636	100
Means	572	573	572		565	569	566	
ACT Composite								
1 – 14	3	1	4	0	2	1	3	0
15 – 18	213	64	277	3	130	20	150	4
19 – 22	1796	579	2375	27	1086	127	1213	30
23 – 26	2560	1112	3672	41	1426	254	1680	42
27 – 36	1675	917	2592	29	772	198	970	24
Valid Cases	6247	2673	8920	100	3416	600	4016	100
Means	24.4	25.1	24.6		24.0	24.9	24.1	
CCHE Index								
90 – 100	619	403	1022	10	409	108	517	12
101 – 114	2806	1664	4470	42	1652	346	1998	46
115 – 160	2967	2084	5051	48	1410	426	1836	42
Valid Cases	6392	4151	10543	100	3471	880	4351	100
Means	114	115	115		113	115	113	

Institutional Research
 Freshmen Profile
 Fall 2008

Agricultural Sciences

Admitted N= 601

Enrolled N=243

	Res	Nonres	Total	Percent	Res	Nonres	Total	Percent
High School GPA								
2.5 – 2.999	6	20	26	4	6	4	10	4
3 – 3.599	85	123	208	35	64	30	94	40
3.6 – 4.0	95	196	291	49	60	49	109	46
4.001 – 10	12	54	66	11	9	14	23	10
Valid Cases	198	393	591	100	139	97	236	100
Means	3.58	3.66	3.63		3.54	3.67	3.60	
Percentile Rank								
1 – 29	1	1	2	0	1	1	2	1
30 – 49	20	14	34	8	15	4	19	10
50 – 59	19	15	34	8	15	5	20	10
60 – 79	70	74	144	33	52	25	77	39
80 – 89	38	57	95	22	22	10	32	16
90 – 99	38	88	126	29	24	25	49	25
Valid Cases	186	249	435	100	129	70	199	100
Means	73.3	80.3	77.3		71.9	78.9	74.3	
SAT Verbal								
200 – 399	0	4	4	1	0	0	0	0
400 – 499	15	55	70	22	10	14	24	25
500 – 599	17	120	137	42	11	27	38	40
600 – 699	14	77	91	28	10	16	26	27
700 – 800	2	21	23	7	2	6	8	8
Valid Cases	48	277	325	100	33	63	96	100
Means	555	565	564		558	571	567	
SAT Math								
200 – 399	0	5	5	2	0	2	2	2
400 – 499	11	40	51	16	8	8	16	17
500 – 599	21	130	151	46	15	26	41	43
600 – 699	13	83	96	30	8	23	31	32
700 – 800	3	19	22	7	2	4	6	6
Valid Cases	48	277	325	100	33	63	96	100
Means	560	571	569		558	575	569	
ACT Composite								
1 – 14	0	1	1	0	0	1	1	0
15 – 18	4	7	11	2	3	3	6	3
19 – 22	75	53	128	29	58	15	73	35
23 – 26	78	82	160	36	54	21	75	36
27 – 36	41	106	147	33	24	29	53	25
Valid Cases	198	249	447	100	139	69	208	100
Means	23.8	25.4	24.7		23.5	25.0	24.0	
CCHE Index								
90 – 100	17	24	41	7	13	7	20	8
101 – 114	96	135	231	39	72	32	104	44
115 – 160	85	234	319	54	54	58	112	47
Valid Cases	198	393	591	100	139	97	236	100
Means	113	118	116		112	118	115	

Institutional Research
Freshmen Profile
Fall 2008

Applied Human Sciences	Admitted N= 1147				Enrolled N=627			
	Res	Nonres	Total	Percent	Res	Nonres	Total	Percent
High School GPA								
2.5 – 2.999	40	37	77	7	27	13	40	6
3 – 3.599	344	175	519	46	262	54	316	50
3.6 – 4.0	290	173	463	41	189	45	234	37
4.001 – 10	48	33	81	7	30	6	36	6
Valid Cases	722	418	1140	100	508	118	626	100
Means	3.52	3.52	3.52		3.49	3.49	3.49	
Percentile Rank								
1 – 29	8	7	15	2	6	4	10	2
30 – 49	84	30	114	12	66	6	72	13
50 – 59	96	31	127	13	67	10	77	14
60 – 79	248	90	338	36	185	24	209	38
80 – 89	126	53	179	19	85	17	102	18
90 – 99	106	67	173	18	61	21	82	15
Valid Cases	668	278	946	100	470	82	552	100
Means	70.2	73.1	71.0		68.9	73.5	69.6	
SAT Verbal								
200 – 399	8	5	13	3	6	0	6	3
400 – 499	67	72	139	30	45	19	64	31
500 – 599	95	133	228	49	64	35	99	49
600 – 699	34	47	81	17	18	16	34	17
700 – 800	0	6	6	1	0	1	1	0
Valid Cases	204	263	467	100	133	71	204	100
Means	519	535	528		516	543	525	
SAT Math								
200 – 399	6	4	10	2	2	1	3	1
400 – 499	58	50	108	23	35	14	49	24
500 – 599	92	135	227	49	68	32	100	49
600 – 699	45	69	114	24	26	23	49	24
700 – 800	3	5	8	2	2	1	3	1
Valid Cases	204	263	467	100	133	71	204	100
Means	537	550	545		538	553	543	
ACT Composite								
15 – 18	45	12	57	6	33	4	37	6
19 – 22	295	77	372	38	220	19	239	41
23 – 26	282	135	417	42	192	47	239	41
27 – 36	90	56	146	15	55	15	70	12
Valid Cases	712	280	992	100	500	85	585	100
Means	22.9	24.0	23.2		22.7	23.8	22.8	
CCHE Index								
90 – 100	119	56	175	15	99	19	118	19
101 – 114	376	174	550	48	269	49	318	51
115 – 160	226	187	413	36	139	49	188	30
Valid Cases	721	417	1138	100	507	117	624	100
Means	110	113	111		109	112	110	

Institutional Research
Freshmen Profile
Fall 2008

Business	Admitted N= 882				Enrolled N=346			
	Res	Nonres	Total	Percent	Res	Nonres	Total	Percent
High School GPA								
2.5 – 2.999	3	7	10	1	2	1	3	1
3 – 3.599	188	95	283	32	101	14	115	33
3.6 – 4.0	315	160	475	54	151	31	182	53
4.001 – 10	75	29	104	12	39	6	45	13
Valid Cases	581	291	872	100	293	52	345	100
Means	3.70	3.67	3.69		3.67	3.73	3.68	
Percentile Rank								
1 – 29	0	4	4	1	0	3	3	1
30 – 49	22	9	31	4	14	1	15	5
50 – 59	41	18	59	8	20	2	22	7
60 – 79	190	65	255	35	102	8	110	36
80 – 89	147	55	202	28	79	10	89	29
90 – 99	138	45	183	25	59	10	69	22
Valid Cases	538	196	734	100	274	34	308	100
Means	78.3	76.4	77.8		77.3	76.3	77.2	
SAT Verbal								
200 – 399	0	1	1	0	0	1	1	1
400 – 499	43	20	63	15	23	1	24	19
500 – 599	105	97	202	49	43	16	59	46
600 – 699	75	55	130	32	36	7	43	33
700 – 800	8	8	16	4	2	0	2	2
Valid Cases	231	181	412	100	104	25	129	100
Means	566	570	568		560	556	559	
SAT Math								
400 – 499	23	8	31	8	9	2	11	9
500 – 599	97	90	187	45	46	17	63	49
600 – 699	99	73	172	42	43	6	49	38
700 – 800	12	10	22	5	6	0	6	5
Valid Cases	231	181	412	100	104	25	129	100
Means	587	595	591		589	568	585	
ACT Composite								
15 – 18	0	1	1	0	0	1	1	0
19 – 22	67	21	88	12	33	4	37	11
23 – 26	315	91	406	53	172	21	193	58
27 – 36	186	80	266	35	86	15	101	30
Valid Cases	568	193	761	100	291	41	332	100
Means	25.5	25.9	25.6		25.3	25.7	25.4	
CCHE Index								
101 – 114	219	103	322	37	120	20	140	41
115 – 160	362	188	550	63	173	32	205	59
Valid Cases	581	291	872	100	293	52	345	100
Means	119	119	119		118	119	118	

Institutional Research
Freshmen Profile
Fall 2008

Engineering	Admitted N= 928				Enrolled N=401			
	Res	Nonres	Total	Percent	Res	Nonres	Total	Percent
High School GPA								
3 – 3.599	136	94	230	25	82	23	105	27
3.6 – 4.0	317	182	499	55	171	39	210	53
4.001 – 10	118	63	181	20	66	12	78	20
Valid Cases	571	339	910	100	319	74	393	100
Means	3.80	3.77	3.79		3.79	3.74	3.78	
Percentile Rank								
1 – 29	1	0	1	0	1	0	1	0
30 – 49	8	5	13	2	4	0	4	1
50 – 59	25	12	37	5	14	4	18	5
60 – 79	175	69	244	32	103	16	119	33
80 – 89	127	66	193	25	68	19	87	24
90 – 99	183	88	271	36	111	16	127	36
Valid Cases	519	240	759	100	301	55	356	100
Means	81.5	82.3	81.7		81.8	81.6	81.7	
SAT Verbal								
200 – 399	2	5	7	1	0	2	2	1
400 – 499	31	26	57	12	20	4	24	13
500 – 599	106	106	212	43	50	23	73	41
600 – 699	85	96	181	37	47	20	67	38
700 – 800	16	21	37	7	6	6	12	7
Valid Cases	240	254	494	100	123	55	178	100
Means	579	583	581		575	586	579	
SAT Math								
400 – 499	4	1	5	1	2	1	3	2
500 – 599	58	61	119	24	35	8	43	24
600 – 699	136	145	281	57	65	34	99	56
700 – 800	42	47	89	18	21	12	33	19
Valid Cases	240	254	494	100	123	55	178	100
Means	637	643	640		633	653	639	
ACT Composite								
15 – 18	2	1	3	0	1	0	1	0
19 – 22	47	16	63	8	32	3	35	10
23 – 26	248	71	319	42	133	18	151	41
27 – 36	262	121	383	50	149	28	177	49
Valid Cases	559	209	768	100	315	49	364	100
Means	26.5	27.4	26.8		26.4	27.7	26.6	
CCHE Index								
101 – 114	110	42	152	17	72	7	79	20
115 – 160	461	297	758	83	247	67	314	80
Valid Cases	571	339	910	100	319	74	393	100
Means	122	124	123		122	125	122	

Institutional Research
Freshmen Profile
Fall 2008

Liberal Arts**Admitted N= 1662****Enrolled N=632****High School GPA**

	Res	Nonres	Total	Percent	Res	Nonres	Total	Percent
2.5 – 2.999	55	62	117	7	25	15	40	6
3 – 3.599	434	273	707	43	244	55	299	48
3.6 – 4.0	395	218	613	37	182	37	219	35
4.001 – 10	158	54	212	13	58	11	69	11
Valid Cases	1042	607	1649	100	509	118	627	100
Means	3.60	3.51	3.57		3.54	3.46	3.52	

Percentile Rank

1 – 29	5	4	9	1	1	1	2	0
30 – 49	82	53	135	10	56	18	74	14
50 – 59	118	42	160	12	70	9	79	14
60 – 79	315	126	441	33	167	20	187	34
80 – 89	207	80	287	22	99	15	114	21
90 – 99	204	88	292	22	74	16	90	16
Valid Cases	931	393	1324	100	467	79	546	100
Means	74.3	72.9	73.9		71.5	68.9	71.2	

SAT Verbal

200 – 399	3	6	9	1	3	1	4	2
400 – 499	52	68	120	15	20	12	32	13
500 – 599	160	180	340	42	73	32	105	43
600 – 699	157	122	279	34	59	19	78	32
700 – 800	38	25	63	8	18	9	27	11
Valid Cases	410	401	811	100	173	73	246	100
Means	589	568	578		586	577	583	

SAT Math

200 – 399	8	5	13	2	4	0	4	2
400 – 499	72	90	162	20	36	17	53	22
500 – 599	210	197	407	50	90	32	122	50
600 – 699	103	96	199	25	35	23	58	24
700 – 800	17	13	30	4	8	1	9	4
Valid Cases	410	401	811	100	173	73	246	100
Means	558	552	555		549	561	552	

ACT Composite

15 – 18	26	9	35	2	14	2	16	3
19 – 22	243	90	333	23	118	14	132	23
23 – 26	420	180	600	42	229	39	268	46
27 – 36	324	133	457	32	134	30	164	28
Valid Cases	1013	412	1425	100	495	85	580	100
Means	24.8	25.0	24.9		24.5	25.2	24.6	

CCHE Index

90 – 100	76	60	136	8	40	15	55	9
101 – 114	437	269	706	43	241	51	292	47
115 – 160	529	277	806	49	228	52	280	45
Valid Cases	1042	606	1648	100	509	118	627	100
Means	116	114	115		114	114	114	

Institutional Research
Freshmen Profile
Fall 2008

Warner College of Natural Resources	Admitted N= 213				Enrolled N=101			
	Res	Nonres	Total	Percent	Res	Nonres	Total	Percent
High School GPA								
2.5 – 2.999	3	15	18	9	2	4	6	6
3 – 3.599	50	44	94	45	36	16	52	51
3.6 – 4.0	44	30	74	35	31	6	37	37
4.001 – 10	9	15	24	11	4	2	6	6
Valid Cases	106	104	210	100	73	28	101	100
Means	3.55	3.49	3.52		3.51	3.34	3.46	
Percentile Rank								
1 – 29	0	2	2	1	0	0	0	0
30 – 49	9	2	11	7	6	1	7	9
50 – 59	14	8	22	14	12	1	13	16
60 – 79	38	28	66	41	28	9	37	45
80 – 89	16	9	25	16	11	1	12	15
90 – 99	23	12	35	22	12	1	13	16
Valid Cases	100	61	161	100	69	13	82	100
Means	73.1	72.0	72.7		70.9	68.4	70.5	
SAT Verbal								
200 – 399	1	1	2	2	1	0	1	3
400 – 499	6	15	21	21	4	5	9	26
500 – 599	10	32	42	42	7	7	14	41
600 – 699	8	20	28	28	6	3	9	26
700 – 800	3	3	6	6	0	1	1	3
Valid Cases	28	71	99	100	18	16	34	100
Means	570	557	561		541	539	540	
SAT Math								
400 – 499	8	11	19	19	5	4	9	26
500 – 599	9	34	43	43	7	9	16	47
600 – 699	10	25	35	35	6	3	9	26
700 – 800	1	1	2	2	0	0	0	0
Valid Cases	28	71	99	100	18	16	34	100
Means	561	564	564		549	531	540	
ACT Composite								
15 – 18	3	0	3	2	1	0	1	1
19 – 22	40	13	53	31	30	9	39	40
23 – 26	37	33	70	40	28	9	37	38
27 – 36	26	21	47	27	14	6	20	21
Valid Cases	106	67	173	100	73	24	97	100
Means	24.0	25.1	24.4		23.6	24.5	23.8	
CCHE Index								
90 – 100	19	11	30	14	14	2	16	16
101 – 114	47	45	92	44	35	20	55	54
115 – 160	40	48	88	42	24	6	30	30
Valid Cases	106	104	210	100	73	28	101	100
Means	113	114	114		112	110	111	

Institutional Research
Freshmen Profile
Fall 2008

Natural Sciences**Admitted N= 1618****Enrolled N=673**

	Res	Nonres	Total	Percent	Res	Nonres	Total	Percent
High School GPA								
2.5 – 2.999	43	40	83	5	28	11	39	6
3 – 3.599	353	262	615	39	209	63	272	41
3.6 – 4.0	368	281	649	41	191	73	264	40
4.001 – 10	141	105	246	15	62	26	88	13
Valid Cases	905	688	1593	100	490	173	663	100
Means	3.63	3.63	3.63		3.59	3.64	3.60	
Percentile Rank								
1 – 29	6	6	12	1	3	1	4	1
30 – 49	64	28	92	7	41	5	46	8
50 – 59	73	39	112	9	44	11	55	10
60 – 79	294	117	411	32	153	36	189	33
80 – 89	154	120	274	22	101	40	141	25
90 – 99	224	148	372	29	103	31	134	24
Valid Cases	815	458	1273	100	445	124	569	100
Means	75.9	78.3	76.8		74.9	78.3	75.6	
SAT Verbal								
200 – 399	5	10	15	2	2	3	5	2
400 – 499	66	83	149	18	33	21	54	19
500 – 599	169	204	373	44	75	53	128	46
600 – 699	107	147	254	30	52	31	83	30
700 – 800	25	23	48	6	6	5	11	4
Valid Cases	372	467	839	100	168	113	281	100
Means	568	564	565		564	557	561	
SAT Math								
200 – 399	2	9	11	1	1	4	5	2
400 – 499	58	72	130	15	35	18	53	19
500 – 599	149	191	340	41	64	46	110	39
600 – 699	134	160	294	35	56	39	95	34
700 – 800	29	35	64	8	12	6	18	6
Valid Cases	372	467	839	100	168	113	281	100
Means	580	574	577		572	564	569	
ACT Composite								
1 – 14	2	0	2	0	2	0	2	0
15 – 18	36	11	47	4	19	3	22	4
19 – 22	210	83	293	22	126	20	146	25
23 – 26	337	192	529	40	179	50	229	39
27 – 36	290	166	456	34	150	39	189	32
Valid Cases	875	452	1327	100	476	112	588	100
Means	24.8	25.4	25.0		24.6	25.3	24.8	
CCHE Index								
90 – 100	66	52	118	7	37	14	51	8
101 – 114	354	234	588	37	214	62	276	42
115 – 160	485	402	887	56	239	97	336	51
Valid Cases	905	688	1593	100	490	173	663	100
Means	116	117	117		115	117	115	

Institutional Research
Freshmen Profile
Fall 2008

**Veterinary Medicine +
Biomedical Sci**
Admitted N= 291
Enrolled N=126

	Res	Nonres	Total	Percent	Res	Nonres	Total	Percent
High School GPA								
2.5 – 2.999	1	3	4	1	1	1	2	2
3 – 3.599	15	19	34	12	11	4	15	12
3.6 – 4.0	95	55	150	52	60	14	74	59
4.001 – 10	66	36	102	35	28	6	34	27
Valid Cases	177	113	290	100	100	25	125	100
Means	3.97	3.89	3.94		3.92	3.88	3.91	
Percentile Rank								
30 – 49	1	3	4	2	1	1	2	2
50 – 59	0	1	1	0	0	0	0	0
60 – 79	22	10	32	14	14	3	17	16
80 – 89	36	13	49	21	20	4	24	23
90 – 99	98	49	147	63	53	8	61	59
Valid Cases	157	76	233	100	88	16	104	100
Means	88.9	88.5	88.8		88.1	86.7	87.9	
SAT Verbal								
400 – 499	4	5	9	5	1	0	1	2
500 – 599	36	32	68	40	18	6	24	36
600 – 699	41	31	72	42	22	10	32	48
700 – 800	14	7	21	12	8	1	9	14
Valid Cases	95	75	170	100	49	17	66	100
Means	611	598	605		618	610	616	
SAT Math								
400 – 499	3	5	8	5	0	1	1	2
500 – 599	36	19	55	32	18	3	21	32
600 – 699	44	41	85	50	26	12	38	58
700 – 800	12	10	22	13	5	1	6	9
Valid Cases	95	75	170	100	49	17	66	100
Means	614	621	617		616	618	617	
ACT Composite								
19 – 22	12	7	19	8	8	3	11	10
23 – 26	58	21	79	31	40	1	41	37
27 – 36	101	54	155	61	48	11	59	53
Valid Cases	171	82	253	100	96	15	111	100
Means	27.4	27.6	27.4		26.9	27.1	27.0	
CCHE Index								
90 – 100	1	3	4	1	1	1	2	2
101 – 114	13	9	22	8	10	2	12	10
115 – 160	163	101	264	91	89	22	111	89
Valid Cases	177	113	290	100	100	25	125	100
Means	126	125	126		125	125	125	

Institutional Research
Freshmen Profile
Fall 2008

Intra-University**Admitted N= 3348****Enrolled N=1255****High School GPA**

	Res	Nonres	Total	Percent	Res	Nonres	Total	Percent
2 – 2.499	3	2	5	0	3	1	4	0
2.5 – 2.999	168	192	360	11	92	49	141	11
3 – 3.599	1156	627	1783	54	640	95	735	59
3.6 – 4.0	627	308	935	28	269	43	312	25
4.001 – 10	139	73	212	6	39	10	49	4
Valid Cases	2093	1202	3295	100	1043	198	1241	100
Means	3.44	3.37	3.42		3.38	3.28	3.36	

Percentile Rank

1 – 29	20	20	40	2	13	7	20	2
30 – 49	309	134	443	17	184	36	220	20
50 – 59	317	103	420	16	193	17	210	19
60 – 79	669	215	884	34	335	39	374	34
80 – 89	312	104	416	16	141	15	156	14
90 – 99	267	108	375	15	105	17	122	11
Valid Cases	1894	684	2578	100	971	131	1102	100
Means	68.1	66.4	67.7		65.5	61.6	65.0	

SAT Verbal

200 – 399	27	26	53	4	15	5	20	5
400 – 499	191	204	395	27	91	35	126	31
500 – 599	296	390	686	46	127	60	187	47
600 – 699	135	164	299	20	36	18	54	13
700 – 800	31	18	49	3	10	5	15	4
Valid Cases	680	802	1482	100	279	123	402	100
Means	540	536	538		525	530	527	

SAT Math

200 – 399	12	6	18	1	6	1	7	2
400 – 499	155	148	303	20	76	30	106	26
500 – 599	297	394	691	47	133	62	195	49
600 – 699	194	223	417	28	63	24	87	22
700 – 800	22	31	53	4	1	6	7	2
Valid Cases	680	802	1482	100	279	123	402	100
Means	553	561	557		538	547	541	

ACT Composite

1 – 14	1	0	1	0	0	0	0	0
15 – 18	97	23	120	4	59	7	66	6
19 – 22	807	219	1026	37	461	40	501	44
23 – 26	785	307	1092	39	399	48	447	39
27 – 36	355	180	535	19	112	25	137	12
Valid Cases	2045	729	2774	100	1031	120	1151	100
Means	23.4	24.1	23.6		22.8	23.5	22.8	

CCHE Index

90 – 100	321	197	518	16	205	50	255	21
101 – 114	1154	653	1807	55	619	103	722	58
115 – 160	616	350	966	29	217	43	260	21
Valid Cases	2091	1200	3291	100	1041	196	1237	100
Means	110	110	110		108	107	108	

**Fall 2007 Freshmen
and
Their Performance
at CSU
After One Year**

Number of New Freshmen by High School GPA & Rank,
Test Scores, CCHE Index and CSU GPA
CSU GPA after One Year for Freshmen Entering Fall 2007

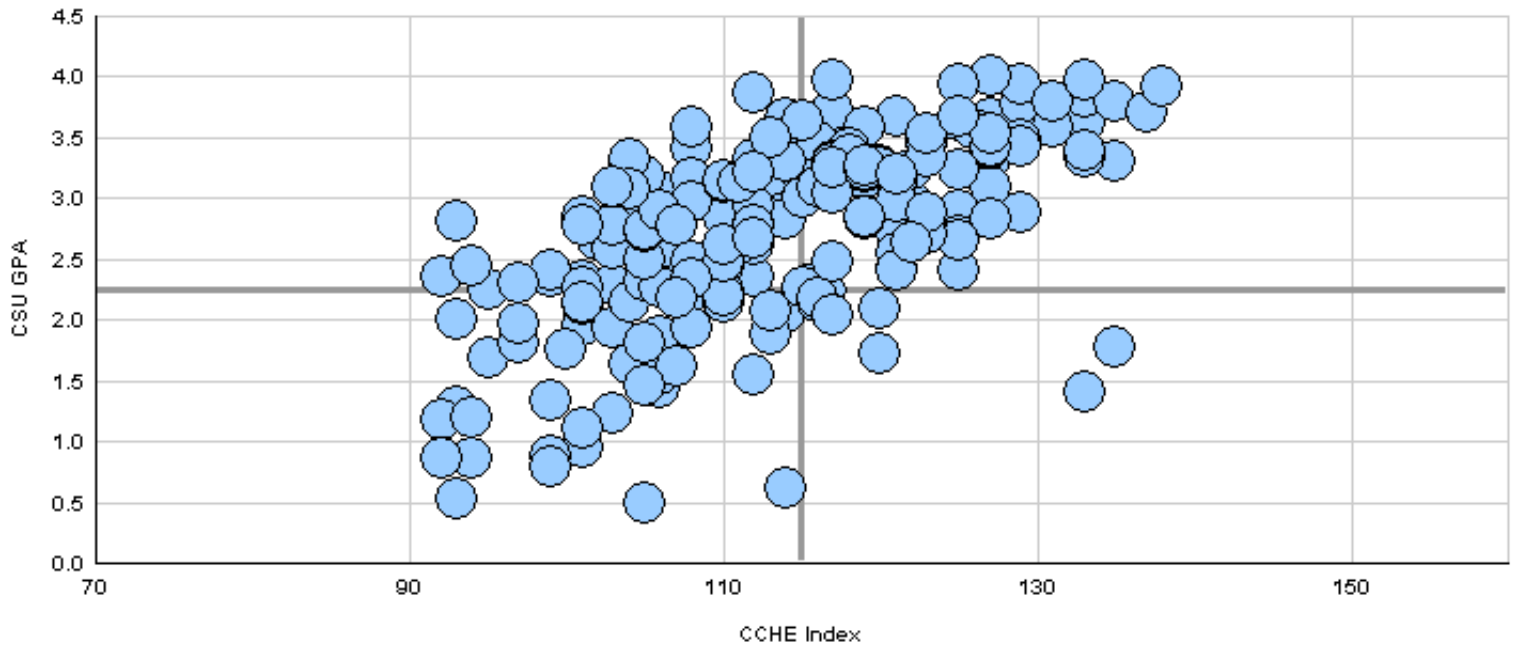
Agricultural Sciences

	CSU GPA				Total
	0.1 - 1.9	2.0 - 2.9	3.0 - 3.5	3.6 - 4.0	
High School GPA					
2.5 - 2.999	4	7			11
3 - 3.599	23	49	15	1	88
3.6 - 4.0	7	33	43	26	109
4.001 - 10			4	3	7
Total	34	89	62	30	215
Percentile Rank					
1 - 29	2	2			4
30 - 49	5	7			12
50 - 59	1	6	1		8
60 - 79	15	35	13	6	69
80 - 89	2	16	18	8	44
90 - 99	1	7	14	13	35
Total	26	73	46	27	172
SAT Verbal					
200 - 399		1			1
400 - 499	6	15	7	2	30
500 - 599	4	14	11	4	33
600 - 699	1	4	10	7	22
700 - 800	1			4	5
Total	12	34	28	17	91
SAT Math					
200 - 399		1			1
400 - 499	4	10	4	1	19
500 - 599	7	15	12	5	39
600 - 699	1	8	12	10	31
700 - 800				1	1
Total	12	34	28	17	91
ACT Composite					
15 - 18	3	5			8
19 - 22	10	26	18	4	58
23 - 26	8	30	17	9	64
27 - 36	2	13	16	10	41
Total	23	74	51	23	171
CCHE Index					
90 - 100	13	8			21
101 - 114	18	55	22	3	98
115 - 160	3	26	40	27	96
Total	34	89	62	30	215

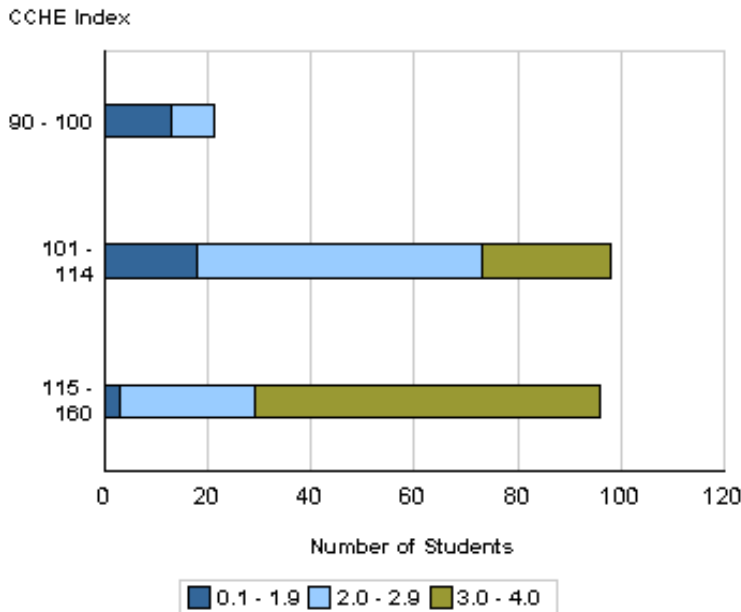
Number of New Freshmen by High School GPA & Rank,
 Test Scores, CCHE Index and CSU GPA
 CSU GPA after One Year for Freshmen Entering Fall 2007

Agricultural Sciences

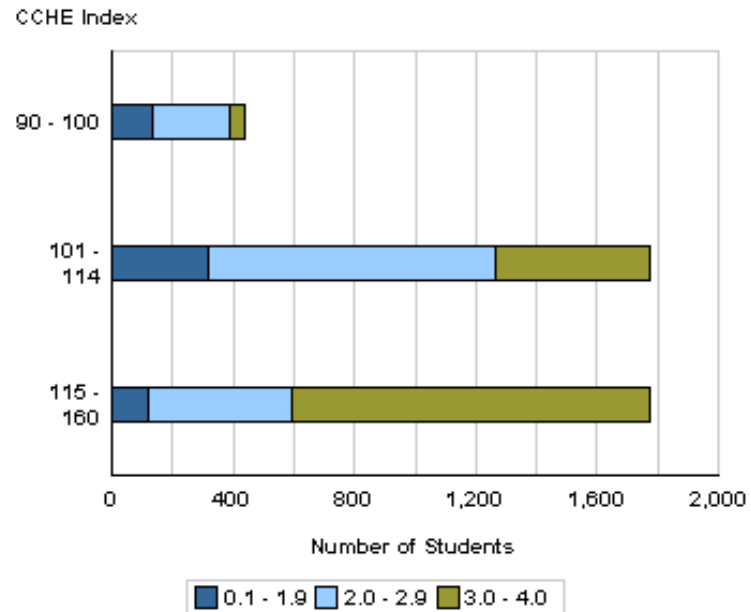
**Fall 2007 - Spring 2008
 First Year CSU GPA by CCHE Index**



Your College



All CSU Freshmen



Number of New Freshmen by High School GPA & Rank,
Test Scores, CCHE Index and CSU GPA
CSU GPA after One Year for Freshmen Entering Fall 2007

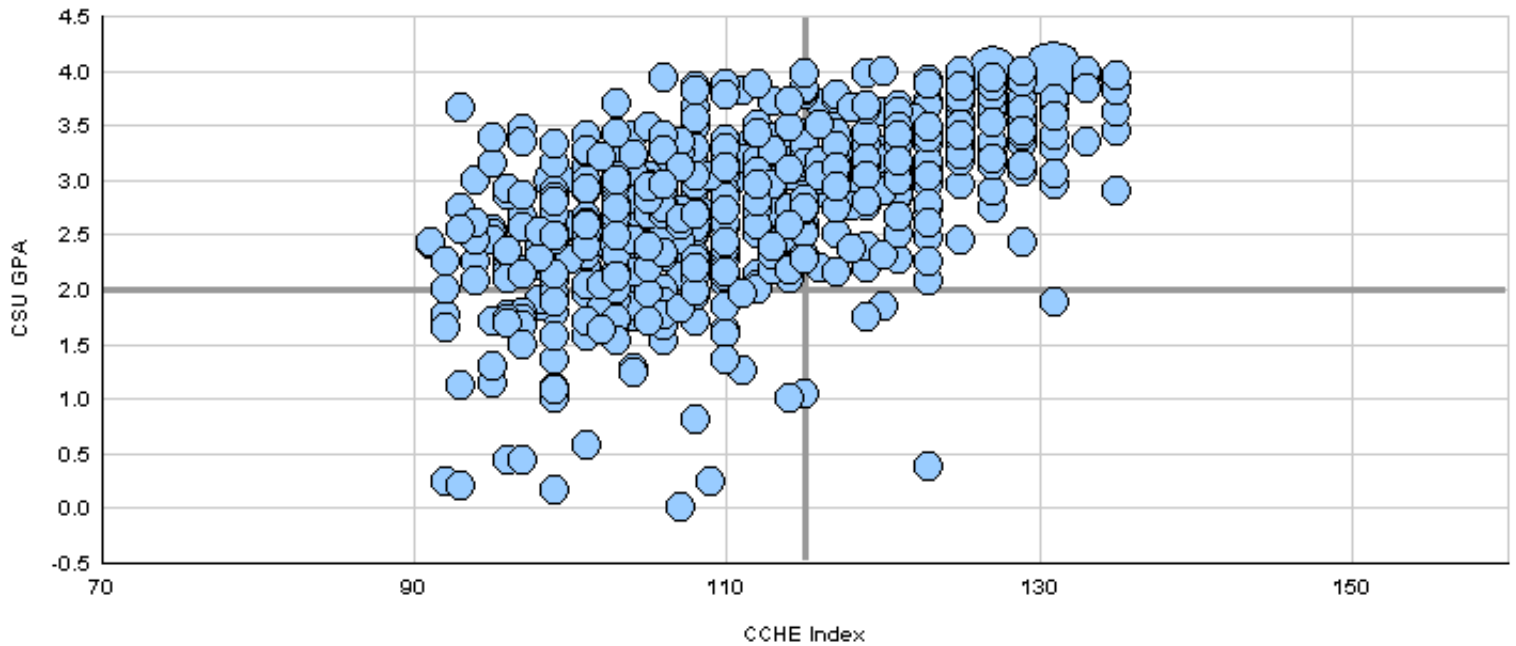
Applied Human Sciences

	CSU GPA				Total
	0.1 - 1.9	2.0 - 2.9	3.0 - 3.5	3.6 - 4.0	
High School GPA					
2.5 - 2.999	11	20	7		38
3 - 3.599	57	140	45	8	250
3.6 - 4.0	6	84	84	56	230
4.001 - 10	2	4	12	20	38
Total	76	248	148	84	556
Percentile Rank					
1 - 29	1	4	1		6
30 - 49	22	32	13		67
50 - 59	11	33	13	3	60
60 - 79	21	93	43	11	168
80 - 89	7	42	36	25	110
90 - 99	2	16	26	41	85
Total	64	220	132	80	496
SAT Verbal					
200 - 399	2				2
400 - 499	10	36	18	3	67
500 - 599	9	39	31	13	92
600 - 699	4	6	6	9	25
700 - 800				2	2
Total	25	81	55	27	188
SAT Math					
200 - 399	2	2	2		6
400 - 499	9	22	13	1	45
500 - 599	10	41	25	9	85
600 - 699	4	16	15	16	51
700 - 800				1	1
Total	25	81	55	27	188
ACT Composite					
1 - 14		1			1
15 - 18	10	10	2	1	23
19 - 22	34	110	42	13	199
23 - 26	19	93	75	28	215
27 - 36	2	10	22	38	72
Total	65	224	141	80	510
CCHE Index					
90 - 100	29	51	9	1	90
101 - 114	42	152	65	12	271
115 - 160	5	45	74	71	195
Total	76	248	148	84	556

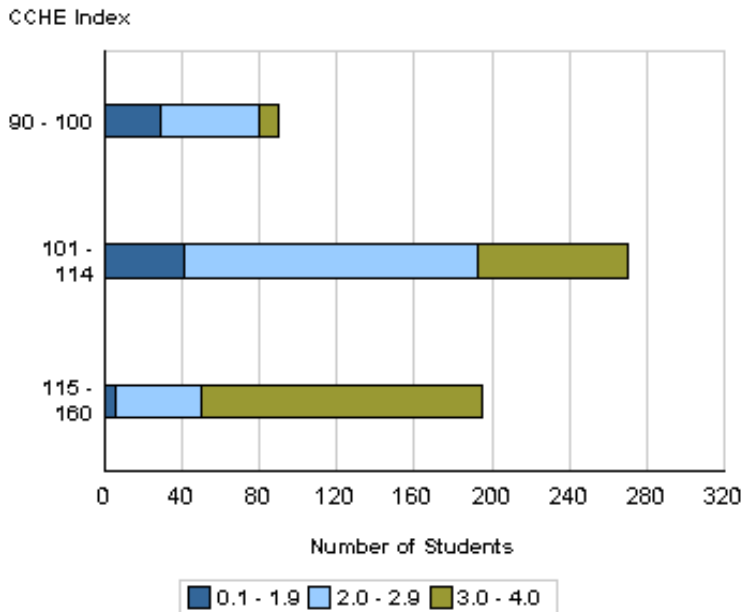
Number of New Freshmen by High School GPA & Rank,
 Test Scores, CCHE Index and CSU GPA
 CSU GPA after One Year for Freshmen Entering Fall 2007

Applied Human Sciences

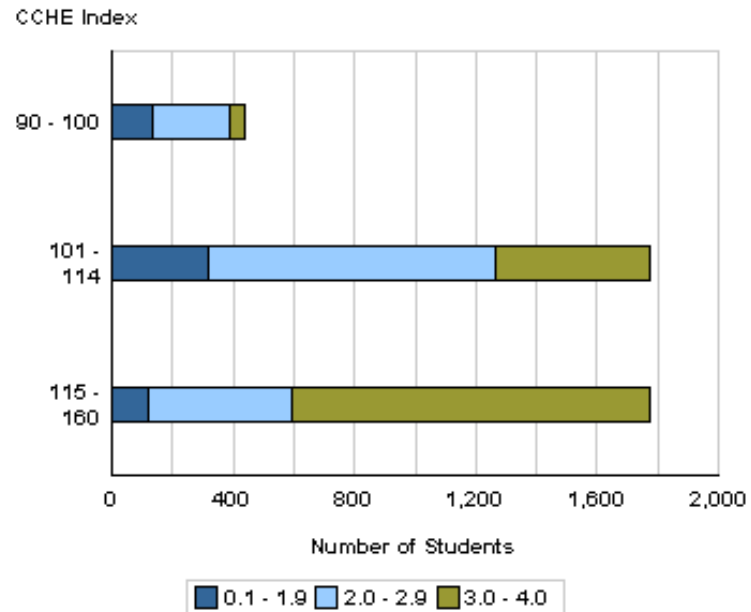
**Fall 2007 - Spring 2008
 First Year CSU GPA by CCHE Index**



Your College



All CSU Freshmen



Number of New Freshmen by High School GPA & Rank,
Test Scores, CCHE Index and CSU GPA
CSU GPA after One Year for Freshmen Entering Fall 2007

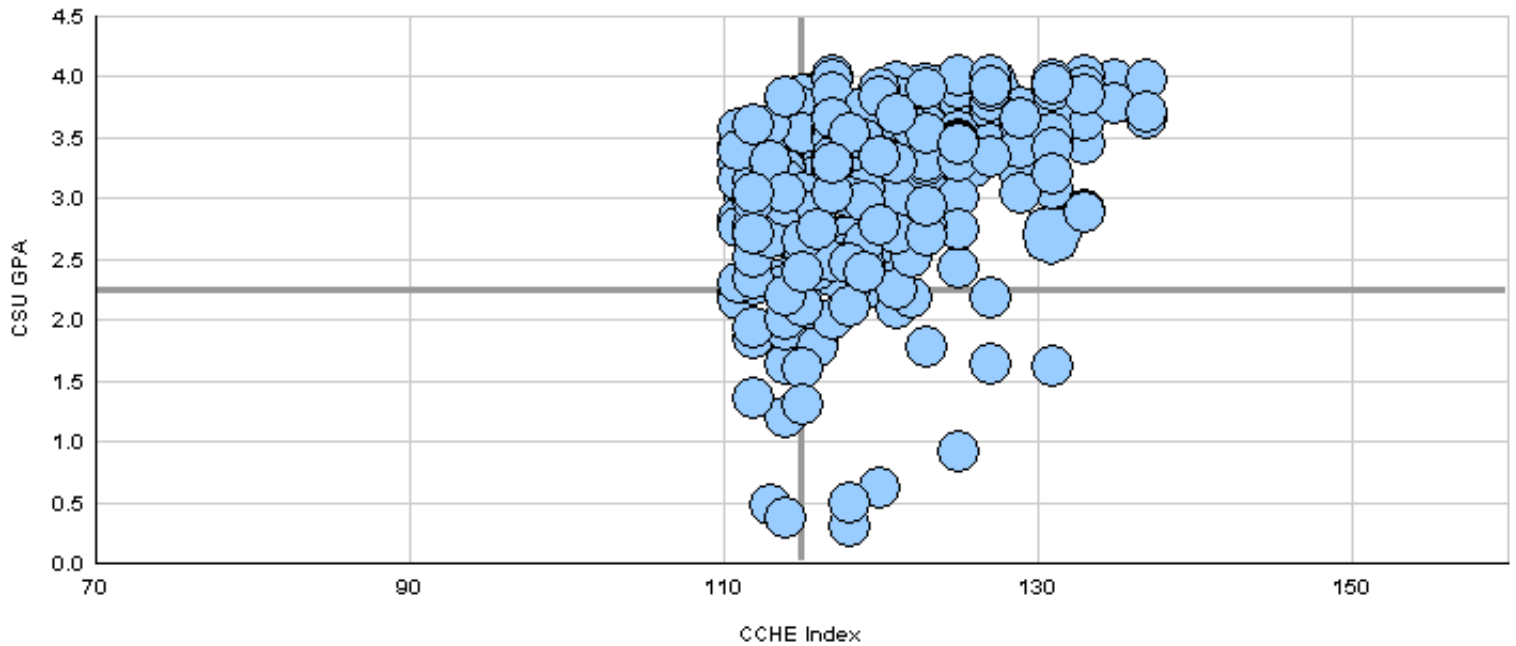
Business

	CSU GPA				Total
	0.1 - 1.9	2.0 - 2.9	3.0 - 3.5	3.6 - 4.0	
High School GPA					
2.5 - 2.999	1	1			2
3 - 3.599	11	37	26	9	83
3.6 - 4.0	7	46	82	61	196
4.001 - 10		6	9	17	32
Total	19	90	117	87	313
Percentile Rank					
30 - 49		8	2		10
50 - 59		5	7	2	14
60 - 79	11	43	49	11	114
80 - 89	3	21	28	32	84
90 - 99	1	6	25	40	72
Total	15	83	111	85	294
SAT Verbal					
400 - 499	1	9	7	4	21
500 - 599	5	17	27	20	69
600 - 699	3	11	11	15	40
700 - 800			1	1	2
Total	9	37	46	40	132
SAT Math					
400 - 499	1	2	2	4	9
500 - 599	4	16	20	13	53
600 - 699	3	15	21	17	56
700 - 800	1	4	3	6	14
Total	9	37	46	40	132
ACT Composite					
19 - 22		10	11	7	28
23 - 26	11	49	63	36	159
27 - 36	6	24	31	38	99
Total	17	83	105	81	286
CCHE Index					
101 - 114	8	33	35	7	83
115 - 160	11	57	82	80	230
Total	19	90	117	87	313

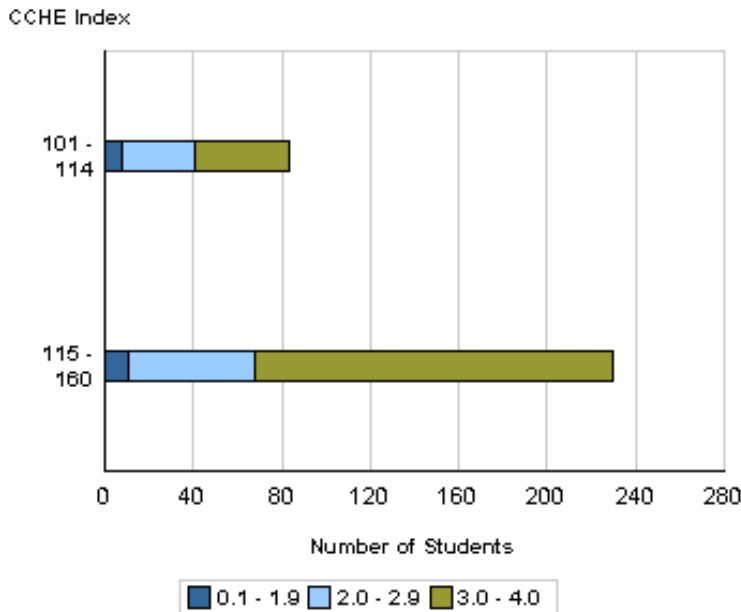
Number of New Freshmen by High School GPA & Rank,
 Test Scores, CCHE Index and CSU GPA
 CSU GPA after One Year for Freshmen Entering Fall 2007

Business

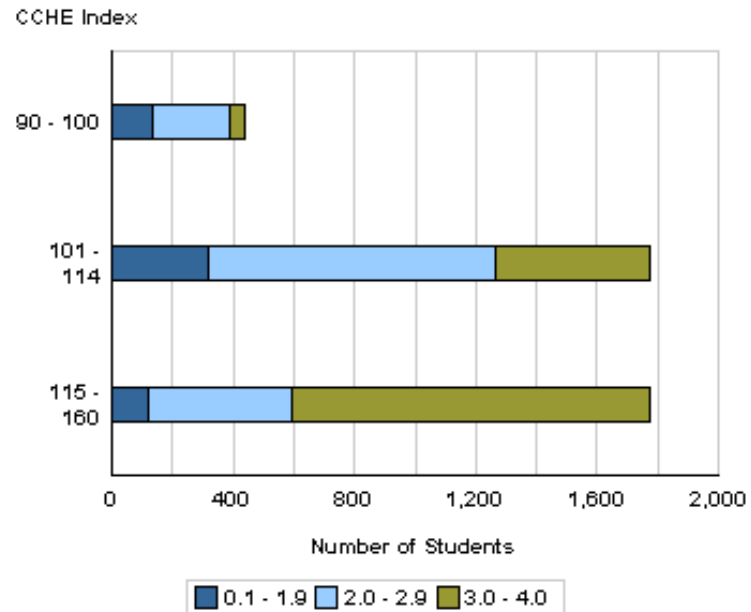
**Fall 2007 - Spring 2008
 First Year CSU GPA by CCHE Index**



Your College



All CSU Freshmen



Number of New Freshmen by High School GPA & Rank,
Test Scores, CCHE Index and CSU GPA
CSU GPA after One Year for Freshmen Entering Fall 2007

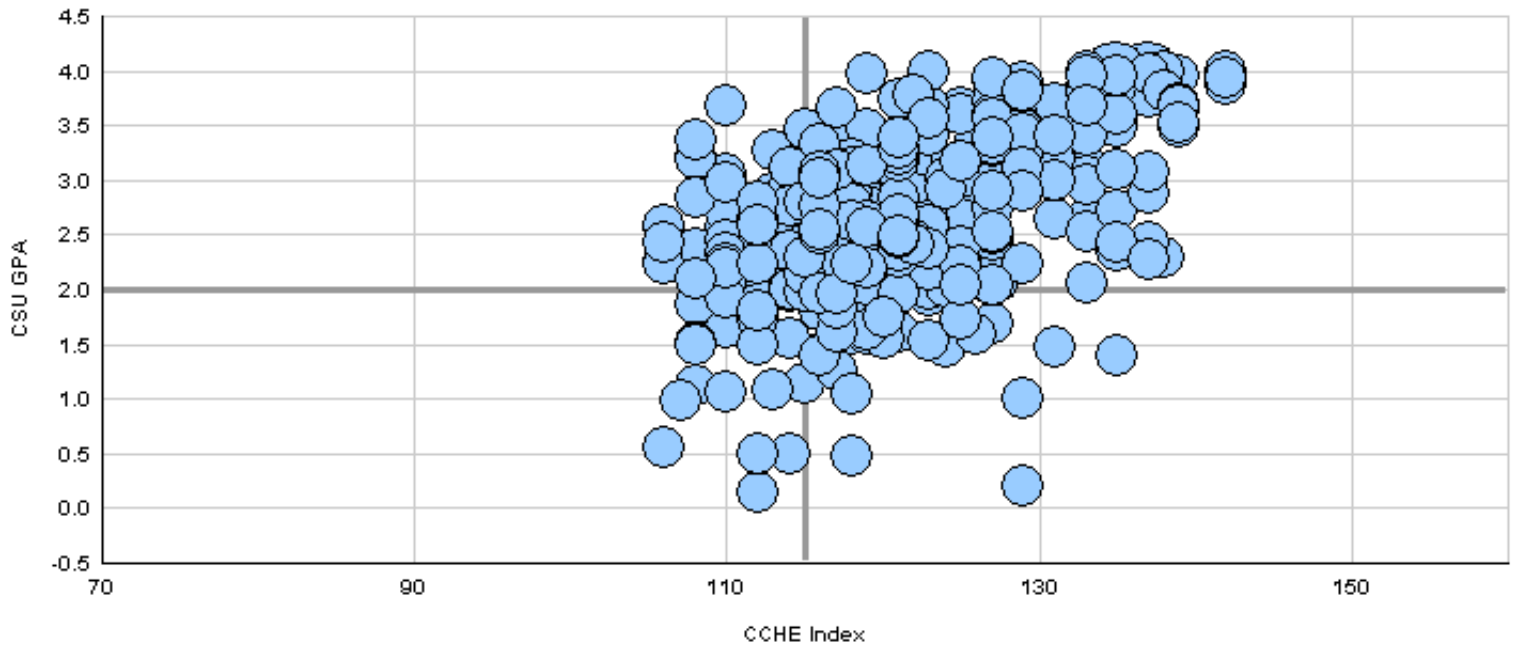
Engineering

	CSU GPA				Total
	0.1 - 1.9	2.0 - 2.9	3.0 - 3.5	3.6 - 4.0	
High School GPA					
3 - 3.599	28	58	11	1	98
3.6 - 4.0	26	84	48	28	186
4.001 - 10		12	15	26	53
Total	54	154	74	55	337
Percentile Rank					
1 - 29	1				1
30 - 49	3	9		1	13
50 - 59	7	12	3		22
60 - 79	21	49	18	5	93
80 - 89	17	42	21	5	85
90 - 99	2	30	27	39	98
Total	51	142	69	50	312
SAT Verbal					
200 - 399		3	2	2	7
400 - 499	5	12	4	2	23
500 - 599	6	38	12	6	62
600 - 699	9	18	16	11	54
700 - 800		4	2	9	15
Total	20	75	36	30	161
SAT Math					
400 - 499		1	1		2
500 - 599	9	35	15	4	63
600 - 699	11	29	17	14	71
700 - 800		10	3	12	25
Total	20	75	36	30	161
ACT Composite					
19 - 22	3	22	3	1	29
23 - 26	25	71	32	7	135
27 - 36	22	49	31	39	141
Total	50	142	66	47	305
CCHE Index					
101 - 114	20	47	7	1	75
115 - 160	34	107	67	54	262
Total	54	154	74	55	337

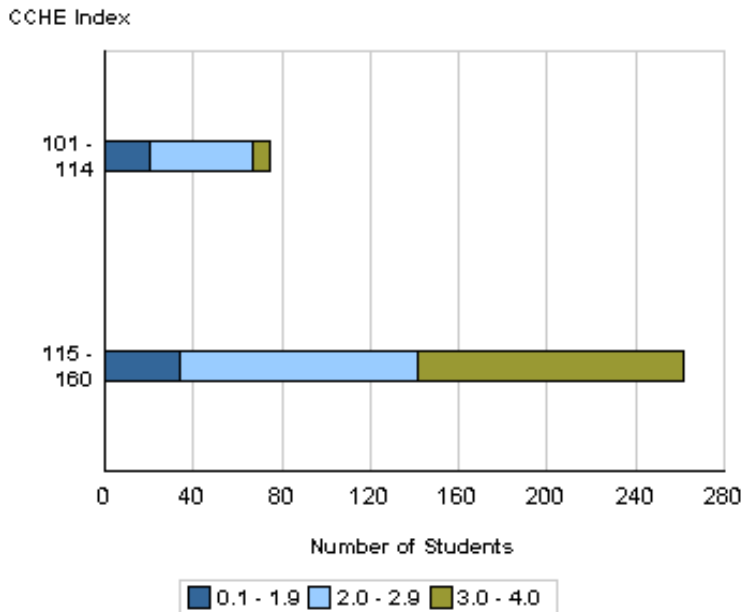
Number of New Freshmen by High School GPA & Rank,
 Test Scores, CCHE Index and CSU GPA
 CSU GPA after One Year for Freshmen Entering Fall 2007

Engineering

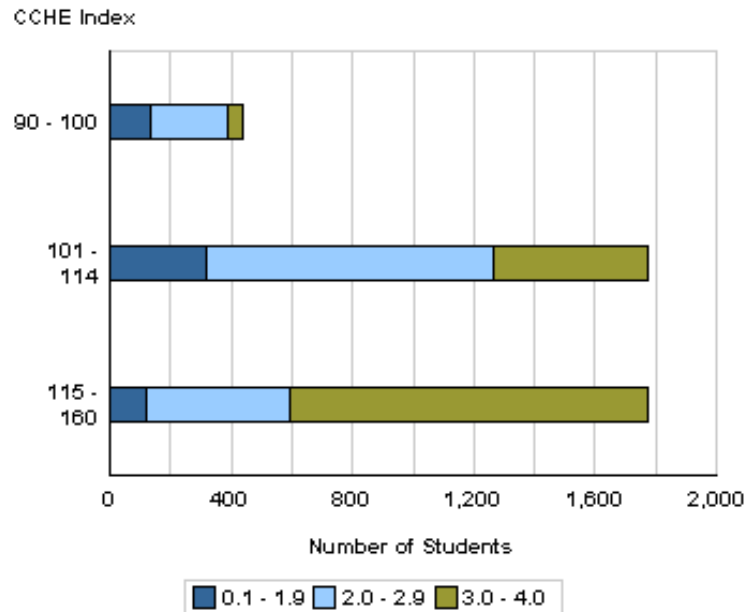
**Fall 2007 - Spring 2008
 First Year CSU GPA by CCHE Index**



Your College



All CSU Freshmen



Number of New Freshmen by High School GPA & Rank,
Test Scores, CCHE Index and CSU GPA
CSU GPA after One Year for Freshmen Entering Fall 2007

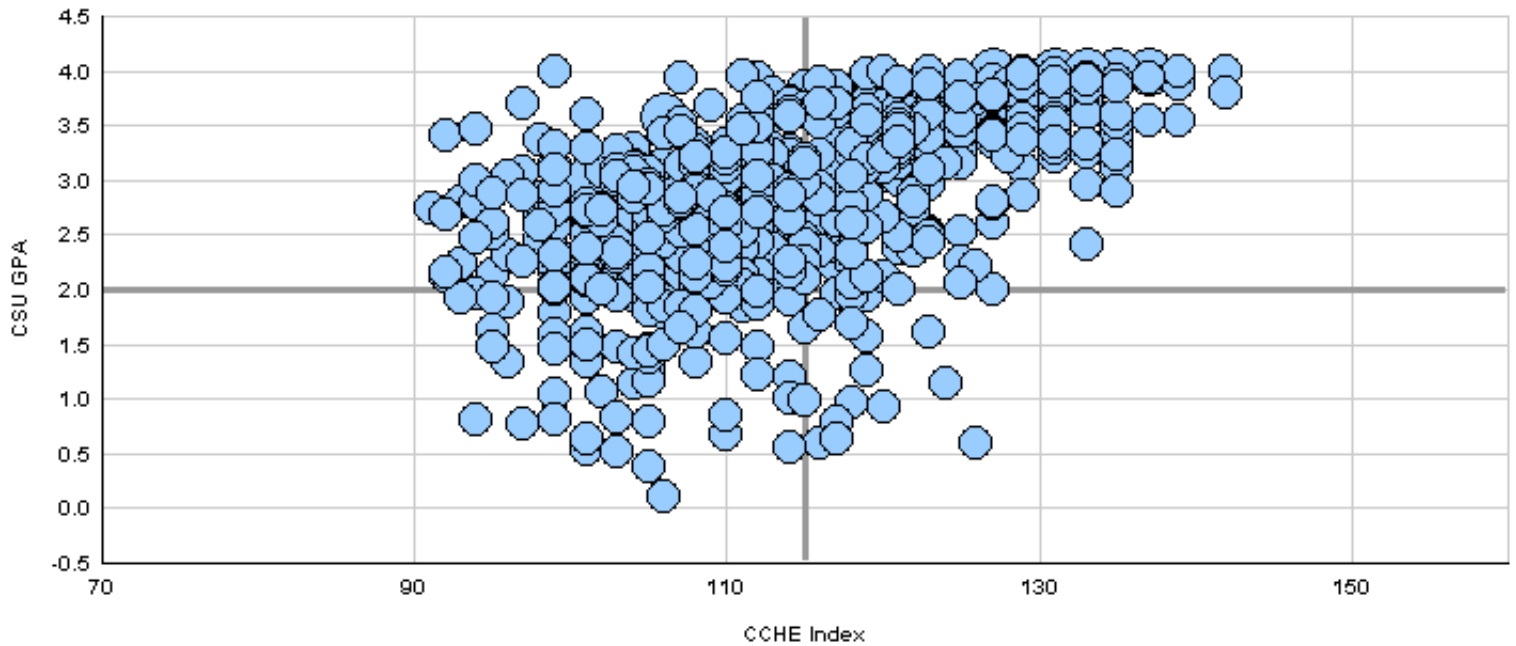
Liberal Arts

	CSU GPA				Total
	0.1 - 1.9	2.0 - 2.9	3.0 - 3.5	3.6 - 4.0	
High School GPA					
2.5 - 2.999	19	18	7	1	45
3 - 3.599	50	164	54	18	286
3.6 - 4.0	11	62	81	86	240
4.001 - 10	1	3	10	39	53
Total	81	247	152	144	624
Percentile Rank					
1 - 29	2	3	3	1	9
30 - 49	15	35	8	3	61
50 - 59	11	37	20	4	72
60 - 79	28	102	41	31	202
80 - 89	10	34	41	35	120
90 - 99	3	13	24	58	98
Total	69	224	137	132	562
SAT Verbal					
200 - 399		2			2
400 - 499	9	20	10	5	44
500 - 599	9	41	24	20	94
600 - 699	9	29	20	37	95
700 - 800		5	6	11	22
Total	27	97	60	73	257
SAT Math					
200 - 399	2	3			5
400 - 499	9	30	10	9	58
500 - 599	11	46	36	31	124
600 - 699	5	17	14	26	62
700 - 800		1		7	8
Total	27	97	60	73	257
ACT Composite					
15 - 18	3	12	1		16
19 - 22	24	73	39	8	144
23 - 26	33	108	64	51	256
27 - 36	12	32	39	80	163
Total	72	225	143	139	579
CCHE Index					
90 - 100	14	32	10	2	58
101 - 114	50	153	57	17	277
115 - 160	17	62	85	125	289
Total	81	247	152	144	624

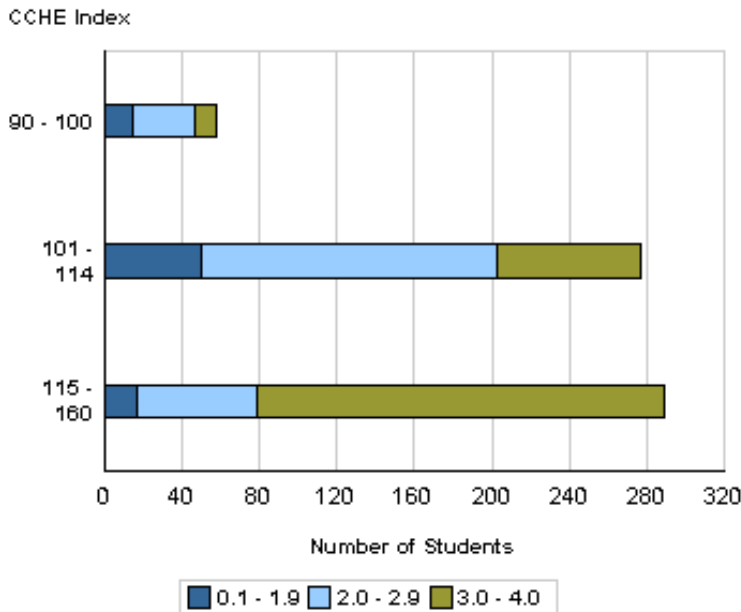
Number of New Freshmen by High School GPA & Rank,
Test Scores, CCHE Index and CSU GPA
CSU GPA after One Year for Freshmen Entering Fall 2007

Liberal Arts

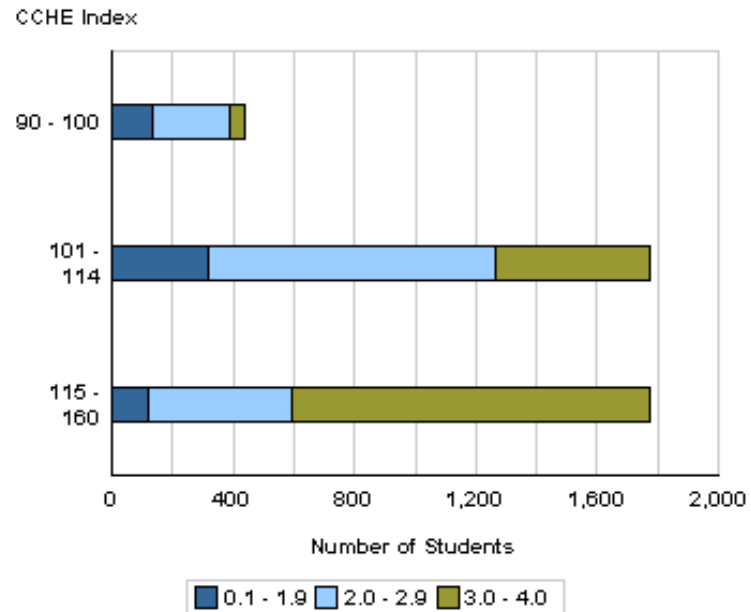
**Fall 2007 - Spring 2008
First Year CSU GPA by CCHE Index**



Your College



All CSU Freshmen



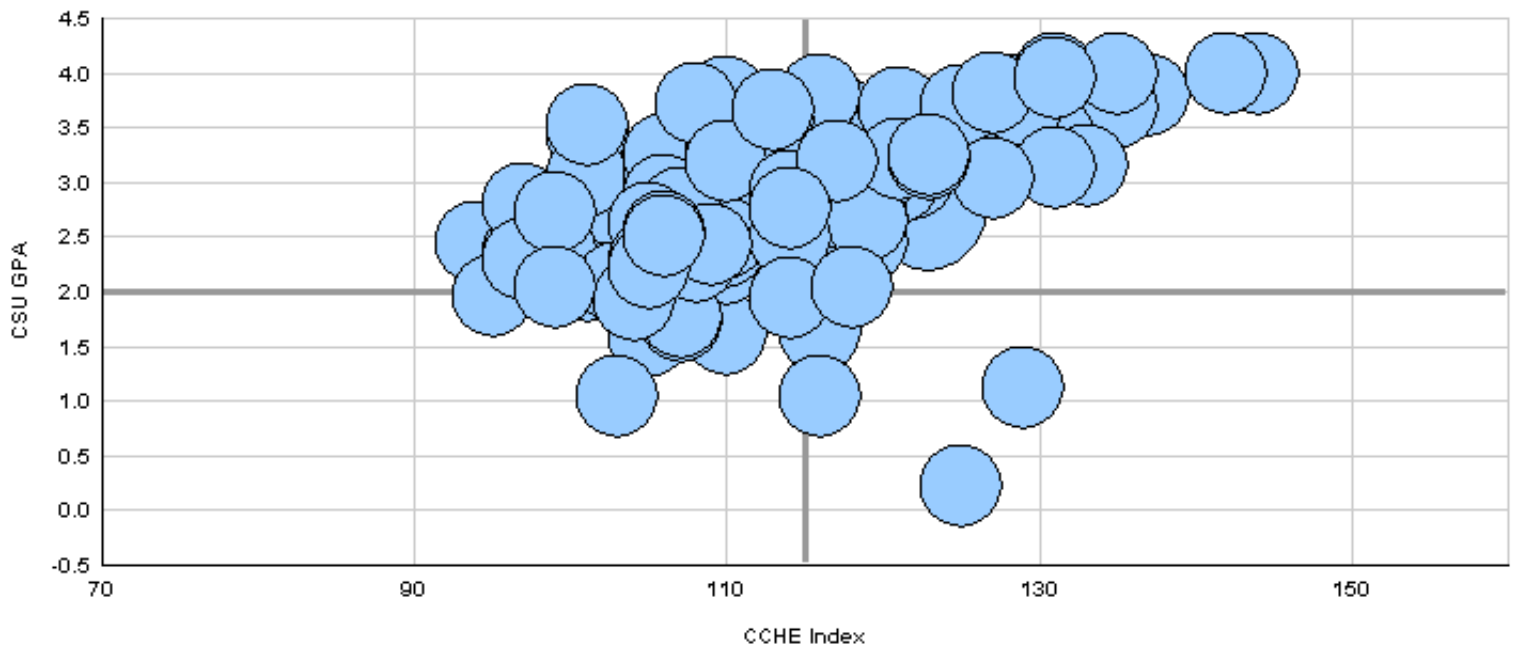
Number of New Freshmen by High School GPA & Rank,
Test Scores, CCHE Index and CSU GPA
CSU GPA after One Year for Freshmen Entering Fall 2007

Warner College of Natural Resources	CSU GPA				Total
	0.1 - 1.9	2.0 - 2.9	3.0 - 3.5	3.6 - 4.0	
High School GPA					
2.5 - 2.999	1	5			6
3 - 3.599	8	24	13	4	49
3.6 - 4.0	3	11	11	10	35
4.001 - 10		1	7	9	17
Total	12	41	31	23	107
Percentile Rank					
1 - 29			1		1
30 - 49	2	5	1	1	9
50 - 59	2	5	1		8
60 - 79	7	10	6	4	27
80 - 89		8	7	3	18
90 - 99		3	6	14	23
Total	11	31	22	22	86
SAT Verbal					
400 - 499		6	1		7
500 - 599		8	5	2	15
600 - 699	4	2	6	6	18
700 - 800	1		1	3	5
Total	5	16	13	11	45
SAT Math					
400 - 499	1	2			3
500 - 599	3	10	7	1	21
600 - 699		4	6	8	18
700 - 800	1			2	3
Total	5	16	13	11	45
ACT Composite					
15 - 18		1	1		2
19 - 22	4	16	3	2	25
23 - 26	4	17	10	8	39
27 - 36	2	3	14	8	27
Total	10	37	28	18	93
CCHE Index					
90 - 100	1	7			8
101 - 114	7	24	8	5	44
115 - 160	4	10	23	18	55
Total	12	41	31	23	107

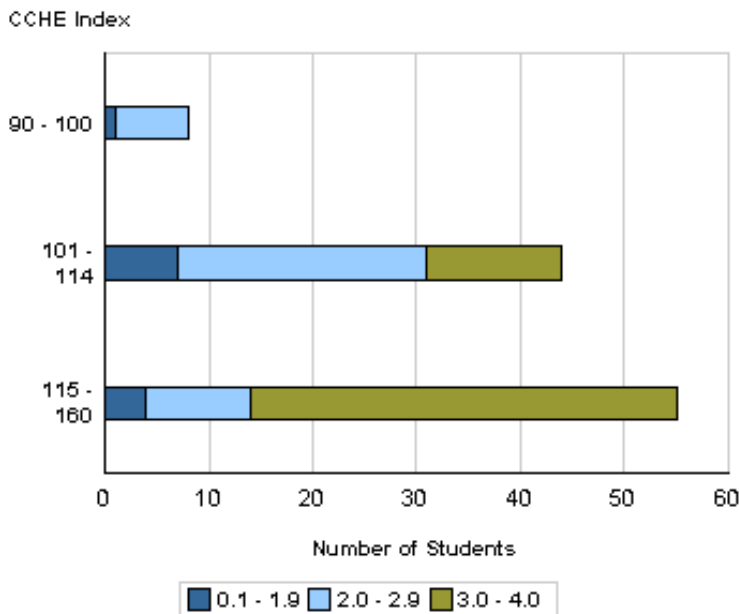
Number of New Freshmen by High School GPA & Rank,
 Test Scores, CCHE Index and CSU GPA
 CSU GPA after One Year for Freshmen Entering Fall 2007

Warner College of Natural Resources

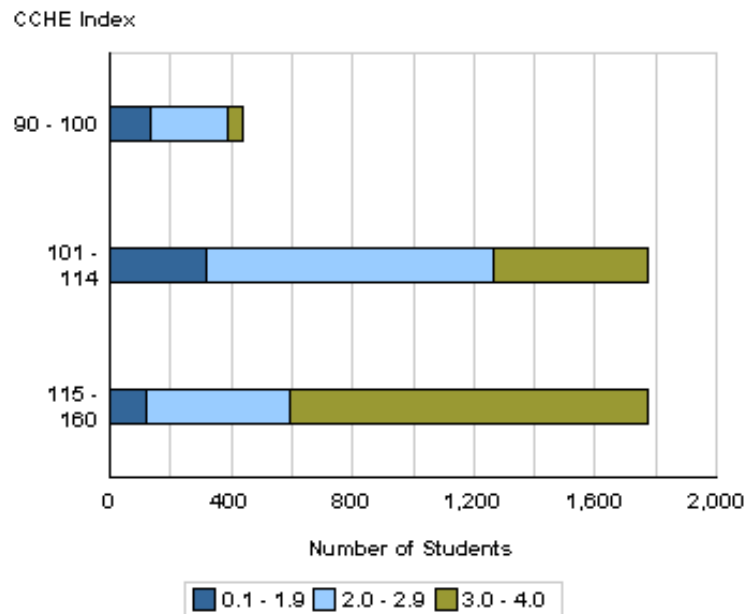
**Fall 2007 - Spring 2008
 First Year CSU GPA by CCHE Index**



Your College



All CSU Freshmen



Number of New Freshmen by High School GPA & Rank,
Test Scores, CCHE Index and CSU GPA
CSU GPA after One Year for Freshmen Entering Fall 2007

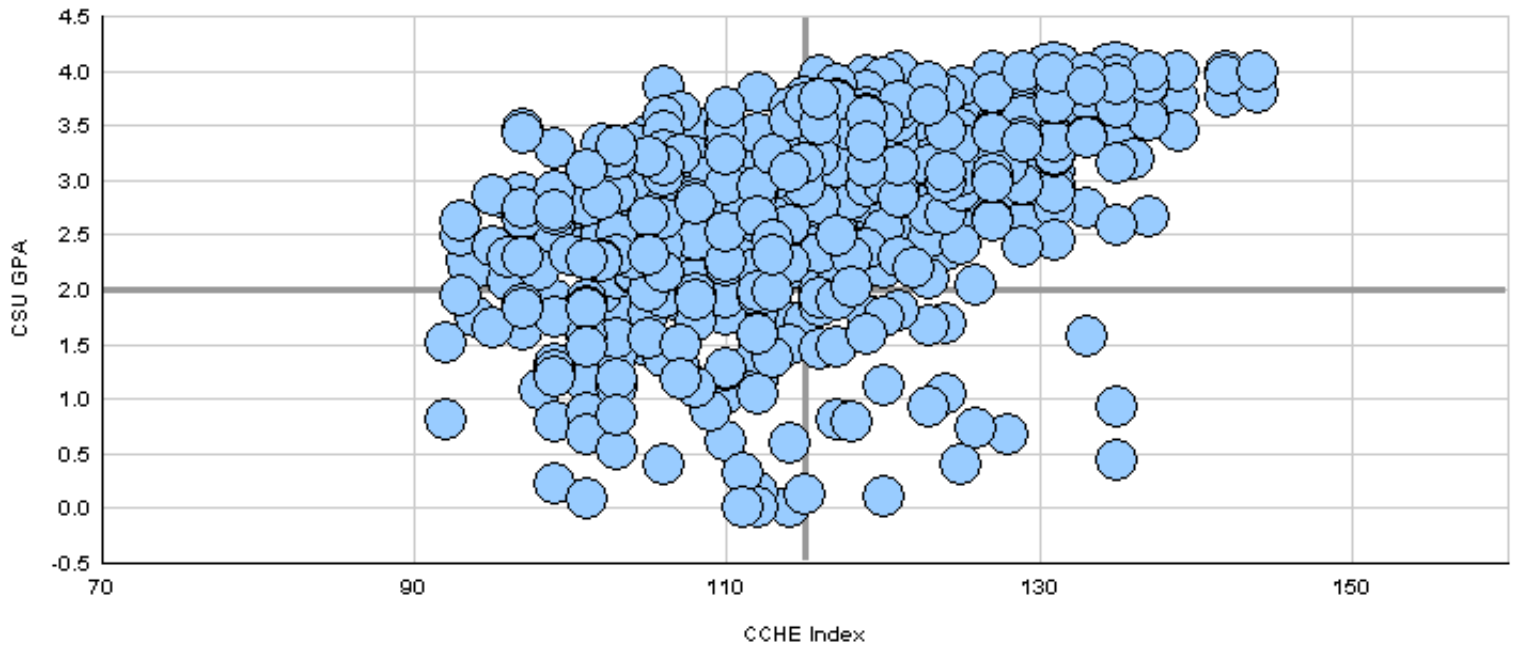
Natural Sciences

	CSU GPA				Total
	0.1 - 1.9	2.0 - 2.9	3.0 - 3.5	3.6 - 4.0	
High School GPA					
2 - 2.499		1			1
2.5 - 2.999	13	12	7		32
3 - 3.599	64	125	39	12	240
3.6 - 4.0	28	95	83	63	269
4.001 - 10	2	8	23	36	69
Total	107	241	152	111	611
Percentile Rank					
1 - 29	3	2	3		8
30 - 49	19	25	9		53
50 - 59	16	34	8	1	59
60 - 79	40	88	43	16	187
80 - 89	14	46	33	28	121
90 - 99	5	22	40	53	120
Total	97	217	136	98	548
SAT Verbal					
200 - 399	1	2	1	2	6
400 - 499	9	30	7	6	52
500 - 599	13	42	37	18	110
600 - 699	9	20	20	28	77
700 - 800	2	4	8	11	25
Total	34	98	73	65	270
SAT Math					
200 - 399		5	1		6
400 - 499	6	16	10	1	33
500 - 599	17	45	40	20	122
600 - 699	9	31	18	32	90
700 - 800	2	1	4	12	19
Total	34	98	73	65	270
ACT Composite					
15 - 18	6	9	2		17
19 - 22	36	73	30	8	147
23 - 26	45	94	55	32	226
27 - 36	19	47	49	59	174
Total	106	223	136	99	564
CCHE Index					
90 - 100	16	23	3		42
101 - 114	66	131	58	8	263
115 - 160	25	87	91	103	306
Total	107	241	152	111	611

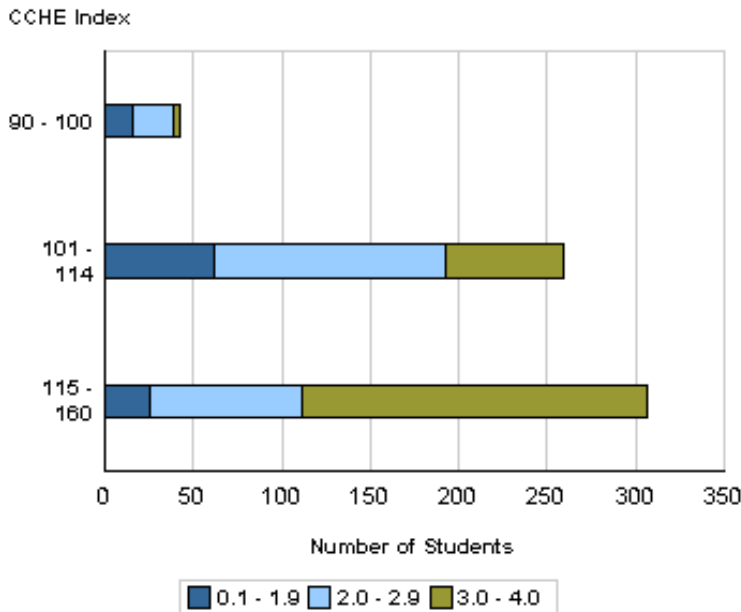
Number of New Freshmen by High School GPA & Rank,
Test Scores, CCHE Index and CSU GPA
CSU GPA after One Year for Freshmen Entering Fall 2007

Natural Sciences

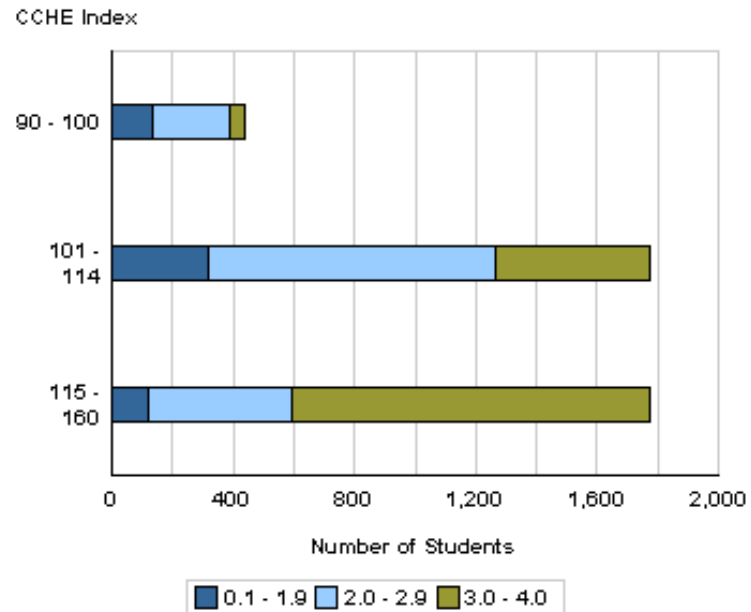
**Fall 2007 - Spring 2008
First Year CSU GPA by CCHE Index**



Your College



All CSU Freshmen



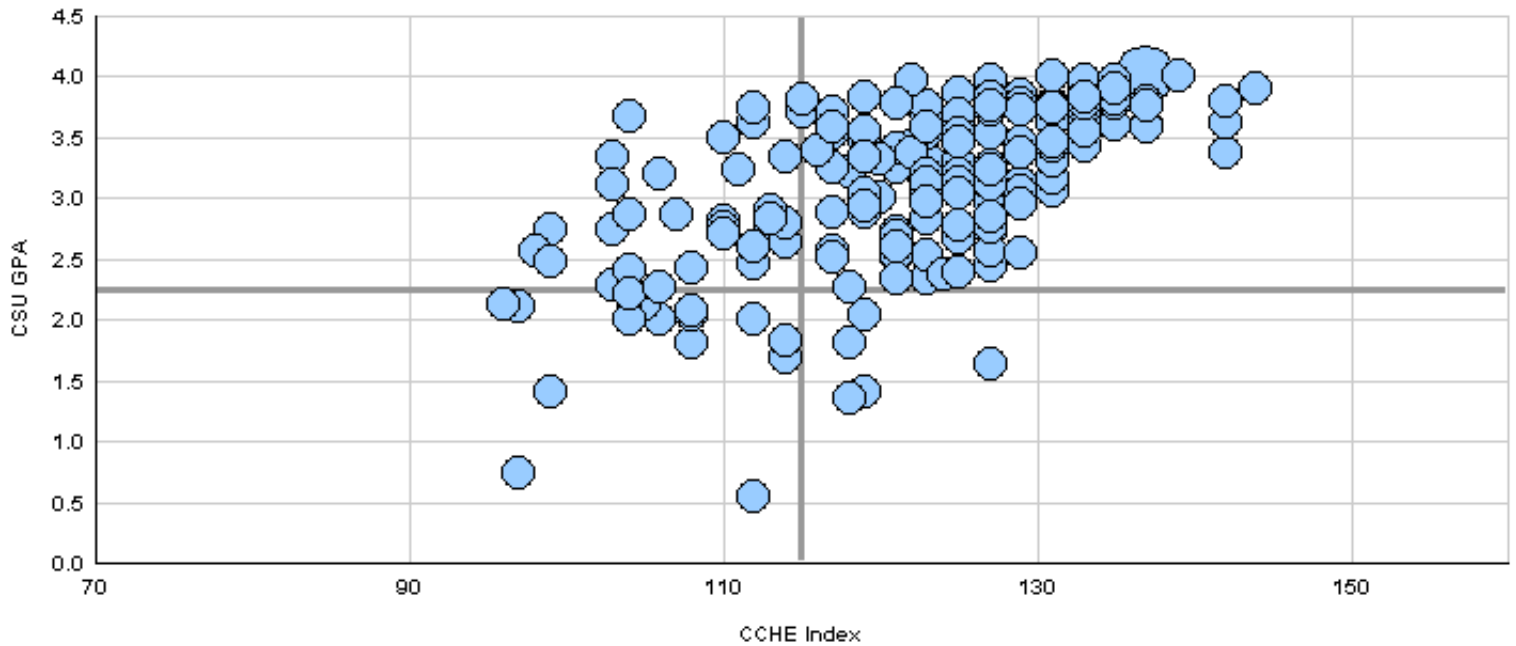
Number of New Freshmen by High School GPA & Rank,
Test Scores, CCHE Index and CSU GPA
CSU GPA after One Year for Freshmen Entering Fall 2007

Veterinary Medicine + Biomedical Sci	CSU GPA				Total
	0.1 - 1.9	2.0 - 2.9	3.0 - 3.5	3.6 - 4.0	
High School GPA					
2.5 - 2.999		2	2		4
3 - 3.599	8	17	7	6	38
3.6 - 4.0	1	41	29	33	104
4.001 - 10	1	5	10	28	44
Total	10	65	48	67	190
Percentile Rank					
1 - 29		1			1
30 - 49		3	1		4
50 - 59	2	4	2	2	10
60 - 79	6	17	8	5	36
80 - 89		23	8	6	37
90 - 99	1	14	24	42	81
Total	9	62	43	55	169
SAT Verbal					
400 - 499	1	6	1	2	10
500 - 599	1	17	15	15	48
600 - 699	1	5	10	10	26
700 - 800			3	8	11
Total	3	28	29	35	95
SAT Math					
400 - 499	1	2	2	3	8
500 - 599	2	17	12	11	42
600 - 699		9	15	18	42
700 - 800				3	3
Total	3	28	29	35	95
ACT Composite					
15 - 18		1			1
19 - 22	3	18	2	3	26
23 - 26	4	23	17	19	63
27 - 36	3	13	21	41	78
Total	10	55	40	63	168
CCHE Index					
90 - 100	2	5			7
101 - 114	4	26	6	4	40
115 - 160	4	34	42	63	143
Total	10	65	48	67	190

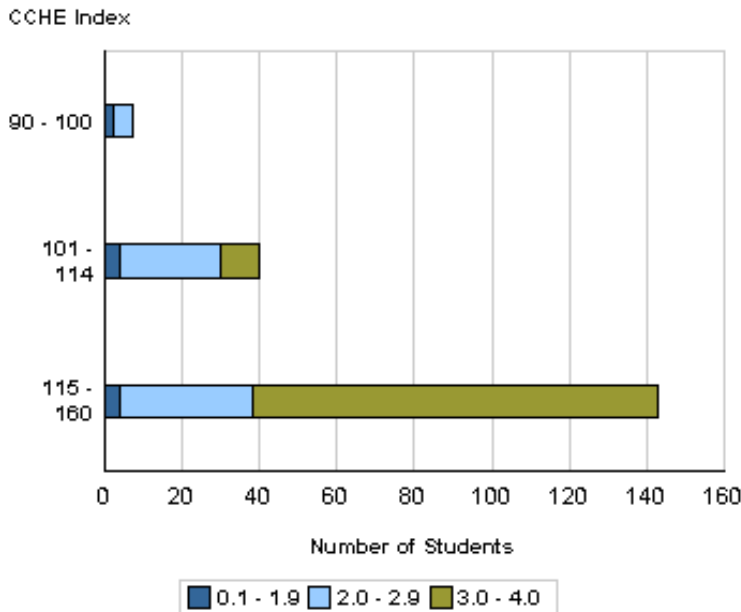
Number of New Freshmen by High School GPA & Rank,
 Test Scores, CCHE Index and CSU GPA
 CSU GPA after One Year for Freshmen Entering Fall 2007

Veterinary Medicine + Biomedical Sci

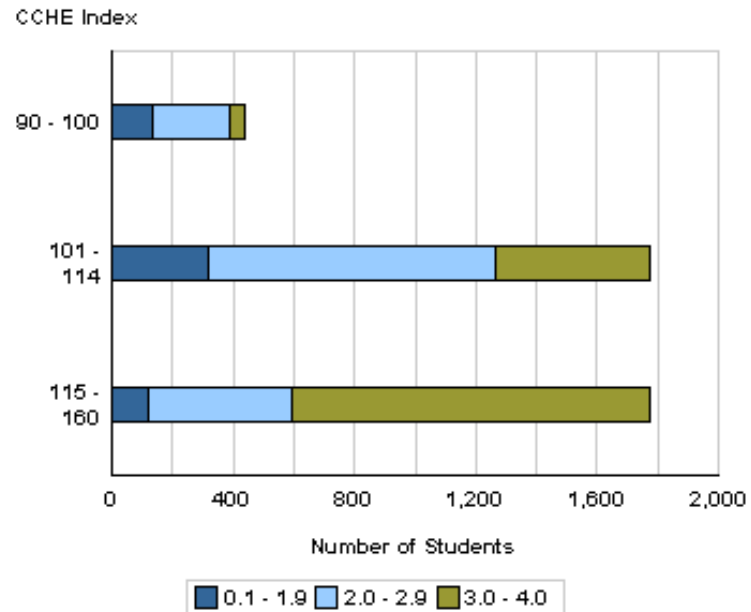
**Fall 2007 - Spring 2008
 First Year CSU GPA by CCHE Index**



Your College



All CSU Freshmen



Number of New Freshmen by High School GPA & Rank,
Test Scores, CCHE Index and CSU GPA
CSU GPA after One Year for Freshmen Entering Fall 2007

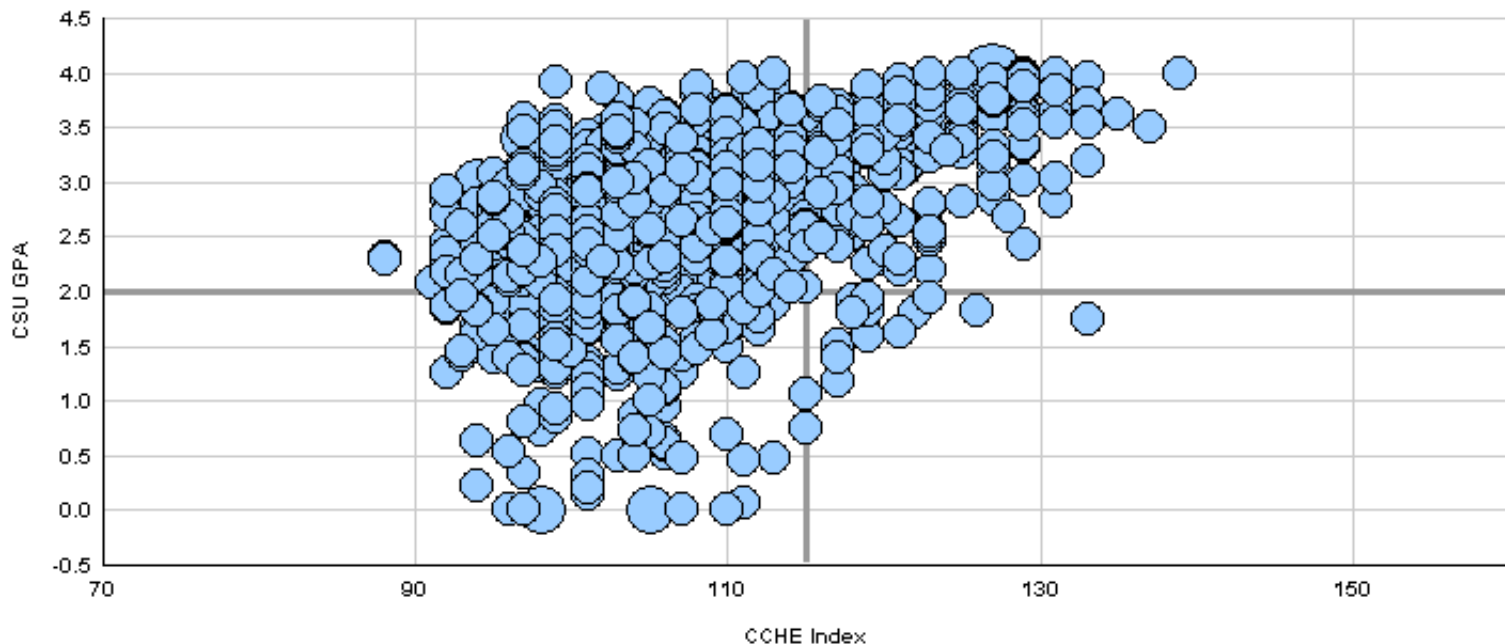
Intra-University

	CSU GPA				Total
	0.1 - 1.9	2.0 - 2.9	3.0 - 3.5	3.6 - 4.0	
High School GPA					
2 - 2.499	1	1			2
2.5 - 2.999	46	61	22	4	133
3 - 3.599	125	352	129	19	625
3.6 - 4.0	19	84	83	78	264
4.001 - 10		6	6	13	25
Total	191	504	240	114	1,049
Percentile Rank					
1 - 29	5	9	2		16
30 - 49	45	118	38	7	208
50 - 59	44	99	37	3	183
60 - 79	53	170	79	24	326
80 - 89	19	41	36	29	125
90 - 99	3	19	21	40	83
Total	169	456	213	103	941
SAT Verbal					
200 - 399	6	7		1	14
400 - 499	20	72	30	5	127
500 - 599	20	55	35	22	132
600 - 699	7	18	21	20	66
700 - 800		2		1	3
Total	53	154	86	49	342
SAT Math					
200 - 399	4	4	2		10
400 - 499	20	48	18	8	94
500 - 599	16	74	47	19	156
600 - 699	12	26	18	22	78
700 - 800	1	2	1		4
Total	53	154	86	49	342
ACT Composite					
15 - 18	12	26	9	2	49
19 - 22	86	251	93	21	451
23 - 26	69	161	106	37	373
27 - 36	16	25	24	44	109
Total	183	463	232	104	982
CCHE Index					
90 - 100	63	129	21	3	216
101 - 114	111	330	160	35	636
115 - 160	17	43	59	76	195
Total	191	502	240	114	1,047

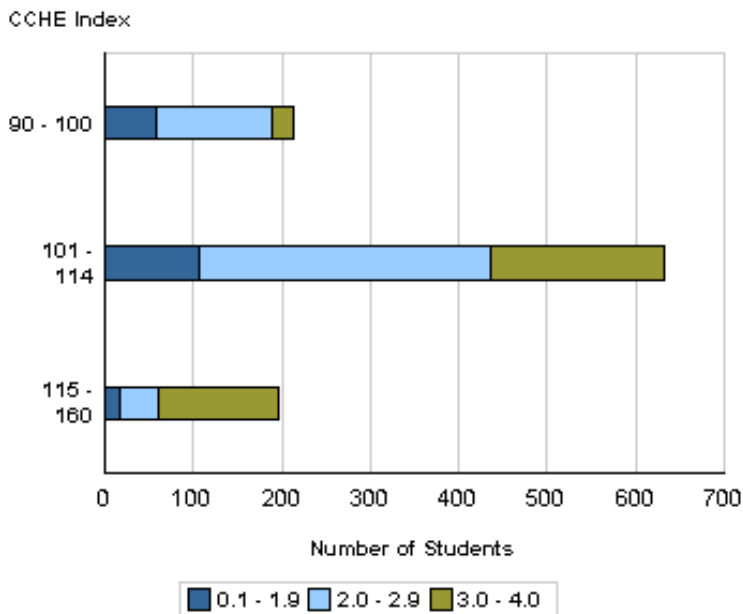
Number of New Freshmen by High School GPA & Rank,
Test Scores, CCHE Index and CSU GPA
CSU GPA after One Year for Freshmen Entering Fall 2007

Intra-University

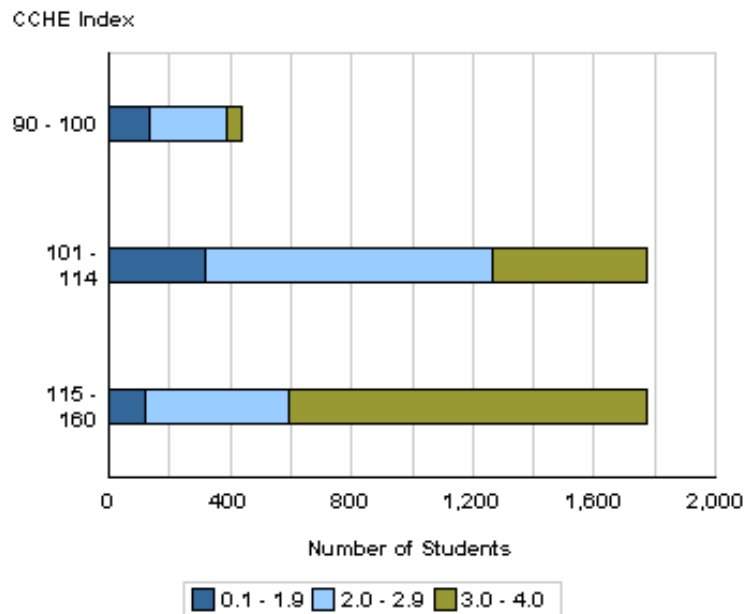
**Fall 2007 - Spring 2008
First Year CSU GPA by CCHE Index**



Your College



All CSU Freshmen



Number of New Freshmen by High School GPA & Rank,
Test Scores, CCHE Index and CSU GPA
CSU GPA after One Year for Freshmen Entering Fall 2007

University Summary

	CSU GPA				Total
	0.1 - 1.9	2.0 - 2.9	3.0 - 3.5	3.6 - 4.0	
High School GPA					
2 - 2.499	1	2			3
2.5 - 2.999	95	126	45	5	271
3 - 3.599	374	966	339	78	1,757
3.6 - 4.0	108	540	544	441	1,633
4.001 - 10	6	45	96	191	338
Total	584	1,679	1,024	715	4,002
Percentile Rank					
1 - 29	14	21	10	1	46
30 - 49	111	242	72	12	437
50 - 59	94	235	92	15	436
60 - 79	202	607	300	113	1,222
80 - 89	72	273	228	171	744
90 - 99	18	130	207	340	695
Total	511	1,508	909	652	3,580
SAT Verbal					
200 - 399	9	15	3	5	32
400 - 499	61	206	85	29	381
500 - 599	67	271	197	120	655
600 - 699	47	113	120	143	423
700 - 800	4	15	21	50	90
Total	188	620	426	347	1,581
SAT Math					
200 - 399	8	15	5		28
400 - 499	51	133	60	27	271
500 - 599	79	299	214	113	705
600 - 699	45	155	136	163	499
700 - 800	5	18	11	44	78
Total	188	620	426	347	1,581
ACT Composite					
1 - 14		1			1
15 - 18	34	64	15	3	116
19 - 22	200	599	241	67	1,107
23 - 26	218	646	439	227	1,530
27 - 36	84	216	247	357	904
Total	536	1,526	942	654	3,658
CCHE Index					
90 - 100	138	255	43	6	442
101 - 114	326	951	418	92	1,787
115 - 160	120	471	563	617	1,771
Total	584	1,677	1,024	715	4,000

Number of New Freshmen by High School GPA & Rank,
Test Scores, CCHE Index and CSU GPA
CSU GPA after One Year for Freshmen Entering Fall 2007

University Summary

**Fall 2007 - Spring 2008
First Year CSU GPA by CCHE Index**

