



Freshmen Profile

2007

Colorado
State
University

Five Year History

Office of Budgets and Institutional Analysis
 Profile of **All New** Freshmen Enrolled Fall Semesters
 Five Year Trend in High School Admissions Scores by College

	2003	2004	2005	2006	2007
Mean High School Rank					
Agricultural Sciences	78	77	75	75	76
Applied Human Sciences	74	73	70	72	71
Business	81	81	80	80	79
Engineering	78	80	78	80	80
Liberal Arts	74	71	70	71	71
Warner College of Natural Resources	70	72	72	70	74
Natural Sciences	76	76	76	74	73
Veterinary Medicine + Biomedical Sci	78	80	78	81	84
Intra–University	66	66	63	64	63
Total	73	73	71	72	72
Mean SAT Verbal Score					
Agricultural Sciences	559	568	568	552	547
Applied Human Sciences	522	528	523	526	520
Business	573	564	564	553	562
Engineering	574	583	585	567	572
Liberal Arts	570	576	568	566	581
Warner College of Natural Resources	542	566	599	586	593
Natural Sciences	568	564	568	569	567
Veterinary Medicine + Biomedical Sci	566	573	574	577	584
Intra–University	527	535	525	527	523
Total	553	557	555	551	555
Mean SAT Math Score					
Agricultural Sciences	556	556	561	559	560
Applied Human Sciences	529	536	532	536	542
Business	585	585	592	579	597
Engineering	620	630	621	630	623
Liberal Arts	552	550	544	543	552
Warner College of Natural Resources	551	565	565	574	592
Natural Sciences	578	576	583	576	572
Veterinary Medicine + Biomedical Sci	569	559	583	583	593
Intra–University	540	542	542	543	539
Total	561	563	563	561	566

Office of Budgets and Institutional Analysis
 Profile of **All New** Freshmen Enrolled Fall Semesters
 Five Year Trend in High School Admissions Scores by College

	2003	2004	2005	2006	2007
Mean Composite ACT Score					
Agricultural Sciences	24.4	24.5	24.4	24.2	23.8
Applied Human Sciences	23.1	23.3	22.8	22.7	23.1
Business	25.2	25.4	25.4	25.1	25.6
Engineering	26.2	26.5	26.5	26.3	26.4
Liberal Arts	24.5	24.9	24.0	24.3	24.6
Warner College of Natural Resources	24.0	24.7	24.5	23.6	24.8
Natural Sciences	24.8	24.9	24.7	24.4	24.5
Veterinary Medicine + Biomedical Sci	24.8	24.9	25.0	25.1	26.1
Intra–University	22.8	23.4	22.7	23.0	22.8
Total	24.1	24.4	24.0	23.9	24.2
Mean High School Grade Point Average					
Agricultural Sciences	3.63	3.59	3.58	3.57	3.58
Applied Human Sciences	3.58	3.54	3.47	3.51	3.51
Business	3.75	3.73	3.74	3.74	3.71
Engineering	3.70	3.73	3.68	3.72	3.75
Liberal Arts	3.56	3.50	3.48	3.51	3.51
Warner College of Natural Resources	3.48	3.52	3.49	3.51	3.56
Natural Sciences	3.60	3.60	3.61	3.58	3.58
Veterinary Medicine + Biomedical Sci	3.64	3.68	3.68	3.72	3.82
Intra–University	3.37	3.39	3.31	3.35	3.33
Total	3.54	3.54	3.50	3.52	3.53
Mean CCHE Index					
Agricultural Sciences	115.9	115.5	114.7	113.9	113.4
Applied Human Sciences	112.1	111.6	109.5	110.1	110.7
Business	119.5	119.4	119.2	119.1	119.5
Engineering	120.6	121.7	120.8	121.2	121.6
Liberal Arts	114.7	114.3	112.3	113.2	113.8
Warner College of Natural Resources	112.6	114.5	113.5	112.2	115.1
Natural Sciences	116.1	116.2	115.7	114.6	115.0
Veterinary Medicine + Biomedical Sci	116.7	117.6	117.9	118.6	121.5
Intra–University	108.1	109.5	106.9	107.8	107.1
Total	113.6	114.2	112.5	112.7	113.2

For the purposes of making index comparisons across years, the 2004 index calculation formula is used for all years.

Office of Budgets and Institutional Analysis
 Profile of **Resident** Freshmen Enrolled Fall Semesters
 Five Year Trend in High School Admissions Scores by College

	2003	2004	2005	2006	2007
Mean High School Rank					
Agricultural Sciences	79	74	76	73	74
Applied Human Sciences	75	73	70	72	71
Business	82	81	81	80	79
Engineering	78	79	78	81	80
Liberal Arts	74	71	71	71	72
Warner College of Natural Resources	75	72	68	70	75
Natural Sciences	76	76	76	75	73
Veterinary Medicine + Biomedical Sci	78	79	78	81	84
Intra–University	66	67	64	65	64
Total	73	73	71	72	71
Mean SAT Verbal Score					
Agricultural Sciences	563	559	575	525	558
Applied Human Sciences	515	519	518	518	518
Business	577	563	562	553	559
Engineering	568	584	576	570	580
Liberal Arts	568	575	567	572	588
Warner College of Natural Resources	548	531	593	605	619
Natural Sciences	566	559	569	570	567
Veterinary Medicine + Biomedical Sci	578	556	574	575	580
Intra–University	527	534	528	535	525
Total	552	553	553	553	557
Mean SAT Math Score					
Agricultural Sciences	557	516	561	547	579
Applied Human Sciences	523	524	525	531	539
Business	580	578	588	573	592
Engineering	613	616	617	622	618
Liberal Arts	550	546	544	547	552
Warner College of Natural Resources	548	539	561	582	603
Natural Sciences	571	572	582	573	568
Veterinary Medicine + Biomedical Sci	571	547	570	580	581
Intra–University	537	538	539	546	537
Total	558	556	560	559	563

Office of Budgets and Institutional Analysis
 Profile of **Resident** Freshmen Enrolled Fall Semesters
 Five Year Trend in High School Admissions Scores by College

	2003	2004	2005	2006	2007
Mean Composite ACT Score					
Agricultural Sciences	24.4	24.3	24.2	23.4	23.3
Applied Human Sciences	23.1	23.0	22.7	22.7	23.0
Business	25.1	25.2	25.3	25.1	25.5
Engineering	26.0	26.2	26.3	26.3	26.3
Liberal Arts	24.5	24.8	24.1	24.3	24.6
Warner College of Natural Resources	24.0	24.7	24.0	23.4	24.5
Natural Sciences	24.7	24.8	24.7	24.2	24.3
Veterinary Medicine + Biomedical Sci	24.9	24.7	25.0	25.1	26.1
Intra–University	22.7	23.3	22.7	23.0	22.8
Total	24.0	24.3	23.9	23.9	24.0
Mean High School Grade Point Average					
Agricultural Sciences	3.66	3.56	3.66	3.55	3.58
Applied Human Sciences	3.60	3.55	3.48	3.54	3.52
Business	3.76	3.75	3.75	3.74	3.72
Engineering	3.70	3.72	3.68	3.72	3.75
Liberal Arts	3.59	3.51	3.50	3.53	3.53
Warner College of Natural Resources	3.52	3.58	3.48	3.46	3.62
Natural Sciences	3.62	3.60	3.63	3.59	3.57
Veterinary Medicine + Biomedical Sci	3.66	3.67	3.69	3.74	3.83
Intra–University	3.40	3.41	3.33	3.37	3.34
Total	3.56	3.55	3.51	3.53	3.53
Mean CCHE Index					
Agricultural Sciences	116.6	113.9	115.4	111.9	112.4
Applied Human Sciences	111.9	111.4	109.4	110.1	110.5
Business	119.3	119.3	119.2	119.2	119.3
Engineering	120.1	120.9	120.4	120.9	121.0
Liberal Arts	115.1	114.1	112.6	113.6	114.1
Warner College of Natural Resources	112.9	114.6	112.0	110.9	115.1
Natural Sciences	115.8	115.9	116.0	114.4	114.3
Veterinary Medicine + Biomedical Sci	117.0	116.5	117.7	118.7	121.2
Intra–University	108.3	109.6	107.1	108.2	107.2
Total	113.6	113.8	112.5	112.7	112.9

For the purposes of making index comparisons across years, the 2004 index calculation formula is used for all years.

Office of Budgets and Institutional Analysis
 Profile of **Nonresident** Freshmen Enrolled Fall Semesters
 Five Year Trend in High School Admissions Scores by College

	2003	2004	2005	2006	2007
Mean High School Rank					
Agricultural Sciences	75	81	73	79	78
Applied Human Sciences	72	70	66	70	70
Business	79	79	76	78	76
Engineering	80	84	82	78	82
Liberal Arts	69	71	65	66	67
Warner College of Natural Resources	62	71	79	72	73
Natural Sciences	74	77	74	71	75
Veterinary Medicine + Biomedical Sci	79	82	79	79	83
Intra–University	61	63	58	60	60
Total	71	74	69	71	72
Mean SAT Verbal Score					
Agricultural Sciences	556	573	565	571	543
Applied Human Sciences	537	546	536	540	524
Business	563	567	570	552	570
Engineering	590	581	624	561	556
Liberal Arts	575	578	572	546	562
Warner College of Natural Resources	538	583	605	573	576
Natural Sciences	571	577	564	567	565
Veterinary Medicine + Biomedical Sci	556	590	574	580	590
Intra–University	527	538	515	502	518
Total	555	566	558	548	550
Mean SAT Math Score					
Agricultural Sciences	556	574	561	567	555
Applied Human Sciences	540	559	548	546	547
Business	597	610	601	603	610
Engineering	637	658	638	645	633
Liberal Arts	557	562	545	526	553
Warner College of Natural Resources	554	577	568	568	584
Natural Sciences	592	586	584	583	578
Veterinary Medicine + Biomedical Sci	566	571	603	587	612
Intra–University	549	554	550	534	545
Total	569	579	570	565	572

Office of Budgets and Institutional Analysis
 Profile of **Nonresident** Freshmen Enrolled Fall Semesters
 Five Year Trend in High School Admissions Scores by College

	2003	2004	2005	2006	2007
Mean Composite ACT Score					
Agricultural Sciences	24.4	25.0	24.8	25.6	24.9
Applied Human Sciences	23.4	24.7	23.2	23.1	24.0
Business	25.6	26.5	25.6	24.8	26.2
Engineering	27.1	27.7	27.8	26.5	27.0
Liberal Arts	24.1	25.2	23.4	23.6	24.2
Warner College of Natural Resources	24.1	24.6	25.7	24.0	25.4
Natural Sciences	25.6	25.8	24.7	25.6	26.0
Veterinary Medicine + Biomedical Sci	24.4	25.7	25.1	25.0	26.4
Intra–University	23.6	23.7	23.1	22.9	23.1
Total	24.6	25.2	24.4	24.3	24.8
Mean High School Grade Point Average					
Agricultural Sciences	3.58	3.62	3.50	3.59	3.57
Applied Human Sciences	3.52	3.49	3.40	3.41	3.44
Business	3.71	3.62	3.70	3.71	3.67
Engineering	3.71	3.76	3.64	3.72	3.76
Liberal Arts	3.39	3.49	3.37	3.40	3.43
Warner College of Natural Resources	3.43	3.44	3.50	3.58	3.50
Natural Sciences	3.52	3.60	3.52	3.50	3.60
Veterinary Medicine + Biomedical Sci	3.61	3.71	3.65	3.66	3.79
Intra–University	3.24	3.28	3.20	3.23	3.24
Total	3.47	3.52	3.44	3.48	3.51
Mean CCHE Index					
Agricultural Sciences	114.9	117.4	113.9	116.3	114.8
Applied Human Sciences	112.5	112.5	110.0	110.1	111.4
Business	120.2	120.3	119.0	118.7	120.4
Engineering	122.7	124.6	124.0	122.1	123.8
Liberal Arts	112.6	114.8	110.6	110.4	112.3
Warner College of Natural Resources	112.1	114.4	115.8	114.1	115.1
Natural Sciences	116.9	118.0	114.8	115.5	117.7
Veterinary Medicine + Biomedical Sci	116.2	119.8	118.6	118.3	122.4
Intra–University	107.5	109.0	105.9	105.8	106.2
Total	113.9	115.5	112.7	113.0	114.4

For the purposes of making index comparisons across years, the 2004 index calculation formula is used for all years.

Fall 2007 Freshmen

Office of Budgets and Institutional Analysis
Freshmen Profile
Fall 2007

University	Admitted N= 10077				Enrolled N=4392			
	Res	Nonres	Total	Percent	Res	Nonres	Total	Percent
High School GPA								
2 – 2.499	3	3	6	0	3	2	5	0
2.5 – 2.999	343	304	647	7	215	92	307	7
3 – 3.599	2703	1520	4223	43	1549	385	1934	45
3.6 – 4.0	2653	1429	4082	41	1391	340	1731	40
4.001 – 10	627	346	973	10	281	73	354	8
Valid Cases	6329	3602	9931	100	3439	892	4331	100
Means	3.57	3.54	3.56		3.53	3.51	3.53	
Percentile Rank								
1 – 29	61	48	109	1	35	14	49	1
30 – 49	639	271	910	11	404	81	485	13
50 – 59	681	258	939	11	411	69	480	12
60 – 79	2002	804	2806	34	1125	210	1335	35
80 – 89	1210	502	1712	21	648	133	781	20
90 – 99	1227	617	1844	22	590	141	731	19
Valid Cases	5820	2500	8320	100	3213	648	3861	100
Means	72.9	73.7	73.1		71.5	72.0	71.6	
SAT Verbal								
200 – 399	34	52	86	2	19	16	35	2
400 – 499	528	541	1069	22	258	145	403	24
500 – 599	1017	1084	2101	44	464	244	708	42
600 – 699	663	605	1268	26	301	154	455	27
700 – 800	158	128	286	6	64	30	94	6
Valid Cases	2400	2410	4810	100	1106	589	1695	100
Means	561	553	557		557	550	555	
SAT Math								
200 – 399	40	17	57	1	24	5	29	2
400 – 499	424	374	798	17	210	93	303	18
500 – 599	1073	1091	2164	45	480	265	745	44
600 – 699	724	816	1540	32	340	196	536	32
700 – 800	140	112	252	5	52	30	82	5
Valid Cases	2401	2410	4811	100	1106	589	1695	100
Means	568	573	570		563	572	566	
ACT Composite								
1 – 14	3	5	8	0	0	2	2	0
15 – 18	192	62	254	3	112	18	130	3
19 – 22	1814	542	2356	28	1082	127	1209	31
23 – 26	2599	982	3581	42	1409	242	1651	42
27 – 36	1593	720	2313	27	778	180	958	24
Valid Cases	6201	2311	8512	100	3381	569	3950	100
Means	24.3	24.8	24.4		24.0	24.8	24.2	
CCHE Index								
35 – 89	0	2	2	0	0	2	2	0
90 – 100	609	341	950	10	393	97	490	11
101 – 114	2778	1503	4281	43	1588	378	1966	45
115 – 160	2943	1757	4700	47	1457	415	1872	43
Valid Cases	6330	3603	9933	100	3438	892	4330	100
Means	114	115	114		113	114	113	

Office of Budgets and Institutional Analysis
Freshmen Profile
Fall 2007

Agricultural Sciences**Admitted N= 558****Enrolled N=230**

	Res	Nonres	Total	Percent	Res	Nonres	Total	Percent
High School GPA								
2.5 – 2.999	5	14	19	3	3	8	11	5
3 – 3.599	81	118	199	36	57	38	95	41
3.6 – 4.0	102	181	283	51	65	50	115	50
4.001 – 10	11	40	51	9	5	3	8	3
Valid Cases	199	353	552	100	130	99	229	100
Means	3.60	3.66	3.63		3.58	3.57	3.58	
Percentile Rank								
1 – 29	4	3	7	2	3	1	4	2
30 – 49	15	13	28	6	9	3	12	7
50 – 59	14	19	33	8	6	4	10	5
60 – 79	69	70	139	32	50	22	72	39
80 – 89	40	70	110	25	28	20	48	26
90 – 99	38	78	116	27	19	19	38	21
Valid Cases	180	253	433	100	115	69	184	100
Means	74.5	78.7	76.9		73.9	78.3	75.6	
SAT Verbal								
200 – 399	0	2	2	1	0	1	1	1
400 – 499	11	62	73	24	7	25	32	33
500 – 599	14	112	126	42	6	29	35	36
600 – 699	11	67	78	26	9	16	25	26
700 – 800	2	20	22	7	1	4	5	5
Valid Cases	38	263	301	100	23	75	98	100
Means	558	563	562		558	543	547	
SAT Math								
200 – 399	0	2	2	1	0	1	1	1
400 – 499	8	53	61	20	5	15	20	20
500 – 599	17	110	127	42	9	34	43	44
600 – 699	13	91	104	35	9	24	33	34
700 – 800	0	7	7	2	0	1	1	1
Valid Cases	38	263	301	100	23	75	98	100
Means	563	565	564		579	555	560	
ACT Composite								
15 – 18	11	9	20	5	6	3	9	5
19 – 22	67	46	113	29	49	13	62	34
23 – 26	81	71	152	38	52	17	69	38
27 – 36	36	74	110	28	21	21	42	23
Valid Cases	195	200	395	100	128	54	182	100
Means	23.5	25.1	24.3		23.3	24.9	23.8	
CCHE Index								
90 – 100	18	22	40	7	13	8	21	9
101 – 114	97	132	229	41	65	42	107	47
115 – 160	84	199	283	51	52	49	101	44
Valid Cases	199	353	552	100	130	99	229	100
Means	113	117	115		112	115	113	

Office of Budgets and Institutional Analysis
Freshmen Profile
Fall 2007

Applied Human Sciences	Admitted N= 1158				Enrolled N=613			
	Res	Nonres	Total	Percent	Res	Nonres	Total	Percent
High School GPA								
2.5 – 2.999	31	44	75	7	25	18	43	7
3 – 3.599	320	187	507	44	222	57	279	46
3.6 – 4.0	309	164	473	41	202	46	248	41
4.001 – 10	59	39	98	8	32	8	40	7
Valid Cases	719	434	1153	100	481	129	610	100
Means	3.56	3.51	3.54		3.52	3.44	3.51	
Percentile Rank								
1 – 29	6	6	12	1	5	1	6	1
30 – 49	77	36	113	12	63	14	77	14
50 – 59	75	32	107	11	53	10	63	12
60 – 79	230	105	335	35	153	36	189	35
80 – 89	154	57	211	22	99	17	116	21
90 – 99	119	61	180	19	72	17	89	16
Valid Cases	661	297	958	100	445	95	540	100
Means	72.6	72.0	72.4		70.9	69.8	70.7	
SAT Verbal								
200 – 399	3	4	7	1	1	1	2	1
400 – 499	78	79	157	30	48	26	74	36
500 – 599	112	148	260	50	59	41	100	49
600 – 699	35	50	85	16	17	10	27	13
700 – 800	3	7	10	2	0	2	2	1
Valid Cases	231	288	519	100	125	80	205	100
Means	528	532	531		518	524	520	
SAT Math								
200 – 399	6	5	11	2	5	1	6	3
400 – 499	47	59	106	20	33	20	53	26
500 – 599	116	145	261	50	53	39	92	45
600 – 699	60	74	134	26	33	20	53	26
700 – 800	2	5	7	1	1	0	1	0
Valid Cases	231	288	519	100	125	80	205	100
Means	548	552	550		539	547	542	
ACT Composite								
1 – 14	0	2	2	0	0	1	1	0
15 – 18	28	9	37	4	22	4	26	5
19 – 22	267	86	353	36	196	27	223	40
23 – 26	309	122	431	43	196	33	229	41
27 – 36	101	67	168	17	58	21	79	14
Valid Cases	705	286	991	100	472	86	558	100
Means	23.3	24.0	23.5		23.0	24.0	23.1	
CCHE Index								
90 – 100	98	57	155	13	80	20	100	16
101 – 114	341	205	546	47	235	69	304	50
115 – 160	280	172	452	39	166	40	206	34
Valid Cases	719	434	1153	100	481	129	610	100
Means	112	112	112		111	111	111	

Office of Budgets and Institutional Analysis
Freshmen Profile
Fall 2007

Business	Admitted N= 751				Enrolled N=329			
	Res	Nonres	Total	Percent	Res	Nonres	Total	Percent
High School GPA								
2.5 – 2.999	3	2	5	1	1	1	2	1
3 – 3.599	112	77	189	25	69	22	91	28
3.6 – 4.0	309	153	462	62	164	36	200	61
4.001 – 10	59	31	90	12	26	7	33	10
Valid Cases	483	263	746	100	260	66	326	100
Means	3.74	3.71	3.73		3.72	3.67	3.71	
Percentile Rank								
1 – 29	1	0	1	0	1	0	1	0
30 – 49	13	5	18	3	8	2	10	3
50 – 59	19	17	36	5	9	6	15	5
60 – 79	166	73	239	36	99	24	123	40
80 – 89	131	59	190	29	68	16	84	27
90 – 99	123	48	171	26	61	12	73	24
Valid Cases	453	202	655	100	246	60	306	100
Means	79.9	78.3	79.4		79.3	76.5	78.8	
SAT Verbal								
200 – 399	1	1	2	1	0	0	0	0
400 – 499	37	21	58	15	16	5	21	15
500 – 599	106	92	198	52	55	20	75	53
600 – 699	61	50	111	29	28	15	43	30
700 – 800	8	3	11	3	2	0	2	1
Valid Cases	213	167	380	100	101	40	141	100
Means	562	564	563		559	570	562	
SAT Math								
200 – 399	1	0	1	0	0	0	0	0
400 – 499	16	5	21	6	6	3	9	6
500 – 599	100	70	170	45	47	12	59	42
600 – 699	80	83	163	43	40	19	59	42
700 – 800	16	9	25	7	8	6	14	10
Valid Cases	213	167	380	100	101	40	141	100
Means	589	604	595		592	610	597	
ACT Composite								
19 – 22	46	19	65	10	27	2	29	10
23 – 26	260	86	346	53	144	21	165	56
27 – 36	169	69	238	37	85	17	102	34
Valid Cases	475	174	649	100	256	40	296	100
Means	25.7	25.9	25.7		25.5	26.2	25.6	
CCHE Index								
101 – 114	117	66	183	24	73	16	89	27
115 – 160	366	198	564	76	187	50	237	73
Valid Cases	483	264	747	100	260	66	326	100
Means	120	120	120		119	120	119	

Office of Budgets and Institutional Analysis
Freshmen Profile
Fall 2007

Engineering	Admitted N= 855				Enrolled N=367			
	Res	Nonres	Total	Percent	Res	Nonres	Total	Percent
High School GPA								
2.5 – 2.999	0	2	2	0	0	0	0	0
3 – 3.599	140	77	217	26	80	20	100	28
3.6 – 4.0	304	146	450	54	155	42	197	56
4.001 – 10	107	50	157	19	46	10	56	16
Valid Cases	551	275	826	100	281	72	353	100
Means	3.78	3.77	3.78		3.75	3.76	3.75	
Percentile Rank								
1 – 29	1	0	1	0	1	0	1	0
30 – 49	14	7	21	3	12	1	13	4
50 – 59	28	9	37	5	18	4	22	7
60 – 79	157	57	214	29	83	15	98	30
80 – 89	138	53	191	26	72	17	89	27
90 – 99	177	85	262	36	82	20	102	31
Valid Cases	515	211	726	100	268	57	325	100
Means	81.5	83.1	82.0		79.9	82.3	80.3	
SAT Verbal								
200 – 399	0	14	14	3	0	7	7	4
400 – 499	32	25	57	12	17	6	23	14
500 – 599	101	95	196	43	48	18	66	40
600 – 699	93	60	153	33	37	19	56	34
700 – 800	23	14	37	8	10	5	15	9
Valid Cases	249	208	457	100	112	55	167	100
Means	587	562	576		580	556	572	
SAT Math								
400 – 499	2	2	4	1	2	0	2	1
500 – 599	86	64	150	33	46	18	64	38
600 – 699	108	110	218	48	47	28	75	45
700 – 800	53	32	85	19	17	9	26	16
Valid Cases	249	208	457	100	112	55	167	100
Means	632	632	632		618	633	623	
ACT Composite								
15 – 18	0	1	1	0	0	0	0	0
19 – 22	39	11	50	7	30	1	31	10
23 – 26	236	63	299	42	123	21	144	45
27 – 36	261	99	360	51	123	21	144	45
Valid Cases	536	174	710	100	276	43	319	100
Means	26.6	27.2	26.8		26.3	27.0	26.4	
CCHE Index								
101 – 114	110	49	159	19	70	10	80	23
115 – 160	441	226	667	81	211	62	273	77
Valid Cases	551	275	826	100	281	72	353	100
Means	123	123	123		121	124	122	

Office of Budgets and Institutional Analysis
Freshmen Profile
Fall 2007

Liberal Arts	Admitted N= 1715				Enrolled N=678			
	Res	Nonres	Total	Percent	Res	Nonres	Total	Percent
High School GPA								
2.5 – 2.999	62	55	117	7	35	16	51	8
3 – 3.599	488	265	753	44	260	58	318	47
3.6 – 4.0	480	194	674	40	216	37	253	37
4.001 – 10	115	42	157	9	46	8	54	8
Valid Cases	1145	556	1701	100	557	119	676	100
Means	3.57	3.48	3.54		3.53	3.43	3.51	
Percentile Rank								
1 – 29	11	7	18	1	6	3	9	1
30 – 49	105	47	152	11	57	13	70	11
50 – 59	121	41	162	11	70	15	85	14
60 – 79	362	151	513	36	186	32	218	36
80 – 89	230	75	305	21	108	18	126	21
90 – 99	209	64	273	19	94	9	103	17
Valid Cases	1038	385	1423	100	521	90	611	100
Means	73.2	70.7	72.5		71.8	66.8	71.1	
SAT Verbal								
200 – 399	2	6	8	1	1	1	2	1
400 – 499	64	72	136	16	29	17	46	17
500 – 599	178	156	334	39	73	27	100	36
600 – 699	187	103	290	34	83	19	102	37
700 – 800	51	33	84	10	16	8	24	9
Valid Cases	482	370	852	100	202	72	274	100
Means	589	566	579		588	562	581	
SAT Math								
200 – 399	10	3	13	2	5	0	5	2
400 – 499	102	76	178	21	45	18	63	23
500 – 599	219	180	399	47	94	35	129	47
600 – 699	132	100	232	27	50	18	68	25
700 – 800	19	11	30	4	8	1	9	3
Valid Cases	482	370	852	100	202	72	274	100
Means	558	558	558		552	553	552	
ACT Composite								
1 – 14	0	1	1	0	0	0	0	0
15 – 18	29	8	37	2	15	2	17	3
19 – 22	273	95	368	25	137	24	161	26
23 – 26	468	172	640	43	236	41	277	44
27 – 36	344	92	436	29	156	18	174	28
Valid Cases	1114	368	1482	100	544	85	629	100
Means	24.8	24.5	24.7		24.6	24.2	24.6	
CCHE Index								
90 – 100	88	58	146	9	52	16	68	10
101 – 114	482	246	728	43	244	58	302	45
115 – 160	576	252	828	49	261	45	306	45
Valid Cases	1146	556	1702	100	557	119	676	100
Means	115	114	115		114	112	114	

Office of Budgets and Institutional Analysis
Freshmen Profile
Fall 2007

Warner College of Natural Resources	Admitted N= 258				Enrolled N=125			
	Res	Nonres	Total	Percent	Res	Nonres	Total	Percent
High School GPA								
2.5 – 2.999	3	13	16	6	1	6	7	6
3 – 3.599	43	64	107	42	33	25	58	46
3.6 – 4.0	36	65	101	40	25	17	42	34
4.001 – 10	16	15	31	12	12	6	18	14
Valid Cases	98	157	255	100	71	54	125	100
Means	3.61	3.54	3.57		3.62	3.50	3.56	
Percentile Rank								
1 – 29	0	2	2	1	0	1	1	1
30 – 49	10	8	18	9	5	5	10	10
50 – 59	11	7	18	9	9	2	11	11
60 – 79	29	37	66	34	21	11	32	32
80 – 89	17	17	34	17	15	5	20	20
90 – 99	24	35	59	30	16	11	27	27
Valid Cases	91	106	197	100	66	35	101	100
Means	74.3	76.7	75.6		75.1	72.8	74.3	
SAT Verbal								
200 – 399	0	3	3	2	0	0	0	0
400 – 499	3	14	17	12	3	4	7	13
500 – 599	7	42	49	36	5	14	19	36
600 – 699	12	42	54	39	8	13	21	40
700 – 800	5	9	14	10	5	1	6	11
Valid Cases	27	110	137	100	21	32	53	100
Means	615	580	587		619	576	593	
SAT Math								
400 – 499	3	13	16	12	3	2	5	9
500 – 599	8	45	53	39	5	17	22	42
600 – 699	13	48	61	45	10	13	23	43
700 – 800	3	4	7	5	3	0	3	6
Valid Cases	27	110	137	100	21	32	53	100
Means	601	585	588		603	584	592	
ACT Composite								
1 – 14	1	0	1	1	0	0	0	0
15 – 18	2	3	5	3	2	1	3	3
19 – 22	29	23	52	27	23	6	29	27
23 – 26	41	38	79	42	30	15	45	42
27 – 36	24	29	53	28	15	14	29	27
Valid Cases	97	93	190	100	70	36	106	100
Means	24.5	24.7	24.6		24.5	25.4	24.8	
CCHE Index								
90 – 100	8	13	21	8	5	4	9	7
101 – 114	38	68	106	41	28	25	53	42
115 – 160	52	77	129	50	38	25	63	50
Valid Cases	98	158	256	100	71	54	125	100
Means	115	116	115		115	115	115	

Office of Budgets and Institutional Analysis
Freshmen Profile
Fall 2007

Natural Sciences

Admitted N= 1613

Enrolled N=680

	Res	Nonres	Total	Percent	Res	Nonres	Total	Percent
High School GPA								
2 – 2.499	0	1	1	0	0	1	1	0
2.5 – 2.999	44	31	75	5	29	7	36	5
3 – 3.599	407	225	632	40	222	51	273	41
3.6 – 4.0	438	261	699	44	234	55	289	43
4.001 – 10	117	68	185	12	54	17	71	11
Valid Cases	1006	586	1592	100	539	131	670	100
Means	3.60	3.60	3.60		3.57	3.60	3.58	
Percentile Rank								
1 – 29	11	6	17	1	5	3	8	1
30 – 49	86	36	122	9	51	8	59	10
50 – 59	99	41	140	10	60	8	68	11
60 – 79	315	121	436	33	176	30	206	34
80 – 89	198	77	275	21	114	15	129	22
90 – 99	224	124	348	26	98	30	128	21
Valid Cases	933	405	1338	100	504	94	598	100
Means	74.2	76.1	74.8		72.8	75.4	73.2	
SAT Verbal								
200 – 399	6	4	10	1	5	2	7	2
400 – 499	86	79	165	21	41	15	56	19
500 – 599	175	176	351	44	78	45	123	42
600 – 699	110	103	213	27	51	29	80	27
700 – 800	36	25	61	8	19	6	25	9
Valid Cases	413	387	800	100	194	97	291	100
Means	567	561	564		567	565	567	
SAT Math								
200 – 399	8	2	10	1	7	0	7	2
400 – 499	71	60	131	16	28	13	41	14
500 – 599	173	172	345	43	83	45	128	44
600 – 699	128	128	256	32	64	31	95	33
700 – 800	33	25	58	7	12	8	20	7
Valid Cases	413	387	800	100	194	97	291	100
Means	573	575	574		568	578	572	
ACT Composite								
15 – 18	36	8	44	3	21	2	23	4
19 – 22	263	70	333	24	152	11	163	26
23 – 26	419	166	585	42	216	33	249	40
27 – 36	274	144	418	30	147	35	182	29
Valid Cases	992	388	1380	100	536	81	617	100
Means	24.5	25.4	24.8		24.3	26.0	24.5	
CCHE Index								
90 – 100	75	30	105	7	44	7	51	8
101 – 114	433	229	662	42	247	48	295	44
115 – 160	499	327	826	52	248	76	324	48
Valid Cases	1007	586	1593	100	539	131	670	100
Means	115	117	116		114	118	115	

Office of Budgets and Institutional Analysis
Freshmen Profile
Fall 2007

**Veterinary Medicine +
Biomedical Sci**

Admitted N= 409

Enrolled N=204

	Res	Nonres	Total	Percent	Res	Nonres	Total	Percent
High School GPA								
2.5 – 2.999	3	4	7	2	1	3	4	2
3 – 3.599	48	26	74	18	32	12	44	22
3.6 – 4.0	129	93	222	54	79	29	108	53
4.001 – 10	64	41	105	26	35	12	47	23
Valid Cases	244	164	408	100	147	56	203	100
Means	3.85	3.85	3.85		3.83	3.79	3.82	
Percentile Rank								
1 – 29	1	1	2	1	0	1	1	1
30 – 49	6	4	10	3	4	0	4	2
50 – 59	12	2	14	4	9	1	10	6
60 – 79	45	26	71	20	29	9	38	21
80 – 89	59	31	90	25	30	11	41	23
90 – 99	106	61	167	47	68	16	84	47
Valid Cases	229	125	354	100	140	38	178	100
Means	84.0	85.3	84.5		83.6	83.3	83.5	
SAT Verbal								
400 – 499	11	11	22	10	7	4	11	11
500 – 599	53	54	107	48	34	16	50	49
600 – 699	33	37	70	32	15	15	30	29
700 – 800	13	9	22	10	7	4	11	11
Valid Cases	110	111	221	100	63	39	102	100
Means	587	582	584		580	590	584	
SAT Math								
400 – 499	9	6	15	7	7	1	8	8
500 – 599	47	49	96	43	27	17	44	43
600 – 699	52	46	98	44	29	18	47	46
700 – 800	2	10	12	5	0	3	3	3
Valid Cases	110	111	221	100	63	39	102	100
Means	590	600	595		581	612	593	
ACT Composite								
15 – 18	0	1	1	0	0	1	1	1
19 – 22	41	9	50	14	24	4	28	16
23 – 26	85	38	123	35	54	12	66	37
27 – 36	111	64	175	50	63	20	83	47
Valid Cases	237	112	349	100	141	37	178	100
Means	26.1	26.9	26.3		26.1	26.4	26.1	
CCHE Index								
90 – 100	9	4	13	3	7	2	9	4
101 – 114	52	23	75	18	30	11	41	20
115 – 160	183	137	320	78	110	43	153	75
Valid Cases	244	164	408	100	147	56	203	100
Means	122	123	122		121	122	122	

Office of Budgets and Institutional Analysis
Freshmen Profile
Fall 2007

Intra-University	Admitted N= 2760				Enrolled N=1166			
	Res	Nonres	Total	Percent	Res	Nonres	Total	Percent
High School GPA								
2 – 2.499	3	2	5	0	3	1	4	0
2.5 – 2.999	192	139	331	12	120	33	153	13
3 – 3.599	1064	481	1545	57	574	102	676	59
3.6 – 4.0	546	172	718	27	251	28	279	24
4.001 – 10	79	20	99	4	25	2	27	2
Valid Cases	1884	814	2698	100	973	166	1139	100
Means	3.40	3.30	3.37		3.34	3.24	3.33	
Percentile Rank								
1 – 29	26	23	49	2	14	4	18	2
30 – 49	313	115	428	19	195	35	230	23
50 – 59	302	90	392	18	177	19	196	19
60 – 79	629	164	793	35	328	31	359	35
80 – 89	243	63	306	14	114	14	128	13
90 – 99	207	61	268	12	80	7	87	9
Valid Cases	1720	516	2236	100	908	110	1018	100
Means	66.1	63.3	65.5		63.7	59.5	63.2	
SAT Verbal								
200 – 399	22	18	40	3	12	4	16	4
400 – 499	206	178	384	34	90	43	133	37
500 – 599	271	209	480	42	106	34	140	38
600 – 699	121	93	214	19	53	18	71	20
700 – 800	17	8	25	2	4	0	4	1
Valid Cases	637	506	1143	100	265	99	364	100
Means	530	526	528		525	518	523	
SAT Math								
200 – 399	15	5	20	2	7	3	10	3
400 – 499	166	100	266	23	81	21	102	28
500 – 599	307	256	563	49	116	48	164	45
600 – 699	138	136	274	24	58	25	83	23
700 – 800	12	9	21	2	3	2	5	1
Valid Cases	638	506	1144	100	265	99	364	100
Means	542	555	548		537	545	539	
ACT Composite								
1 – 14	2	2	4	0	0	1	1	0
15 – 18	86	23	109	5	46	5	51	5
19 – 22	789	183	972	41	444	39	483	45
23 – 26	700	226	926	39	358	49	407	38
27 – 36	273	82	355	15	110	13	123	12
Valid Cases	1850	516	2366	100	958	107	1065	100
Means	23.1	23.5	23.2		22.8	23.1	22.8	
CCHE Index								
35 – 89	0	2	2	0	0	2	2	0
90 – 100	313	157	470	17	192	40	232	20
101 – 114	1108	485	1593	59	596	99	695	61
115 – 160	462	169	631	23	184	25	209	18
Valid Cases	1883	813	2696	100	972	166	1138	100
Means	109	108	109		107	106	107	

**Fall 2006 Freshmen
and
Their Performance
at CSU
After One Year**

Office of Budgets and Institutional Analysis
 Number of New Freshmen by High School GPA & Rank,
 Test Scores, CCHE Index and CSU GPA
 CSU GPA after One Year for Freshmen Entering Fall 2006

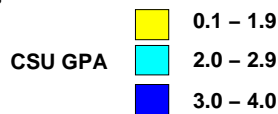
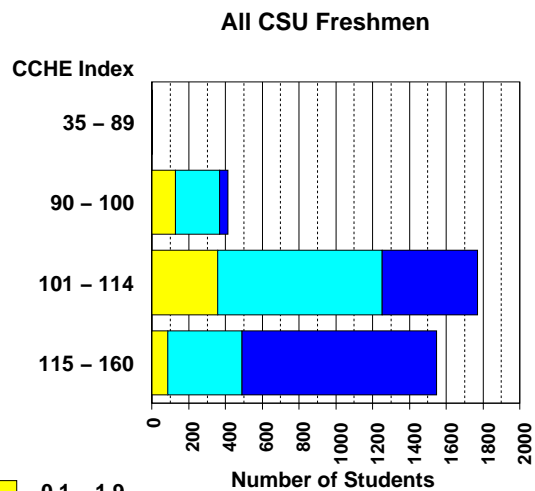
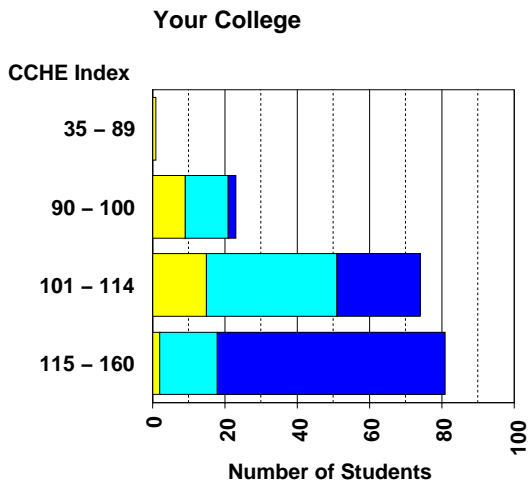
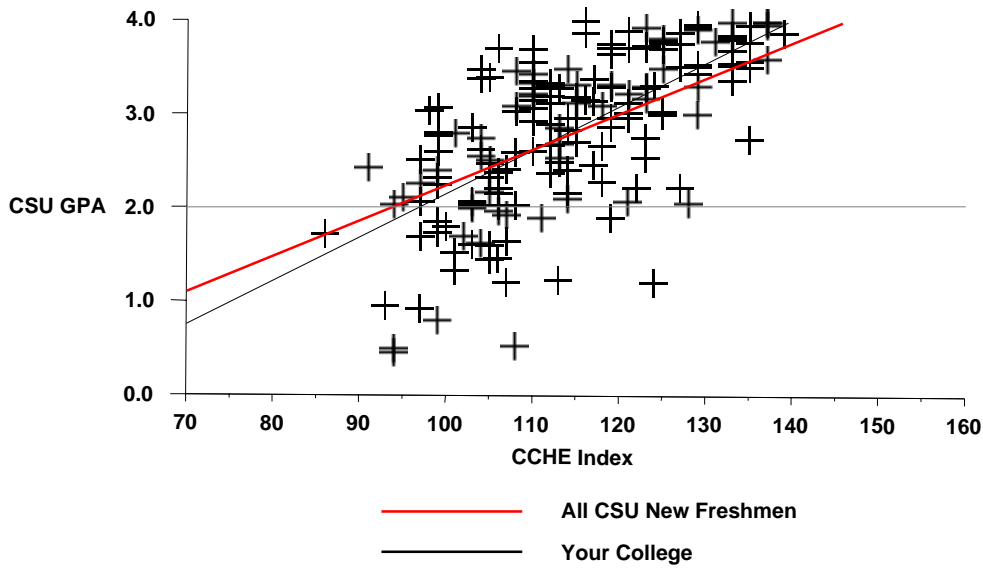
Agricultural Sciences

	CSU GPA				Total
	0.1 – 1.9	2.0 – 2.9	3.0 – 3.5	3.6 – 4.0	
High School GPA					
2 – 2.499			1		1
2.5 – 2.999	5	4			9
3 – 3.599	20	38	18	2	78
3.6 – 4.0	2	20	23	30	75
4.001 – 10		2	3	11	16
Total	27	64	45	43	179
Percentile Rank					
30 – 49	7	8	2		17
50 – 59	4	11	3		18
60 – 79	6	21	7	3	37
80 – 89	2	9	10	6	27
90 – 99	1	3	14	28	46
Total	20	52	36	37	145
SAT Verbal					
200 – 399	2				2
400 – 499	4	12	5		21
500 – 599	7	12	17	7	43
600 – 699	1	5	2	13	21
700 – 800		2	1	2	5
Total	14	31	25	22	92
SAT Math					
200 – 399	1	2			3
400 – 499	7	6	7		20
500 – 599	4	16	11	7	38
600 – 699	1	5	7	12	25
700 – 800	1	2		3	6
Total	14	31	25	22	92
ACT Composite					
15 – 18	5	3			8
19 – 22	10	20	11	2	43
23 – 26	6	21	19	12	58
27 – 36	3	10	6	23	42
Total	24	54	36	37	151
CCHE Index					
35 – 89	1				1
90 – 100	9	12	2		23
101 – 114	15	36	20	3	74
115 – 160	2	16	23	40	81
Total	27	64	45	43	179

Office of Budgets and Institutional Analysis
 Number of New Freshmen by High School GPA & Rank,
 Test Scores, CCHE Index and CSU GPA
 CSU GPA after One Year for Freshmen Entering Fall 2006

Agricultural Sciences

**Fall 2006 – Spring 2007
 First Year CSU Grades by CCHE Index**



Office of Budgets and Institutional Analysis
 Number of New Freshmen by High School GPA & Rank,
 Test Scores, CCHE Index and CSU GPA
 CSU GPA after One Year for Freshmen Entering Fall 2006

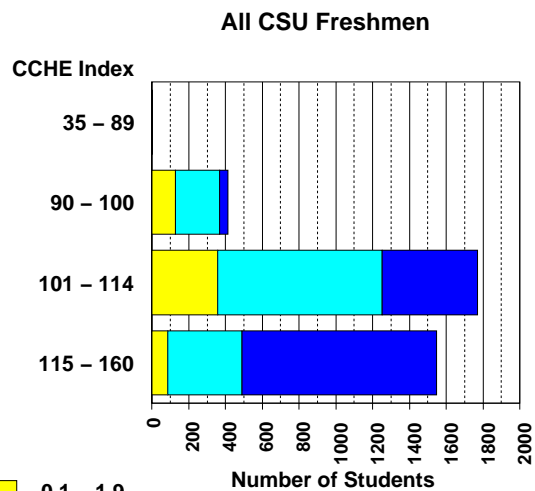
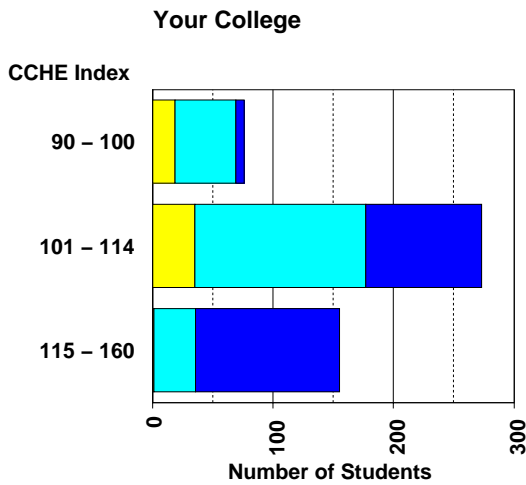
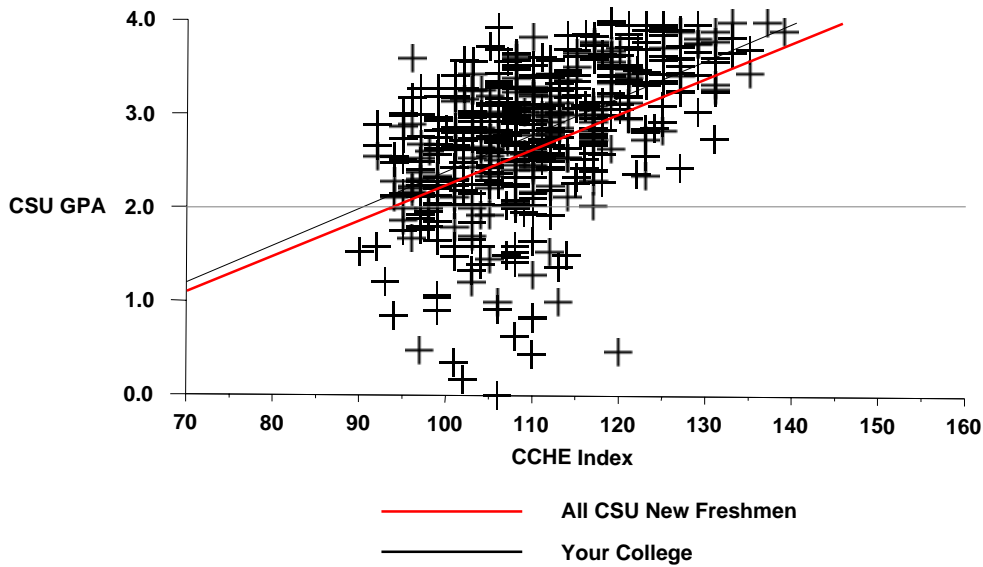
Applied Human Sciences

	CSU GPA				Total
	0.1 – 1.9	2.0 – 2.9	3.0 – 3.5	3.6 – 4.0	
High School GPA					
2.5 – 2.999	12	16	2		30
3 – 3.599	38	142	58	12	250
3.6 – 4.0	6	67	68	53	194
4.001 – 10		2	12	17	31
Total	56	227	140	82	505
Percentile Rank					
1 – 29	1	3			4
30 – 49	14	23	5	2	44
50 – 59	12	32	7	2	53
60 – 79	17	110	54	12	193
80 – 89	5	31	38	25	99
90 – 99	1	12	20	38	71
Total	50	211	124	79	464
SAT Verbal					
200 – 399	3	4	1		8
400 – 499	2	34	20	7	63
500 – 599	7	45	32	12	96
600 – 699	3	8	10	17	38
700 – 800		1		1	2
Total	15	92	63	37	207
SAT Math					
200 – 399			3		3
400 – 499	9	37	16	3	65
500 – 599	4	39	31	15	89
600 – 699	2	16	12	18	48
700 – 800			1	1	2
Total	15	92	63	37	207
ACT Composite					
1 – 14	1				1
15 – 18	4	12	4	1	21
19 – 22	24	117	50	19	210
23 – 26	22	61	58	28	169
27 – 36	2	11	16	25	54
Total	53	201	128	73	455
CCHE Index					
90 – 100	19	50	6	1	76
101 – 114	36	142	77	19	274
115 – 160	1	35	57	62	155
Total	56	227	140	82	505

Office of Budgets and Institutional Analysis
 Number of New Freshmen by High School GPA & Rank,
 Test Scores, CCHE Index and CSU GPA
 CSU GPA after One Year for Freshmen Entering Fall 2006

Applied Human Sciences

**Fall 2006 – Spring 2007
 First Year CSU Grades by CCHE Index**



Office of Budgets and Institutional Analysis
 Number of New Freshmen by High School GPA & Rank,
 Test Scores, CCHE Index and CSU GPA
 CSU GPA after One Year for Freshmen Entering Fall 2006

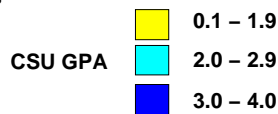
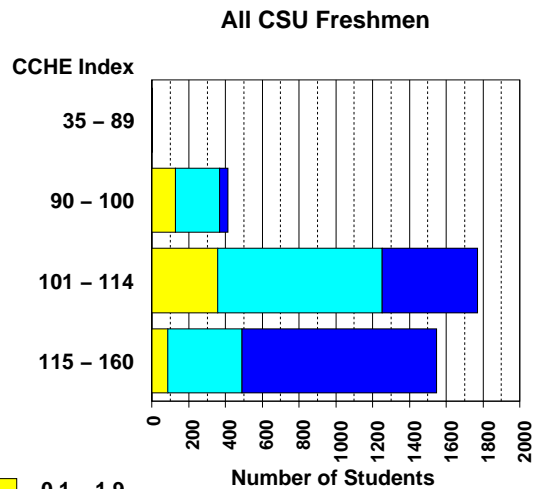
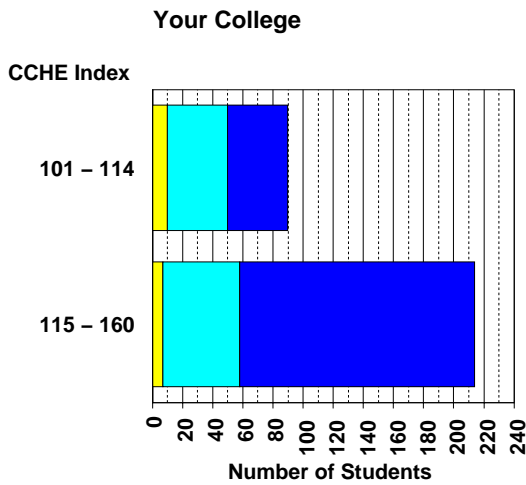
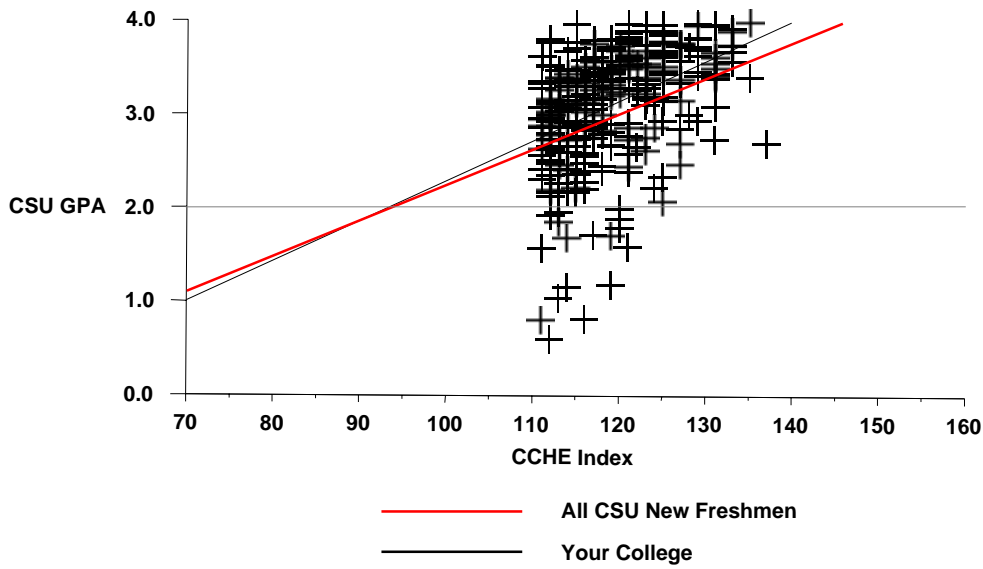
Business

	CSU GPA				Total
	0.1 – 1.9	2.0 – 2.9	3.0 – 3.5	3.6 – 4.0	
High School GPA					
2.5 – 2.999		2			2
3 – 3.599	8	33	17	10	68
3.6 – 4.0	9	52	82	67	210
4.001 – 10		4	8	12	24
Total	17	91	107	89	304
Percentile Rank					
1 – 29		1			1
30 – 49		3	1		4
50 – 59	1	5	8	4	18
60 – 79	10	36	35	15	96
80 – 89	4	30	31	28	93
90 – 99	2	8	24	34	68
Total	17	83	99	81	280
SAT Verbal					
400 – 499	2	11	12	3	28
500 – 599	1	28	27	25	81
600 – 699	1	10	9	14	34
700 – 800		1	1	1	3
Total	4	50	49	43	146
SAT Math					
400 – 499		6	9	4	19
500 – 599	2	24	21	19	66
600 – 699	2	18	16	16	52
700 – 800		2	3	4	9
Total	4	50	49	43	146
ACT Composite					
15 – 18	1				1
19 – 22	4	9	21	7	41
23 – 26	8	56	61	36	161
27 – 36	4	14	21	39	78
Total	17	79	103	82	281
CCHE Index					
101 – 114	10	40	33	7	90
115 – 160	7	51	74	82	214
Total	17	91	107	89	304

Office of Budgets and Institutional Analysis
 Number of New Freshmen by High School GPA & Rank,
 Test Scores, CCHE Index and CSU GPA
 CSU GPA after One Year for Freshmen Entering Fall 2006

Business

**Fall 2006 – Spring 2007
 First Year CSU Grades by CCHE Index**



Office of Budgets and Institutional Analysis
 Number of New Freshmen by High School GPA & Rank,
 Test Scores, CCHE Index and CSU GPA
 CSU GPA after One Year for Freshmen Entering Fall 2006

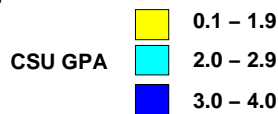
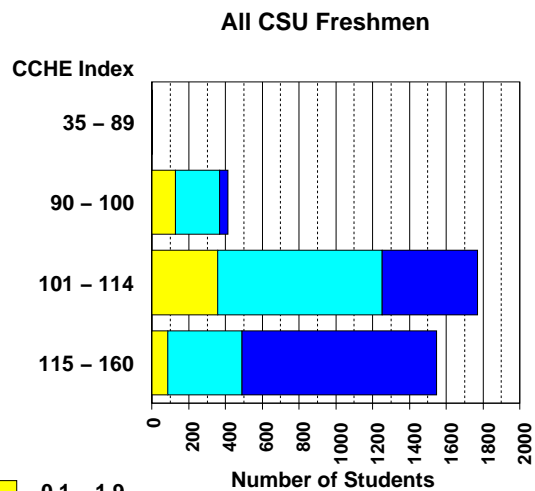
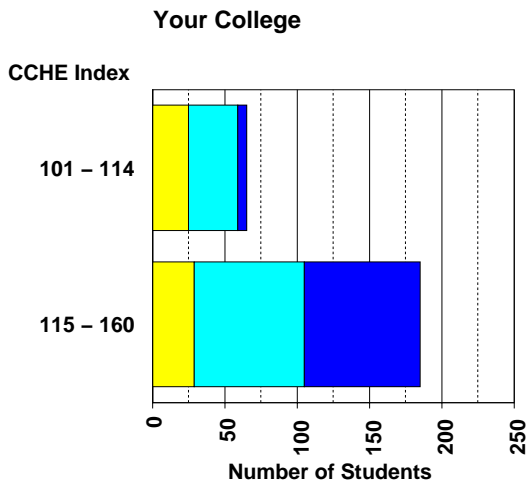
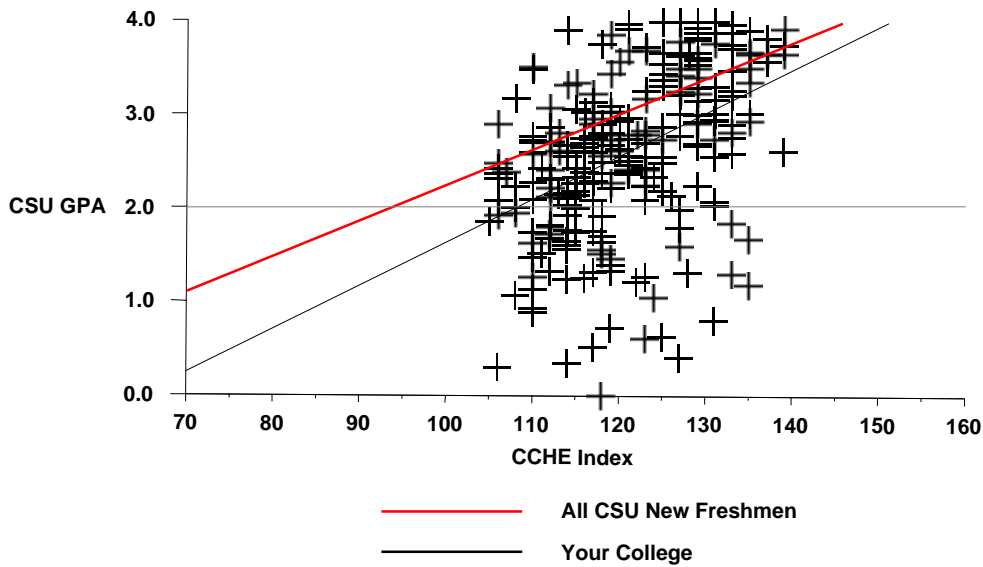
Engineering

	CSU GPA				Total
	0.1 – 1.9	2.0 – 2.9	3.0 – 3.5	3.6 – 4.0	
High School GPA					
2.5 – 2.999	1				1
3 – 3.599	33	40	8	1	82
3.6 – 4.0	19	64	23	32	138
4.001 – 10	2	6	5	17	30
Total	55	110	36	50	251
Percentile Rank					
30 – 49	4	3			7
50 – 59	5	7	1	1	14
60 – 79	25	39	5	3	72
80 – 89	12	27	9	11	59
90 – 99	4	21	18	32	75
Total	50	97	33	47	227
SAT Verbal					
200 – 399	2			2	4
400 – 499	5	7	4	1	17
500 – 599	16	23	13	12	64
600 – 699	9	12	5	13	39
700 – 800		3		4	7
Total	32	45	22	32	131
SAT Math					
400 – 499	3				3
500 – 599	11	18	4	2	35
600 – 699	15	24	13	24	76
700 – 800	3	3	5	6	17
Total	32	45	22	32	131
ACT Composite					
15 – 18		2			2
19 – 22	8	7	3	1	19
23 – 26	22	51	14	11	98
27 – 36	20	38	16	35	109
Total	50	98	33	47	228
CCHE Index					
101 – 114	25	34	4	2	65
115 – 160	30	76	32	48	186
Total	55	110	36	50	251

Office of Budgets and Institutional Analysis
 Number of New Freshmen by High School GPA & Rank,
 Test Scores, CCHE Index and CSU GPA
 CSU GPA after One Year for Freshmen Entering Fall 2006

Engineering

**Fall 2006 – Spring 2007
 First Year CSU Grades by CCHE Index**



Office of Budgets and Institutional Analysis
 Number of New Freshmen by High School GPA & Rank,
 Test Scores, CCHE Index and CSU GPA
 CSU GPA after One Year for Freshmen Entering Fall 2006

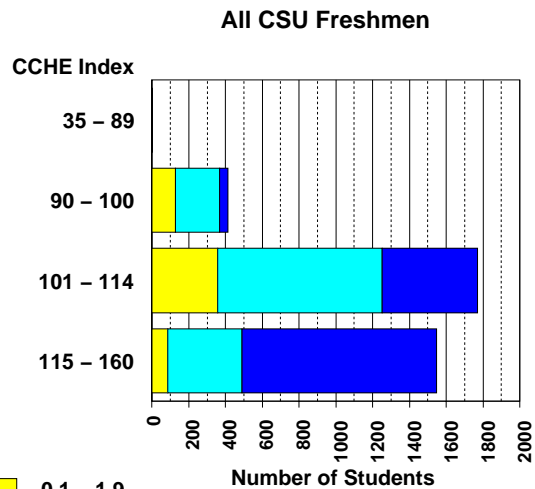
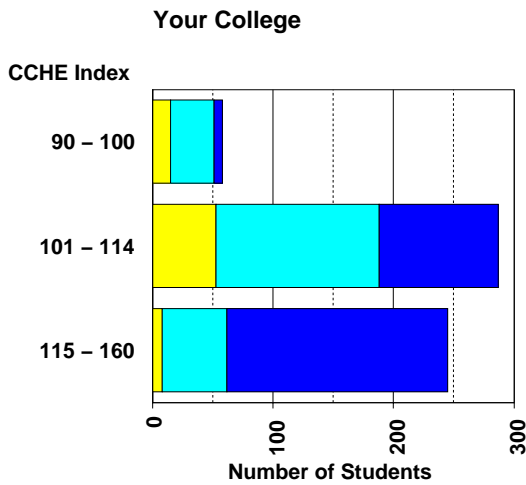
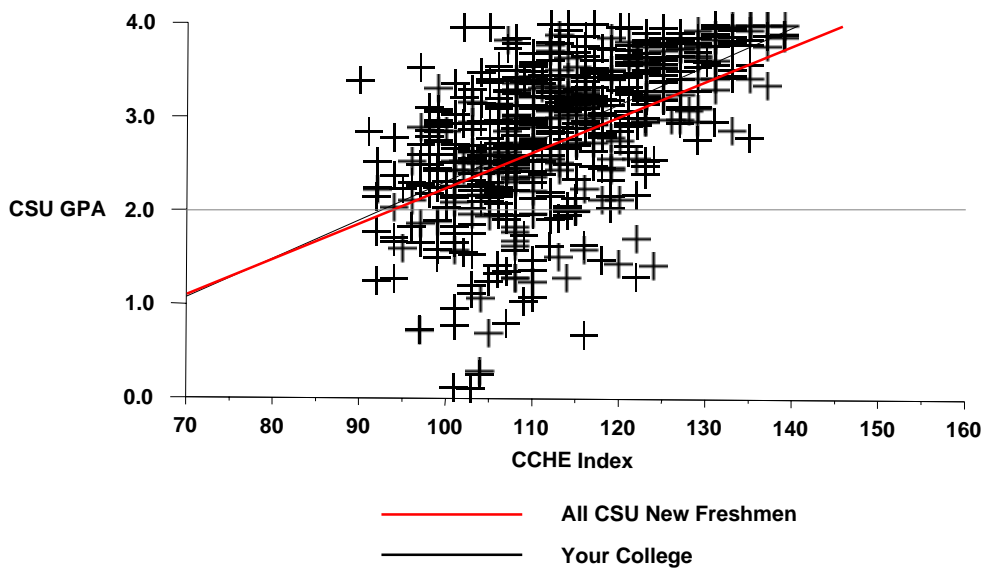
Liberal Arts

	CSU GPA				Total
	0.1 – 1.9	2.0 – 2.9	3.0 – 3.5	3.6 – 4.0	
High School GPA					
2 – 2.499		1			1
2.5 – 2.999	17	21	4	1	43
3 – 3.599	54	137	62	18	271
3.6 – 4.0	5	62	82	83	232
4.001 – 10		4	10	29	43
Total	76	225	158	131	590
Percentile Rank					
1 – 29	3	5	2		10
30 – 49	24	37	8	2	71
50 – 59	15	40	16	5	76
60 – 79	24	83	54	20	181
80 – 89	3	32	38	29	102
90 – 99	1	8	29	66	104
Total	70	205	147	122	544
SAT Verbal					
200 – 399	1	1	2		4
400 – 499	13	21	12	6	52
500 – 599	11	44	36	27	118
600 – 699	5	23	23	27	78
700 – 800	1	3	2	11	17
Total	31	92	75	71	269
SAT Math					
200 – 399	1	3	3		7
400 – 499	8	32	23	10	73
500 – 599	15	43	36	25	119
600 – 699	6	13	13	33	65
700 – 800	1	1		3	5
Total	31	92	75	71	269
ACT Composite					
15 – 18		13	3		16
19 – 22	25	73	36	12	146
23 – 26	36	93	78	49	256
27 – 36	9	29	31	63	132
Total	70	208	148	124	550
CCHE Index					
90 – 100	15	36	6	1	58
101 – 114	53	135	73	26	287
115 – 160	8	54	79	104	245
Total	76	225	158	131	590

Office of Budgets and Institutional Analysis
 Number of New Freshmen by High School GPA & Rank,
 Test Scores, CCHE Index and CSU GPA
 CSU GPA after One Year for Freshmen Entering Fall 2006

Liberal Arts

**Fall 2006 – Spring 2007
 First Year CSU Grades by CCHE Index**



Office of Budgets and Institutional Analysis
 Number of New Freshmen by High School GPA & Rank,
 Test Scores, CCHE Index and CSU GPA
 CSU GPA after One Year for Freshmen Entering Fall 2006

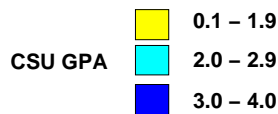
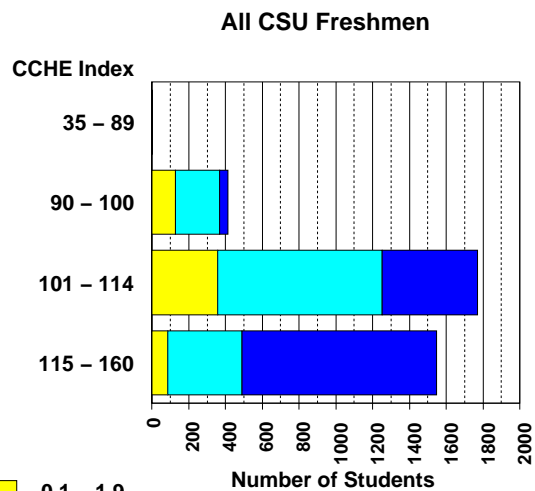
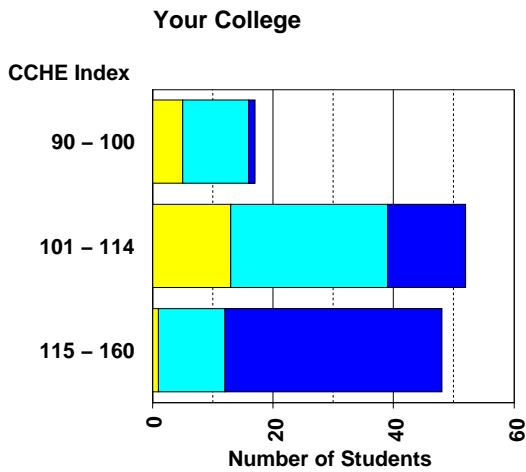
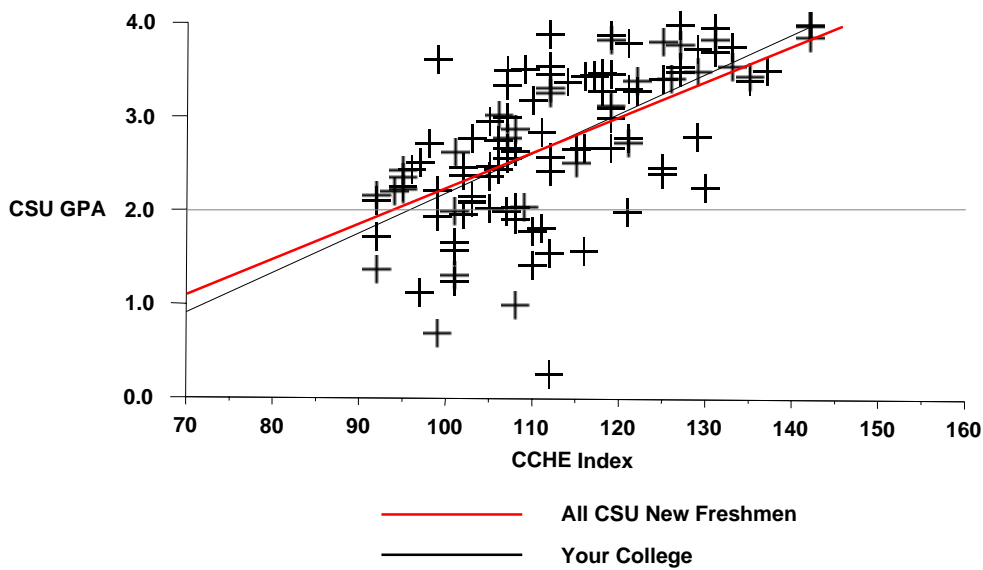
Warner College of Natural Resources

	CSU GPA				Total
	0.1 – 1.9	2.0 – 2.9	3.0 – 3.5	3.6 – 4.0	
High School GPA					
2.5 – 2.999	2	6		1	9
3 – 3.599	16	29	6	3	54
3.6 – 4.0	1	12	16	10	39
4.001 – 10		1	5	9	15
Total	19	48	27	23	117
Percentile Rank					
1 – 29	1				1
30 – 49	4	8		1	13
50 – 59	1	8	2		11
60 – 79	10	16	7	4	37
80 – 89		7	4	1	12
90 – 99		2	8	11	21
Total	16	41	21	17	95
SAT Verbal					
200 – 399		3			3
400 – 499	5	4	1		10
500 – 599	3	4	4	4	15
600 – 699	1	6	2	6	15
700 – 800		1	2	6	9
Total	9	18	9	16	52
SAT Math					
400 – 499	3	5			8
500 – 599	6	9	7	4	26
600 – 699		3	1	8	12
700 – 800		1	1	4	6
Total	9	18	9	16	52
ACT Composite					
15 – 18	4	4			8
19 – 22	5	17	5	2	29
23 – 26	7	17	10	4	38
27 – 36	1	3	8	8	20
Total	17	41	23	14	95
CCHE Index					
90 – 100	5	11		1	17
101 – 114	13	26	9	4	52
115 – 160	1	11	18	18	48
Total	19	48	27	23	117

Office of Budgets and Institutional Analysis
 Number of New Freshmen by High School GPA & Rank,
 Test Scores, CCHE Index and CSU GPA
 CSU GPA after One Year for Freshmen Entering Fall 2006

Warner College of Natural Resources

**Fall 2006 – Spring 2007
 First Year CSU Grades by CCHE Index**



Office of Budgets and Institutional Analysis
 Number of New Freshmen by High School GPA & Rank,
 Test Scores, CCHE Index and CSU GPA
 CSU GPA after One Year for Freshmen Entering Fall 2006

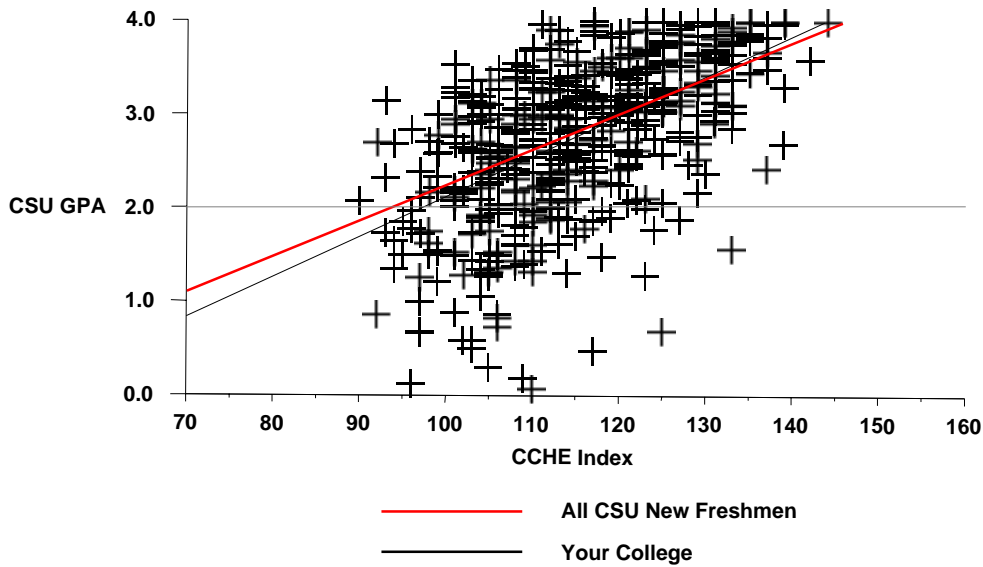
Natural Sciences

	CSU GPA				Total
	0.1 – 1.9	2.0 – 2.9	3.0 – 3.5	3.6 – 4.0	
High School GPA					
2 – 2.499	1				1
2.5 – 2.999	11	14	1	2	28
3 – 3.599	58	84	52	5	199
3.6 – 4.0	17	77	71	70	235
4.001 – 10	2	8	16	28	54
Total	89	183	140	105	517
Percentile Rank					
1 – 29	2	2	1		5
30 – 49	20	17	5	2	44
50 – 59	17	19	11		47
60 – 79	29	60	46	11	146
80 – 89	6	44	29	19	98
90 – 99	6	21	37	63	127
Total	80	163	129	95	467
SAT Verbal					
200 – 399	1		1		2
400 – 499	5	19	8	3	35
500 – 599	22	29	39	18	108
600 – 699	10	12	23	26	71
700 – 800		6	3	8	17
Total	38	66	74	55	233
SAT Math					
200 – 399	1				1
400 – 499	7	14	12		33
500 – 599	20	30	31	15	96
600 – 699	9	17	27	33	86
700 – 800	1	5	4	7	17
Total	38	66	74	55	233
ACT Composite					
15 – 18	9	8	2		19
19 – 22	31	59	20	12	122
23 – 26	28	74	65	30	197
27 – 36	8	32	38	57	135
Total	76	173	125	99	473
CCHE Index					
90 – 100	20	14	2		36
101 – 114	56	105	52	13	226
115 – 160	13	64	86	92	255
Total	89	183	140	105	517

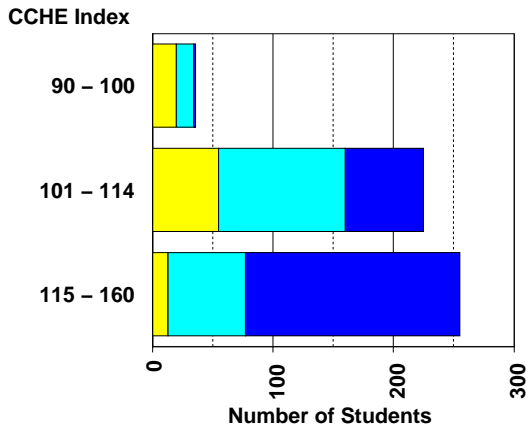
Office of Budgets and Institutional Analysis
Number of New Freshmen by High School GPA & Rank,
Test Scores, CCHE Index and CSU GPA
CSU GPA after One Year for Freshmen Entering Fall 2006

Natural Sciences

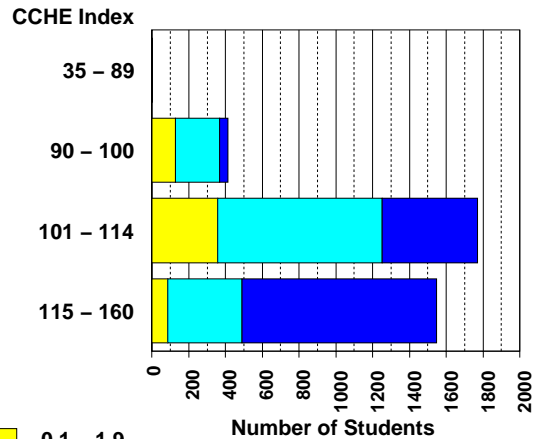
Fall 2006 – Spring 2007
First Year CSU Grades by CCHE Index



Your College



All CSU Freshmen



CSU GPA
0.1 – 1.9
2.0 – 2.9
3.0 – 4.0

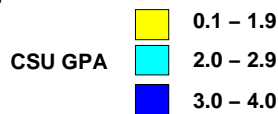
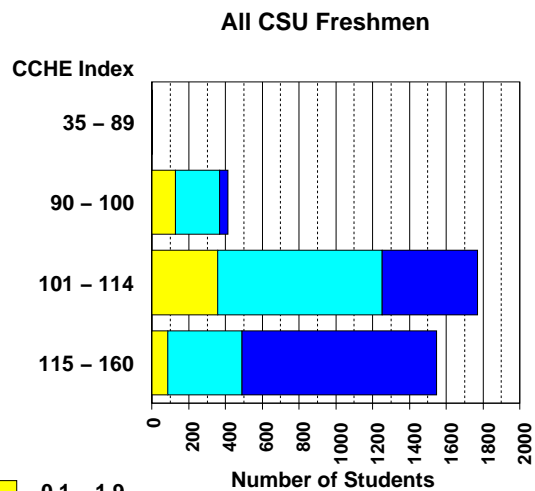
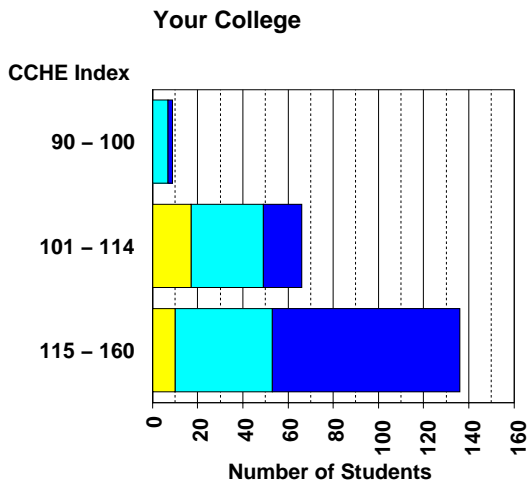
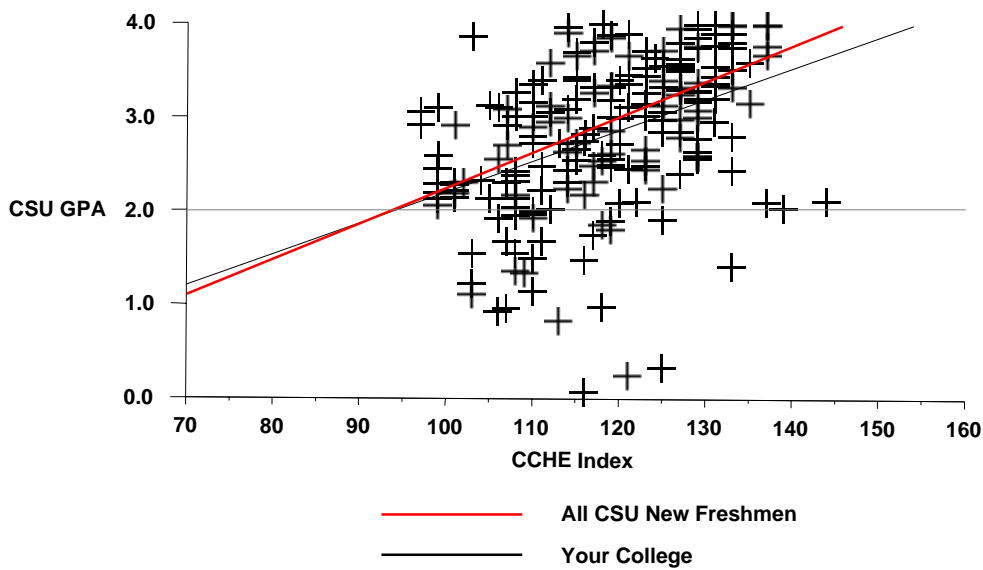
Office of Budgets and Institutional Analysis
 Number of New Freshmen by High School GPA & Rank,
 Test Scores, CCHE Index and CSU GPA
 CSU GPA after One Year for Freshmen Entering Fall 2006

Veterinary Medicine + Biomedical Sci	CSU GPA				Total
	0.1 – 1.9	2.0 – 2.9	3.0 – 3.5	3.6 – 4.0	
High School GPA					
2.5 – 2.999	2	2	3		7
3 – 3.599	9	33	9	5	56
3.6 – 4.0	17	39	37	32	125
4.001 – 10		8	6	10	24
Total	28	82	55	47	212
Percentile Rank					
30 – 49	3	5	3		11
50 – 59	2	2		2	6
60 – 79	7	28	13	5	53
80 – 89	7	19	16	11	53
90 – 99	3	19	18	24	64
Total	22	73	50	42	187
SAT Verbal					
400 – 499	3	11	5		19
500 – 599	5	17	14	11	47
600 – 699	4	14	10	11	39
700 – 800		1	3	4	8
Total	12	43	32	26	113
SAT Math					
400 – 499	3	4	4	2	13
500 – 599	4	22	19	5	50
600 – 699	4	16	8	18	46
700 – 800	1	1	1	1	4
Total	12	43	32	26	113
ACT Composite					
15 – 18		5			5
19 – 22	11	22	10	4	47
23 – 26	10	24	21	11	66
27 – 36	3	20	20	29	72
Total	24	71	51	44	190
CCHE Index					
90 – 100		7	2		9
101 – 114	17	32	13	4	66
115 – 160	11	43	40	43	137
Total	28	82	55	47	212

Office of Budgets and Institutional Analysis
 Number of New Freshmen by High School GPA & Rank,
 Test Scores, CCHE Index and CSU GPA
 CSU GPA after One Year for Freshmen Entering Fall 2006

Veterinary Medicine + Biomedical Sci

**Fall 2006 – Spring 2007
 First Year CSU Grades by CCHE Index**



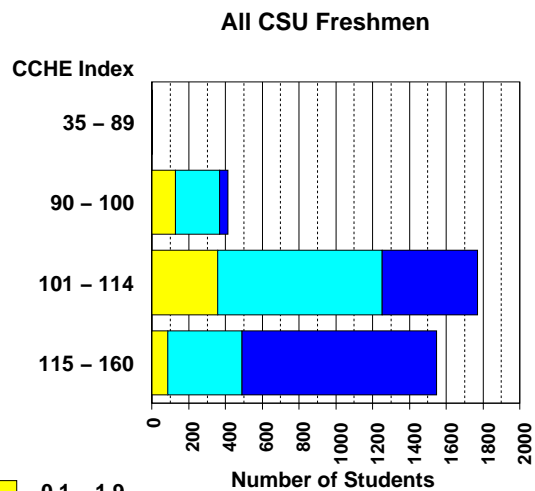
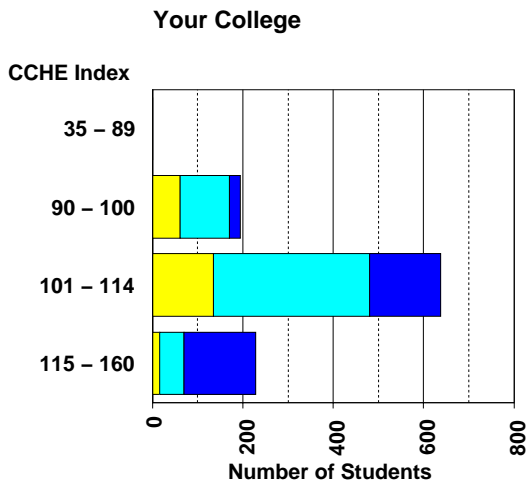
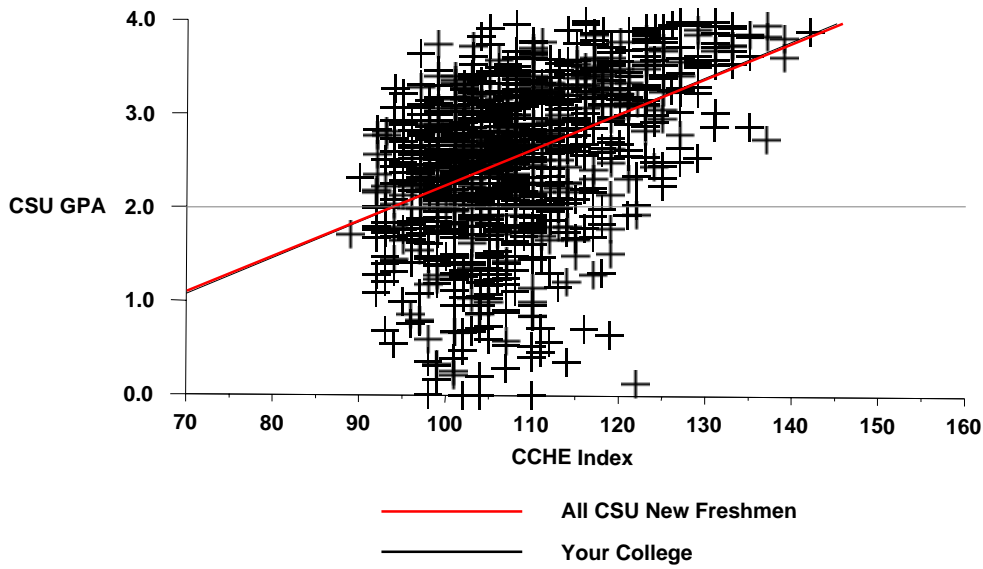
Office of Budgets and Institutional Analysis
 Number of New Freshmen by High School GPA & Rank,
 Test Scores, CCHE Index and CSU GPA
 CSU GPA after One Year for Freshmen Entering Fall 2006

Intra-University	CSU GPA				Total
	0.1 – 1.9	2.0 – 2.9	3.0 – 3.5	3.6 – 4.0	
High School GPA					
2 – 2.499	1	1			2
2.5 – 2.999	54	58	12	1	125
3 – 3.599	135	343	116	22	616
3.6 – 4.0	27	100	89	71	287
4.001 – 10		6	5	23	34
Total	217	508	222	117	1,064
Percentile Rank					
1 – 29	13	16	4	1	34
30 – 49	55	107	23	2	187
50 – 59	51	82	26	6	165
60 – 79	59	181	82	24	346
80 – 89	16	64	33	28	141
90 – 99	5	15	30	47	97
Total	199	465	198	108	970
SAT Verbal					
200 – 399		12	3	3	18
400 – 499	29	61	25	3	118
500 – 599	37	76	55	15	183
600 – 699	10	20	16	29	75
700 – 800		2		4	6
Total	76	171	99	54	400
SAT Math					
200 – 399		3	2	1	6
400 – 499	15	63	25	6	109
500 – 599	40	69	49	23	181
600 – 699	21	34	21	16	92
700 – 800		2	2	8	12
Total	76	171	99	54	400
ACT Composite					
15 – 18	17	25	7	1	50
19 – 22	89	230	81	16	416
23 – 26	76	191	90	43	400
27 – 36	20	33	29	54	136
Total	202	479	207	114	1,002
CCHE Index					
35 – 89	1				1
90 – 100	62	109	22	2	195
101 – 114	138	345	129	28	640
115 – 160	16	54	71	87	228
Total	217	508	222	117	1,064

Office of Budgets and Institutional Analysis
 Number of New Freshmen by High School GPA & Rank,
 Test Scores, CCHE Index and CSU GPA
 CSU GPA after One Year for Freshmen Entering Fall 2006

Intra-University

**Fall 2006 – Spring 2007
 First Year CSU Grades by CCHE Index**



0.1 - 1.9
 2.0 - 2.9
 3.0 - 4.0