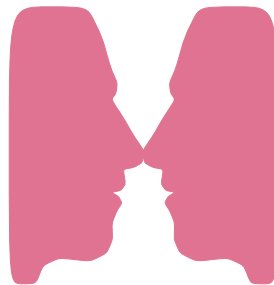


Freshmen Profile

2004



Five Year History

Office of Budgets and Institutional Analysis
 Profile of **All New** Freshmen Enrolled Fall Semesters
 Five Year Trend in High School Admissions Scores by College

	2000	2001	2002	2003	2004
Mean High School Rank					
Agricultural Sciences	77	78	76	78	77
Applied Human Sciences	76	73	74	74	73
Business	77	83	81	81	81
Engineering	83	81	83	78	80
Intra–University	69	68	67	66	66
Liberal Arts	74	73	73	74	71
Natural Resources	75	72	74	70	72
Natural Sciences	77	76	76	76	76
Veterinary Medicine + Biomedical Sci	80	82	81	78	80
Total	76	74	74	73	73
Mean SAT Verbal Score					
Agricultural Sciences	555	563	567	559	568
Applied Human Sciences	527	522	517	522	528
Business	541	557	562	573	564
Engineering	569	567	572	574	583
Intra–University	520	522	521	527	535
Liberal Arts	579	574	568	570	576
Natural Resources	569	571	574	542	566
Natural Sciences	559	552	559	568	564
Veterinary Medicine + Biomedical Sci	569	567	565	566	573
Total	551	549	548	553	557
Mean SAT Math Score					
Agricultural Sciences	549	560	552	556	556
Applied Human Sciences	536	533	537	529	536
Business	565	585	585	585	585
Engineering	618	606	628	620	630
Intra–University	525	537	532	540	542
Liberal Arts	547	548	552	552	550
Natural Resources	558	559	561	551	565
Natural Sciences	566	565	572	578	576
Veterinary Medicine + Biomedical Sci	566	561	562	569	559
Total	557	557	559	561	563

Office of Budgets and Institutional Analysis
 Profile of **All New** Freshmen Enrolled Fall Semesters
 Five Year Trend in High School Admissions Scores by College

	2000	2001	2002	2003	2004
Mean Composite ACT Score					
Agricultural Sciences	24.4	24.4	24.6	24.4	24.5
Applied Human Sciences	22.8	22.8	23.1	23.1	23.3
Business	24.1	25.4	25.1	25.2	25.4
Engineering	26.1	25.9	26.2	26.2	26.5
Intra–University	22.7	22.9	22.9	22.8	23.4
Liberal Arts	24.4	24.3	24.7	24.5	24.9
Natural Resources	23.7	24.0	24.6	24.0	24.7
Natural Sciences	24.5	24.4	24.8	24.8	24.9
Veterinary Medicine + Biomedical Sci	24.4	24.8	25.1	24.8	24.9
Total	24.0	24.0	24.2	24.1	24.4
Mean High School Grade Point Average					
Agricultural Sciences	3.58	3.62	3.57	3.63	3.59
Applied Human Sciences	3.54	3.53	3.55	3.58	3.54
Business	3.59	3.76	3.73	3.75	3.73
Engineering	3.70	3.70	3.75	3.70	3.73
Intra–University	3.37	3.39	3.38	3.37	3.39
Liberal Arts	3.52	3.55	3.51	3.56	3.50
Natural Resources	3.52	3.51	3.51	3.48	3.52
Natural Sciences	3.58	3.58	3.58	3.60	3.60
Veterinary Medicine + Biomedical Sci	3.64	3.72	3.68	3.64	3.68
Total	3.54	3.55	3.53	3.54	3.54
Mean CCHE Index					
Agricultural Sciences	115.0	115.9	114.8	115.9	115.5
Applied Human Sciences	111.3	111.1	111.4	112.1	111.6
Business	115.3	120.1	119.0	119.5	119.4
Engineering	120.9	120.2	121.8	120.6	121.7
Intra–University	108.3	108.9	108.5	108.1	109.5
Liberal Arts	114.3	114.2	114.4	114.7	114.3
Natural Resources	114.8	113.4	114.3	112.6	114.5
Natural Sciences	115.7	114.9	115.8	116.1	116.2
Veterinary Medicine + Biomedical Sci	116.4	118.1	117.6	116.7	117.6
Total	113.9	113.9	113.6	113.6	114.2

For the purposes of making index comparisons across years, the 2004 index calculation formula is used for all years.

Office of Budgets and Institutional Analysis
 Profile of **Resident** Freshmen Enrolled Fall Semesters
 Five Year Trend in High School Admissions Scores by College

	2000	2001	2002	2003	2004
Mean High School Rank					
Agricultural Sciences	78	77	76	79	74
Applied Human Sciences	77	73	75	75	73
Business	79	84	81	82	81
Engineering	83	80	82	78	79
Intra–University	70	69	68	66	67
Liberal Arts	75	75	72	74	71
Natural Resources	76	74	76	75	72
Natural Sciences	77	76	75	76	76
Veterinary Medicine + Biomedical Sci	82	82	79	78	79
Total	76	75	74	73	73
Mean SAT Verbal Score					
Agricultural Sciences	536	546	550	563	559
Applied Human Sciences	527	515	515	515	519
Business	533	557	557	577	563
Engineering	562	561	561	568	584
Intra–University	517	523	520	527	534
Liberal Arts	580	573	566	568	575
Natural Resources	554	568	559	548	531
Natural Sciences	556	551	556	566	559
Veterinary Medicine + Biomedical Sci	566	566	558	578	556
Total	547	546	544	552	553
Mean SAT Math Score					
Agricultural Sciences	522	533	548	557	516
Applied Human Sciences	535	528	532	523	524
Business	558	576	571	580	578
Engineering	605	603	616	613	616
Intra–University	520	532	528	537	538
Liberal Arts	544	548	543	550	546
Natural Resources	533	546	547	548	539
Natural Sciences	565	562	571	571	572
Veterinary Medicine + Biomedical Sci	553	552	558	571	547
Total	551	553	553	558	556

Office of Budgets and Institutional Analysis
 Profile of **Resident** Freshmen Enrolled Fall Semesters
 Five Year Trend in High School Admissions Scores by College

	2000	2001	2002	2003	2004
Mean Composite ACT Score					
Agricultural Sciences	23.8	24.2	24.5	24.4	24.3
Applied Human Sciences	22.7	22.8	23.0	23.1	23.0
Business	23.9	25.1	25.1	25.1	25.2
Engineering	25.8	25.7	26.0	26.0	26.2
Intra–University	22.6	22.8	22.9	22.7	23.3
Liberal Arts	24.2	24.2	24.7	24.5	24.8
Natural Resources	23.3	23.4	24.2	24.0	24.7
Natural Sciences	24.5	24.2	24.6	24.7	24.8
Veterinary Medicine + Biomedical Sci	24.3	24.7	25.0	24.9	24.7
Total	23.8	23.9	24.0	24.0	24.3
Mean High School Grade Point Average					
Agricultural Sciences	3.63	3.62	3.59	3.66	3.56
Applied Human Sciences	3.57	3.53	3.57	3.60	3.55
Business	3.61	3.76	3.73	3.76	3.75
Engineering	3.70	3.69	3.73	3.70	3.72
Intra–University	3.41	3.41	3.41	3.40	3.41
Liberal Arts	3.54	3.57	3.51	3.59	3.51
Natural Resources	3.59	3.53	3.58	3.52	3.58
Natural Sciences	3.58	3.58	3.58	3.62	3.60
Veterinary Medicine + Biomedical Sci	3.66	3.73	3.67	3.66	3.67
Total	3.56	3.56	3.54	3.56	3.55
Mean CCHE Index					
Agricultural Sciences	114.5	114.5	114.7	116.6	113.9
Applied Human Sciences	111.4	111.0	111.4	111.9	111.4
Business	115.1	119.7	118.5	119.3	119.3
Engineering	119.9	119.6	120.6	120.1	120.9
Intra–University	108.7	109.1	108.9	108.3	109.6
Liberal Arts	114.2	114.3	114.0	115.1	114.1
Natural Resources	113.9	112.8	114.5	112.9	114.6
Natural Sciences	115.5	114.6	115.5	115.8	115.9
Veterinary Medicine + Biomedical Sci	116.2	117.8	117.2	117.0	116.5
Total	113.7	113.6	113.4	113.6	113.8

For the purposes of making index comparisons across years, the 2004 index calculation formula is used for all years.

Office of Budgets and Institutional Analysis
 Profile of **Nonresident** Freshmen Enrolled Fall Semesters
 Five Year Trend in High School Admissions Scores by College

	2000	2001	2002	2003	2004
Mean High School Rank					
Agricultural Sciences	76	81	76	75	81
Applied Human Sciences	72	74	70	72	70
Business	72	81	79	79	79
Engineering	84	84	86	80	84
Intra–University	63	65	61	61	63
Liberal Arts	70	69	75	69	71
Natural Resources	73	70	71	62	71
Natural Sciences	76	75	78	74	77
Veterinary Medicine + Biomedical Sci	78	84	83	79	82
Total	73	74	73	71	74
Mean SAT Verbal Score					
Agricultural Sciences	570	574	578	556	573
Applied Human Sciences	528	538	521	537	546
Business	567	556	573	563	567
Engineering	589	583	592	590	581
Intra–University	529	520	522	527	538
Liberal Arts	575	577	572	575	578
Natural Resources	582	574	585	538	583
Natural Sciences	567	556	567	571	577
Veterinary Medicine + Biomedical Sci	573	568	573	556	590
Total	562	555	557	555	566
Mean SAT Math Score					
Agricultural Sciences	569	577	554	556	574
Applied Human Sciences	540	543	545	540	559
Business	586	612	616	597	610
Engineering	653	613	652	637	658
Intra–University	540	550	542	549	554
Liberal Arts	557	549	574	557	562
Natural Resources	579	569	572	554	577
Natural Sciences	569	574	574	592	586
Veterinary Medicine + Biomedical Sci	584	570	565	566	571
Total	572	569	572	569	579

Office of Budgets and Institutional Analysis
 Profile of **Nonresident** Freshmen Enrolled Fall Semesters
 Five Year Trend in High School Admissions Scores by College

	2000	2001	2002	2003	2004
Mean Composite ACT Score					
Agricultural Sciences	25.4	24.9	25.0	24.4	25.0
Applied Human Sciences	23.1	22.6	23.9	23.4	24.7
Business	25.4	26.4	25.5	25.6	26.5
Engineering	27.4	26.6	27.5	27.1	27.7
Intra–University	23.0	23.1	23.3	23.6	23.7
Liberal Arts	25.5	24.8	25.0	24.1	25.2
Natural Resources	24.5	24.7	25.3	24.1	24.6
Natural Sciences	24.8	25.4	25.7	25.6	25.8
Veterinary Medicine + Biomedical Sci	24.8	25.1	25.3	24.4	25.7
Total	24.8	24.7	24.9	24.6	25.2
Mean High School Grade Point Average					
Agricultural Sciences	3.51	3.61	3.53	3.58	3.62
Applied Human Sciences	3.43	3.54	3.48	3.52	3.49
Business	3.52	3.75	3.72	3.71	3.62
Engineering	3.72	3.72	3.82	3.71	3.76
Intra–University	3.22	3.30	3.23	3.24	3.28
Liberal Arts	3.46	3.45	3.51	3.39	3.49
Natural Resources	3.44	3.49	3.42	3.43	3.44
Natural Sciences	3.56	3.57	3.57	3.52	3.60
Veterinary Medicine + Biomedical Sci	3.59	3.70	3.69	3.61	3.71
Total	3.47	3.53	3.49	3.47	3.52
Mean CCHE Index					
Agricultural Sciences	115.6	117.6	114.9	114.9	117.4
Applied Human Sciences	110.7	111.4	111.5	112.5	112.5
Business	116.3	121.1	120.5	120.2	120.3
Engineering	124.3	121.9	125.5	122.7	124.6
Intra–University	106.7	108.0	106.9	107.5	109.0
Liberal Arts	114.6	113.9	115.5	112.6	114.8
Natural Resources	115.8	114.0	114.1	112.1	114.4
Natural Sciences	116.5	116.2	117.0	116.9	118.0
Veterinary Medicine + Biomedical Sci	116.8	118.5	118.3	116.2	119.8
Total	114.6	114.8	114.4	113.9	115.5

For the purposes of making index comparisons across years, the 2004 index calculation formula is used for all years.

Fall 2004 Freshmen

Office of Budgets and Institutional Analysis
Freshmen Profile
Fall 2004

University	Admitted N= 9724				Enrolled N=4061			
	Res	Nonres	Total	Percent	Res	Nonres	Total	Percent
High School GPA								
2.0 – 2.4	3	6	9	0	3	3	6	0
2.5 – 2.9	272	308	580	7	175	95	270	7
3.0 – 3.5	2580	1392	3972	45	1412	339	1751	47
3.6 – 4.0	2777	1488	4265	48	1387	334	1721	46
Valid Cases	5632	3194	8826	100	2977	771	3748	100
Means	3.52	3.48	3.51		3.50	3.45	3.49	
Percentile Rank								
1 – 29	45	49	94	1	35	15	50	1
30 – 49	516	252	768	9	335	82	417	11
50 – 59	602	281	883	10	336	75	411	11
60 – 79	1998	841	2839	33	1094	198	1292	34
80 – 89	1239	571	1810	21	633	133	766	20
90 – 99	1371	751	2122	25	618	193	811	22
Valid Cases	5771	2745	8516	100	3051	696	3747	100
Means	74.7	75.0	74.8		72.8	73.6	73.0	
SAT Verbal								
200 – 399	35	35	70	1	19	12	31	2
400 – 499	542	367	909	17	270	90	360	19
500 – 599	1359	1253	2612	49	639	276	915	49
600 – 699	757	726	1483	28	298	185	483	26
700 – 800	148	144	292	5	46	35	81	4
Valid Cases	2841	2525	5366	100	1272	598	1870	100
Means	561	567	564		553	566	557	
SAT Math								
200 – 399	38	11	49	1	24	6	30	2
400 – 499	520	303	823	15	264	77	341	18
500 – 599	1278	1133	2411	45	583	260	843	45
600 – 699	844	895	1739	32	348	212	560	30
700 – 800	161	183	344	6	53	43	96	5
Valid Cases	2841	2525	5366	100	1272	598	1870	100
Means	565	582	573		556	579	563	
ACT Composite								
1 – 14	0	2	2	0	0	1	1	0
15 – 18	140	41	181	2	72	9	81	2
19 – 22	1681	453	2134	26	935	101	1036	29
23 – 26	2495	988	3483	43	1317	223	1540	43
27 – 36	1638	713	2351	29	772	191	963	27
Valid Cases	5954	2197	8151	100	3096	525	3621	100
Means	24.5	25.1	24.7		24.3	25.2	24.4	
CCHE Index								
35 – 89	3	4	7	0	2	3	5	0
90 – 100	287	160	447	5	174	61	235	6
101 – 114	2897	1511	4408	46	1636	355	1991	49
115 – 160	2946	1837	4783	50	1372	426	1798	45
Valid Cases	6133	3512	9645	100	3184	845	4029	100
Means	115	116	115		114	116	114	

Office of Budgets and Institutional Analysis
Freshmen Profile
Fall 2004

Agricultural Sciences**Admitted N= 410****Enrolled N=193**

	Res	Nonres	Total	Percent	Res	Nonres	Total	Percent
High School GPA								
2.5 – 2.9	6	10	16	4	6	5	11	6
3.0 – 3.5	73	84	157	43	50	33	83	47
3.6 – 4.0	59	134	193	53	41	40	81	46
Valid Cases	138	228	366	100	97	78	175	100
Means	3.52	3.58	3.56		3.50	3.53	3.52	
Percentile Rank								
1 – 29	0	1	1	0	0	0	0	0
30 – 49	7	8	15	4	7	3	10	6
50 – 59	23	12	35	10	17	5	22	13
60 – 79	53	64	117	34	33	24	57	34
80 – 89	24	42	66	19	17	10	27	16
90 – 99	33	73	106	31	24	27	51	31
Valid Cases	140	200	340	100	98	69	167	100
Means	74.7	80.8	78.3		74.5	80.7	77.0	
SAT Verbal								
200 – 399	1	2	3	1	0	0	0	0
400 – 499	12	28	40	16	5	9	14	14
500 – 599	21	85	106	43	19	31	50	51
600 – 699	10	72	82	34	6	23	29	29
700 – 800	1	12	13	5	1	5	6	6
Valid Cases	45	199	244	100	31	68	99	100
Means	548	576	571		559	573	568	
SAT Math								
200 – 399	1	3	4	2	0	2	2	2
400 – 499	16	19	35	14	12	6	18	18
500 – 599	22	92	114	47	16	30	46	46
600 – 699	6	79	85	35	3	27	30	30
700 – 800	0	6	6	2	0	3	3	3
Valid Cases	45	199	244	100	31	68	99	100
Means	522	576	566		516	574	556	
ACT Composite								
15 – 18	4	4	8	3	3	1	4	3
19 – 22	42	24	66	23	30	7	37	25
23 – 26	58	64	122	42	42	25	67	45
27 – 36	39	58	97	33	25	15	40	27
Valid Cases	143	150	293	100	100	48	148	100
Means	24.3	25.5	24.9		24.3	25.0	24.5	
CCHE Index								
35 – 89	0	1	1	0	0	0	0	0
90 – 100	11	6	17	4	9	3	12	6
101 – 114	75	79	154	38	51	29	80	42
115 – 160	62	172	234	58	45	55	100	52
Valid Cases	148	258	406	100	105	87	192	100
Means	114	119	117		114	117	116	

Office of Budgets and Institutional Analysis
Freshmen Profile
Fall 2004

Applied Human Sciences	Admitted N= 859				Enrolled N=436			
	Res	Nonres	Total	Percent	Res	Nonres	Total	Percent
High School GPA								
2.0 – 2.4	0	1	1	0	0	1	1	0
2.5 – 2.9	19	24	43	5	16	8	24	6
3.0 – 3.5	240	140	380	47	154	45	199	48
3.6 – 4.0	248	136	384	48	151	36	187	45
Valid Cases	507	301	808	100	321	90	411	100
Means	3.53	3.49	3.51		3.51	3.44	3.50	
Percentile Rank								
1 – 29	2	4	6	1	2	2	4	1
30 – 49	40	21	61	8	31	13	44	11
50 – 59	50	24	74	10	33	6	39	10
60 – 79	193	91	284	38	123	27	150	38
80 – 89	127	43	170	23	76	11	87	22
90 – 99	91	63	154	21	55	16	71	18
Valid Cases	503	246	749	100	320	75	395	100
Means	74.3	74.3	74.3		73.3	70.4	72.8	
SAT Verbal								
200 – 399	9	2	11	3	8	0	8	5
400 – 499	56	47	103	25	33	15	48	28
500 – 599	102	124	226	55	54	31	85	50
600 – 699	30	34	64	16	14	14	28	16
700 – 800	2	6	8	2	1	0	1	1
Valid Cases	199	213	412	100	110	60	170	100
Means	523	542	533		519	546	528	
SAT Math								
200 – 399	6	1	7	2	5	0	5	3
400 – 499	53	37	90	22	32	9	41	24
500 – 599	104	113	217	53	54	34	88	52
600 – 699	35	53	88	21	18	16	34	20
700 – 800	1	9	10	2	1	1	2	1
Valid Cases	199	213	412	100	110	60	170	100
Means	531	558	545		524	559	536	
ACT Composite								
15 – 18	27	3	30	4	17	1	18	5
19 – 22	219	56	275	38	141	10	151	39
23 – 26	204	105	309	43	133	35	168	43
27 – 36	73	37	110	15	42	13	55	14
Valid Cases	523	201	724	100	333	59	392	100
Means	23.1	24.0	23.3		23.0	24.7	23.3	
CCHE Index								
35 – 89	0	1	1	0	0	1	1	0
90 – 100	39	16	55	6	27	8	35	8
101 – 114	307	165	472	55	202	49	251	58
115 – 160	188	138	326	38	109	38	147	34
Valid Cases	534	320	854	100	338	96	434	100
Means	112	113	112		111	112	112	

Office of Budgets and Institutional Analysis
Freshmen Profile
Fall 2004

Business	Admitted N= 772				Enrolled N=304			
	Res	Nonres	Total	Percent	Res	Nonres	Total	Percent
High School GPA								
2.5 – 2.9	5	6	11	2	3	0	3	1
3.0 – 3.5	150	76	226	33	62	19	81	29
3.6 – 4.0	335	112	447	65	170	23	193	70
Valid Cases	490	194	684	100	235	42	277	100
Means	3.68	3.59	3.65		3.70	3.59	3.68	
Percentile Rank								
30 – 49	13	8	21	3	4	0	4	1
50 – 59	31	17	48	7	13	5	18	6
60 – 79	151	58	209	30	76	14	90	31
80 – 89	161	46	207	30	75	9	84	29
90 – 99	165	37	202	29	79	11	90	31
Valid Cases	521	166	687	100	247	39	286	100
Means	81.2	77.0	80.2		81.4	79.3	81.1	
SAT Verbal								
200 – 399	0	3	3	1	0	1	1	1
400 – 499	45	18	63	14	21	2	23	16
500 – 599	145	80	225	49	54	16	70	48
600 – 699	99	50	149	33	40	10	50	34
700 – 800	11	7	18	4	2	1	3	2
Valid Cases	300	158	458	100	117	30	147	100
Means	569	569	569		563	567	564	
SAT Math								
200 – 399	1	0	1	0	1	0	1	1
400 – 499	30	7	37	8	15	3	18	12
500 – 599	132	64	196	43	49	10	59	40
600 – 699	122	68	190	41	48	13	61	41
700 – 800	15	19	34	7	4	4	8	5
Valid Cases	300	158	458	100	117	30	147	100
Means	586	610	595		578	610	585	
ACT Composite								
15 – 18	1	0	1	0	1	0	1	0
19 – 22	71	13	84	13	43	4	47	17
23 – 26	282	65	347	52	125	9	134	48
27 – 36	177	55	232	35	79	19	98	35
Valid Cases	531	133	664	100	248	32	280	100
Means	25.5	25.8	25.5		25.2	26.5	25.4	
CCHE Index								
101 – 114	152	61	213	28	83	8	91	30
115 – 160	400	154	554	72	176	37	213	70
Valid Cases	552	215	767	100	259	45	304	100
Means	120	120	120		119	120	119	

Office of Budgets and Institutional Analysis
Freshmen Profile
Fall 2004

Engineering	Admitted N= 921				Enrolled N=366			
	Res	Nonres	Total	Percent	Res	Nonres	Total	Percent
High School GPA								
2.5 – 2.9	1	0	1	0	0	0	0	0
3.0 – 3.5	164	97	261	34	89	23	112	37
3.6 – 4.0	325	181	506	66	143	48	191	63
Valid Cases	490	278	768	100	232	71	303	100
Means	3.66	3.65	3.66		3.63	3.68	3.64	
Percentile Rank								
1 – 29	1	0	1	0	1	0	1	0
30 – 49	22	16	38	5	14	4	18	5
50 – 59	29	12	41	5	15	4	19	6
60 – 79	167	64	231	28	88	15	103	30
80 – 89	129	56	185	23	71	13	84	25
90 – 99	195	120	315	39	75	38	113	33
Valid Cases	543	268	811	100	264	74	338	100
Means	81.4	82.5	81.7		79.3	83.6	80.2	
SAT Verbal								
200 – 399	0	1	1	0	0	1	1	1
400 – 499	33	25	58	10	11	7	18	9
500 – 599	151	129	280	48	73	30	103	52
600 – 699	107	88	195	33	40	24	64	32
700 – 800	30	19	49	8	9	3	12	6
Valid Cases	321	262	583	100	133	65	198	100
Means	589	584	587		584	581	583	
SAT Math								
400 – 499	14	5	19	3	6	1	7	4
500 – 599	89	64	153	26	43	8	51	26
600 – 699	160	131	291	50	64	36	100	51
700 – 800	58	62	120	21	20	20	40	20
Valid Cases	321	262	583	100	133	65	198	100
Means	626	640	632		616	658	630	
ACT Composite								
19 – 22	46	13	59	8	25	2	27	8
23 – 26	244	82	326	42	126	15	141	43
27 – 36	278	121	399	51	119	42	161	49
Valid Cases	568	216	784	100	270	59	329	100
Means	26.6	27.2	26.8		26.2	27.7	26.5	
CCHE Index								
90 – 100	0	1	1	0	0	1	1	0
101 – 114	121	59	180	20	69	12	81	22
115 – 160	462	265	727	80	206	73	279	77
Valid Cases	583	325	908	100	275	86	361	100
Means	122	123	123		121	125	122	

Office of Budgets and Institutional Analysis
Freshmen Profile
Fall 2004

Intra-University

	Admitted N= 2802				Enrolled N=1189			
	Res	Nonres	Total	Percent	Res	Nonres	Total	Percent
High School GPA								
2.0 – 2.4	0	2	2	0	0	1	1	0
2.5 – 2.9	138	161	299	11	82	45	127	11
3.0 – 3.5	1009	440	1449	55	572	94	666	58
3.6 – 4.0	649	253	902	34	306	46	352	31
Valid Cases	1796	856	2652	100	960	186	1146	100
Means	3.42	3.31	3.39		3.39	3.25	3.37	
Percentile Rank								
1 – 29	22	32	54	2	14	9	23	2
30 – 49	249	115	364	15	159	32	191	17
50 – 59	255	103	358	15	139	24	163	15
60 – 79	685	210	895	37	389	45	434	39
80 – 89	299	103	402	17	144	26	170	15
90 – 99	259	98	357	15	104	16	120	11
Valid Cases	1769	661	2430	100	949	152	1101	100
Means	69.1	66.0	68.3		66.9	63.3	66.4	
SAT Verbal								
200 – 399	16	18	34	2	5	7	12	2
400 – 499	230	114	344	23	113	27	140	27
500 – 599	416	329	745	51	203	63	266	51
600 – 699	143	155	298	20	62	30	92	18
700 – 800	26	25	51	3	5	4	9	2
Valid Cases	831	641	1472	100	388	131	519	100
Means	539	553	545		534	538	535	
SAT Math								
200 – 399	14	1	15	1	10	1	11	2
400 – 499	188	84	272	18	97	23	120	23
500 – 599	422	326	748	51	200	73	273	53
600 – 699	187	198	385	26	75	31	106	20
700 – 800	20	32	52	4	6	3	9	2
Valid Cases	831	641	1472	100	388	131	519	100
Means	546	572	557		538	554	542	
ACT Composite								
1 – 14	0	2	2	0	0	1	1	0
15 – 18	64	14	78	3	28	1	29	3
19 – 22	716	162	878	37	387	43	430	40
23 – 26	743	255	998	42	407	53	460	43
27 – 36	299	110	409	17	137	24	161	15
Valid Cases	1822	543	2365	100	959	122	1081	100
Means	23.4	24.1	23.6		23.3	23.7	23.4	
CCHE Index								
35 – 89	0	2	2	0	0	2	2	0
90 – 100	148	79	227	8	85	29	114	10
101 – 114	1190	547	1737	62	662	116	778	66
115 – 160	537	277	814	29	241	44	285	24
Valid Cases	1875	905	2780	100	988	191	1179	100
Means	111	111	111		110	109	110	

Office of Budgets and Institutional Analysis
Freshmen Profile
Fall 2004

Liberal Arts	Admitted N= 1708				Enrolled N=644			
	Res	Nonres	Total	Percent	Res	Nonres	Total	Percent
High School GPA								
2.0 – 2.4	3	2	5	0	3	0	3	1
2.5 – 2.9	58	60	118	8	35	21	56	9
3.0 – 3.5	464	226	690	44	230	41	271	45
3.6 – 4.0	491	247	738	48	222	44	266	45
Valid Cases	1016	535	1551	100	490	106	596	100
Means	3.50	3.47	3.49		3.46	3.39	3.45	
Percentile Rank								
1 – 29	11	6	17	1	10	2	12	2
30 – 49	116	37	153	10	68	15	83	14
50 – 59	116	49	165	11	67	14	81	13
60 – 79	342	155	497	33	157	26	183	30
80 – 89	208	100	308	21	94	21	115	19
90 – 99	249	112	361	24	103	25	128	21
Valid Cases	1042	459	1501	100	499	103	602	100
Means	73.7	74.8	74.1		71.1	71.0	71.1	
SAT Verbal								
200 – 399	3	2	5	1	2	1	3	1
400 – 499	66	53	119	13	27	12	39	13
500 – 599	245	190	435	47	104	34	138	47
600 – 699	183	121	304	33	61	30	91	31
700 – 800	37	33	70	8	15	6	21	7
Valid Cases	534	399	933	100	209	83	292	100
Means	579	577	578		575	578	576	
SAT Math								
200 – 399	9	2	11	1	3	2	5	2
400 – 499	132	71	203	22	55	11	66	23
500 – 599	228	185	413	44	91	40	131	45
600 – 699	146	127	273	29	55	27	82	28
700 – 800	19	14	33	4	5	3	8	3
Valid Cases	534	399	933	100	209	83	292	100
Means	552	563	557		546	562	550	
ACT Composite								
15 – 18	17	11	28	2	8	2	10	2
19 – 22	255	76	331	23	126	14	140	24
23 – 26	443	167	610	42	205	35	240	42
27 – 36	351	127	478	33	157	28	185	32
Valid Cases	1066	381	1447	100	496	79	575	100
Means	25.0	25.0	25.0		24.8	25.2	24.9	
CCHE Index								
35 – 89	3	0	3	0	2	0	2	0
90 – 100	36	28	64	4	23	8	31	5
101 – 114	515	264	779	46	262	56	318	50
115 – 160	556	291	847	50	233	55	288	45
Valid Cases	1110	583	1693	100	520	119	639	100
Means	115	115	115		114	115	114	

Office of Budgets and Institutional Analysis
Freshmen Profile
Fall 2004

Natural Resources	Admitted N= 240				Enrolled N=102			
	Res	Nonres	Total	Percent	Res	Nonres	Total	Percent
High School GPA								
2.5 – 2.9	4	15	19	9	3	7	10	10
3.0 – 3.5	27	62	89	41	18	21	39	41
3.6 – 4.0	49	62	111	51	30	17	47	49
Valid Cases	80	139	219	100	51	45	96	100
Means	3.57	3.47	3.50		3.56	3.39	3.48	
Percentile Rank								
1 – 29	1	1	2	1	1	1	2	2
30 – 49	9	13	22	11	6	6	12	13
50 – 59	6	12	18	9	4	5	9	10
60 – 79	28	31	59	30	22	7	29	32
80 – 89	17	27	44	23	10	10	20	22
90 – 99	16	34	50	26	9	9	18	20
Valid Cases	77	118	195	100	52	38	90	100
Means	73.7	75.5	74.8		72.1	71.4	71.8	
SAT Verbal								
200 – 399	1	0	1	1	1	0	1	2
400 – 499	5	10	15	10	3	5	8	15
500 – 599	19	53	72	47	10	13	23	42
600 – 699	11	45	56	37	4	17	21	38
700 – 800	0	9	9	6	0	2	2	4
Valid Cases	36	117	153	100	18	37	55	100
Means	549	585	577		531	583	566	
SAT Math								
200 – 399	1	1	2	1	1	0	1	2
400 – 499	5	11	16	10	4	6	10	18
500 – 599	22	58	80	52	9	17	26	47
600 – 699	7	41	48	31	4	13	17	31
700 – 800	1	6	7	5	0	1	1	2
Valid Cases	36	117	153	100	18	37	55	100
Means	554	581	575		539	577	565	
ACT Composite								
15 – 18	0	1	1	1	0	1	1	1
19 – 22	21	21	42	26	11	7	18	24
23 – 26	39	31	70	43	30	6	36	48
27 – 36	21	29	50	31	12	8	20	27
Valid Cases	81	82	163	100	53	22	75	100
Means	24.7	25.1	24.9		24.7	24.6	24.7	
CCHE Index								
90 – 100	2	5	7	3	1	4	5	5
101 – 114	39	74	113	48	25	25	50	50
115 – 160	42	73	115	49	27	19	46	46
Valid Cases	83	152	235	100	53	48	101	100
Means	115	116	116		115	114	114	

Office of Budgets and Institutional Analysis
Freshmen Profile
Fall 2004

Natural Sciences

	Admitted N= 1606				Enrolled N=648			
	Res	Nonres	Total	Percent	Res	Nonres	Total	Percent
High School GPA								
2.0 – 2.4	0	1	1	0	0	1	1	0
2.5 – 2.9	34	28	62	4	24	8	32	5
3.0 – 3.5	371	215	586	41	198	44	242	41
3.6 – 4.0	518	260	778	55	263	52	315	53
Valid Cases	923	504	1427	100	485	105	590	100
Means	3.57	3.54	3.56		3.55	3.53	3.54	
Percentile Rank								
1 – 29	7	4	11	1	6	1	7	1
30 – 49	52	29	81	6	41	7	48	8
50 – 59	80	41	121	8	42	9	51	8
60 – 79	306	133	439	30	165	30	195	32
80 – 89	225	115	340	24	118	22	140	23
90 – 99	297	153	450	31	134	32	166	27
Valid Cases	967	475	1442	100	506	101	607	100
Means	78.2	78.4	78.3		76.0	77.1	76.2	
SAT Verbal								
200 – 399	3	5	8	1	1	1	2	1
400 – 499	78	52	130	15	48	9	57	19
500 – 599	222	199	421	48	104	38	142	47
600 – 699	141	117	258	29	58	20	78	26
700 – 800	36	25	61	7	11	9	20	7
Valid Cases	480	398	878	100	222	77	299	100
Means	571	571	571		559	577	564	
SAT Math								
200 – 399	5	3	8	1	3	1	4	1
400 – 499	67	48	115	13	36	10	46	15
500 – 599	213	167	380	43	95	28	123	41
600 – 699	149	151	300	34	71	31	102	34
700 – 800	46	29	75	9	17	7	24	8
Valid Cases	480	398	878	100	222	77	299	100
Means	580	585	582		572	586	576	
ACT Composite								
15 – 18	24	4	28	2	13	1	14	2
19 – 22	248	69	317	23	143	10	153	26
23 – 26	403	170	573	41	202	34	236	40
27 – 36	330	136	466	34	160	31	191	32
Valid Cases	1005	379	1384	100	518	76	594	100
Means	25.0	25.6	25.2		24.8	25.8	24.9	
CCHE Index								
90 – 100	38	19	57	4	20	5	25	4
101 – 114	418	207	625	39	239	46	285	44
115 – 160	572	345	917	57	267	66	333	52
Valid Cases	1028	571	1599	100	526	117	643	100
Means	117	118	117		116	118	116	

Office of Budgets and Institutional Analysis
Freshmen Profile
Fall 2004

Veterinary Medicine + Biomed	Admitted N= 406				Enrolled N=179			
	Res	Nonres	Total	Percent	Res	Nonres	Total	Percent
High School GPA								
2.5 – 2.9	7	4	11	3	6	1	7	5
3.0 – 3.5	82	52	134	38	39	19	58	38
3.6 – 4.0	103	103	206	59	61	28	89	58
Valid Cases	192	159	351	100	106	48	154	100
Means	3.59	3.63	3.61		3.59	3.61	3.60	
Percentile Rank								
1 – 29	1	1	2	1	1	0	1	1
30 – 49	8	5	13	4	5	2	7	4
50 – 59	12	11	23	6	6	3	9	6
60 – 79	73	35	108	30	41	10	51	32
80 – 89	49	39	88	24	28	11	39	24
90 – 99	66	61	127	35	35	19	54	34
Valid Cases	209	152	361	100	116	45	161	100
Means	79.6	81.4	80.4		78.8	81.7	79.6	
SAT Verbal								
200 – 399	2	2	4	2	2	1	3	3
400 – 499	17	20	37	16	9	4	13	14
500 – 599	38	64	102	44	18	20	38	42
600 – 699	33	44	77	33	13	17	30	33
700 – 800	5	8	13	6	2	5	7	8
Valid Cases	95	138	233	100	44	47	91	100
Means	566	572	570		556	590	573	
SAT Math								
200 – 399	1	0	1	0	1	0	1	1
400 – 499	15	21	36	15	7	8	15	16
500 – 599	46	64	110	47	26	20	46	51
600 – 699	32	47	79	34	10	18	28	31
700 – 800	1	6	7	3	0	1	1	1
Valid Cases	95	138	233	100	44	47	91	100
Means	563	572	569		547	571	559	
ACT Composite								
15 – 18	3	4	7	2	2	2	4	3
19 – 22	63	19	82	25	29	4	33	22
23 – 26	79	49	128	39	47	11	58	39
27 – 36	70	40	110	34	41	11	52	35
Valid Cases	215	112	327	100	119	28	147	100
Means	24.6	25.2	24.8		24.7	25.7	24.9	
CCHE Index								
90 – 100	13	6	19	5	9	3	12	7
101 – 114	80	55	135	33	43	14	57	32
115 – 160	127	122	249	62	68	39	107	61
Valid Cases	220	183	403	100	120	56	176	100
Means	117	119	118		117	120	118	

**Fall 2003 Freshmen
and
Their Performance
at CSU
After One Year**

Office of Budgets and Institutional Analysis
 Number of New Freshmen by High School GPA & Rank,
 Test Scores, CCHE Index and CSU GPA
 CSU GPA after One Year for Freshmen Entering Fall 2003

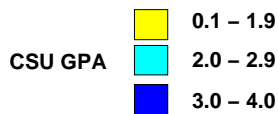
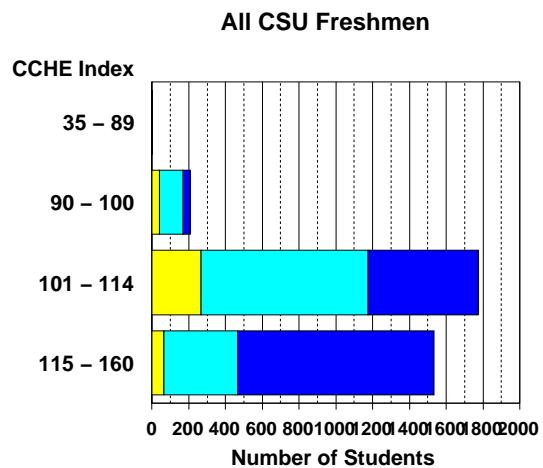
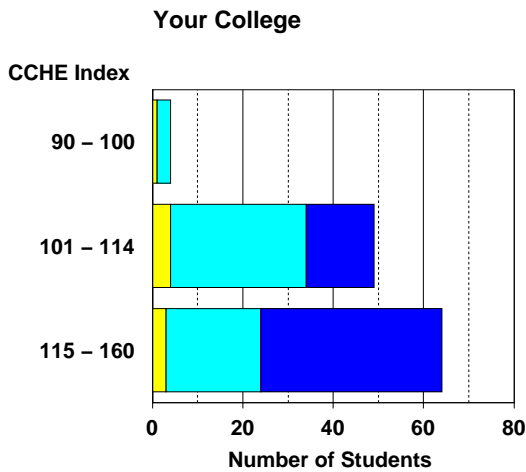
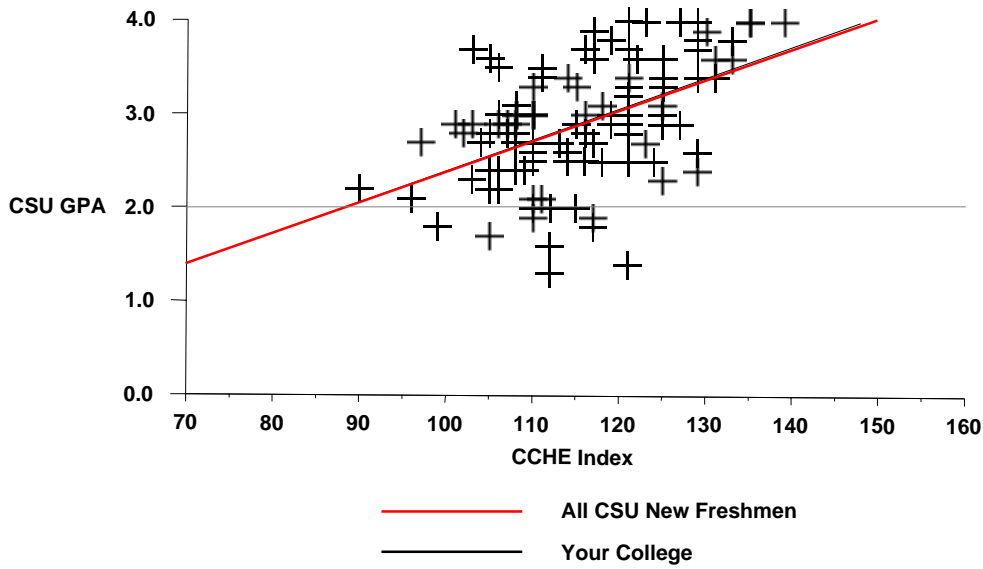
Agricultural Sciences

	CSU GPA				Total
	0.1 – 1.9	2.0 – 2.9	3.0 – 3.5	3.6 – 4.0	
High School GPA					
2.5 – 2.9		4	1		5
3.0 – 3.5	5	17	9	4	35
3.6 – 4.0	2	33	17	17	69
Total	7	54	27	21	109
Percentile Rank					
1 – 29		1			1
30 – 49		3	1		4
50 – 59		8	3	1	12
60 – 79	4	12	7	4	27
80 – 89	3	12	7	6	28
90 – 99		11	8	13	32
Total	7	47	26	24	104
SAT Verbal					
200 – 399		1			1
400 – 499		5	3	2	10
500 – 599	3	13	7	3	26
600 – 699		7	3	6	16
700 – 800			1	2	3
Total	3	26	14	13	56
SAT Math					
400 – 499		8	3	1	12
500 – 599	3	13	6	5	27
600 – 699		5	5	7	17
Total	3	26	14	13	56
ACT Composite					
15 – 18		1		1	2
19 – 22	2	15	7	2	26
23 – 26	5	26	11	4	46
27 – 36		6	5	13	24
Total	7	48	23	20	98
CCHE Index					
90 – 100	1	3			4
101 – 114	4	30	13	2	49
115 – 160	3	21	16	24	64
Total	8	54	29	26	117

Office of Budgets and Institutional Analysis
 Number of New Freshmen by High School GPA & Rank,
 Test Scores, CCHE Index and CSU GPA
 CSU GPA after One Year for Freshmen Entering Fall 2003

Agricultural Sciences

**Fall 2003 – Spring 2004
 First Year CSU Grades by CCHE Index**



Office of Budgets and Institutional Analysis
 Number of New Freshmen by High School GPA & Rank,
 Test Scores, CCHE Index and CSU GPA
 CSU GPA after One Year for Freshmen Entering Fall 2003

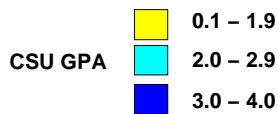
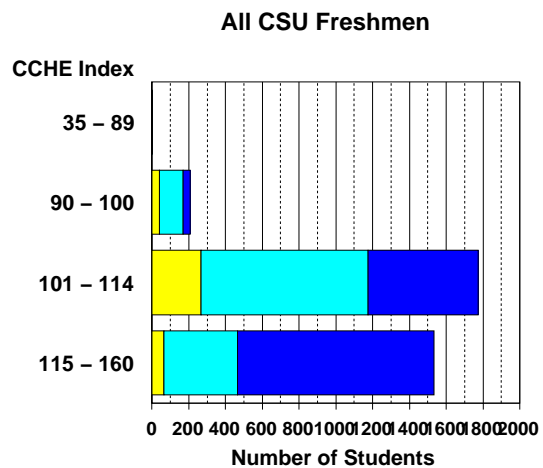
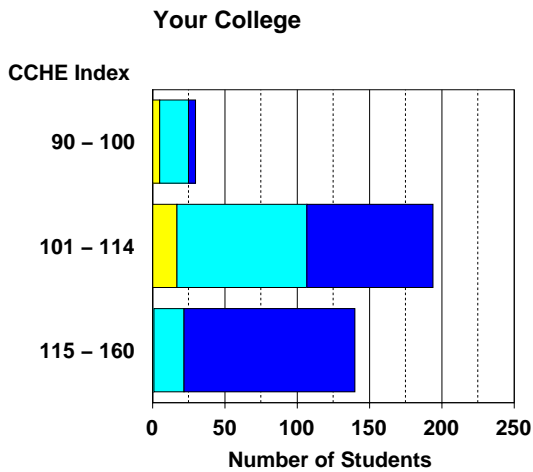
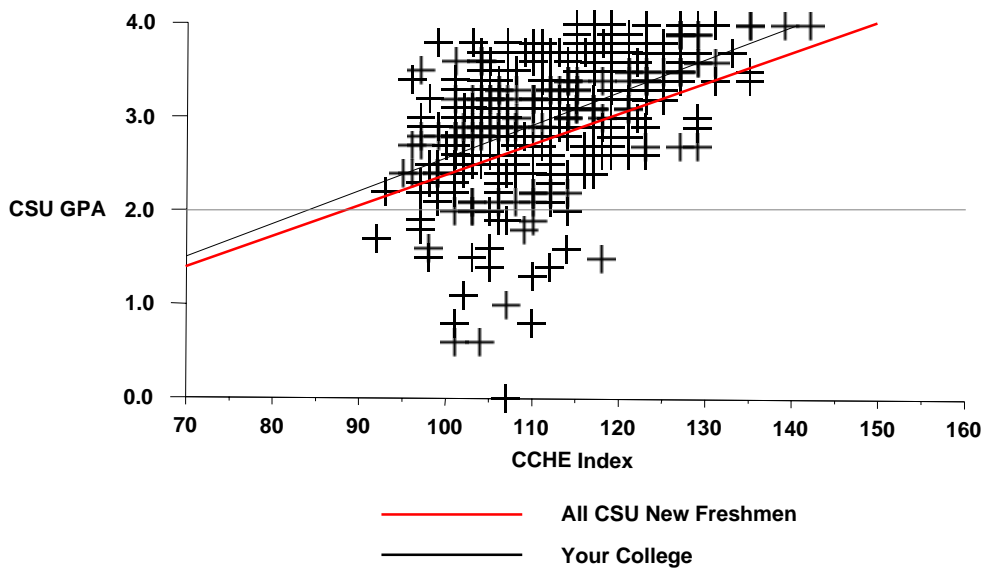
Applied Human Sciences

	CSU GPA				Total
	0.1 – 1.9	2.0 – 2.9	3.0 – 3.5	3.6 – 4.0	
High School GPA					
2.5 – 2.9	6	6	1		13
3.0 – 3.5	16	78	49	13	156
3.6 – 4.0	1	45	72	53	171
Total	23	129	122	66	340
Percentile Rank					
1 – 29	1	1	1		3
30 – 49	6	13	5	1	25
50 – 59	4	18	12	1	35
60 – 79	11	61	42	20	134
80 – 89		21	44	19	84
90 – 99	1	10	23	32	66
Total	23	124	127	73	347
SAT Verbal					
200 – 399	1	3	3	1	8
400 – 499	2	25	21	4	52
500 – 599	4	30	31	18	83
600 – 699		7	8	12	27
700 – 800				2	2
Total	7	65	63	37	172
SAT Math					
200 – 399	1	1	3		5
400 – 499	4	26	17	5	52
500 – 599	2	26	36	17	81
600 – 699		12	6	12	30
700 – 800			1	3	4
Total	7	65	63	37	172
ACT Composite					
15 – 18	1	6	5	2	14
19 – 22	10	67	45	10	132
23 – 26	6	32	59	34	131
27 – 36	4	10	11	21	46
Total	21	115	120	67	323
CCHE Index					
90 – 100	5	20	4	1	30
101 – 114	18	90	70	17	195
115 – 160	1	21	59	59	140
Total	24	131	133	77	365

Office of Budgets and Institutional Analysis
 Number of New Freshmen by High School GPA & Rank,
 Test Scores, CCHE Index and CSU GPA
 CSU GPA after One Year for Freshmen Entering Fall 2003

Applied Human Sciences

**Fall 2003 – Spring 2004
 First Year CSU Grades by CCHE Index**



Office of Budgets and Institutional Analysis
 Number of New Freshmen by High School GPA & Rank,
 Test Scores, CCHE Index and CSU GPA
 CSU GPA after One Year for Freshmen Entering Fall 2003

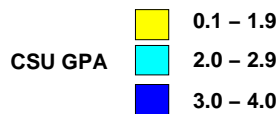
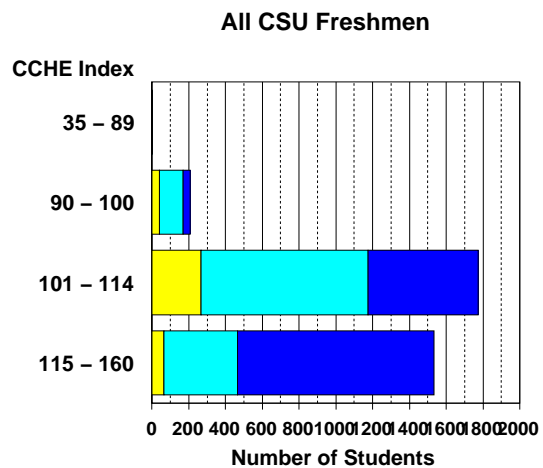
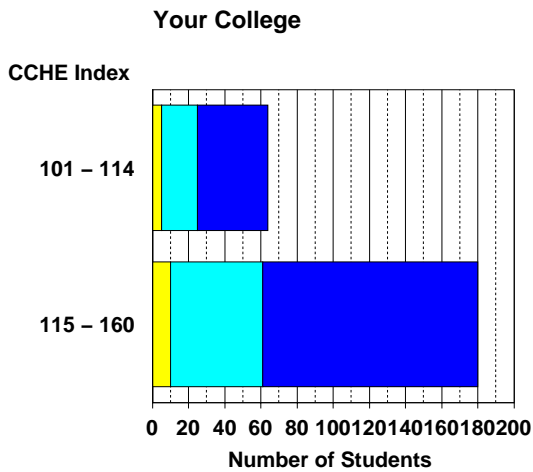
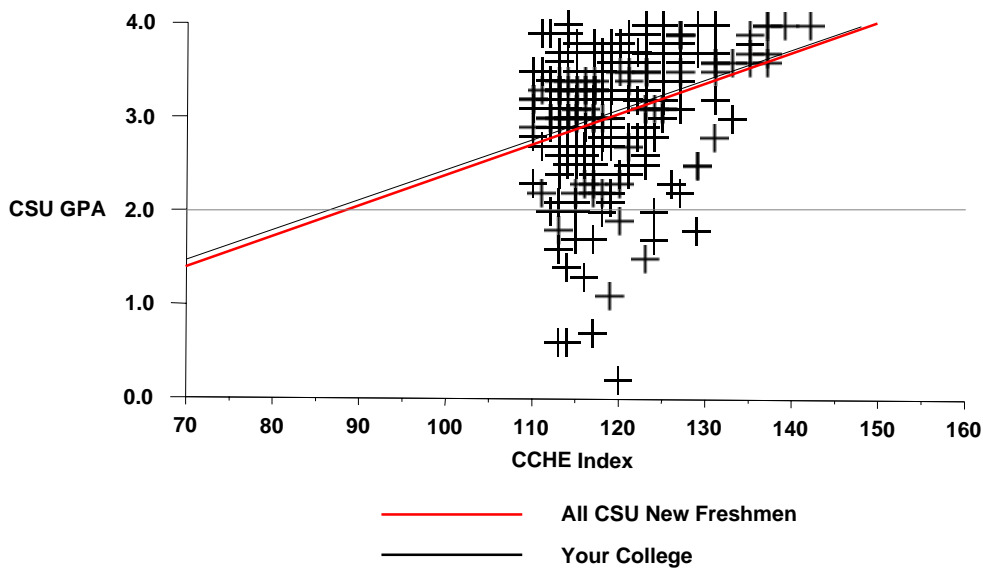
Business

	CSU GPA				Total
	0.1 – 1.9	2.0 – 2.9	3.0 – 3.5	3.6 – 4.0	
High School GPA					
2.5 – 2.9	1	1	1		3
3.0 – 3.5	8	18	13	2	41
3.6 – 4.0	6	51	70	54	181
Total	15	70	84	56	225
Percentile Rank					
1 – 29		1			1
30 – 49	2	2	1	1	6
50 – 59	2	3	2		7
60 – 79	7	33	30	5	75
80 – 89	3	16	29	25	73
90 – 99		13	23	33	69
Total	14	68	85	64	231
SAT Verbal					
200 – 399		1			1
400 – 499	1	3	4	4	12
500 – 599	5	18	26	21	70
600 – 699	3	9	9	15	36
700 – 800	1			4	5
Total	10	31	39	44	124
SAT Math					
200 – 399			1		1
400 – 499		1	4	5	10
500 – 599	4	12	22	21	59
600 – 699	6	18	12	10	46
700 – 800				8	8
Total	10	31	39	44	124
ACT Composite					
19 – 22	2	9	21	8	40
23 – 26	5	38	46	27	116
27 – 36	7	16	18	29	70
Total	14	63	85	64	226
CCHE Index					
101 – 114	5	20	29	10	64
115 – 160	10	51	59	60	180
Total	15	71	88	70	244

Office of Budgets and Institutional Analysis
 Number of New Freshmen by High School GPA & Rank,
 Test Scores, CCHE Index and CSU GPA
 CSU GPA after One Year for Freshmen Entering Fall 2003

Business

Fall 2003 – Spring 2004
 First Year CSU Grades by CCHE Index



Office of Budgets and Institutional Analysis
 Number of New Freshmen by High School GPA & Rank,
 Test Scores, CCHE Index and CSU GPA
 CSU GPA after One Year for Freshmen Entering Fall 2003

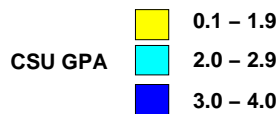
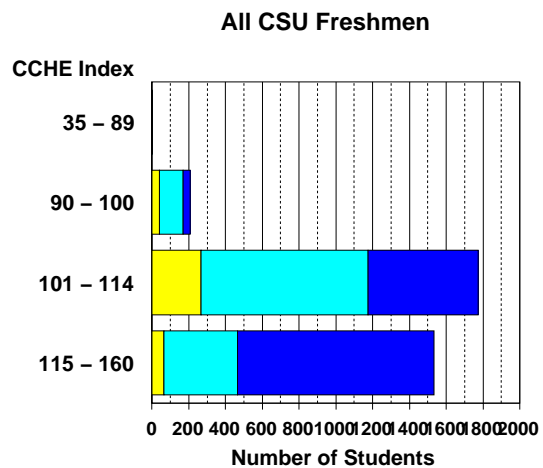
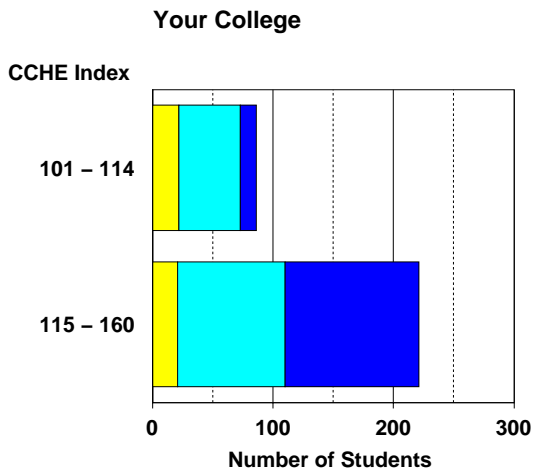
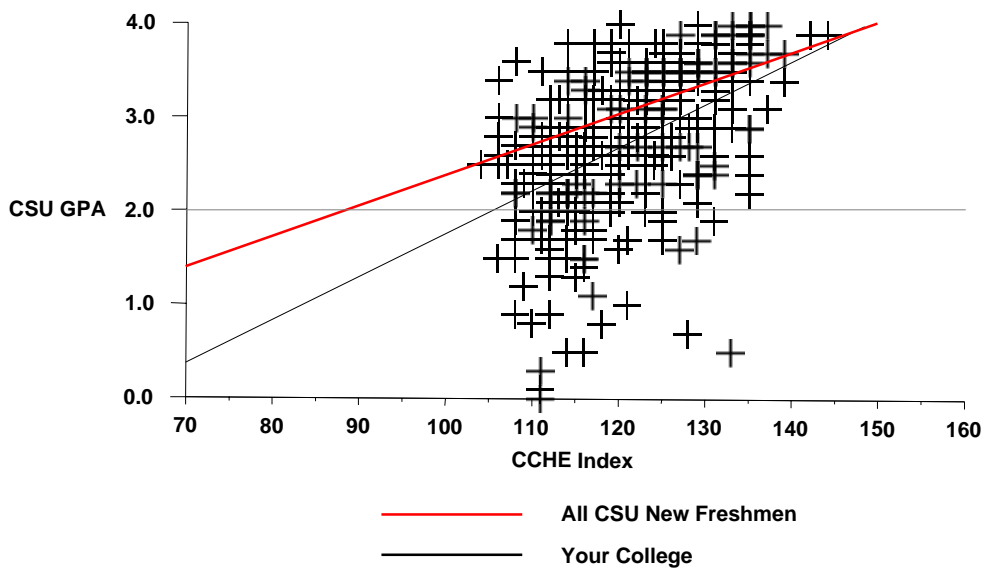
Engineering

	CSU GPA				Total
	0.1 – 1.9	2.0 – 2.9	3.0 – 3.5	3.6 – 4.0	
High School GPA					
2.5 – 2.9	1	1			2
3.0 – 3.5	27	58	10	4	99
3.6 – 4.0	15	77	56	31	179
Total	43	136	66	35	280
Percentile Rank					
30 – 49	5	8			13
50 – 59	9	12	4		25
60 – 79	17	63	16	5	101
80 – 89	10	27	20	5	62
90 – 99	2	22	35	34	93
Total	43	132	75	44	294
SAT Verbal					
200 – 399			1		1
400 – 499	3	14	5	1	23
500 – 599	11	37	27	11	86
600 – 699	4	29	14	14	61
700 – 800	2	1	1	1	5
Total	20	81	48	27	176
SAT Math					
400 – 499		2	1		3
500 – 599	8	46	8	5	67
600 – 699	11	28	34	12	85
700 – 800	1	5	5	10	21
Total	20	81	48	27	176
ACT Composite					
19 – 22	5	16	9		30
23 – 26	21	72	24	10	127
27 – 36	14	42	38	30	124
Total	40	130	71	40	281
CCHE Index					
101 – 114	23	51	11	2	87
115 – 160	21	89	67	44	221
Total	44	140	78	46	308

Office of Budgets and Institutional Analysis
 Number of New Freshmen by High School GPA & Rank,
 Test Scores, CCHE Index and CSU GPA
 CSU GPA after One Year for Freshmen Entering Fall 2003

Engineering

**Fall 2003 – Spring 2004
 First Year CSU Grades by CCHE Index**



Office of Budgets and Institutional Analysis
 Number of New Freshmen by High School GPA & Rank,
 Test Scores, CCHE Index and CSU GPA
 CSU GPA after One Year for Freshmen Entering Fall 2003

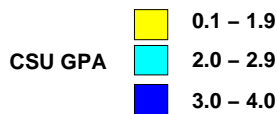
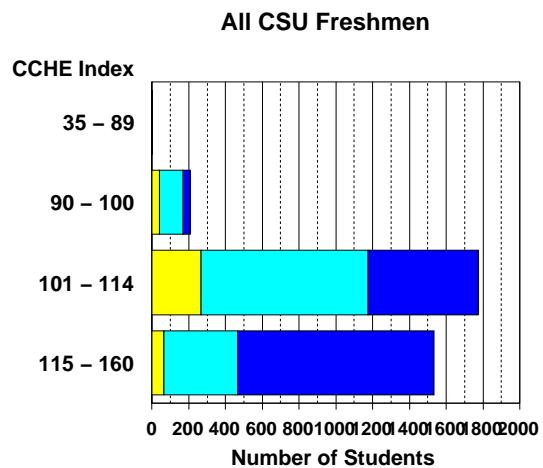
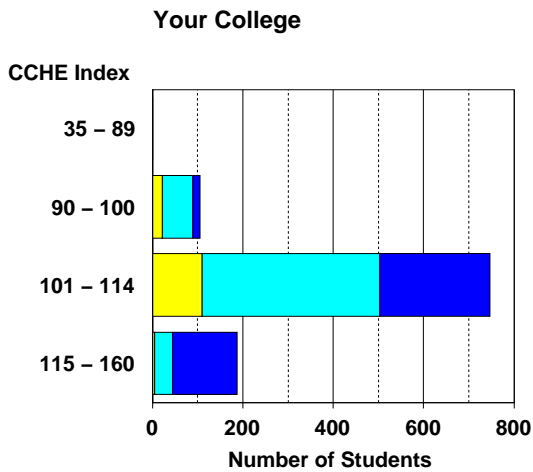
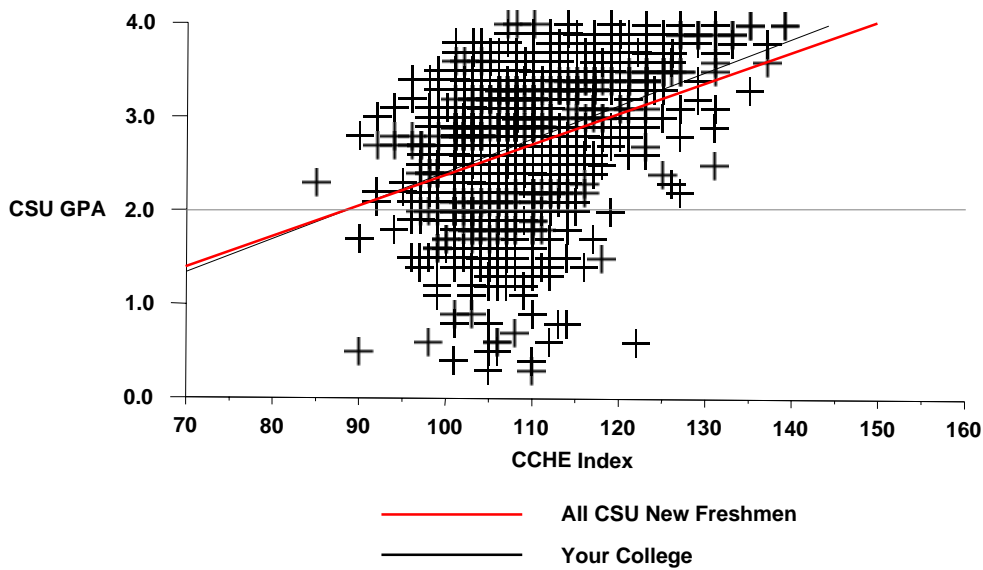
Intra-University

	CSU GPA				Total
	0.1 – 1.9	2.0 – 2.9	3.0 – 3.5	3.6 – 4.0	
High School GPA					
0.1 – 1.9		1			1
2.0 – 2.4	2	3	2		7
2.5 – 2.9	23	55	10	6	94
3.0 – 3.5	93	331	157	25	606
3.6 – 4.0	17	109	115	64	305
Total	135	499	284	95	1,013
Percentile Rank					
1 – 29	6	8	1	3	18
30 – 49	37	100	23	4	164
50 – 59	26	99	46	5	176
60 – 79	43	177	119	30	369
80 – 89	12	58	49	20	139
90 – 99		25	33	35	93
Total	124	467	271	97	959
SAT Verbal					
200 – 399	2	8	2		12
400 – 499	18	81	41	6	146
500 – 599	29	113	63	29	234
600 – 699	12	28	15	19	74
700 – 800			1	5	6
Total	61	230	122	59	472
SAT Math					
200 – 399	1	3	1		5
400 – 499	10	67	29	5	111
500 – 599	37	120	67	27	251
600 – 699	12	39	22	26	99
700 – 800	1	1	3	1	6
Total	61	230	122	59	472
ACT Composite					
1 – 14		1			1
15 – 18	6	28	5		39
19 – 22	57	225	119	28	429
23 – 26	52	179	136	37	404
27 – 36	8	22	18	36	84
Total	123	455	278	101	957
CCHE Index					
35 – 89		1			1
90 – 100	21	69	15		105
101 – 114	110	393	200	44	747
115 – 160	4	40	80	64	188
Total	135	503	295	108	1,041

Office of Budgets and Institutional Analysis
 Number of New Freshmen by High School GPA & Rank,
 Test Scores, CCHE Index and CSU GPA
 CSU GPA after One Year for Freshmen Entering Fall 2003

Intra-University

**Fall 2003 – Spring 2004
 First Year CSU Grades by CCHE Index**



Office of Budgets and Institutional Analysis
 Number of New Freshmen by High School GPA & Rank,
 Test Scores, CCHE Index and CSU GPA
 CSU GPA after One Year for Freshmen Entering Fall 2003

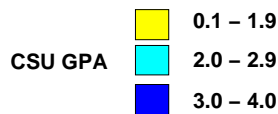
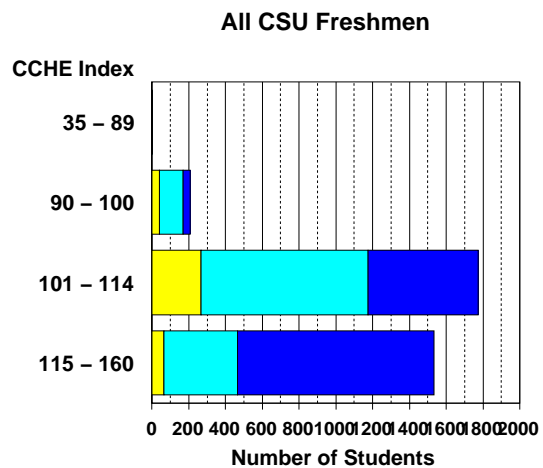
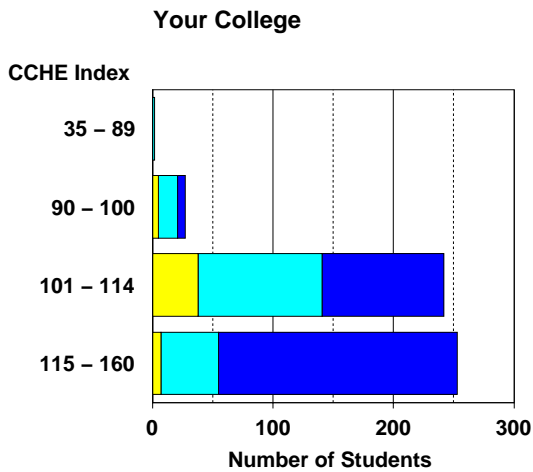
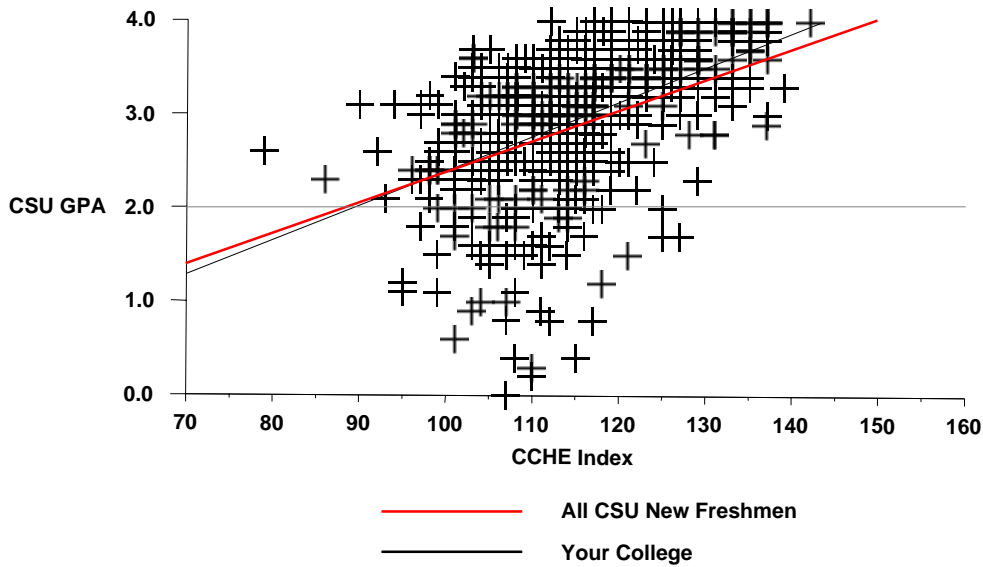
Liberal Arts

	CSU GPA				Total
	0.1 – 1.9	2.0 – 2.9	3.0 – 3.5	3.6 – 4.0	
High School GPA					
2.0 – 2.4			1		1
2.5 – 2.9	12	16	8	3	39
3.0 – 3.5	33	102	57	17	209
3.6 – 4.0	6	49	110	76	241
Total	51	167	176	96	490
Percentile Rank					
1 – 29	1	1	3		5
30 – 49	14	28	13	2	57
50 – 59	7	24	8	3	42
60 – 79	19	67	66	20	172
80 – 89	4	26	45	26	101
90 – 99		14	46	57	117
Total	45	160	181	108	494
SAT Verbal					
200 – 399	3	4			7
400 – 499	4	15	18	3	40
500 – 599	11	38	46	15	110
600 – 699	7	21	29	42	99
700 – 800	3	2	4	5	14
Total	28	80	97	65	270
SAT Math					
200 – 399	2	7	2		11
400 – 499	9	22	19	2	52
500 – 599	11	38	58	28	135
600 – 699	5	11	16	30	62
700 – 800	1	2	2	5	10
Total	28	80	97	65	270
ACT Composite					
1 – 14	1				1
15 – 18	2	6	2		10
19 – 22	11	60	54	9	134
23 – 26	23	63	82	33	201
27 – 36	9	23	40	66	138
Total	46	152	178	108	484
CCHE Index					
35 – 89		2			2
90 – 100	5	16	6		27
101 – 114	39	103	87	14	243
115 – 160	7	48	98	100	253
Total	51	169	191	114	525

Office of Budgets and Institutional Analysis
Number of New Freshmen by High School GPA & Rank,
Test Scores, CCHE Index and CSU GPA
CSU GPA after One Year for Freshmen Entering Fall 2003

Liberal Arts

Fall 2003 – Spring 2004
First Year CSU Grades by CCHE Index



Office of Budgets and Institutional Analysis
 Number of New Freshmen by High School GPA & Rank,
 Test Scores, CCHE Index and CSU GPA
 CSU GPA after One Year for Freshmen Entering Fall 2003

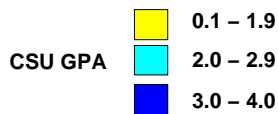
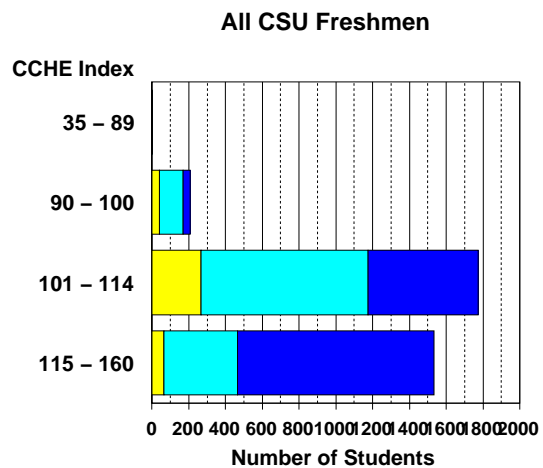
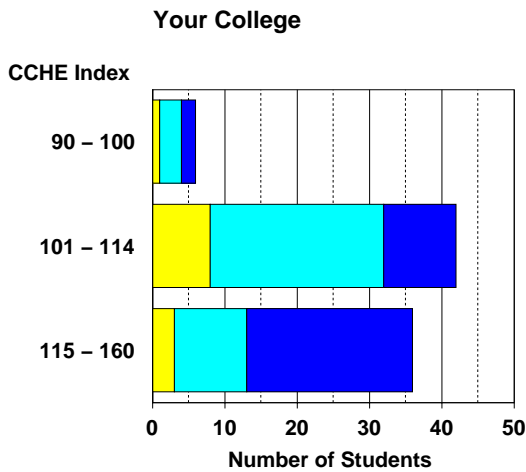
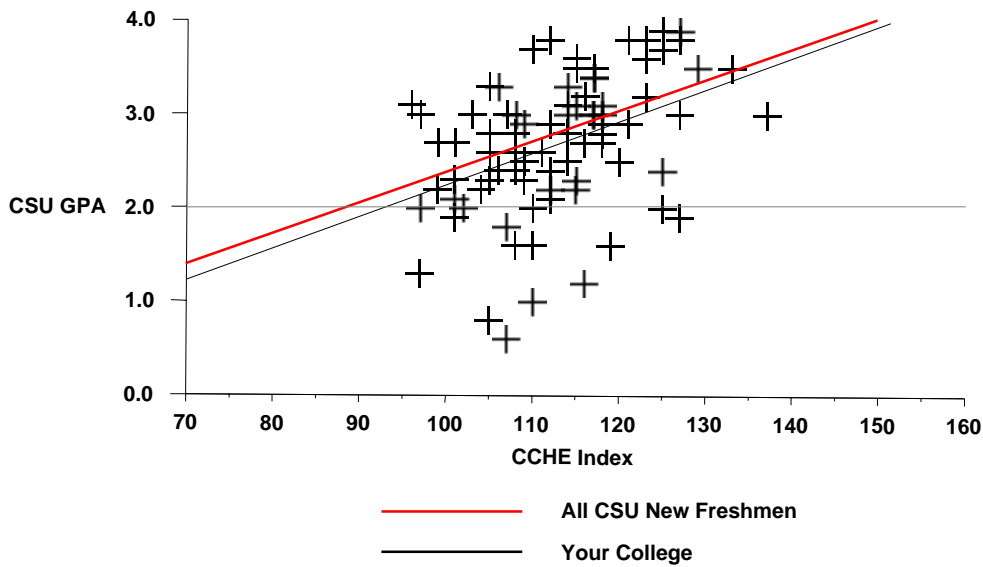
Natural Resources

	CSU GPA				Total
	0.1 – 1.9	2.0 – 2.9	3.0 – 3.5	3.6 – 4.0	
High School GPA					
2.5 – 2.9	1	6			7
3.0 – 3.5	9	22	12		43
3.6 – 4.0	1	9	12	8	30
Total	11	37	24	8	80
Percentile Rank					
1 – 29		1			1
30 – 49	2	5	2		9
50 – 59	2	3	2		7
60 – 79	5	15	7	2	29
80 – 89		4	5	2	11
90 – 99		2	6	5	13
Total	9	30	22	9	70
SAT Verbal					
200 – 399	1				1
400 – 499	4	3	2	1	10
500 – 599	4	5	10	4	23
600 – 699	1	7	2	1	11
Total	10	15	14	6	45
SAT Math					
400 – 499	3	2	3		8
500 – 599	3	9	9	2	23
600 – 699	4	4	2	4	14
Total	10	15	14	6	45
ACT Composite					
15 – 18	1	1			2
19 – 22	3	5	5	2	15
23 – 26	4	24	10	4	42
27 – 36	1	5	8		14
Total	9	35	23	6	73
CCHE Index					
90 – 100	1	3	2		6
101 – 114	8	24	8	2	42
115 – 160	3	10	15	8	36
Total	12	37	25	10	84

Office of Budgets and Institutional Analysis
 Number of New Freshmen by High School GPA & Rank,
 Test Scores, CCHE Index and CSU GPA
 CSU GPA after One Year for Freshmen Entering Fall 2003

Natural Resources

**Fall 2003 – Spring 2004
 First Year CSU Grades by CCHE Index**



Office of Budgets and Institutional Analysis
 Number of New Freshmen by High School GPA & Rank,
 Test Scores, CCHE Index and CSU GPA
 CSU GPA after One Year for Freshmen Entering Fall 2003

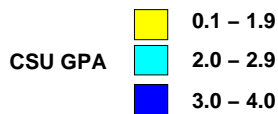
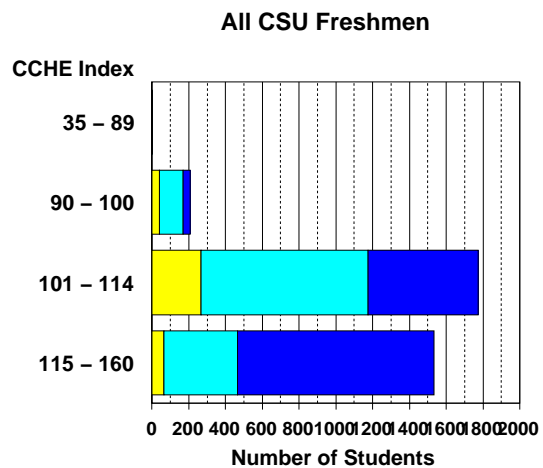
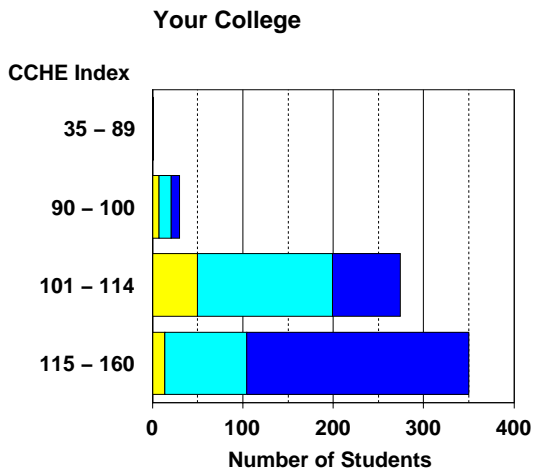
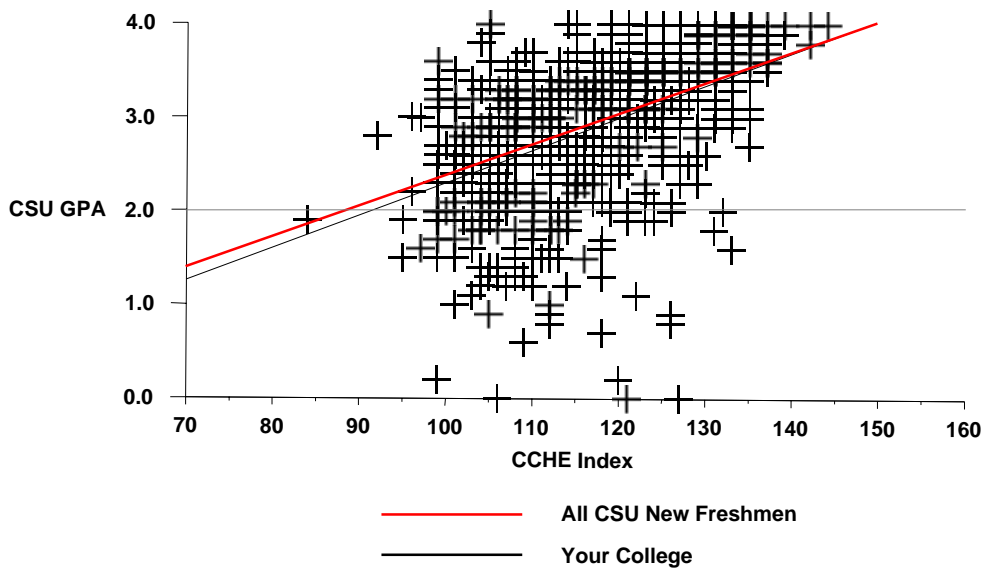
Natural Sciences

	CSU GPA				Total
	0.1 – 1.9	2.0 – 2.9	3.0 – 3.5	3.6 – 4.0	
High School GPA					
2.5 – 2.9	15	24	4	2	45
3.0 – 3.5	52	124	54	9	239
3.6 – 4.0	8	95	113	90	306
Total	75	243	171	101	590
Percentile Rank					
1 – 29	2	2	2		6
30 – 49	14	27	12	3	56
50 – 59	10	32	11	2	55
60 – 79	31	102	44	11	188
80 – 89	7	43	50	31	131
90 – 99	4	31	65	78	178
Total	68	237	184	125	614
SAT Verbal					
200 – 399	2	3	1		6
400 – 499	12	25	13	10	60
500 – 599	21	48	59	31	159
600 – 699	7	26	34	28	95
700 – 800	3	7	4	13	27
Total	45	109	111	82	347
SAT Math					
200 – 399		2	1		3
400 – 499	7	17	18	5	47
500 – 599	23	55	50	27	155
600 – 699	12	32	37	31	112
700 – 800	3	3	5	19	30
Total	45	109	111	82	347
ACT Composite					
1 – 14	1				1
15 – 18	3	11	2		16
19 – 22	14	81	39	13	147
23 – 26	31	95	78	39	243
27 – 36	17	46	60	71	194
Total	66	233	179	123	601
CCHE Index					
35 – 89	1				1
90 – 100	7	14	8	1	30
101 – 114	51	149	64	11	275
115 – 160	16	90	126	120	352
Total	75	253	198	132	658

Office of Budgets and Institutional Analysis
 Number of New Freshmen by High School GPA & Rank,
 Test Scores, CCHE Index and CSU GPA
 CSU GPA after One Year for Freshmen Entering Fall 2003

Natural Sciences

**Fall 2003 – Spring 2004
 First Year CSU Grades by CCHE Index**



Office of Budgets and Institutional Analysis
 Number of New Freshmen by High School GPA & Rank,
 Test Scores, CCHE Index and CSU GPA
 CSU GPA after One Year for Freshmen Entering Fall 2003

Veterinary Medicine + Biomedical Sci	CSU GPA				Total
	0.1 – 1.9	2.0 – 2.9	3.0 – 3.5	3.6 – 4.0	
High School GPA					
2.5 – 2.9	3	3			6
3.0 – 3.5	13	34	9	1	57
3.6 – 4.0	1	47	28	27	103
Total	17	84	37	28	166
Percentile Rank					
1 – 29	1				1
30 – 49	3	5			8
50 – 59	1	5	4	1	11
60 – 79	8	30	8	3	49
80 – 89	1	25	10	7	43
90 – 99	1	14	16	26	57
Total	15	79	38	37	169
SAT Verbal					
200 – 399	1				1
400 – 499	3	13	3	1	20
500 – 599	7	23	9	5	44
600 – 699	3	8	15	15	41
700 – 800		3		5	8
Total	14	47	27	26	114
SAT Math					
200 – 399		1			1
400 – 499	5	8	5		18
500 – 599	7	27	11	6	51
600 – 699	2	11	11	15	39
700 – 800				5	5
Total	14	47	27	26	114
ACT Composite					
15 – 18		3			3
19 – 22	7	24	5	1	37
23 – 26	6	31	17	11	65
27 – 36	2	13	12	21	48
Total	15	71	34	33	153
CCHE Index					
90 – 100	2	4			6
101 – 114	14	49	10	3	76
115 – 160	2	32	31	36	101
Total	18	85	41	39	183

Office of Budgets and Institutional Analysis
 Number of New Freshmen by High School GPA & Rank,
 Test Scores, CCHE Index and CSU GPA
 CSU GPA after One Year for Freshmen Entering Fall 2003

Veterinary Medicine + Biomedical Sci

**Fall 2003 – Spring 2004
 First Year CSU Grades by CCHE Index**

