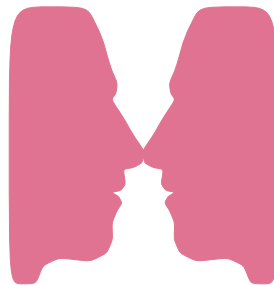


Freshmen Profile

2003



Five Year History

Office of Budgets and Institutional Analysis
 Profile of **All New** Freshmen Enrolled Fall Semesters
 Five Year Trend in High School Admissions Scores by College

	1999	2000	2001	2002	2003
Mean High School Rank					
Agricultural Sciences	79	77	78	76	78
Applied Human Sciences	76	76	73	74	74
Business	74	74	72	71	70
Engineering	82	83	81	83	78
Intra–University	71	70	70	68	67
Liberal Arts	73	74	73	73	74
Natural Resources	75	75	72	74	70
Natural Sciences	78	77	76	76	76
Veterinary Medicine + Biomedical Sci	81	80	82	81	78
Total	76	76	74	74	73
Mean SAT Verbal Score					
Agricultural Sciences	569	555	563	567	559
Applied Human Sciences	524	527	522	517	522
Business	528	524	526	533	540
Engineering	578	569	567	572	574
Intra–University	537	532	533	527	534
Liberal Arts	567	579	574	568	570
Natural Resources	562	569	571	574	542
Natural Sciences	559	559	552	559	568
Veterinary Medicine + Biomedical Sci	562	569	567	565	566
Total	552	551	549	548	553
Mean SAT Math Score					
Agricultural Sciences	566	549	560	552	556
Applied Human Sciences	526	536	533	537	529
Business	553	549	552	551	556
Engineering	627	618	606	628	620
Intra–University	545	532	543	538	544
Liberal Arts	546	547	548	552	552
Natural Resources	569	558	559	561	551
Natural Sciences	568	566	565	572	578
Veterinary Medicine + Biomedical Sci	565	566	561	562	569
Total	561	557	557	559	561

Office of Budgets and Institutional Analysis
 Profile of **All New** Freshmen Enrolled Fall Semesters
 Five Year Trend in High School Admissions Scores by College

	1999	2000	2001	2002	2003
Mean Composite ACT Score					
Agricultural Sciences	24.6	24.4	24.4	24.6	24.4
Applied Human Sciences	23.2	22.8	22.8	23.1	23.1
Business	23.5	23.3	23.5	23.5	23.4
Engineering	26.2	26.1	25.9	26.2	26.2
Intra–University	23.4	23.1	23.4	23.3	23.1
Liberal Arts	24.2	24.4	24.3	24.7	24.5
Natural Resources	24.4	23.7	24.0	24.6	24.0
Natural Sciences	24.8	24.5	24.4	24.8	24.8
Veterinary Medicine + Biomedical Sci	24.7	24.4	24.8	25.1	24.8
Total	24.2	24.0	24.0	24.2	24.1
Mean High School Grade Point Average					
Agricultural Sciences	3.56	3.58	3.62	3.57	3.63
Applied Human Sciences	3.52	3.54	3.53	3.55	3.58
Business	3.47	3.49	3.50	3.49	3.48
Engineering	3.63	3.70	3.70	3.75	3.70
Intra–University	3.37	3.41	3.44	3.41	3.42
Liberal Arts	3.46	3.52	3.55	3.51	3.56
Natural Resources	3.48	3.52	3.51	3.51	3.48
Natural Sciences	3.55	3.58	3.58	3.58	3.60
Veterinary Medicine + Biomedical Sci	3.60	3.64	3.72	3.68	3.64
Total	3.50	3.54	3.55	3.53	3.54
Mean CCHE Index					
Agricultural Sciences	112	111	112	111	112
Applied Human Sciences	107	107	107	107	108
Business	107	107	108	107	107
Engineering	117	117	117	118	117
Intra–University	106	105	106	105	105
Liberal Arts	109	110	110	110	111
Natural Resources	110	111	109	110	108
Natural Sciences	112	112	111	112	112
Veterinary Medicine + Biomedical Sci	112	112	114	114	113
Total	110	110	110	110	110

Office of Budgets and Institutional Analysis
 Profile of **Resident** Freshmen Enrolled Fall Semesters
 Five Year Trend in High School Admissions Scores by College

	1999	2000	2001	2002	2003
Mean High School Rank					
Agricultural Sciences	78	78	77	76	79
Applied Human Sciences	78	77	73	75	75
Business	75	75	72	72	71
Engineering	82	83	80	82	78
Intra–University	71	71	71	69	68
Liberal Arts	73	75	75	72	74
Natural Resources	75	76	74	76	75
Natural Sciences	78	77	76	75	76
Veterinary Medicine + Biomedical Sci	82	82	82	79	78
Total	76	76	75	74	73
Mean SAT Verbal Score					
Agricultural Sciences	550	536	546	550	563
Applied Human Sciences	528	527	515	515	515
Business	528	518	527	532	543
Engineering	574	562	561	561	568
Intra–University	539	528	533	525	534
Liberal Arts	563	580	573	566	568
Natural Resources	546	554	568	559	548
Natural Sciences	558	556	551	556	566
Veterinary Medicine + Biomedical Sci	561	566	566	558	578
Total	550	547	546	544	552
Mean SAT Math Score					
Agricultural Sciences	548	522	533	548	557
Applied Human Sciences	525	535	528	532	523
Business	550	545	545	540	550
Engineering	623	605	603	616	613
Intra–University	545	524	538	535	542
Liberal Arts	542	544	548	543	550
Natural Resources	563	533	546	547	548
Natural Sciences	566	565	562	571	571
Veterinary Medicine + Biomedical Sci	560	553	552	558	571
Total	559	551	553	553	558

Office of Budgets and Institutional Analysis
 Profile of **Resident** Freshmen Enrolled Fall Semesters
 Five Year Trend in High School Admissions Scores by College

	1999	2000	2001	2002	2003
Mean Composite ACT Score					
Agricultural Sciences	23.7	23.8	24.2	24.5	24.4
Applied Human Sciences	23.3	22.7	22.8	23.0	23.1
Business	23.4	23.1	23.3	23.5	23.3
Engineering	26.0	25.8	25.7	26.0	26.0
Intra–University	23.4	23.1	23.3	23.2	23.0
Liberal Arts	24.1	24.2	24.2	24.7	24.5
Natural Resources	23.9	23.3	23.4	24.2	24.0
Natural Sciences	24.6	24.5	24.2	24.6	24.7
Veterinary Medicine + Biomedical Sci	24.7	24.3	24.7	25.0	24.9
Total	24.1	23.8	23.9	24.0	24.0
Mean High School Grade Point Average					
Agricultural Sciences	3.57	3.63	3.62	3.59	3.66
Applied Human Sciences	3.55	3.57	3.53	3.57	3.60
Business	3.50	3.52	3.51	3.52	3.51
Engineering	3.64	3.70	3.69	3.73	3.70
Intra–University	3.41	3.44	3.46	3.45	3.44
Liberal Arts	3.47	3.54	3.57	3.51	3.59
Natural Resources	3.50	3.59	3.53	3.58	3.52
Natural Sciences	3.56	3.58	3.58	3.58	3.62
Veterinary Medicine + Biomedical Sci	3.64	3.66	3.73	3.67	3.66
Total	3.52	3.56	3.56	3.54	3.56
Mean CCHE Index					
Agricultural Sciences	109	110	110	110	112
Applied Human Sciences	108	107	107	107	108
Business	107	107	107	107	107
Engineering	117	116	116	117	116
Intra–University	106	106	106	106	105
Liberal Arts	109	110	110	110	111
Natural Resources	108	110	109	110	108
Natural Sciences	111	111	110	111	112
Veterinary Medicine + Biomedical Sci	113	112	114	113	113
Total	109	109	109	109	110

Office of Budgets and Institutional Analysis
 Profile of **Nonresident** Freshmen Enrolled Fall Semesters
 Five Year Trend in High School Admissions Scores by College

	1999	2000	2001	2002	2003
Mean High School Rank					
Agricultural Sciences	80	76	81	76	75
Applied Human Sciences	72	72	74	70	72
Business	69	68	70	67	69
Engineering	81	84	84	86	80
Intra–University	66	64	68	63	63
Liberal Arts	75	70	69	75	69
Natural Resources	75	73	70	71	62
Natural Sciences	75	76	75	78	74
Veterinary Medicine + Biomedical Sci	77	78	84	83	79
Total	74	73	74	73	71
Mean SAT Verbal Score					
Agricultural Sciences	577	570	574	578	556
Applied Human Sciences	513	528	538	521	537
Business	528	539	525	536	536
Engineering	597	589	583	592	590
Intra–University	532	544	531	532	534
Liberal Arts	578	575	577	572	575
Natural Resources	569	582	574	585	538
Natural Sciences	562	567	556	567	571
Veterinary Medicine + Biomedical Sci	563	573	568	573	556
Total	557	562	555	557	555
Mean SAT Math Score					
Agricultural Sciences	573	569	577	554	556
Applied Human Sciences	528	540	543	545	540
Business	563	560	570	572	569
Engineering	643	653	613	652	637
Intra–University	542	553	558	546	550
Liberal Arts	559	557	549	574	557
Natural Resources	572	579	569	572	554
Natural Sciences	573	569	574	574	592
Veterinary Medicine + Biomedical Sci	578	584	570	565	566
Total	567	572	569	572	569

Office of Budgets and Institutional Analysis
 Profile of **Nonresident** Freshmen Enrolled Fall Semesters
 Five Year Trend in High School Admissions Scores by College

	1999	2000	2001	2002	2003
Mean Composite ACT Score					
Agricultural Sciences	25.6	25.4	24.9	25.0	24.4
Applied Human Sciences	22.6	23.1	22.6	23.9	23.4
Business	24.0	24.3	24.3	23.6	24.0
Engineering	27.6	27.4	26.6	27.5	27.1
Intra–University	23.9	23.4	23.7	23.9	24.1
Liberal Arts	24.7	25.5	24.8	25.0	24.1
Natural Resources	24.9	24.5	24.7	25.3	24.1
Natural Sciences	25.6	24.8	25.4	25.7	25.6
Veterinary Medicine + Biomedical Sci	24.7	24.8	25.1	25.3	24.4
Total	24.8	24.8	24.7	24.9	24.6
Mean High School Grade Point Average					
Agricultural Sciences	3.55	3.51	3.61	3.53	3.58
Applied Human Sciences	3.40	3.43	3.54	3.48	3.52
Business	3.37	3.39	3.47	3.41	3.38
Engineering	3.58	3.72	3.72	3.82	3.71
Intra–University	3.22	3.27	3.35	3.26	3.31
Liberal Arts	3.41	3.46	3.45	3.51	3.39
Natural Resources	3.46	3.44	3.49	3.42	3.43
Natural Sciences	3.52	3.56	3.57	3.57	3.52
Veterinary Medicine + Biomedical Sci	3.48	3.59	3.70	3.69	3.61
Total	3.44	3.47	3.53	3.49	3.47
Mean CCHE Index					
Agricultural Sciences	114	112	114	111	111
Applied Human Sciences	105	106	107	108	108
Business	107	108	109	108	108
Engineering	119	122	119	124	120
Intra–University	104	105	106	105	105
Liberal Arts	109	111	110	112	109
Natural Resources	111	112	110	111	108
Natural Sciences	112	113	113	113	113
Veterinary Medicine + Biomedical Sci	109	114	115	115	113
Total	110	111	111	111	110

Fall 2003 Freshmen

Office of Budgets and Institutional Analysis
Freshmen Profile
Fall 2003

University	Admitted N= 9520				Enrolled N=3802			
	Res	Nonres	Total	Percent	Res	Nonres	Total	Percent
High School GPA								
0.1 – 1.9	1	0	1	0	1	0	1	0
2.0 – 2.4	2	11	13	0	2	7	9	0
2.5 – 2.9	210	329	539	6	131	98	229	7
3.0 – 3.5	2353	1565	3918	45	1275	345	1620	46
3.6 – 4.0	2662	1525	4187	48	1322	332	1654	47
Valid Cases	5228	3430	8658	100	2731	782	3513	100
Means	3.53	3.46	3.50		3.51	3.43	3.49	
Percentile Rank								
1 – 29	28	48	76	1	22	15	37	1
30 – 49	416	304	720	9	270	99	369	11
50 – 59	580	313	893	11	333	75	408	12
60 – 79	1910	937	2847	34	1024	202	1226	35
80 – 89	1154	629	1783	21	571	138	709	20
90 – 99	1278	713	1991	24	600	146	746	21
Valid Cases	5366	2944	8310	100	2820	675	3495	100
Means	75.1	73.8	74.6		73.3	71.4	73.0	
SAT Verbal								
200 – 399	42	40	82	2	27	11	38	2
400 – 499	558	475	1033	19	277	117	394	21
500 – 599	1296	1296	2592	48	599	295	894	48
600 – 699	738	751	1489	27	316	163	479	26
700 – 800	122	106	228	4	49	23	72	4
Valid Cases	2756	2668	5424	100	1268	609	1877	100
Means	558	559	558		552	555	553	
SAT Math								
200 – 399	42	19	61	1	24	4	28	1
400 – 499	471	347	818	15	242	97	339	18
500 – 599	1298	1234	2532	47	616	286	902	48
600 – 699	805	929	1734	32	335	187	522	28
700 – 800	140	139	279	5	51	35	86	5
Valid Cases	2756	2668	5424	100	1268	609	1877	100
Means	565	576	570		558	569	561	
ACT Composite								
1 – 14	2	3	5	0	1	2	3	0
15 – 18	133	58	191	2	79	13	92	3
19 – 22	1674	535	2209	28	926	136	1062	31
23 – 26	2421	1040	3461	44	1255	207	1462	43
27 – 36	1331	715	2046	26	620	154	774	23
Valid Cases	5561	2351	7912	100	2881	512	3393	100
Means	24.2	24.8	24.4		24.0	24.6	24.1	
CCHE Index								
35 – 89	8	14	22	0	5	10	15	0
90 – 100	1079	691	1770	19	650	183	833	22
101 – 114	2778	1674	4452	48	1451	350	1801	48
115 – 160	1804	1318	3122	33	827	277	1104	29
Valid Cases	5669	3697	9366	100	2933	820	3753	100
Means	111	111	111		110	110	110	

Office of Budgets and Institutional Analysis
Freshmen Profile
Fall 2003

Agricultural Sciences**Admitted N= 302****Enrolled N=126**

	Res	Nonres	Total	Percent	Res	Nonres	Total	Percent
High School GPA								
2.5 - 2.9	4	9	13	5	2	4	6	5
3.0 - 3.5	31	58	89	33	19	20	39	34
3.6 - 4.0	71	98	169	62	48	22	70	61
Valid Cases	106	165	271	100	69	46	115	100
Means	3.61	3.58	3.59		3.62	3.53	3.58	
Percentile Rank								
1 - 29	1	0	1	0	1	0	1	1
30 - 49	3	7	10	4	1	3	4	4
50 - 59	9	12	21	8	4	9	13	12
60 - 79	36	42	78	31	23	7	30	27
80 - 89	28	39	67	27	18	12	30	27
90 - 99	30	44	74	29	23	9	32	29
Valid Cases	107	144	251	100	70	40	110	100
Means	78.0	79.1	78.7		79.3	75.4	77.9	
SAT Verbal								
200 - 399	0	1	1	1	0	1	1	2
400 - 499	9	15	24	15	5	5	10	17
500 - 599	19	54	73	45	11	17	28	47
600 - 699	11	48	59	36	7	11	18	30
700 - 800	1	6	7	4	1	2	3	5
Valid Cases	40	124	164	100	24	36	60	100
Means	555	577	571		563	556	559	
SAT Math								
400 - 499	8	16	24	15	5	7	12	20
500 - 599	22	61	83	51	12	18	30	50
600 - 699	9	44	53	32	7	11	18	30
700 - 800	1	3	4	2	0	0	0	0
Valid Cases	40	124	164	100	24	36	60	100
Means	552	571	566		557	556	556	
ACT Composite								
15 - 18	1	1	2	1	1	1	2	2
19 - 22	37	22	59	26	21	7	28	27
23 - 26	50	50	100	45	32	15	47	46
27 - 36	22	40	62	28	17	8	25	25
Valid Cases	110	113	223	100	71	31	102	100
Means	24.1	25.3	24.7		24.4	24.4	24.4	
CCHE Index								
35 - 89	0	1	1	0	0	1	1	1
90 - 100	17	19	36	12	10	8	18	15
101 - 114	59	72	131	44	38	19	57	46
115 - 160	37	90	127	43	26	22	48	39
Valid Cases	113	182	295	100	74	50	124	100
Means	111	114	113		112	111	112	

Office of Budgets and Institutional Analysis
Freshmen Profile
Fall 2003

Applied Human Sciences**Admitted N= 838****Enrolled N=387**

	Res	Nonres	Total	Percent	Res	Nonres	Total	Percent
High School GPA								
2.5 - 2.9	11	22	33	4	5	8	13	4
3.0 - 3.5	201	151	352	45	128	37	165	46
3.6 - 4.0	246	151	397	51	140	40	180	50
Valid Cases	458	324	782	100	273	85	358	100
Means	3.56	3.50	3.53		3.55	3.47	3.53	
Percentile Rank								
1 - 29	3	3	6	1	1	2	3	1
30 - 49	27	30	57	8	17	9	26	7
50 - 59	50	25	75	10	33	4	37	10
60 - 79	179	92	271	36	110	30	140	38
80 - 89	108	70	178	24	63	23	86	24
90 - 99	103	62	165	22	61	12	73	20
Valid Cases	470	282	752	100	285	80	365	100
Means	75.1	73.9	74.7		74.6	72.2	74.1	
SAT Verbal								
200 - 399	7	4	11	3	7	1	8	4
400 - 499	66	61	127	29	37	20	57	31
500 - 599	108	106	214	49	61	26	87	48
600 - 699	34	46	80	18	13	16	29	16
700 - 800	4	2	6	1	2	0	2	1
Valid Cases	219	219	438	100	120	63	183	100
Means	526	535	531		515	537	522	
SAT Math								
200 - 399	10	0	10	2	6	0	6	3
400 - 499	55	39	94	21	37	18	55	30
500 - 599	111	105	216	49	60	28	88	48
600 - 699	38	68	106	24	14	16	30	16
700 - 800	5	7	12	3	3	1	4	2
Valid Cases	219	219	438	100	120	63	183	100
Means	532	561	547		523	540	529	
ACT Composite								
15 - 18	19	14	33	5	11	3	14	4
19 - 22	197	60	257	37	123	17	140	41
23 - 26	188	111	299	42	113	24	137	40
27 - 36	72	43	115	16	39	11	50	15
Valid Cases	476	228	704	100	286	55	341	100
Means	23.2	23.7	23.4		23.1	23.4	23.1	
CCHE Index								
35 - 89	1	1	2	0	1	1	2	1
90 - 100	121	85	206	25	76	29	105	27
101 - 114	244	151	395	48	151	32	183	48
115 - 160	123	105	228	27	66	29	95	25
Valid Cases	489	342	831	100	294	91	385	100
Means	108	109	109		108	108	108	

Office of Budgets and Institutional Analysis
Freshmen Profile
Fall 2003

Business**Admitted N= 1402****Enrolled N=569**

	Res	Nonres	Total	Percent	Res	Nonres	Total	Percent
High School GPA								
2.0 - 2.4	0	5	5	0	0	5	5	1
2.5 - 2.9	38	57	95	7	24	18	42	8
3.0 - 3.5	418	238	656	50	214	40	254	47
3.6 - 4.0	380	179	559	43	192	46	238	44
Valid Cases	836	479	1315	100	430	109	539	100
Means	3.49	3.38	3.45		3.48	3.35	3.46	
Percentile Rank								
1 - 29	5	8	13	1	3	3	6	1
30 - 49	82	54	136	11	47	13	60	12
50 - 59	125	48	173	14	69	13	82	16
60 - 79	294	137	431	35	161	25	186	36
80 - 89	187	86	273	22	81	22	103	20
90 - 99	138	51	189	16	67	11	78	15
Valid Cases	831	384	1215	100	428	87	515	100
Means	71.8	69.6	71.1		70.8	68.5	70.4	
SAT Verbal								
200 - 399	11	10	21	3	7	1	8	3
400 - 499	93	78	171	22	38	22	60	23
500 - 599	236	195	431	55	94	43	137	53
600 - 699	73	79	152	19	32	17	49	19
700 - 800	8	7	15	2	6	0	6	2
Valid Cases	421	369	790	100	177	83	260	100
Means	541	542	541		543	536	540	
SAT Math								
200 - 399	4	4	8	1	2	1	3	1
400 - 499	89	32	121	15	40	8	48	18
500 - 599	212	202	414	52	93	45	138	53
600 - 699	103	117	220	28	36	24	60	23
700 - 800	13	14	27	3	6	5	11	4
Valid Cases	421	369	790	100	177	83	260	100
Means	555	572	563		550	569	556	
ACT Composite								
1 - 14	2	0	2	0	1	0	1	0
15 - 18	25	7	32	3	13	2	15	3
19 - 22	311	104	415	35	167	23	190	37
23 - 26	398	145	543	46	206	28	234	45
27 - 36	131	63	194	16	59	17	76	15
Valid Cases	867	319	1186	100	446	70	516	100
Means	23.5	23.9	23.6		23.3	24.0	23.4	
CCHE Index								
35 - 89	1	4	5	0	0	3	3	1
90 - 100	217	122	339	24	122	33	155	28
101 - 114	465	254	719	52	239	48	287	51
115 - 160	198	123	321	23	88	28	116	21
Valid Cases	881	503	1384	100	449	112	561	100
Means	108	108	108		107	108	107	

Office of Budgets and Institutional Analysis
Freshmen Profile
Fall 2003

Engineering**Admitted N= 885****Enrolled N=322**

	Res	Nonres	Total	Percent	Res	Nonres	Total	Percent
High School GPA								
2.5 - 2.9	1	4	5	1	0	2	2	1
3.0 - 3.5	164	102	266	36	89	17	106	36
3.6 - 4.0	315	159	474	64	145	38	183	63
Valid Cases	480	265	745	100	234	57	291	100
Means	3.65	3.63	3.64		3.64	3.66	3.65	
Percentile Rank								
30 - 49	17	9	26	3	10	3	13	4
50 - 59	39	14	53	7	25	4	29	10
60 - 79	174	71	245	31	88	16	104	34
80 - 89	119	65	184	23	55	10	65	21
90 - 99	174	107	281	36	73	21	94	31
Valid Cases	523	266	789	100	251	54	305	100
Means	80.0	81.8	80.6		77.9	79.7	78.3	
SAT Verbal								
200 - 399	2	1	3	1	1	0	1	1
400 - 499	40	25	65	11	21	2	23	13
500 - 599	151	123	274	47	65	23	88	49
600 - 699	112	93	205	35	42	20	62	35
700 - 800	12	20	32	6	3	2	5	3
Valid Cases	317	262	579	100	132	47	179	100
Means	575	584	579		568	590	574	
SAT Math								
400 - 499	8	1	9	2	3	0	3	2
500 - 599	105	66	171	30	54	13	67	37
600 - 699	158	152	310	54	63	25	88	49
700 - 800	46	43	89	15	12	9	21	12
Valid Cases	317	262	579	100	132	47	179	100
Means	623	639	631		613	637	620	
ACT Composite								
15 - 18	0	1	1	0	0	0	0	0
19 - 22	45	13	58	8	25	5	30	10
23 - 26	249	76	325	45	121	11	132	45
27 - 36	241	102	343	47	104	26	130	45
Valid Cases	535	192	727	100	250	42	292	100
Means	26.4	27.0	26.5		26.0	27.1	26.2	
CCHE Index								
101 - 114	238	104	342	40	128	18	146	46
115 - 160	306	208	514	60	129	44	173	54
Valid Cases	544	312	856	100	257	62	319	100
Means	118	120	119		116	120	117	

Office of Budgets and Institutional Analysis
Freshmen Profile
Fall 2003

Intra-University**Admitted N= 2041****Enrolled N=825**

	Res	Nonres	Total	Percent	Res	Nonres	Total	Percent
High School GPA								
0.1 - 1.9	1	0	1	0	1	0	1	0
2.0 - 2.4	2	2	4	0	2	1	3	0
2.5 - 2.9	67	108	175	9	41	22	63	8
3.0 - 3.5	678	348	1026	53	374	78	452	57
3.6 - 4.0	510	208	718	37	232	36	268	34
Valid Cases	1258	666	1924	100	650	137	787	100
Means	3.45	3.34	3.41		3.40	3.29	3.38	
Percentile Rank								
1 - 29	9	23	32	2	9	4	13	2
30 - 49	142	83	225	13	99	28	127	17
50 - 59	174	65	239	14	98	17	115	15
60 - 79	492	168	660	38	262	33	295	39
80 - 89	218	85	303	17	105	13	118	16
90 - 99	219	79	298	17	79	13	92	12
Valid Cases	1254	503	1757	100	652	108	760	100
Means	71.2	67.1	70.0		67.9	63.0	67.2	
SAT Verbal								
200 - 399	9	10	19	2	3	2	5	1
400 - 499	169	115	284	26	88	22	110	29
500 - 599	280	249	529	48	132	57	189	50
600 - 699	127	104	231	21	50	15	65	17
700 - 800	20	11	31	3	5	1	6	2
Valid Cases	605	489	1094	100	278	97	375	100
Means	544	544	544		534	534	534	
SAT Math								
200 - 399	9	8	17	2	4	0	4	1
400 - 499	131	77	208	19	63	24	87	23
500 - 599	303	234	537	49	149	43	192	51
600 - 699	142	156	298	27	59	29	88	23
700 - 800	20	14	34	3	3	1	4	1
Valid Cases	605	489	1094	100	278	97	375	100
Means	550	562	555		542	550	544	
ACT Composite								
1 - 14	0	1	1	0	0	0	0	0
15 - 18	41	11	52	3	26	1	27	4
19 - 22	510	122	632	37	281	29	310	42
23 - 26	563	178	741	43	292	33	325	44
27 - 36	188	100	288	17	65	19	84	11
Valid Cases	1302	412	1714	100	664	82	746	100
Means	23.4	24.2	23.6		23.0	24.1	23.1	
CCHE Index								
35 - 89	0	3	3	0	0	2	2	0
90 - 100	391	212	603	30	249	50	299	37
101 - 114	671	320	991	49	337	65	402	49
115 - 160	263	153	416	21	90	23	113	14
Valid Cases	1325	688	2013	100	676	140	816	100
Means	107	107	107		105	105	105	

Office of Budgets and Institutional Analysis
Freshmen Profile
Fall 2003

Liberal Arts**Admitted N= 1581****Enrolled N=568**

	Res	Nonres	Total	Percent	Res	Nonres	Total	Percent
High School GPA								
2.0 - 2.4	0	3	3	0	0	1	1	0
2.5 - 2.9	40	58	98	7	24	17	41	8
3.0 - 3.5	388	257	645	45	185	44	229	44
3.6 - 4.0	483	209	692	48	226	28	254	48
Valid Cases	911	527	1438	100	435	90	525	100
Means	3.55	3.43	3.50		3.54	3.36	3.51	
Percentile Rank								
1 - 29	4	5	9	1	3	2	5	1
30 - 49	74	53	127	9	48	14	62	12
50 - 59	78	71	149	11	42	8	50	9
60 - 79	331	151	482	35	155	26	181	34
80 - 89	210	79	289	21	95	12	107	20
90 - 99	235	98	333	24	107	15	122	23
Valid Cases	932	457	1389	100	450	77	527	100
Means	76.1	71.8	74.7		74.4	69.1	73.7	
SAT Verbal								
200 - 399	6	2	8	1	5	2	7	2
400 - 499	69	63	132	14	32	9	41	14
500 - 599	200	196	396	43	86	35	121	43
600 - 699	187	134	321	35	77	24	101	36
700 - 800	31	25	56	6	9	5	14	5
Valid Cases	493	420	913	100	209	75	284	100
Means	577	572	575		568	575	570	
SAT Math								
200 - 399	13	5	18	2	9	2	11	4
400 - 499	84	77	161	18	43	12	55	19
500 - 599	239	204	443	49	98	42	140	49
600 - 699	146	125	271	30	53	15	68	24
700 - 800	11	9	20	2	6	4	10	4
Valid Cases	493	420	913	100	209	75	284	100
Means	557	560	559		550	557	552	
ACT Composite								
1 - 14	0	1	1	0	0	1	1	0
15 - 18	16	7	23	2	8	2	10	2
19 - 22	257	69	326	25	130	14	144	28
23 - 26	412	163	575	44	192	26	218	42
27 - 36	281	112	393	30	131	11	142	28
Valid Cases	966	352	1318	100	461	54	515	100
Means	24.6	25.0	24.7		24.5	24.1	24.5	
CCHE Index								
35 - 89	3	4	7	0	3	2	5	1
90 - 100	142	100	242	16	72	17	89	16
101 - 114	498	280	778	50	234	50	284	51
115 - 160	346	186	532	34	158	24	182	33
Valid Cases	989	570	1559	100	467	93	560	100
Means	112	111	111		111	109	111	

Office of Budgets and Institutional Analysis
Freshmen Profile
Fall 2003

Natural Resources**Admitted N= 232****Enrolled N=95**

	Res	Nonres	Total	Percent	Res	Nonres	Total	Percent
High School GPA								
2.5 - 2.9	5	11	16	8	4	3	7	8
3.0 - 3.5	39	71	110	52	24	23	47	53
3.6 - 4.0	37	49	86	41	24	10	34	39
Valid Cases	81	131	212	100	52	36	88	100
Means	3.49	3.42	3.45		3.49	3.39	3.45	
Percentile Rank								
1 - 29	0	1	1	1	0	1	1	1
30 - 49	2	12	14	8	2	8	10	13
50 - 59	10	15	25	14	4	3	7	9
60 - 79	28	36	64	36	22	9	31	40
80 - 89	19	19	38	21	12	2	14	18
90 - 99	17	19	36	20	10	4	14	18
Valid Cases	76	102	178	100	50	27	77	100
Means	75.6	71.1	73.0		74.7	61.9	70.2	
SAT Verbal								
200 - 399	0	2	2	1	0	1	1	2
400 - 499	5	13	18	13	3	7	10	21
500 - 599	19	54	73	53	12	12	24	51
600 - 699	14	28	42	31	5	7	12	26
700 - 800	0	2	2	1	0	0	0	0
Valid Cases	38	99	137	100	20	27	47	100
Means	563	560	561		548	538	542	
SAT Math								
400 - 499	6	12	18	13	3	6	9	19
500 - 599	21	49	70	51	12	12	24	51
600 - 699	9	36	45	33	5	9	14	30
700 - 800	2	2	4	3	0	0	0	0
Valid Cases	38	99	137	100	20	27	47	100
Means	557	571	567		548	554	551	
ACT Composite								
15 - 18	3	1	4	2	2	1	3	4
19 - 22	14	13	27	16	12	5	17	22
23 - 26	47	47	94	57	28	16	44	56
27 - 36	18	23	41	25	10	5	15	19
Valid Cases	82	84	166	100	52	27	79	100
Means	24.4	25.0	24.7		24.0	24.1	24.0	
CCHE Index								
90 - 100	15	22	37	16	11	8	19	21
101 - 114	49	78	127	56	32	21	53	58
115 - 160	20	44	64	28	11	9	20	22
Valid Cases	84	144	228	100	54	38	92	100
Means	109	111	110		108	108	108	

Office of Budgets and Institutional Analysis
Freshmen Profile
Fall 2003

Natural Sciences**Admitted N= 1753****Enrolled N=709**

	Res	Nonres	Total	Percent	Res	Nonres	Total	Percent
High School GPA								
2.0 - 2.4	0	1	1	0	0	0	0	0
2.5 - 2.9	37	52	89	6	27	21	48	8
3.0 - 3.5	373	248	621	40	203	57	260	41
3.6 - 4.0	519	311	830	54	254	67	321	51
Valid Cases	929	612	1541	100	484	145	629	100
Means	3.58	3.52	3.55		3.55	3.47	3.53	
Percentile Rank								
1 - 29	5	6	11	1	4	3	7	1
30 - 49	58	46	104	7	40	17	57	9
50 - 59	81	47	128	8	49	12	61	9
60 - 79	323	170	493	32	169	35	204	31
80 - 89	217	120	337	22	114	25	139	21
90 - 99	303	171	474	31	145	39	184	28
Valid Cases	987	560	1547	100	521	131	652	100
Means	78.0	77.2	77.7		76.3	74.5	76.0	
SAT Verbal								
200 - 399	6	9	15	2	3	3	6	2
400 - 499	94	63	157	16	46	14	60	16
500 - 599	245	220	465	47	115	56	171	47
600 - 699	148	145	293	30	70	32	102	28
700 - 800	37	24	61	6	17	10	27	7
Valid Cases	530	461	991	100	251	115	366	100
Means	568	568	568		566	571	568	
SAT Math								
200 - 399	4	0	4	0	3	0	3	1
400 - 499	78	53	131	13	39	12	51	14
500 - 599	241	206	447	45	113	52	165	45
600 - 699	170	162	332	34	78	38	116	32
700 - 800	37	40	77	8	18	13	31	8
Valid Cases	530	461	991	100	251	115	366	100
Means	575	586	580		571	592	578	
ACT Composite								
1 - 14	0	1	1	0	0	1	1	0
15 - 18	24	8	32	2	15	2	17	3
19 - 22	258	92	350	23	141	20	161	25
23 - 26	421	194	615	41	217	38	255	40
27 - 36	329	173	502	33	161	41	202	32
Valid Cases	1032	468	1500	100	534	102	636	100
Means	24.8	25.5	25.0		24.7	25.6	24.8	
CCHE Index								
35 - 89	2	1	3	0	0	1	1	0
90 - 100	150	96	246	14	91	28	119	17
101 - 114	467	294	761	44	245	57	302	43
115 - 160	432	282	714	41	208	68	276	40
Valid Cases	1051	673	1724	100	544	154	698	100
Means	113	114	113		112	113	112	

Office of Budgets and Institutional Analysis
Freshmen Profile
Fall 2003

	Admitted N= 486				Enrolled N=201			
	Res	Nonres	Total	Percent	Res	Nonres	Total	Percent
Veterinary Medicine + Biomed								
High School GPA								
2.5 - 2.9	7	8	15	3	4	3	7	4
3.0 - 3.5	61	92	153	36	39	29	68	38
3.6 - 4.0	101	161	262	61	61	45	106	59
Valid Cases	169	261	430	100	104	77	181	100
Means	3.60	3.61	3.61		3.59	3.59	3.59	
Percentile Rank								
1 - 29	1	2	3	1	1	0	1	1
30 - 49	11	10	21	5	6	4	10	5
50 - 59	14	16	30	7	9	5	14	8
60 - 79	53	70	123	28	34	21	55	30
80 - 89	48	66	114	26	28	19	47	26
90 - 99	59	82	141	33	35	22	57	31
Valid Cases	186	246	432	100	113	71	184	100
Means	78.6	79.6	79.2		78.4	78.7	78.5	
SAT Verbal								
200 - 399	1	1	2	1	1	0	1	1
400 - 499	13	42	55	17	7	16	23	19
500 - 599	38	99	137	43	23	26	49	40
600 - 699	32	74	106	33	20	21	41	33
700 - 800	9	9	18	6	6	3	9	7
Valid Cases	93	225	318	100	57	66	123	100
Means	576	563	567		578	556	566	
SAT Math								
200 - 399	2	2	4	1	0	1	1	1
400 - 499	12	40	52	16	9	10	19	15
500 - 599	44	107	151	47	25	33	58	47
600 - 699	30	69	99	31	20	20	40	33
700 - 800	5	7	12	4	3	2	5	4
Valid Cases	93	225	318	100	57	66	123	100
Means	568	566	567		571	566	569	
ACT Composite								
15 - 18	4	8	12	3	3	1	4	2
19 - 22	45	40	85	23	26	16	42	25
23 - 26	93	76	169	45	54	16	70	42
27 - 36	49	59	108	29	34	16	50	30
Valid Cases	191	183	374	100	117	49	166	100
Means	24.8	24.8	24.8		24.9	24.4	24.8	
CCHE Index								
35 - 89	1	0	1	0	1	0	1	1
90 - 100	26	35	61	13	19	10	29	15
101 - 114	87	121	208	44	47	40	87	44
115 - 160	79	127	206	43	51	30	81	41
Valid Cases	193	283	476	100	118	80	198	100
Means	113	114	114		113	113	113	

**Fall 2002 Freshmen
and
Their Performance
at CSU
After One Year**

Office of Budgets and Institutional Analysis
 Number of New Freshmen by High School GPA & Rank,
 Test Scores, CCHE Index and CSU GPA
 CSU GPA after One Year for Freshmen Entering Fall 2002

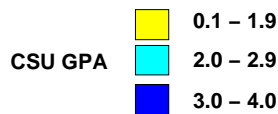
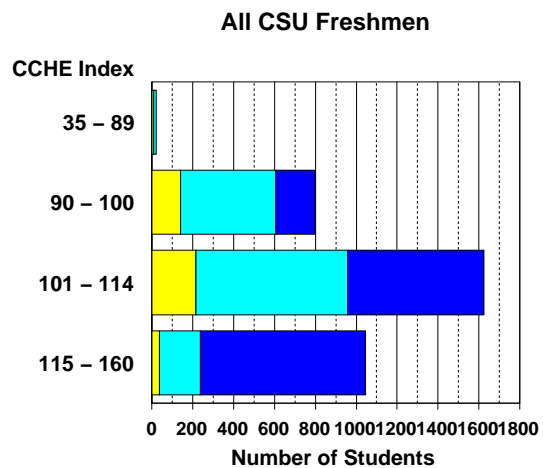
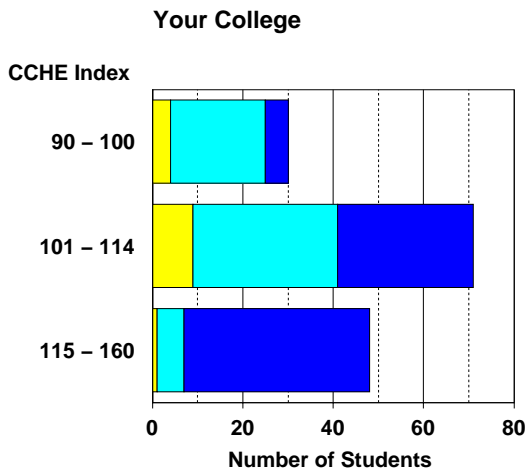
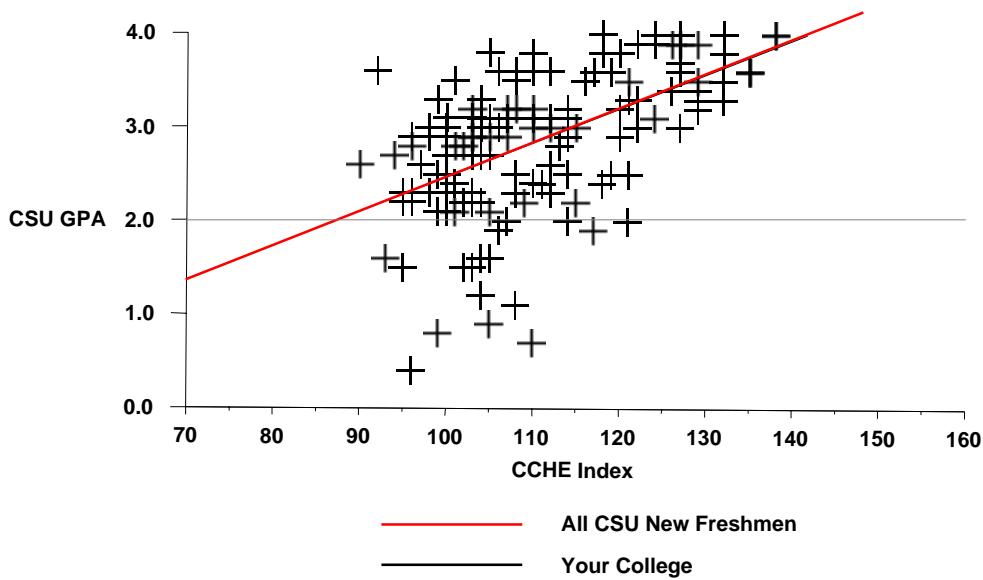
Agricultural Sciences

	CSU GPA				Total
	0.1 – 1.9	2.0 – 2.9	3.0 – 3.5	3.6 – 4.0	
High School GPA					
2.5 – 2.9	2	4	1		7
3.0 – 3.5	10	35	12	5	62
3.6 – 4.0	2	19	29	22	72
Total	14	58	42	27	141
Percentile Rank					
30 – 49	1	7	1	1	10
50 – 59	2	7	1	1	11
60 – 79	9	23	17	5	54
80 – 89	1	11	13	7	32
90 – 99		3	11	15	29
Total	13	51	43	29	136
SAT Verbal					
200 – 399		1			1
400 – 499	1	4	5	1	11
500 – 599	5	13	8	7	33
600 – 699	1	6	10	7	24
700 – 800	1		1	1	3
Total	8	24	24	16	72
SAT Math					
400 – 499	2	5	4		11
500 – 599	3	16	15	8	42
600 – 699	3	3	5	8	19
Total	8	24	24	16	72
ACT Composite					
15 – 18		2			2
19 – 22	3	22	11	2	38
23 – 26	4	12	16	11	43
27 – 36	2	10	11	18	41
Total	9	46	38	31	124
CCHE Index					
90 – 100	4	21	4	1	30
101 – 114	9	32	22	8	71
115 – 160	1	6	18	23	48
Total	14	59	44	32	149

Office of Budgets and Institutional Analysis
 Number of New Freshmen by High School GPA & Rank,
 Test Scores, CCHE Index and CSU GPA
 CSU GPA after One Year for Freshmen Entering Fall 2002

Agricultural Sciences

**Fall 2002 – Spring 2003
 First Year CSU Grades by CCHE Index**



Office of Budgets and Institutional Analysis
 Number of New Freshmen by High School GPA & Rank,
 Test Scores, CCHE Index and CSU GPA
 CSU GPA after One Year for Freshmen Entering Fall 2002

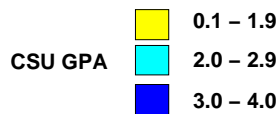
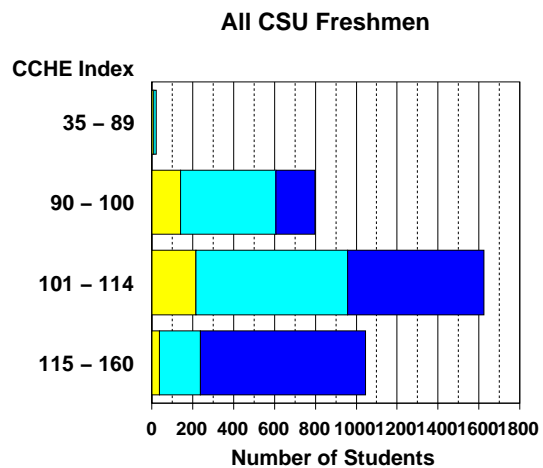
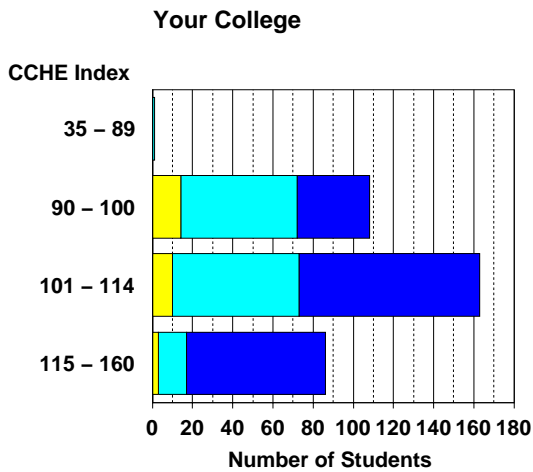
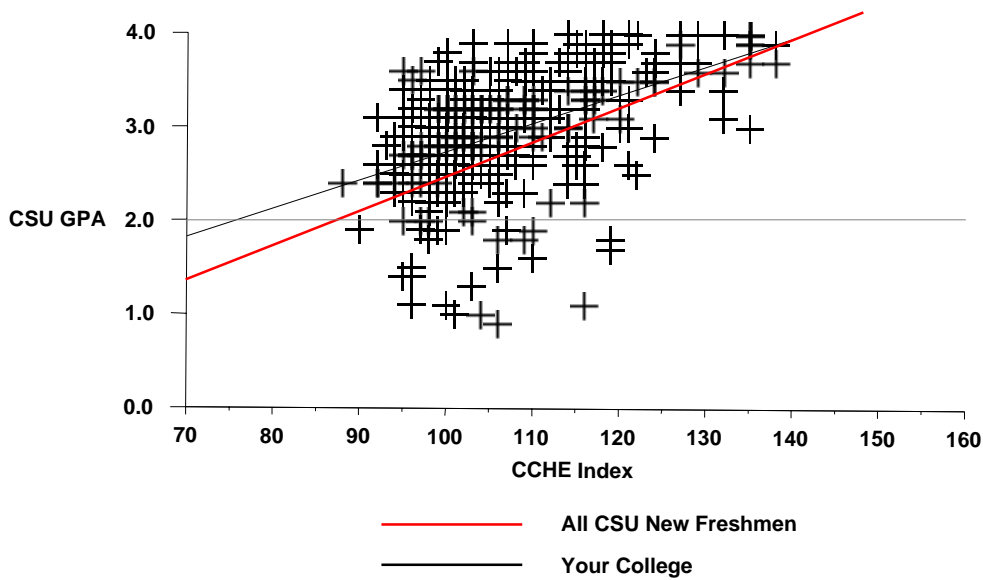
Applied Human Sciences

	CSU GPA				Total
	0.1 – 1.9	2.0 – 2.9	3.0 – 3.5	3.6 – 4.0	
High School GPA					
2.5 – 2.9	4	8			12
3.0 – 3.5	13	78	60	9	160
3.6 – 4.0	10	46	63	49	168
Total	27	132	123	58	340
Percentile Rank					
1 – 29	1	1			2
30 – 49	1	14	4	2	21
50 – 59	4	17	13	3	37
60 – 79	10	62	52	9	133
80 – 89	5	25	31	11	72
90 – 99	2	7	21	39	69
Total	23	126	121	64	334
SAT Verbal					
200 – 399	2	3	1		6
400 – 499	3	27	16	6	52
500 – 599	6	29	29	18	82
600 – 699	2	1	7	14	24
Total	13	60	53	38	164
SAT Math					
400 – 499	3	24	10	3	40
500 – 599	8	33	34	17	92
600 – 699	2	3	9	14	28
700 – 800				4	4
Total	13	60	53	38	164
ACT Composite					
15 – 18	4	8	5		17
19 – 22	8	65	47	16	136
23 – 26	9	42	50	24	125
27 – 36	1	7	13	24	45
Total	22	122	115	64	323
CCHE Index					
35 – 89		1			1
90 – 100	14	58	31	5	108
101 – 114	10	63	70	20	163
115 – 160	3	14	26	43	86
Total	27	136	127	68	358

Office of Budgets and Institutional Analysis
 Number of New Freshmen by High School GPA & Rank,
 Test Scores, CCHE Index and CSU GPA
 CSU GPA after One Year for Freshmen Entering Fall 2002

Applied Human Sciences

**Fall 2002 – Spring 2003
 First Year CSU Grades by CCHE Index**



Office of Budgets and Institutional Analysis
 Number of New Freshmen by High School GPA & Rank,
 Test Scores, CCHE Index and CSU GPA
 CSU GPA after One Year for Freshmen Entering Fall 2002

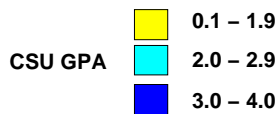
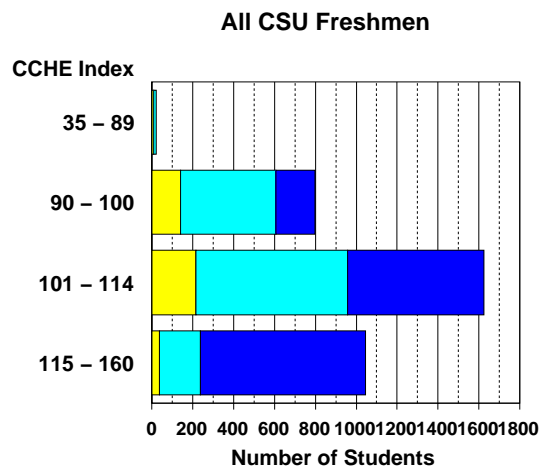
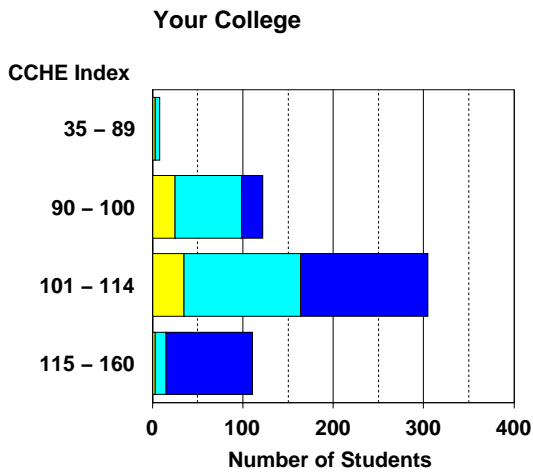
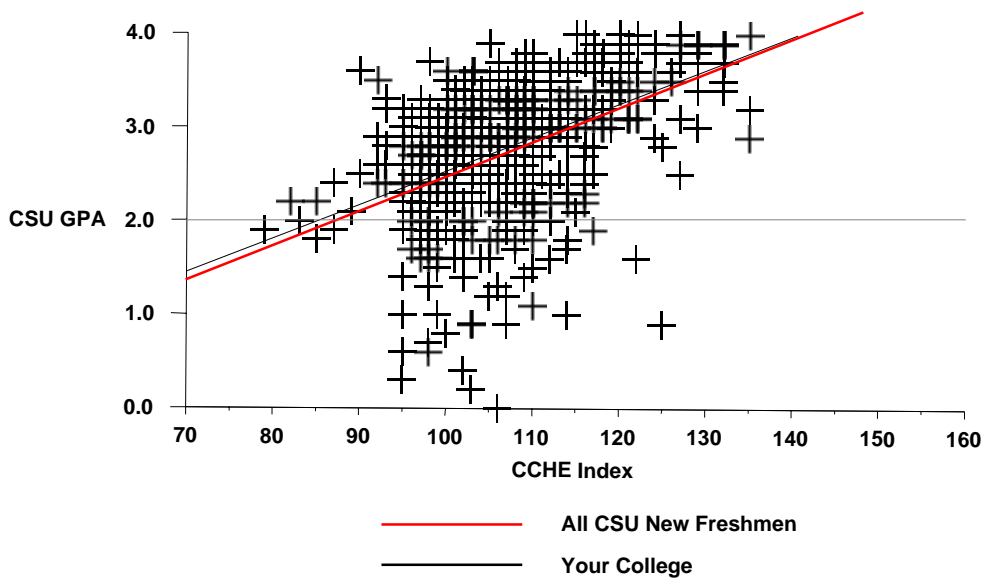
Business

	CSU GPA				Total
	0.1 – 1.9	2.0 – 2.9	3.0 – 3.5	3.6 – 4.0	
High School GPA					
2.0 – 2.4				1	1
2.5 – 2.9	10	13	4	1	28
3.0 – 3.5	46	140	72	12	270
3.6 – 4.0	10	65	100	49	224
Total	66	218	176	63	523
Percentile Rank					
1 – 29	2	3			5
30 – 49	12	27	11	2	52
50 – 59	13	30	12	1	56
60 – 79	22	96	66	13	197
80 – 89	11	36	49	18	114
90 – 99	1	8	37	38	84
Total	61	200	175	72	508
SAT Verbal					
200 – 399	3	3	2		8
400 – 499	9	29	24	4	66
500 – 599	15	60	46	26	147
600 – 699	3	15	11	16	45
700 – 800	2	1	1		4
Total	32	108	84	46	270
SAT Math					
200 – 399	1	2			3
400 – 499	10	26	18	2	56
500 – 599	16	57	44	23	140
600 – 699	5	21	20	19	65
700 – 800		2	2	2	6
Total	32	108	84	46	270
ACT Composite					
15 – 18	2	11	1		14
19 – 22	29	80	51	11	171
23 – 26	21	83	98	35	237
27 – 36	6	14	20	24	64
Total	58	188	170	70	486
CCHE Index					
35 – 89	3	5			8
90 – 100	25	74	20	3	122
101 – 114	36	129	121	20	306
115 – 160	3	12	40	56	111
Total	67	220	181	79	547

Office of Budgets and Institutional Analysis
 Number of New Freshmen by High School GPA & Rank,
 Test Scores, CCHE Index and CSU GPA
 CSU GPA after One Year for Freshmen Entering Fall 2002

Business

**Fall 2002 – Spring 2003
 First Year CSU Grades by CCHE Index**



Office of Budgets and Institutional Analysis
 Number of New Freshmen by High School GPA & Rank,
 Test Scores, CCHE Index and CSU GPA
 CSU GPA after One Year for Freshmen Entering Fall 2002

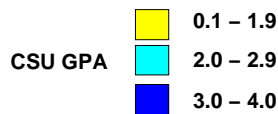
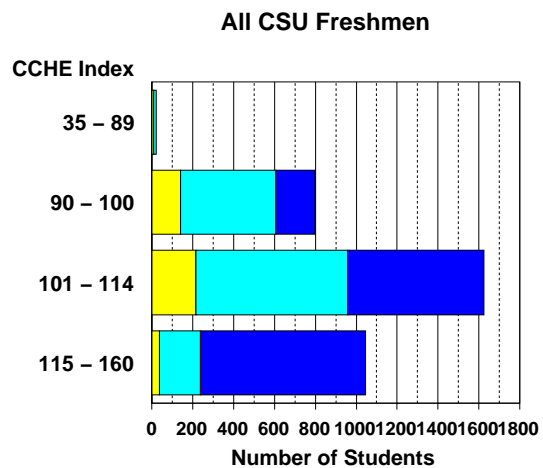
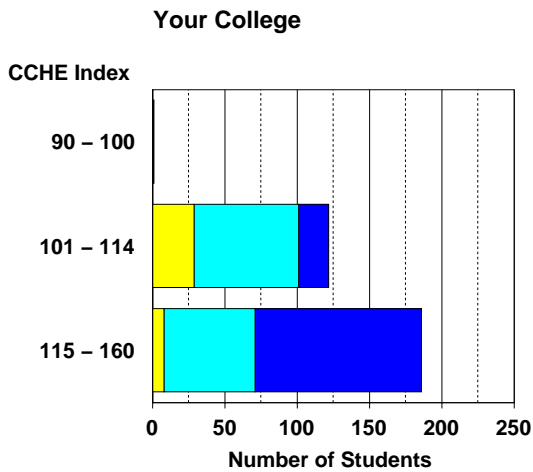
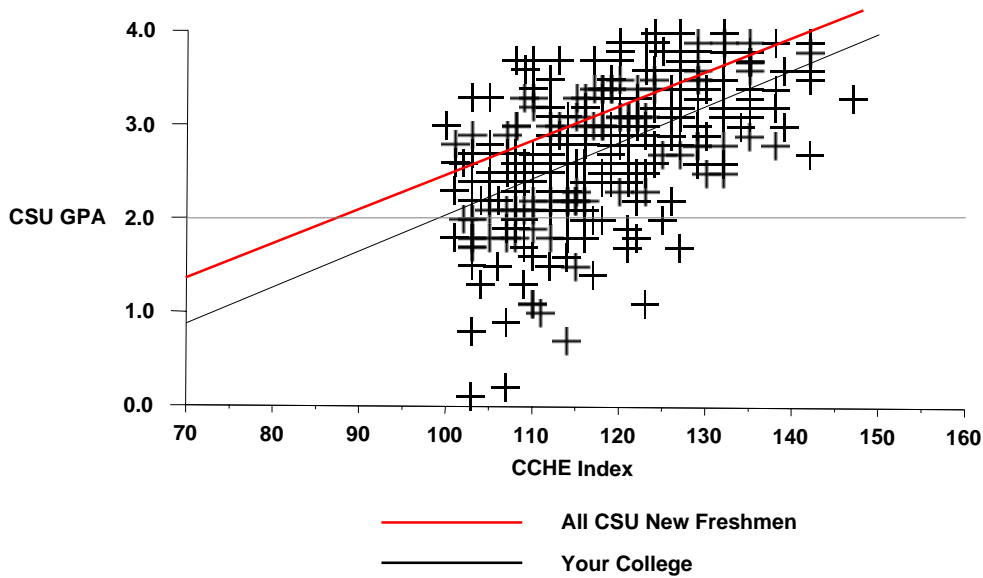
Engineering

	CSU GPA				Total
	0.1 – 1.9	2.0 – 2.9	3.0 – 3.5	3.6 – 4.0	
High School GPA					
3.0 – 3.5	25	36	9	3	73
3.6 – 4.0	12	93	70	26	201
Total	37	129	79	29	274
Percentile Rank					
30 – 49	2	1	1	1	5
50 – 59	6	10	4	1	21
60 – 79	14	35	13	3	65
80 – 89	10	52	19	5	86
90 – 99	1	30	55	30	116
Total	33	128	92	40	293
SAT Verbal					
400 – 499	4	17	9	1	31
500 – 599	12	33	28	9	82
600 – 699	4	17	23	16	60
700 – 800	1	4	3	1	9
Total	21	71	63	27	182
SAT Math					
400 – 499	2	1			3
500 – 599	8	30	16	1	55
600 – 699	10	32	37	17	96
700 – 800	1	8	10	9	28
Total	21	71	63	27	182
ACT Composite					
19 – 22	3	12	6		21
23 – 26	19	76	34	10	139
27 – 36	11	36	41	30	118
Total	33	124	81	40	278
CCHE Index					
90 – 100			1		1
101 – 114	29	72	17	4	122
115 – 160	8	63	78	37	186
Total	37	135	96	41	309

Office of Budgets and Institutional Analysis
 Number of New Freshmen by High School GPA & Rank,
 Test Scores, CCHE Index and CSU GPA
 CSU GPA after One Year for Freshmen Entering Fall 2002

Engineering

**Fall 2002 – Spring 2003
 First Year CSU Grades by CCHE Index**



Office of Budgets and Institutional Analysis
 Number of New Freshmen by High School GPA & Rank,
 Test Scores, CCHE Index and CSU GPA
 CSU GPA after One Year for Freshmen Entering Fall 2002

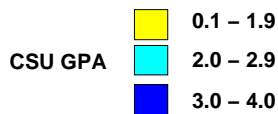
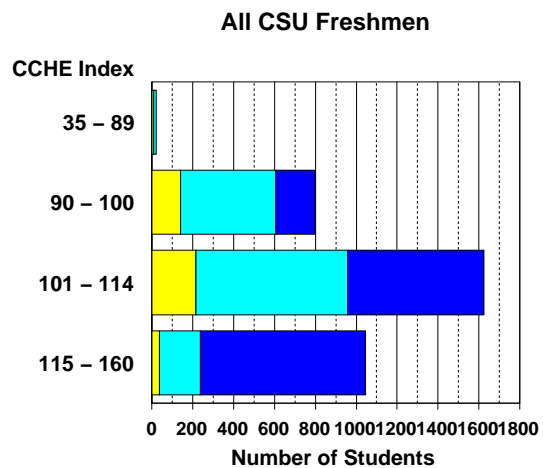
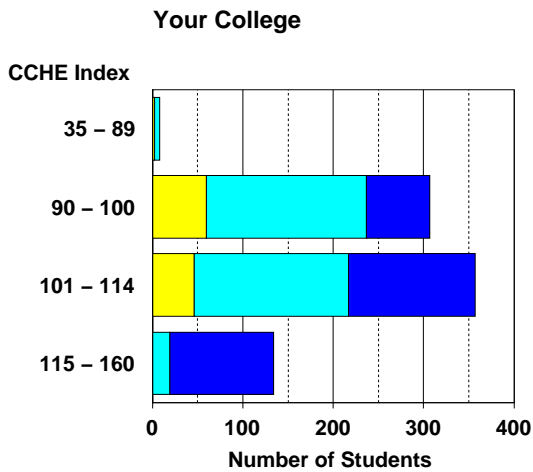
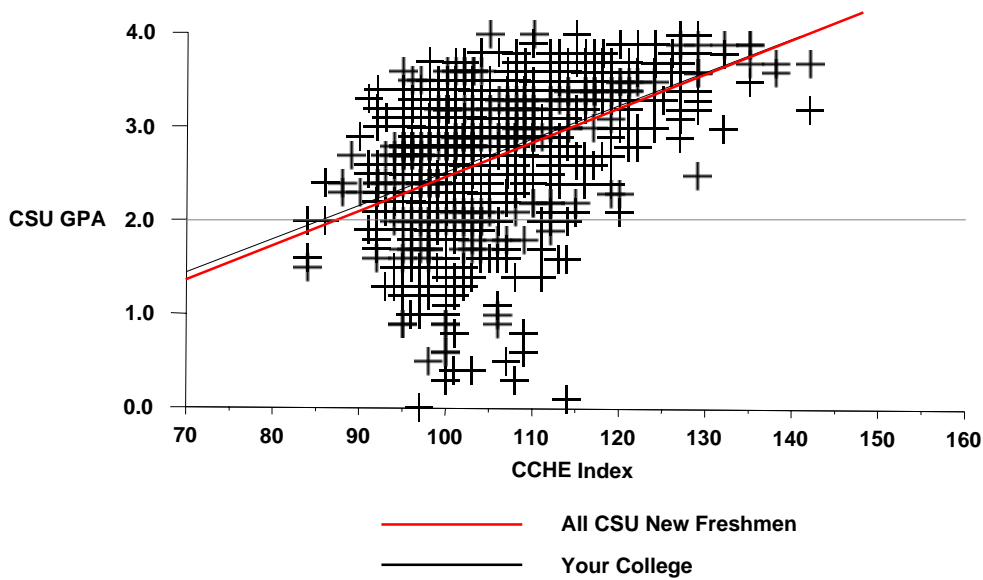
Intra-University

	CSU GPA				Total
	0.1 – 1.9	2.0 – 2.9	3.0 – 3.5	3.6 – 4.0	
High School GPA					
2.0 – 2.4	1	2			3
2.5 – 2.9	23	54	16	2	95
3.0 – 3.5	74	219	97	12	402
3.6 – 4.0	11	96	104	63	274
Total	109	371	217	77	774
Percentile Rank					
1 – 29	7	9	4		20
30 – 49	29	59	19	1	108
50 – 59	20	52	28	5	105
60 – 79	33	159	75	15	282
80 – 89	6	52	53	17	128
90 – 99	1	17	32	57	107
Total	96	348	211	95	750
SAT Verbal					
200 – 399	4	9	3		16
400 – 499	14	61	21	4	100
500 – 599	24	84	66	20	194
600 – 699	8	13	18	26	65
700 – 800	3	1	1	2	7
Total	53	168	109	52	382
SAT Math					
200 – 399	4	3	2		9
400 – 499	14	55	28	5	102
500 – 599	26	83	56	25	190
600 – 699	9	25	21	17	72
700 – 800		2	2	5	9
Total	53	168	109	52	382
ACT Composite					
1 – 14			1		1
15 – 18	7	15	5		27
19 – 22	35	167	78	12	292
23 – 26	41	135	95	38	309
27 – 36	10	27	31	45	113
Total	93	344	210	95	742
CCHE Index					
35 – 89	2	6			8
90 – 100	61	177	67	3	308
101 – 114	46	171	111	29	357
115 – 160		19	49	66	134
Total	109	373	227	98	807

Office of Budgets and Institutional Analysis
 Number of New Freshmen by High School GPA & Rank,
 Test Scores, CCHE Index and CSU GPA
 CSU GPA after One Year for Freshmen Entering Fall 2002

Intra-University

**Fall 2002 – Spring 2003
 First Year CSU Grades by CCHE Index**



Office of Budgets and Institutional Analysis
 Number of New Freshmen by High School GPA & Rank,
 Test Scores, CCHE Index and CSU GPA
 CSU GPA after One Year for Freshmen Entering Fall 2002

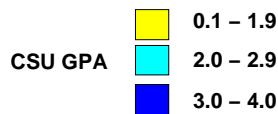
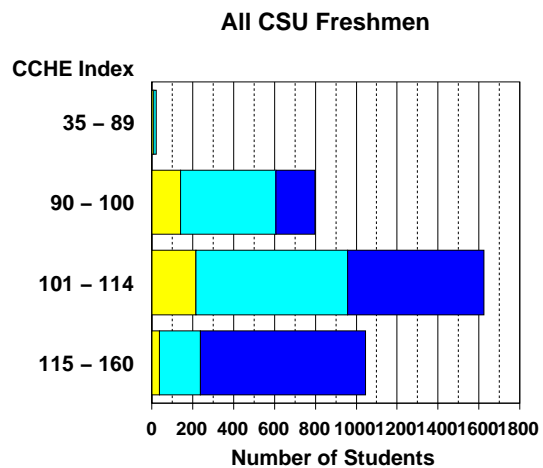
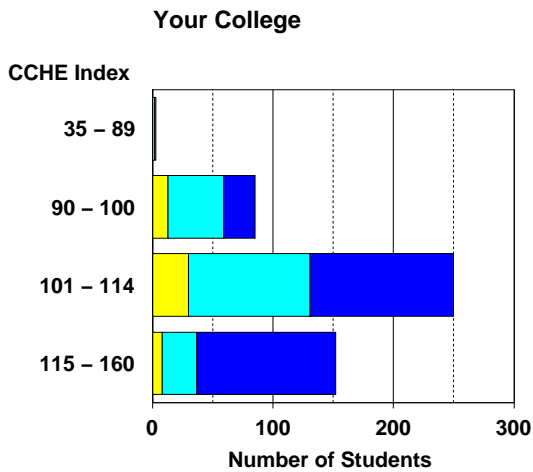
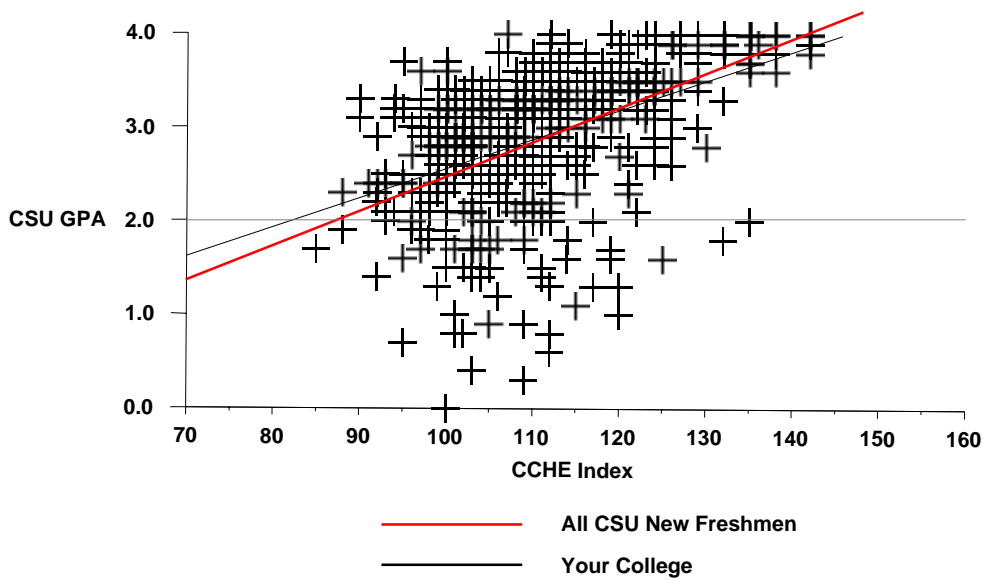
Liberal Arts

	CSU GPA				Total
	0.1 – 1.9	2.0 – 2.9	3.0 – 3.5	3.6 – 4.0	
High School GPA					
2.0 – 2.4		1	1		2
2.5 – 2.9	13	14	8	2	37
3.0 – 3.5	33	105	62	9	209
3.6 – 4.0	8	55	92	57	212
Total	54	175	163	68	460
Percentile Rank					
1 – 29		3	1		4
30 – 49	15	20	13	4	52
50 – 59	9	25	10		44
60 – 79	21	68	55	13	157
80 – 89	4	36	50	16	106
90 – 99	2	9	31	50	92
Total	51	161	160	83	455
SAT Verbal					
200 – 399	1	3	1	1	6
400 – 499	3	18	13	1	35
500 – 599	10	51	47	19	127
600 – 699	7	23	25	22	77
700 – 800	2	3	2	5	12
Total	23	98	88	48	257
SAT Math					
200 – 399		1	1		2
400 – 499	7	25	27	4	63
500 – 599	6	49	31	22	108
600 – 699	9	22	27	15	73
700 – 800	1	1	2	7	11
Total	23	98	88	48	257
ACT Composite					
15 – 18	2	8	3		13
19 – 22	10	38	37	5	90
23 – 26	22	75	75	30	202
27 – 36	14	38	42	42	136
Total	48	159	157	77	441
CCHE Index					
35 – 89	2	1			3
90 – 100	14	46	22	4	86
101 – 114	30	101	94	25	250
115 – 160	8	29	55	60	152
Total	54	177	171	89	491

Office of Budgets and Institutional Analysis
 Number of New Freshmen by High School GPA & Rank,
 Test Scores, CCHE Index and CSU GPA
 CSU GPA after One Year for Freshmen Entering Fall 2002

Liberal Arts

**Fall 2002 – Spring 2003
 First Year CSU Grades by CCHE Index**



Office of Budgets and Institutional Analysis
 Number of New Freshmen by High School GPA & Rank,
 Test Scores, CCHE Index and CSU GPA
 CSU GPA after One Year for Freshmen Entering Fall 2002

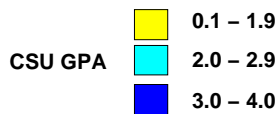
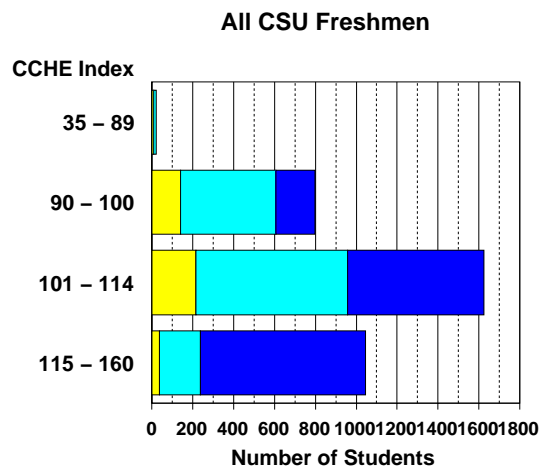
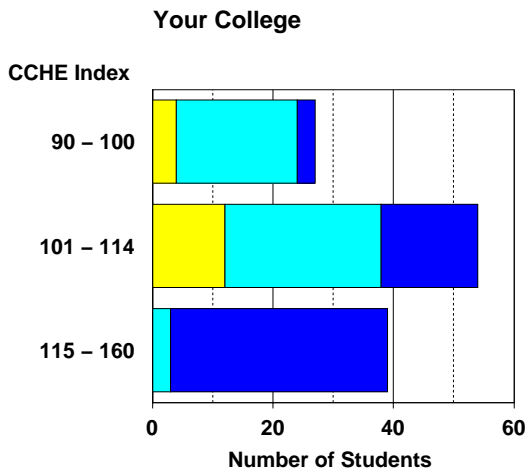
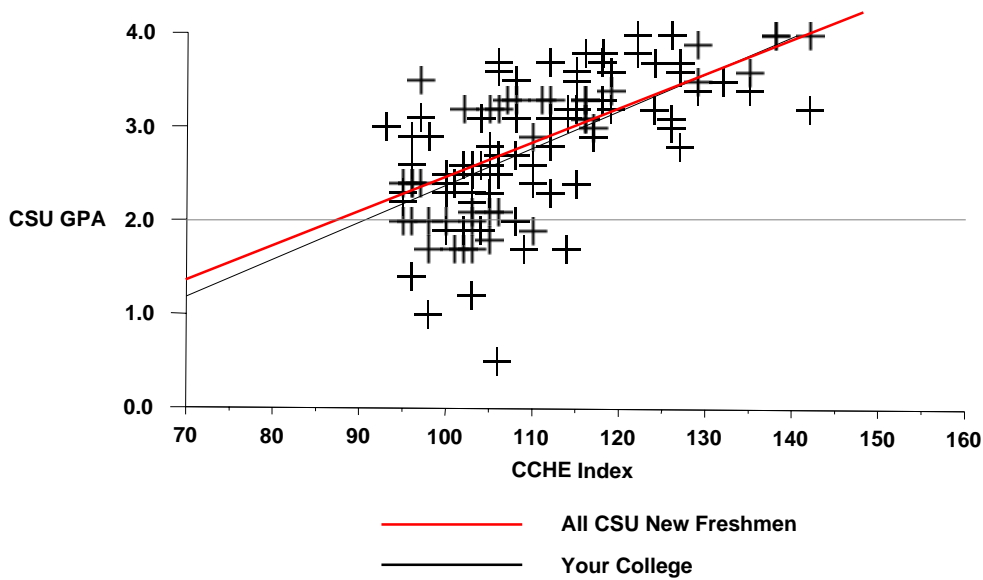
Natural Resources

	CSU GPA				Total
	0.1 – 1.9	2.0 – 2.9	3.0 – 3.5	3.6 – 4.0	
High School GPA					
2.5 – 2.9	2	11	2		15
3.0 – 3.5	12	24	11	1	48
3.6 – 4.0	2	13	22	16	53
Total	16	48	35	17	116
Percentile Rank					
1 – 29	1	2			3
30 – 49	3	3	1		7
50 – 59	2	7	1	1	11
60 – 79	6	19	12	2	39
80 – 89	3	3	9	4	19
90 – 99		8	9	11	28
Total	15	42	32	18	107
SAT Verbal					
400 – 499	1	4	2	2	9
500 – 599	3	9	13	2	27
600 – 699	2	7	8	5	22
700 – 800			1	1	2
Total	6	20	24	10	60
SAT Math					
200 – 399		1			1
400 – 499	2	4	3	1	10
500 – 599	2	10	13	5	30
600 – 699	2	5	7	3	17
700 – 800			1	1	2
Total	6	20	24	10	60
ACT Composite					
15 – 18		1			1
19 – 22	5	16	4	1	26
23 – 26	9	21	15	5	50
27 – 36	1	2	12	9	24
Total	15	40	31	15	101
CCHE Index					
90 – 100	4	20	3		27
101 – 114	12	26	13	3	54
115 – 160		3	19	17	39
Total	16	49	35	20	120

Office of Budgets and Institutional Analysis
 Number of New Freshmen by High School GPA & Rank,
 Test Scores, CCHE Index and CSU GPA
 CSU GPA after One Year for Freshmen Entering Fall 2002

Natural Resources

**Fall 2002 – Spring 2003
 First Year CSU Grades by CCHE Index**



Office of Budgets and Institutional Analysis
 Number of New Freshmen by High School GPA & Rank,
 Test Scores, CCHE Index and CSU GPA
 CSU GPA after One Year for Freshmen Entering Fall 2002

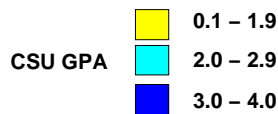
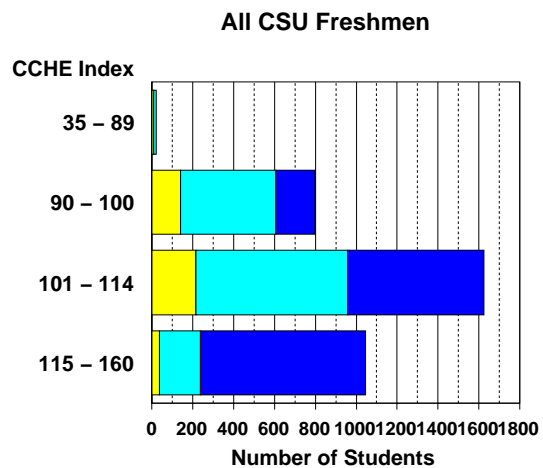
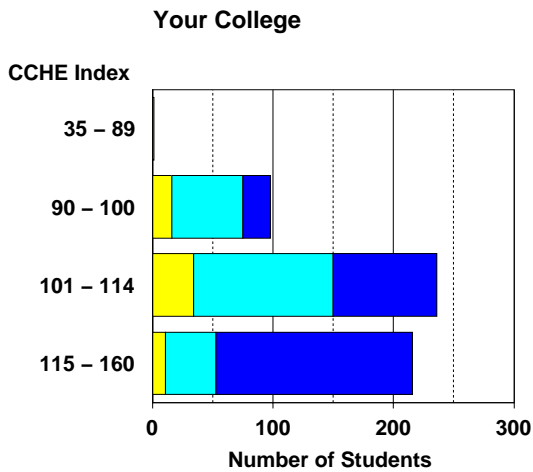
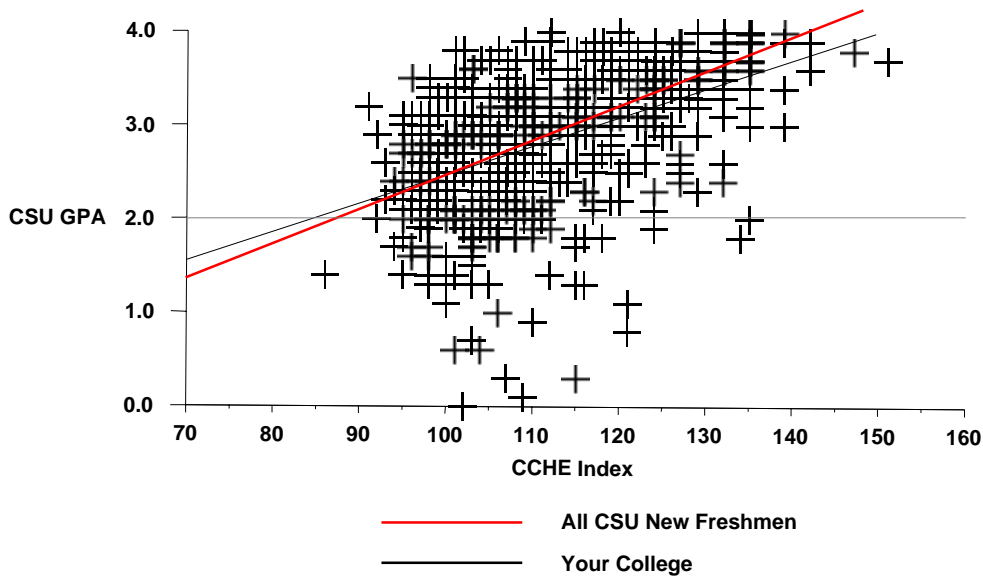
Natural Sciences

	CSU GPA				Total
	0.1 – 1.9	2.0 – 2.9	3.0 – 3.5	3.6 – 4.0	
High School GPA					
2.0 – 2.4			1		1
2.5 – 2.9	2	19	6	1	28
3.0 – 3.5	41	117	45	12	215
3.6 – 4.0	19	74	101	71	265
Total	62	210	153	84	509
Percentile Rank					
1 – 29		3	1		4
30 – 49	3	24	9	3	39
50 – 59	6	18	13		37
60 – 79	31	94	47	12	184
80 – 89	9	36	41	19	105
90 – 99	8	26	45	62	141
Total	57	201	156	96	510
SAT Verbal					
200 – 399		5	2		7
400 – 499	13	33	13	1	60
500 – 599	13	56	49	35	153
600 – 699	4	19	33	31	87
700 – 800	1		7	8	16
Total	31	113	104	75	323
SAT Math					
200 – 399	2	4			6
400 – 499	7	27	13	3	50
500 – 599	14	47	47	23	131
600 – 699	8	33	37	38	116
700 – 800		2	7	11	20
Total	31	113	104	75	323
ACT Composite					
15 – 18	2	9	1		12
19 – 22	22	64	31	9	126
23 – 26	26	83	72	28	209
27 – 36	7	39	58	57	161
Total	57	195	162	94	508
CCHE Index					
35 – 89	1				1
90 – 100	16	59	23		98
101 – 114	35	116	64	22	237
115 – 160	11	42	82	81	216
Total	63	217	169	103	552

Office of Budgets and Institutional Analysis
 Number of New Freshmen by High School GPA & Rank,
 Test Scores, CCHE Index and CSU GPA
 CSU GPA after One Year for Freshmen Entering Fall 2002

Natural Sciences

**Fall 2002 – Spring 2003
 First Year CSU Grades by CCHE Index**



Office of Budgets and Institutional Analysis
 Number of New Freshmen by High School GPA & Rank,
 Test Scores, CCHE Index and CSU GPA
 CSU GPA after One Year for Freshmen Entering Fall 2002

Veterinary Medicine + Biomedical Sci	CSU GPA				Total
	0.1 – 1.9	2.0 – 2.9	3.0 – 3.5	3.6 – 4.0	
High School GPA					
2.5 – 2.9	3	2	1		6
3.0 – 3.5	6	29	9	4	48
3.6 – 4.0	8	27	33	24	92
Total	17	58	43	28	146
Percentile Rank					
1 – 29	1	1			2
30 – 49	3	1	1		5
50 – 59		6	2		8
60 – 79	5	19	8	4	36
80 – 89	5	17	16	7	45
90 – 99	3	9	17	23	52
Total	17	53	44	34	148
SAT Verbal					
200 – 399		3			3
400 – 499	2	4	5	1	12
500 – 599	3	19	16	8	46
600 – 699	1	6	6	14	27
700 – 800			2	2	4
Total	6	32	29	25	92
SAT Math					
400 – 499	1	10	5	1	17
500 – 599	5	16	14	9	44
600 – 699		6	9	13	28
700 – 800			1	2	3
Total	6	32	29	25	92
ACT Composite					
15 – 18	1	2			3
19 – 22	5	14	8	4	31
23 – 26	8	25	15	8	56
27 – 36	2	12	17	15	46
Total	16	53	40	27	136
CCHE Index					
90 – 100	5	12	2		19
101 – 114	10	34	17	7	68
115 – 160	2	14	28	29	73
Total	17	60	47	36	160

Office of Budgets and Institutional Analysis
 Number of New Freshmen by High School GPA & Rank,
 Test Scores, CCHE Index and CSU GPA
 CSU GPA after One Year for Freshmen Entering Fall 2002

Veterinary Medicine + Biomedical Sci

**Fall 2002 – Spring 2003
 First Year CSU Grades by CCHE Index**

