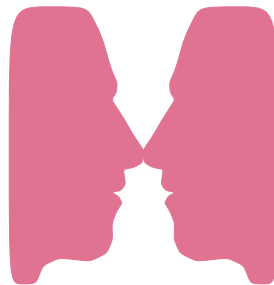


Freshmen Profile

2002



Five Year History

Office of Budgets and Institutional Analysis
 Profile of **All New** Freshmen Enrolled Fall Semesters
 Five Year Trend in High School Admissions Scores by College

	1998	1999	2000	2001	2002
Mean High School Rank					
Agricultural Sciences	80	79	77	78	76
Applied Human Sciences	77	76	76	73	74
Business	73	74	74	72	71
Engineering	81	82	83	81	83
Intra–University	72	71	70	70	68
Liberal Arts	75	73	74	73	73
Natural Resources	74	75	75	72	74
Natural Sciences	77	78	77	76	76
Veterinary Medicine + Biomedical Sci	79	81	80	82	81
Total	76	76	76	74	74
Mean SAT Verbal Score					
Agricultural Sciences	559	569	555	563	567
Applied Human Sciences	528	524	527	522	517
Business	524	528	524	526	533
Engineering	574	578	569	567	572
Intra–University	536	537	532	533	527
Liberal Arts	565	567	579	574	568
Natural Resources	570	562	569	571	574
Natural Sciences	560	559	559	552	559
Veterinary Medicine + Biomedical Sci	558	562	569	567	565
Total	551	552	551	549	548
Mean SAT Math Score					
Agricultural Sciences	552	566	549	560	552
Applied Human Sciences	536	526	536	533	537
Business	552	553	549	552	551
Engineering	619	627	618	606	628
Intra–University	544	545	532	543	538
Liberal Arts	545	546	547	548	552
Natural Resources	558	569	558	559	561
Natural Sciences	574	568	566	565	572
Veterinary Medicine + Biomedical Sci	560	565	566	561	562
Total	561	561	557	557	559

Office of Budgets and Institutional Analysis
 Profile of **All New** Freshmen Enrolled Fall Semesters
 Five Year Trend in High School Admissions Scores by College

	1998	1999	2000	2001	2002
Mean Composite ACT Score					
Agricultural Sciences	24.6	24.6	24.4	24.4	24.6
Applied Human Sciences	23.3	23.2	22.8	22.8	23.1
Business	23.3	23.5	23.3	23.5	23.5
Engineering	26.2	26.2	26.1	25.9	26.2
Intra–University	23.4	23.4	23.1	23.4	23.3
Liberal Arts	24.1	24.2	24.4	24.3	24.7
Natural Resources	24.8	24.4	23.7	24.0	24.6
Natural Sciences	24.6	24.8	24.5	24.4	24.8
Veterinary Medicine + Biomedical Sci	24.7	24.7	24.4	24.8	25.1
Total	24.2	24.2	24.0	24.0	24.2
Mean High School Grade Point Average					
Agricultural Sciences	3.59	3.56	3.58	3.62	3.57
Applied Human Sciences	3.54	3.52	3.54	3.53	3.55
Business	3.45	3.47	3.49	3.50	3.49
Engineering	3.62	3.63	3.70	3.70	3.75
Intra–University	3.41	3.37	3.41	3.44	3.41
Liberal Arts	3.50	3.46	3.52	3.55	3.51
Natural Resources	3.44	3.48	3.52	3.51	3.51
Natural Sciences	3.53	3.55	3.58	3.58	3.58
Veterinary Medicine + Biomedical Sci	3.58	3.60	3.64	3.72	3.68
Total	3.50	3.50	3.54	3.55	3.53
Mean CCHE Index					
Agricultural Sciences	111	112	111	112	111
Applied Human Sciences	108	107	107	107	107
Business	106	107	107	108	107
Engineering	117	117	117	117	118
Intra–University	106	106	105	106	105
Liberal Arts	109	109	110	110	110
Natural Resources	110	110	111	109	110
Natural Sciences	111	112	112	111	112
Veterinary Medicine + Biomedical Sci	112	112	112	114	114
Total	109	110	110	110	110

Office of Budgets and Institutional Analysis
 Profile of **Resident** Freshmen Enrolled Fall Semesters
 Five Year Trend in High School Admissions Scores by College

	1998	1999	2000	2001	2002
Mean High School Rank					
Agricultural Sciences	81	78	78	77	76
Applied Human Sciences	78	78	77	73	75
Business	74	75	75	72	72
Engineering	80	82	83	80	82
Intra–University	72	71	71	71	69
Liberal Arts	76	73	75	75	72
Natural Resources	74	75	76	74	76
Natural Sciences	77	78	77	76	75
Veterinary Medicine + Biomedical Sci	80	82	82	82	79
Total	76	76	76	75	74
Mean SAT Verbal Score					
Agricultural Sciences	541	550	536	546	550
Applied Human Sciences	526	528	527	515	515
Business	529	528	518	527	532
Engineering	572	574	562	561	561
Intra–University	536	539	528	533	525
Liberal Arts	567	563	580	573	566
Natural Resources	568	546	554	568	559
Natural Sciences	560	558	556	551	556
Veterinary Medicine + Biomedical Sci	555	561	566	566	558
Total	550	550	547	546	544
Mean SAT Math Score					
Agricultural Sciences	534	548	522	533	548
Applied Human Sciences	531	525	535	528	532
Business	556	550	545	545	540
Engineering	616	623	605	603	616
Intra–University	539	545	524	538	535
Liberal Arts	541	542	544	548	543
Natural Resources	543	563	533	546	547
Natural Sciences	573	566	565	562	571
Veterinary Medicine + Biomedical Sci	561	560	553	552	558
Total	558	559	551	553	553

Office of Budgets and Institutional Analysis
 Profile of **Resident** Freshmen Enrolled Fall Semesters
 Five Year Trend in High School Admissions Scores by College

	1998	1999	2000	2001	2002
Mean Composite ACT Score					
Agricultural Sciences	24.1	23.7	23.8	24.2	24.5
Applied Human Sciences	23.1	23.3	22.7	22.8	23.0
Business	23.3	23.4	23.1	23.3	23.5
Engineering	26.0	26.0	25.8	25.7	26.0
Intra–University	23.3	23.4	23.1	23.3	23.2
Liberal Arts	24.1	24.1	24.2	24.2	24.7
Natural Resources	24.5	23.9	23.3	23.4	24.2
Natural Sciences	24.6	24.6	24.5	24.2	24.6
Veterinary Medicine + Biomedical Sci	24.5	24.7	24.3	24.7	25.0
Total	24.0	24.1	23.8	23.9	24.0
Mean High School Grade Point Average					
Agricultural Sciences	3.63	3.57	3.63	3.62	3.59
Applied Human Sciences	3.56	3.55	3.57	3.53	3.57
Business	3.47	3.50	3.52	3.51	3.52
Engineering	3.61	3.64	3.70	3.69	3.73
Intra–University	3.43	3.41	3.44	3.46	3.45
Liberal Arts	3.51	3.47	3.54	3.57	3.51
Natural Resources	3.50	3.50	3.59	3.53	3.58
Natural Sciences	3.53	3.56	3.58	3.58	3.58
Veterinary Medicine + Biomedical Sci	3.59	3.64	3.66	3.73	3.67
Total	3.52	3.52	3.56	3.56	3.54
Mean CCHE Index					
Agricultural Sciences	111	109	110	110	110
Applied Human Sciences	108	108	107	107	107
Business	107	107	107	107	107
Engineering	116	117	116	116	117
Intra–University	106	106	106	106	106
Liberal Arts	109	109	110	110	110
Natural Resources	109	108	110	109	110
Natural Sciences	111	111	111	110	111
Veterinary Medicine + Biomedical Sci	112	113	112	114	113
Total	109	109	109	109	109

Office of Budgets and Institutional Analysis
 Profile of **Nonresident** Freshmen Enrolled Fall Semesters
 Five Year Trend in High School Admissions Scores by College

	1998	1999	2000	2001	2002
Mean High School Rank					
Agricultural Sciences	79	80	76	81	76
Applied Human Sciences	74	72	72	74	70
Business	67	69	68	70	67
Engineering	82	81	84	84	86
Intra–University	69	66	64	68	63
Liberal Arts	73	75	70	69	75
Natural Resources	73	75	73	70	71
Natural Sciences	77	75	76	75	78
Veterinary Medicine + Biomedical Sci	77	77	78	84	83
Total	75	74	73	74	73
Mean SAT Verbal Score					
Agricultural Sciences	567	577	570	574	578
Applied Human Sciences	531	513	528	538	521
Business	511	528	539	525	536
Engineering	579	597	589	583	592
Intra–University	534	532	544	531	532
Liberal Arts	560	578	575	577	572
Natural Resources	572	569	582	574	585
Natural Sciences	561	562	567	556	567
Veterinary Medicine + Biomedical Sci	565	563	573	568	573
Total	553	557	562	555	557
Mean SAT Math Score					
Agricultural Sciences	560	573	569	577	554
Applied Human Sciences	547	528	540	543	545
Business	542	563	560	570	572
Engineering	628	643	653	613	652
Intra–University	557	542	553	558	546
Liberal Arts	559	559	557	549	574
Natural Resources	569	572	579	569	572
Natural Sciences	577	573	569	574	574
Veterinary Medicine + Biomedical Sci	558	578	584	570	565
Total	566	567	572	569	572

Office of Budgets and Institutional Analysis
 Profile of **Nonresident** Freshmen Enrolled Fall Semesters
 Five Year Trend in High School Admissions Scores by College

	1998	1999	2000	2001	2002
Mean Composite ACT Score					
Agricultural Sciences	25.3	25.6	25.4	24.9	25.0
Applied Human Sciences	24.2	22.6	23.1	22.6	23.9
Business	23.3	24.0	24.3	24.3	23.6
Engineering	27.2	27.6	27.4	26.6	27.5
Intra–University	23.8	23.9	23.4	23.7	23.9
Liberal Arts	23.6	24.7	25.5	24.8	25.0
Natural Resources	25.2	24.9	24.5	24.7	25.3
Natural Sciences	24.5	25.6	24.8	25.4	25.7
Veterinary Medicine + Biomedical Sci	25.3	24.7	24.8	25.1	25.3
Total	24.7	24.8	24.8	24.7	24.9
Mean High School Grade Point Average					
Agricultural Sciences	3.55	3.55	3.51	3.61	3.53
Applied Human Sciences	3.46	3.40	3.43	3.54	3.48
Business	3.35	3.37	3.39	3.47	3.41
Engineering	3.66	3.58	3.72	3.72	3.82
Intra–University	3.30	3.22	3.27	3.35	3.26
Liberal Arts	3.45	3.41	3.46	3.45	3.51
Natural Resources	3.39	3.46	3.44	3.49	3.42
Natural Sciences	3.52	3.52	3.56	3.57	3.57
Veterinary Medicine + Biomedical Sci	3.55	3.48	3.59	3.70	3.69
Total	3.47	3.44	3.47	3.53	3.49
Mean CCHE Index					
Agricultural Sciences	111	114	112	114	111
Applied Human Sciences	108	105	106	107	108
Business	105	107	108	109	108
Engineering	119	119	122	119	124
Intra–University	106	104	105	106	105
Liberal Arts	109	109	111	110	112
Natural Resources	110	111	112	110	111
Natural Sciences	112	112	113	113	113
Veterinary Medicine + Biomedical Sci	112	109	114	115	115
Total	110	110	111	111	111

Fall 2002 Freshmen

Office of Budgets and Institutional Analysis
Freshmen Profile
Fall 2002

University	Admitted N= 9491				Enrolled N=3827			
	Res	Nonres	Total	Percent	Res	Nonres	Total	Percent
High School GPA								
2.0 – 2.4	7	8	15	0	6	4	10	0
2.5 – 2.9	227	330	557	6	146	111	257	7
3.0 – 3.5	2372	1548	3920	45	1273	348	1621	46
3.6 – 4.0	2615	1571	4186	48	1292	376	1668	47
Valid Cases	5221	3457	8678	100	2717	839	3556	100
Means	3.53	3.47	3.50		3.50	3.44	3.49	
Percentile Rank								
1 – 29	38	55	93	1	28	19	47	1
30 – 49	394	282	676	8	247	81	328	9
50 – 59	493	281	774	9	284	75	359	10
60 – 79	1878	925	2803	34	1024	221	1245	36
80 – 89	1195	660	1855	22	591	163	754	22
90 – 99	1300	831	2131	26	579	182	761	22
Valid Cases	5298	3034	8332	100	2753	741	3494	100
Means	75.6	75.1	75.4		73.6	73.2	73.5	
SAT Verbal								
200 – 399	56	40	96	2	32	16	48	2
400 – 499	604	450	1054	19	295	117	412	21
500 – 599	1379	1372	2751	50	639	310	949	49
600 – 699	678	751	1429	26	274	195	469	24
700 – 800	110	111	221	4	36	24	60	3
Valid Cases	2827	2724	5551	100	1276	662	1938	100
Means	551	560	556		544	557	548	
SAT Math								
200 – 399	41	16	57	1	21	4	25	1
400 – 499	521	346	867	16	278	104	382	20
500 – 599	1316	1215	2531	46	605	292	897	46
600 – 699	804	976	1780	32	319	228	547	28
700 – 800	145	171	316	6	53	34	87	4
Valid Cases	2827	2724	5551	100	1276	662	1938	100
Means	562	579	570		553	572	559	
ACT Composite								
1 – 14	2	3	5	0	0	1	1	0
15 – 18	172	59	231	3	79	18	97	3
19 – 22	1613	583	2196	28	871	136	1007	30
23 – 26	2328	1006	3334	42	1242	225	1467	43
27 – 36	1360	759	2119	27	626	181	807	24
Valid Cases	5475	2410	7885	100	2818	561	3379	100
Means	24.2	24.8	24.4		24.0	24.9	24.2	
CCHE Index								
35 – 89	15	15	30	0	11	12	23	1
90 – 100	1093	684	1777	19	673	205	878	23
101 – 114	2762	1643	4405	47	1406	357	1763	47
115 – 160	1728	1428	3156	34	789	322	1111	29
Valid Cases	5598	3770	9368	100	2879	896	3775	100
Means	110	112	111		109	111	110	

Office of Budgets and Institutional Analysis
Freshmen Profile
Fall 2002

Agricultural Sciences

	Admitted N= 301				Enrolled N=155			
	Res	Nonres	Total	Percent	Res	Nonres	Total	Percent
High School GPA								
2.5 – 2.9	2	8	10	4	2	5	7	5
3.0 – 3.5	46	65	111	41	39	26	65	45
3.6 – 4.0	63	88	151	56	49	25	74	51
Valid Cases	111	161	272	100	90	56	146	100
Means	3.58	3.56	3.57		3.57	3.46	3.53	
Percentile Rank								
1 – 29	0	1	1	0	0	0	0	0
30 – 49	5	9	14	5	5	5	10	7
50 – 59	8	10	18	7	5	6	11	8
60 – 79	52	33	85	33	44	12	56	40
80 – 89	28	36	64	25	21	11	32	23
90 – 99	22	52	74	29	16	15	31	22
Valid Cases	115	141	256	100	91	49	140	100
Means	76.4	80.1	78.4		76.0	76.3	76.1	
SAT Verbal								
200 – 399	1	1	2	1	0	1	1	1
400 – 499	7	19	26	16	6	5	11	15
500 – 599	18	56	74	45	15	18	33	45
600 – 699	10	48	58	35	5	20	25	34
700 – 800	1	5	6	4	1	2	3	4
Valid Cases	37	129	166	100	27	46	73	100
Means	552	572	567		550	578	567	
SAT Math								
200 – 399	0	1	1	1	0	0	0	0
400 – 499	5	22	27	16	4	7	11	15
500 – 599	24	70	94	57	17	26	43	59
600 – 699	7	32	39	23	6	13	19	26
700 – 800	1	4	5	3	0	0	0	0
Valid Cases	37	129	166	100	27	46	73	100
Means	551	558	557		548	554	552	
ACT Composite								
15 – 18	2	1	3	1	2	0	2	2
19 – 22	38	37	75	32	30	10	40	31
23 – 26	40	41	81	35	31	13	44	34
27 – 36	37	38	75	32	30	13	43	33
Valid Cases	117	117	234	100	93	36	129	100
Means	24.5	24.6	24.5		24.5	25.0	24.6	
CCHE Index								
90 – 100	26	22	48	16	22	11	33	21
101 – 114	54	82	136	46	43	28	71	46
115 – 160	37	76	113	38	28	22	50	32
Valid Cases	117	180	297	100	93	61	154	100
Means	111	113	112		110	111	111	

Office of Budgets and Institutional Analysis
Freshmen Profile
Fall 2002

Applied Human Sciences	Admitted N= 791				Enrolled N=387			
	Res	Nonres	Total	Percent	Res	Nonres	Total	Percent
High School GPA								
2.5 – 2.9	12	14	26	4	9	6	15	4
3.0 – 3.5	218	127	345	47	137	34	171	47
3.6 – 4.0	228	138	366	50	141	37	178	49
Valid Cases	458	279	737	100	287	77	364	100
Means	3.54	3.51	3.53		3.53	3.46	3.52	
Percentile Rank								
1 – 29	0	3	3	0	0	3	3	1
30 – 49	28	21	49	7	17	5	22	6
50 – 59	45	24	69	10	31	9	40	11
60 – 79	186	86	272	38	119	24	143	40
80 – 89	101	49	150	21	65	12	77	22
90 – 99	105	63	168	24	59	12	71	20
Valid Cases	465	246	711	100	291	65	356	100
Means	75.5	75.1	75.4		74.6	70.4	73.8	
SAT Verbal								
200 – 399	7	5	12	3	4	2	6	3
400 – 499	66	57	123	29	40	18	58	33
500 – 599	103	116	219	52	56	30	86	49
600 – 699	31	38	69	16	15	10	25	14
700 – 800	2	0	2	0	0	0	0	0
Valid Cases	209	216	425	100	115	60	175	100
Means	522	531	527		515	521	517	
SAT Math								
200 – 399	6	3	9	2	1	0	1	1
400 – 499	56	35	91	21	34	10	44	25
500 – 599	103	121	224	53	58	39	97	55
600 – 699	39	50	89	21	19	10	29	17
700 – 800	5	7	12	3	3	1	4	2
Valid Cases	209	216	425	100	115	60	175	100
Means	533	553	543		532	545	537	
ACT Composite								
1 – 14	0	1	1	0	0	0	0	0
15 – 18	26	8	34	5	14	4	18	5
19 – 22	208	58	266	40	130	14	144	42
23 – 26	171	68	239	36	116	17	133	39
27 – 36	75	42	117	18	39	9	48	14
Valid Cases	480	177	657	100	299	44	343	100
Means	23.1	23.9	23.3		23.0	23.9	23.1	
CCHE Index								
35 – 89	2	1	3	0	0	1	1	0
90 – 100	134	66	200	26	92	22	114	30
101 – 114	234	146	380	49	141	37	178	47
115 – 160	115	84	199	25	70	19	89	23
Valid Cases	485	297	782	100	303	79	382	100
Means	108	109	108		107	108	107	

Office of Budgets and Institutional Analysis
Freshmen Profile
Fall 2002

Business	Admitted N= 1535				Enrolled N=595			
	Res	Nonres	Total	Percent	Res	Nonres	Total	Percent
High School GPA								
2.0 – 2.4	1	2	3	0	1	0	1	0
2.5 – 2.9	34	74	108	7	16	22	38	7
3.0 – 3.5	447	281	728	51	226	63	289	51
3.6 – 4.0	403	199	602	42	188	49	237	42
Valid Cases	885	556	1441	100	431	134	565	100
Means	3.50	3.38	3.45		3.48	3.38	3.46	
Percentile Rank								
1 – 29	8	18	26	2	4	3	7	1
30 – 49	74	71	145	11	40	21	61	11
50 – 59	77	58	135	10	45	16	61	11
60 – 79	341	152	493	37	172	40	212	39
80 – 89	195	94	289	21	93	24	117	21
90 – 99	180	82	262	19	71	16	87	16
Valid Cases	875	475	1350	100	425	120	545	100
Means	74.0	68.9	72.2		72.4	67.1	71.3	
SAT Verbal								
200 – 399	14	9	23	3	5	3	8	3
400 – 499	113	96	209	23	50	22	72	24
500 – 599	252	234	486	54	102	60	162	55
600 – 699	83	80	163	18	32	17	49	17
700 – 800	4	8	12	1	3	2	5	2
Valid Cases	466	427	893	100	192	104	296	100
Means	533	540	536		532	536	533	
SAT Math								
200 – 399	5	2	7	1	3	0	3	1
400 – 499	81	52	133	15	48	13	61	21
500 – 599	244	209	453	51	100	52	152	51
600 – 699	123	149	272	30	37	36	73	25
700 – 800	13	15	28	3	4	3	7	2
Valid Cases	466	427	893	100	192	104	296	100
Means	556	574	565		540	572	551	
ACT Composite								
1 – 14	1	0	1	0	0	0	0	0
15 – 18	31	17	48	4	10	4	14	3
19 – 22	291	116	407	32	153	28	181	35
23 – 26	429	168	597	47	216	38	254	49
27 – 36	151	74	225	18	55	15	70	13
Valid Cases	903	375	1278	100	434	85	519	100
Means	23.7	23.8	23.7		23.5	23.6	23.5	
CCHE Index								
35 – 89	5	5	10	1	4	4	8	1
90 – 100	187	151	338	22	102	36	138	23
101 – 114	538	279	817	54	261	63	324	55
115 – 160	205	152	357	23	83	36	119	20
Valid Cases	935	587	1522	100	450	139	589	100
Means	108	108	108		107	108	107	

Office of Budgets and Institutional Analysis
Freshmen Profile
Fall 2002

Engineering	Admitted N= 937				Enrolled N=332			
	Res	Nonres	Total	Percent	Res	Nonres	Total	Percent
High School GPA								
2.5 – 2.9	0	1	1	0	0	0	0	0
3.0 – 3.5	154	96	250	31	64	14	78	27
3.6 – 4.0	339	214	553	69	160	54	214	73
Valid Cases	493	311	804	100	224	68	292	100
Means	3.68	3.68	3.68		3.68	3.74	3.70	
Percentile Rank								
1 – 29	0	1	1	0	0	0	0	0
30 – 49	8	4	12	1	5	1	6	2
50 – 59	28	15	43	5	16	5	21	7
60 – 79	141	74	215	26	62	11	73	23
80 – 89	150	68	218	26	72	18	90	29
90 – 99	205	142	347	42	88	34	122	39
Valid Cases	532	304	836	100	243	69	312	100
Means	82.8	84.1	83.3		82.0	85.6	82.8	
SAT Verbal								
200 – 399	2	1	3	0	0	0	0	0
400 – 499	58	33	91	15	25	7	32	17
500 – 599	156	129	285	47	63	25	88	46
600 – 699	93	101	194	32	31	31	62	32
700 – 800	17	18	35	6	6	3	9	5
Valid Cases	326	282	608	100	125	66	191	100
Means	566	581	573		561	592	572	
SAT Math								
400 – 499	4	7	11	2	1	2	3	2
500 – 599	112	63	175	29	48	9	57	30
600 – 699	165	150	315	52	61	40	101	53
700 – 800	45	62	107	18	15	15	30	16
Valid Cases	326	282	608	100	125	66	191	100
Means	621	642	630		616	652	628	
ACT Composite								
15 – 18	1	1	2	0	0	0	0	0
19 – 22	52	16	68	9	20	2	22	7
23 – 26	265	111	376	48	131	15	146	50
27 – 36	225	107	332	43	93	33	126	43
Valid Cases	543	235	778	100	244	50	294	100
Means	26.1	26.4	26.2		26.0	27.5	26.2	
CCHE Index								
90 – 100	1	0	1	0	1	0	1	0
101 – 114	245	115	360	39	113	17	130	40
115 – 160	309	247	556	61	135	62	197	60
Valid Cases	555	362	917	100	249	79	328	100
Means	117	121	119		117	124	118	

Office of Budgets and Institutional Analysis
Freshmen Profile
Fall 2002

Intra-University	Admitted N= 2069				Enrolled N=884			
	Res	Nonres	Total	Percent	Res	Nonres	Total	Percent
High School GPA								
2.0 – 2.4	1	4	5	0	1	3	4	0
2.5 – 2.9	88	107	195	10	54	45	99	12
3.0 – 3.5	660	343	1003	51	364	68	432	52
3.6 – 4.0	548	208	756	39	262	39	301	36
Valid Cases	1297	662	1959	100	681	155	836	100
Means	3.45	3.34	3.42		3.42	3.22	3.38	
Percentile Rank								
1 – 29	11	17	28	2	11	10	21	3
30 – 49	140	74	214	12	90	23	113	14
50 – 59	160	73	233	13	94	16	110	14
60 – 79	468	182	650	36	258	47	305	38
80 – 89	270	98	368	20	123	18	141	18
90 – 99	219	89	308	17	99	13	112	14
Valid Cases	1268	533	1801	100	675	127	802	100
Means	71.9	68.9	71.0		69.5	63.2	68.5	
SAT Verbal								
200 – 399	18	11	29	3	11	5	16	4
400 – 499	169	85	254	23	89	24	113	27
500 – 599	324	274	598	53	145	61	206	50
600 – 699	119	102	221	20	49	22	71	17
700 – 800	15	9	24	2	6	1	7	2
Valid Cases	645	481	1126	100	300	113	413	100
Means	535	546	540		525	532	527	
SAT Math								
200 – 399	9	7	16	1	6	4	10	2
400 – 499	155	67	222	20	80	28	108	26
500 – 599	327	244	571	51	162	48	210	51
600 – 699	141	142	283	25	47	29	76	18
700 – 800	13	21	34	3	5	4	9	2
Valid Cases	645	481	1126	100	300	113	413	100
Means	545	567	554		535	546	538	
ACT Composite								
1 – 14	1	1	2	0	0	1	1	0
15 – 18	61	14	75	4	27	4	31	4
19 – 22	497	135	632	36	278	36	314	39
23 – 26	540	180	720	41	291	37	328	41
27 – 36	224	111	335	19	98	23	121	15
Valid Cases	1323	441	1764	100	694	101	795	100
Means	23.3	24.2	23.5		23.2	23.9	23.3	
CCHE Index								
35 – 89	4	6	10	0	4	5	9	1
90 – 100	418	199	617	30	259	67	326	38
101 – 114	658	321	979	48	333	60	393	45
115 – 160	267	168	435	21	110	31	141	16
Valid Cases	1347	694	2041	100	706	163	869	100
Means	107	108	107		106	105	105	

Office of Budgets and Institutional Analysis
Freshmen Profile
Fall 2002

Liberal Arts	Admitted N= 1551				Enrolled N=561			
	Res	Nonres	Total	Percent	Res	Nonres	Total	Percent
High School GPA								
2.0 – 2.4	4	1	5	0	3	0	3	1
2.5 – 2.9	45	57	102	7	30	14	44	8
3.0 – 3.5	387	252	639	45	194	47	241	46
3.6 – 4.0	424	257	681	48	175	56	231	45
Valid Cases	860	567	1427	100	402	117	519	100
Means	3.52	3.46	3.49		3.46	3.47	3.46	
Percentile Rank								
1 – 29	10	7	17	1	5	0	5	1
30 – 49	63	52	115	8	43	16	59	12
50 – 59	91	38	129	9	50	5	55	11
60 – 79	296	155	451	33	143	31	174	34
80 – 89	194	128	322	24	90	26	116	23
90 – 99	218	106	324	24	76	27	103	20
Valid Cases	872	486	1358	100	407	105	512	100
Means	75.3	74.7	75.0		72.0	75.5	72.7	
SAT Verbal								
200 – 399	6	3	9	1	5	1	6	2
400 – 499	73	57	130	14	24	15	39	14
500 – 599	221	197	418	46	101	36	137	48
600 – 699	142	140	282	31	55	32	87	31
700 – 800	43	29	72	8	9	5	14	5
Valid Cases	485	426	911	100	194	89	283	100
Means	574	576	575		566	572	568	
SAT Math								
200 – 399	11	1	12	1	2	0	2	1
400 – 499	119	66	185	20	56	15	71	25
500 – 599	217	196	413	45	85	35	120	42
600 – 699	117	146	263	29	44	35	79	28
700 – 800	21	17	38	4	7	4	11	4
Valid Cases	485	426	911	100	194	89	283	100
Means	549	568	558		543	574	552	
ACT Composite								
1 – 14	0	1	1	0	0	0	0	0
15 – 18	25	9	34	3	14	2	16	3
19 – 22	218	77	295	23	90	17	107	22
23 – 26	388	161	549	43	189	30	219	44
27 – 36	273	122	395	31	125	26	151	31
Valid Cases	904	370	1274	100	418	75	493	100
Means	24.8	25.1	24.8		24.7	25.0	24.7	
CCHE Index								
35 – 89	3	3	6	0	2	2	4	1
90 – 100	144	91	235	15	85	21	106	19
101 – 114	478	297	775	50	225	53	278	50
115 – 160	302	217	519	34	117	48	165	30
Valid Cases	927	608	1535	100	429	124	553	100
Means	111	112	111		110	112	110	

Office of Budgets and Institutional Analysis
Freshmen Profile
Fall 2002

Natural Resources	Admitted N= 275				Enrolled N=129			
	Res	Nonres	Total	Percent	Res	Nonres	Total	Percent
High School GPA								
2.5 – 2.9	6	26	32	12	4	11	15	12
3.0 – 3.5	42	68	110	43	31	21	52	42
3.6 – 4.0	49	67	116	45	32	24	56	46
Valid Cases	97	161	258	100	67	56	123	100
Means	3.56	3.43	3.48		3.54	3.40	3.48	
Percentile Rank								
1 – 29	1	4	5	2	1	2	3	3
30 – 49	8	12	20	9	4	3	7	6
50 – 59	6	17	23	10	5	7	12	11
60 – 79	40	29	69	31	30	11	41	36
80 – 89	15	23	38	17	10	10	20	18
90 – 99	33	38	71	31	20	10	30	27
Valid Cases	103	123	226	100	70	43	113	100
Means	76.1	72.8	74.3		75.5	70.8	73.7	
SAT Verbal								
400 – 499	8	8	16	10	5	4	9	14
500 – 599	25	62	87	52	15	13	28	44
600 – 699	15	39	54	33	7	18	25	39
700 – 800	3	6	9	5	1	1	2	3
Valid Cases	51	115	166	100	28	36	64	100
Means	569	580	576		559	585	574	
SAT Math								
200 – 399	1	0	1	1	1	0	1	2
400 – 499	10	9	19	11	6	4	10	16
500 – 599	23	52	75	45	12	20	32	50
600 – 699	15	48	63	38	9	10	19	30
700 – 800	2	6	8	5	0	2	2	3
Valid Cases	51	115	166	100	28	36	64	100
Means	557	587	578		547	572	561	
ACT Composite								
15 – 18	1	0	1	0	1	0	1	1
19 – 22	26	23	49	24	17	9	26	24
23 – 26	45	51	96	46	35	19	54	50
27 – 36	29	33	62	30	15	12	27	25
Valid Cases	101	107	208	100	68	40	108	100
Means	24.5	25.4	25.0		24.2	25.3	24.6	
CCHE Index								
90 – 100	19	32	51	19	14	14	28	22
101 – 114	48	70	118	43	36	21	57	45
115 – 160	38	67	105	38	21	22	43	34
Valid Cases	105	169	274	100	71	57	128	100
Means	112	112	112		110	111	110	

Office of Budgets and Institutional Analysis
Freshmen Profile
Fall 2002

Natural Sciences	Admitted N= 1631				Enrolled N=607			
	Res	Nonres	Total	Percent	Res	Nonres	Total	Percent
High School GPA								
2.0 – 2.4	1	1	2	0	1	1	2	0
2.5 – 2.9	35	37	72	5	27	6	33	6
3.0 – 3.5	368	235	603	42	181	55	236	43
3.6 – 4.0	472	289	761	53	224	56	280	51
Valid Cases	876	562	1438	100	433	118	551	100
Means	3.55	3.53	3.54		3.53	3.51	3.52	
Percentile Rank								
1 – 29	7	1	8	1	6	0	6	1
30 – 49	62	32	94	7	38	7	45	8
50 – 59	70	40	110	8	32	9	41	7
60 – 79	307	168	475	33	164	34	198	36
80 – 89	202	110	312	22	87	24	111	20
90 – 99	270	173	443	31	118	34	152	27
Valid Cases	918	524	1442	100	445	108	553	100
Means	77.4	78.5	77.8		75.3	77.9	75.8	
SAT Verbal								
200 – 399	6	9	15	2	5	3	8	2
400 – 499	100	74	174	17	51	14	65	19
500 – 599	238	221	459	46	112	48	160	47
600 – 699	162	144	306	31	67	27	94	27
700 – 800	24	21	45	5	9	7	16	5
Valid Cases	530	469	999	100	244	99	343	100
Means	563	566	565		556	567	559	
SAT Math								
200 – 399	9	2	11	1	8	0	8	2
400 – 499	80	59	139	14	39	16	55	16
500 – 599	221	190	411	41	95	42	137	40
600 – 699	179	186	365	37	85	37	122	36
700 – 800	41	32	73	7	17	4	21	6
Valid Cases	530	469	999	100	244	99	343	100
Means	577	584	580		571	574	572	
ACT Composite								
15 – 18	23	5	28	2	10	2	12	2
19 – 22	243	95	338	24	125	14	139	25
23 – 26	391	165	556	40	187	41	228	41
27 – 36	293	167	460	33	138	33	171	31
Valid Cases	950	432	1382	100	460	90	550	100
Means	24.8	25.3	24.9		24.6	25.7	24.8	
CCHE Index								
35 – 89	1	0	1	0	1	0	1	0
90 – 100	150	98	248	15	88	24	112	19
101 – 114	435	245	680	42	201	54	255	43
115 – 160	382	290	672	42	177	52	229	38
Valid Cases	968	633	1601	100	467	130	597	100
Means	112	114	113		111	113	112	

Office of Budgets and Institutional Analysis
 Freshmen Profile
 Fall 2002

Veterinary Medicine + Biomed	Admitted N= 401				Enrolled N=177			
	Res	Nonres	Total	Percent	Res	Nonres	Total	Percent
High School GPA								
2.5 – 2.9	5	6	11	3	4	2	6	4
3.0 – 3.5	50	81	131	38	37	20	57	36
3.6 – 4.0	89	111	200	58	61	36	97	61
Valid Cases	144	198	342	100	102	58	160	100
Means	3.63	3.60	3.61		3.62	3.62	3.62	
Percentile Rank								
1 – 29	1	3	4	1	1	1	2	1
30 – 49	6	7	13	4	5	0	5	3
50 – 59	8	6	14	4	6	2	8	5
60 – 79	47	46	93	26	32	11	43	27
80 – 89	40	54	94	27	30	20	50	31
90 – 99	48	86	134	38	32	21	53	33
Valid Cases	150	202	352	100	106	55	161	100
Means	80.2	82.5	81.5		79.2	83.3	80.6	
SAT Verbal								
200 – 399	2	1	3	1	2	1	3	3
400 – 499	10	21	31	12	5	8	13	13
500 – 599	42	83	125	49	30	19	49	49
600 – 699	23	59	82	32	13	18	31	31
700 – 800	1	15	16	6	1	3	4	4
Valid Cases	78	179	257	100	51	49	100	100
Means	563	581	575		558	573	565	
SAT Math								
400 – 499	11	29	40	16	10	9	19	19
500 – 599	45	70	115	45	28	21	49	49
600 – 699	18	73	91	35	11	18	29	29
700 – 800	4	7	11	4	2	1	3	3
Valid Cases	78	179	257	100	51	49	100	100
Means	565	579	575		558	565	562	
ACT Composite								
15 – 18	2	4	6	2	1	2	3	2
19 – 22	40	26	66	21	28	6	34	23
23 – 26	59	61	120	39	46	15	61	41
27 – 36	53	65	118	38	33	17	50	34
Valid Cases	154	156	310	100	108	40	148	100
Means	25.0	25.5	25.2		25.0	25.3	25.1	
CCHE Index								
90 – 100	14	25	39	10	10	10	20	11
101 – 114	72	88	160	40	53	24	77	44
115 – 160	73	127	200	50	48	30	78	45
Valid Cases	159	240	399	100	111	64	175	100
Means	114	116	115		113	115	114	

**Fall 2001 Freshmen
and
Their Performance
at CSU
After One Year**

Office of Budgets and Institutional Analysis
 Number of New Freshmen by High School GPA & Rank,
 Test Scores, CCHE Index and CSU GPA
 CSU GPA after One Year for Freshmen Entering Fall 2001

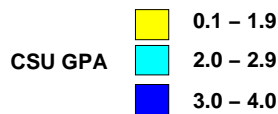
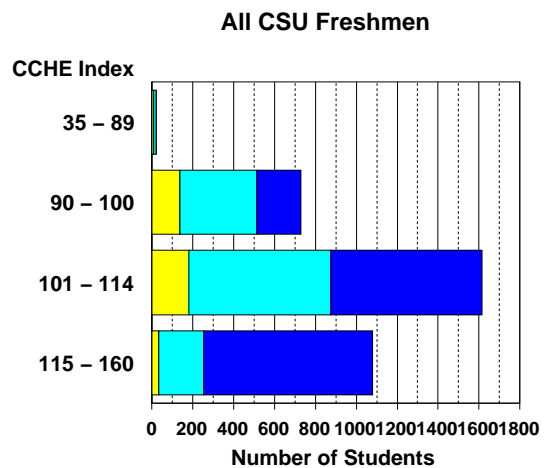
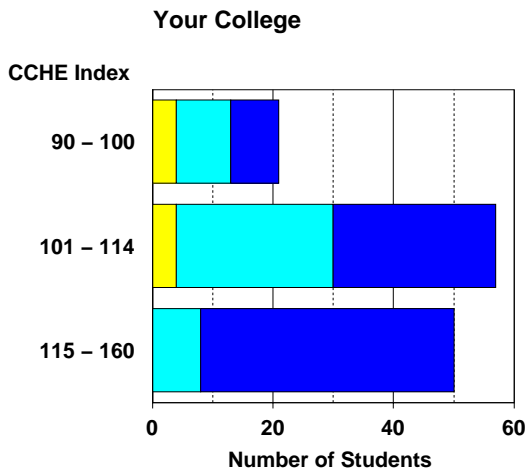
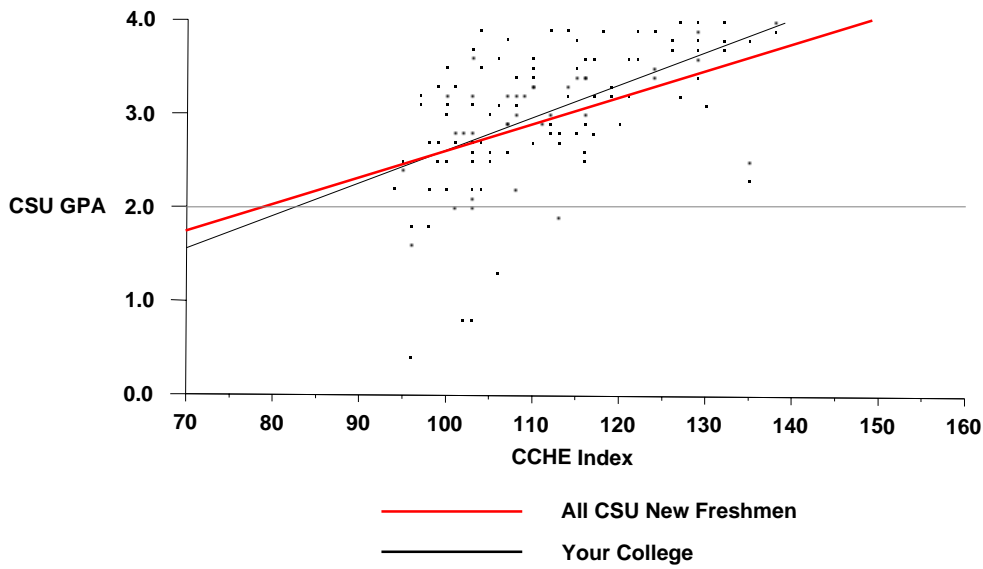
Agricultural Sciences

	CSU GPA				Total
	0.1 – 1.9	2.0 – 2.9	3.0 – 3.5	3.6 – 4.0	
High School GPA					
2.5 – 2.9	1	2	2		5
3.0 – 3.5	5	22	13	5	45
3.6 – 4.0	2	17	26	24	69
Total	8	41	41	29	119
Percentile Rank					
1 – 29		1		1	2
30 – 49	2	2			4
50 – 59	4	3	1		8
60 – 79	1	17	10	4	32
80 – 89		10	14	6	30
90 – 99		6	6	22	34
Total	7	39	31	33	110
SAT Verbal					
200 – 399			1		1
400 – 499	2	8	2	4	16
500 – 599	3	14	9	8	34
600 – 699		2	7	14	23
700 – 800		2	1		3
Total	5	26	20	26	77
SAT Math					
200 – 399	1				1
400 – 499	1	6	3	1	11
500 – 599	2	18	9	14	43
600 – 699	1	2	6	10	19
700 – 800			2	1	3
Total	5	26	20	26	77
ACT Composite					
15 – 18	1	3	2		6
19 – 22	2	9	10	3	24
23 – 26	5	15	11	6	37
27 – 36		4	8	20	32
Total	8	31	31	29	99
CCHE Index					
90 – 100	4	9	8		21
101 – 114	4	26	19	8	57
115 – 160		8	14	28	50
Total	8	43	41	36	128

Office of Budgets and Institutional Analysis
 Number of New Freshmen by High School GPA & Rank,
 Test Scores, CCHE Index and CSU GPA
 CSU GPA after One Year for Freshmen Entering Fall 2001

Agricultural Sciences

**Fall 2001 – Spring 2002
 First Year CSU Grades by CCHE Index**



Office of Budgets and Institutional Analysis
 Number of New Freshmen by High School GPA & Rank,
 Test Scores, CCHE Index and CSU GPA
 CSU GPA after One Year for Freshmen Entering Fall 2001

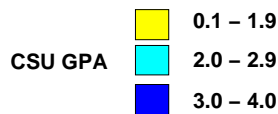
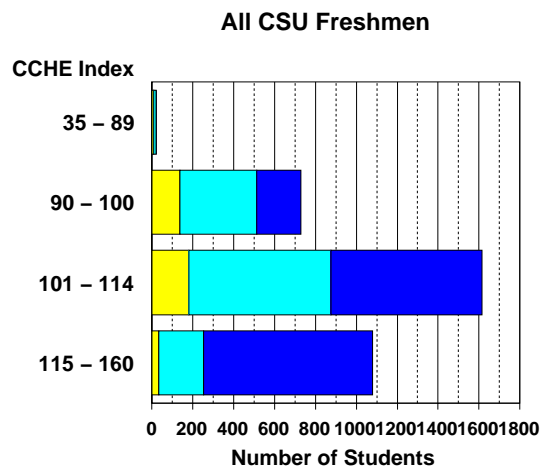
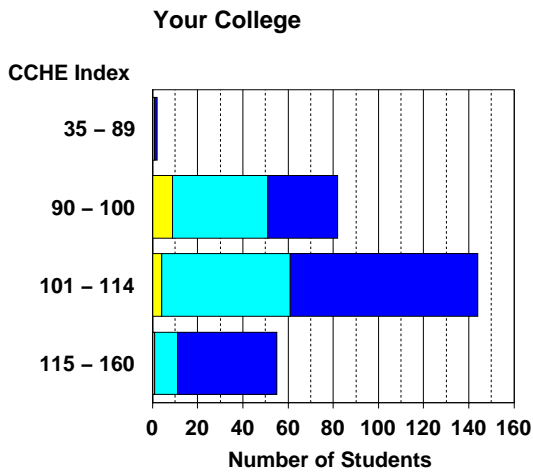
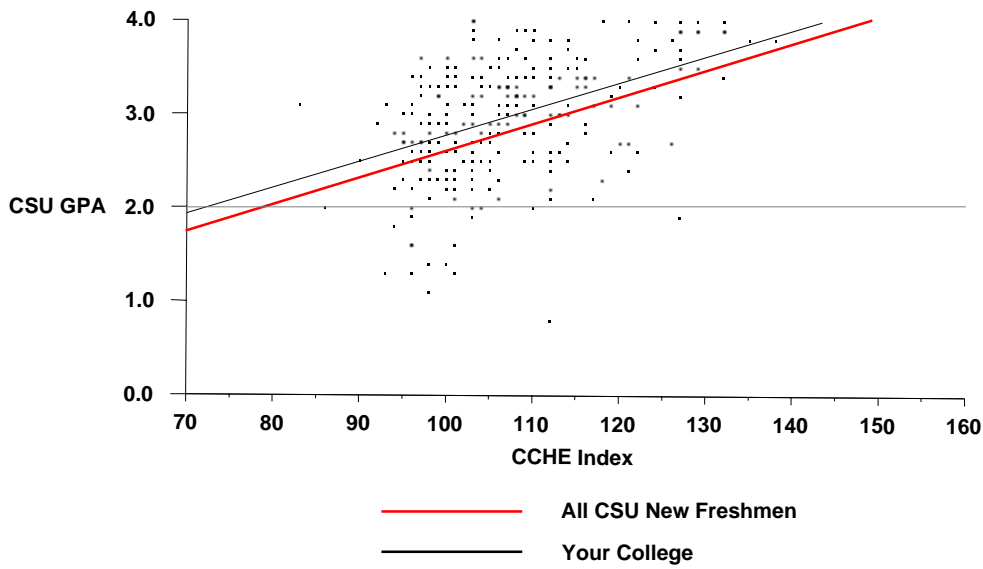
Applied Human Sciences

	CSU GPA				Total
	0.1 – 1.9	2.0 – 2.9	3.0 – 3.5	3.6 – 4.0	
High School GPA					
2.5 – 2.9	3	11	2		16
3.0 – 3.5	8	62	52	5	127
3.6 – 4.0	2	35	51	36	124
Total	13	108	105	41	267
Percentile Rank					
1 – 29		2			2
30 – 49	1	12	8		21
50 – 59	3	22	11		36
60 – 79	6	40	37	13	96
80 – 89	1	16	25	11	53
90 – 99	1	10	20	24	55
Total	12	102	101	48	263
SAT Verbal					
200 – 399	1	2	1		4
400 – 499	1	22	24	6	53
500 – 599	5	34	30	12	81
600 – 699		5	10	6	21
700 – 800		1		2	3
Total	7	64	65	26	162
SAT Math					
200 – 399		2			2
400 – 499	2	26	15	4	47
500 – 599	3	28	37	14	82
600 – 699	2	8	13	6	29
700 – 800				2	2
Total	7	64	65	26	162
ACT Composite					
15 – 18	1	7	4	1	13
19 – 22	5	47	42	11	105
23 – 26	5	32	39	14	90
27 – 36	1	9	9	14	33
Total	12	95	94	40	241
CCHE Index					
35 – 89		1	1		2
90 – 100	9	42	29	2	82
101 – 114	4	57	60	23	144
115 – 160	1	10	20	24	55
Total	14	110	110	49	283

Office of Budgets and Institutional Analysis
 Number of New Freshmen by High School GPA & Rank,
 Test Scores, CCHE Index and CSU GPA
 CSU GPA after One Year for Freshmen Entering Fall 2001

Applied Human Sciences

**Fall 2001 – Spring 2002
 First Year CSU Grades by CCHE Index**



Office of Budgets and Institutional Analysis
 Number of New Freshmen by High School GPA & Rank,
 Test Scores, CCHE Index and CSU GPA
 CSU GPA after One Year for Freshmen Entering Fall 2001

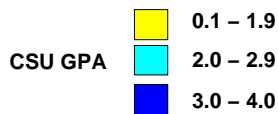
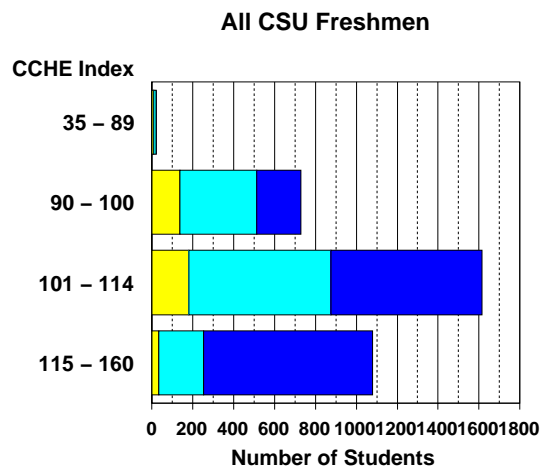
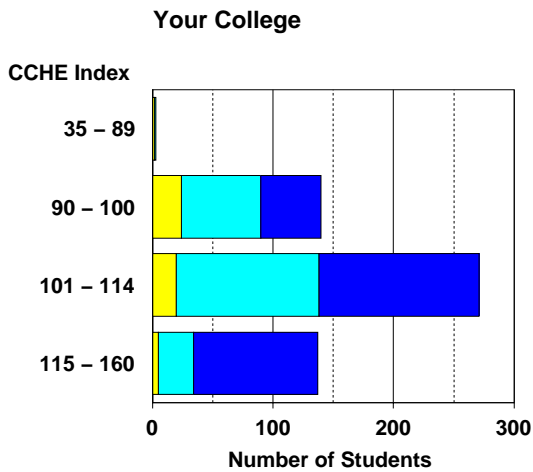
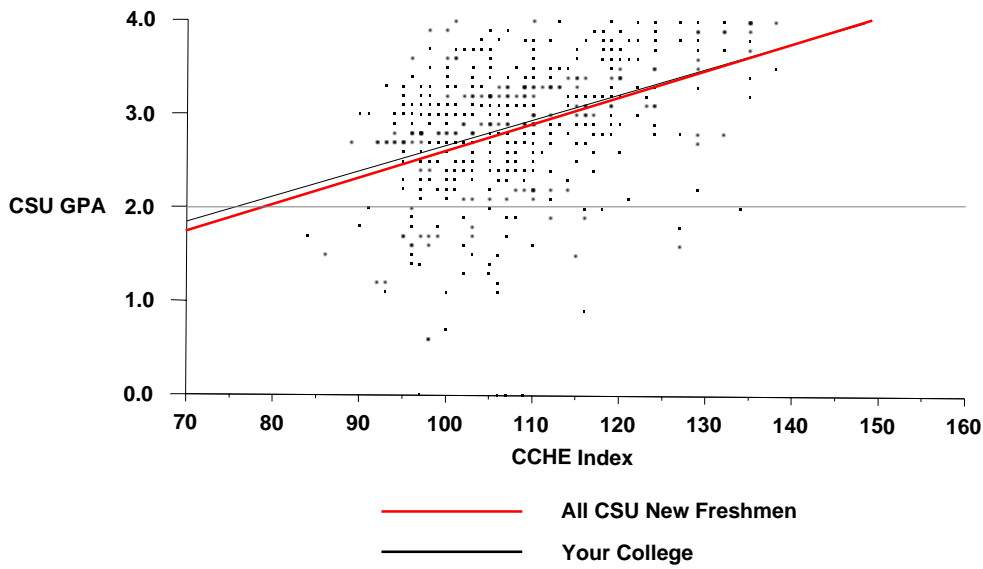
Business

	CSU GPA				Total
	0.1 – 1.9	2.0 – 2.9	3.0 – 3.5	3.6 – 4.0	
High School GPA					
2.0 – 2.4	1				1
2.5 – 2.9	8	13	5		26
3.0 – 3.5	38	118	97	17	270
3.6 – 4.0	8	81	92	57	238
Total	55	212	194	74	535
Percentile Rank					
1 – 29	5	3			8
30 – 49	11	33	16	2	62
50 – 59	11	23	19	3	56
60 – 79	16	76	74	12	178
80 – 89	7	49	43	19	118
90 – 99	1	21	33	49	104
Total	51	205	185	85	526
SAT Verbal					
200 – 399	1	2	2	1	6
400 – 499	10	49	35	11	105
500 – 599	13	58	60	26	157
600 – 699	4	18	10	15	47
700 – 800	2				2
Total	30	127	107	53	317
SAT Math					
200 – 399		2		1	3
400 – 499	8	32	18	7	65
500 – 599	16	57	69	23	165
600 – 699	6	35	18	16	75
700 – 800		1	2	6	9
Total	30	127	107	53	317
ACT Composite					
15 – 18	1	15	5	3	24
19 – 22	20	71	69	15	175
23 – 26	19	74	73	31	197
27 – 36	6	17	26	35	84
Total	46	177	173	84	480
CCHE Index					
35 – 89	2	1			3
90 – 100	25	66	45	5	141
101 – 114	23	118	109	24	274
115 – 160	5	29	44	59	137
Total	55	214	198	88	555

Office of Budgets and Institutional Analysis
 Number of New Freshmen by High School GPA & Rank,
 Test Scores, CCHE Index and CSU GPA
 CSU GPA after One Year for Freshmen Entering Fall 2001

Business

Fall 2001 – Spring 2002
 First Year CSU Grades by CCHE Index



Office of Budgets and Institutional Analysis
 Number of New Freshmen by High School GPA & Rank,
 Test Scores, CCHE Index and CSU GPA
 CSU GPA after One Year for Freshmen Entering Fall 2001

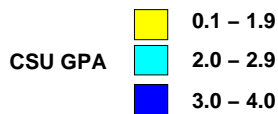
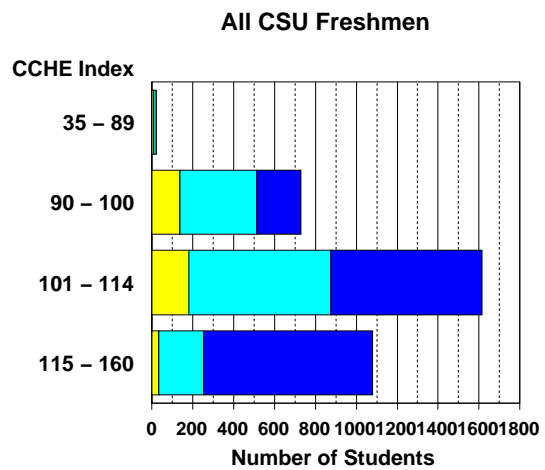
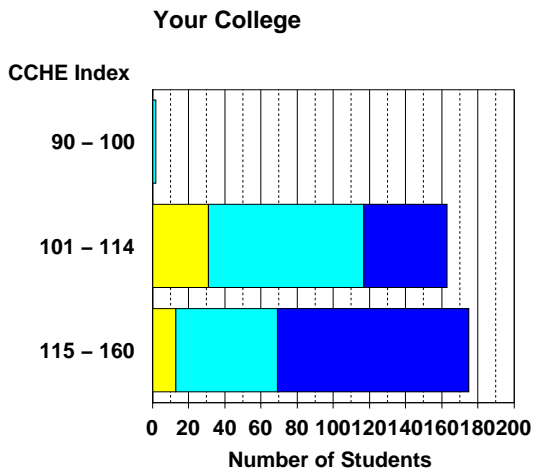
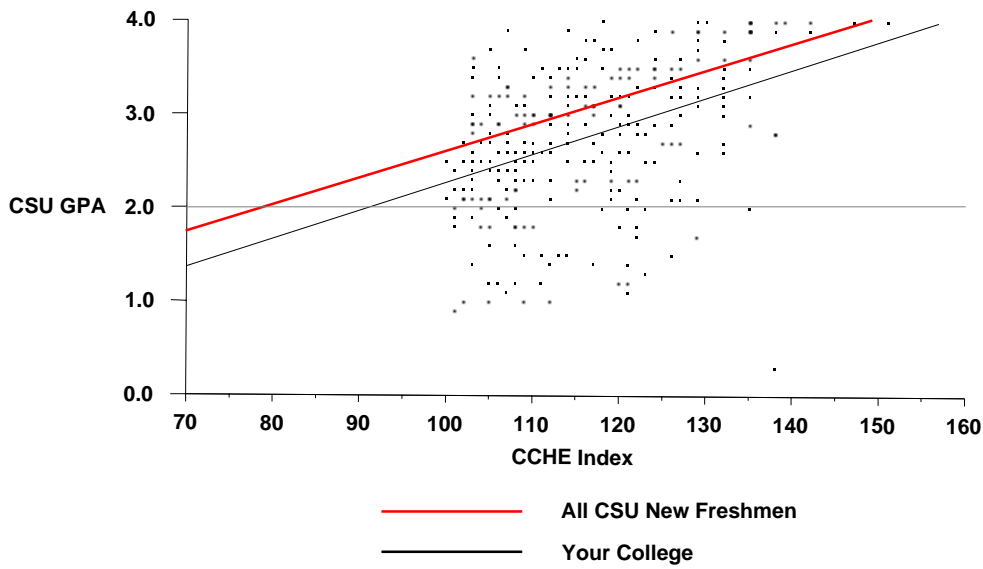
Engineering

	CSU GPA				Total
	0.1 – 1.9	2.0 – 2.9	3.0 – 3.5	3.6 – 4.0	
High School GPA					
3.0 – 3.5	24	68	20	3	115
3.6 – 4.0	19	68	74	24	185
Total	43	136	94	27	300
Percentile Rank					
30 – 49	3	6	1		10
50 – 59	2	14	6		22
60 – 79	21	47	20	4	92
80 – 89	9	35	27	9	80
90 – 99	7	27	44	35	113
Total	42	129	98	48	317
SAT Verbal					
200 – 399	1				1
400 – 499	4	19	11	4	38
500 – 599	14	55	34	7	110
600 – 699	7	22	18	19	66
700 – 800	1	1	3	6	11
Total	27	97	66	36	226
SAT Math					
400 – 499	1	5	2		8
500 – 599	14	47	26	7	94
600 – 699	10	40	34	16	100
700 – 800	2	5	4	13	24
Total	27	97	66	36	226
ACT Composite					
15 – 18	1	1			2
19 – 22	3	20	7	3	33
23 – 26	21	57	47	6	131
27 – 36	11	38	34	35	118
Total	36	116	88	44	284
CCHE Index					
90 – 100		2			2
101 – 114	31	86	41	5	163
115 – 160	13	56	61	45	175
Total	44	144	102	50	340

Office of Budgets and Institutional Analysis
 Number of New Freshmen by High School GPA & Rank,
 Test Scores, CCHE Index and CSU GPA
 CSU GPA after One Year for Freshmen Entering Fall 2001

Engineering

**Fall 2001 – Spring 2002
 First Year CSU Grades by CCHE Index**



Office of Budgets and Institutional Analysis
 Number of New Freshmen by High School GPA & Rank,
 Test Scores, CCHE Index and CSU GPA
 CSU GPA after One Year for Freshmen Entering Fall 2001

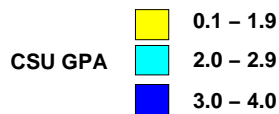
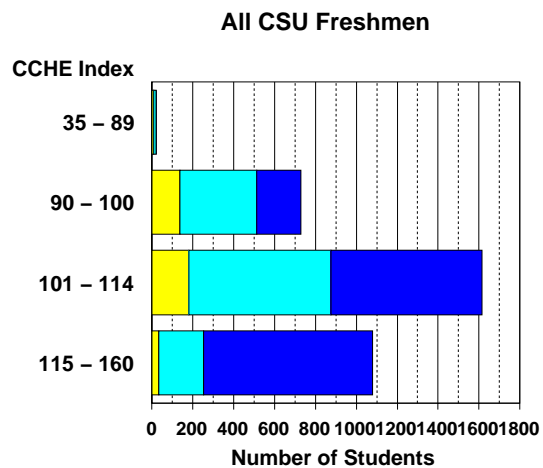
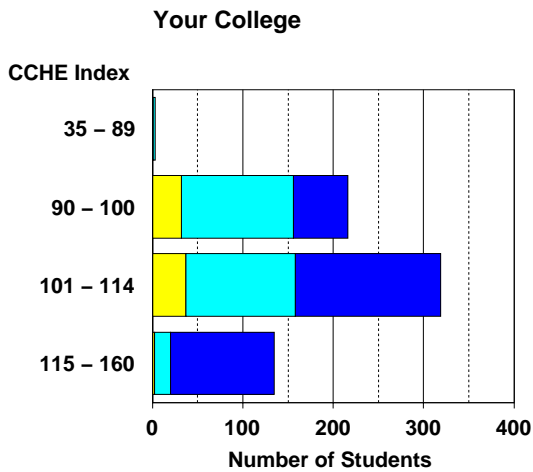
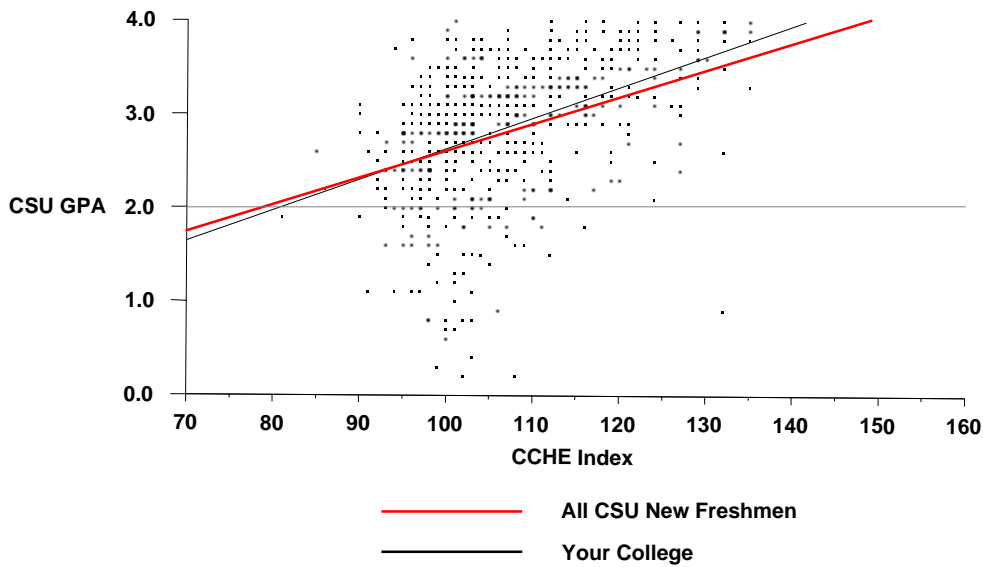
Intra-University

	CSU GPA				Total
	0.1 – 1.9	2.0 – 2.9	3.0 – 3.5	3.6 – 4.0	
High School GPA					
2.0 – 2.4	2	3	2		7
2.5 – 2.9	17	31	8		56
3.0 – 3.5	44	171	108	24	347
3.6 – 4.0	9	58	102	72	241
Total	72	263	220	96	651
Percentile Rank					
1 – 29	4	7	1		12
30 – 49	12	43	15	3	73
50 – 59	17	48	19	3	87
60 – 79	24	87	83	24	218
80 – 89	3	42	57	22	124
90 – 99	1	16	38	52	107
Total	61	243	213	104	621
SAT Verbal					
200 – 399	1	2	2	1	6
400 – 499	13	51	31	11	106
500 – 599	21	75	74	33	203
600 – 699	7	8	19	18	52
700 – 800		3	1	4	8
Total	42	139	127	67	375
SAT Math					
200 – 399		4		1	5
400 – 499	8	38	40	10	96
500 – 599	24	64	59	29	176
600 – 699	10	31	24	25	90
700 – 800		2	4	2	8
Total	42	139	127	67	375
ACT Composite					
1 – 14		2			2
15 – 18	4	3	3		10
19 – 22	18	108	78	24	228
23 – 26	30	87	80	40	237
27 – 36	8	18	37	32	95
Total	60	218	198	96	572
CCHE Index					
35 – 89	1	2			3
90 – 100	32	124	54	6	216
101 – 114	37	121	119	42	319
115 – 160	2	18	55	60	135
Total	72	265	228	108	673

Office of Budgets and Institutional Analysis
 Number of New Freshmen by High School GPA & Rank,
 Test Scores, CCHE Index and CSU GPA
 CSU GPA after One Year for Freshmen Entering Fall 2001

Intra-University

**Fall 2001 – Spring 2002
 First Year CSU Grades by CCHE Index**



Office of Budgets and Institutional Analysis
 Number of New Freshmen by High School GPA & Rank,
 Test Scores, CCHE Index and CSU GPA
 CSU GPA after One Year for Freshmen Entering Fall 2001

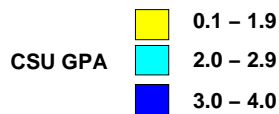
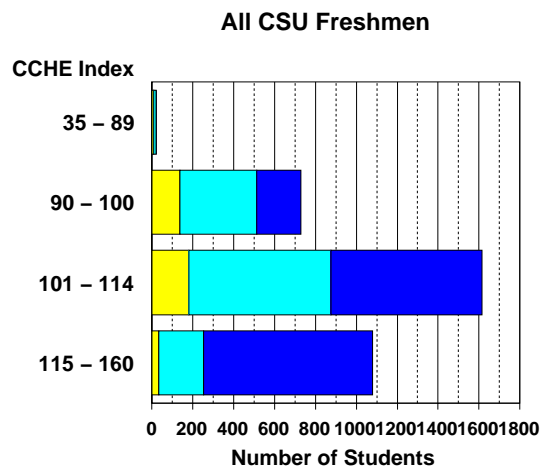
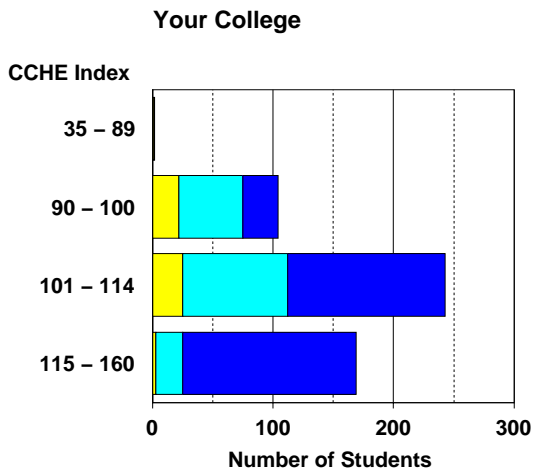
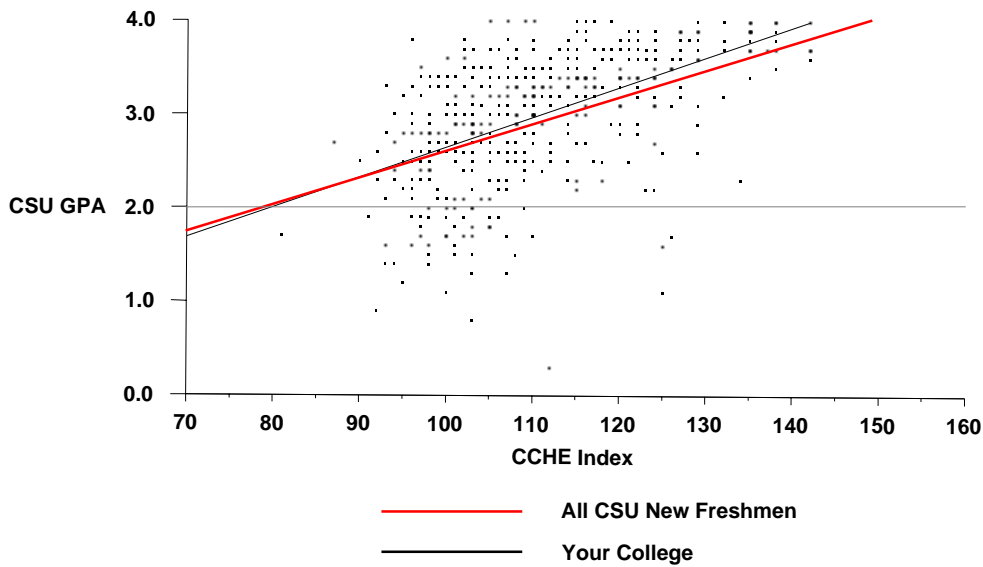
Liberal Arts

	CSU GPA				Total
	0.1 – 1.9	2.0 – 2.9	3.0 – 3.5	3.6 – 4.0	
High School GPA					
2.5 – 2.9	7	21	4		32
3.0 – 3.5	38	92	80	16	226
3.6 – 4.0	6	47	88	74	215
Total	51	160	172	90	473
Percentile Rank					
1 – 29		5			5
30 – 49	5	26	12	1	44
50 – 59	19	20	15	3	57
60 – 79	19	64	75	20	178
80 – 89	6	27	37	23	93
90 – 99		14	38	61	113
Total	49	156	177	108	490
SAT Verbal					
200 – 399	1	1	1		3
400 – 499	7	21	24	2	54
500 – 599	17	36	48	26	127
600 – 699	5	27	29	38	99
700 – 800	2	3	2	14	21
Total	32	88	104	80	304
SAT Math					
200 – 399	1	4	2		7
400 – 499	9	24	35	11	79
500 – 599	16	39	44	30	129
600 – 699	5	20	21	30	76
700 – 800	1	1	2	9	13
Total	32	88	104	80	304
ACT Composite					
15 – 18	5	13	2		20
19 – 22	13	45	46	8	112
23 – 26	17	52	85	35	189
27 – 36	4	24	27	59	114
Total	39	134	160	102	435
CCHE Index					
35 – 89	1	1			2
90 – 100	22	53	27	2	104
101 – 114	25	87	104	27	243
115 – 160	3	22	55	89	169
Total	51	163	186	118	518

Office of Budgets and Institutional Analysis
 Number of New Freshmen by High School GPA & Rank,
 Test Scores, CCHE Index and CSU GPA
 CSU GPA after One Year for Freshmen Entering Fall 2001

Liberal Arts

**Fall 2001 – Spring 2002
 First Year CSU Grades by CCHE Index**



Office of Budgets and Institutional Analysis
 Number of New Freshmen by High School GPA & Rank,
 Test Scores, CCHE Index and CSU GPA
 CSU GPA after One Year for Freshmen Entering Fall 2001

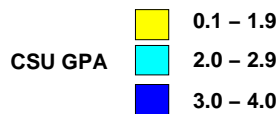
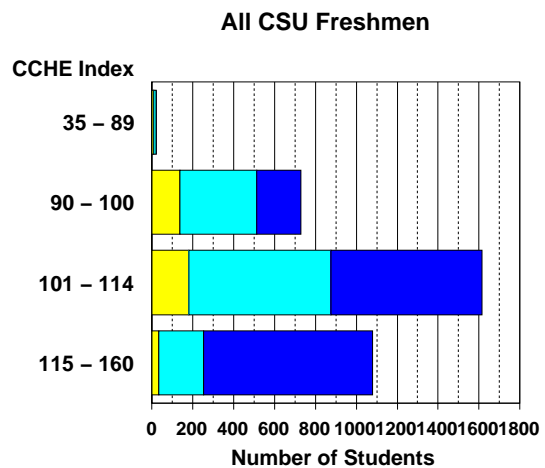
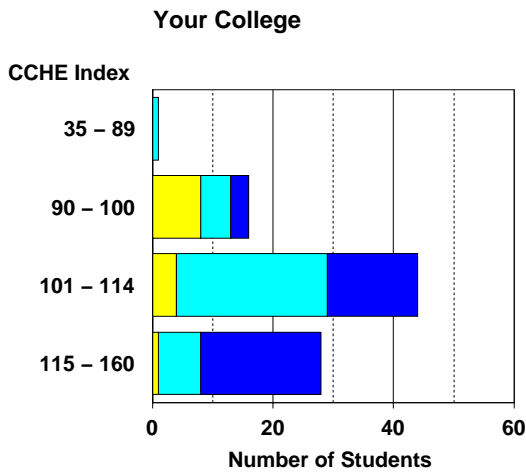
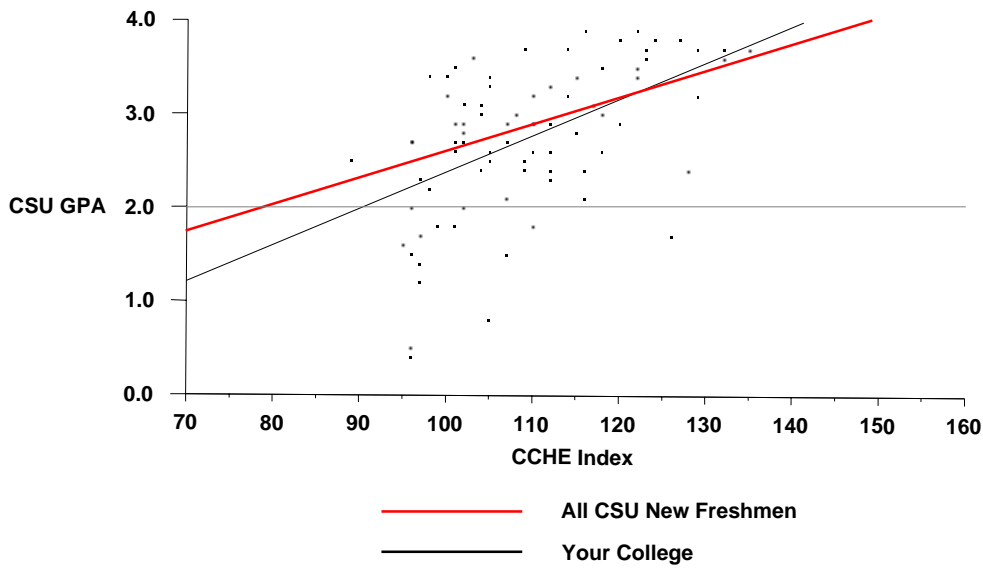
Natural Resources

	CSU GPA				Total
	0.1 – 1.9	2.0 – 2.9	3.0 – 3.5	3.6 – 4.0	
High School GPA					
2.5 – 2.9	4	2			6
3.0 – 3.5	7	22	10	4	43
3.6 – 4.0	2	14	10	6	32
Total	13	38	20	10	81
Percentile Rank					
1 – 29		1			1
30 – 49	4	7	1	1	13
50 – 59	2	4	2		8
60 – 79	3	13	7	5	28
80 – 89	2	6	6	3	17
90 – 99	2	6	4	5	17
Total	13	37	20	14	84
SAT Verbal					
400 – 499	1	2	2		5
500 – 599	6	12	10	2	30
600 – 699		2	6	9	17
700 – 800		1		1	2
Total	7	17	18	12	54
SAT Math					
400 – 499		3	4	1	8
500 – 599	7	11	9	2	29
600 – 699		3	5	9	17
Total	7	17	18	12	54
ACT Composite					
15 – 18		1			1
19 – 22	6	10	4		20
23 – 26	4	20	9	3	36
27 – 36	1	1	2	9	13
Total	11	32	15	12	70
CCHE Index					
35 – 89		1			1
90 – 100	8	5	3		16
101 – 114	4	25	12	3	44
115 – 160	1	7	8	12	28
Total	13	38	23	15	89

Office of Budgets and Institutional Analysis
 Number of New Freshmen by High School GPA & Rank,
 Test Scores, CCHE Index and CSU GPA
 CSU GPA after One Year for Freshmen Entering Fall 2001

Natural Resources

**Fall 2001 – Spring 2002
 First Year CSU Grades by CCHE Index**



Office of Budgets and Institutional Analysis
 Number of New Freshmen by High School GPA & Rank,
 Test Scores, CCHE Index and CSU GPA
 CSU GPA after One Year for Freshmen Entering Fall 2001

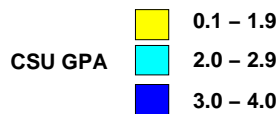
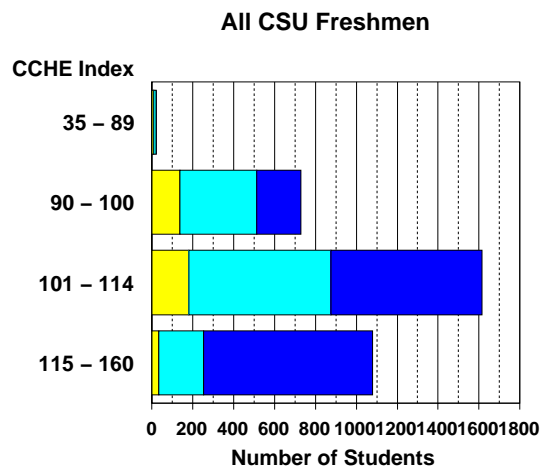
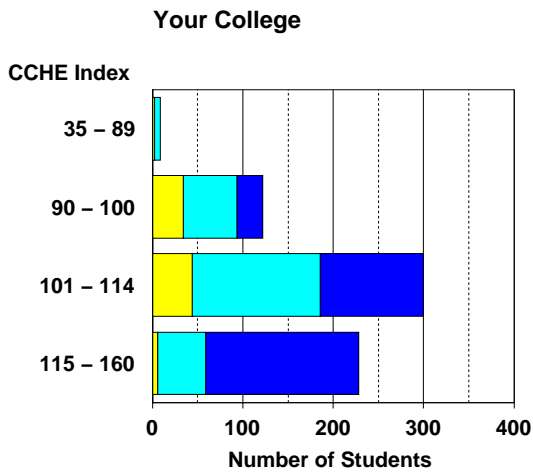
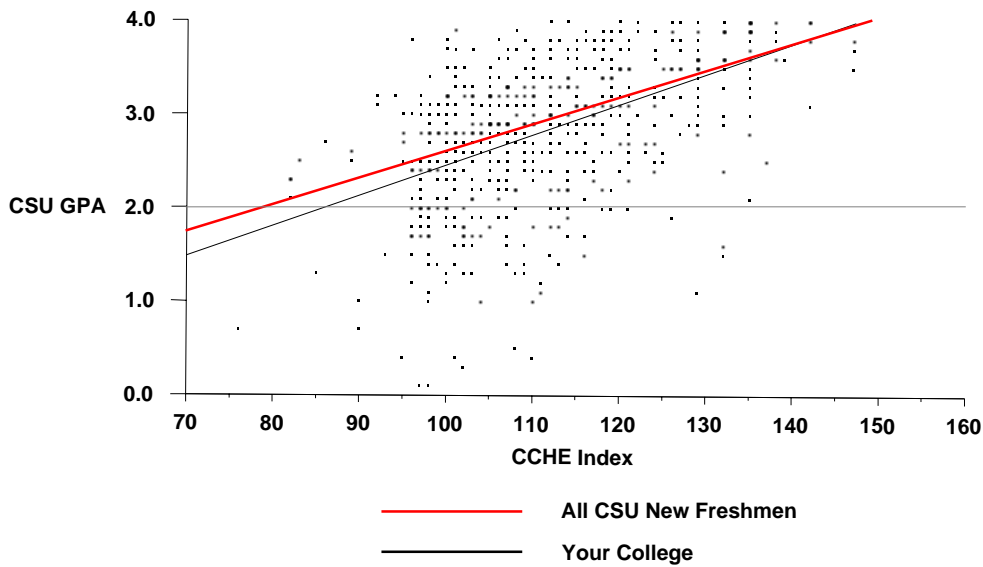
Natural Sciences

	CSU GPA				Total
	0.1 – 1.9	2.0 – 2.9	3.0 – 3.5	3.6 – 4.0	
High School GPA					
0.1 – 1.9	1				1
2.0 – 2.4	1				1
2.5 – 2.9	10	13	7	1	31
3.0 – 3.5	52	133	57	15	257
3.6 – 4.0	21	110	108	80	319
Total	85	256	172	96	609
Percentile Rank					
1 – 29	1	1	3		5
30 – 49	17	26	10	2	55
50 – 59	16	30	11	1	58
60 – 79	25	99	55	15	194
80 – 89	12	55	46	16	129
90 – 99	8	36	50	83	177
Total	79	247	175	117	618
SAT Verbal					
200 – 399	1	6	2		9
400 – 499	13	41	23	8	85
500 – 599	15	79	54	32	180
600 – 699	15	26	35	35	111
700 – 800		4		9	13
Total	44	156	114	84	398
SAT Math					
200 – 399	2	3	1		6
400 – 499	8	43	14	4	69
500 – 599	20	73	58	31	182
600 – 699	12	34	34	39	119
700 – 800	2	3	7	10	22
Total	44	156	114	84	398
ACT Composite					
15 – 18	11	12	5		28
19 – 22	25	84	43	5	157
23 – 26	27	88	70	42	227
27 – 36	10	44	44	63	161
Total	73	228	162	110	573
CCHE Index					
35 – 89	2	7			9
90 – 100	34	60	24	4	122
101 – 114	44	142	88	26	300
115 – 160	6	53	75	94	228
Total	86	262	187	124	659

Office of Budgets and Institutional Analysis
 Number of New Freshmen by High School GPA & Rank,
 Test Scores, CCHE Index and CSU GPA
 CSU GPA after One Year for Freshmen Entering Fall 2001

Natural Sciences

**Fall 2001 – Spring 2002
 First Year CSU Grades by CCHE Index**



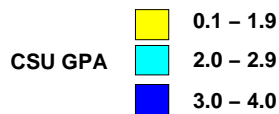
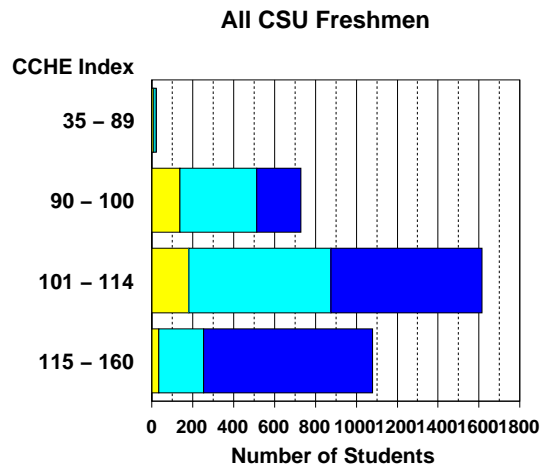
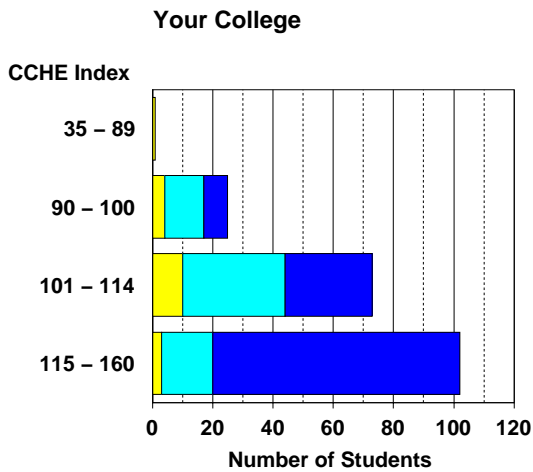
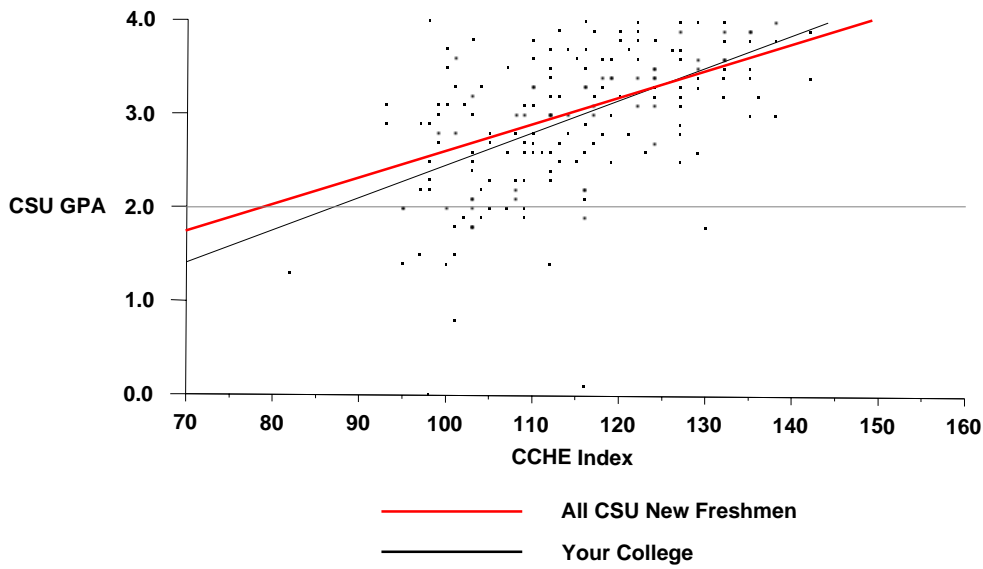
Office of Budgets and Institutional Analysis
 Number of New Freshmen by High School GPA & Rank,
 Test Scores, CCHE Index and CSU GPA
 CSU GPA after One Year for Freshmen Entering Fall 2001

Veterinary Medicine + Biomedical Sci	CSU GPA				Total
	0.1 – 1.9	2.0 – 2.9	3.0 – 3.5	3.6 – 4.0	
High School GPA					
2.5 – 2.9	1	3			4
3.0 – 3.5	13	24	18	5	60
3.6 – 4.0	5	32	40	26	103
Total	19	59	58	31	167
Percentile Rank					
30 – 49	1	3	2		6
50 – 59	2	5	2	1	10
60 – 79	10	20	11	3	44
80 – 89	3	20	11	9	43
90 – 99	1	13	36	35	85
Total	17	61	62	48	188
SAT Verbal					
200 – 399		1	1		2
400 – 499	3	9	7	2	21
500 – 599	7	21	19	9	56
600 – 699	1	8	19	14	42
700 – 800	1		4	2	7
Total	12	39	50	27	128
SAT Math					
200 – 399		1			1
400 – 499	4	9	10	3	26
500 – 599	5	19	23	7	54
600 – 699	3	9	14	17	43
700 – 800		1	3		4
Total	12	39	50	27	128
ACT Composite					
15 – 18	2	3	1		6
19 – 22	7	18	11	4	40
23 – 26	5	22	22	19	68
27 – 36	1	9	22	24	56
Total	15	52	56	47	170
CCHE Index					
35 – 89	1				1
90 – 100	5	13	6	2	26
101 – 114	10	34	22	7	73
115 – 160	3	17	41	41	102
Total	19	64	69	50	202

Office of Budgets and Institutional Analysis
 Number of New Freshmen by High School GPA & Rank,
 Test Scores, CCHE Index and CSU GPA
 CSU GPA after One Year for Freshmen Entering Fall 2001

Veterinary Medicine + Biomedical Sci

**Fall 2001 – Spring 2002
 First Year CSU Grades by CCHE Index**



Office of Budgets and Institutional Analysis
Freshmen Profile
Fall 2002

Applied Human Sciences	Admitted N= 791				Enrolled N=387			
	Res	Nonres	Total	Percent	Res	Nonres	Total	Percent
High School GPA								
2.5 – 2.9	12	14	26	4	9	6	15	4
3.0 – 3.5	218	127	345	47	137	34	171	47
3.6 – 4.0	228	138	366	50	141	37	178	49
Valid Cases	458	279	737	100	287	77	364	100
Means	3.54	3.51	3.53		3.53	3.46	3.52	
Percentile Rank								
1 – 29	0	3	3	0	0	3	3	1
30 – 49	28	21	49	7	17	5	22	6
50 – 59	45	24	69	10	31	9	40	11
60 – 79	186	86	272	38	119	24	143	40
80 – 89	101	49	150	21	65	12	77	22
90 – 99	105	63	168	24	59	12	71	20
Valid Cases	465	246	711	100	291	65	356	100
Means	75.5	75.1	75.4		74.6	70.4	73.8	
SAT Verbal								
200 – 399	7	5	12	3	4	2	6	3
400 – 499	66	57	123	29	40	18	58	33
500 – 599	103	116	219	52	56	30	86	49
600 – 699	31	38	69	16	15	10	25	14
700 – 800	2	0	2	0	0	0	0	0
Valid Cases	209	216	425	100	115	60	175	100
Means	522	531	527		515	521	517	
SAT Math								
200 – 399	6	3	9	2	1	0	1	1
400 – 499	56	35	91	21	34	10	44	25
500 – 599	103	121	224	53	58	39	97	55
600 – 699	39	50	89	21	19	10	29	17
700 – 800	5	7	12	3	3	1	4	2
Valid Cases	209	216	425	100	115	60	175	100
Means	533	553	543		532	545	537	
ACT Composite								
1 – 14	0	1	1	0	0	0	0	0
15 – 18	26	8	34	5	14	4	18	5
19 – 22	208	58	266	40	130	14	144	42
23 – 26	171	68	239	36	116	17	133	39
27 – 36	75	42	117	18	39	9	48	14
Valid Cases	480	177	657	100	299	44	343	100
Means	23.1	23.9	23.3		23.0	23.9	23.1	
CCHE Index								
35 – 89	2	1	3	0	0	1	1	0
90 – 100	134	66	200	26	92	22	114	30
101 – 114	234	146	380	49	141	37	178	47
115 – 160	115	84	199	25	70	19	89	23
Valid Cases	485	297	782	100	303	79	382	100
Means	108	109	108		107	108	107	

Office of Budgets and Institutional Analysis
Freshmen Profile
Fall 2002

Business	Admitted N= 1535				Enrolled N=595			
	Res	Nonres	Total	Percent	Res	Nonres	Total	Percent
High School GPA								
2.0 – 2.4	1	2	3	0	1	0	1	0
2.5 – 2.9	34	74	108	7	16	22	38	7
3.0 – 3.5	447	281	728	51	226	63	289	51
3.6 – 4.0	403	199	602	42	188	49	237	42
Valid Cases	885	556	1441	100	431	134	565	100
Means	3.50	3.38	3.45		3.48	3.38	3.46	
Percentile Rank								
1 – 29	8	18	26	2	4	3	7	1
30 – 49	74	71	145	11	40	21	61	11
50 – 59	77	58	135	10	45	16	61	11
60 – 79	341	152	493	37	172	40	212	39
80 – 89	195	94	289	21	93	24	117	21
90 – 99	180	82	262	19	71	16	87	16
Valid Cases	875	475	1350	100	425	120	545	100
Means	74.0	68.9	72.2		72.4	67.1	71.3	
SAT Verbal								
200 – 399	14	9	23	3	5	3	8	3
400 – 499	113	96	209	23	50	22	72	24
500 – 599	252	234	486	54	102	60	162	55
600 – 699	83	80	163	18	32	17	49	17
700 – 800	4	8	12	1	3	2	5	2
Valid Cases	466	427	893	100	192	104	296	100
Means	533	540	536		532	536	533	
SAT Math								
200 – 399	5	2	7	1	3	0	3	1
400 – 499	81	52	133	15	48	13	61	21
500 – 599	244	209	453	51	100	52	152	51
600 – 699	123	149	272	30	37	36	73	25
700 – 800	13	15	28	3	4	3	7	2
Valid Cases	466	427	893	100	192	104	296	100
Means	556	574	565		540	572	551	
ACT Composite								
1 – 14	1	0	1	0	0	0	0	0
15 – 18	31	17	48	4	10	4	14	3
19 – 22	291	116	407	32	153	28	181	35
23 – 26	429	168	597	47	216	38	254	49
27 – 36	151	74	225	18	55	15	70	13
Valid Cases	903	375	1278	100	434	85	519	100
Means	23.7	23.8	23.7		23.5	23.6	23.5	
CCHE Index								
35 – 89	5	5	10	1	4	4	8	1
90 – 100	187	151	338	22	102	36	138	23
101 – 114	538	279	817	54	261	63	324	55
115 – 160	205	152	357	23	83	36	119	20
Valid Cases	935	587	1522	100	450	139	589	100
Means	108	108	108		107	108	107	

Office of Budgets and Institutional Analysis
Freshmen Profile
Fall 2002

Engineering	Admitted N= 937				Enrolled N=332			
	Res	Nonres	Total	Percent	Res	Nonres	Total	Percent
High School GPA								
2.5 – 2.9	0	1	1	0	0	0	0	0
3.0 – 3.5	154	96	250	31	64	14	78	27
3.6 – 4.0	339	214	553	69	160	54	214	73
Valid Cases	493	311	804	100	224	68	292	100
Means	3.68	3.68	3.68		3.68	3.74	3.70	
Percentile Rank								
1 – 29	0	1	1	0	0	0	0	0
30 – 49	8	4	12	1	5	1	6	2
50 – 59	28	15	43	5	16	5	21	7
60 – 79	141	74	215	26	62	11	73	23
80 – 89	150	68	218	26	72	18	90	29
90 – 99	205	142	347	42	88	34	122	39
Valid Cases	532	304	836	100	243	69	312	100
Means	82.8	84.1	83.3		82.0	85.6	82.8	
SAT Verbal								
200 – 399	2	1	3	0	0	0	0	0
400 – 499	58	33	91	15	25	7	32	17
500 – 599	156	129	285	47	63	25	88	46
600 – 699	93	101	194	32	31	31	62	32
700 – 800	17	18	35	6	6	3	9	5
Valid Cases	326	282	608	100	125	66	191	100
Means	566	581	573		561	592	572	
SAT Math								
400 – 499	4	7	11	2	1	2	3	2
500 – 599	112	63	175	29	48	9	57	30
600 – 699	165	150	315	52	61	40	101	53
700 – 800	45	62	107	18	15	15	30	16
Valid Cases	326	282	608	100	125	66	191	100
Means	621	642	630		616	652	628	
ACT Composite								
15 – 18	1	1	2	0	0	0	0	0
19 – 22	52	16	68	9	20	2	22	7
23 – 26	265	111	376	48	131	15	146	50
27 – 36	225	107	332	43	93	33	126	43
Valid Cases	543	235	778	100	244	50	294	100
Means	26.1	26.4	26.2		26.0	27.5	26.2	
CCHE Index								
90 – 100	1	0	1	0	1	0	1	0
101 – 114	245	115	360	39	113	17	130	40
115 – 160	309	247	556	61	135	62	197	60
Valid Cases	555	362	917	100	249	79	328	100
Means	117	121	119		117	124	118	

Office of Budgets and Institutional Analysis
Freshmen Profile
Fall 2002

Intra-University	Admitted N= 2069				Enrolled N=884			
	Res	Nonres	Total	Percent	Res	Nonres	Total	Percent
High School GPA								
2.0 – 2.4	1	4	5	0	1	3	4	0
2.5 – 2.9	88	107	195	10	54	45	99	12
3.0 – 3.5	660	343	1003	51	364	68	432	52
3.6 – 4.0	548	208	756	39	262	39	301	36
Valid Cases	1297	662	1959	100	681	155	836	100
Means	3.45	3.34	3.42		3.42	3.22	3.38	
Percentile Rank								
1 – 29	11	17	28	2	11	10	21	3
30 – 49	140	74	214	12	90	23	113	14
50 – 59	160	73	233	13	94	16	110	14
60 – 79	468	182	650	36	258	47	305	38
80 – 89	270	98	368	20	123	18	141	18
90 – 99	219	89	308	17	99	13	112	14
Valid Cases	1268	533	1801	100	675	127	802	100
Means	71.9	68.9	71.0		69.5	63.2	68.5	
SAT Verbal								
200 – 399	18	11	29	3	11	5	16	4
400 – 499	169	85	254	23	89	24	113	27
500 – 599	324	274	598	53	145	61	206	50
600 – 699	119	102	221	20	49	22	71	17
700 – 800	15	9	24	2	6	1	7	2
Valid Cases	645	481	1126	100	300	113	413	100
Means	535	546	540		525	532	527	
SAT Math								
200 – 399	9	7	16	1	6	4	10	2
400 – 499	155	67	222	20	80	28	108	26
500 – 599	327	244	571	51	162	48	210	51
600 – 699	141	142	283	25	47	29	76	18
700 – 800	13	21	34	3	5	4	9	2
Valid Cases	645	481	1126	100	300	113	413	100
Means	545	567	554		535	546	538	
ACT Composite								
1 – 14	1	1	2	0	0	1	1	0
15 – 18	61	14	75	4	27	4	31	4
19 – 22	497	135	632	36	278	36	314	39
23 – 26	540	180	720	41	291	37	328	41
27 – 36	224	111	335	19	98	23	121	15
Valid Cases	1323	441	1764	100	694	101	795	100
Means	23.3	24.2	23.5		23.2	23.9	23.3	
CCHE Index								
35 – 89	4	6	10	0	4	5	9	1
90 – 100	418	199	617	30	259	67	326	38
101 – 114	658	321	979	48	333	60	393	45
115 – 160	267	168	435	21	110	31	141	16
Valid Cases	1347	694	2041	100	706	163	869	100
Means	107	108	107		106	105	105	

Office of Budgets and Institutional Analysis
Freshmen Profile
Fall 2002

Liberal Arts	Admitted N= 1551				Enrolled N=561			
	Res	Nonres	Total	Percent	Res	Nonres	Total	Percent
High School GPA								
2.0 – 2.4	4	1	5	0	3	0	3	1
2.5 – 2.9	45	57	102	7	30	14	44	8
3.0 – 3.5	387	252	639	45	194	47	241	46
3.6 – 4.0	424	257	681	48	175	56	231	45
Valid Cases	860	567	1427	100	402	117	519	100
Means	3.52	3.46	3.49		3.46	3.47	3.46	
Percentile Rank								
1 – 29	10	7	17	1	5	0	5	1
30 – 49	63	52	115	8	43	16	59	12
50 – 59	91	38	129	9	50	5	55	11
60 – 79	296	155	451	33	143	31	174	34
80 – 89	194	128	322	24	90	26	116	23
90 – 99	218	106	324	24	76	27	103	20
Valid Cases	872	486	1358	100	407	105	512	100
Means	75.3	74.7	75.0		72.0	75.5	72.7	
SAT Verbal								
200 – 399	6	3	9	1	5	1	6	2
400 – 499	73	57	130	14	24	15	39	14
500 – 599	221	197	418	46	101	36	137	48
600 – 699	142	140	282	31	55	32	87	31
700 – 800	43	29	72	8	9	5	14	5
Valid Cases	485	426	911	100	194	89	283	100
Means	574	576	575		566	572	568	
SAT Math								
200 – 399	11	1	12	1	2	0	2	1
400 – 499	119	66	185	20	56	15	71	25
500 – 599	217	196	413	45	85	35	120	42
600 – 699	117	146	263	29	44	35	79	28
700 – 800	21	17	38	4	7	4	11	4
Valid Cases	485	426	911	100	194	89	283	100
Means	549	568	558		543	574	552	
ACT Composite								
1 – 14	0	1	1	0	0	0	0	0
15 – 18	25	9	34	3	14	2	16	3
19 – 22	218	77	295	23	90	17	107	22
23 – 26	388	161	549	43	189	30	219	44
27 – 36	273	122	395	31	125	26	151	31
Valid Cases	904	370	1274	100	418	75	493	100
Means	24.8	25.1	24.8		24.7	25.0	24.7	
CCHE Index								
35 – 89	3	3	6	0	2	2	4	1
90 – 100	144	91	235	15	85	21	106	19
101 – 114	478	297	775	50	225	53	278	50
115 – 160	302	217	519	34	117	48	165	30
Valid Cases	927	608	1535	100	429	124	553	100
Means	111	112	111		110	112	110	

Office of Budgets and Institutional Analysis
Freshmen Profile
Fall 2002

Natural Resources	Admitted N= 275				Enrolled N=129			
	Res	Nonres	Total	Percent	Res	Nonres	Total	Percent
High School GPA								
2.5 – 2.9	6	26	32	12	4	11	15	12
3.0 – 3.5	42	68	110	43	31	21	52	42
3.6 – 4.0	49	67	116	45	32	24	56	46
Valid Cases	97	161	258	100	67	56	123	100
Means	3.56	3.43	3.48		3.54	3.40	3.48	
Percentile Rank								
1 – 29	1	4	5	2	1	2	3	3
30 – 49	8	12	20	9	4	3	7	6
50 – 59	6	17	23	10	5	7	12	11
60 – 79	40	29	69	31	30	11	41	36
80 – 89	15	23	38	17	10	10	20	18
90 – 99	33	38	71	31	20	10	30	27
Valid Cases	103	123	226	100	70	43	113	100
Means	76.1	72.8	74.3		75.5	70.8	73.7	
SAT Verbal								
400 – 499	8	8	16	10	5	4	9	14
500 – 599	25	62	87	52	15	13	28	44
600 – 699	15	39	54	33	7	18	25	39
700 – 800	3	6	9	5	1	1	2	3
Valid Cases	51	115	166	100	28	36	64	100
Means	569	580	576		559	585	574	
SAT Math								
200 – 399	1	0	1	1	1	0	1	2
400 – 499	10	9	19	11	6	4	10	16
500 – 599	23	52	75	45	12	20	32	50
600 – 699	15	48	63	38	9	10	19	30
700 – 800	2	6	8	5	0	2	2	3
Valid Cases	51	115	166	100	28	36	64	100
Means	557	587	578		547	572	561	
ACT Composite								
15 – 18	1	0	1	0	1	0	1	1
19 – 22	26	23	49	24	17	9	26	24
23 – 26	45	51	96	46	35	19	54	50
27 – 36	29	33	62	30	15	12	27	25
Valid Cases	101	107	208	100	68	40	108	100
Means	24.5	25.4	25.0		24.2	25.3	24.6	
CCHE Index								
90 – 100	19	32	51	19	14	14	28	22
101 – 114	48	70	118	43	36	21	57	45
115 – 160	38	67	105	38	21	22	43	34
Valid Cases	105	169	274	100	71	57	128	100
Means	112	112	112		110	111	110	

Office of Budgets and Institutional Analysis
Freshmen Profile
Fall 2002

Natural Sciences	Admitted N= 1631				Enrolled N=607			
	Res	Nonres	Total	Percent	Res	Nonres	Total	Percent
High School GPA								
2.0 – 2.4	1	1	2	0	1	1	2	0
2.5 – 2.9	35	37	72	5	27	6	33	6
3.0 – 3.5	368	235	603	42	181	55	236	43
3.6 – 4.0	472	289	761	53	224	56	280	51
Valid Cases	876	562	1438	100	433	118	551	100
Means	3.55	3.53	3.54		3.53	3.51	3.52	
Percentile Rank								
1 – 29	7	1	8	1	6	0	6	1
30 – 49	62	32	94	7	38	7	45	8
50 – 59	70	40	110	8	32	9	41	7
60 – 79	307	168	475	33	164	34	198	36
80 – 89	202	110	312	22	87	24	111	20
90 – 99	270	173	443	31	118	34	152	27
Valid Cases	918	524	1442	100	445	108	553	100
Means	77.4	78.5	77.8		75.3	77.9	75.8	
SAT Verbal								
200 – 399	6	9	15	2	5	3	8	2
400 – 499	100	74	174	17	51	14	65	19
500 – 599	238	221	459	46	112	48	160	47
600 – 699	162	144	306	31	67	27	94	27
700 – 800	24	21	45	5	9	7	16	5
Valid Cases	530	469	999	100	244	99	343	100
Means	563	566	565		556	567	559	
SAT Math								
200 – 399	9	2	11	1	8	0	8	2
400 – 499	80	59	139	14	39	16	55	16
500 – 599	221	190	411	41	95	42	137	40
600 – 699	179	186	365	37	85	37	122	36
700 – 800	41	32	73	7	17	4	21	6
Valid Cases	530	469	999	100	244	99	343	100
Means	577	584	580		571	574	572	
ACT Composite								
15 – 18	23	5	28	2	10	2	12	2
19 – 22	243	95	338	24	125	14	139	25
23 – 26	391	165	556	40	187	41	228	41
27 – 36	293	167	460	33	138	33	171	31
Valid Cases	950	432	1382	100	460	90	550	100
Means	24.8	25.3	24.9		24.6	25.7	24.8	
CCHE Index								
35 – 89	1	0	1	0	1	0	1	0
90 – 100	150	98	248	15	88	24	112	19
101 – 114	435	245	680	42	201	54	255	43
115 – 160	382	290	672	42	177	52	229	38
Valid Cases	968	633	1601	100	467	130	597	100
Means	112	114	113		111	113	112	

Office of Budgets and Institutional Analysis
Freshmen Profile
Fall 2002

Veterinary Medicine + Biomed	Admitted N= 401				Enrolled N=177			
	Res	Nonres	Total	Percent	Res	Nonres	Total	Percent
High School GPA								
2.5 – 2.9	5	6	11	3	4	2	6	4
3.0 – 3.5	50	81	131	38	37	20	57	36
3.6 – 4.0	89	111	200	58	61	36	97	61
Valid Cases	144	198	342	100	102	58	160	100
Means	3.63	3.60	3.61		3.62	3.62	3.62	
Percentile Rank								
1 – 29	1	3	4	1	1	1	2	1
30 – 49	6	7	13	4	5	0	5	3
50 – 59	8	6	14	4	6	2	8	5
60 – 79	47	46	93	26	32	11	43	27
80 – 89	40	54	94	27	30	20	50	31
90 – 99	48	86	134	38	32	21	53	33
Valid Cases	150	202	352	100	106	55	161	100
Means	80.2	82.5	81.5		79.2	83.3	80.6	
SAT Verbal								
200 – 399	2	1	3	1	2	1	3	3
400 – 499	10	21	31	12	5	8	13	13
500 – 599	42	83	125	49	30	19	49	49
600 – 699	23	59	82	32	13	18	31	31
700 – 800	1	15	16	6	1	3	4	4
Valid Cases	78	179	257	100	51	49	100	100
Means	563	581	575		558	573	565	
SAT Math								
400 – 499	11	29	40	16	10	9	19	19
500 – 599	45	70	115	45	28	21	49	49
600 – 699	18	73	91	35	11	18	29	29
700 – 800	4	7	11	4	2	1	3	3
Valid Cases	78	179	257	100	51	49	100	100
Means	565	579	575		558	565	562	
ACT Composite								
15 – 18	2	4	6	2	1	2	3	2
19 – 22	40	26	66	21	28	6	34	23
23 – 26	59	61	120	39	46	15	61	41
27 – 36	53	65	118	38	33	17	50	34
Valid Cases	154	156	310	100	108	40	148	100
Means	25.0	25.5	25.2		25.0	25.3	25.1	
CCHE Index								
90 – 100	14	25	39	10	10	10	20	11
101 – 114	72	88	160	40	53	24	77	44
115 – 160	73	127	200	50	48	30	78	45
Valid Cases	159	240	399	100	111	64	175	100
Means	114	116	115		113	115	114	

Office of Budgets and Institutional Analysis
 Profile of **Nonresident** Freshmen Enrolled Fall Semesters
 Five Year Trend in High School Admissions Scores by College

	1998	1999	2000	2001	2002
Mean Composite ACT Score					
Agricultural Sciences	25.3	25.6	25.4	24.9	25.0
Applied Human Sciences	24.2	22.6	23.1	22.6	23.9
Business	23.3	24.0	24.3	24.3	23.6
Engineering	27.2	27.6	27.4	26.6	27.5
Intra–University	23.8	23.9	23.4	23.7	23.9
Liberal Arts	23.6	24.7	25.5	24.8	25.0
Natural Resources	25.2	24.9	24.5	24.7	25.3
Natural Sciences	24.5	25.6	24.8	25.4	25.7
Veterinary Medicine + Biomedical Sci	25.3	24.7	24.8	25.1	25.3
Total	24.7	24.8	24.8	24.7	24.9
Mean High School Grade Point Average					
Agricultural Sciences	3.55	3.55	3.51	3.61	3.53
Applied Human Sciences	3.46	3.40	3.43	3.54	3.48
Business	3.35	3.37	3.39	3.47	3.41
Engineering	3.66	3.58	3.72	3.72	3.82
Intra–University	3.30	3.22	3.27	3.35	3.26
Liberal Arts	3.45	3.41	3.46	3.45	3.51
Natural Resources	3.39	3.46	3.44	3.49	3.42
Natural Sciences	3.52	3.52	3.56	3.57	3.57
Veterinary Medicine + Biomedical Sci	3.55	3.48	3.59	3.70	3.69
Total	3.47	3.44	3.47	3.53	3.49
Mean CCHE Index					
Agricultural Sciences	111	114	112	114	111
Applied Human Sciences	108	105	106	107	108
Business	105	107	108	109	108
Engineering	119	119	122	119	124
Intra–University	106	104	105	106	105
Liberal Arts	109	109	111	110	112
Natural Resources	110	111	112	110	111
Natural Sciences	112	112	113	113	113
Veterinary Medicine + Biomedical Sci	112	109	114	115	115
Total	110	110	111	111	111

Office of Budgets and Institutional Analysis
 Profile of **Resident** Freshmen Enrolled Fall Semesters
 Five Year Trend in High School Admissions Scores by College

	1998	1999	2000	2001	2002
Mean Composite ACT Score					
Agricultural Sciences	24.1	23.7	23.8	24.2	24.5
Applied Human Sciences	23.1	23.3	22.7	22.8	23.0
Business	23.3	23.4	23.1	23.3	23.5
Engineering	26.0	26.0	25.8	25.7	26.0
Intra–University	23.3	23.4	23.1	23.3	23.2
Liberal Arts	24.1	24.1	24.2	24.2	24.7
Natural Resources	24.5	23.9	23.3	23.4	24.2
Natural Sciences	24.6	24.6	24.5	24.2	24.6
Veterinary Medicine + Biomedical Sci	24.5	24.7	24.3	24.7	25.0
Total	24.0	24.1	23.8	23.9	24.0
Mean High School Grade Point Average					
Agricultural Sciences	3.63	3.57	3.63	3.62	3.59
Applied Human Sciences	3.56	3.55	3.57	3.53	3.57
Business	3.47	3.50	3.52	3.51	3.52
Engineering	3.61	3.64	3.70	3.69	3.73
Intra–University	3.43	3.41	3.44	3.46	3.45
Liberal Arts	3.51	3.47	3.54	3.57	3.51
Natural Resources	3.50	3.50	3.59	3.53	3.58
Natural Sciences	3.53	3.56	3.58	3.58	3.58
Veterinary Medicine + Biomedical Sci	3.59	3.64	3.66	3.73	3.67
Total	3.52	3.52	3.56	3.56	3.54
Mean CCHE Index					
Agricultural Sciences	111	109	110	110	110
Applied Human Sciences	108	108	107	107	107
Business	107	107	107	107	107
Engineering	116	117	116	116	117
Intra–University	106	106	106	106	106
Liberal Arts	109	109	110	110	110
Natural Resources	109	108	110	109	110
Natural Sciences	111	111	111	110	111
Veterinary Medicine + Biomedical Sci	112	113	112	114	113
Total	109	109	109	109	109

Office of Budgets and Institutional Analysis
 Profile of **All New** Freshmen Enrolled Fall Semesters
 Five Year Trend in High School Admissions Scores by College

	1998	1999	2000	2001	2002
Mean Composite ACT Score					
Agricultural Sciences	24.6	24.6	24.4	24.4	24.6
Applied Human Sciences	23.3	23.2	22.8	22.8	23.1
Business	23.3	23.5	23.3	23.5	23.5
Engineering	26.2	26.2	26.1	25.9	26.2
Intra–University	23.4	23.4	23.1	23.4	23.3
Liberal Arts	24.1	24.2	24.4	24.3	24.7
Natural Resources	24.8	24.4	23.7	24.0	24.6
Natural Sciences	24.6	24.8	24.5	24.4	24.8
Veterinary Medicine + Biomedical Sci	24.7	24.7	24.4	24.8	25.1
Total	24.2	24.2	24.0	24.0	24.2
Mean High School Grade Point Average					
Agricultural Sciences	3.59	3.56	3.58	3.62	3.57
Applied Human Sciences	3.54	3.52	3.54	3.53	3.55
Business	3.45	3.47	3.49	3.50	3.49
Engineering	3.62	3.63	3.70	3.70	3.75
Intra–University	3.41	3.37	3.41	3.44	3.41
Liberal Arts	3.50	3.46	3.52	3.55	3.51
Natural Resources	3.44	3.48	3.52	3.51	3.51
Natural Sciences	3.53	3.55	3.58	3.58	3.58
Veterinary Medicine + Biomedical Sci	3.58	3.60	3.64	3.72	3.68
Total	3.50	3.50	3.54	3.55	3.53
Mean CCHE Index					
Agricultural Sciences	111	112	111	112	111
Applied Human Sciences	108	107	107	107	107
Business	106	107	107	108	107
Engineering	117	117	117	117	118
Intra–University	106	106	105	106	105
Liberal Arts	109	109	110	110	110
Natural Resources	110	110	111	109	110
Natural Sciences	111	112	112	111	112
Veterinary Medicine + Biomedical Sci	112	112	112	114	114
Total	109	110	110	110	110