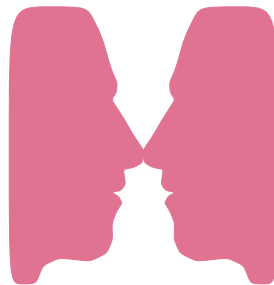


# *Freshmen Profile*

## *2001*



# **Freshmen Profile 2000 Report Highlights**

## Data Highlights

- ◆ the index stayed at its high of 110
- ◆ high school GPA is at a 5 year high
- ◆ mean high school rank dropped several points
- ◆ mean SAT Verbal dropped several points while mean SAT Math remained unchanged
- ◆ mean ACT Composite remained unchanged
- ◆ non-residents have higher test scores and slightly higher indexes
- ◆ residents have a higher rank and high school GPA
- ◆ the percentage of admitted students who enrolled in the range 101-114 increased slightly
- ◆ the percentage of admitted students who enrolled in the range 115-160 remained the same

# **Five Year History**

Office of Budgets and Institutional Analysis  
 Profile of **All New** Freshmen Enrolled Fall Semesters  
 Five Year Trend in High School Admissions Scores by College

	1997	1998	1999	2000	2001
<b>Mean High School Rank</b>					
Agricultural Sciences	81	80	79	77	78
Applied Human Sciences	77	77	76	76	73
Business	73	73	74	74	72
Engineering	80	81	82	83	81
Intra–University	72	72	71	70	70
Liberal Arts	74	75	73	74	73
Natural Resources	72	74	75	75	72
Natural Sciences	77	77	78	77	76
Veterinary Medicine + Biomedical Sci	80	80	81	80	82
<b>Total</b>	<b>75</b>	<b>76</b>	<b>76</b>	<b>76</b>	<b>74</b>
<b>Mean SAT Verbal Score</b>					
Agricultural Sciences	567	557	568	554	563
Applied Human Sciences	524	527	525	526	522
Business	535	526	529	523	526
Engineering	562	574	575	569	567
Intra–University	534	535	537	534	533
Liberal Arts	566	564	567	579	574
Natural Resources	560	570	561	569	571
Natural Sciences	567	561	559	559	552
Veterinary Medicine + Biomedical Sci	556	559	562	571	567
<b>Total</b>	<b>551</b>	<b>551</b>	<b>552</b>	<b>551</b>	<b>549</b>
<b>Mean SAT Math Score</b>					
Agricultural Sciences	563	553	567	547	560
Applied Human Sciences	534	537	528	538	533
Business	568	554	555	547	552
Engineering	608	619	624	617	606
Intra–University	550	543	544	532	543
Liberal Arts	542	544	546	546	548
Natural Resources	557	558	570	557	559
Natural Sciences	574	574	569	566	565
Veterinary Medicine + Biomedical Sci	566	563	564	568	561
<b>Total</b>	<b>562</b>	<b>561</b>	<b>561</b>	<b>557</b>	<b>557</b>

Office of Budgets and Institutional Analysis  
 Profile of **All New** Freshmen Enrolled Fall Semesters  
 Five Year Trend in High School Admissions Scores by College

	1997	1998	1999	2000	2001
<b>Mean Composite ACT Score</b>					
Agricultural Sciences	24.7	24.5	24.6	24.3	24.4
Applied Human Sciences	22.9	23.2	23.2	22.8	22.8
Business	23.8	23.4	23.5	23.2	23.5
Engineering	25.7	26.2	26.1	26.0	25.9
Intra–University	23.4	23.4	23.4	23.2	23.4
Liberal Arts	24.1	24.1	24.2	24.4	24.3
Natural Resources	23.9	24.8	24.5	23.7	24.0
Natural Sciences	24.9	24.6	24.8	24.5	24.4
Veterinary Medicine + Biomedical Sci	24.8	24.7	24.7	24.5	24.8
<b>Total</b>	<b>24.1</b>	<b>24.1</b>	<b>24.2</b>	<b>24.0</b>	<b>24.0</b>
<b>Mean High School Grade Point Average</b>					
Agricultural Sciences	3.56	3.59	3.56	3.58	3.62
Applied Human Sciences	3.50	3.54	3.53	3.54	3.53
Business	3.42	3.45	3.47	3.49	3.50
Engineering	3.58	3.62	3.63	3.70	3.70
Intra–University	3.39	3.42	3.38	3.42	3.44
Liberal Arts	3.44	3.51	3.46	3.52	3.55
Natural Resources	3.43	3.44	3.47	3.52	3.51
Natural Sciences	3.51	3.53	3.56	3.58	3.58
Veterinary Medicine + Biomedical Sci	3.56	3.59	3.59	3.64	3.72
<b>Total</b>	<b>3.47</b>	<b>3.51</b>	<b>3.50</b>	<b>3.54</b>	<b>3.55</b>
<b>Mean CCHE Index</b>					
Agricultural Sciences	112	111	112	111	112
Applied Human Sciences	107	108	107	107	107
Business	107	107	107	107	108
Engineering	115	117	117	117	117
Intra–University	106	106	106	106	106
Liberal Arts	108	109	109	110	110
Natural Resources	108	110	110	111	109
Natural Sciences	112	111	112	112	111
Veterinary Medicine + Biomedical Sci	112	112	112	113	114
<b>Total</b>	<b>109</b>	<b>110</b>	<b>110</b>	<b>110</b>	<b>110</b>

Office of Budgets and Institutional Analysis  
 Profile of **Resident** Freshmen Enrolled Fall Semesters  
 Five Year Trend in High School Admissions Scores by College

	1997	1998	1999	2000	2001
<b>Mean High School Rank</b>					
Agricultural Sciences	78	81	78	78	77
Applied Human Sciences	78	78	78	77	73
Business	75	74	75	75	72
Engineering	81	80	82	83	80
Intra–University	73	72	72	71	71
Liberal Arts	74	76	73	75	75
Natural Resources	74	74	75	76	74
Natural Sciences	77	77	78	77	76
Veterinary Medicine + Biomedical Sci	81	81	82	81	82
<b>Total</b>	<b>76</b>	<b>76</b>	<b>76</b>	<b>76</b>	<b>75</b>
<b>Mean SAT Verbal Score</b>					
Agricultural Sciences	538	541	549	534	546
Applied Human Sciences	518	526	530	526	515
Business	535	532	529	518	527
Engineering	562	572	571	561	561
Intra–University	535	536	538	530	533
Liberal Arts	564	564	564	579	573
Natural Resources	551	568	546	554	568
Natural Sciences	566	559	557	556	551
Veterinary Medicine + Biomedical Sci	547	555	562	565	566
<b>Total</b>	<b>548</b>	<b>550</b>	<b>549</b>	<b>547</b>	<b>546</b>
<b>Mean SAT Math Score</b>					
Agricultural Sciences	561	538	548	520	533
Applied Human Sciences	529	533	526	535	528
Business	571	558	552	543	545
Engineering	608	616	620	605	603
Intra–University	547	540	544	525	538
Liberal Arts	539	540	542	544	548
Natural Resources	547	544	561	533	546
Natural Sciences	571	573	567	565	562
Veterinary Medicine + Biomedical Sci	560	562	559	554	552
<b>Total</b>	<b>561</b>	<b>559</b>	<b>559</b>	<b>550</b>	<b>553</b>

Office of Budgets and Institutional Analysis  
 Profile of **Resident** Freshmen Enrolled Fall Semesters  
 Five Year Trend in High School Admissions Scores by College

	1997	1998	1999	2000	2001
<b>Mean Composite ACT Score</b>					
Agricultural Sciences	24.1	24.1	23.8	23.8	24.2
Applied Human Sciences	22.9	23.0	23.3	22.7	22.8
Business	23.7	23.4	23.4	23.1	23.3
Engineering	25.5	25.9	25.9	25.7	25.7
Intra–University	23.3	23.3	23.4	23.1	23.3
Liberal Arts	23.9	24.1	24.1	24.2	24.2
Natural Resources	23.6	24.5	24.0	23.3	23.4
Natural Sciences	24.7	24.6	24.6	24.4	24.2
Veterinary Medicine + Biomedical Sci	24.5	24.5	24.7	24.3	24.7
<b>Total</b>	<b>24.0</b>	<b>24.0</b>	<b>24.1</b>	<b>23.8</b>	<b>23.9</b>
<b>Mean High School Grade Point Average</b>					
Agricultural Sciences	3.55	3.64	3.58	3.62	3.62
Applied Human Sciences	3.54	3.56	3.56	3.57	3.53
Business	3.47	3.47	3.50	3.51	3.51
Engineering	3.61	3.61	3.64	3.69	3.69
Intra–University	3.42	3.44	3.42	3.45	3.46
Liberal Arts	3.47	3.52	3.47	3.53	3.57
Natural Resources	3.51	3.50	3.49	3.59	3.53
Natural Sciences	3.51	3.53	3.56	3.58	3.58
Veterinary Medicine + Biomedical Sci	3.59	3.60	3.63	3.66	3.73
<b>Total</b>	<b>3.50</b>	<b>3.52</b>	<b>3.52</b>	<b>3.55</b>	<b>3.56</b>
<b>Mean CCHE Index</b>					
Agricultural Sciences	110	111	109	110	110
Applied Human Sciences	107	108	108	107	107
Business	108	107	107	107	107
Engineering	115	116	116	116	116
Intra–University	106	106	106	106	106
Liberal Arts	108	109	109	110	110
Natural Resources	108	109	108	110	109
Natural Sciences	111	111	111	111	110
Veterinary Medicine + Biomedical Sci	112	112	113	112	114
<b>Total</b>	<b>109</b>	<b>109</b>	<b>110</b>	<b>109</b>	<b>109</b>

Office of Budgets and Institutional Analysis  
 Profile of **Nonresident** Freshmen Enrolled Fall Semesters  
 Five Year Trend in High School Admissions Scores by College

	1997	1998	1999	2000	2001
<b>Mean High School Rank</b>					
Agricultural Sciences	83	79	80	76	81
Applied Human Sciences	73	75	72	72	74
Business	66	67	69	68	70
Engineering	77	82	81	84	84
Intra–University	68	70	66	66	68
Liberal Arts	70	73	76	70	69
Natural Resources	71	73	75	73	70
Natural Sciences	76	78	75	76	75
Veterinary Medicine + Biomedical Sci	79	77	77	77	84
<b>Total</b>	<b>74</b>	<b>75</b>	<b>74</b>	<b>73</b>	<b>74</b>
<b>Mean SAT Verbal Score</b>					
Agricultural Sciences	576	564	576	569	574
Applied Human Sciences	537	530	513	525	538
Business	535	510	528	539	525
Engineering	565	579	597	589	583
Intra–University	530	533	534	545	531
Liberal Arts	572	562	577	576	577
Natural Resources	564	572	569	582	574
Natural Sciences	572	564	564	567	556
Veterinary Medicine + Biomedical Sci	571	565	561	578	568
<b>Total</b>	<b>557</b>	<b>553</b>	<b>557</b>	<b>562</b>	<b>555</b>
<b>Mean SAT Math Score</b>					
Agricultural Sciences	563	559	574	568	577
Applied Human Sciences	543	545	531	543	543
Business	561	541	563	560	570
Engineering	608	628	643	651	613
Intra–University	558	554	541	553	558
Liberal Arts	549	559	557	557	549
Natural Resources	563	569	574	577	569
Natural Sciences	584	577	574	570	574
Veterinary Medicine + Biomedical Sci	576	564	577	587	570
<b>Total</b>	<b>565</b>	<b>566</b>	<b>567</b>	<b>572</b>	<b>569</b>



Office of Budgets and Institutional Analysis  
 Profile of **Nonresident** Freshmen Enrolled Fall Semesters  
 Five Year Trend in High School Admissions Scores by College

	1997	1998	1999	2000	2001
<b>Mean Composite ACT Score</b>					
Agricultural Sciences	25.4	25.1	25.6	25.4	24.9
Applied Human Sciences	23.2	24.1	22.5	23.2	22.6
Business	24.2	23.3	24.0	24.3	24.3
Engineering	26.5	27.1	27.6	27.4	26.6
Intra–University	23.7	23.7	23.9	23.4	23.7
Liberal Arts	24.7	23.8	24.8	25.5	24.8
Natural Resources	24.2	25.2	24.9	24.4	24.7
Natural Sciences	25.9	24.6	25.7	24.8	25.4
Veterinary Medicine + Biomedical Sci	25.7	25.5	24.7	25.0	25.1
<b>Total</b>	<b>24.8</b>	<b>24.7</b>	<b>24.8</b>	<b>24.8</b>	<b>24.7</b>
<b>Mean High School Grade Point Average</b>					
Agricultural Sciences	3.56	3.54	3.55	3.51	3.61
Applied Human Sciences	3.40	3.47	3.41	3.44	3.54
Business	3.27	3.36	3.37	3.39	3.47
Engineering	3.50	3.65	3.58	3.71	3.72
Intra–University	3.28	3.32	3.23	3.29	3.35
Liberal Arts	3.33	3.46	3.41	3.46	3.45
Natural Resources	3.37	3.39	3.46	3.44	3.49
Natural Sciences	3.47	3.53	3.53	3.55	3.57
Veterinary Medicine + Biomedical Sci	3.52	3.58	3.47	3.59	3.70
<b>Total</b>	<b>3.41</b>	<b>3.47</b>	<b>3.44</b>	<b>3.48</b>	<b>3.53</b>
<b>Mean CCHE Index</b>					
Agricultural Sciences	113	111	114	112	114
Applied Human Sciences	106	108	105	106	107
Business	106	105	106	108	109
Engineering	115	119	119	121	119
Intra–University	105	106	104	105	106
Liberal Arts	108	109	109	111	110
Natural Resources	108	110	111	112	110
Natural Sciences	113	112	113	113	113
Veterinary Medicine + Biomedical Sci	112	113	109	114	115
<b>Total</b>	<b>109</b>	<b>110</b>	<b>110</b>	<b>111</b>	<b>111</b>

# **Fall 2001 Freshmen**

Office of Budgets and Institutional Analysis  
Freshmen Profile  
Fall 2001

University	Admitted N= 9223				Enrolled N=3720			
	Res	Nonres	Total	Percent	Res	Nonres	Total	Percent
<b>High School GPA</b>								
2.0 – 2.4	5	11	16	0	5	5	10	0
2.5 – 2.9	210	281	491	6	117	70	187	5
3.0 – 3.5	2280	1556	3836	46	1245	369	1614	47
3.6 – 4.0	2482	1592	4074	48	1247	359	1606	47
Valid Cases	4977	3440	8417	100	2614	803	3417	100
<b>Means</b>	<b>3.53</b>	<b>3.48</b>	<b>3.51</b>		<b>3.51</b>	<b>3.46</b>	<b>3.50</b>	
<b>Percentile Rank</b>								
1 – 29	37	50	87	1	24	14	38	1
30 – 49	379	244	623	8	235	73	308	9
50 – 59	490	295	785	10	291	79	370	11
60 – 79	1729	993	2722	33	916	231	1147	33
80 – 89	1162	683	1845	23	581	152	733	21
90 – 99	1292	838	2130	26	627	201	828	24
Valid Cases	5089	3103	8192	100	2674	750	3424	100
<b>Means</b>	<b>75.9</b>	<b>75.5</b>	<b>75.7</b>		<b>74.5</b>	<b>74.1</b>	<b>74.4</b>	
<b>SAT Verbal</b>								
200 – 399	46	35	81	1	26	9	35	2
400 – 499	701	531	1232	21	384	131	515	24
500 – 599	1478	1279	2757	48	742	290	1032	48
600 – 699	736	729	1465	25	345	158	503	23
700 – 800	131	123	254	4	55	22	77	4
Valid Cases	3092	2697	5789	100	1552	610	2162	100
<b>Means</b>	<b>552</b>	<b>560</b>	<b>556</b>		<b>546</b>	<b>555</b>	<b>549</b>	
<b>SAT Math</b>								
200 – 399	40	21	61	1	20	5	25	1
400 – 499	608	360	968	17	344	101	445	21
500 – 599	1481	1213	2694	47	744	269	1013	47
600 – 699	835	944	1779	31	385	208	593	27
700 – 800	128	159	287	5	59	27	86	4
Valid Cases	3092	2697	5789	100	1552	610	2162	100
<b>Means</b>	<b>558</b>	<b>576</b>	<b>567</b>		<b>553</b>	<b>569</b>	<b>557</b>	
<b>ACT Composite</b>								
1 – 14	3	2	5	0	2	0	2	0
15 – 18	171	63	234	3	88	26	114	4
19 – 22	1475	560	2035	28	828	143	971	31
23 – 26	2075	970	3045	42	1058	228	1286	41
27 – 36	1111	754	1865	26	546	186	732	24
Valid Cases	4835	2349	7184	100	2522	583	3105	100
<b>Means</b>	<b>24.1</b>	<b>24.9</b>	<b>24.3</b>		<b>23.9</b>	<b>24.7</b>	<b>24.0</b>	
<b>CCHE Index</b>								
35 – 89	20	12	32	0	12	9	21	1
90 – 100	1052	676	1728	19	618	178	796	22
101 – 114	2577	1672	4249	47	1348	389	1737	47
115 – 160	1702	1368	3070	34	813	300	1113	30
Valid Cases	5351	3728	9079	100	2791	876	3667	100
<b>Means</b>	<b>110</b>	<b>112</b>	<b>111</b>		<b>109</b>	<b>111</b>	<b>110</b>	

Office of Budgets and Institutional Analysis  
Freshmen Profile  
Fall 2001

**Agricultural Sciences****Admitted N= 310****Enrolled N=141****High School GPA**

	Res	Nonres	Total	Percent	Res	Nonres	Total	Percent
2.0 – 2.4	0	1	1	0	0	0	0	0
2.5 – 2.9	4	12	16	6	2	4	6	5
3.0 – 3.5	46	59	105	38	28	20	48	38
3.6 – 4.0	61	97	158	56	41	33	74	58
Valid Cases	111	169	280	100	71	57	128	100
<b>Means</b>	<b>3.57</b>	<b>3.54</b>	<b>3.55</b>		<b>3.58</b>	<b>3.55</b>	<b>3.57</b>	

**Percentile Rank**

1 – 29	1	2	3	1	1	1	2	2
30 – 49	8	1	9	3	4	0	4	3
50 – 59	10	7	17	7	7	3	10	8
60 – 79	37	48	85	33	24	10	34	29
80 – 89	30	39	69	27	18	15	33	28
90 – 99	32	43	75	29	20	15	35	30
Valid Cases	118	140	258	100	74	44	118	100
<b>Means</b>	<b>77.1</b>	<b>80.1</b>	<b>78.7</b>		<b>76.7</b>	<b>80.7</b>	<b>78.2</b>	

**SAT Verbal**

200 – 399	2	1	3	2	1	1	2	2
400 – 499	16	28	44	22	11	5	16	19
500 – 599	21	67	88	44	12	25	37	45
600 – 699	12	38	50	25	7	17	24	29
700 – 800	2	12	14	7	2	2	4	5
Valid Cases	53	146	199	100	33	50	83	100
<b>Means</b>	<b>540</b>	<b>572</b>	<b>564</b>		<b>546</b>	<b>574</b>	<b>563</b>	

**SAT Math**

200 – 399	1	0	1	1	1	0	1	1
400 – 499	14	21	35	18	9	6	15	18
500 – 599	23	76	99	50	16	28	44	53
600 – 699	15	40	55	28	7	13	20	24
700 – 800	0	9	9	5	0	3	3	4
Valid Cases	53	146	199	100	33	50	83	100
<b>Means</b>	<b>535</b>	<b>573</b>	<b>563</b>		<b>533</b>	<b>577</b>	<b>560</b>	

**ACT Composite**

15 – 18	3	4	7	3	3	3	6	6
19 – 22	32	23	55	26	18	8	26	25
23 – 26	47	30	77	36	31	10	41	39
27 – 36	31	42	73	34	19	14	33	31
Valid Cases	113	99	212	100	71	35	106	100
<b>Means</b>	<b>24.3</b>	<b>25.4</b>	<b>24.8</b>		<b>24.2</b>	<b>24.9</b>	<b>24.4</b>	

**CCHE Index**

90 – 100	21	21	42	14	16	8	24	18
101 – 114	60	84	144	48	34	27	61	45
115 – 160	39	76	115	38	25	27	52	38
Valid Cases	120	181	301	100	75	62	137	100
<b>Means</b>	<b>110</b>	<b>114</b>	<b>112</b>		<b>110</b>	<b>114</b>	<b>112</b>	

Office of Budgets and Institutional Analysis  
Freshmen Profile  
Fall 2001

Applied Human Sciences	Admitted N= 693				Enrolled N=314			
	Res	Nonres	Total	Percent	Res	Nonres	Total	Percent
<b>High School GPA</b>								
2.5 – 2.9	17	17	34	5	11	5	16	5
3.0 – 3.5	170	139	309	48	107	37	144	49
3.6 – 4.0	192	103	295	46	110	24	134	46
Valid Cases	379	259	638	100	228	66	294	100
<b>Means</b>	<b>3.53</b>	<b>3.47</b>	<b>3.50</b>		<b>3.51</b>	<b>3.45</b>	<b>3.49</b>	
<b>Percentile Rank</b>								
1 – 29	2	1	3	0	2	0	2	1
30 – 49	30	18	48	8	18	4	22	8
50 – 59	38	28	66	11	31	8	39	14
60 – 79	139	78	217	35	85	24	109	38
80 – 89	92	44	136	22	49	10	59	20
90 – 99	78	68	146	24	42	15	57	20
Valid Cases	379	237	616	100	227	61	288	100
<b>Means</b>	<b>75.0</b>	<b>75.7</b>	<b>75.3</b>		<b>73.3</b>	<b>73.8</b>	<b>73.4</b>	
<b>SAT Verbal</b>								
200 – 399	4	2	6	2	3	1	4	2
400 – 499	65	46	111	28	45	12	57	33
500 – 599	103	97	200	51	62	27	89	51
600 – 699	28	40	68	17	12	9	21	12
700 – 800	5	2	7	2	3	0	3	2
Valid Cases	205	187	392	100	125	49	174	100
<b>Means</b>	<b>525</b>	<b>544</b>	<b>534</b>		<b>515</b>	<b>538</b>	<b>522</b>	
<b>SAT Math</b>								
200 – 399	5	2	7	2	2	0	2	1
400 – 499	52	39	91	23	36	17	53	30
500 – 599	114	89	203	52	67	20	87	50
600 – 699	32	50	82	21	19	11	30	17
700 – 800	2	7	9	2	1	1	2	1
Valid Cases	205	187	392	100	125	49	174	100
<b>Means</b>	<b>534</b>	<b>555</b>	<b>544</b>		<b>528</b>	<b>543</b>	<b>533</b>	
<b>ACT Composite</b>								
15 – 18	19	7	26	5	11	3	14	5
19 – 22	149	63	212	39	99	22	121	45
23 – 26	136	68	204	37	82	15	97	36
27 – 36	63	43	106	19	28	6	34	13
Valid Cases	367	181	548	100	220	46	266	100
<b>Means</b>	<b>23.2</b>	<b>23.8</b>	<b>23.4</b>		<b>22.8</b>	<b>22.6</b>	<b>22.8</b>	
<b>CCHE Index</b>								
35 – 89	2	0	2	0	2	0	2	1
90 – 100	102	73	175	25	70	26	96	31
101 – 114	205	135	340	49	122	33	155	50
115 – 160	89	81	170	25	42	15	57	18
Valid Cases	398	289	687	100	236	74	310	100
<b>Means</b>	<b>108</b>	<b>109</b>	<b>108</b>		<b>107</b>	<b>107</b>	<b>107</b>	

Office of Budgets and Institutional Analysis  
Freshmen Profile  
Fall 2001

Business	Admitted N= 1496				Enrolled N=593			
	Res	Nonres	Total	Percent	Res	Nonres	Total	Percent
<b>High School GPA</b>								
2.0 – 2.4	0	1	1	0	0	1	1	0
2.5 – 2.9	37	49	86	6	18	10	28	5
3.0 – 3.5	422	279	701	50	225	61	286	51
3.6 – 4.0	397	218	615	44	200	49	249	44
Valid Cases	856	547	1403	100	443	121	564	100
<b>Means</b>	<b>3.50</b>	<b>3.43</b>	<b>3.47</b>		<b>3.49</b>	<b>3.43</b>	<b>3.48</b>	
<b>Percentile Rank</b>								
1 – 29	9	12	21	2	7	3	10	2
30 – 49	83	50	133	10	49	17	66	12
50 – 59	81	61	142	11	43	15	58	10
60 – 79	304	178	482	36	154	33	187	34
80 – 89	203	97	300	22	101	25	126	23
90 – 99	173	87	260	19	83	23	106	19
Valid Cases	853	485	1338	100	437	116	553	100
<b>Means</b>	<b>73.7</b>	<b>71.1</b>	<b>72.8</b>		<b>72.4</b>	<b>70.5</b>	<b>72.0</b>	
<b>SAT Verbal</b>								
200 – 399	10	11	21	2	6	1	7	2
400 – 499	152	117	269	29	83	28	111	34
500 – 599	260	211	471	50	115	45	160	48
600 – 699	90	84	174	18	41	10	51	15
700 – 800	3	4	7	1	1	1	2	1
Valid Cases	515	427	942	100	246	85	331	100
<b>Means</b>	<b>532</b>	<b>535</b>	<b>533</b>		<b>527</b>	<b>525</b>	<b>526</b>	
<b>SAT Math</b>								
200 – 399	5	5	10	1	3	0	3	1
400 – 499	97	50	147	16	53	13	66	20
500 – 599	286	230	516	55	138	38	176	53
600 – 699	116	128	244	26	46	31	77	23
700 – 800	11	14	25	3	6	3	9	3
Valid Cases	515	427	942	100	246	85	331	100
<b>Means</b>	<b>551</b>	<b>566</b>	<b>558</b>		<b>545</b>	<b>570</b>	<b>552</b>	
<b>ACT Composite</b>								
1 – 14	1	0	1	0	0	0	0	0
15 – 18	34	15	49	4	20	4	24	5
19 – 22	298	99	397	34	164	25	189	38
23 – 26	356	153	509	44	170	29	199	40
27 – 36	124	79	203	18	67	23	90	18
Valid Cases	813	346	1159	100	421	81	502	100
<b>Means</b>	<b>23.4</b>	<b>24.1</b>	<b>23.6</b>		<b>23.3</b>	<b>24.3</b>	<b>23.5</b>	
<b>CCHE Index</b>								
35 – 89	3	3	6	0	1	2	3	1
90 – 100	207	148	355	24	114	33	147	25
101 – 114	474	275	749	51	237	55	292	50
115 – 160	213	148	361	25	105	36	141	24
Valid Cases	897	574	1471	100	457	126	583	100
<b>Means</b>	<b>108</b>	<b>109</b>	<b>108</b>		<b>107</b>	<b>109</b>	<b>108</b>	

Office of Budgets and Institutional Analysis  
Freshmen Profile  
Fall 2001

Engineering	Admitted N= 959				Enrolled N=357			
	Res	Nonres	Total	Percent	Res	Nonres	Total	Percent
<b>High School GPA</b>								
2.5 – 2.9	2	2	4	0	0	0	0	0
3.0 – 3.5	169	123	292	36	91	26	117	38
3.6 – 4.0	314	209	523	64	142	52	194	62
Valid Cases	485	334	819	100	233	78	311	100
<b>Means</b>	<b>3.65</b>	<b>3.63</b>	<b>3.64</b>		<b>3.63</b>	<b>3.64</b>	<b>3.63</b>	
<b>Percentile Rank</b>								
1 – 29	0	1	1	0	0	0	0	0
30 – 49	16	12	28	3	10	0	10	3
50 – 59	29	19	48	6	18	4	22	7
60 – 79	146	87	233	27	73	22	95	29
80 – 89	133	92	225	26	66	20	86	26
90 – 99	199	116	315	37	85	30	115	35
Valid Cases	523	327	850	100	252	76	328	100
<b>Means</b>	<b>82.0</b>	<b>81.5</b>	<b>81.8</b>		<b>80.3</b>	<b>83.6</b>	<b>81.0</b>	
<b>SAT Verbal</b>								
200 – 399	2	4	6	1	1	0	1	0
400 – 499	68	41	109	17	32	7	39	17
500 – 599	180	140	320	49	84	30	114	49
600 – 699	88	92	180	28	43	24	67	29
700 – 800	17	18	35	5	7	4	11	5
Valid Cases	355	295	650	100	167	65	232	100
<b>Means</b>	<b>561</b>	<b>574</b>	<b>567</b>		<b>561</b>	<b>583</b>	<b>567</b>	
<b>SAT Math</b>								
400 – 499	13	3	16	2	8	1	9	4
500 – 599	140	94	234	36	70	25	95	41
600 – 699	165	154	319	49	71	33	104	45
700 – 800	37	44	81	12	18	6	24	10
Valid Cases	355	295	650	100	167	65	232	100
<b>Means</b>	<b>609</b>	<b>627</b>	<b>617</b>		<b>603</b>	<b>613</b>	<b>606</b>	
<b>ACT Composite</b>								
15 – 18	2	0	2	0	2	0	2	1
19 – 22	61	22	83	11	29	7	36	12
23 – 26	250	110	360	48	114	20	134	46
27 – 36	182	126	308	41	89	32	121	41
Valid Cases	495	258	753	100	234	59	293	100
<b>Means</b>	<b>25.7</b>	<b>26.4</b>	<b>25.9</b>		<b>25.7</b>	<b>26.6</b>	<b>25.9</b>	
<b>CCHE Index</b>								
90 – 100	1	3	4	0	1	1	2	1
101 – 114	254	162	416	45	131	39	170	48
115 – 160	293	214	507	55	131	48	179	51
Valid Cases	548	379	927	100	263	88	351	100
<b>Means</b>	<b>117</b>	<b>118</b>	<b>117</b>		<b>116</b>	<b>119</b>	<b>117</b>	

Office of Budgets and Institutional Analysis  
Freshmen Profile  
Fall 2001

Intra-University	Admitted N= 1779				Enrolled N=722			
	Res	Nonres	Total	Percent	Res	Nonres	Total	Percent
<b>High School GPA</b>								
2.0 – 2.4	4	4	8	0	4	4	8	1
2.5 – 2.9	69	76	145	9	43	15	58	8
3.0 – 3.5	566	306	872	52	304	74	378	54
3.6 – 4.0	439	229	668	39	207	43	250	36
Valid Cases	1078	615	1693	100	558	136	694	100
<b>Means</b>	<b>3.46</b>	<b>3.40</b>	<b>3.44</b>		<b>3.43</b>	<b>3.31</b>	<b>3.41</b>	
<b>Percentile Rank</b>								
1 – 29	12	15	27	2	8	5	13	2
30 – 49	92	54	146	9	59	18	77	12
50 – 59	141	57	198	13	79	16	95	14
60 – 79	394	166	560	36	205	34	239	36
80 – 89	216	110	326	21	107	23	130	20
90 – 99	196	113	309	20	90	19	109	16
Valid Cases	1051	515	1566	100	548	115	663	100
<b>Means</b>	<b>72.4</b>	<b>72.3</b>	<b>72.4</b>		<b>70.8</b>	<b>68.0</b>	<b>70.3</b>	
<b>SAT Verbal</b>								
200 – 399	12	6	18	2	6	0	6	2
400 – 499	165	106	271	25	88	27	115	29
500 – 599	303	232	535	49	156	58	214	54
600 – 699	119	106	225	21	42	12	54	14
700 – 800	19	14	33	3	9	0	9	2
Valid Cases	618	464	1082	100	301	97	398	100
<b>Means</b>	<b>540</b>	<b>551</b>	<b>545</b>		<b>533</b>	<b>531</b>	<b>533</b>	
<b>SAT Math</b>								
200 – 399	12	2	14	1	4	1	5	1
400 – 499	147	71	218	20	84	17	101	25
500 – 599	314	213	527	49	144	46	190	48
600 – 699	135	151	286	26	65	28	93	23
700 – 800	10	27	37	3	4	5	9	2
Valid Cases	618	464	1082	100	301	97	398	100
<b>Means</b>	<b>542</b>	<b>571</b>	<b>555</b>		<b>538</b>	<b>558</b>	<b>543</b>	
<b>ACT Composite</b>								
1 – 14	2	1	3	0	2	0	2	0
15 – 18	37	10	47	3	7	4	11	2
19 – 22	375	117	492	35	218	25	243	40
23 – 26	417	171	588	42	208	47	255	42
27 – 36	180	91	271	19	81	16	97	16
Valid Cases	1011	390	1401	100	516	92	608	100
<b>Means</b>	<b>23.5</b>	<b>24.1</b>	<b>23.7</b>		<b>23.3</b>	<b>23.7</b>	<b>23.4</b>	
<b>CCHE Index</b>								
35 – 89	3	2	5	0	1	2	3	0
90 – 100	322	180	502	29	188	47	235	33
101 – 114	539	284	823	47	276	65	341	48
115 – 160	251	180	431	24	111	26	137	19
Valid Cases	1115	646	1761	100	576	140	716	100
<b>Means</b>	<b>107</b>	<b>109</b>	<b>108</b>		<b>106</b>	<b>106</b>	<b>106</b>	



Office of Budgets and Institutional Analysis  
Freshmen Profile  
Fall 2001

Liberal Arts	Admitted N= 1547				Enrolled N=562			
	Res	Nonres	Total	Percent	Res	Nonres	Total	Percent
<b>High School GPA</b>								
2.5 – 2.9	44	69	113	8	21	15	36	7
3.0 – 3.5	403	242	645	45	200	45	245	48
3.6 – 4.0	410	258	668	47	192	36	228	45
Valid Cases	857	569	1426	100	413	96	509	100
<b>Means</b>	<b>3.51</b>	<b>3.45</b>	<b>3.49</b>		<b>3.50</b>	<b>3.38</b>	<b>3.48</b>	
<b>Percentile Rank</b>								
1 – 29	8	10	18	1	3	2	5	1
30 – 49	68	47	115	8	38	10	48	9
50 – 59	87	57	144	10	48	14	62	12
60 – 79	316	174	490	35	153	40	193	37
80 – 89	181	106	287	21	85	14	99	19
90 – 99	212	117	329	24	103	16	119	23
Valid Cases	872	511	1383	100	430	96	526	100
<b>Means</b>	<b>75.1</b>	<b>73.2</b>	<b>74.4</b>		<b>74.5</b>	<b>68.8</b>	<b>73.5</b>	
<b>SAT Verbal</b>								
200 – 399	6	4	10	1	2	1	3	1
400 – 499	83	75	158	16	41	14	55	17
500 – 599	255	184	439	45	111	28	139	43
600 – 699	170	137	307	31	87	19	106	33
700 – 800	43	24	67	7	17	6	23	7
Valid Cases	557	424	981	100	258	68	326	100
<b>Means</b>	<b>573</b>	<b>570</b>	<b>572</b>		<b>573</b>	<b>577</b>	<b>574</b>	
<b>SAT Math</b>								
200 – 399	10	5	15	2	6	1	7	2
400 – 499	131	81	212	22	64	21	85	26
500 – 599	257	191	448	46	118	22	140	43
600 – 699	139	130	269	27	60	21	81	25
700 – 800	20	17	37	4	10	3	13	4
Valid Cases	557	424	981	100	258	68	326	100
<b>Means</b>	<b>550</b>	<b>561</b>	<b>555</b>		<b>548</b>	<b>549</b>	<b>548</b>	
<b>ACT Composite</b>								
15 – 18	25	10	35	3	17	3	20	4
19 – 22	221	87	308	26	107	15	122	26
23 – 26	366	173	539	45	175	32	207	44
27 – 36	196	121	317	26	95	23	118	25
Valid Cases	808	391	1199	100	394	73	467	100
<b>Means</b>	<b>24.3</b>	<b>25.0</b>	<b>24.5</b>		<b>24.2</b>	<b>24.8</b>	<b>24.3</b>	
<b>CCHE Index</b>								
35 – 89	2	4	6	0	0	2	2	0
90 – 100	172	108	280	18	93	18	111	20
101 – 114	449	286	735	48	216	52	268	48
115 – 160	305	210	515	34	142	33	175	31
Valid Cases	928	608	1536	100	451	105	556	100
<b>Means</b>	<b>111</b>	<b>111</b>	<b>111</b>		<b>110</b>	<b>110</b>	<b>110</b>	

Office of Budgets and Institutional Analysis  
Freshmen Profile  
Fall 2001

Natural Resources	Admitted N= 252				Enrolled N=103			
	Res	Nonres	Total	Percent	Res	Nonres	Total	Percent
<b>High School GPA</b>								
2.5 – 2.9	2	12	14	6	1	6	7	8
3.0 – 3.5	40	69	109	48	27	22	49	53
3.6 – 4.0	36	67	103	46	19	18	37	40
Valid Cases	78	148	226	100	47	46	93	100
<b>Means</b>	<b>3.53</b>	<b>3.47</b>	<b>3.49</b>		<b>3.51</b>	<b>3.38</b>	<b>3.45</b>	
<b>Percentile Rank</b>								
1 – 29	1	1	2	1	0	1	1	1
30 – 49	6	14	20	9	4	9	13	14
50 – 59	5	13	18	8	4	4	8	9
60 – 79	32	45	77	36	20	14	34	37
80 – 89	20	28	48	23	10	9	19	20
90 – 99	17	31	48	23	8	10	18	19
Valid Cases	81	132	213	100	46	47	93	100
<b>Means</b>	<b>74.7</b>	<b>73.8</b>	<b>74.1</b>		<b>73.7</b>	<b>69.7</b>	<b>71.7</b>	
<b>SAT Verbal</b>								
400 – 499	10	11	21	13	5	2	7	11
500 – 599	20	55	75	46	12	21	33	54
600 – 699	16	37	53	33	8	10	18	30
700 – 800	4	9	13	8	2	1	3	5
Valid Cases	50	112	162	100	27	34	61	100
<b>Means</b>	<b>571</b>	<b>583</b>	<b>580</b>		<b>568</b>	<b>574</b>	<b>571</b>	
<b>SAT Math</b>								
200 – 399	0	1	1	1	0	0	0	0
400 – 499	13	11	24	15	8	4	12	20
500 – 599	22	56	78	48	12	18	30	49
600 – 699	14	42	56	35	7	12	19	31
700 – 800	1	2	3	2	0	0	0	0
Valid Cases	50	112	162	100	27	34	61	100
<b>Means</b>	<b>552</b>	<b>574</b>	<b>567</b>		<b>546</b>	<b>569</b>	<b>559</b>	
<b>ACT Composite</b>								
15 – 18	3	1	4	2	1	0	1	1
19 – 22	22	16	38	22	16	8	24	30
23 – 26	33	51	84	49	17	23	40	50
27 – 36	13	31	44	26	8	7	15	19
Valid Cases	71	99	170	100	42	38	80	100
<b>Means</b>	<b>23.5</b>	<b>25.3</b>	<b>24.6</b>		<b>23.4</b>	<b>24.7</b>	<b>24.0</b>	
<b>CCHE Index</b>								
35 – 89	1	0	1	0	1	0	1	1
90 – 100	16	23	39	16	10	9	19	19
101 – 114	41	73	114	46	24	27	51	50
115 – 160	25	67	92	37	13	17	30	30
Valid Cases	83	163	246	100	48	53	101	100
<b>Means</b>	<b>110</b>	<b>112</b>	<b>111</b>		<b>109</b>	<b>110</b>	<b>109</b>	

Office of Budgets and Institutional Analysis  
Freshmen Profile  
Fall 2001

Natural Sciences	Admitted N= 1705				Enrolled N=712			
	Res	Nonres	Total	Percent	Res	Nonres	Total	Percent
<b>High School GPA</b>								
2.0 – 2.4	1	5	6	0	1	0	1	0
2.5 – 2.9	32	38	70	5	19	13	32	5
3.0 – 3.5	407	239	646	42	223	56	279	43
3.6 – 4.0	536	270	806	53	272	61	333	52
Valid Cases	976	552	1528	100	515	130	645	100
<b>Means</b>	<b>3.56</b>	<b>3.50</b>	<b>3.54</b>		<b>3.53</b>	<b>3.50</b>	<b>3.52</b>	
<b>Percentile Rank</b>								
1 – 29	4	7	11	1	3	2	5	1
30 – 49	70	41	111	7	47	14	61	9
50 – 59	88	43	131	9	52	11	63	10
60 – 79	310	148	458	30	172	36	208	32
80 – 89	240	108	348	23	116	20	136	21
90 – 99	315	163	478	31	142	41	183	28
Valid Cases	1027	510	1537	100	532	124	656	100
<b>Means</b>	<b>78.1</b>	<b>77.0</b>	<b>77.8</b>		<b>75.9</b>	<b>75.3</b>	<b>75.8</b>	
<b>SAT Verbal</b>								
200 – 399	9	6	15	1	6	4	10	2
400 – 499	122	75	197	19	68	25	93	22
500 – 599	288	186	474	45	157	30	187	44
600 – 699	182	129	311	30	83	33	116	28
700 – 800	30	26	56	5	10	5	15	4
Valid Cases	631	422	1053	100	324	97	421	100
<b>Means</b>	<b>561</b>	<b>569</b>	<b>564</b>		<b>551</b>	<b>556</b>	<b>552</b>	
<b>SAT Math</b>								
200 – 399	7	3	10	1	4	2	6	1
400 – 499	112	57	169	16	61	14	75	18
500 – 599	277	174	451	43	150	43	193	46
600 – 699	191	162	353	34	91	34	125	30
700 – 800	44	26	70	7	18	4	22	5
Valid Cases	631	422	1053	100	324	97	421	100
<b>Means</b>	<b>569</b>	<b>581</b>	<b>574</b>		<b>562</b>	<b>574</b>	<b>565</b>	
<b>ACT Composite</b>								
1 – 14	0	1	1	0	0	0	0	0
15 – 18	44	12	56	4	24	6	30	5
19 – 22	273	94	367	27	145	23	168	28
23 – 26	394	140	534	39	210	30	240	40
27 – 36	269	152	421	31	122	44	166	27
Valid Cases	980	399	1379	100	501	103	604	100
<b>Means</b>	<b>24.4</b>	<b>25.2</b>	<b>24.7</b>		<b>24.2</b>	<b>25.4</b>	<b>24.4</b>	
<b>CCHE Index</b>								
35 – 89	8	3	11	1	6	3	9	1
90 – 100	189	90	279	17	109	25	134	19
101 – 114	480	263	743	44	262	57	319	46
115 – 160	395	246	641	38	178	59	237	34
Valid Cases	1072	602	1674	100	555	144	699	100
<b>Means</b>	<b>112</b>	<b>113</b>	<b>112</b>		<b>110</b>	<b>113</b>	<b>111</b>	

Office of Budgets and Institutional Analysis  
Freshmen Profile  
Fall 2001

Veterinary Medicine + Biomed	Admitted N= 482				Enrolled N=216			
	Res	Nonres	Total	Percent	Res	Nonres	Total	Percent
<b>High School GPA</b>								
2.5 – 2.9	3	6	9	2	2	2	4	2
3.0 – 3.5	57	100	157	39	40	28	68	38
3.6 – 4.0	97	141	238	59	64	43	107	60
Valid Cases	157	247	404	100	106	73	179	100
<b>Means</b>	<b>3.62</b>	<b>3.60</b>	<b>3.60</b>		<b>3.62</b>	<b>3.62</b>	<b>3.62</b>	
<b>Percentile Rank</b>								
1 – 29	0	1	1	0	0	0	0	0
30 – 49	6	7	13	3	6	1	7	4
50 – 59	11	10	21	5	9	4	13	7
60 – 79	51	69	120	28	30	18	48	24
80 – 89	47	59	106	25	29	16	45	23
90 – 99	70	100	170	39	54	32	86	43
Valid Cases	185	246	431	100	128	71	199	100
<b>Means</b>	<b>81.7</b>	<b>82.5</b>	<b>82.2</b>		<b>81.7</b>	<b>83.8</b>	<b>82.5</b>	
<b>SAT Verbal</b>								
200 – 399	1	1	2	1	1	1	2	1
400 – 499	20	32	52	16	11	11	22	16
500 – 599	48	107	155	47	33	26	59	43
600 – 699	31	66	97	30	22	24	46	34
700 – 800	8	14	22	7	4	3	7	5
Valid Cases	108	220	328	100	71	65	136	100
<b>Means</b>	<b>564</b>	<b>572</b>	<b>570</b>		<b>566</b>	<b>568</b>	<b>567</b>	
<b>SAT Math</b>								
200 – 399	0	3	3	1	0	1	1	1
400 – 499	29	27	56	17	21	8	29	21
500 – 599	48	90	138	42	29	29	58	43
600 – 699	28	87	115	35	19	25	44	32
700 – 800	3	13	16	5	2	2	4	3
Valid Cases	108	220	328	100	71	65	136	100
<b>Means</b>	<b>552</b>	<b>580</b>	<b>571</b>		<b>552</b>	<b>570</b>	<b>561</b>	
<b>ACT Composite</b>								
15 – 18	4	4	8	2	3	3	6	3
19 – 22	44	39	83	23	32	10	42	23
23 – 26	76	74	150	41	51	22	73	41
27 – 36	53	69	122	34	37	21	58	32
Valid Cases	177	186	363	100	123	56	179	100
<b>Means</b>	<b>24.7</b>	<b>25.4</b>	<b>25.1</b>		<b>24.7</b>	<b>25.1</b>	<b>24.8</b>	
<b>CCHE Index</b>								
35 – 89	1	0	1	0	1	0	1	0
90 – 100	22	30	52	11	17	11	28	13
101 – 114	75	110	185	39	46	34	80	37
115 – 160	92	146	238	50	66	39	105	49
Valid Cases	190	286	476	100	130	84	214	100
<b>Means</b>	<b>114</b>	<b>115</b>	<b>115</b>		<b>114</b>	<b>115</b>	<b>114</b>	

**Fall 2000 Freshmen  
and  
Their Performance  
at CSU  
After One Year**

Office of Budgets and Institutional Analysis  
 Number of New Freshmen by High School GPA & Rank,  
 Test Scores, CCHE Index and CSU GPA  
 CSU GPA after One Year for Freshmen Entering Fall 2000

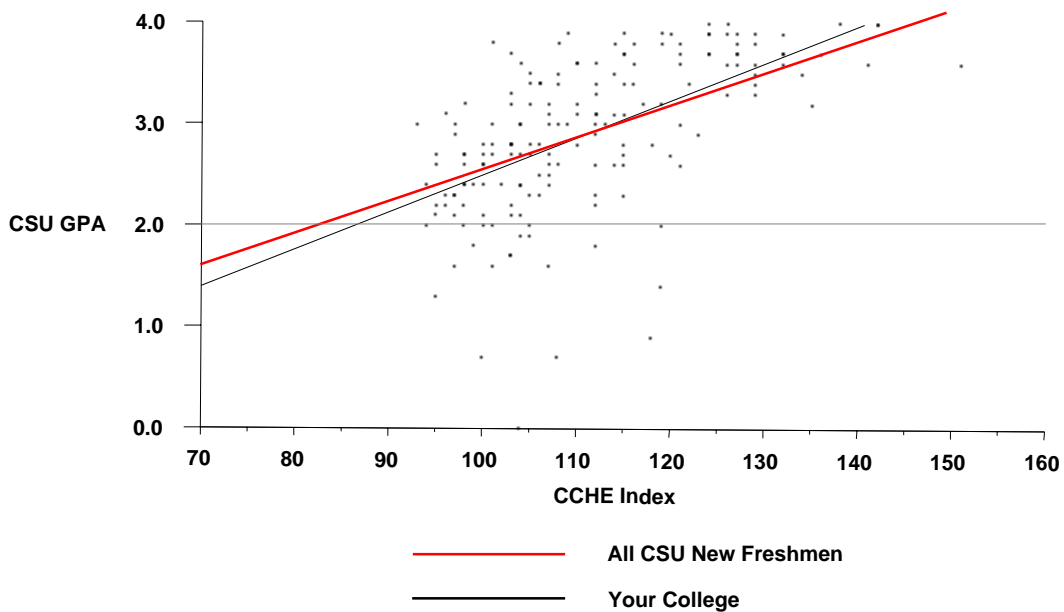
**Agricultural Sciences**

	CSU GPA				Total
	0.1 – 1.9	2.0 – 2.9	3.0 – 3.5	3.6 – 4.0	
High School GPA					
2.5 – 2.9	1	4	1		6
3.0 – 3.5	10	41	13	4	68
3.6 – 4.0	3	23	29	37	92
<b>Total</b>	<b>14</b>	<b>68</b>	<b>43</b>	<b>41</b>	<b>166</b>
Percentile Rank					
30 – 49	1	3		1	5
50 – 59	4	14	4		22
60 – 79	4	22	13	4	43
80 – 89	2	16	12	8	38
90 – 99	2	4	10	25	41
<b>Total</b>	<b>13</b>	<b>59</b>	<b>39</b>	<b>38</b>	<b>149</b>
SAT Verbal					
200 – 399		2	1		3
400 – 499	3	10	7	1	21
500 – 599	7	27	10	8	52
600 – 699		5	5	13	23
700 – 800			1	7	8
<b>Total</b>	<b>10</b>	<b>44</b>	<b>24</b>	<b>29</b>	<b>107</b>
SAT Math					
200 – 399	1				1
400 – 499	3	13	9	3	28
500 – 599	6	26	8	12	52
600 – 699		5	4	12	21
700 – 800			3	2	5
<b>Total</b>	<b>10</b>	<b>44</b>	<b>24</b>	<b>29</b>	<b>107</b>
ACT Composite					
15 – 18		1	1		2
19 – 22	4	22	6	4	36
23 – 26	7	26	21	10	64
27 – 36		4	9	24	37
<b>Total</b>	<b>11</b>	<b>53</b>	<b>37</b>	<b>38</b>	<b>139</b>
CCHE Index					
90 – 100	4	27	4		35
101 – 114	9	32	27	9	77
115 – 160	2	9	13	37	61
<b>Total</b>	<b>15</b>	<b>68</b>	<b>44</b>	<b>46</b>	<b>173</b>

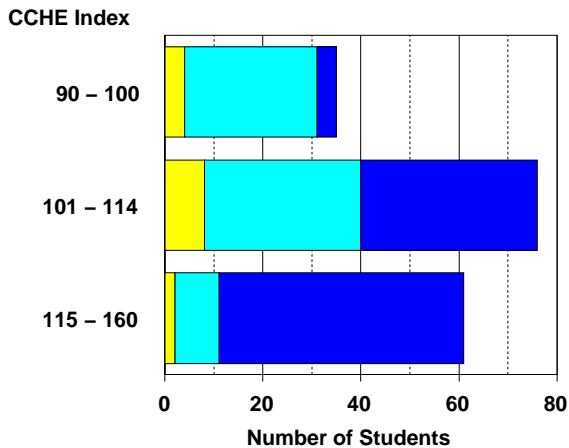
Office of Budgets and Institutional Analysis  
 Number of New Freshmen by High School GPA & Rank,  
 Test Scores, CCHE Index and CSU GPA  
 CSU GPA after One Year for Freshmen Entering Fall 2000

**Agricultural Sciences**

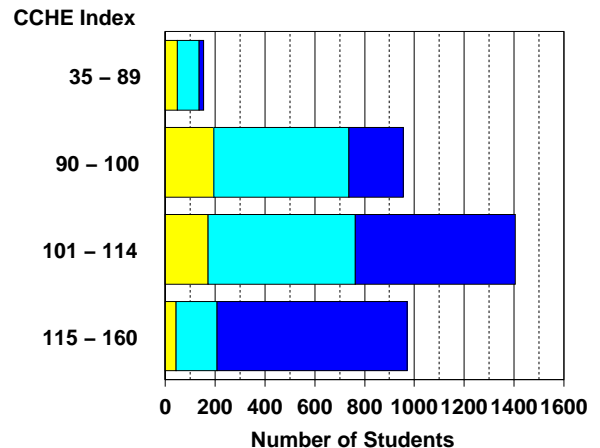
**First Year CSU Grades by CCHE Index**



**Your College**



**All CSU Freshmen**



Office of Budgets and Institutional Analysis  
 Number of New Freshmen by High School GPA & Rank,  
 Test Scores, CCHE Index and CSU GPA  
 CSU GPA after One Year for Freshmen Entering Fall 2000

### Applied Human Sciences

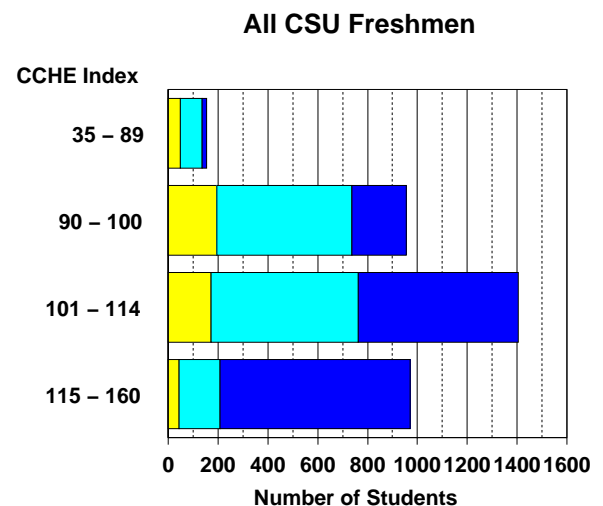
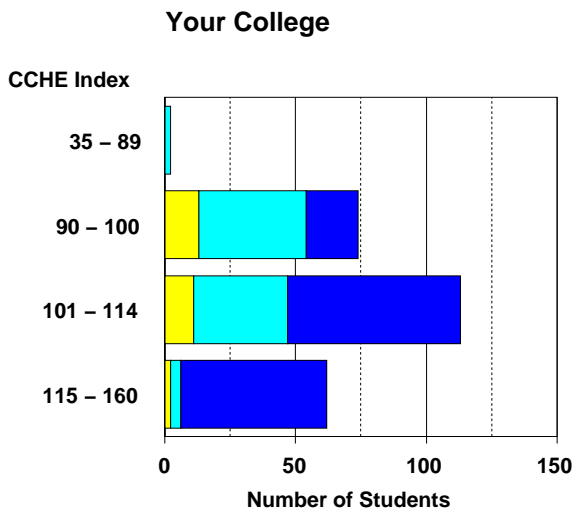
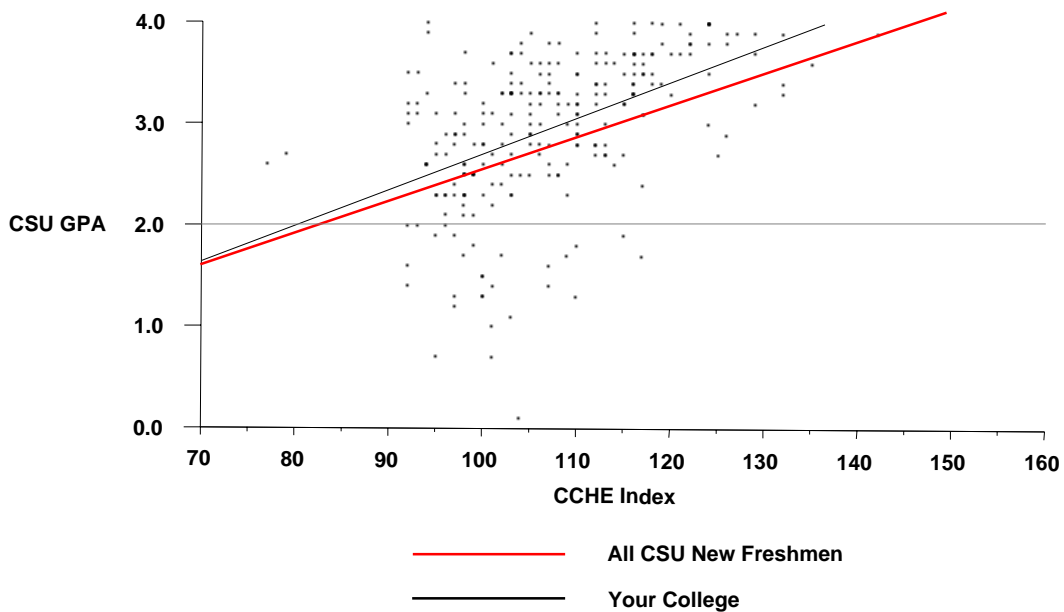
	CSU GPA				Total
	0.1 – 1.9	2.0 – 2.9	3.0 – 3.5	3.6 – 4.0	
High School GPA					
2.5 – 2.9	3	7	3	2	15
3.0 – 3.5	16	45	31	9	101
3.6 – 4.0	7	31	49	45	132
<b>Total</b>	<b>26</b>	<b>83</b>	<b>83</b>	<b>56</b>	<b>248</b>
Percentile Rank					
1 – 29	1	1			2
30 – 49	3	10	1	1	15
50 – 59	1	11	5	1	18
60 – 79	12	35	31	12	90
80 – 89	4	19	21	14	58
90 – 99	4	4	22	26	56
<b>Total</b>	<b>25</b>	<b>80</b>	<b>80</b>	<b>54</b>	<b>239</b>
SAT Verbal					
200 – 399		4			4
400 – 499	8	12	16	5	41
500 – 599	6	18	17	19	60
600 – 699	1	5	6	11	23
700 – 800		1			1
<b>Total</b>	<b>15</b>	<b>40</b>	<b>39</b>	<b>35</b>	<b>129</b>
SAT Math					
200 – 399		2	1		3
400 – 499	7	11	12	3	33
500 – 599	6	24	20	19	69
600 – 699	2	3	6	12	23
700 – 800				1	1
<b>Total</b>	<b>15</b>	<b>40</b>	<b>39</b>	<b>35</b>	<b>129</b>
ACT Composite					
15 – 18		7	4	1	12
19 – 22	15	35	38	9	97
23 – 26	7	23	28	32	90
27 – 36	2	3	5	12	22
<b>Total</b>	<b>24</b>	<b>68</b>	<b>75</b>	<b>54</b>	<b>221</b>
CCHE Index					
35 – 89		2			2
90 – 100	13	41	17	3	74
101 – 114	11	36	46	20	113
115 – 160	2	4	22	34	62
<b>Total</b>	<b>26</b>	<b>83</b>	<b>85</b>	<b>57</b>	<b>251</b>



Office of Budgets and Institutional Analysis  
 Number of New Freshmen by High School GPA & Rank,  
 Test Scores, CCHE Index and CSU GPA  
 CSU GPA after One Year for Freshmen Entering Fall 2000

**Applied Human Sciences**

**First Year CSU Grades by CCHE Index**



Office of Budgets and Institutional Analysis  
 Number of New Freshmen by High School GPA & Rank,  
 Test Scores, CCHE Index and CSU GPA  
 CSU GPA after One Year for Freshmen Entering Fall 2000

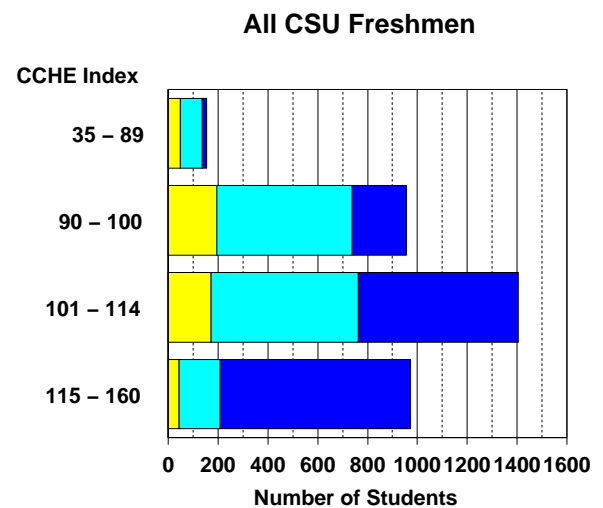
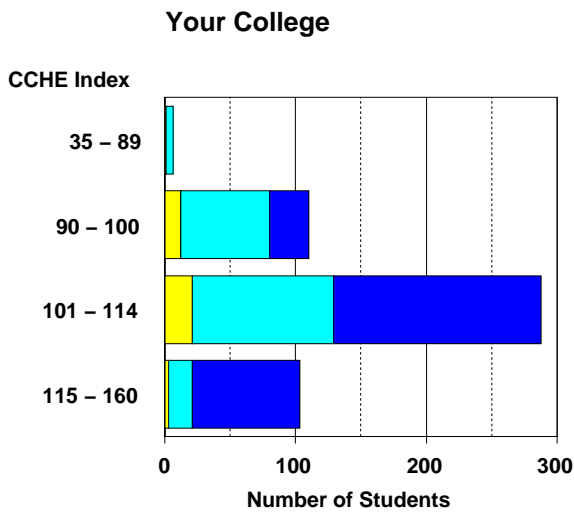
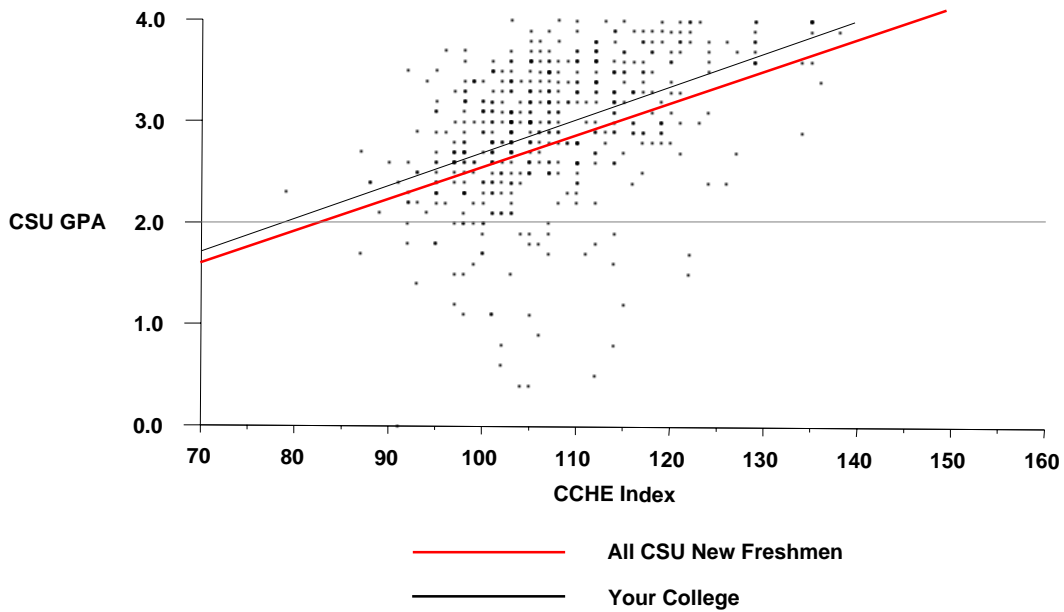
**Business**

	CSU GPA				Total
	0.1 – 1.9	2.0 – 2.9	3.0 – 3.5	3.6 – 4.0	
High School GPA					
2.0 – 2.4		1			1
2.5 – 2.9	4	19	5		28
3.0 – 3.5	27	113	88	20	248
3.6 – 4.0	7	66	75	74	222
<b>Total</b>	<b>38</b>	<b>199</b>	<b>168</b>	<b>94</b>	<b>499</b>
Percentile Rank					
1 – 29		2			2
30 – 49	8	17	8	3	36
50 – 59	5	24	11	4	44
60 – 79	11	89	72	21	193
80 – 89	10	38	42	27	117
90 – 99	2	13	24	44	83
<b>Total</b>	<b>36</b>	<b>183</b>	<b>157</b>	<b>99</b>	<b>475</b>
SAT Verbal					
200 – 399	2	6		1	9
400 – 499	9	44	24	11	88
500 – 599	11	51	61	33	156
600 – 699	6	15	9	12	42
700 – 800				3	3
<b>Total</b>	<b>28</b>	<b>116</b>	<b>94</b>	<b>60</b>	<b>298</b>
SAT Math					
200 – 399	2	4	1	1	8
400 – 499	5	32	16	8	61
500 – 599	13	57	47	28	145
600 – 699	8	22	30	17	77
700 – 800		1		6	7
<b>Total</b>	<b>28</b>	<b>116</b>	<b>94</b>	<b>60</b>	<b>298</b>
ACT Composite					
15 – 18	1	12	1	1	15
19 – 22	10	74	59	25	168
23 – 26	12	76	71	38	197
27 – 36	3	12	13	29	57
<b>Total</b>	<b>26</b>	<b>174</b>	<b>144</b>	<b>93</b>	<b>437</b>
CCHE Index					
35 – 89	1	5			6
90 – 100	13	68	27	3	111
101 – 114	21	108	114	45	288
115 – 160	3	18	29	53	103
<b>Total</b>	<b>38</b>	<b>199</b>	<b>170</b>	<b>101</b>	<b>508</b>

Office of Budgets and Institutional Analysis  
 Number of New Freshmen by High School GPA & Rank,  
 Test Scores, CCHE Index and CSU GPA  
 CSU GPA after One Year for Freshmen Entering Fall 2000

**Business**

**First Year CSU Grades by CCHE Index**



Office of Budgets and Institutional Analysis  
 Number of New Freshmen by High School GPA & Rank,  
 Test Scores, CCHE Index and CSU GPA  
 CSU GPA after One Year for Freshmen Entering Fall 2000

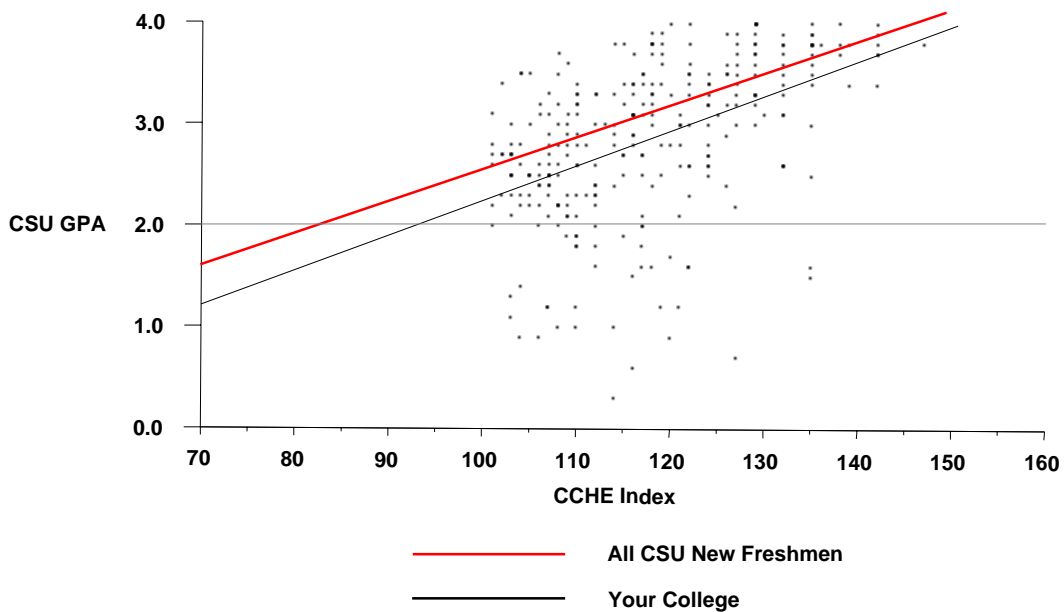
**Engineering**

	CSU GPA				Total
	0.1 – 1.9	2.0 – 2.9	3.0 – 3.5	3.6 – 4.0	
High School GPA					
2.5 – 2.9	1	1	1		3
3.0 – 3.5	16	51	14	2	83
3.6 – 4.0	17	51	70	44	182
<b>Total</b>	<b>34</b>	<b>103</b>	<b>85</b>	<b>46</b>	<b>268</b>
Percentile Rank					
30 – 49	1	1	1		3
50 – 59	3	7	2		12
60 – 79	11	48	17	3	79
80 – 89	11	25	33	9	78
90 – 99	5	21	34	47	107
<b>Total</b>	<b>31</b>	<b>102</b>	<b>87</b>	<b>59</b>	<b>279</b>
SAT Verbal					
200 – 399		1		1	2
400 – 499	1	15	9	3	28
500 – 599	11	39	32	18	100
600 – 699	8	17	15	17	57
700 – 800	1		6	8	15
<b>Total</b>	<b>21</b>	<b>72</b>	<b>62</b>	<b>47</b>	<b>202</b>
SAT Math					
400 – 499		3	1	2	6
500 – 599	6	37	18	7	68
600 – 699	13	29	37	24	103
700 – 800	2	3	6	14	25
<b>Total</b>	<b>21</b>	<b>72</b>	<b>62</b>	<b>47</b>	<b>202</b>
ACT Composite					
15 – 18		1			1
19 – 22	2	19	6	1	28
23 – 26	14	53	43	16	126
27 – 36	13	24	28	29	94
<b>Total</b>	<b>29</b>	<b>97</b>	<b>77</b>	<b>46</b>	<b>249</b>
CCHE Index					
101 – 114	19	75	28	3	125
115 – 160	15	35	63	56	169
<b>Total</b>	<b>34</b>	<b>110</b>	<b>91</b>	<b>59</b>	<b>294</b>

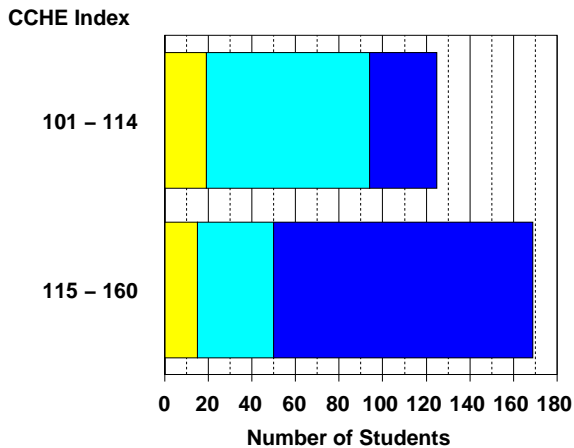
Office of Budgets and Institutional Analysis  
 Number of New Freshmen by High School GPA & Rank,  
 Test Scores, CCHE Index and CSU GPA  
 CSU GPA after One Year for Freshmen Entering Fall 2000

**Engineering**

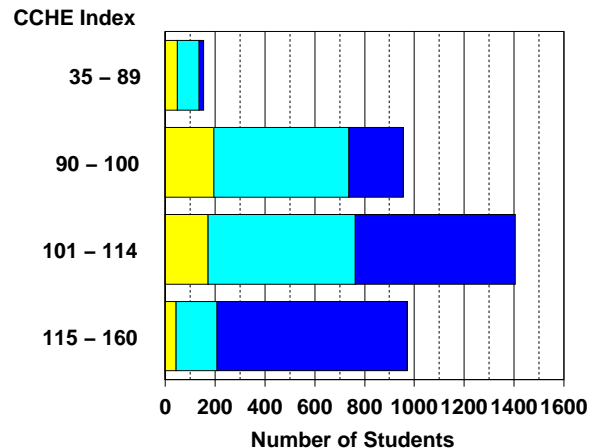
**First Year CSU Grades by CCHE Index**



**Your College**



**All CSU Freshmen**



Office of Budgets and Institutional Analysis  
 Number of New Freshmen by High School GPA & Rank,  
 Test Scores, CCHE Index and CSU GPA  
 CSU GPA after One Year for Freshmen Entering Fall 2000

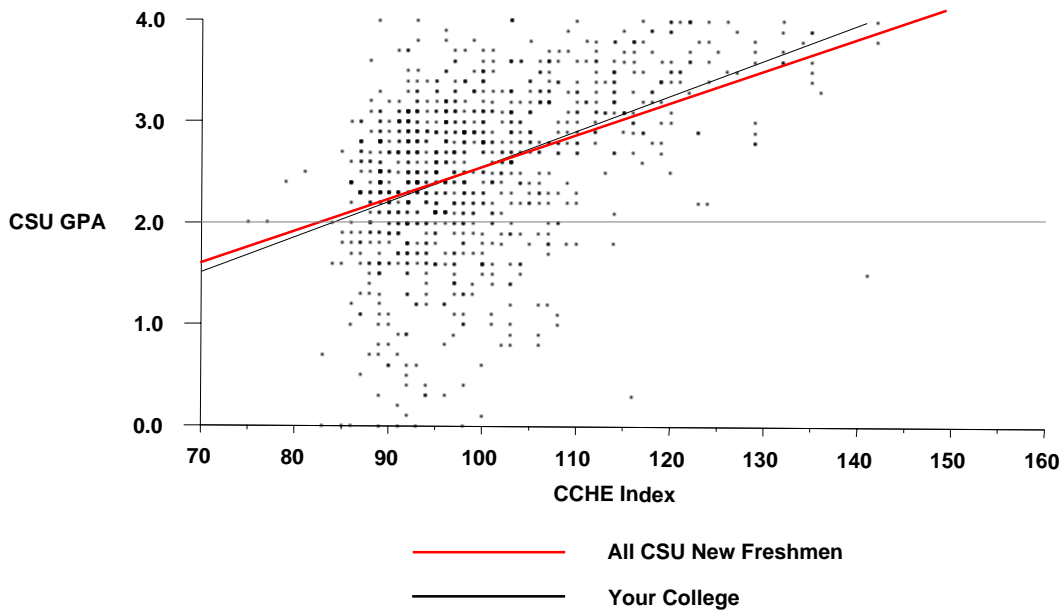
**Intra-University**

	CSU GPA				Total
	0.1 – 1.9	2.0 – 2.9	3.0 – 3.5	3.6 – 4.0	
High School GPA					
2.0 – 2.4	12	20	6		38
2.5 – 2.9	84	157	40	8	289
3.0 – 3.5	86	238	98	25	447
3.6 – 4.0	18	49	77	54	198
<b>Total</b>	<b>200</b>	<b>464</b>	<b>221</b>	<b>87</b>	<b>972</b>
Percentile Rank					
1 – 29	26	36	11	2	75
30 – 49	60	128	33	6	227
50 – 59	28	82	31	4	145
60 – 79	49	136	61	21	267
80 – 89	14	30	39	17	100
90 – 99	1	10	27	39	77
<b>Total</b>	<b>178</b>	<b>422</b>	<b>202</b>	<b>89</b>	<b>891</b>
SAT Verbal					
200 – 399	15	19	1	3	38
400 – 499	41	105	46	8	200
500 – 599	38	115	69	30	252
600 – 699	12	25	21	12	70
700 – 800	1		2	5	8
<b>Total</b>	<b>107</b>	<b>264</b>	<b>139</b>	<b>58</b>	<b>568</b>
SAT Math					
200 – 399	6	16	10	2	34
400 – 499	42	108	43	14	207
500 – 599	42	107	69	25	243
600 – 699	16	31	15	17	79
700 – 800	1	2	2		5
<b>Total</b>	<b>107</b>	<b>264</b>	<b>139</b>	<b>58</b>	<b>568</b>
ACT Composite					
1 – 14		1	1		2
15 – 18	28	56	13	2	99
19 – 22	88	212	78	14	392
23 – 26	38	107	75	32	252
27 – 36	11	16	28	29	84
<b>Total</b>	<b>165</b>	<b>392</b>	<b>195</b>	<b>77</b>	<b>829</b>
CCHE Index					
35 – 89	49	80	10	2	141
90 – 100	112	272	103	14	501
101 – 114	37	97	79	31	244
115 – 160	2	17	34	47	100
<b>Total</b>	<b>200</b>	<b>466</b>	<b>226</b>	<b>94</b>	<b>986</b>

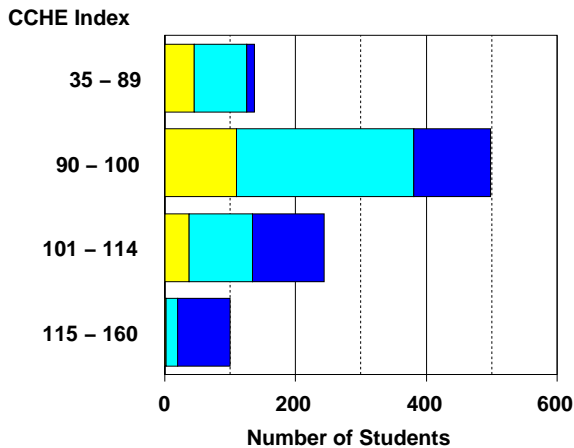
Office of Budgets and Institutional Analysis  
 Number of New Freshmen by High School GPA & Rank,  
 Test Scores, CCHE Index and CSU GPA  
 CSU GPA after One Year for Freshmen Entering Fall 2000

**Intra-University**

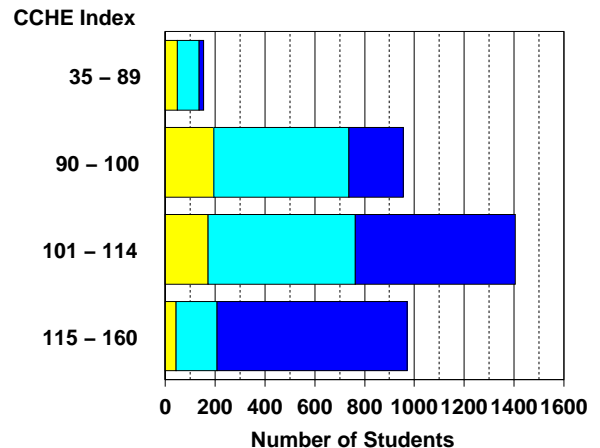
**First Year CSU Grades by CCHE Index**



**Your College**



**All CSU Freshmen**



Office of Budgets and Institutional Analysis  
 Number of New Freshmen by High School GPA & Rank,  
 Test Scores, CCHE Index and CSU GPA  
 CSU GPA after One Year for Freshmen Entering Fall 2000

**Liberal Arts**

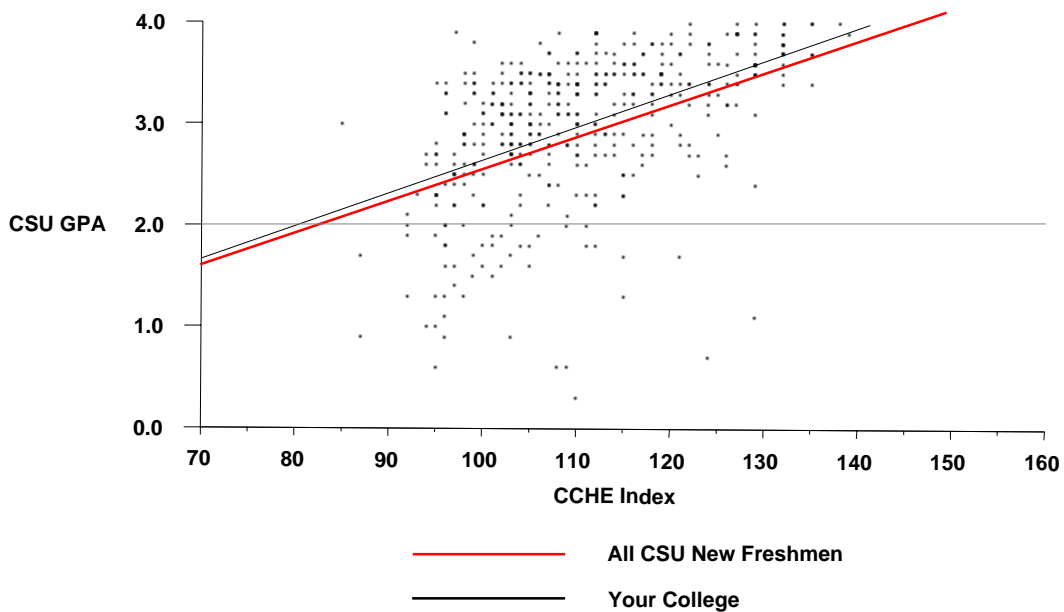
	CSU GPA				Total
	0.1 – 1.9	2.0 – 2.9	3.0 – 3.5	3.6 – 4.0	
High School GPA					
2.0 – 2.4		1			1
2.5 – 2.9	11	15	8	1	35
3.0 – 3.5	27	73	66	13	179
3.6 – 4.0	4	40	83	60	187
<b>Total</b>	<b>42</b>	<b>129</b>	<b>157</b>	<b>74</b>	<b>402</b>
Percentile Rank					
1 – 29		3			3
30 – 49	12	18	11	2	43
50 – 59	5	16	18	4	43
60 – 79	13	42	50	11	116
80 – 89	6	25	44	20	95
90 – 99	1	18	37	42	98
<b>Total</b>	<b>37</b>	<b>122</b>	<b>160</b>	<b>79</b>	<b>398</b>
SAT Verbal					
200 – 399		3			3
400 – 499	6	13	17	2	38
500 – 599	7	42	44	19	112
600 – 699	8	18	37	29	92
700 – 800		3	4	13	20
<b>Total</b>	<b>21</b>	<b>79</b>	<b>102</b>	<b>63</b>	<b>265</b>
SAT Math					
200 – 399		3			3
400 – 499	8	22	24	3	57
500 – 599	8	43	59	37	147
600 – 699	5	10	18	21	54
700 – 800		1	1	2	4
<b>Total</b>	<b>21</b>	<b>79</b>	<b>102</b>	<b>63</b>	<b>265</b>
ACT Composite					
15 – 18	3	4	3		10
19 – 22	13	36	38	8	95
23 – 26	12	56	69	25	162
27 – 36	7	18	31	40	96
<b>Total</b>	<b>35</b>	<b>114</b>	<b>141</b>	<b>73</b>	<b>363</b>
CCHE Index					
35 – 89	2		1		3
90 – 100	20	44	19	2	85
101 – 114	16	64	98	23	201
115 – 160	5	23	50	62	140
<b>Total</b>	<b>43</b>	<b>131</b>	<b>168</b>	<b>87</b>	<b>429</b>



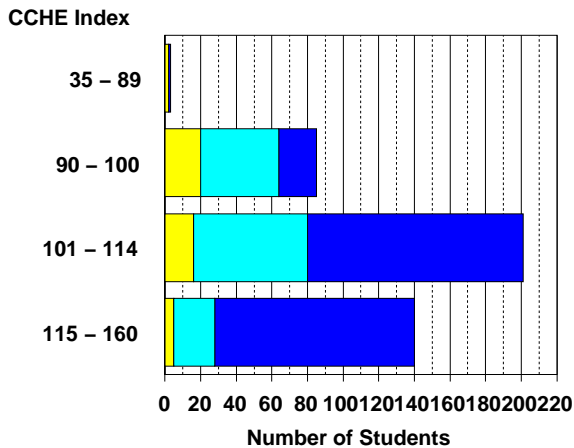
Office of Budgets and Institutional Analysis  
 Number of New Freshmen by High School GPA & Rank,  
 Test Scores, CCHE Index and CSU GPA  
 CSU GPA after One Year for Freshmen Entering Fall 2000

**Liberal Arts**

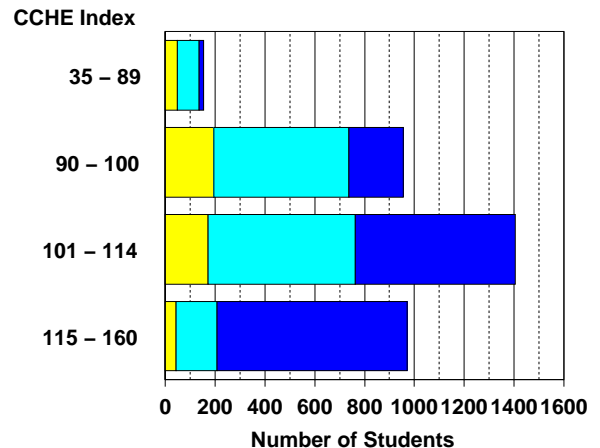
**First Year CSU Grades by CCHE Index**



**Your College**



**All CSU Freshmen**



Office of Budgets and Institutional Analysis  
 Number of New Freshmen by High School GPA & Rank,  
 Test Scores, CCHE Index and CSU GPA  
 CSU GPA after One Year for Freshmen Entering Fall 2000

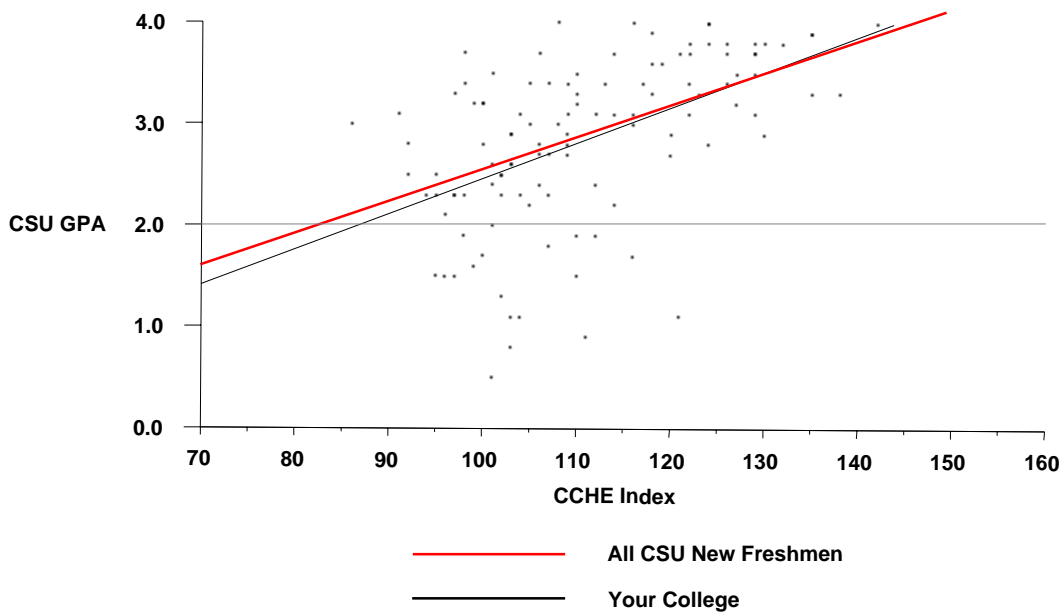
**Natural Resources**

	CSU GPA				Total
	0.1 – 1.9	2.0 – 2.9	3.0 – 3.5	3.6 – 4.0	
High School GPA					
2.0 – 2.4		1			1
2.5 – 2.9	2	6			8
3.0 – 3.5	9	21	14	5	49
3.6 – 4.0	7	7	16	15	45
<b>Total</b>	<b>18</b>	<b>35</b>	<b>30</b>	<b>20</b>	<b>103</b>
Percentile Rank					
1 – 29		1			1
30 – 49	1	4	2		7
50 – 59	2	5	2	1	10
60 – 79	10	14	12	2	38
80 – 89	3	6	6	2	17
90 – 99	1	2	8	18	29
<b>Total</b>	<b>17</b>	<b>32</b>	<b>30</b>	<b>23</b>	<b>102</b>
SAT Verbal					
200 – 399		1			1
400 – 499	4	5	7	2	18
500 – 599	5	11	9	3	28
600 – 699	2	7	8	11	28
700 – 800		1	3	2	6
<b>Total</b>	<b>11</b>	<b>25</b>	<b>27</b>	<b>18</b>	<b>81</b>
SAT Math					
400 – 499	3	4	8	1	16
500 – 599	5	18	10	7	40
600 – 699	3	2	8	10	23
700 – 800		1	1		2
<b>Total</b>	<b>11</b>	<b>25</b>	<b>27</b>	<b>18</b>	<b>81</b>
ACT Composite					
15 – 18		1	2		3
19 – 22	9	14	5	1	29
23 – 26	4	9	14	7	34
27 – 36	1	2	6	6	15
<b>Total</b>	<b>14</b>	<b>26</b>	<b>27</b>	<b>14</b>	<b>81</b>
CCHE Index					
35 – 89			1		1
90 – 100	6	10	6	1	23
101 – 114	10	22	14	3	49
115 – 160	2	4	14	20	40
<b>Total</b>	<b>18</b>	<b>36</b>	<b>35</b>	<b>24</b>	<b>113</b>

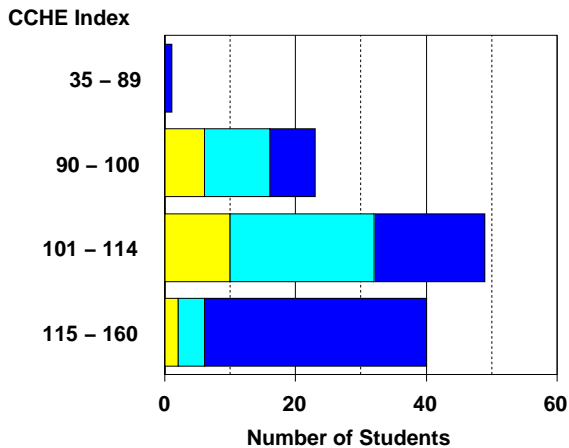
Office of Budgets and Institutional Analysis  
 Number of New Freshmen by High School GPA & Rank,  
 Test Scores, CCHE Index and CSU GPA  
 CSU GPA after One Year for Freshmen Entering Fall 2000

**Natural Resources**

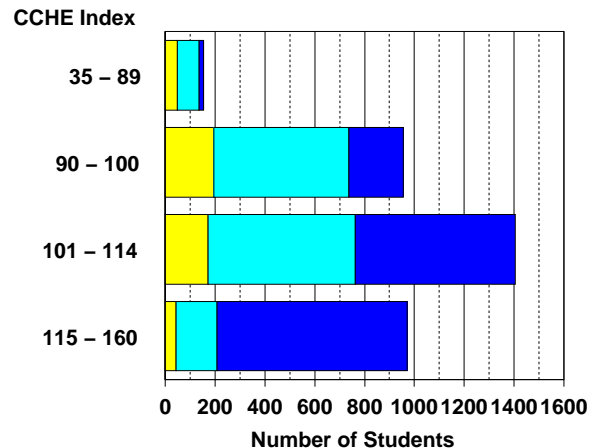
**First Year CSU Grades by CCHE Index**



**Your College**



**All CSU Freshmen**



Office of Budgets and Institutional Analysis  
 Number of New Freshmen by High School GPA & Rank,  
 Test Scores, CCHE Index and CSU GPA  
 CSU GPA after One Year for Freshmen Entering Fall 2000

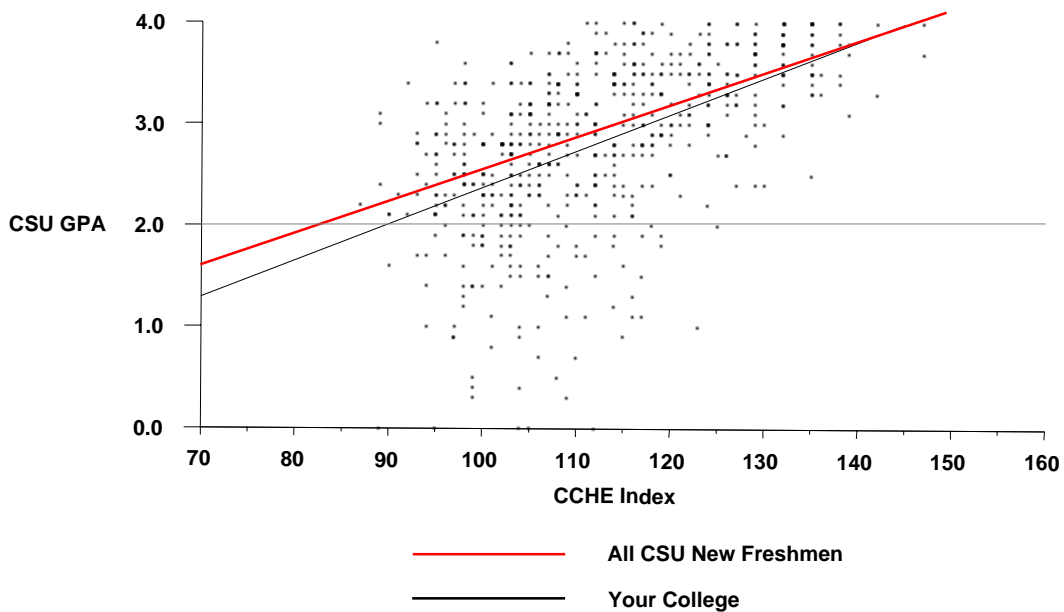
**Natural Sciences**

	CSU GPA				Total
	0.1 – 1.9	2.0 – 2.9	3.0 – 3.5	3.6 – 4.0	
High School GPA					
2.5 – 2.9	16	12	1	1	30
3.0 – 3.5	55	131	48	11	245
3.6 – 4.0	14	86	118	73	291
<b>Total</b>	<b>85</b>	<b>229</b>	<b>167</b>	<b>85</b>	<b>566</b>
Percentile Rank					
1 – 29	1	2		1	4
30 – 49	13	24	2		39
50 – 59	18	19	9		46
60 – 79	32	99	50	16	197
80 – 89	13	47	51	19	130
90 – 99	4	35	60	69	168
<b>Total</b>	<b>81</b>	<b>226</b>	<b>172</b>	<b>105</b>	<b>584</b>
SAT Verbal					
200 – 399		6			6
400 – 499	15	45	23	6	89
500 – 599	29	62	48	25	164
600 – 699	7	20	43	34	104
700 – 800	2	3	8	13	26
<b>Total</b>	<b>53</b>	<b>136</b>	<b>122</b>	<b>78</b>	<b>389</b>
SAT Math					
200 – 399		6		1	7
400 – 499	11	39	20	6	76
500 – 599	22	60	57	23	162
600 – 699	18	26	36	42	122
700 – 800	2	5	9	6	22
<b>Total</b>	<b>53</b>	<b>136</b>	<b>122</b>	<b>78</b>	<b>389</b>
ACT Composite					
15 – 18	4	9	3		16
19 – 22	20	74	34	14	142
23 – 26	35	87	59	22	203
27 – 36	17	32	56	54	159
<b>Total</b>	<b>76</b>	<b>202</b>	<b>152</b>	<b>90</b>	<b>520</b>
CCHE Index					
35 – 89	1	2	2		5
90 – 100	29	67	15	2	113
101 – 114	46	121	70	19	256
115 – 160	10	43	93	89	235
<b>Total</b>	<b>86</b>	<b>233</b>	<b>180</b>	<b>110</b>	<b>609</b>

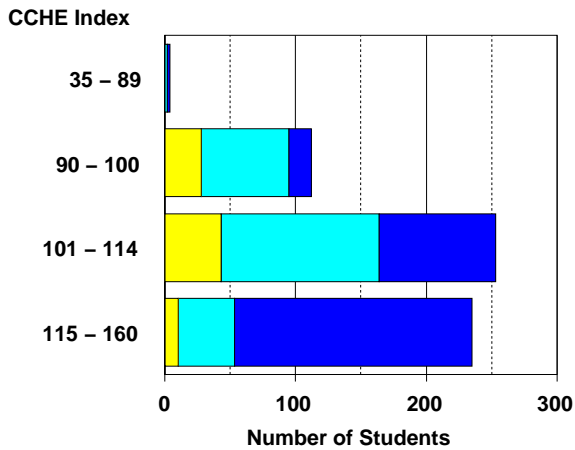
Office of Budgets and Institutional Analysis  
 Number of New Freshmen by High School GPA & Rank,  
 Test Scores, CCHE Index and CSU GPA  
 CSU GPA after One Year for Freshmen Entering Fall 2000

**Natural Sciences**

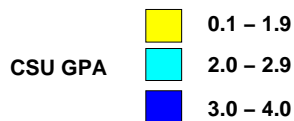
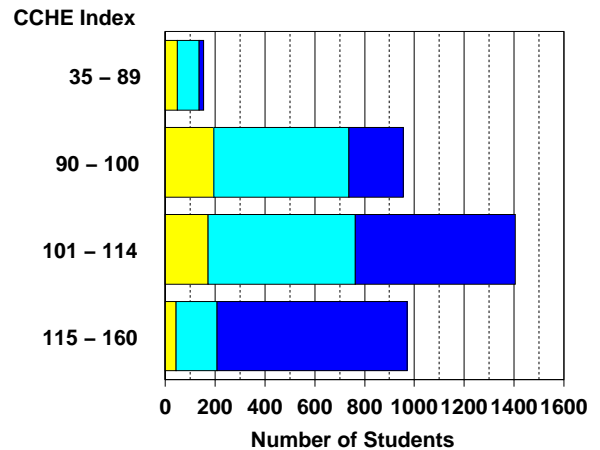
**First Year CSU Grades by CCHE Index**



**Your College**



**All CSU Freshmen**



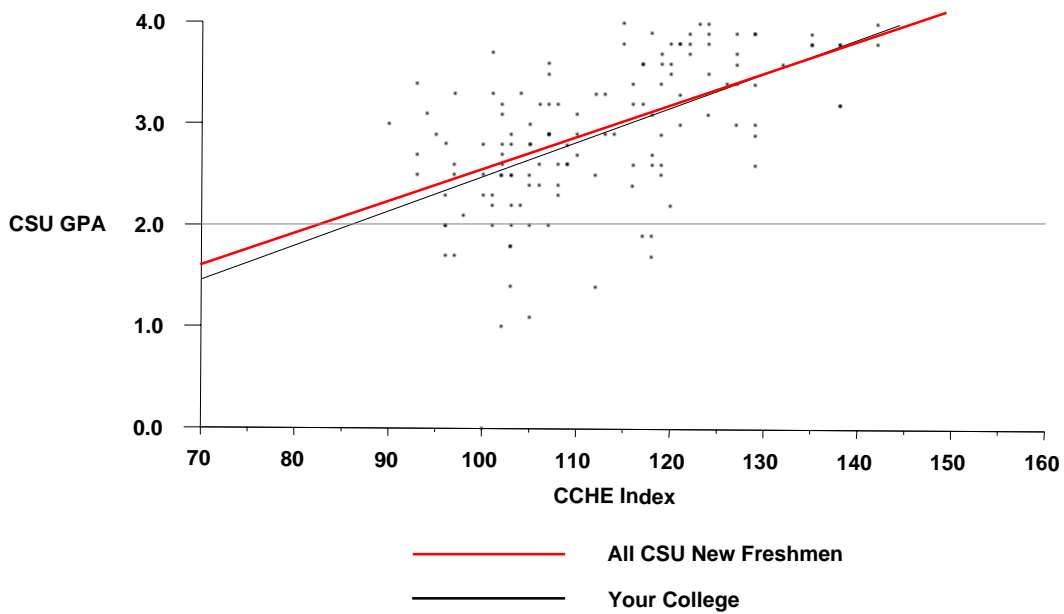
Office of Budgets and Institutional Analysis  
 Number of New Freshmen by High School GPA & Rank,  
 Test Scores, CCHE Index and CSU GPA  
 CSU GPA after One Year for Freshmen Entering Fall 2000

Veterinary Medicine + Biomedical Sci	CSU GPA				Total
	0.1 – 1.9	2.0 – 2.9	3.0 – 3.5	3.6 – 4.0	
High School GPA					
2.0 – 2.4	1				1
2.5 – 2.9		5	1	1	7
3.0 – 3.5	8	24	8	1	41
3.6 – 4.0	3	29	21	23	76
<b>Total</b>	<b>12</b>	<b>58</b>	<b>30</b>	<b>25</b>	<b>125</b>
Percentile Rank					
1 – 29	1				1
30 – 49	1	3	1		5
50 – 59		7			7
60 – 79	6	20	10	4	40
80 – 89	3	13	9	5	30
90 – 99		16	10	22	48
<b>Total</b>	<b>11</b>	<b>59</b>	<b>30</b>	<b>31</b>	<b>131</b>
SAT Verbal					
200 – 399		1			1
400 – 499	1	13	4	1	19
500 – 599	3	18	6	7	34
600 – 699	3	5	7	15	30
700 – 800	1	1	1	1	4
<b>Total</b>	<b>8</b>	<b>38</b>	<b>18</b>	<b>24</b>	<b>88</b>
SAT Math					
400 – 499	2	12	3	1	18
500 – 599	1	24	10	10	45
600 – 699	3	2	4	10	19
700 – 800	2		1	3	6
<b>Total</b>	<b>8</b>	<b>38</b>	<b>18</b>	<b>24</b>	<b>88</b>
ACT Composite					
15 – 18	1	4	1		6
19 – 22	4	24	5	1	34
23 – 26	1	16	10	11	38
27 – 36	1	7	11	20	39
<b>Total</b>	<b>7</b>	<b>51</b>	<b>27</b>	<b>32</b>	<b>117</b>
CCHE Index					
90 – 100	3	13	4		20
101 – 114	6	37	12	2	57
115 – 160	3	10	17	31	61
<b>Total</b>	<b>12</b>	<b>60</b>	<b>33</b>	<b>33</b>	<b>138</b>

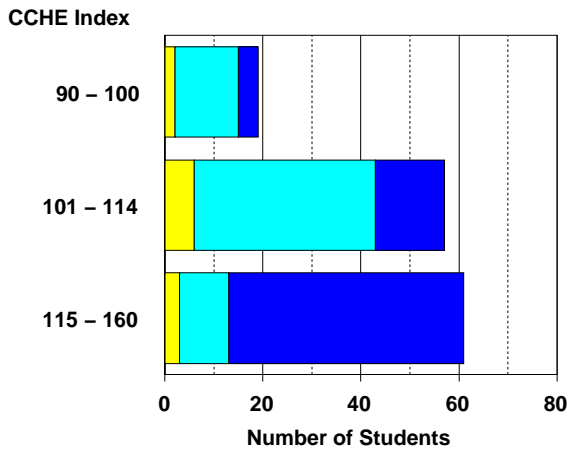
Office of Budgets and Institutional Analysis  
 Number of New Freshmen by High School GPA & Rank,  
 Test Scores, CCHE Index and CSU GPA  
 CSU GPA after One Year for Freshmen Entering Fall 2000

**Veterinary Medicine + Biomedical Sci**

**First Year CSU Grades by CCHE Index**



**Your College**



**All CSU Freshmen**

