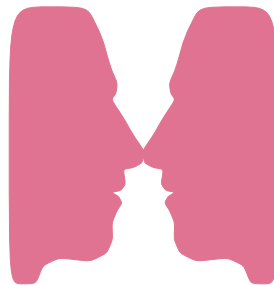


Freshmen Profile

2000



Freshmen Profile 2000 Report Highlights

Data Highlights

- ◆ the index stayed at its high of 110
- ◆ high school GPA is at a 5 year high
- ◆ mean high school rank remained unchanged
- ◆ mean SAT Verbal remained unchanged while mean SAT Math dropped to a 5 year low
- ◆ mean ACT Composite dropped to a 5 year low
- ◆ non-residents have higher test scores and slightly higher indexes
- ◆ residents have a higher rank and high school GPA
- ◆ the percentage of admitted students who enrolled in the range 115-160 increased slightly

Five Year History

Office of Budgets and Institutional Analysis
 Profile of **All New** Freshmen Enrolled Fall Semesters
 Five Year Trend in High School Admissions Scores by College

	1996	1997	1998	1999	2000
Mean High School Rank					
Agricultural Sciences	80	81	80	79	77
Applied Human Sciences	77	76	77	76	76
Business	73	73	73	74	74
Engineering	83	80	81	82	83
Intra–University	73	72	72	71	70
Liberal Arts	75	73	75	73	74
Natural Resources	74	72	74	75	75
Natural Sciences	79	77	77	78	77
Veterinary Medicine + Biomedical Sci	83	80	79	81	80
Total	76	75	76	76	76
Mean SAT Verbal Score					
Agricultural Sciences	563	564	559	569	555
Applied Human Sciences	526	524	528	524	527
Business	536	534	524	528	524
Engineering	573	563	574	578	569
Intra–University	536	534	536	537	532
Liberal Arts	566	568	565	567	579
Natural Resources	565	560	570	562	569
Natural Sciences	561	568	560	559	559
Veterinary Medicine + Biomedical Sci	568	555	558	562	569
Total	553	551	551	552	551
Mean SAT Math Score					
Agricultural Sciences	566	563	552	566	549
Applied Human Sciences	538	535	536	526	536
Business	553	569	552	553	549
Engineering	623	608	619	627	618
Intra–University	546	551	544	545	532
Liberal Arts	544	542	545	546	547
Natural Resources	563	557	558	569	558
Natural Sciences	570	576	574	568	566
Veterinary Medicine + Biomedical Sci	566	565	560	565	566
Total	561	563	561	561	557

Office of Budgets and Institutional Analysis
 Profile of **All New** Freshmen Enrolled Fall Semesters
 Five Year Trend in High School Admissions Scores by College

	1996	1997	1998	1999	2000
Mean Composite ACT Score					
Agricultural Sciences	24.6	24.6	24.6	24.6	24.4
Applied Human Sciences	23.0	22.9	23.3	23.2	22.8
Business	23.7	23.8	23.3	23.5	23.3
Engineering	26.3	25.7	26.2	26.2	26.1
Intra–University	23.4	23.4	23.4	23.4	23.1
Liberal Arts	24.2	24.0	24.1	24.2	24.4
Natural Resources	24.0	23.9	24.8	24.4	23.7
Natural Sciences	24.5	25.0	24.6	24.8	24.5
Veterinary Medicine + Biomedical Sci	24.8	24.7	24.7	24.7	24.4
Total	24.1	24.2	24.2	24.2	24.0
Mean High School Grade Point Average					
Agricultural Sciences	3.58	3.56	3.59	3.56	3.58
Applied Human Sciences	3.50	3.50	3.54	3.52	3.54
Business	3.41	3.42	3.45	3.47	3.49
Engineering	3.64	3.58	3.62	3.63	3.70
Intra–University	3.39	3.39	3.41	3.37	3.41
Liberal Arts	3.45	3.43	3.50	3.46	3.52
Natural Resources	3.43	3.42	3.44	3.48	3.52
Natural Sciences	3.51	3.50	3.53	3.55	3.58
Veterinary Medicine + Biomedical Sci	3.58	3.55	3.58	3.60	3.64
Total	3.48	3.47	3.50	3.50	3.54
Mean CCHE Index					
Agricultural Sciences	112	112	111	112	111
Applied Human Sciences	107	107	108	107	107
Business	107	107	106	107	107
Engineering	117	115	117	117	117
Intra–University	106	106	106	106	105
Liberal Arts	109	108	109	109	110
Natural Resources	109	108	110	110	111
Natural Sciences	111	112	111	112	112
Veterinary Medicine + Biomedical Sci	113	112	112	112	112
Total	109	109	109	110	110

Office of Budgets and Institutional Analysis
 Profile of **Resident** Freshmen Enrolled Fall Semesters
 Five Year Trend in High School Admissions Scores by College

	1996	1997	1998	1999	2000
Mean High School Rank					
Agricultural Sciences	79	78	81	78	78
Applied Human Sciences	78	77	78	78	77
Business	76	75	74	75	75
Engineering	83	81	80	82	83
Intra–University	74	72	72	71	71
Liberal Arts	76	74	76	73	75
Natural Resources	75	73	74	75	76
Natural Sciences	79	77	77	78	77
Veterinary Medicine + Biomedical Sci	84	82	80	82	82
Total	77	76	76	76	76
Mean SAT Verbal Score					
Agricultural Sciences	532	526	541	550	536
Applied Human Sciences	513	518	526	528	527
Business	531	534	529	528	518
Engineering	573	562	572	574	562
Intra–University	537	536	536	539	528
Liberal Arts	558	566	567	563	580
Natural Resources	537	552	568	546	554
Natural Sciences	560	566	560	558	556
Veterinary Medicine + Biomedical Sci	572	547	555	561	566
Total	547	548	550	550	547
Mean SAT Math Score					
Agricultural Sciences	562	560	534	548	522
Applied Human Sciences	527	529	531	525	535
Business	548	572	556	550	545
Engineering	619	609	616	623	605
Intra–University	548	548	539	545	524
Liberal Arts	544	539	541	542	544
Natural Resources	551	548	543	563	533
Natural Sciences	568	574	573	566	565
Veterinary Medicine + Biomedical Sci	562	558	561	560	553
Total	559	562	558	559	551

Office of Budgets and Institutional Analysis
 Profile of **Resident** Freshmen Enrolled Fall Semesters
 Five Year Trend in High School Admissions Scores by College

	1996	1997	1998	1999	2000
Mean Composite ACT Score					
Agricultural Sciences	24.1	24.0	24.1	23.7	23.8
Applied Human Sciences	22.7	22.8	23.1	23.3	22.7
Business	23.6	23.7	23.4	23.4	23.1
Engineering	26.1	25.6	26.0	26.0	25.8
Intra–University	23.3	23.4	23.3	23.4	23.1
Liberal Arts	24.2	23.9	24.1	24.1	24.2
Natural Resources	23.4	23.6	24.5	23.9	23.3
Natural Sciences	24.4	24.8	24.6	24.6	24.5
Veterinary Medicine + Biomedical Sci	24.9	24.4	24.5	24.7	24.3
Total	24.0	24.0	24.0	24.1	23.8
Mean High School Grade Point Average					
Agricultural Sciences	3.57	3.55	3.63	3.57	3.63
Applied Human Sciences	3.54	3.54	3.56	3.55	3.57
Business	3.48	3.47	3.47	3.50	3.52
Engineering	3.66	3.60	3.61	3.64	3.70
Intra–University	3.42	3.42	3.43	3.41	3.44
Liberal Arts	3.49	3.46	3.51	3.47	3.54
Natural Resources	3.47	3.50	3.50	3.50	3.59
Natural Sciences	3.54	3.51	3.53	3.56	3.58
Veterinary Medicine + Biomedical Sci	3.63	3.59	3.59	3.64	3.66
Total	3.51	3.49	3.52	3.52	3.56
Mean CCHE Index					
Agricultural Sciences	110	109	111	109	110
Applied Human Sciences	107	107	108	108	107
Business	108	108	107	107	107
Engineering	117	115	116	117	116
Intra–University	106	106	106	106	106
Liberal Arts	109	108	109	109	110
Natural Resources	107	108	109	108	110
Natural Sciences	111	111	111	111	111
Veterinary Medicine + Biomedical Sci	113	112	112	113	112
Total	109	109	109	109	109

Office of Budgets and Institutional Analysis
 Profile of **Nonresident** Freshmen Enrolled Fall Semesters
 Five Year Trend in High School Admissions Scores by College

	1996	1997	1998	1999	2000
Mean High School Rank					
Agricultural Sciences	82	83	79	80	76
Applied Human Sciences	76	72	74	72	72
Business	63	67	67	69	68
Engineering	81	77	82	81	84
Intra–University	68	68	69	66	64
Liberal Arts	70	70	73	75	70
Natural Resources	72	71	73	75	73
Natural Sciences	77	76	77	75	76
Veterinary Medicine + Biomedical Sci	80	77	77	77	78
Total	74	73	75	74	73
Mean SAT Verbal Score					
Agricultural Sciences	586	576	567	577	570
Applied Human Sciences	545	537	531	513	528
Business	548	535	511	528	539
Engineering	573	565	579	597	589
Intra–University	533	531	534	532	544
Liberal Arts	585	573	560	578	575
Natural Resources	580	563	572	569	582
Natural Sciences	564	574	561	562	567
Veterinary Medicine + Biomedical Sci	563	569	565	563	573
Total	563	557	553	557	562
Mean SAT Math Score					
Agricultural Sciences	569	563	560	573	569
Applied Human Sciences	556	546	547	528	540
Business	565	562	542	563	560
Engineering	634	608	628	643	653
Intra–University	541	557	557	542	553
Liberal Arts	544	548	559	559	557
Natural Resources	569	561	569	572	579
Natural Sciences	575	586	577	573	569
Veterinary Medicine + Biomedical Sci	571	576	558	578	584
Total	565	566	566	567	572

Office of Budgets and Institutional Analysis
 Profile of **Nonresident** Freshmen Enrolled Fall Semesters
 Five Year Trend in High School Admissions Scores by College

	1996	1997	1998	1999	2000
Mean Composite ACT Score					
Agricultural Sciences	25.3	25.3	25.3	25.6	25.4
Applied Human Sciences	23.9	23.1	24.2	22.6	23.1
Business	23.9	24.3	23.3	24.0	24.3
Engineering	27.2	26.4	27.2	27.6	27.4
Intra–University	23.8	23.8	23.8	23.9	23.4
Liberal Arts	24.3	24.7	23.6	24.7	25.5
Natural Resources	24.8	24.2	25.2	24.9	24.5
Natural Sciences	25.1	26.1	24.5	25.6	24.8
Veterinary Medicine + Biomedical Sci	24.5	25.6	25.3	24.7	24.8
Total	24.7	24.7	24.7	24.8	24.8
Mean High School Grade Point Average					
Agricultural Sciences	3.59	3.56	3.55	3.55	3.51
Applied Human Sciences	3.42	3.39	3.46	3.40	3.43
Business	3.19	3.27	3.35	3.37	3.39
Engineering	3.58	3.49	3.66	3.58	3.72
Intra–University	3.29	3.28	3.30	3.22	3.27
Liberal Arts	3.32	3.34	3.45	3.41	3.46
Natural Resources	3.39	3.36	3.39	3.46	3.44
Natural Sciences	3.41	3.47	3.52	3.52	3.56
Veterinary Medicine + Biomedical Sci	3.48	3.48	3.55	3.48	3.59
Total	3.40	3.40	3.47	3.44	3.47
Mean CCHE Index					
Agricultural Sciences	115	113	111	114	112
Applied Human Sciences	108	106	108	105	106
Business	105	106	105	107	108
Engineering	117	114	119	119	122
Intra–University	104	105	106	104	105
Liberal Arts	108	108	109	109	111
Natural Resources	110	108	110	111	112
Natural Sciences	111	113	112	112	113
Veterinary Medicine + Biomedical Sci	112	111	112	109	114
Total	109	109	110	110	111

Fall 2000 Freshmen

Office of Budgets and Institutional Analysis
Freshmen Profile
Fall 2000

University	Admitted N= 8499				Enrolled N=3313			
	Res	Nonres	Total	Percent	Res	Nonres	Total	Percent
High School GPA								
2.0 – 2.4	6	17	23	0	4	8	12	0
2.5 – 2.9	214	316	530	7	115	91	206	7
3.0 – 3.5	2104	1378	3482	44	1085	317	1402	45
3.6 – 4.0	2498	1407	3905	49	1202	299	1501	48
Valid Cases	4822	3118	7940	100	2406	715	3121	100
Means	3.54	3.46	3.51		3.53	3.41	3.50	
Percentile Rank								
1 – 29	22	43	65	1	13	13	26	1
30 – 49	260	246	506	7	152	79	231	8
50 – 59	405	264	669	9	222	66	288	9
60 – 79	1667	837	2504	33	865	200	1065	35
80 – 89	1164	620	1784	24	579	123	702	23
90 – 99	1286	775	2061	27	579	163	742	24
Valid Cases	4804	2785	7589	100	2410	644	3054	100
Means	77.3	75.5	76.7		76.2	73.0	75.5	
SAT Verbal								
200 – 399	60	43	103	2	29	15	44	2
400 – 499	678	402	1080	20	356	100	456	23
500 – 599	1449	1190	2639	48	649	265	914	46
600 – 699	714	689	1403	26	325	171	496	25
700 – 800	141	118	259	5	63	30	93	5
Valid Cases	3042	2442	5484	100	1422	581	2003	100
Means	551	562	556		547	562	551	
SAT Math								
200 – 399	50	22	72	1	33	8	41	2
400 – 499	606	350	956	17	303	98	401	20
500 – 599	1434	1120	2554	47	687	254	941	47
600 – 699	828	809	1637	30	356	180	536	27
700 – 800	124	141	265	5	43	41	84	4
Valid Cases	3042	2442	5484	100	1422	581	2003	100
Means	558	575	566		551	572	557	
ACT Composite								
1 – 14	2	3	5	0	1	2	3	0
15 – 18	145	70	215	3	78	26	104	4
19 – 22	1402	462	1864	28	752	103	855	31
23 – 26	1936	941	2877	43	954	220	1174	42
27 – 36	1100	697	1797	27	467	161	628	23
Valid Cases	4585	2173	6758	100	2252	512	2764	100
Means	24.1	24.9	24.4		23.8	24.8	24.0	
CCHE Index								
35 – 89	25	17	42	0	16	13	29	1
90 – 100	962	627	1589	19	539	177	716	22
101 – 114	2490	1453	3943	47	1223	298	1521	46
115 – 160	1597	1245	2842	34	736	282	1018	31
Valid Cases	5074	3342	8416	100	2514	770	3284	100
Means	110	112	111		109	111	110	

Office of Budgets and Institutional Analysis
Freshmen Profile
Fall 2000

Agricultural Sciences**Admitted N= 378****Enrolled N=192**

	Res	Nonres	Total	Percent	Res	Nonres	Total	Percent
High School GPA								
2.0 – 2.4	0	1	1	0	0	0	0	0
2.5 – 2.9	3	13	16	4	1	6	7	4
3.0 – 3.5	56	90	146	41	37	37	74	40
3.6 – 4.0	90	107	197	55	67	36	103	56
Valid Cases	149	211	360	100	105	79	184	100
Means	3.59	3.52	3.55		3.61	3.48	3.56	
Percentile Rank								
1 – 29	1	1	2	1	0	1	1	1
30 – 49	7	10	17	5	3	3	6	4
50 – 59	11	19	30	9	10	13	23	14
60 – 79	47	44	91	29	33	16	49	30
80 – 89	40	48	88	28	29	17	46	28
90 – 99	38	53	91	29	25	16	41	25
Valid Cases	144	175	319	100	100	66	166	100
Means	78.0	78.5	78.3		78.5	75.6	77.3	
SAT Verbal								
200 – 399	2	2	4	2	2	1	3	3
400 – 499	19	21	40	18	14	9	23	20
500 – 599	33	78	111	49	23	32	55	47
600 – 699	13	43	56	25	10	18	28	24
700 – 800	3	13	16	7	2	6	8	7
Valid Cases	70	157	227	100	51	66	117	100
Means	537	572	561		536	570	555	
SAT Math								
200 – 399	1	0	1	0	1	0	1	1
400 – 499	22	26	48	21	17	12	29	25
500 – 599	35	78	113	50	25	33	58	50
600 – 699	12	45	57	25	8	16	24	21
700 – 800	0	8	8	4	0	5	5	4
Valid Cases	70	157	227	100	51	66	117	100
Means	529	568	556		522	569	549	
ACT Composite								
15 – 18	6	4	10	4	3	1	4	3
19 – 22	39	28	67	24	31	9	40	27
23 – 26	70	66	136	48	45	23	68	45
27 – 36	25	44	69	24	18	20	38	25
Valid Cases	140	142	282	100	97	53	150	100
Means	23.8	25.0	24.4		23.8	25.4	24.4	
CCHE Index								
35 – 89	1	0	1	0	0	0	0	0
90 – 100	27	43	70	19	18	22	40	21
101 – 114	83	92	175	47	58	29	87	46
115 – 160	45	85	130	35	33	31	64	34
Valid Cases	156	220	376	100	109	82	191	100
Means	110	112	111		110	112	111	

Office of Budgets and Institutional Analysis
Freshmen Profile
Fall 2000

Applied Human Sciences	Admitted N= 625				Enrolled N=275			
	Res	Nonres	Total	Percent	Res	Nonres	Total	Percent
High School GPA								
2.5 – 2.9	17	20	37	6	9	8	17	6
3.0 – 3.5	150	103	253	42	86	30	116	43
3.6 – 4.0	198	111	309	52	117	20	137	51
Valid Cases	365	234	599	100	212	58	270	100
Means	3.55	3.51	3.53		3.57	3.41	3.53	
Percentile Rank								
1 – 29	1	4	5	1	0	2	2	1
30 – 49	25	14	39	7	13	5	18	7
50 – 59	25	24	49	8	14	7	21	8
60 – 79	134	65	199	34	82	18	100	38
80 – 89	95	58	153	26	50	10	60	23
90 – 99	87	54	141	24	49	10	59	23
Valid Cases	367	219	586	100	208	52	260	100
Means	76.9	76.1	76.6		76.9	71.7	75.9	
SAT Verbal								
200 – 399	4	3	7	2	1	3	4	3
400 – 499	58	44	102	30	35	8	43	31
500 – 599	82	86	168	49	42	22	64	47
600 – 699	29	32	61	18	17	8	25	18
700 – 800	2	3	5	1	1	0	1	1
Valid Cases	175	168	343	100	96	41	137	100
Means	526	541	533		527	528	527	
SAT Math								
200 – 399	2	4	6	2	1	2	3	2
400 – 499	52	23	75	22	29	5	34	25
500 – 599	77	98	175	51	47	28	75	55
600 – 699	43	38	81	24	18	6	24	18
700 – 800	1	5	6	2	1	0	1	1
Valid Cases	175	168	343	100	96	41	137	100
Means	538	555	546		535	540	536	
ACT Composite								
1 – 14	1	0	1	0	0	0	0	0
15 – 18	18	12	30	6	8	4	12	5
19 – 22	147	38	185	36	94	12	106	44
23 – 26	150	71	221	43	81	18	99	41
27 – 36	42	34	76	15	19	4	23	10
Valid Cases	358	155	513	100	202	38	240	100
Means	22.9	23.9	23.2		22.7	23.1	22.8	
CCHE Index								
35 – 89	2	2	4	1	1	1	2	1
90 – 100	109	51	160	26	66	20	86	32
101 – 114	172	117	289	47	93	26	119	44
115 – 160	91	77	168	27	53	13	66	24
Valid Cases	374	247	621	100	213	60	273	100
Means	107	110	108		107	106	107	

Office of Budgets and Institutional Analysis
Freshmen Profile
Fall 2000

Business	Admitted N= 1313				Enrolled N=547			
	Res	Nonres	Total	Percent	Res	Nonres	Total	Percent
High School GPA								
2.0 – 2.4	0	3	3	0	0	1	1	0
2.5 – 2.9	36	60	96	8	16	15	31	6
3.0 – 3.5	391	219	610	49	207	55	262	49
3.6 – 4.0	384	156	540	43	206	30	236	45
Valid Cases	811	438	1249	100	429	101	530	100
Means	3.50	3.39	3.46		3.51	3.35	3.48	
Percentile Rank								
1 – 29	2	9	11	1	1	1	2	0
30 – 49	46	48	94	8	25	16	41	8
50 – 59	72	40	112	9	36	10	46	9
60 – 79	305	136	441	37	167	34	201	40
80 – 89	195	89	284	24	110	17	127	25
90 – 99	177	70	247	21	76	12	88	17
Valid Cases	797	392	1189	100	415	90	505	100
Means	75.9	71.4	74.4		75.3	68.0	74.0	
SAT Verbal								
200 – 399	12	13	25	3	7	3	10	3
400 – 499	148	58	206	25	77	16	93	29
500 – 599	261	188	449	55	122	44	166	53
600 – 699	68	66	134	16	29	15	44	14
700 – 800	3	5	8	1	2	1	3	1
Valid Cases	492	330	822	100	237	79	316	100
Means	525	543	532		518	539	524	
SAT Math								
200 – 399	9	8	17	2	5	4	9	3
400 – 499	100	46	146	18	51	14	65	21
500 – 599	256	147	403	49	124	31	155	49
600 – 699	121	111	232	28	53	25	78	25
700 – 800	6	18	24	3	4	5	9	3
Valid Cases	492	330	822	100	237	79	316	100
Means	549	572	559		545	560	549	
ACT Composite								
15 – 18	30	15	45	4	13	4	17	4
19 – 22	281	77	358	34	165	14	179	39
23 – 26	335	132	467	45	173	34	207	45
27 – 36	116	59	175	17	46	14	60	13
Valid Cases	762	283	1045	100	397	66	463	100
Means	23.4	24.0	23.5		23.1	24.3	23.3	
CCHE Index								
35 – 89	5	5	10	1	4	3	7	1
90 – 100	178	109	287	22	96	23	119	22
101 – 114	472	218	690	53	254	51	305	56
115 – 160	182	129	311	24	81	28	109	20
Valid Cases	837	461	1298	100	435	105	540	100
Means	108	109	108		107	108	107	

Office of Budgets and Institutional Analysis
Freshmen Profile
Fall 2000

Engineering	Admitted N= 927				Enrolled N=317			
	Res	Nonres	Total	Percent	Res	Nonres	Total	Percent
High School GPA								
2.5 – 2.9	4	5	9	1	2	2	4	1
3.0 – 3.5	175	107	282	34	76	20	96	33
3.6 – 4.0	340	207	547	65	144	44	188	65
Valid Cases	519	319	838	100	222	66	288	100
Means	3.66	3.64	3.65		3.65	3.66	3.65	
Percentile Rank								
1 – 29	0	1	1	0	0	0	0	0
30 – 49	7	8	15	2	4	0	4	1
50 – 59	20	17	37	4	10	3	13	4
60 – 79	159	70	229	27	71	17	88	30
80 – 89	142	65	207	25	68	13	81	27
90 – 99	203	152	355	42	79	30	109	37
Valid Cases	531	313	844	100	232	63	295	100
Means	83.0	83.6	83.3		82.6	84.3	82.9	
SAT Verbal								
200 – 399	2	2	4	1	1	1	2	1
400 – 499	54	40	94	15	25	5	30	14
500 – 599	192	119	311	49	84	20	104	49
600 – 699	99	94	193	30	37	24	61	29
700 – 800	22	17	39	6	11	5	16	8
Valid Cases	369	272	641	100	158	55	213	100
Means	565	573	568		562	589	569	
SAT Math								
400 – 499	14	7	21	3	6	1	7	3
500 – 599	138	73	211	33	62	7	69	32
600 – 699	176	150	326	51	78	34	112	53
700 – 800	41	42	83	13	12	13	25	12
Valid Cases	369	272	641	100	158	55	213	100
Means	612	628	619		605	653	618	
ACT Composite								
1 – 14	0	1	1	0	0	0	0	0
15 – 18	2	1	3	0	1	0	1	0
19 – 22	68	19	87	11	27	3	30	11
23 – 26	244	107	351	46	115	19	134	50
27 – 36	194	123	317	42	73	28	101	38
Valid Cases	508	251	759	100	216	50	266	100
Means	25.8	26.6	26.1		25.8	27.4	26.1	
CCHE Index								
90 – 100	0	1	1	0	0	0	0	0
101 – 114	261	128	389	43	117	20	137	44
115 – 160	298	227	525	57	125	52	177	56
Valid Cases	559	356	915	100	242	72	314	100
Means	117	119	118		116	122	117	

Office of Budgets and Institutional Analysis
Freshmen Profile
Fall 2000

Intra-University	Admitted N= 1623				Enrolled N=580			
	Res	Nonres	Total	Percent	Res	Nonres	Total	Percent
High School GPA								
2.0 – 2.4	3	4	7	0	2	4	6	1
2.5 – 2.9	66	97	163	11	31	27	58	10
3.0 – 3.5	493	265	758	49	251	46	297	53
3.6 – 4.0	419	198	617	40	166	36	202	36
Valid Cases	981	564	1545	100	450	113	563	100
Means	3.46	3.36	3.42		3.43	3.24	3.39	
Percentile Rank								
1 – 29	9	12	21	1	8	4	12	2
30 – 49	69	60	129	9	40	20	60	11
50 – 59	111	69	180	13	59	13	72	14
60 – 79	366	147	513	36	175	26	201	38
80 – 89	212	81	293	21	89	12	101	19
90 – 99	196	87	283	20	68	13	81	15
Valid Cases	963	456	1419	100	439	88	527	100
Means	73.9	69.7	72.6		71.2	64.5	70.0	
SAT Verbal								
200 – 399	22	6	28	3	12	2	14	4
400 – 499	157	80	237	23	78	17	95	28
500 – 599	294	229	523	50	114	50	164	48
600 – 699	122	108	230	22	43	19	62	18
700 – 800	20	11	31	3	6	1	7	2
Valid Cases	615	434	1049	100	253	89	342	100
Means	540	554	546		528	544	532	
SAT Math								
200 – 399	26	5	31	3	17	1	18	5
400 – 499	142	69	211	20	72	18	90	26
500 – 599	315	214	529	50	118	47	165	48
600 – 699	118	131	249	24	44	21	65	19
700 – 800	14	15	29	3	2	2	4	1
Valid Cases	615	434	1049	100	253	89	342	100
Means	540	564	550		524	553	532	
ACT Composite								
1 – 14	1	1	2	0	1	1	2	0
15 – 18	36	12	48	4	25	8	33	7
19 – 22	336	106	442	34	161	19	180	37
23 – 26	372	149	521	40	164	31	195	40
27 – 36	183	96	279	22	61	16	77	16
Valid Cases	928	364	1292	100	412	75	487	100
Means	23.6	24.2	23.8		23.1	23.4	23.1	
CCHE Index								
35 – 89	5	5	10	1	5	5	10	2
90 – 100	302	169	471	29	162	50	212	37
101 – 114	482	256	738	46	216	37	253	44
115 – 160	240	154	394	24	78	25	103	18
Valid Cases	1029	584	1613	100	461	117	578	100
Means	108	108	108		106	105	105	

Office of Budgets and Institutional Analysis
Freshmen Profile
Fall 2000

Liberal Arts	Admitted N= 1278				Enrolled N=462			
	Res	Nonres	Total	Percent	Res	Nonres	Total	Percent
High School GPA								
2.0 – 2.4	3	4	7	1	2	0	2	0
2.5 – 2.9	38	52	90	7	27	13	40	9
3.0 – 3.5	344	212	556	46	156	33	189	44
3.6 – 4.0	380	169	549	46	168	29	197	46
Valid Cases	765	437	1202	100	353	75	428	100
Means	3.52	3.41	3.48		3.50	3.39	3.48	
Percentile Rank								
1 – 29	2	4	6	1	2	1	3	1
30 – 49	50	46	96	9	30	15	45	11
50 – 59	75	39	114	10	42	5	47	11
60 – 79	248	129	377	34	108	18	126	30
80 – 89	187	83	270	24	85	13	98	23
90 – 99	186	71	257	23	87	14	101	24
Valid Cases	748	372	1120	100	354	66	420	100
Means	76.4	71.9	74.9		74.9	69.6	74.1	
SAT Verbal								
200 – 399	5	3	8	1	2	1	3	1
400 – 499	75	41	116	14	32	7	39	14
500 – 599	212	156	368	44	91	28	119	42
600 – 699	166	115	281	33	80	19	99	35
700 – 800	47	19	66	8	18	3	21	7
Valid Cases	505	334	839	100	223	58	281	100
Means	579	574	577		580	575	579	
SAT Math								
200 – 399	5	3	8	1	3	0	3	1
400 – 499	123	64	187	22	47	12	59	21
500 – 599	256	174	430	51	127	28	155	55
600 – 699	109	84	193	23	42	18	60	21
700 – 800	12	9	21	3	4	0	4	1
Valid Cases	505	334	839	100	223	58	281	100
Means	546	557	550		544	557	547	
ACT Composite								
15 – 18	18	7	25	3	9	1	10	3
19 – 22	194	69	263	27	90	11	101	26
23 – 26	295	129	424	43	148	23	171	45
27 – 36	183	93	276	28	78	24	102	27
Valid Cases	690	298	988	100	325	59	384	100
Means	24.3	24.8	24.5		24.2	25.5	24.4	
CCHE Index								
35 – 89	4	1	5	0	2	1	3	1
90 – 100	130	98	228	18	70	19	89	19
101 – 114	426	213	639	50	193	29	222	48
115 – 160	247	147	394	31	111	33	144	31
Valid Cases	807	459	1266	100	376	82	458	100
Means	111	110	110		110	111	110	

Office of Budgets and Institutional Analysis
Freshmen Profile
Fall 2000

Natural Resources**Admitted N= 270****Enrolled N=125****High School GPA**

	Res	Nonres	Total	Percent	Res	Nonres	Total	Percent
2.0 – 2.4	0	3	3	1	0	2	2	2
2.5 – 2.9	4	23	27	11	2	6	8	7
3.0 – 3.5	44	68	112	46	30	25	55	49
3.6 – 4.0	48	56	104	42	29	19	48	42
Valid Cases	96	150	246	100	61	52	113	100
Means	3.56	3.37	3.44		3.55	3.35	3.46	

Percentile Rank

1 – 29	0	4	4	2	0	1	1	1
30 – 49	4	12	16	7	2	6	8	7
50 – 59	9	13	22	10	7	4	11	10
60 – 79	37	41	78	34	26	15	41	37
80 – 89	20	29	49	21	10	9	19	17
90 – 99	25	36	61	27	17	14	31	28
Valid Cases	95	135	230	100	62	49	111	100
Means	77.1	74.1	75.3		76.3	73.2	75.0	

SAT Verbal

200 – 399	0	2	2	1	0	1	1	1
400 – 499	13	17	30	17	10	10	20	23
500 – 599	29	53	82	46	18	13	31	35
600 – 699	14	39	53	30	11	19	30	34
700 – 800	3	8	11	6	1	5	6	7
Valid Cases	59	119	178	100	40	48	88	100
Means	558	574	569		554	582	569	

SAT Math

400 – 499	14	14	28	16	11	7	18	20
500 – 599	31	57	88	49	21	21	42	48
600 – 699	11	41	52	29	8	17	25	28
700 – 800	3	7	10	6	0	3	3	3
Valid Cases	59	119	178	100	40	48	88	100
Means	548	581	570		533	579	558	

ACT Composite

15 – 18	1	3	4	2	1	2	3	3
19 – 22	32	19	51	27	23	8	31	36
23 – 26	42	41	83	44	25	12	37	43
27 – 36	12	38	50	27	6	10	16	18
Valid Cases	87	101	188	100	55	32	87	100
Means	23.6	25.0	24.4		23.3	24.5	23.7	

CCHE Index

35 – 89	0	2	2	1	0	1	1	1
90 – 100	17	36	53	20	11	15	26	21
101 – 114	54	70	124	46	34	21	55	44
115 – 160	31	57	88	33	20	22	42	34
Valid Cases	102	165	267	100	65	59	124	100
Means	110	111	111		110	112	111	

Office of Budgets and Institutional Analysis
Freshmen Profile
Fall 2000

Natural Sciences**Admitted N= 1697****Enrolled N=660**

	Res	Nonres	Total	Percent	Res	Nonres	Total	Percent
High School GPA								
2.0 – 2.4	0	1	1	0	0	0	0	0
2.5 – 2.9	42	37	79	5	24	8	32	5
3.0 – 3.5	398	244	642	41	205	59	264	43
3.6 – 4.0	539	293	832	54	249	64	313	51
Valid Cases	979	575	1554	100	478	131	609	100
Means	3.56	3.52	3.54		3.54	3.49	3.53	
Percentile Rank								
1 – 29	7	6	13	1	2	2	4	1
30 – 49	48	38	86	6	33	11	44	7
50 – 59	76	33	109	7	41	7	48	8
60 – 79	321	151	472	31	167	44	211	34
80 – 89	237	126	363	24	115	25	140	22
90 – 99	313	173	486	32	142	38	180	29
Valid Cases	1002	527	1529	100	500	127	627	100
Means	78.8	78.4	78.7		77.3	76.1	77.1	
SAT Verbal								
200 – 399	12	12	24	2	3	3	6	1
400 – 499	141	72	213	19	76	17	93	22
500 – 599	299	211	510	45	132	44	176	43
600 – 699	173	139	312	28	77	36	113	27
700 – 800	39	25	64	6	21	5	26	6
Valid Cases	664	459	1123	100	309	105	414	100
Means	557	564	560		556	567	559	
SAT Math								
200 – 399	7	1	8	1	6	1	7	2
400 – 499	122	78	200	18	58	22	80	19
500 – 599	274	202	476	42	134	42	176	43
600 – 699	218	153	371	33	94	33	127	31
700 – 800	43	25	68	6	17	7	24	6
Valid Cases	664	459	1123	100	309	105	414	100
Means	570	575	572		565	569	566	
ACT Composite								
1 – 14	0	1	1	0	0	1	1	0
15 – 18	31	12	43	3	15	3	18	3
19 – 22	259	79	338	24	131	20	151	27
23 – 26	378	189	567	41	174	47	221	40
27 – 36	294	148	442	32	135	33	168	30
Valid Cases	962	429	1391	100	455	104	559	100
Means	24.6	25.2	24.7		24.5	24.8	24.5	
CCHE Index								
35 – 89	8	2	10	1	4	2	6	1
90 – 100	176	96	272	16	99	22	121	19
101 – 114	467	271	738	44	215	64	279	43
115 – 160	396	259	655	39	193	55	248	38
Valid Cases	1047	628	1675	100	511	143	654	100
Means	112	113	112		111	113	112	

Office of Budgets and Institutional Analysis
Freshmen Profile
Fall 2000

	Admitted N= 388				Enrolled N=155			
	Res	Nonres	Total	Percent	Res	Nonres	Total	Percent
Veterinary Medicine + Biomed								
High School GPA								
2.0 – 2.4	0	1	1	0	0	1	1	1
2.5 – 2.9	4	9	13	4	3	6	9	7
3.0 – 3.5	53	70	123	35	37	12	49	36
3.6 – 4.0	100	110	210	61	56	21	77	57
Valid Cases	157	190	347	100	96	40	136	100
Means	3.64	3.57	3.60		3.62	3.42	3.56	
Percentile Rank								
1 – 29	0	2	2	1	0	1	1	1
30 – 49	4	10	14	4	2	3	5	3
50 – 59	6	10	16	5	3	4	7	5
60 – 79	50	54	104	29	36	12	48	34
80 – 89	36	41	77	22	23	7	30	21
90 – 99	61	79	140	40	36	16	52	36
Valid Cases	157	196	353	100	100	43	143	100
Means	82.1	81.1	81.6		81.7	77.6	80.4	
SAT Verbal								
200 – 399	1	0	1	0	1	0	1	1
400 – 499	13	29	42	16	9	11	20	21
500 – 599	47	70	117	45	23	12	35	37
600 – 699	30	53	83	32	21	13	34	36
700 – 800	2	17	19	7	1	4	5	5
Valid Cases	93	169	262	100	55	40	95	100
Means	562	579	573		566	573	569	
SAT Math								
200 – 399	0	1	1	0	0	0	0	0
400 – 499	17	23	40	15	12	7	19	20
500 – 599	52	77	129	49	29	17	46	48
600 – 699	20	56	76	29	11	10	21	22
700 – 800	4	12	16	6	3	6	9	9
Valid Cases	93	169	262	100	55	40	95	100
Means	558	580	572		553	584	566	
ACT Composite								
15 – 18	3	4	7	2	3	3	6	5
19 – 22	46	27	73	24	30	7	37	29
23 – 26	50	57	107	36	29	13	42	33
27 – 36	51	62	113	38	31	12	43	34
Valid Cases	150	150	300	100	93	35	128	100
Means	24.6	25.6	25.1		24.3	24.8	24.4	
CCHE Index								
90 – 100	23	24	47	12	17	6	23	15
101 – 114	73	88	161	42	43	21	64	42
115 – 160	67	110	177	46	42	23	65	43
Valid Cases	163	222	385	100	102	50	152	100
Means	113	116	114		112	114	112	

**Fall 1999 Freshmen
and
Their Performance
at CSU
After One Year**

Number of New Freshmen by High School GPA & Rank,
Test Scores, CCHE Index and CSU GPA
CSU GPA after One Year for Freshmen Entering Fall 1999

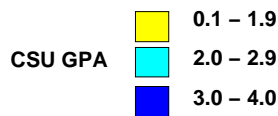
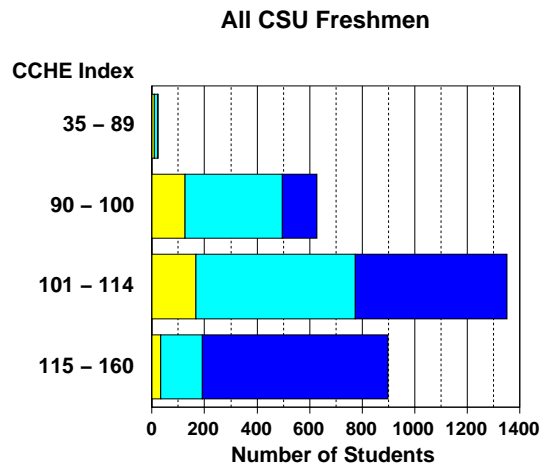
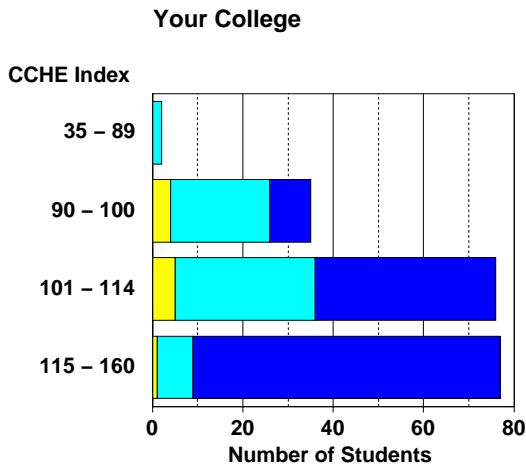
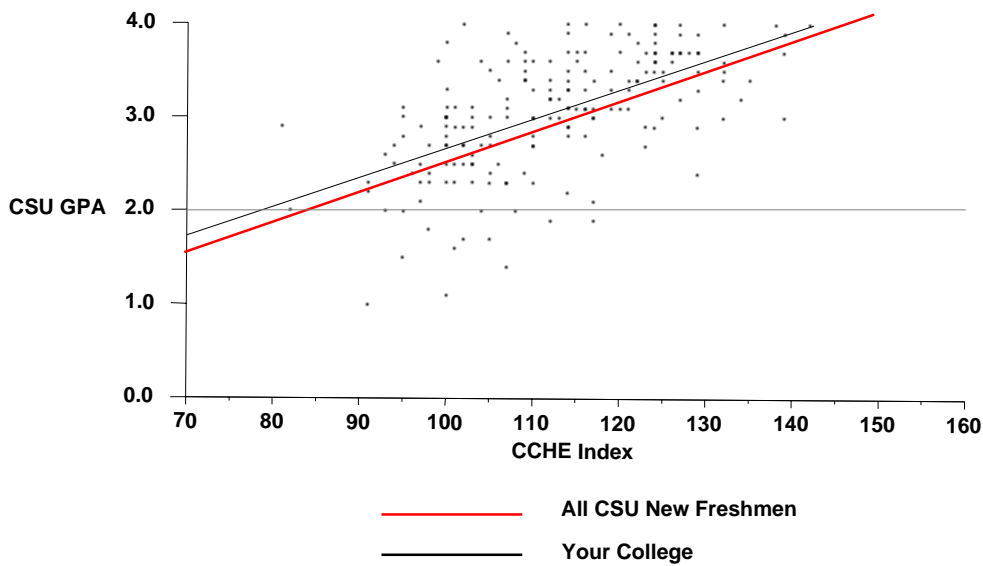
Agricultural Sciences

	CSU GPA				Total
	0.1 – 1.9	2.0 – 2.9	3.0 – 3.5	3.6 – 4.0	
High School GPA					
2.0 – 2.4		1			1
2.5 – 2.9	2	5			7
3.0 – 3.5	7	36	20	8	71
3.6 – 4.0	1	21	48	42	112
Total	10	63	68	50	191
Percentile Rank					
1 – 29		1			1
30 – 49	1	5		1	7
50 – 59	1	7	1	1	10
60 – 79	4	23	24	6	57
80 – 89	1	8	16	10	35
90 – 99	1	14	19	27	61
Total	8	58	60	45	171
SAT Verbal					
200 – 399		3			3
400 – 499	3	9	3	2	17
500 – 599	5	19	19	8	51
600 – 699	1	3	17	20	41
700 – 800			2	2	4
Total	9	34	41	32	116
SAT Math					
400 – 499	3	15	7	2	27
500 – 599	4	14	15	10	43
600 – 699	2	4	15	17	38
700 – 800		1	4	3	8
Total	9	34	41	32	116
ACT Composite					
15 – 18		3			3
19 – 22	3	20	12	5	40
23 – 26	2	22	22	10	56
27 – 36	1	4	15	22	42
Total	6	49	49	37	141
CCHE Index					
35 – 89		2			2
90 – 100	4	22	7	2	35
101 – 114	5	31	28	12	76
115 – 160	1	8	32	36	77
Total	10	63	67	50	190

Office of Budgets and Institutional Analysis
 Number of New Freshmen by High School GPA & Rank,
 Test Scores, CCHE Index and CSU GPA
 CSU GPA after One Year for Freshmen Entering Fall 1999

Agricultural Sciences

**Fall 1999 – Spring 2000
 First Year CSU Grades by CCHE Index**



Number of New Freshmen by High School GPA & Rank,
Test Scores, CCHE Index and CSU GPA
CSU GPA after One Year for Freshmen Entering Fall 1999

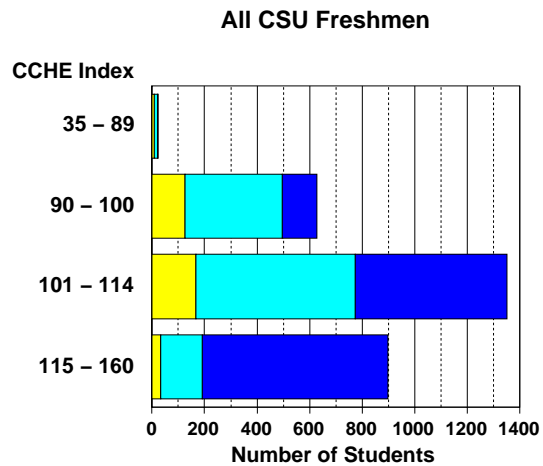
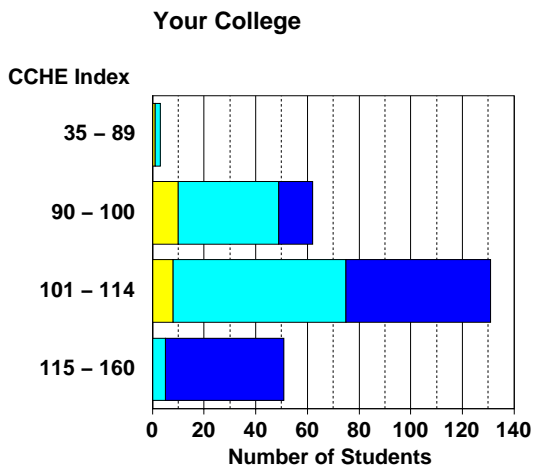
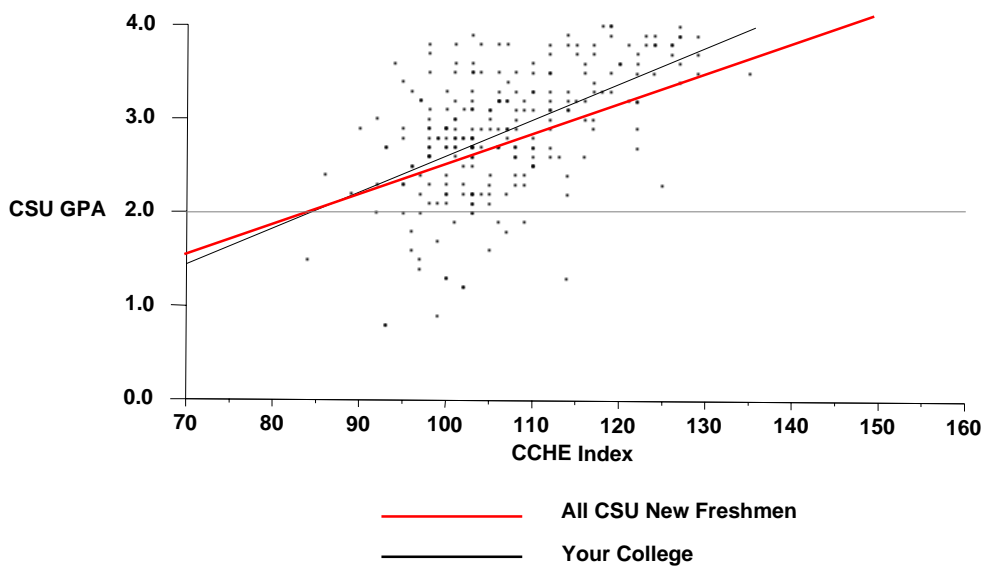
Applied Human Sciences

	CSU GPA				Total
	0.1 – 1.9	2.0 – 2.9	3.0 – 3.5	3.6 – 4.0	
High School GPA					
2.5 – 2.9	2	5	2	1	10
3.0 – 3.5	14	68	27	10	119
3.6 – 4.0	3	40	43	32	118
Total	19	113	72	43	247
Percentile Rank					
30 – 49	2	7	1	1	11
50 – 59	2	15	5	2	24
60 – 79	10	50	20	8	88
80 – 89	3	24	19	9	55
90 – 99	1	9	21	20	51
Total	18	105	66	40	229
SAT Verbal					
200 – 399		1	1		2
400 – 499	8	26	11		45
500 – 599	3	32	22	17	74
600 – 699	1	6	5	5	17
700 – 800			1		1
Total	12	65	40	22	139
SAT Math					
200 – 399	2	2	2		6
400 – 499	5	22	12	1	40
500 – 599	5	35	18	14	72
600 – 699		5	8	7	20
700 – 800		1			1
Total	12	65	40	22	139
ACT Composite					
15 – 18	2	4	2		8
19 – 22	11	47	17	6	81
23 – 26	4	41	33	18	96
27 – 36			13	14	27
Total	17	92	65	38	212
CCHE Index					
35 – 89	1	2			3
90 – 100	10	39	10	3	62
101 – 114	8	67	44	12	131
115 – 160		5	18	28	51
Total	19	113	72	43	247

Office of Budgets and Institutional Analysis
 Number of New Freshmen by High School GPA & Rank,
 Test Scores, CCHE Index and CSU GPA
 CSU GPA after One Year for Freshmen Entering Fall 1999

Applied Human Sciences

**Fall 1999 – Spring 2000
 First Year CSU Grades by CCHE Index**



Number of New Freshmen by High School GPA & Rank,
Test Scores, CCHE Index and CSU GPA
CSU GPA after One Year for Freshmen Entering Fall 1999

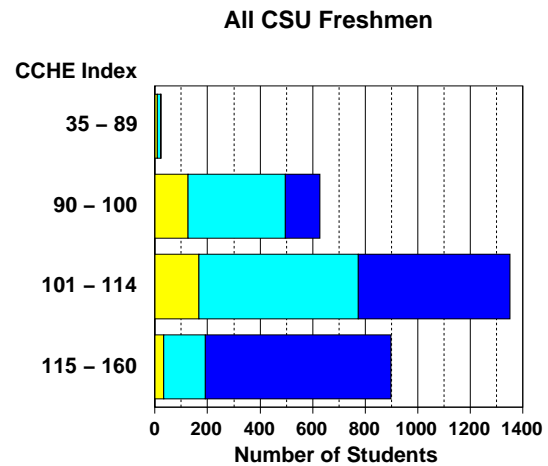
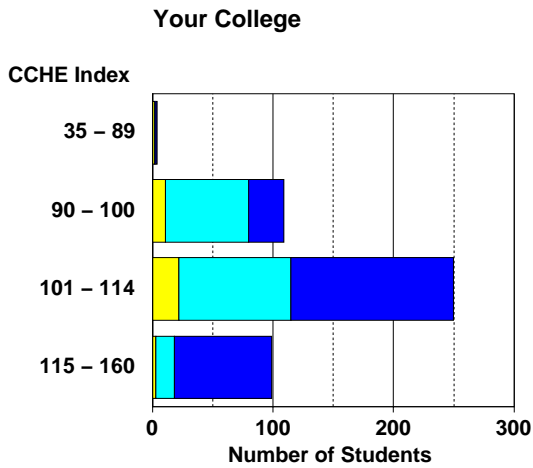
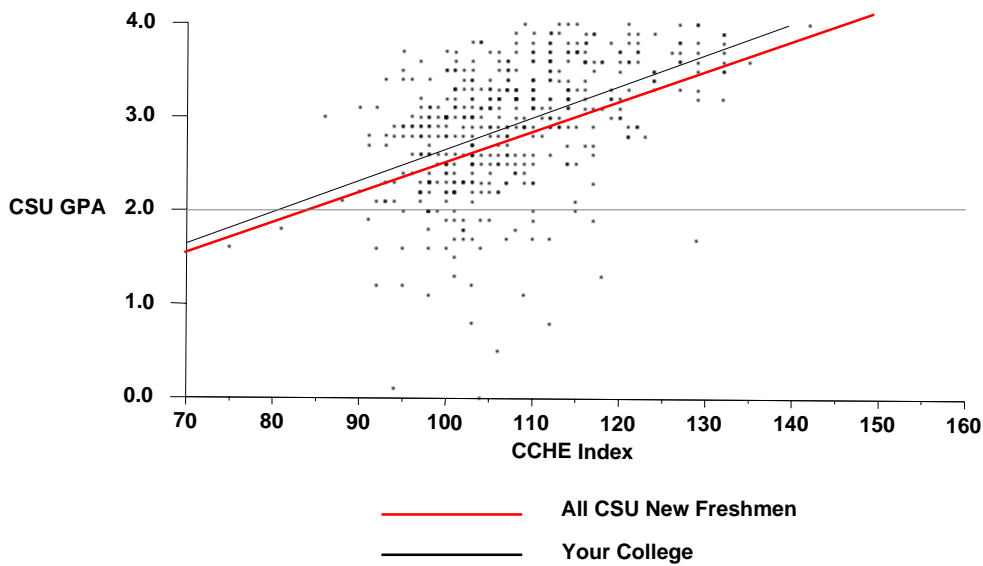
Business

	CSU GPA				Total
	0.1 – 1.9	2.0 – 2.9	3.0 – 3.5	3.6 – 4.0	
High School GPA					
2.0 – 2.4	1				1
2.5 – 2.9	6	24	8		38
3.0 – 3.5	23	99	66	15	203
3.6 – 4.0	9	55	82	76	222
Total	39	178	156	91	464
Percentile Rank					
1 – 29	2	2	4		8
30 – 49	4	18	5	1	28
50 – 59	1	22	19	3	45
60 – 79	18	73	44	12	147
80 – 89	9	42	48	25	124
90 – 99		11	27	44	82
Total	34	168	147	85	434
SAT Verbal					
200 – 399	1	4	1		6
400 – 499	4	39	22	12	77
500 – 599	10	53	42	29	134
600 – 699	2	5	15	16	38
700 – 800				2	2
Total	17	101	80	59	257
SAT Math					
200 – 399		4	2	1	7
400 – 499	2	29	17	5	53
500 – 599	9	46	38	28	121
600 – 699	5	20	21	23	69
700 – 800	1	2	2	2	7
Total	17	101	80	59	257
ACT Composite					
1 – 14	1				1
15 – 18	1	15	5	1	22
19 – 22	14	64	33	15	126
23 – 26	13	65	76	44	198
27 – 36	2	14	24	23	63
Total	31	158	138	83	410
CCHE Index					
35 – 89	2	1	1		4
90 – 100	11	69	26	3	109
101 – 114	23	93	98	37	251
115 – 160	3	15	30	51	99
Total	39	178	155	91	463

Office of Budgets and Institutional Analysis
 Number of New Freshmen by High School GPA & Rank,
 Test Scores, CCHE Index and CSU GPA
 CSU GPA after One Year for Freshmen Entering Fall 1999

Business

**Fall 1999 – Spring 2000
 First Year CSU Grades by CCHE Index**



Number of New Freshmen by High School GPA & Rank,
Test Scores, CCHE Index and CSU GPA
CSU GPA after One Year for Freshmen Entering Fall 1999

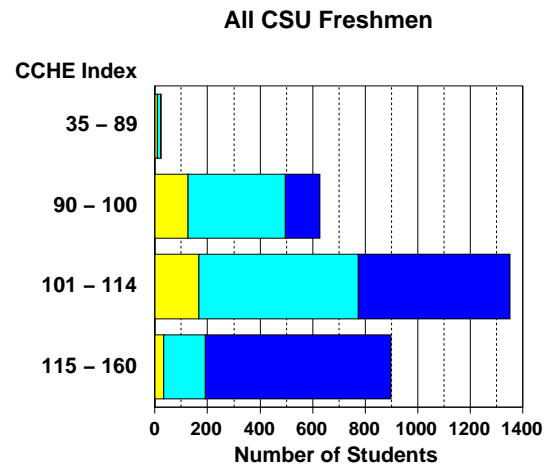
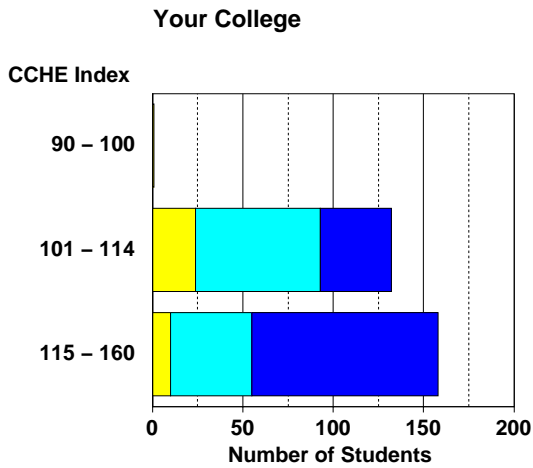
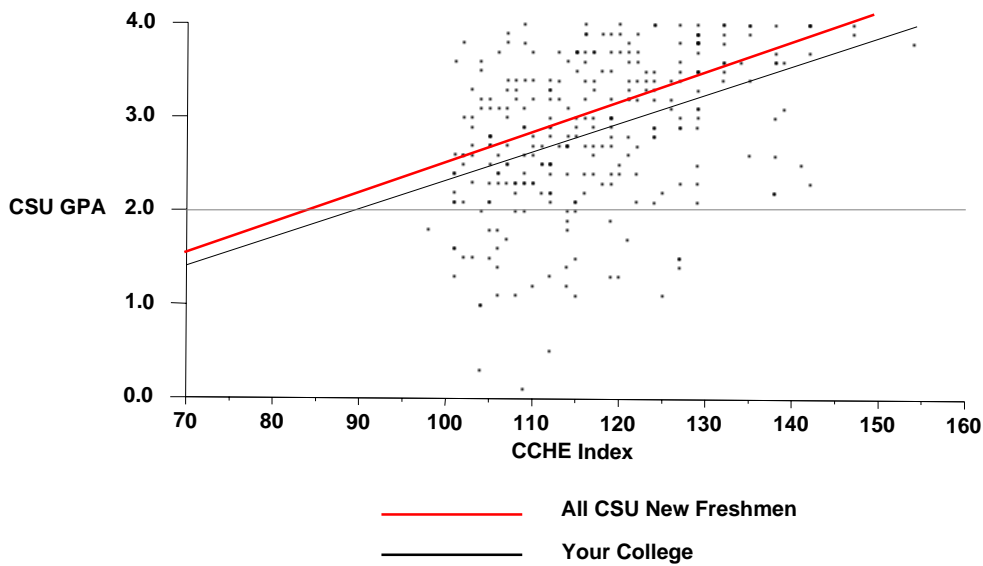
Engineering

	CSU GPA				Total
	0.1 – 1.9	2.0 – 2.9	3.0 – 3.5	3.6 – 4.0	
High School GPA					
2.5 – 2.9	5	3			8
3.0 – 3.5	23	49	17	10	99
3.6 – 4.0	7	62	56	59	184
Total	35	114	73	69	291
Percentile Rank					
30 – 49	3	1	1	1	6
50 – 59	4	5	1	1	11
60 – 79	19	39	17	9	84
80 – 89	4	31	20	9	64
90 – 99	3	29	31	47	110
Total	33	105	70	67	275
SAT Verbal					
200 – 399		1	2		3
400 – 499	2	10	6	6	24
500 – 599	14	38	24	11	87
600 – 699	10	23	13	16	62
700 – 800	1	3	2	7	13
Total	27	75	47	40	189
SAT Math					
400 – 499	1	1	1		3
500 – 599	6	29	15	9	59
600 – 699	16	36	27	17	96
700 – 800	4	9	4	14	31
Total	27	75	47	40	189
ACT Composite					
15 – 18		1			1
19 – 22	3	15	8	4	30
23 – 26	12	44	28	21	105
27 – 36	13	39	30	40	122
Total	28	99	66	65	258
CCHE Index					
90 – 100	1				1
101 – 114	24	69	28	11	132
115 – 160	10	45	45	58	158
Total	35	114	73	69	291

Office of Budgets and Institutional Analysis
 Number of New Freshmen by High School GPA & Rank,
 Test Scores, CCHE Index and CSU GPA
 CSU GPA after One Year for Freshmen Entering Fall 1999

Engineering

**Fall 1999 – Spring 2000
 First Year CSU Grades by CCHE Index**



Number of New Freshmen by High School GPA & Rank,
Test Scores, CCHE Index and CSU GPA
CSU GPA after One Year for Freshmen Entering Fall 1999

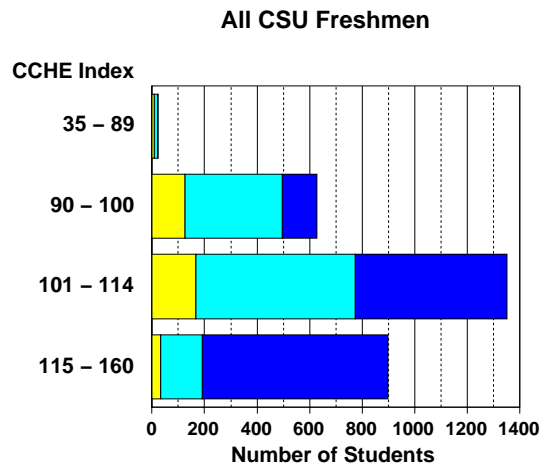
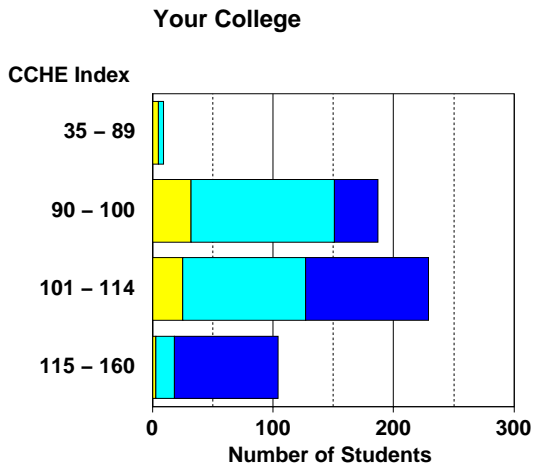
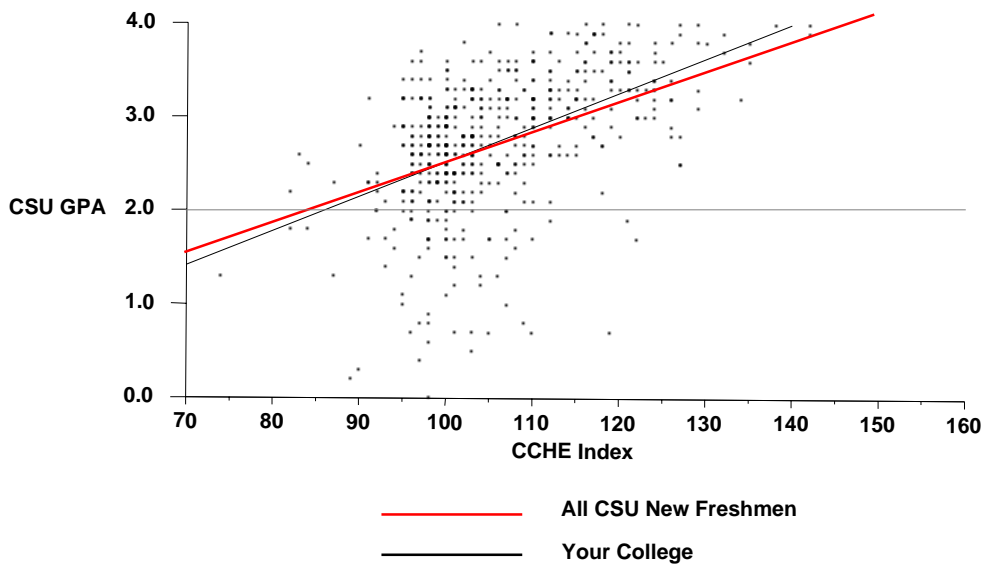
Intra-University

	CSU GPA				Total
	0.1 – 1.9	2.0 – 2.9	3.0 – 3.5	3.6 – 4.0	
High School GPA					
2.0 – 2.4	3	1	1		5
2.5 – 2.9	19	40	5	2	66
3.0 – 3.5	39	143	67	19	268
3.6 – 4.0	5	56	85	44	190
Total	66	240	158	65	529
Percentile Rank					
1 – 29	4	3	1		8
30 – 49	13	38	7	4	62
50 – 59	14	37	9	3	63
60 – 79	22	93	48	15	178
80 – 89	5	39	44	10	98
90 – 99	2	13	37	33	85
Total	60	223	146	65	494
SAT Verbal					
200 – 399	2	4	1		7
400 – 499	7	48	22	4	81
500 – 599	22	62	51	15	150
600 – 699	4	19	20	12	55
700 – 800		1	2	6	9
Total	35	134	96	37	302
SAT Math					
200 – 399	1	2			3
400 – 499	9	39	28	2	78
500 – 599	18	68	44	16	146
600 – 699	7	24	23	17	71
700 – 800		1	1	2	4
Total	35	134	96	37	302
ACT Composite					
1 – 14		1			1
15 – 18	3	8	3		14
19 – 22	22	96	40	5	163
23 – 26	21	82	66	26	195
27 – 36	10	18	25	23	76
Total	56	205	134	54	449
CCHE Index					
35 – 89	5	4			9
90 – 100	33	119	32	4	188
101 – 114	25	102	84	18	229
115 – 160	3	15	43	43	104
Total	66	240	159	65	530

Office of Budgets and Institutional Analysis
 Number of New Freshmen by High School GPA & Rank,
 Test Scores, CCHE Index and CSU GPA
 CSU GPA after One Year for Freshmen Entering Fall 1999

Intra-University

**Fall 1999 – Spring 2000
 First Year CSU Grades by CCHE Index**



Number of New Freshmen by High School GPA & Rank,
Test Scores, CCHE Index and CSU GPA
CSU GPA after One Year for Freshmen Entering Fall 1999

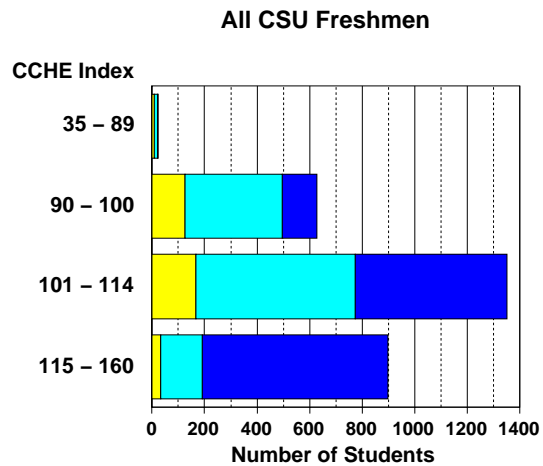
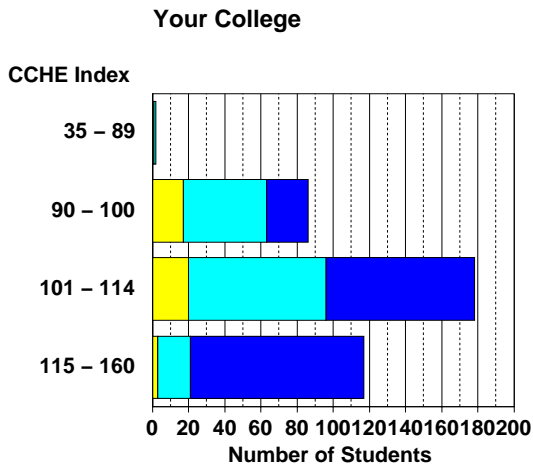
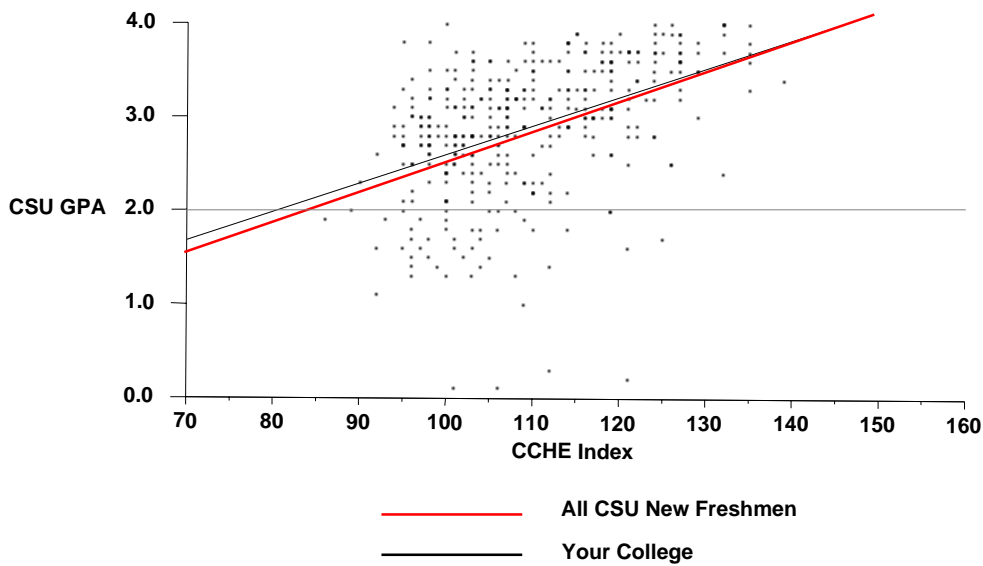
Liberal Arts

	CSU GPA				Total
	0.1 – 1.9	2.0 – 2.9	3.0 – 3.5	3.6 – 4.0	
High School GPA					
2.5 – 2.9	7	22	5	2	36
3.0 – 3.5	27	79	54	13	173
3.6 – 4.0	7	39	68	59	173
Total	41	140	127	74	382
Percentile Rank					
1 – 29	1	1			2
30 – 49	5	20	6	3	34
50 – 59	10	23	11	1	45
60 – 79	11	45	40	12	108
80 – 89	8	29	33	14	84
90 – 99	2	10	26	40	78
Total	37	128	116	70	351
SAT Verbal					
200 – 399	1	1			2
400 – 499	6	22	12	3	43
500 – 599	11	38	48	21	118
600 – 699	4	24	27	19	74
700 – 800	1	1	2	8	12
Total	23	86	89	51	249
SAT Math					
200 – 399		3			3
400 – 499	3	20	16	9	48
500 – 599	17	46	57	27	147
600 – 699	3	16	15	14	48
700 – 800		1	1	1	3
Total	23	86	89	51	249
ACT Composite					
15 – 18	3	4	2		9
19 – 22	10	42	30	7	89
23 – 26	15	48	50	30	143
27 – 36	5	20	21	24	70
Total	33	114	103	61	311
CCHE Index					
35 – 89	1	1			2
90 – 100	17	46	20	3	86
101 – 114	20	76	63	19	178
115 – 160	3	18	44	52	117
Total	41	141	127	74	383

Office of Budgets and Institutional Analysis
 Number of New Freshmen by High School GPA & Rank,
 Test Scores, CCHE Index and CSU GPA
 CSU GPA after One Year for Freshmen Entering Fall 1999

Liberal Arts

**Fall 1999 – Spring 2000
 First Year CSU Grades by CCHE Index**



Office of Budgets and Institutional Analysis
 Number of New Freshmen by High School GPA & Rank,
 Test Scores, CCHE Index and CSU GPA
 CSU GPA after One Year for Freshmen Entering Fall 1999

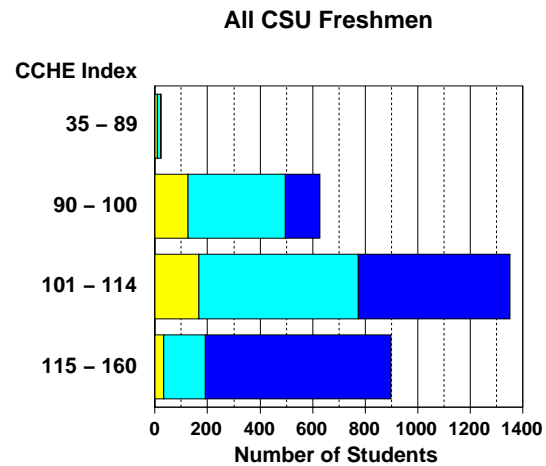
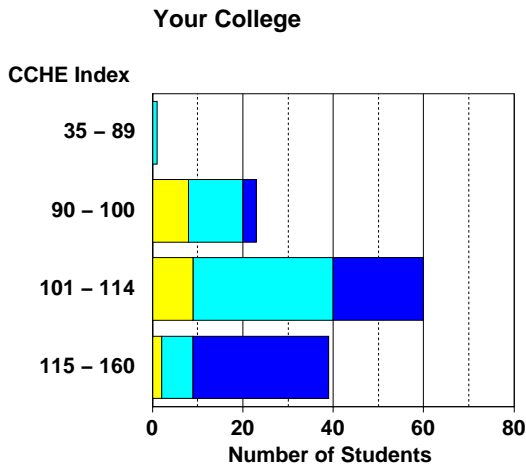
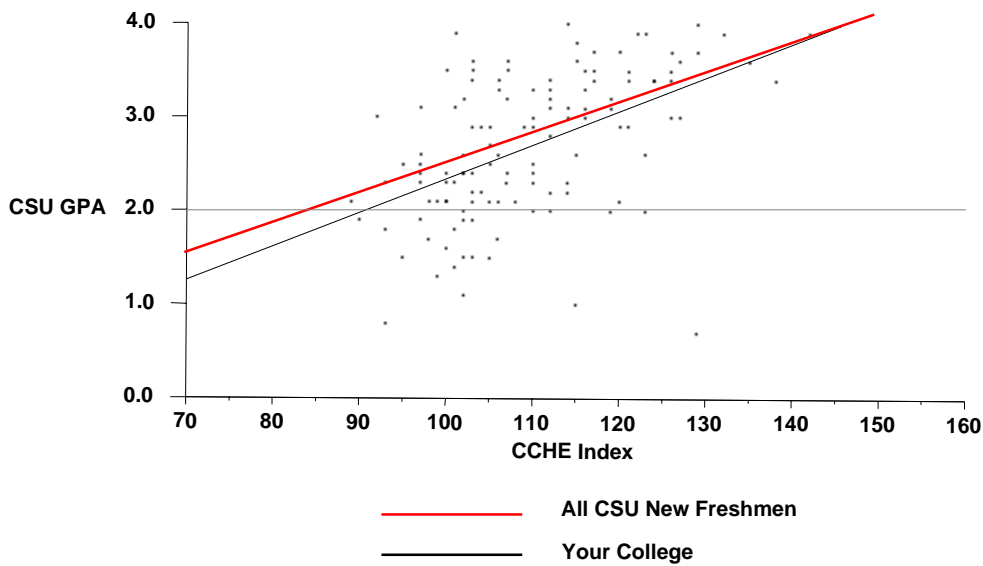
Natural Resources

	CSU GPA				Total
	0.1 – 1.9	2.0 – 2.9	3.0 – 3.5	3.6 – 4.0	
High School GPA					
2.0 – 2.4		1			1
2.5 – 2.9	4	7	1		12
3.0 – 3.5	13	27	6	5	51
3.6 – 4.0	2	16	29	12	59
Total	19	51	36	17	123
Percentile Rank					
30 – 49	3	7	1		11
50 – 59	6	5	1		12
60 – 79	8	16	5	3	32
80 – 89		9	8	6	23
90 – 99		8	15	7	30
Total	17	45	30	16	108
SAT Verbal					
400 – 499	3	6	2		11
500 – 599	6	21	12	7	46
600 – 699	2	7	9	2	20
700 – 800			2	1	3
Total	11	34	25	10	80
SAT Math					
400 – 499	4	10	4		18
500 – 599	5	12	13	4	34
600 – 699	2	10	7	6	25
700 – 800		2	1		3
Total	11	34	25	10	80
ACT Composite					
15 – 18		3			3
19 – 22	4	15	5		24
23 – 26	6	19	12	4	41
27 – 36	3	6	8	8	25
Total	13	43	25	12	93
CCHE Index					
35 – 89		1			1
90 – 100	8	12	3		23
101 – 114	9	31	16	4	60
115 – 160	2	7	17	13	39
Total	19	51	36	17	123

Office of Budgets and Institutional Analysis
 Number of New Freshmen by High School GPA & Rank,
 Test Scores, CCHE Index and CSU GPA
 CSU GPA after One Year for Freshmen Entering Fall 1999

Natural Resources

**Fall 1999 – Spring 2000
 First Year CSU Grades by CCHE Index**



Number of New Freshmen by High School GPA & Rank,
Test Scores, CCHE Index and CSU GPA
CSU GPA after One Year for Freshmen Entering Fall 1999

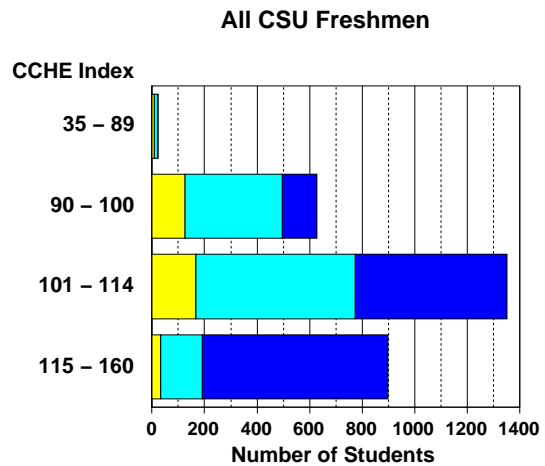
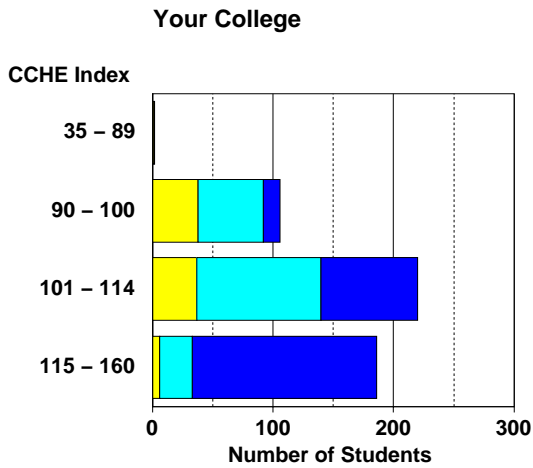
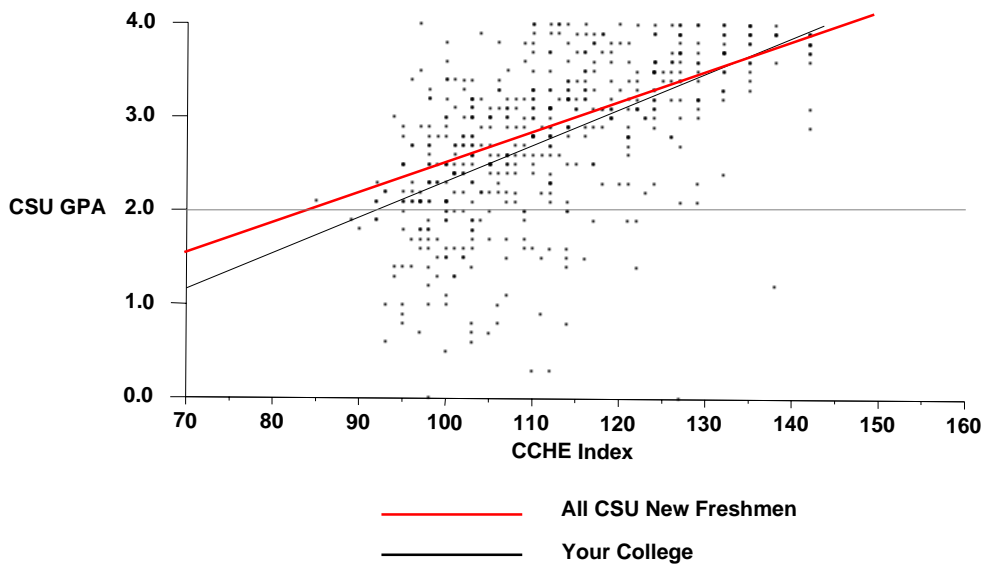
Natural Sciences

	CSU GPA				Total
	0.1 – 1.9	2.0 – 2.9	3.0 – 3.5	3.6 – 4.0	
High School GPA					
2.0 – 2.4		1			1
2.5 – 2.9	12	16	2		30
3.0 – 3.5	55	94	39	9	197
3.6 – 4.0	18	74	104	93	289
Total	85	185	145	102	517
Percentile Rank					
1 – 29		1			1
30 – 49	11	16	3		30
50 – 59	14	17	6	2	39
60 – 79	36	79	31	8	154
80 – 89	17	33	45	17	112
90 – 99	3	28	55	66	152
Total	81	174	140	93	488
SAT Verbal					
200 – 399	1	3	2		6
400 – 499	8	32	15	7	62
500 – 599	29	54	42	27	152
600 – 699	7	14	28	30	79
700 – 800	3	2	2	12	19
Total	48	105	89	76	318
SAT Math					
200 – 399	1			1	2
400 – 499	11	27	16	3	57
500 – 599	27	57	38	22	144
600 – 699	8	18	31	34	91
700 – 800	1	3	4	16	24
Total	48	105	89	76	318
ACT Composite					
15 – 18	1	6	2		9
19 – 22	32	60	25	7	124
23 – 26	25	69	51	24	169
27 – 36	15	25	49	58	147
Total	73	160	127	89	449
CCHE Index					
35 – 89	1	1			2
90 – 100	39	54	11	3	107
101 – 114	37	103	61	19	220
115 – 160	7	27	73	80	187
Total	84	185	145	102	516

Office of Budgets and Institutional Analysis
 Number of New Freshmen by High School GPA & Rank,
 Test Scores, CCHE Index and CSU GPA
 CSU GPA after One Year for Freshmen Entering Fall 1999

Natural Sciences

**Fall 1999 – Spring 2000
 First Year CSU Grades by CCHE Index**



Number of New Freshmen by High School GPA & Rank,
Test Scores, CCHE Index and CSU GPA
CSU GPA after One Year for Freshmen Entering Fall 1999

Veterinary Medicine + Biomedical Sci

	CSU GPA				Total
	0.1 – 1.9	2.0 – 2.9	3.0 – 3.5	3.6 – 4.0	
High School GPA					
2.5 – 2.9	1	2			3
3.0 – 3.5	17	25	13	2	57
3.6 – 4.0	9	35	33	22	99
Total	27	62	46	24	159
Percentile Rank					
30 – 49	1			1	2
50 – 59	5	4	1		10
60 – 79	8	24	9	2	43
80 – 89	8	14	15	6	43
90 – 99	3	16	16	13	48
Total	25	58	41	22	146
SAT Verbal					
200 – 399		1			1
400 – 499	4	7	2	3	16
500 – 599	11	22	15	8	56
600 – 699	4	7	9	5	25
700 – 800		1	2	4	7
Total	19	38	28	20	105
SAT Math					
400 – 499	6	6	5	1	18
500 – 599	11	21	13	5	50
600 – 699	2	11	9	12	34
700 – 800			1	2	3
Total	19	38	28	20	105
ACT Composite					
19 – 22	10	11	9	1	31
23 – 26	11	30	16	6	63
27 – 36	2	11	12	13	38
Total	23	52	37	20	132
CCHE Index					
90 – 100	4	10	3	1	18
101 – 114	18	34	20	3	75
115 – 160	5	18	23	20	66
Total	27	62	46	24	159

Office of Budgets and Institutional Analysis
 Number of New Freshmen by High School GPA & Rank,
 Test Scores, CCHE Index and CSU GPA
 CSU GPA after One Year for Freshmen Entering Fall 1999

Veterinary Medicine + Biomedical Sci

**Fall 1999 – Spring 2000
 First Year CSU Grades by CCHE Index**

