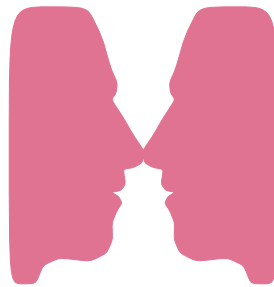


Freshmen Profile

1999



Freshmen Profile 1999 Report Highlights

Data Highlights

- ◆ SAT scores were recentered between the 1994 and 1995 reporting periods. This resulted in a major jump in Verbal scores and a slight increase in Math scores
- ◆ the index rose slightly to a high of 110
- ◆ mean ACT scores, high school GPA, and high school rank have been virtually unchanged for five years
- ◆ high school GPA rose to a high of 3.50
- ◆ non-resident students have slightly worse high school rank and high school GPA, but better test scores and Index
- ◆ we admitted 31 students with an index less than 90 and 23 (74.2%) of them enrolled
- ◆ the percentage of admitted students who enrolled in the range 115-160 increased slightly

Office of Budgets and Institutional Analysis
 Profile of **All New** Freshmen Enrolled Fall Semesters
 Five Year Trend in High School Admissions Scores by College

	1995	1996	1997	1998	1999
Mean High School Rank					
Agricultural Sciences	78	80	81	80	79
Applied Human Sciences	78	77	76	77	76
Business	76	73	73	73	78
Engineering	85	83	80	81	82
Intra–University	72	73	72	72	69
Liberal Arts	75	75	73	75	73
Natural Resources	80	74	72	74	75
Natural Sciences	78	79	77	77	78
Veterinary Medicine + Biomedical Sci	81	83	80	79	81
Total	77	76	75	76	76
Mean SAT Verbal Score					
Agricultural Sciences	569	563	564	559	569
Applied Human Sciences	528	526	524	528	524
Business	536	536	535	524	542
Engineering	576	573	563	574	578
Intra–University	537	536	534	536	528
Liberal Arts	573	566	568	565	567
Natural Resources	569	566	560	570	562
Natural Sciences	566	561	568	560	559
Veterinary Medicine + Biomedical Sci	556	568	555	558	562
Total	556	553	551	551	552
Mean SAT Math Score					
Agricultural Sciences	563	566	563	552	566
Applied Human Sciences	534	538	535	536	526
Business	555	553	569	552	570
Engineering	618	623	608	619	627
Intra–University	548	546	551	544	537
Liberal Arts	546	544	542	545	546
Natural Resources	568	563	557	558	569
Natural Sciences	579	570	576	574	568
Veterinary Medicine + Biomedical Sci	556	566	565	560	565
Total	564	561	563	561	561

Office of Budgets and Institutional Analysis
 Profile of **All New** Freshmen Enrolled Fall Semesters
 Five Year Trend in High School Admissions Scores by College

	1995	1996	1997	1998	1999
Mean Composite ACT Score					
Agricultural Sciences	24.1	24.6	24.6	24.6	24.6
Applied Human Sciences	22.9	23.0	22.9	23.3	23.2
Business	23.3	23.6	23.8	23.3	24.4
Engineering	26.2	26.3	25.8	26.2	26.2
Intra–University	23.2	23.4	23.4	23.4	23.0
Liberal Arts	24.1	24.2	24.1	24.1	24.2
Natural Resources	24.2	24.0	23.9	24.8	24.4
Natural Sciences	24.7	24.5	25.0	24.6	24.8
Veterinary Medicine + Biomedical Sci	24.6	24.8	24.7	24.7	24.7
Total	24.1	24.1	24.2	24.2	24.2
Mean High School Grade Point Average					
Agricultural Sciences	3.51	3.58	3.56	3.59	3.56
Applied Human Sciences	3.52	3.50	3.50	3.54	3.52
Business	3.46	3.41	3.42	3.45	3.58
Engineering	3.65	3.64	3.58	3.62	3.63
Intra–University	3.33	3.39	3.39	3.41	3.34
Liberal Arts	3.41	3.45	3.43	3.50	3.46
Natural Resources	3.49	3.43	3.42	3.44	3.48
Natural Sciences	3.51	3.51	3.50	3.53	3.55
Veterinary Medicine + Biomedical Sci	3.55	3.58	3.55	3.58	3.60
Total	3.47	3.48	3.47	3.50	3.50
Mean CCHE Index					
Agricultural Sciences	110	112	112	111	112
Applied Human Sciences	107	107	107	108	107
Business	107	107	107	106	111
Engineering	117	118	115	117	117
Intra–University	105	106	106	106	104
Liberal Arts	108	109	108	109	109
Natural Resources	110	108	108	110	110
Natural Sciences	111	111	112	111	112
Veterinary Medicine + Biomedical Sci	111	113	112	112	112
Total	109	109	109	109	110

Office of Budgets and Institutional Analysis
 Profile of **Resident** Freshmen Enrolled Fall Semesters
 Five Year Trend in High School Admissions Scores by College

	1995	1996	1997	1998	1999
Mean High School Rank					
Agricultural Sciences	78	79	78	81	78
Applied Human Sciences	79	78	77	78	78
Business	77	76	75	74	79
Engineering	85	83	81	80	82
Intra–University	73	74	72	72	70
Liberal Arts	76	76	74	76	73
Natural Resources	77	75	73	74	75
Natural Sciences	79	79	77	77	78
Veterinary Medicine + Biomedical Sci	81	84	82	80	82
Total	78	77	76	76	76
Mean SAT Verbal Score					
Agricultural Sciences	540	532	526	541	550
Applied Human Sciences	530	513	518	526	528
Business	532	531	534	529	540
Engineering	577	573	562	572	574
Intra–University	535	537	536	536	530
Liberal Arts	572	558	566	567	563
Natural Resources	551	537	552	568	546
Natural Sciences	560	560	566	560	558
Veterinary Medicine + Biomedical Sci	551	572	546	555	561
Total	552	547	548	550	550
Mean SAT Math Score					
Agricultural Sciences	546	562	560	534	548
Applied Human Sciences	527	527	529	531	525
Business	547	548	572	556	569
Engineering	616	619	609	616	623
Intra–University	541	548	548	539	535
Liberal Arts	543	544	539	541	542
Natural Resources	549	551	548	543	563
Natural Sciences	582	568	574	573	566
Veterinary Medicine + Biomedical Sci	551	562	559	561	560
Total	561	559	562	558	559

Office of Budgets and Institutional Analysis
 Profile of **Resident** Freshmen Enrolled Fall Semesters
 Five Year Trend in High School Admissions Scores by College

	1995	1996	1997	1998	1999
Mean Composite ACT Score					
Agricultural Sciences	23.8	24.1	24.0	24.1	23.7
Applied Human Sciences	22.9	22.7	22.8	23.1	23.3
Business	23.2	23.6	23.7	23.3	24.3
Engineering	26.2	26.1	25.6	26.0	26.0
Intra–University	23.2	23.3	23.4	23.3	22.9
Liberal Arts	24.2	24.2	23.9	24.1	24.1
Natural Resources	23.5	23.4	23.6	24.5	23.9
Natural Sciences	24.7	24.4	24.8	24.6	24.6
Veterinary Medicine + Biomedical Sci	24.5	24.9	24.4	24.5	24.7
Total	24.1	24.0	24.0	24.0	24.1
Mean High School Grade Point Average					
Agricultural Sciences	3.54	3.57	3.55	3.63	3.57
Applied Human Sciences	3.55	3.54	3.54	3.56	3.55
Business	3.49	3.48	3.47	3.47	3.59
Engineering	3.68	3.66	3.60	3.61	3.64
Intra–University	3.37	3.42	3.42	3.43	3.37
Liberal Arts	3.45	3.49	3.46	3.51	3.47
Natural Resources	3.50	3.47	3.50	3.50	3.50
Natural Sciences	3.51	3.54	3.51	3.53	3.56
Veterinary Medicine + Biomedical Sci	3.58	3.63	3.59	3.59	3.64
Total	3.50	3.51	3.49	3.52	3.52
Mean CCHE Index					
Agricultural Sciences	109	110	109	111	109
Applied Human Sciences	107	107	107	108	108
Business	107	107	108	107	111
Engineering	118	117	115	116	117
Intra–University	105	106	106	106	104
Liberal Arts	109	109	108	109	109
Natural Resources	107	107	108	109	108
Natural Sciences	111	111	111	111	111
Veterinary Medicine + Biomedical Sci	111	113	112	112	113
Total	109	109	109	109	109

Office of Budgets and Institutional Analysis
 Profile of **Nonresident** Freshmen Enrolled Fall Semesters
 Five Year Trend in High School Admissions Scores by College

	1995	1996	1997	1998	1999
Mean High School Rank					
Agricultural Sciences	78	82	83	79	80
Applied Human Sciences	76	76	72	74	72
Business	71	63	66	67	75
Engineering	82	81	77	82	81
Intra–University	68	68	68	69	64
Liberal Arts	70	70	70	73	75
Natural Resources	82	72	71	73	75
Natural Sciences	78	77	76	77	75
Veterinary Medicine + Biomedical Sci	80	80	77	77	77
Total	75	74	73	75	74
Mean SAT Verbal Score					
Agricultural Sciences	581	586	576	567	577
Applied Human Sciences	526	545	537	531	513
Business	547	546	535	511	550
Engineering	574	574	565	579	597
Intra–University	540	533	531	534	521
Liberal Arts	575	585	572	560	578
Natural Resources	579	581	563	572	569
Natural Sciences	580	564	574	561	562
Veterinary Medicine + Biomedical Sci	563	563	569	565	563
Total	562	563	557	553	557
Mean SAT Math Score					
Agricultural Sciences	570	569	563	560	573
Applied Human Sciences	543	556	546	547	528
Business	577	565	561	542	573
Engineering	624	633	608	628	643
Intra–University	559	541	557	557	542
Liberal Arts	555	544	549	559	559
Natural Resources	578	569	561	569	572
Natural Sciences	573	575	586	577	573
Veterinary Medicine + Biomedical Sci	563	571	576	558	578
Total	570	565	566	566	567

Office of Budgets and Institutional Analysis
 Profile of **Nonresident** Freshmen Enrolled Fall Semesters
 Five Year Trend in High School Admissions Scores by College

	1995	1996	1997	1998	1999
Mean Composite ACT Score					
Agricultural Sciences	24.5	25.3	25.3	25.3	25.6
Applied Human Sciences	22.8	23.9	23.1	24.2	22.6
Business	23.8	23.9	24.2	23.3	24.8
Engineering	26.1	27.2	26.4	27.2	27.6
Intra–University	23.3	23.8	23.8	23.8	23.4
Liberal Arts	23.4	24.3	24.7	23.6	24.7
Natural Resources	25.3	24.8	24.2	25.2	24.9
Natural Sciences	24.8	25.1	26.0	24.5	25.6
Veterinary Medicine + Biomedical Sci	25.1	24.5	25.6	25.3	24.7
Total	24.2	24.7	24.7	24.7	24.8
Mean High School Grade Point Average					
Agricultural Sciences	3.48	3.59	3.56	3.55	3.55
Applied Human Sciences	3.46	3.42	3.39	3.46	3.40
Business	3.33	3.19	3.27	3.35	3.50
Engineering	3.53	3.59	3.49	3.66	3.58
Intra–University	3.22	3.29	3.28	3.30	3.19
Liberal Arts	3.29	3.32	3.33	3.45	3.41
Natural Resources	3.48	3.38	3.36	3.39	3.46
Natural Sciences	3.48	3.41	3.47	3.52	3.52
Veterinary Medicine + Biomedical Sci	3.47	3.48	3.48	3.55	3.48
Total	3.40	3.40	3.40	3.47	3.44
Mean CCHE Index					
Agricultural Sciences	111	115	113	111	114
Applied Human Sciences	107	108	106	108	105
Business	107	104	106	105	111
Engineering	115	118	114	119	119
Intra–University	105	104	105	106	102
Liberal Arts	107	108	108	109	109
Natural Resources	113	110	108	110	111
Natural Sciences	112	111	113	112	112
Veterinary Medicine + Biomedical Sci	111	112	111	112	109
Total	109	109	109	110	110

Office of Budgets and Institutional Analysis
Freshmen Profile
Fall 1999

University	Admitted N= 8104				Enrolled N=3137			
	Res	Nonres	Total	Percent	Res	Nonres	Total	Percent
High School GPA								
2.0 – 2.4	10	9	19	0	10	0	10	0
2.5 – 2.9	226	326	552	7	133	100	233	7
3.0 – 3.5	1998	1383	3381	42	1032	326	1358	44
3.6 – 4.0	2447	1646	4093	51	1190	322	1512	49
Valid Cases	4681	3364	8045	100	2365	748	3113	100
Means	3.55	3.50	3.53		3.52	3.44	3.50	
Percentile Rank								
1 – 29	23	36	59	1	17	5	22	1
30 – 49	228	244	472	6	142	70	212	7
50 – 59	377	244	621	9	219	63	282	10
60 – 79	1440	870	2310	32	760	210	970	34
80 – 89	1113	620	1733	24	554	120	674	23
90 – 99	1218	866	2084	29	561	164	725	25
Valid Cases	4399	2880	7279	100	2253	632	2885	100
Means	77.8	76.5	77.3		76.3	73.9	75.7	
SAT Verbal								
200 – 399	37	34	71	1	20	10	30	2
400 – 499	601	433	1034	20	301	101	402	22
500 – 599	1370	1151	2521	49	656	274	930	50
600 – 699	699	667	1366	26	297	137	434	23
700 – 800	98	104	202	4	55	17	72	4
Valid Cases	2805	2389	5194	100	1329	539	1868	100
Means	553	561	557		550	557	552	
SAT Math								
200 – 399	29	17	46	1	17	4	21	1
400 – 499	518	363	881	17	271	102	373	20
500 – 599	1282	1075	2357	45	618	245	863	46
600 – 699	828	796	1624	31	366	159	525	28
700 – 800	148	138	286	6	57	29	86	5
Valid Cases	2805	2389	5194	100	1329	539	1868	100
Means	565	573	569		559	567	561	
ACT Composite								
1 – 14	4	5	9	0	2	1	3	0
15 – 18	113	66	179	3	53	19	72	3
19 – 22	1246	449	1695	26	662	99	761	29
23 – 26	1853	934	2787	44	941	199	1140	43
27 – 36	1032	696	1728	27	498	149	647	25
Valid Cases	4248	2150	6398	100	2156	467	2623	100
Means	24.2	24.9	24.5		24.1	24.8	24.2	
CCHE Index								
35 – 89	16	15	31	0	15	8	23	1
90 – 100	908	628	1536	19	520	178	698	22
101 – 114	2228	1492	3720	46	1132	319	1451	47
115 – 160	1527	1229	2756	34	696	242	938	30
Valid Cases	4679	3364	8043	100	2363	747	3110	100
Means	110	111	111		109	110	110	

Office of Budgets and Institutional Analysis
Freshmen Profile
Fall 1999

Agricultural Sciences**Admitted N= 402****Enrolled N=207**

	Res	Nonres	Total	Percent	Res	Nonres	Total	Percent
High School GPA								
2.0 – 2.4	1	0	1	0	1	0	1	0
2.5 – 2.9	4	14	18	5	3	5	8	4
3.0 – 3.5	45	95	140	35	33	44	77	38
3.6 – 4.0	72	166	238	60	50	68	118	58
Valid Cases	122	275	397	100	87	117	204	100
Means	3.58	3.58	3.58		3.57	3.55	3.56	
Percentile Rank								
1 – 29	1	2	3	1	1	0	1	1
30 – 49	4	8	12	3	4	5	9	5
50 – 59	5	17	22	6	4	6	10	5
60 – 79	49	64	113	32	33	29	62	34
80 – 89	24	58	82	23	16	21	37	20
90 – 99	34	88	122	34	26	39	65	35
Valid Cases	117	237	354	100	84	100	184	100
Means	78.5	80.5	79.8		78.4	80.2	79.4	
SAT Verbal								
200 – 399	1	4	5	2	1	2	3	2
400 – 499	11	31	42	17	6	14	20	16
500 – 599	26	93	119	48	19	34	53	43
600 – 699	7	63	70	28	7	36	43	35
700 – 800	1	10	11	4	1	3	4	3
Valid Cases	46	201	247	100	34	89	123	100
Means	541	568	563		550	577	569	
SAT Math								
200 – 399	0	1	1	0	0	0	0	0
400 – 499	14	35	49	20	12	19	31	25
500 – 599	20	86	106	43	12	33	45	37
600 – 699	10	69	79	32	8	31	39	32
700 – 800	2	10	12	5	2	6	8	7
Valid Cases	46	201	247	100	34	89	123	100
Means	548	572	567		548	573	566	
ACT Composite								
15 – 18	3	4	7	2	2	2	4	3
19 – 22	39	28	67	24	29	15	44	29
23 – 26	55	75	130	46	38	21	59	39
27 – 36	17	61	78	28	11	32	43	29
Valid Cases	114	168	282	100	80	70	150	100
Means	23.7	25.4	24.7		23.7	25.6	24.6	
CCHE Index								
35 – 89	2	0	2	1	2	0	2	1
90 – 100	22	44	66	17	16	24	40	20
101 – 114	66	104	170	43	45	36	81	40
115 – 160	31	126	157	40	23	56	79	39
Valid Cases	121	274	395	100	86	116	202	100
Means	109	114	112		109	114	112	

Office of Budgets and Institutional Analysis
Freshmen Profile
Fall 1999

Applied Human Sciences	Admitted N= 611				Enrolled N=270			
	Res	Nonres	Total	Percent	Res	Nonres	Total	Percent
High School GPA								
2.5 – 2.9	7	20	27	4	5	7	12	4
3.0 – 3.5	150	114	264	43	95	34	129	48
3.6 – 4.0	191	127	318	52	106	22	128	48
Valid Cases	348	261	609	100	206	63	269	100
Means	3.57	3.51	3.54		3.55	3.40	3.52	
Percentile Rank								
1 – 29	0	3	3	1	0	0	0	0
30 – 49	10	18	28	5	6	6	12	5
50 – 59	29	22	51	9	15	11	26	10
60 – 79	121	69	190	34	80	15	95	38
80 – 89	93	55	148	26	50	11	61	25
90 – 99	77	66	143	25	44	10	54	22
Valid Cases	330	233	563	100	195	53	248	100
Means	78.0	76.5	77.4		77.5	71.7	76.3	
SAT Verbal								
200 – 399	2	3	5	1	2	0	2	1
400 – 499	56	51	107	30	32	15	47	31
500 – 599	98	88	186	52	54	28	82	55
600 – 699	33	24	57	16	16	2	18	12
700 – 800	2	3	5	1	1	0	1	1
Valid Cases	191	169	360	100	105	45	150	100
Means	531	524	528		528	513	524	
SAT Math								
200 – 399	6	3	9	3	3	3	6	4
400 – 499	53	41	94	26	31	12	43	29
500 – 599	98	87	185	51	56	23	79	53
600 – 699	31	36	67	19	14	7	21	14
700 – 800	3	2	5	1	1	0	1	1
Valid Cases	191	169	360	100	105	45	150	100
Means	532	541	537		525	528	526	
ACT Composite								
1 – 14	2	1	3	1	1	0	1	0
15 – 18	8	7	15	3	5	3	8	3
19 – 22	118	61	179	36	70	16	86	37
23 – 26	148	79	227	45	91	17	108	47
27 – 36	42	35	77	15	25	3	28	12
Valid Cases	318	183	501	100	192	39	231	100
Means	23.4	23.7	23.5		23.3	22.6	23.2	
CCHE Index								
35 – 89	0	3	3	0	0	3	3	1
90 – 100	75	68	143	24	50	18	68	25
101 – 114	187	118	305	50	111	33	144	54
115 – 160	85	72	157	26	45	9	54	20
Valid Cases	347	261	608	100	206	63	269	100
Means	108	108	108		108	105	107	

Office of Budgets and Institutional Analysis
Freshmen Profile
Fall 1999

Business	Admitted N= 1233				Enrolled N=500			
	Res	Nonres	Total	Percent	Res	Nonres	Total	Percent
High School GPA								
2.0 – 2.4	1	0	1	0	1	0	1	0
2.5 – 2.9	53	71	124	10	25	18	43	9
3.0 – 3.5	348	238	586	48	182	44	226	45
3.6 – 4.0	354	160	514	42	192	36	228	46
Valid Cases	756	469	1225	100	400	98	498	100
Means	3.49	3.38	3.45		3.50	3.37	3.47	
Percentile Rank								
1 – 29	8	7	15	1	6	2	8	2
30 – 49	44	49	93	8	25	11	36	8
50 – 59	69	52	121	11	39	9	48	10
60 – 79	250	148	398	36	123	37	160	34
80 – 89	187	77	264	24	116	16	132	28
90 – 99	151	63	214	19	73	10	83	18
Valid Cases	709	396	1105	100	382	85	467	100
Means	75.3	70.1	73.5		75.3	69.1	74.2	
SAT Verbal								
200 – 399	7	8	15	2	4	2	6	2
400 – 499	120	79	199	27	61	21	82	29
500 – 599	231	175	406	54	113	33	146	52
600 – 699	64	52	116	16	35	8	43	15
700 – 800	6	5	11	1	1	1	2	1
Valid Cases	428	319	747	100	214	65	279	100
Means	530	537	533		528	528	528	
SAT Math								
200 – 399	9	1	10	1	7	0	7	3
400 – 499	90	47	137	18	41	14	55	20
500 – 599	209	170	379	51	106	30	136	49
600 – 699	109	91	200	27	56	17	73	26
700 – 800	11	10	21	3	4	4	8	3
Valid Cases	428	319	747	100	214	65	279	100
Means	552	564	557		550	563	553	
ACT Composite								
1 – 14	1	1	2	0	1	0	1	0
15 – 18	27	10	37	4	17	5	22	5
19 – 22	229	81	310	31	123	14	137	31
23 – 26	329	152	481	49	172	37	209	48
27 – 36	100	59	159	16	56	13	69	16
Valid Cases	686	303	989	100	369	69	438	100
Means	23.4	24.0	23.6		23.4	24.0	23.5	
CCHE Index								
35 – 89	4	2	6	0	4	0	4	1
90 – 100	172	126	298	24	92	26	118	24
101 – 114	418	245	663	54	222	52	274	55
115 – 160	160	96	256	21	80	20	100	20
Valid Cases	754	469	1223	100	398	98	496	100
Means	108	107	107		107	107	107	

Office of Budgets and Institutional Analysis
Freshmen Profile
Fall 1999

Engineering	Admitted N= 860				Enrolled N=308			
	Res	Nonres	Total	Percent	Res	Nonres	Total	Percent
High School GPA								
2.5 – 2.9	5	11	16	2	4	4	8	3
3.0 – 3.5	184	104	288	34	92	16	108	35
3.6 – 4.0	358	196	554	65	163	29	192	62
Valid Cases	547	311	858	100	259	49	308	100
Means	3.66	3.64	3.65		3.64	3.58	3.63	
Percentile Rank								
1 – 29	0	1	1	0	0	0	0	0
30 – 49	9	10	19	2	6	1	7	2
50 – 59	23	14	37	5	10	3	13	4
60 – 79	140	71	211	27	72	16	88	30
80 – 89	133	59	192	24	60	8	68	23
90 – 99	209	119	328	42	98	16	114	39
Valid Cases	514	274	788	100	246	44	290	100
Means	83.2	82.5	83.0		82.1	80.6	81.9	
SAT Verbal								
200 – 399	4	0	4	1	3	0	3	2
400 – 499	54	17	71	12	23	2	25	13
500 – 599	177	104	281	49	73	18	91	46
600 – 699	112	77	189	33	50	15	65	33
700 – 800	19	13	32	6	13	1	14	7
Valid Cases	366	211	577	100	162	36	198	100
Means	569	586	575		574	597	578	
SAT Math								
400 – 499	10	2	12	2	3	0	3	2
500 – 599	116	51	167	29	52	8	60	30
600 – 699	186	121	307	53	81	22	103	52
700 – 800	54	37	91	16	26	6	32	16
Valid Cases	366	211	577	100	162	36	198	100
Means	623	636	628		623	643	627	
ACT Composite								
15 – 18	1	0	1	0	1	0	1	0
19 – 22	69	16	85	12	31	0	31	11
23 – 26	224	85	309	43	102	10	112	41
27 – 36	209	112	321	45	107	21	128	47
Valid Cases	503	213	716	100	241	31	272	100
Means	26.0	26.6	26.1		26.0	27.6	26.2	
CCHE Index								
90 – 100	3	5	8	1	0	1	1	0
101 – 114	230	124	354	41	121	20	141	46
115 – 160	314	182	496	58	138	28	166	54
Valid Cases	547	311	858	100	259	49	308	100
Means	117	118	118		117	119	117	

Office of Budgets and Institutional Analysis
Freshmen Profile
Fall 1999

Intra-University	Admitted N= 1493				Enrolled N=572			
	Res	Nonres	Total	Percent	Res	Nonres	Total	Percent
High School GPA								
2.0 – 2.4	5	5	10	1	5	0	5	1
2.5 – 2.9	69	84	153	10	42	27	69	12
3.0 – 3.5	492	251	743	50	244	53	297	52
3.6 – 4.0	387	188	575	39	171	25	196	35
Valid Cases	953	528	1481	100	462	105	567	100
Means	3.46	3.36	3.42		3.41	3.22	3.37	
Percentile Rank								
1 – 29	8	8	16	1	6	2	8	2
30 – 49	70	62	132	10	44	20	64	12
50 – 59	100	57	157	12	58	12	70	13
60 – 79	317	147	464	35	164	31	195	37
80 – 89	211	76	287	22	90	12	102	19
90 – 99	177	77	254	19	74	13	87	17
Valid Cases	883	427	1310	100	436	90	526	100
Means	74.2	70.1	72.8		71.5	65.7	70.5	
SAT Verbal								
200 – 399	10	9	19	2	3	4	7	2
400 – 499	151	81	232	25	67	19	86	27
500 – 599	257	191	448	48	122	38	160	50
600 – 699	116	87	203	22	44	14	58	18
700 – 800	14	10	24	3	7	2	9	3
Valid Cases	548	378	926	100	243	77	320	100
Means	540	547	543		539	532	537	
SAT Math								
200 – 399	4	5	9	1	2	1	3	1
400 – 499	129	68	197	21	64	22	86	27
500 – 599	258	182	440	48	114	39	153	48
600 – 699	141	109	250	27	60	14	74	23
700 – 800	16	14	30	3	3	1	4	1
Valid Cases	548	378	926	100	243	77	320	100
Means	552	561	556		545	542	545	
ACT Composite								
1 – 14	0	1	1	0	0	1	1	0
15 – 18	30	18	48	4	11	4	15	3
19 – 22	312	75	387	33	163	12	175	36
23 – 26	363	141	504	43	177	34	211	44
27 – 36	152	82	234	20	69	12	81	17
Valid Cases	857	317	1174	100	420	63	483	100
Means	23.5	24.3	23.7		23.4	23.9	23.4	
CCHE Index								
35 – 89	6	6	12	1	6	3	9	2
90 – 100	295	145	440	30	164	44	208	37
101 – 114	440	251	691	47	203	42	245	43
115 – 160	213	126	339	23	90	16	106	19
Valid Cases	954	528	1482	100	463	105	568	100
Means	107	107	107		106	104	106	

Office of Budgets and Institutional Analysis
Freshmen Profile
Fall 1999

Liberal Arts

	Admitted N= 1144				Enrolled N=410			
	Res	Nonres	Total	Percent	Res	Nonres	Total	Percent
High School GPA								
2.0 – 2.4	0	2	2	0	0	0	0	0
2.5 – 2.9	41	47	88	8	26	14	40	10
3.0 – 3.5	315	187	502	44	154	36	190	47
3.6 – 4.0	330	216	546	48	141	36	177	43
Valid Cases	686	452	1138	100	321	86	407	100
Means	3.52	3.48	3.50		3.47	3.41	3.46	
Percentile Rank								
1 – 29	4	5	9	1	3	0	3	1
30 – 49	46	37	83	8	29	5	34	9
50 – 59	70	24	94	9	43	6	49	13
60 – 79	204	119	323	31	95	23	118	32
80 – 89	144	94	238	23	68	21	89	24
90 – 99	174	105	279	27	64	15	79	21
Valid Cases	642	384	1026	100	302	70	372	100
Means	76.1	76.0	76.1		72.9	75.4	73.3	
SAT Verbal								
200 – 399	3	2	5	1	2	0	2	1
400 – 499	63	51	114	15	36	11	47	18
500 – 599	210	151	361	47	99	29	128	48
600 – 699	151	99	250	32	58	17	75	28
700 – 800	16	26	42	5	8	5	13	5
Valid Cases	443	329	772	100	203	62	265	100
Means	574	577	575		563	578	567	
SAT Math								
200 – 399	5	3	8	1	3	0	3	1
400 – 499	82	64	146	19	44	12	56	21
500 – 599	237	147	384	50	119	31	150	57
600 – 699	107	105	212	27	35	18	53	20
700 – 800	12	10	22	3	2	1	3	1
Valid Cases	443	329	772	100	203	62	265	100
Means	554	563	558		542	559	546	
ACT Composite								
15 – 18	17	11	28	3	7	2	9	3
19 – 22	156	58	214	24	83	11	94	29
23 – 26	275	118	393	44	130	20	150	46
27 – 36	161	88	249	28	59	14	73	22
Valid Cases	609	275	884	100	279	47	326	100
Means	24.4	25.0	24.6		24.1	24.7	24.2	
CCHE Index								
35 – 89	2	2	4	0	1	1	2	0
90 – 100	129	85	214	19	74	20	94	23
101 – 114	317	200	517	45	152	39	191	47
115 – 160	239	166	405	36	94	27	121	30
Valid Cases	687	453	1140	100	321	87	408	100
Means	111	111	111		109	109	109	

Office of Budgets and Institutional Analysis
Freshmen Profile
Fall 1999

Natural Resources	Admitted N= 343				Enrolled N=138			
	Res	Nonres	Total	Percent	Res	Nonres	Total	Percent
High School GPA								
2.0 – 2.4	1	1	2	1	1	0	1	1
2.5 – 2.9	2	27	29	9	0	13	13	10
3.0 – 3.5	50	81	131	39	27	27	54	40
3.6 – 4.0	52	124	176	52	25	42	67	50
Valid Cases	105	233	338	100	53	82	135	100
Means	3.52	3.52	3.52		3.50	3.46	3.48	
Percentile Rank								
1 – 29	0	4	4	1	0	1	1	1
30 – 49	4	16	20	7	2	9	11	9
50 – 59	10	18	28	9	6	7	13	11
60 – 79	31	50	81	27	21	14	35	30
80 – 89	30	49	79	27	12	13	25	21
90 – 99	20	64	84	28	8	24	32	27
Valid Cases	95	201	296	100	49	68	117	100
Means	76.9	77.3	77.2		74.9	75.0	75.0	
SAT Verbal								
200 – 399	0	1	1	0	0	0	0	0
400 – 499	13	18	31	13	8	3	11	13
500 – 599	34	88	122	52	12	37	49	58
600 – 699	15	59	74	31	6	16	22	26
700 – 800	3	5	8	3	2	1	3	4
Valid Cases	65	171	236	100	28	57	85	100
Means	553	574	568		546	569	562	
SAT Math								
200 – 399	0	1	1	0	0	0	0	0
400 – 499	14	24	38	16	7	11	18	21
500 – 599	32	74	106	45	11	24	35	41
600 – 699	18	63	81	34	10	19	29	34
700 – 800	1	9	10	4	0	3	3	4
Valid Cases	65	171	236	100	28	57	85	100
Means	556	579	573		563	572	569	
ACT Composite								
15 – 18	4	5	9	4	1	2	3	3
19 – 22	27	24	51	22	17	9	26	25
23 – 26	35	70	105	44	17	27	44	43
27 – 36	24	47	71	30	12	17	29	28
Valid Cases	90	146	236	100	47	55	102	100
Means	24.1	25.1	24.7		23.9	24.9	24.4	
CCHE Index								
35 – 89	1	0	1	0	1	0	1	1
90 – 100	15	38	53	16	10	17	27	20
101 – 114	59	97	156	46	29	32	61	45
115 – 160	30	98	128	38	13	33	46	34
Valid Cases	105	233	338	100	53	82	135	100
Means	109	113	112		108	111	110	

Office of Budgets and Institutional Analysis
Freshmen Profile
Fall 1999

Natural Sciences

	Admitted N= 1601				Enrolled N=558			
	Res	Nonres	Total	Percent	Res	Nonres	Total	Percent
High School GPA								
2.0 – 2.4	1	1	2	0	1	0	1	0
2.5 – 2.9	39	46	85	5	24	11	35	6
3.0 – 3.5	362	228	590	37	169	46	215	39
3.6 – 4.0	578	333	911	57	254	49	303	55
Valid Cases	980	608	1588	100	448	106	554	100
Means	3.60	3.56	3.58		3.56	3.52	3.55	
Percentile Rank								
1 – 29	1	6	7	0	1	0	1	0
30 – 49	35	37	72	5	23	12	35	7
50 – 59	64	26	90	6	37	6	43	8
60 – 79	280	159	439	30	138	30	168	32
80 – 89	241	105	346	24	105	11	116	22
90 – 99	314	195	509	35	132	29	161	31
Valid Cases	935	528	1463	100	436	88	524	100
Means	80.4	79.2	80.0		78.3	74.7	77.7	
SAT Verbal								
200 – 399	9	7	16	2	4	2	6	2
400 – 499	112	81	193	18	55	11	66	20
500 – 599	280	192	472	45	123	40	163	48
600 – 699	174	143	317	30	64	20	84	25
700 – 800	30	19	49	5	16	3	19	6
Valid Cases	605	442	1047	100	262	76	338	100
Means	561	567	564		558	562	559	
SAT Math								
200 – 399	5	2	7	1	2	0	2	1
400 – 499	102	63	165	16	53	8	61	18
500 – 599	256	206	462	44	112	40	152	45
600 – 699	197	139	336	32	78	21	99	29
700 – 800	45	32	77	7	17	7	24	7
Valid Cases	605	442	1047	100	262	76	338	100
Means	573	576	574		566	573	568	
ACT Composite								
1 – 14	1	2	3	0	0	0	0	0
15 – 18	20	11	31	2	8	1	9	2
19 – 22	253	77	330	25	117	16	133	28
23 – 26	342	146	488	38	159	22	181	38
27 – 36	286	159	445	34	127	30	157	33
Valid Cases	902	395	1297	100	411	69	480	100
Means	24.7	25.4	24.9		24.6	25.6	24.8	
CCHE Index								
35 – 89	1	2	3	0	1	1	2	0
90 – 100	172	91	263	17	99	21	120	22
101 – 114	427	255	682	43	189	45	234	42
115 – 160	380	259	639	40	159	38	197	36
Valid Cases	980	607	1587	100	448	105	553	100
Means	113	113	113		111	112	112	

Office of Budgets and Institutional Analysis
Freshmen Profile
Fall 1999

	Admitted N= 417				Enrolled N=174			
	Res	Nonres	Total	Percent	Res	Nonres	Total	Percent
Veterinary Medicine + Biomed								
High School GPA								
2.0 – 2.4	1	0	1	0	1	0	1	1
2.5 – 2.9	6	6	12	3	4	1	5	3
3.0 – 3.5	52	85	137	33	36	26	62	36
3.6 – 4.0	125	136	261	64	88	15	103	60
Valid Cases	184	227	411	100	129	42	171	100
Means	3.64	3.61	3.62		3.64	3.48	3.60	
Percentile Rank								
1 – 29	1	0	1	0	0	0	0	0
30 – 49	6	7	13	3	3	1	4	3
50 – 59	7	14	21	6	7	3	10	6
60 – 79	48	43	91	24	34	15	49	31
80 – 89	50	47	97	26	37	7	44	28
90 – 99	62	89	151	40	42	8	50	32
Valid Cases	174	200	374	100	123	34	157	100
Means	82.3	83.0	82.7		82.4	76.9	81.2	
SAT Verbal								
200 – 399	1	0	1	0	1	0	1	1
400 – 499	21	24	45	16	13	5	18	16
500 – 599	57	69	126	45	41	17	58	53
600 – 699	27	63	90	32	17	9	26	24
700 – 800	7	13	20	7	6	1	7	6
Valid Cases	113	169	282	100	78	32	110	100
Means	558	582	572		561	563	562	
SAT Math								
200 – 399	0	1	1	0	0	0	0	0
400 – 499	24	19	43	15	16	4	20	18
500 – 599	56	72	128	45	36	17	53	48
600 – 699	29	63	92	33	24	10	34	31
700 – 800	4	14	18	6	2	1	3	3
Valid Cases	113	169	282	100	78	32	110	100
Means	558	582	572		560	578	565	
ACT Composite								
15 – 18	3	0	3	1	1	0	1	1
19 – 22	43	29	72	23	29	6	35	25
23 – 26	82	68	150	47	55	11	66	47
27 – 36	41	53	94	29	32	7	39	28
Valid Cases	169	150	319	100	117	24	141	100
Means	24.5	25.3	24.8		24.7	24.7	24.7	
CCHE Index								
90 – 100	25	26	51	12	15	7	22	13
101 – 114	84	98	182	44	60	20	80	47
115 – 160	75	104	179	43	54	15	69	40
Valid Cases	184	228	412	100	129	42	171	100
Means	112	114	114		113	109	112	

Number of New Freshmen by High School GPA & Rank,
Test Scores, CCHE Index and CSU GPA
Fall 1998

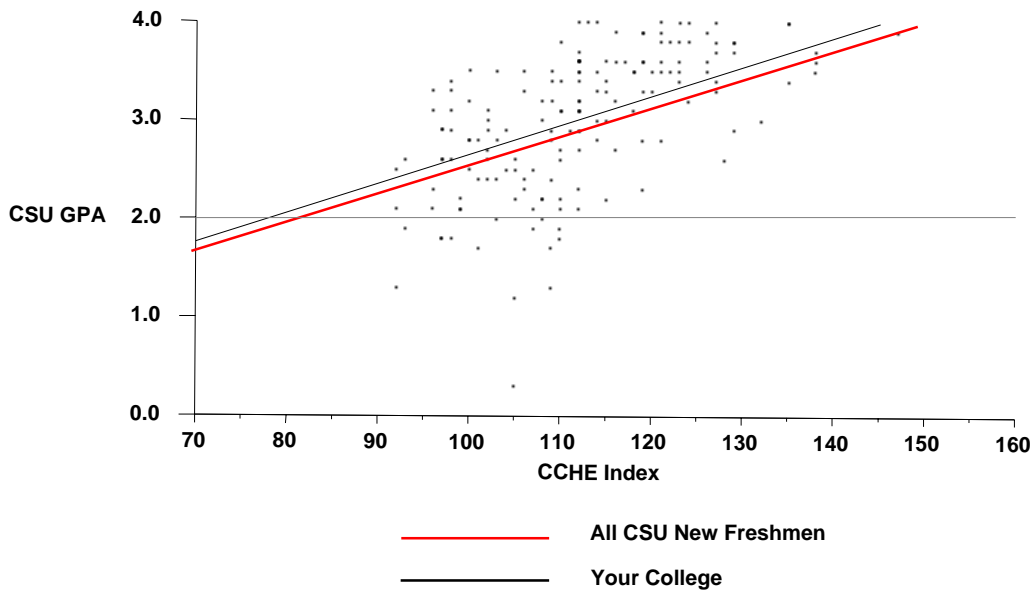
Agricultural Sciences

	CSU GPA				Total
	0.1 – 1.9	2.0 – 2.9	3.0 – 3.5	3.6 – 4.0	
High School GPA					
2.5 – 2.9	1	4			5
3.0 – 3.5	11	32	18	1	62
3.6 – 4.0	1	23	34	39	97
Total	13	59	52	40	164
Percentile Rank					
30 – 49	2	4			6
50 – 59		5	2		7
60 – 79	4	25	15	4	48
80 – 89	5	13	13	15	46
90 – 99		7	18	20	45
Total	11	54	48	39	152
SAT Verbal					
200 – 399		1			1
400 – 499	2	9	7		18
500 – 599	4	19	19	10	52
600 – 699	2	6	6	11	25
700 – 800		1	1	3	5
Total	8	36	33	24	101
SAT Math					
200 – 399			1		1
400 – 499	2	13	5	1	21
500 – 599	4	15	18	16	53
600 – 699	2	8	8	7	25
700 – 800			1		1
Total	8	36	33	24	101
ACT Composite					
15 – 18	2	1			3
19 – 22	2	14	9		25
23 – 26	4	19	18	15	56
27 – 36	2	5	10	17	34
Total	10	39	37	32	118
CCHE Index					
35 – 89			1		1
90 – 100	5	17	7		29
101 – 114	8	35	24	9	76
115 – 160		7	21	31	59
Total	13	59	53	40	165

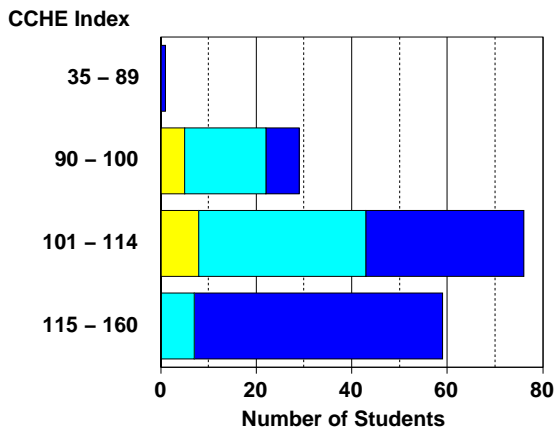
Office of Budgets and Institutional Analysis
 Number of New Freshmen by High School GPA & Rank,
 Test Scores, CCHE Index and CSU GPA
 Fall 1998

Agricultural Sciences

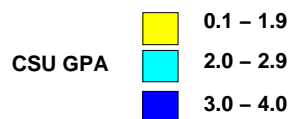
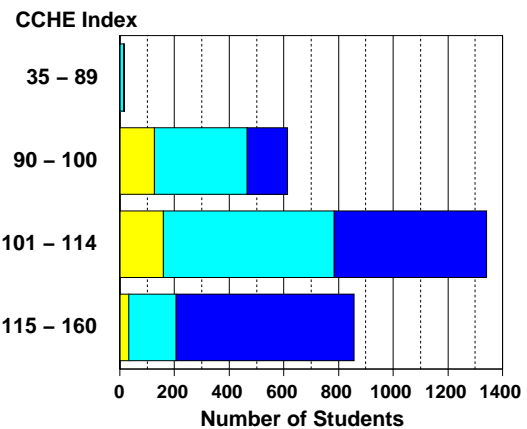
**Fall 1998 – Spring 1999
 First Year CSU Grades by CCHE Index**



Your College



All CSU Freshmen



Number of New Freshmen by High School GPA & Rank,
Test Scores, CCHE Index and CSU GPA
Fall 1998

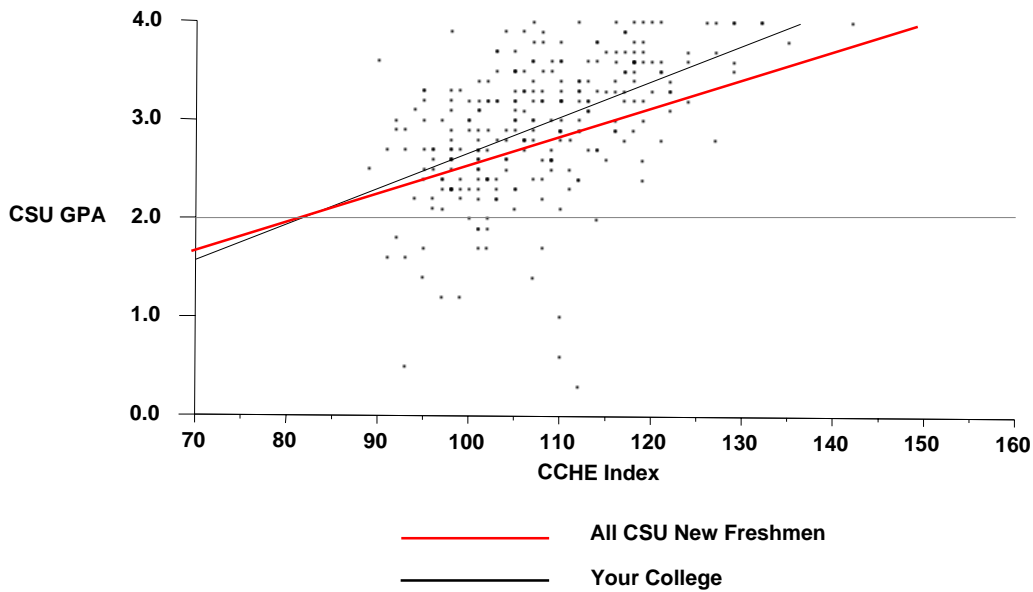
Applied Human Sciences

	CSU GPA				Total
	0.1 – 1.9	2.0 – 2.9	3.0 – 3.5	3.6 – 4.0	
High School GPA					
2.5 – 2.9	3	7	1	1	12
3.0 – 3.5	9	70	34	8	121
3.6 – 4.0	6	32	53	47	138
Total	18	109	88	56	271
Percentile Rank					
1 – 29	2	1	1		4
30 – 49	2	3	1	2	8
50 – 59	1	12	8	1	22
60 – 79	7	50	24	7	88
80 – 89	5	26	29	15	75
90 – 99		12	18	28	58
Total	17	104	81	53	255
SAT Verbal					
200 – 399	2	1			3
400 – 499	8	23	11	4	46
500 – 599	5	30	31	21	87
600 – 699	1	7	9	7	24
700 – 800				1	1
Total	16	61	51	33	161
SAT Math					
200 – 399	2	2	1		5
400 – 499	7	20	13	2	42
500 – 599	6	31	27	15	79
600 – 699	1	7	10	14	32
700 – 800		1		2	3
Total	16	61	51	33	161
ACT Composite					
15 – 18	1	1	1		3
19 – 22	10	44	30	8	92
23 – 26	5	35	38	28	106
27 – 36		6	12	13	31
Total	16	86	81	49	232
CCHE Index					
35 – 89		1			1
90 – 100	8	37	14	2	61
101 – 114	10	62	52	20	144
115 – 160		9	22	34	65
Total	18	109	88	56	271

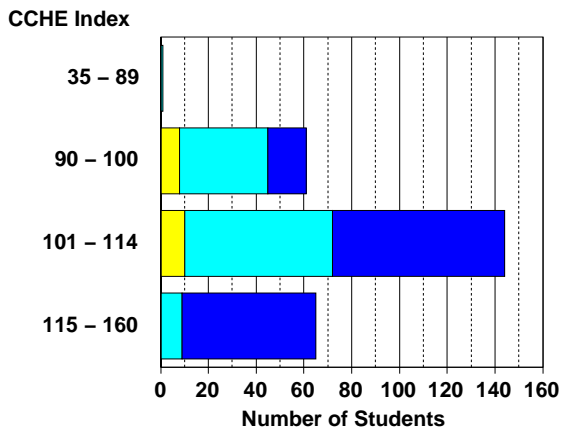
Office of Budgets and Institutional Analysis
 Number of New Freshmen by High School GPA & Rank,
 Test Scores, CCHE Index and CSU GPA
 Fall 1998

Applied Human Sciences

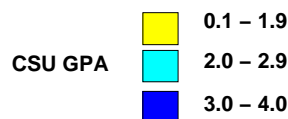
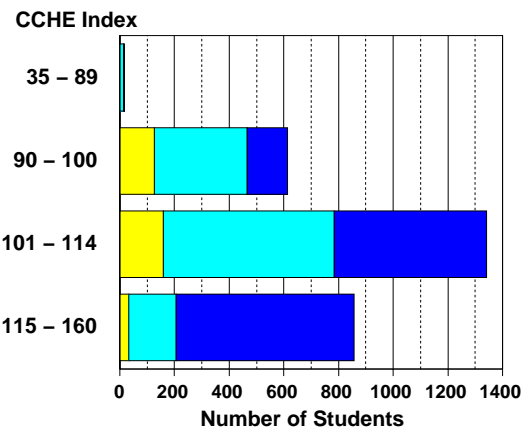
**Fall 1998 – Spring 1999
 First Year CSU Grades by CCHE Index**



Your College



All CSU Freshmen



Number of New Freshmen by High School GPA & Rank,
Test Scores, CCHE Index and CSU GPA
Fall 1998

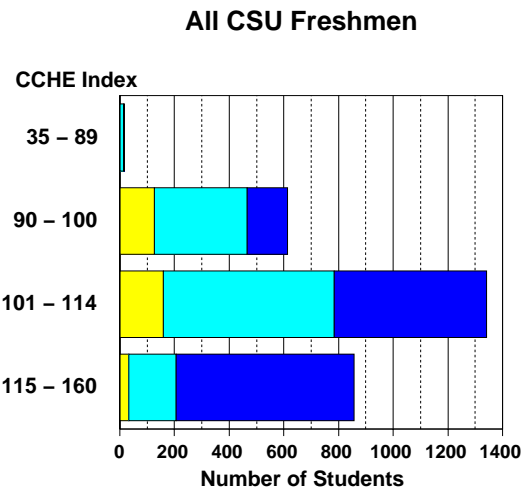
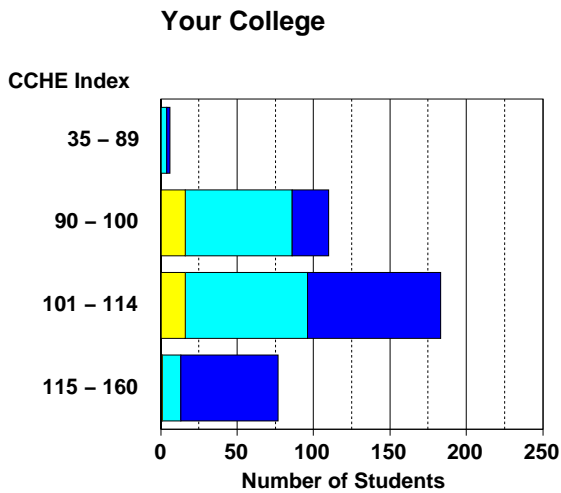
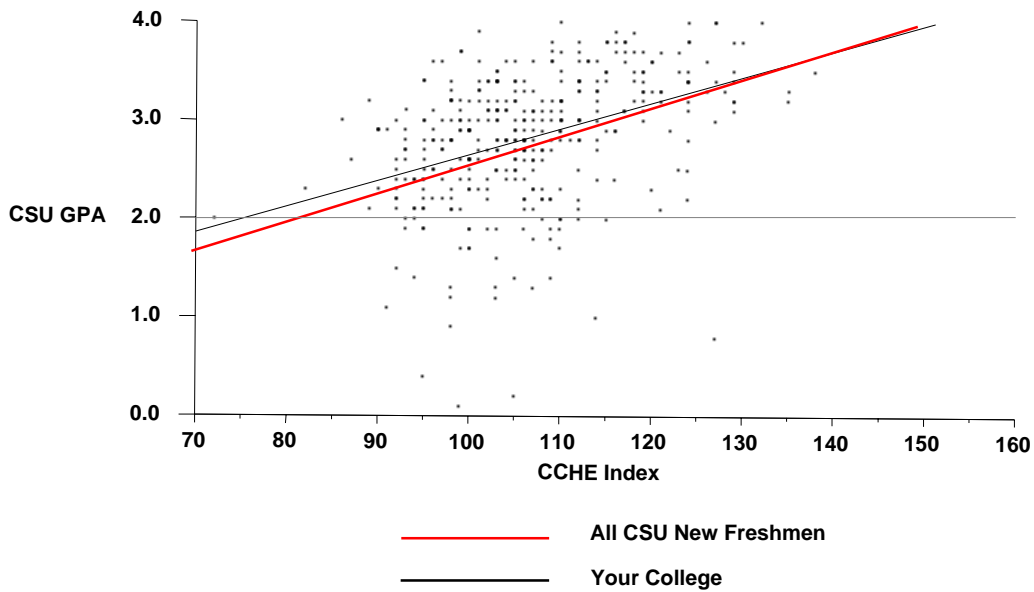
Business

	CSU GPA				Total
	0.1 – 1.9	2.0 – 2.9	3.0 – 3.5	3.6 – 4.0	
High School GPA					
2.5 – 2.9	7	19	4	1	31
3.0 – 3.5	23	106	59	11	199
3.6 – 4.0	3	41	69	35	148
Total	33	166	132	47	378
Percentile Rank					
1 – 29		2			2
30 – 49	6	22	8	1	37
50 – 59	6	26	6	4	42
60 – 79	13	70	45	7	135
80 – 89	2	31	39	12	84
90 – 99	2	11	30	22	65
Total	29	162	128	46	365
SAT Verbal					
200 – 399		5	2		7
400 – 499	5	38	15	4	62
500 – 599	12	43	45	17	117
600 – 699	3	12	13	4	32
700 – 800	1	1	1	1	4
Total	21	99	76	26	222
SAT Math					
200 – 399	2	1			3
400 – 499	1	25	12	3	41
500 – 599	13	52	36	11	112
600 – 699	4	21	27	11	63
700 – 800	1		1	1	3
Total	21	99	76	26	222
ACT Composite					
1 – 14		1			1
15 – 18	3	8	3		14
19 – 22	8	66	36	9	119
23 – 26	12	54	48	22	136
27 – 36	3	14	27	12	56
Total	26	143	114	43	326
CCHE Index					
35 – 89		4	2		6
90 – 100	16	70	20	4	110
101 – 114	16	80	70	17	183
115 – 160	1	12	39	25	77
Total	33	166	131	46	376

Office of Budgets and Institutional Analysis
 Number of New Freshmen by High School GPA & Rank,
 Test Scores, CCHE Index and CSU GPA
 Fall 1998

Business

**Fall 1998 – Spring 1999
 First Year CSU Grades by CCHE Index**



Number of New Freshmen by High School GPA & Rank,
Test Scores, CCHE Index and CSU GPA
Fall 1998

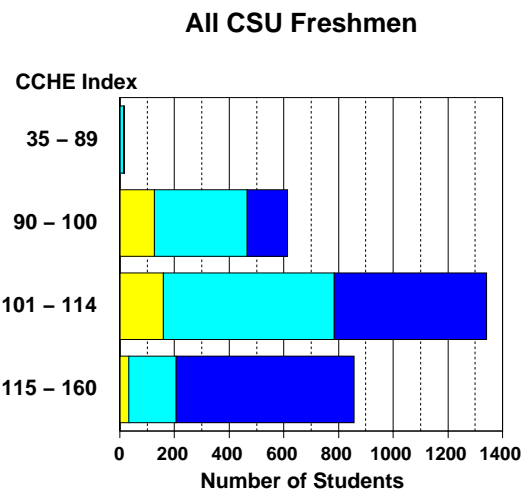
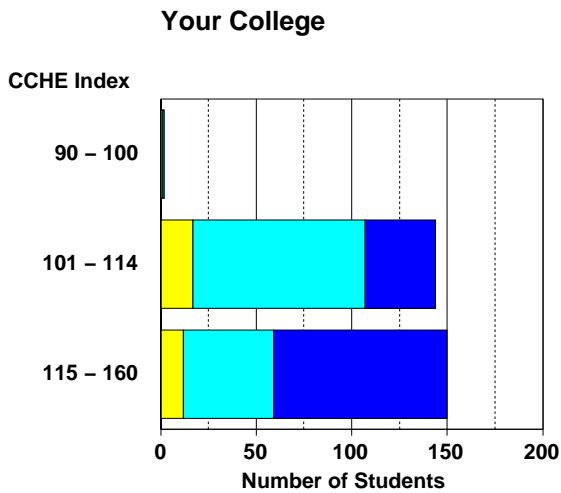
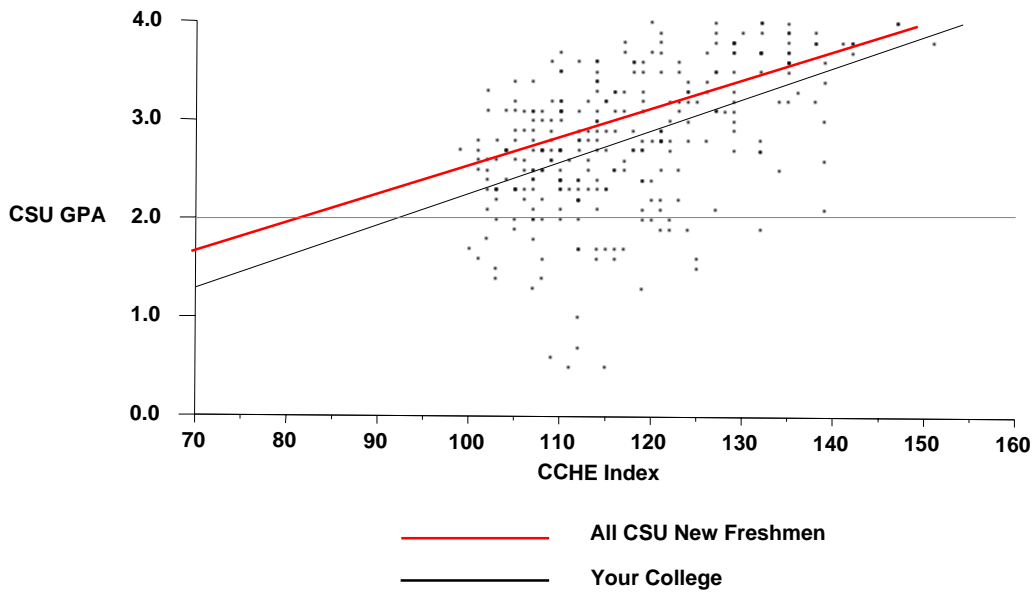
Engineering

	CSU GPA				Total
	0.1 – 1.9	2.0 – 2.9	3.0 – 3.5	3.6 – 4.0	
High School GPA					
2.5 – 2.9	1	4	1		6
3.0 – 3.5	21	69	16		106
3.6 – 4.0	8	64	59	52	183
Total	30	137	76	52	295
Percentile Rank					
30 – 49	3	8			11
50 – 59	3	9	5		17
60 – 79	11	50	13	4	78
80 – 89	7	40	26	7	80
90 – 99	4	24	31	38	97
Total	28	131	75	49	283
SAT Verbal					
200 – 399			1	1	2
400 – 499	2	13	10	1	26
500 – 599	9	52	31	13	105
600 – 699	7	24	15	12	58
700 – 800	1	3	2	11	17
Total	19	92	59	38	208
SAT Math					
400 – 499		5	5	1	11
500 – 599	8	33	15	4	60
600 – 699	9	49	32	22	112
700 – 800	2	5	7	11	25
Total	19	92	59	38	208
ACT Composite					
19 – 22	3	13	7	1	24
23 – 26	12	67	30	10	119
27 – 36	13	36	26	33	108
Total	28	116	63	44	251
CCHE Index					
90 – 100	1	1			2
101 – 114	17	90	32	5	144
115 – 160	12	47	44	47	150
Total	30	138	76	52	296

Office of Budgets and Institutional Analysis
 Number of New Freshmen by High School GPA & Rank,
 Test Scores, CCHE Index and CSU GPA
 Fall 1998

Engineering

**Fall 1998 – Spring 1999
 First Year CSU Grades by CCHE Index**



Number of New Freshmen by High School GPA & Rank,
Test Scores, CCHE Index and CSU GPA
Fall 1998

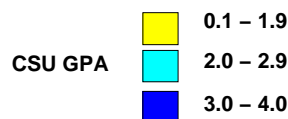
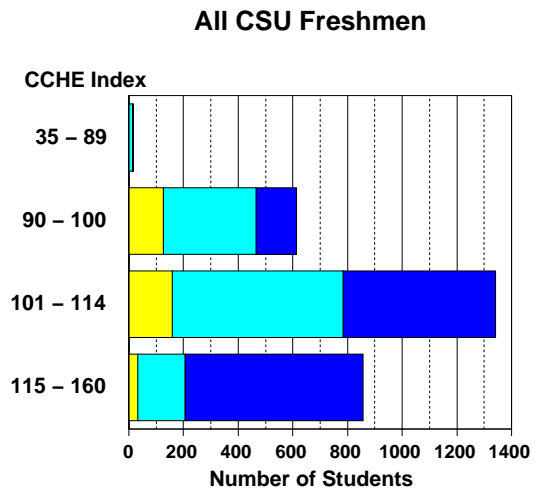
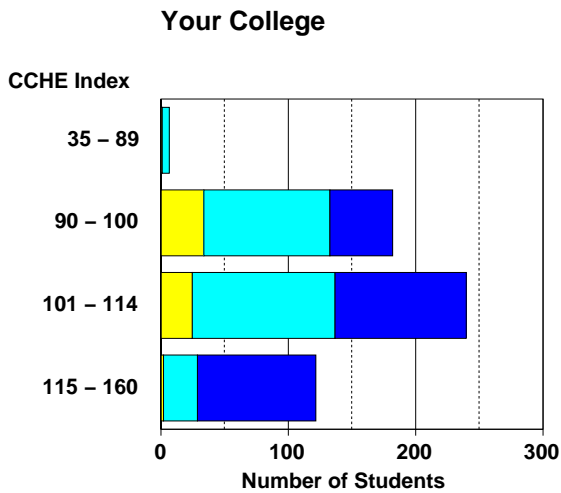
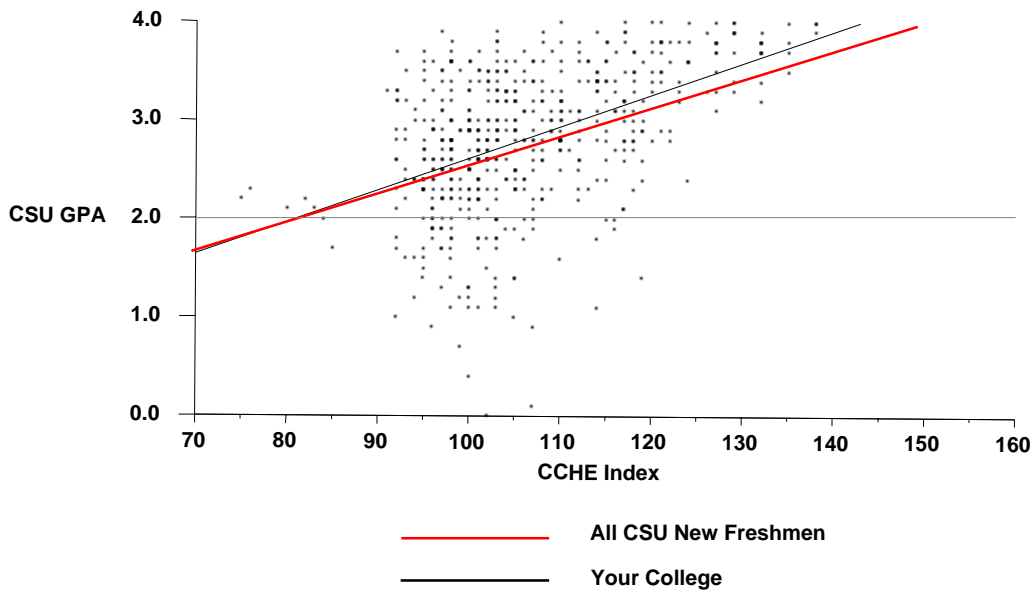
Intra-University

	CSU GPA				Total
	0.1 – 1.9	2.0 – 2.9	3.0 – 3.5	3.6 – 4.0	
High School GPA					
2.0 – 2.4		5	1		6
2.5 – 2.9	13	42	11	2	68
3.0 – 3.5	45	134	57	21	257
3.6 – 4.0	5	64	85	68	222
Total	63	245	154	91	553
Percentile Rank					
1 – 29	1	6			7
30 – 49	13	34	9	3	59
50 – 59	13	39	12	2	66
60 – 79	28	92	48	20	188
80 – 89	4	47	38	18	107
90 – 99	3	13	40	42	98
Total	62	231	147	85	525
SAT Verbal					
200 – 399	1	6	2	1	10
400 – 499	13	47	17	8	85
500 – 599	17	61	53	17	148
600 – 699	6	12	17	27	62
700 – 800	1	2		2	5
Total	38	128	89	55	310
SAT Math					
200 – 399	3	7	1		11
400 – 499	7	35	24	5	71
500 – 599	22	64	42	22	150
600 – 699	5	22	21	24	72
700 – 800	1		1	4	6
Total	38	128	89	55	310
ACT Composite					
1 – 14		1			1
15 – 18	2	10	8		20
19 – 22	25	100	51	19	195
23 – 26	20	79	51	26	176
27 – 36	7	24	23	32	86
Total	54	214	133	77	478
CCHE Index					
35 – 89	1	6			7
90 – 100	34	99	36	13	182
101 – 114	26	112	79	24	241
115 – 160	2	27	39	54	122
Total	63	244	154	91	552

Office of Budgets and Institutional Analysis
 Number of New Freshmen by High School GPA & Rank,
 Test Scores, CCHE Index and CSU GPA
 Fall 1998

Intra-University

**Fall 1998 – Spring 1999
 First Year CSU Grades by CCHE Index**



Number of New Freshmen by High School GPA & Rank,
Test Scores, CCHE Index and CSU GPA
Fall 1998

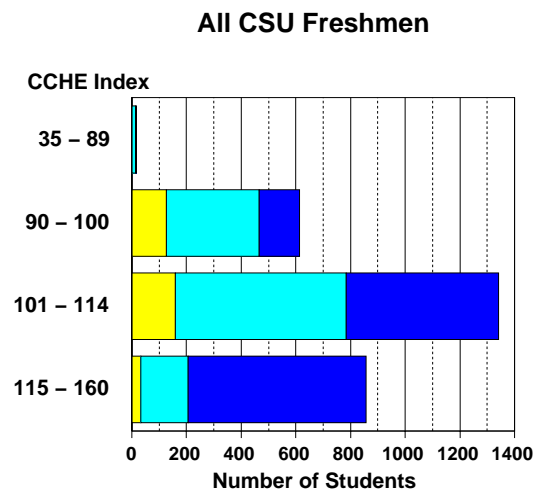
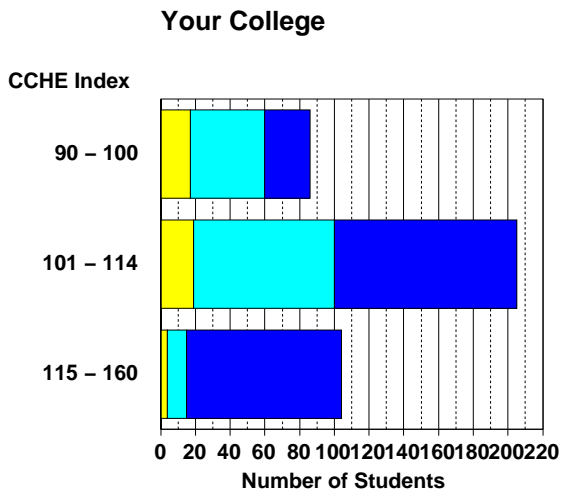
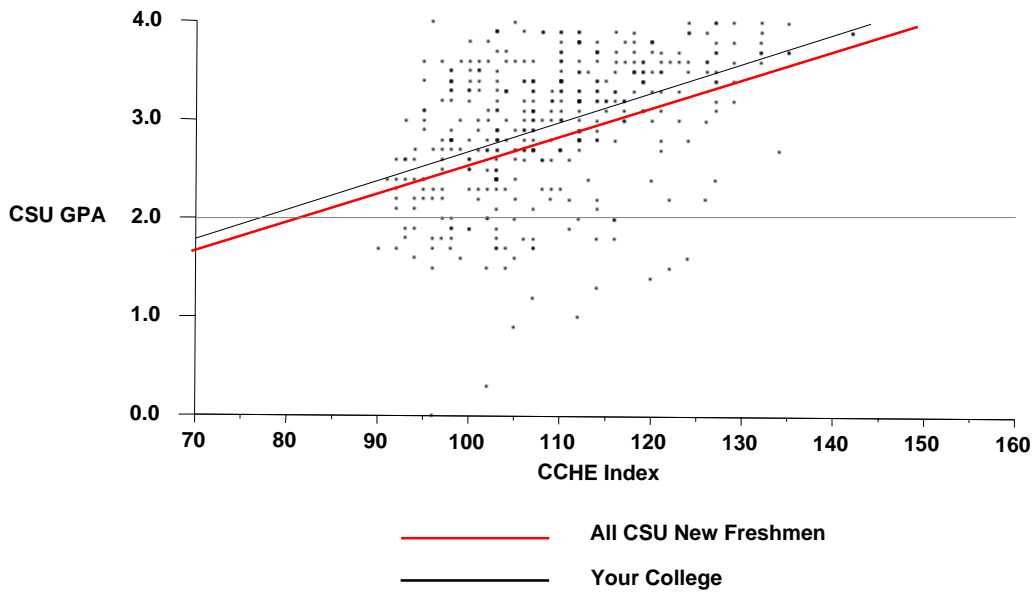
Liberal Arts

	CSU GPA				Total
	0.1 – 1.9	2.0 – 2.9	3.0 – 3.5	3.6 – 4.0	
High School GPA					
2.0 – 2.4				1	1
2.5 – 2.9	6	13	8		27
3.0 – 3.5	27	78	46	24	175
3.6 – 4.0	8	44	79	63	194
Total	41	135	133	88	397
Percentile Rank					
1 – 29	3	2		1	6
30 – 49	3	10	9	1	23
50 – 59	9	12	4	3	28
60 – 79	14	71	45	19	149
80 – 89	8	20	40	23	91
90 – 99	1	12	29	37	79
Total	38	127	127	84	376
SAT Verbal					
200 – 399		1	1		2
400 – 499	6	19	12	3	40
500 – 599	9	34	35	26	104
600 – 699	10	16	26	26	78
700 – 800	1	2	2	5	10
Total	26	72	76	60	234
SAT Math					
200 – 399		3	2		5
400 – 499	8	14	17	11	50
500 – 599	12	47	36	28	123
600 – 699	5	7	20	18	50
700 – 800	1	1	1	3	6
Total	26	72	76	60	234
ACT Composite					
15 – 18	2	3	1		6
19 – 22	13	49	37	11	110
23 – 26	6	49	51	32	138
27 – 36	8	17	31	25	81
Total	29	118	120	68	335
CCHE Index					
90 – 100	18	43	20	6	87
101 – 114	19	81	70	35	205
115 – 160	4	11	43	46	104
Total	41	135	133	87	396

Office of Budgets and Institutional Analysis
 Number of New Freshmen by High School GPA & Rank,
 Test Scores, CCHE Index and CSU GPA
 Fall 1998

Liberal Arts

**Fall 1998 – Spring 1999
 First Year CSU Grades by CCHE Index**



Number of New Freshmen by High School GPA & Rank,
Test Scores, CCHE Index and CSU GPA
Fall 1998

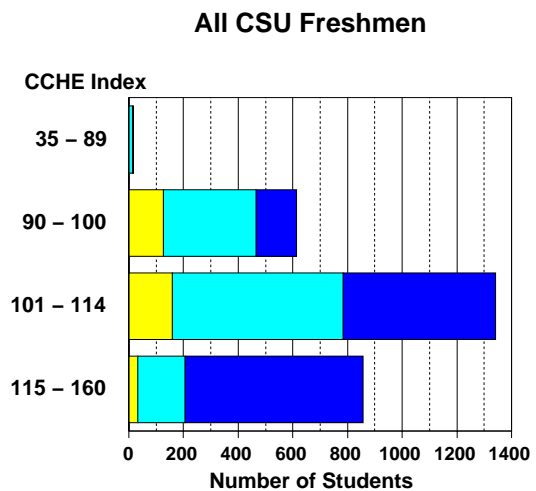
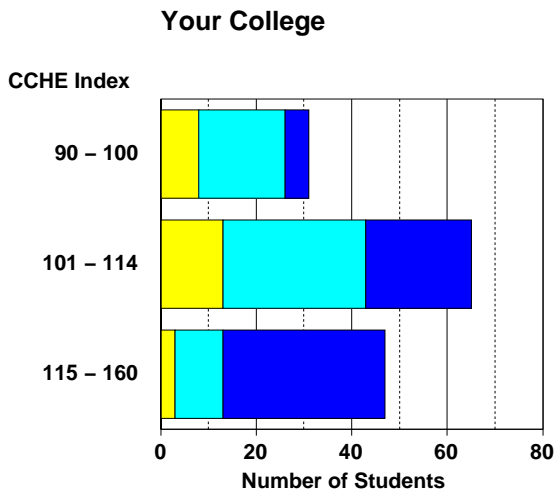
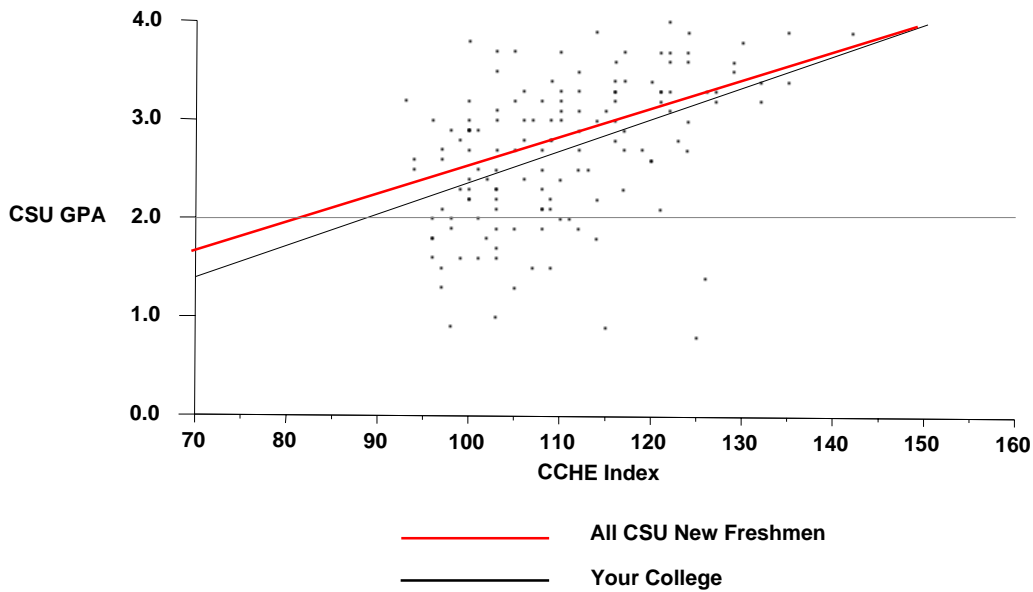
Natural Resources

	CSU GPA				Total
	0.1 – 1.9	2.0 – 2.9	3.0 – 3.5	3.6 – 4.0	
High School GPA					
2.5 – 2.9	6	15	1		22
3.0 – 3.5	13	25	9	6	53
3.6 – 4.0	5	18	33	12	68
Total	24	58	43	18	143
Percentile Rank					
1 – 29		1			1
30 – 49	4	11	2		17
50 – 59	4	7	1		12
60 – 79	9	17	8	5	39
80 – 89	3	12	15	2	32
90 – 99	1	6	16	10	33
Total	21	54	42	17	134
SAT Verbal					
200 – 399			1		1
400 – 499	5	5	3	1	14
500 – 599	5	19	13	8	45
600 – 699	4	11	7	2	24
700 – 800	1		3	3	7
Total	15	35	27	14	91
SAT Math					
200 – 399			1		1
400 – 499	4	5	6	2	17
500 – 599	10	22	13	6	51
600 – 699	1	8	6	4	19
700 – 800			1	2	3
Total	15	35	27	14	91
ACT Composite					
15 – 18	1		1		2
19 – 22	4	10	8	1	23
23 – 26	8	22	15	3	48
27 – 36	5	12	10	8	35
Total	18	44	34	12	108
CCHE Index					
90 – 100	8	18	4	1	31
101 – 114	13	30	18	4	65
115 – 160	3	10	21	13	47
Total	24	58	43	18	143

Office of Budgets and Institutional Analysis
 Number of New Freshmen by High School GPA & Rank,
 Test Scores, CCHE Index and CSU GPA
 Fall 1998

Natural Resources

**Fall 1998 – Spring 1999
 First Year CSU Grades by CCHE Index**



Number of New Freshmen by High School GPA & Rank,
Test Scores, CCHE Index and CSU GPA
Fall 1998

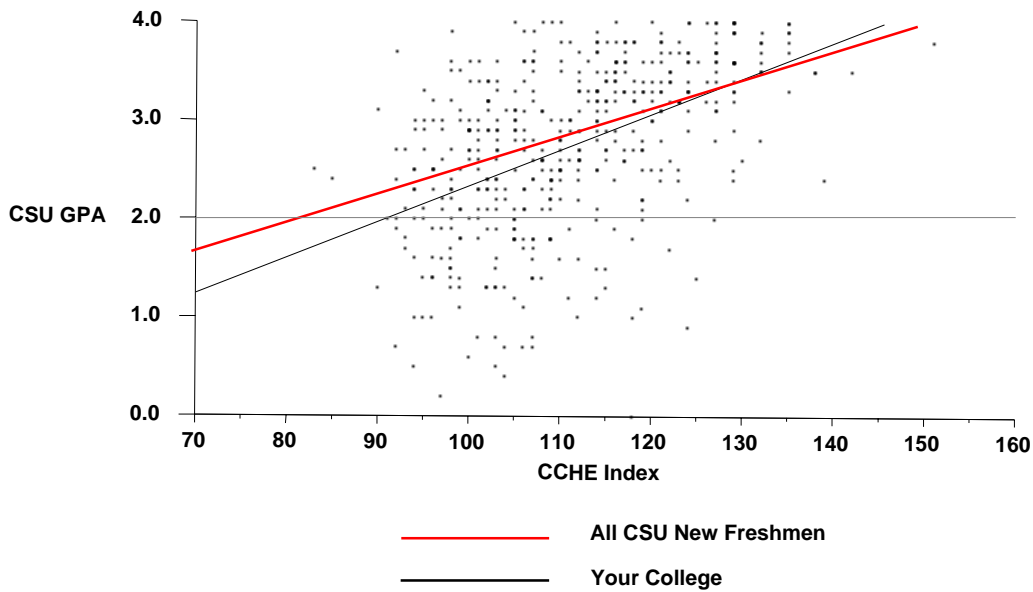
Natural Sciences

	CSU GPA				Total
	0.1 – 1.9	2.0 – 2.9	3.0 – 3.5	3.6 – 4.0	
High School GPA					
2.5 – 2.9	9	19	4	2	34
3.0 – 3.5	60	78	35	10	183
3.6 – 4.0	16	73	83	80	252
Total	85	170	122	92	469
Percentile Rank					
1 – 29	1	1			2
30 – 49	13	16	4	1	34
50 – 59	13	11	6	3	33
60 – 79	39	67	24	10	140
80 – 89	12	49	31	15	107
90 – 99	5	20	49	60	134
Total	83	164	114	89	450
SAT Verbal					
200 – 399	2	2			4
400 – 499	10	26	15	3	54
500 – 599	21	42	36	24	123
600 – 699	12	25	25	23	85
700 – 800	1	4	1	4	10
Total	46	99	77	54	276
SAT Math					
200 – 399		2	1		3
400 – 499	6	20	12	3	41
500 – 599	21	50	34	18	123
600 – 699	16	26	25	26	93
700 – 800	3	1	5	7	16
Total	46	99	77	54	276
ACT Composite					
15 – 18	4	7	3		14
19 – 22	27	47	18	13	105
23 – 26	30	61	47	25	163
27 – 36	15	31	36	42	124
Total	76	146	104	80	406
CCHE Index					
35 – 89		2			2
90 – 100	31	41	14	4	90
101 – 114	44	90	45	23	202
115 – 160	10	37	63	65	175
Total	85	170	122	92	469

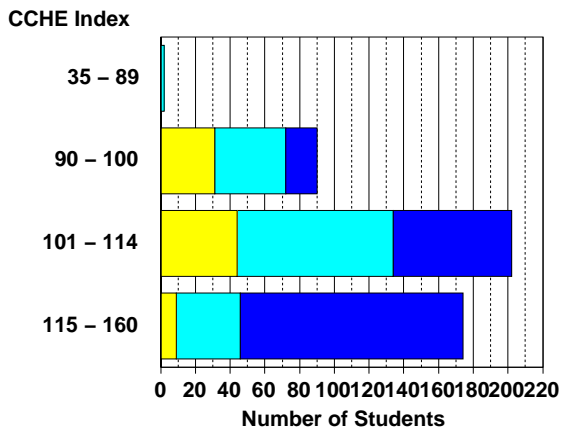
Office of Budgets and Institutional Analysis
 Number of New Freshmen by High School GPA & Rank,
 Test Scores, CCHE Index and CSU GPA
 Fall 1998

Natural Sciences

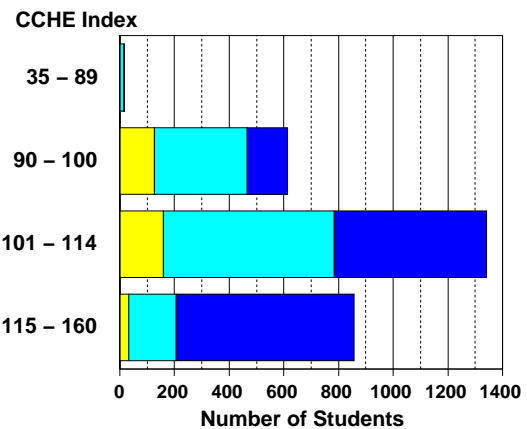
**Fall 1998 – Spring 1999
 First Year CSU Grades by CCHE Index**



Your College



All CSU Freshmen



Number of New Freshmen by High School GPA & Rank,
Test Scores, CCHE Index and CSU GPA
Fall 1998

Veterinary Medicine + Biomedical Sci

	CSU GPA				Total
	0.1 – 1.9	2.0 – 2.9	3.0 – 3.5	3.6 – 4.0	
High School GPA					
2.5 – 2.9	3	2	1		6
3.0 – 3.5	9	40	13	4	66
3.6 – 4.0	5	29	30	30	94
Total	17	71	44	34	166
Percentile Rank					
1 – 29	1	1	1		3
30 – 49			1	1	2
50 – 59	2	4	3		9
60 – 79	7	33	9	3	52
80 – 89	4	17	16	6	43
90 – 99		14	11	24	49
Total	14	69	41	34	158
SAT Verbal					
400 – 499	3	15	4	4	26
500 – 599	4	25	12	8	49
600 – 699	3	7	11	10	31
700 – 800				3	3
Total	10	47	27	25	109
SAT Math					
200 – 399	1	1			2
400 – 499	2	13	4	1	20
500 – 599	5	25	14	11	55
600 – 699	2	7	8	11	28
700 – 800		1	1	2	4
Total	10	47	27	25	109
ACT Composite					
15 – 18	1	2			3
19 – 22	4	21	8	1	34
23 – 26	5	22	20	14	61
27 – 36	5	9	9	13	36
Total	15	54	37	28	134
CCHE Index					
90 – 100	7	14	2		23
101 – 114	8	44	24	7	83
115 – 160	2	13	18	27	60
Total	17	71	44	34	166

Office of Budgets and Institutional Analysis
 Number of New Freshmen by High School GPA & Rank,
 Test Scores, CCHE Index and CSU GPA
 Fall 1998

Veterinary Medicine + Biomedical Sci

**Fall 1998 – Spring 1999
 First Year CSU Grades by CCHE Index**

