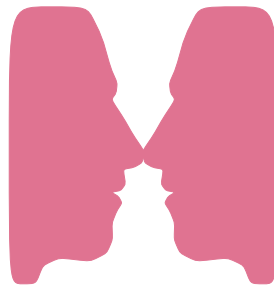


Freshmen Profile

1998



Freshmen Profile 1998 Report Highlights

Background Information

- ◆ over the past five years, we have steadily decreased the number of students admitted with an index less than 101 (our “window”)
- ◆ we have a working admissions index “floor” of 90
- ◆ SAT scores were recentered between the 1994 and 1995 reporting periods. This resulted in a major jump in Verbal scores and a slight increase in Math scores
- ◆ The CCHE index was adjusted so that it remained stable through the recentering process

Data Highlights

- ◆ high school rank rose one percentage point over last year
- ◆ mean ACT scores, high school GPA, and Index have been virtually unchanged for five years
- ◆ high school GPA rose to a high of 3.50
- ◆ non-resident students have slightly worse high school rank and high school GPA, but better test scores and Index
- ◆ we admitted 39 students with an index less than 90 and 26 (66.7%) of them enrolled

Office of Budgets and Institutional Analysis
 Profile of **All New** Freshmen Enrolled Fall Semesters
 Five Year Trend in High School Admissions Scores by College

	1994	1995	1996	1997	1998
Mean High School Rank					
Agricultural Sciences	80	78	80	81	80
Applied Human Sciences	80	78	77	76	77
Business	76	76	73	73	73
Engineering	84	85	83	80	81
Intra–University	73	72	73	72	72
Liberal Arts	76	75	75	73	75
Natural Resources	78	80	74	72	74
Natural Sciences	79	78	79	77	77
Veterinary Medicine + Biomedical Sci	83	81	83	80	79
Total	78	77	76	75	76
Mean SAT Verbal Score					
Agricultural Sciences	488	569	563	564	559
Applied Human Sciences	449	528	526	524	528
Business	449	536	536	535	524
Engineering	490	576	573	563	574
Intra–University	458	537	536	534	536
Liberal Arts	493	573	566	568	565
Natural Resources	496	569	566	560	570
Natural Sciences	487	566	561	568	560
Veterinary Medicine + Biomedical Sci	492	556	568	555	558
Total	476	556	553	551	551
Mean SAT Math Score					
Agricultural Sciences	548	563	566	563	552
Applied Human Sciences	508	534	538	535	536
Business	532	555	553	569	552
Engineering	604	618	623	608	619
Intra–University	525	548	546	551	544
Liberal Arts	529	546	544	542	545
Natural Resources	553	568	563	557	558
Natural Sciences	556	579	570	576	574
Veterinary Medicine + Biomedical Sci	524	556	566	565	560
Total	543	564	561	563	561

Office of Budgets and Institutional Analysis
 Profile of **All New** Freshmen Enrolled Fall Semesters
 Five Year Trend in High School Admissions Scores by College

	1994	1995	1996	1997	1998
Mean Composite ACT Score					
Agricultural Sciences	24.8	24.1	24.6	24.6	24.6
Applied Human Sciences	23.1	22.9	23.0	22.9	23.3
Business	23.4	23.3	23.6	23.8	23.3
Engineering	26.2	26.2	26.3	25.8	26.2
Intra–University	23.7	23.2	23.4	23.4	23.4
Liberal Arts	24.7	24.1	24.2	24.1	24.1
Natural Resources	25.0	24.2	24.0	23.9	24.8
Natural Sciences	25.0	24.7	24.5	25.0	24.6
Veterinary Medicine + Biomedical Sci	24.4	24.6	24.8	24.7	24.7
Total	24.4	24.1	24.1	24.2	24.2
Mean High School Grade Point Average					
Agricultural Sciences	3.54	3.51	3.58	3.56	3.59
Applied Human Sciences	3.51	3.52	3.50	3.50	3.54
Business	3.40	3.46	3.41	3.42	3.45
Engineering	3.61	3.65	3.64	3.58	3.62
Intra–University	3.36	3.33	3.39	3.39	3.41
Liberal Arts	3.43	3.41	3.45	3.43	3.50
Natural Resources	3.44	3.49	3.43	3.42	3.44
Natural Sciences	3.50	3.51	3.51	3.50	3.53
Veterinary Medicine + Biomedical Sci	3.59	3.55	3.58	3.55	3.58
Total	3.47	3.47	3.48	3.47	3.50
Mean CCHE Index					
Agricultural Sciences	112	110	112	112	111
Applied Human Sciences	107	107	107	107	108
Business	106	107	107	107	106
Engineering	116	117	118	115	117
Intra–University	105	105	106	106	106
Liberal Arts	109	108	109	108	109
Natural Resources	111	110	108	108	110
Natural Sciences	111	111	111	112	111
Veterinary Medicine + Biomedical Sci	112	111	113	112	112
Total	109	109	109	109	109

Office of Budgets and Institutional Analysis
 Profile of **Resident** Freshmen Enrolled Fall Semesters
 Five Year Trend in High School Admissions Scores by College

	1994	1995	1996	1997	1998
Mean High School Rank					
Agricultural Sciences	80	78	79	78	81
Applied Human Sciences	82	79	78	77	78
Business	78	77	76	75	74
Engineering	84	85	83	81	80
Intra–University	74	73	74	72	72
Liberal Arts	78	76	76	74	76
Natural Resources	79	77	75	73	74
Natural Sciences	80	79	79	77	77
Veterinary Medicine + Biomedical Sci	82	81	84	82	80
Total	79	78	77	76	76
Mean SAT Verbal Score					
Agricultural Sciences	498	540	532	526	541
Applied Human Sciences	439	530	513	518	526
Business	439	532	531	534	529
Engineering	489	577	573	562	572
Intra–University	460	535	537	536	536
Liberal Arts	499	572	558	566	567
Natural Resources	479	551	537	552	568
Natural Sciences	490	560	560	566	560
Veterinary Medicine + Biomedical Sci	492	551	572	546	555
Total	474	552	547	548	550
Mean SAT Math Score					
Agricultural Sciences	556	546	562	560	534
Applied Human Sciences	497	527	527	529	531
Business	532	547	548	572	556
Engineering	598	616	619	609	616
Intra–University	527	541	548	548	539
Liberal Arts	535	543	544	539	541
Natural Resources	537	549	551	548	543
Natural Sciences	559	582	568	574	573
Veterinary Medicine + Biomedical Sci	517	551	562	559	561
Total	542	561	559	562	558

Office of Budgets and Institutional Analysis
 Profile of **Resident** Freshmen Enrolled Fall Semesters
 Five Year Trend in High School Admissions Scores by College

	1994	1995	1996	1997	1998
Mean Composite ACT Score					
Agricultural Sciences	24.8	23.8	24.1	24.0	24.1
Applied Human Sciences	22.9	22.9	22.7	22.8	23.1
Business	23.4	23.2	23.6	23.7	23.3
Engineering	26.0	26.2	26.1	25.6	26.0
Intra–University	23.7	23.2	23.3	23.4	23.3
Liberal Arts	24.8	24.2	24.2	23.9	24.1
Natural Resources	24.3	23.5	23.4	23.6	24.5
Natural Sciences	25.1	24.7	24.4	24.8	24.6
Veterinary Medicine + Biomedical Sci	24.2	24.5	24.9	24.4	24.5
Total	24.4	24.1	24.0	24.0	24.0
Mean High School Grade Point Average					
Agricultural Sciences	3.61	3.54	3.57	3.55	3.63
Applied Human Sciences	3.56	3.55	3.54	3.54	3.56
Business	3.45	3.49	3.48	3.47	3.47
Engineering	3.62	3.68	3.66	3.60	3.61
Intra–University	3.40	3.37	3.42	3.42	3.43
Liberal Arts	3.47	3.45	3.49	3.46	3.51
Natural Resources	3.55	3.50	3.47	3.50	3.50
Natural Sciences	3.52	3.51	3.54	3.51	3.53
Veterinary Medicine + Biomedical Sci	3.59	3.58	3.63	3.59	3.59
Total	3.50	3.50	3.51	3.49	3.52
Mean CCHE Index					
Agricultural Sciences	112	109	110	109	111
Applied Human Sciences	107	107	107	107	108
Business	107	107	107	108	107
Engineering	115	118	117	115	116
Intra–University	106	105	106	106	106
Liberal Arts	110	109	109	108	109
Natural Resources	110	107	107	108	109
Natural Sciences	112	111	111	111	111
Veterinary Medicine + Biomedical Sci	111	111	113	112	112
Total	109	109	109	109	109

Office of Budgets and Institutional Analysis
 Profile of **Nonresident** Freshmen Enrolled Fall Semesters
 Five Year Trend in High School Admissions Scores by College

	1994	1995	1996	1997	1998
Mean High School Rank					
Agricultural Sciences	80	78	82	83	79
Applied Human Sciences	74	76	76	72	74
Business	69	71	63	66	67
Engineering	84	82	81	77	82
Intra–University	70	68	68	68	69
Liberal Arts	71	70	70	70	73
Natural Resources	78	82	72	71	73
Natural Sciences	77	78	77	76	77
Veterinary Medicine + Biomedical Sci	84	80	80	77	77
Total	76	75	74	73	75
Mean SAT Verbal Score					
Agricultural Sciences	485	581	586	576	567
Applied Human Sciences	465	526	545	537	531
Business	471	547	546	535	511
Engineering	493	574	574	565	579
Intra–University	455	540	533	531	534
Liberal Arts	478	575	585	572	560
Natural Resources	502	579	581	563	572
Natural Sciences	480	580	564	574	561
Veterinary Medicine + Biomedical Sci	491	563	563	569	565
Total	480	562	563	557	553
Mean SAT Math Score					
Agricultural Sciences	546	570	569	563	560
Applied Human Sciences	526	543	556	546	547
Business	532	577	565	561	542
Engineering	614	624	633	608	628
Intra–University	522	559	541	557	557
Liberal Arts	514	555	544	549	559
Natural Resources	559	578	569	561	569
Natural Sciences	548	573	575	586	577
Veterinary Medicine + Biomedical Sci	532	563	571	576	558
Total	544	570	565	566	566

Office of Budgets and Institutional Analysis
 Profile of **Nonresident** Freshmen Enrolled Fall Semesters
 Five Year Trend in High School Admissions Scores by College

	1994	1995	1996	1997	1998
Mean Composite ACT Score					
Agricultural Sciences	24.8	24.5	25.3	25.3	25.3
Applied Human Sciences	24.3	22.8	23.9	23.1	24.2
Business	23.3	23.8	23.9	24.2	23.3
Engineering	26.7	26.1	27.2	26.4	27.2
Intra–University	23.6	23.3	23.8	23.8	23.8
Liberal Arts	24.3	23.4	24.3	24.7	23.6
Natural Resources	25.7	25.3	24.8	24.2	25.2
Natural Sciences	24.9	24.8	25.1	26.0	24.5
Veterinary Medicine + Biomedical Sci	25.3	25.1	24.5	25.6	25.3
Total	24.8	24.2	24.7	24.7	24.7
Mean High School Grade Point Average					
Agricultural Sciences	3.49	3.48	3.59	3.56	3.55
Applied Human Sciences	3.36	3.46	3.42	3.39	3.46
Business	3.23	3.33	3.19	3.27	3.35
Engineering	3.58	3.53	3.59	3.49	3.66
Intra–University	3.24	3.22	3.29	3.28	3.30
Liberal Arts	3.30	3.29	3.32	3.33	3.45
Natural Resources	3.37	3.48	3.38	3.36	3.39
Natural Sciences	3.41	3.48	3.41	3.47	3.52
Veterinary Medicine + Biomedical Sci	3.59	3.47	3.48	3.48	3.55
Total	3.39	3.40	3.40	3.40	3.47
Mean CCHE Index					
Agricultural Sciences	111	111	115	113	111
Applied Human Sciences	106	107	108	106	108
Business	104	107	104	106	105
Engineering	117	115	118	114	119
Intra–University	104	105	104	105	106
Liberal Arts	106	107	108	108	109
Natural Resources	111	113	110	108	110
Natural Sciences	110	112	111	113	112
Veterinary Medicine + Biomedical Sci	114	111	112	111	112
Total	109	109	109	109	110

Office of Budgets and Institutional Analysis
Freshmen Profile
Fall 1998

University	Admitted N= 7874				Enrolled N=3056			
	Res	Nonres	Total	Percent	Res	Nonres	Total	Percent
High School GPA								
2.0 – 2.4	4	10	14	0	3	5	8	0
2.5 – 2.9	223	287	510	7	138	86	224	7
3.0 – 3.5	1909	1406	3315	42	1018	302	1320	44
3.6 – 4.0	2306	1663	3969	51	1142	339	1481	49
Valid Cases	4442	3366	7808	100	2301	732	3033	100
Means	3.54	3.50	3.52		3.52	3.47	3.50	
Percentile Rank								
1 – 29	15	31	46	1	11	16	27	1
30 – 49	245	178	423	6	160	57	217	8
50 – 59	350	237	587	8	193	69	262	9
60 – 79	1426	850	2276	32	788	193	981	34
80 – 89	1057	709	1766	25	558	148	706	24
90 – 99	1148	879	2027	28	520	170	690	24
Valid Cases	4241	2884	7125	100	2230	653	2883	100
Means	77.6	77.9	77.7		76.1	74.7	75.8	
SAT Verbal								
200 – 399	35	41	76	1	19	12	31	2
400 – 499	556	408	964	19	287	109	396	22
500 – 599	1306	1233	2539	49	616	275	891	49
600 – 699	645	719	1364	26	305	137	442	24
700 – 800	104	106	210	4	49	20	69	4
Valid Cases	2646	2507	5153	100	1276	553	1829	100
Means	553	562	557		550	553	551	
SAT Math								
200 – 399	39	19	58	1	26	5	31	2
400 – 499	470	342	812	16	248	86	334	18
500 – 599	1196	1142	2338	45	590	268	858	47
600 – 699	802	880	1682	33	354	173	527	29
700 – 800	139	124	263	5	58	21	79	4
Valid Cases	2646	2507	5153	100	1276	553	1829	100
Means	565	575	570		558	566	561	
ACT Composite								
1 – 14	2	4	6	0	0	2	2	0
15 – 18	104	52	156	3	55	14	69	3
19 – 22	1185	456	1641	27	672	104	776	31
23 – 26	1755	821	2576	42	879	194	1073	42
27 – 36	990	733	1723	28	483	140	623	24
Valid Cases	4036	2066	6102	100	2089	454	2543	100
Means	24.2	25.0	24.5		24.0	24.7	24.2	
CCHE Index								
35 – 89	11	12	23	0	9	10	19	1
90 – 100	863	627	1490	19	496	162	658	22
101 – 114	2146	1441	3587	46	1128	319	1447	48
115 – 160	1418	1292	2710	35	664	243	907	30
Valid Cases	4438	3372	7810	100	2297	734	3031	100
Means	110	112	111		109	110	109	

Office of Budgets and Institutional Analysis
Freshmen Profile
Fall 1998

Agricultural Sciences**Admitted N= 356****Enrolled N=182**

	Res	Nonres	Total	Percent	Res	Nonres	Total	Percent
High School GPA								
2.0 – 2.4	0	1	1	0	0	1	1	1
2.5 – 2.9	3	11	14	4	2	4	6	3
3.0 – 3.5	42	91	133	38	28	40	68	38
3.6 – 4.0	73	129	202	58	50	54	104	58
Valid Cases	118	232	350	100	80	99	179	100
Means	3.63	3.56	3.59		3.63	3.55	3.59	
Percentile Rank								
1 – 29	0	1	1	0	0	1	1	1
30 – 49	4	10	14	5	2	4	6	4
50 – 59	7	9	16	5	4	5	9	5
60 – 79	30	60	90	29	23	29	52	32
80 – 89	35	52	87	28	26	25	51	31
90 – 99	32	69	101	33	21	25	46	28
Valid Cases	108	201	309	100	76	89	165	100
Means	80.2	80.4	80.3		80.6	79.3	79.9	
SAT Verbal								
200 – 399	1	1	2	1	1	0	1	1
400 – 499	9	22	31	14	6	13	19	17
500 – 599	27	92	119	53	18	42	60	54
600 – 699	10	52	62	27	6	19	25	22
700 – 800	1	11	12	5	1	6	7	6
Valid Cases	48	178	226	100	32	80	112	100
Means	546	572	566		541	567	559	
SAT Math								
200 – 399	0	1	1	0	0	1	1	1
400 – 499	17	30	47	21	12	11	23	21
500 – 599	22	95	117	52	13	45	58	52
600 – 699	7	51	58	26	6	23	29	26
700 – 800	2	1	3	1	1	0	1	1
Valid Cases	48	178	226	100	32	80	112	100
Means	531	562	555		534	560	552	
ACT Composite								
1 – 14	0	2	2	1	0	0	0	0
15 – 18	3	2	5	2	2	1	3	2
19 – 22	36	20	56	23	24	6	30	23
23 – 26	46	53	99	41	34	27	61	48
27 – 36	25	53	78	33	17	17	34	27
Valid Cases	110	130	240	100	77	51	128	100
Means	24.1	25.5	24.9		24.1	25.3	24.6	
CCHE Index								
35 – 89	0	2	2	1	0	1	1	1
90 – 100	20	36	56	16	13	19	32	18
101 – 114	58	99	157	45	41	45	86	48
115 – 160	40	97	137	39	26	35	61	34
Valid Cases	118	234	352	100	80	100	180	100
Means	111	113	112		111	111	111	

Office of Budgets and Institutional Analysis
Freshmen Profile
Fall 1998

Applied Human Sciences	Admitted N= 626				Enrolled N=293			
	Res	Nonres	Total	Percent	Res	Nonres	Total	Percent
High School GPA								
2.5 – 2.9	9	15	24	4	7	6	13	4
3.0 – 3.5	141	112	253	41	93	35	128	44
3.6 – 4.0	202	142	344	55	117	32	149	51
Valid Cases	352	269	621	100	217	73	290	100
Means	3.58	3.52	3.55		3.56	3.46	3.54	
Percentile Rank								
1 – 29	2	7	9	2	1	4	5	2
30 – 49	10	9	19	3	6	3	9	3
50 – 59	26	17	43	8	18	6	24	9
60 – 79	112	77	189	33	70	24	94	35
80 – 89	111	67	178	31	65	15	80	29
90 – 99	76	58	134	23	45	15	60	22
Valid Cases	337	235	572	100	205	67	272	100
Means	78.5	77.5	78.1		78.0	74.1	77.0	
SAT Verbal								
200 – 399	4	3	7	2	3	1	4	2
400 – 499	62	48	110	29	32	15	47	28
500 – 599	95	106	201	52	67	27	94	55
600 – 699	28	30	58	15	15	9	24	14
700 – 800	1	6	7	2	1	0	1	1
Valid Cases	190	193	383	100	118	52	170	100
Means	523	538	531		526	531	528	
SAT Math								
200 – 399	7	0	7	2	5	0	5	3
400 – 499	48	46	94	25	30	15	45	26
500 – 599	98	96	194	51	62	20	82	48
600 – 699	34	46	80	21	20	15	35	21
700 – 800	3	5	8	2	1	2	3	2
Valid Cases	190	193	383	100	118	52	170	100
Means	535	552	543		531	547	536	
ACT Composite								
15 – 18	6	4	10	2	2	1	3	1
19 – 22	140	55	195	39	85	11	96	39
23 – 26	142	82	224	44	90	26	116	47
27 – 36	41	34	75	15	23	9	32	13
Valid Cases	329	175	504	100	200	47	247	100
Means	23.1	24.0	23.4		23.1	24.2	23.3	
CCHE Index								
35 – 89	2	0	2	0	2	0	2	1
90 – 100	72	66	138	22	44	19	63	22
101 – 114	199	129	328	53	121	37	158	54
115 – 160	79	74	153	25	50	17	67	23
Valid Cases	352	269	621	100	217	73	290	100
Means	108	109	108		108	108	108	

Office of Budgets and Institutional Analysis
Freshmen Profile
Fall 1998

Business	Admitted N= 1063				Enrolled N=409			
	Res	Nonres	Total	Percent	Res	Nonres	Total	Percent
High School GPA								
2.0 – 2.4	0	1	1	0	0	0	0	0
2.5 – 2.9	36	48	84	8	20	13	33	8
3.0 – 3.5	341	201	542	52	174	36	210	52
3.6 – 4.0	265	156	421	40	137	25	162	40
Valid Cases	642	406	1048	100	331	74	405	100
Means	3.47	3.40	3.45		3.47	3.35	3.45	
Percentile Rank								
1 – 29	0	4	4	0	0	2	2	1
30 – 49	53	39	92	10	28	13	41	10
50 – 59	66	42	108	11	33	9	42	11
60 – 79	233	110	343	36	127	22	149	38
80 – 89	134	84	218	23	75	13	88	22
90 – 99	129	68	197	20	62	8	70	18
Valid Cases	615	347	962	100	325	67	392	100
Means	74.5	72.6	73.8		74.0	66.8	72.8	
SAT Verbal								
200 – 399	8	12	20	3	3	4	7	3
400 – 499	97	84	181	27	49	17	66	28
500 – 599	206	153	359	53	90	33	123	53
600 – 699	56	49	105	15	27	6	33	14
700 – 800	7	7	14	2	4	0	4	2
Valid Cases	374	305	679	100	173	60	233	100
Means	533	529	531		529	511	524	
SAT Math								
200 – 399	4	3	7	1	2	1	3	1
400 – 499	65	45	110	16	31	14	45	19
500 – 599	189	151	340	50	89	28	117	50
600 – 699	108	101	209	31	48	17	65	28
700 – 800	8	5	13	2	3	0	3	1
Valid Cases	374	305	679	100	173	60	233	100
Means	559	563	561		556	542	552	
ACT Composite								
1 – 14	0	1	1	0	0	1	1	0
15 – 18	19	11	30	4	13	2	15	4
19 – 22	223	72	295	35	114	17	131	38
23 – 26	247	98	345	42	123	21	144	41
27 – 36	97	63	160	19	49	9	58	17
Valid Cases	586	245	831	100	299	50	349	100
Means	23.4	24.2	23.6		23.3	23.3	23.3	
CCHE Index								
35 – 89	4	4	8	1	3	3	6	1
90 – 100	169	117	286	27	90	29	119	30
101 – 114	332	176	508	49	171	25	196	49
115 – 160	135	109	244	23	65	17	82	20
Valid Cases	640	406	1046	100	329	74	403	100
Means	107	108	107		107	105	106	

Office of Budgets and Institutional Analysis
Freshmen Profile
Fall 1998

Engineering	Admitted N= 885				Enrolled N=318			
	Res	Nonres	Total	Percent	Res	Nonres	Total	Percent
High School GPA								
2.5 – 2.9	5	9	14	2	4	2	6	2
3.0 – 3.5	163	112	275	32	92	24	116	37
3.6 – 4.0	351	233	584	67	142	49	191	61
Valid Cases	519	354	873	100	238	75	313	100
Means	3.67	3.65	3.66		3.61	3.66	3.62	
Percentile Rank								
30 – 49	12	7	19	2	11	1	12	4
50 – 59	18	16	34	4	15	6	21	7
60 – 79	136	69	205	25	68	16	84	28
80 – 89	131	78	209	26	65	18	83	28
90 – 99	200	141	341	42	75	25	100	33
Valid Cases	497	311	808	100	234	66	300	100
Means	83.4	84.3	83.8		80.0	82.4	80.6	
SAT Verbal								
200 – 399	2	3	5	1	1	1	2	1
400 – 499	59	22	81	13	23	3	26	12
500 – 599	167	142	309	49	80	34	114	52
600 – 699	106	86	192	30	44	18	62	28
700 – 800	28	17	45	7	14	3	17	8
Valid Cases	362	270	632	100	162	59	221	100
Means	570	580	574		572	579	574	
SAT Math								
400 – 499	15	4	19	3	11	0	11	5
500 – 599	108	69	177	28	48	17	65	29
600 – 699	186	162	348	55	81	37	118	53
700 – 800	53	35	88	14	22	5	27	12
Valid Cases	362	270	632	100	162	59	221	100
Means	622	632	626		616	628	619	
ACT Composite								
19 – 22	60	24	84	12	23	3	26	10
23 – 26	220	90	310	43	105	21	126	47
27 – 36	190	141	331	46	84	30	114	43
Valid Cases	470	255	725	100	212	54	266	100
Means	26.1	26.8	26.3		26.0	27.2	26.2	
CCHE Index								
90 – 100	5	0	5	1	2	0	2	1
101 – 114	227	137	364	42	122	32	154	49
115 – 160	287	220	507	58	114	44	158	50
Valid Cases	519	357	876	100	238	76	314	100
Means	118	119	118		116	119	117	

Office of Budgets and Institutional Analysis
Freshmen Profile
Fall 1998

Intra-University	Admitted N= 1486				Enrolled N=586			
	Res	Nonres	Total	Percent	Res	Nonres	Total	Percent
High School GPA								
2.0 – 2.4	3	5	8	1	2	4	6	1
2.5 – 2.9	74	80	154	10	50	22	72	12
3.0 – 3.5	451	254	705	48	230	43	273	47
3.6 – 4.0	404	204	608	41	200	34	234	40
Valid Cases	932	543	1475	100	482	103	585	100
Means	3.46	3.39	3.44		3.43	3.30	3.41	
Percentile Rank								
1 – 29	6	9	15	1	4	3	7	1
30 – 49	75	32	107	8	52	10	62	11
50 – 59	94	54	148	11	54	18	72	13
60 – 79	336	144	480	36	177	20	197	36
80 – 89	193	106	299	22	98	13	111	20
90 – 99	185	97	282	21	84	20	104	19
Valid Cases	889	442	1331	100	469	84	553	100
Means	74.1	74.0	74.1		72.3	69.2	71.8	
SAT Verbal								
200 – 399	12	10	22	2	7	3	10	3
400 – 499	138	86	224	23	69	25	94	28
500 – 599	279	193	472	49	123	33	156	47
600 – 699	113	110	223	23	51	17	68	20
700 – 800	10	13	23	2	3	2	5	2
Valid Cases	552	412	964	100	253	80	333	100
Means	540	551	545		536	534	536	
SAT Math								
200 – 399	13	3	16	2	9	2	11	3
400 – 499	122	68	190	20	57	20	77	23
500 – 599	263	193	456	47	130	27	157	47
600 – 699	143	135	278	29	52	28	80	24
700 – 800	11	13	24	2	5	3	8	2
Valid Cases	552	412	964	100	253	80	333	100
Means	548	566	555		539	557	544	
ACT Composite								
1 – 14	2	1	3	0	0	1	1	0
15 – 18	33	11	44	4	18	2	20	4
19 – 22	303	87	390	34	180	24	204	40
23 – 26	347	119	466	40	168	19	187	37
27 – 36	161	91	252	22	77	16	93	18
Valid Cases	846	309	1155	100	443	62	505	100
Means	23.6	24.4	23.8		23.3	23.8	23.4	
CCHE Index								
35 – 89	3	6	9	1	2	6	8	1
90 – 100	272	155	427	29	154	38	192	33
101 – 114	438	223	661	45	223	32	255	44
115 – 160	218	159	377	26	102	27	129	22
Valid Cases	931	543	1474	100	481	103	584	100
Means	107	108	108		106	106	106	

Office of Budgets and Institutional Analysis
Freshmen Profile
Fall 1998

Liberal Arts	Admitted N= 1135				Enrolled N=426			
	Res	Nonres	Total	Percent	Res	Nonres	Total	Percent
High School GPA								
2.0 – 2.4	1	0	1	0	1	0	1	0
2.5 – 2.9	35	40	75	7	20	9	29	7
3.0 – 3.5	314	208	522	46	152	33	185	44
3.6 – 4.0	345	185	530	47	171	36	207	49
Valid Cases	695	433	1128	100	344	78	422	100
Means	3.52	3.46	3.50		3.51	3.45	3.50	
Percentile Rank								
1 – 29	4	5	9	1	4	2	6	2
30 – 49	31	29	60	6	19	6	25	6
50 – 59	66	33	99	10	25	6	31	8
60 – 79	241	122	363	35	132	24	156	39
80 – 89	153	88	241	24	77	21	98	25
90 – 99	162	91	253	25	70	13	83	21
Valid Cases	657	368	1025	100	327	72	399	100
Means	76.6	75.4	76.2		75.6	73.3	75.2	
SAT Verbal								
200 – 399	1	4	5	1	0	2	2	1
400 – 499	59	50	109	15	34	9	43	17
500 – 599	194	142	336	45	84	27	111	44
600 – 699	147	111	258	35	68	15	83	33
700 – 800	17	14	31	4	8	3	11	4
Valid Cases	418	321	739	100	194	56	250	100
Means	572	569	571		567	560	565	
SAT Math								
200 – 399	7	6	13	2	5	0	5	2
400 – 499	86	56	142	19	43	9	52	21
500 – 599	214	165	379	51	101	32	133	53
600 – 699	99	85	184	25	41	12	53	21
700 – 800	12	9	21	3	4	3	7	3
Valid Cases	418	321	739	100	194	56	250	100
Means	548	556	552		541	559	545	
ACT Composite								
15 – 18	15	8	23	3	3	4	7	2
19 – 22	170	71	241	28	99	15	114	32
23 – 26	276	101	377	44	126	21	147	42
27 – 36	151	74	225	26	72	11	83	24
Valid Cases	612	254	866	100	300	51	351	100
Means	24.4	24.4	24.4		24.1	23.6	24.1	
CCHE Index								
90 – 100	131	97	228	20	73	19	92	22
101 – 114	355	203	558	50	181	37	218	52
115 – 160	208	133	341	30	89	22	111	26
Valid Cases	694	433	1127	100	343	78	421	100
Means	110	110	110		109	109	109	

Office of Budgets and Institutional Analysis
Freshmen Profile
Fall 1998

Natural Resources	Admitted N= 349				Enrolled N=159			
	Res	Nonres	Total	Percent	Res	Nonres	Total	Percent
High School GPA								
2.5 – 2.9	7	34	41	12	5	19	24	15
3.0 – 3.5	52	97	149	43	36	27	63	40
3.6 – 4.0	64	95	159	46	38	34	72	45
Valid Cases	123	226	349	100	79	80	159	100
Means	3.54	3.42	3.46		3.50	3.39	3.44	
Percentile Rank								
1 – 29	1	1	2	1	1	0	1	1
30 – 49	11	21	32	10	9	12	21	14
50 – 59	6	19	25	8	4	8	12	8
60 – 79	39	55	94	30	26	20	46	31
80 – 89	34	45	79	25	23	12	35	23
90 – 99	28	54	82	26	14	21	35	23
Valid Cases	119	195	314	100	77	73	150	100
Means	76.8	75.4	75.9		74.3	73.3	73.8	
SAT Verbal								
200 – 399	1	0	1	0	1	0	1	1
400 – 499	12	16	28	12	9	7	16	16
500 – 599	32	90	122	53	18	32	50	50
600 – 699	17	51	68	29	11	15	26	26
700 – 800	6	7	13	6	5	3	8	8
Valid Cases	68	164	232	100	44	57	101	100
Means	567	577	574		568	572	570	
SAT Math								
200 – 399	1	0	1	0	1	0	1	1
400 – 499	18	16	34	15	13	5	18	18
500 – 599	33	85	118	51	20	37	57	56
600 – 699	14	57	71	31	8	13	21	21
700 – 800	2	6	8	3	2	2	4	4
Valid Cases	68	164	232	100	44	57	101	100
Means	550	578	569		543	569	558	
ACT Composite								
15 – 18	2	1	3	1	2	0	2	2
19 – 22	27	24	51	20	19	7	26	22
23 – 26	51	62	113	45	28	26	54	45
27 – 36	33	50	83	33	23	15	38	32
Valid Cases	113	137	250	100	72	48	120	100
Means	24.5	25.3	24.9		24.5	25.2	24.8	
CCHE Index								
90 – 100	24	42	66	19	19	17	36	23
101 – 114	59	102	161	46	36	36	72	45
115 – 160	40	82	122	35	24	27	51	32
Valid Cases	123	226	349	100	79	80	159	100
Means	110	111	111		109	110	110	

Office of Budgets and Institutional Analysis
Freshmen Profile
Fall 1998

Natural Sciences**Admitted N= 1534****Enrolled N=507**

	Res	Nonres	Total	Percent	Res	Nonres	Total	Percent
High School GPA								
2.0 – 2.4	0	3	3	0	0	0	0	0
2.5 – 2.9	50	41	91	6	28	7	35	7
3.0 – 3.5	339	232	571	37	164	40	204	40
3.6 – 4.0	503	356	859	56	219	46	265	53
Valid Cases	892	632	1524	100	411	93	504	100
Means	3.57	3.56	3.57		3.53	3.52	3.53	
Percentile Rank								
1 – 29	1	1	2	0	1	1	2	0
30 – 49	45	23	68	5	30	7	37	8
50 – 59	58	36	94	7	31	8	39	8
60 – 79	250	157	407	29	130	20	150	31
80 – 89	218	133	351	25	95	20	115	24
90 – 99	282	205	487	35	113	28	141	29
Valid Cases	854	555	1409	100	400	84	484	100
Means	79.7	80.8	80.1		77.4	77.3	77.4	
SAT Verbal								
200 – 399	6	8	14	1	3	1	4	1
400 – 499	96	53	149	15	45	12	57	19
500 – 599	252	213	465	47	103	29	132	45
600 – 699	147	149	296	30	67	22	89	30
700 – 800	30	26	56	6	10	3	13	4
Valid Cases	531	449	980	100	228	67	295	100
Means	564	573	568		560	561	560	
SAT Math								
200 – 399	6	5	11	1	3	0	3	1
400 – 499	76	54	130	13	37	5	42	14
500 – 599	220	192	412	42	91	41	132	45
600 – 699	189	163	352	36	82	16	98	33
700 – 800	40	35	75	8	15	5	20	7
Valid Cases	531	449	980	100	228	67	295	100
Means	578	583	580		573	577	574	
ACT Composite								
15 – 18	22	12	34	3	12	3	15	3
19 – 22	188	83	271	22	99	14	113	26
23 – 26	354	151	505	41	153	22	175	40
27 – 36	253	161	414	34	112	20	132	30
Valid Cases	817	407	1224	100	376	59	435	100
Means	24.9	25.3	25.0		24.6	24.5	24.6	
CCHE Index								
35 – 89	2	0	2	0	2	0	2	0
90 – 100	142	85	227	15	81	14	95	19
101 – 114	397	257	654	43	176	45	221	44
115 – 160	351	291	642	42	152	34	186	37
Valid Cases	892	633	1525	100	411	93	504	100
Means	112	114	113		111	112	111	

Office of Budgets and Institutional Analysis
Freshmen Profile
Fall 1998

	Admitted N= 440				Enrolled N=176			
	Res	Nonres	Total	Percent	Res	Nonres	Total	Percent
Veterinary Medicine + Biomed								
High School GPA								
2.5 – 2.9	4	9	13	3	2	4	6	3
3.0 – 3.5	66	99	165	38	49	24	73	41
3.6 – 4.0	99	163	262	60	68	29	97	55
Valid Cases	169	271	440	100	119	57	176	100
Means	3.60	3.61	3.61		3.59	3.55	3.58	
Percentile Rank								
1 – 29	1	3	4	1	0	3	3	2
30 – 49	4	8	12	3	3	1	4	2
50 – 59	9	11	20	5	9	3	12	7
60 – 79	49	56	105	27	35	18	53	32
80 – 89	48	56	104	26	34	11	45	27
90 – 99	54	96	150	38	36	15	51	30
Valid Cases	165	230	395	100	117	51	168	100
Means	81.2	81.9	81.6		80.4	76.6	79.3	
SAT Verbal								
400 – 499	24	27	51	16	20	8	28	25
500 – 599	54	102	156	49	33	18	51	45
600 – 699	21	81	102	32	16	16	32	28
700 – 800	4	5	9	3	3	0	3	3
Valid Cases	103	215	318	100	72	42	114	100
Means	556	574	568		555	565	558	
SAT Math								
200 – 399	1	1	2	1	1	1	2	2
400 – 499	23	23	46	14	14	7	21	18
500 – 599	49	96	145	46	36	21	57	50
600 – 699	22	80	102	32	16	12	28	25
700 – 800	8	15	23	7	5	1	6	5
Valid Cases	103	215	318	100	72	42	114	100
Means	562	582	576		561	558	560	
ACT Composite								
15 – 18	4	3	7	2	3	1	4	3
19 – 22	38	20	58	19	29	7	36	25
23 – 26	72	65	137	45	52	11	63	44
27 – 36	39	66	105	34	26	13	39	27
Valid Cases	153	154	307	100	110	32	142	100
Means	24.5	25.8	25.2		24.5	25.3	24.7	
CCHE Index								
90 – 100	28	29	57	13	20	7	27	15
101 – 114	81	115	196	45	57	30	87	49
115 – 160	60	127	187	43	42	20	62	35
Valid Cases	169	271	440	100	119	57	176	100
Means	112	115	114		112	112	112	

Number of New Freshmen by High School GPA & Rank,
Test Scores, CCHE Index and CSU GPA
Fall 1997

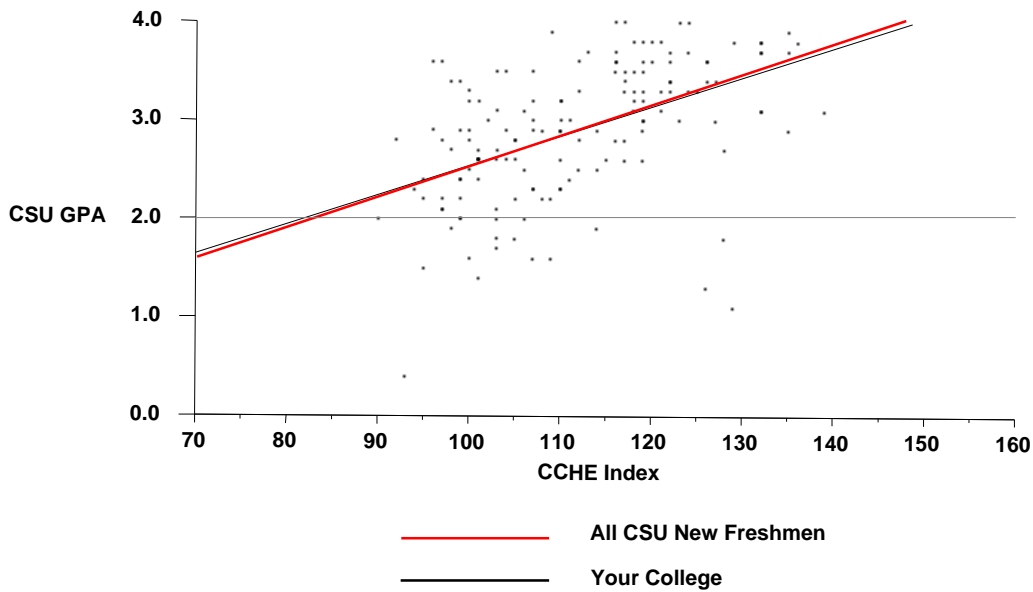
Agricultural Sciences

	CSU GPA				Total
	0.1 – 1.9	2.0 – 2.9	3.0 – 3.5	3.6 – 4.0	
High School GPA					
2.5 – 2.9	2	7	2		11
3.0 – 3.5	7	37	13	2	59
3.6 – 4.0	5	18	30	29	82
Total	14	62	45	31	152
Percentile Rank					
30 – 49		6	1		7
50 – 59	2	2	1		5
60 – 79	6	28	8	2	44
80 – 89	3	14	14	11	42
90 – 99	1	6	16	18	41
Total	12	56	40	31	139
SAT Verbal					
200 – 399	1	1			2
400 – 499	1	9	8	1	19
500 – 599	3	19	13	9	44
600 – 699	2	10	10	10	32
700 – 800			3	1	4
Total	7	39	34	21	101
SAT Math					
200 – 399		1			1
400 – 499	3	10	5	2	20
500 – 599	3	19	17	6	45
600 – 699	1	8	10	12	31
700 – 800		1	2	1	4
Total	7	39	34	21	101
ACT Composite					
15 – 18		2	1		3
19 – 22	3	20	7	2	32
23 – 26	4	23	12	9	48
27 – 36	4	5	10	14	33
Total	11	50	30	25	116
CCHE Index					
90 – 100	4	20	4	2	30
101 – 114	7	34	14	3	58
115 – 160	3	8	27	26	64
Total	14	62	45	31	152

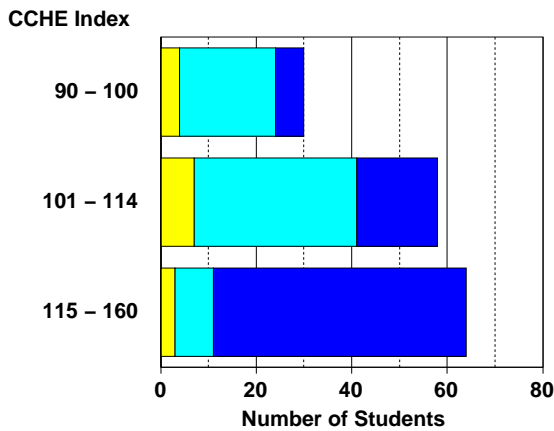
Office of Budgets and Institutional Analysis
 Number of New Freshmen by High School GPA & Rank,
 Test Scores, CCHE Index and CSU GPA
 Fall 1997

Agricultural Sciences

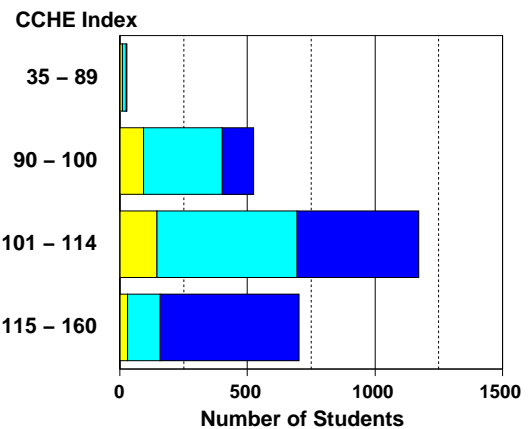
**Fall 1997 – Spring 1998
 First Year CSU Grades by CCHE Index**



Your College



All CSU Freshmen



Number of New Freshmen by High School GPA & Rank,
Test Scores, CCHE Index and CSU GPA
Fall 1997

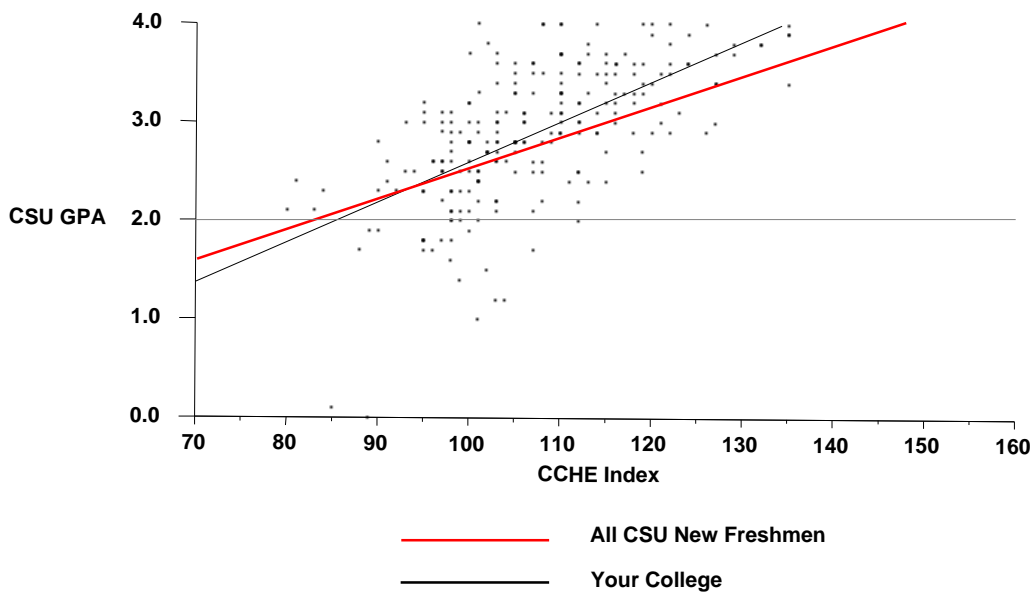
Applied Human Sciences

	CSU GPA				Total
	0.1 – 1.9	2.0 – 2.9	3.0 – 3.5	3.6 – 4.0	
High School GPA					
2.0 – 2.4		1			1
2.5 – 2.9	7	12			19
3.0 – 3.5	13	54	23	6	96
3.6 – 4.0		34	48	39	121
Total	20	101	71	45	237
Percentile Rank					
1 – 29		1			1
30 – 49	4	10	1		15
50 – 59	6	13	5	1	25
60 – 79	8	40	19	8	75
80 – 89	2	22	19	7	50
90 – 99		9	25	27	61
Total	20	95	69	43	227
SAT Verbal					
200 – 399	1	3	2		6
400 – 499	7	18	8	1	34
500 – 599	2	26	24	14	66
600 – 699	1	6	6	12	25
Total	11	53	40	27	131
SAT Math					
200 – 399	1	2	1		4
400 – 499	4	14	9	5	32
500 – 599	6	28	22	13	69
600 – 699		9	8	7	24
700 – 800				2	2
Total	11	53	40	27	131
ACT Composite					
15 – 18	3	12	2		17
19 – 22	5	37	22	8	72
23 – 26	4	33	32	16	85
27 – 36	1	6	10	11	28
Total	13	88	66	35	202
CCHE Index					
35 – 89	4	4			8
90 – 100	11	39	11	1	62
101 – 114	5	50	36	19	110
115 – 160		8	24	25	57
Total	20	101	71	45	237

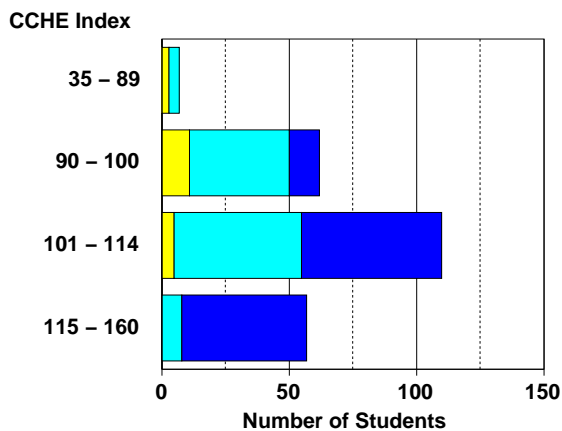
Office of Budgets and Institutional Analysis
 Number of New Freshmen by High School GPA & Rank,
 Test Scores, CCHE Index and CSU GPA
 Fall 1997

Applied Human Sciences

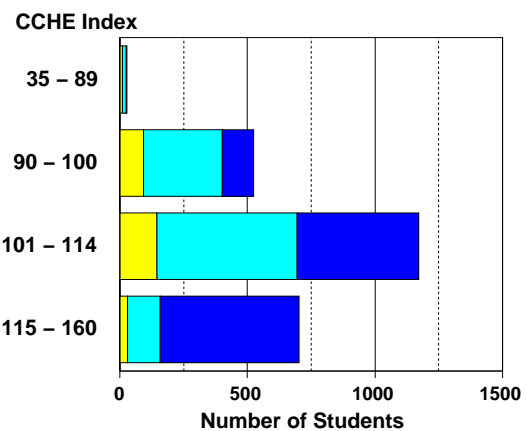
**Fall 1997 – Spring 1998
 First Year CSU Grades by CCHE Index**



Your College



All CSU Freshmen



Number of New Freshmen by High School GPA & Rank,
Test Scores, CCHE Index and CSU GPA
Fall 1997

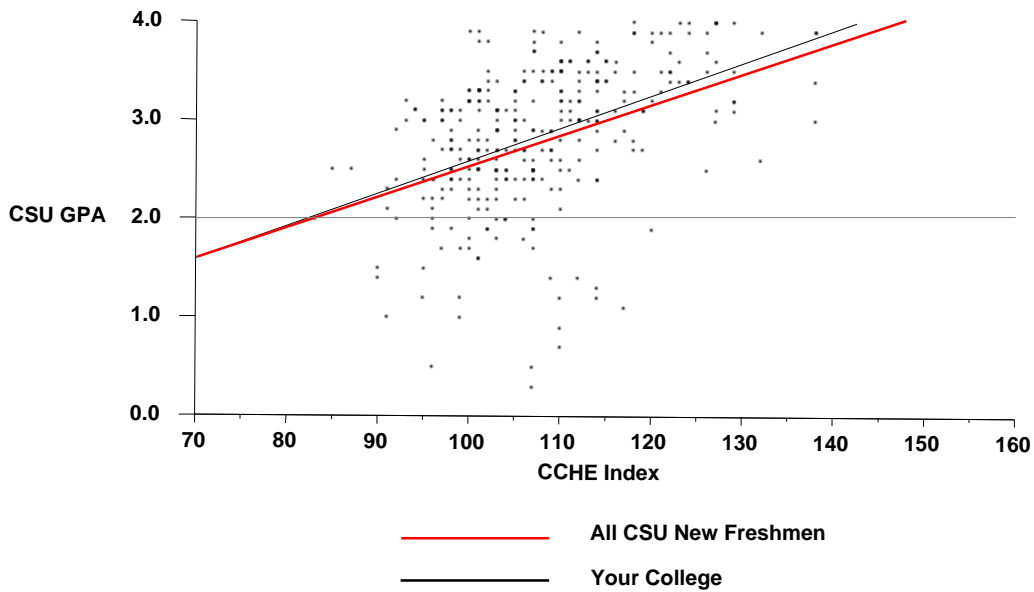
Business

	CSU GPA				Total
	0.1 – 1.9	2.0 – 2.9	3.0 – 3.5	3.6 – 4.0	
High School GPA					
2.0 – 2.4		1			1
2.5 – 2.9	5	15	9	4	33
3.0 – 3.5	19	86	46	11	162
3.6 – 4.0	10	25	59	32	126
Total	34	127	114	47	322
Percentile Rank					
1 – 29	2	1			3
30 – 49	3	14	7	2	26
50 – 59	4	14	9	3	30
60 – 79	14	62	39	8	123
80 – 89	7	21	28	10	66
90 – 99	1	8	27	22	58
Total	31	120	110	45	306
SAT Verbal					
200 – 399	1		1		2
400 – 499	4	27	17	6	54
500 – 599	13	37	46	17	113
600 – 699	2	12	9	9	32
Total	20	76	73	32	201
SAT Math					
200 – 399	1	1			2
400 – 499	2	16	10	1	29
500 – 599	12	42	32	14	100
600 – 699	3	15	28	15	61
700 – 800	2	2	3	2	9
Total	20	76	73	32	201
ACT Composite					
15 – 18	2	6	1		9
19 – 22	10	45	22	2	79
23 – 26	13	45	50	19	127
27 – 36	1	12	20	15	48
Total	26	108	93	36	263
CCHE Index					
35 – 89		3			3
90 – 100	14	39	20	1	74
101 – 114	18	78	66	20	182
115 – 160	2	7	28	25	62
Total	34	127	114	46	321

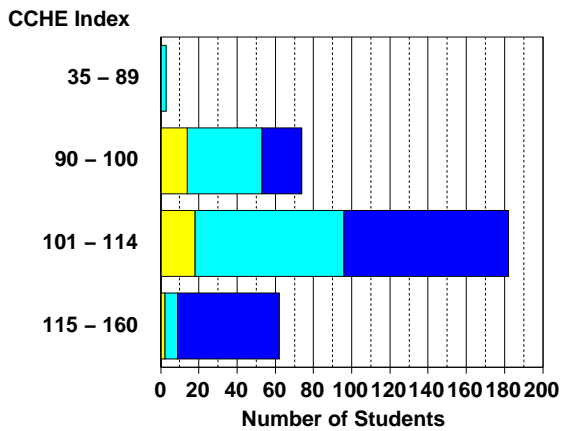
Office of Budgets and Institutional Analysis
 Number of New Freshmen by High School GPA & Rank,
 Test Scores, CCHE Index and CSU GPA
 Fall 1997

Business

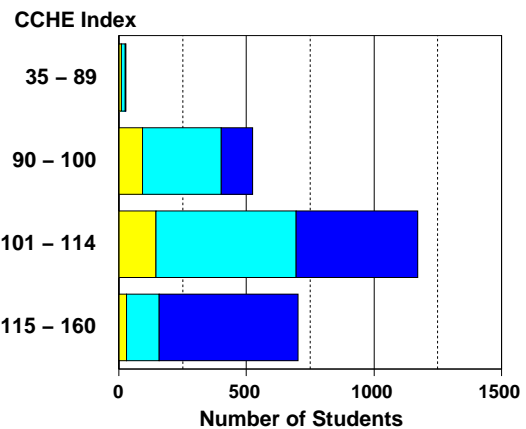
**Fall 1997 – Spring 1998
 First Year CSU Grades by CCHE Index**



Your College



All CSU Freshmen



Number of New Freshmen by High School GPA & Rank,
Test Scores, CCHE Index and CSU GPA
Fall 1997

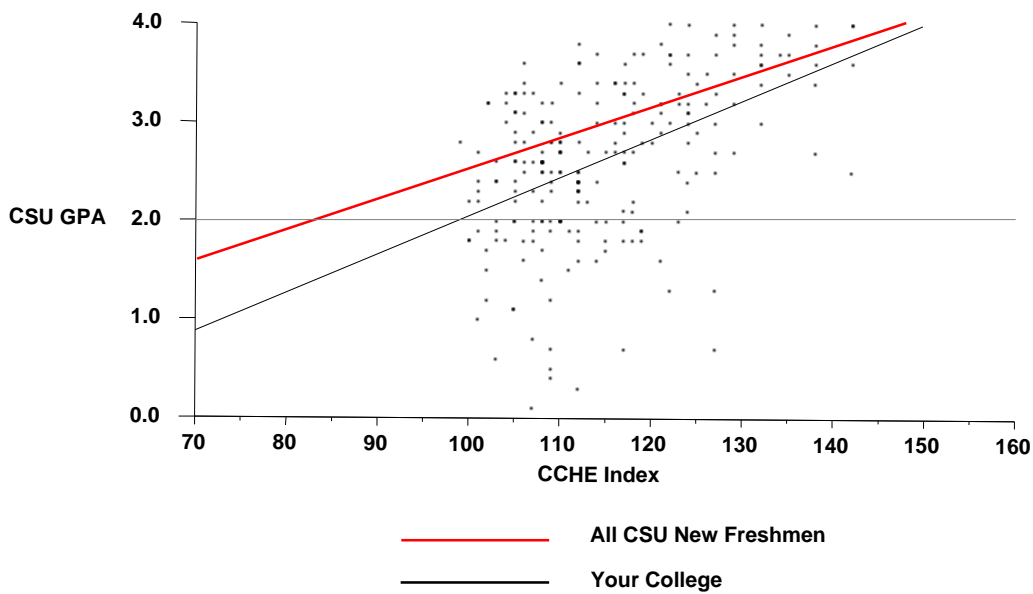
Engineering

	CSU GPA				Total
	0.1 – 1.9	2.0 – 2.9	3.0 – 3.5	3.6 – 4.0	
High School GPA					
2.5 – 2.9	6	2	1		9
3.0 – 3.5	29	41	19		89
3.6 – 4.0	10	55	37	34	136
Total	45	98	57	34	234
Percentile Rank					
1 – 29	2	2			4
30 – 49	2	2	1		5
50 – 59	7	4	2		13
60 – 79	21	32	12	2	67
80 – 89	7	34	23	4	68
90 – 99	4	21	17	27	69
Total	43	95	55	33	226
SAT Verbal					
400 – 499	2	14	6		22
500 – 599	23	40	17	9	89
600 – 699	8	12	12	11	43
700 – 800	2	1		4	7
Total	35	67	35	24	161
SAT Math					
400 – 499	1	3			4
500 – 599	16	34	13	6	69
600 – 699	15	24	17	11	67
700 – 800	3	6	5	7	21
Total	35	67	35	24	161
ACT Composite					
19 – 22	6	11	7	1	25
23 – 26	20	52	15	10	97
27 – 36	8	23	30	18	79
Total	34	86	52	29	201
CCHE Index					
90 – 100	2	2			4
101 – 114	31	68	23	5	127
115 – 160	12	28	34	29	103
Total	45	98	57	34	234

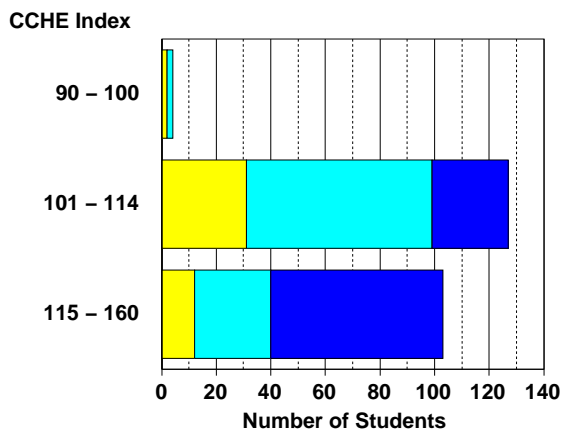
Office of Budgets and Institutional Analysis
 Number of New Freshmen by High School GPA & Rank,
 Test Scores, CCHE Index and CSU GPA
 Fall 1997

Engineering

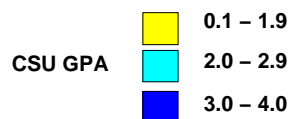
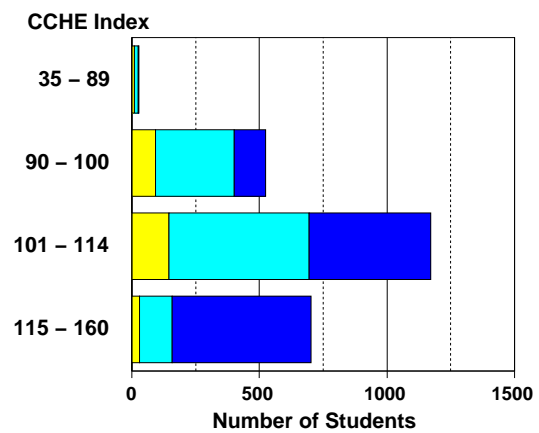
**Fall 1997 – Spring 1998
 First Year CSU Grades by CCHE Index**



Your College



All CSU Freshmen



Number of New Freshmen by High School GPA & Rank,
Test Scores, CCHE Index and CSU GPA
Fall 1997

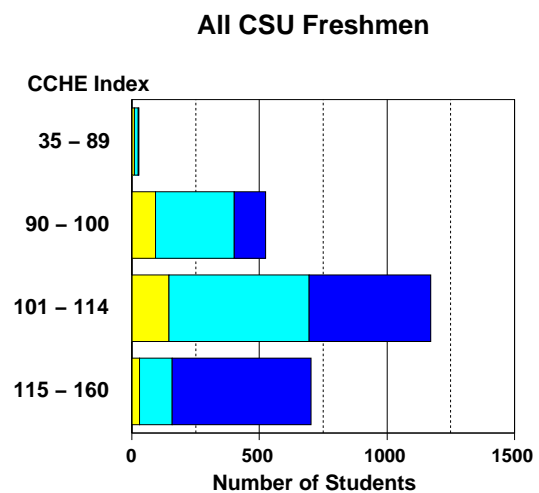
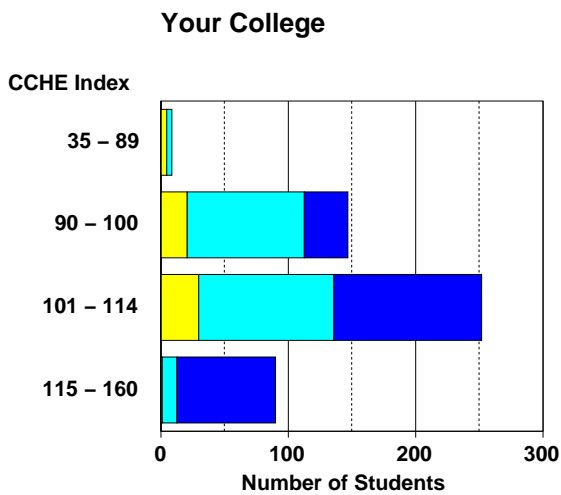
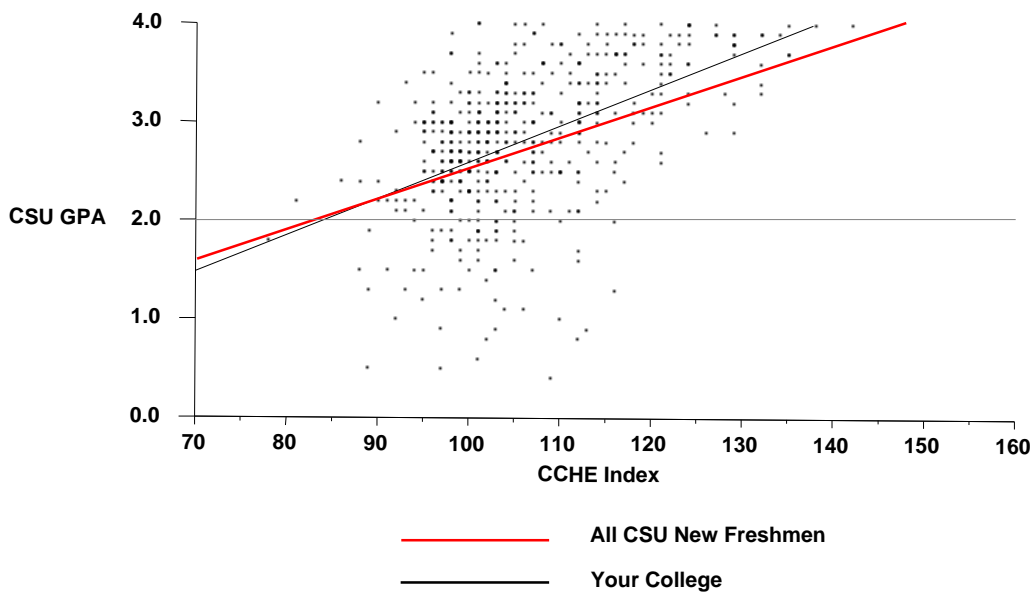
Intra-University

	CSU GPA				Total
	0.1 – 1.9	2.0 – 2.9	3.0 – 3.5	3.6 – 4.0	
High School GPA					
2.0 – 2.4	2	2			4
2.5 – 2.9	14	26	16	1	57
3.0 – 3.5	37	139	73	13	262
3.6 – 4.0	4	47	50	74	175
Total	57	214	139	88	498
Percentile Rank					
1 – 29	4	2	1		7
30 – 49	8	22	10	1	41
50 – 59	7	27	15		49
60 – 79	27	109	53	11	200
80 – 89	1	36	30	26	93
90 – 99	1	6	20	46	73
Total	48	202	129	84	463
SAT Verbal					
200 – 399	1	4	3		8
400 – 499	6	36	24	7	73
500 – 599	18	74	50	23	165
600 – 699	3	11	14	19	47
700 – 800	1		2	5	8
Total	29	125	93	54	301
SAT Math					
200 – 399		3			3
400 – 499	9	29	20	7	65
500 – 599	16	75	45	24	160
600 – 699	3	18	25	19	65
700 – 800	1		3	4	8
Total	29	125	93	54	301
ACT Composite					
15 – 18	3	15	6		24
19 – 22	20	71	38	16	145
23 – 26	19	80	51	30	180
27 – 36	8	20	18	27	73
Total	50	186	113	73	422
CCHE Index					
35 – 89	5	4			9
90 – 100	21	92	31	3	147
101 – 114	30	106	84	32	252
115 – 160	1	12	24	53	90
Total	57	214	139	88	498

Office of Budgets and Institutional Analysis
 Number of New Freshmen by High School GPA & Rank,
 Test Scores, CCHE Index and CSU GPA
 Fall 1997

Intra-University

**Fall 1997 – Spring 1998
 First Year CSU Grades by CCHE Index**



Number of New Freshmen by High School GPA & Rank,
Test Scores, CCHE Index and CSU GPA
Fall 1997

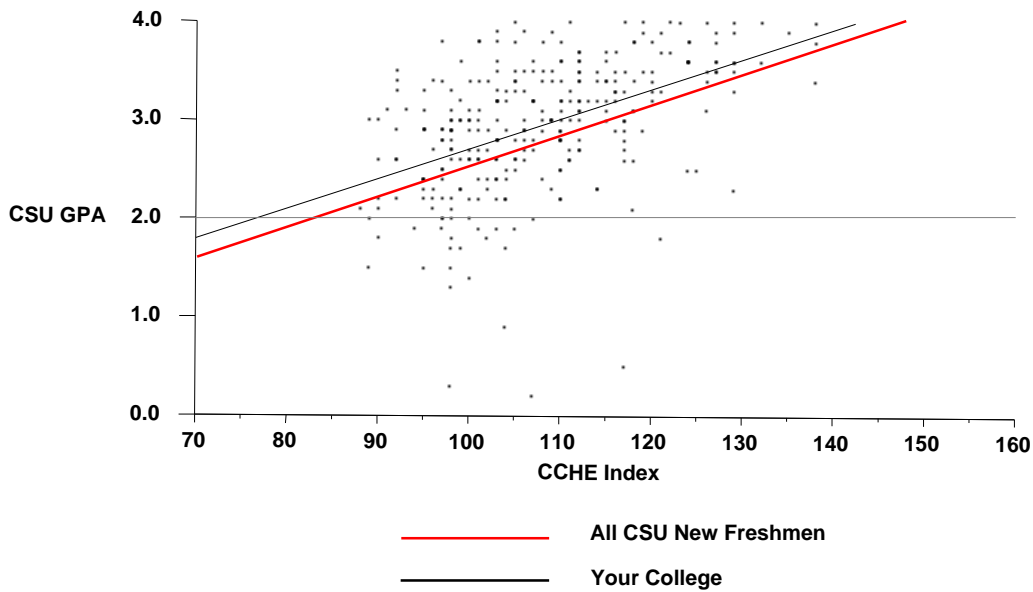
Liberal Arts

	CSU GPA				Total
	0.1 – 1.9	2.0 – 2.9	3.0 – 3.5	3.6 – 4.0	
High School GPA					
2.0 – 2.4		1			1
2.5 – 2.9	4	15	6	6	31
3.0 – 3.5	15	69	58	8	150
3.6 – 4.0	2	32	42	41	117
Total	21	117	106	55	299
Percentile Rank					
1 – 29	1	2		1	4
30 – 49	4	11	4	3	22
50 – 59	6	18	11	1	36
60 – 79	6	45	36	7	94
80 – 89	1	20	24	15	60
90 – 99	2	15	19	25	61
Total	20	111	94	52	277
SAT Verbal					
200 – 399			1		1
400 – 499	4	18	9	2	33
500 – 599	6	28	33	15	82
600 – 699	3	13	19	18	53
700 – 800		1	3	1	5
Total	13	60	65	36	174
SAT Math					
200 – 399		2	1		3
400 – 499	6	19	13	5	43
500 – 599	6	31	38	14	89
600 – 699	1	8	13	15	37
700 – 800				2	2
Total	13	60	65	36	174
ACT Composite					
15 – 18		3	2		5
19 – 22	7	43	26	5	81
23 – 26	5	40	37	21	103
27 – 36	2	11	19	23	55
Total	14	97	84	49	244
CCHE Index					
35 – 89	1	2	1		4
90 – 100	11	48	21	2	82
101 – 114	7	55	53	19	134
115 – 160	2	11	31	34	78
Total	21	116	106	55	298

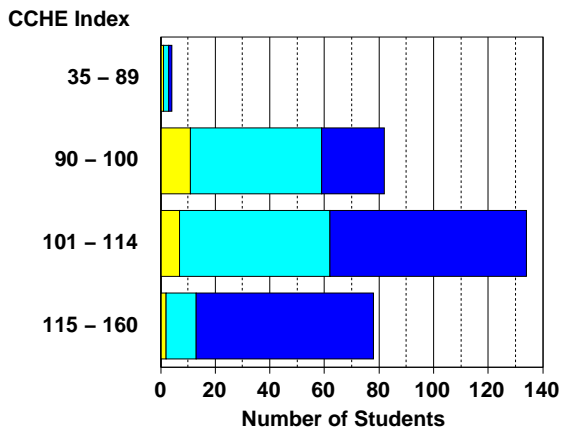
Office of Budgets and Institutional Analysis
 Number of New Freshmen by High School GPA & Rank,
 Test Scores, CCHE Index and CSU GPA
 Fall 1997

Liberal Arts

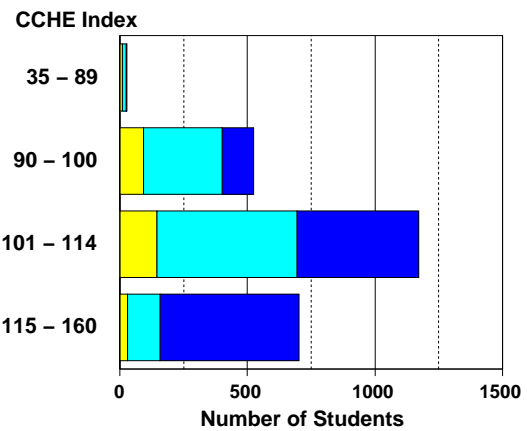
**Fall 1997 – Spring 1998
 First Year CSU Grades by CCHE Index**



Your College



All CSU Freshmen



Number of New Freshmen by High School GPA & Rank,
Test Scores, CCHE Index and CSU GPA
Fall 1997

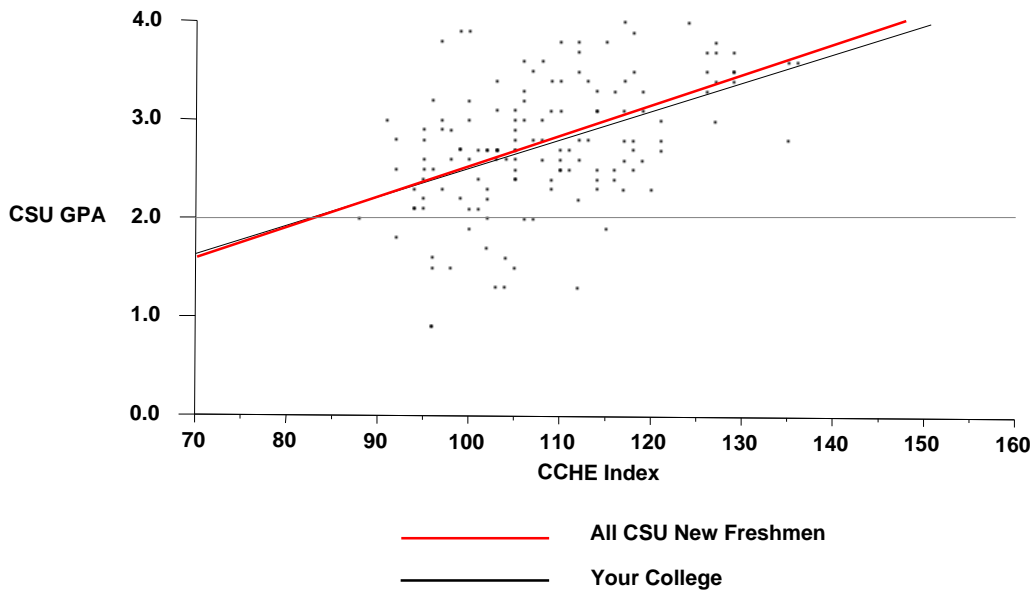
Natural Resources

	CSU GPA				Total
	0.1 – 1.9	2.0 – 2.9	3.0 – 3.5	3.6 – 4.0	
High School GPA					
2.0 – 2.4			1		1
2.5 – 2.9	1	12			13
3.0 – 3.5	11	40	15	6	72
3.6 – 4.0	2	25	21	12	60
Total	14	77	37	18	146
Percentile Rank					
30 – 49	1	9	2	1	13
50 – 59	5	8	1	1	15
60 – 79	8	29	10	2	49
80 – 89		14	12	2	28
90 – 99		8	6	10	24
Total	14	68	31	16	129
SAT Verbal					
200 – 399		1	1		2
400 – 499	3	10	2	1	16
500 – 599	3	24	15	9	51
600 – 699	1	14	7	4	26
700 – 800		2	2		4
Total	7	51	27	14	99
SAT Math					
200 – 399		1			1
400 – 499	1	8	4	1	14
500 – 599	4	30	15	9	58
600 – 699	2	12	7	4	25
700 – 800			1		1
Total	7	51	27	14	99
ACT Composite					
15 – 18	1	1	1		3
19 – 22	4	20	4	1	29
23 – 26	5	23	13	7	48
27 – 36	1	8	5	6	20
Total	11	52	23	14	100
CCHE Index					
35 – 89		1			1
90 – 100	7	22	5	3	37
101 – 114	6	41	18	5	70
115 – 160	1	13	14	10	38
Total	14	77	37	18	146

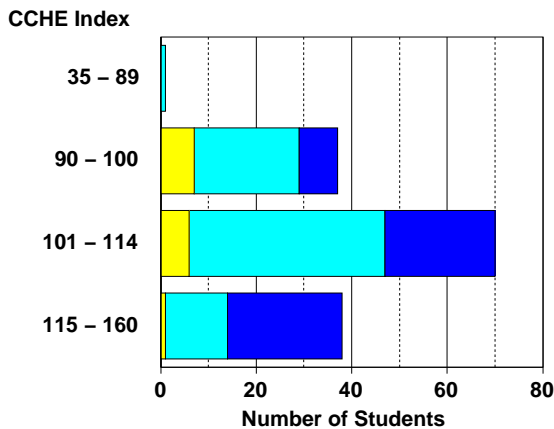
Office of Budgets and Institutional Analysis
 Number of New Freshmen by High School GPA & Rank,
 Test Scores, CCHE Index and CSU GPA
 Fall 1997

Natural Resources

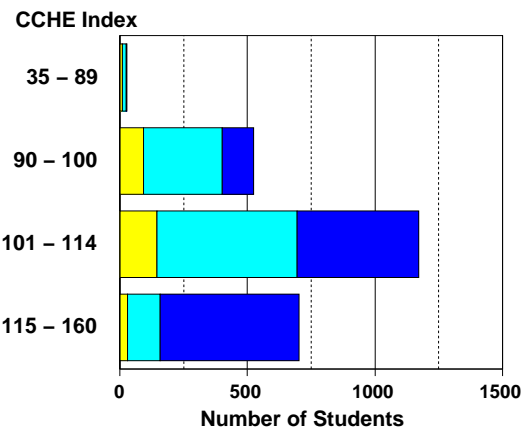
**Fall 1997 – Spring 1998
 First Year CSU Grades by CCHE Index**



Your College



All CSU Freshmen



Number of New Freshmen by High School GPA & Rank,
Test Scores, CCHE Index and CSU GPA
Fall 1997

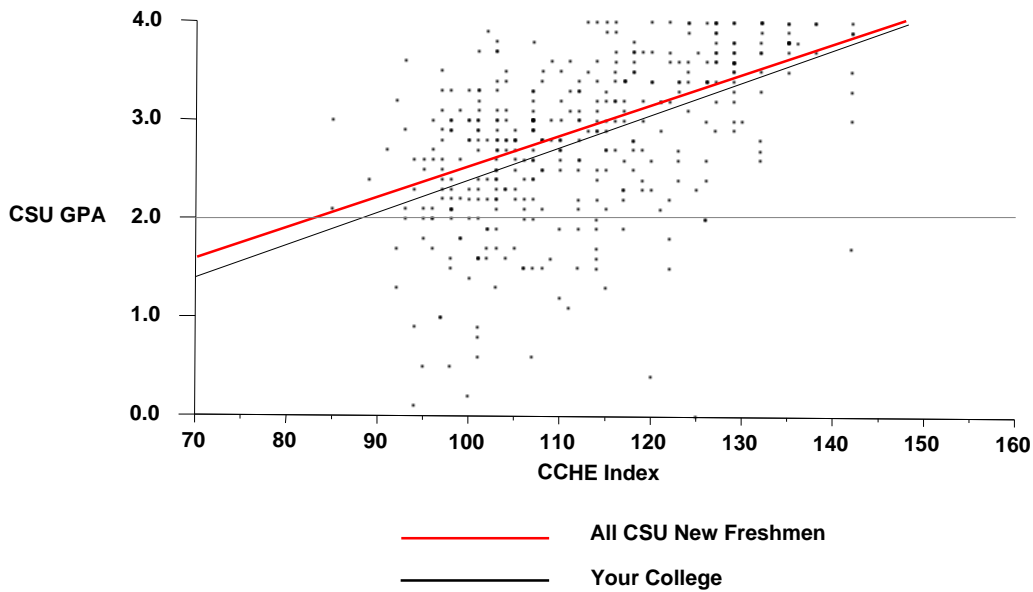
Natural Sciences

	CSU GPA				Total
	0.1 – 1.9	2.0 – 2.9	3.0 – 3.5	3.6 – 4.0	
High School GPA					
2.5 – 2.9	13	17	10	1	41
3.0 – 3.5	33	82	33	9	157
3.6 – 4.0	7	57	62	69	195
Total	53	156	105	79	393
Percentile Rank					
1 – 29	1	1			2
30 – 49	8	16	6	1	31
50 – 59	10	13	8	1	32
60 – 79	23	57	25	10	115
80 – 89	3	40	25	5	73
90 – 99	5	19	35	60	119
Total	50	146	99	77	372
SAT Verbal					
200 – 399	1	4			5
400 – 499	7	27	11	1	46
500 – 599	19	35	23	25	102
600 – 699	9	24	23	24	80
700 – 800	1	9	3	7	20
Total	37	99	60	57	253
SAT Math					
200 – 399		1			1
400 – 499	5	29	6	2	42
500 – 599	17	43	29	16	105
600 – 699	14	22	20	31	87
700 – 800	1	4	5	8	18
Total	37	99	60	57	253
ACT Composite					
15 – 18		5	2		7
19 – 22	10	41	19	5	75
23 – 26	23	61	38	16	138
27 – 36	9	23	32	50	114
Total	42	130	91	71	334
CCHE Index					
35 – 89		2	1		3
90 – 100	16	38	12	1	67
101 – 114	30	80	44	11	165
115 – 160	7	35	48	67	157
Total	53	155	105	79	392

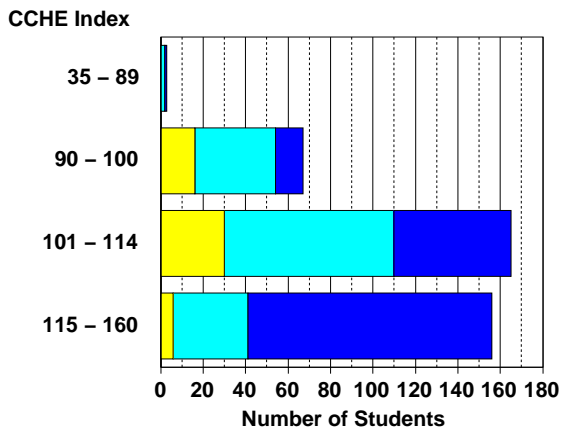
Office of Budgets and Institutional Analysis
 Number of New Freshmen by High School GPA & Rank,
 Test Scores, CCHE Index and CSU GPA
 Fall 1997

Natural Sciences

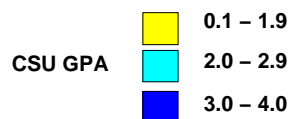
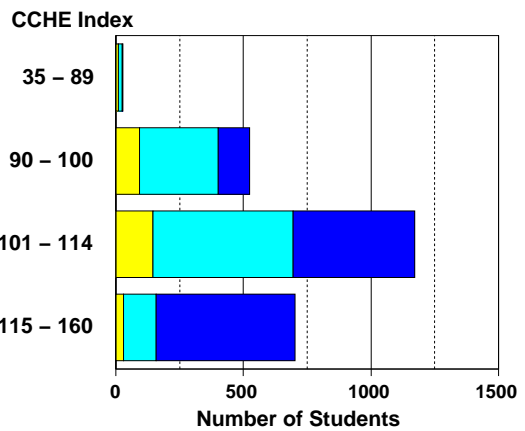
**Fall 1997 – Spring 1998
 First Year CSU Grades by CCHE Index**



Your College



All CSU Freshmen



Number of New Freshmen by High School GPA & Rank,
Test Scores, CCHE Index and CSU GPA
Fall 1997

Veterinary Medicine + Biomedical Sci

	CSU GPA				Total
	0.1 – 1.9	2.0 – 2.9	3.0 – 3.5	3.6 – 4.0	
High School GPA					
2.0 – 2.4	2				2
2.5 – 2.9	3	1	3		7
3.0 – 3.5	13	29	12	4	58
3.6 – 4.0	4	25	33	23	85
Total	22	55	48	27	152
Percentile Rank					
30 – 49	2		2		4
50 – 59	2	1	2		5
60 – 79	9	23	10	2	44
80 – 89	7	20	18	2	47
90 – 99	1	5	14	20	40
Total	21	49	46	24	140
SAT Verbal					
200 – 399	1	1			2
400 – 499	2	11	5	1	19
500 – 599	6	18	18	12	54
600 – 699	2	7	8	7	24
700 – 800		3	3	1	7
Total	11	40	34	21	106
SAT Math					
200 – 399	1				1
400 – 499	1	13	5		19
500 – 599	7	19	11	7	44
600 – 699	2	7	16	11	36
700 – 800		1	2	3	6
Total	11	40	34	21	106
ACT Composite					
15 – 18	1				1
19 – 22	11	17	8	2	38
23 – 26	4	19	12	11	46
27 – 36	4	8	17	11	40
Total	20	44	37	24	125
CCHE Index					
35 – 89	1				1
90 – 100	7	9	6		22
101 – 114	12	39	16	8	75
115 – 160	2	7	26	20	55
Total	22	55	48	28	153

Office of Budgets and Institutional Analysis
 Number of New Freshmen by High School GPA & Rank,
 Test Scores, CCHE Index and CSU GPA
 Fall 1997

Veterinary Medicine + Biomedical Sci

**Fall 1997 – Spring 1998
 First Year CSU Grades by CCHE Index**

