



SCORECARD

fall
2005

Colorado
State
University

Knowledge to Go Places

Institutional **S**corecard

Fall 2005

Colorado
State
University

Knowledge to Go Places

DEFINITIONS

Explanation of abbreviations:

Fiscal Year, Full Year, and Degree Year all represent the same time frame so the abbreviation FY is used for all three. The only exception is Academic Year, in which case the abbreviation AY is used.

Fiscal Year is Summer, Fall, Spring Abbreviation used is FY
Example: from Summer of 2004 to Spring of 2005 is FY05

Academic Year is Fall, Spring Abbreviation used is AY
Example: from Fall of 2004 to Spring of 2005 is AY05

Full Year is Summer, Fall, Spring Abbreviation used is FY
Example: from Summer of 2004 to Spring of 2005 is FY05

Degree Year is Summer, Fall, Spring Abbreviation used is FY
Example: from Summer of 2004 to Spring of 2005 is FY05

Retention and Degree Definitions:

Persistence - Rates are determined by summing graduated students and those still enrolled at the end of each study period (five years after their entry term, including summer). Students who have been dismissed, but are still enrolled in Continuing Education are not counted as persisters.

Graduation - A student is considered graduated if he or she receives a bachelor's degree after four or five calendar years. The last summer session after the four or five-year period is included for determining graduation rates. Students who entered as freshmen, stayed at Colorado State and continued into the Professional Veterinary Medicine Program are counted as four-year graduates in the college of their major while an undergraduate.

Index - The admission index is a standard developed by the Colorado Commission on Higher Education. It is derived using the components of high school work (gpa or rank) and test scores (ACT or SAT).

TABLE OF CONTENTS

Enrollment

Fall Enrollment	2
Student Level Enrollment	3
Undergraduate Enrollment by Ethnicity	4
New Freshman & Transfer Enrollment	5
Graduate Student Enrollment.	6
International Student Enrollment.	7
Twenty States with Highest Nonresident Enrollment	8
High School Students Taking Courses at CSU	9
Enrollment in Technology Programs	10
Number of Students Enrolled in CSU's Unique Majors	11
Study Abroad by Program Type	12
Honors Program.	13
Distribution of Credit Hours for Undergraduates	14
Enrollment and Credit Hours Including Continuing Education	15
Resident Student FTE	16
Graduate FTE by Course Level	17
Full-Year Student FTE by College	18
Student FTE for Off-Campus RI-Funded Programs	19
Comparison of Course Section Size	20

New Freshmen

New Freshman by Residency.	22
Residency Distribution of New Freshmen.	23
New Freshmen Enrollment by Ethnicity	24
Ethnic Percentage of Freshmen Enrolls.	25
Average CCHE Index for New Freshmen	26
CCHE Index for New Freshmen	27
CCHE Index.	28
Average ACT Composite for New Freshmen	29
Average High School GPA for New Freshmen.	30
Enrollment of Colorado High School Graduates.	31
Comparison of Admission Requirements	32

Graduation

Persistence of New Freshmen	34
Persistence of Minority New Freshmen	35
Persistence Profile by Ethnicity and Index Range	36
Persistence of New Freshmen with an Index 125+	37
Five-Year Graduation Rate by Index	38
Degrees Awarded	39

Faculty

Faculty Headcount	42
Faculty FTE	43
E&G Faculty FTE	44
E&G Faculty Salary Expenditures	45
University Student/Faculty Ratio	46
Student/Faculty Ratios by College	47
Undergraduate Credit Hours by Faculty Type	48
Percent of Undergraduate Credit Hours Taught by Tenure-Track Faculty	49
Tenure-Track Faculty Turnover	50
Number of Faculty by Rank Who Leave Prior to Receiving Tenure	51
Faculty All Ranks Combined Average Salary Comparison	52
Faculty All Ranks Combined Average Compensation Comparison	53
Faculty Merit Salary Increase Compared to the Consumer Price Index in Budget Year	54
Cumulative History of Faculty Salary Increases Compared to the Consumer Price Index in Budget Year	55
Annual AAUP Faculty Salary Information	56
Annual AAUP Faculty Salary Comparison	57

Administrative Professionals, Research Associates and Post Docorates

Administrative Professional Headcount	60
Administrative Professional FTE	61
E&G Administrative Professional FTE	62
E&G Administrative Professional Salary Expenditures	63
Research Associate Headcount	64
Research Associate FTE	65

Administrative Professionals, Research Associates and Post Docorates cont'd

Post Doctoral Headcount	66
Post Doctoral FTE	67
Administrative Professional Turnover.	68

State Classified

State Classified Headcount	70
State Classified FTE	71
E&G State Classified Employees	72
E&G State Classified Salary Expenditures	73
Cumulative History of State Classified Salary Increases Compared to the Consumer Price Index in Budget Year	74
State Classified Turnover.	75

External Activity

CSU Foundation Total Invested Assets	78
President's Council Members	79
Summary of Private Support (Graph)	80
Summary of Private Support (Table).	81
Assessment by Alumni	82

Financial Information

2005-06 Budgeted Revenue	84
2005-06 Budgeted Expenditures	85
Education & General (E&G)2005-06 Budgeted Revenue.	86
E&G 2005-06 Budgeted Expenditures	87
E&G Budgeted Revenue	88
Comparison Of General Fund Appropriations.	89
53 Fund FTE and Expenditures as a Percent of Total for Regular Faculty Paid from E&G and Research Funds	90
E&G Salary Expenditures as a Percent of Total Budget	91
Central Reallocations	92
E&G Institutional Support Expenditures as a Percent of Total Expenditures	93
Total Resident & Nonresident Tuition Revenues	94

Financial Information cont'd

Federal Research and Development	
Expenditures, CCHE Peer Institutions	95
Federal Research and Development	
Expenditures, Internal Peer Institutions	96
Resident Undergraduate Tuition Increases	
CSU and CCHE Peer Institutions	97
Nonresident Undergraduate Tuition Increases	
CSU and CCHE Peer Institutions	98
State Appropriations - Peer Comparisons	99
Higher Education Share of Statewide General Fund	100
Annual Research Expenditures	101

Financial Aid

Financial Aid Recipients	104
Financial Aid Awarded to Students	105
Financial Aid Recipients as a Percent of Total Student Population.	106
Historical View of Financial Aid Resources Actual Expenditures	107
Resident Tuition Compared to Average	
Pell Grant and Average Stafford Loan	108
Boettcher and National Merit Scholars	109
Graduate Students with Funding from External Sources	110
Outside Scholarships Students Bring to University	111
Financial Aid from Outside Scholarships	112
University-Related Student Employment.	113

Colorado Comparisons

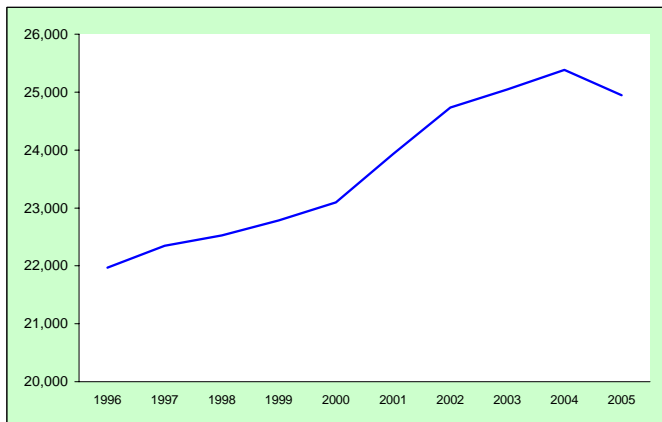
Confidence in Institutions	116
Comparison of Resident FTE.	117

Other

University Peer Groups	120
Faculty Recognition	121
Public Rankings	122
Student Computer Labs and Workstations.	123
Campus Interview Opportunities	124

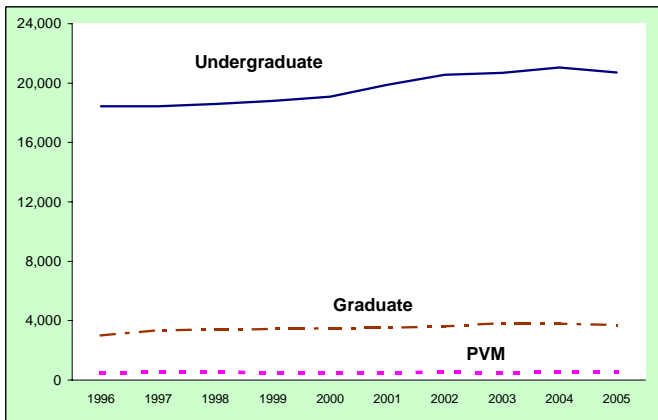
Enrollment

Fall Enrollment



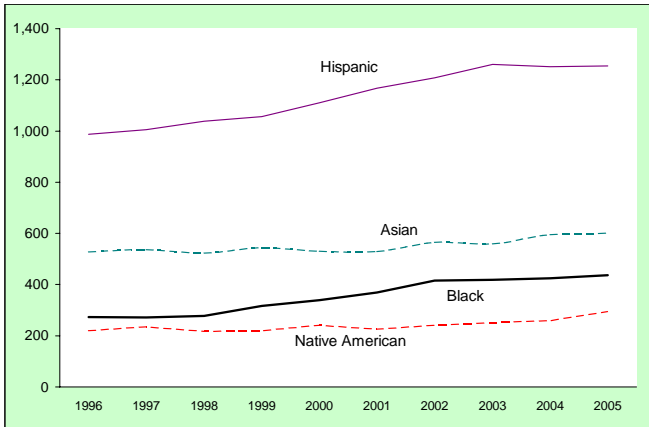
<u>Fall</u>	<u>All Students</u>
1996	21,970
1997	22,344
1998	22,523
1999	22,782
2000	23,098
2001	23,934
2002	24,735
2003	25,042
2004	25,382
2005	24,947

Student Level Enrollment



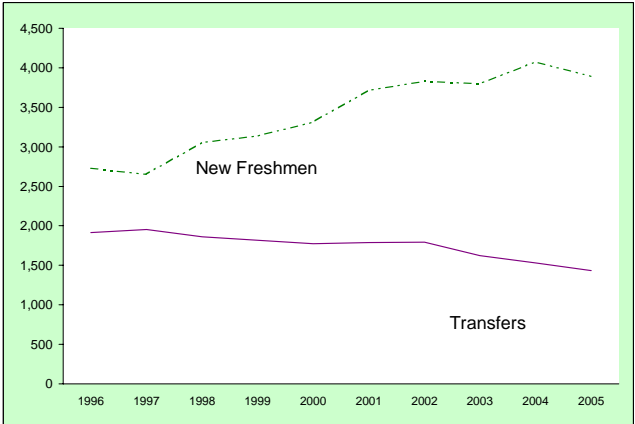
Fall	Under-graduate	Graduate	Prof Vet Medicine	Total
1996	18,451	2,989	530	21,970
1997	18,451	3,361	532	22,344
1998	18,607	3,380	536	22,523
1999	18,800	3,452	530	22,782
2000	19,075	3,494	529	23,098
2001	19,899	3,507	528	23,934
2002	20,568	3,630	537	24,735
2003	20,678	3,837	527	25,042
2004	21,049	3,795	538	25,382
2005	20,720	3,690	537	24,947

Undergraduate Enrollment by Ethnicity



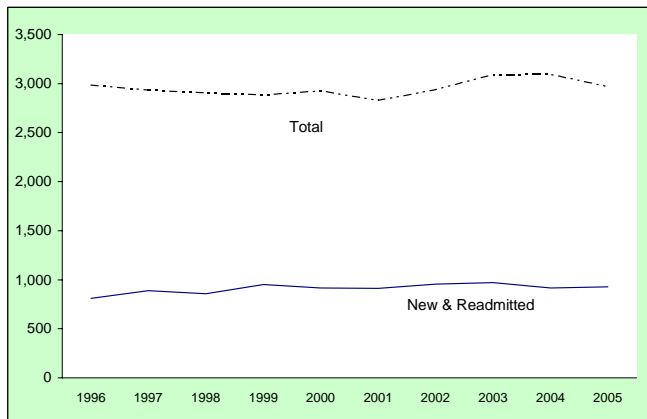
	Asian	Black	Hispanic	Native American	Total
1996	528	273	987	221	2,009
1997	537	272	1,006	235	2,050
1998	523	277	1,038	218	2,056
1999	545	317	1,056	220	2,138
2000	531	339	1,110	242	2,222
2001	529	369	1,168	227	2,293
2002	566	416	1,208	241	2,431
2003	559	418	1,260	252	2,489
2004	596	424	1,252	260	2,532
2005	601	436	1,254	295	2,586

New Freshmen & Transfer Enrollment



	New Freshmen	Transfer Students	Total
Fall			
1996	2,733	1,917	4,650
1997	2,654	1,955	4,609
1998	3,056	1,863	4,919
1999	3,137	1,817	4,954
2000	3,314	1,776	5,090
2001	3,720	1,789	5,509
2002	3,829	1,791	5,620
2003	3,802	1,625	5,427
2004	4,078	1,532	5,610
2005	3,893	1,436	5,329

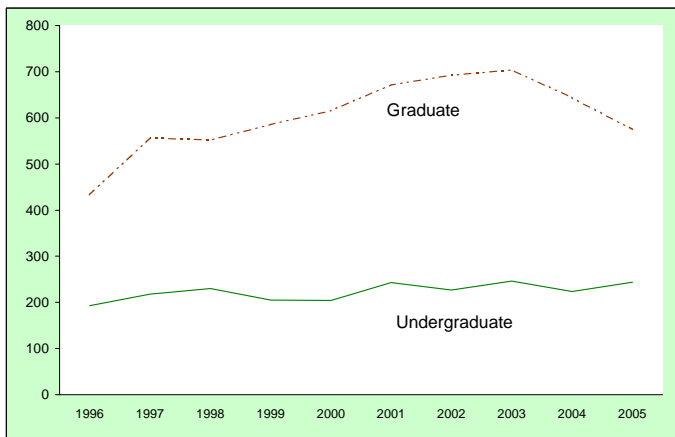
Graduate Student Enrollment



Fall	New & Readmitted	Total
1996	812	2,989
1997	890	2,935
1998	856	2,908
1999	953	2,884
2000	915	2,930
2001	913	2,831
2002	955	2,939
2003	969	3,092
2004	918	3,098
2005	927	2,973

Note: Continuous enrollment of graduate students began in Fall 1997 and these students are excluded. Professional Veterinary Medicine is also excluded.

International Student Enrollment



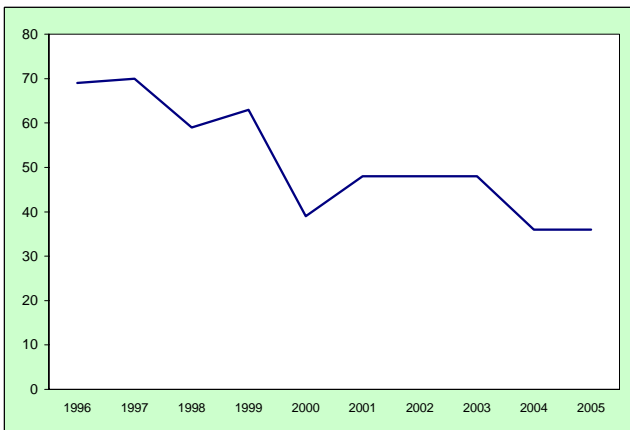
Fall	Undergraduate	Graduate	Total
1996	193	433	626
1997	218	557	775
1998	230	552	782
1999	205	586	791
2000	204	616	820
2001	243	672	915
2002	227	693	920
2003	246	704	950
2004	224	644	868
2005	244	575	819

Note: Graduate enrollment includes Professional Veterinary Medicine.

Twenty States with Highest Undergraduate Nonresident Enrollment

Fall:	<u>1996</u>	<u>1997</u>	<u>1998</u>	<u>1999</u>	<u>2000</u>	<u>2001</u>	<u>2002</u>	<u>2003</u>	<u>2004</u>	<u>2005</u>
California	555	472	440	389	333	340	318	323	359	400
Texas	186	198	206	222	285	349	393	399	406	364
Illinois	288	314	347	338	329	344	347	342	369	338
Minnesota	125	122	131	126	110	99	117	113	122	131
Wyoming	89	83	106	118	130	139	135	114	131	129
New Mexico	180	159	160	150	143	161	171	170	156	124
Alaska	85	96	99	96	101	119	122	121	111	100
Nebraska	97	110	115	124	112	143	137	115	111	96
Hawaii	135	131	137	146	140	122	107	103	92	93
Washington	49	52	52	75	68	86	86	82	108	92
Oregon	64	52	51	65	73	80	85	93	102	92
Pennsylvania	98	105	91	95	87	75	82	85	91	90
Missouri	78	71	86	89	75	108	106	91	93	86
Arizona	72	70	64	67	62	71	64	75	76	78
Michigan	86	66	63	73	82	82	100	92	67	66
Kansas	53	54	44	65	79	76	73	74	72	64
Wisconsin	76	74	62	73	98	99	99	84	71	63
South Dakota	41	39	34	32	43	52	56	64	67	62
Nevada	72	71	61	58	60	57	53	52	54	61
Ohio	88	90	112	111	107	87	93	91	75	59

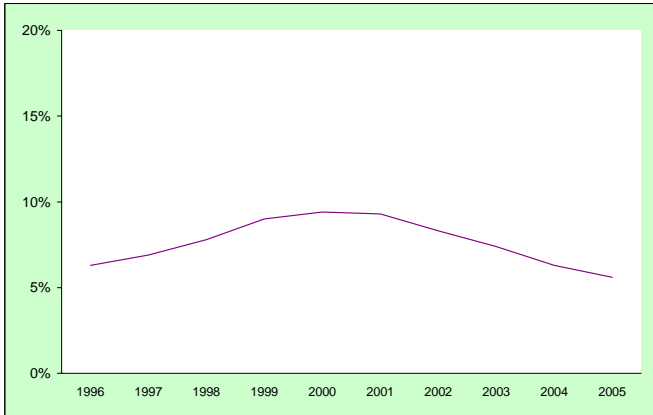
High School Students Taking Courses at CSU



Fall	Enrollment
1996	69
1997	70
1998	59
1999	63
2000	39
2001	48
2002	48
2003	48
2004	36
2005	36

Note: A policy change in 2000 required high school students to pay up front for classes taken at CSU.

Enrollment in Technology Programs

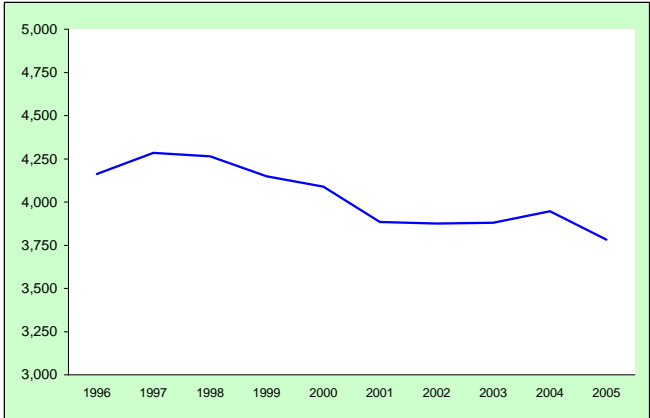


Fall	Percent of Total Enrollment
1996	6.3%
1997	6.9%
1998	7.8%
1999	9.0%
2000	9.4%
2001	9.3%
2002	8.3%
2003	7.4%
2004	6.3%
2005	5.6%

Technology Programs include:

Computer Engineering, Computer Information Systems, Computer Science
Electrical Engineering, Technical Journalism

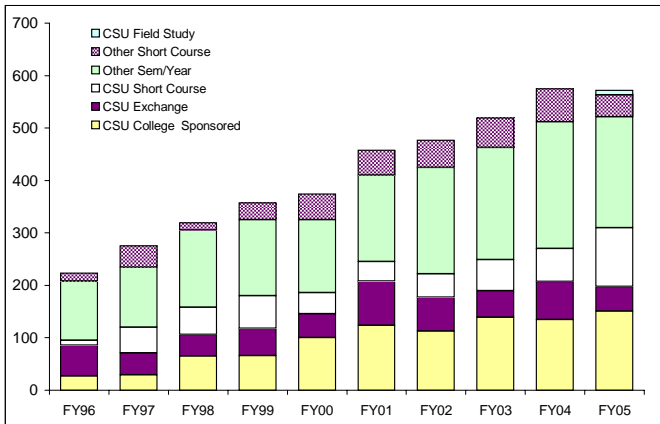
Number of Students Enrolled in CSU's Unique Majors



<u>Fall</u>	<u>Students</u>	<u>Percent of Total</u>
1996	4,163	19%
1997	4,285	19%
1998	4,264	19%
1999	4,150	18%
2000	4,089	18%
2001	3,884	16%
2002	3,875	16%
2003	3,881	15%
2004	3,947	16%
2005	3,783	15%

Colorado State offers about 30 programs of study which are unique in Colorado.

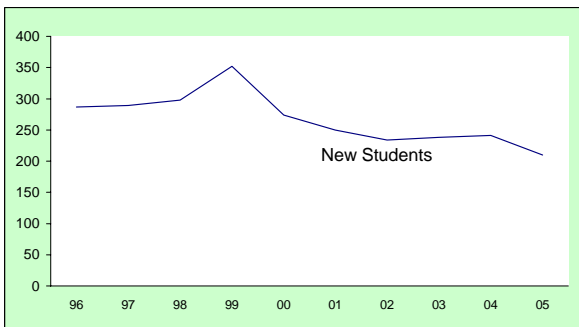
Study Abroad by Program Type



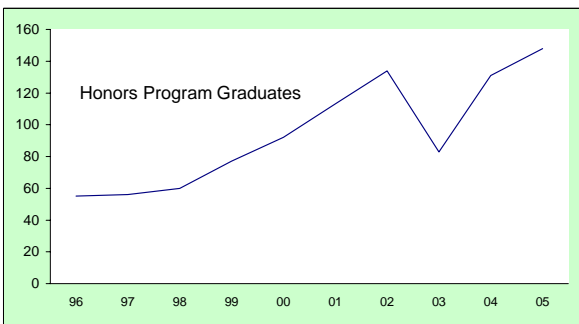
Full Year	CSU College Sponsored	CSU Exchange	CSU Field Study	CSU Short Course	Other Sem/Year	Other Short Course	Total
FY96	27	59	0	9	113	15	223
FY97	29	42	0	49	114	41	275
FY98	65	41	0	52	147	14	319
FY99	66	52	0	62	145	32	357
FY00	100	46	0	40	139	49	374
FY01	124	84	0	37	165	48	458
FY02	113	64	0	45	203	52	477
FY03	139	51	0	59	214	56	519
FY04	135	72	0	63	242	63	575
FY05	151	47	9	112	211	42	572

Note: The short courses are in the summer. The Field Study is no credit.

Honors Program

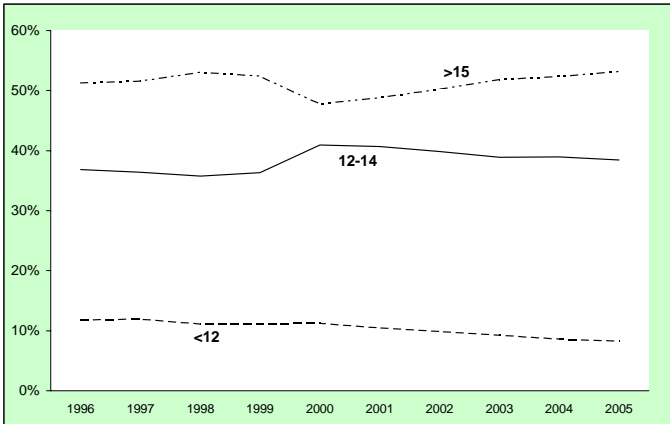


<u>Fall</u>	<u>96</u>	<u>97</u>	<u>98</u>	<u>99</u>	<u>00</u>	<u>01</u>	<u>02</u>	<u>03</u>	<u>04</u>	<u>05</u>
New Students:	287	289	298	352	274	250	234	238	241	210



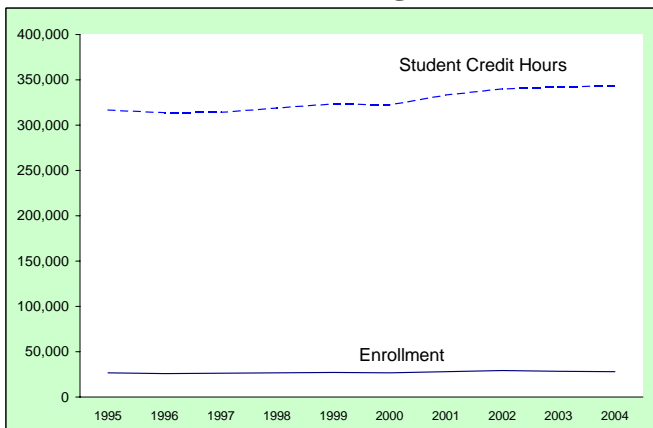
<u>Degree Year:</u>	<u>96</u>	<u>97</u>	<u>98</u>	<u>99</u>	<u>00</u>	<u>01</u>	<u>02</u>	<u>03</u>	<u>04</u>	<u>05</u>
Graduates:	55	56	60	77	92	113	134	83	131	148

Distribution of Credit Hours for Undergraduates



Fall	Undergraduates				% of total		
	<12	12-14	>15	Total	<12	12-14	>15
1996	2,179	6,804	9,468	18,451	12%	37%	51%
1997	2,205	6,719	9,527	18,451	12%	36%	52%
1998	2,073	6,658	9,876	18,607	11%	36%	53%
1999	2,099	6,836	9,865	18,800	11%	36%	52%
2000	2,147	7,810	9,118	19,075	11%	41%	48%
2001	2,090	8,090	9,719	19,899	11%	41%	49%
2002	2,037	8,194	10,337	20,568	10%	40%	50%
2003	1,915	8,041	10,722	20,678	9%	39%	52%
2004	1,821	8,195	11,033	21,049	9%	39%	52%
2005	1,729	7,969	11,022	20,720	8%	38%	53%

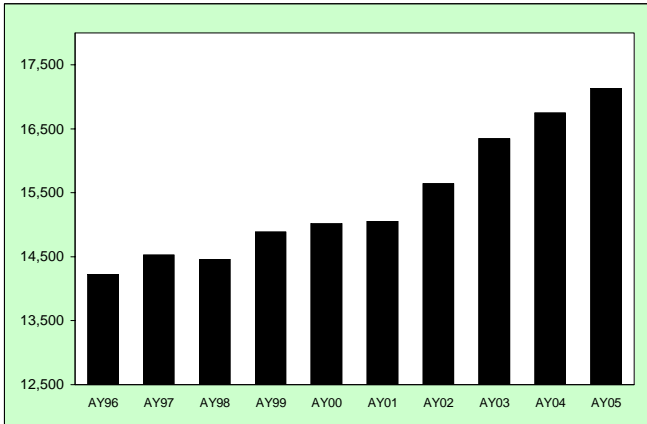
Enrollment and Credit Hours Including Division of Continuing Education



Fall	Enrollment	Student Credit Hours	Credit Hours per Student
1995	26,700	316,973	11.87
1996	25,699	313,989	12.22
1997	26,430	314,229	11.89
1998	26,837	319,061	11.89
1999	27,185	323,609	11.90
2000	26,870	322,488	12.00
2001	28,161	333,463	11.84
2002	29,192	340,440	11.66
2003	28,184	342,278	12.14
2004	27,879	343,504	12.32

Data includes Resident Instruction figures as well as numbers for students enrolled through Division of Continuing Education taking courses on the main campus.

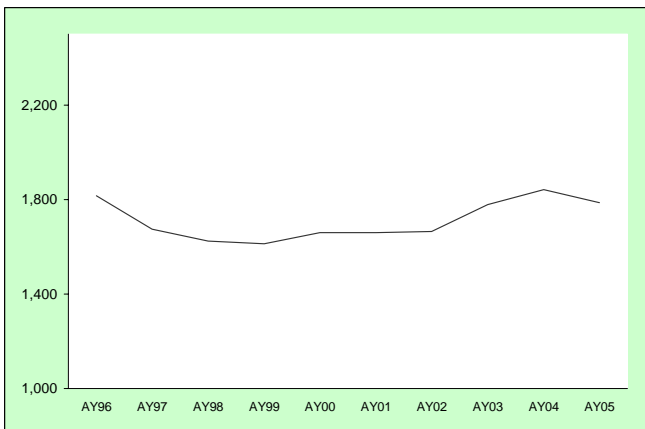
Resident Student FTE



<u>Academic Year</u>	<u>FTE of Residents</u>
AY96	14,229.4
AY97	14,530.7
AY98	14,463.2
AY99	14,887.1
AY00	15,021.9
AY01	15,060.5
AY02	15,647.5
AY03	16,346.4
AY04	16,750.9
AY05	17,137.0

Note: Includes Professional Veterinary Medicine

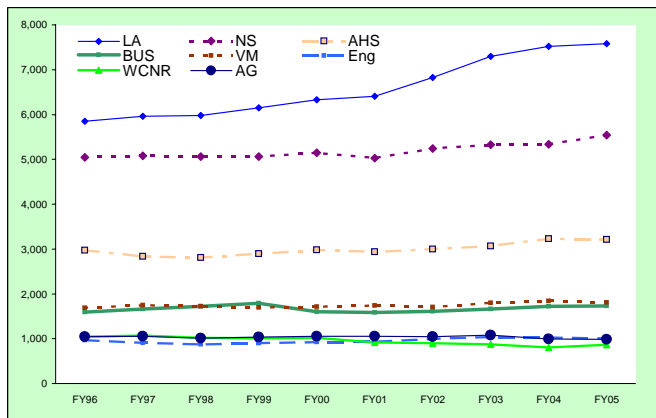
FTE Generated in Graduate Courses



<u>Academic Year</u>	<u>FTE</u>
AY96	1,816
AY97	1,674
AY98	1,624
AY99	1,612
AY00	1,659
AY01	1,660
AY02	1,665
AY03	1,778
AY04	1,842
AY05	1,786

Note: Professional Veterinary Medicine is excluded.
FTE generated by enrollment in graduate courses.

Full-Year Student FTE by College

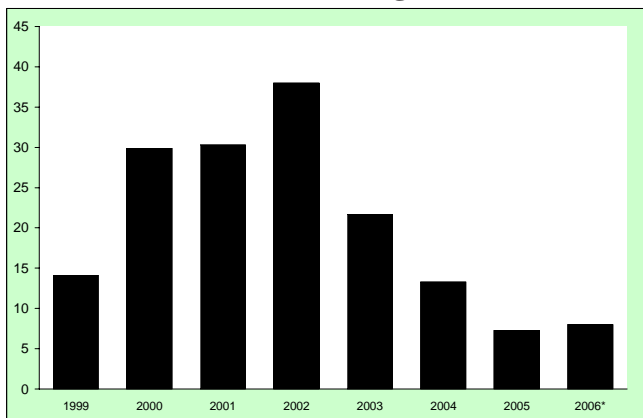


Full Year ¹	AG	AHS	Bus	Eng	IU	LA	WCNR	NS	VM	Total
FY96	1,045	2,971	1,589	971	51	5,850	1,045	5,044	1,691	20,256
FY97	1,055	2,833	1,661	910	71	5,965	1,073	5,080	1,746	20,394
FY98	1,014	2,810	1,723	878	56	5,980	1,019	5,065	1,722	20,266
FY99	1,034	2,896	1,792	898	60	6,148	1,011	5,062	1,699	20,601
FY00	1,050	2,978	1,605	921	61	6,327	1,020	5,144	1,715	20,821
FY01	1,051	2,939	1,585	935	108	6,406	920	5,027	1,738	20,708
FY02	1,046	3,001	1,613	996	135	6,829	901	5,240	1,708	21,468
FY03	1,077	3,068	1,662	1,036	155	7,298	873	5,324	1,795	22,287
FY04	996	3,231	1,720	1,031	146	7,519	806	5,338	1,838	22,625
FY05	988	3,214	1,732	999	165	7,584	866	5,542	1,804	22,894

¹Full Year is Summer, Fall, Spring semesters.

Note: PVM is included.

Student FTE for Off-Campus RI-Funded Programs



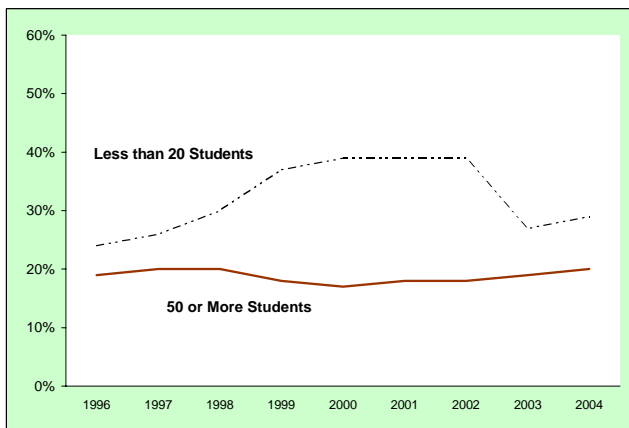
Student FTE for Full Year:

	1999	2000	2001	2002	2003	2004	2005	2006*
<u>MSW: Social Work</u>								
Western Slope	14.1	12.1	6.1	7.6	0.0	0.0	0.0	0.0
<u>M.Ed.: Ed and Human Res Studies</u>								
Sterling	--	8.1	8.3	7.5	0.0	0.0	0.0	0.0
Pueblo	--	--	11.6	17.8	7.7	0.0	0.0	0.0
<u>Ph.D.: Ed and Human Res Studies</u>								
Grand Junction	--	9.7	4.3	5.1	2.5	1.2	0.0	0.0
<u>M.Ed.: Counseling & Career Dev</u>								
Pueblo	--	--	--	--	8.7	8.1	0.0	0.0
<u>Ph.D.: Community Coll Leadership</u>								
Pueblo	--	--	--	--	2.8	4.0	7.3	8.0
Total	14.1	29.9	30.3	38.0	21.7	13.3	7.3	8.0

Source: College of Applied Human Sciences

Note: 2006 is estimated.

Comparison of Course Section Size



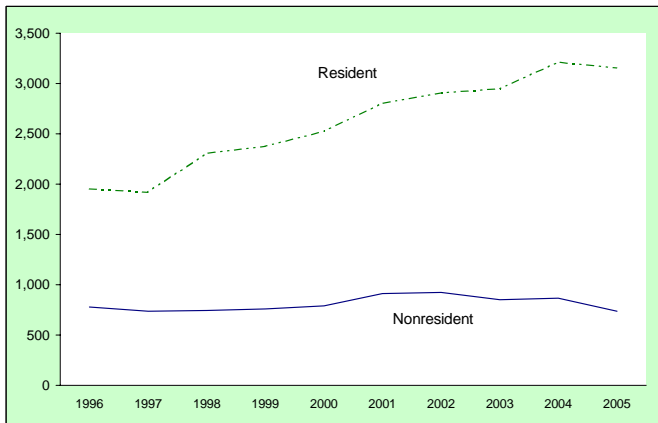
Undergraduate Course Sections

Fall	Less than 20 students	50 or more students
1996	24%	19%
1997	26%	20%
1998	30%	20%
1999	37%	18%
2000	39%	17%
2001	39%	18%
2002	39%	18%
2003	27%	19%
2004	29%	20%
2005	37%	18%

Note: Beginning in 1997, data are calculated using criteria for U.S. News & World Report.

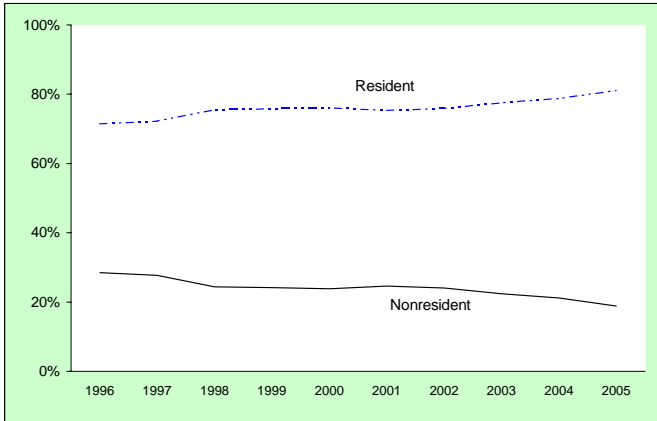
New Freshmen

New Freshmen by Residency



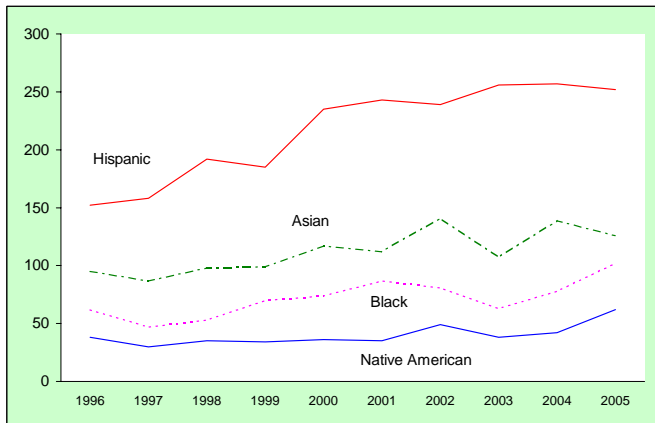
Fall	Resident	Nonresident	Total
1996	1,955	778	2,733
1997	1,918	736	2,654
1998	2,310	746	3,056
1999	2,377	760	3,137
2000	2,525	789	3,314
2001	2,806	914	3,720
2002	2,907	922	3,829
2003	2,950	852	3,802
2004	3,212	866	4,078
2005	3,156	737	3,893

Residency Distribution of New Freshmen



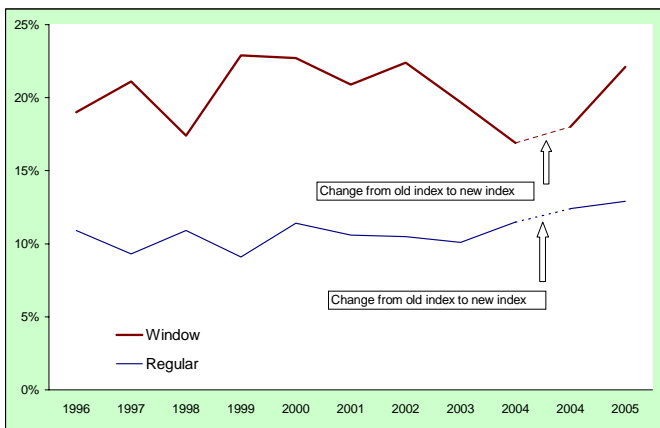
<u>Fall</u>	<u>Residents</u>	<u>Nonresidents</u>
1996	71.5%	28.5%
1997	72.3%	27.7%
1998	75.6%	24.4%
1999	75.8%	24.2%
2000	76.2%	23.8%
2001	75.4%	24.6%
2002	75.9%	24.1%
2003	77.6%	22.4%
2004	78.8%	21.2%
2005	81.1%	18.9%

New Freshmen Enrollment by Ethnicity



Fall	Asian	Black	Hispanic	Native American	Total
1996	95	62	152	38	347
1997	87	47	158	30	322
1998	98	53	192	35	378
1999	99	70	185	34	388
2000	117	74	235	36	462
2001	112	87	243	35	477
2002	141	81	239	49	510
2003	107	63	256	38	464
2004	139	78	257	42	516
2005	126	102	252	62	542

Ethnic Percentage of Freshmen Enrolls

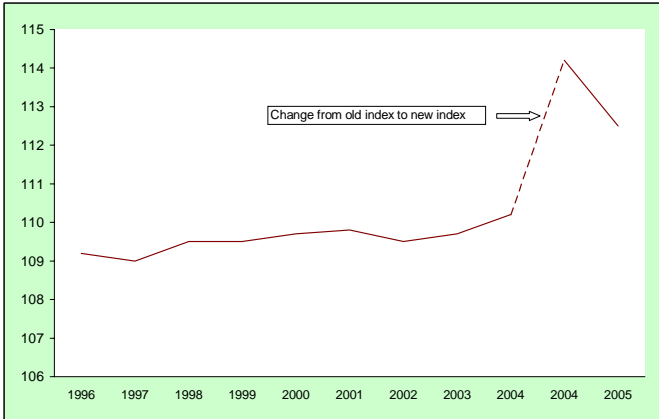


Minority Percentage

	Window	Regular	
1996	19.0%	10.9%	
1997	21.1%	9.3%	
1998	17.4%	10.9%	
1999	22.9%	9.1%	
2000	22.7%	11.4%	
2001	20.9%	10.6%	
2002	22.4%	10.5%	
2003	19.7%	10.1%	
2004	16.9%	11.5%	old index
2004	18.0%	12.4%	new index
2005	22.1%	12.9%	

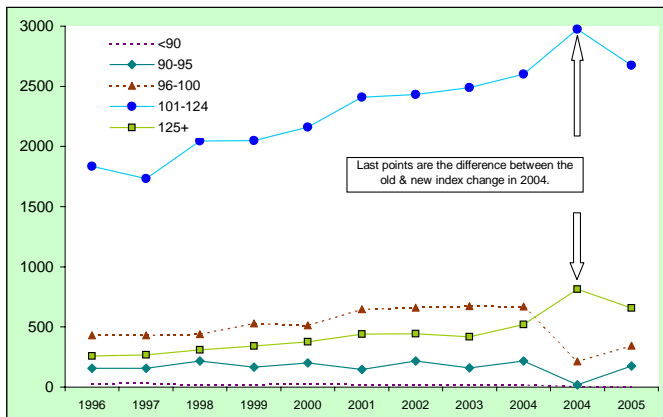
Window enrolls are students with less than a 101 index.
 Regular enrolls are students with an index of 101 or higher.
 Old index = 1996 CCHE Index.
 New Index = 2004 CCHE Index.

Average CCHE Index for New Freshmen



Fall	CCHE Index	
1996	109.2	
1997	109.0	
1998	109.5	
1999	109.5	
2000	109.7	
2001	109.8	
2002	109.5	
2003	109.7	
2004	110.2	old index
2004	114.2	new index
2005	112.5	

CCHE Index for New Freshmen

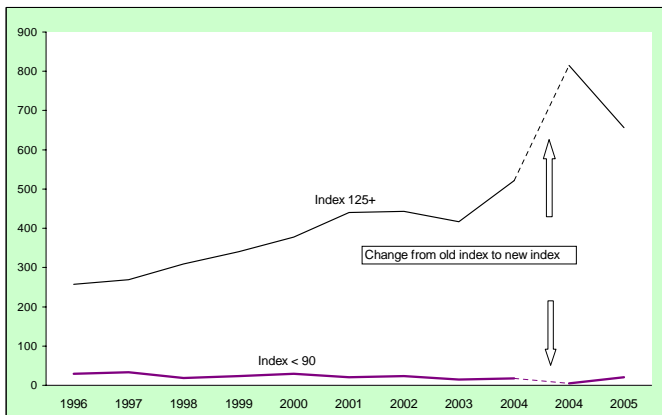


	New Freshmen						Percent of Total				
	<90	90-95	96-100	101-124	125+	Total	<90	90-95	96-100	101-124	125+
1996	29	156	430	1,835	257	2707	1%	6%	16%	68%	9%
1997	33	155	432	1,733	269	2622	1%	6%	16%	66%	10%
1998	19	216	442	2,045	309	3031	1%	7%	15%	67%	10%
1999	23	167	531	2,049	340	3110	1%	5%	17%	66%	11%
2000	29	202	514	2,161	378	3284	1%	6%	16%	66%	12%
2001	21	147	649	2,410	440	3667	1%	4%	18%	66%	12%
2002	23	218	660	2,431	443	3775	1%	6%	17%	64%	12%
2003	15	161	672	2,488	417	3753	0%	4%	18%	66%	11%
2004	18	218	671	2,600	521	4028	0%	5%	17%	65%	13%
2004	5	20	214	2,974	815	4028	0%	0%	5%	74%	20%
2005	1	175	344	2,673	656	3849	0%	5%	9%	69%	17%

¹Based on the old index

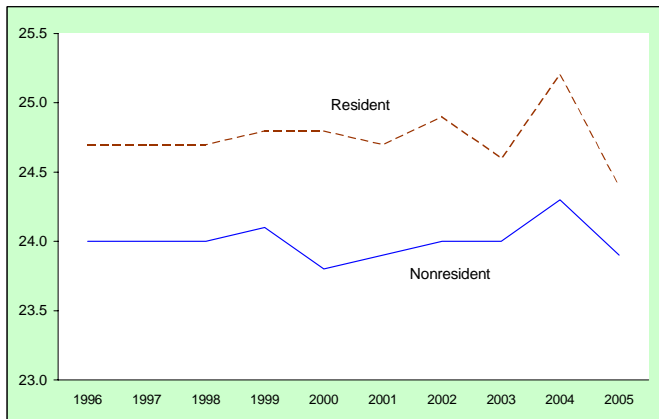
²Based on the new index

CCHE Index



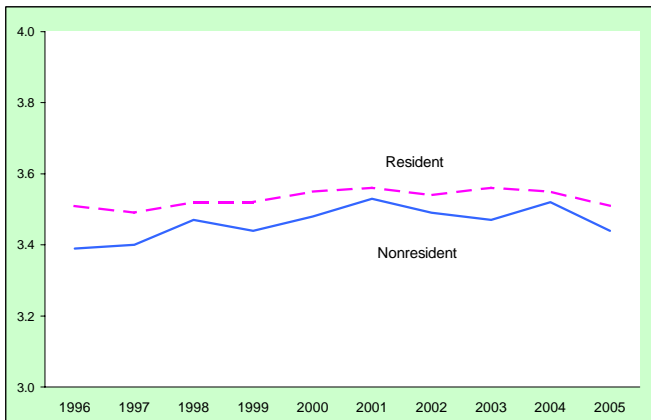
	Index 125+		Index < 90	
Fall	Total		Total	
1996	257		29	
1997	269		33	
1998	309		19	
1999	340		23	
2000	378		29	
2001	440		21	
2002	443		23	
2003	417		15	
2004	521	old index	18	
2004	815	new index	5	
2005	656		21	

Average ACT Composite for New Freshmen



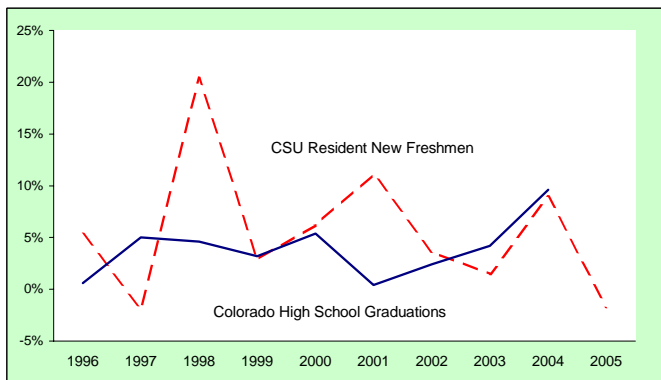
Fall	Resident	Nonresident	Combined
1996	24.0	24.7	24.1
1997	24.0	24.7	24.2
1998	24.0	24.7	24.2
1999	24.1	24.8	24.2
2000	23.8	24.8	24.0
2001	23.9	24.7	24.0
2002	24.0	24.9	24.2
2003	24.0	24.6	24.1
2004	24.3	25.2	24.4
2005	23.9	24.4	24.0

Average High School GPA for New Freshmen



<u>Fall</u>	<u>Resident</u>	<u>Nonresident</u>	<u>Combined</u>
1996	3.51	3.39	3.48
1997	3.49	3.40	3.46
1998	3.52	3.47	3.50
1999	3.52	3.44	3.50
2000	3.55	3.48	3.54
2001	3.56	3.53	3.55
2002	3.54	3.49	3.53
2003	3.56	3.47	3.54
2004	3.55	3.52	3.54
2005	3.51	3.44	3.50

Enrollment of New Resident Freshmen Compared to Colorado High School Graduations



Percent Change in Each Category from Previous Year

	CSU Resident New Freshmen	Colorado High School Graduations
1996	5.3%	0.6%
1997	-1.9%	5.0%
1998	20.4%	4.6%
1999	2.9%	3.2%
2000	6.2%	5.4%
2001	11.1%	0.4%
2002	3.6%	2.4%
2003	1.5%	4.2%
2004	8.9%	5.3% ¹
2005	-1.7%	n/a ²

¹ Estimate based on Colorado Department of Education Data.

² Data for 2004 high school graduations will not be available until Spring '06.

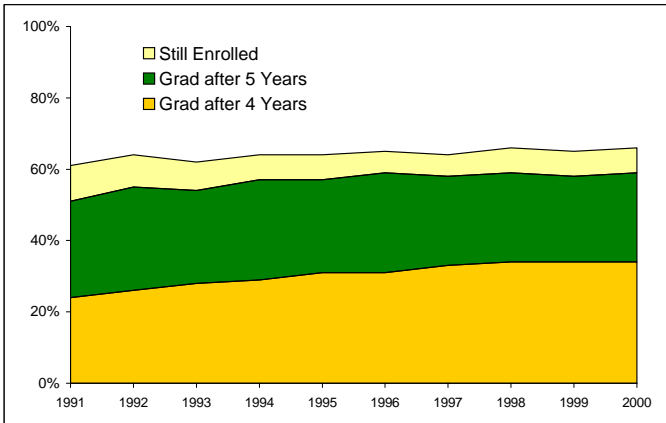
Comparison of Admission Requirements Index Score Equivalents of Selected Institutions

	Index ¹	Mandatory Admissions Cutoff	"Window" exceptions to Admissions cutoff	High School Math Requirement (years)
Arizona State	95	No	No limit	4
Florida	95	No	10%	3
Florida State	101	No	No limit	4
Georgia	91	Yes	No limit	4
Iowa State	83	No	No limit	3
Kansas State	77	NA	10%	3
Missouri - Columbia	90	Yes	10%	4
Nebraska	84	No	No limit	4
North Carolina State	102	No	25%	3
Oklahoma State	79	Yes	8%	3
Oregon State	96	NA	No limit	3
Texas A&M	86	NA	"Most meet cutoff"	3.5
Virginia Tech	96	NA	10%	3
Washington State	87	NA	No limit	3
Colorado State	101	Yes	20%	3

¹Estimated equivalent of CCHE Index score.

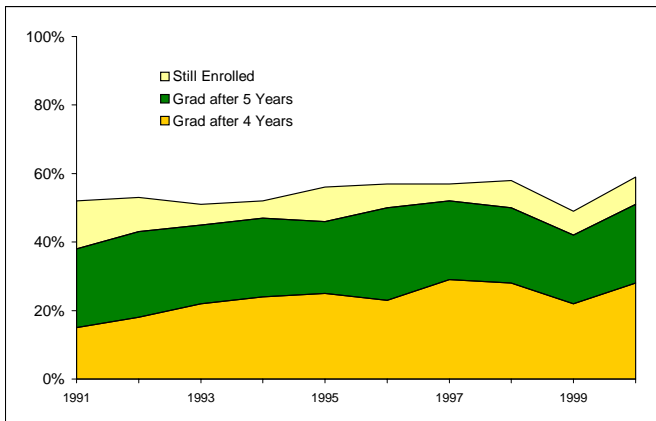
Graduation

Persistence of New Freshmen



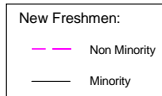
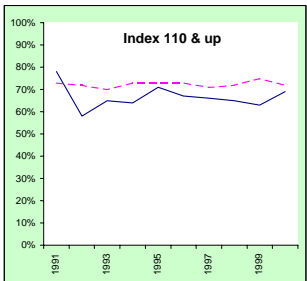
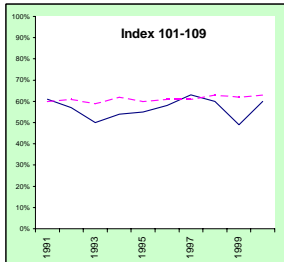
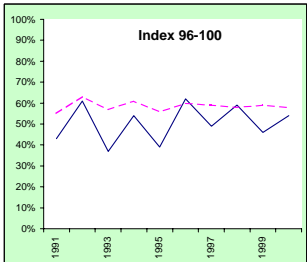
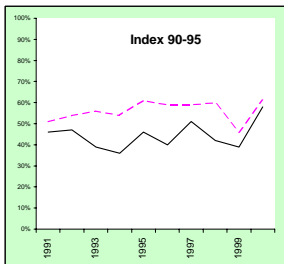
Fall Entered	Grad after 4 Years	Grad after 5 Years	Still Enrolled	Overall Persistence
1991	24%	27%	10%	61%
1992	26%	29%	9%	64%
1993	28%	26%	8%	62%
1994	29%	28%	7%	64%
1995	31%	26%	7%	64%
1996	31%	28%	6%	65%
1997	33%	25%	6%	64%
1998	34%	25%	7%	66%
1999	34%	24%	7%	65%
2000	34%	25%	7%	65%

Persistence of Minority New Freshmen

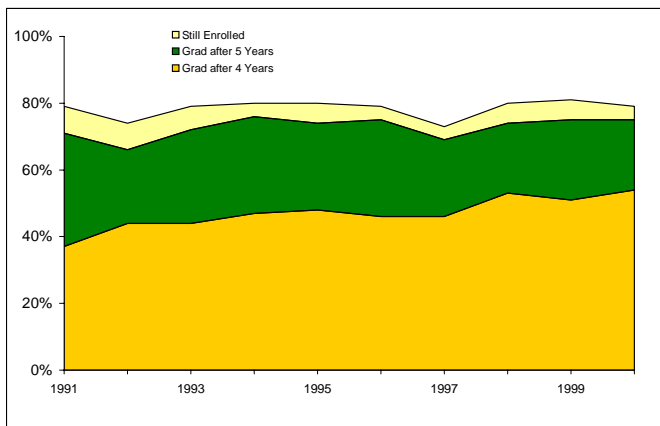


<u>Fall Entered</u>	<u>Grad after 4 Years</u>	<u>Grad after 5 Years</u>	<u>Still Enrolled</u>	<u>Overall Persistence</u>
1991	15%	23%	14%	52%
1992	18%	25%	10%	53%
1993	22%	23%	6%	51%
1994	24%	23%	5%	52%
1995	25%	21%	10%	56%
1996	23%	27%	7%	57%
1997	29%	23%	5%	57%
1998	28%	22%	8%	58%
1999	22%	20%	7%	50%
2000	28%	23%	8%	59%

Persistence Profile by Ethnicity and Index Range



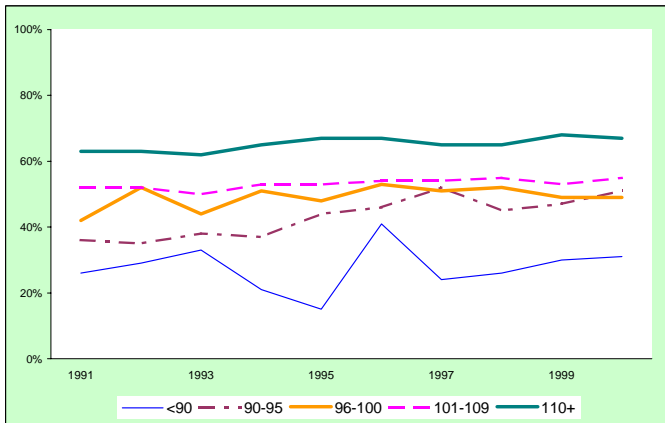
Persistence of New Freshmen with an Index 125+



Fall Entered	Grad after 4 Years	Grad after 5 Years	Still Enrolled	Attrition
1991	37%	34%	8%	21%
1992	44%	22%	8%	26%
1993	44%	28%	7%	21%
1994	47%	29%	4%	20%
1995	48%	26%	6%	20%
1996	46%	29%	4%	21%
1997	46%	23%	4%	27%
1998	53%	21%	6%	21%
1999	51%	24%	6%	19%
2000	54%	21%	4%	21%

Index = 1996 CCHE Index

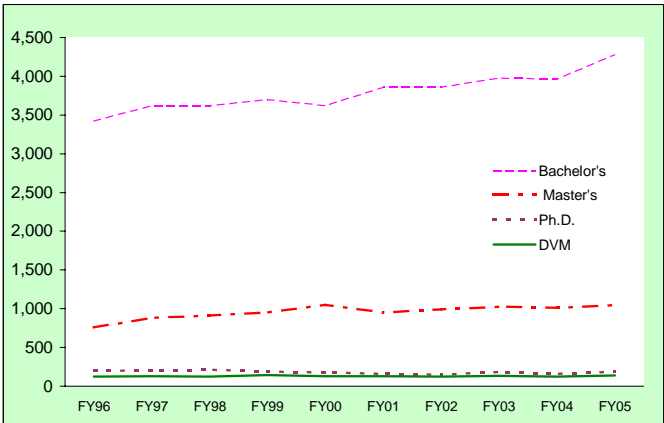
Five-Year Graduation Rate by Index



Index	Enrolled Fall of									
	1991	1992	1993	1994	1995	1996	1997	1998	1999	2000
Percent Graduated After Five Years										
<90	26%	29%	33%	21%	15%	41%	24%	26%	30%	31%
90-95	36%	35%	38%	37%	44%	46%	52%	45%	47%	51%
96-100	42%	52%	44%	51%	48%	53%	51%	52%	49%	49%
101-109	52%	52%	50%	53%	53%	54%	54%	55%	53%	55%
110+	63%	63%	62%	65%	67%	67%	65%	65%	68%	67%
Index	Population Size									
<90	113	48	31	34	41	29	33	19	23	29
90-95	172	113	80	88	171	156	155	216	167	202
96-100	392	424	320	369	369	430	432	442	531	513
101-109	718	779	792	786	857	888	859	975	998	1071
110+	756	827	946	999	1137	1204	1143	1381	1391	1467

Index = 1996 CCHE Index

Degrees Awarded

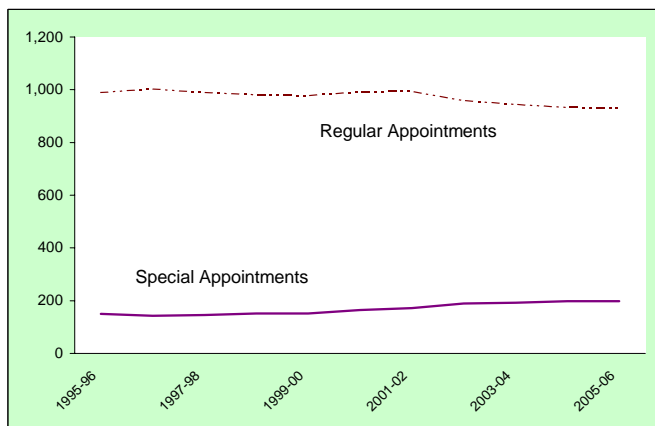


Degree Year ¹	Bachelor's	Master's	Ph.D.	DVM	Total
FY96	3,423	758	196	123	4,500
FY97	3,622	881	202	128	4,833
FY98	3,621	914	214	124	4,873
FY99	3,703	952	188	142	4,985
FY00	3,621	1,053	180	129	4,983
FY01	3,860	950	157	131	5,098
FY02	3,860	989	148	124	5,121
FY03	3,980	1,027	182	132	5,321
FY04	3,964	1,011	160	126	5,261
FY05	4,281	1,045	187	138	5,651

¹Degree Year is Summer, Fall, and Spring Semesters.

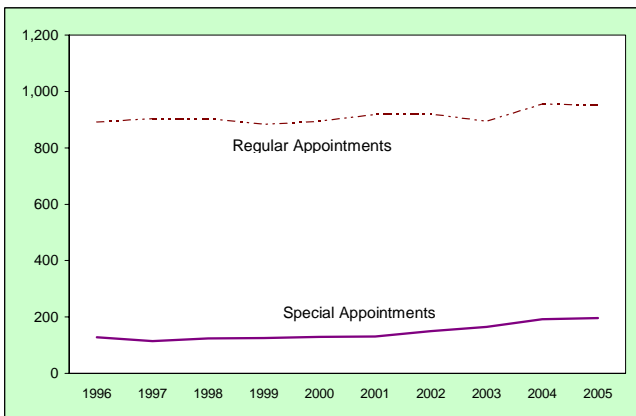
Faculty

Faculty Headcount



Academic Year	Regular Appointments	Special Appointments	Total Headcount
1995-96	990	150	1,140
1996-97	1,004	143	1,147
1997-98	990	146	1,136
1998-99	982	152	1,134
1999-00	979	151	1,130
2000-01	993	165	1,158
2001-02	995	172	1,167
2002-03	960	190	1,150
2003-04	945	192	1,137
2004-05	934	198	1,132
2005-06	930	198	1,128

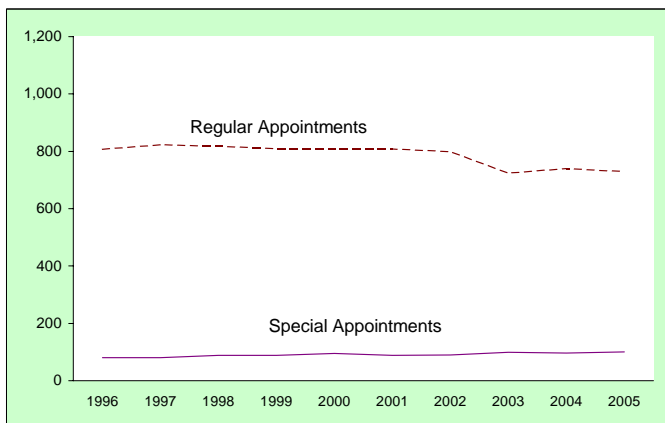
Faculty FTE



Academic Year	Regular Appointment	Special Appointment	Total
1996	892.3	128.1	1,020.4
1997	904.6	114.7	1,019.3
1998	904.5	123.9	1,028.4
1999	883.6	124.9	1,008.5
2000	894.8	128.9	1,023.7
2001	918.8	131.3	1,050.1
2002	921.2	149.3	1,070.5
2003	894.6	164.6	1,059.2
2004	956.0	192.3	1,148.3
2005	952.0	195.9	1,147.9

Note: 9 months = 1 FTE. Includes all faculty on regular or special appointments with a rank of professor, associate professor, assistant professor, instructor or lecturer. Vice presidents and deans are included through January 1, 2003 when they were reclassified as administrative professionals. Library faculty and all fund groups are included.

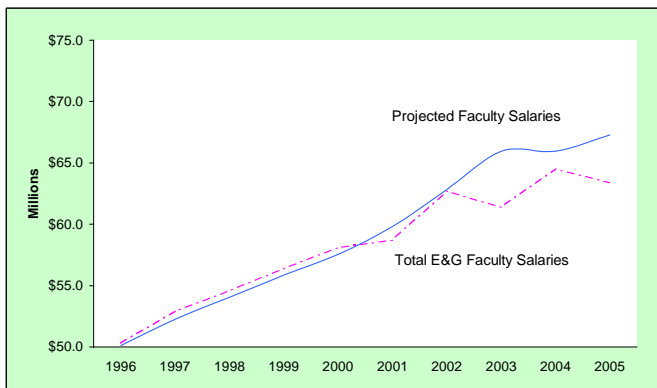
E&G Faculty FTE



Fiscal Year	Regular Appointments	Special Appointments	Total E&G Faculty FTE
1996	807	80	974
1997	823	80	990
1998	818	89	989
1999	810	89	994
2000	810	95	1,010
2001	809	89	898
2002	800	90	890
2003	725	99	824
2004	740	96	836
2005	730	100	830

Note: Regular faculty include tenure-track faculty paid from the 13 & 16 funds. Library faculty are included. Summer for faculty on 9-month appointments is excluded. Vice presidents and deans were reclassified to administrative professionals on January 1, 2003.

E&G Faculty Salary Expenditures



Fiscal Year	Regular Faculty ^{1,2}	Special Appts ²	Temp ²	E&G Faculty Salaries	Annual Increase ³	Projected Faculty Salaries ⁴
1996	\$45.1	\$2.8	\$2.4	\$50.3	4.50%	\$50.12
1997	\$47.7	\$2.8	\$2.4	\$52.9	4.25%	\$52.25
1998	\$49.1	\$3.2	\$2.3	\$54.6	3.50%	\$54.07
1999	\$50.4	\$3.3	\$2.7	\$56.4	3.30%	\$55.86
2000	\$51.8	\$3.4	\$2.9	\$58.1	3.00%	\$57.53
2001	\$52.5	\$3.4	\$2.8	\$58.7	4.00%	\$59.84
2002	\$56.0	\$3.5	\$3.2	\$62.7	5.00%	\$62.83
2003	\$54.0	\$4.1	\$3.3	\$61.4	5.00%	\$65.97
2004	\$56.7	\$4.2	\$3.7	\$64.5	0.00%	\$65.97
2005	\$55.5	\$4.2	\$3.7	\$63.4	2.00%	\$67.29

Note: Salary expend adjusted to eliminate the effects of avg. annual salary increases.

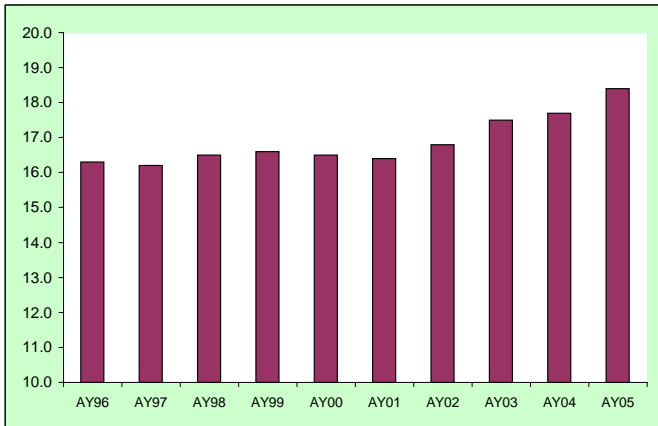
¹Tenured and Tenure-Track faculty paid from the 13 & 16 funds. Excludes summer for faculty on 9-month appointments. Vice presidents and deans are included through January 1, 2003, when they were reclassified to administrative professionals.

²Excludes fringe benefits

³The average salary increase approved by the Board of Governors of the CSU system.

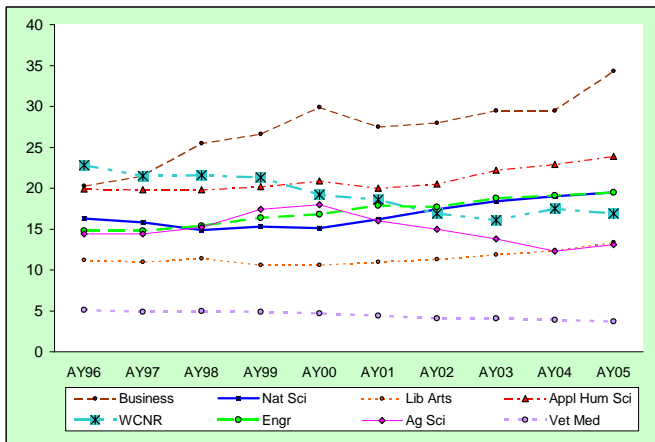
⁴Base year actual salaries inflated by average salary increase.

University Student/Faculty Ratio



Academic Year	Ratio
AY96	16.3
AY97	16.2
AY98	16.5
AY99	16.6
AY00	16.5
AY01	16.4
AY02	16.8
AY03	17.5
AY04	17.7
AY05	18.4

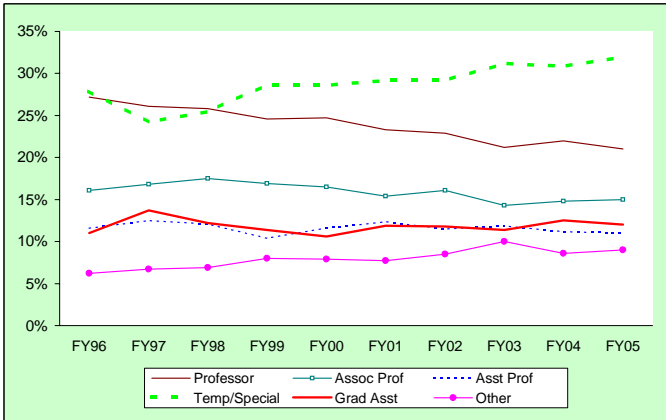
Student/Faculty Ratios by College



Academic Year	Appl							
	Ag Sci	Hum Sci	Business	Engr	Lib Arts	WCNR	Nat Sci	Vet Med
AY96	14.4	19.9	20.3	14.8	11.2	22.8	16.3	5.1
AY97	14.4	19.8	21.5	14.8	11.0	21.5	15.8	4.9
AY98	15.2	19.8	25.5	15.4	11.4	21.6	14.9	5.0
AY99	17.4	20.2	26.6	16.4	10.6	21.3	15.3	4.9
AY00	18.0	20.9	29.9	16.8	10.6	19.2	15.1	4.7
AY01	16.0	20.0	27.5	17.9	11.0	18.6	16.2	4.4
AY02	15.0	20.5	28.0	17.7	11.3	16.9	17.4	4.1
AY03	13.8	22.2	29.5	18.8	11.9	16.1	18.4	4.1
AY04	12.3	22.9	29.5	19.1	12.4	17.5	19.0	3.9
AY05	13.1	23.9	34.3	19.5	13.4	16.9	19.5	3.7

PVM students are excluded.

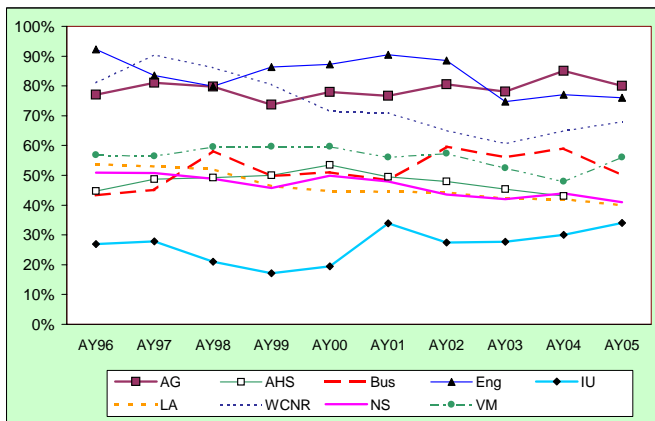
Undergraduate Credit Hours by Faculty Type



Full Year	Professor	Associate Professor	Assistant Professor	Temporary/Special	Graduate Assistant	Other
FY96	27%	16%	12%	28%	11%	6%
FY97	26%	17%	13%	24%	14%	7%
FY98	26%	18%	12%	26%	12%	7%
FY99	25%	17%	10%	29%	11%	8%
FY00	25%	17%	12%	29%	11%	8%
FY01	23%	15%	12%	29%	12%	8%
FY02	23%	16%	12%	29%	12%	9%
FY03	21%	14%	12%	31%	11%	10%
FY04	22%	15%	11%	31%	13%	9%
FY05	21%	15%	11%	32%	12%	9%

Note: Other includes administrative professionals, post-doctorates, faculty affiliates, and state classified staff.

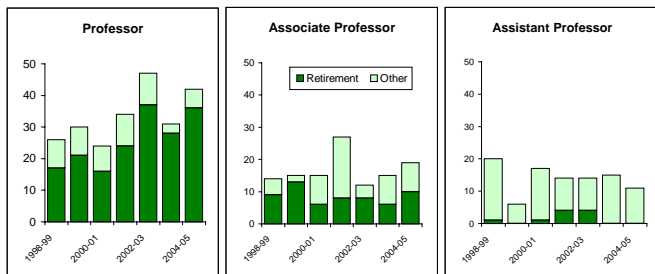
Percent of Undergraduate Credit Hours Taught by Tenure-Track Faculty



Academic

Year	AG	AHS	Bus	Eng	IU	LA	WCNR	NS	VM	Univ.
AY96	77%	45%	43%	92%	27%	54%	81%	51%	57%	55%
AY97	81%	49%	45%	84%	28%	53%	90%	51%	56%	55%
AY98	80%	49%	58%	80%	21%	52%	86%	49%	60%	55%
AY99	74%	50%	50%	86%	17%	46%	81%	46%	60%	52%
AY00	78%	54%	51%	87%	20%	45%	72%	50%	60%	53%
AY01	77%	50%	48%	91%	34%	45%	71%	48%	56%	51%
AY02	81%	48%	60%	89%	27%	44%	65%	44%	57%	51%
AY03	78%	45%	56%	75%	28%	42%	61%	42%	53%	47%
AY04	85%	43%	59%	77%	30%	42%	65%	44%	48%	48%
AY05	80%	42%	50%	76%	34%	40%	68%	41%	56%	47%

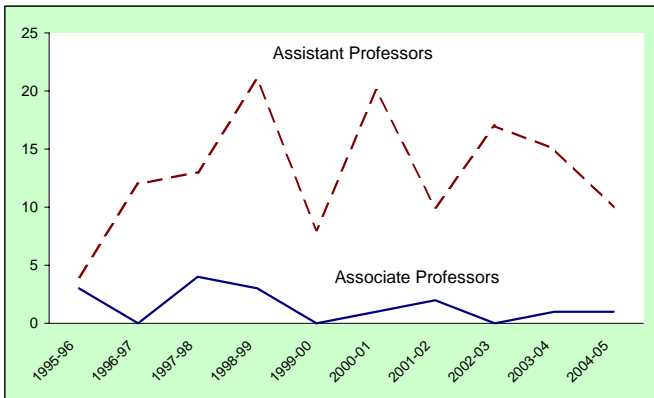
Tenure-Track Faculty Attrition



	Academic Year						
	1998-99	1999-00	2000-01	2001-02	2002-03	2003-04	2004-05
Professor							
Retirement	17	21	16	24	37	28	36
Administrative Position	2	4	3	9	0	0	6
Nontenure-track position	0	0	0	0	0	0	0
Other	9	9	8	10	10	3	6
Total	28	34	27	43	47	31	48
Associate Professor							
Retirement	9	13	6	8	8	6	10
Administrative Position	0	1	0	3	0	0	1
Nontenure-track position	0	0	1	3	0	0	0
Other	5	2	9	19	4	9	9
Total	14	16	16	33	12	15	20
Assistant Professor							
Retirement	1	0	1	4	4	0	0
Administrative Position	1	1	0	0	0	0	0
Nontenure-track position	1	1	3	1	1	0	0
Other	19	6	16	10	10	15	11
Total	22	8	20	15	15	15	11

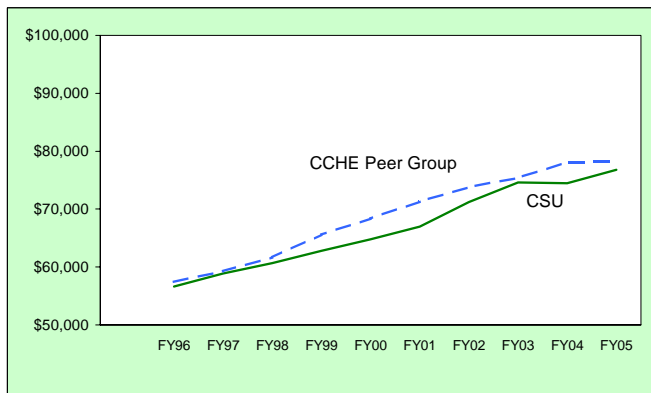
Note: Other reasons for leaving a tenure-track position include death, other employment or family relocation.

Number of Faculty by Rank Who Leave Prior to Receiving Tenure



	Academic Year									
	1995-96	1996-97	1997-98	1998-99	1999-00	2000-01	2001-02	2002-03	2003-04	2004-05
Associate Professors	3	0	4	3	0	1	2	0	1	1
Assistant Professors	4	12	13	21	8	20	10	17	15	10
Total	7	12	17	24	8	21	12	17	16	11

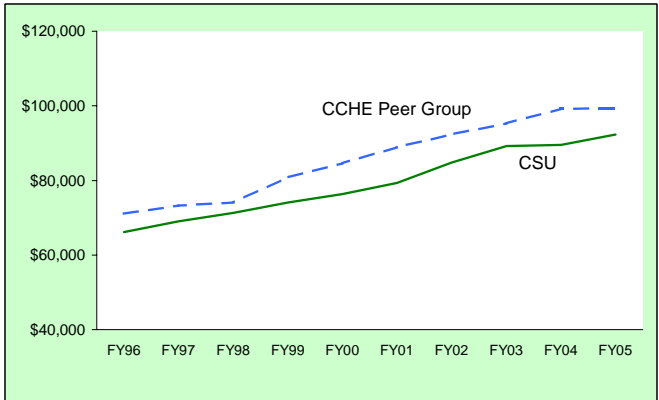
Faculty All Ranks Combined Average Salary Comparison



<u>Fiscal Year</u>	<u>CSU</u>	<u>CCHE Peer Group</u>
FY96	\$56,600	\$57,400
FY97	\$58,900	\$59,300
FY98	\$60,700	\$61,700
FY99	\$62,800	\$65,600
FY00	\$64,800	\$68,400
FY01	\$67,000	\$71,300
FY02	\$71,200	\$73,800
FY03	\$74,600	\$75,400
FY04	\$74,500	\$78,100
FY05	\$76,800	\$78,200

Note: A list of CCHE peer institutions is provided in the last section of this document.

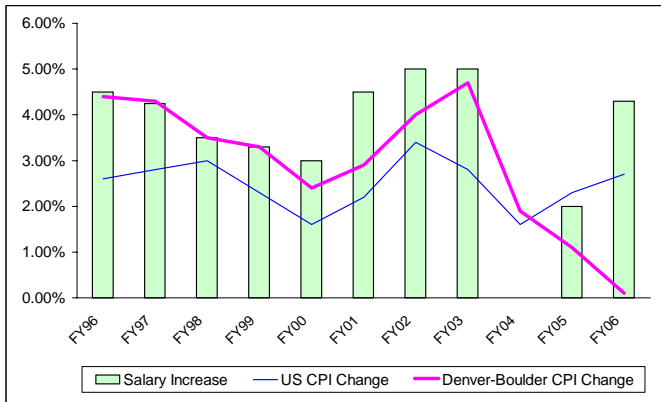
Faculty All Ranks Combined Average Compensation Comparison



Fiscal Year	CSU	CCHE Peer Group
FY96	\$66,200	\$71,100
FY97	\$69,000	\$73,300
FY98	\$71,300	\$74,100
FY99	\$74,100	\$80,900
FY00	\$76,300	\$84,600
FY01	\$79,300	\$88,900
FY02	\$84,800	\$92,300
FY03	\$89,200	\$95,300
FY04	\$89,500	\$99,200
FY05	\$92,300	\$99,300

Note: A list of CCHE peer institutions is provided in the last section of this document.

Faculty Merit Salary Increase Compared to the Consumer Price Index in Budget Year

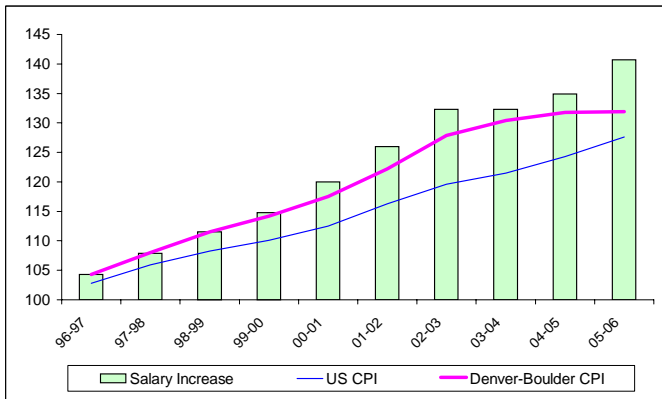


Fiscal Year	Salary Increase	US CPI Change	Denver-Boulder CPI Change
FY96	4.50%	2.60%	4.40%
FY97	4.25%	2.80%	4.30%
FY98	3.50%	3.00%	3.50%
FY99	3.30%	2.30%	3.30%
FY00	3.00%	1.60%	2.40%
FY01	4.50%	2.20%	2.90%
FY02	5.00%	3.40%	4.00%
FY03	5.00%	2.80%	4.70%
FY04	0.00%	1.60%	1.90%
FY05	2.00%	2.30%	1.10%
FY06	4.30%	2.70%	0.10%

Source: Colorado Legislative Council staff.

Note: U.S. and Denver-Boulder CPIs are reported with the year they were used to project a faculty salary increase, i.e., a faculty salary increase of 4.3% in FY06 is based on the CPIs for the calendar year 2004.

Cumulative History of Faculty Salary Increases Compared to the Consumer Price Index in Budget Year



<u>Fiscal Year</u>	<u>Salary Increase</u>	<u>US CPI</u>	<u>Denver-Boulder CPI</u>
96-97	104.3	102.8	104.3
97-98	107.9	105.9	108.0
98-99	111.5	108.3	111.5
99-00	114.8	110.1	114.2
00-01	120.0	112.5	117.5
01-02	126.0	116.3	122.2
02-03	132.3	119.6	127.9
03-04	132.3	121.5	130.4
04-05	134.9	124.3	131.8
05-06	140.7	127.6	131.9

Source: Colorado Legislative Council staff.

Note: U.S. and Denver-Boulder CPIs are reported with the year they were used to project a faculty salary increase, i.e., a faculty salary increase of 4.3% in FY06 is based on the CPIs for the calendar year 2004.

Annual AAUP Faculty Salary Information All Ranks Combined Comparison

	Salaries		Compensation	
	% of Internal Peers	% of CCHE Peers	% of Internal Peers	% of CCHE Peers
FY05	106.0%	98.2%	101.2%	92.9%
FY04	102.7%	95.4%	98.2%	90.3%
FY03	105.3%	98.9%	100.3%	93.6%
FY02	102.1%	96.4%	98.0%	91.8%
FY01	99.9%	93.9%	95.1%	89.2%
FY00	100.8%	94.7%	96.0%	90.2%
FY99	101.9%	95.8%	97.6%	91.6%
FY98	103.9%	98.4%	99.7%	93.8%
FY97	104.8%	99.3%	99.3%	94.1%
to FY90	101.9%	95.2%	99.0%	93.9%
<hr/>				
FY04 to FY05 Change	3.3%	2.8%	3.0%	2.6%
<hr/>				
FY90 to FY05 Change	4.1%	3.0%	2.2%	-1.0%

Note: A list of CCHE peer institutions is provided in the last section of this document.

Source: Academe, The Economic Status of the Profession

Annual AAUP Faculty Salary Comparison All Ranks Combined

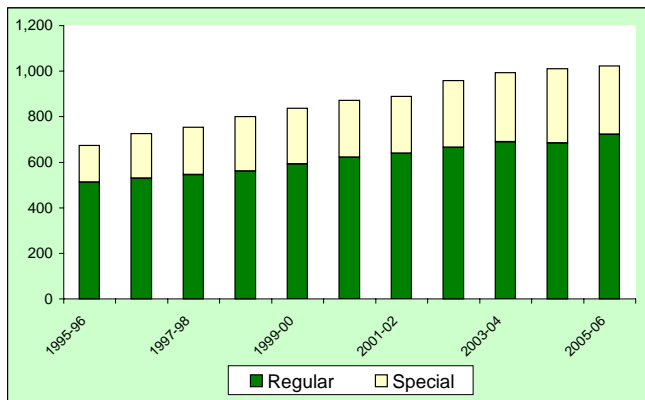
	CSU	CU - Boulder	Difference
FY91	\$46.4	\$50.1	-\$3.7
FY92	\$48.4	\$53.0	-\$4.6
FY93	\$49.9	\$53.9	-\$4.0
FY94	\$51.7	\$52.8	-\$1.1
FY95	\$53.2	\$56.4	-\$3.2
FY96	\$55.5	\$57.9	-\$2.4
FY97	\$58.0	\$58.7	-\$0.7
FY98	\$60.7	\$60.8	-\$0.1
FY99	\$62.8	\$63.2	-\$0.4
FY00	\$64.8	\$64.7	\$0.1
FY01	\$67.0	\$66.7	\$0.3
FY02	\$71.2	\$69.9	\$1.3
FY03	\$74.6	\$74.4	\$0.2
FY04	\$74.5	\$75.1	-\$0.6
FY05	\$76.8	\$77.1	-\$0.3

Faculty Salary Increases			
1990-91 to 2004-05		<u>CU - Boulder</u>	<u>CSU</u>
Twelve-year Cumulative All Ranks Combined		61.0%	75.3%

Note: Salaries reported in thousands.

A **Administrative**
Professionals,
Research Associates
and Post Doctorates

Administrative Professional Headcount Excludes Research Associates

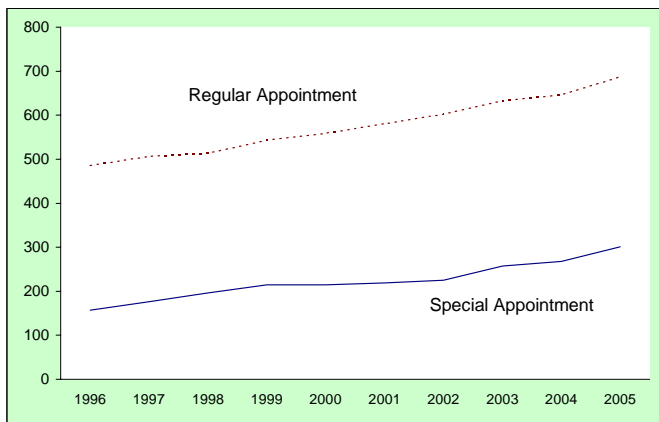


Academic

Year	Regular	Special	Total
1995-96	512	162	674
1996-97	529	197	726
1997-98	546	207	753
1998-99	561	239	800
1999-00	593	244	837
2000-01	622	250	872
2001-02	639	250	889
2002-03	665	293	958
2003-04	690	304	994
2004-05	685	325	1,010
2005-06	723	299	1,022

Note: Vice presidents and deans were reclassified from faculty to administrative professionals on January 1, 2003.

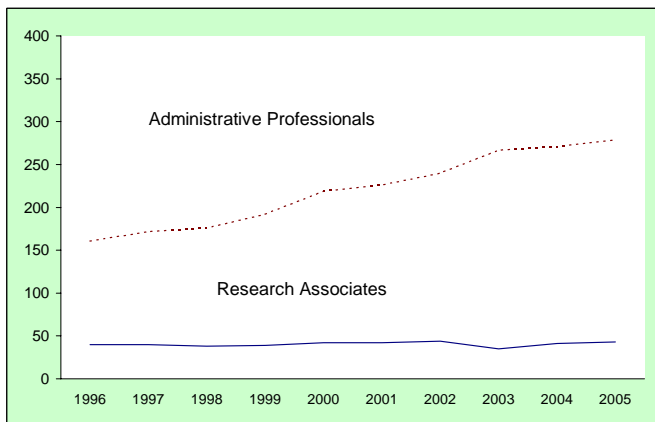
Administrative Professional FTE Excludes Research Associates



Fiscal Year	Regular Appointment	Special Appointment	Total
1996	486.1	156.9	643.0
1997	506.8	176.3	683.1
1998	514.0	196.0	710.0
1999	543.4	214.2	757.6
2000	558.8	214.3	773.1
2001	581.0	219.1	800.1
2002	603.2	225.0	828.2
2003	633.6	257.4	891.0
2004	646.8	267.9	914.7
2005	687.3	301.4	988.7

Note: Vice presidents and deans were reclassified from faculty to administrative professionals on January 1, 2003. All fund groups are included.
12 months = 1 FTE

E&G Administrative Professional FTE

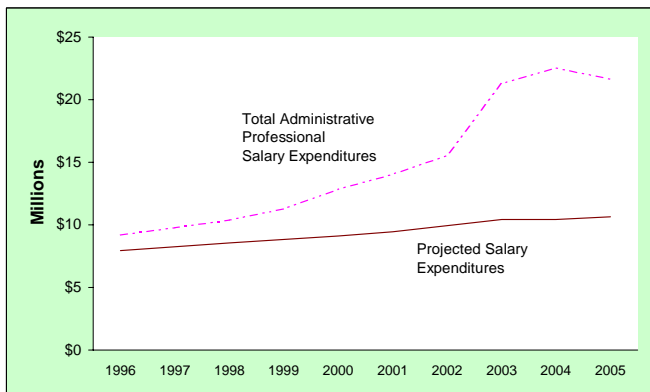


Fiscal Year	Administrative Professionals	Research Associates	Total
1996	161	40	201
1997	172	40	212
1998	176	38	214
1999	192	39	231
2000	219	42	261
2001	226	42	268
2002	240	44	284
2003	267	35	302
2004	271	41	312
2005	279	43	322

Note: Vice presidents and deans were reclassified from faculty to administrative professionals on January 1, 2003. All fund groups are included.

Includes 13 & 16 funds only. 12 months = 1 FTE

E&G Administrative Professional Salary Expenditures

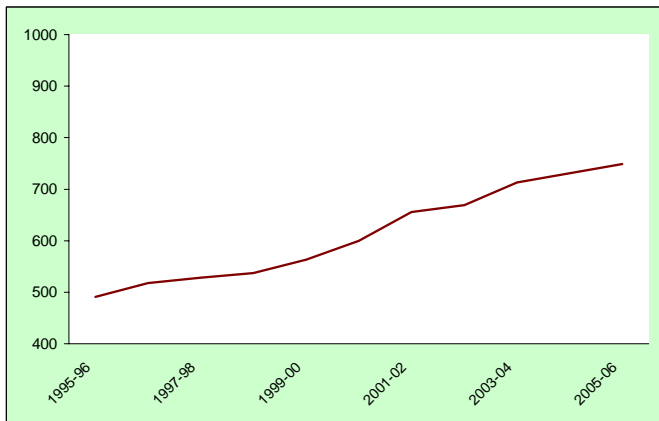


Fiscal Year	Administrative Professional	Research Associate	Total	Average Annual Increase ¹	Projected Salary Expenditures ²
1996	\$7.79	\$1.40	\$9.19	4.5%	\$7.93
1997	\$8.35	\$1.43	\$9.78	4.25%	\$8.26
1998	\$8.92	\$1.47	\$10.39	3.5%	\$8.55
1999	\$9.76	\$1.52	\$11.28	3.3%	\$8.83
2000	\$11.18	\$1.66	\$12.84	3.0%	\$9.10
2001	\$12.30	\$1.76	\$14.06	4.0%	\$9.46
2002	\$13.62	\$1.92	\$15.54	5.0%	\$9.93
2003	\$19.85	\$1.43	\$21.28	5.0%	\$10.43
2004	\$20.33	\$2.23	\$22.56	0.0%	\$10.43
2005	\$19.65	\$2.01	\$21.66	2.0%	\$10.64

¹Average salary increase as approved by the Board of Governors of the Colorado State University System

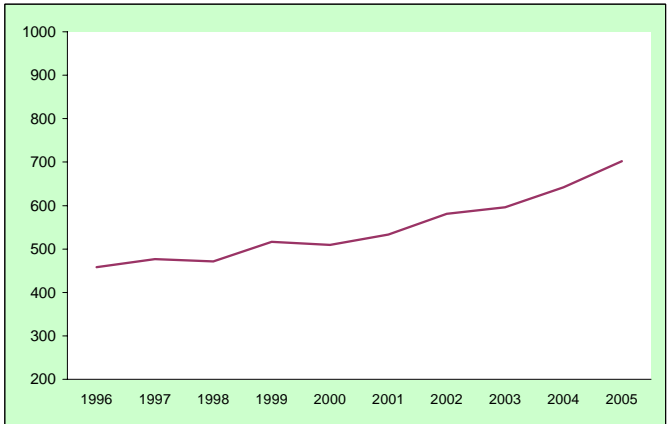
²Base year (1993) total salary expenditures compounded annually by average increase. Vice presidents and deans were reclassified from faculty to administrative professionals on January 1, 2003.

Research Associate Headcount



Academic Year	Regular	Special	Total
1995-96	0	491	491
1996-97	1	517	518
1997-98	2	526	528
1998-99	1	536	537
1999-00	1	562	563
2000-01	1	599	600
2001-02	5	651	656
2002-03	6	663	669
2003-04	9	704	713
2004-05	7	724	731
2005-06	10	739	749

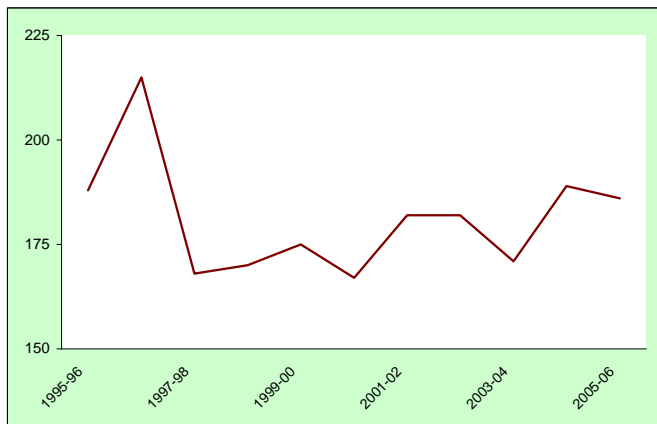
Research Associate FTE



<u>Fiscal Year</u>	<u>FTE</u>
1996	458.4
1997	476.8
1998	471.8
1999	516.8
2000	509.0
2001	533.3
2002	580.6
2003	595.9
2004	642.1
2005	702.2

Note: Regular and special appointments are included. All fund groups are included.
12 months = 1 FTE

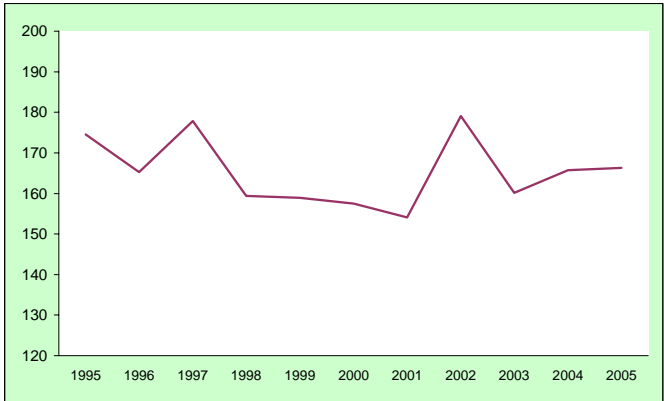
Post Doctoral Headcount



Academic

<u>Year</u>	<u>Total</u>
1995-96	188
1996-97	215
1997-98	168
1998-99	170
1999-00	175
2000-01	167
2001-02	182
2002-03	182
2003-04	171
2004-05	189
2005-06	186

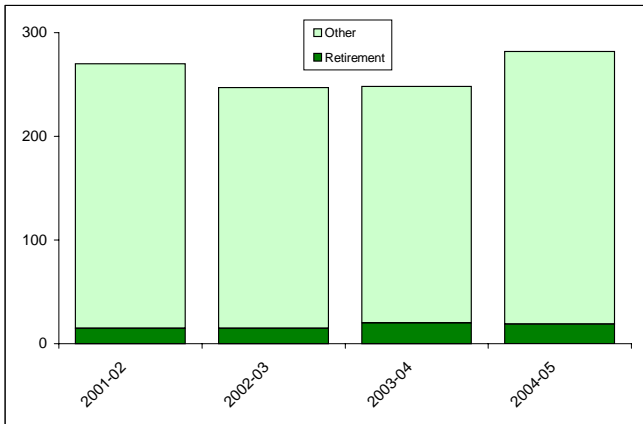
Post Doctoral FTE



<u>Year</u>	<u>FTE</u>
1995	174.5
1996	165.3
1997	177.8
1998	159.4
1999	158.9
2000	157.5
2001	154.1
2002	179.1
2003	160.1
2004	165.7
2005	166.3

Note: All fund groups are included. 12 months = 1 FTE

Administrative Professional Attrition

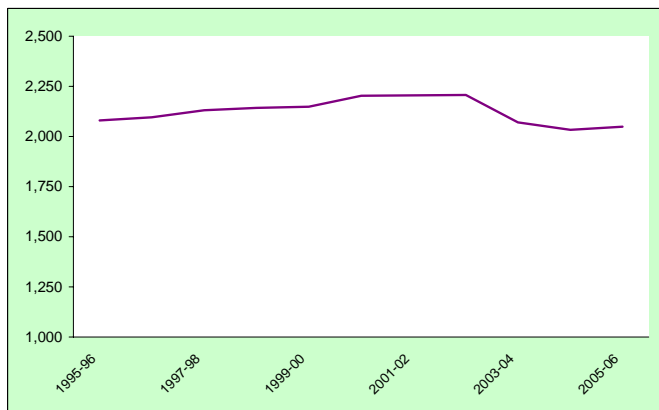


	Academic Year									
	2001-02		2002-03		2003-04		2004-05		2005-06	
	Total	Percent	Total	Percent	Total	Percent	Total	Percent	Total	Percent
Retirement	15	6%	15	6%	20	8%	19	7%	21	7%
Other	255	94%	232	94%	228	92%	263	93%	285	93%
Total	270	100%	247	100%	248	100%	282	100%	306	100%

Note: Research Associates are included.

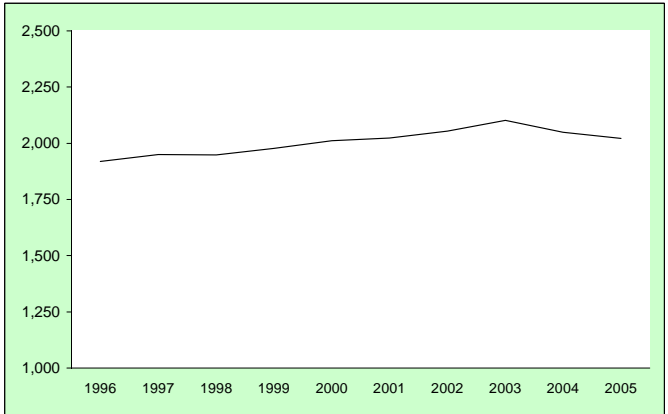
State Classified

State Classified Headcount



Academic Year	Headcount
1995-96	2,081
1996-97	2,095
1997-98	2,131
1998-99	2,142
1999-00	2,149
2000-01	2,203
2001-02	2,206
2002-03	2,207
2003-04	2,070
2004-05	2,034
2005-06	2,048

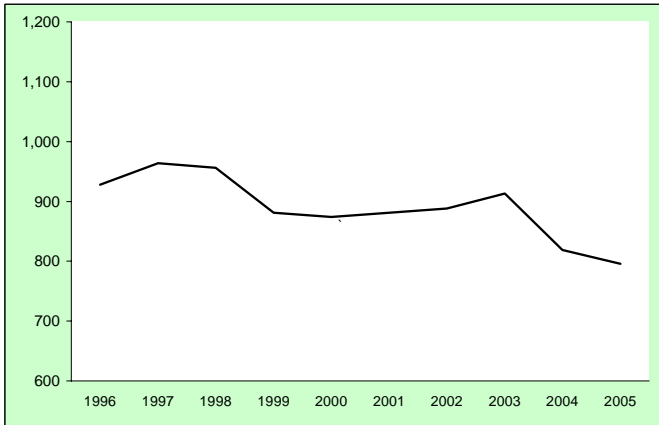
State Classified FTE



Fiscal Year	FTE
1996	1,919.8
1997	1,949.1
1998	1,948.4
1999	1,977.2
2000	2,010.8
2001	2,023.5
2002	2,053.7
2003	2,101.9
2004	2,049.5
2005	2,021.2

Note: All fund groups are included. 12 months = 1 FTE

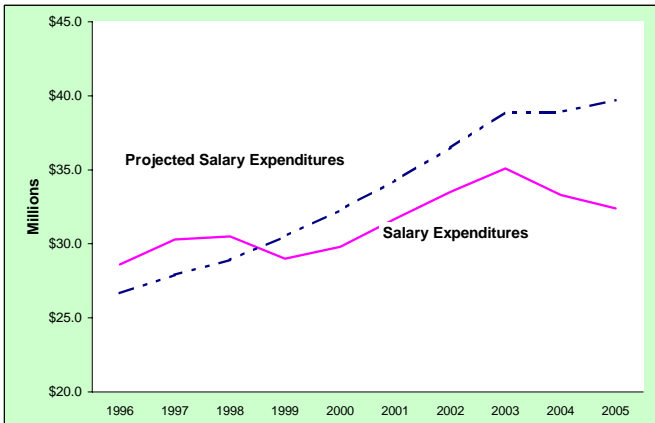
E&G State Classified Employees



Fiscal Year	Headcount
1996	928
1997	964
1998	956
1999	881
2000	874
2001	881
2002	888
2003	913
2004	819
2005	796

Note: Includes 13 & 16 funds only.

E&G State Classified Salary Expenditures

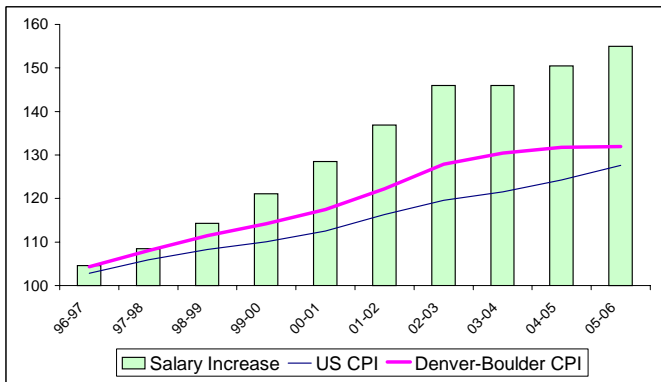


Fiscal Year	Salary Expenditures	Annual Average Increase	Projected Salary Expenditures
1996	\$28.6	3.8%	\$26.67
1997	\$30.3	4.6%	\$27.90
1998	\$30.5	3.7%	\$28.93
1999	\$29.0	5.4%	\$30.50
2000	\$29.8	5.9%	\$32.30
2001	\$31.7	6.1%	\$34.30
2002	\$33.5	6.6%	\$36.50
2003	\$35.1	6.6%	\$38.90
2004	\$33.3	0.0%	\$38.90
2005	\$32.4	3.1%	\$39.72

Note: Includes 13 & 16 funds only.

The annual average increase is the sum of the salary wage increases and anniversary increases as a percent of total state classified salaries. Base year actual salary totals inflated by the average salary increase.

Cumulative History of State Classified Salary Increases Compared to the Consumer Price Index in Budget Year



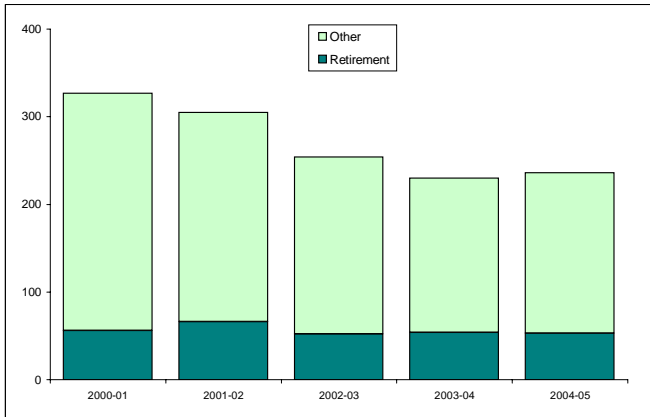
1995-96 = 100.0

Fiscal Year	Salary Increase	US CPI	Denver-Boulder CPI
96-97	104.6	102.8	104.3
97-98	108.5	105.9	108.0
98-99	114.3	108.3	111.5
99-00	121.1	110.1	114.2
00-01	128.5	112.5	117.5
01-02	136.9	116.3	122.2
02-03	146.0	119.6	127.9
03-04	146.0	121.5	130.4
04-05	150.5	124.3	131.8
05-06	155.0	127.6	131.9

Source: Colorado Legislative Council Staff.

Note: U.S. and Denver-Boulder CPIs are reported with the year they were used to project a faculty salary increase, i.e., a faculty salary increase of 3.75% in 1996-97 is based on the CPIs for the calendar year 1995.

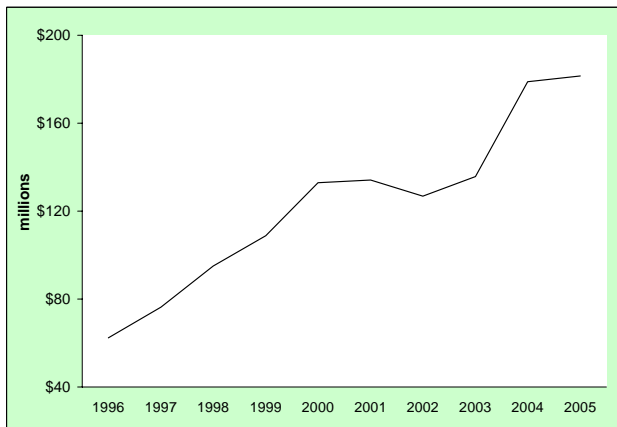
State Classified Attrition



	2000-01		2001-02		2002-03		2003-04		2004-05	
	Total	Percent	Total	Percent	Total	Percent	Total	Percent	Total	Percent
Retirement	56	17%	66	22%	52	20%	54	23%	53	22%
Other	271	83%	239	78%	202	80%	176	77%	183	78%
Total	327	100%	305	100%	254	100%	230	100%	236	100%

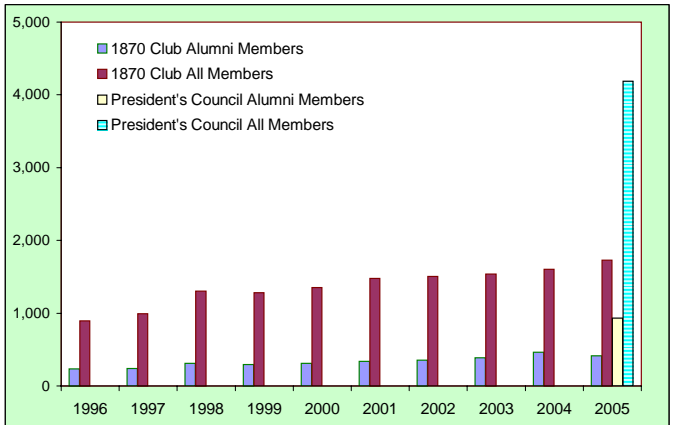
External Activity

CSU Foundation Total Invested Assets



Fiscal Year	Total Invested Assets
1996	\$62.3
1997	\$76.4
1998	\$95.0
1999	\$108.9
2000	\$133.0
2001	\$134.1
2002	\$126.8
2003	\$135.8
2004	\$178.8
2005	\$181.4

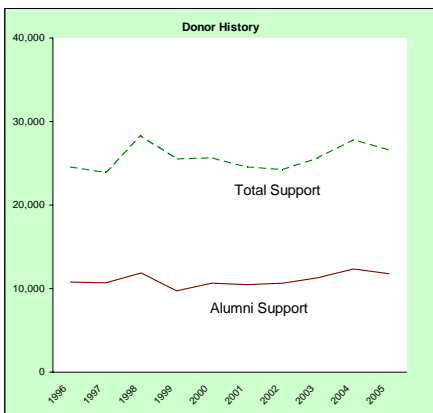
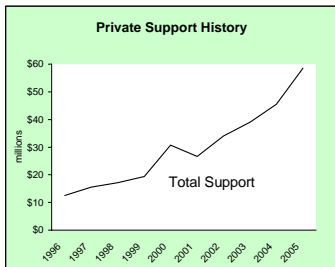
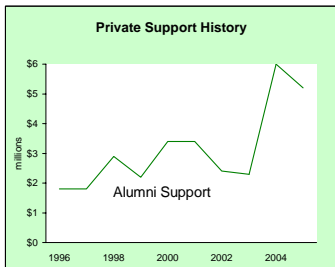
President's Council Members



Fiscal Year	1870 Club		President's Council	
	Alumni Members	All Members	Alumni Members	All Members
1996	234	892	0	0
1997	240	994	0	0
1998	310	1,304	0	0
1999	294	1,279	0	0
2000	312	1,350	0	0
2001	337	1,479	0	0
2002	357	1,503	0	0
2003	386	1,536	0	0
2004	466	1,601	0	0
2005	417	1,730	932	4,186

Note: Beginning in 2004-05, the comprehensive "President's Council" gift club group was formed. This council includes members from the annual 1870 and Cornerstone clubs, as well as the lifetime Presidents, Morgan and Lory Societies. Frontier Society and President's Club members are also included.

Summary of Private Support



Summary of Private Support

Year	Alumni Support		Total Support	
1996	10,793	\$1.8	24,574	\$12.5
1997	10,684	\$1.8	23,946	\$15.6
1998	11,879	\$2.9	28,295	\$17.1
1999	9,759	\$2.2	25,549	\$19.4
2000	10,639	\$3.4	25,685	\$30.7
2001	10,465	\$3.4	24,592	\$26.6
2002	10,657	\$2.4	24,268	\$34.0
2003	11,292	\$2.3	25,669	\$39.0
2004	12,365	\$6.0	27,860	\$45.5
2005	11,803	\$5.2	26,650	\$58.6

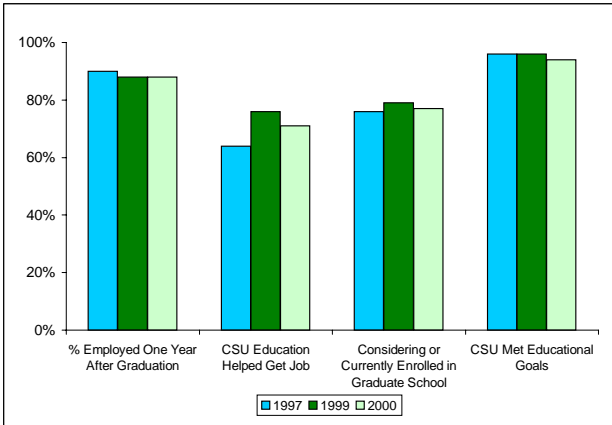
Note: All dollars are in millions.

Note: As of 2003-04, private support includes outright gifts, pledge payments, unpaid commitments and private grants, contracts & cooperative agreements, but does not include payments made to pledges from prior years. As of 2004-05, revocable commitments are also included.

The count of alumni donors and the total for alumni support does not include non-graduates or alumni support made through estates, family foundations or corporate support provided on behalf of alumni. However, this support is included in the total numbers.

Source: *University Development and Advancement*

Assessment by Alumni

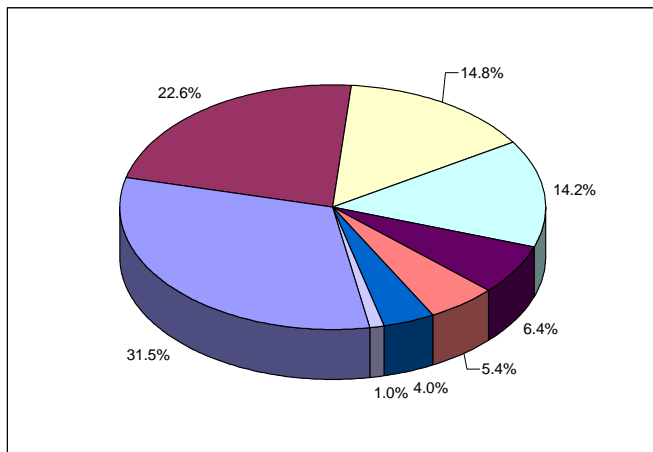


Year Graduated	% Employed One Year After Graduation	CSU Education Helped Get Job	Considering or Currently Enrolled in Graduate School	CSU Met Educational Goals
1997	90%	64%	76%	96%
1999	88%	76%	79%	96%
2000	88%	71%	77%	94%

Note: Based on survey sent to bachelor degree recipients one year after graduation.

Financial Information

2005-06 Budgeted Revenue

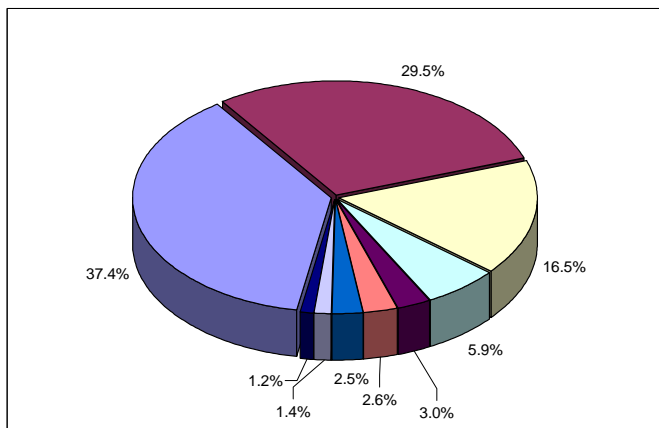


Total Budgeted Revenue = \$655,204,756

Sponsored Programs	31.5%
Tuition & fees	22.6%
State Support (FFS+COF)	14.8%
Auxiliary Enterprises	14.2%
Self Funded Activities	6.4%
Indirect Cost Recoveries	5.4%
Misc. Revenue & Cash Operations	4.0%
Federal & Restricted Funds	1.0%

Note: Figures may not add to 100.0% because of rounding.

2005-06 Budgeted Expenditures



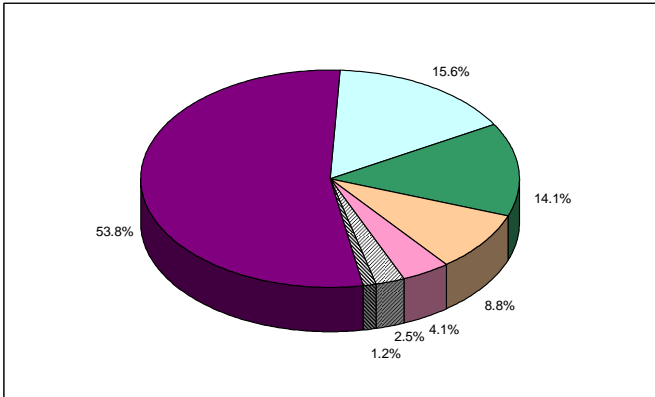
Total CSU Budget = \$655,204,756

Professional Salaries & Fringe Benefits	37.5%
Operating Expenses	29.6%
Support Salaries & Fringe Benefits	16.5%
Overhead Allocations	5.9%
Cost of Sales	3.0%
Capital Outlay	2.6%
Utilities	2.5%
Travel	1.4%
Auxiliary Debt Service & Facilities Reserves	1.2%

Note: Figures may not add to 100.0% because of rounding.

E & G

2005-06 Budgeted Revenue¹



Total E&G Budget = \$249,705,199

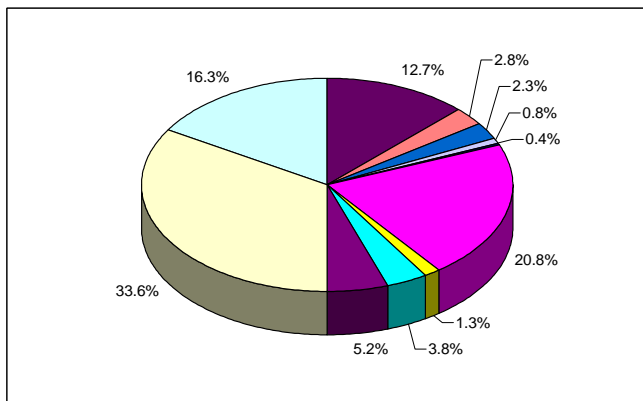
Tuition	53.8%
State Financial Aid (COF)	15.6%
Indirect Cost Recoveries	14.1%
State Fee For Service	8.8%
Internal Overhead Allocations	4.1%
Misc. Revenue	2.5%
Interest Income	1.2%

Note: Figures may not add to 100.0% because of rounding.

¹13 & 16 funds only. Excludes PVM, CSU Agencies, and Course Fees/Technology Charges.

E & G

2005-06 Budgeted Expenditures¹



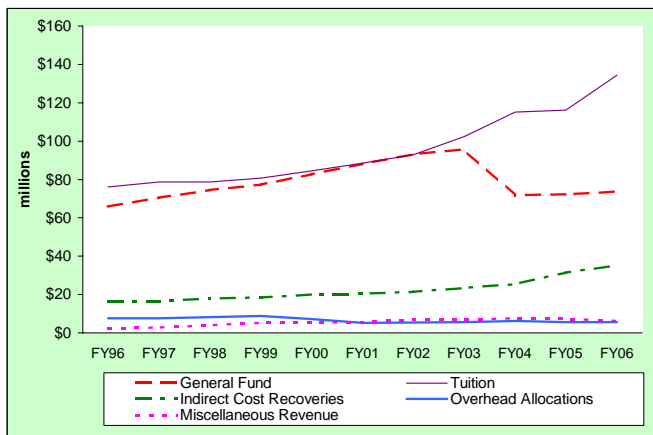
Total E&G Budget = \$249,705,199

Academic Faculty Salaries & Benefits	33.6%
State Classified Salaries & Benefits	16.3%
Administrative Professional Salaries & Benefits	12.7%
Graduate Student Salaries & Benefits	2.8%
All Temporary Salaries & Benefits	2.3%
Student Hourly & Workstudy Salaries & Benefits	0.8%
Travel	0.4%
Operating Costs Materials & Supplies	20.8%
Capital Outlay	1.3%
Utilities	3.8%
Graduate Assistant Tuition & Fellowships	5.2%

Note: Figures may not add to 100.0% because of rounding.

¹Excludes PVM, CSU Agencies, and Course Fees/Technology Charges.

E&G Budgeted Revenue¹



Year	General ²		Indirect	Misc.	Overhead	Other	Total
	Fund	Tuition	Cost Recoveries	Revenue	Allocations		
FY96	\$65.82	\$76.19	\$16.52	\$2.30	\$7.57		\$168.40
FY97	\$70.44	\$78.79	\$16.52	\$2.85	\$7.56	\$0.95	\$177.11
FY98	\$74.48	\$78.74	\$18.00	\$4.05	\$8.23		\$183.52
FY99	\$77.38	\$80.64	\$18.50	\$5.12	\$8.82		\$190.46
FY00	\$82.66	\$84.48	\$20.00	\$5.59	\$7.16		\$199.89
FY01	\$88.03	\$88.55	\$20.50	\$5.42	\$5.25		\$207.75
FY02	\$93.20	\$92.91	\$21.40	\$7.06	\$5.41		\$219.98
FY03	\$95.70 ³	\$102.24	\$23.40	\$6.89	\$5.61	\$1.92	\$235.76
FY04	\$71.81	\$115.21	\$25.40	\$7.57	\$6.25		\$226.24
FY05	\$72.21	\$116.16	\$31.40	\$7.37	\$5.60		\$232.74
FY06	\$73.70	\$134.30	\$35.20	\$9.20	\$5.60		\$258.00

Source: Board Budgets

¹13 & 16 Funds only, excludes Course/Tech Fees, CSU Agencies and PVM

²State Support

³Initial Operating Budget prior to mid-year General Fund Reductions

Comparison Of General Fund/State Support Appropriations (Includes Resident Instruction, PVM, and the CSU Agencies)

	CSU State Support	% of Total State Support	% of Higher Ed. State Budget	\$ Change in CSU State Support ¹	% Change in CSU State Support ²	Total State of Colorado General Fund	Total State Support to Higher Education ⁴	% of Total State General Fund
FY96 Actual	94,250,244	2.4%	16.2%	5,541,336	6.2%	3,899,024,749	582,433,260	14.9%
FY97 Actual	99,542,864	2.4%	16.0%	5,292,620	5.6%	4,178,391,767	621,618,791	14.9%
FY98 Actual	105,581,698	2.4%	16.1%	6,038,834	6.1%	4,463,475,931	656,223,861	14.7%
FY99 Actual	110,689,636	2.3%	16.4%	5,107,938	4.8%	4,755,090,668	676,307,254	14.2%
FY00 Actual	113,657,283 ³	2.2%	15.9%	2,967,647	2.7%	5,087,348,475	715,638,339	14.1%
FY01 Actual	118,695,965	2.2%	15.9%	5,038,682	4.4%	5,321,069,689	746,513,508	14.0%
FY02 Actual	119,175,674 ⁵	2.1%	15.9%	479,709	0.4%	5,613,905,990	770,615,074	13.7%
FY03 Actual	110,312,260	2.0%	16.1%	(8,863,414)	-7.4%	5,544,343,746	685,529,236	12.4%
FY04 Actual	94,930,319	1.7%	16.1%	(15,381,941)	-13.9%	5,627,296,522	591,409,402	10.5%
FY05 Actual	94,885,277 ⁶	1.1%	16.1%	(45,042)	-0.05%	5,839,605,032	587,972,772	10.0%
FY06 Initial	94,516,445	1.5%	15.2%	(368,832)	-0.4%	6,233,954,971	597,922,758	9.6%

¹CSU Average \$ Increase Last 10 Years (FY94-FY05) \$580,753

²CSU Average % Increase Last 10 Years (FY94-FY05) .85%

³Excludes Technology One-time Appropriation of \$1,041,447

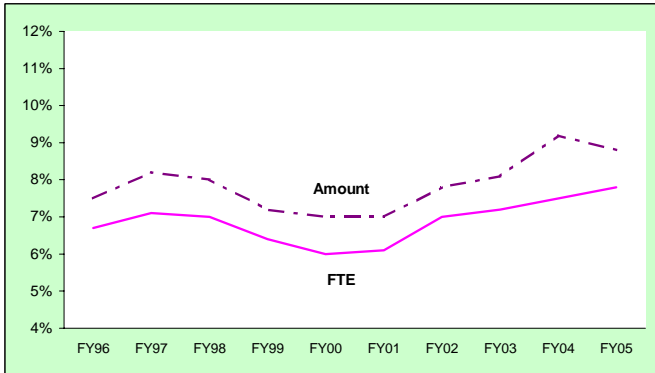
⁴Includes local districts

⁵Includes reductions through payday shift.

⁶Excludes Board of Governors' Support.

	Seven-Year Change	FY00	FY06	% Increase
∞	CSU State Support	113,657,283	94,516,445	-16.8%
	Higher Education	715,638,339	597,922,758	-16.4%
	State of Colorado	5,087,348,475	6,233,954,791	22.5%

53 Fund FTE and Expenditures as a Percent of Total for Regular Faculty Paid from E&G and Research Funds



Faculty FTE and Salary Expenditures

	FY96	FY97	FY98	FY99	FY00	FY01	FY02	FY03	FY04	FY05
E&G										
FTE ¹	807	823	818	810	810	809	800	725	740	730
Amount ²	\$45.10	\$47.71	\$49.11	\$50.40	\$51.80	\$52.50	\$55.99	\$53.98	\$56.71	\$55.47
53 Fund										
FTE ¹	58	63	62	55	52	53	60	56	60	62
Amount ²	\$3.65	\$4.25	\$4.25	\$3.90	\$3.87	\$3.97	\$4.73	\$4.76	\$5.74	\$5.35
Total										
FTE ¹	865	886	880	865	862	862	860	781	800	792
Amount ²	\$48.75	\$51.96	\$53.36	\$54.30	\$55.67	\$56.47	\$60.72	\$58.74	\$62.45	\$60.82

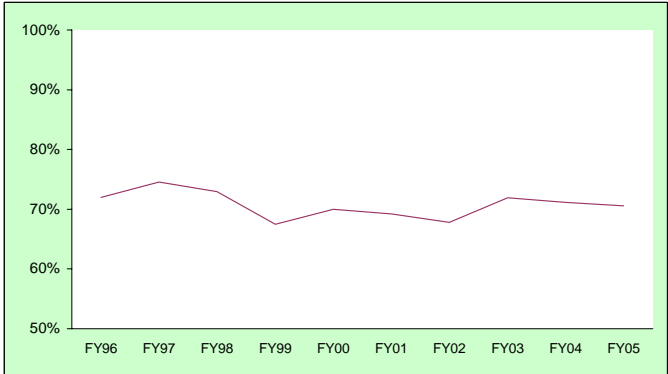
53 Fund as a percent of the Total of E&G and the 53 Fund

	FY96	FY97	FY98	FY99	FY00	FY01	FY02	FY03	FY04	FY05
FTE ¹	6.7%	7.1%	7.0%	6.4%	6.0%	6.1%	7.0%	7.2%	7.5%	7.8%
Amount	7.5%	8.2%	8.0%	7.2%	7.0%	7.0%	7.8%	8.1%	9.2%	8.8%

Note: Dollar amounts are in millions.

¹Tenured/Tenure-track Faculty paid from the 13 & 16 funds.

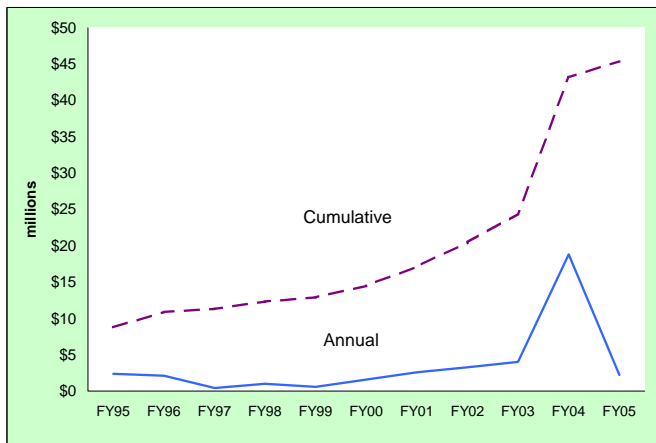
E&G Salary Expenditures as a Percent of Total Budget (13, 16, and 25 Funds)



<u>Year</u>	<u>E&G Total Expenditures</u>	<u>E&G Salary Expenditures</u>	<u>Salaries Percent of Total E&G Expenditures</u>
FY96	\$166.3	\$119.7	72.0%
FY97	\$171.1	\$127.6	74.6%
FY98	\$177.5	\$129.5	73.0%
FY99	\$194.5	\$131.2	67.5%
FY00	\$195.1	\$136.5	70.0%
FY01	\$208.2	\$144.1	69.2%
FY02	\$234.4	\$158.9	67.8%
FY03	\$229.9	\$165.4	71.9%
FY04	\$226.0	\$160.8	71.2%
FY05	\$236.1	\$166.6	70.6%

Amounts are in millions of dollars. Includes 13, 16, and 25 Funds

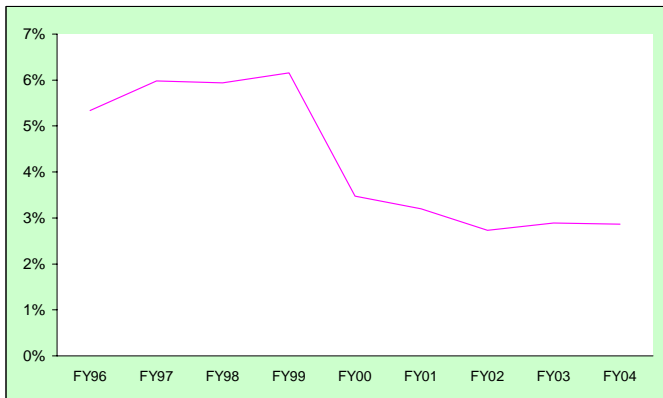
Central Reallocations



<u>Year</u>	<u>Central Reallocations</u>	<u>Cumulative Total</u>
FY95	\$2.4	\$8.8
FY96	\$2.1	\$10.9
FY97	\$0.4	\$11.3
FY98	\$1.0	\$12.3
FY99	\$0.6	\$12.9
FY00	\$1.6	\$14.5
FY01	\$2.6	\$17.1
FY02	\$3.3	\$20.5
FY03	\$4.0	\$24.4
FY04	\$18.8	\$43.2
FY05	\$2.2	\$45.4

Note: This data does not include the annual intra-unit reallocations.

E&G Institutional Support Expenditures as a Percent of Total Expenditures¹

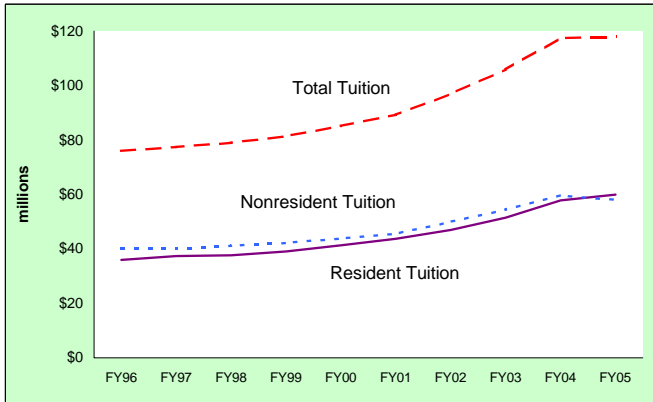


<u>Year</u>	<u>Total E&G Current Funds Expenditures¹</u>	<u>CSU Institutional Support Expenditures</u>	<u>Institutional Support as a percent of Total Expenditures</u>
FY96	\$477.4	\$25.5	5.3%
FY97	\$417.8	\$25.0	6.0%
FY98	\$432.9	\$25.7	5.9%
FY99	\$468.0	\$28.8	6.2%
FY00	\$503.4	\$17.5	3.5%
FY01	\$516.2	\$16.5	3.2%
FY02	\$578.9	\$15.8	2.7%
FY03	\$598.5	\$17.3	2.9%
FY04	\$600.5	\$17.2	2.9%

Source: Integrated Postsecondary Education Data System (IPEDS), Finance Survey

¹Total E&G Expenses and Other Deductions, Integrated Postsecondary Education Data System (IPEDS), Finance Survey

Total Resident & Nonresident Tuition Revenue¹

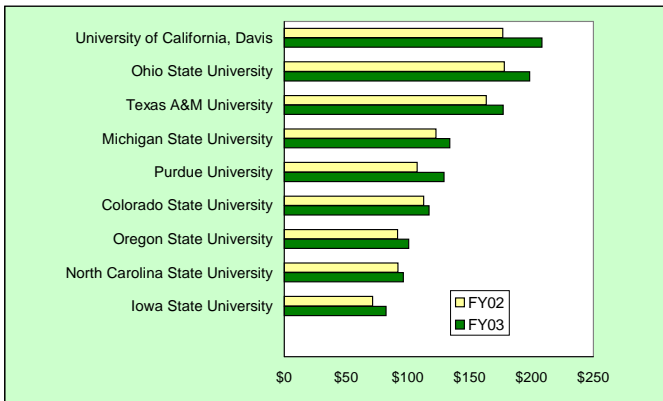


Year	Resident	Nonresident	Total
FY96	\$36.0	\$40.0	\$76.0
FY97	\$37.4	\$40.0	\$77.4
FY98	\$37.7	\$41.2	\$78.9
FY99	\$39.1	\$42.2	\$81.3
FY00	\$41.3	\$43.8	\$85.1
FY01	\$43.7	\$45.5	\$89.2
FY02	\$47.0	\$49.9	\$96.9
FY03	\$51.5	\$54.4	\$105.9
FY04	\$57.8	\$59.6	\$117.4
FY05	\$59.9	\$58.0	\$117.9

¹Excludes PVM and Continuing Education

Source: Budget Data Book

Federal Research and Development Expenditures, CCHE Peer Institutions



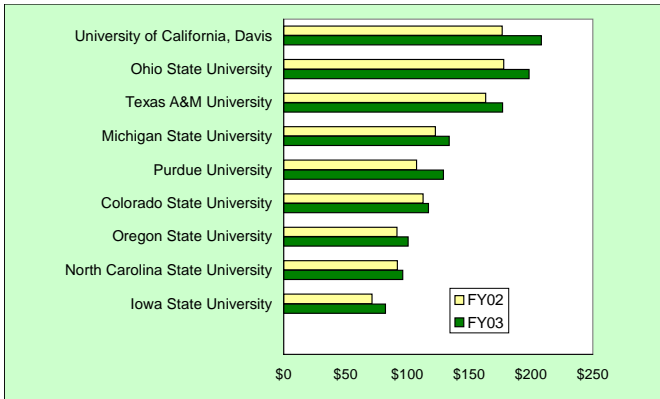
	FY02	FY03
University of Illinois, Urbana	\$214.3	\$266.5
University of California, Davis	\$176.6	\$208.3
Ohio State University	\$177.9	\$198.5
Texas A&M University	\$163.5	\$177.1
Michigan State University	\$122.6	\$133.8
Purdue University	\$107.5	\$129.2
Colorado State University	\$112.7	\$117.1
Oregon State University	\$91.7	\$100.5
North Carolina State University	\$92.0	\$96.2
Iowa State University	\$71.4	\$82.3

Note: Oklahoma State and Washington State were not listed in the top 100 institutions.

Dollar Amount in millions

Source: *Chronicle of Higher Education*, July 29, 2005

Federal Research and Development Expenditures, Internal Peer Institutions

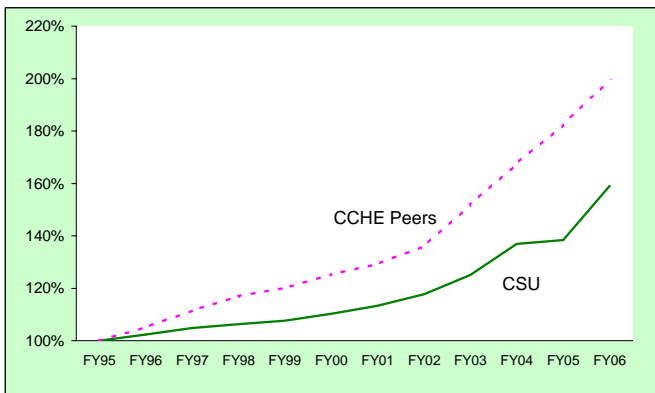


	FY02	FY03
University of Illinois, Urbana	\$214.3	\$266.5
University of California, Davis	\$176.6	\$208.3
Ohio State University	\$177.9	\$198.5
Texas A&M University	\$163.5	\$177.1
Michigan State University	\$122.6	\$133.8
Purdue University	\$107.5	\$129.2
Colorado State University	\$112.7	\$117.1
Oregon State University	\$91.7	\$100.5
North Carolina State University	\$92.0	\$96.2
Iowa State University	\$71.4	\$82.3

Note: Kansas State, Oklahoma State, University of Nebraska and Washington State were not listed in the top 100 institutions.
Dollar amount in millions

96 Source: *The Chronicle of Higher Education* Aug 6, 2004.

Resident Undergraduate Tuition Increases CSU and CCHE Peer Institutions

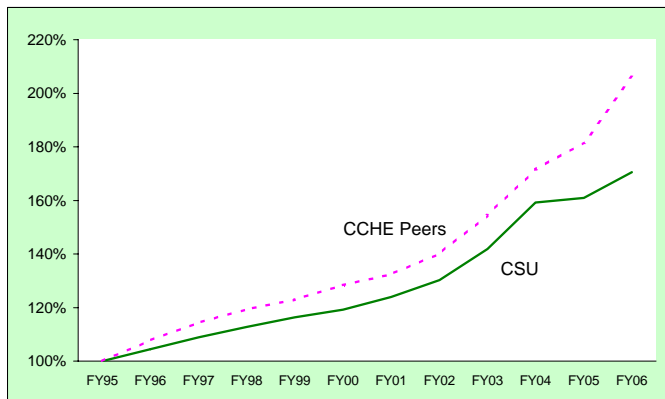


Fiscal Year	CSU	CCHE Peers
FY95	100.0%	100.0%
FY96	102.4%	105.1%
FY97	104.8%	111.4%
FY98	106.3%	117.0%
FY99	107.6%	120.1%
FY00	110.2%	125.2%
FY01	113.4%	129.3%
FY02	117.8%	136.0%
FY03	125.0%	151.8%
FY04	136.9%	167.6%
FY05	138.4%	182.4%
FY06	159.1%	199.7%

Note: 1994-1995 = 100%

A list of CCHE peer institutions is provided in the last section of this document.

Nonresident Undergraduate Tuition Increases CSU and CCHE Peer Institutions



Fiscal Year	CSU	CCHE Peers
FY95	100.0%	100.0%
FY96	104.4%	107.8%
FY97	108.9%	114.3%
FY98	112.7%	119.4%
FY99	116.4%	123.0%
FY00	119.2%	128.4%
FY01	124.0%	132.4%
FY02	130.2%	140.2%
FY03	141.9%	154.5%
FY04	159.2%	171.5%
FY05	161.0%	181.6%
FY06	170.6%	205.9%

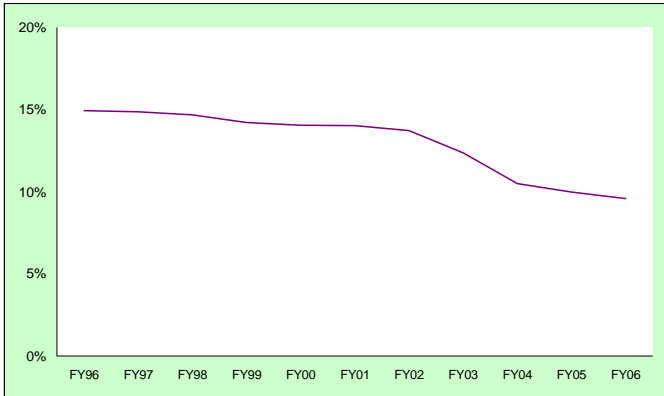
Note: 1994-1995 = 100%

State Appropriations Peer Comparisons

Institution	2003-04 approp.	1-year change
<u>CCHE Peers</u>		
Iowa State	\$226,996,000	-0.3%
Michigan State	\$349,284,000	0%
North Carolina State	\$361,215,000	3.6%
Ohio State	\$396,628,000	1.1%
Oklahoma State	\$205,159,000	3.2%
Oregon State System	\$312,293,000	-2.8%
Purdue	\$336,953,000	2.9%
Texas A&M	\$755,228,000	-1.8%
Univ. of Illinois, System	\$822,386,000	-0.08%
Washington State	\$195,184,000	2.6%
 <u>Internal Peers</u>		
Iowa State	\$226,996,000	-0.3%
Kansas State	\$163,428,000	3.6%
Michigan State	\$349,284,000	0.0%
North Carolina State	\$361,215,000	3.6%
Oklahoma State	\$205,159,000	3.2%
Oregon State, System	\$312,293,000	-2.8%
Texas A&M	\$755,228,000	-1.8%
Univ. of Georgia	\$390,433,000	-2.0%
Univ. of Missouri, System	\$408,900,000	2.9%
Univ. of Nebraska, Lincoln	\$398,617,000	1.4%
Virginia Polytechnic Inst.	\$145,344,000	9.2%
Washington State	\$195,184,000	2.6%
 Colorado State University	 \$109,184,000	 0%

Source: Chronicle of Higher Education, 12/17/04

Higher Education Share of Statewide General Fund



Year	Higher Education (in millions)	Total State General Fund (in millions)	Percent Share
FY96	\$582.4	\$3,899.0	14.9%
FY97	\$621.6	\$4,178.4	14.9%
FY98	\$656.2	\$4,463.5	14.7%
FY99	\$676.3	\$4,755.1	14.2%
FY00	\$715.6	\$5,087.4	14.1%
FY01	\$746.5	\$5,321.1	14.0%
FY02	\$770.6	\$5,613.9	13.7%
FY03	\$685.5	\$5,544.3	12.4%
FY04	\$591.4	\$5,627.3	10.5%
FY05	\$588.0	\$5,831.0	10.0%
FY06	\$597.9	\$6,234.0	9.6%

2004-05 Annual Research Expenditures

Federal Funds (in Millions)

Department of Agriculture (USDA)	\$38.6
Department of Defense	11.7
Department of Energy	6.3
Health & Human Services	42.3
National Science Foundation	21.2
NASA	9.5
Miscellaneous Federal	24.6
Non-Science & Engineering (Federal)	5.4
Total Federal Funds	\$159.6

Non-Federal Funds

Industrials	\$19.4
State and Local	15.6
Non-Science & Engineering (Non-Federal)	2.4
Foundations	1.9
All other Non-Federal Sources	15.0
Total Non-Federal Funds	\$54.3

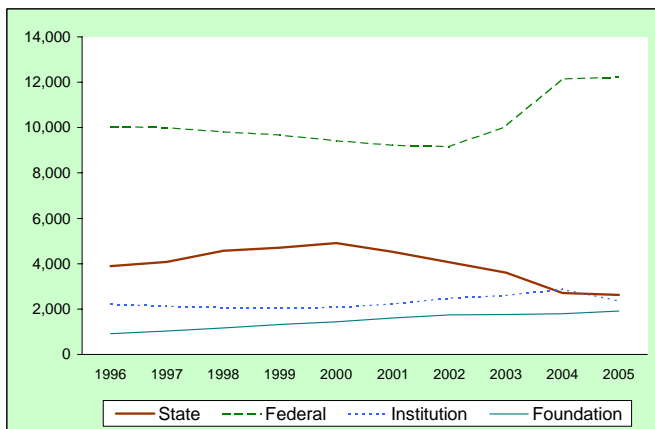
Total Sponsored Expenditures **\$213.9**

Institutional Expenditures **\$30.4**

Total CSU Research Expenditures \$244.3

Financial Aid

Financial Aid Recipients

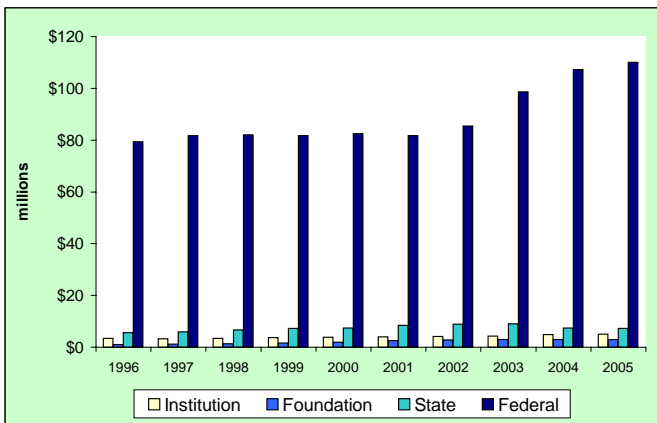


Fiscal Year	Institution Scholarships¹	Foundation Scholarships²	State Awards	Federal Awards
1996	2,216	911	3,886	10,064
1997	2,125	1,034	4,078	10,009
1998	2,057	1,170	4,573	9,823
1999	2,047	1,327	4,713	9,687
2000	2,081	1,442	4,912	9,423
2001	2,231	1,614	4,514	9,226
2002	2,496	1,738	4,066	9,167
2003	2,602	1,753	3,609	10,059
2004	2,879	1,790	2,716	12,148
2005	2,371	1,912	2,626	12,220

¹Scholarships given by CSU (13 Funds).

²Scholarships given by CSU Foundation (64 Funds)

Financial Aid Awarded to Students



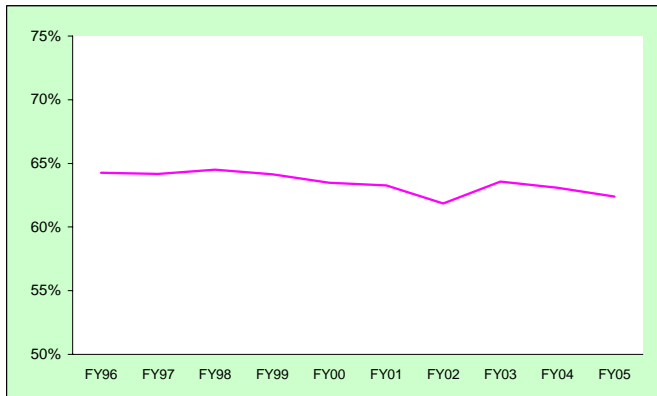
Fiscal Year	Institution Scholarships ¹	Foundation Scholarships ²	State Awards	Federal Awards	Total Awards
1996	\$3.4	\$1.0	\$5.7	\$79.4	\$100.8
1997	\$3.3	\$1.2	\$6.0	\$81.7	\$104.3
1998	\$3.4	\$1.4	\$6.7	\$82.0	\$108.0
1999	\$3.7	\$1.7	\$7.2	\$81.7	\$109.6
2000	\$3.8	\$2.0	\$7.4	\$82.5	\$112.3
2001	\$4.0	\$2.5	\$8.4	\$81.8	\$114.7
2002	\$4.1	\$2.8	\$8.9	\$85.4	\$120.5
2003	\$4.3	\$2.9	\$9.1	\$98.6	\$136.8
2004	\$4.9	\$3.0	\$7.4	\$107.3	\$148.1
2005	\$5.0	\$3.0	\$7.2	\$110.0	\$152.8

¹13 Funds

²64 Funds

State = All state assistance through CCHE, excluding work-study

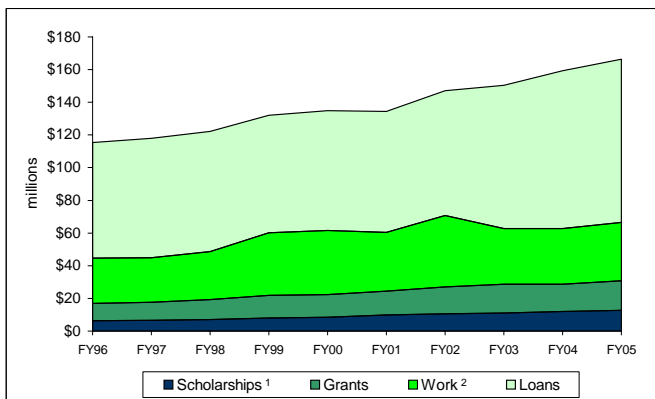
Financial Aid Recipients as a Percent of Total Student Population



Full Year	Total Aid Recipients	Total Students Enrolled	Percent of Total Receiving Financial Aid
FY96	14,086	21,914	64.3%
FY97	14,097	21,970	64.2%
FY98	14,413	22,344	64.5%
FY99	14,445	22,523	64.1%
FY00	14,465	22,782	63.5%
FY01	14,617	23,098	63.3%
FY02	14,802	23,934	61.8%
FY03	15,727	24,735	63.6%
FY04	15,800	25,042	63.1%
FY05	15,839	25,382	62.4%

Note: Represents unduplicated number of financial aid recipients (includes all students) as reflected in the SURDS Report compared to the Fall University enrollment number. Financial Aid = grants, loans, scholarships, fellowships, etc.

Historical View of Financial Aid Resources Actual Expenditures

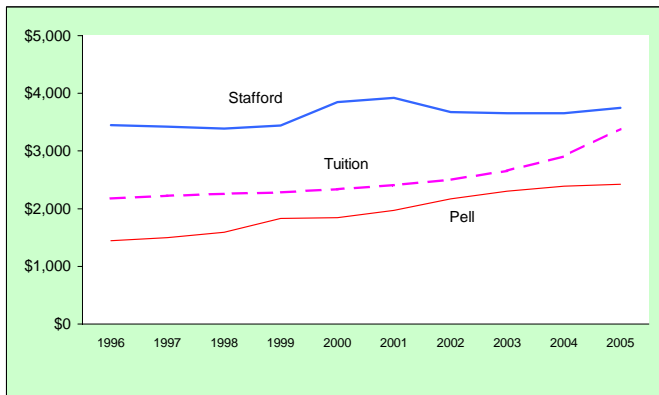


Year	Scholarships ¹	Grants	Work ²	Loans	Total Resources
FY96	\$6.3	\$10.7	\$27.6	\$70.7	\$115.3
FY97	\$6.6	\$11.1	\$27.2	\$73.1	\$118.0
FY98	\$7.0	\$12.3	\$29.4	\$73.6	\$122.3
FY99	\$7.9	\$13.9	\$38.3	\$71.9	\$132.0
FY00	\$8.5	\$13.8	\$39.3	\$73.4	\$135.0
FY01	\$9.9	\$14.6	\$35.9	\$74.0	\$134.4
FY02	\$10.6	\$16.4	\$43.7	\$76.4	\$147.1
FY03	\$11.0	\$17.7	\$34.0	\$87.7	\$150.4
FY04	\$12.1	\$16.5	\$34.1	\$96.6	\$159.3
FY05	\$12.7	\$18.0	\$35.7	\$100.0	\$166.4

¹Scholarships include those from the Institution, CSU Foundation, and outside.

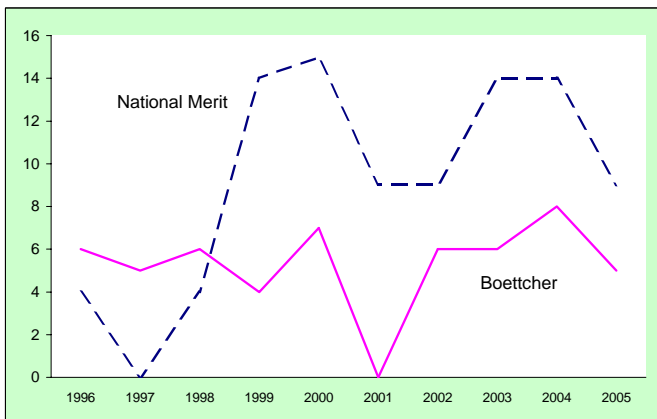
²Includes student hourly and off-campus employment arranged through CSU.

Resident Tuition Compared to Average Pell Grant and Average Stafford Loan



Fiscal Year	Resident Tuition	Average Pell Grant	Average Stafford Loan
1996	\$2,174	\$1,442	\$3,447
1997	\$2,224	\$1,495	\$3,420
1998	\$2,258	\$1,589	\$3,392
1999	\$2,286	\$1,831	\$3,442
2000	\$2,340	\$1,844	\$3,846
2001	\$2,408	\$1,972	\$3,920
2002	\$2,502	\$2,173	\$3,678
2003	\$2,655	\$2,305	\$3,658
2004	\$2,908	\$2,388	\$3,656
2005	\$3,382	\$2,425	\$3,749

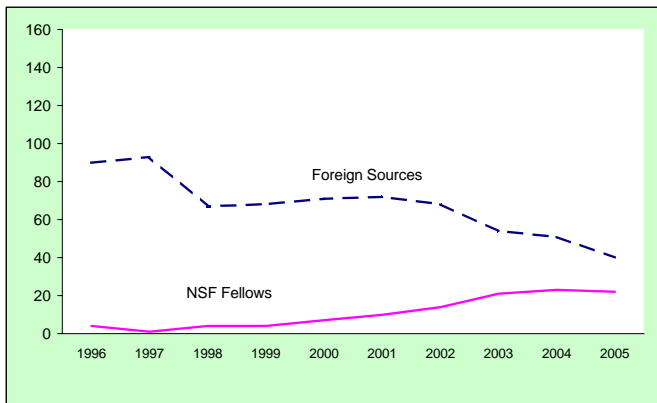
Boettcher and National Merit Scholars



Fall	Boettcher Scholars	National Merit Scholars
1996	6	4
1997	5	0
1998	6	4
1999	4	14
2000	7	15
2001	0	9
2002	6	9
2003	6	14
2004	8	14
2005	5	9

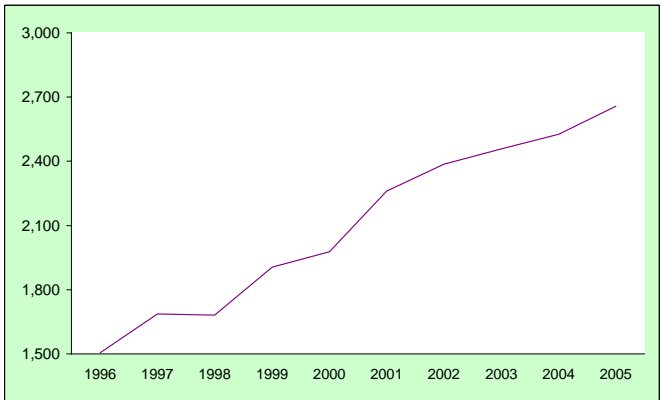
Note: Numbers reflect new fall enrollees.

Graduate Students with Funding from External Sources



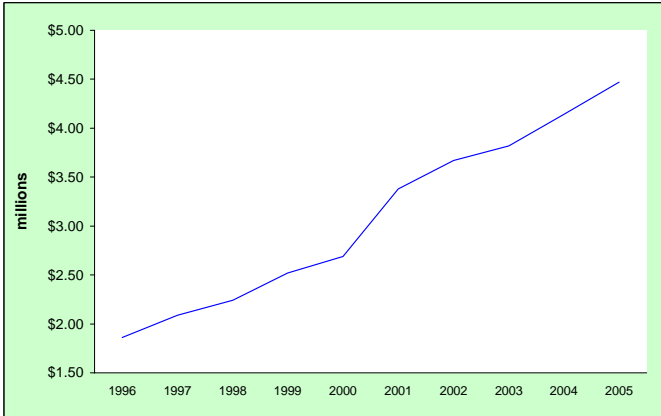
Fiscal Year	NSF Fellows	Foreign Sources
1996	4	90
1997	1	93
1998	4	67
1999	4	68
2000	7	71
2001	10	72
2002	14	68
2003	21	54
2004	23	51
2005	22	40

Outside Scholarships Students Bring to University



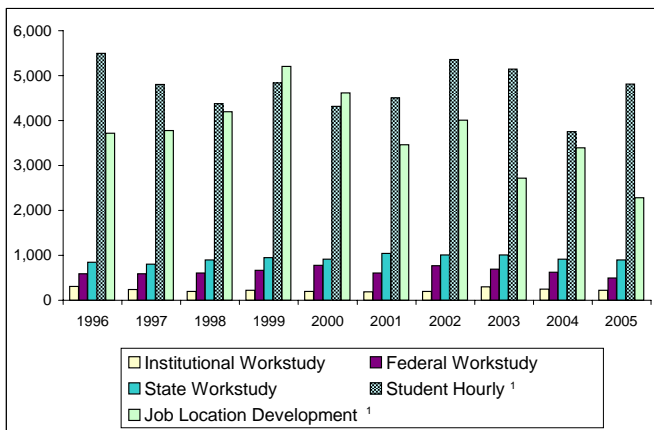
Fiscal Year	Number of Scholarships
1996	1,506
1997	1,686
1998	1,681
1999	1,905
2000	1,978
2001	2,261
2002	2,387
2003	2,458
2004	2,527
2005	2,658

Financial Aid from Outside Scholarships



Fiscal Year	Total (In Millions)
1996	\$1.86
1997	\$2.09
1998	\$2.24
1999	\$2.52
2000	\$2.69
2001	\$3.38
2002	\$3.67
2003	\$3.82
2004	\$4.14
2005	\$4.47

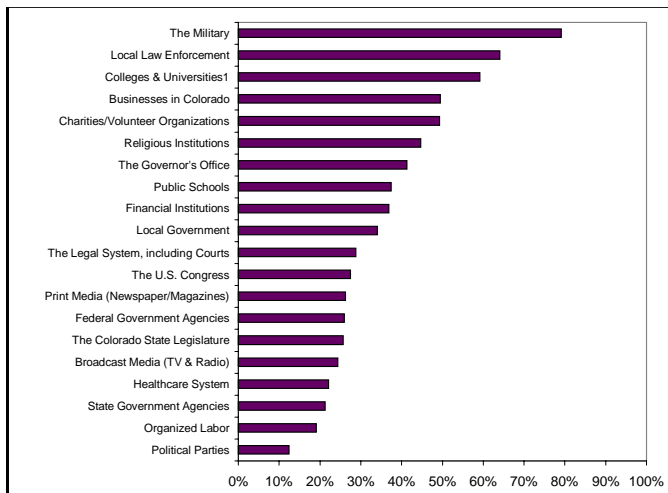
University-Related Student Employment



¹ Estimated based on sample data.

Colorado Comparisons

Confidence in Institutions

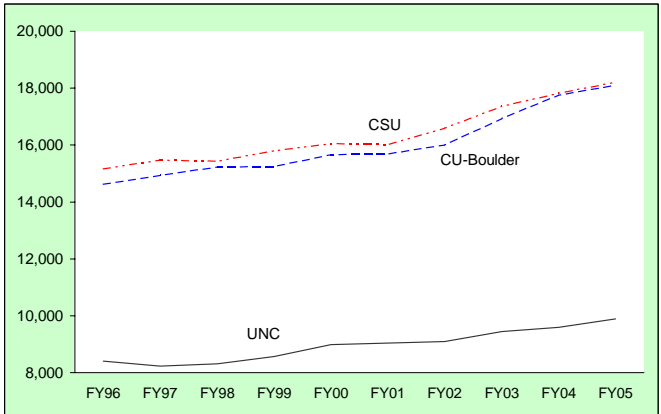


The Military	79.1%
Local Law Enforcement	64.1%
Colleges & Universities ¹	59.2%
Businesses in Colorado	49.5%
Charities/Volunteer Organizations	49.3%
Religious Institutions	44.7%
The Governor's Office	41.3%
Public Schools	37.4%
Financial Institutions	36.9%
Local Government	34.1%
The Legal System, including Courts	28.8%
The U.S. Congress	27.5%
Print Media (Newspaper/Magazines)	26.2%
Federal Government Agencies	26.0%
The Colorado State Legislature	25.7%
Broadcast Media (TV & Radio)	24.4%
Healthcare System	22.1%
State Government Agencies	21.3%
Organized Labor	19.1%
Political Parties	12.4%

Source: *The Mind of Colorado 2003*

¹Colleges and Universities were down nearly seven points, falling to their lowest score since 1998.

Comparison of Resident FTE



Full Year ¹	CSU	CU-Boulder	Univ N Colo
FY96	15,174	14,632	8,403
FY97	15,484	14,934	8,225
FY98	15,432	15,239	8,315
FY99	15,804	15,242	8,573
FY00	16,057	15,666	8,988
FY01	16,019	15,692	9,041
FY02	16,593	16,007	9,088
FY03	17,363	16,934	9,441
FY04	17,830	17,759	9,598
FY05	18,214	18,109	9,884

Note: CSU includes Professional Veterinary Medicine.

¹Full Year includes Summer, Fall and Spring semesters.

Other

University Peer Groups

Internal Peer Group

Iowa State University
Kansas State University
Michigan State University
North Carolina State University
Oklahoma State University
Oregon State University
Texas A&M University
University of Georgia
University of Missouri, Columbia
University of Nebraska, Lincoln
Virginia Polytechnic Institute
and State University
Washington State University

CCHE Peer Group

Iowa State University
Michigan State University
North Carolina State University
Ohio State University
Oklahoma State University
Oregon State University
Purdue University
Texas A&M University
University of California, Davis
University of Illinois, Urbana
Washington State University

Faculty Recognition

University Distinguished Professors

Barry Beaty, Microbiology, Immunology and Pathology
Patrick Brennan, Microbiology, Immunology and Pathology
Louis Hegedus, Chemistry
Edward Hoover, Microbiology, Immunology and Pathology
Bernard Rollin, Philosophy
Holmes Rolston III, Philosophy
George Seidel, Jr., Biomedical Sciences
Gary Smith, Animal Sciences
Graeme Stephens, Atmospheric Science
Thomas VonderHaar, Atmospheric Science
Robert Williams, Chemistry
Stephen Withrow, Clinical Sciences

University Distinguished Teaching Scholars

2003 Recipients

Rich Feller, Education
Kate Kiefer, English
Ed Redente, Forest, Rangeland and Watershed Stewardship
Wayne Viney, Psychology
Ray Whalen, Biomedical Sciences

2001 Recipients

Ken Barbarick, Soil and Crop Sciences
James Boyd, Philosophy
Ingrid Burke, Forest, Rangeland and Watershed Stewardship
Pattie Cowell, English

2000 Recipients

Mike Palmquist, English
Stephen Thompson, Chemistry
Frank Vattano, Psychology

Public Rankings

In its 2006 edition, *U.S. News and World Report* ranked CSU in the prestigious Top Tier (rank of 120) among public and private national universities and 59th among public doctoral universities in its "Best Colleges" edition. It also ranked the College of Engineering's Undergraduate Engineering Program 57th (among institutions offering doctorates) in the nation

In its 2005 edition, *U.S. News and World Report* ranked CSU's Undergraduate Business Program 87th in the nation. The Psychology (Research) Doctorate Program ranked 151st in the nation. The Graduate Engineering Program ranked 61st, Chemical Engineering and Electrical Engineering Programs both ranked 55th , Civil Engineering and Environmental Engineering both ranked 26th and Mechanical Engineering ranked 60th.

In its 2004 edition, *U.S. News and World Report* ranked CSU's Occupational Therapy Masters Program 7th in the nation. The Social Work Masters Program ranked 46th in the nation.

In its 2003 edition, *U.S. News and World Report* ranked CSU's Veterinary Medicine Program (DVM) second in the nation.

In its 2002 edition, *U.S. News and World Report* ranked CSU's Mathematics Doctoral Program 80th in the nation and the Applied Mathematics Doctoral Program 77th. The Biological Sciences Doctoral Program ranked 95th and the Chemistry Doctoral ranked 37th in the nation.

Kiplinger's Personal Finance Magazine ranked CSU 27th for quality education and affordability in their annual 100 Best Values in Public Colleges ranking.

Templeton Foundation listed CSU as a top character-building institution.

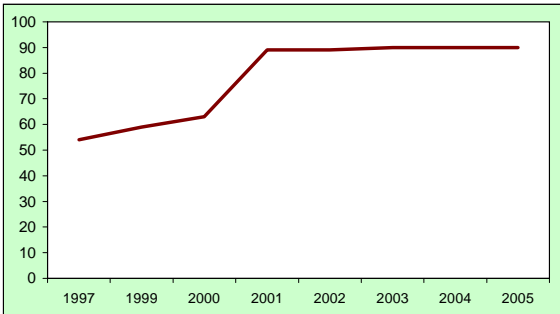
The Peace Corps ranked CSU 8th in the nation for the number of volunteers this year.

The National Science Foundation recently ranked CSU among the nation's top 5 percent of public and private institutions of higher education receiving federal research and development financial support in engineering and the sciences.

CSU ranked second in the nation in federal research and development support when compared with other public research universities without medical schools.

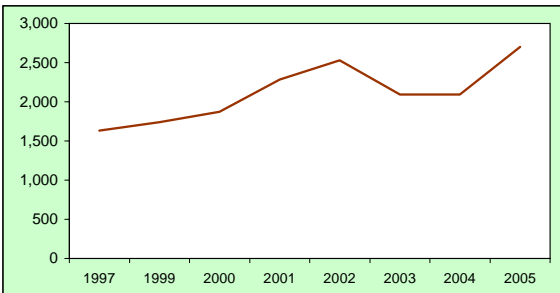
Kaplan's 2004 Unofficial, Unbiased Guide to the 328 Most Interesting Colleges lists CSU as a top university in the categories of schools that are "hot and trendy", "schools with the most beautiful campus in a suburban or rural setting" and "schools where the students enjoy themselves so much they never want to leave".

Student Computer Labs



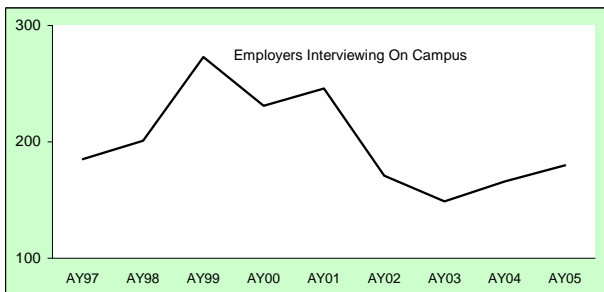
	<u>1997</u>	<u>1999</u>	<u>2000</u>	<u>2001</u>	<u>2002</u>	<u>2003</u>	<u>2004</u>	<u>2005</u>
Total	54	59	63	89	89	90	90	90

Student Computer Workstations



	<u>1997</u>	<u>1999</u>	<u>2000</u>	<u>2001</u>	<u>2002</u>	<u>2003</u>	<u>2004</u>	<u>2005</u>
Total	1,634	1,739	1,873	2,283	2,530	2,095	2,095	2,700

Campus Interview Opportunities



Academic Year	Employers Interviewing On Campus	On-Campus Interview Opportunities
AY97	185	3,042
AY98	201	5,532
AY99	273	7,685
AY00	231	7,348
AY01	246	5,024
AY02	171	2,354
AY03	149	2,725
AY04	166	2,598
AY05	180	5,709

