

SCORECARD

NOVEMBER

Colorado
State
University

2004

Knowledge in Our Places

Institutional **S**corecard

Fall 2004

Colorado
State
University

Knowledge to Go Places

DEFINITIONS

Explanation of abbreviations:

Fiscal Year, Full Year, and Degree Year all represent the same time frame so the abbreviation FY is used for all three. The only exception is Academic Year, in which case the abbreviation AY is used.

Fiscal Year is Summer, Fall, Spring. Abbreviation used is FY
Example: from Summer of 2003 to Spring of 2004 is FY04

Academic Year is Fall, Spring. Abbreviation used is AY
Example: from Fall of 2003 to Spring of 2004 is AY04

Full Year is Summer, Fall, Spring. Abbreviation used is FY
Example: from Summer of 2003 to Spring of 2004 is FY04

Degree Year is Summer, Fall, Spring Abbreviation used is FY
Example: from Summer of 2003 to Spring of 2004 is FY04

Retention and Degree Definitions:

Persistence - Rates are determined by summing graduated students and those still enrolled at the end of each study period (five years after their entry term, including summer). Students who have been dismissed, but are still enrolled in Continuing Education are not counted as persisters.

Graduation - A student is considered graduated if he or she receives a bachelor's degree after four or five calendar years. The last summer session after the four or five-year period is included for determining graduation rates. Students who entered as freshmen, stayed at Colorado State and continued into the Professional Veterinary Medicine Program are counted as four-year graduates in the college of their major while an undergraduate.

Index - The admission index is a standard developed by the Colorado Commission on Higher Education. It is derived using the components of high school work (gpa or rank) and test scores.

TABLE OF CONTENTS

Enrollment

Fall Enrollment	2
Student Level Enrollment	3
Undergraduate Enrollment by Ethnicity	4
New Freshman & Transfer Enrollment	5
Graduate Student Enrollment	6
International Student Enrollment	7
Twenty States with the Highest Nonresident Enrollment	8
High School Students Taking Courses at CSU	9
Enrollment in Technology Programs	10
Number of Students Enrolled in CSU's Unique Majors	11
WUE Enrollment by State	12
Study Abroad by Program Type	13
Honors Program	14
Distribution of Credit Hours for Undergraduates	15
Enrollment and Credit Hours Including Continuing Education	16
Resident Student FTE	17
Graduate FTE by Course Level	18
Full-Year Student FTE by College	19
Student FTE for Off-Campus RI-Funded Programs	20
Comparison of Course Section Size	21

New Freshmen

New Freshman by Residency	24
Residency Distribution of New Freshmen	25
New Freshmen Enrollment by Ethnicity	26
Ethnic Percentage of Freshmen Enrolls	27
Average CCHE Index for New Freshmen	28
CCHE Index for New Freshmen	29
CCHE Index (125 + and Less than 90)	30
Average Index for Window and Start-Up/ACCESS Enrolls	31
Average ACT Composite for New Freshmen	32
Average High School GPA for New Freshmen	33
Enrollment of Colorado High School Graduates	34
Comparison of Admission Requirements	35

Graduation

Persistence of New Freshmen	38
Persistence of Minority New Freshmen	39
Persistence Profile by Ethnicity and Index Range	40
Persistence of New Freshmen with an Index 125+	41
Five-Year Graduation Rate by Index	42
Graduation Rates Comparison: Start-Up/ACCESS and Freshmen	43
Graduation Rates Comparison: Start-Up/ACCESS and Transfer Students	44
Degrees Awarded	45

Faculty

Faculty Headcount	48
Faculty FTE	49
E&G Faculty FTE	50
E&G Faculty Salary Expenditures	51
University Student/Faculty Ratio	52
Student/Faculty Ratios by College	53
Undergraduate Credit Hours by Faculty Type	54
Percent of Undergraduate Credit Hours Taught by Tenure-Track Faculty	55
Tenure-Track Faculty Turnover	56
Number of Faculty by Rank Who Leave Prior to Receiving Tenure	57
Faculty All Ranks Combined Average Salary Comparison	58
Faculty All Ranks Combined Average Compensation Comparison	59
Faculty Merit Salary Increase Compared to the Consumer Price Index in Budget Year	60
Cumulative History of Faculty Salary Increases Compared to the Consumer Price Index in Budget Year	61
Annual AAUP Faculty Salary Information	62
Annual AAUP Faculty Salary Comparison	63

Administrative Professionals, Research Associates, and Post Doctorates

Administrative Professional Headcount	66
Administrative Professional FTE	67
E&G Administrative Professional FTE	68
E&G Administrative Professional Salary Expenditures	69
Research Associate Headcount	70

Administrative Professionals, Research Associates, and Post Doctorates cont.

Research Associate FTE	71
Post Doctoral Headcount	72
Post Doctoral FTE	73
Administrative Professional Turnover	74

State Classified

State Classified Headcount	76
State Classified FTE	77
E&G State Classified Employees	78
E&G State Classified Salary Expenditures	79
Cumulative History of State Classified Salary Increases Compared to the Consumer Price Index in Budget Year	80
State Classified Turnover	81

External Activity

CSU Foundation Total Invested Assets	84
1870 Club Members	85
Summary of Private Support	86-87
Assessment by Alumni	88

Financial Information

2004-05 Budgeted Revenue	90
2004-05 Budgeted Expenditures	91
Education & General 2004-05 Budgeted Revenue	92
Education & General 2004-05 Budgeted Expenditures	93
E&G Budgeted Revenue	94
Comparison Of General Fund Appropriations	95
53 Fund FTE and Expenditures as a Percent of Total for Regular Faculty Paid from E&G and Research Funds	96
E&G Salary Expenditures as a Percent of Total Budget	97
Central Reallocations	98
College & Unit Reallocations	99
E&G Institutional Support Expenditures as a Percent of Total Expenditures	100
Total Resident & Nonresident Tuition Revenue	101

Financial Information cont.

Federal Research and Development Expenditures, CCHE Peer Institutions	102
Federal Research and Development Expenditures, Internal Peer Institutions	103
Resident Undergraduate Tuition Increases CSU and CCHE Peer Institutions	104
Nonresident Undergraduate Tuition Increases CSU and CCHE Peer Institutions	105
State Appropriations - Peer Comparisons.	106
Change in Appropriations of State Tax Funds	107
Higher Education Share of Statewide General Fund	108
Annual Research Expenditures.	109

Financial Aid

Financial Aid Recipients.	112
Financial Aid Awarded to Students	113
Need-Based Financial Aid Recipients	114
Financial Aid Recipients as a Percent of Total Student Population	115
Historical View of Financial Aid Resources Actual Expenditures.	116
Resident Tuition Compared to Average Pell Grant and Average Stafford Loan.	117
Boettcher and National Merit Scholars.	118
Graduate Students with Funding from External Sources	119
Outside Scholarships Students Bring to University	120
Financial Aid from Outside Scholarships.	121
University-Related Student Employment.	122

Colorado Comparisons

Confidence in Institutions.	124
Comparison of Resident FTE	125
CCHE Quality Indicators for FY05 Budget Process	126-127
Six-Year Graduation Rates of 1991 Freshmen by Admissions Index	128

Other

University Peer Groups	130
Faculty Recognition	131
Public Rankings.	132
Student Computer Labs and Workstations	133
Campus Interview Opportunities.	134

List of Supplemental Scorecard Items Available on the Web: www.colostate.edu/Depts/OBIA

Board of Governor's Diversity Report

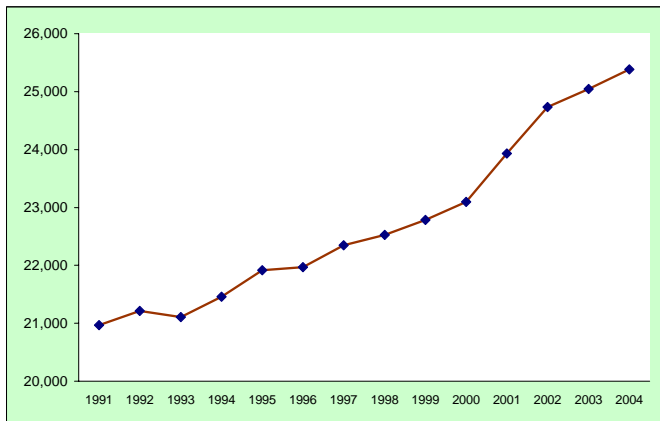
- Summary of Bachelor's Student Ethnicity and Gender Profile
- Summary of Master's Student Ethnicity and Gender Profile
- Summary of Doctoral Student Ethnicity and Gender Profile
- Summary of Professional Veterinary Medicine Student Ethnicity and Gender Profile
- Employee Summary Profile
- Faculty Summary Profile
- Tenure and Promotion Profile
- Hiring Process Profile
- Administrative Professional Summary Profile
- Administrative Professionals by Job Title, Gender and Ethnicity Profile
- Research Associates Summary Profile
- State Classified Summary Profile
- Change in Appropriations of State Tax Funds for Operating Expenses
- CSU Inflation Adjusted Revenue, FY96 through FY03
- Faculty Workload by Department
- Trends in Volunteering and Service Learning

Facilities:

- Institutional Efforts to Solve Funding Problems
- Summary of Institutional Master Plan
- Facilities Audit Program
- Building Revitalization (BRP) & Revitalization Plan Schedule

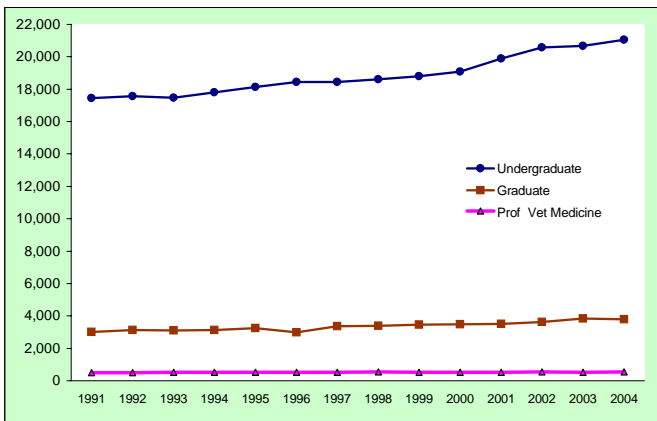
Enrollment

Fall Enrollment



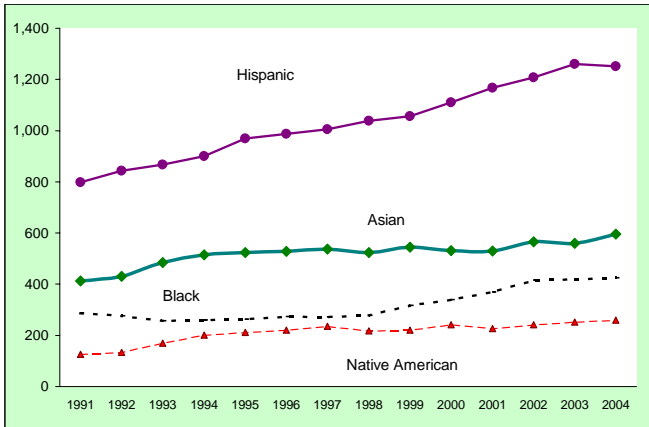
<u>Fall</u>	<u>All Students</u>
1991	20,967
1992	21,210
1993	21,110
1994	21,461
1995	21,914
1996	21,970
1997	22,344
1998	22,523
1999	22,782
2000	23,098
2001	23,934
2002	24,735
2003	25,042
2004	25,382

Student Level Enrollment



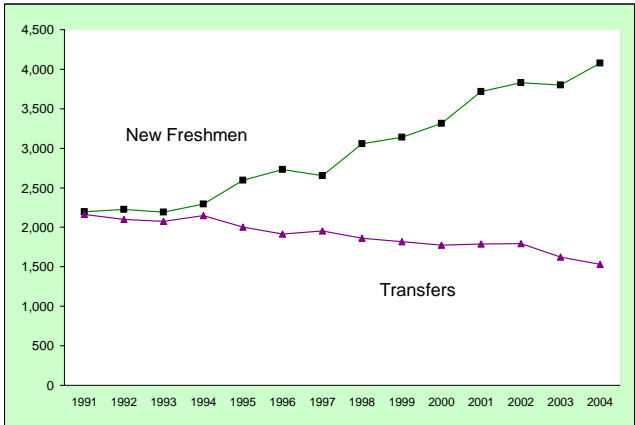
	Under-graduate	Graduate	Prof Vet Medicine	Total
Fall 1991	17,460	3,009	498	20,967
1992	17,572	3,134	504	21,210
1993	17,475	3,109	526	21,110
1994	17,800	3,138	523	21,461
1995	18,136	3,257	521	21,914
1996	18,451	2,989	530	21,970
1997	18,451	3,361	532	22,344
1998	18,607	3,380	536	22,523
1999	18,800	3,452	530	22,782
2000	19,075	3,494	529	23,098
2001	19,899	3,507	528	23,934
2002	20,568	3,630	537	24,735
2003	20,678	3,837	527	25,042
2004	21,049	3,795	538	25,382

Undergraduate Enrollment by Ethnicity



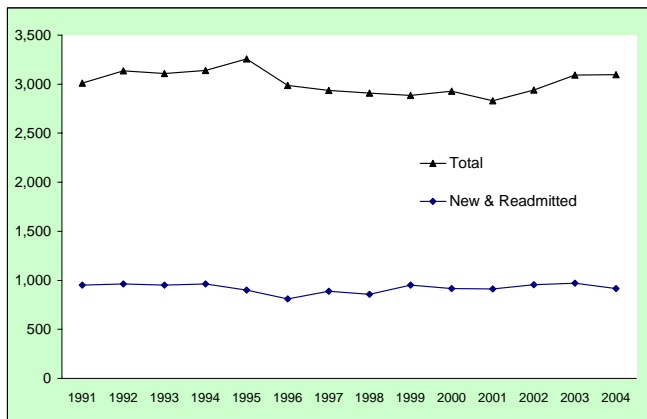
	Asian	Black	Hispanic	Native American	Total
Fall					
1991	412	286	799	126	1,623
1992	431	276	843	134	1,684
1993	484	257	867	170	1,778
1994	514	259	900	201	1,874
1995	523	262	970	211	1,966
1996	528	273	987	221	2,009
1997	537	272	1,006	235	2,050
1998	523	277	1,038	218	2,056
1999	545	317	1,056	220	2,138
2000	531	339	1,110	242	2,222
2001	529	369	1,168	227	2,293
2002	566	416	1,208	241	2,431
2003	559	418	1,260	252	2,489
2004	596	424	1,252	260	2,532

New Freshman & Transfer Enrollment



	New Freshmen	Transfer Students	Total
1991	2,195	2,164	4,359
1992	2,225	2,100	4,325
1993	2,194	2,073	4,267
1994	2,295	2,148	4,443
1995	2,594	2,000	4,594
1996	2,733	1,917	4,650
1997	2,654	1,955	4,609
1998	3,056	1,863	4,919
1999	3,137	1,817	4,954
2000	3,314	1,776	5,090
2001	3,720	1,789	5,509
2002	3,829	1,791	5,620
2003	3,802	1,625	5,427
2004	4,078	1,532	5,610

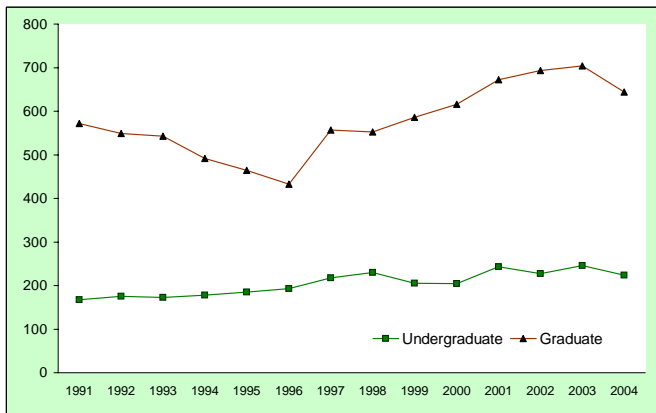
Graduate Student Enrollment



<u>Fall</u>	<u>New & Readmitted</u>	<u>Total</u>
1991	951	3,009
1992	962	3,134
1993	951	3,109
1994	964	3,138
1995	901	3,257
1996	812	2,989
1997	890	2,935
1998	856	2,908
1999	953	2,884
2000	915	2,930
2001	913	2,831
2002	955	2,939
2003	969	3,092
2004	918	3,098

Note: Continuous enrollment of graduate students began in Fall 1997 and these students are excluded. Professional Veterinary Medicine is also excluded.

International Student Enrollment



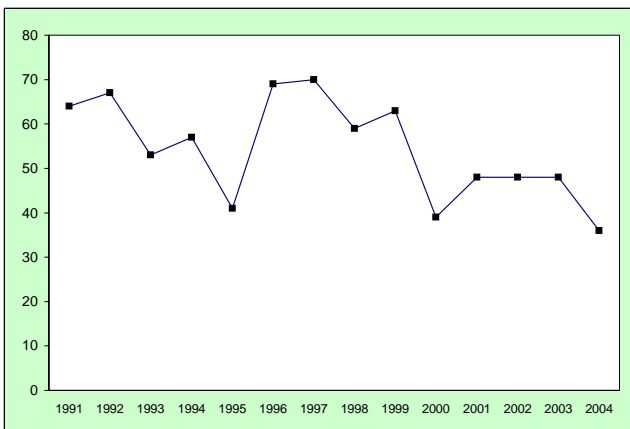
Fall	Undergraduate	Graduate	Total
1991	167	572	739
1992	175	549	724
1993	173	543	716
1994	178	492	670
1995	185	464	649
1996	193	433	626
1997	218	557	775
1998	230	552	782
1999	205	586	791
2000	204	616	820
2001	243	672	915
2002	227	693	920
2003	246	704	950
2004	224	644	868

Note: Graduate enrollment includes Professional Veterinary Medicine.

Twenty States with Highest Nonresident Enrollment

Fall:	1995	1996	1997	1998	1999	2000	2001	2002	2003	2004
Texas	188	186	198	206	222	285	349	393	399	406
Illinois	262	288	314	347	338	329	344	347	342	369
California	655	555	472	440	389	333	340	318	323	359
New Mexico	154	180	159	160	150	143	161	171	170	156
Wyoming	108	89	83	106	118	130	139	135	114	131
Minnesota	119	125	122	131	126	110	99	117	113	122
Alaska	75	85	96	99	96	101	119	122	121	111
Nebraska	106	97	110	115	124	112	143	137	115	111
Washington	50	49	52	52	75	68	86	86	82	108
Oregon	63	64	52	51	65	73	80	85	93	102
Missouri	82	78	71	86	89	75	108	106	91	93
Hawaii	156	135	131	137	146	140	122	107	103	92
Pennsylvania	91	98	105	91	95	87	75	82	85	91
Arizona	71	72	70	64	67	62	71	64	75	76
Ohio	87	88	90	112	111	107	87	93	91	75
Kansas	54	53	54	44	65	79	76	73	74	72
Wisconsin	69	76	74	62	73	98	99	99	84	71
Michigan	74	86	66	63	73	82	82	100	92	67
Iowa	47	67	64	58	73	64	88	77	74	67
South Dakota	42	41	39	34	32	43	52	56	64	67

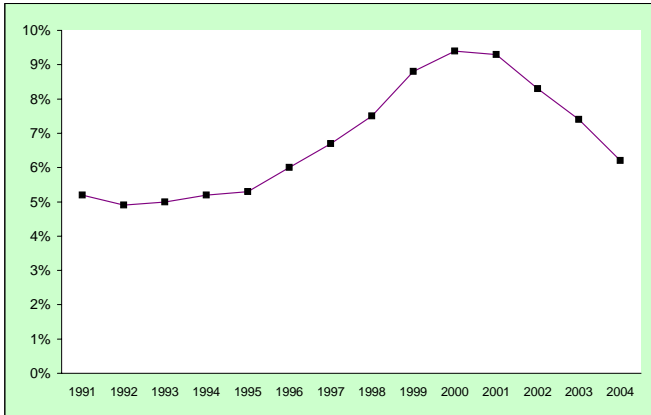
High School Students Taking Courses at CSU



Fall	Enrollment
1991	64
1992	67
1993	53
1994	57
1995	41
1996	69
1997	70
1998	59
1999	63
2000	39
2001	48
2002	48
2003	48
2004	36

Note: Fort Collins High School moved from near campus to 5 miles away in Fall 1995.
A policy change in 2000 required high school students to pay up front for classes taken at CSU.

Enrollment in Technology Programs

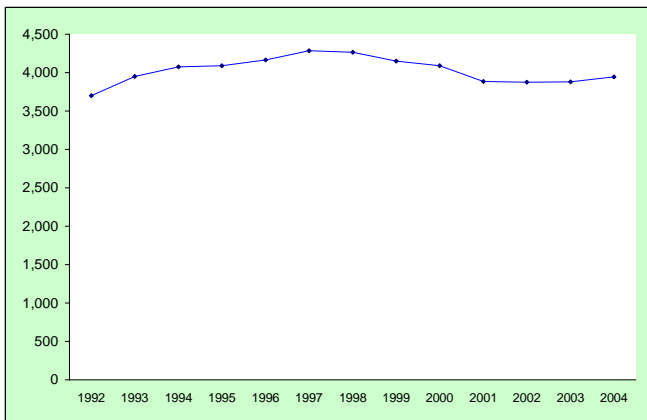


Percent of Total Enrollment	
Fall	
1991	5.2%
1992	4.9%
1993	5.0%
1994	5.2%
1995	5.3%
1996	6.0%
1997	6.7%
1998	7.5%
1999	8.8%
2000	9.4%
2001	9.3%
2002	8.3%
2003	7.4%
2004	6.2%

Technology Programs include:

Computer Engineering, Computer Information Systems, Computer Science
Electrical Engineering, Technical Journalism

Number of Students Enrolled in CSU's Unique Majors



<u>Fall</u>	<u>Students</u>	<u>Percent of Total</u>
1992	3,702	17%
1993	3,949	19%
1994	4,077	19%
1995	4,091	19%
1996	4,163	19%
1997	4,285	19%
1998	4,264	19%
1999	4,150	18%
2000	4,089	18%
2001	3,884	16%
2002	3,875	16%
2003	3,881	15%
2004	3,947	16%

Colorado State offers about 30 programs of study which are unique in Colorado.

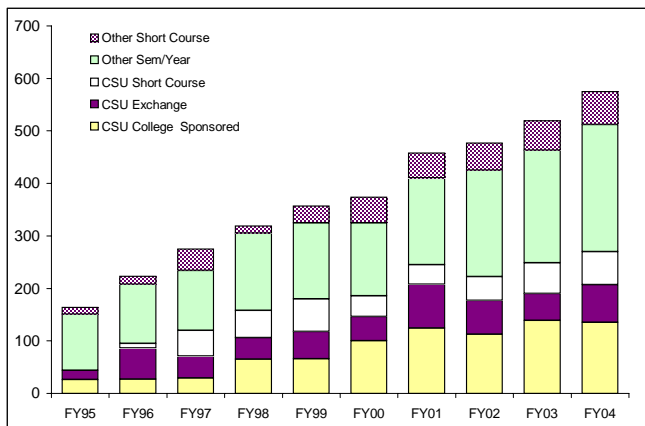
WUE Enrollment by State

	<u>Fall:</u>	<u>1995</u>	<u>1996</u>	<u>1997</u>	<u>1998</u>	<u>1999</u>	<u>2000</u>	<u>2001</u>	<u>2002</u>	<u>2003</u>	<u>2004</u>
Alaska		24	25	30	32	37	37	38	39	33	32
Arizona		0	0	0	0	0	5	11	13	17	24
Hawaii		49	49	44	57	62	53	44	30	22	16
Idaho		10	7	13	12	13	16	10	12	10	17
Montana		21	23	27	29	31	23	18	25	20	15
Nevada		22	20	22	19	21	22	19	20	16	19
New Mexico		51	71	57	54	59	53	58	55	54	49
North Dakota		4	3	8	7	8	9	8	9	6	6
Oregon		23	21	11	20	16	23	26	24	24	34
South Dakota		7	8	10	8	8	14	18	19	21	30
Utah		13	12	9	9	7	12	13	17	16	11
Washington		0	0	0	0	5	7	14	14	20	19
Wyoming		22	22	18	18	23	27	31	30	26	34
State not reported		0	0	0	0	0	0	0	0	0	3
Total		246	261	249	265	290	301	308	307	285	309
WUE New Freshmen		66	76	76	97	98	78	85	103	78	123

WUE = Western Undergraduate Exchange, a program of the Western Interstate Commission for Higher Education (WICHE). In fall of 2000, WUE became a scholarship program for students from certain western states with a CCHE index of 126 or above.

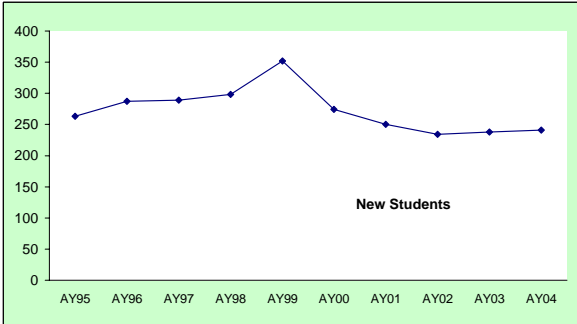
Note: Numbers are Resident Instruction students.

Study Abroad by Program Type



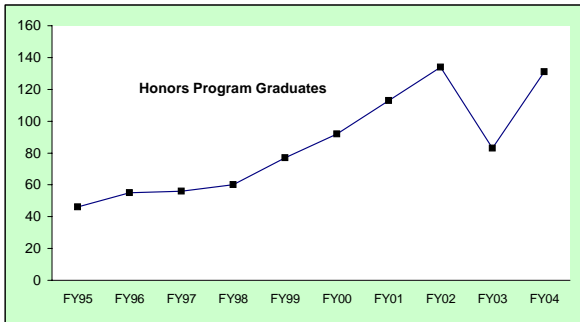
Full Year	CSU College Sponsored	CSU Exchange	CSU Short Course	Other Sem/Year	Other Short Course	Total
FY95	26	18	0	107	13	164
FY96	27	59	9	113	15	223
FY97	29	42	49	114	41	275
FY98	65	41	52	147	14	319
FY99	66	52	62	145	32	357
FY00	100	46	40	139	49	374
FY01	124	84	37	165	48	458
FY02	113	64	45	203	52	477
FY03	139	51	59	214	56	519
FY04	135	72	63	242	63	575

Honors Program



Academic Year: AY95 AY96 AY97 AY98 AY99 AY00 AY01 AY02 AY03 AY04

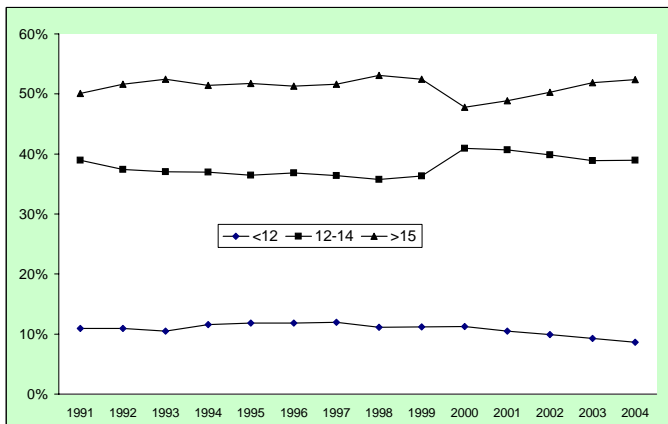
New Students: 263 287 289 298 352 274 250 234 238 241



Degree Year: FY95 FY96 FY97 FY98 FY99 FY00 FY01 FY02 FY03 FY04

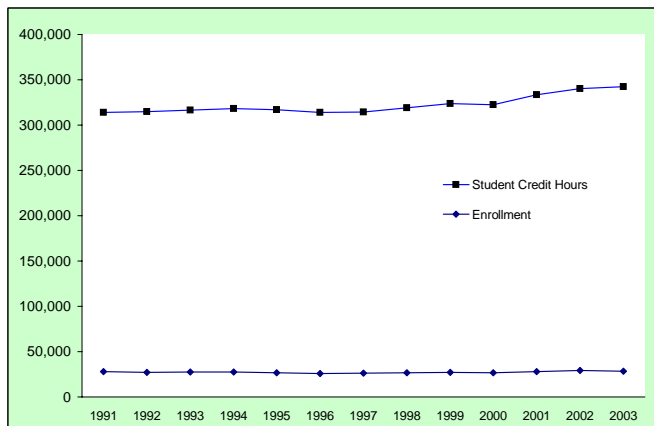
Graduates: 46 55 56 60 77 92 113 134 83 131

Distribution of Credit Hours for Undergraduates



Fall	Undergraduates			Total	% of total		
	<12	12-14	>15		<12	12-14	>15
1991	1,910	6,803	8,747	17,460	10.9%	39.0%	50.1%
1992	1,924	6,575	9,073	17,572	10.9%	37.4%	51.6%
1993	1,829	6,475	9,171	17,475	10.5%	37.1%	52.5%
1994	2,060	6,581	9,159	17,800	11.6%	37.0%	51.5%
1995	2,141	6,608	9,387	18,136	11.8%	36.4%	51.8%
1996	2,179	6,804	9,468	18,451	11.8%	36.9%	51.3%
1997	2,205	6,719	9,527	18,451	12.0%	36.4%	51.6%
1998	2,073	6,658	9,876	18,607	11.1%	35.8%	53.1%
1999	2,099	6,836	9,865	18,800	11.2%	36.4%	52.5%
2000	2,147	7,810	9,118	19,075	11.3%	40.9%	47.8%
2001	2,090	8,090	9,719	19,899	10.5%	40.7%	48.8%
2002	2,037	8,194	10,337	20,568	9.9%	39.8%	50.3%
2003	1,915	8,041	10,722	20,678	9.3%	38.9%	51.9%
2004	1,821	8,195	11,033	21,049	8.7%	38.9%	52.4%

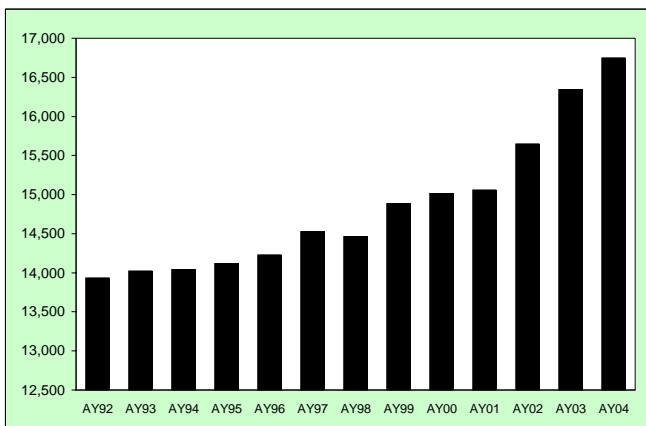
Enrollment and Credit Hours Including Division of Continuing Education



Fall	Enrollment	Student Credit Hours	Credit Hours per Student
1991	27,851	314,084	11.28
1992	27,325	314,909	11.52
1993	27,513	316,448	11.50
1994	27,632	318,071	11.51
1995	26,700	316,973	11.87
1996	25,699	313,989	12.22
1997	26,430	314,229	11.89
1998	26,837	319,061	11.89
1999	27,185	323,609	11.90
2000	26,870	322,488	12.00
2001	28,161	333,463	11.84
2002	29,192	340,440	11.66
2003	28,184	342,278	12.14

Data includes Resident Instruction figures as well as numbers for students enrolled through Division of Continuing Education taking courses on the main campus.

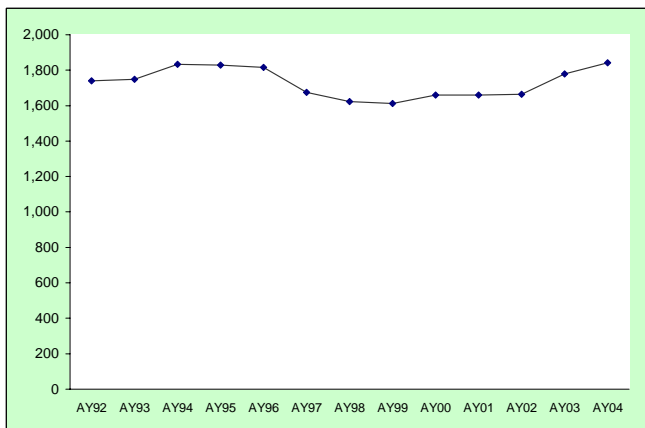
Resident Student FTE



<u>Academic Year</u>	<u>FTE of Residents</u>
AY92	13,934.6
AY93	14,022.2
AY94	14,047.7
AY95	14,122.6
AY96	14,229.4
AY97	14,530.7
AY98	14,463.2
AY99	14,887.1
AY00	15,021.9
AY01	15,060.5
AY02	15,647.5
AY03	16,346.4
AY04	16,750.9

Note: Includes Professional Veterinary Medicine

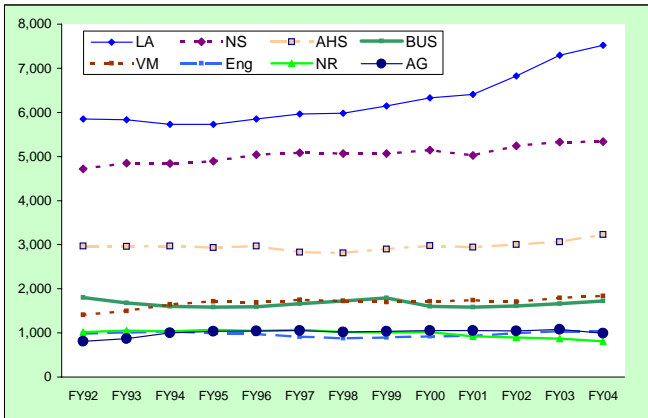
Graduate FTE by Course Level



<u>Academic Year</u>	<u>FTE</u>
AY92	1,739
AY93	1,749
AY94	1,834
AY95	1,829
AY96	1,816
AY97	1,674
AY98	1,624
AY99	1,612
AY00	1,659
AY01	1,660
AY02	1,665
AY03	1,778
AY04	1,842

Note: Professional Veterinary Medicine is excluded.
FTE generated by enrollment in graduate courses.

Full-Year Student FTE by College

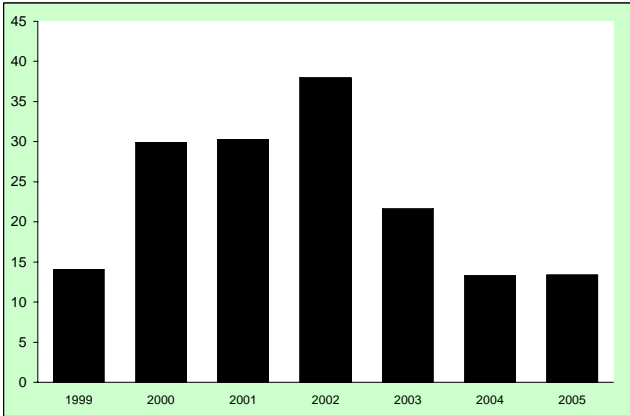


Full Year ¹	AG	AHS	Bus	Eng	IntraU	LA	NR	NS	VM	Total
FY92	808	2,968	1,805	988	43	5,852	1,023	4,717	1,413	19,615
FY93	870	2,963	1,679	1,013	46	5,831	1,056	4,845	1,498	19,800
FY94	1,001	2,971	1,602	1,033	47	5,724	1,032	4,844	1,644	19,899
FY95	1,033	2,937	1,581	988	50	5,727	1,074	4,896	1,711	19,996
FY96	1,045	2,971	1,589	971	51	5,850	1,045	5,044	1,691	20,256
FY97	1,055	2,833	1,661	910	71	5,965	1,073	5,080	1,746	20,394
FY98	1,014	2,810	1,723	878	56	5,980	1,019	5,065	1,722	20,266
FY99	1,034	2,896	1,792	898	60	6,148	1,011	5,062	1,699	20,600
FY00	1,050	2,978	1,605	921	61	6,327	1,020	5,144	1,715	20,821
FY01	1,051	2,939	1,585	935	108	6,406	920	5,027	1,738	20,709
FY02	1,046	3,001	1,613	996	135	6,829	901	5,240	1,708	21,468
FY03	1,077	3,068	1,662	1,036	155	7,298	873	5,324	1,795	22,287
FY04	996	3,231	1,720	1,031	146	7,519	806	5,338	1,838	22,625

¹Full Year is Summer, Fall, Spring semesters.

Note: PVM is included.

Student FTE for Off-Campus RI-Funded Programs



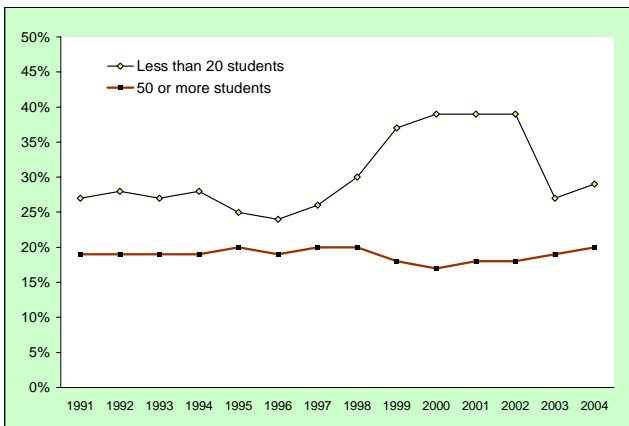
Student FTE for Full Year:

	1999	2000	2001	2002	2003	2004	2005
<u>MSW: Social Work</u>							
Western Slope	14.1	12.1	6.1	7.6	0.0	0.0	0.0
<u>M.Ed.: Ed and Human Res Studies</u>							
Sterling	--	8.1	8.3	7.5	0.0	0.0	0.0
Pueblo	--	--	11.6	17.8	7.7	0.0	0.0
<u>Ph.D.: Ed and Human Res Studies</u>							
Grand Junction	--	9.7	4.3	5.1	2.5	1.2	5.2
<u>M.Ed.: Counseling & Career Dev</u>							
Pueblo	--	--	--	--	8.7	8.1	5.0
<u>Ph.D.: Community Coll Leadership</u>							
Pueblo	--	--	--	--	2.8	4.0	3.2
Total	14.1	29.9	30.3	38.0	21.7	13.3	13.4

Source: College of Applied Human Sciences

Note: 2005 is estimated.

Comparison of Course Section Size



Undergraduate Course Sections

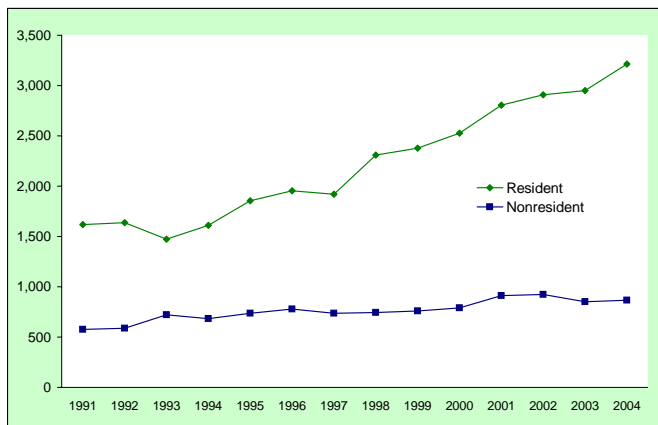
Fall	Less than 20 students	50 or more students
1991	27%	19%
1992	28%	19%
1993	27%	19%
1994	28%	19%
1995	25%	20%
1996	24%	19%
1997	26%	20%
1998	30%	20%
1999	37%	18%
2000	39%	17%
2001	39%	18%
2002	39%	18%
2003	27%	19%
2004 ¹	29%	20%

Note: Beginning in 1997, data are calculated using criteria for U.S. News & World Report.

¹2004 data are from the start of the term.

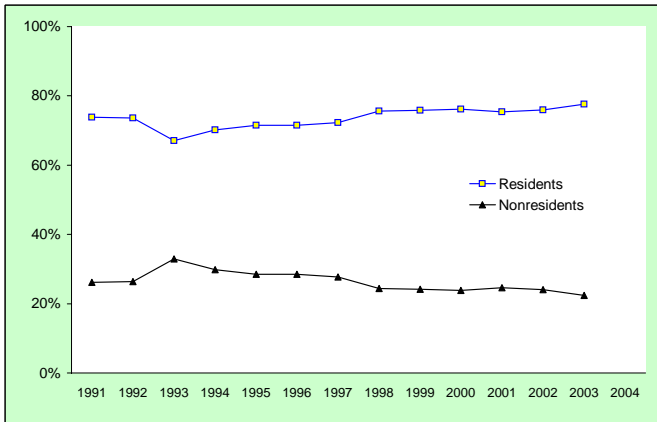
New Freshmen

New Freshman by Residency



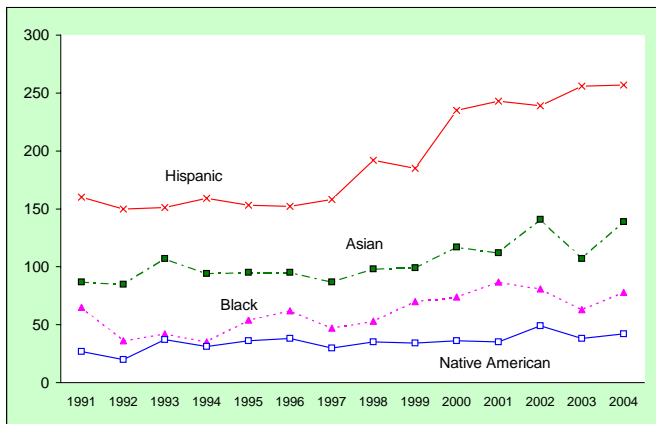
<u>Fall</u>	<u>Resident</u>	<u>Nonresident</u>	<u>Total</u>
1991	1,619	576	2,195
1992	1,638	587	2,225
1993	1,473	721	2,194
1994	1,612	683	2,295
1995	1,856	738	2,594
1996	1,955	778	2,733
1997	1,918	736	2,654
1998	2,310	746	3,056
1999	2,377	760	3,137
2000	2,525	789	3,314
2001	2,806	914	3,720
2002	2,907	922	3,829
2003	2,950	852	3,802
2004	3,212	866	4,078

Residency Distribution of New Freshmen



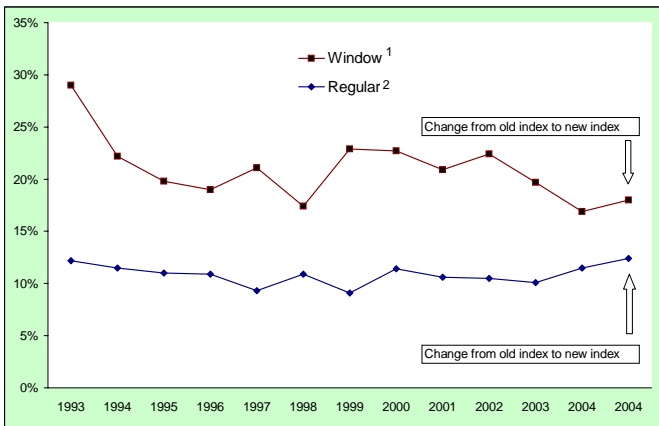
<u>Fall</u>	<u>Residents</u>	<u>Nonresidents</u>
1991	73.8%	26.2%
1992	73.6%	26.4%
1993	67.1%	32.9%
1994	70.2%	29.8%
1995	71.5%	28.5%
1996	71.5%	28.5%
1997	72.3%	27.7%
1998	75.6%	24.4%
1999	75.8%	24.2%
2000	76.2%	23.8%
2001	75.4%	24.6%
2002	75.9%	24.1%
2003	77.6%	22.4%
2004	78.8%	21.2%

New Freshmen Enrollment by Ethnicity



Fall	Native				Total
	Asian	Black	Hispanic	American	
1991	87	65	160	27	339
1992	85	36	150	20	291
1993	107	42	151	37	337
1994	94	35	159	31	319
1995	95	54	153	36	338
1996	95	62	152	38	347
1997	87	47	158	30	322
1998	98	53	192	35	378
1999	99	70	185	34	388
2000	117	74	235	36	462
2001	112	87	243	35	477
2002	141	81	239	49	510
2003	107	63	256	38	464
2004	139	78	257	42	516

Ethnic Percentage of Freshmen Enrolls



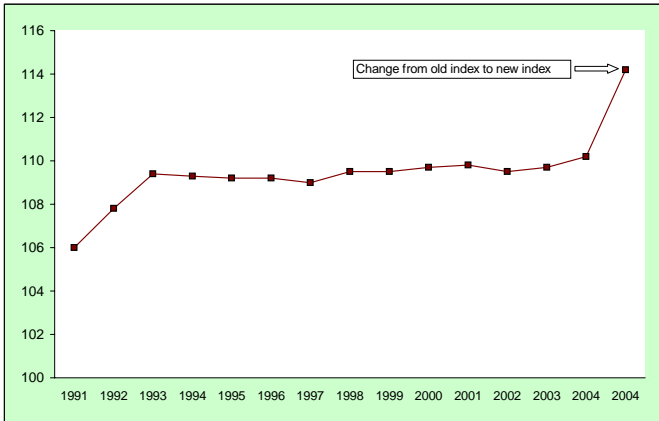
Minority Percentage

Fall	Window ¹	Regular ²	
1993	29.0%	12.2%	
1994	22.2%	11.5%	
1995	19.8%	11.0%	
1996	19.0%	10.9%	
1997	21.1%	9.3%	
1998	17.4%	10.9%	
1999	22.9%	9.1%	
2000	22.7%	11.4%	
2001	20.9%	10.6%	
2002	22.4%	10.5%	
2003	19.7%	10.1%	
2004	16.9%	11.5%	old index
2004	18.0%	12.4%	new index

¹Window enrolls are students with less than a 101 index.

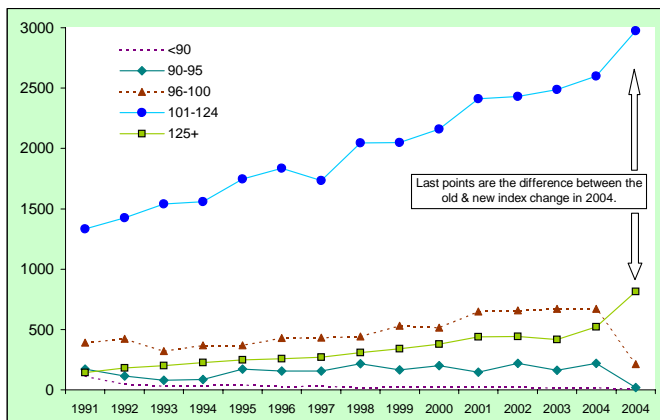
²Regular enrolls are students with an index of 101 or higher.

Average CCHE Index for New Freshmen



<u>Fall</u>	<u>CCHE</u> <u>Index</u>	
1991	106.0	
1992	107.8	
1993	109.4	
1994	109.3	
1995	109.2	
1996	109.2	
1997	109.0	
1998	109.5	
1999	109.5	
2000	109.7	
2001	109.8	
2002	109.5	
2003	109.7	
2004	110.2	old index
2004	114.2	new index

CCHE Index for New Freshmen

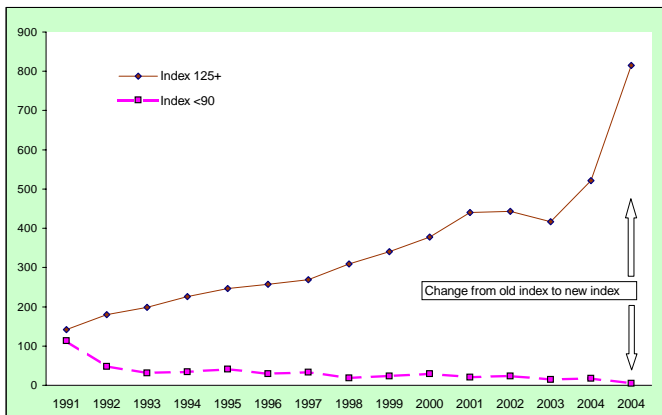


	New Freshmen					Percent of Total				
	<90	90-95	96-100	101-124	125+	<90	90-95	96-100	101-124	125+
1991	113	172	392	1,332	142	5%	8%	18%	62%	7%
1992	48	113	424	1,426	180	2%	5%	19%	65%	8%
1993	31	80	320	1,539	199	1%	4%	15%	71%	9%
1994	34	87	369	1,560	226	1%	4%	16%	69%	10%
1995	41	171	369	1,747	247	2%	7%	14%	68%	9%
1996	29	156	430	1,835	257	1%	6%	16%	68%	9%
1997	33	155	432	1,733	269	1%	6%	16%	66%	10%
1998	19	216	442	2,045	309	1%	7%	15%	67%	10%
1999	23	167	531	2,049	340	1%	5%	17%	66%	11%
2000	29	202	514	2,161	378	1%	6%	16%	66%	11%
2001	21	147	649	2,410	440	1%	4%	17%	66%	12%
2002	23	218	660	2,431	443	1%	6%	18%	64%	11%
2003	15	161	672	2,488	417	1%	4%	18%	65%	11%
2004 ¹	18	218	671	2,600	521	1%	5%	17%	64%	13%
2004 ²	5	20	214	2,974	815	1%	1%	5%	73%	20%

¹Based on the old index

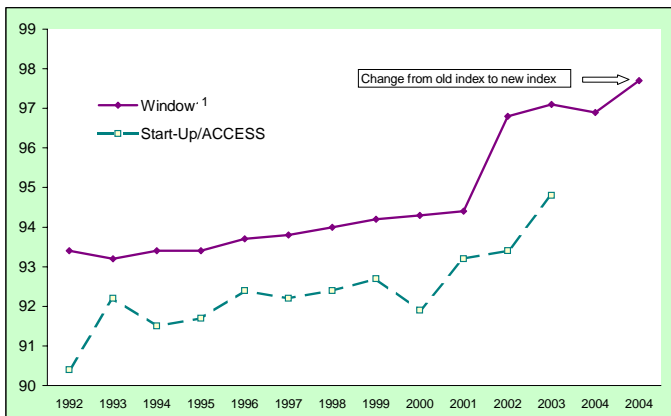
²Based on the new index

CCHE Index



Fall	Index 125+			Index <90	
	WUE	Other	Total	Total	
1991	3	139	142	113	
1992	4	176	180	48	
1993	13	186	199	31	
1994	16	210	226	34	
1995	9	238	247	41	
1996	18	239	257	29	
1997	12	257	269	33	
1998	16	293	309	19	
1999	25	315	340	23	
2000	77	301	378	29	
2001	85	355	440	21	
2002	103	340	443	23	
2003	78	339	417	15	
2004	97	424	521	old index	18
2004	123	692	815	new index	5

Comparison of Average Index Window and Start-Up/ACCESS Enrolls



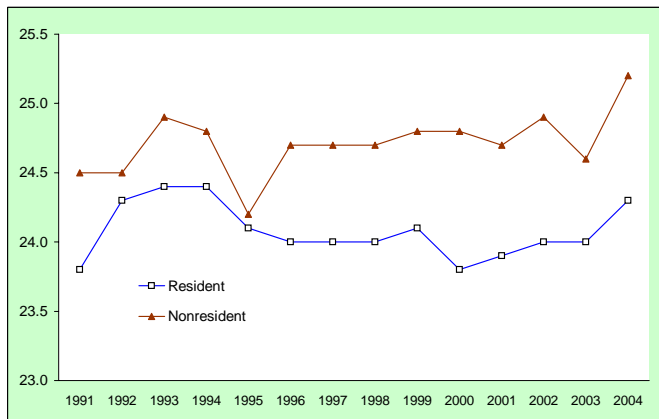
Average Index Score

Fall	Window ¹	Start-Up/ ACCESS	
1992	93.4	90.4	
1993	93.2	92.2	
1994	93.4	91.5	
1995	93.4	91.7	
1996	93.7	92.4	
1997	93.8	92.2	
1998	94.0	92.4	
1999	94.2	92.7	
2000	94.3	91.9	
2001	94.4	93.2	
2002	96.8	93.4	
2003	97.1	94.8	
2004 ²	96.9	n/a	old index
2004 ²	97.7	n/a	new index

¹Window students have a CCHE Index score of less than 101.

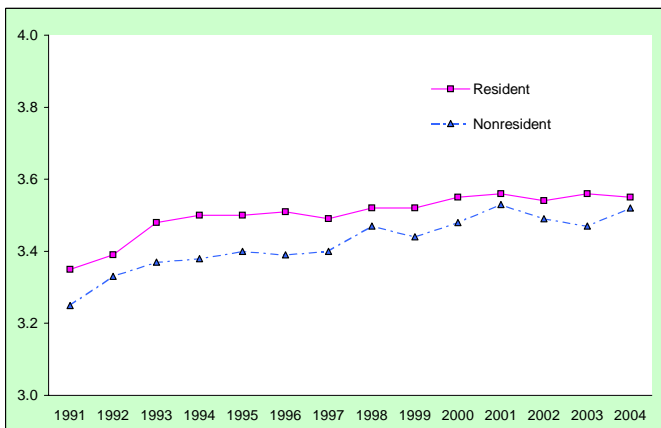
²Start-up/ACCESS was discontinued in Fall of 2004.

Average ACT Composite for New Freshmen



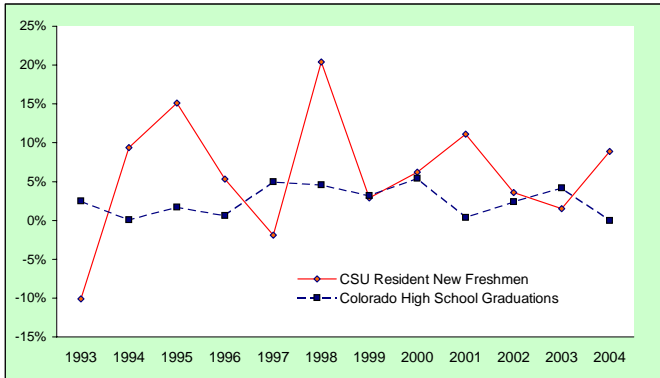
Fall	Resident	Nonresident	Total
1991	23.8	24.5	23.9
1992	24.3	24.5	24.3
1993	24.4	24.9	24.5
1994	24.4	24.8	24.4
1995	24.1	24.2	24.1
1996	24.0	24.7	24.1
1997	24.0	24.7	24.2
1998	24.0	24.7	24.2
1999	24.1	24.8	24.2
2000	23.8	24.8	24.0
2001	23.9	24.7	24.0
2002	24.0	24.9	24.2
2003	24.0	24.6	24.1
2004	24.3	25.2	24.4

Average High School GPA for New Freshmen



Fall	Resident	Nonresident	Total
1991	3.35	3.25	3.33
1992	3.39	3.33	3.38
1993	3.48	3.37	3.45
1994	3.50	3.38	3.47
1995	3.50	3.40	3.47
1996	3.51	3.39	3.48
1997	3.49	3.40	3.46
1998	3.52	3.47	3.50
1999	3.52	3.44	3.50
2000	3.55	3.48	3.54
2001	3.56	3.53	3.55
2002	3.54	3.49	3.53
2003	3.56	3.47	3.54
2004	3.55	3.52	3.54

Enrollment of New Resident Freshmen Compared to Colorado High School Graduations



Percent Change in Each Category from Previous Year

	CSU Resident New Freshmen	Colorado High School Graduations
1993	-10.1%	2.5%
1994	9.4%	0.1%
1995	15.1%	1.7%
1996	5.3%	0.6%
1997	-1.9%	5.0%
1998	20.4%	4.6%
1999	2.9%	3.2%
2000	6.2%	5.4%
2001	11.1%	0.4%
2002	3.6%	2.4%
2003	1.5%	4.2%
2004	8.9%	N/A ¹

¹Data for 2004 high school graduations will not be available until Spring '05.

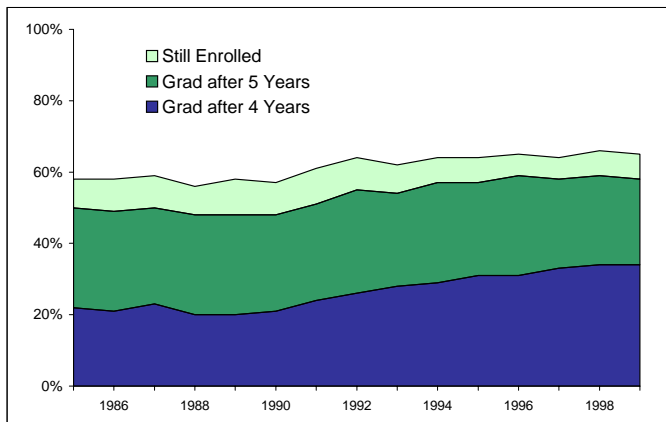
Comparison of Admission Requirements Index Score Equivalents of Selected Institutions

	Index ¹	Mandatory Admissions Cutoff	"Window" exceptions to Admissions cutoff	High School Math Requirement (years)
Arizona State	95	No	No limit	4
Florida	95	No	10%	3
Florida State	101	No	No limit	4
Georgia	91	Yes	No limit	4
Iowa State	83	No	No limit	3
Kansas State	77	NA	10%	3
Missouri - Columbia	90	Yes	10%	4
Nebraska	84	No	No limit	4
North Carolina State	102	No	25%	3
Oklahoma State	79	Yes	8%	3
Oregon State	96	NA	No limit	3
Texas A&M	86	NA	"Most meet cutoff"	3.5
Virginia Tech	96	NA	10%	3
Washington State	87	NA	No limit	3
Colorado State	101	Yes	20%	3

¹Estimated equivalent of CCHE Index score.
Data is as of Fall 2004.

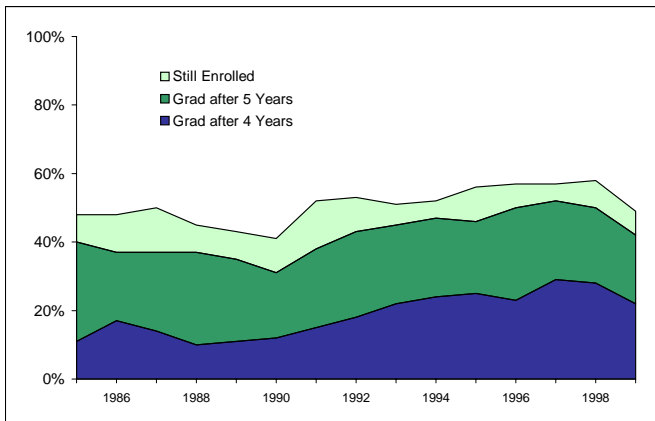
Graduation

Persistence of New Freshmen



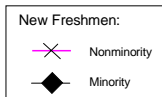
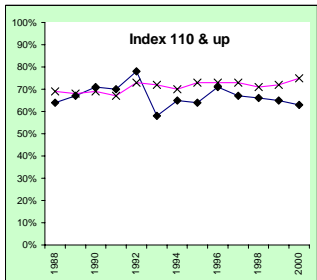
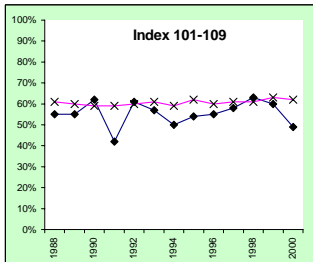
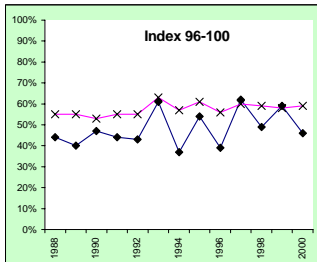
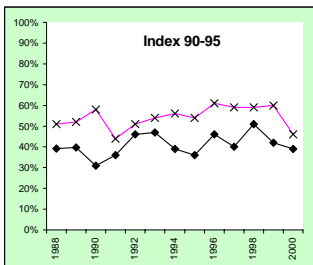
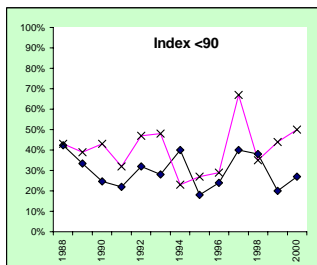
Fall Entered	Grad after 4 Years	Grad after 5 Years	Still Enrolled	Overall Persistence
1985	22%	28%	8%	58%
1986	21%	28%	9%	58%
1987	23%	27%	9%	59%
1988	20%	28%	8%	56%
1989	20%	28%	10%	58%
1990	21%	27%	9%	57%
1991	24%	27%	10%	61%
1992	26%	29%	9%	64%
1993	28%	26%	8%	62%
1994	29%	28%	7%	64%
1995	31%	26%	7%	64%
1996	31%	28%	6%	65%
1997	33%	25%	6%	64%
1998	34%	25%	7%	66%
1999	34%	24%	7%	65%

Persistence of Minority New Freshmen

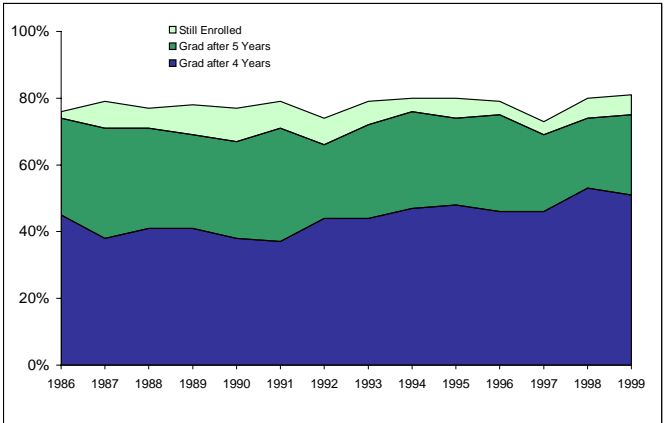


Fall Entered	Grad after 4 Years	Grad after 5 Years	Still Enrolled	Overall Persistence
1985	11%	29%	8%	48%
1986	17%	20%	11%	48%
1987	14%	23%	13%	50%
1988	10%	27%	8%	45%
1989	11%	24%	8%	43%
1990	12%	19%	10%	41%
1991	15%	23%	14%	52%
1992	18%	25%	10%	53%
1993	22%	23%	6%	51%
1994	24%	23%	5%	52%
1995	25%	21%	10%	56%
1996	23%	27%	7%	57%
1997	29%	23%	5%	57%
1998	28%	22%	8%	58%
1999	22%	20%	7%	50%

Persistence Profile by Ethnicity and Index Range

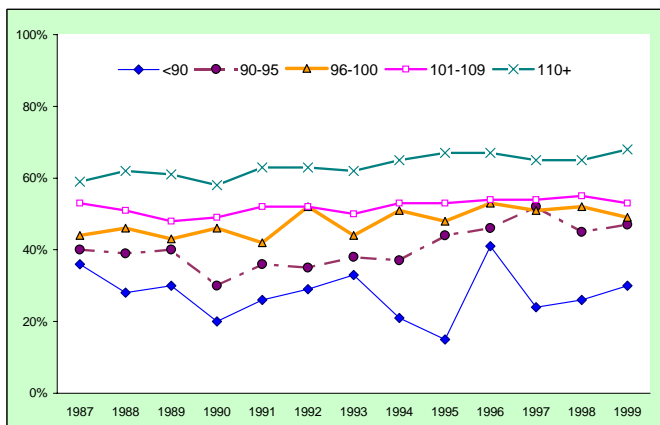


Persistence of New Freshmen with an Index 125+



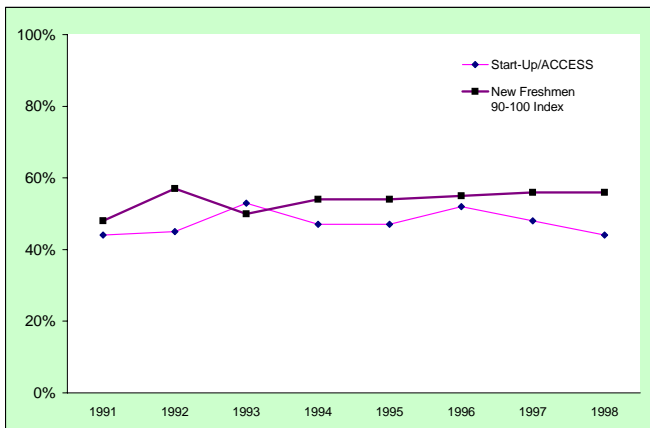
Fall Entered	Grad after 4 Years	Grad after 5 Years	Still Enrolled	Attrition
1986	45%	29%	2%	24%
1987	38%	33%	8%	21%
1988	41%	30%	6%	23%
1989	41%	28%	9%	22%
1990	38%	29%	10%	23%
1991	37%	34%	8%	21%
1992	44%	22%	8%	26%
1993	44%	28%	7%	21%
1994	47%	29%	4%	20%
1995	48%	26%	6%	20%
1996	46%	29%	4%	21%
1997	46%	23%	4%	27%
1998	53%	21%	6%	21%
1999	51%	24%	6%	19%

Five-Year Graduation Rate by Index



Index	Enrolled Fall of												
	1987	1988	1989	1990	1991	1992	1993	1994	1995	1996	1997	1998	1999
	Percent Graduated After Five Years												
<90	36%	28%	30%	20%	26%	29%	33%	21%	15%	41%	24%	26%	30%
90-95	40%	39%	40%	30%	36%	35%	38%	37%	44%	46%	52%	45%	47%
96-100	44%	46%	43%	46%	42%	52%	44%	51%	48%	53%	51%	52%	49%
101-109	53%	51%	48%	49%	52%	50%	53%	53%	54%	54%	55%	53%	
110+	59%	62%	61%	58%	63%	63%	62%	65%	67%	67%	65%	65%	68%
	Population Size												
<90	214	320	356	127	113	48	31	34	41	29	33	19	23
90-95	429	506	436	233	172	113	80	88	171	156	155	216	167
96-100	488	562	446	389	392	424	320	369	369	430	432	442	531
101-109	730	886	809	582	718	779	792	786	857	888	859	975	998
110+	870	859	814	686	756	827	946	999	1137	1204	1143	1381	1391

Comparison of Graduation Rates: Start-Up/ACCESS and Freshmen

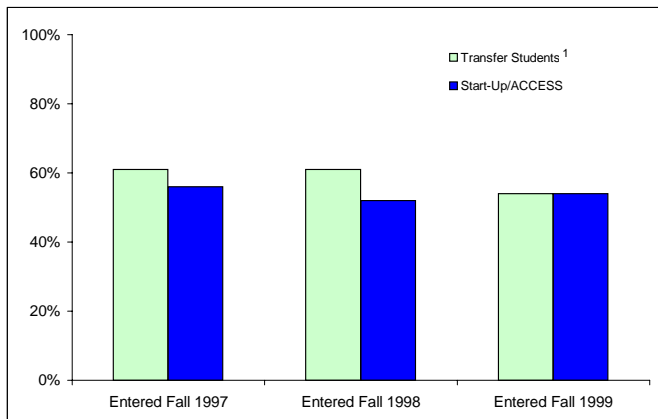


Six-Year Graduation Rates

Entered:	Start-Up/ ACCESS ¹	New Freshmen 90-100 Index
1991	44%	48%
1992	45%	57%
1993	53%	50%
1994	47%	54%
1995	47%	54%
1996	52%	55%
1997	48%	56%
1998	44%	56%

¹Rates are for total ACCESS students entering CSU.
ACCESS became START-UP in Fall 2002.
Fall 1998 Average ACCESS Index - 92.4.

Comparison of Graduation Rates: Start-Up/ACCESS and Transfer Students

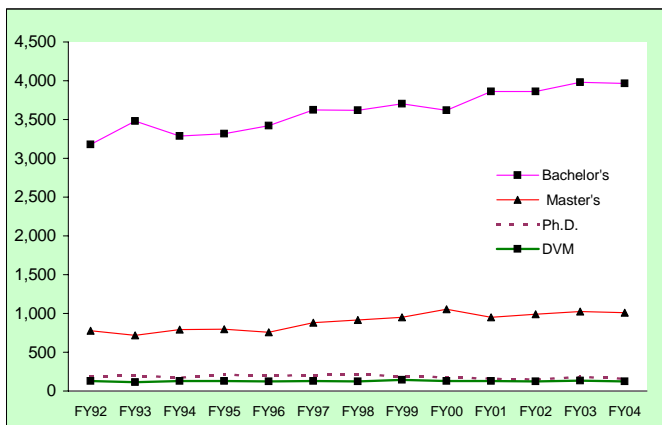


5 Year Graduation Rate

	Transfer Students ¹	Start-Up/ ACCESS
Entered Fall 1997	61%	56%
Entered Fall 1998	61%	52%
Entered Fall 1999	54%	54%

¹Transfer students have transferred 16-29 credits from four-year Colorado colleges. Rates based on ACCESS students entered in Fall who were accepted as transfers to the Spring Semester. The ACCESS program became START-UP in Fall '02.

Degrees Awarded

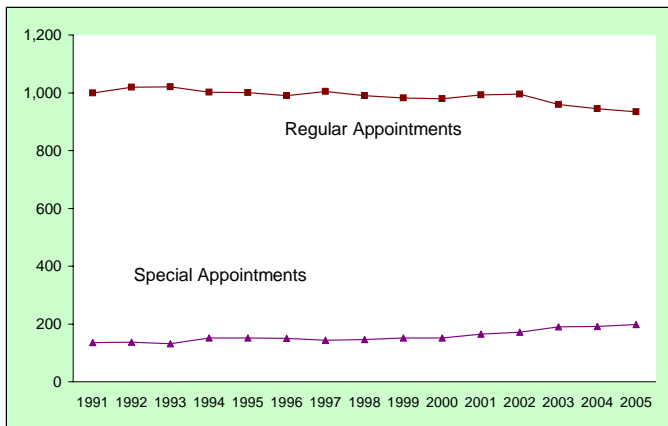


Degree Year ¹	Bachelor's	Master's	Ph.D.	DVM	Total
FY92	3,177	779	194	127	4,277
FY93	3,482	719	197	116	4,514
FY94	3,288	791	175	127	4,381
FY95	3,319	798	209	131	4,457
FY96	3,423	758	196	123	4,500
FY97	3,622	881	202	128	4,833
FY98	3,621	914	214	124	4,873
FY99	3,703	952	188	142	4,985
FY00	3,621	1,053	180	129	4,983
FY01	3,860	950	157	131	5,098
FY02	3,860	989	148	124	5,121
FY03	3,980	1,027	182	132	5,321
FY04	3,964	1,011	160	126	5,261

¹Degree Year is Summer, Fall, and Spring Semesters.

Faculty

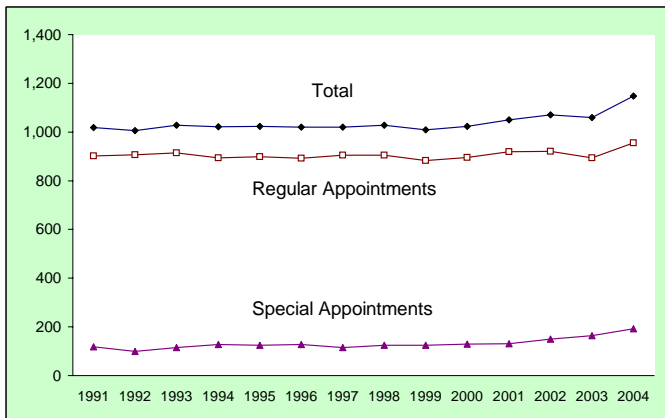
Faculty Headcount



Fiscal Year	Regular Appointments	Special Appointments	Total Headcount
1991	999	135	1,134
1992	1,019	137	1,156
1993	1,021	131	1,152
1994	1,002	152	1,154
1995	1,001	151	1,152
1996	990	150	1,140
1997	1,004	143	1,147
1998	990	146	1,136
1999	982	152	1,134
2000	979	151	1,130
2001	993	165	1,158
2002	995	172	1,167
2003	960	190	1,150
2004	945	192	1,137
2005	934	198	1,132

Note: Regular appointments include Library. All fund groups are included.

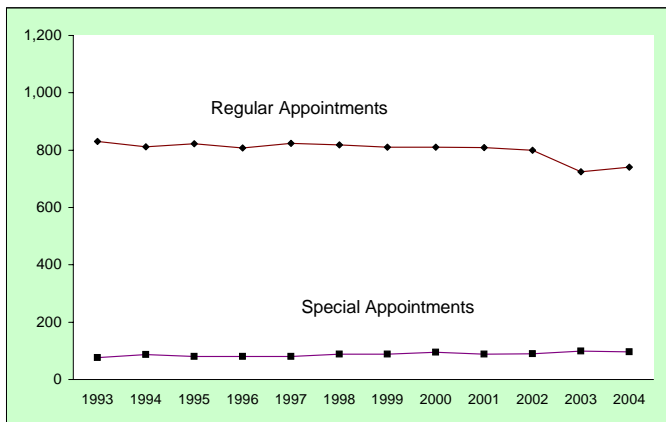
Faculty FTE



Academic Year	Regular Appointment	Special Appointment	Total
1991	901.2	118.0	1,019.2
1992	906.5	99.6	1,006.1
1993	913.8	114.9	1,028.7
1994	894.6	127.3	1,021.8
1995	898.3	124.5	1,022.8
1996	892.3	128.1	1,020.4
1997	904.6	114.7	1,019.3
1998	904.5	123.9	1,028.4
1999	883.6	124.9	1,008.5
2000	894.8	128.9	1,023.7
2001	918.8	131.3	1,050.1
2002	921.2	149.3	1,070.5
2003	894.6	164.6	1,059.2
2004	956.0	192.3	1,148.3

Note: 9 months = 1 FTE. Includes all faculty on regular or special appointments with a rank of professor, associate professor, assistant professor, instructor or lecturer. Vice presidents and deans are included through January 1, 2003 when they were reclassified as administrative professionals. Library faculty and all fund groups are included.

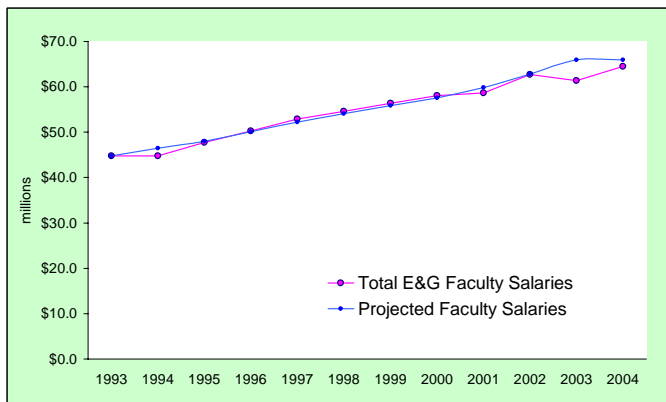
E&G Faculty FTE



Fiscal Year	Regular Appointments	Special Appointments	Total E&G Faculty FTE
1993	831	76	982
1994	812	87	981
1995	822	81	976
1996	807	80	974
1997	823	80	990
1998	818	89	989
1999	810	89	994
2000	810	95	1,010
2001	809	89	898
2002	800	90	890
2003	725	99	824
2004	740	96	836

Note: Regular faculty include tenure-track faculty paid from the 13 & 16 funds. Library faculty are included. Summer for faculty on 9-month appointments is excluded. Vice presidents and deans were reclassified to administrative professionals on January 1, 2003.

E&G Faculty Salary Expenditures



Fiscal Year	Regular Faculty ^{1,2}	Special Appts ²	Temp ²	E&G Faculty Salaries	Annual Increase ³	Projected Faculty Salaries ⁴
1993	\$40.6	\$2.2	\$1.9	\$44.8	3.40%	\$44.80
1994	\$40.1	\$2.6	\$2.1	\$44.8	3.75%	\$46.48
1995	\$43.2	\$2.5	\$2.0	\$47.7	3.25%	\$47.96
1996	\$45.1	\$2.8	\$2.4	\$50.3	4.50%	\$50.12
1997	\$47.7	\$2.8	\$2.4	\$52.9	4.25%	\$52.25
1998	\$49.1	\$3.2	\$2.3	\$54.6	3.50%	\$54.07
1999	\$50.4	\$3.3	\$2.7	\$56.4	3.30%	\$55.86
2000	\$51.8	\$3.4	\$2.9	\$58.1	3.00%	\$57.53
2001	\$52.5	\$3.4	\$2.8	\$58.7	4.00%	\$59.84
2002	\$56.0	\$3.5	\$3.2	\$62.7	5.00%	\$62.83
2003	\$54.0	\$4.1	\$3.3	\$61.4	5.00%	\$65.97
2004	\$56.7	\$4.2	\$3.7	\$64.5	0.00%	\$65.97

Note: Salary expend adjusted to eliminate the effects of avg. annual salary increases.

¹Tenured and Tenure-Track faculty paid from the 13 & 16 funds. Excludes summer for faculty on 9-month appointments. Vice presidents and deans are included through January 1, 2003, when they were reclassified to administrative professionals.

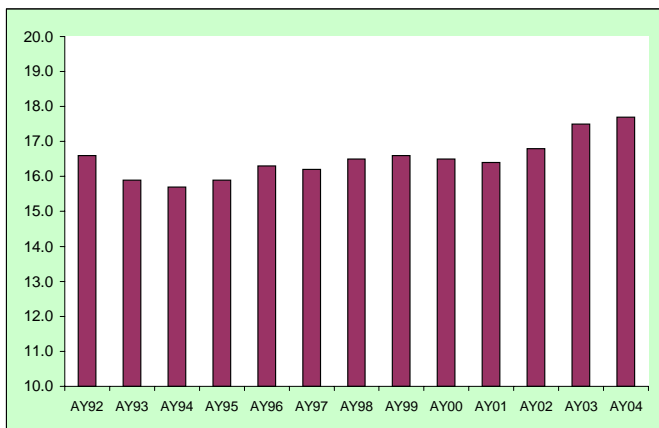
²Excludes fringe benefits

³The average salary increase approved by the Board of Governors of the CSU system.

⁴Base year actual salaries inflated by average salary increase.

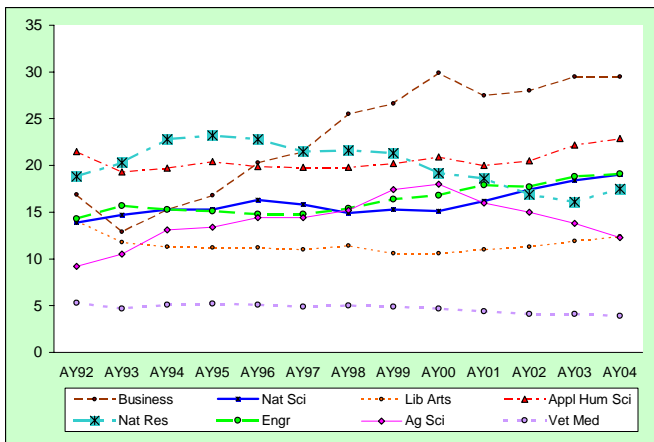
Office of Budgets and Institutional Analysis

University Student/Faculty Ratio



Academic Year	Ratio
AY92	16.6
AY93	15.9
AY94	15.7
AY95	15.9
AY96	16.3
AY97	16.2
AY98	16.5
AY99	16.6
AY00	16.5
AY01	16.4
AY02	16.8
AY03	17.5
AY04	17.7

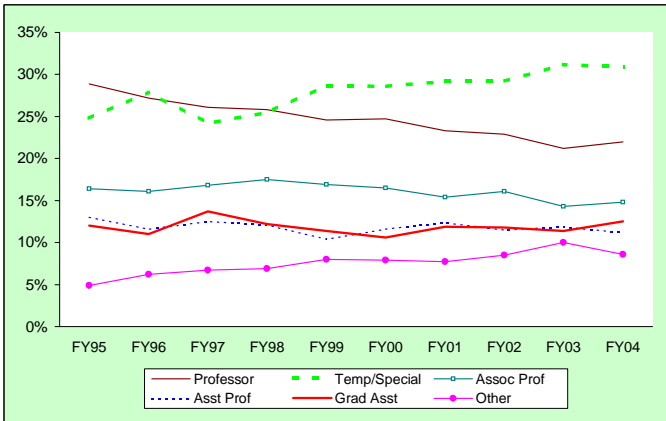
Student/Faculty Ratios by College



Academic Year	Appl							
	Ag Sci	Hum Sci	Business	Engr	Lib Arts	Nat Res	Nat Sci	Vet Med
AY92	9.2	21.5	16.9	14.3	14.1	18.8	13.9	5.3
AY93	10.5	19.3	12.9	15.7	11.8	20.3	14.7	4.7
AY94	13.1	19.7	15.3	15.3	11.3	22.8	15.3	5.1
AY95	13.4	20.4	16.8	15.1	11.2	23.2	15.3	5.2
AY96	14.4	19.9	20.3	14.8	11.2	22.8	16.3	5.1
AY97	14.4	19.8	21.5	14.8	11.0	21.5	15.8	4.9
AY98	15.2	19.8	25.5	15.4	11.4	21.6	14.9	5.0
AY99	17.4	20.2	26.6	16.4	10.6	21.3	15.3	4.9
AY00	18.0	20.9	29.9	16.8	10.6	19.2	15.1	4.7
AY01	16.0	20.0	27.5	17.9	11.0	18.6	16.2	4.4
AY02	15.0	20.5	28.0	17.7	11.3	16.9	17.4	4.1
AY03	13.8	22.2	29.5	18.8	11.9	16.1	18.4	4.1
AY04	12.3	22.9	29.5	19.1	12.4	17.5	19.0	3.9

PVM students are excluded.

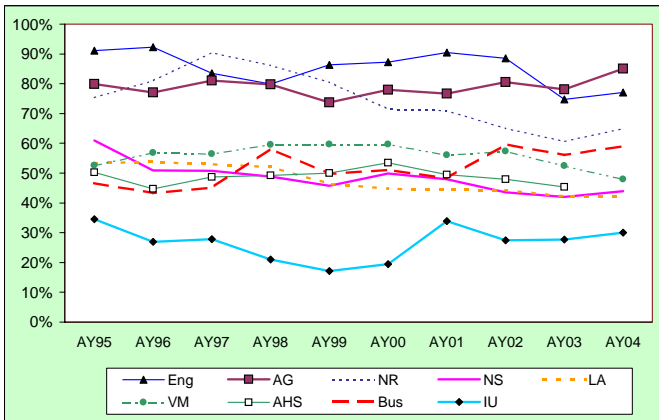
Undergraduate Credit Hours by Faculty Type



Full Year	Professor	Associate Professor	Assistant Professor	Temporary/Special	Graduate Assistant	Other
FY95	28.9%	16.4%	13.0%	24.8%	12.0%	4.9%
FY96	27.2%	16.1%	11.6%	27.9%	11.0%	6.2%
FY97	26.1%	16.8%	12.5%	24.2%	13.7%	6.7%
FY98	25.8%	17.5%	12.1%	25.5%	12.2%	6.9%
FY99	24.6%	16.9%	10.4%	28.7%	11.4%	8.0%
FY00	24.7%	16.5%	11.6%	28.6%	10.6%	7.9%
FY01	23.3%	15.4%	12.4%	29.2%	11.9%	7.7%
FY02	22.9%	16.1%	11.5%	29.2%	11.8%	8.5%
FY03	21.2%	14.3%	11.9%	31.2%	11.4%	10.0%
FY04	22.0%	14.8%	11.2%	30.9%	12.5%	8.6%

Note: Other includes administrative professionals, post-doctorates, faculty affiliates, and state classified staff.

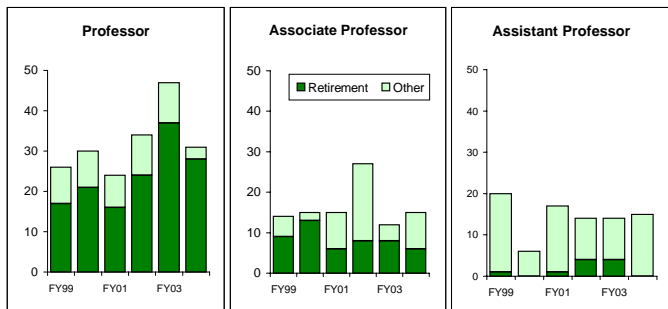
Percent of Undergraduate Credit Hours Taught by Tenure-Track Faculty



Academic

Year	AG	AHS	Bus	Eng	IU	LA	NR	NS	VM	Total
AY95	80%	50%	47%	91%	35%	53%	75%	61%	53%	54%
AY96	77%	45%	43%	92%	27%	54%	81%	51%	57%	55%
AY97	81%	49%	45%	84%	28%	53%	90%	51%	56%	55%
AY98	80%	49%	58%	80%	21%	52%	86%	49%	60%	55%
AY99	74%	50%	50%	86%	17%	46%	81%	46%	60%	52%
AY00	78%	54%	51%	87%	20%	45%	72%	50%	60%	53%
AY01	77%	50%	48%	91%	34%	45%	71%	48%	56%	51%
AY02	81%	48%	60%	89%	27%	44%	65%	44%	57%	51%
AY03	78%	45%	56%	75%	28%	42%	61%	42%	53%	47%
AY04	85%	43%	59%	77%	30%	42%	65%	44%	48%	48%

Tenure-Track Faculty Attrition

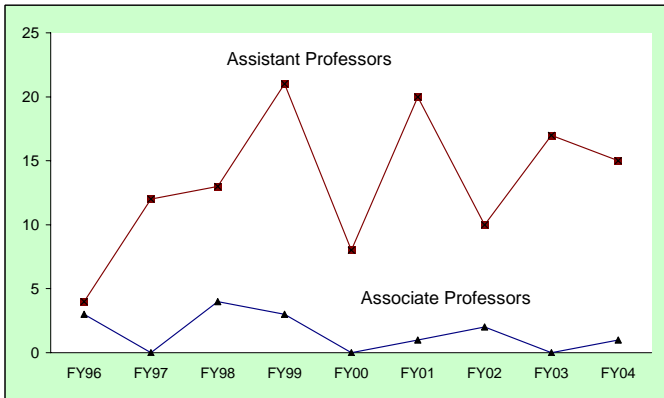


FY99 FY00 FY01 FY02 FY03 FY04

Professor						
Retirement	17	21	16	24	37	28
Administrative Position (Dean, Director)	2	4	3	9	0	0
Another nontenure-track position	0	0	0	0	0	0
Other	9	9	8	10	10	3
Total	28	34	27	43	47	31
Associate Professor						
Retirement	9	13	6	8	8	6
Administrative Position (Dean, Director)	0	1	0	3	0	0
Another nontenure-track position	0	0	1	3	0	0
Other	5	2	9	19	4	9
Total	14	16	16	33	12	15
Assistant Professor						
Retirement	1	0	1	4	4	0
Administrative Position (Dean, Director)	1	1	0	0	0	0
Another nontenure-track position	1	1	3	1	1	0
Other	19	6	16	10	10	15
Total	22	8	20	15	15	15

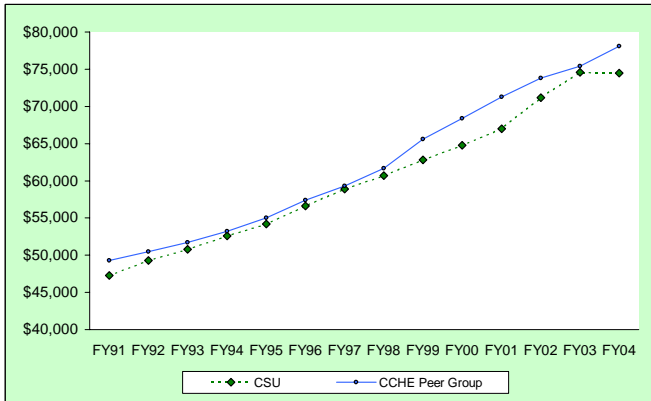
Note: Other reasons for leaving a tenure-track position include death, other employment or family relocation.

Number of Faculty by Rank Who Leave Prior to Receiving Tenure



	FY96	FY97	FY98	FY99	FY00	FY01	FY02	FY03	FY04
Associate Professors	3	0	4	3	0	1	2	0	1
Assistant Professors	4	12	13	21	8	20	10	17	15
Total	8	12	17	24	8	21	12	17	16

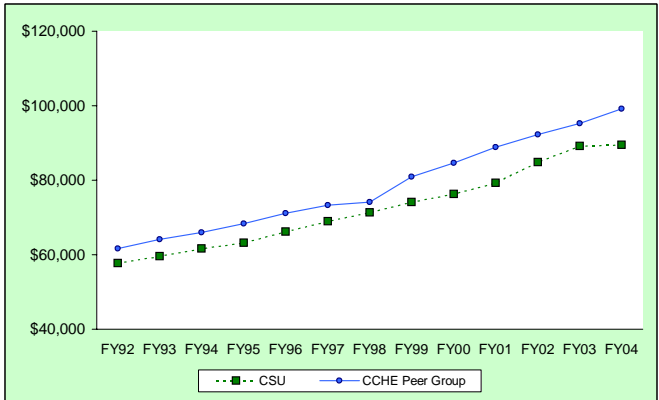
Faculty All Ranks Combined Average Salary Comparison



Fiscal Year	CSU	CCHE Peer Group
FY91	\$47,300	\$49,300
FY92	\$49,300	\$50,500
FY93	\$50,800	\$51,700
FY94	\$52,600	\$53,200
FY95	\$54,200	\$55,000
FY96	\$56,600	\$57,400
FY97	\$58,900	\$59,300
FY98	\$60,700	\$61,700
FY99	\$62,800	\$65,600
FY00	\$64,800	\$68,400
FY01	\$67,000	\$71,300
FY02	\$71,200	\$73,800
FY03	\$74,600	\$75,400
FY04	\$74,500	\$78,100

Note: A list of CCHE peer institutions is provided in the last section of this document.

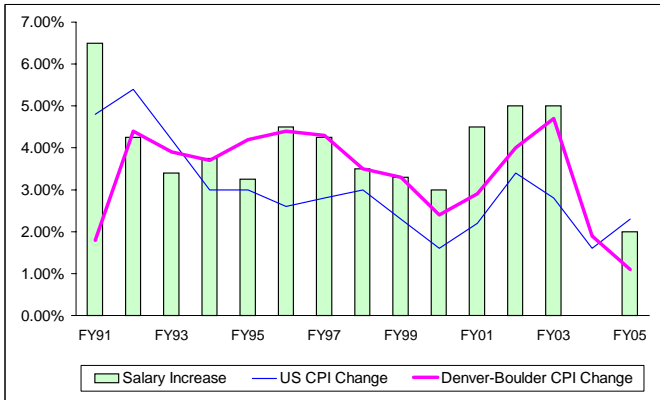
Faculty All Ranks Combined Average Compensation Comparison



Fiscal Year	CSU	CCHE Peer Group
FY92	\$57,700	\$61,600
FY93	\$59,600	\$64,100
FY94	\$61,700	\$66,000
FY95	\$63,200	\$68,400
FY96	\$66,200	\$71,100
FY97	\$69,000	\$73,300
FY98	\$71,300	\$74,100
FY99	\$74,100	\$80,900
FY00	\$76,300	\$84,600
FY01	\$79,300	\$88,900
FY02	\$84,800	\$92,300
FY03	\$89,200	\$95,300
FY04	\$89,500	\$99,200

Note: A list of CCHE peer institutions is provided in the last section of this document.

Faculty Merit Salary Increase Compared to the Consumer Price Index in Budget Year

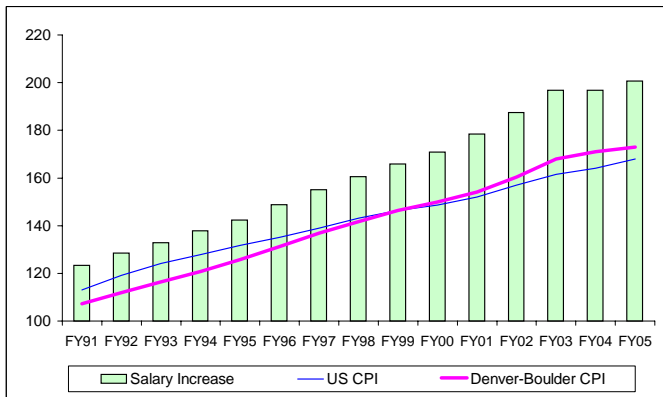


Fiscal Year	Salary Increase	US CPI Change	Denver-Boulder CPI Change
FY91	6.50%	4.80%	1.80%
FY92	4.25%	5.40%	4.40%
FY93	3.40%	4.20%	3.90%
FY94	3.75%	3.00%	3.70%
FY95	3.25%	3.00%	4.20%
FY96	4.50%	2.60%	4.40%
FY97	4.25%	2.80%	4.30%
FY98	3.50%	3.00%	3.50%
FY99	3.30%	2.30%	3.30%
FY00	3.00%	1.60%	2.40%
FY01	4.50%	2.20%	2.90%
FY02	5.00%	3.40%	4.00%
FY03	5.00%	2.80%	4.70%
FY04	0.00%	1.60%	1.90%
FY05	2.00%	2.30%	1.10%

Source: Colorado Legislative Council staff.

Note: U.S. and Denver-Boulder CPIs are reported with the year they were used to project a faculty salary increase, i.e., a faculty salary increase of 3.75% in 1993-94 is based on the CPIs for the calendar year 1992.

Cumulative History of Faculty Salary Increases Compared to the Consumer Price Index in Budget Year



Fiscal Year	Salary Increase	US CPI	Denver-Boulder CPI
FY91	123.3	113.0	107.3
FY92	128.5	119.1	112.0
FY93	132.9	124.1	116.4
FY94	137.9	127.9	120.7
FY95	142.4	131.7	125.7
FY96	148.8	135.1	131.3
FY97	155.1	138.9	136.9
FY98	160.5	143.1	141.7
FY99	165.8	146.4	146.4
FY00	170.8	148.7	149.9
FY01	178.5	152.0	154.2
FY02	187.4	157.1	160.4
FY03	196.8	161.5	167.9
FY04	196.8	164.1	171.1
FY05	200.7	167.9	173.0

Source: Colorado Legislative Council staff.

Note: U.S. and Denver-Boulder CPIs are reported with the year they were used to project a faculty salary increase, i.e., a faculty salary increase of 3.75% in 1993-94 is based on the CPIs for the calendar year 1992.

Annual AAUP Faculty Salary Information All Ranks Combined Comparison

	Salaries		Compensation	
	% of Internal Peers	% of CCHE Peers	% of Internal Peers	% of CCHE Peers
FY04	102.7%	95.4%	98.2%	90.3%
FY03	105.3%	98.9%	100.3%	93.6%
FY02	102.1%	96.4%	98.0%	91.8%
FY01	99.9%	93.9%	95.1%	89.2%
FY00	100.8%	94.7%	96.0%	90.2%
FY99	101.9%	95.8%	97.6%	91.6%
FY98	103.9%	98.4%	99.7%	93.8%
FY97	104.8%	99.3%	99.3%	94.1%
to FY90	101.9%	95.2%	99.0%	93.9%
<hr/>				
FY03 to FY04 Change	-2.6%	-3.5%	-2.1%	-3.3%
<hr/>				
FY90 to FY04 Change	0.8%	0.2%	-0.8%	-3.6%

Note: A list of CCHE peer institutions is provided in the last section of this document.

Source: Academe, The Economic Status of the Profession

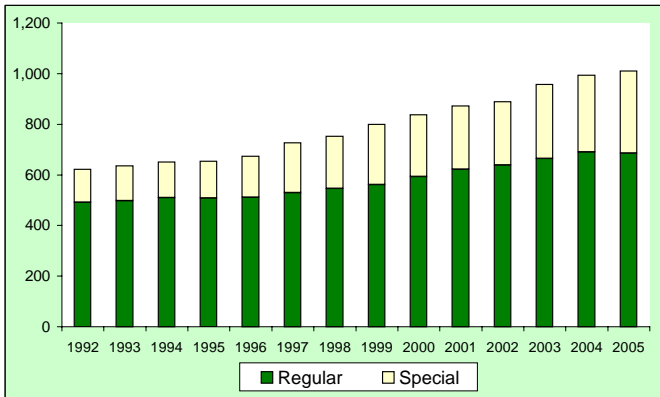
Annual AAUP Faculty Salary Comparison All Ranks Combined

	CSU	CU - Boulder	Difference
FY91	\$46.4	\$50.1	-\$3.7
FY92	\$48.4	\$53.0	-\$4.6
FY93	\$49.9	\$53.9	-\$4.0
FY94	\$51.7	\$52.8	-\$1.1
FY95	\$53.2	\$56.4	-\$3.2
FY96	\$55.5	\$57.9	-\$2.4
FY97	\$58.0	\$58.7	-\$0.7
FY98	\$60.7	\$60.8	-\$0.1
FY99	\$62.8	\$63.2	-\$0.4
FY00	\$64.8	\$64.7	\$0.1
FY01	\$67.0	\$66.7	\$0.3
FY02	\$71.2	\$69.9	\$1.3
FY03	\$74.6	\$74.4	\$0.2
FY04	\$74.5	\$75.1	-\$0.6

Faculty Salary Increases			
1990-91 to 2003-04			
	<u>CU - Boulder</u>	<u>CSU</u>	
Eleven-year Cumulative All Ranks Combined	56.8%	70.1%	

A **Administrative**
Professionals,
Research Associates
and Post Doctorates

Administrative Professional Headcount Excludes Research Associates

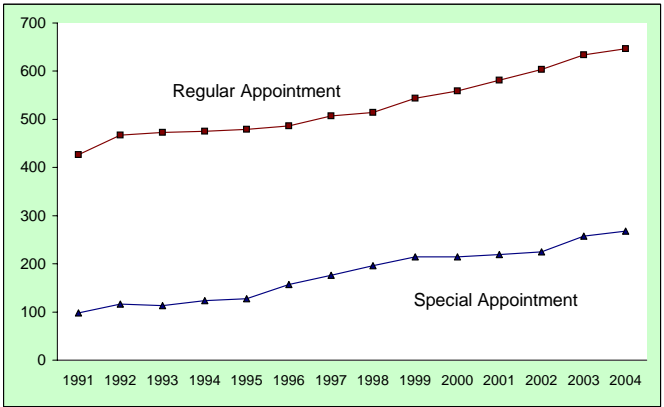


Fiscal Year	Regular	Special	Total
1992	491	131	622
1993	498	137	635
1994	509	142	651
1995	508	146	654
1996	512	162	674
1997	529	197	726
1998	546	207	753
1999	561	239	800
2000	593	244	837
2001	622	250	872
2002	639	250	889
2003	665	293	958
2004	690	304	994
2005	685	325	1010

Note: Vice presidents and deans were reclassified from faculty to administrative professionals on January 1, 2003. All fund groups are included.

Administrative Professional FTE

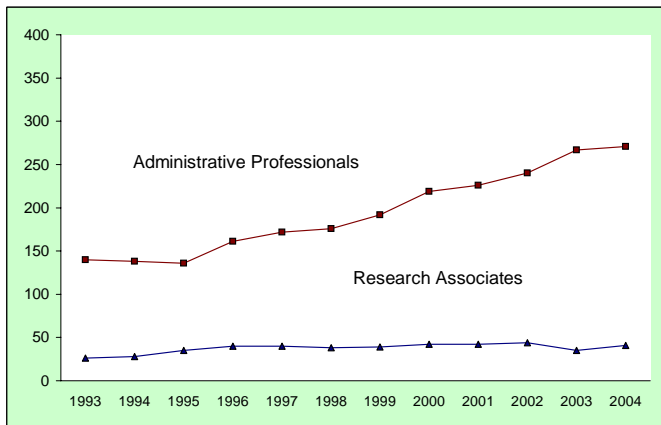
Excludes Research Associates



<u>Fiscal Year</u>	<u>Regular Appointment</u>	<u>Special Appointment</u>	<u>Total</u>
1991	426.9	97.7	524.6
1992	466.8	116.4	583.2
1993	472.5	112.9	585.4
1994	474.8	123.7	598.5
1995	479.1	127.8	606.9
1996	486.1	156.9	643.0
1997	506.8	176.3	683.1
1998	514.0	196.0	710.0
1999	543.4	214.2	757.6
2000	558.8	214.3	773.1
2001	581.0	219.1	800.1
2002	603.2	225.0	828.2
2003	633.6	257.4	891.0
2004	646.8	267.9	914.7

Note: Vice presidents and deans were reclassified from faculty to administrative professionals on January 1, 2003. All fund groups are included.
12 months = 1 FTE

E&G Administrative Professional FTE

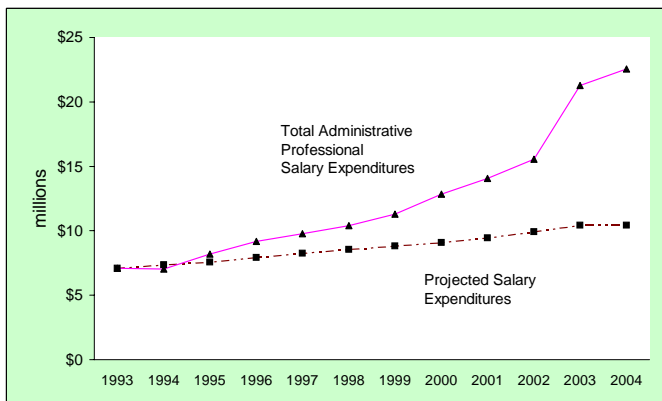


Fiscal Year	Administrative Professionals	Research Associates	Total
1993	140	26	166
1994	138	28	166
1995	136	35	171
1996	161	40	201
1997	172	40	212
1998	176	38	214
1999	192	39	231
2000	219	42	261
2001	226	42	268
2002	240	44	284
2003	267	35	302
2004	271	41	312

Note: Vice presidents and deans were reclassified from faculty to administrative professionals on January 1, 2003. All fund groups are included.

Includes 13 & 16 funds only. 12 months = 1 FTE

E&G Administrative Professional Salary Expenditures

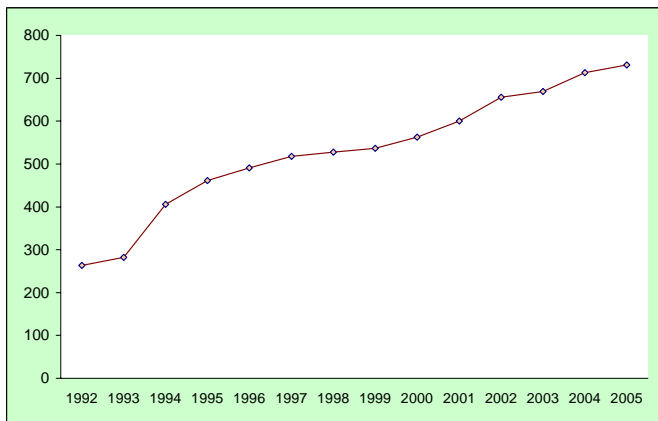


Fiscal Year	Administrative Professional	Research Associate	Total	Average Annual Increase ¹	Projected Salary Expenditures ²
1993	\$6.24	\$0.84	\$7.08	3.4%	\$7.08
1994	\$6.14	\$0.90	\$7.04	3.75%	\$7.35
1995	\$7.02	\$1.18	\$8.20	3.25%	\$7.58
1996	\$7.79	\$1.40	\$9.19	4.5%	\$7.93
1997	\$8.35	\$1.43	\$9.78	4.25%	\$8.26
1998	\$8.92	\$1.47	\$10.39	3.5%	\$8.55
1999	\$9.76	\$1.52	\$11.28	3.3%	\$8.83
2000	\$11.18	\$1.66	\$12.84	3.0%	\$9.10
2001	\$12.30	\$1.76	\$14.06	4.0%	\$9.46
2002	\$13.62	\$1.92	\$15.54	5.0%	\$9.93
2003	\$19.85	\$1.43	\$21.28	5.0%	\$10.43
2004	\$20.33	\$2.23	\$22.56	0.0%	\$10.43

¹Average salary increase as approved by the Board of Governors of the Colorado State University System

²Base year (1993) total salary expenditures compounded annually by average increase. Vice presidents and deans were reclassified from faculty to administrative professionals on January 1, 2003.

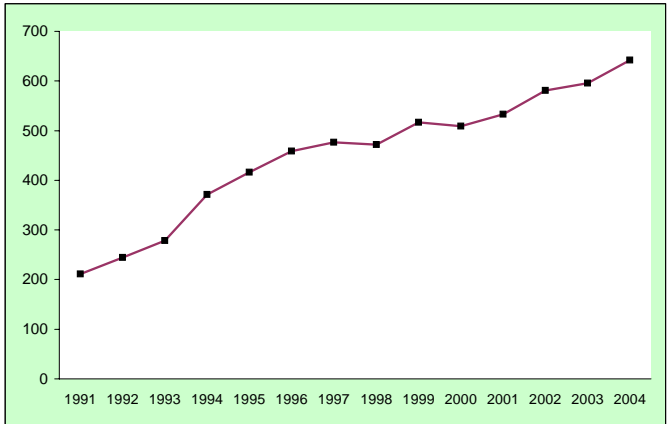
Research Associate Headcount



Fiscal Year	Regular	Special	Total
1992	3	260	263
1993	1	281	282
1994	0	406	406
1995	0	461	461
1996	0	491	491
1997	1	517	518
1998	2	526	528
1999	1	536	537
2000	1	562	563
2001	1	599	600
2002	5	651	656
2003	6	663	669
2004	9	704	713
2005	7	724	731

Note: All fund groups are included.

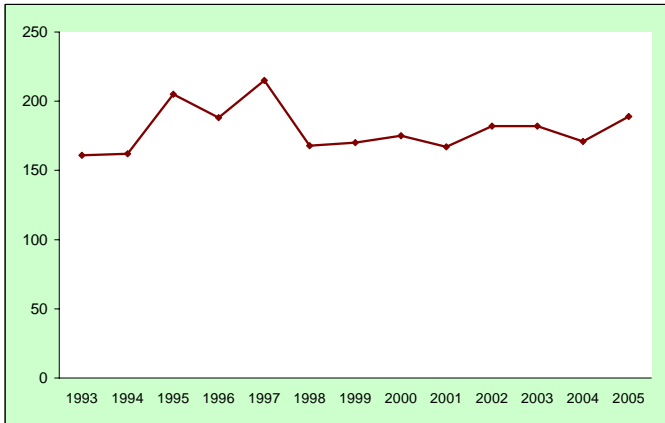
Research Associate FTE



<u>Fiscal Year</u>	<u>FTE</u>
1991	211.1
1992	244.3
1993	278.2
1994	371.6
1995	416.1
1996	458.4
1997	476.8
1998	471.8
1999	516.8
2000	509.0
2001	533.3
2002	580.6
2003	595.9
2004	642.1

Note: Regular and special appointments are included. All fund groups are included.
12 months = 1 FTE

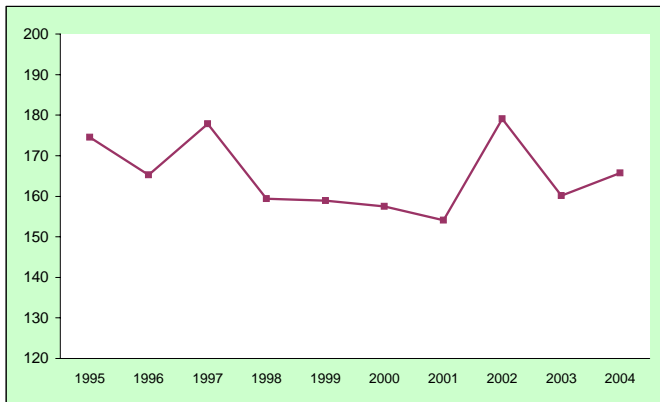
Post Doctoral Headcount



Fiscal Year	Total
1993	161
1994	162
1995	205
1996	188
1997	215
1998	168
1999	170
2000	175
2001	167
2002	182
2003	182
2004	171
2005	189

Note: All fund groups included.

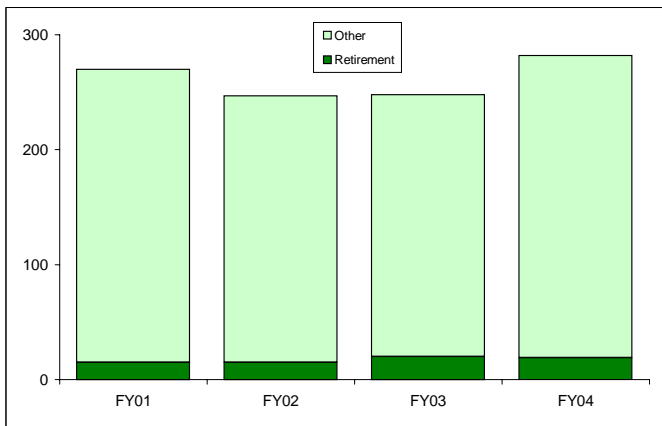
Post Doctoral FTE



<u>Fiscal Year</u>	<u>FTE</u>
1995	174.5
1996	165.3
1997	177.8
1998	159.4
1999	158.9
2000	157.5
2001	154.1
2002	179.1
2003	160.1
2004	165.7

Note: All fund groups are included. 12 months = 1 FTE

Administrative Professional Attrition

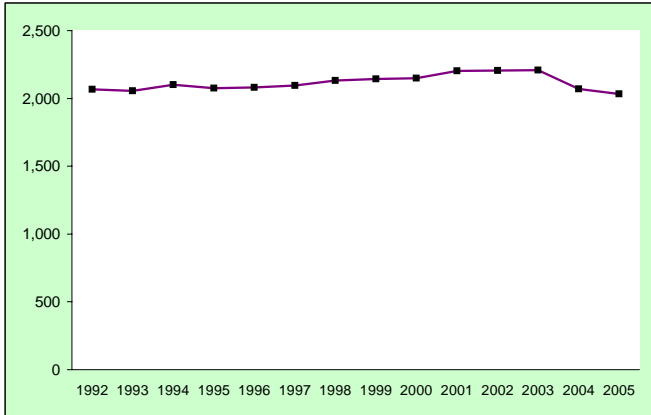


	FY01		FY02		FY03		FY04	
	Total	Percent	Total	Percent	Total	Percent	Total	Percent
Retirement	15	6%	15	6%	20	8%	19	7%
Other	255	94%	232	94%	228	92%	263	93%
Total	270	100%	247	100%	248	100%	282	100%

Note: Research Associates are included.

State Classified

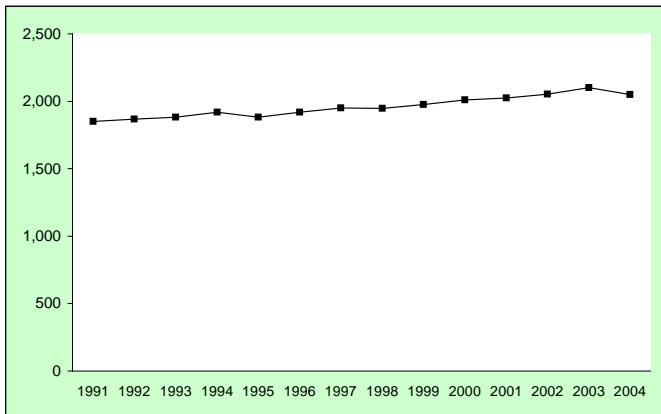
State Classified Headcount



<u>Fiscal Year</u>	<u>Headcount</u>
1992	2,066
1993	2,056
1994	2,102
1995	2,074
1996	2,081
1997	2,095
1998	2,131
1999	2,142
2000	2,149
2001	2,203
2002	2,206
2003	2,207
2004	2,070
2005	2,034

Note: All fund groups are included.

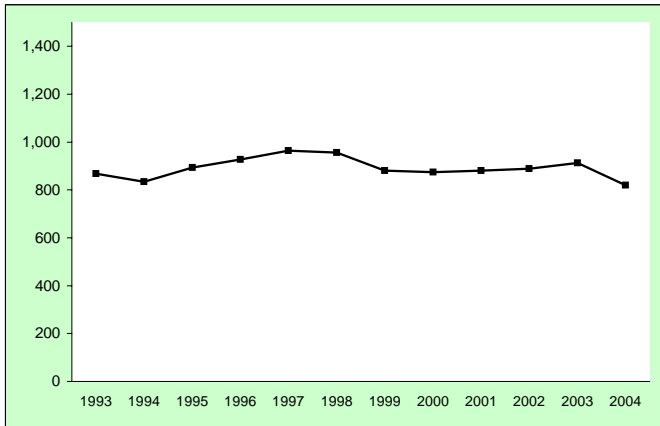
State Classified FTE



Fiscal Year	FTE
1991	1,851.2
1992	1,867.1
1993	1,881.8
1994	1,918.1
1995	1,881.0
1996	1,919.8
1997	1,949.1
1998	1,948.4
1999	1,977.2
2000	2,010.8
2001	2,023.5
2002	2,053.7
2003	2,101.9
2004	2,049.5

Note: All fund groups are included. 12 months = 1 FTE

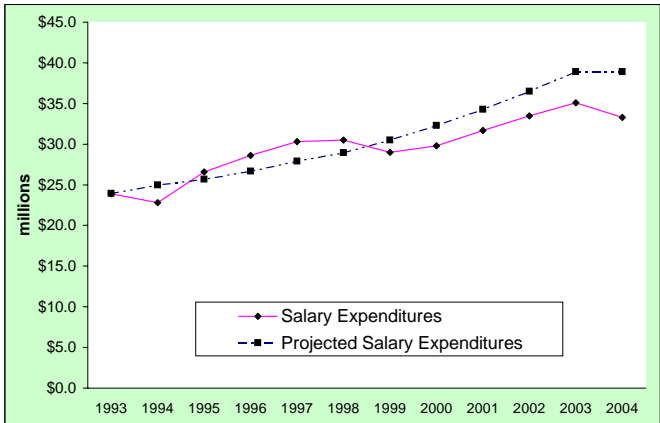
E&G State Classified Employees



<u>Fiscal Year</u>	<u>Headcount</u>
1993	868
1994	834
1995	893
1996	928
1997	964
1998	956
1999	881
2000	874
2001	881
2002	888
2003	913
2004	819

Note: Includes 13 & 16 funds only.

E&G State Classified Salary Expenditures

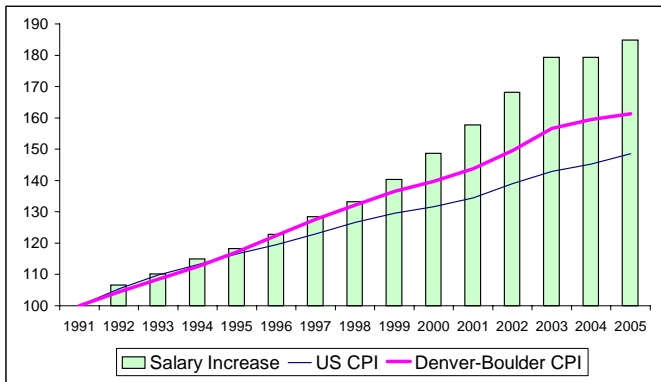


Fiscal Year	Salary Expenditures	Annual Average Increase	Projected Salary Expenditures
1993	\$23.9	3.4%	\$23.94
1994	\$22.8	4.3%	\$24.97
1995	\$26.6	2.9%	\$25.70
1996	\$28.6	3.8%	\$26.67
1997	\$30.3	4.6%	\$27.90
1998	\$30.5	3.7%	\$28.93
1999	\$29.0	5.4%	\$30.50
2000	\$29.8	5.9%	\$32.30
2001	\$31.7	6.1%	\$34.30
2002	\$33.5	6.6%	\$36.50
2003	\$35.1	6.6%	\$38.90
2004	\$33.3	0.0%	\$38.90

Note: Includes 13 & 16 funds only.

The annual average increase is the sum of the salary wage increases and anniversary increases as a percent of total state classified salaries. Base year actual salary totals inflated by the average salary increase.

Cumulative History of State Classified Salary Increases Compared to the Consumer Price Index in Budget Year



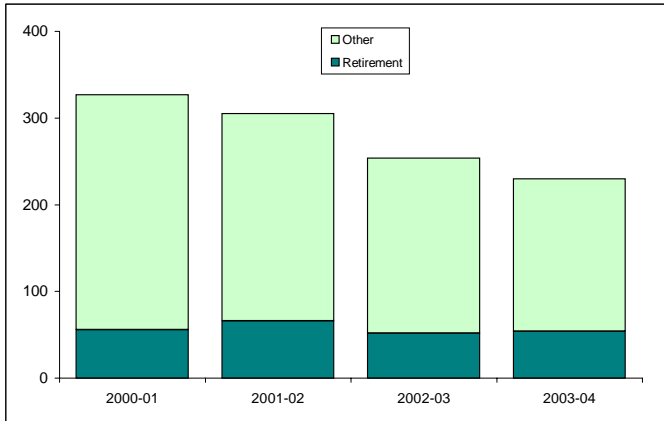
1990-91 = 100.0

Fiscal Year	Salary Increase	US CPI	Denver-Boulder CPI
1991	100.0	100.0	100.0
1992	106.6	105.4	104.4
1993	110.2	109.8	108.5
1994	115.0	113.1	112.5
1995	118.3	116.5	117.2
1996	122.8	119.5	122.4
1997	128.5	122.9	127.6
1998	133.2	126.6	132.1
1999	140.4	129.5	136.5
2000	148.7	131.6	139.7
2001	157.8	134.5	143.8
2002	168.2	139.0	149.5
2003	179.3	142.9	156.6
2004	179.3	145.2	159.5
2005	184.8	148.5	161.3

Source: Colorado Legislative Council Staff.

Note: U.S. and Denver-Boulder CPIs are reported with the year they were used to project a faculty salary increase, i.e., a faculty salary increase of 3.75% in 1993-94 is based on the CPIs for the calendar year 1992.

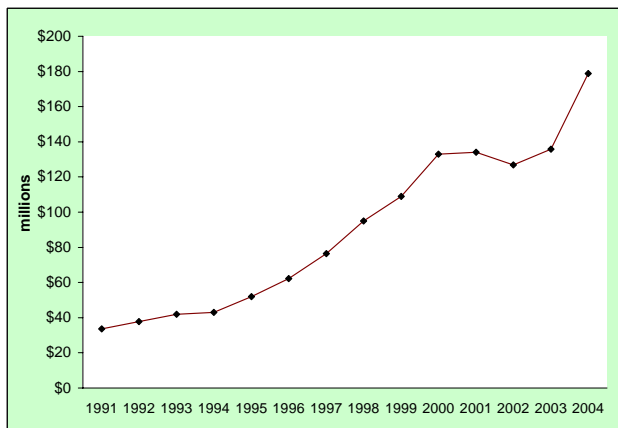
State Classified Attrition



	2000-01		2001-02		2002-03		2003-04	
	Total	Percent	Total	Percent	Total	Percent	Total	Percent
Retirement	56	17%	66	22%	52	20%	54	23%
Other	271	83%	239	78%	202	80%	176	77%
Total	327	100%	305	100%	254	100%	230	100%

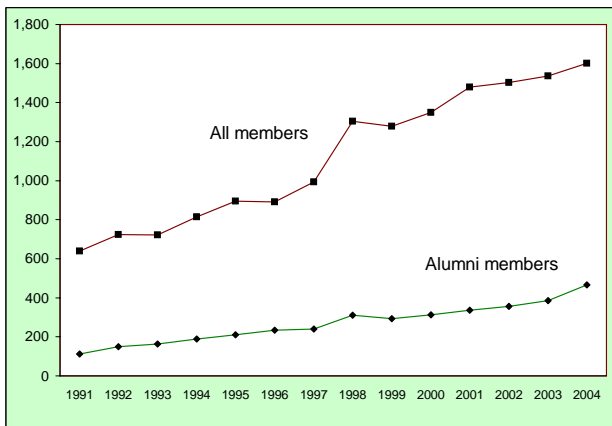
Eexternal Activity

CSU Foundation Total Invested Assets



Fiscal Year	Total Invested Assets
1991	\$33.7
1992	\$37.7
1993	\$41.9
1994	\$43.1
1995	\$51.9
1996	\$62.3
1997	\$76.4
1998	\$95.0
1999	\$108.9
2000	\$133.0
2001	\$134.1
2002	\$126.8
2003	\$135.8
2004	\$178.8

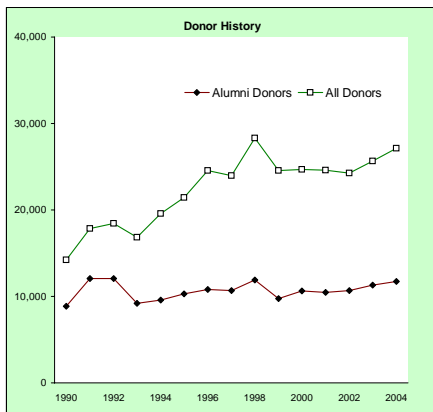
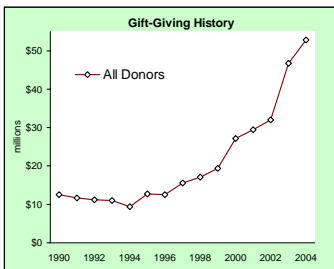
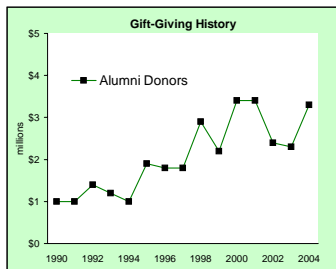
1870 Club Members



Fiscal Year	Alumni Members	All Members
1991	112	639
1992	149	723
1993	164	721
1994	189	815
1995	211	896
1996	234	892
1997	240	994
1998	310	1,304
1999	294	1,279
2000	312	1,350
2001	337	1,479
2002	357	1,503
2003	386	1,536
2004	466	1,601

Alumni member count includes degreed and non-degreed alumni members (vs. memberships).

Summary of Private Support



Totals for 2000-01, 2001-02, 2002-03, and 2003-04 do not include unpaid commitments. Totals for all years, including 2003-04, do not include grants.

The number of alumni donors and the amount donated by alumni do not include alumni gifts made through estates, family foundations or corporate gifts made on behalf of alumni. However, these gifts are included in the total donor amounts.

Summary of Private Support

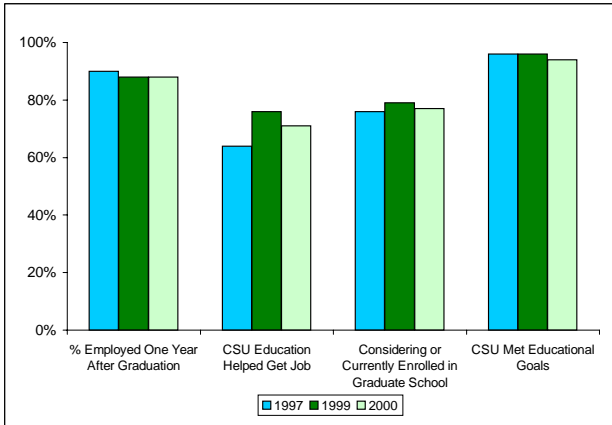
Year	Alumni Donors		All Donors	
1990	8,880	\$1.0	14,207	\$12.5
1991	12,051	\$1.0	17,829	\$11.7
1992	12,069	\$1.4	18,444	\$11.2
1993	9,217	\$1.2	16,838	\$11.0
1994	9,562	\$1.0	19,586	\$9.4
1995	10,286	\$1.9	21,426	\$12.7
1996	10,793	\$1.8	24,574	\$12.5
1997	10,684	\$1.8	23,946	\$15.6
1998	11,879	\$2.9	28,295	\$17.1
1999	9,759	\$2.2	24,549	\$19.4
2000	10,639	\$3.4	24,685	\$27.2
2001	10,465	\$3.4	24,592	\$29.4
2002	10,657	\$2.4	24,268	\$32.0
2003	11,292	\$2.3	25,669	\$46.7
2004	11,741	\$3.3	27,130	\$52.8

Note: All dollars are in millions.

Totals for 2000-01, 2001-02, 2002-03, and 2003-04 do not include unpaid commitments.

Totals for all years, including 2003-04, do not include grants.

Assessment by Alumni

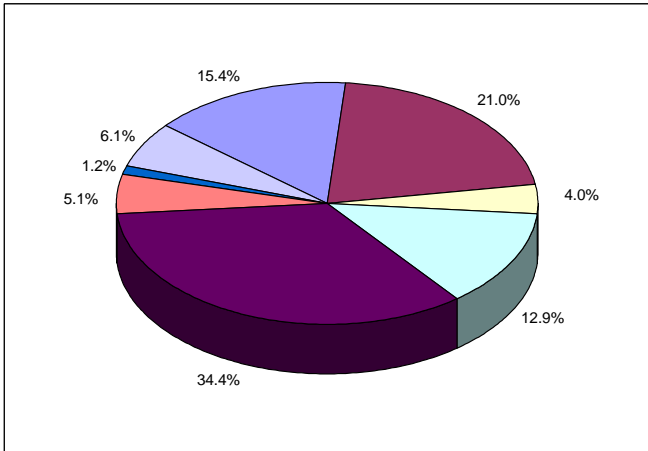


Year Graduated	% Employed One Year After Graduation	CSU Education Helped Get Job	Considering or Currently Enrolled in Graduate School	CSU Met Educational Goals
1997	90%	64%	76%	96%
1999	88%	76%	79%	96%
2000	88%	71%	77%	94%

Note: Based on survey sent to bachelor degree recipients one year after graduation.

Financial Information

2004-05 Budgeted Revenue

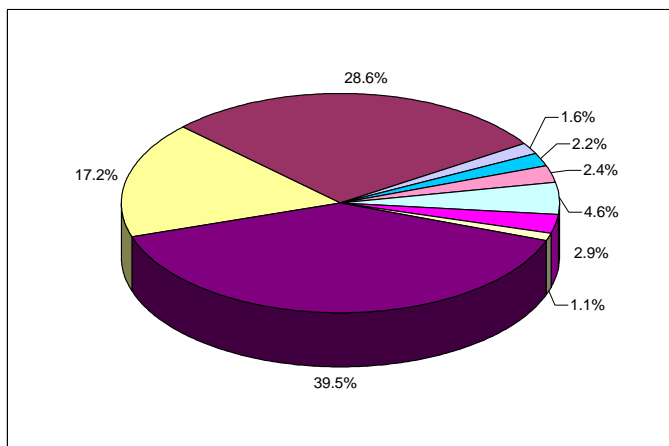


Total Budgeted Revenue = \$617,392,521

General fund	15.4%
Tuition & fees	21.0%
Misc. revenue & cash operations	4.0%
Auxiliary enterprises	12.9%
Sponsored programs	34.4%
Indirect cost recoveries	5.1%
Federal funds	1.2%
Self-funded activities	6.1%

Note: Figures may not add to 100.0% because of rounding.

2004-05 Budgeted Expenditures

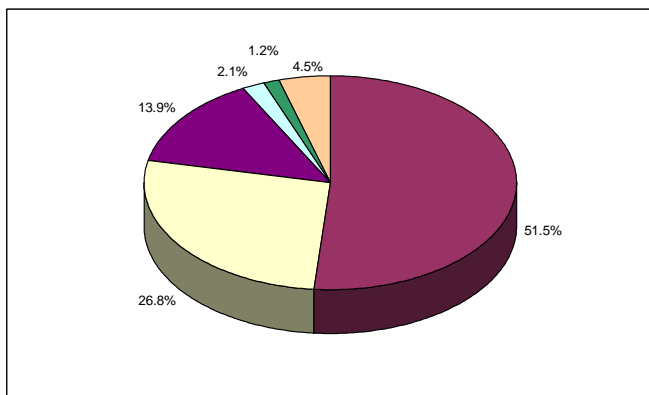


Total CSU Budget = \$617,392,521

Professional salaries	39.5%
Support salaries	17.2%
Operating expenses	28.6%
Travel	1.6%
Utilities	2.2%
Capital outlay	2.4%
Overhead allocations	4.6%
Cost of sales	2.9%
Auxiliary debt service & facilities reserves	1.1%

Note: Figures may not add to 100.0% because of rounding.

Education & General 2004-05 Budgeted Revenue¹



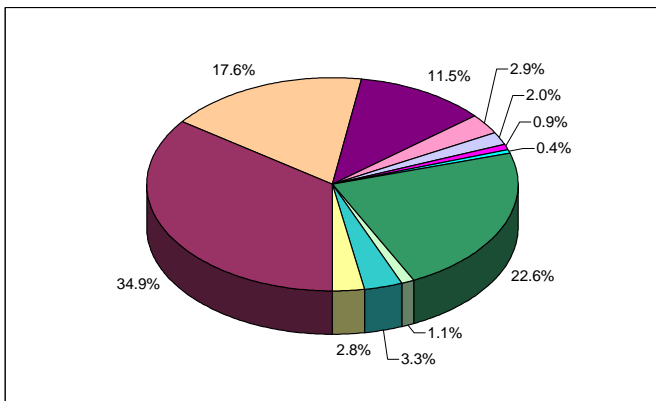
Total E&G Budget = \$225,525,195

Tuition	51.5%
State general fund	26.8%
Indirect cost recoveries	13.9%
Misc. revenue	2.1%
Interest income	1.2%
Internal overhead allocations	4.5%

Note: Figures may not add to 100.0% because of rounding.

¹13 & 16 funds only. Excludes PVM, CSU Agencies, and Course Fees/Technology Charges.

Education & General 2004-05 Budgeted Expenditures¹



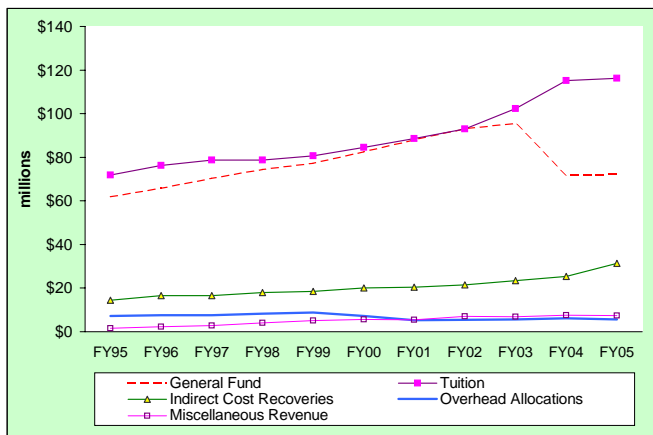
Total E&G Budget = \$225,525,195

Academic faculty salaries & benefits	34.9%
State classified salaries & benefits	17.6%
Administrative professional salaries & benefits	11.5%
Graduate student salaries & benefits	2.9%
All temporary salaries & benefits	2.0%
Student hourly & workstudy/salaries & benefits	0.9%
Travel	0.4%
Materials & supplies	22.6%
Capital Outlay	1.1%
Utilities	3.3%
Graduate Assistant Tuition & Fellowships	2.8%

Note: Figures may not add to 100.0% because of rounding.

¹Excludes PVM, CSU Agencies, and Course Fees/Technology Charges.

E&G Budgeted Revenue



Year	General Fund		Indirect Cost Recoveries	Misc. Revenue	Overhead Allocations	Other	Total
	Fund	Tuition					
FY95	\$62.07	\$71.79	\$14.46	\$1.54	\$7.27	\$0.05	\$157.18
FY96	\$65.82	\$76.19	\$16.52	\$2.30	\$7.57		\$168.40
FY97	\$70.44	\$78.79	\$16.52	\$2.85	\$7.56	\$0.95	\$177.11
FY98	\$74.48	\$78.74	\$18.00	\$4.05	\$8.23		\$183.52
FY99	\$77.38	\$80.64	\$18.50	\$5.12	\$8.82		\$190.46
FY00	\$82.66	\$84.48	\$20.00	\$5.59	\$7.16		\$199.89
FY01	\$88.03	\$88.55	\$20.50	\$5.42	\$5.25		\$207.75
FY02	\$93.20	\$92.91	\$21.40	\$7.06	\$5.41		\$219.98
FY03	\$95.70 ²	\$102.24	\$23.40	\$6.89	\$5.61	\$1.92	\$235.76
FY04	\$71.81	\$115.21	\$25.40	\$7.57	\$6.25		\$226.24
FY05	\$72.21	\$116.16	\$31.40	\$7.37	\$5.60		\$232.74

Source: Board Budgets

¹13 & 16 Funds only, excludes Course/Tech Fees, CSU Agencies and PVM

²Initial Operating Budget prior to mid-year General Fund Reductions

Comparison Of General Fund Appropriations (Includes Resident Instruction, PVM, and the CSU Agencies)

	CSU General Fund Appropriations	% of Total State General Fund	% of Total Higher Ed. State Budget	\$ Change in CSU General Fund ¹	% Change in CSU General Fund ²	Total State of Colorado General Fund	Total State General Fund to Higher Education ⁴	% of Total State General Fund
FY94 Actual	86,622,671	2.6%	16.3%	1,622,415	1.9%	3,375,568,399	531,584,779	15.7%
FY95 Actual	88,708,908	2.4%	16.5%	2,086,237	2.4%	3,674,202,306	538,128,142	14.6%
FY96 Actual	94,250,244	2.4%	16.2%	5,541,336	6.2%	3,899,024,749	582,433,260	14.9%
FY97 Actual	99,542,864	2.4%	16.0%	5,292,620	5.6%	4,178,391,767	621,618,791	14.9%
FY98 Actual	105,581,698	2.4%	16.1%	6,038,834	6.1%	4,463,475,931	656,223,861	14.7%
FY99 Actual	110,689,636	2.3%	16.4%	5,107,938	4.8%	4,755,090,668	676,307,254	14.2%
FY00 Actual	113,657,283 ³	2.2%	15.9%	2,967,647	2.7%	5,087,348,475	715,638,339	14.1%
FY01 Actual	118,695,965	2.2%	15.9%	5,038,682	4.4%	5,321,069,689	746,513,508	14.0%
FY02 Actual	119,175,674	2.1%	15.9%	479,709	0.4%	5,613,905,990	770,615,074	13.7%
FY03 Actual	110,312,260 ⁵	2.0%	16.1%	(8,863,414)	-7.4%	5,544,343,746	685,529,236	12.4%
FY04 Actual	94,930,319	1.7%	16.1%	(15,381,941)	-13.9%	5,627,296,522	591,409,402	10.5%
FY05 Long Bill	94,885,277	1.1%	16.1%	(45,042)	-0.05%	5,831,046,039	587,972,772	10.0%

¹CSU Average \$ Increase Last 10 Years (FY94-FY05) 617,637

²CSU Average % Increase Last 10 Years (FY94-FY05) .88%

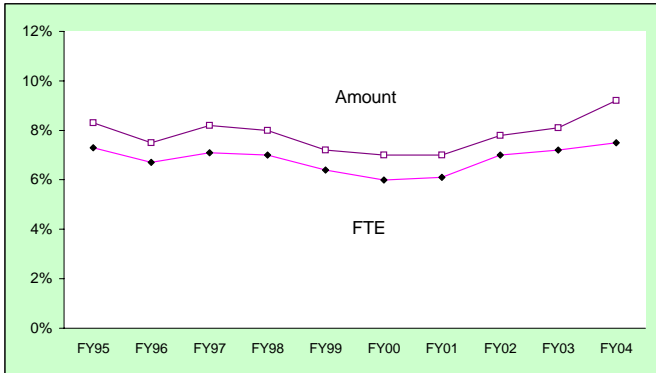
³Excludes Technology One-time Appropriation of \$1,041,447

⁴Includes local districts

⁵Includes reductions through payroll shift.

	FY99	FY05	% Increase
Seven-Year Change			
CSU GF Base	110,689,636	94,885,277	-14.3%
Higher Education	676,307,254	587,972,772	-13.1%
State of Colorado	4,755,090,668	5,831,046,039	22.6%

53 Fund FTE and Expenditures as a Percent of Total for Regular Faculty Paid from E&G and Research Funds



Faculty FTE and Salary Expenditures

	FY95	FY96	FY97	FY98	FY99	FY00	FY01	FY02	FY03	FY04
E&G										
FTE ¹	822	807	823	818	810	810	809	800	725	740
Amount ²	\$43.20	\$45.10	\$47.71	\$49.11	\$50.40	\$51.80	\$52.50	\$55.99	\$53.98	\$56.71
53 Fund										
FTE ¹	65	58	63	62	55	52	53	60	56	60
Amount ²	\$3.93	\$3.65	\$4.25	\$4.25	\$3.90	\$3.87	\$3.97	\$4.73	\$4.76	\$5.74
Total										
FTE ¹	887	865	886	880	865	862	862	860	781	800
Amount ²	\$47.13	\$48.75	\$51.96	\$53.36	\$54.30	\$55.67	\$56.47	\$60.72	\$58.74	\$62.45

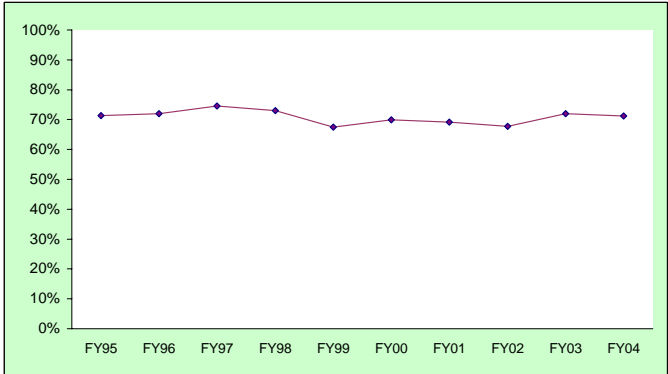
53 Fund as a percent of the Total of E&G and the 53 Fund

	FY95	FY96	FY97	FY98	FY99	FY00	FY01	FY02	FY03	FY04
FTE ¹	7.3%	6.7%	7.1%	7.0%	6.4%	6.0%	6.1%	7.0%	7.2%	7.5%
Amount	8.3%	7.5%	8.2%	8.0%	7.2%	7.0%	7.0%	7.8%	8.1%	9.2%

Note: Dollar amounts are in millions.

¹Tenured/Tenure-track Faculty paid from the 13 & 16 funds.

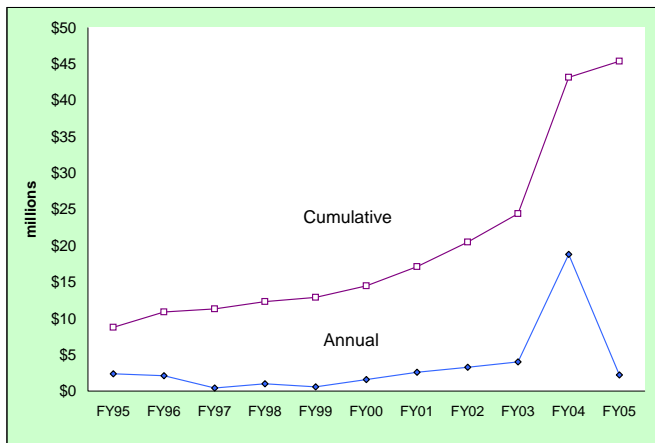
E&G Salary Expenditures as a Percent of Total Budget (13, 16, and 25 Funds)



Year	E&G Total Expenditures	E&G Salary Expenditures	Salaries Percent of Total E&G Expenditures
FY95	\$159.3	\$113.6	71.3%
FY96	\$166.3	\$119.7	72.0%
FY97	\$171.1	\$127.6	74.6%
FY98	\$177.5	\$129.5	73.0%
FY99	\$194.5	\$131.2	67.5%
FY00	\$195.1	\$136.5	70.0%
FY01	\$208.2	\$144.1	69.2%
FY02	\$234.4	\$158.9	67.8%
FY03	\$229.9	\$165.4	71.9%
FY04	\$226.0	\$160.8	71.2%

Amounts are in millions of dollars. Includes 13, 16, and 25 Funds

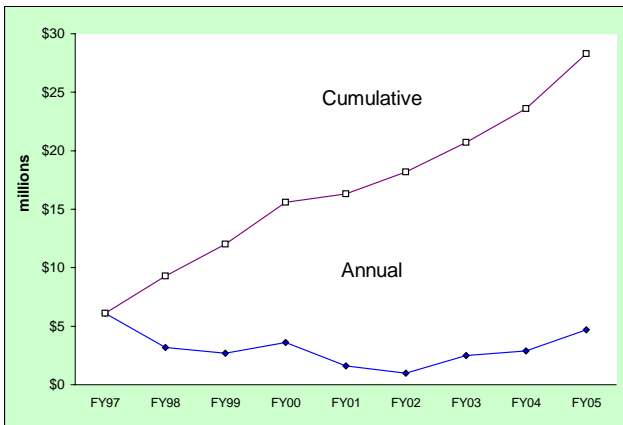
Central Reallocations



Year	Central Reallocations	Cumulative Total
FY95	\$2.4	\$8.8
FY96	\$2.1	\$10.9
FY97	\$0.4	\$11.3
FY98	\$1.0	\$12.3
FY99	\$0.6	\$12.9
FY00	\$1.6	\$14.5
FY01	\$2.6	\$17.1
FY02	\$3.3	\$20.5
FY03	\$4.0	\$24.4
FY04	\$18.8	\$43.2
FY05	\$2.2	\$45.4

Note: This data does not include the annual intra-unit reallocations.

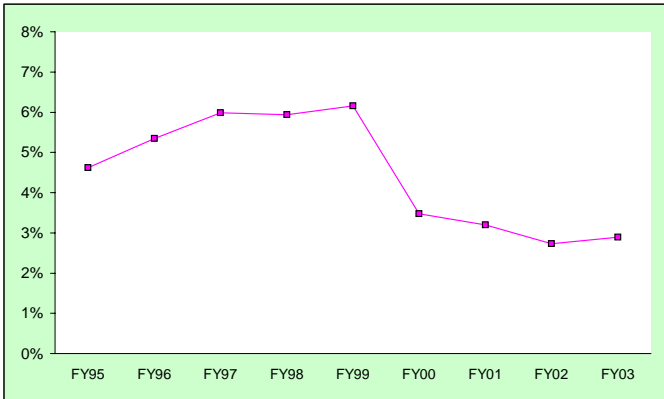
College & Unit Reallocations¹



	FY97	FY98	FY99	FY00	FY01	FY02	FY03	FY04	FY05
Cumulative Total	\$6.1	\$9.3	\$12.0	\$15.6	\$16.3	\$18.2	\$20.7	\$23.6	\$28.3
Reallocations	\$6.1	\$3.2	\$2.7	\$3.6	\$1.6	\$1.0	\$2.5	\$2.9	\$4.7

¹In Addition to Campuswide Central Reallocations

E&G Institutional Support Expenditures as a Percent of Total Expenditures¹

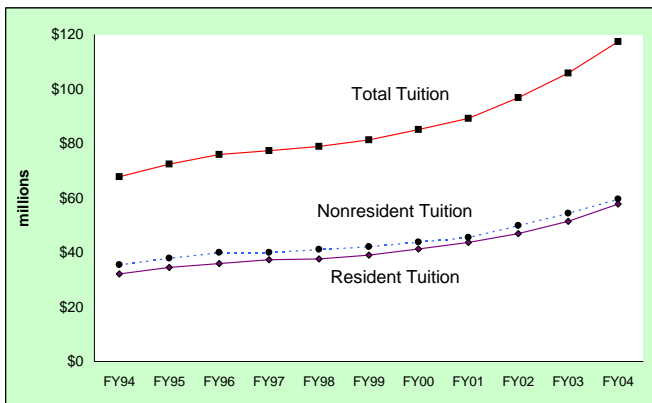


Year	Total E&G Current Funds Expenditures¹	CSU Institutional Support Expenditures	Institutional Support as a percent of Total Expenditures
FY95	\$452.2	\$20.9	4.6%
FY96	\$477.4	\$25.5	5.3%
FY97	\$417.8	\$25.0	6.0%
FY98	\$432.9	\$25.7	5.9%
FY99	\$468.0	\$28.8	6.2%
FY00	\$503.4	\$17.5	3.5%
FY01	\$516.2	\$16.5	3.2%
FY02	\$578.9	\$15.8	2.7%
FY03	\$598.5	\$17.3	2.9%

Source: Integrated Postsecondary Education Data System (IPEDS), Finance Survey

¹Total E&G Expenses and Other Deductions, Integrated Postsecondary Education Data System (IPEDS), Finance Survey

Total Resident & Nonresident Tuition Revenue¹

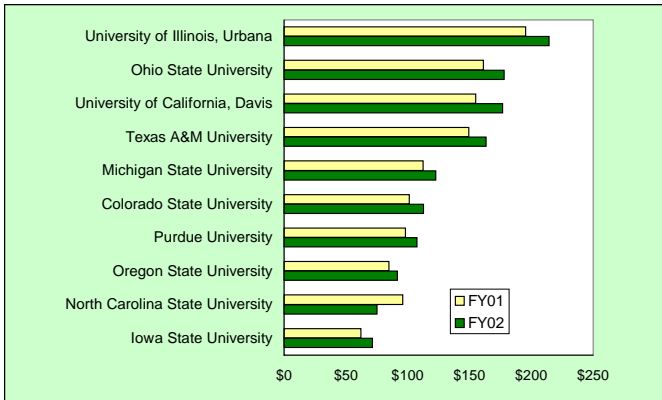


Year	Resident	Nonresident	Total
FY94	\$32.2	\$35.6	\$67.8
FY95	\$34.6	\$37.9	\$72.5
FY96	\$36.0	\$40.0	\$76.0
FY97	\$37.4	\$40.0	\$77.4
FY98	\$37.7	\$41.2	\$78.9
FY99	\$39.1	\$42.2	\$81.3
FY00	\$41.3	\$43.8	\$85.1
FY01	\$43.7	\$45.5	\$89.2
FY02	\$47.0	\$49.9	\$96.9
FY03	\$51.5	\$54.4	\$105.9
FY04	\$57.8	\$59.6	\$117.4

¹Excludes PVM and Continuing Education

Source: Budget Data Books

Federal Research and Development Expenditures, CCHE Peer Institutions

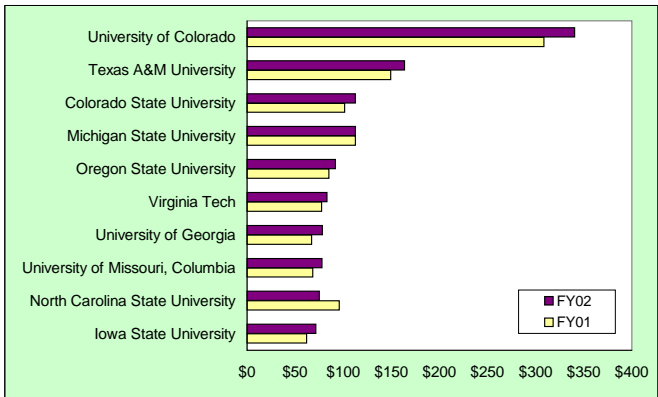


	FY01	FY02
University of Illinois, Urbana	\$195.3	\$214.3
Ohio State University	\$161.1	\$177.9
University of California, Davis	\$154.9	\$176.6
Texas A&M University	\$149.4	\$163.5
Michigan State University	\$112.4	\$122.6
Colorado State University	\$101.3	\$112.7
Purdue University	\$98.2	\$107.5
Oregon State University	\$84.9	\$91.7
North Carolina State University	\$95.9	\$75.2
Iowa State University	\$62.0	\$71.4

Note: Oklahoma State and Washington State were not listed in the top 100 institutions.

Dollar Amount in millions

Federal Research and Development Expenditures, Internal Peer Institutions



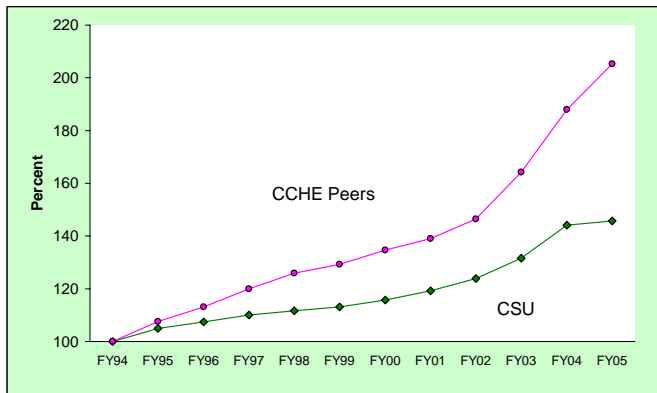
	FY01	FY02
University of Colorado	\$308.6	\$340.5
Texas A&M University	\$149.4	\$163.5
Colorado State University	\$101.3	\$112.7
Michigan State University	\$112.4	\$112.6
Oregon State University	\$84.9	\$91.7
Virginia Tech	\$77.4	\$83.0
University of Georgia	\$66.9	\$78.1
University of Missouri, Columbia	\$68.4	\$77.7
North Carolina State University	\$95.9	\$75.2
Iowa State University	\$62.0	\$71.4

Note: Kansas State, Oklahoma State, University of Nebraska and Washington State were not listed in the top 100 institutions.

Dollar amount in millions

Source: *Chronicle of Higher Education*, Aug. 6, 2004

Resident Undergraduate Tuition Increases CSU and CCHE Peer Institutions

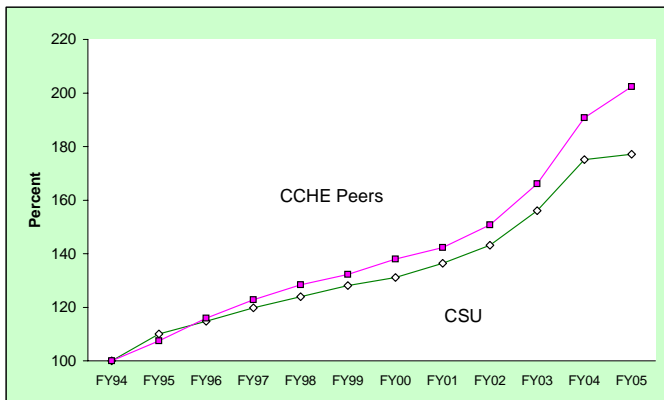


Fiscal Year	CSU	CCHE Peers
FY94	100.0	100.0
FY95	105.0	107.6
FY96	107.5	113.1
FY97	110.0	119.9
FY98	111.6	125.9
FY99	113.1	129.3
FY00	115.8	134.7
FY01	119.2	139.1
FY02	123.9	146.4
FY03	131.6	164.2
FY04	144.1	188.0
FY05	145.7	205.3

Note: 1993-1994 = 100%

A list of CCHE peer institutions is provided in the last section of this document.

Nonresident Undergraduate Tuition Increases CSU and CCHE Peer Institutions



Fiscal Year	CSU	CCHE Peers
FY94	100.0	100.0
FY95	110.0	107.5
FY96	114.8	115.9
FY97	119.8	122.8
FY98	124.0	128.4
FY99	128.1	132.2
FY00	131.1	138.0
FY01	136.4	142.3
FY02	143.2	150.7
FY03	156.1	166.1
FY04	175.1	190.7
FY05	177.1	202.3

Note: 1993-1994 = 100%

State Appropriations Peer Comparisons

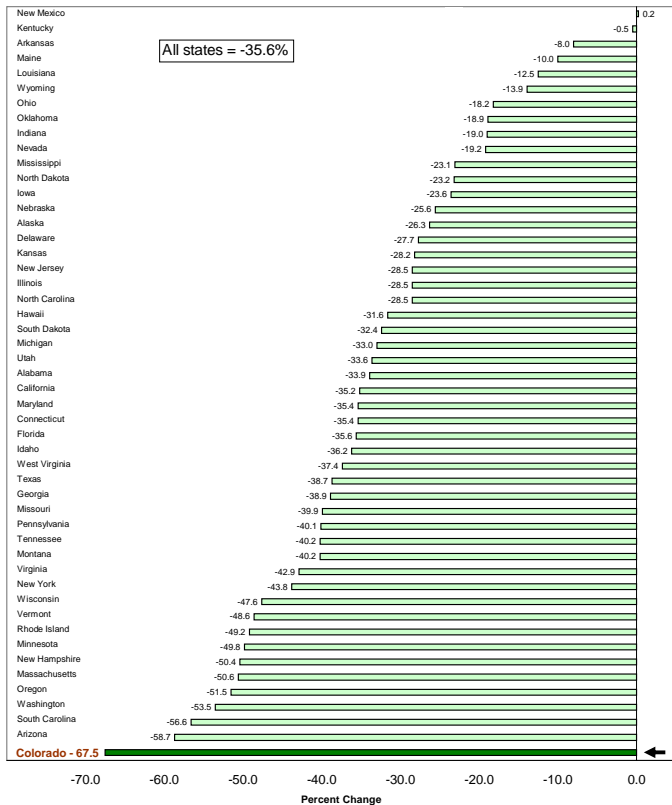
Institution	2003-04 approp.	1-year change
<u>CCHE Peers</u>		
Iowa State	\$232,817,000	-2.9%
Michigan State	\$355,152,000	-7.0%
North Carolina State	\$340,688,000	-4.4%
Ohio State	\$395,740,000	-0.1%
Oklahoma State	\$197,198,000	-2.8%
Oregon State System	\$314,100,000	-8.2%
Purdue	\$327,579,000	+2.7%
Texas A&M	\$758,596,000	+1.6%
Univ. of Illinois, System	\$828,843,000	-4.9%
Washington State	\$185,340,000	-4.6%
		Weighted average -5.7%
		National CPI Adjusted -8%
<u>Internal Peers</u>		
Iowa State	\$232,817,000	-2.9%
Kansas State	\$157,713,000	+0.3%
Michigan State	\$355,152,000	-7.0%
North Carolina State	\$340,688,000	-4.4%
Oklahoma State	\$197,198,000	-2.8%
Oregon State, System	\$314,100,000	-8.2%
Texas A&M	\$758,596,000	+1.6%
Univ. of Georgia	\$406,526,000	-1.2%
Univ. of Missouri, System	\$397,320,000	-4.8%
Univ. of Nebraska, Lincoln	\$393,119,000	-4.7%
Virginia Polytechnic Inst.	\$132,769,000	-8.3%
Washington State	\$185,340,000	-4.6%
		Weighted average -6.9%
		National CPI adjusted -9.2%
Colorado State University	\$94,930,319	-13.9%
National CPI adjusted		-16.2%

National CPI percentage change for 2003 was 2.3%

Source: Bureau of Labor Statistics and the Colorado Legislative Economic Forecast

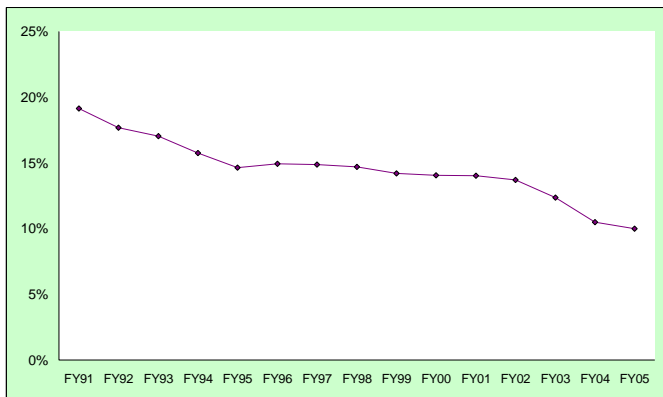
Source: Chronicle of Higher Education, 1/16/04

Change in Appropriations of State Tax Funds for Operating Expenses of Higher Education per \$1000 of Personal Income, FY1978-FY04



Source: *Postsecondary Education OPPORTUNITY*, January 2004, 139, pg. 4

Higher Education Share of Statewide General Fund



Year	Higher Education (in millions)	Total State General Fund (in millions)	Percent Share
FY91	\$502.0	\$2,619.7	19.2%
FY92	\$496.6	\$2,809.0	17.7%
FY93	\$525.3	\$3,079.3	17.1%
FY94	\$531.6	\$3,375.6	15.7%
FY95	\$538.1	\$3,674.2	14.6%
FY96	\$582.4	\$3,899.0	14.9%
FY97	\$621.6	\$4,178.4	14.9%
FY98	\$656.2	\$4,463.5	14.7%
FY99	\$676.3	\$4,755.1	14.2%
FY00	\$715.6	\$5,087.4	14.1%
FY01	\$746.5	\$5,321.1	14.0%
FY02	\$770.6	\$5,613.9	13.7%
FY03	\$685.5	\$5,544.3	12.4%
FY04	\$591.4	\$5,627.3	10.5%
FY05	\$588.0	\$5,831.0	10.0%

2003-04 Annual Research Expenditures

Federal Funds (in Millions)

Department of Agriculture (USDA)	\$36.5
Department of Defense	12.6
Department of Energy	5.5
Health & Human Services	41.1
National Science Foundation	20.2
NASA	6.9
Miscellaneous Federal	22.4
Non-Science & Engineering (Federal)	6.8
Total Federal Funds	\$152.0

Non-Federal Funds

Industrials	\$22.1
State and Local	17.1
Non-Science & Engineering (Non-Federal)	2.5
Foundations	1.3
All other Non-Federal Sources	5.9
Total Non-Federal Funds	\$48.9

Total Sponsored Expenditures **\$200.9**

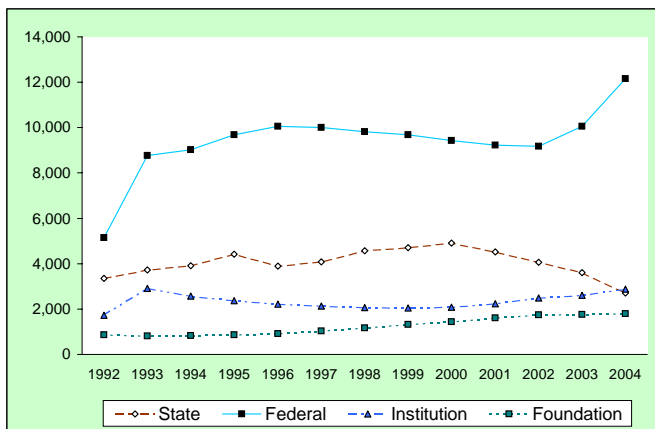
Institutional Expenditures **\$23.3**

Total CSU Research Expenditures \$224.2

Note: Of the \$36.5 million in USDA funding, approximately \$12 million is associated with the activities of the Colorado State Forest Service that have been transferred to the Research Division.

Financial Aid

Financial Aid Recipients



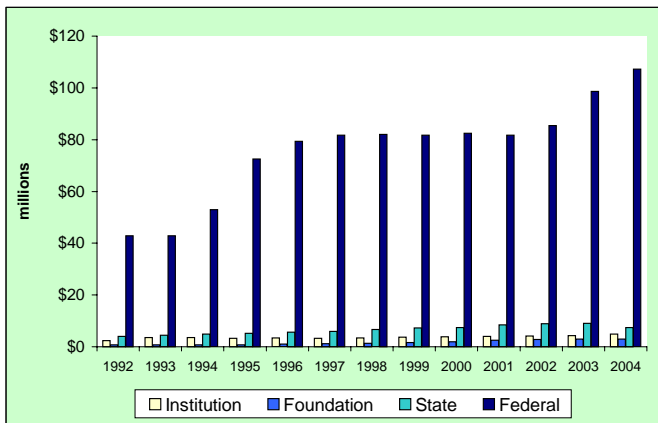
Fiscal Year	Institution Scholarships ¹	Foundation Scholarships ²	State Awards	Federal Awards
1992	1,721	869	3,347	5,154
1993	2,913	805	3,719	8,775
1994	2,568	834	3,915	9,015
1995	2,376	856	4,410	9,678
1996	2,216	911	3,886	10,064
1997	2,125	1,034	4,078	10,009
1998	2,057	1,170	4,573	9,823
1999	2,047	1,327	4,713	9,687
2000	2,081	1,442	4,912	9,423
2001	2,231	1,614	4,514	9,226
2002	2,496	1,738	4,066	9,167
2003	2,602	1,753	3,609	10,059
2004	2,879	1,790	2,716	12,148

¹Scholarships given by CSU (13 Funds).

²Scholarships given by CSU Foundation (64 Funds)

Note: Numbers are duplicated since many students receive multiple sources of funding.

Financial Aid Awarded to Students



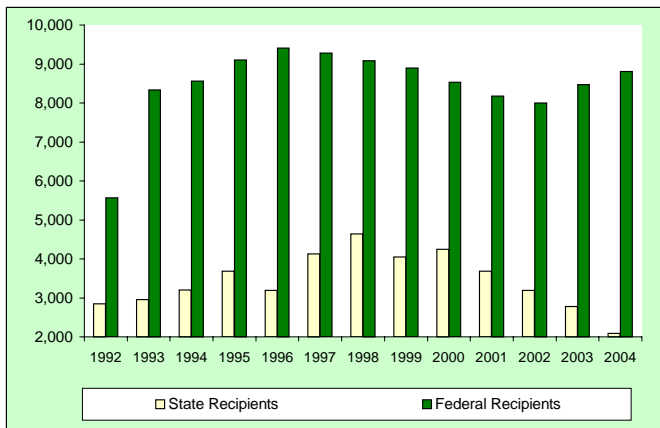
Fiscal Year	Institution Scholarships ¹	Foundation Scholarships ²	State Awards	Federal Awards	Total Awards
1992	\$2.3	\$0.8	\$4.0	\$42.8	\$58.4
1993	\$3.5	\$0.8	\$4.4	\$42.9	\$60.1
1994	\$3.6	\$0.8	\$4.9	\$52.9	\$75.5
1995	\$3.3	\$0.8	\$5.2	\$72.5	\$92.9
1996	\$3.4	\$1.0	\$5.7	\$79.4	\$100.8
1997	\$3.3	\$1.2	\$6.0	\$81.7	\$104.3
1998	\$3.4	\$1.4	\$6.7	\$82.0	\$108.0
1999	\$3.7	\$1.7	\$7.2	\$81.7	\$109.6
2000	\$3.8	\$2.0	\$7.4	\$82.5	\$112.3
2001	\$4.0	\$2.5	\$8.4	\$81.8	\$114.7
2002	\$4.1	\$2.8	\$8.9	\$85.4	\$120.5
2003	\$4.3	\$2.9	\$9.1	\$98.6	\$136.8
2004	\$4.9	\$3.0	\$7.4	\$107.3	\$148.1

¹13 Funds

²64 Funds

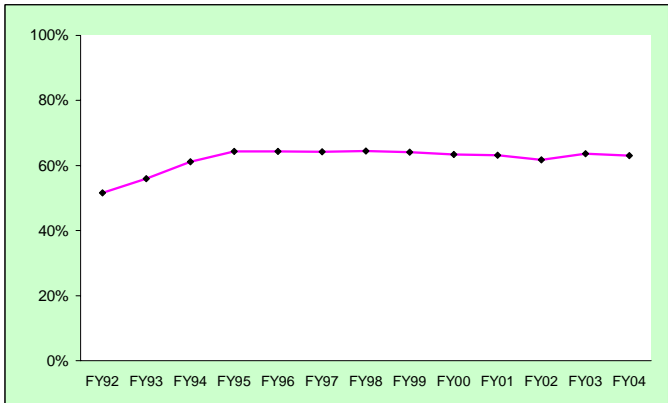
State = All state assistance through CCHE, excluding work-study

Need-Based Financial Aid Recipients



Fiscal Year	State Recipients	Federal Recipients	Total Recipients
1992	2,849	5,562	8,524
1993	2,958	8,334	8,711
1994	3,201	8,564	9,091
1995	3,682	9,104	9,657
1996	3,190	9,407	9,986
1997	4,124	9,282	9,915
1998	4,637	9,082	9,780
1999	4,046	8,898	9,612
2000	4,242	8,531	9,240
2001	3,685	8,181	8,973
2002	3,197	8,002	8,855
2003	2,774	8,477	9,321
2004	2,089	8,811	9,047

Financial Aid Recipients as a Percent of Total Student Population

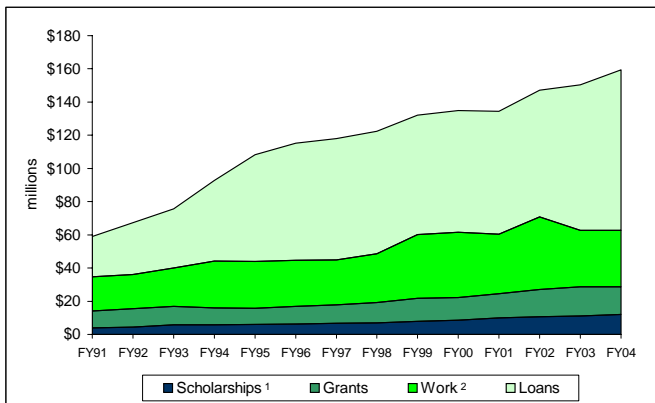


Full Year	Total Aid Recipients	Total Students Enrolled	Percent of Total Receiving Financial Aid
FY92	10,821	20,967	51.6%
FY93	11,887	21,210	56.0%
FY94	12,902	21,110	61.1%
FY95	13,796	21,461	64.3%
FY96	14,086	21,914	64.3%
FY97	14,097	21,970	64.2%
FY98	14,413	22,344	64.5%
FY99	14,445	22,523	64.1%
FY00	14,465	22,782	63.4%
FY01	14,617	23,098	63.2%
FY02	14,802	23,934	61.8%
FY03	15,727	24,735	63.6%
FY04	15,800	25,042	63.1%

Note: Represents unduplicated number of financial aid recipients (includes all students) as reflected in the SURDS Report compared to the Fall University enrollment number. Financial Aid = grants, loans, scholarships, fellowships, etc.

Historical View of Financial Aid Resources

Actual Expenditures

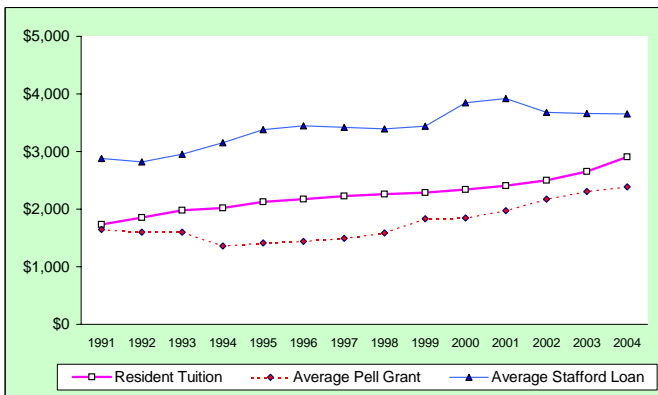


Year	Scholarships ¹	Grants	Work ²	Loans	Total Resources
FY91	\$3.9	\$10.1	\$20.6	\$24.4	\$59.0
FY92	\$4.5	\$10.9	\$20.7	\$31.2	\$67.3
FY93	\$5.7	\$11.3	\$23.1	\$35.6	\$75.7
FY94	\$5.8	\$10.1	\$28.3	\$48.6	\$92.8
FY95	\$6.0	\$9.8	\$28.1	\$64.3	\$108.2
FY96	\$6.3	\$10.7	\$27.6	\$70.7	\$115.3
FY97	\$6.6	\$11.1	\$27.2	\$73.1	\$118.0
FY98	\$7.0	\$12.3	\$29.4	\$73.6	\$122.3
FY99	\$7.9	\$13.9	\$38.3	\$71.9	\$132.0
FY00	\$8.5	\$13.8	\$39.3	\$73.4	\$135.0
FY01	\$9.9	\$14.6	\$35.9	\$74.0	\$134.4
FY02	\$10.6	\$16.4	\$43.7	\$76.4	\$147.1
FY03	\$11.0	\$17.7	\$34.0	\$87.7	\$150.5
FY04	\$12.1	\$16.5	\$34.1	\$96.6	\$159.3

¹Scholarships include those from the Institution, CSU Foundation, and outside.

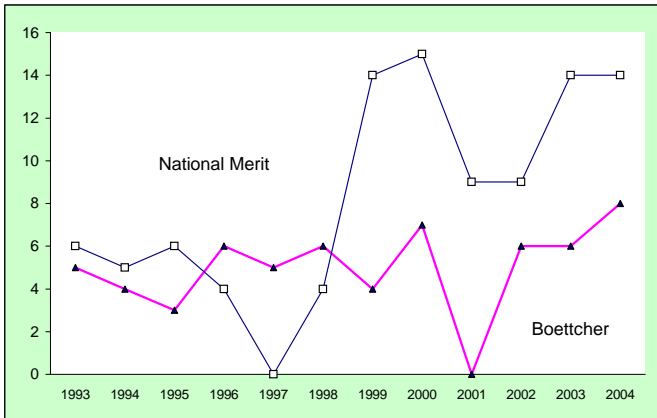
²Includes student hourly and off-campus employment arranged through CSU.

Resident Tuition Compared to Average Pell Grant and Average Stafford Loan



Fiscal Year	Resident Tuition	Average Pell Grant	Average Stafford Loan
1991	\$1,734	\$1,646	\$2,882
1992	\$1,855	\$1,597	\$2,821
1993	\$1,982	\$1,598	\$2,954
1994	\$2,022	\$1,362	\$3,154
1995	\$2,124	\$1,413	\$3,379
1996	\$2,174	\$1,442	\$3,447
1997	\$2,224	\$1,495	\$3,420
1998	\$2,258	\$1,589	\$3,392
1999	\$2,286	\$1,831	\$3,442
2000	\$2,340	\$1,844	\$3,846
2001	\$2,408	\$1,972	\$3,920
2002	\$2,502	\$2,173	\$3,678
2003	\$2,655	\$2,305	\$3,658
2004	\$2,908	\$2,388	\$3,656

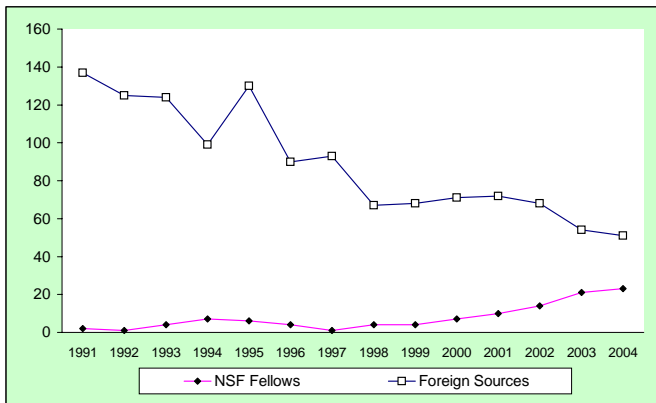
Boettcher and National Merit Scholars



Fall	Boettcher Scholars	National Merit Scholars
1993	5	6
1994	4	5
1995	3	6
1996	6	4
1997	5	0
1998	6	4
1999	4	14
2000	7	15
2001	0	9
2002	6	9
2003	6	14
2004	8	14

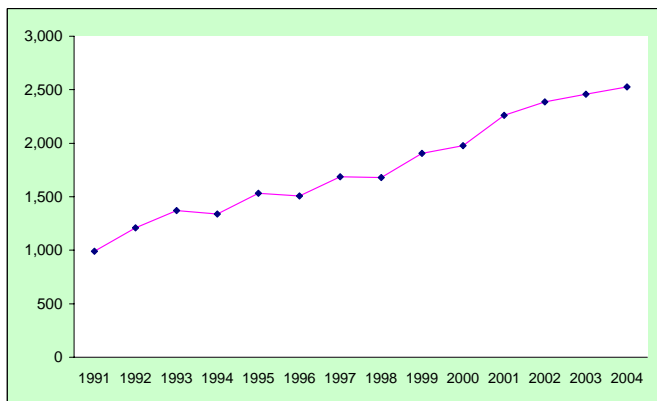
Note: Numbers reflect new fall enrollees.

Graduate Students with Funding from External Sources



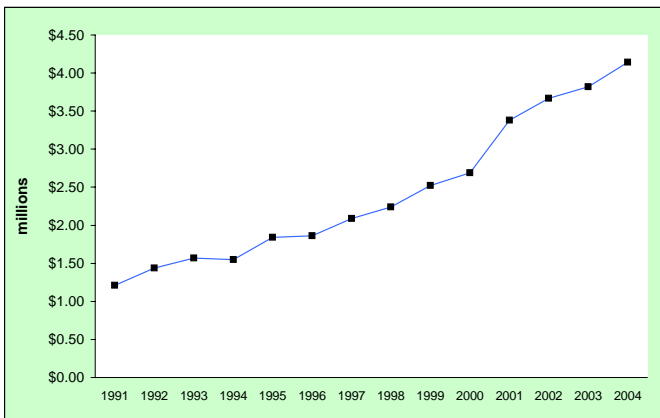
Fiscal Year	NSF Fellows	Foreign Sources
1991	2	137
1992	1	125
1993	4	124
1994	7	99
1995	6	130
1996	4	90
1997	1	93
1998	4	67
1999	4	68
2000	7	71
2001	10	72
2002	14	68
2003	21	54
2004	23	51

Outside Scholarships Students Bring to University



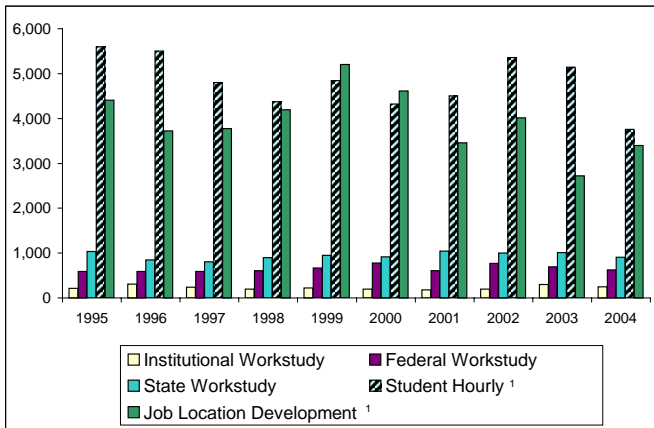
<u>Fiscal Year</u>	<u>Number of Scholarships</u>
1991	989
1992	1,208
1993	1,371
1994	1,339
1995	1,531
1996	1,506
1997	1,686
1998	1,681
1999	1,905
2000	1,978
2001	2,261
2002	2,387
2003	2,458
2004	2,527

Financial Aid from Outside Scholarships



<u>Fiscal Year</u>	<u>Total (In Millions)</u>
1991	\$1.21
1992	\$1.44
1993	\$1.57
1994	\$1.55
1995	\$1.84
1996	\$1.86
1997	\$2.09
1998	\$2.24
1999	\$2.52
2000	\$2.69
2001	\$3.38
2002	\$3.67
2003	\$3.82
2004	\$4.14

University-Related Student Employment

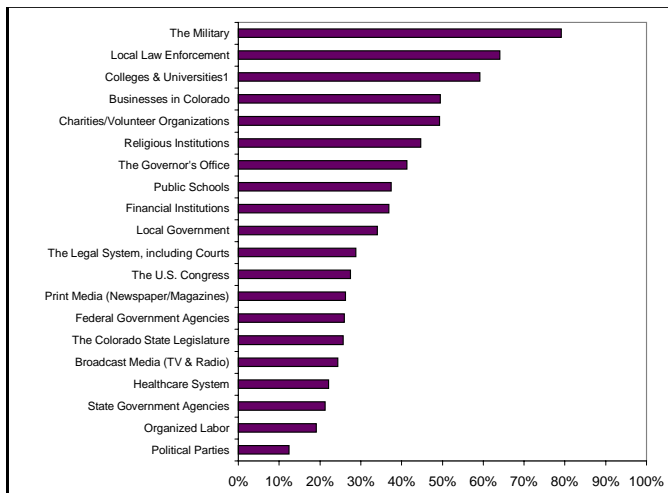


Fiscal Year	Institutional Workstudy	Federal Workstudy	State Workstudy	Student Hourly ¹	Job Location Development ¹	Total Employed
1995	211	587	1,035	5,600	4,412	11,634
1996	305	587	848	5,500	3,722	10,657
1997	236	587	807	4,800	3,776	9,970
1998	194	609	901	4,375	4,195	10,080
1999	223	667	948	4,841	5,206	11,662
2000	194	779	915	4,320	4,614	10,628
2001	184	605	1,044	4,504	3,460	9,797
2002	198	770	1,005	5,361	4,012	11,346
2003	301	691	1,009	5,146	2,721	9,868
2004	245	623	911	3,754	3,395	8,928

¹Estimated based on sample data.

Colorado Comparisons

Confidence in Institutions

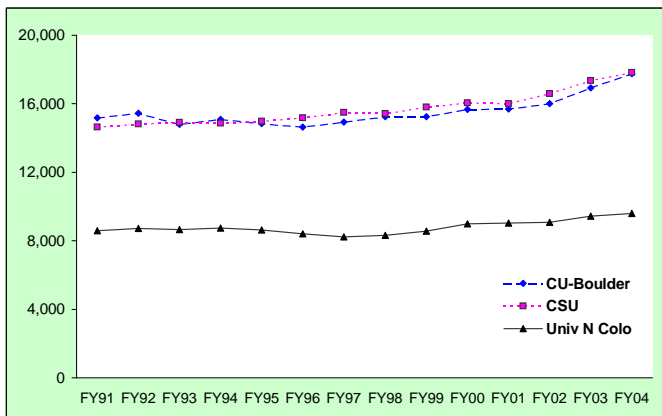


The Military	79.1%
Local Law Enforcement	64.1%
Colleges & Universities ¹	59.2%
Businesses in Colorado	49.5%
Charities/Volunteer Organizations	49.3%
Religious Institutions	44.7%
The Governor's Office	41.3%
Public Schools	37.4%
Financial Institutions	36.9%
Local Government	34.1%
The Legal System, including Courts	28.8%
The U.S. Congress	27.5%
Print Media (Newspaper/Magazines)	26.2%
Federal Government Agencies	26.0%
The Colorado State Legislature	25.7%
Broadcast Media (TV & Radio)	24.4%
Healthcare System	22.1%
State Government Agencies	21.3%
Organized Labor	19.1%
Political Parties	12.4%

Source: *The Mind of Colorado 2003*

¹Colleges and Universities were down nearly seven points, falling to their lowest score since 1998.

Comparison of Resident FTE



Full Year ¹	CSU	CU-Boulder	Univ N Colo
FY91	14,650	15,176	8,598
FY92	14,829	15,456	8,717
FY93	14,911	14,809	8,651
FY94	14,868	15,097	8,749
FY95	14,986	14,846	8,643
FY96	15,174	14,632	8,403
FY97	15,484	14,934	8,225
FY98	15,432	15,239	8,315
FY99	15,804	15,242	8,573
FY00	16,057	15,666	8,988
FY01	16,019	15,692	9,041
FY02	16,593	16,007	9,088
FY03	17,363	16,934	9,441
FY04	17,830	17,759	9,598

Note: CSU includes Professional Veterinary Medicine.

¹Full Year includes Summer, Fall and Spring semesters.

CCHE Quality Indicators for FY05 Budget Process

Quality Indicators/Intra-Institutional Comparisons

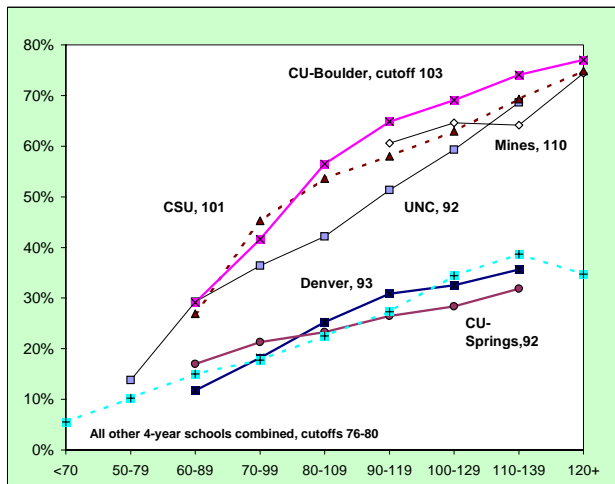
- 1 Baccalaureate Graduation Rates
 4 years
 5 years
 6 years
 Total
- 2 Freshmen Retention Rate in Same Institution
- 3 Support and Success of Minority Students
 1-year retention
 6-year graduation rate
 Total
- 4 Achievement Scores on Licensure
 Examinations and Other Tests Taken
 by Baccalaureate Seniors and Graduates
- 5 Institutional Support Expenditures per SFTE
- 6 Class size comparisons
 <20
 >50

CCHE Quality Indicators for FY05 Budget Process

	CSU Score	Benchmark	FY05 % of Goal	FY04 %of Goal
1	33.8%	26.2-30.2%	129%	101%
	57.9%	52.7-56.7%	110%	111%
	62.9%	58.4-62.4%	108%	116%
2	83.1%	80.4-84.4%	103%	106%
3	84.4%	77.3-81.3%	109%	106%
	56.0%	48.6-52.6%	115%	99%
4	N/A			
5	\$737 ¹	\$1,999-2081	165%	120%
6	38.8%	43%	90%	94%
	17.5% ¹	11%	63%	69%

¹For these indicators, the goal is to be as low as possible below the benchmark.

Six-Year Graduation Rates of 1991 Freshmen by Admissions Index



Note: Data is for groups of 50+ resident entering freshmen. Index groupings overlap, to smooth the curves.
 Statewide information is no longer available, however, data trends have remained the same.

Other

University Peer Groups

Internal Peer Group

Iowa State University
Kansas State University
Michigan State University
North Carolina State University
Oklahoma State University
Oregon State University
Texas A&M University
University of Georgia
University of Missouri, Columbia
University of Nebraska, Lincoln
Virginia Polytechnic Institute
and State University
Washington State University

CCHE Peer Group

Iowa State University
Michigan State University
North Carolina State University
Ohio State University
Oklahoma State University
Oregon State University
Purdue University
Texas A&M University
University of California, Davis
University of Illinois, Urbana
Washington State University

Faculty Recognition

University Distinguished Professors

Barry Beaty, Microbiology
Patrick Brennan, Microbiology
Louis Hegedus, Chemistry
Edward Hoover, Pathology
Gordon Niswender, Physiology
Bernard Rollin, Philosophy
Holmes Rolston III, Philosophy
George Seidel, Jr., Physiology
Gary Smith, Animal Science
Thomas VonderHaar, Atmospheric Science
Robert Williams, Chemistry
Stephen Withrow, Clinical Science
Emeritus Status
Jack Cermak, Civil Engineering
Marshall Fixman, Chemistry
Albert Meyers, Chemistry

University Distinguished Teaching Scholars

2003 Recipients

Rich Feller, School of Education
Kate Kiefer, English
Ed Redente, Rangeland Ecosystem Science
Wayne Viney, Psychology
Ray Whalen, Anatomy and Neurobiology

2001 Recipients

Ken Barbarick, Soil and Crop Sciences
James Boyd, Philosophy
Ingrid Burke, Forest Sciences
Pattie Cowell, English

2000 Recipients

Mike Palmquist, English
Stephen Thompson, Chemistry
Frank Vattano

Emeritus Status

Bob Richburg, School of Education

Public Rankings

U.S. News and World Report ranked Colorado State 56th among public doctoral universities in its 2004 "Best Colleges" edition.

The Veterinary Medicine Program (DVM) is ranked 2nd in the nation.

Occupational Therapy master's program and the Vocational and Technical Education program are both ranked 7th in the nation.

College of Engineering ranked 60th, Graduate Engineering ranked 56th

College of Business ranked 87th

Kiplinger's Personal Finance Magazine has ranked Colorado State 27th for quality education in their annual 100 Best Values in Public Colleges rankings.

Templeton Foundation listed CSU as a top character building institution.

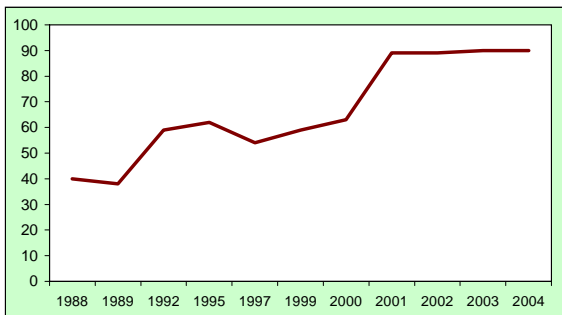
The Peace Corps indicated CSU ranked 8th in the nation for number of volunteers this year.

The National Science Foundation recently ranked Colorado State among the nation's top 5 percent of public and private institutions of higher education receiving federal research and development financial support in engineering and the sciences.

Colorado State ranked second in the nation in federal research and development support when compared with other public research universities without medical schools..

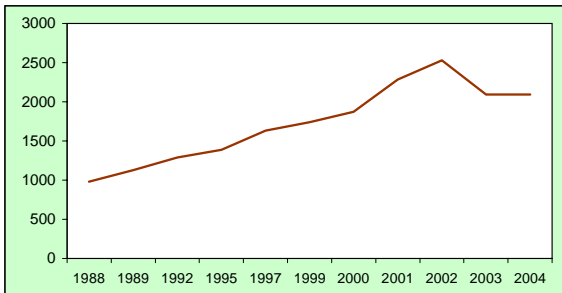
Kaplan's 2004 Unofficial, Unbiased Guide to the 328 Most Interesting Colleges lists Colorado State as a top university in the categories of schools that are hot and trendy, schools with the most beautiful campus in an urban setting, schools with the most beautiful campus in a suburban or rural setting and schools where the students enjoy themselves so much they never want to leave.

Student Computer Labs



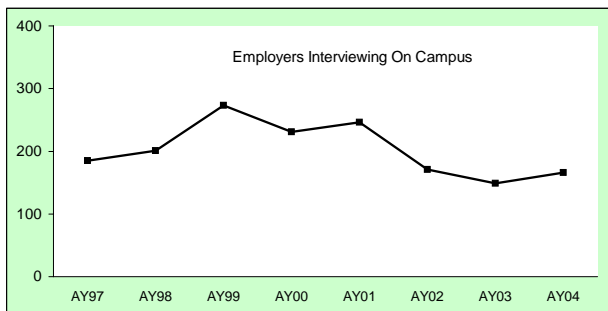
	1988	1989	1992	1995	1997	1999	2000	2001	2002	2003	2004
Total	40	38	59	62	54	59	63	89	89	90	90

Student Computer Workstations

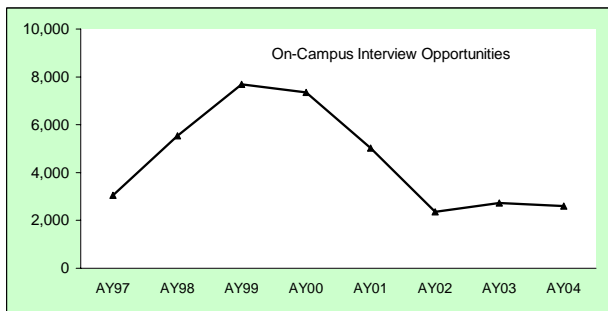


	1988	1989	1992	1995	1997	1999	2000	2001	2002	2003	2004
Total	978	1,126	1,291	1,387	1,634	1,739	1,873	2,283	2,530	2,095	2,095

Campus Interview Opportunities



<u>Academic Year</u>	<u>Employers Interviewing On Campus</u>	<u>On-Campus Interview Opportunities</u>
AY97	185	3,042
AY98	201	5,532
AY99	273	7,685
AY00	231	7,348
AY01	246	5,024
AY02	171	2,354
AY03	149	2,725
AY04	166	2,598



FOR ADDITIONAL COPIES OR MORE INFORMATION
CONTACT:

OFFICE OF BUDGETS AND INSTITUTIONAL ANALYSIS
301 ADMINISTRATION BUILDING
FORT COLLINS, CO 80523-6104
(970) 491-5939

THIS ENTIRE DOCUMENT IS AVAILABLE ON THE WEB AT
WWW.COLOSTATE.EDU/DEPTS/OBIA/OBIA.HTML



Knowledge to Go Places