



## THE MINES FOUNDATION

The Mines Foundation advances the university's mission by raising and managing funds and by fostering engagement with Mines alumni and friends. The Alumni Office offers lifelong opportunities for alumni to show their Oredigger pride by staying active with the university and connecting with each other, wherever they live.

In 2024, Mines will celebrate its 150th anniversary. The Campaign for MINES@150 provides opportunities to invest in producing distinctive and highly valued graduates who are needed to solve society's greatest challenges for the next 150 years.

The Foundation is a tax-exempt organization that supports fundraising on a large and small scale, from estate gifts to the university's crowdfunding platform and #idigmnes Giving Day, Mines' annual day of giving every February. The Foundation advances the university by receiving and stewarding these vital donations and helping alumni and friends make tax-favored gifts of any size.

A voluntary Board of Governors oversees the Foundation and the management of the university's \$400 million endowment.

For more information, visit [weare.mines.edu](http://weare.mines.edu) or call 303-273-3275.



**#1** Mines has the largest collegiate section of the Society of Women Engineers in the U.S.

**6** Rocky Mountain Athletic Conference All-Sports Competition Cup championships

**18** intercollegiate varsity athletic teams at Mines

**92%, 92%, 96%** of 2020-2021 bachelor's, master's and PhD graduates had positive career outcomes within six months of graduation

**200+** student organizations on campus

**6,754** degree-seeking undergraduate and graduate students

**\$43.68M** raised by Mines in fiscal year 2021

**\$87.84M** in total research awards in fiscal year 2021

**\$406.9M** invested in the Mines endowment as of November 2021

## Research and Technology Transfer

Mines faculty and students (both graduate and undergraduate) explore new frontiers in a diverse research portfolio. Topics include conventional and unconventional oil and gas research, groundwater contaminants, human-device interactions, quantum engineering, underground construction and computational modeling, to name a few.

**\$87.84M** in total research awards during the fiscal year 2021  
**27** research centers and institutes are affiliated with Mines  
**160** research faculty at Mines as of Jan. 2022

For more information, visit [research.mines.edu](http://research.mines.edu).

## RESEARCH



More than 11,000 students apply each year for one of the approximately 1,200 first-year seats and 200 transfer seats. Mines' entering class score averages include:

- **3.81-4.0** middle 50 percent unweighted GPA
- **1340-1490** middle 50 percent SAT composite (Mines is a test-optional institution)

For more information, call 303-384-2027, visit [mines.edu/undergraduate-admissions](http://mines.edu/undergraduate-admissions) or email [admissions@mines.edu](mailto:admissions@mines.edu).

Mines welcomes graduates from four-year baccalaureate programs at recognized colleges and universities worldwide. Admission to graduate school is competitive and is based on an evaluation of academic performance, test scores, references and/or professional experience.

For more information, call 303-273-3247, visit [mines.edu/graduate-admissions](http://mines.edu/graduate-admissions) or email [grad-admissions@mines.edu](mailto:grad-admissions@mines.edu).



## MINES IS RANKED

**#1** mineral and mining engineering program in the world (2021 QS World University Rankings)

**#3** in petroleum engineering (U.S. News & World Report, 2022)

**#4** Engineering school in the U.S., based on value and average salary (Money Magazine)

**#4** best public university in the U.S. by salary potential and no. 1 in Colorado (Payscale)

**#4** among America's brainiest colleges (Lumosity)

**#12** on the list of top 25 universities, as evaluated by alumni. Mines sits five spots above Stanford University. (Forbes)

**#19** overall return on investment among 4,500 two- and four-year public and private institutions 30 and 40 years out (Georgetown University Center on Education and the Workforce)

**#33** public university in the U.S. (U.S. News & World Report, 2022)

**#57** Most innovative school (U.S. News & World Report, 2022)

**Mines Museum of Earth Science** is a world-class museum specializing in the exhibit of Colorado minerals.

**2** moon rocks collected during the Apollo 17 and Apollo 15 missions are on display in the Mines Museum

**2,500** rocks, minerals, fossils and other earth science-related objects are on display

Schedule a tour by emailing [museumevents@mines.edu](mailto:museumevents@mines.edu) with "TOUR" in the subject line.

**Mines Athletics** is one of the top athletic programs at the NCAA Division II level.

Fans across the region can follow **18** teams competing throughout the year at Lockridge Arena, Marv Kay Stadium at Campbell Field and **15** other facilities.

Tickets are available for purchase online at [minesathletics.com](http://minesathletics.com).



## CAREER CENTER

With expert teaching staff, state-of-the-art facilities and strong industry partnerships, Mines provides the ideal environment for training exceptional graduates in the STEM fields. The Mines Career Center provides support by creating opportunities for students and recruiters to connect—through career fairs, workshops, information sessions and on-campus interviews.

- **710** organizations posted **4,335** jobs in DiggerNet
- **107** employer information sessions

Average starting salaries:

- **\$73,418** Bachelor's
- **\$80,995** Master's
- **\$77,491** PhD

For more information, visit: [careers.mines.edu](http://careers.mines.edu) or call 303-273-3233.

## VISIT MINES

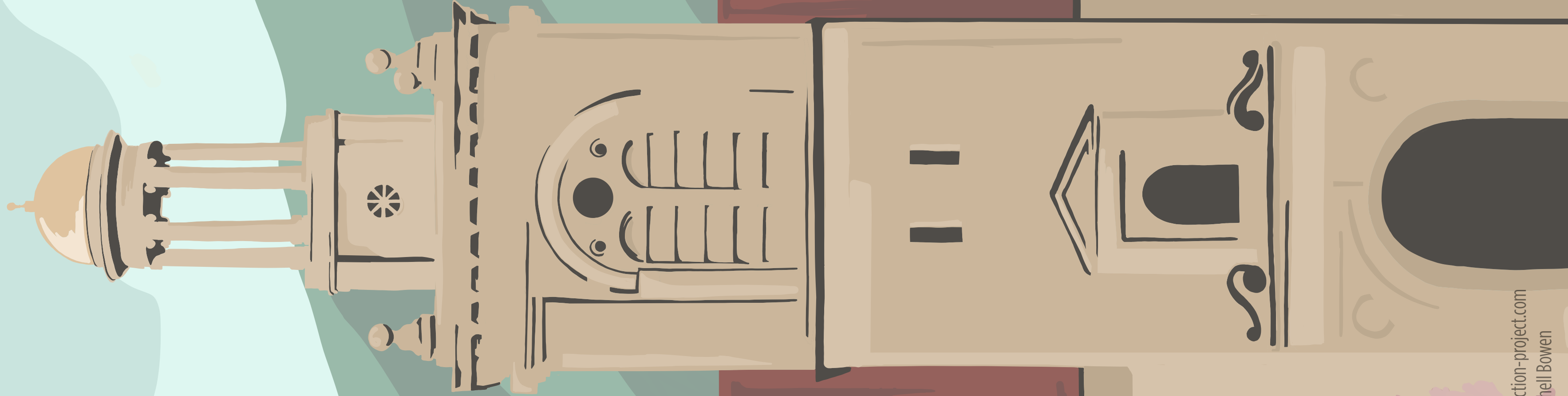


## MINES ADMISSIONS





GOLDEN, CO



M

*gateway to the Rockies and research*

# GUGGENHEIM HALL

AT COLORADO SCHOOL OF MINES