



**COLORADO**  
MOUNTAIN COLLEGE

# **COLORADO MOUNTAIN COLLEGE**

---

## **▶ 2022 ANNUAL SECURITY & FIRE SAFETY REPORT**

**In compliance with the Jeanne Clery Disclosure  
of Campus Security Policy and Campus Crime Statistics Act**

## Contents

<b>A Message from CMC’s President &amp; CEO</b> .....	<b>1</b>
<b>2022 Annual Security &amp; Fire Safety Report</b> .....	<b>2</b>
1. Statement Addressing How to Report a Crime or Emergency on Campus .....	2
2. Statement Addressing Access to and Security of Campus Facilities .....	3
3. Statement Addressing Campus Safety and Law Enforcement .....	3
4. Statement Addressing Interagency Relationships with Local and State Law Enforcement .....	3
5. Statement Encouraging Accurate and Prompt Crime Reporting .....	3
6. Statement Addressing Confidential Resources for Crime Reporting .....	4
7. Statement Addressing Security Awareness Programs for Students and Employees .....	5
8. Statement Addressing Crime Prevention Programs for Students and Employees .....	6
9. Crime Statistics .....	6
10. Statement Addressing Criminal Activity Off Campus .....	6
11. Statement Addressing Possession, Use, and Sale of Alcoholic Beverages and Illegal Drugs .....	6
12. Registered Sex Offender Information .....	7
13. Statement Addressing Emergency Response, Notification, and Evacuation Procedures .....	7
14. Statement Addressing the Issuance of Timely Warnings .....	8
15. Policy Regarding Missing Students .....	9
<b>Sex Assault, Domestic Violence, Dating Violence, and Stalking Programs and Procedures</b> .....	<b>10</b>
16. Statement of Policy Regarding Sexual Misconduct .....	10
17. Statement Addressing Prevention and Awareness Programs .....	11
18. Statement Addressing Procedures for Disciplinary Action .....	12
19. Statement Addressing Possible Protective Measures or Sanctions .....	14
20. Statement Addressing Procedures Victims Should Follow and Reporting Options .....	14
21. Statement Addressing Protection of Victim Confidentiality .....	16
22. Victim Services and Resources .....	16
23. Victim Accommodations .....	16
<b>Colorado Mountain College Annual Fire Safety Report</b> .....	<b>16</b>
24. On-campus Student Residential Housing Facility Fire Safety Systems .....	17

25. Fire Drills Held During The Previous Calendar Year .....	17
26. Policy Regarding Portable Electrical Appliances, Smoking and Open Flames in Student Residential Housing Facilities .....	17
27. Procedures For Student Housing Evacuation in The Case Of A Fire.....	18
28. Fire Safety Education and Training Programs for Students and Employees.....	18
29. Employees to Which Students and Employees Should Report That A Fire Has Occurred .....	18
30. CMC's Plans for Future Improvements in Fire Safety.....	19
31. Fire Statistics .....	19
<b>APPENDIX A – Clery Geography Maps.....</b>	<b>23</b>
<b>APPENDIX B – Clery Reportable Offenses by Campus.....</b>	<b>29</b>
<b>APPENDIX C – Local Resources by Campus.....</b>	<b>55</b>
<b>National Resources.....</b>	<b>62</b>



## A Message from CMC's President & CEO

October 1, 2022

Dear Colorado Mountain College Community:

As the only institution of higher learning located in a 12,000 square mile region of Colorado's central Rocky Mountains, Colorado Mountain College (CMC) has a unique opportunity to reach many remote communities. The college also has a critical responsibility to ensure safety and well-being for enrolled students, visiting parents and guests, and faculty and staff.

This Annual Security & Fire Safety Report is required by the Jeanne Clery Disclosure of Campus Security Policy and Campus Crime Statistics Act. This report also includes information that will enhance awareness and the college's ability to respond effectively to criminal incidents and emergencies.

As you will see in this report, CMC campuses do not experience high rates of crime. Certainly, incidents occur, as is true in all places, buildings, and facilities open to the public. Nevertheless, the level of reportable activities on or near our campuses is generally low.

We have continued to monitor local developments in COVID-19 through reports from state and local health authorities, and we continue to utilize technology when remote learning or working is necessary. If needed in the future, the college again will identify prevention and mitigation measures while preserving the learning experience to the best of our ability. To learn more about our response to COVID-19, and to keep track of future changes in our responses, please visit <https://coloradomtn.edu/covid19/>.

Thank you for your interest in CMC and this report, which we hope will inform and assure visitors, students, employees, and friends of the college.

With regard,

Carrie Besnette Hauser, Ph.D.  
President & CEO

## 2022 Annual Security & Fire Safety Report

In compliance with the Jeanne Clery Disclosure of Campus Security Policy and Campus Crime Statistics Act

### 1. Statement Addressing How to Report a Crime or Emergency on Campus

It is the policy of Colorado Mountain College (“CMC” or the “College”) that each campus be equipped to respond to emergencies in a variety of ways. Each campus is encouraged to develop partnerships with local law enforcement and fire departments to enhance emergency preparedness. All members of the CMC community and all guests and visitors are encouraged to report emergency situations or instances of possible violations of law or campus policies to appropriate CMC authorities. Primary responsibility for responding to such reports rests with local police jurisdictions and a designated individual at each campus. Please report crimes at specific campuses to the local police and College campus safety authorities as outlined below. **In any emergency, call 911.**

The local police departments for each campus and their numbers are as follows:

- **Aspen** – Pitkin County Sheriff, contact at (970)920-5300
- **Breckenridge** – Breckenridge Police Department, contact at (970)453-2941
- **Buena Vista** – Buena Vista Police Department, contact at (719)395-8654
- **Carbondale** – Carbondale Police Department, contact at (970)963-2662
- **Dillon** – Dillon Police Department, contact at (970)468-6078
- **Edwards** – Eagle County Sheriff, contact at (970)328-8500
- **Glenwood Springs** – Glenwood Springs Police Department, contact at (970)384-6500
- **Glenwood Springs-Spring Valley** – Garfield County Sheriff, contact at (970)945-0453
- **Leadville** – Lake County Sheriff, contact at (719)486-1249
- **Rifle** – Rifle Police Department, contact at (970)665-6500
- **Salida** – Salida Police Department, contact at (719)539-2596
- **Steamboat Springs** – Steamboat Springs Police Services, contact at (970)879-1144

Non-Campus contact information:

- **Central Services** – Glenwood Springs Police Department, contact at (970)384-6500

CMC’s senior campus officers serve as safety contacts at the various campuses. Their contact phone numbers are as follows:

- **Aspen** – Steve Skadron, Vice President and Campus Dean, (970) 236-0402
- **Breckenridge** – Dave Askeland, Vice President and Campus Dean, (970)989-1312
- **Buena Vista** – Ben Cairns, Vice President and Campus Dean, (719)486-4212
- **Carbondale** – Steve Skadron, Vice President and Campus Dean, (970) 236-0402
- **Dillon** – Dave Askeland, Vice President and Campus Dean, (970)989-1312
- **Edwards** – Marc Brennan, Vice President and Campus Dean, (970) 569-2913
- **Glenwood Springs** – Heather Exby, Vice President and Campus Dean, 970-947-8201
- **Glenwood Springs-Spring Valley** – Heather Exby, Vice President and Campus Dean, (970) 947-8201
- **Leadville** – Ben Cairns, Vice President and Campus Dean, (719)486-4212
- **Rifle** – Tinker Duclo, Vice President and Campus Dean (970) 625-6926
- **Salida** – Ben Cairns, Vice President and Campus Dean, (719)486-4212
- **Steamboat Springs** – Jonathon Norling, Vice President and Campus Dean, (970) 870-4414

Non-Campus contact information:

- **Central Services** – Safety Officer, Steve Rozanski, Director of Risk Management, (970) 384-8533

2. Statement Addressing Access to and Security of Campus Facilities

CMC prohibits possession of weapons (except as otherwise permitted by law), violence, abuse, threats and intimidation. CMC staff routinely provides security and access training and facilities, including lock-down procedures, fire evacuations, paging, alarm systems, security cameras, network communication techniques, and emergency response plans. College campuses utilize video surveillance as a security measure for public portions of various campuses.

3. Statement Addressing Campus Safety and Law Enforcement

CMC does not maintain its own police force or security department, and therefore relies upon local police departments and sheriff's offices for law enforcement. Safety programs at CMC are under the direction of the Safety Officer, Steve Rozanski, Director of Risk Management, (970) 384-8533.

4. Statement Addressing Interagency Relationships with Local and State Law Enforcement

CMC maintains working relationships with local law enforcement and prosecutorial agencies with jurisdiction in each campus location. The College has initiated conversations with these agencies regarding cooperation in addressing sexual assault and other crimes on CMC campuses.

The contact information for local law enforcement agencies is listed below.

- **Aspen** – Pitkin County Sheriff, contact at (970) 920-5300
- **Breckenridge** – Breckenridge Police Department, contact at (970) 453-2941
- **Buena Vista** – Buena Vista Police Department, contact at (719) 395-8654
- **Carbondale** – Carbondale Police Department, contact at (970) 963-2662
- **Dillon** – Dillon Police Department, contact at (970) 468-6078
- **Edwards** – Eagle County Sheriff, contact at (970) 328-8500
- **Glenwood Springs** – Glenwood Springs Police Department, contact at (970) 384-6500
- **Glenwood Springs-Spring Valley** – Garfield County Sheriff, contact at (970) 945-0453
- **Leadville** – Lake County Sheriff, contact at (719) 486-1249
- **Rifle** – Rifle Police Department, contact at (970) 665-6500
- **Salida** – Salida Police Department, contact at (719) 539-2596
- **Steamboat Springs** – Steamboat Springs Police Services, contact at (970) 879-1144

Non-Campus contact information:

- **Central Services** – Glenwood Springs Police Department, contact at (970) 384-6500

5. Statement Encouraging Accurate and Prompt Crime Reporting

Community members, students, faculty, staff, and guests are encouraged to report all crimes and public safety related incidents in a timely and accurate manner. Colorado Revised Statutes § 18-8-115 (Duty to report a crime – liability for disclosure) states: "It is the duty of every corporation or person who has reasonable grounds to believe that a crime has been committed to report promptly the suspected crime to law enforcement authorities. Notwithstanding any other provision of the law to the contrary, a corporation or person may disclose information concerning a suspected crime to other persons or corporations for the purpose of giving notice of the possibility

that other such criminal conduct may be attempted which may affect the persons or corporations notified. When acting in good faith, such corporation or person shall be immune from any civil liability for such reporting or disclosure. This duty shall exist notwithstanding any other provision of the law to the contrary; except that this section shall not require disclosure of any communication privileged by law.”

Crimes should be reported to CMC for inclusion with the annual crime statistics (if they occurred within any CMC campus’s defined Clery geographical boundaries) and may be used to aid in the provision of timely warnings or safety advisories to the CMC community.

**\*See Appendix A for CMC Clery geographical boundary maps**

**\*See Appendix B for CMC Crime Statistics**

#### 6. Statement Addressing Confidential Resources for Crime Reporting

Occasionally, victims of crime wish to report a crime, but do not want to provide their names and/or do not want to pursue action through the criminal justice or CMC judicial systems. Although pastoral and professionally credentialed counselors may be legally exempt from reporting crimes, CMC counselors provide academic counseling and therefore are not providing pastoral or professionally credentialed counseling services. Certain CMC counselors therefore are required to report information that is needed for Clery Act compliance, but they are not required to report personally identifiable information regarding the victim.

CMC has designated the persons named below as confidential resources for purposes of reporting Sexual Misconduct prohibited by College policy. If a student reports to one of the individuals below, the student is required to share non-personally identifiable information with CMC for inclusion into the annual disclosure of crime statistics or for the purpose of a timely warning.

- **Aspen** – Jennifer Cantway, Counselor, (970)925-7740
- **Breckenridge** – Jean Kramlich, Counselor, (970)453-6757
- **Buena Vista** – Amy Dennis, Assistant Dean of Student Affairs, (719) 530-7922, x4922
- **Carbondale** – Jen Cantway, Counselor, (970)963-2306
- **Dillon** – Jackie McKenney, Counselor, (970) 468-5989
- **Edwards** – Larry Dutmer, Counselor, (970) 569-2915, Sue O’Connor, Counselor, (970) 569-2959
- **Glenwood Springs** – Cory Rikard, Counselor, (970) 947-8480
- **Glenwood Springs-Spring Valley** – Jen Brennan, Counselor, (970) 947-8275 and Andrea Caruso, Counselor, (970) 947-8221
- **Leadville** – Paloma Hammond, Academic Advisor, (719) 486-4237
- **Rifle** – Brenda Walk, Academic Advisor, (970) 625-6959, Jenny Boone, Academic Advisor, (970) 625-6928
- **Salida** – Amy Dennis, Assistant Dean of Student Affairs, (719) 530-7922 x4922
- **Steamboat Springs** – Debra Arnold, Counselor, (970) 870-4457 and Jennifer Simbre, College Counselor (970) 870-4513

The list of confidential resources may change from time to time. Please contact the Campus Dean or Campus Vice President for current information.

CMC provides up to date information on [Counseling Services](#) on Basecamp. Each student receives six visits per enrolled semester at no charge. CMC has partnered with College Telehealth, a [Virtual Counseling](#)

services provider, to offer clinical counseling services to all CMC students regardless of a student's location. The Colorado Crisis line is available 24/7. **1-844-493-8255** or text TALK to 38255. For more information contact Lisa Doak, Assistant Vice President of Student Services, (970) 947-8351

For Students on the Steamboat Campus, CMC has retained Rachel Hirning, LPC, [rachelhirning@gmail.com](mailto:rachelhirning@gmail.com), a mental health provider to deliver clinical counseling for students both in-person and live stream.

For students in Lake and Chaffee Counties, CMC partners with Solvista Health, a local mental health provider, for counseling and therapy for student mental, behavioral and emotional wellness. Solvista Health maintains a 24/7 Emergency Services Line at (844) 493-TALK (8255) or text TALK to 38255. Outpatient services are available in Freemont/Custer County, Chaffee County, and Lake County.

For more information, see <http://www.solvistahealth.org/> or contact Evan Weatherbie, Assistant Campus Dean of Student Affairs, at (719) 486-4290.

#### 7. Statement Addressing Security Awareness Programs for Students and Employees

Each semester, students are notified of their roles in creating and maintaining a safe campus environment at CMC. Residence hall students must attend a required meeting about safety at which staff review key safety policies, procedures and expectations with residents including:

- Do not prop exterior doors for convenience;
- Maintain control of your key card at all times and do not lend your key card to anyone;
- Do not leave your room door unlocked;
- Do not provide access to others to the building unless the individual is your guest;
- Report unusual or unfamiliar individuals in the building if they are unaccompanied by a resident or staff member;
- Do not walk alone at night – use the buddy system, take a friend, be a friend;
- Be aware of wildlife on the campuses and roads (lions, turkeys, bear, elk, deer);
- Attend the “safe driving tips for mountain roads” session offered on campus;
- Utilize safe transportation methods such as the RIDE CMC or city bus, do not hitch hike, do not pick up hitchhikers;
- Know campus emergency phone locations;
- Know campus safety and security numbers;
- Review emergency services.
- Review use of campus surveillance equipment on campus.

Additionally, drills are held on each campus each semester and/or year for fire, armed assailant, emergency gathering procedures and locations on campus

Campus Safety Committees are responsible for facilitating trainings and materials for staff and faculty on fire drills and other emergency response protocols, including emergency gathering procedures and locations at each location.

In response to the COVID-19 pandemic, the college implemented a comprehensive set of prevention protocols that adhere to the guidelines from the Colorado Department of Public Health and Environment. Additional information about COVID-19 and related prevention protocols can be found on the CMC [Coronavirus Updates and Information](#) page



## 8. Statement Addressing Crime Prevention Programs for Students and Employees

The College has adopted an Emergency Preparedness Plan outlining response procedure for medical, environmental, and situational (human engineered) emergencies. The situational emergency response procedures address a variety of threats including acts of violence, intruders, persons with weapons, threats, domestic situations, and other human-caused threats. Training and drills for faculty, staff, and students are conducted annually. For more information on the Emergency Preparedness Plan, contact Safety Officer, Steve Rozanski, Director of Risk Management, (970) 384-8533.

Training designed to assist faculty, staff, and students in recognizing, preventing, or addressing sexual assault, domestic violence, dating violence, stalking and other forms of sexual misconduct is provided by webinar sessions purchased from Everfi, a third-party vendor, also known as Vector Solutions.

## 9. Crime Statistics

The Clery Act crime statistics section is intended to capture Clery crimes, the Violence Against Women Act crimes, and arrests or disciplinary proceedings involving illegal use of liquor, drugs, or weapons. Each of the statistics are published in the ASR for three calendar years for each CMC campus and are categorized to include on-campus, non-campus, public property, and residential categories. For detailed charts of crime on all campuses, please **see Appendix B**.

**\*See Appendix A for CMC Clery geographical boundary maps**

**\*See Appendix B for CMC Crime Statistics**

## 10. Statement Addressing Criminal Activity Off Campus

CMC does not recognize any off-campus student organizations. In general, prospective students, employees and visitors to any CMC campus should know that, as with any community, criminal activity occasionally occurs both on- and off-campus, and it is important to take reasonable precautions at all times.

## 11. Statement Addressing Possession, Use, and Sale of Alcoholic Beverages and Illegal Drugs

Colorado Mountain College complies with the Drug Free Schools and Communities Amendments of 1989 (PL 101-226 in Federal Law). The college adopts the following drug and alcohol abuse prevention program:

1. Standards of conduct - Students and employees shall not engage in the unauthorized or unlawful use, possession, manufacture, distribution, or dispensation of alcohol and/or illicit drugs on college property or as part of college courses or activities. Although possession and use of marijuana is no longer a crime in the State of Colorado, the possession and use of marijuana remains illegal under federal law. Consistent with federal law, including the Controlled Substances Act and the Drug-Free Schools and Communities Act, the use and/or possession of marijuana continues to be prohibited while a student or employee is on college property including residence halls or as part of college courses/activities.

2. Penalties that may be imposed by the college - Students and/or employees who violate the above standard of conduct will be subject to disciplinary action under employee and student disciplinary policies. The sanctions include, but are not limited to, a requirement to complete an appropriate rehabilitation or re-entry program; suspension from college housing; expulsion from the college or termination of employment; and/or referral to authorities for prosecution. See Student Amnesty for Alcohol and Drug Emergencies.

3. Legal sanctions that may be imposed by law enforcement agencies - The unauthorized or unlawful possession, use, or distribution of illicit drugs or alcohol may subject the individual to certain penalties. The penalties include imposition of a citation and fine to a jail term. Any student or employee who is convicted of the unlawful possession, use of, or distribution of illicit drugs or alcohol is subject to criminal penalties under local, state, and federal law. The exact penalty assessed depends upon the nature and severity of the individual offense, and the municipality where the event occurred.

4. Health risks associated with use of illicit drugs and alcohol abuse - Health risks associated with drug and alcohol include, but are not limited to, malnutrition, brain damage, heart disease, pancreatic disease, cirrhosis of the liver, mental illness, death, low birth weight babies and babies with drug addictions.

5. Available counseling, treatment, rehabilitation or re-entry program - Counseling, treatment, rehabilitation, or re-entry program information can be procured from the Campus Vice President or designee at each site.

## 12. Registered Sex Offender Information

The federal Campus Sex Crimes Prevention Act requires institutions of higher education to issue a statement advising the campus community where to obtain state law enforcement agency information concerning registered sex offenders. It also requires sex offenders already required to register in a state to provide notice, as required under state law, of each institution of higher education in that state at which the person is employed, carries on a vocation, volunteers services, or is a student.

The Colorado Bureau of Investigation provides a searchable database of convicted sex offenders in Colorado. Students and employees may also contact the local police department, county sheriff's office or the Colorado Bureau of Investigation for a complete list of registered sex offenders in the applicable city or county. To view the State of Colorado sex offender registry, see <https://www.colorado.gov/apps/cdps/sor/>.

## 13. Statement Addressing Emergency Response, Notification, and Evacuation Procedures

CMC's emergency communication system includes email, web site announcements, use of public media, and Colorado Mountain College Alert (CMC Alert), and the Alertus emergency communication system. The CMC Alert mass notification system will send text, voicemail, and/or email notifications to all enrolled users. Colorado Mountain College Alert will be utilized for timely warnings and emergency notifications in the event of a significant emergency or dangerous situation involving an immediate threat to students or staff. The Alertus emergency communications system consists of emergency beacons located in each classroom, conference room, and other areas that people may gather, plus supplemental communication tools including computer screen takeover, desk phone screen takeover, mobile app, and text-to-speech speakers. This system is primarily intended to communicate urgent emergency notifications to anyone inside campus buildings.

CMC Alerts and the Alertus notifications will be used to distribute information regarding emergencies that require immediate action. For the purposes of Colorado Mountain College Alert, an emergency is a situation that poses an immediate risk to the health and safety of the campus community or significantly disrupts its programs and activities. Examples of such emergencies include cancelation of classes due to a fire, flood, unexpected road closures, evacuation of buildings, an ongoing criminal incident, or severe weather. The alert message will

direct you where to find more information or learn what action to take. Less urgent messages will be sent using CMC's e-mail system. Following a warning, the appropriate communication system will be used to provide additional messages or an "all clear" announcement.

Students, staff, and faculty are automatically enrolled in Colorado Mountain College Alert. Alert information is based on current contact information on file with the college. Go to [http://coloradomtn.edu/student\\_services/cmcalert/](http://coloradomtn.edu/student_services/cmcalert/) for more information.

CMC has adopted an Emergency Preparedness Plan that outlines response procedures for medical, environmental, and situational (human engineered) emergencies. Each plan contains site-specific emergency contacts, evacuation procedures, information about emergency equipment and supplies, utility shutoff locations, and response procedures by type of emergency. Training and drills for faculty, staff, and students are conducted on an annual basis. Colorado Mountain College Alert, the Emergency Response Plan, and Evacuation Procedures are tested at a minimum, on an annual basis.

#### 14. Statement Addressing the Issuance of Timely Warnings

CMC is responsible for developing and disseminating Timely Warning notices to members of the CMC community. The Campus Safety Authority (below) or his/her designee will determine if a Timely Warning should be issued.

- **Aspen** – Steve Skadron, Vice President and Campus Dean, (970) 236-0402
- **Breckenridge** – Dave Askeland, Vice President and Campus Dean, (970) 989-1312
- **Buena Vista** – Ben Cairns, Vice President and Campus Dean, (719) 486-4212
- **Carbondale** – Steve Skadron, Vice President and Campus Dean, (970) 236-0402
- **Dillon** – Dave Askeland, Vice President and Campus Dean, (970) 989-1312
- **Edwards** – Marc Brennan, Vice President and Campus Dean, (970) 569-2913
- **Glenwood Springs** – Heather Exby, Vice President and Campus Dean, 970-947-8201
- **Glenwood Springs-Spring Valley** – Heather Exby, Vice President and Campus Dean, (970) 947-8201
- **Leadville** – Ben Cairns, Vice President and Campus Dean, (719) 486-4212
- **Rifle** – Tinker Duclo, Vice President and Campus Dean (970) 625-6926
- **Salida** – Ben Cairns, Vice President and Campus Dean, (719) 486-4212
- **Steamboat Springs** – Jonathon Norling, Vice President and Campus Dean, (970) 870-4414
- **Central Services** – Steve Rozanski, Director of Risk Management, (970) 384-8533

The decision will be made on a case-by-case basis, including a variety of factors. These factors include:

- Whether the incident poses a **serious or continuing threat** to the CMC community;
- If the **suspect has been apprehended**;
- **Timeliness** of the reported crime to CMC; and
- Whether a **pattern of crimes** exists that places CMC students or employees at risk of becoming victims of a similar crime.

In general, Timely Warnings will be issued when a serious **statutorily designated crime** is reported to CMC, the reported crime presents a **serious or continuing threat** to CMC students, faculty, and staff, and the reported crime occurred within a campus's **Clery geographical boundaries** (defined as on campus, on public property within or immediately

adjacent to the campus boundaries, or in buildings or on property beyond the core campus, but designated as a non-campus location), as identified in Appendix A.

### 15. Policy Regarding Missing Students

As required by federal law, every student residing in on-campus housing will be given the option of providing confidential contact information that will be used in the event that the resident is reported missing. The confidential contact is not required to be a parent or guardian. A student's confidential contact information will be registered confidentially and is accessible only by authorized campus officials and law enforcement in the process of investigation. Parents or guardians will be called if the resident is under the age of 18 years of age and not emancipated. During the residence halls application process, every student will be offered the opportunity to register a confidential missing person contact person or persons to be notified by CMC in the event they are determined to be missing by CMC or local law enforcement. If the student does not wish to list a contact, they may decline to do so.

Reports of missing on-campus residents should be made to CMC's senior campus officers (either a Vice President or Campus Dean, depending on the location). Their names and contact phone numbers are as follows:

- **Aspen** – Steve Skadron, Vice President and Campus Dean, (970) 236-0402
- **Breckenridge** – Dave Askeland, Vice President and Campus Dean, (970) 989-1312
- **Buena Vista** – Ben Cairns, Vice President and Campus Dean, (719) 486-4212
- **Carbondale** – Steve Skadron, Vice President and Campus Dean, (970) 236-0402
- **Dillon** – Dave Askeland, Vice President and Campus Dean, (970) 989-1312
- **Edwards** – Marc Brennan, Vice President and Campus Dean, (970) 569-2913
- **Glenwood Springs** – Heather Exby, Vice President and Campus Dean, 970-947-8201
- **Glenwood Springs-Spring Valley** – Heather Exby, Vice President and Campus Dean, (970) 947-8201
- **Leadville** – Ben Cairns, Vice President and Campus Dean, (719) 486-4212
- **Rifle** – Tinker Duclo, Vice President and Campus Dean (970) 625-6926
- **Salida** – Ben Cairns, Vice President and Campus Dean, (719) 486-4212
- **Steamboat Springs** – Jonathon Norling, Vice President and Campus Dean, (970) 870-4414

Non-Campus contact information:

- **Central Services** – Safety Officer, Steve Rozanski, Director of Risk Management, (970) 384-8533

Reports of missing students who do not live in campus residential housing should typically be made to the law enforcement agency in that jurisdiction.

CMC has no security department or police force. All missing student reports must be referred immediately to the local law enforcement agency that has jurisdiction in the area. The law enforcement agencies for the various campuses are as follows:

- **Aspen** – Pitkin County Sheriff, contact at (970) 920-5300
- **Breckenridge** – Breckenridge Police Department, contact at (970) 453-2941
- **Buena Vista** – Buena Vista Police Department, contact at (719) 395-8654
- **Carbondale** – Carbondale Police Department, contact at (970) 963-2662
- **Dillon** – Dillon Police Department, contact at (970) 468-6078
- **Edwards** – Eagle County Sheriff, contact at (970) 328-8500

- **Glenwood Springs** – Glenwood Springs Police Department, contact at (970) 384-6500
- **Glenwood Springs-Spring Valley** – Garfield County Sheriff, contact at (970) 945-0453
- **Leadville** – Lake County Sheriff, contact at (719) 486-1249
- **Rifle** – Rifle Police Department, contact at (970) 665-6500
- **Salida** – Salida Police Department, contact at (719) 539-2596
- **Steamboat Springs** – Steamboat Springs Police Services, contact at (970) 879-1144

Non-Campus contact information:

- **Central Services** – Glenwood Springs Police Department, contact at (970) 384-6500

CMC will ensure:

- The listed missing person emergency contact, if registered, is contacted by CMC within 24 hours from when a representative of the Office of the Dean of Students is contacted and made aware of the missing student's status.
- If the student is under 18 years of age and not emancipated, CMC will notify the custodial parent or legal guardian and any other designated contact within 24 hours of the student being determined missing.
- Regardless of whether the student has identified a contact person, is above the age of 18, or is an emancipated minor, CMC will inform the local law enforcement agency with jurisdiction in the area that the student is missing within 24 hours.

CMC has adopted a Protocol for Missing or Deceased Students which sets forth general incident procedures, procedures to be followed for deceased students and the missing student policy described above. The Protocol assigns responsibility for notifications within the College administration and communications with the family and the public.

## **Sex Assault, Domestic Violence, Dating Violence, and Stalking Programs and Procedures**

### 16. Statement of Policy Regarding Sexual Misconduct

It is the policy of CMC to provide an educational and employment environment free of unlawful discrimination or harassment. CMC prohibits all forms of discrimination based on sex or gender, including sexual misconduct by students, faculty, staff, and other members of the CMC community. Sexual assault, dating violence, domestic violence, and stalking are forms of sex or gender discrimination and are violations of criminal law in addition to prohibited offenses by CMC.

CMC has procedures in place requiring that it investigate and take action in response to reports of sexual misconduct, including sexual assault, domestic violence, dating violence, and stalking. Individuals are informed of their right to file a formal complaint, file criminal charges and utilize available medical, counseling and support services. The procedures also include remedies to prevent contact between a victim and an accused party, such as interim housing, academic, transportation and working accommodations, if reasonably available. These procedures include new regulatory requirements mandated by Title IX regulations adopted in 2020 by the U.S. Department of Education.

All complaints of sexual misconduct should be reported to CMC's Title IX Coordinator: Lisa Doak, Assistant Vice President of Student Services, (970) 947-8351, [lidoak@coloradomtn.edu](mailto:lidoak@coloradomtn.edu), 802 Grand Avenue, Glenwood Springs, CO 81601.

Additionally, each campus has one or more Deputy Title IX Coordinators responsible for coordinating training, education, communications, and administration of the complaint and

grievance procedures for sexual misconduct complaints on that campus.

As of the date of this report, the Deputy Title IX Coordinators are listed below.

- **Aspen** – Lisa Runck, (970) 947-8212, [lrunck@coloradomtn.edu](mailto:lrunck@coloradomtn.edu)
- **Breckenridge** – Nicole Fazande (970) 968-5805, [nfazande@coloradomtn.edu](mailto:nfazande@coloradomtn.edu)
- **Carbondale** – Lisa Runck, (970) 947-8212, [lrunck@coloradomtn.edu](mailto:lrunck@coloradomtn.edu)
- **Dillon** – Nicole Fazande (970) 968-5805, [nfazande@coloradomtn.edu](mailto:nfazande@coloradomtn.edu)
- **Glenwood Springs** – Lisa Runck, (970) 947-8212, [lrunck@coloradomtn.edu](mailto:lrunck@coloradomtn.edu)
- **Glenwood Springs – Spring Valley** - Lisa Runck, (970) 947-8212, [lrunck@coloradomtn.edu](mailto:lrunck@coloradomtn.edu)
- **Leadville** – Evan Weatherbie, 970-486-4290, [eweatherbie@coloradotmn.edu](mailto:eweatherbie@coloradotmn.edu)
- **Rifle** – Chip Thomas, 970-625-6955, [rmthomas@coloradomtn.edu](mailto:rmthomas@coloradomtn.edu)
- **Salida** - Evan Weatherbie, 970-486-4290, [eweatherbie@coloradotmn.edu](mailto:eweatherbie@coloradotmn.edu)
- **Steamboat Springs** – Carolyn Lawrence, (970) 870-4463, [cmlawrence@coloradomtn.edu](mailto:cmlawrence@coloradomtn.edu)
- **Vail Valley at Edwards** – Paula Hauswirth-Cummings, (970) 569-2922, [pcummings@coloradomtn.edu](mailto:pcummings@coloradomtn.edu)

Please refer to College Policy 3.12 Sexual Misconduct Policy and Sexual Misconduct Procedures 3-A (Sexual Misconduct Procedures) and 3-B (Procedures for Investigation of Title IX Sexual Harassment). College policies and procedures are available through the following link: [http://coloradomtn.edu/about-cmc/board\\_of\\_trustees/policies-procedures/](http://coloradomtn.edu/about-cmc/board_of_trustees/policies-procedures/)

#### 17. Statement Addressing Prevention and Awareness Programs

CMC engages in comprehensive educational programming to prevent domestic violence, dating violence, sexual assault and stalking. Educational programming consists of primary prevention and awareness programs for all incoming students and new employees and ongoing awareness and prevention campaigns for students and faculty. In addition, the Title IX coordinator team has received training in 2021 from a number of different sources, listed at <https://coloradomtn.edu/notice-of-nondiscrimination/>.

In general, training is designed to accomplish the following objectives:

- Identifying domestic violence, dating violence, sexual assault and stalking as prohibited conduct;
- Defining what behavior constitutes domestic violence, dating violence, sexual assault, and stalking pursuant to federal and Colorado law;
- Defining what behavior and actions constitute consent to sexual activity in the State of Colorado;
- Providing safe and positive options for bystander intervention that may be carried out by an individual to prevent harm or intervene when there is a risk of domestic violence, dating violence, sexual assault, or stalking against a person other than the bystander;
- Providing information on risk reduction so that students and employees may recognize warning signs of abusive behavior and how to avoid potential attacks; and
- Providing information on the procedures CMC will adhere to after a sex offense occurs.

Educational programs are offered to raise awareness for all incoming students and all employees and are often conducted during new student orientation and throughout an incoming student's first semester. Training also is required for new employees and for all other employees on a periodic basis. These programs and others offered throughout the year include strong messages regarding not just awareness, but also primary prevention. Bystander engagement is encouraged through safe and positive intervention techniques and by empowering third-party intervention and prevention such as calling for help, using intervention-based apps, identifying

allies and/or creating distractions.

Training programs also offer information on risk reduction that strives to empower students and employees, describes how to recognize warning signals, and describes how to avoid potential attacks. Throughout the year, ongoing awareness and prevention campaigns are directed to students and employees, including faculty, often taking the form of campaigns, emails, guest speakers and events such as regularly scheduled webinar training required for employees. Student training is mandatory for those who reside in residence halls, and strongly encouraged for all other students, through residence hall orientations, workshops provided at College assemblies (CMC Days), campus town-hall style meetings, and student events.

Training designed to assist faculty and staff in recognizing, preventing, or addressing sexual assault, domestic violence, dating violence, stalking and other forms of sexual misconduct is provided by webinar sessions purchased from Everfi, a third-party vendor, also known as Vector Solutions.

## 18. Statement Addressing Procedures for Disciplinary Action

### *Formal Resolution Process and Investigation*

The College will initiate a formal resolution process for any complaint of sexual harassment under Title IX, violence, sexual assault, domestic violence, dating violence, or stalking. Following a report of Sexual Misconduct, including a formal complaint or when CMC receives notice that Sexual Misconduct may have occurred, the Title IX Coordinator will offer supportive services to reporting parties and to those who are responding to a report, and will assign an investigator to conduct an investigation to determine whether or not the conduct occurred and, if the conduct occurred, what actions should be taken by CMC. Supportive services also will be made available following any report, regardless of whether or not a formal complaint is filed. The College will take immediate or interim measures for severe cases and acts of sexual violence, as further described below in "Victim Accommodations".

An individual suspected or accused of Sexual Misconduct will be provided with a written explanation indicating that an investigation has commenced, a description of the alleged actions or conduct leading to the investigation, and the policy violation under investigation. In addition, upon receipt of a formal complaint of sexual harassment, the Title IX Coordinator will notify the parties named in the complaint of the following:

- The college sexual harassment procedure and the processes within the procedure, including availability of an informal resolution process;
- The identities of the parties involved, if known;
- The conduct allegedly constituting sexual harassment;
- The date and location of the incident, if known;
- A statement that the responding party is presumed not responsible for the alleged conduct;
- A statement that a determination regarding responsibility is made at the conclusion of the formal resolution process;
- A statement that parties may have an advisor of their choice, who may be, but is not required to be, an attorney;
- A statement that parties may inspect and review evidence; and
- A statement that knowingly making false statements or knowingly submitting false information during this process is prohibited.

CMC will commence the investigation as soon as is practicable under the circumstances regardless of whether there is a pending criminal investigation or formal criminal charge. CMC will use all reasonable efforts to complete its investigation within a reasonable timeframe following

the filing of a complaint or the date on which CMC becomes aware of suspected Sexual Misconduct, without jeopardizing the rights of any party to the complaint and subject to any factors which delay the investigation beyond CMC's control. CMC will schedule dates for completion of the initial investigation, completion of the investigation report, final decision-making and/or determination of sanctions.

The nature and extent of the investigation will vary depending upon the circumstances, including whether the parties are amenable to pursuing an informal resolution if appropriate. The Investigator will conduct fact-finding, review of written and other evidence and witness interviews. Each party will have the opportunity to present witnesses and evidence to the Investigator. The Investigator will interview both the victim and the respondent and allow both parties to provide information regarding the complaint. To help ensure a prompt and thorough investigation, the victim and the respondent will be required to provide as much information as possible relating to the conduct, including the individuals involved, all relevant details and circumstances pertaining to the conduct, names of witnesses and any other information that the victim or the respondent believes to be relevant to the investigation. As appropriate, the Investigator will interview witnesses with relevant information.

The Investigator will provide, in advance and with reasonable opportunity to prepare, written notice of the date, time, location, participants, and purpose of any interview or other meeting to any party whose participation is invited or expected. Prior to conclusion of the investigation, the Title IX Coordinator or Investigator will send to each party all evidence obtained as part of the investigation, whether or not the Institution intends to rely on such evidence. Parties have the right to submit responses which must be considered by the Investigator during the course of the investigation.

At the conclusion of the investigation, the Investigator will prepare a written report summarizing the investigation and findings. A hearing officer or panel of hearing officers will conduct a live hearing (which may be conducted remotely) and will determine responsibility and, if appropriate, sanctions. The hearing officer(s) will accept evidence, including witness examination and cross-examination as legally required. The standard used to determine whether the respondent has violated CMC's sexual misconduct policies is whether it is more likely than not that the respondent has engaged in behavior that constitutes Sexual Misconduct. This is often referred to as a "preponderance of the evidence" standard. For purposes of both the investigation and decision-making process, CMC will strive to be complete, thorough, and objective, basing all decisions on evidence and information determined to be reliable.

Victims and respondents will be provided with the following procedural protections in connection with the resolution of suspected or alleged sexual misconduct:

- The opportunity to speak or present evidence on their own behalf (cross-examination by an advisor for either the victim or the respondent will be permitted as legally required).
- The opportunity to identify witnesses who can provide information about the alleged conduct at issue.
- The opportunity to review any information that will be offered by the other party in support of the other party's position (to the greatest extent possible and consistent with FERPA or other applicable law).
- The right to bring an advisor to all phases of the investigation and campus conduct proceeding.
- The right to be informed of the outcome of the investigation.
- The opportunity to appeal the outcome of the investigation.

After considering the investigative report, including any party's written responses to the



investigative report and all relevant evidence presented at the hearing, one or more decision-makers designated by the college will issue a written determination. The written determination will include a description of the allegations potentially constituting sexual harassment or other sexual misconduct, the procedural steps from the receipt of the formal complaint through the determination, findings of fact supporting the determination, application of college policy and legal requirements to the facts, and a statement of, and rationale for, the result as to each allegation, including disciplinary sanctions or remedies, if any.

### *Right to Appeal*

After written notification of the resolution has been provided, either the victim or the respondent will have the opportunity to appeal dismissal of a formal complaint or any allegations therein, or A determination regarding responsibility. Any appeal must be submitted in writing to the college president within five (5) business days after written determination and must set forth the grounds upon which the appeal is based.

A party may only appeal on one or more of the following bases:

- A procedural irregularity affected the outcome of the matter;
- New evidence that was not reasonably available at the time the determination regarding responsibility or dismissal was made, that could affect the outcome of the matter (the requirement of a basis for appeal is not satisfied simply because evidence was not presented during the proceedings, if the evidence was reasonably available at the time the determination was made); or
- The Title IX Coordinator, investigator, hearing officer, or Decision-Maker had a conflict of interest or bias for or against Complainants or Respondents generally, or the individual Complainant or Respondent, that affected the outcome of the matter.

The college will appoint a decision-maker for purposes of considering appeals. A decision on whether or not to overturn or modify the outcome will be solely based on the grounds for appeal listed above. Neither party shall be entitled to a hearing in connection with any appeal.

### 19. Statement Addressing Possible Protective Measures or Sanctions

The range of potential sanctions that may be imposed against a student includes, but is not limited to, the following: written or verbal apology, discrimination or harassment education, verbal or written warning, probation, suspension and dismissal from CMC. Employees who are found to have violated CMC's Sexual Misconduct Policy may be subject to corrective actions including disciplinary action up to and including termination.

Guests and other third parties who are found to have violated CMC's Sexual Misconduct Policy are subject to action deemed appropriate by CMC, which may include removal or exclusion from CMC, termination of any applicable contractual or other arrangements with CMC and any other remedies available through law or equity. In instances where CMC is unable to take disciplinary or other corrective action in response to a violation of this policy because a victim requests confidentiality or for some other reason, CMC will nonetheless pursue other steps to limit the effects of the misconduct at issue and prevent its recurrence.

### 20. Statement Addressing Procedures Victims Should Follow and Reporting Options

An individual with questions or a possible sexual misconduct report against a student, faculty, staff member or other individual should contact the Title IX Coordinator or the Deputy Title IX Coordinator designated for the individual's campus, as designated below. Reports of sexual

misconduct in which no students are involved will be investigated and processed by the Vice President for Human Resources in collaboration with the Title IX Coordinator. Any individual who is a victim of sexual assault or other act of sexual misconduct will be informed of available law enforcement authorities and the option to file or decline to file a criminal complaint. The Title IX Coordinator will assist victims in making contact with appropriate law enforcement authorities where requested.

#### Title IX Coordinator

- Lisa Doak, Assistant Vice President of Student Services, (970) 947-8351, [ldoak@coloradomtn.edu](mailto:ldoak@coloradomtn.edu)

#### Deputy Title IX Coordinators

- **Aspen** – Lisa Runck, (970) 947-8212, [lrunck@coloradomtn.edu](mailto:lrunck@coloradomtn.edu)
- **Breckenridge** – Nicole Fazande (970) 968-5805, [nfazande@coloradomtn.edu](mailto:nfazande@coloradomtn.edu)
- **Carbondale** – Lisa Runck, (970) 947-8212, [lrunck@coloradomtn.edu](mailto:lrunck@coloradomtn.edu)
- **Dillon** – Nicole Fazande (970) 968-5805, [nfazande@coloradomtn.edu](mailto:nfazande@coloradomtn.edu)
- **Glenwood Springs** – Lisa Runck, (970) 947-8212, [lrunck@coloradomtn.edu](mailto:lrunck@coloradomtn.edu)
- **Glenwood Springs – Spring Valley** - Lisa Runck, (970) 947-8212, [lrunck@coloradomtn.edu](mailto:lrunck@coloradomtn.edu)
- **Leadville** – Evan Weatherbie, 970-486-4290, [eweatherbie@coloradotmn.edu](mailto:eweatherbie@coloradotmn.edu)
- **Rifle** – Chip Thomas, 970-625-6955, [rmthomas@coloradomtn.edu](mailto:rmthomas@coloradomtn.edu)
- **Salida** - Evan Weatherbie, 970-486-4290, [eweatherbie@coloradotmn.edu](mailto:eweatherbie@coloradotmn.edu)
- **Steamboat Springs** – Carolyn Lawrence, (970) 870-4463, [cmlawrence@coloradomtn.edu](mailto:cmlawrence@coloradomtn.edu)
- **Vail Valley at Edwards** – Paula Hauswirth-Cummings, (970) 569-2922, [pcummings@coloradomtn.edu](mailto:pcummings@coloradomtn.edu)

Victims of sexual assault should be aware of the importance of preserving evidence. The preservation of evidence can be important proof of criminal domestic violence, dating violence, sexual assault, or stalking, or in obtaining a protection order. Bathing, smoking, changing clothing or cleaning the bed/linen/area where a sexual assault occurred may reduce the ability to collect forensic evidence. In circumstances of sexual assault, if victims do not opt for forensic evidence collection, health care providers can still treat injuries and take steps to address concerns of pregnancy and/or sexually transmitted disease.

Victims of sexual assault, domestic violence, dating violence, and stalking are also encouraged to preserve evidence such as text messages, instant messages, social networking pages, other communications, pictures, logs, or other copies of documents that may be useful to CMC's and/or law enforcement investigations.

After an incident of sexual assault, the victim should consider seeking medical attention as soon as possible. Many medical facilities have Sexual Assault Nurse Examiner (SANE) or Forensic Nurse Examiner (FNE) programs that collect forensic medical evidence.

- St. Anthony Summit Medical Center's FNE program serves the 5th Judicial District that includes Summit, Clear Creek, Eagle, Lake Counties and the north part of Park County, and the 9th Judicial District that includes Pitkin and Garfield Counties. CMC's campuses that reside in these counties include Aspen, Breckenridge, Carbondale, Dillon, Edwards, Glenwood Springs, Glenwood Springs - Spring Valley, Leadville, and Rifle. Buena Vista is also serviced by St. Anthony.
- Yampah Valley Medical Center services the Steamboat Campus.

## 21. Statement Addressing Protection of Victim Confidentiality

CMC will protect the identity of persons who report having been victims of sexual assault, domestic violence, dating violence, or stalking to the fullest extent of the law. When a victim requests confidentiality or asks that a complaint not be pursued, CMC will inform the victim that honoring a request for confidentiality may limit its ability to respond fully to the incident, including pursuing disciplinary action against the respondent. If the victim still requests confidentiality or asks that a complaint not be pursued, CMC will take all reasonable steps to investigate and respond to the complaint consistent with the request, provided that CMC is able to both honor the victim's request and provide a safe and nondiscriminatory environment for all individuals, including the victim and other students or employees. The Title IX Coordinator or Deputy Title IX Coordinator for the individual's campus will be responsible for evaluating confidentiality requests.

## 22. Victim Services and Resources

Each of CMC's campuses has identified counselors that can assist victims of sexual misconduct. Contact information for your campus's identified counselor can be found above and at [http://coloradomtn.edu/student\\_services/counseling/](http://coloradomtn.edu/student_services/counseling/).

Employee assistance services are provided through the College's Department of Human Resources and TRIAD Employee Assistance Program. Employees wishing to obtain specific information regarding such services should contact the Employee Benefits Manager: Jennifer Victor at 970-947-8302.

**\*See Appendix C for CMC's community resources in each CMC community and a list of national resources**

## 23. Victim Accommodations

CMC will provide appropriate supportive services to both parties prior to the final outcome of the investigation. CMC may temporarily suspend any member of CMC community suspected or accused of violating CMC's Sexual Misconduct Policy or take any other interim measures CMC deems appropriate after conducting an individualized safety and risk analysis, performed by the Title IX Coordinator in conjunction with the Campus Student Care Support Team using its standard objective violence risk assessment procedures, determining that an immediate threat to the physical health or safety of any student or other individual arising from the allegations of Sexual Harassment justifies removal; and providing the respondent party with notice and an opportunity to challenge the decision immediately following the removal.

CMC will take reasonable steps to prevent the recurrence of any Sexual Misconduct, including retaliation, and to correct discriminatory effects on the victim and others. Immediate and appropriate steps will be taken to protect victims who experience sexual violence and to protect any person from retaliation associated with suspected or actual Sexual Misconduct.

# Colorado Mountain College Annual Fire Safety Report

## Overview

The Higher Education Opportunity Act requires all United States institutions of higher education to produce an Annual Fire Safety Report which outlines fire safety practices, standards, and all fire-related on-campus statistics. The following report details all information required by this law as it relates to Colorado Mountain College.

## 24. On-campus Student Residential Housing Facility Fire Safety Systems

Colorado Mountain College has three campuses with student residential housing facilities, plus one additional location with college-owned apartment units adjacent to campus. Students are able to live on-campus at the Leadville (Mountain View Residence Hall), Steamboat Springs (Hill Residence Hall), and Glenwood Springs-Spring Valley (Sopris Residence Hall) campuses. CMC also owns three apartment buildings (Denison Commons Building #1, #2 and #3) adjacent to the Breckenridge Campus that are designated for student and employee housing. The fire safety systems in **each** individual housing facility are described below. Campus fire prevention and security equipment is maintained in an attempt to make the residence hall safer for you and the rest of the CMC community. Tampering with equipment, which includes blocking emergency exits and paths, misusing or propping open fire doors, using fire extinguishers in an unauthorized manner, removing exit signs, interfering with cameras, disengaging or disabling door locks, removing smoke detectors and/or initiating a false alarm threatens the safety of the community and will not be tolerated.

All student residential housing facility rooms are equipped with fire safety equipment, including smoke alarms and a state-of-the-art sprinkler system. The sprinkler heads on the walls and in the ceiling are connected to a powerful building-wide sprinkler system. If the sprinklers are activated, they will generate more than 40 gallons of water each minute from each head (there are 3 heads in each room). This is the equivalent of filling 3 bathtubs every minute. This amount of water will flood dormitory rooms quickly and do serious damage to student belongings. If a resident is responsible for a sprinkler being activated for any reason, whether intentional or accidental, the resident will be held accountable for all damage, which is likely to cost thousands of dollars.

Each room contains two different alarms to protect residents. A smoke detector will sound if there is enough smoke detected in a room. The smoke detector will only sound within the individual room and is not connected to the central fire system. Additionally, there is a thermal alarm which will sound if the temperature in the room reaches a certain level. This alarm is connected to the central fire alarm system and will alert the entire building that there is a fire. Tampering with either alarm can activate the alarm. Intentional activation of either alarm is prohibited and a violation of CMC's fire safety policies.

The Denison Commons Apartment buildings are equipped with actively monitored fire suppression systems and smoke detectors as required by code.

## 25. Fire Drills Held During The Previous Calendar Year

Planned fire drills are conducted at each residence hall once per semester (spring/fall) at a minimum.

## 26. Policy Regarding Portable Electrical Appliances, Smoking and Open Flames in Student Residential Housing Facilities

Draperies, tapestries, blankets or posters that are displayed on walls, ceilings, and on or around doors in a manner which would facilitate ignition, block entrances or exits or fire detection units, or present overhead fire hazards are prohibited in all student residential housing facilities.

In addition, the following are prohibited in student residential housing facilities due to the potential threat to fire safety:

- Electrical appliances which are not UL (Underwriter Laboratories, Inc.) approved;
- All electrical appliances with open coils including, but not limited to: toasters, hot plates,

- toaster ovens, coiled cup heaters, space heaters etc.;
- Any lamp which uses a halogen bulb;
- Appliances that use an excessive amount of electricity, for example microwaves (1000-watt max.) and refrigerators (4.0 cubic feet max.), etc.;
- Barbecue grills; camp stoves; charcoal or starter fluid; propane; lighter fluid or other flammable liquids, gasses or chemicals etc.;
- Candles with a wick, scented wax warmers, incense, fireworks, firecrackers, safe for use or décor, etc.;
- Vaporizers, e-cigarettes, hookahs, cigarettes, cigars, or any other incendiary device;
- Other hazardous or combustible materials;
- Unapproved room and common area decorations, such as holiday decorations and live Christmas trees;
- Obstruction of/blocking a clear path out of the room;
- Obstruction of/blocking fire exits, hallways, stairwells, or other common areas with bicycles, chairs, etc.;
- Extension cords that are not surge protected;
- Starting fires of any kind on any CMC property.

#### 27. Procedures For Student Housing Evacuation in The Case Of A Fire

Each student residential housing facility has a designated emergency assembly point which is communicated to students during orientation and/or at the beginning of each academic semester. The designated emergency assembly point for each housing facility is posted within each housing facility. When a fire alarm sounds, all occupants of the building must evacuate the building and report to the assigned emergency assembly point. During a fire alarm, students must not leave campus until a headcount is completed and the students are released by a member of the Residence Life staff. Failure to comply with appropriate procedures during an evacuation or fire drill may result in CMC and/or law enforcement judicial actions.

Students residing in the residence halls are taught basic fire safety and evacuation procedures at the beginning of the fall semester each August. This information is also reviewed with residents occasionally at RA – resident meetings.

#### 28. Fire Safety Education and Training Programs for Students and Employees

Fire safety and evacuation procedure training is conducted for students residing in the residence halls and residence hall staff each August, at the beginning of the academic year. The training includes safe evacuation procedures, fire alarm activation, evacuation relocation site, roll call procedure, and instructions from emergency response personnel. In addition, the Resident Assistants (RAs) attend a fire safety training where they learn proper fire extinguisher use, evacuation procedures, understanding the fire detection/suppression system, and general fire prevention. The RAs may review fire safety and prevention during RA meetings with residents.

#### 29. Employees to Which Students and Employees Should Report That A Fire Has Occurred

In the event of any fire at a CMC residence hall, no matter how small or contained the fire is, Risk Management and the respective Campus Vice President shown below must be notified:

- **Risk Management** – Steve Rozanski, Director of Risk Management, (970)384-8533
- **Glenwood Springs-Spring Valley** – Heather Exby, Vice President and Campus Dean, (970)947-8201
- **Leadville** – Ben Cairns, Vice President and Campus Dean, (719)486-4212

- **Steamboat Springs** – Jonathon Norling, Vice President and Campus Dean, (970) 870-4414

30. CMC’s Plans for Future Improvements in Fire Safety

Each CMC residence hall has a modern fire detection and suppression system, and no upgrades are planned or deemed necessary at this time.

31. Fire Statistics

CMC Residence Hall and Student Apartment Fire Statistics

<b>Campus</b>	<b>2019</b>	<b>2020</b>	<b>2021</b>
Mountain View Residence Hall (Leadville)	0	0	0
Hill Residence Hall (Steamboat)	0	0	0
Sopris Residence Hall (Spring Valley)	0	0	0
Denison Commons Building #1, #2 & #3 (Breckenridge)	0	0	0

*[Appendices follow this page.]*

# APPENDIXA – Clery Geography Maps

The zone colors represent: RED - Core Campus, YELLOW - Adjacent Public Land, BLUE - Non-Campus.

## Aspen



## Breckenridge



The zone colors represent: RED - Core Campus, YELLOW - Adjacent Public Land, BLUE - Non-Campus.

## Buena Vista



## Carbondale



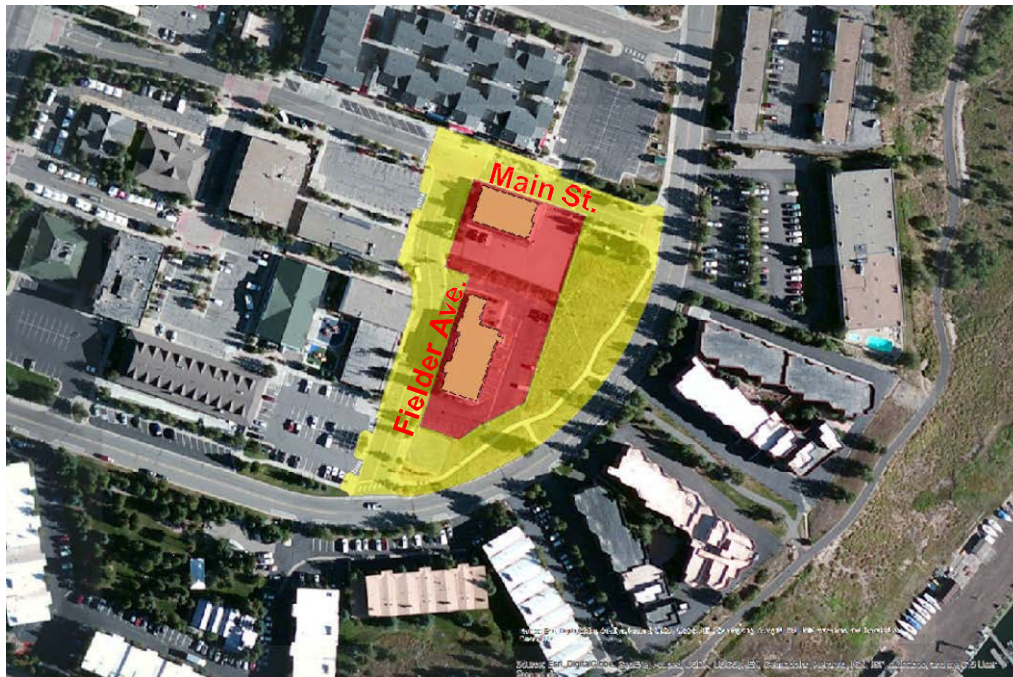


The zone colors represent: RED - Core Campus, YELLOW - Adjacent Public Land, BLUE - Non-Campus.

## Central Services

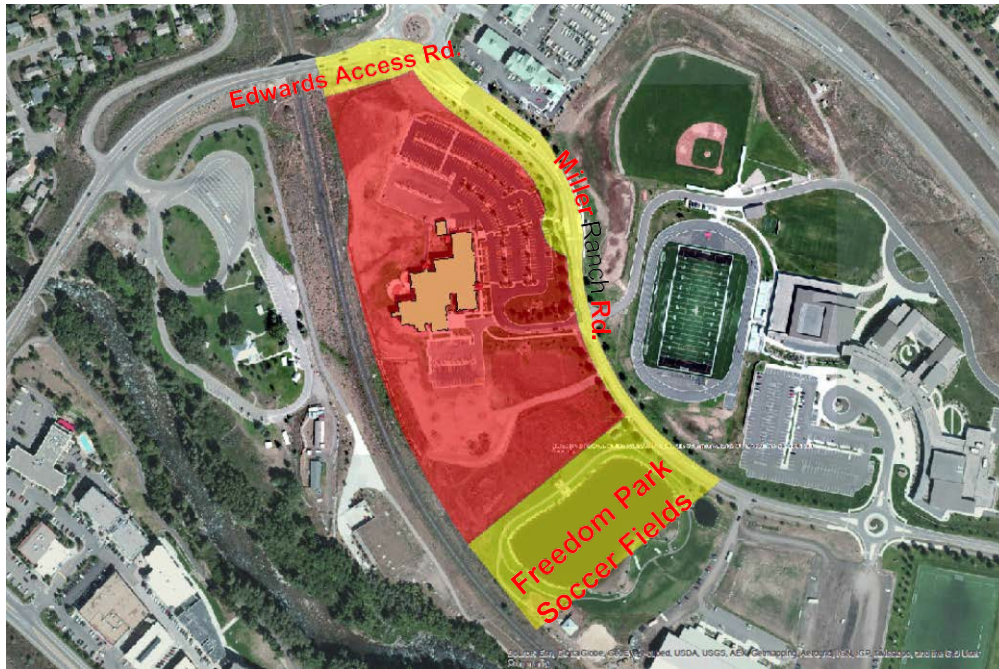


## Dillon

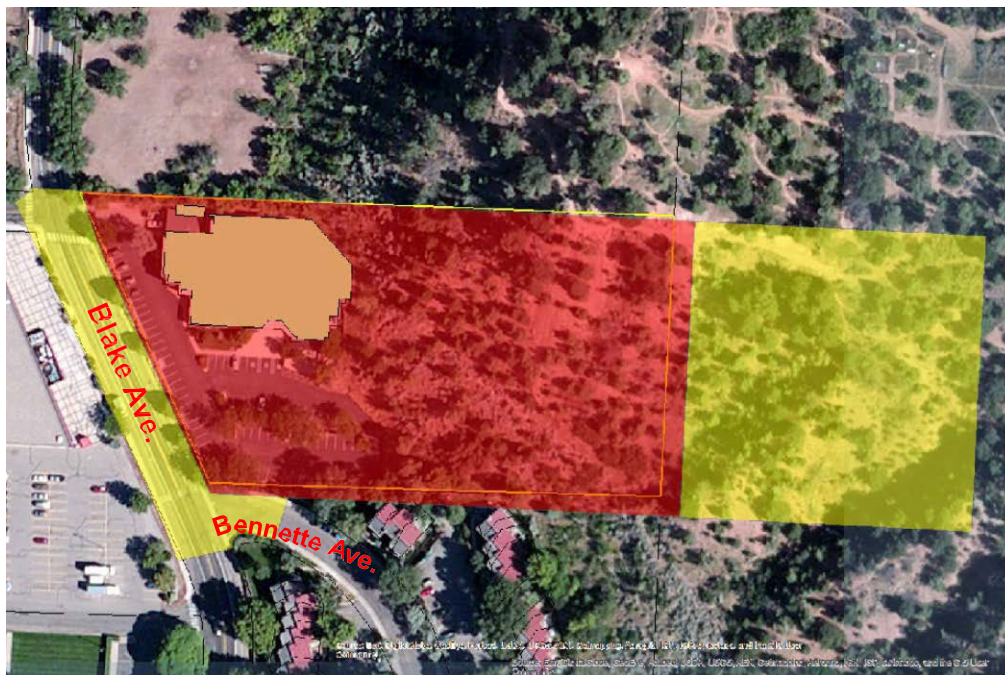


The zone colors represent: RED - Core Campus, YELLOW - Adjacent Public Land, BLUE - Non-Campus.

## Edwards

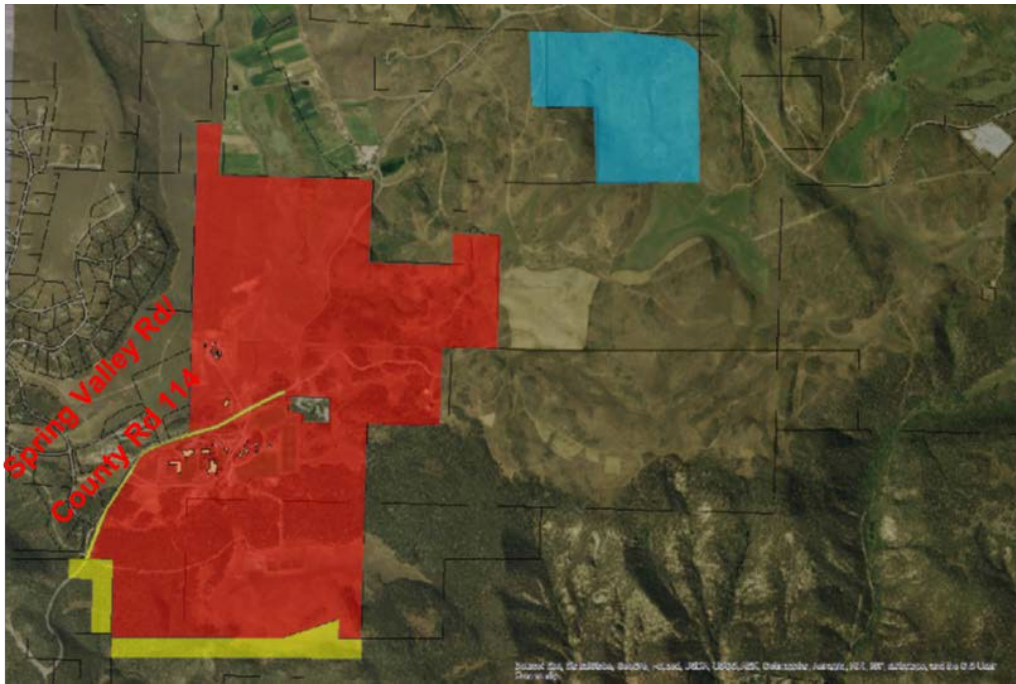


## Glenwood Springs

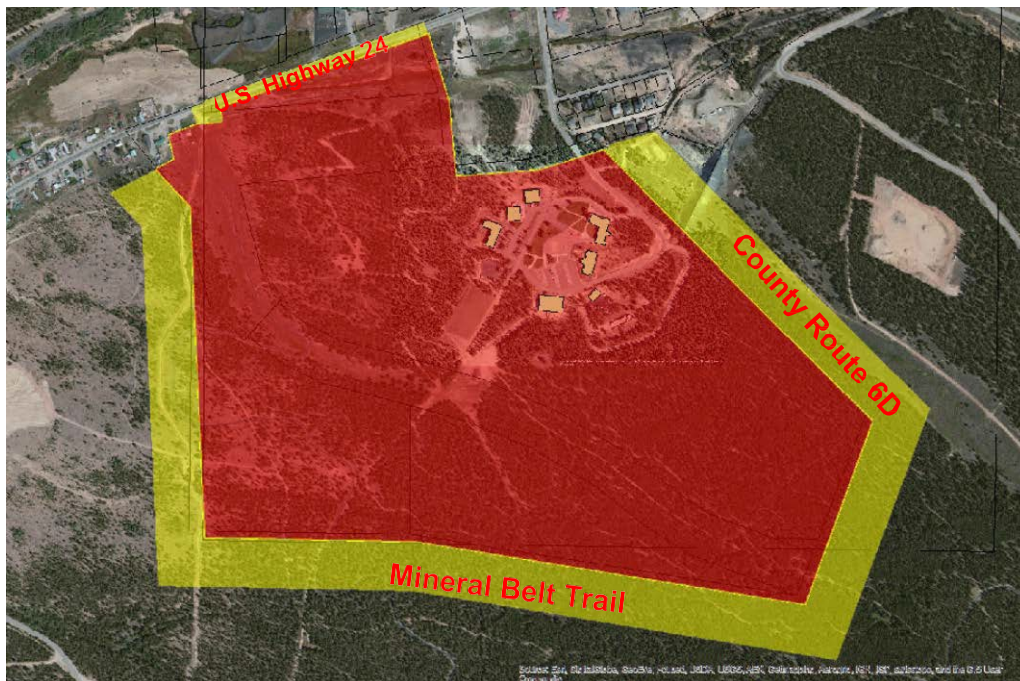


The zone colors represent: RED - Core Campus, YELLOW - Adjacent Public Land, BLUE - Non-Campus.

## Glenwood Springs – Spring Valley

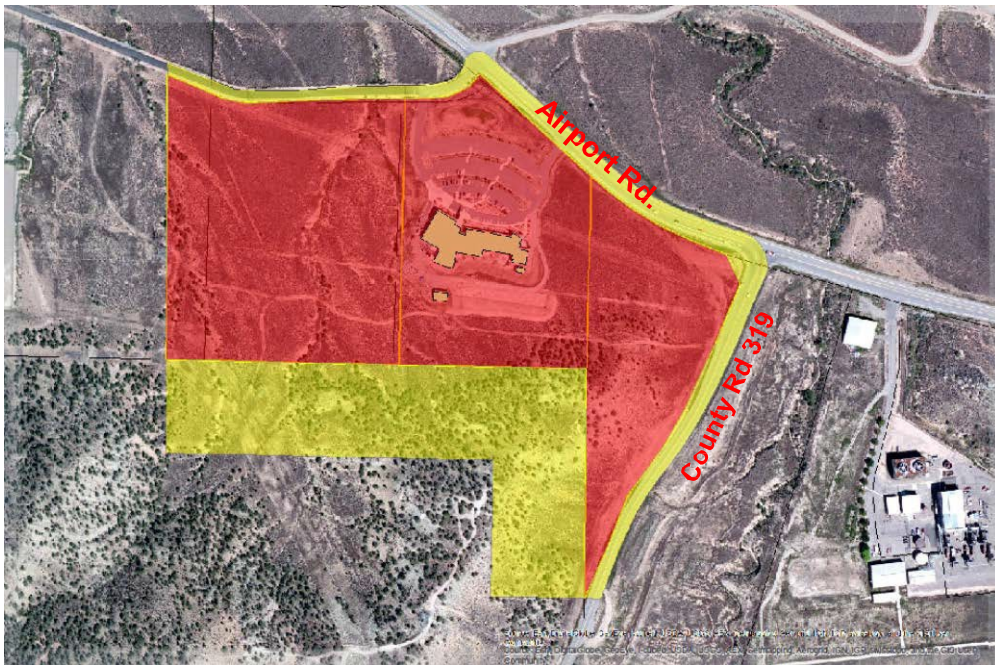


## Leadville



The zone colors represent: RED - Core Campus, YELLOW - Adjacent Public Land, BLUE - Non-Campus.

## Rifle



## Steamboat Springs



## APPENDIX B – Clery Reportable Offenses by Campus

Colorado Mountain College – Aspen	Year	On-Campus Residence Hall	On-Campus: Other	Total On-Campus	Non-Campus Property	Adjacent Public Property
<b>Reportable Criminal Offenses</b>						
Murder & Non-negligent Manslaughter	2021	0	0	0	0	0
	2020	0	0	0	0	0
	2019	0	0	0	0	0
Negligent Manslaughter	2021	0	0	0	0	0
	2020	0	0	0	0	0
	2019	0	0	0	0	0
Robbery	2021	0	0	0	0	0
	2020	0	0	0	0	0
	2019	0	0	0	0	0
Aggravated Assault	2021	0	0	0	0	0
	2020	0	0	0	0	0
	2019	0	0	0	0	0
Burglary	2021	0	0	0	0	0
	2020	0	0	0	0	0
	2019	0	0	0	0	0
Motor Vehicle Theft	2021	0	0	0	0	0
	2020	0	0	0	0	0
	2019	0	0	0	0	0
Arson	2021	0	0	0	0	0
	2020	0	0	0	0	0
	2019	0	0	0	0	0
<b>VAWA Offenses</b>						
Forcible Sex Offenses (Rape, Sodomy, Sexual Assault With an Object, Fondling)	2021	0	0	0	0	0
	2020	0	0	0	0	0
	2019	0	0	0	0	0
Non-Forcible Sex Offenses (Incest/Statutory Rape)	2021	0	0	0	0	0
	2020	0	0	0	0	0
	2019	0	0	0	0	0
Domestic Violence	2021	0	0	0	0	0
	2020	0	0	0	0	0
	2019	0	0	0	0	0
Dating Violence	2021	0	0	0	0	0
	2020	0	0	0	0	0
	2019	0	0	0	0	0
Stalking	2021	0	0	0	0	0

	2020	0	0	0	0	0
	2019	0	0	0	0	0
<b>Liquor, Drug &amp; Weapons Statistics</b>						
Liquor Law Violation Arrests	2021	0	0	0	0	0
	2020	0	0	0	0	0
	2019	0	0	0	0	0
Liquor Law Violation Disciplinary Referrals	2021	0	0	0	0	0
	2020	0	0	0	0	0
	2019	0	0	0	0	0
Drug Law Violation Arrests	2021	0	0	0	0	0
	2020	0	0	0	0	0
	2019	0	0	0	0	0
Drug Law Violation Disciplinary Referrals	2021	0	0	0	0	0
	2020	0	0	0	0	0
	2019	0	0	0	0	0
Weapons Violations Arrests	2021	0	0	0	0	0
	2020	0	0	0	0	0
	2019	0	0	0	0	0
Weapons Violations Disciplinary Referrals	2021	0	0	0	0	0
	2020	0	0	0	0	0
	2019	0	0	0	0	0
<b>Reportable Hate Crimes</b>						
Race	2021	0	0	0	0	0
	2020	0	0	0	0	0
	2019	0	0	0	0	0
Gender	2021	0	0	0	0	0
	2020	0	0	0	0	0
	2019	0	0	0	0	0
Religion	2021	0	0	0	0	0
	2020	0	0	0	0	0
	2019	0	0	0	0	0
Sexual Orientation	2021	0	0	0	0	0
	2020	0	0	0	0	0
	2019	0	0	0	0	0
Ethnicity	2021	0	0	0	0	0
	2020	0	0	0	0	0
	2019	0	0	0	0	0
Disability	2021	0	0	0	0	0
	2020	0	0	0	0	0
	2019	0	0	0	0	0

Colorado Mountain College - Breckenridge	Year	On-Campus Residence Hall	On-Campus: Other	Total On-Campus	Non-Campus Property	Adjacent Public Property
<b>Reportable Criminal Offenses</b>						
Murder & Non-negligent Manslaughter	2021	0	0	0	0	0
	2020	0	0	0	0	0
	2019	0	0	0	0	0
Negligent Manslaughter	2021	0	0	0	0	0
	2020	0	0	0	0	0
	2019	0	0	0	0	0
Robbery	2021	0	0	0	0	0
	2020	0	0	0	0	0
	2019	0	0	0	0	0
Aggravated Assault	2021	0	0	0	0	0
	2020	0	0	0	0	0
	2019	0	0	0	0	0
Burglary	2021	0	0	0	0	0
	2020	0	0	0	0	0
	2019	0	0	0	0	0
Motor Vehicle Theft	2021	0	0	0	0	0
	2020	0	0	0	0	0
	2019	0	0	0	0	0
Arson	2021	0	0	0	0	0
	2020	0	0	0	0	0
	2019	0	0	0	0	0
<b>VAWA Offenses</b>						
Forcible Sex Offenses (Rape, Sodomy, Sexual Assault With an Object, Fondling)	2021	0	0	0	0	0
	2020	0	0	0	0	0
	2019	0	0	0	0	0
Non-Forcible Sex Offenses (Incest/Statutory Rape)	2021	0	0	0	0	0
	2020	0	0	0	0	0
	2019	0	0	0	0	0
Domestic Violence	2021	0	0	0	0	0
	2020	0	0	0	0	0
	2019	0	0	0	0	0
Dating Violence	2021	0	0	0	0	0
	2020	0	0	0	0	0
	2019	0	0	0	0	0
Stalking	2021	0	0	0	0	0
	2020	0	0	0	0	0
	2019	0	0	0	0	0

<b>Liquor, Drug &amp; Weapons Statistics</b>						
Liquor Law Violation Arrests	2021	0	0	0	0	0
	2020	0	0	0	0	0
	2019	0	0	0	0	0
Liquor Law Violation Disciplinary Referrals	2021	0	0	0	0	0
	2020	0	0	0	0	0
	2019	0	0	0	0	0
Drug Law Violation Arrests	2021	0	0	0	0	0
	2020	0	0	0	0	0
	2019	0	0	0	0	0
Drug Law Violation Disciplinary Referrals	2021	0	0	0	0	0
	2020	0	0	0	0	0
	2019	0	0	0	0	0
Weapons Violations Arrests	2021	0	0	0	0	0
	2020	0	0	0	0	0
	2019	0	0	0	0	0
Weapons Violations Disciplinary Referrals	2021	0	0	0	0	0
	2020	0	0	0	0	0
	2019	0	0	0	0	0
<b>Reportable Hate Crimes</b>						
Race	2021	0	0	0	0	0
	2020	0	0	0	0	0
	2019	0	0	0	0	0
Gender	2021	0	0	0	0	0
	2020	0	0	0	0	0
	2019	0	0	0	0	0
Religion	2021	0	0	0	0	0
	2020	0	0	0	0	0
	2019	0	0	0	0	0
Sexual Orientation	2021	0	0	0	0	0
	2020	0	0	0	0	0
	2019	0	0	0	0	0
Ethnicity	2021	0	0	0	0	0
	2020	0	0	0	0	0
	2019	0	0	0	0	0
Disability	2021	0	0	0	0	0
	2020	0	0	0	0	0
	2019	0	0	0	0	0



Colorado Mountain College - Buena Vista	Year	On-Campus Residence Hall	On-Campus: Other	Total On-Campus	Non-Campus Property	Adjacent Public Property
<b>Reportable Criminal Offenses</b>						
Murder & Non-negligent Manslaughter	2021	0	0	0	0	0
	2020	0	0	0	0	0
	2019	0	0	0	0	0
Negligent Manslaughter	2021	0	0	0	0	0
	2020	0	0	0	0	0
	2019	0	0	0	0	0
Robbery	2021	0	0	0	0	0
	2020	0	0	0	0	0
	2019	0	0	0	0	0
Aggravated Assault	2021	0	0	0	0	0
	2020	0	0	0	0	0
	2019	0	1	1	0	0
Burglary	2021	0	0	0	0	0
	2020	0	0	0	0	0
	2019	0	0	0	0	0
Motor Vehicle Theft	2021	0	0	0	0	0
	2020	0	0	0	0	0
	2019	0	0	0	0	0
Arson	2021	0	0	0	0	0
	2020	0	0	0	0	0
	2019	0	0	0	0	0
<b>VAWA Offenses</b>						
Forcible Sex Offenses (Rape, Sodomy, Sexual Assault With an Object, Fondling)	2021	0	0	0	0	0
	2020	0	0	0	0	0
	2019	0	0	0	0	0
Non-Forcible Sex Offenses (Incest/Statutory Rape)	2021	0	0	0	0	0
	2020	0	0	0	0	0
	2019	0	0	0	0	0
Domestic Violence	2021	0	0	0	0	0
	2020	0	0	0	0	0
	2019	0	0	0	0	0
Dating Violence	2021	0	0	0	0	0
	2020	0	0	0	0	0
	2019	0	0	0	0	0
Stalking	2021	0	0	0	0	0
	2020	0	0	0	0	0

	2019	0	0	0	0	0
<b>Liquor, Drug &amp; Weapons Statistics</b>						
Liquor Law Violation Arrests	2021	0	0	0	0	0
	2020	0	0	0	0	0
	2019	0	0	0	0	0
Liquor Law Violation Disciplinary Referrals	2021	0	0	0	0	0
	2020	0	0	0	0	0
	2019	0	0	0	0	0
Drug Law Violation Arrests	2021	0	0	0	0	0
	2020	0	0	0	0	0
	2019	0	0	0	0	0
Drug Law Violation Disciplinary Referrals	2021	0	0	0	0	0
	2020	0	0	0	0	0
	2019	0	0	0	0	0
Weapons Violations Arrests	2021	0	0	0	0	0
	2020	0	0	0	0	0
	2019	0	0	0	0	0
Weapons Violations Disciplinary Referrals	2021	0	0	0	0	0
	2020	0	0	0	0	0
	2019	0	0	0	0	0
<b>Reportable Hate Crimes</b>						
Race	2021	0	0	0	0	0
	2020	0	0	0	0	0
	2019	0	0	0	0	0
Gender	2021	0	0	0	0	0
	2020	0	0	0	0	0
	2019	0	0	0	0	0
Religion	2021	0	0	0	0	0
	2020	0	0	0	0	0
	2019	0	0	0	0	0
Sexual Orientation	2021	0	0	0	0	0
	2020	0	0	0	0	0
	2019	0	0	0	0	0
Ethnicity	2021	0	0	0	0	0
	2020	0	0	0	0	0
	2019	0	0	0	0	0
Disability	2021	0	0	0	0	0
	2020	0	0	0	0	0
	2019	0	0	0	0	0

Colorado Mountain College - Carbondale	Year	On- Campus Residence Hall	On- Campus: Other	Total On- Campus	Non- Campus Property	Adjacent Public Property
<b>Reportable Criminal Offenses</b>						
Murder & Non-negligent Manslaughter	2021	0	0	0	0	0
	2020	0	0	0	0	0
	2019	0	0	0	0	0
Negligent Manslaughter	2021	0	0	0	0	0
	2020	0	0	0	0	0
	2019	0	0	0	0	0
Robbery	2021	0	0	0	0	0
	2020	0	0	0	0	0
	2019	0	0	0	0	0
Aggravated Assault	2021	0	0	0	0	0
	2020	0	0	0	0	0
	2019	0	0	0	0	0
Burglary	2021	0	0	0	0	0
	2020	0	0	0	0	0
	2019	0	0	0	0	0
Motor Vehicle Theft	2021	0	0	0	0	0
	2020	0	0	0	0	0
	2019	0	0	0	0	0
Arson	2021	0	0	0	0	0
	2020	0	0	0	0	0
	2019	0	0	0	0	0
<b>VAWA Offenses</b>						
Forcible Sex Offenses (Rape, Sodomy, Sexual Assault With an Object, Fondling)	2021	0	0	0	0	0
	2020	0	0	0	0	0
	2019	0	0	0	0	0
Non-Forcible Sex Offenses (Incest/Statutory Rape)	2021	0	0	0	0	0
	2020	0	0	0	0	0
	2019	0	0	0	0	0
Domestic Violence	2021	0	0	0	0	0
	2020	0	0	0	0	0
	2019	0	0	0	0	0
Dating Violence	2021	0	0	0	0	0
	2020	0	0	0	0	0
	2019	0	0	0	0	0
Stalking	2021	0	0	0	0	0
	2020	0	0	0	0	0

	2019	0	0	0	0	0
<b>Liquor, Drug &amp; Weapons Statistics</b>						
Liquor Law Violation Arrests	2021	0	0	0	0	0
	2020	0	0	0	0	0
	2019	0	0	0	0	0
Liquor Law Violation Disciplinary Referrals	2021	0	0	0	0	0
	2020	0	0	0	0	0
	2019	0	0	0	0	0
Drug Law Violation Arrests	2021	0	0	0	0	0
	2020	0	0	0	0	0
	2019	0	0	0	0	0
Drug Law Violation Disciplinary Referrals	2021	0	0	0	0	0
	2020	0	0	0	0	0
	2019	0	0	0	0	0
Weapons Violations Arrests	2021	0	0	0	0	0
	2020	0	0	0	0	0
	2019	0	0	0	0	0
Weapons Violations Disciplinary Referrals	2021	0	0	0	0	0
	2020	0	0	0	0	0
	2019	0	0	0	0	0
<b>Reportable Hate Crimes</b>						
Race	2021	0	0	0	0	0
	2020	0	0	0	0	0
	2019	0	0	0	0	0
Gender	2021	0	0	0	0	0
	2020	0	0	0	0	0
	2019	0	0	0	0	0
Religion	2021	0	0	0	0	0
	2020	0	0	0	0	0
	2019	0	0	0	0	0
Sexual Orientation	2021	0	0	0	0	0
	2020	0	0	0	0	0
	2019	0	0	0	0	0
Ethnicity	2021	0	0	0	0	0
	2020	0	0	0	0	0
	2019	0	0	0	0	0
Disability	2021	0	0	0	0	0
	2020	0	0	0	0	0
	2019	0	0	0	0	0

Colorado Mountain College – Central Services and Morgridge Commons	Year	On- Campus Residence Hall	On- Campus: Other	Total On- Campus	Non- Campus Property	Adjacent Public Property
<b>Reportable Criminal Offenses</b>						
Murder & Non-negligent Manslaughter	2021	0	0	0	0	0
	2020	0	0	0	0	0
	2019	0	0	0	0	0
Negligent Manslaughter	2021	0	0	0	0	0
	2020	0	0	0	0	0
	2019	0	0	0	0	0
Robbery	2021	0	0	0	0	0
	2020	0	0	0	0	0
	2019	0	0	0	0	0
Aggravated Assault	2021	0	0	0	0	0
	2020	0	0	0	0	0
	2019	0	0	0	0	0
Burglary	2021	0	0	0	0	0
	2020	0	0	0	0	0
	2019	0	0	0	0	0
Motor Vehicle Theft	2021	0	0	0	0	0
	2020	0	0	0	0	0
	2019	0	0	0	0	0
Arson	2021	0	0	0	0	0
	2020	0	0	0	0	0
	2019	0	0	0	0	0
<b>VAWA Offenses</b>						
Forcible Sex Offenses (Rape, Sodomy, Sexual Assault With an Object, Fondling)	2021	0	0	0	0	0
	2020	0	0	0	0	0
	2019	0	0	0	0	0
Non-Forcible Sex Offenses (Incest/Statutory Rape)	2021	0	0	0	0	0
	2020	0	0	0	0	0
	2019	0	0	0	0	0
Domestic Violence	2021	0	0	0	0	0
	2020	0	0	0	0	0
	2019	0	0	0	0	0
Dating Violence	2021	0	0	0	0	0
	2020	0	0	0	0	0
	2019	0	0	0	0	0
Stalking	2021	0	0	0	0	0
	2020	0	0	0	0	0

	2019	0	0	0	0	0
<b>Liquor, Drug &amp; Weapons Statistics</b>						
Liquor Law Violation Arrests	2021	0	0	0	0	0
	2020	0	0	0	0	0
	2019	0	0	0	0	0
Liquor Law Violation Disciplinary Referrals	2021	0	0	0	0	0
	2020	0	0	0	0	0
	2019	0	0	0	0	0
Drug Law Violation Arrests	2021	0	0	0	0	0
	2020	0	0	0	0	0
	2019	0	0	0	0	0
Drug Law Violation Disciplinary Referrals	2021	0	0	0	0	0
	2020	0	0	0	0	0
	2019	0	0	0	0	0
Weapons Violations Arrests	2021	0	0	0	0	0
	2020	0	0	0	0	0
	2019	0	0	0	0	0
Weapons Violations Disciplinary Referrals	2021	0	0	0	0	0
	2020	0	0	0	0	0
	2019	0	0	0	0	0
<b>Reportable Hate Crimes</b>						
Race	2021	0	0	0	0	0
	2020	0	0	0	0	0
	2019	0	0	0	0	0
Gender	2021	0	0	0	0	0
	2020	0	0	0	0	0
	2019	0	0	0	0	0
Religion	2021	0	0	0	0	0
	2020	0	0	0	0	0
	2019	0	0	0	0	0
Sexual Orientation	2021	0	0	0	0	0
	2020	0	0	0	0	0
	2019	0	0	0	0	0
Ethnicity	2021	0	0	0	0	0
	2020	0	0	0	0	0
	2019	0	0	0	0	0
Disability	2021	0	0	0	0	0
	2020	0	0	0	0	0
	2019	0	0	0	0	0

Colorado Mountain College - Dillon	Year	On-Campus Residence Hall	On-Campus: Other	Total On-Campus	Non-Campus Property	Adjacent Public Property
<b>Reportable Criminal Offenses</b>						
Murder & Non-negligent Manslaughter	2021	0	0	0	0	0
	2020	0	0	0	0	0
	2019	0	0	0	0	0
Negligent Manslaughter	2021	0	0	0	0	0
	2020	0	0	0	0	0
	2019	0	0	0	0	0
Robbery	2021	0	0	0	0	0
	2020	0	0	0	0	0
	2019	0	0	0	0	0
Aggravated Assault	2021	0	0	0	0	0
	2020	0	0	0	0	0
	2019	0	0	0	0	0
Burglary	2021	0	0	0	0	0
	2020	0	0	0	0	0
	2019	0	0	0	0	0
Motor Vehicle Theft	2021	0	0	0	0	0
	2020	0	0	0	0	0
	2019	0	0	0	0	0
Arson	2021	0	0	0	0	0
	2020	0	0	0	0	0
	2019	0	0	0	0	0
<b>VAWA Offenses</b>						
Forcible Sex Offenses (Rape, Sodomy, Sexual Assault With an Object, Fondling)	2021	0	0	0	0	0
	2020	0	0	0	0	0
	2019	0	0	0	0	0
Non-Forcible Sex Offenses (Incest/Statutory Rape)	2021	0	0	0	0	0
	2020	0	0	0	0	0
	2019	0	0	0	0	0
Domestic Violence	2021	0	0	0	0	0
	2020	0	0	0	0	0
	2019	0	0	0	0	0
Dating Violence	2021	0	0	0	0	0
	2020	0	0	0	0	0
	2019	0	0	0	0	0
Stalking	2021	0	0	0	0	0
	2020	0	0	0	0	0

	2019	0	0	0	0	0
<b>Liquor, Drug &amp; Weapons Statistics</b>						
Liquor Law Violation Arrests	2021	0	0	0	0	0
	2020	0	0	0	0	0
	2019	0	0	0	0	0
Liquor Law Violation Disciplinary Referrals	2021	0	0	0	0	0
	2020	0	0	0	0	0
	2019	0	0	0	0	0
Drug Law Violation Arrests	2021	0	0	0	0	0
	2020	0	0	0	0	0
	2019	0	0	0	0	0
Drug Law Violation Disciplinary Referrals	2021	0	0	0	0	0
	2020	0	0	0	0	0
	2019	0	0	0	0	0
Weapons Violations Arrests	2021	0	0	0	0	0
	2020	0	0	0	0	0
	2019	0	0	0	0	0
Weapons Violations Disciplinary Referrals	2021	0	0	0	0	0
	2020	0	0	0	0	0
	2019	0	0	0	0	0
<b>Reportable Hate Crimes</b>						
Race	2021	0	0	0	0	0
	2020	0	0	0	0	0
	2019	0	0	0	0	0
Gender	2021	0	0	0	0	0
	2020	0	0	0	0	0
	2019	0	0	0	0	0
Religion	2021	0	0	0	0	0
	2020	0	0	0	0	0
	2019	0	0	0	0	0
Sexual Orientation	2021	0	0	0	0	0
	2020	0	0	0	0	0
	2019	0	0	0	0	0
Ethnicity	2021	0	0	0	0	0
	2020	0	0	0	0	0
	2019	0	0	0	0	0
Disability	2021	0	0	0	0	0
	2020	0	0	0	0	0
	2019	0	0	0	0	0



Colorado Mountain College - Edwards	Year	On- Campus Residence Hall	On- Campus: Other	Total On- Campus	Non- Campus Property	Adjacent Public Property
<b>Reportable Criminal Offenses</b>						
Murder & Non-negligent Manslaughter	2021	0	0	0	0	0
	2020	0	0	0	0	0
	2019	0	0	0	0	0
Negligent Manslaughter	2021	0	0	0	0	0
	2020	0	0	0	0	0
	2019	0	0	0	0	0
Robbery	2021	0	0	0	0	0
	2020	0	0	0	0	0
	2019	0	0	0	0	0
Aggravated Assault	2021	0	0	0	0	0
	2020	0	0	0	0	0
	2019	0	0	0	0	0
Burglary	2021	0	0	0	0	0
	2020	0	0	0	0	0
	2019	0	0	0	0	0
Motor Vehicle Theft	2021	0	0	0	0	0
	2020	0	0	0	0	0
	2019	0	0	0	0	0
Arson	2021	0	0	0	0	0
	2020	0	0	0	0	0
	2019	0	0	0	0	0
<b>VAWA Offenses</b>						
Forcible Sex Offenses (Rape, Sodomy, Sexual Assault With an Object, Fondling)	2021	0	0	0	0	0
	2020	0	0	0	0	0
	2019	0	0	0	0	0
Non-Forcible Sex Offenses (Incest/Statutory Rape)	2021	0	0	0	0	0
	2020	0	0	0	0	0
	2019	0	0	0	0	0
Domestic Violence	2021	0	0	0	0	0
	2020	0	0	0	0	0
	2019	0	0	0	0	0
Dating Violence	2021	0	0	0	0	0
	2020	0	0	0	0	0
	2019	0	0	0	0	0
Stalking	2021	0	0	0	0	0
	2020	0	0	0	0	0

	2019	0	0	0	0	0
<b>Liquor, Drug &amp; Weapons Statistics</b>						
Liquor Law Violation Arrests	2021	0	0	0	0	0
	2020	0	0	0	0	0
	2019	0	0	0	0	0
Liquor Law Violation Disciplinary Referrals	2021	0	0	0	0	0
	2020	0	0	0	0	0
	2019	0	0	0	0	0
Drug Law Violation Arrests	2021	0	0	0	0	0
	2020	0	0	0	0	0
	2019	0	0	0	0	0
Drug Law Violation Disciplinary Referrals	2021	0	0	0	0	0
	2020	0	0	0	0	0
	2019	0	0	0	0	0
Weapons Violations Arrests	2021	0	0	0	0	0
	2020	0	0	0	0	0
	2019	0	0	0	0	0
Weapons Violations Disciplinary Referrals	2021	0	0	0	0	0
	2020	0	0	0	0	0
	2019	0	0	0	0	0
<b>Reportable Hate Crimes</b>						
Race	2021	0	0	0	0	0
	2020	0	0	0	0	0
	2019	0	0	0	0	0
Gender	2021	0	0	0	0	0
	2020	0	0	0	0	0
	2019	0	0	0	0	0
Religion	2021	0	0	0	0	0
	2020	0	0	0	0	0
	2019	0	0	0	0	0
Sexual Orientation	2021	0	0	0	0	0
	2020	0	0	0	0	0
	2019	0	0	0	0	0
Ethnicity	2021	0	0	0	0	0
	2020	0	0	0	0	0
	2019	0	0	0	0	0
Disability	2021	0	0	0	0	0
	2020	0	0	0	0	0
	2019	0	0	0	0	0

Colorado Mountain College - Glenwood Center	Year	On- Campus Residence Hall	On- Campus: Other	Total On- Campus	Non- Campus Property	Adjacent Public Property
<b>Reportable Criminal Offenses</b>						
Murder & Non-negligent Manslaughter	2021	0	0	0	0	0
	2020	0	0	0	0	0
	2019	0	0	0	0	0
Negligent Manslaughter	2021	0	0	0	0	0
	2020	0	0	0	0	0
	2019	0	0	0	0	0
Robbery	2021	0	0	0	0	0
	2020	0	0	0	0	0
	2019	0	0	0	0	0
Aggravated Assault	2021	0	0	0	0	0
	2020	0	0	0	0	0
	2019	0	0	0	0	0
Burglary	2021	0	0	0	0	0
	2020	0	0	0	0	0
	2019	0	0	0	0	0
Motor Vehicle Theft	2021	0	0	0	0	0
	2020	0	0	0	0	0
	2019	0	0	0	0	0
Arson	2021	0	0	0	0	0
	2020	0	0	0	0	0
	2019	0	0	0	0	0
<b>VAWA Offenses</b>						
Forcible Sex Offenses (Rape, Sodomy, Sexual Assault With an Object, Fondling)	2021	0	0	0	0	0
	2020	0	0	0	0	0
	2019	0	0	0	0	0
Non-Forcible Sex Offenses (Incest/Statutory Rape)	2021	0	0	0	0	0
	2020	0	0	0	0	0
	2019	0	0	0	0	0
Domestic Violence	2021	0	0	0	0	0
	2020	0	0	0	0	0
	2019	0	0	0	0	0
Dating Violence	2021	0	0	0	0	0
	2020	0	0	0	0	0
	2019	0	0	0	0	0
Stalking	2021	0	0	0	0	0
	2020	0	0	0	0	0

	2019	0	0	0	0	0
<b>Liquor, Drug &amp; Weapons Statistics</b>						
Liquor Law Violation Arrests	2021	0	0	0	0	0
	2020	0	0	0	0	0
	2019	0	0	0	0	0
Liquor Law Violation Disciplinary Referrals	2021	0	0	0	0	0
	2020	0	0	0	0	0
	2019	0	0	0	0	0
Drug Law Violation Arrests	2021	0	0	0	0	0
	2020	0	0	0	0	0
	2019	0	0	0	0	0
Drug Law Violation Disciplinary Referrals	2021	0	0	0	0	0
	2020	0	0	0	0	0
	2019	0	0	0	0	0
Weapons Violations Arrests	2021	0	0	0	0	0
	2020	0	0	0	0	0
	2019	0	0	0	0	0
Weapons Violations Disciplinary Referrals	2021	0	0	0	0	0
	2020	0	0	0	0	0
	2019	0	0	0	0	0
<b>Reportable Hate Crimes</b>						
Race	2021	0	0	0	0	0
	2020	0	0	0	0	0
	2019	0	0	0	0	0
Gender	2021	0	0	0	0	0
	2020	0	0	0	0	0
	2019	0	0	0	0	0
Religion	2021	0	0	0	0	0
	2020	0	0	0	0	0
	2019	0	0	0	0	0
Sexual Orientation	2021	0	0	0	0	0
	2020	0	0	0	0	0
	2019	0	0	0	0	0
Ethnicity	2021	0	0	0	0	0
	2020	0	0	0	0	0
	2019	0	0	0	0	0
Disability	2021	0	0	0	0	0
	2020	0	0	0	0	0
	2019	0	0	0	0	0

Colorado Mountain College - Leadville	Year	On-Campus Residence Hall	On-Campus: Other	Total On-Campus	Non-Campus Property	Adjacent Public Property
<b>Reportable Criminal Offenses</b>						
Murder & Non-negligent Manslaughter	2021	0	0	0	0	0
	2020	0	0	0	0	0
	2019	0	0	0	0	0
Negligent Manslaughter	2021	0	0	0	0	0
	2020	0	0	0	0	0
	2019	0	0	0	0	0
Robbery	2021	0	0	0	0	0
	2020	0	0	0	0	0
	2019	0	0	0	0	0
Aggravated Assault	2021	0	0	0	0	0
	2020	0	0	0	0	0
	2019	0	0	0	0	0
Burglary	2021	0	0	0	0	0
	2020	0	0	0	0	0
	2019	0	0	0	0	0
Motor Vehicle Theft	2021	0	0	0	0	0
	2020	0	0	0	0	0
	2019	0	0	0	0	0
Arson	2021	0	0	0	0	0
	2020	0	0	0	0	0
	2019	0	0	0	0	0
<b>VAWA Offenses</b>						
Forcible Sex Offenses (Rape, Sodomy, Sexual Assault With an Object, Fondling)	2021	0	0	0	0	0
	2020	0	0	0	0	0
	2019	1	0	1	0	0
Non-Forcible Sex Offenses (Incest/Statutory Rape)	2021	0	0	0	0	0
	2020	0	0	0	0	0
	2019	0	0	0	0	0
Domestic Violence	2021	0	0	0	0	0
	2020	0	0	0	0	0
	2019	0	0	0	0	0
Dating Violence	2021	0	0	0	0	0
	2020	0	0	0	0	0
	2019	0	0	0	0	0
Stalking	2021	0	0	0	0	0
	2020	0	0	0	0	0

	2019	0	0	0	0	0
<b>Liquor, Drug &amp; Weapons Statistics</b>						
Liquor Law Violation Arrests	2021	0	0	0	0	0
	2020	0	0	0	0	0
	2019	0	0	0	0	0
Liquor Law Violation Disciplinary Referrals	2021	10	0	10	0	0
	2020	15	1	16	0	0
	2019	2	3	5	0	1
Drug Law Violation Arrests	2021	0	0	0	0	0
	2020	0	0	0	0	0
	2019	0	0	0	0	0
Drug Law Violation Disciplinary Referrals	2021	5	0	5	0	0
	2020	7	0	7	0	0
	2019	0	0	0	0	0
Weapons Violations Arrests	2021	0	0	0	0	0
	2020	0	0	0	0	0
	2019	0	0	0	0	0
Weapons Violations Disciplinary Referrals	2021	0	0	0	0	0
	2020	0	0	0	0	0
	2019	0	0	0	0	0
<b>Reportable Hate Crimes</b>						
Race	2021	0	0	0	0	0
	2020	0	0	0	0	0
	2019	0	0	0	0	0
Gender	2021	0	0	0	0	0
	2020	0	0	0	0	0
	2019	0	0	0	0	0
Religion	2021	0	0	0	0	0
	2020	0	0	0	0	0
	2019	0	0	0	0	0
Sexual Orientation	2021	0	0	0	0	0
	2020	0	0	0	0	0
	2019	0	0	0	0	0
Ethnicity	2021	0	0	0	0	0
	2020	0	0	0	0	0
	2019	0	0	0	0	0
Disability	2021	0	0	0	0	0
	2020	0	0	0	0	0
	2019	0	0	0	0	0

Colorado Mountain College - Rifle	Year	On-Campus Residence Hall	On-Campus: Other	Total On-Campus	Non-Campus Property	Adjacent Public Property
<b>Reportable Criminal Offenses</b>						
Murder & Non-negligent Manslaughter	2021	0	0	0	0	0
	2020	0	0	0	0	0
	2019	0	0	0	0	0
Negligent Manslaughter	2021	0	0	0	0	0
	2020	0	0	0	0	0
	2019	0	0	0	0	0
Robbery	2021	0	0	0	0	0
	2020	0	0	0	0	0
	2019	0	0	0	0	0
Aggravated Assault	2021	0	0	0	0	0
	2020	0	0	0	0	0
	2019	0	0	0	0	0
Burglary	2021	0	0	0	0	0
	2020	0	0	0	0	0
	2019	0	0	0	0	0
Motor Vehicle Theft	2021	0	0	0	0	0
	2020	0	0	0	0	0
	2019	0	0	0	0	0
Arson	2021	0	0	0	0	0
	2020	0	0	0	0	0
	2019	0	0	0	0	0
<b>VAWA Offenses</b>						
Forcible Sex Offenses (Rape, Sodomy, Sexual Assault With an Object, Fondling)	2021	0	0	0	0	0
	2020	0	0	0	0	0
	2019	0	0	0	0	0
Non-Forcible Sex Offenses (Incest/Statutory Rape)	2021	0	0	0	0	0
	2020	0	0	0	0	0
	2019	0	0	0	0	0
Domestic Violence	2021	0	0	0	0	0
	2020	0	0	0	0	0
	2019	0	0	0	0	0
Dating Violence	2021	0	0	0	0	0
	2020	0	0	0	0	0
	2019	0	0	0	0	0
Stalking	2021	0	0	0	0	0
	2020	0	0	0	0	0

	2019	0	0	0	0	0
<b>Liquor, Drug &amp; Weapons Statistics</b>						
Liquor Law Violation Arrests	2021	0	0	0	0	0
	2020	0	0	0	0	0
	2019	0	0	0	0	0
Liquor Law Violation Disciplinary Referrals	2021	0	0	0	0	0
	2020	0	0	0	0	0
	2019	0	0	0	0	0
Drug Law Violation Arrests	2021	0	0	0	0	0
	2020	0	0	0	0	0
	2019	0	0	0	0	0
Drug Law Violation Disciplinary Referrals	2021	0	0	0	0	0
	2020	0	0	0	0	0
	2019	0	0	0	0	0
Weapons Violations Arrests	2021	0	0	0	0	0
	2020	0	0	0	0	0
	2019	0	0	0	0	0
Weapons Violations Disciplinary Referrals	2021	0	0	0	0	0
	2020	0	0	0	0	0
	2019	0	0	0	0	0
<b>Reportable Hate Crimes</b>						
Race	2021	0	0	0	0	0
	2020	0	0	0	0	0
	2019	0	0	0	0	0
Gender	2021	0	0	0	0	0
	2020	0	0	0	0	0
	2019	0	0	0	0	0
Religion	2021	0	0	0	0	0
	2020	0	0	0	0	0
	2019	0	0	0	0	0
Sexual Orientation	2021	0	0	0	0	0
	2020	0	0	0	0	0
	2019	0	0	0	0	0
Ethnicity	2021	0	0	0	0	0
	2020	0	0	0	0	0
	2019	0	0	0	0	0
Disability	2021	0	0	0	0	0
	2020	0	0	0	0	0
	2019	0	0	0	0	0



Colorado Mountain College - Salida	Year	On-Campus Residence Hall	On-Campus: Other	Total On-Campus	Non-Campus Property	Adjacent Public Property
<b>Reportable Criminal Offenses</b>						
Murder & Non-negligent Manslaughter	2021	0	0	0	0	0
	2020	0	0	0	0	0
	2019	0	0	0	0	0
Negligent Manslaughter	2021	0	0	0	0	0
	2020	0	0	0	0	0
	2019	0	0	0	0	0
Robbery	2021	0	0	0	0	0
	2020	0	0	0	0	0
	2019	0	0	0	0	0
Aggravated Assault	2021	0	0	0	0	0
	2020	0	0	0	0	0
	2019	0	0	0	0	0
Burglary	2021	0	0	0	0	0
	2020	0	0	0	0	0
	2019	0	0	0	0	0
Motor Vehicle Theft	2021	0	0	0	0	0
	2020	0	0	0	0	0
	2019	0	0	0	0	0
Arson	2021	0	0	0	0	0
	2020	0	0	0	0	0
	2019	0	0	0	0	0
<b>VAWA Offenses</b>						
Forcible Sex Offenses (Rape, Sodomy, Sexual Assault With an Object, Fondling)	2021	0	0	0	0	0
	2020	0	0	0	0	0
	2019	0	0	0	0	0
Non-Forcible Sex Offenses (Incest/Statutory Rape)	2021	0	0	0	0	0
	2020	0	0	0	0	0
	2019	0	0	0	0	0
Domestic Violence	2021	0	0	0	0	0
	2020	0	0	0	0	0
	2019	0	0	0	0	0
Dating Violence	2021	0	0	0	0	0
	2020	0	0	0	0	0
	2019	0	0	0	0	0
Stalking	2021	0	0	0	0	0
	2020	0	0	0	0	0

	2019	0	0	0	0	0
<b>Liquor, Drug &amp; Weapons Statistics</b>						
Liquor Law Violation Arrests	2021	0	0	0	0	0
	2020	0	0	0	0	0
	2019	0	0	0	0	0
Liquor Law Violation Disciplinary Referrals	2021	0	0	0	0	0
	2020	0	0	0	0	0
	2019	0	0	0	0	0
Drug Law Violation Arrests	2021	0	0	0	0	0
	2020	0	0	0	0	0
	2019	0	0	0	0	0
Drug Law Violation Disciplinary Referrals	2021	0	0	0	0	0
	2020	0	0	0	0	0
	2019	0	0	0	0	0
Weapons Violations Arrests	2021	0	0	0	0	0
	2020	0	0	0	0	0
	2019	0	0	0	0	0
Weapons Violations Disciplinary Referrals	2021	0	0	0	0	0
	2020	0	0	0	0	0
	2019	0	0	0	0	0
<b>Reportable Hate Crimes</b>						
Race	2021	0	0	0	0	0
	2020	0	0	0	0	0
	2019	0	0	0	0	0
Gender	2021	0	0	0	0	0
	2020	0	0	0	0	0
	2019	0	0	0	0	0
Religion	2021	0	0	0	0	0
	2020	0	0	0	0	0
	2019	0	0	0	0	0
Sexual Orientation	2021	0	0	0	0	0
	2020	0	0	0	0	0
	2019	0	0	0	0	0
Ethnicity	2021	0	0	0	0	0
	2020	0	0	0	0	0
	2019	0	0	0	0	0
Disability	2021	0	0	0	0	0
	2020	0	0	0	0	0
	2019	0	0	0	0	0

Colorado Mountain College - Spring Valley	Year	On- Campus Residence Hall	On- Campus: Other	Total On- Campus	Non- Campus Property	Adjacent Public Property
<b>Reportable Criminal Offenses</b>						
Murder & Non-negligent Manslaughter	2021	0	0	0	0	0
	2020	0	0	0	0	0
	2019	0	0	0	0	0
Negligent Manslaughter	2021	0	0	0	0	0
	2020	0	0	0	0	0
	2019	0	0	0	0	0
Robbery	2021	0	0	0	0	0
	2020	0	0	0	0	0
	2019	0	0	0	0	0
Aggravated Assault	2021	0	0	0	0	0
	2020	0	0	0	0	0
	2019	0	0	0	0	0
Burglary	2021	0	0	0	0	0
	2020	0	0	0	0	0
	2019	0	0	0	0	0
Motor Vehicle Theft	2021	0	0	0	0	0
	2020	0	0	0	0	0
	2019	0	0	0	0	0
Arson	2021	0	0	0	0	0
	2020	0	0	0	0	0
	2019	0	0	0	0	0
<b>VAWA Offenses</b>						
Forcible Sex Offenses (Rape, Sodomy, Sexual Assault With an Object, Fondling)	2021	1	0	1	0	0
	2020	0	0	0	0	0
	2019	0	0	0	0	0
Non-Forcible Sex Offenses (Incest/Statutory Rape)	2021	0	0	0	0	0
	2020	0	0	0	0	0
	2019	0	0	0	0	0
Domestic Violence	2021	0	0	0	0	0
	2020	0	0	0	0	0
	2019	0	0	0	0	0
Dating Violence	2021	0	0	0	0	0
	2020	0	0	0	0	0
	2019	0	0	0	0	0
Stalking	2021	0	0	0	0	0

	2020	0	0	0	0	0
	2019	0	0	0	0	0
<b>Liquor, Drug &amp; Weapons Statistics</b>						
Liquor Law Violation Arrests	2021	0	0	0	0	0
	2020	0	0	0	0	0
	2019	0	0	0	0	0
Liquor Law Violation Disciplinary Referrals	2021	1	0	1	0	0
	2020	13	0	13	0	0
	2019	19	0	19	0	0
Drug Law Violation Arrests	2021	0	0	0	0	0
	2020	0	0	0	0	0
	2019	0	0	0	0	0
Drug Law Violation Disciplinary Referrals	2021	4	0	4	0	0
	2020	5	0	5	0	0
	2019	6	0	6	0	0
Weapons Violations Arrests	2021	0	0	0	0	0
	2020	0	0	0	0	0
	2019	0	0	0	0	0
Weapons Violations Disciplinary Referrals	2021	0	0	0	0	0
	2020	0	0	0	0	0
	2019	0	0	0	0	0
<b>Reportable Hate Crimes</b>						
Race	2021	0	0	0	0	0
	2020	0	0	0	0	0
	2019	0	0	0	0	0
Gender	2021	0	0	0	0	0
	2020	0	0	0	0	0
	2019	0	0	0	0	0
Religion	2021	0	0	0	0	0
	2020	0	0	0	0	0
	2019	0	0	0	0	0
Sexual Orientation	2021	0	0	0	0	0
	2020	0	0	0	0	0
	2019	0	0	0	0	0
Ethnicity	2021	0	0	0	0	0
	2020	0	0	0	0	0
	2019	0	0	0	0	0
Disability	2021	0	0	0	0	0
	2020	0	0	0	0	0
	2019	0	0	0	0	0

Colorado Mountain College - Steamboat Springs	Year	On-Campus Residence Hall	On-Campus: Other	Total On-Campus	Non-Campus Property	Adjacent Public Property
<b>Reportable Criminal Offenses</b>						
Murder & Non-negligent Manslaughter	2021	0	0	0	0	0
	2020	0	0	0	0	0
	2019	0	0	0	0	0
Negligent Manslaughter	2021	0	0	0	0	0
	2020	0	0	0	0	0
	2019	0	0	0	0	0
Robbery	2021	0	0	0	0	0
	2020	0	0	0	0	0
	2019	0	0	0	0	0
Aggravated Assault	2021	0	0	0	0	0
	2020	0	0	0	0	0
	2019	0	0	0	0	0
Burglary	2021	0	0	0	0	0
	2020	0	0	0	0	0
	2019	0	0	0	0	0
Motor Vehicle Theft	2021	0	0	0	0	0
	2020	0	0	0	0	0
	2019	0	0	0	0	0
Arson	2021	0	0	0	0	0
	2020	0	0	0	0	0
	2019	0	0	0	0	0
<b>VAWA Offenses</b>						
Forcible Sex Offenses (Rape, Sodomy, Sexual Assault With an Object, Fondling)	2021	1	0	1	0	0
	2020	0	0	0	0	0
	2019	0	0	0	0	0
Non-Forcible Sex Offenses (Incest/Statutory Rape)	2021	0	0	0	0	0
	2020	0	0	0	0	0
	2019	0	0	0	0	0
Domestic Violence	2021	0	0	0	0	0
	2020	0	0	0	0	0
	2019	0	0	0	0	0
Dating Violence	2021	0	0	0	0	0
	2020	0	0	0	0	0
	2019	0	0	0	0	0
Stalking	2021	0	0	0	0	0

	2020	0	0	0	0	0
	2019	0	0	0	0	0
<b>Liquor, Drug &amp; Weapons Statistics</b>						
Liquor Law Violation Arrests	2021	14	0	14	0	0
	2020	1	1	2	0	0
	2019	0	0	0	0	0
Liquor Law Violation Disciplinary Referrals	2021	9	0	9	0	0
	2020	7	1	8	0	0
	2019	27	0	27	0	0
Drug Law Violation Arrests	2021	2	1	3	0	0
	2020	0	1	1	0	0
	2019	1	0	1	0	0
Drug Law Violation Disciplinary Referrals	2021	9	1	10	0	0
	2020	5	0	5	0	0
	2019	10	0	10	0	0
Weapons Violations Arrests	2021	0	0	0	0	0
	2020	0	0	0	0	0
	2019	0	0	0	0	0
Weapons Violations Disciplinary Referrals	2021	0	0	0	0	0
	2020	0	0	0	0	0
	2019	0	0	0	0	0
<b>Reportable Hate Crimes</b>						
Race	2021	0	0	0	0	0
	2020	0	0	0	0	0
	2019	0	0	0	0	0
Gender	2021	0	0	0	0	0
	2020	0	0	0	0	0
	2019	0	0	0	0	0
Religion	2021	0	0	0	0	0
	2020	0	0	0	0	0
	2019	0	0	0	0	0
Sexual Orientation	2021	0	0	0	0	0
	2020	0	0	0	0	0
	2019	0	0	0	0	0
Ethnicity	2021	0	0	0	0	0
	2020	0	0	0	0	0
	2019	0	0	0	0	0
Disability	2021	0	0	0	0	0
	2020	0	0	0	0	0
	2019	0	0	0	0	0

## APPENDIX C – Local Resources by Campus

<b>Aspen</b>		
<b>Agency - Local Resources</b>	<b>Address</b>	<b>Phone</b>
Pitkin County Sheriff	506 E. Main St. Aspen, CO 81611	(970) 920-5300
Aspen Valley Hospital	0401 Castle Creek Road Aspen, Co81611	(970) 925-1120
Response - Help for Survivors of Domestic Violence and Sexual Assault	Po Box 1340 Aspen, Co 81612	(970) 920-5357
Sexual Assault Nurse Examiner/ Forensic Nurse Examiner	Aspen Valley Hospital 0401 Castle Creek Road Aspen, Co 81611	(970) 925-1120
Roaring Fork Gay & Lesbian Community Fund / AspenOUT	216 N Garmish St. Aspen, Co81611	(970) 925-4124
Pitkin County Courthouse & 9th Judicial District	506 E. Main Suite 300 Aspen, CO 81611	(970) 925-7635
<b>Breckenridge</b>		
<b>Agency - Local Resources</b>	<b>Address</b>	<b>Phone</b>
Breckenridge Police Department	150 Valley Brook Street Breckenridge, Co 80424	(970) 453-2941
St. Anthony Breckenridge Community Emergency Center	555 South Park, Plaza II Breckenridge, CO 80424	(970) 453-1010
Advocates for Victims of Assault	Po Box 1859 Frisco, Co 80443	(970) 668-3906
Sexual Assault Nurse Examiner/ Forensic Nurse Examiner	St. Anthony Summit Medical Center 340 Peak One Drive Frisco, Co 80443	(970) 668-3300
Colorado Anti Violence Program	Po Box 181085 Denver, CO 80218	(888) 557-4441
Summit County Courthouse & 5th Judicial District	501 N. Park Avenue Breckenridge, Co80424	(970) 453-2272

<b>Buena Vista</b>		
<b>Agency - Local Resources</b>	<b>Address</b>	<b>Phone</b>
Buena Vista Police Department	713 E Main St, Buena Vista, CO 81211	<a href="tel:(719)395-8654">(719) 395-8654</a>
St. Anthony Summit Medical Center	340 Peak One Dr, Frisco, CO 80443	(970) 668-3300
The Alliance Against Domestic Abuse	Po Box 173 Salida, CO 81201	(719) 395-9321
Sexual Assault Nurse Examiner/ Forensic Nurse Examiner	St. Anthony Summit Medical Center 340 Peak One Dr, Frisco, CO 80443	(970) 668-3300
Colorado Anti Violence Program	Po Box 181085 Denver, CO 80218	(888) 557-4441
Chaffee County Courthouse & 11th Judicial District	142 Crestone Sailda, CO 81201	(719) 539-2561
<b>Carbondale</b>		
<b>Agency - Local Resources</b>	<b>Address</b>	<b>Phone</b>
Carbondale Police Department	511 Colorado Ave # 911, Carbondale, CO 81623	(970) 963-2662
Valley View Hospital	1906 Blake Ave, Glenwood Springs, CO 81601	(970) 945-6535
Advocate Safehouse Project	109 8th St, Glenwood Springs, CO 81601	(970) 945-4439
Sexual Assault Nurse Examiner/ Forensic Nurse Examiner	St. Anthony Summit Medical Center 340 Peak One Dr, Frisco, CO 80443	(970) 668-3300
Roaring Fork Gay & Lesbian Community Fund / AspenOUT	216 N Garmish St. Aspen, Co 81611	(970) 925-4124
Garfield County Courthouse	108 8th St Suite 104 Glenwood Springs, Co 81601	(970) 928-3065
9th Judicial District	109 8th St Suite 308 Glenwood Springs, Co 81601	(970) 945-8635



Mountain West SANE Alliance	To request an exam: patients/law enforcement may call Garfield County Dispatch at (970)625-8095 and request a call back from an on-call nurse. MWSA has exam sites in Glenwood and Rifle.	(970) 625-8095
<b>Central Services</b>		
<b>Agency - Local Resources</b>	<b>Address</b>	<b>Phone</b>
Glenwood Springs Police Department	101 W 8th St, Glenwood Springs, CO 81601	(970) 384-6500
Valley View Hospital	1906 Blake Ave, Glenwood Springs, CO 81601	(970) 945-6535
Advocate Safehouse Project	PO Box 2036, Glenwood Springs, CO 81602	(970) 945-4439
Sexual Assault Nurse Examiner/ Forensic Nurse Examiner	St. Anthony Summit Medical Center 340 Peak One Dr, Frisco, CO 80443	(970) 668-3300
Roaring Fork Gay & Lesbian Community Fund / AspenOUT	216 N Garmish St. Aspen, Co 81611	(970) 925-4124
Garfield County Courthouse	109 8th St. Suite 104 Glenwood Springs, CO 81601	(970) 928-3065
9th Judicial District	109 8th St Suite 308 Glenwood Springs, Co 81601	(970) 945-8635
Mountain West SANE Alliance	To request an exam: patients/law enforcement may call Garfield County Dispatch at (970)625-8095 and request a call back from an on-call nurse. MWSA has exam sites in Glenwood and Rifle.	(970) 625-8095
<b>Dillon</b>		
<b>Agency - Local Resources</b>	<b>Address</b>	<b>Phone</b>
Dillon Police Department	275 Lake Dillon Drive, Dillon, CO 80435	(970) 468-6078
St. Anthony Summit Medical Center	340 Peak One Dr, Frisco, CO 80443	(970) 668-3300
Advocates for Victims of Assault	P.O. Box 1859, Frisco, CO 80443	(970) 668-3906

Sexual Assault Nurse Examiner/ Forensic Nurse Examiner	St. Anthony Summit Medical Center 340 Peak One Dr, Frisco, CO 80443	(970) 668-3300
The Center Advancing LGBTColorado	1301 E. Colfax, Denver, CO 80218	(303) 733-7743
Summit County Justice Center & 5th Judicial District	501 N. Park Avenue Breckenridge, CO 80424	(970) 453-2272
<b>Edwards</b>		
<b>Agency - Local Resources</b>	<b>Address</b>	<b>Phone</b>
Eagle County Sheriff	0885 E Chambers Ave. P.O. Box 359 Eagle, CO 81631	(970) 328-8500
Vail Valley Medical Center- Edwards Campus	322 Beard Creek Road, Edwards, CO 81632	(970) 477-3090
Resource Center Domestic Violence/ Sexual Assault Victims	P.O. Box 1859, Frisco, CO 80443	(970) 949-7086
Sexual Assault Nurse Examiner/ Forensic Nurse Examiner	St. Anthony Summit Medical Center340Peak One Dr, Frisco, CO 80443	(970) 668-3300
The Center Advancing LGBTColorado	1301 E. Colfax, Denver, CO 80218	(303) 733.7743
Eagle County Justice Center & 5th Judicial District	885 Chambers Ave Eagle, CO 81631	(970) 328-6373
<b>Glenwood Springs</b>		
<b>Agency - Local Resources</b>	<b>Address</b>	<b>Phone</b>
Glenwood Springs Police Department	101 W 8th St, Glenwood Springs, CO 81601	(970) 384-6500
Valley View Hospital	1906 Blake Ave, Glenwood Springs, CO 81601	(970) 945-6535
Advocate Safehouse Project	PO Box 2036, Glenwood Springs, CO 81602	(970) 945-4439
Sexual Assault Nurse Examiner/ Forensic Nurse Examiner	St. Anthony Summit Medical Center340Peak One Dr, Frisco, CO 80443	(970) 668-3300
Roaring Fork Gay & Lesbian Community Fund / AspenOUT	216 N Garmish St. Aspen, Co 81611	(970) 925-4124

Garfield County Courthouse	109 8th St. Suite 104 Glenwood Springs, CO 81601	(970) 928-3065
9th Judicial District	109 8th St Suite 308 Glenwood Springs, Co 81601	(970) 945-8635
Mountain West SANE Alliance	To request an exam: patients/law enforcement may call Garfield County Dispatch at (970)625-8095 and request a call back from an on-call nurse. MWSA has exam sites in Glenwood and Rifle.	(970) 625-8095
<b>Glenwood Springs - Spring Valley</b>		
<b>Agency - Local Resources</b>	<b>Address</b>	<b>Phone</b>
Garfield County Sheriff	107 8th St Glenwood Springs, Co 81601	(970) 945-0453
Valley View Hospital	1906 Blake Ave, Glenwood Springs, CO 81601	(970) 945-6535
Advocate Safehouse Project	PO Box 2036 Glenwood Springs, CO 81602	(970) 945-4439
Roaring Fork Gay & Lesbian Community Fund / AspenOUT	216 N Garmish St. Aspen, Co 81611	(970) 925-4124
Sexual Assault Nurse Examiner/ Forensic Nurse Examiner	St. Anthony Summit Medical Center 340 Peak One Dr, Frisco, CO 80443	(970) 668-3300
Garfield County Courthouse	109 8th St. Suite 104 Glenwood Springs, CO 81601	(970) 928-3065
9th Judicial District	109 8th St Suite 308 Glenwood Springs, Co 81601	(970) 945-8635
Mountain West SANE Alliance	To request an exam: patients/law enforcement may call Garfield County Dispatch at (970)625-8095 and request a call back from an on-call nurse. MWSA has exam sites in Glenwood and Rifle.	(970) 625-8095
<b>Leadville</b>		
<b>Agency - Local Resources</b>	<b>Address</b>	<b>Phone</b>
Lake County Sheriff	505 Harrison Ave, Leadville, CO 80461	(719) 486-1249
St. Anthony Summit Medical Center	340 Peak One Dr, Frisco, CO 80443	(970) 668-3300

Advocates of Lake County, Inc.	115 West 6th St Leadville, CO 80461	(719) 486-3530
Sexual Assault Nurse Examiner/ Forensic Nurse Examiner	St. Anthony Summit Medical Center 340 Peak One Dr, Frisco, CO 80443	(970) 668-3300
LGBT Friendly Treatment Centers	118 West 6th Street Leadville, Colorado 80461	(844) 279-6495
Lake County Justice Center & 5th Judicial District	505 Harrison Ave. Leadville, CO 80461	(719) 293-8100

**Rifle**

<b>Agency - Local Resources</b>	<b>Address</b>	<b>Phone</b>
Rifle Police Department	202 Railroad Ave. Rifle, CO 81650	(970) 665-6400
Grand River Health	501 Airport Rd, Rifle, CO 81650	(970) 625-1510
Advocate Safehouse Project	PO Box 2036 Glenwood Springs, CO 81602	(970) 945-4439
Sexual Assault Nurse Examiner/ Forensic Nurse Examiner	St. Anthony Summit Medical Center 340 Peak One Dr, Frisco, CO 80443	(970) 668-3300
Roaring Fork Gay & Lesbian Community Fund / AspenOUT	216 N Garmish St. Aspen, Co 81611	(970) 925-4124
Garfield County Associate Court - Rifle	200 E. 18th St., Suite 103 Rifle, CO 81650	(970) 625-5100
9th Judicial District	109 8th St Suite 308 Glenwood Springs, Co 81601	(970) 945-8635
Mountain West SANE Alliance	To request an exam: patients/law enforcement may call Garfield County Dispatch at (970)625-8095 and request a call back from an on-call nurse. MWSA has exam sites in Glenwood and Rifle.	(970) 625-8095

**Steamboat Springs**

<b>Agency - Local Resources</b>	<b>Address</b>	<b>Phone</b>
Steamboat Springs Police Services	840 Yampa Avenue, Steamboat Springs, CO 80487	(970) 879-1144

Yampa Valley Medical Center	1024 Central Park Dr, Steamboat Springs, CO 80487	(970) 879-1322
Advocates Building Peaceful Communities	465 Angles Drive, Steamboat Springs, CO 80477	(970) 879-8888
Sexual Assault Nurse Examiner/ Forensic Nurse Examiner	Yampa Valley Medical Center 1024 Central Park Dr, Steamboat Springs, CO 80487	(970)-879-1322
LGBT Steamboat Springs Facebook	<a href="https://www.facebook.com/LGBTSTEAMBOAT">https://www.facebook.com/LGBTSTEAMBOAT</a>	
Routt Combined Court & 14th Judicial District	1955 Shield Drive Steamboat Springs, CO 80477	(970) 879-5020

## National Resources

Other resources available to persons who report being the victim of sexual assault, domestic violence, dating violence, or stalking, include:

<http://www.ccasa.org/> - Colorado Coalition Against Sexual Assault

<http://ccadv.org/> - Colorado Coalition Against Domestic Violence

<http://coavp.org/> - Colorado Anti-Violence Program, Building Safety and Justice for LGBTQ Communities

[http://www.rainn.org](http://www.rainn.org/) - Rape, Abuse and Incest National Network

[http://www.nsvrc.org](http://www.nsvrc.org/) - National Sexual Violence Resource Center

<http://www.nrcdv.org/> - National Resource Center on Domestic Violence

<http://www.thehotline.org/> - National Domestic Violence Hotline

<http://www.mencanstoprape.org/> - Men Can Stop Rape

<http://victimsofcrime.org/our-programs/stalking-resource-center/stalking-information-stalking-resource-center>

<http://maketheconnection.net/conditions/military-sexual-trauma> - Make the Connection (Support for Veterans)

<https://obamawhitehouse.archives.gov/1is2many-1is2many> - 1 is 2 Many (Focus on teens and women 16-24)

<https://www.justice.gov/ovw/protecting-students-sexual-assault> US Department of Justice Office on Violence Against Women

<http://www2.ed.gov/about/offices/list/ocr/index.html> - Department of Education, Office for Civil Rights