



COLORADO
MOUNTAIN COLLEGE

COLORADO MOUNTAIN COLLEGE

▶ 2016 ANNUAL SECURITY & FIRE SAFETY REPORT

In compliance with the Jeanne Clery Disclosure
of Campus Security Policy and Campus Crime Statistics Act

Contents

A Message to the Colorado Mountain College Community	4
1. Statement Addressing How to Report a Crime or Emergency on Campus	5
2. Statement Addressing Access to and Security of Campus Facilities.....	6
3. Statement Addressing Campus Safety and Law Enforcement.....	6
4. Statement Addressing Interagency Relationships with Local and State Law Enforcement	6
5. Statement Encouraging Accurate and Prompt Crime Reporting	7
6. Statement Addressing Confidential Resources for Crime Reporting	7
7. Statement Addressing Security Awareness Programs for Students and Employees	8
8. Statement Addressing Crime Prevention Programs for Students and Employees	9
9. Crime Statistics	9
10. Statement Addressing Criminal Activity Off Campus	10
11. Statement Addressing Possession, Use, and Sale of Alcoholic Beverages and Illegal Drugs	10
12. Registered Sex Offender Information	10
13. Statement Addressing Emergency Response, Notification, and Evacuation Procedures	11
14. Statement Addressing the Issuance of Timely Warnings	11
15. Policy Regarding Missing Students	12
16. Statement of Policy Regarding Sexual Misconduct.....	14
17. Statement Addressing Prevention and Awareness Programs.....	15
18. Statement Addressing Procedures for Disciplinary Action	16
19. Statement Addressing Possible Protective Measures or Sanctions	17
20. Statement Addressing Procedures Victims Should Follow and Reporting Options	18
21. Statement Addressing Protection of Victim Confidentiality.....	19
22. Victim Services and Resources	19
23. Victim Accommodations	19
24. On-campus Student Residential Housing Facility Fire Safety Systems.....	20
25. Fire Drills Held During The Previous Calendar Year	21
26. Policy Regarding Portable Electrical Appliances, Smoking and Open Flames in Student Residential Housing Facilities.....	21
27. Procedures for Student Housing Evacuation in The Case Of A Fire	21

28. Fire Safety Education and Training Programs for Students and Employees22

29. Employees to Which Students and Employees Should Report a Fire Has Occurred22

30. CMC's Plans for Future Improvements in Fire Safety22

31. Fire Statistics.....22

2016 Annual Security & Fire Safety Report – APPENDIX A23

2016 Annual Security & Fire Safety Report – APPENDIX B.....29

2016 Annual Security & Fire Safety Report – APPENDIX C.....53



A Message to the Colorado Mountain College Community

Dear Colorado Mountain College Community,

Our goal is to enable all students to work toward your educational goals in an inclusive, student-centered, and, most important, safe environment.

This Annual Security & Fire Safety Report (“ASR”) is provided to meet the requirements of the Jeanne Clery Disclosure of Campus Security Policy and Campus Crime Statistics Act. This ASR includes information that will enhance your awareness and ability to respond to crime, suspicious incidents or emergencies. The safety and security of students, staff, and community members at each and every one of our 11 campus facilities is one of our highest priorities, and we hope the information included in this report will further enhance the experiences of all community members at Colorado Mountain College.

Sincerely,

Carrie Besnette Hauser
President & CEO
Colorado Mountain College

2016 Annual Security & Fire Safety Report

In compliance with the Jeanne Clery Disclosure of Campus Security Policy and Campus Crime Statistics Act

1. Statement Addressing How to Report a Crime or Emergency on Campus

It is the policy of Colorado Mountain College (“CMC” or the “College”) that each campus be equipped to respond to emergencies in a variety of ways. Each campus is encouraged to develop partnerships with local law enforcement and fire departments to enhance emergency preparedness. All members of the CMC community and all guests and visitors are encouraged to report emergency situations or instances of possible violations of law or campus policies to appropriate CMC authorities. Primary responsibility for responding to such reports rests with local police jurisdictions and a designated individual at each campus. Please report crimes at specific campuses to the local police and College campus safety authorities as outlined below. **In any emergency, call 911.**

The local police departments for each campus and their numbers are as follows:

- **Aspen** – Pitkin County Sheriff, contact at (970) 920-5300
- **Breckenridge** – Breckenridge Police Department, contact at (970) 453-2941
- **Buena Vista** – Chaffee County Sheriff, contact at (719) 539-2596
- **Carbondale** – Carbondale Police Department, contact at (970) 963-2662
- **Dillon** – Dillon Police Department, contact at (970) 468-6078
- **Edwards** – Eagle County Sheriff, contact at (970) 328-8500
- **Glenwood Springs** – Glenwood Springs Police Department, contact at (970) 384-6500
- **Glenwood Springs-Spring Valley** – Garfield County Sheriff, contact at (970) 945-0453
- **Leadville** – Leadville Police Department, contact at (719) 486-1365
- **Rifle** – Rifle Police Department, contact at (970) 665-6500
- **Steamboat Springs** – Steamboat Springs Police Services, contact at (970) 879-1144

Non-Campus contact information:

- **Central Services** – Glenwood Springs Police Department, contact at (970) 384-6500

CMC’s senior campus officers (either a Vice President or Campus Dean, depending on the location) serve as safety contacts at the various campuses. Their contact phone numbers are as follows:

- **Aspen** – Linda Crockett, Campus Dean, (970) 236-0440 Ext 2440
- **Breckenridge** – Dave Askeland, Vice President, (970) 989-1312
- **Buena Vista** – Rachel Pokrandt, Interim Vice President, (719) 486-4212
- **Carbondale** – Linda Crockett, Campus Dean, (970) 236-0440 Ext 2440
- **Dillon** – Dave Askeland, Vice President, (970) 989-1312
- **Edwards** – Kathryn Regjo, Vice President, (970) 569-2908
- **Glenwood Springs** – Daryl Yarrow, Interim Campus Dean, (970) 947-8453
- **Glenwood Springs-Spring Valley** – Heather Exby, Campus Dean, (970) 947-8201
- **Leadville** – Rachel Pokrandt, Interim Vice President, (719) 486-4212
- **Rifle** – Richard Maestas, Regional Vice President, Interim Campus Dean (970) 625-6944
- **Steamboat Springs** – Kathy Kiser-Miller, Vice President, (970) 870-4489

Non-Campus contact information:

- **Central Services** – Safety Officer, Steve Rozanski, Director of Risk Management, (970) 384-8533

2. Statement Addressing Access to and Security of Campus Facilities

CMC prohibits possession of weapons (except as otherwise permitted by law), violence, abuse, threats and intimidation. CMC staff routinely provides security and access training and facilities, including lock-down procedures, fire evacuations, paging, alarm systems, security cameras, network communication techniques, and emergency response plans. College campuses utilize video surveillance as a security measure for public portions of various campuses.

3. Statement Addressing Campus Safety and Law Enforcement

CMC relies upon local police departments and sheriff's offices for law enforcement, and CMC does not maintain its own police force or security department. Safety programs at CMC are under the direction of the Safety Officer, Steve Rozanski, Director of Risk Management, (970) 384-8533.

4. Statement Addressing Interagency Relationships with Local and State Law Enforcement

CMC maintains working relationships with local law enforcement and prosecutorial agencies with jurisdiction in each campus location. The College has initiated conversations with these agencies regarding cooperation in addressing sexual assault and other crimes on CMC campuses. It is expected that, where possible, a mutually acceptable Memorandum of Understanding ("MOU") with law enforcement with jurisdiction over each campus will be established. An MOU may set forth roles and responsibilities related to prevention of and response to sexual assault, thereby enhancing safety for CMC students, employees and visitors, improving investigations and disciplinary proceedings, facilitating the prosecution of offenders, respecting the legal rights of those accused of sexual assault, providing appropriate support to sexual assault victims and related matters.

The contact information for local law enforcement agencies is listed below.

- **Aspen** – Pitkin County Sheriff, contact at (970) 920-5300
- **Breckenridge** – Breckenridge Police Department, contact at (970) 453-2941
- **Buena Vista** – Chaffee County Sheriff, contact at (719) 539-2596
- **Carbondale** – Carbondale Police Department, contact at (970) 963-2662
- **Dillon** – Dillon Police Department, contact at (970) 468-6078
- **Edwards** – Eagle County Sheriff, contact at (970) 328-8500
- **Glenwood Springs** – Glenwood Springs Police Department, contact at (970) 384-6500
- **Glenwood Springs-Spring Valley** – Garfield County Sheriff, contact at (970) 945-0453
- **Leadville** – Leadville Police Department, contact at (719) 486-1365
- **Rifle** – Rifle Police Department, contact at (970) 665-6500
- **Steamboat Springs** – Steamboat Springs Police Services, contact at (970) 879-1144

Non-Campus contact information:

- **Central Services** – Glenwood Springs Police Department, contact at (970) 384-6500

5. Statement Encouraging Accurate and Prompt Crime Reporting

Community members, students, faculty, staff, and guests are encouraged to report all crimes and public safety related incidents in a timely and accurate manner. Colorado Revised Statutes § 18-8-115 (Duty to report a crime – liability for disclosure) states: “It is the duty of every corporation or person who has reasonable grounds to believe that a crime has been committed to report promptly the suspected crime to law enforcement authorities. Notwithstanding any other provision of the law to the contrary, a corporation or person may disclose information concerning a suspected crime to other persons or corporations for the purpose of giving notice of the possibility that other such criminal conduct may be attempted which may affect the persons or corporations notified. When acting in good faith, such corporation or person shall be immune from any civil liability for such reporting or disclosure. This duty shall exist notwithstanding any other provision of the law to the contrary; except that this section shall not require disclosure of any communication privileged by law.”

Crimes should be reported to CMC for inclusion with the annual crime statistics (if they occurred within any CMC campus’s defined Clery geographical boundaries) and may be used to aid in the provision of timely warnings or safety advisories to the CMC community.

[*See Appendix A for CMC Clery geographical boundary maps](#)

[*See Appendix B for CMC Crime Statistics](#)

6. Statement Addressing Confidential Resources for Crime Reporting

Occasionally, victims of crime wish to report a crime, but do not want to provide their names and/or do not want to pursue action through the criminal justice or CMC judicial systems. Although pastoral and professionally credentialed counselors may be legally exempt from reporting crimes, CMC counselors provide academic counseling and therefore are not providing pastoral or professionally credentialed counseling services. Certain CMC counselors therefore are required to report information that is needed for Clery Act compliance, but they are not required to report personally identifiable information regarding the victim.

CMC has designated the persons named below as confidential resources for purposes of reporting Sexual Misconduct prohibited by College policy. If a student reports to one of the individuals below, the student is required to share non-personally identifiable information with CMC for inclusion into the annual disclosure of crime statistics or for the purpose of a timely warning.

- **Aspen** – Jennifer Cantway, Counselor, (970) 925-7740
- **Breckenridge** – Jean Kramlich, Counselor, (970) 453-6757
- **Buena Vista** – Steven Medina, Counselor, (719) 486-4237
- **Carbondale** – Craig Farnum, Counselor, (970) 963-2172
- **Dillon** – Jason Makowsky, Counselor, (970) 468-5989
- **Edwards** – Larry Dutmer, Counselor, (970) 569-2915 and Paula Hauswirth-Cummings, Counselor, (970) 569-2917
- **Glenwood Springs** – Debra Arnold, Counselor, (970) 945-7486
- **Glenwood Springs-Spring Valley** – Jen Brennan, Counselor, (970) 947-8275 and Lisa Runck, Counselor, (970) 947-8221

- **Leadville** – Steven Medina, Counselor, (719) 486-4237
- **Rifle** – Tinker Duclo, Coordinator of Student Services, (970) 625-1871
- **Steamboat Springs** – Edward Bouchard, Counselor, (970) 870-4457 and Christopher Harnden, Counselor, (970) 870-4455

The list of confidential resources may change from time to time. Please contact the Campus Dean or Campus Vice President for current information.

For students on most campuses, CMC has retained Mind Springs Health, a private mental health provider, to deliver counseling and therapy for student mental, behavioral and emotional wellness. Mind Springs Health maintains a **24/7 Crisis Line at (888) 207-4004**. Each student receives four visits per academic year. The first visit is at no charge and the next three visits require a \$10 copay.

Outpatient services are available in Steamboat, Vail, Aspen, Craig, Eagle, Glenwood Springs, Granby, Frisco, Grand Junction, Meeker, Rangely, Walden/Jackson County, and Rifle.

For more information, see <http://www.mindspringshealth.org/> or contact Lisa Doak, Assistant Vice President of Student Services, (970) 947-8351.

For students in Lake and Chaffee Counties, CMC has retained Solvista Health, a local mental health provider, for counseling and therapy for student mental, behavioral and emotional wellness. Solvista Health maintains a **24/7 Emergency Services Line at (719)-539-6502 for Chaffee County and (719) 486-0985 for Lake County**. Each student receives four visits per academic year. The first visit is at no charge and the next three visits require a \$10 copay. Outpatient services are available in Freemont/Custer County, Chaffee County, and Lake County.

For more information, see <http://www.solvistahealth.org/> or contact Skip Lee, Campus Dean of Student Affairs, at (719) 486-4290.

7. Statement Addressing Security Awareness Programs for Students and Employees

Each semester, students are made aware of their roles in creating and maintaining a safe campus environment at CMC. Residence hall students must attend a required meeting about safety at which staff review key safety policies, procedures and expectations with residents including:

- Do not prop exterior doors for convenience;
- Maintain control of your key card at all times and do not lend your key card to anyone;
- Do not leave your room door unlocked;
- Do not provide access to others to the building unless the individual is your guest;
- Report unusual or unfamiliar individuals in the building if they are unaccompanied by a resident or staff member;
- Do not walk alone at night – use the buddy system, take a friend, be a friend;
- Be aware of wildlife on the campuses and roads (lions, turkeys, bear, elk, deer);
- Attend the “safe driving tips for mountain roads” session offered on campus;
- Utilize safe transportation methods such as the RIDE CMC or city bus, do not hitch hike, do not pick up hitch hikers;

- Know campus emergency phone locations;
- Know campus safety and security numbers;
- Review emergency services.
- Review use of campus surveillance equipment on campus.

Additionally, drills are held on each campus each semester and/or year for fire, armed assailant, emergency gathering procedures and locations on campus

Campus Safety Committees are responsible for facilitating trainings and materials for staff and faculty on fire drills and other emergency response protocols, including emergency gathering procedures and locations at each location.

8. Statement Addressing Crime Prevention Programs for Students and Employees

The College has adopted an Emergency Preparedness Plan outlining response procedures for medical, environmental, and situational (human engineered) emergencies. The situational emergency response procedures address a variety of threats including acts of violence, hostage situations, intruders, persons with weapons, threats, domestic situations, and other human-caused threats. Training and drills for faculty, staff, and students are conducted annually. For more information on the Emergency Contact Plan, contact Safety Officer, Steve Rozanski, Director of Risk Management, (970) 384-8533.

Training designed to assist faculty and staff in recognizing, preventing, or addressing sexual assault, domestic violence, dating violence, stalking and other forms of sexual misconduct is provided by webinar sessions purchased from third party vendors. CMC also has the following training sites available:

- For students, Campus Clarity <http://www.campusclarity.com/>
- For employees, LawRoom <http://www.lawroom.com/>

9. Crime Statistics

The Clery Act crime statistics section is intended to capture Clery crimes, the Violence Against Women Act crimes, and arrests or disciplinary proceedings involving illegal use of liquor, drugs, or weapons. Each of the statistics are published in the ASR for three calendar years for each CMC campus and are categorized to include on-campus, noncampus, public property, and residential categories. For detailed charts of crime on all campuses, please **see Appendix B**.

[*See Appendix A for CMC Clery geographical boundary maps](#)

[*See Appendix B for CMC Crime Statistics](#)

10. Statement Addressing Criminal Activity Off Campus

CMC does not recognize any off-campus student organizations. In general, prospective students, employees and visitors to any CMC campus should know that, as with any community, criminal activity occasionally occurs both on- and off-campus, and it is important to take reasonable precautions at all times.

11. Statement Addressing Possession, Use, and Sale of Alcoholic Beverages and Illegal Drugs

In compliance with the Safe and Drug Free Schools and Communities Act of 1989 and the Drug-Free Workplace Act of 1988, CMC is committed to providing a safe work and campus environment, free from hazards associated with drug and alcohol use. CMC prohibits the unlawful manufacture, distribution, dispensing, possession, or use of controlled substances and alcohol on College premises, while conducting College business or at any time that would interfere with the ability of a student or employee to perform in a safe and efficient manner. CMC recognizes that there are occasions that are part of its role within the community when special events are held at campuses and other off-campus sites. Serving alcohol at these events may be permitted upon prior approval by CMC President or his/her designee.

The following standards of conduct apply to students and employees:

- Students and employees are prohibited from engaging in the unlawful manufacture, distribution, or use of illicit drugs and/or alcohol on College property and/or during College activities.
- Students are prohibited from attending class while under the influence of illegal drugs or alcohol.
- Employees are prohibited from reporting to work while under the influence of illegal drugs or alcohol.
- Employees and students shall notify CMC of any criminal drug statute conviction for a violation occurring in the workplace or during College-sponsored activities no later than five (5) days after such conviction.

CMC actively supports an Alcohol and Other Drugs Educational Program. Counseling, treatment, rehabilitation, or re-entry program information can be obtained from the Campus Vice President or designee at each campus. The Student Affairs Leadership Team (SALT) meets regularly to conduct periodic policy revision recommendations, organize educational efforts, and produce material for distribution to students and staff.

12. Registered Sex Offender Information

The federal Campus Sex Crimes Prevention Act requires institutions of higher education to issue a statement advising the campus community where to obtain state law enforcement agency information concerning registered sex offenders. It also requires sex offenders already required to register in a state to provide notice, as required under state law, of each institution of higher education in that state at which the person is employed, carries on a vocation, volunteers services, or is a student.

The Colorado Bureau of Investigation maintains a searchable database of convicted sex offenders in Colorado. Students and employees may also contact the local police department,

county sheriff's office or the Colorado Bureau of Investigation for a complete list of registered sex offenders in the applicable city or county. To view the State of Colorado sex offender registry, see <https://www.colorado.gov/apps/cdps/sor/>.

13. Statement Addressing Emergency Response, Notification, and Evacuation Procedures

CMC's emergency communication system includes intercom, email, web site announcements, use of public media, and Colorado Mountain College Alert. The Colorado Mountain College Alert emergency notification system will send text, voicemail, and/or email notifications to all enrolled users. This system is designed to supplement CMC's building intercom system, email, and website announcements. Colorado Mountain College Alert will be utilized for timely warnings and emergency notifications in the event of a significant emergency or dangerous situation involving an immediate threat to students or staff.

Colorado Mountain College Alert will be used to distribute information regarding emergencies that require immediate action. For the purposes of Colorado Mountain College Alert, an emergency is a situation that poses an immediate risk to the health and safety of the campus community or significantly disrupts its programs and activities. Examples of such emergencies include cancelation of classes due to a fire, flood, unexpected road closures, evacuation of buildings, an ongoing criminal incident, or severe weather. The alert message will direct you where to find more information or learn what action to take. Less urgent messages will be sent using CMC's e-mail system. Following a warning, the alert system will be used to provide additional messages or an "all clear" announcement. All students and employees enrolled in Colorado Mountain College Alert will receive text messages. Those not enrolled in Colorado Mountain College Alert will receive emergency notification in another manner, such as voicemail or email.

Students, staff, and faculty are automatically enrolled in Colorado Mountain College Alert. Alert information is based on current contact information on file with the college, Go TO http://coloradomtn.edu/student_services/cmcalert/ for more information.

CMC has adopted an Emergency Preparedness Plan that outlines response procedures for medical, environmental, and situational (human engineered) emergencies. Each plan contains site-specific emergency contacts, evacuation procedures, information about emergency equipment and supplies, utility shutoff locations, and response procedures by type of emergency. Training and drills for faculty, staff, and students are conducted on an annual basis. Colorado Mountain College Alert, the Emergency Response Plan, and Evacuation Procedures are tested at a minimum, on an annual basis.

14. Statement Addressing the Issuance of Timely Warnings

CMC is responsible for developing and disseminating Timely Warning notices to members of the CMC community. The Campus Safety Authority (below) or his/her designee will determine if a Timely Warning should be issued.

- **Aspen** – Linda Crockett, Campus Dean, (970) 236-0440 Ext 2440
- **Breckenridge** – Dave Askeland, Vice President, (970) 989-1312
- **Buena Vista** – Rachel Pokrandt, Interim Vice President, (719) 486-4212
- **Carbondale** – Linda Crockett, Campus Dean, (970) 236-0440 Ext 2440

- **Dillon** – Dave Askeland, Vice President, (970) 989-1312
- **Edwards** – Kathryn Regjo, Vice President, (970) 569-2908
- **Glenwood Springs** – Daryl Yarrow, Interim Campus Dean, (970) 947-8453
- **Glenwood Springs-Spring Valley** – Heather Exby, Campus Dean, (970) 947-8201
- **Leadville** – Rachel Pokrandt, Interim Vice President, (719) 486-4212
- **Rifle** – Richard Maestas, Regional Vice President, Interim Campus Dean (970) 625-6944
- **Steamboat Springs** – Kathy Kiser-Miller, Vice President, (970) 870-4489

Non-Campus contact information:

- **Central Services** – Steve Rozanski, Director of Risk Management, (970) 384-8533

The decision will be made on a case-by-case basis, including a variety of factors. These factors include:

- Whether the incident poses a **serious or continuing threat** to the CMC community;
- If the **suspect has been apprehended**;
- **Timeliness** of the reported crime to CMC; and
- Whether a **pattern of crimes** exists that places CMC students or employees at risk of becoming victims of a similar crime.

In general, Timely Warnings will be issued when a serious **statutorily designated crime** is reported to CMC, the reported crime presents a **serious or continuing threat** to CMC students, faculty, and staff, and the reported crime occurred within a campus's **Clery geographical boundaries** (defined as on campus, on public property within or immediately adjacent to the campus boundaries, or in buildings or on property beyond the core campus, but designated as a non-campus location), as identified in Appendix A.

15. Policy Regarding Missing Students

As required by federal law, every student residing in on-campus housing will be given the option of providing confidential contact information that will be used in the event that the resident is reported missing. The confidential contact is not required to be a parent or guardian. A student's confidential contact information will be registered confidentially and is accessible only by authorized campus officials and law enforcement in the process of investigation. Parents or guardians will be called if the resident is under the age of 18 years of age and not emancipated. During the residence halls application process, every student will be offered the opportunity to register a confidential missing person contact person or persons to be notified by CMC in the event they are determined to be missing by CMC or local law enforcement. If the student does not wish to list a contact, they may decline to do so.

Reports of missing on-campus residents should be made to CMC's senior campus officers (either a Vice President or Campus Dean, depending on the location). Their names and contact phone numbers are as follows:

- **Aspen** – Linda Crockett, Campus Dean, (970) 236-0440 Ext 2440
- **Breckenridge** – Dave Askeland, Vice President, (970) 989-1312
- **Buena Vista** – Rachel Pokrandt, Interim Vice President, (719) 486-4212

- **Carbondale** – Linda Crockett, Campus Dean, (970) 236-0440 Ext 2440
- **Dillon** – Dave Askeland, Vice President, (970) 989-1312
- **Edwards** – Kathryn Regjo, Vice President, (970) 569-2908
- **Glenwood Springs** – Daryl Yarrow, Interim Campus Dean, (970) 947-8453
- **Glenwood Springs-Spring Valley** – Heather Exby, Campus Dean, (970) 947-8201
- **Leadville** – Rachel Pokrandt, Interim Vice President, (719) 486-4212
- **Rifle** – Richard Maestas, Regional Vice President, Interim Campus Dean (970) 625-6944
- **Steamboat Springs** – Kathy Kiser-Miller, Vice President, (970) 870-4489

Non-Campus contact information:

- **Central Services** – Safety Officer, Steve Rozanski, Director of Risk Management, (970) 384-8533

Reports of missing students who do not live in campus residential housing should typically be made to the law enforcement agency in that jurisdiction.

CMC has no security department or police force. All missing student reports must be referred immediately to the local law enforcement agency that has jurisdiction in the area. The law enforcement agencies for the various campuses are as follows:

- **Aspen** – Pitkin County Sheriff, contact at (970) 920-5300
- **Breckenridge** – Breckenridge Police Department, contact at (970) 453-2941
- **Buena Vista** – Chaffee County Sheriff, contact at (719) 539-2596
- **Carbondale** – Carbondale Police Department, contact at (970) 963-2662
- **Dillon** – Dillon Police Department, contact at (970) 468-6078
- **Edwards** – Eagle County Sheriff, contact at (970) 328-8500
- **Glenwood Springs** – Glenwood Springs Police Department, contact at (970) 384-6500
- **Glenwood Springs-Spring Valley** – Garfield County Sheriff, contact at (970) 945-0453
- **Leadville** – Leadville Police Department, contact at (719) 486-1365
- **Rifle** – Rifle Police Department, contact at (970) 665-6500
- **Steamboat Springs** – Steamboat Springs Police Services, contact at (970) 879-1144

Non-Campus contact information:

- **Central Services** – Glenwood Springs Police Department, contact at (970) 384-6500

CMC will ensure:

- The listed missing person emergency contact, if registered, is contacted within 24 hours by CMC, a representative of the Office of the Dean of Students, and is made aware of the missing student's status.
- If the student is under 18 years of age and not emancipated, CMC will notify the custodial parent or legal guardian and any other designated contact within 24 hours of the student being determined missing.
- Regardless of whether the student has identified a contact person, is above the age of 18, or is an emancipated minor, CMC will inform the local law enforcement agency with jurisdiction in the area that the student is missing within 24 hours.

CMC has adopted a Protocol for Missing or Deceased Students which sets forth general incident procedures, procedures to be followed for deceased students and the missing student policy described above. The Protocol assigns responsibility for notifications within the College administration and communications with the family and the public.

Sex Assault, Domestic Violence, Dating Violence, and Stalking Programs and Procedures

16. Statement of Policy Regarding Sexual Misconduct

It is the policy of CMC to provide an educational and employment environment free of unlawful discrimination or harassment. CMC prohibits all forms of discrimination based on sex or gender, including sexual misconduct by students, faculty, staff, and other members of the CMC community. Sexual assault, dating violence, domestic violence, and stalking are forms of sex or gender discrimination and are violations of criminal law in addition to prohibited offenses by CMC.

CMC has procedures in place that serve to be sensitive to those who report sexual assault, domestic violence, dating violence, and stalking, including informing individuals about their right to file criminal charges and the availability of medical, counseling and support services, and additional remedies to prevent contact between a victim and an accused party, such as housing, academic, transportation and working accommodations, if reasonably available.

All complaints of sexual misconduct should be reported to CMC's Title IX Coordinator: Lisa Doak, Assistant Vice President of Student Services, (970) 947-8351, ldoak@coloradomtn.edu, 802 Grand Avenue, Glenwood Springs, CO 81601.

Additionally, each campus has one or more Deputy Title IX Coordinators responsible for coordinating training, education, communications, and administration of the complaint and grievance procedures for sexual misconduct complaints on that campus.

- **Aspen** – Margaret Clement, (970) 236-0430 Ext 2430, mmaxwell@coloradomtn.edu
- **Breckenridge** – Dave Askeland (970) 989-1312 , daskeland@coloradomtn.edu
- **Buena Vista** – Skip Lee, (719) 486-4290, wlee@coloradomtn.edu
- **Carbondale** – Abbie Kroesen, (970) 947-8222, akroesen@coloradomtn.edu
- **Dillon** – Dave Askeland (970) 989-1312 , daskeland@coloradomtn.edu
- **Edwards** – Marc Brennan, (970) 569-2913, mabrennan@coloradomtn.edu
- **Glenwood Springs** – Abbie Kroesen, (970) 947-8222, akroesen@coloradomtn.edu
- **Glenwood Springs – Spring Valley** – Abbie Kroesen, (970) 947-8212, akroesen@coloradomtn.edu
- **Leadville** – Skip Lee, (719) 486-4290, wlee@coloradomtn.edu
- **Rifle** – Richard Maestas, (970) 625-6944, rmaestas@coloradomtn.edu
- **Steamboat Springs** – Brian Hoza, (970) 870-4463, bhoza@coloradomtn.edu

Link to Policy 3.12 Sexual Misconduct Policy and Sexual Misconduct Procedures under Chapter 3: http://coloradomtn.edu/about-cmc/board_of_trustees/policies-procedures/

17. Statement Addressing Prevention and Awareness Programs

CMC engages in comprehensive educational programming to prevent domestic violence, dating violence, sexual assault and stalking. Educational programming consists of primary prevention and awareness programs for all incoming students and new employees and ongoing awareness and prevention campaigns for students and faculty that:

- Identifies domestic violence, dating violence, sexual assault and stalking as prohibited conduct;
- Defines what behavior constitutes domestic violence, dating violence, sexual assault, and stalking pursuant to Colorado law;
- Defines what behavior and actions constitute consent to sexual activity in the State of Colorado;
- Provides safe and positive options for bystander intervention that may be carried out by an individual to prevent harm or intervene when there is a risk of domestic violence, dating violence, sexual assault, or stalking against a person other than the bystander;
- Provides information on risk reduction so that students and employees may recognize warning signs of abusive behavior and how to avoid potential attacks; and
- Provides information on the procedures CMC will adhere to after a sex offense occurs.

Educational programs are offered to raise awareness for all incoming students and employees, and are often conducted during new student and new employee orientation and throughout an incoming student's first semester. These programs and others offered throughout the year include strong messages regarding not just awareness, but also primary prevention. Bystander engagement is encouraged through safe and positive intervention techniques and by empowering third-party intervention and prevention such as calling for help, using intervention based apps, identifying allies and/or creating distractions.

Programs also offer information on risk reduction that strives to empower victims, how to recognize warning signals and how to avoid potential attacks, and do so without victim-blaming approaches. Throughout the year, ongoing awareness and prevention campaigns are directed to students and employees, including faculty, often taking the form of campaigns, emails, guest speakers and events such as regularly scheduled webinar training required for employees and strongly encouraged for students, mandatory sexual misconduct training as part of residence hall orientation, workshops provided at College assemblies (CMC Days), campus townhall style meetings, and student events.

Training designed to assist faculty and staff in recognizing, preventing, or addressing sexual assault, domestic violence, dating violence, stalking and other forms of sexual misconduct is provided by webinar sessions purchased from third party vendors. CMC also has the following training sites available:

For students, Campus Clarity <http://www.campusclarity.com/>

For employees, LawRoom <http://www.lawroom.com/>

18. Statement Addressing Procedures for Disciplinary Action

Formal Resolution Process and Investigation

The College will initiate a formal resolution process for any complaint of sexual violence, sexual assault, domestic violence, dating violence, or stalking. Following a report of Sexual Misconduct, including a formal complaint or when CMC receives notice that Sexual Misconduct may have occurred, the Title IX Coordinator will assign an investigator to conduct an investigation to determine whether or not the conduct occurred and, if the conduct occurred, what actions should be taken by CMC. The College will take immediate or interim measures for severe cases and acts of sexual violence, as further described below in "Victim Accommodations". An individual suspected or accused of Sexual Misconduct will be provided with a written explanation indicating that an investigation has commenced, a description of the alleged actions or conduct leading to the investigation, and the policy violation under investigation.

CMC will commence the investigation as soon as is practicable under the circumstances regardless of whether there is a pending criminal investigation or formal criminal charge. CMC will use all reasonable efforts to complete its investigation within 60 days of the filing of a complaint or within 60 days of the date on which CMC becomes aware of suspected Sexual Misconduct, subject to any factors which delay the investigation beyond CMC's control. CMC will schedule dates for completion of the initial investigation, completion of the investigation report, final decision-making and/or determination of sanctions.

The nature and extent of the investigation will vary depending upon the circumstances, including whether the parties are amenable to pursuing an informal resolution if appropriate. The Investigator will conduct fact-finding, review of written and other evidence and witness interviews. The Investigator will interview both the victim and the respondent and allow both parties to provide information regarding the complaint. To help ensure a prompt and thorough investigation, the victim and the respondent will be required to provide as much information as possible relating to the conduct, including the individuals involved, all relevant details and circumstances pertaining to the conduct, names of witnesses and any other information that the victim or the respondent believes to be relevant to the investigation. As appropriate, the Investigator will interview witnesses with relevant information.

At the conclusion of the investigation, the Investigator will prepare a written report summarizing the investigation and findings. The Title IX Coordinator will review the investigation report prior to its finalization and determine whether a violation of policy has occurred. The standard used to determine whether the respondent has violated CMC's Sexual Misconduct Policy is whether it is more likely than not that the respondent has engaged in behavior that constitutes Sexual Misconduct. This is often referred to as a "preponderance of the evidence" standard. For purposes of both the investigation and decision-making process, CMC will strive to be complete, thorough, and impartial, basing all decisions on evidence and information determined to be reliable.

Victims and respondents will be provided with the following procedural protections in connection with the resolution of suspected or alleged violations of this Policy:

- The opportunity to speak or present evidence on their own behalf (cross-examination by either the victim or the respondent will not be permitted).

- The opportunity to identify witnesses who can provide information about the alleged conduct at issue.
- The opportunity to review any information that will be offered by the other party in support of the other party's position (to the greatest extent possible and consistent with FERPA or other applicable law).
- The right to bring a victim advocate or advisor of the respondent or victim's choice to all phases of the investigation and campus conduct proceeding, provided that such advisor does not directly participate in the investigation, interviews or other proceedings.
- The right to be informed of the outcome of the investigation.
- The opportunity to appeal the outcome of the investigation.

Right to Appeal

After written notification of the resolution has been provided, the victim and the respondent will have the opportunity to appeal the outcome, including whether there is a policy violation and any sanction(s) imposed. Any appeal must be submitted in writing to the President within seven (7) calendar days after notification of the investigation outcome and must set forth the grounds upon which the appeal is based.

Either the victim or the respondent may appeal upon one or more of the following grounds:

- The established procedures were not followed in a significant way and, as a result, the factual findings, the sanction, or both, were not correct.
- The severity of the sanction imposed was not appropriate based on the nature of the violation or the circumstances.
- The discovery of new evidence, unavailable during the original hearing or investigation, which could substantially impact the original finding or sanction. A summary of the new information must be included with the student's request for appeal.

The President's decision on whether or not to overturn or modify the outcome shall be solely based on the grounds for appeal listed above. Neither party shall be entitled to a hearing in connection with any appeal, but the President may request written submissions from the parties or consider any other information as deemed appropriate. If the President is unable to resolve the appeal for any reason, CMC will designate another representative to decide the appeal. Both parties will be informed in writing of the outcome of any appeal within fourteen (14) days of the date by which all requested information is received unless the President determines that additional time is required.

19. Statement Addressing Possible Protective Measures or Sanctions

If, at the conclusion of the investigation, the Title IX Coordinator determines that it is more likely than not that a violation of CMC's Sexual Misconduct Policy has occurred, he or she will, in consultation with student affairs and/or human resources representatives, determine what, if any, sanctions or corrective actions are appropriate. The range of potential sanctions that may be imposed against a student includes, but is not limited to, the following: written or verbal apology, discrimination or harassment education, verbal or written warning, probation, suspension and dismissal from CMC.

Employees who are found to have violated CMC's Sexual Misconduct Policy may be subject to corrective actions including disciplinary action up to and including termination.

Guests and other third parties who are found to have violated CMC's Sexual Misconduct Policy are subject to action deemed appropriate by CMC, which may include removal or exclusion from CMC, termination of any applicable contractual or other arrangements with CMC and any other remedies available through law or equity. In instances where CMC is unable to take disciplinary or other corrective action in response to a violation of this policy because a victim requests confidentiality or for some other reason, CMC will nonetheless pursue other steps to limit the effects of the misconduct at issue and prevent its recurrence.

20. Statement Addressing Procedures Victims Should Follow and Reporting Options

An individual with questions or a possible sexual misconduct report against a student, faculty, staff member or other individual should contact the Title IX Coordinator or the Deputy Title IX Coordinator designated for the individual's campus, as designated below. Reports of sexual misconduct in which no students are involved will be investigated and processed by the Vice President for Human Resources in collaboration with the Title IX Coordinator utilizing procedures as set out in the CMC Sexual Misconduct Policy and Procedures. Any individual who is a victim of sexual assault or other act of sexual misconduct will be informed of available law enforcement authorities and the option to file or decline to file a criminal complaint. The Title IX Coordinator will assist victims in making contact with appropriate law enforcement authorities where requested.

Title IX Coordinator

- Lisa Doak, Assistant Vice President of Student Services, (970) 947-8351, ldoak@coloradomtn.edu

Deputy Title IX Coordinators

- **Aspen** – Margaret Clement, (970) 236-0430 Ext 2430, mmaxwell@coloradomtn.edu
- **Breckenridge** – Dave Askeland (970) 989-1312 , daskeland@coloradomtn.edu
- **Buena Vista** – Skip Lee, (719) 486-4290, wlee@coloradomtn.edu
- **Carbondale** – Abbie Kroesen, (970) 947-8222, akroesen@coloradomtn.edu
- **Dillon** – Dave Askeland (970) 989-1312 , daskeland@coloradomtn.edu
- **Edwards** – Marc Brennan, (970) 569-2913, mabrennan@coloradomtn.edu
- **Glenwood Springs** – Abbie Kroesen, (970) 947-8222, akroesen@coloradomtn.edu
- **Glenwood Springs – Spring Valley** – Abbie Kroesen, (970) 947-8212, akroesen@coloradomtn.edu
- **Leadville** – Skip Lee, (719) 486-4290, wlee@coloradomtn.edu
- **Rifle** – Richard Maestas, (970) 625-6944, rlmaestas@coloradomtn.edu
- **Steamboat Springs** – Brian Hoza, (970) 870-4463, bhoza@coloradomtn.edu

Victims of sexual assault should be aware of the importance of preserving evidence. The preservation of evidence can be important proof of criminal domestic violence, dating violence, sexual assault, or stalking, or in obtaining a protection order. Bathing, smoking, changing clothing or cleaning the bed/linen/area where a sexual assault occurred may reduce the ability to collect forensic evidence. In circumstances of sexual assault, if victims do not opt for forensic evidence collection, health care providers can still treat injuries and take steps to address concerns of pregnancy and/or sexually transmitted disease.

Victims of sexual assault, domestic violence, dating violence, and stalking are also encouraged to preserve evidence such as text messages, instant messages, social networking pages, other communications, pictures, logs, or other copies of documents that may be useful to CMC's and/or law enforcement investigations.

After an incident of sexual assault, the victim should consider seeking medical attention as soon as possible. Many medical facilities have Sexual Assault Nurse Examiner (SANE) or Forensic Nurse Examiner (FNE) programs that collect forensic medical evidence.

- St. Anthony Summit Medical Center's FNE program serves the 5th Judicial District that includes Summit, Clear Creek, Eagle, Lake Counties and the north part of Park County, and the 9th Judicial District that includes Pitkin and Garfield Counties. CMC's campuses that reside in these counties include Aspen, Breckenridge, Carbondale, Dillon, Edwards, Glenwood Springs, Glenwood Springs - Spring Valley, Leadville, and Rifle. Buena Vista is also serviced by St. Anthony.
- Yampah Valley Medical Center services the Steamboat Campus.

21. Statement Addressing Protection of Victim Confidentiality

CMC will protect the identity of persons who report having been victims of sexual assault, domestic violence, dating violence, or stalking to the fullest extent of the law.

When a victim requests confidentiality or asks that a complaint not be pursued, CMC will inform the victim that honoring a request for confidentiality may limit its ability to respond fully to the incident, including pursuing disciplinary action against the respondent. If the victim still requests confidentiality or asks that a complaint not be pursued, CMC will take all reasonable steps to investigate and respond to the complaint consistent with the request, provided that CMC is able to both honor the victim's request and provide a safe and nondiscriminatory environment for all individuals, including the victim. The Title IX Coordinator or Deputy Title IX Coordinator for the individual's campus will be responsible for evaluating confidentiality requests.

22. Victim Services and Resources

Each of CMC's campuses has identified counselors that can assist victims of sexual misconduct. Contact information for your campus's identified counselor can be found above and at http://coloradomtn.edu/student_services/counseling/.

Employee assistance services are provided through the College's Department of Human Resources. Employees wishing to obtain specific information regarding such services should contact the Benefits Manager: Angela Wurtsmith, (970) 947-8311, awurtsmith@coloradomtn.edu.

[*See Appendix C for CMC's community resources in each CMC community and a list of national resources](#)

23. Victim Accommodations

CMC will provide appropriate interim measures to address the safety and well-being of both parties prior to the final outcome of the investigation. CMC may temporarily suspend any member

of CMC community suspected or accused of violating CMC's Sexual Misconduct Policy or take any other interim measures CMC deems appropriate. CMC will provide a written explanation of assistance and accommodation options to each victim. Such interim measures may include, but are not limited to, removing or relocating a student from campus housing, modifying course schedules, and imposing a "no contact" requirement. Any such interim measures will be taken in a manner that minimizes the burden on the victim to the extent possible. CMC will take reasonable steps to prevent the recurrence of any Sexual Misconduct, including retaliation, and to correct discriminatory effects on the victim and others. Immediate and appropriate steps will be taken to protect victims who experience sexual violence and to protect any person from retaliation associated with suspected or actual Sexual Misconduct.

Colorado Mountain College Annual Fire Safety Report

Overview

The Higher Education Opportunity Act requires all United States institutions of higher education to produce an Annual Fire Safety Report which outlines fire safety practices, standards, and all fire-related on-campus statistics. The following report details all information required by this law as it relates to Colorado Mountain College.

24. On-campus Student Residential Housing Facility Fire Safety Systems

Colorado Mountain College has three campuses with student residential housing facilities. Students are able to live on-campus at the Leadville (Mountain View Residence Hall), Steamboat Springs (Hill Residence Hall), and Glenwood Springs-Spring Valley (Sopris Residence Hall) campuses. The fire safety systems in **each** individual housing facility are described below. Campus fire prevention and security equipment is maintained in an attempt to make the residence hall safer for you and the rest of the CMC community. Tampering with equipment, which includes blocking emergency exits and paths, misusing or propping open fire doors, using fire extinguishers in an unauthorized manner, removing exit signs, interfering with cameras, disengaging or disabling door locks, removing smoke detectors and/or initiating a false alarm threatens the safety of the community and will not be tolerated.

All student residential housing facility rooms are equipped with fire safety equipment, including a smoke alarms and a state-of-the-art sprinkler system. The sprinkler heads on the walls and in the ceiling are connected to a powerful building-wide sprinkler system. If the sprinklers are activated, they will generate more than 40 gallons of water each minute from each head (there are 3 heads in each room). This is the equivalent of filling 3 bathtubs every minute. This amount of water will flood dormitory rooms quickly, and do serious damage to student belongings. If a resident is responsible for a sprinkler being activated for any reason, whether intentional or accidental, the resident will be held accountable for all damage, which is likely to cost thousands of dollars. All students residing in student residential housing facilities must sign the Fire System Safety Waiver, which describes the sprinkler system in further detail, and explains the students' responsibilities.

Each room contains two different alarms to protect residents. A smoke detector will sound if there is enough smoke detected in a room. The smoke detector will only sound within the individual room and is not connected to the central fire system. Additionally, there is a thermal alarm which will sound if the temperature in the room reaches a certain level. This alarm is

connected to the central fire alarm system, and will alert the entire building that there is a fire. Tampering with either alarm can activate the alarm. Intentional activation of either alarm is prohibited and a violation of CMC's fire safety policies.

25. Fire Drills Held During The Previous Calendar Year

Planned fire drills are conducted at each residence hall once per semester (spring/fall) at a minimum.

26. Policy Regarding Portable Electrical Appliances, Smoking and Open Flames in Student Residential Housing Facilities

Draperies, tapestries, blankets or posters that are displayed on walls, ceilings, and on or around doors in a manner which would facilitate ignition, block entrances or exits or fire detection units, or present overhead fire hazards are prohibited in all student residential housing facilities.

In addition, the following are prohibited in student residential housing facilities due to the potential threat to fire safety:

- Electrical appliances which are not UL (Underwriter Laboratories, Inc.) approved;
- All electrical appliances with open coils including, but not limited to: toasters, hot plates, toaster ovens, coiled cup heaters, space heaters etc.;
- Any lamp which uses a halogen bulb;
- Appliances that use an excessive amount of electricity, for example microwaves (1000 watt max.) and refrigerators (4.0 cubic feet max.), etc.;
- Barbecue grills; camp stoves; charcoal or starter fluid; propane; lighter fluid or other flammable liquids, gasses or chemicals etc.;
- Candles with a wick, scented wax warmers, incense, fireworks, firecrackers, safe for use or décor, etc.;
- Vaporizers, e-cigarettes, hookahs, cigarettes, cigars, or any other incendiary device;
- Other hazardous or combustible materials;
- Unapproved room and common area decorations, such as holiday decorations and live Christmas trees;
- Obstruction of/blocking a clear path out of the room;
- Obstruction of/blocking fire exits, hallways, stairwells, or other common areas with bicycles, chairs, etc.;
- Extension cords that are not surge protected;
- Starting fires of any kind on any CMC property.

27. Procedures For Student Housing Evacuation in The Case Of A Fire

Each student residential housing facility has a designated emergency assembly point which is communicated to students during orientation and/or at the beginning of each academic semester. The designated emergency assembly point for each housing facility is posted within each housing facility. When a fire alarm sounds, all occupants of the building must evacuate the building and report to the assigned emergency assembly point. During a fire alarm, students must not leave campus until a headcount is completed and the students are released by a member of the Residence Life staff. Failure to comply with appropriate procedures during an evacuation or fire drill may result in CMC and/or law enforcement judicial actions.

Students residing in the residence halls are taught basic fire safety and evacuation procedures at the beginning of the fall semester each August. This information is also reviewed with residents occasionally at RA – resident meetings.

28. Fire Safety Education and Training Programs for Students and Employees

Fire safety and evacuation procedure training is conducted for students residing in the residence halls and residence hall staff each August, at the beginning of the academic year. The training includes safe evacuation procedures, fire alarm activation, evacuation relocation site, roll call procedure, and instructions from emergency response personnel. In addition, the Resident Assistants (RAs) attend a fire safety training conducted by the Fire Marshal where they learn proper fire extinguisher use, evacuation procedures, understanding the fire detection/suppression system, and general fire prevention. The RAs may review fire safety and prevention during RA meetings with residents.

29. Employees to Which Students and Employees Should Report That A Fire Has Occurred

In the event of any fire at a CMC residence hall, no matter how small or contained the fire is, Risk Management and the respective Campus Vice President shown below must be notified:

- **Risk Management** – Steve Rozanski, Director of Risk Management, (970) 384-8533
- **Glenwood Springs-Spring Valley** – Heather Exby, Campus Dean, (970) 947-8201
- **Leadville** – Rachel Pokrandt, Interim Vice President, (719) 486-4212
- **Steamboat Springs** – Kathy Kiser-Miller, Vice President, (970) 870-4489

30. CMC’s Plans for Future Improvements in Fire Safety

Each CMC residence hall has a modern fire detection and suppression system and no upgrades are planned or deemed necessary at this time.

31. Fire Statistics

CMC Residence Hall Fire Statistics

Campus	2013	2014	2015
Mountain View Residence Hall (Leadville)	0	0	0
Hill Residence Hall (Steamboat)	1*	0	0
Sopris Residence Hall (Spring Valley)	0	0	0

* Minor electrical appliance fire occurring on 04/01/2013 at 5:57 P.M. in the Hill Residence Hall. No related injuries and only minor scorching to the wall.

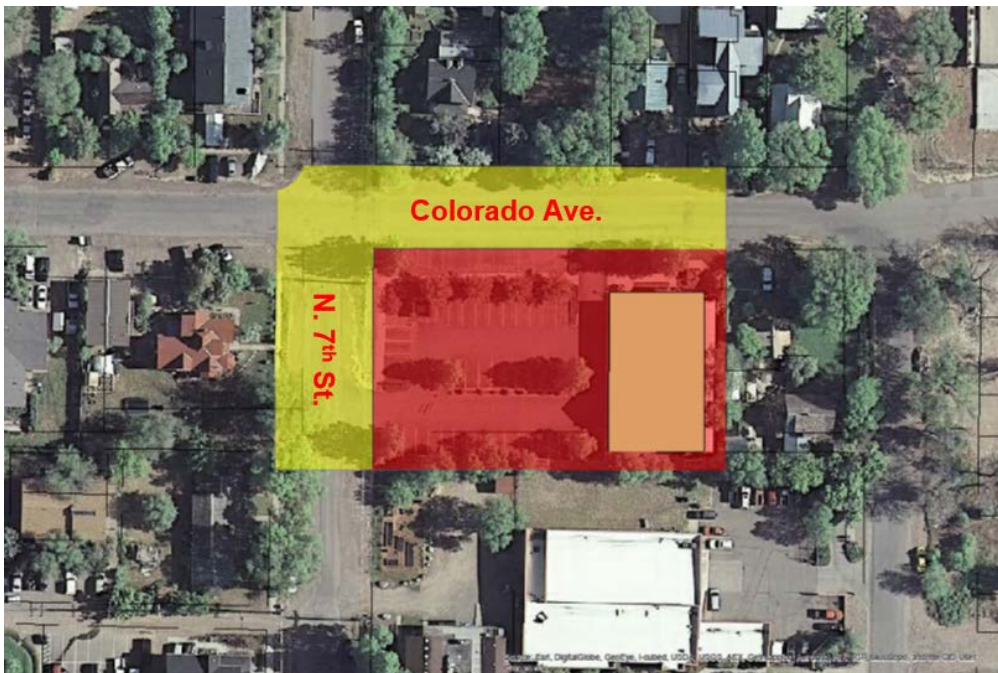
2016 Annual Security & Fire Safety Report – APPENDIX A

The zone colors represent: RED - Core Campus, YELLOW - Adjacent Public Land, BLUE - Non Campus.

Buena Vista



Carbondale



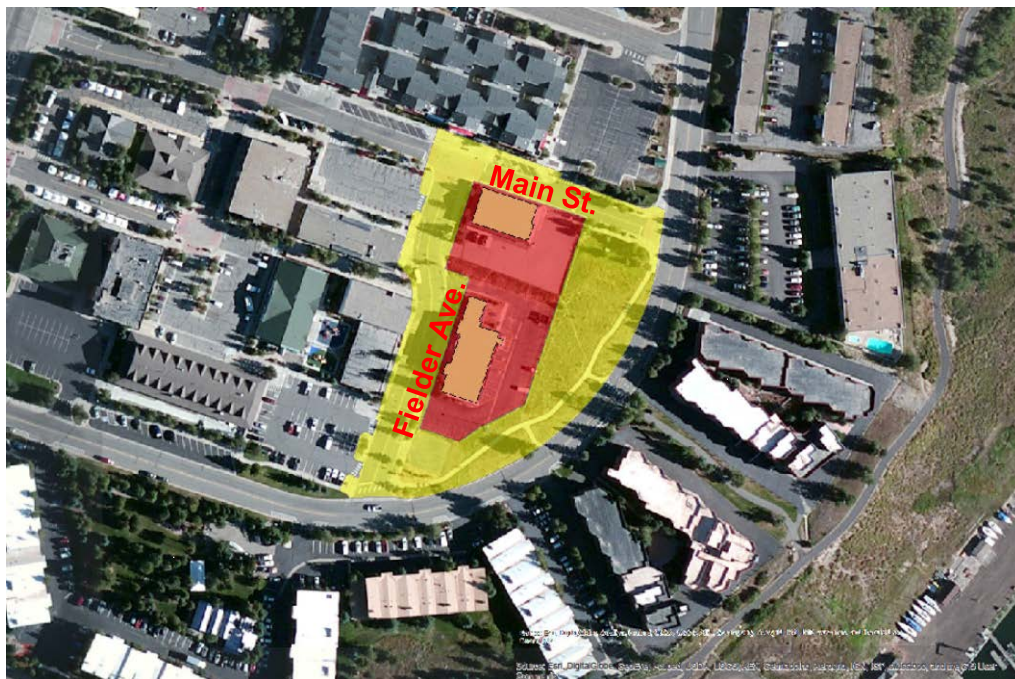
2016 Annual Security & Fire Safety Report – APPENDIX A

The zone colors represent: RED - Core Campus, YELLOW - Adjacent Public Land, BLUE - Non Campus.

Central Services



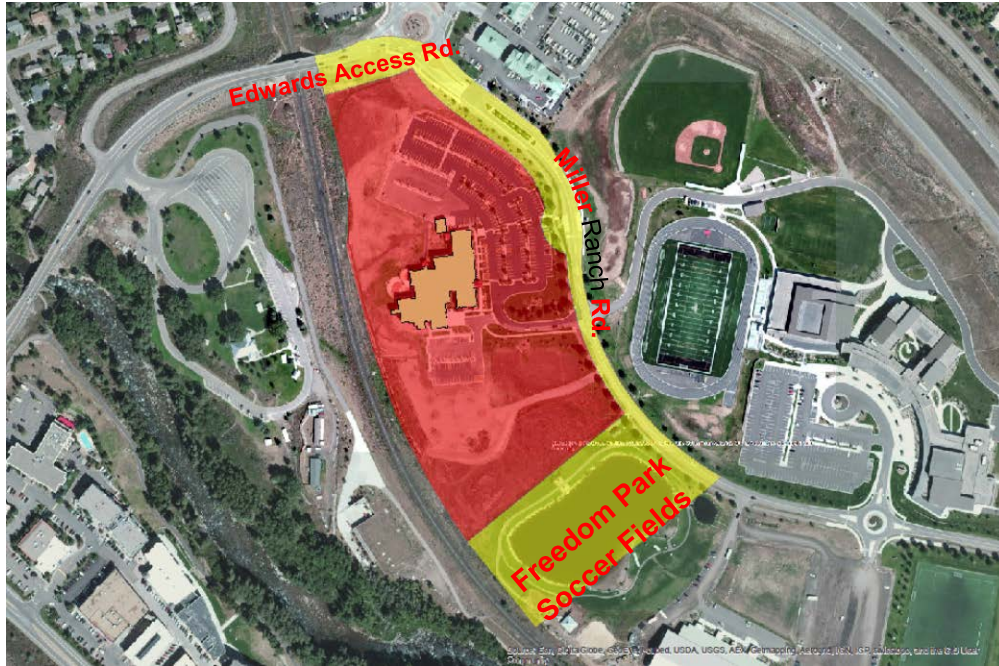
Dillon



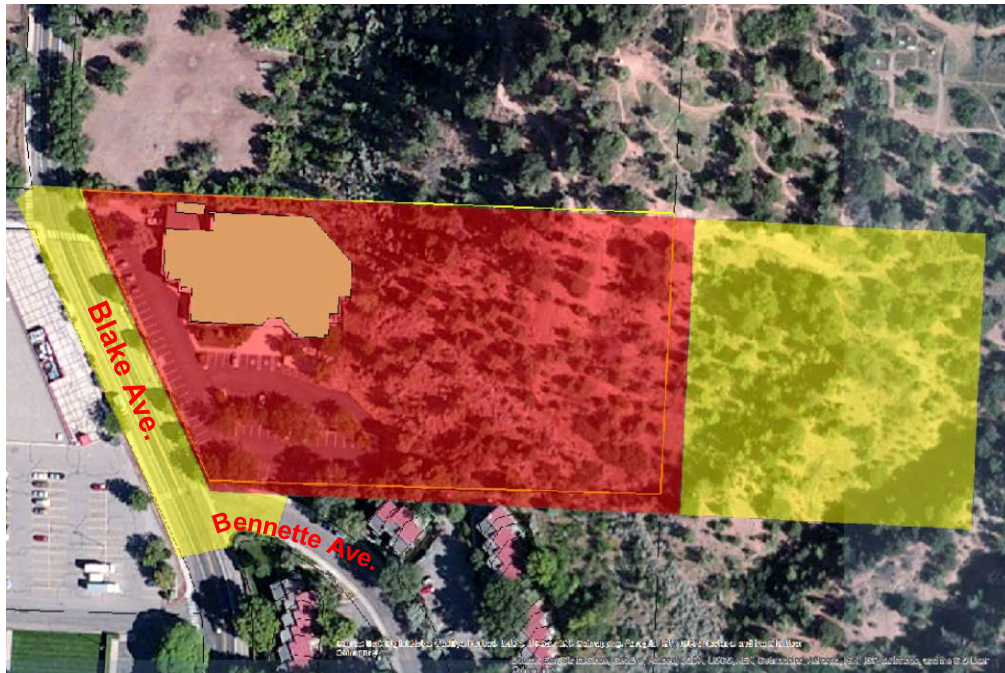
2016 Annual Security & Fire Safety Report – APPENDIX A

The zone colors represent: RED - Core Campus, YELLOW - Adjacent Public Land, BLUE - Non Campus.

Edwards



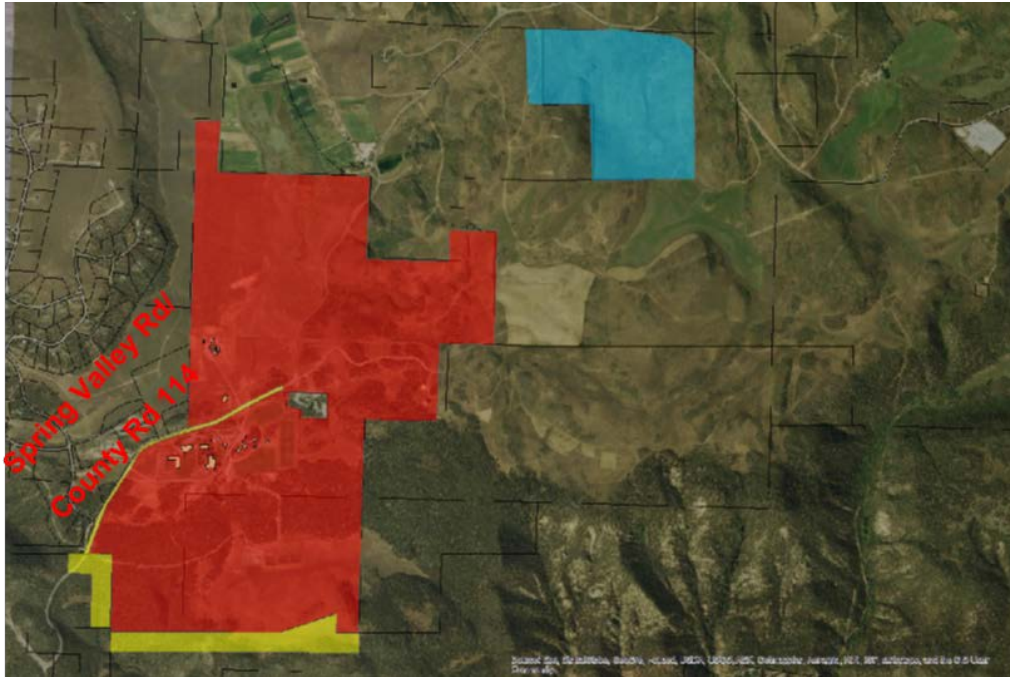
Glenwood Springs



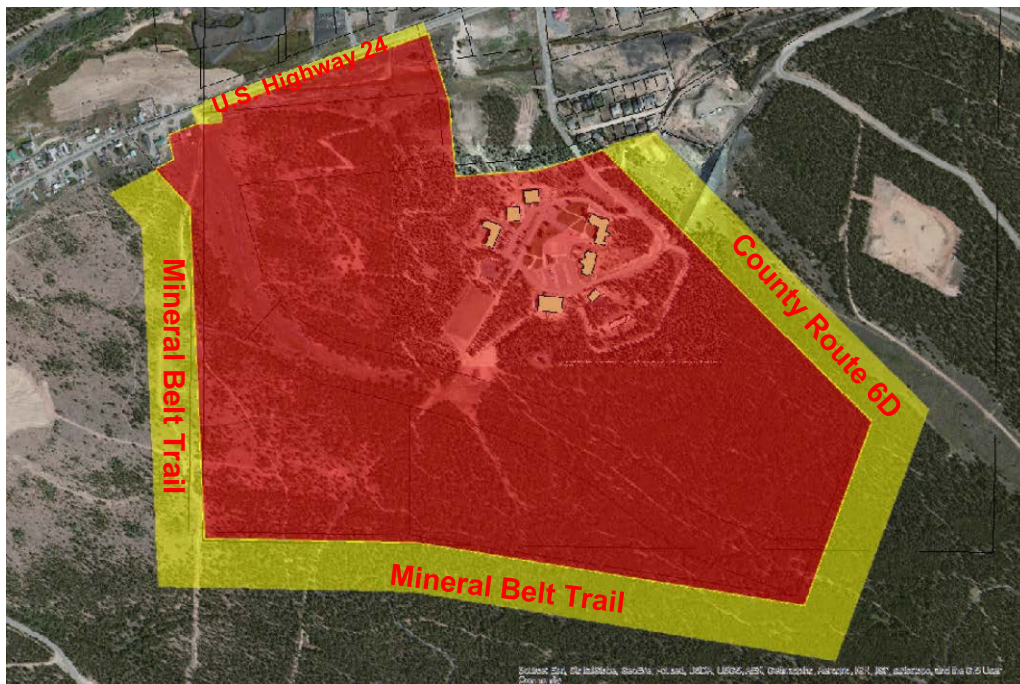
2016 Annual Security & Fire Safety Report – APPENDIX A

The zone colors represent: RED - Core Campus, YELLOW - Adjacent Public Land, BLUE - Non Campus.

Glenwood Springs – Spring Valley



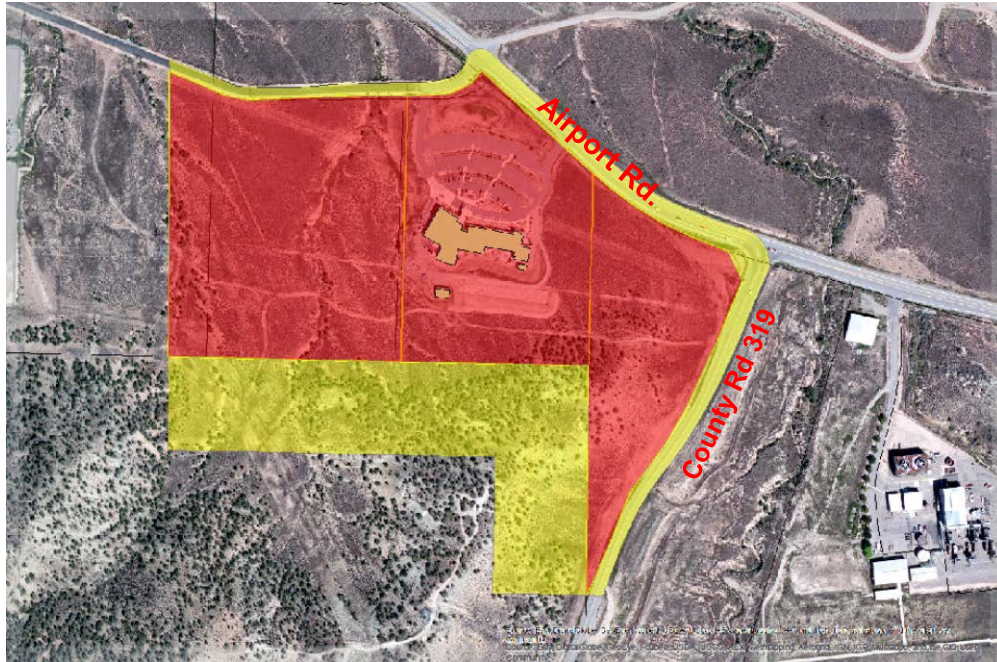
Leadville



2016 Annual Security & Fire Safety Report – APPENDIX A

The zone colors represent: RED - Core Campus, YELLOW - Adjacent Public Land, BLUE - Non Campus.

Rifle



Steamboat Springs



2016 Annual Security & Fire Safety Report – APPENDIX B

Select Campus: [Aspen](#), [Breckenridge](#), [Buena Vista](#), [Carbondale](#), [Central Services](#), [Dillon](#), [Edwards](#), [Glenwood Springs](#), [Glenwood Springs-Spring Valley](#), [Leadville](#), [Rifle](#), [Steamboat Springs](#)

Colorado Mountain College – Aspen	Year	All On-Campus Property	Non-Campus Property	Public Property	Total	Residential Facilities Breakdown
Selected Criminal Offenses						
Murder & Non-negligent Manslaughter	2015	0	0	0	0	0
	2014	0	0	0	0	0
	2013	0	0	0	0	0
Negligent Manslaughter	2015	0	0	0	0	0
	2014	0	0	0	0	0
	2013	0	0	0	0	0
Robbery	2015	0	0	0	0	0
	2014	0	0	0	0	0
	2013	0	0	0	0	0
Aggravated Assault	2015	0	0	0	0	0
	2014	0	0	0	0	0
	2013	0	0	0	0	0
Burglary	2015	0	0	0	0	0
	2014	0	0	0	0	0
	2013	0	0	0	0	0
Motor Vehicle Theft	2015	0	0	0	0	0
	2014	0	0	0	0	0
	2013	0	0	0	0	0
Arson	2015	0	0	0	0	0
	2014	0	0	0	0	0
	2013	0	0	0	0	0
VAWA Offenses						
Forcible Sex Offenses (Rape, Sodomy, Sexual Assault With an Object, Fondling)	2015	0	0	0	0	0
	2014	0	0	0	0	0
	2013	0	0	0	0	0
Non-Forcible Sex Offenses (Incest/Statutory Rape)	2015	0	0	0	0	0
	2014	0	0	0	0	0
	2013	0	0	0	0	0
Domestic Violence	2015	0	0	0	0	0
	2014	0	0	0	0	0
	2013	N/A	N/A	N/A	N/A	N/A
Dating Violence	2015	0	0	0	0	0
	2014	0	0	0	0	0
	2013	N/A	N/A	N/A	N/A	N/A

Colorado Mountain College – Aspen	Year	All On-Campus Property	Non-Campus Property	Public Property	Total	Residential Facilities Breakdown
Stalking	2015	0	0	0	0	0
	2014	0	0	0	0	0
	2013	N/A	N/A	N/A	N/A	N/A
Liquor, Drug & Weapons Statistics						
Liquor Law Violation Arrests	2015	0	0	0	0	0
	2014	0	0	0	0	0
	2013	0	0	0	0	0
Liquor Law Violation Disciplinary Referrals	2015	0	0	0	0	0
	2014	0	0	0	0	0
	2013	0	0	0	0	0
Drug Law Violation Arrests	2015	0	0	0	0	0
	2014	0	0	0	0	0
	2013	0	0	0	0	0
Drug Law Violation Disciplinary Referrals	2015	0	0	0	0	0
	2014	0	0	0	0	0
	2013	0	0	0	0	0
Weapons Violations Arrests	2015	0	0	0	0	0
	2014	0	0	0	0	0
	2013	0	0	0	0	0
Weapons Violations Disciplinary Referrals	2015	0	0	0	0	0
	2014	0	0	0	0	0
	2013	0	0	0	0	0
Reportable Hate Crimes						
Race	2015	0	0	0	0	0
	2014	0	0	0	0	0
	2013	0	0	0	0	0
Gender	2015	0	0	0	0	0
	2014	0	0	0	0	0
	2013	0	0	0	0	0
Religion	2015	0	0	0	0	0
	2014	0	0	0	0	0
	2013	0	0	0	0	0
Sexual Orientation	2015	0	0	0	0	0
	2014	0	0	0	0	0
	2013	0	0	0	0	0
Ethnicity	2015	0	0	0	0	0
	2014	0	0	0	0	0
	2013	0	0	0	0	0
Disability	2015	0	0	0	0	0
	2014	0	0	0	0	0
	2013	0	0	0	0	0

Colorado Mountain College – Breckenridge	Year	All On-Campus Property	Non-Campus Property	Public Property	Total	Residential Facilities Breakdown
Selected Criminal Offenses						
Murder & Non-negligent Manslaughter	2015	0	0	0	0	0
	2014	0	0	0	0	0
	2013	0	0	0	0	0
Negligent Manslaughter	2015	0	0	0	0	0
	2014	0	0	0	0	0
	2013	0	0	0	0	0
Robbery	2015	0	0	0	0	0
	2014	0	0	0	0	0
	2013	0	0	0	0	0
Aggravated Assault	2015	0	0	0	0	0
	2014	0	0	0	0	0
	2013	0	0	0	0	0
Burglary	2015	0	0	0	0	0
	2014	0	0	0	0	0
	2013	0	0	0	0	0
Motor Vehicle Theft	2015	0	0	0	0	0
	2014	0	0	0	0	0
	2013	0	0	0	0	0
Arson	2015	0	0	0	0	0
	2014	0	0	0	0	0
	2013	0	0	0	0	0
VAWA Offenses						
Forcible Sex Offenses (Rape, Sodomy, Sexual Assault With an Object, Fondling)	2015	0	0	0	0	0
	2014	0	0	0	0	0
	2013	0	0	0	0	0
Non-Forcible Sex Offenses (Incest/Statutory Rape)	2015	0	0	0	0	0
	2014	0	0	0	0	0
	2013	0	0	0	0	0
Domestic Violence	2015	0	0	0	0	0
	2014	0	0	0	0	0
	2013	N/A	N/A	N/A	N/A	N/A
Dating Violence	2015	0	0	0	0	0
	2014	0	0	0	0	0
	2013	N/A	N/A	N/A	N/A	N/A
Stalking	2015	0	0	0	0	0
	2014	0	0	0	0	0
	2013	N/A	N/A	N/A	N/A	N/A

Colorado Mountain College – Breckenridge	Year	All On-Campus Property	Non-Campus Property	Public Property	Total	Residential Facilities Breakdown
Liquor, Drug & Weapons Statistics						
Liquor Law Violation Arrests	2015	0	0	0	0	0
	2014	0	0	0	0	0
	2013	0	0	0	0	0
Liquor Law Violation Disciplinary Referrals	2015	0	0	0	0	0
	2014	0	0	0	0	0
	2013	0	0	0	0	0
Drug Law Violation Arrests	2015	0	0	0	0	0
	2014	0	0	0	0	0
	2013	0	0	0	0	0
Drug Law Violation Disciplinary Referrals	2015	0	0	0	0	0
	2014	0	0	0	0	0
	2013	0	0	0	0	0
Weapons Violations Arrests	2015	0	0	0	0	0
	2014	0	0	0	0	0
	2013	0	0	0	0	0
Weapons Violations Disciplinary Referrals	2015	0	0	0	0	0
	2014	0	0	0	0	0
	2013	0	0	0	0	0
Reportable Hate Crimes						
Race	2015	0	0	0	0	0
	2014	0	0	0	0	0
	2013	0	0	0	0	0
Gender	2015	0	0	0	0	0
	2014	0	0	0	0	0
	2013	0	0	0	0	0
Religion	2015	0	0	0	0	0
	2014	0	0	0	0	0
	2013	0	0	0	0	0
Sexual Orientation	2015	0	0	0	0	0
	2014	0	0	0	0	0
	2013	0	0	0	0	0
Ethnicity	2015	0	0	0	0	0
	2014	0	0	0	0	0
	2013	0	0	0	0	0
Disability	2015	0	0	0	0	0
	2014	0	0	0	0	0
	2013	0	0	0	0	0

Colorado Mountain College – Buena Vista	Year	All On-Campus Property	Non-Campus Property	Public Property	Total	Residential Facilities Breakdown
Selected Criminal Offenses						
Murder & Non-negligent Manslaughter	2015	0	0	0	0	0
	2014	0	0	0	0	0
	2013	0	0	0	0	0
Negligent Manslaughter	2015	0	0	0	0	0
	2014	0	0	0	0	0
	2013	0	0	0	0	0
Robbery	2015	0	0	0	0	0
	2014	0	0	0	0	0
	2013	0	0	0	0	0
Aggravated Assault	2015	0	0	0	0	0
	2014	0	0	0	0	0
	2013	0	0	0	0	0
Burglary	2015	0	0	0	0	0
	2014	0	0	0	0	0
	2013	0	0	0	0	0
Motor Vehicle Theft	2015	0	0	0	0	0
	2014	0	0	0	0	0
	2013	0	0	0	0	0
Arson	2015	0	0	0	0	0
	2014	0	0	0	0	0
	2013	0	0	0	0	0
VAWA Offenses						
Forcible Sex Offenses (Rape, Sodomy, Sexual Assault With an Object, Fondling)	2015	0	0	0	0	0
	2014	0	0	0	0	0
	2013	0	0	0	0	0
Non-Forcible Sex Offenses (Incest/Statutory Rape)	2015	0	0	0	0	0
	2014	0	0	0	0	0
	2013	0	0	0	0	0
Domestic Violence	2015	0	0	0	0	0
	2014	0	0	0	0	0
	2013	N/A	N/A	N/A	N/A	N/A
Dating Violence	2015	0	0	0	0	0
	2014	0	0	0	0	0
	2013	N/A	N/A	N/A	N/A	N/A
Stalking	2015	0	0	0	0	0
	2014	0	0	0	0	0
	2013	N/A	N/A	N/A	N/A	N/A

Colorado Mountain College – Buena Vista	Year	All On-Campus Property	Non-Campus Property	Public Property	Total	Residential Facilities Breakdown
Liquor, Drug & Weapons Statistics						
Liquor Law Violation Arrests	2015	0	0	0	0	0
	2014	0	0	0	0	0
	2013	0	0	0	0	0
Liquor Law Violation Disciplinary Referrals	2015	0	0	0	0	0
	2014	0	0	0	0	0
	2013	0	0	0	0	0
Drug Law Violation Arrests	2015	0	0	0	0	0
	2014	0	0	0	0	0
	2013	0	0	0	0	0
Drug Law Violation Disciplinary Referrals	2015	0	0	0	0	0
	2014	0	0	0	0	0
	2013	0	0	0	0	0
Weapons Violations Arrests	2015	0	0	0	0	0
	2014	0	0	0	0	0
	2013	0	0	0	0	0
Weapons Violations Disciplinary Referrals	2015	0	0	0	0	0
	2014	0	0	0	0	0
	2013	0	0	0	0	0
Reportable Hate Crimes						
Race	2015	0	0	0	0	0
	2014	0	0	0	0	0
	2013	0	0	0	0	0
Gender	2015	0	0	0	0	0
	2014	0	0	0	0	0
	2013	0	0	0	0	0
Religion	2015	0	0	0	0	0
	2014	0	0	0	0	0
	2013	0	0	0	0	0
Sexual Orientation	2015	0	0	0	0	0
	2014	0	0	0	0	0
	2013	0	0	0	0	0
Ethnicity	2015	0	0	0	0	0
	2014	0	0	0	0	0
	2013	0	0	0	0	0
Disability	2015	0	0	0	0	0
	2014	0	0	0	0	0
	2013	0	0	0	0	0

Colorado Mountain College – Carbondale	Year	All On- Campus Property	Non- Campus Property	Public Property	Total	Residential Facilities Breakdown
Selected Criminal Offenses						
Murder & Non-negligent Manslaughter	2015	0	0	0	0	0
	2014	0	0	0	0	0
	2013	0	0	0	0	0
Negligent Manslaughter	2015	0	0	0	0	0
	2014	0	0	0	0	0
	2013	0	0	0	0	0
Robbery	2015	0	0	0	0	0
	2014	0	0	0	0	0
	2013	0	0	0	0	0
Aggravated Assault	2015	0	0	0	0	0
	2014	0	0	0	0	0
	2013	0	0	0	0	0
Burglary	2015	0	0	0	0	0
	2014	0	0	0	0	0
	2013	0	0	0	0	0
Motor Vehicle Theft	2015	0	0	0	0	0
	2014	0	0	0	0	0
	2013	0	0	0	0	0
Arson	2015	0	0	0	0	0
	2014	0	0	0	0	0
	2013	0	0	0	0	0
VAWA Offenses						
Forcible Sex Offenses (Rape, Sodomy, Sexual Assault With an Object, Fondling)	2015	0	0	0	0	0
	2014	0	0	0	0	0
	2013	0	0	0	0	0
Non-Forcible Sex Offenses (Incest/Statutory Rape)	2015	0	0	0	0	0
	2014	0	0	0	0	0
	2013	0	0	0	0	0
Domestic Violence	2015	0	0	0	0	0
	2014	0	0	0	0	0
	2013	N/A	N/A	N/A	N/A	N/A
Dating Violence	2015	0	0	0	0	0
	2014	0	0	0	0	0
	2013	N/A	N/A	N/A	N/A	N/A
Stalking	2015	0	0	0	0	0
	2014	0	0	0	0	0
	2013	N/A	N/A	N/A	N/A	N/A

Colorado Mountain College – Carbondale	Year	All On- Campus Property	Non- Campus Property	Public Property	Total	Residential Facilities Breakdown
Liquor, Drug & Weapons Statistics						
Liquor Law Violation Arrests	2015	0	0	0	0	0
	2014	0	0	0	0	0
	2013	0	0	0	0	0
Liquor Law Violation Disciplinary Referrals	2015	0	0	0	0	0
	2014	0	0	0	0	0
	2013	0	0	0	0	0
Drug Law Violation Arrests	2015	0	0	0	0	0
	2014	0	0	0	0	0
	2013	0	0	0	0	0
Drug Law Violation Disciplinary Referrals	2015	0	0	0	0	0
	2014	0	0	0	0	0
	2013	0	0	0	0	0
Weapons Violations Arrests	2015	0	0	0	0	0
	2014	0	0	0	0	0
	2013	0	0	0	0	0
Weapons Violations Disciplinary Referrals	2015	0	0	0	0	0
	2014	0	0	0	0	0
	2013	0	0	0	0	0
Reportable Hate Crimes						
Race	2015	0	0	0	0	0
	2014	0	0	0	0	0
	2013	0	0	0	0	0
Gender	2015	0	0	0	0	0
	2014	0	0	0	0	0
	2013	0	0	0	0	0
Religion	2015	0	0	0	0	0
	2014	0	0	0	0	0
	2013	0	0	0	0	0
Sexual Orientation	2015	0	0	0	0	0
	2014	0	0	0	0	0
	2013	0	0	0	0	0
Ethnicity	2015	0	0	0	0	0
	2014	0	0	0	0	0
	2013	0	0	0	0	0
Disability	2015	0	0	0	0	0
	2014	0	0	0	0	0
	2013	0	0	0	0	0

Colorado Mountain College – Central Services	Year	All On-Campus Property	Non-Campus Property	Public Property	Total	Residential Facilities Breakdown
Selected Criminal Offenses						
Murder & Non-negligent Manslaughter	2015	0	0	0	0	0
	2014	0	0	0	0	0
	2013	0	0	0	0	0
Negligent Manslaughter	2015	0	0	0	0	0
	2014	0	0	0	0	0
	2013	0	0	0	0	0
Robbery	2015	0	0	0	0	0
	2014	0	0	0	0	0
	2013	0	0	0	0	0
Aggravated Assault	2015	0	0	0	0	0
	2014	0	0	0	0	0
	2013	0	0	0	0	0
Burglary	2015	0	0	0	0	0
	2014	0	0	0	0	0
	2013	0	0	0	0	0
Motor Vehicle Theft	2015	0	0	0	0	0
	2014	0	0	0	0	0
	2013	0	0	0	0	0
Arson	2015	0	0	0	0	0
	2014	0	0	0	0	0
	2013	0	0	0	0	0
VAWA Offenses						
Forcible Sex Offenses (Rape, Sodomy, Sexual Assault With an Object, Fondling)	2015	0	0	0	0	0
	2014	0	0	0	0	0
	2013	0	0	0	0	0
Non-Forcible Sex Offenses (Incest/Statutory Rape)	2015	0	0	0	0	0
	2014	0	0	0	0	0
	2013	0	0	0	0	0
Domestic Violence	2015	0	0	0	0	0
	2014	0	0	0	0	0
	2013	N/A	N/A	N/A	N/A	N/A
Dating Violence	2015	0	0	0	0	0
	2014	0	0	0	0	0
	2013	N/A	N/A	N/A	N/A	N/A
Stalking	2015	0	0	0	0	0
	2014	0	0	0	0	0
	2013	N/A	N/A	N/A	N/A	N/A

Colorado Mountain College – Central Services	Year	All On-Campus Property	Non-Campus Property	Public Property	Total	Residential Facilities Breakdown
Liquor, Drug & Weapons Statistics						
Liquor Law Violation Arrests	2015	0	0	0	0	0
	2014	0	0	0	0	0
	2013	0	0	0	0	0
Liquor Law Violation Disciplinary Referrals	2015	0	0	0	0	0
	2014	0	0	0	0	0
	2013	0	0	0	0	0
Drug Law Violation Arrests	2015	0	0	0	0	0
	2014	0	0	0	0	0
	2013	0	0	0	0	0
Drug Law Violation Disciplinary Referrals	2015	0	0	0	0	0
	2014	0	0	0	0	0
	2013	0	0	0	0	0
Weapons Violations Arrests	2015	0	0	0	0	0
	2014	0	0	0	0	0
	2013	0	0	0	0	0
Weapons Violations Disciplinary Referrals	2015	0	0	0	0	0
	2014	0	0	0	0	0
	2013	0	0	0	0	0
Reportable Hate Crimes						
Race	2015	0	0	0	0	0
	2014	0	0	0	0	0
	2013	0	0	0	0	0
Gender	2015	0	0	0	0	0
	2014	0	0	0	0	0
	2013	0	0	0	0	0
Religion	2015	0	0	0	0	0
	2014	0	0	0	0	0
	2013	0	0	0	0	0
Sexual Orientation	2015	0	0	0	0	0
	2014	0	0	0	0	0
	2013	0	0	0	0	0
Ethnicity	2015	0	0	0	0	0
	2014	0	0	0	0	0
	2013	0	0	0	0	0
Disability	2015	0	0	0	0	0
	2014	0	0	0	0	0
	2013	0	0	0	0	0

Colorado Mountain College – Dillon	Year	All On-Campus Property	Non-Campus Property	Public Property	Total	Residential Facilities Breakdown
Selected Criminal Offenses						
Murder & Non-negligent Manslaughter	2015	0	0	0	0	0
	2014	0	0	0	0	0
	2013	0	0	0	0	0
Negligent Manslaughter	2015	0	0	0	0	0
	2014	0	0	0	0	0
	2013	0	0	0	0	0
Robbery	2015	0	0	0	0	0
	2014	0	0	0	0	0
	2013	0	0	0	0	0
Aggravated Assault	2015	0	0	0	0	0
	2014	0	0	0	0	0
	2013	0	0	0	0	0
Burglary	2015	0	0	0	0	0
	2014	0	0	0	0	0
	2013	0	0	0	0	0
Motor Vehicle Theft	2015	0	0	0	0	0
	2014	0	0	0	0	0
	2013	0	0	0	0	0
Arson	2015	0	0	0	0	0
	2014	0	0	0	0	0
	2013	0	0	0	0	0
VAWA Offenses						
Forcible Sex Offenses (Rape, Sodomy, Sexual Assault With an Object, Fondling)	2015	0	0	0	0	0
	2014	0	0	0	0	0
	2013	0	0	0	0	0
Non-Forcible Sex Offenses (Incest/Statutory Rape)	2015	0	0	0	0	0
	2014	0	0	0	0	0
	2013	0	0	0	0	0
Domestic Violence	2015	0	0	0	0	0
	2014	0	0	0	0	0
	2013	N/A	N/A	N/A	N/A	N/A
Dating Violence	2015	0	0	0	0	0
	2014	0	0	0	0	0
	2013	N/A	N/A	N/A	N/A	N/A
Stalking	2015	0	0	0	0	0
	2014	0	0	0	0	0
	2013	N/A	N/A	N/A	N/A	N/A

Colorado Mountain College – Dillon	Year	All On-Campus Property	Non-Campus Property	Public Property	Total	Residential Facilities Breakdown
Liquor, Drug & Weapons Statistics						
Liquor Law Violation Arrests	2015	0	0	0	0	0
	2014	0	0	0	0	0
	2013	0	0	0	0	0
Liquor Law Violation Disciplinary Referrals	2015	0	0	0	0	0
	2014	0	0	0	0	0
	2013	0	0	0	0	0
Drug Law Violation Arrests	2015	0	0	0	0	0
	2014	0	0	0	0	0
	2013	0	0	0	0	0
Drug Law Violation Disciplinary Referrals	2015	0	0	0	0	0
	2014	0	0	0	0	0
	2013	0	0	0	0	0
Weapons Violations Arrests	2015	0	0	0	0	0
	2014	0	0	0	0	0
	2013	0	0	0	0	0
Weapons Violations Disciplinary Referrals	2015	0	0	0	0	0
	2014	0	0	0	0	0
	2013	0	0	0	0	0
Reportable Hate Crimes						
Race	2015	0	0	0	0	0
	2014	0	0	0	0	0
	2013	0	0	0	0	0
Gender	2015	0	0	0	0	0
	2014	0	0	0	0	0
	2013	0	0	0	0	0
Religion	2015	0	0	0	0	0
	2014	0	0	0	0	0
	2013	0	0	0	0	0
Sexual Orientation	2015	0	0	0	0	0
	2014	0	0	0	0	0
	2013	0	0	0	0	0
Ethnicity	2015	0	0	0	0	0
	2014	0	0	0	0	0
	2013	0	0	0	0	0
Disability	2015	0	0	0	0	0
	2014	0	0	0	0	0
	2013	0	0	0	0	0

Colorado Mountain College – Edwards	Year	All On-Campus Property	Non-Campus Property	Public Property	Total	Residential Facilities Breakdown
Selected Criminal Offenses						
Murder & Non-negligent Manslaughter	2015	0	0	0	0	0
	2014	0	0	0	0	0
	2013	0	0	0	0	0
Negligent Manslaughter	2015	0	0	0	0	0
	2014	0	0	0	0	0
	2013	0	0	0	0	0
Robbery	2015	0	0	0	0	0
	2014	0	0	0	0	0
	2013	0	0	0	0	0
Aggravated Assault	2015	0	0	0	0	0
	2014	0	0	0	0	0
	2013	0	0	0	0	0
Burglary	2015	0	0	0	0	0
	2014	0	0	0	0	0
	2013	0	0	0	0	0
Motor Vehicle Theft	2015	0	0	0	0	0
	2014	0	0	0	0	0
	2013	0	0	0	0	0
Arson	2015	0	0	0	0	0
	2014	0	0	0	0	0
	2013	0	0	0	0	0
VAWA Offenses						
Forcible Sex Offenses (Rape, Sodomy, Sexual Assault With an Object, Fondling)	2015	0	0	0	0	0
	2014	0	0	0	0	0
	2013	0	0	0	0	0
Non-Forcible Sex Offenses (Incest/Statutory Rape)	2015	0	0	0	0	0
	2014	0	0	0	0	0
	2013	0	0	0	0	0
Domestic Violence	2015	0	0	0	0	0
	2014	0	0	0	0	0
	2013	N/A	N/A	N/A	N/A	N/A
Dating Violence	2015	0	0	0	0	0
	2014	0	0	0	0	0
	2013	N/A	N/A	N/A	N/A	N/A
Stalking	2015	0	0	0	0	0
	2014	0	0	0	0	0
	2013	N/A	N/A	N/A	N/A	N/A

Colorado Mountain College – Edwards	Year	All On-Campus Property	Non-Campus Property	Public Property	Total	Residential Facilities Breakdown
Liquor, Drug & Weapons Statistics						
Liquor Law Violation Arrests	2015	0	0	0	0	0
	2014	0	0	0	0	0
	2013	0	0	0	0	0
Liquor Law Violation Disciplinary Referrals	2015	0	0	0	0	0
	2014	1	0	0	1	0
	2013	0	0	0	0	0
Drug Law Violation Arrests	2015	0	0	0	0	0
	2014	0	0	0	0	0
	2013	0	0	0	0	0
Drug Law Violation Disciplinary Referrals	2015	0	0	0	0	0
	2014	0	0	0	0	0
	2013	0	0	0	0	0
Weapons Violations Arrests	2015	0	0	0	0	0
	2014	0	0	0	0	0
	2013	0	0	0	0	0
Weapons Violations Disciplinary Referrals	2015	0	0	0	0	0
	2014	0	0	0	0	0
	2013	0	0	0	0	0
Reportable Hate Crimes						
Race	2015	0	0	0	0	0
	2014	0	0	0	0	0
	2013	0	0	0	0	0
Gender	2015	0	0	0	0	0
	2014	0	0	0	0	0
	2013	0	0	0	0	0
Religion	2015	0	0	0	0	0
	2014	0	0	0	0	0
	2013	0	0	0	0	0
Sexual Orientation	2015	0	0	0	0	0
	2014	0	0	0	0	0
	2013	0	0	0	0	0
Ethnicity	2015	0	0	0	0	0
	2014	0	0	0	0	0
	2013	0	0	0	0	0
Disability	2015	0	0	0	0	0
	2014	0	0	0	0	0
	2013	0	0	0	0	0

Colorado Mountain College – Glenwood Center	Year	All On- Campus Property	Non- Campus Property	Public Property	Total	Residential Facilities Breakdown
Selected Criminal Offenses						
Murder & Non-negligent Manslaughter	2015	0	0	0	0	0
	2014	0	0	0	0	0
	2013	0	0	0	0	0
Negligent Manslaughter	2015	0	0	0	0	0
	2014	0	0	0	0	0
	2013	0	0	0	0	0
Robbery	2015	0	0	0	0	0
	2014	0	0	0	0	0
	2013	0	0	0	0	0
Aggravated Assault	2015	0	0	0	0	0
	2014	0	0	0	0	0
	2013	0	0	0	0	0
Burglary	2015	0	0	0	0	0
	2014	0	0	0	0	0
	2013	0	0	0	0	0
Motor Vehicle Theft	2015	0	0	0	0	0
	2014	0	0	0	0	0
	2013	0	0	0	0	0
Arson	2015	0	0	0	0	0
	2014	0	0	0	0	0
	2013	0	0	0	0	0
VAWA Offenses						
Forcible Sex Offenses (Rape, Sodomy, Sexual Assault With an Object, Fondling)	2015	0	0	0	0	0
	2014	0	0	0	0	0
	2013	0	0	0	0	0
Non-Forcible Sex Offenses (Incest/Statutory Rape)	2015	0	0	0	0	0
	2014	0	0	0	0	0
	2013	0	0	0	0	0
Domestic Violence	2015	0	0	0	0	0
	2014	0	0	0	0	0
	2013	N/A	N/A	N/A	N/A	N/A
Dating Violence	2015	0	0	0	0	0
	2014	0	0	0	0	0
	2013	N/A	N/A	N/A	N/A	N/A
Stalking	2015	0	0	0	0	0
	2014	0	0	0	0	0
	2013	N/A	N/A	N/A	N/A	N/A

Colorado Mountain College – Glenwood Center	Year	All On-Campus Property	Non-Campus Property	Public Property	Total	Residential Facilities Breakdown
Liquor, Drug & Weapons Statistics						
Liquor Law Violation Arrests	2015	0	0	0	0	0
	2014	0	0	0	0	0
	2013	0	0	0	0	0
Liquor Law Violation Disciplinary Referrals	2015	0	0	0	0	0
	2014	0	0	0	0	0
	2013	0	0	0	0	0
Drug Law Violation Arrests	2015	0	0	0	0	0
	2014	0	0	0	0	0
	2013	0	0	0	0	0
Drug Law Violation Disciplinary Referrals	2015	0	0	0	0	0
	2014	0	0	0	0	0
	2013	0	0	0	0	0
Weapons Violations Arrests	2015	0	0	0	0	0
	2014	0	0	0	0	0
	2013	0	0	0	0	0
Weapons Violations Disciplinary Referrals	2015	0	0	0	0	0
	2014	0	0	0	0	0
	2013	0	0	0	0	0
Reportable Hate Crimes						
Race	2015	0	0	0	0	0
	2014	0	0	0	0	0
	2013	0	0	0	0	0
Gender	2015	0	0	0	0	0
	2014	0	0	0	0	0
	2013	0	0	0	0	0
Religion	2015	0	0	0	0	0
	2014	0	0	0	0	0
	2013	0	0	0	0	0
Sexual Orientation	2015	0	0	0	0	0
	2014	0	0	0	0	0
	2013	0	0	0	0	0
Ethnicity	2015	0	0	0	0	0
	2014	0	0	0	0	0
	2013	0	0	0	0	0
Disability	2015	0	0	0	0	0
	2014	0	0	0	0	0
	2013	0	0	0	0	0

Colorado Mountain College – Leadville	Year	All On-Campus Property	Non-Campus Property	Public Property	Total	Residential Facilities Breakdown
Selected Criminal Offenses						
Murder & Non-negligent Manslaughter	2015	0	0	0	0	0
	2014	0	0	0	0	0
	2013	0	0	0	0	0
Negligent Manslaughter	2015	0	0	0	0	0
	2014	0	0	0	0	0
	2013	0	0	0	0	0
Robbery	2015	0	0	0	0	0
	2014	0	0	0	0	0
	2013	0	0	0	0	0
Aggravated Assault	2015	0	0	0	0	0
	2014	0	0	0	0	0
	2013	0	0	0	0	0
Burglary	2015	1	0	0	1	1
	2014	1	0	0	1	0
	2013	0	0	0	0	0
Motor Vehicle Theft	2015	0	0	0	0	0
	2014	1	0	0	1	0
	2013	0	0	0	0	0
Arson	2015	0	0	0	0	0
	2014	0	0	0	0	0
	2013	0	0	0	0	0
VAWA Offenses						
Forcible Sex Offenses (Rape, Sodomy, Sexual Assault With an Object, Fondling)	2015	0	0	0	0	0
	2014	0	0	0	0	0
	2013	0	0	0	0	0
Non-Forcible Sex Offenses (Incest/Statutory Rape)	2015	0	0	0	0	0
	2014	0	0	0	0	0
	2013	0	0	0	0	0
Domestic Violence	2015	0	0	0	0	0
	2014	0	0	0	0	0
	2013	N/A	N/A	N/A	N/A	N/A
Dating Violence	2015	0	0	0	0	0
	2014	0	0	0	0	0
	2013	N/A	N/A	N/A	N/A	N/A
Stalking	2015	0	0	0	0	0
	2014	0	0	0	0	0
	2013	N/A	N/A	N/A	N/A	N/A

Colorado Mountain College – Leadville	Year	All On-Campus Property	Non-Campus Property	Public Property	Total	Residential Facilities Breakdown
Liquor, Drug & Weapons Statistics						
Liquor Law Violation Arrests	2015	0	0	0	0	0
	2014	0	0	0	0	0
	2013	0	0	0	0	0
Liquor Law Violation Disciplinary Referrals	2015	34	0	0	34	34
	2014	12	0	0	12	12
	2013	5	0	0	5	5
Drug Law Violation Arrests	2015	0	0	0	0	0
	2014	0	0	0	0	0
	2013	0	0	0	0	0
Drug Law Violation Disciplinary Referrals	2015	9	0	0	9	9
	2014	13	0	0	13	13
	2013	2	0	0	2	2
Weapons Violations Arrests	2015	0	0	0	0	0
	2014	0	0	0	0	0
	2013	0	0	0	0	0
Weapons Violations Disciplinary Referrals	2015	0	0	0	0	0
	2014	0	0	0	0	0
	2013	0	0	0	0	0
Reportable Hate Crimes						
Race	2015	0	0	0	0	0
	2014	0	0	0	0	0
	2013	0	0	0	0	0
Gender	2015	0	0	0	0	0
	2014	0	0	0	0	0
	2013	0	0	0	0	0
Religion	2015	0	0	0	0	0
	2014	0	0	0	0	0
	2013	0	0	0	0	0
Sexual Orientation	2015	0	0	0	0	0
	2014	0	0	0	0	0
	2013	0	0	0	0	0
Ethnicity	2015	0	0	0	0	0
	2014	0	0	0	0	0
	2013	0	0	0	0	0
Disability	2015	0	0	0	0	0
	2014	0	0	0	0	0
	2013	0	0	0	0	0

Colorado Mountain College – Rifle	Year	All On-Campus Property	Non-Campus Property	Public Property	Total	Residential Facilities Breakdown
Selected Criminal Offenses						
Murder & Non-negligent Manslaughter	2015	0	0	0	0	0
	2014	0	0	0	0	0
	2013	0	0	0	0	0
Negligent Manslaughter	2015	0	0	0	0	0
	2014	0	0	0	0	0
	2013	0	0	0	0	0
Robbery	2015	0	0	0	0	0
	2014	0	0	0	0	0
	2013	0	0	0	0	0
Aggravated Assault	2015	0	0	0	0	0
	2014	0	0	0	0	0
	2013	0	0	0	0	0
Burglary	2015	0	0	0	0	0
	2014	0	0	0	0	0
	2013	0	0	0	0	0
Motor Vehicle Theft	2015	0	0	0	0	0
	2014	0	0	0	0	0
	2013	0	0	0	0	0
Arson	2015	0	0	0	0	0
	2014	0	0	0	0	0
	2013	0	0	0	0	0
VAWA Offenses						
Forcible Sex Offenses (Rape, Sodomy, Sexual Assault With an Object, Fondling)	2015	0	0	0	0	0
	2014	0	0	0	0	0
	2013	0	0	0	0	0
Non-Forcible Sex Offenses (Incest/Statutory Rape)	2015	0	0	0	0	0
	2014	0	0	0	0	0
	2013	0	0	0	0	0
Domestic Violence	2015	0	0	0	0	0
	2014	0	0	0	0	0
	2013	N/A	N/A	N/A	N/A	N/A
Dating Violence	2015	0	0	0	0	0
	2014	0	0	0	0	0
	2013	N/A	N/A	N/A	N/A	N/A
Stalking	2015	0	0	0	0	0
	2014	1	0	0	1	0
	2013	N/A	N/A	N/A	N/A	N/A

Colorado Mountain College – Rifle	Year	All On-Campus Property	Non-Campus Property	Public Property	Total	Residential Facilities Breakdown
Liquor, Drug & Weapons Statistics						
Liquor Law Violation Arrests	2015	0	0	0	0	0
	2014	0	0	0	0	0
	2013	0	0	0	0	0
Liquor Law Violation Disciplinary Referrals	2015	0	0	0	0	0
	2014	0	0	0	0	0
	2013	0	0	0	0	0
Drug Law Violation Arrests	2015	0	0	0	0	0
	2014	0	0	0	0	0
	2013	0	0	0	0	0
Drug Law Violation Disciplinary Referrals	2015	0	0	0	0	0
	2014	0	0	0	0	0
	2013	0	0	0	0	0
Weapons Violations Arrests	2015	0	0	0	0	0
	2014	0	0	0	0	0
	2013	0	0	0	0	0
Weapons Violations Disciplinary Referrals	2015	0	0	0	0	0
	2014	0	0	0	0	0
	2013	0	0	0	0	0
Reportable Hate Crimes						
Race	2015	0	0	0	0	0
	2014	0	0	0	0	0
	2013	0	0	0	0	0
Gender	2015	0	0	0	0	0
	2014	0	0	0	0	0
	2013	0	0	0	0	0
Religion	2015	0	0	0	0	0
	2014	0	0	0	0	0
	2013	0	0	0	0	0
Sexual Orientation	2015	0	0	0	0	0
	2014	0	0	0	0	0
	2013	0	0	0	0	0
Ethnicity	2015	0	0	0	0	0
	2014	0	0	0	0	0
	2013	0	0	0	0	0
Disability	2015	0	0	0	0	0
	2014	0	0	0	0	0
	2013	0	0	0	0	0

Colorado Mountain College – Spring Valley	Year	All On-Campus Property	Non-Campus Property	Public Property	Total	Residential Facilities Breakdown
Selected Criminal Offenses						
Murder & Non-negligent Manslaughter	2015	0	0	0	0	0
	2014	0	0	0	0	0
	2013	0	0	0	0	0
Negligent Manslaughter	2015	0	0	0	0	0
	2014	0	0	0	0	0
	2013	0	0	0	0	0
Robbery	2015	0	0	0	0	0
	2014	0	0	0	0	0
	2013	0	0	0	0	0
Aggravated Assault	2015	0	0	0	0	0
	2014	0	0	0	0	0
	2013	0	0	0	0	0
Burglary	2015	0	0	0	0	0
	2014	0	0	0	0	0
	2013	0	0	0	0	0
Motor Vehicle Theft	2015	0	0	0	0	0
	2014	0	0	0	0	0
	2013	0	0	0	0	0
Arson	2015	0	0	0	0	0
	2014	0	0	0	0	0
	2013	0	0	0	0	0
VAWA Offenses						
Forcible Sex Offenses (Rape, Sodomy, Sexual Assault With an Object, Fondling)	2015	0	0	0	0	0
	2014	1	0	0	1	1
	2013	0	0	0	0	0
Non-Forcible Sex Offenses (Incest/Statutory Rape)	2015	0	0	0	0	0
	2014	0	0	0	0	0
	2013	0	0	0	0	0
Domestic Violence	2015	0	0	0	0	0
	2014	0	0	0	0	0
	2013	N/A	N/A	N/A	N/A	N/A
Dating Violence	2015	1	0	0	1	1
	2014	0	0	0	0	0
	2013	N/A	N/A	N/A	N/A	N/A
Stalking	2015	0	0	0	0	0
	2014	0	0	0	0	0
	2013	N/A	N/A	N/A	N/A	N/A

Colorado Mountain College – Spring Valley	Year	All On-Campus Property	Non-Campus Property	Public Property	Total	Residential Facilities Breakdown
Liquor, Drug & Weapons Statistics						
Liquor Law Violation Arrests	2015	0	0	0	0	0
	2014	0	0	0	0	0
	2013	0	0	0	0	0
Liquor Law Violation Disciplinary Referrals	2015	14	0	0	14	14
	2014	16	0	9	25	16
	2013	6	0	0	6	6
Drug Law Violation Arrests	2015	0	0	0	0	0
	2014	0	0	0	0	0
	2013	0	0	0	0	0
Drug Law Violation Disciplinary Referrals	2015	2	0	0	2	2
	2014	14	0	0	14	14
	2013	5	0	0	5	5
Weapons Violations Arrests	2015	0	0	0	0	0
	2014	0	0	0	0	0
	2013	0	0	0	0	0
Weapons Violations Disciplinary Referrals	2015	0	0	0	0	0
	2014	0	0	0	0	0
	2013	0	0	0	0	0
Reportable Hate Crimes						
Race	2015	0	0	0	0	0
	2014	0	0	0	0	0
	2013	0	0	0	0	0
Gender	2015	0	0	0	0	0
	2014	0	0	0	0	0
	2013	0	0	0	0	0
Religion	2015	0	0	0	0	0
	2014	0	0	0	0	0
	2013	0	0	0	0	0
Sexual Orientation	2015	0	0	0	0	0
	2014	0	0	0	0	0
	2013	0	0	0	0	0
Ethnicity	2015	0	0	0	0	0
	2014	0	0	0	0	0
	2013	0	0	0	0	0
Disability	2015	0	0	0	0	0
	2014	0	0	0	0	0
	2013	0	0	0	0	0

Colorado Mountain College – Steamboat Springs	Year	All On-Campus Property	Non-Campus Property	Public Property	Total	Residential Facilities Breakdown
Selected Criminal Offenses						
Murder & Non-negligent Manslaughter	2015	0	0	0	0	0
	2014	0	0	0	0	0
	2013	0	0	0	0	0
Negligent Manslaughter	2015	0	0	0	0	0
	2014	0	0	0	0	0
	2013	0	0	0	0	0
Robbery	2015	0	0	0	0	0
	2014	0	0	0	0	0
	2013	0	0	0	0	0
Aggravated Assault	2015	0	0	0	0	0
	2014	0	0	0	0	0
	2013	0	0	0	0	0
Burglary	2015	0	0	0	0	0
	2014	0	0	0	0	0
	2013	0	0	0	0	0
Motor Vehicle Theft	2015	0	0	0	0	0
	2014	0	0	0	0	0
	2013	0	0	0	0	0
Arson	2015	0	0	0	0	0
	2014	0	0	0	0	0
	2013	0	0	0	0	0
VAWA Offenses						
Forcible Sex Offenses (Rape, Sodomy, Sexual Assault With an Object, Fondling)	2015	0	0	0	0	0
	2014	0	0	0	0	0
	2013	0	0	0	0	0
Non-Forcible Sex Offenses (Incest/Statutory Rape)	2015	0	0	0	0	0
	2014	0	0	0	0	0
	2013	0	0	0	0	0
Domestic Violence	2015	0	0	0	0	0
	2014	0	0	0	0	0
	2013	N/A	N/A	N/A	N/A	N/A
Dating Violence	2015	2	0	0	2	1
	2014	3	0	0	3	3
	2013	N/A	N/A	N/A	N/A	N/A
Stalking	2015	0	0	0	0	0
	2014	0	0	0	0	0
	2013	N/A	N/A	N/A	N/A	N/A

Colorado Mountain College – Steamboat Springs	Year	All On-Campus Property	Non-Campus Property	Public Property	Total	Residential Facilities Breakdown
Liquor, Drug & Weapons Statistics						
Liquor Law Violation Arrests	2015	10	0	0	10	10
	2014	2	0	0	2	2
	2013	0	0	0	0	0
Liquor Law Violation Disciplinary Referrals	2015	5	0	0	5	4
	2014	35	0	0	35	35
	2013	14	0	0	14	14
Drug Law Violation Arrests	2015	7	0	0	7	7
	2014	0	0	0	0	0
	2013	4	0	0	4	4
Drug Law Violation Disciplinary Referrals	2015	6	0	0	6	5
	2014	23	0	0	23	21
	2013	22	0	0	22	22
Weapons Violations Arrests	2015	0	0	0	0	0
	2014	0	0	0	0	0
	2013	0	0	0	0	0
Weapons Violations Disciplinary Referrals	2015	0	0	0	0	0
	2014	1	0	0	1	1
	2013	0	0	0	0	0
Reportable Hate Crimes						
Race	2015	0	0	0	0	0
	2014	0	0	0	0	0
	2013	0	0	0	0	0
Gender	2015	0	0	0	0	0
	2014	1	0	0	1	1
	2013	0	0	0	0	0
Religion	2015	0	0	0	0	0
	2014	0	0	0	0	0
	2013	0	0	0	0	0
Sexual Orientation	2015	0	0	0	0	0
	2014	0	0	0	0	0
	2013	0	0	0	0	0
Ethnicity	2015	0	0	0	0	0
	2014	0	0	0	0	0
	2013	0	0	0	0	0
Disability	2015	0	0	0	0	0
	2014	0	0	0	0	0
	2013	0	0	0	0	0

2016 Annual Security & Fire Safety Report – APPENDIX C

Select Campus: [Aspen](#), [Breckenridge](#), [Buena Vista](#), [Carbondale](#), [Central Services](#), [Dillon](#), [Edwards](#), [Glenwood Springs](#), [Glenwood Springs-Spring Valley](#), [Leadville](#), [Rifle](#), [Steamboat Springs](#)

Aspen		
Agency - Local Resources	Address	Phone
Pitkin County Sheriff	506 E. Main St. Aspen, CO 81611	(970) 920-5300
Aspen Valley Hospital	0401 Castle Creek Road Aspen, Co 81611	(970) 925-1120
Response - Help for Survivors of Domestic Violence and Sexual Assault	Po Box 1340 Aspen, Co 81612	(970) 920-5357
Sexual Assault Nurse Examiner/ Forensic Nurse Examiner	Aspen Valley Hospital 0401 Castle Creek Road Aspen, Co 81611	(970) 925-1120
Roaring Fork Gay & Lesbian Community Fund / AspenOUT	216 N Garmish St. Aspen, Co 81611	(970) 925-4124
Pitkin County Courthouse & 9th Judicial District	506 E. Main Suite 300 Aspen, CO 81611	(970) 925-7635
Breckenridge		
Agency - Local Resources	Address	Phone
Breckenridge Police Department	150 Valley Brook Street Breckenridge, Co 80424	(970) 453-2941
St. Anthony Breckenridge Community Emergency Center	555 South Park, Plaza II Breckenridge, CO 80424	(970) 453-1010
Advocates for Victims of Assault	Po Box 1859 Frisco, Co 80443	(970) 668-3906
Sexual Assault Nurse Examiner/ Forensic Nurse Examiner	St. Anthony Summit Medical Center 340 Peak One Drive Frisco, Co 80443	(970) 668-3300
Colorado Anti Violence Program	Po Box 181085 Denver, CO 80218	(888) 557-4441
Summit County Courthouse & 5th Judicial District	501 N. Park Avenue Breckenridge, Co 80424	(970) 453-2272

Buena Vista		
Agency - Local Resources	Address	Phone
Chaffee County Sheriff	132 Crestone Ave, Salida, CO 81201	(719) 539-2596
St. Anthony Summit Medical Center	340 Peak One Dr, Frisco, CO 80443	(970) 668-3300
The Alliance Against Domestic Abuse	Po Box 173 Salida, CO 81201	(719) 395-9321
Sexual Assault Nurse Examiner/ Forensic Nurse Examiner	St. Anthony Summit Medical Center 340 Peak One Dr, Frisco, CO 80443	(970) 668-3300
Colorado Anti Violence Program	Po Box 181085 Denver, CO 80218	(888) 557-4441
Chaffee County Courthouse & 11th Judicial District	142 Crestone Saida, CO 81201	(719) 539-2561
Carbondale		
Agency - Local Resources	Address	Phone
Carbondale Police Department	511 Colorado Ave # 911, Carbondale, CO 81623	(970) 963-2662
Valley View Hospital	1906 Blake Ave, Glenwood Springs, CO 81601	(970) 945-6535
Advocate Safehouse Project	109 8th St, Glenwood Springs, CO 81601	(970) 945-4439
Sexual Assault Nurse Examiner/ Forensic Nurse Examiner	St. Anthony Summit Medical Center 340 Peak One Dr, Frisco, CO 80443	(970) 668-3300
Roaring Fork Gay & Lesbian Community Fund / AspenOUT	216 N Garmish St. Aspen, Co 81611	(970) 925-4124
Garfield County Courthouse	108 8th St Suite 104 Glenwood Springs, Co 81601	(970) 928-3065
9th Judicial District	109 8th St Suite 308 Glenwood Springs, Co 81601	(970) 945-8635

Central Services		
Agency - Local Resources	Address	Phone
Glenwood Springs Police Department	101 W 8th St, Glenwood Springs, CO 81601	(970) 384-6500
Valley View Hospital	1906 Blake Ave, Glenwood Springs, CO 81601	(970) 945-6535
Advocate Safehouse Project	PO Box 2036, Glenwood Springs, CO 81602	(970) 945-4439
Sexual Assault Nurse Examiner/ Forensic Nurse Examiner	St. Anthony Summit Medical Center 340 Peak One Dr, Frisco, CO 80443	(970) 668-3300
Roaring Fork Gay & Lesbian Community Fund / AspenOUT	216 N Garmish St. Aspen, Co 81611	(970) 925-4124
Garfield County Courthouse	109 8th St. Suite 104 Glenwood Springs, CO 81601	(970) 928-3065
9th Judicial District	109 8th St Suite 308 Glenwood Springs, Co 81601	(970) 945-8635
Dillon		
Agency - Local Resources	Address	Phone
Dillon Police Department	275 Lake Dillon Drive, Dillon, CO 80435	(970) 468-6078
St. Anthony Summit Medical Center	340 Peak One Dr, Frisco, CO 80443	(970) 668-3300
Advocates for Victims of Assault	P.O. Box 1859, Frisco, CO 80443	(970) 668-3906
Sexual Assault Nurse Examiner/ Forensic Nurse Examiner	St. Anthony Summit Medical Center 340 Peak One Dr, Frisco, CO 80443	(970) 668-3300
The Center Advancing LGBT Colorado	1301 E. Colfax, Denver, CO 80218	(303) 733-7743
Summit County Justice Center & 5th Judicial District	501 N. Park Avenue Breckenridge, CO 80424	(970) 453-2272

Edwards		
Agency - Local Resources	Address	Phone
Eagle County Sheriff	0885 E Chambers Ave. P.O. Box 359 Eagle, CO 81631	(970) 328-8500
Vail Valley Medical Center- Edwards Campus	322 Beard Creek Road, Edwards, CO 81632	(970) 477-3090
Resource Center Domestic Violence/ Sexual Assault Victims	P.O. Box 1859, Frisco, CO 80443	(970) 949-7086
Sexual Assault Nurse Examiner/ Forensic Nurse Examiner	St. Anthony Summit Medical Center 340 Peak One Dr, Frisco, CO 80443	(970) 668-3300
The Center Advancing LGBT Colorado	1301 E. Colfax, Denver, CO 80218	(303) 733.7743
Eagle County Justice Center & 5th Judicial District	885 Chambers Ave Eagle, CO 81631	(970) 328-6373
Glenwood Springs		
Agency - Local Resources	Address	Phone
Glenwood Springs Police Department	101 W 8th St, Glenwood Springs, CO 81601	(970) 384-6500
Valley View Hospital	1906 Blake Ave, Glenwood Springs, CO 81601	(970) 945-6535
Advocate Safehouse Project	PO Box 2036, Glenwood Springs, CO 81602	(970) 945-4439
Sexual Assault Nurse Examiner/ Forensic Nurse Examiner	St. Anthony Summit Medical Center 340 Peak One Dr, Frisco, CO 80443	(970) 668-3300
Roaring Fork Gay & Lesbian Community Fund / AspenOUT	216 N Garmish St. Aspen, Co 81611	(970) 925-4124
Garfield County Courthouse	109 8th St. Suite 104 Glenwood Springs, CO 81601	(970) 928-3065
9th Judicial District	109 8th St Suite 308 Glenwood Springs, Co 81601	(970) 945-8635

Glenwood Springs - Spring Valley		
Agency - Local Resources	Address	Phone
Garfield County Sheriff	107 8th St Glenwood Springs, Co 81601	(970) 945-0453
Valley View Hospital	1906 Blake Ave, Glenwood Springs, CO 81601	(970) 945-6535
Advocate Safehouse Project	PO Box 2036 Glenwood Springs, CO 81602	(970) 945-4439
Roaring Fork Gay & Lesbian Community Fund / AspenOUT	216 N Garmish St. Aspen, Co 81611	(970) 925-4124
Sexual Assault Nurse Examiner/ Forensic Nurse Examiner	St. Anthony Summit Medical Center 340 Peak One Dr, Frisco, CO 80443	(970) 668-3300
Garfield County Courthouse	109 8th St. Suite 104 Glenwood Springs, CO 81601	(970) 928-3065
9th Judicial District	109 8th St Suite 308 Glenwood Springs, Co 81601	(970) 945-8635
Leadville		
Agency - Local Resources	Address	Phone
Leadville Police Department	800 Harrison Ave, Leadville, CO 80461	(719) 486-1365
St. Anthony Summit Medical Center	340 Peak One Dr, Frisco, CO 80443	(970) 668-3300
Advocates of Lake County, Inc.	115 West 6th St Leadville, CO 80461	(719) 486-3530
Sexual Assault Nurse Examiner/ Forensic Nurse Examiner	St. Anthony Summit Medical Center 340 Peak One Dr, Frisco, CO 80443	(970) 668-3300
LGBT Friendly Treatment Centers	118 West 6th Street Leadville, Colorado 80461	(844) 279-6495
Lake County Justice Center & 5th Judicial District	505 Harrison Ave. Leadville, CO 80461	(719) 293-8100

Rifle		
Agency - Local Resources	Address	Phone
Rifle Police Department	202 Railroad Ave. Rifle, CO 81650	(970) 665-6400
Grand River Health	501 Airport Rd, Rifle, CO 81650	(970) 625-1510
Advocate Safehouse Project	PO Box 2036 Glenwood Springs, CO 81602	(970) 945-4439
Sexual Assault Nurse Examiner/ Forensic Nurse Examiner	St. Anthony Summit Medical Center 340 Peak One Dr, Frisco, CO 80443	(970) 668-3300
Roaring Fork Gay & Lesbian Community Fund / AspenOUT	216 N Garmish St. Aspen, Co 81611	(970) 925-4124
Garfield County Associate Court - Rifle	200 E. 18th St., Suite 103 Rifle, CO 81650	(970) 625-5100
9th Judicial District	109 8th St Suite 308 Glenwood Springs, Co 81601	(970) 945-8635
Steamboat Springs		
Agency - Local Resources	Address	Phone
Steamboat Springs Police Services	840 Yampa Avenue, Steamboat Springs, CO 80487	(970) 879-1144
Yampa Valley Medical Center	1024 Central Park Dr, Steamboat Springs, CO 80487	(970) 879-1322
Advocates Building Peaceful Communities	465 Angles Drive, Steamboat Springs, CO 80477	(970) 879-8888
Sexual Assault Nurse Examiner/ Forensic Nurse Examiner	Yampa Valley Medical Center 1024 Central Park Dr, Steamboat Springs, CO 80487	(970)-879-1322
LGBT Steamboat Springs Facebook	https://www.facebook.com/LGBTSTEAMBOAT	
Routt Combined Court & 14th Judicial District	1955 Shield Drive Steamboat Springs, CO 80477	(970) 879-5020

2016 Annual Security & Fire Safety Report – APPENDIX C

National Resources

Other resources available to persons who report being the victim of sexual assault, domestic violence, dating violence, or stalking, include:

<http://www.ccasa.org/> - Colorado Coalition Against Sexual Assault

<http://ccadv.org/> - Colorado Coalition Against Domestic Violence

<http://coavp.org/> - Colorado Anti-Violence Program, Building Safety and Justice for LGBTQ Communities

<http://www.rainn.org> - Rape, Abuse and Incest National Network

<http://www.nsvrc.org> - National Sexual Violence Resource Center

<http://www.nrcdv.org/> - National Resource Center on Domestic Violence

<http://www.thehotline.org/> - National Domestic Violence Hotline

<http://www.survivorproject.org/> - Survivor Project

<http://www.mencanstoprape.org/> - Men Can Stop Rape

<http://www.victimsofcrime.org/ourprograms/stalking-resource-center/stalking-information/> - Stalking Resource Center

<http://maketheconnection.net/conditions/military-sexual-trauma> - Make the Connection (Support for Veterans)

<http://www.whitehouse.gov/1is2many> - 1 is 2 Many (Focus on teens and women 16-24)

<https://www.notalone.gov/> - Not Alone Together Against Sexual Assault

<http://www.ovw.usdoj.gov/sexassault.htm> - Department of Justice

<http://www2.ed.gov/about/offices/list/ocr/index.html> - Department of Education, Office for Civil Rights