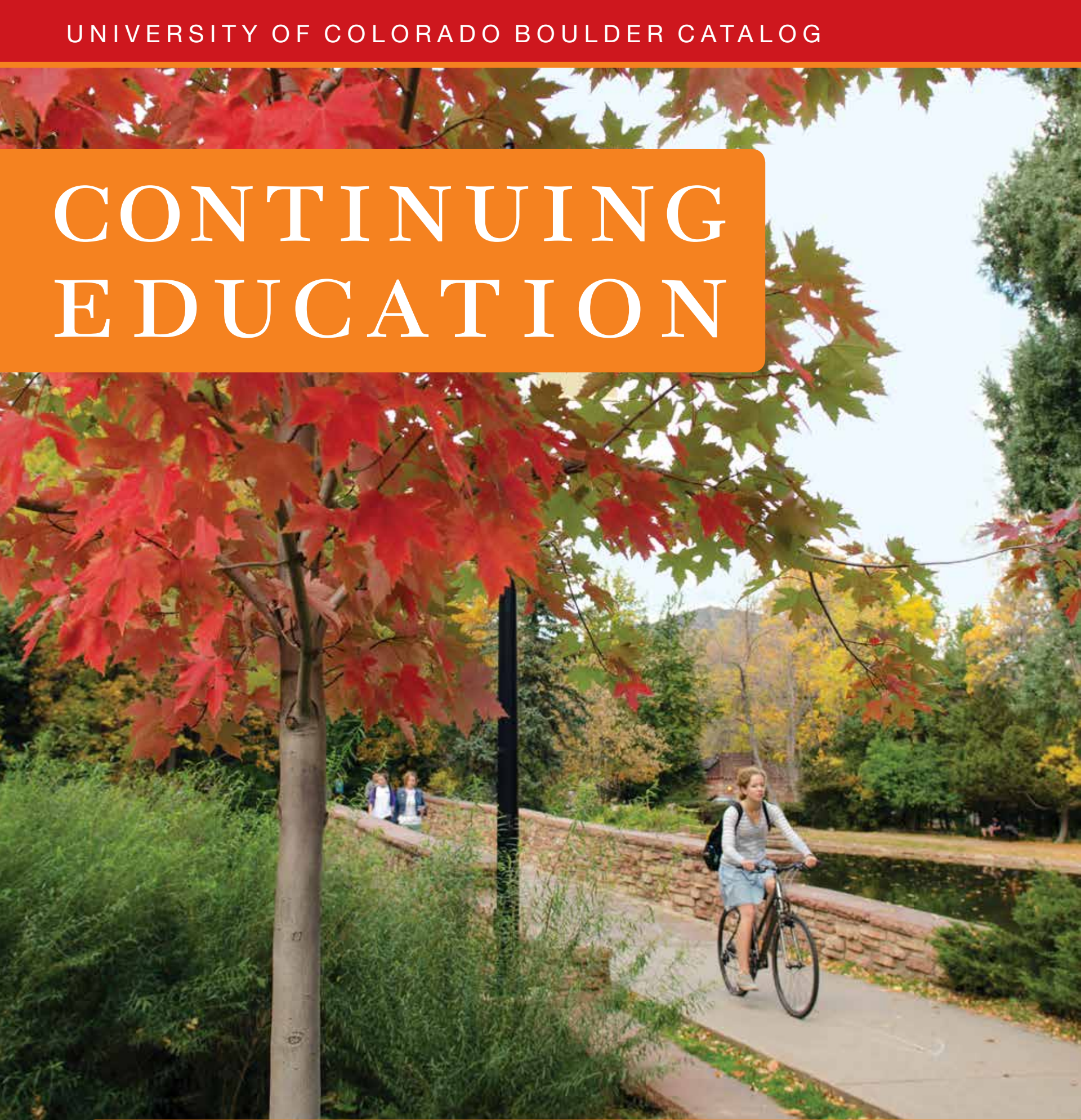


CONTINUING EDUCATION



Music to Your Ears
Evening Credit— p.2

“You Are Biology.”
Online Credit — p.8

**Big Challenges Lead
To Big Achievements**
CU Complete — p. 15

Celebrating 40 Years
International English
Center — p.22

Explore more online:
Visit ce.colorado.edu

FALL '15

LEARNING DOESN'T ALWAYS FOLLOW THE TRADITIONAL COLLEGE PATH

The Division of Continuing Education provides a variety of quality educational opportunities by extending the University of Colorado Boulder's resources in nontraditional ways.

Whether you need to complete a main campus prerequisite online or want to test the waters before returning to college, we provide unique learning options.

Our dedicated enrollment and advising staff is available to help you explore the possibilities and determine the best fit for you.

Learning is a lifelong journey. Take your first step at ce.colorado.edu.



CONTENTS

Earn CU-Boulder Credit

- 2 Evening Credit
- 8 Online Credit
- 15 CU Complete
- 16 Applied Music
- 18 ACCESS
- 18 High School Concurrent
- 18 Individualized Instruction
- 20 Summer Session

Ways to Advance Your Career

- 17 Speech Language and Hearing Sciences
- 19 Post-Baccalaureate Health Professions
- 29 Career Services

Community Engagement

- 16 Youth Piano
- 21 CU on the Weekend
- 24 Science Discovery
- 26 Outreach and Engagement

International Programs

- 18 Visiting International Student Program
- 22 International English Center

Connect With Us

28 Enrollment and Student Resources

Learn more about the first steps toward taking advantage of the educational opportunities available through Continuing Education.

ce.colorado.edu

Course descriptions, registration, and tuition information is available online.



Printed on Forest Stewardship Council paper ensuring the highest standards of environmental and social responsibility. Share your catalog with friends, and recycle all appropriate materials. Thank you.

Appreciation of Music

STEVE MULLINS

“Today we think of music as a commercial commodity— something separate from **MAKING** music ourselves.”

“We can’t be human and not make music in some way; everyone is a musician by nature,” says Steve. “Why a particular music sounds the way it does is a reflection of the culture from which it came, and the world view it represents. Learning to listen in new ways, with an awareness of the context and meaning behind the sounds, opens us to new ideas and an appreciation of people who may be different from ourselves. It helps us understand other people’s experience.”

See p. 5 for course details.

EARN CREDIT IN THE EVENING

Make significant progress toward a degree or acquire career-advancing skills without putting the rest of your busy life on hold. Evening Credit allows you to start a degree, finish one, enhance your employability, experiment with returning to college, or supplement your current on-campus course load. It all depends on you.

Enrollment and Eligibility

We want to help you be successful at the University of Colorado and meet your academic goals. Requirements for admission vary by your status (freshman, transfer, second-degree student), so set up an academic advising appointment at ce.colorado.edu/advising before you enroll in classes.

Enroll through MyCUInfo.colorado.edu, by mail, fax, or in person at the Division of Continuing Education, 1505 University Avenue, 8 am-5 pm Monday through Friday.

New Students

- A high school diploma or GED is required for enrollment.

- Students under age 22 should bring copies of high school transcripts, any college transcripts, and SAT or ACT scores to advising appointments.
- If you are considering applying to CU-Boulder as a degree student in the future, meet with a Continuing Education academic advisor to learn about your academic options.

Current CU-Boulder Students

- Enroll through MyCUInfo.colorado.edu
- Evening credits are just like those awarded on main campus. Grades count toward your GPA. And your transcript doesn’t distinguish between evening and daytime courses.

- Individuals with University of Colorado service indicators (registration stops and financial holds) may not enroll.

For more information about admission procedures and registration status, call Continuing Education at 303-492-5148.

Adding and/or Dropping Courses

A variety of courses are offered through Evening Credit each semester. See the list of courses by start date on pages 4-7 or search for courses by visiting ce.colorado.edu.

Once registered, you may choose to withdraw from a course. If you fail to officially withdraw, you may receive a grade of F for that course and be liable for any tuition and fees. If you don’t regularly attend your course you may be administratively dropped. Check with your instructor or contact Continuing Education for additional information.

Learn more about deadlines for enrolling and dropping courses on p. 4.

EVENING CREDIT



Final Exams and Grades

Final exams are held the last day of the class. Final grades will be available on **MyCUInfo.colorado.edu** approximately two weeks after a class ends. To obtain an official transcript, visit the registrar's office website at **www.colorado.edu/registrar**.

Residency

Tuition is determined by your residency. If you have lived in Colorado for the past 12 months, you may qualify for in-state tuition rates. To learn more or provide documentation of residency, contact our classification coordinator at 303-492-5148.

Tuition

Tuition for Evening Credit is assessed in addition to any tuition paid on campus (resident or nonresident). However, Continuing Education will charge the in-state tuition rate for Evening Credit when a nonresident degree student pays full out-of-state tuition through the Boulder campus and then also enrolls in additional Evening Credit courses.

In-state tuition

\$300 per credit hour.

Out-of-state tuition

\$1,172 per credit hour.

A full tuition schedule is available at **ce.colorado.edu/resources**.


Student Fees

Some courses require special equipment or materials, necessitating an additional course fee.

Evening Credit students can choose to pay main campus student fees for use of the Recreation Center, Wardenburg Student Health Center, an RTD bus pass, etc. Visit **ce.colorado.edu/resources** for information.

Faculty and Staff Discounts

University of Colorado faculty and staff on at least a half-time, permanent appointment and retired faculty and staff may enroll in classes at a 50% tuition discount. Please provide proof of status when you enroll.



Get Connected

Learn more about Evening Credit at **ce.colorado.edu/evening-credit**

COURSES BY START DATE

Course No.-Hours	Sec.	Class No.	Times	Course Title	Core	In-state Tuition
------------------	------	-----------	-------	--------------	------	------------------

FULL SESSION

Monday, Wednesday, and Friday courses begin August 24 and end December 11

FNCE 2820-3	302E	38488	10-11 am	Introduction to Personal Financial Planning	none	\$900
FNCE 2820-3	301E	38486	9-10 am	Introduction to Personal Financial Planning	none	\$900

Tuesday and Thursday course begins August 25 and ends December 10

ARTS 1010-3	300E	38438	5-8 pm	Introduction to Studio Art	none	\$1,125
-------------	------	-------	--------	----------------------------	------	---------

IMPORTANT DATES FOR EVENING CREDIT

Fall 2015

	Full Session (14 weeks)	10-Week Session	Session 1 (7 Weeks)	Session 2 (7 Weeks)
Registration Begins	March 30	March 30	March 30	March 30
Courses Begin	August 31	September 14	August 31	October 19
11:59 pm deadline to enroll online using MyCUInfo (5 pm in person) or add your name to a wait list	September 8	September 21	September 2	October 21
Deadline to petition for in-state tuition classification	September 11	September 25	September 4	October 23
11:59 pm deadline using MyCUInfo (5 pm in person) to select pass/fail grading or drop with a 100% refund*	September 15	September 28	September 8	October 26
Tuition Due	September 25	September 25	September 25	November 5
11:59 pm deadline to withdraw using MyCUInfo (5 pm in person or via email to ceregistration@colorado.edu) with a 60% refund**	September 29	October 5	September 15	November 2
11:59 pm deadline to withdraw using MyCUInfo (5 pm in person or via email to ceregistration@colorado.edu) with a 40% refund**	October 13	October 12	September 22	November 9
11:59 pm deadline to withdraw using MyCUInfo (5 pm in person or via email to ceregistration@colorado.edu) without instructor's signature. No tuition adjustment***	November 5	October 30	October 2	November 20
5 pm deadline to add classes with instructor's signature.	December 7	November 16	October 12	December 7
Petition documenting extenuating circumstances required to add courses. Petition forms available at Continuing Education.	December 8	November 17	October 13	December 8
Final exams. Course Ends.	December 7-10	November 16-19	October 14-15	December 9-10

* Withdrawals from classes after this date will appear as a W on your academic record

**Students who withdraw may be eligible for a tuition adjustment depending on their residency status, when they drop, and the number of credits in which they are enrolled.

*** Instructor's signature and petition documenting extenuating circumstances required after this date to withdraw from classes. Petition forms available at Continuing Education.

Other Important Dates:

September 4: Deadline to apply for the Nontraditional Student Scholarship

September 7: Labor Day holiday. University Closed.

November 23-25: Fall Break. No Classes.

November 26-27: Thanksgiving Holiday. University Closed.

EVENING CREDIT

Course No.–Hours	Sec.	Class No.	Times	Course Title	Core	In-state Tuition
Monday courses begin August 31 and end December 7						
BCOR 2300-3	300E	38447	5:30-7:30 pm	Adding Value with Management	Business Core	\$900
CLAS 1051-3	300E	38451	6-8 pm	The World of the Ancient Greeks	historical context	\$900
ECON 2010-4	300E	38472	6-9 pm	Principles of Microeconomics	contemporary societies	\$1,200
ENGL 3060-3	300E	39846	6-8 pm	Modern and Contemporary Literature for Nonmajors	literature and the arts	\$900
FILM 2003-3	300E	38490	6-9 pm	Landscape and Cinema	none	\$990
HIST 1015-3	300E	38473	6-8 pm	History of the United States to 1865	United States context	\$900
MUEL 1832-3	300E	38462	6-8 pm	Appreciation of Music	literature and the arts	\$935
PHIL 1000-3	300E	38452	6-8 pm	Introduction to Philosophy	ideals and values	\$900
PSYC 2012-3	300E	38441	6-8 pm	Biological Psychology 1	natural science	\$900
PSYC 3456-3	300E	38484	6-8 pm	Psychology of Personality	none	\$900
THTR 1009-3	300E	38201	6-9 pm	Introduction to Theatre	literature and the arts	\$945
THTR 3011-3	300E	38202	6-9 pm	Development of the American Musical Theatre	literature and the arts	\$945
WRTG 3020-3	300E	38149	6-7:30 pm	Topics in Writing	written communication	\$910
Monday and Wednesday courses begin August 31 and end December 9						
SPAN 1010-5	300E	38206	5:30-7:30 pm	Beginning Spanish 1	foreign language	\$1,520
SPAN 1020-5	300E	38205	6-8 pm	Beginning Spanish 2	foreign language	\$1,520
SPAN 1150-5	300E	38204	5:30-7:30 pm	Intensive First Year Spanish	foreign language	\$1,520
Tuesday courses begin September 1 and end December 8						
ANTH 2010-3	300E	38150	6:30-8:30 pm	Introduction to Physical Anthropology 1	natural science	\$900
CESR 4821-3	300E	38449	5:30-8:30 pm	Values and the Power of the Consumer	none	\$900
COMM 3300-3	300E	38614	5:30-8:30 pm	Rhetorical Foundations of Communication	none	\$915
ECON 2020-4	300E	38478	6-9 pm	Principles of Macroeconomics	contemporary societies	\$1,200
ENGL 1191-3	300E	38481	6-9 pm	Introduction to Creative Writing	none	\$912
MATH 2510-3	300E	38463	6-8 pm	Introduction to Statistics	none	\$900
MUEL 2852-3	300E	38453	6-9 pm	Music of the Rock Era	literature and the arts	\$935
PSCI 3301-3	300E	39847	6-9 pm	Gender, Sexuality and U.S. Law	human diversity	\$900
SOCY 2031-3	300E	38434	6-8 pm	Social Problems	ideals and values	\$900
SPAN 2110-3	300E	38203	6-8 pm	Second-Year Spanish 1	foreign language	\$920
WRTG 1150-3	301E	38483	6-8 pm	First-Year Writing and Rhetoric	written communication	\$925
Tuesday and Thursday course begins September 1 and ends December 10						
MATH 1300-5	300E	38464	6-8:30 pm	Calculus 1	quantitative reasoning and mathematical skills	\$1,500



Start Earning Evening Credit

Course descriptions and more are available at ce.colorado.edu/evening-credit

COURSES BY START DATE (continued)

Course No.–Hours	Sec.	Class No.	Times	Course Title	Core	In-state Tuition
------------------	------	-----------	-------	--------------	------	------------------

FULL SESSION (continued)**Wednesday courses begin September 2 and end December 9**

CLAS 1061-3	300E	38454	6-8 pm	The Rise and Fall of Ancient Rome	historical context	\$900
COMM 1300-3	300E	38460	5:30-8:30 pm	Public Speaking	none	\$915
EBIO 1210-3	300E	40143	6-8 pm	General Biology 1	natural science	\$900
EBIO 1220-3	300E	38470	6-9 pm	General Biology 2	natural science	\$900
GEOG 1982-3	300E	38477	6-9 pm	World Regional Geography	none	\$900
GEOG 3251-3	300E	38474	6-9 pm	Mountain Geography	none	\$900
HIST 1025-3	300E	38469	6-8 pm	History of the United States since 1865	United States context	\$900
MATH 1012-3	300E	38465	6-8 pm	Quantitative Reasoning and Mathematical Skills	quantitative reasoning and mathematical skills	\$900
PHIL 1600-3	300E	38448	6-8 pm	Philosophy and Religion	ideals and values	\$900
PSCI 1101-3	300E	39727	6-8 pm	American Politics	contemporary societies or US context	\$900
PSYC 1001-3	300E	38442	6:30-9:30 pm	General Psychology	none	\$900
SOCY 1001-3	300E	38436	6-8 pm	Introduction to Sociology	contemporary societies	\$900
WMST 2000-3	300E	38200	6-8 pm	Introduction to Feminist Studies	human diversity	\$900

Thursday courses begin September 3 and end December 10

ANTH 3010-3	300E	38151	6:30-8:30 pm	The Human Animal	natural science	\$900
BCOR 1015-3	300E	38444	5:30-8:30 pm	World of Business	Business Core	\$900
ENGL 3000-3	300E	38482	6-8 pm	Shakespeare for Nonmajors	literature and the arts	\$900
FILM 1002-3	300E	38487	6-8:30 pm	Film Analysis for Non-Majors	none	\$990
FILM 3002-3	300E	38489	6-9 pm	Film Topics: Australia/New Zealand Cinema	none	\$990
HIST 1012-3	300E	38471	6-9 pm	Empire, Revolution and Global War: European	historical context	\$900
MATH 1011-3	300E	38466	6-9 pm	College Algebra	quantitative reasoning and mathematical skills	\$900
MUEL 2752-3	300E	38459	6-8 pm	Music in American Culture	United States context	\$935
MUEL 2772-3	300E	38456	6-8 pm	World Musics	human diversity	\$935
PHIL 1100-3	300E	38450	6-8 pm	Ethics	ideals and values	\$900
PSCI 3143-3	300E	38443	6-9 pm	Current Affairs in International Relations	contemporary societies	\$900
PSYC 2145-3	300E	38440	6-8 pm	Introductory Cognitive Psychology	none	\$900
SOCY 2061-3	300E		6-8 pm	Intro to Social Statistics	none	\$900

**Ryan Hogrefe**

Appreciation of Music

“I’ve always liked music and how universal it is, so I took this class as one of my requirements. I enjoyed learning about such an impressive array of music, including some styles that have been performed for thousands of years. Now, I definitely listen to music differently. I can hear different things in the music and understand it more.”

EVENING CREDIT

Course No.--Hours	Sec.	Class No.	Times	Course Title	Core	In-state Tuition
-------------------	------	-----------	-------	--------------	------	------------------

SESSION 1

Tuesday and Thursday course begins September 1 and ends October 15

GEOG 1001-4	100E	38480	6-8 pm	Environmental Systems 1 - Climate and Vegetation	natural science	\$1,200
-------------	------	-------	--------	--	-----------------	---------

10 WEEK

Monday course begins September 14 and ends November 16

SOCY 3151-3	400E	38433	6-8 pm	Self in Modern Society	United States context or ideals and values	\$900
-------------	------	-------	--------	------------------------	--	-------

Tuesday courses begin September 15 and end November 17

GEOG 1992-3	400E	38476	6:30-8:30 pm	Human Geographies	none	\$900
WRTG 3020-3	400E	38152	6-7:30 pm	Topics in Writing	written communication	\$910

Wednesday courses begin September 16 and end November 18

ARTH 1300-3	400E	38153	6-8 pm	History of World Art 1	literature and the arts	\$975
CLAS 4130-3	400E	38458	6-9 pm	Greek and Roman Comedy	literature and the arts	\$900
IPHY 2420-3	400E	38468	6-8 pm	Nutrition for Health and Performance	natural science	\$900
PSCI 2223-3	400E	38445	6-8 pm	Introduction to International Relations	contemporary societies	\$900
RLST 2500-3	400E	38437	6-8 pm	Religions in the United States	United States context or ideals and values	\$900
SOCY 1016-3	400E	38435	6-8 pm	Sex, Gender, and Society 1	human diversity	\$900

Thursday courses begin September 17 and end November 19

ARTH 2039-3	400E	38154	6-8:30 pm	Greek Art and Archaeology	literature and the arts	\$900
CLAS 2039-3	400E	38455	6-8:30 pm	Greek Art and Archaeology	literature and the arts	\$900

SESSION 2

Monday course begins October 19 and ends December 7

ANTH 1160-3	200E	38148	6-8:30 pm	The Ancient Egyptian Civilization	human diversity	\$900
-------------	------	-------	-----------	-----------------------------------	-----------------	-------

Tuesday and Thursday course begins October 20 and ends December 10

GEOG 1011-4	200E	38479	6-8 pm	Environmental Systems 2 - Landscapes and Water	natural science	\$1,200
-------------	------	-------	--------	--	-----------------	---------



Find Course Descriptions and More

ce.colorado.edu/evening-credit

Biology: A Human Approach

AMANDA SCHAEZEL

“Biology is everywhere. You are biology.
Your ability to learn and to communicate is biology.
Learning how biology works is

FASCINATING.”

“I’m a biology enthusiast who likes getting others excited about biology,” says Amanda, who has been teaching for over 20 years and has taken many online classes herself. “The best online class experience involves active learning to engage students. My class is designed so that students interact with the material on multiple levels and apply what they learn to their own lives. Making biology relevant is key.”

See p. 10 for course details.

THE FLEXIBILITY OF ONLINE WITH THE QUALITY OF CU

Online Credit allows you to fit your education into your schedule with convenient coursework options. Term-based courses are offered on a semester calendar like in-person courses, but you choose when and where you learn. Self-paced courses offer a flexible start date throughout the year.

Online courses provide CU-Boulder rigor and rich interaction with diverse instructors and students. You can earn extra credit toward your degree, enhance and develop your job skills, prepare for a career change, or just satisfy your curiosity – all at your own convenience.

ONLINE CREDIT



Enrollment and Eligibility

Whether your goal is to earn extra credit toward your degree, enhance and develop your job skills, prepare for a career change, or just satisfy your curiosity, we want to help you succeed. That's why our academic advisors are available to help you by phone or in person before you enroll in classes. They can explain your requirements for admission depending upon your status (freshman, transfer, second-degree student). Make an appointment online by visiting ce.colorado.edu/advising.

Enroll through MyCUInfo.colorado.edu, by mail, fax, or in person at the Division of Continuing Education, 1505 University Avenue, 8 am-5 pm Monday through Friday.

New Students

- A high school diploma or GED is required for enrollment.
- Students under age 22 should bring copies of high school transcripts, any college transcripts, and SAT or ACT scores to advising appointments.
- If you are considering applying to CU-Boulder as a degree student in the future, meet with a Continuing Education academic advisor to learn about your academic options.

Current CU-Boulder Students

- Enroll through MyCUInfo.colorado.edu
- Online credits are just like those awarded on main campus. Grades count toward your GPA. And your transcript doesn't distinguish between online and daytime courses.
- Individuals with University of Colorado service indicators (registration stops and financial holds) may not enroll.

For more information about admission procedures and registration status, call Continuing Education at 303-492-5148.

Course Information

Administered under the direction of the Online Credit Program, these University of Colorado credit classes are approved by the individual departments. For complete course descriptions, visit ce.colorado.edu/online-credit.

Term-based Courses

Term-based courses follow a fixed calendar so that all students will be on the same schedule and can regularly interact with each other online.

Self-paced Courses

Self-paced courses allow you up to 6 months to finish. Many of these courses involve online interaction among students and a broad range of web activities.

Tuition

Tuition for Online Credit is assessed in addition to any tuition paid on campus (resident or nonresident) by CU-Boulder degree students. However, Continuing Education charges a single rate for credits earned online, regardless of a student's in-state or out-of-state classification.

Online Credit tuition

\$377 per credit hour.

A full tuition schedule is available at ce.colorado.edu/tuition.

Faculty and Staff Discounts

University of Colorado faculty and staff on at least a half-time appointment are eligible for a 20% discount on most courses with the exception of the Writing and Rhetoric courses.

TERM-BASED ONLINE COURSES

These courses follow a semester calendar of assignments and examinations, but with the flexibility of a web based environment. Rich interaction between cohorts of students and instructors create dynamic learning opportunities.

TERM-BASED COURSES BY START DATE

Course No.–Hours	Section	Class No.	Course Title	Core	Tuition
Full Session – 14 Weeks: August 31-December 11					
ANTH 2010-3	581	37809	Introduction to Physical Anthropology 1	natural science	\$1131
ANTH 2020-3	581	37827	Introduction to Physical Anthropology 2	natural science	\$1131
ANTH 2200-3	581	38989	The Archaeology of Human History	historical context	\$1131
ANTH 3000-3	581	37828	Primate Behavior	natural science	\$1131
ANTH 4020-3	581	37829	Explorations in Anthropology: Digital Anthropology	none	\$1131
ARTS 1012-3	581	37833	Drawing for Non-Majors	none	\$1131
COMM 2400-3	581	37843	Discourse, Culture and Identities	human diversity	\$1131
COMM 2500-3	581	37845	Interpersonal Communication	none	\$1131
COMM 3310-3	581	37851	Principles and Practices of Argumentation	none	\$1131
COMM 3320-3	581	37856	Persuasion in Society	none	\$1131
COMM 3610-3	581	37859	Communication, Technology, and Society	none	\$1131
DNCE 1017-3	581	37861	Dance and Popular Culture	literature and the arts	\$1131
EBIO 1030-3	581	37862	Biology: A Human Approach 1	natural science	\$1131
EBIO 1040-3	581	37865	Biology: A Human Approach 2	natural science	\$1131
EBIO 1210-3	581	37867	General Biology 1	natural science	\$1131
EBIO 1220-3	581	37870	General Biology 2	natural science	\$1131
ENGL 1600-3	581	37877	Masterpieces of American Literature	literature and the arts	\$1131

IMPORTANT DATES FOR TERM-BASED ONLINE COURSES

Fall 2015

	Full Session (14 weeks)	10-Week Session	Session 1 (7 weeks)	Session 2 (7 weeks)
Registration Begins	March 30	March 30	March 30	March 31
Courses Begin	August 31	September 14	August 31	October 19
11:59 pm deadline to enroll online using MyCUInfo (5 pm in person) or add your name to a wait list	September 8	September 21	September 2	October 21
11:59 pm deadline using MyCUInfo (5 pm in person) to select pass/fail grading or drop with a 100% refund*	September 15	September 28	September 8	October 26
Tuition Due	September 25	September 25	September 25	November 5
11:59 pm deadline to withdraw using MyCUInfo (5 pm in person or via email to ceregistration@colorado.edu) with a 60% refund	September 29	October 5	September 15	November 2
11:59 pm deadline to withdraw using MyCUInfo (5 pm in person or via email to ceregistration@colorado.edu) with a 40% refund	October 13	October 12	September 22	November 9
11:59 pm deadline to withdraw using MyCUInfo (5 pm in person or via email to ceregistration@colorado.edu) without instructor's signature. No tuition adjustment	November 5	October 30	October 2	November 20
5 pm deadline to add with instructor's signature	December 7	November 16	October 12	December 7
Course Ends	December 11	November 20	October 16	December 11

* Withdrawals from classes after this date will appear as a W on your academic record.

ONLINE CREDIT

Course No.–Hours	Section	Class No.	Course Title	Core	Tuition
ENGL 1800-3	581	37880	American Ethnic Literatures	human diversity	\$1131
ENGL 3000-3	581	37883	Shakespeare for Non-Majors	literature and the arts	\$1131
ENGL 3000-3	582	37884	Shakespeare for Non-Majors	literature and the arts	\$1131
ENGL 3060-3	581	37886	Modern and Contemporary Literature for Nonmajors	literature and the arts	\$1131
ENGL 3060-3	582	37887	Modern and Contemporary Literature for Nonmajors	literature and the arts	\$1131
ENGL 3563-3	581	37888	Shakespeare	none	\$1131
ENGL 4665-3	581	37890	Studies in American Literature after 1900	none	\$1131
GEOG 1972-3	581	37894	Environment-Society Geography	none	\$1131
GEOG 1982-3	581	37891	World Regional Geography	none	\$1131
GEOG 1992-3	581	37893	Human Geographies	none	\$1131
GEOG 3822-3	581	37895	Geography of China	human diversity	\$1131
GEOG 4501-3	581	37896	Water Resources and Water Management of Western United States	none	\$1131
GEOG 5501-3	581	37898	Water Resources and Water Management of Western United States	none	\$1440
GEOL 1010-3	581	37902	Introduction to Geology	natural science	\$1131
HIST 1011-3	581	37907	Greeks, Romans, Kings & Crusaders: European History to 1600	historical context	\$1131
HIST 1012-3	581	37913	Empire, Revolution and Global War: European History Since 1600	historical context	\$1131
HIST 1015-3	581	37911	History of the United States to 1865	United States context	\$1131
HIST 1025-3	581	37914	History of the United States since 1865	United States context	\$1131
HIST 1123-3	581	37915	Introduction to British History Since 1660	historical context	\$1131
HIST 2100-3	581	37916	Revolution in History: Haitian Revolution of 1791-1804	historical context	\$1131
IPHY 2420-3	581	37925	Nutrition for Health and Performance	natural science	\$1131
IPHY 2420-3	582	37926	Nutrition for Health and Performance	natural science	\$1131
IPHY 3700-3	581	37931	Scientific Writing in Integrative Physiology	written communication	\$1131
MATH 1011-3	581	37933	College Algebra	quantitative reasoning and mathematical skills	\$1131
MATH 1012-3	581	37935	Quantitative Reasoning and Mathematical Skills	quantitative reasoning and mathematical skills	\$1131
MATH 1081-3	581	37934	Calculus for Social Science and Business	quantitative reasoning and mathematical skills	\$1131
MATH 1150-4	581	37932	Precalculus Mathematics	quantitative reasoning and mathematical skills	\$1508
MATH 2510-3	581	37930	Introduction to Statistics	none	\$1131
MUEL 2752-3	581	37929	Music in American Culture	United States context	\$1131
NRSC 4032-3	581	37923	Neurobiology of Learning and Memory	none	\$1131
NRSC 5032-3	581	37924	Neurobiology of Learning and Memory	none	\$1440
PHIL 1000-3	581	37917	Introduction to Philosophy	ideals and values	\$1131
PHIL 1100-3	581	37910	Ethics	ideals and values	\$1131
PHIL 1200-3	581	37909	Philosophy and Society	United States context or ideals and values	\$1131
PHIL 1400-3	581	37908	Philosophy and the Sciences	natural science	\$1131
PHIL 3140-3	581	37904	Environmental Ethics	ideals and values	\$1131
PSCI 1101-3	581	37903	The American Political System	contemporary societies or United States context	\$1131
PSCI 3143-3	581	38990	Current Affairs in International Relations	contemporary societies	\$1131
PSCI 3301-3	581	39195	Gender, Sexuality and U.S. Law	human diversity	\$1131
PSCI 4703-3	581	37899	Alternative World Futures	none	\$1131



Start Earning Online Credit

Course descriptions and more are available at ce.colorado.edu/online-credit

TERM-BASED COURSES BY START DATE (continued)

Course No.–Hours	Section	Class No.	Course Title	Core	Tuition
PSYC 4021-3	581	37897	Psychology and Neuroscience of Exercise	none	\$1131
PSYC 4541-3	581	39580	Special Topics in Psychology: Psychology of Sustainability	none	\$1131
SOCY 1001-3	581	37872	Introduction to Sociology	contemporary societies	\$1131
SOCY 1016-3	581	37871	Sex, Gender, and Society 1	human diversity	\$1131
SOCY 2031-3	581	37869	Social Problems	ideals and values	\$1131
SOCY 2077-3	581	37868	Environment and Society	ideals and values	\$1131
SOCY 4016-3	581	37866	Sex, Gender, and Society 2	none	\$1131
SOCY 4017-3	581	37864	Animals and Society	none	\$1131
SOCY 4117-3	581	37863	Food and Society	none	\$1131
WRWG 3020-3	581	37849	Topics in Writing: The Grotesque	written communication	\$1131
WRWG 3020-3	582	37850	Topics in Writing: Food and Culture	written communication	\$1131
WRWG 3020-3	583	37853	Topics in Writing: Travel Writing	written communication	\$1131
WRWG 3020-3	584	37854	Topics in Writing: Travel Writing	written communication	\$1131
WRWG 3020-3	585	37855	Topics in Writing: Writing on Music	written communication	\$1131
WRWG 3020-3	586	37857	Topics in Writing: Environmental Writing	written communication	\$1131
WRWG 3020-3	587	37858	Topics in Writing: Food and Culture	written communication	\$1131
WRWG 3030-3	581	37844	Writing on Science and Society	written communication	\$1131
WRWG 3030-3	582	37846	Writing on Science and Society	written communication	\$1131
WRWG 3030-3	583	37847	Writing on Science and Society	written communication	\$1131
WRWG 3030-3	584	37848	Writing on Science and Society	written communication	\$1131
WRWG 3040-3	581	37834	Writing on Business and Society	written communication	\$1131
WRWG 3040-3	582	37836	Writing on Business and Society	written communication	\$1131
WRWG 3040-3	583	37837	Writing on Business and Society	written communication	\$1131
WRWG 3040-3	584	37839	Writing on Business and Society	written communication	\$1131
WRWG 3040-3	585	37840	Writing on Business and Society	written communication	\$1131

Session 1 – 7 weeks: August 31 – October 16

ATOC 1050-3	581	37838	Weather and the Atmosphere	natural science	\$1131
ENGL 3246-1	581	38103	Topics in Popular Culture: Fandom and the Digital Age	none	\$377
WRWG 3090-1	581	37832	Advanced Topics: Digital Literacies	none	\$377

10-week Session: September 14 – November 20

ENGL 1500-3	581	37874	Masterpieces of British Literature	literature and the arts	\$1131
ENGL 3000-3	583	37885	Shakespeare for Non-Majors	literature and the arts	\$1131

Session 2 – 7 weeks: October 19 – December 11

ATOC 1060-3	581	37841	Our Changing Environment: El Nino, Ozone, and Climate	natural science	\$1131
IPHY 3430-3	582	38930	Introduction to Human Physiology	none	\$1131
WRWG 3090-2	582	37831	Advanced Topics: Digital Literacies	none	\$754

**Get Connected**

ce.colorado.edu/online-credit

Search for courses, find tuition information, and learn more.

ONLINE CREDIT

SELF-PACED ONLINE COURSES

Self-paced courses provide additional flexibility for students with busy schedules. Enroll at any time and finish in less than a semester or take up to 6 months. Projects and exams can be completed when you have time to focus on them, but plan to allow a minimum of 2 weeks of study for each credit hour taken. These courses include a broad range of web activities.

SELF-PACED COURSES BY DEPARTMENT

Course No.–Hours	Section	Course Title	Core	Tuition
ANTHROPOLOGY				
ANTH 2070-3	641	Bones, Bodies, and Disease	none	\$1131
ART AND ART HISTORY				
ARTS 1012-3	640	Drawing for Non-Majors	none	\$1131
ASTROPHYSICAL AND PLANETARY SCIENCES				
ASTR 1000-3	640	The Solar System	natural science	\$1131
COMMUNICATION				
COMM 2400-3	642	Discourse, Culture and Identities	human diversity	\$1131
ECONOMICS				
ECON 2010-4	640	Principles of Microeconomics	contemporary societies	\$1508
ECON 2020-4	640	Principles of Macroeconomics	contemporary societies	\$1508
ECON 3403-3	640	International Economics and Policy	contemporary societies	\$1131
ECON 4111-3	640	Money and Banking Systems	none	\$1131
EDUCATION				
EDUC 3621-3	641	Art for the Elementary Teacher	none	\$1131
EDUC 4161-3	641	Children's Literature	none	\$1131
ENGLISH				
ENGL 1260-3	640	Introduction to Women's Literature	human diversity	\$1131
ENGL 1500-3	640	Masterpieces of British Literature	literature and the arts	\$1131
ENGL 1600-3	641	Masterpieces of American Literature	literature and the arts	\$1131
ENGL 2655-3	641	Introduction to American Literature I	none	\$1131
ENGL 2665-3	641	Introduction to American Literature 2	none	\$1131
ENGL 3116-3	640	Topics in Advanced Theory-Postmodernism	none	\$1131
GEOGRAPHY				
GEOG 3251-3	640	Mountain Geography	none	\$1131
GEOLOGICAL SCIENCES				
GEOL 1010-3	641	Introduction to Geology	natural science	\$1131
GEOL 1020-3	640	Introduction to Earth History	natural science	\$1131
HISTORY				
HIST 1011-3	640	Greeks, Romans, Kings & Crusaders: European History to 1600	historical context	\$1131
HIST 1012-3	640	Empire, Revolution and Global War: European History Since 1600	historical context	\$1131
HIST 1015-3	640	History of the United States to 1865	United States context	\$1131
HIST 1025-3	640	History of the United States since 1865	United States context	\$1131

SELF-PACED COURSES BY DEPARTMENT (continued)

Course No.–Hours	Section	Course Title	Core	Tuition
MATHEMATICS				
MATH 1021-2	640	College Trigonometry	none	\$754
MATH 1081-3	640	Calculus for Social Science and Business	quantitative reasoning and mathematical skills	\$1131
MEDIA, COMMUNICATION AND INFORMATION				
MDST 3321-3	640	Media Industries and Economics	none	\$1131
PEACE AND CONFLICT STUDIES				
PACS 3800-3	640	Topics in Peace and Conflict Studies	none	\$1131
PHILOSOPHY				
PHIL 1100-3	641	Ethics	ideals and values	\$1131
PHIL 3140-3	641	Environmental Ethics	ideals and values	\$1131
PSYCHOLOGY				
PSYC 1001-3	640	General Psychology	none	\$1131
PSYC 1001-3	642	General Psychology	none	\$1131
PSYC 2012-3	641	Biological Psychology	natural science	\$1131
PSYC 2111-4	640	Psychological Science I: Statistics	none	\$1508
PSYC 3456-3	640	Psychology of Personality	none	\$1131
PSYC 3684-3	641	Developmental Psychology	none	\$1131
SOCIOLOGY				
SOCY 1001-3	640	Introduction to Sociology	contemporary societies	\$1131
SOCY 4014-3	641	Criminology	none	\$1131
SOCY 4086-3	641	Family and Society	none	\$1131

Samuel Lentz

Topics in Writing: Food & Culture

“As a sociology major, I am fascinated about culture and the role food plays in society. I enjoyed taking this class online and not having to report to a classroom every day at a certain time. I appreciated moving at my own pace, like being able to take a quiz during my lunch break or studying before work. This helped me get the credits I needed in a short time, while still maintaining my heavy work load.”



CU COMPLETE SERVICE

Patrick Pulis

“I earned my undergrad in three and a half years. After I graduated, I went on a mission to Peru for three years. When I got back, I found out that I had not really graduated; there had been a mistake and I was three credits short. I was shocked, and wondered if it really mattered. I doubted the need to finish my degree, especially given the many hurdles I was facing in my life. But, I chose not to fall into that temptation and instead took the needed credits through Continuing Education. I am so proud of myself for finishing my degree twice and realize that the biggest challenges lead to our greatest achievements.”



NOW IS THE TIME TO COMPLETE YOUR DEGREE

Your degree is closer than you think. CU Complete offers academic guidance and potential financial support to help you achieve the CU-Boulder degree that you started.

The Support You Need To Complete Your Degree

Returning to school can be intimidating, but we are here to guide you toward your goal of completing a bachelor’s degree. CU Complete is a service designed to help former CU-Boulder students complete their degrees at CU. Our advisors understand the challenges facing adult students and will help you create an individual academic path toward degree completion. Potential financial support for former CU-Boulder students is also available.

CU Complete Scholarship

Continuing Education has allocated scholarship funds to assist students who are trying to finish their CU bachelor’s degree. More information is available at cucomplete.colorado.edu.

Your Degree is Closer Than You Think

If you are ready to work toward completing your degree, complete the intake form available at cucomplete.colorado.edu.



Learn More

Learn more about CU Complete at cucomplete.colorado.edu

MUSIC LESSONS



Peter Ryan

Instructor

“This music program is very well structured and provides more support to students than any other place I’ve worked. We have access to all sorts of teaching methods, arrangements of music and performance venues that students don’t get anywhere else.”

APPLIED MUSIC PROGRAM

Earn 2 hours of CU credit while receiving music lessons from a CU-Boulder College of Music instructor.

Individual and Group Instruction

The Applied Music Program allows students to earn CU credit while receiving private or group music lessons. All Applied Music instructors are professional musicians and experienced teachers in the CU-Boulder College of Music. Styles include classical, jazz, and rock.

Search for available group (MUEL) and one-on-one (PMUS) sections at ce.colorado.edu. Students must furnish their own instruments, except piano and drum set.

Cost

Tuition for 2 credits: \$652

Visit ce.colorado.edu/tuition for complete tuition schedules.

Enrollment Information

Visit ce.colorado.edu/applied-music to learn more, email apppmusic@colorado.edu, or call 303-492-5950. Current CU-Boulder students can enroll through MyCUInfo.colorado.edu.

FACULTY AND STAFF DISCOUNTS

University of Colorado faculty and staff on at least a half-time appointment are eligible for a 20% discount on both Applied Music courses and the Youth Piano Program.

YOUTH PIANO PROGRAM

The CU Youth Piano Program trains students, ages 6-17 in weekly group and private lessons. Students learn from experienced instructors from the CU-Boulder College of Music.

Cost

Lesson duration and cost are as follows:

\$30 for 30 minutes of instruction

\$45 for 45 minutes of instruction

\$60 for 60 minutes of instruction

Contact Us

Visit ce.colorado.edu/youth-piano for full program details. For enrollment and payment information, contact Amy Li at 303-492-5950 or email yyli@colorado.edu.

SPEECH, LANGUAGE, AND HEARING SCIENCES

Miranda Aragon

Speech Language Pathology
Assistant Certificate Program

“I loved all my undergraduate classes, but I was excited to start working directly with clients to apply what I was learning in class. Through this program I was able to work one on one with kids. It is really special to see them grow so much within such a short period of time.”



ONLINE SPEECH-LANGUAGE PATHOLOGY PROGRAMS

Move forward on a rewarding career path in Speech Language Pathology that addresses the demand for qualified personnel to work with students in our public schools. These professional programs are offered in cooperation with the CU-Boulder Department of Speech, Language, and Hearing Sciences.

Speech-Language Pathology Prerequisites (SLPP) Program

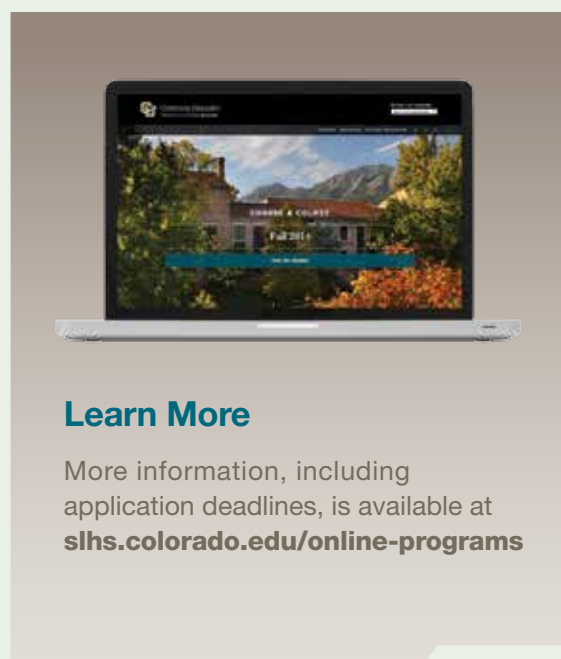
This online program provides the foundation necessary for a Speech-Language Pathology Assistant (SLPA) Certification Program or a Graduate Speech-Language Pathology (MA-SLP) Program to individuals with a BA/BS degree. Students complete 24 credits of prerequisite coursework over 4 semesters designed to meet admission requirements. Students should, however, verify with their intended program of study that SLPP courses meet their requirements, as individual institutions decide what prerequisites are accepted.

For more information, visit slhs.colorado.edu/slpp-online or email slpp@colorado.edu.

Speech-Language Pathology Assistant (SLPA) Certificate Program

The online SLPA Certificate allows recipients to meet the requirements for authorization to work in Colorado public schools. Students develop the knowledge and skills to work under the supervision of a Master's Level SLP. The certificate is appropriate for individuals in their senior year of their undergraduate program, or individuals who have completed a bachelor's in speech pathology and audiology.

For more information, visit slhs.colorado.edu/slpa-certificate-program.



Learn More

More information, including application deadlines, is available at slhs.colorado.edu/online-programs

ADDITIONAL CREDIT PROGRAMS

EARN CREDIT FROM CU-BOULDER

Continuing Education offers students a number of nontraditional ways to access the educational resources of CU-Boulder and to earn credit while learning from the university's distinguished faculty.

ACCESS Program

Available Credit Courses for Eligible Special Students

The ACCESS Program is an opportunity to explore CU-Boulder courses as a nondegree (not formally admitted to a degree program) student. You can learn about the university, explore academic departments, meet faculty, and earn credit.

Our capable staff can provide academic advising, financial aid, and career advising through in-person or telephone appointments. Visit ce.colorado.edu/advising to set up a free appointment.

Apply Now

Nondegree students enroll after most main campus students, but that doesn't mean you have to wait to get started. We are currently accepting applications for the fall 2015 semester.

- Enrollment begins Friday, August 21
- Classes begin Monday, August 24

Call 303-492-5148 for more information or visit ce.colorado.edu/access.

High School Concurrent Program

High school students interested in the challenge of university course work may enroll in credit courses at the University of Colorado Boulder through the High School Concurrent Program. University credit may also be applied toward high school graduation requirements.

Cost

High School Concurrent students pay ACCESS tuition rates and may be eligible to apply for the College Opportunity Fund. Visit cof.college-assist.org for more information.

A full tuition schedule is available at ce.colorado.edu/tuition.

High school juniors and seniors attending a public school may also be eligible for tuition assistance from their school district during the fall and spring semesters.

How to Enroll

Participation in the High School Concurrent Program requires written permission from a high school counselor and a parent/guardian. Notify your counselor at least two months before you intend to enroll.

Full eligibility information is available at ce.colorado.edu/high-school. Email questions to tisdalek@colorado.edu or call 303-735-5456.

Individualized Instruction

For special cases when a student needs a course that is unavailable. Visit ce.colorado.edu/advising to schedule an appointment or call 303-492-5148 to speak with an advisor about your options.

Visiting International Student Program (VISP)

The Visiting International Student Program (VISP) allows students to enroll in undergraduate or graduate courses at CU-Boulder and earn credit as a nondegree student. You can take courses for one semester or up to three consecutive semesters (i.e. fall, spring, summer).

VISP students must enroll as full-time students:

- 12 undergraduate credits in fall/spring semesters
- 6 undergraduate credits in summer session
- 6 graduate credits in fall/spring semesters
- 3 graduate credits in summer session

How to Enroll

To apply, visit ce.colorado.edu/visp and complete the VISP application and supporting enrollment materials.

If you are accepted, we can provide assistance in obtaining an I-20 to apply for an F1 student visa. Once enrolled, Continuing Education will also provide assistance with academic advising, housing, health insurance, travel information, and more.

Email visp@colorado.edu with questions about the program or the application process.

Lindsay Cornwell

Ceramics for Non-Majors

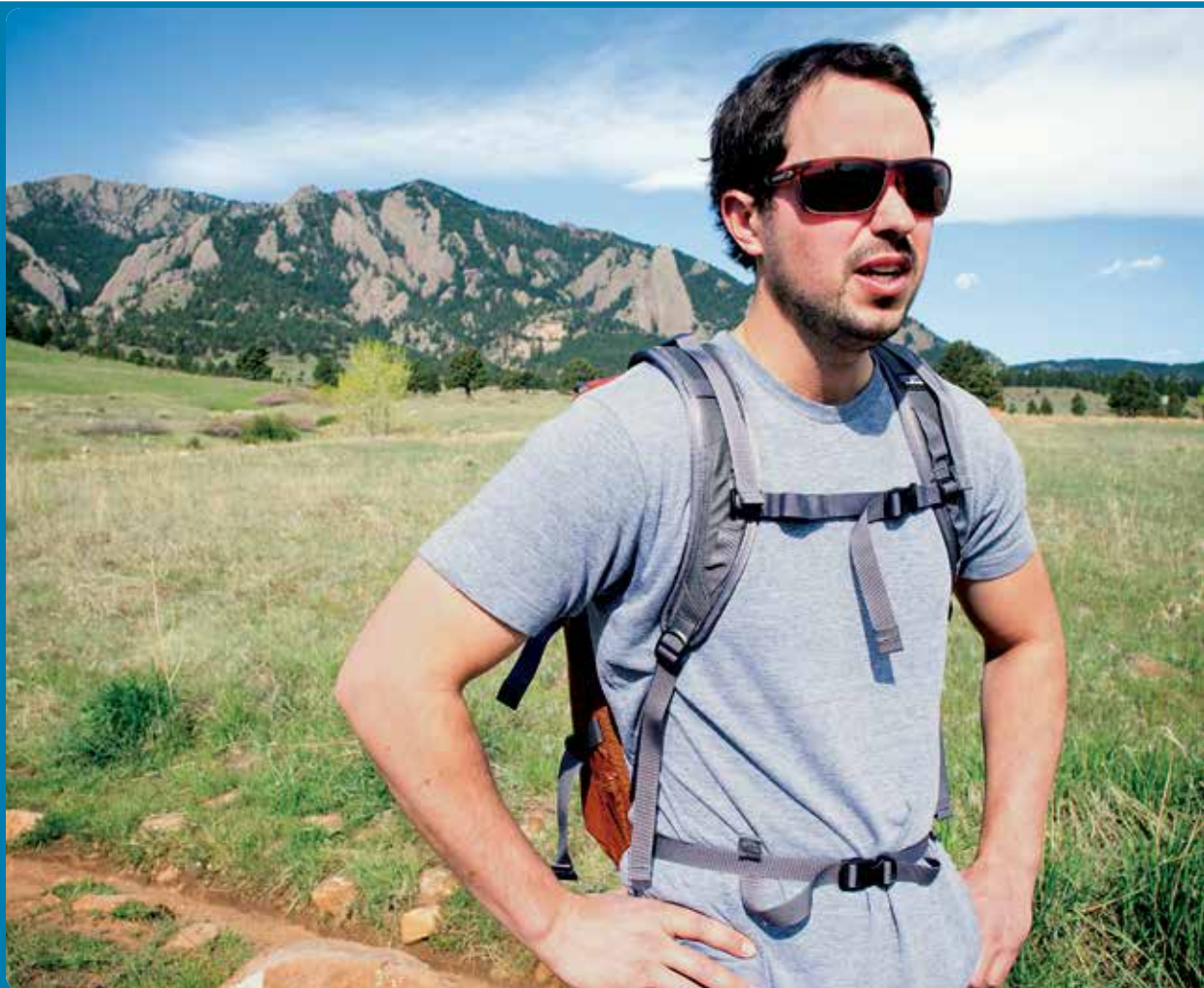
"With this class I am able to explore my creativity and do something different from my normal curriculum. Plus, our class work is something we can take home and use. By the end of the term, I'm going to have a whole set of dishware that I made myself."



POST-BACCALAUREATE HEALTH PROFESSIONS PROGRAM

Nathan Cutshall

“As a medic in the military I developed a passion for medicine and working in a very collaborative environment with a dedicated common goal. I became fascinated by how culture and society can influence health and medicine while I was stationed in Japan. When I returned, I got my degree in anthropology with a focus on medical anthropology. I then decided to go to medical school. I chose this program because of the collaborative cohort model and intensive year-long format.”



WHERE TO BEGIN YOUR NEXT CAREER

The Post-Baccalaureate Health Professions Program is designed for recent college graduates and “career changers” with a desire to transition into healthcare.

This program was created for academically successful individuals who have an informed understanding of the health profession they seek to enter, but have not completed the prerequisite science courses necessary to apply to graduate medical programs. Students receive individual advising, tutoring, application assistance, and special programming to help them reach their goals.

Designed For Students With:

- A strong academic background. Most applicants will have an undergraduate GPA of 3.3 or above
- A bachelor’s degree in a non-science field
- Completion of college algebra and trigonometry, or the equivalent
- Meaningful clinical experience in a health-care setting, such as shadowing medical professionals, volunteering with patients, or employment in a healthcare field.

Course Information

The schedule of this intensive yearlong post-baccalaureate program begins in the summer, followed by a fall and a spring semester.

Summer

- General Chemistry 1 with Lab
- General Chemistry 2 with Lab

Fall

- Introduction to Cellular and Molecular Biology with Lab
- Organic Chemistry 1 with Lab
- General Physics 1 with Lab

Spring

- Principles of Genetics with Lab
- Biochemistry
- General Physics 2 with Lab

Students may choose to complete other courses in additional semesters, including Anatomy, Physiology, and Organic Chemistry 2.

Apply for the 2016 Class

Applications will be accepted on a rolling basis beginning in October 2015.

Visit premed.colorado.edu for more information or email postbacmd@colorado.edu.

SUMMER SESSION



LOOK AHEAD TO SUMMER 2016!

Summer Session 2016 will offer you the opportunity to earn academic credit, satisfy your curiosity, meet major or minor requirements, and be part of our summer community. The diverse population of students from CU and institutions across the country, high school students, and teachers and other professionals makes Summer Session a unique learning experience. We also welcome international students to be part of summer in Boulder.

Summer Offerings

Many of CU's most popular and sought-after courses are offered during the summer terms. In addition, special opportunities include Maymester, Augmester, Featured Classes and the FIRST Program.

Maymester or Augmester 3 weeks. 3 credits.

Complete a core or major requirement in just three weeks with the intensive, single-course focus of Maymester and Augmester. Gain knowledge and momentum while being immersed in an interactive environment.

Featured Classes

Explore the possibilities with new course offerings. Summer Session offers greater flexibility and smaller class sizes with increased engagement. Move forward into a new area. Check out Featured Classes and find one that's right for you.

Faculty-in-Residence Summer Term (FIRST)

Learn from prestigious, world-class faculty that only teach on the Boulder campus during the summer. These renowned scholars bring a wealth of experience,

knowledge, and perspective to the classroom. Take this opportunity to be challenged and inspired.

Online Classes

Learn on your terms. Online classes offered in the summer are rigorous, yet the schedule is flexible. Engage with instructors and classmates in innovative ways, such as discussion groups, message boards, and video lectures.

Summer 2016 Schedule

Session M (Maymester):	May 9-26
Session A (5 weeks):	May 31-July 1
Session B (5 weeks):	July 5-August 5
Session C (8 weeks):	May 31-July 22
Session D (10 weeks):	May 31-August 5
Session G (Augmester):	August 1-18

Stay Up To Date

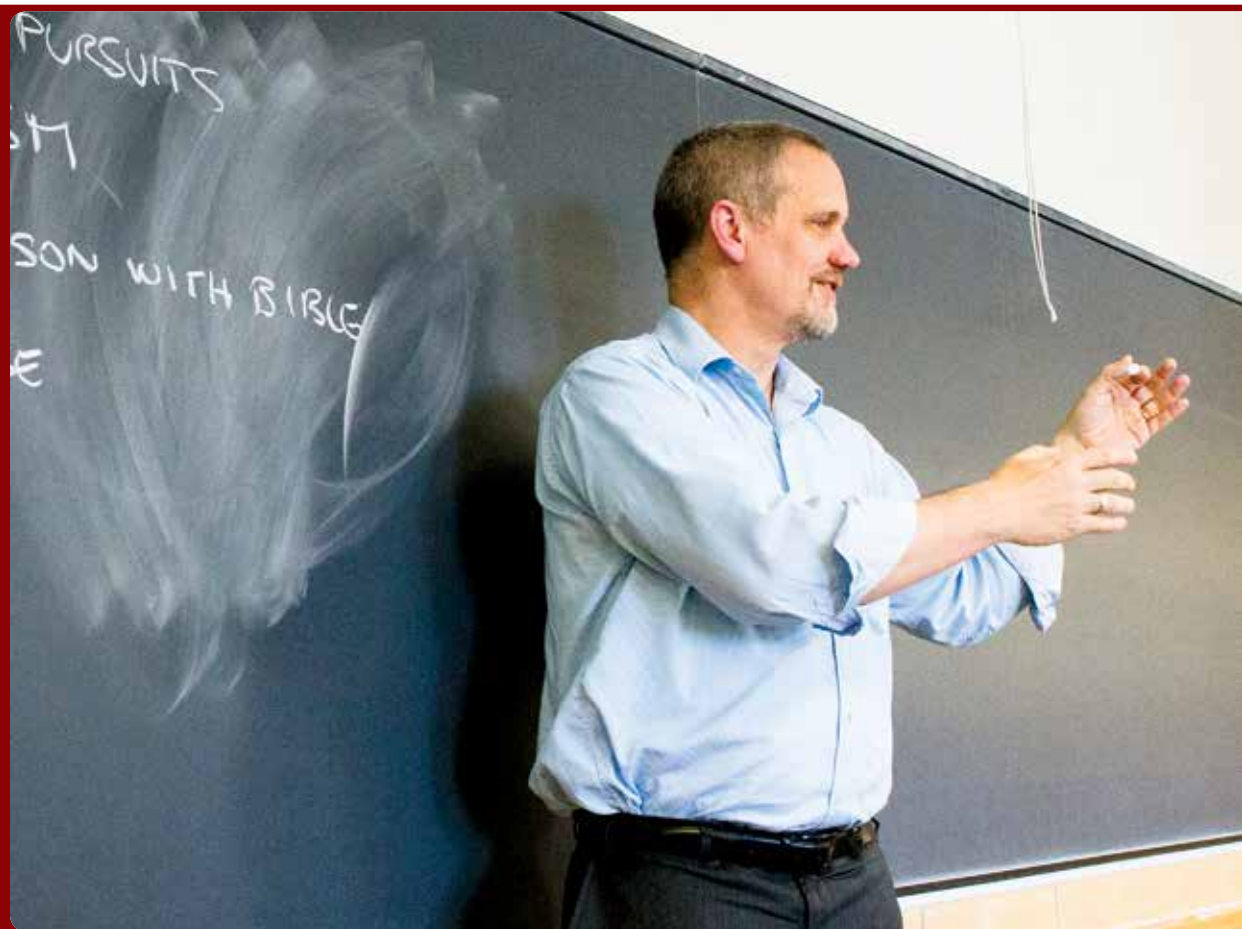
Email SSDean@Colorado.edu with questions or visit summer.colorado.edu for the most up-to-date information about Summer Session.

CU ON THE WEEKEND

Valerio Ferme

It's Not All Academic: Why the Arts and Humanities Matter in the 21st Century

“There has been a lot of talk recently about the crisis of the humanities and the arts. These presentations wish to engage participants in conversations about the value of humanistic and artistic fields of study in the 21st century, at a time when many claim they no longer have a function in our society. Professors from fields as different as German studies and dance will bring their expertise to the participants to share the vitality and currency of their work in the third millennium.”



CU ON THE WEEKEND

CU on the Weekend is a series of free classes led by some of CU-Boulder's most fascinating faculty. Join us for programs designed to satisfy the community's curiosity and highlight some of the intriguing research and creative work conducted at CU-Boulder. This fall, we will feature programs with top faculty in the arts and humanities and an on-going musical conversations series featuring lecture and performance.

Pioneers: Women Artists in Boulder, 1890-1950

Kirk Ambrose, Professor and Chair of Art and Art History

September 19, 1-3 pm
Jennie Smoly Caruthers Biotechnology Building, Butcher Auditorium

Dante, Petrarch, and Boccaccio and the Birth of Humanism: Why Public Engagement and Personal Growth Never Go Out of Style

Valerio Ferme, Associate Professor of Italian and Chair of French and Italian

October 10, 1-3 pm
Jennie Smoly Caruthers Biotechnology Building, Butcher Auditorium

Gershwin Meets Schubert: Words, Music, and Song

Keith Waters and Yonatan Malin, Professors of Music Theory

Performances by CU-Boulder Music Students

October 24, 10:30 am-12 pm
Imig Music Building, Room C199

Pestilence: Past and Present

Elizabeth Fenn, Associate Professor and Chair of History

October 31, 1-3 pm
Jennie Smoly Caruthers Biotechnology Building, Butcher Auditorium

Two Centuries of the Grimms' Fairy Tales

Ann Schmiesing, Associate Professor of Germanic and Nordic Studies

November 14, 1-3 pm
Jennie Smoly Caruthers Biotechnology Building, Butcher Auditorium

Why Watching Modern Dance is so Hard: 10 Hot Tips for Finding Pleasure in the Form

Erika Randall, Associate Professor of Dance

December 5, 1-2:30 pm
Jennie Smoly Caruthers Biotechnology Building, Butcher Auditorium

Free and Open to the Public

Registration is not necessary for CU on the Weekend programs. Seating is available on a first-come, first-served basis, and classrooms open 30 minutes before start time.

Stay Informed

All programs are subject to change. Visit ce.colorado.edu/weekend for the most up-to-date information, including program descriptions, instructor bios, parking info, and more. Administered by the Office for Outreach and Engagement.

International English Center

LARRY FISHER

“This year the IEC celebrates forty years of providing a vital service as a

BRIDGE

into the university for international students.”

“In 1974 I asked a simple question: ‘why doesn’t CU have an intensive English program?’” says Larry, who was part of the original team to propose the idea of the IEC to Continuing Education. “Today, it’s rewarding for me to see the IEC continuing to provide English language and college prep courses to international students from over 20 countries. We don’t just teach English language skills, but also culture and university expectations.”

CREATING A BRIDGE BETWEEN CU-BOULDER AND THE WORLD

Over the last 40 years the International English Center (IEC) has helped over 20,000 international students learn and master English. We are proud to continue to bring quality English instruction to students from across the world and make a lasting impact in their lives. This was exemplified when the children of our former students began enrolling at the IEC.

The International English Center offers English as a Second Language (ESL) programs for international students, community residents, or interested visitors from other countries. In a safe, nurturing, and dynamic environment, students take academically challenging course work in writing, reading, listening, and speaking. Grammar and vocabulary are incorporated into all classes, enabling students to develop their English language skills efficiently. Students also choose an elective course, which best meets their needs and interests. Electives include such topics as: business

English, test preparation, pronunciation, academic vocabulary, sports and nutrition, life skills, and volunteering.

Additionally, the IEC provides workshops on U.S. higher education, a culture hour, reading club, tutoring center, and many other cultural, community, and sports activities. Students have access to university libraries with a rich source of educational and research materials along with two computer labs at the IEC. They gain confidence as they experience the beauty of Boulder and

Colorado and participate in many activities on campus, including conversation groups, lectures, and performances.

All IEC faculty members have master’s degrees and extensive teaching experience in academic English language programs. They also use the most current language learning methodology and materials. The International English Center is fully accredited by the Commission on English Language Program Accreditation (CEA). We are also a member of UCIEP (Consortium of University and College Intensive English Programs) as well as EnglishUSA (formally, the American Association of Intensive English Programs).

Our students go on to attend the University of Colorado, Colorado School of Mines, the University of Denver, Colorado State University, and dozens of other institutions.

INTERNATIONAL ENGLISH CENTER



Intensive English Program (IEP)

This program is especially designed for international students who are preparing to enter a university or graduate program in the U.S. It is also appropriate for working professionals and community members who want to improve their academic or professional English. The IEP consists of five eight-week sessions of full-time English language study (20 hours per week). Students participate in writing, reading, listening & speaking, and elective courses. New students take a placement test, which determines their level. There are eight levels in the program: Introductory, Basic 1, Basic 2, Intermediate 1, Intermediate 2, Intermediate 3, Advanced 1, and Advanced 2. Class size is 12-15 students on average.

With permission of the director, advanced level students may be eligible to enroll in University of Colorado Boulder classes.

A limited number of scholarships are available for immigrants and refugees who demonstrate financial need. For more information about scholarships, please visit iec.colorado.edu.

Certificates of completion are offered.

Non-Intensive Academic and Professional English Program

The IEC offers non-intensive credit courses in accent reduction, academic writing, and presentation skills, designed for undergraduate and graduate students as well as working professionals who need to improve specific areas in their English language proficiency.

ESL Academic Bridge Program

The ESL Academic Bridge Program is for conditionally admitted students who have not met the English language proficiency requirements for admission into an undergraduate degree program at the University of Colorado Boulder. Students who choose to enroll in this program must successfully complete the program prior to beginning their degree program at the university.



Connect with the IEC

Visit iec.colorado.edu or call 303-492-5547 for more information.

The IEC offers five start dates a year. Take the first step toward your English as a Second Language education today and apply online at iec.colorado.edu/how-to-apply.

STEM Academy
LIZ SPECHT

“Once students have a grasp on the details of what we’re learning, their own ideas of how to apply the
KNOWLEDGE
can be really out of the box.”

“The potential for bioengineering is so exciting,” says Liz, who is also a postdoctoral research associate at CU’s BioFrontiers Institute. “We can use biological parts that have already evolved in natural systems and put them together in novel ways to engineer new things that can be beneficial to us. By combining emerging technologies and existing tools from nature, the possibilities are almost endless.”

EXPLORE STEM EDUCATION FOR K-12

CU Science Discovery has been inspiring future generations of scientists and engineers since 1983. Our mission is to heighten interest and increase literacy in science, technology, engineering, and math (STEM) by providing hands-on experiences that connect K-12 students and teachers to current CU science. We collaborate with faculty and capitalize on CU-Boulder’s scientific resources, facilities, and expertise to excite students about a variety of STEM fields and careers.

Summer Camps and After-School Classes

Students ages 5-18 can enroll in a wide variety of summer camps and after-school classes taught by enthusiastic, knowledgeable instructors (often STEM graduate students with teaching experience). Camps and classes offer access to university and community resources, small class sizes (10-16 students), and a variety of laboratory and field experiences.

Camps such as Programming with Python, Sound Hackers, and Craft Technology are designed to enrich student understanding and motivate them to explore science topics in greater depth. Advanced courses, such as Creative Communications: Infographic Design, Materials Science: Biomimicry, and Med School Experience, offer opportunities for high school students to learn more about STEM majors and career opportunities.

Visit sciencediscovery.colorado.edu for a complete list of current camps and classes.

Girls in STEM

By serving as the convening organization for the Colorado Collaborative for Girls in STEM, a statewide affiliate of the NSF-funded National Girls Collaborative Project, Science Discovery is working to advance gender equity in STEM. The model used brings together organizations throughout the state to expend opportunities for girls and women in STEM fields.

Classroom Presentations

Science Discovery brings CU’s cutting-edge science and scientists to classrooms, libraries, and community centers throughout Colorado. Interactive presentations and hands-on workshops introduce students to subjects including chemistry, physiology, optics, genetics, sustainability, engineering, and biotechnology to enrich STEM education statewide. Each program’s content and activities support the Colorado Academic Standards and enrich student learning through fun, hands-on experiences.

Email sfcu@colorado.edu with questions or to request a classroom presentation.

SCIENCE DISCOVERY



STEM Workshops and Teacher Professional Development

Full-day STEM Workshops and related Teacher Professional Development Workshops provide an extended learning experience for elementary and middle school teachers and students. Teachers and students rotate through three different hands-on stations together. Topics include engineering, renewable energy, life science and Earth systems science. STEM Workshops and Teacher Professional Development Workshops are conducted on the CU Campus and at school sites across the state, including both urban and rural locations. Contact School and Teacher Programs at sfcu@colorado.edu to bring a STEM Workshop to your community!

Field Science Programs

Science Discovery provides a variety of opportunities for students and teachers to participate in hands-on science while exploring the great outdoors. Throughout the school year, we offer field study programs that explore Colorado’s ecosystems, such as Stream Ecology and Winter Ecology on Snowshoes. The Mountain Research

Experience, offered in collaboration with CU’s Department of Ecology and Evolutionary Biology and INSTAAR, provides high school students and teachers the opportunity to conduct ecological field research while living and working at CU’s Mountain Research Station. Students and teachers can dig in and experience field science research firsthand.

OPPORTUNITIES FOR TEENS

STEM Research Experience

During this 4-week summer program, CU-Boulder faculty and graduate students mentor students with particular research interests. Past research projects have explored the fields of biochemistry, ecology, evolutionary biology, mechanical engineering and physiology.

Non-Credit STEM Academies

These 3-week long programs are designed for highly motivated students looking to delve deeper into specific STEM fields. CU-Boulder faculty and graduate students guide laboratory work, field trips, guest lectures and discussion groups.

Teen Science Café

Boulder and Denver area teens have the opportunity to meet local scientists in a fun and informal setting. Events are held monthly in both Boulder and Denver. The Youth Leadership Team helps guide the program and runs the café events, which feature a wide range of STEM topics.



Get Involved

Science Discovery programs impact more than 20,000 students and teachers across Colorado each year.

Visit sciencediscovery.colorado.edu to learn more about all upcoming programs and events.

Growing Up Boulder TORI DERR

“Growing Up Boulder is a synthesis between the University, the teachers, the city, and the **CHILDREN.**”

“We bring the expertise and the framework for what participatory planning looks like, the city and the civic area make the project real, and the teachers bring their skills and know-how to make the curriculum effective,” says Tori, Senior Instructor of Environmental Design and Co-coordinator for Growing Up Boulder. “If you take any of those pieces away, it wouldn’t work.”

FRESH PERSPECTIVE: GROWING UP BOULDER INVOLVES YOUTH IN CITY PLANNING

In an on-going effort to make the city of Boulder an increasingly youth-friendly and inclusive community, environmental designers from the University of Colorado Boulder, city officials, teachers, and, perhaps most importantly, children have joined forces to tackle urban planning projects. With guidance from CU-Boulder faculty, staff, and students, local youth are playing important roles in discussions about the upcoming redesign of the city’s civic area.

Third graders have a lot to say about where they live, where they are from, and ways their communities could improve. Through the program Growing Up Boulder, faculty and students from CU-Boulder’s Program in Environmental Design and city leaders are all ears.

Established in 2009, Growing Up Boulder is a child- and youth-friendly city initiative that provides meaningful opportunities for youth participation in urban planning and design. The program’s goals are to: make Boulder a more inclusive place for young people from all income levels, ethnicities, and abilities;

ensure meaningful opportunities for participation; give partners a voice in setting the direction of the project; and disseminate lessons learned to other local, national, and international youth-friendly communities.

As the city embarked on a major redevelopment of its civic area, Growing Up Boulder coordinators, Tori Derr and Mara Mintzer saw an opportunity to infuse youth ideas in the planning process. Boulder’s civic area is the greenway area along Boulder Creek that is just footsteps from the city’s downtown and major hubs, including the public library, municipal buildings, museums, and farmer’s market.

CU-Boulder environmental designers and city planners have been visiting classrooms in Whittier International Elementary School, Casey Middle School, and Boulder High School where teachers have incorporated civic-area-redesign projects into curriculum throughout the school year.

“Growing Up Boulder is a synthesis between the University, the teachers, the city, and the kids,” said Derr, senior instructor of environmental design. “We bring the expertise and the framework for what participatory planning looks like, the city and the civic area make the project real, and the teachers bring their skills and know-how to make the curriculum effective. If you take any of those pieces away, it wouldn’t work.”

With support from a CU-Boulder outreach award, Growing Up Boulder students took field trips to the civic area, created personal niche boxes — multimedia art boxes inspired by Latin American folk art — wrote persuasive letters to local officials, and built 3D models of their design ideas for the area.

Their work resulted in recommendations that incorporate nature play, active play, arts and cultural expression, affordable and diverse

OUTREACH AND ENGAGEMENT



food options, and outdoor learning spaces. From tree houses to affordable food stands, common themes emerged throughout the age groups. Most ideas were practical and feasible, and all age groups took careful consideration of other children, both younger and older, in creating their designs.

Growing Up Boulder leaders were not surprised by the students' thoughtful approach. Derr's research focuses on the intersections of people and place and how engagement of children and youth can contribute to more resilient, vibrant, and sustainable communities. She said incorporating youth voices in urban design is common in many international communities, and as the city of Boulder incorporates these recent ideas and others, the Growing Up Boulder method could serve as a valuable model for other cities.

"We are beginning to see a shift in adults taking kids seriously," Derr said. "Children have valuable ideas and they can make (the design process) better. In essence, we are changing what it means to effectively engage with the community, not just with kids, but with the whole community."

About Outreach and Engagement at CU-Boulder

Extending educational resources to the citizens of Colorado is a vital part of the university as well as the mission of Continuing Education. The Office for Outreach and Engagement, housed in the Division of Continuing Education, supports campus-wide outreach efforts and connects the university's research, teaching, and creative resources with communities throughout Colorado and the world.

The office also provides administrative support and oversight for the CU-Boulder Outreach Committee, which distributes funding for outreach projects that engage faculty in mutually beneficial partnerships with external constituents. These awards are made possible by funds from the Office of the Chancellor, the Office of the Provost, and Continuing Education.



Get Connected

Learn more about CU-Boulder's outreach and engagement programs and initiatives at outreach.colorado.edu



Jennifer Burnham

Enrollment Services Manager

“We are the first connection students have to Continuing Education, so we know our information needs to be accurate and we must have the students’ best interests in mind. Because all the departments in our division are so close and connected, we are able to be responsive both individually and as a group. We are nimble, so we can be flexible and creative when it comes to meeting our students’ needs.”

YOU’VE GOT QUESTIONS. WE’VE GOT ANSWERS.

Lifelong learning doesn’t mean putting your job, family, or life on hold. Continuing Education staff can help you sort through your academic options, identify financial aid resources, prepare for a career, and more.

STUDENT SUPPORT

Our dedicated staff is here to support you whether you are returning to CU, exploring university courses for the first time, or looking for flexible ways to complete your degree.

Academic Advising

Our academic advisors can help you understand the university options and choose the best course of action. Schedule an appointment at ce.colorado.edu/advising.

Financial Assistance

Our financial aid advisor will work with you to determine if there are funds available to help you meet your educational goals. Visit ce.colorado.edu/financial-aid for more information or to schedule an appointment with a Financial Aid Advisor.

Nondegree students (not formally admitted to a degree program) age 22 or older can apply for the Nontraditional Student Scholarships awarded each semester. An application and complete information including eligibility, requirements, and deadlines are available at ce.colorado.edu/financial-support.

APPLY AND ENROLL

Earn CU-Boulder credit toward your degree or for personal fulfillment. Getting started is easy.

If you are new to CU, or it has been more than 12 months since you enrolled in a course, simply complete and submit the online Continuing Education Application at ce.colorado.edu/enroll. We will process your application and send you all of the information you need to enroll in courses using the student portal, MyCUInfo.

If you have been enrolled in a CU course within the past 12 months, call 303-492-5148. We can activate your term record. You will then be able to self-enroll online at MyCUInfo.colorado.edu.

LEARN MORE

ce.colorado.edu

Search for courses, find tuition rates and learn more about all the programs available through Continuing Education.

GETTING STARTED

Stay Up-To-Date on Your Courses

Occasionally information changes after this catalog is printed. It’s recommended that you verify your course information, such as course locations, cancellations, etc., before traveling to campus. Find the most up-to-date information online at ce.colorado.edu.

We also try to notify enrolled students of course changes by email.

Books and Supplies

Required course materials are available at the CU Book Store in the University Memorial Center on campus. Call 303-492-6411 or visit www.cubookstore.com

Course Locations and Parking

Course locations are listed in each course description online. Many campus parking lots offer \$4.00 parking after 5 pm and on Saturdays. Some are free during evenings and weekends. The Campus Map at www.colorado.edu/campusmap gives both building and evening and weekend parking lot locations. To skip parking altogether, take the bus to campus.

Accessing Campus Services

As a Continuing Education student, you may be eligible to use the campus libraries and computer labs. To gain access to these campus services, purchase a student ID, the Buff OneCard, for \$30 at the Buff OneCard office in the Center for Community, room N180, by presenting a copy of your student schedule and photo ID. Visit www.BuffOneCard.com for more information. A government issued ID may also be accepted.

Dropping A Class

Sometimes plans change. You can drop a course through MyCUInfo or by emailing ceregistration@colorado.edu. Tuition adjustments are based on when you drop your course. See the Important Dates for Evening Credit on p. 4, Online Credit on p. 10, and ACCESS at ce.colorado.edu.

Please note: Nonattendance does not constitute withdrawal and you may still be charged for your courses unless you officially withdraw before the drop deadline. Call us at 303-492-5148 or 800-331-2801 (TTY 303-492-8905) if you need any help or for additional information visit ce.colorado.edu.

ENROLLMENT AND STUDENT RESOURCES

TUITION AND PAYMENTS

Continuing Education tuition is dependent upon the type of course or program you enroll in and your residency classification. Non-resident students taking 4 or more credit hours through Continuing Education may be subject to out-of-state tuition assessment.

Visit ce.colorado.edu/tuition for complete tuition schedules.

We offer a full service bursar/accounting office to make paying for your courses easier. Tuition payments can be made online at **MyCUInfo.colorado.edu**. We also accept payments in the form of cash, check, credit card (VISA, MasterCard, Discover, and American Express), or online from your checking or savings account. Please note that payments made to the University of Colorado using a credit or debit card cannot be made over the phone and will be charged an additional nonrefundable 2.75% service fee by the card processor.

If you need confirmation of enrollment and payment of tuition for employer reimbursement, please contact us at 303-492-2212 or by email at cebursar@colorado.edu.

CAREER SERVICES

We provide individual and group options to help you get ahead in your career.

Individual Counseling

Nondegree students are eligible for eight individual career-advising sessions each term they are enrolled. This comprehensive counseling includes career exploration and planning, job search assistance, and other career-related guidance. Visit ce.colorado.edu/resources/career-advising to schedule an appointment.

Career Exploration Workshop

Discover your career passion through this hands-on class, lead by Continuing Ed's experienced Career Advisor. Begin to identify who you are through self-assessment of your interests, values, skills, and personality type, in addition to exploring how this information

relates to a career. Find a career direction that will bring satisfaction, whether you are making a change, contemplating post-retirement options, or just beginning to enter the job market.

For up-to-date enrollment information, visit ce.colorado.edu and search for CSVC 1010.

ADDITIONAL INFORMATION

Student Privacy

CU-Boulder is committed to protecting your educational record by limiting disclosure of your personal (non-directory) information. Additionally, you may elect to have directory information withheld. Please call or visit our office to receive the required form.

Security Phrase

If you wish to access your personal information over the phone or in person without your photo ID, you must speak your security phrase to confirm your identity. If you have not yet set a security phrase in MyCUInfo, university staff will ask you to create a phrase before communicating with you. To set your security phrase, log in to MyCUInfo and expand the MyCUInfo Profile section in the lower right. Click on "Set Security Passphrase" within the Helpful Links. Phrases can contain up to 50 alphabetical characters (no numbers or symbols), should be easily remembered but difficult to guess, and cannot contain lewd, intimidating, abusive, or threatening language. Such language is in violation of the university's Student Conduct Code and will be referred to the Office of Student Conduct.

Disability Services

If you are a student with a disability, Disability Services can provide you with the tools, accommodations, and support services to engage fully in the academic environment. Visit disabilityservices.colorado.edu for more information.



Discounts Available

For more information visit ce.colorado.edu/resources/discounts

Obtaining a Transcript

To obtain a record of credit courses taken, request a transcript through MyCUInfo at [MyCUInfo.colorado.edu](https://mycuinfo.colorado.edu). You can also visit the CU registrar's website at www.colorado.edu/registrar for other options.

For a record of your noncredit courses, email our enrollment services office at cerecords@colorado.edu or call 303-492-5148.

Severe Weather

Campus closings are announced on local radio and television stations along with the CU website at www.colorado.edu. You will also find cancellations on Facebook (facebook.com/CUContinuingEd) and Twitter (@CUContinuingEd).

CONNECT WITH US

We're here to help you reach your academic goals.

ce.colorado.edu/resources

Schedule an appointment with an advisor today!

Building Hours/Closures

Office Hours: Monday - Friday
8 am to 5 pm

Summer Hours: Monday - Friday
7:30 am to 4:30 pm, beginning May 11

CU-Boulder will be closed:
Monday, September 7
Thursday, November 26
Friday, November 27

At the University of Colorado Boulder we are committed to building a campus community in which diversity is a fundamental value. People are different and the differences among us are what we call diversity—a natural and enriching hallmark of life. Diversity includes, but is not limited to, ethnicity, race, gender, age, class, sexual orientation, religion, disability, political viewpoints, veteran status, gender identity/expression, and health status. A climate of healthy diversity is one in which people value individual and group differences, respect the perspectives of others, and communicate openly.

Diversity is a key to inclusive excellence in education. A diverse learning environment better prepares all students for the world that awaits them. CU-Boulder is committed to enriching the lives of our students, faculty, and staff by providing a diverse campus where the exchange of ideas, knowledge, and perspectives is an active part of learning.

—from the Guidelines for Diversity Planning

The University of Colorado Boulder does not discriminate on the basis of race, color, national origin, sex, pregnancy, age, disability, creed, religion, sexual orientation, gender identity, gender expression, or veteran

status, political affiliation, or political philosophy in admission and access to, and treatment and employment in, its educational programs and activities. The university takes affirmative action to increase ethnic, cultural, and gender diversity, to employ qualified disabled individuals, and to provide equal opportunity to all students and employees.

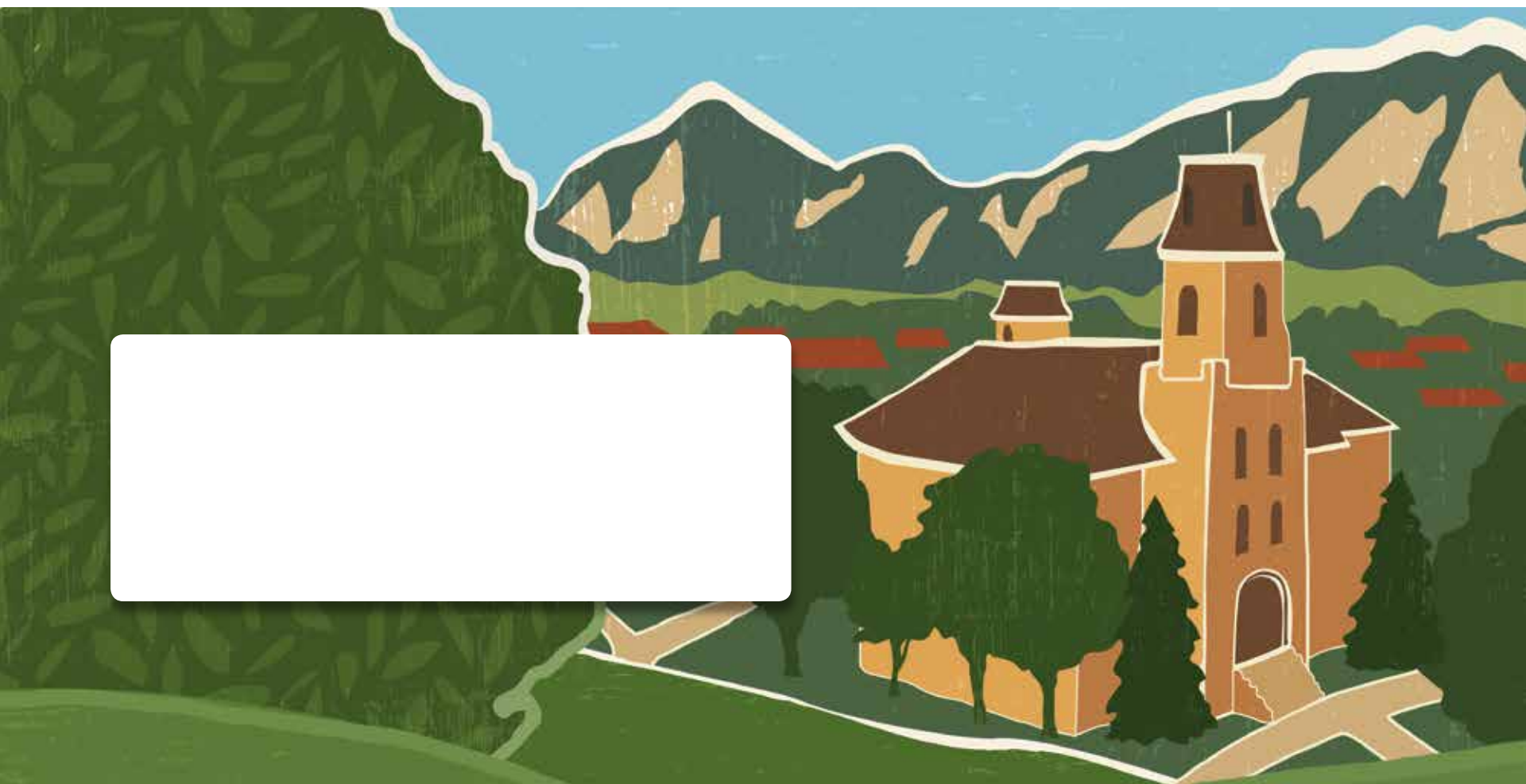
University of Colorado Boulder Catalog (USPS 651-060). 1505 University Avenue, 178 UCB, Boulder, CO 80309-0178. Volume 2015, No. 3, June/July. Published four times a year: January, March, June/July, and October/November. Periodicals postage paid at Boulder, Colorado, and additional mailing offices. POSTMASTER: Send address changes to the University of Colorado Boulder Catalog, Continuing Education, University of Colorado Boulder, 178 UCB, Boulder, CO 80309-0178.

Continuing Education is part of the Colorado Statewide Extended Campus, higher.ed.colorado.gov/academics/ExtendedStudies. This publication was printed and mailed using funds generated solely by Continuing Education programs. Continuing Education regrets any printing errors, but accepts no liability for them.

Design: Vermilion. Printing: Vision Graphics. Cover and Summer Session photos courtesy of the University Photographers.



12019170



CU ON THE WEEKEND

Join us on campus for FREE Saturday classes with some of CU-Boulder's best faculty. See p. 21 for details.

September 19, 1-3 pm

Pioneers: Women Artists in Boulder,
1890-1950

October 10, 1-3 pm

Dante, Petrarch, and Boccaccio and the Birth
of Humanism: Why Public Engagement and
Personal Growth Never Go Out of Style

October 24, 10:30 am-12 pm

Gershwin Meets Schubert: Words, Music,
and Song

October 31, 1-3 pm

Pestilence:
Past and Present

November 14, 1-3 pm

Two Centuries of the Grimms'
Fairy Tales

December 5, 1-2:30 pm

Why Watching Modern Dance is so
Hard: 10 Hot Tips for Finding Pleasure
in the Form