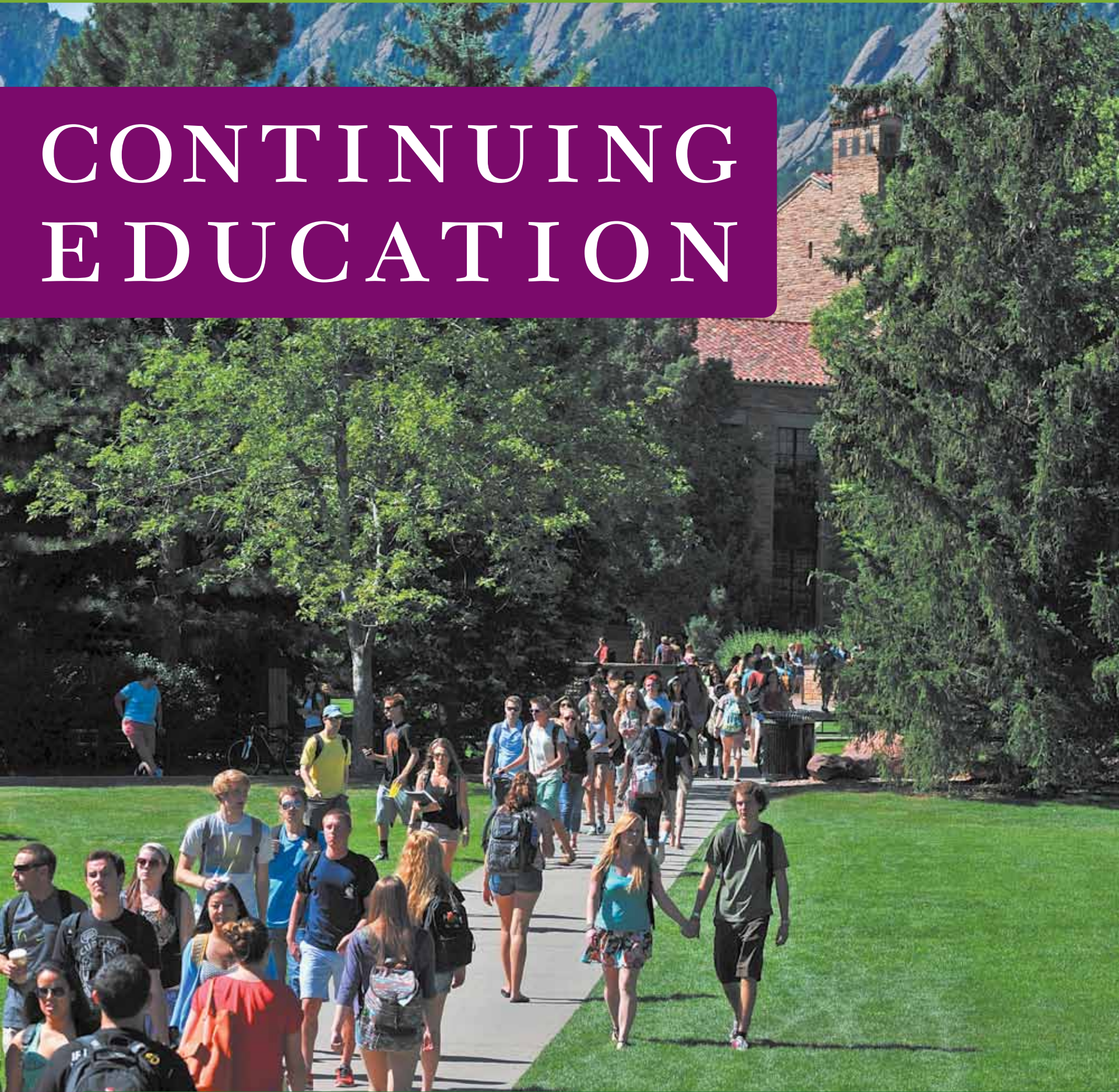


# CONTINUING EDUCATION



**This land is...**  
Environment and  
Public Policy. — p.6

**What's behind your wallet?**  
Money and Banking  
Systems. — p. 14

**Live your dream.**  
Post-Bac. Pre-Med.  
Program. — p.21

**Back-to-school time.**  
CU Complete. — p.23

**Explore more online:**  
Visit [conted.colorado.edu](http://conted.colorado.edu)  
for course updates.

## SPRING '14



**POLI-SCI DURING THE WEEK.**

**SCI-FI ON THE WEEKEND.**

Explore a range of credit and noncredit courses that will challenge whatever you believe.



Continuing Education  
UNIVERSITY OF COLORADO BOULDER

**TAKE ANOTHER LOOK.**

LOOK.COLORADO.EDU

# CONTENTS

## 19 CU on the Weekend

Weekend courses highlighting CU-Boulder faculty research and creative work.

## 20 Additional Credit Programs

- ACCESS (Available Credit Courses for Eligible Special Students)
- High School Concurrent
- Individualized Instruction
- Finishing Your Degree at CU

## 21 Post-Baccalaureate Pre-Medical Program

For recent college graduates or professionals seeking a career change.

## 22 Summer Session

A unique opportunity to earn academic credit, satisfy your curiosity, and meet major or minor requirements.

## 23 CU Complete

A service designed to help former CU-Boulder students complete their degrees.

## 32 Student Resources and Enrollment Information



**Let's get connected.**

Visit [conted.colorado.edu/catalogs](http://conted.colorado.edu/catalogs) to be placed on the permanent mailing list.

## 2 Boulder Evening

University of Colorado credit courses offered weekdays after 5 pm through the departments of communication, English, mathematics, psychology, sociology, Spanish, and more.



## 8 Independent Learning

Online University of Colorado credit courses—an excellent solution for disciplined independent learners. Also includes the Applied Music Program and Youth Piano Program.



## 24 Engineering Online

Convenient, flexible education for working professionals seeking master's degrees, graduate-level certificates, and skill-building short courses.



## 26 International English

English as a second language programs for international students, community residents, or interested visitors from other countries.



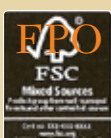
## 28 Science Discovery

An experience-based educational outreach program designed to stimulate scientific interest, understanding, and literacy among Colorado's youth, teachers, and families.



## 30 Outreach

Projects highlighting faculty research, creative work, and teaching aimed at audiences outside the university community.



Printed on Forest Stewardship Council paper ensuring the highest standards of environmental and social responsibility. Share your catalog with friends, and recycle all appropriate materials. Thank you.

Human Geographies

NICOLE SMITH

“Culture and landscape are very much

**INTEGRATED.**

You can't look at one without looking at the other.”

“To understand how cultures exist and individuals behave, you first have to understand the larger social, environmental, political, and economic landscapes,” says Nicole. “We look at the human relationship to space and place and how it influences culture. Among the students in the classroom we have a microcosm of the cultures we are studying. We use this community of diverse backgrounds to better understand the more abstract concepts and help students make a connection between the material and their own lives.”

## TAKE CREDIT FOR LEARNING

**Use our evening courses to make significant progress toward a degree or to acquire a career-advancing skill without taking time away from the rest of your busy life. You can start a degree, finish one, enhance your employability, experiment with returning to college, or supplement your current on-campus course load. It all depends on you.**

**Boulder Evening credits are just like those awarded on main campus. Grades count toward your GPA. And your transcript doesn't distinguish between evening and daytime courses. Talk with one of our advisors today.**

### Eligibility

All you need is a high school diploma or GED. Individuals with University of Colorado service indicators (financial holds) may not enroll.

If you are considering applying to CU-Boulder as a degree student in the future, meet with a Continuing Education academic advisor to learn about your academic options. We want to help you be successful at the University of Colorado and meet your academic goals. Requirements for admission vary by your

status (freshman, transfer, second-degree student), so set up an academic advising appointment before you enroll in classes. If you are under age 22, please bring copies of your high school transcript, any college transcripts, and your SAT or ACT scores to your advising appointment. For more information about admission procedures and registration status, call Continuing Education at 303-492-5148.

### Adding and/or Dropping Courses

Complete information on enrolling and dropping, along with deadlines, can be found on page 4. If you don't officially withdraw from a course, you may receive a grade of *F* for that course and you may be liable for any tuition and fees.

If you do not attend your course regularly during the first week through the last day to drop (see page 4), you **may** be administratively dropped. Check with your instructor or contact Continuing Education for additional information.

### Tuition

Boulder Evening tuition is assessed in addition to any tuition paid on campus (resident or nonresident).

Tuition is determined by your residency.

#### In-state tuition

\$284 per credit hour.

#### Out-of-state tuition

Three credits or less is \$1,104 per credit hour. Four or more credits is \$15,264.



## BOULDER EVENING



The Division will charge the in-state tuition rate for Boulder Evening when a nonresident degree student pays full out-of-state tuition through the Boulder campus and then enrolls for additional Boulder Evening courses. A full tuition schedule is available at [conted.colorado.edu/tuition](https://conted.colorado.edu/tuition).

Some courses requiring special equipment or materials may be slightly higher.

### Residency

If you have lived in Colorado for the past 12 months, you may be eligible for in-state tuition rates although you may be asked for documentation. For additional information, please contact our classification coordinator at 303-492-5148.

### Final Exams and Grades

Final exams are held the last day of the class. See the list of courses by start date on pages 5-7. Final grades will be available on [mycuinfo.colorado.edu](https://mycuinfo.colorado.edu) approximately two weeks after a class ends. If you need an

official transcript, visit the registrar's office website at [www.colorado.edu/registrar](https://www.colorado.edu/registrar) for information.

### Faculty and Staff Discounts

University of Colorado faculty and staff on at least a half-time, permanent appointment and retired faculty and staff may enroll in classes at a 50% tuition discount. Please provide proof of status when you enroll.

### Student Fees

Boulder Evening students have the option of paying student fees for use of the Recreation Center, Wardenburg Student Health Center, etc., including an RTD bus pass. Visit [conted.colorado.edu/student-resources/accounting](https://conted.colorado.edu/student-resources/accounting) for information.



## Let's get connected.

Visit [conted.colorado.edu/catalogs](https://conted.colorado.edu/catalogs) to be placed on the permanent mailing list.

## BOULDER EVENING REGISTRATION AND REFUND DEADLINES

### Full Session

**November 11:** Boulder Evening registration through MyCUInfo begins 7 am-midnight. Registration is also available by mail, fax, or in person at the Division of Continuing Education, 1505 University Avenue, 8 am-5 pm Monday through Friday.

**January 20:** University closed.

**January 21:** Full Session classes begin.

**January 28:** 11:59 pm deadline to enroll online using MyCUInfo (5 pm deadline in person) in Full Session classes, or add your name to a wait list.

**January 31:** Deadline to petition for in-state tuition classification for Full Session.

Deadline to apply for Nontraditional Student Scholarship.

**February 4:** Deadline (11:59 online using MyCUInfo or 5 pm in person) to request *pass/fail* status or drop Full Session with a 100% refund. Withdrawals from classes after this date will appear as a *W* on your academic record.

**February 5:** Tuition for Full Session due.

**February 18:** Deadline (11:59 pm online using MyCUInfo, 5 pm in person, or email to [ceregistration@colorado.edu](mailto:ceregistration@colorado.edu)) to withdraw from Full Session classes with a 60% refund.

**March 4:** Deadline (11:59 pm online using MyCUInfo, 5 pm in person, or email to [ceregistration@colorado.edu](mailto:ceregistration@colorado.edu)) to withdraw from Full Session classes with a 40% refund.

**March 24-28:** Spring break. No classes.

**April 7:** Deadline (11:59 pm online using MyCUInfo, 5 pm in person, or email to [ceregistration@colorado.edu](mailto:ceregistration@colorado.edu)) to withdraw from Full Session classes without instructor's signature.

**April 8:** Instructor's signature and petition documenting extenuating circumstances required to withdraw from Full Session classes. Petition forms available at Continuing Education.

**April 28:** 5 pm deadline to add Full Session classes with instructor's signature.

**April 28 – May 5:** Final exams for Full Session.

**April 29:** Petition documenting extenuating circumstances required to add Full Session classes. Petition forms available at Continuing Education.

### Session 1

**November 11:** Boulder Evening registration through MyCUInfo begins 7 am-midnight. Registration is also available by mail, fax, or in person at the Division of Continuing Education, 1505 University Avenue, 8 am-5 pm Monday through Friday.

**January 20:** University closed.

**January 21:** Session 1 classes begin.

**January 24:** Deadline to petition for in-state tuition classification for Session 1 classes.

**January 28:** 11:59 pm deadline to enroll online using MyCUInfo (5 pm deadline in person) in Session 1 classes, add your name to a wait list, request *pass/fail* status, or drop with a 100% refund. Withdrawals from Session 1 classes after this date will appear as a *W* on your academic record.

**January 31:** Deadline to apply for Nontraditional Student Scholarship.

**February 4:** Deadline (11:59 pm online using MyCUInfo, 5 pm in person, or email to [ceregistration@colorado.edu](mailto:ceregistration@colorado.edu)) to withdraw from Session 1 classes with a 60% refund.

**February 5:** Tuition for Session 1 due.

**February 11:** Deadline (11:59 pm online using MyCUInfo, 5 pm in person, or email to [ceregistration@colorado.edu](mailto:ceregistration@colorado.edu)) to withdraw from Session 1 classes with a 40% refund.

**February 17:** Deadline (11:59 online using MyCUInfo, 5 pm in person, or email to [ceregistration@colorado.edu](mailto:ceregistration@colorado.edu)) to withdraw from Session 1 classes without instructor's signature.

**February 18:** Instructor's signature and petition documenting extenuating circumstances required to withdraw from Session 1 classes. Petition forms available at Continuing Education.

**March 3:** 5 pm deadline to add Session 1 classes with instructor's signature.

**March 4:** Petition documenting extenuating circumstances required to add Session 1 classes. Petition forms available at Continuing Education.

**March 6 and 10:** Session 1 final exams.

### Session 2

**November 11:** Boulder Evening registration through MyCUInfo begins 7 am-midnight. Registration is also available by mail, fax, or in person at the Division of Continuing Education, 1505 University Avenue, 8 am-5 pm Monday through Friday.

**January 20:** University closed.

**January 31:** Deadline to apply for Nontraditional Student Scholarship.

**March 11:** Session 2 classes begin.

**March 14:** Deadline to petition for in-state tuition classification for Session 2 classes.

**March 18:** 11:59 pm deadline to enroll online using MyCUInfo (5 pm deadline in person) in Session 2 classes, add your name to a wait list, request *pass/fail* status, or drop with a 100% refund. Withdrawals from Session 2 classes after this date will appear as a *W* on your academic record and must be received in writing.

**March 24-28:** Spring break. No classes.

**April 1:** Deadline (11:59 online using MyCUInfo, 5 pm in person, or email to [ceregistration@colorado.edu](mailto:ceregistration@colorado.edu)) to withdraw from Session 2 classes with a 60% refund.

**April 2:** Tuition for Session 2 due.

**April 8:** Deadline (11:59 online using MyCUInfo, 5 pm in person, or email to [ceregistration@colorado.edu](mailto:ceregistration@colorado.edu)) to withdraw from Session 2 classes with a 40% refund.

**April 16:** Deadline (11:59 pm online using MyCUInfo, 5 pm in person, or email to [ceregistration@colorado.edu](mailto:ceregistration@colorado.edu)) to withdraw from Session 2 classes without instructor's signature.

**April 17:** Instructor's signature and petition documenting extenuating circumstances required to withdraw from Session 2 classes. Petition forms available at Continuing Education.

**April 28:** 5 pm deadline to add Session 2 classes with instructor's signature.

**April 29:** Petition documenting extenuating circumstances required to add Session 2 classes. Petition forms available at Continuing Education.

**May 1 and 5:** Session 2 final exams.



## BOULDER EVENING

### COURSES BY START DATE

Course No.–Hours	Sec.	Class No.	Times	Course Title	Core	In-state Tuition
------------------	------	-----------	-------	--------------	------	------------------

#### FULL SESSION

Monday, Wednesday, and Friday course begins January 13 and ends May 7

FNCE 2820-3	300E	36169	12-12:50 pm	Introduction to Personal Financial Planning	none	\$852
-------------	------	-------	-------------	---	------	-------

Tuesday and Thursday course begins January 14 and ends May 1

ARTS 1010-3	300E	34694	5-8 pm	Introduction to Studio Art	none	\$1,077
-------------	------	-------	--------	----------------------------	------	---------

Monday courses begin January 27 and end April 28

*BCOR 2300-3	300E	34697	5:30-7:30 pm	Adding Value with Management	business core	\$852
*CLAS 1051-3	300E	34698	6:30-8:30 pm	The World of the Ancient Greeks	historical context	\$852
*COMM 3300-3	300E	34732	6-9 pm	Rhetorical Foundations of Communication	none	\$867
*ECON 2010-4	300E	34804	6-8 pm	Principles of Microeconomics	contemporary societies	\$1,136
*ENGL 1600-3	300E	34809	6-9 pm	Masterpieces of American Literature	literature and the arts	\$852
*HIST 1025-3	300E	34728	6-8 pm	History of the United States since 1865	United States context	\$852
*MUEL 1832-3	300E	34824	6-8 pm	Appreciation of Music	literature and the arts	\$887
*MUEL 2752-3	300E	36183	6-9 pm	Music in American Culture	United States context	\$887
*PSYC 2012-3	300E	34919	6-8 pm	Biological Psychology 1	natural science	\$852
*PSYC 4456-3	300E	34923	6-8 pm	Psychology of Personality	none	\$852
*SPAN 2110-3	300E	34968	6-8 pm	Second-Year Spanish 1	foreign language	\$872
*THTR 1003-3	300E	34969	6-9 pm	Acting 1: Introduction to Acting	none	\$897
THTR 3011-3	300E	34971	6-9 pm	Development of the American Musical Theatre	literature and the arts	\$897

Monday and Wednesday courses begin January 22 and end April 30

*SPAN 1010-5	300E	34965	5:30-7:30 pm	Beginning Spanish 1	foreign language	\$1,440
*SPAN 1020-5	300E	34966	6-8 pm	Beginning Spanish 2	foreign language	\$1,440
*SPAN 1150-5	300E	34967	5:30-7:30 pm	Intensive First Year Spanish	foreign language	\$1,440



#### Sebastian Arango

Values and Power of Consumer in Society

**“This class is very interesting from the perspective of an Economics major because it’s more about the day-to-day consumer on a micro level, rather than how a company works on a macro level. And, the instructor is really good, too.”**

\*A portion of this course will be taught online.

**COURSES BY START DATE**

Course No.–Hours	Sec.	Class No.	Times	Course Title	Core	In-state Tuition
<b>Tuesday courses begin January 21 and end April 29</b>						
*ANTH 2020-3	300E	34689	6:30-8:30 pm	Introduction to Physical Anthropology 2	natural science	\$852
*ANTH 4420-3	300E	34691	6-8 pm	Archaeology of Ancient Egypt	none	\$852
CESR 4821-3	300E	36033	5:30-8:30 pm	Values and Power of the Consumer in Society	none	\$852
COMM 1300-3	300E	34729	6-9 pm	Public Speaking	none	\$867
*ENGL 3000-3	300E	34812	6-8 pm	Shakespeare for Nonmajors	literature and the arts	\$852
FILM 3002-3	300E	34816	6-9 pm	Major Film Movements: Australia and New Zealand Cinema	none	\$937
*GEOG 1992-3	300E	34820	6-8 pm	Human Geographies	none	\$852
*IPHY 2420-3	301E	34734	6-8 pm	Nutrition for Health and Performance	natural science	\$852
*MATH 1012-3	300E	34766	6-8 pm	Quantitative Reasoning and Mathematical Skills	quantitative reasoning and mathematical skills	\$852
*MATH 2510-3	300E	34813	6-8 pm	Introduction to Statistics	none	\$852
MUEL 2852-3	300E	34826	6-9 pm	Music of the Rock Era	literature and the arts	\$887
*PHIL 1000-3	300E	34828	6-8 pm	Introduction to Philosophy	ideals and values	\$852
*PSCI 3011-3	300E	34833	6-8 pm	The American Presidency	United States context	\$852
*PSYC 4684-3	300E	34932	6-8 pm	Developmental Psychology	none	\$852
*RLST 2500-3	300E	34933	6-8 pm	Religions in the United States	United States context or ideals and values	\$852
*WRTG 1150-3	300E	34973	6-8 pm	First-Year Writing and Rhetoric	written communication	\$862
*WRTG 3020-3	301E	34974	6-7:30 pm	Topics in Writing: Language, Power, Perception	written communication	\$862

**Tuesday and Thursday courses begin January 21 and end May 1**

ARTS 1875-3	300E	34695	6-9 pm	Ceramics for Non-Majors	none	\$1,077
MATH 1150-4	300E	34806	6-8:30 pm	Precalculus Mathematics	quantitative reasoning and mathematical skills	\$1,136
MATH 1300-5	300E	34810	6-8:30 pm	Calculus 1	quantitative reasoning and mathematical skills	\$1,420

**Wednesday courses begin January 22 and end April 30**

*ARTH 1400-3	300E	34692	6-8 pm	History of World Art 2	literature and the arts	\$927
*CLAS 1061-3	300E	34699	6-8 pm	The Rise and Fall of Ancient Rome	historical context	\$852
*EBIO 1220-3	300E	35561	6-8 pm	General Biology 2	natural science	\$852
ENGL 1191-3	300E	34808	6:30-9:30 pm	Introduction to Creative Writing	none	\$852
GEOG 1982-3	300E	34819	6-9 pm	World Regional Geography	none	\$852
GEOG 3251-3	300E	34821	6-9 pm	Mountain Geography	none	\$852
*IPHY 2420-3	302E	34735	6-8 pm	Nutrition for Health and Performance	natural science	\$852
*MUEL 2772-3	300E	34825	6-8 pm	World Musics: Africa, Europe, Americas	human diversity	\$887
*PHIL 1600-3	300E	34832	6-8 pm	Philosophy and Religion	ideals and values	\$852
PSCI 3143-3	300E	34834	6-9 pm	Problems in International Relations	contemporary societies	\$852
*PSCI 3206-3	300E	34835	6-8 pm	The Environment and Public Policy	none	\$852
PSYC 1001-3	300E	34842	6:30-9:30 pm	General Psychology	none	\$852
*THTR 1009-3	300E	34970	6-9 pm	Introduction to Theatre	literature and the arts	\$897
*WRTG 3020-3	302E	34975	6-7:30 pm	Topics in Writing: From Essay to Blog	written communication	\$862



## BOULDER EVENING

### COURSES BY START DATE

Course No.–Hours	Sec.	Class No.	Times	Course Title	Core	In-state Tuition
<b>Thursday courses begin January 23 and end May 1</b>						
*ANTH 3000-3	300E	34690	6:30-8:30 pm	Primate Behavior	natural science	\$852
*ARTH 3039-3	300E	34693	6-9 pm	Greek Art and Archaeology	literature and the arts	\$927
BCOR 1010-3	300E	34696	5:30-8:30 pm	Introduction to Business	business core	\$852
*CLAS 3039-3	300E	34763	6-9 pm	Greek Art and Archaeology	literature and the arts	\$927
ECON 2020-4	300E	34807	6-9 pm	Principles of Macroeconomics	contemporary societies	\$1,136
ENGL 3060-3	300E	34815	6-9 pm	Modern and Contemporary Literature for Nonmajors	literature and the arts	\$852
HIST 1020-3	300E	34822	6-9 pm	Western Civilization 2: 16th Century to the Present	historical context	\$852
*MATH 1011-3	300E	34740	6-8 pm	Fundamentals and Techniques of College Algebra	quantitative reasoning and mathematical skills	\$852
*PHIL 1100-3	300E	34829	6-8 pm	Ethics	ideals and values	\$852
*PSYC 2145-3	300E	34920	6-8 pm	Introductory Cognitive Psychology	none	\$852
*SOCY 1001-3	300E	34934	6-8 pm	Introduction to Sociology	contemporary societies	\$852
*SOCY 2031-3	300E	34956	6-8 pm	Social Problems	ideals and values	\$852
SOCY 3151-3	300E	34957	6-9 pm	Self in Modern Society	United States context or ideals and values	\$852
*WMST 2000-3	300E	34972	6:30-8:30 pm	Introduction to Feminist Studies	human diversity	\$852

### SESSION 1

#### Monday and Wednesday courses begin January 22 and end March 10

ENGL 3000-3	100E	34811	6-9 pm	Shakespeare for Nonmajors	literature and the arts	\$852
*SOCY 1016-3	100E	34955	6-9 pm	Sex, Gender, and Society 1	human diversity	\$852

#### Tuesday and Thursday course begins January 21 and ends March 6

*GEOG 1001-4	100E	34817	6-8 pm	Environmental Systems 1: Climate and Vegetation	natural science	\$1,136
--------------	------	-------	--------	---	-----------------	---------

### SESSION 2

#### Monday and Wednesday course begins March 12 and ends April 30

ENGL 3060-3	200E	34814	6:30-9:30 pm	Modern and Contemporary Literature for Nonmajors	literature and the arts	\$852
-------------	------	-------	--------------	--	-------------------------	-------

#### Tuesday and Thursday course begins March 11 and ends May 1

*GEOG 1011-4	200E	34818	6-8 pm	Environmental Systems 2: Landscapes and Water	natural science	\$1,136
--------------	------	-------	--------	---	-----------------	---------

#### Thursday course begins March 13 and ends May 1

*ANTH 1160-3	200E	34688	6-9 pm	The Ancient Egyptian Civilization	human diversity	\$852
--------------	------	-------	--------	-----------------------------------	-----------------	-------



Course descriptions are available at  
[conted.colorado.edu/evening](http://conted.colorado.edu/evening)

General Biology

BETH BENNETT

“When a question seems unanswerable, it is really satisfying for students to have the ability to think through a  
**PROGRESSION**  
and get to the correct answer.”

“I group students together, so they can interact virtually around the lecture material,” says Beth. “I pick a real-world topic that explains what we are studying so students can apply what they learn to tangible issues. A lot of my students thought they didn’t like biology because of their middle school experience. But now they appreciate the role science plays in our lives and think it’s pretty interesting. Understanding biology and the scientific method teaches a new way of looking at our world.”

**THE ULTIMATE IN FLEXIBILITY WITH CU QUALITY.**

**You call the shots – by deciding when, where, and how you learn.**

**Independent Learning lets you start your study any time of the year.**

**You can complete courses over the Internet; choose from self-paced classes that you complete according to your calendar; or term-based classes that follow the semester calendar. Online classes allow rich interaction with your instructor and other students.**

**Think of the possibilities. You can earn extra credit toward your degree, enhance and develop your job skills, prepare for a career change, or just satisfy your curiosity – all at your own convenience.**



## INDEPENDENT LEARNING



So, it's up to you to challenge yourself and to decide how you want to take a course. Complete course descriptions and additional information are available at [conted.colorado.edu/independent](http://conted.colorado.edu/independent) or call 303-492-5148.

If you are considering applying to CU-Boulder as a degree student in the future, meet with a Continuing Education academic advisor to learn about your academic options. We want to help you be successful at the University of Colorado and meet your academic goals. Requirements for admission vary by your status (freshman, transfer, second-degree student), so set up an academic advising appointment before you enroll in classes. If you are under age 22, please bring copies of your high school transcript, any college transcripts, and your SAT or ACT scores to your advising appointment. Advising appointments can be held by phone or in person. To make an appointment online and explore your options, visit [conted.colorado.edu/student-resources](http://conted.colorado.edu/student-resources). For more information about admission procedures and registration status, call Continuing Education at 303-492-5148.

### Faculty and Staff Discounts

University of Colorado faculty and staff on at least a half-time appointment are eligible for a 20% discount on most courses with the exception of the Writing and Rhetoric courses.

### Course Information

These University of Colorado credit classes are approved by the individual departments.

#### Term-based Courses

Term-based courses follow a fixed calendar so that all students will be on the same schedule and can regularly interact with each other online.

#### Self-paced Courses

Self-paced courses allow you up to 6 months to finish and can be extended for another 6 months. All course communications are conducted online. Many of these courses involve online interaction among students and a broad range of web activities.

### Independent Learning also offers:

#### Applied Music

Private and small group for-credit music instruction with the Applied Music program (see page 17).

#### Youth Piano Program

Private lessons for youth ages 6 to 17 years (see page 17).

### TERM-BASED ONLINE COURSES

These courses are offered on a term basis in order to provide rich interaction with your instructor and the other students in the course. The courses follow a calendar of assignments and examinations. Note the term dates carefully. These courses are conducted as virtual seminars, requiring significant amounts of writing and significant amounts of interaction with the instructor and other students. Plan on 90 hours of work in addition to approximately 45 hours with the study guide.

### TERM-BASED COURSES BY START DATE

Course No.–Hours	Section	Class No.	Course Title	Core	Tuition
<b>Session IL 3 – 14 weeks: January 21 – May 2</b>					
ANTH 2010-3	581	32810	Introduction to Physical Anthropology 1	natural science	\$1,065
ATLS 3519-3	581	32811	Special Topics in Technology, Arts, and Media: Universal Design for Digital Media	none	\$1,065
ATLS 4519-3	581	36178	Advanced Special Topics in Technology, Arts, and Media: Implementing Accessibility in WordPress	none	\$1,065
COMM 2400-3	581	32816	Discourse, Culture, and Identities	human diversity	\$1,065
COMM 2500-3	581	32815	Interpersonal Communication	none	\$1,065
COMM 3310-3	581	32818	Principles and Practices of Argumentation	none	\$1,065
COMM 3320-3	581	32820	Persuasion in Society	none	\$1,065
COMM 3610-3	581	32821	Communication, Technology, and Society	none	\$1,065
EBIO 1210-3	581	32823	General Biology 1	natural science	\$1,065
ENGL 1600-3	581	32826	Masterpieces of American Literature	literature and the arts	\$1,065
ENGL 1800-3	581	32827	American Ethnic Literatures	human diversity	\$1,065
ENGL 2665-3	581	32831	Introduction to American Literature 2	none	\$1,065

### IMPORTANT DATES FOR TERM-BASED ONLINE COURSES

#### Spring 2014

	Session IL 3 (14 weeks)	Session IL 4 (10 weeks)	Session IL 1 (7 weeks)	Session IL 2 (7 weeks)
Registration Begins.	November 11	November 11	November 11	November 11
Course Begins.	January 21	February 3	January 21	March 10
11:59 pm deadline to enroll online using MyCUInfo (5 pm deadline in person) or add your name to a wait list.	January 28	February 10	January 28	March 18
11:59 pm deadline to request pass/fail or drop online using MyCUInfo (5 pm deadline in person) with a 100% refund.*	February 4	February 10	January 28	March 18
Tuition Due	February 5	February 5	February 5	April 2
11:59 pm deadline to withdraw using MyCUInfo (5 pm in person or via email to ceregistration@colorado.edu) with a 60% refund.	February 18	February 17	February 4	April 1
11:59 pm deadline to withdraw using MyCUInfo (5 pm in person or via email to ceregistration@colorado.edu) with a 40% refund.	March 4	February 24	February 11	April 8
11:59 pm deadline to withdraw using MyCUInfo (5 pm in person or via email to ceregistration@colorado.edu) without any signatures.	April 7	April 4	February 17	April 16
Petition documenting extenuating circumstances required to add courses. Petition forms available at Continuing Education.	April 28	April 15	March 3	April 28
Course Ends	May 2	April 18	March 7	May 2

\* Withdrawals from classes after this date will appear as a W on your academic record.

## INDEPENDENT LEARNING

Course No.-Hours	Section	Class No.	Course Title	Core	Tuition
ENGL 3000-3	581	32852	Shakespeare for Nonmajors	literature and the arts	\$1,065
ENGL 3000-3	582	32853	Shakespeare for Nonmajors	literature and the arts	\$1,065
ENGL 3060-3	581	32880	Modern and Contemporary Literature for Nonmajors	literature and the arts	\$1,065
ENGL 3060-3	582	32881	Modern and Contemporary Literature for Nonmajors	literature and the arts	\$1,065
ENGL 3267-3	581	32882	Women Writers	none	\$1,065
ENGL 3563-3	581	32883	Shakespeare	none	\$1,065
ENGL 4665-3	581	37425	Studies in American Literature after 1900	none	\$1,065
FILM 1002-3	581	32884	Film Analysis for Non-Majors	none	\$1,150
FREN 1010-5	581	37527	Beginning French 1	foreign language	\$1,795
GEOG 1001-4	581	32885	Environmental Systems 1: Climate and Vegetation	natural science	\$1,420
GEOG 1011-4	581	32886	Environmental Systems 2: Landscapes and Water	natural science	\$1,420
GEOG 1992-3	581	32887	Human Geographies	none	\$1,065
GEOG 2412-3	581	32888	Environment and Culture	none	\$1,065
GEOG 4501-3	581	32890	Water Resources and Water Management of Western United States	none	\$1,065
GEOG 5501-3	581	32892	Water Resources and Water Management of Western United States	none	\$1,353
GEOL 1010-3	581	32896	Introduction to Geology	natural science	\$1,065
HIST 1010-3	581	32898	Western Civilization 1: From Antiquity to the 16th Century	historical context	\$1,065
HIST 1015-3	581	32899	History of the United States to 1865	United States context	\$1,065
HIST 1020-3	581	32902	Western Civilization 2: 16th Century to the Present	historical context	\$1,065
HIST 1025-3	581	32904	History of the United States since 1865	United States context	\$1,065
HIST 1123-3	581	32905	Introduction to British History since 1660	historical context	\$1,065
HIST 2100-3	581	32906	Revolution in History: Haitian Revolution of 1791-1804	historical context	\$1,065
IPHY 2420-3	581	32911	Nutrition for Health and Performance	natural science	\$1,065
IPHY 2420-3	582	32913	Nutrition for Health and Performance	natural science	\$1,065
IPHY 3430-3	581	32914	Introduction to Human Physiology	none	\$1,065
JOUR 1001-3	581	32915	Contemporary Media Analysis	none	\$1,065
JOUR 4301-3	581	32798	Media Ethics	none	\$1,065
JOUR 5301-3	581	32800	Media Ethics	none	\$1,353
MATH 1011-3	581	32814	Fundamentals and Techniques of College Algebra	quantitative reasoning and mathematical skills	\$1,065
MATH 1012-3	581	32817	Quantitative Reasoning and Mathematical Skills	quantitative reasoning and mathematical skills	\$1,065
MATH 1071-3	581	32819	Finite Mathematics for Social Science and Business	quantitative reasoning and mathematical skills	\$1,065
MATH 1081-3	581	32822	Calculus for Social Science and Business	quantitative reasoning and mathematical skills	\$1,065
MATH 1150-4	581	32825	Precalculus Mathematics	quantitative reasoning and mathematical skills	\$1,420
MATH 2510-3	581	32828	Introduction to Statistics	none	\$1,065
MUEL 2752-3	581	32830	Music in American Culture	United States context	\$1,065
NRSC 4032-3	581	32832	Neurobiology of Learning and Memory	none	\$1,065
NRSC 5032-3	581	32833	Neurobiology of Learning and Memory	none	\$1,353



**Course descriptions are available at**  
[conted.colorado.edu/independent](http://conted.colorado.edu/independent)



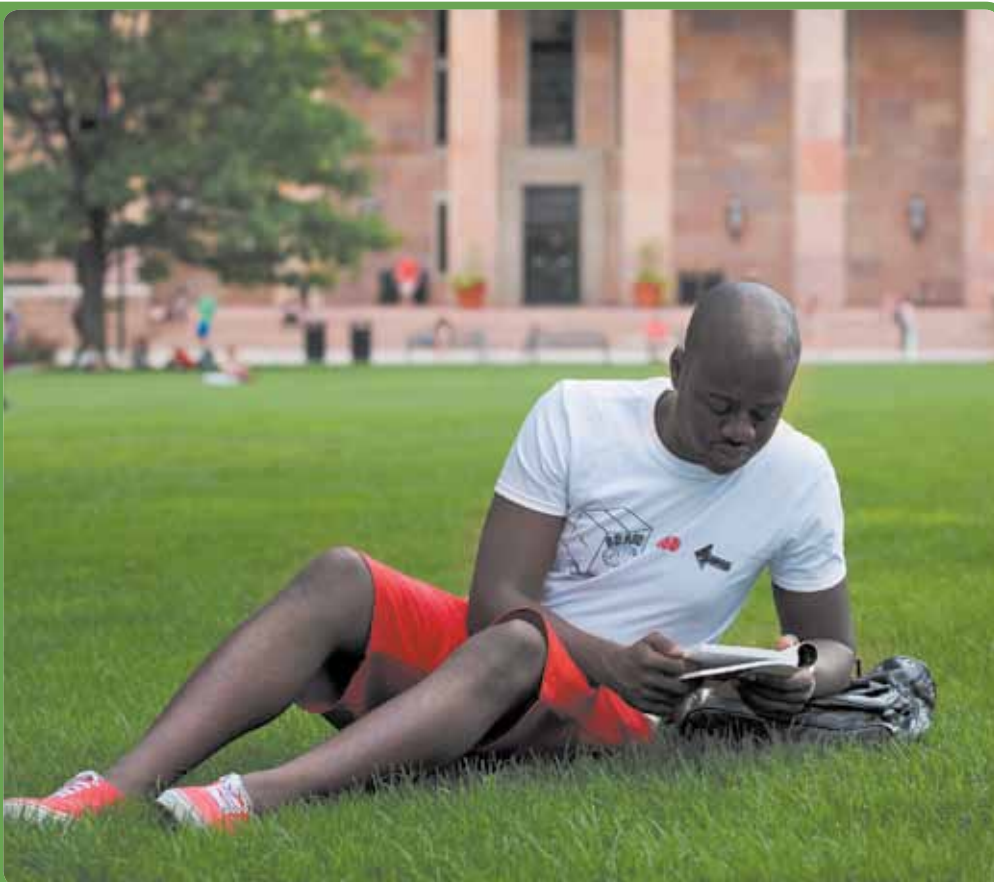
**TERM-BASED COURSES BY START DATE** (continued)

Course No.–Hours	Section	Class No.	Course Title	Core	Tuition
PHIL 1000-3	581	32835	Introduction to Philosophy	ideals and values	\$1,065
PHIL 1200-3	581	32837	Philosophy and Society	United States context or ideals and values	\$1,065
PHIL 1400-3	581	32847	Philosophy and the Sciences	natural science	\$1,065
PHIL 3140-3	581	32855	Environmental Ethics	ideals and values	\$1,065
PHIL 3180-3	581	32856	Critical Thinking: Contemporary Topics	none	\$1,065
PSCI 1101-3	581	32857	The American Political System	contemporary societies or United States context	\$1,065
PSCI 2004-3	581	35874	Survey of Western Political Thought	ideals and values	\$1,065
PSCI 3061-3	581	35875	State Government and Politics	United States context	\$1,065
PSCI 3191-3	581	35876	National Security Organization and Policy Making	none	\$1,065
PSCI 4703-3	581	35877	Alternative World Futures	none	\$1,065
PSYC 3101-4	581	36203	Statistics and Research Methods in Psychology	none	\$1,420
PSYC 4021-3	581	32860	Psychology and Neuroscience of Exercise	none	\$1,065
SLHS 5032-3	581	32889	Competencies and Strategies for the SLPA	none	\$1,353
SLHS 5930-4	581	32897	Speech Language Pathology Assistant Internship	none	\$1,804
SOCY 1001-3	581	32900	Introduction to Sociology	contemporary societies	\$1,065
SOCY 1016-3	581	32903	Sex, Gender, and Society 1	human diversity	\$1,065
SOCY 2031-3	581	32917	Social Problems	ideals and values	\$1,065
SOCY 2077-3	581	32919	Environment and Society	ideals and values	\$1,065
SOCY 3042-3	581	33182	Topics in Population and Health: Death and Dying	none	\$1,065
SOCY 4121-3	581	36180	Sociology of Religion	ideals and values	\$1,065
WRTG 3020-3	581	32921	Topics in Writing: Multicultural Rhetorics	written communication	\$1,065
WRTG 3020-3	582	32922	Topics in Writing: Food and Culture	written communication	\$1,065
WRTG 3020-3	583	32923	Topics in Writing: Food and Culture	written communication	\$1,065
WRTG 3020-3	584	32924	Topics in Writing: Sports in American Culture	written communication	\$1,065
WRTG 3020-3	585	32925	Topics in Writing: Best American Essays	written communication	\$1,065

**Kwabena Mensa**

Persuasion in Society

**“I like taking classes online because I can operate at my own pace, while balancing school with a heavy work load. I certainly have to be self-motivated and organized, but that’s how the real world operates. I know I have to be at work at a certain time and get projects done on time. It’s the same thing with school work. I’ll take as many online classes as I can for my degree.”**



# INDEPENDENT LEARNING

Course No.–Hours	Section	Class No.	Course Title	Core	Tuition
WR TG 3020-3	586	32926	Topics in Writing: Writing on <i>The New York Times</i>	written communication	\$1,065
WR TG 3020-3	587	32927	Topics in Writing: Writing on <i>The New York Times</i>	written communication	\$1,065
WR TG 3020-3	588	32928	Topics in Writing: Gender, Sexuality, New Media	written communication	\$1,065
WR TG 3020-3	589	34830	Topics in Writing: Travel Writing	written communication	\$1,065
WR TG 3020-3	590	34831	Topics in Writing: Travel Writing	written communication	\$1,065
WR TG 3030-3	581	32931	Writing on Science and Society	written communication	\$1,065
WR TG 3030-3	582	32932	Writing on Science and Society	written communication	\$1,065
WR TG 3030-3	583	32933	Writing on Science and Society	written communication	\$1,065
WR TG 3040-3	581	32935	Writing on Business and Society	written communication	\$1,065
WR TG 3040-3	582	32936	Writing on Business and Society	written communication	\$1,065
WR TG 3040-3	583	32937	Writing on Business and Society	written communication	\$1,065
WR TG 3040-3	584	32938	Writing on Business and Society	written communication	\$1,065

### Session IL 1 – 7 weeks: January 21 – March 7

ATOC 1050-3	581	32812	Weather and the Atmosphere	natural science	\$1,065
-------------	-----	-------	----------------------------	-----------------	---------

### Session IL 4 – 10 weeks: February 3 – April 18

ENGL 1500-3	581	32824	Masterpieces of British Literature	literature and the arts	\$1,065
ENGL 3000-3	583	32854	Shakespeare for Nonmajors	literature and the arts	\$1,065
WR TG 3090-2	581	32939	Open Topics in Writing: Advanced–Environmental Literature	none	\$710

### Session IL 2 – 7 weeks: March 10 – May 2

ATOC 1060-3	581	32813	Our Changing Environment: El Niño, Ozone, and Climate	natural science	\$1,065
PHIL 1000-3	582	32836	Introduction to Philosophy	ideals and values	\$1,065



**Course descriptions are available at**  
[conted.colorado.edu/independent](http://conted.colorado.edu/independent)

## SELF-PACED COURSES

Course No.-Hours	Section	Course Title	Core	Tuition
<b>ALLIANCE FOR TECHNOLOGY, LEARNING, AND SOCIETY (ATLAS)</b>				
ATLS 3519-3	640	Special Topics in Technology, Arts, and Media: Universal Design for Digital Media	none	\$1,065
NCTM 3519	640	Universal Design for Digital Media (noncredit)	none	\$645
<b>ANTHROPOLOGY</b>				
ANTH 2070-3	641	Bones, Bodies, and Disease	none	\$1,065
<b>ART AND ART HISTORY</b>				
ARTS 1012-3	640	Drawing for Non-Majors	none	\$1,065
<b>ASTROPHYSICAL AND PLANETARY SCIENCES</b>				
ASTR 1000-3	640	The Solar System	natural science	\$1,065
<b>COMMUNICATION</b>				
COMM 2400-3	642	Discourse, Culture, and Identities	human diversity	\$1,065
<b>ECOLOGY AND EVOLUTIONARY BIOLOGY</b>				
EBIO 1040-3	641	Biology: A Human Approach 2	natural science	\$1,065
EBIO 4100-3	640	Advanced Ecology: Tropical Conservation	none	\$1,065
<b>ECONOMICS</b>				
ECON 2010-4	640	Principles of Microeconomics	contemporary societies	\$1,420
ECON 2020-4	640	Principles of Macroeconomics	contemporary societies	\$1,420
ECON 3403-3	640	International Economics and Policy	contemporary societies	\$1,065
ECON 4111-3	640	Money and Banking Systems	none	\$1,065
<b>EDUCATION</b>				
EDUC 3621-3	641	Art for the Elementary Teacher	none	\$1,065
EDUC 4161-3	641	Children's Literature	none	\$1,065



Course descriptions are available at [conted.colorado.edu/independent](http://conted.colorado.edu/independent)



## INDEPENDENT LEARNING

Course No.–Hours	Section	Course Title	Core	Tuition
<b>ENGLISH</b>				
ENGL 1260-3	640	Introduction to Women's Literature	human diversity	\$1,065
ENGL 1500-3	640	Masterpieces of British Literature	literature and the arts	\$1,065
ENGL 1600-3	641	Masterpieces of American Literature	literature and the arts	\$1,065
ENGL 2655-3	641	Introduction to American Literature 1	none	\$1,065
ENGL 2665-3	641	Introduction to American Literature 2	none	\$1,065
ENGL 3000-3	641	Shakespeare for Nonmajors	literature and the arts	\$1,065
ENGL 3060-3	641	Modern and Contemporary Literature for Nonmajors	literature and the arts	\$1,065
ENGL 3116-3	640	Topics in Advanced Theory: Postmodernism	none	\$1,065
ENGL 3553-3	640	Geoffrey Chaucer	none	\$1,065
<b>GEOGRAPHY</b>				
GEOG 1982-3	640	World Regional Geography	none	\$1,065
GEOG 3251-3	640	Mountain Geography	none	\$1,065
<b>GEOLOGICAL SCIENCES</b>				
GEOL 1010-3	641	Introduction to Geology	natural science	\$1,065
GEOL 1020-3	640	Introduction to Earth History	natural science	\$1,065
<b>HISTORY</b>				
HIST 1010-3	641	Western Civilization 1: From Antiquity to the 16th Century	historical context	\$1,065
HIST 1015-3	640	History of the United States to 1865	United States context	\$1,065
HIST 1020-3	641	Western Civilization 2: 16th Century to the Present	historical context	\$1,065
HIST 1025-3	640	History of the United States since 1865	United States context	\$1,065
<b>JOURNALISM</b>				
JOUR 3771-3	641	Media and Communication History	none	\$1,065
JOUR 4321-3	640	Media Institutions and Economics	none	\$1,065
<b>MATHEMATICS</b>				
MATH 1021-2	640	Numerical and Analytical College Trigonometry	none	\$710
MATH 1071-3	640	Finite Mathematics for Social Science and Business	quantitative reasoning and mathematical skills	\$1,065
MATH 1081-3	640	Calculus for Social Science and Business	quantitative reasoning and mathematical skills	\$1,065
<b>MUSIC</b>				
MUEL 2752-3	640	Music in American Culture	United States context	\$1,065
<b>PEACE AND CONFLICT STUDIES</b>				
PACS 3800-3	640	Topics in Peace and Conflict Studies	none	\$1,090

**SELF-PACED COURSES** (continued)

Course No.–Hours	Section	Course Title	Core	Tuition
<b>PHILOSOPHY</b>				
PHIL 1100-3	640	Ethics	ideals and values	\$1,065
PHIL 3140-3	640	Environmental Ethics	ideals and values	\$1,065
<b>PSYCHOLOGY</b>				
PSYC 1001-3	641	General Psychology	none	\$1,065
PSYC 1001-3	642	General Psychology	none	\$1,065
PSYC 2012-3	641	Biological Psychology 1	natural science	\$1,065
PSYC 2145-3	641	Introductory Cognitive Psychology	none	\$1,065
PSYC 2606-3	640	Social Psychology	contemporary societies	\$1,065
PSYC 3101-4	640	Statistics and Research Methods in Psychology	none	\$1,420
PSYC 4303-3	640	Abnormal Psychology	none	\$1,065
PSYC 4456-3	640	Psychology of Personality	none	\$1,065
PSYC 4511-3	641	History of Psychology	none	\$1,065
PSYC 4684-3	641	Developmental Psychology	none	\$1,065
<b>SOCIOLOGY</b>				
SOCY 1001-3	640	Introduction to Sociology	contemporary societies	\$1,065
SOCY 4014-3	641	Criminology	none	\$1,065
SOCY 4086-3	641	Family and Society	none	\$1,065

**Samuel Lentz**

Topics in Writing: Food and Culture

**“As a sociology major, I am fascinated about culture and the role food plays in society. I enjoyed taking this class online and not having to report to a classroom every day at a certain time. I appreciated moving at my own pace, like being able to take a quiz during my lunch break or studying before work. This helped me get the credits I needed in a short time, while still maintaining my heavy workload.”**



# INDEPENDENT LEARNING

## Olivia Fontanese

Piano

**“My uncle is a professional musician and has given me many, many music lessons in my life. I’ve been playing guitar for as long as I can remember and I also play classical violin. I love learning piano because it is all music theory. Everything is right there and you don’t have to guess. I find it very calming.”**



## APPLIED MUSIC PROGRAM

The Applied Music Program allows students to earn 2 hours of CU credit while receiving private or group music lessons. All Applied Music instructors are professional musicians and experienced teachers in the CU-Boulder College of Music. Students must furnish their own instruments, except piano and drum set. Styles include classical, jazz, and rock.

### GROUP CLASSES INCLUDE:

- Guitar
- Piano
- Hand Drum Circle

### PRIVATE (ONE-ON-ONE) INSTRUCTION IS AVAILABLE ON:

- Guitar
- Piano
- Voice
- Percussion
- Mandolin
- Banjo
- Harp
- Winds
- Brass
- Strings

### Tuition

\$630 for 2 credit hours.  
*Nonresident students taking four (4) or more credit hours through Continuing Education may be subject to out-of-state tuition assessment.*

Learn more at [conted.colorado.edu/appliedmusic](http://conted.colorado.edu/appliedmusic), email the applied music advisor at [appmusic@colorado.edu](mailto:appmusic@colorado.edu), or call 303-492-5950.



### Youth Piano Program

In cooperation with the CU-Boulder College of Music, we are offering private lessons for ages 9-17 or younger students with some training. Students will learn from experienced instructors from the College of Music. Visit [conted.colorado.edu/youthpiano](http://conted.colorado.edu/youthpiano) for complete information.





**Miranda Aragon**

Speech Language Pathology  
Assistant Certificate Program

**“I loved all my undergraduate classes, but I was excited to start working directly with clients to apply what I was learning in class. Through this program I was able to work one on one with kids. It is really special to see them grow so much within such a short period of time.”**

**SPEECH LANGUAGE PATHOLOGY ASSISTANT CERTIFICATE PROGRAM**

Offered in cooperation with the CU-Boulder Department of Speech, Language, and Hearing Sciences, this professional certificate provides the opportunity for individuals desiring employment in public schools as a speech language pathology assistant (SLPA) to meet the requisite requirements for authorization in the state of Colorado and develop the knowledge and skills to work under the supervision of a MA Level SLP.

This certificate is appropriate for individuals in the senior year of their undergraduate program or individuals who have completed a BA in speech pathology and audiology. Interested students should visit [slhs.colorado.edu/slpa-certificate-program](http://slhs.colorado.edu/slpa-certificate-program) for complete information on applying.

Because these courses are offered online, they are available to individuals who live outside the CU-Boulder area and to working people who can complete the professional certificate while maintaining employment.

**Introduction to Clinical Practice**  
**SLHS 4918** 2 SEMESTER HOURS

Introduces students to the clinical processes and key components of assessment and interventions. Explores the applications of the theoretical and scientific information to clinical settings. Students complete supervised observation of individuals with communication challenges.

**Competencies and Strategies for the SLPA**

**SLHS 5032** 3 SEMESTER HOURS

Includes roles and responsibilities for the Speech Language Pathology Assistant (SLPA) working in the public schools, service delivery models, health and safety, screening assistive technology, intervention and self reflection and evaluation. Prereq., SLHS 4918. Must be accepted in the SLPA certification program.

**Speech Language Pathology Assistant Internship**

**SLHS 5930** 4 SEMESTER HOURS

Placement for a minimum of 12 hours per week for a total of 180 hours including 100 direct contact hours under the supervision of a fully credentialed SLP, to fully develop requisite skills as an SLPA, and become employed in a public school setting. Prereq., SLHS 4918. Must be accepted in the SLPA certification program.

We are excited to be adding the Speech-Language Pathology Prerequisites Program to our online offerings. Complete information is available at [slhs.colorado.edu/slpp-online](http://slhs.colorado.edu/slpp-online).

**CU ON THE WEEKEND**

**Adam Bradley**

**The Real Hip Hop**

**“I think the public will discover a hip hop they never dreamed existed. Beyond the sound, beyond the offense, beyond the bling, is a culture rooted in community and creation. I’m excited to share this hip hop—the real hip hop—and to give participants a backstage pass to the lives and the art of some of rap’s leading voices. I treasure opportunities to speak to public audiences. CU on the Weekend is a wonderful opportunity to speak to and to hear from people from all walks of life.”**



**CU ON THE WEEKEND**

**CU on the Weekend is a series of one-day classes led by some of CU-Boulder’s best faculty. Join faculty members such as Adam Bradley, associate professor of English, for programs that are free and open to the public. From hip hop to forensic anthropology, these one-day classes allow for in-depth conversations on a range of engaging subjects.**

**Spring 2014**

**The Real Hip Hop**

*Adam Bradley, Associate Professor, English*  
 Saturday, February 8, 1-4 pm  
 Benson Earth Sciences – Room 180

**Post Holocaust American Judaism**

*David Schneer, Professor, History*  
 Saturday, March 1, 1-4 pm  
 Norlin Library – British Studies –  
 Room M549

**Complementary and Alternative Medicine:  
 Turning Anecdotes into Data**

*Theresa Hernandez, Professor, Psychology  
 and Neuroscience*  
 Saturday, March 8, 9 am-12 pm  
 Benson Earth Sciences – Room 180

**Approaches in Forensic Anthropology:  
 A Case Study from Organized Crime**

*Steven Leigh, Arts and Sciences Dean  
 and Professor, Anthropology*  
 Saturday, April 5, 1-4 pm  
 Jennie Smoly Caruthers Biotechnology  
 Building – Butcher Auditorium – A115

**Free and Open to the Public**

Seating is available on a first-come, first-served basis. Classrooms open 30 minutes before start time.

**Stay Informed**

The CU on the Weekend webpage is the primary source for the most up-to-date course descriptions, instructor bios, locations, parking information, and more. For a complete schedule of CU on the Weekend spring classes, visit [conted.colorado.edu/weekend](http://conted.colorado.edu/weekend).

Sign up for email reminders for one or more classes via the CU on the Weekend webpage. All programs are subject to change. Those who sign up for email reminders will receive email notification if a program is cancelled or rescheduled. For more information about public outreach programs follow us on Twitter: @CUoutreach and Facebook: [facebook.com/CUoutreach](http://facebook.com/CUoutreach).



## ADDITIONAL CREDIT PROGRAMS

### ACCESS Program

#### (Available Credit Courses for Eligible Special Students)

Enroll in daytime credit classes at the University of Colorado Boulder for personal or professional development through the ACCESS Program. Nondegree students may take main campus undergraduate or graduate courses after most degree-seeking students have enrolled. ACCESS is an opportunity to learn about CU-Boulder and the academic departments, meet the faculty, and earn credit.

We are accepting applications for the spring 2014 semester. Enrollment begins Friday, January 10, and classes begin Monday, January 13. Call 303-492-5148 for more information or visit [conted.colorado.edu/access](http://conted.colorado.edu/access).

Our capable staff can provide academic advising, financial aid, and career advising through in-person or telephone appointments. Visit [conted.colorado.edu/student-resources](http://conted.colorado.edu/student-resources) to set up a free appointment.

ACCESS students who are Colorado residents taking undergraduate or a combination of undergraduate and graduate classes may be eligible for the College Opportunity Fund (COF). For more information visit [cof.college-assist.org](http://cof.college-assist.org).

### High School Concurrent Program

If you are a high school student interested in the challenge of university course work, you may enroll in credit courses at the University of Colorado Boulder through the High School Concurrent Program. You will earn university credit that may also be applied toward high school graduation requirements. Participation in the High School Concurrent Program requires written permission from your high school counselor and a parent/guardian.

If you are a high school junior or senior attending a public high school, you may be eligible for tuition assistance from your school district during the fall and spring semesters. You must notify your counselor of your intent to enroll at least two months prior to the beginning of the term. Call 303-735-5456 for an application and more information or visit [conted.colorado.edu/highschool](http://conted.colorado.edu/highschool).

High School Concurrent students enrolled in ACCESS courses are eligible to apply for the College Opportunity Fund. Visit [cof.college-assist.org](http://cof.college-assist.org) for more information.

### Individualized Instruction

For special cases when a student needs a course that is unavailable (talk to your advisor or call 303-492-5148 for more information).

### Finishing Your Degree at CU

Completing a degree is a very unique experience for each person. Whether you began your degree at CU years ago, or are hoping to complete a degree started elsewhere, we have a friendly staff who understands the challenges of balancing school, work, family...life. Let our academic advisors help you create a plan to meet your needs, making the most of the abundant programs and resources that the university has to offer. Schedule an in-person or telephone appointment at [conted.colorado.edu/student-resources](http://conted.colorado.edu/student-resources) to discuss your options.

Learn more about the CU Complete Service for former CU-Boulder students on page 23.

### Nigel Peterson

Values and Power of Consumer in Society

**“It’s my goal to start a business that produces environmentally conscious and sustainable outerwear for the ski and snowboard industry. To help me get prepared, I’m combining environmental studies with this class to learn more about green consumerism.”**





## POST-BACCALAUREATE PRE-MEDICAL PROGRAM

### Joseph Walker

“I was a college football coach, so I’ve spent a lot of time around orthopedic doctors and surgeons. Their ability to bring health and healing to athletes intrigued me. In most cases, even with a traumatic injury, docs were able to get athletes back to an active life. I was inspired, and decided to follow my love of helping others by becoming a doctor. The program is intense and rigorous, but I know it’s preparing me for medical school. I choose *this* program because it provides critical direction and guidance.”



### WHERE TO BEGIN YOUR NEXT CAREER

The post-baccalaureate pre-medical program is designed for “career changers” who were academically successful as undergraduates and have completed a bachelor’s degree, but have not completed the prerequisite courses necessary to apply to medical schools. This intensive yearlong post-baccalaureate program (one summer, followed by a fall semester and a spring semester) is appropriate for students who are either recent college graduates or experienced professionals seeking a career change. The program begins in early June, 2014 and provides the course work and support necessary to apply to medical schools in 2015.

Applications for the 2014 class will be accepted on a rolling basis beginning in November, 2013.

#### This program is designed for students who have:

- a strong academic undergraduate record with a bachelor’s degree in a non-science field. Most applicants will have a grade point average of 3.3 or above.
- completed college algebra and trigonometry, or the equivalent.

- an informed understanding of the health profession they seek to enter based on extensive and meaningful clinical experience in a healthcare setting such as shadowing medical professionals, volunteering with patients, or employment in a healthcare field.

We offer you the opportunity to gain a sound foundation in the science classes necessary to apply for graduate medical studies. Students receive individual advising, study skills for science classes, and application assistance. Here are the courses provided in the program:

#### Summer

- General Chemistry 1 with Lab
- General Chemistry 2 with Lab

#### Fall

- Introduction to Cellular and Molecular Biology with Lab
- Organic Chemistry 1 with Lab
- General Physics 1 with Lab

#### Spring

- Principles of Genetics with Lab
- Organic Chemistry 2 with Lab
- General Physics 2 with Lab

An optional second summer term with anatomy, physiology, and/or biochemistry courses is available.

Visit [premed.colorado.edu](http://premed.colorado.edu) for more information or email [postbacmd@colorado.edu](mailto:postbacmd@colorado.edu).

## SUMMER SESSION



**Margaret Asirvatham**  
Instructor, Chemistry and Biochemistry

### GET INTO SUMMER!

Summer Session offers you the opportunity to earn academic credit, satisfy your curiosity, meet major or minor requirements, and be part of our summer community. Many of CU's most popular and sought-after courses are offered. The diverse population of students from CU and institutions across the country, high school students, and teachers and other professionals makes Summer Session a unique learning experience.

We also welcome international students to be part of summer in Boulder. Email [ceadvise@colorado.edu](mailto:ceadvise@colorado.edu) for more information.

#### Special offerings during Summer Session include:

##### Faculty-in-Residence Summer Term (FIRST)

Learn from prestigious, world-class faculty that teach on the Boulder campus during summer session. These renowned scholars bring a wealth of experience, knowledge, and perspective to the classroom that will challenge and inspire your thinking. Take advantage of the incredible opportunity FIRST brings to you.

##### Maymester 3 weeks. 3 credits.

Accelerate your academic career with the intensive, single-course focus of Maymester. You will be immersed into an interactive environment where you can complete a core or major requirement in just three weeks. Gain knowledge and momentum by concentrating on a Maymester course.

##### Featured Classes

Explore the possibilities with new course offerings and classes that move you forward

and into new areas. Summer Session offers greater flexibility and smaller class sizes to make the learning process that much more engaging. Check out Featured Classes and find one that's right for you.

##### Online Classes

Get even more out of Summer Session with our online course program. Engage with your instructors and classmates in innovative ways, such as discussion groups, message boards, and video lectures. The classes are rigorous yet the schedule is flexible, so you can learn on your terms.

Visit the Summer Session website at [www.colorado.edu/summer](http://www.colorado.edu/summer) for additional information or to request a copy of the 2014 catalog.

##### Summer 2014 Schedule

Session M (Maymester):	May 12-30
Session A (5 weeks):	June 2-July 3
Session B (5 weeks):	July 8-August 8
Session C (8 weeks):	June 2-July 25
Session D (10 weeks):	June 2-August 8



## CU COMPLETE SERVICE

### Jen Hall

**“I went back to school because of my kids. I wanted to give us a better life and I knew that I could do that if I finished my college degree. My goal was to earn my Bachelor’s of Psychology before my oldest girl finished high school. Because of CU Complete I was able to do it. Through Continuing Education, I got a scholarship that made summer school and a faster track possible. Now, my goal is to work in health and human services with at-risk youth and, ultimately, get my master’s in social work.”**



### NOW IS THE TIME TO COMPLETE YOUR DEGREE.

Your degree is closer than you think. CU Complete offers the academic guidance and potential financial support to achieve the CU-Boulder degree that you started.

#### Guiding Former Students Toward Completing Their Degrees

CU Complete is a service designed to help former CU-Boulder students complete their degrees at CU.

Our advisors understand the challenges facing the adult student population and can help you create a path toward completing your degree.

If you are ready to work toward completing your degree, please fill out the intake form available at [cucomplete.colorado.edu](http://cucomplete.colorado.edu).

#### CU Complete Scholarship

Continuing Education has allocated scholarship funds to assist students who are trying to finish their CU bachelor’s degree.

More information is available at [cucomplete.colorado.edu](http://cucomplete.colorado.edu).



### Let’s get connected.

Visit [conted.colorado.edu/catalogs](http://conted.colorado.edu/catalogs) to be placed on the permanent mailing list.



CAETE Director

DAVID FUSCO

“Our students are able to access the top minds and very best

# EXPERIENCES

in the fields of engineering and technology.”

“With a strong framework of nationally recognized professors and successful programs, CU is a leader in flexible, blended online learning models,” says David, the director of CAETE. “CAETE is continually assessing what programs and cutting-edge learning models are most relevant and effective for today’s professional adult students. We know they are searching for a phenomenal program, like ours, that will be worth their investment of time and money to support their career goals.”

Imagine sitting in your home or office, taking graduate classes from one of the top-ranked engineering schools in the nation. Ranked 20th among public engineering programs nationwide, and 35th overall (*U.S. News and World Report* 2013), we work hard to provide professionals a superior education with the University of Colorado Boulder’s College of Engineering and Applied Science.

For 30 years, the Center for Advanced Engineering and Technology Education (CAETE), which delivers CU Engineering Online, has helped working professionals like you advance their careers with flexible, convenient education through unique programs.

Through CU Engineering Online, you can pursue engineering and technology course work, or earn graduate specialized certificates and master’s degrees in a number of disciplines. We offer courses in real time, both online and on campus, and anytime, via streaming video or download. We also offer skill-building (noncredit) short courses for professional development.

## Master’s Degrees

- Aerospace Engineering
- Computer Science
- Electrical and Computer Engineering
- Engineering Management
- Telecommunications

## Master’s-Level Certificates

- Aerospace Engineering:
  - Astrodynamics and Satellite Navigation Systems
- Electrical/Computer Engineering:
  - Embedded Systems
  - Power Electronics
  - Software Engineering
- Engineering Management:
  - Engineering Entrepreneurship
  - Engineering Management
  - Leadership and Management
  - Managing Applied Research in Technology
  - Performance Excellence in Technology Management
  - Project Management
  - Quality Systems for Product/Process Engineering

## ENGINEERING ONLINE



- Six Sigma Practitioner
- Six Sigma Belt Certifications
- Systems Engineering
- Technology Ventures and Product Management
- Telecommunications
  - Computer and Network Security
  - Energy Communication Networks
  - Network Architecture
  - Telecommunications Policy
  - Wireless Networks and Technologies
- RASEI (Renewable and Sustainable Energy Institute)
  - Renewable Energy
- Civil, Environmental, and Architectural Engineering
  - Water Engineering and Management

### Course Schedule Information

[CUEngineeringOnline.colorado.edu](http://CUEngineeringOnline.colorado.edu)

303-492-6331

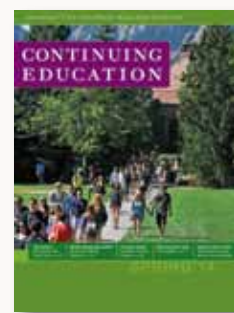
[caete@colorado.edu](mailto:caete@colorado.edu)

[www.coloradodistance.com/blog](http://www.coloradodistance.com/blog)

The **Lockheed Martin Engineering Management Program (EMP)** is the MBA alternative for engineers, scientists, and technical professionals who want to move into management. Through your studies in EMP you can learn and practice data-driven management, develop leadership capabilities, and apply proven principles for business performance improvement. EMP offers 22 certificates, degrees, and dual degrees.

The **Interdisciplinary Telecommunications Program (ITP)** gives you the opportunity to study the most cutting-edge fields in telecommunications—and equips you to become a leader in high-growth companies and policy making agencies. While earning a degree through ITP, you can choose to focus in the areas of Wireless, Energy, IP Networks, Policy, and Security.

Why wait? Get started today to experience the robust curricula, world-class faculty, and strong industry partnerships of a tier 1 research university.



### Let's get connected.

Visit [conted.colorado.edu/catalogs](http://conted.colorado.edu/catalogs) to be placed on the permanent mailing list.

IEC Director

PATTI JUZA

“One way to empower people is to help them learn a language.

COMMUNICATION  
is such an important form of power.”

“International students here are often misjudged because they can’t articulate themselves in English, and it’s our role to help them unleash their communication skills,” says Patti, IEC’s director. “It’s an exciting time on this campus because there are so many international initiatives going on. The IEC is so proud to play a role in welcoming a diverse student population and giving them the skills they need to succeed.”

### 1030 13TH STREET ON “THE HILL.”

Since 1975, the International English Center (IEC) has helped over 20,000 international students learn and master English. Our students go on to attend the University of Colorado, Colorado School of Mines, the University of Denver, Colorado State University, and dozens of other institutions. The children of our former students are now IEC students – we are multi-generational! The IEC offers two English as a Second Language (ESL) programs for international students, community residents, or interested visitors from other countries.

#### About the International English Center (IEC)

The International English Center, established in 1975, provides an intensive approach to learning English. We offer an integrated language skills approach where students have classes in listening/speaking, reading, writing, and grammar each day. The IEC also makes available to students numerous cultural, community, and sports activities that allow them to explore U.S. culture in a friendly and safe environment.

Students have access to university libraries with a rich source of educational and research materials along with two computer labs in the IEC with Internet connections. Because we are part of the University of Colorado Boulder, there are many opportunities to interact with its diverse student population.

All IEC instructors have master’s degrees and teaching experience in international intensive programs.

The International English Center is fully accredited by the Commission on English Language Program Accreditation (CEA). We are also a member of UCIEP, consortium of University and College Intensive English Programs, and AAIEP, the American Association of Intensive English Programs.

#### Intensive English Program (IEP)

The program is especially designed for citizens and residents of other countries who have come to the United States on student visas and who are preparing to enter a college or university in the U.S. It is also appropriate for professionals who need to improve their English for work and for community members who desire to study English intensively. The IEP consists of five eight-week sessions of full-time communicative English language study (20-23 hours per week) with instruction in grammar, reading, writing, listening, and speaking. Students are tested upon arrival and are placed into classes appropriate to their proficiency.



## INTERNATIONAL ENGLISH CENTER



The program consists of 20 hours of core language instruction each week at eight proficiency levels: Introductory, Basic 1 and 2, Intermediate 1, 2, and 3, Advanced 1 and 2. An additional 3 hours each week of optional elective classes are available at no additional cost. Classes average 12 to 15 students and utilize the latest ESL teaching practices and materials.

With the permission of the director, advanced-level students may be eligible to enroll in University of Colorado Boulder classes.

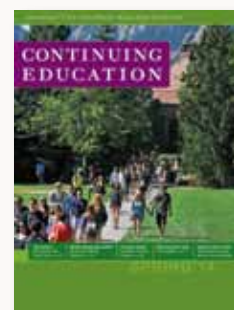
If you are an immigrant or a refugee and cannot afford the program, please ask about scholarship assistance.

Certificates of completion are offered.

### English as a Second Language for Degree Students (ESLG)

These non-intensive credit accent reduction and writing courses are designed for graduate and undergraduate degree students who need to strengthen specific areas in their academic language proficiency. Nondegree students may enroll if they demonstrate an appropriate level of English proficiency. An English placement test is given at the beginning of the fall and spring semesters and recommendations are made based on student results.

For more information on any of these programs, please visit [iec.colorado.edu](http://iec.colorado.edu) or call 303-492-5547.



### Let's get connected.

Visit [conted.colorado.edu/catalogs](http://conted.colorado.edu/catalogs) to be placed on the permanent mailing list.

Class Program Instructor

KELLY LUBKEMAN

“We take for granted the magic of science that surrounds us every day. But when kids learn this, they **LIGHT UP** and want more.”

“I think it is really important for kids to be introduced to science as play,” says Kelly. “When they are exposed at an early age to scientific ideas and words like ‘experiment’ or ‘hypotheses’, it becomes second nature to them. Then, when they get to high school and people tell them they have to do experiments, they love it. They don’t have to overcome their fear of something new before they are ready to learn.”

**ABOUT SCIENCE DISCOVERY**

**CU Science Discovery, established in 1983, collaborates with CU-Boulder faculty to develop and deliver science education programs for K-12 students and teachers. Our mission is to heighten interest and increase literacy in science, technology, engineering, and math (STEM) by providing hands-on experiences that connect students and teachers to current CU science. We capitalize on CU-Boulder’s scientific resources, facilities, and expertise to excite students about STEM, expose them to a variety of STEM careers and professionals, and inspire a future generation of scientists and engineers. Through our programs, we impact more than 20,000 students and teachers across Colorado each year.**

**Summer and After-School Classes**

For students ages 5-18, CU Science Discovery offers a wide variety of classes that span the STEM disciplines. Classes offer enthusiastic and knowledgeable instructors (often STEM graduate students with teaching experience), access to university and community resources, small class sizes (10-16 students), and a

variety of laboratory and field experiences. Classes such as Wildlife Forensics, CU Science: Behind the Scenes, and Reverse Engineering are designed to enrich student understanding and motivate them to explore science topics in greater depth. Advanced workshops, such as Geoscience Field Methods, the Medical School Experience, and Biomedical Engineering, offer

opportunities for high school students to learn more about STEM majors and career opportunities. From fossils to forensics to physics, our Class Program offers something for everyone! For a complete listing of current classes, please visit our website.

**Classroom Presentations**

Science Discovery brings CU’s cutting-edge science and scientists to classrooms, libraries, and community centers throughout Colorado. The program collaborates with CU faculty, peer institutions, and other educational organizations to enrich STEM education statewide. Our interactive presentations and hands-on workshops introduce students to subjects across the STEM disciplines, including chemistry, physiology, and optics. Current offerings include several new programs in physical science, sustainability, and biotechnology. Each program’s content and activities support the Colorado Academic Standards and enrich student learning through fun, hands-on experiences.

## SCIENCE DISCOVERY



### STEM Workshops and Teacher Professional Development

Full-day STEM Workshops, offered on the CU campus and at school sites around the state, provide a more extended experience for elementary and middle school teachers and students. Teachers and students rotate through three different hands-on workshop modules, giving teachers the opportunity to participate in workshop activities alongside their students. STEM Workshops and related Teacher Professional Development Workshops focus on topics such as engineering, renewable energy and earth systems science. CU Science Discovery conducts STEM Workshops and Teacher Professional Development Workshops at urban and rural sites throughout Colorado. Contact us to bring a STEM Workshop to your community!

### Field Science Programs

CU Science Discovery provides a variety of opportunities for students and teachers to participate in hands-on science while exploring the great outdoors. Throughout the school year, we offer field study programs that explore Colorado's ecosystems, such as Stream Ecology and Winter Ecology on Snowshoes. Our Mountain Research Experience, offered in collaboration with CU's Department of Ecology and Evolutionary Biology and INSTAAR, provides high school students the opportunity to conduct ecological field research while living and working at CU's Mountain Research Station. Our field programs provide teachers and their students with opportunities to dig in and experience field science research firsthand. For more information about our programs and current offerings, visit [sciencediscovery.colorado.edu](http://sciencediscovery.colorado.edu) or call 303-492-7188.

### Girls in STEM

CU Science Discovery is working to advance gender equity in STEM by serving as the convening organization for the Colorado Collaborative for Girls in STEM, a statewide affiliate of the NSF-funded National Girls Collaborative Project. In this role, we help to coordinate activities across the state designed to build capacity among STEM education providers and school counselors, and promote greater opportunities for girls and women in STEM.

### CU Science Discovery Teen Café

Our new Teen Café offers Boulder and Denver area teens an opportunity to meet and interact with local scientists in a fun and informal setting. The Teen Science Café meets monthly at each of two locations, one in Boulder and the other in Denver. Café topics span a wide range of STEM fields – from ecology to medicine to astrophysics! Topics and presenters are identified by our Youth Leadership Team who help us guide the program and run café events. For information about upcoming events or to get involved, please visit our website.



The Bees' Needs

DEANE BOWERS

“People love bees, yet there is a lot of incorrect public information about bee  
**DECLINE.**”

“Bee declines are a reality, and this project is a way to address that,” says Deane, curator of entomology at the CU Museum of Natural History and professor of ecology and evolutionary biology. “Part of our job at the Museum of Natural History is to engage the public in science. The Bees’ Needs project has been an incredible way to involve the public in entomology and citizen science.”

## ENGAGING CITIZENS IN BEE RESEARCH

**As news has spread of the mysteriously waning honeybee populations, scientists and citizens alike have taken an interest in bees in recent years. Native bees play vital roles in local ecosystems and they are also showing signs of decline. The University of Colorado Museum of Natural History’s The Bees’ Needs project invites the public to help collect much needed information about native bee populations.**

Deane Bowers’ fascination with insects began with butterflies, but she soon spread her wings to embrace other “bugs.” As curator of entomology at the University of Colorado Museum of Natural History and professor of ecology and evolutionary biology, Bowers is always looking for ways to make entomology more accessible to the public. She offers homemade, chocolate chip and mealworm cookies to students as an end-of-the-semester snack, but luckily inviting the public to participate in bee research is an easier sell. The Bees’ Needs project aims to engage the public and to educate volunteers about beloved bees.

“People love bees, yet there is a lot of incorrect public information about bee decline,” Bowers said.

“Bee declines are a reality, and this project is a way to address that. Part of our job at the Museum of Natural History is to engage the public in science. The Bees’ Needs project has been an incredible way to involve the public in entomology and citizen science.”

There are more than 900 bee species in Colorado and more than 550 species in the Boulder area. Alexandra Rose, the museum’s citizen scientist coordinator, and Virginia Scott, the museum’s entomology collections manager and native bee

expert, helped create The Bees’ Needs to involve the public in studying what community characteristics determine where bee species live so that scientists can better understand population declines.

In The Bees’ Needs, the public act as citizen scientists who share in data collection and discoveries about Colorado’s native bees. The project furnishes bird-house-sized “bee blocks” for volunteers to install in their yards. The wooden blocks are drilled with 40 holes in various sizes to provide enticing homes for solitary, wood-nesting bees. Volunteers provide information about their yard and neighborhood, and they document what materials—plant fibers, mud, pebbles, etc. — they observe bees using to build their nests. The nesting materials help researchers identify what species are present and where they live.

Since the program’s launch in spring 2013, Rose and Scott have led workshops that not only teach volunteers how to collect data but also address common misinformation about bees.

## OUTREACH



“I see a lack of knowledge about bees but not a lack of interest,” Scott said. “Most people are surprised to find out that bees are not all social and that most are solitary insects. They come in all different sizes and all different colors: black, green, red.”

The Bees’ Needs project has been so popular that the organizers quickly met volunteer recruitment goals in 2013 and a waitlist is in effect for 2014 volunteers. However, the program continues to expand the citizen-science model to K-12 educators and classrooms.

With support from the CU-Boulder Outreach Committee, The Bees’ Needs is partnering with CU-Boulder’s Biological Sciences Initiative (BSI) and ScienceLIVE to develop classroom curricula for 4th-12th grade teachers. Together, the programs are developing teacher workshops, web tools, blogs, and webinars that allow classrooms and citizen scientists to connect with CU scientists.

These new developments will allow organizers to spread bee identification to other areas of the state and engage diverse populations that are often underrepresented in the sciences. Involving K-12 classes, educators, and citizen scientists in The Bees’ Needs will strengthen the scope of the data and broaden the public’s understanding of the important role that pollinators play in our local ecosystems, Rose said.

“The citizen-science model is significant from a scientific perspective, because it offers us the ability to gather samples that are geographically and numerically not possible otherwise,” she said. “Socially, citizen science allows us to subtly and not-so-subtly offer education and outreach to the public. People respond to scientific messages when they are part of process.”

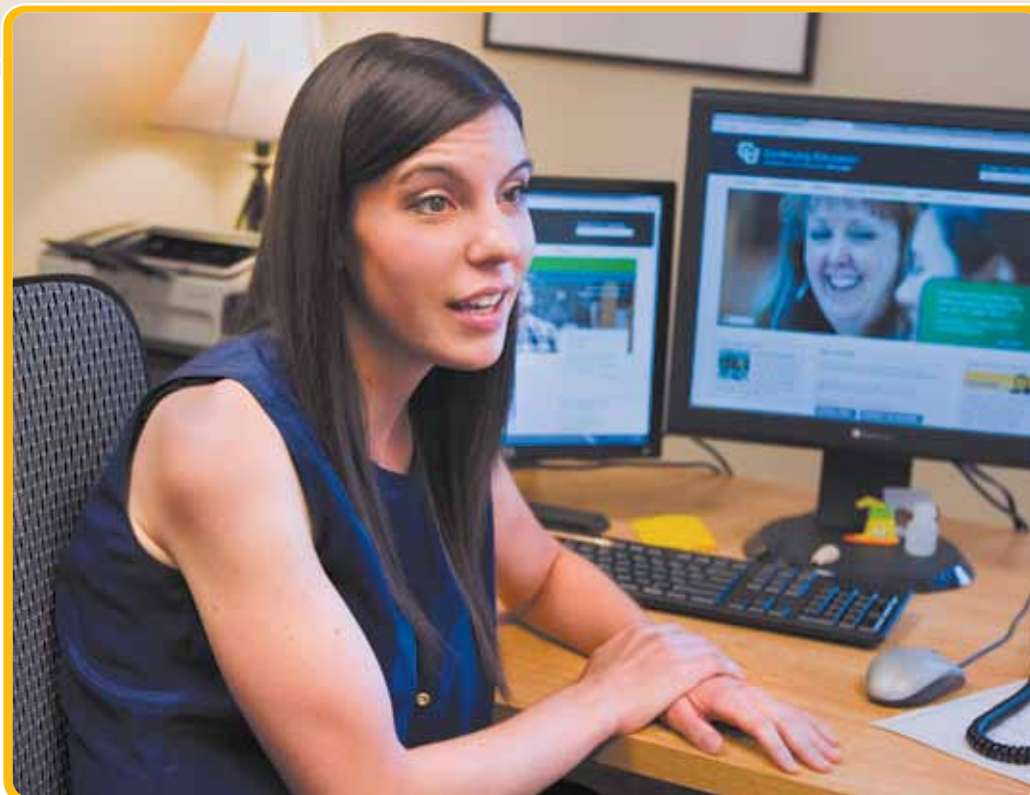
For more information about the program, visit [beesneeds.colorado.edu](http://beesneeds.colorado.edu).

### About Outreach at CU-Boulder

Extending educational opportunities to the citizens of Colorado is a vital part of the university as well as the mission of Continuing Education. The Division is home of the Office for University Outreach, which supports campus-wide outreach efforts and connects the university’s research, teaching, and creative resources with communities throughout Colorado and the world.

The office also administers the CU-Boulder Outreach Committee, which distributes funding for outreach projects that engage faculty in mutually beneficial partnerships with external constituents. These awards are made possible by funds from the Office of the Chancellor, the Office of the Provost, and Continuing Education. For more information about the Office for University Outreach and its programs, visit [outreach.colorado.edu](http://outreach.colorado.edu) or email [outreach@colorado.edu](mailto:outreach@colorado.edu).





**Blazey Heier**

Academic Advisor

**“Each one of our students is different, whether they are a returning adult student, a main campus student, or someone taking a class for fun. I work with each one individually to see how we can make their class life meet the needs of their personal life. I help people figure out what they need to reach their goals, and strategize to find the right combination of classes and programs to fit their unique needs.”**

**YOU’VE GOT QUESTIONS. WE’VE GOT ANSWERS.**

Lifelong learning doesn’t mean putting your job, family, or life on hold – and no one understands that better than the staff at Continuing Education. We can help you sort through your academic options, identify financial aid resources, prepare for a career, and more. Visit [conted.colorado.edu/student-resources](http://conted.colorado.edu/student-resources) to learn more or to schedule an appointment with an advisor.

**GETTING STARTED**

**Academic Advising**

Our academic advisors can help you understand the university options and choose the best course of action. You will find helpful hints for preparing for your appointment at [conted.colorado.edu/student-resources/academic-advising](http://conted.colorado.edu/student-resources/academic-advising).

**Financial Assistance**

Our financial aid advisor can help you determine if there are funds available to help you meet your educational goals. Visit [www.colorado.edu/finaid/continuinged.html](http://www.colorado.edu/finaid/continuinged.html) for more information.

Nondegree students age 22 or older are eligible to apply for one of several Nontraditional Student Scholarships awarded each semester. An application and complete information including eligibility, requirements, and deadlines are available at [conted.colorado.edu/student-resources/financial-aid](http://conted.colorado.edu/student-resources/financial-aid).

**Career Services**

Our career advisor is available for comprehensive career counseling including career exploration and planning, job search assistance, and other career-related guidance. Nondegree students are eligible for eight individual career advising sessions each term they are enrolled. To schedule an appointment or for more information, visit [conted.colorado.edu/student-resources/career-services](http://conted.colorado.edu/student-resources/career-services).

**CAREER EXPLORATION WORKSHOP**

**NCLS 1010**

Want to discover a career passion? Begin to identify who you are through your interests, values, skills, and personality type, in addition to exploring how this information relates to a career. We will integrate various methods for self-assessment and tracking career passions. This hands-on class will assist you in finding a career direction that will bring job satisfaction, whether you are making a career change or just beginning to enter the job market. After the class, you will also have access to the Continuing Education career advisor.

Dahlia Smith, LCSW, is the Career Advisor at Continuing Education. She has been counseling job seekers and changers for over 14 years.

Wednesdays, March 5-April 16 (no class March 26), 11 am - 1 pm, Continuing Education Center, room 140, 6 sessions. \$190.

**ENROLLING IN UNIVERSITY CREDIT COURSES**

If you would like to enroll in courses for University credit answer these questions to determine your next step.

**Are you new to CU, or has it been more than 12 months since you enrolled in a course?**

If yes, then please complete and submit the online Continuing Education Application at [conted.colorado.edu/enroll](http://conted.colorado.edu/enroll). We will process your application and send you an Invitation to Enroll, complete with all of the information you will need to enroll in courses using MyCUInfo.

**Have you been enrolled in a CU course within the past 12 months?**

If yes, give us a call at 303-492-5148 and we can activate your term record. You will then be able to enroll online via MyCUInfo at [mycuinfo.colorado.edu](http://mycuinfo.colorado.edu).

**ENROLLING IN THE CAREER EXPLORATION WORKSHOP**

Visit [conted.colorado.edu/enroll/noncredit](http://conted.colorado.edu/enroll/noncredit) for information on how to enroll, call our enrollment services office at 303-492-5148, or visit us at 1505 University Avenue, Boulder.

Once you are enrolled, you will receive confirmation of enrollment including course meeting times and locations. If you have any questions about the enrollment process, call us at 303-492-5148.



## STUDENT SERVICES

### PAYING

Continuing Education offers a full service bursar/accounting office. You can pay your tuition by check, cash, credit card (VISA, MasterCard, Discover, and American Express), or online from your checking or savings account. Please note that effective August 1, 2013, any payments made to the University of Colorado using a credit or debit card will be charged an additional nonrefundable 2.75% service fee by the card processor. Credit students can also pay using a credit card online at [mycuinfo.colorado.edu](http://mycuinfo.colorado.edu). Visit [conted.colorado.edu/student-resources/accounting](http://conted.colorado.edu/student-resources/accounting) for more information.

If you need confirmation of enrollment and payment of tuition for employer reimbursement, please contact us at 303-492-2212 or by email at [cebursar@colorado.edu](mailto:cebursar@colorado.edu).

### ADDITIONAL INFORMATION

#### Course Updates

Occasionally information printed in this catalog changes. We encourage you to verify your course information such as course locations, cancellations, etc. before traveling to campus for your class. You will find the most up-to-date information at [conted.colorado.edu](http://conted.colorado.edu).

We try to notify enrolled students of course changes by email and telephone. We therefore encourage you to let us know if your contact information changes.

#### Student Privacy

You may elect to have directory information withheld about yourself. Please call or visit our office to receive the required form.

#### Disability Services

If you are a student with a disability, Disability Services can provide you with the tools, accommodations, and support services to engage fully in the academic environment. Visit [disabilityservices.colorado.edu](http://disabilityservices.colorado.edu) for more information.

### Accessing Campus Services

As a Continuing Education student, you may be eligible to use the campus libraries and computer labs at no cost. To gain access to these campus services, please obtain a “no fees paid” sticker (available at the Continuing Education cashier’s window) and bring the sticker and a photo ID with you when you plan to use the libraries or computer labs. You can also purchase a student ID, the Buff OneCard, for \$25 at the Buff OneCard office in the Center for Community, room N180, by presenting a copy of your student schedule and photo ID. Visit [www.BuffOneCard.com](http://www.BuffOneCard.com) for more information.

### Severe Weather

Classes are held when scheduled. Campus closings are announced on local radio and television stations along with the CU website at [www.colorado.edu](http://www.colorado.edu). You will also find cancellations on Facebook ([facebook.com/CUContinuingEd](http://facebook.com/CUContinuingEd)) and Twitter (@CUContinuingEd).

### Books and Supplies

Required course materials are available at the CU Book Store in the basement of the University Memorial Center on campus. Call 303-492-6411 or visit [www.cubookstore.com](http://www.cubookstore.com).

### FAQS

#### How much will my course cost?

Costs vary depending on the course. For the Career Exploration Workshop, you will find the cost at the end of the course listing. For Boulder Evening, tuition is different for Colorado residents and nonresidents. Independent Learning tuition is different depending on whether the course is undergraduate or graduate level. Information on tuition and residency can be found at [conted.colorado.edu/tuition](http://conted.colorado.edu/tuition).

Continuing Education tuition is charged separate from and in addition to other CU tuition. All tuition and refund determinations are subject to audit.

### Where do I get a record of my classes?

If you need a record of your academic credit courses, request a transcript through MyCUInfo at [mycuinfo.colorado.edu](http://mycuinfo.colorado.edu). You can also visit the CU registrar’s website at [www.colorado.edu/registrar](http://www.colorado.edu/registrar) for other options.

For a record of your noncredit courses, email our enrollment services office at [ceregistration@colorado.edu](mailto:ceregistration@colorado.edu) or call 303-492-5148.

### Where is my class? Is there parking nearby?

Course locations are listed at the end of each course description. Many campus parking lots offer \$4.00 parking after 5 pm and on Saturdays. Some are free during evenings and weekends. The Campus Map at [www.colorado.edu/campusmap](http://www.colorado.edu/campusmap) gives both building and evening and weekend parking lot locations. To skip parking altogether, take the bus to campus.

### What if my plans change and I have to drop my class?

Please let us know. Depending on when you drop a course, you may receive a full refund. Refer to each program description for refund policies after a course begins.

Please note: Nonattendance does not constitute withdrawal and you may still be charged for your courses unless you officially withdraw before the drop deadline.

Call us at 303-492-5148 or 800-331-2801 (TTY 303-492-8905) if you need any help or for additional information visit [conted.colorado.edu](http://conted.colorado.edu).

### Building Hours/Closures

Our office hours are 8 am to 5 pm Monday through Friday. CU-Boulder will be closed Thursday and Friday, November 28 and 29; Tuesday and Wednesday, December 24 and 25; Wednesday, January 1; Monday, January 20; Friday, March 28.



#### Alumni Discounts Available

For more information visit [conted.colorado.edu/student-resources/accounting/discounts](http://conted.colorado.edu/student-resources/accounting/discounts)

At the University of Colorado Boulder we are committed to building a campus community in which diversity is a fundamental value. People are different and the differences among us are what we call diversity—a natural and enriching hallmark of life. Diversity includes, but is not limited to, ethnicity, race, gender, age, class, sexual orientation, religion, disability, political viewpoints, veteran status, gender identity/expression, and health status. A climate of healthy diversity is one in which people value individual and group differences, respect the perspectives of others, and communicate openly.

Diversity is a key to inclusive excellence in education. A diverse learning environment better prepares all students for the world that awaits them. CU-Boulder is committed to enriching the lives of our students, faculty, and staff by providing a diverse campus where the exchange of ideas, knowledge, and perspectives is an active part of learning.

—from the Guidelines for Diversity Planning

The University of Colorado Boulder does not discriminate on the basis of race, color, national origin, sex, age, disability, creed, religion, sexual orientation, gender identity, gender expression, or veteran status in admission

and access to, and treatment and employment in, its educational programs and activities. The university takes affirmative action to increase ethnic, cultural, and gender diversity, to employ qualified disabled individuals, and to provide equal opportunity to all students and employees.

University of Colorado Boulder Catalog (USPS 651-060). 1505 University Avenue, 178 UCB, Boulder, CO 80309-0178. Volume 2013, No. 4, October/November. Published four times a year: January, March, June/July, and October/November. Periodicals postage paid at Boulder, Colorado, and additional mailing offices. POSTMASTER: Send address changes to the University of Colorado Boulder Catalog, Continuing Education, University of Colorado Boulder, 178 UCB, Boulder, CO 80309-0178.

Continuing Education is part of the Colorado Statewide Extended Campus, [highered.colorado.gov/academics/ExtendedStudies](http://highered.colorado.gov/academics/ExtendedStudies). This publication was printed and mailed using funds generated solely by Continuing Education programs. Continuing Education regrets any printing errors, but accepts no liability for them.

Design: Vermilion. Printing: Vision Graphics. Cover, CU on the Weekend, and Summer Session photos courtesy of the University Photographers.

**Division of Continuing Education**  
1505 University Avenue  
University of Colorado Boulder  
178 UCB  
Boulder, CO 80309-0178  
[conted.colorado.edu](http://conted.colorado.edu)



Printed on Forest Stewardship Council paper ensuring the highest standards of environmental and social responsibility. Share your catalog with friends, and recycle all appropriate materials. Thank you.

12019170

## CU ON THE WEEKEND

Join us on campus for FREE Saturday classes with some of CU-Boulder's best faculty. Discover more about their academic passions. Gain fresh perspectives. Explore a new path to learning.

See page 19 for details.

