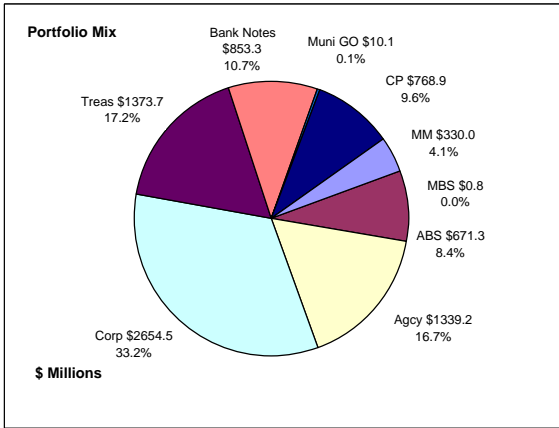


Colorado Treasury Pool Combined March 31, 2018



Portfolio Value

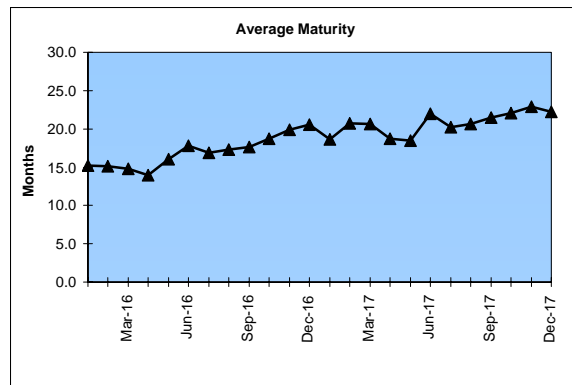
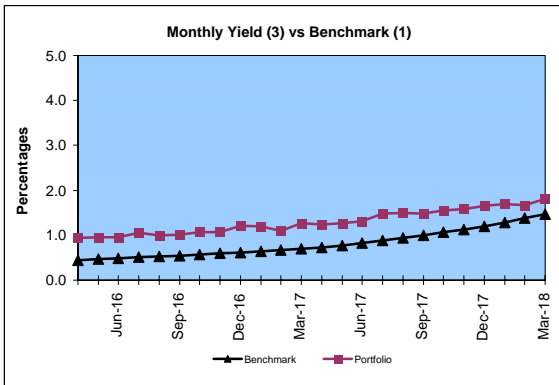
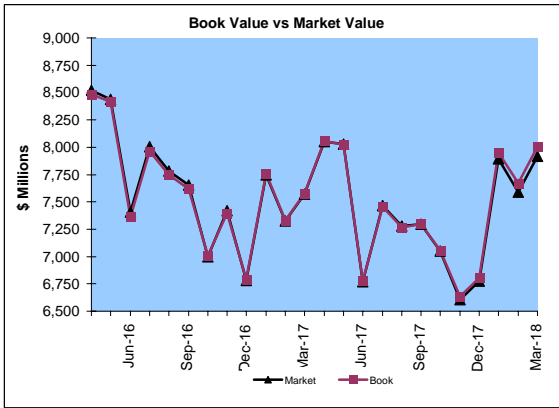
Market Value \$7,919.2 Million
Book Value \$8,001.8 Million

Yield and Average Maturity

Portfolio Book Yield 1.6%
Portfolio Average Maturity 19.3 Months

Portfolio Quality

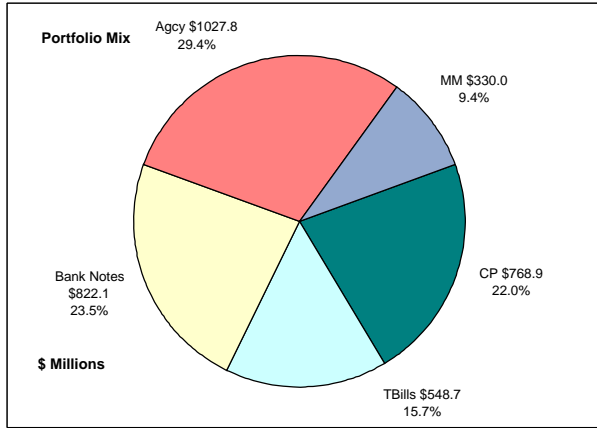
	A1 / P1	AAA	AA	A	BBB	BB	B	Other	Portfolio Percent
Asset Backed		100.0%							8.4%
Corporates		2.4%	20.7%	74.0%	2.9%				33.2%
Mortgage Securities			100.0%						0.0%
Commercial Paper	100.0%								9.6%
Treasuries			100.0%						17.2%
Federal Agencies		0.7%	99.3%						16.7%
Bank Notes		3.7%	96.3%						10.7%
Muni GOs			100.0%						0.1%
Certificates of Deposit									
Money Market Funds								100.0%	4.1%
Total Portfolio	9.6%	9.7%	51.0%	24.6%	1.0%			4.1%	100.0%



	\$ Millions			Performance Benchmarks (2)	
	Average Portfolio	Realized Income	Book Yield		
FY '18 YTD	7,412.6	89.2	1.6%	1.5%	
Last 12 months	7,558.2	114.6	1.5%	1.5%	
FY '17	7,635.0	87.8 ³	1.2%	0.8%	
FY '16	7,972.4	77.0	1.0%	0.5%	
FY '15	7,661.9	79.2	1.0%	0.2%	
FY '14	7,842.0	77.4	1.0%	0.1%	
FY '13	7,157.7	78.3	1.1%	0.2%	
Avg FY '13-'17	7,653.8	79.9	1.0%	0.4%	

(1) 12 month moving average of the constant maturity yield on the 1 year Treasury note
 (2) 12 month moving average of the constant maturity yield on the 1 year Treasury note at end of period
 (3) Excludes \$80K in net gains for FYTD 2017

Colorado Treasury Cash
(0 - 1 year maturities)
March 31, 2018



Portfolio Value

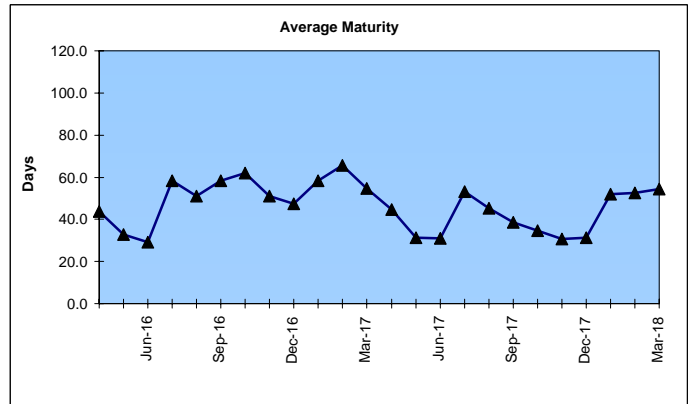
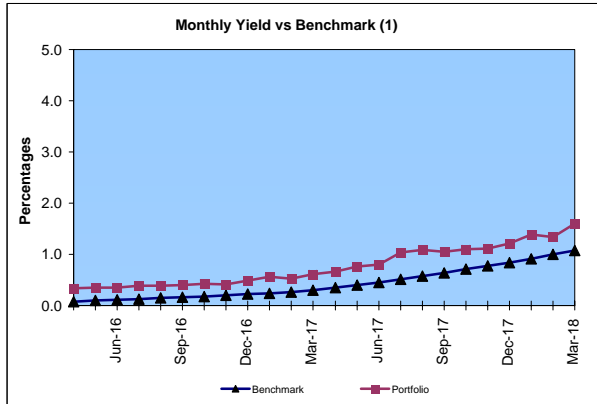
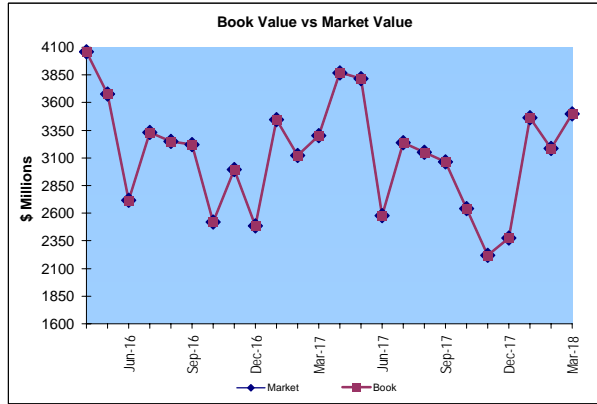
Market Value \$3,497.3 Million
Book Value \$3,497.5 Million

Yield and Average Maturity

Portfolio Book Yield 1.22%
Portfolio Average Maturity 54 Days

Portfolio Quality

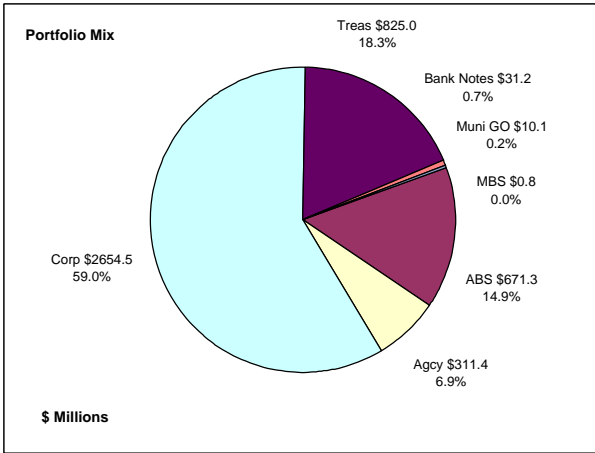
	A1 / P1	AA	AAA	Other	Portfolio Percent
Commercial Paper	100.0%				22.0%
Federal Agencies		100.0%			29.4%
Corporates					0.0%
Certificates of Deposit					0.0%
Bank Notes					23.5%
Tbills		100.0%			15.7%
Money Market Funds				100.0%	9.4%
Total Portfolio	22.0%	68.6%		9.4%	100.0%



	\$ Millions		Book Yield	Performance Benchmarks (2)
	Average Portfolio	Realized Income		
FY '18 YTD	3,064.2	28.1	1.22%	1.08%
Last 12 months	3,247.4	35.2	1.08%	1.08%
FY '17	3,274.3	18.0	0.55%	0.45%
FY '16	3,276.6	7.5	0.23%	0.11%
FY '15	2,467.4	1.8	0.07%	0.01%
FY '14	2,970.8	2.0	0.07%	0.03%
FY '13	3,223.2	3.5	0.11%	0.05%
Avg FY '13-'17	3,042.5	6.5	0.21%	0.13%

(1) 12 month moving average of the 30 day Treasury bill
(2) 12 month moving average of the 30 day Treasury bill at end of period

Colorado Treasury Bond (1 - 5 year maturities) March 31, 2018



Portfolio Value

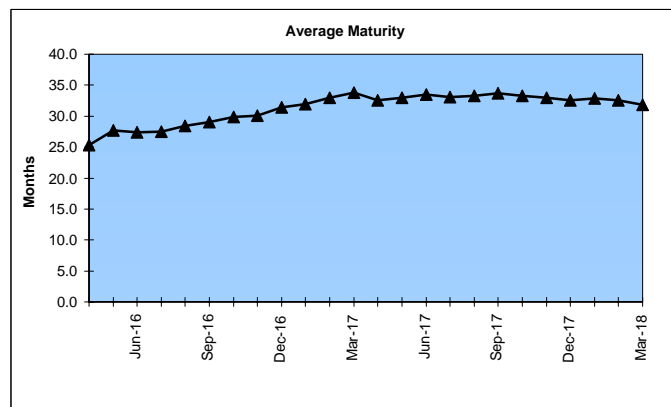
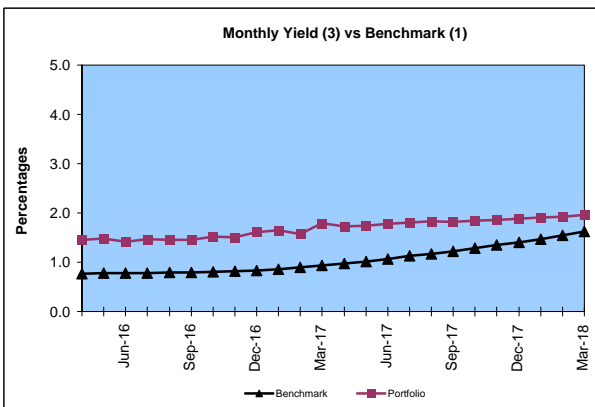
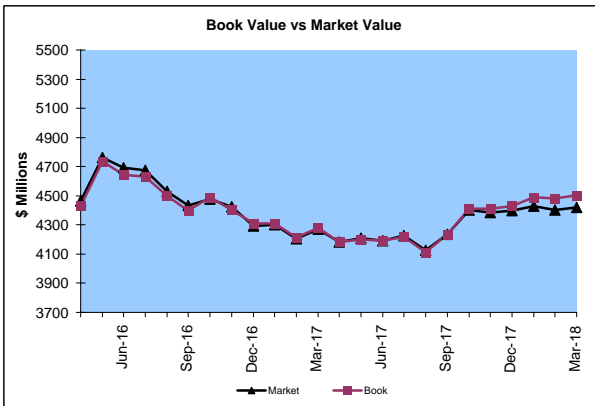
Market Value \$4,421.9 Million
Book Value \$4,504.3 Million

Yield and Average Maturity

Portfolio Book Yield 1.9%
Portfolio Average Maturity 31.9 Months

Portfolio Quality

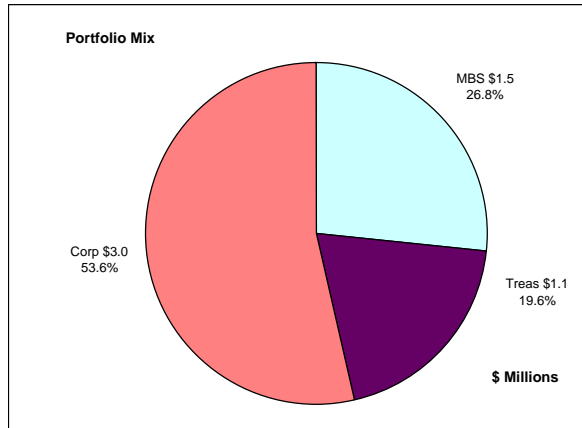
	AAA	AA	A	BBB	BB	B	Other	Portfolio Percent
Asset Backed	100.0%							14.9%
Corporates	2.4%	20.7%	74.0%	2.9%				59.0%
Bank Notes	100.0%							0.7%
Mortgage Securities		100.0%						0.0%
Treasuries		100.0%						18.3%
Federal Agencies	3.2%	96.8%						6.9%
Muni GOs		100.0%						0.2%
Total Portfolio	17.3%	37.4%	43.6%	1.7%				100.0%



	Average Portfolio	Realized Income	Book Yield	Performance Benchmarks (2)
FY '18 YTD	4,348.4	61.1	1.9%	1.6%
Last 12 months	4,310.8	79.4	1.8%	1.6%
FY '17	4,360.6	69.9 ³	1.6%	1.1%
FY '16	4,695.9	69.4	1.5%	0.8%
FY '15	5,194.5	77.4	1.5%	0.6%
FY '14	4,871.2	75.4	1.6%	0.4%
FY '13	3,934.5	74.8	1.9%	0.3%
Avg FY '13-'17	4,611.3	73.4	1.6%	0.6%

(1) 12 month moving average of the constant maturity yield on the 2 year Treasury note
(2) 12 month moving average of the constant maturity yield on the 2 year Treasury note at end of period
(3) Excludes \$80K in net gains for FYTD 2017

Colorado Major Medical Insurance Fund
March 31, 2018



Portfolio Value (1)

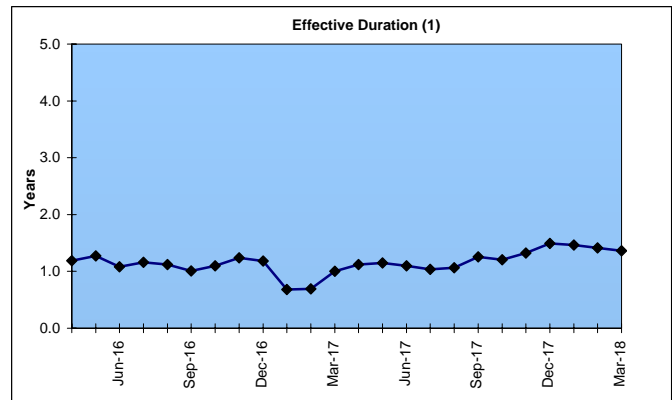
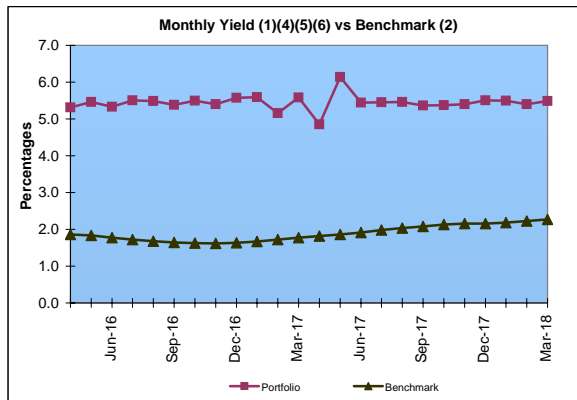
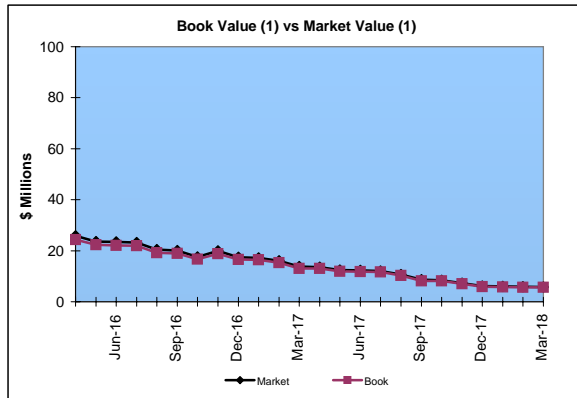
Market Value \$5.8 Million
Book Value \$5.6 Million

Yield and Effective Duration

Portfolio Book Yield 2.0%
Portfolio Effective Duration (1) 1.4 Yrs

Portfolio Quality

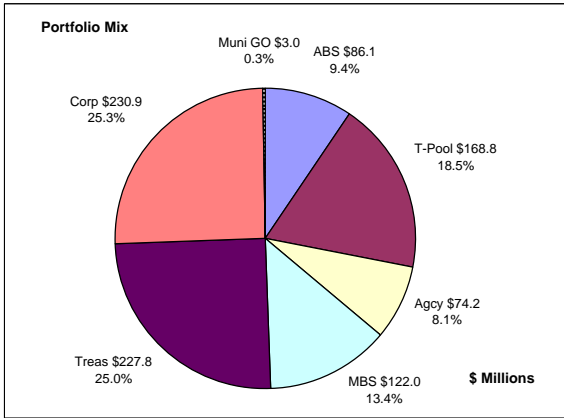
	AAA	AA	A	BBB	BB	Portfolio Percent
Asset Backed						0.0%
Corporates	33.3%		66.7%			53.6%
Federal Agencies						0.0%
Mortgage Securities		100.0%				26.8%
Treasuries		100.0%				19.6%
Total Portfolio	17.9%	46.4%	35.7%			100.0%



	\$ Millions		Book Yield	Performance Benchmarks (3)
	Average Portfolio	Realized Income		
FY '18 YTD	76.8	1.1 ⁶	2.0%	2.3%
Last 12 months	77.3	1.5	2.0%	2.3%
FY '17	80.7	1.6 ⁵	2.0%	1.9%
FY '16	84.3	2.0	2.3%	1.8%
FY '15	87.7	2.5 ⁴	2.9%	2.0%
FY '14	90.7	3.1	3.4%	2.2%
FY '13	89.7	3.9	4.3%	1.2%
Avg FY '13-'17	86.6	2.6	3.0%	1.8%

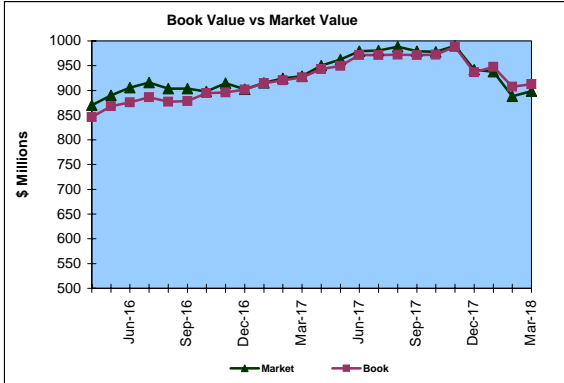
(1) Does not include State Treasury Pool cash balances in calculation.
 (2) 12 month moving average of the constant maturity yield on the 7 year Treasury note
 (3) 12 month moving average of the constant maturity yield on the 7 year Treasury note at end of period
 (4) Excludes \$113K in gains for FYTD 2015
 (5) Excludes \$64K in gains for FYTD 2017
 (6) Excludes \$7K in gains for FYTD 2018

Colorado Public School Permanent Fund *
March 31, 2018



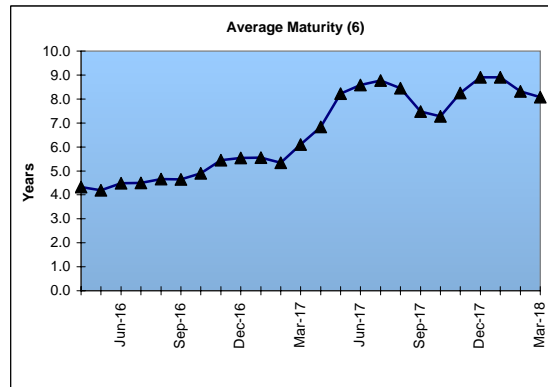
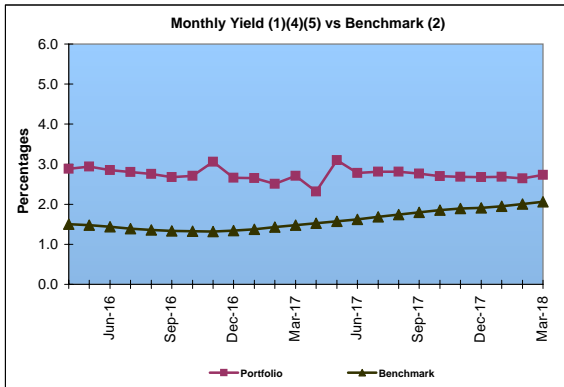
Portfolio Value
Market Value \$898.4 Million
Book Value \$912.8 Million

Yield and Average Maturity
Portfolio Book Yield 2.5%
Portfolio Average Maturity 8.1 Yrs



Portfolio Quality

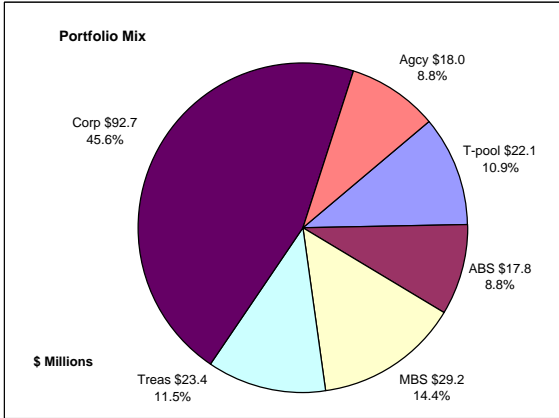
	A1 / P1	AAA	AA	A	BBB	BB	B	Other	Portfolio Percent
Asset Backed		100.0%							9.4%
Corporates		7.8%	43.1%	31.5%	17.6%				25.3%
Mortgage Securities			96.9%					3.1%	13.4%
Treasuries			100.0%						25.0%
Federal Agencies			100.0%						8.1%
Muni GOs			100.0%						0.3%
T-Pool Combined	9.6%	9.7%	51.0%	24.6%	1.0%	0.0%	0.0%	4.1%	18.5%
Total Portfolio	1.8%	13.2%	66.7%	12.5%	4.6%			1.2%	100.0%



	\$ Millions		Book Yield	Performance Benchmarks (3)
	Average Portfolio	Realized Income		
FY '18 YTD	952.2	17.7 ⁵	2.5%	2.1%
Last 12 months	947.8	23.4	2.5%	2.1%
FY '17	902.4	21.6 ⁴	2.4%	1.6%
FY '16	835.1	21.7	2.6%	1.4%
FY '15	739.8	22.1	3.0%	1.6%
FY '14	668.8	21.6	3.2%	1.6%
FY '13	622.2	22.4	3.6%	0.8%
Avg FY '13-'17	753.7	21.9	3.0%	1.4%

* Represents bond portion only; investments managed externally are excluded
 (1) Does not include State Treasury Pool cash balances in calculation.
 (2) Latest 12 month moving average of the constant maturity yield on the 5 year Treasury note
 (3) Latest 12 month moving average of the constant maturity yield on the 5 year Treasury note at end of period
 (4) Excludes \$4.15 million in net gains for FYTD 2017
 (5) Excludes \$9K in net losses for FYTD 2018
 (6) Does not include State Treasury Pool cash balances in calculation as of April 2017

Unclaimed Property Tourism Fund March 31, 2018



Portfolio Value

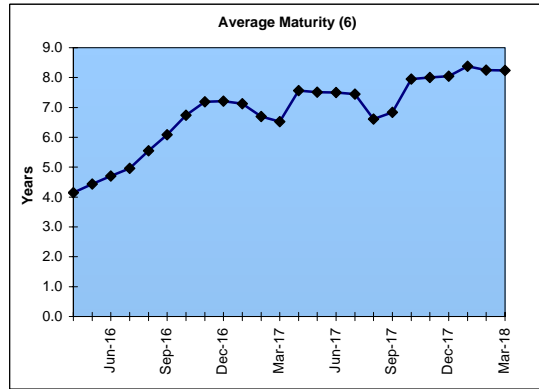
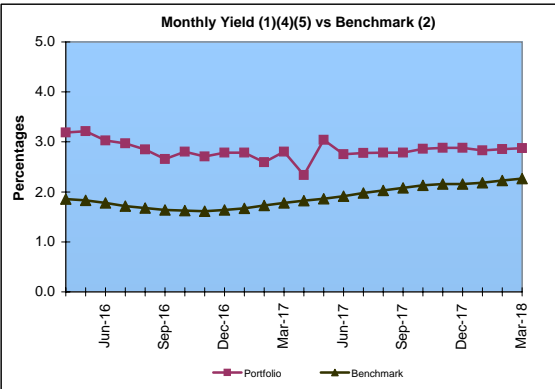
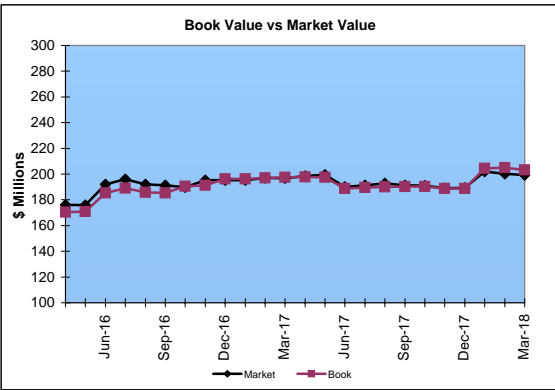
Market Value \$199.2 Million
Book Value \$203.2 Million

Yield and Average Maturity

Portfolio Book Yield 2.7%
Portfolio Average Maturity 8.2 Yrs

Portfolio Quality

	A1 / P1	AAA	AA	A	BBB	BB	B	Other	Portfolio Percent
Asset Backed			100.0%						8.8%
Corporates		3.3%	19.5%	68.6%	8.6%				45.6%
Federal Agencies			100.0%						8.8%
Mortgage Securities			100.0%						14.4%
Treasuries			100.0%						11.5%
T-Pool Combined	9.6%	9.7%	51.0%	24.6%	1.0%	0.0%	0.0%	4.1%	10.9%
Total Portfolio	1.0%	11.3%	49.2%	34.0%	4.0%			0.5%	100.0%



	\$ Millions		Book Yield	Performance Benchmarks (3)
	Average Portfolio	Realized Income		
FY '18 YTD	195.9	4.0 ⁵	2.7%	2.3%
Last 12 months	196.4	5.2	2.7%	2.3%
FY '17	192.1	4.9 ⁴	2.6%	1.9%
FY '16	169.5	4.6	2.7%	1.8%
FY '15	153.7	4.6	3.0%	2.0%
FY '14	136.9	4.3	3.1%	2.2%
FY '13	122.9	4.1	3.3%	1.2%
Avg FY '13-'17	155.0	4.5	2.9%	1.8%

- (1) Does not include State Treasury Pool cash balances in calculation.
- (2) 12 month moving average of the constant maturity yield on the 7 year Treasury note
- (3) 12 month moving average of the constant maturity yield on the 7 year Treasury note at end of period
- (4) Excludes \$353K in net gains for FYTD 2017
- (5) Excludes \$39K in net gains for FYTD 2018
- (6) Does not include State Treasury Pool cash balances in calculation as of April 2017