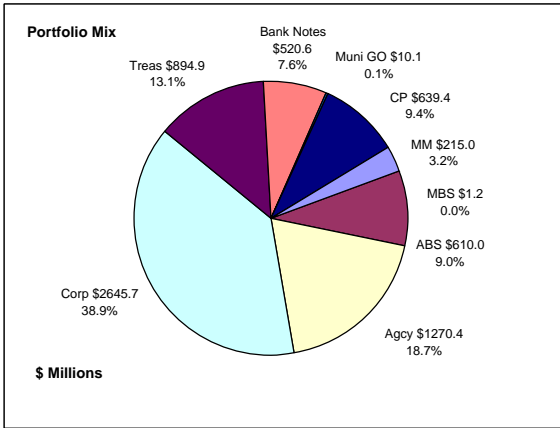


Colorado Treasury Pool Combined December 31, 2017



Portfolio Value

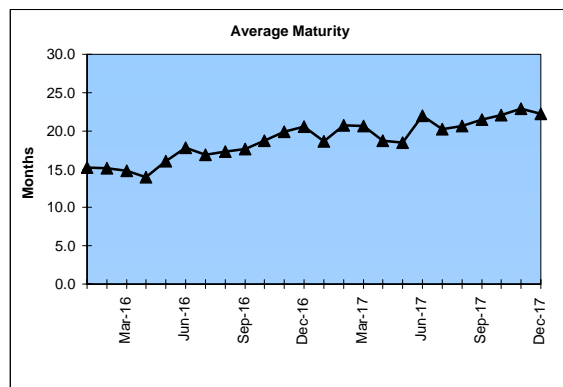
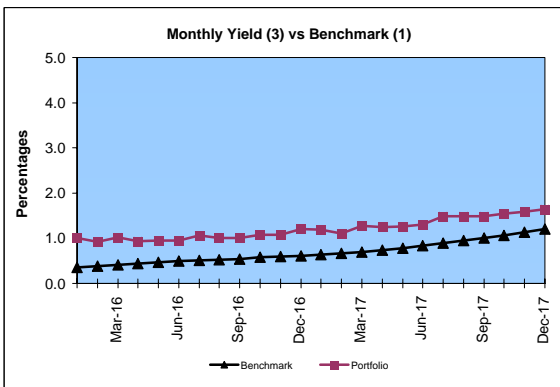
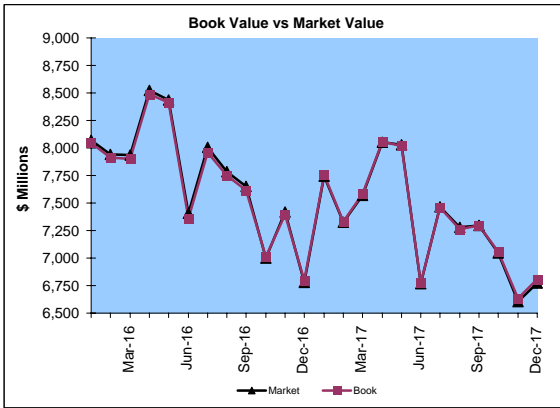
Market Value \$6,774.7 Million
Book Value \$6,807.3 Million

Yield and Average Maturity

Portfolio Book Yield 1.5%
Portfolio Average Maturity 22.2 Months

Portfolio Quality

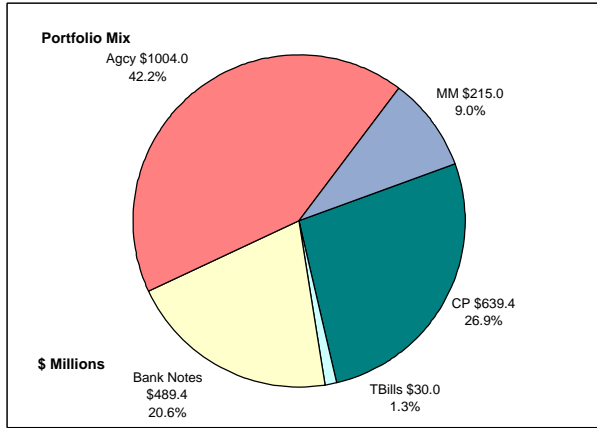
	A1 / P1	AAA	AA	A	BBB	BB	B	Other	Portfolio Percent
Asset Backed		100.0%							9.0%
Corporates		2.5%	23.3%	71.0%	3.2%				38.9%
Mortgage Securities			100.0%						0.0%
Commercial Paper	100.0%								9.4%
Treasuries			100.0%						13.1%
Federal Agencies		0.8%	99.2%						18.7%
Bank Notes		6.0%	94.0%						7.6%
Muni GOs			100.0%						0.1%
Certificates of Deposit								100.0%	3.2%
Money Market Funds									
Total Portfolio	9.4%	10.5%	48.1%	27.6%	1.2%			3.2%	100.0%



	\$ Millions		Book Yield	Performance Benchmarks (2)
	Average Portfolio	Realized Income		
FY '18 YTD	7,183.5	55.3	1.5%	1.2%
Last 12 months	7,488.2	103.3	1.4%	1.2%
FY '17	7,635.0	87.8 ³	1.2%	0.8%
FY '16	7,972.4	77.0	1.0%	0.5%
FY '15	7,661.9	79.2	1.0%	0.2%
FY '14	7,842.0	77.4	1.0%	0.1%
FY '13	7,157.7	78.3	1.1%	0.2%
Avg FY '13-17	7,653.8	79.9	1.0%	0.4%

(1) 12 month moving average of the constant maturity yield on the 1 year Treasury note
(2) 12 month moving average of the constant maturity yield on the 1 year Treasury note at end of period
(3) Excludes \$80K in net gains for FYTD 2017

Colorado Treasury Cash
(0 - 1 year maturities)
December 31, 2017



Portfolio Value

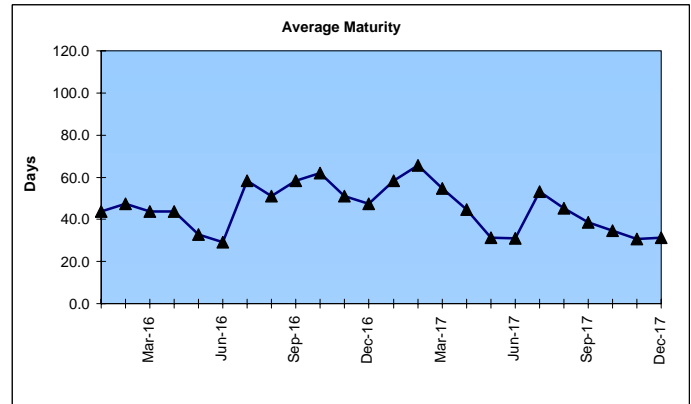
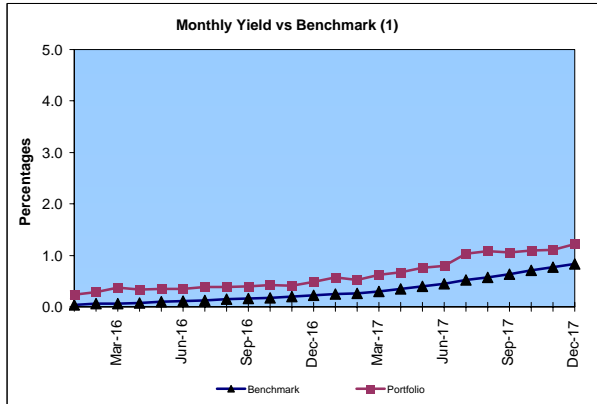
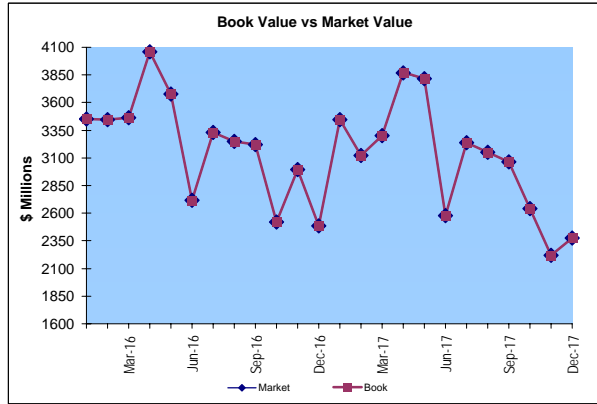
Market Value \$2,377.7 Million
Book Value \$2,377.8 Million

Yield and Average Maturity

Portfolio Book Yield 1.10%
Portfolio Average Maturity 31 Days

Portfolio Quality

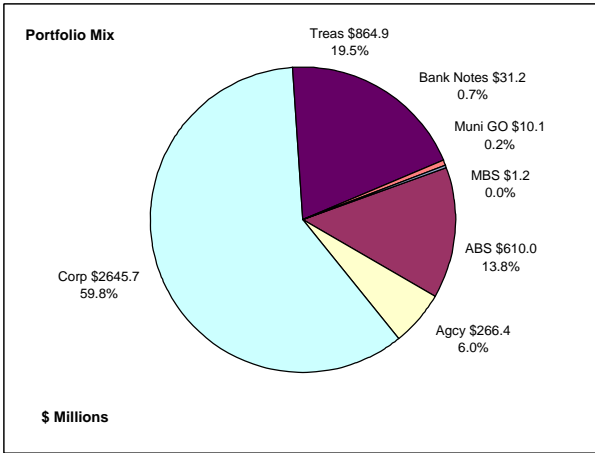
	A1 / P1	AA	AAA	Other	Portfolio Percent
Commercial Paper	100.0%				26.9%
Federal Agencies		100.0%			42.2%
Corporates					0.0%
Certificates of Deposit					0.0%
Bank Notes					20.6%
Tbills		100.0%			1.3%
Money Market Funds				100.0%	9.0%
Total Portfolio	26.9%	64.1%		9.0%	100.0%



	\$ Millions		Book	Performance
	Average Portfolio	Realized Income	Yield	Benchmarks (2)
FY '18 YTD	2,898.1	15.9	1.10%	0.84%
Last 12 months	3,226.8	27.6	0.86%	0.84%
FY '17	3,274.3	18.0	0.55%	0.45%
FY '16	3,276.6	7.5	0.23%	0.11%
FY '15	2,467.4	1.8	0.07%	0.01%
FY '14	2,970.8	2.0	0.07%	0.03%
FY '13	3,223.2	3.5	0.11%	0.05%
Avg FY '13-'17	3,042.5	6.5	0.21%	0.13%

(1) 12 month moving average of the 30 day Treasury bill
(2) 12 month moving average of the 30 day Treasury bill at end of period

Colorado Treasury Bond
(1 - 5 year maturities)
December 31, 2017



Portfolio Value

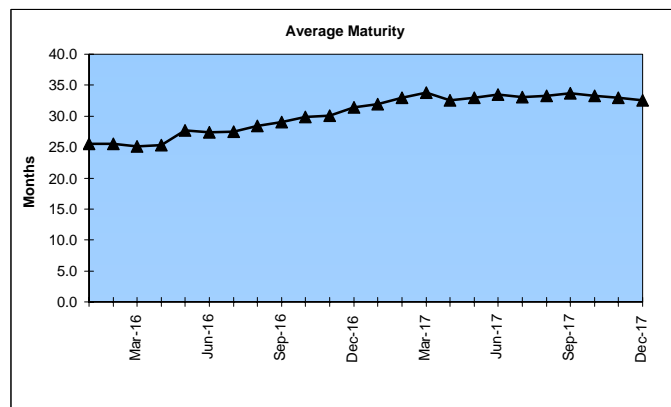
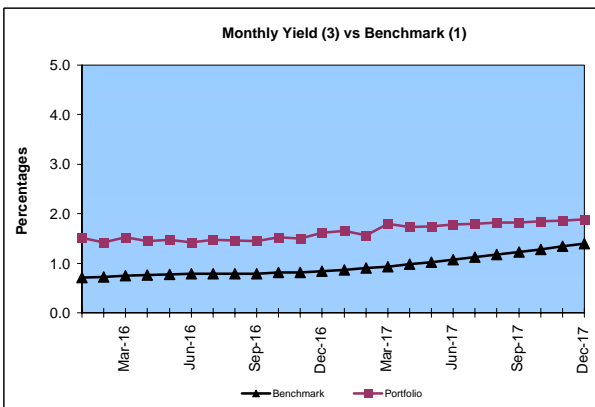
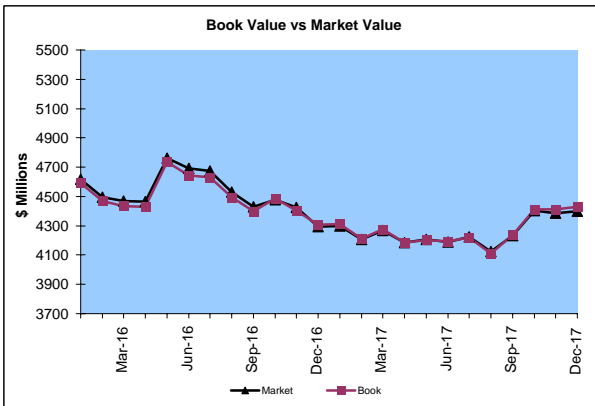
Market Value \$4,397.0 Million
Book Value \$4,429.5 Million

Yield and Average Maturity

Portfolio Book Yield 1.8%
Portfolio Average Maturity 32.5 Months

Portfolio Quality

	AAA	AA	A	BBB	BB	B	Other	Portfolio Percent
Asset Backed	100.0%							13.8%
Corporates	2.5%	23.3%	71.0%	3.2%				59.8%
Bank Notes	100.0%							0.7%
Mortgage Securities		100.0%						0.0%
Treasuries		100.0%						19.5%
Federal Agencies	3.8%	96.2%						6.0%
Muni GOs		100.0%						0.2%
Total Portfolio	16.2%	39.5%	42.4%	1.9%				100.0%

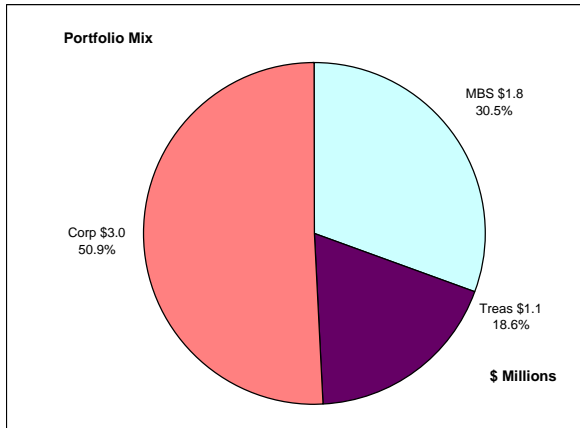


	Average Portfolio	Realized Income	Book Yield	Performance Benchmarks (2)
FY '18 YTD	4,285.4	39.4	1.8%	1.4%
Last 12 months	4,261.5	75.7	1.8%	1.4%
FY '17	4,360.6	69.9 ³	1.6%	1.1%
FY '16	4,695.9	69.4	1.5%	0.8%
FY '15	5,194.5	77.4	1.5%	0.6%
FY '14	4,871.2	75.4	1.6%	0.4%
FY '13	3,934.5	74.8	1.9%	0.3%
Avg FY '13-'17	4,611.3	73.4	1.6%	0.6%

(1) 12 month moving average of the constant maturity yield on the 2 year Treasury note
(2) 12 month moving average of the constant maturity yield on the 2 year Treasury note at end of period
(3) Excludes \$80K in net gains for FYTD 2017

Colorado Major Medical Insurance Fund

December 31, 2017



Portfolio Value (1)

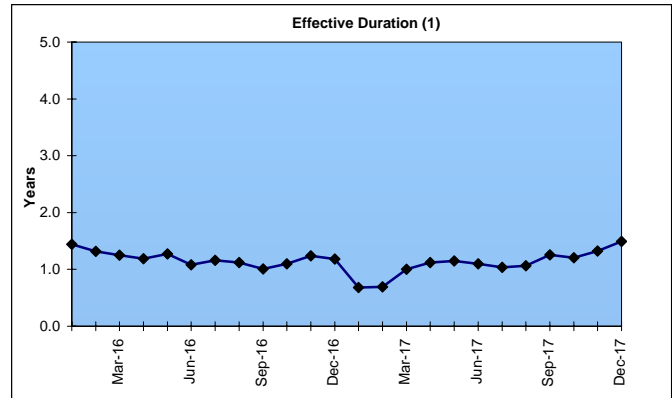
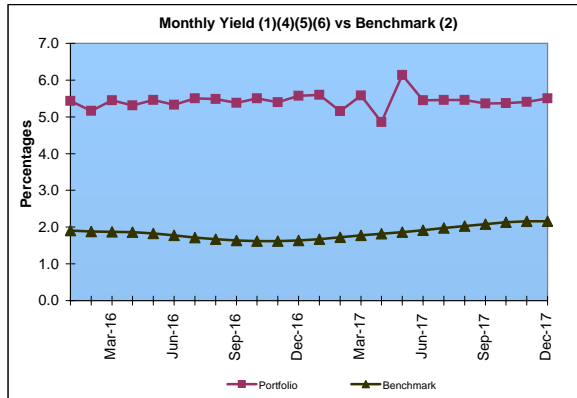
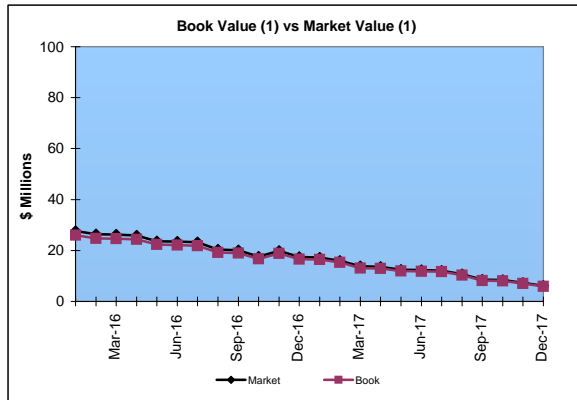
Market Value \$6.2 Million
Book Value \$5.9 Million

Yield and Effective Duration

Portfolio Book Yield 1.9%
Portfolio Effective Duration (1) 1.5 Yrs

Portfolio Quality

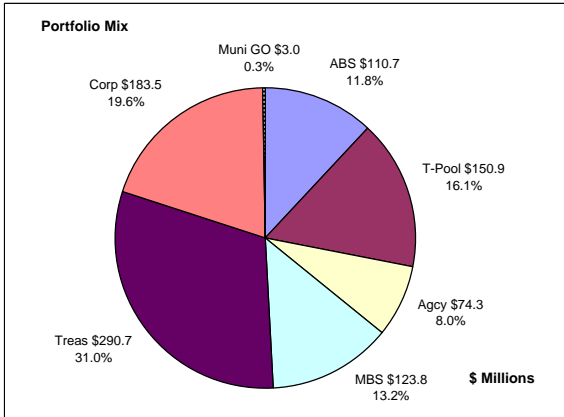
	AAA	AA	A	BBB	BB	Portfolio Percent
Asset Backed						0.0%
Corporates	33.3%		66.7%			50.9%
Federal Agencies						0.0%
Mortgage Securities		100.0%				30.5%
Treasuries		100.0%				18.6%
Total Portfolio	16.9%	49.2%	33.9%			100.0%



	\$ Millions		Book Yield	Performance Benchmarks (3)
	Average Portfolio	Realized Income		
FY '18 YTD	77.4	0.8 ⁶	1.9%	2.2%
Last 12 months	78.5	1.5	2.0%	2.2%
FY '17	80.7	1.6 ⁵	2.0%	1.9%
FY '16	84.3	2.0	2.3%	1.8%
FY '15	87.7	2.5 ⁴	2.9%	2.0%
FY '14	90.7	3.1	3.4%	2.2%
FY '13	89.7	3.9	4.3%	1.2%
Avg FY '13-'17	86.6	2.6	3.0%	1.8%

- (1) Does not include State Treasury Pool cash balances in calculation.
- (2) 12 month moving average of the constant maturity yield on the 7 year Treasury note
- (3) 12 month moving average of the constant maturity yield on the 7 year Treasury note at end of period
- (4) Excludes \$113K in gains for FYTD 2015
- (5) Excludes \$64K in gains for FYTD 2017
- (6) Excludes \$7K in gains for FYTD 2018

Colorado Public School Permanent Fund December 31, 2017



Portfolio Value

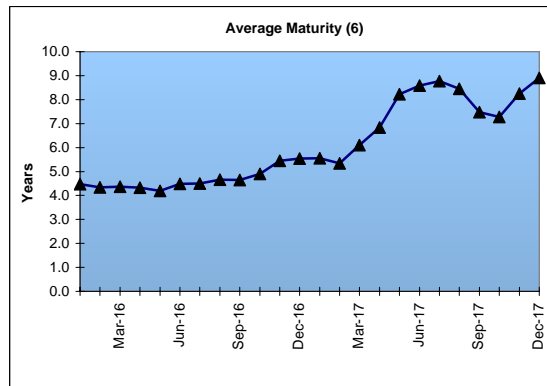
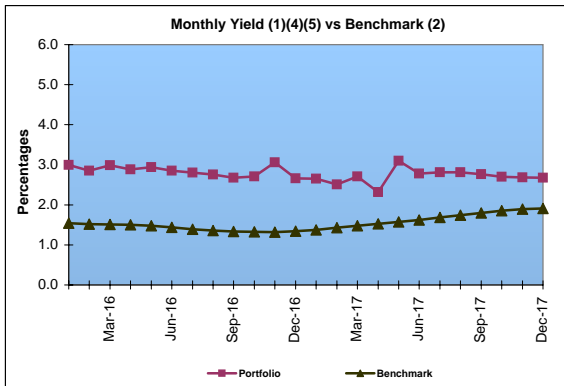
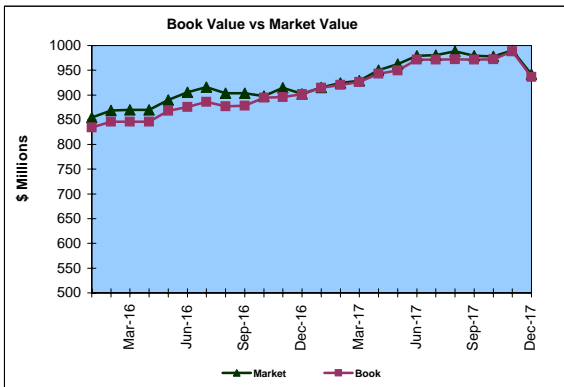
Market Value \$941.6 Million
Book Value \$936.9 Million

Yield and Average Maturity

Portfolio Book Yield 2.4%
Portfolio Average Maturity 8.9 Yrs

Portfolio Quality

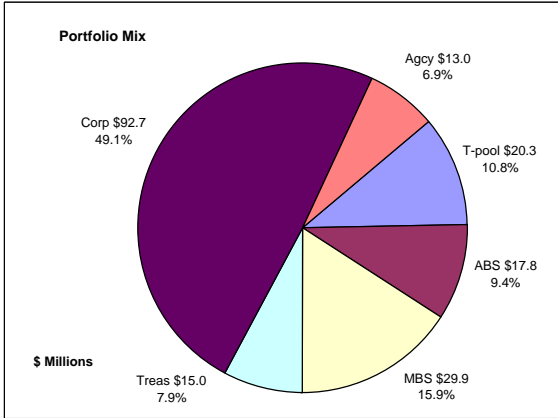
	A1 / P1	AAA	AA	A	BBB	BB	B	Other	Portfolio Percent
Asset Backed		100.0%							11.8%
Corporates		18.9%	62.3%	18.8%					19.6%
Mortgage Securities			96.8%					3.2%	13.2%
Treasuries			100.0%						31.0%
Federal Agencies			100.0%						8.0%
Muni GOs			100.0%						0.3%
T-Pool Combined	9.4%	10.5%	48.1%	27.6%	1.2%	0.0%	0.0%	3.2%	16.1%
Total Portfolio	1.5%	17.2%	72.1%	8.1%	0.2%			0.9%	100.0%



	\$ Millions		Book Yield	Performance Benchmarks (3)
	Average Portfolio	Realized Income		
FY '18 YTD	967.6	11.9	2.4%	1.9%
Last 12 months	945.1	22.9	2.4%	1.9%
FY '17	902.4	21.6 ⁴	2.4%	1.6%
FY '16	835.1	21.7	2.6%	1.4%
FY '15	739.8	22.1	3.0%	1.6%
FY '14	668.8	21.6	3.2%	1.6%
FY '13	622.2	22.4	3.6%	0.8%
Avg FY '13-'17	753.7	21.9	3.0%	1.4%

- (1) Does not include State Treasury Pool cash balances in calculation.
- (2) Latest 12 month moving average of the constant maturity yield on the 5 year Treasury note
- (3) Latest 12 month moving average of the constant maturity yield on the 5 year Treasury note at end of period
- (4) Excludes \$4.15 million in net gains for FYTD 2017
- (5) Excludes \$1K in net gains for FYTD 2018
- (6) Does not include State Treasury Pool cash balances in calculation as of April 2017

Unclaimed Property Tourism Fund December 31, 2017



Portfolio Value

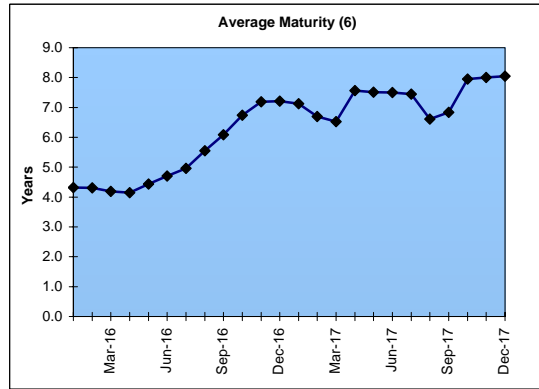
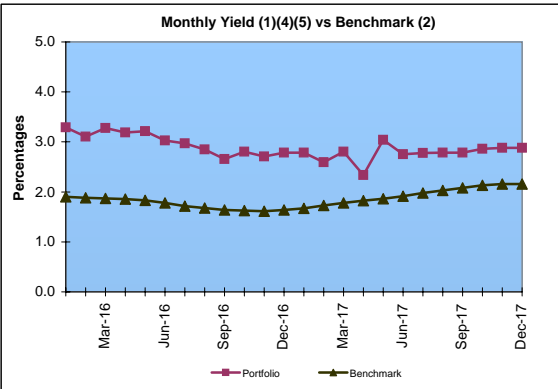
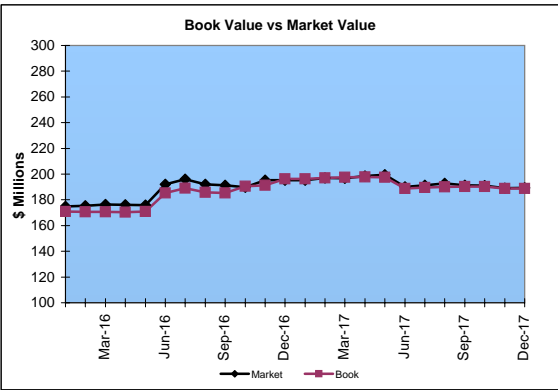
Market Value \$189.3 Million
Book Value \$188.7 Million

Yield and Average Maturity

Portfolio Book Yield 2.7%
Portfolio Average Maturity 8.0 Yrs

Portfolio Quality

	A1 / P1	AAA	AA	A	BBB	BB	B	Other	Portfolio Percent
Asset Backed			100.0%						9.4%
Corporates		3.3%	19.5%	68.6%	8.6%				49.1%
Federal Agencies			100.0%						6.9%
Mortgage Securities			100.0%						15.9%
Treasuries			100.0%						7.9%
T-Pool Combined	9.4%	10.5%	48.1%	27.6%	1.2%	0.0%	0.0%	3.2%	10.8%
Total Portfolio	1.0%	12.2%	45.4%	36.7%	4.4%			0.3%	100.0%



	\$ Millions		Book Yield	Performance Benchmarks (3)
	Average Portfolio	Realized Income		
FY '18 YTD	190.7	2.6 ⁵	2.7%	2.2%
Last 12 months	193.9	5.1	2.6%	2.2%
FY '17	192.1	4.9 ⁴	2.6%	1.9%
FY '16	169.5	4.6	2.7%	1.8%
FY '15	153.7	4.6	3.0%	2.0%
FY '14	136.9	4.3	3.1%	2.2%
FY '13	122.9	4.1	3.3%	1.2%
Avg FY '13-'17	155.0	4.5	2.9%	1.8%

- (1) Does not include State Treasury Pool cash balances in calculation.
- (2) 12 month moving average of the constant maturity yield on the 7 year Treasury note
- (3) 12 month moving average of the constant maturity yield on the 7 year Treasury note at end of period
- (4) Excludes \$353K in net gains for FYTD 2017
- (5) Excludes \$39K in net gains for FYTD 2018
- (6) Does not include State Treasury Pool cash balances in calculation as of April 2017