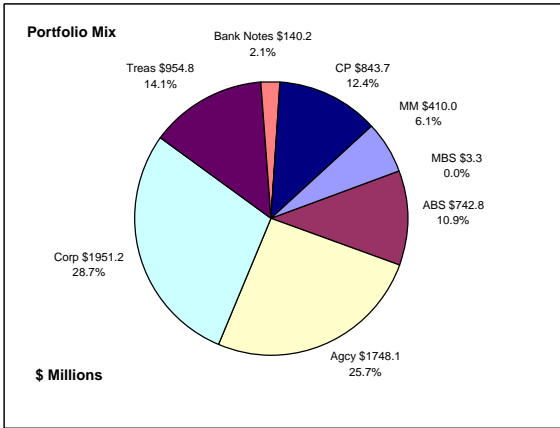


Colorado Treasury Pool Combined December 31, 2016



Portfolio Value

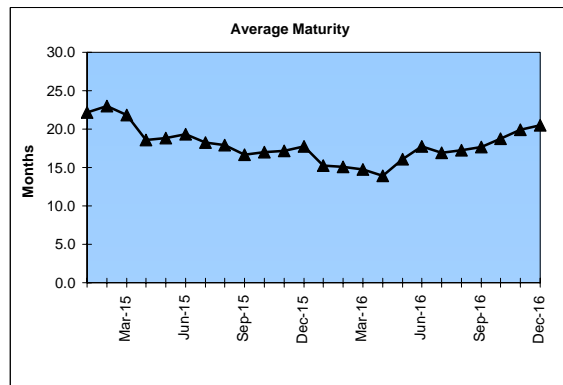
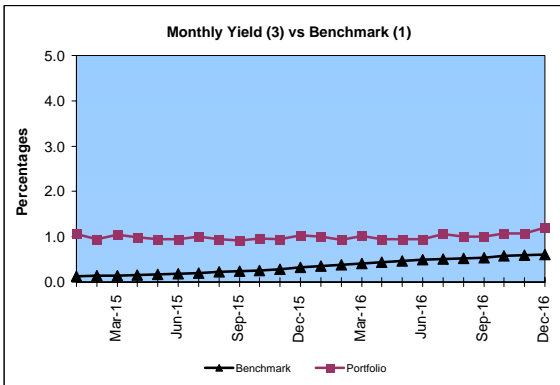
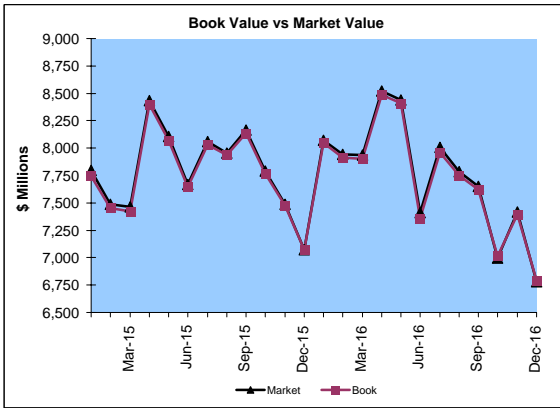
Market Value \$6,779.6 Million
Book Value \$6,794.1 Million

Yield and Average Maturity

Portfolio Book Yield 1.1%
Portfolio Average Maturity 20.5 Months

Portfolio Quality

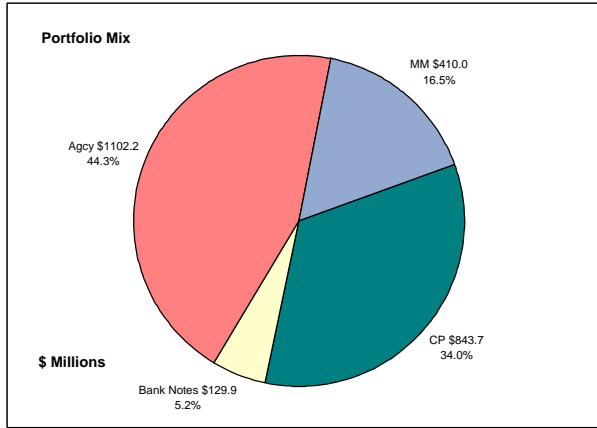
	A1 / P1	AAA	AA	A	BBB	BB	B	Other	Portfolio Percent
Asset Backed		100.0%							10.9%
Corporates		2.5%	46.6%	47.3%	3.6%				28.7%
Mortgage Securities			100.0%						0.0%
Commercial Paper	100.0%								12.4%
Treasuries			100.0%						14.1%
Federal Agencies			100.0%						25.7%
Bank Notes		100.0%							2.1%
Certificates of Deposit								100.0%	6.1%
Money Market Funds								6.1%	100.0%
Total Portfolio	12.4%	13.7%	53.2%	13.6%	1.0%				



	\$ Millions		Book Yield	Performance Benchmarks (2)
	Average Portfolio	Realized Income		
FY '17 YTD	7,476.9	39.9 ³	1.1%	0.6%
Last 12 months	7,800.8	79.0 ³	1.0%	0.6%
FY '16	7,972.4	77.0	1.0%	0.5%
FY '15	7,661.9	79.2	1.0%	0.2%
FY '14	7,842.0	77.4	1.0%	0.1%
FY '13	7,157.7	78.3	1.1%	0.2%
FY '12	6,442.3	89.5	1.4%	0.2%
Avg FY '12-16	7,415.3	80.3	1.1%	0.2%

(1) 12 month moving average of the constant maturity yield on the 1 year Treasury note
(2) 12 month moving average of the constant maturity yield on the 1 year Treasury note at end of period
(3) Excludes \$26K in net gains for FYTD 2017

Colorado Treasury Cash
(0 - 1 year maturities)
December 31, 2016



Portfolio Value

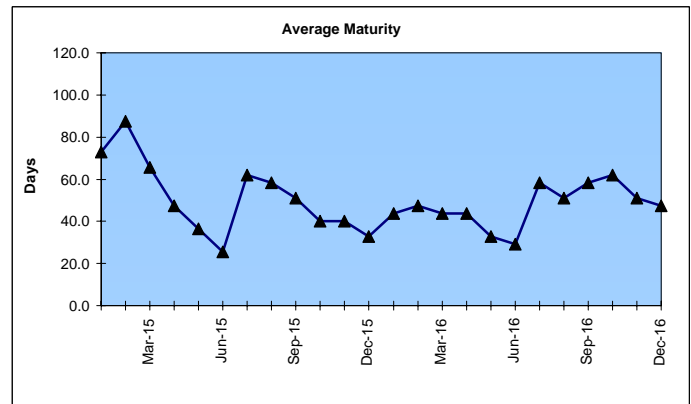
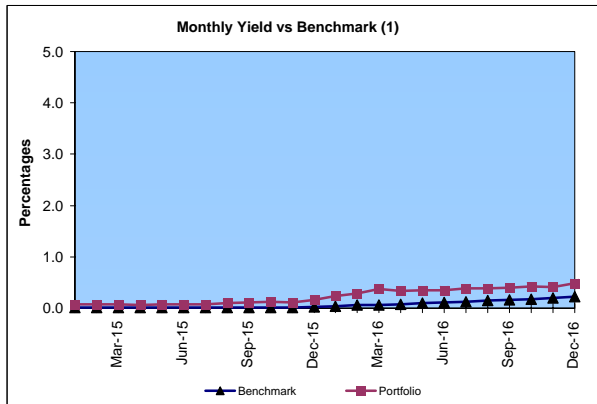
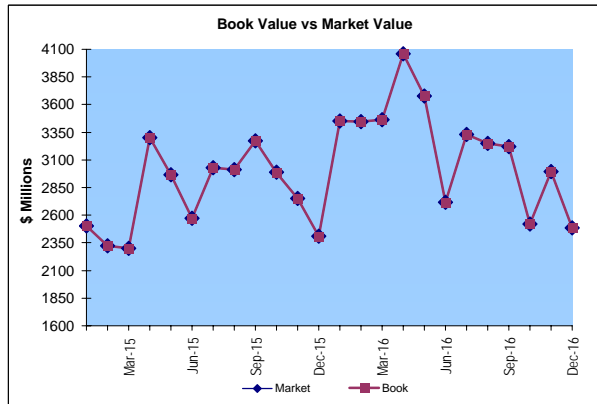
Market Value \$2,485.7 Million
Book Value \$2,485.8 Million

Yield and Average Maturity

Portfolio Book Yield 0.41%
Portfolio Average Maturity 47 Days

Portfolio Quality

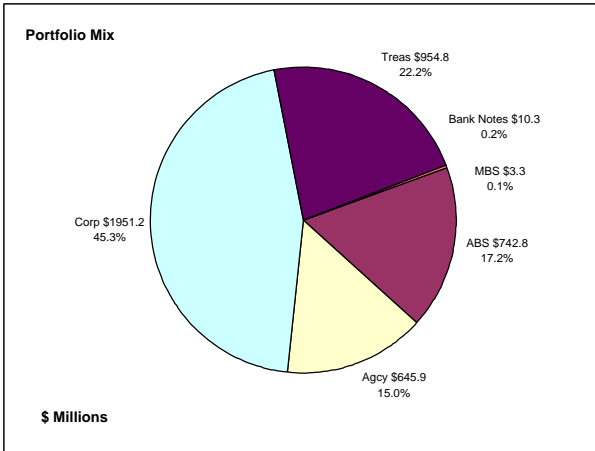
	A1 / P1	AA	AAA	Other	Portfolio Percent
Commercial Paper	100.0%				34.0%
Federal Agencies		100.0%			44.3%
Corporates					0.0%
Certificates of Deposit					0.0%
Bank Notes			100.0%		5.2%
Money Market Funds				100.0%	16.5%
Total Portfolio	34.0%	44.3%	5.2%	16.5%	100.0%



	\$ Millions		Book	Performance
	Average Portfolio	Realized Income	Yield	Benchmarks (2)
FY '17 YTD	2,993.2	6.2	0.41%	0.22%
Last 12 months	3,288.7	12.0	0.37%	0.22%
FY '16	3,276.6	7.5	0.23%	0.11%
FY '15	2,467.4	1.8	0.07%	0.01%
FY '14	2,970.8	2.0	0.07%	0.03%
FY '13	3,223.2	3.5	0.11%	0.05%
FY '12	3,135.5	2.6	0.08%	0.03%
Avg FY '12-'16	3,014.7	3.5	0.11%	0.05%

(1) 12 month moving average of the 30 day Treasury bill
(2) 12 month moving average of the 30 day Treasury bill at end of period

Colorado Treasury Pool
(1 - 5 year maturities)
December 31, 2016



Portfolio Value

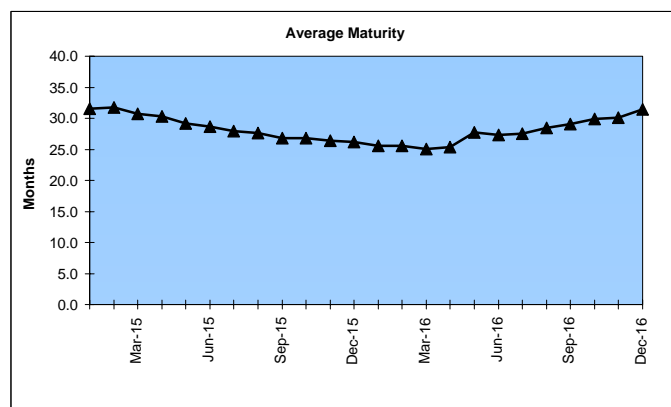
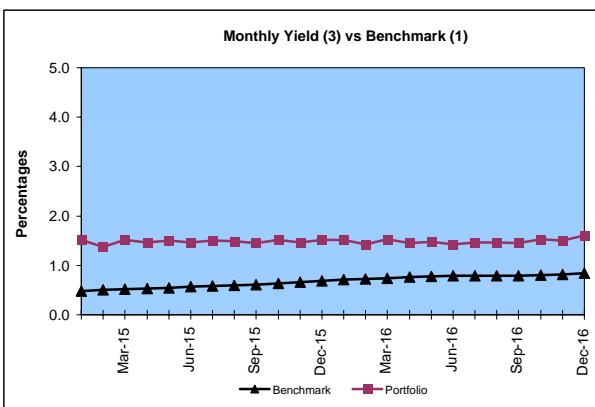
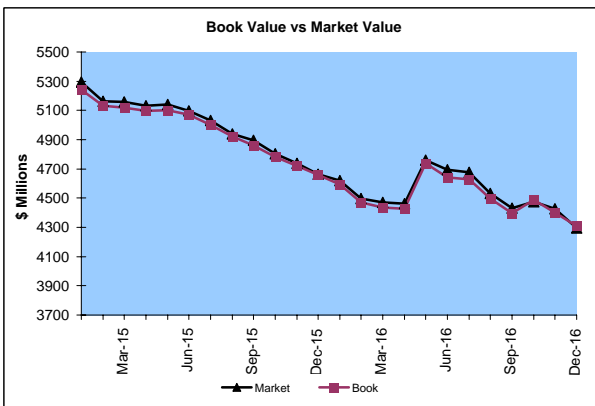
Market Value \$4,293.9 Million
Book Value \$4,308.3 Million

Yield and Average Maturity

Portfolio Book Yield 1.5%
Portfolio Average Maturity 31.4 Months

Portfolio Quality

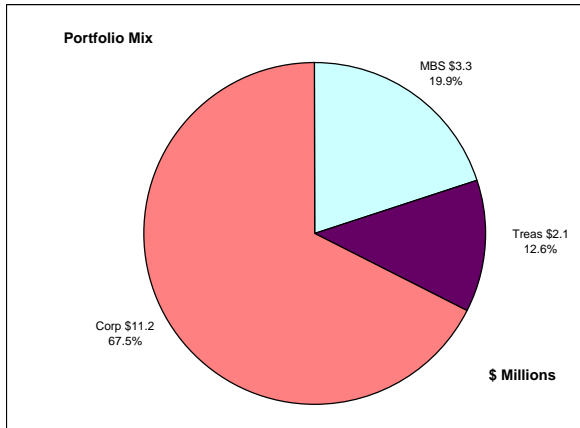
	AAA	AA	A	BBB	BB	B	Other	Portfolio Percent
Asset Backed	100.0%							17.2%
Corporates	2.5%	46.6%	47.3%	3.6%				45.3%
Bank Notes	100.0%							0.2%
Mortgage Securities		100.0%						0.1%
Treasuries		100.0%						22.2%
Federal Agencies		100.0%						15.0%
Total Portfolio	18.6%	58.4%	21.4%	1.6%				100.0%



	Average Portfolio	Realized Income	Book Yield	Performance Benchmarks (2)
FY '17 YTD	4,483.7	33.7 ³	1.5%	0.8%
Last 12 months	4,512.1	67.0 ³	1.5%	0.8%
FY '16	4,695.9	69.4	1.5%	0.8%
FY '15	5,194.5	77.4	1.5%	0.6%
FY '14	4,871.2	75.4	1.6%	0.4%
FY '13	3,934.5	74.8	1.9%	0.3%
FY '12	3,306.8	86.9	2.6%	0.3%
Avg FY '12-'16	4,400.6	76.8	1.8%	0.5%

(1) 12 month moving average of the constant maturity yield on the 2 year Treasury note
(2) 12 month moving average of the constant maturity yield on the 2 year Treasury note at end of period
(3) Excludes \$26K in net gains for FYTD 2017

Colorado Major Medical Insurance Fund
December 31, 2016



Portfolio Value (1)

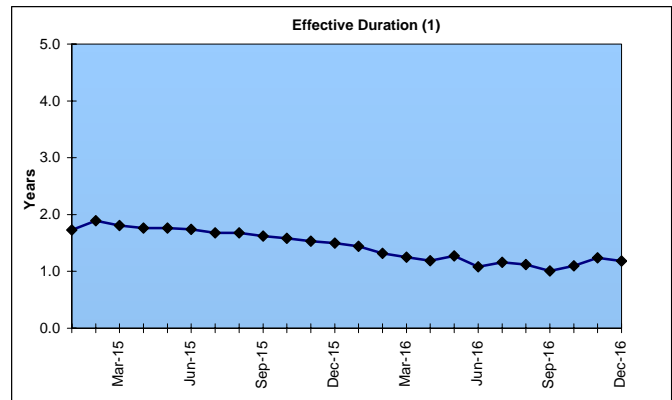
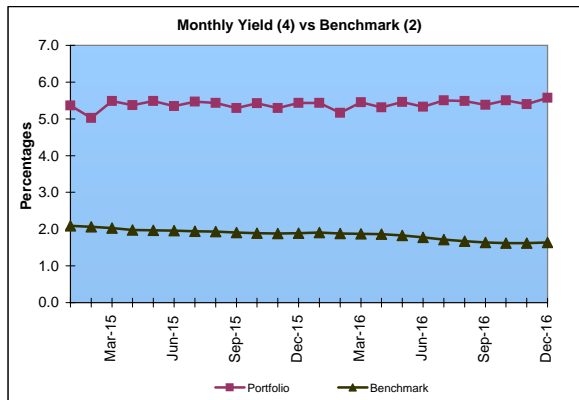
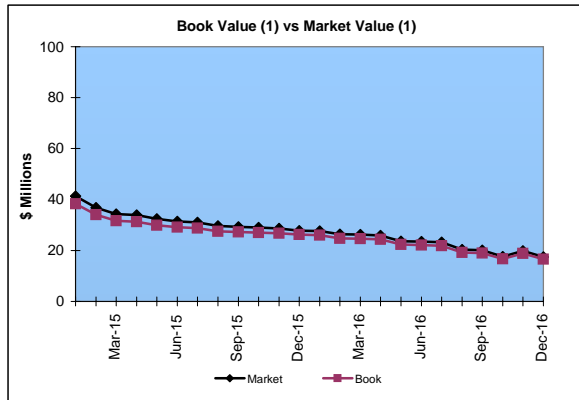
Market Value \$17.4 Million
Book Value \$16.6 Million

Yield and Effective Duration

Portfolio Book Yield 2.1%
Portfolio Effective Duration (1) 1.2 Yrs

Portfolio Quality (1)

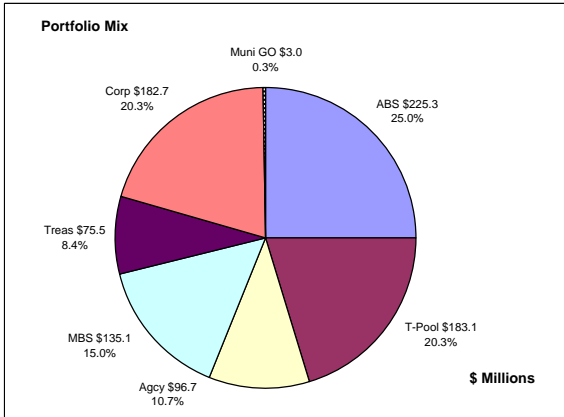
	AAA	AA	A	BBB	BB	Portfolio Percent
Asset Backed						0.0%
Corporates	17.9%	44.6%	19.6%	17.9%		67.5%
Federal Agencies						0.0%
Mortgage Securities		100.0%				19.9%
Treasuries		100.0%				12.6%
Total Portfolio	12.0%	62.7%	13.3%	12.0%		100.0%



	\$ Millions		Book Yield	Performance Benchmarks (3)
	Average Portfolio	Realized Income		
FY '17 YTD	81.7	0.9	2.1%	1.6%
Last 12 months	82.6	1.8	2.2%	1.6%
FY '16	84.3	2.0	2.3%	1.8%
FY '15	87.7	2.5 ⁴	2.9%	2.0%
FY '14	90.7	3.1	3.4%	2.2%
FY '13	89.7	3.9	4.3%	1.2%
FY '12	99.4	4.7	4.7%	1.5%
Avg FY '12-'16	90.3	3.2	3.5%	1.7%

(1) Does not include State Treasury Pool balances in calculation.
(2) 12 month moving average of the constant maturity yield on the 7 year Treasury note
(3) 12 month moving average of the constant maturity yield on the 7 year Treasury note at end of period
(4) Excludes \$0.1 million in gains for FYTD 2015

Colorado Public School Permanent Fund December 31, 2016



Portfolio Value

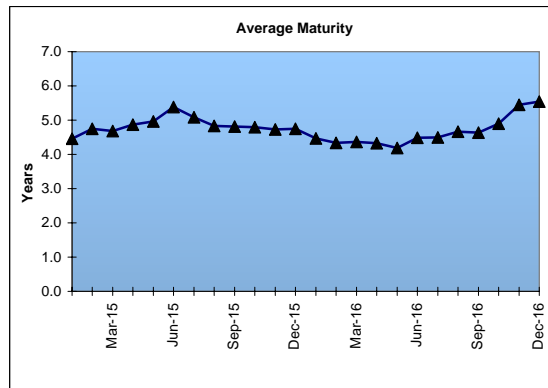
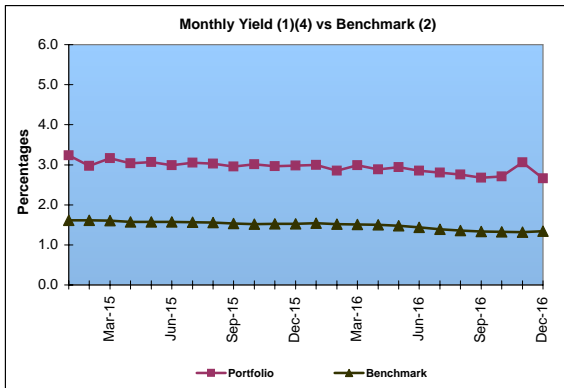
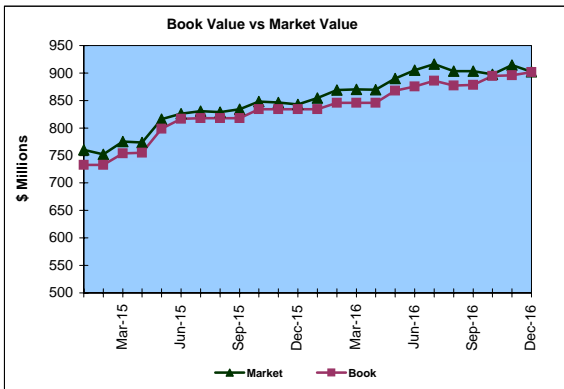
Market Value \$902.3 Million
Book Value \$901.4 Million

Yield and Average Maturity

Portfolio Book Yield 2.4%
Portfolio Average Maturity 5.5 Yrs

Portfolio Quality

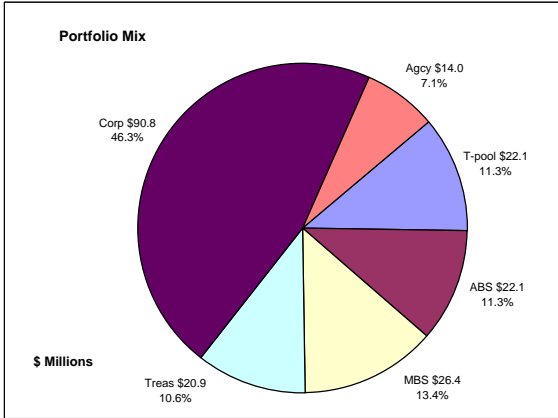
	A1 / P1	AAA	AA	A	BBB	BB	B	Other	Portfolio Percent
Asset Backed		100.0%							25.0%
Corporates		13.1%	77.3%	9.6%					20.3%
Mortgage Securities			100.0%						15.0%
Treasuries			100.0%						8.4%
Federal Agencies			100.0%						10.7%
Muni GOs									0.3%
T-Pool Combined	12.4%	13.7%	53.2%	13.6%	1.0%	0.0%	0.0%	6.1%	20.3%
Total Portfolio	2.5%	30.4%	60.6%	4.7%	0.2%			1.6%	100.0%



	\$ Millions		Book Yield	Performance Benchmarks (3)
	Average Portfolio	Realized Income		
FY '17 YTD	882.4	10.6 ⁴	2.4%	1.3%
Last 12 months	865.3	21.2 ⁴	2.4%	1.3%
FY '16	835.1	21.7	2.6%	1.4%
FY '15	739.8	22.1	3.0%	1.6%
FY '14	668.8	21.6	3.2%	1.6%
FY '13	622.2	22.4	3.6%	0.8%
FY '12	582.2	24.1	4.1%	1.0%
Avg FY '12-'16	689.6	22.4	3.3%	1.3%

- (1) Does not include State Treasury Pool balances in calculation.
- (2) Latest 12 month moving average of the constant maturity yield on the 5 year Treasury note
- (3) Latest 12 month moving average of the constant maturity yield on the 5 year Treasury note at end of period
- (4) Excludes \$1.65 million in gains for FYTD 2017

Unclaimed Property Tourism Fund December 31, 2016



Portfolio Value

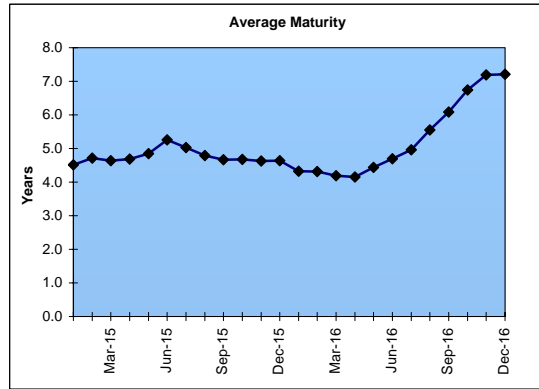
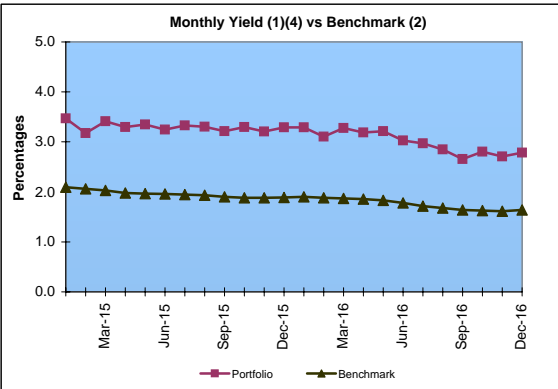
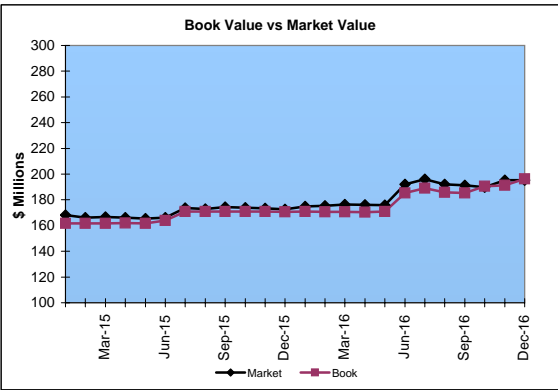
Market Value \$195.2 Million
Book Value \$196.3 Million

Yield and Average Maturity

Portfolio Book Yield 2.5%
Portfolio Average Maturity 7.2 Yrs

Portfolio Quality

	A1 / P1	AAA	AA	A	BBB	BB	B	Other	Portfolio Percent
Asset Backed			100.0%						11.3%
Corporates		3.3%	40.9%	49.2%	6.6%				46.3%
Federal Agencies			100.0%						7.1%
Mortgage Securities			100.0%						13.4%
Treasuries			100.0%						10.6%
T-Pool Combined	12.4%	13.7%	53.2%	13.6%	1.0%	0.0%	0.0%	6.1%	11.3%
Total Portfolio	1.4%	14.3%	56.1%	24.3%	3.2%			0.7%	100.0%



	Average Portfolio	Realized Income	Book Yield	Performance Benchmarks (3)
FY '17 YTD	187.1	2.4 ⁴	2.5%	1.6%
Last 12 months	178.8	4.6 ⁴	2.6%	1.6%
FY '16	169.5	4.6	2.7%	1.8%
FY '15	153.7	4.6	3.0%	2.0%
FY '14	136.9	4.3	3.1%	2.2%
FY '13	122.9	4.1	3.3%	1.2%
FY '12	114.3	3.8	3.3%	1.5%
Avg FY '12-'16	139.5	4.3	3.1%	1.7%

- (1) Does not include State Treasury Pool balances in calculation.
- (2) 12 month moving average of the constant maturity yield on the 7 year Treasury note
- (3) 12 month moving average of the constant maturity yield on the 7 year Treasury note at end of period
- (4) Excludes \$0.4 million in gains for FYTD 2017