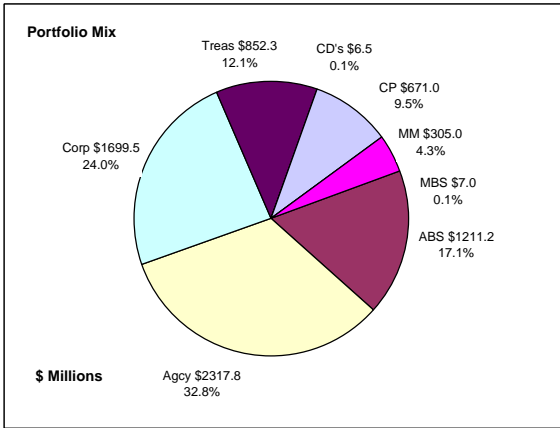


Colorado Treasury Pool Combined December 31, 2015



Portfolio Value

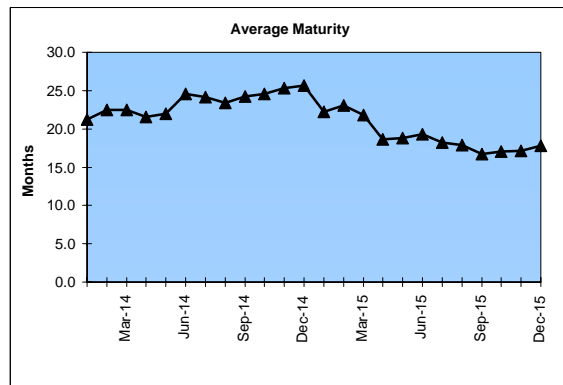
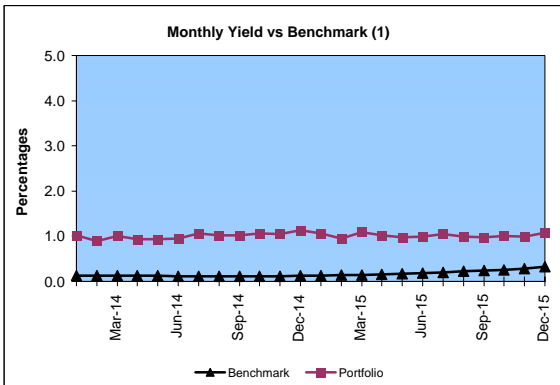
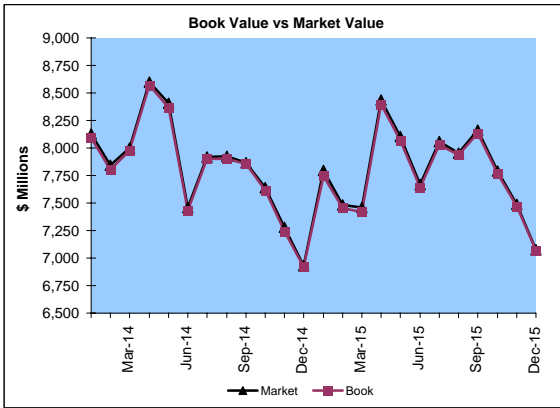
Market Value \$7,073.4 Million
Book Value \$7,070.3 Million

Yield and Average Maturity

Portfolio Book Yield 1.0%
Portfolio Average Maturity 17.8 Months

Portfolio Quality

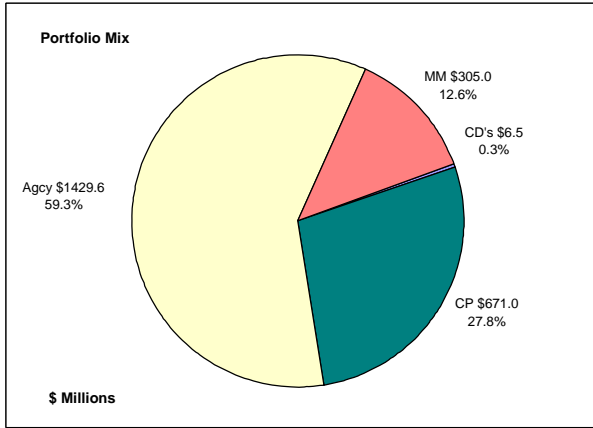
	A1 / P1	AAA	AA	A	BBB	BB	B	Other	Portfolio Percent
Asset Backed		100.0%							17.1%
Corporates		6.3%	37.9%	49.9%	5.0%	0.9%			24.0%
Mortgage Securities			100.0%						0.1%
Commercial Paper	100.0%								9.5%
Treasuries			100.0%						12.1%
Federal Agencies			100.0%						32.8%
Certificates of Deposit								100.0%	0.1%
Money Market Funds								100.0%	4.3%
Total Portfolio	9.5%	18.6%	54.1%	12.0%	1.2%	0.2%	4.4%	100.0%	



	\$ Millions		Book Yield	Performance Benchmarks (2)
	Average Portfolio	Realized Income		
FY '16 YTD	7,447.2	37.8	1.0%	0.3%
Last 12 months	7,553.1	76.6	1.0%	0.3%
FY '15	7,661.9	79.2	1.0%	0.2%
FY '14	7,842.0	77.4	1.0%	0.1%
FY '13	7,157.7	78.3	1.1%	0.2%
FY '12	6,442.3	89.5	1.4%	0.2%
FY '11	5,718.6	113.0	2.0%	0.3%
Avg FY '11-15	6,964.5	87.5	1.3%	0.2%

(1) 12 month moving average of the constant maturity yield on the 1 year Treasury note
(2) 12 month moving average of the constant maturity yield on the 1 year Treasury note at end of period

Colorado Treasury Cash
(0 - 1 year maturities)
December 31, 2015



Portfolio Value

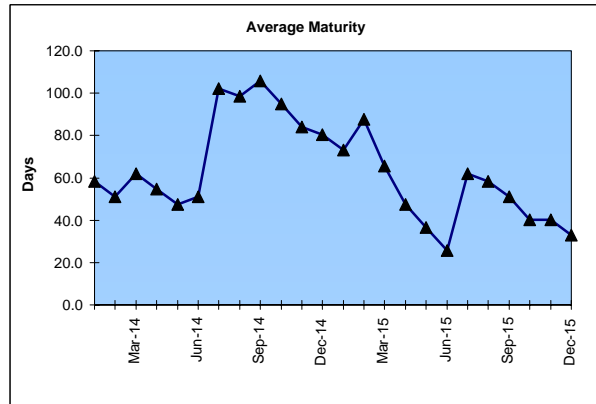
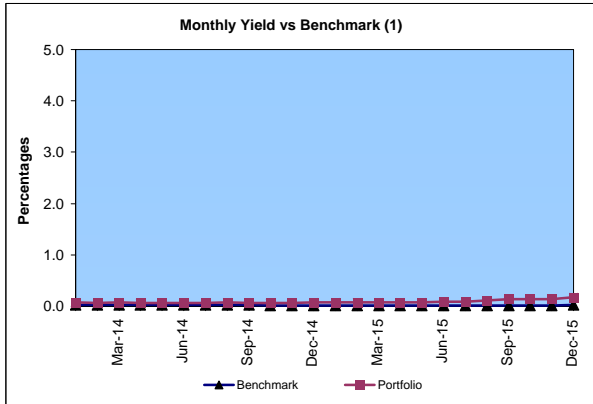
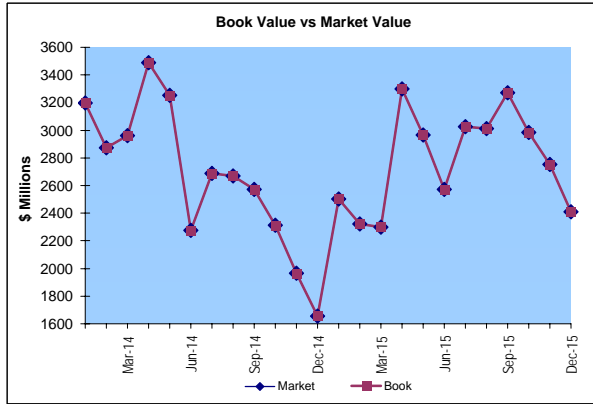
Market Value \$2,411.9 Million
 Book Value \$2,412.1 Million

Yield and Average Maturity

Portfolio Book Yield 0.13%
 Portfolio Average Maturity 33 Days

Portfolio Quality

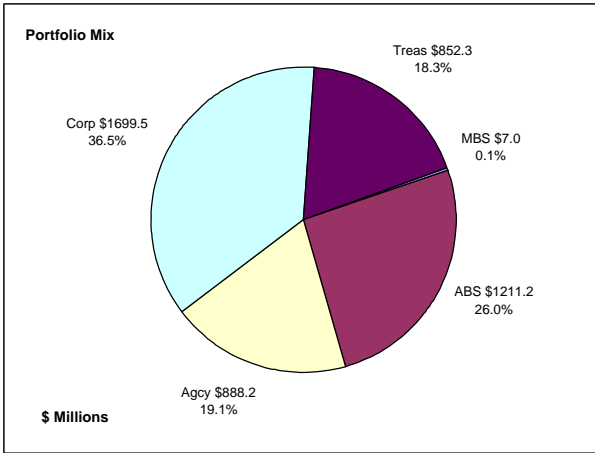
	A1 / P1	AA	Other	Portfolio Percent
Commercial Paper	100.0%			27.8%
Federal Agencies		100.0%		59.3%
Corporates				0.0%
Certificates of Deposit			100.0%	0.3%
Money Market Funds			100.0%	12.6%
Total Portfolio	27.8%	59.3%	12.9%	100.0%



	\$ Millions			
	Average Portfolio	Realized Income	Book Yield	Performance Benchmarks (2)
FY '16 YTD	2,596.0	1.7	0.13%	0.02%
Last 12 months	2,559.2	2.7	0.10%	0.02%
FY '15	2,467.4	1.8	0.07%	0.01%
FY '14	2,970.8	2.0	0.07%	0.03%
FY '13	3,223.2	3.5	0.11%	0.05%
FY '12	3,135.5	2.6	0.08%	0.03%
FY '11	2,355.2	3.2	0.14%	0.10%
Avg FY '11-'15	2,830.4	2.6	0.09%	0.04%

(1) 12 month moving average of the 30 day Treasury bill
 (2) 12 month moving average of the 30 day Treasury bill at end of period

Colorado Treasury Pool
(1 - 5 year maturities)
December 31, 2015



Portfolio Value

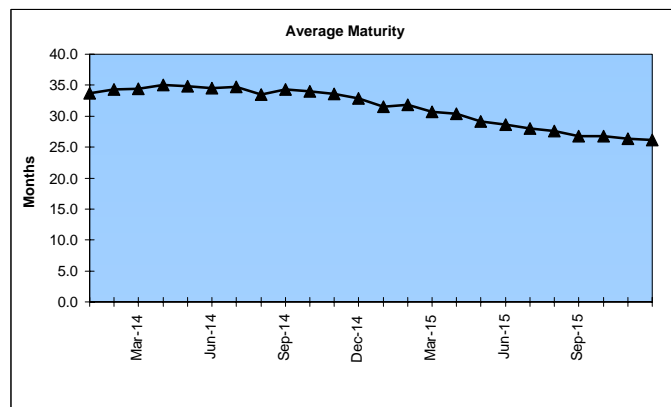
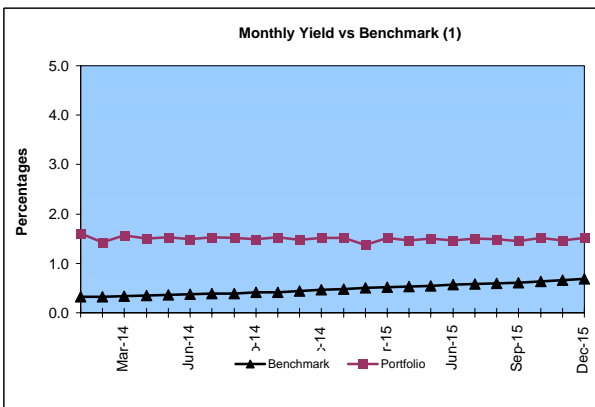
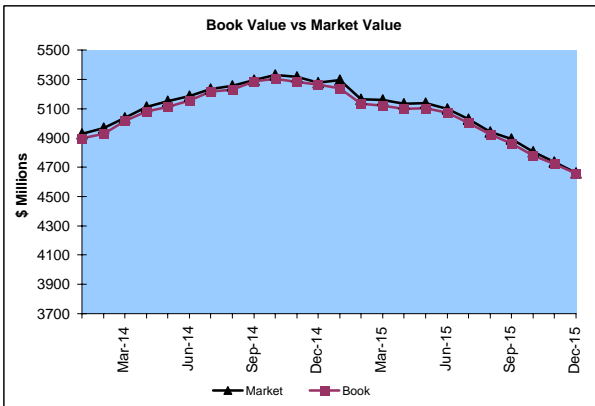
Market Value \$4,661.5 Million
Book Value \$4,658.2 Million

Yield and Average Maturity

Portfolio Book Yield 1.5%
Portfolio Average Maturity 26.2 Months

Portfolio Quality

	AAA	AA	A	BBB	BB	B	Other	Portfolio Percent
Asset Backed	100.0%							26.0%
Corporates	6.3%	37.9%	49.9%	5.0%	0.9%			36.5%
Mortgage Securities		100.0%						0.1%
Treasuries		100.0%						18.3%
Federal Agencies		100.0%						19.1%
Total Portfolio	28.3%	51.4%	18.2%	1.8%	0.3%			100.0%

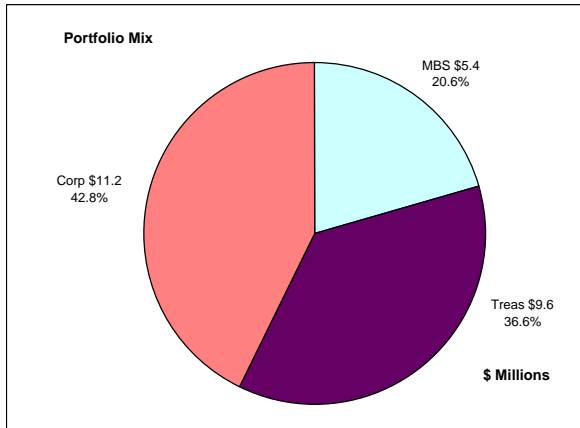


	Average Portfolio	Realized Income	Book Yield	Performance Benchmarks (2)
FY '16 YTD	4,851.3	36.1	1.5%	0.7%
Last 12 months	4,994.0	73.9	1.5%	0.7%
FY '15	5,194.5	77.4	1.5%	0.6%
FY '14	4,871.2	75.4	1.6%	0.4%
FY '13	3,934.5	74.8	1.9%	0.3%
FY '12	3,306.8	86.9	2.6%	0.3%
FY '11	3,363.5	109.8	3.3%	0.6%
Avg FY '11-'15	4,134.1	84.8	2.2%	0.4%

(1) 12 month moving average of the constant maturity yield on the 2 year Treasury note
(2) 12 month moving average of the constant maturity yield on the 2 year Treasury note at end of period

Colorado Major Medical Insurance Fund

December 31, 2015



Portfolio Value (1)

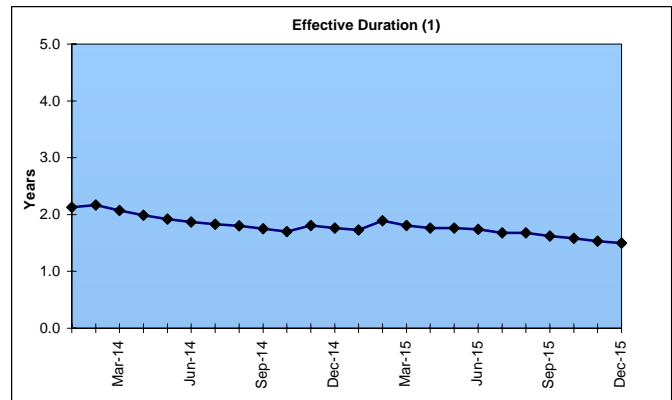
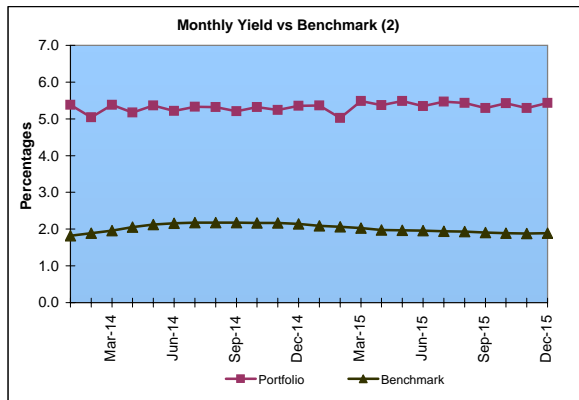
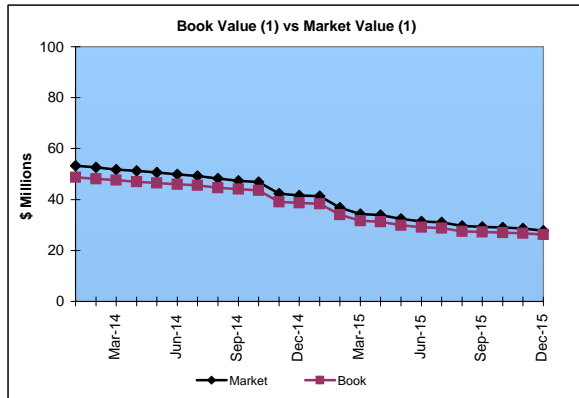
Market Value \$27.8 Million
 Book Value \$26.2 Million

Yield and Effective Duration

Portfolio Book Yield 2.4%
 Portfolio Effective Duration (1) 1.5 Yrs

Portfolio Quality (1)

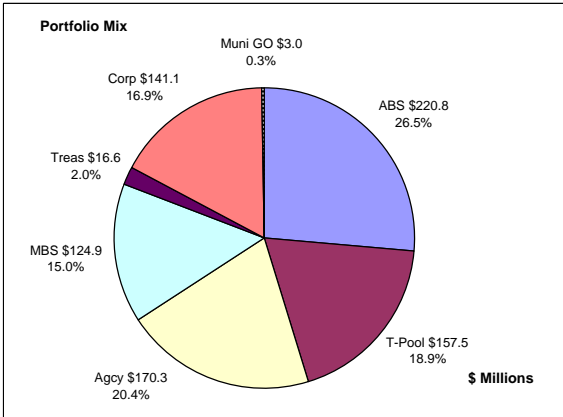
	AAA	AA	A	BBB	BB	Portfolio Percent
Asset Backed						0.0%
Corporates	17.9%	44.6%	28.6%	8.9%		42.8%
Federal Agencies						0.0%
Mortgage Securities		100.0%				20.6%
Treasuries		100.0%				36.6%
Total Portfolio	7.6%	76.4%	12.2%	3.8%		100.0%



	\$ Millions		Book Yield	Performance Benchmarks (3)
	Average Portfolio	Realized Income		
FY '16 YTD	85.1	1.0	2.4%	1.9%
Last 12 months	85.6	2.2	2.5%	1.9%
FY '15	87.7	2.5 ⁴	2.9%	2.0%
FY '14	90.7	3.1	3.4%	2.2%
FY '13	89.7	3.9	4.3%	1.2%
FY '12	99.4	4.7	4.7%	1.5%
FY '11	120.5	5.5	4.5%	2.4%
Avg FY '11-'15	97.6	3.9	4.0%	1.9%

(1) Does not include State Treasury Pool balances in calculation.
 (2) 12 month moving average of the constant maturity yield on the 7 year Treasury note
 (3) 12 month moving average of the constant maturity yield on the 7 year Treasury note at end of period
 (4) Excludes \$0.1 million in gain on an investment call in March 2015.

Colorado Public School Permanent Fund December 31, 2015



Portfolio Value

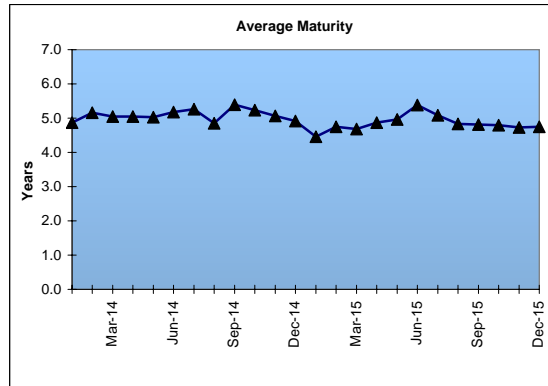
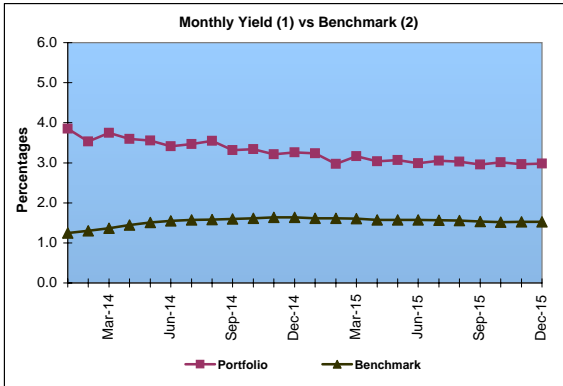
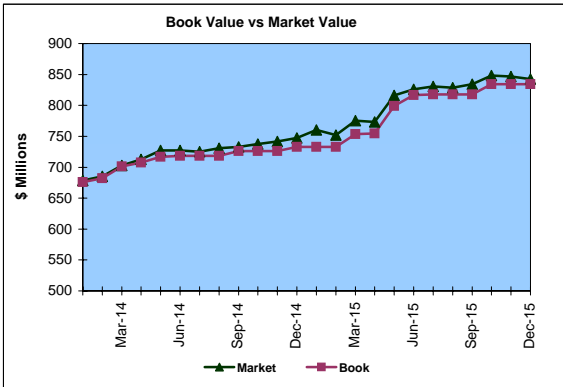
Market Value \$842.8 Million
Book Value \$834.2 Million

Yield and Average Maturity

Portfolio Book Yield 2.7%
Portfolio Average Maturity 4.8 Yrs

Portfolio Quality

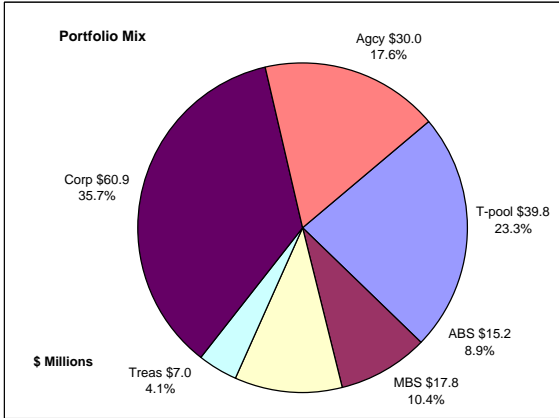
	A1 / P1	AAA	AA	A	BBB	BB	B	Other	Portfolio Percent
Asset Backed		100.0%							26.5%
Corporates		13.4%	72.1%	10.3%	4.2%				16.9%
Mortgage Securities			100.0%						15.0%
Treasuries			100.0%						2.0%
Federal Agencies			100.0%						20.4%
Muni GOs			100.0%						0.3%
T-Pool Combined	9.5%	18.6%	54.1%	12.0%	1.2%	0.2%	0.0%	4.4%	18.9%
Total Portfolio	1.8%	32.3%	60.1%	4.0%	1.0%	0.0%		0.8%	100.0%



	\$ Millions			
	Average Portfolio	Realized Income	Book Yield	Performance Benchmarks (3)
FY '16 YTD	822.3	11.1	2.7%	1.5%
Last 12 months	790.0	22.1	2.8%	1.5%
FY '15	739.8	22.1	3.0%	1.6%
FY '14	668.8	21.6	3.2%	1.6%
FY '13	622.2	22.4	3.6%	0.8%
FY '12	582.2	24.1	4.1%	1.0%
FY '11	580.7	27.0	4.6%	1.8%
Avg FY '11-'15	638.8	23.4	3.7%	1.3%

- (1) Does not include State Treasury Pool balances in calculation.
- (2) Latest 12 month moving average of the constant maturity yield on the 5 year Treasury note
- (3) Latest 12 month moving average of the constant maturity yield on the 5 year Treasury note at end of period

Unclaimed Property Tourism Fund December 31, 2015



Portfolio Value

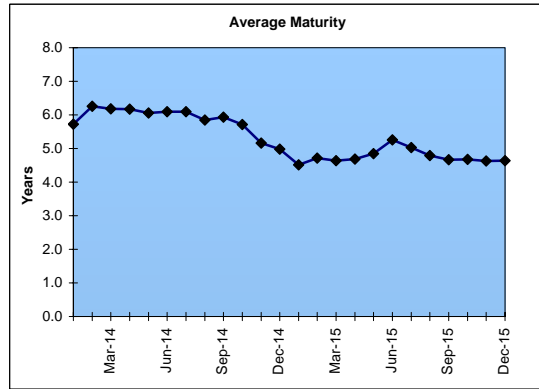
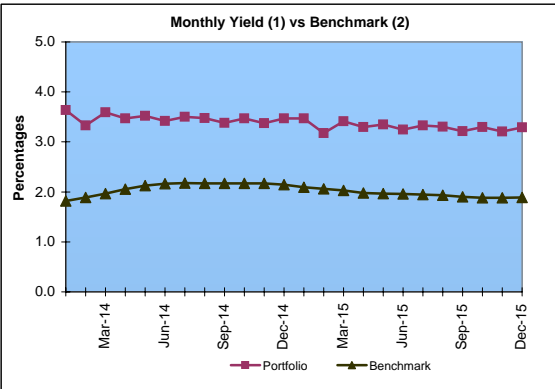
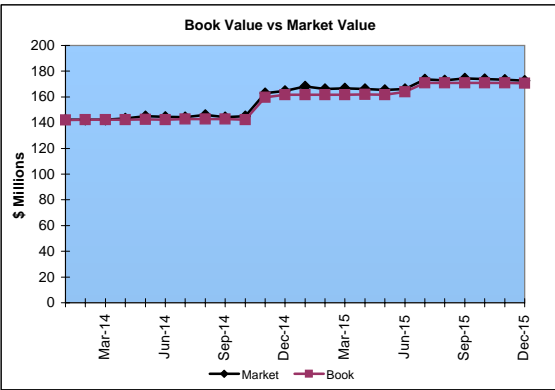
Market Value \$172.7 Million
Book Value \$170.7 Million

Yield and Average Maturity

Portfolio Book Yield 2.8%
Portfolio Average Maturity 4.6 Yrs

Portfolio Quality

	A1 / P1	AAA	AA	A	BBB	BB	B	Other	Portfolio Percent
Asset Backed			100.0%						8.9%
Corporates		3.3%	36.1%	46.6%	14.0%				35.7%
Federal Agencies			100.0%						17.6%
Mortgage Securities			100.0%						10.4%
Treasuries			100.0%						4.1%
T-Pool Combined	9.5%	18.6%	54.1%	12.0%	1.2%	0.2%	0.0%	4.4%	23.3%
Total Portfolio	2.2%	14.4%	57.6%	19.5%	5.3%	0.0%		1.0%	100.0%



	Average Portfolio	Realized Income	Book Yield	Performance Benchmarks (3)
FY '16 YTD	168.5	2.4	2.8%	1.9%
Last 12 months	164.9	4.7	2.8%	1.9%
FY '15	153.7	4.6	3.0%	2.0%
FY '14	136.9	4.3	3.1%	2.2%
FY '13	122.9	4.1	3.3%	1.2%
FY '12	114.3	3.8	3.3%	1.5%
FY '11	104.7	3.5	3.4%	2.4%
Avg FY '11-'15	126.5	4.0	3.2%	1.9%

- (1) Does not include State Treasury Pool balances in calculation.
- (2) 12 month moving average of the constant maturity yield on the 7 year Treasury note
- (3) 12 month moving average of the constant maturity yield on the 7 year Treasury note at end of period