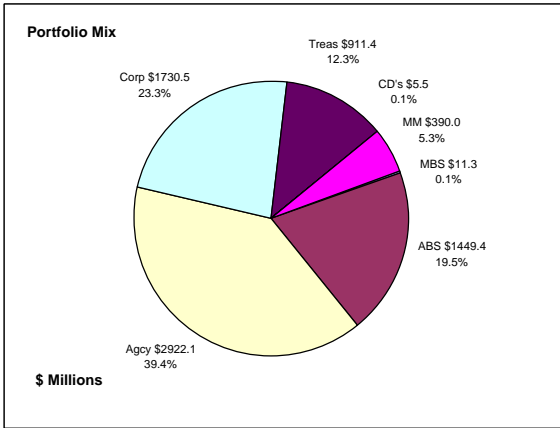


Colorado Treasury Pool Combined March 31, 2015



Portfolio Value

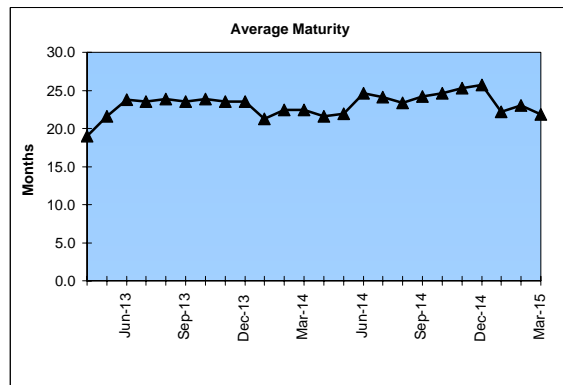
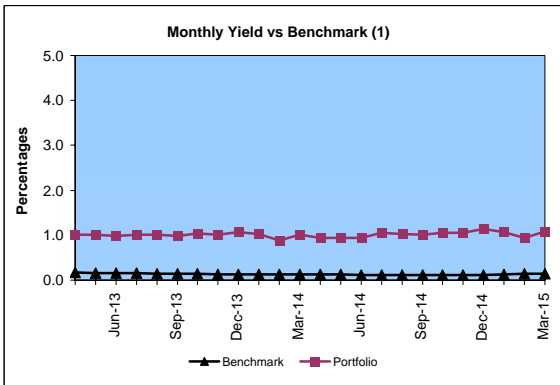
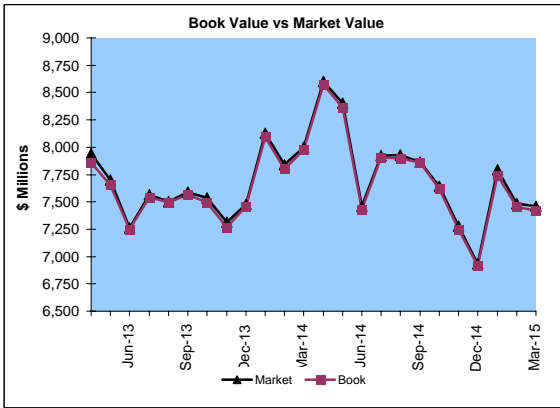
Market Value \$7,461.2 Million
Book Value \$7,420.2 Million

Yield and Average Maturity

Portfolio Book Yield 1.1%
Portfolio Average Maturity 21.8 Months

Portfolio Quality

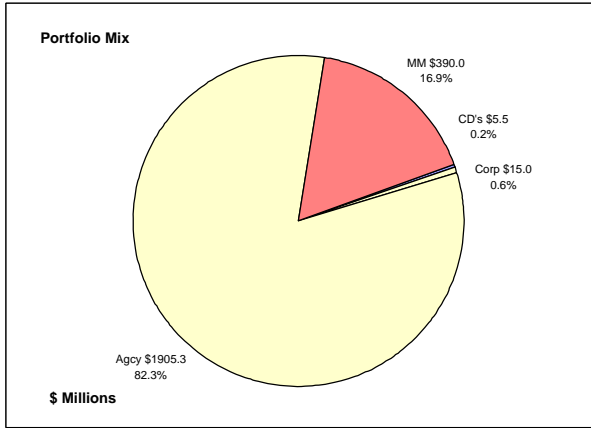
	A1 / P1	AAA	AA	A	BBB	BB	B	Other	Portfolio Percent
Asset Backed		100.0%							19.5%
Corporates		6.2%	36.8%	50.6%	5.0%	1.4%			23.3%
Mortgage Securities			100.0%						0.1%
Commercial Paper									
Treasuries			100.0%						12.3%
Federal Agencies			100.0%						39.4%
Certificates of Deposit								100.0%	0.1%
Money Market Funds								100.0%	5.3%
Total Portfolio		21.0%	60.4%	11.8%	1.2%	0.3%		5.3%	100.0%



	\$ Millions		Book Yield	Performance Benchmarks (2)
	Average Portfolio	Realized Income		
FY '15 YTD	7,628.2	59.9	1.1%	0.2%
Last 12 months	7,813.3	79.5	1.0%	0.2%
FY '14	7,842.0	77.4	1.0%	0.1%
FY '13	7,157.7	78.3	1.1%	0.2%
FY '12	6,442.3	89.5	1.4%	0.2%
FY '11	5,718.6	113.0	2.0%	0.3%
FY '10	5,717.7	139.0 ³	2.4%	0.4%
Avg FY '10-14	6,575.7	99.4	1.6%	0.2%

(1) 12 month moving average of the constant maturity yield on the 1 year Treasury note
(2) 12 month moving average of the constant maturity yield on the 1 year Treasury note at end of period
(3) Excludes \$5.5 million in losses on sale of investments in July 2009.

Colorado Treasury Cash
(0 - 1 year maturities)
March 31, 2015



Portfolio Value

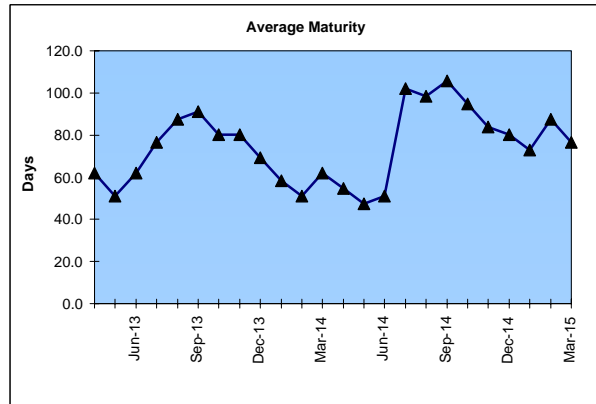
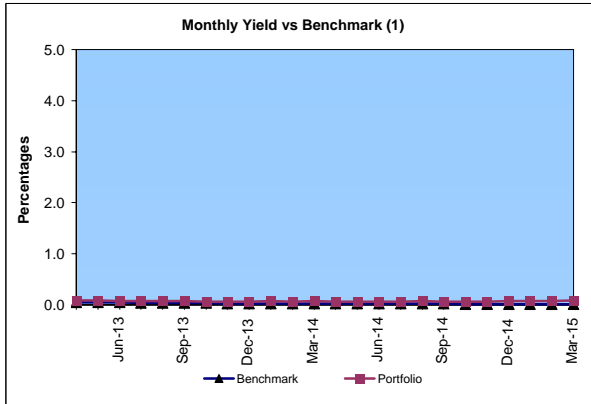
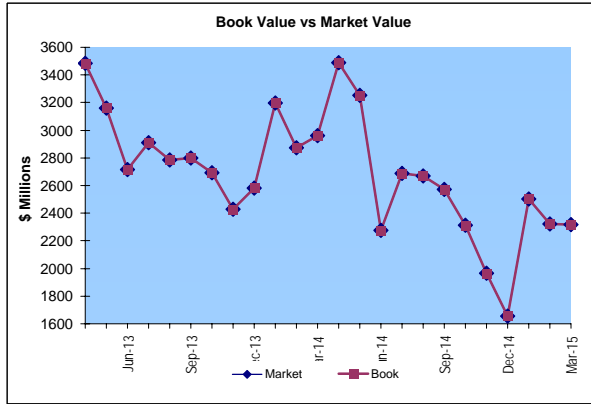
Market Value \$2,316.1 Million
 Book Value \$2,315.8 Million

Yield and Average Maturity

Portfolio Book Yield 0.07%
 Portfolio Average Maturity 77 Days

Portfolio Quality

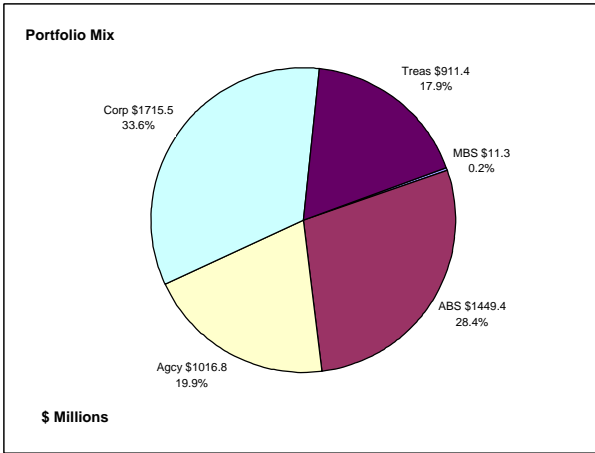
	A	AA	Other	Portfolio Percent
Commercial Paper				0.0%
Federal Agencies		100.0%		82.3%
Corporates	100.0%			0.6%
Certificates of Deposit			100.0%	0.2%
Money Market Funds			100.0%	16.9%
Total Portfolio	0.6%	82.3%	17.1%	100.0%



	\$ Millions			
	Average Portfolio	Realized Income	Book Yield	Performance Benchmarks (2)
FY '15 YTD	2,401.4	1.3	0.07%	0.02%
Last 12 months	2,620.3	1.8	0.07%	0.02%
FY '14	2,970.8	2.0	0.07%	0.03%
FY '13	3,223.2	3.5	0.11%	0.05%
FY '12	3,135.5	2.6	0.08%	0.03%
FY '11	2,355.2	3.2	0.14%	0.10%
FY '10	2,013.9	4.1	0.20%	0.09%
Avg FY '10-'14	2,739.7	3.1	0.12%	0.06%

(1) 12 month moving average of the 30 day Treasury bill
 (2) 12 month moving average of the 30 day Treasury bill at end of period

Colorado Treasury Pool
(1 - 5 year maturities)
 March 31, 2015



Portfolio Value

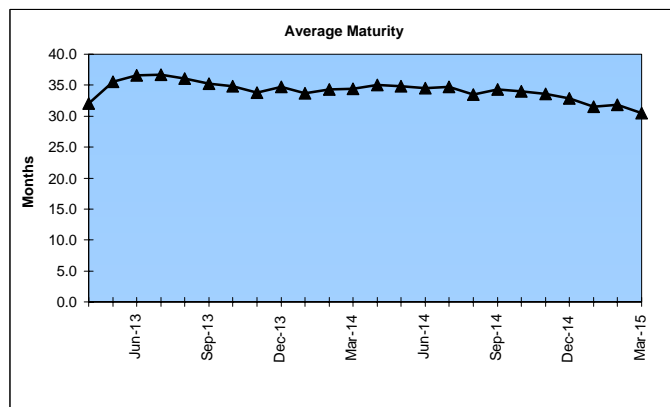
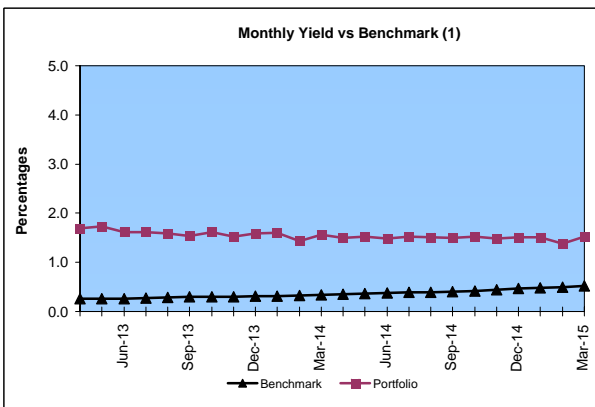
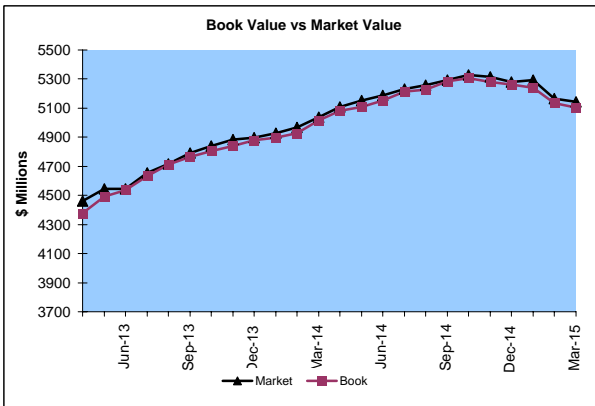
Market Value \$5,145.1 Million
 Book Value \$5,104.4 Million

Yield and Average Maturity

Portfolio Book Yield 1.5%
 Portfolio Average Maturity 30.5 Months

Portfolio Quality

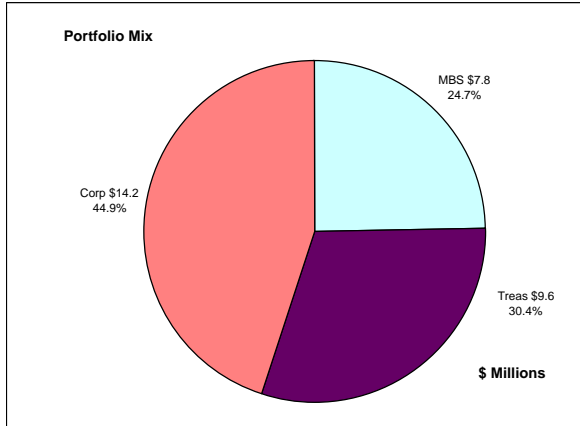
	AAA	AA	A	BBB	BB	B	Other	Portfolio Percent
Asset Backed	100.0%							28.4%
Corporates	6.2%	37.1%	50.1%	5.1%	1.5%			33.6%
Mortgage Securities		100.0%						0.2%
Treasuries		100.0%						17.9%
Federal Agencies		100.0%						19.9%
Total Portfolio	30.5%	50.5%	16.8%	1.7%	0.5%			100.0%



	Average Portfolio	Realized Income	Book Yield	Performance Benchmarks (2)
FY '15 YTD	5,226.7	58.6	1.5%	0.5%
Last 12 months	5,193.0	77.8	1.5%	0.5%
FY '14	4,871.2	75.4	1.6%	0.4%
FY '13	3,934.5	74.8	1.9%	0.3%
FY '12	3,306.8	86.9	2.6%	0.3%
FY '11	3,363.5	109.8	3.3%	0.6%
FY '10	3,703.9	134.9 ³	3.6%	0.9%
Avg FY '10-'14	3,836.0	96.3	2.6%	0.5%

(1) 12 month moving average of the constant maturity yield on the 2 year Treasury note
 (2) 12 month moving average of the constant maturity yield on the 2 year Treasury note at end of period
 (3) Excludes \$5.5 million in losses on sale of investments in July 2009.

Colorado Major Medical Insurance Fund
March 31, 2015



Portfolio Value (1)

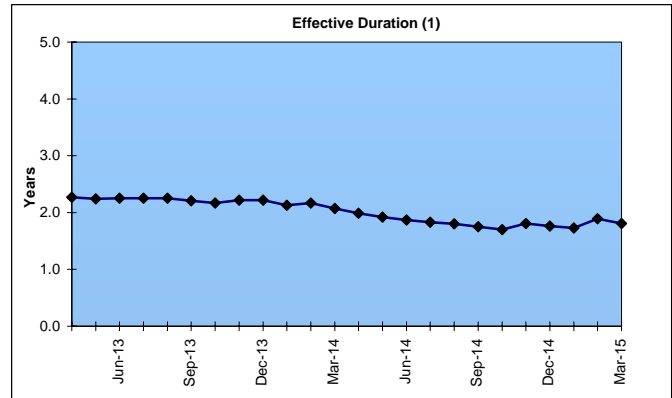
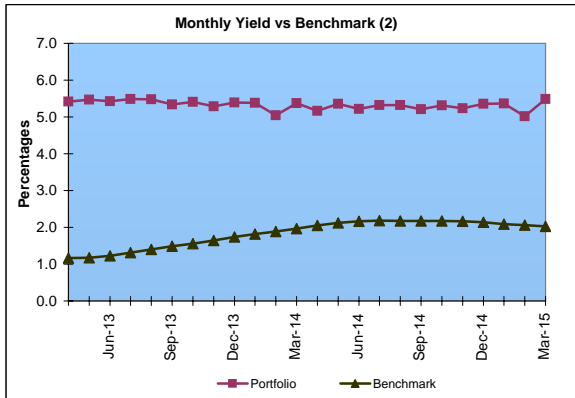
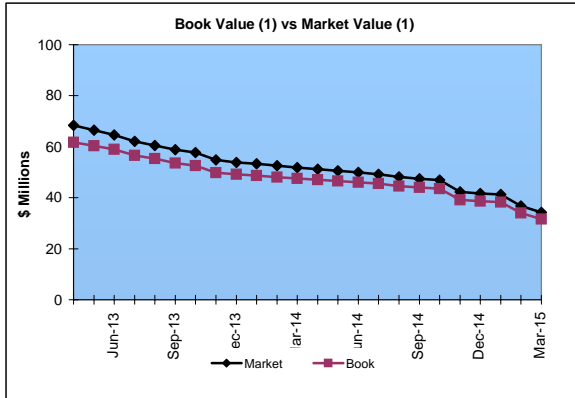
Market Value \$34.3 Million
Book Value \$31.6 Million

Yield and Effective Duration

Portfolio Book Yield 3.0%
Portfolio Effective Duration (1) 1.8 Yrs

Portfolio Quality (1)

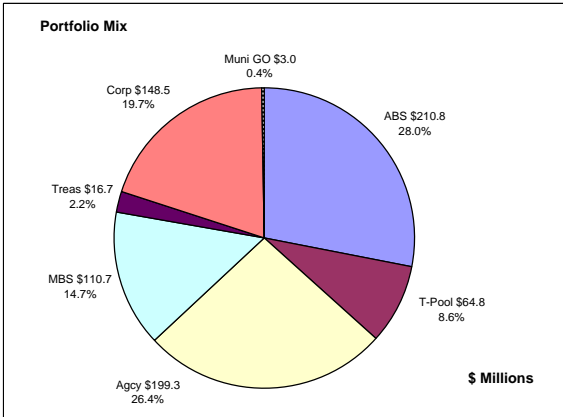
	AAA	AA	A	BBB	BB	Portfolio Percent
Asset Backed						0.0%
Corporates	14.1%	35.2%	47.2%	3.5%		44.9%
Federal Agencies						0.0%
Mortgage Securities		100.0%				24.7%
Treasuries		100.0%				30.4%
Total Portfolio	6.3%	70.9%	21.2%	1.6%		100.0%



	\$ Millions		Book Yield	Performance Benchmarks (3)
	Average Portfolio	Realized Income		
FY '15 YTD	88.0	2.0 ⁵	3.0%	2.0%
Last 12 months	88.4	2.7 ⁵	3.0%	2.0%
FY '14	90.7	3.1	3.4%	2.2%
FY '13	89.7	3.9	4.3%	1.2%
FY '12	99.4	4.7	4.7%	1.5%
FY '11	120.5	5.5	4.5%	2.4%
FY '10	126.8	6.0 ⁴	4.7%	3.1%
Avg FY '10-'14	105.4	4.6	4.3%	2.1%

(1) Does not include State Treasury Pool balances in calculation.
 (2) 12 month moving average of the constant maturity yield on the 7 year Treasury note
 (3) 12 month moving average of the constant maturity yield on the 7 year Treasury note at end of period
 (4) Excludes \$0.2 million in losses on sale of investments in July 2009.
 (5) Excludes \$0.1 million in gain on an investment call in March 2015.

Colorado Public School Permanent Fund
March 31, 2015



Portfolio Value

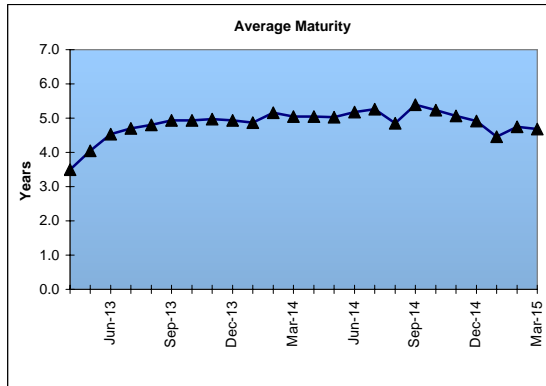
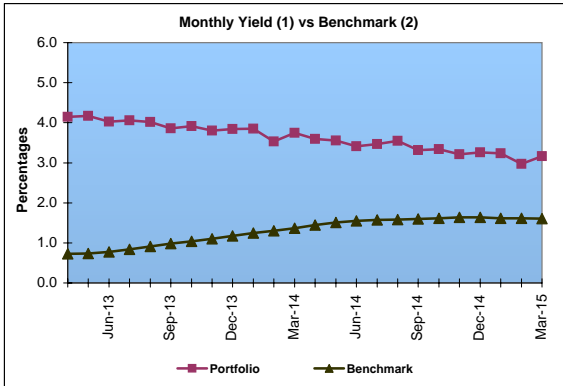
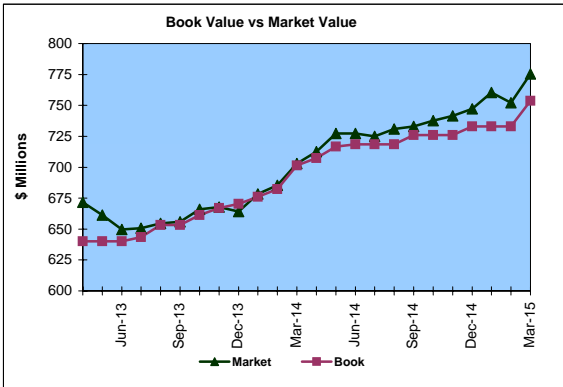
Market Value \$775.5 Million
 Book Value \$753.8 Million

Yield and Average Maturity

Portfolio Book Yield 3.0%
 Portfolio Average Maturity 4.7 Yrs

Portfolio Quality

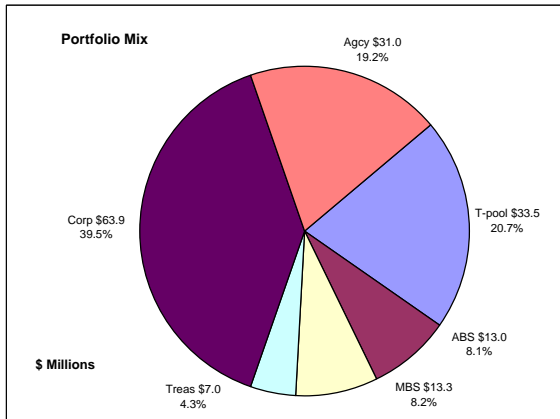
	A1 / P1	AAA	AA	A	BBB	BB	B	Other	Portfolio Percent
Asset Backed		100.0%							28.0%
Corporates		12.7%	73.5%	9.8%	4.0%				19.7%
Mortgage Securities			100.0%						14.7%
Treasuries			100.0%						2.2%
Federal Agencies			100.0%						26.4%
Muni GOs			100.0%						0.4%
T-Pool Combined	0.0%	21.0%	60.4%	11.8%	1.2%	0.3%	0.0%	5.3%	8.6%
Total Portfolio		32.3%	63.4%	2.9%	0.9%	0.0%		0.5%	100.0%



	\$ Millions			
	Average Portfolio	Realized Income	Book Yield	Performance Benchmarks (3)
FY '15 YTD	726.8	16.6	3.0%	1.6%
Last 12 months	720.8	22.0	3.1%	1.6%
FY '14	668.8	21.6	3.2%	1.6%
FY '13	622.2	22.4	3.6%	0.8%
FY '12	582.2	24.1	4.1%	1.0%
FY '11	580.7	27.0	4.6%	1.8%
FY '10	580.8	28.5	4.9%	2.4%
Avg FY '10-'14	606.9	24.7	4.1%	1.5%

- (1) Does not include State Treasury Pool balances in calculation.
- (2) Latest 12 month moving average of the constant maturity yield on the 5 year Treasury note
- (3) Latest 12 month moving average of the constant maturity yield on the 5 year Treasury note at end of period

Unclaimed Property Tourism Fund March 31, 2015



Portfolio Value

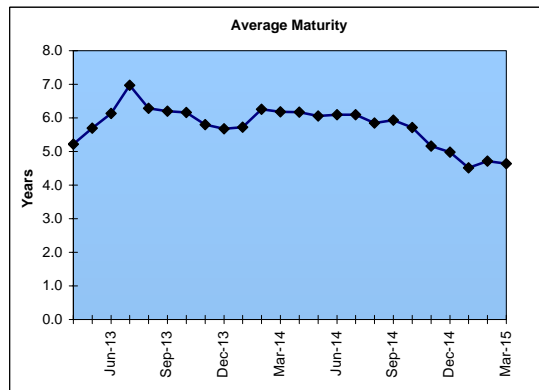
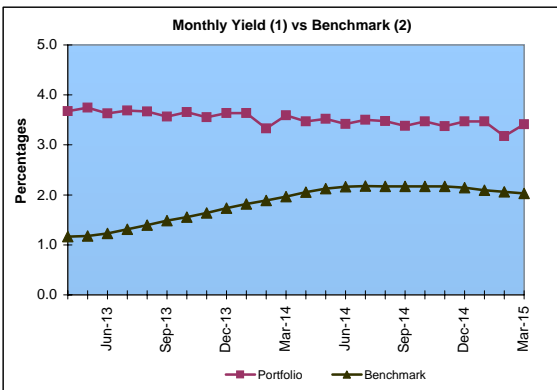
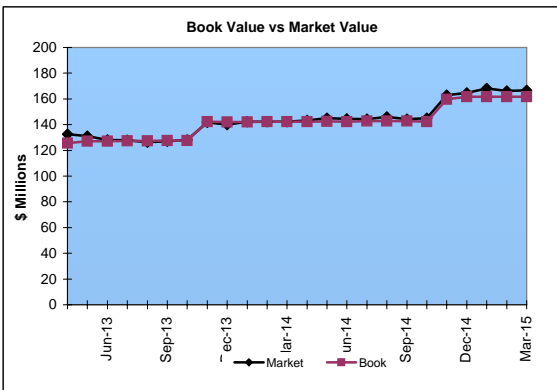
Market Value \$166.7 Million
Book Value \$161.7 Million

Yield and Average Maturity

Portfolio Book Yield 3.0%
Portfolio Average Maturity 4.6 Yrs

Portfolio Quality

	A1 / P1	AAA	AA	A	BBB	BB	B	Other	Portfolio Percent
Asset Backed			100.0%						8.1%
Corporates		3.1%	32.9%	56.2%	7.8%				39.5%
Federal Agencies			100.0%						19.2%
Mortgage Securities			100.0%						8.2%
Treasuries			100.0%						4.3%
T-Pool Combined	0.0%	21.0%	60.4%	11.8%	1.2%	0.3%	0.0%	5.3%	20.7%
Total Portfolio		13.6%	57.2%	24.7%	3.3%	0.1%		1.1%	100.0%



	\$ Millions		Book Yield	Performance Benchmarks (3)
	Average Portfolio	Realized Income		
FY '15 YTD	151.2	3.4	3.0%	2.0%
Last 12 months	149.0	4.5	3.0%	2.0%
FY '14	136.9	4.3	3.1%	2.2%
FY '13	122.9	4.1	3.3%	1.2%
FY '12	114.3	3.8	3.3%	1.5%
FY '11	104.7	3.5	3.4%	2.4%
FY '10	87.9	3.4 ⁴	3.9%	3.1%
Avg FY '10-'14	113.3	3.8	3.4%	2.1%

- (1) Does not include State Treasury Pool balances in calculation.
- (2) 12 month moving average of the constant maturity yield on the 7 year Treasury note
- (3) 12 month moving average of the constant maturity yield on the 7 year Treasury note at end of period
- (4) Excludes \$.2 million in losses on sale of investments in July 2009.