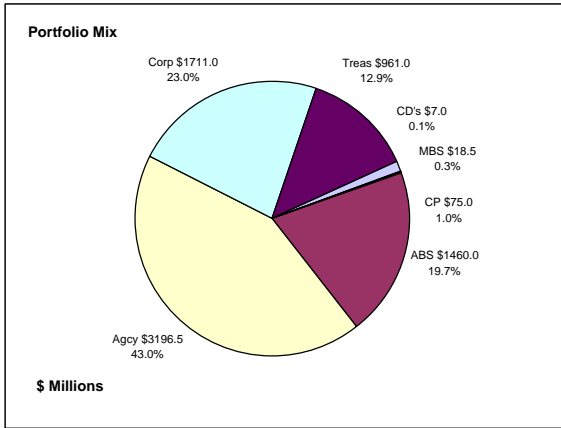


## Colorado Treasury Pool Combined June 30, 2014



### Portfolio Value

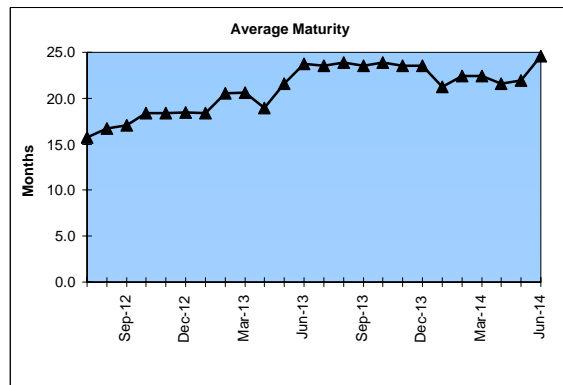
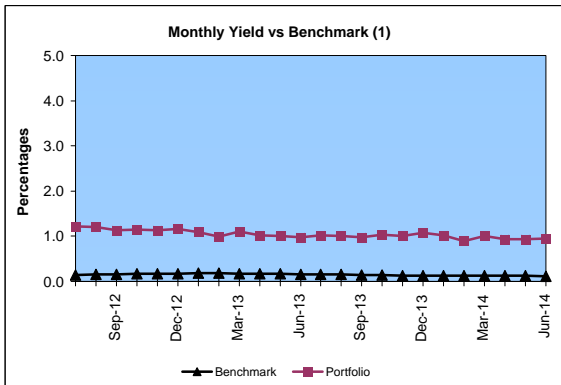
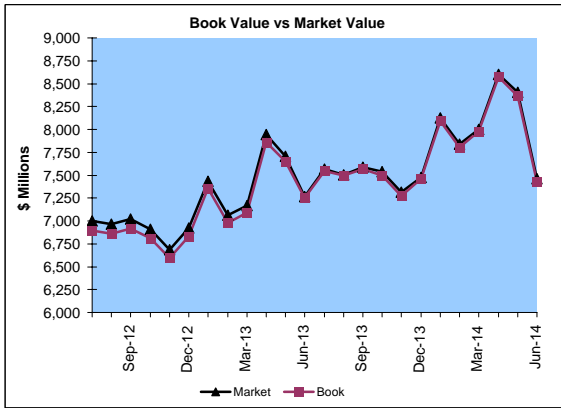
Market Value           \$7,462.1 Million  
Book Value             \$7,429.0 Million

### Yield and Average Maturity

Portfolio Book Yield       1.0%  
Portfolio Average Maturity   24.6 Months

### Portfolio Quality

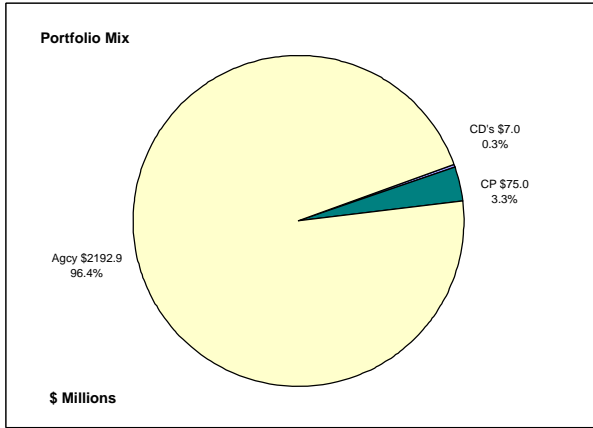
	A1 / P1	AAA	AA	A	BBB	BB	B	Other	Portfolio Percent
Asset Backed		100.0%							19.7%
Corporates		5.2%	37.0%	55.4%	0.9%		1.5%		23.0%
Mortgage Securities			100.0%						0.3%
Commercial Paper	100.0%								1.0%
Treasuries			100.0%						12.9%
Federal Agencies			100.0%						43.0%
Certificates of Deposit							100.0%		0.1%
Money Market Funds									
<b>Total Portfolio</b>	1.0%	20.9%	64.7%	12.8%	0.2%	0.3%	0.1%		100.0%



	\$ Millions		Book Yield	Performance Benchmarks (2)
	Average Portfolio	Realized Income		
FY '14 YTD	7,842.0	77.4	1.0%	0.1%
Last 12 months	7,842.0	77.4	1.0%	0.1%
FY '13	7,157.7	78.3	1.1%	0.2%
FY '12	6,442.3	89.5	1.4%	0.2%
FY '11	5,718.6	113.0	2.0%	0.3%
FY '10	5,717.7	139.0 <sup>3</sup>	2.4%	0.4%
FY '09	5,828.6	177.4	3.0%	1.1%
Avg FY '09-13	6,173.0	119.4	2.0%	0.4%

(1) 12 month moving average of the constant maturity yield on the 1 year Treasury note  
(2) 12 month moving average of the constant maturity yield on the 1 year Treasury note at end of period  
(3) Excludes \$5.5 million in losses on sale of investments in July 2009.

**Colorado Treasury Cash**  
*(0 - 1 year maturities)*  
**June 30, 2014**



**Portfolio Value**

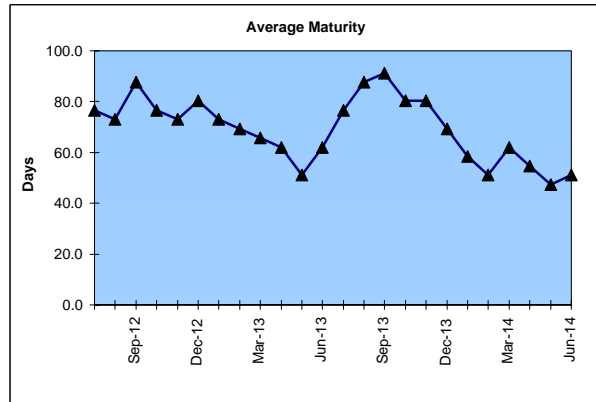
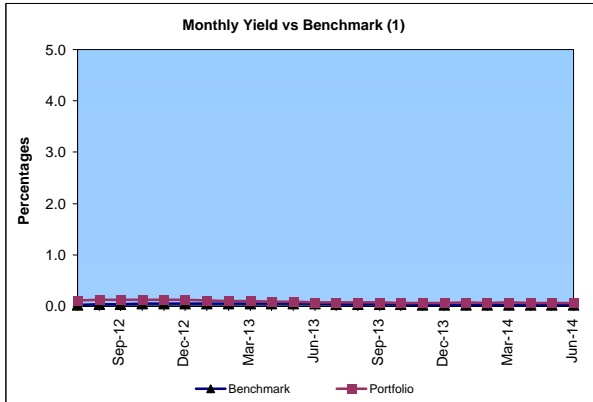
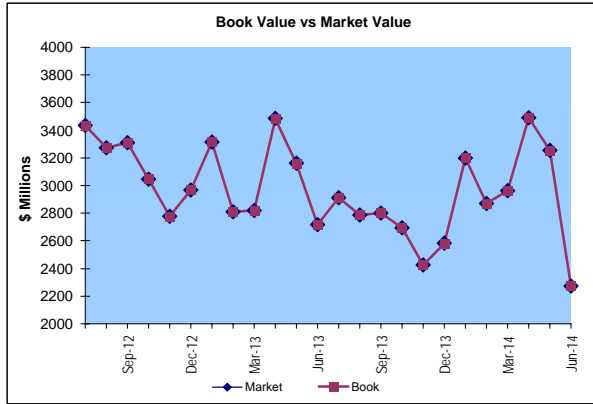
Market Value \$2,275.0 Million  
 Book Value \$2,274.9 Million

**Yield and Average Maturity**

Portfolio Book Yield 0.07%  
 Portfolio Average Maturity 51 Days

**Portfolio Quality**

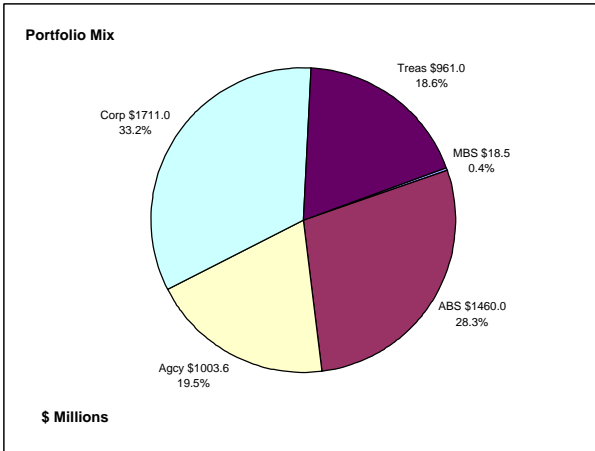
	A1 / P1	AA	Other	Portfolio Percent
Commercial Paper	100.0%			3.3%
Federal Agencies		100.0%		96.4%
Treasuries				0.0%
Certificates of Deposit			100.0%	0.3%
Money Market Funds				0.0%
<b>Total Portfolio</b>	<b>3.3%</b>	<b>96.4%</b>	<b>0.3%</b>	<b>100.0%</b>



	\$ Millions			
	Average Portfolio	Realized Income	Book Yield	Performance Benchmarks (2)
FY '14 YTD	2,970.8	2.0	0.07%	0.03%
Last 12 months	2,970.8	2.0	0.07%	0.03%
FY '13	3,223.2	3.5	0.11%	0.05%
FY '12	3,135.5	2.6	0.08%	0.03%
FY '11	2,355.2	3.2	0.14%	0.10%
FY '10	2,013.9	4.1	0.20%	0.09%
FY '09	2,705.6	39.2	1.40%	0.40%
Avg FY '09-'13	2,686.7	10.5	0.39%	0.13%

(1) 12 month moving average of the 30 day Treasury bill  
 (2) 12 month moving average of the 30 day Treasury bill at end of period

**Colorado Treasury Pool**  
(1 - 5 year maturities)  
June 30, 2014



**Portfolio Value**

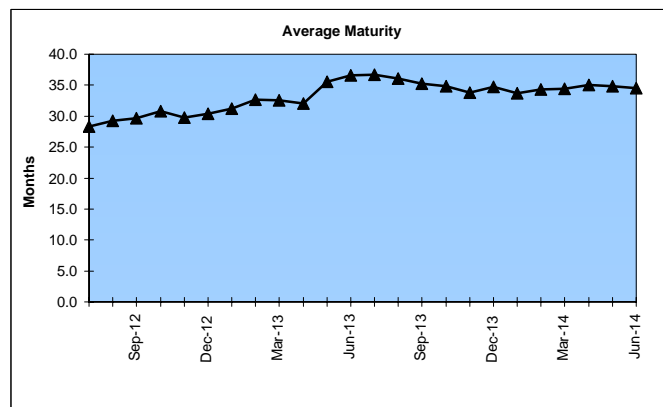
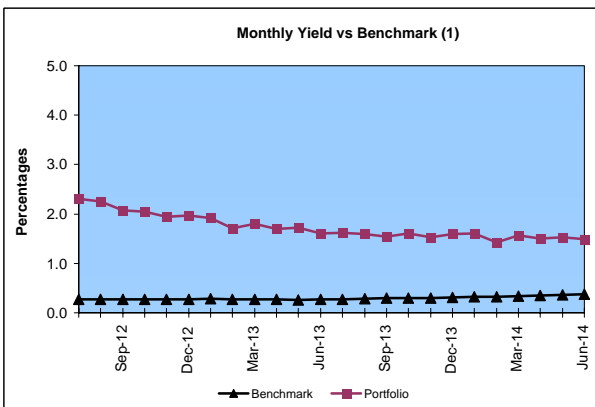
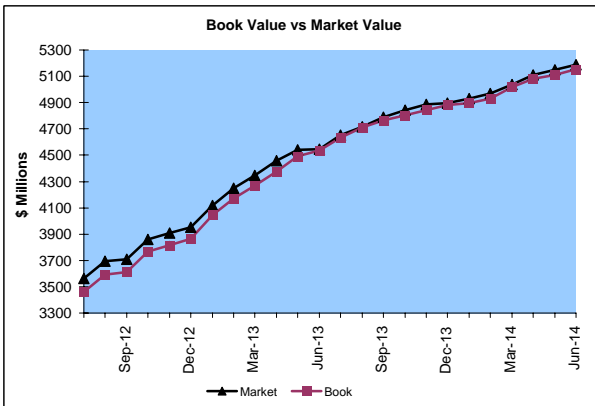
Market Value \$5,187.1 Million  
Book Value \$5,154.1 Million

**Yield and Average Maturity**

Portfolio Book Yield 1.6%  
Portfolio Average Maturity 34.6 Months

**Portfolio Quality**

	AAA	AA	A	BBB	BB	B	Other	Portfolio Percent
Asset Backed	100.0%							28.3%
Corporates	5.2%	37.0%	55.4%	0.9%		1.5%		33.2%
Mortgage Securities			100.0%					0.4%
Treasuries			100.0%					18.6%
Federal Agencies			100.0%					19.5%
<b>Total Portfolio</b>	<b>30.1%</b>	<b>50.7%</b>	<b>18.4%</b>	<b>0.3%</b>		<b>0.5%</b>		<b>100.0%</b>

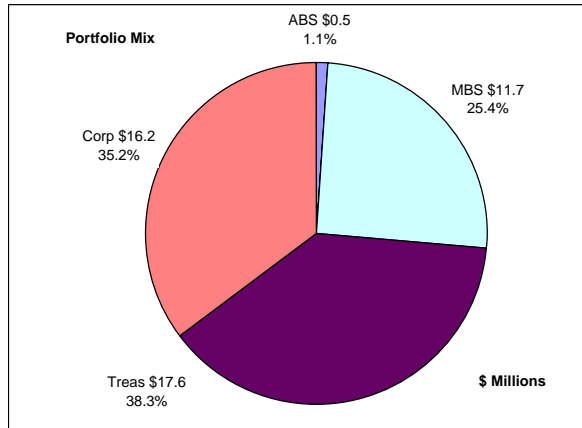


	Average Portfolio	Realized Income	Book Yield	Performance Benchmarks (2)
FY '14 YTD	4,871.2	75.4	1.6%	0.4%
Last 12 months	4,871.2	75.4	1.6%	0.4%
FY '13	3,934.5	74.8	1.9%	0.3%
FY '12	3,306.8	86.9	2.6%	0.3%
FY '11	3,363.5	109.8	3.3%	0.6%
FY '10	3,703.9	134.9 <sup>3</sup>	3.6%	0.9%
FY '09	3,123.0	138.2	4.4%	1.4%
Avg FY '09-'13	3,486.3	108.9	3.2%	0.7%

(1) 12 month moving average of the constant maturity yield on the 2 year Treasury note  
(2) 12 month moving average of the constant maturity yield on the 2 year Treasury note at end of period  
(3) Excludes \$5.5 million in losses on sale of investments in July 2009.

# Colorado Major Medical Insurance Fund

## June 30, 2014



### Portfolio Value (1)

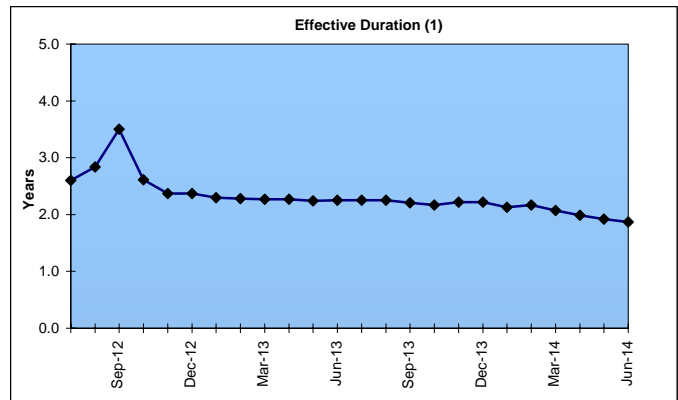
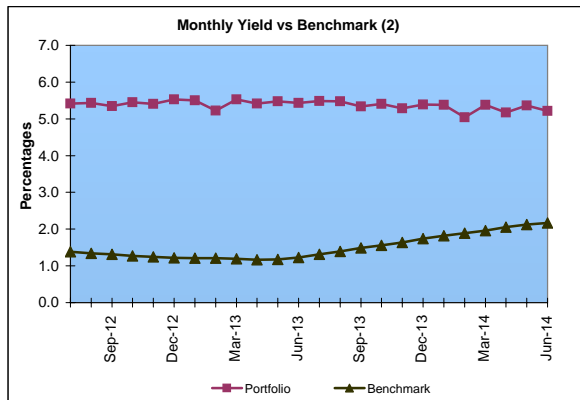
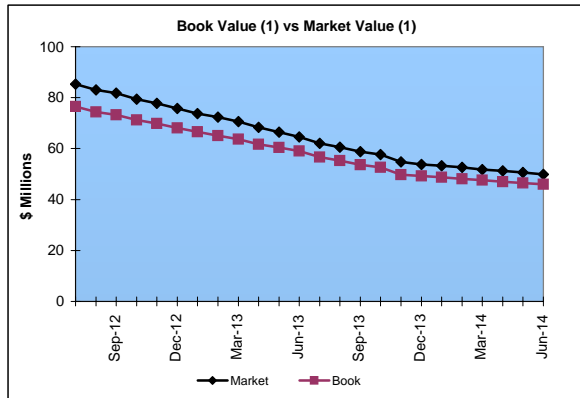
Market Value \$49.9 Million  
Book Value \$46.0 Million

### Yield and Effective Duration

Portfolio Book Yield 3.4%  
Portfolio Effective Duration (1) 1.9 Yrs

### Portfolio Quality (1)

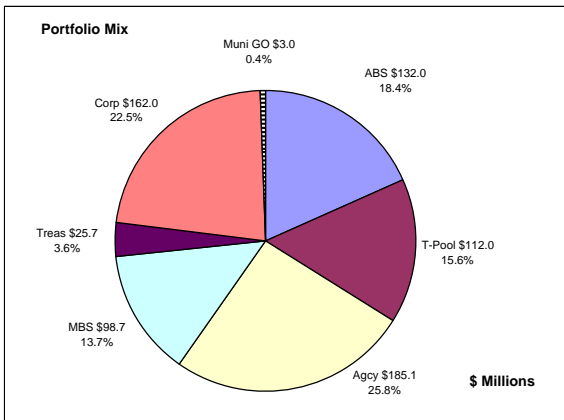
	AAA	AA	A	BBB	BB	Portfolio Percent
Asset Backed	100.0%					1.1%
Corporates	12.3%	43.2%	41.4%	3.1%		35.2%
Federal Agencies						0.0%
Mortgage Securities		100.0%				25.4%
Treasuries		100.0%				38.3%
<b>Total Portfolio</b>	<b>5.4%</b>	<b>78.9%</b>	<b>14.6%</b>	<b>1.1%</b>		<b>100.0%</b>



	\$ Millions		Book Yield	Performance Benchmarks (3)
	Average Portfolio	Realized Income		
FY '14 YTD	90.7	3.1	3.4%	2.2%
Last 12 months	90.7	3.1	3.4%	2.2%
FY '13	89.7	3.9	4.3%	1.2%
FY '12	99.4	4.7	4.7%	1.5%
FY '11	120.5	5.5	4.5%	2.4%
FY '10	126.8	6.0 <sup>5</sup>	4.7%	3.1%
FY '09	163.0	7.4 <sup>4</sup>	4.6%	2.8%
Avg FY '09-'13	119.9	5.5	4.6%	2.2%

- (1) Does not include State Treasury Pool balances in calculation.
- (2) 12 month moving average of the constant maturity yield on the 7 year Treasury note
- (3) 12 month moving average of the constant maturity yield on the 7 year Treasury note at end of period
- (4) Excludes \$.4 million in gains on sale of investments in May 2009.
- (5) Excludes \$.2 million in losses on sale of investments in July 2009.

**Colorado Public School Permanent Fund**  
June 30, 2014



**Portfolio Value**

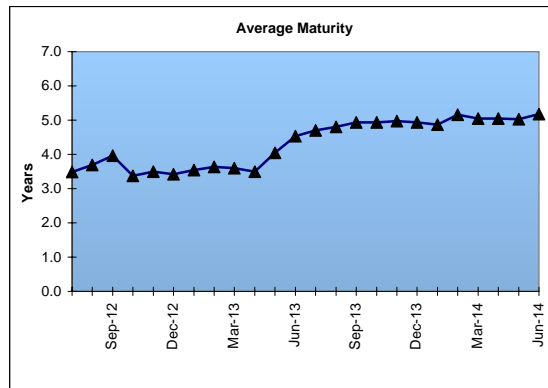
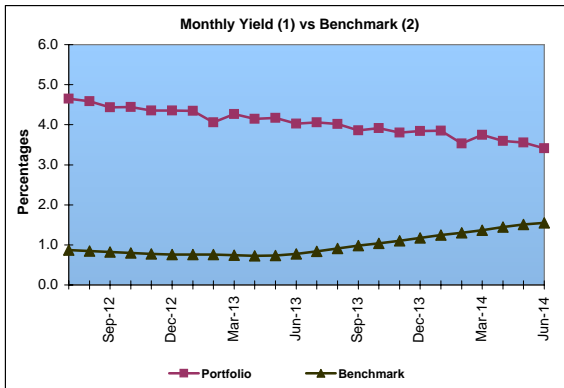
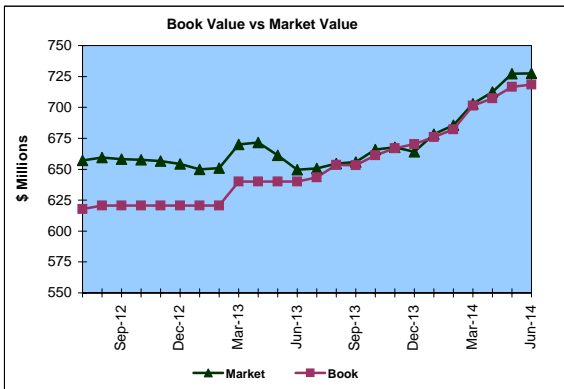
Market Value \$727.4 Million  
Book Value \$718.5 Million

**Yield and Average Maturity**

Portfolio Book Yield 3.2%  
Portfolio Average Maturity 5.2 Yrs

**Portfolio Quality**

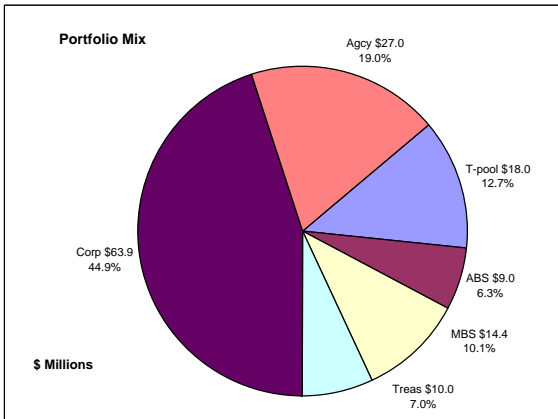
	A1 / P1	AAA	AA	A	BBB	BB	B	Other	Portfolio Percent
Asset Backed		100.0%							18.4%
Corporates		11.6%	75.7%	12.7%					22.5%
Mortgage Securities			100.0%						13.7%
Treasuries			100.0%						3.6%
Federal Agencies			100.0%						25.8%
Muni GOs			100.0%						0.4%
T-Pool Combined	1.0%	20.9%	64.7%	12.8%	0.2%	0.0%	0.3%	0.1%	15.6%
Total Portfolio	0.2%	24.2%	70.7%	4.8%	0.0%		0.1%	0.0%	100.0%



	\$ Millions		Book Yield	Performance Benchmarks (3)
	Average Portfolio	Realized Income		
FY '14 YTD	668.8	21.6	3.2%	1.6%
Last 12 months	668.8	21.6	3.2%	1.6%
FY '13	622.2	22.4	3.6%	0.8%
FY '12	582.2	24.1	4.1%	1.0%
FY '11	580.7	27.0	4.6%	1.8%
FY '10	580.8	28.5	4.9%	2.4%
FY '09	572.4	29.2	5.1%	2.3%
Avg FY '09-'13	587.7	26.2	4.5%	1.6%

- (1) Does not include State Treasury Pool balances in calculation.
- (2) Latest 12 month moving average of the constant maturity yield on the 5 year Treasury note
- (3) Latest 12 month moving average of the constant maturity yield on the 5 year Treasury note at end of period

## Unclaimed Property Tourism Fund June 30, 2014



### Portfolio Value

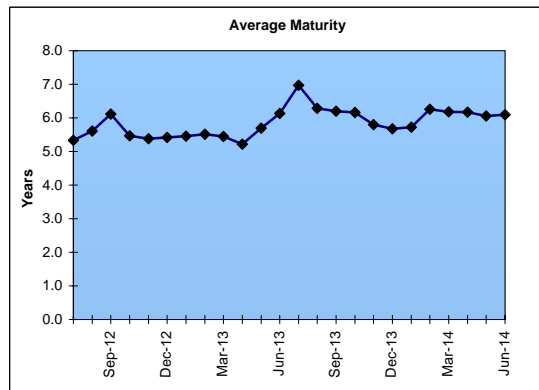
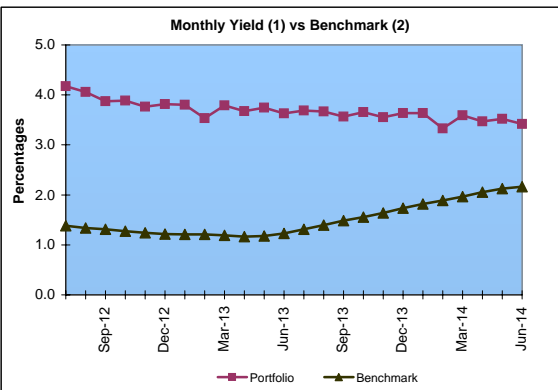
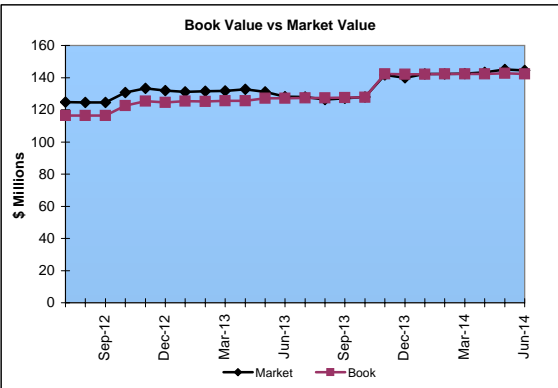
Market Value           \$144.5 Million  
Book Value             \$142.3 Million

### Yield and Average Maturity

Portfolio Book Yield       3.1%  
Portfolio Average Maturity   6.1 Yrs

### Portfolio Quality

	A1 / P1	AAA	AA	A	BBB	BB	B	Other	Portfolio Percent
Asset Backed				100.0%					6.3%
Corporates		3.1%	32.9%	59.3%	4.7%				44.9%
Federal Agencies			100.0%						19.0%
Mortgage Securities			100.0%						10.1%
Treasuries				100.0%					7.0%
T-Pool Combined	1.0%	20.9%	64.7%	12.8%	0.2%	0.0%	0.3%	0.1%	12.7%
Total Portfolio	0.1%	10.4%	59.1%	28.3%	2.1%				100.0%



	\$ Millions		Book Yield	Performance Benchmarks (3)
	Average Portfolio	Realized Income		
FY '14 YTD	136.9	4.3	3.1%	2.2%
Last 12 months	136.9	4.3	3.1%	2.2%
FY '13	122.9	4.1	3.3%	1.2%
FY '12	114.3	3.8	3.3%	1.5%
FY '11	104.7	3.5	3.4%	2.4%
FY '10	87.9	3.4 <sup>4</sup>	3.9%	3.1%
FY '09	65.9	3.1	4.8%	2.8%
Avg FY '09-'13	99.1	3.6	3.7%	2.2%

- (1) Does not include State Treasury Pool balances in calculation.
- (2) 12 month moving average of the constant maturity yield on the 7 year Treasury note
- (3) 12 month moving average of the constant maturity yield on the 7 year Treasury note at end of period
- (4) Excludes \$.2 million in losses on sale of investments in July 2009.