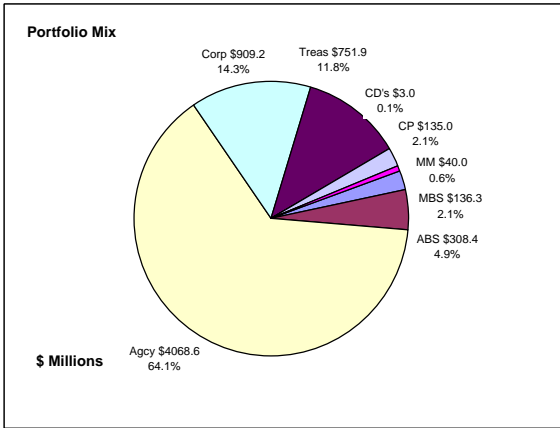


## Colorado Treasury Pool Combined March 31, 2012



### Portfolio Value

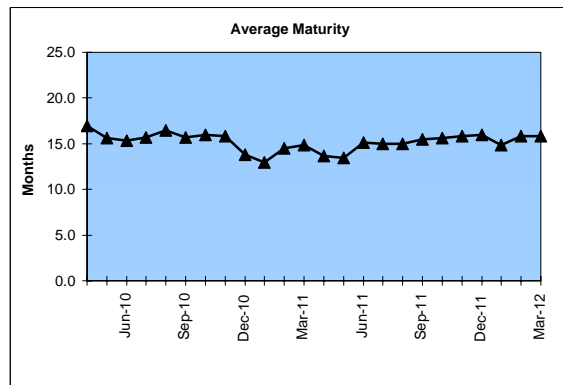
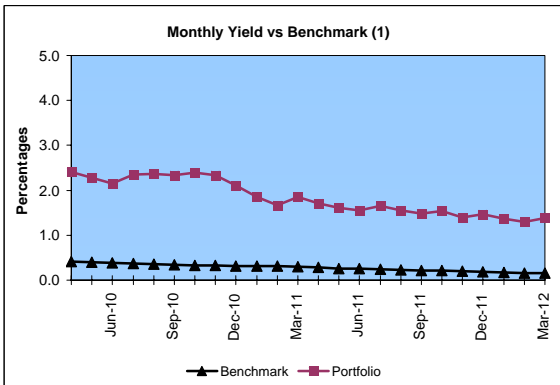
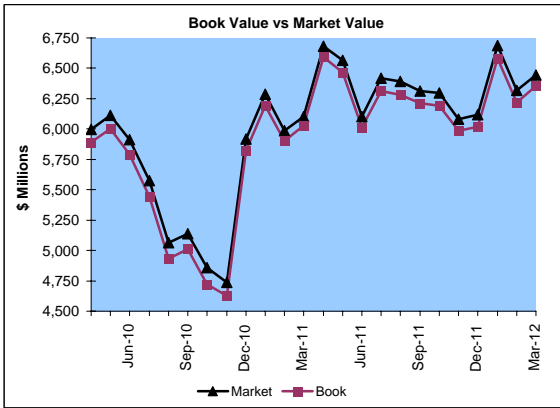
Market Value           \$6,443.4 Million  
Book Value             \$6,352.4 Million

### Yield and Average Maturity

Portfolio Book Yield       1.5%  
Portfolio Average Maturity   15.8 Months

### Portfolio Quality

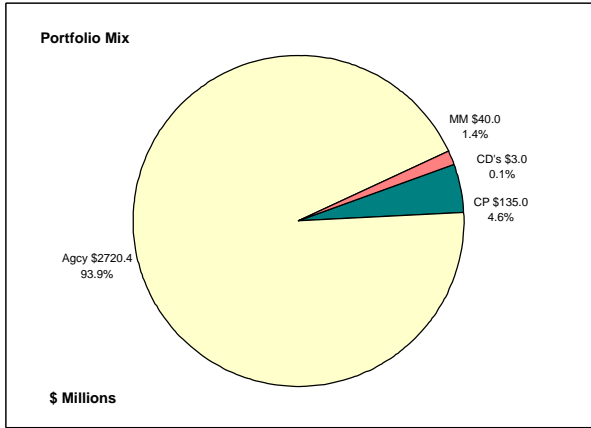
	A1 / P1	AAA	AA	A	BBB	BB	B	Other	Portfolio Percent
Asset Backed		100.0%							4.9%
Corporates		4.3%	37.4%	56.6%	1.7%				14.3%
Mortgage Securities			100.0%						2.1%
Commercial Paper	100.0%								2.1%
Treasuries			100.0%						11.8%
Federal Agencies			100.0%						64.1%
Certificates of Deposit								100.0%	0.1%
Money Market Funds								100.0%	0.6%
<b>Total Portfolio</b>	<b>2.1%</b>	<b>5.5%</b>	<b>83.4%</b>	<b>8.1%</b>	<b>0.2%</b>			<b>0.7%</b>	<b>100.0%</b>



	\$ Millions		Book Yield	Performance Benchmarks (2)
	Average Portfolio	Realized Income		
FY '12 YTD	6,267.7	68.6	1.5%	0.2%
Last 12 months	6,321.8	94.8	1.5%	0.2%
FY '11	5,718.6	113.0	2.0%	0.3%
FY '10	5,717.7	139.0 <sup>3</sup>	2.4%	0.4%
FY '09	5,828.6	177.4	3.0%	1.1%
FY '08	5,835.7	249.9	4.3%	3.1%
FY '07	5,122.0	244.3	4.7%	5.0%
Avg FY '07-11	5,644.5	184.7	3.3%	2.0%

(1) 12 month moving average of the constant maturity yield on the 1 year Treasury note  
(2) 12 month moving average of the constant maturity yield on the 1 year Treasury note at end of period  
(3) Excludes \$5.5 million in losses on sale of investments in July 2009.

**Colorado Treasury Cash**  
*(0 - 1 year maturities)*  
**March 31, 2012**



**Portfolio Value**

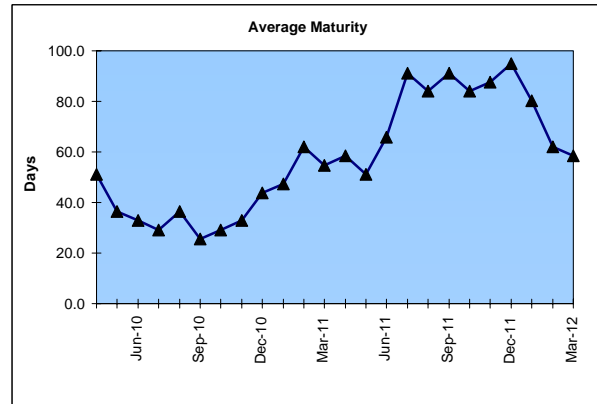
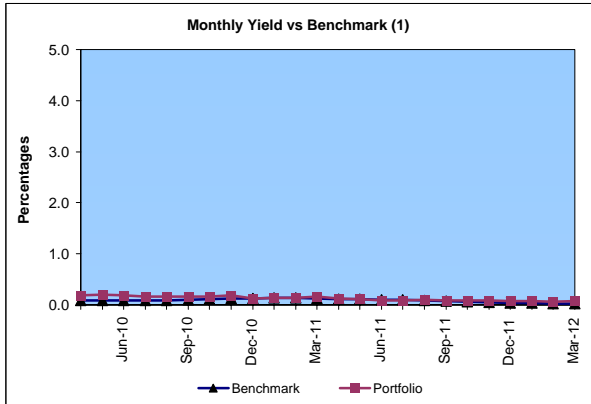
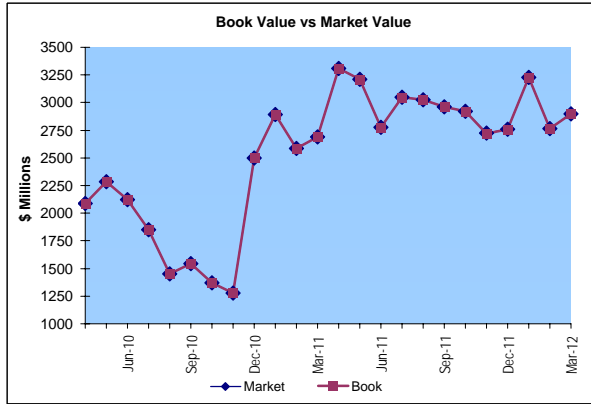
Market Value           \$2,898.6 Million  
 Book Value             \$2,898.4 Million

**Yield and Average Maturity**

Portfolio Book Yield                               0.1%  
 Portfolio Average Maturity                     58 Days

**Portfolio Quality**

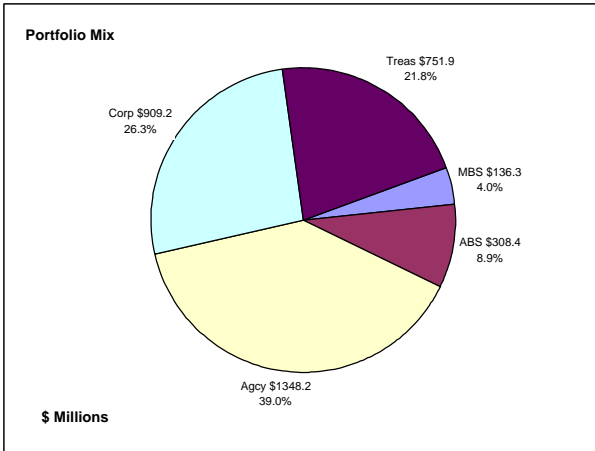
	A1 / P1	AA	Other	Portfolio Percent
Commercial Paper	100.0%			4.6%
Federal Agencies		100.0%		93.9%
Treasuries				0.0%
Certificates of Deposit			100.0%	0.1%
Money Market Funds			100.0%	1.4%
<b>Total Portfolio</b>	<b>4.6%</b>	<b>93.9%</b>	<b>1.5%</b>	<b>100.0%</b>



	\$ Millions			
	Average Portfolio	Realized Income	Book Yield	Performance Benchmarks (2)
FY '12 YTD	2,991.6	1.8	0.1%	0.0%
Last 12 months	3,048.8	2.7	0.1%	0.0%
FY '11	2,355.2	3.2	0.1%	0.1%
FY '10	2,013.9	4.1	0.2%	0.1%
FY '09	2,705.6	39.2	1.4%	0.4%
FY '08	2,895.9	114.9	4.0%	2.6%
FY '07	2,312.0	123.6	5.3%	4.8%
Avg FY '07-'11	2,456.5	57.0	2.2%	1.6%

(1) 12 month moving average of the 30 day Treasury bill  
 (2) 12 month moving average of the 30 day Treasury bill at end of period

**Colorado Treasury Pool**  
**(1 - 5 year maturities)**  
**March 31, 2012**



**Portfolio Value**

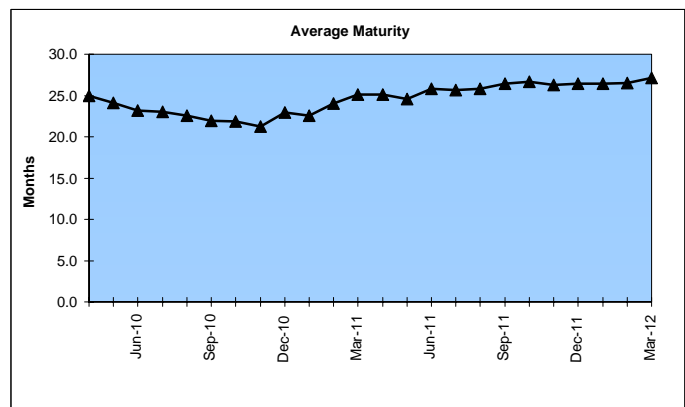
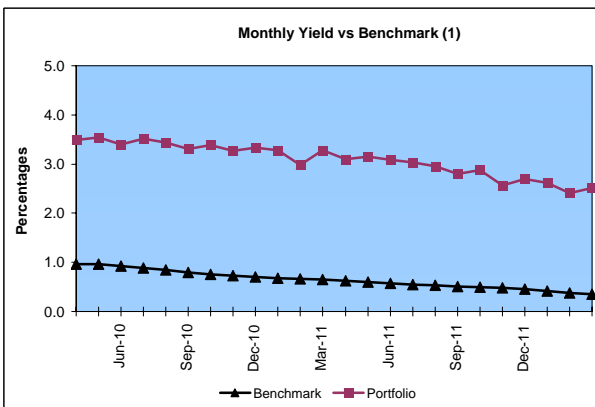
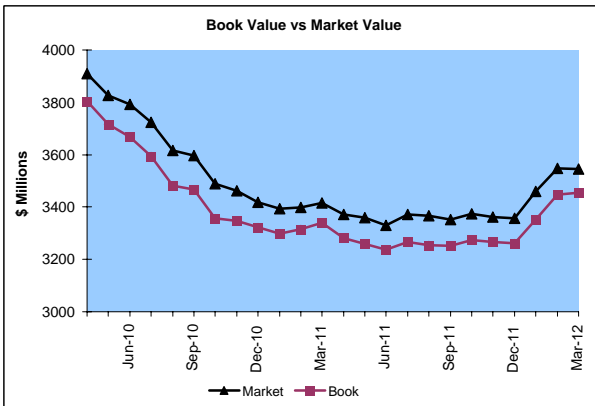
Market Value                   \$3,544.8 Million  
 Book Value                     \$3,454.0 Million

**Yield and Average Maturity**

Portfolio Book Yield               2.7%  
 Portfolio Average Maturity       27.1 Months

**Portfolio Quality**

	AAA	AA	A	BBB	BB	B	Other	Portfolio Percent
Asset Backed	100.0%							8.9%
Corporates	4.3%	37.4%	56.6%	1.7%				26.3%
Mortgage Securities		100.0%						4.0%
Treasuries		100.0%						21.8%
Federal Agencies		100.0%						39.0%
<b>Total Portfolio</b>	<b>10.1%</b>	<b>74.6%</b>	<b>14.9%</b>	<b>0.4%</b>				<b>100.0%</b>

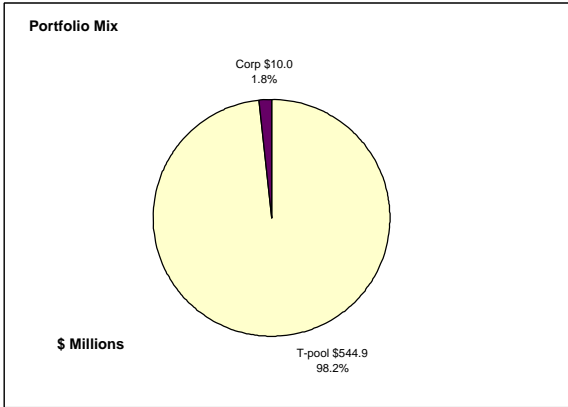


	Average Portfolio	Realized Income	Book Yield	Performance Benchmarks (2)
FY '12 YTD	3,276.1	66.7	2.7%	0.4%
Last 12 months	3,273.1	92.1	2.8%	0.4%
FY '11	3,363.5	109.8	3.3%	0.6%
FY '10	3,703.9	134.9 <sup>3</sup>	3.6%	0.9%
FY '09	3,123.0	138.2	4.4%	1.4%
FY '08	2,939.8	134.9	4.6%	3.1%
FY '07	2,810.1	120.6	4.2%	4.8%
Avg FY '07-'11	3,188.0	127.7	4.0%	2.2%

(1) 12 month moving average of the constant maturity yield on the 2 year Treasury note  
 (2) 12 month moving average of the constant maturity yield on the 2 year Treasury note at end of period  
 (3) Excludes \$5.5 million in losses on sale of investments in July 2009.

# Colorado State Education Fund

## March 31, 2012



### Portfolio Value

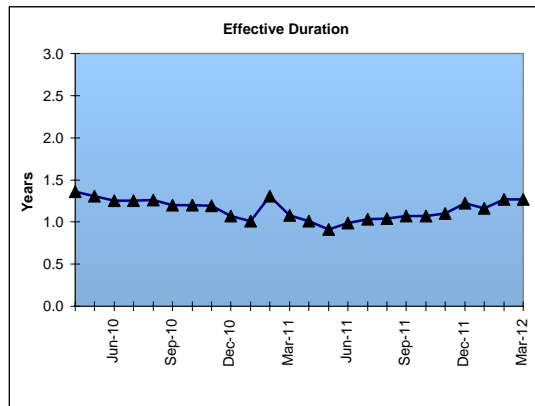
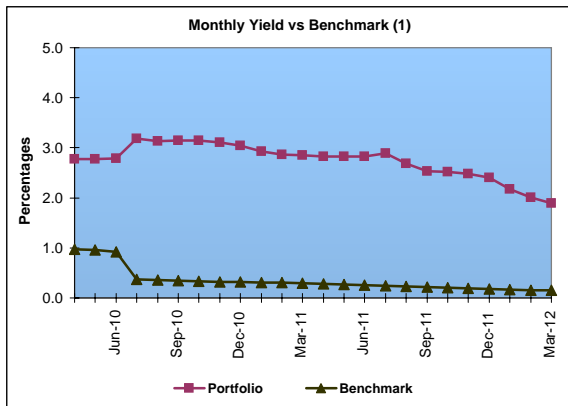
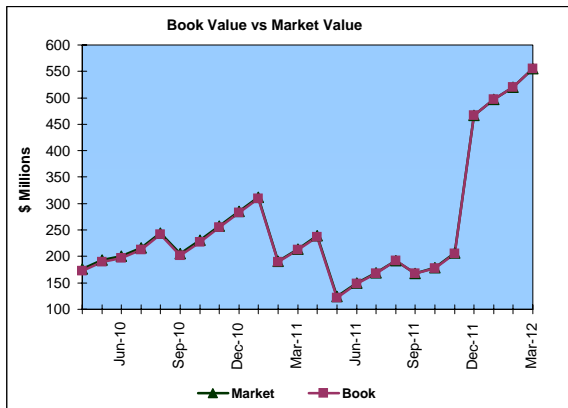
Market Value                \$554.9 Million  
 Book Value                 \$554.9 Million

### Yield and Effective Duration

Portfolio Book Yield        1.9%  
 Portfolio Effective Duration   1.3 Yrs

### Portfolio Quality

	A1 / P1	AAA	AA	A	BBB	BB	B	Other	Portfolio Percent
Corporates			50.0%	50.0%					1.8%
Treasuries									0.0%
Federal Agencies									0.0%
T-Pool Combined	2.1%	5.5%	83.4%	8.1%	0.2%	0.0%	0.0%	0.7%	98.2%
Total Portfolio	2.1%	5.4%	82.8%	8.8%	0.2%			0.7%	100.0%



	\$ Millions		Book Yield	Performance Benchmarks (2)
	Average Portfolio	Realized Income		
FY '12 YTD	276.7	3.9	1.9%	0.2%
Last 12 months	248.7	5.1	2.0%	0.2%
FY '11	207.6	5.9	2.8%	0.6%
FY '10	365.7	10.2	2.8%	0.9%
FY '09	412.5	13.4	3.2%	1.4%
FY '08	383.2	16.7	4.3%	3.1%
FY '07	272.0	13.4	4.9%	4.8%
Avg FY '07-'11	328.2	11.9	3.6%	2.2%

(1) 12 month moving average of the constant maturity yield on the 2 year Treasury note

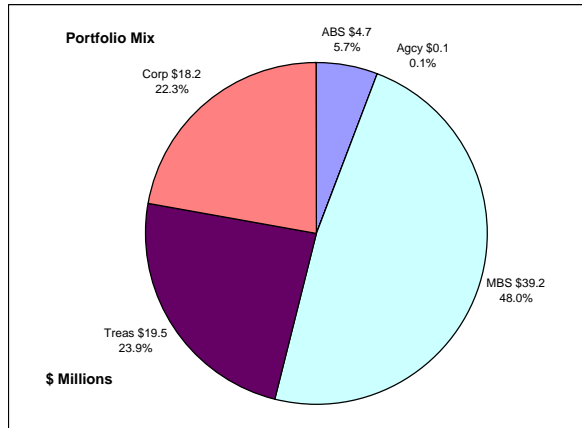
\* Effective July 2010, changed to latest 12 month average of the constant maturity yield on the 1 year Treasury note to match current investment policy.

(2) 12 month moving average of the constant maturity yield on the 2 year Treasury note at end of period

\* Effective July 2010, changed to latest 12 month average of the constant maturity yield on the 1 year Treasury note to match current investment policy.

# Colorado Major Medical Insurance Fund

## March 31, 2012



### Portfolio Value (1)

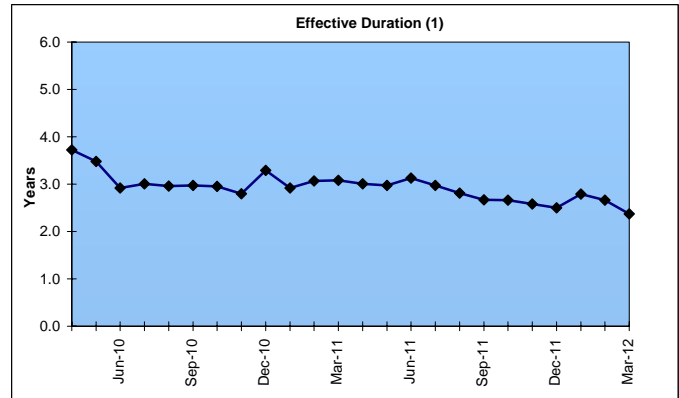
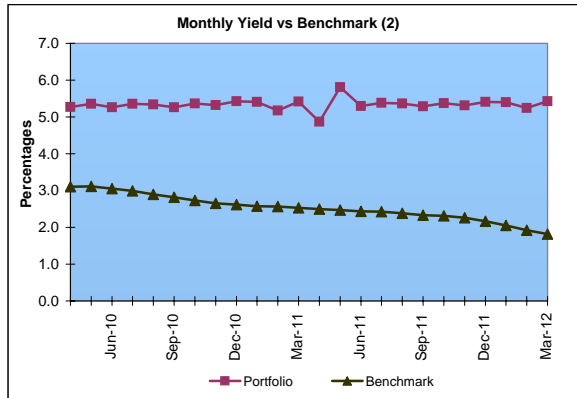
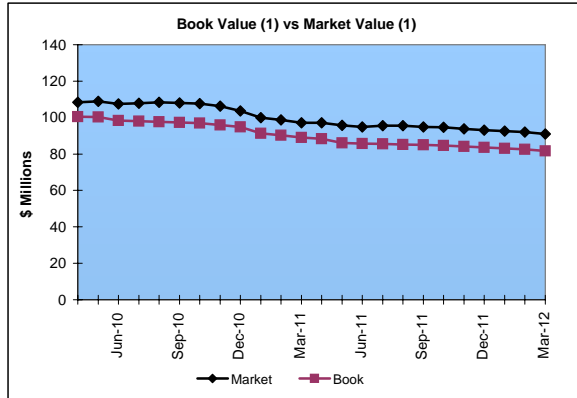
Market Value \$91.0 Million  
Book Value \$81.7 Million

### Yield and Effective Duration

Portfolio Book Yield 4.7%  
Portfolio Effective Duration (1) 2.4 Yrs

### Portfolio Quality (1)

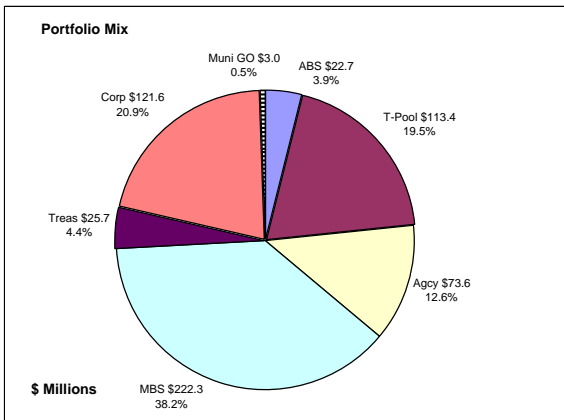
	AAA	AA	A	BBB	BB	Portfolio Percent
Asset Backed	100.0%					5.7%
Corporates	11.0%	27.5%	56.0%	5.5%		22.3%
Federal Agencies		100.0%				0.1%
Mortgage Securities		100.0%				48.0%
Treasuries		100.0%				23.9%
<b>Total Portfolio</b>	<b>8.2%</b>	<b>78.1%</b>	<b>12.5%</b>	<b>1.2%</b>		<b>100.0%</b>



	\$ Millions		Book Yield	Performance Benchmarks (3)
	Average Portfolio	Realized Income		
FY '12 YTD	100.8	3.5	4.7%	1.8%
Last 12 months	105.2	4.8	4.6%	1.8%
FY '11	120.5	5.5	4.5%	2.4%
FY '10	126.8	6.0 <sup>5</sup>	4.7%	3.1%
FY '09	163.0	7.4 <sup>4</sup>	4.6%	2.8%
FY '08	133.7	6.6	4.9%	3.8%
FY '07	76.2	3.8	5.0%	4.7%
Avg FY '07-'11	124.0	5.9	4.8%	3.4%

- (1) Does not include State Treasury Pool balances in calculation.
- (2) 12 month moving average of the constant maturity yield on the 7 year Treasury note
- (3) 12 month moving average of the constant maturity yield on the 7 year Treasury note at end of period
- (4) Excludes \$.4 million in gains on sale of investments in May 2009.
- (5) Excludes \$.2 million in losses on sale of investments in July 2009.

## Colorado Public School Permanent Fund March 31, 2012



### Portfolio Value

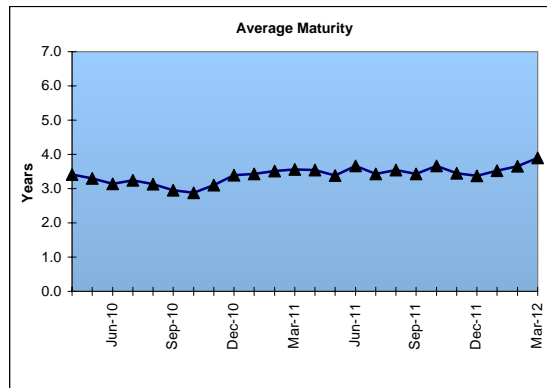
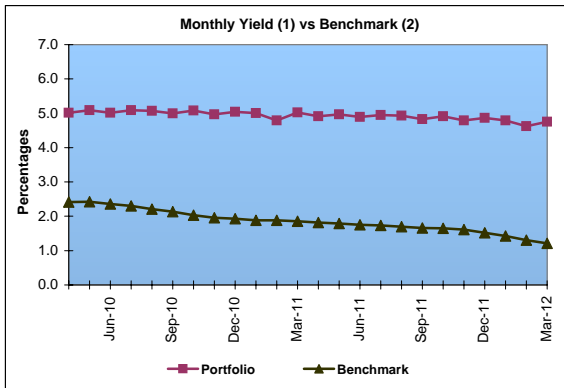
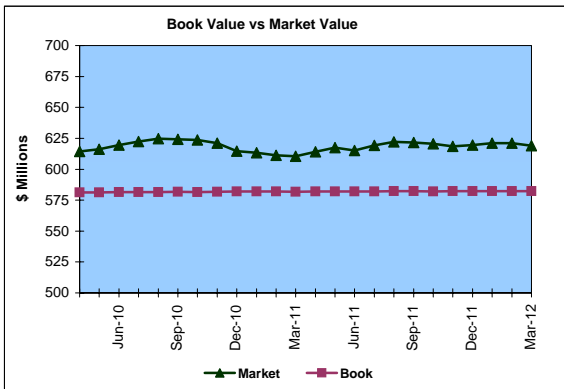
Market Value \$619.0 Million  
Book Value \$582.3 Million

### Yield and Average Maturity

Portfolio Book Yield 4.2%  
Portfolio Average Maturity 3.9 Yrs

### Portfolio Quality

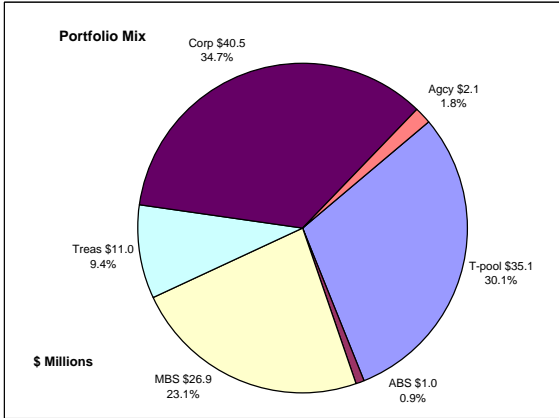
	A1 / P1	AAA	AA	A	BBB	BB	B	Other	Portfolio Percent
Asset Backed		100.0%							3.9%
Corporates		7.3%	64.0%	24.2%	4.5%				20.9%
Mortgage Securities			100.0%						38.2%
Treasuries			100.0%						4.4%
Federal Agencies			100.0%						12.6%
Muni GOs			100.0%						0.5%
T-Pool Combined	2.1%	5.5%	83.4%	8.1%	0.2%	0.0%	0.0%	0.7%	19.5%
<b>Total Portfolio</b>	<b>0.4%</b>	<b>6.5%</b>	<b>85.4%</b>	<b>6.6%</b>	<b>1.0%</b>	<b>0.0%</b>	<b>0.0%</b>	<b>0.1%</b>	<b>100.0%</b>



	\$ Millions		Book Yield	Performance Benchmarks (3)
	Average Portfolio	Realized Income		
FY '12 YTD	580.2	18.3	4.2%	1.2%
Last 12 months	580.3	24.8	4.3%	1.2%
FY '11	580.7	27.0	4.6%	1.8%
FY '10	580.8	28.5	4.9%	2.4%
FY '09	572.4	29.2	5.1%	2.3%
FY '08	519.3	27.1	5.2%	3.6%
FY '07	470.2	24.6	5.2%	4.7%
Avg FY '07-'11	544.7	27.3	5.0%	2.9%

- (1) Does not include State Treasury Pool balances in calculation.
- (2) Latest 12 month moving average of the constant maturity yield on the 5 year Treasury note
- (3) Latest 12 month moving average of the constant maturity yield on the 5 year Treasury note at end of period

## Unclaimed Property Tourism Fund March 31, 2012



### Portfolio Value

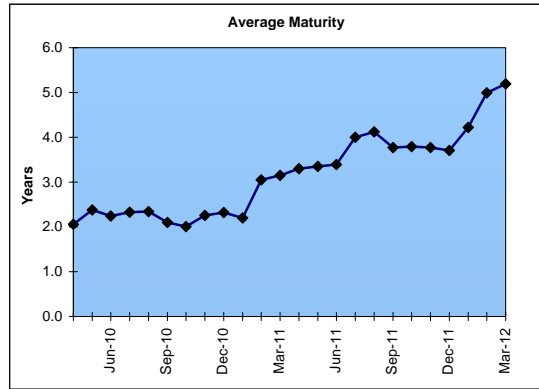
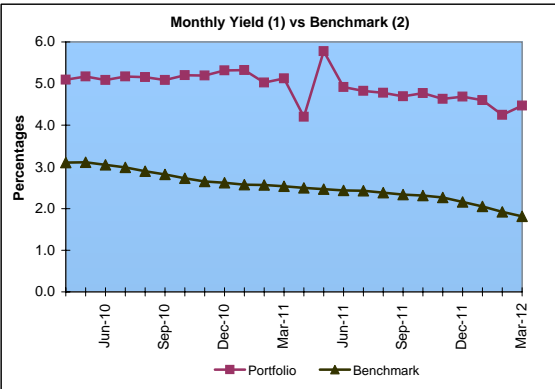
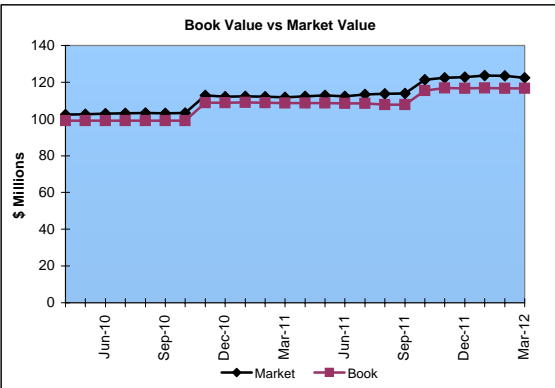
Market Value           \$122.5 Million  
Book Value             \$116.6 Million

### Yield and Average Maturity

Portfolio Book Yield       3.3%  
Portfolio Average Maturity   5.2 Yrs

### Portfolio Quality

	A1 / P1	AAA	AA	A	BBB	BB	B	Other	Portfolio Percent
Asset Backed			100.0%						0.9%
Corporates		2.5%	13.5%	81.5%	2.5%				34.7%
Federal Agencies			100.0%						1.8%
Mortgage Securities			100.0%						23.1%
Treasuries			100.0%						9.4%
T-Pool Combined	2.1%	5.5%	83.4%	8.1%	0.2%	0.0%	0.0%	0.7%	30.1%
<b>Total Portfolio</b>	<b>0.7%</b>	<b>3.4%</b>	<b>64.1%</b>	<b>30.7%</b>	<b>0.9%</b>			<b>0.2%</b>	<b>100.0%</b>



	\$ Millions		Book Yield	Performance Benchmarks (3)
	Average Portfolio	Realized Income		
FY '12 YTD	113.6	2.8	3.3%	1.8%
Last 12 months	112.4	3.7	3.2%	1.8%
FY '11	104.7	3.5	3.4%	2.4%
FY '10	87.9	3.4 <sup>4</sup>	3.9%	3.1%
FY '09	65.9	3.1	4.8%	2.8%
FY '08	65.7	3.3	5.0%	3.8%
FY '07	64.9	3.3	5.0%	4.7%
Avg FY '07-'11	77.8	3.3	4.4%	3.4%

- (1) Does not include State Treasury Pool balances in calculation.
- (2) 12 month moving average of the constant maturity yield on the 7 year Treasury note
- (3) 12 month moving average of the constant maturity yield on the 7 year Treasury note at end of period
- (4) Excludes \$.2 million in losses on sale of investments in July 2009.