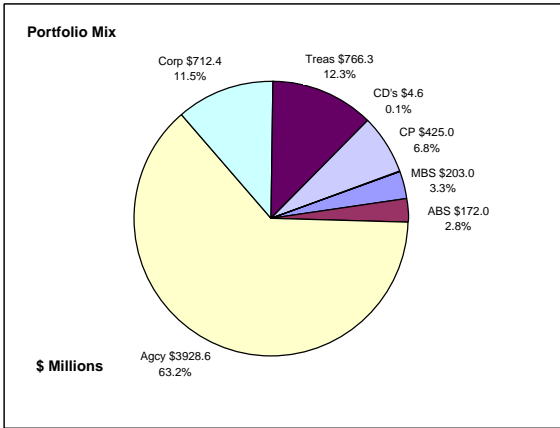


Colorado Treasury Pool Combined September 30, 2011



Portfolio Value

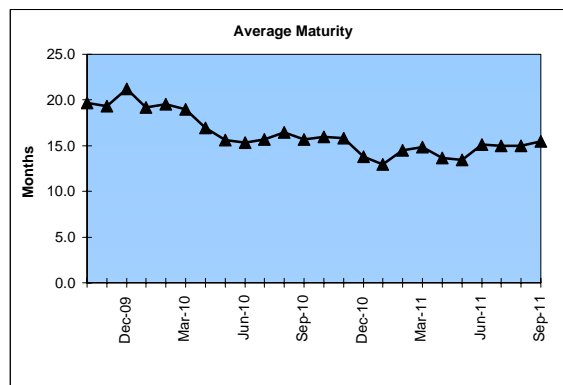
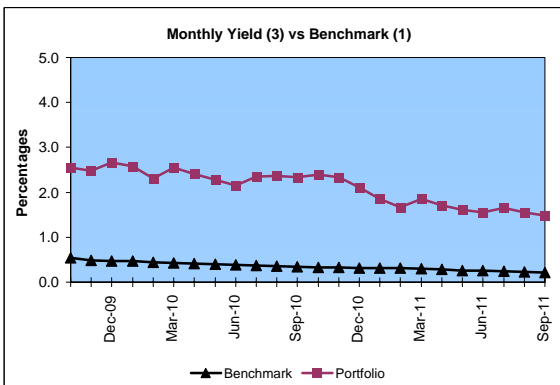
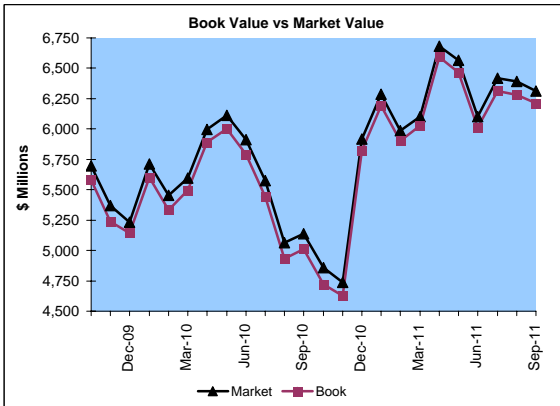
Market Value \$6,312.6 Million
Book Value \$6,211.9 Million

Yield and Average Maturity

Portfolio Book Yield 1.6%
Portfolio Average Maturity 15.5 Months

Portfolio Quality

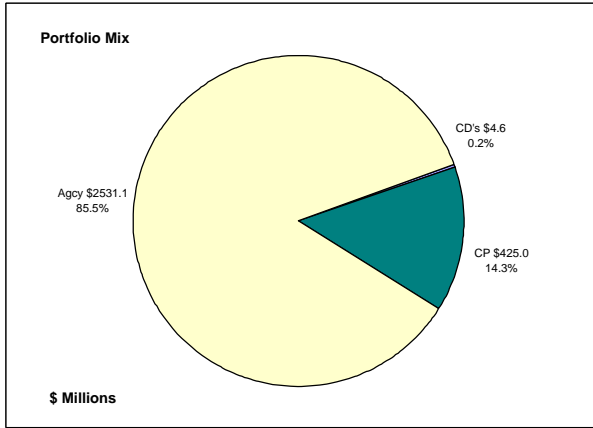
	A1 / P1	AAA	AA	A	BBB	BB	B	Other	Portfolio Percent
Asset Backed		100.0%							2.8%
Corporates		5.5%	44.5%	46.8%	1.8%		1.4%		11.5%
Mortgage Securities			100.0%						3.3%
Commercial Paper	100.0%								6.8%
Treasuries			100.0%						12.3%
Federal Agencies			100.0%						63.2%
Certificates of Deposit							100.0%		0.1%
Money Market Funds									
Total Portfolio	6.8%	3.4%	83.9%	5.4%	0.2%	0.2%	0.1%	0.1%	100.0%



	\$ Millions		Book Yield	Performance Benchmarks (2)
	Average Portfolio	Realized Income		
FY '12 YTD	6,234.3	24.4	1.6%	0.2%
Last 12 months	5,959.2	106.4	1.8%	0.2%
FY '11	5,718.6	113.0	2.0%	0.3%
FY '10	5,717.7	139.0 ³	2.4%	0.4%
FY '09	5,828.6	177.4	3.0%	1.1%
FY '08	5,835.7	249.9	4.3%	3.1%
FY '07	5,122.0	244.3	4.7%	5.0%
Avg FY '07-11	5,644.5	184.7	3.3%	2.0%

(1) 12 month moving average of the constant maturity yield on the 1 year Treasury note
(2) 12 month moving average of the constant maturity yield on the 1 year Treasury note at end of period
(3) Excludes \$5.5 million in losses on sale of investments in July 2009.

Colorado Treasury Cash
(0 - 1 year maturities)
September 30, 2011



Portfolio Value

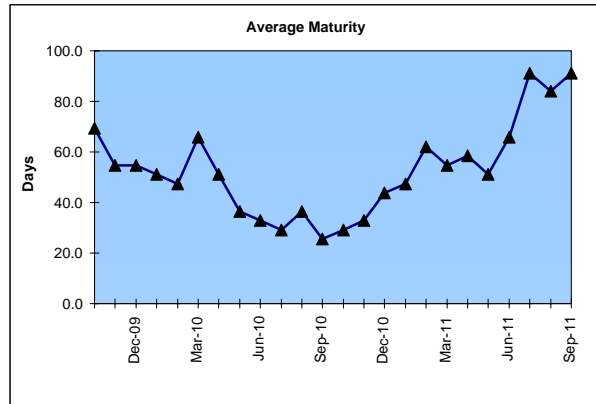
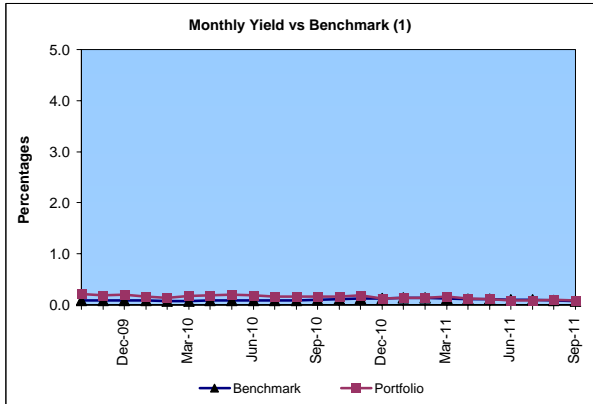
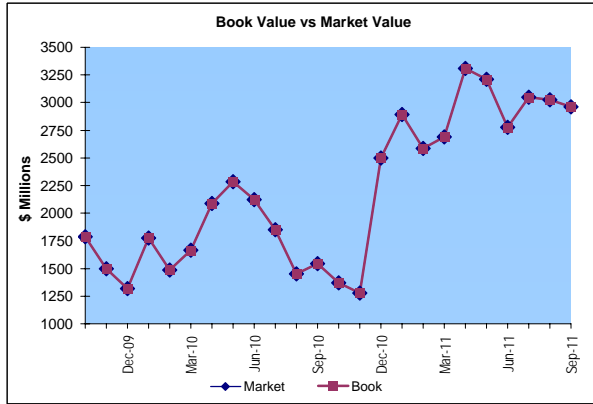
Market Value \$2,961.1 Million
Book Value \$2,960.7 Million

Yield and Average Maturity

Portfolio Book Yield 0.1%
Portfolio Average Maturity 91 Days

Portfolio Quality

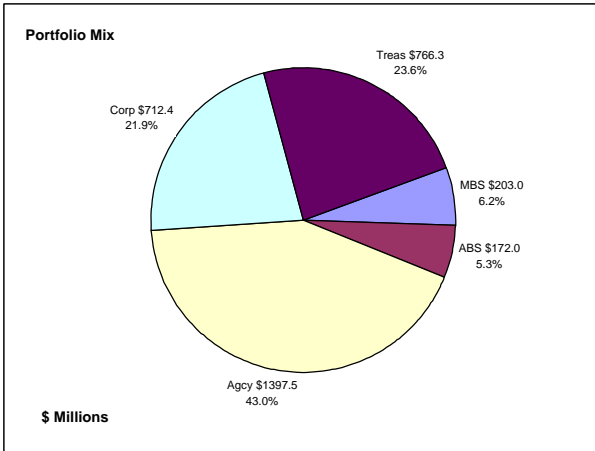
	A1 / P1	AA	Other	Portfolio Percent
Commercial Paper	100.0%			14.3%
Federal Agencies		100.0%		85.5%
Treasuries				0.0%
Certificates of Deposit			100.0%	0.2%
Money Market Funds				0.0%
Total Portfolio	14.3%	85.5%	0.2%	100.0%



	\$ Millions			Performance
	Average Portfolio	Realized Income	Book Yield	Benchmarks (2)
FY '12 YTD	3,002.8	0.7	0.1%	0.1%
Last 12 months	2,671.1	3.2	0.1%	0.1%
FY '11	2,355.2	3.2	0.1%	0.1%
FY '10	2,013.9	4.1	0.2%	0.1%
FY '09	2,705.6	39.2	1.4%	0.4%
FY '08	2,895.9	114.9	4.0%	2.6%
FY '07	2,312.0	123.6	5.3%	4.8%
Avg FY '07-'11	2,456.5	57.0	2.2%	1.6%

(1) 12 month moving average of the 30 day Treasury bill
(2) 12 month moving average of the 30 day Treasury bill at end of period

Colorado Treasury Pool
(1 - 5 year maturities)
September 30, 2011



Portfolio Value

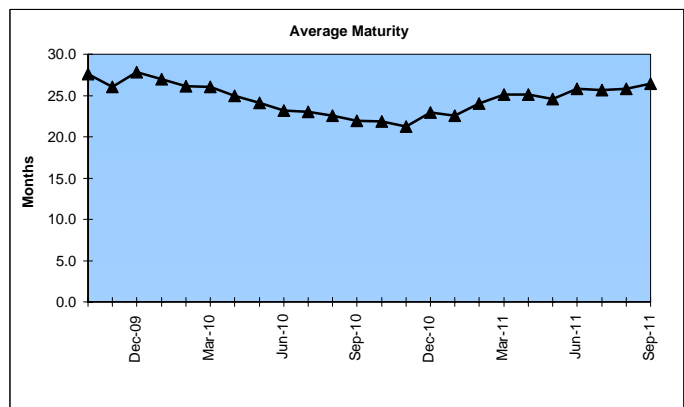
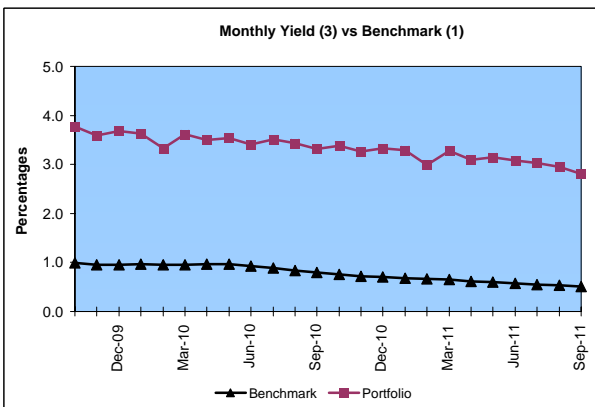
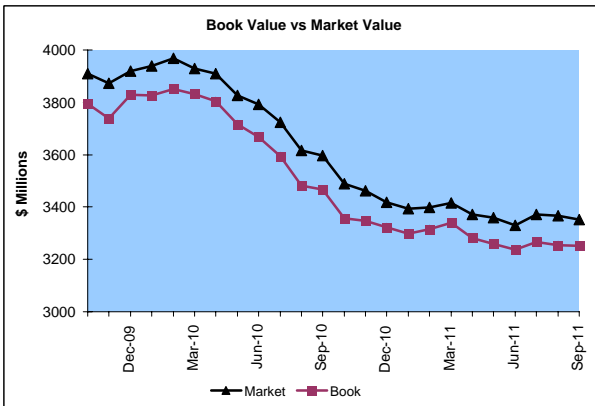
Market Value \$3,351.5 Million
 Book Value \$3,251.2 Million

Yield and Average Maturity

Portfolio Book Yield 2.9%
 Portfolio Average Maturity 26.4 Months

Portfolio Quality

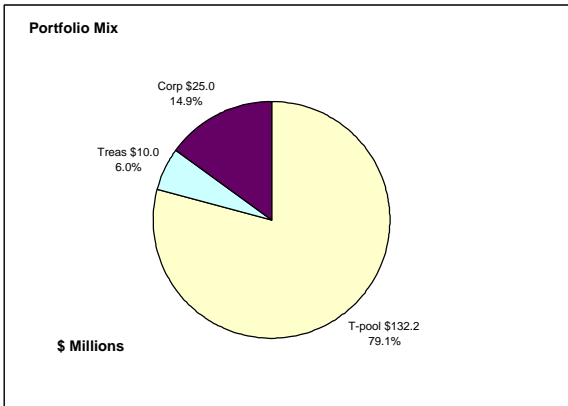
	AAA	AA	A	BBB	BB	B	Other	Portfolio Percent
Asset Backed	100.0%							5.3%
Corporates	5.5%	44.5%	46.8%	1.8%		1.4%		21.9%
Mortgage Securities		100.0%						6.2%
Treasuries		100.0%						23.6%
Federal Agencies		100.0%						43.0%
Total Portfolio	6.5%	82.6%	10.2%	0.4%		0.3%		100.0%



	\$ Millions		Book Yield	Performance Benchmarks (2)
	Average Portfolio	Realized Income		
FY '12 YTD	3,231.5	23.7	2.9%	0.5%
Last 12 months	3,288.1	103.2	3.1%	0.5%
FY '11	3,363.5	109.8	3.3%	0.6%
FY '10	3,703.9	134.9 ³	3.6%	0.9%
FY '09	3,123.0	138.2	4.4%	1.4%
FY '08	2,939.8	134.9	4.6%	3.1%
FY '07	2,810.1	120.6	4.2%	4.8%
Avg FY '07-'11	3,188.0	127.7	4.0%	2.2%

(1) 12 month moving average of the constant maturity yield on the 2 year Treasury note
 (2) 12 month moving average of the constant maturity yield on the 2 year Treasury note at end of period
 (3) Excludes \$5.5 million in losses on sale of investments in July 2009.

Colorado State Education Fund
September 30, 2011



Portfolio Value

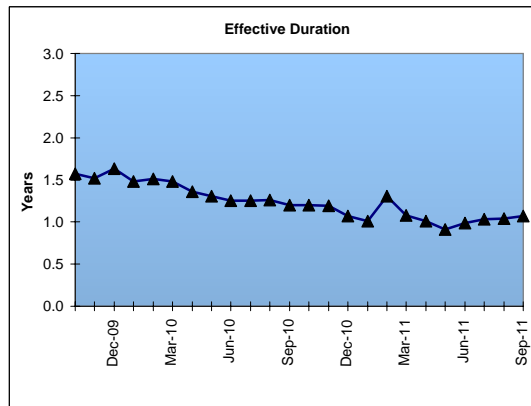
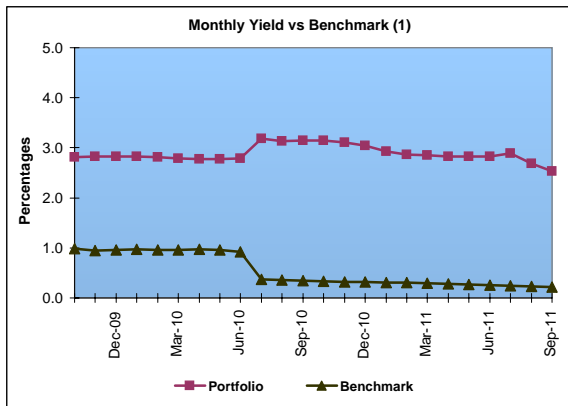
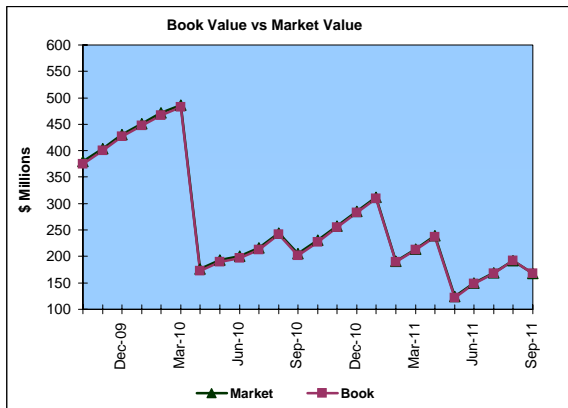
Market Value \$167.9 Million
Book Value \$167.2 Million

Yield and Average Maturity

Portfolio Book Yield 2.5%
Portfolio Effective Duration 1.1 Yrs

Portfolio Quality

	A1 / P1	AAA	AA	A	BBB	BB	B	Other	Portfolio Percent
Corporates			60.0%	40.0%					14.9%
Treasuries			100.0%						6.0%
Federal Agencies									0.0%
T-Pool Combined	6.8%	3.4%	83.9%	5.4%	0.2%	0.0%	0.2%	0.1%	79.1%
Total Portfolio	5.4%	2.7%	81.3%	10.2%	0.2%		0.1%	0.1%	100.0%



	\$ Millions			
	Average Portfolio	Realized Income	Book Yield	Performance Benchmarks (2)
FY '12 YTD	161.3	1.0	2.5%	0.2%
Last 12 months	198.9	5.4	2.7%	0.2%
FY '11	207.6	5.9	2.8%	0.6%
FY '10	365.7	10.2	2.8%	0.9%
FY '09	412.5	13.4	3.2%	1.4%
FY '08	383.2	16.7	4.3%	3.1%
FY '07	272.0	13.4	4.9%	4.8%
Avg FY '07-'11	328.2	11.9	3.6%	2.2%

(1) 12 month moving average of the constant maturity yield on the 2 year Treasury note

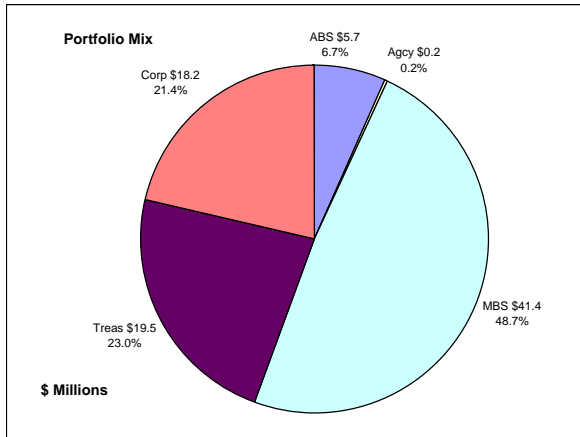
* Effective July 2010, changed to latest 12 month average of the constant maturity yield on the 1 year Treasury note to match current investment policy.

(2) 12 month moving average of the constant maturity yield on the 2 year Treasury note at end of period

* Effective July 2010, changed to latest 12 month average of the constant maturity yield on the 1 year Treasury note to match current investment policy.

Colorado Major Medical Insurance Fund

September 30, 2011



Portfolio Value

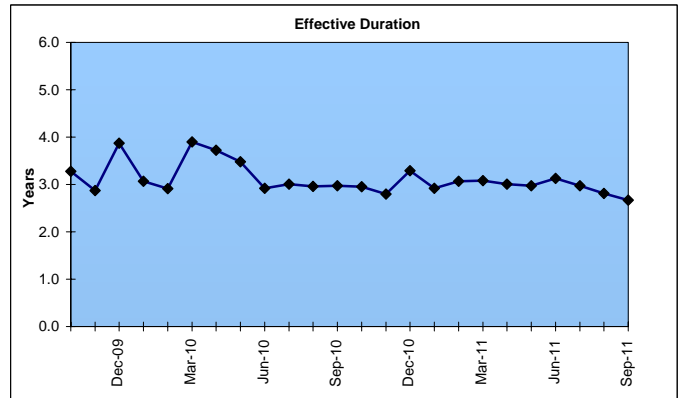
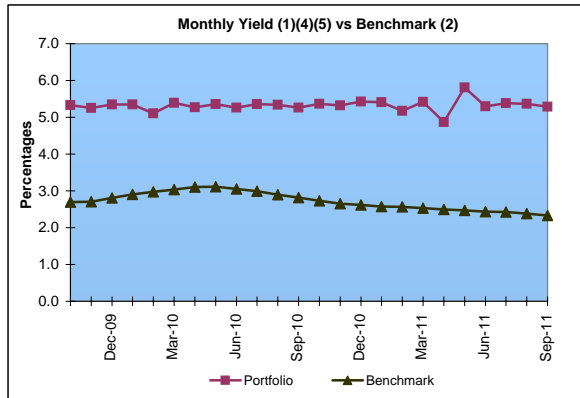
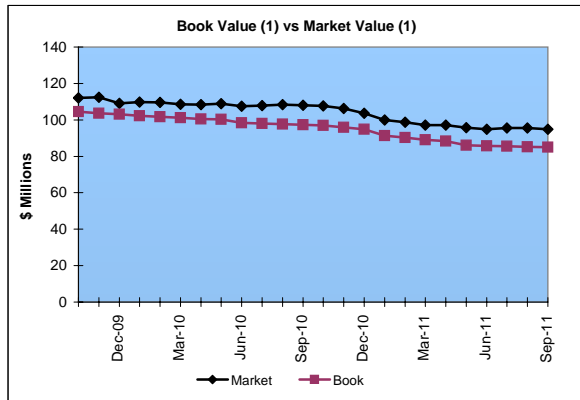
Market Value ⁽¹⁾ \$94.9 Million
 Book Value ⁽¹⁾ \$85.0 Million

Yield and Duration

Portfolio Book Yield 4.6%
 Portfolio Effective Duration 2.7 Yrs

Portfolio Quality

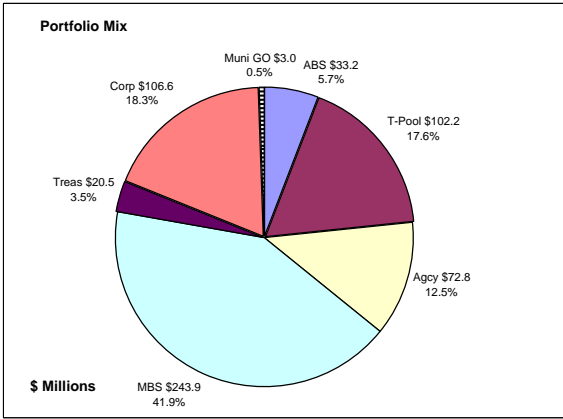
	AAA	AA	A	BBB	BB	Portfolio Percent
Asset Backed	100.0%					6.7%
Corporates	11.0%	27.5%	56.0%	5.5%		21.4%
Federal Agencies		100.0%				0.2%
Mortgage Securities		100.0%				48.7%
Treasuries		100.0%				23.0%
Total Portfolio	9.0%	77.8%	12.0%	1.2%		100.0%



	\$ Millions		Book Yield	Performance Benchmarks (3)
	Average Portfolio	Realized Income		
FY '12 YTD	103.5	1.2	4.6%	2.3%
Last 12 months	116.0	5.3	4.5%	2.3%
FY '11	120.5	5.5	4.5%	2.4%
FY '10	126.8	6.0 ⁵	4.7%	3.1%
FY '09	163.0	7.4 ⁴	4.6%	2.8%
FY '08	133.7	6.6	4.9%	3.8%
FY '07	76.2	3.8	5.0%	4.7%
Avg FY '07-'11	124.0	5.9	4.8%	3.4%

- (1) Does not include State Treasury Pool balances in calculation.
- (2) 12 month moving average of the constant maturity yield on the 7 year Treasury note
- (3) 12 month moving average of the constant maturity yield on the 7 year Treasury note at end of period
- (4) Excludes \$.4 million in gains on sale of investments in May 2009.
- (5) Excludes \$.2 million in losses on sale of investments in July 2009.

Colorado Public School Permanent Fund
September 30, 2011



Portfolio Value

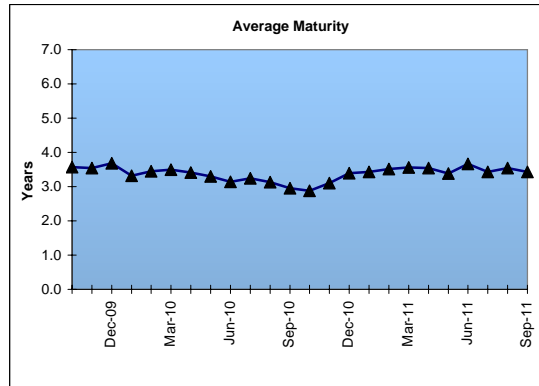
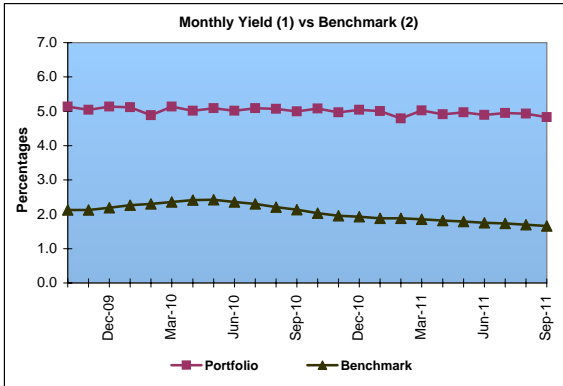
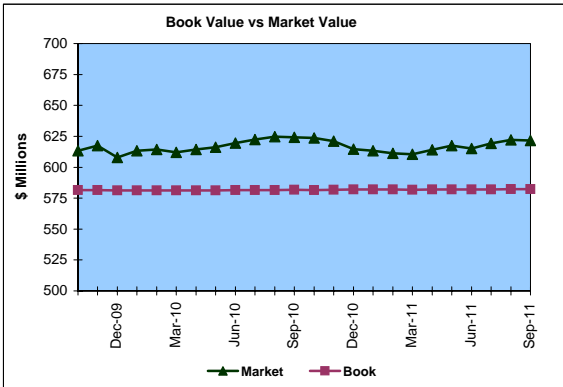
Market Value \$621.7 Million
Book Value \$582.2 Million

Yield and Average Maturity

Portfolio Book Yield 4.3%
Portfolio Average Maturity 3.4 Yrs

Portfolio Quality

	A1 / P1	AAA	AA	A	BBB	BB	B	Other	Portfolio Percent
Asset Backed		100.0%							5.7%
Corporates		8.4%	70.5%	18.7%	2.4%				18.3%
Mortgage Securities			100.0%						41.9%
Treasuries			100.0%						3.5%
Federal Agencies			100.0%						12.5%
Muni GOs			100.0%						0.5%
T-Pool Combined	6.8%	3.4%	83.9%	5.4%	0.2%	0.0%	0.2%	0.1%	17.6%
Total Portfolio	1.2%	7.8%	86.1%	4.4%	0.5%		0.0%	0.0%	100.0%

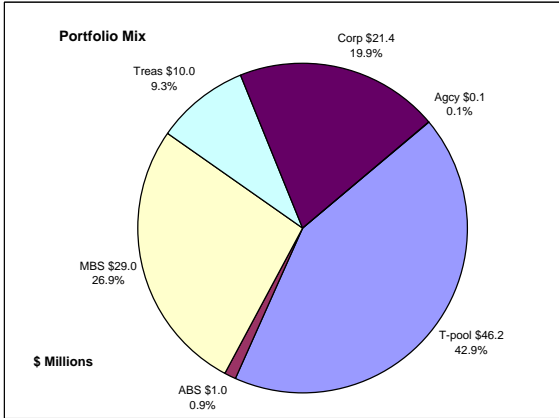


	\$ Millions		Book Yield	Performance Benchmarks (3)
	Average Portfolio	Realized Income		
FY '12 YTD	580.6	6.3	4.3%	1.7%
Last 12 months	580.7	26.3	4.5%	1.7%
FY '11	580.7	27.0	4.6%	1.8%
FY '10	580.8	28.5	4.9%	2.4%
FY '09	572.4	29.2	5.1%	2.3%
FY '08	519.3	27.1	5.2%	3.6%
FY '07	470.2	24.6	5.2%	4.7%
Avg FY '07-'11	544.7	27.3	5.0%	2.9%

- (1) Does not include State Treasury Pool balances in calculation.
- (2) Latest 12 month moving average of the constant maturity yield on the 5 year Treasury note
- (3) Latest 12 month moving average of the constant maturity yield on the 5 year Treasury note at end of period

Unclaimed Property Tourism Fund

September 30, 2011



Portfolio Value

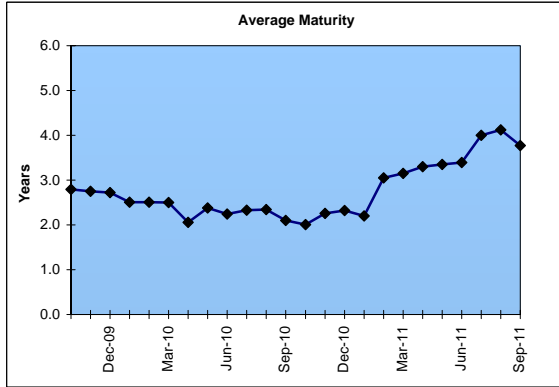
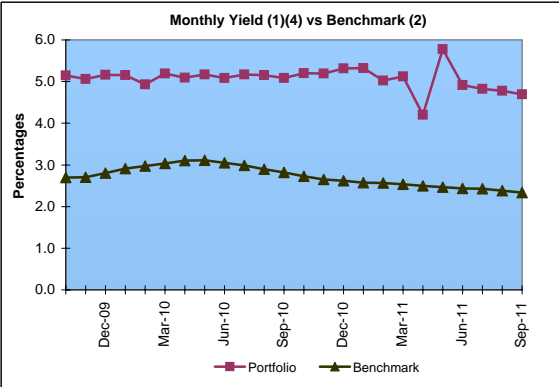
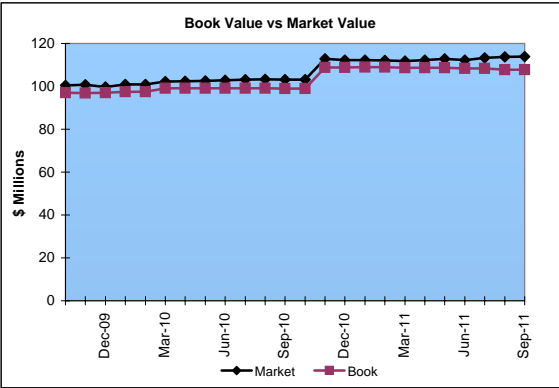
Market Value \$113.9 Million
Book Value \$107.7 Million

Yield and Average Maturity

Portfolio Book Yield 3.3%
Portfolio Average Maturity 3.8 Yrs

Portfolio Quality

	A1 / P1	AAA	AA	A	BBB	BB	B	Other	Portfolio Percent
Asset Backed		100.0%							0.9%
Corporates		4.7%	7.0%	83.6%	4.7%				19.9%
Federal Agencies			100.0%						0.1%
Mortgage Securities			100.0%						26.9%
Treasuries			100.0%						9.3%
T-Pool Combined	6.8%	3.4%	83.9%	5.4%	0.2%	0.0%	0.2%	0.1%	42.9%
Total Portfolio	2.9%	3.3%	73.7%	18.9%	1.0%	0.1%	0.1%	0.1%	100.0%



	\$ Millions		Book Yield	Performance Benchmarks (3)
	Average Portfolio	Realized Income		
FY '12 YTD	108.3	0.9	3.3%	2.3%
Last 12 months	106.9	3.5	3.3%	2.3%
FY '11	104.7	3.5	3.4%	2.4%
FY '10	87.9	3.4 ⁴	3.9%	3.1%
FY '09	65.9	3.1	4.8%	2.8%
FY '08	65.7	3.3	5.0%	3.8%
FY '07	64.9	3.3	5.0%	4.7%
Avg FY '07-'11	77.8	3.3	4.4%	3.4%

(1) Does not include State Treasury Pool balances in calculation.
(2) 12 month moving average of the constant maturity yield on the 7 year Treasury note
(3) 12 month moving average of the constant maturity yield on the 7 year Treasury note at end of period
(4) Excludes \$.2 million in losses on sale of investments in July 2009.