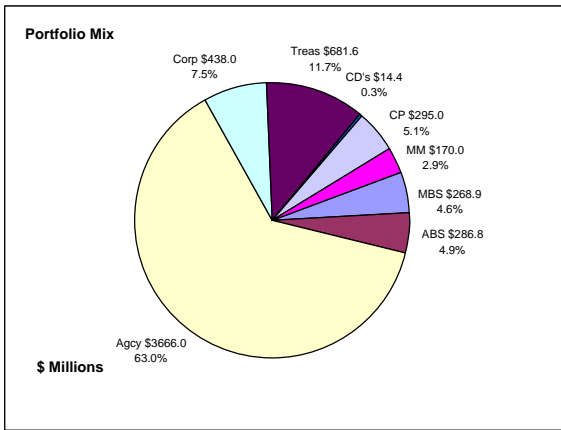


Colorado Treasury Pool Combined December 31, 2010



Portfolio Value

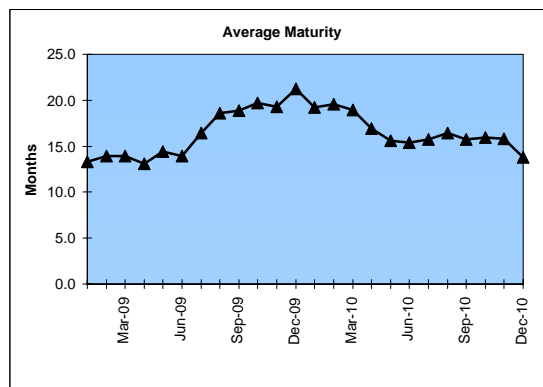
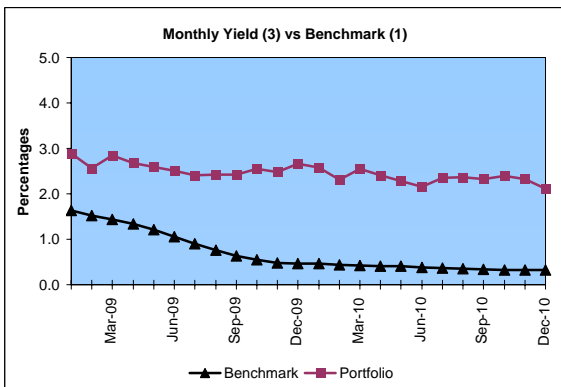
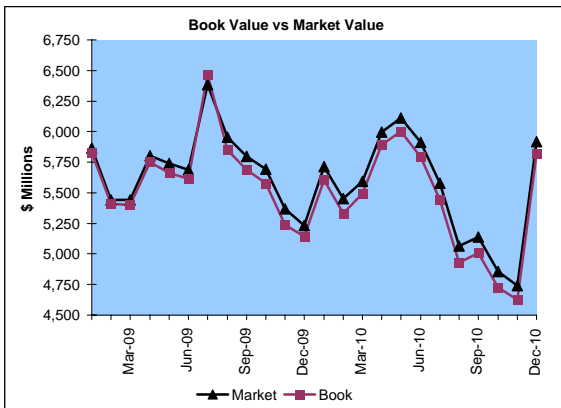
Market Value \$5,916.2 Million
Book Value \$5,820.7 Million

Yield and Average Maturity

Portfolio Book Yield 2.3%
Portfolio Average Maturity 13.8 Months

Portfolio Quality

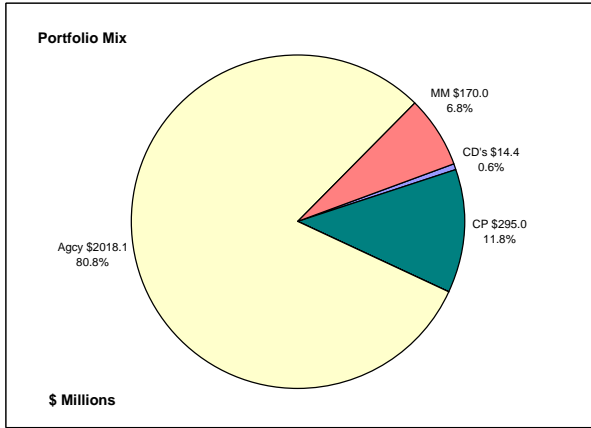
	A1 / P1	AAA	AA	A	BBB	BB	B	Other	Portfolio Percent
Asset Backed		100.0%							4.9%
Corporates		0.9%	48.0%	40.2%	4.1%	3.4%	3.4%		7.5%
Mortgage Securities		100.0%							4.6%
Commercial Paper	100.0%								5.1%
Treasuries		100.0%							11.7%
Federal Agencies		100.0%							63.0%
Certificates of Deposit								100.0%	0.3%
Money Market Funds								100.0%	2.9%
Total Portfolio	5.0%	84.3%	3.6%	3.0%	0.3%	0.3%	0.3%	3.2%	100.1%



	\$ Millions		Book Yield	Performance Benchmarks (2)
	Average Portfolio	Realized Income		
FY '11 YTD	5,144.3	59.4	2.3%	0.3%
Last 12 months	5,431.6	127.3	2.3%	0.3%
FY '10	5,717.7	139.0 ³	2.4%	0.4%
FY '09	5,828.6	177.4	3.0%	1.1%
FY '08	5,835.7	249.9	4.3%	3.1%
FY '07	5,122.0	244.3	4.7%	5.0%
FY '06	4,550.8	182.4	4.0%	4.4%
Avg FY '06-10	5,411.0	198.6	3.7%	2.8%

(1) 12 month moving average of the constant maturity yield on the 1 year Treasury note
(2) 12 month moving average of the constant maturity yield on the 1 year Treasury note at end of period
(3) Excludes \$5.5 million in losses on sale of investments in July 2009.

Colorado Treasury Cash
(0 - 1 year maturities)
December 31, 2010



Portfolio Value

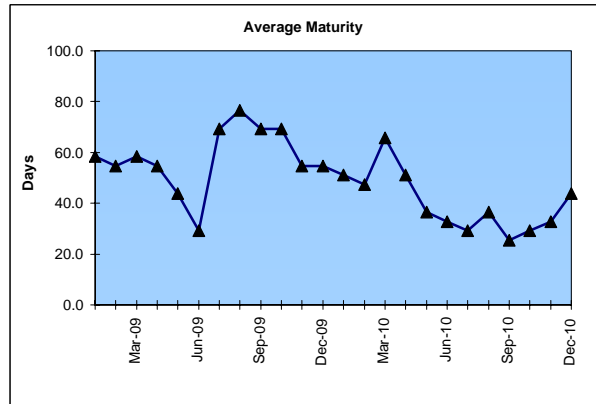
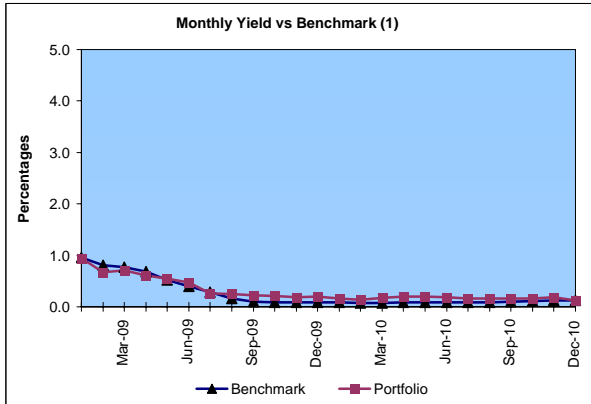
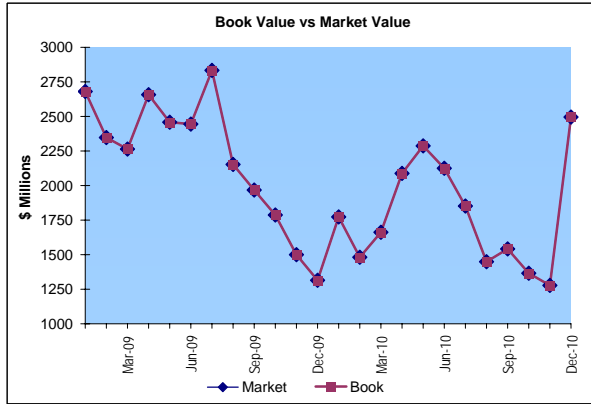
Market Value \$2,497.5 Million
 Book Value \$2,497.5 Million

Yield and Average Maturity

Portfolio Book Yield 0.2%
 Portfolio Average Maturity 44 Days

Portfolio Quality

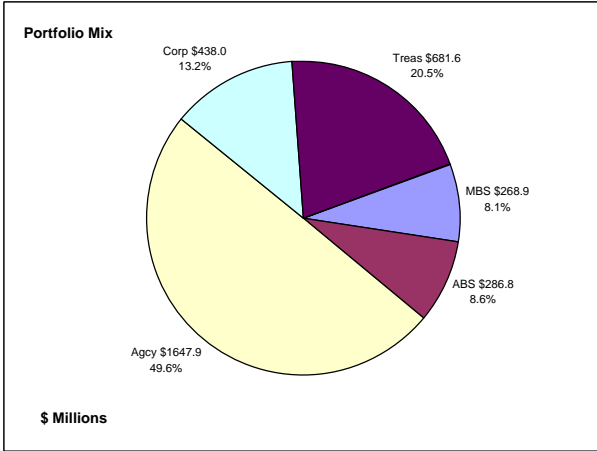
	A1 / P1	AAA	Other	Portfolio Percent
Commercial Paper	100.0%			11.8%
Federal Agencies		100.0%		80.8%
Treasuries				0.0%
Certificates of Deposit			100.0%	0.6%
Money Market Funds			100.0%	6.8%
Total Portfolio	11.8%	80.8%	7.4%	100.0%



	\$ Millions			
	Average Portfolio	Realized Income	Book Yield	Performance Benchmarks (2)
FY '11 YTD	1,702.8	1.3	0.2%	0.1%
Last 12 months	1,821.9	3.1	0.2%	0.1%
FY '10	2,013.9	4.1	0.2%	0.1%
FY '09	2,705.6	39.2	1.4%	0.4%
FY '08	2,895.9	114.9	4.0%	2.6%
FY '07	2,312.0	123.6	5.3%	4.8%
FY '06	1,911.2	79.9	4.2%	4.0%
Avg FY '06-'10	2,367.7	72.3	3.0%	2.4%

(1) 12 month moving average of the 30 day Treasury bill
 (2) 12 month moving average of the 30 day Treasury bill at end of period

Colorado Treasury Pool
(1 - 5 year maturities)
December 31, 2010



Portfolio Value

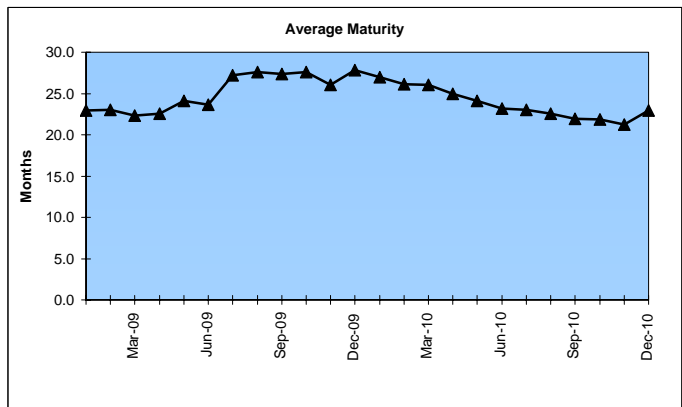
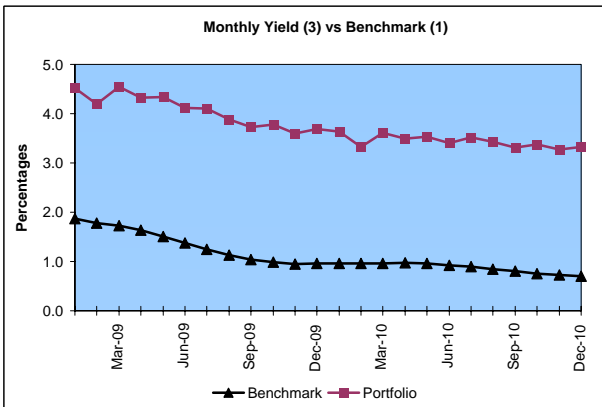
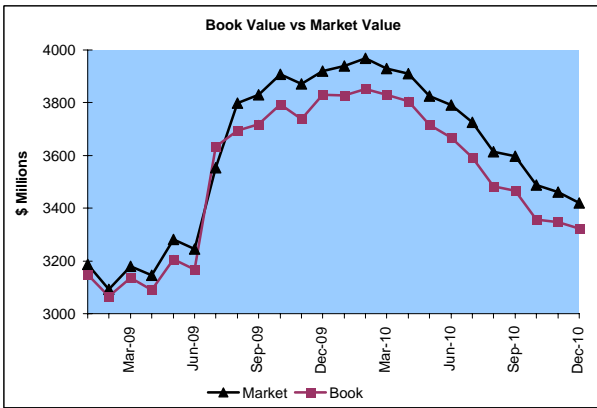
Market Value \$3,418.7 Million
 Book Value \$3,323.2 Million

Yield and Average Maturity

Portfolio Book Yield 3.4%
 Portfolio Average Maturity 22.9 Months

Portfolio Quality

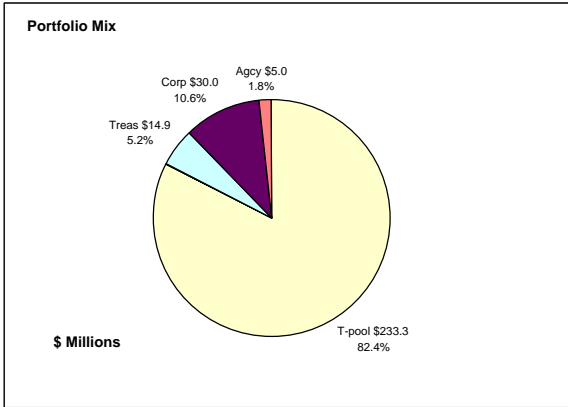
	AAA	AA	A	BBB	BB	B	Other	Portfolio Percent
Asset Backed	100.0%							8.6%
Corporates	0.9%	48.0%	40.2%	4.1%	3.4%	3.4%		13.2%
Mortgage Securities	100.0%							8.1%
Treasuries	100.0%							20.5%
Federal Agencies	100.0%							49.6%
Total Portfolio	86.9%	6.3%	5.3%	0.5%	0.5%	0.5%		100.0%



	\$ Millions		Book Yield	Performance Benchmarks (2)
	Average Portfolio	Realized Income		
FY '11 YTD	3,441.5	58.1	3.4%	0.7%
Last 12 months	3,609.7	124.2	3.4%	0.7%
FY '10	3,703.9	134.9 ³	3.6%	0.9%
FY '09	3,123.0	138.2	4.4%	1.4%
FY '08	2,939.8	134.9	4.6%	3.1%
FY '07	2,810.1	120.6	4.2%	4.8%
FY '06	2,639.7	102.6	3.8%	4.5%
Avg FY '06-'10	3,043.3	126.2	4.1%	2.9%

(1) 12 month moving average of the constant maturity yield on the 2 year Treasury note
 (2) 12 month moving average of the constant maturity yield on the 2 year Treasury note at end of period
 (3) Excludes \$5.5 million in losses on sale of investments in July 2009.

Colorado State Education Fund December 31, 2010



Portfolio Value

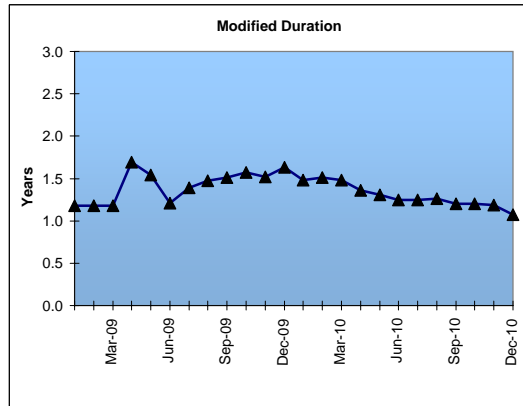
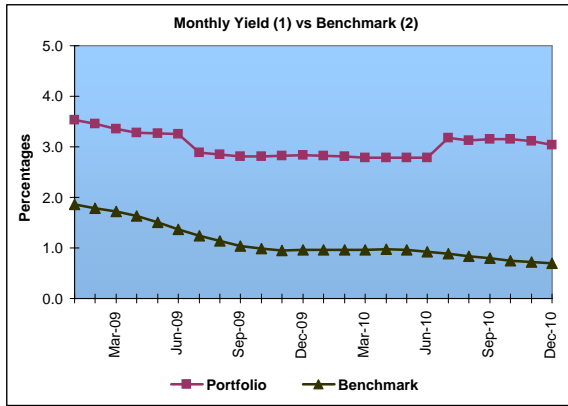
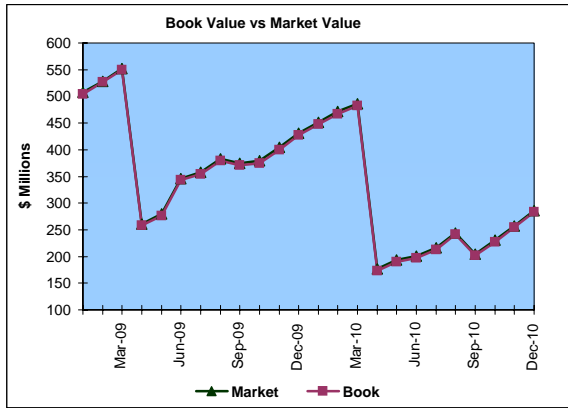
Market Value \$285.5 Million
Book Value \$283.2 Million

Yield and Average Maturity

Portfolio Book Yield 3.0%
Portfolio Average Duration 1.1 Yrs

Portfolio Quality

	A1 / P1	AAA	AA	A	BBB	BB	B	Other	Portfolio Percent
Corporates			50.0%	50.0%					10.6%
Treasuries		100.0%							5.2%
Federal Agencies		100.0%							1.8%
T-Pool Combined	5.0%	84.3%	3.6%	3.0%	0.3%	0.3%	0.3%	3.2%	82.4%
Total Portfolio	4.1%	76.5%	8.3%	7.8%	0.3%	0.2%	0.2%	2.6%	100.0%



	\$ Millions			
	Average Portfolio	Realized Income	Book Yield	Performance Benchmarks (3)
FY '11 YTD	211.0	3.2	3.0%	0.7%
Last 12 months	289.4	8.3	2.9%	0.7%
FY '10	365.7	10.2	2.8%	0.9%
FY '09	412.5	13.4	3.2%	1.4%
FY '08	383.2	16.7	4.3%	3.1%
FY '07	272.0	13.4	4.9%	4.8%
FY '06	209.3	9.3	4.5%	4.5%
Avg FY '06-'10	328.5	12.6	3.9%	2.9%

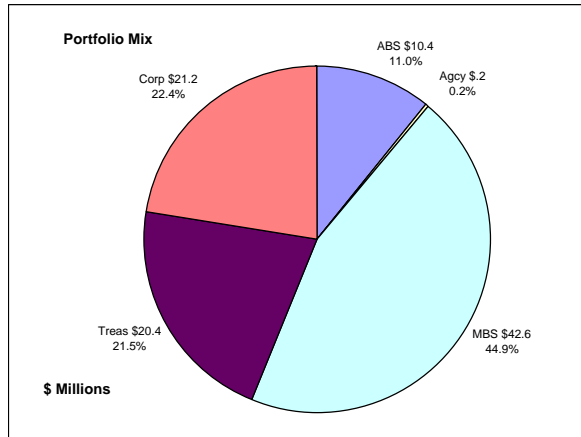
(1) Does not include State Treasury Pool balances in calculation.

(2) 12 month moving average of the constant maturity yield on the 2 year Treasury note

(3) 12 month moving average of the constant maturity yield on the 2 year Treasury note at end of period

Colorado Major Medical Insurance Fund

December 31, 2010



Portfolio Value

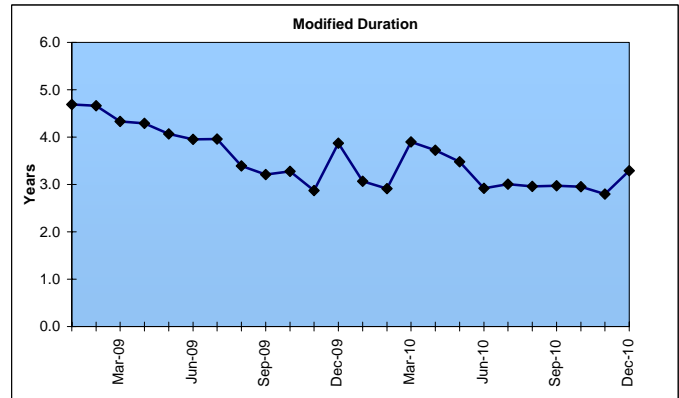
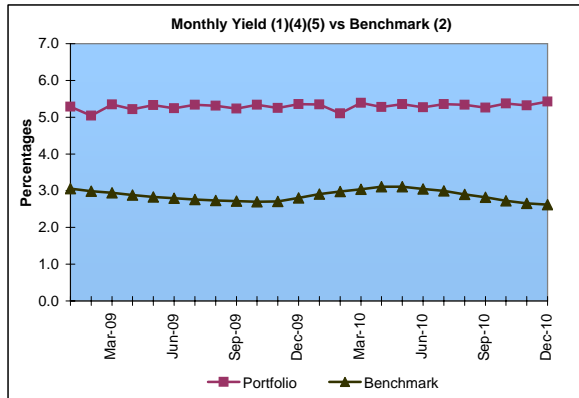
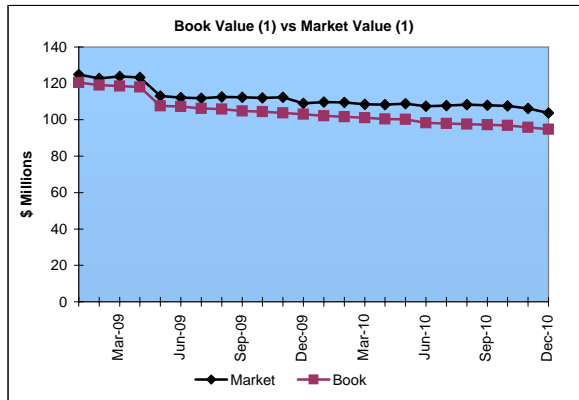
Market Value ⁽¹⁾ \$103.7 Million
 Book Value ⁽¹⁾ \$94.8 Million

Yield and Duration

Portfolio Book Yield 4.7%
 Portfolio Modified Duration 3.3 Yrs

Portfolio Quality

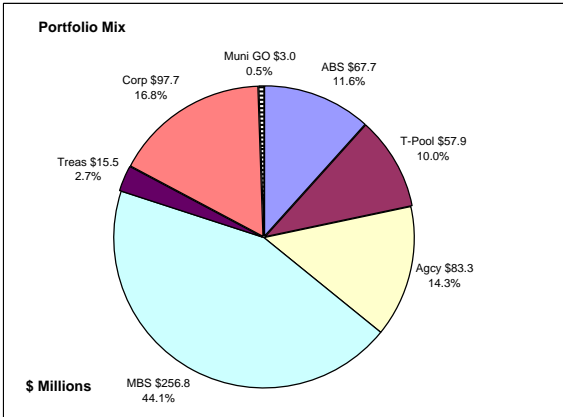
	AAA	AA	A	BBB	BB	Portfolio Percent
Asset Backed	100.0%					11.0%
Corporates	9.4%	28.3%	57.5%	2.4%	2.4%	22.4%
Federal Agencies	100.0%					0.2%
Mortgage Securities	100.0%					44.9%
Treasuries	100.0%					21.5%
Total Portfolio	79.8%	6.3%	12.9%	0.5%	0.5%	100.0%



	\$ Millions		Book Yield	Performance Benchmarks (3)
	Average Portfolio	Realized Income		
FY '11 YTD	121.2	2.9	4.7%	2.6%
Last 12 months	123.7	5.8	4.7%	2.6%
FY '10	126.8	6.0 ⁵	4.7%	3.1%
FY '09	163.0	7.4 ⁴	4.6%	2.8%
FY '08	133.7	6.6	4.9%	3.8%
FY '07	76.2	3.8	5.0%	4.7%
FY '06	49.4	2.3	4.7%	4.5%
Avg FY '06-'10	109.8	5.2	4.8%	3.8%

- (1) Does not include State Treasury Pool balances in calculation.
- (2) 12 month moving average of the constant maturity yield on the 7 year Treasury note
- (3) 12 month moving average of the constant maturity yield on the 7 year Treasury note at end of period
- (4) Excludes \$.4 million in gains on sale of investments in May 2009.
- (5) Excludes \$.2 million in losses on sale of investments in July 2009.

Colorado Public School Permanent Fund
December 31, 2010



Portfolio Value

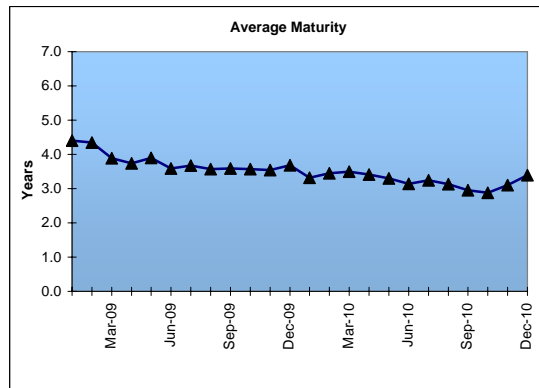
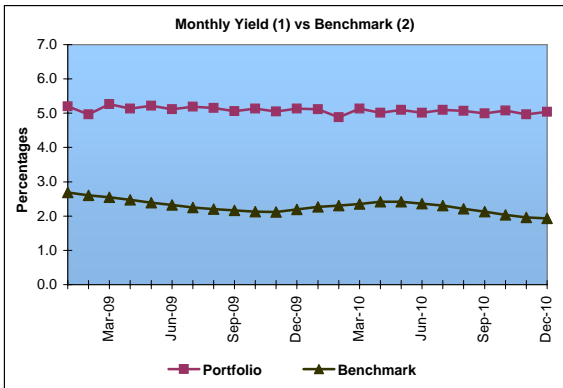
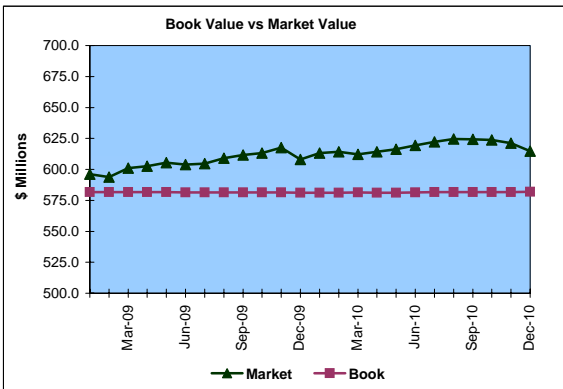
Market Value \$614.6 Million
Book Value \$581.9 Million

Yield and Average Maturity

Portfolio Book Yield 4.7%
Portfolio Average Maturity 3.4 Yrs

Portfolio Quality

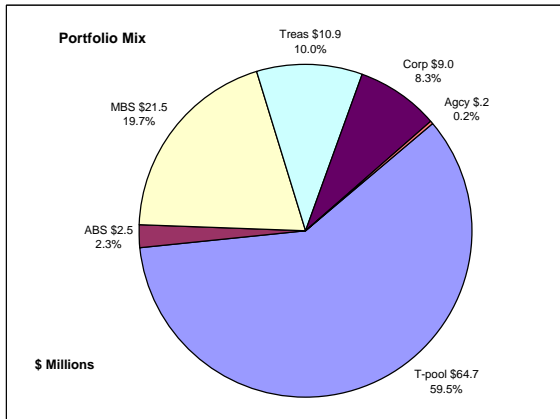
	A1 / P1	AAA	AA	A	BBB	BB	B	Other	Portfolio Percent
Asset Backed		100.0%							11.6%
Corporates		9.2%	62.7%	20.4%	7.7%				16.8%
Mortgage Securities		100.0%	100.0%						44.1%
Treasuries		100.0%							2.7%
Federal Agencies		100.0%							14.3%
Muni GOs			100.0%						0.5%
T-Pool Combined	5.0%	84.3%	3.6%	3.0%	0.3%	0.3%	0.3%	3.2%	10.0%
Total Portfolio	0.5%	82.7%	11.4%	3.8%	1.3%	0.0%	0.0%	0.3%	100.0%



	Average Portfolio	Realized Income	Book Yield	Performance Benchmarks (3)
FY '11 YTD	\$580.8	13.8	4.7%	1.9%
Last 12 months	\$580.8	27.9	4.8%	1.9%
FY '10	\$580.8	28.5	4.9%	2.4%
FY '09	\$572.4	29.2	5.1%	2.3%
FY '08	\$519.3	27.1	5.2%	3.6%
FY '07	\$470.2	24.6	5.2%	4.7%
FY '06	\$418.7	22.2	5.3%	4.5%
Avg FY '06-'10	\$512.3	26.3	5.1%	3.5%

- (1) Does not include State Treasury Pool balances in calculation.
- (2) Latest 12 month moving average of the constant maturity yield on the 5 year Treasury note
- (3) Latest 12 month moving average of the constant maturity yield on the 5 year Treasury note at end of period

Unclaimed Property Tourism Fund December 31, 2010



Portfolio Value

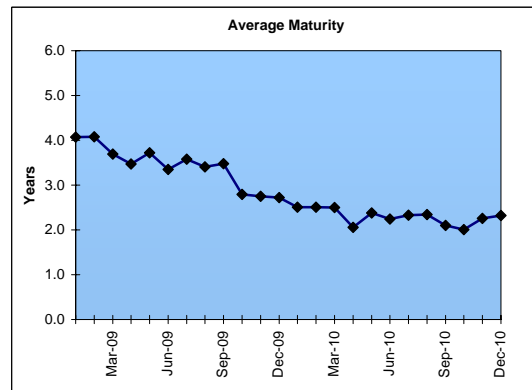
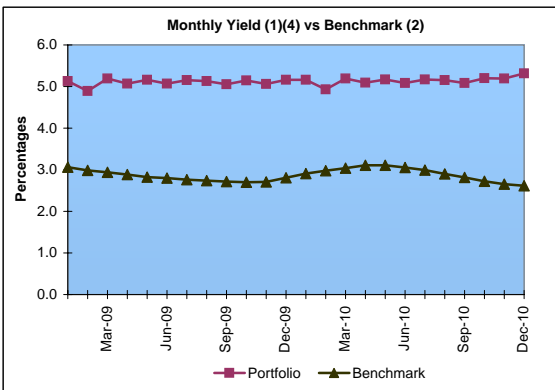
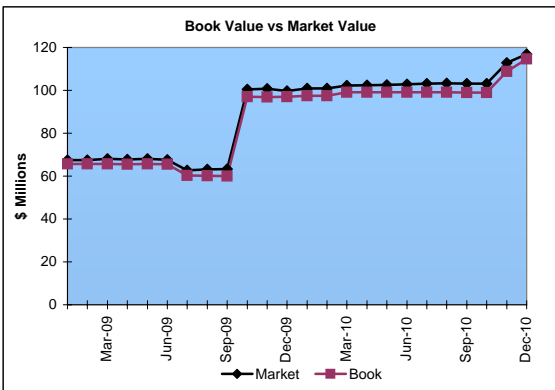
Market Value \$112.2 Million
Book Value \$108.8 Million

Yield and Average Maturity

Portfolio Book Yield 3.6%
Portfolio Average Maturity 2.3 Yrs

Portfolio Quality

	A1 / P1	AAA	AA	A	BBB	BB	B	Other	Portfolio Percent
Asset Backed		100.0%							2.3%
Corporates			22.2%	61.1%	16.7%				8.3%
Federal Agencies		100.0%							0.2%
Mortgage Securities		100.0%							19.7%
Treasuries		100.0%							10.0%
T-Pool Combined	5.0%	84.3%	3.6%	3.0%	0.3%	0.3%	0.3%	3.2%	59.5%
Total Portfolio	3.0%	82.4%	4.0%	6.9%	1.6%	0.1%	0.1%	1.9%	100.0%



	\$ Millions		Book Yield	Performance Benchmarks (3)
	Average Portfolio	Realized Income		
FY '11 YTD	100.7	1.8	3.6%	2.6%
Last 12 months	99.6	3.6	3.6%	2.6%
FY '10	87.9	3.4 ⁴	3.9%	3.1%
FY '09	65.9	3.1	4.8%	2.8%
FY '08	65.7	3.3	5.0%	3.8%
FY '07	64.9	3.3	5.0%	4.7%
FY '06	59.1	2.6	4.5%	4.5%
Avg FY '06-'10	68.7	3.2	4.6%	3.8%

- (1) Does not include State Treasury Pool balances in calculation.
- (2) 12 month moving average of the constant maturity yield on the 7 year Treasury note
- (3) 12 month moving average of the constant maturity yield on the 7 year Treasury note at end of period
- (4) Excludes \$.2 million in losses on sale of investments in July 2009.