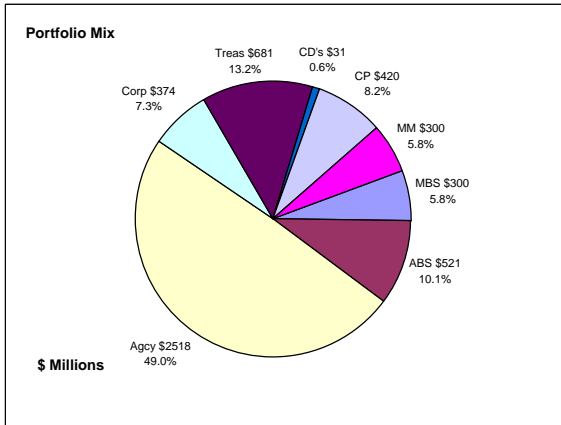


Colorado Treasury Pool Combined December 31, 2009



Portfolio Value

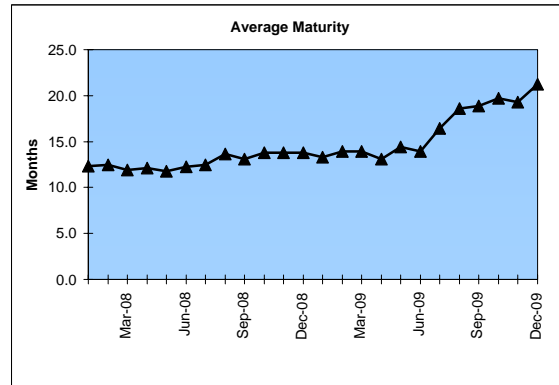
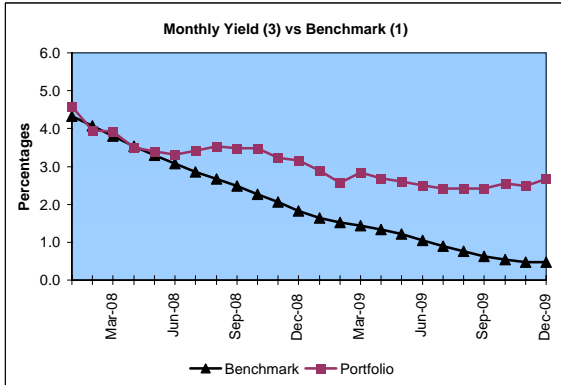
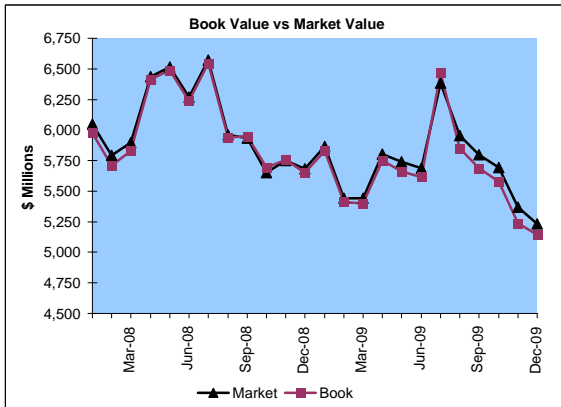
Market Value \$5,234.6 Million
Book Value \$5,145.3 Million

Yield and Average Maturity

Portfolio Book Yield 2.5%
Portfolio Average Maturity 21.2 Months

Portfolio Quality

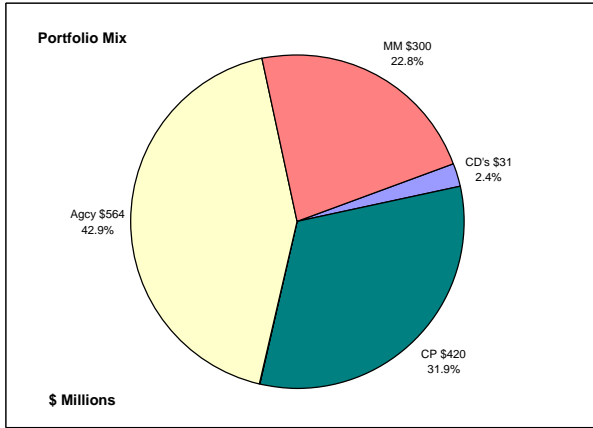
	A1 / P1	AAA	AA	A	BBB	BB	Other	Portfolio Percent
Asset Backed		100.0%						10.1%
Corporates		2.4%	39.3%	39.2%	12.0%	5.8%	1.3%	7.3%
Mortgage Securities		100.0%						5.8%
Commercial Paper	100.0%							8.2%
Treasuries		100.0%						13.2%
Federal Agencies		100.0%						49.0%
Certificates of Deposit							100.0%	0.6%
Money Market Funds							100.0%	5.8%
Total Portfolio	8.2%	78.3%	2.9%	2.8%	0.9%	0.4%	6.5%	100.0%



	\$ Millions		Book Yield	Performance Benchmarks (2)
	Average Portfolio	Realized Income		
FY '10 YTD	5,716.5	71.1 ³	2.5%	0.5%
Last 12 months	5,699.0	147.3 ³	2.6%	0.5%
FY '09	5,828.6	177.4	3.0%	1.1%
FY '08	5,835.7	249.9	4.3%	3.1%
FY '07	5,122.0	244.3	4.7%	5.0%
FY '06	4,550.8	182.4	4.0%	4.4%
FY '05	3,863.7	125.8	3.3%	2.7%
Avg FY '05-'09	5,040.2	196.0	3.9%	3.3%

- (1) 12 month moving average of the constant maturity yield on the 1 year Treasury note
- (2) 12 month moving average of the constant maturity yield on the 1 year Treasury note at end of period
- (3) Excludes \$5.5 million in losses on sale of investments in July 2009.

Colorado Treasury Cash
(0 - 1 year maturities)
December 31, 2009



Portfolio Value

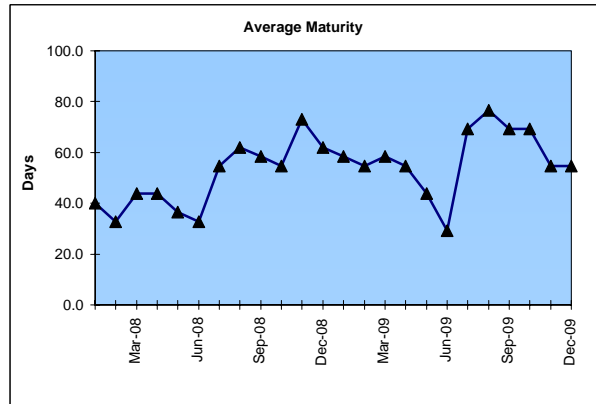
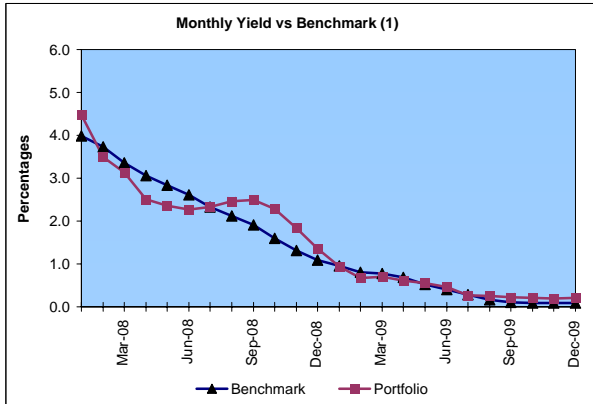
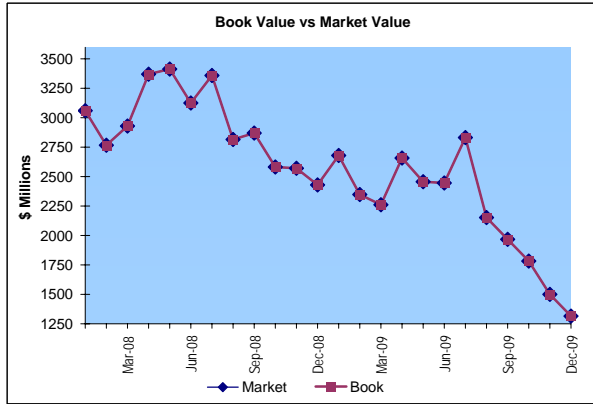
Market Value \$1,315.4 Million
Book Value \$1,315.4 Million

Yield and Average Maturity

Portfolio Book Yield 0.2%
Portfolio Average Maturity 55 Days

Portfolio Quality

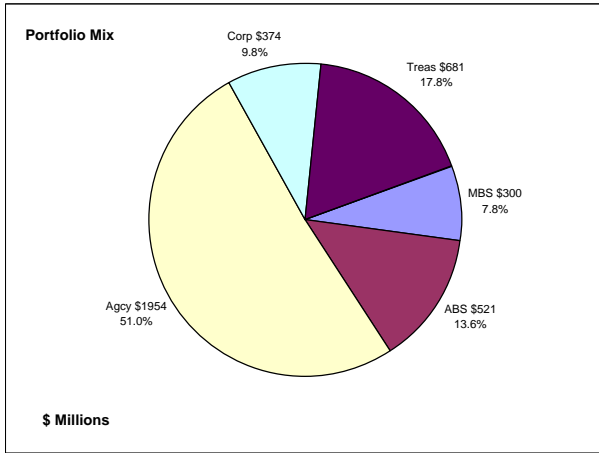
	A1 / P1	AAA	Other	Portfolio Percent
Commercial Paper	100.0%			31.9%
Federal Agencies		100.0%		42.9%
Treasuries				0.0%
Certificates of Deposit			100.0%	2.4%
Money Market Funds			100.0%	22.8%
Total Portfolio	31.9%	42.9%	25.2%	100.0%



	\$ Millions		Book	Performance
	Average Portfolio	Realized Income	Yield	Benchmarks (2)
FY '10 YTD	2,086.7	2.4	0.2%	0.1%
Last 12 months	2,321.8	10.8	0.5%	0.1%
FY '09	2,705.6	39.2	1.4%	0.4%
FY '08	2,895.9	114.9	4.0%	2.6%
FY '07	2,312.0	123.6	5.3%	4.8%
FY '06	1,911.2	79.9	4.2%	4.0%
FY '05	1,595.8	34.9	2.2%	2.1%
Avg FY '05-'09	2,284.1	78.5	3.4%	2.8%

(1) 12 month moving average of the 30 day Treasury bill
(2) 12 month moving average of the 30 day Treasury bill at end of period

Colorado Treasury Pool
(1 - 5 year maturities)
December 31, 2009



Portfolio Value

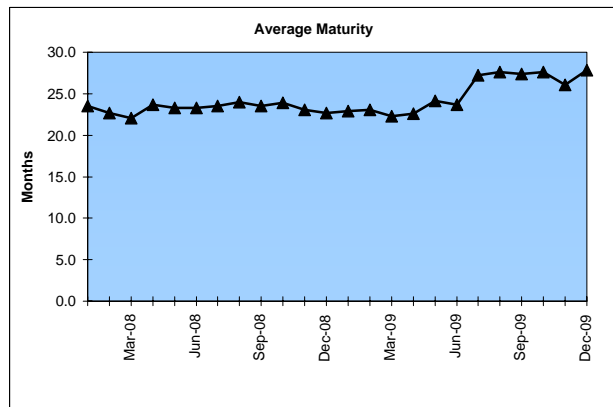
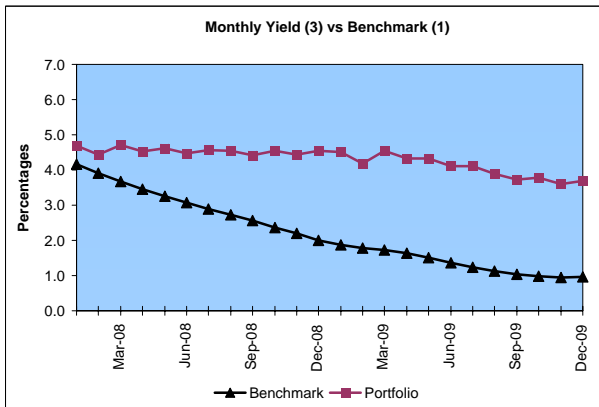
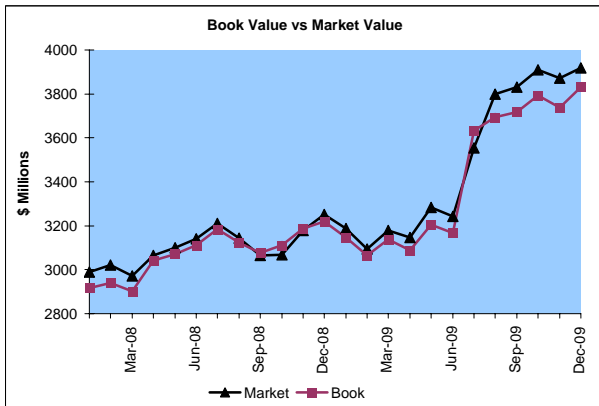
Market Value \$3,919.2 Million
Book Value \$3,829.9 Million

Yield and Average Maturity

Portfolio Book Yield 3.8%
Portfolio Average Maturity 27.8 Months

Portfolio Quality

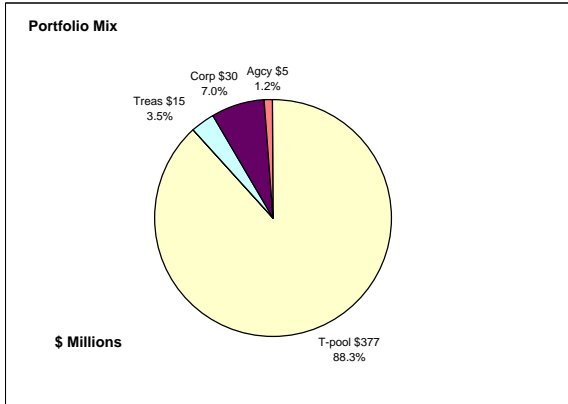
	AAA	AA	A	BBB	BB	Other	Portfolio Percent
Asset Backed	100.0%						13.6%
Corporates	2.4%	39.3%	39.2%	12.0%	5.8%	1.3%	9.8%
Mortgage Securities	100.0%						7.8%
Treasuries	100.0%						17.8%
Federal Agencies	100.0%						51.0%
Total Portfolio	90.5%	3.8%	3.8%	1.2%	0.6%	0.1%	100.0%



	Average Portfolio	Realized Income	Book Yield	Performance Benchmarks (2)
FY '10 YTD	3,629.8	68.7 ³	3.8%	1.0%
Last 12 months	3,377.2	136.5 ³	4.0%	1.0%
FY '09	3,123.0	138.2	4.4%	1.4%
FY '08	2,939.8	134.9	4.6%	3.1%
FY '07	2,810.1	120.6	4.2%	4.8%
FY '06	2,639.7	102.6	3.8%	4.5%
FY '05	2,267.9	90.9	4.0%	3.1%
Avg FY '05-'09	2,756.1	117.4	4.2%	3.4%

(1) 12 month moving average of the constant maturity yield on the 2 year Treasury note
(2) 12 month moving average of the constant maturity yield on the 2 year Treasury note at end of period
(3) Excludes \$5.5 million in losses on sale of investments in July 2009.

Colorado State Education Fund December 31, 2009



Portfolio Value

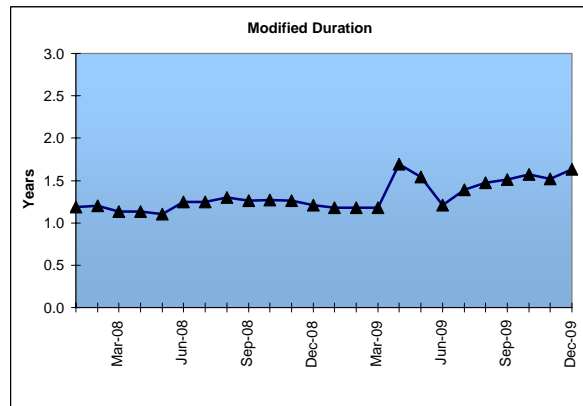
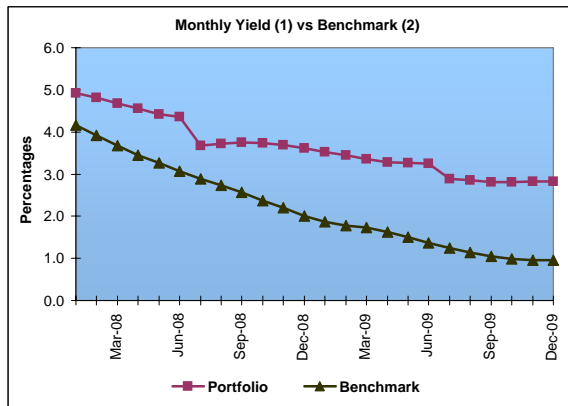
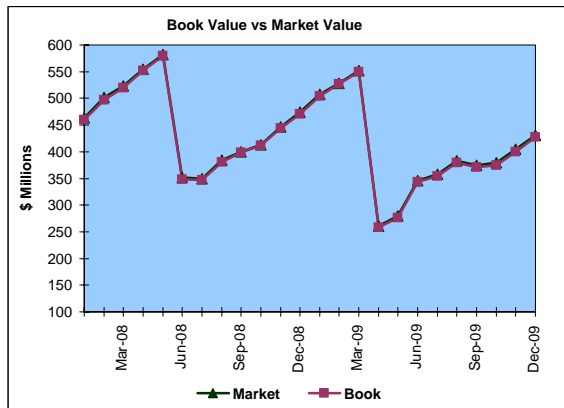
Market Value \$430.5 Million
Book Value \$426.8 Million

Yield and Average Maturity

Portfolio Book Yield 2.8%
Portfolio Average Duration 1.6 Yrs

Portfolio Quality

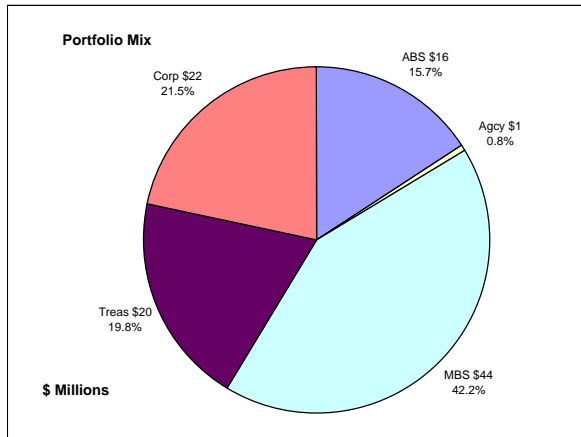
	A1 / P1	AAA	AA	A	BBB	BB	Other	Portfolio Percent
Corporates			50.0%	50.0%				7.0%
Treasuries		100.0%						3.5%
Federal Agencies		100.0%						1.2%
T-Pool Combined	8.2%	78.3%	2.9%	2.8%	0.9%	0.4%	6.5%	88.3%
Total Portfolio	7.2%	73.8%	6.0%	6.0%	0.8%	0.4%	5.8%	100.0%



	\$ Millions		Book Yield	Performance Benchmarks (3)
	Average Portfolio	Realized Income		
FY '10 YTD	362.4	5.2	2.8%	1.0%
Last 12 months	402.6	11.6	2.9%	1.0%
FY '09	412.5	13.4	3.2%	1.4%
FY '08	383.2	16.7	4.3%	3.1%
FY '07	272.0	13.4	4.9%	4.8%
FY '06	209.3	9.3	4.5%	4.5%
FY '05	234.9	9.1	3.9%	3.1%
Avg FY '05-'09	302.4	12.4	4.2%	3.4%

- (1) Does not include State Treasury Pool balances in calculation.
- (2) 12 month moving average of the constant maturity yield on the 2 year Treasury note
- (3) 12 month moving average of the constant maturity yield on the 2 year Treasury note at end of period

Colorado Major Medical Insurance Fund December 31, 2009



Portfolio Value

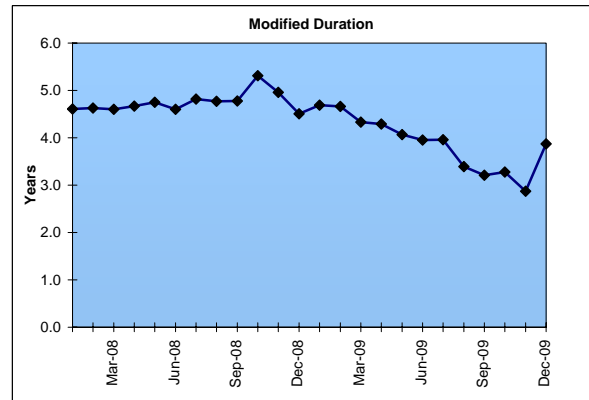
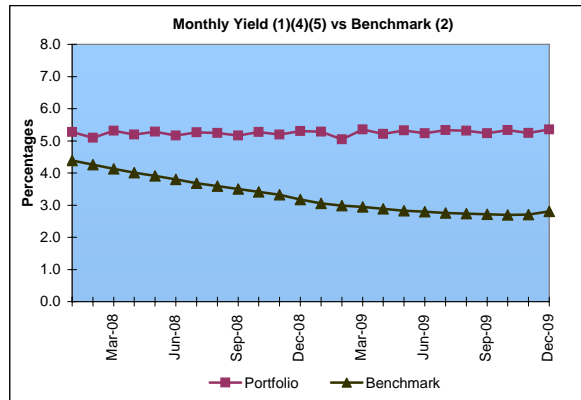
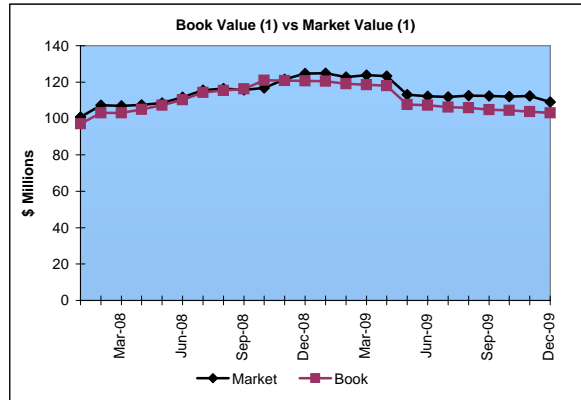
Market Value ⁽¹⁾ \$109.0 Million
 Book Value ⁽¹⁾ \$103.1 Million

Yield and Duration

Portfolio Book Yield 4.7%
 Portfolio Modified Duration 3.9 Yrs

Portfolio Quality

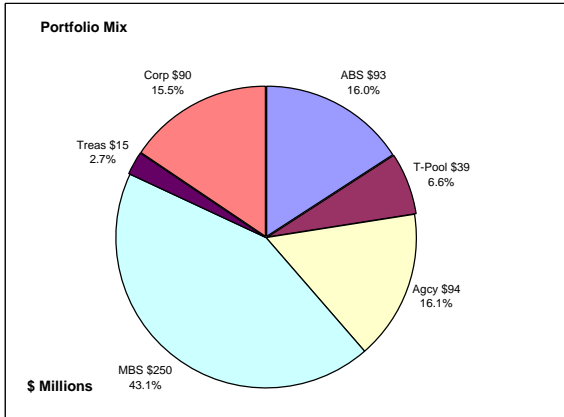
	AAA	AA	A	BBB	Portfolio Percent
Asset Backed	100.0%				15.7%
Corporates	11.3%	27.0%	57.2%	4.5%	21.5%
Federal Agencies	100.0%				0.8%
Mortgage Securities	100.0%				42.2%
Treasuries	100.0%				19.8%
Total Portfolio	80.9%	5.8%	12.3%	1.0%	100.0%



	\$ Millions		Book	Performance
	Average Portfolio	Realized Income	Yield	Benchmarks (3)
FY '10 YTD	127.5	3.0 ⁵	4.7%	2.8%
Last 12 months	149.0	6.8 ⁵	4.6%	2.8%
FY '09	163.0	7.4 ⁴	4.6%	2.8%
FY '08	133.7	6.6	4.9%	3.8%
FY '07	76.2	3.8	5.0%	4.7%
FY '06	49.4	2.3	4.7%	4.5%
FY '05	16.3	0.5	5.0%	4.0% First Investments 11/04
Avg FY '06-'09	105.6	5.0	4.8%	4.0%

- (1) Does not include State Treasury Pool balances in calculation.
- (2) 12 month moving average of the constant maturity yield on the 7 year Treasury note
- (3) 12 month moving average of the constant maturity yield on the 7 year Treasury note at end of period
- (4) Excludes \$.4 million in gains on sale of investments in May 2009.
- (5) Excludes \$.2 million in losses on sale of investments in July 2009.

Colorado Public School Permanent Fund
December 31, 2009



Portfolio Value

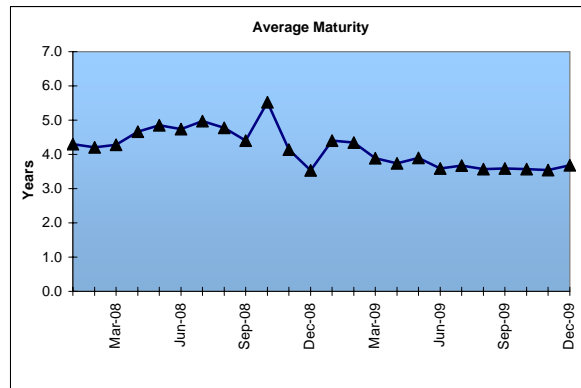
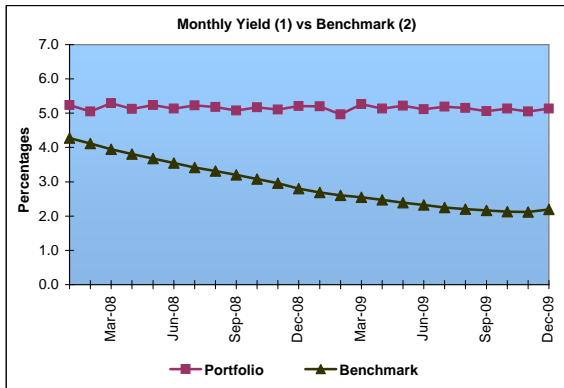
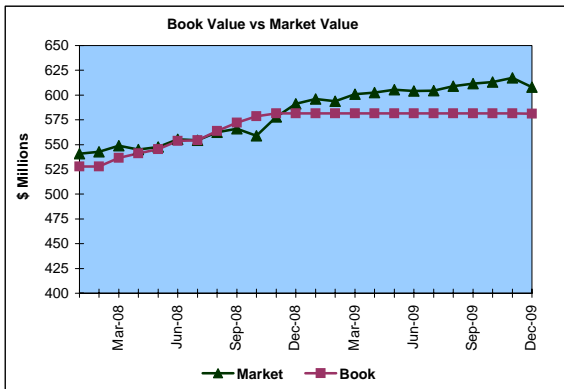
Market Value \$607.9 Million
Book Value \$581.2 Million

Yield and Average Maturity

Portfolio Book Yield 4.9%
Portfolio Average Maturity 3.7 Yrs

Portfolio Quality

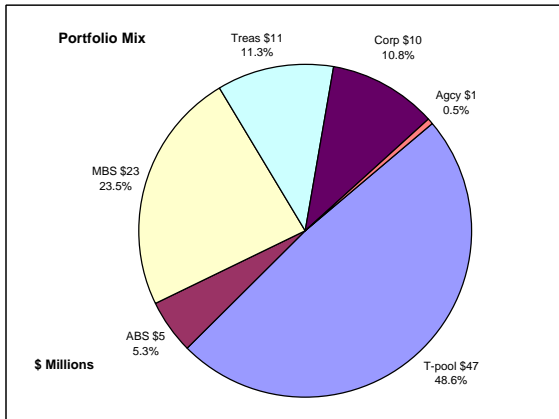
	A1 / P1	AAA	AA	A	BBB	BB	Other	Portfolio Percent
Asset Backed		100.0%						16.0%
Corporates		7.7%	44.2%	35.9%	12.2%			15.5%
Mortgage Securities		100.0%						43.1%
Treasuries		100.0%						2.7%
Federal Agencies		100.0%						16.1%
T-Pool Combined	8.2%	78.3%	2.9%	2.8%	0.9%	0.4%	6.5%	6.6%
Total Portfolio	0.5%	84.2%	7.1%	5.8%	2.0%	0.0%	0.4%	100.0%



	\$ Millions		Book Yield	Performance Benchmarks (3)
	Average Portfolio	Realized Income		
FY '10 YTD	580.9	14.4	4.9%	2.2%
Last 12 months	580.9	29.1	5.0%	2.2%
FY '09	572.4	29.2	5.1%	2.3%
FY '08	519.3	27.1	5.2%	3.6%
FY '07	470.2	24.6	5.2%	4.7%
FY '06	418.7	22.2	5.3%	4.5%
FY '05	376.9	21.4	5.7%	3.7%
Avg FY '05-'09	471.5	24.9	5.3%	3.8%

- (1) Does not include State Treasury Pool balances in calculation.
- (2) Latest 12 month moving average of the constant maturity yield on the 5 year Treasury note
- (3) Latest 12 month moving average of the constant maturity yield on the 5 year Treasury note at end of period

Unclaimed Property Tourism Fund December 31, 2009



Portfolio Value

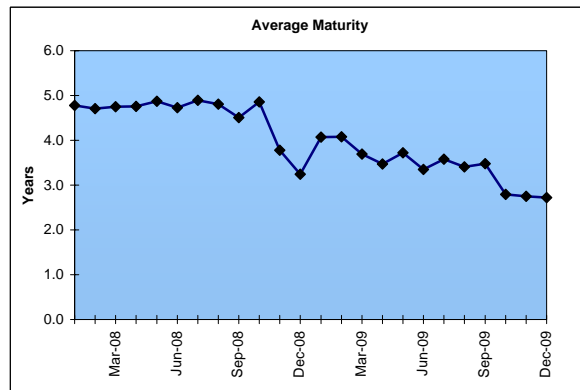
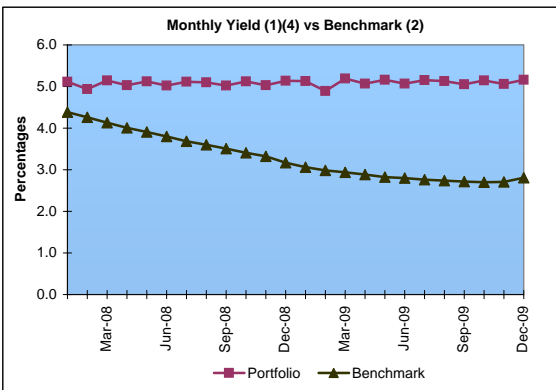
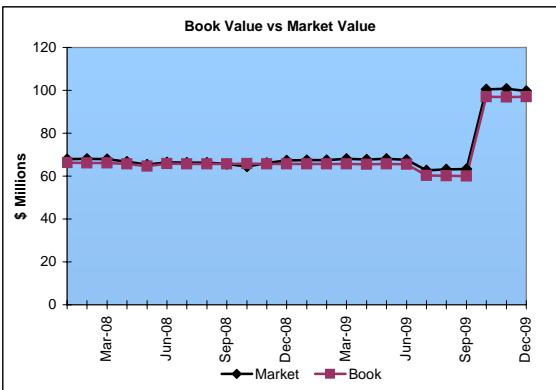
Market Value \$99.7 Million
Book Value \$97.0 Million

Yield and Average Maturity

Portfolio Book Yield 4.2%
Portfolio Average Maturity 2.7 Yrs

Portfolio Quality

	A1 / P1	AAA	AA	A	BBB	BB	Other	Portfolio Percent
Asset Backed		100.0%						5.3%
Corporates		4.8%	23.8%	61.9%	9.5%			10.8%
Federal Agencies		100.0%						0.5%
Mortgage Securities		100.0%						23.5%
Treasuries		100.0%						11.3%
T-Pool Combined	8.2%	78.3%	2.9%	2.8%	0.9%	0.4%	6.5%	48.6%
Total Portfolio	4.0%	79.1%	4.0%	8.1%	1.4%	0.2%	3.2%	100.0%



	\$ Millions		Book Yield	Performance Benchmarks (3)
	Average Portfolio	Realized Income		
FY '10 YTD	77.5	1.6 ⁴	4.2%	2.8%
Last 12 months	71.7	3.2 ⁴	4.4%	2.8%
FY '09	65.9	3.1	4.8%	2.8%
FY '08	65.7	3.3	5.0%	3.8%
FY '07	64.9	3.3	5.0%	4.7%
FY '06	59.1	2.6	4.5%	4.5%
FY '05	19.9	0.3	3.5%	4.0%
Avg FY '06-'09	63.9	3.1	4.8%	4.0%

- (1) Does not include State Treasury Pool balances in calculation.
- (2) 12 month moving average of the constant maturity yield on the 7 year Treasury note
- (3) 12 month moving average of the constant maturity yield on the 7 year Treasury note at end of period
- (4) Excludes \$.2 million in losses on sale of investments in July 2009.