

# STATE OF COLORADO

---



**DEPARTMENT OF TRANSPORTATION**  
**Contracts and Market Analysis Branch**  
4201 East Arkansas Avenue, 4<sup>th</sup> Floor  
Denver, Colorado 80222  
(303) 757-9736

June 8, 2012

## COLORADO CONSTRUCTION COST INDEX REPORT Calendar Year 2012 First Quarter

Prepared by  
Shawn Yu  
Engineering Estimates and Market Analysis Unit  
Contracts and Market Analysis Branch

Prepared for  
Tim Harris, Chief Engineer

# STATE OF COLORADO



**DEPARTMENT OF TRANSPORTATION**  
**Contracts and Market Analysis Branch**  
4201 East Arkansas Avenue, 4<sup>th</sup> Floor  
Denver, Colorado 80222  
(303) 757-9736

## SUMMARY

### CONSTRUCTION COST INDEX FOR SELECTED HIGHWAY CONSTRUCTION ITEMS

1<sup>st</sup> QUARTER ENDING March 31, 2012

Index for this quarter.....	285.6
Index for last quarter.....	284.0
Point change from last quarter.....	1.6
Percentage change from last quarter.....	0.6%
Index for same quarter of last year.....	255.4
Point change from same quarter last year.....	30.2
Percentage change from this quarter last year.....	11.8%
4-quarter moving average.....	286.8
4-quarter moving average percentage change from last quarter.....	2.7%

Average number of bidders this quarter.....	5.0
Change in number of bidders from last quarter.....	4.6%

NOTE: All information shown in this publication was assembled using 1987 as the base year except as noted.

**Summary Report for all the projects awarded between 1/1/2012 And 3/31/2012**

<i>Project Amount</i>	<i>No. of Projects</i>	<i>No. of Bidders</i>	<i>Total Contract Amt.</i>	<i>Avg. # of Bids</i>
<i>\$0.00 to \$49,999.99</i>	0			
<i>\$50,000.00 to \$99,999.99</i>	1	2	\$79,705.00	2.0
<i>\$100,000.00 to \$249,999.99</i>	2	8	\$414,526.49	4.0
<i>\$250,000.00 to \$499,999.99</i>	8	44	\$2,954,571.77	5.5
<i>\$500,000.00 to \$999,999.99</i>	7	27	\$4,634,756.89	3.9
<i>1,000,000.00 to \$2,499,999.99</i>	9	49	\$15,463,202.36	5.4
<i>2,500,000.00 to \$4,999,999.99</i>	9	57	\$32,255,434.57	6.3
<i>5,000,000.00 to \$9,999,999.99</i>	9	40	\$56,203,058.88	4.4
<i>10,000,000.00 to \$19,999,999.99</i>	1	3	\$10,342,346.10	3.0
<i>20,000,000.00 to \$49,499,999.99</i>	1	5	\$42,793,272.17	5.0
<i>50,000,000.00 or Greater</i>	0			

<b>Total</b>	<b>47</b>	<b>235</b>	<b>\$165,140,874.23</b>
--------------	-----------	------------	-------------------------

The number of bidders on all projects awards during this period averaged **5.00** bidders per contract.  
 Average cost per project is **\$3,513,635.62**.

## CCI ITEMS USED FROM 1/1/2012 TO 3/31/2012

ITEM CODE	# OF ITEM	QUANTITY	PRICE	UNIT PRICE	INDEX
203-00000 To 203-00060 203-00062 To 203-00210 203-00400 To 203-00500	35	English (CY) 320,877.00	\$3,038,771.69	\$9.47	
203-01020 To 203-01030 209-00000 To 209-00050	0	Metric (CM) 0.00	\$0.00	\$0.00	
<b>UNCLASSIFIED EXCAV (CIP)</b>	<b>35</b>	<b>320,877.00<sup>CY</sup></b>	<b>\$3,038,771.69</b>	<b>\$9.47</b>	<b>383.3</b>
403-00720, 403-01000, 403-01010, 403-02000, 403-09121 To 403-09500	99	English (TON) 696,918.45	\$53,789,030.07	\$77.18	
403-31300 To 403 36447 403-91401 To 403-95353 411-03100 To 411-03355 411-10010 To 411-90010 (Gal/Lit) Gallon & Liter are converted to Ton	0	Metric (MT) 0.00	\$0.00	\$0.00	
<b>HOT MIX ASPHALT (H A)</b>	<b>99</b>	<b>696,918.45 T</b>	<b>\$53,789,030.07</b>	<b>\$77.18</b>	<b>334.4</b>
412-00000 To 412-00050 412-00700 To 412-01352 412-03000 To 412-03000	19	English (SY) 459,666.91	\$13,606,616.72	\$29.60	
	0	Metric (SM) 0.00	\$0.00	\$0.00	
<b>CONCRETE PAVEMENT (9")</b>	<b>19</b>	<b>459,666.91<sup>SY</sup></b>	<b>\$13,606,616.72</b>	<b>\$29.60</b>	<b>221.6</b>
<b>SURFACING TOTAL INDEX</b>					<b>321.6</b>
509-00000 To 509-00000	1	English (LB) 304.00	\$304.00	\$1.00	
	0	Metric (KG) 0.00	\$0.00	\$0.00	
<b>STRUCTURAL STEEL</b>	<b>1</b>	<b>304.00<sup>LB</sup></b>	<b>\$304.00</b>	<b>\$1.00</b>	<b>117.2</b>
601-01022 To 601-01022 601-01030 To 601-01060 601-03030 To 601-05064	23	English (CY) 11,773.00	\$4,309,612.45	\$366.06	
	0	Metric (CM) 0.00	\$0.00	\$0.00	
<b>STRUCTURAL CONCRETE</b>	<b>23</b>	<b>11,773.00<sup>CY</sup></b>	<b>\$4,309,612.45</b>	<b>\$366.06</b>	<b>168.5</b>
602-00000 To 602-00000 602-00020 To 602-00020	22	English (LB) 1,957,474.00	\$1,733,502.46	\$0.89	
	0	Metric (KG) 0.00	\$0.00	\$0.00	
<b>REINFORCING STEEL</b>	<b>22</b>	<b>1,957,474.00<sup>LB</sup></b>	<b>\$1,733,502.46</b>	<b>\$0.89</b>	<b>216.0</b>
<b>STRUCTURAL TOTAL INDEX</b>					<b>167.2</b>
<b>COMPOSITE INDEX =</b>					<b>285.6</b>

Sum of the 6 categories cost = \$76,477,837.39

HBP Unit Price per CY = \$152.82

Concrete Pavement Unit Price per CY = \$118.40

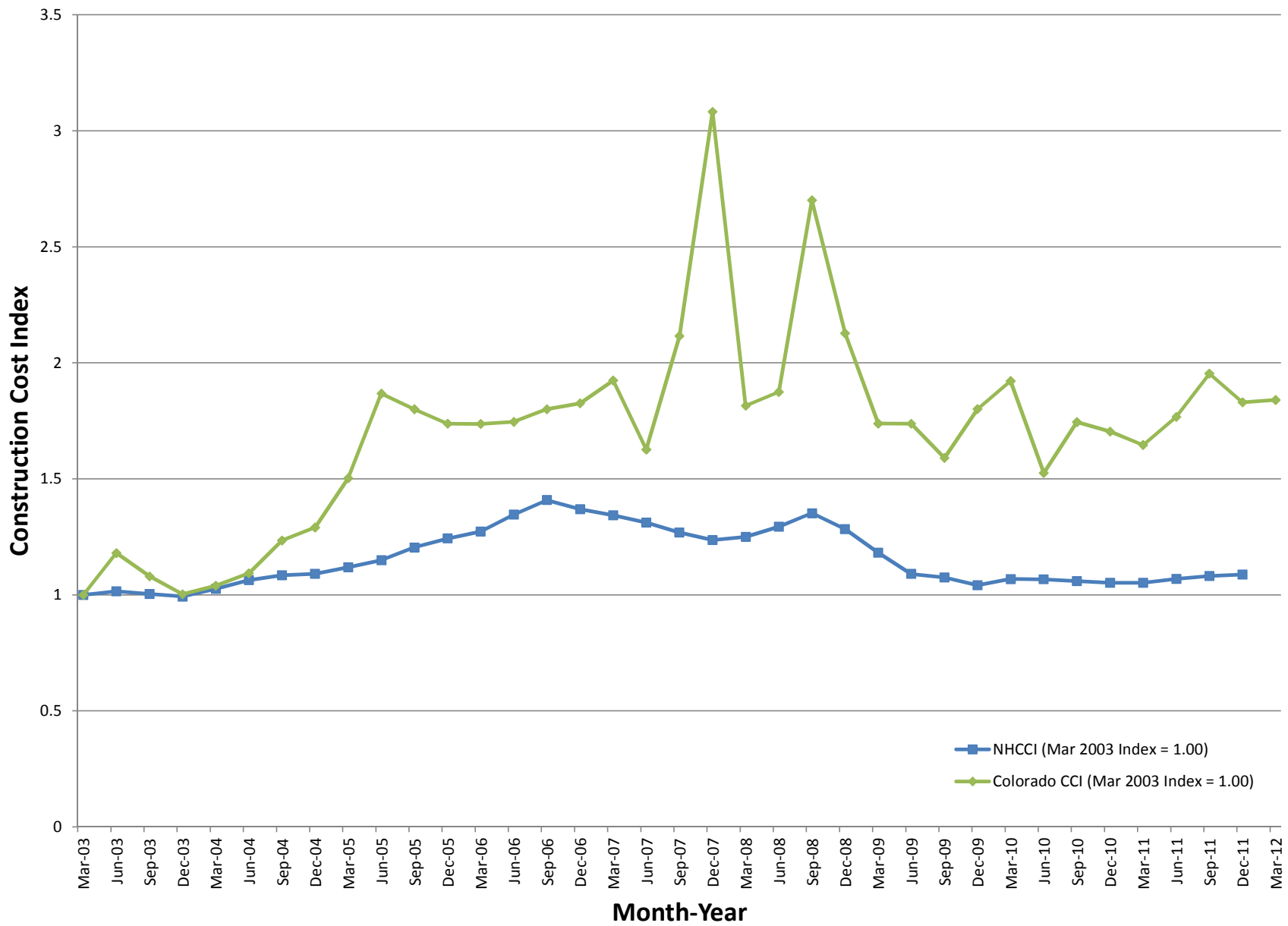
## Colorado Highway Construction Cost Index Graph and Tabulations (1987 Base Year)

YEAR	QTR.	Earthwork		Asph. Pavement		Concrete Pavement		Surfacing Index	Structural Concrete		Reinforcing Steel		Structural Steel		Structural Index	Composite Index
		Bid Price	Index	Bid Price	Index	Bid Price	Index		Bid Price	Index	Bid Price	Index	Bid Price	Index		
1987	1987	\$2.47	100.0	\$23.17	100.0	\$13.36	100.0	100.0	\$217.32	100.0	\$0.41	100.0	\$0.85	100.0	100.0	100.0
1988	1988	\$2.92	118.1	\$23.88	103.0	\$13.84	103.6	103.1	\$195.02	89.7	\$0.45	110.7	\$0.89	104.1	96.7	103.7
1989	1989	\$2.57	103.9	\$23.67	102.2	\$11.65	87.2	100.6	\$199.41	91.8	\$0.40	97.8	\$0.88	103.5	95.3	99.6
1990	1990	\$2.78	112.5	\$23.98	103.5	\$15.09	113.0	104.5	\$190.86	87.8	\$0.37	90.8	\$0.99	116.0	94.1	102.7
1991	1991	\$3.31	133.8	\$26.25	113.3	\$16.03	120.0	114.0	\$195.43	89.9	\$0.38	93.1	\$0.89	104.4	93.5	111.2
1992	1992	\$2.77	112.3	\$26.20	113.1	\$23.82	178.3	119.8	\$216.87	99.8	\$0.36	87.9	\$0.71	82.8	94.0	110.7
1993	1993	\$3.25	131.4	\$27.74	119.7	\$16.75	125.4	121.3	\$212.43	97.7	\$0.37	90.1	\$0.79	93.0	95.3	114.7
1994	1994	\$3.56	144.2	\$28.40	122.6	\$18.78	140.6	124.4	\$219.94	101.2	\$0.37	89.7	\$0.67	78.8	94.4	118.8
1995	1995	\$3.41	138.1	\$30.25	130.5	\$17.82	133.4	130.8	\$211.29	97.2	\$0.39	94.0	\$0.90	105.5	98.3	122.3
1996	1996	\$4.46	180.5	\$32.73	141.3	\$19.22	143.9	141.5	\$265.98	122.4	\$0.43	105.1	\$1.09	128.5	120.2	141.7
1997	1997	\$4.24	171.7	\$32.92	142.1	\$21.39	160.1	143.9	\$246.29	113.3	\$0.45	110.8	\$1.01	117.9	113.8	139.6
1998	1998	\$4.89	198.0	\$35.72	154.2	\$26.54	198.7	158.7	\$283.01	130.2	\$0.50	122.0	(\$1.00)	-1.0	128.2	158.1
1999	1999	\$4.94	199.8	\$35.23	152.0	\$22.78	170.5	153.9	\$310.56	142.9	\$0.54	132.0	\$1.41	165.3	145.3	159.2
2000	2000	\$5.25	212.6	\$40.02	173.0	\$20.56	153.9	170.8	\$346.82	159.6	\$0.47	115.2	\$1.18	138.8	146.8	170.7
2001	2001	\$4.19	169.5	\$38.67	167.4	\$17.45	130.6	163.2	\$303.22	139.5	\$0.50	120.9	\$1.29	151.5	138.4	156.8
2002	2002	\$3.74	151.2	\$37.99	164.7	\$24.81	185.7	166.2	\$285.35	131.3	\$0.50	121.3	\$0.78	91.9	121.4	150.1
2003	2003	\$4.42	178.9	\$38.23	165.7	\$20.91	156.6	164.1	\$289.44	133.2	\$0.55	133.4	\$0.72	84.7	123.4	154.4
2004	04Q3	\$4.38	177.1	\$43.33	188.0	\$27.59	206.5	189.0	\$350.71	161.4	\$0.91	221.3	\$2.70	316.3	204.4	191.6
2005	05AV	\$12.90	522.0	\$44.17	191.8	\$30.69	229.8	194.7	\$508.77	234.1	\$0.96	232.9	\$1.01	118.4	210.4	255.2
2006	06AV	\$7.54	305.1	\$59.61	258.4	\$33.79	253.0	256.8	\$430.27	198.0	\$0.92	223.5	\$2.62	306.9	225.1	255.5
2007	07Q3	\$10.32	417.6	\$81.60	352.9	\$28.59	214.0	338.0	\$588.03	270.6	\$1.06	258.9	\$2.00	234.4	261.0	328.3
2007	07Q4	\$17.76	719.0	\$103.64	448.2	\$98.13	734.6	476.8	\$563.39	259.3	\$1.02	249.2	\$5.90	691.1	345.1	478.4
2007	07AV	\$7.18	290.5	\$66.58	287.9	\$37.76	282.7	286.9	\$546.29	251.4	\$1.01	245.7	\$1.40	163.6	232.4	271.1
2008	08AV	\$9.04	365.7	\$69.72	302.2	\$29.93	224.1	293.0	\$467.51	215.1	\$1.05	255.8	\$1.65	193.6	218.6	283.0
2009	09Q3	\$6.11	247.5	\$62.94	272.0	\$31.44	235.4	267.9	\$450.29	207.2	\$0.90	218.9	\$1.77	207.8	209.6	246.8
2009	09Q4	\$6.13	248.1	\$77.79	336.4	\$38.79	290.4	331.1	\$352.16	162.1	\$0.54	132.7	\$3.50	410.2	206.8	279.5
2009	09Q2	\$7.91	320.1	\$65.25	282.2	\$37.17	278.3	281.3	\$379.98	174.9	\$0.70	169.7	\$3.46	405.9	220.8	269.7
2009	09Q1	\$5.87	237.5	\$67.74	292.9	\$78.51	587.7	322.7	\$425.40	195.8	\$0.85	207.2	\$1.55	181.7	195.1	269.8
2009	09AV	\$6.63	268.3	\$66.49	287.5	\$44.12	330.2	291.4	\$399.34	183.8	\$0.75	183.8	\$1.58	185.5	184.1	255.1
2010	10Q3	\$9.30	376.3	\$59.49	257.1	\$48.22	361.0	267.4	\$428.29	197.1	\$0.91	222.9	\$0.00	0.0	203.3	270.8
2010	10Q4	\$8.52	344.7	\$64.69	279.6	\$32.63	244.3	275.6	\$395.91	182.2	\$0.76	186.3	\$0.00	0.0	183.2	264.5
2010	Q1AV	\$7.86	318.3	\$61.92	267.9	\$29.19	218.5	262.2	\$430.84	198.3	\$0.78	190.6	\$2.27	266.4	210.6	256.2
2011	11Q1	\$7.17	290.4	\$69.28	300.9	\$28.75	215.2	290.4	\$365.40	168.2	\$0.76	186.5	\$1.55	181.7	174.4	255.4
2011	11Q2	\$7.37	298.2	\$69.89	302.2	\$41.46	310.3	302.5	\$419.00	192.8	\$0.83	203.2	\$0.00	0.0	195.3	274.3
2011	11Q3	\$9.51	385.0	\$78.57	340.0	\$27.00	202.1	325.0	\$408.18	187.8	\$0.93	226.6	\$0.00	0.0	197.2	303.2
2011	11Q4	\$6.67	270.0	\$74.69	323.1	\$56.69	424.4	332.8	\$444.85	204.7	\$0.87	212.2	\$1.75	205.6	206.3	284.0
2012	12Q1	\$9.47	383.3	\$77.18	334.4	\$29.60	221.6	321.6	\$366.06	168.5	\$0.89	216.0	\$1.00	117.2	167.2	285.6

[View Annual/Qtr Graphs](#)

[View Tabular Report](#)

Year	Month-Year	NHCCI (Mar-03=1.00)	Colorado CCI (1987 = 100)	Colorado CCI (Mar-03 = 1.00)
2003	Mar-03	1.0000	155.2000	1.0000
	Jun-03	1.0156	183.2000	1.1804
	Sep-03	1.0038	167.6000	1.0799
	Dec-03	0.9929	155.7000	1.0032
2004	Mar-04	1.0260	161.3000	1.0393
	Jun-04	1.0638	169.6000	1.0928
	Sep-04	1.0849	191.6000	1.2345
	Dec-04	1.0910	200.3000	1.2906
2005	Mar-05	1.1189	233.3000	1.5032
	Jun-05	1.1489	289.8000	1.8673
	Sep-05	1.2045	279.3000	1.7996
	Dec-05	1.2429	269.7000	1.7378
2006	Mar-06	1.2727	269.5000	1.7365
	Jun-06	1.3464	270.9000	1.7455
	Sep-06	1.4084	279.4000	1.8003
	Dec-06	1.3693	283.4000	1.8260
2007	Mar-07	1.3425	298.6000	1.9240
	Jun-07	1.3118	252.5000	1.6269
	Sep-07	1.2691	328.3000	2.1153
	Dec-07	1.2363	478.4000	3.0825
2008	Mar-08	1.2500	281.7000	1.8151
	Jun-08	1.2938	290.9000	1.8744
	Sep-08	1.3521	419.2000	2.7010
	Dec-08	1.2835	330.1000	2.1269
2009	Mar-09	1.1818	269.8000	1.7384
	Jun-09	1.0901	269.7000	1.7378
	Sep-09	1.0752	246.8000	1.5902
	Dec-09	1.0410	279.5000	1.8009
2010	Mar-10	1.0683	298.3000	1.9220
	Jun-10	1.0671	236.7000	1.5251
	Sep-10	1.0595	270.8000	1.7448
	Dec-10	1.0520	264.5000	1.7043
2011	Mar-11	1.0524	255.4000	1.6456
	Jun-11	1.0691	274.3000	1.7674
	Sep-11	1.0817	303.2000	1.9536
	Dec-11	1.0880	284.0000	1.8299
2012	Mar-12		285.6000	1.8402



### Comments:

This Colorado Construction Cost Index is composed of six indicator items and based on bid prices relative to the unit prices of 1987 (unit index=100). The Index varies due to type and location of projects in addition to overall economic conditions.

### Earthwork (Excavation and Embankment):

The average price was \$9.47 a cu. yd. which is up \$2.80 from the previous quarter.

### Hot Mix Asphalt:

The average price was \$77.18 a ton which is up \$2.49 from the previous quarter.

### Concrete Pavement:

The average price was \$29.60 a sq. yd. which is down \$27.09 from the previous quarter. One extremely large project in Region 6 contributed to the sharp decrease from the above average price level of the previous quarter.

### Structural Steel:

The average price was \$1.00 a lb. which is down \$0.75 from the previous quarter. Only one job was bid with this item.

### Structural Concrete:

The average price was \$366.06 a cu. yd. which is down \$78.79 from the previous quarter. Two bridge projects in Region 6 with large structural concrete quantities contributed to the decrease.

### Reinforcing Steel:

The average price was \$0.89 a lb. which is up \$.02 from the previous quarter.

### ADDITIONAL INFORMATION:

For the 1<sup>st</sup> quarter, the category indices showing an increase were Earthwork, Hot Mix Asphalt, and Reinforcing Steel. The category indices showing a decrease were Concrete Pavement, Structural Steel, and Structural Concrete.

47 projects were bid and awarded this quarter for a total of \$165,140,874.23. By comparison, 32 projects were bid last quarter. The six categories for CCI totaled \$76,477,837.39 which is 46.3% of total awarded amount.

The competitions for projects increased to 5.00 bidders from 4.78 on average for each project on average.