

STATE OF COLORADO



DEPARTMENT OF TRANSPORTATION
Contracts and Market Analysis Branch
4201 East Arkansas Avenue, 4th Floor
Denver, Colorado 80222
(303) 757-9736

March 14, 2012

COLORADO CONSTRUCTION COST INDEX REPORT Calendar Year 2011 Fourth Quarter

Prepared by
Shawn Yu, EEMA Manager
Engineering Estimates and Market Analysis Unit of
Contracts and Market Analysis Branch

Prepared for
Tim Harris, Chief Engineer

STATE OF COLORADO



DEPARTMENT OF TRANSPORTATION
Contracts and Market Analysis Branch
4201 East Arkansas Avenue, 4th Floor
Denver, Colorado 80222
(303) 757-9736

SUMMARY

CONSTRUCTION COST INDEX FOR SELECTED HIGHWAY CONSTRUCTION ITEMS

4th QUARTER ENDING December 31, 2011

Index for this quarter.....	284.0
Index for last quarter.....	303.2
Point change from last quarter.....	-19.2
Percentage change from last quarter.....	-6.33%
Index for same quarter of last year.....	264.5
Point change from same quarter last year.....	19.5
Percentage change from this quarter last year.....	7.37%
4-quarter moving average.....	279.2

Average number of bidders this quarter.....	4.78
Change in number of bidders from last quarter.....	11.2%

NOTE: All information shown in this publication was assembled using 1987 as the base year.

Summary Report for all the projects awarded betwee 10/1/2011 And 12/31/2011

<i>Project Amount</i>	<i>No. of Projects</i>	<i>No. of Bidders</i>	<i>Total Contract Amt.</i>	<i>Avg. # of Bids</i>
<i>\$0.00 to \$49,999.99</i>	0			
<i>\$50,000.00 to \$99,999.99</i>	0			
<i>\$100,000.00 to \$249,999.99</i>	2	11	\$393,134.00	5.5
<i>\$250,000.00 to \$499,999.99</i>	3	11	\$1,289,968.90	3.7
<i>\$500,000.00 to \$999,999.99</i>	11	44	\$8,941,045.33	4.0
<i>1,000,000.00 to \$2,499,999.99</i>	6	30	\$10,232,203.95	5.0
<i>2,500,000.00 to \$4,999,999.99</i>	2	8	\$5,239,671.20	4.0
<i>5,000,000.00 to \$9,999,999.99</i>	6	37	\$43,308,143.87	6.2
<i>10,000,000.00 to \$19,999,999.99</i>	2	12	\$28,769,316.99	6.0
<i>20,000,000.00 to \$49,499,999.99</i>	0			
<i>50,000,000.00 or Greater</i>	0			

Total	32	153	\$98,173,484.24
--------------	-----------	------------	------------------------

The number of bidders on all projects awards during this period averaged **4.78** bidders per contract.
 Average cost per project is **\$2,305,307.15** (avg. cci 1994=118.8 / avg. cci 1998 =158.1) in 1994 dollars.

Summary Report for all the projects awarded betwee 1/1/2011 And 12/31/2011

<i>Project Amount</i>	<i>No. of Projects</i>	<i>No. of Bidders</i>	<i>Total Contract Amt.</i>	<i>Avg. # of Bids</i>
<i>\$0.00 to \$49,999.99</i>	0			
<i>\$50,000.00 to \$99,999.99</i>	2	9	\$161,566.00	4.5
<i>\$100,000.00 to \$249,999.99</i>	18	72	\$3,596,722.19	4.0
<i>\$250,000.00 to \$499,999.99</i>	26	121	\$9,867,216.10	4.7
<i>\$500,000.00 to \$999,999.99</i>	41	168	\$31,545,478.10	4.1
<i>1,000,000.00 to \$2,499,999.99</i>	33	174	\$55,743,933.81	5.3
<i>2,500,000.00 to \$4,999,999.99</i>	17	80	\$60,505,483.68	4.7
<i>5,000,000.00 to \$9,999,999.99</i>	17	99	\$113,622,928.19	5.8
<i>10,000,000.00 to \$19,999,999.99</i>	7	45	\$94,541,748.79	6.4
<i>20,000,000.00 to \$49,499,999.99</i>	1	9	\$32,088,000.00	9.0
<i>50,000,000.00 or Greater</i>	0			

Total	162	777	\$401,673,076.86
--------------	------------	------------	-------------------------

The number of bidders on all projects awards during this period averaged **4.80** bidders per contract.
 Average cost per project is **\$1,863,126.23** (avg. cci 1994=118.8 / avg. cci 1998 =158.1) in 1994 dollars.

CCI ITEMS USED FROM 10/1/2011 TO 12/31/2011

ITEM CODE	# OF ITEM	QUANTITY	PRICE	UNIT PRICE	INDEX
203-00000 To 203-00060 203-00062 To 203-00210 203-00400 To 203-00500 203-01020 To 203-01030 209-00000 To 209-00050	21	English (CY) 970,993.00	\$6,478,487.02	\$6.67	
	0	Metric (CM) 0.00	\$0.00	\$0.00	
UNCLASSIFIED EXCAV (CIP)	21	970,993.00^{CY}	\$6,478,487.02	\$6.67	270.0
403-00720, 403-01000, 403-01010, 403-02000, 403-09121 To 403-09500 403-31300 To 403 36447 403-91401 To 403-95353 411-03100 To 411-03355 411-10010 To 411-90010 (Gal/Lit) Gallon & Liter are converted to Ton	53	English (TON) 287,275.53	\$21,455,345.35	\$74.69	
	0	Metric (MT) 0.00	\$0.00	\$0.00	
HOT MIX ASPHALT (H A)	53	287,275.53 T	\$21,455,345.35	\$74.69	323.1
412-00000 To 412-00050 412-00700 To 412-01352 412-03000 To 412-03000	6	English (SY) 11,539.05	\$654,124.18	\$56.69	
	0	Metric (SM) 0.00	\$0.00	\$0.00	
CONCRETE PAVEMENT (9")	6	11,539.05^{SY}	\$654,124.18	\$56.69	424.4
SURFACING TOTAL INDEX					332.8
509-00000 To 509-00000	2	English (LB) 874,539.00	\$1,533,864.70	\$1.75	
	0	Metric (KG) 0.00	\$0.00	\$0.00	
STRUCTURAL STEEL	2	874,539.00^{LB}	\$1,533,864.70	\$1.75	205.6
601-01022 To 601-01022 601-01030 To 601-01060 601-03030 To 601-05064	17	English (CY) 6,542.00	\$2,910,240.85	\$444.85	
	0	Metric (CM) 0.00	\$0.00	\$0.00	
STRUCTURAL CONCRETE	17	6,542.00^{CY}	\$2,910,240.85	\$444.85	204.7
602-00000 To 602-00000 602-00020 To 602-00020	13	English (LB) 1,512,248.00	\$1,315,582.63	\$0.87	
	0	Metric (KG) 0.00	\$0.00	\$0.00	
REINFORCING STEEL	13	1,512,248.00^{LB}	\$1,315,582.63	\$0.87	212.2
STRUCTURAL TOTAL INDEX					206.3
COMPOSITE INDEX =					284.0

Sum of the 6 categories cost = \$34,347,644.73

HBP Unit Price per CY = \$147.88

Concrete Pavement Unit Price per CY = \$226.75

CCI ITEMS USED FROM 1/1/2011 TO 12/31/2011

ITEM CODE	# OF ITEM	QUANTITY	PRICE	UNIT PRICE	INDEX
203-00000 To 203-00060 203-00062 To 203-00210 203-00400 To 203-00500	213	English (CY) 3,834,215.00	\$28,031,655.51	\$7.31	
203-01020 To 203-01030 209-00000 To 209-00050	0	Metric (CM) 0.00	\$0.00	\$0.00	
UNCLASSIFIED EXCAV (CIP)	213	3,834,215.00^{CY}	\$28,031,655.51	\$7.31	295.9
403-00720, 403-01000, 403-01010, 403-02000, 403-09121 To 403-09500 403-31300 To 403 36447 403-91401 To 403-95353 411-03100 To 411-03355 411-10010 To 411-90010 (Gal/Lit) Gallon & Liter are converted to Ton	500	English (TON) 2,053,320.26	\$145,886,368.17	\$71.05	
	0	Metric (MT) 0.00	\$0.00	\$0.00	
HOT MIX ASPHALT (H A)	500	2,053,320.26 T	\$145,886,368.17	\$71.05	307.4
412-00000 To 412-00050 412-00700 To 412-01352 412-03000 To 412-03000	53	English (SY) 614,319.57	\$22,258,099.70	\$36.23	
	0	Metric (SM) 0.00	\$0.00	\$0.00	
CONCRETE PAVEMENT (9")	53	614,319.57^{SY}	\$22,258,099.70	\$36.23	271.2
SURFACING TOTAL INDEX					303.0
509-00000 To 509-00000	3	English (LB) 956,843.00	\$1,661,435.90	\$1.74	
	0	Metric (KG) 0.00	\$0.00	\$0.00	
STRUCTURAL STEEL	3	956,843.00^{LB}	\$1,661,435.90	\$1.74	203.5
601-01022 To 601-01022 601-01030 To 601-01060 601-03030 To 601-05064	107	English (CY) 75,846.93	\$31,397,545.05	\$413.96	
	0	Metric (CM) 0.00	\$0.00	\$0.00	
STRUCTURAL CONCRETE	107	75,846.93^{CY}	\$31,397,545.05	\$413.96	190.5
602-00000 To 602-00000 602-00020 To 602-00020	99	English (LB) 13,626,454.00	\$11,314,216.62	\$0.83	
	0	Metric (KG) 0.00	\$0.00	\$0.00	
REINFORCING STEEL	99	13,626,454.00^{LB}	\$11,314,216.62	\$0.83	202.5

STRUCTURAL TOTAL INDEX 195.5

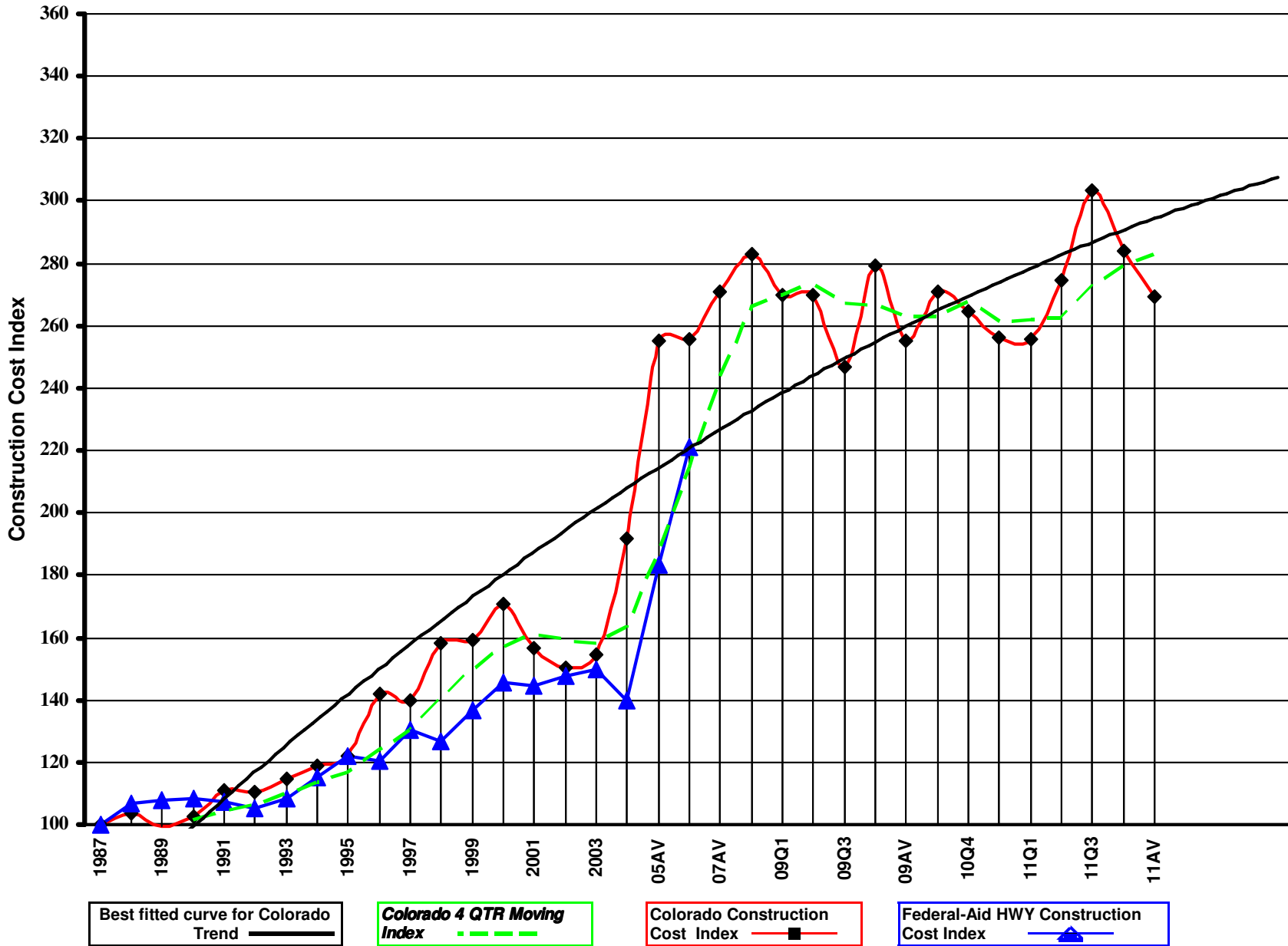
COMPOSITE INDEX = 269.4

Sum of the 6 categories cost = \$240,549,320.95

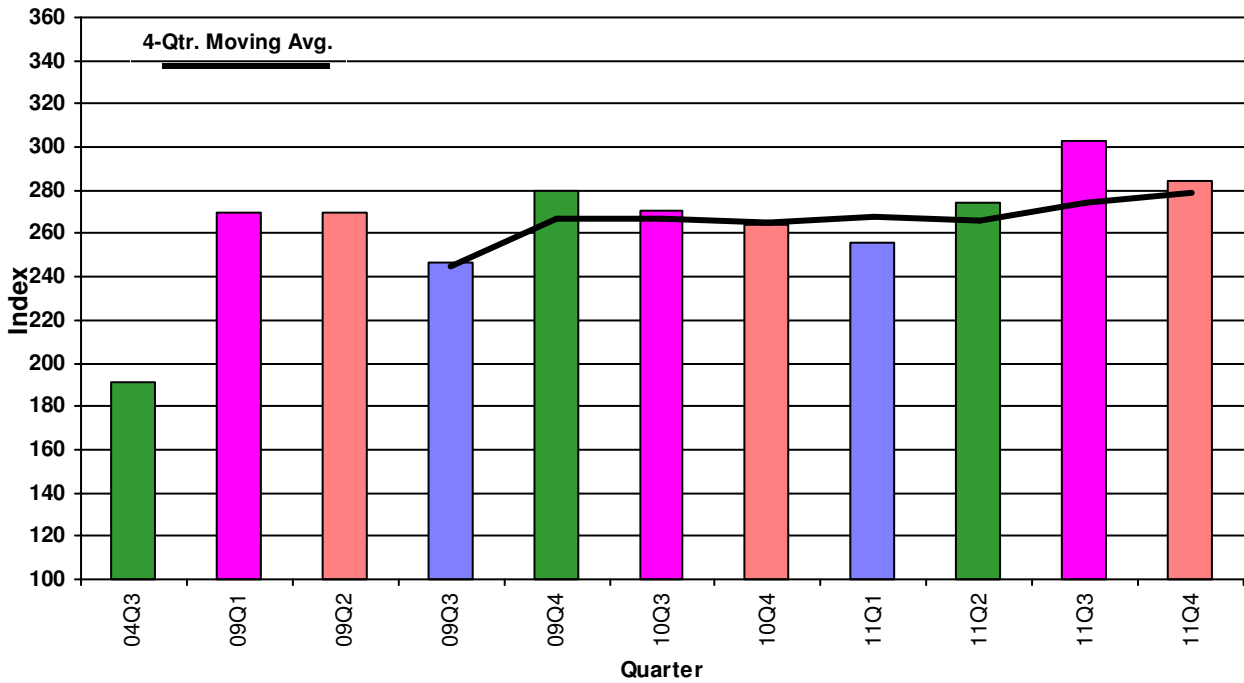
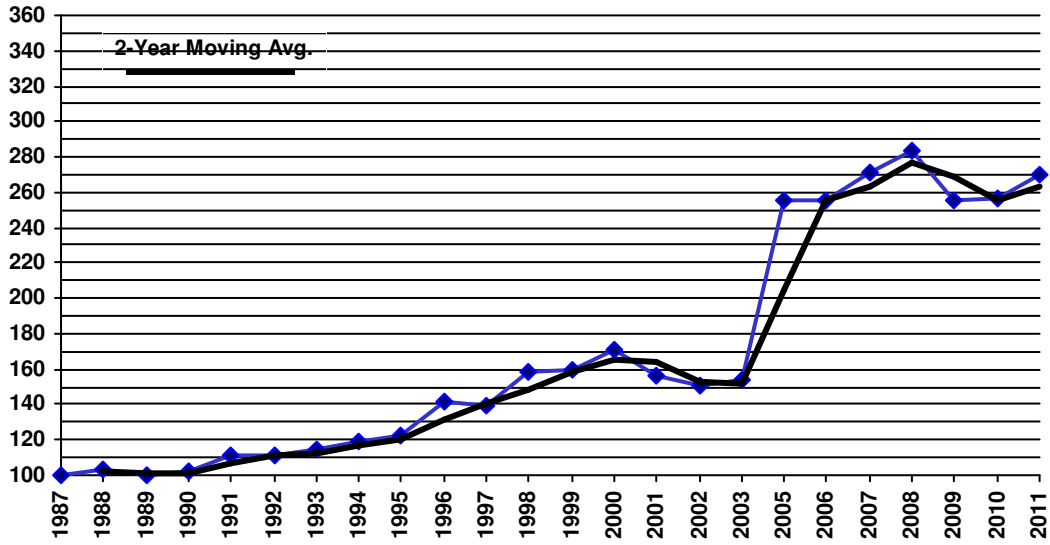
HBP Unit Price per CY = \$140.68

Concrete Pavement Unit Price per CY = \$144.93

Colorado Highway Construction Cost Index Graph and Tabulations (1987 Base Year)



Colorado Construction Cost Index



YEAR	QTR.	Earthwork		Asph. Pavement		Concrete Pavement		Surfacing Index	Structural Concrete		Reinforcing Steel		Structural Steel		Structural Index	Composite Index
		Bid Price	Index	Bid Price	Index	Bid Price	Index		Bid Price	Index	Bid Price	Index	Bid Price	Index		
1987	1987	\$2.47	100.0	\$23.17	100.0	\$13.36	100.0	100.0	\$217.32	100.0	\$0.41	100.0	\$0.85	100.0	100.0	100.0
1988	1988	\$2.92	118.1	\$23.88	103.0	\$13.84	103.6	103.1	\$195.02	89.7	\$0.45	110.7	\$0.89	104.1	96.7	103.7
1989	1989	\$2.57	103.9	\$23.67	102.2	\$11.65	87.2	100.6	\$199.41	91.8	\$0.40	97.8	\$0.88	103.5	95.3	99.6
1990	1990	\$2.78	112.5	\$23.98	103.5	\$15.09	113.0	104.5	\$190.86	87.8	\$0.37	90.8	\$0.99	116.0	94.1	102.7
1991	1991	\$3.31	133.8	\$26.25	113.3	\$16.03	120.0	114.0	\$195.43	89.9	\$0.38	93.1	\$0.89	104.4	93.5	111.2
1992	1992	\$2.77	112.3	\$26.20	113.1	\$23.82	178.3	119.8	\$216.87	99.8	\$0.36	87.9	\$0.71	82.8	94.0	110.7
1993	1993	\$3.25	131.4	\$27.74	119.7	\$16.75	125.4	121.3	\$212.43	97.7	\$0.37	90.1	\$0.79	93.0	95.3	114.7
1994	1994	\$3.56	144.2	\$28.40	122.6	\$18.78	140.6	124.4	\$219.94	101.2	\$0.37	89.7	\$0.67	78.8	94.4	118.8
1995	1995	\$3.41	138.1	\$30.25	130.5	\$17.82	133.4	130.8	\$211.29	97.2	\$0.39	94.0	\$0.90	105.5	98.3	122.3
1996	1996	\$4.46	180.5	\$32.73	141.3	\$19.22	143.9	141.5	\$265.98	122.4	\$0.43	105.1	\$1.09	128.5	120.2	141.7
1997	1997	\$4.24	171.7	\$32.92	142.1	\$21.39	160.1	143.9	\$246.29	113.3	\$0.45	110.8	\$1.01	117.9	113.8	139.6
1998	1998	\$4.89	198.0	\$35.72	154.2	\$26.54	198.7	158.7	\$283.01	130.2	\$0.50	122.0	(\$1.00)	-1.0	128.2	158.1
1999	1999	\$4.94	199.8	\$35.23	152.0	\$22.78	170.5	153.9	\$310.56	142.9	\$0.54	132.0	\$1.41	165.3	145.3	159.2
2000	2000	\$5.25	212.6	\$40.02	173.0	\$20.56	153.9	170.8	\$346.82	159.6	\$0.47	115.2	\$1.18	138.8	146.8	170.7
2001	2001	\$4.19	169.5	\$38.67	167.4	\$17.45	130.6	163.2	\$303.22	139.5	\$0.50	120.9	\$1.29	151.5	138.4	156.8
2002	2002	\$3.74	151.2	\$37.99	164.7	\$24.81	185.7	166.2	\$285.35	131.3	\$0.50	121.3	\$0.78	91.9	121.4	150.1
2003	2003	\$4.42	178.9	\$38.23	165.7	\$20.91	156.6	164.1	\$289.44	133.2	\$0.55	133.4	\$0.72	84.7	123.4	154.4
2004	04Q3	\$4.38	177.1	\$43.33	188.0	\$27.59	206.5	189.0	\$350.71	161.4	\$0.91	221.3	\$2.70	316.3	204.4	191.6
2005	05AV	\$12.90	522.0	\$44.17	191.8	\$30.69	229.8	194.7	\$508.77	234.1	\$0.96	232.9	\$1.01	118.4	210.4	255.2
2006	06AV	\$7.54	305.1	\$59.61	258.4	\$33.79	253.0	256.8	\$430.27	198.0	\$0.92	223.5	\$2.62	306.9	225.1	255.5
2007	07AV	\$7.18	290.5	\$66.58	287.9	\$37.76	282.7	286.9	\$546.29	251.4	\$1.01	245.7	\$1.40	163.6	232.4	271.1
2008	08AV	\$9.04	365.7	\$69.72	302.2	\$29.93	224.1	293.0	\$467.51	215.1	\$1.05	255.8	\$1.65	193.6	218.6	283.0
2009	09Q1	\$5.87	237.5	\$67.74	292.9	\$78.51	587.7	322.7	\$425.40	195.8	\$0.85	207.2	\$1.55	181.7	195.1	269.8
2009	09Q2	\$7.91	320.1	\$65.25	282.2	\$37.17	278.3	281.3	\$379.98	174.9	\$0.70	169.7	\$3.46	405.9	220.8	269.7
2009	09Q3	\$6.11	247.5	\$62.94	272.0	\$31.44	235.4	267.9	\$450.29	207.2	\$0.90	218.9	\$1.77	207.8	209.6	246.8
2009	09Q4	\$6.13	248.1	\$77.79	336.4	\$38.79	290.4	331.1	\$352.16	162.1	\$0.54	132.7	\$3.50	410.2	206.8	279.5
2009	09AV	\$6.63	268.3	\$66.49	287.5	\$44.12	330.2	291.4	\$399.34	183.8	\$0.75	183.8	\$1.58	185.5	184.1	255.1
2010	10Q3	\$9.30	376.3	\$59.49	257.1	\$48.22	361.0	267.4	\$428.29	197.1	\$0.91	222.9	\$0.00	0.0	203.3	270.8
2010	10Q4	\$8.52	344.7	\$64.69	279.6	\$32.63	244.3	275.6	\$395.91	182.2	\$0.76	186.3	\$0.00	0.0	183.2	264.5
2010	10AV	\$7.86	318.3	\$61.92	267.9	\$29.19	218.5	262.2	\$430.84	198.3	\$0.78	190.6	\$2.27	266.4	210.6	256.2
2011	11Q1	\$7.17	290.4	\$69.28	300.9	\$28.75	215.2	290.4	\$365.40	168.2	\$0.76	186.5	\$1.55	181.7	174.4	255.4
2011	11Q2	\$7.37	298.2	\$69.89	302.2	\$41.46	310.3	302.5	\$419.00	192.8	\$0.83	203.2	\$0.00	0.0	195.3	274.3
2011	11Q3	\$9.51	385.0	\$78.57	340.0	\$27.00	202.1	325.0	\$408.18	187.8	\$0.93	226.6	\$0.00	0.0	197.2	303.2
2011	11Q4	\$6.67	270.0	\$74.69	323.1	\$56.69	424.4	332.8	\$444.85	204.7	\$0.87	212.2	\$1.75	205.6	206.3	284.0
2011	11AV	\$7.31	295.9	\$71.05	307.4	\$36.23	271.2	303.0	\$413.96	190.5	\$0.83	202.5	\$1.74	203.5	195.5	269.4

[View Annual/Qtr Graphs](#)

[View Tabular Report](#)

Comments:

This Colorado Construction Cost Index is composed of six indicator items and based on bid prices relative to the unit prices of 1987 (unit index=100). The Index varies due to type and location of projects in addition to overall economic conditions.

Earthwork (Excavation and Embankment):

The average price was \$6.67 a cu. yd. which is down \$2.84 from the previous quarter. Two projects in Region 2 and Region 3, respectively, with extremely large quantities of earthwork contributed to this decline.

Hot Mix Asphalt:

The average price was \$74.69 a ton which is down \$3.88 from the previous quarter. In the 4th quarter oil prices decreased which resulted in lower fuel and asphalt cement prices.

Concrete Pavement:

The average price was \$56.69 a sq. yd. which is up \$29.69 per sq. yd. from the previous quarter. Several projects with relatively small quantities resulted in the higher 4th quarter price.

Structural Steel:

The average price was \$1.75 a lb. Insignificant amount of Structural Steel was bid previous quarter.

Structural Concrete:

The average price was \$444.85 a cu. yd. which is up \$36.67 from the previous quarter. Several bridge projects in the Denver Metro area contributed to the increase.

Reinforcing Steel:

The average price was \$0.87 a lb. which is down \$.06 a lb. from the previous quarter. Several projects with large quantities contributed to the price incline.