

# STATE OF COLORADO

---

DEPARTMENT OF TRANSPORTATION



DEPARTMENT OF TRANSPORTATION

**Contracts and Market Analysis Branch**

4201 East Arkansas Avenue, 4<sup>th</sup> Floor

Denver, Colorado 80222

(303) 757-9736

June 2010

## COLORADO CONSTRUCTION COST INDEX REPORT Calendar Year 2010 First Quarter

Prepared by  
Gus Bieber  
Engineering Estimates and Market Analysis Unit of  
Contracts and Market Analysis Branch

Prepared for  
Pamela Hutton, Chief Engineer

# STATE OF COLORADO



**DEPARTMENT OF TRANSPORTATION**  
**Contracts and Market Analysis Branch**  
4201 East Arkansas Avenue, 4<sup>th</sup> Floor  
Denver, Colorado 80222  
(303) 757-9736

## SUMMARY

### CONSTRUCTION COST INDEX FOR SELECTED HIGHWAY CONSTRUCTION ITEMS

1<sup>st</sup> QUARTER ENDING March 31, 2010

Index for this quarter.....	298.3
Index for last quarter.....	279.5
Point change from last quarter.....	18.8
Percentage change from last quarter.....	6.7%
Index for same quarter of last year.....	269.8
Point change from same quarter last year.....	28.5
Percentage change from this quarter last year.....	10.56%
4-quarter moving average.....	279.1

Average number of bidders this quarter.....	5.94
Change in number of bidders from last quarter.....	+5.7%

NOTE: All information shown in this publication was assembled using 1987 as the base year.

### Comments:

This Colorado Construction Cost Index is composed of six indicator items and based on bid prices relative to the unit prices of 1987 (unit index=100). The Index varies due to type and location of projects in addition to overall economic conditions.

### Earthwork (Excavation and Embankment):

The average price was \$9.92 a cu. yd. which is up \$6.13 from the previous quarter. Earthwork quantities decreased per project from the previous quarter.

### Hot Mix Asphalt:

The average price was \$64.06 a ton which is down \$13.73 from the previous quarter. Competition continues to remain competitive and AC oil prices have stabilized.

### Concrete Pavement:

The average price was \$57.58 a sq. yd. which is up \$19.06 per sq. yd. from the previous quarter. Concrete pavement quantities decreased per project from the previous quarter.

### Structural Steel:

The average price of Structural Steel was \$2.35 per LB this quarter, which is down \$1.15 per LB from the previous quarter. Quantities per project increased significantly from the previous quarter. Steel prices still remain steady.

### Structural Concrete:

The average price was \$553.84 a cu. yd. which is up \$201.68 from the previous quarter. Quantities per project decreased significantly from the previous quarter.

### Reinforcing Steel:

The average price was \$0.86 a lb which is up \$0.32 from the previous quarter. Quantities per project decreased significantly from the previous quarter.

### ADDITIONAL INFORMATION:

For the first quarter, Earthwork, Hot Mix Asphalt, Concrete Pavement, and Structural Steel category indices showed a decrease. The category indices showing an increase were Structural Concrete, and Reinforcing Steel.

35 projects were bid and awarded this quarter for a total of \$83,061,390.33 By comparison, 49 projects were bid last quarter. The six categories for CCI items totaled \$57,741,110.14, which is 69.5% of the total awarded amount. 9 maintenance contract projects were bid this quarter. No metric, Lump Sum or Design Build projects were bid this quarter.

The competition for projects decreased to 5.70 bidders from 5.94 bidders for each project on average from last quarter.

*Summary Report for all the projects awarded between 1/1/2010 And 3/31/2010*

<i>Project Amount</i>	<i>No. of Projects</i>	<i>No. of Bidders</i>	<i>Total Contract Amt.</i>	<i>Avg. # of Bids</i>
<i>\$0.00 to \$49,999.99</i>	0			
<i>\$50,000.00 to \$99,999.99</i>	2	8	\$139,278.48	4.0
<i>\$100,000.00 to \$249,999.99</i>	3	13	\$427,499.25	4.3
<i>\$250,000.00 to \$499,999.99</i>	7	42	\$2,538,782.33	6.0
<i>\$500,000.00 to \$999,999.99</i>	6	31	\$3,814,380.06	5.2
<i>1,000,000.00 to \$2,499,999.99</i>	7	38	\$11,534,865.89	5.4
<i>2,500,000.00 to \$4,999,999.99</i>	4	23	\$15,115,693.60	5.8
<i>5,000,000.00 to \$9,999,999.99</i>	5	33	\$32,318,119.25	6.6
<i>10,000,000.00 to \$19,999,999.99</i>	1	5	\$17,172,771.47	5.0
<i>20,000,000.00 to \$49,499,999.99</i>	0			
<i>50,000,000.00 or Greater</i>	0			

<b>Total</b>	<b>35</b>	<b>193</b>	<b>\$83,061,390.33</b>
--------------	-----------	------------	------------------------

The number of bidders on all projects awards during this period averaged 5.51 bidders per contract.  
 Average cost per project is \$1,783,264.33 (avg. cci 1994=118.8 / avg. cci 1998 =158.1) in 1994 dollars.

**CCI ITEMS USED FROM 1/1/2010 TO 3/1/2010**

ITEM CODE	# OF ITEM	QUANTITY	PRICE	UNIT PRICE	INDEX
203-00000 To 203-00080 203-00082 To 203-00210 203-00400 To 203-00500 203-01020 To 203-01030 209-00000 To 209-00050	32	English (CY) 246,054.80	\$2,440,619.38	\$9.92	
	0	Metric (CM) 0.00	\$0.00	\$0.00	
<b>UNCLASSIFIED EXCAV (CIP)</b>	<b>32</b>	<b>246,054.80<sup>CY</sup></b>	<b>\$2,440,619.38</b>	<b>\$9.92</b>	<b>401.5</b>
403-00720, 403-01000, 403-01010, 403-02000, 403-09121 To 403-09500 403-31300 To 403 36447 403-91401 To 403-95353 411-03100 To 411-03355 411-10010 To 411-90010 (Gal/Lit) Gallon & Liter are converted to Ton	98	English (TON) 777,908.08	\$49,829,412.40	\$64.06	
	0	Metric (MT) 0.00	\$0.00	\$0.00	
<b>HOT MIX ASPHALT (H.A)</b>	<b>98</b>	<b>777,908.08<sup>T</sup></b>	<b>\$49,829,412.40</b>	<b>\$64.06</b>	<b>277.0</b>
412-00000 To 412-00050 412-00700 To 412-01352 412-03000 To 412-03000	14	English (SY) 61,746.20	\$3,571,773.40	\$57.85	
	0	Metric (SM) 0.00	\$0.00	\$0.00	
<b>CONCRETE PAVEMENT (9")</b>	<b>14</b>	<b>61,746.20<sup>SY</sup></b>	<b>\$3,571,773.40</b>	<b>\$57.85</b>	<b>433.0</b>

**SURFACING TOTAL INDEX 292.6**

509-00000 To 509-00000	2	English (LB) 19,100.00	\$44,885.00	\$2.35	
	0	Metric (KG) 0.00	\$0.00	\$0.00	
<b>STRUCTURAL STEEL</b>	<b>2</b>	<b>19,100.00<sup>LB</sup></b>	<b>\$44,885.00</b>	<b>\$2.35</b>	<b>275.4</b>
601-01022 To 601-01022 601-01030 To 601-01080 601-03030 To 601-05084	20	English (CY) 2,818.80	\$1,561,171.96	\$553.84	
	0	Metric (CM) 0.00	\$0.00	\$0.00	
<b>STRUCTURAL CONCRETE</b>	<b>20</b>	<b>2,818.80<sup>CY</sup></b>	<b>\$1,561,171.96</b>	<b>\$553.84</b>	<b>254.9</b>
602-00000 To 602-00000 602-00020 To 602-00020	18	English (LB) 342,654.00	\$293,248.00	\$0.86	
	0	Metric (KG) 0.00	\$0.00	\$0.00	
<b>REINFORCING STEEL</b>	<b>18</b>	<b>342,654.00<sup>LB</sup></b>	<b>\$293,248.00</b>	<b>\$0.86</b>	<b>208.7</b>

**STRUCTURAL TOTAL INDEX 250.1**

**COMPOSITE INDEX = 298.3**

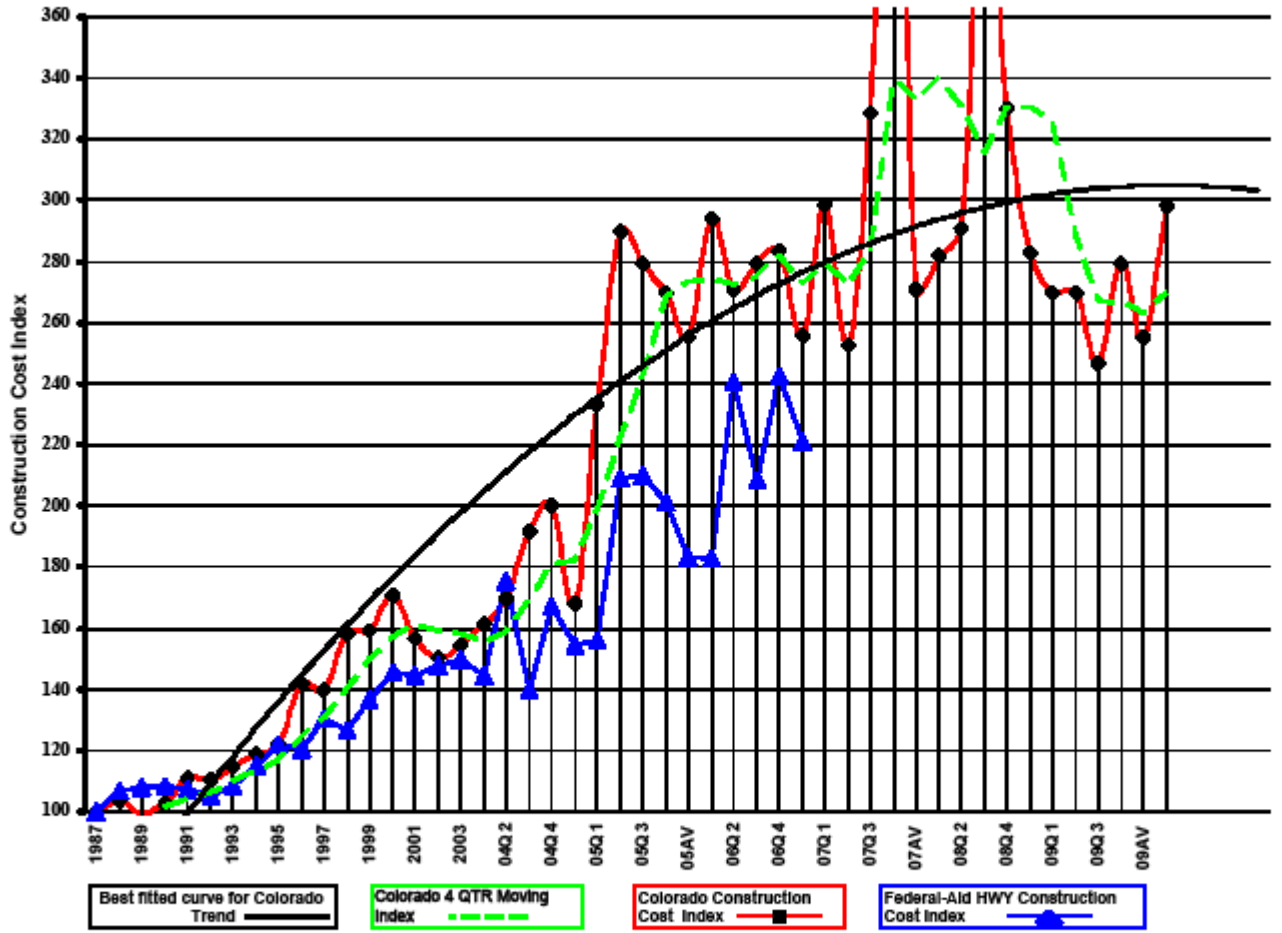
Sum of the 6 categories cost = \$57,741,110.14

HBP Unit Price per CY = \$126.83

Concrete Pavement Unit Price per CY = \$231.38

YEAR	QTR.	Earthwork Bid Price	Earthwork Index	Asph. Pavement Bid Price	Asph. Pavement Index	Concrete Pavement Bid Price	Concrete Pavement Index	Surfacing Index	Structural Concrete Bid Price	Structural Concrete Index	Reinforcing Steel Bid Price	Reinforcing Steel Index	Structural Steel Bid Price	Structural Steel Index	Structural Index	Composite Index
1987	1987	\$2.47	100.0	\$23.17	100.0	\$13.36	100.0	100.0	\$217.32	100.0	\$0.41	100.0	\$0.85	100.0	100.0	100.0
1988	1988	\$2.92	118.1	\$23.88	103.0	\$13.84	103.6	103.1	\$195.02	89.7	\$0.45	110.7	\$0.89	104.1	96.7	103.7
1989	1989	\$2.57	103.9	\$23.67	102.2	\$11.65	87.2	100.6	\$199.41	91.8	\$0.40	97.8	\$0.88	103.5	95.3	99.6
1990	1990	\$2.78	112.5	\$23.98	103.5	\$15.09	113.0	104.5	\$190.86	87.8	\$0.37	90.8	\$0.99	116.0	94.1	102.7
1991	1991	\$3.31	133.8	\$26.25	113.3	\$16.03	120.0	114.0	\$195.43	89.9	\$0.38	93.1	\$0.89	104.4	93.5	111.2
1992	1992	\$2.77	112.3	\$26.20	113.1	\$23.82	178.3	119.8	\$216.87	99.8	\$0.36	87.9	\$0.71	82.8	94.0	110.7
1993	1993	\$3.25	131.4	\$27.74	119.7	\$16.75	125.4	121.3	\$212.43	97.7	\$0.37	90.1	\$0.79	93.0	95.3	114.7
1994	1994	\$3.56	144.2	\$28.40	122.6	\$18.78	140.6	124.4	\$219.94	101.2	\$0.37	89.7	\$0.67	78.8	94.4	118.8
1995	1995	\$3.41	138.1	\$30.25	130.5	\$17.82	133.4	130.8	\$211.29	97.2	\$0.39	94.0	\$0.90	105.5	96.3	122.3
1996	1996	\$4.46	180.5	\$32.73	141.3	\$19.22	143.9	141.5	\$265.98	122.4	\$0.43	105.1	\$1.09	128.5	120.2	141.7
1997	1997	\$4.24	171.7	\$32.92	142.1	\$21.39	160.1	143.9	\$246.29	113.3	\$0.45	110.8	\$1.01	117.9	113.8	139.6
1998	1998	\$4.89	198.0	\$35.72	154.2	\$26.54	198.7	158.7	\$283.01	130.2	\$0.50	122.0	(\$1.00)	-1.0	128.2	158.1
1999	1999	\$4.94	199.8	\$35.23	152.0	\$22.78	170.5	153.9	\$310.56	142.9	\$0.54	132.0	\$1.41	165.3	145.3	159.2
2000	2000	\$5.25	212.6	\$40.02	173.0	\$20.56	153.9	170.8	\$346.82	159.6	\$0.47	115.2	\$1.18	138.8	146.8	170.7
2001	2001	\$4.19	169.5	\$38.67	167.4	\$17.45	130.6	163.2	\$303.22	139.5	\$0.50	120.9	\$1.29	151.5	138.4	156.8
2002	2002	\$3.74	151.2	\$37.99	164.7	\$24.81	185.7	166.2	\$285.35	131.3	\$0.50	121.3	\$0.78	91.9	121.4	150.1
2003	2003	\$4.42	178.9	\$38.23	165.7	\$20.91	156.6	164.1	\$289.44	133.2	\$0.55	133.4	\$0.72	84.7	123.4	154.4
2004	04Q1	\$3.94	159.7	\$36.03	156.1	\$31.13	233.0	163.5	\$297.69	137.0	\$0.71	172.4	\$1.78	208.9	158.4	161.3
2004	04Q2	\$5.84	236.6	\$35.97	155.9	\$28.42	212.8	161.2	\$297.92	137.1	\$0.78	190.1	\$1.13	132.9	146.5	169.6
2004	04Q3	\$4.38	177.1	\$43.33	188.0	\$27.59	206.5	189.0	\$350.71	161.4	\$0.91	221.3	\$2.70	316.3	204.4	191.6
2004	04Q4	\$7.39	298.9	\$41.45	179.2	\$40.01	299.5	191.3	\$305.55	140.6	\$0.74	179.9	\$0.00	0.0	150.1	200.3
2004	04AV	\$4.60	186.1	\$37.43	162.1	\$28.96	216.8	167.2	\$323.50	148.9	\$0.83	202.7	\$1.26	147.6	159.0	168.0
2005	05Q1	\$9.43	381.7	\$41.99	182.3	\$60.10	449.9	208.8	\$443.32	204.0	\$0.91	222.2	\$1.10	128.9	192.2	233.3
2005	05Q2	\$16.07	650.5	\$44.19	192.4	\$28.54	213.6	193.1	\$540.39	248.7	\$0.98	240.0	\$0.00	0.0	246.6	289.8
2005	05Q3	\$9.74	394.2	\$57.71	249.5	\$34.29	256.7	249.9	\$491.90	226.4	\$0.97	237.3	\$3.50	410.2	265.9	279.3
2005	05Q4	\$12.52	506.9	\$52.73	228.4	\$56.18	420.5	247.4	\$407.63	187.6	\$0.81	198.2	\$0.97	113.7	174.6	269.7
2005	05AV	\$12.90	522.0	\$44.17	191.8	\$30.69	229.8	194.7	\$508.77	234.1	\$0.96	232.9	\$1.01	118.4	210.4	255.2
2006	06Q1	\$11.48	464.6	\$54.99	238.8	\$47.80	357.8	249.7	\$566.84	260.9	\$1.22	296.5	\$0.00	0.0	269.5	293.8
2006	06Q2	\$10.68	432.4	\$58.85	255.1	\$28.40	212.6	249.7	\$426.20	196.1	\$1.11	271.4	\$1.93	226.1	216.8	270.9
2006	06Q3	\$7.03	284.7	\$74.90	323.5	\$26.79	200.6	310.6	\$439.17	202.1	\$0.91	222.3	\$0.00	0.0	207.0	279.4
2006	06Q4	\$6.20	251.1	\$67.40	291.4	\$45.03	337.1	295.6	\$387.04	178.1	\$0.79	191.9	\$5.70	667.6	280.3	283.4
2006	06AV	\$7.54	305.1	\$59.61	258.4	\$33.79	253.0	256.8	\$430.27	198.0	\$0.92	223.5	\$2.62	306.9	225.1	255.5
2007	07Q1	\$9.68	391.6	\$63.57	274.9	\$54.18	405.6	287.8	\$564.69	259.9	\$1.41	343.2	\$1.75	205.1	264.8	298.6
2007	07Q2	\$5.99	242.5	\$67.30	290.9	\$38.03	284.7	289.9	\$468.58	215.6	\$0.89	217.7	\$0.85	99.8	192.5	252.5
2007	07Q3	\$10.32	417.6	\$81.60	352.9	\$28.59	214.0	338.0	\$588.03	270.6	\$1.06	258.9	\$2.00	234.4	261.0	328.3
2007	07Q4	\$17.76	719.0	\$103.64	448.2	\$98.13	734.6	476.8	\$563.39	259.3	\$1.02	249.2	\$5.90	691.1	345.1	478.4
2007	07AV	\$7.18	290.5	\$66.58	287.9	\$37.76	282.7	286.9	\$546.29	251.4	\$1.01	245.7	\$1.40	163.6	232.4	271.1
2008	08Q1	\$10.52	425.9	\$64.79	280.6	\$48.08	359.9	287.9	\$334.70	154.0	\$0.83	202.1	\$0.00	0.0	165.7	281.7
2008	08Q2	\$9.35	378.4	\$74.05	321.5	\$29.27	219.1	309.3	\$436.09	200.7	\$1.03	251.6	\$1.65	193.6	209.1	290.9
2008	08Q3	\$12.12	490.4	\$96.63	418.0	\$53.31	399.0	415.2	\$832.10	382.9	\$1.48	359.8	\$0.00	0.0	377.3	419.2
2008	08Q4	\$5.80	234.8	\$100.36	434.4	\$31.60	236.6	412.9	\$430.70	198.2	\$1.11	270.0	\$0.00	0.0	215.6	330.1
2008	08AV	\$9.04	365.7	\$69.72	302.2	\$29.93	224.1	293.0	\$467.51	215.1	\$1.05	255.8	\$1.65	193.6	218.6	283.0
2009	09Q1	\$5.87	237.5	\$67.74	292.9	\$78.51	587.7	322.7	\$425.40	195.8	\$0.85	207.2	\$1.55	181.7	195.1	269.8
2009	09Q2	\$7.91	320.1	\$65.25	282.2	\$37.17	278.3	281.3	\$379.98	174.9	\$0.70	169.7	\$3.46	405.9	220.8	269.7
2009	09Q3	\$6.11	247.5	\$62.94	272.0	\$31.44	235.4	267.9	\$450.29	207.2	\$0.90	218.9	\$1.77	207.8	209.6	246.8
2009	09Q4	\$6.13	248.1	\$77.79	336.4	\$38.79	290.4	331.1	\$352.16	162.1	\$0.54	132.7	\$3.50	410.2	206.8	279.5
2009	09AV	\$6.63	268.3	\$66.49	287.5	\$44.12	330.2	291.4	\$399.34	183.8	\$0.75	183.8	\$1.58	185.5	184.1	255.1
2010	10Q1	\$9.92	401.5	\$64.06	277.0	\$57.85	433.0	292.6	\$553.84	254.9	\$0.86	208.7	\$2.35	275.4	250.1	298.3

Colorado Highway Construction Cost Index Graph and Tabulations (1987 Base Year)



### Colorado Construction Cost Index

