

STATE OF COLORADO



DEPARTMENT OF TRANSPORTATION
Contracts and Market Analysis Branch
4201 East Arkansas Avenue, 4th Floor
Denver, Colorado 80222
(303) 757-9736

February 26, 2010

COLORADO CONSTRUCTION COST INDEX REPORT Calendar year 2009 Fourth Quarter

Prepared by
Gus Bieber
Engineering Estimates and Market Analysis Unit of
Contracts and Market Analysis Branch

Prepared for
Pamela Hutton, Chief Engineer

STATE OF COLORADO



DEPARTMENT OF TRANSPORTATION
Contracts and Market Analysis Branch
4201 East Arkansas Avenue, 4th Floor
Denver, Colorado 80222
(303) 757-9736

SUMMARY

CONSTRUCTION COST INDEX FOR SELECTED HIGHWAY CONSTRUCTION ITEMS

4th QUARTER ENDING December 31, 2009

Index for 2009 (entire year)	255.1
Index for 2008 (entire year)	283.0
Point change	-27.9
Percent change	-9.9%

Index for this quarter.....	279.5
Index for last quarter.....	246.8
Point change from last quarter.....	32.7
Percentage change from last quarter.....	13.2%
Index for same quarter of last year.....	330.1
Point change from same quarter last year.....	-50.6
Percentage change from this quarter last year.....	-15.3%
4-quarter moving average.....	266.5

Average number of bidders this quarter.....	6.42
Change in number of bidders from last quarter.....	+8.1%

NOTE: All information shown in this publication was assembled using 1987 as the base year.

Summary Report for all the projects awarded betwee 10/1/2009 And 12/31/2009

<i>Project Amount</i>	<i>No. of Projects</i>	<i>No. of Bidders</i>	<i>Total Contract Amt.</i>	<i>Avg. # of Bids</i>
<i>\$0.00 to \$49,999.99</i>	0			
<i>\$50,000.00 to \$99,999.99</i>	0			
<i>\$100,000.00 to \$249,999.99</i>	2	11	\$324,889.30	5.5
<i>\$250,000.00 to \$499,999.99</i>	3	20	\$1,050,387.68	6.7
<i>\$500,000.00 to \$999,999.99</i>	1	4	\$664,318.00	4.0
<i>1,000,000.00 to \$2,499,999.99</i>	2	10	\$2,239,693.00	5.0
<i>2,500,000.00 to \$4,999,999.99</i>	2	13	\$5,783,025.85	6.5
<i>5,000,000.00 to \$9,999,999.99</i>	1	12	\$8,544,947.29	12.0
<i>10,000,000.00 to \$19,999,999.99</i>	0			
<i>20,000,000.00 to \$49,499,999.99</i>	1	7	\$23,723,233.20	7.0
<i>50,000,000.00 or Greater</i>	0			

Total	12	77	\$42,330,494.32
--------------	-----------	-----------	------------------------

Summary Report for all the projects awarded betwee 1/1/2009 And 12/31/2009

<i>Project Amount</i>	<i>No. of Projects</i>	<i>No. of Bidders</i>	<i>Total Contract Amt.</i>	<i>Avg. # of Bids</i>
<i>\$0.00 to \$49,999.99</i>	1	5	\$41,205.54	5.0
<i>\$50,000.00 to \$99,999.99</i>	2	12	\$174,418.10	6.0
<i>\$100,000.00 to \$249,999.99</i>	21	106	\$4,068,123.44	5.0
<i>\$250,000.00 to \$499,999.99</i>	27	155	\$10,374,255.29	5.7
<i>\$500,000.00 to \$999,999.99</i>	21	121	\$15,104,524.49	5.8
<i>1,000,000.00 to \$2,499,999.99</i>	26	145	\$43,028,589.68	5.6
<i>2,500,000.00 to \$4,999,999.99</i>	18	116	\$63,109,895.71	6.4
<i>5,000,000.00 to \$9,999,999.99</i>	14	105	\$104,089,485.86	7.5
<i>10,000,000.00 to \$19,999,999.99</i>	3	17	\$37,018,468.64	5.7
<i>20,000,000.00 to \$49,499,999.99</i>	2	14	\$46,061,024.02	7.0
<i>50,000,000.00 or Greater</i>	0			

Total	135	796	\$323,069,990.77
--------------	------------	------------	-------------------------

CCI ITEMS USED FROM 10/1/2009 TO 12/31/2009

ITEM CODE	# OF ITEM	QUANTITY	PRICE	UNIT PRICE	INDEX
203-00000 To 203-00060 203-00062 To 203-00210 203-00400 To 203-00500	6	English (CY) 157,069.00	\$962,743.91	\$6.13	
203-01020 To 203-01030 209-00000 To 209-00050	0	Metric (CM) 0.00	\$0.00	\$0.00	
UNCLASSIFIED EXCAV (CIP)	6	157,069.00^{CY}	\$962,743.91	\$6.13	248.1
403-00720, 403-01000, 403-01010, 403-02000, 403-09121 To 403-09500 403-31300 To 403 36447 403-91401 To 403-95353 411-03100 To 411-03355 411-10010 To 411-90010 (Gal/Lit) Gallon & Liter are converted to Ton	26	English (TON) 89,702.34	\$6,978,355.77	\$77.79	
	0	Metric (MT) 0.00	\$0.00	\$0.00	
HOT MIX ASPHALT (H A)	26	89,702.34 T	\$6,978,355.77	\$77.79	336.4
412-00000 To 412-00050 412-00700 To 412-01352 412-03000 To 412-03000	6	English (SY) 73,569.02	\$2,853,581.13	\$38.79	
	0	Metric (SM) 0.00	\$0.00	\$0.00	
CONCRETE PAVEMENT (9")	6	73,569.02^{SY}	\$2,853,581.13	\$38.79	290.4
SURFACING TOTAL INDEX					331.1
509-00000 To 509-00000	1	English (LB) 3,300.00	\$11,550.00	\$3.50	
	0	Metric (KG) 0.00	\$0.00	\$0.00	
STRUCTURAL STEEL	1	3,300.00^{LB}	\$11,550.00	\$3.50	410.2
601-01022 To 601-01022 601-01030 To 601-01060 601-03030 To 601-05064	8	English (CY) 8,355.30	\$2,942,366.59	\$352.16	
	0	Metric (CM) 0.00	\$0.00	\$0.00	
STRUCTURAL CONCRETE	8	8,355.30^{CY}	\$2,942,366.59	\$352.16	162.1
602-00000 To 602-00000 602-00020 To 602-00020	9	English (LB) 1,346,714.00	\$732,504.81	\$0.54	
	0	Metric (KG) 0.00	\$0.00	\$0.00	
REINFORCING STEEL	9	1,346,714.00^{LB}	\$732,504.81	\$0.54	132.7
STRUCTURAL TOTAL INDEX					206.8
COMPOSITE INDEX					279.5

Sum of the 6 categories cost = \$14,481,102.21

HBP Unit Price per CY = \$154.03

Concrete Pavement Unit Price per CY = \$155.15

Friday, February 26, 2010

CCI ITEMS USED FROM 1/1/2009 TO 12/31/2009

ITEM CODE	# OF ITEM	QUANTITY	PRICE	UNIT PRICE	INDEX
203-00000 To 203-00060 203-00062 To 203-00210 203-00400 To 203-00500	113	English (CY) 2,313,422.00	\$15,337,317.53	\$6.63	
203-01020 To 203-01030 209-00000 To 209-00050	0	Metric (CM) 0.00	\$0.00	\$0.00	
UNCLASSIFIED EXCAV (CIP)	113	2,313,422.00^{CY}	\$15,337,317.53	\$6.63	268.3
403-00720, 403-01000, 403-01010, 403-02000, 403-09121 To 403-09500 403-31300 To 403 36447 403-91401 To 403-95353 411-03100 To 411-03355 411-10010 To 411-90010 (Gal/Lit) Gallon & Liter are converted to Ton	322	English (TON) 1,356,009.01	\$90,154,884.92	\$66.49	
	0	Metric (MT) 0.00	\$0.00	\$0.00	
HOT MIX ASPHALT (H A)	322	1,356,009.01 T	\$90,154,884.92	\$66.49	287.5
412-00000 To 412-00050 412-00700 To 412-01352 412-03000 To 412-03000	40	English (SY) 1,040,533.46	\$45,903,563.89	\$44.12	
	0	Metric (SM) 0.00	\$0.00	\$0.00	
CONCRETE PAVEMENT (9")	40	1,040,533.46^{SY}	\$45,903,563.89	\$44.12	330.2
SURFACING TOTAL INDEX					291.4
509-00000 To 509-00000	7	English (LB) 1,423,118.00	\$2,252,638.98	\$1.58	
	0	Metric (KG) 0.00	\$0.00	\$0.00	
STRUCTURAL STEEL	7	1,423,118.00^{LB}	\$2,252,638.98	\$1.58	185.5
601-01022 To 601-01022 601-01030 To 601-01060 601-03030 To 601-05064	61	English (CY) 33,356.10	\$13,320,302.72	\$399.34	
	0	Metric (CM) 0.00	\$0.00	\$0.00	
STRUCTURAL CONCRETE	61	33,356.10^{CY}	\$13,320,302.72	\$399.34	183.8
602-00000 To 602-00000 602-00020 To 602-00020	70	English (LB) 6,626,563.60	\$4,994,487.47	\$0.75	
	0	Metric (KG) 0.00	\$0.00	\$0.00	
REINFORCING STEEL	70	6,626,563.60^{LB}	\$4,994,487.47	\$0.75	183.8

STRUCTURAL TOTAL INDEX 184.1

COMPOSITE INDEX = 255.1

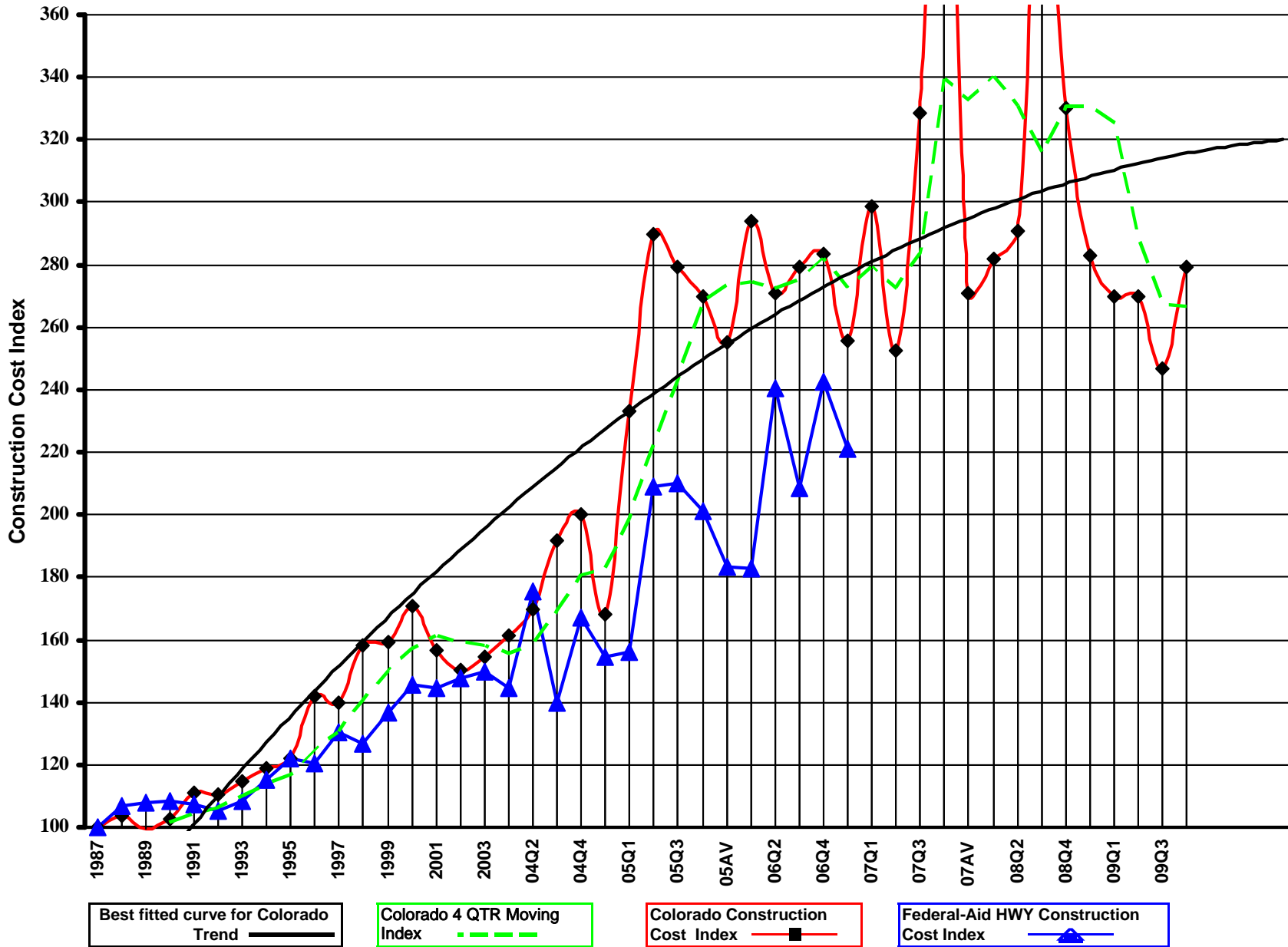
Sum of the 6 categories cost = \$171,963,195.51

HBP Unit Price per CY = \$131.64

Concrete Pavement Unit Price per CY = \$176.46

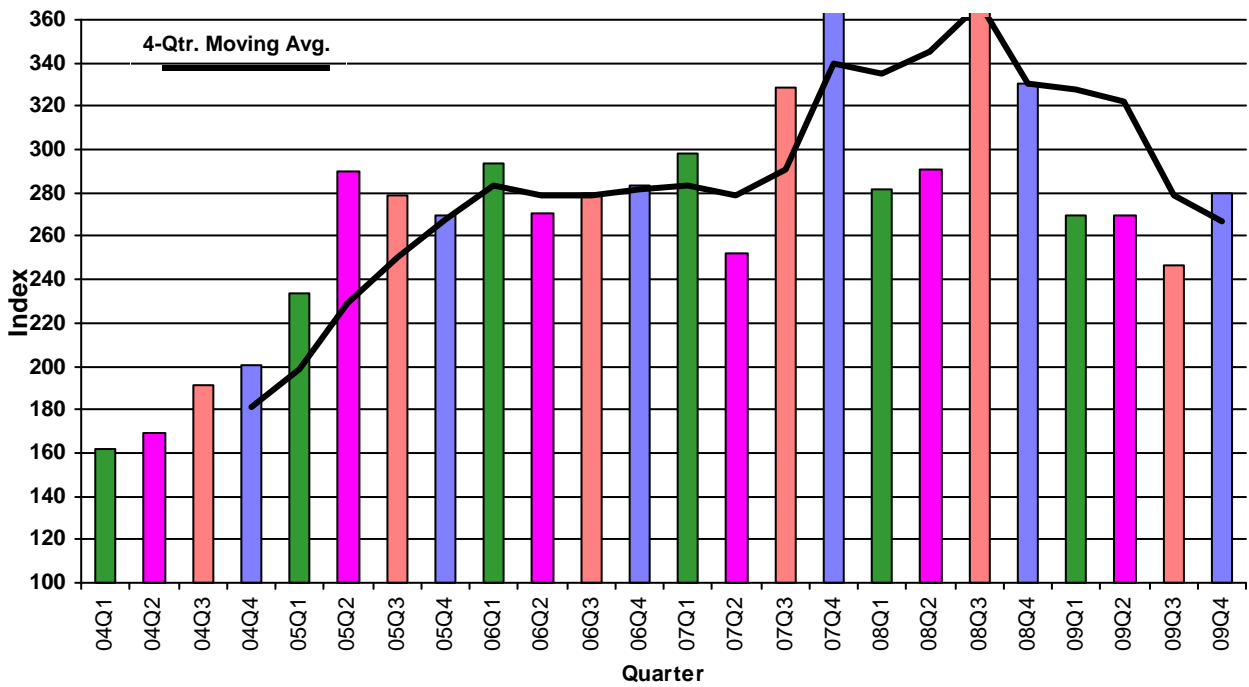
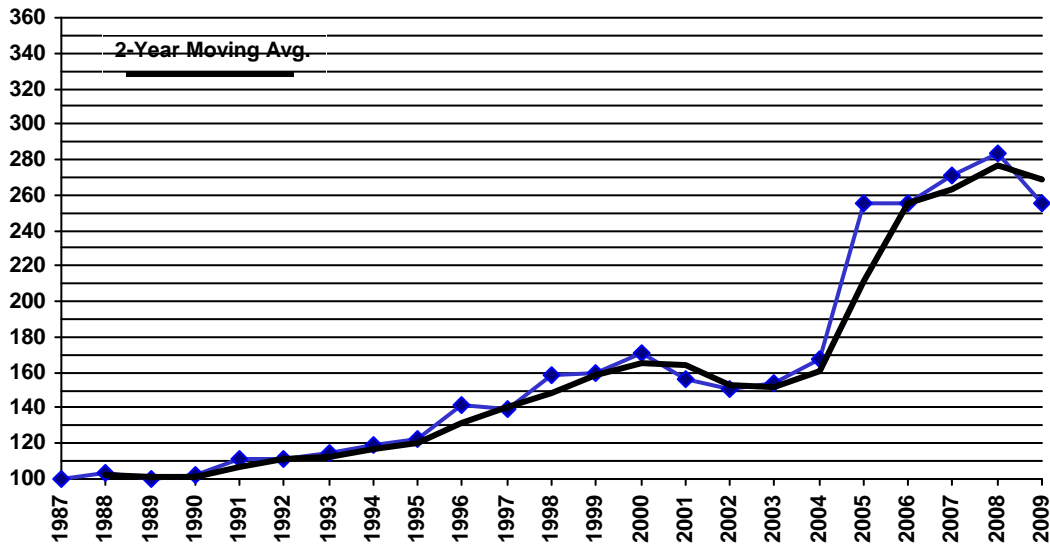
Friday, February 26, 2010

Colorado Highway Construction Cost Index Graph and Tabulations (1987 Base Year)



YEAR	QTR.	Earthwork		Asph. Pavement		Concrete Pavement		Surfacing Index	Structural Concrete		Reinforcing Steel		Structural Steel		Structural Index	Composite Index	
		Bid Price	Index	Bid Price	Index	Bid Price	Index		Bid Price	Index	Bid Price	Index	Bid Price	Index			
1987	1987	\$2.47	100.0	\$23.17	100.0	\$13.36	100.0	100.0	\$217.32	100.0	\$0.41	100.0	\$0.85	100.0	100.0	100.0	
1988	1988	\$2.92	118.1	\$23.88	103.0	\$13.84	103.6	103.1	\$195.02	89.7	\$0.45	110.7	\$0.89	104.1	96.7	103.7	
1989	1989	\$2.57	103.9	\$23.67	102.2	\$11.65	87.2	100.6	\$199.41	91.8	\$0.40	97.8	\$0.88	103.5	95.3	99.6	
1990	1990	\$2.78	112.5	\$23.98	103.5	\$15.09	113.0	104.5	\$190.86	87.8	\$0.37	90.8	\$0.99	116.0	94.1	102.7	
1991	1991	\$3.31	133.8	\$26.25	113.3	\$16.03	120.0	114.0	\$195.43	89.9	\$0.38	93.1	\$0.89	104.4	93.5	111.2	
1992	1992	\$2.77	112.3	\$26.20	113.1	\$23.82	178.3	119.8	\$216.87	99.8	\$0.36	87.9	\$0.71	82.8	94.0	110.7	
1993	1993	\$3.25	131.4	\$27.74	119.7	\$16.75	125.4	121.3	\$212.43	97.7	\$0.37	90.1	\$0.79	93.0	95.3	114.7	
1994	1994	\$3.56	144.2	\$28.40	122.6	\$18.78	140.6	124.4	\$219.94	101.2	\$0.37	89.7	\$0.67	78.8	94.4	118.8	
1995	1995	\$3.41	138.1	\$30.25	130.5	\$17.82	133.4	130.8	\$211.29	97.2	\$0.39	94.0	\$0.90	105.5	98.3	122.3	
1996	1996	\$4.46	180.5	\$32.73	141.3	\$19.22	143.9	141.5	\$265.98	122.4	\$0.43	105.1	\$1.09	128.5	120.2	141.7	
1997	1997	\$4.24	171.7	\$32.92	142.1	\$21.39	160.1	143.9	\$246.29	113.3	\$0.45	110.8	\$1.01	117.9	113.8	139.6	
1998	1998	\$4.89	198.0	\$35.72	154.2	\$26.54	198.7	158.7	\$283.01	130.2	\$0.50	122.0	(\$1.00)	-1.0	128.2	158.1	
1999	1999	\$4.94	199.8	\$35.23	152.0	\$22.78	170.5	153.9	\$310.56	142.9	\$0.54	132.0	\$1.41	165.3	145.3	159.2	
2000	2000	\$5.25	212.6	\$40.02	173.0	\$20.56	153.9	170.8	\$346.82	159.6	\$0.47	115.2	\$1.18	138.8	146.8	170.7	
2001	2001	\$4.19	169.5	\$38.67	167.4	\$17.45	130.6	163.2	\$303.22	139.5	\$0.50	120.9	\$1.29	151.5	138.4	156.8	
2002	2002	\$3.74	151.2	\$37.99	164.7	\$24.81	185.7	166.2	\$285.35	131.3	\$0.50	121.3	\$0.78	91.9	121.4	150.1	
2003	2003	\$4.42	178.9	\$38.23	165.7	\$20.91	156.6	164.1	\$289.44	133.2	\$0.55	133.4	\$0.72	84.7	123.4	154.4	
2004	04Q1	\$3.94	159.7	\$36.03	156.1	\$31.13	233.0	163.5	\$297.69	137.0	\$0.71	172.4	\$1.78	208.9	158.4	161.3	
2004	04Q2	\$5.84	236.6	\$35.97	155.9	\$28.42	212.8	161.2	\$297.92	137.1	\$0.78	190.1	\$1.13	132.9	146.5	169.6	
2004	04Q3	\$4.38	177.1	\$43.33	188.0	\$27.59	206.5	189.0	\$350.71	161.4	\$0.91	221.3	\$2.70	316.3	204.4	191.6	
2004	04Q4	\$7.39	298.9	\$41.45	179.2	\$40.01	299.5	191.3	\$305.55	140.6	\$0.74	179.9	\$0.00	0.0	150.1	200.3	
2004	04AV	\$4.60	186.1	\$37.43	162.1	\$28.96	216.8	167.2	\$323.50	148.9	\$0.83	202.7	\$1.26	147.6	159.0	168.0	
2005	05Q1	\$9.43	381.7	\$41.99	182.3	\$60.10	449.9	208.8	\$443.32	204.0	\$0.91	222.2	\$1.10	128.9	192.2	233.3	
2005	05Q2	\$16.07	650.5	\$44.19	192.4	\$28.54	213.6	193.1	\$540.39	248.7	\$0.98	240.0	\$0.00	0.0	246.6	289.8	
2005	05Q3	\$9.74	394.2	\$57.71	249.5	\$34.29	256.7	249.9	\$491.90	226.4	\$0.97	237.3	\$3.50	410.2	265.9	279.3	
2005	05Q4	\$12.52	506.9	\$52.73	228.4	\$56.18	420.5	247.4	\$407.63	187.6	\$0.81	198.2	\$0.97	113.7	174.6	269.7	
2005	05AV	\$12.90	522.0	\$44.17	191.8	\$30.69	229.8	194.7	\$508.77	234.1	\$0.96	232.9	\$1.01	118.4	210.4	255.2	
2006	06Q1	\$11.48	464.6	\$54.99	238.8	\$47.80	357.8	249.7	\$566.84	260.9	\$1.22	296.5	\$0.00	0.0	269.5	293.8	
2006	06Q2	\$10.68	432.4	\$58.85	255.1	\$28.40	212.6	249.7	\$426.20	196.1	\$1.11	271.4	\$1.93	226.1	216.8	270.9	
2006	06Q3	\$7.03	284.7	\$74.90	323.5	\$26.79	200.6	310.6	\$439.17	202.1	\$0.91	222.3	\$0.00	0.0	207.0	279.4	
2006	06Q4	\$6.20	251.1	\$67.40	291.4	\$45.03	337.1	295.6	\$387.04	178.1	\$0.79	191.9	\$5.70	667.6	280.3	283.4	
2006	06AV	\$7.54	305.1	\$59.61	258.4	\$33.79	253.0	256.8	\$430.27	198.0	\$0.92	223.5	\$2.62	306.9	225.1	255.5	
2007	07Q1	\$9.68	391.6	\$63.57	274.9	\$54.18	405.6	287.8	\$564.69	259.9	\$1.41	343.2	\$1.75	205.1	264.8	298.6	
2007	07Q2	\$5.99	242.5	\$67.30	290.9	\$38.03	284.7	289.9	\$468.58	215.6	\$0.89	217.7	\$0.85	99.8	192.5	252.5	
2007	07Q3	\$10.32	417.6	\$81.60	352.9	\$28.59	214.0	338.0	\$588.03	270.6	\$1.06	258.9	\$2.00	234.4	261.0	328.3	
2007	07Q4	\$17.76	719.0	\$103.64	448.2	\$98.13	734.6	476.8	\$563.39	259.3	\$1.02	249.2	\$5.90	691.1	345.1	478.4	
2007	07AV	\$7.18	290.5	\$66.58	287.9	\$37.76	282.7	286.9	\$546.29	251.4	\$1.01	245.7	\$1.40	163.6	232.4	271.1	
2008	08Q1	\$10.52	425.9	\$64.79	280.6	\$48.08	359.9	287.9	\$334.70	154.0	\$0.83	202.1	\$0.00	0.0	165.7	281.7	
2008	08Q2	\$9.35	378.4	\$74.05	321.5	\$29.27	219.1	309.3	\$436.09	200.7	\$1.03	251.6	\$1.65	193.6	209.1	290.9	
2008	08Q3	\$12.12	490.4	\$96.63	418.0	\$53.31	399.0	415.2	\$832.10	382.9	\$1.48	359.8	\$0.00	0.0	377.3	419.2	
2008	08Q4	\$5.80	234.8	\$100.36	434.4	\$31.60	236.6	412.9	\$430.70	198.2	\$1.11	270.0	\$0.00	0.0	215.6	330.1	
2008	08AV	\$9.04	365.7	\$69.72	302.2	\$29.93	224.1	293.0	\$467.51	215.1	\$1.05	255.8	\$1.65	193.6	218.6	283.0	
2009	09Q1	\$5.87	237.5	\$67.74	292.9	\$78.51	587.7	322.7	\$425.40	195.8	\$0.85	207.2	\$1.55	181.7	195.1	269.8	
2009	09Q2	\$7.91	320.1	\$65.25	282.2	\$37.17	278.3	281.3	\$379.98	174.9	\$0.70	169.7	\$3.46	405.9	220.8	269.7	
2009	09Q3	\$6.11	247.5	\$62.94	272.0	\$31.44	235.4	267.9	\$450.29	207.2	\$0.90	218.9	\$1.77	207.8	209.6	246.8	
2009	09Q4	\$6.13	248.1	\$77.79	336.4	\$38.79	290.4	331.1	\$352.16	162.1	\$0.54	132.7	\$3.50	410.2	206.8	279.5	
2009	09AV	\$6.63	268.3	\$66.49	287.5	\$44.12	330.2	291.4	\$399.34	183.8	\$0.75	183.8	\$1.58	185.5	184.1	255.1	
View Annual/Qtr							View Tabular Report										

Colorado Construction Cost Index



Comments:

This Colorado Construction Cost Index is composed of six indicator items and based on bid prices relative to the unit prices of 1987 (unit index=100). The Index varies due to type and location of projects in addition to overall economic conditions.

Earthwork (Excavation and Embankment):

The average price was \$6.13 a cu. yd. which is up \$0.02 from the previous quarter. Earthwork quantities remained consistent from the previous quarter.

Hot Mix Asphalt:

The average price was \$77.79 a ton which is up \$14.85 from the previous quarter. Asphalt pavement quantities decreased per project from the previous quarter.

Concrete Pavement:

The average price was \$38.79 a sq. yd. which is up \$7.35 per sq. yd. from the previous quarter. Concrete pavement quantities decreased per project from the previous quarter.

Structural Steel:

The average price of Structural Steel was \$3.50 a LB this quarter, which is up \$1.27 a LB from the previous quarter. Quantities per project decreased significantly from the previous quarter. Steel prices still remain steady.

Structural Concrete:

The average price was \$352.16 a cu. yd. which is down \$98.13 from the previous quarter. Competition between contractors continues to keep price down. Quantities per project increased significantly from the previous quarter.

Reinforcing Steel:

The average price was \$0.54 a lb which is down \$0.36 from the previous quarter. Quantities per project increased significantly from the previous quarter.

ADDITIONAL INFORMATION:

For the fourth quarter, Earthwork, Hot Mix Asphalt, and Concrete Pavement category indices showed an increase. The category indices showing a decrease were Structural Steel, Structural Concrete, and Reinforcing Steel.

12 projects were bid and awarded this quarter for a total of \$42,330,494.32 By comparison, 49 projects were bid last quarter. The six categories for CCI items totaled \$14,481,102.21, which is 34.2% of the total awarded amount. 2 maintenance contract projects were bid this quarter. No metric, Lump Sum or Design Build projects were bid this quarter.

The competition for projects increased to 6.42 bidders from 5.94 bidders for each project on average from last quarter.