

STATE OF COLORADO



DEPARTMENT OF TRANSPORTATION
Contracts and Market Analysis Branch
4201 East Arkansas Avenue, 4th Floor
Denver, Colorado 80222
(303) 757-9736

August 8, 2005

COLORADO CONSTRUCTION COST INDEX REPORT Calendar year 2005 Second Quarter

Prepared by
Gus Bieber
Engineering Estimates and Market Analysis Unit of
Contracts and Market Analysis Branch

Prepared for
Craig Siracusa, Chief Engineer

STATE OF COLORADO



DEPARTMENT OF TRANSPORTATION
Contracts and Market Analysis Branch
4201 East Arkansas Avenue, 4th Floor
Denver, Colorado 80222
(303) 757-9736

SUMMARY

CONSTRUCTION COST INDEX FOR SELECTED HIGHWAY CONSTRUCTION ITEMS

2nd QUARTER ENDING June 30, 2005

Index for this quarter.....	289.8
Index for last quarter.....	233.3
Point change from last quarter.....	+56.5
Percentage change from last quarter.....	+24.2%
Index for same quarter of last year.....	169.6
Point change from same quarter last year.....	+120.2
Percentage change from this quarter last year.....	+70.9%

Average number of bidders this quarter.....	3.42
Change in number of bidders from last quarter.....	-11.86%

NOTE: All information shown in this publication was assembled using 1987 as the base year.

Summary Report for all the projects awarded betwee 4/1/2005 And 6/30/2005

<i>Project Amount</i>	<i>No. of Projects</i>	<i>No. of Bidders</i>	<i>Total Contract Amt.</i>	<i>Avg. # of Bids</i>
<i>\$0.00 to \$49,999.99</i>	4	15	\$115,732.80	3.8
<i>\$50,000.00 to \$99,999.99</i>	1	4	\$84,192.50	4.0
<i>\$100,000.00 to \$249,999.99</i>	5	18	\$887,028.73	3.6
<i>\$250,000.00 to \$499,999.99</i>	11	42	\$4,125,386.18	3.8
<i>\$500,000.00 to \$999,999.99</i>	11	28	\$7,534,550.68	2.5
<i>1,000,000.00 to \$2,499,999.99</i>	10	41	\$16,632,256.73	4.1
<i>2,500,000.00 to \$4,999,999.99</i>	4	12	\$17,132,843.83	3.0
<i>5,000,000.00 to \$9,999,999.99</i>	3	10	\$19,558,667.71	3.3
<i>10,000,000.00 to \$19,999,999.99</i>	3	8	\$37,175,791.22	2.7
<i>20,000,000.00 to \$49,499,999.99</i>	0			
<i>50,000,000.00 or Greater</i>	0			

Total	52	178	\$103,246,450.38
--------------	-----------	------------	-------------------------

The number of bidders on all projects awards during this period averaged **3.42** bidders per contract.
 Average cost per project is **\$1,985,508.66**

CCI ITEMS USED FROM 4/1/2005 TO 6/30/2005

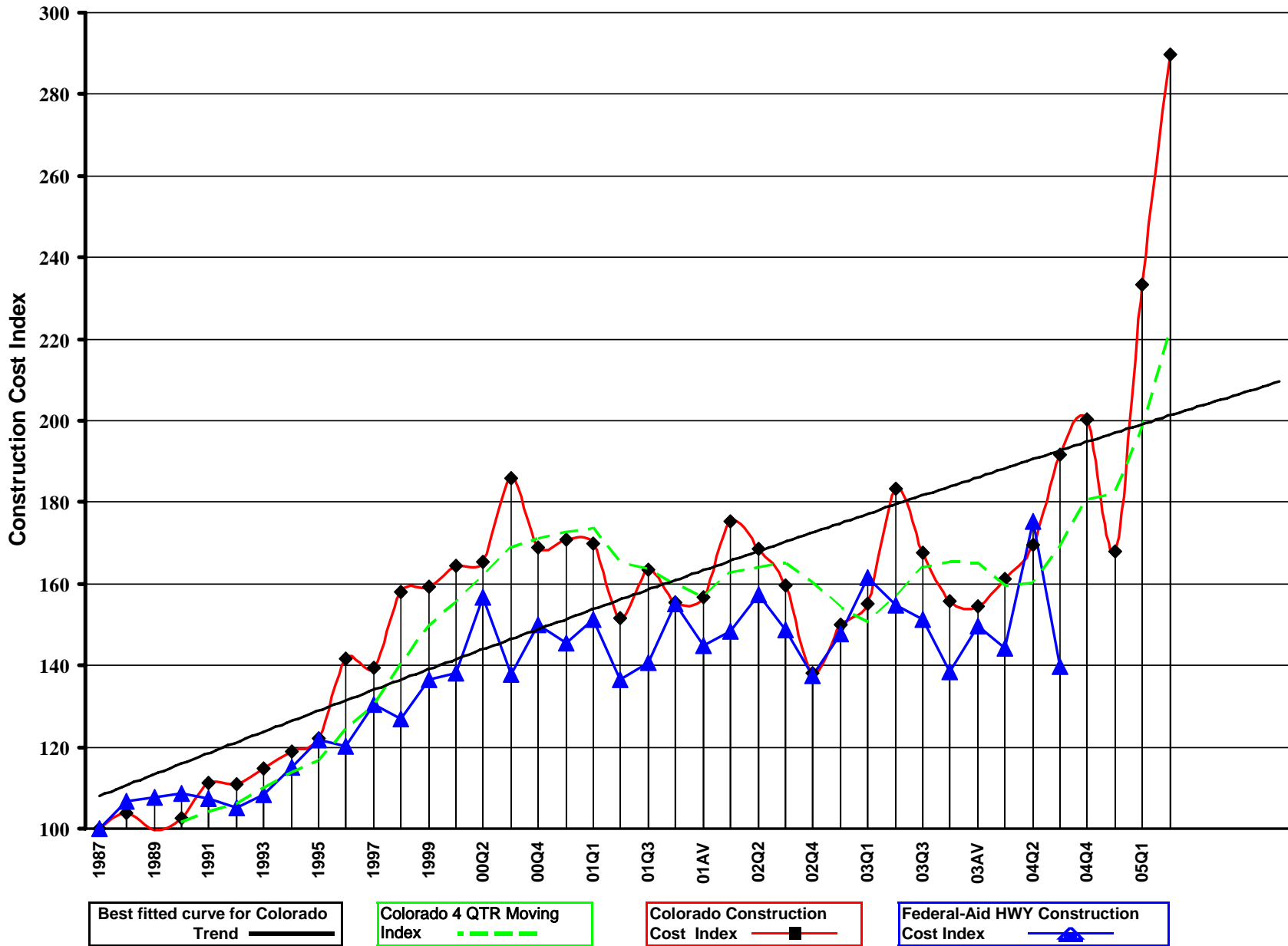
ITEM CODE	# OF ITEM	QUANTITY	PRICE	UNIT PRICE	INDEX
203-00000 To 203-00060 203-00062 To 203-00210 203-00400 To 203-00500	30	English (CY) 455,868.00	\$7,870,323.54	\$17.26	
203-01020 To 203-01030 209-00000 To 209-00050	2	Metric (CM) 68,102.00	\$888,338.00	\$13.04	
UNCLASSIFIED EXCAV (CIP)	32	544,945.42^{CY}	\$8,758,661.54	\$16.07	650.5
403-00720, 403-01000, 403-01010, 403-02000, 403-09121 To 403-09500 403-31300 To 403 36447 403-91401 To 403-95353 411-03100 To 411-03355 411-10010 To 411-90010 (Gal/Lit) Gallon & Liter are converted to Ton	85	English (TON) 318,319.57	\$14,065,113.27	\$44.19	
	0	Metric (MT) 0.00	\$0.00	\$0.00	
HOT BIT. PAVEMENT (H A)	85	318,319.57 T	\$14,065,113.27	\$44.19	192.4
412-00000 To 412-00050 412-00700 To 412-01352 412-03000 To 412-03000	11	English (SY) 296,767.60	\$7,980,877.50	\$26.89	
	4	Metric (SM) 77,937.31	\$3,147,336.10	\$40.38	
CONCRETE PAVEMENT (9")	15	389,979.85^{SY}	\$11,128,213.60	\$28.54	213.6
SURFACING TOTAL INDEX					193.1
509-00000 To 509-00000	0	English (LB) 0.00	\$0.00	\$0.00	
	0	Metric (KG) 0.00	\$0.00	\$0.00	
STRUCTURAL STEEL	0	0.00^{LB}	\$0.00	\$0.00	0.0
601-01022 To 601-01022 601-01030 To 601-01060 601-03030 To 601-05064	14	English (CY) 10,415.82	\$5,520,671.02	\$530.03	
	6	Metric (CM) 1,467.00	\$1,144,800.00	\$780.37	
STRUCTURAL CONCRETE	20	12,334.66^{CY}	\$6,665,471.02	\$540.39	248.7
602-00000 To 602-00000 602-00020 To 602-00020	15	English (LB) 1,894,057.00	\$1,906,633.85	\$1.01	
	2	Metric (KG) 196,299.00	\$383,070.20	\$1.95	
REINFORCING STEEL	17	2,326,896.30^{LB}	\$2,289,704.05	\$0.98	240.0
STRUCTURAL TOTAL INDEX					246.6
COMPOSITE INDEX =					289.8

Sum of the 6 categories cost = \$42,907,163.48

HBP Unit Price per CY = \$87.49

Concrete Pavement Unit Price per CY = \$114.14

Colorado Highway Construction Cost Index Graph and Tabulations (1987 Base Year)



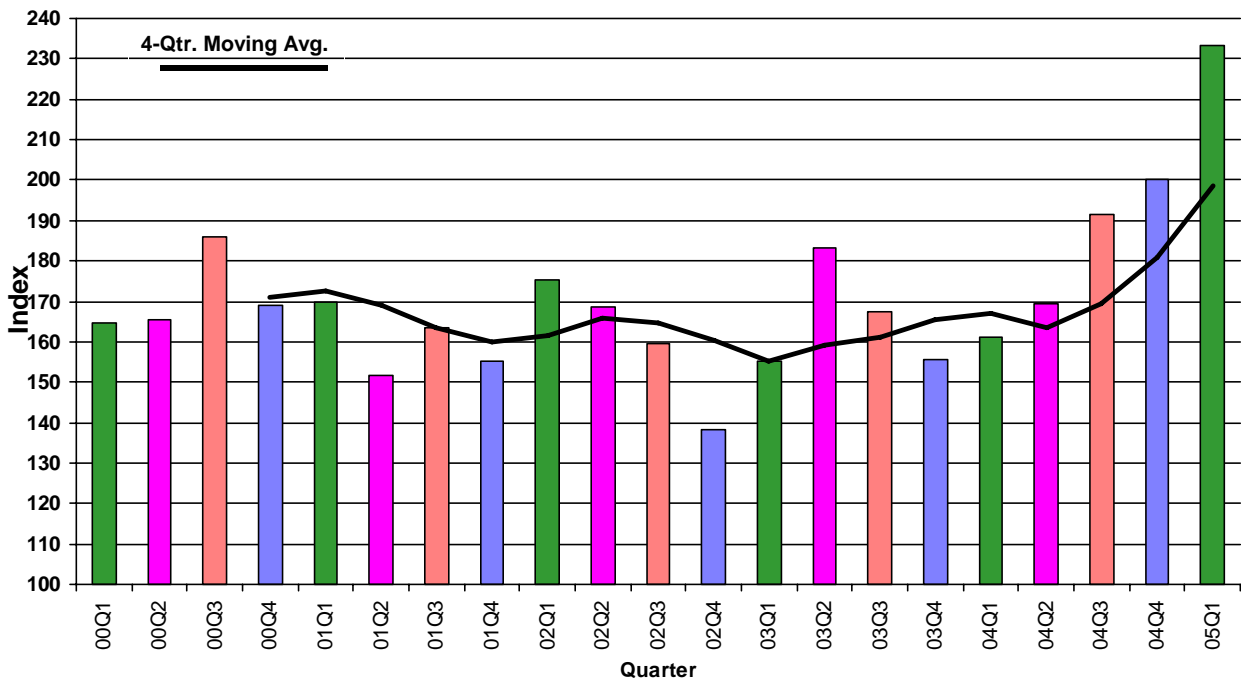
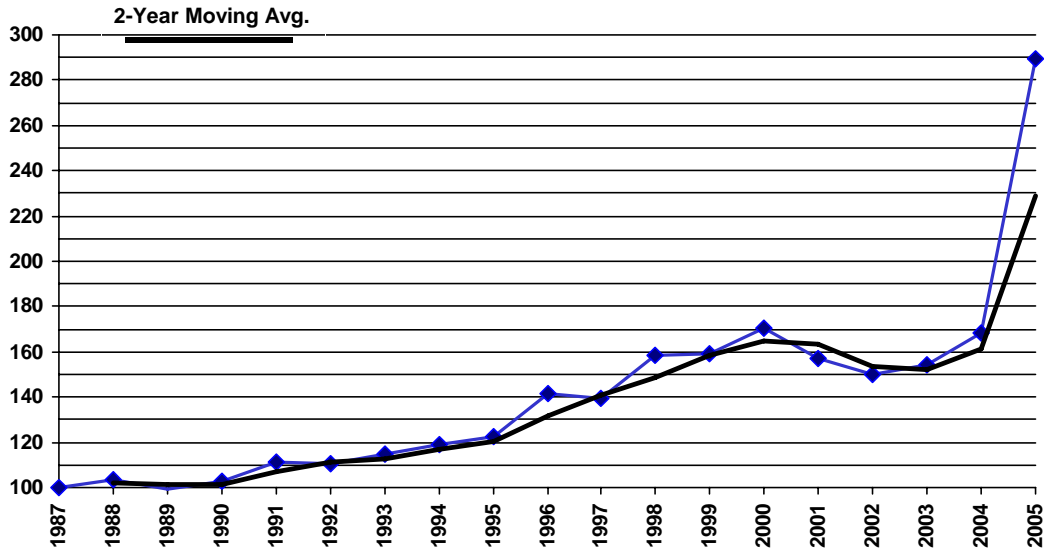
Colorado Highway Construction Cost Index Graph and Tabulations (1987 Base Year)

YEAR	QTR.	Earthwork		Asph. Pavement		Concrete Pavement		Surfacing Index	Structural Concrete		Reinforcing Steel		Structural Steel		Structural Index	Composite Index
		Bid Price	Index	Bid Price	Index	Bid Price	Index		Bid Price	Index	Bid Price	Index	Bid Price	Index		
1987	1987	\$2.47	100.0	\$23.17	100.0	\$13.36	100.0	100.0	\$217.32	100.0	\$0.41	100.0	\$0.85	100.0	100.0	100.0
1988	1988	\$2.92	118.1	\$23.88	103.0	\$13.84	103.6	103.1	\$195.02	89.7	\$0.45	110.7	\$0.89	104.1	96.7	103.7
1989	1989	\$2.57	103.9	\$23.67	102.2	\$11.65	87.2	100.6	\$199.41	91.8	\$0.40	97.8	\$0.88	103.5	95.3	99.6
1990	1990	\$2.78	112.5	\$23.98	103.5	\$15.09	113.0	104.5	\$190.86	87.8	\$0.37	90.8	\$0.99	116.0	94.1	102.7
1991	1991	\$3.31	133.8	\$26.25	113.3	\$16.03	120.0	114.0	\$195.43	89.9	\$0.38	93.1	\$0.89	104.4	93.5	111.2
1992	1992	\$2.77	112.3	\$26.20	113.1	\$23.82	178.3	119.8	\$216.87	99.8	\$0.36	87.9	\$0.71	82.8	94.0	110.7
1993	1993	\$3.25	131.4	\$27.74	119.7	\$16.75	125.4	121.3	\$212.43	97.7	\$0.37	90.1	\$0.79	93.0	95.3	114.7
1994	1994	\$3.56	144.2	\$28.40	122.6	\$18.78	140.6	124.4	\$219.94	101.2	\$0.37	89.7	\$0.67	78.8	94.4	118.8
1995	1995	\$3.41	138.1	\$30.25	130.5	\$17.82	133.4	130.8	\$211.29	97.2	\$0.39	94.0	\$0.90	105.5	98.3	122.3
1996	1996	\$4.46	180.5	\$32.73	141.3	\$19.22	143.9	141.5	\$265.98	122.4	\$0.43	105.1	\$1.09	128.5	120.2	141.7
1997	1997	\$4.24	171.7	\$32.92	142.1	\$21.39	160.1	143.9	\$246.29	113.3	\$0.45	110.8	\$1.01	117.9	113.8	139.6
1998	1998	\$4.89	198.0	\$35.72	154.2	\$26.54	198.7	158.7	\$283.01	130.2	\$0.50	122.0	(\$1.00)	-1.0	128.2	158.1
1999	1999	\$4.94	199.8	\$35.23	152.0	\$22.78	170.5	153.9	\$310.56	142.9	\$0.54	132.0	\$1.41	165.3	145.3	159.2
2000	00Q1	\$5.11	206.9	\$36.84	159.0	\$21.73	162.7	159.4	\$341.22	157.0	\$0.45	110.2	(\$1.00)	-1.0	145.7	164.5
2000	00Q2	\$4.41	178.5	\$40.71	175.7	\$11.84	88.6	166.8	\$374.75	172.5	\$0.47	114.7	\$1.25	146.2	155.9	165.5
2000	00Q3	\$6.42	259.7	\$43.57	188.0	\$22.69	169.8	186.2	\$355.44	163.6	\$0.47	114.0	\$0.96	111.9	143.5	185.8
2000	00Q4	\$4.77	193.0	\$38.42	166.0	\$43.65	326.8	182.4	\$288.39	132.7	\$0.51	123.3	\$1.16	136.3	131.6	168.9
2000	00AV	\$5.25	212.6	\$40.02	173.0	\$20.56	153.9	170.8	\$346.82	159.6	\$0.47	115.2	\$1.18	138.8	146.8	170.7
2001	01Q1	\$4.14	167.6	\$40.40	175.5	\$37.17	278.2	185.0	\$311.48	143.3	\$0.51	123.8	\$0.00	0.0	138.6	170.0
2001	01Q2	\$4.78	193.6	\$35.62	154.0	\$13.66	102.3	148.5	\$282.89	130.2	\$0.50	122.6	\$0.00	0.0	128.3	151.5
2001	01Q3	\$4.29	173.6	\$41.20	177.9	\$20.63	154.5	175.4	\$297.55	136.9	\$0.50	120.8	\$1.29	151.5	136.8	163.4
2001	01Q4	\$3.13	126.6	\$34.33	147.6	\$47.93	358.8	169.8	\$335.74	154.5	\$0.45	110.2	\$0.00	0.0	143.7	155.3
2001	01AV	\$4.19	169.5	\$38.67	167.4	\$17.45	130.6	163.2	\$303.22	139.5	\$0.50	120.9	\$1.29	151.5	138.4	156.8
2002	02Q1	\$6.25	252.9	\$37.53	163.1	\$31.12	233.0	169.3	\$293.38	135.0	\$0.53	129.6	\$0.00	0.0	133.7	175.4
2002	02Q2	\$5.69	230.3	\$39.67	171.5	\$28.33	212.1	175.4	\$294.41	135.5	\$0.50	121.3	\$0.70	82.4	121.9	168.6
2002	02Q3	\$4.42	178.8	\$34.98	151.4	\$25.51	190.9	155.1	\$299.12	137.7	\$0.49	120.5	\$2.11	247.3	156.6	159.6
2002	02Q4	\$2.31	93.3	\$38.71	167.5	\$21.26	159.2	166.2	\$257.37	118.4	\$0.49	120.7	\$0.81	95.0	114.1	138.1
2002	02AV	\$3.74	151.2	\$37.99	164.7	\$24.81	185.7	166.2	\$285.35	131.3	\$0.50	121.3	\$0.78	91.9	121.4	150.1
2003	03Q1	\$4.23	171.2	\$36.48	158.2	\$24.92	186.6	160.4	\$283.25	130.4	\$0.57	137.9	\$0.00	0.0	132.2	155.2
2003	03Q2	\$10.00	404.8	\$40.35	174.9	\$43.68	327.0	189.9	\$327.84	150.9	\$0.62	151.9	\$0.31	36.3	127.8	183.2
2003	03Q3	\$4.64	187.9	\$41.05	177.5	\$18.89	141.4	173.5	\$336.84	155.0	\$0.58	140.5	\$1.05	123.1	145.7	167.6
2003	03Q4	\$3.85	155.7	\$40.10	173.5	\$19.51	146.1	170.3	\$267.39	123.1	\$0.51	125.0	\$0.00	0.0	123.5	155.7
2003	03AV	\$4.42	178.9	\$38.23	165.7	\$20.91	156.6	164.1	\$289.44	133.2	\$0.55	133.4	\$0.72	84.7	123.4	154.4
2004	04Q1	\$3.94	159.7	\$36.03	156.1	\$31.13	233.0	163.5	\$297.69	137.0	\$0.71	172.4	\$1.78	208.9	158.4	161.3
2004	04Q2	\$5.84	236.6	\$35.97	155.9	\$28.42	212.8	161.2	\$297.92	137.1	\$0.78	190.1	\$1.13	132.9	146.5	169.6
2004	04Q3	\$4.38	177.1	\$43.33	188.0	\$27.59	206.5	189.0	\$350.71	161.4	\$0.91	221.3	\$2.70	316.3	204.4	191.6
2004	04Q4	\$7.39	298.9	\$41.45	179.2	\$40.01	299.5	191.3	\$305.55	140.6	\$0.74	179.9	\$0.00	0.0	150.1	200.3
2004	04AV	\$4.60	186.1	\$37.43	162.1	\$28.96	216.8	167.2	\$323.50	148.9	\$0.83	202.7	\$1.26	147.6	159.0	168.0
2005	05Q1	\$9.43	381.7	\$41.99	182.3	\$60.10	449.9	208.8	\$443.32	204.0	\$0.91	222.2	\$1.10	128.9	192.2	233.3
2005	Q2	\$16.07	650.5	\$44.19	192.4	\$28.54	213.6	193.1	\$540.39	248.7	\$0.98	240.0	\$0.00	0.0	246.6	289.8

[View Annual/Qtr](#)

[View Tabular Report](#)

Colorado Construction Cost Index



Comments:

This Colorado Construction Cost Index is composed of six indicator items and based on bid prices relative to the unit prices of 1987 (unit index=100). The Index varies due to type and location of projects in addition overall economic conditions.

Earthwork (Excavation and Embankment):

The average price was \$16.07 a cu. yd. which is up \$6.64 from the previous quarter. The current quarter had a large excavation project on highway 160, near Wolf Creek pass (mountainous terrain) which included 193,474 cu. yd. of excavation at a cost of \$25.75 per cy.yd.

Hot Bituminous Pavement:

The average price was \$44.19 a ton which is up \$2.20 from the previous quarter. Higher energy and material costs continue to contributed to this higher bid price.

Concrete Pavement:

The average price was \$28.54 sq. yd. which is down \$31.56 from the previous quarter. The previous quarter was represented with small quantity concrete projects which resulted in higher overall cost. The current price is comparable to average cost of \$28.96 for the 2004 year.

Structural Steel:

The current quarter had no structural steel.

Structural Concrete:

The average price was \$540.39 a cu. yd. which is up \$97.07 from the previous quarter. The current quarter included 3523 cu. yd. of bridge concrete bid at \$700 per cy. yd. for construction of the new Maroon Creek Bridge, a segmental structure in Aspen. This resulted in higher average costs for the quarter.

Reinforcing Steel:

The average price was \$0.98 a lb which is up \$0.07 a lb from the previous quarter. The current quarter included higher costs for large quantities of reinforcing steel for construction of the new Maroon Creek Bridge, segmental structure on SH 82 in Aspen. This resulted in higher costs for the quarter.

ADDITIONAL INFORMATION:

For the 2nd quarter, the category indices showing an increase were Earthwork, Structural Concrete, Hot Bituminous Pavement and Reinforcing Steel. The category index showing a decrease was Concrete Pavement.

52 projects were bid and awarded this quarter for a total of \$103,246,450.38. By comparison, 64 projects were bid last quarter. The six categories for CCI items totaled \$42,907,163.48 which is 41.5% of total awarded amount. 17 maintenance contract projects were bid this quarter. One metric project was bid this quarter. No Design/Build or Lump Sum projects were bid this quarter. The competition for projects decreased to 3.42 bidders from 3.88 bidders for each project on average.