

STATE OF COLORADO



DEPARTMENT OF TRANSPORTATION

4201 East Arkansas Avenue
Denver, Colorado 80222
(303) 757-9293

October 28, 2003

COLORADO CONSTRUCTION COST INDEX REPORT
Calendar year 2003
Third Quarter

Prepared by
Dino Sarganis
Engineering Estimates and Market Analysis Unit of
Contracts and Market Analysis Branch

Prepared for
Craig Siracusa, Chief Engineer

STATE OF COLORADO



DEPARTMENT OF TRANSPORTATION

4201 East Arkansas Avenue
Denver, Colorado 80222
(303) 757-9293

SUMMARY

CONSTRUCTION COST INDEX FOR SELECTED HIGHWAY CONSTRUCTION ITEMS

3rd QUARTER ENDING Sept. 30, 2003

Index for this quarter.....	167.6
Index for last quarter.....	183.2
Point change from last quarter.....	-15.6
Percentage change from last quarter.....	- 8.5%
Index for same quarter of last year.....	159.6
Point change from same quarter last year.....	+8.0
Percentage change from this quarter last year.....	+ 5.0%

Average number of bidders this quarter.....	3.94
Change in number of bidders from last quarter.....	- 13.8%

NOTE: All information shown in this publication was assembled using 1987 as the base year.

Summary Report for all the projects awarded between 7/1/2003 And 9/30/2003

<i>Project Amount</i>	<i>No. of Projects</i>	<i>No. of Bidders</i>	<i>Total Contract Amt.</i>	<i>Avg. # of Bids</i>
<i>\$0.00 to \$49,999.99</i>	0			
<i>\$50,000.00 to \$99,999.99</i>	1	7	\$66,462.00	7.0
<i>\$100,000.00 to \$249,999.99</i>	5	14	\$980,488.37	2.8
<i>\$250,000.00 to \$499,999.99</i>	12	46	\$4,454,093.15	3.8
<i>\$500,000.00 to \$999,999.99</i>	7	25	\$5,231,777.55	3.6
<i>1,000,000.00 to \$2,499,999.99</i>	3	12	\$4,765,113.82	4.0
<i>2,500,000.00 to \$4,999,999.99</i>	2	8	\$10,250,474.36	4.0
<i>5,000,000.00 to \$9,999,999.99</i>	4	22	\$28,167,955.70	5.5
<i>10,000,000.00 to \$19,999,999.99</i>	0			
<i>20,000,000.00 to \$49,499,999.99</i>	0			
<i>50,000,000.00 or Greater</i>	0			

Total	34	134	\$53,916,364.95
--------------	-----------	------------	------------------------

The number of bidders on all projects awards during this period averaged **3.94** bidders per contract.
 Average cost per project is **\$1,585,775.44**

CCI ITEMS USED FROM 7/1/2003 TO 9/30/2003

ITEM CODE	# OF ITEM	QUANTITY	PRICE	UNIT PRICE	INDEX
203-00000 To 203-00060 203-00062 To 203-00210 203-00400 To 203-00500	19	English (CY) 917,209.00	\$4,258,502.60	\$4.64	
203-01020 To 203-01030 209-00000 To 209-00050	0	Metric (CM) 0.00	\$0.00	\$0.00	
UNCLASSIFIED EXCAV (CIP)	19	917,209.00^{CY}	\$4,258,502.60	\$4.64	187.9
403-00720, 403-01000, 403-01010, 403-02000, 403-09121 To 403-09500 403-31300 To 403 36447 403-91401 To 403-95353 411-03100 To 411-03355 411-10010 To 411-90010 (Gal/Lit) Gallon & Liter are converted to Ton	62	English (TON) 277,692.18	\$11,398,353.29	\$41.05	
	0	Metric (MT) 0.00	\$0.00	\$0.00	
HOT BIT. PAVEMENT (H_A)	62	277,692.18 T	\$11,398,353.29	\$41.05	177.5
412-00000 To 412-00050 412-00700 To 412-01352 412-03000 To 412-03000	7	English (SY) 328,142.01	\$6,196,998.33	\$18.89	
	0	Metric (SM) 0.00	\$0.00	\$0.00	
CONCRETE PAVEMENT (9")	7	328,142.01^{SY}	\$6,196,998.33	\$18.89	141.4
SURFACING TOTAL INDEX					173.5
509-00000 To 509-00000	1	English (LB) 241,500.00	\$253,575.00	\$1.05	
	0	Metric (KG) 0.00	\$0.00	\$0.00	
STRUCTURAL STEEL	1	241,500.00^{LB}	\$253,575.00	\$1.05	123.1
601-01022 To 601-01022 601-01030 To 601-01060 601-03030 To 601-05064	15	English (CY) 4,223.00	\$1,422,488.00	\$336.84	
	0	Metric (CM) 0.00	\$0.00	\$0.00	
STRUCTURAL CONCRETE	15	4,223.00^{CY}	\$1,422,488.00	\$336.84	155.0
602-00000 To 602-00000 602-00020 To 602-00020	14	English (LB) 663,049.60	\$382,043.80	\$0.58	
	0	Metric (KG) 0.00	\$0.00	\$0.00	
REINFORCING STEEL	14	663,049.60^{LB}	\$382,043.80	\$0.58	140.5

STRUCTURAL TOTAL INDEX 145.7

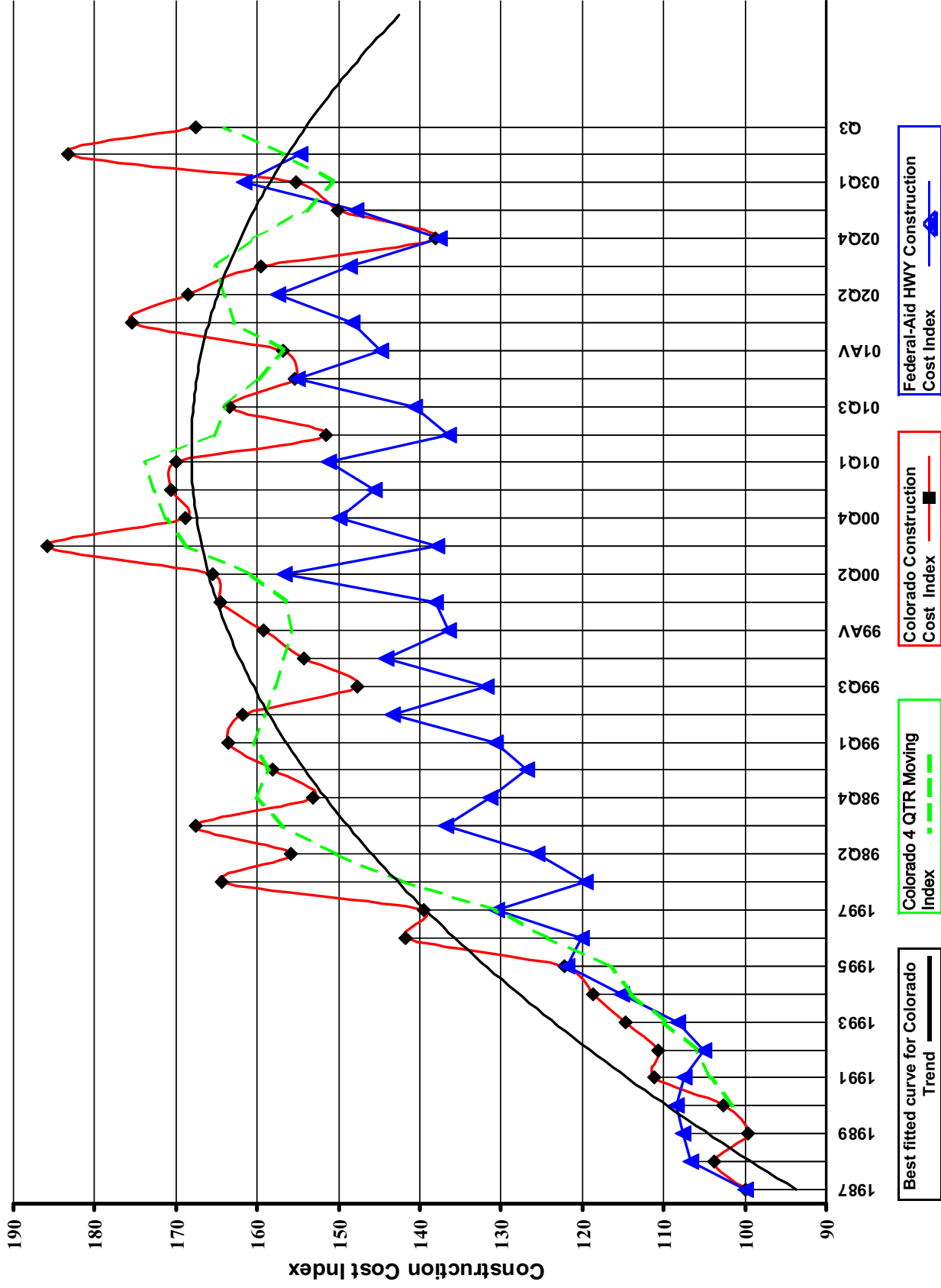
COMPOSITE INDEX = 167.6

Sum of the 6 categories cost = \$23,911,961.02

HBP Unit Price per CY = \$81.27

Concrete Pavement Unit Price per CY = \$75.54

Colorado Highway Construction Cost Index Graph and Tabulations (1987 Base Year)

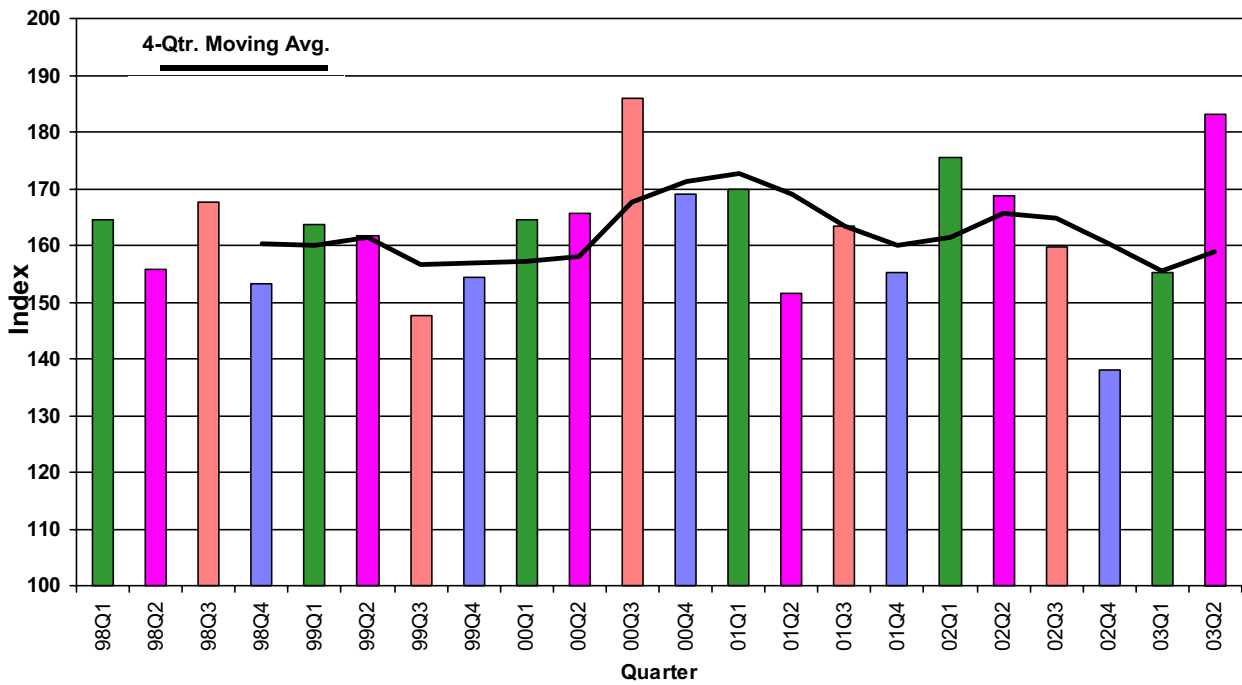
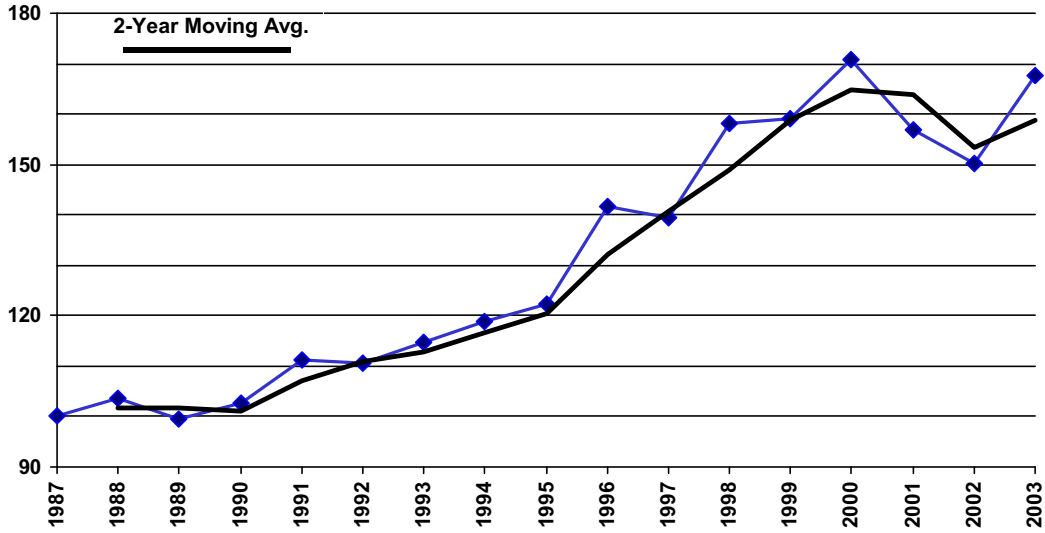


Colorado Highway Construction Cost Index Graph and Tabulations (1987 Base Year)

YEAR	QTR.	Earthwork		Asph. Pavement		Concrete Pavement		Surfacing		Structural Concrete		Reinforcing Steel		Structural Steel		Composite	
		Bid Price	Index	Bid Price	Index	Bid Price	Index	Bid Price	Index	Bid Price	Index	Bid Price	Index	Bid Price	Index	Bid Price	Index
1987	1987	\$2.47	100.0	\$23.17	100.0	\$13.36	100.0	100.0	100.0	\$217.32	100.0	\$0.41	100.0	\$0.85	100.0	\$0.85	100.0
1988	1988	\$2.92	118.1	\$23.88	103.0	\$13.84	103.6	103.6	103.1	\$195.02	89.7	\$0.45	110.7	\$0.89	104.1	\$0.89	103.7
1989	1989	\$2.57	103.9	\$23.67	102.2	\$11.65	87.2	87.2	100.6	\$199.41	91.8	\$0.40	97.8	\$0.88	103.5	\$0.88	99.6
1990	1990	\$2.78	112.5	\$23.98	103.5	\$15.09	113.0	113.0	104.5	\$190.86	87.8	\$0.37	90.8	\$0.99	116.0	\$0.99	102.7
1991	1991	\$3.31	133.8	\$26.25	113.3	\$16.03	120.0	120.0	114.0	\$195.43	89.9	\$0.38	93.1	\$0.89	104.4	\$0.89	111.2
1992	1992	\$2.77	112.3	\$26.20	113.1	\$23.82	178.3	178.3	119.8	\$216.87	99.8	\$0.36	87.9	\$0.71	82.8	\$0.71	110.7
1993	1993	\$3.25	131.4	\$27.74	119.7	\$16.75	125.4	125.4	121.3	\$212.43	97.7	\$0.37	90.1	\$0.79	93.0	\$0.79	114.7
1994	1994	\$3.56	144.2	\$28.40	122.6	\$18.78	140.6	140.6	124.4	\$219.94	101.2	\$0.37	89.7	\$0.67	78.8	\$0.67	118.8
1995	1995	\$3.41	138.1	\$30.25	130.5	\$17.82	133.4	133.4	130.8	\$211.29	97.2	\$0.39	94.0	\$0.90	105.5	\$0.90	122.3
1996	1996	\$4.46	180.5	\$32.73	141.3	\$19.22	143.9	143.9	141.5	\$265.98	122.4	\$0.43	105.1	\$1.09	128.5	\$1.09	141.7
1997	1997	\$4.24	171.7	\$32.92	142.1	\$21.39	160.1	160.1	143.9	\$246.29	113.3	\$0.45	110.8	\$1.01	117.9	\$1.01	139.6
1998	98Q1	\$5.30	214.4	\$36.20	156.2	\$30.88	231.2	231.2	164.0	\$292.00	134.4	\$0.48	116.2	(\$1.00)	-1.0	129.9	164.4
1998	98Q2	\$4.76	192.6	\$36.52	157.6	\$24.23	181.4	181.4	160.1	\$264.38	121.7	\$0.48	116.0	(\$1.00)	-1.0	120.3	155.8
1998	98Q3	\$2.69	230.4	\$35.21	141.9	\$34.18	255.9	255.9	162.6	\$295.21	135.8	\$0.22	126.6	(\$1.00)	-1.0	133.6	167.5
1998	98Q4	\$4.33	175.0	\$34.53	149.0	\$28.64	214.4	214.4	155.8	\$291.27	134.0	\$0.51	125.1	(\$1.00)	-1.0	131.9	153.1
1998	98AV	\$4.89	198.0	\$35.72	154.2	\$26.54	198.7	198.7	158.7	\$283.01	130.2	\$0.50	122.0	(\$1.00)	-1.0	128.2	158.1
1999	99Q1	\$5.91	239.4	\$36.57	157.8	\$18.57	139.0	139.0	155.9	\$335.29	154.3	\$0.59	144.9	\$0.54	63.8	134.1	163.5
1999	99Q2	\$5.34	216.0	\$35.09	151.4	\$21.90	163.9	163.9	152.7	\$326.59	150.3	\$0.61	149.8	\$1.15	135.3	147.1	161.8
1999	99Q3	\$4.42	178.8	\$36.62	158.1	\$24.59	184.1	184.1	160.7	\$298.62	137.4	\$0.52	125.5	(\$1.00)	-1.0	107.2	147.7
1999	99Q4	\$4.11	166.5	\$33.96	146.6	\$33.04	247.3	247.3	156.9	\$305.27	140.5	\$0.50	121.1	\$1.46	171.1	143.0	154.3
1999	99AV	\$4.94	199.8	\$35.23	152.0	\$22.78	170.5	170.5	153.9	\$310.56	142.9	\$0.54	132.0	\$1.41	165.3	145.3	159.2
2000	00Q1	\$5.11	206.9	\$36.84	159.0	\$21.73	162.7	162.7	159.4	\$341.22	157.0	\$0.45	110.2	(\$1.00)	-1.0	145.7	164.5
2000	00Q2	\$4.41	178.5	\$40.71	175.7	\$11.84	88.6	88.6	166.8	\$374.75	172.5	\$0.47	114.7	\$1.25	146.2	155.9	165.5
2000	00Q3	\$6.42	259.7	\$43.57	188.0	\$22.69	169.8	169.8	186.2	\$355.44	163.6	\$0.47	114.0	\$0.96	111.9	143.5	185.8
2000	00Q4	\$4.77	193.0	\$38.42	166.0	\$43.65	326.8	326.8	182.4	\$288.39	132.7	\$0.51	123.3	\$1.16	136.3	131.6	168.9
2000	00AV	\$5.25	212.6	\$40.02	173.0	\$20.56	153.9	153.9	170.8	\$346.82	159.6	\$0.47	115.2	\$1.18	138.8	146.8	170.7
2001	01Q1	\$4.14	167.6	\$40.40	175.5	\$37.17	278.2	278.2	185.0	\$311.48	143.3	\$0.51	123.8	\$0.00	0.0	138.6	170.0
2001	01Q2	\$4.78	193.6	\$35.62	154.0	\$13.66	102.3	102.3	148.5	\$282.89	130.2	\$0.50	122.6	\$0.00	0.0	128.3	151.5
2001	01Q3	\$4.29	173.6	\$41.20	177.9	\$20.63	154.5	154.5	175.4	\$297.55	136.9	\$0.50	120.8	\$1.29	151.5	136.8	163.4
2001	01Q4	\$3.13	126.6	\$34.33	147.6	\$47.93	358.8	358.8	169.8	\$335.74	154.5	\$0.45	110.2	\$0.00	0.0	143.7	155.3
2001	01AV	\$4.19	169.5	\$38.67	167.4	\$17.45	130.6	130.6	163.2	\$303.22	139.5	\$0.50	120.9	\$1.29	151.5	138.4	156.8
2002	02Q1	\$6.25	252.9	\$37.53	163.1	\$31.12	233.0	233.0	169.3	\$293.38	135.0	\$0.53	129.6	\$0.00	0.0	133.7	175.4
2002	02Q2	\$5.69	230.3	\$39.67	171.5	\$28.33	212.1	212.1	175.4	\$294.41	135.5	\$0.50	121.3	\$0.70	82.4	121.9	168.6
2002	02Q3	\$4.42	178.8	\$34.98	151.4	\$25.51	190.9	190.9	155.1	\$299.12	137.7	\$0.49	120.5	\$2.11	247.3	156.6	159.6
2002	02Q4	\$2.31	93.3	\$38.71	167.5	\$21.26	159.2	159.2	166.2	\$257.37	118.4	\$0.49	120.7	\$0.81	95.0	114.1	138.1
2002	02AV	\$3.74	151.2	\$37.99	164.7	\$24.81	185.7	185.7	166.2	\$285.35	131.3	\$0.50	121.3	\$0.78	91.9	121.4	150.1
2003	03Q1	\$4.23	171.2	\$36.48	158.2	\$24.92	186.6	186.6	160.4	\$283.25	130.4	\$0.57	137.9	\$0.00	0.0	132.2	155.2
2003	03Q2	\$10.00	404.8	\$40.35	174.9	\$43.68	327.0	327.0	189.9	\$327.84	150.9	\$0.62	151.9	\$0.31	36.3	127.8	183.2
2003	Q3	\$4.64	187.9	\$41.05	177.5	\$18.89	141.4	141.4	173.5	\$336.84	155.0	\$0.58	140.5	\$1.05	123.1	145.7	167.6

[View Annual/Qtr](#) [View Tabular Report](#)

Colorado Construction Cost Index



Comments:

This Colorado Construction Cost Index is composed of six indicator items and based on bid prices relative to the unit prices of 1987 (unit index=100). Projects awarded this quarter total \$53,916,364.95. The six categories for CCI items totaled \$23,911,916.02 which is 44.4% of total awarded amount. The comparison of CCI items to all construction items is as follows:

3 rd Quarter CCI items is	\$23,911,916.02	
	-----	= 44.4%
3 rd Quarter All Construction Items	\$53,916,364.95.	

Earthwork (Excavation and Embankment):

The average price was \$4.64 a cu. yd. The current quarter average price includes several mountainous projects resulting in higher than average prices. This quarter average price is somewhat higher compared to the average bid price of \$3.74 a cu. yd. for the entire year 2002.

Hot Bituminous Pavement:

The average price was \$41.05 a ton which is up \$0.70 from the previous quarter. This increase is primarily due to higher asphalt material prices.

Concrete Pavement:

The average price of 9" equivalent concrete was \$18.89 a sq. yd. The current quarter had a large concrete project on SH 287 north of Lamar, which received competitive bids resulting in a lower price when compared to the average of \$24.81 a sq. yd. for the entire year 2002.

Structural Steel:

The average price was \$1.05 a lb which was due to higher than average bid received on the C-470 extension project. The average price was \$0.78 for the entire year 2002.

Structural Concrete:

The average price was \$336.84 a cu. yd. which is up \$9.00 from the previous quarter. The current quarter had a number of small projects resulting in a high average price.

Reinforcing Steel:

The average price was \$0.58 a lb which is down \$0.04 a lb from the previous quarter. Several large projects received more competitive prices for reinforcing steel which lowered the overall average price for the current quarter.

ADDITIONAL INFORMATION:

For the 3rd quarter, the category indices showing an increase were Hot Bituminous Pavement, Structural Concrete, and Structural Steel. The categories decreasing were Earthwork, Concrete Pavement, and Reinforcing Steel.

34 projects were awarded this quarter, by comparison, 51 projects were awarded last quarter. The competition for projects decreased to 3.94 from 5.41 bidders for each project on average. 18 maintenance contract projects were bid this quarter. No Metric, Design/Build or Lump Sum projects were bid this quarter.