

# STATE OF COLORADO

---



**DEPARTMENT OF TRANSPORTATION**

4201 East Arkansas Avenue  
Denver, Colorado 80222  
(303) 757-9293

July 30, 2002

**COLORADO CONSTRUCTION COST INDEX REPORT**  
Calendar year 2002  
Second Quarter

Prepared by  
Dino Sarganis  
Engineering Estimates and Market Analysis Unit of  
Contracts and Market Analysis Branch

Prepared for  
John Unbewust, Chief Engineer

# STATE OF COLORADO



## DEPARTMENT OF TRANSPORTATION

4201 East Arkansas Avenue  
Denver, Colorado 80222  
(303) 757-9293

### SUMMARY

#### CONSTRUCTION COST INDEX FOR SELECTED HIGHWAY CONSTRUCTION ITEMS

2nd QUARTER ENDING June 30, 2002

Index for this quarter.....	168.6
Index for last quarter.....	175.4
Point change from last quarter.....	-6.8
Percentage change from last quarter.....	-3.9%
Index for same quarter of last year.....	151.5
Point change from same quarter last year.....	+ 17.1
Percentage change from this quarter last year.....	+ 11.3 %

Average number of bidders this quarter.....	4.28
Change in number of bidders from last quarter.....	-18.8%

NOTE: All information shown in this publication was assembled using 1987 as the base year.

**Summary Report for all the projects awarded between 4/1/2002 And 6/30/2002**

<i>Project Amount</i>	<i>No. of Projects</i>	<i>No. of Bidders</i>	<i>Total Contract Amt.</i>	<i>Avg. # of Bids</i>
<i>\$0.00 to \$49,999.99</i>	4	14	\$85,985.80	3.5
<i>\$50,000.00 to \$99,999.99</i>	5	21	\$370,943.45	4.2
<i>\$100,000.00 to \$249,999.99</i>	6	23	\$970,026.25	3.8
<i>\$250,000.00 to \$499,999.99</i>	7	29	\$2,671,379.71	4.1
<i>\$500,000.00 to \$999,999.99</i>	8	28	\$5,771,670.03	3.5
<i>1,000,000.00 to \$2,499,999.99</i>	5	22	\$10,323,870.44	4.4
<i>2,500,000.00 to \$4,999,999.99</i>	8	45	\$31,443,727.50	5.6
<i>5,000,000.00 to \$9,999,999.99</i>	2	10	\$14,931,945.18	5.0
<i>10,000,000.00 to \$19,999,999.99</i>	1	5	\$19,878,331.73	5.0
<i>20,000,000.00 to \$49,499,999.99</i>	0			
<i>50,000,000.00 or Greater</i>	0			
<b>Total</b>	<b>46</b>	<b>197</b>	<b>\$86,447,880.09</b>	

The number of bidders on all projects awards during this period averaged 4.28 bidders per contract.

Average cost per project is \$1,879,301.74

2 <sup>nd</sup> Quarter 2002 CCI Items:	\$44,263,278.51	
	-----	= 51.2%
2 <sup>nd</sup> Quarter All Construction Items:	\$86,447,880.09	

**CCI ITEMS USED FROM 4/1/2002 TO 6/30/2002**

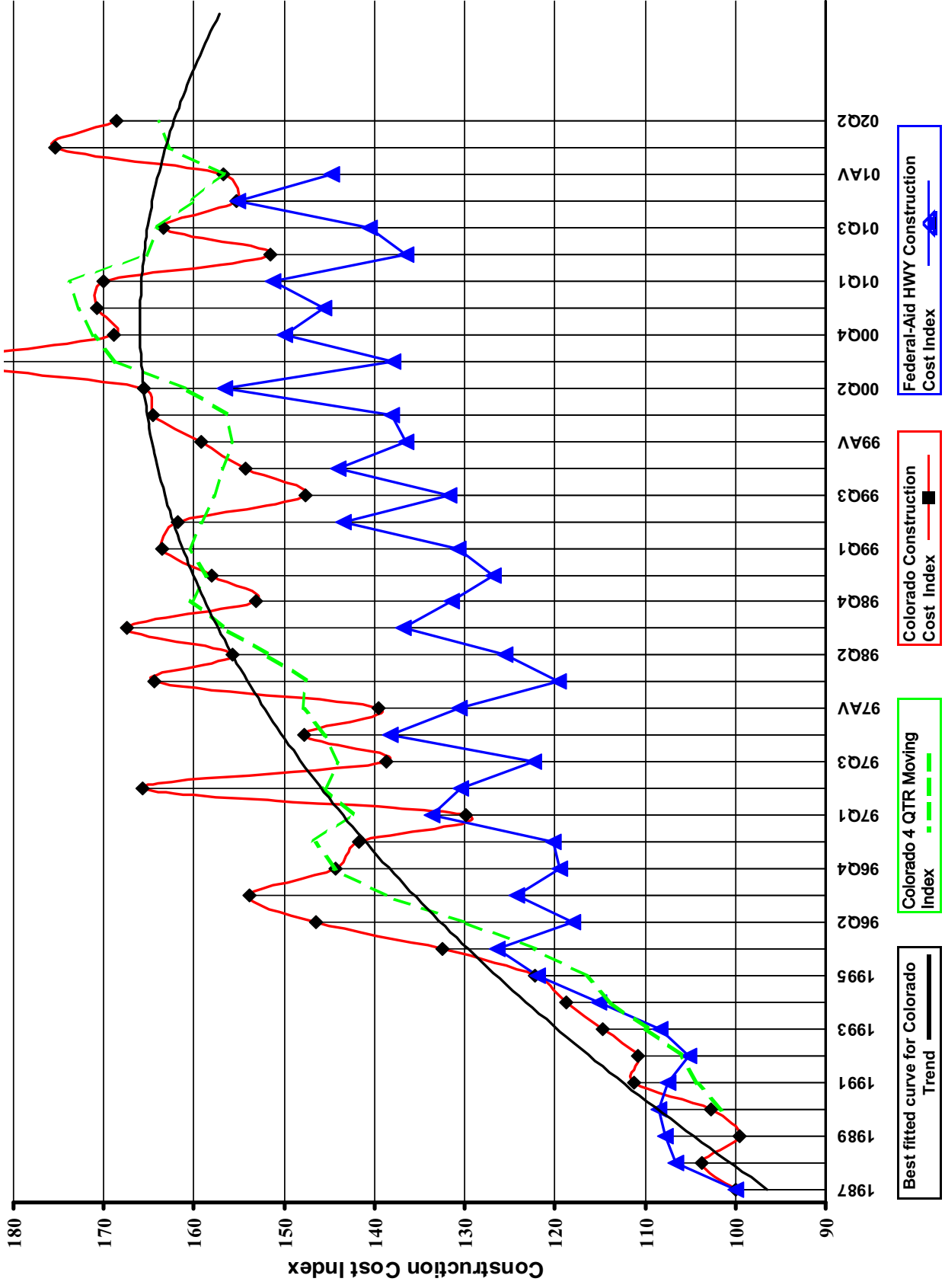
ITEM CODE	# OF ITEM	QUANTITY	PRICE	UNIT PRICE	INDEX
203-00000 To 203-00060 203-00062 To 203-00210 203-00400 To 203-00500	30	English (CY) 1,033,976.00	\$7,204,607.23	\$6.97	
203-01020 To 203-01030 209-00000 To 209-00050	4	Metric (CM) 477,240.00	\$2,228,539.37	\$4.67	
<b>UNCLASSIFIED EXCAV (CIP)</b>	<b>34</b>	<b>1,658,205.92<sup>CY</sup></b>	<b>\$9,433,146.60</b>	<b>\$5.69</b>	<b>230.3</b>
403-00720, 403-01000, 403-01010, 403-02000, 403-09121 To 403-09500	75	English (TON) 503,328.85	\$20,116,427.33	\$39.97	
403-31300 To 403 36447 403-91401 To 403-95353 411-03100 To 411-03355 411-10010 To 411-90010 (Gal/Lit) Gallon & Liter are converted to Ton	8	Metric (MT) 38,844.02	\$1,549,626.36	\$39.89	
<b>HOT BIT. PAVEMENT (H_A)</b>	<b>83</b>	<b>546,154.39 T</b>	<b>\$21,666,053.69</b>	<b>\$39.67</b>	<b>171.5</b>
412-00000 To 412-00050 412-00700 To 412-01352 412-03000 To 412-03000	8	English (SY) 80,411.64	\$2,304,646.87	\$28.66	
	4	Metric (SM) 139,845.63	\$4,712,034.83	\$33.69	
<b>CONCRETE PAVEMENT (9")</b>	<b>12</b>	<b>247,665.62<sup>SY</sup></b>	<b>\$7,016,681.70</b>	<b>\$28.33</b>	<b>212.1</b>
<b>SURFACING TOTAL INDEX</b>					<b>175.4</b>
509-00000 To 509-00000	0	English (LB) 0.00	\$0.00	\$0.00	
	1	Metric (KG) 368,343.00	\$570,931.65	\$1.55	
<b>STRUCTURAL STEEL</b>	<b>1</b>	<b>812,196.32<sup>LB</sup></b>	<b>\$570,931.65</b>	<b>\$0.70</b>	<b>82.4</b>
601-01022 To 601-01022 601-01030 To 601-01060 601-03030 To 601-05064	26	English (CY) 7,608.40	\$2,310,889.30	\$303.73	
	6	Metric (CM) 5,043.83	\$1,871,370.91	\$371.02	
<b>STRUCTURAL CONCRETE</b>	<b>32</b>	<b>14,205.73<sup>CY</sup></b>	<b>\$4,182,260.21</b>	<b>\$294.41</b>	<b>135.5</b>
602-00000 To 602-00000 602-00020 To 602-00020	17	English (LB) 1,432,576.00	\$761,798.87	\$0.53	
	3	Metric (KG) 621,565.00	\$632,405.79	\$1.02	
<b>REINFORCING STEEL</b>	<b>20</b>	<b>2,803,126.83<sup>LB</sup></b>	<b>\$1,394,204.66</b>	<b>\$0.50</b>	<b>121.3</b>
<b>STRUCTURAL TOTAL INDEX</b>					<b>121.9</b>
<b>COMPOSITE INDEX =</b>					<b>168.6</b>

**Sum of the 6 categories cost = \$44,263,278.51**

HBP Unit Price per CY = \$78.55

Concrete Pavement Unit Price per CY = \$113.33

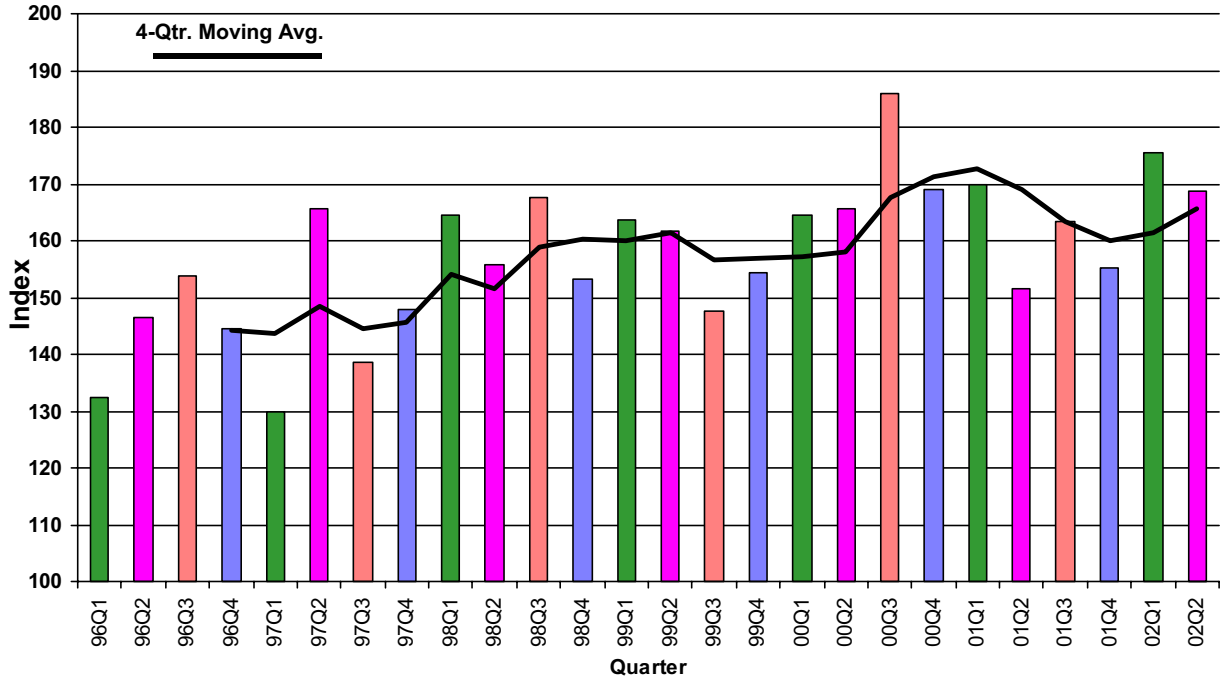
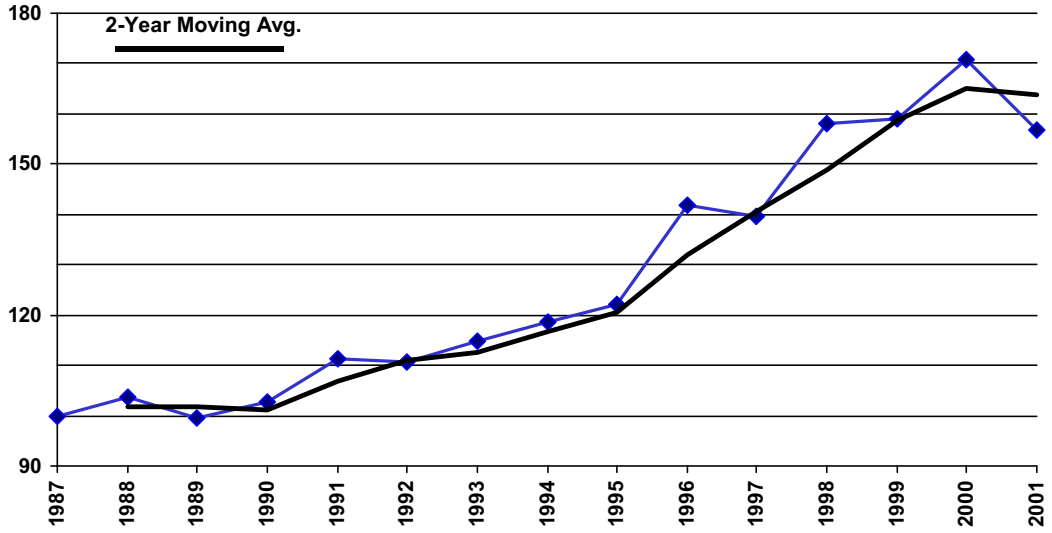
# Colorado Highway Construction Cost Index Graph and Tabulations (1987 Base Year)



**Colorado Highway Construction Cost Index Graph and Tabulations (1987 Base Year)**

YEAR	QTR.	Earthwork		Asph. Pavement		Concrete Pavement		Surfacing		Structural Concrete		Reinforcing Steel		Structural Steel		Composite	
		Bid Price	Index	Bid Price	Index	Bid Price	Index	Bid Price	Index	Bid Price	Index	Bid Price	Index	Bid Price	Index	Bid Price	Index
1987	1987	\$2.47	100.0	\$23.17	100.0	\$13.36	100.0	100.0	100.0	\$217.32	100.0	\$0.41	100.0	\$0.85	100.0	100.0	100.0
1988	1988	\$2.92	118.1	\$23.88	103.0	\$13.84	103.6	103.1	89.7	\$195.02	104.1	\$0.45	110.7	\$0.89	104.1	96.7	103.7
1989	1989	\$2.57	103.9	\$23.67	102.2	\$11.65	87.2	100.6	91.8	\$199.41	97.8	\$0.40	97.8	\$0.88	103.5	95.3	99.6
1990	1990	\$2.78	112.5	\$23.98	103.5	\$15.09	113.0	104.5	87.8	\$190.86	90.8	\$0.37	90.8	\$0.99	116.0	94.1	102.7
1991	1991	\$3.31	133.8	\$26.25	113.3	\$16.03	120.0	114.0	89.9	\$195.43	93.1	\$0.38	93.1	\$0.89	104.4	93.5	111.2
1992	1992	\$2.77	112.3	\$26.20	113.1	\$23.82	178.3	119.8	99.8	\$216.87	87.9	\$0.36	87.9	\$0.71	82.8	94.0	110.7
1993	1993	\$3.25	131.4	\$27.74	119.7	\$16.75	125.4	121.3	97.7	\$212.43	90.1	\$0.37	90.1	\$0.79	93.0	95.3	114.7
1994	1994	\$3.56	144.2	\$28.40	122.6	\$18.78	140.6	124.4	101.2	\$219.94	89.7	\$0.37	89.7	\$0.67	78.8	94.4	118.8
1995	1995	\$3.41	138.1	\$30.25	130.5	\$17.82	133.4	130.8	97.2	\$211.29	94.0	\$0.39	94.0	\$0.90	105.5	98.3	122.3
1996	96Q1	\$4.26	172.4	\$30.62	132.2	\$17.31	129.6	131.9	109.3	\$237.58	94.0	\$0.39	94.0	(\$1.00)	-1.0	105.6	132.5
1996	96Q2	\$5.11	206.9	\$31.35	135.3	\$34.29	256.7	147.8	109.3	\$237.47	103.7	\$0.43	103.7	\$1.02	119.1	110.2	146.5
1996	96Q3	\$4.48	181.2	\$36.31	156.7	\$16.92	126.6	153.6	143.7	\$312.26	106.7	\$0.44	106.7	\$1.32	154.8	138.8	153.9
1996	96Q4	\$4.05	164.1	\$35.94	155.1	(\$1.00)	-1.0	155.1	109.3	\$237.47	108.9	\$0.45	108.9	(\$1.00)	-1.0	109.2	144.4
1996	96AV	\$4.46	180.5	\$32.73	141.3	\$19.22	143.9	141.5	122.4	\$265.98	105.1	\$0.43	105.1	\$1.09	128.5	120.2	141.7
1997	97Q1	\$3.60	145.8	\$31.47	135.8	\$20.81	156.0	137.9	105.7	\$229.63	103.5	\$0.42	103.5	\$0.97	113.7	106.9	129.9
1997	97Q2	\$7.09	286.8	\$34.08	147.1	\$24.42	182.8	150.7	124.2	\$269.94	111.7	\$0.46	111.7	\$1.12	131.6	123.3	165.7
1997	97Q3	\$4.08	165.1	\$31.55	136.2	\$24.15	180.8	140.8	118.5	\$257.62	119.3	\$0.49	119.3	\$1.06	124.7	119.9	138.6
1997	97Q4	\$3.65	147.9	\$37.66	162.5	\$18.84	141.1	160.3	123.4	\$268.22	110.8	\$0.45	110.8	(\$1.00)	-1.0	120.4	147.8
1997	97AV	\$4.24	171.7	\$32.92	142.1	\$21.39	160.1	143.9	113.3	\$246.29	113.3	\$0.45	113.3	\$1.01	117.9	113.8	139.6
1998	98Q1	\$5.30	214.4	\$36.20	156.2	\$30.88	231.2	164.0	134.4	\$292.00	116.2	\$0.48	116.2	(\$1.00)	-1.0	129.9	164.4
1998	98Q2	\$4.76	192.6	\$36.52	157.6	\$24.23	181.4	160.1	121.7	\$264.38	116.0	\$0.48	116.0	(\$1.00)	-1.0	120.3	155.8
1998	98Q3	\$2.69	230.4	\$35.21	141.9	\$34.18	255.9	162.6	135.8	\$295.21	126.6	\$0.22	126.6	(\$1.00)	-1.0	133.6	167.5
1998	98Q4	\$4.33	175.0	\$34.53	149.0	\$28.64	214.4	155.8	134.0	\$291.27	125.1	\$0.51	125.1	(\$1.00)	-1.0	131.9	153.1
1998	98AV	\$4.89	198.0	\$35.72	154.2	\$26.54	198.7	158.7	130.2	\$283.01	122.0	\$0.50	122.0	(\$1.00)	-1.0	128.2	158.1
1999	99Q1	\$5.91	239.4	\$36.57	157.8	\$18.57	139.0	155.9	154.3	\$335.29	144.9	\$0.59	144.9	\$0.54	63.8	134.1	163.5
1999	99Q2	\$5.34	216.0	\$35.09	151.4	\$21.90	163.9	152.7	150.3	\$326.59	149.8	\$0.61	149.8	\$1.15	135.3	147.1	161.8
1999	99Q3	\$4.42	178.8	\$36.62	158.1	\$24.59	184.1	160.7	137.4	\$298.62	125.5	\$0.52	125.5	(\$1.00)	-1.0	107.2	147.7
1999	99Q4	\$4.11	166.5	\$33.96	146.6	\$33.04	247.3	156.9	140.5	\$305.27	121.1	\$0.50	121.1	\$1.46	171.1	143.0	154.3
1999	99AV	\$4.94	199.8	\$35.23	152.0	\$22.78	170.5	153.9	142.9	\$310.56	132.0	\$0.54	132.0	\$1.41	165.3	145.3	159.2
2000	00Q1	\$5.11	206.9	\$36.84	159.0	\$21.73	162.7	159.4	157.0	\$341.22	110.2	\$0.45	110.2	(\$1.00)	-1.0	145.7	164.5
2000	00Q2	\$4.41	178.5	\$40.71	175.7	\$11.84	88.6	166.8	172.5	\$374.75	114.7	\$0.47	114.7	\$1.25	146.2	155.9	165.5
2000	00Q3	\$6.42	259.7	\$43.57	188.0	\$22.69	169.8	186.2	163.6	\$355.44	114.0	\$0.47	114.0	\$0.96	111.9	143.5	185.8
2000	00Q4	\$4.77	193.0	\$38.42	166.0	\$43.65	326.8	182.4	132.7	\$288.39	123.3	\$0.51	123.3	\$1.16	136.3	131.6	168.9
2000	00AV	\$5.25	212.6	\$40.02	173.0	\$20.56	153.9	170.8	159.6	\$346.82	115.2	\$0.47	115.2	\$1.18	138.8	146.8	170.7
2001	01Q1	\$4.14	167.6	\$40.40	175.5	\$37.17	278.2	185.0	143.3	\$311.48	123.8	\$0.51	123.8	\$0.00	0.0	138.6	170.0
2001	01Q2	\$4.78	193.6	\$35.62	154.0	\$13.66	102.3	148.5	130.2	\$282.89	122.6	\$0.50	122.6	\$0.00	0.0	128.3	151.5
2001	01Q3	\$4.29	173.6	\$41.20	177.9	\$20.63	154.5	175.4	136.9	\$297.55	120.8	\$0.50	120.8	\$1.29	151.5	136.8	163.4
2001	01Q4	\$3.13	126.6	\$34.33	147.6	\$47.93	358.8	169.8	154.5	\$335.74	110.2	\$0.45	110.2	\$0.00	0.0	143.7	155.3
2001	01AV	\$4.19	169.5	\$38.67	167.4	\$17.45	130.6	163.2	139.5	\$303.22	120.9	\$0.50	120.9	\$1.29	151.5	138.4	156.8
2002	02Q1	\$6.25	252.9	\$37.53	163.1	\$31.12	233.0	169.3	135.0	\$293.38	129.6	\$0.53	129.6	\$0.00	0.0	133.7	175.4
2002	02Q2	\$5.69	230.3	\$39.67	171.5	\$28.33	212.1	175.4	135.5	\$294.41	121.3	\$0.50	121.3	\$0.70	82.4	121.9	168.6

## Colorado Construction Cost Index



Comments:

This Colorado Construction Cost Index is composed of six indicator items and based on bid prices relative to the unit prices of 1987 (unit index=100).

Earthwork (Excavation and Embankment):

The average price was \$5.69 a cu. yd which is down \$0.56 from the previous quarter.

Hot Bituminous Pavement:

The average price was \$39.67 a ton which is up \$2.14 from the previous quarter. The current quarter average price is comparable to the average bid price of \$38.67 a ton for the entire year 2001.

Concrete Pavement:

The average price was \$28.33 a sq. yd. which is down \$2.79 from the previous quarter.

Structural Steel:

Only one job was bid for this item at a price of \$0.70 a lb. Insignificant quantities of structural steel was bid during the previous quarter for comparison.

Structural Concrete:

The average price was \$294.41 a cu. yd. which is up \$1.03 from the previous quarter. The current quarter average price is comparable to the average bid price of \$303.22 a lb. for the entire year 2001.

Reinforcing Steel:

The average price was \$0.50 a lb. which is down \$0.03 a lb from the previous quarter. The current average price is comparable to the average bid price of \$0.50 a lb. for the entire year 2001.

ADDITIONAL INFORMATION:

For the 2nd quarter, the category indices showing an increase were Hot Bituminous Pavement, and Structural Concrete. The Index level decreased for Earthwork, Concrete Pavement, and Reinforcing Steel.

46 projects were bid and awarded this quarter for a total of \$86,447,880.09.

The competition for projects decreased from 5.27 to 4.28 bidders for each project on average. By comparison, 60 projects were bid last quarter and 42 in the same quarter last year.

15 maintenance contract projects were bid this quarter.

Two metric projects were bid this quarter. Metric quantities are converted into English units for inclusion in this report. No Design/Build or Lump Sum projects were bid this quarter.