

STATE OF COLORADO



DEPARTMENT OF TRANSPORTATION

4201 East Arkansas Avenue
Denver, Colorado 80222
(303) 757-9293

May 17, 2002

COLORADO CONSTRUCTION COST INDEX REPORT
Calendar year 2002
First Quarter

Prepared by
Dino Sarganis
Engineering Estimates and Market Analysis Unit of
Contracts and Market Analysis Branch

Prepared for
John Unbewust, Chief Engineer

STATE OF COLORADO



DEPARTMENT OF TRANSPORTATION

4201 East Arkansas Avenue
Denver, Colorado 80222
(303) 757-9293

SUMMARY

CONSTRUCTION COST INDEX FOR SELECTED HIGHWAY CONSTRUCTION ITEMS

1st QUARTER ENDING March 31, 2002

Index for this quarter.....	175.4
Index for last quarter.....	155.3
Point change from last quarter.....	+ 20.1
Percentage change from last quarter.....	+ 12.9%
Index for same quarter of last year.....	170.0
Point change from same quarter last year.....	+ 5.4
Percentage change from this quarter last year.....	+ 3.2 %

Average number of bidders this quarter.....	5.27
Change in number of bidders from last quarter.....	-4.2%

NOTE: All information shown in this publication was assembled using 1987 as the base year.

Summary Report for all the projects awarded Between 1/1/2002 And 3/31/2002

<i>Project Amount</i>	<i>No. of Projects</i>	<i>No. of Bidders</i>	<i>Total Contract Amt.</i>	<i>Avg. # of Bids</i>
<i>\$0.00 to \$49,999.99</i>	4	18	\$134,690.10	4.5
<i>\$50,000.00 to \$99,999.99</i>	--	--	----	----
<i>\$100,000.00 to \$249,999.99</i>	5	19	\$984,137.50	3.8
<i>\$250,000.00 to \$499,999.99</i>	10	48	\$3,541,792.99	4.8
<i>\$500,000.00 to \$999,999.99</i>	8	46	\$6,336,934.40	5.8
<i>1,000,000.00 to \$2,499,999.99</i>	23	138	\$39,950,981.85	6.0
<i>2,500,000.00 to \$4,999,999.99</i>	9	42	\$28,097,443.38	4.7
<i>5,000,000.00 to \$9,999,999.99</i>	1	5	\$5,555,555.55	5.5
<i>10,000,000.00 to \$19,999,999.99</i>	---	---	----	---
<i>20,000,000.00 or \$49,999,999.99</i>	---	---	----	---
<i>20,000,000.00 or Greater</i>	---	---	----	---
Total	60	316	\$84,601,535.77	

The number of bidders on all projects awards during this period **5.27** bidders per contract averaged Average cost per project is **\$1,410,025.59**

Index Items as a percent of the total construction cost.

1st Quarter 2002 CCI Items: **\$ 39,831,677**
 ----- = **47.1 %**

1st Quarter 2002 All Construction Items: **\$ 84,601,535**

CCI ITEMS USED FROM 1/1/2002 TO 3/31/2002

ITEM CODE	# OF ITEM	QUANTITY	PRICE	UNIT PRICE	INDEX
203-00000 To 203-00060 203-00062 To 203-00210 203-00400 To 203-00500 203-01020 To 203-01030 209-00000 To 209-00050	39	English (CY) 280,850.00	\$1,754,898.78	\$6.25	
	0	Metric (CM) 0.00	\$0.00	\$0.00	
UNCLASSIFIED EXCAV (CIP)	39	280,850.00^{CY}	\$1,754,898.78	\$6.25	252.9
403-00720, 403-01000, 403-01010, 403-02000, 403-09121 To 403-09500 403-31300 To 403 36447 403-91401 To 403-95353 411-03100 To 411-03355 411-10010 To 411-90010 (Gal/Lit) Gallon & Liter are converted to Ton	131	English (TON) 943,163.59	\$35,397,416.97	\$37.53	
	0	Metric (MT) 0.00	\$0.00	\$0.00	
HOT BIT. PAVEMENT (H_A)	131	943,163.59 T	\$35,397,416.97	\$37.53	163.1
412-00000 To 412-00050 412-00700 To 412-01352 412-03000 To 412-03000	6	English (SY) 49,151.15	\$1,529,521.15	\$31.12	
	0	Metric (SM) 0.00	\$0.00	\$0.00	
CONCRETE PAVEMENT (9")	6	49,151.15^{SY}	\$1,529,521.15	\$31.12	233.0
SURFACING TOTAL INDEX					169.3
509-00000 To 509-00000	0	English (LB) 0.00	\$0.00	\$0.00	
	0	Metric (KG) 0.00	\$0.00	\$0.00	
STRUCTURAL STEEL	0	0.00^{LB}	\$0.00	\$0.00	0.0
601-01022 To 601-01022 601-01030 To 601-01060 601-03030 To 601-05064	15	English (CY) 3,004.60	\$881,477.71	\$293.38	
	0	Metric (CM) 0.00	\$0.00	\$0.00	
STRUCTURAL CONCRETE	15	3,004.60^{CY}	\$881,477.71	\$293.38	135.0
602-00000 To 602-00000 602-00020 To 602-00020	16	English (LB) 505,097.00	\$268,362.03	\$0.53	
	0	Metric (KG) 0.00	\$0.00	\$0.00	
REINFORCING STEEL	16	505,097.00^{LB}	\$268,362.03	\$0.53	129.6

STRUCTURAL TOTAL INDEX 133.7

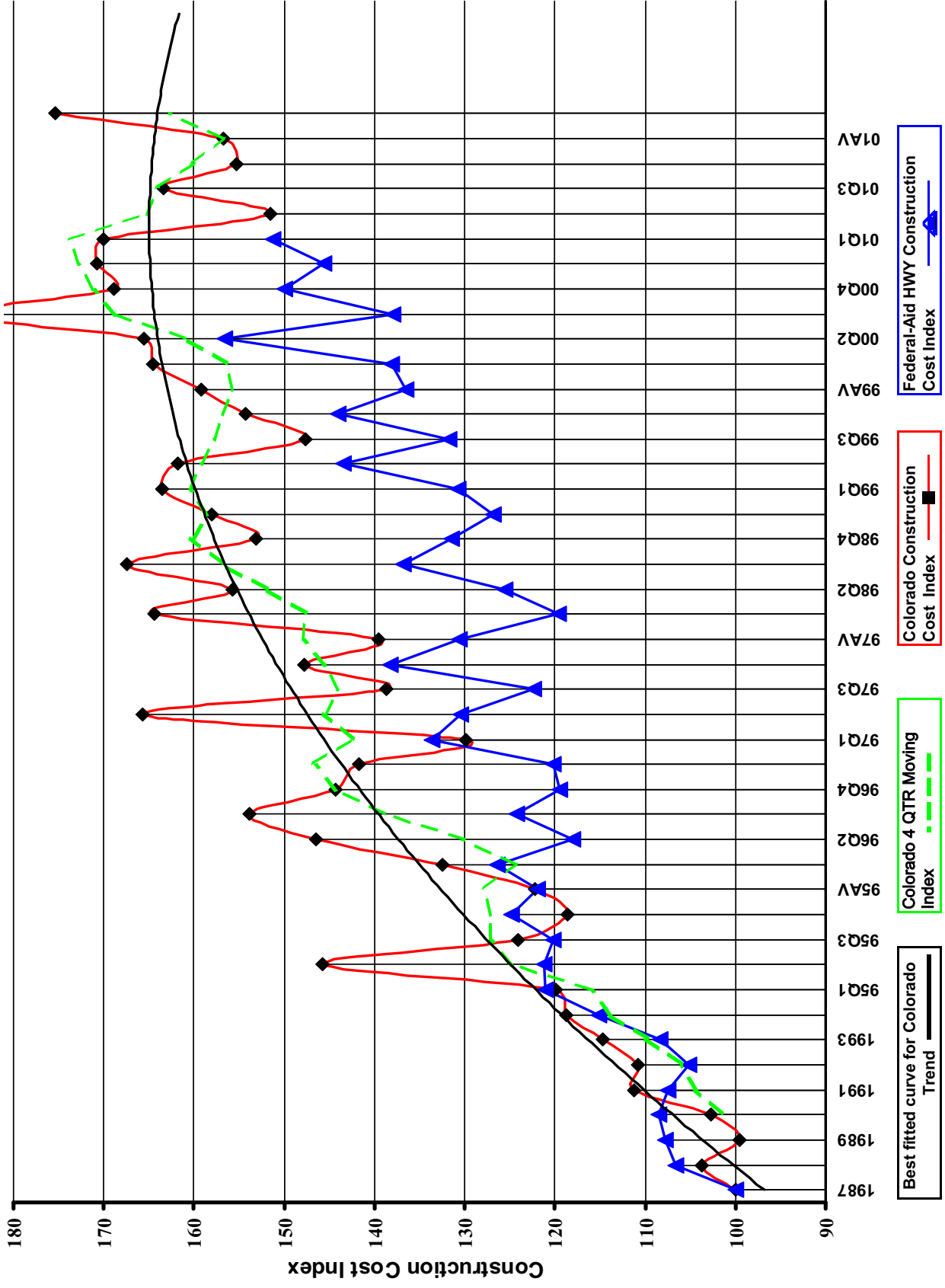
COMPOSITE INDEX = 175.4

Sum of the 6 categories cost = \$39,831,676.64

HBP Unit Price per CY = \$74.31

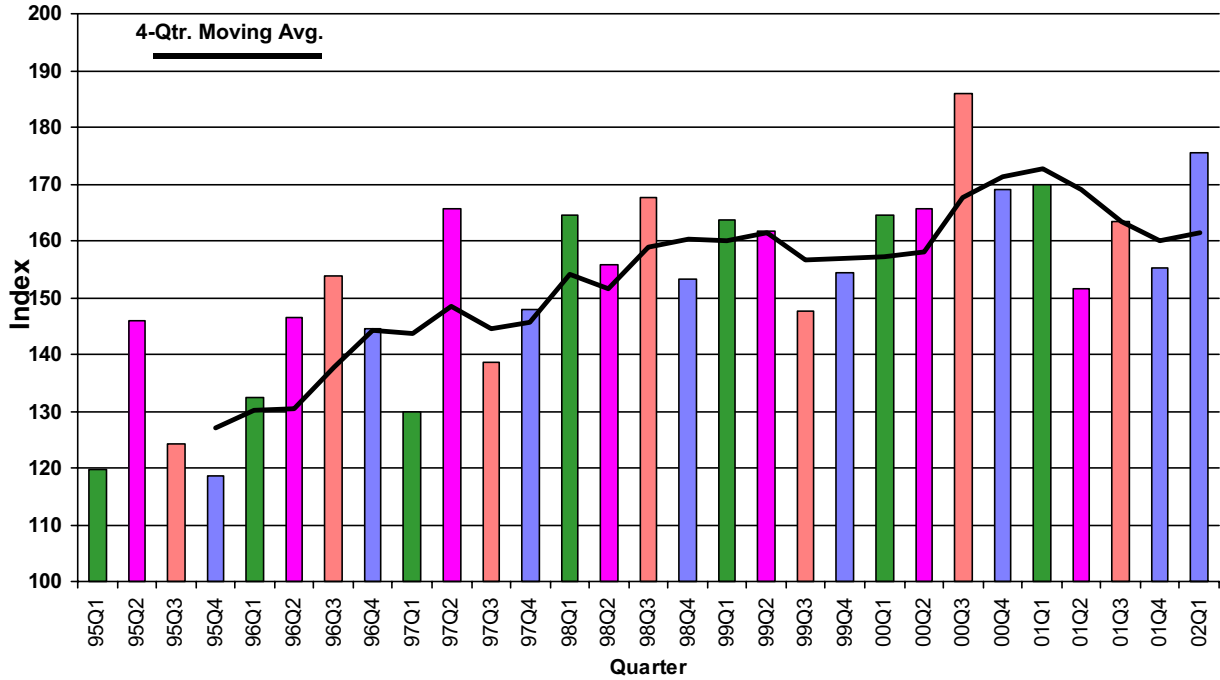
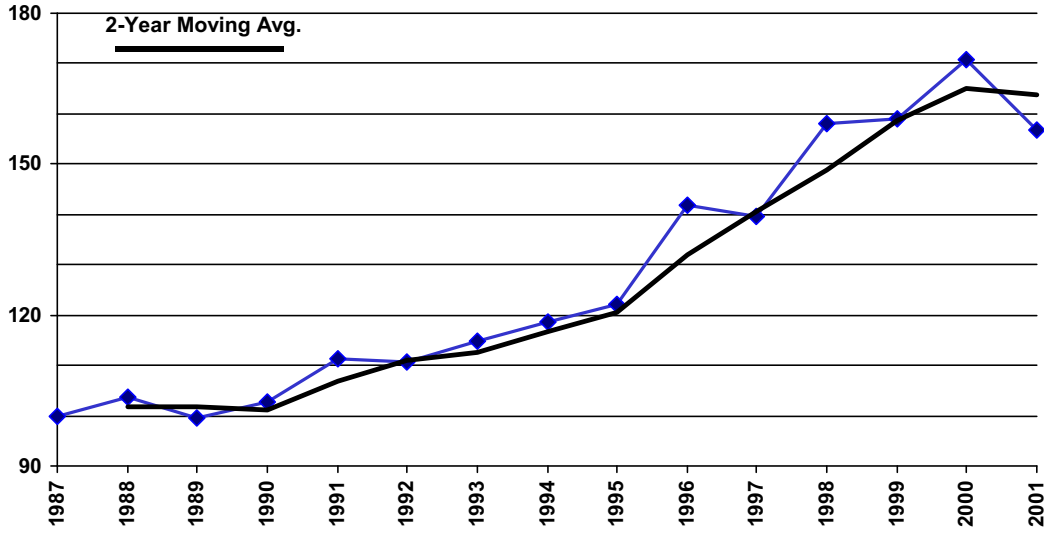
Concrete Pavement Unit Price per CY = \$124.47

Colorado Highway Construction Cost Index Graph and Tabulations (1987 Base Year)



YEAR	QTR.	Earthwork		Asph. Pavement		Concrete Pavement		Surfacing		Structural Concrete		Reinforcing Steel		Structural Steel		Composite Index	
		Bid Price	Index	Bid Price	Index	Bid Price	Index	Bid Price	Index	Bid Price	Index	Bid Price	Index	Bid Price	Index	Structural Index	Composite Index
1987	1987	\$2.47	100.0	\$23.17	100.0	\$13.36	100.0	100.0	100.0	\$217.32	100.0	\$0.41	100.0	\$0.85	100.0	100.0	100.0
1988	1988	\$2.92	118.1	\$23.88	103.0	\$13.84	103.6	103.1	103.6	\$195.02	89.7	\$0.45	110.7	\$0.89	104.1	96.7	103.7
1989	1989	\$2.57	103.9	\$23.67	102.2	\$11.65	87.2	100.6	100.6	\$199.41	91.8	\$0.40	97.8	\$0.88	103.5	95.3	99.6
1990	1990	\$2.78	112.5	\$23.98	103.5	\$15.09	113.0	104.5	104.5	\$190.86	87.8	\$0.37	90.8	\$0.99	116.0	94.1	102.7
1991	1991	\$3.31	133.8	\$26.25	113.3	\$16.03	120.0	114.0	114.0	\$195.43	89.9	\$0.38	93.1	\$0.89	104.4	93.5	111.2
1992	1992	\$2.77	112.3	\$26.20	113.1	\$23.82	178.3	119.8	119.8	\$216.87	99.8	\$0.36	87.9	\$0.71	82.8	94.0	110.7
1993	1993	\$3.25	131.4	\$27.74	119.7	\$16.75	125.4	121.3	121.3	\$212.43	97.7	\$0.37	90.1	\$0.79	93.0	95.3	114.7
1994	1994	\$3.56	144.2	\$28.40	122.6	\$18.78	140.6	124.4	124.4	\$219.94	101.2	\$0.37	89.7	\$0.67	78.8	94.4	118.8
1995	95Q1	\$2.85	115.5	\$30.98	133.7	\$20.33	152.2	135.6	135.6	\$217.43	100.1	\$0.39	94.6	\$0.67	78.8	94.7	119.8
1995	95Q2	\$6.18	250.1	\$30.43	131.3	\$27.06	202.5	138.7	138.7	\$227.59	104.7	\$0.40	97.0	\$0.73	85.6	99.3	145.8
1995	95Q3	\$3.33	134.7	\$30.51	131.7	\$16.02	119.9	130.5	130.5	\$229.50	105.6	\$0.38	93.8	(\$1.00)	-1.0	102.7	124.1
1995	95Q4	\$3.33	134.9	\$28.43	122.7	\$21.81	163.2	126.9	126.9	\$192.09	88.4	\$0.40	97.8	\$0.95	111.7	94.9	118.6
1995	95AV	\$3.41	138.1	\$30.25	130.5	\$17.82	133.4	130.8	130.8	\$211.29	97.2	\$0.39	94.0	\$0.90	105.5	98.3	122.3
1996	96Q1	\$4.26	172.4	\$30.62	132.2	\$17.31	129.6	131.9	131.9	\$237.58	109.3	\$0.39	94.0	(\$1.00)	-1.0	105.6	132.5
1996	96Q2	\$5.11	206.9	\$31.35	135.3	\$34.29	256.7	147.8	147.8	\$237.47	109.3	\$0.43	103.7	\$1.02	119.1	110.2	146.5
1996	96Q3	\$4.48	181.2	\$36.31	156.7	\$16.92	126.6	153.6	153.6	\$312.26	143.7	\$0.44	106.7	\$1.32	154.8	138.8	159.9
1996	96Q4	\$4.05	164.1	\$35.94	155.1	(\$1.00)	-1.0	155.1	155.1	\$237.47	109.3	\$0.45	108.9	(\$1.00)	-1.0	109.2	144.4
1996	96AV	\$4.46	180.5	\$32.73	141.3	\$19.22	143.9	141.5	141.5	\$265.98	122.4	\$0.43	105.1	\$1.09	128.5	120.2	141.7
1997	97Q1	\$3.60	145.8	\$31.47	135.8	\$20.81	156.0	137.9	137.9	\$229.63	105.7	\$0.42	103.5	\$0.97	113.7	106.9	129.9
1997	97Q2	\$7.09	286.8	\$34.08	147.1	\$24.42	182.8	150.7	150.7	\$269.94	124.2	\$0.46	111.7	\$1.12	131.6	123.3	165.7
1997	97Q3	\$4.08	165.1	\$31.55	136.2	\$24.15	180.8	140.8	140.8	\$257.62	118.5	\$0.49	119.3	\$1.06	124.7	119.9	138.6
1997	97Q4	\$3.65	147.9	\$37.66	162.5	\$18.84	141.1	160.3	160.3	\$268.22	123.4	\$0.45	110.8	(\$1.00)	-1.0	120.4	147.8
1997	97AV	\$4.24	171.7	\$32.92	142.1	\$21.39	160.1	143.9	143.9	\$246.29	113.3	\$0.45	110.8	\$1.01	117.9	113.8	139.6
1998	98Q1	\$5.30	214.4	\$36.20	156.2	\$30.88	231.2	164.0	164.0	\$292.00	134.4	\$0.48	116.2	(\$1.00)	-1.0	129.9	164.4
1998	98Q2	\$4.76	192.6	\$36.52	157.6	\$24.23	181.4	160.1	160.1	\$264.38	121.7	\$0.48	116.0	(\$1.00)	-1.0	120.3	155.8
1998	98Q3	\$2.69	230.4	\$35.21	141.9	\$34.18	255.9	162.6	162.6	\$295.21	135.8	\$0.22	126.6	(\$1.00)	-1.0	133.6	167.5
1998	98Q4	\$4.33	175.0	\$34.53	149.0	\$28.64	214.4	155.8	155.8	\$291.27	134.0	\$0.51	125.1	(\$1.00)	-1.0	131.9	153.1
1998	98AV	\$4.89	198.0	\$35.72	154.2	\$26.54	198.7	158.7	158.7	\$283.01	130.2	\$0.50	122.0	(\$1.00)	-1.0	128.2	158.1
1999	99Q1	\$5.91	239.4	\$36.57	157.8	\$18.57	139.0	155.9	155.9	\$335.29	154.3	\$0.59	144.9	\$0.54	63.8	134.1	163.5
1999	99Q2	\$5.34	216.0	\$35.09	151.4	\$21.90	163.9	152.7	152.7	\$326.59	150.3	\$0.61	149.8	\$1.15	135.3	147.1	161.8
1999	99Q3	\$4.42	178.8	\$36.62	158.1	\$24.59	184.1	160.7	160.7	\$298.62	137.4	\$0.52	125.5	(\$1.00)	-1.0	107.2	147.7
1999	99Q4	\$4.11	166.5	\$33.96	146.6	\$33.04	247.3	156.9	156.9	\$305.27	140.5	\$0.50	121.1	\$1.46	171.1	143.0	154.3
1999	99AV	\$4.94	199.8	\$35.23	152.0	\$22.78	170.5	153.9	153.9	\$310.56	142.9	\$0.54	132.0	\$1.41	165.3	145.3	159.2
2000	00Q1	\$5.11	206.9	\$36.84	159.0	\$21.73	162.7	159.4	159.4	\$341.22	157.0	\$0.45	110.2	(\$1.00)	-1.0	145.7	164.5
2000	00Q2	\$4.41	178.5	\$40.71	175.7	\$11.84	88.6	166.8	166.8	\$374.75	172.5	\$0.47	114.7	\$1.25	146.2	155.9	165.5
2000	00Q3	\$6.42	259.7	\$43.57	188.0	\$22.69	169.8	186.2	186.2	\$355.44	163.6	\$0.47	114.0	\$0.96	111.9	143.5	165.8
2000	00Q4	\$4.77	193.0	\$38.42	166.0	\$43.65	326.8	182.4	182.4	\$288.39	132.7	\$0.51	123.3	\$1.16	136.3	131.6	168.9
2000	00AV	\$5.25	212.6	\$40.02	173.0	\$20.56	153.9	170.8	170.8	\$346.82	159.6	\$0.47	115.2	\$1.18	138.8	146.8	170.7
2001	01Q1	\$4.14	167.6	\$40.40	175.5	\$37.17	278.2	185.0	185.0	\$311.48	143.3	\$0.51	123.8	\$0.00	0.0	138.6	170.0
2001	01Q2	\$4.78	193.6	\$35.62	154.0	\$13.66	102.3	148.5	148.5	\$282.89	130.2	\$0.50	122.6	\$0.00	0.0	128.3	151.5
2001	01Q3	\$4.29	173.6	\$41.20	177.9	\$20.63	154.5	175.4	175.4	\$297.55	136.9	\$0.50	120.8	\$1.29	151.5	136.8	163.4
2001	01Q4	\$3.13	126.6	\$34.33	147.6	\$47.93	358.8	169.8	169.8	\$335.74	154.5	\$0.45	110.2	\$0.00	0.0	143.7	155.3
2001	01AV	\$4.19	169.5	\$38.67	167.4	\$17.45	130.6	163.2	163.2	\$303.22	139.5	\$0.50	120.9	\$1.29	151.5	138.4	156.8
2002	02Q1	\$6.25	252.9	\$37.53	163.1	\$31.12	233.0	169.3	169.3	\$293.38	135.0	\$0.53	129.6	\$0.00	0.0	133.7	175.4

Colorado Construction Cost Index



Comments:

This Colorado Construction Cost Index is composed of six indicator items and based on bid prices relative to the unit prices of 1987 (unit index=100).

Earthwork (Excavation and Embankment):

The average price was \$6.25 a cu. yd which is up \$3.12 from the previous quarter. The majority of projects bid had smaller quantities of earthwork which tend to have higher unit

Bituminous Pavement:

The average price was \$37.53 a ton which is up \$3.20 from the previous quarter. The current quarter average price is comparable to the average bid price of \$38.67 a ton for the entire year 2001.

Concrete Pavement:

The average price was \$31.12 a sq. yd. which is down \$16.81 from the previous quarter. The previous quarter price for concrete was unusually high.

Structural Steel:

Insignificant quantities of structural steel was bid during the current quarter.

Structural Concrete:

The average price was \$293.38 a cu. yd. which is down \$42.36 from the previous quarter. The current quarter average price is comparable to the average bid price of \$303.22 a lb. for the entire year 2001.

Reinforcing Steel:

The average price was \$0.53 a lb. which is up \$0.08 a lb from the previous quarter. The current average price is comparable to the average bid price of \$0.50 a lb. for the entire year 2001.

ADDITIONAL INFORMATION:

For the 1st quarter, the category indices showing an increase were Earthwork, Hot Bituminous Pavement, and Reinforcing Steel. The Index level decreased for Concrete Pavement, and Structural Concrete.

60 projects were bid and awarded this quarter for a total of \$84,601,535. The competition for projects decreased from 5.5 to 5.27 bidders for each project on average. By comparison,

20 projects were bid last quarter and 42 in the same quarter last year.

Eight maintenance contract projects were bid this quarter.

NO metric projects were bid this quarter. Metric quantities are converted into English units for inclusion in this report. No Design/Build or Lump Sum projects were bid this quarter.